

GUERRERO

**---RED FEDERAL LIBRE---**

1	ACAPULCO - ZIHUATANEJO	MEX-200
2	CD. ALTAMIRANO - T. C. (ZIHUATANEJO - LA MIRA)	MEX-134
3	CHILPANCINGO - ACAPULCO	MEX-095
4	CHILPANCINGO - CHICHIHUALCO	MEX-196
5	CHILPANCINGO - JILOTEPEC	MEX-093
6	CUERNAVACA - CHILPANCINGO	MEX-095
7	ENT. ALPUYECA - GRUTAS DE CACAHUAMILPA	MEX-166
8	IGUALA - CD. ALTAMIRANO	MEX-051
9	LA SABANA - PUERTO MARQUES	MEX
10	LAS CRUCES - PINOTEPA NACIONAL	MEX-200
11	LIBRAMIENTO NORTE DE ACAPULCO	MEX
12	MILPILLAS - T. C. (ACAPULCO - ZIHUATANEJO)	MEX-196
13	RAMAL A AEROPUERTO ZIHUATANEJO	MEX
14	SAN JUAN DE LOS LLANOS - OMETEPEC	MEX
15	TIERRA COLORADA - CRUZ GRANDE	MEX-198
16	TOLUCA - CD. ALTAMIRANO	MEX-134
17	ZIHUATANEJO - LA MIRA	MEX-200

**---RED FEDERAL DE CUOTA---**

18	CUERNAVACA - ACAPULCO (CUOTA)	MEX-095D
19	ENT. URUAPAN - LAZARO CARDENAS (CUOTA)	MEX-037D
20	LIBRAMIENTO DE TECPAN (CUOTA)	MEX-200D
21	PUENTE DE IXTLA - IGUALA (CUOTA)	MEX-D
22	ZACAPALCO - TAXCO (CUOTA)	MEX-D

**---RED ESTATAL LIBRE---**

23	ACAPULCO - AEROPUERTO ACAPULCO	GRO
24	ENT. POTRERO - LOMAS DE CHAPULTEPEC	GRO
25	PIE DE LA CUESTA - BARRA DE COYUCA	GRO
26	RAMAL A COCULA	GRO
27	T. C. (IGUALA - CHILPANCINGO) - ATENANGO DEL RIO	GRO-001
28	TAXCO - IXCATEOPAN	GRO
29	TEOLOAPAN - APAXTLA DE CASTREJON	GRO

**---CARRETERAS INTEGRADAS POR TRAMOS FEDERALES Y ESTATALES---**

30	TOLUCA - AXIXINTLA	EM-MEX-055
----	--------------------	------------

# 12 GUERRERO

SECRETARÍA DE COMUNICACIONES Y TRANSPORTES  
DIRECCIÓN GENERAL DE SERVICIOS TÉCNICOS



GUERRERO

1 CARR: ACAPULCO - ZIHUATANEJO

CLAVE: 12072

RUTA: MEX-200

AÑO: 2010

LUGAR	ESTACION				CLASIFICACION VEHICULAR EN PORCIENTO								COORDENADAS						
	KM	TE	SC	TDPA	A	B	C2	C3	T3S2	T3S3	T3S2R4	OTROS	A	B	C	K'	D	LATITUD	LONGITUD
ACAPULCO	0.00																		
T. IZQ. PIE DE LA CUESTA	10.37	1	0	17766	89.9	6.0	3.7	0.3	0.1	0.0	0.0	0.0	89.9	6.0	4.1	0.062	0.507	16.896393	-99.960742
T. IZQ. PIE DE LA CUESTA	10.37	3	0	15752	89.3	6.7	3.6	0.3	0.1	0.0	0.0	0.0	89.3	6.7	4.0	0.070	0.502	16.907278	-99.962272
T. DER. LIBRAMIENTO DE ACAPULCO	21.37	3	0	7359	90.2	5.9	3.5	0.3	0.1	0.0	0.0	0.0	90.2	5.9	3.9	0.069	0.506	16.966150	-99.999746
COYUCA DE BENITEZ	33.60	3	0	7363	88.2	4.0	4.9	0.9	0.7	0.6	0.7	0.0	88.2	4.0	7.8	0.069	0.501	17.010037	-100.097921
T. DER. ATOYAC DE ALVAREZ	77.85	3	0	8399	88.8	3.7	4.6	0.9	0.7	0.6	0.7	0.0	88.8	3.7	7.5	0.067	0.502	17.161199	-100.434820
TECPAN DE GALEANA	103.60	1	0	5462	88.5	4.0	4.6	0.9	0.7	0.6	0.7	0.0	88.5	4.0	7.5	0.066	0.501	17.202497	-100.627859
TECPAN DE GALEANA	103.60	3	0	5658	88.4	4.1	4.6	0.9	0.7	0.6	0.7	0.0	88.4	4.1	7.5	0.066	0.500	17.236099	-100.627468
PAPANOA	162.25	1	0	4243	88.2	4.1	4.6	1.0	0.7	0.6	0.8	0.0	88.2	4.1	7.7	0.076	0.500	17.318869	-101.044915
PETATLAN	206.30	1	0	4560	88.5	3.8	4.8	0.9	0.7	0.6	0.7	0.0	88.5	3.8	7.7	0.068	0.502	17.529245	-101.261353
ZIHUATANEJO	242.90	1	1	6427	88.5	3.8	4.8	0.9	0.7	0.6	0.7	0.0	88.5	3.8	7.7	0.061	0.501	17.646418	-101.520824
ZIHUATANEJO	242.90	1	2	6397	88.6	3.9	4.6	0.9	0.7	0.6	0.7	0.0	88.6	3.9	7.5	0.067	0.501	17.646418	-101.520824

2 CARR: CD. ALTAMIRANO - T. C. (ZIHUATANEJO - LA MIRA)

CLAVE: 12422

RUTA: MEX-134

AÑO: 2010

LUGAR	ESTACION				CLASIFICACION VEHICULAR EN PORCIENTO								COORDENADAS						
	KM	TE	SC	TDPA	A	B	C2	C3	T3S2	T3S3	T3S2R4	OTROS	A	B	C	K'	D	LATITUD	LONGITUD
CD. ALTAMIRANO	0.00	3	1	8802	83.1	3.7	3.5	3.7	2.5	1.9	1.3	0.3	83.1	3.7	13.2	0.062	0.501	18.335654	-100.686131
CD. ALTAMIRANO	0.00	3	2	8771	82.8	3.5	3.2	3.8	2.7	2.0	1.5	0.5	82.8	3.5	13.7	0.063	0.501	18.335654	-100.686131
T. DER. ZIRANDARO	15.00	3	0	2319	87.9	3.5	3.3	1.7	1.0	1.3	0.7	0.6	87.9	3.5	8.6	0.058	0.505	18.317415	-100.786220
T. C. ZIHUATANEJO - LA MIRA	185.30	1	0	1161	83.6	4.3	3.0	3.0	2.3	1.8	1.3	0.7	83.6	4.3	12.1	0.066	0.505	17.732332	-101.603395

3 CARR: CHILPANCINGO - ACAPULCO

CLAVE: 12045

RUTA: MEX-095

AÑO: 2010

LUGAR	ESTACION				CLASIFICACION VEHICULAR EN PORCIENTO								COORDENADAS						
	KM	TE	SC	TDPA	A	B	C2	C3	T3S2	T3S3	T3S2R4	OTROS	A	B	C	K'	D	LATITUD	LONGITUD
CHILPANCINGO	0.00																		
T. C. CUERNAVACA - ACAPULCO (CUOTA)	4.20	1	1	13824	88.1	0.8	6.4	2.3	1.3	1.0	0.1	0.0	88.1	0.8	11.1	0.066	0.504	17.523824	-99.487122
T. C. CUERNAVACA - ACAPULCO (CUOTA)	4.20	1	2	13593	88.9	0.8	5.8	2.2	1.2	1.0	0.1	0.0	88.9	0.8	10.3	0.062	0.504	17.523824	-99.487122
T. C. CUERNAVACA - ACAPULCO (CUOTA)	4.20	3	0	17104	88.5	0.8	6.1	2.2	1.3	1.0	0.1	0.0	88.5	0.8	10.7	0.064	0.500	17.503330	-99.471559
PETAQUILLAS	12.01	1	1	7042	88.4	0.8	6.2	2.2	1.3	1.0	0.1	0.0	88.4	0.8	10.8	0.070	0.509	17.492111	-99.463227
PETAQUILLAS	12.01	1	2	7008	88.6	0.9	5.9	2.2	1.3	1.0	0.1	0.0	88.6	0.9	10.5	0.071	0.509	17.492111	-99.463227
PETAQUILLAS	12.01	3	0	6624	89.2	0.8	5.6	2.0	1.3	1.0	0.1	0.0	89.2	0.8	10.0	0.061	0.510	17.469990	-99.456073
EL OCOTITO	50.68	1	0	5609	89.2	0.8	5.6	2.1	1.2	1.0	0.1	0.0	89.2	0.8	10.0	0.071	0.502	17.252870	-99.507837
EL OCOTITO	50.68	3	0	5895	88.6	0.8	6.2	2.1	1.2	1.0	0.1	0.0	88.6	0.8	10.6	0.059	0.500	17.238018	-99.515583

GUERRERO

3 CARR: CHILPANCINGO - ACAPULCO

CLAVE: 12045

RUTA: MEX-095

AÑO: 2010

LUGAR	ESTACION				CLASIFICACION VEHICULAR EN PORCIENTO								COORDENADAS						
	KM	TE	SC	TDPA	A	B	C2	C3	T3S2	T3S3	T3S2R4	OTROS	A	B	C	K'	D	LATITUD	LONGITUD
T. IZQ. TIERRA COLORADA INICIA	61.18	1	0	5822	88.0	0.8	6.5	2.2	1.3	1.1	0.1	0.0	88.0	0.8	11.2	0.059	0.502	17.176259	-99.519583
T. IZQ. TIERRA COLORADA TERMINA	65.14	3	0	5408	89.3	0.8	5.7	2.0	1.2	0.9	0.1	0.0	89.3	0.8	9.9	0.065	0.506	17.171427	-99.543647
X. C. CUERNAVACA - ACAPULCO (CUOTA)	70.10	3	0	4326	88.2	0.9	6.2	2.1	1.4	1.1	0.1	0.0	88.2	0.9	10.9	0.065	0.507	17.180356	-99.572258
T. DER. PABLO GALEANA	88.15	3	0	4316	88.2	0.8	6.2	2.3	1.3	1.1	0.1	0.0	88.2	0.8	11.0	0.065	0.501	17.117410	-99.700192
T. DER. LIBRAMIENTO NORTE DE ACAPULCO	112.80	1	0	10225	89.0	0.8	5.7	2.1	1.3	1.0	0.1	0.0	89.0	0.8	10.2	0.070	0.506	16.980088	-99.812152
T. DER. LIBRAMIENTO NORTE DE ACAPULCO ACAPULCO	112.80 132.67	3	0	13328	89.0	0.8	5.7	2.1	1.3	1.0	0.1	0.0	89.0	0.8	10.2	0.058	0.508	16.966461	-99.810921

4 CARR: CHILPANCINGO - CHICHIHUALCO

CLAVE: 12426

RUTA: MEX-196

AÑO: 2010

LUGAR	ESTACION				CLASIFICACION VEHICULAR EN PORCIENTO								COORDENADAS						
	KM	TE	SC	TDPA	A	B	C2	C3	T3S2	T3S3	T3S2R4	OTROS	A	B	C	K'	D	LATITUD	LONGITUD
T. C. CUERNAVACA - CHILPANCINGO	0.00	3	0	2973	92.8	3.0	0.4	1.3	0.6	0.2	0.8	0.9	92.8	3.0	4.2	0.062	0.500	17.590770	-99.518406
T. DER. EL PALMAR	15.10	1	0	1200	93.1	2.6	0.7	1.2	0.5	0.7	0.6	0.6	93.1	2.6	4.3	0.070	0.506	17.626950	-99.599601
CHICHIHUALCO	26.30	1	0	1052	92.2	3.2	0.8	1.3	0.7	0.7	0.6	0.5	92.2	3.2	4.6	0.063	0.506	17.635884	-99.662812

5 CARR: CHILPANCINGO - JILOTEPEC

CLAVE: 12002

RUTA: MEX-093

AÑO: 2010

LUGAR	ESTACION				CLASIFICACION VEHICULAR EN PORCIENTO								COORDENADAS						
	KM	TE	SC	TDPA	A	B	C2	C3	T3S2	T3S3	T3S2R4	OTROS	A	B	C	K'	D	LATITUD	LONGITUD
CHILPANCINGO	0.00	3	0	6564	88.3	2.6	1.9	1.9	2.8	1.0	1.0	0.5	88.3	2.6	9.1	0.066	0.517	17.550581	-99.485783
T. DER. TIXTLA DE GUERRERO	16.30	3	0	6308	89.2	2.5	1.6	1.8	2.4	0.9	1.2	0.4	89.2	2.5	8.3	0.071	0.514	17.576868	-99.394725
T. IZQ. ALMOLONGA	28.20	3	0	3327	88.3	2.6	2.1	1.8	2.2	1.2	1.4	0.4	88.3	2.6	9.1	0.075	0.502	17.605210	-99.310795
CHILAPA DE ALVAREZ	53.62	3	0	4654	88.1	2.6	2.2	1.7	2.6	1.1	1.0	0.7	88.1	2.6	9.3	0.068	0.504	17.595497	-99.154297
TLAPA DE COMONFORT	178.50	1	0	2773	84.1	3.4	4.4	1.8	2.8	1.1	1.6	0.8	84.1	3.4	12.5	0.076	0.511	17.539295	-98.598800
HUAMUXTITLAN	200.63	1	0	2722	84.6	3.6	4.7	1.4	2.8	0.6	1.4	0.9	84.6	3.6	11.8	0.076	0.505	17.792720	-98.561644
XOCHIHUEHUETLAN	216.80	1	0	2399	86.7	3.4	4.3	1.7	1.1	1.0	1.1	0.7	86.7	3.4	9.9	0.081	0.503	17.903302	-98.495456
JILOTEPEC	235.00	1	0	1728	84.5	4.2	4.0	1.9	1.5	1.5	1.6	0.8	84.5	4.2	11.3	0.069	0.500	17.964118	-98.478500

6 CARR: CUERNAVACA - CHILPANCINGO

CLAVE: 00042

RUTA: MEX-095

AÑO: 2010

LUGAR	ESTACION				CLASIFICACION VEHICULAR EN PORCIENTO								COORDENADAS						
	KM	TE	SC	TDPA	A	B	C2	C3	T3S2	T3S3	T3S2R4	OTROS	A	B	C	K'	D	LATITUD	LONGITUD
CUERNAVACA	0.00																		
TEMIXCO	9.80	1	0	20428	89.1	3.4	5.2	0.8	0.9	0.4	0.2	0.0	89.1	3.4	7.5	0.070	0.509	18.871324	-99.226718

GUERRERO

6 CARR: CUERNAVACA - CHILPANCINGO

CLAVE: 00042

RUTA: MEX-095

AÑO: 2010

LUGAR	ESTACION				CLASIFICACION VEHICULAR EN PORCIENTO								COORDENADAS						
	KM	TE	SC	TDPA	A	B	C2	C3	T3S2	T3S3	T3S2R4	OTROS	A	B	C	K'	D	LATITUD	LONGITUD
TEMIXCO	9.80	3	1	12631	89.1	3.5	5.1	0.8	0.9	0.4	0.2	0.0	89.1	3.5	7.4	0.059	0.505	18.849120	-99.223187
TEMIXCO	9.80	3	2	12878	89.5	3.3	5.1	0.7	0.8	0.4	0.2	0.0	89.5	3.3	7.2	0.060	0.505	18.849120	-99.223187
ACATLIPA	12.43	1	1	10751	89.0	3.5	5.3	0.8	0.8	0.4	0.2	0.0	89.0	3.5	7.5	0.072	0.504	18.828887	-99.227954
ACATLIPA	12.43	1	2	10924	88.7	3.6	5.4	0.8	0.9	0.4	0.2	0.0	88.7	3.6	7.7	0.073	0.504	18.828887	-99.227954
ACATLIPA	12.43	3	1	7289	89.2	3.3	5.3	0.8	0.8	0.4	0.2	0.0	89.2	3.3	7.5	0.069	0.507	18.815952	-99.233086
ACATLIPA	12.43	3	2	7484	88.2	3.7	5.7	0.8	1.0	0.4	0.2	0.0	88.2	3.7	8.1	0.072	0.507	18.815952	-99.233086
T. IZQ. XOCHITEPEC (REAL DEL PUENTE)	16.05	3	1	5250	89.5	3.1	5.3	0.7	0.8	0.4	0.2	0.0	89.5	3.1	7.4	0.068	0.513	18.797050	-99.241180
T. IZQ. XOCHITEPEC (REAL DEL PUENTE)	16.05	3	2	5528	88.9	3.5	5.2	0.9	0.9	0.4	0.2	0.0	88.9	3.5	7.6	0.060	0.513	18.797050	-99.241180
X. C. ALPUYECA - JOJUTLA	24.15	1	0	14385	89.1	3.5	5.1	0.8	0.9	0.4	0.2	0.0	89.1	3.5	7.4	0.068	0.502	18.735342	-99.258377
T. DER. COATETELCO	28.00	3	0	8670	89.6	3.2	4.9	0.8	0.9	0.4	0.2	0.0	89.6	3.2	7.2	0.060	0.501	18.702953	-99.276855
T. DER. MICHAPA	44.36	1	0	6755	76.9	2.6	6.7	5.9	3.9	2.1	1.8	0.1	76.9	2.6	20.5	0.069	0.502	18.612063	-99.356120
T. IZQ. CUERNAVACA - IGUALA (CUOTA)	46.93	1	0	6564	77.1	2.6	7.0	5.6	3.7	2.2	1.7	0.1	77.1	2.6	20.3	0.056	0.503	18.604934	-99.377081
T. IZQ. CUERNAVACA - IGUALA (CUOTA)	46.93	3	0	4873	77.7	2.5	6.7	5.7	3.5	2.2	1.6	0.1	77.7	2.5	19.8	0.058	0.505	18.603195	-99.381806
HUAJINTLA	52.00	3	0	3737	77.8	2.4	6.7	5.5	3.5	2.3	1.7	0.1	77.8	2.4	19.8	0.066	0.509	18.612854	-99.430725
LIM. EDOS. TERM. MOR. PPIA. GRO.	57.10																		
T. DER. IXTAPAN DE LA SAL (AXIXINTLA)	63.47	1	0	2491	77.0	2.6	6.9	5.6	3.6	2.4	1.8	0.1	77.0	2.6	20.4	0.064	0.505	18.606906	-99.498287
TAXCO	89.90	3	0	5610	77.4	2.5	6.9	5.6	3.5	2.3	1.7	0.1	77.4	2.5	20.1	0.074	0.503	18.540564	-99.612106
IGUALA	119.63	1	0	6790	78.1	2.5	6.4	5.6	3.6	2.1	1.6	0.1	78.1	2.5	19.4	0.061	0.507	18.371823	-99.529148
T. IZQ. PUENTE DE IXTLA	123.98	3	0	13030	77.6	2.5	6.6	5.8	3.4	2.2	1.8	0.1	77.6	2.5	19.9	0.061	0.501	18.320207	-99.499066
T. DER. SABANA GRANDE	144.95	1	0	8081	77.8	2.5	6.7	5.8	3.3	2.2	1.6	0.1	77.8	2.5	19.7	0.063	0.501	18.163507	-99.552389
T. DER. TECUESCONTITLAN	146.78	1	0	10335	77.6	2.5	6.6	5.8	3.6	2.1	1.7	0.1	77.6	2.5	19.9	0.067	0.500	18.131081	-99.555636
T. DER. MEZCALA	173.14	1	0	6921	77.0	2.6	6.6	5.8	3.9	2.3	1.7	0.1	77.0	2.6	20.4	0.064	0.501	17.944113	-99.586821
T. DER. FILO DE CABALLO	189.89	3	0	7444	77.6	2.5	6.4	5.9	3.7	2.1	1.7	0.1	77.6	2.5	19.9	0.066	0.501	17.794934	-99.566877
CHILPANCINGO	223.70	1	1	10180	77.9	2.5	6.5	5.8	3.4	2.1	1.7	0.1	77.9	2.5	19.6	0.078	0.501	17.585264	-99.516042
CHILPANCINGO	223.70	1	2	10223	77.3	2.6	6.4	5.8	3.6	2.4	1.8	0.1	77.3	2.6	20.1	0.074	0.501	17.585264	-99.516042

7 CARR: ENT. ALPUYECA - GRUTAS DE CACAHUAMILPA

CLAVE: 00421

RUTA: MEX-166

AÑO: 2010

LUGAR	ESTACION				CLASIFICACION VEHICULAR EN PORCIENTO								COORDENADAS						
	KM	TE	SC	TDPA	A	B	C2	C3	T3S2	T3S3	T3S2R4	OTROS	A	B	C	K'	D	LATITUD	LONGITUD
T. C. CUERNAVACA - CHILPANCINGO	0.00	3	0	6282	88.4	4.1	2.2	0.7	3.2	0.4	0.5	0.5	88.4	4.1	7.5	0.063	0.500	18.748404	-99.257538
MIACATLAN	14.95	3	1	4436	90.3	4.1	2.2	0.9	1.5	0.1	0.6	0.3	90.3	4.1	5.6	0.083	0.516	18.755375	-99.363845
MIACATLAN	14.95	3	2	4158	88.4	4.0	2.3	0.8	3.4	0.2	0.5	0.4	88.4	4.0	7.6	0.081	0.516	18.755375	-99.363845
MAZATEPEC	18.28	3	0	8163	86.9	3.9	3.2	1.3	3.1	0.5	0.7	0.4	86.9	3.9	9.2	0.067	0.505	18.722790	-99.368199
TETECALA	25.05	3	0	6068	85.2	3.2	6.0	1.4	2.6	0.1	1.0	0.5	85.2	3.2	11.6	0.066	0.502	18.728867	-99.405101

GUERRERO

7 CARR: ENT. ALPUYECA - GRUTAS DE CACAHUAMILPA

CLAVE: 00421

RUTA: MEX-166

AÑO: 2010

LUGAR	ESTACION				CLASIFICACION VEHICULAR EN PORCIENTO								COORDENADAS						
	KM	TE	SC	TDPA	A	B	C2	C3	T3S2	T3S3	T3S2R4	OTROS	A	B	C	K'	D	LATITUD	LONGITUD
COATLAN DEL RIO	29.80	3	0	4170	93.3	2.8	1.7	0.6	0.4	0.3	0.4	0.5	93.3	2.8	3.9	0.084	0.502	18.748130	-99.444152
MICHAPA	41.26	1	0	2437	86.3	3.1	4.6	1.5	2.7	0.2	1.2	0.4	86.3	3.1	10.6	0.071	0.516	18.708475	-99.473687
LIM. EDOS. TERM. MOR. PPIA. GRO.	42.40																		
T. C. TOLUCA - AXIXINTLA	48.65																		

8 CARR: IGUALA - CD. ALTAMIRANO

CLAVE: 12195

RUTA: MEX-051

AÑO: 2010

LUGAR	ESTACION				CLASIFICACION VEHICULAR EN PORCIENTO								COORDENADAS						
	KM	TE	SC	TDPA	A	B	C2	C3	T3S2	T3S3	T3S2R4	OTROS	A	B	C	K'	D	LATITUD	LONGITUD
IGUALA	0.00																		
T. IZQ. COCULA	9.40	1	0	6630	86.9	3.4	2.7	0.8	4.0	0.6	1.3	0.3	86.9	3.4	9.7	0.067	0.511	18.327532	-99.596550
T. IZQ. COCULA	9.40	3	0	3802	88.8	3.1	2.5	1.4	2.0	1.0	0.5	0.7	88.8	3.1	8.1	0.064	0.500	18.322336	-99.608192
T. IZQ. TELOLOAPAN	63.99	1	0	3232	88.7	3.0	2.2	1.2	3.2	0.3	0.9	0.5	88.7	3.0	8.3	0.092	0.503	18.354163	-99.847604
T. IZQ. ALMOLOYA	116.60	1	0	1418	86.1	2.7	3.3	2.4	2.7	1.4	0.7	0.7	86.1	2.7	11.2	0.060	0.516	18.375552	-100.172728
T. IZQ. ARCELIA	131.98	3	0	3856	87.6	3.7	3.4	0.9	3.0	0.6	0.5	0.3	87.6	3.7	8.7	0.075	0.512	18.327962	-100.295628
CD. ALTAMIRANO	184.55	1	1	5702	89.4	2.4	1.9	0.6	3.8	0.5	0.7	0.7	89.4	2.4	8.2	0.065	0.503	18.348098	-100.658936
CD. ALTAMIRANO	184.55	1	2	5626	88.8	2.5	2.1	1.0	4.3	0.4	0.5	0.4	88.8	2.5	8.7	0.063	0.503	18.348098	-100.658936

9 CARR: LA SABANA - PUERTO MARQUES

CLAVE: 12291

RUTA: MEX

AÑO: 2010

LUGAR	ESTACION				CLASIFICACION VEHICULAR EN PORCIENTO								COORDENADAS						
	KM	TE	SC	TDPA	A	B	C2	C3	T3S2	T3S3	T3S2R4	OTROS	A	B	C	K'	D	LATITUD	LONGITUD
T. C. LAS CRUCES - PINOTEPA NACIONAL	0.00	3	1	11637	79.1	7.6	6.4	3.9	1.1	0.6	1.1	0.2	79.1	7.6	13.3	0.071	0.503	16.837200	-99.813834
T. C. LAS CRUCES - PINOTEPA NACIONAL	0.00	3	2	11509	78.7	7.4	6.3	4.2	1.2	0.7	1.2	0.3	78.7	7.4	13.9	0.079	0.503	16.837200	-99.813834
X. C. ACAPULCO - AEROPUERTO ACAPULCO	7.20	1	1	9082	78.0	6.9	4.9	4.4	2.5	1.7	1.3	0.3	78.0	6.9	15.1	0.082	0.516	16.837200	-99.813834
X. C. ACAPULCO - AEROPUERTO ACAPULCO	7.20	1	2	8530	77.4	6.8	5.1	4.6	2.3	1.8	1.6	0.4	77.4	6.8	15.8	0.090	0.516	16.808767	-99.820934
PUERTO MARQUES	8.70																		

10 CARR: LAS CRUCES - PINOTEPA NACIONAL

CLAVE: 00073

RUTA: MEX-200

AÑO: 2010

LUGAR	ESTACION				CLASIFICACION VEHICULAR EN PORCIENTO								COORDENADAS						
	KM	TE	SC	TDPA	A	B	C2	C3	T3S2	T3S3	T3S2R4	OTROS	A	B	C	K'	D	LATITUD	LONGITUD
T. C. CHILPANCINGO - ACAPULCO	0.00	3	1	16785	75.1	6.0	3.0	2.0	4.4	4.2	4.7	0.6	75.1	6.0	18.9	0.062	0.520	16.885646	-99.832875
T. C. CHILPANCINGO - ACAPULCO	0.00	3	2	15484	76.5	6.1	3.3	1.8	4.0	3.1	4.5	0.7	76.5	6.1	17.4	0.066	0.520	16.885646	-99.832875
T. DER. PUERTO MARQUES	4.62	1	1	16669	79.9	4.8	3.5	2.1	3.0	3.3	2.7	0.7	79.9	4.8	15.3	0.066	0.501	16.865051	-99.810249

GUERRERO

10 CARR: LAS CRUCES - PINOTEPA NACIONAL

CLAVE: 00073

RUTA: MEX-200

AÑO: 2010

LUGAR	ESTACION				CLASIFICACION VEHICULAR EN PORCIENTO								COORDENADAS						
	KM	TE	SC	TDPA	A	B	C2	C3	T3S2	T3S3	T3S2R4	OTROS	A	B	C	K'	D	LATITUD	LONGITUD
T. DER. PUERTO MARQUES	4.62	1	2	16769	81.3	3.9	2.9	1.7	3.5	4.0	2.1	0.6	81.3	3.9	14.8	0.061	0.501	16.865051	-99.810249
T. DER. PUERTO MARQUES	4.62	3	0	9546	81.8	3.9	2.6	1.8	3.0	3.8	2.3	0.8	81.8	3.9	14.3	0.078	0.501	16.851991	-99.794580
SAN MARCOS	58.90	1	0	8395	80.6	3.7	4.3	1.3	3.1	3.6	2.7	0.7	80.6	3.7	15.7	0.069	0.502	16.783574	-99.398298
NEXPA	84.96	3	0	7400	83.4	3.6	3.9	1.8	1.5	3.2	1.9	0.7	83.4	3.6	13.0	0.067	0.502	16.768509	-99.185527
T. IZQ. COPALA (1° ACCESO)	117.50	1	0	4358	81.3	3.4	4.2	2.8	3.8	1.5	2.5	0.5	81.3	3.4	15.3	0.071	0.501	16.606889	-98.985093
T. IZQ. COPALA (1° ACCESO)	117.50	3	0	4764	82.5	3.1	3.9	2.9	4.3	1.0	1.5	0.8	82.5	3.1	14.4	0.070	0.500	16.604804	-98.980931
T. IZQ. OMETEPEC	175.88	1	0	3662	84.6	3.3	3.6	2.7	2.9	1.0	1.1	0.8	84.6	3.3	12.1	0.081	0.500	16.655291	-98.503135
CUAJINICUILAPA	200.60	3	0	4760	82.8	4.3	4.1	2.5	2.9	1.1	1.6	0.7	82.8	4.3	12.9	0.068	0.501	16.465657	-98.400795
LIM. EDOS. TERM. GRO. PPIA. OAX.	207.80																		
T. IZQ. SAN PEDRO ORIZABA	215.00	3	0	1508	86.3	2.3	2.3	2.5	2.8	2.1	1.0	0.7	86.3	2.3	11.4	0.084	0.502	16.442490	-98.341614
T. IZQ. TLAXIACO	245.47	1	0	2592	84.4	2.5	3.5	2.5	2.9	2.0	1.2	1.0	84.4	2.5	13.1	0.091	0.501	16.382363	-98.099214
T. IZQ. TLAXIACO	245.47	3	0	4739	84.7	2.6	3.4	1.3	2.8	2.7	1.9	0.6	84.7	2.6	12.7	0.080	0.502	16.370292	-98.088645
PINOTEPA NACIONAL	252.50																		

11 CARR: LIBRAMIENTO NORTE DE ACAPULCO

CLAVE: 12421

RUTA: MEX

AÑO: 2010

LUGAR	ESTACION				CLASIFICACION VEHICULAR EN PORCIENTO								COORDENADAS						
	KM	TE	SC	TDPA	A	B	C2	C3	T3S2	T3S3	T3S2R4	OTROS	A	B	C	K'	D	LATITUD	LONGITUD
T. C. CHILPANCINGO - ACAPULCO	0.00	3	0	4130	83.4	5.1	4.7	2.8	1.5	1.3	1.0	0.2	83.4	5.1	11.5	0.082	0.515	16.982174	-99.820422
T. DER. PELILLO	6.40	3	0	2771	85.4	3.9	3.5	2.8	1.2	1.1	1.5	0.6	85.4	3.9	10.7	0.073	0.504	16.980134	-99.866814
T. C. ACAPULCO - ZIHUATANEJO	21.10	1	0	4021	84.8	4.2	3.3	2.7	1.5	2.0	1.2	0.3	84.8	4.2	11.0	0.064	0.500	16.968630	-99.967505

12 CARR: MILPILLAS - T. C. (ACAPULCO - ZIHUATANEJO)

CLAVE: 12012

RUTA: MEX-196

AÑO: 2010

LUGAR	ESTACION				CLASIFICACION VEHICULAR EN PORCIENTO								COORDENADAS						
	KM	TE	SC	TDPA	A	B	C2	C3	T3S2	T3S3	T3S2R4	OTROS	A	B	C	K'	D	LATITUD	LONGITUD
T. C. CUERNAVACA - CHILPANCINGO	0.00	3	0	948	90.3	2.4	1.8	1.9	1.1	1.0	0.6	0.9	90.3	2.4	7.3	0.069	0.530	17.799330	-99.565784
LOS MORROS	45.07	1	0	641	88.0	4.2	2.4	2.0	1.2	0.7	0.6	0.9	88.0	4.2	7.8	0.084	0.524	17.693987	-99.802467
ATOYAC DE ALVAREZ	233.50	1	0	761	91.8	3.1	1.2	0.8	1.0	0.9	0.7	0.5	91.8	3.1	5.1	0.105	0.501	17.219698	-100.422320
T. C. ACAPULCO - ZIHUATANEJO	237.00	1	0	7721	91.2	3.8	1.6	0.5	0.8	1.0	0.5	0.6	91.2	3.8	5.0	0.067	0.503	17.165750	-100.433678



GUERRERO

13 CARR: RAMAL A AEROPUERTO ZIHUATANEJO

CLAVE: 12423

RUTA: MEX

AÑO: 2010

LUGAR	ESTACION				CLASIFICACION VEHICULAR EN PORCIENTO								COORDENADAS						
	KM	TE	SC	TDPA	A	B	C2	C3	T3S2	T3S3	T3S2R4	OTROS	A	B	C	K'	D	LATITUD	LONGITUD
T. C. ACAPULCO - ZIHUATANEJO	0.00	3	0	3173	90.8	4.0	1.4	1.0	1.5	0.3	0.4	0.6	90.8	4.0	5.2	0.068	0.500	17.622849	-101.459416
AEROPUERTO	2.00																		

14 CARR: SAN JUAN DE LOS LLANOS - OMETEPEC

CLAVE: 12011

RUTA: MEX

AÑO: 2010

LUGAR	ESTACION				CLASIFICACION VEHICULAR EN PORCIENTO								COORDENADAS						
	KM	TE	SC	TDPA	A	B	C2	C3	T3S2	T3S3	T3S2R4	OTROS	A	B	C	K'	D	LATITUD	LONGITUD
T. C. LAS CRUCES - PINOTEPA NACIONAL	0.00	3	0	2378	87.4	2.5	3.1	1.2	2.2	1.6	1.5	0.5	87.4	2.5	10.1	0.083	0.501	16.660473	-98.498226
OMETEPEC	15.94	1	0	2005	87.7	2.6	3.5	1.5	1.8	1.3	1.1	0.5	87.7	2.6	9.7	0.084	0.503	16.688735	-98.435064

15 CARR: TIERRA COLORADA - CRUZ GRANDE

CLAVE: 12420

RUTA: MEX-198

AÑO: 2010

LUGAR	ESTACION				CLASIFICACION VEHICULAR EN PORCIENTO								COORDENADAS						
	KM	TE	SC	TDPA	A	B	C2	C3	T3S2	T3S3	T3S2R4	OTROS	A	B	C	K'	D	LATITUD	LONGITUD
TIERRA COLORADA	0.00	3	0	2920	88.5	3.8	2.2	2.6	1.1	0.6	0.5	0.7	88.5	3.8	7.7	0.070	0.511	17.142880	-99.529249
TECOANAPA	61.00	1	0	2100	89.2	4.2	2.5	1.4	1.0	0.6	0.6	0.5	89.2	4.2	6.6	0.088	0.503	16.985746	-99.265015
AYUTLA DE LOS LIBRES	82.00	1	0	3863	88.0	4.4	2.7	1.4	1.6	0.9	0.5	0.5	88.0	4.4	7.6	0.073	0.502	16.977131	-99.105890
AYUTLA DE LOS LIBRES	82.00	3	0	2743	86.9	4.5	2.8	2.0	1.8	0.8	0.6	0.6	86.9	4.5	8.6	0.065	0.501	16.951040	-99.102871
CRUZ GRANDE	113.80	1	0	2247	86.0	4.9	2.5	2.3	2.1	1.2	0.5	0.5	86.0	4.9	9.1	0.059	0.516	16.733999	-99.128942
T. C. LAS CRUCES - PINOTEPA NACIONAL	114.80																		

16 CARR: TOLUCA - CD. ALTAMIRANO

CLAVE: 00020

RUTA: MEX-134

AÑO: 2010

LUGAR	ESTACION				CLASIFICACION VEHICULAR EN PORCIENTO								COORDENADAS						
	KM	TE	SC	TDPA	A	B	C2	C3	T3S2	T3S3	T3S2R4	OTROS	A	B	C	K'	D	LATITUD	LONGITUD
T. C. TOLUCA - AXIXINTLA	0.00																		
T. IZQ. CAPULTITLAN	1.78	3	1	7731	77.3	2.8	3.8	2.5	7.9	1.5	3.6	0.6	77.3	2.8	19.9	0.080	0.504	19.256430	-99.683508
T. IZQ. CAPULTITLAN	1.78	3	2	7841	77.9	2.4	3.7	2.6	8.0	1.4	3.7	0.3	77.9	2.4	19.7	0.081	0.504	19.256417	-99.683521
T. DER. ZINACATEPEC	10.21	3	0	16404	82.3	2.0	4.5	1.2	7.3	1.6	0.6	0.5	82.3	2.0	15.7	0.067	0.501	19.251464	-99.751868
T. IZQ. SULTEPEC	18.72	3	0	5839	83.0	2.3	5.0	1.7	2.3	2.0	3.3	0.4	83.0	2.3	14.7	0.063	0.503	19.213060	-99.808625
T. DER. VALLE DE BRAVO	52.00	3	0	5365	79.3	5.4	6.3	3.9	2.5	1.6	0.4	0.6	79.3	5.4	15.3	0.068	0.504	19.147639	-99.919722
TEMASCALTEPEC	68.76	1	0	3750	82.9	4.0	4.2	3.3	2.9	1.3	1.2	0.2	82.9	4.0	13.1	0.084	0.509	19.046738	-100.052974
TEMASCALTEPEC	68.76	3	0	4282	80.9	3.9	4.7	3.0	3.9	1.8	1.3	0.5	80.9	3.9	15.2	0.078	0.504	19.041248	-100.040966
T. IZQ. SAN DIEGO CUENTLA	84.34	3	0	3851	82.3	4.4	4.7	2.5	3.0	1.6	1.2	0.3	82.3	4.4	13.3	0.079	0.510	18.964391	-100.084356
TEJUPILCO DE HIDALGO	100.76	1	0	3724	80.0	6.3	4.9	2.8	2.8	1.8	0.9	0.5	80.0	6.3	13.7	0.076	0.501	18.923180	-100.145638

GUERRERO

16 CARR: TOLUCA - CD. ALTAMIRANO

CLAVE: 00020

RUTA: MEX-134

AÑO: 2010

LUGAR	ESTACION				CLASIFICACION VEHICULAR EN PORCIENTO								COORDENADAS						
	KM	TE	SC	TDPA	A	B	C2	C3	T3S2	T3S3	T3S2R4	OTROS	A	B	C	K'	D	LATITUD	LONGITUD
TEJUPILCO DE HIDALGO	100.76	3	0	3808	78.6	5.9	5.5	3.3	2.9	2.0	1.1	0.7	78.6	5.9	15.5	0.083	0.510	18.903273	-100.163124
CUADRILLA DE LOPEZ	113.20	3	0	2744	81.5	4.2	4.9	2.5	2.7	2.4	1.6	0.2	81.5	4.2	14.3	0.075	0.509	18.875234	-100.228242
T. IZQ. BEJUCOS	147.57	1	0	2345	79.8	5.1	5.7	3.3	2.5	1.8	1.1	0.7	79.8	5.1	15.1	0.085	0.502	18.784852	-100.421194
LIM. EDOS. TERM. MEX. PPIA. GRO.	148.00																		
CUTZAMALA	196.00	1	0	4334	84.3	4.0	4.9	1.7	1.7	1.9	1.0	0.5	84.3	4.0	11.7	0.067	0.501	18.488113	-100.578415
LIM. EDOS. TERM. GRO. PPIA. MICH.	201.00																		
LIM. EDOS. TERM. MICH. PPIA. GRO.	210.30																		
CD. ALTAMIRANO	216.00	1	0	5484	90.2	3.3	2.9	1.1	1.4	0.5	0.3	0.3	90.2	3.3	6.5	0.064	0.501	18.382654	-100.651043

17 CARR: ZIHUATANEJO - LA MIRA

CLAVE: 00121

RUTA: MEX-200

AÑO: 2010

LUGAR	ESTACION				CLASIFICACION VEHICULAR EN PORCIENTO								COORDENADAS						
	KM	TE	SC	TDPA	A	B	C2	C3	T3S2	T3S3	T3S2R4	OTROS	A	B	C	K'	D	LATITUD	LONGITUD
ZIHUATANEJO	0.00	3	1	10270	85.2	4.1	2.8	0.6	3.7	1.3	1.6	0.7	85.2	4.1	10.7	0.083	0.500	17.656692	-101.570776
ZIHUATANEJO	0.00	3	2	10265	86.3	4.0	2.5	0.4	3.2	1.2	1.7	0.7	86.3	4.0	9.7	0.085	0.500	17.656692	-101.570776
T. IZQ. IXTAPA ZIHUATANEJO	8.00	3	0	13049	80.7	4.9	6.8	1.8	2.0	1.9	1.2	0.7	80.7	4.9	14.4	0.070	0.503	17.679713	-101.602876
T. DER. CD. ALTAMIRANO	16.30	1	0	6062	81.3	4.3	6.2	2.0	2.5	2.1	1.1	0.5	81.3	4.3	14.4	0.076	0.514	17.726334	-101.603276
T. DER. CD. ALTAMIRANO	16.30	3	0	5711	84.1	4.5	5.1	2.4	1.5	1.0	1.0	0.4	84.1	4.5	11.4	0.072	0.501	17.729239	-101.608322
T. DER. LA UNION	52.00	3	0	3513	87.8	4.0	2.9	2.0	1.1	1.1	0.6	0.5	87.8	4.0	8.2	0.060	0.501	17.942453	-101.837409
ZACATULA	93.50	1	0	4307	88.6	4.2	2.7	1.6	0.9	1.0	0.5	0.5	88.6	4.2	7.2	0.076	0.503	18.003670	-102.174422
LIM. EDOS. TERM. GRO. PPIA. MICH.	102.30																		
LA VILLITA	103.80	3	0	4363	81.1	8.1	4.5	2.4	0.9	2.1	0.3	0.6	81.1	8.1	10.8	0.066	0.507	18.044258	-102.188530
GUACAMAYAS	107.00	1	0	2608	82.8	6.1	4.6	2.6	0.8	2.2	0.5	0.4	82.8	6.1	11.1	0.079	0.508	18.029282	-102.200473
T. IZQ. LAZARO CARDENAS	110.85	1	1	12999	82.1	6.3	3.7	1.1	4.0	2.0	0.6	0.2	82.1	6.3	11.6	0.057	0.504	17.999620	-102.221937
T. IZQ. LAZARO CARDENAS	110.85	1	2	12785	84.3	5.2	3.4	1.0	4.1	1.2	0.4	0.4	84.3	5.2	10.5	0.059	0.504	17.999620	-102.221937
LA MIRA	123.60	1	0	9062	82.2	5.1	3.0	3.0	4.7	1.1	0.5	0.4	82.2	5.1	12.7	0.077	0.501	18.028360	-102.312279

18 CARR: CUERNAVACA - ACAPULCO (CUOTA)

CLAVE: 00045

RUTA: MEX-095D

AÑO: 2010

LUGAR	ESTACION				CLASIFICACION VEHICULAR EN PORCIENTO								COORDENADAS						
	KM	TE	SC	TDPA	A	B	C2	C3	T3S2	T3S3	T3S2R4	OTROS	A	B	C	K'	D	LATITUD	LONGITUD
CUERNAVACA	0.00	3	1	29314	88.9	4.8	2.1	1.5	1.2	0.7	0.7	0.1	88.9	4.8	6.3	0.061	0.501	18.882486	-99.229665
CUERNAVACA	0.00	3	2	29171	89.2	4.5	2.2	1.4	1.2	0.7	0.7	0.1	89.2	4.5	6.3	0.062	0.501	18.882486	-99.229665
CASETA DE COBRO CENTRAL DE ABASTOS	4.00	1	0	44333	88.9	4.8	2.2	1.4	1.2	0.7	0.7	0.1	88.9	4.8	6.3			18.837505	-99.215412
CASETA DE COBRO AEROPUERTO	14.80	1	0	40022	88.2	5.2	2.2	1.4	1.3	0.8	0.8	0.1	88.2	5.2	6.6			18.802321	-99.221288

GUERRERO

18 CARR: CUERNAVACA - ACAPULCO (CUOTA)

CLAVE: 00045

RUTA: MEX-095D

AÑO: 2010

LUGAR	ESTACION				CLASIFICACION VEHICULAR EN PORCIENTO								COORDENADAS						
	KM	TE	SC	TDPA	A	B	C2	C3	T3S2	T3S3	T3S2R4	OTROS	A	B	C	K'	D	LATITUD	LONGITUD
T. DER. ACATLIPA	15.00	3	1	19043	88.2	5.3	2.1	1.4	1.3	0.8	0.8	0.1	88.2	5.3	6.5	0.075	0.507	18.844000	-99.218063
T. DER. ACATLIPA	15.00	3	2	18491	88.0	5.3	2.2	1.4	1.3	0.9	0.8	0.1	88.0	5.3	6.7	0.078	0.507	18.844000	-99.218063
CASETA DE COBRO ALPUYECA	24.95	1	1	9591	82.1	8.7	2.4	2.1	2.4	0.9	1.1	0.3	82.1	8.7	9.2	0.058	0.508	18.724591	-99.258258
CASETA DE COBRO ALPUYECA	24.95	1	2	9283	82.2	9.1	2.2	1.9	2.3	0.9	1.1	0.3	82.2	9.1	8.7	0.058	0.508	18.724591	-99.258258
CASETA DE COBRO ALPUYECA	24.95	2	0	18991	81.9	9.2	2.3	2.1	2.2	0.9	1.1	0.3	81.9	9.2	8.9			18.723677	-99.260113
CASETA DE COBRO ALPUYECA	24.95	3	1	6544	80.1	9.4	2.2	2.6	2.7	1.2	1.4	0.4	80.1	9.4	10.5	0.065	0.510	18.720405	-99.263787
CASETA DE COBRO ALPUYECA	24.95	3	2	6797	80.7	8.8	2.2	2.6	2.8	1.1	1.4	0.4	80.7	8.8	10.5	0.062	0.510	18.720405	-99.263787
LIM. EDOS. TERM. MOR. PPIA. GRO.	52.05																		
CASETA DE COBRO PASO MORELOS	89.43	1	1	3679	84.6	8.5	1.6	0.8	2.2	0.5	1.5	0.3	84.6	8.5	6.9	0.075	0.502	18.238236	-99.213922
CASETA DE COBRO PASO MORELOS	89.43	1	2	3705	83.8	9.0	1.7	0.9	2.3	0.5	1.5	0.3	83.8	9.0	7.2	0.073	0.502	18.238236	-99.213922
CASETA DE COBRO PASO MORELOS	89.43	2	0	7686	84.9	8.2	1.7	0.8	2.1	0.6	1.4	0.3	84.9	8.2	6.9			18.231549	-99.215620
CASETA DE COBRO PASO MORELOS	89.43	3	0	7377	84.7	8.4	1.6	0.8	2.1	0.6	1.5	0.3	84.7	8.4	6.9			18.231549	-99.215620
CASETA DE COBRO PALO BLANCO	199.77	1	1	4197	84.8	8.5	1.5	0.8	2.1	0.6	1.4	0.3	84.8	8.5	6.7	0.075	0.518	17.427336	-99.471077
CASETA DE COBRO PALO BLANCO	199.77	1	2	4187	84.8	8.4	1.5	0.8	2.1	0.6	1.5	0.3	84.8	8.4	6.8	0.073	0.518	17.427336	-99.471077
X. C. CHILPANCINGO - ACAPULCO (TIERRA COLORADA)	231.69	1	1	3819	84.4	8.7	1.6	0.8	2.1	0.5	1.5	0.4	84.4	8.7	6.9	0.064	0.562	17.182711	-99.551732
X. C. CHILPANCINGO - ACAPULCO (TIERRA COLORADA)	231.69	1	2	3747	83.3	9.7	1.7	0.8	2.0	0.5	1.6	0.4	83.3	9.7	7.0	0.058	0.562	17.182711	-99.551732
CASETA DE COBRO LA VENTA	276.10	1	1	3874	83.4	10.0	1.4	0.7	2.1	0.5	1.6	0.3	83.4	10.0	6.6	0.069	0.501	16.929161	-99.799581
CASETA DE COBRO LA VENTA	276.10	1	2	3861	83.8	9.4	1.5	0.7	2.2	0.5	1.6	0.3	83.8	9.4	6.8	0.068	0.501	16.929161	-99.799581
T. C. CHILPANCINGO - ACAPULCO (ENT. LA VENTA)	277.16	1	1	3610	82.6	10.6	1.5	0.7	2.1	0.5	1.7	0.3	82.6	10.6	6.8	0.065	0.513	16.923213	-99.811289
T. C. CHILPANCINGO - ACAPULCO (ENT. LA VENTA)	277.16	1	2	3543	83.3	10.0	1.4	0.7	2.2	0.5	1.6	0.3	83.3	10.0	6.7	0.065	0.513	16.923213	-99.811289

19 CARR: ENT. URUAPAN - LAZARO CARDENAS (CUOTA)

CLAVE: 00032

RUTA: MEX-037D

AÑO: 2010

LUGAR	ESTACION				CLASIFICACION VEHICULAR EN PORCIENTO								COORDENADAS						
	KM	TE	SC	TDPA	A	B	C2	C3	T3S2	T3S3	T3S2R4	OTROS	A	B	C	K'	D	LATITUD	LONGITUD
T. C. ENT. PATZCUARO - URUAPAN (CUOTA)	0.00																		
CASETA DE COBRO TARETAN	8.893	1	0	8228	82.0	3.8	3.2	2.2	2.4	1.1	5.0	0.3	82.0	3.8	14.2			19.355413	-101.918127
CASETA DE COBRO TARETAN	8.893	2	0	8240	82.0	3.8	3.2	2.2	2.4	1.1	5.0	0.3	82.0	3.8	14.2			19.355413	-101.918127
CASETA DE COBRO TARETAN	8.893	3	0	6456	78.0	4.8	3.4	2.7	3.0	1.4	6.3	0.4	78.0	4.8	17.2			19.355413	-101.918127
CASETA DE COBRO SANTA CASILDA	39.647	1	0	6247	77.4	4.9	3.4	2.8	3.1	1.5	6.5	0.4	77.4	4.9	17.7			19.152887	-101.978112
CASETA DE COBRO LAS CAÑAS	100.00	2	0	3651	72.8	4.7	3.1	2.8	3.9	2.2	9.9	0.6	72.8	4.7	22.5			18.554190	-101.970337
LIM. EDOS. TERM. MICH. PPIA. GRO.	159.20																		
CASETA DE COBRO FELICIANO	170.60	1	0	3305	69.5	4.3	3.8	2.7	4.3	2.5	12.3	0.6	69.5	4.3	26.2			18.006510	-101.961761
CASETA DE COBRO FELICIANO	170.60	2	0	4911	74.0	4.2	3.6	3.0	3.9	2.2	8.6	0.5	74.0	4.2	21.8			18.006510	-101.961761
CASETA DE COBRO FELICIANO	170.60	3	0	3841	71.2	4.5	3.4	3.0	4.5	2.5	10.2	0.7	71.2	4.5	24.3			18.006510	-101.961761



GUERRERO

23 CARR: ACAPULCO - AEROPUERTO ACAPULCO

CLAVE: 12292

RUTA: GRO

AÑO: 2010

LUGAR	ESTACION				CLASIFICACION VEHICULAR EN PORCIENTO								COORDENADAS						
	KM	TE	SC	TDPA	A	B	C2	C3	T3S2	T3S3	T3S2R4	OTROS	A	B	C	K'	D	LATITUD	LONGITUD
ACAPULCO	0.00																		
PUERTO MARQUES	8.70	1	1	12932	83.2	3.4	2.0	0.8	3.4	3.2	3.3	0.7	83.2	3.4	13.4	0.068	0.501	16.806923	-99.833110
PUERTO MARQUES	8.70	1	2	12963	83.8	3.3	1.9	0.9	3.3	3.1	3.2	0.5	83.8	3.3	12.9	0.068	0.501	16.806923	-99.833110
PUERTO MARQUES	8.70	3	1	14847	80.8	2.7	1.6	1.4	5.9	3.1	3.9	0.6	80.8	2.7	16.5	0.066	0.510	16.801180	-99.820534
PUERTO MARQUES	8.70	3	2	14257	78.6	2.8	2.8	1.3	6.2	3.9	3.8	0.6	78.6	2.8	18.6	0.071	0.510	16.801180	-99.820534
T. DER. LOS AMATES	14.90	3	1	4037	81.3	4.6	5.0	1.2	3.7	2.0	1.5	0.7	81.3	4.6	14.1	0.073	0.561	16.769794	-99.770314
T. DER. LOS AMATES	14.90	3	2	3954	81.0	4.7	4.9	1.5	3.8	2.1	1.5	0.5	81.0	4.7	14.3	0.076	0.561	16.769925	-99.770370
AEROPUERTO	16.20																		

24 CARR: ENT. POTRERO - LOMAS DE CHAPULTEPEC

CLAVE: 12293

RUTA: GRO

AÑO: 2010

LUGAR	ESTACION				CLASIFICACION VEHICULAR EN PORCIENTO								COORDENADAS						
	KM	TE	SC	TDPA	A	B	C2	C3	T3S2	T3S3	T3S2R4	OTROS	A	B	C	K'	D	LATITUD	LONGITUD
T. C. ACAPULCO - AEROPUERTO ACAPULCO	0.00	3	0	8813	84.8	3.4	2.9	2.6	3.1	1.3	1.1	0.8	84.8	3.4	11.8	0.069	0.500	16.768303	-99.775253
T. C. LAS CRUCES - PINOTEPA NACIONAL	29.00																		

25 CARR: PIE DE LA CUESTA - BARRA DE COYUCA

CLAVE: 12427

RUTA: GRO

AÑO: 2010

LUGAR	ESTACION				CLASIFICACION VEHICULAR EN PORCIENTO								COORDENADAS						
	KM	TE	SC	TDPA	A	B	C2	C3	T3S2	T3S3	T3S2R4	OTROS	A	B	C	K'	D	LATITUD	LONGITUD
T. C. ACAPULCO - ZIHUATANEJO	0.00	3	0	10022	87.9	3.4	3.8	1.1	2.0	1.0	0.5	0.3	87.9	3.4	8.7	0.069	0.503	16.898611	-99.965171
BARRA DE COYUCA	16.50	1	0	2018	86.7	4.5	4.4	1.5	1.0	0.9	0.6	0.4	86.7	4.5	8.8	0.074	0.503	16.945588	-100.091042

26 CARR: RAMAL A COCULA

CLAVE: 12082

RUTA: GRO

AÑO: 2010

LUGAR	ESTACION				CLASIFICACION VEHICULAR EN PORCIENTO								COORDENADAS						
	KM	TE	SC	TDPA	A	B	C2	C3	T3S2	T3S3	T3S2R4	OTROS	A	B	C	K'	D	LATITUD	LONGITUD
T. C. IGUALA - CIUDAD ALTAMIRANO	0.00	3	0	2887	90.7	3.9	1.5	0.4	1.9	0.4	0.6	0.6	90.7	3.9	5.4	0.076	0.500	18.317677	-99.605179
COCULA	13.00																		

27 CARR: T. C. (IGUALA - CHILPANCINGO) - ATENANGO DEL RIO

CLAVE: 12001

RUTA: GRO-001

AÑO: 2010

LUGAR	ESTACION				CLASIFICACION VEHICULAR EN PORCIENTO								COORDENADAS						
	KM	TE	SC	TDPA	A	B	C2	C3	T3S2	T3S3	T3S2R4	OTROS	A	B	C	K'	D	LATITUD	LONGITUD
T. C. CUERNAVACA - CHILPANCINGO	0.00	3	0	4649	81.1	3.5	3.8	2.7	3.5	3.5	1.1	0.8	81.1	3.5	15.4	0.085	0.501	18.291549	-99.506724

GUERRERO

27 CARR: T. C. (IGUALA - CHILPANCINGO) - ATENANGO DEL RIO

CLAVE: 12001

RUTA: GRO-001

AÑO: 2010

LUGAR	ESTACION				CLASIFICACION VEHICULAR EN PORCIENTO								COORDENADAS						
	KM	TE	SC	TDPA	A	B	C2	C3	T3S2	T3S3	T3S2R4	OTROS	A	B	C	K'	D	LATITUD	LONGITUD
T. DER. POLOLCINGO	11.20	1	0	3370	80.9	3.2	3.5	2.4	4.8	3.2	1.1	0.9	80.9	3.2	15.9	0.066	0.500	18.304938	-99.426055
T. DER. POLOLCINGO	11.20	3	0	3149	82.4	3.7	3.8	2.6	3.4	3.1	0.8	0.2	82.4	3.7	13.9	0.060	0.533	18.319081	-99.410461
HUITZUCO	22.00	3	0	3917	85.8	3.8	3.6	1.6	2.5	1.1	0.9	0.7	85.8	3.8	10.4	0.071	0.503	18.299286	-99.322302
ATENANGO DEL RIO	62.00	1	0	777	88.4	2.6	3.1	1.3	1.3	1.4	1.1	0.8	88.4	2.6	9.0	0.085	0.504	18.115187	-99.111715

28 CARR: TAXCO - IXCATEOPAN

CLAVE: 12083

RUTA: GRO

AÑO: 2010

LUGAR	ESTACION				CLASIFICACION VEHICULAR EN PORCIENTO								COORDENADAS						
	KM	TE	SC	TDPA	A	B	C2	C3	T3S2	T3S3	T3S2R4	OTROS	A	B	C	K'	D	LATITUD	LONGITUD
TAXCO	0.00	3	0	4895	88.4	3.5	1.2	0.7	3.3	1.0	1.2	0.7	88.4	3.5	8.1	0.060	0.502	18.553408	-99.618927
IXCATEOPAN	36.00	1	0	3768	91.0	4.3	0.3	0.1	2.8	0.2	0.8	0.5	91.0	4.3	4.7	0.058	0.502	18.504477	-99.785347

29 CARR: TELOLOAPAN - APAXTLA DE CASTREJON

CLAVE: 12081

RUTA: GRO

AÑO: 2010

LUGAR	ESTACION				CLASIFICACION VEHICULAR EN PORCIENTO								COORDENADAS						
	KM	TE	SC	TDPA	A	B	C2	C3	T3S2	T3S3	T3S2R4	OTROS	A	B	C	K'	D	LATITUD	LONGITUD
T. C. IGUALA - CIUDAD ALTAMIRANO	0.00	3	0	3894	92.7	2.3	1.6	0.2	1.4	1.2	0.2	0.4	92.7	2.3	5.0	0.070	0.503	18.354619	-99.856279
APAXTLA DE CASTREJON	34.00																		

30 CARR: TOLUCA - AXIXINTLA

CLAVE: 00122

RUTA: EM-MEX-055

AÑO: 2010

LUGAR	ESTACION				CLASIFICACION VEHICULAR EN PORCIENTO								COORDENADAS						
	KM	TE	SC	TDPA	A	B	C2	C3	T3S2	T3S3	T3S2R4	OTROS	A	B	C	K'	D	LATITUD	LONGITUD
TOLUCA	0.00																		
T. IZQ. METEPEC	4.74	1	1	22093	77.3	4.5	5.2	1.0	6.3	2.2	2.9	0.6	77.3	4.5	18.2	0.084	0.506	19.242672	-99.601883
T. IZQ. METEPEC	4.74	1	2	22656	77.3	4.4	5.7	0.8	6.4	2.1	2.6	0.7	77.3	4.4	18.3	0.087	0.506	19.242672	-99.601883
MEXICALCINGO	8.80	1	1	19454	80.9	3.9	7.3	1.0	2.2	1.4	2.6	0.7	80.9	3.9	15.2	0.087	0.509	19.221792	-99.592677
MEXICALCINGO	8.80	1	2	20190	77.5	4.1	5.0	0.7	7.3	2.2	2.4	0.8	77.5	4.1	18.4	0.091	0.509	19.221752	-99.592830
MEXICALCINGO	8.80	3	1	15820	80.4	4.2	5.8	0.7	3.8	1.7	2.7	0.7	80.4	4.2	15.4	0.077	0.503	19.200306	-99.584972
MEXICALCINGO	8.80	3	2	15611	78.2	4.6	5.7	1.5	4.4	2.0	2.9	0.7	78.2	4.6	17.2	0.077	0.503	19.200444	-99.584944
T. DER. CALIMAYA	12.70	3	1	15767	80.1	4.1	5.9	1.2	4.9	1.1	2.3	0.4	80.1	4.1	15.8	0.082	0.501	19.181024	-99.577922
T. DER. CALIMAYA	12.70	3	2	15800	76.3	5.7	6.4	1.0	5.3	1.8	2.9	0.6	76.3	5.7	18.0	0.075	0.501	19.181024	-99.577922
TENANCINGO	44.80	3	0	7756	82.4	4.2	3.5	2.2	4.0	1.8	1.3	0.6	82.4	4.2	13.4	0.078	0.502	18.965290	-99.601843
T. IZQ. VILLA GUERRERO	56.84	3	0	9524	82.6	3.7	4.0	2.5	3.7	1.8	1.0	0.7	82.6	3.7	13.7	0.067	0.501	18.965167	-99.644778
IXTAPAN DE LA SAL	80.00	1	1	3593	81.6	4.0	4.1	2.9	4.0	1.9	1.2	0.3	81.6	4.0	14.4	0.068	0.501	18.851815	-99.675148

GUERRERO

30 CARR: TOLUCA - AXIXINTLA

CLAVE: 00122

RUTA: EM-MEX-055

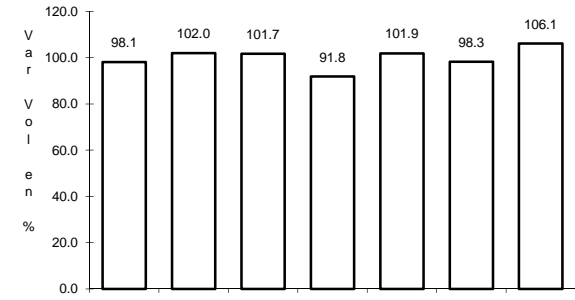
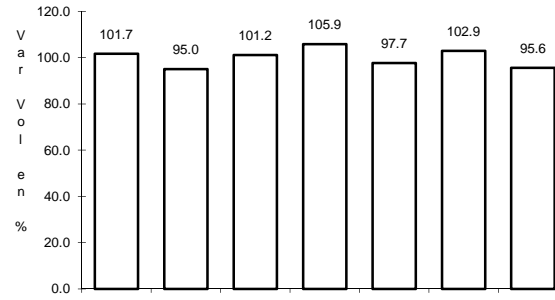
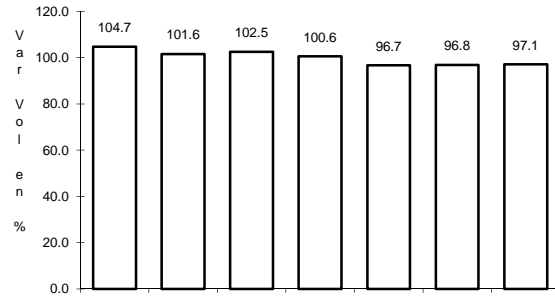
AÑO: 2010

L U G A R	E S T A C I O N				C L A S I F I C A C I O N V E H I C U L A R								E N P O R C I E N T O				C O O R D E N A D A S		
	KM	TE	SC	TDPA	A	B	C2	C3	T3S2	T3S3	T3S2R4	OTROS	A	B	C	K'	D	LATITUD	LONGITUD
IXTAPAN DE LA SAL	80.00	1	2	3580	82.1	4.1	4.0	2.4	3.9	1.9	1.3	0.3	82.1	4.1	13.8	0.071	0.501	18.851815	-99.675148
IXTAPAN DE LA SAL	80.00	3	1	3378	82.0	4.3	4.3	2.6	3.2	1.9	1.3	0.4	82.0	4.3	13.7	0.075	0.501	18.831641	-99.667959
IXTAPAN DE LA SAL	80.00	3	2	3398	81.7	4.2	4.5	2.8	3.2	1.9	1.3	0.4	81.7	4.2	14.1	0.074	0.501	18.831641	-99.667959
TONATICO	86.20	3	0	4077	81.8	4.3	4.7	2.1	3.8	1.7	1.1	0.5	81.8	4.3	13.9	0.065	0.501	18.801148	-99.658627
LIM. EDOS. TERM. MEX. PPIA. GRO.	98.50																		
CACAHUAMILPA	120.30	1	0	2455	82.1	4.1	4.8	2.0	3.4	1.8	0.9	0.9	82.1	4.1	13.8	0.064	0.518	18.685104	-99.514664
T. C. CUERNAVACA - CHILPANCINGO	125.30	1	0	1576	82.1	5.0	5.1	2.1	3.5	0.6	0.9	0.7	82.1	5.0	12.9	0.065	0.511	18.621665	-99.508311

1 CARR: ACAPULCO - ZIHUATANEJO

CLAVE: 12072

ruta: MEX-200



Km: 10.37      Tipo: 1      Sent: 0

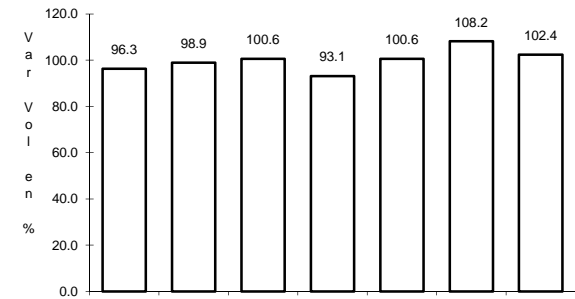
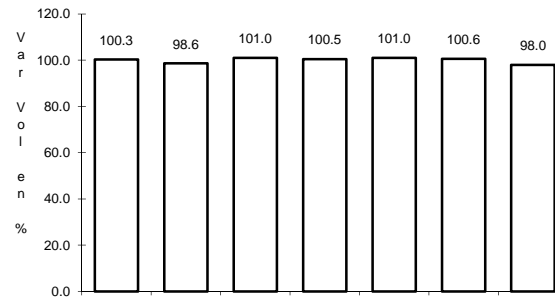
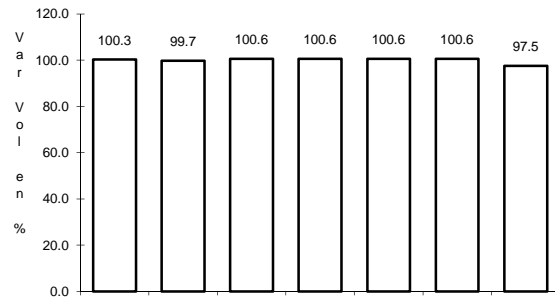
Km: 242.90      Tipo: 1      Sent: 1

Km: 242.90      Tipo: 1      Sent: 2

2 CARR: CD. ALTAMIRANO - T. C. (ZIHUATANEJO - LA MIRA)

CLAVE: 12422

ruta: MEX-134



Km: 0.00      Tipo: 3      Sent: 1

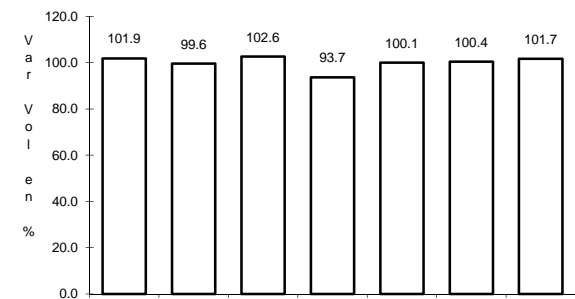
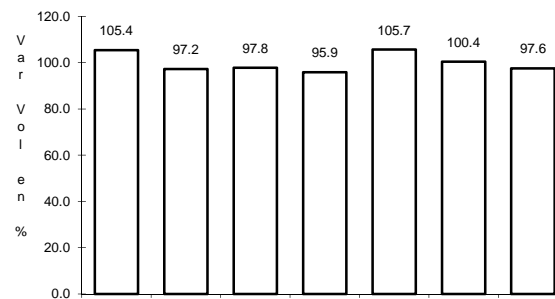
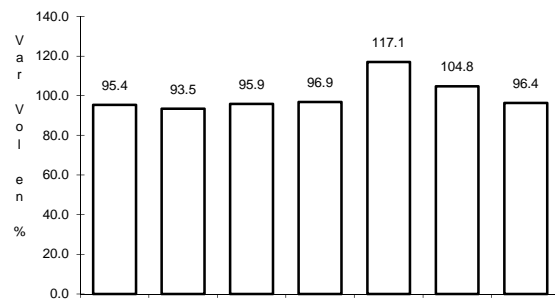
Km: 0.00      Tipo: 3      Sent: 2

Km: 185.30      Tipo: 1      Sent: 0

3 CARR: CHILPANCINGO - ACAPULCO

CLAVE: 12045

ruta: MEX-095



Km: 4.20      Tipo: 1      Sent: 1

Km: 4.20      Tipo: 1      Sent: 2

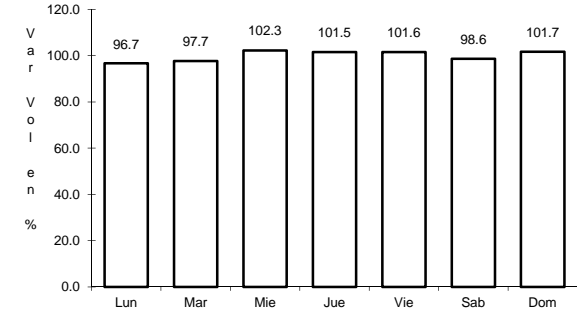
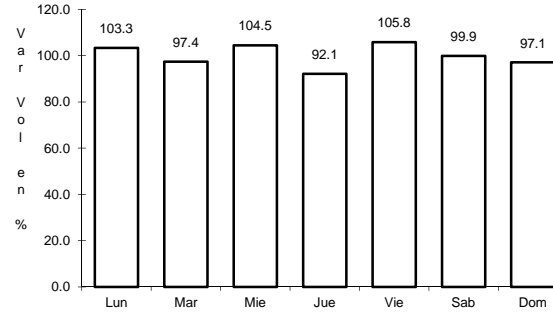
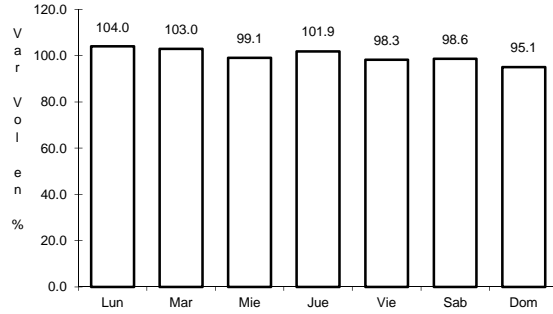
Km: 112.80      Tipo: 3      Sent: 0



4 CARR: CHILPANCINGO - CHICHIHUALCO

CLAVE: 12426

RUTA: MEX-196



Km: 0.00      Tipo: 3      Sent: 0

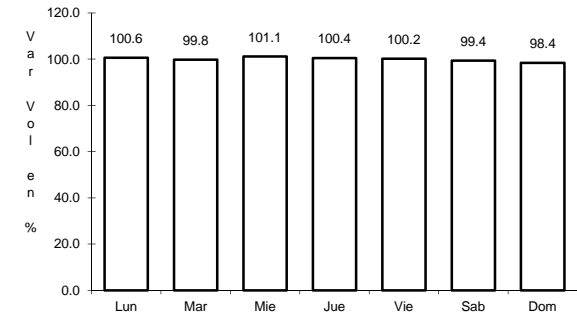
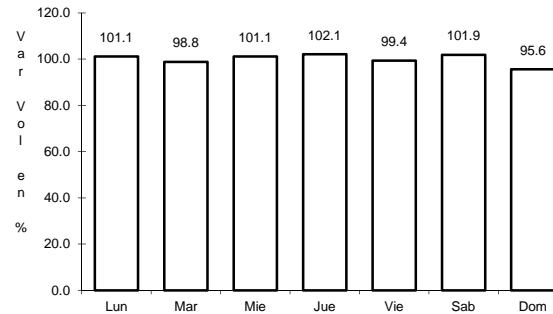
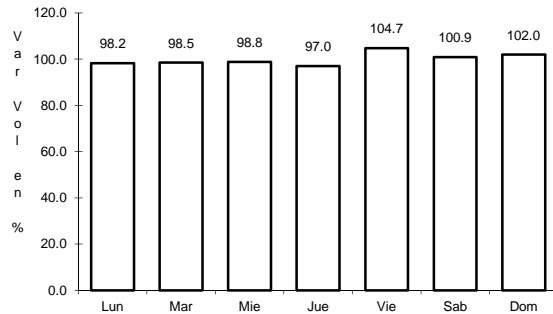
Km: 15.10      Tipo: 1      Sent: 0

Km: 26.30      Tipo: 1      Sent: 0

5 CARR: CHILPANCINGO - JILOTEPEC

CLAVE: 12002

RUTA: MEX-093



Km: 0.00      Tipo: 3      Sent: 0

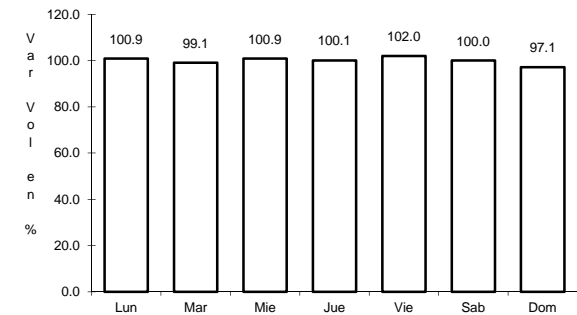
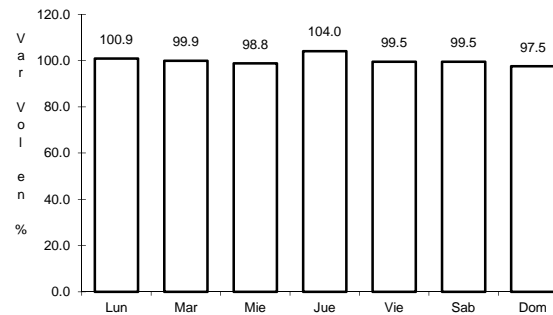
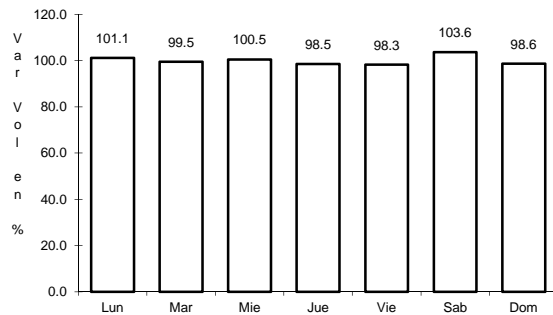
Km: 178.50      Tipo: 1      Sent: 0

Km: 235.00      Tipo: 1      Sent: 0

6 CARR: CUERNAVACA - CHILPANCINGO

CLAVE: 00042

RUTA: MEX-095



Km: 9.80      Tipo: 1      Sent: 0

Km: 223.70      Tipo: 1      Sent: 1

Km: 223.70      Tipo: 1      Sent: 2



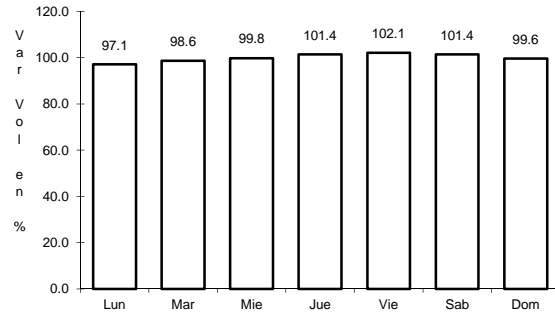




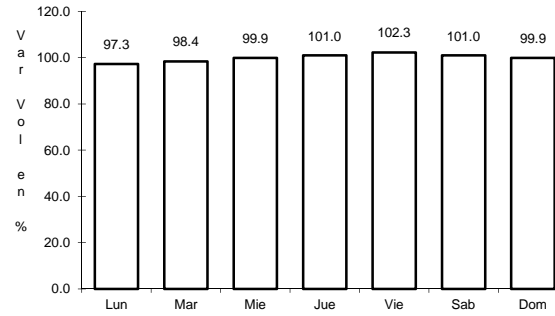
16 CARR: TOLUCA - CD. ALTAMIRANO

CLAVE: 00020

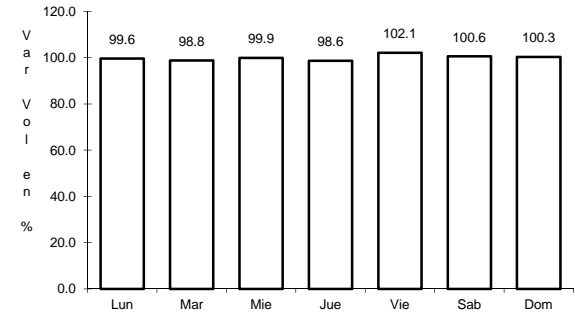
ruta: MEX-134



Km: 1.78      Tipo: 3      Sent: 1



Km: 1.78      Tipo: 3      Sent: 2

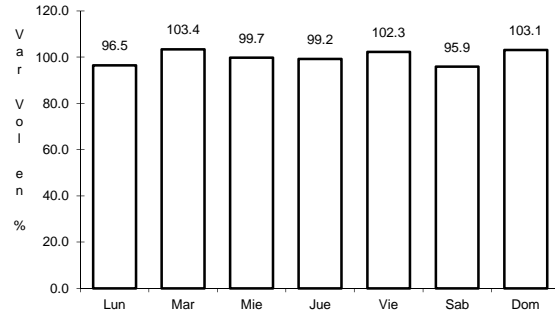


Km: 216.00      Tipo: 1      Sent: 0

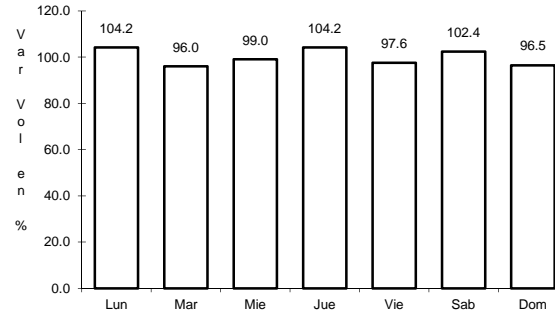
17 CARR: ZIHUATANEJO - LA MIRA

CLAVE: 00121

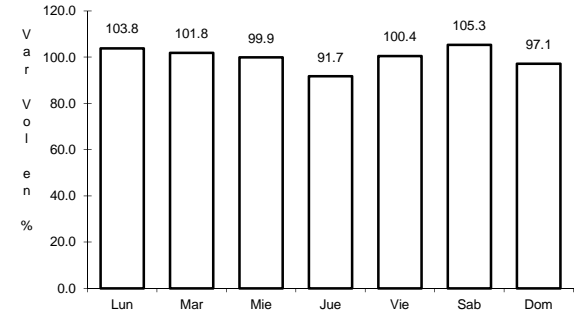
ruta: MEX-200



Km: 0.00      Tipo: 3      Sent: 1



Km: 0.00      Tipo: 3      Sent: 2

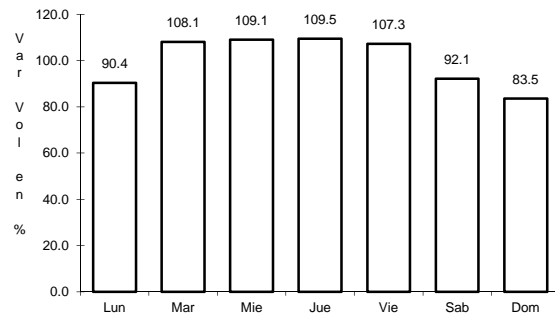


Km: 123.60      Tipo: 1      Sent: 0

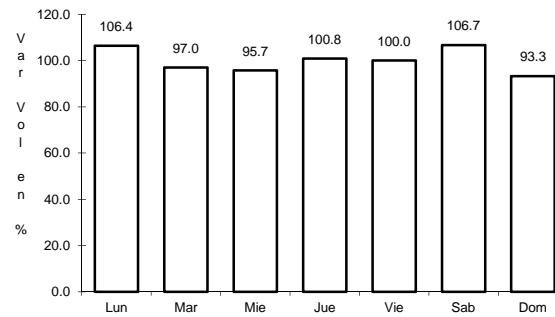
18 CARR: CUERNAVACA - ACAPULCO (CUOTA)

CLAVE: 00045

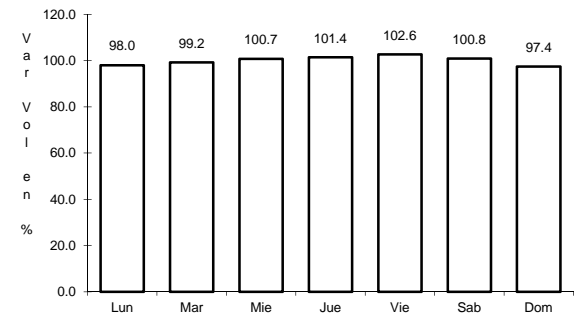
ruta: MEX-095D



Km: 0.00      Tipo: 3      Sent: 1



Km: 0.00      Tipo: 3      Sent: 2

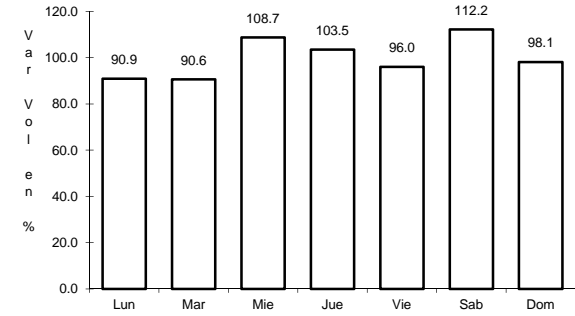
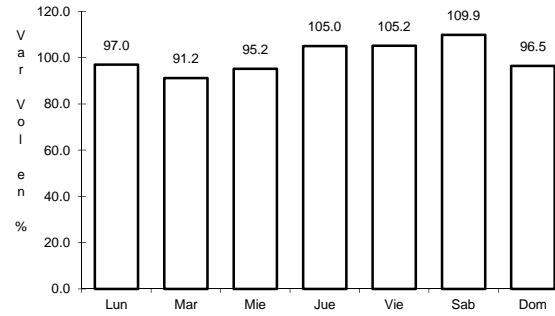
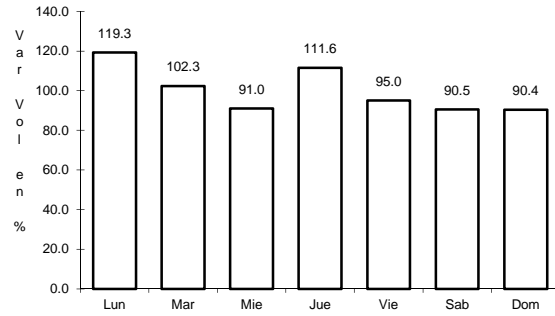


Km: 277.16      Tipo: 1      Sent: 1

21 CARR: PUENTE DE IXTLA - IGUALA (CUOTA)

CLAVE: 00043

ruta: MEX-D



Km: 2.00 Tipo: 3 Sent: 0

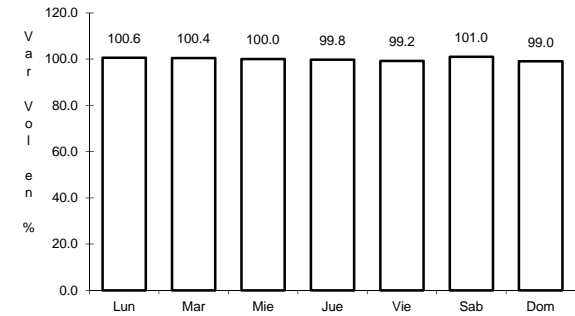
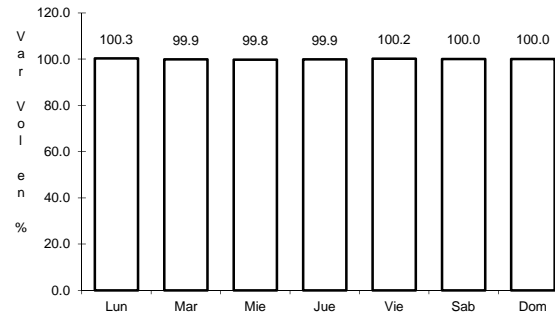
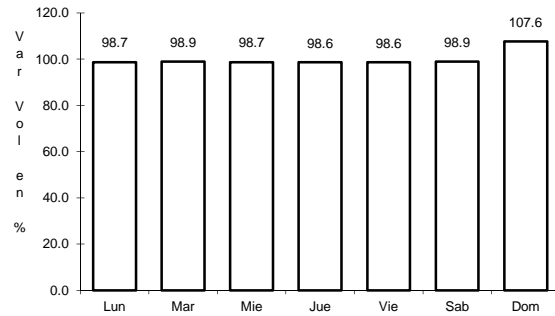
Km: 33.58 Tipo: 3 Sent: 0

Km: 59.50 Tipo: 1 Sent: 0

23 CARR: ACAPULCO - AEROPUERTO ACAPULCO

CLAVE: 12292

ruta: GRO



Km: 8.70 Tipo: 1 Sent: 1

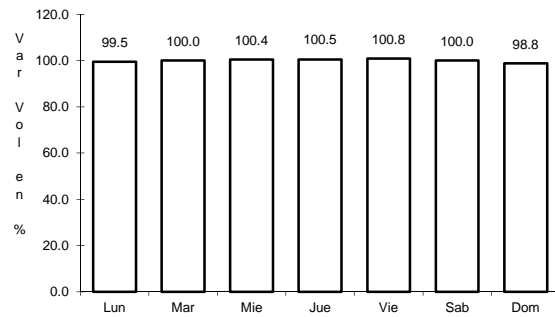
Km: 8.70 Tipo: 1 Sent: 2

Km: 14.90 Tipo: 3 Sent: 1

24 CARR: ENT. POTRERO - LOMAS DE CHAPULTEPEC

CLAVE: 12293

ruta: GRO



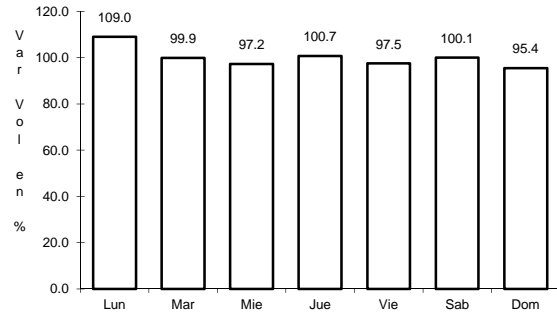
Km: 0.00 Tipo: 3 Sent: 0



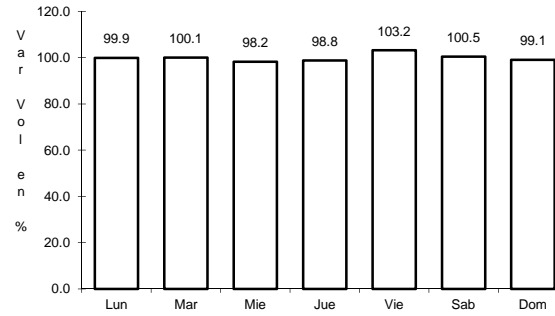
28 CARR: TAXCO - IXCATEOPAN

CLAVE: 12083

RUTA: GRO



Km: 0.00      Tipo: 3      Sent: 0

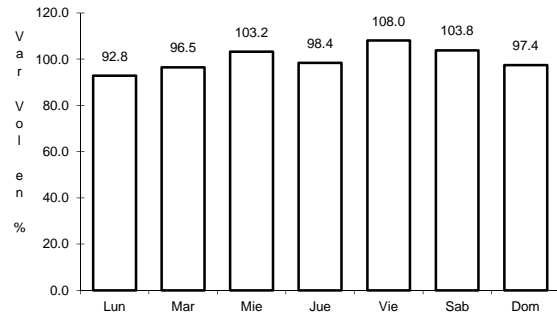


Km: 36.00      Tipo: 1      Sent: 0

29 CARR: TELOLOAPAN - APAXTLA DE CASTREJON

CLAVE: 12081

RUTA: GRO

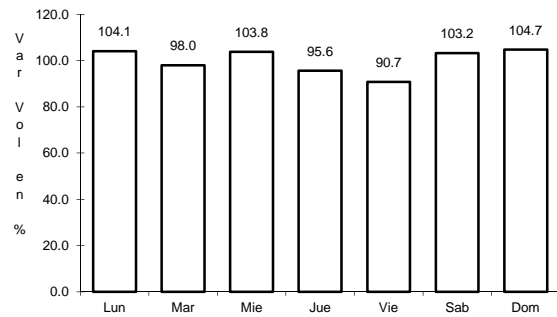


Km: 0.00      Tipo: 3      Sent: 0

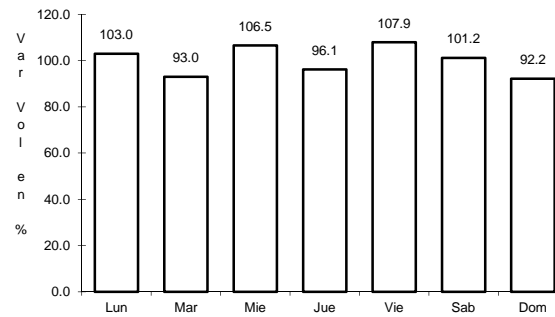
30 CARR: TOLUCA - AXIXINTLA

CLAVE: 00122

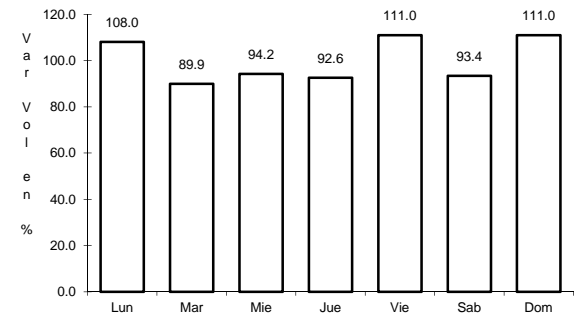
RUTA: EM-MEX-055



Km: 4.74      Tipo: 1      Sent: 1



Km: 4.74      Tipo: 1      Sent: 2



Km: 125.30      Tipo: 1      Sent: 0