

DURANGO

---RED FEDERAL LIBRE---

1	BERMEJILLO - EL PALMITO	MEX-030
2	DURANGO - ENT. LA ZARCA	MEX-045
3	DURANGO - MEZQUITAL	MEX-023
4	DURANGO - TORREON	MEX-040
5	DURANGO - VILLA UNION	MEX-040
6	ENT. LA CHICHARRONA - CUENCAME	MEX-049
7	ENT. LA ZARCA - HIDALGO DEL PARRAL	MEX-045
8	ENT. LOS HERRERA - TOPIA	MEX-036
9	GOMEZ PALACIO - JIMENEZ	MEX-049
10	GOMEZ PALACIO - LA UNION	MEX
11	GOMEZ PALACIO - TLAHUALILLO	MEX
12	GREGORIO GARCIA - FRANCISCO I. MADERO	MEX
13	GUADALUPE AGUILERA - TEPEHUANES	MEX-023
14	HIDALGO DEL PARRAL - GUADALUPE Y CALVO	MEX-024
15	LIBRAMIENTO CUENCAME	MEX
16	PEDRICEÑA - ENT. RODEO	MEX-034
17	RAMAL A SANTA CLARA	MEX
18	RAMAL A VILLA JUAREZ	MEX
19	ZACATECAS - DURANGO	MEX-045

---RED FEDERAL DE CUOTA---

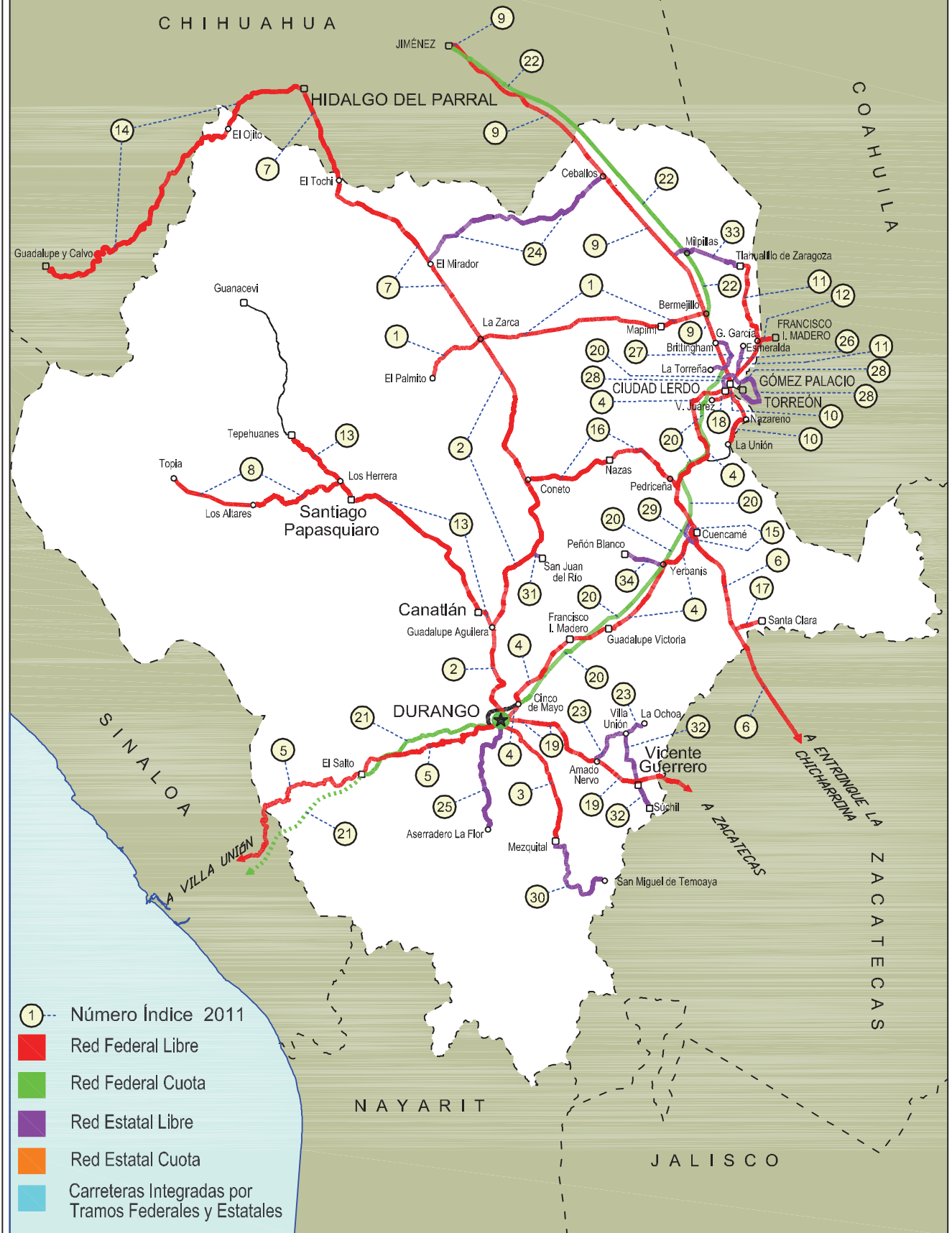
20	DURANGO - GOMEZ PALACIO (CUOTA)	MEX-040D
21	DURANGO - VILLA UNION (CUOTA)	MEX-040D
22	GOMEZ PALACIO - JIMENEZ (CUOTA)	MEX-049D

---RED ESTATAL LIBRE---

23	AMADO NERVO - LA OCHOA	DGO-542
24	CEBALLOS - EL MIRADOR	DGO-044
25	DURANGO - ASERRADERO LA FLOR	DGO-115
26	JABONOSO - ESMERALDA	DGO-363
27	LA TORREÑA - BRITTINGHAM	DGO-325
28	LIBRAMIENTO DE TORREON	COA
29	LIBRAMIENTO EXTERIOR CUENCAMÉ	DGO
30	MEZQUITAL - SAN MIGUEL DE TEMOAYA	DGO
31	RAMAL A SAN JUAN DEL RIO	DGO-290
32	SUCHIL - VILLA UNION	DGO-241
33	TLAHUALILLO DE ZARAGOZA - T.C. GOMEZ PALACIO - JIMENEZ	DGO
34	YERBANIS - PEÑON BLANCO	DGO-316

10 DURANGO

SECRETARÍA DE COMUNICACIONES Y TRANSPORTES
DIRECCIÓN GENERAL DE SERVICIOS TÉCNICOS



DURANGO

1 CARR: BERMEJILLO - EL PALMITO

CLAVE: 10105

RUTA: MEX-030

AÑO: 2010

LUGAR	ESTACION				CLASIFICACION VEHICULAR EN PORCIENTO								COORDENADAS						
	KM	TE	SC	TDPA	A	B	C2	C3	T3S2	T3S3	T3S2R4	OTROS	A	B	C	K'	D	LATITUD	LONGITUD
BERMEJILLO	0.00	3	0	2100	86.9	3.4	4.3	1.4	2.2	0.7	0.0	1.1	86.9	3.4	9.7	0.090	0.507	25.892523	-103.629224
SANTO DOMINGO	86.00	1	0	752	85.2	4.4	5.5	1.5	1.7	0.8	0.1	0.8	85.2	4.4	10.4	0.100	0.528	25.814144	-104.442538
SANTO DOMINGO	86.00	3	0	383	87.1	2.1	5.7	1.7	1.5	0.6	0.2	1.1	87.1	2.1	10.8	0.099	0.520	25.814122	-104.447336
ENT. LA ZARCA	120.00	1	0	502	86.1	2.5	6.5	1.5	1.5	0.6	0.1	1.2	86.1	2.5	11.4	0.118	0.514	25.788454	-104.749364
ENT. LA ZARCA	120.00	3	0	242	89.2	1.4	5.2	2.0	0.8	0.5	0.2	0.7	89.2	1.4	9.4	0.140	0.507	25.782081	-104.764431
EL PALMITO	160.00	1	0	192	90.1	1.9	3.7	2.3	0.4	0.7	0.2	0.7	90.1	1.9	8.0	0.161	0.513	25.621266	-104.999976

2 CARR: DURANGO - ENT. LA ZARCA

CLAVE: 10016

RUTA: MEX-045

AÑO: 2010

LUGAR	ESTACION				CLASIFICACION VEHICULAR EN PORCIENTO								COORDENADAS						
	KM	TE	SC	TDPA	A	B	C2	C3	T3S2	T3S3	T3S2R4	OTROS	A	B	C	K'	D	LATITUD	LONGITUD
DURANGO	0.00	3	1	9878	88.6	1.8	3.0	2.4	1.6	0.9	0.2	1.5	88.6	1.8	9.6	0.088	0.533	24.038926	-104.657777
DURANGO	0.00	3	2	9512	84.7	2.7	3.9	3.0	1.9	1.4	0.2	2.2	84.7	2.7	12.6	0.101	0.533	24.038931	-104.657889
CASETA FISCAL ZONA INDUSTRIAL	5.30	1	1	6044	88.9	1.6	3.0	1.8	1.5	1.2	0.0	2.0	88.9	1.6	9.5	0.092	0.503	24.050928	-104.657696
CASETA FISCAL ZONA INDUSTRIAL	5.30	1	2	5967	86.2	1.5	4.1	2.8	1.6	1.3	0.0	2.5	86.2	1.5	12.3	0.084	0.503	24.050932	-104.657801
CASETA FISCAL ZONA INDUSTRIAL	5.30	3	1	5490	88.5	1.5	4.0	1.0	1.7	1.6	0.0	1.7	88.5	1.5	10.0	0.097	0.504	24.061188	-104.655821
CASETA FISCAL ZONA INDUSTRIAL	5.30	3	2	5397	88.2	2.4	4.2	1.5	1.7	0.6	0.0	1.4	88.2	2.4	9.4	0.091	0.504	24.061202	-104.656002
X. PERIFERICO DURANGO	6.20	3	1	3739	85.8	1.5	5.0	2.5	2.0	1.5	0.0	1.7	85.8	1.5	12.7	0.097	0.513	24.073314	-104.659529
X. PERIFERICO DURANGO	6.20	3	2	3934	85.4	1.8	5.4	1.8	2.4	1.3	0.0	1.9	85.4	1.8	12.8	0.096	0.513	24.073314	-104.659529
T. DER. SAN JOSE DEL MOLINO	28.00	1	0	4295	88.2	2.7	2.9	1.4	1.9	1.1	0.0	1.8	88.2	2.7	9.1	0.088	0.519	24.207165	-104.661887
T. IZQ. CANATLAN	55.25	1	0	4554	87.8	2.3	3.5	1.8	1.6	1.1	0.0	1.9	87.8	2.3	9.9	0.091	0.512	24.436108	-104.698961
T. IZQ. CANATLAN	55.25	3	0	3013	87.8	2.1	3.5	2.1	1.8	1.1	0.0	1.6	87.8	2.1	10.1	0.111	0.518	24.450859	-104.699198
T. DER. SAN JUAN DEL RIO	105.81	1	0	2173	91.5	1.3	2.5	1.2	1.4	0.5	0.0	1.6	91.5	1.3	7.2	0.082	0.508	24.795946	-104.501415
T. DER. SAN JUAN DEL RIO	105.81	3	0	1712	89.1	2.2	3.6	1.2	1.4	0.7	0.1	1.7	89.1	2.2	8.7	0.087	0.516	24.798889	-104.499275
T. DER. NAZAS	155.50	3	0	2023	92.3	1.4	2.9	0.8	1.2	0.4	0.0	1.0	92.3	1.4	6.3	0.088	0.507	25.130626	-104.540159
T. DER. RODEO	160.70	1	0	2951	90.2	1.3	4.1	1.6	1.2	0.7	0.0	0.9	90.2	1.3	8.5	0.080	0.516	25.164326	-104.552632
T. IZQ. ABASOLO	178.00	3	0	1030	87.0	2.8	5.5	2.0	1.2	0.6	0.1	0.8	87.0	2.8	10.2	0.083	0.521	25.309033	-104.640503
ENT. LA ZARCA	239.50	1	0	885	86.6	3.6	6.2	1.3	1.2	0.3	0.1	0.7	86.6	3.6	9.8	0.086	0.509	25.779289	-104.760788

3 CARR: DURANGO - MEZQUITAL

CLAVE: 10423

RUTA: MEX-023

AÑO: 2010

LUGAR	ESTACION				CLASIFICACION VEHICULAR EN PORCIENTO								COORDENADAS						
	KM	TE	SC	TDPA	A	B	C2	C3	T3S2	T3S3	T3S2R4	OTROS	A	B	C	K'	D	LATITUD	LONGITUD
DURANGO	0.00	3	0	8530	82.5	2.9	5.8	3.1	2.5	1.5	0.0	1.7	82.5	2.9	14.6	0.090	0.501	23.996011	-104.637385
GABINO SANTILLAN	8.00	3	0	5750	85.0	3.9	4.6	2.1	1.5	0.8	0.0	2.1	85.0	3.9	11.1	0.090	0.510	23.980027	-104.590388

DURANGO

3 CARR: DURANGO - MEZQUITAL

CLAVE: 10423

RUTA: MEX-023

AÑO: 2010

LUGAR	ESTACION				CLASIFICACION VEHICULAR EN PORCIENTO								COORDENADAS						
	KM	TE	SC	TDPA	A	B	C2	C3	T3S2	T3S3	T3S2R4	OTROS	A	B	C	K'	D	LATITUD	LONGITUD
T. IZQ. MONTE MORELOS	13.00	3	0	3419	85.4	2.1	4.8	3.3	1.8	0.7	0.0	1.9	85.4	2.1	12.5	0.090	0.510	23.945680	-104.562984
MEZQUITAL	82.00	1	0	2326	85.7	3.0	5.9	2.1	1.2	0.5	0.0	1.6	85.7	3.0	11.3	0.088	0.505	23.482722	-104.387207

4 CARR: DURANGO - TORREON

CLAVE: 10085

RUTA: MEX-040

AÑO: 2010

LUGAR	ESTACION				CLASIFICACION VEHICULAR EN PORCIENTO								COORDENADAS						
	KM	TE	SC	TDPA	A	B	C2	C3	T3S2	T3S3	T3S2R4	OTROS	A	B	C	K'	D	LATITUD	LONGITUD
DURANGO	0.00	3	1	10311	86.8	2.9	3.3	1.3	1.8	1.1	0.8	2.0	86.8	2.9	10.3	0.077	0.501	24.080391	-104.587838
DURANGO	0.00	3	2	10289	85.5	2.9	2.9	2.4	2.2	1.3	0.4	2.4	85.5	2.9	11.6	0.075	0.501	24.080415	-104.587896
T. DER. CD. DE LOS NIÑOS	7.70	3	1	4946	84.7	2.9	3.8	2.3	2.0	1.5	0.9	1.9	84.7	2.9	12.4	0.088	0.506	24.094848	-104.574186
T. DER. CD. DE LOS NIÑOS	7.70	3	2	5059	87.4	1.8	3.1	2.1	1.7	1.1	0.9	1.9	87.4	1.8	10.8	0.083	0.506	24.094848	-104.574186
X. PERIFERICO DURANGO	9.00	1	1	3720	87.7	2.0	3.0	2.2	2.0	0.8	0.6	1.7	87.7	2.0	10.3	0.088	0.511	24.092633	-104.577383
X. PERIFERICO DURANGO	9.00	1	2	3886	84.4	3.2	3.2	2.6	2.6	1.2	0.7	2.1	84.4	3.2	12.4	0.097	0.511	24.092633	-104.577383
T. DER. AEROPUERTO	9.42	1	1	6472	84.6	2.2	5.1	1.8	2.3	0.9	0.9	2.2	84.6	2.2	13.2	0.070	0.503	24.083065	-104.585556
T. DER. AEROPUERTO	9.42	1	2	6556	80.1	3.2	6.0	2.5	2.2	1.4	1.2	3.4	80.1	3.2	16.7	0.069	0.503	24.083105	-104.585630
T. DER. AEROPUERTO	9.42	3	0	6658	82.9	2.6	4.3	2.6	2.4	1.4	1.0	2.8	82.9	2.6	14.5	0.094	0.508	24.097964	-104.576403
LA CALDERA	10.85	3	0	6464	85.5	2.6	4.3	1.8	3.0	0.8	0.0	2.0	85.5	2.6	11.9	0.078	0.509	24.109571	-104.571693
ABRAHAM GONZALEZ	27.10	3	0	5152	83.0	2.9	5.1	1.3	4.1	1.3	0.4	1.9	83.0	2.9	14.1	0.078	0.515	24.208173	-104.510904
FRANCISCO I. MADERO	56.30	1	0	4771	77.0	3.2	4.2	2.4	5.3	3.0	1.6	3.3	77.0	3.2	19.8	0.089	0.521	24.392726	-104.330616
FRANCISCO I. MADERO	56.30	3	0	4886	78.5	2.6	5.4	2.2	5.6	2.8	0.9	2.0	78.5	2.6	18.9	0.080	0.517	24.405151	-104.305150
GUADALUPE VICTORIA	77.50	1	0	4539	77.6	3.3	5.0	1.9	5.6	3.0	0.9	2.7	77.6	3.3	19.1	0.072	0.504	24.443628	-104.148262
GUADALUPE VICTORIA	77.50	3	0	5532	78.0	3.3	4.9	1.7	5.2	2.8	1.0	3.1	78.0	3.3	18.7	0.084	0.504	24.450502	-104.108482
T. DER. IGNACIO ALLENDE	90.13	1	0	4165	76.3	3.3	6.0	2.6	5.3	2.3	1.1	3.1	76.3	3.3	20.4	0.077	0.516	24.496997	-104.023886
T. DER. IGNACIO ALLENDE	90.13	3	0	3813	77.6	3.3	5.6	3.0	4.7	2.5	0.5	2.8	77.6	3.3	19.1	0.078	0.518	24.501609	-104.017000
T. IZQ. PEÑON BLANCO	120.90	1	0	2981	68.3	3.6	7.8	3.7	9.3	4.7	0.6	2.0	68.3	3.6	28.1	0.074	0.512	24.732669	-103.843576
T. IZQ. PEÑON BLANCO	120.90	3	0	3586	71.1	3.7	7.1	3.2	8.1	3.8	1.0	2.0	71.1	3.7	25.2	0.067	0.512	24.744823	-103.836562
CUENCAME	144.30	1	0	3954	79.2	2.9	5.7	2.0	6.3	2.0	0.6	1.3	79.2	2.9	17.9	0.083	0.510	24.861260	-103.701296
CUENCAME	144.30	3	0	5366	75.8	3.7	5.7	3.0	5.8	2.1	0.9	3.0	75.8	3.7	20.5	0.064	0.515	24.883917	-103.699859
T. IZQ. NAZAS	171.61	1	0	5491	62.6	4.3	8.3	4.4	10.5	4.9	1.7	3.3	62.6	4.3	33.1	0.062	0.521	25.085709	-103.771306
T. IZQ. NAZAS	171.61	3	0	4944	67.4	5.2	7.9	4.1	7.8	3.5	1.3	2.8	67.4	5.2	27.4	0.067	0.525	25.098772	-103.770383
T. DER. VILLA JUAREZ	194.40	3	0	4783	71.2	4.7	6.1	4.3	6.6	2.5	1.1	3.5	71.2	4.7	24.1	0.071	0.511	25.456137	-103.692147
LEON GUZMAN	229.58	3	0	9713	72.1	2.9	6.2	3.2	8.1	3.6	1.0	2.9	72.1	2.9	25.0	0.064	0.510	25.508678	-103.650731
CD. LERDO	244.80	1	0	10809	69.9	4.5	5.8	2.9	9.1	3.8	1.0	3.0	69.9	4.5	25.6	0.072	0.508	25.515600	-103.530698
T. IZQ. GOMEZ PALACIO	248.90	3	1	17086	77.7	3.0	6.6	2.5	4.3	1.7	1.0	3.2	77.7	3.0	19.3	0.075	0.506	25.549565	-103.475749
T. IZQ. GOMEZ PALACIO	248.90	3	2	17494	82.8	2.1	5.0	1.9	4.0	1.2	0.1	2.9	82.8	2.1	15.1	0.081	0.506	25.549565	-103.475749

DURANGO

4 CARR: DURANGO - TORREON

CLAVE: 10085

RUTA: MEX-040

AÑO: 2010

LUGAR	ESTACION				CLASIFICACION VEHICULAR EN PORCIENTO								COORDENADAS						
	KM	TE	SC	TDPA	A	B	C2	C3	T3S2	T3S3	T3S2R4	OTROS	A	B	C	K'	D	LATITUD	LONGITUD
LIM. EDOS. TERM. DGO. PPIA. COAH.	251.00																		
TORREON	255.80	1	1	17647	62.7	4.2	3.1	2.2	9.2	5.1	12.3	1.2	62.7	4.2	33.1	0.071	0.503	25.547822	-103.471332
TORREON	255.80	1	2	17830	62.9	4.3	3.2	2.1	8.7	5.3	12.5	1.0	62.9	4.3	32.8	0.067	0.503	25.547834	-103.471269

5 CARR: DURANGO - VILLA UNION

CLAVE: 00083

RUTA: MEX-040

AÑO: 2010

LUGAR	ESTACION				CLASIFICACION VEHICULAR EN PORCIENTO								COORDENADAS						
	KM	TE	SC	TDPA	A	B	C2	C3	T3S2	T3S3	T3S2R4	OTROS	A	B	C	K'	D	LATITUD	LONGITUD
DURANGO	0.00	3	0	4941	86.9	2.3	5.5	1.9	0.9	1.1	0.0	1.4	86.9	2.3	10.8	0.098	0.505	23.995309	-104.720615
T. DER. PINO	22.86	3	0	4225	81.0	3.4	5.8	2.9	3.5	1.5	0.4	1.5	81.0	3.4	15.6	0.071	0.512	23.964380	-104.826048
T. IZQ. ESTACION NAVIOS	58.42	3	0	1958	76.3	3.9	8.2	3.8	3.5	1.7	0.5	2.1	76.3	3.9	19.8	0.094	0.525	23.897687	-105.049663
LLANO GRANDE	77.23	1	0	2180	79.8	3.0	7.2	3.9	3.9	1.2	0.1	0.9	79.8	3.0	17.2	0.072	0.508	23.870360	-105.189260
EL SALTO	99.76	3	0	2953	80.1	4.1	6.5	3.1	2.4	1.6	0.2	2.0	80.1	4.1	15.8	0.077	0.506	23.777992	-105.388295
LA CIUDAD	145.50	1	0	2005	82.9	4.1	5.3	1.9	2.3	1.0	0.2	2.3	82.9	4.1	13.0	0.071	0.509	23.731839	-105.669430
LA CIUDAD	145.50	3	0	1388	81.8	4.6	6.8	2.0	2.1	1.1	0.1	1.5	81.8	4.6	13.6	0.081	0.522	23.727235	-105.692019
LIM. EDOS. TERM. DGO. PPIA. SIN.	198.50																		
T. C. TEPIC - MAZATLAN	294.40	1	0	7754	68.9	7.8	7.7	3.5	7.5	1.4	2.6	0.6	68.9	7.8	23.3	0.083	0.505	23.202584	-106.201750

6 CARR: ENT. LA CHICHARRONA - CUENCAME

CLAVE: 00152

RUTA: MEX-049

AÑO: 2010

LUGAR	ESTACION				CLASIFICACION VEHICULAR EN PORCIENTO								COORDENADAS						
	KM	TE	SC	TDPA	A	B	C2	C3	T3S2	T3S3	T3S2R4	OTROS	A	B	C	K'	D	LATITUD	LONGITUD
ENT. LA CHICHARRONA	0.00	3	1	3648	65.5	4.8	3.5	4.5	11.5	5.2	4.3	0.7	65.5	4.8	29.7	0.072	0.519	23.304895	-102.958666
ENT. LA CHICHARRONA	0.00	3	2	3940	65.5	4.7	3.4	4.8	11.5	5.3	4.2	0.6	65.5	4.7	29.8	0.075	0.519	23.310304	-102.958879
T. DER. CAÑITAS DE FELIPE PESCADOR	25.86	1	1	3354	66.3	4.6	3.7	4.7	10.0	4.7	5.3	0.7	66.3	4.6	29.1	0.064	0.509	23.523509	-102.959499
T. DER. CAÑITAS DE FELIPE PESCADOR	25.86	1	2	3473	65.7	4.4	3.8	4.8	10.1	4.8	5.4	1.0	65.7	4.4	29.9	0.064	0.509	23.524170	-102.959843
RIO GRANDE	60.00	1	0	5900	66.2	4.7	3.8	4.2	10.2	5.1	4.6	1.2	66.2	4.7	29.1	0.077	0.504	23.793405	-103.016954
RIO GRANDE	60.00	3	0	6225	66.1	4.1	3.0	4.3	11.4	4.9	5.2	1.0	66.1	4.1	29.8	0.079	0.512	23.871083	-103.084834
T. DER. NIEVES	78.00	3	0	5294	65.8	5.4	3.5	4.4	10.4	4.1	5.6	0.8	65.8	5.4	28.8	0.064	0.513	23.924719	-103.160623
X. C. JUAN ALDAMA - MIGUEL AUZA	124.50	1	0	6950	65.3	5.6	3.7	4.8	10.6	4.0	5.4	0.6	65.3	5.6	29.1	0.060	0.504	24.272397	-103.400248
X. C. JUAN ALDAMA - MIGUEL AUZA	124.50	3	0	7420	66.4	5.6	3.3	4.1	10.3	4.0	5.2	1.1	66.4	5.6	28.0	0.073	0.508	24.289639	-103.407371
LIM. EDOS. TERM. ZAC. PPIA. DGO.	134.30																		
T. DER. SANTA CLARA	144.00	1	0	5073	67.1	5.3	3.3	4.1	10.5	3.8	4.8	1.1	67.1	5.3	27.6	0.064	0.510	24.431451	-103.483456
T. DER. SANTA CLARA	144.00	3	0	4941	66.5	5.7	3.5	4.0	9.8	3.9	5.5	1.1	66.5	5.7	27.8	0.065	0.510	24.442087	-103.490455
CUENCAME	199.10	1	0	4380	65.1	5.5	3.5	4.2	11.0	4.2	5.4	1.1	65.1	5.5	29.4	0.076	0.522	24.860530	-103.698495

DURANGO

9 CARR: GOMEZ PALACIO - JIMENEZ

CLAVE: 00006

RUTA: MEX-049

AÑO: 2010

LUGAR	ESTACION				CLASIFICACION VEHICULAR EN PORCIENTO								COORDENADAS						
	KM	TE	SC	TDPA	A	B	C2	C3	T3S2	T3S3	T3S2R4	OTROS	A	B	C	K'	D	LATITUD	LONGITUD
ESTACION ESCALON	160.89	3	0	5225	68.4	4.4	5.9	5.4	10.4	2.4	2.6	0.5	68.4	4.4	27.2	0.056	0.506	26.761524	-104.346792
JIMENEZ	223.00	3	0	4249	66.9	4.6	6.0	5.6	11.2	2.6	2.6	0.5	66.9	4.6	28.5	0.063	0.527	27.108346	-104.877541

10 CARR: GOMEZ PALACIO - LA UNION

CLAVE: 10009

RUTA: MEX

AÑO: 2010

LUGAR	ESTACION				CLASIFICACION VEHICULAR EN PORCIENTO								COORDENADAS						
	KM	TE	SC	TDPA	A	B	C2	C3	T3S2	T3S3	T3S2R4	OTROS	A	B	C	K'	D	LATITUD	LONGITUD
GOMEZ PALACIO	0.00	3	0	5751	86.9	3.0	3.8	1.2	2.2	1.3	0.0	1.6	86.9	3.0	10.1	0.070	0.504	25.536758	-103.501047
X. C. TORREON - VILLA JUAREZ	4.30	3	0	2950	80.9	4.9	6.2	3.1	2.3	0.9	0.0	1.7	80.9	4.9	14.2	0.111	0.519	25.505943	-103.480363
NAZARENO	20.90	1	0	2272	82.2	5.7	5.9	2.1	1.6	1.1	0.0	1.4	82.2	5.7	12.1	0.080	0.514	25.404181	-103.423205
NAZARENO	20.90	3	0	1766	80.6	5.0	5.4	2.5	2.8	1.4	0.0	2.3	80.6	5.0	14.4	0.084	0.545	25.394605	-103.433152
LA UNION	42.20	1	0	874	87.3	1.7	6.5	2.0	1.3	0.3	0.1	0.8	87.3	1.7	11.0	0.102	0.539	25.292883	-103.510769

11 CARR: GOMEZ PALACIO - TLAHUALILLO

CLAVE: 10005

RUTA: MEX

AÑO: 2010

LUGAR	ESTACION				CLASIFICACION VEHICULAR EN PORCIENTO								COORDENADAS						
	KM	TE	SC	TDPA	A	B	C2	C3	T3S2	T3S3	T3S2R4	OTROS	A	B	C	K'	D	LATITUD	LONGITUD
T. C. GOMEZ PALACIO - JIMENEZ	0.00																		
T. IZQ. ESMERALDA	5.60	1	0	10108	80.5	5.5	4.7	5.7	1.6	0.7	1.1	0.2	80.5	5.5	14.0	0.073	0.503	25.611245	-103.461065
T. IZQ. ESMERALDA	5.60	3	0	7610	81.0	5.3	4.6	5.5	1.6	0.6	1.2	0.2	81.0	5.3	13.7	0.094	0.503	25.613584	-103.458171
GREGORIO GARCIA	26.00	3	0	3890	80.0	5.7	5.0	5.7	1.6	0.7	1.1	0.2	80.0	5.7	14.3	0.110	0.507	25.753057	-103.348915
T. IZQ. ESMERALDA	31.44	1	0	4522	79.5	6.0	5.1	5.6	1.7	0.7	1.2	0.2	79.5	6.0	14.5	0.093	0.503	25.757851	-103.352640
SAN FRANCISCO	48.90	1	0	2204	80.8	5.4	4.7	5.6	1.5	0.6	1.2	0.2	80.8	5.4	13.8	0.076	0.529	25.928838	-103.416609
SAN FRANCISCO	48.90	3	0	2104	80.4	5.4	4.7	5.8	1.6	0.7	1.2	0.2	80.4	5.4	14.2	0.075	0.504	25.943032	-103.420490
TLAHUALILLO	72.90	1	0	3128	79.4	5.7	5.3	5.9	1.6	0.7	1.2	0.2	79.4	5.7	14.9	0.101	0.525	26.109365	-103.422376

12 CARR: GREGORIO GARCIA - FRANCISCO I. MADERO

CLAVE: 00110

RUTA: MEX

AÑO: 2010

LUGAR	ESTACION				CLASIFICACION VEHICULAR EN PORCIENTO								COORDENADAS						
	KM	TE	SC	TDPA	A	B	C2	C3	T3S2	T3S3	T3S2R4	OTROS	A	B	C	K'	D	LATITUD	LONGITUD
T. C. GOMEZ PALACIO - TLAHUALILLO	0.00																		
LIM. EDOS. TERM. DGO. PPIA. COAH.	3.60																		
FRANCISCO I. MADERO	9.60	1	0	5407	86.7	4.1	2.7	0.6	3.6	0.3	1.5	0.5	86.7	4.1	9.2	0.071	0.507	25.772791	-103.287863

DURANGO

13 CARR: GUADALUPE AGUILERA - TEPEHUANES

CLAVE: 10220

RUTA: MEX-023

AÑO: 2010

LUGAR	ESTACION				CLASIFICACION VEHICULAR EN PORCIENTO								COORDENADAS						
	KM	TE	SC	TDPA	A	B	C2	C3	T3S2	T3S3	T3S2R4	OTROS	A	B	C	K'	D	LATITUD	LONGITUD
GUADALUPE AGUILERA	0.00	3	0	3667	85.7	2.5	4.7	1.6	2.0	1.3	0.1	2.1	85.7	2.5	11.8	0.107	0.501	24.445058	-104.703626
CANATLAN	14.00	3	0	3294	86.8	2.9	4.7	1.9	1.4	0.8	0.2	1.3	86.8	2.9	10.3	0.072	0.511	24.540139	-104.776233
T. DER. CONETO DE COMONFORT	41.60	1	0	2750	84.4	2.4	4.5	2.1	2.3	1.7	0.5	2.1	84.4	2.4	13.2	0.080	0.513	24.795448	-104.928203
LA SOLEDAD	45.80	3	0	2585	81.6	3.2	5.4	3.8	2.2	1.0	0.8	2.0	81.6	3.2	15.2	0.095	0.514	24.769984	-104.931450
JOSE MARIA MORELOS	90.20	1	0	2450	88.9	1.9	2.6	2.0	1.6	0.9	0.5	1.6	88.9	1.9	9.2	0.078	0.505	25.008365	-105.203500
SANTIAGO PAPASQUIARO	117.00	3	0	5040	90.1	1.3	3.3	1.1	1.6	0.8	0.3	1.5	90.1	1.3	8.6	0.083	0.510	25.071121	-105.428329
LAS HERRERAS	133.00	3	0	1173	88.6	1.0	4.6	2.8	1.3	0.5	0.0	1.2	88.6	1.0	10.4	0.115	0.509	25.159709	-105.510433
TEPEHUANES	169.00	1	0	1234	89.0	1.0	4.4	2.7	1.2	0.5	0.0	1.2	89.0	1.0	10.0	0.104	0.556	25.322895	-105.714687

14 CARR: HIDALGO DEL PARRAL - GUADALUPE Y CALVO

CLAVE: 00802

RUTA: MEX-024

AÑO: 2010

LUGAR	ESTACION				CLASIFICACION VEHICULAR EN PORCIENTO								COORDENADAS						
	KM	TE	SC	TDPA	A	B	C2	C3	T3S2	T3S3	T3S2R4	OTROS	A	B	C	K'	D	LATITUD	LONGITUD
T. C. HIDALGO DEL PARRAL - SANTA BARBARA	0.00	3	0	3126	85.7	2.7	5.2	2.2	1.7	1.2	0.0	1.3	85.7	2.7	11.6	0.096	0.534	26.915380	-105.764282
T. DER. GUACHOCHIC	35.00	1	0	1710	85.6	2.1	5.1	2.8	2.3	1.3	0.0	0.8	85.6	2.1	12.3	0.094	0.505	26.815459	-106.014229
T. DER. GUACHOCHIC	35.00	3	0	877	87.6	1.9	5.4	2.4	1.5	0.7	0.1	0.4	87.6	1.9	10.5	0.094	0.515	26.811249	-106.015610
LIM. EDOS. TERM. CHIH. PPIA. DGO	38.00																		
LIM. EDOS. TERM. DGO. PPIA. CHIH.	57.00																		
EL VERGEL	110.00	1	0	1481	88.8	1.4	4.7	1.9	1.5	0.6	0.0	1.1	88.8	1.4	9.8	0.094	0.520	26.481503	-106.377642
PUERTO SABINAL	212.00	1	0	1193	92.7	1.6	3.2	1.2	0.4	0.3	0.0	0.6	92.7	1.6	5.7	0.096	0.508	26.068359	-106.784371
GUADALUPE Y CALVO	234.00																		

15 CARR: LIBRAMIENTO CUENCAME

CLAVE: 10006

RUTA: MEX

AÑO: 2010

LUGAR	ESTACION				CLASIFICACION VEHICULAR EN PORCIENTO								COORDENADAS						
	KM	TE	SC	TDPA	A	B	C2	C3	T3S2	T3S3	T3S2R4	OTROS	A	B	C	K'	D	LATITUD	LONGITUD
T. C. LA CHICHARRONA - CUENCAME	0.00	3	0	2404	77.1	3.0	5.9	3.4	5.0	2.4	0.7	2.5	77.1	3.0	19.9	0.087	0.516	24.863242	-103.699384
T. C. DURANGO - TORREON	2.60	3	0	2128	70.6	5.1	8.0	3.1	7.2	2.3	0.9	2.8	70.6	5.1	24.3	0.072	0.519	24.879703	-103.701275
T. C. DURANGO - TORREON	5.00																		

16 CARR: PEDRICEÑA - ENT. RODEO

CLAVE: 10002

RUTA: MEX-034

AÑO: 2010

LUGAR	ESTACION				CLASIFICACION VEHICULAR EN PORCIENTO								COORDENADAS						
	KM	TE	SC	TDPA	A	B	C2	C3	T3S2	T3S3	T3S2R4	OTROS	A	B	C	K'	D	LATITUD	LONGITUD
T. C. CUENCAME - TORREON	0.00	3	0	1860	87.7	2.5	3.8	2.0	2.4	0.9	0.0	0.7	87.7	2.5	9.8	0.085	0.570	25.090779	-103.772327

DURANGO

16 CARR: PEDRICEÑA - ENT. RODEO

CLAVE: 10002

RUTA: MEX-034

AÑO: 2010

LUGAR	ESTACION				CLASIFICACION VEHICULAR EN PORCIENTO								COORDENADAS						
	KM	TE	SC	TDPA	A	B	C2	C3	T3S2	T3S3	T3S2R4	OTROS	A	B	C	K'	D	LATITUD	LONGITUD
NAZAS	45.00	1	0	2028	89.2	2.0	3.9	1.9	1.6	0.7	0.0	0.7	89.2	2.0	8.8	0.165	0.523	25.233704	-104.102619
NAZAS	45.00	3	0	1524	89.6	2.4	4.1	1.7	1.1	0.6	0.0	0.5	89.6	2.4	8.0	0.154	0.519	25.218891	-104.122424
T. C. (DURANGO - ENT. LA ZARCA)-ENT. RODEO	98.00	1	0	879	91.2	1.6	4.5	2.1	0.1	0.2	0.1	0.2	91.2	1.6	7.2	0.092	0.523	25.133326	-104.525419

17 CARR: RAMAL A SANTA CLARA

CLAVE: 10287

RUTA: MEX

AÑO: 2010

LUGAR	ESTACION				CLASIFICACION VEHICULAR EN PORCIENTO								COORDENADAS						
	KM	TE	SC	TDPA	A	B	C2	C3	T3S2	T3S3	T3S2R4	OTROS	A	B	C	K'	D	LATITUD	LONGITUD
T. C. ENT. LA CHICHARRONA - CUENCAME	0.00	3	0	942	86.7	0.4	9.2	3.2	0.1	0.2	0.0	0.2	86.7	0.4	12.9	0.091	0.546	24.440480	-103.486143
SANTA CLARA	14.00																		

18 CARR: RAMAL A VILLA JUAREZ

CLAVE:

RUTA: MEX

AÑO: 2010

LUGAR	ESTACION				CLASIFICACION VEHICULAR EN PORCIENTO								COORDENADAS						
	KM	TE	SC	TDPA	A	B	C2	C3	T3S2	T3S3	T3S2R4	OTROS	A	B	C	K'	D	LATITUD	LONGITUD
T.C. GOMEZ PALACIO - LA UNION	0.00	3	0	2329	88.3	3.3	6.2	1.9	0.2	0.1	0.0	0.0	88.3	3.3	8.4	0.118	0.506	25.517438	-103.495112
VILLA JUAREZ	13.00																		

19 CARR: ZACATECAS - DURANGO

CLAVE: 00544

RUTA: MEX-045

AÑO: 2010

LUGAR	ESTACION				CLASIFICACION VEHICULAR EN PORCIENTO								COORDENADAS						
	KM	TE	SC	TDPA	A	B	C2	C3	T3S2	T3S3	T3S2R4	OTROS	A	B	C	K'	D	LATITUD	LONGITUD
ZACATECAS	0.00																		
T. IZO. GUADALAJARA	6.40	3	1	10651	77.5	4.0	3.5	2.5	5.5	2.0	3.8	1.2	77.5	4.0	18.5	0.071	0.507	22.783556	-102.626979
T. IZO. GUADALAJARA	6.40	3	2	10361	77.0	4.1	3.5	2.2	6.3	1.9	3.9	1.1	77.0	4.1	18.9	0.067	0.507	22.783562	-102.627094
T. DER. SALTILLO (T. MORELOS)	15.00	3	1	9506	65.7	5.3	4.4	6.1	7.5	3.9	6.3	0.8	65.7	5.3	29.0	0.058	0.502	22.866054	-102.628683
T. DER. SALTILLO (T. MORELOS)	15.00	3	2	9448	65.9	5.2	4.5	6.0	7.4	4.2	6.2	0.6	65.9	5.2	28.9	0.060	0.502	22.861358	-102.648170
VICTOR ROSALES	28.00	1	1	8044	62.8	5.4	4.2	7.2	7.7	4.8	7.2	0.7	62.8	5.4	31.8	0.079	0.506	22.929962	-102.685419
VICTOR ROSALES	28.00	1	2	8250	65.9	5.3	5.0	5.1	7.2	3.9	6.9	0.7	65.9	5.3	28.8	0.090	0.506	22.930010	-102.685759
GRAL. ENRIQUE ESTRADA	34.60	3	1	9667	70.1	5.6	4.6	3.0	8.7	3.1	4.0	0.9	70.1	5.6	24.3	0.066	0.507	23.010174	-102.750714
GRAL. ENRIQUE ESTRADA	34.60	3	2	9396	72.3	5.7	4.5	2.7	7.3	3.4	3.4	0.7	72.3	5.7	22.0	0.071	0.507	23.010661	-102.751111
FRESNILLO	58.50	1	1	6889	75.8	6.3	2.9	3.2	6.5	2.6	2.1	0.6	75.8	6.3	17.9	0.087	0.510	23.162264	-102.853313
FRESNILLO	58.50	1	2	7171	76.9	6.4	2.4	3.4	5.6	2.4	2.0	0.9	76.9	6.4	16.7	0.078	0.510	23.159595	-102.852074
ENT. LA CHICHARRONA	74.30	1	1	6636	68.5	3.8	3.2	5.4	9.8	4.0	4.7	0.6	68.5	3.8	27.7	0.070	0.519	23.285842	-102.949627
ENT. LA CHICHARRONA	74.30	1	2	6592	68.8	3.9	3.4	5.3	9.4	3.7	4.7	0.8	68.8	3.9	27.3	0.067	0.519	23.284041	-102.948981

DURANGO

19 CARR: ZACATECAS - DURANGO

CLAVE: 00544

RUTA: MEX-045

AÑO: 2010

LUGAR	ESTACION				CLASIFICACION VEHICULAR EN PORCIENTO								COORDENADAS						
	KM	TE	SC	TDPA	A	B	C2	C3	T3S2	T3S3	T3S2R4	OTROS	A	B	C	K'	D	LATITUD	LONGITUD
ENT. LA CHICHARRONA	74.30	3	0	5568	69.7	3.9	3.7	4.7	9.2	3.5	4.4	0.9	69.7	3.9	26.4	0.082	0.502	23.308067	-102.964830
T. DER. SAIN ALTO	121.00	3	0	2844	72.0	3.7	3.5	4.3	8.4	3.3	4.0	0.8	72.0	3.7	24.3	0.080	0.510	23.581068	-103.274188
T. IZQ. SOMBRERETE (2º ACCESO)	161.50	3	0	4788	72.6	3.6	3.5	3.2	8.8	3.6	3.7	1.0	72.6	3.6	23.8	0.069	0.504	23.644910	-103.648738
LIM. EDOS. TERM. ZAC. PPIA. DGO.	190.08																		
X. C. VICENTE GUERRERO - VILLA UNION	206.98	1	0	2845	76.1	5.8	6.9	2.6	4.1	2.8	0.0	1.7	76.1	5.8	18.1	0.096	0.522	23.745843	-103.977433
X. C. VICENTE GUERRERO - VILLA UNION	206.98	3	0	3837	80.8	4.6	6.0	2.2	2.0	1.4	0.0	3.0	80.8	4.6	14.6	0.088	0.527	23.744268	-103.995815
T. IZQ. GRACEROS	210.00	1	0	3533	77.9	5.0	5.9	3.6	3.7	2.4	0.0	1.5	77.9	5.0	17.1	0.091	0.505	23.747896	-104.036253
AMADO NERVO	231.51	1	0	3144	77.0	4.3	6.4	2.6	4.9	2.5	0.0	2.3	77.0	4.3	18.7	0.091	0.511	23.839662	-104.181316
AMADO NERVO	231.51	3	0	4339	77.5	4.4	6.3	3.6	3.7	2.8	0.0	1.7	77.5	4.4	18.1	0.101	0.505	23.845021	-104.209757
NOMBRE DE DIOS	236.80	1	0	4185	74.8	4.6	7.9	3.0	4.1	2.8	0.0	2.8	74.8	4.6	20.6	0.105	0.515	23.843777	-104.223411
NOMBRE DE DIOS	236.80	3	0	4892	80.6	4.3	5.6	2.7	3.3	2.0	0.0	1.5	80.6	4.3	15.1	0.086	0.516	23.854887	-104.252502
T. DER. CONSTANCIA	240.60	3	0	4318	79.6	3.9	5.9	2.0	3.7	2.8	0.0	2.1	79.6	3.9	16.5	0.078	0.522	23.874807	-104.276078
T. DER. TUITAN	250.80	3	0	4048	77.1	6.1	5.5	2.8	3.3	2.6	0.0	2.6	77.1	6.1	16.8	0.096	0.511	23.929762	-104.336093
T. DER. INDEPENDENCIA Y LIBERTAD	261.70	1	0	4301	81.3	5.2	4.4	1.6	3.2	2.9	0.0	1.4	81.3	5.2	13.5	0.112	0.520	23.991366	-104.372343
T. DER. INDEPENDENCIA Y LIBERTAD	261.70	3	0	4775	74.0	5.7	6.2	4.1	4.1	3.3	0.0	2.6	74.0	5.7	20.3	0.092	0.505	24.003740	-104.382620
T. IZQ. PARRAS DE LA FUENTE	276.60	3	1	2761	84.0	2.6	3.9	2.5	2.4	1.6	0.0	3.0	84.0	2.6	13.4	0.137	0.505	24.022816	-104.540739
T. IZQ. PARRAS DE LA FUENTE	276.60	3	2	2705	82.9	2.1	4.5	2.1	3.0	2.3	0.0	3.1	82.9	2.1	15.0	0.110	0.505	24.022816	-104.540739
T. DER. PERIFERICO DURANGO	278.80	1	1	3431	90.8	2.0	2.8	1.3	1.4	0.3	0.0	1.4	90.8	2.0	7.2	0.114	0.512	24.018743	-104.504733
T. DER. PERIFERICO DURANGO	278.80	1	2	3505	88.6	1.4	3.6	1.4	1.7	1.1	0.0	2.2	88.6	1.4	10.0	0.091	0.512	24.018743	-104.504733
DURANGO	287.30	1	1	4555	82.5	3.1	4.7	2.0	3.1	1.7	0.0	2.9	82.5	3.1	14.4	0.102	0.503	24.029565	-104.604849
DURANGO	287.30	1	2	4613	81.0	3.4	5.2	2.1	3.3	2.2	0.0	2.8	81.0	3.4	15.6	0.108	0.503	24.029565	-104.604849

20 CARR: DURANGO - GOMEZ PALACIO (CUOTA)

CLAVE: 10003

RUTA: MEX-040D

AÑO: 2010

LUGAR	ESTACION				CLASIFICACION VEHICULAR EN PORCIENTO								COORDENADAS						
	KM	TE	SC	TDPA	A	B	C2	C3	T3S2	T3S3	T3S2R4	OTROS	A	B	C	K'	D	LATITUD	LONGITUD
T. C. DURANGO - TORREON	0.00																		
CASETA DE COBRO DURANGO	15.50	2	0	1507	75.1	10.0	3.7	1.8	5.6	1.1	2.4	0.3	75.1	10.0	14.9			24.131744	-104.534063
CASETA DE COBRO YERBANIS	112.186	2	0	1176	71.7	11.6	3.9	1.8	6.3	1.2	3.1	0.4	71.7	11.6	16.7			24.730279	-103.862552
CASETA DE COBRO CUENCAME	143.22	1	0	1297	73.1	11.5	3.6	1.9	5.5	1.2	2.8	0.4	73.1	11.5	15.4			24.980370	-103.734393
CASETA DE COBRO CUENCAME	143.22	2	0	3382	62.0	12.1	3.7	2.5	9.1	1.9	8.0	0.7	62.0	12.1	25.9			24.980370	-103.734393
CASETA DE COBRO CUENCAME	143.22	3	0	3262	61.5	12.5	3.6	2.5	9.1	2.0	8.2	0.6	61.5	12.5	26.0			24.980370	-103.734393
X. C. CUENCAME - TORREON	180.00	1	1	1441	63.2	11.1	3.6	2.6	9.4	2.0	7.5	0.6	63.2	11.1	25.7	0.078	0.525	25.134200	-103.755394
X. C. CUENCAME - TORREON	180.00	1	2	1593	64.3	11.2	3.6	2.7	8.8	2.0	6.8	0.6	64.3	11.2	24.5	0.068	0.525	25.134200	-103.755394
X. C. CUENCAME - TORREON	180.00	3	1	1651	63.6	11.9	3.6	2.6	8.5	1.9	7.3	0.6	63.6	11.9	24.5	0.073	0.509	25.142624	-103.757532

DURANGO

20 CARR: DURANGO - GOMEZ PALACIO (CUOTA)

CLAVE: 10003

RUTA: MEX-040D

AÑO: 2010

LUGAR	ESTACION				CLASIFICACION VEHICULAR EN PORCIENTO								COORDENADAS						
	KM	TE	SC	TDPA	A	B	C2	C3	T3S2	T3S3	T3S2R4	OTROS	A	B	C	K'	D	LATITUD	LONGITUD
X. C. CUENCAME - TORREON	180.00	3	2	1714	63.1	11.1	3.7	2.7	9.5	1.9	7.4	0.6	63.1	11.1	25.8	0.079	0.509	25.142624	-103.757532
CASETA DE COBRO LEON GUZMAN	212.709	1	1	1782	63.3	11.9	3.6	2.6	9.2	1.9	6.9	0.6	63.3	11.9	24.8	0.081	0.511	25.516697	-103.639835
CASETA DE COBRO LEON GUZMAN	212.709	1	2	1859	63.5	11.1	3.6	2.6	9.2	2.0	7.4	0.6	63.5	11.1	25.4	0.067	0.511	25.516708	-103.640085
CASETA DE COBRO LEON GUZMAN	212.709	2	0	4149	59.8	10.6	3.8	3.4	12.4	2.6	6.7	0.7	59.8	10.6	29.6			25.520712	-103.639620
CASETA DE COBRO LEON GUZMAN	212.709	3	1	1367	52.3	13.8	4.2	3.8	16.0	3.1	5.9	0.9	52.3	13.8	33.9	0.065	0.530	25.528782	-103.638760
CASETA DE COBRO LEON GUZMAN	212.709	3	2	1543	55.0	13.1	4.0	3.7	14.8	2.8	5.8	0.8	55.0	13.1	31.9	0.064	0.530	25.528793	-103.638866
T. C. GOMEZ PALACIO - JIMENEZ	220.00																		

21 CARR: DURANGO - VILLA UNION (CUOTA)

CLAVE:

RUTA: MEX-040D

AÑO: 2010

LUGAR	ESTACION				CLASIFICACION VEHICULAR EN PORCIENTO								COORDENADAS						
	KM	TE	SC	TDPA	A	B	C2	C3	T3S2	T3S3	T3S2R4	OTROS	A	B	C	K'	D	LATITUD	LONGITUD
LIBRAMIENTO DE DURANGO	0.00	3	0	2316	81.5	2.8	3.9	3.2	6.7	1.6	0.3	0.0	81.5	2.8	15.7	0.081	0.507	24.006442	-104.730541
CASETA DE COBRO DURANGO	20.00	2	0	2144	81.3	2.8	4.0	3.4	6.6	1.6	0.3	0.0	81.3	2.8	15.9			24.131744	-104.534063
ENT. OTINAPA	22.85	1	0	2150	80.3	3.0	4.3	3.7	6.8	1.6	0.3	0.0	80.3	3.0	16.7	0.083	0.509	23.978392	-104.958978
LIM. EDOS. TERM. DGO. PPIA. SIN.	135.75																		
CONCORDIA	188.35	3	0	794	80.5	2.8	4.2	3.5	7.0	1.7	0.3	0.0	80.5	2.8	16.7	0.151	0.556	23.254903	-106.053769
VILLA UNION	208.35	1	0	967	80.9	2.9	4.2	3.5	6.6	1.6	0.3	0.0	80.9	2.9	16.2	0.126	0.542	23.197960	-106.170960

22 CARR: GOMEZ PALACIO - JIMENEZ (CUOTA)

CLAVE: 00016

RUTA: MEX-049D

AÑO: 2010

LUGAR	ESTACION				CLASIFICACION VEHICULAR EN PORCIENTO								COORDENADAS						
	KM	TE	SC	TDPA	A	B	C2	C3	T3S2	T3S3	T3S2R4	OTROS	A	B	C	K'	D	LATITUD	LONGITUD
T. C. GOMEZ PALACIO - JIMENEZ (LIBRE)	0.00																		
CASETA DE COBRO BERMEJILLO	5.00	2	0	2410	45.7	15.7	2.3	1.4	20.5	3.1	9.9	1.4	45.7	15.7	38.6			25.923654	-103.622041
CASETA DE COBRO CEBALLOS	89.00	2	0	2375	45.6	15.7	2.3	1.4	20.6	3.1	9.8	1.5	45.6	15.7	38.7			26.586790	-104.057602
LIM. EDOS. TERM. DGO. PPIA. CHIH.	112.00																		
T. C. LIBRAMIENTO JIMENEZ	150.59																		

23 CARR: AMADO NERVO - LA OCHOA

CLAVE: 10012

RUTA: DGO-542

AÑO: 2010

LUGAR	ESTACION				CLASIFICACION VEHICULAR EN PORCIENTO								COORDENADAS						
	KM	TE	SC	TDPA	A	B	C2	C3	T3S2	T3S3	T3S2R4	OTROS	A	B	C	K'	D	LATITUD	LONGITUD
AMADO NERVO	0.00	3	0	1497	87.7	4.3	4.7	1.5	0.9	0.2	0.0	0.7	87.7	4.3	8.0	0.112	0.515	23.853769	-104.172369
VILLA UNION	25.00	1	0	2701	88.5	4.0	4.4	1.4	0.8	0.2	0.0	0.7	88.5	4.0	7.5	0.088	0.512	23.958226	-104.062353

DURANGO

23 CARR: AMADO NERVO - LA OCHOA

CLAVE: 10012

RUTA: DGO-542

AÑO: 2010

LUGAR	ESTACION				CLASIFICACION VEHICULAR EN PORCIENTO								COORDENADAS						
	KM	TE	SC	TDPA	A	B	C2	C3	T3S2	T3S3	T3S2R4	OTROS	A	B	C	K'	D	LATITUD	LONGITUD
LA OCHOA	42.00	1	0	465	85.9	1.8	8.0	2.2	0.3	0.8	0.2	0.8	85.9	1.8	12.3	0.095	0.524	24.013608	-103.935696

24 CARR: CEBALLOS - EL MIRADOR

CLAVE: 10417

RUTA: DGO-044

AÑO: 2010

LUGAR	ESTACION				CLASIFICACION VEHICULAR EN PORCIENTO								COORDENADAS						
	KM	TE	SC	TDPA	A	B	C2	C3	T3S2	T3S3	T3S2R4	OTROS	A	B	C	K'	D	LATITUD	LONGITUD
CEBALLOS	0.00	3	0	789	87.0	2.7	4.9	2.2	1.6	1.0	0.1	0.5	87.0	2.7	10.3	0.138	0.529	26.529770	-104.134538
T. C. ENT. LA ZARCA - HIDALGO DEL PARRAL	113.50	1	0	350	88.3	1.3	5.6	2.5	1.3	0.5	0.1	0.4	88.3	1.3	10.4	0.143	0.525	26.141511	-105.028680

25 CARR: DURANGO - ASERRADERO LA FLOR

CLAVE: 10422

RUTA: DGO-115

AÑO: 2010

LUGAR	ESTACION				CLASIFICACION VEHICULAR EN PORCIENTO								COORDENADAS						
	KM	TE	SC	TDPA	A	B	C2	C3	T3S2	T3S3	T3S2R4	OTROS	A	B	C	K'	D	LATITUD	LONGITUD
DURANGO	0.00	3	1	5766	88.4	2.9	4.2	1.7	0.7	0.3	0.0	1.8	88.4	2.9	8.7	0.106	0.507	23.984212	-104.664511
DURANGO	0.00	3	2	5924	88.3	2.8	4.5	1.3	0.8	0.2	0.0	2.1	88.3	2.8	8.9	0.086	0.507	23.984211	-104.664385
T. DER. PRESA GUADALUPE VICTORIA	4.00	3	0	7662	88.9	2.4	5.3	1.2	0.7	0.3	0.0	1.2	88.9	2.4	8.7	0.085	0.504	23.976862	-104.664362
ASERRADERO LA FLOR	39.00	1	0	136	80.9	4.3	9.6	3.4	0.2	0.6	0.2	0.8	80.9	4.3	14.8	0.125	0.511	23.788833	-104.756691

26 CARR: JABONOSO - ESMERALDA

CLAVE: 10004

RUTA: DGO-363

AÑO: 2010

LUGAR	ESTACION				CLASIFICACION VEHICULAR EN PORCIENTO								COORDENADAS						
	KM	TE	SC	TDPA	A	B	C2	C3	T3S2	T3S3	T3S2R4	OTROS	A	B	C	K'	D	LATITUD	LONGITUD
JABONOSO	0.00	3	0	8913	78.3	5.0	6.6	3.3	3.4	1.2	0.0	2.2	78.3	5.0	16.7	0.072	0.505	25.641708	-103.456606
T. IZO. CHIMAL	10.00	3	0	3576	85.0	2.3	4.4	2.2	3.8	1.4	0.0	0.9	85.0	2.3	12.7	0.084	0.507	25.699206	-103.442348
ESMERALDA	16.30	1	0	2864	85.2	3.2	5.2	3.6	1.2	0.6	0.0	1.0	85.2	3.2	11.6	0.082	0.515	25.736755	-103.432321

27 CARR: LA TORREÑA - BRITTINGHAM

CLAVE: 10010

RUTA: DGO-325

AÑO: 2010

LUGAR	ESTACION				CLASIFICACION VEHICULAR EN PORCIENTO								COORDENADAS						
	KM	TE	SC	TDPA	A	B	C2	C3	T3S2	T3S3	T3S2R4	OTROS	A	B	C	K'	D	LATITUD	LONGITUD
LA TORREÑA	0.00	3	0	2730	80.1	2.9	6.4	2.6	5.3	1.4	0.0	1.3	80.1	2.9	17.0	0.096	0.525	25.639456	-103.579469
X. C. GOMEZ PALACIO - JIMENEZ	7.00	1	0	2685	78.8	1.9	11.8	1.6	2.9	1.3	0.0	1.7	78.8	1.9	19.3	0.100	0.507	25.641962	-103.526280
X. C. GOMEZ PALACIO - JIMENEZ	7.00	3	0	3063	84.3	1.9	8.5	2.8	0.9	0.4	0.0	1.2	84.3	1.9	13.8	0.102	0.518	25.641675	-103.516292
CHIMAL	16.00	1	0	1713	82.4	4.0	6.5	2.1	3.2	1.0	0.0	0.8	82.4	4.0	13.6	0.099	0.521	25.690069	-103.492114
CHIMAL	16.00	3	0	1159	85.9	2.6	5.7	1.9	2.6	0.5	0.1	0.7	85.9	2.6	11.5	0.096	0.533	25.699112	-103.491998

DURANGO

27 CARR: LA TORREÑA - BRITTINGHAM

CLAVE: 10010

RUTA: DGO-325

AÑO: 2010

LUGAR	ESTACION				CLASIFICACION VEHICULAR EN PORCIENTO								COORDENADAS						
	KM	TE	SC	TDPA	A	B	C2	C3	T3S2	T3S3	T3S2R4	OTROS	A	B	C	K'	D	LATITUD	LONGITUD
BRITTINGHAM	33.00	1	0	838	87.0	1.9	4.7	2.4	2.4	1.0	0.1	0.5	87.0	1.9	11.1	0.117	0.522	25.772909	-103.575129

28 CARR: LIBRAMIENTO DE TORREON

CLAVE: 05516

RUTA: COA

AÑO: 2010

LUGAR	ESTACION				CLASIFICACION VEHICULAR EN PORCIENTO								COORDENADAS						
	KM	TE	SC	TDPA	A	B	C2	C3	T3S2	T3S3	T3S2R4	OTROS	A	B	C	K'	D	LATITUD	LONGITUD
T. C. DURANGO - TORREON	0.00																		
X. C. SALTILLO - TORREON	6.70	1	1	15057	80.2	4.7	4.2	2.7	2.1	2.5	2.6	1.0	80.2	4.7	15.1	0.069	0.503	25.530769	-103.365925
X. C. SALTILLO - TORREON	6.70	1	2	14820	81.4	4.8	4.0	2.8	2.3	2.4	1.3	1.0	81.4	4.8	13.8	0.070	0.503	25.530817	-103.366013
X. C. SALTILLO - TORREON	6.70	3	1	19553	80.9	5.1	4.1	3.3	2.0	2.3	1.2	1.1	80.9	5.1	14.0	0.078	0.512	25.539883	-103.370477
X. C. SALTILLO - TORREON	6.70	3	2	19498	79.2	5.1	4.7	3.5	2.4	2.8	1.1	1.2	79.2	5.1	15.7	0.078	0.512	25.540214	-103.371032
T. C. LA CUCHILLA - TORREON	12.00	1	1	20935	79.1	5.1	5.1	3.5	2.3	2.5	1.5	0.9	79.1	5.1	15.8	0.072	0.504	25.581414	-103.400188
T. C. LA CUCHILLA - TORREON	12.00	1	2	20613	79.2	5.2	5.1	3.3	2.4	2.4	1.5	0.9	79.2	5.2	15.6	0.076	0.504	25.581672	-103.401989
LIM. EDOS. TERM. DGO. PPIA. COAH.	16.50																		
T. C. CUENCAME - TORREON	43.00																		

29 CARR: LIBRAMIENTO EXTERIOR CUENCAMÉ

CLAVE:

RUTA: DGO

AÑO: 2010

LUGAR	ESTACION				CLASIFICACION VEHICULAR EN PORCIENTO								COORDENADAS						
	KM	TE	SC	TDPA	A	B	C2	C3	T3S2	T3S3	T3S2R4	OTROS	A	B	C	K'	D	LATITUD	LONGITUD
ENT. LA CHICHARRONA - CUENCAME	0.00	3	0	4453	56.0	7.0	6.8	3.4	14.5	7.0	1.4	3.9	56.0	7.0	37.0	0.055	0.521	24.840940	-103.692883
T. C. DURANGO - TORREÓN	6.50																		

30 CARR: MEZQUITAL - SAN MIGUEL DE TEMOAYA

CLAVE:

RUTA: DGO

AÑO: 2010

LUGAR	ESTACION				CLASIFICACION VEHICULAR EN PORCIENTO								COORDENADAS						
	KM	TE	SC	TDPA	A	B	C2	C3	T3S2	T3S3	T3S2R4	OTROS	A	B	C	K'	D	LATITUD	LONGITUD
T.C. DURANGO - MEZQUITAL	0.00	3	0	349	81.6	3.6	10.6	2.7	0.1	0.5	0.1	0.8	81.6	3.6	14.8	0.092	0.504	23.497043	-104.388123
SAN MIGUEL DE TEMOAYA	48.00	1	0	289	81.9	2.8	12.2	1.7	0.1	0.5	0.1	0.7	81.9	2.8	15.3	0.114	0.511	23.324892	-104.165381

31 CARR: RAMAL A SAN JUAN DEL RIO

CLAVE: 10001

RUTA: DGO-290

AÑO: 2010

LUGAR	ESTACION				CLASIFICACION VEHICULAR EN PORCIENTO								COORDENADAS						
	KM	TE	SC	TDPA	A	B	C2	C3	T3S2	T3S3	T3S2R4	OTROS	A	B	C	K'	D	LATITUD	LONGITUD
T. C. DURANGO - ENT. LA ZARCA	0.00	3	0	2070	93.1	1.6	3.5	1.1	0.0	0.1	0.0	0.6	93.1	1.6	5.3	0.101	0.501	24.797016	-104.497730

DURANGO

31 CARR: RAMAL A SAN JUAN DEL RIO

CLAVE: 10001

RUTA: DGO-290

AÑO: 2010

LUGAR	ESTACION				CLASIFICACION VEHICULAR EN PORCIENTO								COORDENADAS						
	KM	TE	SC	TDPA	A	B	C2	C3	T3S2	T3S3	T3S2R4	OTROS	A	B	C	K'	D	LATITUD	LONGITUD
SAN JUAN DEL RIO	5.00	1	0	2571	89.7	2.5	4.9	2.8	0.0	0.1	0.0	0.0	89.7	2.5	7.8	0.100	0.501	24.781066	-104.467344

32 CARR: SUCHIL - VILLA UNION

CLAVE: 10419

RUTA: DGO-241

AÑO: 2010

LUGAR	ESTACION				CLASIFICACION VEHICULAR EN PORCIENTO								COORDENADAS						
	KM	TE	SC	TDPA	A	B	C2	C3	T3S2	T3S3	T3S2R4	OTROS	A	B	C	K'	D	LATITUD	LONGITUD
SUCHIL	0.00	3	0	1784	86.6	2.7	5.1	2.8	0.3	0.2	0.1	2.2	86.6	2.7	10.7	0.102	0.501	23.630574	-103.924819
VICENTE GUERRERO	13.40	1	0	1600	88.1	3.0	4.9	1.9	0.3	0.2	0.0	1.6	88.1	3.0	8.9	0.101	0.503	23.717367	-103.973343
X. C. ZACATECAS - DURANGO	14.50	1	1	2849	91.3	2.3	3.1	2.0	0.4	0.2	0.0	0.7	91.3	2.3	6.4	0.094	0.506	23.742040	-103.985041
X. C. ZACATECAS - DURANGO	14.50	1	2	2916	88.6	1.9	4.6	3.2	0.4	0.1	0.0	1.2	88.6	1.9	9.5	0.090	0.506	23.742040	-103.985041
X. C. ZACATECAS - DURANGO	14.50	3	0	1588	88.9	2.3	4.6	1.6	0.7	0.2	0.1	1.6	88.9	2.3	8.8	0.079	0.507	23.747145	-103.987744
VILLA UNION	41.40	1	0	1902	84.7	3.6	5.4	2.5	0.7	0.3	0.1	2.7	84.7	3.6	11.7	0.117	0.525	23.953258	-104.049463

33 CARR: TLAHUALILLO DE ZARAGOZA - T.C. GOMEZ PALACIO - JIMENEZ

CLAVE:

RUTA: DGO

AÑO: 2010

LUGAR	ESTACION				CLASIFICACION VEHICULAR EN PORCIENTO								COORDENADAS						
	KM	TE	SC	TDPA	A	B	C2	C3	T3S2	T3S3	T3S2R4	OTROS	A	B	C	K'	D	LATITUD	LONGITUD
TLAHUALILLO DE ZARAGOZA	0.00	3	0	1072	90.7	1.7	4.8	1.8	0.6	0.2	0.1	0.1	90.7	1.7	7.6	0.126	0.518	26.117360	-103.445806
T.C. GOMEZ PALACIO - JIMENEZ	37.00	1	0	888	91.6	1.6	4.6	1.5	0.1	0.2	0.1	0.3	91.6	1.6	6.8	0.108	0.558	26.156498	-103.775483

34 CARR: YERBANIS - PEÑON BLANCO

CLAVE: 10032

RUTA: DGO-316

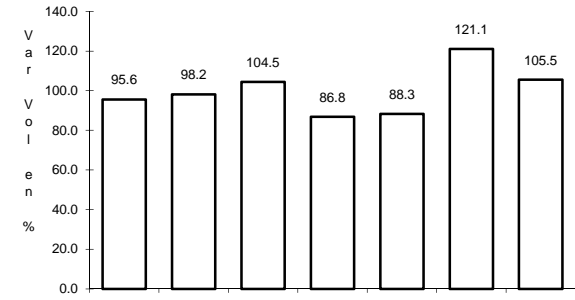
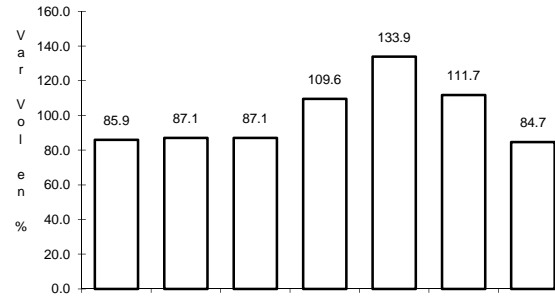
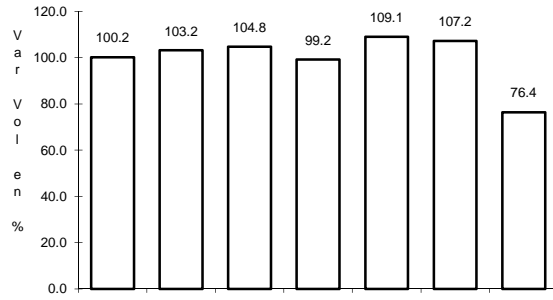
AÑO: 2010

LUGAR	ESTACION				CLASIFICACION VEHICULAR EN PORCIENTO								COORDENADAS						
	KM	TE	SC	TDPA	A	B	C2	C3	T3S2	T3S3	T3S2R4	OTROS	A	B	C	K'	D	LATITUD	LONGITUD
YERBANIS	0.00	3	0	973	85.4	4.1	7.9	1.8	0.3	0.2	0.1	0.2	85.4	4.1	10.5	0.127	0.525	24.735737	-103.847955
PEÑON BLANCO	22.00	1	0	1498	90.8	2.1	5.6	1.3	0.0	0.1	0.0	0.1	90.8	2.1	7.1	0.100	0.505	24.784723	-104.015561

1 CARR: BERMEJILLO - EL PALMITO

CLAVE: 10105

ruta: MEX-030



Km: 0.00 Tipo: 3 Sent: 0

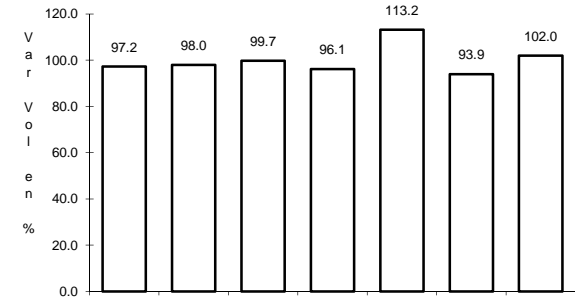
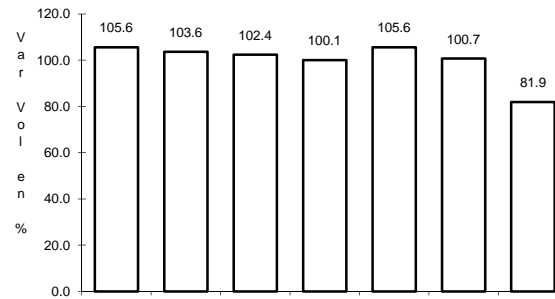
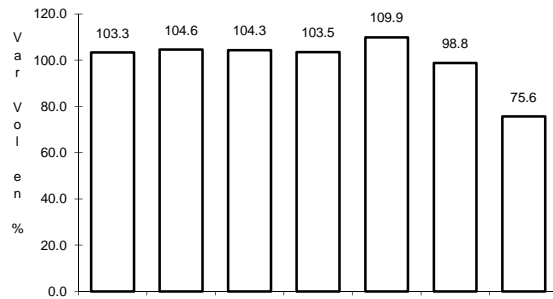
Km: 86.00 Tipo: 3 Sent: 0

Km: 160.00 Tipo: 1 Sent: 0

2 CARR: DURANGO - ENT. LA ZARCA

CLAVE: 10016

ruta: MEX-045



Km: 0.00 Tipo: 3 Sent: 1

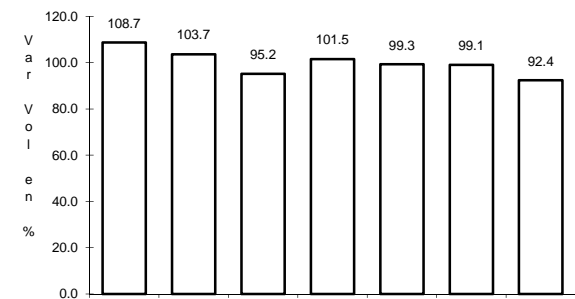
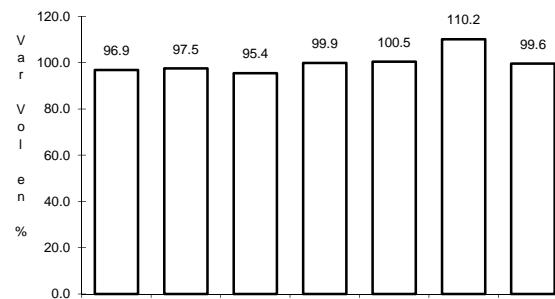
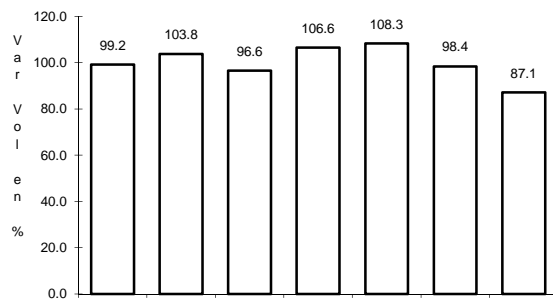
Km: 0.00 Tipo: 3 Sent: 2

Km: 239.50 Tipo: 1 Sent: 0

3 CARR: DURANGO - MEZQUITAL

CLAVE: 10423

ruta: MEX-023



Km: 0.00 Tipo: 3 Sent: 0

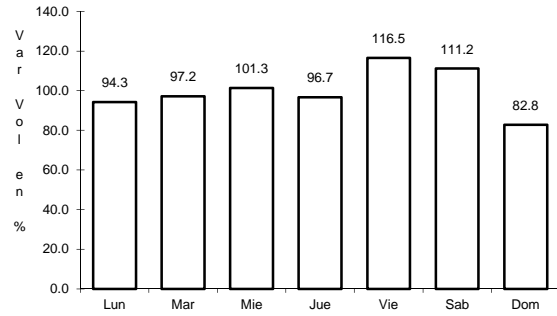
Km: 13.00 Tipo: 3 Sent: 0

Km: 82.00 Tipo: 1 Sent: 0

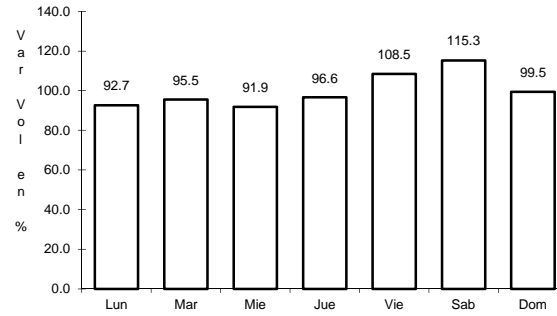
7 CARR: ENT. LA ZARCA - HIDALGO DEL PARRAL

CLAVE: 00488

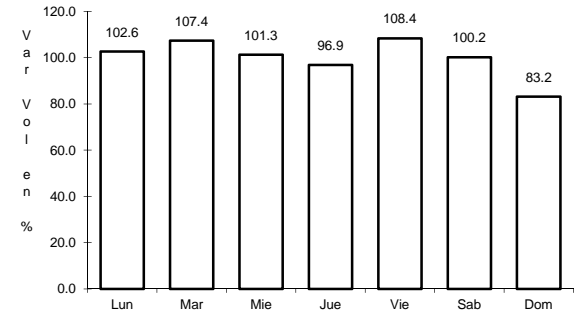
ruta: MEX-045



Km: 0.00 Tipo: 3 Sent: 0



Km: 97.60 Tipo: 3 Sent: 0

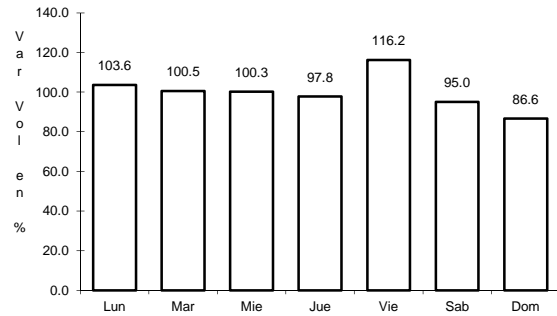


Km: 171.00 Tipo: 1 Sent: 0

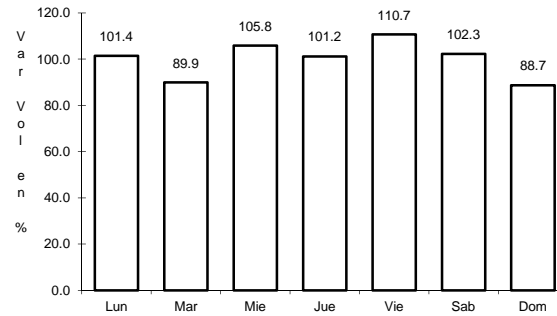
8 CARR: ENT. LOS HERRERA - TOPIA

CLAVE: 10090

ruta: MEX-036



Km: 0.00 Tipo: 3 Sent: 0

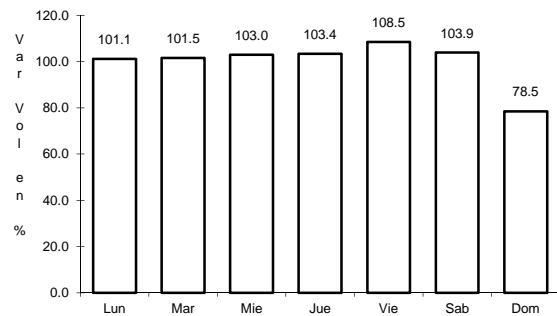


Km: 80.00 Tipo: 1 Sent: 0

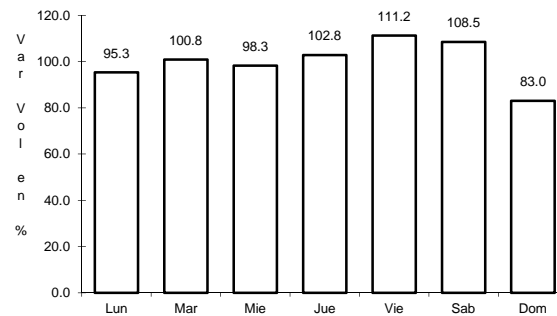
9 CARR: GOMEZ PALACIO - JIMENEZ

CLAVE: 00006

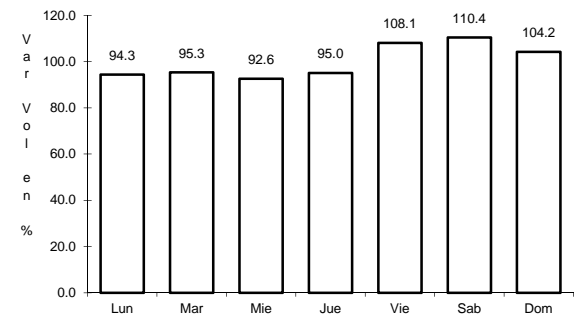
ruta: MEX-049



Km: 0.00 Tipo: 3 Sent: 1



Km: 0.00 Tipo: 3 Sent: 2

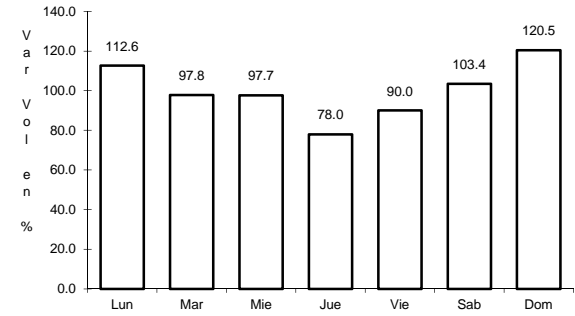
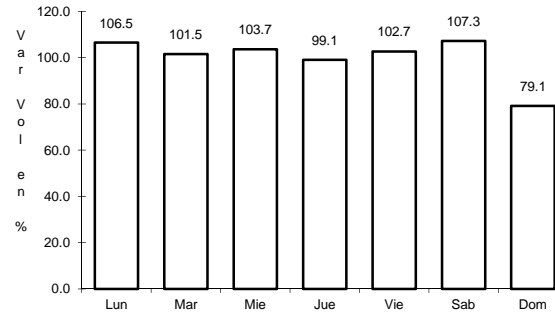
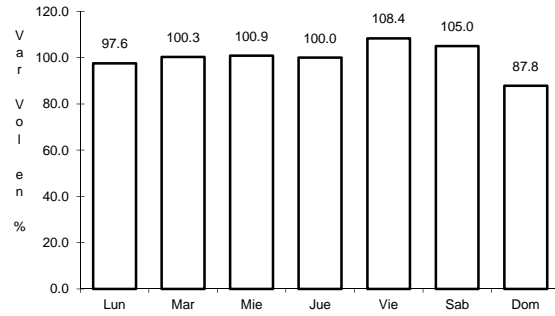


Km: 223.00 Tipo: 3 Sent: 0

10 CARR: GOMEZ PALACIO - LA UNION

CLAVE: 10009

ruta: MEX



Km: 0.00 Tipo: 3 Sent: 0

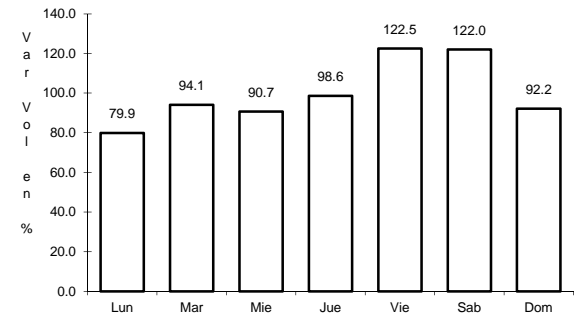
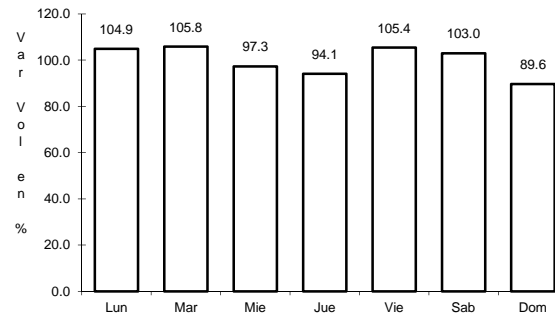
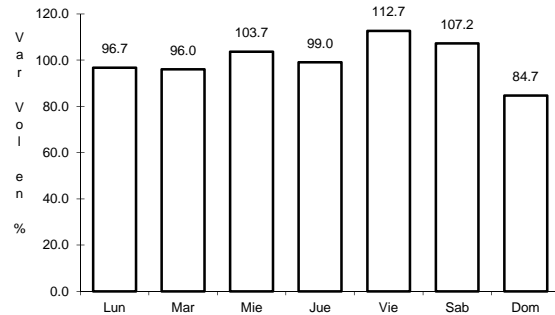
Km: 20.90 Tipo: 1 Sent: 0

Km: 42.20 Tipo: 1 Sent: 0

11 CARR: GOMEZ PALACIO - TLAHUALILLO

CLAVE: 10005

ruta: MEX



Km: 5.60 Tipo: 1 Sent: 0

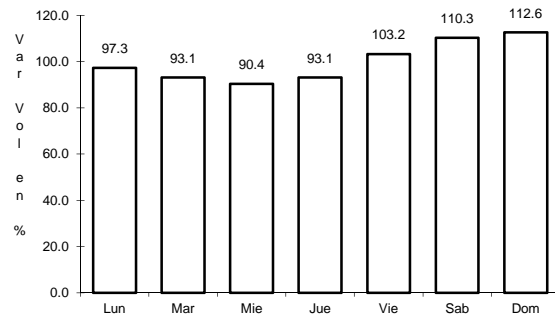
Km: 31.44 Tipo: 1 Sent: 0

Km: 72.90 Tipo: 1 Sent: 0

12 CARR: GREGORIO GARCIA - FRANCISCO I. MADERO

CLAVE: 00110

ruta: MEX

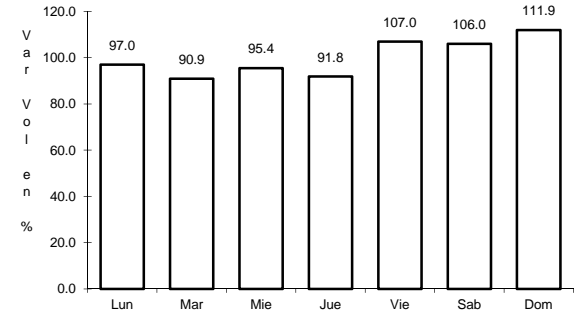
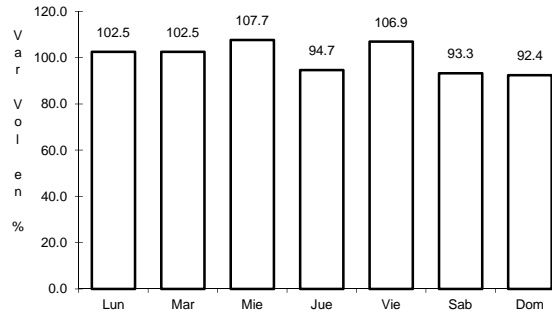
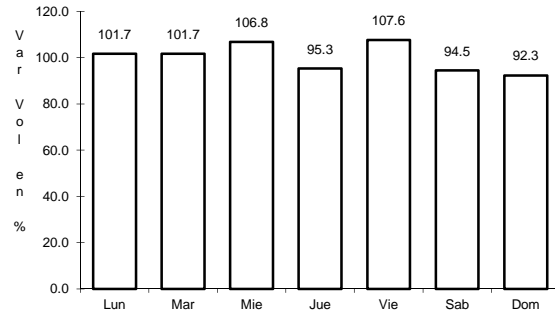


Km: 9.60 Tipo: 1 Sent: 0

19 CARR: ZACATECAS - DURANGO

CLAVE: 00544

ruta: MEX-045



Km: 6.40 Tipo: 3 Sent: 1

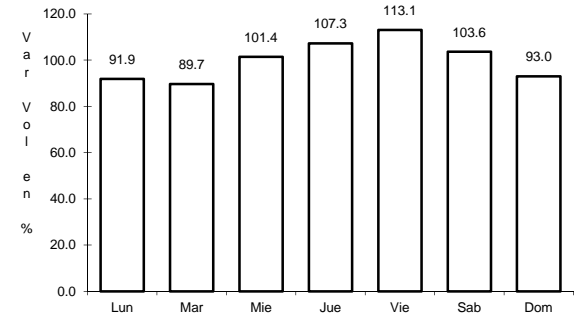
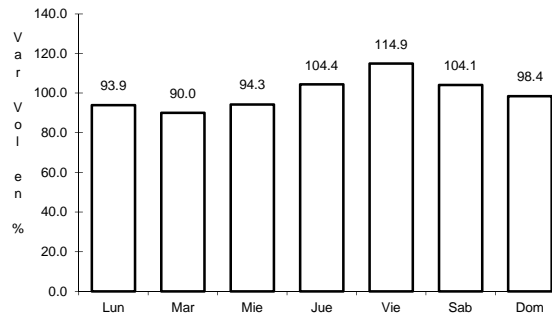
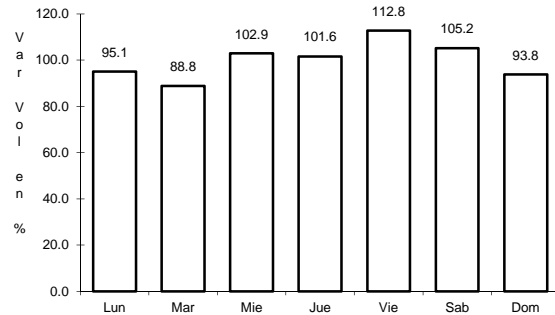
Km: 6.40 Tipo: 3 Sent: 2

Km: 261.70 Tipo: 3 Sent: 0

20 CARR: DURANGO - GOMEZ PALACIO (CUOTA)

CLAVE: 10003

ruta: MEX-040D



Km: 180.00 Tipo: 1 Sent: 1

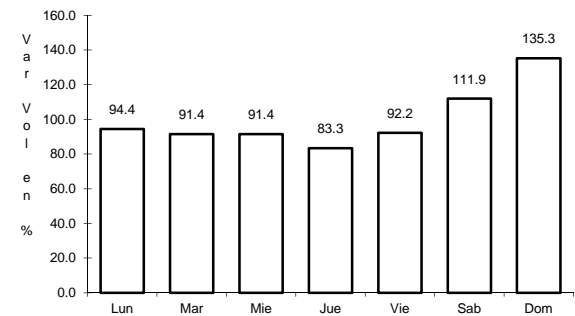
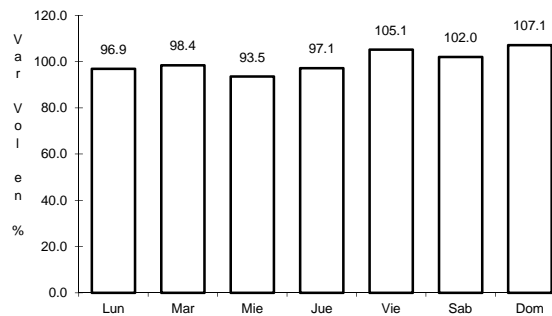
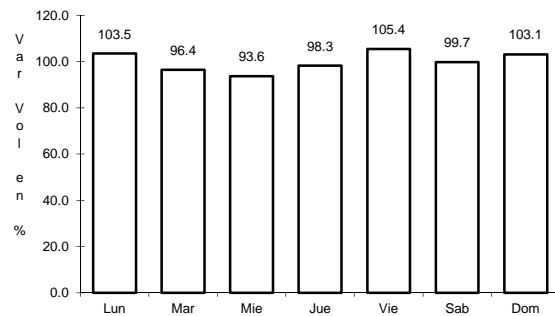
Km: 180.00 Tipo: 1 Sent: 2

Km: 212.71 Tipo: 3 Sent: 1

21 CARR: DURANGO - VILLA UNION (CUOTA)

CLAVE:

ruta: MEX-040D



Km: 0.00 Tipo: 3 Sent: 0

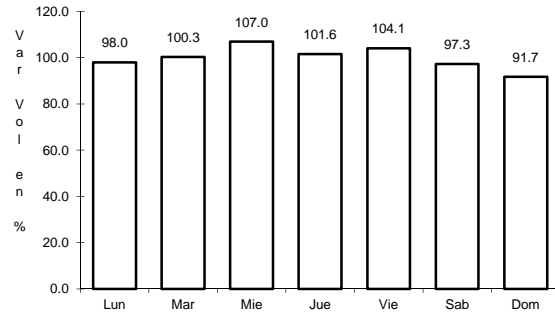
Km: 22.85 Tipo: 1 Sent: 0

Km: 208.35 Tipo: 1 Sent: 0

29 CARR: LIBRAMIENTO EXTERIOR CUENCAMÉ

CLAVE:

RUTA: DGO



Km: 0.00

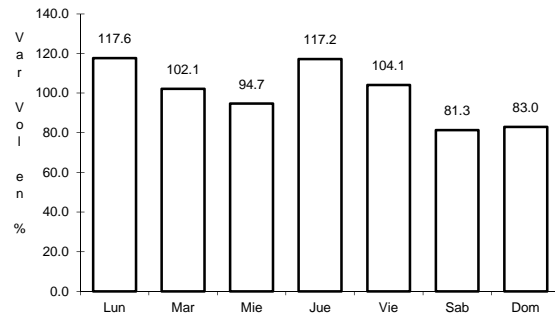
Tipo: 3

Sent: 0

30 CARR: MEZQUITAL - SAN MIGUEL DE TEMOAYA

CLAVE:

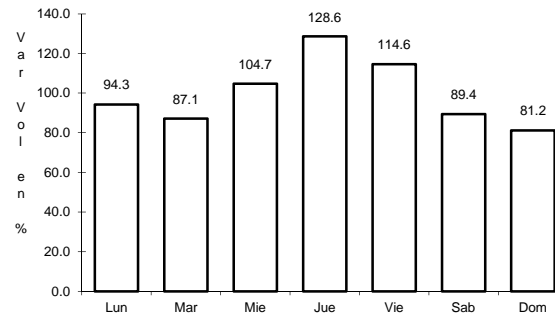
RUTA: DGO



Km: 0.00

Tipo: 3

Sent: 0



Km: 48.00

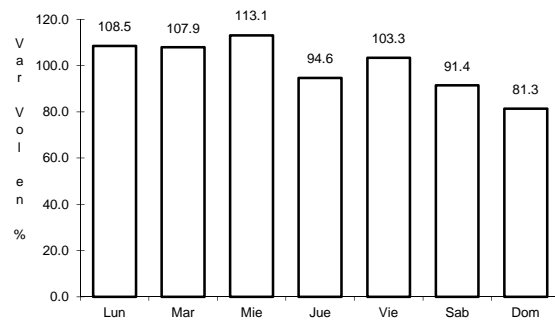
Tipo: 1

Sent: 0

31 CARR: RAMAL A SAN JUAN DEL RIO

CLAVE: 10001

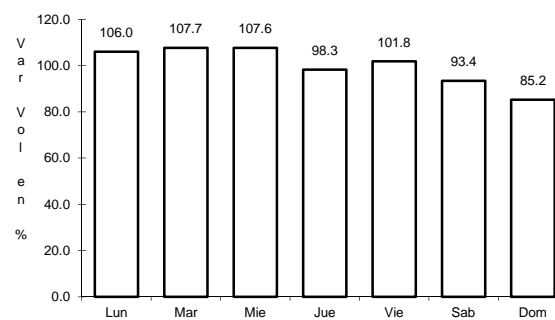
RUTA: DGO-290



Km: 0.00

Tipo: 3

Sent: 0



Km: 5.00

Tipo: 1

Sent: 0

