

CHIAPAS

---RED FEDERAL LIBRE---

1	BENEMERITO DE LAS AMERICAS - PALENQUE	MEX-307
2	CATAZAJA - T. C. (TUXTLA GTZ. - CD. CUAUHEMOC)	MEX-199
3	EL SUSPIRO - TENOSIQUE	MEX-203
4	ENT. JARITAS - CIUDAD HIDALGO	MEX
5	HUIXTLA - EL JOCOTE	MEX-211
6	LA TRINITARIA - BENEMERITO DE LAS AMERICAS	MEX-307
7	LAS CRUCES - ARRIAGA	MEX-193
8	LIBRAMIENTO DE OCOZOCOAUTLA	MEX
9	MALPASO - EL BELLOTE	MEX-187
10	OCOZOCOAUTLA - ENT. EL SABINO	MEX-220
11	RAMAL A CD. HIDALGO	MEX
12	RAMAL A LA GLORIA	MEX
13	RAMAL A PAREDON	MEX
14	RAMAL A PUERTO ARISTA	MEX
15	RAMAL A UNION JUAREZ	MEX
16	TAPACHULA - PUERTO MADERO	MEX-225
17	TAPANATEPEC - TALISMAN	MEX-200
18	TAPANATEPEC - TUXTLA GUTIERREZ	MEX-190
19	TERAN - CHICOASEN	MEX
20	TUXTLA GUTIERREZ - ANGOSTURA	MEX
21	TUXTLA GUTIERREZ - CD. CUAUHEMOC	MEX-190
22	VILLAHERMOSA - ESCOPETAZO	MEX-195
23	VILLAHERMOSA - FRANCISCO ESCARCEGA	MEX-186

---RED FEDERAL DE CUOTA---

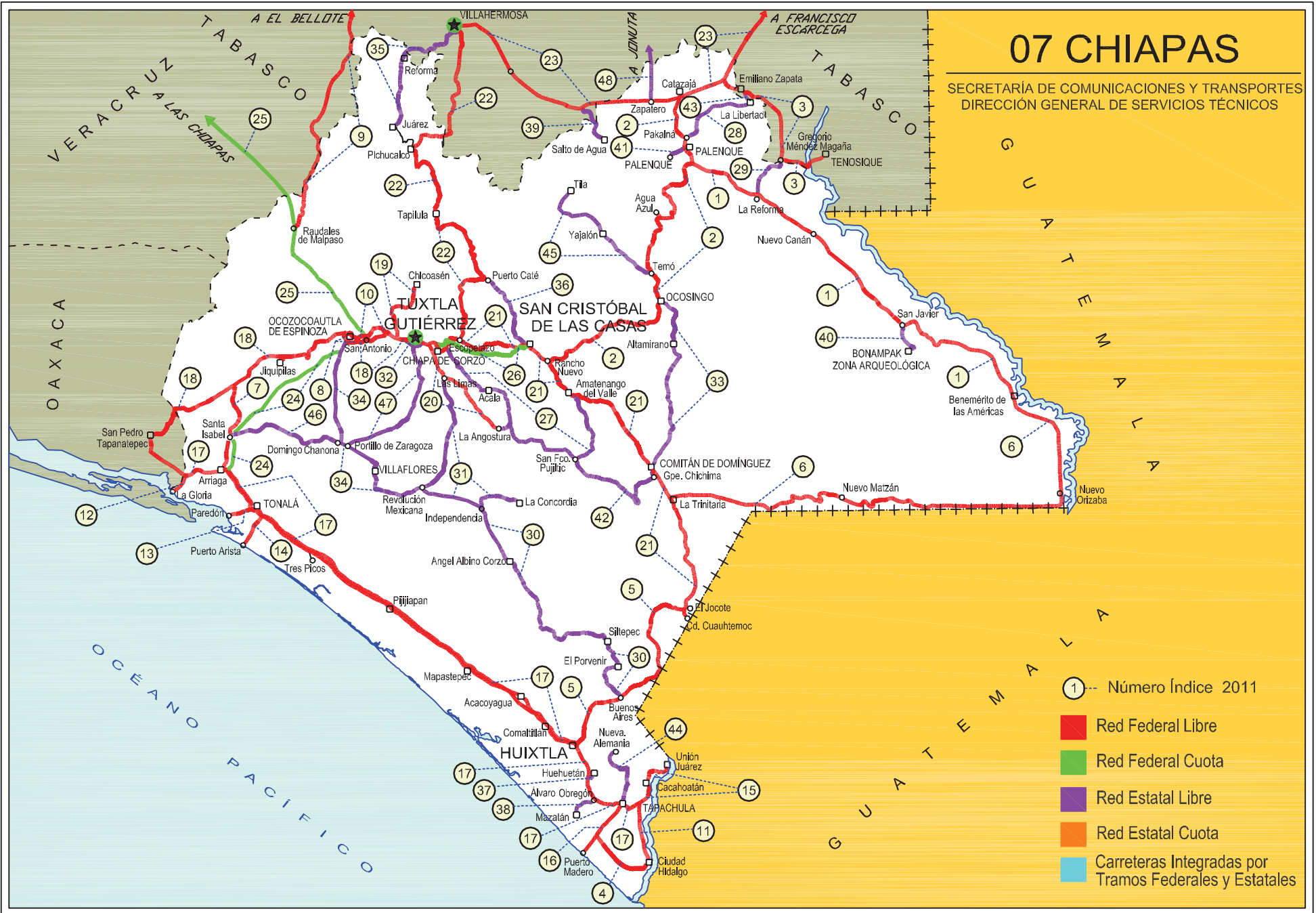
24	ARRIAGA - OCOZOCOAUTLA (CUOTA)	MEX-193D
25	LAS CHOAPAS - OCOZOCOAUTLA (CUOTA)	MEX-187D
26	TUXTLA GUTIERREZ - SAN CRISTOBAL DE LAS CASAS (CUOTA)	MEX-190D

---RED ESTATAL LIBRE---

27	CHIAPA DE CORZO - AMATENANGO DEL VALLE	CHIS
28	ESTACION PALENQUE - LA LIBERTAD	CHIS-010
29	GREGORIO MENDEZ MAGAÑA - REFORMA DE OCAMPO	CHIS
30	INDEPENDENCIA - BUENOS AIRES	CHIS
31	LAS LIMAS - LA CONCORDIA	CHIS
32	LIBRAMIENTO SUR DE TUXTLA GUTIERREZ	CHIS
33	OCOSINGO - COMITAN	CHIS
34	OCOZOCOAUTLA - REVOLUCION MEXICANA	CHIS-053-230
35	PASO DE CUNDUACAN - ESTACION JUAREZ	TAB-CHIS
36	PUERTO CAFE - SAN CRISTOBAL DE LAS CASAS	CHIS
37	RAMAL A HUEHUETAN	CHIS
38	RAMAL A MAZATAN	CHIS-219
39	RAMAL A SALTO DEL AGUA	TAB-CHIS
40	RAMAL ZONA ARQUEOLOGICA " BONAMPAK "	CHIS
41	RAMAL ZONA ARQUEOLOGICA " PALENQUE "	CHIS
42	T. C. (CHIAPA DE CORZO - AMATENANGO DEL VALLE) - COMITAN	CHIS
43	T. C. (EL SUSPIRO - TENOSIQUE) - LA LIBERTAD	CHIS-TAB
44	TAPACHULA - NUEVA ALEMANIA	CHIS-229
45	TEMO - TILA	CHIS
46	TIERRA Y LIBERTAD - DR. DOMINGO CHANONA	CHIS
47	TUXTLA GUTIERREZ - PORTILLO ZARAGOZA	CHIS-133
48	ZAPATERO - T. C. (JALAPA - JONUTA)	CHIS-TAB

07 CHIAPAS

SECRETARÍA DE COMUNICACIONES Y TRANSPORTES
DIRECCIÓN GENERAL DE SERVICIOS TÉCNICOS



- ① --- Número Índice 2011
- Red Federal Libre
- Red Federal Cuota
- Red Estatal Libre
- Red Estatal Cuota
- Carreteras Integradas por Tramos Federales y Estatales

CHIAPAS

1 CARR: BENEMERITO DE LAS AMERICAS - PALENQUE

CLAVE: 07095

RUTA: MEX-307

AÑO: 2010

LUGAR	ESTACION				CLASIFICACION VEHICULAR EN PORCIENTO								COORDENADAS						
	KM	TE	SC	TDPA	A	B	C2	C3	T3S2	T3S3	T3S2R4	OTROS	A	B	C	K'	D	LATITUD	LONGITUD
BENEMERITO DE LAS AMERICAS	0.00																		
FRONTERA COROZAL	42.00	3	0	804	84.2	6.3	2.8	0.7	3.9	1.3	0.4	0.4	84.2	6.3	9.5	0.092	0.503	16.761562	-91.010071
SAN JAVIER	67.00	3	0	526	84.7	6.2	2.6	0.9	3.7	1.2	0.5	0.2	84.7	6.2	9.1	0.063	0.501	16.801765	-91.107266
REFORMA DE OCAMPO	160.00	1	0	1732	84.6	6.3	3.2	1.1	2.8	1.3	0.5	0.2	84.6	6.3	9.1	0.079	0.501	17.319360	-91.691354
T. C. CATAZAJA - T. C. (TUXTLA GTZ. - CD. CUAUHTEMOC)	194.00	1	0	2873	85.4	6.1	3.5	1.2	2.4	0.9	0.1	0.4	85.4	6.1	8.5	0.067	0.508	17.443345	-91.962393

2 CARR: CATAZAJA - T. C. (TUXTLA GTZ. - CD. CUAUHTEMOC)

CLAVE: 07582

RUTA: MEX-199

AÑO: 2010

LUGAR	ESTACION				CLASIFICACION VEHICULAR EN PORCIENTO								COORDENADAS						
	KM	TE	SC	TDPA	A	B	C2	C3	T3S2	T3S3	T3S2R4	OTROS	A	B	C	K'	D	LATITUD	LONGITUD
CATAZAJA	0.00																		
X. C. VILLAHERMOSA - FRANCISCO ESCARCEGA	2.20	3	0	3810	84.2	5.8	3.4	1.1	2.8	1.1	1.0	0.6	84.2	5.8	10.0	0.061	0.502	17.709888	-92.013508
T. IZQ. PALENQUE	27.50	1	0	13676	84.6	5.1	3.6	1.1	3.0	1.0	1.0	0.6	84.6	5.1	10.3	0.078	0.502	17.520962	-91.993056
T. IZQ. PALENQUE	27.50	3	0	5239	82.7	5.0	3.9	1.5	4.3	1.1	1.1	0.4	82.7	5.0	12.3	0.080	0.501	17.497402	-91.987711
T. IZQ. BONAMPAK	33.20	3	0	2122	84.3	5.5	3.4	1.7	2.5	1.4	1.0	0.2	84.3	5.5	10.2	0.067	0.506	17.444080	-91.965172
T. DER. SALTO DEL AGUA	54.00	1	0	1679	84.0	5.0	3.6	1.5	1.9	2.3	1.3	0.4	84.0	5.0	11.0	0.080	0.510	17.361884	-92.051113
T. DER. AGUA AZUL	68.30	1	0	3505	88.1	3.5	2.8	1.6	2.0	1.6	0.2	0.2	88.1	3.5	8.4	0.069	0.511	17.236165	-92.093231
T. DER. CHILON	111.00	1	0	2640	87.2	3.4	3.5	1.5	2.1	1.4	0.4	0.5	87.2	3.4	9.4	0.073	0.502	17.016341	-92.135410
T. DER. CHILON	111.00	3	0	3515	88.4	3.5	3.1	0.4	2.2	1.8	0.3	0.3	88.4	3.5	8.1	0.087	0.501	17.014465	-92.133556
OCOSINGO	136.00	3	0	3095	86.9	3.5	3.0	0.6	3.8	1.8	0.1	0.3	86.9	3.5	9.6	0.068	0.504	16.891816	-92.104151
T. IZQ. ALTAMIRANO	152.00	1	0	2735	87.0	3.6	3.3	1.2	2.6	1.7	0.3	0.3	87.0	3.6	9.4	0.079	0.505	16.814417	-92.161361
HUIXTAN	190.60	1	0	3474	87.7	3.8	3.4	1.2	2.7	0.8	0.1	0.3	87.7	3.8	8.5	0.068	0.502	16.715918	-92.452544
HUIXTAN	190.60	3	0	2571	87.2	3.8	3.4	1.4	2.9	0.7	0.2	0.4	87.2	3.8	9.0	0.073	0.504	16.708086	-92.458861
T. C. TUXTLA GUTIERREZ - CD. CUAUHTEMOC	210.00	1	0	2898	87.2	4.3	3.4	1.1	2.5	1.0	0.2	0.3	87.2	4.3	8.5	0.059	0.500	16.667444	-92.563624

3 CARR: EL SUSPIRO - TENOSIQUE

CLAVE: 00276

RUTA: MEX-203

AÑO: 2010

LUGAR	ESTACION				CLASIFICACION VEHICULAR EN PORCIENTO								COORDENADAS						
	KM	TE	SC	TDPA	A	B	C2	C3	T3S2	T3S3	T3S2R4	OTROS	A	B	C	K'	D	LATITUD	LONGITUD
ENT. EL SUSPIRO	0.00	3	0	4637	87.5	4.7	3.1	1.2	0.9	1.0	0.9	0.7	87.5	4.7	7.8	0.085	0.504	17.752827	-91.818350
LIM. EDOS. TERM. CHIS. PPIA. TAB.	8.00																		
EMILIANO ZAPATA	8.61	3	0	4933	85.5	4.5	4.3	1.8	2.7	0.4	0.2	0.6	85.5	4.5	10.0	0.072	0.506	17.727889	-91.758083
T. DER. LA LIBERTAD	12.10	3	0	2995	86.7	4.7	3.6	1.7	2.2	0.4	0.3	0.4	86.7	4.7	8.6	0.075	0.501	17.723595	-91.744303
T. IZQ. BALANCAN	32.60	1	0	2211	86.4	4.9	3.3	1.8	2.3	0.5	0.2	0.6	86.4	4.9	8.7	0.086	0.503	17.633364	-91.601941
T. IZQ. BALANCAN	32.60	3	0	2201	84.5	6.7	3.5	2.0	1.9	0.4	0.3	0.7	84.5	6.7	8.8	0.067	0.505	17.631261	-91.601133

CHIAPAS

7 CARR: LAS CRUCES - ARRIAGA

CLAVE: 07196

RUTA: MEX-193

AÑO: 2010

LUGAR	ESTACION				CLASIFICACION VEHICULAR EN PORCIENTO								COORDENADAS						
	KM	TE	SC	TDPA	A	B	C2	C3	T3S2	T3S3	T3S2R4	OTROS	A	B	C	K'	D	LATITUD	LONGITUD
LAS CRUCES	0.00	3	0	3138	79.4	7.8	6.9	3.4	1.1	1.0	0.0	0.4	79.4	7.8	12.8	0.074	0.500	16.564670	-93.844472
SANTA ISABEL	27.90	3	0	2861	79.6	7.7	6.8	3.4	1.1	1.0	0.0	0.4	79.6	7.7	12.7	0.079	0.508	16.341943	-93.876060
ARRIAGA	49.00	1	0	2992	79.3	7.4	7.0	3.7	1.2	1.0	0.0	0.4	79.3	7.4	13.3	0.094	0.502	16.246853	-93.885999

8 CARR: LIBRAMIENTO DE OCOZOCOAUTLA

CLAVE: 07583

RUTA: MEX

AÑO: 2010

LUGAR	ESTACION				CLASIFICACION VEHICULAR EN PORCIENTO								COORDENADAS						
	KM	TE	SC	TDPA	A	B	C2	C3	T3S2	T3S3	T3S2R4	OTROS	A	B	C	K'	D	LATITUD	LONGITUD
T. C. TAPANATEPEC - TUXTLA GUTIERREZ	0.00	3	0	6720	79.6	2.3	4.6	4.2	4.0	1.3	3.3	0.7	79.6	2.3	18.1	0.077	0.500	16.769151	-93.388206
T. C. TAPANATEPEC - TUXTLA GUTIERREZ	9.00	1	0	7048	84.6	1.9	3.5	1.1	2.6	1.9	3.8	0.6	84.6	1.9	13.5	0.068	0.502	16.747415	-93.337938

9 CARR: MALPASO - EL BELLOTE

CLAVE: 00137

RUTA: MEX-187

AÑO: 2010

LUGAR	ESTACION				CLASIFICACION VEHICULAR EN PORCIENTO								COORDENADAS						
	KM	TE	SC	TDPA	A	B	C2	C3	T3S2	T3S3	T3S2R4	OTROS	A	B	C	K'	D	LATITUD	LONGITUD
PRESA MALPASO	0.00																		
LIM. EDOS. TERM. CHIS. PPIA. TAB.	43.99																		
LIM. EDOS. TERM. TAB. PPIA. CHIS.	44.59																		
LIM. EDOS. TERM. CHIS. PPIA. TAB.	45.26																		
LIM. EDOS. TERM. TAB. PPIA. CHIS.	45.63																		
LIM. EDOS. TERM. CHIS. PPIA. TAB.	55.04																		
MACABIL (LA ESTRELLA)	70.12	1	0	2481	84.3	3.4	6.4	2.0	2.2	0.9	0.3	0.5	84.3	3.4	12.3	0.085	0.505	17.624736	-93.500832
ESTACION CHONTALPA	75.69	1	0	4556	83.4	3.7	5.5	2.0	3.6	0.9	0.2	0.7	83.4	3.7	12.9	0.059	0.507	17.659389	-93.482657
ESTACION CHONTALPA	75.69	3	0	4949	84.5	3.8	5.4	1.2	2.1	1.4	0.9	0.7	84.5	3.8	11.7	0.072	0.505	17.674764	-93.476234
T. IZQ. FRANCISCO RUEDA	90.49	1	0	3741	85.6	4.0	3.6	1.9	2.7	1.0	0.9	0.3	85.6	4.0	10.4	0.073	0.502	17.787672	-93.439115
T. IZQ. FRANCISCO RUEDA	90.49	3	0	6068	84.4	4.9	3.7	1.9	2.8	1.2	0.6	0.5	84.4	4.9	10.7	0.080	0.504	17.792321	-93.436256
HUIMANGUILLO	98.03	1	0	7340	81.9	5.7	2.6	3.4	2.7	1.1	2.4	0.2	81.9	5.7	12.4	0.068	0.507	17.819472	-93.401432
HUIMANGUILLO	98.03	3	0	9505	76.1	4.5	7.6	7.8	2.4	0.9	0.2	0.5	76.1	4.5	19.4	0.071	0.503	17.845532	-93.397406
CARDENAS	117.56	1	0	10537	78.6	3.9	7.0	5.7	2.9	1.4	0.1	0.4	78.6	3.9	17.5	0.071	0.529	17.951421	-93.362384
CARDENAS	117.56	3	0	10401	65.1	5.2	15.0	5.4	5.9	1.4	1.2	0.8	65.1	5.2	29.7	0.076	0.501	18.024507	-93.366820
TULIPAN	134.70	3	0	7584	75.1	4.9	3.5	6.2	5.0	1.7	3.2	0.4	75.1	4.9	20.0	0.061	0.501	18.125666	-93.291571
T. DER. CUNDUACAN	141.70	1	0	7659	74.1	4.2	6.5	4.9	4.8	2.2	2.7	0.6	74.1	4.2	21.7	0.089	0.503	18.139928	-93.271618
T. DER. CUNDUACAN	141.70	3	0	7377	76.2	5.0	3.4	3.9	4.9	3.1	3.0	0.5	76.2	5.0	18.8	0.067	0.501	18.143677	-93.268922
T. DER. JALPA	153.50	1	0	8385	80.3	5.2	3.8	1.0	5.5	1.1	2.7	0.4	80.3	5.2	14.5	0.079	0.502	18.244100	-93.211500
T. DER. JALPA	153.50	3	0	11903	79.4	4.7	3.1	1.4	5.6	1.3	4.0	0.5	79.4	4.7	15.9	0.079	0.500	18.248708	-93.213392

CHIAPAS

13 CARR: RAMAL A PAREDON

CLAVE: 07269

RUTA: MEX

AÑO: 2010

LUGAR	ESTACION				CLASIFICACION VEHICULAR EN PORCIENTO								COORDENADAS						
	KM	TE	SC	TDPA	A	B	C2	C3	T3S2	T3S3	T3S2R4	OTROS	A	B	C	K'	D	LATITUD	LONGITUD
T. C. TAPANATEPEC - TALISMAN	0.00	3	0	3945	82.3	5.8	3.2	2.9	2.8	1.9	0.7	0.4	82.3	5.8	11.9	0.079	0.505	16.080807	-93.774453
PAREDON	14.00																		

14 CARR: RAMAL A PUERTO ARISTA

CLAVE: 07270

RUTA: MEX

AÑO: 2010

LUGAR	ESTACION				CLASIFICACION VEHICULAR EN PORCIENTO								COORDENADAS						
	KM	TE	SC	TDPA	A	B	C2	C3	T3S2	T3S3	T3S2R4	OTROS	A	B	C	K'	D	LATITUD	LONGITUD
T. C. TAPANATEPEC - TALISMAN	0.00	3	0	2149	84.1	6.7	3.5	1.7	1.2	1.4	0.6	0.8	84.1	6.7	9.2	0.079	0.506	16.049507	-93.736100
T. DER. PAREDON	11.00	3	0	2221	82.7	6.6	2.7	1.7	2.4	2.1	1.1	0.7	82.7	6.6	10.7	0.079	0.503	15.972715	-93.775652
PUERTO ARISTA	17.00	1	0	2320	81.5	6.7	3.3	1.7	2.4	2.2	1.2	1.0	81.5	6.7	11.8	0.077	0.500	15.941889	-93.800236

15 CARR: RAMAL A UNION JUAREZ

CLAVE: 07273

RUTA: MEX

AÑO: 2010

LUGAR	ESTACION				CLASIFICACION VEHICULAR EN PORCIENTO								COORDENADAS						
	KM	TE	SC	TDPA	A	B	C2	C3	T3S2	T3S3	T3S2R4	OTROS	A	B	C	K'	D	LATITUD	LONGITUD
T. C. TAPANATEPEC - TALISMAN	0.00																		
CACAOATAN	5.00	1	0	4369	84.6	4.2	2.9	2.4	2.9	1.9	0.6	0.5	84.6	4.2	11.2	0.074	0.502	14.982949	-92.157176
UNION JUAREZ	22.00	1	0	4354	85.1	4.2	2.9	2.4	2.6	1.7	0.6	0.5	85.1	4.2	10.7	0.076	0.501	15.050994	-92.081194

16 CARR: TAPACHULA - PUERTO MADERO

CLAVE: 07018

RUTA: MEX-225

AÑO: 2010

LUGAR	ESTACION				CLASIFICACION VEHICULAR EN PORCIENTO								COORDENADAS						
	KM	TE	SC	TDPA	A	B	C2	C3	T3S2	T3S3	T3S2R4	OTROS	A	B	C	K'	D	LATITUD	LONGITUD
TAPACHULA	0.00	3	1	8332	82.8	4.2	3.9	1.0	4.2	1.9	1.4	0.6	82.8	4.2	13.0	0.071	0.504	14.866380	-92.291343
TAPACHULA	0.00	3	2	8456	82.4	4.3	4.1	1.3	4.0	2.0	1.3	0.6	82.4	4.3	13.3	0.075	0.504	14.866380	-92.291343
T. DER. AEROPUERTO	14.50	3	0	4348	85.3	4.5	3.5	1.4	2.5	1.3	0.8	0.7	85.3	4.5	10.2	0.076	0.502	14.786982	-92.366100
PUERTO MADERO	27.00	1	0	3222	85.0	4.8	3.1	1.2	2.8	1.7	0.8	0.6	85.0	4.8	10.2	0.072	0.502	14.727029	-92.415621

17 CARR: TAPANATEPEC - TALISMAN

CLAVE: 00075

RUTA: MEX-200

AÑO: 2010

LUGAR	ESTACION				CLASIFICACION VEHICULAR EN PORCIENTO								COORDENADAS						
	KM	TE	SC	TDPA	A	B	C2	C3	T3S2	T3S3	T3S2R4	OTROS	A	B	C	K'	D	LATITUD	LONGITUD
TAPANATEPEC	0.00	3	0	4290	75.5	5.2	4.4	1.9	7.7	2.3	2.5	0.5	75.5	5.2	19.3	0.067	0.503	16.346226	-94.190627
LIM. EDOS. TERM. OAX. PPIA. CHIS.	25.90																		
T. DER. EMILIANO ZAPATA	26.20	1	0	4630	74.3	6.4	4.8	2.7	8.0	1.9	1.1	0.8	74.3	6.4	19.3	0.067	0.504	16.216260	-94.050315

CHIAPAS

17 CARR: TAPANATEPEC - TALISMAN

CLAVE: 00075

RUTA: MEX-200

AÑO: 2010

LUGAR	ESTACION				CLASIFICACION VEHICULAR EN PORCIENTO								COORDENADAS						
	KM	TE	SC	TDPA	A	B	C2	C3	T3S2	T3S3	T3S2R4	OTROS	A	B	C	K'	D	LATITUD	LONGITUD
T. DER. EMILIANO ZAPATA	26.20	3	0	3402	74.2	6.3	5.3	2.5	8.4	1.5	0.8	1.0	74.2	6.3	19.5	0.061	0.504	16.214682	-94.040186
ARRIAGA	45.00	1	0	4744	76.7	6.3	5.3	1.1	7.5	1.1	1.2	0.8	76.7	6.3	17.0	0.067	0.503	16.221895	-93.941985
ARRIAGA	45.00	3	1	3997	76.2	6.4	4.7	1.3	7.8	1.3	1.5	0.8	76.2	6.4	17.4	0.081	0.500	16.234881	-93.880572
ARRIAGA	45.00	3	2	3994	75.8	6.3	4.8	1.6	7.9	1.3	1.7	0.6	75.8	6.3	17.9	0.074	0.500	16.234881	-93.880572
T. DER. PUERTO ARISTA	73.00	3	1	2304	69.7	6.2	5.4	3.4	8.3	1.9	4.1	1.0	69.7	6.2	24.1	0.066	0.513	16.055879	-93.734418
T. DER. PUERTO ARISTA	73.00	3	2	2422	68.6	6.3	5.2	3.5	9.4	2.3	4.2	0.5	68.6	6.3	25.1	0.065	0.513	16.055879	-93.734418
T. DER. LOS PATOS	114.75	1	0	2718	71.0	6.2	5.5	2.2	8.3	2.7	3.2	0.9	71.0	6.2	22.8	0.090	0.501	15.841290	-93.437883
T. DER. LOS PATOS	114.75	3	0	2771	69.7	6.1	6.7	2.5	8.1	2.7	3.6	0.6	69.7	6.1	24.2	0.079	0.502	15.830454	-93.429818
PIJIJAPAN	144.45	1	0	4565	73.5	6.3	5.7	2.2	6.2	2.9	2.6	0.6	73.5	6.3	20.2	0.077	0.501	15.701840	-93.217354
T. DER. MAPASTEPEC	188.85	3	0	3297	75.5	6.2	5.0	1.8	5.6	2.9	2.3	0.7	75.5	6.2	18.3	0.080	0.501	15.455047	-92.881892
T. DER. ESTACION SOCONUSCO	213.30	1	0	6065	76.2	6.0	4.7	1.4	6.1	2.5	2.4	0.7	76.2	6.0	17.8	0.061	0.502	15.339191	-92.712685
T. DER. ESTACION SOCONUSCO	213.30	3	0	5824	78.1	5.4	5.6	1.9	4.2	2.1	1.9	0.8	78.1	5.4	16.5	0.066	0.501	15.329810	-92.701325
HUIXTLA	250.50	1	0	6267	78.9	5.8	6.0	0.7	4.0	1.8	2.2	0.6	78.9	5.8	15.3	0.079	0.500	15.147420	-92.473939
HUIXTLA	250.50	3	1	4613	80.3	5.4	4.8	0.8	4.1	1.7	2.1	0.8	80.3	5.4	14.3	0.077	0.505	15.137977	-92.453501
HUIXTLA	250.50	3	2	4525	79.6	5.6	5.1	1.3	3.6	2.1	1.9	0.8	79.6	5.6	14.8	0.081	0.505	15.137977	-92.453501
T. IZQ. HAMBURGO	262.70	3	1	3829	78.1	5.9	5.2	1.8	3.9	2.2	2.3	0.6	78.1	5.9	16.0	0.084	0.505	15.105767	-92.431320
T. IZQ. HAMBURGO	262.70	3	2	3910	78.3	4.9	4.5	1.9	3.6	2.0	4.1	0.7	78.3	4.9	16.8	0.080	0.505	15.105767	-92.431320
T. IZQ. HUEHUETAN	273.70	1	1	4848	77.6	4.8	4.7	1.6	3.8	2.7	4.2	0.6	77.6	4.8	17.6	0.079	0.503	15.016261	-92.402878
T. IZQ. HUEHUETAN	273.70	1	2	4553	77.6	4.9	6.7	1.1	4.5	1.9	2.6	0.7	77.6	4.9	17.5	0.083	0.502	15.016261	-92.402878
TAPACHULA	292.25	1	1	7809	77.1	5.6	6.8	1.1	4.2	1.7	2.7	0.8	77.1	5.6	17.3	0.073	0.501	14.908533	-92.330118
TAPACHULA	292.25	1	2	7503	78.8	5.8	5.6	0.8	3.9	1.9	2.5	0.7	78.8	5.8	15.4	0.069	0.503	14.908533	-92.330118
T. DER. CD. HIDALGO	302.75	1	0	2641	76.9	5.8	5.8	0.4	5.8	2.1	2.5	0.7	76.9	5.8	17.3	0.073	0.500	14.911668	-92.197950
TUXTLA CHICO	307.00	1	0	8190	77.4	6.1	5.9	0.7	4.6	2.1	2.5	0.7	77.4	6.1	16.5	0.073	0.501	14.936829	-92.160956
TALISMAN	310.77	1	0	3807	78.5	7.0	5.5	0.9	3.5	2.0	2.3	0.3	78.5	7.0	14.5	0.080	0.503	14.959892	-92.151591

18 CARR: TAPANATEPEC - TUXTLA GUTIERREZ

CLAVE: 00060

RUTA: MEX-190

AÑO: 2010

LUGAR	ESTACION				CLASIFICACION VEHICULAR EN PORCIENTO								COORDENADAS						
	KM	TE	SC	TDPA	A	B	C2	C3	T3S2	T3S3	T3S2R4	OTROS	A	B	C	K'	D	LATITUD	LONGITUD
TAPANATEPEC	0.00	3	0	2088	74.5	6.9	11.8	2.7	2.0	1.1	0.6	0.4	74.5	6.9	18.6	0.078	0.502	16.371451	-94.182616
LIM. EDOS. TERM. OAX. PPIA. CHIS.	17.90																		
RIZO DE ORO	26.60	1	0	2220	74.5	6.8	11.8	2.8	2.0	1.1	0.6	0.4	74.5	6.8	18.7	0.078	0.504	16.473173	-94.088739
T. DER. ARRIAGA	56.80	1	0	4557	74.3	6.9	11.8	2.9	2.0	1.1	0.6	0.4	74.3	6.9	18.8	0.076	0.502	16.569856	-93.848240
T. DER. ARRIAGA	56.80	3	0	4880	73.9	7.2	12.1	2.8	1.9	1.1	0.6	0.4	73.9	7.2	18.9	0.066	0.502	16.574066	-93.841748
T. DER. JIQUIPILAS	82.00	1	0	6268	79.9	7.3	6.8	2.3	1.4	1.8	0.4	0.1	79.9	7.3	12.8	0.086	0.500	16.687865	-93.667156

CHIAPAS

18 CARR: TAPANATEPEC - TUXTLA GUTIERREZ

CLAVE: 00060

RUTA: MEX-190

AÑO: 2010

LUGAR	ESTACION				CLASIFICACION VEHICULAR EN PORCIENTO								COORDENADAS						
	KM	TE	SC	TDPA	A	B	C2	C3	T3S2	T3S3	T3S2R4	OTROS	A	B	C	K'	D	LATITUD	LONGITUD
T. DER. JIQUIPILAS	82.00	3	0	5351	80.9	7.3	6.3	2.0	1.4	1.6	0.4	0.1	80.9	7.3	11.8	0.084	0.500	16.685432	-93.635183
OCOZOCOAUTLA	123.29	1	0	6213	80.4	4.9	5.9	3.2	2.2	1.0	2.3	0.1	80.4	4.9	14.7	0.064	0.502	16.772062	-93.391196
OCOZOCOAUTLA	123.29	3	0	7740	80.1	5.1	5.5	3.4	2.4	1.1	2.3	0.1	80.1	5.1	14.8	0.061	0.500	16.757883	-93.362445
T. IZO. AEROPUERTO	132.70	1	0	8525	79.2	5.3	5.8	3.5	2.3	1.2	2.6	0.1	79.2	5.3	15.5	0.059	0.500	16.752997	-93.340146
T. IZO. BERRIOZABAL (1° ACCESO)	136.40	1	0	6937	78.5	5.5	6.4	3.5	2.4	1.1	2.5	0.1	78.5	5.5	16.0	0.081	0.500	16.767617	-93.295164
T. IZO. BERRIOZABAL (1° ACCESO)	136.40	3	0	7003	78.9	5.5	6.0	3.4	2.3	1.2	2.6	0.1	78.9	5.5	15.6	0.080	0.501	16.769227	-93.277987
T. IZO. SAN FERNANDO	151.70	1	1	9301	80.2	4.9	5.8	3.1	2.2	1.1	2.6	0.1	80.2	4.9	14.9	0.084	0.508	16.770359	-93.196719
T. IZO. SAN FERNANDO	151.70	1	2	8997	79.6	4.8	6.2	3.4	2.4	1.1	2.4	0.1	79.6	4.8	15.6	0.089	0.508	16.770359	-93.196719
TUXTLA GUTIERREZ	159.00	1	1	8551	79.4	5.2	5.9	3.4	2.4	1.1	2.5	0.1	79.4	5.2	15.4	0.071	0.503	16.767800	-93.193083
TUXTLA GUTIERREZ	159.00	1	2	8646	80.6	4.8	5.6	3.2	2.3	1.0	2.4	0.1	80.6	4.8	14.6	0.072	0.503	16.767800	-93.193083

19 CARR: TERAN - CHICOASEN

CLAVE: 07072

RUTA: MEX

AÑO: 2010

LUGAR	ESTACION				CLASIFICACION VEHICULAR EN PORCIENTO								COORDENADAS						
	KM	TE	SC	TDPA	A	B	C2	C3	T3S2	T3S3	T3S2R4	OTROS	A	B	C	K'	D	LATITUD	LONGITUD
TERAN	0.00	3	0	6085	84.0	4.2	4.1	0.3	3.5	1.7	1.4	0.8	84.0	4.2	11.8	0.079	0.501	16.790991	-93.179775
T. IZO. SAN FERNANDO (1° ACCESO)	14.00	1	0	5173	83.8	4.8	4.5	0.5	3.7	1.2	1.1	0.4	83.8	4.8	11.4	0.077	0.501	16.854509	-93.200191
CHICOASEN	34.00																		

20 CARR: TUXTLA GUTIERREZ - ANGOSTURA

CLAVE: 07584

RUTA: MEX

AÑO: 2010

LUGAR	ESTACION				CLASIFICACION VEHICULAR EN PORCIENTO								COORDENADAS						
	KM	TE	SC	TDPA	A	B	C2	C3	T3S2	T3S3	T3S2R4	OTROS	A	B	C	K'	D	LATITUD	LONGITUD
T. C. TUXTLA GUTIERREZ - CD. CUAUHTEMOC	0.00	3	1	6013	85.7	1.1	10.4	1.4	0.6	0.4	0.4	0.0	85.7	1.1	13.2	0.075	0.506	16.727364	-93.039854
T. C. TUXTLA GUTIERREZ - CD. CUAUHTEMOC	0.00	3	2	5868	85.5	1.1	10.5	1.5	0.6	0.4	0.4	0.0	85.5	1.1	13.4	0.077	0.506	16.727364	-93.039854
T. DER. REVOLUCION MEXICANA	16.70	3	0	5078	85.5	1.2	10.6	1.3	0.6	0.4	0.4	0.0	85.5	1.2	13.3	0.086	0.504	16.607523	-92.989300
ANGOSTURA	52.00	1	0	6828	85.8	1.1	10.2	1.5	0.6	0.4	0.4	0.0	85.8	1.1	13.1	0.087	0.501	16.405120	-92.786362

21 CARR: TUXTLA GUTIERREZ - CD. CUAUHTEMOC

CLAVE: 07061

RUTA: MEX-190

AÑO: 2010

LUGAR	ESTACION				CLASIFICACION VEHICULAR EN PORCIENTO								COORDENADAS						
	KM	TE	SC	TDPA	A	B	C2	C3	T3S2	T3S3	T3S2R4	OTROS	A	B	C	K'	D	LATITUD	LONGITUD
TUXTLA GUTIERREZ	0.00																		
T. DER. PRESA LA ANGOSTURA	7.50	1	1	11366	93.7	0.7	4.6	0.6	0.2	0.2	0.0	0.0	93.7	0.7	5.6	0.090	0.504	16.733426	-93.052847
T. DER. PRESA LA ANGOSTURA	7.50	1	2	11546	93.3	0.8	4.9	0.6	0.2	0.2	0.0	0.0	93.3	0.8	5.9	0.085	0.504	16.733426	-93.052847

CHIAPAS

21 CARR: TUXTLA GUTIERREZ - CD. CUAUHTEMOC

CLAVE: 07061

RUTA: MEX-190

AÑO: 2010

LUGAR	ESTACION				CLASIFICACION VEHICULAR EN PORCIENTO								COORDENADAS						
	KM	TE	SC	TDPA	A	B	C2	C3	T3S2	T3S3	T3S2R4	OTROS	A	B	C	K'	D	LATITUD	LONGITUD
T. DER. PRESA LA ANGOSTURA	7.50	3	1	10028	93.5	0.8	4.7	0.6	0.2	0.2	0.0	0.0	93.5	0.8	5.7	0.073	0.522	16.736961	-93.043568
T. DER. PRESA LA ANGOSTURA	7.50	3	2	10939	93.4	0.8	4.8	0.6	0.2	0.2	0.0	0.0	93.4	0.8	5.8	0.069	0.522	16.736961	-93.043568
CHIAPA DE CORZO	15.33	3	0	6701	93.9	0.8	4.3	0.6	0.2	0.2	0.0	0.0	93.9	0.8	5.3	0.070	0.500	16.708517	-92.999717
T. IZQ. PICHUCALCO	34.41	1	0	4379	93.3	0.8	4.9	0.6	0.2	0.2	0.0	0.0	93.3	0.8	5.9	0.062	0.502	16.760049	-92.946398
T. IZQ. PICHUCALCO	34.41	3	0	4841	93.4	0.8	4.8	0.6	0.2	0.2	0.0	0.0	93.4	0.8	5.8	0.070	0.502	16.755313	-92.935791
SAN CRISTOBAL DE LAS CASAS	85.19	1	0	5782	93.7	0.8	4.5	0.6	0.2	0.2	0.0	0.0	93.7	0.8	5.5	0.056	0.500	16.724372	-92.674782
SAN CRISTOBAL DE LAS CASAS	85.19	3	0	8746	93.4	0.8	4.8	0.6	0.2	0.2	0.0	0.0	93.4	0.8	5.8	0.086	0.505	16.704469	-92.612837
T. IZQ. OCOCINGO	95.90	3	0	5232	93.5	0.8	4.7	0.6	0.2	0.2	0.0	0.0	93.5	0.8	5.7	0.073	0.501	16.664718	-92.564882
TEOPISCA	116.90	1	0	5384	93.3	0.9	4.8	0.6	0.2	0.2	0.0	0.0	93.3	0.9	5.8	0.083	0.501	16.554427	-92.479732
TEOPISCA	116.90	3	0	4656	93.5	0.8	4.7	0.6	0.2	0.2	0.0	0.0	93.5	0.8	5.7	0.069	0.502	16.532298	-92.464713
T. DER. LAS ROSAS	121.00	3	0	3642	93.3	0.8	4.9	0.6	0.2	0.2	0.0	0.0	93.3	0.8	5.9	0.066	0.507	16.301496	-92.184076
COMITAN	171.60	1	0	5880	93.4	0.8	4.8	0.6	0.2	0.2	0.0	0.0	93.4	0.8	5.8	0.061	0.502	16.261852	-92.150383
COMITAN	171.60	3	1	6130	93.5	0.8	4.7	0.6	0.2	0.2	0.0	0.0	93.5	0.8	5.7	0.085	0.507	16.223036	-92.120418
COMITAN	171.60	3	2	5953	93.3	0.9	4.8	0.6	0.2	0.2	0.0	0.0	93.3	0.9	5.8	0.084	0.507	16.223036	-92.120418
T. IZQ. MONTEBELLO	187.46	1	1	4644	93.6	0.8	4.6	0.6	0.2	0.2	0.0	0.0	93.6	0.8	5.6	0.070	0.502	16.138468	-92.068561
T. IZQ. MONTEBELLO	187.46	1	2	4658	93.8	0.8	4.4	0.6	0.2	0.2	0.0	0.0	93.8	0.8	5.4	0.070	0.501	16.138468	-92.068561
T. IZQ. CHIHUAHUA	201.04	3	0	3535	93.4	0.8	4.8	0.6	0.2	0.2	0.0	0.0	93.4	0.8	5.8	0.075	0.503	16.019114	-92.017142
CD. CUAUHTEMOC	256.00	1	0	3477	93.5	0.8	4.7	0.6	0.2	0.2	0.0	0.0	93.5	0.8	5.7	0.070	0.501	15.668288	-92.002099

22 CARR: VILLAHERMOSA - ESCOPETAZO

CLAVE: 00104

RUTA: MEX-195

AÑO: 2010

LUGAR	ESTACION				CLASIFICACION VEHICULAR EN PORCIENTO								COORDENADAS						
	KM	TE	SC	TDPA	A	B	C2	C3	T3S2	T3S3	T3S2R4	OTROS	A	B	C	K'	D	LATITUD	LONGITUD
VILLAHERMOSA	0.00	3	1	8263	81.2	0.0	8.5	3.8	3.5	1.9	1.0	0.1	81.2	0.0	18.8	0.077	0.504	17.950669	-92.914257
VILLAHERMOSA	0.00	3	2	8218	81.4	0.0	8.5	3.8	3.6	1.8	0.8	0.1	81.4	0.0	18.6	0.076	0.504	17.950677	-92.914239
PARRILLA	10.00	1	1	16698	82.2	0.0	7.8	3.7	3.5	1.8	0.9	0.1	82.2	0.0	17.8	0.077	0.515	17.914519	-92.923001
PARRILLA	10.00	1	2	15742	82.5	0.0	7.8	3.6	3.3	1.9	0.8	0.1	82.5	0.0	17.5	0.074	0.515	17.914513	-92.923000
PARRILLA	10.00	3	1	14887	81.6	0.0	8.2	3.7	3.5	2.0	0.9	0.1	81.6	0.0	18.4	0.063	0.503	17.890878	-92.923323
PARRILLA	10.00	3	2	15084	80.7	0.0	8.8	3.7	3.6	2.1	1.0	0.1	80.7	0.0	19.3	0.064	0.503	17.890893	-92.923305
T. IZQ. SUBTE. GARCIA	20.00	3	0	6977	81.0	0.0	8.5	3.8	3.7	2.0	0.9	0.1	81.0	0.0	19.0	0.073	0.502	17.822306	-92.929466
LA ARENA	44.00	1	0	4795	81.6	0.0	8.4	3.6	3.5	1.9	0.9	0.1	81.6	0.0	18.4	0.068	0.505	17.657604	-92.953734
T. IZQ. TEAPA	54.80	1	0	7340	81.2	0.0	8.3	3.9	3.6	2.0	0.9	0.1	81.2	0.0	18.8	0.065	0.503	17.573374	-92.957683
T. IZQ. TEAPA	54.80	3	0	4648	82.5	0.0	8.0	3.5	3.3	1.8	0.8	0.1	82.5	0.0	17.5	0.085	0.519	17.568451	-92.959721
LIM. EDOS. TERM. TAB. PPIA. CHIS.	61.42																		
PICHUCALCO	76.00	1	0	3216	81.5	0.0	8.3	3.8	3.5	1.9	0.9	0.1	81.5	0.0	18.5	0.066	0.502	17.520338	-93.100887

CHIAPAS

22 CARR: VILLAHERMOSA - ESCOPETAZO

CLAVE: 00104

RUTA: MEX-195

AÑO: 2010

LUGAR	ESTACION				CLASIFICACION VEHICULAR EN PORCIENTO								COORDENADAS						
	KM	TE	SC	TDPA	A	B	C2	C3	T3S2	T3S3	T3S2R4	OTROS	A	B	C	K'	D	LATITUD	LONGITUD
PICHUCALCO	76.00	3	0	2849	81.9	0.0	8.0	3.7	3.4	2.0	0.9	0.1	81.9	0.0	18.1	0.084	0.500	17.499239	-93.104699
SOLUSUCHIAPA	112.00	1	0	1836	82.2	0.0	8.1	3.5	3.4	1.8	0.9	0.1	82.2	0.0	17.8	0.083	0.501	17.428098	-93.038442
SOLUSUCHIAPA	112.00	3	0	1522	81.3	0.0	8.6	3.8	3.5	1.8	0.9	0.1	81.3	0.0	18.7	0.090	0.505	17.422083	-93.027136
RAYON	146.00	1	0	1464	81.1	0.0	8.6	3.7	3.5	2.0	1.0	0.1	81.1	0.0	18.9	0.087	0.512	17.209031	-93.011894
JITOTOL	197.79	1	0	1319	82.4	0.0	7.8	3.7	3.4	1.7	0.9	0.1	82.4	0.0	17.6	0.085	0.504	17.074011	-92.864792
BOCHIL	211.00	1	0	2300	80.7	0.0	8.7	3.9	3.8	1.9	0.9	0.1	80.7	0.0	19.3	0.060	0.501	16.988534	-92.876200
IXTAPA	247.00	1	0	2497	82.5	0.0	7.8	3.5	3.4	1.9	0.8	0.1	82.5	0.0	17.5	0.068	0.502	16.807537	-92.909699
ESCOPETAZO	259.00	1	0	2478	81.8	0.0	8.4	3.5	3.5	1.9	0.8	0.1	81.8	0.0	18.2	0.070	0.507	16.759600	-92.943797

23 CARR: VILLAHERMOSA - FRANCISCO ESCARCEGA

CLAVE: 00092

RUTA: MEX-186

AÑO: 2010

LUGAR	ESTACION				CLASIFICACION VEHICULAR EN PORCIENTO								COORDENADAS						
	KM	TE	SC	TDPA	A	B	C2	C3	T3S2	T3S3	T3S2R4	OTROS	A	B	C	K'	D	LATITUD	LONGITUD
VILLAHERMOSA	0.00	3	1	9796	76.6	6.5	5.7	3.6	4.0	1.4	1.7	0.5	76.6	6.5	16.9	0.071	0.508	18.000985	-92.890791
VILLAHERMOSA	0.00	3	2	10119	76.5	6.6	5.8	3.4	3.9	1.5	1.8	0.5	76.5	6.6	16.9	0.081	0.508	18.000962	-92.890832
T. IZQ. AEROPUERTO	12.00	1	1	11312	75.9	6.7	5.9	3.6	4.1	1.5	1.8	0.5	75.9	6.7	17.4	0.077	0.513	17.984677	-92.829192
T. IZQ. AEROPUERTO	12.00	1	2	10736	75.5	7.0	6.2	3.4	3.9	1.6	1.9	0.5	75.5	7.0	17.5	0.075	0.513	17.984589	-92.829126
PUENTE GRIJALVA	17.60	2	0	13978	80.4	4.9	4.4	3.2	3.9	1.2	0.5	1.5	80.4	4.9	14.7			17.947556	-92.785240
X. C. CACAOS - LA GRANJA	32.46	1	0	10589	76.8	6.2	6.0	3.3	4.0	1.5	1.7	0.5	76.8	6.2	17.0	0.084	0.500	17.832499	-92.719217
X. C. CACAOS - LA GRANJA	32.46	3	1	4291	76.4	6.4	6.0	3.4	4.0	1.5	1.8	0.5	76.4	6.4	17.2	0.080	0.503	17.822640	-92.713871
X. C. CACAOS - LA GRANJA	32.46	3	2	4341	75.6	6.9	5.8	3.6	4.1	1.6	1.9	0.5	75.6	6.9	17.5	0.082	0.503	17.822645	-92.713860
X. C. JALAPA - JONUTA	40.00	3	0	6757	77.6	0.2	7.1	4.3	6.0	2.0	2.3	0.5	77.6	0.2	22.2	0.075	0.501	17.779879	-92.680278
T. IZQ. MACUSPANA	46.20	1	1	3452	79.0	0.2	6.6	3.8	5.9	1.8	2.2	0.5	79.0	0.2	20.8	0.070	0.513	17.743274	-92.633180
T. IZQ. MACUSPANA	46.20	1	2	3368	78.6	0.2	6.8	4.0	5.9	1.8	2.2	0.5	78.6	0.2	21.2	0.070	0.513	17.743274	-92.633180
T. IZQ. MACUSPANA	46.20	3	0	7849	78.7	0.2	6.5	4.2	5.8	1.8	2.3	0.5	78.7	0.2	21.1	0.063	0.513	17.735839	-92.623605
X. C. ESTACION MACUSPANA - VERNET	54.30	1	0	7356	78.6	0.2	6.7	4.1	6.0	1.8	2.1	0.5	78.6	0.2	21.2	0.079	0.504	17.708483	-92.569934
T. DER. CHIVALITO (EST. PINO SUAREZ)	70.00	1	0	6487	79.2	0.2	6.4	4.0	5.7	1.8	2.2	0.5	79.2	0.2	20.6	0.066	0.569	17.669121	-92.441752
T. DER. CHIVALITO (EST. PINO SUAREZ)	70.00	3	0	7261	78.5	0.2	6.7	4.2	5.8	1.8	2.3	0.5	78.5	0.2	21.3	0.059	0.506	17.667572	-92.436508
T. DER. ESTACION ZOPO	71.00	1	0	6546	78.9	0.2	6.4	4.0	5.9	1.9	2.2	0.5	78.9	0.2	20.9	0.069	0.500	17.672227	-92.415215
T. DER. ESTACION ZOPO	71.00	3	0	7763	80.1	0.2	6.1	4.0	5.3	1.8	2.0	0.5	80.1	0.2	19.7	0.084	0.504	17.675463	-92.410257
LIM. EDOS. TERM. TAB. PPIA. CHIS.	76.90																		
T. IZQ. BONANZA	88.00	1	0	5520	78.4	0.2	6.3	4.4	6.1	1.9	2.2	0.5	78.4	0.2	21.4	0.068	0.506	17.699583	-92.255833
T. IZQ. JONUTA	101.00	1	0	4432	79.3	0.2	6.2	3.9	6.0	1.7	2.2	0.5	79.3	0.2	20.5	0.080	0.503	17.697773	-92.133498
T. IZQ. JONUTA	101.00	3	0	4616	77.9	0.2	6.8	4.4	6.1	1.9	2.2	0.5	77.9	0.2	21.9	0.090	0.515	17.697790	-92.131168
X. C. CATAZAJA - PALENQUE	114.00	1	0	4625	78.5	0.2	6.6	4.2	5.8	1.9	2.3	0.5	78.5	0.2	21.3	0.085	0.503	17.710055	-92.017402

CHIAPAS

23 CARR: VILLAHERMOSA - FRANCISCO ESCARCEGA

CLAVE: 00092

RUTA: MEX-186

AÑO: 2010

LUGAR	ESTACION				CLASIFICACION VEHICULAR EN PORCIENTO								COORDENADAS						
	KM	TE	SC	TDPA	A	B	C2	C3	T3S2	T3S3	T3S2R4	OTROS	A	B	C	K'	D	LATITUD	LONGITUD
X. C. CATAZAJA - PALENQUE	114.00	3	0	4709	79.5	0.2	6.6	3.9	5.4	1.7	2.2	0.5	79.5	0.2	20.3	0.076	0.504	17.711874	-92.011533
T. DER. EMILIANO ZAPATA	134.70	1	0	4229	78.3	0.2	6.4	4.2	6.2	1.9	2.3	0.5	78.3	0.2	21.5	0.078	0.506	17.771564	-91.834593
T. DER. EMILIANO ZAPATA	134.70	3	0	3812	78.4	0.2	6.9	4.3	5.6	1.8	2.3	0.5	78.4	0.2	21.4	0.079	0.509	17.778449	-91.823833
LIM. EDOS. TERM. CHIS. PPIA. TAB.	140.70																		
PUENTE USUMACINTA	145.20	2	0	3068	61.9	5.2	6.3	5.2	13.2	1.9	1.5	4.8	61.9	5.2	32.9			17.859876	-91.783607
T. IZQ. PALIZADA	154.05	1	0	2734	79.6	0.2	6.3	4.0	5.5	1.8	2.1	0.5	79.6	0.2	20.2	0.075	0.506	17.938910	-91.736358
T. IZQ. PALIZADA	154.05	3	0	2974	78.1	0.2	6.6	4.4	6.0	1.9	2.3	0.5	78.1	0.2	21.7	0.085	0.501	17.942286	-91.733541
LIM. EDOS. TERM. TAB. PPIA. CAMP.	154.60																		
T. DER. CANDELARIA	233.40	1	0	4221	78.6	0.2	6.9	4.0	5.9	1.8	2.1	0.5	78.6	0.2	21.2	0.081	0.502	18.373406	-91.201642
T. DER. FELIPE ANGELES	253.00	1	0	2882	79.7	0.2	6.2	3.9	5.6	1.8	2.1	0.5	79.7	0.2	20.1	0.063	0.502	18.504203	-91.106366
T. IZQ. SABANCUY	274.10	1	0	3251	78.2	0.2	6.9	4.1	5.9	1.9	2.3	0.5	78.2	0.2	21.6	0.086	0.504	18.629412	-90.985892
FRANCISCO ESCARCEGA	297.04	1	0	4650	79.8	0.2	6.4	4.0	5.4	1.7	2.0	0.5	79.8	0.2	20.0	0.060	0.501	18.609265	-90.767310

24 CARR: ARRIAGA - OCOZOCOAUTLA (CUOTA)

CLAVE:

RUTA: MEX-193D

AÑO: 2010

LUGAR	ESTACION				CLASIFICACION VEHICULAR EN PORCIENTO								COORDENADAS						
	KM	TE	SC	TDPA	A	B	C2	C3	T3S2	T3S3	T3S2R4	OTROS	A	B	C	K'	D	LATITUD	LONGITUD
ARRIAGA	0.00	3	0	3032	80.8	11.3	4.2	0.1	2.1	0.7	0.8	0.0	80.8	11.3	7.9	0.068	0.507	16.240531	-93.880577
ENT. TIERRA Y LIBERTAD	20.70	1	0	3086	81.2	11.3	3.8	0.1	2.1	0.7	0.8	0.0	81.2	11.3	7.5	0.067	0.500	16.346858	-93.867574
OCOZOCOAUTLA	93.77																		

25 CARR: LAS CHOAPAS - OCOZOCOAUTLA (CUOTA)

CLAVE: 00077

RUTA: MEX-187D

AÑO: 2010

LUGAR	ESTACION				CLASIFICACION VEHICULAR EN PORCIENTO								COORDENADAS						
	KM	TE	SC	TDPA	A	B	C2	C3	T3S2	T3S3	T3S2R4	OTROS	A	B	C	K'	D	LATITUD	LONGITUD
T. C. COATZACOALCOS - VILLAHERMOSA	0.00	3	0	5308	60.7	4.9	5.4	6.7	8.2	2.4	10.7	1.0	60.7	4.9	34.4	0.069	0.516	18.064035	-94.247071
CASETA DE COBRO LAS CHOAPAS	16.80	1	0	2944	59.5	5.1	5.3	7.2	8.7	2.5	10.7	1.0	59.5	5.1	35.4			17.944788	-94.172378
CASETA DE COBRO LAS CHOAPAS	16.80	2	0	4152	46.0	6.5	5.6	9.2	12.2	3.9	15.2	1.4	46.0	6.5	47.5			17.944788	-94.172378
CASETA DE COBRO LAS CHOAPAS	16.80	3	0	2118	45.8	6.8	5.6	9.1	12.0	4.4	14.9	1.4	45.8	6.8	47.4			17.944788	-94.172378
CASETA DE COBRO MALPASITO	128.00	1	0	1977	45.5	7.1	5.8	9.2	12.1	3.5	15.5	1.3	45.5	7.1	47.4			17.349102	-93.586412
CASETA DE COBRO MALPASITO	128.00	2	0	2714	54.2	6.6	6.6	7.7	9.6	3.0	11.3	1.0	54.2	6.6	39.2			17.349102	-93.586412
CASETA DE COBRO MALPASITO	128.00	3	0	2691	54.1	6.6	6.6	7.7	9.6	3.0	11.4	1.0	54.1	6.6	39.3			17.349102	-93.586412
LIM. EDOS. TERM. VER. PPIA. CHIS.	130.00																		
T. IZQ. MALPASO	141.865	1	0	2882	53.2	6.7	6.9	7.5	10.0	3.1	11.6	1.0	53.2	6.7	40.1	0.075	0.502	17.261253	-93.570153
CASETA DE COBRO OCOZOCOAUTLA	182.20	2	0	3685	62.7	5.4	7.0	6.0	7.4	2.4	8.3	0.8	62.7	5.4	31.9			16.863216	-93.407000

CHIAPAS

25 CARR: LAS CHOAPAS - OCOZOCAUTLA (CUOTA)

CLAVE: 00077

RUTA: MEX-187D

AÑO: 2010

LUGAR	ESTACION				CLASIFICACION VEHICULAR EN PORCIENTO								COORDENADAS						
	KM	TE	SC	TDPA	A	B	C2	C3	T3S2	T3S3	T3S2R4	OTROS	A	B	C	K'	D	LATITUD	LONGITUD
T. C. TAPANATEPEC - TUXTLA GUTIERREZ	197.50	1	0	4103	63.1	5.2	7.1	6.0	7.3	2.4	8.1	0.8	63.1	5.2	31.7	0.092	0.500	16.772960	-93.319105

26 CARR: TUXTLA GUTIERREZ - SAN CRISTOBAL DE LAS CASAS (CUOTA)

CLAVE: 07580

RUTA: MEX-190D

AÑO: 2010

LUGAR	ESTACION				CLASIFICACION VEHICULAR EN PORCIENTO								COORDENADAS						
	KM	TE	SC	TDPA	A	B	C2	C3	T3S2	T3S3	T3S2R4	OTROS	A	B	C	K'	D	LATITUD	LONGITUD
T. C. TUXTLA GUTIERREZ - CD. CUAUHTEMOC	0.00																		
CASETA DE COBRO CHIAPA DE CORZO	1.30	2	0	9724	89.6	2.6	4.1	1.3	1.2	0.5	0.6	0.1	89.6	2.6	7.8			16.730590	-93.009614
T. C. LIBRAMIENTO DE SAN CRISTOBAL DE LAS CASAS	21.00																		

27 CARR: CHIAPA DE CORZO - AMATENANGO DEL VALLE

CLAVE: 07024

RUTA: CHIS

AÑO: 2010

LUGAR	ESTACION				CLASIFICACION VEHICULAR EN PORCIENTO								COORDENADAS						
	KM	TE	SC	TDPA	A	B	C2	C3	T3S2	T3S3	T3S2R4	OTROS	A	B	C	K'	D	LATITUD	LONGITUD
T. C. TUXTLA GUTIERREZ - CD. CUAUHTEMOC	0.00	3	0	1358	75.1	7.8	9.7	2.6	2.0	1.9	0.7	0.2	75.1	7.8	17.1	0.082	0.506	16.708517	-92.999717
FLORES MAGON	74.00	1	0	2875	81.1	6.4	5.7	1.9	1.6	1.9	1.1	0.3	81.1	6.4	12.5	0.071	0.503	16.397456	-92.703372
FLORES MAGON	74.00	3	0	2640	81.2	6.5	5.8	2.0	1.3	1.7	1.3	0.2	81.2	6.5	12.3	0.061	0.502	16.383112	-92.697968
T. IZQ. VENUSTIANO CARRANZA (1° ACCESO)	92.80	1	0	2631	82.3	6.5	5.5	1.7	1.3	0.9	1.3	0.5	82.3	6.5	11.2	0.068	0.503	16.344271	-92.579400
T. IZQ. VENUSTIANO CARRANZA (1° ACCESO)	92.80	3	0	2567	80.2	6.3	6.0	2.5	1.8	2.1	0.9	0.2	80.2	6.3	13.5	0.062	0.502	16.341733	-92.577579
SOYATITAN	111.20	1	0	2162	81.4	6.4	5.6	2.7	1.6	1.5	0.5	0.3	81.4	6.4	12.2	0.084	0.506	16.295699	-92.428512
T. DER. LAS ROSAS (1° ACCESO)	120.22	1	0	2088	82.2	6.3	6.3	2.2	1.0	1.2	0.4	0.4	82.2	6.3	11.5	0.076	0.502	16.350684	-92.377752
T. DER. LAS ROSAS (1° ACCESO)	120.22	3	0	2788	82.7	6.1	6.2	2.1	1.2	1.1	0.4	0.2	82.7	6.1	11.2	0.077	0.500	16.364258	-92.378161
T. C. TUXTLA GUTIERREZ - CD. CUAUHTEMOC	146.50	1	0	1200	83.5	6.5	6.0	1.4	1.1	0.8	0.3	0.4	83.5	6.5	10.0	0.086	0.505	16.527038	-92.445894

28 CARR: ESTACION PALENQUE - LA LIBERTAD

CLAVE: 07002

RUTA: CHIS-010

AÑO: 2010

LUGAR	ESTACION				CLASIFICACION VEHICULAR EN PORCIENTO								COORDENADAS						
	KM	TE	SC	TDPA	A	B	C2	C3	T3S2	T3S3	T3S2R4	OTROS	A	B	C	K'	D	LATITUD	LONGITUD
ESTACION PALENQUE	0.00	3	0	1779	82.0	8.5	4.3	0.9	2.6	0.9	0.5	0.3	82.0	8.5	9.5	0.082	0.520	17.550025	-91.982321
LA LIBERTAD	40.00	1	0	1414	80.3	8.2	3.8	1.4	4.3	1.2	0.5	0.3	80.3	8.2	11.5	0.079	0.504	17.680263	-91.728404

CHIAPAS

29 CARR: GREGORIO MENDEZ MAGAÑA - REFORMA DE OCAMPO

CLAVE: 00103

RUTA: CHIS

AÑO: 2010

LUGAR	ESTACION				CLASIFICACION VEHICULAR EN PORCIENTO								COORDENADAS						
	KM	TE	SC	TDPA	A	B	C2	C3	T3S2	T3S3	T3S2R4	OTROS	A	B	C	K'	D	LATITUD	LONGITUD
GREGORIO MENDEZ MAGAÑA	0.00	3	0	814	83.9	4.8	3.9	4.1	0.3	1.2	1.2	0.6	83.9	4.8	11.3	0.068	0.505	17.447329	-91.595957
LIM. EDOS. TERM. TAB. PPIA. CHIS.	3.00																		
T. C. BENEMERITO DE LAS AMERICAS - PALENQUE	21.00	1	0	1792	84.3	4.7	4.0	0.0	4.5	1.4	0.8	0.3	84.3	4.7	11.0	0.069	0.502	17.322031	-91.694062
REFORMA DE OCAMPO	22.00																		

30 CARR: INDEPENDENCIA - BUENOS AIRES

CLAVE: 07098

RUTA: CHIS

AÑO: 2010

LUGAR	ESTACION				CLASIFICACION VEHICULAR EN PORCIENTO								COORDENADAS						
	KM	TE	SC	TDPA	A	B	C2	C3	T3S2	T3S3	T3S2R4	OTROS	A	B	C	K'	D	LATITUD	LONGITUD
INDEPENDENCIA	0.00																		
EL PORVENIR	139.00	3	0	832	77.4	7.8	7.0	3.7	1.6	1.2	1.0	0.3	77.4	7.8	14.8	0.084	0.500	15.443575	-92.324899
BUENOS AIRES	159.00	1	0	1106	79.4	6.9	6.3	2.7	2.4	1.2	0.8	0.3	79.4	6.9	13.7	0.071	0.504	15.335682	-92.278870

31 CARR: LAS LIMAS - LA CONCORDIA

CLAVE: 07028

RUTA: CHIS

AÑO: 2010

LUGAR	ESTACION				CLASIFICACION VEHICULAR EN PORCIENTO								COORDENADAS						
	KM	TE	SC	TDPA	A	B	C2	C3	T3S2	T3S3	T3S2R4	OTROS	A	B	C	K'	D	LATITUD	LONGITUD
T. C. TUXTLA GUTIERREZ - ANGOSTURA	0.00	3	0	3154	81.9	3.5	8.9	1.2	2.8	0.9	0.1	0.7	81.9	3.5	14.6	0.069	0.501	16.607665	-92.992986
REVOLUCION MEXICANA	83.00	1	0	3456	82.8	3.8	8.3	0.9	2.6	1.1	0.1	0.4	82.8	3.8	13.4	0.074	0.502	16.174536	-93.059849
LA CONCORDIA	135.00																		

32 CARR: LIBRAMIENTO SUR DE TUXTLA GUTIERREZ

CLAVE: 07578

RUTA: CHIS

AÑO: 2010

LUGAR	ESTACION				CLASIFICACION VEHICULAR EN PORCIENTO								COORDENADAS						
	KM	TE	SC	TDPA	A	B	C2	C3	T3S2	T3S3	T3S2R4	OTROS	A	B	C	K'	D	LATITUD	LONGITUD
T. C. TAPANATEPEC - TUXTLA GUTIERREZ	0.00	3	1	8250	83.1	2.7	2.9	0.2	5.9	1.9	2.8	0.5	83.1	2.7	14.2	0.067	0.500	16.752517	-93.141917
T. C. TAPANATEPEC - TUXTLA GUTIERREZ	0.00	3	2	8242	82.2	2.9	2.8	0.2	6.4	1.9	2.9	0.7	82.2	2.9	14.9	0.068	0.500	16.752517	-93.141917
T. C. TUXTLA GUTIERREZ - CD. CUAUHEMOC	9.20	1	1	7984	82.9	4.1	4.3	0.5	4.6	1.1	2.0	0.5	82.9	4.1	13.0	0.083	0.513	16.740757	-93.079564
T. C. TUXTLA GUTIERREZ - CD. CUAUHEMOC	9.20	1	2	8403	81.5	4.2	4.0	0.4	6.0	1.3	1.9	0.7	81.5	4.2	14.3	0.084	0.513	16.740757	-93.079564

33 CARR: OCOSINGO - COMITAN

CLAVE: 07092

RUTA: CHIS

AÑO: 2010

LUGAR	ESTACION				CLASIFICACION VEHICULAR EN PORCIENTO								COORDENADAS						
	KM	TE	SC	TDPA	A	B	C2	C3	T3S2	T3S3	T3S2R4	OTROS	A	B	C	K'	D	LATITUD	LONGITUD
OCOSINGO	0.00	3	0	1765	88.2	2.6	3.5	1.4	0.9	0.1	2.7	0.6	88.2	2.6	9.2	0.075	0.502	16.896564	-92.074350

CHIAPAS

33 CARR: OCOSINGO - COMITAN

CLAVE: 07092

RUTA: CHIS

AÑO: 2010

LUGAR	ESTACION				CLASIFICACION VEHICULAR EN PORCIENTO								COORDENADAS						
	KM	TE	SC	TDPA	A	B	C2	C3	T3S2	T3S3	T3S2R4	OTROS	A	B	C	K'	D	LATITUD	LONGITUD
ALTAMIRANO	24.00	1	0	1504	88.3	2.8	4.3	1.5	0.6	0.0	2.0	0.5	88.3	2.8	8.9	0.080	0.508	16.743974	-92.040929
ALTAMIRANO	24.00	3	0	1383	86.8	3.1	3.8	1.6	1.5	0.9	2.0	0.3	86.8	3.1	10.1	0.086	0.501	16.716679	-92.043413
LA MENDOZA	30.00	1	0	1407	86.6	3.5	4.2	1.9	1.0	0.5	1.9	0.4	86.6	3.5	9.9	0.079	0.509	16.685618	-92.021420
COMITAN	100.00	1	0	1740	87.6	3.3	3.6	1.7	1.2	0.3	1.9	0.4	87.6	3.3	9.1	0.093	0.506	16.270939	-92.127363

34 CARR: OCOZOCOAUTLA - REVOLUCION MEXICANA

CLAVE: 07571

RUTA: CHIS-053-230

AÑO: 2010

LUGAR	ESTACION				CLASIFICACION VEHICULAR EN PORCIENTO								COORDENADAS						
	KM	TE	SC	TDPA	A	B	C2	C3	T3S2	T3S3	T3S2R4	OTROS	A	B	C	K'	D	LATITUD	LONGITUD
OCOZOCOAUTLA	0.00	3	0	3911	72.6	8.1	7.8	6.4	2.8	0.9	0.7	0.7	72.6	8.1	19.3	0.060	0.505	16.752462	-93.382784
NUEVO MEXICO	36.00	3	0	1856	74.6	7.6	7.0	5.3	2.7	0.9	1.3	0.6	74.6	7.6	17.8	0.086	0.502	16.460349	-93.435820
T. DER. CRISTOBAL OBREGON	41.00	3	0	1956	75.5	7.3	6.4	5.5	2.3	0.9	1.4	0.7	75.5	7.3	17.2	0.085	0.506	16.423693	-93.420714
T. IZQ. TUXTLA GUTIERREZ	76.00	1	0	3459	76.7	6.8	6.2	5.1	3.2	0.3	0.7	1.0	76.7	6.8	16.5	0.058	0.501	16.316371	-93.332209
T. IZQ. TUXTLA GUTIERREZ	76.00	3	0	4632	78.2	6.2	5.9	4.7	2.6	1.0	0.6	0.8	78.2	6.2	15.6	0.067	0.502	16.314800	-93.328617
VILLA FLORES	84.00	1	0	3955	79.2	5.6	5.6	3.8	3.0	1.5	0.6	0.7	79.2	5.6	15.2	0.081	0.500	16.256024	-93.266420
VILLA DE CORZO	94.00	1	0	6595	80.5	5.1	4.7	3.7	2.9	1.6	0.6	0.9	80.5	5.1	14.4	0.071	0.501	16.198797	-93.262864
REVOLUCION MEXICANA	119.00	1	0	3463	82.3	5.0	4.7	2.6	1.5	2.0	1.0	0.9	82.3	5.0	12.7	0.070	0.504	16.168025	-93.088645

35 CARR: PASO DE CUNDUACAN - ESTACION JUAREZ

CLAVE: 00588

RUTA: TAB-CHIS

AÑO: 2010

LUGAR	ESTACION				CLASIFICACION VEHICULAR EN PORCIENTO								COORDENADAS						
	KM	TE	SC	TDPA	A	B	C2	C3	T3S2	T3S3	T3S2R4	OTROS	A	B	C	K'	D	LATITUD	LONGITUD
PASO DE CUNDUACAN	0.00	3	0	6851	79.3	3.6	6.9	1.5	5.4	1.5	1.3	0.5	79.3	3.6	17.1	0.072	0.506	17.961503	-93.138004
LIM. EDOS. TERM. TAB. PPIA. CHIS.	9.00																		
SANTA TERESA 2° SECC.	18.00	3	0	3233	85.1	5.4	2.1	2.1	1.5	1.9	1.2	0.7	85.1	5.4	9.5	0.077	0.501	17.768516	-93.169579
ESTACION JUAREZ	57.80	1	0	2776	84.2	5.5	2.7	1.9	1.5	2.2	0.8	1.2	84.2	5.5	10.3	0.082	0.521	17.611176	-93.173270

36 CARR: PUERTO CAFE - SAN CRISTOBAL DE LAS CASAS

CLAVE: 07097

RUTA: CHIS

AÑO: 2010

LUGAR	ESTACION				CLASIFICACION VEHICULAR EN PORCIENTO								COORDENADAS						
	KM	TE	SC	TDPA	A	B	C2	C3	T3S2	T3S3	T3S2R4	OTROS	A	B	C	K'	D	LATITUD	LONGITUD
PUERTO CAFE	0.00	3	0	971	81.5	4.5	8.9	1.3	1.4	1.8	0.1	0.5	81.5	4.5	14.0	0.071	0.503	16.995356	-92.820266
LARRAINZAR	20.00	1	0	923	84.9	4.3	7.0	1.2	1.1	0.7	0.3	0.5	84.9	4.3	10.8	0.083	0.514	16.886207	-92.725591
T. IZQ. CHAMULA	32.00	1	0	1481	82.0	4.4	4.2	2.9	2.9	1.4	2.0	0.2	82.0	4.4	13.6	0.064	0.505	16.783920	-92.695113
SAN CRISTOBAL DE LAS CASAS	40.00	1	0	2360	82.0	3.4	4.2	1.4	3.8	1.7	3.1	0.4	82.0	3.4	14.6	0.059	0.505	16.755694	-92.670167

CHIAPAS

37 CARR: RAMAL A HUEHUETAN

CLAVE: 07360

RUTA: CHIS

AÑO: 2010

LUGAR	ESTACION				CLASIFICACION VEHICULAR EN PORCIENTO								COORDENADAS						
	KM	TE	SC	TDPA	A	B	C2	C3	T3S2	T3S3	T3S2R4	OTROS	A	B	C	K'	D	LATITUD	LONGITUD
T. C. TAPANATEPEC - TALISMAN HUEHUETAN	0.00	3	0	2794	82.9	3.8	6.8	3.5	0.7	0.8	0.5	1.0	82.9	3.8	13.3	0.079	0.503	15.010219	-92.395924
	2.50																		

38 CARR: RAMAL A MAZATAN

CLAVE: 07560

RUTA: CHIS-219

AÑO: 2010

LUGAR	ESTACION				CLASIFICACION VEHICULAR EN PORCIENTO								COORDENADAS						
	KM	TE	SC	TDPA	A	B	C2	C3	T3S2	T3S3	T3S2R4	OTROS	A	B	C	K'	D	LATITUD	LONGITUD
T. C. TAPANATEPEC - TALISMAN MAZATAN	0.00	3	0	2929	81.8	6.4	6.8	3.2	1.0	0.2	0.2	0.4	81.8	6.4	11.8	0.079	0.504	14.928141	-92.374114
	12.00																		

39 CARR: RAMAL A SALTO DEL AGUA

CLAVE: 00069

RUTA: TAB-CHIS

AÑO: 2010

LUGAR	ESTACION				CLASIFICACION VEHICULAR EN PORCIENTO								COORDENADAS						
	KM	TE	SC	TDPA	A	B	C2	C3	T3S2	T3S3	T3S2R4	OTROS	A	B	C	K'	D	LATITUD	LONGITUD
T. C. VILLAHERMOSA - FRANCISCO ESCARCEGA LIM. EDOS. TERM. TAB. PPIA. CHIS.	0.00	3	0	825	84.8	3.8	4.0	3.8	0.2	0.3	2.0	1.1	84.8	3.8	11.4	0.088	0.518	17.672135	-92.413434
SALTO DEL AGUA	17.00	1	0	872	85.8	3.9	3.7	2.4	1.3	1.2	1.1	0.6	85.8	3.9	10.3	0.107	0.518	17.559271	-92.353806

40 CARR: RAMAL ZONA ARQUEOLOGICA " BONAMPAK "

CLAVE: 07100

RUTA: CHIS

AÑO: 2010

LUGAR	ESTACION				CLASIFICACION VEHICULAR EN PORCIENTO								COORDENADAS						
	KM	TE	SC	TDPA	A	B	C2	C3	T3S2	T3S3	T3S2R4	OTROS	A	B	C	K'	D	LATITUD	LONGITUD
T. C. BENEMERITO DE LAS AMERICAS - PALENQUE ZONA ARQUEOLOGICA BONAMPAK	0.00	3	0	266	89.0	1.2	5.9	2.0	1.2	0.0	0.7	0.0	89.0	1.2	9.8	0.090	0.509	16.798698	-91.105753
	13.00																		

41 CARR: RAMAL ZONA ARQUEOLOGICA " PALENQUE "

CLAVE: 07099

RUTA: CHIS

AÑO: 2010

LUGAR	ESTACION				CLASIFICACION VEHICULAR EN PORCIENTO								COORDENADAS						
	KM	TE	SC	TDPA	A	B	C2	C3	T3S2	T3S3	T3S2R4	OTROS	A	B	C	K'	D	LATITUD	LONGITUD
T. C. (CATAZAJA - T. C. (TUXTLA GTZ. - CD. CUAUHTEMOC)) ZONA ARQUEOLOGICA " PALENQUE "	0.00	3	0	2963	88.1	5.8	3.5	0.7	1.2	0.2	0.1	0.4	88.1	5.8	6.1	0.085	0.503	17.504312	-91.992903
	7.30	1	0	1356	88.8	6.2	3.7	0.0	0.2	0.3	0.3	0.5	88.8	6.2	5.0	0.088	0.507	17.487724	-92.040967

CHIAPAS

42 CARR: T. C. (CHIAPA DE CORZO - AMATENANGO DEL VALLE) - COMITAN

CLAVE: 07093

RUTA: CHIS

AÑO: 2010

LUGAR	ESTACION				CLASIFICACION VEHICULAR EN PORCIENTO								COORDENADAS						
	KM	TE	SC	TDPA	A	B	C2	C3	T3S2	T3S3	T3S2R4	OTROS	A	B	C	K'	D	LATITUD	LONGITUD
T. C. CHIAPA DE CORZO - AMATENANGO DEL VALLE	0.00	3	0	2194	83.3	4.0	4.4	1.8	2.4	1.8	1.6	0.7	83.3	4.0	12.7	0.082	0.500	16.271831	-92.444336
COMITAN	54.00	1	0	2992	83.1	3.9	4.6	1.6	2.3	1.8	2.0	0.7	83.1	3.9	13.0	0.079	0.503	16.202117	-92.136128

43 CARR: T. C. (EL SUSPIRO - TENOSIQUE) - LA LIBERTAD

CLAVE: 00062

RUTA: CHIS-TAB

AÑO: 2010

LUGAR	ESTACION				CLASIFICACION VEHICULAR EN PORCIENTO								COORDENADAS						
	KM	TE	SC	TDPA	A	B	C2	C3	T3S2	T3S3	T3S2R4	OTROS	A	B	C	K'	D	LATITUD	LONGITUD
T. C. EL SUSPIRO - TENOSIQUE	0.00	3	0	1797	81.3	5.4	1.8	2.8	6.4	1.8	0.2	0.3	81.3	5.4	13.3	0.082	0.502	17.722150	-91.744674
LIM. EDOS. TERM. TAB. PPIA. CHIS.	8.00																		
LA LIBERTAD	10.00	1	0	1365	77.8	6.9	3.7	2.6	4.4	3.3	1.1	0.2	77.8	6.9	15.3	0.102	0.504	17.690541	-91.724694

44 CARR: TAPACHULA - NUEVA ALEMANIA

CLAVE: 07581

RUTA: CHIS-229

AÑO: 2010

LUGAR	ESTACION				CLASIFICACION VEHICULAR EN PORCIENTO								COORDENADAS						
	KM	TE	SC	TDPA	A	B	C2	C3	T3S2	T3S3	T3S2R4	OTROS	A	B	C	K'	D	LATITUD	LONGITUD
TAPACHULA	0.00	3	0	4593	83.9	4.6	3.9	0.6	3.7	1.2	1.6	0.5	83.9	4.6	11.5	0.083	0.500	14.953048	-92.254602
NUEVA ALEMANIA	27.20																		

45 CARR: TEMO - TILA

CLAVE: 07090

RUTA: CHIS

AÑO: 2010

LUGAR	ESTACION				CLASIFICACION VEHICULAR EN PORCIENTO								COORDENADAS						
	KM	TE	SC	TDPA	A	B	C2	C3	T3S2	T3S3	T3S2R4	OTROS	A	B	C	K'	D	LATITUD	LONGITUD
TEMO	0.00	3	0	1975	82.7	3.2	8.4	1.6	1.1	1.9	0.6	0.5	82.7	3.2	14.1	0.080	0.504	17.018003	-92.138167
YAJALON	28.00	1	0	1278	82.7	3.7	6.7	2.1	1.8	1.2	1.3	0.5	82.7	3.7	13.6	0.061	0.500	17.158642	-92.316832
TILA	50.00	1	0	1160	82.9	3.3	5.6	3.0	1.5	2.2	0.8	0.7	82.9	3.3	13.8	0.084	0.503	17.294637	-92.428506

46 CARR: TIERRA Y LIBERTAD - DR. DOMINGO CHANONA

CLAVE: 07096

RUTA: CHIS

AÑO: 2010

LUGAR	ESTACION				CLASIFICACION VEHICULAR EN PORCIENTO								COORDENADAS						
	KM	TE	SC	TDPA	A	B	C2	C3	T3S2	T3S3	T3S2R4	OTROS	A	B	C	K'	D	LATITUD	LONGITUD
T. C. LAS CRUCES - ARRIAGA	0.00	3	0	3089	84.3	5.0	4.6	2.1	1.4	0.8	1.1	0.7	84.3	5.0	10.7	0.062	0.503	16.368048	-93.866997
T. C. OCOZOCOATLA - REVOLUCION MEXICANA	60.00	1	0	1694	83.8	5.3	4.2	2.6	1.5	1.1	0.9	0.6	83.8	5.3	10.9	0.093	0.503	16.345426	-93.407268

CHIAPAS

47 CARR: TUXTLA GUTIERREZ - PORTILLO ZARAGOZA

CLAVE: 07574

RUTA: CHIS-133

AÑO: 2010

LUGAR	ESTACION				CLASIFICACION VEHICULAR EN PORCIENTO								COORDENADAS						
	KM	TE	SC	TDPA	A	B	C2	C3	T3S2	T3S3	T3S2R4	OTROS	A	B	C	K'	D	LATITUD	LONGITUD
ENT. PERIFERICO TUXTLA GUTIERREZ	0.00	3	0	8810	88.8	1.8	1.1	0.2	2.4	2.3	2.9	0.5	88.8	1.8	9.4	0.072	0.501	16.726954	-93.110567
SUCHIAPA	19.00	1	0	3762	90.2	2.5	2.0	0.4	2.0	1.1	1.0	0.8	90.2	2.5	7.3	0.084	0.501	16.637607	-93.092621
LAS CRUCES	53.50	1	0	2031	87.9	4.1	2.4	0.9	1.7	2.3	0.1	0.6	87.9	4.1	8.0	0.065	0.503	16.406484	-93.184174
LAS CRUCES	53.50	3	0	2100	85.3	4.6	4.3	1.4	1.6	1.9	0.1	0.8	85.3	4.6	10.1	0.081	0.503	16.403854	-93.189169
PORTILLO DE TACUBAYA	79.00	1	0	2653	85.8	4.5	3.5	1.7	1.5	1.9	0.1	1.0	85.8	4.5	9.7	0.077	0.500	16.316656	-93.330649

48 CARR: ZAPATERO - T. C. (JALAPA - JONUTA)

CLAVE: 00061

RUTA: CHIS-TAB

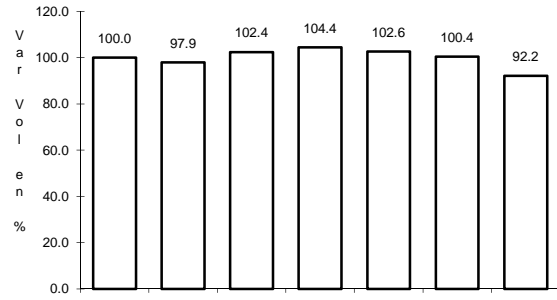
AÑO: 2010

LUGAR	ESTACION				CLASIFICACION VEHICULAR EN PORCIENTO								COORDENADAS						
	KM	TE	SC	TDPA	A	B	C2	C3	T3S2	T3S3	T3S2R4	OTROS	A	B	C	K'	D	LATITUD	LONGITUD
T. C. VILLAHERMOSA - FRANCISCO ESCARCEGA	0.00	3	0	1683	84.9	2.4	5.9	1.0	1.8	2.8	1.0	0.2	84.9	2.4	12.7	0.069	0.506	17.699059	-92.131863
LIM. EDOS. TERM. CHIS. PPIA. TAB.	16.00																		
T. C. JALAPA - JONUTA	41.00	1	0	1165	90.6	2.4	3.3	1.6	0.6	0.5	0.3	0.7	90.6	2.4	7.0	0.082	0.509	18.021416	-92.157138

1 CARR: BENEMERITO DE LAS AMERICAS - PALENQUE

CLAVE: 07095

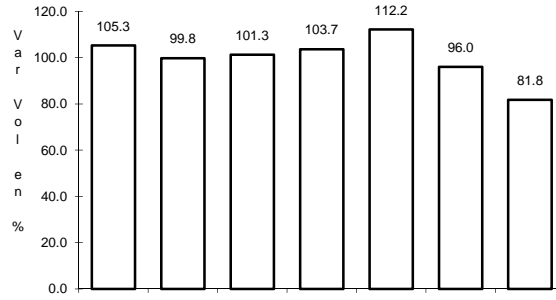
ruta: MEX-307



Km: 42.00

Tipo: 3

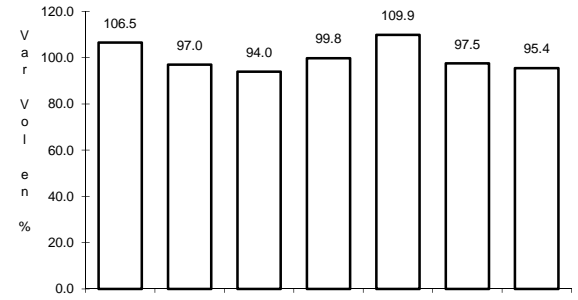
Sent: 0



Km: 160.00

Tipo: 1

Sent: 0



Km: 194.00

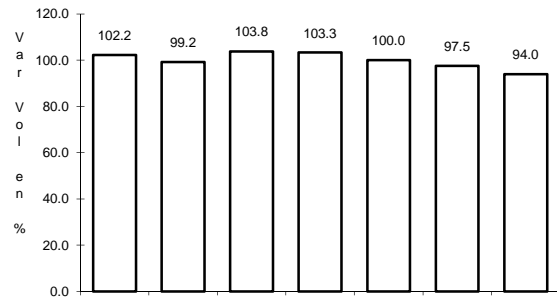
Tipo: 1

Sent: 0

2 CARR: CATAZAJA - T. C. (TUXTLA GTZ. - CD. CUAUHTEMOC)

CLAVE: 07582

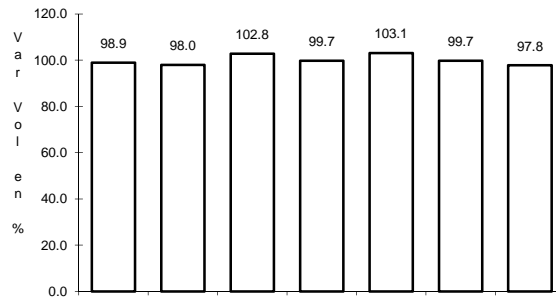
ruta: MEX-199



Km: 2.20

Tipo: 3

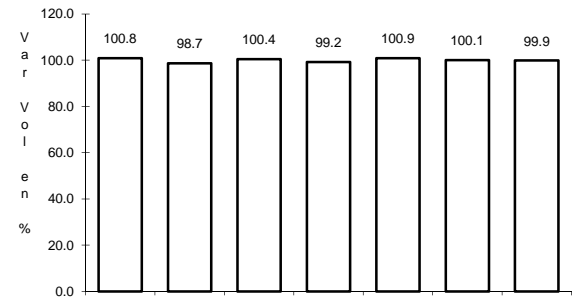
Sent: 0



Km: 111.00

Tipo: 1

Sent: 0



Km: 210.00

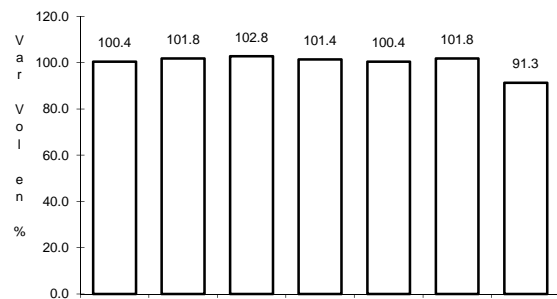
Tipo: 1

Sent: 0

3 CARR: EL SUSPIRO - TENOSIQUE

CLAVE: 00276

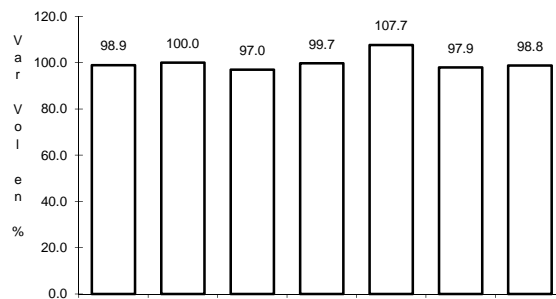
ruta: MEX-203



Km: 0.00

Tipo: 3

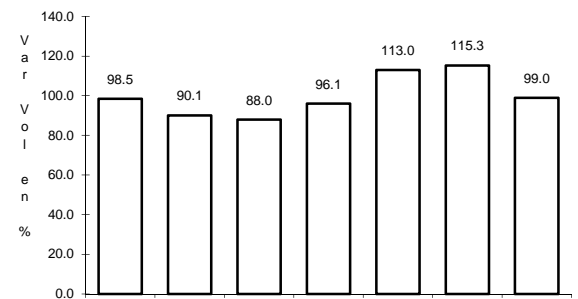
Sent: 0



Km: 32.60

Tipo: 1

Sent: 0



Km: 53.00

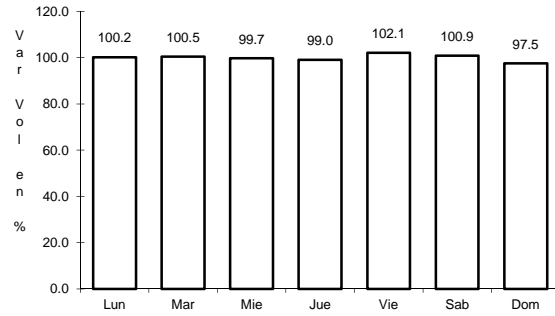
Tipo: 3

Sent: 0

13 CARR: RAMAL A PAREDON

CLAVE: 07269

ruta: MEX



Km: 0.00

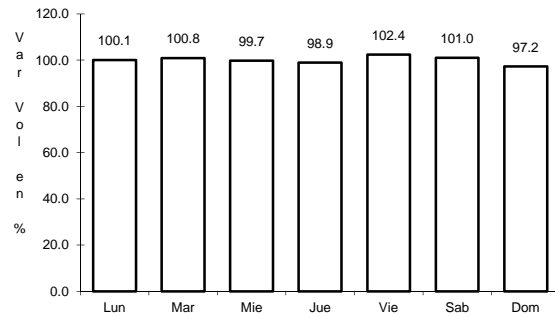
Tipo: 3

Sent: 0

14 CARR: RAMAL A PUERTO ARISTA

CLAVE: 07270

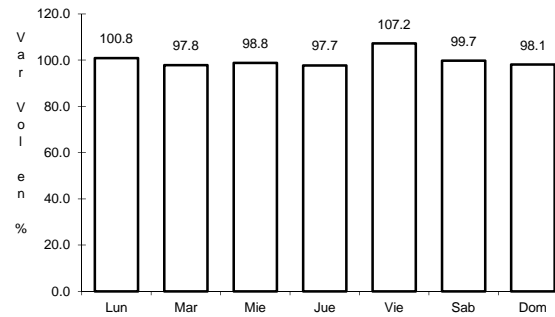
ruta: MEX



Km: 0.00

Tipo: 3

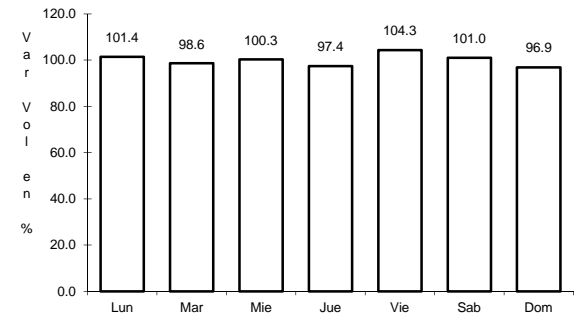
Sent: 0



Km: 11.00

Tipo: 3

Sent: 0



Km: 17.00

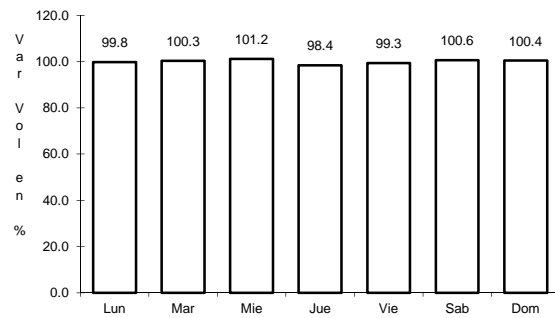
Tipo: 1

Sent: 0

15 CARR: RAMAL A UNION JUAREZ

CLAVE: 07273

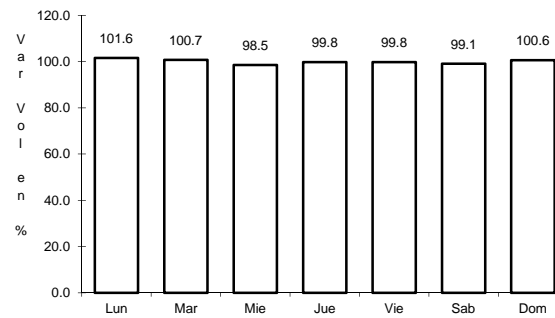
ruta: MEX



Km: 5.00

Tipo: 1

Sent: 0



Km: 22.00

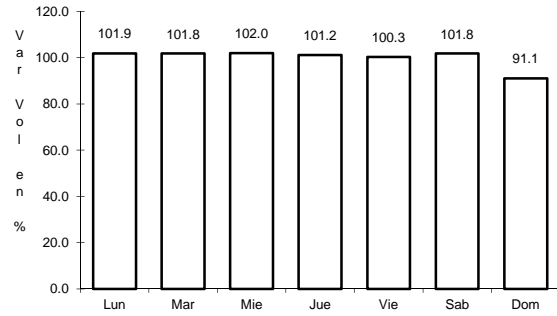
Tipo: 1

Sent: 0

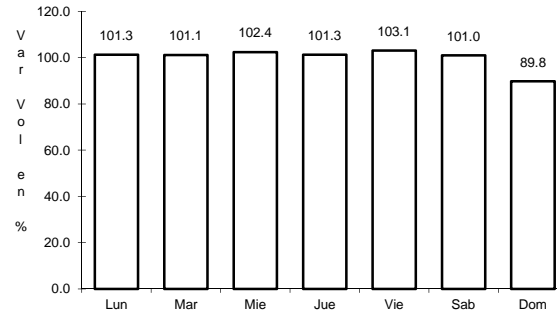
22 CARR: VILLAHERMOSA - ESCOPETAZO

CLAVE: 00104

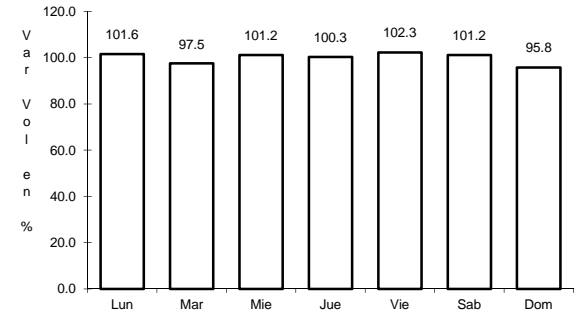
ruta: MEX-195



Km: 0.00 Tipo: 3 Sent: 1



Km: 0.00 Tipo: 3 Sent: 2

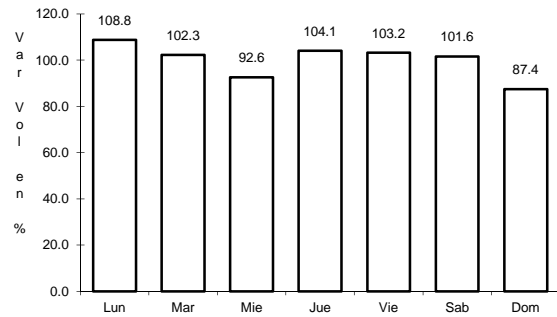


Km: 259.00 Tipo: 1 Sent: 0

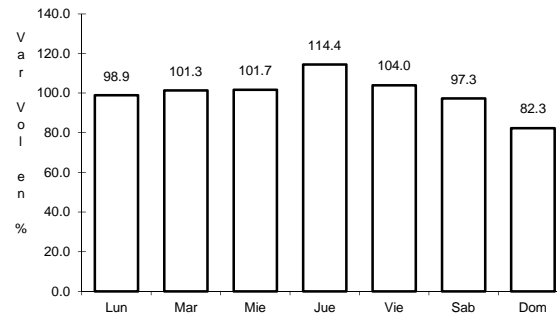
23 CARR: VILLAHERMOSA - FRANCISCO ESCARCEGA

CLAVE: 00092

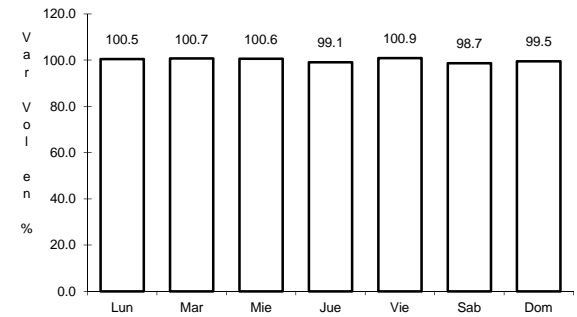
ruta: MEX-186



Km: 0.00 Tipo: 3 Sent: 1



Km: 0.00 Tipo: 3 Sent: 2

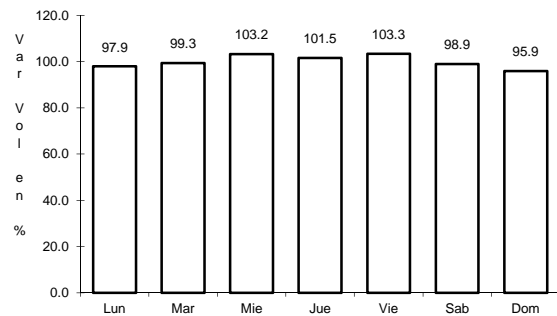


Km: 297.04 Tipo: 1 Sent: 0

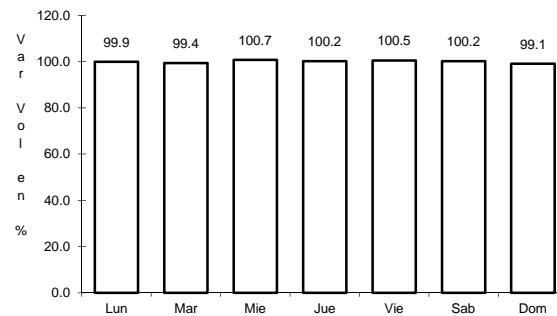
24 CARR: ARRIAGA - OCOZOCOAUTLA (CUOTA)

CLAVE:

ruta: MEX-193D



Km: 0.00 Tipo: 3 Sent: 0

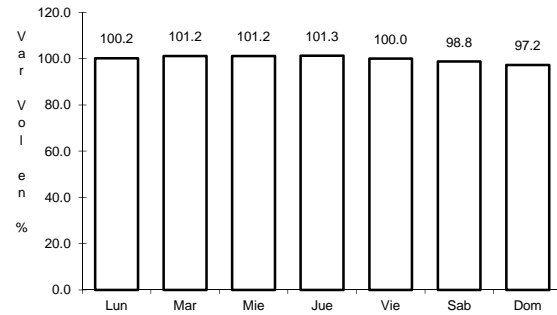


Km: 20.70 Tipo: 1 Sent: 0

38 CARR: RAMAL A MAZATAN

CLAVE: 07560

ruta: CHIS-219



Km: 0.00

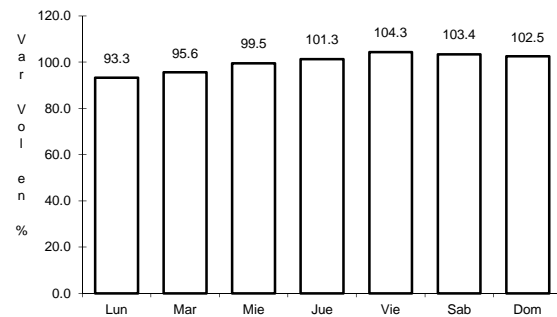
Tipo: 3

Sent: 0

39 CARR: RAMAL A SALTO DEL AGUA

CLAVE: 00069

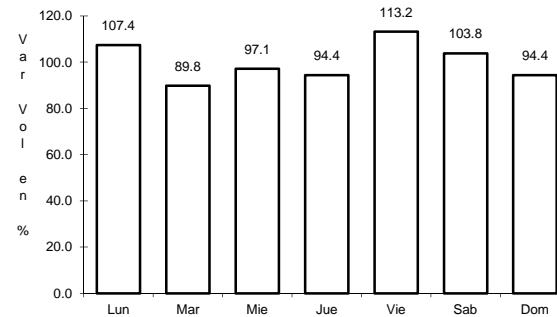
ruta: TAB-CHIS



Km: 0.00

Tipo: 3

Sent: 0



Km: 17.00

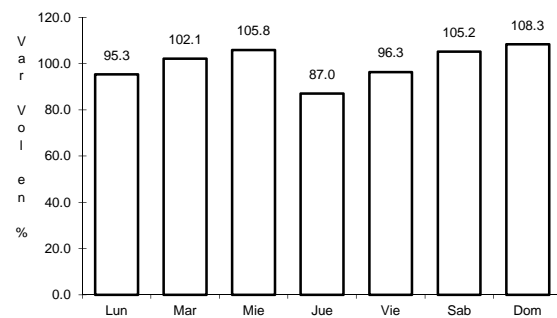
Tipo: 1

Sent: 0

40 CARR: RAMAL ZONA ARQUEOLOGICA " BONAMPAK "

CLAVE: 07100

ruta: CHIS



Km: 0.00

Tipo: 3

Sent: 0

