

COLIMA

---RED FEDERAL LIBRE---

1	CD. GUZMAN - COLIMA	MEX-054
2	COLIMA - ENT. TECOMAN	MEX-110
3	ENT. PLAYA AZUL - MANZANILLO	MEX-200
4	JIQUILPAN - COLIMA	MEX-110
5	LIBRAMIENTO DE COLIMA	MEX
6	LIBRAMIENTO DE MANZANILLO (LIBRE)	MEX
7	LIBRAMIENTO DE MANZANILLO NORTE	MEX
8	MANZANILLO - PUERTO VALLARTA	MEX-200
9	MINATITLAN - ENT. PEZ VELA	MEX-098
10	RAMAL A CUYUTLAN	MEX
11	RAMAL CERRO DE LOS JUANES	MEX
12	RAMAL CERRO DE ORTEGA	MEX
13	TECOMAN - BOCA DE PASCUALES	MEX

---RED FEDERAL DE CUOTA---

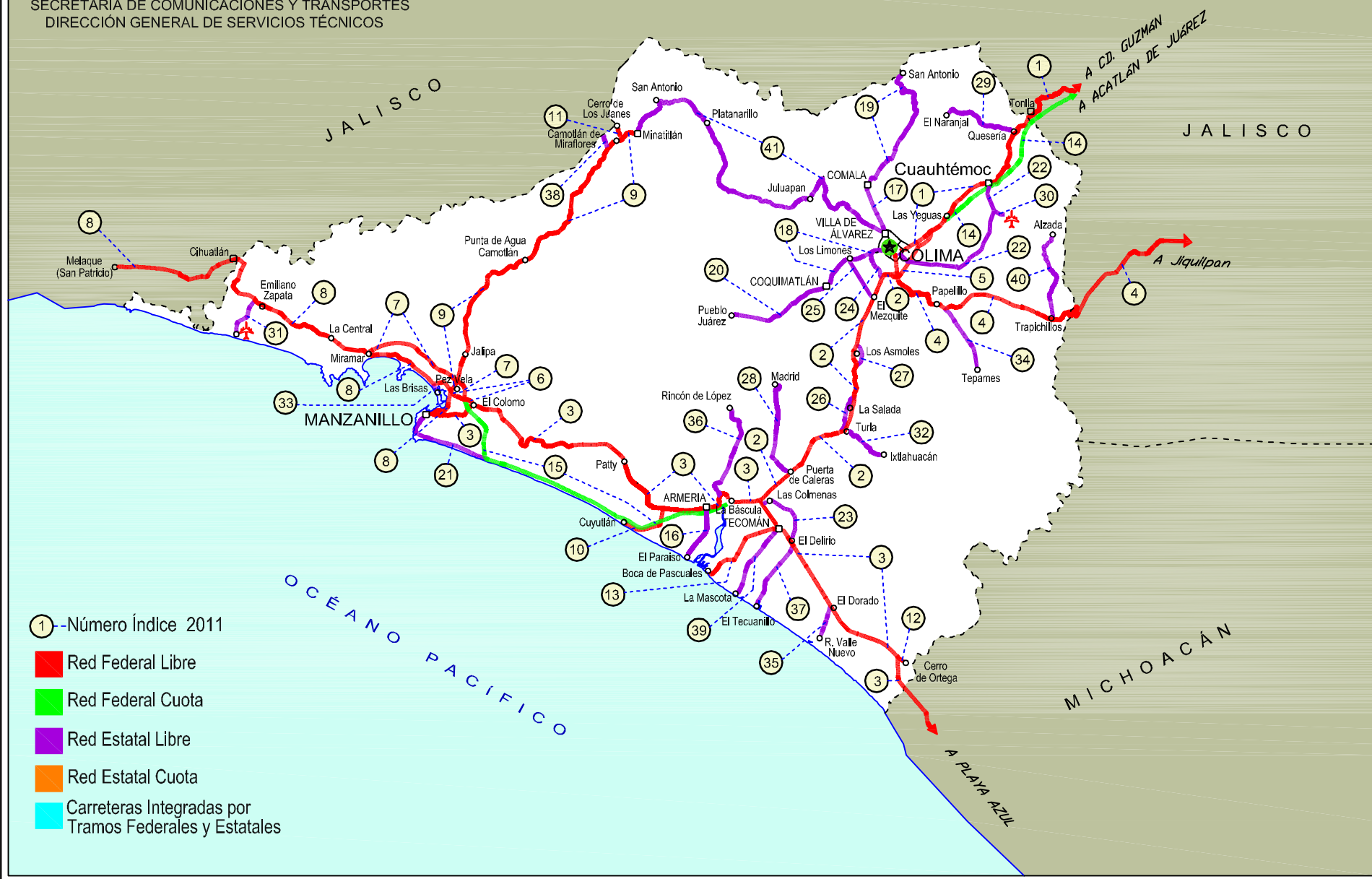
14	ACATLAN DE JUAREZ - EL TRAPICHE (CUOTA)	MEX-054D
15	ARMERIA - MANZANILLO (CUOTA)	MEX-200D

---RED ESTATAL LIBRE---

16	ARMERIA - PLAYA EL PARAISO	COL
17	COLIMA - COMALA	COL-016
18	COLIMA - COQUIMATLAN	COL-034
19	COMALA - SAN ANTONIO	COL-016
20	COQUIMATLAN - PUEBLO JUAREZ	COL-034
21	COSTERA LAGUNA DE CUYUTLAN	COL
22	CUAUHEMOC - COLIMA	COL-019
23	LIBRAMIENTO DE TECOMAN	COL
24	LIBRAMIENTO PONIENTE DE COLIMA	COL
25	LOS LIMONES - LOMA DE JUAREZ	COL
26	PASO POR LA SALADA	COL
27	PASO POR LOS ASMOLES	COL
28	PUERTA DE CALERAS - MADRID	COL-014
29	QUESERIA - EL NARANJAL	COL-001
30	RAMAL A AEROPUERTO DE COLIMA	COL
31	RAMAL A AEROPUERTO MANZANILLO	COL
32	RAMAL A IXTLAHUACAN	COL-005
33	RAMAL A LAS BRISAS	COL
34	RAMAL A LOS TEPAMES	COL-004
35	RAMAL A RANCHO VALLE NUEVO	COL
36	RAMAL A RINCON DE LOPEZ	COL
37	RAMAL A TECUANILLO	COL-009
38	RAMAL CAMOTLAN DE MIRAFLORES	COL
39	TECOMAN - LA MASCOTA	COL
40	TRAPICHILLOS - ESTACION ALZADA	COL-003
41	VILLA DE ALVAREZ - MINATITLAN	COL

06 COLIMA

SECRETARÍA DE COMUNICACIONES Y TRANSPORTES
DIRECCIÓN GENERAL DE SERVICIOS TÉCNICOS



COLIMA

1 CARR: CD. GUZMAN - COLIMA

CLAVE: 00117

RUTA: MEX-054

AÑO: 2010

LUGAR	ESTACION				CLASIFICACION VEHICULAR EN PORCIENTO								COORDENADAS						
	KM	TE	SC	TDPA	A	B	C2	C3	T3S2	T3S3	T3S2R4	OTROS	A	B	C	K'	D	LATITUD	LONGITUD
CD. GUZMAN	0.00	3	1	7438	89.7	1.9	2.7	1.7	1.6	0.5	0.6	1.3	89.7	1.9	8.4	0.081	0.503	19.672814	-103.476987
CD. GUZMAN	0.00	3	2	7361	83.8	2.7	4.5	2.1	2.4	1.0	0.9	2.6	83.8	2.7	13.5	0.082	0.503	19.672814	-103.476987
T. IZQ. ZAPOTILIC	4.35	3	0	4658	89.1	1.7	4.0	1.6	1.5	0.6	0.3	1.2	89.1	1.7	9.2	0.085	0.504	19.649861	-103.472960
T. DER. TEPOZAL Y NEVADO DE COLIMA	10.70	1	0	3025	86.1	2.2	4.0	2.1	2.2	1.0	0.0	2.4	86.1	2.2	11.7	0.098	0.506	19.560675	-103.440739
ATENQUIQUE	31.90	1	0	3094	84.7	2.3	4.7	1.6	2.7	1.2	0.5	2.3	84.7	2.3	13.0	0.085	0.516	19.530446	-103.433330
ATENQUIQUE	31.90	3	0	2314	82.1	2.2	4.1	2.1	5.2	2.2	0.4	1.7	82.1	2.2	15.7	0.106	0.505	19.526816	-103.439046
LIM. EDOS. TERM. JAL. PPIA. COL.	56.50																		
T. DER. QUESERIA	58.35	1	0	2945	84.9	3.3	7.0	1.3	2.8	0.3	0.1	0.3	84.9	3.3	11.8	0.066	0.501	19.392535	-103.564816
CUAUHEMOC	66.25	1	0	4677	83.8	3.6	7.1	1.5	3.0	0.4	0.3	0.3	83.8	3.6	12.6	0.065	0.541	19.326194	-103.596722
CUAUHEMOC	66.25	3	0	4876	85.2	3.5	5.9	1.2	3.1	0.1	0.7	0.3	85.2	3.5	11.3	0.064	0.578	19.324278	-103.608472
EL TRAPICHE	76.55	3	1	11870	84.1	3.2	5.8	2.0	2.3	1.0	1.0	0.6	84.1	3.2	12.7	0.079	0.503	19.268028	-103.676472
EL TRAPICHE	76.55	3	2	11722	83.9	3.1	5.9	1.9	2.4	1.1	0.9	0.8	83.9	3.1	13.0	0.081	0.503	19.268028	-103.676472
T. IZQ. LIBRAMIENTO DE COLIMA	78.05	1	1	7637	85.3	3.9	5.2	1.8	2.6	0.4	0.4	0.4	85.3	3.9	10.8	0.060	0.514	19.262083	-103.684389
T. IZQ. LIBRAMIENTO DE COLIMA	78.05	1	2	7217	85.9	3.8	5.0	1.6	2.4	0.4	0.3	0.6	85.9	3.8	10.3	0.062	0.514	19.262083	-103.684389
T. C. CUAUHEMOC - COLIMA	83.40																		

2 CARR: COLIMA - ENT. TECOMAN

CLAVE: 06119

RUTA: MEX-110

AÑO: 2010

LUGAR	ESTACION				CLASIFICACION VEHICULAR EN PORCIENTO								COORDENADAS						
	KM	TE	SC	TDPA	A	B	C2	C3	T3S2	T3S3	T3S2R4	OTROS	A	B	C	K'	D	LATITUD	LONGITUD
T. C. JIQUILPAN - COLIMA	0.00	3	1	9902	76.9	3.3	4.6	2.9	5.8	2.4	3.2	0.9	76.9	3.3	19.8	0.075	0.515	19.215044	-103.734373
T. C. JIQUILPAN - COLIMA	0.00	3	2	9336	76.8	3.3	4.8	2.9	5.8	2.4	3.2	0.8	76.8	3.3	19.9	0.079	0.515	19.215044	-103.734373
T. IZQ. LOS ASMOLES	13.00	3	1	7906	76.5	3.5	4.9	2.6	5.3	2.8	3.5	0.9	76.5	3.5	20.0	0.088	0.501	19.126250	-103.774806
T. IZQ. LOS ASMOLES	13.00	3	2	7869	76.2	3.6	4.4	3.0	5.6	2.6	4.1	0.5	76.2	3.6	20.2	0.092	0.501	19.126250	-103.774806
T. DER. CALERAS	34.55	1	1	7769	72.9	3.5	10.7	4.4	3.3	1.2	1.9	2.1	72.9	3.5	23.6	0.076	0.509	18.980564	-103.854675
T. DER. CALERAS	34.55	1	2	7505	76.5	2.9	7.5	4.0	3.3	1.0	1.9	2.9	76.5	2.9	20.6	0.081	0.509	18.980564	-103.854675
T. C. ENT. PLAYA AZUL - MANZANILLO	40.10	1	1	9200	76.5	3.6	5.1	2.5	5.3	2.2	3.7	1.1	76.5	3.6	19.9	0.062	0.523	18.947447	-103.894769
T. C. ENT. PLAYA AZUL - MANZANILLO	40.10	1	2	10091	74.6	3.5	6.4	2.7	5.7	2.3	3.7	1.1	74.6	3.5	21.9	0.061	0.523	18.947447	-103.894769

3 CARR: ENT. PLAYA AZUL - MANZANILLO

CLAVE: 00495

RUTA: MEX-200

AÑO: 2010

LUGAR	ESTACION				CLASIFICACION VEHICULAR EN PORCIENTO								COORDENADAS						
	KM	TE	SC	TDPA	A	B	C2	C3	T3S2	T3S3	T3S2R4	OTROS	A	B	C	K'	D	LATITUD	LONGITUD
T. C. CARAPAN - PLAYA AZUL	0.00	3	0	3561	76.1	2.9	5.9	3.3	3.5	5.8	0.2	2.3	76.1	2.9	21.0	0.062	0.507	18.020137	-102.341453
CALETA DE CAMPOS	50.24	1	0	1337	74.6	3.1	6.5	3.5	3.6	5.9	0.2	2.6	74.6	3.1	22.3	0.073	0.501	18.077532	-102.745948

COLIMA

3 CARR: ENT. PLAYA AZUL - MANZANILLO

CLAVE: 00495

RUTA: MEX-200

AÑO: 2010

LUGAR	ESTACION				CLASIFICACION VEHICULAR EN PORCIENTO								COORDENADAS						
	KM	TE	SC	TDPA	A	B	C2	C3	T3S2	T3S3	T3S2R4	OTROS	A	B	C	K'	D	LATITUD	LONGITUD
TIZUAPAN	106.60	1	0	624	75.5	2.7	6.3	3.6	3.3	5.9	0.2	2.5	75.5	2.7	21.8	0.080	0.504	18.226662	-103.126389
MARUATA	149.75	1	0	779	74.9	2.8	6.4	3.6	3.5	6.1	0.2	2.5	74.9	2.8	22.3	0.063	0.502	18.274805	-103.347481
MARUATA	149.75	3	0	886	76.0	2.9	6.1	3.5	3.4	5.6	0.2	2.3	76.0	2.9	21.1	0.077	0.508	18.279211	-103.353971
T. DER. AQUILA	190.10	3	0	2148	74.5	2.9	6.5	3.5	3.6	6.3	0.2	2.5	74.5	2.9	22.6	0.072	0.503	18.566485	-103.623225
LIM. EDOS. TERM. MICH. PPIA. COL.	229.60																		
CERRO DE ORTEGA	233.20	1	0	5301	74.7	3.0	6.4	3.5	3.6	6.1	0.2	2.5	74.7	3.0	22.3	0.063	0.525	18.745627	-103.724139
EL BALCON	242.95	1	0	5381	74.9	2.8	6.6	3.3	3.5	6.1	0.2	2.6	74.9	2.8	22.3	0.061	0.505	18.783340	-103.771602
EL BALCON	242.95	3	0	5982	74.0	3.0	6.9	3.4	3.8	6.2	0.2	2.5	74.0	3.0	23.0	0.056	0.505	18.784781	-103.776020
COFRADIA DE MORELOS	252.45	1	0	7311	75.7	2.7	6.3	3.5	3.5	5.6	0.2	2.5	75.7	2.7	21.6	0.091	0.514	18.861852	-103.836116
COFRADIA DE MORELOS	252.45	3	0	8224	75.3	2.8	6.0	3.6	3.5	6.1	0.2	2.5	75.3	2.8	21.9	0.072	0.526	18.868737	-103.840602
T. C. COLIMA - ENT. TECOMAN	263.75	1	1	4620	68.1	4.5	6.6	5.0	7.8	7.2	0.0	0.8	68.1	4.5	27.4	0.079	0.513	18.899311	-103.860425
T. C. COLIMA - ENT. TECOMAN	263.75	1	2	4385	66.6	4.6	7.0	5.1	8.1	7.8	0.0	0.8	66.6	4.6	28.8	0.076	0.513	18.899311	-103.860425
T. DER. RINCON DE LOPEZ	269.25	1	0	5621	66.1	4.6	6.8	5.4	8.7	7.5	0.0	0.9	66.1	4.6	29.3	0.059	0.502	18.951117	-103.946321
ARMERIA	272.50	1	0	5877	66.5	4.8	6.7	5.0	8.5	7.7	0.0	0.8	66.5	4.8	28.7	0.060	0.503	18.937885	-103.951097
T. IZQ. CUYUTLAN	278.17	1	0	5150	66.3	4.7	7.0	5.3	8.6	7.2	0.0	0.9	66.3	4.7	29.0	0.067	0.514	18.935580	-104.018672
SANTA RITA	292.50	1	0	5489	68.3	4.4	6.7	5.0	7.7	7.1	0.0	0.8	68.3	4.4	27.3	0.084	0.506	19.009545	-104.082755
SANTA RITA	292.50	3	0	5668	66.2	4.9	6.9	5.4	8.6	7.2	0.0	0.8	66.2	4.9	28.9	0.070	0.509	19.013241	-104.102839
LAS NUEVAS JUNTAS	310.65	1	0	6529	66.2	4.8	7.0	5.3	8.3	7.6	0.0	0.8	66.2	4.8	29.0	0.061	0.509	19.042918	-104.218618
T. DER. LIBRAMIENTO DE MANZANILLO (LIBRE)	312.65	1	0	6598	66.0	4.7	7.2	5.5	8.2	7.6	0.0	0.8	66.0	4.7	29.3	0.073	0.511	19.055610	-104.236794
T. DER. LIBRAMIENTO DE MANZANILLO (LIBRE)	312.65	3	0	4765	66.1	4.9	7.0	5.4	8.6	7.2	0.0	0.8	66.1	4.9	29.0	0.066	0.509	19.055643	-104.243444
MANZANILLO	321.12	1	0	6528	66.4	4.8	6.8	5.3	8.2	7.7	0.0	0.8	66.4	4.8	28.8	0.068	0.513	19.049055	-104.296957

4 CARR: JIQUILPAN - COLIMA

CLAVE: 00156

RUTA: MEX-110

AÑO: 2010

LUGAR	ESTACION				CLASIFICACION VEHICULAR EN PORCIENTO								COORDENADAS						
	KM	TE	SC	TDPA	A	B	C2	C3	T3S2	T3S3	T3S2R4	OTROS	A	B	C	K'	D	LATITUD	LONGITUD
JIQUILPAN	0.00	3	0	5100	88.0	4.7	3.2	1.2	1.3	0.5	0.6	0.5	88.0	4.7	7.3	0.077	0.510	19.995716	-102.745099
SAN JOSE DE GRACIA	37.93	1	0	3759	83.0	4.8	3.4	3.0	2.9	1.0	1.2	0.7	83.0	4.8	12.2	0.072	0.508	19.998854	-103.017786
LIM. EDOS. TERM. MICH. PPIA. JAL.	41.00																		
MAZAMITLA	48.65	1	0	3303	88.2	3.0	4.7	1.7	0.9	0.5	0.0	1.0	88.2	3.0	8.8	0.104	0.503	19.921061	-103.017746
MAZAMITLA	48.65	3	0	3404	88.1	2.0	5.0	1.7	1.5	0.5	0.0	1.2	88.1	2.0	9.9	0.083	0.516	19.921698	-103.022637
T. IZQ. TAMAZULA DE GORDIANO (2º ACCESO)	96.70	3	0	6987	87.6	1.6	4.5	1.9	2.1	0.6	0.0	1.7	87.6	1.6	10.8	0.092	0.507	19.697699	-103.229453
T. DER. CD. GUZMAN	108.50	3	0	5628	86.8	1.8	4.8	1.3	2.8	0.8	0.0	1.7	86.8	1.8	11.4	0.083	0.504	19.644722	-103.335347
TECALITLAN	132.00	3	0	3258	89.7	2.1	3.9	1.2	1.2	0.4	0.0	1.5	89.7	2.1	8.2	0.084	0.521	19.462507	-103.318477
T. DER. ATENQUIQUE	137.67	3	0	2682	90.1	3.5	3.3	1.3	0.7	0.4	0.0	0.7	90.1	3.5	6.4	0.091	0.503	19.452790	-103.351576

COLIMA

4 CARR: JIQUILPAN - COLIMA

CLAVE: 00156

RUTA: MEX-110

AÑO: 2010

LUGAR	ESTACION				CLASIFICACION VEHICULAR EN PORCIENTO								COORDENADAS						
	KM	TE	SC	TDPA	A	B	C2	C3	T3S2	T3S3	T3S2R4	OTROS	A	B	C	K'	D	LATITUD	LONGITUD
PIHUAMO	168.19	3	0	2891	94.1	2.0	2.1	0.7	0.5	0.2	0.0	0.4	94.1	2.0	3.9	0.104	0.518	19.265129	-103.384036
LIM. EDOS. TERM. JAL. PPIA. COL.	189.60																		
T. DER. ESTACION ALZADA	198.60	3	0	1799	83.8	4.0	4.1	1.6	3.7	1.2	1.3	0.3	83.8	4.0	12.2	0.071	0.504	19.160440	-103.526850
T. IZO. LOS TEPAMES	214.20	1	0	2109	83.0	2.9	6.0	1.6	3.3	1.6	0.9	0.7	83.0	2.9	14.1	0.074	0.504	19.173744	-103.660186
X. C. LIBRAMIENTO DE COLIMA	220.00	1	0	6534	83.2	3.7	5.3	1.4	3.5	1.3	0.9	0.7	83.2	3.7	13.1	0.077	0.504	19.208607	-103.721194
COLIMA	222.00	1	0	9448	85.2	3.3	4.8	1.2	2.7	1.5	0.8	0.5	85.2	3.3	11.5	0.072	0.501	19.214194	-103.721472

5 CARR: LIBRAMIENTO DE COLIMA

CLAVE: 06573

RUTA: MEX

AÑO: 2010

LUGAR	ESTACION				CLASIFICACION VEHICULAR EN PORCIENTO								COORDENADAS						
	KM	TE	SC	TDPA	A	B	C2	C3	T3S2	T3S3	T3S2R4	OTROS	A	B	C	K'	D	LATITUD	LONGITUD
T. C. CD. GUZMAN - COLIMA	0.00	3	1	5185	75.2	3.6	3.1	3.9	5.8	3.1	4.7	0.6	75.2	3.6	21.2	0.076	0.525	19.260444	-103.682917
T. C. CD. GUZMAN - COLIMA	0.00	3	2	5222	75.8	3.3	3.3	3.6	5.8	3.0	4.7	0.5	75.8	3.3	20.9	0.069	0.525	19.260444	-103.682917
T. C. COLIMA - ENT. TECOMAN	9.00	1	1	4703	76.2	3.5	3.5	3.2	5.8	2.3	4.9	0.6	76.2	3.5	20.3	0.071	0.514	19.214743	-103.718208
T. C. COLIMA - ENT. TECOMAN	9.00	1	2	4443	76.3	3.2	3.9	2.6	5.9	2.6	4.8	0.7	76.3	3.2	20.5	0.077	0.514	19.214743	-103.718208

6 CARR: LIBRAMIENTO DE MANZANILLO (LIBRE)

CLAVE: 06574

RUTA: MEX

AÑO: 2010

LUGAR	ESTACION				CLASIFICACION VEHICULAR EN PORCIENTO								COORDENADAS						
	KM	TE	SC	TDPA	A	B	C2	C3	T3S2	T3S3	T3S2R4	OTROS	A	B	C	K'	D	LATITUD	LONGITUD
T. C. ENT. PLAYA AZUL - MANZANILLO	0.00	3	0	6048	72.3	5.1	6.1	5.2	6.0	3.6	1.4	0.3	72.3	5.1	22.6	0.080	0.511	19.057569	-104.244257
T. C. MANZANILLO - PUERTO VALLARTA	6.30	1	1	4980	75.7	3.2	3.6	3.3	5.8	4.4	3.6	0.4	75.7	3.2	21.1	0.089	0.511	19.073417	-104.281667
T. C. MANZANILLO - PUERTO VALLARTA	6.30	1	2	4760	75.8	4.0	3.6	3.2	6.7	3.6	2.4	0.7	75.8	4.0	20.2	0.087	0.511	19.073417	-104.281667

7 CARR: LIBRAMIENTO DE MANZANILLO NORTE

CLAVE: 06122

RUTA: MEX

AÑO: 2010

LUGAR	ESTACION				CLASIFICACION VEHICULAR EN PORCIENTO								COORDENADAS						
	KM	TE	SC	TDPA	A	B	C2	C3	T3S2	T3S3	T3S2R4	OTROS	A	B	C	K'	D	LATITUD	LONGITUD
T. C. LIBRAMIENTO DE MANZANILLO (LIBRE)	0.00																		
T. C. MINATITLAN - ENT. PEZ VELA	3.00	3	0	7954	84.0	3.2	3.6	2.8	2.9	1.8	1.5	0.2	84.0	3.2	12.8	0.079	0.501	19.098306	-104.281194
T. C. MANZANILLO - PUERTO VALLARTA	19.00	1	0	3726	84.0	3.2	3.0	3.0	3.4	1.9	1.3	0.2	84.0	3.2	12.8	0.079	0.510	19.127222	-104.396250

COLIMA

8 CARR : MANZANILLO - PUERTO VALLARTA

CLAVE: 00070

RUTA: MEX-200

AÑO : 2010

LUGAR	ESTACION				CLASIFICACION VEHICULAR EN PORCIENTO								COORDENADAS						
	KM	TE	SC	TDPA	A	B	C2	C3	T3S2	T3S3	T3S2R4	OTROS	A	B	C	K'	D	LATITUD	LONGITUD
MANZANILLO	0.00	3	1	13769	83.1	2.5	8.8	4.1	0.9	0.5	0.0	0.1	83.1	2.5	14.4	0.063	0.507	19.054917	-104.308000
MANZANILLO	0.00	3	2	13413	83.4	2.5	8.8	3.9	0.8	0.5	0.0	0.1	83.4	2.5	14.1	0.061	0.507	19.054917	-104.308000
T. DER. MINATITLAN	3.14	1	1	14789	82.8	2.5	8.8	4.4	0.9	0.5	0.0	0.1	82.8	2.5	14.7	0.057	0.505	19.074078	-104.284561
T. DER. MINATITLAN	3.14	1	2	15106	82.7	2.6	9.1	4.1	0.9	0.5	0.0	0.1	82.7	2.6	14.7	0.065	0.505	19.074078	-104.284561
SANTIAGO	13.24	1	1	8488	82.0	2.8	9.3	4.3	1.0	0.5	0.0	0.1	82.0	2.8	15.2	0.081	0.509	19.115722	-104.348778
SANTIAGO	13.24	1	2	8807	82.2	2.6	9.5	4.2	0.9	0.5	0.0	0.1	82.2	2.6	15.2	0.075	0.509	19.115722	-104.348778
SANTIAGO	13.24	3	1	4386	82.7	2.5	9.0	4.3	0.9	0.5	0.0	0.1	82.7	2.5	14.8	0.079	0.513	19.118972	-104.362750
SANTIAGO	13.24	3	2	4475	83.3	2.6	8.5	4.1	0.9	0.5	0.0	0.1	83.3	2.6	14.1	0.074	0.513	19.118972	-104.362750
SAN JUAN DE CUATRO VIENTOS	39.04	3	0	6594	82.9	2.4	9.0	4.3	0.8	0.5	0.0	0.1	82.9	2.4	14.7	0.072	0.510	19.192111	-104.537722
T. IZQ. AEROPUERTO MANZANILLO	40.55	3	0	5768	81.5	2.7	9.8	4.5	0.9	0.5	0.0	0.1	81.5	2.7	15.8	0.067	0.504	19.197556	-104.555972
LIM. EDOS. TERM. COL. PPIA. JAL.	43.50																		
CIHUATLAN	47.92	1	0	7582	83.5	2.5	8.4	4.1	0.9	0.5	0.0	0.1	83.5	2.5	14.0	0.071	0.512	19.236662	-104.554095
CIHUATLAN	47.92	3	0	8036	83.2	2.5	8.8	4.0	0.9	0.5	0.0	0.1	83.2	2.5	14.3	0.072	0.508	19.232298	-104.577156
T. IZQ. SAN FRANCISCO	50.18	3	0	6199	82.7	2.5	8.8	4.5	0.9	0.5	0.0	0.1	82.7	2.5	14.8	0.080	0.509	19.214841	-104.620986
MELAUQUE	61.64	1	0	9110	83.0	2.6	8.6	4.4	0.8	0.5	0.0	0.1	83.0	2.6	14.4	0.077	0.501	19.228480	-104.695493
MELAUQUE	61.64	3	0	5715	81.7	2.8	9.6	4.4	0.9	0.5	0.0	0.1	81.7	2.8	15.5	0.078	0.501	19.239082	-104.711585
T. IZQ. TENACATITA	90.44	3	0	3079	81.8	2.9	9.2	4.6	0.9	0.5	0.0	0.1	81.8	2.9	15.3	0.087	0.501	19.347431	-104.880307
T. DER. TOMATLAN	177.64	1	0	3092	90.6	3.0	2.9	1.3	0.7	1.1	0.3	0.1	90.6	3.0	6.4	0.082	0.504	19.973861	-105.320585
T. DER. TOMATLAN	177.64	3	0	3357	89.8	3.3	3.3	1.3	0.7	1.2	0.3	0.1	89.8	3.3	6.9	0.074	0.512	19.976635	-105.319780
T. IZQ. EL TUITO	230.64	3	0	3772	90.6	3.2	2.9	1.2	0.7	1.0	0.3	0.1	90.6	3.2	6.2	0.073	0.502	20.329492	-105.316999
PUERTO VALLARTA	273.64	1	0	7478	90.2	3.3	3.0	1.3	0.7	1.1	0.3	0.1	90.2	3.3	6.5	0.090	0.503	20.591745	-105.242501

9 CARR : MINATITLAN - ENT. PEZ VELA

CLAVE: 06015

RUTA: MEX-098

AÑO : 2010

LUGAR	ESTACION				CLASIFICACION VEHICULAR EN PORCIENTO								COORDENADAS						
	KM	TE	SC	TDPA	A	B	C2	C3	T3S2	T3S3	T3S2R4	OTROS	A	B	C	K'	D	LATITUD	LONGITUD
MINATITLAN	0.00																		
T. DER. JALIPA	49.50	1	0	1814	80.6	2.8	8.4	3.3	1.3	1.5	1.8	0.3	80.6	2.8	16.6	0.078	0.505	19.129472	-104.264333
T. DER. JALIPA	49.50	3	0	3192	82.0	3.1	7.5	2.7	1.3	1.4	1.8	0.2	82.0	3.1	14.9	0.090	0.502	19.123306	-104.262833
T. C. MANZANILLO - PUERTO VALLARTA	58.50	1	1	8783	80.6	3.8	7.9	2.5	1.8	1.2	1.6	0.6	80.6	3.8	15.6	0.078	0.501	19.080583	-104.285083
T. C. MANZANILLO - PUERTO VALLARTA	58.50	1	2	8328	80.7	3.4	7.5	2.9	1.6	1.8	1.6	0.5	80.7	3.4	15.9	0.071	0.501	19.080583	-104.285083

COLIMA

10 CARR: RAMAL A CUYUTLAN

CLAVE: 06225

RUTA: MEX

AÑO: 2010

LUGAR	ESTACION				CLASIFICACION VEHICULAR EN PORCIENTO								COORDENADAS						
	KM	TE	SC	TDPA	A	B	C2	C3	T3S2	T3S3	T3S2R4	OTROS	A	B	C	K'	D	LATITUD	LONGITUD
T. C. ENT. PLAYA AZUL - MANZANILLO	0.00	3	0	786	70.2	6.8	12.1	2.2	3.1	0.7	2.4	2.5	70.2	6.8	23.0	0.059	0.510	18.934279	-104.019820
CUYUTLAN	7.00	1	0	499	79.4	8.3	7.5	1.3	1.5	0.3	0.8	0.9	79.4	8.3	12.3	0.136	0.507	18.913322	-104.058074

11 CARR: RAMAL CERRO DE LOS JUANES

CLAVE:

RUTA: MEX

AÑO: 2010

LUGAR	ESTACION				CLASIFICACION VEHICULAR EN PORCIENTO								COORDENADAS						
	KM	TE	SC	TDPA	A	B	C2	C3	T3S2	T3S3	T3S2R4	OTROS	A	B	C	K'	D	LATITUD	LONGITUD
T. C. MINATITLAN - ENT. PEZ VELA	0.00	3	0	760	82.1	5.9	5.2	3.9	1.4	1.0	0.1	0.4	82.1	5.9	12.0	0.072	0.501	19.379012	-104.081841
CERRO DE LOS JUANES	3.00																		

12 CARR: RAMAL CERRO DE ORTEGA

CLAVE:

RUTA: MEX

AÑO: 2010

LUGAR	ESTACION				CLASIFICACION VEHICULAR EN PORCIENTO								COORDENADAS						
	KM	TE	SC	TDPA	A	B	C2	C3	T3S2	T3S3	T3S2R4	OTROS	A	B	C	K'	D	LATITUD	LONGITUD
T. C. ENT. PLAYA AZUL - MANZANILLO	0.00	3	0	4272	83.2	3.9	3.7	2.5	2.5	1.7	1.7	0.8	83.2	3.9	12.9	0.076	0.502	18.754126	-103.722061
CERRO DE ORTEGA	1.00																		

13 CARR: TECOMAN - BOCA DE PASCUALES

CLAVE: 06226

RUTA: MEX

AÑO: 2010

LUGAR	ESTACION				CLASIFICACION VEHICULAR EN PORCIENTO								COORDENADAS						
	KM	TE	SC	TDPA	A	B	C2	C3	T3S2	T3S3	T3S2R4	OTROS	A	B	C	K'	D	LATITUD	LONGITUD
TECOMAN	0.00	3	0	2612	80.8	5.5	5.3	3.4	1.8	1.4	1.3	0.5	80.8	5.5	13.7	0.077	0.503	18.906146	-103.895947
BOCA DE PASCUALES	12.00																		

14 CARR: ACATLAN DE JUAREZ - EL TRAPICHE (CUOTA)

CLAVE: 00118

RUTA: MEX-054D

AÑO: 2010

LUGAR	ESTACION				CLASIFICACION VEHICULAR EN PORCIENTO								COORDENADAS						
	KM	TE	SC	TDPA	A	B	C2	C3	T3S2	T3S3	T3S2R4	OTROS	A	B	C	K'	D	LATITUD	LONGITUD
T. C. ENT. SANTA CRUZ - MELAQUE	0.00																		
CASETA DE COBRO "ACATLAN"	0.20	3	1	4015	75.8	4.3	3.4	3.7	3.6	1.6	7.0	0.6	75.8	4.3	19.9	0.075	0.517	20.412059	-103.558106
CASETA DE COBRO "ACATLAN"	0.20	3	2	4187	75.4	4.6	3.4	3.5	3.7	1.5	7.3	0.6	75.4	4.6	20.0	0.095	0.517	20.412059	-103.558106
T. IZQ. SAN MARCOS	10.80	1	1	4620	75.7	4.3	3.5	3.7	3.9	1.6	6.7	0.6	75.7	4.3	20.0	0.097	0.509	20.300062	-103.558476
T. IZQ. SAN MARCOS	10.80	1	2	4796	75.4	4.4	3.6	3.8	3.8	1.5	6.9	0.6	75.4	4.4	20.2	0.095	0.509	20.300062	-103.558476
T. DER. USMAJAC	67.80	1	1	5463	75.0	4.6	3.4	3.7	3.7	1.5	7.5	0.6	75.0	4.6	20.4	0.079	0.506	19.882765	-103.516977
T. DER. USMAJAC	67.80	1	2	5595	75.6	4.4	3.4	3.7	3.7	1.6	7.0	0.6	75.6	4.4	20.0	0.079	0.506	19.882765	-103.516977

COLIMA

14 CARR: ACATLAN DE JUAREZ - EL TRAPICHE (CUOTA)

CLAVE: 00118

RUTA: MEX-054D

AÑO: 2010

LUGAR	ESTACION				CLASIFICACION VEHICULAR EN PORCIENTO								COORDENADAS						
	KM	TE	SC	TDPA	A	B	C2	C3	T3S2	T3S3	T3S2R4	OTROS	A	B	C	K'	D	LATITUD	LONGITUD
T. IZQ. CD. GUZMAN	86.70	1	0	5691	67.2	3.5	3.9	5.4	6.8	3.3	8.6	1.3	67.2	3.5	29.3	0.069	0.505	19.706392	-103.500094
CASETA DE COBRO SAN MARCOS	122.50	2	0	7921	66.4	3.5	4.1	5.6	6.9	3.5	8.7	1.3	66.4	3.5	30.1			19.433636	-103.494843
LIM. EDOS. TERM. JAL. PPIA. COL.	129.50																		
T. C. CD. GUZMAN - COLIMA	148.00																		

15 CARR: ARMERIA - MANZANILLO (CUOTA)

CLAVE: 06585

RUTA: MEX-200D

AÑO: 2010

LUGAR	ESTACION				CLASIFICACION VEHICULAR EN PORCIENTO								COORDENADAS						
	KM	TE	SC	TDPA	A	B	C2	C3	T3S2	T3S3	T3S2R4	OTROS	A	B	C	K'	D	LATITUD	LONGITUD
T. C. ENT. PLAYA AZUL - MANZANILLO	0.00																		
CASETA DE COBRO CUYUTLAN	18.00	2	0	5402	69.0	3.8	2.6	5.1	3.9	1.7	12.6	1.3	69.0	3.8	27.2			18.927735	-104.081626
T. C. LIBRAMIENTO DE MANZANILLO (LIBRE)	46.00																		

16 CARR: ARMERIA - PLAYA EL PARAISO

CLAVE: 06580

RUTA: COL

AÑO: 2010

LUGAR	ESTACION				CLASIFICACION VEHICULAR EN PORCIENTO								COORDENADAS						
	KM	TE	SC	TDPA	A	B	C2	C3	T3S2	T3S3	T3S2R4	OTROS	A	B	C	K'	D	LATITUD	LONGITUD
T. C. ENT. PLAYA AZUL - MANZANILLO	0.00	3	0	2810	87.9	2.8	5.5	1.6	1.3	0.2	0.3	0.4	87.9	2.8	9.3	0.067	0.505	18.925083	-103.964023
PLAYA PARAISO	7.50	1	0	1373	85.3	3.2	5.7	1.5	0.6	0.1	0.5	3.1	85.3	3.2	11.5	0.078	0.541	18.877656	-103.990042

17 CARR: COLIMA - COMALA

CLAVE: 06016

RUTA: COL-016

AÑO: 2010

LUGAR	ESTACION				CLASIFICACION VEHICULAR EN PORCIENTO								COORDENADAS						
	KM	TE	SC	TDPA	A	B	C2	C3	T3S2	T3S3	T3S2R4	OTROS	A	B	C	K'	D	LATITUD	LONGITUD
COLIMA	0.00																		
VILLA ALVAREZ	3.00	3	1	7855	87.8	3.5	2.5	0.6	3.5	0.4	1.1	0.6	87.8	3.5	8.7	0.077	0.510	19.286444	-103.745556
VILLA ALVAREZ	3.00	3	2	7544	88.0	3.4	2.4	0.7	3.5	0.5	1.0	0.5	88.0	3.4	8.6	0.075	0.510	19.286444	-103.745556
COMALA	10.00																		

18 CARR: COLIMA - COQUIMATLAN

CLAVE: 06034

RUTA: COL-034

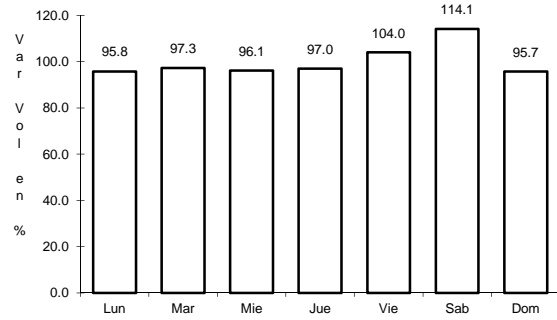
AÑO: 2010

LUGAR	ESTACION				CLASIFICACION VEHICULAR EN PORCIENTO								COORDENADAS						
	KM	TE	SC	TDPA	A	B	C2	C3	T3S2	T3S3	T3S2R4	OTROS	A	B	C	K'	D	LATITUD	LONGITUD
COLIMA	0.00																		
T. DER. VILLA ALVAREZ	3.00	3	1	9142	86.3	3.5	3.3	2.4	1.8	1.5	0.3	0.9	86.3	3.5	10.2	0.078	0.522	19.242222	-103.753444

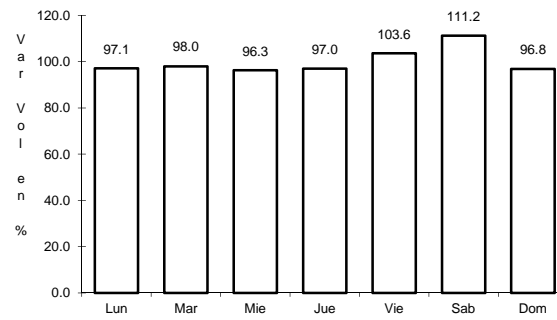
17 CARR: COLIMA - COMALA

CLAVE: 06016

RUTA: COL-016



Km: 3.00 Tipo: 3 Sent: 1

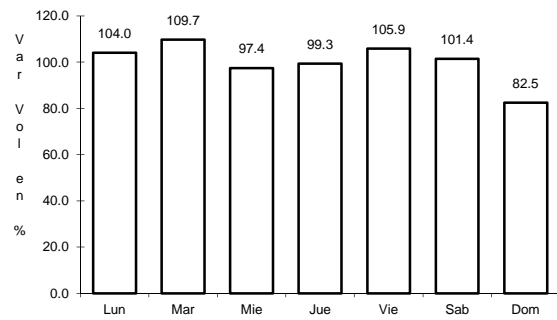


Km: 3.00 Tipo: 3 Sent: 2

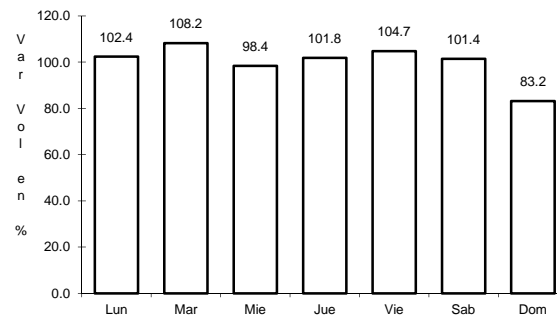
18 CARR: COLIMA - COQUIMATLAN

CLAVE: 06034

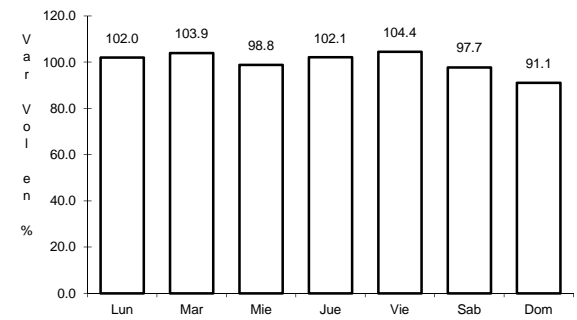
RUTA: COL-034



Km: 3.00 Tipo: 3 Sent: 1



Km: 3.00 Tipo: 3 Sent: 2

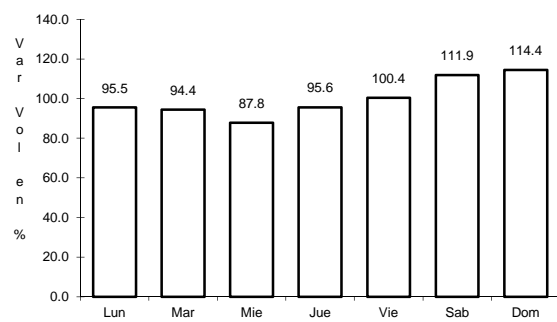


Km: 11.00 Tipo: 1 Sent: 1

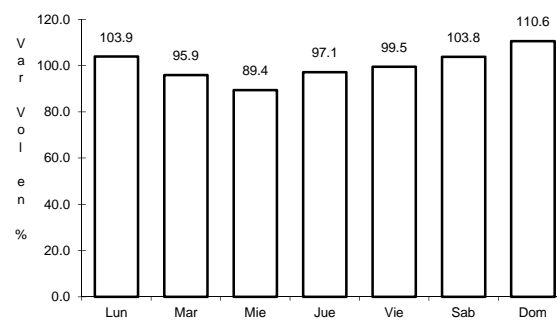
19 CARR: COMALA - SAN ANTONIO

CLAVE: 06030

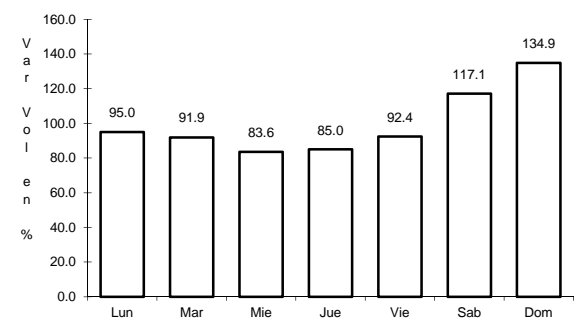
RUTA: COL-016



Km: 0.00 Tipo: 3 Sent: 1



Km: 0.00 Tipo: 3 Sent: 2

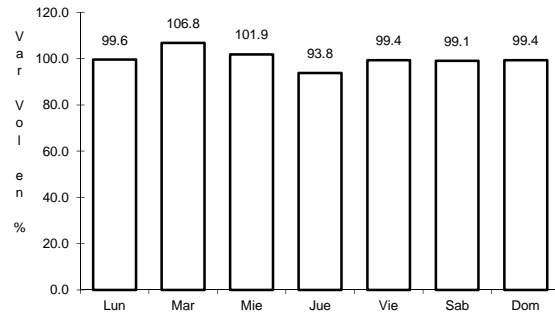


Km: 10.00 Tipo: 1 Sent: 0

26 CARR: PASO POR LA SALADA

CLAVE: 06121

RUTA: COL



Km: 0.00

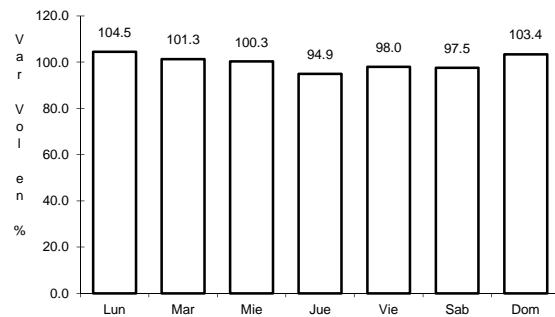
Tipo: 3

Sent: 0

27 CARR: PASO POR LOS ASMOLES

CLAVE: 06120

RUTA: COL



Km: 1.80

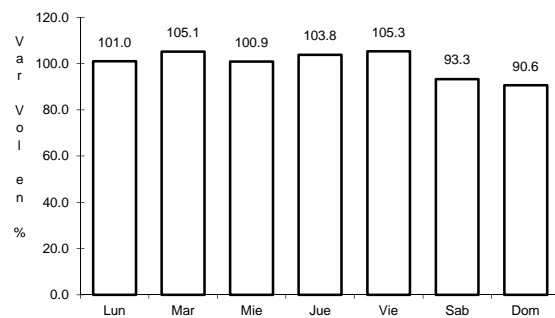
Tipo: 3

Sent: 0

28 CARR: PUERTA DE CALERAS - MADRID

CLAVE: 06014

RUTA: COL-014



Km: 0.00

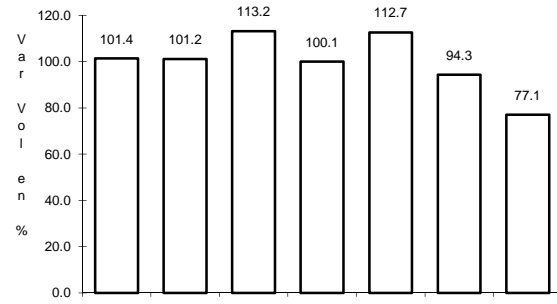
Tipo: 3

Sent: 0

32 CARR: RAMAL A IXTLAHUACAN

CLAVE: 06577

RUTA: COL-005



Km: 0.00

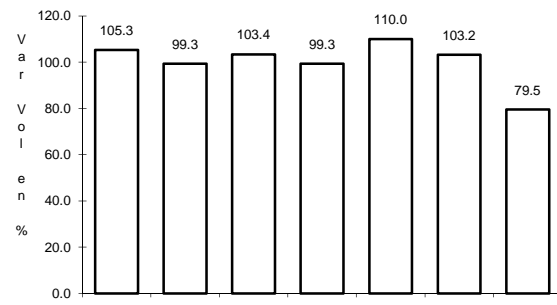
Tipo: 3

Sent: 0

33 CARR: RAMAL A LAS BRISAS

CLAVE: 06571

RUTA: COL



Km: 0.00

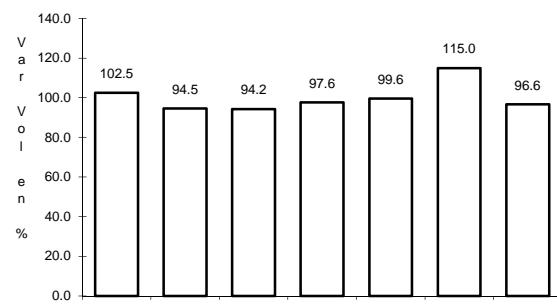
Tipo: 3

Sent: 0

34 CARR: RAMAL A LOS TEPAMES

CLAVE: 06004

RUTA: COL-004



Km: 0.00

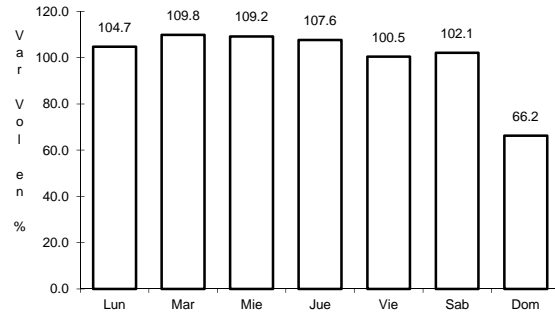
Tipo: 3

Sent: 0

35 CARR: RAMAL A RANCHO VALLE NUEVO

CLAVE: 06583

RUTA: COL



Km: 0.00

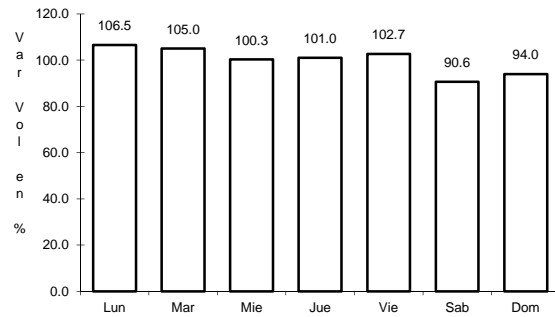
Tipo: 3

Sent: 0

36 CARR: RAMAL A RINCON DE LOPEZ

CLAVE: 06578

RUTA: COL



Km: 0.00

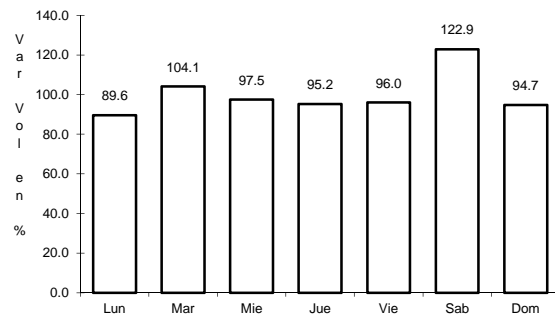
Tipo: 3

Sent: 0

37 CARR: RAMAL A TECUANILLO

CLAVE: 06009

RUTA: COL-009



Km: 0.00

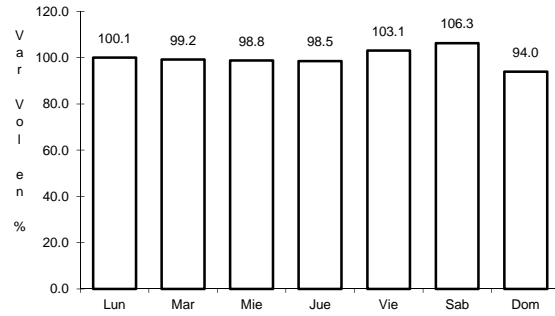
Tipo: 3

Sent: 0

38 CARR: RAMAL CAMOTLAN DE MIRAFLORES

CLAVE:

RUTA: COL



Km: 0.00

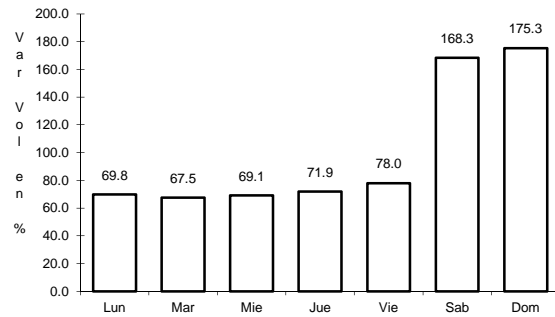
Tipo: 3

Sent: 0

39 CARR: TECOMAN - LA MASCOTA

CLAVE: 06572

RUTA: COL



Km: 0.00

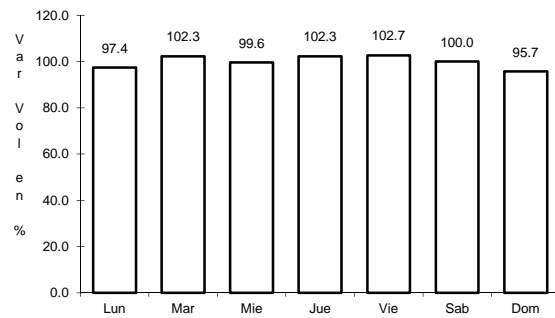
Tipo: 3

Sent: 0

40 CARR: TRAPICHILLOS - ESTACION ALZADA

CLAVE: 06003

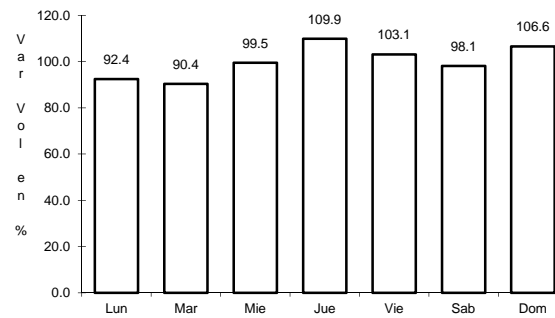
RUTA: COL-003



Km: 0.00

Tipo: 3

Sent: 0



Km: 12.50

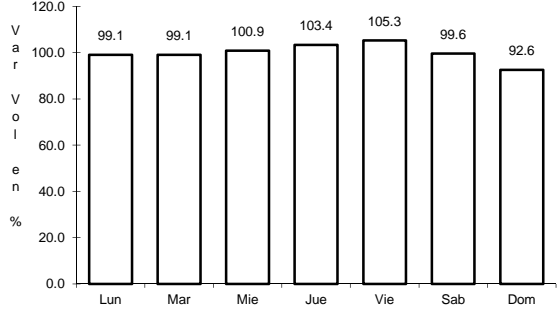
Tipo: 1

Sent: 0

41 CARR: VILLA DE ALVAREZ - MINATITLAN

CLAVE: 06040

RUTA: COL



Km: 0.00

Tipo: 3

Sent: 0