

COAHUILA

## ---RED FEDERAL LIBRE---

1	CD. ACUÑA - PRESA DE LA AMISTAD	MEX
2	DURANGO - TORREON	MEX-040
3	ENT. BELLA UNION - SALTILLO	MEX-057
4	ENT. MORELOS - SALTILLO	MEX-054
5	GREGORIO GARCIA - FRANCISCO I. MADERO	MEX
6	HUACHICHIL - LA ENCANTADA	MEX
7	LA CUCHILLA - TORREON	MEX-030
8	LIBRAMIENTO ALLENDE - NAVA	MEX
9	MONCLOVA - PIEDRAS NEGRAS	MEX-057
10	MONCLOVA - SAN PEDRO DE LAS COLONIAS	MEX-030
11	MONTERREY - CASTAÑOS	MEX-053
12	MORELOS - CD. ACUÑA	MEX-047
13	NUEVA ROSITA - BOQUILLAS DEL CARMEN	MEX-053
14	OJO CALIENTE - SANTA CRUZ	MEX
15	PIEDRAS NEGRAS - CD. ACUÑA	MEX-002
16	PIEDRAS NEGRAS - NUEVO LAREDO	MEX-002
17	SALTILLO - MONCLOVA	MEX-057
18	SALTILLO - MONTERREY	MEX-040
19	SALTILLO - TORREON	MEX-040

## ---RED FEDERAL DE CUOTA---

20	PUERTO MEXICO - OJO CALIENTE (CUOTA)	MEX-057D
21	TORREON - SALTILLO (CUOTA)	MEX-040D

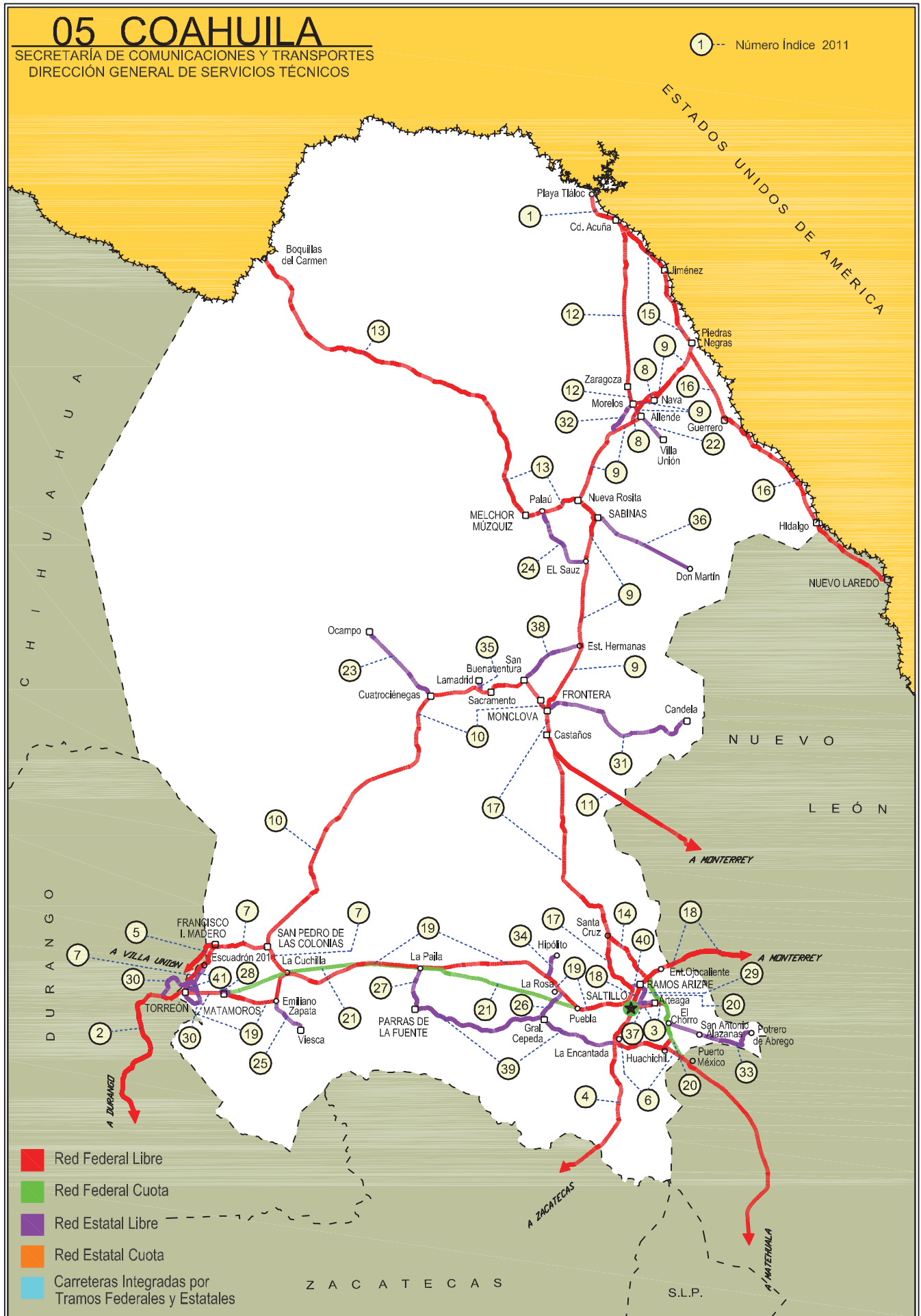
## ---RED ESTATAL LIBRE---

22	ALLENDE - VILLA UNION	COA-015
23	CUATRO CIENEGAS - OCAMPO	COA-048
24	EL SAUZ - PALAU	COA-022
25	EMILIANO ZAPATA - VIESCA	COA-082
26	ENT. LA ROSA - GENERAL CEPEDA	COA-034
27	ENT. PAILA - PARRAS DE LA FUENTE	COA-102
28	LIBRAMIENTO DE MATAMOROS	COA
29	LIBRAMIENTO DE SALTILLO J.L.P.	COA
30	LIBRAMIENTO DE TORREON	COA
31	MONCLOVA - ESTACION CANDELA	COA-030-NL
32	MORELOS - ENT. LAS CORRIENTES	COA-010
33	PUERTO DE FLORES - EL HONDABLE	COA-112
34	RAMAL A HIPOLITO	COA-114
35	RAMAL A LAMADRID	COA-042
36	SABINAS - DON MARTIN	COA-025
37	SALTILLO - ARTEAGA	COA-106
38	SAN BUENAVENTURA - ESTACION HERMANAS	COA-034
39	T. C. (ENT. MORELOS - SALTILLO) - PARRAS DE LA FUENTE	COA-105
40	T. C. (SALTILLO - MONCLOVA) - RAMOS ARIZPE	COA
41	TORREON - ESCUADRON 201	COA-011

# 05 COAHUILA

SECRETARÍA DE COMUNICACIONES Y TRANSPORTES  
DIRECCIÓN GENERAL DE SERVICIOS TÉCNICOS

1 --- Número Índice 2011



## COAHUILA

1 CARR: CD. ACUÑA - PRESA DE LA AMISTAD

CLAVE: 05085

RUTA: MEX

AÑO: 2010

LUGAR	ESTACION				CLASIFICACION VEHICULAR EN PORCIENTO								COORDENADAS						
	KM	TE	SC	TDPA	A	B	C2	C3	T3S2	T3S3	T3S2R4	OTROS	A	B	C	K'	D	LATITUD	LONGITUD
CD. ACUÑA	0.00	3	1	5065	88.7	2.9	3.5	1.2	1.9	0.6	0.9	0.3	88.7	2.9	8.4	0.063	0.504	29.339808	-100.989956
CD. ACUÑA	0.00	3	2	4985	88.5	2.8	3.7	1.1	2.0	0.7	0.8	0.4	88.5	2.8	8.7	0.070	0.504	29.339761	-100.989901
T. IZQ. SANTA EULALIA	10.60	1	0	3084	88.5	3.1	3.7	1.1	1.8	0.8	0.7	0.3	88.5	3.1	8.4	0.073	0.511	29.344662	-101.010168
PRESA DE LA AMISTAD	23.00	1	0	2925	88.4	2.9	3.6	1.1	2.1	0.6	0.9	0.4	88.4	2.9	8.7	0.069	0.506	29.444538	-101.074507

2 CARR: DURANGO - TORREON

CLAVE: 10085

RUTA: MEX-040

AÑO: 2010

LUGAR	ESTACION				CLASIFICACION VEHICULAR EN PORCIENTO								COORDENADAS						
	KM	TE	SC	TDPA	A	B	C2	C3	T3S2	T3S3	T3S2R4	OTROS	A	B	C	K'	D	LATITUD	LONGITUD
DURANGO	0.00	3	1	10311	86.8	2.9	3.3	1.3	1.8	1.1	0.8	2.0	86.8	2.9	10.3	0.077	0.501	24.080391	-104.587838
DURANGO	0.00	3	2	10289	85.5	2.9	2.9	2.4	2.2	1.3	0.4	2.4	85.5	2.9	11.6	0.075	0.501	24.080415	-104.587896
T. DER. CD. DE LOS NIÑOS	7.70	3	1	4946	84.7	2.9	3.8	2.3	2.0	1.5	0.9	1.9	84.7	2.9	12.4	0.088	0.506	24.094848	-104.574186
T. DER. CD. DE LOS NIÑOS	7.70	3	2	5059	87.4	1.8	3.1	2.1	1.7	1.1	0.9	1.9	87.4	1.8	10.8	0.083	0.506	24.094848	-104.574186
X. PERIFERICO DURANGO	9.00	1	1	3720	87.7	2.0	3.0	2.2	2.0	0.8	0.6	1.7	87.7	2.0	10.3	0.088	0.511	24.092633	-104.577383
X. PERIFERICO DURANGO	9.00	1	2	3886	84.4	3.2	3.2	2.6	2.6	1.2	0.7	2.1	84.4	3.2	12.4	0.097	0.511	24.092633	-104.577383
T. DER. AEROPUERTO	9.42	1	1	6472	84.6	2.2	5.1	1.8	2.3	0.9	0.9	2.2	84.6	2.2	13.2	0.070	0.503	24.083065	-104.585556
T. DER. AEROPUERTO	9.42	1	2	6556	80.1	3.2	6.0	2.5	2.2	1.4	1.2	3.4	80.1	3.2	16.7	0.069	0.503	24.083105	-104.585630
T. DER. AEROPUERTO	9.42	3	0	6658	82.9	2.6	4.3	2.6	2.4	1.4	1.0	2.8	82.9	2.6	14.5	0.094	0.508	24.097964	-104.576403
LA CALDERA	10.85	3	0	6464	85.5	2.6	4.3	1.8	3.0	0.8	0.0	2.0	85.5	2.6	11.9	0.078	0.509	24.109571	-104.571693
ABRAHAM GONZALEZ	27.10	3	0	5152	83.0	2.9	5.1	1.3	4.1	1.3	0.4	1.9	83.0	2.9	14.1	0.078	0.515	24.208173	-104.510904
FRANCISCO I. MADERO	56.30	1	0	4771	77.0	3.2	4.2	2.4	5.3	3.0	1.6	3.3	77.0	3.2	19.8	0.089	0.521	24.392726	-104.330616
FRANCISCO I. MADERO	56.30	3	0	4886	78.5	2.6	5.4	2.2	5.6	2.8	0.9	2.0	78.5	2.6	18.9	0.080	0.517	24.405151	-104.305150
GUADALUPE VICTORIA	77.50	1	0	4539	77.6	3.3	5.0	1.9	5.6	3.0	0.9	2.7	77.6	3.3	19.1	0.072	0.504	24.443628	-104.148262
GUADALUPE VICTORIA	77.50	3	0	5532	78.0	3.3	4.9	1.7	5.2	2.8	1.0	3.1	78.0	3.3	18.7	0.084	0.504	24.450502	-104.108482
T. DER. IGNACIO ALLENDE	90.13	1	0	4165	76.3	3.3	6.0	2.6	5.3	2.3	1.1	3.1	76.3	3.3	20.4	0.077	0.516	24.496997	-104.023886
T. DER. IGNACIO ALLENDE	90.13	3	0	3813	77.6	3.3	5.6	3.0	4.7	2.5	0.5	2.8	77.6	3.3	19.1	0.078	0.518	24.501609	-104.017000
T. IZQ. PEÑON BLANCO	120.90	1	0	2981	68.3	3.6	7.8	3.7	9.3	4.7	0.6	2.0	68.3	3.6	28.1	0.074	0.512	24.732669	-103.843576
T. IZQ. PEÑON BLANCO	120.90	3	0	3586	71.1	3.7	7.1	3.2	8.1	3.8	1.0	2.0	71.1	3.7	25.2	0.067	0.512	24.744823	-103.836562
CUENCAME	144.30	1	0	3954	79.2	2.9	5.7	2.0	6.3	2.0	0.6	1.3	79.2	2.9	17.9	0.083	0.510	24.861260	-103.701296
CUENCAME	144.30	3	0	5366	75.8	3.7	5.7	3.0	5.8	2.1	0.9	3.0	75.8	3.7	20.5	0.064	0.515	24.883917	-103.699859
T. IZQ. NAZAS	171.61	1	0	5491	62.6	4.3	8.3	4.4	10.5	4.9	1.7	3.3	62.6	4.3	33.1	0.062	0.521	25.085709	-103.771306
T. IZQ. NAZAS	171.61	3	0	4944	67.4	5.2	7.9	4.1	7.8	3.5	1.3	2.8	67.4	5.2	27.4	0.067	0.525	25.098772	-103.770383
T. DER. VILLA JUAREZ	194.40	3	0	4783	71.2	4.7	6.1	4.3	6.6	2.5	1.1	3.5	71.2	4.7	24.1	0.071	0.511	25.456137	-103.692147
LEON GUZMAN	229.58	3	0	9713	72.1	2.9	6.2	3.2	8.1	3.6	1.0	2.9	72.1	2.9	25.0	0.064	0.510	25.508678	-103.650731
CD. LERDO	244.80	1	0	10809	69.9	4.5	5.8	2.9	9.1	3.8	1.0	3.0	69.9	4.5	25.6	0.072	0.508	25.515600	-103.530698

## COAHUILA

2 CARR: DURANGO - TORREON

CLAVE: 10085

RUTA: MEX-040

AÑO: 2010

LUGAR	ESTACION				CLASIFICACION VEHICULAR EN PORCIENTO								COORDENADAS						
	KM	TE	SC	TDPA	A	B	C2	C3	T3S2	T3S3	T3S2R4	OTROS	A	B	C	K'	D	LATITUD	LONGITUD
T. IZQ. GOMEZ PALACIO	248.90	3	1	17086	77.7	3.0	6.6	2.5	4.3	1.7	1.0	3.2	77.7	3.0	19.3	0.075	0.506	25.549565	-103.475749
T. IZQ. GOMEZ PALACIO	248.90	3	2	17494	82.8	2.1	5.0	1.9	4.0	1.2	0.1	2.9	82.8	2.1	15.1	0.081	0.506	25.549565	-103.475749
LIM. EDOS. TERM. DGO. PPIA. COAH.	251.00																		
TORREON	255.80	1	1	17647	62.7	4.2	3.1	2.2	9.2	5.1	12.3	1.2	62.7	4.2	33.1	0.071	0.503	25.547822	-103.471332
TORREON	255.80	1	2	17830	62.9	4.3	3.2	2.1	8.7	5.3	12.5	1.0	62.9	4.3	32.8	0.067	0.503	25.547834	-103.471269

3 CARR: ENT. BELLA UNION - SALTILLO

CLAVE: 05003

RUTA: MEX-057

AÑO: 2010

LUGAR	ESTACION				CLASIFICACION VEHICULAR EN PORCIENTO								COORDENADAS						
	KM	TE	SC	TDPA	A	B	C2	C3	T3S2	T3S3	T3S2R4	OTROS	A	B	C	K'	D	LATITUD	LONGITUD
T. C. ENT. PUERTO MEXICO - ENT. OJO CALIENTE (CUOTA)	0.00																		
T. DER. ARTEAGA	4.61	1	1	6485	79.0	5.3	2.1	2.8	5.9	1.3	2.6	1.0	79.0	5.3	15.7	0.062	0.504	25.444216	-100.835236
T. DER. ARTEAGA	4.61	1	2	6588	78.9	5.4	2.0	2.9	5.8	1.5	2.4	1.1	78.9	5.4	15.7	0.060	0.504	25.444216	-100.835236
SALTILLO	17.00	1	1	13576	76.7	4.3	4.9	4.6	5.0	1.8	2.0	0.7	76.7	4.3	19.0	0.070	0.511	25.436666	-100.907354
SALTILLO	17.00	1	2	13485	77.2	4.1	4.8	4.3	5.1	1.7	1.9	0.9	77.2	4.1	18.7	0.071	0.511	25.436666	-100.907354

4 CARR: ENT. MORELOS - SALTILLO

CLAVE: 00149

RUTA: MEX-054

AÑO: 2010

LUGAR	ESTACION				CLASIFICACION VEHICULAR EN PORCIENTO								COORDENADAS						
	KM	TE	SC	TDPA	A	B	C2	C3	T3S2	T3S3	T3S2R4	OTROS	A	B	C	K'	D	LATITUD	LONGITUD
T. C. ZACATECAS - DURANGO	0.00	3	0	6151	66.2	6.2	5.7	6.1	9.7	3.1	2.5	0.5	66.2	6.2	27.6	0.060	0.501	22.869018	-102.619522
T. DER. STA. MONICA	11.00	1	0	5436	66.2	6.2	5.9	6.0	9.8	2.9	2.5	0.5	66.2	6.2	27.6	0.068	0.516	22.940574	-102.568099
T. DER. STA. MONICA	11.00	3	0	5066	66.6	6.2	5.3	6.0	10.0	3.1	2.3	0.5	66.6	6.2	27.2	0.065	0.516	22.950431	-102.559108
T. IZQ. VILLA DE COSS	53.90	1	0	5065	64.5	6.6	6.2	6.2	10.3	3.3	2.4	0.5	64.5	6.6	28.9	0.074	0.506	23.265040	-102.333144
T. IZQ. VILLA DE COSS	53.90	3	0	4274	66.6	6.0	5.5	6.0	10.1	3.1	2.2	0.5	66.6	6.0	27.4	0.070	0.501	23.273848	-102.326825
SIERRA VIEJA	85.50	3	0	3282	65.7	6.2	5.7	6.4	9.8	3.2	2.5	0.5	65.7	6.2	28.1	0.073	0.516	23.503275	-102.124380
T. DER. MAJOMA	144.50	3	0	2873	66.3	6.3	5.7	5.9	9.9	3.0	2.4	0.5	66.3	6.3	27.4	0.070	0.520	23.880705	-101.733813
T. DER. SAN TIBURCIO	185.25	1	0	2980	65.6	5.9	5.8	6.3	10.5	3.1	2.3	0.5	65.6	5.9	28.5	0.069	0.508	24.156759	-101.496244
T. DER. SAN TIBURCIO	185.25	3	0	2937	65.7	6.6	5.9	6.0	9.7	3.1	2.5	0.5	65.7	6.6	27.7	0.066	0.507	24.159747	-101.494037
T. IZQ. CONCEPCION DEL ORO	240.00	1	0	6508	64.9	6.2	5.6	6.5	10.5	3.2	2.6	0.5	64.9	6.2	28.9	0.073	0.506	24.619126	-101.383332
T. IZQ. CONCEPCION DEL ORO	240.00	3	0	4312	66.0	6.3	5.6	6.1	10.0	3.0	2.5	0.5	66.0	6.3	27.7	0.071	0.512	24.626050	-101.381587
LIM. EDOS. TERM. ZAC. PPIA. COAH.	266.50																		
AGUA NUEVA	322.00	1	0	4262	66.0	6.4	5.6	6.0	9.9	3.2	2.4	0.5	66.0	6.4	27.6	0.075	0.507	25.180910	-101.094436
T. DER. LA TRINIDAD	333.00	3	0	10906	66.6	6.3	5.5	6.3	9.3	3.1	2.4	0.5	66.6	6.3	27.1	0.064	0.502	25.270515	-101.091130
X. C. LIBRAMIENTO DE SALTILLO	348.00	1	1	10232	65.5	6.3	5.9	6.1	10.0	3.2	2.5	0.5	65.5	6.3	28.2	0.091	0.502	25.371672	-101.013836

COAHUILA

4 CARR: ENT. MORELOS - SALTILLO

CLAVE: 00149

RUTA: MEX-054

AÑO: 2010

LUGAR	ESTACION				CLASIFICACION VEHICULAR EN PORCIENTO								COORDENADAS						
	KM	TE	SC	TDPA	A	B	C2	C3	T3S2	T3S3	T3S2R4	OTROS	A	B	C	K'	D	LATITUD	LONGITUD
X. C. LIBRAMIENTO DE SALTILLO	348.00	1	2	10329	64.7	6.7	6.0	6.4	10.2	3.1	2.4	0.5	64.7	6.7	28.6	0.092	0.502	25.371672	-101.013836
SALTILLO	354.00	1	1	11534	66.1	6.3	5.6	6.0	10.1	3.1	2.3	0.5	66.1	6.3	27.6	0.060	0.519	25.397396	-101.001660
SALTILLO	354.00	1	2	11869	64.4	6.5	6.1	6.5	10.3	3.2	2.5	0.5	64.4	6.5	29.1	0.061	0.519	25.397396	-101.001660

5 CARR: GREGORIO GARCIA - FRANCISCO I. MADERO

CLAVE: 00110

RUTA: MEX

AÑO: 2010

LUGAR	ESTACION				CLASIFICACION VEHICULAR EN PORCIENTO								COORDENADAS						
	KM	TE	SC	TDPA	A	B	C2	C3	T3S2	T3S3	T3S2R4	OTROS	A	B	C	K'	D	LATITUD	LONGITUD
T. C. GOMEZ PALACIO - TLAHUALILLO	0.00																		
LIM. EDOS. TERM. DGO. PPIA. COAH.	3.60																		
FRANCISCO I. MADERO	9.60	1	0	5407	86.7	4.1	2.7	0.6	3.6	0.3	1.5	0.5	86.7	4.1	9.2	0.071	0.507	25.772791	-103.287863

6 CARR: HUACHICHIL - LA ENCANTADA

CLAVE: 05002

RUTA: MEX

AÑO: 2010

LUGAR	ESTACION				CLASIFICACION VEHICULAR EN PORCIENTO								COORDENADAS						
	KM	TE	SC	TDPA	A	B	C2	C3	T3S2	T3S3	T3S2R4	OTROS	A	B	C	K'	D	LATITUD	LONGITUD
T. C. AUT. PUERTO MEXICO - OJO CALIENTE	0.00	3	0	2714	74.4	6.3	7.0	4.1	2.4	3.0	2.6	0.2	74.4	6.3	19.3	0.072	0.501	25.224048	-100.816664
T. C. ENT. MORELOS - SALTILLO	41.00	1	0	2229	75.5	6.3	6.0	4.1	2.5	2.5	2.9	0.2	75.5	6.3	18.2	0.074	0.504	25.260646	-101.085656

7 CARR: LA CUCHILLA - TORREON

CLAVE: 05021

RUTA: MEX-030

AÑO: 2010

LUGAR	ESTACION				CLASIFICACION VEHICULAR EN PORCIENTO								COORDENADAS						
	KM	TE	SC	TDPA	A	B	C2	C3	T3S2	T3S3	T3S2R4	OTROS	A	B	C	K'	D	LATITUD	LONGITUD
LA CUCHILLA	0.00	3	0	770	76.0	3.5	6.1	4.0	5.5	2.5	1.2	1.2	76.0	3.5	20.5	0.145	0.507	25.626403	-102.883445
T. DER. MAYRAN	3.30	3	0	1085	76.9	3.4	6.0	3.9	4.7	2.8	1.2	1.1	76.9	3.4	19.7	0.129	0.502	25.648478	-102.906660
SAN PEDRO DE LAS COLONIAS	18.70	1	1	2519	82.3	3.1	6.3	1.6	2.9	1.4	1.1	1.3	82.3	3.1	14.6	0.072	0.505	25.749558	-102.970828
SAN PEDRO DE LAS COLONIAS	18.70	1	2	2565	82.7	3.0	6.2	1.6	2.9	1.4	1.3	0.9	82.7	3.0	14.3	0.075	0.505	25.749558	-102.970828
SAN PEDRO DE LAS COLONIAS	18.70	3	1	4670	82.4	3.2	6.2	1.4	3.3	1.5	1.2	0.8	82.4	3.2	14.4	0.068	0.504	25.757550	-103.013016
SAN PEDRO DE LAS COLONIAS	18.70	3	2	4594	82.0	3.3	5.9	1.2	3.7	1.4	1.3	1.2	82.0	3.3	14.7	0.068	0.504	25.757550	-103.013016
URQUIZO	33.00	3	1	3809	81.1	5.0	4.8	2.1	2.9	1.3	1.5	1.3	81.1	5.0	13.9	0.061	0.503	25.772848	-103.136447
URQUIZO	33.00	3	2	3763	80.4	6.0	4.1	3.2	2.6	1.4	1.4	0.9	80.4	6.0	13.6	0.064	0.503	25.772848	-103.136447
T. DER. FCO. I. MADERO	43.80	1	0	10169	83.0	6.1	3.9	1.4	2.4	1.5	1.2	0.5	83.0	6.1	10.9	0.061	0.511	25.763231	-103.239471
T. DER. FCO. I. MADERO	43.80	3	1	3906	84.1	6.0	2.1	2.3	2.1	1.6	1.3	0.5	84.1	6.0	9.9	0.075	0.510	25.753961	-103.290982
T. DER. FCO. I. MADERO	43.80	3	2	3750	83.1	6.2	2.6	2.4	2.3	1.3	1.3	0.8	83.1	6.2	10.7	0.074	0.510	25.753961	-103.290982
T. IZQ. ESCUADRON 201	62.40	3	1	7733	80.5	6.6	3.2	1.7	3.9	1.5	1.4	1.2	80.5	6.6	12.9	0.064	0.500	25.670875	-103.351491

## COAHUILA

7 CARR: LA CUCHILLA - TORREON

CLAVE: 05021

RUTA: MEX-030

AÑO: 2010

LUGAR	ESTACION				CLASIFICACION VEHICULAR EN PORCIENTO								COORDENADAS						
	KM	TE	SC	TDPA	A	B	C2	C3	T3S2	T3S3	T3S2R4	OTROS	A	B	C	K'	D	LATITUD	LONGITUD
T. IZQ. ESCUADRON 201	62.40	3	2	7742	80.0	6.7	3.3	1.9	3.9	1.7	1.4	1.1	80.0	6.7	13.3	0.064	0.500	25.670706	-103.351351
TORREON	84.00	1	1	14234	80.2	6.7	3.3	2.0	3.6	1.8	1.2	1.2	80.2	6.7	13.1	0.092	0.500	25.576833	-103.415306
TORREON	84.00	1	2	14208	80.6	7.0	3.3	2.3	3.0	1.5	1.3	1.0	80.6	7.0	12.4	0.087	0.500	25.576833	-103.415306

8 CARR: LIBRAMIENTO ALLENDE - NAVA

CLAVE: 05518

RUTA: MEX

AÑO: 2010

LUGAR	ESTACION				CLASIFICACION VEHICULAR EN PORCIENTO								COORDENADAS						
	KM	TE	SC	TDPA	A	B	C2	C3	T3S2	T3S3	T3S2R4	OTROS	A	B	C	K'	D	LATITUD	LONGITUD
T. C. MONCLOVA - PIEDRAS NEGRAS	0.00	3	0	5985	76.4	2.6	2.1	1.8	7.2	5.3	3.7	0.9	76.4	2.6	21.0	0.080	0.503	28.332424	-100.884100
X. DER. ALLENDE - IZQ. MORELOS	6.06	3	1	4043	78.8	3.5	2.3	1.2	6.5	4.1	3.0	0.6	78.8	3.5	17.7	0.061	0.506	28.377053	-100.859073
X. DER. ALLENDE - IZQ. MORELOS	6.06	3	2	3946	78.4	3.6	2.4	1.3	6.6	3.9	3.1	0.7	78.4	3.6	18.0	0.063	0.506	28.377013	-100.859108
T. C. MONCLOVA - PIEDRAS NEGRAS	17.55	1	1	3666	78.6	3.4	1.9	1.3	7.3	2.9	3.9	0.7	78.6	3.4	18.0	0.061	0.507	28.422940	-100.809644
T. C. MONCLOVA - PIEDRAS NEGRAS	17.55	1	2	3567	78.5	3.6	2.1	1.1	7.1	3.1	3.8	0.7	78.5	3.6	17.9	0.063	0.507	28.422969	-100.809685

9 CARR: MONCLOVA - PIEDRAS NEGRAS

CLAVE: 05407

RUTA: MEX-057

AÑO: 2010

LUGAR	ESTACION				CLASIFICACION VEHICULAR EN PORCIENTO								COORDENADAS						
	KM	TE	SC	TDPA	A	B	C2	C3	T3S2	T3S3	T3S2R4	OTROS	A	B	C	K'	D	LATITUD	LONGITUD
MONCLOVA	0.00	3	1	5992	79.2	4.7	4.9	2.1	4.4	1.2	2.5	1.0	79.2	4.7	16.1	0.108	0.515	26.955514	-101.411113
MONCLOVA	0.00	3	2	5648	79.5	4.8	4.7	2.2	4.6	1.3	2.4	0.5	79.5	4.8	15.7	0.102	0.515	26.955626	-101.411094
T. DER. LIBRAMIENTO DE MONCLOVA	10.80	3	1	3366	76.3	4.3	4.4	4.3	4.8	1.8	3.4	0.7	76.3	4.3	19.4	0.084	0.520	26.979790	-101.374635
T. DER. LIBRAMIENTO DE MONCLOVA	10.80	3	2	3112	77.3	4.2	4.5	4.1	4.7	1.7	3.2	0.3	77.3	4.2	18.5	0.084	0.520	26.979844	-101.374651
T. DER. PROGRESO	61.50	1	1	2563	75.3	4.4	4.6	4.7	4.4	2.4	3.7	0.5	75.3	4.4	20.3	0.072	0.502	27.386823	-101.215058
T. DER. PROGRESO	61.50	1	2	2541	75.5	4.2	4.7	4.3	4.5	2.6	3.9	0.3	75.5	4.2	20.3	0.067	0.502	27.386825	-101.215058
T. IZQ. PALAU	88.50	1	1	2753	72.5	5.3	4.6	3.7	4.9	3.6	4.5	0.9	72.5	5.3	22.2	0.092	0.503	27.636587	-101.182463
T. IZQ. PALAU	88.50	1	2	2717	73.7	4.8	4.2	3.5	5.1	3.2	4.7	0.8	73.7	4.8	21.5	0.092	0.503	27.636702	-101.182767
T. IZQ. PALAU	88.50	3	1	2909	73.1	4.4	4.1	4.0	5.2	3.7	4.3	1.2	73.1	4.4	22.5	0.100	0.502	27.645227	-101.184848
T. IZQ. PALAU	88.50	3	2	2883	72.7	4.6	4.1	3.9	5.7	3.6	4.2	1.2	72.7	4.6	22.7	0.093	0.502	27.645215	-101.184984
T. DER. SABINAS (2° ACCESO)	115.00	1	1	5679	74.6	4.2	3.6	3.8	5.9	3.2	3.9	0.8	74.6	4.2	21.2	0.062	0.505	27.821774	-101.137146
T. DER. SABINAS (2° ACCESO)	115.00	1	2	5789	74.7	4.3	3.9	4.0	5.8	3.1	3.8	0.4	74.7	4.3	21.0	0.060	0.505	27.821812	-101.137202
AGUJITA	118.85	1	1	8749	76.9	3.4	4.8	2.1	6.4	2.5	3.5	0.4	76.9	3.4	19.7	0.070	0.503	27.887634	-101.149055
AGUJITA	118.85	1	2	8641	76.4	3.5	4.7	2.0	6.5	2.5	3.3	1.1	76.4	3.5	20.1	0.072	0.503	27.887456	-101.149114
T. IZQ. NUEVA ROSITA (1° ACCESO)	126.30	3	0	9033	72.1	3.4	3.4	2.2	8.4	4.9	4.7	0.9	72.1	3.4	24.5	0.074	0.505	27.951371	-101.203493
T. IZQ. LIBRAMIENTO DE ALLENDE	182.00	1	0	7594	70.4	3.6	4.3	2.3	8.4	5.2	5.0	0.8	70.4	3.6	26.0	0.072	0.505	28.312013	-100.911609
ALLENDE	187.20	3	1	4303	73.1	3.3	3.4	1.7	7.9	4.8	5.2	0.6	73.1	3.3	23.6	0.073	0.508	28.359884	-100.857745

COAHUILA

9 CARR: MONCLOVA - PIEDRAS NEGRAS

CLAVE: 05407

RUTA: MEX-057

AÑO: 2010

LUGAR	ESTACION				CLASIFICACION VEHICULAR EN PORCIENTO								COORDENADAS						
	KM	TE	SC	TDPA	A	B	C2	C3	T3S2	T3S3	T3S2R4	OTROS	A	B	C	K'	D	LATITUD	LONGITUD
ALLENDE	187.20	3	2	4165	72.9	3.2	3.5	1.8	8.0	4.7	5.3	0.6	72.9	3.2	23.9	0.072	0.508	28.359860	-100.857743
NAVA	206.85	1	0	5781	70.5	3.4	3.1	1.8	9.1	5.0	6.4	0.7	70.5	3.4	26.1	0.066	0.506	28.421030	-100.800675
NAVA	206.85	3	1	5271	75.8	2.8	3.5	1.2	7.7	4.6	3.9	0.5	75.8	2.8	21.4	0.079	0.504	28.439013	-100.760072
NAVA	206.85	3	2	5184	76.4	2.7	3.6	1.1	7.4	4.8	3.7	0.3	76.4	2.7	20.9	0.081	0.504	28.438997	-100.760101
T. DER. GUERRERO	240.28	1	1	5742	83.5	5.4	1.4	1.6	4.6	1.1	1.9	0.5	83.5	5.4	11.1	0.080	0.503	28.631756	-100.563697
T. DER. GUERRERO	240.28	1	2	5814	83.8	5.3	1.6	1.4	4.9	0.8	1.7	0.5	83.8	5.3	10.9	0.082	0.503	28.631807	-100.563689
PIEDRAS NEGRAS	248.00																		

10 CARR: MONCLOVA - SAN PEDRO DE LAS COLONIAS

CLAVE: 05062

RUTA: MEX-030

AÑO: 2010

LUGAR	ESTACION				CLASIFICACION VEHICULAR EN PORCIENTO								COORDENADAS						
	KM	TE	SC	TDPA	A	B	C2	C3	T3S2	T3S3	T3S2R4	OTROS	A	B	C	K'	D	LATITUD	LONGITUD
MONCLOVA	0.00																		
FRONTERA	2.00	3	1	7665	83.9	3.3	4.1	2.6	3.0	0.8	1.2	1.1	83.9	3.3	12.8	0.065	0.516	26.958469	-101.461176
FRONTERA	2.00	3	2	7193	84.0	3.2	4.2	2.5	3.1	0.6	1.3	1.1	84.0	3.2	12.8	0.071	0.516	26.958461	-101.461172
8 DE ENERO	11.00	3	1	4876	83.1	3.4	3.9	1.7	3.8	1.0	2.2	0.9	83.1	3.4	13.5	0.078	0.503	27.007499	-101.500076
8 DE ENERO	11.00	3	2	4942	83.6	3.3	3.4	1.8	3.8	0.9	2.2	1.0	83.6	3.3	13.1	0.078	0.503	27.007509	-101.500104
NADADORES	27.00	3	1	1895	84.1	3.0	3.7	1.4	3.7	1.4	2.3	0.4	84.1	3.0	12.9	0.064	0.501	27.031346	-101.602135
NADADORES	27.00	3	2	1902	84.6	3.1	3.6	1.6	3.5	1.4	1.8	0.4	84.6	3.1	12.3	0.063	0.501	27.031340	-101.602160
SACRAMENTO	45.27	1	0	3042	85.2	3.3	3.4	1.4	3.3	1.7	1.4	0.3	85.2	3.3	11.5	0.071	0.510	27.013548	-101.719650
CUATRO CIENEGAS	80.15	3	0	756	77.9	3.5	4.5	2.2	7.6	2.0	1.6	0.7	77.9	3.5	18.6	0.081	0.502	26.974402	-102.076463
SAN PEDRO DE LAS COLONIAS	267.00	1	1	1135	79.6	2.8	5.7	3.1	3.1	1.8	2.4	1.5	79.6	2.8	17.6	0.101	0.508	25.773841	-102.978829
SAN PEDRO DE LAS COLONIAS	267.00	1	2	1101	80.5	2.8	5.2	3.2	2.9	1.6	2.4	1.4	80.5	2.8	16.7	0.106	0.508	25.773841	-102.978829

11 CARR: MONTERREY - CASTAÑOS

CLAVE: 00128

RUTA: MEX-053

AÑO: 2010

LUGAR	ESTACION				CLASIFICACION VEHICULAR EN PORCIENTO								COORDENADAS						
	KM	TE	SC	TDPA	A	B	C2	C3	T3S2	T3S3	T3S2R4	OTROS	A	B	C	K'	D	LATITUD	LONGITUD
T. C. MONTERREY - NUEVO LAREDO	0.00	3	0	12181	79.3	4.6	3.6	2.6	4.5	2.8	1.9	0.7	79.3	4.6	16.1	0.077	0.504	25.805368	-100.279113
X. C. LIBRAMIENTO NOROESTE DE MONTERREY	3.46	3	0	12447	79.1	4.8	3.5	2.9	4.8	2.6	1.7	0.6	79.1	4.8	16.1	0.068	0.502	25.830493	-100.306382
T. DER. VILLA DEL CARMEN	13.80	1	0	11559	71.8	5.3	3.6	2.6	7.6	3.0	5.4	0.7	71.8	5.3	22.9	0.070	0.509	25.896273	-100.351812
T. IZQ. HIDALGO	24.78	1	0	10480	71.9	5.9	3.7	1.6	7.4	3.4	5.4	0.7	71.9	5.9	22.2	0.071	0.506	25.956695	-100.424782
T. IZQ. HIDALGO	24.78	3	0	7582	69.7	6.0	3.8	2.4	8.3	3.6	5.6	0.6	69.7	6.0	24.3	0.091	0.503	25.986048	-100.454164
T. IZQ. MINA	34.75	1	0	6192	69.0	5.7	3.4	2.7	8.5	4.5	5.6	0.6	69.0	5.7	25.3	0.071	0.507	26.000689	-100.514521
T. IZQ. ESPINAZO	91.90	1	0	3686	68.8	6.4	3.3	3.0	8.5	4.6	4.5	0.9	68.8	6.4	24.8	0.072	0.504	26.362714	-100.878785



COAHUILA

11 CARR: MONTERREY - CASTAÑOS

CLAVE: 00128

RUTA: MEX-053

AÑO: 2010

LUGAR	ESTACION				CLASIFICACION VEHICULAR EN PORCIENTO								COORDENADAS						
	KM	TE	SC	TDPA	A	B	C2	C3	T3S2	T3S3	T3S2R4	OTROS	A	B	C	K'	D	LATITUD	LONGITUD
T. IZQ. ESPINAZO	91.90	3	0	3093	70.9	6.5	3.2	1.1	8.2	4.6	4.7	0.8	70.9	6.5	22.6	0.066	0.506	26.365794	-100.883930
LIM. EDOS. TERM. N.L. PPIA. COAH.	115.90																		
T. C. SALTILLO - MONCLOVA	155.90	1	0	4890	61.1	5.6	4.1	4.2	9.3	9.5	5.8	0.4	61.1	5.6	33.3	0.065	0.515	26.693028	-101.383668

12 CARR: MORELOS - CD. ACUÑA

CLAVE: 05029

RUTA: MEX-047

AÑO: 2010

LUGAR	ESTACION				CLASIFICACION VEHICULAR EN PORCIENTO								COORDENADAS						
	KM	TE	SC	TDPA	A	B	C2	C3	T3S2	T3S3	T3S2R4	OTROS	A	B	C	K'	D	LATITUD	LONGITUD
MORELOS	0.00	3	1	2641	85.5	3.4	2.8	1.2	4.4	1.6	0.6	0.5	85.5	3.4	11.1	0.072	0.509	28.418806	-100.890820
MORELOS	0.00	3	2	2552	85.8	3.3	2.7	1.2	4.5	1.3	0.5	0.7	85.8	3.3	10.9	0.071	0.509	28.418806	-100.890807
SAN CARLOS	69.00	1	0	1759	86.4	3.2	2.8	1.2	3.7	1.3	0.7	0.7	86.4	3.2	10.4	0.111	0.504	29.019514	-100.904610
T. DER. PIEDRAS NEGRAS	87.00	3	1	4004	86.4	3.5	3.1	1.2	3.4	1.2	0.6	0.6	86.4	3.5	10.1	0.077	0.501	29.296384	-100.914460
T. DER. PIEDRAS NEGRAS	87.00	3	2	3991	86.9	3.6	3.2	1.0	2.6	1.3	0.8	0.6	86.9	3.6	9.5	0.082	0.501	29.296466	-100.914289
CD. ACUÑA	104.00	1	1	5193	87.6	3.4	2.9	1.2	2.8	1.1	0.7	0.3	87.6	3.4	9.0	0.075	0.504	29.303479	-100.921846
CD. ACUÑA	104.00	1	2	5285	87.7	3.3	2.7	1.0	3.3	1.0	0.6	0.4	87.7	3.3	9.0	0.068	0.504	29.303630	-100.922390

13 CARR: NUEVA ROSITA - BOQUILLAS DEL CARMEN

CLAVE: 05028

RUTA: MEX-053

AÑO: 2010

LUGAR	ESTACION				CLASIFICACION VEHICULAR EN PORCIENTO								COORDENADAS						
	KM	TE	SC	TDPA	A	B	C2	C3	T3S2	T3S3	T3S2R4	OTROS	A	B	C	K'	D	LATITUD	LONGITUD
NUEVA ROSITA	0.00	3	1	3813	86.1	4.2	2.1	1.9	3.1	1.4	0.9	0.3	86.1	4.2	9.7	0.069	0.502	27.947889	-101.251075
NUEVA ROSITA	0.00	3	2	3839	85.6	4.0	2.3	2.0	3.4	1.3	1.0	0.4	85.6	4.0	10.4	0.069	0.502	27.947812	-101.249413
PALAU	25.00	1	1	3326	80.5	3.0	5.8	2.5	3.4	2.1	1.6	1.1	80.5	3.0	16.5	0.093	0.502	27.887498	-101.412218
PALAU	25.00	1	2	3353	82.0	2.8	5.7	2.2	3.2	2.0	1.7	0.4	82.0	2.8	15.2	0.092	0.502	27.887499	-101.412216
PALAU	25.00	3	1	3806	84.2	3.9	3.1	2.8	2.7	1.5	1.0	0.8	84.2	3.9	11.9	0.082	0.505	27.887078	-101.432352
PALAU	25.00	3	2	3884	84.0	4.0	3.0	2.6	2.7	1.3	0.9	1.5	84.0	4.0	12.0	0.081	0.505	27.887085	-101.432342
MELCHOR MUZQUIZ	35.00	3	0	2178	85.4	4.0	2.7	2.4	2.6	1.3	0.9	0.7	85.4	4.0	10.6	0.091	0.500	27.899556	-101.535525
BOQUILLAS DEL CARMEN	250.00																		

14 CARR: OJO CALIENTE - SANTA CRUZ

CLAVE: 05007

RUTA: MEX

AÑO: 2010

LUGAR	ESTACION				CLASIFICACION VEHICULAR EN PORCIENTO								COORDENADAS						
	KM	TE	SC	TDPA	A	B	C2	C3	T3S2	T3S3	T3S2R4	OTROS	A	B	C	K'	D	LATITUD	LONGITUD
T. C. SALTILLO - MONTERREY	0.00	3	0	3329	75.7	3.7	3.6	2.1	7.3	4.0	3.1	0.5	75.7	3.7	20.6	0.066	0.502	25.596620	-100.892614
T. C. SALTILLO - MONCLOVA	34.00	1	0	2505	76.2	3.7	3.5	2.2	7.0	3.9	3.0	0.5	76.2	3.7	20.1	0.069	0.517	25.785957	-101.106342

## COAHUILA

15 CARR: PIEDRAS NEGRAS - CD. ACUÑA

CLAVE: 05061

RUTA: MEX-002

AÑO: 2010

LUGAR	ESTACION				CLASIFICACION VEHICULAR EN PORCIENTO								COORDENADAS						
	KM	TE	SC	TDPA	A	B	C2	C3	T3S2	T3S3	T3S2R4	OTROS	A	B	C	K'	D	LATITUD	LONGITUD
PIEDRAS NEGRAS	0.00	3	0	4391	86.5	3.5	4.2	2.6	1.7	1.2	0.1	0.2	86.5	3.5	10.0	0.055	0.503	28.732775	-100.576574
T. C. MORELOS - CD. ACUÑA	83.30	1	0	3634	87.0	3.3	4.2	2.5	1.6	1.1	0.1	0.2	87.0	3.3	9.7	0.060	0.503	29.291839	-100.911287

16 CARR: PIEDRAS NEGRAS - NUEVO LAREDO

CLAVE: 00503

RUTA: MEX-002

AÑO: 2010

LUGAR	ESTACION				CLASIFICACION VEHICULAR EN PORCIENTO								COORDENADAS						
	KM	TE	SC	TDPA	A	B	C2	C3	T3S2	T3S3	T3S2R4	OTROS	A	B	C	K'	D	LATITUD	LONGITUD
T. C. MONCLOVA - PIEDRAS NEGRAS	0.00	3	1	3181	74.3	5.1	2.0	1.9	5.9	4.0	5.9	0.9	74.3	5.1	20.6	0.081	0.510	28.629336	-100.545509
T. C. MONCLOVA - PIEDRAS NEGRAS	0.00	3	2	3309	73.8	5.2	2.2	1.8	6.1	3.9	6.1	0.9	73.8	5.2	21.0	0.080	0.510	28.629384	-100.545557
EL SAUCITO	16.90	3	0	2578	73.9	4.9	2.8	1.5	7.2	3.4	5.5	0.8	73.9	4.9	21.2	0.073	0.516	28.462459	-100.442233
GUERRERO	42.00	3	0	1203	71.9	4.5	3.2	2.7	7.4	3.7	5.7	0.9	71.9	4.5	23.6	0.073	0.508	28.307883	-100.366524
LIM. EDOS. TERM. COAH. PPIA. N.L.	113.00																		
LIM. EDOS. TERM. N.L. PPIA. TAMP.	137.00																		
T. DER. LIBRAMIENTO DE NUEVO LAREDO	168.90	1	1	3972	67.2	5.6	5.7	6.6	5.9	3.6	4.8	0.6	67.2	5.6	27.2	0.098	0.506	27.571831	-99.599152
T. DER. LIBRAMIENTO DE NUEVO LAREDO	168.90	1	2	4064	67.6	5.5	5.7	6.5	5.9	3.6	4.6	0.6	67.6	5.5	26.9	0.104	0.506	27.571856	-99.599708
NUEVO LAREDO	175.00	1	0	7988	67.4	5.4	5.6	6.7	5.8	3.7	4.8	0.6	67.4	5.4	27.2	0.072	0.507	27.542987	-99.575879

17 CARR: SALTILLO - MONCLOVA

CLAVE: 05406

RUTA: MEX-057

AÑO: 2010

LUGAR	ESTACION				CLASIFICACION VEHICULAR EN PORCIENTO								COORDENADAS						
	KM	TE	SC	TDPA	A	B	C2	C3	T3S2	T3S3	T3S2R4	OTROS	A	B	C	K'	D	LATITUD	LONGITUD
SALTILLO	0.00																		
T. DER. RAMOS ARIZPE	13.00	1	0	2910	74.9	5.5	5.2	3.0	6.4	2.4	1.8	0.8	74.9	5.5	19.6	0.065	0.504	25.527191	-101.002505
T. DER. RAMOS ARIZPE	13.00	3	0	1654	76.2	5.9	4.4	3.7	5.2	2.5	1.6	0.5	76.2	5.9	17.9	0.063	0.505	25.529285	-101.006015
T. DER. MONTERREY	164.79	1	0	2912	75.3	6.7	3.3	4.0	5.6	2.6	1.7	0.8	75.3	6.7	18.0	0.068	0.519	26.685441	-101.387510
T. DER. MONTERREY	164.79	3	1	2995	72.3	4.8	3.8	3.8	5.6	5.4	3.3	1.0	72.3	4.8	22.9	0.074	0.503	26.704969	-101.391515
T. DER. MONTERREY	164.79	3	2	3030	72.2	4.8	3.6	3.8	5.6	5.3	3.2	1.5	72.2	4.8	23.0	0.067	0.503	26.705032	-101.391655
T. DER. LIBRAMIENTO DE CASTAÑOS (1º ACCESO)	175.20	1	1	2835	71.6	4.9	3.7	3.9	5.9	5.6	3.2	1.2	71.6	4.9	23.5	0.075	0.507	26.756360	-101.408699
T. DER. LIBRAMIENTO DE CASTAÑOS (1º ACCESO)	175.20	1	2	2915	71.5	4.8	3.9	3.6	6.2	5.3	3.9	0.8	71.5	4.8	23.7	0.074	0.507	26.756360	-101.408839
T. DER. LIBRAMIENTO DE CASTAÑOS (2º ACCESO)	177.10	3	1	5739	74.1	5.1	4.2	3.7	5.7	3.6	3.1	0.5	74.1	5.1	20.8	0.068	0.511	26.802563	-101.421741
T. DER. LIBRAMIENTO DE CASTAÑOS (2º ACCESO)	177.10	3	2	5491	73.7	5.0	4.4	3.8	5.6	3.4	3.2	0.9	73.7	5.0	21.3	0.068	0.511	26.802705	-101.421474
MONCLOVA	192.00	1	1	13040	76.3	4.9	3.2	3.1	4.9	1.9	4.5	1.2	76.3	4.9	18.8	0.085	0.502	26.871596	-101.426994
MONCLOVA	192.00	1	2	12950	76.2	5.0	3.1	3.3	4.9	1.9	4.4	1.2	76.2	5.0	18.8	0.082	0.502	26.872280	-101.427286

## COAHUILA

18 CARR: SALTILLO - MONTERREY

CLAVE: 00087

RUTA: MEX-040

AÑO: 2010

LUGAR	ESTACION				CLASIFICACION VEHICULAR EN PORCIENTO								COORDENADAS						
	KM	TE	SC	TDPA	A	B	C2	C3	T3S2	T3S3	T3S2R4	OTROS	A	B	C	K'	D	LATITUD	LONGITUD
T. C. SALTILLO - ARTEAGA	0.00																		
T. IZQ. SINCAMEX	4.25	3	1	21629	55.5	4.4	7.5	3.7	21.3	3.8	3.4	0.4	55.5	4.4	40.1	0.092	0.507	25.481304	-100.972774
T. IZQ. SINCAMEX	4.25	3	2	21050	55.8	4.3	7.7	3.9	21.2	3.4	3.3	0.4	55.8	4.3	39.9	0.089	0.507	25.481304	-100.972774
RAMOS ARIZPE	11.30	1	1	20189	55.4	4.2	7.4	3.8	21.6	3.7	3.5	0.4	55.4	4.2	40.4	0.080	0.506	25.531074	-100.951477
RAMOS ARIZPE	11.30	1	2	20658	55.9	4.1	7.4	3.7	21.7	3.5	3.3	0.4	55.9	4.1	40.0	0.076	0.506	25.531074	-100.951477
T. DER. AEROPUERTO	13.00	3	1	15261	57.0	4.1	7.8	3.7	20.0	3.5	3.5	0.4	57.0	4.1	38.9	0.084	0.511	25.554459	-100.927500
T. DER. AEROPUERTO	13.00	3	2	15926	55.8	4.1	8.0	3.8	21.1	3.6	3.2	0.4	55.8	4.1	40.1	0.077	0.511	25.554459	-100.927500
T. DER. LIBRAMIENTO J.L.P.	16.00	3	1	16036	57.3	4.2	7.2	3.8	20.6	3.4	3.1	0.4	57.3	4.2	38.5	0.064	0.501	25.564946	-100.915098
T. DER. LIBRAMIENTO J.L.P.	16.00	3	2	15943	56.1	4.1	8.1	3.8	20.7	3.4	3.4	0.4	56.1	4.1	39.8	0.068	0.501	25.564946	-100.915098
OJO CALIENTE	26.30	1	1	13679	56.3	4.1	7.8	3.6	21.1	3.3	3.4	0.4	56.3	4.1	39.6	0.089	0.507	25.598559	-100.873891
OJO CALIENTE	26.30	1	2	13297	56.4	4.0	7.5	3.6	21.4	3.4	3.3	0.4	56.4	4.0	39.6	0.086	0.507	25.598559	-100.873891
LIM. EDOS. TERM. COAH. PPIA. N.L.	33.00																		
T. IZQ. LIBRAMIENTO NOROESTE DE MONTERREY	54.00	1	1	13747	56.6	4.2	7.5	3.8	20.6	3.6	3.3	0.4	56.6	4.2	39.2	0.066	0.517	25.698612	-100.568588
T. IZQ. LIBRAMIENTO NOROESTE DE MONTERREY	54.00	1	2	14005	55.5	4.0	7.8	3.8	21.7	3.3	3.5	0.4	55.5	4.0	40.5	0.067	0.517	25.698582	-100.562588
T. DER. SANTA CATARINA (1º ACCESO)	62.46	1	1	21560	56.8	3.8	7.7	3.8	20.8	3.3	3.4	0.4	56.8	3.8	39.4	0.066	0.501	25.692262	-100.508962
T. DER. SANTA CATARINA (1º ACCESO)	62.46	1	2	21434	56.1	4.0	7.9	3.8	20.9	3.5	3.4	0.4	56.1	4.0	39.9	0.064	0.501	25.692262	-100.508962
PPIA. MONTERREY	79.20	1	1	21781	82.2	5.3	4.7	2.0	3.6	1.2	0.9	0.1	82.2	5.3	12.5	0.061	0.503	25.671215	-100.380216
PPIA. MONTERREY	79.20	1	2	21553	81.2	5.5	5.1	2.1	3.9	1.2	0.9	0.1	81.2	5.5	13.3	0.063	0.503	25.671215	-100.380216

19 CARR: SALTILLO - TORREON

CLAVE: 05086

RUTA: MEX-040

AÑO: 2010

LUGAR	ESTACION				CLASIFICACION VEHICULAR EN PORCIENTO								COORDENADAS						
	KM	TE	SC	TDPA	A	B	C2	C3	T3S2	T3S3	T3S2R4	OTROS	A	B	C	K'	D	LATITUD	LONGITUD
SALTILLO	0.00																		
T. DER. MONCLOVA	6.10	3	1	4151	63.5	4.8	8.6	3.2	11.4	4.3	3.6	0.6	63.5	4.8	31.7	0.080	0.502	25.453773	-101.073796
T. DER. MONCLOVA	6.10	3	2	4188	61.4	5.2	8.9	3.6	11.8	4.7	3.8	0.6	61.4	5.2	33.4	0.079	0.502	25.453773	-101.073796
T. IZQ. GENERAL CEPEDA	44.14	1	0	4120	63.3	5.0	8.2	3.5	11.2	4.5	3.7	0.6	63.3	5.0	31.7	0.071	0.509	25.505006	-101.375214
T. IZQ. GENERAL CEPEDA	44.14	3	0	3394	63.0	5.1	8.6	3.2	11.2	4.3	4.0	0.6	63.0	5.1	31.9	0.073	0.521	25.509515	-101.379294
T. DER. ESTACION MARTE	91.20	1	0	2763	63.1	5.3	8.1	3.3	11.1	4.5	4.0	0.6	63.1	5.3	31.6	0.087	0.509	25.658814	-101.764596
ENT. PAILA	127.90	1	1	3113	62.5	5.4	8.2	3.4	11.4	4.4	4.1	0.6	62.5	5.4	32.1	0.069	0.519	25.649620	-102.138783
ENT. PAILA	127.90	1	2	3179	61.9	5.1	8.7	3.6	11.7	4.3	4.1	0.6	61.9	5.1	33.0	0.069	0.519	25.649620	-102.138783
T. DER. SAN PEDRO DE LAS COLONIAS (LA CUCHILLA)	204.58	1	1	2587	72.3	6.3	6.2	2.9	7.1	1.9	2.7	0.6	72.3	6.3	21.4	0.080	0.525	25.632485	-102.866580
T. DER. SAN PEDRO DE LAS COLONIAS (LA CUCHILLA)	204.58	1	2	2862	73.8	5.6	5.9	2.6	7.3	1.8	2.4	0.6	73.8	5.6	20.6	0.072	0.525	25.625422	-102.869622
EMILIANO ZAPATA	221.68	1	0	2420	72.7	6.3	6.4	2.7	7.0	1.9	2.4	0.6	72.7	6.3	21.0	0.072	0.515	25.496797	-102.943102
EMILIANO ZAPATA	221.68	3	0	2654	71.3	6.5	6.8	2.9	7.4	2.0	2.5	0.6	71.3	6.5	22.2	0.070	0.510	25.489138	-102.954684

COAHUILA

19 CARR: SALTILLO - TORREON

CLAVE: 05086

RUTA: MEX-040

AÑO: 2010

LUGAR	ESTACION				CLASIFICACION VEHICULAR EN PORCIENTO								COORDENADAS						
	KM	TE	SC	TDPA	A	B	C2	C3	T3S2	T3S3	T3S2R4	OTROS	A	B	C	K'	D	LATITUD	LONGITUD
T. DER. LIBRAMIENTO DE MATAMOROS (1° ACCESO)	246.80	1	0	7278	73.9	5.7	6.1	2.7	6.6	1.8	2.6	0.6	73.9	5.7	20.4	0.071	0.506	25.526236	-103.212097
T. DER. LIBRAMIENTO DE MATAMOROS (1° ACCESO)	246.80	3	1	3969	71.9	6.3	6.3	2.9	7.6	1.9	2.5	0.6	71.9	6.3	21.8	0.074	0.505	25.527780	-103.218345
T. DER. LIBRAMIENTO DE MATAMOROS (1° ACCESO)	246.80	3	2	4053	72.7	5.9	6.5	2.8	7.0	1.9	2.6	0.6	72.7	5.9	21.4	0.076	0.505	25.527659	-103.218193
MATAMOROS	252.80	3	1	6942	72.2	6.3	6.7	2.9	6.9	1.9	2.5	0.6	72.2	6.3	21.5	0.074	0.503	25.534875	-103.247579
MATAMOROS	252.80	3	2	7025	72.8	6.2	6.2	2.8	6.9	1.9	2.6	0.6	72.8	6.2	21.0	0.078	0.503	25.534796	-103.247625
T. DER. LIBRAMIENTO DE MATAMOROS (2° ACCESO)	253.12	3	1	10790	73.9	5.8	5.8	2.8	6.7	1.9	2.5	0.6	73.9	5.8	20.3	0.066	0.504	25.535133	-103.260052
T. DER. LIBRAMIENTO DE MATAMOROS (2° ACCESO)	253.12	3	2	10622	72.0	6.4	6.3	3.0	7.0	2.0	2.7	0.6	72.0	6.4	21.6	0.066	0.504	25.535395	-103.259955
T. DER. LIBRAMIENTO DE TORREON	264.50	3	1	18486	72.7	6.1	6.3	2.9	7.1	1.9	2.4	0.6	72.7	6.1	21.2	0.085	0.509	25.535249	-103.373612
T. DER. LIBRAMIENTO DE TORREON	264.50	3	2	19168	72.4	5.9	6.2	3.0	7.4	1.9	2.6	0.6	72.4	5.9	21.7	0.080	0.509	25.534924	-103.374375
TORREON	291.00																		

20 CARR: PUERTO MEXICO - OJO CALIENTE (CUOTA)

CLAVE: 00115

RUTA: MEX-057D

AÑO: 2010

LUGAR	ESTACION				CLASIFICACION VEHICULAR EN PORCIENTO								COORDENADAS						
	KM	TE	SC	TDPA	A	B	C2	C3	T3S2	T3S3	T3S2R4	OTROS	A	B	C	K'	D	LATITUD	LONGITUD
ENT. PUERTO MEXICO	0.00																		
LIM. EDOS. TERM. N.L. PPIA. COAH.	1.50																		
CASETA DE COBRO LOS CHORROS	2.50	2	0	10827	39.1	6.1	4.1	2.6	38.2	3.6	5.4	0.9	39.1	6.1	54.8			25.186795	-100.732080
CASETA DE COBRO HUACHICHIL	5.50	3	0	12999	35.6	5.2	5.4	3.5	39.0	4.2	6.1	1.0	35.6	5.2	59.2			25.245484	-100.801502
T. DER. SAN ANTONIO DE LAS ALAZANAS	23.88	1	1	7067	34.6	5.0	5.7	3.4	39.4	4.4	6.5	1.0	34.6	5.0	60.4	0.063	0.501	25.345202	-100.794585
T. DER. SAN ANTONIO DE LAS ALAZANAS	23.88	1	2	7045	35.8	5.0	5.1	3.6	39.3	4.0	6.2	1.0	35.8	5.0	59.2	0.062	0.501	25.345202	-100.794585
T. DER. SAN ANTONIO DE LAS ALAZANAS	23.88	3	1	7672	36.8	5.3	5.3	3.3	37.7	4.3	6.3	1.0	36.8	5.3	57.9	0.056	0.505	25.352115	-100.794451
T. DER. SAN ANTONIO DE LAS ALAZANAS	23.88	3	2	7532	34.6	5.4	5.6	3.6	39.6	4.2	6.0	1.0	34.6	5.4	60.0	0.064	0.505	25.352115	-100.794451
LOS LIRIOS	25.88	3	1	7458	34.6	5.2	5.4	3.4	40.4	4.2	5.8	1.0	34.6	5.2	60.2	0.056	0.502	25.352115	-100.794451
LOS LIRIOS	25.88	3	2	7397	35.1	5.2	5.3	3.6	39.4	4.1	6.3	1.0	35.1	5.2	59.7	0.059	0.502	25.379889	-100.792760
CASETA DE COBRO CARBONERA	50.30	3	1	5925	35.7	4.7	5.8	3.6	39.1	4.2	6.0	0.9	35.7	4.7	59.6	0.104	0.516	25.514712	-100.867012
CASETA DE COBRO CARBONERA	50.30	3	2	6322	33.7	5.1	5.8	3.5	40.6	4.4	6.0	0.9	33.7	5.1	61.2	0.101	0.516	25.514712	-100.867012
T. C. SALTILLO - MONTERREY	59.00																		

21 CARR: TORREON - SALTILLO (CUOTA)

CLAVE:

RUTA: MEX-040D

AÑO: 2010

LUGAR	ESTACION				CLASIFICACION VEHICULAR EN PORCIENTO								COORDENADAS						
	KM	TE	SC	TDPA	A	B	C2	C3	T3S2	T3S3	T3S2R4	OTROS	A	B	C	K'	D	LATITUD	LONGITUD
MATAMOROS	0.00																		
CASETA DE COBRO LA CUCHILLA	37.00	2	0	3392	55.0	8.4	2.2	1.0	17.9	3.5	10.5	1.5	55.0	8.4	36.6			25.626987	-102.878211



COAHUILA

26 CARR: ENT. LA ROSA - GENERAL CEPEDA

CLAVE: 05034

RUTA: COA-034

AÑO: 2010

LUGAR	ESTACION				CLASIFICACION VEHICULAR EN PORCIENTO								COORDENADAS						
	KM	TE	SC	TDPA	A	B	C2	C3	T3S2	T3S3	T3S2R4	OTROS	A	B	C	K'	D	LATITUD	LONGITUD
T. C. SALTILLO - TORREON	0.00	3	0	994	87.2	4.1	4.2	1.7	1.4	0.8	0.2	0.4	87.2	4.1	8.7	0.082	0.516	25.504494	-101.381397
GRAL. CEPEDA	21.00	1	0	945	86.9	4.1	4.3	1.7	1.7	0.7	0.3	0.3	86.9	4.1	9.0	0.080	0.505	25.390579	-101.478042

27 CARR: ENT. PAILA - PARRAS DE LA FUENTE

CLAVE: 05014

RUTA: COA-102

AÑO: 2010

LUGAR	ESTACION				CLASIFICACION VEHICULAR EN PORCIENTO								COORDENADAS						
	KM	TE	SC	TDPA	A	B	C2	C3	T3S2	T3S3	T3S2R4	OTROS	A	B	C	K'	D	LATITUD	LONGITUD
ENT. PAILA	0.00	3	0	1916	83.8	4.8	3.7	1.9	3.7	0.9	0.3	0.9	83.8	4.8	11.4	0.062	0.504	25.643185	-102.149274
PARRAS DE LA FUENTE	20.05	1	0	2618	83.2	5.3	3.9	1.9	3.1	1.3	0.7	0.6	83.2	5.3	11.5	0.067	0.501	25.473598	-102.173148

28 CARR: LIBRAMIENTO DE MATAMOROS

CLAVE: 05032

RUTA: COA

AÑO: 2010

LUGAR	ESTACION				CLASIFICACION VEHICULAR EN PORCIENTO								COORDENADAS						
	KM	TE	SC	TDPA	A	B	C2	C3	T3S2	T3S3	T3S2R4	OTROS	A	B	C	K'	D	LATITUD	LONGITUD
T. C. SALTILLO - TORREON	0.00	3	0	6700	70.5	7.4	2.3	2.8	8.9	3.2	4.3	0.6	70.5	7.4	22.1	0.077	0.500	25.533645	-103.220112
X. C. MATAMOROS - LA UNION	3.70	3	1	5888	66.1	6.1	4.7	3.0	9.2	3.3	7.3	0.3	66.1	6.1	27.8	0.078	0.500	25.538692	-103.225818
X. C. MATAMOROS - LA UNION	3.70	3	2	5898	67.4	6.4	4.8	2.6	9.2	2.5	6.3	0.8	67.4	6.4	26.2	0.075	0.500	25.538691	-103.225818
T. C. SALTILLO - TORREON	5.32	1	1	6773	75.5	6.7	4.3	2.5	5.6	2.4	2.6	0.4	75.5	6.7	17.8	0.059	0.505	25.536604	-103.246035
T. C. SALTILLO - TORREON	5.32	1	2	6907	75.1	6.5	4.5	2.5	5.7	2.5	2.8	0.4	75.1	6.5	18.4	0.057	0.505	25.536549	-103.246034

29 CARR: LIBRAMIENTO DE SALTILLO J.L.P.

CLAVE: 05031

RUTA: COA

AÑO: 2010

LUGAR	ESTACION				CLASIFICACION VEHICULAR EN PORCIENTO								COORDENADAS						
	KM	TE	SC	TDPA	A	B	C2	C3	T3S2	T3S3	T3S2R4	OTROS	A	B	C	K'	D	LATITUD	LONGITUD
T. C. ENT. BELLA UNION - SALTILLO	0.00																		
X. C. SALTILLO - ARTEAGA	2.50	3	0	12662	69.6	3.6	4.7	6.0	6.4	4.3	3.9	1.5	69.6	3.6	26.8	0.086	0.524	25.442400	-100.889621
T. C. SALTILLO - MONTERREY	18.00	1	0	15716	70.7	3.4	4.6	5.8	5.8	4.4	4.0	1.3	70.7	3.4	25.9	0.081	0.510	25.548065	-100.923078

30 CARR: LIBRAMIENTO DE TORREON

CLAVE: 05516

RUTA: COA

AÑO: 2010

LUGAR	ESTACION				CLASIFICACION VEHICULAR EN PORCIENTO								COORDENADAS						
	KM	TE	SC	TDPA	A	B	C2	C3	T3S2	T3S3	T3S2R4	OTROS	A	B	C	K'	D	LATITUD	LONGITUD
T. C. DURANGO - TORREON	0.00																		
X. C. SALTILLO - TORREON	6.70	1	1	15057	80.2	4.7	4.2	2.7	2.1	2.5	2.6	1.0	80.2	4.7	15.1	0.069	0.503	25.530769	-103.365925
X. C. SALTILLO - TORREON	6.70	1	2	14820	81.4	4.8	4.0	2.8	2.3	2.4	1.3	1.0	81.4	4.8	13.8	0.070	0.503	25.530817	-103.366013







COAHUILA

38 CARR: SAN BUENAVENTURA - ESTACION HERMANAS

CLAVE: 05004

RUTA: COA-034

AÑO: 2010

LUGAR	ESTACION				CLASIFICACION VEHICULAR EN PORCIENTO								COORDENADAS						
	KM	TE	SC	TDPA	A	B	C2	C3	T3S2	T3S3	T3S2R4	OTROS	A	B	C	K'	D	LATITUD	LONGITUD
SAN BUENAVENTURA	0.00	3	0	1350	92.9	2.2	1.1	1.2	0.9	0.8	0.5	0.4	92.9	2.2	4.9	0.071	0.504	27.079133	-101.531047
ESTACION HERMANAS	50.00	1	0	1521	92.3	2.2	1.2	1.1	1.2	1.1	0.5	0.4	92.3	2.2	5.5	0.082	0.512	27.223240	-101.229619

39 CARR: T. C. (ENT. MORELOS - SALTILLO) - PARRAS DE LA FUENTE

CLAVE: 05510

RUTA: COA-105

AÑO: 2010

LUGAR	ESTACION				CLASIFICACION VEHICULAR EN PORCIENTO								COORDENADAS						
	KM	TE	SC	TDPA	A	B	C2	C3	T3S2	T3S3	T3S2R4	OTROS	A	B	C	K'	D	LATITUD	LONGITUD
T. C. MORELOS - SALTILLO	0.00	3	0	3672	79.9	7.6	5.0	2.6	1.4	1.9	1.4	0.2	79.9	7.6	12.5	0.085	0.501	25.262233	-101.097055
GRAL. CEPEDA	40.00	1	0	913	80.4	7.3	5.6	2.4	0.9	1.4	1.4	0.6	80.4	7.3	12.3	0.074	0.502	25.362141	-101.477922
GRAL. CEPEDA	40.00	3	0	646	83.0	5.0	4.9	3.1	0.9	1.0	1.5	0.6	83.0	5.0	12.0	0.085	0.503	25.379609	-101.486678
PARRAS DE LA FUENTE	102.00	1	0	1438	88.6	3.1	4.4	1.4	0.4	0.8	1.2	0.1	88.6	3.1	8.3	0.124	0.524	25.443344	-102.145314

40 CARR: T. C. (SALTILLO - MONCLOVA) - RAMOS ARIZPE

CLAVE: 05508

RUTA: COA

AÑO: 2010

LUGAR	ESTACION				CLASIFICACION VEHICULAR EN PORCIENTO								COORDENADAS						
	KM	TE	SC	TDPA	A	B	C2	C3	T3S2	T3S3	T3S2R4	OTROS	A	B	C	K'	D	LATITUD	LONGITUD
T. C. SALTILLO - MONCLOVA	0.00	3	0	1469	64.5	4.8	2.6	4.0	6.1	9.4	7.7	0.9	64.5	4.8	30.7	0.076	0.503	25.529445	-101.002787
RAMOS ARIZPE	12.00																		

41 CARR: TORREON - ESCUADRON 201

CLAVE: 05022

RUTA: COA-011

AÑO: 2010

LUGAR	ESTACION				CLASIFICACION VEHICULAR EN PORCIENTO								COORDENADAS						
	KM	TE	SC	TDPA	A	B	C2	C3	T3S2	T3S3	T3S2R4	OTROS	A	B	C	K'	D	LATITUD	LONGITUD
TORREON	0.00	3	1	9612	82.0	5.4	2.9	2.1	3.6	1.9	1.1	1.0	82.0	5.4	12.6	0.084	0.503	25.584155	-103.387913
TORREON	0.00	3	2	9737	82.0	5.6	2.9	2.0	3.7	1.9	1.1	0.8	82.0	5.6	12.4	0.086	0.503	25.584394	-103.388094
EL AGUILA	11.35	1	0	5125	84.4	5.6	2.1	1.6	3.2	1.0	1.2	0.9	84.4	5.6	10.0	0.084	0.505	25.614328	-103.374226
ESCUADRON 201	17.06	1	0	1498	83.7	5.1	2.4	2.3	3.4	1.1	0.9	1.1	83.7	5.1	11.2	0.056	0.509	25.663654	-103.347188







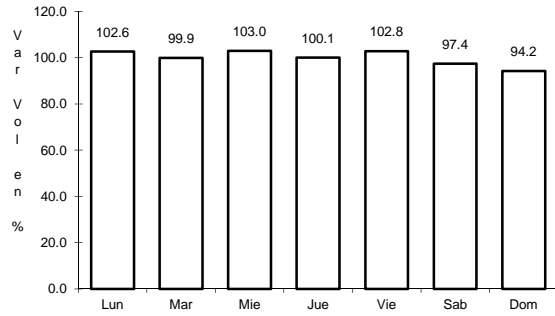




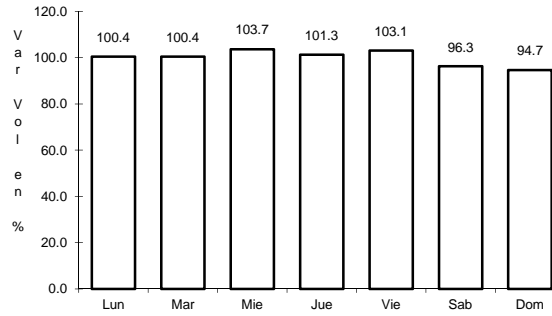
16 CARR: PIEDRAS NEGRAS - NUEVO LAREDO

CLAVE: 00503

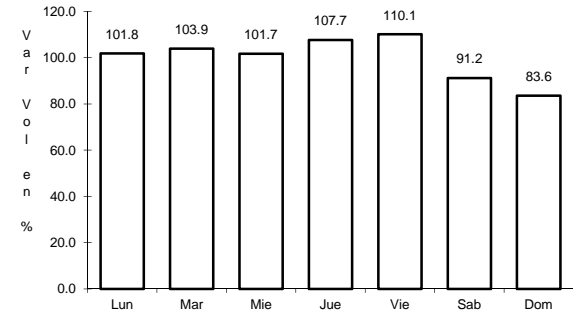
ruta: MEX-002



Km: 0.00      Tipo: 3      Sent: 1



Km: 0.00      Tipo: 3      Sent: 2

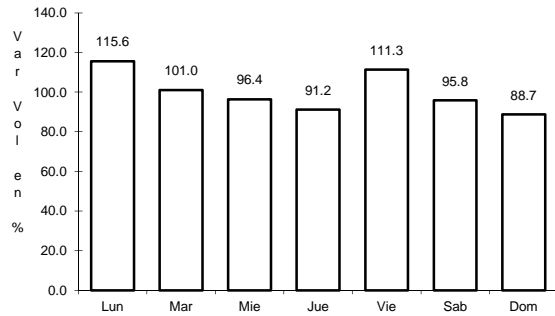


Km: 175.00      Tipo: 1      Sent: 0

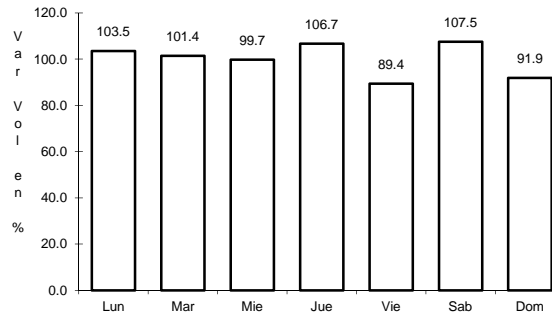
17 CARR: SALTILLO - MONCLOVA

CLAVE: 05406

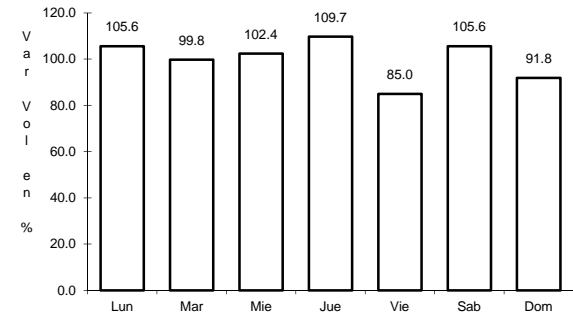
ruta: MEX-057



Km: 13.00      Tipo: 1      Sent: 0



Km: 192.00      Tipo: 1      Sent: 1

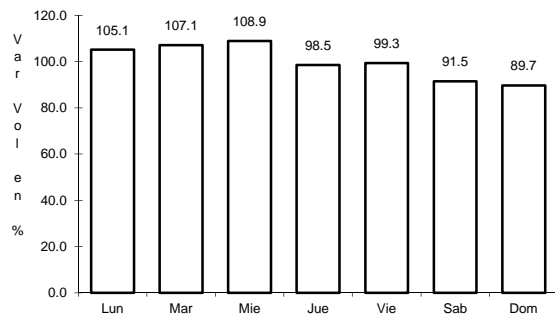


Km: 192.00      Tipo: 1      Sent: 2

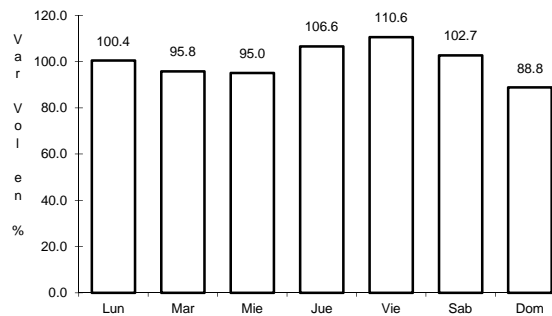
18 CARR: SALTILLO - MONTERREY

CLAVE: 00087

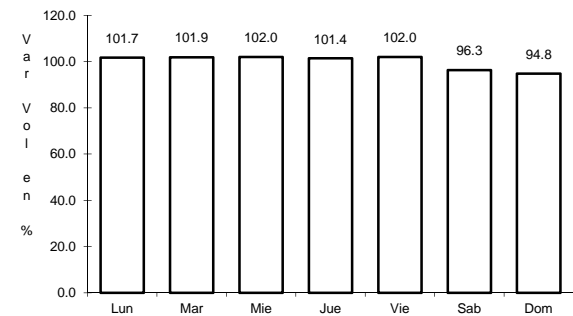
ruta: MEX-040



Km: 4.25      Tipo: 3      Sent: 1



Km: 4.25      Tipo: 3      Sent: 2

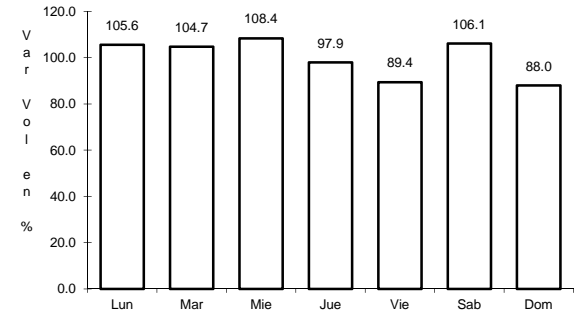
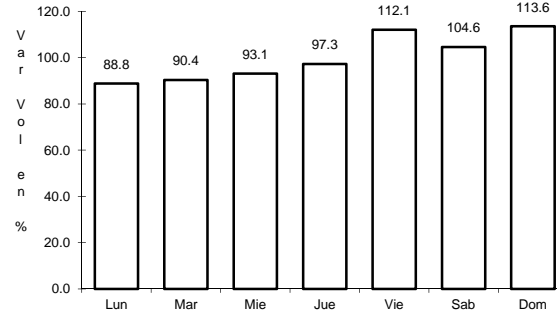
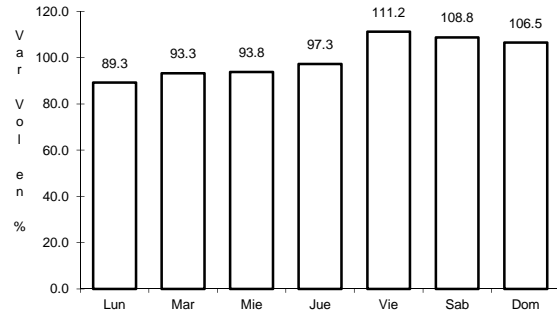


Km: 79.20      Tipo: 1      Sent: 1

19 CARR: SALTILLO - TORREON

CLAVE: 05086

RUTA: MEX-040



Km: 6.10

Tipo: 3

Sent: 1

Km: 6.10

Tipo: 3

Sent: 2

Km: 246.80

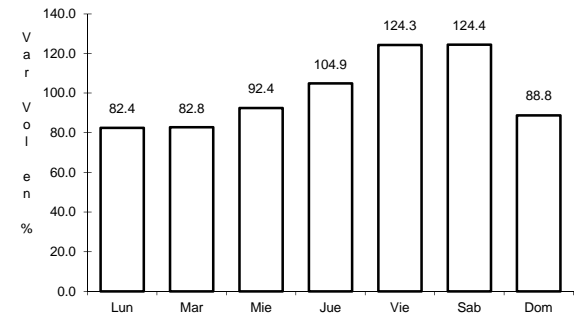
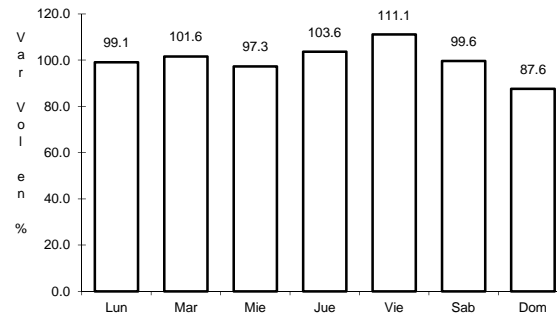
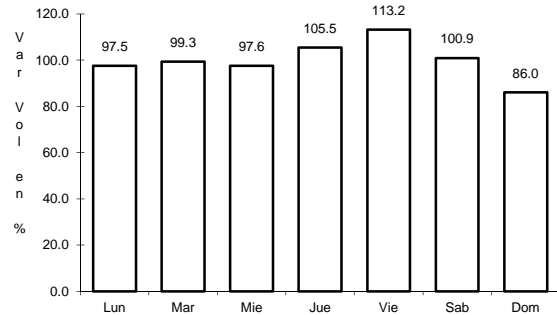
Tipo: 1

Sent: 0

20 CARR: PUERTO MEXICO - OJO CALIENTE (CUOTA)

CLAVE: 00115

RUTA: MEX-057D



Km: 23.88

Tipo: 1

Sent: 1

Km: 23.88

Tipo: 1

Sent: 2

Km: 50.30

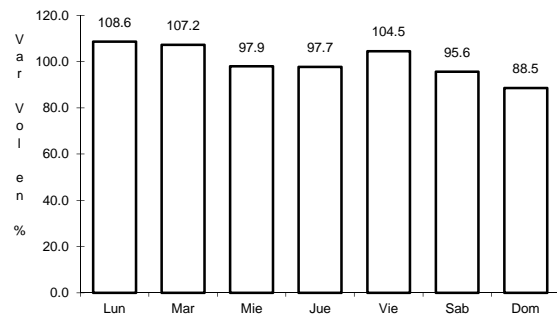
Tipo: 3

Sent: 1

22 CARR: ALLENDE - VILLA UNION

CLAVE: 05001

RUTA: COA-015



Km: 0.00

Tipo: 3

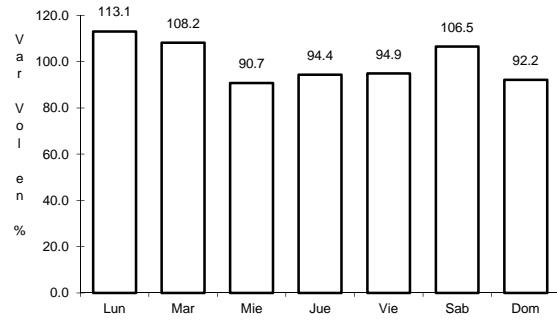
Sent: 0



23 CARR: CUATRO CIENEGAS - OCAMPO

CLAVE: 05026

ruta: COA-048



Km: 0.00

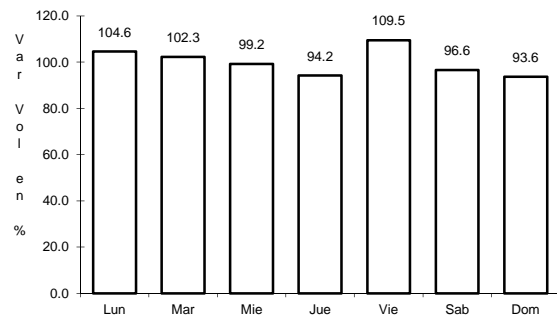
Tipo: 3

Sent: 0

24 CARR: EL SAUZ - PALAU

CLAVE: 05060

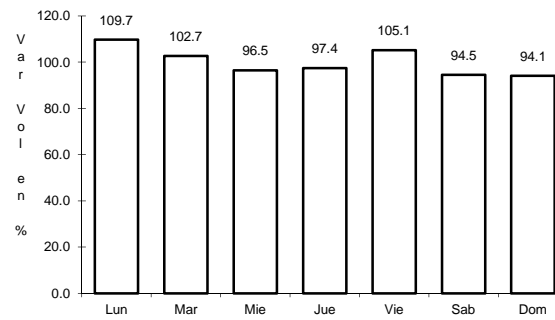
ruta: COA-022



Km: 0.00

Tipo: 3

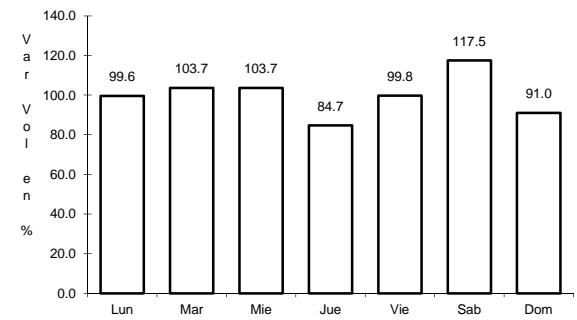
Sent: 1



Km: 0.00

Tipo: 3

Sent: 2



Km: 42.50

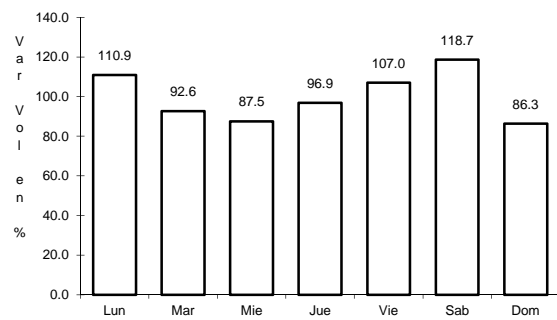
Tipo: 1

Sent: 0

25 CARR: EMILIANO ZAPATA - VIESCA

CLAVE: 05521

ruta: COA-082



Km: 0.00

Tipo: 3

Sent: 0



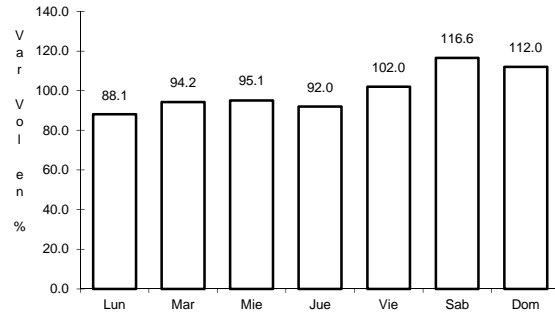




35 CARR: RAMAL A LAMADRID

CLAVE: 05522

ruta: COA-042



Km: 0.00

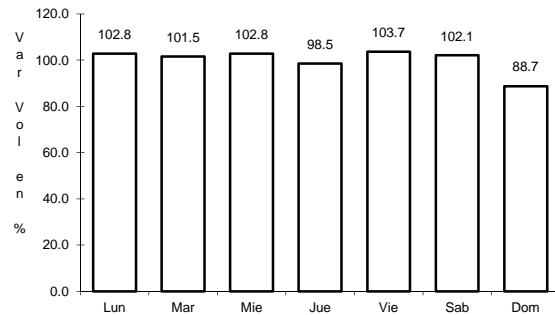
Tipo: 3

Sent: 0

36 CARR: SABINAS - DON MARTIN

CLAVE: 05501

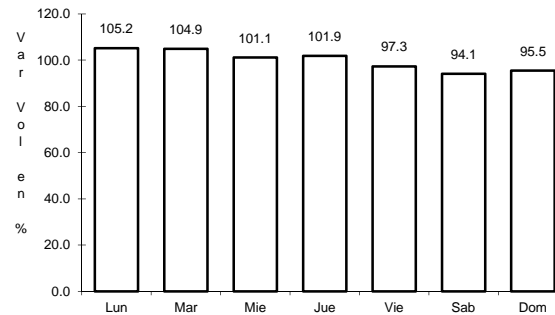
ruta: COA-025



Km: 0.00

Tipo: 3

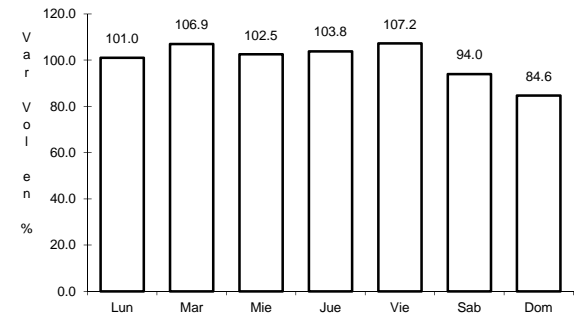
Sent: 0



Km: 53.00

Tipo: 3

Sent: 0



Km: 66.00

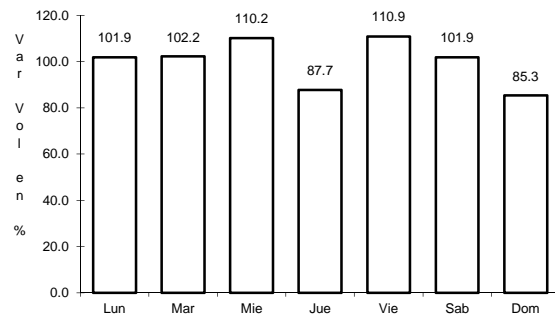
Tipo: 1

Sent: 0

37 CARR: SALTILLO - ARTEAGA

CLAVE: 05008

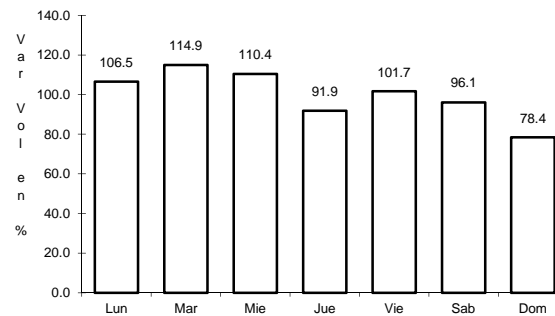
ruta: COA-106



Km: 0.00

Tipo: 3

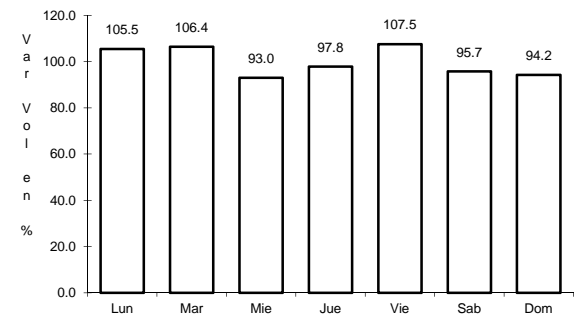
Sent: 1



Km: 0.00

Tipo: 3

Sent: 2



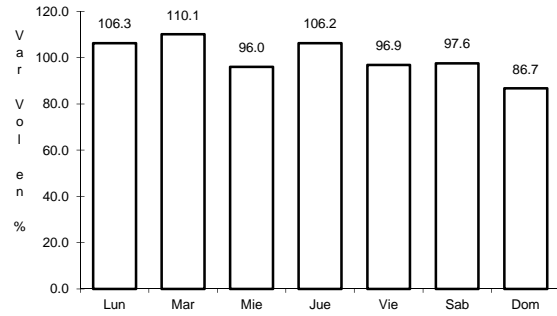
Km: 12.00

Tipo: 1

Sent: 1



41 CARR: TORREON - ESCUADRON 201

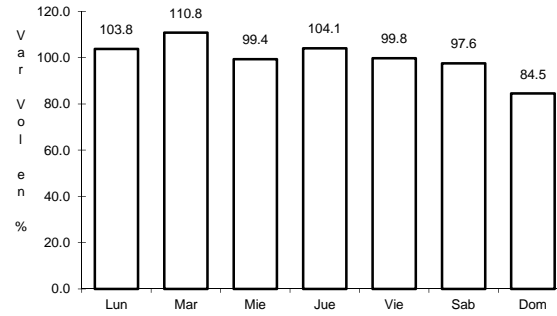


Km: 0.00

Tipo: 3

Sent: 1

CLAVE: 05022

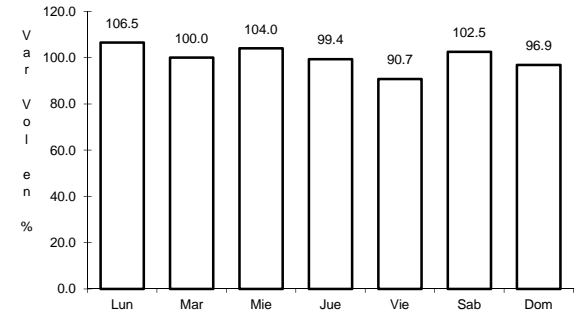


Km: 0.00

Tipo: 3

Sent: 2

RUTA: COA-011



Km: 17.06

Tipo: 1

Sent: 0