

CAMPECHE

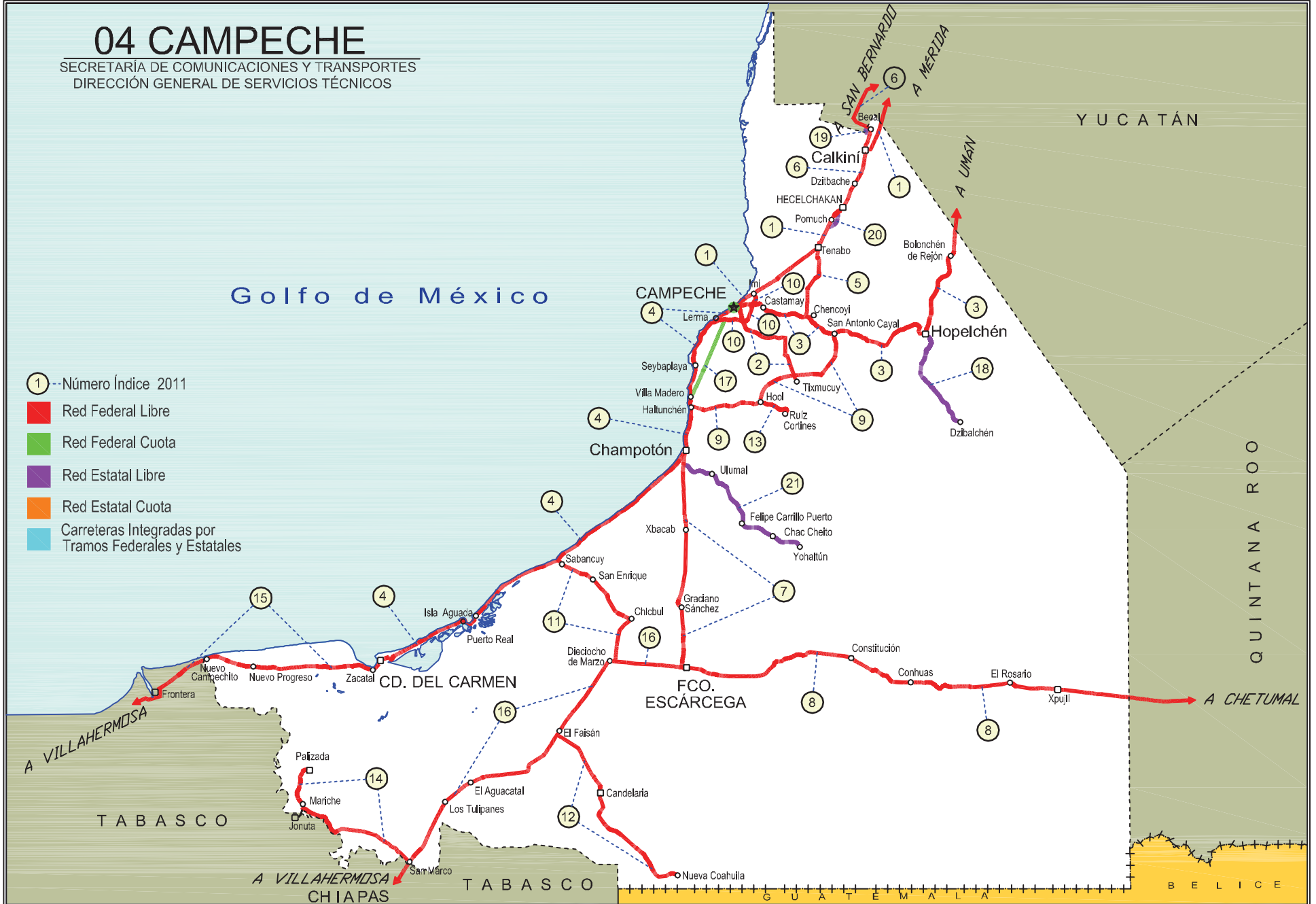
No. INDICE	CARRETERA	RUTA
	---RED FEDERAL LIBRE---	
1	CAMPECHE - MERIDA	MEX-180
2	CAMPECHE - TIXMUCUY	MEX
3	CAMPECHE - UMAN	MEX-261
4	CD. DEL CARMEN - CAMPECHE	MEX-180
5	CHENCOYI - TENABO	MEX-263
6	DZITBALCHE - ENT. SAN BERNARDO	MEX-265
7	FRANCISCO ESCARCEGA - CHAMPOTON	MEX-261
8	FRANCISCO ESCARCEGA - CHETUMAL	MEX-186
9	HALTUNCHEN - SAN ANTONIO CAYAL	MEX-188
10	LIBRAMIENTO DE CAMPECHE	MEX-202
11	PRESIDENTE DIAZ ORDAZ - SABANCUY	MEX-259
12	RAMAL A NUEVO COAHUILA	MEX-221
13	RAMAL A RUIZ CORTINES	MEX
14	SAN MARCO - PALIZADA	MEX-217
15	VILLAHERMOSA - CD. DEL CARMEN	MEX-180
16	VILLAHERMOSA - FRANCISCO ESCARCEGA	MEX-186
	---RED FEDERAL DE CUOTA---	
17	ENT. VILLA MADERO - CAMPECHE (CUOTA)	MEX-180D
	---RED ESTATAL LIBRE---	
18	HOPELCHEN - DZIBALCHEN	CAM-261
19	LIBRAMIENTO DE BECAL	CAM
20	LIBRAMIENTO DE POMUCH	CAM
21	T. C. (FRANCISCO ESCARCEGA - CHAMPOTON) - YOHALTUN	CAM

04 CAMPECHE

SECRETARÍA DE COMUNICACIONES Y TRANSPORTES
DIRECCIÓN GENERAL DE SERVICIOS TÉCNICOS

Golfo de México

- ① -- Número Índice 2011
- Red Federal Libre
- Red Federal Cuota
- Red Estatal Libre
- Red Estatal Cuota
- Carreteras Integradas por Tramos Federales y Estatales



CAMPECHE

1 CARR: CAMPECHE - MERIDA

CLAVE: 00066

RUTA: MEX-180

AÑO: 2010

LUGAR	ESTACION				CLASIFICACION VEHICULAR EN PORCIENTO								COORDENADAS						
	KM	TE	SC	TDPA	A	B	C2	C3	T3S2	T3S3	T3S2R4	OTROS	A	B	C	K'	D	LATITUD	LONGITUD
CAMPECHE	0.00	3	1	3025	77.4	5.3	4.6	2.9	4.8	1.0	3.6	0.4	77.4	5.3	17.3	0.074	0.508	19.890338	-90.468097
CAMPECHE	0.00	3	2	3120	77.0	5.5	4.5	3.1	5.1	1.0	3.4	0.4	77.0	5.5	17.5	0.072	0.508	19.890338	-90.468097
T. DER. LIBRAMIENTO DE CAMPECHE	7.00	3	0	7872	76.9	5.6	4.9	2.9	4.8	1.0	3.5	0.4	76.9	5.6	17.5	0.078	0.505	19.891933	-90.462338
TENABO	40.00	1	0	6165	77.0	5.6	4.8	3.1	4.8	0.9	3.4	0.4	77.0	5.6	17.4	0.084	0.508	20.030413	-90.230013
T. DER. LIBRAMIENTO DE POMUCH (2° ACCESO)	50.00	3	0	6681	76.8	5.5	4.8	3.1	5.0	1.0	3.4	0.4	76.8	5.5	17.7	0.077	0.501	20.149263	-90.163513
LIM. EDOS. TERM. CAMP. PPIA. YUC.	96.96																		
KOPOMA	124.29	3	0	6056	69.8	5.0	7.0	5.1	6.6	1.3	4.9	0.3	69.8	5.0	25.2	0.068	0.501	20.662001	-89.890946
T. DER. LIBRAMIENTO DE CHOCHOLA (1° ACCESO)	137.89	1	0	6577	71.6	4.5	6.6	4.8	6.5	1.3	4.4	0.3	71.6	4.5	23.9	0.077	0.501	20.734868	-89.838657
T. IZQ. UMAN	146.99	3	0	5051	70.9	4.7	6.8	4.7	6.8	1.2	4.6	0.3	70.9	4.7	24.4	0.066	0.503	20.797663	-89.809641
X. C. CAMPECHE - UMAN	160.49	1	0	5756	69.8	5.1	7.0	5.2	6.5	1.4	4.7	0.3	69.8	5.1	25.1	0.067	0.500	20.836566	-89.753718
T. C. PERIFERICO DE MERIDA	171.21																		

2 CARR: CAMPECHE - TIXMUCUY

CLAVE: 04575

RUTA: MEX

AÑO: 2010

LUGAR	ESTACION				CLASIFICACION VEHICULAR EN PORCIENTO								COORDENADAS						
	KM	TE	SC	TDPA	A	B	C2	C3	T3S2	T3S3	T3S2R4	OTROS	A	B	C	K'	D	LATITUD	LONGITUD
CAMPECHE	0.00	3	1	2989	87.0	3.3	6.4	2.1	0.3	0.1	0.5	0.3	87.0	3.3	9.7	0.079	0.501	19.802361	-90.504014
CAMPECHE	0.00	3	2	2997	86.5	3.4	6.8	1.8	0.7	0.1	0.4	0.3	86.5	3.4	10.1	0.080	0.501	19.802361	-90.504014
X. C. LIBRAMIENTO DE CAMPECHE	4.00	3	0	3621	90.3	3.0	2.8	2.6	0.6	0.0	0.2	0.5	90.3	3.0	6.7	0.079	0.507	19.784113	-90.499398
X. C. HALTUNCHEN - CAYAL	39.00	1	0	897	89.2	5.3	4.2	0.6	0.0	0.4	0.1	0.2	89.2	5.3	5.5	0.088	0.501	19.604498	-90.319468
TIXMUCUY	42.00	1	0	400	94.0	1.4	3.0	1.6	0.0	0.0	0.0	0.0	94.0	1.4	4.6	0.065	0.502	19.602900	-90.319562

3 CARR: CAMPECHE - UMAN

CLAVE: 00164

RUTA: MEX-261

AÑO: 2010

LUGAR	ESTACION				CLASIFICACION VEHICULAR EN PORCIENTO								COORDENADAS						
	KM	TE	SC	TDPA	A	B	C2	C3	T3S2	T3S3	T3S2R4	OTROS	A	B	C	K'	D	LATITUD	LONGITUD
CAMPECHE	0.00																		
X. C. LIBRAMIENTO DE CAMPECHE	7.00	1	0	4146	82.9	2.8	5.7	2.8	1.5	3.8	0.4	0.1	82.9	2.8	14.3	0.080	0.501	19.850519	-90.470521
X. C. LIBRAMIENTO DE CAMPECHE	7.00	3	0	1729	81.8	2.9	5.8	3.1	1.6	4.3	0.4	0.1	81.8	2.9	15.3	0.080	0.502	19.849345	-90.465738
T. IZQ. TENABO	30.88	1	0	1211	82.5	2.9	5.5	2.9	1.6	4.1	0.4	0.1	82.5	2.9	14.6	0.078	0.501	19.804698	-90.275290
T. IZQ. TENABO	30.88	3	0	1220	82.3	2.9	5.7	2.8	1.6	4.2	0.4	0.1	82.3	2.9	14.8	0.077	0.501	19.804532	-90.273139
T. DER. EDZNA	44.51	1	0	1093	82.7	2.6	5.7	2.9	1.5	4.1	0.4	0.1	82.7	2.6	14.7	0.075	0.501	19.743675	-90.178079
T. DER. EDZNA	44.51	3	0	1017	82.8	2.6	5.6	2.9	1.5	4.1	0.4	0.1	82.8	2.6	14.6	0.077	0.502	19.744500	-90.173077
HOPELCHEN	84.88	1	0	1324	82.0	2.9	5.7	3.0	1.7	4.2	0.4	0.1	82.0	2.9	15.1	0.095	0.519	19.752606	-89.854478
BOLONCHEN DE REJON	117.88	3	0	714	82.4	2.9	5.8	2.8	1.6	4.0	0.4	0.1	82.4	2.9	14.7	0.091	0.516	20.007031	-89.736023

CAMPECHE

3 CARR: CAMPECHE - UMAN

CLAVE: 00164

RUTA: MEX-261

AÑO: 2010

LUGAR	ESTACION				CLASIFICACION VEHICULAR EN PORCIENTO								COORDENADAS						
	KM	TE	SC	TDPA	A	B	C2	C3	T3S2	T3S3	T3S2R4	OTROS	A	B	C	K'	D	LATITUD	LONGITUD
LIM. EDOS. TERM. CAMP. PPIA. YUC.	126.88																		
T. DER. SAYIL	140.88	1	0	631	82.1	2.8	6.0	2.9	1.6	4.1	0.4	0.1	82.1	2.8	15.1	0.089	0.506	20.211467	-89.665906
SANTA ELENA	158.88	1	0	841	83.0	2.7	5.5	2.9	1.6	3.8	0.4	0.1	83.0	2.7	14.3	0.086	0.503	20.318666	-89.643248
T. IZO. RUINAS DE UXMAL	172.48	1	0	651	83.0	2.6	5.4	3.0	1.5	4.0	0.4	0.1	83.0	2.6	14.4	0.057	0.501	20.362922	-89.766857
MUNA	187.43	1	0	1147	82.9	2.7	5.5	3.0	1.5	3.9	0.4	0.1	82.9	2.7	14.4	0.092	0.507	20.460925	-89.725142
MUNA	187.43	3	0	3102	82.6	2.6	6.0	2.8	1.5	4.0	0.4	0.1	82.6	2.6	14.8	0.073	0.503	20.512171	-89.709087
XPETEN	225.38	1	0	3988	81.7	2.8	6.2	3.1	1.6	4.1	0.4	0.1	81.7	2.8	15.5	0.074	0.503	20.804204	-89.734507
UMAN	230.83	1	0	2903	82.5	2.7	5.9	2.9	1.6	3.9	0.4	0.1	82.5	2.7	14.8	0.062	0.501	20.868042	-89.746231

4 CARR: CD. DEL CARMEN - CAMPECHE

CLAVE: 04065

RUTA: MEX-180

AÑO: 2010

LUGAR	ESTACION				CLASIFICACION VEHICULAR EN PORCIENTO								COORDENADAS						
	KM	TE	SC	TDPA	A	B	C2	C3	T3S2	T3S3	T3S2R4	OTROS	A	B	C	K'	D	LATITUD	LONGITUD
CD. DEL CARMEN	0.00	3	1	4163	83.8	2.4	6.5	2.4	1.8	0.5	2.4	0.2	83.8	2.4	13.8	0.078	0.504	18.659490	-91.773693
CD. DEL CARMEN	0.00	3	2	4226	85.0	2.1	5.9	2.3	1.9	0.5	2.1	0.2	85.0	2.1	12.9	0.074	0.504	18.659490	-91.773693
ISLA AGUADA	37.75	3	0	3629	84.9	2.2	5.8	2.3	1.8	0.5	2.3	0.2	84.9	2.2	12.9	0.064	0.506	18.796677	-91.483917
T. DER. SABANCUY	78.05	3	0	2947	83.7	2.4	6.2	2.5	2.0	0.5	2.5	0.2	83.7	2.4	13.9	0.078	0.501	18.992125	-91.187045
CHAMPOTON	141.80	1	0	2885	65.9	4.5	9.1	5.5	7.7	1.5	5.3	0.5	65.9	4.5	29.6	0.068	0.504	19.323209	-90.745238
CHAMPOTON	141.80	3	1	3521	73.7	4.6	4.9	4.3	5.6	1.3	4.9	0.7	73.7	4.6	21.7	0.062	0.508	19.372413	-90.721630
CHAMPOTON	141.80	3	2	3631	73.8	4.2	4.9	4.7	5.6	1.3	4.8	0.7	73.8	4.2	22.0	0.069	0.508	19.372413	-90.721630
T. DER. LIBRAMIENTO DE SEYBAPLAYA (1º ACCESO)	175.71	1	0	3014	80.2	4.3	7.1	3.8	3.3	0.9	0.2	0.2	80.2	4.3	15.5	0.063	0.516	19.621766	-90.685439
T. DER. LIBRAMIENTO DE SEYBAPLAYA (1º ACCESO)	175.71	3	0	2666	81.7	4.0	6.6	3.5	2.9	0.9	0.2	0.2	81.7	4.0	14.3	0.082	0.516	19.625840	-90.685174
T. DER. LIBRAMIENTO DE CAMPECHE	195.70	1	0	2741	80.2	4.4	7.3	3.5	3.3	0.9	0.2	0.2	80.2	4.4	15.4	0.096	0.513	19.788486	-90.622654
LERMA	199.51	1	0	3876	80.7	4.3	7.1	3.5	3.1	0.9	0.2	0.2	80.7	4.3	15.0	0.072	0.506	19.792087	-90.619039
CAMPECHE	203.18																		

5 CARR: CHENCOYI - TENABO

CLAVE: 04576

RUTA: MEX-263

AÑO: 2010

LUGAR	ESTACION				CLASIFICACION VEHICULAR EN PORCIENTO								COORDENADAS						
	KM	TE	SC	TDPA	A	B	C2	C3	T3S2	T3S3	T3S2R4	OTROS	A	B	C	K'	D	LATITUD	LONGITUD
T. C. CAMPECHE - UMAN	0.00																		
TENABO	28.00	1	0	819	88.8	4.4	5.0	0.0	0.0	0.7	0.8	0.3	88.8	4.4	6.8	0.077	0.503	20.028489	-90.226667

CAMPECHE

6 CARR: DZITBALCHE - ENT. SAN BERNARDO

CLAVE: 00162

RUTA: MEX-265

AÑO: 2010

LUGAR	ESTACION				CLASIFICACION VEHICULAR EN PORCIENTO								COORDENADAS						
	KM	TE	SC	TDPA	A	B	C2	C3	T3S2	T3S3	T3S2R4	OTROS	A	B	C	K'	D	LATITUD	LONGITUD
T. C. CAMPECHE - MERIDA	0.00																		
T. IZO. LIBRAMIENTO DE BECAL (1° ACCESO)	12.33	1	0	2728	85.6	4.5	6.0	1.8	1.1	0.2	0.3	0.5	85.6	4.5	9.9	0.072	0.508	20.423037	-90.032412
T. IZO. LIBRAMIENTO DE BECAL (2° ACCESO)	15.41	3	0	3120	85.3	4.4	5.8	1.6	1.2	0.5	0.7	0.5	85.3	4.4	10.3	0.067	0.503	20.450528	-90.040117
LIM. EDOS. TERM. CAMP. PPIA. YUC.	15.80																		
HALACHO	21.08	1	0	4519	82.3	6.9	4.2	3.5	1.2	1.1	0.2	0.6	82.3	6.9	10.8	0.068	0.502	20.469707	-90.067022
T. IZO. LIBRAMIENTO DE MAXCANU (1° ACCESO)	35.60	1	0	3479	80.1	5.5	6.1	3.4	2.7	1.5	0.2	0.5	80.1	5.5	14.4	0.077	0.501	20.584237	-90.019069
T. DER. MUNA	40.36	3	0	3656	81.7	4.6	6.2	3.7	1.4	1.4	0.2	0.8	81.7	4.6	13.7	0.066	0.501	20.601926	-89.975188
T. C. CAMPECHE - MERIDA	41.53																		

7 CARR: FRANCISCO ESCARCEGA - CHAMPOTON

CLAVE: 04103

RUTA: MEX-261

AÑO: 2010

LUGAR	ESTACION				CLASIFICACION VEHICULAR EN PORCIENTO								COORDENADAS						
	KM	TE	SC	TDPA	A	B	C2	C3	T3S2	T3S3	T3S2R4	OTROS	A	B	C	K'	D	LATITUD	LONGITUD
FRANCISCO ESCARCEGA	0.00	3	0	2823	74.0	4.5	7.0	3.9	5.5	1.7	2.7	0.7	74.0	4.5	21.5	0.061	0.505	18.626235	-90.741718
T. IZO. LEY FEDERAL DE LA REFORMA AGRARIA	51.40	1	0	3061	73.9	4.5	6.9	4.0	5.8	1.6	2.6	0.7	73.9	4.5	21.6	0.072	0.504	19.063675	-90.725269
T. DER. ULUMAL Y PATZAJOL	77.00	1	0	2407	74.4	4.6	6.6	3.8	5.8	1.6	2.5	0.7	74.4	4.6	21.0	0.083	0.521	19.295327	-90.732213
CHAMPOTON	81.40	1	1	2135	72.6	4.8	7.5	4.0	6.0	1.8	2.6	0.7	72.6	4.8	22.6	0.081	0.529	19.317766	-90.729102
CHAMPOTON	81.40	1	2	2139	74.1	4.3	6.9	4.0	5.9	1.6	2.5	0.7	74.1	4.3	21.6	0.082	0.529	19.317766	-90.729102

8 CARR: FRANCISCO ESCARCEGA - CHETUMAL

CLAVE: 00093

RUTA: MEX-186

AÑO: 2010

LUGAR	ESTACION				CLASIFICACION VEHICULAR EN PORCIENTO								COORDENADAS						
	KM	TE	SC	TDPA	A	B	C2	C3	T3S2	T3S3	T3S2R4	OTROS	A	B	C	K'	D	LATITUD	LONGITUD
FRANCISCO ESCARCEGA	0.00	3	0	4951	77.7	4.9	4.5	2.2	4.6	1.6	3.9	0.6	77.7	4.9	17.4	0.068	0.502	18.603932	-90.716808
ADOLFO LOPEZ MATEOS	41.50	1	0	1929	79.8	3.5	2.9	3.7	3.6	2.6	3.4	0.5	79.8	3.5	16.7	0.056	0.501	18.639314	-90.305387
T. DER. SILVITUC	55.70	1	0	1788	79.2	3.7	2.9	3.7	3.8	2.6	3.6	0.5	79.2	3.7	17.1	0.065	0.501	18.650961	-90.272570
T. DER. SILVITUC	55.70	3	0	1523	79.5	3.6	3.0	3.8	3.8	2.5	3.3	0.5	79.5	3.6	16.9	0.058	0.501	18.649509	-90.261855
CONHUAS	100.00	1	0	1615	79.2	3.8	3.1	3.6	3.7	2.6	3.5	0.5	79.2	3.8	17.0	0.063	0.501	18.540276	-89.916232
XPUJIL	155.73	1	0	2102	80.0	3.6	2.7	3.4	3.7	2.6	3.5	0.5	80.0	3.6	16.4	0.062	0.501	18.508996	-89.405390
LIM. EDOS. TERM. CAMP. PPIA. OROO.	179.90																		
NICOLAS BRAVO	206.01	1	0	2029	79.5	3.7	2.9	3.6	3.7	2.6	3.5	0.5	79.5	3.7	16.8	0.070	0.504	18.458362	-88.944031
NICOLAS BRAVO	206.01	3	0	2231	79.3	3.4	3.0	3.9	3.6	2.5	3.6	0.7	79.3	3.4	17.3	0.072	0.504	18.459177	-88.916888
T. IZO. MOROCOY	214.90	1	0	1882	81.3	3.4	2.2	3.3	4.4	2.0	3.2	0.2	81.3	3.4	15.3	0.082	0.500	18.478776	-88.818023
T. IZO. MOROCOY	214.90	3	0	2085	83.1	3.4	2.7	3.3	2.7	2.1	2.4	0.3	83.1	3.4	13.5	0.063	0.501	18.478827	-88.815173
T. DER. UNION	247.50	1	0	2638	82.5	3.7	2.8	3.3	2.7	2.2	2.5	0.3	82.5	3.7	13.8	0.086	0.503	18.505122	-88.527013

CAMPECHE

8 CARR: FRANCISCO ESCARCEGA - CHETUMAL

CLAVE: 00093

RUTA: MEX-186

AÑO: 2010

LUGAR	ESTACION				CLASIFICACION VEHICULAR EN PORCIENTO								COORDENADAS						
	KM	TE	SC	TDPA	A	B	C2	C3	T3S2	T3S3	T3S2R4	OTROS	A	B	C	K'	D	LATITUD	LONGITUD
T. DER. UNION	247.50	3	0	4501	83.0	3.5	2.7	3.4	2.7	2.1	2.3	0.3	83.0	3.5	13.5	0.085	0.500	18.506010	-88.519622
T. IZO. FPE. CARRILLO PUERTO	255.15	1	0	3674	83.2	3.5	2.7	3.3	2.6	2.2	2.2	0.3	83.2	3.5	13.3	0.076	0.502	18.525836	-88.469861
T. DER. SUBTENIENTE LOPEZ	268.57	1	0	11697	83.2	3.5	2.6	3.2	2.6	2.1	2.5	0.3	83.2	3.5	13.3	0.075	0.501	18.518083	-88.383799
T. IZO. AV. INSURGENTES	270.00	1	1	3812	82.3	3.5	2.9	3.6	2.8	2.1	2.5	0.3	82.3	3.5	14.2	0.080	0.508	18.513099	-88.362160
T. IZO. AV. INSURGENTES	270.00	1	2	3777	83.6	3.5	2.5	3.2	2.5	2.1	2.3	0.3	83.6	3.5	12.9	0.079	0.508	18.513099	-88.362160
T. IZO. AV. INSURGENTES	270.00	3	1	5270	83.1	3.4	2.5	3.2	2.8	2.2	2.5	0.3	83.1	3.4	13.5	0.070	0.501	18.510849	-88.354713
T. IZO. AV. INSURGENTES	270.00	3	2	5242	83.2	3.3	2.6	3.2	2.8	2.2	2.4	0.3	83.2	3.3	13.5	0.069	0.501	18.510849	-88.354713
CHETUMAL	277.36	1	1	5986	82.8	3.5	2.6	1.7	3.6	2.4	2.9	0.5	82.8	3.5	13.7	0.084	0.500	18.502090	-88.322130
CHETUMAL	277.36	1	2	5986	82.5	3.4	2.4	1.8	3.6	2.6	3.0	0.7	82.5	3.4	14.1	0.086	0.500	18.502090	-88.322130

9 CARR: HALTUNCHEN - SAN ANTONIO CAYAL

CLAVE: 04009

RUTA: MEX-188

AÑO: 2010

LUGAR	ESTACION				CLASIFICACION VEHICULAR EN PORCIENTO								COORDENADAS						
	KM	TE	SC	TDPA	A	B	C2	C3	T3S2	T3S3	T3S2R4	OTROS	A	B	C	K'	D	LATITUD	LONGITUD
T. C. CD. DEL CARMEN - CAMPECHE	0.00	3	0	1210	90.6	2.5	3.4	1.1	1.1	0.6	0.2	0.5	90.6	2.5	6.9	0.081	0.514	19.499139	-90.700621
SIHOCHAC	14.00	3	0	1144	89.6	2.4	4.3	1.4	1.1	0.2	0.5	0.5	89.6	2.4	8.0	0.084	0.502	19.501667	-90.575036
X. C. CHINA - TIXMUCUY	47.10	1	0	810	88.7	2.6	4.6	1.5	0.9	0.4	0.9	0.4	88.7	2.6	8.7	0.069	0.514	19.603443	-90.321510
EDZNA	59.00	1	0	929	88.8	2.8	4.3	1.4	0.8	0.9	0.6	0.4	88.8	2.8	8.4	0.076	0.506	19.604317	-90.226279
T. DER. PICHUCALCO	60.00	3	0	718	89.7	2.5	4.0	1.1	0.6	0.7	0.9	0.5	89.7	2.5	7.8	0.081	0.507	19.605917	-90.222924
SAN ANTONIO CAYAL	79.00	1	0	495	89.3	2.5	4.3	1.3	0.7	0.8	0.7	0.4	89.3	2.5	8.2	0.097	0.505	19.740324	-90.174041

10 CARR: LIBRAMIENTO DE CAMPECHE

CLAVE: 04573

RUTA: MEX-202

AÑO: 2010

LUGAR	ESTACION				CLASIFICACION VEHICULAR EN PORCIENTO								COORDENADAS						
	KM	TE	SC	TDPA	A	B	C2	C3	T3S2	T3S3	T3S2R4	OTROS	A	B	C	K'	D	LATITUD	LONGITUD
ENT. LERMA	0.00	3	0	3917	75.2	5.5	4.7	2.7	6.3	1.3	4.1	0.2	75.2	5.5	19.3	0.061	0.502	19.790395	-90.615787
X. C. CAMPECHE - UMAN	21.00	1	0	4262	68.6	5.6	5.1	4.0	9.1	1.9	5.4	0.3	68.6	5.6	25.8	0.089	0.522	19.847260	-90.469485
T. C. CAMPECHE - MERIDA	26.00	1	0	4462	68.6	6.0	5.3	4.1	8.5	1.9	5.2	0.4	68.6	6.0	25.4	0.090	0.516	19.888806	-90.464827

11 CARR: PRESIDENTE DIAZ ORDAZ - SABANCUY

CLAVE: 04570

RUTA: MEX-259

AÑO: 2010

LUGAR	ESTACION				CLASIFICACION VEHICULAR EN PORCIENTO								COORDENADAS						
	KM	TE	SC	TDPA	A	B	C2	C3	T3S2	T3S3	T3S2R4	OTROS	A	B	C	K'	D	LATITUD	LONGITUD
T. C. VILLAHERMOSA - FRANCISCO ESCARCEGA	0.00	3	0	2322	84.3	4.6	4.4	2.1	2.4	1.3	0.6	0.3	84.3	4.6	11.1	0.063	0.504	18.633223	-90.982587
CHICBUL	30.00	1	0	1182	83.9	4.1	4.5	1.8	2.2	2.5	0.7	0.3	83.9	4.1	12.0	0.088	0.508	18.822292	-91.006977

CAMPECHE

15 CARR: VILLAHERMOSA - CD. DEL CARMEN

CLAVE: 00064

RUTA: MEX-180

AÑO: 2010

LUGAR	ESTACION				CLASIFICACION VEHICULAR EN PORCIENTO								COORDENADAS						
	KM	TE	SC	TDPA	A	B	C2	C3	T3S2	T3S3	T3S2R4	OTROS	A	B	C	K'	D	LATITUD	LONGITUD
VILLAHERMOSA	0.00																		
T. IZQ. CD. INDUSTRIAL	4.30	3	1	14231	89.7	2.3	3.2	1.5	1.3	0.6	1.3	0.1	89.7	2.3	8.0	0.069	0.503	18.037154	-92.901536
T. IZQ. CD. INDUSTRIAL	4.30	3	2	14047	89.3	2.4	3.3	1.6	1.3	0.6	1.4	0.1	89.3	2.4	8.3	0.070	0.503	18.037154	-92.901536
MACULTEPEC	18.60	1	0	13228	89.0	2.6	3.3	1.6	1.4	0.6	1.4	0.1	89.0	2.6	8.4	0.072	0.524	18.142286	-92.864539
MACULTEPEC	18.60	3	0	13058	89.3	2.4	3.2	1.6	1.4	0.6	1.4	0.1	89.3	2.4	8.3	0.069	0.503	18.149758	-92.862749
EL ESPINO	33.20	1	0	4797	81.6	0.7	5.4	3.4	4.1	1.2	3.3	0.3	81.6	0.7	17.7	0.079	0.513	18.239454	-92.830011
EL ESPINO	33.20	3	0	5554	80.5	0.8	6.1	3.3	4.3	1.2	3.5	0.3	80.5	0.8	18.7	0.080	0.503	18.255497	-92.831898
T. IZQ. EL BELLOTE	49.67	3	0	5815	80.9	0.7	5.9	3.2	4.4	1.2	3.4	0.3	80.9	0.7	18.4	0.086	0.504	18.395224	-92.798238
FRONTERA	74.59	1	0	7734	80.8	0.8	5.9	3.1	4.4	1.2	3.5	0.3	80.8	0.8	18.4	0.076	0.500	18.513469	-92.660991
FRONTERA	74.59	3	0	3856	81.1	0.8	5.7	3.4	4.2	1.2	3.3	0.3	81.1	0.8	18.1	0.080	0.502	18.541069	-92.633878
T. IZQ. ESCOLLERAS	78.00	3	0	3860	79.9	0.8	6.2	3.3	4.6	1.2	3.7	0.3	79.9	0.8	19.3	0.083	0.506	18.574202	-92.586035
PUENTE SAN PEDRO	96.50	3	0	3756	80.3	0.8	6.0	3.4	4.3	1.2	3.7	0.3	80.3	0.8	18.9	0.086	0.507	18.641359	-92.463339
LIM. EDOS. TERM. TAB. PPIA. CAMP.	99.75																		
NUEVO CAMPECHITO	100.00	1	0	4332	81.2	0.8	5.7	3.3	4.2	1.2	3.3	0.3	81.2	0.8	18.0	0.082	0.501	18.642431	-92.457951
NUEVO PROGRESO	116.57	1	0	3556	73.5	7.0	4.9	3.3	4.7	1.0	5.2	0.4	73.5	7.0	19.5	0.071	0.502	18.626477	-92.325692
PUENTE ZACATAL	162.4102	2	0	4602	73.1	7.0	5.1	3.2	4.9	1.1	5.2	0.4	73.1	7.0	19.9			18.641877	-92.460302
ZACATAL	163.17	1	0	3856	72.6	6.9	5.1	3.2	5.2	1.1	5.5	0.4	72.6	6.9	20.5	0.086	0.500	18.616479	-91.874506
CD. DEL CARMEN	167.50																		

16 CARR: VILLAHERMOSA - FRANCISCO ESCARCEGA

CLAVE: 00092

RUTA: MEX-186

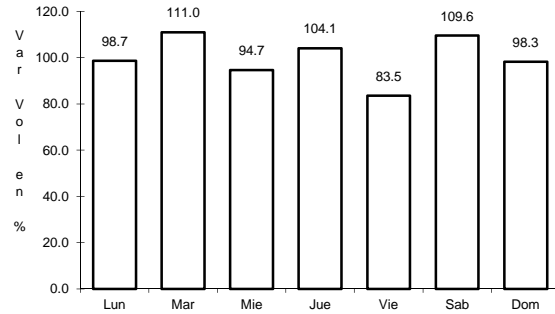
AÑO: 2010

LUGAR	ESTACION				CLASIFICACION VEHICULAR EN PORCIENTO								COORDENADAS						
	KM	TE	SC	TDPA	A	B	C2	C3	T3S2	T3S3	T3S2R4	OTROS	A	B	C	K'	D	LATITUD	LONGITUD
VILLAHERMOSA	0.00	3	1	9796	76.6	6.5	5.7	3.6	4.0	1.4	1.7	0.5	76.6	6.5	16.9	0.071	0.508	18.000985	-92.890791
VILLAHERMOSA	0.00	3	2	10119	76.5	6.6	5.8	3.4	3.9	1.5	1.8	0.5	76.5	6.6	16.9	0.081	0.508	18.000962	-92.890832
T. IZQ. AEROPUERTO	12.00	1	1	11312	75.9	6.7	5.9	3.6	4.1	1.5	1.8	0.5	75.9	6.7	17.4	0.077	0.513	17.984677	-92.829192
T. IZQ. AEROPUERTO	12.00	1	2	10736	75.5	7.0	6.2	3.4	3.9	1.6	1.9	0.5	75.5	7.0	17.5	0.075	0.513	17.984589	-92.829126
PUENTE GRIJALVA	17.60	2	0	13978	80.4	4.9	4.4	3.2	3.9	1.2	0.5	1.5	80.4	4.9	14.7			17.947556	-92.785240
X. C. CACAOS - LA GRANJA	32.46	1	0	10589	76.8	6.2	6.0	3.3	4.0	1.5	1.7	0.5	76.8	6.2	17.0	0.084	0.500	17.832499	-92.719217
X. C. CACAOS - LA GRANJA	32.46	3	1	4291	76.4	6.4	6.0	3.4	4.0	1.5	1.8	0.5	76.4	6.4	17.2	0.080	0.503	17.822640	-92.713871
X. C. CACAOS - LA GRANJA	32.46	3	2	4341	75.6	6.9	5.8	3.6	4.1	1.6	1.9	0.5	75.6	6.9	17.5	0.082	0.503	17.822645	-92.713860
X. C. JALAPA - JONUTA	40.00	3	0	6757	77.6	0.2	7.1	4.3	6.0	2.0	2.3	0.5	77.6	0.2	22.2	0.075	0.501	17.779879	-92.680278
T. IZQ. MACUSPANA	46.20	1	1	3452	79.0	0.2	6.6	3.8	5.9	1.8	2.2	0.5	79.0	0.2	20.8	0.070	0.513	17.743274	-92.633180
T. IZQ. MACUSPANA	46.20	1	2	3368	78.6	0.2	6.8	4.0	5.9	1.8	2.2	0.5	78.6	0.2	21.2	0.070	0.513	17.743274	-92.633180
T. IZQ. MACUSPANA	46.20	3	0	7849	78.7	0.2	6.5	4.2	5.8	1.8	2.3	0.5	78.7	0.2	21.1	0.063	0.513	17.735839	-92.623605

13 CARR: RAMAL A RUIZ CORTINES

CLAVE: 04101

RUTA: MEX

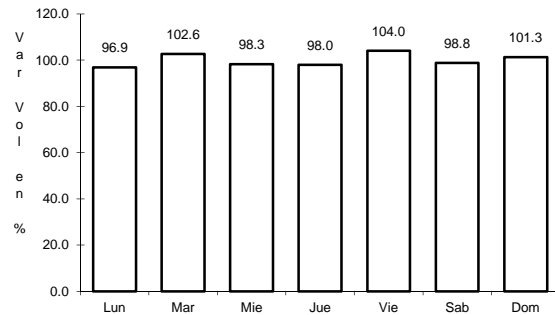


Km: 1.00 Tipo: 3 Sent: 0

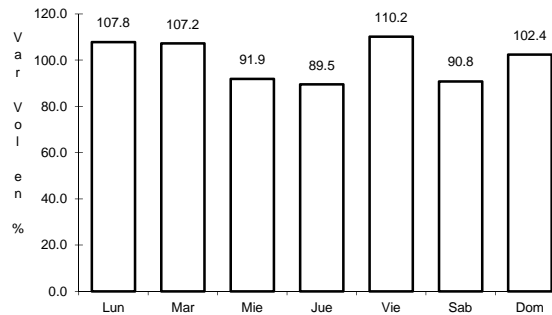
14 CARR: SAN MARCO - PALIZADA

CLAVE: 00490

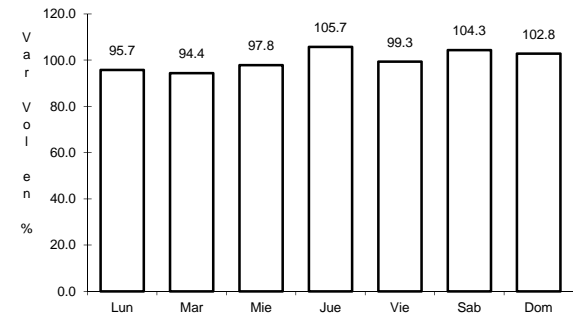
RUTA: MEX-217



Km: 0.00 Tipo: 3 Sent: 0



Km: 46.20 Tipo: 1 Sent: 0

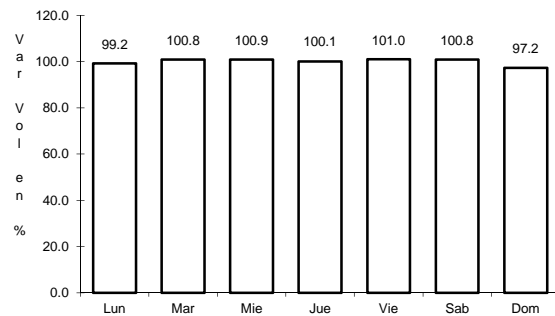


Km: 46.20 Tipo: 3 Sent: 0

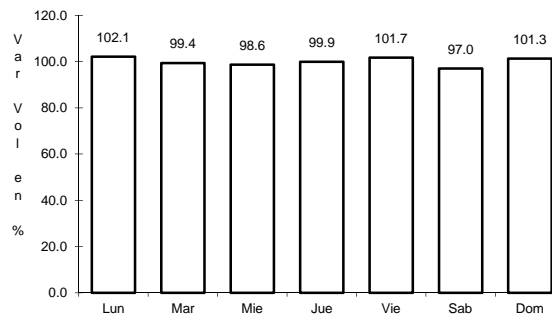
15 CARR: VILLAHERMOSA - CD. DEL CARMEN

CLAVE: 00064

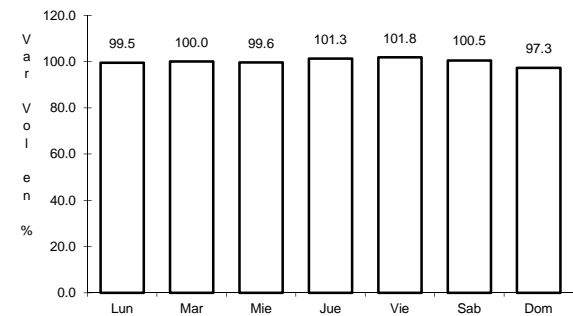
RUTA: MEX-180



Km: 4.30 Tipo: 3 Sent: 1



Km: 4.30 Tipo: 3 Sent: 2

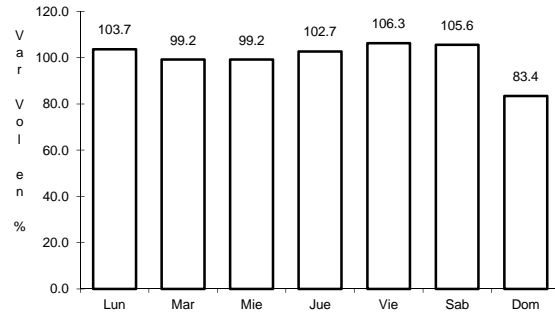


Km: 163.17 Tipo: 1 Sent: 0

20 CARR: LIBRAMIENTO DE POMUCH

CLAVE: 04579

RUTA: CAM



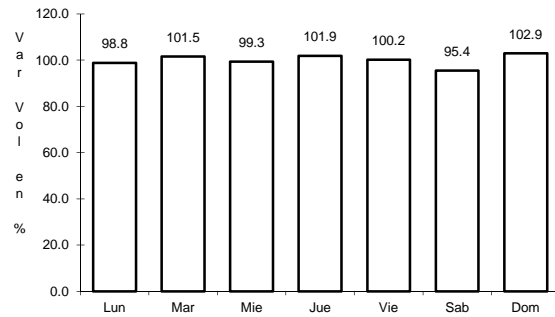
Km: 0.00

Tipo: 3

Sent: 0

21 CARR: T. C. (FRANCISCO ESCARCEGA - CHAMPOTON) - YOHALTU CLAVE: 04581

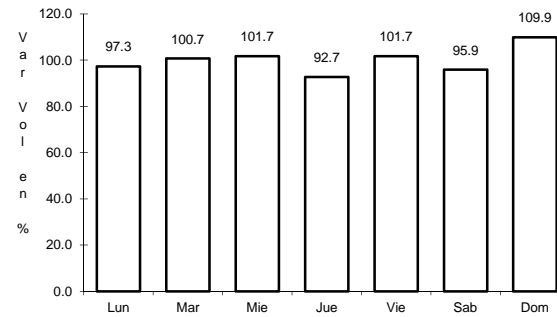
RUTA: CAM



Km: 0.00

Tipo: 3

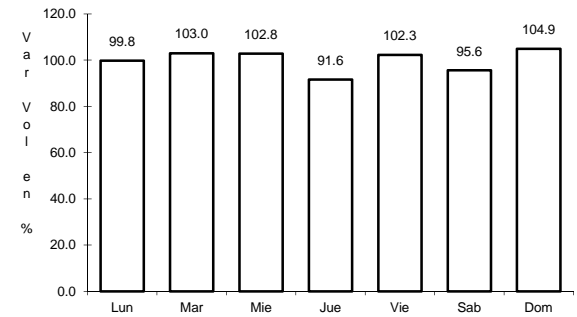
Sent: 0



Km: 36.50

Tipo: 1

Sent: 0



Km: 36.50

Tipo: 3

Sent: 0