

BAJA CALIFORNIA SUR

No. INDICE	CARRETERA	RUTA
---RED FEDERAL LIBRE---		
1	CABO SAN LUCAS - LA PAZ	MEX-001
2	CD. CONSTITUCION - PUERTO SAN CARLOS	MEX-022
3	CD. INSURGENTES - LORETO	MEX-001
4	LA PAZ - CD. INSURGENTES	MEX-001
5	LA PAZ - PICHILINGUE	MEX-011
6	LIBRAMIENTO DE CABO SAN LUCAS	MEX
7	LORETO - SANTA ROSALIA	MEX-001
8	PUNTA PRIETA - GUERRERO NEGRO	MEX-001
9	RAMAL A AEROPUERTO DE LA PAZ	MEX
10	RAMAL A AEROPUERTO DE LOS CABOS	MEX
11	RAMAL A LOS PAREDONES	MEX
12	RAMAL A MIRAFLORES	MEX
13	RAMAL A PUERTO ESCONDIDO	MEX
14	RAMAL A SAN IGNACIO	MEX
15	RAMAL A SANTIAGO	MEX
16	RAMAL AEROPISTA SAN IGNACIO	MEX
17	RAMAL AEROPISTA SANTA ROSALIA	MEX
18	SAN PEDRO - CABO SAN LUCAS	MEX-019
19	SANTA ROSALIA - GUERRERO NEGRO	MEX-001
---RED FEDERAL DE CUOTA---		
20	SAN JOSE DEL CABO - AEROPUERTO LOS CABOS (CUOTA)	MEX-001D
---RED ESTATAL LIBRE---		
21	CAMPO FISHER - PUNTA ABREOJOS	BCS
22	CD. INSURGENTES - LA PURISIMA	BCS-001
23	CD. INSURGENTES - PTO. ADOLFO LOPEZ MATEOS	BCS
24	LA PAZ - ENSENADA DE MUERTOS	BCS-246
25	LIBRAMIENTO DE LA PAZ	BCS
26	LIBRAMIENTO NORTE DE LA PAZ	BCS
27	RAMAL A BENITO JUAREZ	BCS
28	RAMAL A EJIDO LEY FEDERAL DE AGUAS NUMERO CUATRO	BCS
29	RAMAL A EL CARRIZAL	BCS
30	RAMAL A GUERRERO NEGRO	BCS
31	RAMAL A LA RIBERA	BCS
32	RAMAL A MELITON ALBAÑEZ	BCS
33	RAMAL A SANTA CATARINA	BCS
---CARRETERAS INTEGRADAS POR TRAMOS FEDERALES Y ESTATALES---		
34	RAMAL A BAHIA DE TORTUGAS	MEX-BCS
35	RAMAL A EJIDO LEY FEDERAL DE AGUAS NUMERO DOS	BCS-MEX
36	RAMAL A LEY FEDERAL DE AGUAS NUMERO CINCO	BCS-MEX
37	RAMAL A SAN JUAN DE LA COSTA	BCS-163-MEX

03 BAJA CALIFORNIA SUR

SECRETARÍA DE COMUNICACIONES Y TRANSPORTES
DIRECCIÓN GENERAL DE SERVICIOS TÉCNICOS



BAJA CALIFORNIA SUR

3 CARR: CD. INSURGENTES - LORETO

CLAVE: 03092

RUTA: MEX-001

AÑO: 2010

LUGAR	ESTACION				CLASIFICACION VEHICULAR EN PORCIENTO								COORDENADAS						
	KM	TE	SC	TDPA	A	B	C2	C3	T3S2	T3S3	T3S2R4	OTROS	A	B	C	K'	D	LATITUD	LONGITUD
CD. INSURGENTES	0.00	3	0	4352	91.0	1.5	4.0	1.0	1.0	0.3	0.1	1.1	91.0	1.5	7.5	0.070	0.500	25.262801	-111.760259
T. DER. LEY FEDERAL DE AGUAS NUMERO UNO	7.00	3	0	1772	84.2	2.3	5.3	1.0	3.6	2.0	0.1	1.5	84.2	2.3	13.5	0.071	0.521	25.337714	-111.627770
T. DER. LEY FEDERAL DE AGUAS NUMERO DOS	17.00	3	0	2244	91.1	2.0	3.4	1.1	1.0	0.3	0.1	1.0	91.1	2.0	6.9	0.080	0.515	25.320386	-111.652288
T. DER. PUERTO AGUA VERDE	65.00	1	0	1578	89.8	1.6	3.9	1.7	1.3	0.4	0.1	1.2	89.8	1.6	8.6	0.068	0.522	25.607893	-111.316611
T. DER. PUERTO AGUA VERDE	65.00	3	0	1751	90.1	2.3	4.7	1.1	0.9	0.2	0.0	0.7	90.1	2.3	7.6	0.072	0.520	25.611308	-111.310347
EL LIGUI	84.50	1	0	1729	85.5	3.7	6.5	1.4	1.4	0.5	0.0	1.0	85.5	3.7	10.8	0.073	0.510	25.727194	-111.265931
T. DER. PUERTO ESCONDIDO	95.40	1	0	1840	90.6	1.6	3.7	1.4	1.0	0.5	0.1	1.1	90.6	1.6	7.8	0.077	0.505	25.798946	-111.326732
T. DER. PUERTO ESCONDIDO	95.40	3	0	2094	91.5	1.6	4.0	1.3	0.7	0.1	0.0	0.8	91.5	1.6	6.9	0.076	0.502	25.803042	-111.328307
NOPOLO	109.50	1	0	2610	82.2	3.4	4.9	2.9	3.4	1.2	0.7	1.3	82.2	3.4	14.4	0.082	0.541	25.915852	-111.348385
T. DER. AEROPUERTO DE LORETO	117.30	1	0	4404	82.0	3.1	5.7	2.6	2.8	1.3	0.7	1.8	82.0	3.1	14.9	0.077	0.518	25.976872	-111.367329
T. DER. LORETO	120.00	1	0	6527	83.8	2.8	5.5	2.7	1.7	0.9	0.7	1.9	83.8	2.8	13.4	0.077	0.520	26.002051	-111.366442

4 CARR: LA PAZ - CD. INSURGENTES

CLAVE: 03101

RUTA: MEX-001

AÑO: 2010

LUGAR	ESTACION				CLASIFICACION VEHICULAR EN PORCIENTO								COORDENADAS						
	KM	TE	SC	TDPA	A	B	C2	C3	T3S2	T3S3	T3S2R4	OTROS	A	B	C	K'	D	LATITUD	LONGITUD
LA PAZ	0.00	3	1	7313	85.9	3.1	5.4	2.1	1.5	0.7	0.0	1.3	85.9	3.1	11.0	0.086	0.504	24.120827	-110.337508
LA PAZ	0.00	3	2	7439	89.3	2.2	4.4	1.1	1.3	0.5	0.0	1.2	89.3	2.2	8.5	0.109	0.504	24.120844	-110.337527
T. IZQ. AEROPUERTO	8.90	1	1	8165	95.1	1.0	1.6	0.9	0.6	0.1	0.0	0.7	95.1	1.0	3.9	0.083	0.503	24.111758	-110.353039
T. IZQ. AEROPUERTO	8.90	1	2	8074	92.2	1.4	3.3	1.1	0.8	0.3	0.0	0.9	92.2	1.4	6.4	0.076	0.503	24.111758	-110.353039
T. IZQ. AEROPUERTO	8.90	3	0	12428	92.6	1.4	2.8	1.1	0.8	0.4	0.0	0.9	92.6	1.4	6.0	0.075	0.500	24.098809	-110.384625
EL CENTENARIO	13.50	3	0	6783	87.5	3.2	5.0	1.7	1.1	0.4	0.0	1.1	87.5	3.2	9.3	0.079	0.511	24.114041	-110.425475
T. DER. SAN JUAN DE LA COSTA	17.00	1	0	6179	88.9	2.3	4.2	1.5	1.6	0.4	0.0	1.1	88.9	2.3	8.8	0.079	0.506	24.117785	-110.431585
T. DER. SAN JUAN DE LA COSTA	17.00	3	0	3142	90.8	1.1	3.5	0.9	1.8	0.6	0.0	1.3	90.8	1.1	8.1	0.112	0.511	24.119700	-110.438276
T. DER. ALFREDO V. BONFIL	24.00	3	0	2496	89.9	2.0	3.0	1.6	2.0	0.4	0.0	1.1	89.9	2.0	8.1	0.087	0.514	24.087922	-110.523515
T. IZQ. EL CONEJO	79.60	1	0	2206	90.4	1.7	3.1	1.5	1.9	0.7	0.0	0.7	90.4	1.7	7.9	0.091	0.513	24.178729	-110.939979
T. IZQ. EL CONEJO	79.60	3	0	2354	90.5	2.2	3.4	1.1	1.7	0.6	0.0	0.5	90.5	2.2	7.3	0.085	0.504	24.189212	-110.945637
EL CIENTO VEINTIOCHO	118.20	1	0	2138	88.6	1.8	3.2	1.8	2.2	1.4	0.0	1.0	88.6	1.8	9.6	0.079	0.535	24.463892	-111.210662
SANTA RITA	156.70	1	0	2423	83.5	3.3	4.7	1.8	3.7	1.4	0.1	1.5	83.5	3.3	13.2	0.087	0.527	24.586110	-111.460633
SANTA RITA	156.70	3	0	2165	86.6	2.2	4.5	1.7	2.4	1.2	0.1	1.3	86.6	2.2	11.2	0.085	0.513	24.590496	-111.468963
CD. CONSTITUCION	213.00	1	0	4769	86.1	2.4	4.7	1.5	2.6	1.2	0.2	1.3	86.1	2.4	11.5	0.071	0.503	25.013386	-111.664456
CD. CONSTITUCION	213.00	3	0	6243	90.0	1.7	3.5	1.1	1.7	1.0	0.0	1.0	90.0	1.7	8.3	0.071	0.503	25.045970	-111.679473
T. DER. LEY FEDERAL DE AGUAS NUMERO CUATRO	229.00	1	0	4749	92.2	1.4	3.3	1.0	1.0	0.4	0.0	0.7	92.2	1.4	6.4	0.077	0.516	25.193585	-111.747754
CD. INSURGENTES	236.50	1	1	2600	91.5	1.1	4.1	1.1	0.9	0.4	0.0	0.9	91.5	1.1	7.4	0.071	0.502	25.243820	-111.770987
CD. INSURGENTES	236.70	1	2	2575	91.5	1.5	3.3	1.9	0.9	0.2	0.0	0.7	91.5	1.5	7.0	0.075	0.502	25.243820	-111.770987

BAJA CALIFORNIA SUR

18 CARR: SAN PEDRO - CABO SAN LUCAS

CLAVE: 03003

RUTA: MEX-019

AÑO: 2010

LUGAR	ESTACION				CLASIFICACION VEHICULAR EN PORCIENTO								COORDENADAS						
	KM	TE	SC	TDPA	A	B	C2	C3	T3S2	T3S3	T3S2R4	OTROS	A	B	C	K'	D	LATITUD	LONGITUD
T. C. CABO SAN LUCAS - LA PAZ	0.00	3	0	6215	86.0	1.6	3.6	2.0	4.1	1.6	0.6	0.5	86.0	1.6	12.4	0.090	0.512	23.879117	-110.254110
T. DER. MELITON ALBAÑES	16.00	1	0	4408	85.7	1.7	3.6	2.2	4.1	1.6	0.6	0.5	85.7	1.7	12.6	0.096	0.504	23.654001	-110.224497
T. DER. MELITON ALBAÑES	16.00	3	0	4837	85.9	1.7	3.6	2.0	4.1	1.6	0.6	0.5	85.9	1.7	12.4	0.112	0.509	23.650103	-110.225221
TODOS SANTOS	52.00	1	0	5681	86.7	1.6	3.4	1.9	3.7	1.6	0.6	0.5	86.7	1.6	11.7	0.089	0.507	23.457990	-110.219961
TODOS SANTOS	52.00	3	0	6225	86.0	1.6	3.7	2.1	3.8	1.7	0.6	0.5	86.0	1.6	12.4	0.076	0.505	23.439816	-110.219085
EL PESCADERO	62.00	1	0	6161	86.4	1.6	3.5	1.9	3.9	1.6	0.6	0.5	86.4	1.6	12.0	0.083	0.515	23.375227	-110.178986
EL PESCADERO	62.00	3	0	5588	86.3	1.6	3.5	2.1	3.8	1.6	0.6	0.5	86.3	1.6	12.1	0.085	0.506	23.353163	-110.163323
MIGRIÑO	102.50	1	0	4157	86.2	1.6	3.6	2.0	3.9	1.6	0.6	0.5	86.2	1.6	12.2	0.097	0.504	23.049479	-110.094369
CABO SAN LUCAS	131.00	1	0	18354	86.5	1.6	3.6	1.8	3.9	1.5	0.6	0.5	86.5	1.6	11.9	0.074	0.504	22.905597	-109.941268

19 CARR: SANTA ROSALIA - GUERRERO NEGRO

CLAVE: 03095

RUTA: MEX-001

AÑO: 2010

LUGAR	ESTACION				CLASIFICACION VEHICULAR EN PORCIENTO								COORDENADAS						
	KM	TE	SC	TDPA	A	B	C2	C3	T3S2	T3S3	T3S2R4	OTROS	A	B	C	K'	D	LATITUD	LONGITUD
SANTA ROSALIA	0.00	3	0	2551	68.6	2.5	5.8	1.8	19.1	1.4	0.4	0.4	68.6	2.5	28.9	0.075	0.515	27.360128	-112.277310
CUESTA INFIERNILLO	12.00	1	0	1243	70.1	2.5	5.2	1.8	18.3	1.3	0.4	0.4	70.1	2.5	27.4	0.097	0.505	27.386591	-112.355000
CUESTA INFIERNILLO	12.00	3	0	1595	68.0	2.5	5.8	2.0	19.4	1.5	0.4	0.4	68.0	2.5	29.5	0.076	0.505	27.387535	-112.362175
T. IZQ. SAN IGNACIO	73.60	1	0	2330	69.0	2.4	5.7	1.9	18.8	1.4	0.4	0.4	69.0	2.4	28.6	0.088	0.514	27.301618	-112.892244
T. IZQ. SAN IGNACIO	73.60	3	0	2240	70.9	2.4	5.4	1.9	17.3	1.3	0.4	0.4	70.9	2.4	26.7	0.072	0.521	27.301898	-112.897560
T. IZQ. PUNTA ABREOJOS	95.70	1	0	1485	70.3	2.4	5.2	1.8	18.1	1.4	0.4	0.4	70.3	2.4	27.3	0.081	0.510	27.321547	-113.102273
T. IZQ. PUNTA ABREOJOS	95.70	3	0	1394	69.1	2.5	5.6	2.0	18.6	1.4	0.4	0.4	69.1	2.5	28.4	0.080	0.508	27.330147	-113.117066
LOS ANGELES	117.90	1	0	1982	69.8	2.5	5.9	2.0	17.6	1.4	0.4	0.4	69.8	2.5	27.7	0.071	0.504	27.477602	-113.291744
LOS ANGELES	117.90	3	0	2050	69.8	2.6	5.6	1.9	17.9	1.4	0.4	0.4	69.8	2.6	27.6	0.069	0.509	27.492279	-113.300057
T. IZQ. VIZCAINO	144.00	1	0	2531	68.5	2.7	5.5	1.9	19.2	1.4	0.4	0.4	68.5	2.7	28.8	0.083	0.533	27.634029	-113.378340
T. IZQ. VIZCAINO	144.00	3	0	2466	68.1	2.6	5.8	2.0	19.3	1.4	0.4	0.4	68.1	2.6	29.3	0.077	0.530	27.660815	-113.391251
T. DER. EL ARCO	189.00	1	0	1902	68.9	2.4	5.5	2.0	19.0	1.4	0.4	0.4	68.9	2.4	28.7	0.080	0.511	27.849406	-113.758540
T. DER. EL ARCO	189.00	3	0	1470	70.4	2.6	5.4	1.8	17.7	1.3	0.4	0.4	70.4	2.6	27.0	0.082	0.505	27.855005	-113.772890
ENT. GUERRERO NEGRO	216.85	1	0	2309	68.6	2.4	5.4	1.9	19.5	1.4	0.4	0.4	68.6	2.4	29.0	0.079	0.503	27.964604	-114.009054

20 CARR: SAN JOSE DEL CABO - AEROPUERTO LOS CABOS (CUOTA)

CLAVE: 03392

RUTA: MEX-001D

AÑO: 2010

LUGAR	ESTACION				CLASIFICACION VEHICULAR EN PORCIENTO								COORDENADAS						
	KM	TE	SC	TDPA	A	B	C2	C3	T3S2	T3S3	T3S2R4	OTROS	A	B	C	K'	D	LATITUD	LONGITUD
T. C. CABO SAN LUCAS - LA PAZ	0.00																		
CASETA DE COBRO LOS CABOS	1.52	2	0	2385	98.9	0.9	0.2	0.0	0.0	0.0	0.0	0.0	98.9	0.9	0.2			23.049954	-109.719556

BAJA CALIFORNIA SUR

20 CARR: SAN JOSE DEL CABO - AEROPUERTO LOS CABOS (CUOTA)

CLAVE: 03392

RUTA: MEX-001D

AÑO: 2010

LUGAR	ESTACION				CLASIFICACION VEHICULAR EN PORCIENTO								COORDENADAS						
	KM	TE	SC	TDPA	A	B	C2	C3	T3S2	T3S3	T3S2R4	OTROS	A	B	C	K'	D	LATITUD	LONGITUD
AEROPUERTO DE LOS CABOS	19.50																		

21 CARR: CAMPO FISHER - PUNTA ABREOJOS

CLAVE: 03411

RUTA: BCS

AÑO: 2010

LUGAR	ESTACION				CLASIFICACION VEHICULAR EN PORCIENTO								COORDENADAS						
	KM	TE	SC	TDPA	A	B	C2	C3	T3S2	T3S3	T3S2R4	OTROS	A	B	C	K'	D	LATITUD	LONGITUD
T. C. SANTA ROSALIA - PARALELO 28	0.00	3	0	966	90.2	2.4	4.6	1.5	0.5	0.2	0.0	0.6	90.2	2.4	7.4	0.152	0.509	27.328295	-113.117259
PUNTA ABREOJOS	88.00																		

22 CARR: CD. INSURGENTES - LA PURISIMA

CLAVE: 03005

RUTA: BCS-001

AÑO: 2010

LUGAR	ESTACION				CLASIFICACION VEHICULAR EN PORCIENTO								COORDENADAS						
	KM	TE	SC	TDPA	A	B	C2	C3	T3S2	T3S3	T3S2R4	OTROS	A	B	C	K'	D	LATITUD	LONGITUD
CD. INSURGENTES	0.00	3	0	2925	88.3	2.9	3.8	1.6	1.6	0.5	0.0	1.3	88.3	2.9	8.8	0.081	0.518	25.273038	-111.784431
IGNACIO ZARAGOZA	18.00	1	0	1811	84.6	2.4	7.2	2.3	1.9	0.5	0.1	1.0	84.6	2.4	13.0	0.070	0.506	25.392248	-111.839748
IGNACIO ZARAGOZA	18.00	3	0	1456	89.3	2.1	4.1	1.4	1.5	0.3	0.1	1.2	89.3	2.1	8.6	0.079	0.520	25.403267	-111.844792
T. IZQ. SANTO DOMINGO	28.70	1	0	856	88.8	1.5	5.8	1.4	0.9	0.3	0.1	1.2	88.8	1.5	9.7	0.107	0.512	25.494877	-111.887301
FRANCISCO VILLA	64.00	3	0	492	87.5	2.6	5.4	2.5	0.7	0.5	0.1	0.7	87.5	2.6	9.9	0.132	0.520	25.804781	-112.031024
LA PURISIMA	107.00	1	0	389	89.4	1.3	5.4	1.6	1.0	0.5	0.2	0.6	89.4	1.3	9.3	0.185	0.514	26.179995	-112.082078

23 CARR: CD. INSURGENTES - PTO. ADOLFO LOPEZ MATEOS

CLAVE: 03404

RUTA: BCS

AÑO: 2010

LUGAR	ESTACION				CLASIFICACION VEHICULAR EN PORCIENTO								COORDENADAS						
	KM	TE	SC	TDPA	A	B	C2	C3	T3S2	T3S3	T3S2R4	OTROS	A	B	C	K'	D	LATITUD	LONGITUD
T. C. CD. INSURGENTES - LA PURISIMA	0.00	3	0	607	86.3	2.5	7.2	2.2	0.1	0.4	0.1	1.2	86.3	2.5	11.2	0.109	0.533	25.274374	-111.789745
PUERTO ADOLFO LOPEZ MATEOS	35.50	1	0	717	92.0	1.7	4.0	1.6	0.1	0.3	0.1	0.2	92.0	1.7	6.3	0.099	0.524	25.199074	-112.078988

24 CARR: LA PAZ - ENSENADA DE MUERTOS

CLAVE: 03103

RUTA: BCS-246

AÑO: 2010

LUGAR	ESTACION				CLASIFICACION VEHICULAR EN PORCIENTO								COORDENADAS						
	KM	TE	SC	TDPA	A	B	C2	C3	T3S2	T3S3	T3S2R4	OTROS	A	B	C	K'	D	LATITUD	LONGITUD
LA PAZ	0.00	3	0	5983	91.9	1.5	4.0	1.2	0.9	0.2	0.0	0.3	91.9	1.5	6.6	0.083	0.515	24.119222	-110.293752
T. IZQ. EL SARGENTO	45.00	1	0	2001	92.6	1.4	3.3	2.0	0.3	0.1	0.0	0.3	92.6	1.4	6.0	0.076	0.511	23.982385	-109.994100
T. IZQ. EL SARGENTO	45.00	3	0	1865	92.2	1.9	3.2	1.6	0.5	0.2	0.1	0.3	92.2	1.9	5.9	0.076	0.527	23.981235	-109.990220
ENSENADA DE MUERTOS	57.50	1	0	923	90.0	1.8	6.1	1.2	0.2	0.3	0.1	0.3	90.0	1.8	8.2	0.114	0.506	23.996569	-109.831728

BAJA CALIFORNIA SUR

35 CARR: RAMAL A EJIDO LEY FEDERAL DE AGUAS NUMERO DOS

CLAVE: 03050

RUTA: BCS-MEX

AÑO: 2010

LUGAR	ESTACION				CLASIFICACION VEHICULAR EN PORCIENTO								COORDENADAS						
	KM	TE	SC	TDPA	A	B	C2	C3	T3S2	T3S3	T3S2R4	OTROS	A	B	C	K'	D	LATITUD	LONGITUD
T. C. CD. INSURGENTES - LORETO	0.00	3	0	662	93.2	1.7	3.5	1.0	0.0	0.3	0.1	0.2	93.2	1.7	5.1	0.110	0.557	25.315155	-111.659804
EJIDO LEY FEDERAL DE AGUAS NUMERO DOS	10.00																		

36 CARR: RAMAL A LEY FEDERAL DE AGUAS NUMERO CINCO

CLAVE: 03407

RUTA: BCS-MEX

AÑO: 2010

LUGAR	ESTACION				CLASIFICACION VEHICULAR EN PORCIENTO								COORDENADAS						
	KM	TE	SC	TDPA	A	B	C2	C3	T3S2	T3S3	T3S2R4	OTROS	A	B	C	K'	D	LATITUD	LONGITUD
CD. CONSTITUCION	0.00	3	0	7932	84.4	3.1	7.2	3.1	0.5	0.2	0.0	1.5	84.4	3.1	12.5	0.061	0.510	25.035227	-111.630321
LEY FEDERAL DE AGUAS NUMERO CINCO	17.50																		

37 CARR: RAMAL A SAN JUAN DE LA COSTA

CLAVE: 03403

RUTA: BCS-163-MEX

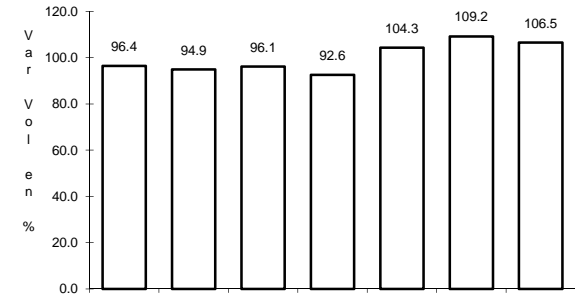
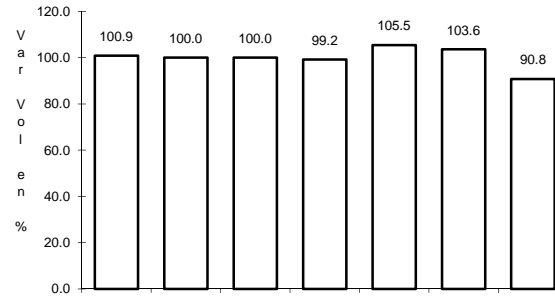
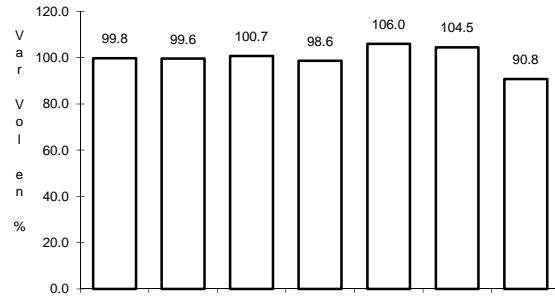
AÑO: 2010

LUGAR	ESTACION				CLASIFICACION VEHICULAR EN PORCIENTO								COORDENADAS						
	KM	TE	SC	TDPA	A	B	C2	C3	T3S2	T3S3	T3S2R4	OTROS	A	B	C	K'	D	LATITUD	LONGITUD
T. C. LA PAZ - CD. INSURGENTES	0.00	3	0	980	89.8	2.0	5.4	1.6	0.5	0.2	0.1	0.4	89.8	2.0	8.2	0.077	0.519	24.121471	-110.437952
PUERTO CAJETE	23.00	3	0	617	92.1	0.9	5.1	0.9	0.1	0.2	0.1	0.6	92.1	0.9	7.0	0.094	0.553	24.250954	-110.608862
SAN JUAN DE LA COSTA	40.70	1	0	573	88.8	2.6	5.9	1.7	0.4	0.3	0.1	0.2	88.8	2.6	8.6	0.141	0.513	24.369690	-110.689961

1 CARR: CABO SAN LUCAS - LA PAZ

CLAVE: 03102

RUTA: MEX-001



Km: 0.00

Tipo: 3

Sent: 1

Km: 0.00

Tipo: 3

Sent: 2

Km: 211.00

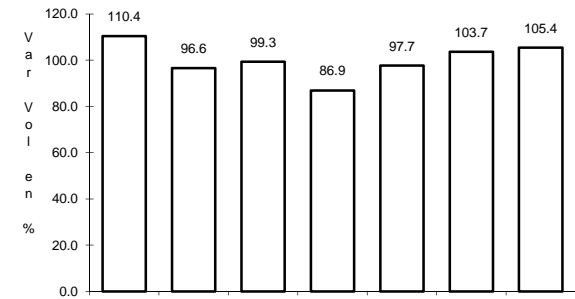
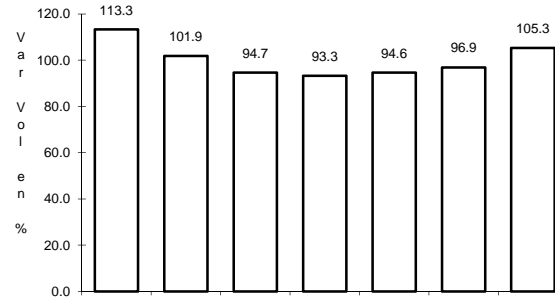
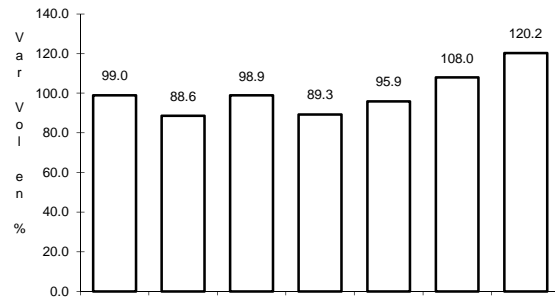
Tipo: 1

Sent: 0

2 CARR: CD. CONSTITUCION - PUERTO SAN CARLOS

CLAVE: 03231

RUTA: MEX-022



Km: 0.00

Tipo: 3

Sent: 0

Km: 10.00

Tipo: 1

Sent: 0

Km: 10.00

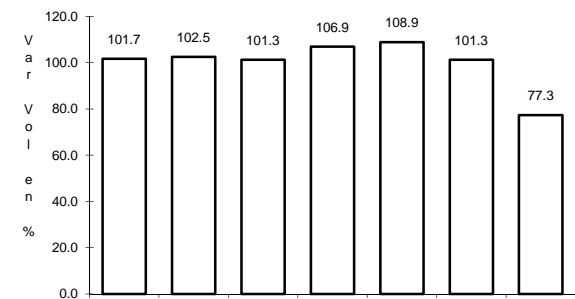
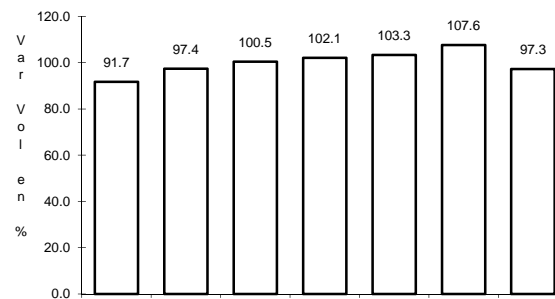
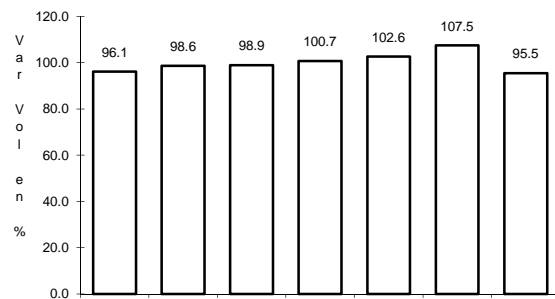
Tipo: 3

Sent: 0

3 CARR: CD. INSURGENTES - LORETO

CLAVE: 03092

RUTA: MEX-001



Km: 0.00

Tipo: 3

Sent: 0

Km: 65.00

Tipo: 1

Sent: 0

Km: 120.00

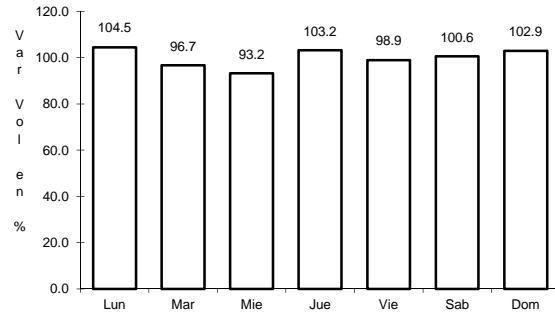
Tipo: 1

Sent: 0

10 CARR: RAMAL A AEROPUERTO DE LOS CABOS

CLAVE: 03394

RUTA: MEX



Km: 0.00

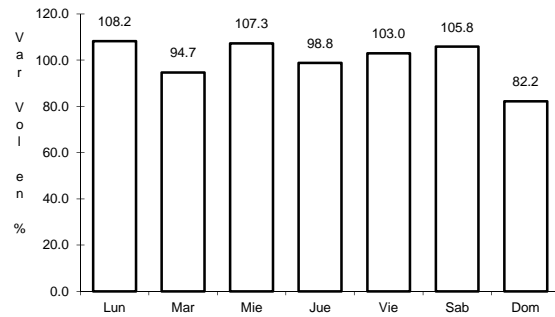
Tipo: 3

Sent: 0

11 CARR: RAMAL A LOS PAREDONES

CLAVE:

RUTA: MEX



Km: 0.00

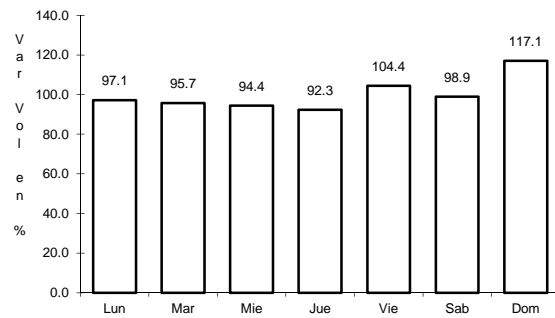
Tipo: 3

Sent: 0

12 CARR: RAMAL A MIRAFLORES

CLAVE:

RUTA: MEX



Km: 0.00

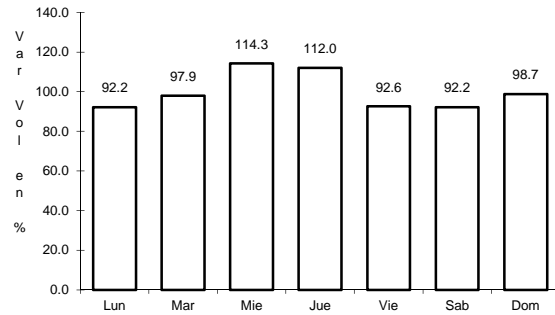
Tipo: 3

Sent: 0

13 CARR: RAMAL A PUERTO ESCONDIDO

CLAVE:

RUTA: MEX



Km: 0.00

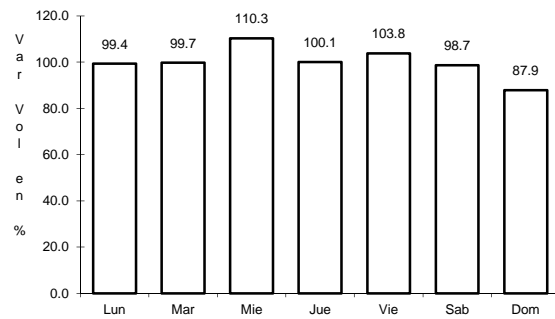
Tipo: 3

Sent: 0

14 CARR: RAMAL A SAN IGNACIO

CLAVE: 03413

RUTA: MEX



Km: 0.00

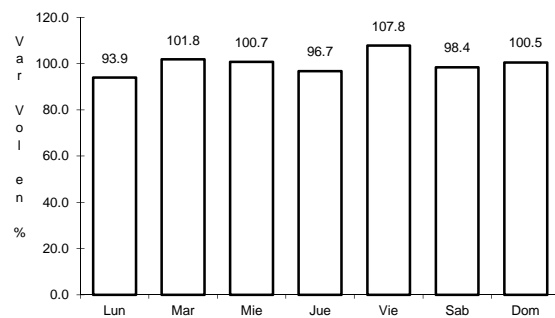
Tipo: 3

Sent: 0

15 CARR: RAMAL A SANTIAGO

CLAVE: 03051

RUTA: MEX



Km: 0.00

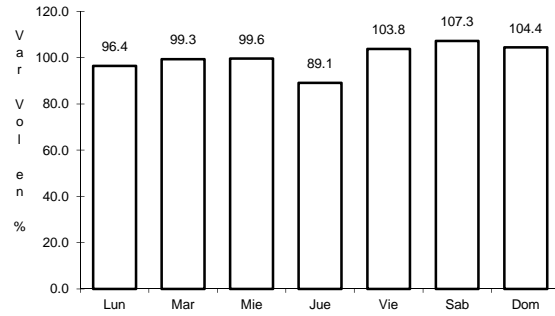
Tipo: 3

Sent: 0

16 CARR: RAMAL AEROPISTA SAN IGNACIO

CLAVE:

RUTA: MEX



Km: 0.00

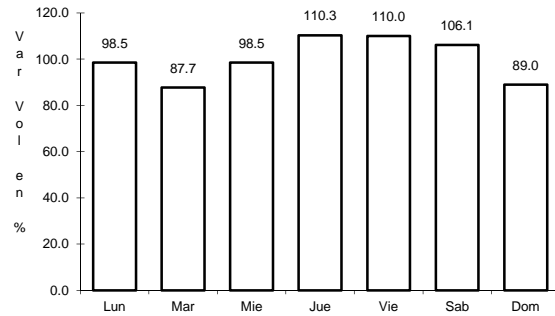
Tipo: 3

Sent: 0

17 CARR: RAMAL AEROPISTA SANTA ROSALIA

CLAVE:

RUTA: MEX



Km: 0.00

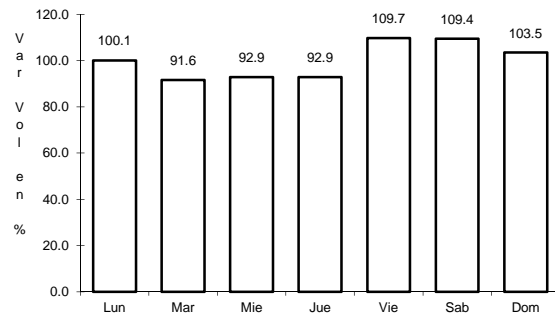
Tipo: 3

Sent: 0

18 CARR: SAN PEDRO - CABO SAN LUCAS

CLAVE: 03003

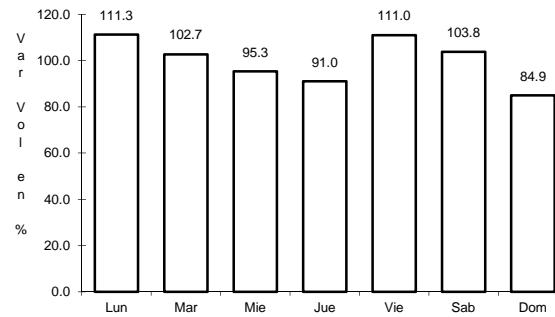
RUTA: MEX-019



Km: 0.00

Tipo: 3

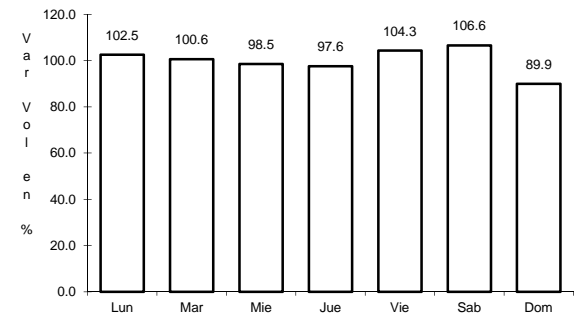
Sent: 0



Km: 62.00

Tipo: 1

Sent: 0



Km: 131.00

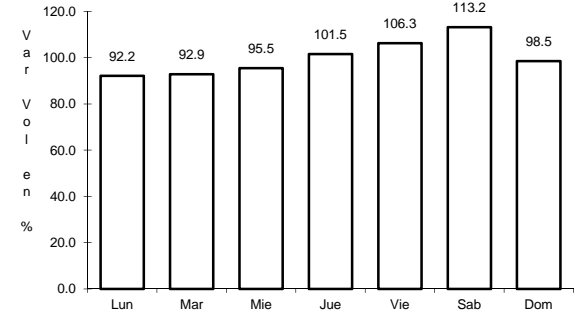
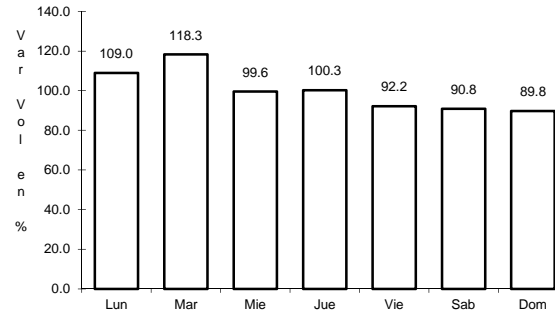
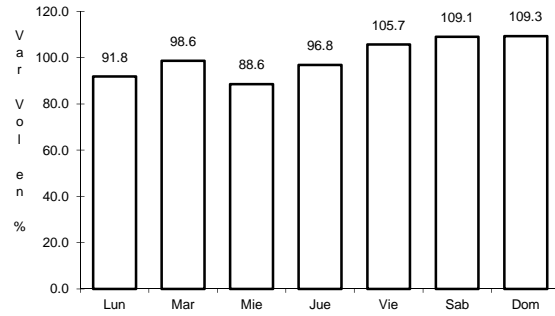
Tipo: 1

Sent: 0

19 CARR: SANTA ROSALIA - GUERRERO NEGRO

CLAVE: 03095

ruta: MEX-001



Km: 0.00 Tipo: 3 Sent: 0

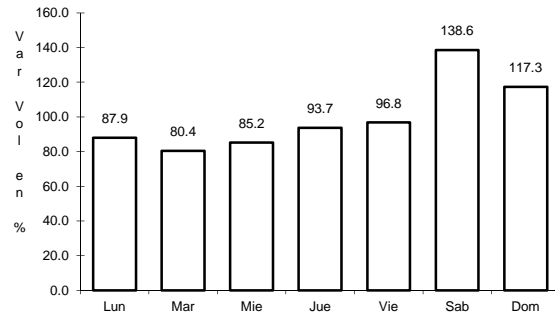
Km: 117.90 Tipo: 1 Sent: 0

Km: 216.85 Tipo: 1 Sent: 0

21 CARR: CAMPO FISHER - PUNTA ABREOJOS

CLAVE: 03411

ruta: BCS

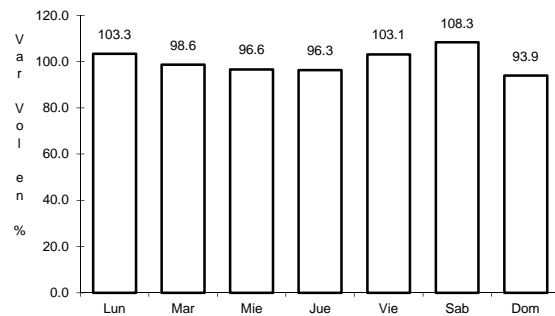


Km: 0.00 Tipo: 3 Sent: 0

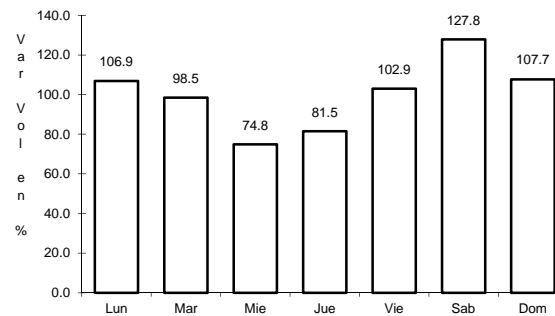
22 CARR: CD. INSURGENTES - LA PURISIMA

CLAVE: 03005

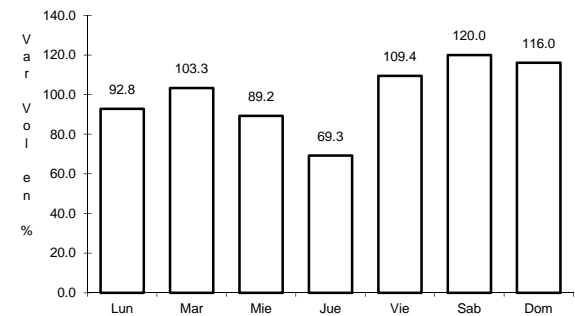
ruta: BCS-001



Km: 0.00 Tipo: 3 Sent: 0



Km: 64.00 Tipo: 3 Sent: 0

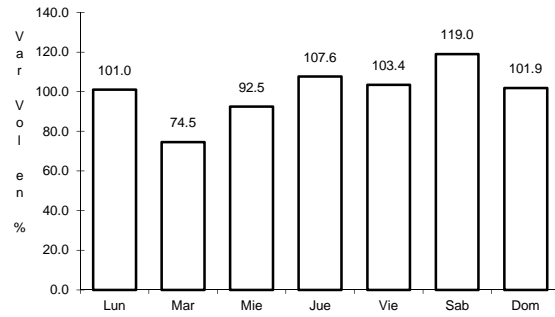


Km: 107.00 Tipo: 1 Sent: 0

29 CARR: RAMAL A EL CARRIZAL

CLAVE:

RUTA: BCS



Km: 0.00

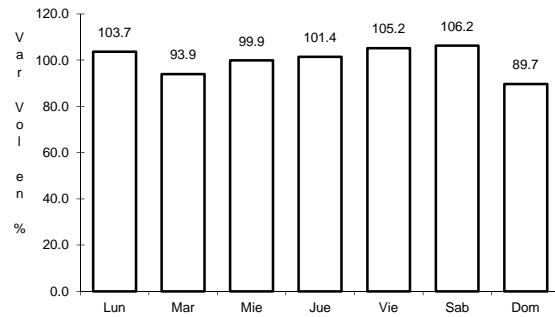
Tipo: 3

Sent: 0

30 CARR: RAMAL A GUERRERO NEGRO

CLAVE: 03395

RUTA: BCS



Km: 0.00

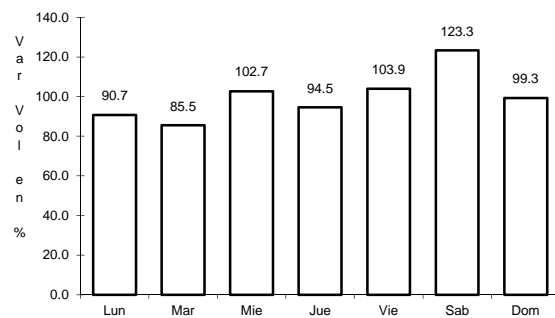
Tipo: 3

Sent: 0

31 CARR: RAMAL A LA RIBERA

CLAVE: 03406

RUTA: BCS



Km: 0.00

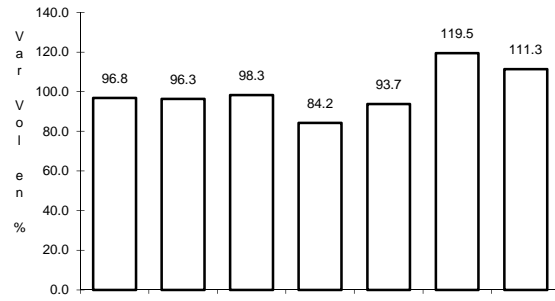
Tipo: 3

Sent: 0

32 CARR: RAMAL A MELITON ALBAÑEZ

CLAVE:

RUTA: BCS



Km: 0.00

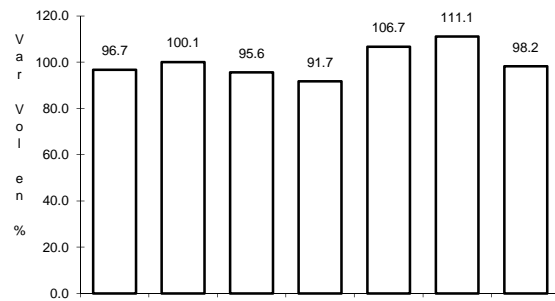
Tipo: 3

Sent: 0

33 CARR: RAMAL A SANTA CATARINA

CLAVE: 03052

RUTA: BCS



Km: 0.00

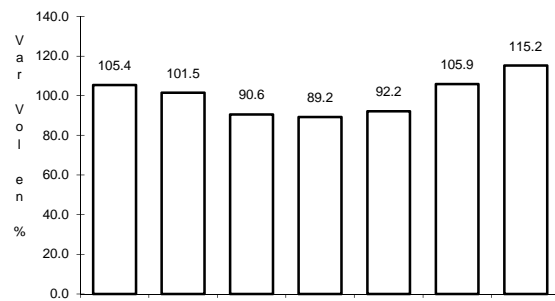
Tipo: 3

Sent: 0

34 CARR: RAMAL A BAHIA DE TORTUGAS

CLAVE: 03397

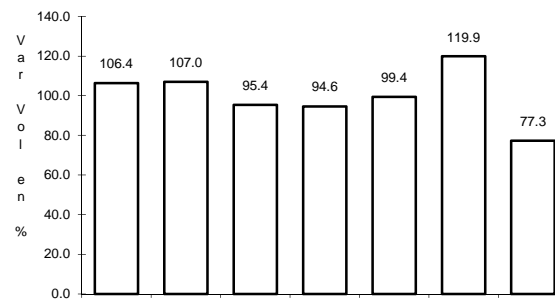
RUTA: MEX-BCS



Km: 0.00

Tipo: 3

Sent: 0



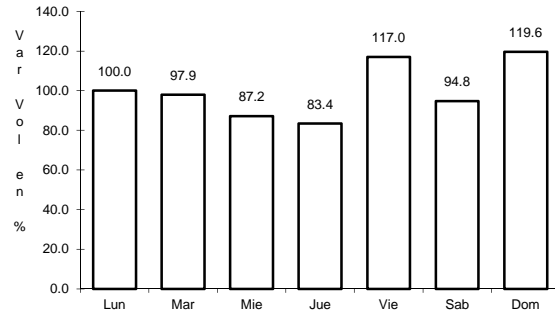
Km: 6.00

Tipo: 3

Sent: 0

35 CARR: RAMAL A EJIDO LEY FEDERAL DE AGUAS NUMERO DOS CLAVE: 03050

RUTA: BCS-MEX

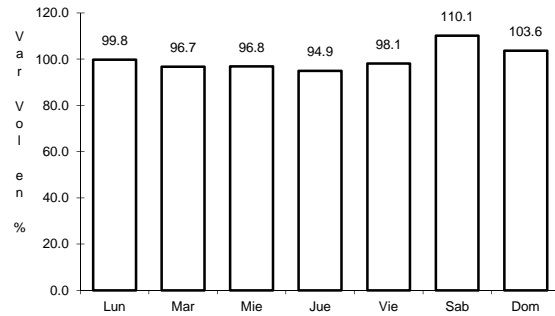


Km: 0.00 Tipo: 3 Sent: 0

36 CARR: RAMAL A LEY FEDERAL DE AGUAS NUMERO CINCO

CLAVE: 03407

RUTA: BCS-MEX

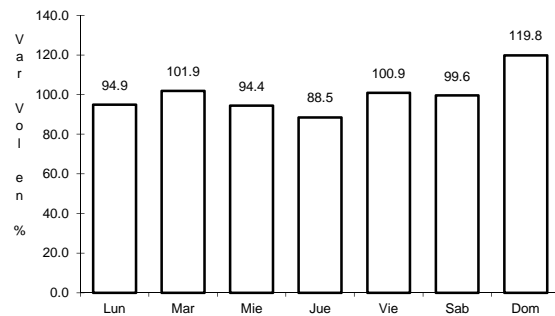


Km: 0.00 Tipo: 3 Sent: 0

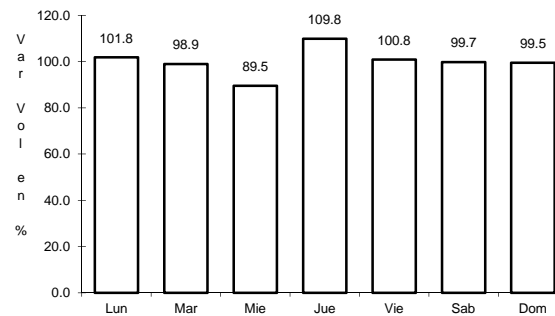
37 CARR: RAMAL A SAN JUAN DE LA COSTA

CLAVE: 03403

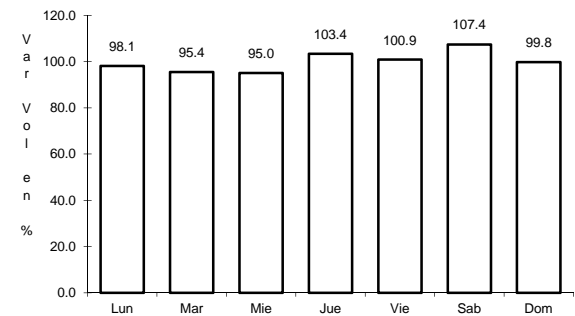
RUTA: BCS-163-MEX



Km: 0.00 Tipo: 3 Sent: 0



Km: 23.00 Tipo: 3 Sent: 0



Km: 40.70 Tipo: 1 Sent: 0