

BAJA CALIFORNIA

---

No. INDICE	CARRETERA	RUTA
<b>---RED FEDERAL LIBRE---</b>		
1	ENSENADA - EL CHINERO	MEX-003
2	ENSENADA - LAZARO CARDENAS	MEX-001
3	LAZARO CARDENAS - PUNTA PRIETA	MEX-001
4	MEXICALI - SAN FELIPE	MEX-005
5	MEXICALI - TIJUANA	MEX-002
6	PARADOR PUNTA PRIETA - BAHIA DE LOS ANGELES	MEX-012
7	PUNTA PRIETA - GUERRERO NEGRO	MEX-001
8	RAMAL A AEROPUERTO DE MEXICALI	MEX
9	RAMAL A SANTA MARIA	MEX
10	SAN FELIPE - CHAPALA	MEX-005
11	SONOITA - MEXICALI	MEX-002
12	TECATE - EL SAUZAL	MEX-003
13	TIJUANA - ENSENADA (LIBRE)	MEX-001
<b>---RED FEDERAL DE CUOTA---</b>		
14	LIBRAMIENTO MEXICALI (CUOTA)	MEX-D
15	MEXICALI - TIJUANA (CUOTA)	MEX-002D
16	TIJUANA - SAN MIGUEL (CUOTA)	MEX-001D
<b>---RED ESTATAL LIBRE---</b>		
17	ALGODONES - ISLAS AGRARIAS GRUPO B	BC-008
18	EJIDO BENITO JUAREZ - EJIDO CHIAPAS	BC-061
19	EJIDO MONTERREY - MAZON	BC-003
20	EL FARO - ESTACION COAHUILA	BC-004
21	LA PUERTA - T. C. (MEXICALI - ESTACION COAHUILA)	BC-010
22	MEXICALI - ALGODONES	BC-002
23	MEXICALI - ESTACION COAHUILA	BC-001
24	MEXICALI - PROGRESO	BC-005
25	SANTA ROSA - ENT. PACHUCA	BC-006

# 02 BAJA CALIFORNIA

SECRETARÍA DE COMUNICACIONES Y TRANSPORTES  
DIRECCIÓN GENERAL DE SERVICIOS TÉCNICOS

ESTADOS UNIDOS DE NORTE AMÉRICA





BAJA CALIFORNIA

3 CARR: LAZARO CARDENAS - PUNTA PRIETA

CLAVE: 02319

RUTA: MEX-001

AÑO: 2010

LUGAR	ESTACION				CLASIFICACION VEHICULAR EN PORCIENTO								COORDENADAS						
	KM	TE	SC	TDPA	A	B	C2	C3	T3S2	T3S3	T3S2R4	OTROS	A	B	C	K'	D	LATITUD	LONGITUD
LAZARO CARDENAS	0.00	3	0	10386	81.2	3.9	5.1	2.0	3.7	1.4	0.9	1.8	81.2	3.9	14.9	0.079	0.503	30.506404	-115.925128
ROSARIO DE ARRIBA	53.70	1	0	2508	84.2	2.9	5.3	2.4	2.0	0.9	0.7	1.6	84.2	2.9	12.9	0.076	0.518	30.063788	-115.729110
ROSARIO DE ARRIBA	53.70	3	0	4559	82.9	3.2	3.9	2.6	3.3	1.4	0.7	2.0	82.9	3.2	13.9	0.093	0.517	30.067405	-115.714535
T. DER. EMILIANO ZAPATA	80.00	3	0	1268	82.8	2.7	6.4	1.6	2.3	1.4	0.7	2.1	82.8	2.7	14.5	0.070	0.519	30.027828	-115.531437
SAN AGUSTIN	140.00	1	0	1570	88.3	2.1	3.4	1.1	2.5	1.1	0.2	1.3	88.3	2.1	9.6	0.081	0.517	29.922076	-114.981912
SAN AGUSTIN	140.00	3	0	1296	82.1	3.5	4.7	2.0	2.9	1.2	1.1	2.5	82.1	3.5	14.4	0.074	0.561	29.921567	-114.973424
SAN LUIS	173.00	1	0	1325	82.1	2.6	5.1	1.7	3.9	1.3	0.7	2.6	82.1	2.6	15.3	0.068	0.528	29.734656	-114.726113
RANCHO CHAPALA	222.80	1	0	1633	79.6	3.3	7.0	3.1	3.5	1.5	0.5	1.5	79.6	3.3	17.1	0.085	0.519	29.388742	-114.385455
PARADOR PUNTA PRIETA	275.66	1	0	1428	82.6	3.2	4.9	2.2	3.1	1.5	0.6	1.9	82.6	3.2	14.2	0.079	0.511	29.054702	-114.154100

4 CARR: MEXICALI - SAN FELIPE

CLAVE: 02096

RUTA: MEX-005

AÑO: 2010

LUGAR	ESTACION				CLASIFICACION VEHICULAR EN PORCIENTO								COORDENADAS						
	KM	TE	SC	TDPA	A	B	C2	C3	T3S2	T3S3	T3S2R4	OTROS	A	B	C	K'	D	LATITUD	LONGITUD
MEXICALI	0.00	3	1	14666	82.0	0.0	4.4	4.2	5.2	3.6	0.2	0.4	82.0	0.0	18.0	0.088	0.509	32.548321	-115.415036
MEXICALI	0.00	3	2	15184	81.8	0.0	4.4	4.6	5.2	3.4	0.2	0.4	81.8	0.0	18.2	0.098	0.509	32.548344	-115.415008
LA PUERTA	32.00	1	1	5327	82.9	0.0	4.2	4.1	5.0	3.2	0.2	0.4	82.9	0.0	17.1	0.080	0.501	32.339065	-115.331398
LA PUERTA	32.00	1	2	5339	82.3	0.0	4.0	4.3	5.3	3.5	0.2	0.4	82.3	0.0	17.7	0.082	0.501	32.339065	-115.331398
T. IZQ. ESTACION COAHUILA	39.00	1	1	3707	82.1	0.0	4.4	4.2	5.3	3.4	0.2	0.4	82.1	0.0	17.9	0.094	0.511	32.275426	-115.321936
T. IZQ. ESTACION COAHUILA	39.00	1	2	3868	82.9	0.0	4.0	4.2	4.8	3.5	0.2	0.4	82.9	0.0	17.1	0.085	0.511	32.275426	-115.321936
T. IZQ. ESTACION COAHUILA	39.00	3	0	4359	82.9	0.0	4.0	4.2	5.1	3.2	0.2	0.4	82.9	0.0	17.1	0.089	0.511	32.268553	-115.321507
EL CHINERO	141.00	1	0	2585	82.7	0.0	4.2	4.3	5.0	3.2	0.2	0.4	82.7	0.0	17.3	0.086	0.505	31.439562	-115.052665
EL CHINERO	141.00	3	0	2234	82.2	0.0	4.1	4.5	5.2	3.4	0.2	0.4	82.2	0.0	17.8	0.087	0.528	31.407131	-115.037496
SAN FELIPE	189.60	1	0	6914	82.5	0.0	4.3	4.3	4.9	3.4	0.2	0.4	82.5	0.0	17.5	0.077	0.504	31.032485	-114.861135

5 CARR: MEXICALI - TIJUANA

CLAVE: 02082

RUTA: MEX-002

AÑO: 2010

LUGAR	ESTACION				CLASIFICACION VEHICULAR EN PORCIENTO								COORDENADAS						
	KM	TE	SC	TDPA	A	B	C2	C3	T3S2	T3S3	T3S2R4	OTROS	A	B	C	K'	D	LATITUD	LONGITUD
MEXICALI	0.00																		
COLONIA PROGRESO	7.80	3	1	8207	82.1	2.8	3.6	2.5	4.7	1.9	0.0	2.4	82.1	2.8	15.1	0.076	0.500	32.583557	-115.589920
COLONIA PROGRESO	7.80	3	2	8223	79.8	3.5	5.4	2.5	4.3	2.4	0.0	2.1	79.8	3.5	16.7	0.080	0.500	32.583557	-115.589920
LAGUNA SALADA	25.00	1	1	6694	78.1	4.3	6.2	2.3	5.9	1.5	0.0	1.7	78.1	4.3	17.6	0.075	0.509	32.576525	-115.742990
LAGUNA SALADA	25.00	1	2	6934	80.5	3.9	6.5	1.4	4.4	1.6	0.0	1.7	80.5	3.9	15.6	0.092	0.509	32.576525	-115.742990
LA RUMOROSA	67.60	1	0	9770	73.2	1.4	8.5	2.9	9.3	2.4	0.0	2.3	73.2	1.4	25.4	0.117	0.507	32.549596	-116.045116





BAJA CALIFORNIA

12 CARR: TECATE - EL SAUZAL

CLAVE: 02097

RUTA: MEX-003

AÑO: 2010

LUGAR	ESTACION				CLASIFICACION VEHICULAR EN PORCIENTO								COORDENADAS						
	KM	TE	SC	TDPA	A	B	C2	C3	T3S2	T3S3	T3S2R4	OTROS	A	B	C	K'	D	LATITUD	LONGITUD
TECATE	0.00	3	0	9204	88.6	1.9	3.0	1.1	2.9	1.2	0.0	1.3	88.6	1.9	9.5	0.084	0.506	32.552961	-116.622463
T. DER. VALLE DE LAS PALMAS	27.80	1	0	4248	85.2	3.0	4.5	1.5	3.1	1.2	0.0	1.5	85.2	3.0	11.8	0.085	0.509	32.376918	-116.614205
EL TEZTERAZO	48.80	3	0	3279	78.7	2.8	6.0	1.5	6.7	2.5	0.0	1.8	78.7	2.8	18.5	0.086	0.505	32.289172	-116.530078
T. IZO. SAN MARCOS	63.50	1	0	2731	81.7	2.9	5.6	1.7	4.2	1.9	0.0	2.0	81.7	2.9	15.4	0.094	0.504	32.197636	-116.489339
EL PORVENIR GUADALUPE	74.80	3	0	3761	84.1	2.8	5.1	2.4	3.3	1.1	0.0	1.2	84.1	2.8	13.1	0.093	0.518	32.095940	-116.561581
LAS PALMAS	85.00	1	0	4769	83.2	2.2	5.3	2.1	4.2	1.8	0.0	1.2	83.2	2.2	14.6	0.088	0.518	32.006061	-116.633360
SAN ANTONIO DE LAS MINAS	93.90	1	0	6370	83.2	2.3	5.8	1.6	4.1	1.3	0.0	1.7	83.2	2.3	14.5	0.087	0.510	31.988206	-116.644093
EL SAUZAL	104.53	1	0	7280	85.1	2.0	4.9	1.6	3.9	1.2	0.0	1.3	85.1	2.0	12.9	0.089	0.508	31.914071	-116.689849

13 CARR: TIJUANA - ENSENADA (LIBRE)

CLAVE: 02099

RUTA: MEX-001

AÑO: 2010

LUGAR	ESTACION				CLASIFICACION VEHICULAR EN PORCIENTO								COORDENADAS						
	KM	TE	SC	TDPA	A	B	C2	C3	T3S2	T3S3	T3S2R4	OTROS	A	B	C	K'	D	LATITUD	LONGITUD
TIJUANA	0.00																		
X. C. TIJUANA - SAN MIGUEL (CUOTA)	22.00	1	1	23087	84.8	0.0	5.2	1.1	7.1	0.8	0.6	0.4	84.8	0.0	15.2	0.075	0.516	32.378289	-117.056973
X. C. TIJUANA - SAN MIGUEL (CUOTA)	22.00	1	2	21652	85.3	0.0	4.7	1.0	7.3	0.7	0.6	0.4	85.3	0.0	14.7	0.062	0.516	32.378289	-117.056973
ROSARITO	25.94	1	1	15995	84.9	0.0	4.8	1.0	7.6	0.7	0.6	0.4	84.9	0.0	15.1	0.077	0.508	32.372344	-117.059840
ROSARITO	25.94	1	2	16514	85.6	0.0	4.7	1.0	7.0	0.7	0.6	0.4	85.6	0.0	14.4	0.065	0.508	32.372340	-117.059841
ROSARITO	25.94	3	0	14168	84.9	0.0	5.0	1.0	7.3	0.8	0.6	0.4	84.9	0.0	15.1	0.078	0.504	32.331688	-117.051250
T. IZO. AUTOPISTA	46.12	1	0	9370	85.1	0.0	5.0	1.0	7.2	0.7	0.6	0.4	85.1	0.0	14.9	0.094	0.505	32.230428	-116.921663
POBLACION PLAZA SANTA MARIA	56.98	1	0	3506	85.4	0.0	4.7	0.9	7.3	0.7	0.6	0.4	85.4	0.0	14.6	0.118	0.501	32.143461	-116.891496
LA MISION	64.98	1	0	3577	90.3	2.0	2.4	1.0	3.6	0.2	0.3	0.2	90.3	2.0	7.7	0.097	0.524	32.095176	-116.862497
T. IZO. COLONIA GUADALUPE	82.90	1	0	2722	90.6	2.0	2.3	1.0	3.4	0.2	0.3	0.2	90.6	2.0	7.4	0.097	0.513	31.990612	-116.746852
ENT. SAN MIGUEL	95.80	1	0	3063	89.6	2.2	2.5	1.0	4.0	0.2	0.3	0.2	89.6	2.2	8.2	0.100	0.516	31.911848	-116.729985
EL SAUZAL	102.00	3	1	12839	90.5	1.9	2.3	1.0	3.6	0.2	0.3	0.2	90.5	1.9	7.6	0.102	0.501	31.878469	-116.682000
EL SAUZAL	102.00	3	2	12900	90.0	2.0	2.4	1.0	3.9	0.2	0.3	0.2	90.0	2.0	8.0	0.095	0.501	31.878469	-116.682000
ENSENADA	110.00																		

14 CARR: LIBRAMIENTO MEXICALI (CUOTA)

CLAVE:

RUTA: MEX-D

AÑO: 2010

LUGAR	ESTACION				CLASIFICACION VEHICULAR EN PORCIENTO								COORDENADAS						
	KM	TE	SC	TDPA	A	B	C2	C3	T3S2	T3S3	T3S2R4	OTROS	A	B	C	K'	D	LATITUD	LONGITUD
T.C. SONOITA - MEXICALI	0.00	3	0	3918	67.8	1.1	3.0	3.4	17.5	2.6	3.5	1.1	67.8	1.1	31.1	0.094	0.518	32.551873	-115.303672
CASETA DE COBRO MEXICALI	16.00	1	0	2708	67.3	1.2	2.9	3.7	17.6	2.6	3.6	1.1	67.3	1.2	31.5			32.533492	-115.420759
CASETA DE COBRO MEXICALI	16.00	3	0	1961	62.0	1.6	2.9	4.2	20.6	2.5	4.8	1.4	62.0	1.6	36.4			32.533492	-115.420759



BAJA CALIFORNIA

14 CARR: LIBRAMIENTO MEXICALI (CUOTA)

CLAVE:

RUTA: MEX-D

AÑO: 2010

LUGAR	ESTACION				CLASIFICACION VEHICULAR EN PORCIENTO								COORDENADAS						
	KM	TE	SC	TDPA	A	B	C2	C3	T3S2	T3S3	T3S2R4	OTROS	A	B	C	K'	D	LATITUD	LONGITUD
T.C. MEXICALI - TIJUANA	41.00	1	0	6218	62.2	1.5	2.9	4.1	20.5	2.5	4.8	1.5	62.2	1.5	36.3	0.108	0.505	32.592918	-115.680008

15 CARR: MEXICALI - TIJUANA (CUOTA)

CLAVE: 02011

RUTA: MEX-002D

AÑO: 2010

LUGAR	ESTACION				CLASIFICACION VEHICULAR EN PORCIENTO								COORDENADAS						
	KM	TE	SC	TDPA	A	B	C2	C3	T3S2	T3S3	T3S2R4	OTROS	A	B	C	K'	D	LATITUD	LONGITUD
T. C. MEXICALI - TIJUANA	0.00																		
LA RUMOROSA	19.35	3	1	4358	78.6	7.5	3.6	1.0	6.1	0.4	2.3	0.5	78.6	7.5	13.9	0.086	0.500	32.558438	-116.053516
LA RUMOROSA	19.35	3	2	4352	79.0	7.1	3.7	1.0	6.0	0.4	2.3	0.5	79.0	7.1	13.9	0.076	0.500	32.558438	-116.053516
CASETA DE COBRO EL HONGO	68.76	1	0	5641	79.0	7.1	3.6	1.0	6.2	0.4	2.2	0.5	79.0	7.1	13.9			32.521903	-116.319783
CASETA DE COBRO EL HONGO	68.76	2	0	6275	80.6	6.5	3.4	1.0	5.7	0.4	2.0	0.4	80.6	6.5	12.9			32.521903	-116.319783
CASETA DE COBRO EL HONGO	68.76	3	1	3050	80.4	6.9	3.5	0.9	5.5	0.4	1.9	0.5	80.4	6.9	12.7	0.073	0.502	32.522655	-116.324114
CASETA DE COBRO EL HONGO	68.76	3	2	3075	81.2	6.4	3.1	1.0	5.4	0.4	2.0	0.5	81.2	6.4	12.4	0.076	0.502	32.522655	-116.324114
CASETA DE COBRO TIJUANA	124.60	1	0	6384	78.8	7.9	2.7	0.8	7.2	0.4	1.6	0.6	78.8	7.9	13.3			32.545773	-116.852030
CASETA DE COBRO TIJUANA	124.60	2	0	8114	80.4	6.6	2.8	0.8	7.0	0.5	1.3	0.6	80.4	6.6	13.0			32.545773	-116.852030
CASETA DE COBRO TIJUANA	124.60	3	1	3417	80.0	7.8	2.7	0.6	6.6	0.4	1.3	0.6	80.0	7.8	12.2	0.075	0.504	32.544796	-116.852641
CASETA DE COBRO TIJUANA	124.60	3	2	3474	81.2	7.1	2.5	0.6	6.2	0.4	1.4	0.6	81.2	7.1	11.7	0.070	0.504	32.544796	-116.852641
TERMINA AUTOPISTA PRINCIPIA TIJUANA	138.04																		

16 CARR: TIJUANA - SAN MIGUEL (CUOTA)

CLAVE: 02100

RUTA: MEX-001D

AÑO: 2010

LUGAR	ESTACION				CLASIFICACION VEHICULAR EN PORCIENTO								COORDENADAS						
	KM	TE	SC	TDPA	A	B	C2	C3	T3S2	T3S3	T3S2R4	OTROS	A	B	C	K'	D	LATITUD	LONGITUD
TIJUANA	0.00																		
CASETA DE COBRO PLAYAS DE TIJUANA	9.70	2	0	12108	97.4	1.1	0.6	0.5	0.4	0.0	0.0	0.0	97.4	1.1	1.5			32.514031	-117.109509
CASETA DE COBRO ROSARITO	35.427	2	0	7291	92.1	2.6	2.2	0.4	2.1	0.1	0.4	0.1	92.1	2.6	5.3			32.311054	-117.044308
CASETA DE COBRO ENSENADA	98.60	2	0	10478	86.5	2.2	3.3	0.8	5.7	0.4	0.8	0.3	86.5	2.2	11.3			31.903093	-116.732720
T. C. TIJUANA - ENSENADA (LIBRE)	99.00																		

17 CARR: ALGODONES - ISLAS AGRARIAS GRUPO B

CLAVE: 02006

RUTA: BC-008

AÑO: 2010

LUGAR	ESTACION				CLASIFICACION VEHICULAR EN PORCIENTO								COORDENADAS						
	KM	TE	SC	TDPA	A	B	C2	C3	T3S2	T3S3	T3S2R4	OTROS	A	B	C	K'	D	LATITUD	LONGITUD
ALGODONES	0.00	3	0	5463	94.5	1.5	2.6	0.6	0.4	0.2	0.0	0.2	94.5	1.5	4.0	0.085	0.507	32.708136	-114.738290
T. IZQ. CD. MORELOS	14.00	1	0	5828	93.4	1.4	3.3	0.9	0.5	0.2	0.0	0.3	93.4	1.4	5.2	0.071	0.512	32.665938	-114.849769

BAJA CALIFORNIA

17 CARR: ALGODONES - ISLAS AGRARIAS GRUPO B

CLAVE: 02006

RUTA: BC-008

AÑO: 2010

LUGAR	ESTACION				CLASIFICACION VEHICULAR EN PORCIENTO								COORDENADAS						
	KM	TE	SC	TDPA	A	B	C2	C3	T3S2	T3S3	T3S2R4	OTROS	A	B	C	K'	D	LATITUD	LONGITUD
MERIDA	20.30	3	0	2416	89.1	2.7	4.1	1.5	1.2	0.6	0.0	0.8	89.1	2.7	8.2	0.076	0.505	32.664661	-114.924403
T. IZQ. EJIDO LAZARO CARDENAS	31.50	1	0	3028	86.5	4.7	5.9	1.5	0.5	0.1	0.0	0.8	86.5	4.7	8.8	0.079	0.502	32.614546	-115.015802
ISLAS AGRARIAS GRUPO B	55.50	1	0	5361	85.9	2.6	7.1	2.2	1.0	0.4	0.0	0.8	85.9	2.6	11.5	0.076	0.502	32.614913	-115.268773

18 CARR: EJIDO BENITO JUAREZ - EJIDO CHIAPAS

CLAVE: 02501

RUTA: BC-061

AÑO: 2010

LUGAR	ESTACION				CLASIFICACION VEHICULAR EN PORCIENTO								COORDENADAS						
	KM	TE	SC	TDPA	A	B	C2	C3	T3S2	T3S3	T3S2R4	OTROS	A	B	C	K'	D	LATITUD	LONGITUD
EJIDO BENITO JUAREZ	0.00	3	0	2844	90.6	1.7	4.4	1.4	0.8	0.3	0.0	0.8	90.6	1.7	7.7	0.131	0.519	32.549649	-114.992893
EJIDO MEXICO	7.00	1	0	1280	91.7	1.7	4.6	1.0	0.5	0.1	0.1	0.3	91.7	1.7	6.6	0.097	0.516	32.519645	-114.978654
EJIDO CHIAPAS	10.56	1	0	1143	89.5	3.1	4.8	1.3	0.4	0.2	0.1	0.6	89.5	3.1	7.4	0.093	0.501	32.499304	-114.969939

19 CARR: EJIDO MONTERREY - MAZON

CLAVE: 02004

RUTA: BC-003

AÑO: 2010

LUGAR	ESTACION				CLASIFICACION VEHICULAR EN PORCIENTO								COORDENADAS						
	KM	TE	SC	TDPA	A	B	C2	C3	T3S2	T3S3	T3S2R4	OTROS	A	B	C	K'	D	LATITUD	LONGITUD
T. C. SONOITA - MEXICALI	0.00	3	0	4881	90.2	2.0	3.1	1.6	1.6	0.7	0.0	0.8	90.2	2.0	7.8	0.082	0.509	32.544942	-115.075358
X. C. MEXICALI - ALGODONES	15.16	1	0	3877	86.0	3.1	5.5	1.5	1.9	0.9	0.0	1.1	86.0	3.1	10.9	0.085	0.502	32.420338	-115.067270
X. C. MEXICALI - ALGODONES	15.16	3	0	8472	83.7	3.0	5.1	2.4	2.7	1.4	0.0	1.7	83.7	3.0	13.3	0.078	0.503	32.414773	-115.067031
GUADALUPE VICTORIA	30.47	1	0	9740	85.8	2.3	4.4	2.1	2.4	1.2	0.0	1.8	85.8	2.3	11.9	0.077	0.505	32.297210	-115.085980
MAZON	35.00	1	0	6334	84.3	3.5	4.2	1.8	3.6	1.2	0.0	1.4	84.3	3.5	12.2	0.089	0.501	32.243276	-115.111051

20 CARR: EL FARO - ESTACION COAHUILA

CLAVE: 02013

RUTA: BC-004

AÑO: 2010

LUGAR	ESTACION				CLASIFICACION VEHICULAR EN PORCIENTO								COORDENADAS						
	KM	TE	SC	TDPA	A	B	C2	C3	T3S2	T3S3	T3S2R4	OTROS	A	B	C	K'	D	LATITUD	LONGITUD
T. C. MEXICALI - SAN FELIPE	0.00	3	0	4477	87.2	3.2	4.7	1.7	1.8	0.6	0.0	0.8	87.2	3.2	9.6	0.069	0.506	32.273411	-115.319714
X. C. MEXICALI - ESTACION COAHUILA	16.30	1	0	5269	83.7	4.1	4.0	2.8	2.5	1.3	0.0	1.6	83.7	4.1	12.2	0.076	0.516	32.239543	-115.180433
X. C. MEXICALI - ESTACION COAHUILA	16.30	3	0	9592	84.1	4.0	4.9	2.3	2.1	0.8	0.0	1.8	84.1	4.0	11.9	0.079	0.508	32.239384	-115.148355
T. IZQ. CARR. EJIDO MONTERREY - MAZON	26.70	3	0	6859	85.7	3.7	4.6	1.4	2.1	0.8	0.0	1.7	85.7	3.7	10.6	0.068	0.508	32.239507	-115.088757
FRANCISCO MURGUIA	30.00	3	0	4519	87.9	3.0	3.9	1.8	1.4	0.7	0.0	1.3	87.9	3.0	9.1	0.074	0.510	32.239786	-115.060168
ESTACION COAHUILA	34.50	1	0	6641	86.5	3.1	4.9	2.3	1.7	0.5	0.0	1.0	86.5	3.1	10.4	0.071	0.509	32.209925	-115.015070

BAJA CALIFORNIA

21 CARR: LA PUERTA - T. C. (MEXICALI - ESTACION COAHUILA)

CLAVE: 02502

RUTA: BC-010

AÑO: 2010

LUGAR	ESTACION				CLASIFICACION VEHICULAR EN PORCIENTO								COORDENADAS						
	KM	TE	SC	TDPA	A	B	C2	C3	T3S2	T3S3	T3S2R4	OTROS	A	B	C	K'	D	LATITUD	LONGITUD
T. C. MEXICALI - SAN FELIPE	0.00																		
ZAKAMOTO	4.60	1	0	2522	91.4	2.1	3.6	1.4	1.0	0.5	0.0	0.0	91.4	2.1	6.5	0.086	0.530	32.325600	-115.288640
NAYARIT	9.00	3	0	2322	90.4	1.2	3.8	1.4	2.1	0.8	0.0	0.3	90.4	1.2	8.4	0.096	0.518	32.313396	-115.231937
T. C. MEXICALI - ESTACION COAHUILA	15.00																		

22 CARR: MEXICALI - ALGODONES

CLAVE: 02012

RUTA: BC-002

AÑO: 2010

LUGAR	ESTACION				CLASIFICACION VEHICULAR EN PORCIENTO								COORDENADAS						
	KM	TE	SC	TDPA	A	B	C2	C3	T3S2	T3S3	T3S2R4	OTROS	A	B	C	K'	D	LATITUD	LONGITUD
T. C. MEXICALI - SAN FELIPE	0.00																		
EJIDO PUEBLA	12.00	3	0	9202	84.4	3.2	5.2	2.4	1.7	1.1	0.0	2.0	84.4	3.2	12.4	0.073	0.507	32.553271	-115.361454
T. C. GEOTERMICA - ESTACION DELTA	31.50	1	0	6384	89.5	2.1	3.5	1.3	1.6	0.8	0.0	1.2	89.5	2.1	8.4	0.081	0.508	32.424483	-115.261933
X. C. MEXICALI - ESTACION COAHUILA	37.70	1	0	6684	89.6	1.8	3.9	1.4	1.5	0.7	0.0	1.1	89.6	1.8	8.6	0.085	0.504	32.419128	-115.202395
X. C. MEXICALI - ESTACION COAHUILA	37.70	3	0	5543	92.5	1.1	2.7	1.0	1.0	0.4	0.0	1.3	92.5	1.1	6.4	0.075	0.505	32.418998	-115.173420
X. C. EJIDO MONTERREY - MAZON	49.65	1	0	5790	85.7	3.3	5.7	1.6	1.3	0.5	0.3	1.6	85.7	3.3	11.0	0.080	0.512	32.418493	-115.074052
X. C. EJIDO MONTERREY - MAZON	49.65	3	0	2081	91.0	1.9	3.8	0.9	1.0	0.4	0.1	0.9	91.0	1.9	7.1	0.095	0.525	32.418454	-115.063977
T. IZQ. TRES DE MARZO	60.50	1	0	2336	88.8	2.3	4.7	1.3	1.0	0.4	0.2	1.3	88.8	2.3	8.9	0.085	0.520	32.466317	-114.946388
X. C. SONOITA - MEXICALI	72.00	1	0	2387	89.6	2.8	4.4	0.9	0.8	0.2	0.2	1.1	89.6	2.8	7.6	0.074	0.541	32.504620	-114.848397
X. C. SONOITA - MEXICALI	72.00	3	0	4325	90.8	2.4	3.7	1.1	0.8	0.2	0.1	0.9	90.8	2.4	6.8	0.077	0.528	32.506748	-114.842988
PACHUCA	83.00	1	0	4938	89.4	2.7	4.8	1.6	0.5	0.2	0.0	0.8	89.4	2.7	7.9	0.075	0.531	32.603325	-114.829654
ALGODONES	94.46	1	0	3304	91.8	2.8	3.8	0.4	0.4	0.1	0.0	0.7	91.8	2.8	5.4	0.079	0.512	32.705018	-114.730518

23 CARR: MEXICALI - ESTACION COAHUILA

CLAVE: 02016

RUTA: BC-001

AÑO: 2010

LUGAR	ESTACION				CLASIFICACION VEHICULAR EN PORCIENTO								COORDENADAS						
	KM	TE	SC	TDPA	A	B	C2	C3	T3S2	T3S3	T3S2R4	OTROS	A	B	C	K'	D	LATITUD	LONGITUD
MEXICALI	0.00	3	1	12419	85.5	2.8	4.8	2.1	2.0	1.0	0.0	1.8	85.5	2.8	11.7	0.072	0.510	32.653052	-115.390576
MEXICALI	0.00	3	2	12946	87.2	2.6	5.5	1.6	1.5	0.7	0.0	0.9	87.2	2.6	10.2	0.073	0.510	32.653052	-115.390576
T. IZQ. AEROPUERTO	11.30	1	1	6818	85.6	2.6	5.5	2.0	2.0	1.1	0.0	1.2	85.6	2.6	11.8	0.080	0.506	32.652941	-115.370790
T. IZQ. AEROPUERTO	11.30	1	2	6987	82.2	2.8	6.7	2.8	2.6	1.1	0.0	1.8	82.2	2.8	15.0	0.075	0.506	32.652941	-115.370790
ISLAS AGRARIAS GRUPO A	14.10	1	0	12281	81.8	2.9	6.6	3.1	2.7	1.1	0.0	1.8	81.8	2.9	15.3	0.061	0.506	32.614114	-115.343882
X. C. SONOITA - MEXICALI	30.79	1	0	5121	88.5	2.2	4.1	1.8	1.6	0.6	0.0	1.2	88.5	2.2	9.3	0.075	0.505	32.555218	-115.215030
X. C. SONOITA - MEXICALI	30.79	3	0	5044	88.6	2.4	4.8	1.2	1.3	0.6	0.0	1.1	88.6	2.4	9.0	0.065	0.506	32.550287	-115.215116
EJIDO NUEVO LEON	46.83	1	0	6376	88.5	2.8	5.2	1.6	0.7	0.2	0.0	1.0	88.5	2.8	8.7	0.069	0.512	32.421424	-115.192517
EJIDO NUEVO LEON	46.83	3	0	7654	89.8	1.1	5.8	1.6	0.9	0.3	0.0	0.5	89.8	1.1	9.1	0.067	0.522	32.395283	-115.194626



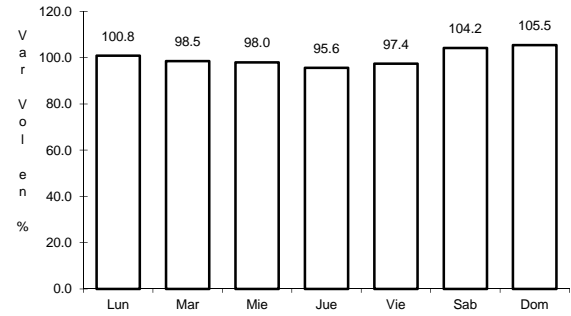
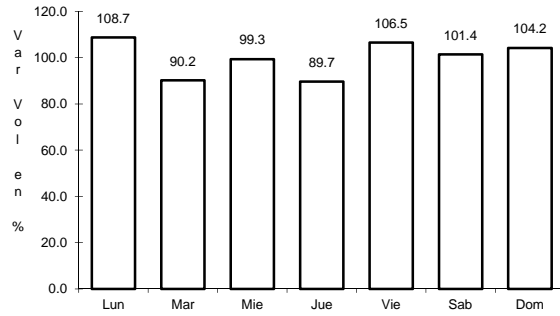
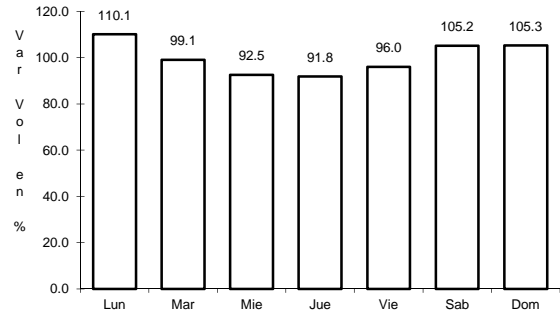




7 CARR: PUNTA PRIETA - GUERRERO NEGRO

CLAVE: 00321

ruta: MEX-001



Km: 0.00 Tipo: 3 Sent: 0

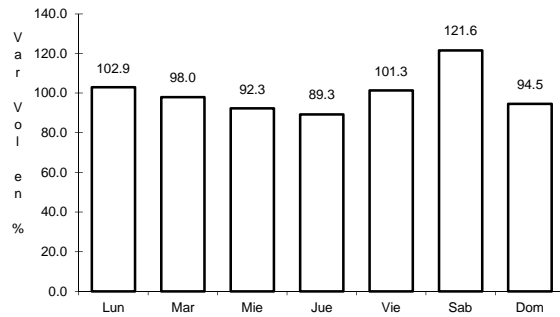
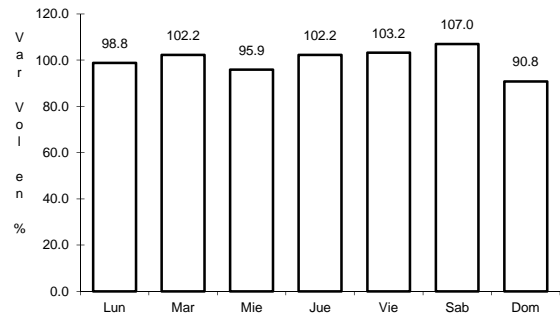
Km: 70.10 Tipo: 3 Sent: 0

Km: 130.00 Tipo: 1 Sent: 0

8 CARR: RAMAL A AEROPUERTO DE MEXICALI

CLAVE: 02321

ruta: MEX



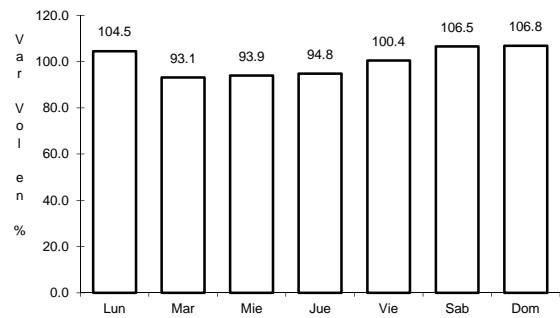
Km: 0.00 Tipo: 3 Sent: 0

Km: 10.00 Tipo: 1 Sent: 0

9 CARR: RAMAL A SANTA MARIA

CLAVE: 02506

ruta: MEX

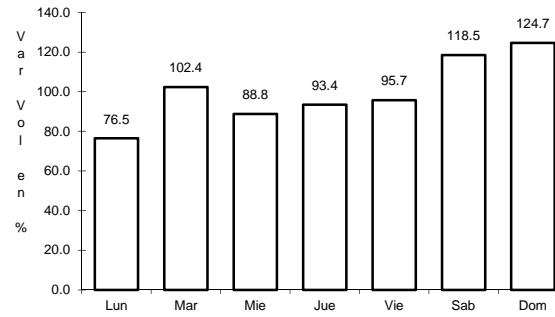
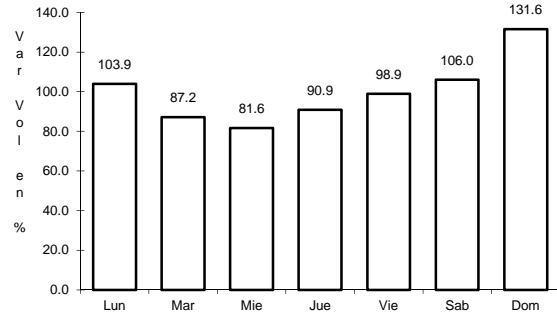


Km: 0.00 Tipo: 3 Sent: 0

10 CARR: SAN FELIPE - CHAPALA

CLAVE: 02503

RUTA: MEX-005



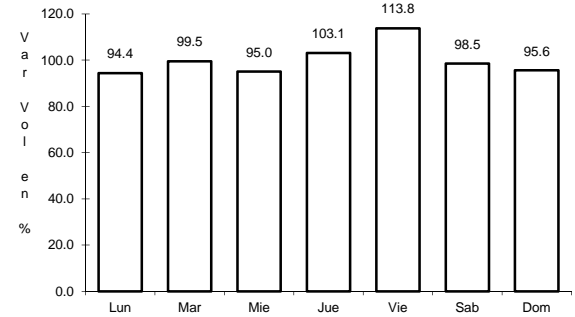
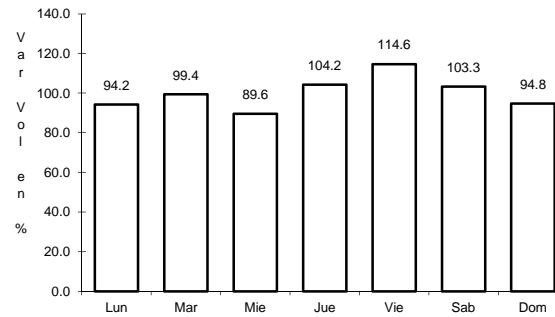
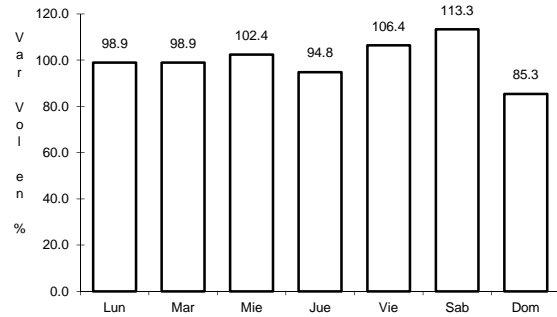
Km: 0.00      Tipo: 3      Sent: 0

Km: 75.46      Tipo: 3      Sent: 0

11 CARR: SONOITA - MEXICALI

CLAVE: 00081

RUTA: MEX-002



Km: 0.00      Tipo: 3      Sent: 0

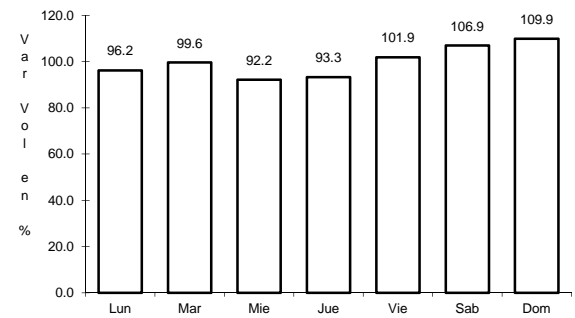
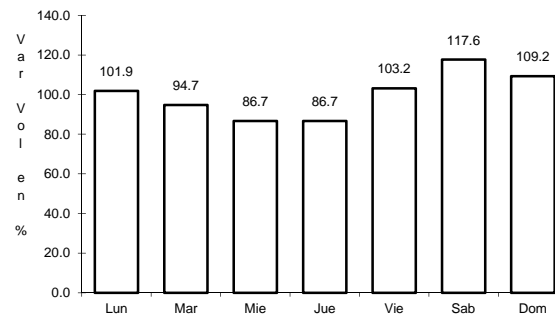
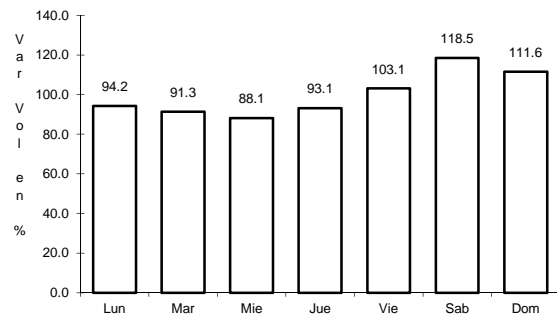
Km: 256.47      Tipo: 1      Sent: 1

Km: 256.47      Tipo: 1      Sent: 2

12 CARR: TECATE - EL SAUZAL

CLAVE: 02097

RUTA: MEX-003



Km: 0.00      Tipo: 3      Sent: 0

Km: 48.80      Tipo: 3      Sent: 0

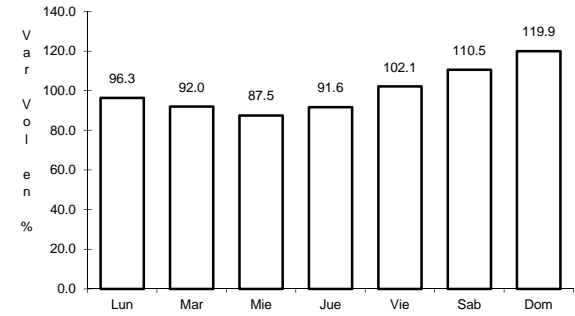
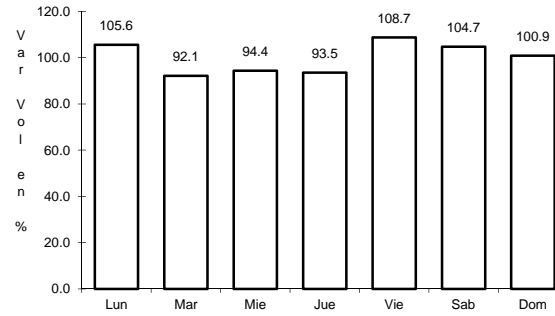
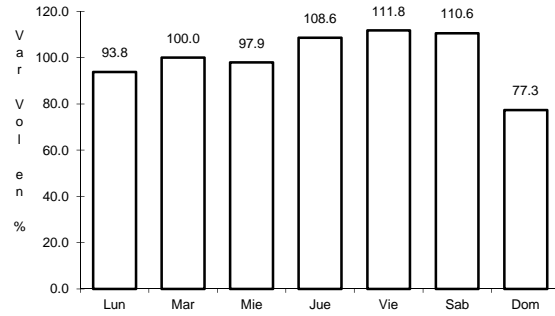
Km: 104.53      Tipo: 1      Sent: 0



13 CARR: TIJUANA - ENSENADA (LIBRE)

CLAVE: 02099

RUTA: MEX-001



Km: 22.00      Tipo: 1      Sent: 1

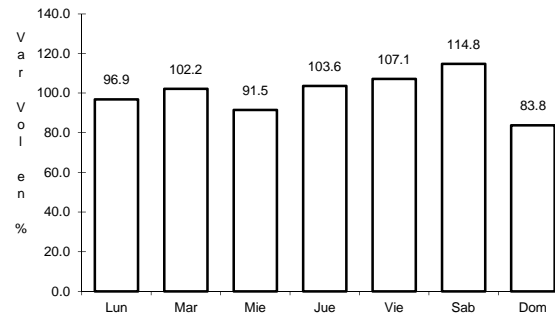
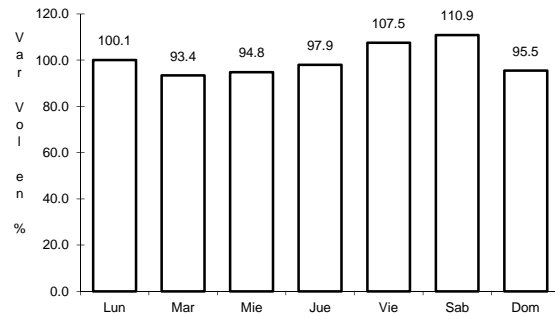
Km: 22.00      Tipo: 1      Sent: 2

Km: 95.80      Tipo: 1      Sent: 0

14 CARR: LIBRAMIENTO MEXICALI (CUOTA)

CLAVE:

RUTA: MEX-D



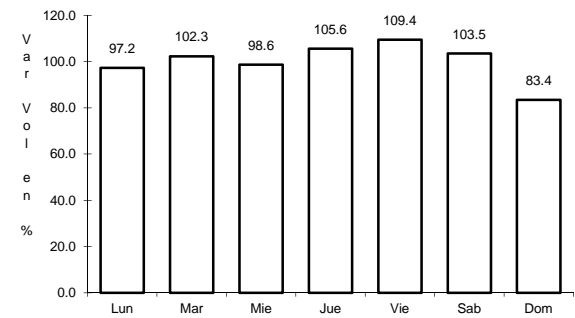
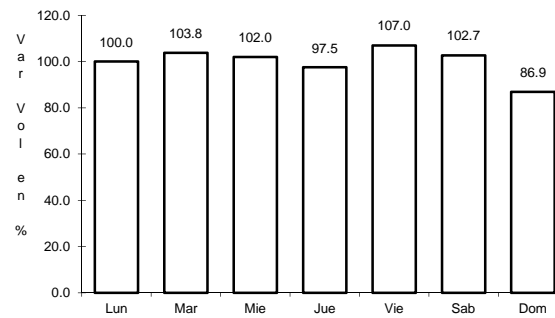
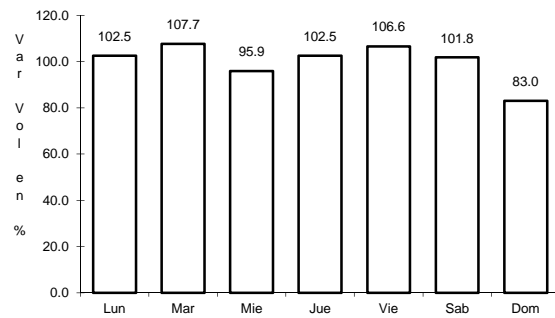
Km: 0.00      Tipo: 3      Sent: 0

Km: 41.00      Tipo: 1      Sent: 0

15 CARR: MEXICALI - TIJUANA (CUOTA)

CLAVE: 02011

RUTA: MEX-002D



Km: 19.35      Tipo: 3      Sent: 1

Km: 19.35      Tipo: 3      Sent: 2

Km: 124.60      Tipo: 3      Sent: 1





