

TABASCO

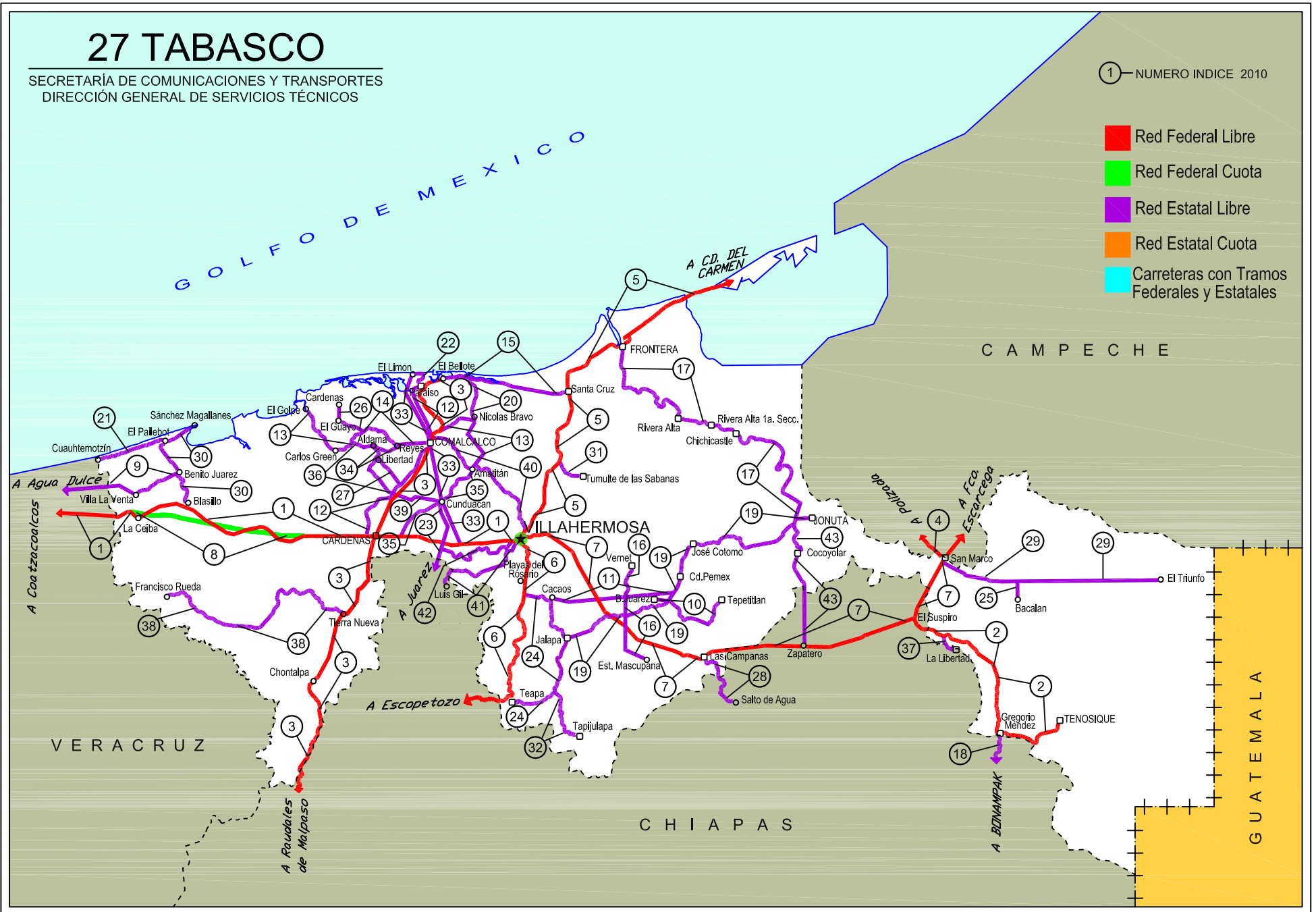
No. INDICE	CARRETERA	ruta
---- RED FEDERAL LIBRE ----		
1	COATZACOALCOS - VILLAHERMOSA	MEX-180
2	EL SUSPIRO - TENOSIQUE	MEX-203
3	MALPASO - EL BELLOTE	MEX-187
4	SAN MARCO - PALIZADA	MEX-217
5	VILLAHERMOSA - CD. DEL CARMEN	MEX-180
6	VILLAHERMOSA - ESCOPETAZO	MEX-195
7	VILLAHERMOSA - FRANCISCO ESCARCEGA	MEX-186
---- RED FEDERAL DE CUOTA ----		
8	AGUA DULCE - CARDENAS (CUOTA)	MEX-184D
---- RED ESTATAL LIBRE ----		
9	BENITO JUAREZ - AGUA DULCE	TAB-VER
10	BENITO JUAREZ - TEPETITAN	TAB
11	CACAOS - LA GRANJA	TAB
12	CARDENAS - PARAISO	TAB
13	CHICHICAPA - ENT. LA LIBERTAD	TAB
14	COMALCALCO - EL GOLPE	TAB
15	EL BELLOTE - SANTA CRUZ	TAB
16	ESTACION MACUSPANA - VERNET	TAB-041
17	FRONTERA - T. C. (JALAPA - JONUTA)	TAB
18	GREGORIO MENDEZ MAGAÑA - REFORMA DE OCAMPO	CHIS
19	JALAPA - JONUTA	TAB
20	NICOLAS BRAVO - T. C. (EL BELLOTE - SANTA CRUZ)	TAB
21	PAILEBOT - CUAUHEMOTZIN	TAB
22	PARAISO - EL LIMON	TAB
23	PASO DE CUNDUACAN - ESTACION JUAREZ	TAB-CHIS
24	PLAYAS DEL ROSARIO - TEAPA	TAB-001
25	RAMAL A BALANCAN	TAB
26	RAMAL A LAZARO CARDENAS	TAB
27	RAMAL A LIBERTAD	TAB
28	RAMAL A SALTO DEL AGUA	TAB-CHIS
29	RAMAL A SAN ANTONIO	TAB
30	RAMAL A SANCHEZ MAGALLANES	TAB
31	RAMAL A TAMULTE DE LAS SABANAS	TAB
32	RAMAL A TAPIJULAPA	TAB
33	REFORMA - DOS BOCAS	TAB
34	REYES HERNANDEZ - VILLA ALDAMA	TAB
35	SAMARIA - AMATITAN	TAB
36	T. C. (CARDENAS - PARAISO) - CARLOS GREEN	TAB
37	T. C. (EL SUSPIRO - TENOSIQUE) - LA LIBERTAD	CHIS-TAB
38	TIERRA NUEVA - FRANCISCO RUEDA	TAB
39	TULIPAN - CUNDUACAN	TAB
40	VILLAHERMOSA - COMALCALCO	TAB
41	VILLAHERMOSA - LUIS GIL PEREZ	TAB
42	VILLAHERMOSA - T. C. (P. DE CUNDUACAN - ESTACION JUAREZ)	TAB
43	ZAPATERO - T. C. (JALAPA - JONUTA)	CHIS-TAB

27 TABASCO

SECRETARÍA DE COMUNICACIONES Y TRANSPORTES
DIRECCIÓN GENERAL DE SERVICIOS TÉCNICOS

① — NUMERO INDICE 2010

- Red Federal Libre
- Red Federal Cuota
- Red Estatal Libre
- Red Estatal Cuota
- Carreteras con Tramos Federales y Estatales



TABASCO

2 CARR : EL SUSPIRO - TENOSIQUE

CLAVE: 00276

RUTA : MEX-203

AÑO : 2009

L U G A R	E S T A C I O N				C L A S I F I C A C I O N V E H I C U L A R E N P O R C I E N T O .												
	KM	TE	SC	TDPA	A	B	C2	C3	T3S2	T3S3	T3S2R4	OTROS	A	B	C	K'	D
EMILIANO ZAPATA	8.61	3	0	4646	91.3	4.2	1.8	0.9	0.5	0.1	0.2	1.0	91.3	4.2	4.5	0.074	0.502
T. DER. LA LIBERTAD	12.10	3	0	2753	91.0	4.6	1.9	0.8	0.4	0.1	0.2	1.0	91.0	4.6	4.4	0.079	0.507
T. IZQ. BALANCAN	32.60	1	0	2163	86.1	4.9	3.7	1.5	1.4	0.8	0.2	1.4	86.1	4.9	9.0	0.082	0.502
T. IZQ. BALANCAN	32.60	3	0	1866	87.2	6.4	1.9	1.6	1.1	0.5	0.2	1.1	87.2	6.4	6.4	0.091	0.508
ESTACION ZAPATA	53.00	1	0	1825	88.3	5.7	1.5	1.6	1.3	0.5	0.2	0.9	88.3	5.7	6.0	0.088	0.505
ESTACION ZAPATA	53.00	3	0	1717	86.2	7.6	1.5	1.8	1.2	0.5	0.2	1.0	86.2	7.6	6.2	0.107	0.502
TENOSIQUE	75.30																

3 CARR : MALPASO - EL BELLOTE

CLAVE: 00137

RUTA : MEX-187

AÑO : 2009

L U G A R	E S T A C I O N				C L A S I F I C A C I O N V E H I C U L A R E N P O R C I E N T O .												
	KM	TE	SC	TDPA	A	B	C2	C3	T3S2	T3S3	T3S2R4	OTROS	A	B	C	K'	D
PRESA MALPASO	0.00																
LIM. EDOS. TERM. CHIS. PPIA. TAB.	43.99																
LIM. EDOS. TERM. TAB. PPIA. CHIS.	44.59																
LIM. EDOS. TERM. CHIS. PPIA. TAB.	45.26																
LIM. EDOS. TERM. TAB. PPIA. CHIS.	45.63																
LIM. EDOS. TERM. CHIS. PPIA. TAB.	55.04																
MACABIL (LA ESTRELLA)	70.12	1	0	2435	82.4	3.9	6.3	2.8	1.4	0.4	0.1	2.7	82.4	3.9	13.7	0.088	0.503
ESTACION CHONTALPA	75.69	1	0	4261	83.9	3.6	5.3	2.6	1.3	0.3	0.1	2.9	83.9	3.6	12.5	0.076	0.507
ESTACION CHONTALPA	75.69	3	0	3888	84.3	3.7	5.3	1.4	1.1	1.3	0.9	2.0	84.3	3.7	12.0	0.083	0.505
T. IZQ. FRANCISCO RUEDA	90.49	1	0	3322	85.8	3.8	3.3	1.5	1.0	1.5	0.9	2.2	85.8	3.8	10.4	0.084	0.510
T. IZQ. FRANCISCO RUEDA	90.49	3	0	4670	86.3	4.2	3.2	1.8	1.0	1.4	0.6	1.5	86.3	4.2	9.5	0.078	0.500
HUIMANGUILLO	98.03	1	0	6142	80.2	5.4	2.5	2.4	2.6	2.0	2.5	2.4	80.2	5.4	14.4	0.073	0.513
HUIMANGUILLO	98.03	3	0	6892	75.8	4.4	7.5	7.7	2.5	0.7	0.1	1.3	75.8	4.4	19.8	0.077	0.501
CARDENAS	117.60	1	0	9769	79.7	3.8	6.7	5.4	1.7	1.4	0.1	1.2	79.7	3.8	16.5	0.068	0.516
CARDENAS	117.60	3	0	9938	65.8	4.6	14.5	6.6	5.2	1.6	0.3	1.4	65.8	4.6	29.6	0.076	0.514
TULIPAN	134.70	3	0	7211	74.0	4.4	2.5	7.8	4.0	1.7	3.0	2.6	74.0	4.4	21.6	0.072	0.501
T. DER. CUNDUACAN	141.70	1	0	6990	72.7	3.3	5.2	5.5	4.7	2.2	2.3	4.1	72.7	3.3	24.0	0.071	0.525
T. DER. CUNDUACAN	141.70	3	0	6782	76.5	4.8	3.3	3.6	2.7	3.8	2.2	3.1	76.5	4.8	18.7	0.074	0.510
T. DER. JALPA	153.50	1	0	7898	81.5	5.4	3.3	0.1	4.7	1.0	1.9	2.1	81.5	5.4	13.1	0.071	0.504
T. DER. JALPA	153.50	3	0	12419	73.2	4.9	2.4	1.7	5.7	2.5	5.4	4.2	73.2	4.9	21.9	0.065	0.501
PARAISO	176.90	1	0	13988	83.2	4.8	1.7	0.9	3.6	1.3	1.3	3.2	83.2	4.8	12.0	0.070	0.508
PARAISO	176.90	3	0	8216	87.4	3.9	2.6	0.2	2.2	0.2	1.5	2.0	87.4	3.9	8.7	0.069	0.503
CEIBA	182.00	3	0	5662	87.5	3.5	2.9	0.2	2.2	0.2	1.3	2.2	87.5	3.5	9.0	0.078	0.502

TABASCO

6 CARR : VILLAHERMOSA - ESCOPETAZO

CLAVE: 00104

RUTA : MEX-195

AÑO : 2009

L U G A R	E S T A C I O N				C L A S I F I C A C I O N V E H I C U L A R E N P O R C I E N T O .												
	KM	TE	SC	TDPA	A	B	C2	C3	T3S2	T3S3	T3S2R4	OTROS	A	B	C	K'	D
VILLAHERMOSA	0.00	3	0	15742	82.6	4.4	3.3	2.7	1.9	2.0	0.7	2.4	82.6	4.4	13.0	0.084	0.517
PARRILLA	10.00	1	0	15668	82.0	5.0	4.0	1.7	2.3	2.8	1.4	0.8	82.0	5.0	13.0	0.064	0.503
PARRILLA	10.00	3	0	14089	82.8	5.7	3.9	1.7	1.9	1.9	1.4	0.7	82.8	5.7	11.5	0.066	0.503
T. IZQ. SUBTE. GARCIA	20.00	3	0	6554	86.9	5.1	2.0	1.6	1.5	1.4	1.1	0.4	86.9	5.1	8.0	0.092	0.501
LA ARENA	44.00	1	0	4447	77.2	4.6	5.2	2.4	3.5	2.1	1.8	3.2	77.2	4.6	18.2	0.077	0.507
T. IZQ. TEAPA	54.80	1	0	6997	79.4	3.8	4.3	2.0	2.7	1.8	1.4	4.6	79.4	3.8	16.8	0.081	0.507
T. IZQ. TEAPA	54.80	3	0	4484	83.1	2.5	3.7	1.1	3.1	0.2	0.6	5.7	83.1	2.5	14.4	0.089	0.512
LIM. EDOS. TERM. TAB. PPIA. CHIS.	61.42																
PICHUCALCO	76.00	1	0	3145	80.8	3.9	3.7	3.4	2.8	1.4	1.5	2.5	80.8	3.9	15.3	0.089	0.501
PICHUCALCO	76.00	3	0	2709	82.6	4.2	4.5	3.0	2.0	1.1	1.2	1.4	82.6	4.2	13.2	0.086	0.521
SOLUSUCHIAPA	112.00	1	0	1815	78.8	5.0	5.3	3.1	2.2	1.9	1.3	2.4	78.8	5.0	16.2	0.105	0.505
SOLUSUCHIAPA	112.00	3	0	1439	78.7	4.3	6.0	3.7	1.7	1.5	0.8	3.3	78.7	4.3	17.0	0.075	0.503
RAYON	146.00	1	0	1406	82.2	4.3	4.7	2.8	1.8	2.3	0.4	1.5	82.2	4.3	13.5	0.088	0.512
JITOTOL	197.80	1	0	1286	79.1	4.6	5.1	3.2	2.2	3.6	0.7	1.5	79.1	4.6	16.3	0.112	0.516
BOCHIL	211.00	1	0	2258	77.5	4.8	3.9	2.8	3.0	3.6	1.3	3.1	77.5	4.8	17.7	0.088	0.500
IXTAPA	247.00	1	0	2351	80.8	4.9	4.2	1.9	1.7	3.2	1.3	2.0	80.8	4.9	14.3	0.101	0.512
ESCOPETAZO	259.00	1	0	2390	83.2	3.8	2.5	1.8	3.1	2.9	1.1	1.6	83.2	3.8	13.0	0.101	0.504

7 CARR : VILLAHERMOSA - FRANCISCO ESCARCEGA

CLAVE: 00092

RUTA : MEX-186

AÑO : 2009

L U G A R	E S T A C I O N				C L A S I F I C A C I O N V E H I C U L A R E N P O R C I E N T O .												
	KM	TE	SC	TDPA	A	B	C2	C3	T3S2	T3S3	T3S2R4	OTROS	A	B	C	K'	D
VILLAHERMOSA	0.00	3	1	9457	78.8	5.4	4.8	3.1	4.5	1.5	0.4	1.5	78.8	5.4	15.8	0.072	0.503
VILLAHERMOSA	0.00	3	2	9362	81.5	4.8	3.9	3.1	3.2	1.5	0.4	1.6	81.5	4.8	13.7	0.075	0.503
T. IZQ. AEROPUERTO	12.00	1	1	10468	78.3	5.1	5.4	3.6	4.0	1.5	0.6	1.5	78.3	5.1	16.6	0.069	0.508
T. IZQ. AEROPUERTO	12.00	1	2	10157	80.0	5.5	4.4	3.0	3.5	1.4	0.6	1.6	80.0	5.5	14.5	0.069	0.508
PUENTE GRIJALVA	17.60	2	0	13997	79.8	5.0	4.7	3.3	3.9	1.4	0.5	1.4	79.8	5.0	15.2		
X. C. CACAOS - LA GRANJA	32.46	1	0	9857	79.0	4.9	5.0	3.9	3.8	1.6	0.5	1.3	79.0	4.9	16.1	0.073	0.510
X. C. CACAOS - LA GRANJA	32.46	3	0	7421	79.1	6.0	4.4	3.5	3.2	1.6	0.6	1.6	79.1	6.0	14.9	0.080	0.503
X. C. JALAPA - JONUTA	40.00	3	0	6436	79.6	5.6	3.9	3.3	4.6	1.4	0.4	1.2	79.6	5.6	14.8	0.068	0.509
T. IZQ. MACUSPANA	46.20	1	0	6791	78.2	5.9	5.3	3.2	4.2	1.2	0.5	1.5	78.2	5.9	15.9	0.069	0.507
T. IZQ. MACUSPANA	46.20	3	0	7696	79.6	5.8	4.7	3.3	3.3	1.5	0.5	1.3	79.6	5.8	14.6	0.069	0.505
X. C. ESTACION MACUSPANA - VERNET	54.30	1	0	6862	79.8	5.0	4.7	2.9	4.6	1.2	0.5	1.3	79.8	5.0	15.2	0.076	0.507
T. DER. CHIVALITO (EST. PINO SUAREZ)	70.00	1	0	6766	79.9	4.6	5.5	2.6	4.5	1.2	0.4	1.3	79.9	4.6	15.5	0.069	0.506
T. DER. CHIVALITO (EST. PINO SUAREZ)	70.00	3	0	7555	81.4	5.0	4.0	3.0	3.7	1.2	0.5	1.2	81.4	5.0	13.6	0.070	0.512

TABASCO

7 CARR : VILLAHERMOSA - FRANCISCO ESCARCEGA

CLAVE: 00092

RUTA : MEX-186

AÑO : 2009

L U G A R	E S T A C I O N			C L A S I F I C A C I O N V E H I C U L A R E N P O R C I E N T O .												
	KM	TE	SC TDPA	A	B	C2	C3	T3S2	T3S3	T3S2R4	OTROS	A	B	C	K'	D
T. DER. ESTACION ZOPO	71.00	1	0 6359	63.3	6.2	5.8	5.8	10.4	2.1	1.9	4.5	63.3	6.2	30.5	0.076	0.509
T. DER. ESTACION ZOPO	71.00	3	0 7613	67.5	5.0	5.3	4.2	10.8	2.0	1.5	3.7	67.5	5.0	27.5	0.074	0.501
LIM. EDOS. TERM. TAB. PPIA. CHIS.	76.90															
T. IZQ. BONANZA	88.00	1	0 5119	62.8	5.3	6.2	6.0	11.5	2.6	1.7	3.9	62.8	5.3	31.9	0.075	0.503
T. IZQ. JONUTA	101.00	1	0 4383	62.5	5.8	6.3	5.0	13.3	2.0	1.5	3.6	62.5	5.8	31.7	0.081	0.508
T. IZQ. JONUTA	101.00	3	0 4290	60.4	5.0	6.4	5.6	15.1	1.8	1.3	4.4	60.4	5.0	34.6	0.088	0.501
X. C. CATAZAJA - PALENQUE	114.00	1	0 4408	59.2	6.4	6.2	4.8	15.2	1.8	1.4	5.0	59.2	6.4	34.4	0.077	0.501
X. C. CATAZAJA - PALENQUE	114.00	3	0 4594	62.3	5.8	5.8	4.8	12.8	2.3	1.9	4.3	62.3	5.8	31.9	0.069	0.502
T. DER. EMILIANO ZAPATA	134.70	1	0 4055	65.6	4.7	6.6	4.3	10.9	1.9	1.7	4.3	65.6	4.7	29.7	0.079	0.501
T. DER. EMILIANO ZAPATA	134.70	3	0 3739	59.8	5.9	7.0	5.1	13.8	2.6	1.6	4.2	59.8	5.9	34.3	0.074	0.511
LIM. EDOS. TERM. CHIS. PPIA. TAB.	140.70															
PUENTE USUMACINTA	145.20	2	0 3182	62.5	5.3	5.9	5.2	12.9	2.2	1.6	4.4	62.5	5.3	32.2		
T. IZQ. PALIZADA	154.10	1	0 2641	64.9	4.9	5.3	4.8	12.2	2.4	1.3	4.2	64.9	4.9	30.2	0.071	0.515
T. IZQ. PALIZADA	154.10	3	0 2952	60.6	5.1	5.6	5.9	14.7	2.6	1.9	3.6	60.6	5.1	34.3	0.073	0.501
LIM. EDOS. TERM. TAB. PPIA. CAMP.	154.60															
T. DER. CANDELARIA	233.40	1	0 4028	63.0	5.2	6.2	4.8	13.3	1.9	1.4	4.2	63.0	5.2	31.8	0.075	0.508
T. DER. FELIPE ANGELES	253.00	1	0 2784	63.1	5.8	4.9	4.7	13.5	2.4	1.8	3.8	63.1	5.8	31.1	0.068	0.526
T. IZQ. SABANCUY	274.10	1	0 3017	64.0	5.9	5.2	4.4	12.8	2.6	1.5	3.6	64.0	5.9	30.1	0.076	0.515
FRANCISCO ESCARCEGA	297.00	1	0 4606	63.0	5.0	4.8	4.9	15.0	2.2	1.4	3.7	63.0	5.0	32.0	0.069	0.526

8 CARR : AGUA DULCE - CARDENAS (CUOTA)

CLAVE:

RUTA : MEX-184D

AÑO : 2009

L U G A R	E S T A C I O N			C L A S I F I C A C I O N V E H I C U L A R E N P O R C I E N T O .												
	KM	TE	SC TDPA	A	B	C2	C3	T3S2	T3S3	T3S2R4	OTROS	A	B	C	K'	D
ENT. LA CEIBA	45.00															
CASETA DE COBRO LA VENTA	73.20	1	0 7344	68.2	5.2	4.2	3.7	7.7	2.5	7.8	0.7	68.2	5.2	26.6		
CASETA DE COBRO LA VENTA	73.20	2	0 7426	68.5	5.2	4.2	3.7	7.6	2.4	7.7	0.7	68.5	5.2	26.3		
CASETA DE COBRO LA VENTA	73.20	3	0 6647	66.5	5.7	4.2	3.8	8.0	2.5	8.6	0.7	66.5	5.7	27.8		
ENT. CHONTALPA	99.11															

9 CARR : BENITO JUAREZ - AGUA DULCE

CLAVE: 00202

RUTA : TAB-VER

AÑO : 2009

L U G A R	E S T A C I O N			C L A S I F I C A C I O N V E H I C U L A R E N P O R C I E N T O .												
	KM	TE	SC TDPA	A	B	C2	C3	T3S2	T3S3	T3S2R4	OTROS	A	B	C	K'	D
BENITO JUAREZ	0.00	3	0 1616	85.4	4.5	4.4	1.9	1.4	0.3	0.9	1.2	85.4	4.5	10.1	0.090	0.514

TABASCO

9 CARR : BENITO JUAREZ - AGUA DULCE

CLAVE: 00202

RUTA : TAB-VER

AÑO : 2009

L U G A R	E S T A C I O N				C L A S I F I C A C I O N V E H I C U L A R E N P O R C I E N T O .												
	KM	TE	SC	TDPA	A	B	C2	C3	T3S2	T3S3	T3S2R4	OTROS	A	B	C	K'	D
LA VENTA	18.00	1	0	2605	85.2	4.4	4.3	1.7	1.6	0.3	1.0	1.5	85.2	4.4	10.4	0.080	0.510
LA VENTA	18.00	3	0	2710	81.0	4.9	6.5	3.7	1.3	0.3	1.2	1.1	81.0	4.9	14.1	0.081	0.515
LIM. EDOS. TERM. TAB. PPIA. VER.	26.00																
AGUA DULCE	33.00	1	0	2618	88.7	3.0	1.3	0.1	2.6	0.1	1.2	3.0	88.7	3.0	8.3	0.076	0.520

10 CARR : BENITO JUAREZ - TEPETITAN

CLAVE: 27204

RUTA : TAB

AÑO : 2009

L U G A R	E S T A C I O N				C L A S I F I C A C I O N V E H I C U L A R E N P O R C I E N T O .												
	KM	TE	SC	TDPA	A	B	C2	C3	T3S2	T3S3	T3S2R4	OTROS	A	B	C	K'	D
BENITO JUAREZ	0.00																
X. C. JALAPA - JONUTA	1.50	3	0	3188	89.5	3.0	2.0	0.5	2.7	0.5	0.7	1.1	89.5	3.0	7.5	0.087	0.503
LIMBANO BLANDIN	18.50	1	0	816	82.4	3.5	7.1	4.4	0.6	0.7	0.3	1.0	82.4	3.5	14.1	0.094	0.503
LIMBANO BLANDIN	18.50	3	0	461	89.4	5.8	1.3	0.5	0.7	1.0	0.4	0.9	89.4	5.8	4.8	0.090	0.502
TEPETITAN	20.00	1	0	730	90.3	2.5	2.0	0.5	2.5	0.6	0.6	1.0	90.3	2.5	7.2	0.115	0.500

11 CARR : CACAOS - LA GRANJA

CLAVE: 27002

RUTA : TAB

AÑO : 2009

L U G A R	E S T A C I O N				C L A S I F I C A C I O N V E H I C U L A R E N P O R C I E N T O .												
	KM	TE	SC	TDPA	A	B	C2	C3	T3S2	T3S3	T3S2R4	OTROS	A	B	C	K'	D
CACAOS	0.00	3	0	1495	87.5	3.8	1.7	1.9	1.2	2.4	0.4	1.1	87.5	3.8	8.7	0.093	0.510
X. C. VILLAHERMOSA - FRANCISCO ESCARCEGA	16.00	3	0	3581	87.4	3.9	1.9	1.8	1.0	2.4	0.4	1.2	87.4	3.9	8.7	0.088	0.527
T. C. JALAPA - JONUTA	39.00	1	0	4236	87.4	5.5	0.2	0.7	2.6	1.2	1.4	1.0	87.4	5.5	7.1	0.075	0.503

12 CARR : CARDENAS - PARAISO

CLAVE: 27117

RUTA : TAB

AÑO : 2009

L U G A R	E S T A C I O N				C L A S I F I C A C I O N V E H I C U L A R E N P O R C I E N T O .												
	KM	TE	SC	TDPA	A	B	C2	C3	T3S2	T3S3	T3S2R4	OTROS	A	B	C	K'	D
T. C. COATZACOALCOS - VILLAHERMOSA	0.00	3	0	5116	89.4	3.2	2.4	2.9	0.3	0.4	0.2	1.2	89.4	3.2	7.4	0.071	0.508
T. IZQ. EL GOLPE	22.00	1	0	1595	89.8	3.4	2.0	2.9	0.3	0.3	0.2	1.1	89.8	3.4	6.8	0.074	0.507
T. IZQ. EL GOLPE	22.00	3	0	1424	89.2	2.7	2.6	3.4	0.3	0.5	0.2	1.1	89.2	2.7	8.1	0.072	0.501
COMALCALCO	37.00	3	0	5751	87.6	3.6	0.9	1.1	3.4	1.8	0.9	0.7	87.6	3.6	8.8	0.075	0.504
PARAISO	52.00	1	0	3664	81.4	2.5	2.6	1.4	5.3	1.6	3.1	2.1	81.4	2.5	16.1	0.081	0.516

TABASCO

13 CARR : CHICHICAPA - ENT. LA LIBERTAD

CLAVE: 27100

RUTA : TAB

AÑO : 2009

L U G A R	E S T A C I O N				C L A S I F I C A C I O N V E H I C U L A R E N P O R C I E N T O .												
	KM	TE	SC	TDPA	A	B	C2	C3	T3S2	T3S3	T3S2R4	OTROS	A	B	C	K'	D
CHICHICAPA	0.00	3	0	2325	77.0	7.6	11.2	0.4	1.8	0.8	0.5	0.7	77.0	7.6	15.4	0.075	0.507
NICOLAS BRAVO	10.00	3	0	2477	76.5	7.1	11.4	0.5	1.4	0.7	0.6	1.8	76.5	7.1	16.4	0.078	0.505
ENT. LA LIBERTAD	18.00	1	0	2906	75.9	6.7	10.5	0.2	2.7	0.4	1.5	2.1	75.9	6.7	17.4	0.088	0.542

14 CARR : COMALCALCO - EL GOLPE

CLAVE: 27102

RUTA : TAB

AÑO : 2009

L U G A R	E S T A C I O N				C L A S I F I C A C I O N V E H I C U L A R E N P O R C I E N T O .												
	KM	TE	SC	TDPA	A	B	C2	C3	T3S2	T3S3	T3S2R4	OTROS	A	B	C	K'	D
T. C. MALPASO - BELLOTE	0.00																
COMALCALCO	0.00	3	0	10276	79.8	3.2	3.7	0.2	5.5	1.8	2.5	3.3	79.8	3.2	17.0	0.066	0.514
TECOLUTILLA	15.00	1	0	4202	84.7	4.5	3.5	0.4	4.1	0.5	0.9	1.4	84.7	4.5	10.8	0.072	0.505
TECOLUTILLA	15.00	3	0	3342	84.6	4.6	4.1	0.5	3.4	0.6	1.0	1.2	84.6	4.6	10.8	0.081	0.526
T. DER. LAZARO CARDENAS	20.00	3	0	1644	83.8	4.4	3.7	2.3	2.2	1.6	0.3	1.7	83.8	4.4	11.8	0.088	0.503
CARLOS GREEN	24.00	3	0	1994	87.9	3.0	3.5	0.4	1.9	0.7	0.6	2.0	87.9	3.0	9.1	0.075	0.500
EL GOLPE	34.00	1	0	806	87.1	3.1	2.5	2.0	1.2	0.6	0.2	3.3	87.1	3.1	9.8	0.086	0.512

15 CARR : EL BELLOTE - SANTA CRUZ

CLAVE: 27105

RUTA : TAB

AÑO : 2009

L U G A R	E S T A C I O N				C L A S I F I C A C I O N V E H I C U L A R E N P O R C I E N T O .												
	KM	TE	SC	TDPA	A	B	C2	C3	T3S2	T3S3	T3S2R4	OTROS	A	B	C	K'	D
BELLOTE	0.00	3	0	3033	89.1	3.1	2.4	0.9	2.1	0.3	0.7	1.4	89.1	3.1	7.8	0.077	0.510
T. DER. CHICHICAPA	8.00	3	0	2307	87.4	3.8	3.0	0.8	2.4	0.4	0.8	1.4	87.4	3.8	8.8	0.073	0.514
IGNACIO ALLENDE	35.00	1	0	2232	82.1	3.0	5.4	3.4	2.5	0.7	1.2	1.7	82.1	3.0	14.9	0.074	0.511
IGNACIO ALLENDE	35.00	3	0	2105	87.9	2.9	5.3	1.2	0.7	1.1	0.8	0.1	87.9	2.9	9.2	0.085	0.508
SANTA CRUZ	40.00	1	0	2222	78.6	6.3	6.8	1.3	3.4	1.3	0.9	1.4	78.6	6.3	15.1	0.072	0.512

16 CARR : ESTACION MACUSPANA - VERNET

CLAVE: 27091

RUTA : TAB-041

AÑO : 2009

L U G A R	E S T A C I O N				C L A S I F I C A C I O N V E H I C U L A R E N P O R C I E N T O .												
	KM	TE	SC	TDPA	A	B	C2	C3	T3S2	T3S3	T3S2R4	OTROS	A	B	C	K'	D
ESTACION MACUSPANA	0.00																
X. C. VILLAHERMOSA - FRANCISCO ESCARCEGA	11.00	1	0	1482	80.8	5.8	5.8	3.8	2.4	0.4	0.5	0.5	80.8	5.8	13.4	0.088	0.503
X. C. VILLAHERMOSA - FRANCISCO ESCARCEGA	11.00	3	0	1599	80.1	6.7	4.8	4.4	2.5	0.5	0.6	0.4	80.1	6.7	13.2	0.087	0.503
BELEM	20.50	1	0	7153	81.5	4.7	5.5	4.3	2.8	0.3	0.4	0.5	81.5	4.7	13.8	0.073	0.507
BELEM	20.50	3	0	2248	91.6	3.0	2.6	0.6	1.1	0.2	0.1	0.8	91.6	3.0	5.4	0.080	0.501

TABASCO

16 CARR : ESTACION MACUSPANA - VERNET

CLAVE: 27091

RUTA : TAB-041

AÑO : 2009

L U G A R	E S T A C I O N				C L A S I F I C A C I O N V E H I C U L A R E N P O R C I E N T O .												
	KM	TE	SC	TDPA	A	B	C2	C3	T3S2	T3S3	T3S2R4	OTROS	A	B	C	K'	D
X. C. CACAOS - LA GRANJA	25.50	3	0	1006	89.1	5.2	1.1	1.1	1.2	0.8	0.7	0.8	89.1	5.2	5.7	0.093	0.512
VERNET	32.50	1	0	643	88.6	5.2	3.3	1.1	0.6	0.5	0.1	0.6	88.6	5.2	6.2	0.090	0.513

17 CARR : FRONTERA - T. C. (JALAPA - JONUTA)

CLAVE: 27081

RUTA : TAB

AÑO : 2009

L U G A R	E S T A C I O N				C L A S I F I C A C I O N V E H I C U L A R E N P O R C I E N T O .												
	KM	TE	SC	TDPA	A	B	C2	C3	T3S2	T3S3	T3S2R4	OTROS	A	B	C	K'	D
FRONTERA	0.00																
X. C. VILLAHERMOSA - CD. DEL CARMEN	1.00	3	0	889	85.6	4.8	1.9	3.4	1.2	0.8	0.7	1.6	85.6	4.8	9.6	0.094	0.514
T. C. JALAPA - JONUTA	123.00	1	0	1778	85.3	5.0	2.0	3.7	1.1	0.7	0.7	1.5	85.3	5.0	9.7	0.093	0.502

18 CARR : GREGORIO MENDEZ MAGAÑA - REFORMA DE OCAMPO

CLAVE: 00103

RUTA : CHIS

AÑO : 2009

L U G A R	E S T A C I O N				C L A S I F I C A C I O N V E H I C U L A R E N P O R C I E N T O .												
	KM	TE	SC	TDPA	A	B	C2	C3	T3S2	T3S3	T3S2R4	OTROS	A	B	C	K'	D
GREGORIO MENDEZ MAGAÑA	0.00	3	0	1504	89.1	4.4	2.0	0.5	1.6	1.3	0.8	0.3	89.1	4.4	6.5	0.082	0.506
LIM. EDOS. TERM. TAB. PPIA. CHIS.	3.00																
T. C. BENEMERITO DE LAS AMERICAS - PALENQUE	21.00	1	0	1372	89.7	4.0	1.8	0.5	1.6	1.2	0.8	0.4	89.7	4.0	6.3	0.082	0.519
REFORMA DE OCAMPO	22.00																

19 CARR : JALAPA - JONUTA

CLAVE: 27107

RUTA : TAB

AÑO : 2009

L U G A R	E S T A C I O N				C L A S I F I C A C I O N V E H I C U L A R E N P O R C I E N T O .												
	KM	TE	SC	TDPA	A	B	C2	C3	T3S2	T3S3	T3S2R4	OTROS	A	B	C	K'	D
JALAPA	0.00	3	0	2290	86.2	5.2	4.5	0.1	2.3	0.3	0.1	1.3	86.2	5.2	8.6	0.082	0.521
X. C. VILLAHERMOSA - FRANCISCO ESCARCEGA	15.00	1	0	1424	85.3	5.8	5.0	0.1	1.9	0.3	0.1	1.5	85.3	5.8	8.9	0.099	0.508
X. C. VILLAHERMOSA - FRANCISCO ESCARCEGA	15.00	3	0	1610	85.7	5.8	4.3	0.1	2.4	0.3	0.1	1.3	85.7	5.8	8.5	0.080	0.503
BELEM	24.00	1	0	1455	92.6	3.8	0.6	0.5	0.8	0.7	0.3	0.7	92.6	3.8	3.6	0.080	0.500
T. IZQ. CACAOS	39.00	1	0	3016	92.1	4.4	0.5	0.5	0.9	0.6	0.2	0.8	92.1	4.4	3.5	0.081	0.503
CD. PEMEX	43.00	1	1	4518	85.8	4.0	1.2	1.0	2.5	1.0	1.8	2.7	85.8	4.0	10.2	0.085	0.506
CD. PEMEX	43.00	1	2	4417	87.0	3.9	1.1	0.8	2.6	0.7	1.5	2.4	87.0	3.9	9.1	0.092	0.506
CD. PEMEX	43.00	3	0	3653	87.9	5.1	1.1	0.4	2.9	0.7	0.6	1.3	87.9	5.1	7.0	0.087	0.504
JONUTA	97.50	1	0	1966	88.7	4.6	2.7	1.5	1.0	0.7	0.1	0.7	88.7	4.6	6.7	0.095	0.503

TABASCO

20 CARR : NICOLAS BRAVO - T. C. (EL BELLOTE - SANTA CRUZ)

CLAVE: 27010

RUTA : TAB

AÑO : 2009

L U G A R	E S T A C I O N				C L A S I F I C A C I O N V E H I C U L A R E N P O R C I E N T O .												
	KM	TE	SC	TDPA	A	B	C2	C3	T3S2	T3S3	T3S2R4	OTROS	A	B	C	K'	D
NICOLAS BRAVO	0.00	3	0	1215	85.5	3.5	1.6	3.4	4.4	0.4	0.4	0.8	85.5	3.5	11.0	0.073	0.504
T. C. BELLOTE - SANTA CRUZ	22.00	1	0	1230	85.5	2.9	1.7	4.0	4.2	0.5	0.4	0.8	85.5	2.9	11.6	0.090	0.510

21 CARR : PAILEBOT - CUAUHTEMOTZIN

CLAVE: 27112

RUTA : TAB

AÑO : 2009

L U G A R	E S T A C I O N				C L A S I F I C A C I O N V E H I C U L A R E N P O R C I E N T O .												
	KM	TE	SC	TDPA	A	B	C2	C3	T3S2	T3S3	T3S2R4	OTROS	A	B	C	K'	D
PAILEBOT	0.00	3	0	799	89.0	6.1	1.7	1.0	0.5	0.6	0.3	0.8	89.0	6.1	4.9	0.103	0.508
CUAUHTEMOTZIN	23.00	1	0	403	89.1	6.2	1.9	1.0	0.1	0.8	0.3	0.6	89.1	6.2	4.7	0.095	0.538

22 CARR : PARAISO - EL LIMON

CLAVE: 27108

RUTA : TAB

AÑO : 2009

L U G A R	E S T A C I O N				C L A S I F I C A C I O N V E H I C U L A R E N P O R C I E N T O .												
	KM	TE	SC	TDPA	A	B	C2	C3	T3S2	T3S3	T3S2R4	OTROS	A	B	C	K'	D
PARAISO	0.00	3	0	2324	75.0	3.8	1.0	1.3	5.3	9.1	2.2	2.3	75.0	3.8	21.2	0.075	0.504
LIMON	6.00	1	0	2018	76.2	3.7	3.2	0.8	5.9	3.7	3.6	2.9	76.2	3.7	20.1	0.074	0.521

23 CARR : PASO DE CUNDUACAN - ESTACION JUAREZ

CLAVE: 00588

RUTA : TAB-CHIS

AÑO : 2009

L U G A R	E S T A C I O N				C L A S I F I C A C I O N V E H I C U L A R E N P O R C I E N T O .												
	KM	TE	SC	TDPA	A	B	C2	C3	T3S2	T3S3	T3S2R4	OTROS	A	B	C	K'	D
PASO DE CUNDUACAN	0.00	3	0	6463	80.4	3.4	6.4	4.9	1.7	1.5	1.2	0.5	80.4	3.4	16.2	0.065	0.507
LIM. EDOS. TERM. TAB. PPIA. CHIS.	9.00																
SANTA TERESA 2° SECC.	18.00	3	0	3063	84.4	5.2	2.0	1.9	1.6	2.0	0.9	2.0	84.4	5.2	10.4	0.081	0.502
ESTACION JUAREZ	57.80	1	0	2608	84.2	5.4	2.6	1.7	1.9	1.4	0.5	2.3	84.2	5.4	10.4	0.091	0.503

24 CARR : PLAYAS DEL ROSARIO - TEAPA

CLAVE: 27203

RUTA : TAB-001

AÑO : 2009

L U G A R	E S T A C I O N				C L A S I F I C A C I O N V E H I C U L A R E N P O R C I E N T O .												
	KM	TE	SC	TDPA	A	B	C2	C3	T3S2	T3S3	T3S2R4	OTROS	A	B	C	K'	D
T. C. VILLAHERMOSA - ESCOPETAZO	0.00	3	0	4636	79.5	6.0	2.7	2.7	3.2	2.4	0.4	3.1	79.5	6.0	14.5	0.072	0.512
X. C. VILLAHERMOSA - ESCOPETAZO	3.00	3	0	4863	86.7	3.4	1.8	1.3	2.5	0.9	1.3	2.1	86.7	3.4	9.9	0.077	0.518
CACAOS	7.00	3	0	3420	86.1	3.9	1.8	1.5	2.8	0.9	1.2	1.8	86.1	3.9	10.0	0.086	0.501
JALAPA	23.00	1	0	3987	85.6	4.6	1.6	0.8	3.0	1.4	1.2	1.8	85.6	4.6	9.8	0.092	0.504
JALAPA	23.00	3	0	3288	84.5	4.2	3.1	1.5	3.6	1.0	0.8	1.3	84.5	4.2	11.3	0.080	0.521

TABASCO

24 CARR : PLAYAS DEL ROSARIO - TEAPA

CLAVE: 27203

RUTA : TAB-001

AÑO : 2009

L U G A R	E S T A C I O N				C L A S I F I C A C I O N V E H I C U L A R E N P O R C I E N T O .												
	KM	TE	SC	TDPA	A	B	C2	C3	T3S2	T3S3	T3S2R4	OTROS	A	B	C	K'	D
T. IZQ. TACOTALPA	39.00	1	0	2306	85.4	4.3	2.7	2.3	2.6	1.1	1.1	0.5	85.4	4.3	10.3	0.082	0.505
T. IZQ. TACOTALPA	39.00	3	0	3186	86.4	3.4	2.1	1.1	3.4	1.4	0.7	1.5	86.4	3.4	10.2	0.093	0.519
TEAPA	54.00	1	0	4026	87.3	3.2	1.9	1.3	2.8	1.2	0.7	1.6	87.3	3.2	9.5	0.085	0.507

25 CARR : RAMAL A BALANCAN

CLAVE: 27078

RUTA : TAB

AÑO : 2009

L U G A R	E S T A C I O N				C L A S I F I C A C I O N V E H I C U L A R E N P O R C I E N T O .												
	KM	TE	SC	TDPA	A	B	C2	C3	T3S2	T3S3	T3S2R4	OTROS	A	B	C	K'	D
T. C. EL SUSPIRO - TENOSIQUE	0.00	3	0	1475	82.2	5.0	4.7	1.2	0.6	3.2	1.6	1.5	82.2	5.0	12.8	0.088	0.502
BALANCAN	24.00	1	0	1687	82.7	4.7	5.0	1.0	0.7	2.9	1.7	1.3	82.7	4.7	12.6	0.091	0.514

26 CARR : RAMAL A LAZARO CARDENAS

CLAVE: 27208

RUTA : TAB

AÑO : 2009

L U G A R	E S T A C I O N				C L A S I F I C A C I O N V E H I C U L A R E N P O R C I E N T O .												
	KM	TE	SC	TDPA	A	B	C2	C3	T3S2	T3S3	T3S2R4	OTROS	A	B	C	K'	D
T. C. COMALCALCO - EL GOLPE	0.00	3	0	1522	83.4	3.8	2.8	2.0	2.0	0.8	0.9	4.3	83.4	3.8	12.8	0.091	0.509
LAZARO CARDENAS	14.00	1	0	1358	83.4	4.6	2.4	1.8	2.3	1.0	0.8	3.7	83.4	4.6	12.0	0.088	0.501

27 CARR : RAMAL A LIBERTAD

CLAVE: 27205

RUTA : TAB

AÑO : 2009

L U G A R	E S T A C I O N				C L A S I F I C A C I O N V E H I C U L A R E N P O R C I E N T O .												
	KM	TE	SC	TDPA	A	B	C2	C3	T3S2	T3S3	T3S2R4	OTROS	A	B	C	K'	D
T. C. CARDENAS - PARAISO	0.00	3	0	3761	88.1	3.6	2.3	2.0	1.5	0.2	0.3	2.0	88.1	3.6	8.3	0.074	0.520
LIBERTAD	8.50	1	0	2873	88.4	2.9	2.5	2.0	1.8	0.2	0.3	1.9	88.4	2.9	8.7	0.075	0.504

28 CARR : RAMAL A SALTO DEL AGUA

CLAVE: 00069

RUTA : TAB-CHIS

AÑO : 2009

L U G A R	E S T A C I O N				C L A S I F I C A C I O N V E H I C U L A R E N P O R C I E N T O .												
	KM	TE	SC	TDPA	A	B	C2	C3	T3S2	T3S3	T3S2R4	OTROS	A	B	C	K'	D
T. C. VILLAHERMOSA - FRANCISCO ESCARCEGA	0.00	3	0	785	89.3	3.4	0.7	2.6	1.0	0.4	1.4	1.2	89.3	3.4	7.3	0.093	0.509
LIM. EDOS. TERM. TAB. PPIA. CHIS.	12.00																
SALTO DEL AGUA	17.00	1	0	860	89.5	3.5	0.6	2.3	1.0	0.4	1.5	1.2	89.5	3.5	7.0	0.086	0.504

TABASCO

29 CARR : RAMAL A SAN ANTONIO

CLAVE: 27003

RUTA : TAB

AÑO : 2009

L U G A R	E S T A C I O N				C L A S I F I C A C I O N V E H I C U L A R E N P O R C I E N T O .												
	KM	TE	SC	TDPA	A	B	C2	C3	T3S2	T3S3	T3S2R4	OTROS	A	B	C	K'	D
T. C. VILLAHERMOSA - FRANCISCO ESCARCEGA	0.00	3	0	489	79.3	3.3	5.6	1.8	2.2	2.2	1.8	3.8	79.3	3.3	17.4	0.094	0.501
T. DER. BALANCAN	24.00	1	0	865	79.3	2.7	6.3	1.9	2.1	2.5	1.7	3.5	79.3	2.7	18.0	0.097	0.503
T. DER. BALANCAN	24.00	3	0	1658	82.1	5.3	5.6	1.3	1.3	1.4	1.3	1.7	82.1	5.3	12.6	0.093	0.506
EL TRIUNFO	72.00																

30 CARR : RAMAL A SANCHEZ MAGALLANES

CLAVE: 27016

RUTA : TAB

AÑO : 2009

L U G A R	E S T A C I O N				C L A S I F I C A C I O N V E H I C U L A R E N P O R C I E N T O .												
	KM	TE	SC	TDPA	A	B	C2	C3	T3S2	T3S3	T3S2R4	OTROS	A	B	C	K'	D
T. C. COATZACOALCOS - VILLAHERMOSA	0.00	3	0	1418	87.6	5.9	2.3	1.4	0.6	0.6	0.1	1.5	87.6	5.9	6.5	0.088	0.504
CAMPO MAGALLANES	13.00	1	0	1222	82.8	4.6	5.1	4.1	1.2	1.2	0.1	0.9	82.8	4.6	12.6	0.082	0.501
CAMPO MAGALLANES	13.00	3	0	1623	79.6	3.3	5.6	8.8	1.4	0.7	0.1	0.5	79.6	3.3	17.1	0.082	0.504
SANCHEZ MAGALLANES	33.00	1	0	1220	89.1	3.0	2.5	0.9	1.5	0.3	0.9	1.8	89.1	3.0	7.9	0.088	0.502

31 CARR : RAMAL A TAMULTE DE LAS SABANAS

CLAVE: 27080

RUTA : TAB

AÑO : 2009

L U G A R	E S T A C I O N				C L A S I F I C A C I O N V E H I C U L A R E N P O R C I E N T O .												
	KM	TE	SC	TDPA	A	B	C2	C3	T3S2	T3S3	T3S2R4	OTROS	A	B	C	K'	D
T. C. VILLAHERMOSA - CD. DEL CARMEN	0.00	3	0	2344	91.8	2.7	2.2	0.6	1.3	0.3	0.4	0.7	91.8	2.7	5.5	0.082	0.502
TAMULTE DE LAS SABANAS	7.00																

32 CARR : RAMAL A TAPIJULAPA

CLAVE: 27200

RUTA : TAB

AÑO : 2009

L U G A R	E S T A C I O N				C L A S I F I C A C I O N V E H I C U L A R E N P O R C I E N T O .												
	KM	TE	SC	TDPA	A	B	C2	C3	T3S2	T3S3	T3S2R4	OTROS	A	B	C	K'	D
T. C. PLAYAS DEL ROSARIO - TEAPA	0.00	3	0	2097	85.2	3.7	3.3	1.9	2.7	1.4	0.6	1.2	85.2	3.7	11.1	0.091	0.518
TAPIJULAPA	20.00	1	0	1320	83.4	4.2	4.6	1.9	3.2	0.3	0.1	2.3	83.4	4.2	12.4	0.087	0.504

33 CARR : REFORMA - DOS BOCAS

CLAVE:

RUTA : TAB

AÑO : 2009

L U G A R	E S T A C I O N				C L A S I F I C A C I O N V E H I C U L A R E N P O R C I E N T O .												
	KM	TE	SC	TDPA	A	B	C2	C3	T3S2	T3S3	T3S2R4	OTROS	A	B	C	K'	D
REFORMA	0.00	3	0	12036	82.2	3.1	2.1	1.3	4.9	1.4	2.8	2.2	82.2	3.1	14.7	0.088	0.504
DOS BOCAS	53.00	1	0	6948	81.1	3.8	2.1	1.4	3.2	2.2	3.2	3.0	81.1	3.8	15.1	0.074	0.500

TABASCO

34 CARR : REYES HERNANDEZ - VILLA ALDAMA

CLAVE: 27119

RUTA : TAB

AÑO : 2009

L U G A R	E S T A C I O N				C L A S I F I C A C I O N V E H I C U L A R E N P O R C I E N T O .												
	KM	TE	SC	TDPA	A	B	C2	C3	T3S2	T3S3	T3S2R4	OTROS	A	B	C	K'	D
REYES HERNANDEZ	0.00	3	0	2497	80.3	4.7	2.4	0.2	4.0	1.5	3.5	3.4	80.3	4.7	15.0	0.099	0.506
T. C. (CARDENAS - PARAISO) - CARLOS GREEN	9.00	1	0	2322	80.3	4.6	2.3	0.2	3.7	1.7	3.5	3.7	80.3	4.6	15.1	0.068	0.505

35 CARR : SAMARIA - AMATITAN

CLAVE: 27114

RUTA : TAB

AÑO : 2009

L U G A R	E S T A C I O N				C L A S I F I C A C I O N V E H I C U L A R E N P O R C I E N T O .												
	KM	TE	SC	TDPA	A	B	C2	C3	T3S2	T3S3	T3S2R4	OTROS	A	B	C	K'	D
T. C. COATZACOALCOS - VILLAHERMOSA	0.00	3	0	3204	81.0	3.2	6.7	2.5	1.8	1.9	1.2	1.7	81.0	3.2	15.8	0.078	0.502
CUNDUACAN	17.00	1	0	3363	84.7	4.0	2.3	1.1	5.5	0.6	0.6	1.2	84.7	4.0	11.3	0.083	0.506
CUNDUACAN	17.00	3	0	2505	84.4	4.7	2.8	1.1	4.6	0.3	0.5	1.6	84.4	4.7	10.9	0.078	0.528
AMATITAN	31.40	1	0	4546	81.9	5.7	2.4	2.2	4.4	0.5	1.2	1.7	81.9	5.7	12.4	0.073	0.509

36 CARR : T. C. (CARDENAS - PARAISO) - CARLOS GREEN

CLAVE: 27111

RUTA : TAB

AÑO : 2009

L U G A R	E S T A C I O N				C L A S I F I C A C I O N V E H I C U L A R E N P O R C I E N T O .												
	KM	TE	SC	TDPA	A	B	C2	C3	T3S2	T3S3	T3S2R4	OTROS	A	B	C	K'	D
T. C. MALPASO - EL BELLOTE	0.00																
T. C. CARDENAS - PARAISO	0.00	3	0	2554	89.2	3.6	1.2	0.9	1.7	0.5	1.7	1.2	89.2	3.6	7.2	0.078	0.506
T. DER. REYES HERNANDEZ	12.50	3	0	3301	76.3	5.1	4.0	8.3	3.8	0.1	0.9	1.5	76.3	5.1	18.6	0.077	0.507
CARLOS GREEN	15.70	1	0	1582	79.5	4.8	1.0	2.5	1.6	2.7	1.1	6.8	79.5	4.8	15.7	0.087	0.501

37 CARR : T. C. (EL SUSPIRO - TENOSIQUE) - LA LIBERTAD

CLAVE: 00062

RUTA : CHIS-TAB

AÑO : 2009

L U G A R	E S T A C I O N				C L A S I F I C A C I O N V E H I C U L A R E N P O R C I E N T O .												
	KM	TE	SC	TDPA	A	B	C2	C3	T3S2	T3S3	T3S2R4	OTROS	A	B	C	K'	D
T. C. EL SUSPIRO - TENOSIQUE	0.00	3	0	1622	81.0	5.5	1.5	2.7	6.2	1.7	0.1	1.3	81.0	5.5	13.5	0.100	0.504
LIM. EDOS. TERM. TAB. PPIA. CHIS.	8.00																
LA LIBERTAD	10.00	1	0	1170	79.3	6.7	1.6	2.6	4.4	4.2	1.2	0.0	79.3	6.7	14.0	0.083	0.504

38 CARR : TIERRA NUEVA - FRANCISCO RUEDA

CLAVE: 27110

RUTA : TAB

AÑO : 2009

L U G A R	E S T A C I O N				C L A S I F I C A C I O N V E H I C U L A R E N P O R C I E N T O .												
	KM	TE	SC	TDPA	A	B	C2	C3	T3S2	T3S3	T3S2R4	OTROS	A	B	C	K'	D
TIERRA NUEVA	0.00	3	0	1595	89.7	3.9	3.7	1.4	0.4	0.1	0.5	0.3	89.7	3.9	6.4	0.080	0.502
OCUAPAN	14.00	3	0	698	90.8	3.4	3.5	1.2	0.4	0.1	0.4	0.2	90.8	3.4	5.8	0.087	0.503

TABASCO

38 CARR : TIERRA NUEVA - FRANCISCO RUEDA

CLAVE: 27110

RUTA : TAB

AÑO : 2009

L U G A R	E S T A C I O N				C L A S I F I C A C I O N V E H I C U L A R E N P O R C I E N T O .												
	KM	TE	SC	TDPA	A	B	C2	C3	T3S2	T3S3	T3S2R4	OTROS	A	B	C	K'	D
T. IZQ. ENCOMENDADERO	31.00	1	0	756	83.3	5.0	7.7	1.2	0.5	1.7	0.6	0.0	83.3	5.0	11.7	0.083	0.501
T. IZQ. ENCOMENDADERO	31.00	3	0	669	83.9	4.8	8.2	1.1	0.4	0.5	0.8	0.3	83.9	4.8	11.3	0.074	0.505
FRANCISCO RUEDA	71.00	1	0	429	83.9	4.8	8.1	1.1	0.4	0.5	0.9	0.3	83.9	4.8	11.3	0.079	0.506

39 CARR : TULIPAN - CUNDUACAN

CLAVE: 27115

RUTA : TAB

AÑO : 2009

L U G A R	E S T A C I O N				C L A S I F I C A C I O N V E H I C U L A R E N P O R C I E N T O .												
	KM	TE	SC	TDPA	A	B	C2	C3	T3S2	T3S3	T3S2R4	OTROS	A	B	C	K'	D
T. C. MALPASO - BELLOTE	0.00	3	0	5284	72.2	3.5	8.3	6.4	3.9	3.0	1.1	1.6	72.2	3.5	24.3	0.070	0.542
T. DER. MOTE	14.00	1	0	6283	81.9	5.2	4.4	6.8	0.5	0.2	1.0	0.0	81.9	5.2	12.9	0.079	0.509
CUNDUACAN	15.00	1	0	3259	79.4	5.4	4.6	5.2	1.8	1.7	1.7	0.2	79.4	5.4	15.2	0.071	0.515

40 CARR : VILLAHERMOSA - COMALCALCO

CLAVE: 27021

RUTA : TAB

AÑO : 2009

L U G A R	E S T A C I O N				C L A S I F I C A C I O N V E H I C U L A R E N P O R C I E N T O .												
	KM	TE	SC	TDPA	A	B	C2	C3	T3S2	T3S3	T3S2R4	OTROS	A	B	C	K'	D
T. C. VILLAHERMOSA - CD. DEL CARMEN	0.00	3	1	7044	78.8	4.3	1.5	1.7	3.9	2.5	3.8	3.5	78.8	4.3	16.9	0.067	0.502
T. C. VILLAHERMOSA - CD. DEL CARMEN	0.00	3	2	7095	78.4	3.9	1.9	1.5	4.2	2.1	4.2	3.8	78.4	3.9	17.7	0.071	0.502
SALOYA	13.00	1	0	9842	81.2	6.2	1.3	1.0	3.8	1.4	2.7	2.4	81.2	6.2	12.6	0.079	0.503
SALOYA	13.00	3	0	9168	83.1	5.5	1.8	0.9	3.9	0.7	1.8	2.3	83.1	5.5	11.4	0.084	0.506
NACAJUCA	21.00	1	0	7109	79.4	2.0	3.2	5.9	3.5	1.4	1.8	2.8	79.4	2.0	18.6	0.067	0.507
NACAJUCA	21.00	3	1	4268	79.3	7.1	3.9	5.4	2.0	0.2	0.3	1.8	79.3	7.1	13.6	0.070	0.507
NACAJUCA	21.00	3	2	4384	79.2	7.2	3.8	5.3	2.0	0.4	0.3	1.8	79.2	7.2	13.6	0.075	0.507
JALPA DE MENDEZ	27.00	3	0	7881	79.0	6.8	3.6	4.1	1.8	1.0	0.9	2.8	79.0	6.8	14.2	0.065	0.507
CUPILCO	40.00	1	0	3638	81.3	5.7	3.8	4.7	2.5	0.4	0.6	1.0	81.3	5.7	13.0	0.082	0.535
CUPILCO	40.00	3	0	3733	89.3	3.3	1.5	1.6	0.9	2.3	0.3	0.8	89.3	3.3	7.4	0.072	0.510
CHICHICAPA	46.50	1	0	4344	81.3	4.6	1.3	0.4	2.7	0.1	8.3	1.3	81.3	4.6	14.1	0.082	0.505
T. C. MALPASO - BELLOTE	50.70	1	0	6876	85.0	5.3	2.5	1.9	3.5	0.7	0.8	0.3	85.0	5.3	9.7	0.063	0.522

41 CARR : VILLAHERMOSA - LUIS GIL PEREZ

CLAVE: 27206

RUTA : TAB

AÑO : 2009

L U G A R	E S T A C I O N				C L A S I F I C A C I O N V E H I C U L A R E N P O R C I E N T O .												
	KM	TE	SC	TDPA	A	B	C2	C3	T3S2	T3S3	T3S2R4	OTROS	A	B	C	K'	D
VILLAHERMOSA	0.00	3	0	7473	82.7	4.7	2.3	2.8	2.7	2.4	0.9	1.5	82.7	4.7	12.6	0.076	0.526
LUIS GIL PEREZ	22.00	1	0	2127	85.2	5.8	1.8	1.4	1.8	1.2	0.2	2.6	85.2	5.8	9.0	0.102	0.500

T A B A S C O

42 CARR : VILLAHERMOSA - T. C. (P. DE CUNDUACAN - ESTACION JUAREZ)

CLAVE: 27106

RUTA : TAB

AÑO : 2009

L U G A R	E S T A C I O N				C L A S I F I C A C I O N V E H I C U L A R E N P O R C I E N T O .												
	KM	TE	SC	TDPA	A	B	C2	C3	T3S2	T3S3	T3S2R4	OTROS	A	B	C	K'	D
VILLAHERMOSA	0.00	3	0	24253	78.9	5.3	0.9	0.8	2.6	3.4	3.8	4.3	78.9	5.3	15.8	0.069	0.509
SAN JOAQUIN	4.00	3	0	12343	78.9	2.7	3.4	1.2	6.4	1.7	3.5	2.2	78.9	2.7	18.4	0.073	0.504
T. IZQ. LUIS GIL PEREZ	19.00	3	0	2110	87.9	5.5	2.2	1.3	1.5	0.4	0.5	0.7	87.9	5.5	6.6	0.089	0.509
T. C. PASO DE CUNDUACAN - ESTACION JUAREZ	25.20	1	0	1848	84.1	4.8	5.1	1.8	1.6	0.4	0.6	1.6	84.1	4.8	11.1	0.086	0.515

43 CARR : ZAPATERO - T. C. (JALAPA - JONUTA)

CLAVE: 00061

RUTA : CHIS-TAB

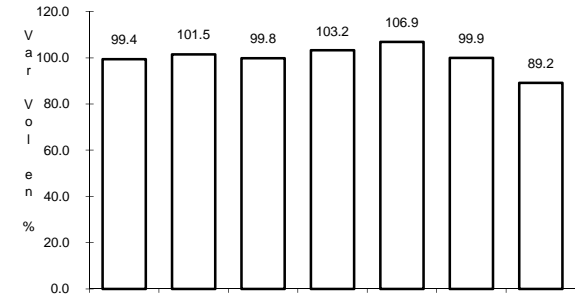
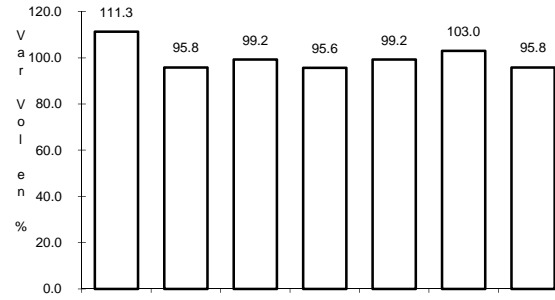
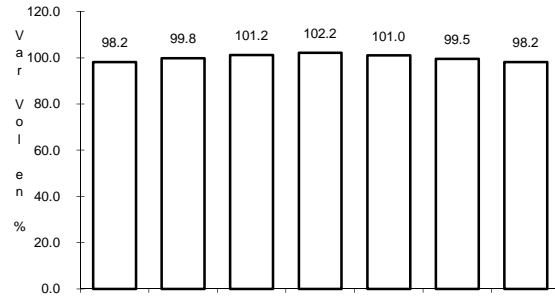
AÑO : 2009

L U G A R	E S T A C I O N				C L A S I F I C A C I O N V E H I C U L A R E N P O R C I E N T O .												
	KM	TE	SC	TDPA	A	B	C2	C3	T3S2	T3S3	T3S2R4	OTROS	A	B	C	K'	D
T. C. VILLAHERMOSA - FRANCISCO ESCARCEGA	0.00	3	0	596	87.5	1.0	5.6	1.3	1.0	2.7	0.9	0.0	87.5	1.0	11.5	0.082	0.508
LIM. EDOS. TERM. CHIS. PPIA. TAB.	16.00																
T. C. JALAPA - JONUTA	41.00	1	0	1071	93.8	0.8	3.3	0.1	0.5	0.4	0.2	0.9	93.8	0.8	5.4	0.100	0.514

1 CARR: COATZACOALCOS - VILLAHERMOSA

CLAVE: 00528

RUTA: MEX-180



Km: 3.00 Tipo: 1 Sent: 0

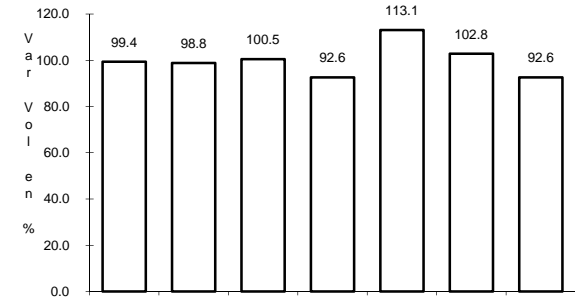
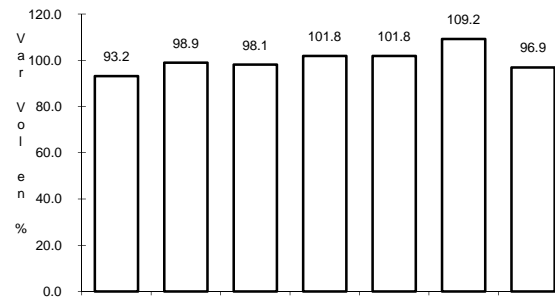
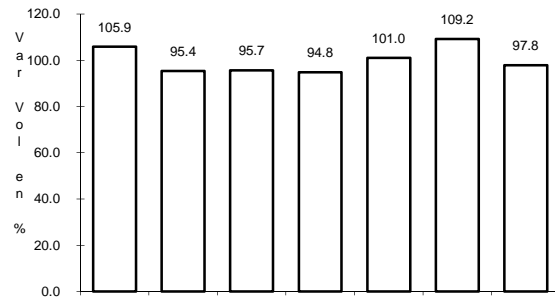
Km: 171.15 Tipo: 1 Sent: 1

Km: 171.15 Tipo: 1 Sent: 2

2 CARR: EL SUSPIRO - TENOSIQUE

CLAVE: 00276

RUTA: MEX-203



Km: 0.00 Tipo: 3 Sent: 0

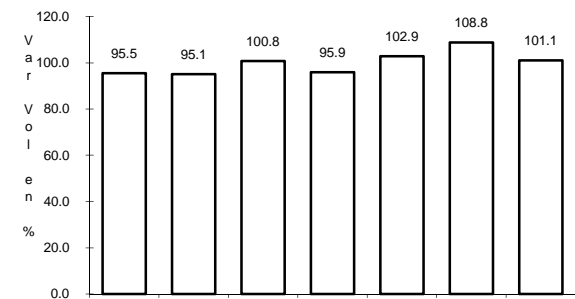
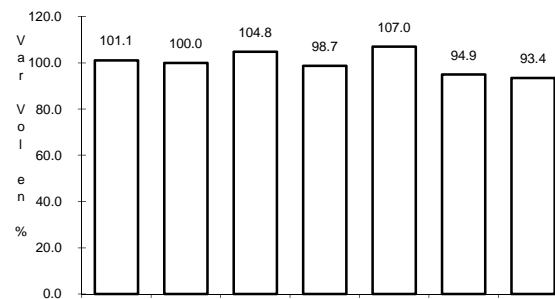
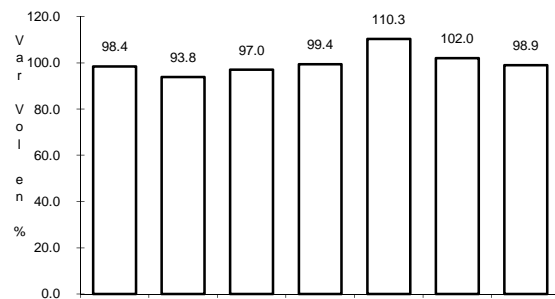
Km: 32.60 Tipo: 1 Sent: 0

Km: 53.00 Tipo: 3 Sent: 0

3 CARR: MALPASO - EL BELLOTE

CLAVE: 00137

RUTA: MEX-187



Km: 70.12 Tipo: 1 Sent: 0

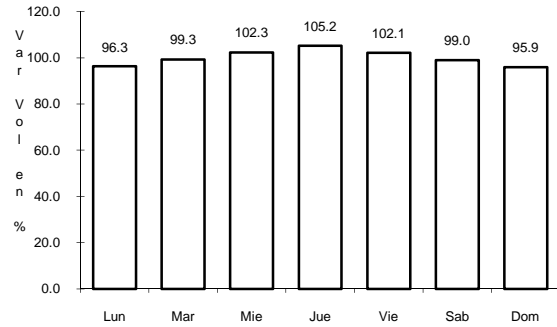
Km: 90.49 Tipo: 1 Sent: 0

Km: 182.00 Tipo: 3 Sent: 0

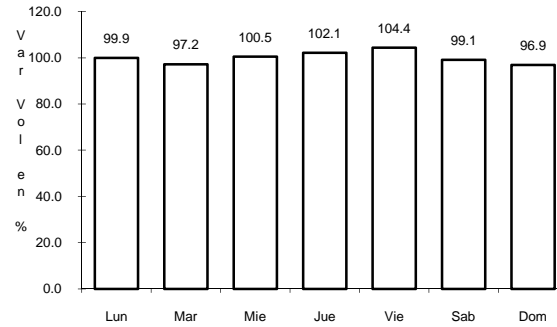
23 CARR: PASO DE CUNDUACAN - ESTACION JUAREZ

CLAVE: 00588

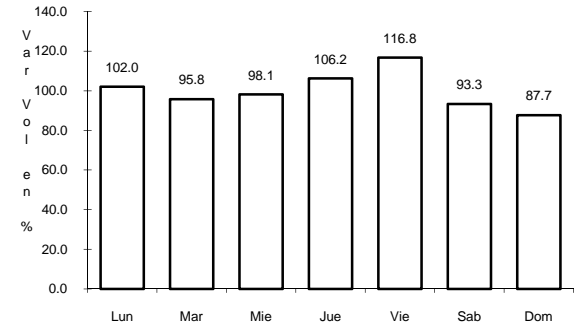
ruta: TAB-CHIS



Km: 0.00 Tipo: 3 Sent: 0



Km: 18.00 Tipo: 3 Sent: 0

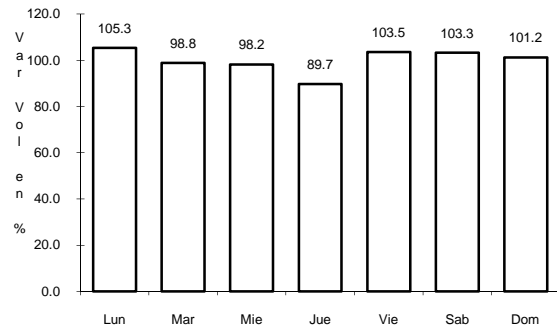


Km: 57.80 Tipo: 1 Sent: 0

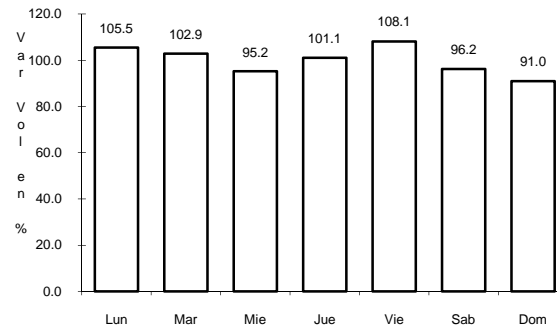
24 CARR: PLAYAS DEL ROSARIO - TEAPA

CLAVE: 27203

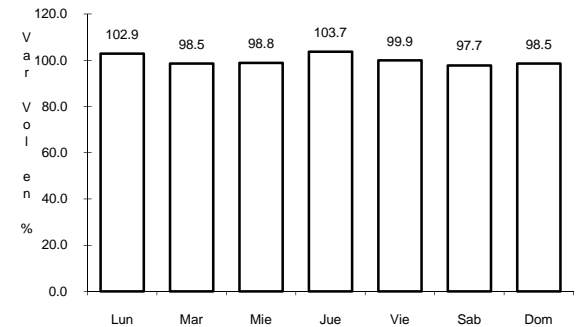
ruta: TAB-001



Km: 0.00 Tipo: 3 Sent: 0



Km: 23.00 Tipo: 1 Sent: 0

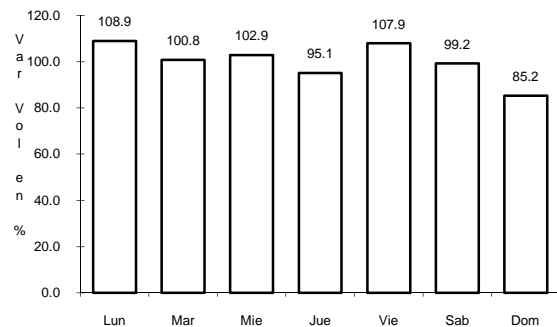


Km: 54.00 Tipo: 1 Sent: 0

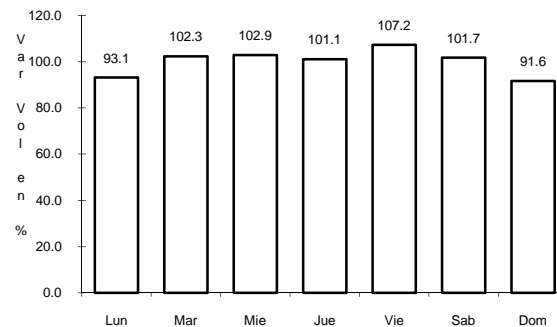
25 CARR: RAMAL A BALANCAN

CLAVE: 27078

ruta: TAB



Km: 0.00 Tipo: 3 Sent: 0

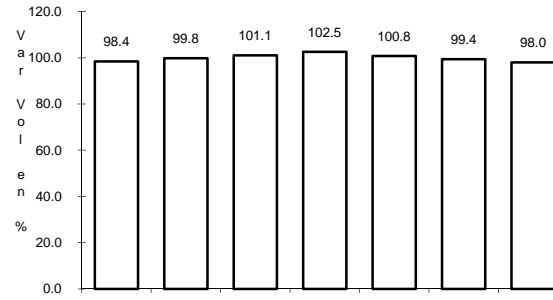
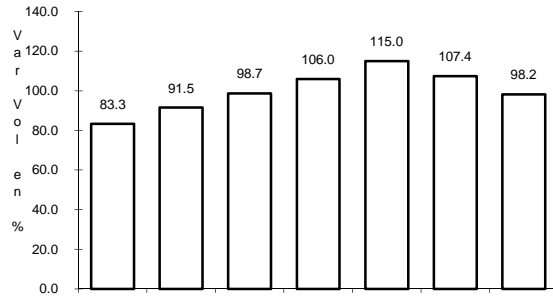


Km: 24.00 Tipo: 1 Sent: 0

32 CARR: RAMAL A TAPIJULAPA

CLAVE: 27200

RUTA: TAB



Km: 0.00

Tipo: 3

Sent: 0

Km: 20.00

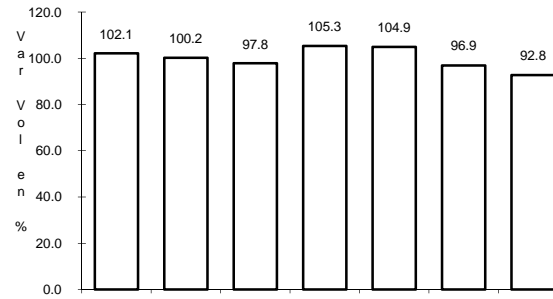
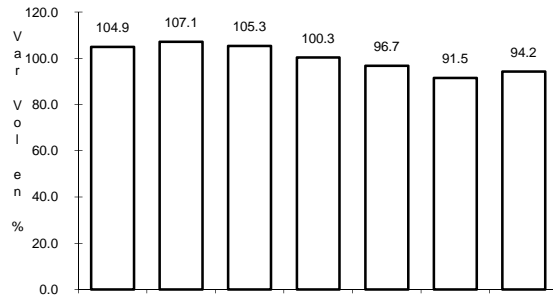
Tipo: 1

Sent: 0

33 CARR: REFORMA - DOS BOCAS

CLAVE:

RUTA: TAB



Km: 0.00

Tipo: 3

Sent: 0

Km: 53.00

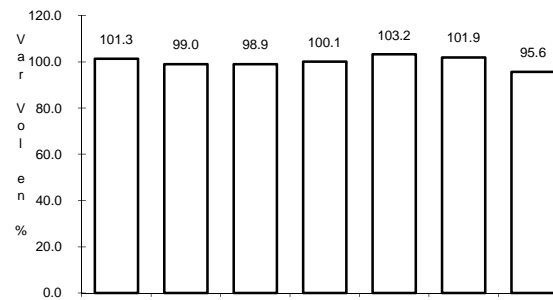
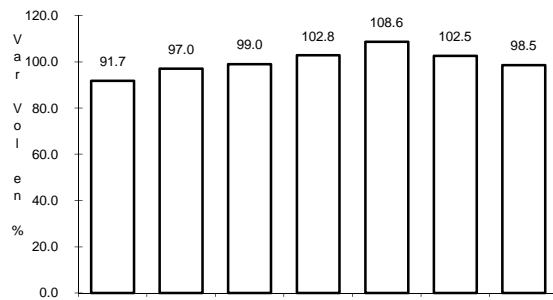
Tipo: 1

Sent: 0

34 CARR: REYES HERNANDEZ - VILLA ALDAMA

CLAVE: 27119

RUTA: TAB



Km: 0.00

Tipo: 3

Sent: 0

Km: 9.00

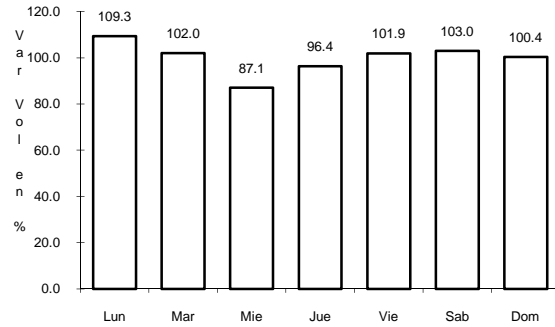
Tipo: 1

Sent: 0

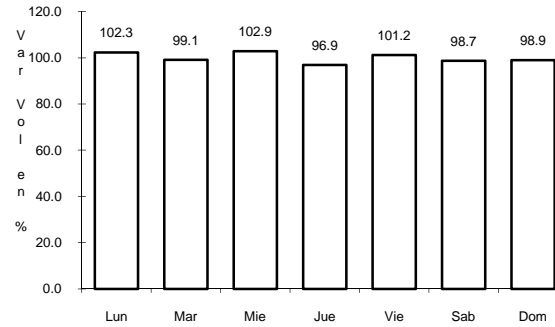
38 CARR: TIERRA NUEVA - FRANCISCO RUEDA

CLAVE: 27110

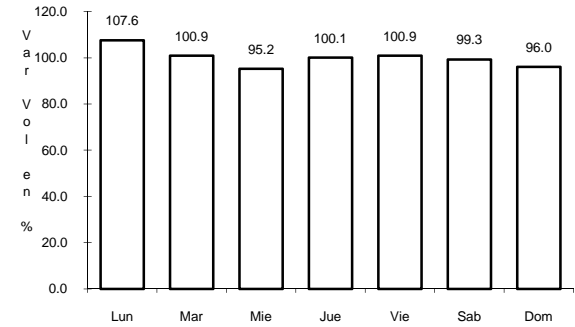
RUTA: TAB



Km: 0.00 Tipo: 3 Sent: 0



Km: 31.00 Tipo: 1 Sent: 0

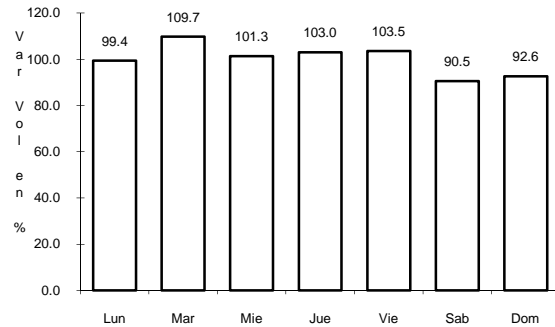


Km: 71.00 Tipo: 1 Sent: 0

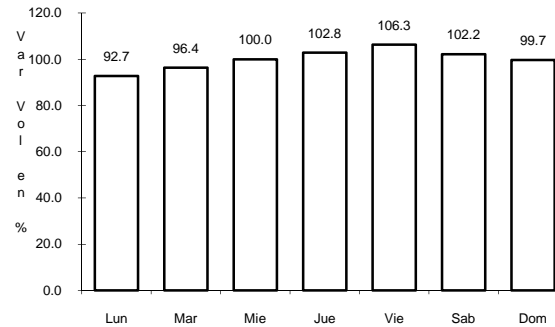
39 CARR: TULIPAN - CUNDUACAN

CLAVE: 27115

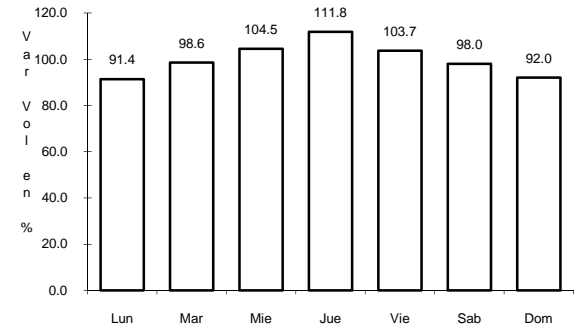
RUTA: TAB



Km: 0.00 Tipo: 3 Sent: 0



Km: 14.00 Tipo: 1 Sent: 0

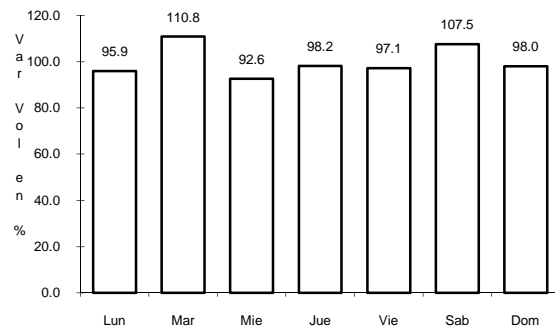


Km: 15.00 Tipo: 1 Sent: 0

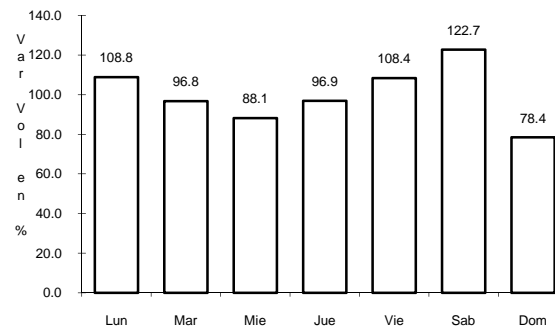
40 CARR: VILLAHERMOSA - COMALCALCO

CLAVE: 27021

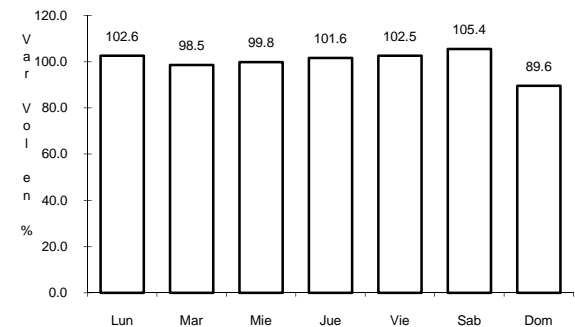
RUTA: TAB



Km: 0.00 Tipo: 3 Sent: 1



Km: 0.00 Tipo: 3 Sent: 2

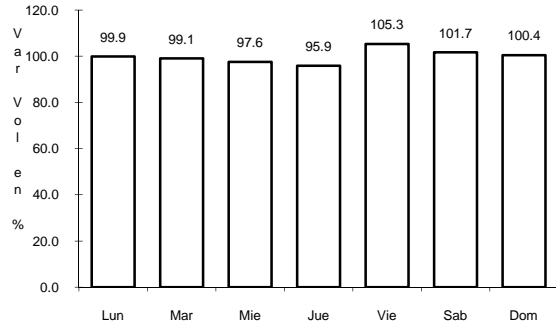


Km: 50.70 Tipo: 1 Sent: 0

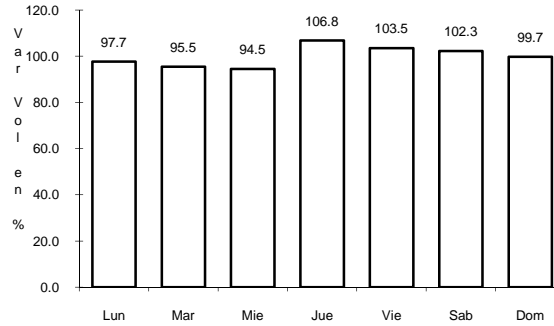
41 CARR: VILLAHERMOSA - LUIS GIL PEREZ

CLAVE: 27206

RUTA: TAB



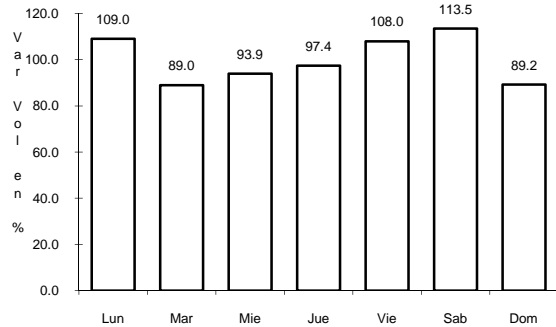
Km: 0.00 Tipo: 3 Sent: 0



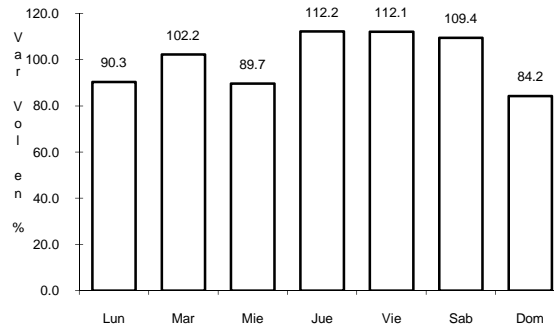
Km: 22.00 Tipo: 1 Sent: 0

42 CARR: VILLAHERMOSA - T. C. (P. DE CUNDUACAN - ESTACION JUAREZ) CLAVE: 27106

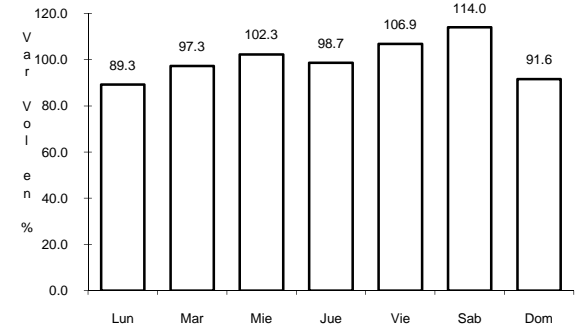
RUTA: TAB



Km: 0.00 Tipo: 3 Sent: 0



Km: 19.00 Tipo: 3 Sent: 0

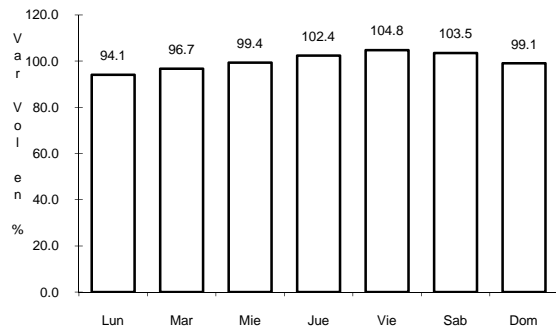


Km: 25.20 Tipo: 1 Sent: 0

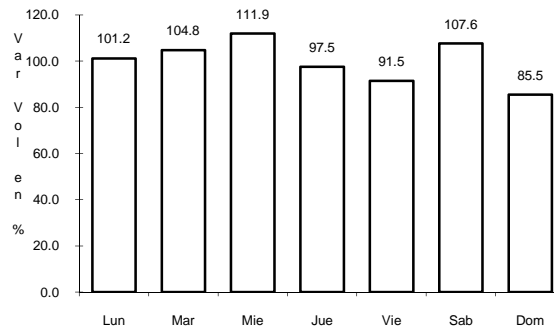
43 CARR: ZAPATERO - T. C. (JALAPA - JONUTA)

CLAVE: 00061

RUTA: CHIS-TAB



Km: 0.00 Tipo: 3 Sent: 0



Km: 41.00 Tipo: 1 Sent: 0