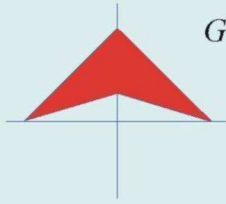


YUCATAN

Núm. INDICE	CARRETERA		RUTA
---- FEDERAL LIBRE ----			
1	CAMPECHE - MERIDA		MEX-180
2	CAMPECHE - UMAN		MEX-261
3	CANSAHCAB - TIZIMIN		MEX-176
4	CONKAL - PUERTO CHICXULUB		MEX
5	DZITBALCHE - ENT. SAN BERNARDO		MEX-265
6	ENT. POXILA - MERIDA		MEX
7	HUNUCMA - SISAL		MEX-025
8	LIBRAMIENTO DE PROGRESO		MEX
9	MERIDA - CELESTUN		MEX-281
10	MERIDA - DZILAM DE BRAVO		MEX-178
11	MERIDA - PROGRESO		MEX-261
12	MERIDA - PUERTO JUAREZ		MEX-180
13	MERIDA - TEKANTO		MEX
14	MUNA - FELIPE CARRILLO PUERTO		MEX-184
15	RAMAL A PANABA		MEX
16	TEYA -PETO		MEX
17	TZUCACAB - SANTA ROSA		MEX
18	VALLADOLID - FELIPE CARRILLO PUERTO		MEX-295
19	VALLADOLID - RIO LAGARTOS		MEX-295
---- FEDERAL CUOTA ----			
20	KANTUNIL - CANCUN (CUOTA)		MEX-180D
---- ESTATAL LIBRE ----			
21	ACANCEH - ESTACION POLOBAN		YUC
22	BACA - DZIDZANTUN		YUC
23	CITILCUM - TIXKOCHOH		YUC
24	DZEMUL - XTAMPU		YUC
25	DZIDZANTUN - SANTA CLARA		YUC
26	HOCTUN - CENOTILLO		YUC-011
27	HOLCA - SOTUTA		YUC
28	IZAMAL - DZILAM GONZALEZ		YUC
29	KANTUNIL - IZAMAL		YUC
30	KINCHIL - UMAN		YUC
31	MERIDA - ACANCEH		YUC
32	MERIDA - OXKUTZCAB		YUC-018
33	MERIDA - TIMUCUY		YUC
34	MOTUL - PUERTO TELCHAC		YUC-172
35	MUNA - MAXCANU		YUC
36	OXKUTZCAB - XUL		YUC-031
37	PISTE - DZITAS		YUC-013
38	PROGRESO - TELCHAC PUERTO		YUC-027
39	RAMAL A CHAN KOM		YUC
40	RAMAL A DZONOT CARRETERO		YUC
41	RAMAL A SAN FELIPE		YUC
42	RAMAL A TEDZIDZ		YUC
43	RAMAL A YAXCABA		YUC-289
44	SINANCHE - XITIBCANUL		YUC
45	SUCILA - CALOTMUL		YUC
46	SUMA - IZAMAL		YUC-081
47	TELCHAC PUERTO - DZILAM DE BRAVO		YUC
48	THUL - BECANCHEN		YUC-281
49	TICUL - CHAPAB		YUC
50	TICUL - DZAN		YUC
51	TIXKOKOB - BACA		YUC
52	TIXKOKOB - SOTUTA		YUC
53	TIZIMIN - YUCATAN		YUC
54	YAXCHE - SIERRA PAPACAL		YUC
55	YOBAIN - CHABIHAU		YUC
---- COMBINADA ----			
56	PROGRESO - CELESTUN		MEX-YUC

GOLFO DE MEXICO



- Red Federal Libre
- Red Federal Cuota
- Red Estatal Libre
- Red Estatal Cuota
- Red Combinada

MAPA INDICE
—15— Num. Indice
2009

Secretaría de Comunicaciones y Transportes

31 YUCATAN

YUCATAN

1 CARR : CAMPECHE - MERIDA

CLAVE: 00066

RUTA : MEX-180

AÑO : 2008

L U G A R	E S T A C I O N				C L A S I F I C A C I O N V E H I C U L A R E N P O R C I E N T O .												
	KM	TE	SC	TDPA	A	B	C2	C3	T3S2	T3S3	T3S2R4	OTROS	A	B	C	K'	D
CAMPECHE	0.00	3	1	2786	88.6	3.7	5.0	1.2	0.0	0.0	0.0	1.5	88.6	3.7	7.7	0.105	0.505
CAMPECHE	0.00	3	2	2731	87.2	3.9	6.4	1.4	0.0	0.0	0.0	1.1	87.2	3.9	8.9	0.108	0.505
T. DER. LIBRAMIENTO DE CAMPECHE	7.00	3	0	6975	84.3	4.5	5.8	4.5	0.0	0.0	0.0	0.9	84.3	4.5	11.2	0.067	0.503
TENABO	40.00	1	0	5206	87.1	4.2	3.2	3.4	0.0	0.0	0.0	2.1	87.1	4.2	8.7	0.106	0.502
T. DER. LIBRAMIENTO DE POMUCH (2° ACCESO)	50.00	3	0	4627	83.3	3.9	7.5	4.2	0.0	0.0	0.0	1.1	83.3	3.9	12.8	0.101	0.503
LIM. EDOS. TERM. CAMP. PPIA. YUC.	97.30																
KOPIOMA	124.30	3	0	4664	73.4	11.1	6.0	2.5	2.0	4.1	0.0	0.9	73.4	11.1	15.5	0.076	0.503
T. DER. LIBRAMIENTO DE CHOCHOLA (1° ACCESO)	137.90	1	0	4260	83.1	4.3	3.5	2.2	2.3	2.6	0.1	1.9	83.1	4.3	12.6	0.065	0.501
T. IZQ. UMAN	147.00	3	0	3429	81.0	6.6	7.1	3.9	0.2	0.4	0.1	0.7	81.0	6.6	12.4	0.096	0.504
X. C. CAMPECHE - UMAN	160.50	1	0	5967	78.3	6.1	5.8	3.6	0.0	0.0	0.0	6.2	78.3	6.1	15.6	0.100	0.561
T. C. PERIFERICO DE MERIDA	171.20																

2 CARR : CAMPECHE - UMAN

CLAVE: 00164

RUTA : MEX-261

AÑO : 2008

L U G A R	E S T A C I O N				C L A S I F I C A C I O N V E H I C U L A R E N P O R C I E N T O .												
	KM	TE	SC	TDPA	A	B	C2	C3	T3S2	T3S3	T3S2R4	OTROS	A	B	C	K'	D
CAMPECHE	0.00																
X. C. LIBRAMIENTO DE CAMPECHE	7.00	1	0	3032	88.7	3.9	4.4	2.5	0.0	0.0	0.0	0.5	88.7	3.9	7.4	0.107	0.519
X. C. LIBRAMIENTO DE CAMPECHE	7.00	3	0	1779	89.4	3.6	4.2	2.4	0.0	0.0	0.0	0.4	89.4	3.6	7.0	0.104	0.502
T. DER. TENABO	30.88	1	0	1231	84.2	4.7	10.1	0.6	0.0	0.0	0.0	0.4	84.2	4.7	11.1	0.136	0.502
T. DER. TENABO	30.88	3	0	1131	85.1	4.8	2.8	2.8	0.0	0.0	0.0	4.5	85.1	4.8	10.1	0.087	0.508
T. DER. EDZNA	44.51	1	0	1066	87.5	3.5	6.3	1.8	0.0	0.0	0.0	0.9	87.5	3.5	9.0	0.096	0.514
T. DER. EDZNA	44.51	3	0	1070	85.9	3.2	2.0	7.7	0.0	0.0	0.0	1.2	85.9	3.2	10.9	0.105	0.506
HOPELCHEN	84.88	1	0	885	86.4	3.8	8.2	0.8	0.0	0.0	0.0	0.8	86.4	3.8	9.8	0.108	0.507
BOLONCHEN DE REJON	117.90	3	0	572	88.9	3.0	4.5	2.4	0.0	0.0	0.0	1.2	88.9	3.0	8.1	0.094	0.524
LIM. EDOS. TERM. CAMP. PPIA. YUC.	126.90																
T. DER. SAYIL	140.90	1	0	526	89.3	4.0	5.1	1.6	0.0	0.0	0.0	0.0	89.3	4.0	6.7	0.129	0.511
SANTA ELENA	158.90	1	0	755	90.1	3.3	1.1	1.5	0.0	0.0	0.0	4.0	90.1	3.3	6.6	0.078	0.502
T. IZQ. RUINAS DE UXMAL	172.50	1	0	772	85.4	7.1	5.7	1.5	0.0	0.0	0.0	0.3	85.4	7.1	7.5	0.082	0.510
MUNA	187.40	1	0	995	86.2	6.3	4.4	3.0	0.0	0.0	0.0	0.1	86.2	6.3	7.5	0.140	0.503
MUNA	187.40	3	0	3363	88.6	4.9	2.2	2.3	0.0	0.0	0.0	2.0	88.6	4.9	6.5	0.072	0.505
XPETEN	225.40	1	0	3806	91.5	3.5	2.3	0.9	0.6	0.2	0.4	0.6	91.5	3.5	5.0	0.114	0.503
UMAN	230.80	1	0	2774	84.6	4.2	4.1	6.0	0.0	0.0	0.0	1.1	84.6	4.2	11.2	0.080	0.503

YUCATAN

3 CARR : CANSAHCAB - TIZIMIN

CLAVE: 31014

RUTA : MEX-176

AÑO : 2008

L U G A R	E S T A C I O N				C L A S I F I C A C I O N V E H I C U L A R E N P O R C I E N T O .												
	KM	TE	SC	TDPA	A	B	C2	C3	T3S2	T3S3	T3S2R4	OTROS	A	B	C	K'	D
CANSAHCAB	0.00	3	0	1818	74.5	20.9	0.9	1.5	0.0	0.0	0.0	2.2	74.5	20.9	4.6	0.091	0.520
TEMAX	16.73	3	0	1256	81.2	8.3	7.0	3.2	0.0	0.0	0.0	0.3	81.2	8.3	10.5	0.104	0.504
BUCTZOTZ	32.92	3	0	1090	81.7	3.9	3.2	3.0	3.0	1.2	2.0	2.0	81.7	3.9	14.4	0.090	0.509
TIZIMIN	99.14	1	0	1358	80.9	3.4	3.0	3.7	2.9	1.7	2.2	2.2	80.9	3.4	15.7	0.128	0.508

4 CARR : CONKAL - PUERTO CHICXULUB

CLAVE: 31004

RUTA : MEX

AÑO : 2008

L U G A R	E S T A C I O N				C L A S I F I C A C I O N V E H I C U L A R E N P O R C I E N T O .												
	KM	TE	SC	TDPA	A	B	C2	C3	T3S2	T3S3	T3S2R4	OTROS	A	B	C	K'	D
CONKAL	0.00	3	0	2681	89.6	4.0	1.5	3.1	0.0	0.0	0.0	1.8	89.6	4.0	6.4	0.109	0.507
PUERTO CHICXULUB	27.00	1	0	940	90.4	2.7	3.8	2.6	0.0	0.0	0.0	0.5	90.4	2.7	6.9	0.061	0.515

5 CARR : DZITBALCHE - ENT. SAN BERNARDO

CLAVE: 00162

RUTA : MEX-265

AÑO : 2008

L U G A R	E S T A C I O N				C L A S I F I C A C I O N V E H I C U L A R E N P O R C I E N T O .												
	KM	TE	SC	TDPA	A	B	C2	C3	T3S2	T3S3	T3S2R4	OTROS	A	B	C	K'	D
T. C. CAMPECHE - MERIDA	0.00																
T. IZQ. LIBRAMIENTO DE BECAL (1° ACCESO)	28.76	1	0	2702	76.0	2.7	14.7	5.0	0.0	0.0	0.0	1.6	76.0	2.7	21.3	0.076	0.509
LIM. EDOS. TERM. CAMP. PPIA. YUC.	30.30																
T. IZQ. LIBRAMIENTO DE BECAL (2° ACCESO)	30.86	3	0	3088	88.5	4.5	5.4	0.4	0.0	0.0	0.0	1.2	88.5	4.5	7.0	0.072	0.503
HALACHO	34.59	1	0	3766	82.9	8.2	2.8	3.6	0.0	0.0	0.0	2.5	82.9	8.2	8.9	0.120	0.507
T. IZQ. LIBRAMIENTO DE MAXCANU (1° ACCESO)	47.88	1	0	3303	79.1	5.4	6.4	3.2	2.4	1.8	0.0	1.7	79.1	5.4	15.5	0.091	0.503
T. DER. MUNA	53.86	3	0	3320	81.0	4.5	6.4	3.0	1.8	1.6	0.0	1.7	81.0	4.5	14.5	0.101	0.505
T. C. CAMPECHE - MERIDA	59.70																

6 CARR : ENT. POXILA - MERIDA

CLAVE: 31003

RUTA : MEX

AÑO : 2008

L U G A R	E S T A C I O N				C L A S I F I C A C I O N V E H I C U L A R E N P O R C I E N T O .												
	KM	TE	SC	TDPA	A	B	C2	C3	T3S2	T3S3	T3S2R4	OTROS	A	B	C	K'	D
T. C. CAMPECHE - MERIDA	0.00																
UMAN	9.46	1	0	5542	81.8	12.0	2.4	2.6	0.0	0.0	0.0	1.2	81.8	12.0	6.2	0.090	0.513
X. PERIFERICO MERIDA	16.37	1	1	7918	78.7	2.7	1.8	1.4	3.0	2.5	1.5	8.4	78.7	2.7	18.6	0.090	0.508
X. PERIFERICO MERIDA	16.37	1	2	8175	78.5	2.9	1.8	1.3	4.3	2.2	2.4	6.6	78.5	2.9	18.6	0.085	0.508
MERIDA	25.70	1	1	13645	82.3	7.4	5.4	3.4	0.0	0.0	0.0	1.5	82.3	7.4	10.3	0.091	0.502
MERIDA	25.70	1	2	13534	82.6	7.3	5.3	3.3	0.0	0.0	0.0	1.5	82.6	7.3	10.1	0.092	0.502

YUCATAN

7 CARR : HUNUCMA - SISAL

CLAVE: 31021

RUTA : MEX-025

AÑO : 2008

L U G A R	E S T A C I O N				C L A S I F I C A C I O N V E H I C U L A R E N P O R C I E N T O .												
	KM	TE	SC	TDPA	A	B	C2	C3	T3S2	T3S3	T3S2R4	OTROS	A	B	C	K'	D
HUNUCMA	0.00	3	0	1168	88.4	6.1	2.6	2.1	0.0	0.0	0.0	0.8	88.4	6.1	5.5	0.101	0.516
SISAL	23.20	1	0	701	76.1	7.4	9.1	5.0	0.0	0.0	0.0	2.4	76.1	7.4	16.5	0.080	0.510

8 CARR : LIBRAMIENTO DE PROGRESO

CLAVE: 31631

RUTA : MEX

AÑO : 2008

L U G A R	E S T A C I O N				C L A S I F I C A C I O N V E H I C U L A R E N P O R C I E N T O .												
	KM	TE	SC	TDPA	A	B	C2	C3	T3S2	T3S3	T3S2R4	OTROS	A	B	C	K'	D
T. C. MERIDA - PROGRESO	0.00	3	0	4545	93.1	1.7	2.0	1.9	0.0	0.0	0.0	1.3	93.1	1.7	5.2	0.068	0.504
YUCALPETEN	6.50	1	0	4177	92.2	0.5	2.9	2.4	0.0	0.0	0.0	2.0	92.2	0.5	7.3	0.077	0.506

9 CARR : MERIDA - CELESTUN

CLAVE: 31025

RUTA : MEX-281

AÑO : 2008

L U G A R	E S T A C I O N				C L A S I F I C A C I O N V E H I C U L A R E N P O R C I E N T O .												
	KM	TE	SC	TDPA	A	B	C2	C3	T3S2	T3S3	T3S2R4	OTROS	A	B	C	K'	D
MERIDA	0.00	3	1	9892	91.0	2.5	2.2	1.3	0.0	0.0	0.0	3.0	91.0	2.5	6.5	0.082	0.502
MERIDA	0.00	3	2	9797	88.6	3.0	1.7	2.4	0.0	0.0	0.0	4.3	88.6	3.0	8.4	0.076	0.502
X. PERIFERICO DE MERIDA	5.10	1	1	12288	84.8	3.0	3.1	1.9	0.0	0.0	0.0	7.2	84.8	3.0	12.2	0.078	0.508
X. PERIFERICO DE MERIDA	5.10	1	2	12688	86.1	2.5	3.9	1.7	0.0	0.0	0.0	5.8	86.1	2.5	11.4	0.077	0.508
X. PERIFERICO DE MERIDA	5.10	3	1	4512	76.6	8.6	11.2	2.7	0.0	0.0	0.0	0.9	76.6	8.6	14.8	0.100	0.501
X. PERIFERICO DE MERIDA	5.10	3	2	4538	79.4	10.1	7.4	1.8	0.0	0.0	0.0	1.3	79.4	10.1	10.5	0.120	0.501
HUNUCMA	26.00	1	0	1914	87.9	3.7	2.0	4.1	0.0	0.0	0.0	2.3	87.9	3.7	8.4	0.093	0.500
HUNUCMA	26.00	3	0	1583	86.2	6.3	6.1	0.4	0.0	0.0	0.0	1.0	86.2	6.3	7.5	0.100	0.501
KINCHIL	40.00	3	0	1000	84.1	5.4	8.5	1.3	0.0	0.0	0.0	0.7	84.1	5.4	10.5	0.078	0.509
T. IZQ. SAN MATEO	67.00	1	0	632	78.1	5.2	14.0	1.3	0.0	0.0	0.0	1.4	78.1	5.2	16.7	0.120	0.524
CELESTUN	89.00	1	0	650	88.5	3.7	3.7	2.5	0.8	0.8	0.0	0.0	88.5	3.7	7.8	0.062	0.502

10 CARR : MERIDA - DZILAM DE BRAVO

CLAVE: 31001

RUTA : MEX-178

AÑO : 2008

L U G A R	E S T A C I O N				C L A S I F I C A C I O N V E H I C U L A R E N P O R C I E N T O .												
	KM	TE	SC	TDPA	A	B	C2	C3	T3S2	T3S3	T3S2R4	OTROS	A	B	C	K'	D
MERIDA	0.00																
X. PERIFERICO DE MERIDA	5.90	3	0	4885	90.9	2.3	4.0	0.7	0.4	0.3	0.2	1.2	90.9	2.3	6.8	0.075	0.509
CONKAL	18.00	1	0	4605	71.7	1.4	0.6	7.5	0.0	0.0	0.0	18.8	71.7	1.4	26.9	0.115	0.505
BACA	34.40	1	0	4063	87.2	3.0	7.3	1.2	0.0	0.0	0.0	1.3	87.2	3.0	9.8	0.100	0.503
MOTUL	44.00	1	0	4649	82.3	7.1	4.5	3.1	0.0	0.0	0.0	3.0	82.3	7.1	10.6	0.075	0.501

YUCATAN

10 CARR : MERIDA - DZILAM DE BRAVO

CLAVE: 31001

ruta : MEX-178

AÑO : 2008

L U G A R	E S T A C I O N				C L A S I F I C A C I O N V E H I C U L A R E N P O R C I E N T O .												
	KM	TE	SC	TDPA	A	B	C2	C3	T3S2	T3S3	T3S2R4	OTROS	A	B	C	K'	D
MOTUL	44.00	3	0	3408	87.3	3.0	3.8	3.6	0.0	0.0	0.0	2.3	87.3	3.0	9.7	0.102	0.518
CANSAHCAB	68.00	3	0	1423	82.8	7.1	6.1	3.6	0.0	0.0	0.0	0.4	82.8	7.1	10.1	0.073	0.502
DZIDZANTUN	80.00	1	0	981	79.0	4.8	6.4	2.7	2.9	2.4	1.0	0.8	79.0	4.8	16.2	0.112	0.501
DZILAM DE BRAVO	105.00	1	0	755	89.0	3.8	5.3	0.4	0.7	0.2	0.2	0.4	89.0	3.8	7.2	0.106	0.505

11 CARR : MERIDA - PROGRESO

CLAVE: 31091

ruta : MEX-261

AÑO : 2008

L U G A R	E S T A C I O N				C L A S I F I C A C I O N V E H I C U L A R E N P O R C I E N T O .												
	KM	TE	SC	TDPA	A	B	C2	C3	T3S2	T3S3	T3S2R4	OTROS	A	B	C	K'	D
T. C. MERIDA - DZILAM DE BRAVO	0.00																
MERIDA	0.00	3	1	17421	91.7	2.7	2.0	0.9	0.0	0.0	0.0	2.7	91.7	2.7	5.6	0.085	0.500
MERIDA	0.00	3	2	17437	90.3	2.7	1.6	0.9	0.0	0.0	0.0	4.5	90.3	2.7	7.0	0.081	0.500
PERIFERICO MERIDA	5.40	1	1	11644	84.2	6.6	2.0	1.9	0.0	0.0	0.0	5.3	84.2	6.6	9.2	0.081	0.513
PERIFERICO MERIDA	5.40	1	2	12283	87.2	6.8	1.2	0.8	0.0	0.0	0.0	4.0	87.2	6.8	6.0	0.090	0.513
T. IZQ. DZITYA	10.40	1	1	8872	89.3	2.5	2.2	1.6	0.0	0.0	0.0	4.4	89.3	2.5	8.2	0.110	0.526
T. IZQ. DZITYA	10.40	1	2	8378	88.1	2.4	2.8	1.8	0.0	0.0	0.0	4.9	88.1	2.4	9.5	0.063	0.526
T. IZQ. DZITYA	10.40	3	1	11800	80.4	14.1	1.1	1.8	0.0	0.0	0.0	2.6	80.4	14.1	5.5	0.074	0.503
T. IZQ. DZITYA	10.40	3	2	11936	87.8	6.9	1.5	1.6	0.0	0.0	0.0	2.2	87.8	6.9	5.3	0.079	0.503
PROGRESO	35.04	1	0	12035	86.6	3.5	3.4	3.3	0.0	0.0	0.0	3.2	86.6	3.5	9.9	0.092	0.527

12 CARR : MERIDA - PUERTO JUAREZ

CLAVE: 00067

ruta : MEX-180

AÑO : 2008

L U G A R	E S T A C I O N				C L A S I F I C A C I O N V E H I C U L A R E N P O R C I E N T O .												
	KM	TE	SC	TDPA	A	B	C2	C3	T3S2	T3S3	T3S2R4	OTROS	A	B	C	K'	D
MERIDA	0.00																
X. PERIFERICO DE MERIDA	5.60	1	1	6553	85.2	3.4	2.2	2.2	2.2	0.7	0.9	3.2	85.2	3.4	11.4	0.092	0.501
X. PERIFERICO DE MERIDA	5.60	1	2	6610	82.6	3.4	1.6	2.3	3.2	1.7	1.4	3.8	82.6	3.4	14.0	0.081	0.501
X. PERIFERICO DE MERIDA	5.60	3	1	4743	85.7	4.0	3.5	3.8	0.0	0.0	0.0	3.0	85.7	4.0	10.3	0.153	0.501
X. PERIFERICO DE MERIDA	5.60	3	2	4395	80.5	11.7	2.6	2.7	0.0	0.0	0.0	2.5	80.5	11.7	7.8	0.141	0.501
TEYA	13.00	1	1	4539	64.7	7.1	0.9	5.4	0.0	0.0	0.0	21.9	64.7	7.1	28.2	0.105	0.524
TEYA	13.00	1	2	4718	74.4	18.7	2.0	3.2	0.0	0.0	0.0	1.7	74.4	18.7	6.9	0.107	0.524
T. DER. SEYE	28.79	1	0	8232	84.2	3.9	7.0	0.7	0.0	0.0	0.0	4.2	84.2	3.9	11.9	0.074	0.517
T. DER. SEYE	28.79	3	0	6468	86.8	4.5	5.1	3.6	0.0	0.0	0.0	0.0	86.8	4.5	8.7	0.096	0.505
TAHMEK	42.00	1	0	6833	85.4	4.5	5.5	2.9	0.0	0.0	0.0	1.7	85.4	4.5	10.1	0.137	0.508
T. IZQ. HOCTUN (1º ACCESO)	46.65	1	0	4466	84.8	4.3	6.1	3.2	0.0	0.0	0.0	1.6	84.8	4.3	10.9	0.097	0.508

YUCATAN

12 CARR : MERIDA - PUERTO JUAREZ

CLAVE: 00067

RUTA : MEX-180

AÑO : 2008

L U G A R	E S T A C I O N				C L A S I F I C A C I O N V E H I C U L A R E N P O R C I E N T O .												
	KM	TE	SC	TDPA	A	B	C2	C3	T3S2	T3S3	T3S2R4	OTROS	A	B	C	K'	D
T. IZQ. HOCTUN (2° ACCESO)	48.62	1	0	3906	77.8	10.7	1.5	0.6	4.3	1.2	1.9	2.0	77.8	10.7	11.5	0.084	0.510
T. IZQ. HOCTUN (2° ACCESO)	48.62	3	0	6308	75.6	7.2	6.2	4.8	2.7	2.0	0.4	1.1	75.6	7.2	17.2	0.126	0.502
KANTUNIL	67.28	3	0	1881	74.4	5.6	4.7	3.7	3.5	2.6	2.0	3.5	74.4	5.6	20.0	0.087	0.502
LIBRE UNION	92.91	1	0	2290	80.2	5.5	5.3	2.9	2.7	2.0	0.5	0.9	80.2	5.5	14.3	0.094	0.504
LIBRE UNION	92.91	3	0	1903	79.9	6.2	5.8	2.8	2.8	1.4	0.5	0.6	79.9	6.2	13.9	0.107	0.505
PISTE	116.30	3	0	4165	59.5	11.9	1.6	2.1	9.3	6.1	3.9	5.6	59.5	11.9	28.6	0.077	0.508
CHICHEN ITZA	118.60	1	0	4633	74.4	6.1	2.9	1.8	2.8	6.8	1.9	3.3	74.4	6.1	19.5	0.111	0.505
CHICHEN ITZA	118.60	3	0	4497	79.2	8.6	5.1	2.3	1.5	2.1	0.0	1.2	79.2	8.6	12.2	0.080	0.507
T. DER. CHANKOM	127.00	1	0	3729	80.7	9.7	4.7	1.3	1.4	1.0	0.0	1.2	80.7	9.7	9.6	0.087	0.503
T. DER. CHANKOM	127.00	3	0	3166	82.3	4.3	4.8	2.8	1.8	2.1	0.5	1.4	82.3	4.3	13.4	0.085	0.505
VALLADOLID	160.70	1	0	3849	91.4	0.0	4.8	3.1	0.0	0.0	0.0	0.7	91.4	0.0	8.6	0.073	0.501
T. DER. CHEMAX	189.80	3	0	4197	93.5	2.4	2.5	1.6	0.0	0.0	0.0	0.0	93.5	2.4	4.1	0.090	0.501
X-CAN	225.00	3	0	3006	82.1	8.6	6.5	2.7	0.0	0.0	0.0	0.1	82.1	8.6	9.3	0.091	0.504
LIM. EDOS. TERM. YUC. PPIA. QROO.	230.40																
NUEVO X-CAN	231.90	3	0	2669	84.0	6.0	6.3	3.5	0.0	0.0	0.0	0.2	84.0	6.0	10.0	0.096	0.500
ZARAGOZA	239.00	1	0	3729	86.8	2.6	6.6	2.8	0.0	0.0	0.0	1.2	86.8	2.6	10.6	0.066	0.501
VICENTE GUERRERO	261.00	1	0	2908	78.3	5.6	7.1	2.7	2.8	1.0	1.2	1.3	78.3	5.6	16.1	0.098	0.503
LEONA VICARIO	275.50	1	0	4079	79.4	7.7	5.8	1.8	1.8	0.8	1.0	1.7	79.4	7.7	12.9	0.089	0.501
LEONA VICARIO	275.50	3	0	4786	78.1	6.2	7.8	3.6	1.8	1.5	0.0	1.0	78.1	6.2	15.7	0.104	0.504
T. DER. ALFREDO V. BONFIL	310.00	1	1	7045	83.3	3.0	5.0	3.0	2.2	1.5	0.1	1.9	83.3	3.0	13.7	0.093	0.503
T. DER. ALFREDO V. BONFIL	310.00	1	2	6955	82.8	3.5	4.8	2.8	1.9	1.6	0.3	2.3	82.8	3.5	13.7	0.083	0.503
PUERTO JUAREZ	321.40																

13 CARR : MERIDA - TEKANTO

CLAVE: 31587

RUTA : MEX

AÑO : 2008

L U G A R	E S T A C I O N				C L A S I F I C A C I O N V E H I C U L A R E N P O R C I E N T O .												
	KM	TE	SC	TDPA	A	B	C2	C3	T3S2	T3S3	T3S2R4	OTROS	A	B	C	K'	D
T. C. MERIDA - PUERTO JUAREZ	0.00																
X. PERIFERICO DE MERIDA	5.70	1	0	6129	85.4	3.5	5.7	1.7	0.0	0.0	0.0	3.7	85.4	3.5	11.1	0.079	0.502
T. DER. TIXPEHUAL	13.25	1	0	4404	78.7	7.3	6.5	4.6	0.0	0.0	0.0	2.9	78.7	7.3	14.0	0.088	0.501
T. DER. TIXPEHUAL	13.25	3	0	2583	86.5	3.0	7.7	1.3	0.0	0.0	0.0	1.5	86.5	3.0	10.5	0.098	0.538
TIXKOKOB	21.00	1	0	2144	81.2	6.9	6.9	3.7	0.0	0.0	0.0	1.3	81.2	6.9	11.9	0.101	0.502
TIXKOKOB	21.00	3	0	2265	86.4	4.4	6.6	1.2	0.0	0.0	0.0	1.4	86.4	4.4	9.2	0.063	0.513
CACALCHEN	38.00	1	0	1064	86.9	8.3	3.1	0.0	0.0	0.0	0.0	1.7	86.9	8.3	4.8	0.092	0.503
TEKANTO	51.00	1	0	781	81.4	5.2	6.3	3.2	1.9	0.9	0.4	0.7	81.4	5.2	13.4	0.097	0.504

YUCATAN

14 CARR : MUNA - FELIPE CARRILLO PUERTO

CLAVE: 00148

RUTA : MEX-184

AÑO : 2008

L U G A R	E S T A C I O N				C L A S I F I C A C I O N V E H I C U L A R E N P O R C I E N T O .												
	KM	TE	SC	TDPA	A	B	C2	C3	T3S2	T3S3	T3S2R4	OTROS	A	B	C	K'	D
MUNA	0.00	3	0	3437	82.3	5.1	7.7	3.7	0.0	0.0	0.0	1.2	82.3	5.1	12.6	0.091	0.502
TICUL	19.10	1	0	4556	83.2	4.2	8.0	2.5	0.0	0.0	0.0	2.1	83.2	4.2	12.6	0.069	0.504
TICUL	19.10	3	0	3079	86.4	7.2	2.9	1.2	0.0	0.0	0.0	2.3	86.4	7.2	6.4	0.120	0.505
OXKUTZCAB	40.50	3	0	3418	91.6	4.4	1.5	1.5	0.0	0.0	0.0	1.0	91.6	4.4	4.0	0.092	0.503
TEKAX	53.90	3	0	2765	91.0	5.1	2.7	0.8	0.0	0.0	0.0	0.4	91.0	5.1	3.9	0.062	0.502
TZUCACAB	86.60	1	0	1552	90.3	3.9	3.6	1.5	0.0	0.0	0.0	0.7	90.3	3.9	5.8	0.145	0.510
TZUCACAB	86.60	3	0	1012	94.6	3.0	2.1	0.1	0.0	0.0	0.0	0.2	94.6	3.0	2.4	0.084	0.510
SANTA ROSA	109.60	3	0	1531	88.3	4.4	3.9	3.0	0.0	0.0	0.0	0.4	88.3	4.4	7.3	0.090	0.508
LIM. EDOS. TERM. YUC. PPIA. QROO.	117.00																
DZIUCHE	118.00	1	0	1713	86.8	4.5	4.5	3.5	0.0	0.0	0.0	0.7	86.8	4.5	8.7	0.084	0.510
DZIUCHE	118.00	3	0	2270	84.8	5.0	6.1	3.3	0.0	0.0	0.0	0.8	84.8	5.0	10.2	0.094	0.504
JOSE MARIA MORELOS	138.60	1	0	2583	88.5	3.3	4.8	2.8	0.0	0.0	0.0	0.6	88.5	3.3	8.2	0.063	0.503
JOSE MARIA MORELOS	138.60	3	0	2310	81.9	5.9	5.6	4.3	0.0	0.0	0.0	2.3	81.9	5.9	12.2	0.069	0.505
POLYUC	161.90	1	0	1568	88.7	3.7	5.1	2.4	0.0	0.0	0.0	0.1	88.7	3.7	7.6	0.088	0.500
POLYUC	161.90	3	0	1531	90.6	3.2	4.3	1.6	0.0	0.0	0.0	0.3	90.6	3.2	6.2	0.083	0.500
T. DER. DZULA	178.10	3	0	1170	86.4	5.5	4.6	2.5	0.0	0.0	0.0	1.0	86.4	5.5	8.1	0.089	0.502
FELIPE CARRILLO PUERTO	217.00	1	0	1157	85.2	6.2	5.7	2.6	0.0	0.0	0.0	0.3	85.2	6.2	8.6	0.086	0.500

15 CARR : RAMAL A PANABA

CLAVE: 31609

RUTA : MEX

AÑO : 2008

L U G A R	E S T A C I O N				C L A S I F I C A C I O N V E H I C U L A R E N P O R C I E N T O .												
	KM	TE	SC	TDPA	A	B	C2	C3	T3S2	T3S3	T3S2R4	OTROS	A	B	C	K'	D
T. C. VALLADOLID - RIO LAGARTOS	0.00	3	0	815	89.7	6.0	3.5	0.6	0.0	0.0	0.0	0.2	89.7	6.0	4.3	0.107	0.501
PANABA	18.00	1	0	422	89.3	6.8	0.8	2.2	0.0	0.0	0.0	0.9	89.3	6.8	3.9	0.116	0.501

16 CARR : TEYA -PETO

CLAVE:

RUTA : MEX

AÑO : 2008

L U G A R	E S T A C I O N				C L A S I F I C A C I O N V E H I C U L A R E N P O R C I E N T O .												
	KM	TE	SC	TDPA	A	B	C2	C3	T3S2	T3S3	T3S2R4	OTROS	A	B	C	K'	D
T.C. MERIDA - PUERTO JUAREZ	0.00																
SAN ANTONIO TEHUITZ	3.80	3	0	5199	81.1	1.4	0.3	5.7	1.6	1.6	6.2	2.1	81.1	1.4	17.5	0.101	0.504
T. IZQ. TEABO	69.05	1	0	3049	86.8	5.1	1.3	3.4	0.0	0.0	0.0	3.4	86.8	5.1	8.1	0.079	0.509
T. IZQ. TEABO	69.05	3	0	2164	85.5	6.0	1.5	3.3	0.0	0.0	0.0	3.7	85.5	6.0	8.5	0.079	0.508
T. IZQ. TIXMEUAC	97.10	1	0	2358	82.5	4.9	4.4	6.6	0.0	0.0	0.0	1.6	82.5	4.9	12.6	0.079	0.504
T. IZQ. PETO	120.70	1	0	1537	84.8	4.6	3.9	6.0	0.0	0.0	0.0	0.7	84.8	4.6	10.6	0.088	0.501

YUCATAN

20 CARR : KANTUNIL - CANCUN (CUOTA)

CLAVE: 00071

RUTA : MEX-180D

AÑO : 2008

L U G A R	E S T A C I O N				C L A S I F I C A C I O N V E H I C U L A R E N P O R C I E N T O .												
	KM	TE	SC	TDPA	A	B	C2	C3	T3S2	T3S3	T3S2R4	OTROS	A	B	C	K'	D
T. C. MERIDA - PUERTO JUAREZ	0.00																
CASETA DE COBRO PISTE	51.00	1	1	1020	77.3	6.8	2.8	1.5	1.7	1.0	6.7	2.2	77.3	6.8	15.9	0.099	0.506
CASETA DE COBRO PISTE	51.00	1	2	1046	77.8	6.4	2.9	1.8	1.6	0.9	6.5	2.1	77.8	6.4	15.8	0.105	0.506
CASETA DE COBRO PISTE	51.00	2	0	2787	77.9	7.4	2.5	1.1	1.4	0.7	7.0	2.0	77.9	7.4	14.7		
CASETA DE COBRO "X-CAN"	155.00	1	1	1596	83.2	3.5	1.9	0.6	3.6	1.8	4.9	0.5	83.2	3.5	13.3	0.147	0.506
CASETA DE COBRO "X-CAN"	155.00	1	2	1638	84.3	4.0	2.0	0.9	2.0	1.2	5.2	0.4	84.3	4.0	11.7	0.147	0.506
LIM. EDOS. TERM. YUC. PPIA. QROO.	160.00																
T. C. MERIDA - PUERTO JUAREZ	292.00	3	1	1173	86.2	3.9	4.6	2.8	1.1	1.0	0.3	0.1	86.2	3.9	9.9	0.154	0.502
T. C. MERIDA - PUERTO JUAREZ	292.00	3	2	1181	85.8	4.0	5.3	2.6	0.9	0.5	0.4	0.5	85.8	4.0	10.2	0.162	0.502
T. C. REFORMA AGRARIA - PUERTO JUAREZ	308.10	1	0	1350	85.9	5.9	4.4	2.4	1.4	0.0	0.0	0.0	85.9	5.9	8.2	0.099	0.502

21 CARR : ACANCEH - ESTACION POLOBAN

CLAVE: 31615

RUTA : YUC

AÑO : 2008

L U G A R	E S T A C I O N				C L A S I F I C A C I O N V E H I C U L A R E N P O R C I E N T O .												
	KM	TE	SC	TDPA	A	B	C2	C3	T3S2	T3S3	T3S2R4	OTROS	A	B	C	K'	D
ACANCEH	0.00	3	0	1065	86.4	4.1	5.6	3.0	0.0	0.0	0.0	0.9	86.4	4.1	9.5	0.115	0.505
HOMUN	20.00	3	0	480	86.5	3.9	5.6	3.6	0.0	0.0	0.0	0.4	86.5	3.9	9.6	0.146	0.504
ESTACION POLOBAN	24.40	1	0	501	89.2	3.8	4.5	1.7	0.0	0.0	0.0	0.8	89.2	3.8	7.0	0.096	0.501

22 CARR : BACA - DZIDZANTUN

CLAVE: 31591

RUTA : YUC

AÑO : 2008

L U G A R	E S T A C I O N				C L A S I F I C A C I O N V E H I C U L A R E N P O R C I E N T O .												
	KM	TE	SC	TDPA	A	B	C2	C3	T3S2	T3S3	T3S2R4	OTROS	A	B	C	K'	D
BACA	0.00	3	0	992	83.6	6.6	6.5	2.5	0.0	0.0	0.0	0.8	83.6	6.6	9.8	0.081	0.506
DZEMUL	15.00	1	0	1116	87.6	4.3	4.6	2.2	0.3	0.0	0.1	0.9	87.6	4.3	8.1	0.106	0.500
DZEMUL	15.00	3	0	1085	82.2	5.3	8.1	2.5	0.0	0.0	0.0	1.9	82.2	5.3	12.5	0.064	0.503
PUEBLO TELCHAC	19.10	1	0	1192	84.7	7.6	1.7	4.6	0.0	0.0	0.0	1.4	84.7	7.6	7.7	0.102	0.510
SINANCHE	29.10	3	0	684	84.9	5.7	5.3	1.7	1.1	0.7	0.5	0.1	84.9	5.7	9.4	0.082	0.506
DZIDZANTUN	43.00	1	0	622	87.1	5.8	5.1	1.8	0.0	0.0	0.0	0.2	87.1	5.8	7.1	0.087	0.510

23 CARR : CITILCUM - TIXKOCHOH

CLAVE: 31064

RUTA : YUC

AÑO : 2008

L U G A R	E S T A C I O N				C L A S I F I C A C I O N V E H I C U L A R E N P O R C I E N T O .												
	KM	TE	SC	TDPA	A	B	C2	C3	T3S2	T3S3	T3S2R4	OTROS	A	B	C	K'	D
CITILCUM	0.00	3	0	540	84.5	4.3	4.6	2.9	1.4	0.9	0.6	0.8	84.5	4.3	11.2	0.117	0.508

YUCATAN

23 CARR : CITILCUM - TIXKOCHOH

CLAVE: 31064

RUTA : YUC

AÑO : 2008

L U G A R	E S T A C I O N				C L A S I F I C A C I O N V E H I C U L A R E N P O R C I E N T O .												
	KM	TE	SC	TDPA	A	B	C2	C3	T3S2	T3S3	T3S2R4	OTROS	A	B	C	K'	D
TEKANTO	7.00	1	0	379	89.0	4.6	4.8	1.6	0.0	0.0	0.0	0.0	89.0	4.6	6.4	0.113	0.500
TIXKOCHOH	10.00	1	0	301	91.2	0.0	3.7	1.7	1.5	1.3	0.6	0.0	91.2	0.0	8.8	0.110	0.508

24 CARR : DZEMUL - XTAMPU

CLAVE: 31608

RUTA : YUC

AÑO : 2008

L U G A R	E S T A C I O N				C L A S I F I C A C I O N V E H I C U L A R E N P O R C I E N T O .												
	KM	TE	SC	TDPA	A	B	C2	C3	T3S2	T3S3	T3S2R4	OTROS	A	B	C	K'	D
DZEMUL	0.00	3	0	245	77.5	0.0	1.4	9.8	0.0	0.0	0.0	11.3	77.5	0.0	22.5	0.110	0.540
XTAMPU	10.00	1	0	262	90.0	1.9	5.0	1.6	0.8	0.4	0.2	0.1	90.0	1.9	8.1	0.080	0.516

25 CARR : DZIDZANTUN - SANTA CLARA

CLAVE: 31592

RUTA : YUC

AÑO : 2008

L U G A R	E S T A C I O N				C L A S I F I C A C I O N V E H I C U L A R E N P O R C I E N T O .												
	KM	TE	SC	TDPA	A	B	C2	C3	T3S2	T3S3	T3S2R4	OTROS	A	B	C	K'	D
DZIDZANTUN	0.00	3	0	795	84.4	3.9	3.9	3.0	1.9	1.3	0.9	0.7	84.4	3.9	11.7	0.099	0.510
SANTA CLARA	14.00	1	0	550	87.5	3.5	3.3	2.4	1.3	0.9	0.6	0.5	87.5	3.5	9.0	0.085	0.505

26 CARR : HOCTUN - CENOTILLO

CLAVE: 31011

RUTA : YUC-011

AÑO : 2008

L U G A R	E S T A C I O N				C L A S I F I C A C I O N V E H I C U L A R E N P O R C I E N T O .												
	KM	TE	SC	TDPA	A	B	C2	C3	T3S2	T3S3	T3S2R4	OTROS	A	B	C	K'	D
HOCTUN	0.00	3	0	2850	87.4	3.2	4.6	1.6	1.9	0.3	0.5	0.5	87.4	3.2	9.4	0.075	0.508
CITILCUM	13.20	3	0	1982	77.8	6.1	6.5	3.7	2.5	1.8	0.4	1.2	77.8	6.1	16.1	0.070	0.501
IZAMAL	24.00	3	0	1399	83.5	7.9	5.9	2.3	0.0	0.0	0.0	0.4	83.5	7.9	8.6	0.069	0.503
TUNKAS	55.20	3	0	607	67.6	11.0	5.3	0.7	15.0	0.0	0.0	0.4	67.6	11.0	21.4	0.099	0.508
CENOTILLO	70.90	1	0	724	92.9	2.4	4.1	0.2	0.0	0.0	0.0	0.4	92.9	2.4	4.7	0.109	0.505

27 CARR : HOLCA - SOTUTA

CLAVE: 31626

RUTA : YUC

AÑO : 2008

L U G A R	E S T A C I O N				C L A S I F I C A C I O N V E H I C U L A R E N P O R C I E N T O .												
	KM	TE	SC	TDPA	A	B	C2	C3	T3S2	T3S3	T3S2R4	OTROS	A	B	C	K'	D
T. C. MERIDA - PUERTO JUAREZ	0.00	3	0	605	80.4	4.1	5.4	4.5	3.2	1.7	0.6	0.1	80.4	4.1	15.5	0.124	0.506
TIBOLON	10.00	3	0	594	84.3	4.5	5.4	2.3	1.7	1.2	0.4	0.2	84.3	4.5	11.2	0.111	0.502
SOTUTA	20.00	1	0	500	81.0	4.2	5.7	4.3	4.2	0.2	0.0	0.4	81.0	4.2	14.8	0.114	0.502

YUCATAN

28 CARR : IZAMAL - DZILAM GONZALEZ

CLAVE: 31605

RUTA : YUC

AÑO : 2008

L U G A R	E S T A C I O N				C L A S I F I C A C I O N V E H I C U L A R E N P O R C I E N T O .												
	KM	TE	SC	TDPA	A	B	C2	C3	T3S2	T3S3	T3S2R4	OTROS	A	B	C	K'	D
IZAMAL	0.00	3	0	797	91.8	2.6	3.7	1.1	0.4	0.1	0.0	0.3	91.8	2.6	5.6	0.120	0.506
TEMAX	30.00	1	0	590	82.3	8.2	6.1	2.3	0.0	0.0	0.0	1.1	82.3	8.2	9.5	0.095	0.517
DZILAM GONZALEZ	43.00	1	0	413	90.7	4.0	3.5	0.2	0.3	0.0	0.1	1.2	90.7	4.0	5.3	0.140	0.503

29 CARR : KANTUNIL - IZAMAL

CLAVE: 31012

RUTA : YUC

AÑO : 2008

L U G A R	E S T A C I O N				C L A S I F I C A C I O N V E H I C U L A R E N P O R C I E N T O .												
	KM	TE	SC	TDPA	A	B	C2	C3	T3S2	T3S3	T3S2R4	OTROS	A	B	C	K'	D
KANTUNIL	0.00	3	0	538	91.1	3.1	1.9	0.8	0.6	0.1	0.1	2.3	91.1	3.1	5.8	0.154	0.505
IZAMAL	17.80	1	0	1317	78.3	6.6	5.7	3.0	3.0	1.8	0.9	0.7	78.3	6.6	15.1	0.088	0.501

30 CARR : KINCHIL - UMAN

CLAVE: 31009

RUTA : YUC

AÑO : 2008

L U G A R	E S T A C I O N				C L A S I F I C A C I O N V E H I C U L A R E N P O R C I E N T O .												
	KM	TE	SC	TDPA	A	B	C2	C3	T3S2	T3S3	T3S2R4	OTROS	A	B	C	K'	D
KINCHIL	0.00	3	0	1131	85.4	1.9	4.9	6.9	0.0	0.0	0.0	0.9	85.4	1.9	12.7	0.116	0.520
UMAN	26.00																

31 CARR : MERIDA - ACANCEH

CLAVE: 31023

RUTA : YUC

AÑO : 2008

L U G A R	E S T A C I O N				C L A S I F I C A C I O N V E H I C U L A R E N P O R C I E N T O .												
	KM	TE	SC	TDPA	A	B	C2	C3	T3S2	T3S3	T3S2R4	OTROS	A	B	C	K'	D
MERIDA	0.00	3	0	4732	78.8	2.6	4.5	0.7	5.7	1.5	3.3	2.9	78.8	2.6	18.6	0.132	0.502
UXEC TAMAN	11.00	1	0	3575	85.3	4.1	1.1	3.3	2.6	1.0	1.9	0.7	85.3	4.1	10.6	0.070	0.502
UXEC TAMAN	11.00	3	0	3936	79.3	7.9	6.0	5.3	0.0	0.0	0.0	1.5	79.3	7.9	12.8	0.090	0.515
TIMUCUY	20.00	3	0	1762	88.1	8.7	1.0	0.0	0.0	0.0	0.0	2.2	88.1	8.7	3.2	0.120	0.506
ACANCEH	26.00	1	0	1460	89.8	3.4	2.3	1.4	1.6	0.3	0.3	0.9	89.8	3.4	6.8	0.091	0.504

32 CARR : MERIDA - OXKUTZCAB

CLAVE: 31018

RUTA : YUC-018

AÑO : 2008

L U G A R	E S T A C I O N				C L A S I F I C A C I O N V E H I C U L A R E N P O R C I E N T O .												
	KM	TE	SC	TDPA	A	B	C2	C3	T3S2	T3S3	T3S2R4	OTROS	A	B	C	K'	D
MERIDA	0.00	3	0	8285	74.7	4.9	5.3	1.2	7.2	0.9	1.3	4.5	74.7	4.9	20.4	0.113	0.506
KANACIN	5.97	1	0	5919	84.8	7.3	5.8	2.1	0.0	0.0	0.0	0.0	84.8	7.3	7.9	0.076	0.502
ACANCEH	20.39	1	0	3251	77.6	3.0	9.0	8.1	0.0	0.0	0.0	2.3	77.6	3.0	19.4	0.086	0.523

YUCATAN

32 CARR : MERIDA - OXKUTZCAB

CLAVE: 31018

RUTA : YUC-018

AÑO : 2008

L U G A R	E S T A C I O N				C L A S I F I C A C I O N V E H I C U L A R E N P O R C I E N T O .												
	KM	TE	SC	TDPA	A	B	C2	C3	T3S2	T3S3	T3S2R4	OTROS	A	B	C	K'	D
ACANCEH	20.39	3	0	1019	86.9	3.8	5.9	2.8	0.0	0.0	0.0	0.6	86.9	3.8	9.3	0.080	0.502
TECOH	29.30	1	0	1428	86.2	4.4	6.6	2.8	0.0	0.0	0.0	0.0	86.2	4.4	9.4	0.074	0.503
TEKIT	61.70	1	0	1157	85.8	3.1	6.4	2.8	0.0	0.0	0.0	1.9	85.8	3.1	11.1	0.080	0.506
MANI	98.20	1	0	747	91.5	3.0	4.7	0.6	0.0	0.0	0.0	0.2	91.5	3.0	5.5	0.092	0.506
MANI	98.20	3	0	917	88.2	4.6	5.7	1.0	0.0	0.0	0.0	0.5	88.2	4.6	7.2	0.099	0.508
OXKUTZCAB	109.30	1	0	1217	92.8	6.1	0.4	0.3	0.0	0.0	0.0	0.4	92.8	6.1	1.1	0.092	0.505

33 CARR : MERIDA - TIMUCUY

CLAVE: 31024

RUTA : YUC

AÑO : 2008

L U G A R	E S T A C I O N				C L A S I F I C A C I O N V E H I C U L A R E N P O R C I E N T O .												
	KM	TE	SC	TDPA	A	B	C2	C3	T3S2	T3S3	T3S2R4	OTROS	A	B	C	K'	D
MERIDA	0.00	3	0	6252	83.5	3.0	11.0	1.1	0.0	0.0	0.0	1.4	83.5	3.0	13.5	0.082	0.521
TEKIK DE REGIL	15.10	1	0	2477	89.4	0.6	7.9	0.0	1.0	0.2	0.2	0.7	89.4	0.6	10.0	0.100	0.501
TEKIK DE REGIL	15.10	3	0	2891	86.6	2.0	4.7	2.5	1.6	1.0	0.8	0.8	86.6	2.0	11.4	0.090	0.502
TIMUCUY	18.65	1	0	2940	84.5	2.0	12.1	0.0	0.4	0.2	0.1	0.7	84.5	2.0	13.5	0.120	0.506

34 CARR : MOTUL - PUERTO TELCHAC

CLAVE: 31006

RUTA : YUC-172

AÑO : 2008

L U G A R	E S T A C I O N				C L A S I F I C A C I O N V E H I C U L A R E N P O R C I E N T O .												
	KM	TE	SC	TDPA	A	B	C2	C3	T3S2	T3S3	T3S2R4	OTROS	A	B	C	K'	D
MOTUL	0.00	3	0	3920	86.7	3.6	7.3	1.2	0.0	0.0	0.0	1.2	86.7	3.6	9.7	0.086	0.502
PUEBLO TELCHAC	12.00	3	0	1319	87.2	4.3	3.3	2.5	1.2	0.6	0.5	0.4	87.2	4.3	8.5	0.108	0.515
PUERTO TELCHAC	28.00																

35 CARR : MUNA - MAXCANU

CLAVE: 31053

RUTA : YUC

AÑO : 2008

L U G A R	E S T A C I O N				C L A S I F I C A C I O N V E H I C U L A R E N P O R C I E N T O .												
	KM	TE	SC	TDPA	A	B	C2	C3	T3S2	T3S3	T3S2R4	OTROS	A	B	C	K'	D
MUNA	0.00	3	0	673	90.0	4.4	2.7	2.5	0.0	0.0	0.0	0.4	90.0	4.4	5.6	0.119	0.501
OPICHEN	17.00	3	0	662	87.2	7.3	4.2	0.1	0.0	0.0	0.0	1.2	87.2	7.3	5.5	0.144	0.505
T. C. CAMPECHE - MERIDA	31.00	1	0	771	64.9	27.9	5.2	0.6	0.2	0.2	0.0	1.0	64.9	27.9	7.2	0.095	0.518

YUCATAN

36 CARR : OXKUTZCAB - XUL

CLAVE: 31051

RUTA : YUC-031

AÑO : 2008

L U G A R	E S T A C I O N				C L A S I F I C A C I O N V E H I C U L A R E N P O R C I E N T O .												
	KM	TE	SC	TDPA	A	B	C2	C3	T3S2	T3S3	T3S2R4	OTROS	A	B	C	K'	D
OXKUTZCAB	0.00	3	0	1698	88.9	4.6	3.4	1.6	0.0	0.0	0.0	1.5	88.9	4.6	6.5	0.079	0.502
EMILIANO ZAPATA	10.00	3	0	1013	86.0	4.1	6.3	3.1	0.0	0.0	0.0	0.5	86.0	4.1	9.9	0.141	0.509
XUL	25.00	1	0	1051	86.6	2.5	6.8	3.7	0.0	0.0	0.0	0.4	86.6	2.5	10.9	0.120	0.508

37 CARR : PISTE - DZITAS

CLAVE: 31013

RUTA : YUC-013

AÑO : 2008

L U G A R	E S T A C I O N				C L A S I F I C A C I O N V E H I C U L A R E N P O R C I E N T O .												
	KM	TE	SC	TDPA	A	B	C2	C3	T3S2	T3S3	T3S2R4	OTROS	A	B	C	K'	D
PISTE	0.00	3	0	922	90.0	3.6	4.9	0.4	0.4	0.1	0.0	0.6	90.0	3.6	6.4	0.140	0.503
DZITAS	18.00	1	0	538	87.7	5.1	1.7	1.4	3.8	0.0	0.0	0.3	87.7	5.1	7.2	0.141	0.509

38 CARR : PROGRESO - TELCHAC PUERTO

CLAVE: 31616

RUTA : YUC-027

AÑO : 2008

L U G A R	E S T A C I O N				C L A S I F I C A C I O N V E H I C U L A R E N P O R C I E N T O .												
	KM	TE	SC	TDPA	A	B	C2	C3	T3S2	T3S3	T3S2R4	OTROS	A	B	C	K'	D
PROGRESO	0.00	3	1	1156	90.5	2.7	3.2	2.4	0.0	0.0	0.0	1.2	90.5	2.7	6.8	0.111	0.505
PROGRESO	0.00	3	2	1136	88.3	2.8	3.5	2.9	0.0	0.0	0.0	2.5	88.3	2.8	8.9	0.099	0.505
CHICXULUB PUERTO	6.00	1	1	1118	82.2	7.6	4.8	3.6	0.0	0.0	0.0	1.8	82.2	7.6	10.2	0.090	0.511
CHICXULUB PUERTO	6.00	1	2	1067	83.9	8.4	5.1	1.7	0.0	0.0	0.0	0.9	83.9	8.4	7.7	0.104	0.511
CHICXULUB PUERTO	6.00	3	0	2233	82.8	7.8	6.6	2.3	0.0	0.0	0.0	0.5	82.8	7.8	9.4	0.080	0.503
XTAMPU	20.00	1	0	615	89.6	2.1	4.0	2.0	0.8	0.6	0.5	0.4	89.6	2.1	8.3	0.140	0.518
XTAMPU	20.00	3	0	648	89.9	2.1	3.9	1.9	0.8	0.5	0.5	0.4	89.9	2.1	8.0	0.110	0.516
TELCHAC PUERTO	33.00	1	0	590	88.6	3.2	3.7	2.1	0.9	0.6	0.5	0.4	88.6	3.2	8.2	0.120	0.523

39 CARR : RAMAL A CHAN KOM

CLAVE: 31049

RUTA : YUC

AÑO : 2008

L U G A R	E S T A C I O N				C L A S I F I C A C I O N V E H I C U L A R E N P O R C I E N T O .												
	KM	TE	SC	TDPA	A	B	C2	C3	T3S2	T3S3	T3S2R4	OTROS	A	B	C	K'	D
T. C. MERIDA - PUERTO JUAREZ	0.00	3	0	984	93.1	3.4	0.2	1.0	1.9	0.3	0.0	0.1	93.1	3.4	3.5	0.104	0.502
CHAN KOM	9.00	1	0	606	96.8	1.6	1.0	0.0	0.0	0.0	0.0	0.6	96.8	1.6	1.6	0.134	0.504

YUCATAN

40 CARR : RAMAL A DZONOT CARRETERO

CLAVE: 31614

RUTA : YUC

AÑO : 2008

L U G A R	E S T A C I O N				C L A S I F I C A C I O N V E H I C U L A R E N P O R C I E N T O .												
	KM	TE	SC	TDPA	A	B	C2	C3	T3S2	T3S3	T3S2R4	OTROS	A	B	C	K'	D
T. C. VALLADOLID - RIO LAGARTOS	0.00	3	0	326	87.8	6.5	4.6	1.1	0.0	0.0	0.0	0.0	87.8	6.5	5.7	0.147	0.501
DZONOT CARRETERO	35.00																

41 CARR : RAMAL A SAN FELIPE

CLAVE: 31628

RUTA : YUC

AÑO : 2008

L U G A R	E S T A C I O N				C L A S I F I C A C I O N V E H I C U L A R E N P O R C I E N T O .												
	KM	TE	SC	TDPA	A	B	C2	C3	T3S2	T3S3	T3S2R4	OTROS	A	B	C	K'	D
T. C. VALLADOLID - RIO LAGARTOS	0.00	3	0	474	91.2	7.5	0.2	0.9	0.0	0.0	0.0	0.2	91.2	7.5	1.3	0.108	0.500
SAN FELIPE	7.20	1	0	409	90.1	6.5	0.6	2.3	0.0	0.0	0.0	0.5	90.1	6.5	3.4	0.120	0.517

42 CARR : RAMAL A TEDZIDZ

CLAVE: 31600

RUTA : YUC

AÑO : 2008

L U G A R	E S T A C I O N				C L A S I F I C A C I O N V E H I C U L A R E N P O R C I E N T O .												
	KM	TE	SC	TDPA	A	B	C2	C3	T3S2	T3S3	T3S2R4	OTROS	A	B	C	K'	D
T. C. MERIDA - CELESTUM	0.00																
TEDZIDZ	6.00	1	0	263	86.4	6.2	5.2	2.2	0.0	0.0	0.0	0.0	86.4	6.2	7.4	0.080	0.525

43 CARR : RAMAL A YAXCABA

CLAVE: 31111

RUTA : YUC-289

AÑO : 2008

L U G A R	E S T A C I O N				C L A S I F I C A C I O N V E H I C U L A R E N P O R C I E N T O .												
	KM	TE	SC	TDPA	A	B	C2	C3	T3S2	T3S3	T3S2R4	OTROS	A	B	C	K'	D
T. C. MERIDA - PUERTO JUAREZ	0.00	3	0	475	86.1	4.6	4.0	1.6	1.5	1.6	0.4	0.2	86.1	4.6	9.3	0.109	0.509
YAXCABA	18.00	1	0	450	96.8	2.9	0.0	0.3	0.0	0.0	0.0	0.0	96.8	2.9	0.3	0.136	0.506

44 CARR : SINANCHE - XITIBCANUL

CLAVE: 31619

RUTA : YUC

AÑO : 2008

L U G A R	E S T A C I O N				C L A S I F I C A C I O N V E H I C U L A R E N P O R C I E N T O .												
	KM	TE	SC	TDPA	A	B	C2	C3	T3S2	T3S3	T3S2R4	OTROS	A	B	C	K'	D
SINANCHE	0.00	3	0	313	90.7	5.2	1.1	1.3	1.0	0.4	0.3	0.0	90.7	5.2	4.1	0.118	0.501
XITIBCANUL	7.00	1	0	262	91.4	3.6	1.4	0.9	1.0	0.5	0.5	0.7	91.4	3.6	5.0	0.099	0.512

45 CARR : SUCILA - CALOTMUL

CLAVE: 31617

RUTA : YUC

AÑO : 2008

L U G A R	E S T A C I O N				C L A S I F I C A C I O N V E H I C U L A R E N P O R C I E N T O .												
	KM	TE	SC	TDPA	A	B	C2	C3	T3S2	T3S3	T3S2R4	OTROS	A	B	C	K'	D
X. C. CANSAHCAB - TIZIMIN	2.00	3	0	808	89.9	6.4	3.7	0.0	0.0	0.0	0.0	0.0	89.9	6.4	3.7	0.120	0.501

YUCATAN

45 CARR : SUCILA - CALOTMUL

CLAVE: 31617

RUTA : YUC

AÑO : 2008

L U G A R	E S T A C I O N				C L A S I F I C A C I O N V E H I C U L A R E N P O R C I E N T O .												
	KM	TE	SC	TDPA	A	B	C2	C3	T3S2	T3S3	T3S2R4	OTROS	A	B	C	K'	D
CALOTMUL	30.20	1	0	385	84.3	8.3	4.3	2.4	0.0	0.0	0.0	0.7	84.3	8.3	7.4	0.114	0.508

46 CARR : SUMA - IZAMAL

CLAVE: 31081

RUTA : YUC-081

AÑO : 2008

L U G A R	E S T A C I O N				C L A S I F I C A C I O N V E H I C U L A R E N P O R C I E N T O .												
	KM	TE	SC	TDPA	A	B	C2	C3	T3S2	T3S3	T3S2R4	OTROS	A	B	C	K'	D
SUMA	0.00	3	0	491	83.2	7.9	5.6	3.3	0.0	0.0	0.0	0.0	83.2	7.9	8.9	0.069	0.502
IZAMAL	22.00	1	0	552	83.0	7.5	4.3	4.8	0.0	0.0	0.0	0.4	83.0	7.5	9.5	0.114	0.509

47 CARR : TELCHAC PUERTO - DZILAM DE BRAVO

CLAVE: 31042

RUTA : YUC

AÑO : 2008

L U G A R	E S T A C I O N				C L A S I F I C A C I O N V E H I C U L A R E N P O R C I E N T O .												
	KM	TE	SC	TDPA	A	B	C2	C3	T3S2	T3S3	T3S2R4	OTROS	A	B	C	K'	D
TELCHAC PUERTO	0.00	3	0	842	90.2	3.4	1.9	1.2	1.1	0.7	0.8	0.7	90.2	3.4	6.4	0.127	0.516
T. DER. SINANCHE	8.00	1	0	617	85.5	8.2	4.5	0.8	0.0	0.0	0.0	1.0	85.5	8.2	6.3	0.109	0.503
T. DER. SINANCHE	8.00	3	0	448	86.9	3.8	2.5	1.7	1.7	1.1	1.3	1.0	86.9	3.8	9.3	0.121	0.502
CHABIHAU	15.00	1	0	415	86.1	3.9	2.7	1.8	1.8	1.2	1.4	1.1	86.1	3.9	10.0	0.089	0.504
CHABIHAU	15.00	3	0	441	96.2	2.0	0.9	0.5	0.2	0.0	0.0	0.2	96.2	2.0	1.8	0.127	0.508
SANTA CLARA	26.00	1	0	388	93.8	1.9	1.6	0.6	0.9	0.6	0.3	0.3	93.8	1.9	4.3	0.106	0.507
SANTA CLARA	26.00	3	0	339	93.3	1.4	2.0	0.8	1.1	0.7	0.4	0.3	93.3	1.4	5.3	0.106	0.516
DZILAM DE BRAVO	39.00	1	0	446	94.6	3.9	1.0	0.3	0.1	0.1	0.0	0.0	94.6	3.9	1.5	0.110	0.508

48 CARR : THUL - BECANCHEN

CLAVE: 31104

RUTA : YUC-281

AÑO : 2008

L U G A R	E S T A C I O N				C L A S I F I C A C I O N V E H I C U L A R E N P O R C I E N T O .												
	KM	TE	SC	TDPA	A	B	C2	C3	T3S2	T3S3	T3S2R4	OTROS	A	B	C	K'	D
T. C. MUNA - FELIPE CARRILLO PUERTO	0.00	3	0	143	92.2	3.4	3.3	1.1	0.0	0.0	0.0	0.0	92.2	3.4	4.4	0.154	0.540
BECANCHEN	32.00																

49 CARR : TICUL - CHAPAB

CLAVE: 31623

RUTA : YUC

AÑO : 2008

L U G A R	E S T A C I O N				C L A S I F I C A C I O N V E H I C U L A R E N P O R C I E N T O .												
	KM	TE	SC	TDPA	A	B	C2	C3	T3S2	T3S3	T3S2R4	OTROS	A	B	C	K'	D
TICUL	0.00	3	0	1002	91.5	4.9	2.0	1.1	0.0	0.0	0.0	0.5	91.5	4.9	3.6	0.085	0.506
CHAPAB	8.00	1	0	576	85.5	7.2	5.0	2.3	0.0	0.0	0.0	0.0	85.5	7.2	7.3	0.115	0.514

YUCATAN

50 CARR : TICUL - DZAN

CLAVE: 31621

RUTA : YUC

AÑO : 2008

L U G A R	E S T A C I O N				C L A S I F I C A C I O N V E H I C U L A R E N P O R C I E N T O .												
	KM	TE	SC	TDPA	A	B	C2	C3	T3S2	T3S3	T3S2R4	OTROS	A	B	C	K'	D
TICUL	0.00																
T. IZQ. LIBRAMIENTO DE TICUL	2.50	3	0	2229	88.7	5.6	2.3	1.9	0.0	0.0	0.0	1.5	88.7	5.6	5.7	0.095	0.502
DZAN	7.00	1	0	1300	92.3	4.3	1.9	1.3	0.0	0.0	0.0	0.2	92.3	4.3	3.4	0.102	0.504

51 CARR : TIXKOKOB - BACA

CLAVE: 31010

RUTA : YUC

AÑO : 2008

L U G A R	E S T A C I O N				C L A S I F I C A C I O N V E H I C U L A R E N P O R C I E N T O .												
	KM	TE	SC	TDPA	A	B	C2	C3	T3S2	T3S3	T3S2R4	OTROS	A	B	C	K'	D
TIXKOKOB	0.00	3	0	2446	83.2	7.0	3.3	2.3	0.0	0.0	0.0	4.2	83.2	7.0	9.8	0.085	0.501
BACA	15.00	1	0	1325	87.8	1.9	0.8	3.7	0.0	0.0	0.0	5.8	87.8	1.9	10.3	0.113	0.521

52 CARR : TIXKOKOB - SOTUTA

CLAVE: 31106

RUTA : YUC

AÑO : 2008

L U G A R	E S T A C I O N				C L A S I F I C A C I O N V E H I C U L A R E N P O R C I E N T O .												
	KM	TE	SC	TDPA	A	B	C2	C3	T3S2	T3S3	T3S2R4	OTROS	A	B	C	K'	D
TIXKOKOB	0.00	3	0	1245	86.3	7.9	1.8	1.0	0.0	0.0	0.0	3.0	86.3	7.9	5.8	0.093	0.505
TAHMEK	24.00	3	0	582	90.1	4.7	3.3	0.3	0.8	0.1	0.1	0.6	90.1	4.7	5.2	0.129	0.511
HOCABA	31.00	3	0	437	88.3	3.3	4.8	3.1	0.0	0.0	0.0	0.5	88.3	3.3	8.4	0.151	0.517
HUHI	43.00	1	0	450	87.0	3.6	6.0	3.0	0.0	0.0	0.0	0.4	87.0	3.6	9.4	0.093	0.513
SOTUTA	65.00	1	0	248	84.5	5.5	7.7	2.3	0.0	0.0	0.0	0.0	84.5	5.5	10.0	0.089	0.509

53 CARR : TIZIMIN - YUCATAN

CLAVE: 31588

RUTA : YUC

AÑO : 2008

L U G A R	E S T A C I O N				C L A S I F I C A C I O N V E H I C U L A R E N P O R C I E N T O .												
	KM	TE	SC	TDPA	A	B	C2	C3	T3S2	T3S3	T3S2R4	OTROS	A	B	C	K'	D
TIZIMIN	0.00	3	0	2247	89.4	2.7	5.1	1.5	0.0	0.0	0.0	1.3	89.4	2.7	7.9	0.097	0.506
T. DER. BUENAVENTURA	30.00	3	0	904	83.0	8.4	5.3	2.8	0.0	0.0	0.0	0.5	83.0	8.4	8.6	0.108	0.501
YUCATAN	46.50	1	0	437	87.2	7.1	4.2	1.5	0.0	0.0	0.0	0.0	87.2	7.1	5.7	0.119	0.501

54 CARR : YAXCHE - SIERRA PAPACAL

CLAVE: 31620

RUTA : YUC

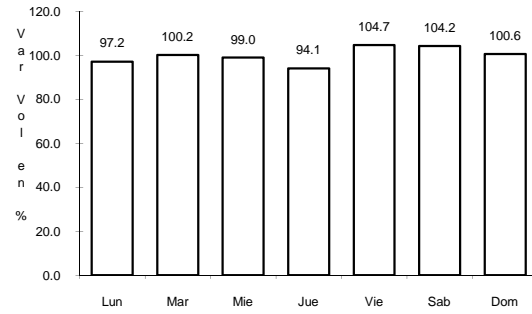
AÑO : 2008

L U G A R	E S T A C I O N				C L A S I F I C A C I O N V E H I C U L A R E N P O R C I E N T O .												
	KM	TE	SC	TDPA	A	B	C2	C3	T3S2	T3S3	T3S2R4	OTROS	A	B	C	K'	D
T. C. MERIDA - PROGRESO	0.00	3	0	1159	82.0	7.4	7.5	2.9	0.0	0.0	0.0	0.2	82.0	7.4	10.6	0.073	0.512
SIERRA PAPACAL	12.00	1	0	727	89.2	2.8	7.5	0.0	0.0	0.0	0.0	0.5	89.2	2.8	8.0	0.078	0.502

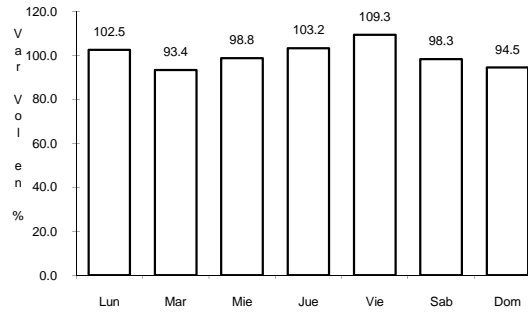
4 CARR: CONKAL - PUERTO CHICXULUB

CLAVE: 31004

RUTA: MEX



Km: 0.00 Tipo: 3 Sent: 0

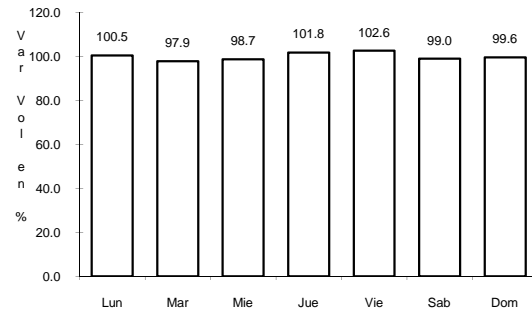


Km: 27.00 Tipo: 1 Sent: 0

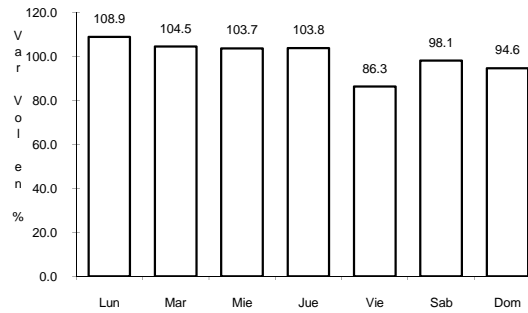
5 CARR: DZITBALCHE - ENT. SAN BERNARDO

CLAVE: 00162

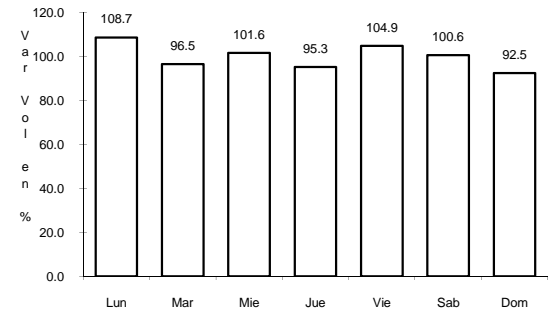
RUTA: MEX-265



Km: 28.76 Tipo: 1 Sent: 0



Km: 34.59 Tipo: 1 Sent: 0

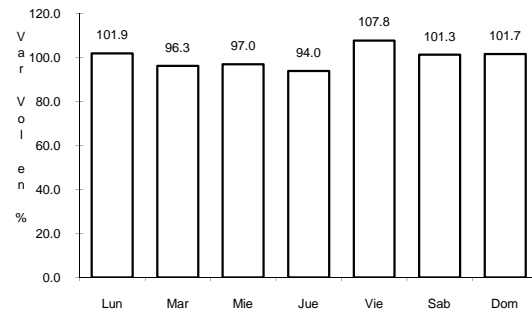


Km: 53.86 Tipo: 3 Sent: 0

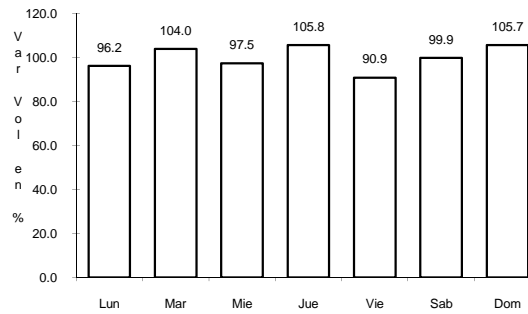
6 CARR: ENT. POXILA - MERIDA

CLAVE: 31003

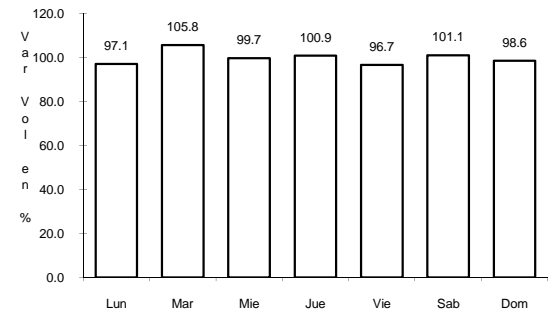
RUTA: MEX



Km: 9.46 Tipo: 1 Sent: 0



Km: 25.70 Tipo: 1 Sent: 1

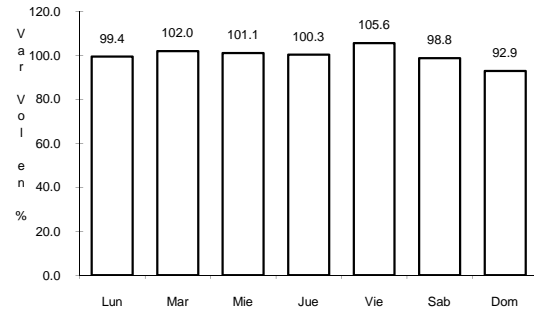


Km: 25.70 Tipo: 1 Sent: 2

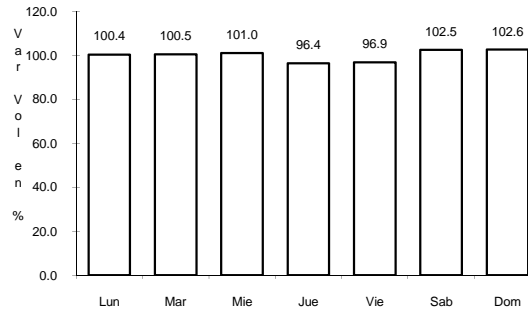
7 CARR: HUNUCMA - SISAL

CLAVE: 31021

RUTA: MEX-025



Km: 0.00 Tipo: 3 Sent: 0

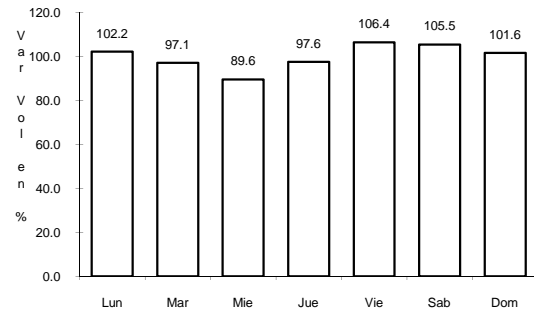


Km: 23.20 Tipo: 1 Sent: 0

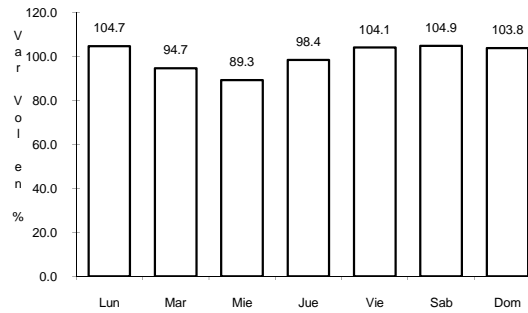
8 CARR: LIBRAMIENTO DE PROGRESO

CLAVE: 31631

RUTA: MEX



Km: 0.00 Tipo: 3 Sent: 0

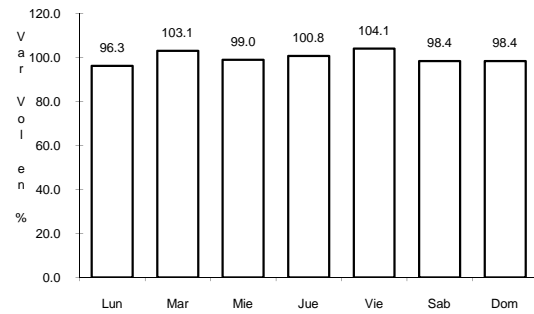


Km: 6.50 Tipo: 1 Sent: 0

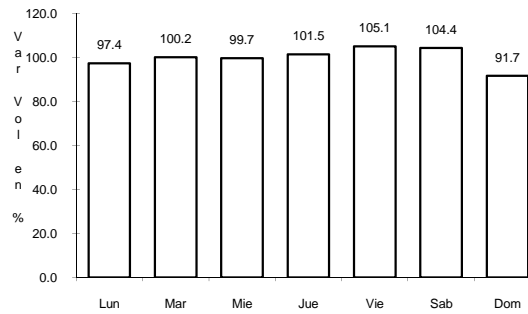
9 CARR: MERIDA - CELESTUN

CLAVE: 31025

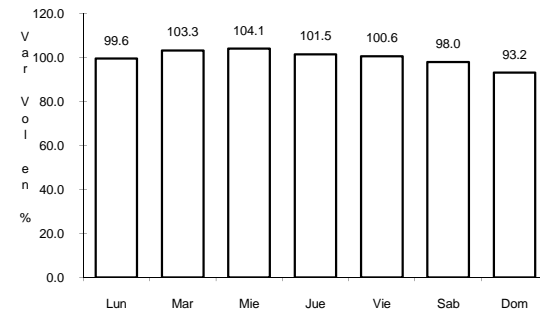
RUTA: MEX-281



Km: 0.00 Tipo: 3 Sent: 1



Km: 0.00 Tipo: 3 Sent: 2

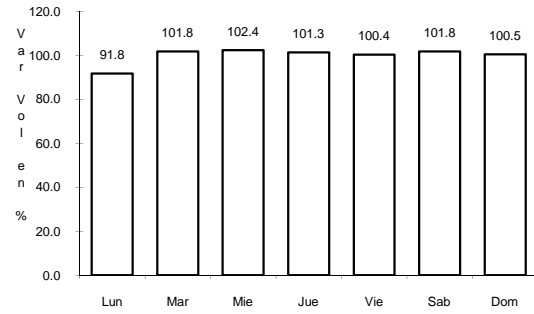


Km: 89.00 Tipo: 1 Sent: 0

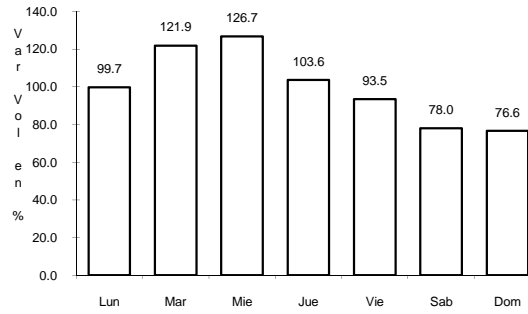
34 CARR: MOTUL - PUERTO TELCHAC

CLAVE: 31006

ruta: YUC-172



Km: 0.00 Tipo: 3 Sent: 0

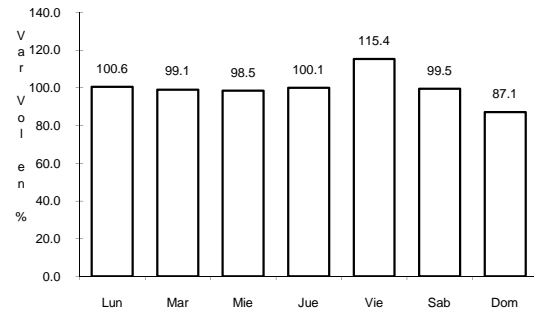


Km: 12.00 Tipo: 3 Sent: 0

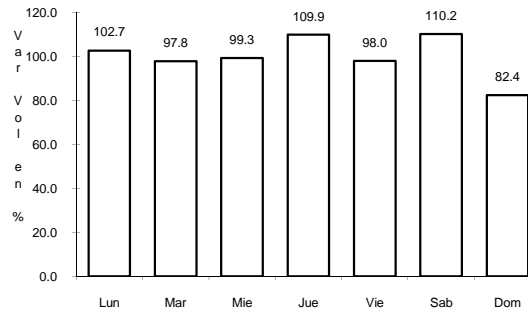
35 CARR: MUNA - MAXCANU

CLAVE: 31053

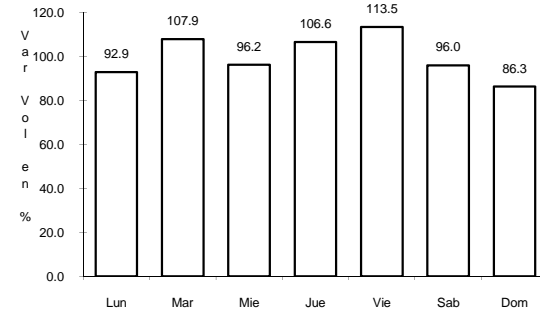
ruta: YUC



Km: 0.00 Tipo: 3 Sent: 0



Km: 17.00 Tipo: 3 Sent: 0

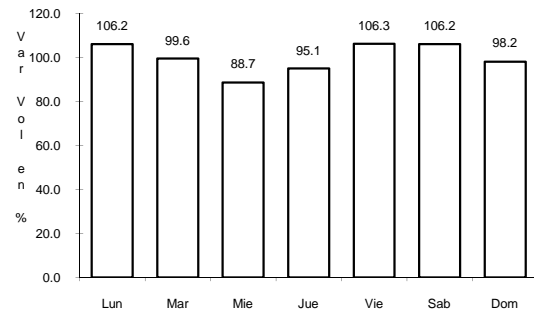


Km: 31.00 Tipo: 1 Sent: 0

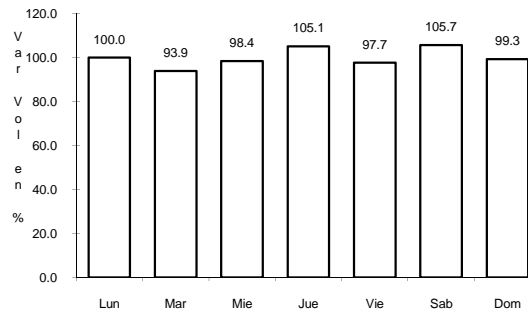
36 CARR: OXKUTZCAB - XUL

CLAVE: 31051

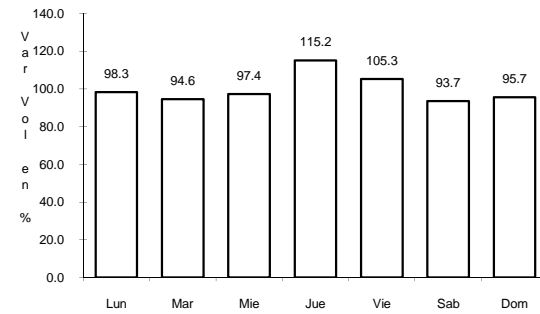
ruta: YUC-031



Km: 0.00 Tipo: 3 Sent: 0

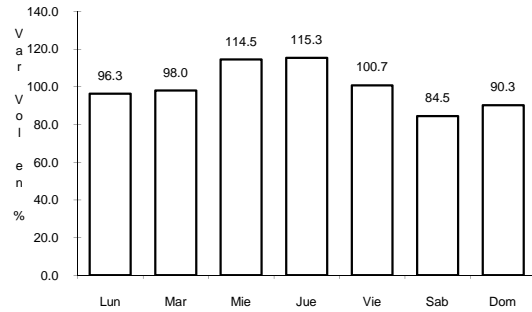


Km: 10.00 Tipo: 3 Sent: 0



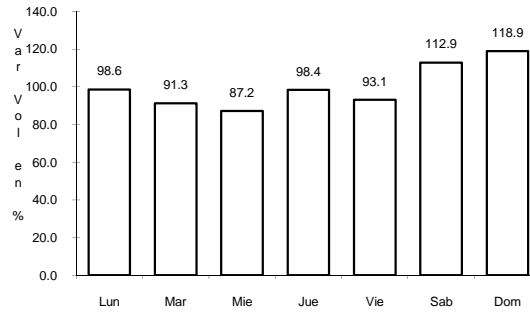
Km: 25.00 Tipo: 1 Sent: 0

37 CARR: PISTE - DZITAS



Km: 0.00 Tipo: 3 Sent: 0

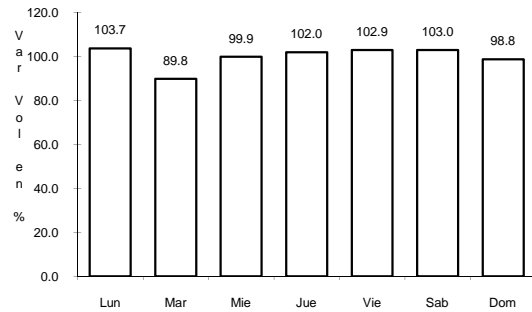
CLAVE: 31013



Km: 18.00 Tipo: 1 Sent: 0

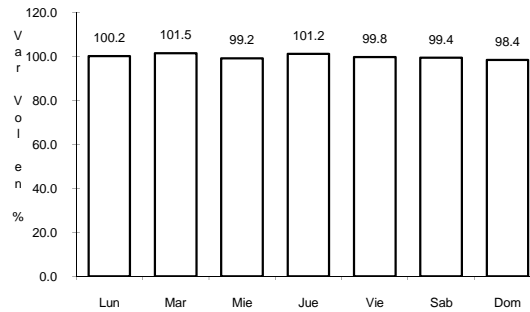
RUTA: YUC-013

38 CARR: PROGRESO - TELCHAC PUERTO



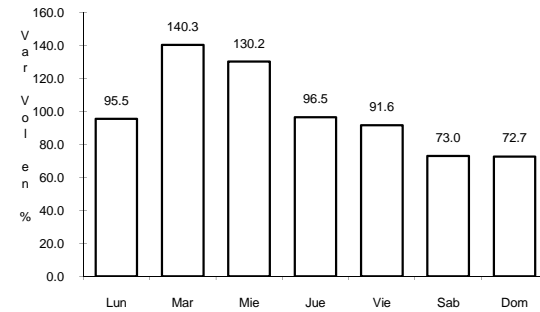
Km: 0.00 Tipo: 3 Sent: 1

CLAVE: 31616



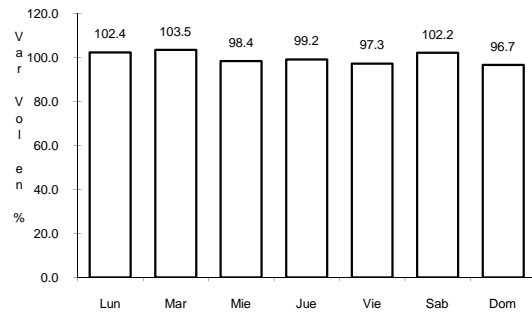
Km: 0.00 Tipo: 3 Sent: 2

RUTA: YUC-027



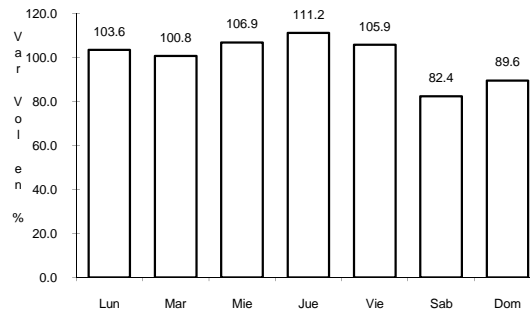
Km: 33.00 Tipo: 1 Sent: 0

39 CARR: RAMAL A CHAN KOM



Km: 0.00 Tipo: 3 Sent: 0

CLAVE: 31049



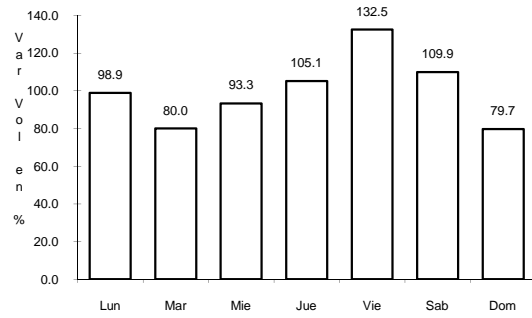
Km: 9.00 Tipo: 1 Sent: 0

RUTA: YUC

40 CARR: RAMAL A DZONOT CARRETERO

CLAVE: 31614

RUTA: YUC



Km: 0.00

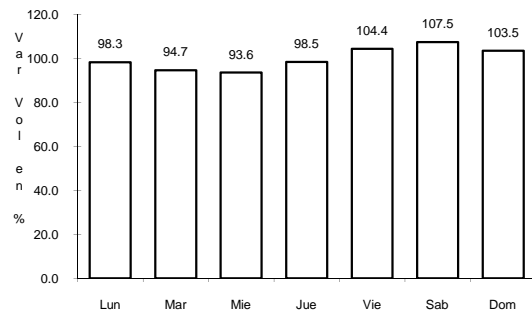
Tipo: 3

Sent: 0

41 CARR: RAMAL A SAN FELIPE

CLAVE: 31628

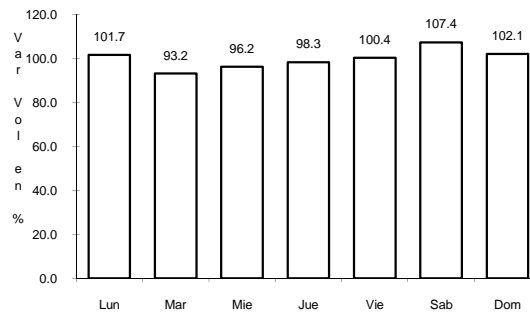
RUTA: YUC



Km: 0.00

Tipo: 3

Sent: 0



Km: 7.20

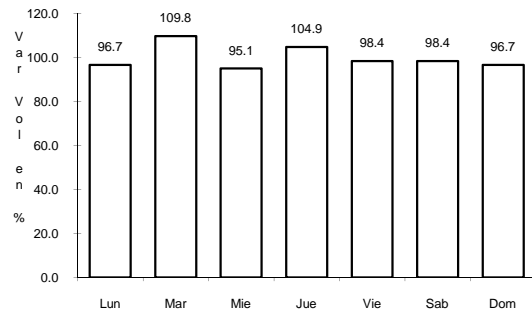
Tipo: 1

Sent: 0

42 CARR: RAMAL A TEDZIDZ

CLAVE: 31600

RUTA: YUC



Km: 6.00

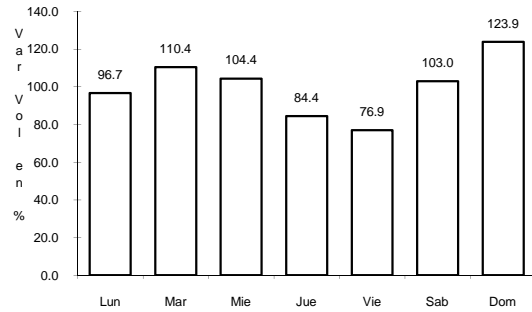
Tipo: 1

Sent: 0

43 CARR: RAMAL A YAXCABA

CLAVE: 31111

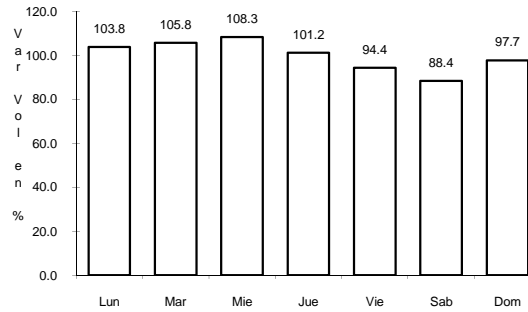
RUTA: YUC-289



Km: 0.00

Tipo: 3

Sent: 0



Km: 18.00

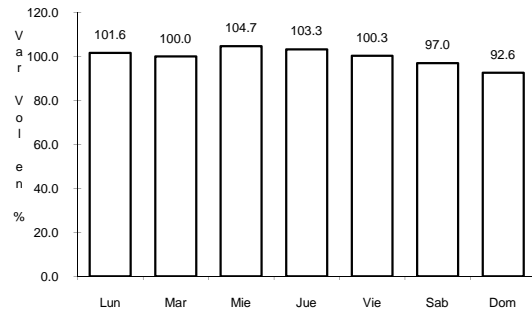
Tipo: 1

Sent: 0

44 CARR: SINANCHE - XITIBCANUL

CLAVE: 31619

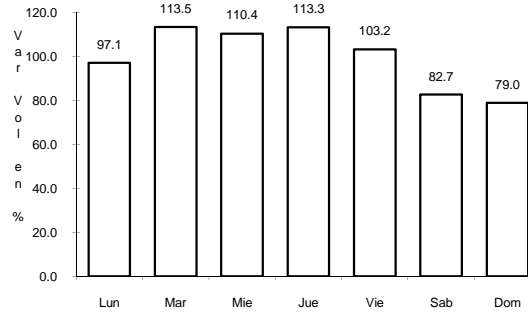
RUTA: YUC



Km: 0.00

Tipo: 3

Sent: 0



Km: 7.00

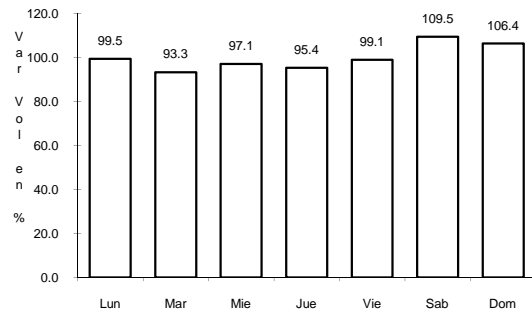
Tipo: 1

Sent: 0

45 CARR: SUCILA - CALOTMUL

CLAVE: 31617

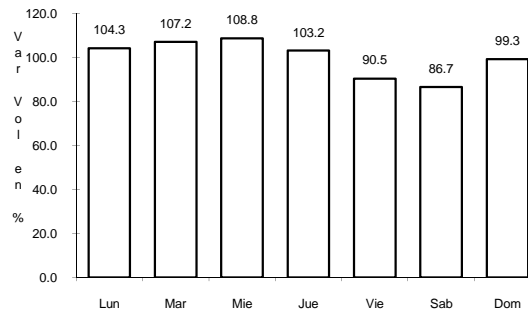
RUTA: YUC



Km: 2.00

Tipo: 3

Sent: 0



Km: 30.20

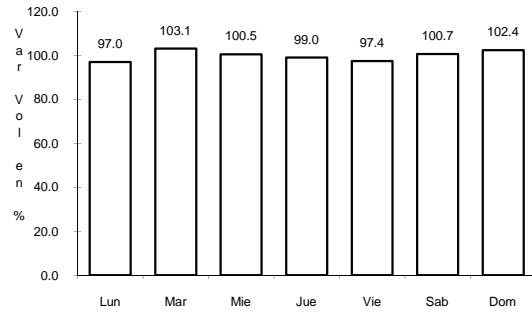
Tipo: 1

Sent: 0

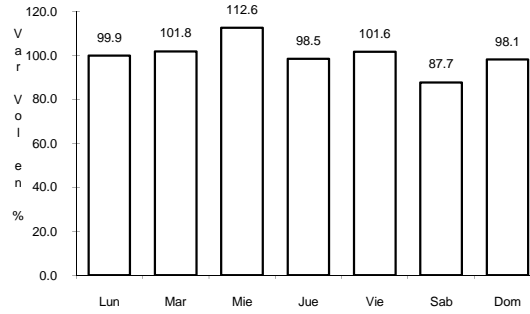
46 CARR: SUMA - IZAMAL

CLAVE: 31081

ruta: YUC-081



Km: 0.00 Tipo: 3 Sent: 0

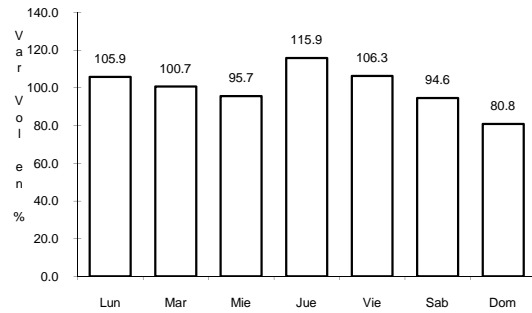


Km: 22.00 Tipo: 1 Sent: 0

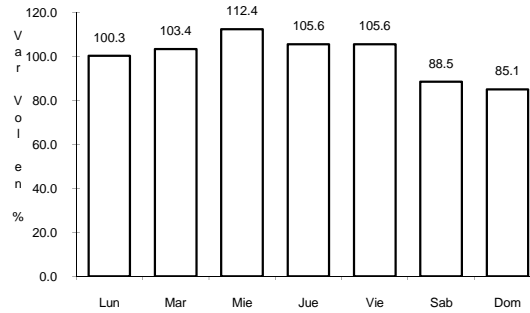
47 CARR: TELCHAC PUERTO - DZILAM DE BRAVO

CLAVE: 31042

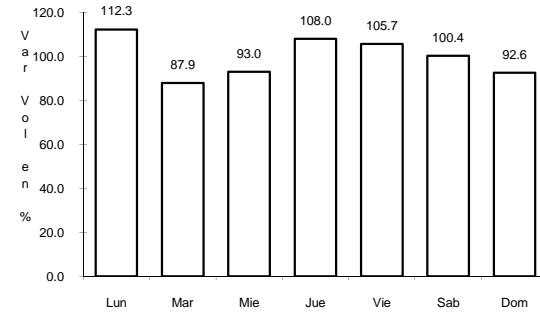
ruta: YUC



Km: 0.00 Tipo: 3 Sent: 0



Km: 26.00 Tipo: 1 Sent: 0

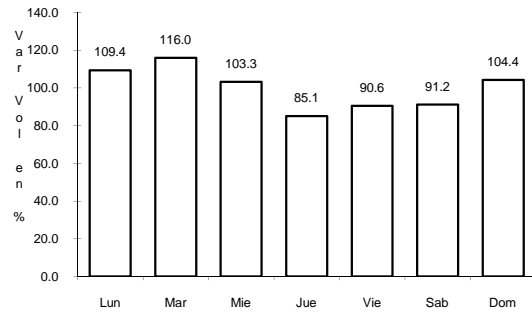


Km: 39.00 Tipo: 1 Sent: 0

48 CARR: THUL - BECANCHEN

CLAVE: 31104

ruta: YUC-281

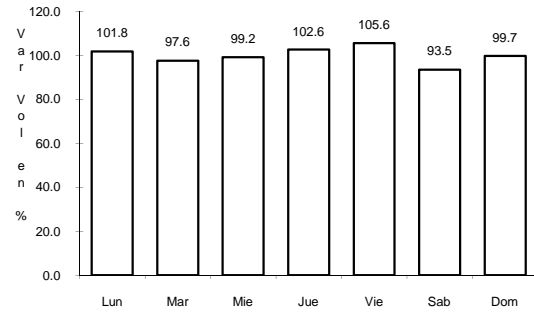


Km: 0.00 Tipo: 3 Sent: 0

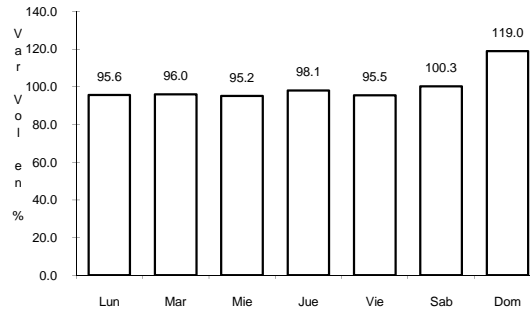
49 CARR: TICUL - CHAPAB

CLAVE: 31623

RUTA: YUC



Km: 0.00 Tipo: 3 Sent: 0

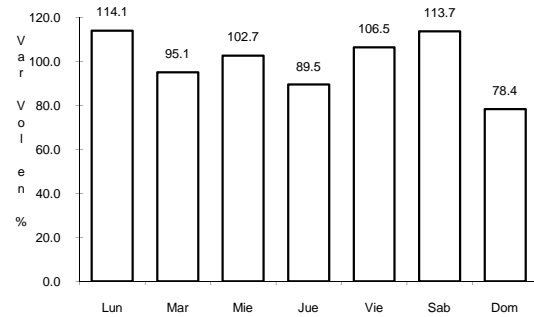


Km: 8.00 Tipo: 1 Sent: 0

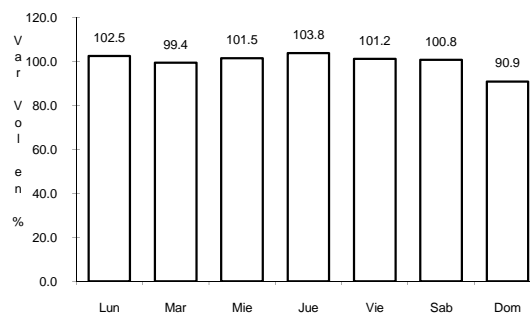
50 CARR: TICUL - DZAN

CLAVE: 31621

RUTA: YUC



Km: 2.50 Tipo: 3 Sent: 0

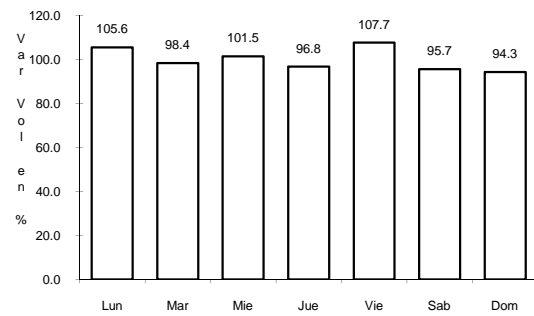


Km: 7.00 Tipo: 1 Sent: 0

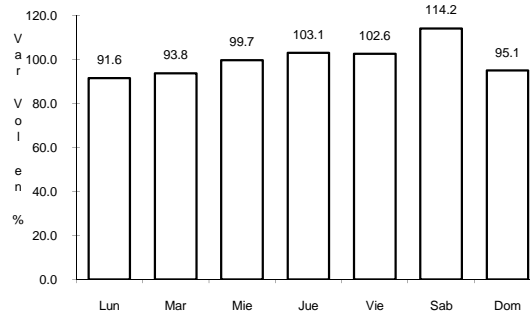
51 CARR: TIXKOKOB - BACA

CLAVE: 31010

RUTA: YUC

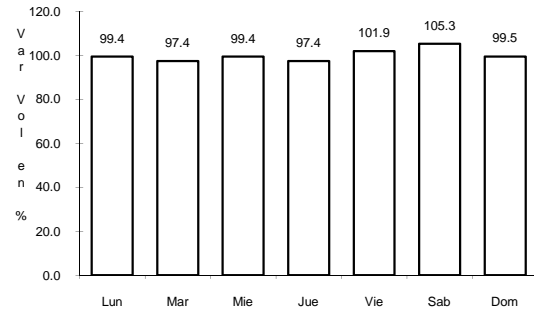


Km: 0.00 Tipo: 3 Sent: 0



Km: 15.00 Tipo: 1 Sent: 0

52 CARR: TIXKOKOB - SOTUTA

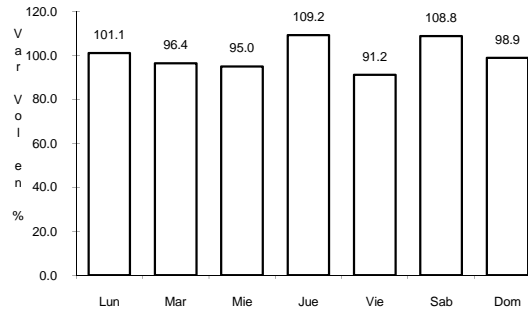


Km: 0.00

Tipo: 3

Sent: 0

CLAVE: 31106

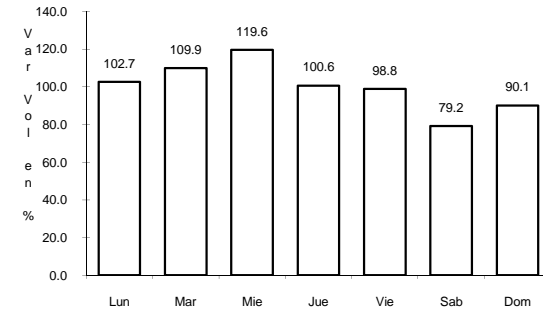


Km: 31.00

Tipo: 3

Sent: 0

ruta: YUC

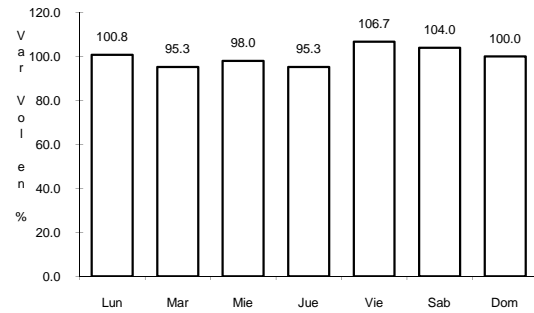


Km: 65.00

Tipo: 1

Sent: 0

53 CARR: TIZIMIN - YUCATAN

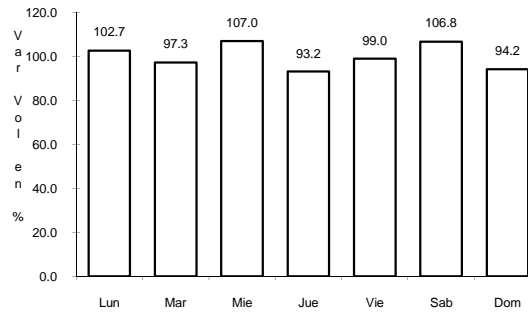


Km: 0.00

Tipo: 3

Sent: 0

CLAVE: 31588

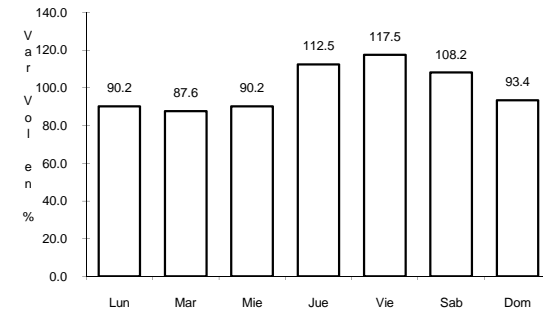


Km: 30.00

Tipo: 3

Sent: 0

ruta: YUC

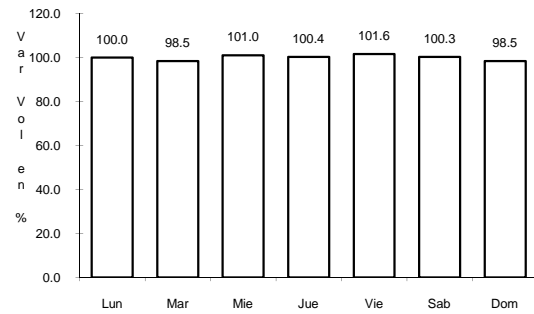


Km: 46.50

Tipo: 1

Sent: 0

54 CARR: YAXCHE - SIERRA PAPACAL

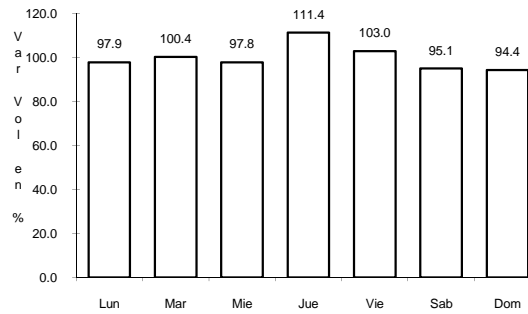


Km: 0.00

Tipo: 3

Sent: 0

CLAVE: 31620



Km: 12.00

Tipo: 1

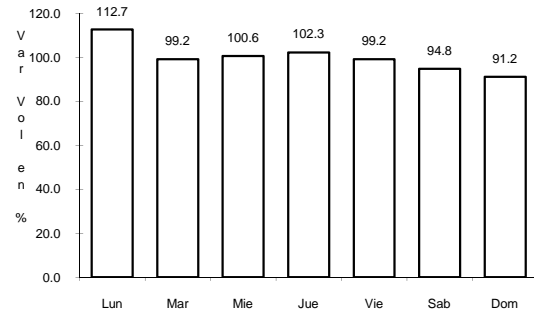
Sent: 0

ruta: YUC

55 CARR: YOBAIN - CHABIHAU

CLAVE: 31610

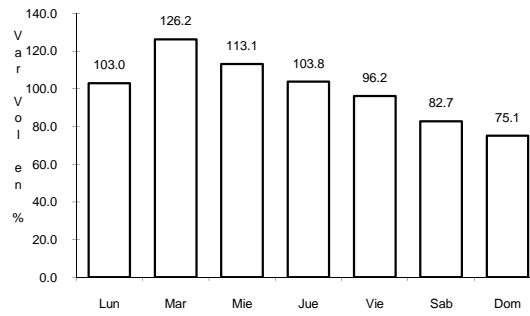
RUTA: YUC



Km: 0.00

Tipo: 3

Sent: 0



Km: 12.00

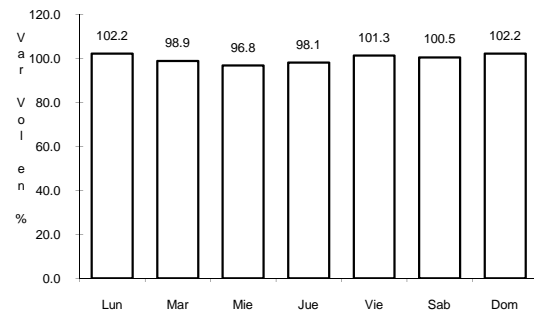
Tipo: 1

Sent: 0

56 CARR: PROGRESO - CELESTUN

CLAVE: 31040

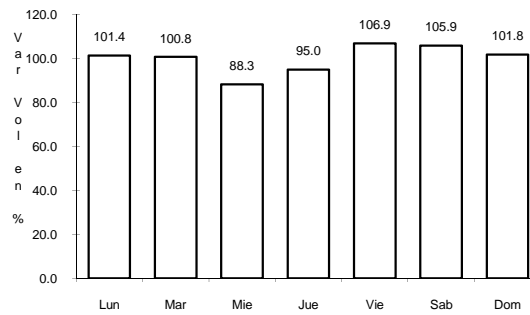
RUTA: MEX-YUC



Km: 0.00

Tipo: 3

Sent: 0



Km: 6.00

Tipo: 3

Sent: 0