

TLAXCALA

Núm. INDICE	CARRETERA	RUTA
---- FEDERAL LIBRE ----		
1	AMOZOC - TEZIUTLAN	MEX-129
2	APIZACO - SAN PABLO APETATITLAN	MEX
3	APIZACO - TEJOCOTAL	MEX-119
4	HUAMANTLA - LA VENTA	MEX
5	HUAMANTLA - TERRENATE	MEX
6	LIBRAMIENTO DE APIZACO	MEX
7	LIBRAMIENTO HUAMANTLA	MEX
8	LIBRAMIENTO HUEYOTLIPAN	MEX
9	LOS REYES - ZACATEPEC	MEX-136
10	PUEBLA - BELEM	MEX-121
11	PUEBLA - TLAXCALA	MEX-119
12	RAMAL A SAN FELIPE DE HIDALGO	MEX
13	SAN MARTIN TEXMELUCAN - TLAXCALA	MEX-117
14	TLAXCALA - BELEM	MEX
15	VILLA ALTA - T. C. (PUEBLA - TLAXCALA)	MEX
---- FEDERAL CUOTA ----		
16	AMOZOC - PEROTE (CUOTA)	MEX-140D
17	MEXICO - PUEBLA (CUOTA)	MEX-150D
18	SAN MARTIN TEXMELUCAN - OCOTOXCO (CUOTA)	MEX-117D
---- ESTATAL LIBRE ----		
19	RAMAL A ALTZAYANCA DE HIDALGO	TLAX
20	RAMAL A SAN PEDRO ECATEPEC	TLAX
21	RAMAL A XALOSTOC	TLAX
22	XALOSTOC - TERRENATE	TLAX
---- COMBINADA ----		
23	ACOCOTLA - VICENTE GUERRERO	MEX-TLAX
24	APIZACO - EMILIANO ZAPATA	TLAX-MEX
25	CALPULALPAN - EL OCOTE	MEX-HGO
26	CALPULALPAN - NANACAMILPA	TLAX-MEX



TLAXCALA

1 CARR : AMOZOC - TEZIUTLAN

CLAVE: 00210

RUTA : MEX-129

AÑO : 2008

L U G A R	E S T A C I O N				C L A S I F I C A C I O N V E H I C U L A R E N P O R C I E N T O .												
	KM	TE	SC	TDPA	A	B	C2	C3	T3S2	T3S3	T3S2R4	OTROS	A	B	C	K'	D
AMOZOC	0.00																
X. C. PUEBLA - CORDOBA (CUOTA)	1.40	3	0	10525	70.8	4.9	8.0	3.1	5.6	3.2	2.7	1.7	70.8	4.9	24.3	0.069	0.501
ACAJETE	12.00	3	0	8832	69.9	7.4	5.0	2.1	6.5	3.1	4.3	1.7	69.9	7.4	22.7	0.066	0.503
RAFAEL LARA GRAJALES	35.50	1	0	5097	72.4	10.5	2.3	2.0	5.7	2.0	3.3	1.8	72.4	10.5	17.1	0.087	0.501
RAFAEL LARA GRAJALES	35.50	3	0	9676	76.7	4.4	5.7	3.7	4.0	2.1	1.9	1.5	76.7	4.4	18.9	0.075	0.504
LIM. EDOS. TERM. PUE. PPIA. TLAX.	50.54																
X. C. LOS REYES - ZACATEPEC	56.31	1	0	3580	68.4	12.5	6.9	3.4	2.3	4.6	1.5	0.4	68.4	12.5	19.1	0.082	0.503
LIM. EDOS. TERM. TLAX. PPIA. PUE.	60.22																
ORIENTAL	62.62	1	0	7722	79.7	3.5	7.2	2.0	3.8	1.0	1.2	1.6	79.7	3.5	16.8	0.075	0.515
ORIENTAL	62.62	3	0	6535	78.1	3.0	5.7	2.5	5.2	1.5	2.4	1.6	78.1	3.0	18.9	0.119	0.520
LIBRES	76.35	3	0	4840	85.4	1.1	5.0	1.9	1.0	1.2	2.4	2.0	85.4	1.1	13.5	0.115	0.502
T. IZQ. ZACAPOAXTLA	114.80	1	0	5826	77.8	5.3	2.8	1.9	4.7	2.0	2.9	2.6	77.8	5.3	16.9	0.094	0.501
T. IZQ. ZACAPOAXTLA	114.80	3	0	6327	79.3	2.8	3.9	0.9	2.8	2.0	4.6	3.7	79.3	2.8	17.9	0.085	0.503
TEZIUTLAN	157.80	1	0	9368	85.1	1.8	1.3	0.0	5.4	2.0	1.0	3.4	85.1	1.8	13.1	0.068	0.501

2 CARR : APIZACO - SAN PABLO APETATITLAN

CLAVE: 29035

RUTA : MEX

AÑO : 2008

L U G A R	E S T A C I O N				C L A S I F I C A C I O N V E H I C U L A R E N P O R C I E N T O .												
	KM	TE	SC	TDPA	A	B	C2	C3	T3S2	T3S3	T3S2R4	OTROS	A	B	C	K'	D
T. C. LOS REYES - ZACATEPEC	0.00	3	0	5553	88.0	3.2	1.7	0.4	3.3	0.8	1.1	1.5	88.0	3.2	8.8	0.084	0.537
T. DER. TECNOLOGICO	0.55	3	0	6329	87.3	3.5	1.3	0.4	3.8	0.7	1.4	1.6	87.3	3.5	9.2	0.077	0.525
CUAXOMULCO	9.10	3	0	1798	90.3	2.4	4.4	1.0	0.6	0.4	0.8	0.1	90.3	2.4	7.3	0.088	0.502
SANTA CRUZ TLAXCALA	14.50	3	0	4317	88.5	4.4	0.9	0.2	3.2	0.3	0.8	1.7	88.5	4.4	7.1	0.075	0.505
T. IZQ. CONTLA	18.90	1	0	6866	86.5	2.2	0.6	0.6	5.3	0.9	2.2	1.7	86.5	2.2	11.3	0.067	0.503
SAN PABLO APETATITLAN	20.00	1	0	9711	79.6	4.5	1.0	0.2	7.5	1.1	3.6	2.5	79.6	4.5	15.9	0.074	0.501

3 CARR : APIZACO - TEJOCOTAL

CLAVE: 00430

RUTA : MEX-119

AÑO : 2008

L U G A R	E S T A C I O N				C L A S I F I C A C I O N V E H I C U L A R E N P O R C I E N T O .												
	KM	TE	SC	TDPA	A	B	C2	C3	T3S2	T3S3	T3S2R4	OTROS	A	B	C	K'	D
APIZACO	0.00	3	0	11597	70.4	4.6	3.0	1.4	8.2	2.5	6.5	3.4	70.4	4.6	25.0	0.083	0.504
T. DER. TETLA	6.60	3	0	10387	75.9	5.2	4.1	2.0	5.8	1.8	2.9	2.3	75.9	5.2	18.9	0.097	0.504
T. IZQ. ATLANGATEPEC	12.15	1	0	9288	71.5	7.6	5.9	2.7	5.4	1.8	2.8	2.3	71.5	7.6	20.9	0.095	0.508
TLAXCO	23.91	1	0	7533	83.8	5.5	2.1	1.3	3.7	1.2	1.1	1.3	83.8	5.5	10.7	0.080	0.508
TLAXCO	23.91	3	0	4725	89.3	2.9	0.8	1.1	2.1	1.3	1.2	1.3	89.3	2.9	7.8	0.089	0.507



TLAXCALA

7 CARR : LIBRAMIENTO HUAMANTLA

CLAVE:

RUTA : MEX

AÑO : 2008

L U G A R	E S T A C I O N				C L A S I F I C A C I O N V E H I C U L A R E N P O R C I E N T O .												
	KM	TE	SC	TDPA	A	B	C2	C3	T3S2	T3S3	T3S2R4	OTROS	A	B	C	K'	D
T.C. LOS REYES - ZACATEPEC	0.00	3	1	5060	53.5	4.6	3.3	6.5	13.4	7.2	8.5	3.0	53.5	4.6	41.9	0.061	0.503
T.C. LOS REYES - ZACATEPEC	0.00	3	2	4805	55.5	4.3	3.5	6.9	12.6	7.0	8.4	1.8	55.5	4.3	40.2	0.072	0.503
T.C. LOS REYES - ZACATEPEC	4.70	1	1	5476	53.3	4.0	3.7	7.3	12.4	8.1	8.2	3.0	53.3	4.0	42.7	0.063	0.502
T.C. LOS REYES - ZACATEPEC	4.70	1	2	5520	53.5	4.6	3.8	7.3	13.0	7.9	7.7	2.2	53.5	4.6	41.9	0.120	0.502

8 CARR : LIBRAMIENTO HUEYOTLIPAN

CLAVE:

RUTA : MEX

AÑO : 2008

L U G A R	E S T A C I O N				C L A S I F I C A C I O N V E H I C U L A R E N P O R C I E N T O .												
	KM	TE	SC	TDPA	A	B	C2	C3	T3S2	T3S3	T3S2R4	OTROS	A	B	C	K'	D
T.C. LOS REYES - ZACATEPEC	0.00	3	0	7750	73.4	5.9	4.7	2.7	6.5	2.7	2.3	1.8	73.4	5.9	20.7	0.073	0.504
T.C. LOS REYES - ZACATEPEC	2.70																

9 CARR : LOS REYES - ZACATEPEC

CLAVE: 00052

RUTA : MEX-136

AÑO : 2008

L U G A R	E S T A C I O N				C L A S I F I C A C I O N V E H I C U L A R E N P O R C I E N T O .												
	KM	TE	SC	TDPA	A	B	C2	C3	T3S2	T3S3	T3S2R4	OTROS	A	B	C	K'	D
T. C. MEXICO - PUEBLA (LIBRE)	0.00																
T. IZQ. LA MAGDALENA	3.35	3	1	38626	77.6	7.1	6.6	3.0	2.0	1.4	0.2	2.1	77.6	7.1	15.3	0.092	0.501
T. IZQ. LA MAGDALENA	3.35	3	2	38447	77.9	7.2	6.3	3.0	2.3	1.3	0.3	1.7	77.9	7.2	14.9	0.082	0.501
T. IZQ. CHIMALHUACAN	8.45	1	1	21290	72.2	3.9	1.7	0.9	8.6	3.7	5.3	3.7	72.2	3.9	23.9	0.080	0.504
T. IZQ. CHIMALHUACAN	8.45	1	2	20928	73.9	3.9	1.5	0.6	8.9	2.8	5.0	3.4	73.9	3.9	22.2	0.069	0.504
T. C. SAN BERNARDINO - TEPEXPAN	17.00	3	0	30837	72.0	7.3	5.4	5.9	3.0	2.6	0.3	3.5	72.0	7.3	20.7	0.079	0.513
TEXCOCO	23.02	3	1	11920	60.7	4.4	1.3	1.9	12.2	4.8	9.9	4.8	60.7	4.4	34.9	0.100	0.512
TEXCOCO	23.02	3	2	12500	63.7	3.9	1.1	1.8	11.6	4.2	9.5	4.2	63.7	3.9	32.4	0.070	0.512
T. IZQ. TEPETLAOXTOC	30.03	1	1	14383	65.7	4.1	1.9	3.8	9.8	4.4	7.4	2.9	65.7	4.1	30.2	0.060	0.505
T. IZQ. TEPETLAOXTOC	30.03	1	2	14099	69.0	4.0	1.8	3.9	9.0	3.4	7.1	1.8	69.0	4.0	27.0	0.062	0.505
T. DER. TOTOLAPAN	42.00	3	0	9703	51.1	5.4	1.8	4.8	17.7	5.6	11.9	1.7	51.1	5.4	43.5	0.068	0.502
LIM. EDOS. TERM. MEX. PPIA. TLAX.	43.15																
CALPULALPAN	59.58	3	0	9912	50.0	4.8	5.3	6.3	16.9	5.1	10.3	1.3	50.0	4.8	45.2	0.077	0.512
T. DER. NANACAMILPA	71.76	3	0	12335	45.1	3.8	5.1	7.2	18.9	6.1	12.4	1.4	45.1	3.8	51.1	0.090	0.517
HUEYOTLIPAN	88.21	3	0	11546	65.5	9.3	9.3	6.6	4.2	3.0	1.6	0.5	65.5	9.3	25.2	0.069	0.501
XALTOCAN	108.10	1	0	14011	56.9	6.6	4.4	6.8	9.1	6.5	6.9	2.8	56.9	6.6	36.5	0.067	0.512
APIZACO	117.70	1	1	16216	81.3	4.6	4.6	3.0	0.7	3.1	2.6	0.1	81.3	4.6	14.1	0.076	0.501
APIZACO	117.70	1	2	16284	82.1	4.4	4.9	2.4	0.4	2.9	2.8	0.1	82.1	4.4	13.5	0.071	0.501
APIZACO	117.70	3	0	16557	72.4	4.6	2.6	0.9	7.6	1.9	6.6	3.4	72.4	4.6	23.0	0.074	0.503

TLAXCALA

9 CARR : LOS REYES - ZACATEPEC

CLAVE: 00052

RUTA : MEX-136

AÑO : 2008

L U G A R	E S T A C I O N				C L A S I F I C A C I O N V E H I C U L A R E N P O R C I E N T O .												
	KM	TE	SC	TDPA	A	B	C2	C3	T3S2	T3S3	T3S2R4	OTROS	A	B	C	K'	D
T. DER. CUAXOMULCO	119.90	3	0	14477	69.7	7.5	1.2	0.6	8.4	2.6	7.1	2.9	69.7	7.5	22.8	0.074	0.507
T. IZQ. XALOSTOC	126.70	3	1	7708	77.2	4.5	5.1	2.0	4.6	1.2	1.6	3.8	77.2	4.5	18.3	0.067	0.502
T. IZQ. XALOSTOC	126.70	3	2	7759	76.2	4.3	5.6	2.6	4.7	1.2	1.6	3.8	76.2	4.3	19.5	0.070	0.502
T. IZQ. LIBRAMIENTO DE HUAMANTLA	141.70	1	1	6714	66.8	3.2	4.3	5.2	7.0	5.5	5.8	2.2	66.8	3.2	30.0	0.073	0.504
T. IZQ. LIBRAMIENTO DE HUAMANTLA	141.70	1	2	6824	67.0	3.5	5.5	5.1	7.3	4.5	5.5	1.6	67.0	3.5	29.5	0.080	0.504
HUAMANTLA	143.00	3	0	9526	83.7	6.6	4.7	0.4	3.0	0.3	0.3	1.0	83.7	6.6	9.7	0.076	0.554
T. DER. CUAPIAXTLA	159.40	1	0	9214	58.7	3.9	6.3	4.0	11.3	5.2	8.4	2.2	58.7	3.9	37.4	0.075	0.516
X. C. AMOZOC - TEZIUTLAN	173.50	1	0	9780	54.9	4.3	7.4	4.1	11.1	4.9	10.8	2.5	54.9	4.3	40.8	0.072	0.504
X. C. AMOZOC - TEZIUTLAN	173.50	3	0	8617	41.3	6.3	1.2	7.9	18.0	9.2	14.7	1.4	41.3	6.3	52.4	0.090	0.502
LIM. EDOS. TERM. TLAX. PPIA. PUE.	177.60																
ZACATEPEC	187.70	1	0	9461	51.0	3.6	7.1	5.1	13.3	10.0	7.5	2.4	51.0	3.6	45.4	0.110	0.507

10 CARR : PUEBLA - BELEM

CLAVE: 00055

RUTA : MEX-121

AÑO : 2008

L U G A R	E S T A C I O N				C L A S I F I C A C I O N V E H I C U L A R E N P O R C I E N T O .												
	KM	TE	SC	TDPA	A	B	C2	C3	T3S2	T3S3	T3S2R4	OTROS	A	B	C	K'	D
T. C. PUEBLA - TLAXCALA	0.00																
X. C. PUEBLA - CORDOBA (CUOTA)	4.00	3	1	16780	78.7	4.0	4.4	2.8	4.1	2.6	2.4	1.0	78.7	4.0	17.3	0.071	0.501
X. C. PUEBLA - CORDOBA (CUOTA)	4.00	3	2	16733	80.9	4.0	4.2	1.9	3.3	2.0	3.0	0.7	80.9	4.0	15.1	0.072	0.501
LIM. EDOS. TERM. PUE. PPIA. TLAX.	6.60																
LIM. EDOS. TERM. TLAX. PPIA. PUE.	8.40																
LIM. EDOS. TERM. PUE. PPIA. TLAX.	9.50																
T. IZQ. ZACATELCO	16.70	1	1	9822	87.1	2.6	4.3	2.3	0.0	0.0	0.0	3.7	87.1	2.6	10.3	0.093	0.507
T. IZQ. ZACATELCO	16.70	1	2	9546	94.3	4.5	0.5	0.3	0.0	0.0	0.0	0.4	94.3	4.5	1.2	0.127	0.507
X. C. TLAXCALA - BELEM	28.80	1	1	13006	79.0	2.7	2.9	1.6	6.0	2.2	2.6	3.0	79.0	2.7	18.3	0.070	0.505
X. C. TLAXCALA - BELEM	28.80	1	2	13268	80.1	2.8	2.8	1.6	5.3	1.9	2.4	3.1	80.1	2.8	17.1	0.072	0.505
T. C. SAN MARTIN TEXMELUCAN - OCOTOXCO (CUOTA)	34.90																

11 CARR : PUEBLA - TLAXCALA

CLAVE: 00475

RUTA : MEX-119

AÑO : 2008

L U G A R	E S T A C I O N				C L A S I F I C A C I O N V E H I C U L A R E N P O R C I E N T O .												
	KM	TE	SC	TDPA	A	B	C2	C3	T3S2	T3S3	T3S2R4	OTROS	A	B	C	K'	D
PUEBLA	0.00																
X. C. PUEBLA - CORDOBA (CUOTA)	5.41	3	1	17246	71.6	2.0	2.4	2.4	5.9	4.2	5.5	6.0	71.6	2.0	26.4	0.068	0.501
X. C. PUEBLA - CORDOBA (CUOTA)	5.41	3	2	17345	73.3	3.0	3.5	2.0	6.1	3.3	3.7	5.1	73.3	3.0	23.7	0.069	0.501

TLAXCALA

11 CARR : PUEBLA - TLAXCALA

CLAVE: 00475

RUTA : MEX-119

AÑO : 2008

L U G A R	E S T A C I O N				C L A S I F I C A C I O N V E H I C U L A R E N P O R C I E N T O .												
	KM	TE	SC	TDPA	A	B	C2	C3	T3S2	T3S3	T3S2R4	OTROS	A	B	C	K'	D
LIM. EDOS. TERM. PUE. PPIA. TLAX.	11.83																
PANZACOLA	13.14	3	0	16507	72.1	2.3	3.0	0.8	9.6	1.8	8.0	2.4	72.1	2.3	25.6	0.061	0.503
SAN TORIBIO XICOHTZINGO	16.10	3	0	16499	79.2	2.6	3.2	0.5	7.5	1.2	3.6	2.2	79.2	2.6	18.2	0.066	0.502
ZACATELCO	20.78	1	0	16405	81.6	8.7	5.9	3.2	0.0	0.0	0.0	0.6	81.6	8.7	9.7	0.068	0.501
T. IZQ. SAN MARTIN TEXMELUCAN	22.99	1	0	14267	90.1	5.0	2.1	0.3	0.0	0.0	0.0	2.5	90.1	5.0	4.9	0.069	0.501
T. DER. TEPEYANCO (2º ACCESO)	24.97	3	0	15616	73.2	13.7	1.8	0.4	5.4	1.0	2.4	2.1	73.2	13.7	13.1	0.061	0.513
T. DER. OCOTLAN	32.45	1	1	9013	85.3	3.4	0.9	1.4	3.2	1.1	1.0	3.7	85.3	3.4	11.3	0.061	0.505
T. DER. OCOTLAN	32.45	1	2	8822	80.9	3.6	0.9	1.4	4.7	1.8	2.0	4.7	80.9	3.6	15.5	0.060	0.505
TLAXCALA	33.22	1	1	8378	73.6	2.8	0.3	0.2	6.9	2.3	10.5	3.4	73.6	2.8	23.6	0.062	0.525
TLAXCALA	33.22	1	2	8331	71.3	2.8	0.3	0.2	8.0	3.1	10.3	4.0	71.3	2.8	25.9	0.060	0.525

12 CARR : RAMAL A SAN FELIPE DE HIDALGO

CLAVE: 29565

RUTA : MEX

AÑO : 2008

L U G A R	E S T A C I O N				C L A S I F I C A C I O N V E H I C U L A R E N P O R C I E N T O .												
	KM	TE	SC	TDPA	A	B	C2	C3	T3S2	T3S3	T3S2R4	OTROS	A	B	C	K'	D
T. C. LOS REYES - ZACATEPEC	0.00	3	0	2568	85.4	5.2	3.0	1.7	2.2	1.2	0.7	0.6	85.4	5.2	9.4	0.080	0.529
SAN FELIPE DE HIDALGO	10.50	1	0	1742	78.1	4.3	7.1	5.1	2.3	1.9	1.2	0.0	78.1	4.3	17.6	0.068	0.523

13 CARR : SAN MARTIN TEXMELUCAN - TLAXCALA

CLAVE: 00158

RUTA : MEX-117

AÑO : 2008

L U G A R	E S T A C I O N				C L A S I F I C A C I O N V E H I C U L A R E N P O R C I E N T O .												
	KM	TE	SC	TDPA	A	B	C2	C3	T3S2	T3S3	T3S2R4	OTROS	A	B	C	K'	D
SAN MARTIN TEXMELUCAN	0.00	3	0	12700	80.6	4.2	7.5	2.2	2.4	1.0	0.7	1.4	80.6	4.2	15.2	0.063	0.500
X. C. SAN MARTIN TEXMELUCAN - OCOTOXCO (CUOTA)	1.65	1	0	14674	84.7	3.7	4.5	2.7	1.7	1.4	1.2	0.1	84.7	3.7	11.6	0.090	0.502
LIM. EDOS. TERM. PUE. PPIA. TLAX.	2.84																
T. DER. TEPETITLA	3.45	3	0	9012	77.6	3.8	2.4	1.9	6.2	1.6	4.0	2.5	77.6	3.8	18.6	0.093	0.507
SAN DIEGO XOCOYUCAN	7.21	3	0	5946	83.8	4.6	0.8	2.8	4.3	0.6	1.4	1.7	83.8	4.6	11.6	0.069	0.520
T. DER. PANOTLA	19.72	1	0	6571	85.9	4.8	4.0	0.3	1.5	1.1	1.2	1.2	85.9	4.8	9.3	0.079	0.508
T. DER. PANOTLA	19.72	3	0	8170	83.6	3.6	1.6	2.1	5.2	0.7	1.5	1.7	83.6	3.6	12.8	0.075	0.508
TOTOLAC	21.38	1	0	6370	80.3	4.1	1.8	1.5	6.8	1.0	2.4	2.1	80.3	4.1	15.6	0.086	0.542
TOTOLAC	21.38	3	0	7434	85.7	2.3	1.4	1.6	5.1	0.7	1.5	1.7	85.7	2.3	12.0	0.085	0.500
TLAXCALA	24.81	1	0	13230	57.2	9.8	2.0	1.1	9.5	3.6	14.0	2.8	57.2	9.8	33.0	0.078	0.525





TLAXCALA

17 CARR : MEXICO - PUEBLA (CUOTA)

CLAVE: 00450

RUTA : MEX-150D

AÑO : 2008

L U G A R	E S T A C I O N				CLASIFICACION VEHICULAR EN PORCIENTO .												
	KM	TE	SC	TDPA	A	B	C2	C3	T3S2	T3S3	T3S2R4	OTROS	A	B	C	K'	D
MEXICO	0.00																
LIM. EDOS. TERM. D.F. PPIA. MEX.	17.71																
T. IZQ. LOS REYES	20.00	3	1	55222	77.0	8.0	5.5	4.6	2.0	1.4	0.2	1.3	77.0	8.0	15.0	0.099	0.502
T. IZQ. LOS REYES	20.00	3	2	54785	77.1	8.1	5.2	4.9	1.8	1.7	0.3	0.9	77.1	8.1	14.8	0.094	0.502
X. C. SANTA BARBARA - IZUCAR DE MATAMOROS	32.14	1	1	41589	71.1	10.1	9.0	3.1	2.4	2.1	0.9	1.3	71.1	10.1	18.8	0.127	0.508
X. C. SANTA BARBARA - IZUCAR DE MATAMOROS	32.14	1	2	42890	71.4	10.1	8.8	3.2	2.5	2.0	0.8	1.2	71.4	10.1	18.5	0.119	0.508
X. C. SANTA BARBARA - IZUCAR DE MATAMOROS	32.14	3	1	16867	76.7	8.0	5.9	3.3	3.9	0.4	0.9	0.9	76.7	8.0	15.3	0.095	0.501
X. C. SANTA BARBARA - IZUCAR DE MATAMOROS	32.14	3	2	16804	76.8	8.1	5.7	3.1	4.1	0.5	0.7	1.0	76.8	8.1	15.1	0.078	0.501
CASETA DE COBRO SAN MARCOS	33.30	2	0	30447	71.2	10.2	5.8	3.8	4.8	0.7	2.4	1.1	71.2	10.2	18.6		
T. IZQ. RIO FRIO	63.79	3	1	19226	72.8	9.1	6.5	4.7	2.8	2.3	0.6	1.2	72.8	9.1	18.1	0.078	0.507
T. IZQ. RIO FRIO	63.79	3	2	19767	73.1	8.8	6.3	4.4	3.1	2.4	0.8	1.1	73.1	8.8	18.1	0.084	0.507
LIM. EDOS. TERM. MEX. PPIA. PUE.	63.85																
T. IZQ. TLAXCALA	90.61	1	1	14865	75.2	8.7	6.6	2.2	2.4	2.1	1.2	1.6	75.2	8.7	16.1	0.075	0.504
T. IZQ. TLAXCALA	90.61	1	2	15117	75.3	8.5	6.5	2.3	2.5	2.2	1.3	1.4	75.3	8.5	16.2	0.076	0.504
T. IZQ. TLAXCALA	90.61	3	1	13719	78.6	7.7	3.2	3.1	3.3	1.1	1.0	2.0	78.6	7.7	13.7	0.075	0.502
T. IZQ. TLAXCALA	90.61	3	2	13617	79.2	7.2	3.2	3.2	3.2	1.9	0.8	1.3	79.2	7.2	13.6	0.080	0.502
CASETA DE COBRO SAN MARTIN TEXMELUCAN	91.00	2	0	36126	70.8	9.3	5.6	4.3	5.4	0.2	2.9	1.5	70.8	9.3	19.9		
LIM. EDOS. TERM. PUE. PPIA. TLAX.	103.00																
LIM. EDOS. TERM. TLAX. PPIA. PUE.	107.00																
T. C. PUEBLA - TLAXCALA	124.90																

18 CARR : SAN MARTIN TEXMELUCAN - OCOTOXCO (CUOTA)

CLAVE: 00212

RUTA : MEX-117D

AÑO : 2008

L U G A R	E S T A C I O N				CLASIFICACION VEHICULAR EN PORCIENTO .												
	KM	TE	SC	TDPA	A	B	C2	C3	T3S2	T3S3	T3S2R4	OTROS	A	B	C	K'	D
T. C. MEXICO - PUEBLA (CUOTA)	0.00																
X. C. SAN MARTIN TEXMELUCAN - TLAXCALA	1.80	1	0	6543	81.5	8.3	3.5	1.7	1.8	1.1	1.5	0.6	81.5	8.3	10.2	0.083	0.501
LIM. EDOS. TERM. PUE. PPIA. TLAX.	4.05																
CASETA DE COBRO SAN MARTIN TEXMELUCAN	5.45	2	0	7079	81.5	9.6	3.9	1.6	1.8	0.5	1.0	0.1	81.5	9.6	8.9		
X. C. SAN MARTIN TEXMELUCAN - TLAXCALA (TREBOL)	24.75	1	1	11202	79.4	4.8	6.0	3.1	3.3	1.1	1.4	0.9	79.4	4.8	15.8	0.079	0.501
X. C. SAN MARTIN TEXMELUCAN - TLAXCALA (TREBOL)	24.75	1	2	11254	80.2	4.1	6.1	2.5	2.9	1.6	1.5	1.1	80.2	4.1	15.7	0.073	0.501
X. C. SAN MARTIN TEXMELUCAN - TLAXCALA (TREBOL)	24.75	3	1	10375	80.9	3.7	6.4	2.9	2.7	1.5	1.1	0.8	80.9	3.7	15.4	0.095	0.534
X. C. SAN MARTIN TEXMELUCAN - TLAXCALA (TREBOL)	24.75	3	2	9064	82.4	3.8	4.5	1.9	2.1	1.8	2.0	1.5	82.4	3.8	13.8	0.088	0.534
T. IZQ. TIZATLAN	29.00	3	1	18350	83.5	3.8	4.9	1.9	2.2	1.5	1.5	0.7	83.5	3.8	12.7	0.068	0.503
T. IZQ. TIZATLAN	29.00	3	2	18584	81.2	5.2	5.0	2.1	2.6	1.6	1.2	1.1	81.2	5.2	13.6	0.074	0.503

TLAXCALA

18 CARR : SAN MARTIN TEXMELUCAN - OCOTOXCO (CUOTA)

CLAVE: 00212

RUTA : MEX-117D

AÑO : 2008

L U G A R	E S T A C I O N				C L A S I F I C A C I O N V E H I C U L A R E N P O R C I E N T O .												
	KM	TE	SC	TDPA	A	B	C2	C3	T3S2	T3S3	T3S2R4	OTROS	A	B	C	K'	D
T. DER. SAN PABLO APETATITLAN	31.65	3	1	18378	80.6	7.2	5.0	2.0	2.0	1.5	1.3	0.4	80.6	7.2	12.2	0.072	0.503
T. DER. SAN PABLO APETATITLAN	31.65	3	2	18169	79.0	7.1	5.1	2.5	2.1	1.7	1.8	0.7	79.0	7.1	13.9	0.068	0.503
OCOTOXCO	35.20	1	1	18218	84.0	3.4	5.1	2.3	2.0	1.1	0.5	1.6	84.0	3.4	12.6	0.066	0.502
OCOTOXCO	35.20	1	2	18349	83.8	3.6	5.5	2.7	1.9	0.8	0.8	0.9	83.8	3.6	12.6	0.069	0.502

19 CARR : RAMAL A ALTZAYANCA DE HIDALGO

CLAVE: 29562

RUTA : TLAX

AÑO : 2008

L U G A R	E S T A C I O N				C L A S I F I C A C I O N V E H I C U L A R E N P O R C I E N T O .												
	KM	TE	SC	TDPA	A	B	C2	C3	T3S2	T3S3	T3S2R4	OTROS	A	B	C	K'	D
T. C. LOS REYES - ZACATEPEC	0.00	3	0	1930	89.0	2.7	5.0	0.7	1.7	0.2	0.2	0.5	89.0	2.7	8.3	0.099	0.504
XICOTENCATL	6.50	3	0	1854	87.4	4.1	5.2	0.7	1.6	0.2	0.3	0.5	87.4	4.1	8.5	0.079	0.505
ALTZAYANCA DE HIDALGO	15.00	1	0	1951	90.2	3.7	4.5	0.2	0.8	0.1	0.0	0.5	90.2	3.7	6.1	0.081	0.502

20 CARR : RAMAL A SAN PEDRO ECATEPEC

CLAVE: 29561

RUTA : TLAX

AÑO : 2008

L U G A R	E S T A C I O N				C L A S I F I C A C I O N V E H I C U L A R E N P O R C I E N T O .												
	KM	TE	SC	TDPA	A	B	C2	C3	T3S2	T3S3	T3S2R4	OTROS	A	B	C	K'	D
T. C. APIZACO - TEJOCOTAL	0.00	3	0	1600	89.1	8.6	2.2	0.0	0.1	0.0	0.0	0.0	89.1	8.6	2.3	0.082	0.504
SAN PEDRO ECATEPEC	4.60	1	0	1428	89.0	6.5	1.0	0.0	1.9	0.3	0.6	0.7	89.0	6.5	4.5	0.098	0.505

21 CARR : RAMAL A XALOSTOC

CLAVE: 29563

RUTA : TLAX

AÑO : 2008

L U G A R	E S T A C I O N				C L A S I F I C A C I O N V E H I C U L A R E N P O R C I E N T O .												
	KM	TE	SC	TDPA	A	B	C2	C3	T3S2	T3S3	T3S2R4	OTROS	A	B	C	K'	D
T. C. LOS REYES - ZACATEPEC	0.00	3	0	6638	83.0	2.3	1.4	0.9	6.2	1.5	1.8	2.9	83.0	2.3	14.7	0.070	0.520
XALOSTOC	2.50	1	0	5467	88.0	1.0	0.4	0.3	5.2	1.0	1.9	2.2	88.0	1.0	11.0	0.090	0.510

22 CARR : XALOSTOC - TERRENATE

CLAVE: 29390

RUTA : TLAX

AÑO : 2008

L U G A R	E S T A C I O N				C L A S I F I C A C I O N V E H I C U L A R E N P O R C I E N T O .												
	KM	TE	SC	TDPA	A	B	C2	C3	T3S2	T3S3	T3S2R4	OTROS	A	B	C	K'	D
XALOSTOC	0.00	3	0	2275	90.8	2.1	1.5	0.5	3.0	0.5	0.6	1.0	90.8	2.1	7.1	0.095	0.541
SAN FRANCISCO TEOMETITLA	7.10	3	0	741	93.7	3.5	1.3	0.4	0.4	0.1	0.0	0.6	93.7	3.5	2.8	0.112	0.507
T. C. HUAMANTLA - TERRENATE	17.50	1	0	914	93.1	3.3	1.1	0.8	0.9	0.2	0.1	0.5	93.1	3.3	3.6	0.102	0.502

TLAXCALA

23 CARR : ACOCOTLA - VICENTE GUERRERO

CLAVE: 29560

RUTA : MEX-TLAX

AÑO : 2008

L U G A R	E S T A C I O N				C L A S I F I C A C I O N V E H I C U L A R E N P O R C I E N T O .												
	KM	TE	SC	TDPA	A	B	C2	C3	T3S2	T3S3	T3S2R4	OTROS	A	B	C	K'	D
T. C. LOS REYES - ZACATEPEC	0.00	3	0	13789	79.4	6.3	1.6	0.7	4.9	1.2	1.7	4.2	79.4	6.3	14.3	0.074	0.501
T. C. PUEBLA - BELEM	37.70	1	0	6457	70.8	2.7	3.0	0.3	7.7	2.6	8.5	4.4	70.8	2.7	26.5	0.074	0.503

24 CARR : APIZACO - EMILIANO ZAPATA

CLAVE: 29033

RUTA : TLAX-MEX

AÑO : 2008

L U G A R	E S T A C I O N				C L A S I F I C A C I O N V E H I C U L A R E N P O R C I E N T O .												
	KM	TE	SC	TDPA	A	B	C2	C3	T3S2	T3S3	T3S2R4	OTROS	A	B	C	K'	D
APIZACO	0.00	3	0	6689	81.9	4.7	4.8	1.9	1.1	1.2	2.4	2.0	81.9	4.7	13.4	0.081	0.507
CAPULA	16.00	1	0	2204	91.1	4.8	0.9	0.3	1.5	0.2	0.3	0.9	91.1	4.8	4.1	0.095	0.561
EMILIANO ZAPATA	37.00	1	0	1232	92.1	2.7	2.4	0.7	1.7	0.0	0.1	0.3	92.1	2.7	5.2	0.125	0.507

25 CARR : CALPULALPAN - EL OCOTE

CLAVE: 00054

RUTA : MEX-HGO

AÑO : 2008

L U G A R	E S T A C I O N				C L A S I F I C A C I O N V E H I C U L A R E N P O R C I E N T O .												
	KM	TE	SC	TDPA	A	B	C2	C3	T3S2	T3S3	T3S2R4	OTROS	A	B	C	K'	D
CALPULALPAN	0.00	3	0	9004	70.2	6.5	8.6	6.8	2.2	3.1	2.0	0.6	70.2	6.5	23.3	0.076	0.501
LIM. EDOS. TERM. TLAX. PPIA. HGO.	5.00																
APAN	19.58	3	1	2760	84.1	3.1	5.9	2.4	2.5	1.1	0.9	0.0	84.1	3.1	12.8	0.101	0.502
APAN	19.58	3	2	2741	84.0	3.3	5.5	2.5	2.7	1.2	0.8	0.0	84.0	3.3	12.7	0.103	0.502
TEPEAPULCO	34.92	3	0	3962	92.1	2.5	0.6	0.6	2.6	0.4	0.5	0.7	92.1	2.5	5.4	0.098	0.500
X. C. VENTA DE CARPIO - TULANCINGO	51.18	1	0	2959	89.6	4.2	0.8	2.1	1.5	0.7	0.3	0.8	89.6	4.2	6.2	0.099	0.557
X. C. VENTA DE CARPIO - TULANCINGO	51.18	3	0	1797	95.1	1.9	0.1	1.1	1.2	0.2	0.1	0.3	95.1	1.9	3.0	0.104	0.502
EL OCOTE	70.44	1	0	2504	71.4	4.8	6.7	2.8	4.5	2.7	1.9	5.2	71.4	4.8	23.8	0.098	0.501

26 CARR : CALPULALPAN - NANACAMILPA

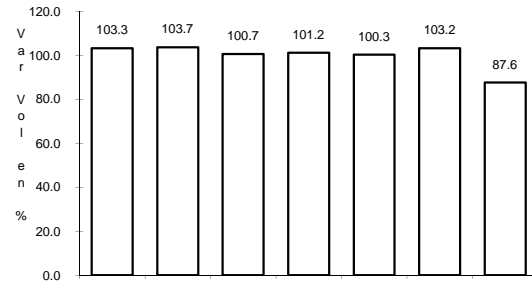
CLAVE: 29034

RUTA : TLAX-MEX

AÑO : 2008

L U G A R	E S T A C I O N				C L A S I F I C A C I O N V E H I C U L A R E N P O R C I E N T O .												
	KM	TE	SC	TDPA	A	B	C2	C3	T3S2	T3S3	T3S2R4	OTROS	A	B	C	K'	D
CALPULALPAN	0.00	3	0	2484	89.4	2.8	3.2	1.0	1.2	1.2	1.1	0.1	89.4	2.8	7.8	0.083	0.500
NANACAMILPA	15.50	1	0	1729	88.2	3.5	2.9	2.2	0.7	1.3	1.2	0.0	88.2	3.5	8.3	0.091	0.500

1 CARR: AMOZOC - TEZIUTLAN

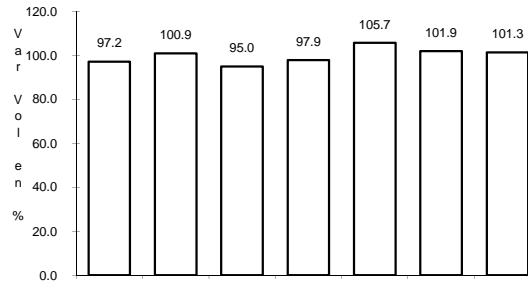


Km: 1.40

Tipo: 3

Sent: 0

CLAVE: 00210

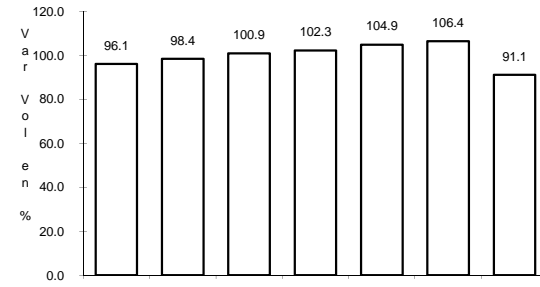


Km: 76.35

Tipo: 3

Sent: 0

RUTA: MEX-129

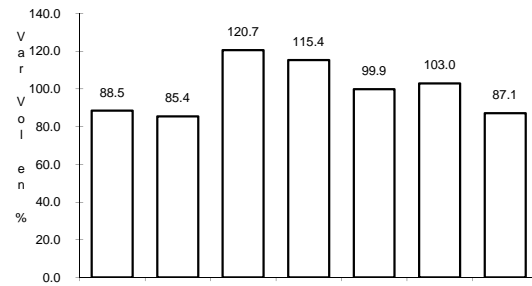


Km: 157.80

Tipo: 1

Sent: 0

2 CARR: APIZACO - SAN PABLO APETATITLAN

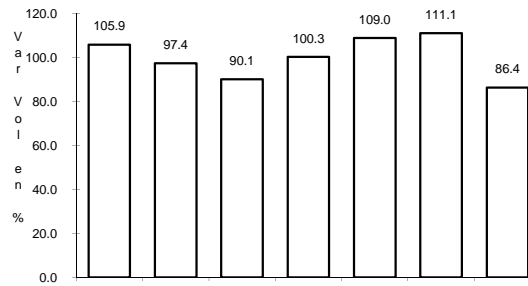


Km: 0.00

Tipo: 3

Sent: 0

CLAVE: 29035

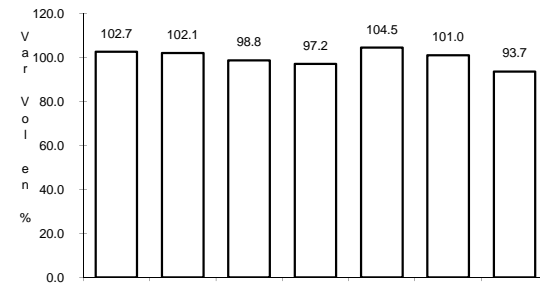


Km: 9.10

Tipo: 3

Sent: 0

RUTA: MEX

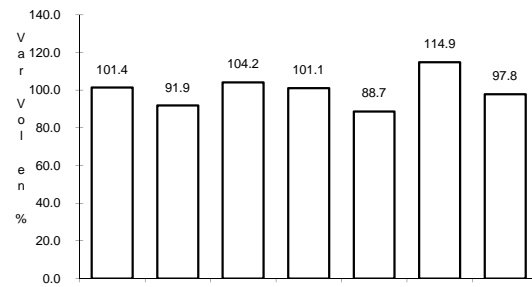


Km: 20.00

Tipo: 1

Sent: 0

3 CARR: APIZACO - TEJOCOTAL

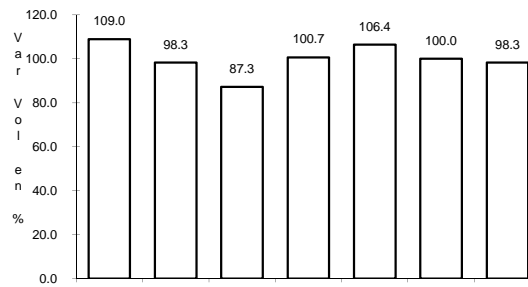


Km: 0.00

Tipo: 3

Sent: 0

CLAVE: 00430

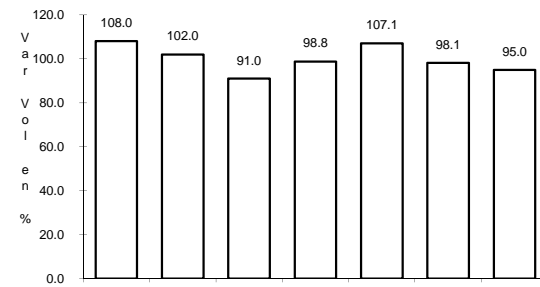


Km: 52.20

Tipo: 1

Sent: 0

RUTA: MEX-119



Km: 113.15

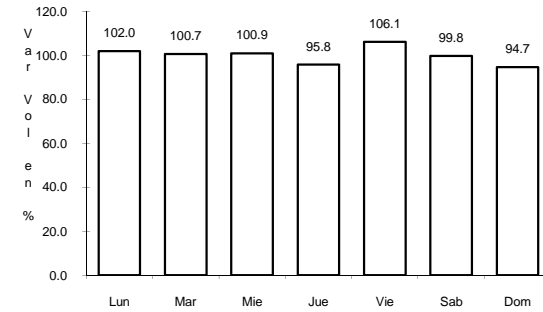
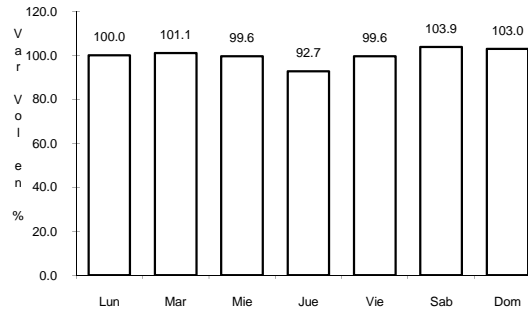
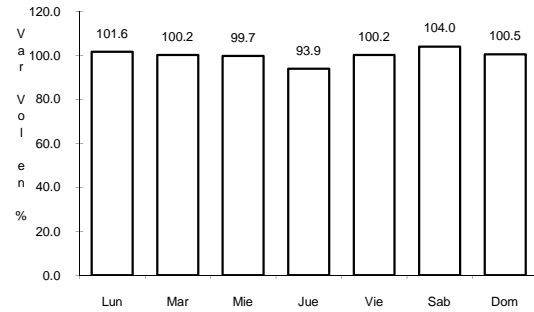
Tipo: 1

Sent: 0

4 CARR: HUAMANTLA - LA VENTA

CLAVE: 29564

RUTA: MEX



Km: 0.00

Tipo: 3

Sent: 1

Km: 0.00

Tipo: 3

Sent: 2

Km: 11.06

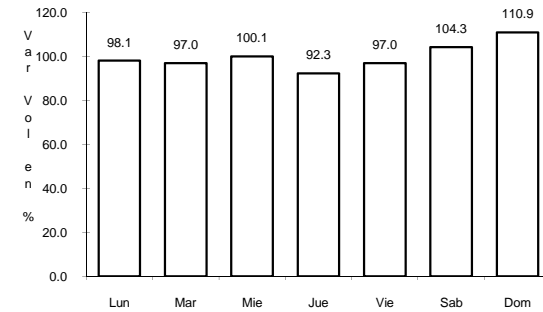
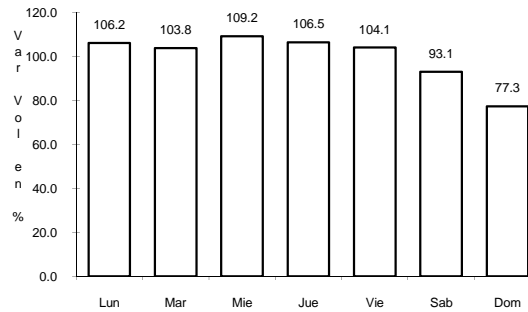
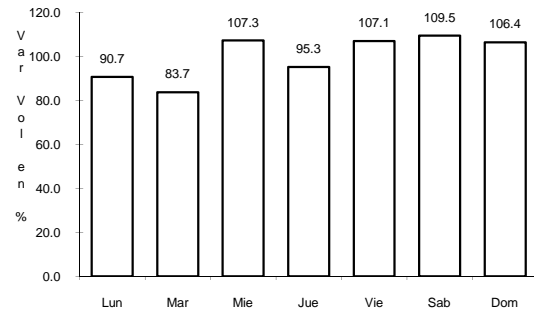
Tipo: 1

Sent: 0

5 CARR: HUAMANTLA - TERRENATE

CLAVE: 29036

RUTA: MEX



Km: 0.00

Tipo: 3

Sent: 0

Km: 12.50

Tipo: 1

Sent: 0

Km: 21.00

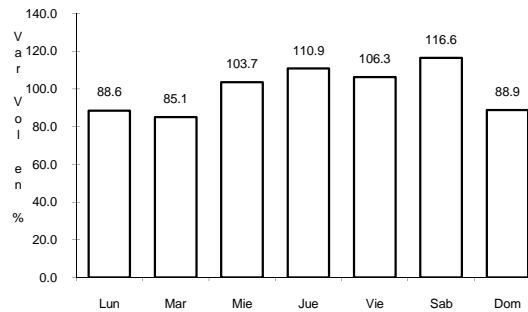
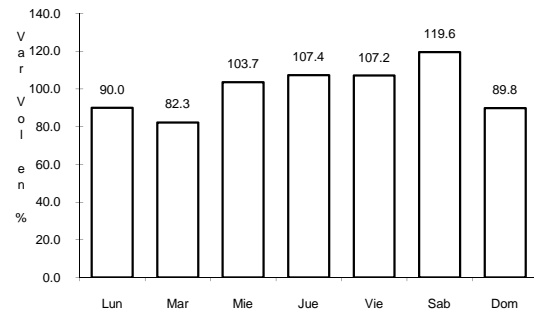
Tipo: 1

Sent: 0

6 CARR: LIBRAMIENTO DE APIZACO

CLAVE: 29567

RUTA: MEX



Km: 8.00

Tipo: 1

Sent: 0

Km: 8.00

Tipo: 3

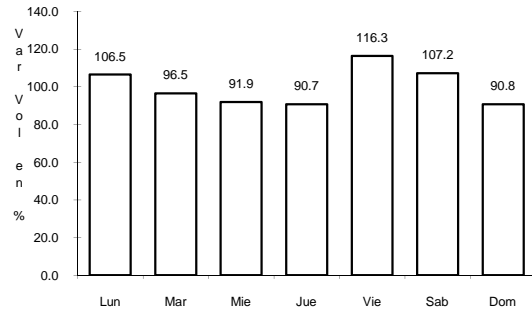
Sent: 0



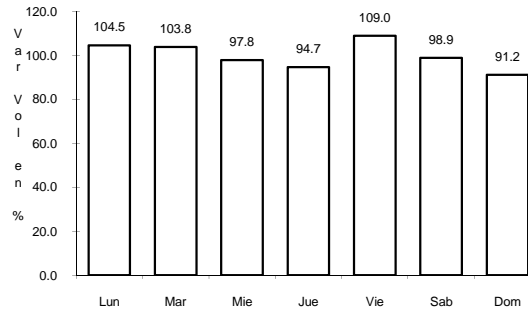
10 CARR: PUEBLA - BELEM

CLAVE: 00055

RUTA: MEX-121



Km: 4.00 Tipo: 3 Sent: 1

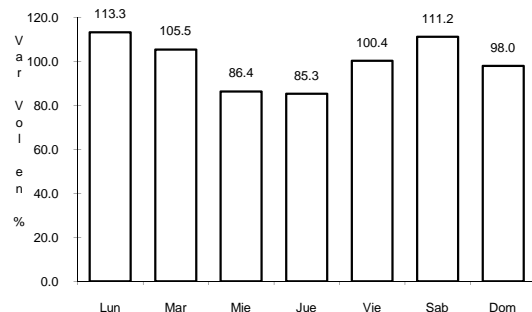


Km: 4.00 Tipo: 3 Sent: 2

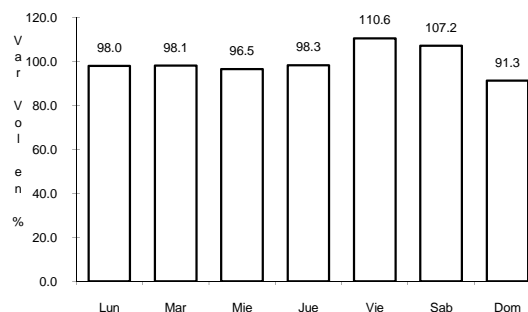
11 CARR: PUEBLA - TLAXCALA

CLAVE: 00475

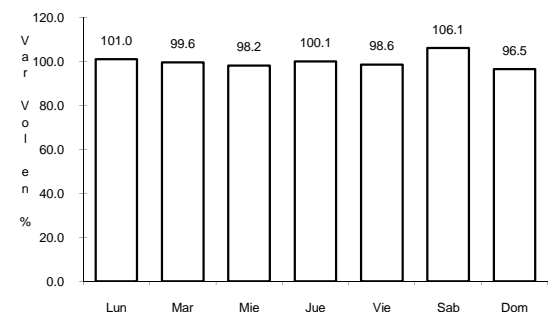
RUTA: MEX-119



Km: 5.41 Tipo: 3 Sent: 1



Km: 5.41 Tipo: 3 Sent: 2

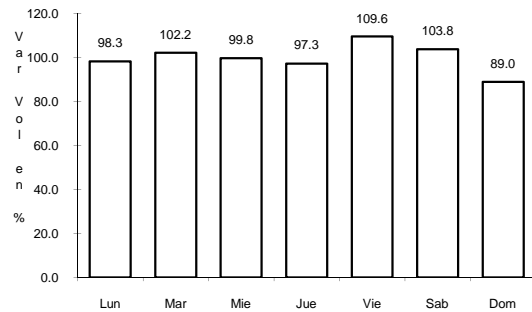


Km: 16.10 Tipo: 3 Sent: 0

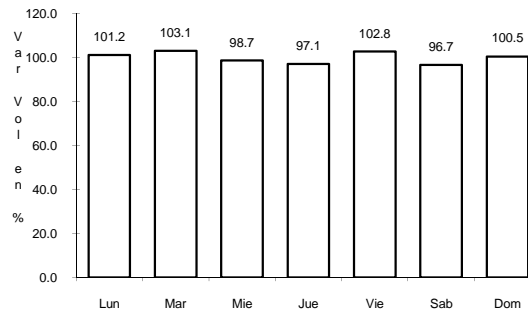
12 CARR: RAMAL A SAN FELIPE DE HIDALGO

CLAVE: 29565

RUTA: MEX



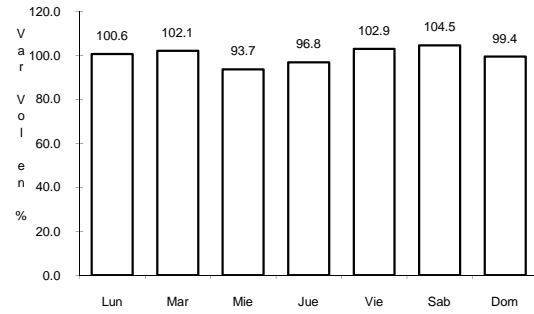
Km: 0.00 Tipo: 3 Sent: 0



Km: 10.50 Tipo: 1 Sent: 0

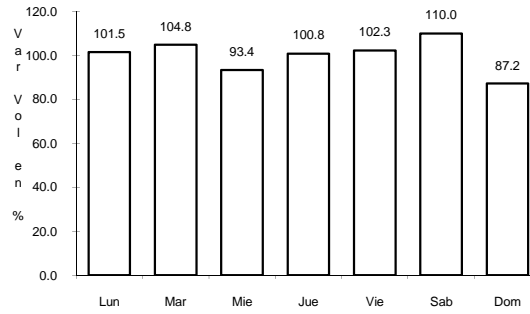


13 CARR: SAN MARTIN TEXMELUCAN - TLAXCALA



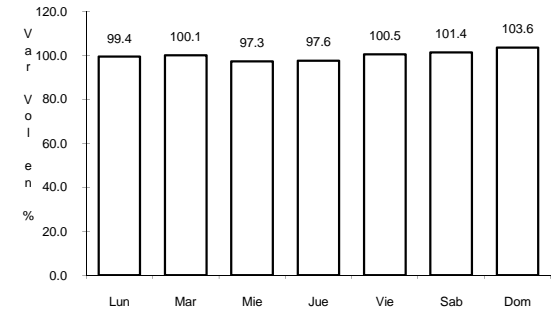
Km: 0.00 Tipo: 3 Sent: 0

CLAVE: 00158



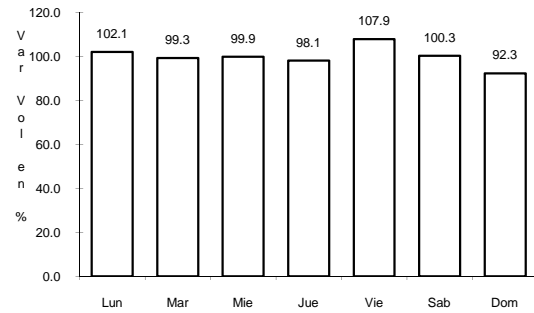
Km: 7.21 Tipo: 3 Sent: 0

RUTA: MEX-117



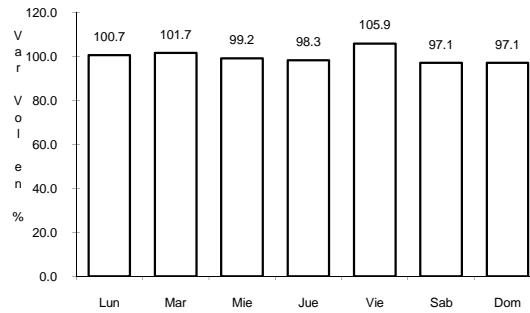
Km: 24.81 Tipo: 1 Sent: 0

14 CARR: TLAXCALA - BELEM



Km: 3.91 Tipo: 1 Sent: 1

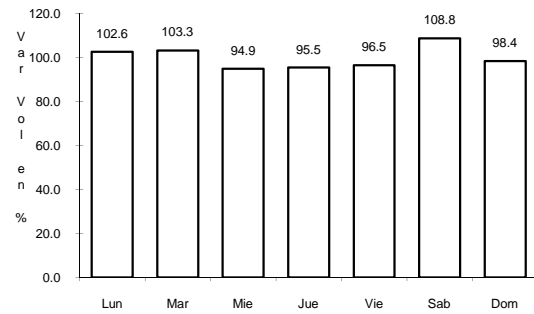
CLAVE: 29389



Km: 3.91 Tipo: 1 Sent: 2

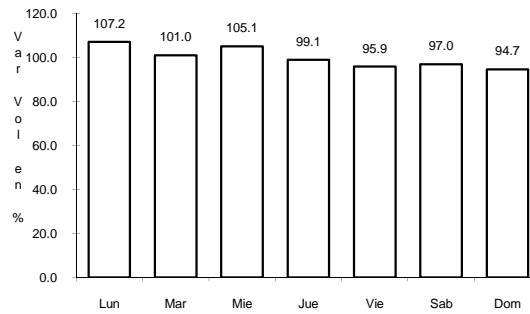
RUTA: MEX

15 CARR: VILLA ALTA - T. C. (PUEBLA - TLAXCALA)



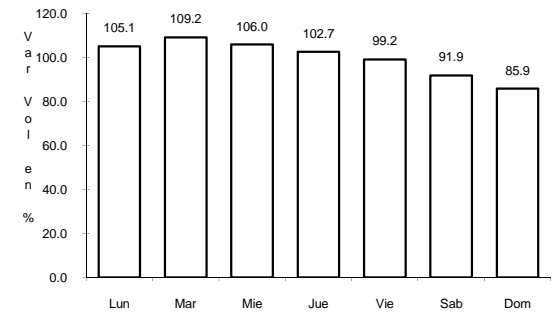
Km: 0.00 Tipo: 3 Sent: 0

CLAVE: 29566



Km: 10.50 Tipo: 3 Sent: 0

RUTA: MEX

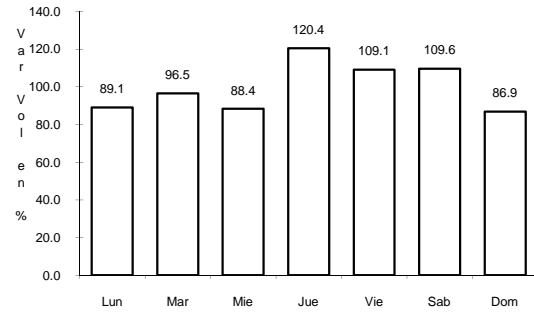


Km: 22.05 Tipo: 1 Sent: 0

16 CARR: AMOZOC - PEROTE (CUOTA)

CLAVE:

RUTA: MEX-140D



Km: 0.00

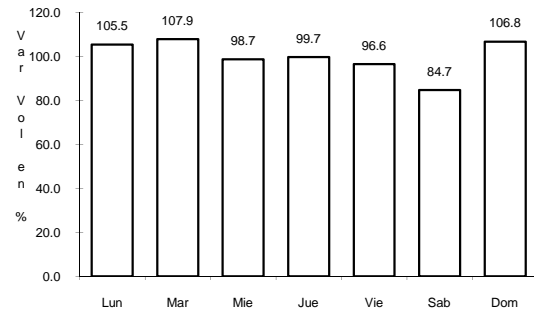
Tipo: 3

Sent: 0

17 CARR: MEXICO - PUEBLA (CUOTA)

CLAVE: 00450

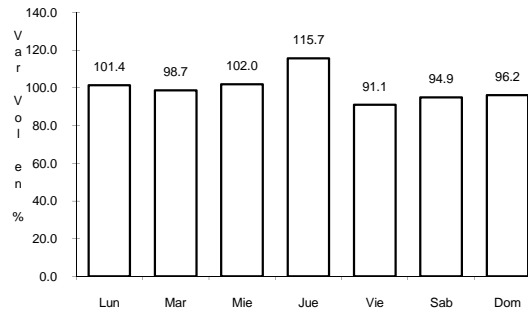
RUTA: MEX-150D



Km: 20.00

Tipo: 3

Sent: 1



Km: 20.00

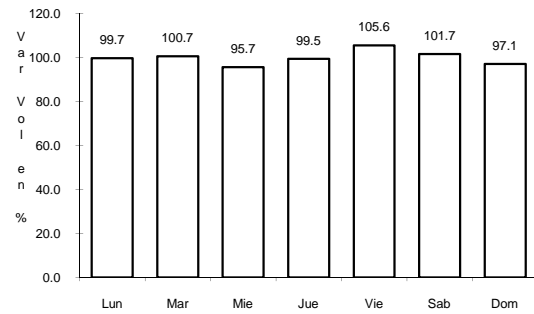
Tipo: 3

Sent: 2

18 CARR: SAN MARTIN TEXMELUCAN - OCOTOXCO (CUOTA)

CLAVE: 00212

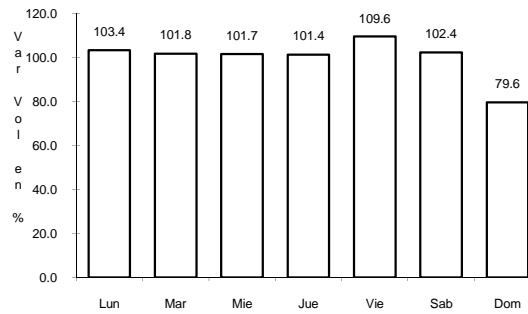
RUTA: MEX-117D



Km: 1.80

Tipo: 1

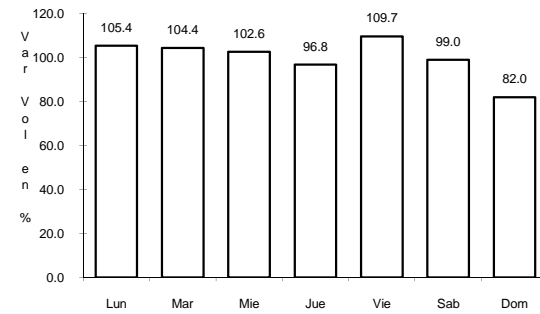
Sent: 0



Km: 35.20

Tipo: 1

Sent: 1



Km: 35.20

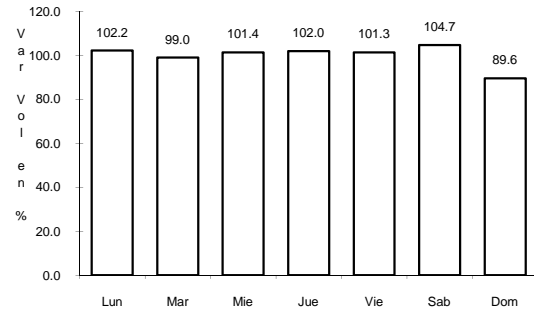
Tipo: 1

Sent: 2

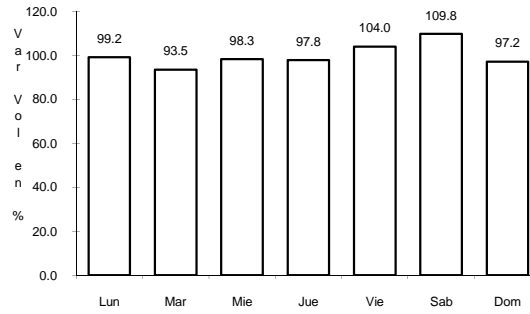
19 CARR: RAMAL A ALTZAYANCA DE HIDALGO

CLAVE: 29562

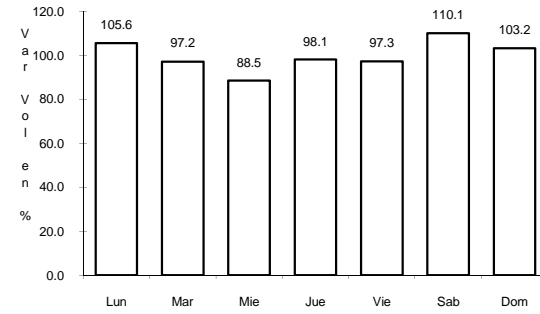
RUTA: TLAX



Km: 0.00 Tipo: 3 Sent: 0



Km: 6.50 Tipo: 3 Sent: 0

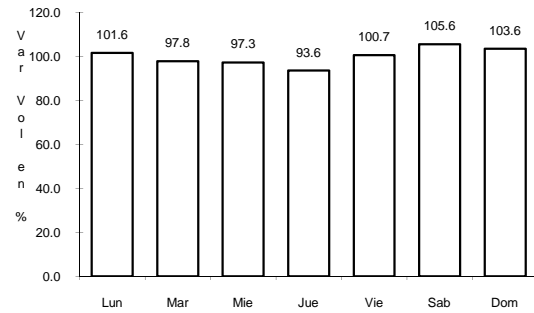


Km: 15.00 Tipo: 1 Sent: 0

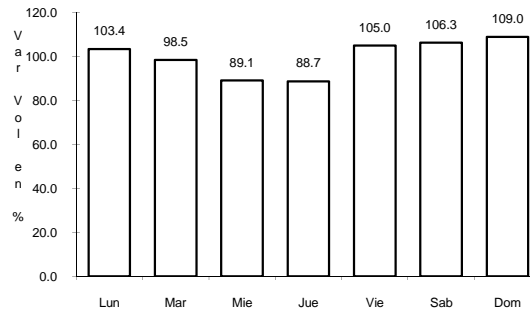
20 CARR: RAMAL A SAN PEDRO ECATEPEC

CLAVE: 29561

RUTA: TLAX



Km: 0.00 Tipo: 3 Sent: 0

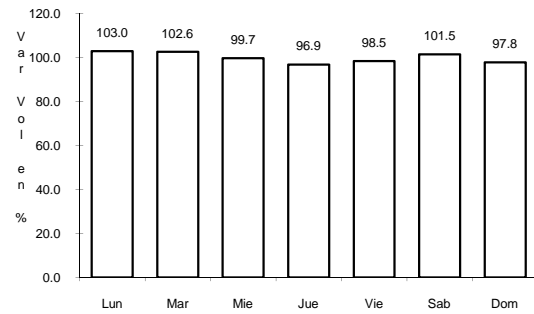


Km: 4.60 Tipo: 1 Sent: 0

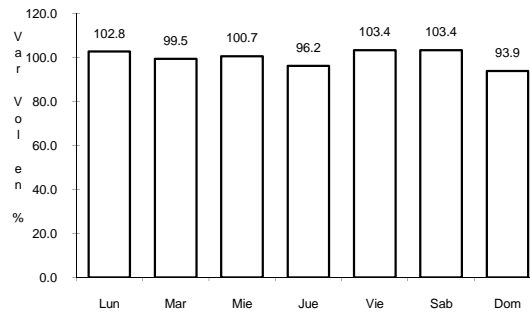
21 CARR: RAMAL A XALOSTOC

CLAVE: 29563

RUTA: TLAX

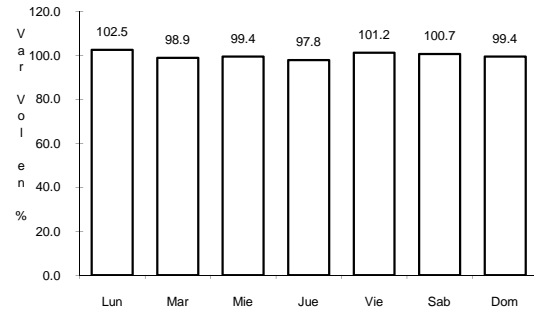


Km: 0.00 Tipo: 3 Sent: 0



Km: 2.50 Tipo: 1 Sent: 0

22 CARR: XALOSTOC - TERRENATE

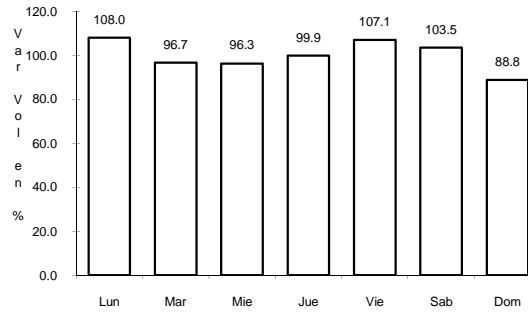


Km: 0.00

Tipo: 3

Sent: 0

CLAVE: 29390

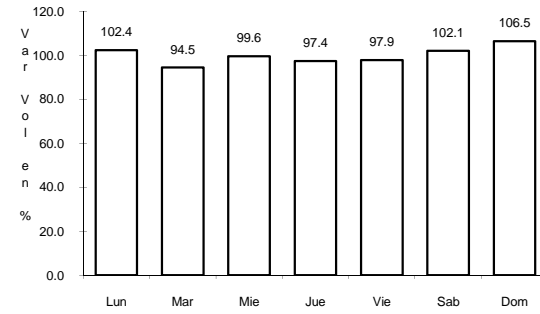


Km: 7.10

Tipo: 3

Sent: 0

RUTA: TLAX

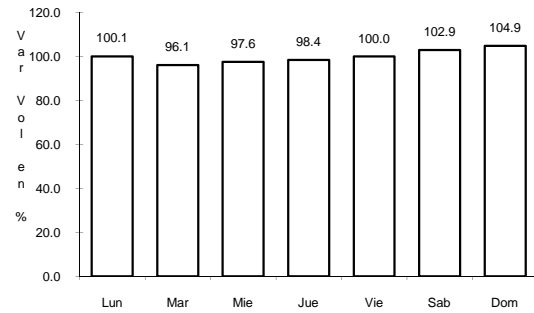


Km: 17.50

Tipo: 1

Sent: 0

23 CARR: ACOCOTLA - VICENTE GUERRERO

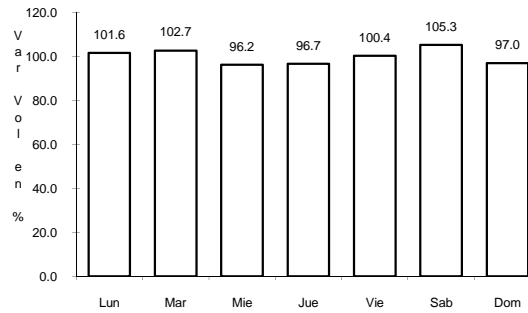


Km: 0.00

Tipo: 3

Sent: 0

CLAVE: 29560



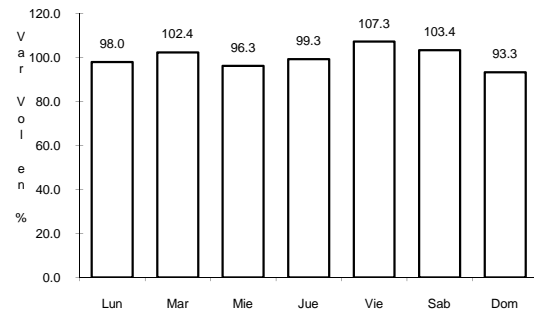
Km: 37.70

Tipo: 1

Sent: 0

RUTA: MEX-TLAX

24 CARR: APIZACO - EMILIANO ZAPATA

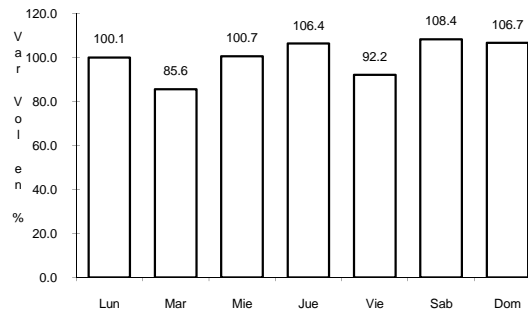


Km: 0.00

Tipo: 3

Sent: 0

CLAVE: 29033

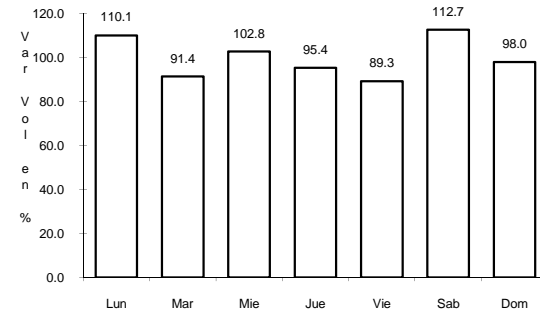


Km: 16.00

Tipo: 1

Sent: 0

RUTA: TLAX-MEX

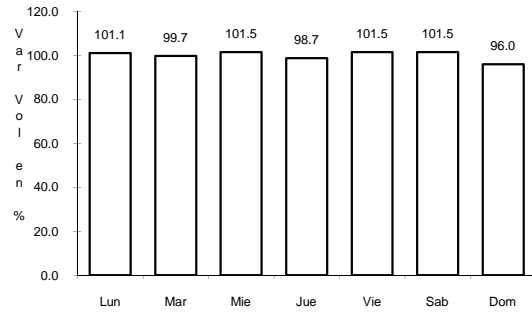


Km: 37.00

Tipo: 1

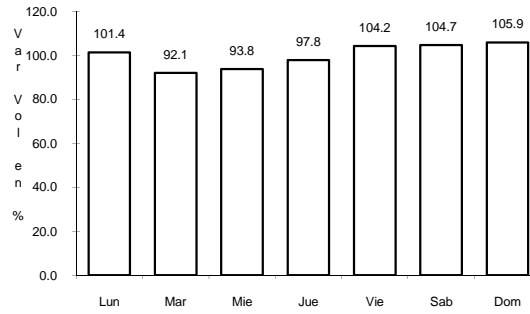
Sent: 0

25 CARR: CALPULALPAN - EL OCOTE



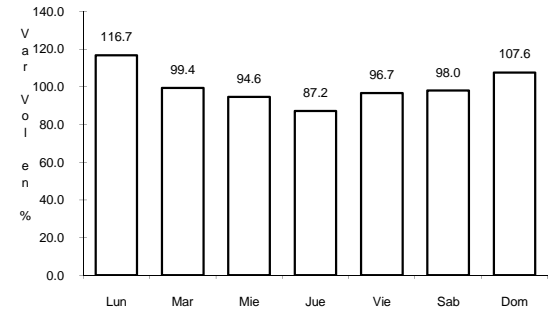
Km: 0.00                      Tipo: 3                      Sent: 0

CLAVE: 00054



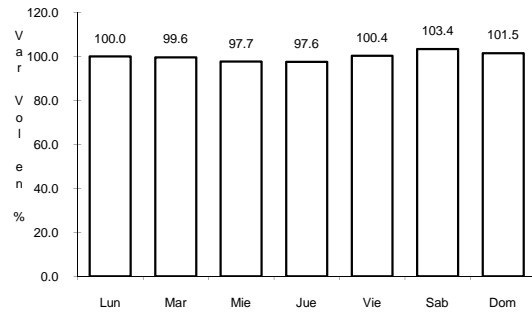
Km: 34.92                      Tipo: 3                      Sent: 0

RUTA: MEX-HGO



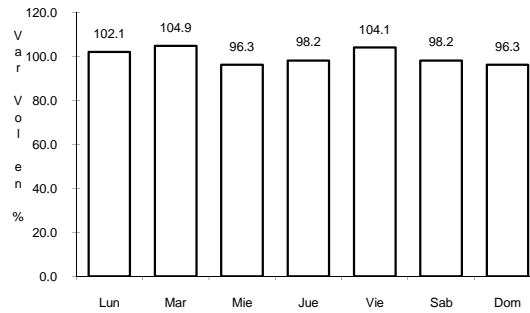
Km: 70.44                      Tipo: 1                      Sent: 0

26 CARR: CALPULALPAN - NANACAMILPA



Km: 0.00                      Tipo: 3                      Sent: 0

CLAVE: 29034



Km: 15.50                      Tipo: 1                      Sent: 0

RUTA: TLAX-MEX