

SONORA

Núm. INDICE	CARRETERA	RUTA
---- FEDERAL LIBRE ----		
1	HERMOSILLO - YECORA	MEX-016
2	IMURIS - AGUA PRIETA	MEX-002
3	JANOS - AGUA PRIETA	MEX-002
4	LA JUNTA - YECORA	MEX-016
5	MOCTEZUMA - AGUA PRIETA	MEX-017
6	RAMAL A NACO	MEX
7	RAMAL A PUERTA DE MEXICO	MEX
8	SANTA ANA - SONOYTA	MEX-002
9	SONOITA - MEXICALI	MEX-002
10	SONOITA - PUERTO PEÑASCO	MEX-008
---- FEDERAL CUOTA ----		
11	LIBRAMIENTO DE EMPALME - GUAYMAS (CUOTA)	MEX-015D
12	LIBRAMIENTO DE NOGALES (CUOTA)	MEX-D
13	LOS MOCHIS - CD. OBREGON (CUOTA)	MEX-015D
---- ESTATAL LIBRE ----		
14	ALTAR - SARIC	SON-064
15	CABORCA - EL DESEMBOQUE	SON-037
16	CALLE 36 NORTE - PUERTO DE LA LIBERTAD	SON-029
17	ESPERANZA - PRESA ALVARO OBREGON	SON-011
18	HERMOSILLO - BAHIA KINO	SON
19	HERMOSILLO - SAHUARIPA	SON-020
20	HORNOS - SAN NICOLAS	SON-017
21	HUATABAMPO - BACABACHE	SON-019
22	LA ALAMEDA - EL SAHUARO	SON-038
23	MAZOCAHUI - CANANEA	SON-118
24	NAVOJOA - ALAMOS	SON-013
25	NAVOJOA - YAVAROS	SON-056
26	NOGALES - SAN ANTONIO	SON
27	RAMAL A AEROPUERTO DE GUAYMAS	SON
28	SAN LUIS RIO COLORADO - GOLFO DE SANTA CLARA	SON-040
29	SONOITA - PITIQUITO	SON
---- COMBINADA ----		
30	CD. OBREGON - HERMOSILLO	MEX-015D-015
31	HERMOSILLO - NOGALES	MEX-015D-015
32	T. C. (HERMOSILLO - NOGALES) - HUASABAS	MEX-SON

26 SONORA

ESTADOS UNIDOS DE AMERICA



- Red Federal Libre
- Red Federal Cuota
- Red Estatal Libre
- Red Estatal Cuota
- Red Combinada

Secretaría de Comunicaciones y Transportes

MAPA INDICE
 15 Num. Indice
 2009

SONORA

1 CARR : HERMOSILLO - YECORA

CLAVE: 26251

RUTA : MEX-016

AÑO : 2008

L U G A R	E S T A C I O N				C L A S I F I C A C I O N V E H I C U L A R E N P O R C I E N T O .												
	KM	TE	SC	TDPA	A	B	C2	C3	T3S2	T3S3	T3S2R4	OTROS	A	B	C	K'	D
T. C. CD. OBREGON - HERMOSILLO	0.00																
T. IZQ. SAHUARIPA	4.00	3	1	1621	71.1	8.1	3.8	1.2	4.1	7.7	2.7	1.3	71.1	8.1	20.8	0.134	0.500
T. IZQ. SAHUARIPA	4.00	3	2	1620	72.1	7.8	3.7	1.2	5.3	4.7	2.5	2.7	72.1	7.8	20.1	0.127	0.500
LA COLORADA	47.00	3	0	917	81.2	5.4	2.3	1.2	4.9	3.1	1.2	0.7	81.2	5.4	13.4	0.116	0.511
TECORIPA	138.00	3	0	462	82.9	6.2	3.5	0.8	4.5	1.6	0.1	0.4	82.9	6.2	10.9	0.104	0.504
YECORA	250.60																

2 CARR : IMURIS - AGUA PRIETA

CLAVE: 26079

RUTA : MEX-002

AÑO : 2008

L U G A R	E S T A C I O N				C L A S I F I C A C I O N V E H I C U L A R E N P O R C I E N T O .												
	KM	TE	SC	TDPA	A	B	C2	C3	T3S2	T3S3	T3S2R4	OTROS	A	B	C	K'	D
IMURIS	0.00	3	0	4060	68.4	7.9	7.2	5.1	5.6	3.1	0.7	2.0	68.4	7.9	23.7	0.086	0.510
T. DER. CANANEA	80.93	1	0	5435	57.1	9.7	5.8	4.7	12.5	4.0	4.4	1.8	57.1	9.7	33.2	0.083	0.501
T. DER. CANANEA	80.93	3	0	6400	68.7	7.2	7.3	5.0	5.9	3.2	0.6	2.1	68.7	7.2	24.1	0.074	0.502
AGUA PRIETA	164.70	1	0	4804	67.9	7.3	8.0	5.0	5.8	3.3	0.6	2.1	67.9	7.3	24.8	0.080	0.502

3 CARR : JANOS - AGUA PRIETA

CLAVE: 00220

RUTA : MEX-002

AÑO : 2008

L U G A R	E S T A C I O N				C L A S I F I C A C I O N V E H I C U L A R E N P O R C I E N T O .												
	KM	TE	SC	TDPA	A	B	C2	C3	T3S2	T3S3	T3S2R4	OTROS	A	B	C	K'	D
T. C. CD. JUAREZ - JANOS	0.00	3	0	4161	61.4	3.8	2.8	3.2	15.1	3.5	8.6	1.6	61.4	3.8	34.8	0.087	0.504
LOS MIMBRES	56.00	3	0	1857	76.4	6.3	1.0	3.9	3.5	5.0	1.3	2.6	76.4	6.3	17.3	0.075	0.503
LIM. EDOS. TERM. CHIH. PPIA. SON.	82.40																
AGUA PRIETA	156.40	1	0	2184	86.4	4.2	5.4	2.4	0.8	0.4	0.1	0.3	86.4	4.2	9.4	0.135	0.511

4 CARR : LA JUNTA - YECORA

CLAVE: 00065

RUTA : MEX-016

AÑO : 2008

L U G A R	E S T A C I O N				C L A S I F I C A C I O N V E H I C U L A R E N P O R C I E N T O .												
	KM	TE	SC	TDPA	A	B	C2	C3	T3S2	T3S3	T3S2R4	OTROS	A	B	C	K'	D
T. C. CHIHUAHUA - MADERA	0.00	3	0	3012	85.0	3.4	3.9	1.5	3.6	0.8	0.7	1.1	85.0	3.4	11.6	0.115	0.505
T. IZQ. SAN JUANITO	16.00	1	0	1937	81.1	4.7	2.5	2.8	4.7	1.8	1.1	1.3	81.1	4.7	14.2	0.089	0.511
T. IZQ. SAN JUANITO	16.00	3	0	1178	82.3	5.3	3.6	1.7	4.5	1.6	0.5	0.5	82.3	5.3	12.4	0.090	0.505
TONACHIC	70.00	3	0	975	80.3	5.6	4.8	2.4	4.0	1.8	0.4	0.7	80.3	5.6	14.1	0.122	0.509
LIM. EDOS. TERM. CHIH. PPIA. SON.	190.00																
YECORA	253.00	1	0	1704	81.9	4.7	3.6	2.9	5.3	0.8	0.4	0.4	81.9	4.7	13.4	0.080	0.506

SONORA

5 CARR : MOCTEZUMA - AGUA PRIETA

CLAVE: 26027

RUTA : MEX-017

AÑO : 2008

L U G A R	E S T A C I O N				C L A S I F I C A C I O N V E H I C U L A R E N P O R C I E N T O .												
	KM	TE	SC	TDPA	A	B	C2	C3	T3S2	T3S3	T3S2R4	OTROS	A	B	C	K'	D
MOCTEZUMA	0.00	3	0	1490	82.1	7.7	2.6	1.4	2.3	1.6	1.0	1.3	82.1	7.7	10.2	0.123	0.503
NACUZARI DE GARCIA	81.00	3	0	1734	75.5	5.2	5.8	1.6	4.4	3.1	3.2	1.2	75.5	5.2	19.3	0.104	0.512
TURUCACHI	111.00	1	0	3175	80.7	5.4	4.6	1.9	3.0	1.7	1.8	0.9	80.7	5.4	13.9	0.109	0.509
T. C. IMURIS - AGUA PRIETA	197.60	1	0	3758	78.6	8.5	2.0	2.4	4.0	1.2	2.3	1.0	78.6	8.5	12.9	0.139	0.508

6 CARR : RAMAL A NACO

CLAVE: 26579

RUTA : MEX

AÑO : 2008

L U G A R	E S T A C I O N				C L A S I F I C A C I O N V E H I C U L A R E N P O R C I E N T O .												
	KM	TE	SC	TDPA	A	B	C2	C3	T3S2	T3S3	T3S2R4	OTROS	A	B	C	K'	D
T. C. IMURIS - AGUA PRIETA	0.00	3	0	1701	84.9	7.1	2.9	2.0	1.7	0.3	0.4	0.7	84.9	7.1	8.0	0.062	0.503
NACO	15.00																

7 CARR : RAMAL A PUERTA DE MEXICO

CLAVE: 26577

RUTA : MEX

AÑO : 2008

L U G A R	E S T A C I O N				C L A S I F I C A C I O N V E H I C U L A R E N P O R C I E N T O .												
	KM	TE	SC	TDPA	A	B	C2	C3	T3S2	T3S3	T3S2R4	OTROS	A	B	C	K'	D
T. C. SONOYTA - MEXICALI	0.00	3	0	8115	91.0	4.6	0.5	0.8	0.7	0.5	0.3	1.6	91.0	4.6	4.4	0.078	0.502
FRONTERA E.U.A	3.15																

8 CARR : SANTA ANA - SONOYTA

CLAVE: 26080

RUTA : MEX-002

AÑO : 2008

L U G A R	E S T A C I O N				C L A S I F I C A C I O N V E H I C U L A R E N P O R C I E N T O .												
	KM	TE	SC	TDPA	A	B	C2	C3	T3S2	T3S3	T3S2R4	OTROS	A	B	C	K'	D
SANTA ANA	0.00	3	0	10447	63.0	4.8	3.7	3.7	12.9	3.0	6.7	2.2	63.0	4.8	32.2	0.069	0.500
ALTAR	73.00	1	0	7425	70.1	4.8	2.8	3.1	11.2	2.3	4.8	0.9	70.1	4.8	25.1	0.072	0.506
ALTAR	73.00	3	0	9169	75.0	8.0	5.4	4.5	4.6	0.5	0.3	1.7	75.0	8.0	17.0	0.080	0.503
T. IZQ. ESTACION PITIQUITO	94.28	1	0	9316	74.9	8.1	5.7	4.5	4.5	0.4	0.3	1.6	74.9	8.1	17.0	0.080	0.501
CABORCA	103.80	1	0	11025	76.4	4.6	2.8	3.1	7.8	1.8	2.8	0.7	76.4	4.6	19.0	0.071	0.501
COZON	180.30	1	0	5323	79.3	4.1	3.5	2.5	2.7	2.0	3.6	2.3	79.3	4.1	16.6	0.087	0.502
SONOYTA	251.10	1	0	5183	72.2	4.1	2.6	1.8	9.1	4.3	3.6	2.3	72.2	4.1	23.7	0.085	0.504

SONORA

9 CARR : SONOITA - MEXICALI

CLAVE: 00081

RUTA : MEX-002

AÑO : 2008

L U G A R	E S T A C I O N				C L A S I F I C A C I O N V E H I C U L A R E N P O R C I E N T O .												
	KM	TE	SC	TDPA	A	B	C2	C3	T3S2	T3S3	T3S2R4	OTROS	A	B	C	K'	D
SONOITA	0.00	3	0	8766	75.0	8.0	6.4	3.5	4.5	0.8	0.2	1.6	75.0	8.0	17.0	0.073	0.503
LOS VIDRIOS	58.75	3	0	6557	75.0	7.6	3.6	1.7	2.3	5.0	2.6	2.2	75.0	7.6	17.4	0.085	0.500
SAN LUIS RIO COLORADO	200.00	1	0	7476	79.4	4.4	2.5	1.5	2.2	4.3	3.6	2.1	79.4	4.4	16.2	0.087	0.502
SAN LUIS RIO COLORADO	200.00	3	1	7413	79.1	4.0	1.8	2.5	5.8	2.0	3.1	1.7	79.1	4.0	16.9	0.074	0.503
SAN LUIS RIO COLORADO	200.00	3	2	7319	80.3	3.8	1.6	2.5	5.1	2.1	3.2	1.4	80.3	3.8	15.9	0.085	0.503
LIM. EDOS. TERM. SON. PPIA. B.C.	203.70																
X. C. MEXICALI - ALGODONES	206.80	1	1	9241	81.8	4.9	2.2	0.4	1.9	0.9	1.1	6.8	81.8	4.9	13.3	0.069	0.501
X. C. MEXICALI - ALGODONES	206.80	1	2	9261	81.6	5.0	2.4	0.4	6.0	1.8	1.8	1.0	81.6	5.0	13.4	0.069	0.501
X. C. MEXICALI - ALGODONES	206.80	3	1	7715	78.2	7.0	1.1	2.0	3.8	4.1	2.0	1.8	78.2	7.0	14.8	0.064	0.505
X. C. MEXICALI - ALGODONES	206.80	3	2	7560	80.6	7.1	1.2	2.0	4.0	2.2	2.2	0.7	80.6	7.1	12.3	0.082	0.505
T. IZQ. EJIDO HERMOSILLO	214.80	3	1	6582	79.5	6.2	3.5	2.6	2.9	3.0	1.1	1.2	79.5	6.2	14.3	0.066	0.501
T. IZQ. EJIDO HERMOSILLO	214.80	3	2	6608	78.3	6.4	3.6	2.8	3.2	3.3	0.9	1.5	78.3	6.4	15.3	0.062	0.501
EJIDO MONTERREY	228.60	3	1	8620	80.8	5.9	3.0	2.1	3.5	2.2	1.2	1.3	80.8	5.9	13.3	0.061	0.501
EJIDO MONTERREY	228.60	3	2	8580	81.4	5.7	2.9	2.0	3.5	2.1	1.3	1.1	81.4	5.7	12.9	0.080	0.501
X. C. MEXICALI - ALGODONES	256.50	1	1	10716	76.3	5.8	3.9	3.1	4.9	2.1	2.0	1.9	76.3	5.8	17.9	0.070	0.502
X. C. MEXICALI - ALGODONES	256.50	1	2	10819	77.1	5.9	4.0	3.1	4.0	2.7	1.7	1.5	77.1	5.9	17.0	0.066	0.502
T. C. MEXICALI - SAN FELIPE	265.10																

10 CARR : SONOITA - PUERTO PEÑASCO

CLAVE: 26232

RUTA : MEX-008

AÑO : 2008

L U G A R	E S T A C I O N				C L A S I F I C A C I O N V E H I C U L A R E N P O R C I E N T O .												
	KM	TE	SC	TDPA	A	B	C2	C3	T3S2	T3S3	T3S2R4	OTROS	A	B	C	K'	D
SONOITA	0.00	3	0	3492	91.1	2.7	1.4	1.1	1.6	0.6	0.6	0.9	91.1	2.7	6.2	0.108	0.506
PUERTO PEÑASCO	100.40																

11 CARR : LIBRAMIENTO DE EMPALME - GUAYMAS (CUOTA)

CLAVE: 26256

RUTA : MEX-015D

AÑO : 2008

L U G A R	E S T A C I O N				C L A S I F I C A C I O N V E H I C U L A R E N P O R C I E N T O .												
	KM	TE	SC	TDPA	A	B	C2	C3	T3S2	T3S3	T3S2R4	OTROS	A	B	C	K'	D
T. C. CD. OBREGON - HERMOSILLO	0.00	3	1	2666	62.6	6.3	3.0	3.4	16.4	2.4	4.8	1.1	62.6	6.3	31.1	0.090	0.515
T. C. CD. OBREGON - HERMOSILLO	0.00	3	2	2830	62.9	6.9	2.9	3.1	15.8	2.1	5.4	0.9	62.9	6.9	30.2	0.084	0.515
T. C. CD. OBREGON - HERMOSILLO	21.50	1	1	2660	61.9	6.7	3.2	3.7	16.1	2.3	5.1	1.0	61.9	6.7	31.4	0.104	0.502
T. C. CD. OBREGON - HERMOSILLO	21.50	1	2	2683	62.0	7.0	3.1	3.4	15.5	2.5	5.5	1.0	62.0	7.0	31.0	0.103	0.502

SONORA

12 CARR : LIBRAMIENTO DE NOGALES (CUOTA)

CLAVE: 26100

RUTA : MEX-D

AÑO : 2008

L U G A R	E S T A C I O N				C L A S I F I C A C I O N V E H I C U L A R E N P O R C I E N T O .												
	KM	TE	SC	TDPA	A	B	C2	C3	T3S2	T3S3	T3S2R4	OTROS	A	B	C	K'	D
T. C. HERMOSILLO - NOGALES	0.00	3	1	2011	31.3	0.2	4.0	3.6	59.3	0.8	0.4	0.4	31.3	0.2	68.5	0.120	0.505
T. C. HERMOSILLO - NOGALES	0.00	3	2	2052	30.4	0.5	3.4	3.2	60.7	0.7	0.5	0.6	30.4	0.5	69.1	0.148	0.505
CASETA DE COBRO NOGALES	1.80	2	0	5402	33.6	0.0	4.5	4.3	57.6	0.0	0.0	0.0	33.6	0.0	66.4		
FRONTERA E.U.A.	6.73	1	1	1595	31.3	0.1	4.1	3.7	59.4	0.7	0.3	0.4	31.3	0.1	68.6	0.105	0.505
FRONTERA E.U.A.	6.73	1	2	1808	30.6	0.4	3.6	3.3	60.8	0.6	0.3	0.4	30.6	0.4	69.0	0.098	0.505

13 CARR : LOS MOCHIS - CD. OBREGON (CUOTA)

CLAVE: 00452

RUTA : MEX-015D

AÑO : 2008

L U G A R	E S T A C I O N				C L A S I F I C A C I O N V E H I C U L A R E N P O R C I E N T O .												
	KM	TE	SC	TDPA	A	B	C2	C3	T3S2	T3S3	T3S2R4	OTROS	A	B	C	K'	D
T. C. TOPOLOBAMPO - CHOIX	0.00	3	1	7075	74.5	9.9	2.8	1.9	5.3	2.9	2.1	0.6	74.5	9.9	15.6	0.069	0.505
T. C. TOPOLOBAMPO - CHOIX	0.00	3	2	7213	75.0	9.8	2.6	1.9	5.8	2.8	1.4	0.7	75.0	9.8	15.2	0.069	0.505
T. IZQ. AHOME	17.13	3	1	4124	64.5	6.7	1.6	1.5	11.4	4.4	8.0	1.9	64.5	6.7	28.8	0.085	0.501
T. IZQ. AHOME	17.13	3	2	4112	61.3	6.1	1.7	1.6	12.5	5.3	8.5	3.0	61.3	6.1	32.6	0.079	0.501
T. IZQ. COHUIBAMPO	19.00	1	1	6988	63.7	6.6	3.7	2.8	6.7	2.9	8.3	5.3	63.7	6.6	29.7	0.066	0.502
T. IZQ. COHUIBAMPO	19.00	1	2	7044	61.4	6.7	3.4	2.9	7.8	2.8	9.1	5.9	61.4	6.7	31.9	0.082	0.502
T. IZQ. COHUIBAMPO	19.00	3	1	7495	74.8	6.2	1.5	2.7	8.2	2.2	3.4	1.0	74.8	6.2	19.0	0.100	0.507
T. IZQ. COHUIBAMPO	19.00	3	2	7291	73.6	6.7	1.6	2.9	9.3	2.1	2.8	1.0	73.6	6.7	19.7	0.120	0.507
POBLADO CHICO	50.00	3	1	5090	64.6	7.4	2.1	2.8	9.9	3.6	5.8	3.8	64.6	7.4	28.0	0.063	0.504
POBLADO CHICO	50.00	3	2	5018	65.4	7.4	2.2	2.5	11.3	3.6	4.7	2.9	65.4	7.4	27.2	0.065	0.504
T. DER. EL FUERTE	54.80	1	1	7034	61.9	8.4	1.5	1.8	10.6	3.5	7.5	4.8	61.9	8.4	29.7	0.080	0.500
T. DER. EL FUERTE	54.80	1	2	7586	63.0	8.7	1.3	2.2	6.5	3.5	10.0	4.8	63.0	8.7	28.3	0.090	0.500
T. DER. EL FUERTE	54.80	3	1	5023	74.2	6.7	3.0	2.6	5.9	2.3	4.2	1.1	74.2	6.7	19.1	0.109	0.504
T. DER. EL FUERTE	54.80	3	2	5108	73.3	6.5	3.4	2.3	7.2	2.2	3.9	1.2	73.3	6.5	20.2	0.088	0.504
CASETA DE COBRO PUENTE SAN MIGUEL	68.00	2	0	10116	63.0	8.1	3.7	5.7	13.4	2.5	3.0	0.6	63.0	8.1	28.9		
LIM. EDOS. TERM. SIN. PPIA. SON.	68.84																
CASETA DE COBRO ESTACION DON (LA JAULA)	70.80	2	0	4266	58.7	10.9	3.1	3.0	14.4	1.8	6.3	1.8	58.7	10.9	30.4		
T. IZQ. HUATABAMPO	128.00	1	1	2423	57.5	11.9	3.6	3.5	13.4	1.9	6.7	1.5	57.5	11.9	30.6	0.078	0.507
T. IZQ. HUATABAMPO	128.00	1	2	2491	57.1	13.6	3.1	3.4	14.9	1.6	5.4	0.9	57.1	13.6	29.3	0.084	0.507
NAVOJOA	155.00	1	1	5068	57.7	12.5	3.0	2.8	14.5	1.6	6.2	1.7	57.7	12.5	29.8	0.067	0.501
NAVOJOA	155.00	1	2	5045	57.8	11.8	3.3	3.1	15.0	1.6	6.3	1.1	57.8	11.8	30.4	0.078	0.501
NAVOJOA	155.00	3	1	5168	62.4	10.9	3.4	2.4	12.1	2.1	5.6	1.1	62.4	10.9	26.7	0.123	0.510
NAVOJOA	155.00	3	2	5388	62.9	11.0	3.2	2.6	11.4	2.1	6.1	0.7	62.9	11.0	26.1	0.115	0.510
T. IZQ. VILLA JUAREZ	167.30	3	1	4347	61.6	11.6	3.8	2.4	12.0	1.5	5.9	1.2	61.6	11.6	26.8	0.068	0.512
T. IZQ. VILLA JUAREZ	167.30	3	2	4141	63.2	10.5	3.1	2.7	11.9	1.6	5.8	1.2	63.2	10.5	26.3	0.069	0.512

SONORA

17 CARR : ESPERANZA - PRESA ALVARO OBREGON

CLAVE: 26242

RUTA : SON-011

AÑO : 2008

L U G A R	E S T A C I O N				C L A S I F I C A C I O N V E H I C U L A R E N P O R C I E N T O .												
	KM	TE	SC	TDPA	A	B	C2	C3	T3S2	T3S3	T3S2R4	OTROS	A	B	C	K'	D
ESPERANZA	0.00	3	0	4368	77.9	7.8	2.4	1.8	5.1	1.0	2.3	1.7	77.9	7.8	14.3	0.097	0.502
T. DER. LOS HORNOS	17.00	3	0	1258	91.6	2.9	0.6	0.4	1.9	0.5	1.0	1.1	91.6	2.9	5.5	0.120	0.515
PRESA ALVARO OBREGON	32.00																

18 CARR : HERMOSILLO - BAHIA KINO

CLAVE: 26109

RUTA : SON

AÑO : 2008

L U G A R	E S T A C I O N				C L A S I F I C A C I O N V E H I C U L A R E N P O R C I E N T O .												
	KM	TE	SC	TDPA	A	B	C2	C3	T3S2	T3S3	T3S2R4	OTROS	A	B	C	K'	D
HERMOSILLO	0.00	3	1	15719	61.2	6.4	4.3	4.0	8.4	4.4	9.8	1.5	61.2	6.4	32.4	0.091	0.502
HERMOSILLO	0.00	3	2	15837	63.1	6.7	4.6	3.8	8.0	4.0	8.2	1.6	63.1	6.7	30.2	0.079	0.502
T. DER. AEROPUERTO	11.00	1	1	8230	81.3	6.0	1.7	2.3	4.2	0.9	1.1	2.5	81.3	6.0	12.7	0.098	0.500
T. DER. AEROPUERTO	11.00	1	2	8228	77.8	6.2	1.7	2.7	5.0	1.8	1.5	3.3	77.8	6.2	16.0	0.091	0.500
T. DER. AEROPUERTO	11.00	3	1	5014	85.3	3.3	1.7	3.1	3.2	0.9	0.6	1.9	85.3	3.3	11.4	0.108	0.501
T. DER. AEROPUERTO	11.00	3	2	5028	82.3	3.3	1.9	3.3	3.7	1.2	2.1	2.2	82.3	3.3	14.4	0.108	0.501
T. IZQ. CALLE 4 SUR	53.00	3	0	4433	87.3	3.4	2.0	3.1	2.0	0.9	0.4	0.9	87.3	3.4	9.3	0.094	0.511
EL TRIUNFO	55.50	1	0	4450	83.7	2.5	3.5	3.0	4.4	0.8	0.8	1.3	83.7	2.5	13.8	0.092	0.502
T. DER. CALLE 36	84.40	1	0	2252	78.5	4.7	3.7	2.6	2.7	1.8	1.4	4.6	78.5	4.7	16.8	0.091	0.504
T. DER. CALLE 36	84.40	3	0	3236	83.3	4.9	4.2	3.3	1.8	0.6	0.4	1.5	83.3	4.9	11.8	0.104	0.508
BAHIA KINO	106.50	1	0	1890	89.1	5.7	2.6	0.8	0.6	0.2	0.1	0.9	89.1	5.7	5.2	0.113	0.503

19 CARR : HERMOSILLO - SAHUARIPA

CLAVE: 26230

RUTA : SON-020

AÑO : 2008

L U G A R	E S T A C I O N				C L A S I F I C A C I O N V E H I C U L A R E N P O R C I E N T O .												
	KM	TE	SC	TDPA	A	B	C2	C3	T3S2	T3S3	T3S2R4	OTROS	A	B	C	K'	D
T. C. LIBRAMIENTO DE HERMOSILLO	0.00	3	0	12652	77.0	7.9	5.0	2.5	3.7	2.2	0.9	0.8	77.0	7.9	15.1	0.094	0.501
MAZATAN	88.00	1	0	850	89.6	6.6	1.1	1.9	0.3	0.0	0.1	0.4	89.6	6.6	3.8	0.144	0.503
MAZATAN	88.00	3	0	706	87.7	7.6	3.3	1.3	0.1	0.0	0.0	0.0	87.7	7.6	4.7	0.125	0.514
SAHUARIPA	199.00																

20 CARR : HORNOS - SAN NICOLAS

CLAVE: 26243

RUTA : SON-017

AÑO : 2008

L U G A R	E S T A C I O N				C L A S I F I C A C I O N V E H I C U L A R E N P O R C I E N T O .												
	KM	TE	SC	TDPA	A	B	C2	C3	T3S2	T3S3	T3S2R4	OTROS	A	B	C	K'	D
HORNOS	0.00	3	0	741	81.7	5.0	2.8	2.1	3.6	1.7	1.1	2.0	81.7	5.0	13.3	0.105	0.551
ROSARIO	58.00	1	0	658	81.1	5.5	2.0	1.6	4.3	2.2	1.4	1.9	81.1	5.5	13.4	0.134	0.564

SONORA

20 CARR : HORNOS - SAN NICOLAS

CLAVE: 26243

RUTA : SON-017

AÑO : 2008

L U G A R	E S T A C I O N				C L A S I F I C A C I O N V E H I C U L A R E N P O R C I E N T O .												
	KM	TE	SC	TDPA	A	B	C2	C3	T3S2	T3S3	T3S2R4	OTROS	A	B	C	K'	D
SAN NICOLAS	137.20																

21 CARR : HUATABAMPO - BACABACHE

CLAVE: 26237

RUTA : SON-019

AÑO : 2008

L U G A R	E S T A C I O N				C L A S I F I C A C I O N V E H I C U L A R E N P O R C I E N T O .												
	KM	TE	SC	TDPA	A	B	C2	C3	T3S2	T3S3	T3S2R4	OTROS	A	B	C	K'	D
HUATABAMPO	0.00	3	0	4745	68.1	7.7	7.6	5.3	5.7	3.1	0.6	1.9	68.1	7.7	24.2	0.090	0.506
T. C. LOS MOCHIS - CD. OBREGON (CUOTA)	29.00	1	0	2136	85.1	9.2	2.9	2.3	0.4	0.1	0.0	0.0	85.1	9.2	5.7	0.123	0.502

22 CARR : LA ALAMEDA - EL SAHUARO

CLAVE: 26234

RUTA : SON-038

AÑO : 2008

L U G A R	E S T A C I O N				C L A S I F I C A C I O N V E H I C U L A R E N P O R C I E N T O .												
	KM	TE	SC	TDPA	A	B	C2	C3	T3S2	T3S3	T3S2R4	OTROS	A	B	C	K'	D
T. C. CABORCA - EL DESEMBOQUE	0.00	3	0	1078	81.4	4.7	2.7	2.8	4.6	2.3	0.9	0.6	81.4	4.7	13.9	0.096	0.507
ESTACION EL SAHUARO	47.00	1	0	1482	87.9	4.5	4.8	2.2	0.1	0.5	0.0	0.0	87.9	4.5	7.6	0.093	0.501

23 CARR : MAZOCAHUI - CANANEA

CLAVE: 26118

RUTA : SON-118

AÑO : 2008

L U G A R	E S T A C I O N				C L A S I F I C A C I O N V E H I C U L A R E N P O R C I E N T O .												
	KM	TE	SC	TDPA	A	B	C2	C3	T3S2	T3S3	T3S2R4	OTROS	A	B	C	K'	D
T. C. HERMOSILLO - MOCTEZUMA	0.00	3	0	859	90.5	5.5	1.9	1.1	0.5	0.1	0.1	0.3	90.5	5.5	4.0	0.098	0.510
BAVIACORA	15.20	3	0	1828	84.6	7.9	3.9	3.1	0.4	0.1	0.0	0.0	84.6	7.9	7.5	0.130	0.503
ARIZPE	98.00	1	0	930	87.8	4.4	5.4	1.1	0.7	0.3	0.1	0.2	87.8	4.4	7.8	0.124	0.502
T. C. IMURIS - AGUA PRIETA	204.00	1	0	1759	92.3	2.9	0.7	0.7	2.0	0.7	0.2	0.5	92.3	2.9	4.8	0.119	0.507

24 CARR : NAVOJOA - ALAMOS

CLAVE: 26240

RUTA : SON-013

AÑO : 2008

L U G A R	E S T A C I O N				C L A S I F I C A C I O N V E H I C U L A R E N P O R C I E N T O .												
	KM	TE	SC	TDPA	A	B	C2	C3	T3S2	T3S3	T3S2R4	OTROS	A	B	C	K'	D
NAVOJOA	0.00	3	0	3561	81.3	8.4	5.7	0.6	2.2	0.1	0.6	1.1	81.3	8.4	10.3	0.102	0.508
ALAMOS	52.80	1	0	1571	84.4	8.3	2.3	2.0	1.8	0.3	0.3	0.6	84.4	8.3	7.3	0.129	0.505

SONORA

25 CARR : NAVOJOA - YAVAROS

CLAVE: 26229

RUTA : SON-056

AÑO : 2008

L U G A R	E S T A C I O N				CLASIFICACION VEHICULAR EN PORCIENTO .												
	KM	TE	SC	TDPA	A	B	C2	C3	T3S2	T3S3	T3S2R4	OTROS	A	B	C	K'	D
NAVOJOA	0.00	3	0	6675	80.4	7.4	2.6	2.3	4.3	0.8	0.7	1.5	80.4	7.4	12.2	0.088	0.513
YAVAROS	55.00	1	0	1472	84.8	8.0	3.4	1.1	1.4	0.2	0.3	0.8	84.8	8.0	7.2	0.110	0.506

26 CARR : NOGALES - SAN ANTONIO

CLAVE: 26110

RUTA : SON

AÑO : 2008

L U G A R	E S T A C I O N				CLASIFICACION VEHICULAR EN PORCIENTO .												
	KM	TE	SC	TDPA	A	B	C2	C3	T3S2	T3S3	T3S2R4	OTROS	A	B	C	K'	D
NOGALES	0.00																
SAN ANTONIO	58.00	1	0	777	85.8	3.5	0.1	1.5	6.4	0.8	1.9	0.0	85.8	3.5	10.7	0.109	0.514

27 CARR : RAMAL A AEROPUERTO DE GUAYMAS

CLAVE: 26568

RUTA : SON

AÑO : 2008

L U G A R	E S T A C I O N				CLASIFICACION VEHICULAR EN PORCIENTO .												
	KM	TE	SC	TDPA	A	B	C2	C3	T3S2	T3S3	T3S2R4	OTROS	A	B	C	K'	D
T. C. CD. OBREGON - HERMOSILLO	0.00	3	0	1946	83.4	6.6	1.4	1.0	2.8	2.3	1.5	1.0	83.4	6.6	10.0	0.159	0.503
AEROPUERTO DE GUAYMAS	3.00																

28 CARR : SAN LUIS RIO COLORADO - GOLFO DE SANTA CLARA

CLAVE: 26226

RUTA : SON-040

AÑO : 2008

L U G A R	E S T A C I O N				CLASIFICACION VEHICULAR EN PORCIENTO .												
	KM	TE	SC	TDPA	A	B	C2	C3	T3S2	T3S3	T3S2R4	OTROS	A	B	C	K'	D
SAN LUIS RIO COLORADO	0.00	3	0	5531	79.6	4.3	2.4	1.6	2.2	4.2	3.5	2.2	79.6	4.3	16.1	0.088	0.500
T. IZQ. LAGUNITAS	25.50	3	0	4053	74.5	8.3	5.4	4.9	2.1	1.1	2.0	1.7	74.5	8.3	17.2	0.086	0.501
GOLFO DE SANTA CLARA	114.30	1	0	1070	80.7	4.9	3.9	3.7	2.8	1.5	2.1	0.4	80.7	4.9	14.4	0.106	0.511

29 CARR : SONOITA - PITIQUITO

CLAVE: 26022

RUTA : SON

AÑO : 2008

L U G A R	E S T A C I O N				CLASIFICACION VEHICULAR EN PORCIENTO .												
	KM	TE	SC	TDPA	A	B	C2	C3	T3S2	T3S3	T3S2R4	OTROS	A	B	C	K'	D
SONOYTA	0.00	3	0	1688	90.1	4.4	1.8	2.1	0.0	1.2	0.4	0.0	90.1	4.4	5.5	0.123	0.501
PITIQUITO	170.00	1	0	967	87.4	3.8	5.1	2.0	0.1	0.5	0.5	0.6	87.4	3.8	8.8	0.118	0.504

SONORA

30 CARR : CD. OBREGON - HERMOSILLO

CLAVE: 26444

RUTA : MEX-015D-015

AÑO : 2008

L U G A R	E S T A C I O N				C L A S I F I C A C I O N V E H I C U L A R E N P O R C I E N T O .													
	KM	TE	SC	TDPA	A	B	C2	C3	T3S2	T3S3	T3S2R4	OTROS	A	B	C	K'	D	
CD. OBREGON	0.00																	
ESPERANZA	7.96	1	1	8641	60.2	8.5	3.0	3.2	17.0	2.5	5.1	0.5	60.2	8.5	31.3	0.071	0.508	
ESPERANZA	7.96	1	2	8366	62.0	8.6	3.6	4.1	14.4	2.1	4.8	0.4	62.0	8.6	29.4	0.068	0.508	
ESPERANZA	7.96	3	1	5601	51.9	11.7	3.1	3.4	20.2	2.7	6.1	0.9	51.9	11.7	36.4	0.120	0.502	
ESPERANZA	7.96	3	2	5551	51.0	11.1	3.4	4.5	20.4	2.7	5.9	1.0	51.0	11.1	37.9	0.120	0.502	
CASETA DE COBRO ESPERANZA	10.70	2	0	5315	51.3	10.5	3.4	3.5	20.6	2.6	6.4	1.7	51.3	10.5	38.2			
T. DER. ESTACION CORRAL	13.80	1	1	2521	50.8	11.4	3.4	3.7	20.2	2.5	6.8	1.2	50.8	11.4	37.8	0.074	0.507	
T. DER. ESTACION CORRAL	13.80	1	2	2597	51.4	11.8	4.1	3.3	20.3	2.8	5.3	1.0	51.4	11.8	36.8	0.080	0.507	
T. DER. ESTACION CORRAL	13.80	3	1	2554	50.6	11.8	4.0	3.9	19.6	2.9	6.1	1.1	50.6	11.8	37.6	0.080	0.507	
T. DER. ESTACION CORRAL	13.80	3	2	2625	51.3	11.0	3.8	3.4	20.2	2.6	6.2	1.5	51.3	11.0	37.7	0.081	0.507	
T. IZQ. BACUM	25.46	1	1	2238	50.4	12.4	4.1	3.7	19.3	3.0	6.1	1.0	50.4	12.4	37.2	0.078	0.523	
T. IZQ. BACUM	25.46	1	2	2456	52.1	11.3	3.6	3.2	19.4	2.4	6.5	1.5	52.1	11.3	36.6	0.091	0.523	
T. IZQ. BACUM	25.46	3	1	4246	51.6	12.1	3.6	3.7	19.3	3.0	5.6	1.1	51.6	12.1	36.3	0.090	0.505	
T. IZQ. BACUM	25.46	3	2	4336	50.6	11.1	3.9	3.5	20.8	2.9	6.3	0.9	50.6	11.1	38.3	0.078	0.505	
VICAM	47.28	3	1	4017	52.4	10.4	3.4	4.0	19.8	2.4	6.1	1.5	52.4	10.4	37.2	0.080	0.501	
VICAM	47.28	3	2	4001	51.9	11.6	3.2	3.4	20.9	2.6	5.6	0.8	51.9	11.6	36.5	0.088	0.501	
T. IZQ. POTAM	57.10	1	1	4426	50.9	11.5	4.4	3.5	21.0	2.5	5.3	0.9	50.9	11.5	37.6	0.070	0.509	
T. IZQ. POTAM	57.10	1	2	4277	52.6	12.1	3.7	3.2	18.4	2.6	6.1	1.3	52.6	12.1	35.3	0.086	0.509	
T. IZQ. POTAM	57.10	3	1	4637	51.2	10.9	4.0	3.5	20.5	3.0	6.0	0.9	51.2	10.9	37.9	0.083	0.506	
T. IZQ. POTAM	57.10	3	2	4747	51.6	12.7	4.2	3.9	18.4	2.8	5.8	0.6	51.6	12.7	35.7	0.089	0.506	
T. DER. LIBRAMIENTO DE GUAYMAS	107.70	1	1	5135	51.7	12.0	4.1	3.1	20.1	2.2	5.9	0.9	51.7	12.0	36.3	0.070	0.510	
T. DER. LIBRAMIENTO DE GUAYMAS	107.70	1	2	5336	52.2	11.8	4.0	3.2	19.3	2.5	5.9	1.1	52.2	11.8	36.0	0.080	0.510	
T. DER. LIBRAMIENTO DE GUAYMAS	107.70	3	0	6254	74.0	8.3	4.3	1.5	6.6	1.9	2.4	1.0	74.0	8.3	17.7	0.079	0.505	
EMPALME	115.00	1	0	6509	74.5	7.8	4.3	1.9	6.4	1.8	2.3	1.0	74.5	7.8	17.7	0.082	0.504	
EMPALME	115.00	3	1	7073	75.7	6.6	3.3	2.5	6.2	1.7	2.9	1.1	75.7	6.6	17.7	0.100	0.504	
EMPALME	115.00	3	2	6970	75.3	7.4	3.7	2.1	6.4	1.6	2.2	1.3	75.3	7.4	17.3	0.090	0.504	
T. IZQ. SAN CARLOS	132.20	1	1	4840	75.8	7.9	3.2	2.4	5.7	1.5	2.3	1.2	75.8	7.9	16.3	0.104	0.507	
T. IZQ. SAN CARLOS	132.20	1	2	4710	75.0	6.6	3.2	2.5	7.2	1.2	2.5	1.8	75.0	6.6	18.4	0.122	0.507	
T. IZQ. SAN CARLOS	132.20	3	1	3047	74.8	7.7	3.2	2.9	6.0	2.0	2.2	1.2	74.8	7.7	17.5	0.074	0.503	
T. IZQ. SAN CARLOS	132.20	3	2	3079	75.0	8.2	3.2	2.5	6.0	1.8	2.0	1.3	75.0	8.2	16.8	0.091	0.503	
T. IZQ. BAHIA KINO	171.10	1	1	4537	52.2	11.0	3.7	3.6	20.2	2.3	5.7	1.3	52.2	11.0	36.8	0.079	0.505	
T. IZQ. BAHIA KINO	171.10	1	2	4621	51.8	11.9	3.0	3.6	19.7	2.3	6.5	1.2	51.8	11.9	36.3	0.088	0.505	
T. IZQ. BAHIA KINO	171.10	3	1	4071	52.0	11.4	3.8	3.3	20.3	2.4	5.8	1.0	52.0	11.4	36.6	0.092	0.511	
T. IZQ. BAHIA KINO	171.10	3	2	3894	54.4	10.0	3.4	3.6	19.1	2.4	5.9	1.2	54.4	10.0	35.6	0.083	0.511	
HERMOSILLO	252.80	1	1	8522	55.4	11.5	3.8	4.0	18.2	1.6	5.0	0.5	55.4	11.5	33.1	0.076	0.502	

SONORA

30 CARR : CD. OBREGON - HERMOSILLO

CLAVE: 26444

ruta : MEX-015D-015

AÑO : 2008

L U G A R	E S T A C I O N				C L A S I F I C A C I O N V E H I C U L A R E N P O R C I E N T O .												
	KM	TE	SC	TDPA	A	B	C2	C3	T3S2	T3S3	T3S2R4	OTROS	A	B	C	K'	D
HERMOSILLO	252.80	1	2	8601	55.3	11.3	3.5	3.9	18.2	1.9	5.3	0.6	55.3	11.3	33.4	0.069	0.502

31 CARR : HERMOSILLO - NOGALES

CLAVE: 26445

ruta : MEX-015D-015

AÑO : 2008

L U G A R	E S T A C I O N				C L A S I F I C A C I O N V E H I C U L A R E N P O R C I E N T O .												
	KM	TE	SC	TDPA	A	B	C2	C3	T3S2	T3S3	T3S2R4	OTROS	A	B	C	K'	D
HERMOSILLO	0.00	3	1	11807	54.7	9.6	3.1	3.5	20.1	2.5	5.6	0.9	54.7	9.6	35.7	0.086	0.502
HERMOSILLO	0.00	3	2	11890	57.2	10.2	2.9	3.1	18.0	2.2	5.3	1.1	57.2	10.2	32.6	0.086	0.502
T. DER. URES	8.60	1	1	9450	67.9	6.7	3.2	1.8	13.7	2.0	3.6	1.1	67.9	6.7	25.4	0.083	0.505
T. DER. URES	8.60	1	2	9624	67.6	6.5	3.4	2.1	14.4	1.8	3.1	1.1	67.6	6.5	25.9	0.070	0.505
T. DER. URES	8.60	3	1	5101	68.5	6.8	4.0	2.5	11.7	1.4	4.2	0.9	68.5	6.8	24.7	0.070	0.503
T. DER. URES	8.60	3	2	5170	68.3	7.1	3.7	1.8	11.6	1.8	4.3	1.4	68.3	7.1	24.6	0.069	0.503
CASETA DE COBRO HERMOSILLO	15.20	2	0	9563	70.2	5.9	3.0	1.9	11.9	1.4	4.0	1.7	70.2	5.9	23.9		
T. DER. PESQUEIRA	32.39	3	1	5225	68.2	6.8	3.8	2.4	11.8	1.7	4.1	1.2	68.2	6.8	25.0	0.071	0.505
T. DER. PESQUEIRA	32.39	3	2	5329	69.4	6.9	3.5	1.7	11.3	1.7	4.1	1.4	69.4	6.9	23.7	0.070	0.505
T. DER. CARBO	68.90	1	1	6693	68.5	7.0	3.4	2.2	11.4	2.0	3.9	1.6	68.5	7.0	24.5	0.120	0.514
T. DER. CARBO	68.90	1	2	7074	68.4	6.9	2.9	2.1	12.9	1.2	4.2	1.4	68.4	6.9	24.7	0.090	0.514
T. DER. CARBO	68.90	3	1	5136	67.4	6.5	3.8	2.0	13.4	2.1	3.9	0.9	67.4	6.5	26.1	0.084	0.515
T. DER. CARBO	68.90	3	2	4846	68.8	7.0	3.9	2.6	10.9	2.0	3.6	1.2	68.8	7.0	24.2	0.080	0.515
T. IZQ. BENJAMIN HILL	125.40	1	1	4814	68.4	7.0	3.3	1.7	12.8	1.8	3.9	1.1	68.4	7.0	24.6	0.074	0.504
T. IZQ. BENJAMIN HILL	125.40	1	2	4884	68.3	6.8	3.6	2.0	12.9	1.7	3.9	0.8	68.3	6.8	24.9	0.084	0.504
T. IZQ. BENJAMIN HILL	125.40	3	1	5019	68.3	6.8	3.5	2.1	12.2	2.3	3.8	1.0	68.3	6.8	24.9	0.075	0.503
T. IZQ. BENJAMIN HILL	125.40	3	2	5074	68.4	7.0	3.6	1.3	12.4	2.0	3.6	1.7	68.4	7.0	24.6	0.068	0.503
SANTA ANA	167.30	1	1	5773	68.5	7.0	3.8	1.7	12.3	1.8	3.7	1.2	68.5	7.0	24.5	0.064	0.503
SANTA ANA	167.30	1	2	5834	68.6	6.6	3.2	1.9	12.6	2.4	3.7	1.0	68.6	6.6	24.8	0.075	0.503
SANTA ANA	167.30	3	1	5241	71.6	5.3	2.2	1.2	12.9	1.4	4.4	1.0	71.6	5.3	23.1	0.090	0.503
SANTA ANA	167.30	3	2	5182	71.1	5.7	2.2	1.5	12.5	1.6	4.1	1.3	71.1	5.7	23.2	0.088	0.503
MAGDALENA DE KINO	182.70	1	1	4457	72.8	4.0	2.1	1.5	10.6	2.8	5.3	0.9	72.8	4.0	23.2	0.077	0.502
MAGDALENA DE KINO	182.70	1	2	4499	73.4	4.1	2.5	2.1	10.2	2.3	4.6	0.8	73.4	4.1	22.5	0.077	0.502
MAGDALENA DE KINO	182.70	3	1	4149	73.5	4.9	1.8	1.5	11.0	1.8	4.6	0.9	73.5	4.9	21.6	0.091	0.500
MAGDALENA DE KINO	182.70	3	2	4156	73.3	4.0	2.3	1.8	10.4	2.0	5.1	1.1	73.3	4.0	22.7	0.122	0.500
IMURIS	208.00	1	1	4970	71.2	5.1	1.4	3.2	11.4	1.6	5.3	0.8	71.2	5.1	23.7	0.077	0.507
IMURIS	208.00	1	2	5107	71.8	4.2	2.1	2.4	12.1	1.5	4.9	1.0	71.8	4.2	24.0	0.082	0.507
T. DER. AGUA PRIETA	208.80	3	1	5022	71.8	5.2	1.9	2.5	11.6	1.6	4.7	0.7	71.8	5.2	23.0	0.076	0.506
T. DER. AGUA PRIETA	208.80	3	2	5143	71.7	4.6	2.1	2.0	12.2	1.5	4.9	1.0	71.7	4.6	23.7	0.082	0.506

SONORA

31 CARR : HERMOSILLO - NOGALES

CLAVE: 26445

RUTA : MEX-015D-015

AÑO : 2008

L U G A R	E S T A C I O N				C L A S I F I C A C I O N V E H I C U L A R E N P O R C I E N T O .												
	KM	TE	SC	TDPA	A	B	C2	C3	T3S2	T3S3	T3S2R4	OTROS	A	B	C	K'	D
T. IZQ. SARIC	255.90	1	1	6151	73.5	3.7	2.2	1.9	11.6	1.6	4.7	0.8	73.5	3.7	22.8	0.120	0.503
T. IZQ. SARIC	255.90	1	2	6087	72.1	4.6	2.2	1.7	12.1	1.5	4.8	1.0	72.1	4.6	23.3	0.060	0.503
T. IZQ. SARIC	255.90	3	1	7023	69.3	7.5	2.0	1.9	12.3	1.8	4.5	0.7	69.3	7.5	23.2	0.075	0.505
T. IZQ. SARIC	255.90	3	2	6893	71.1	4.1	2.2	2.1	12.5	2.5	4.7	0.8	71.1	4.1	24.8	0.073	0.505
T. IZQ. LIBRAMIENTO DE NOGALES	270.60	1	1	7506	71.0	5.3	2.0	2.0	11.9	2.3	4.4	1.1	71.0	5.3	23.7	0.074	0.502
T. IZQ. LIBRAMIENTO DE NOGALES	270.60	1	2	7441	70.4	6.5	2.0	1.5	12.1	2.3	4.3	0.9	70.4	6.5	23.1	0.074	0.502
T. IZQ. LIBRAMIENTO DE NOGALES	270.60	3	1	8471	70.5	6.0	2.0	2.1	11.7	2.4	4.1	1.2	70.5	6.0	23.5	0.100	0.505
T. IZQ. LIBRAMIENTO DE NOGALES	270.60	3	2	8645	71.2	5.2	2.0	2.0	12.0	2.3	4.3	1.0	71.2	5.2	23.6	0.100	0.505
NOGALES	277.00	1	1	11796	71.8	6.6	1.8	2.0	10.2	2.5	4.0	1.1	71.8	6.6	21.6	0.070	0.501
NOGALES	277.00	1	2	11756	72.2	6.6	1.9	2.2	10.1	2.0	4.0	1.0	72.2	6.6	21.2	0.090	0.501

32 CARR : T. C. (HERMOSILLO - NOGALES) - HUASABAS

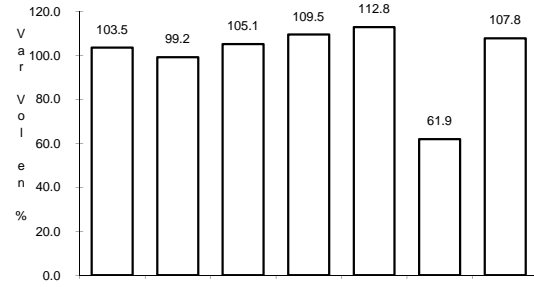
CLAVE: 26231

RUTA : MEX-SON

AÑO : 2008

L U G A R	E S T A C I O N				C L A S I F I C A C I O N V E H I C U L A R E N P O R C I E N T O .												
	KM	TE	SC	TDPA	A	B	C2	C3	T3S2	T3S3	T3S2R4	OTROS	A	B	C	K'	D
T. C. HERMOSILLO - NOGALES	0.00	3	0	6370	89.1	4.5	2.7	1.0	0.7	0.3	0.3	1.4	89.1	4.5	6.4	0.134	0.506
URES	63.00	3	0	2941	90.1	3.4	2.6	1.1	1.1	0.3	0.3	1.1	90.1	3.4	6.5	0.135	0.500
MAZOCAHUI	99.00	3	0	1149	79.4	4.9	4.5	2.7	3.4	3.3	1.5	0.3	79.4	4.9	15.7	0.085	0.507
MOCTEZUMA	165.00	1	0	1285	81.6	3.7	4.0	2.5	3.2	3.2	1.5	0.3	81.6	3.7	14.7	0.087	0.515
MOCTEZUMA	165.00	3	0	1575	81.7	5.1	3.3	2.0	3.1	3.1	1.5	0.2	81.7	5.1	13.2	0.088	0.515
HUASABAS	212.50	1	0	758	79.6	6.2	3.5	2.2	3.3	3.3	1.6	0.3	79.6	6.2	14.2	0.160	0.509

1 CARR: HERMOSILLO - YECORA

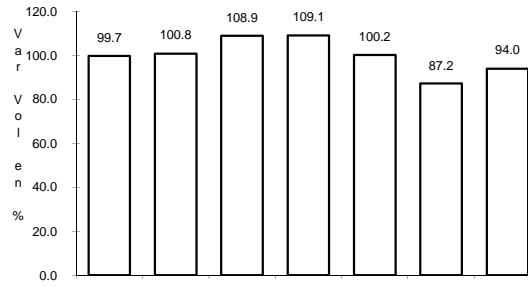


Km: 4.00

Tipo: 3

Sent: 1

CLAVE: 26251

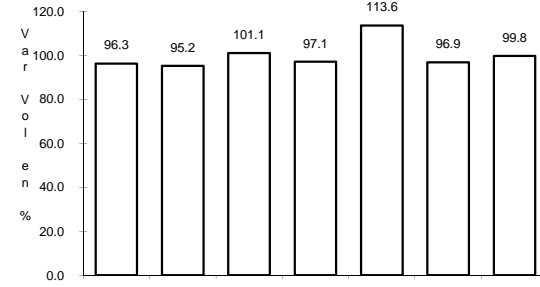


Km: 4.00

Tipo: 3

Sent: 2

RUTA: MEX-016

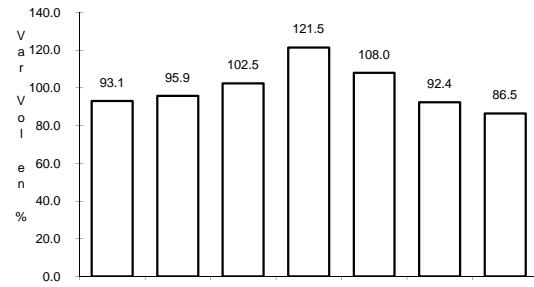


Km: 138.00

Tipo: 3

Sent: 0

2 CARR: IMURIS - AGUA PRIETA

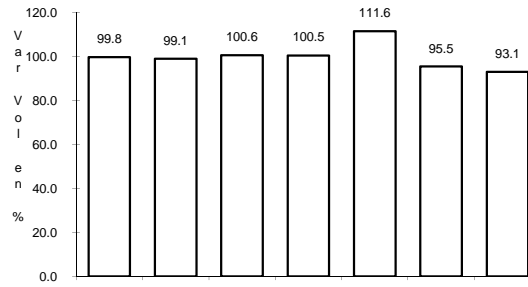


Km: 0.00

Tipo: 3

Sent: 0

CLAVE: 26079

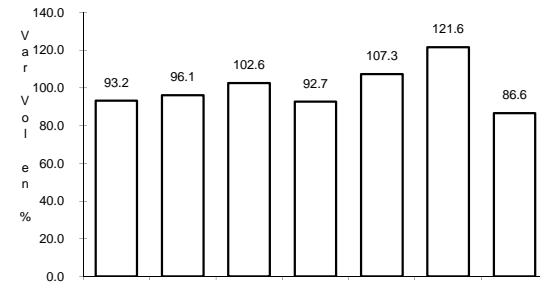


Km: 80.93

Tipo: 1

Sent: 0

RUTA: MEX-002

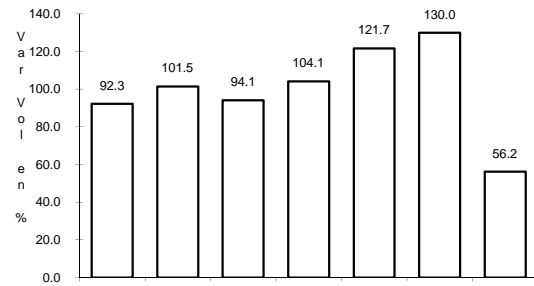


Km: 164.67

Tipo: 1

Sent: 0

3 CARR: JANOS - AGUA PRIETA

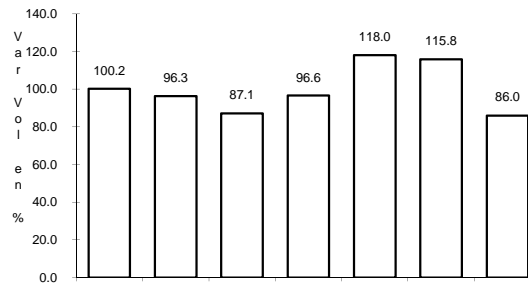


Km: 0.00

Tipo: 3

Sent: 0

CLAVE: 00220

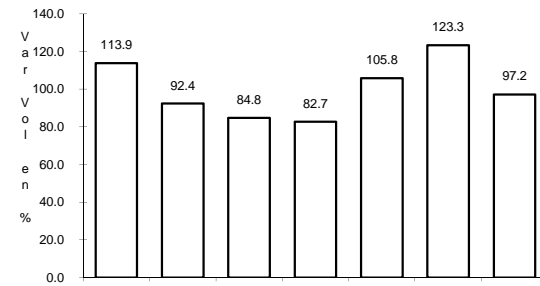


Km: 56.00

Tipo: 3

Sent: 0

RUTA: MEX-002

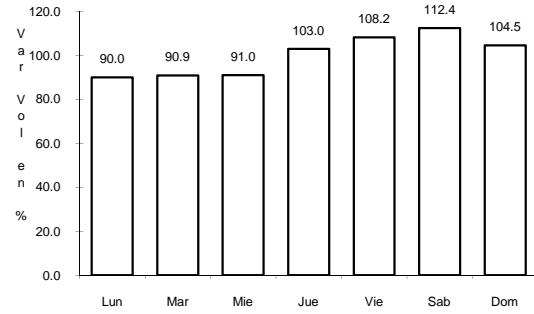


Km: 156.40

Tipo: 1

Sent: 0

4 CARR: LA JUNTA - YECORA

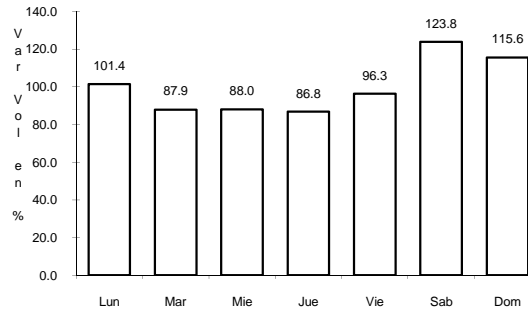


Km: 0.00

Tipo: 3

Sent: 0

CLAVE: 00065

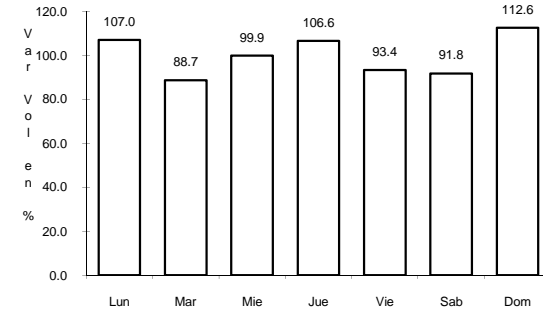


Km: 70.00

Tipo: 3

Sent: 0

ruta: MEX-016

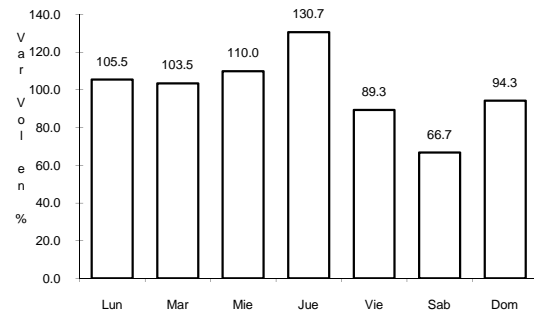


Km: 253.00

Tipo: 1

Sent: 0

5 CARR: MOCTEZUMA - AGUA PRIETA

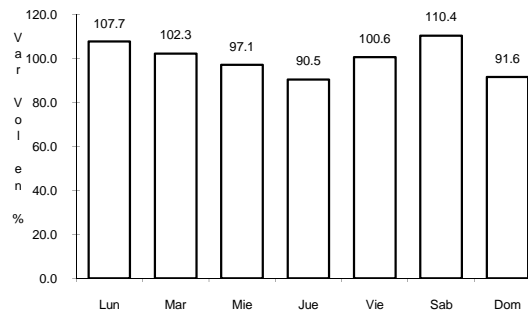


Km: 0.00

Tipo: 3

Sent: 0

CLAVE: 26027

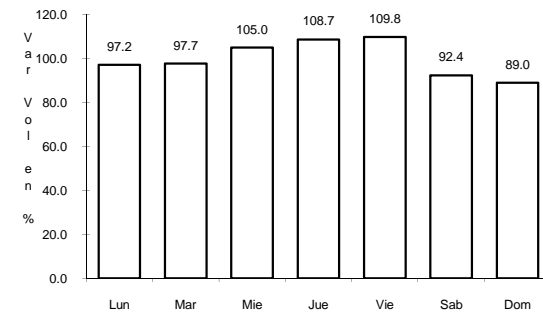


Km: 81.00

Tipo: 3

Sent: 0

ruta: MEX-017

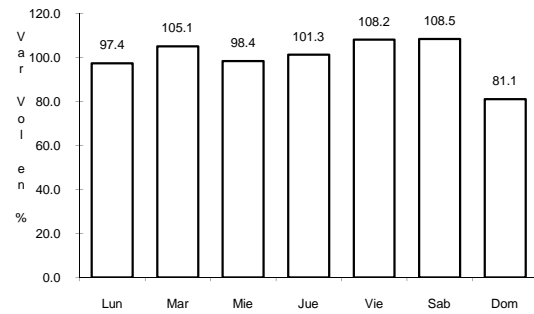


Km: 197.60

Tipo: 1

Sent: 0

6 CARR: RAMAL A NACO



Km: 0.00

Tipo: 3

Sent: 0

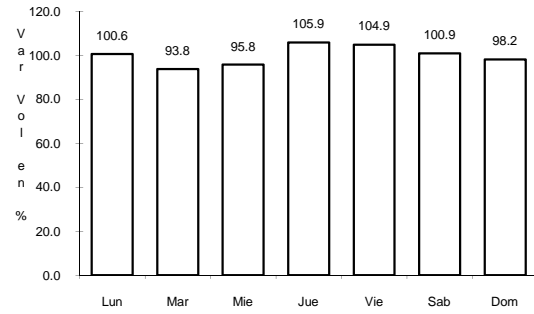
CLAVE: 26579

ruta: MEX

7 CARR: RAMAL A PUERTA DE MEXICO

CLAVE: 26577

RUTA: MEX



Km: 0.00

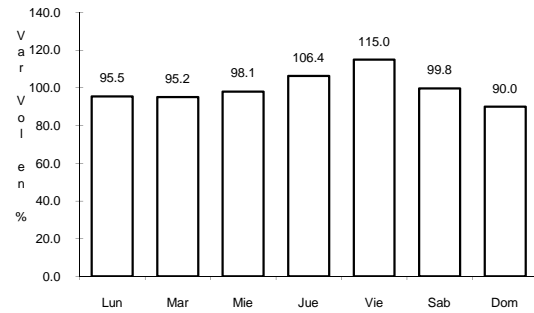
Tipo: 3

Sent: 0

8 CARR: SANTA ANA - SONOYTA

CLAVE: 26080

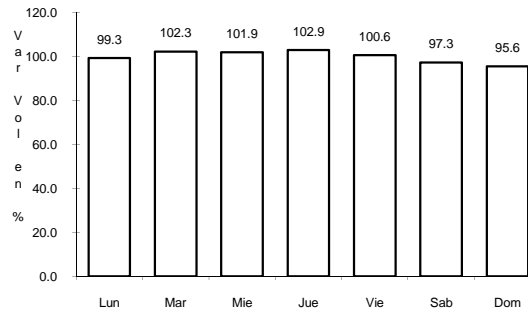
RUTA: MEX-002



Km: 0.00

Tipo: 3

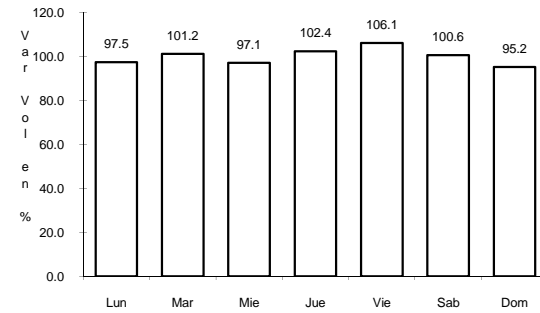
Sent: 0



Km: 103.83

Tipo: 1

Sent: 0



Km: 251.10

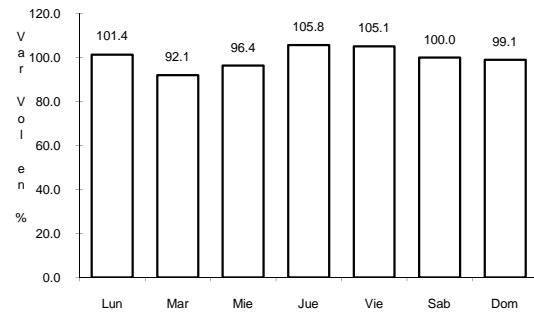
Tipo: 1

Sent: 0

9 CARR: SONOITA - MEXICALI

CLAVE: 00081

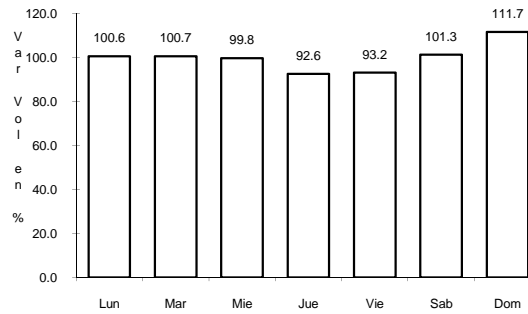
RUTA: MEX-002



Km: 0.00

Tipo: 3

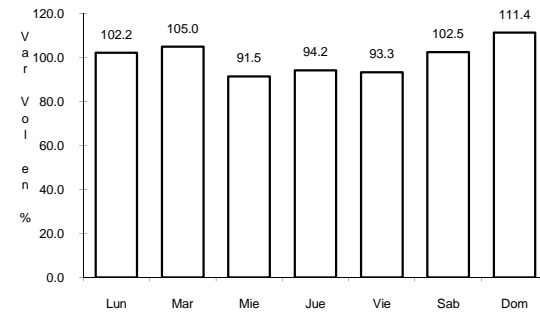
Sent: 0



Km: 256.47

Tipo: 1

Sent: 1



Km: 256.47

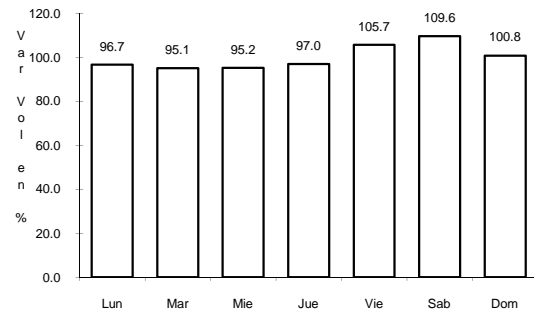
Tipo: 1

Sent: 2

10 CARR: SONOITA - PUERTO PEÑASCO

CLAVE: 26232

RUTA: MEX-008



Km: 0.00

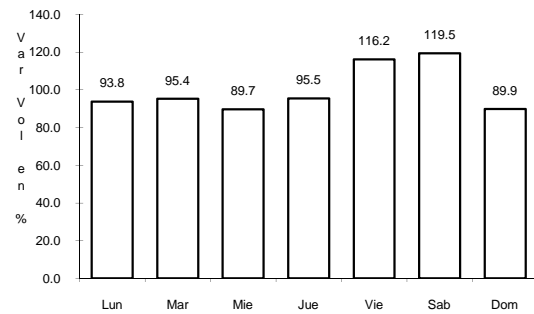
Tipo: 3

Sent: 0

11 CARR: LIBRAMIENTO DE EMPALME - GUAYMAS (CUOTA)

CLAVE: 26256

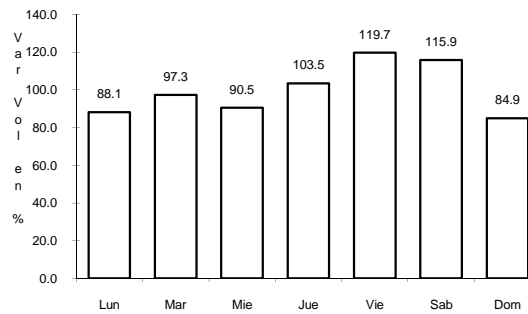
RUTA: MEX-015D



Km: 0.00

Tipo: 3

Sent: 1



Km: 0.00

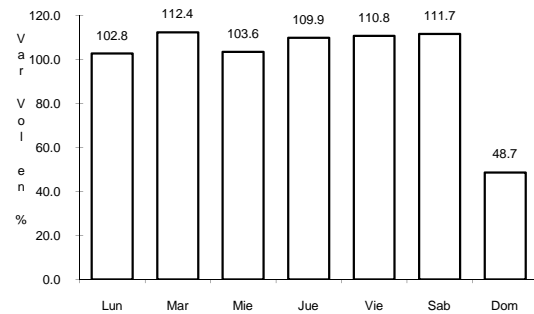
Tipo: 3

Sent: 2

12 CARR: LIBRAMIENTO DE NOGALES (CUOTA)

CLAVE: 26100

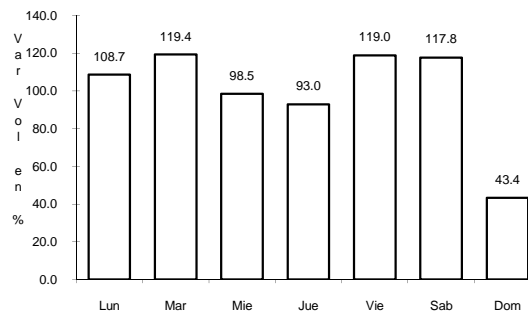
RUTA: MEX-D



Km: 0.00

Tipo: 3

Sent: 1



Km: 0.00

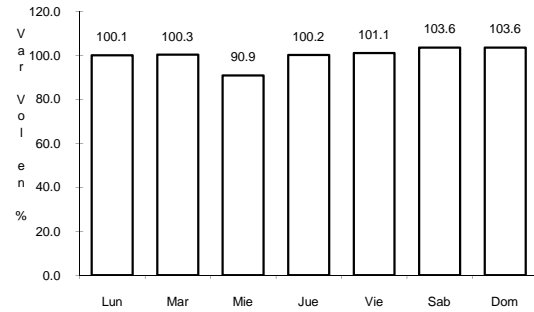
Tipo: 3

Sent: 2

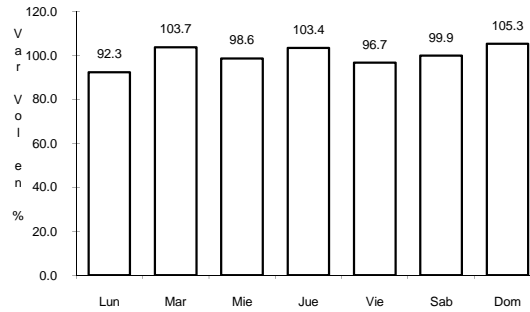
13 CARR: LOS MOCHIS - CD. OBREGON (CUOTA)

CLAVE: 00452

RUTA: MEX-015D



Km: 0.00 Tipo: 3 Sent: 1

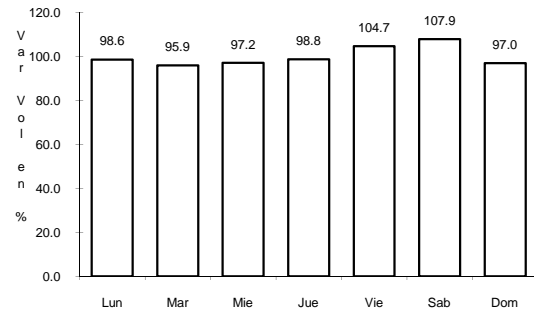


Km: 0.00 Tipo: 3 Sent: 2

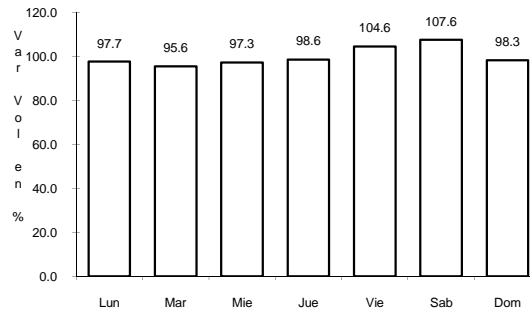
14 CARR: ALTAR - SARIC

CLAVE: 26233

RUTA: SON-064



Km: 0.00 Tipo: 3 Sent: 0

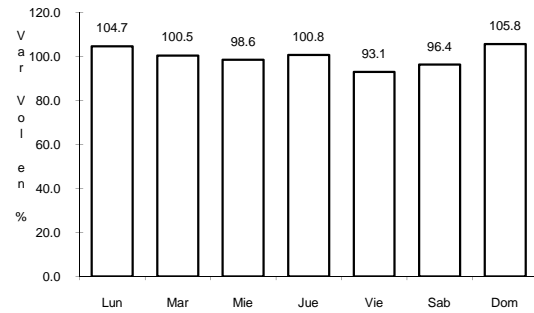


Km: 68.00 Tipo: 1 Sent: 0

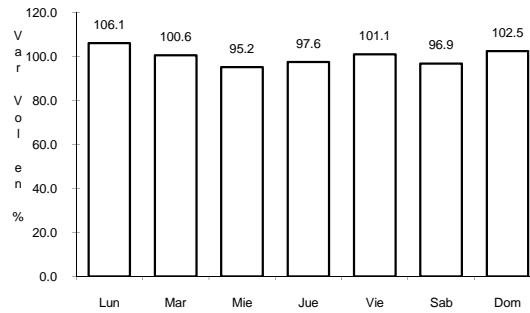
15 CARR: CABORCA - EL DESEMBOQUE

CLAVE: 26225

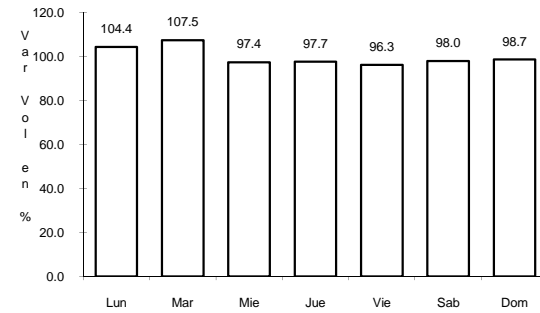
RUTA: SON-037



Km: 0.00 Tipo: 3 Sent: 0



Km: 6.90 Tipo: 3 Sent: 0

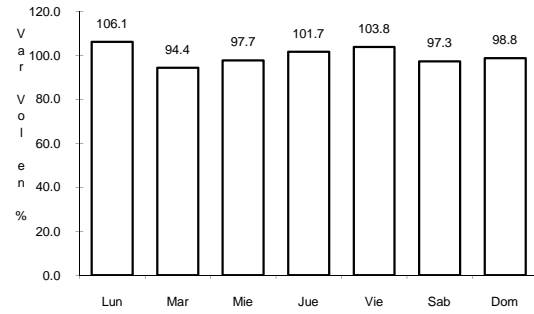


Km: 61.20 Tipo: 3 Sent: 0

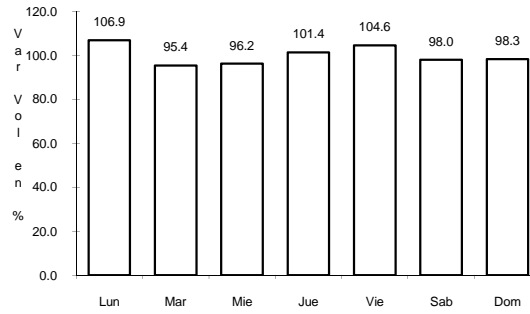
16 CARR: CALLE 36 NORTE - PUERTO DE LA LIBERTAD

CLAVE: 26117

ruta: SON-029



Km: 0.00 Tipo: 3 Sent: 0

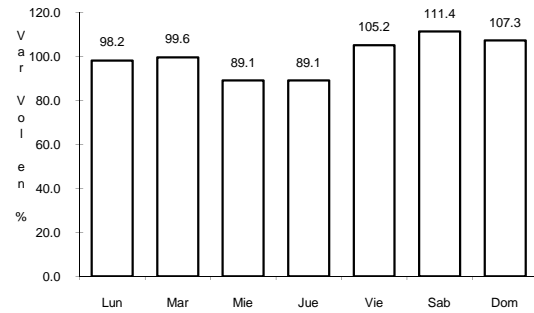


Km: 45.00 Tipo: 3 Sent: 0

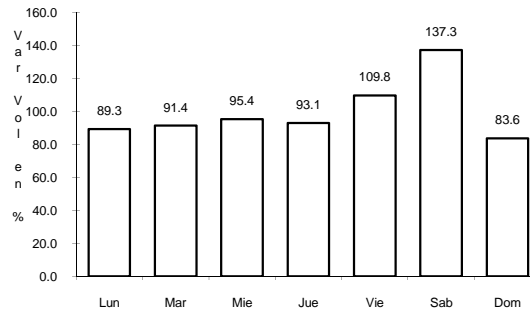
17 CARR: ESPERANZA - PRESA ALVARO OBREGON

CLAVE: 26242

ruta: SON-011



Km: 0.00 Tipo: 3 Sent: 0

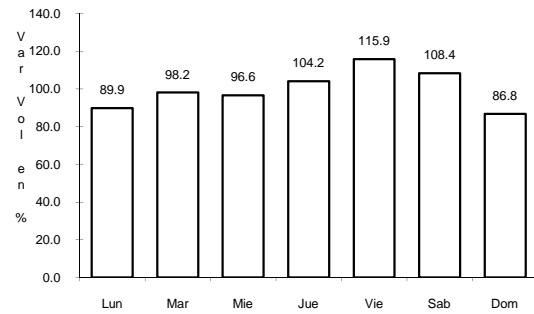


Km: 17.00 Tipo: 3 Sent: 0

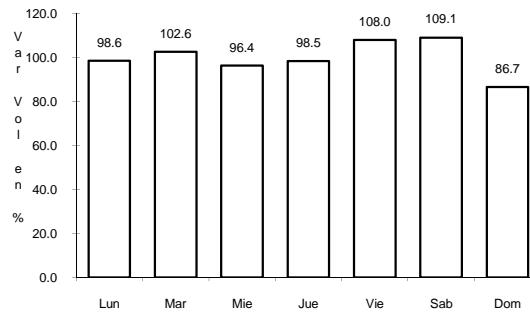
18 CARR: HERMOSILLO - BAHIA KINO

CLAVE: 26109

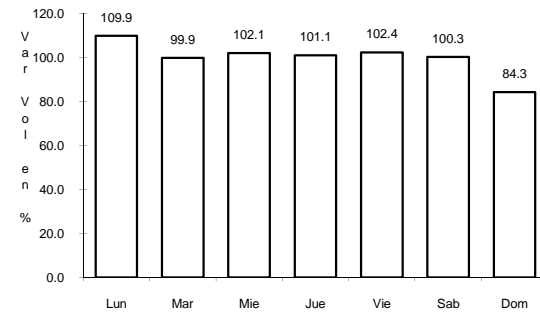
ruta: SON



Km: 0.00 Tipo: 3 Sent: 1



Km: 0.00 Tipo: 3 Sent: 2

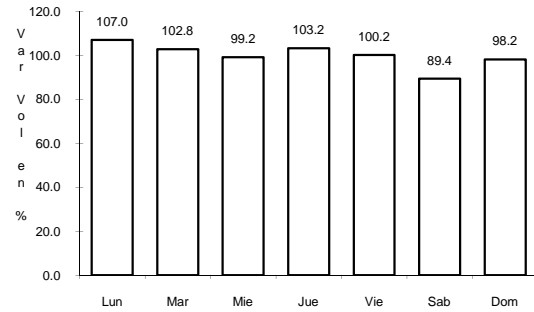


Km: 106.50 Tipo: 1 Sent: 0

19 CARR: HERMOSILLO - SAHUARIPA

CLAVE: 26230

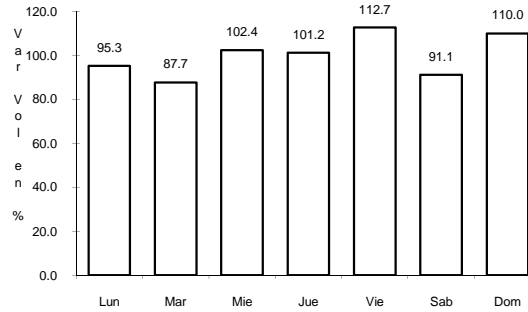
ruta: SON-020



Km: 0.00

Tipo: 3

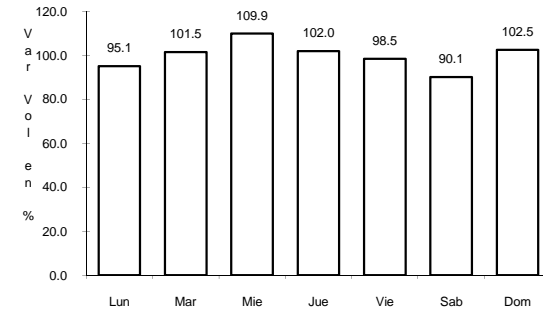
Sent: 0



Km: 88.00

Tipo: 1

Sent: 0



Km: 88.00

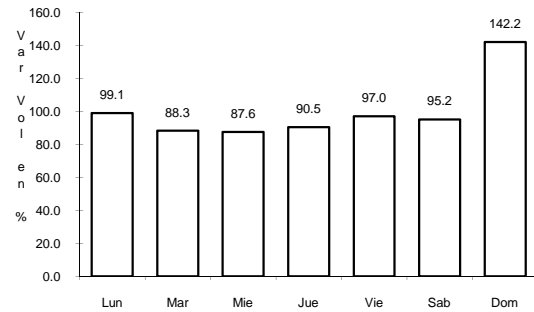
Tipo: 3

Sent: 0

20 CARR: HORNOS - SAN NICOLAS

CLAVE: 26243

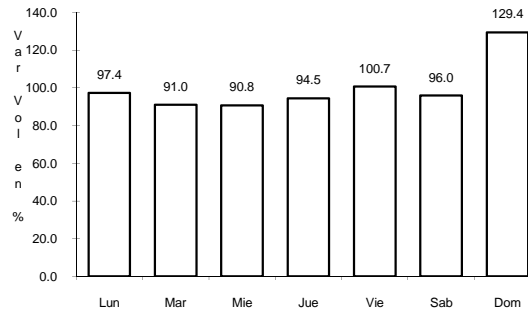
ruta: SON-017



Km: 0.00

Tipo: 3

Sent: 0



Km: 58.00

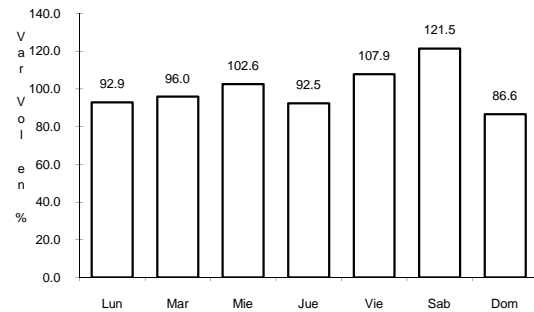
Tipo: 1

Sent: 0

21 CARR: HUATABAMPO - BACABACHE

CLAVE: 26237

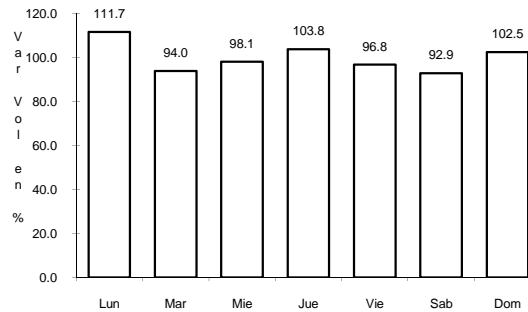
ruta: SON-019



Km: 0.00

Tipo: 3

Sent: 0



Km: 29.00

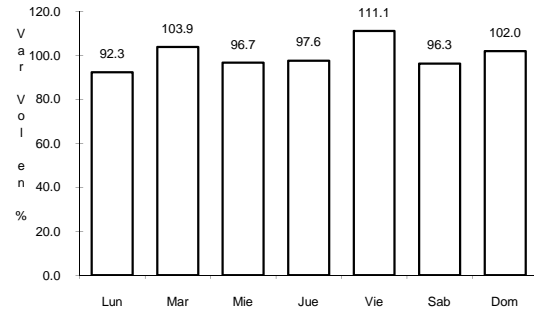
Tipo: 1

Sent: 0

22 CARR: LA ALAMEDA - EL SAHUARO

CLAVE: 26234

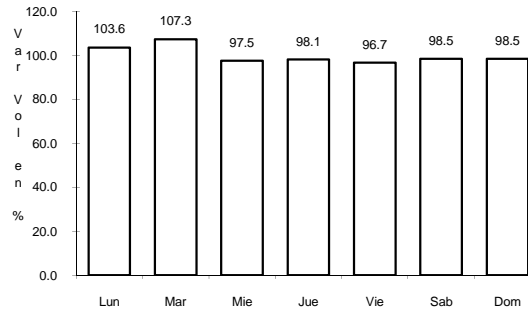
ruta: SON-038



Km: 0.00

Tipo: 3

Sent: 0



Km: 47.00

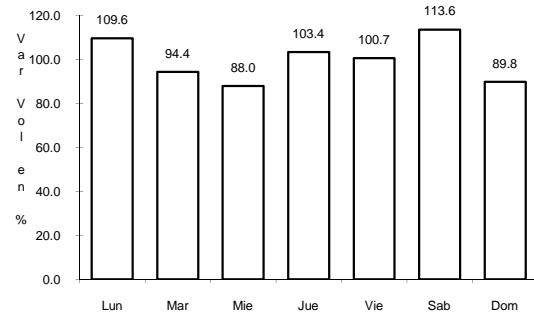
Tipo: 1

Sent: 0

23 CARR: MAZOCAHUI - CANANEA

CLAVE: 26118

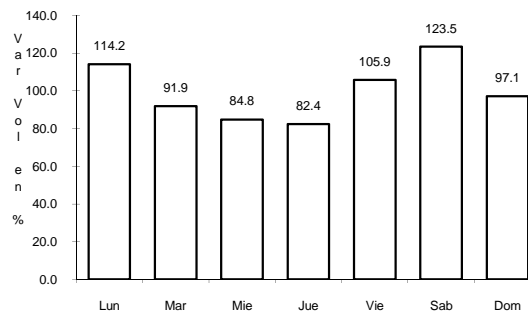
ruta: SON-118



Km: 0.00

Tipo: 3

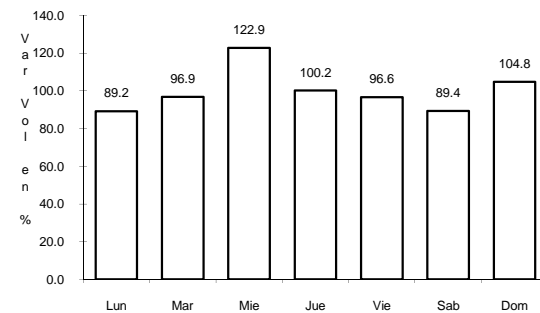
Sent: 0



Km: 98.00

Tipo: 1

Sent: 0



Km: 204.00

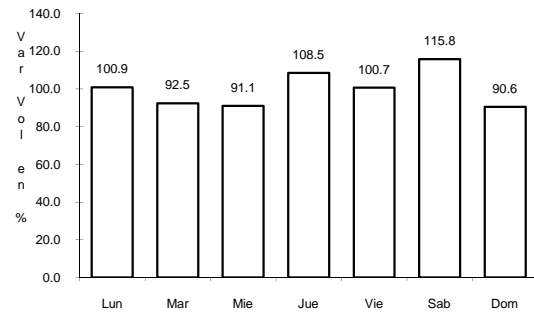
Tipo: 1

Sent: 0

24 CARR: NAVOJOA - ALAMOS

CLAVE: 26240

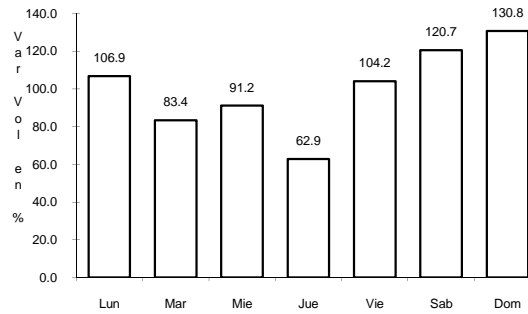
ruta: SON-013



Km: 0.00

Tipo: 3

Sent: 0



Km: 52.80

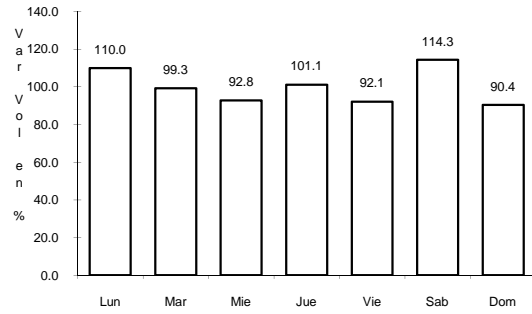
Tipo: 1

Sent: 0

25 CARR: NAVOJOA - YAVAROS

CLAVE: 26229

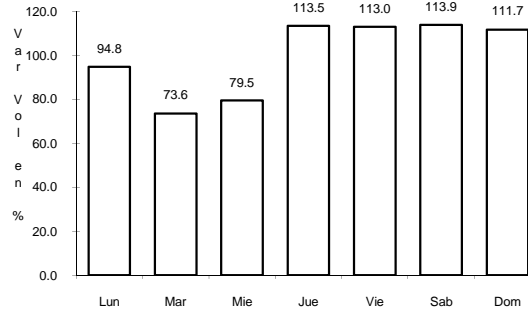
RUTA: SON-056



Km: 0.00

Tipo: 3

Sent: 0



Km: 55.00

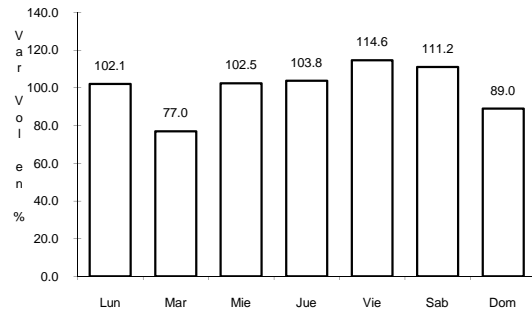
Tipo: 1

Sent: 0

26 CARR: NOGALES - SAN ANTONIO

CLAVE: 26110

RUTA: SON



Km: 58.00

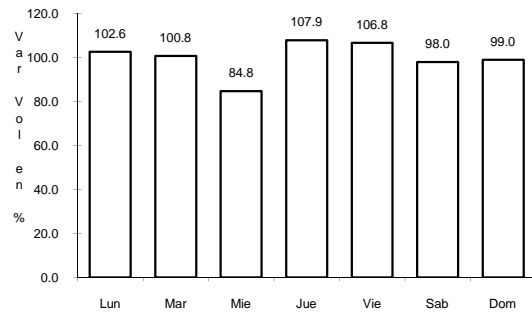
Tipo: 1

Sent: 0

27 CARR: RAMAL A AEROPUERTO DE GUAYMAS

CLAVE: 26568

RUTA: SON



Km: 0.00

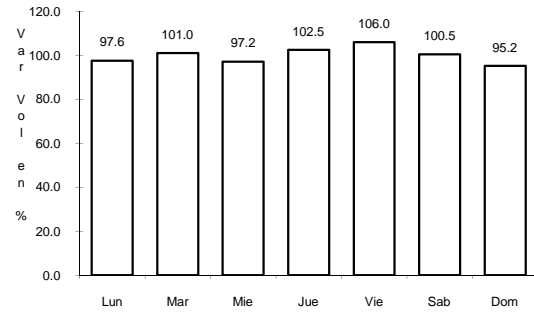
Tipo: 3

Sent: 0

28 CARR: SAN LUIS RIO COLORADO - GOLFO DE SANTA CLARA

CLAVE: 26226

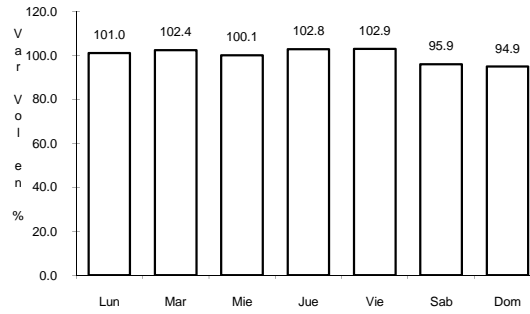
ruta: SON-040



Km: 0.00

Tipo: 3

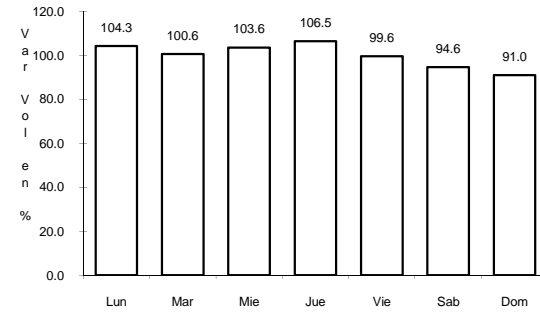
Sent: 0



Km: 25.50

Tipo: 3

Sent: 0



Km: 114.30

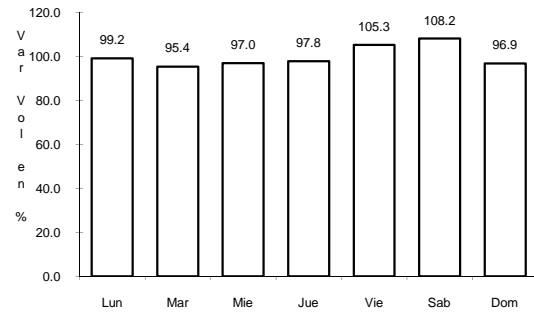
Tipo: 1

Sent: 0

29 CARR: SONOITA - PITIQUITO

CLAVE: 26022

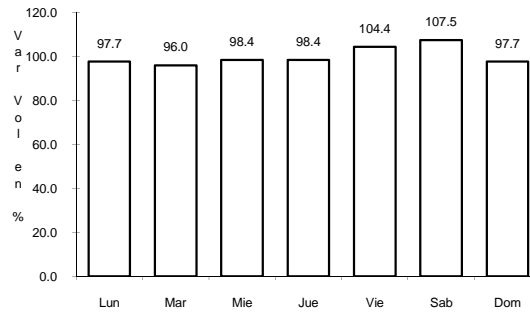
ruta: SON



Km: 0.00

Tipo: 3

Sent: 0



Km: 170.00

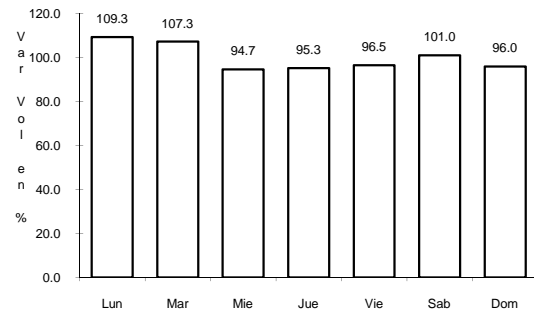
Tipo: 1

Sent: 0

30 CARR: CD. OBREGON - HERMOSILLO

CLAVE: 26444

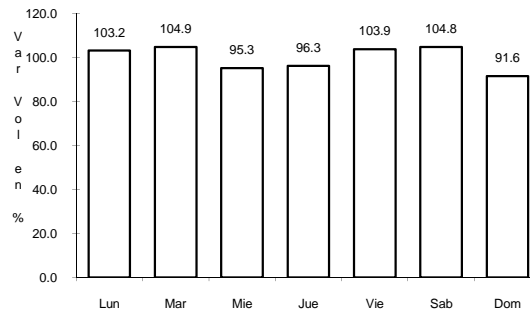
ruta: MEX-015D-015



Km: 7.96

Tipo: 1

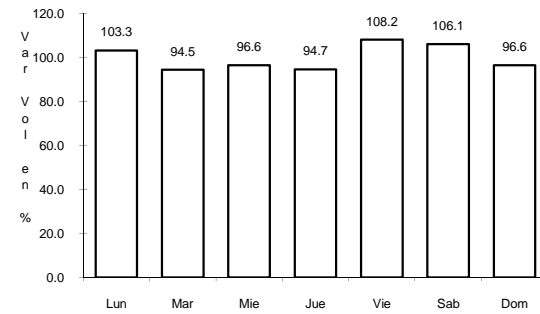
Sent: 1



Km: 7.96

Tipo: 1

Sent: 2



Km: 107.70

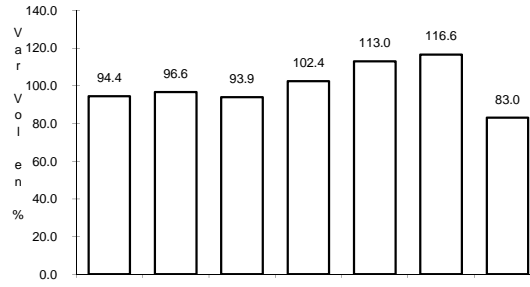
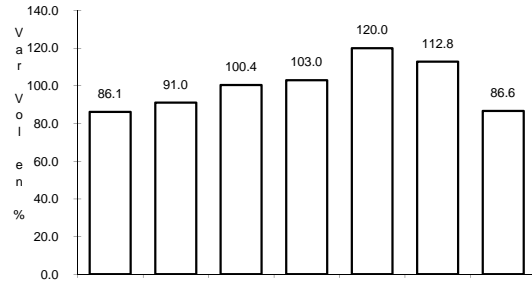
Tipo: 3

Sent: 0

31 CARR: HERMOSILLO - NOGALES

CLAVE: 26445

RUTA: MEX-015D-015



Km: 0.00

Tipo: 3

Sent: 1

Km: 0.00

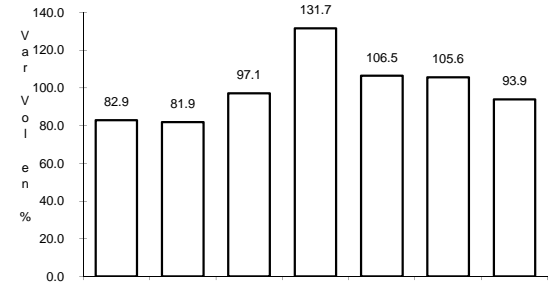
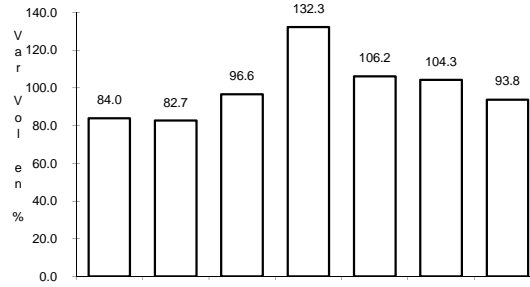
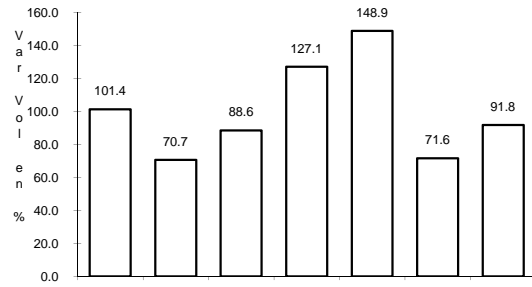
Tipo: 3

Sent: 2

32 CARR: T. C. (HERMOSILLO - NOGALES) - HUASABAS

CLAVE: 26231

RUTA: MEX-SON



Km: 0.00

Tipo: 3

Sent: 0

Km: 99.00

Tipo: 3

Sent: 0

Km: 212.50

Tipo: 1

Sent: 0