

SINALOA

Núm. INDICE	CARRETERA		RUTA
		---- FEDERAL LIBRE ----	
1	CULIACAN - LOS MOCHIS		MEX-015
2	DURANGO - VILLA UNION		MEX-040
3	LIBRAMIENTO DE MAZATLAN		MEX
4	LIBRAMIENTO SUR DE CULIACAN		MEX
5	MAZATLAN - CULIACAN		MEX-015
6	PERICOS - LOS NARANJOS		MEX-024
7	TEPIC - MAZATLAN		MEX-015
		---- FEDERAL CUOTA ----	
8	CULIACAN - LAS BRISAS (CUOTA)		MEX-015D
9	DURANGO - VILLA UNION (CUOTA)		MEX-040D
10	LOS MOCHIS - CD. OBREGON (CUOTA)		MEX-015D
11	MAZATLAN - CULIACAN (CUOTA)		MEX-015D
12	TEPIC - MAZATLAN (CUOTA)		MEX-015D
		---- ESTATAL LIBRE ----	
13	CARRIZAL - CAMPO ANIBAL		SIN-019
14	CULIACAN - ALTATA		SIN-030
15	CULIACAN - EL DORADO		SIN-005
16	EL LIMONCITO - CINCO HERMANOS		SIN-016
17	EL SALADO - EL DORADO		SIN-010
18	ESCUINAPA DE HIDALGO - TEACAPAN		SIN-001
19	ESTACION DIMAS - SAN IGNACIO		SIN-006
20	GUAMUCHIL - MOCORITO		SIN-021
21	GUASAVE - SINALOA DE LEYVA		SIN-023
22	NAVOLATO - EL CASTILLO		SIN-004
23	POZOLE - COFRADIA		SIN-080
24	RAMAL A CHAMETLA		SIN-002
25	RAMAL A COSALA		SIN-008
26	RAMAL A EL QUELITE		SIN-060
27	RAMAL A ESTACION BAMOA		SIN-022
28	RAMAL A LA CRUZ		SIN
29	RAMAL A LA NORIA		SIN
30	RAMAL A LA REFORMA		SIN-004
31	ROSARIO - CAIMANERO		SIN-003
32	SAN PEDRO - CAMPO ANIBAL		SIN
33	TOPOLOBAMPO - CHOIX		SIN-023
34	VILLA UNION - EL WALAMO		SIN-081
35	VILLA UNION - SIQUEIROS		SIN-063



SINALOA

1 CARR : CULIACAN - LOS MOCHIS

CLAVE: 25502

RUTA : MEX-015

AÑO : 2008

L U G A R	E S T A C I O N				C L A S I F I C A C I O N V E H I C U L A R E N P O R C I E N T O .												
	KM	TE	SC	TDPA	A	B	C2	C3	T3S2	T3S3	T3S2R4	OTROS	A	B	C	K'	D
CULIACAN	0.00																
T. DER. LOS MONZONES	4.00	1	1	6386	74.9	5.7	2.3	2.5	7.1	2.3	3.3	1.9	74.9	5.7	19.4	0.090	0.507
T. DER. LOS MONZONES	4.00	1	2	6216	74.6	5.8	2.3	2.4	6.7	2.3	3.8	2.1	74.6	5.8	19.6	0.120	0.507
T. DER. PRESA LOPEZ MATEOS	27.20	3	0	7944	64.4	11.7	4.5	3.6	7.0	3.2	3.7	1.9	64.4	11.7	23.9	0.079	0.504
X. C. PERICOS - LOS NARANJOS	43.60	3	0	6651	77.5	2.4	4.5	2.7	8.2	1.5	2.0	1.2	77.5	2.4	20.1	0.076	0.500
GUAMUCHIL	104.70	1	0	6988	70.7	6.3	4.2	3.2	8.7	2.2	2.0	2.7	70.7	6.3	23.0	0.080	0.503
GUAMUCHIL	104.70	3	0	10434	60.9	10.4	7.5	8.7	5.0	3.4	1.8	2.3	60.9	10.4	28.7	0.081	0.500
T. IZQ. AUT. CULIACAN - LAS BRISAS	121.20	1	0	12369	72.3	7.5	2.0	4.3	8.2	2.0	2.4	1.3	72.3	7.5	20.2	0.070	0.509
T. IZQ. AUT. CULIACAN - LAS BRISAS	121.20	3	1	5533	69.5	7.2	2.0	4.5	9.7	2.2	3.4	1.5	69.5	7.2	23.3	0.078	0.508
T. IZQ. AUT. CULIACAN - LAS BRISAS	121.20	3	2	7431	66.7	7.5	2.4	4.1	10.4	3.4	3.7	1.8	66.7	7.5	25.8	0.110	0.508
T. DER. ESTACION BAMOA	133.20	3	1	5561	67.3	6.1	2.1	4.3	8.5	2.7	5.4	3.6	67.3	6.1	26.6	0.076	0.508
T. DER. ESTACION BAMOA	133.20	3	2	5753	70.4	5.9	2.0	4.1	8.5	2.6	4.9	1.6	70.4	5.9	23.7	0.082	0.508
GUASAVE	146.30	3	1	8772	73.2	8.4	0.8	2.0	8.2	2.3	3.1	2.0	73.2	8.4	18.4	0.082	0.510
GUASAVE	146.30	3	2	9117	76.0	7.6	0.8	1.8	6.6	1.9	3.0	2.3	76.0	7.6	16.4	0.097	0.510
T. IZQ. LOS MOCHIS (1° ACCESO)	202.00	1	1	10530	73.3	8.2	0.9	2.0	8.2	2.3	3.1	2.0	73.3	8.2	18.5	0.082	0.501
T. IZQ. LOS MOCHIS (1° ACCESO)	202.00	1	2	10491	75.4	7.9	0.8	2.1	6.6	1.9	3.0	2.3	75.4	7.9	16.7	0.098	0.501
T. IZQ. LOS MOCHIS (1° ACCESO)	202.00	3	1	9417	73.6	8.3	0.8	1.7	8.3	2.3	3.0	2.0	73.6	8.3	18.1	0.082	0.528
T. IZQ. LOS MOCHIS (1° ACCESO)	202.00	3	2	10515	76.0	7.8	0.8	1.6	6.6	1.9	3.0	2.3	76.0	7.8	16.2	0.098	0.528
T. C. TOPOLOBAMPO - CHOIX	205.20																

2 CARR : DURANGO - VILLA UNION

CLAVE: 00083

RUTA : MEX-040

AÑO : 2008

L U G A R	E S T A C I O N				C L A S I F I C A C I O N V E H I C U L A R E N P O R C I E N T O .												
	KM	TE	SC	TDPA	A	B	C2	C3	T3S2	T3S3	T3S2R4	OTROS	A	B	C	K'	D
DURANGO	0.00	3	0	4871	79.9	4.7	3.1	5.4	2.2	1.0	2.4	1.3	79.9	4.7	15.4	0.064	0.505
T. DER. PINO	22.86	3	0	4622	82.5	4.8	3.5	3.5	2.1	1.4	1.2	1.0	82.5	4.8	12.7	0.062	0.515
T. IZQ. ESTACION NAVIOS	58.42	3	0	2648	72.8	6.1	1.4	3.7	6.8	4.4	3.0	1.8	72.8	6.1	21.1	0.082	0.502
LLANO GRANDE	77.23	1	0	2728	74.1	7.1	1.5	3.3	7.6	4.3	1.0	1.1	74.1	7.1	18.8	0.086	0.506
EL SALTO	99.76	3	0	2987	74.8	6.6	2.8	2.8	7.7	3.5	0.8	1.0	74.8	6.6	18.6	0.090	0.502
LA CIUDAD	145.50	1	0	1856	79.2	6.4	1.3	3.9	5.0	2.4	0.7	1.1	79.2	6.4	14.4	0.103	0.508
LA CIUDAD	145.50	3	0	1416	75.7	5.2	1.2	5.2	5.6	4.5	1.4	1.2	75.7	5.2	19.1	0.101	0.513
LIM. EDOS. TERM. DGO. PPIA. SIN.	198.50																
T. C. TEPIC - MAZATLAN	294.40	1	0	6401	85.3	3.9	3.5	1.7	3.3	1.2	0.4	0.7	85.3	3.9	10.8	0.085	0.511

SINALOA

6 CARR : PERICOS - LOS NARANJOS

CLAVE: 25598

RUTA : MEX-024

AÑO : 2008

L U G A R	E S T A C I O N				C L A S I F I C A C I O N V E H I C U L A R E N P O R C I E N T O .												
	KM	TE	SC	TDPA	A	B	C2	C3	T3S2	T3S3	T3S2R4	OTROS	A	B	C	K'	D
PERICOS	0.00	3	0	1915	88.6	1.9	2.3	1.2	2.0	0.7	1.3	2.0	88.6	1.9	9.5	0.104	0.503
BADIRAGUATO	37.50	1	0	1664	86.5	5.1	1.7	0.3	3.0	1.2	0.8	1.4	86.5	5.1	8.4	0.120	0.501
NARANJOS	66.00																

7 CARR : TEPIC - MAZATLAN

CLAVE: 00500

RUTA : MEX-015

AÑO : 2008

L U G A R	E S T A C I O N				C L A S I F I C A C I O N V E H I C U L A R E N P O R C I E N T O .												
	KM	TE	SC	TDPA	A	B	C2	C3	T3S2	T3S3	T3S2R4	OTROS	A	B	C	K'	D
TEPIC	0.00	3	1	8183	80.4	1.5	4.3	3.6	4.3	1.5	1.8	2.6	80.4	1.5	18.1	0.069	0.529
TEPIC	0.00	3	2	7288	81.6	1.4	3.9	3.4	3.9	1.3	2.0	2.5	81.6	1.4	17.0	0.075	0.529
T. IZQ. LIBRAMIENTO DE TEPIC	2.56	1	1	11102	81.6	6.3	3.3	1.0	3.3	1.3	1.8	1.4	81.6	6.3	12.1	0.091	0.532
T. IZQ. LIBRAMIENTO DE TEPIC	2.56	1	2	9786	77.3	6.3	3.2	1.9	3.4	2.8	2.5	2.6	77.3	6.3	16.4	0.085	0.532
T. IZQ. AUT. TEPIC - ENT. SAN BLAS (CUOTA)	3.70	3	0	8378	70.1	4.1	1.6	2.8	10.8	3.3	5.6	1.7	70.1	4.1	25.8	0.100	0.507
LOS OTATES	19.80	3	0	8265	60.1	4.3	0.8	1.6	13.6	7.9	7.9	3.8	60.1	4.3	35.6	0.100	0.510
T. IZQ. JUMATAN	28.52	1	0	6666	75.6	5.2	1.8	2.4	3.2	2.7	5.2	3.9	75.6	5.2	19.2	0.110	0.515
T. IZQ. JUMATAN	28.52	3	1	7349	63.4	3.5	4.8	4.9	9.7	4.6	6.1	3.0	63.4	3.5	33.1	0.110	0.502
T. IZQ. JUMATAN	28.52	3	2	7398	66.9	3.5	4.8	4.9	9.0	3.4	5.7	1.8	66.9	3.5	29.6	0.110	0.502
T. IZQ. SAN BLAS	33.54	1	1	6276	60.2	5.6	5.1	3.6	10.7	5.1	6.4	3.3	60.2	5.6	34.2	0.069	0.500
T. IZQ. SAN BLAS	33.54	1	2	6280	61.9	5.4	5.2	3.6	10.0	4.6	6.2	3.1	61.9	5.4	32.7	0.071	0.500
T. IZQ. VILLA HIDALGO	48.12	1	0	11878	83.1	2.8	2.9	1.8	4.1	2.9	2.0	0.4	83.1	2.8	14.1	0.075	0.505
T. IZQ. VILLA HIDALGO	48.12	3	0	10286	67.0	2.3	6.9	6.9	8.1	4.5	1.5	2.8	67.0	2.3	30.7	0.077	0.506
T. IZQ. SANTIAGO IXCUINTLA	56.42	1	0	10308	64.3	5.8	4.2	3.3	8.6	4.0	6.7	3.1	64.3	5.8	29.9	0.070	0.504
T. IZQ. SANTIAGO IXCUINTLA	56.42	3	0	10332	72.0	5.4	3.6	5.3	5.5	4.5	1.3	2.4	72.0	5.4	22.6	0.075	0.504
T. IZQ. TUXPAN	70.60	1	0	12719	73.6	5.8	4.5	4.4	4.1	4.5	1.2	1.9	73.6	5.8	20.6	0.072	0.504
T. IZQ. TUXPAN	70.60	3	0	13197	72.3	7.8	4.1	1.9	4.6	3.5	1.9	3.9	72.3	7.8	19.9	0.088	0.506
T. DER. ROSAMORADA	90.70	3	0	10484	72.2	7.0	3.2	3.5	4.7	3.5	1.9	4.0	72.2	7.0	20.8	0.070	0.508
TIERRA GENEROSA	110.40	1	0	7768	77.0	2.7	1.8	1.4	12.2	2.8	1.8	0.3	77.0	2.7	20.3	0.074	0.503
T. DER. ACAPONETA	136.50	1	0	9854	71.2	7.5	4.1	3.7	6.7	3.8	1.6	1.4	71.2	7.5	21.3	0.074	0.509
T. DER. ACAPONETA	136.50	3	0	4527	77.7	8.4	1.8	2.1	6.3	1.4	1.2	1.1	77.7	8.4	13.9	0.076	0.508
LIM. EDOS. TERM. NAY. PPIA. SIN.	147.00																
ESCUINAPA DE HIDALGO	200.00	1	0	4006	74.6	3.2	1.5	2.7	7.4	2.8	4.1	3.7	74.6	3.2	22.2	0.110	0.502
ESCUINAPA DE HIDALGO	200.00	3	0	4259	83.2	4.8	2.0	2.7	3.7	1.2	1.3	1.1	83.2	4.8	12.0	0.086	0.505
ROSARIO	221.70	1	0	10675	82.1	2.0	1.6	1.8	3.7	2.3	3.7	2.8	82.1	2.0	15.9	0.077	0.504
ROSARIO	221.70	3	0	2826	85.1	3.7	1.9	2.7	3.2	1.3	1.0	1.1	85.1	3.7	11.2	0.121	0.501
T. DER. DURANGO	268.00	1	0	3245	74.6	4.5	2.4	2.4	10.6	3.0	1.4	1.1	74.6	4.5	20.9	0.110	0.509

SINALOA

7 CARR : TEPIC - MAZATLAN

CLAVE: 00500

RUTA : MEX-015

AÑO : 2008

L U G A R	E S T A C I O N				C L A S I F I C A C I O N V E H I C U L A R E N P O R C I E N T O .												
	KM	TE	SC	TDPA	A	B	C2	C3	T3S2	T3S3	T3S2R4	OTROS	A	B	C	K'	D
T. DER. DURANGO	268.00	3	0	5549	72.7	3.7	1.3	1.4	4.9	3.6	7.9	4.5	72.7	3.7	23.6	0.091	0.503
VILLA UNION	269.50	3	0	13562	62.3	4.3	2.5	2.7	9.3	4.1	11.1	3.7	62.3	4.3	33.4	0.141	0.500
T. DER. LIBRAMIENTO DE MAZATLAN	288.90	1	1	11528	86.0	2.8	2.7	2.3	2.1	1.6	1.0	1.5	86.0	2.8	11.2	0.109	0.501
T. DER. LIBRAMIENTO DE MAZATLAN MAZATLAN	288.90	1	2	11595	87.2	3.0	2.5	2.2	1.8	1.4	0.8	1.1	87.2	3.0	9.8	0.107	0.501
	292.00																

8 CARR : CULIACAN - LAS BRISAS (CUOTA)

CLAVE: 25503

RUTA : MEX-015D

AÑO : 2008

L U G A R	E S T A C I O N				C L A S I F I C A C I O N V E H I C U L A R E N P O R C I E N T O .												
	KM	TE	SC	TDPA	A	B	C2	C3	T3S2	T3S3	T3S2R4	OTROS	A	B	C	K'	D
T. C. CULIACAN - EL DORADO	0.00																
CASETA DE COBRO "CULIACAN"	1.50	3	1	2306	66.1	5.1	1.5	1.8	12.9	11.2	1.3	0.1	66.1	5.1	28.8	0.103	0.503
CASETA DE COBRO "CULIACAN"	1.50	3	2	1826	65.8	5.2	1.4	1.6	14.4	9.9	1.6	0.1	65.8	5.2	29.0	0.120	0.503
T. C. CULIACAN - LOS MOCHIS	125.70																

9 CARR : DURANGO - VILLA UNION (CUOTA)

CLAVE:

RUTA : MEX-040D

AÑO : 2008

L U G A R	E S T A C I O N				C L A S I F I C A C I O N V E H I C U L A R E N P O R C I E N T O .												
	KM	TE	SC	TDPA	A	B	C2	C3	T3S2	T3S3	T3S2R4	OTROS	A	B	C	K'	D
LIBRAMIENTO DE DURANGO	21.60	3	0	2461	77.3	4.3	2.7	3.5	5.7	2.8	2.3	1.4	77.3	4.3	18.4	0.091	0.502
T.C. EL SOLDADO - OTINAPA	44.00	3	0	1689	81.8	5.5	5.9	2.2	3.5	0.3	0.2	0.6	81.8	5.5	12.7	0.091	0.510
CONCORDIA	221.50	3	0	545	91.6	2.5	2.3	1.4	0.8	0.4	0.0	1.0	91.6	2.5	5.9	0.163	0.504
VILLA UNION	230.00	1	0	577	91.0	3.5	2.1	1.3	0.8	0.3	0.0	1.0	91.0	3.5	5.5	0.120	0.506

10 CARR : LOS MOCHIS - CD. OBREGON (CUOTA)

CLAVE: 00452

RUTA : MEX-015D

AÑO : 2008

L U G A R	E S T A C I O N				C L A S I F I C A C I O N V E H I C U L A R E N P O R C I E N T O .												
	KM	TE	SC	TDPA	A	B	C2	C3	T3S2	T3S3	T3S2R4	OTROS	A	B	C	K'	D
T. C. TOPOLOBAMPO - CHOIX	0.00	3	1	7075	74.5	9.9	2.8	1.9	5.3	2.9	2.1	0.6	74.5	9.9	15.6	0.069	0.505
T. C. TOPOLOBAMPO - CHOIX	0.00	3	2	7213	75.0	9.8	2.6	1.9	5.8	2.8	1.4	0.7	75.0	9.8	15.2	0.069	0.505
T. IZQ. AHOME	17.13	3	1	4124	64.5	6.7	1.6	1.5	11.4	4.4	8.0	1.9	64.5	6.7	28.8	0.085	0.501
T. IZQ. AHOME	17.13	3	2	4112	61.3	6.1	1.7	1.6	12.5	5.3	8.5	3.0	61.3	6.1	32.6	0.079	0.501
T. IZQ. COHUIBAMPO	19.00	1	1	6988	63.7	6.6	3.7	2.8	6.7	2.9	8.3	5.3	63.7	6.6	29.7	0.066	0.502
T. IZQ. COHUIBAMPO	19.00	1	2	7044	61.4	6.7	3.4	2.9	7.8	2.8	9.1	5.9	61.4	6.7	31.9	0.082	0.502
T. IZQ. COHUIBAMPO	19.00	3	1	7495	74.8	6.2	1.5	2.7	8.2	2.2	3.4	1.0	74.8	6.2	19.0	0.100	0.507

SINALOA

10 CARR : LOS MOCHIS - CD. OBREGON (CUOTA)

CLAVE: 00452

RUTA : MEX-015D

AÑO : 2008

L U G A R	E S T A C I O N				C L A S I F I C A C I O N V E H I C U L A R E N P O R C I E N T O .												
	KM	TE	SC	TDPA	A	B	C2	C3	T3S2	T3S3	T3S2R4	OTROS	A	B	C	K'	D
T. IZQ. COHUIBAMPO	19.00	3	2	7291	73.6	6.7	1.6	2.9	9.3	2.1	2.8	1.0	73.6	6.7	19.7	0.120	0.507
POBLADO CHICO	50.00	3	1	5090	64.6	7.4	2.1	2.8	9.9	3.6	5.8	3.8	64.6	7.4	28.0	0.063	0.504
POBLADO CHICO	50.00	3	2	5018	65.4	7.4	2.2	2.5	11.3	3.6	4.7	2.9	65.4	7.4	27.2	0.065	0.504
T. DER. EL FUERTE	54.80	1	1	7034	61.9	8.4	1.5	1.8	10.6	3.5	7.5	4.8	61.9	8.4	29.7	0.080	0.500
T. DER. EL FUERTE	54.80	1	2	7586	63.0	8.7	1.3	2.2	6.5	3.5	10.0	4.8	63.0	8.7	28.3	0.090	0.500
T. DER. EL FUERTE	54.80	3	1	5023	74.2	6.7	3.0	2.6	5.9	2.3	4.2	1.1	74.2	6.7	19.1	0.109	0.504
T. DER. EL FUERTE	54.80	3	2	5108	73.3	6.5	3.4	2.3	7.2	2.2	3.9	1.2	73.3	6.5	20.2	0.088	0.504
CASETA DE COBRO PUENTE SAN MIGUEL	68.00	2	0	10116	63.0	8.1	3.7	5.7	13.4	2.5	3.0	0.6	63.0	8.1	28.9		
LIM. EDOS. TERM. SIN. PPIA. SON.	68.84																
CASETA DE COBRO ESTACION DON (LA JAULA)	70.80	2	0	4266	58.7	10.9	3.1	3.0	14.4	1.8	6.3	1.8	58.7	10.9	30.4		
T. IZQ. HUATABAMPO	128.00	1	1	2423	57.5	11.9	3.6	3.5	13.4	1.9	6.7	1.5	57.5	11.9	30.6	0.078	0.507
T. IZQ. HUATABAMPO	128.00	1	2	2491	57.1	13.6	3.1	3.4	14.9	1.6	5.4	0.9	57.1	13.6	29.3	0.084	0.507
NAVOJOA	155.00	1	1	5068	57.7	12.5	3.0	2.8	14.5	1.6	6.2	1.7	57.7	12.5	29.8	0.067	0.501
NAVOJOA	155.00	1	2	5045	57.8	11.8	3.3	3.1	15.0	1.6	6.3	1.1	57.8	11.8	30.4	0.078	0.501
NAVOJOA	155.00	3	1	5168	62.4	10.9	3.4	2.4	12.1	2.1	5.6	1.1	62.4	10.9	26.7	0.123	0.510
NAVOJOA	155.00	3	2	5388	62.9	11.0	3.2	2.6	11.4	2.1	6.1	0.7	62.9	11.0	26.1	0.115	0.510
T. IZQ. VILLA JUAREZ	167.30	3	1	4347	61.6	11.6	3.8	2.4	12.0	1.5	5.9	1.2	61.6	11.6	26.8	0.068	0.512
T. IZQ. VILLA JUAREZ	167.30	3	2	4141	63.2	10.5	3.1	2.7	11.9	1.6	5.8	1.2	63.2	10.5	26.3	0.069	0.512
CASETA DE COBRO FUNDICION	195.50	2	0	5012	62.3	10.1	3.4	2.3	12.5	1.4	6.4	1.6	62.3	10.1	27.6		
T. DER. FUNDICION	196.90	1	1	3310	61.8	11.5	3.2	2.7	12.2	1.3	6.0	1.3	61.8	11.5	26.7	0.082	0.504
T. DER. FUNDICION	196.90	1	2	3363	61.4	11.2	3.3	2.5	12.1	1.7	6.4	1.4	61.4	11.2	27.4	0.085	0.504
CD. OBREGON	222.80	1	1	9678	61.7	11.5	3.2	2.4	12.3	1.7	6.2	1.0	61.7	11.5	26.8	0.075	0.500
CD. OBREGON	222.80	1	2	9692	62.3	11.4	3.6	2.6	11.7	1.5	6.0	0.9	62.3	11.4	26.3	0.077	0.500

11 CARR : MAZATLAN - CULIACAN (CUOTA)

CLAVE: 25045

RUTA : MEX-015D

AÑO : 2008

L U G A R	E S T A C I O N				C L A S I F I C A C I O N V E H I C U L A R E N P O R C I E N T O .												
	KM	TE	SC	TDPA	A	B	C2	C3	T3S2	T3S3	T3S2R4	OTROS	A	B	C	K'	D
ENT. VENADILLO	0.00	3	1	2405	80.9	5.6	3.7	2.1	3.4	2.0	1.0	1.3	80.9	5.6	13.5	0.107	0.514
ENT. VENADILLO	0.00	3	2	2590	82.0	5.8	3.4	1.9	3.5	1.9	1.1	0.4	82.0	5.8	12.2	0.065	0.514
CASETA DE COBRO MARMOL	25.15	2	0	5026	61.6	10.0	3.5	3.1	13.0	2.4	4.3	2.1	61.6	10.0	28.4		
CASETA DE COBRO MARMOL	25.15	3	1	2397	61.6	11.6	3.5	4.4	9.5	3.0	5.1	1.3	61.6	11.6	26.8	0.087	0.531
CASETA DE COBRO MARMOL	25.15	3	2	2120	60.9	11.1	3.6	4.3	10.9	3.3	4.9	1.0	60.9	11.1	28.0	0.083	0.531
CASETA DE COBRO COSTA RICA	187.80	1	0	4977	61.1	10.0	3.4	3.4	12.9	2.2	5.2	1.8	61.1	10.0	28.9		
CASETA DE COBRO COSTA RICA	187.80	2	0	4770	59.9	10.4	3.4	3.3	13.4	2.3	5.4	1.9	59.9	10.4	29.7		

SINALOA

11 CARR : MAZATLAN - CULIACAN (CUOTA)

CLAVE: 25045

RUTA : MEX-015D

AÑO : 2008

L U G A R	E S T A C I O N				C L A S I F I C A C I O N V E H I C U L A R E N P O R C I E N T O .												
	KM	TE	SC	TDPA	A	B	C2	C3	T3S2	T3S3	T3S2R4	OTROS	A	B	C	K'	D
CASETA DE COBRO COSTA RICA	187.80	3	1	2747	60.1	11.6	2.9	3.1	12.9	2.6	5.5	1.3	60.1	11.6	28.3	0.079	0.511
CASETA DE COBRO COSTA RICA	187.80	3	2	2631	59.6	11.7	3.4	3.2	11.8	2.4	6.5	1.4	59.6	11.7	28.7	0.081	0.511
T. C. LIBRAMIENTO SUR DE CULIACAN	205.00	1	1	10110	72.7	12.5	1.3	2.3	5.3	1.9	2.2	1.8	72.7	12.5	14.8	0.094	0.551
T. C. LIBRAMIENTO SUR DE CULIACAN	205.00	1	2	9911	73.5	11.9	1.5	2.1	6.4	2.4	1.3	0.9	73.5	11.9	14.6	0.128	0.551

12 CARR : TEPIC - MAZATLAN (CUOTA)

CLAVE:

RUTA : MEX-015D

AÑO : 2008

L U G A R	E S T A C I O N				C L A S I F I C A C I O N V E H I C U L A R E N P O R C I E N T O .												
	KM	TE	SC	TDPA	A	B	C2	C3	T3S2	T3S3	T3S2R4	OTROS	A	B	C	K'	D
CASETA DE COBRO EL PICHON	4.70	2	0	8092	71.4	8.9	3.8	3.2	5.4	0.9	2.8	3.6	71.4	8.9	19.7		
CRUCERO DE SAN BLAS	24.50	3	0	2051	62.8	5.0	4.9	2.4	11.5	6.4	3.4	3.6	62.8	5.0	32.2	0.072	0.501
CASETA DE COBRO ESTACION RUIZ	54.70	1	0	2103	92.2	0.6	2.7	0.3	0.1	0.0	0.0	4.1	92.2	0.6	7.2		
CASETA DE COBRO ESTACION RUIZ	54.70	2	0	1677	93.6	0.6	2.4	0.3	0.1	0.0	0.0	3.0	93.6	0.6	5.8		
EST. RUIZ	54.90	1	0	3492	88.0	5.5	2.5	1.8	1.7	0.3	0.1	0.1	88.0	5.5	6.5	0.086	0.505
EST. RUIZ	54.90	3	0	2427	88.9	4.6	2.5	1.8	1.7	0.3	0.1	0.1	88.9	4.6	6.5	0.122	0.504
ROSAMORADA	73.50	1	0	2777	88.4	4.9	2.5	2.2	1.5	0.3	0.1	0.1	88.4	4.9	6.7	0.122	0.503
ROSAMORADA	73.50	3	0	2683	88.7	4.9	2.1	2.3	1.5	0.3	0.1	0.1	88.7	4.9	6.4	0.122	0.504
ACAPONETA	120.20	1	0	3572	88.1	2.8	1.8	2.0	2.2	1.5	0.8	0.8	88.1	2.8	9.1	0.091	0.521
ACAPONETA	120.20	3	0	3263	65.2	3.9	5.0	6.6	6.3	2.2	8.6	2.2	65.2	3.9	30.9	0.076	0.515
CASETA DE COBRO ROSARIO	199.50	1	0	3900	56.6	10.8	3.1	3.7	13.9	2.0	6.6	3.3	56.6	10.8	32.6		
CASETA DE COBRO ROSARIO	199.50	2	0	3516	54.7	10.8	3.0	3.9	15.3	2.2	7.3	2.8	54.7	10.8	34.5		
CASETA DE COBRO ROSARIO	199.50	3	0	3848	56.2	11.1	2.9	3.7	14.0	2.0	6.7	3.4	56.2	11.1	32.7		
ESCUINAPA DE HIDALGO	208.60	1	0	3693	64.9	5.8	4.6	5.8	6.2	2.0	8.6	2.1	64.9	5.8	29.3	0.076	0.513
ESCUINAPA DE HIDALGO	208.60	3	0	2766	64.7	4.9	5.0	6.0	6.3	2.2	8.6	2.3	64.7	4.9	30.4	0.077	0.528
ROSARIO	220.70	1	0	3242	60.8	2.7	4.4	5.1	7.5	3.1	9.0	7.4	60.8	2.7	36.5	0.085	0.502
ROSARIO	220.70	3	0	4809	60.3	5.8	3.8	2.8	13.6	2.8	9.1	1.8	60.3	5.8	33.9	0.067	0.500
VILLA UNION	238.40	1	0	4479	56.2	3.7	7.3	5.3	13.6	3.0	9.0	1.9	56.2	3.7	40.1	0.067	0.500

13 CARR : CARRIZAL - CAMPO ANIBAL

CLAVE: 25585

RUTA : SIN-019

AÑO : 2008

L U G A R	E S T A C I O N				C L A S I F I C A C I O N V E H I C U L A R E N P O R C I E N T O .												
	KM	TE	SC	TDPA	A	B	C2	C3	T3S2	T3S3	T3S2R4	OTROS	A	B	C	K'	D
T. C. MAZATLAN - CULIACAN	0.00	3	0	1475	84.2	6.8	2.4	2.3	1.9	0.5	1.5	0.4	84.2	6.8	9.0	0.155	0.505
X. C. CULIACAN - EL DORADO	29.20	1	0	6573	79.5	5.5	1.7	1.7	3.2	1.2	1.4	5.8	79.5	5.5	15.0	0.106	0.510
X. C. CULIACAN - EL DORADO	29.20	3	0	4458	86.8	4.8	2.1	1.3	1.7	1.2	0.6	1.5	86.8	4.8	8.4	0.088	0.502

SINALOA

13 CARR : CARRIZAL - CAMPO ANIBAL

CLAVE: 25585

ruta : SIN-019

AÑO : 2008

L U G A R	E S T A C I O N				C L A S I F I C A C I O N V E H I C U L A R E N P O R C I E N T O .												
	KM	TE	SC	TDPA	A	B	C2	C3	T3S2	T3S3	T3S2R4	OTROS	A	B	C	K'	D
T. C. SAN PEDRO - CAMPO ANIBAL	32.00	1	0	6678	84.5	4.7	1.5	1.6	3.3	2.2	0.9	1.3	84.5	4.7	10.8	0.078	0.502

14 CARR : CULIACAN - ALTATA

CLAVE: 25013

ruta : SIN-030

AÑO : 2008

L U G A R	E S T A C I O N				C L A S I F I C A C I O N V E H I C U L A R E N P O R C I E N T O .												
	KM	TE	SC	TDPA	A	B	C2	C3	T3S2	T3S3	T3S2R4	OTROS	A	B	C	K'	D
CULIACAN	0.00																
T. IZQ. EL DORADO	6.20	1	1	19548	82.2	3.6	4.1	3.6	2.9	1.7	0.7	1.2	82.2	3.6	14.2	0.060	0.505
T. IZQ. EL DORADO	6.20	1	2	19933	84.6	3.5	4.3	3.4	2.2	1.0	0.4	0.6	84.6	3.5	11.9	0.090	0.505
T. IZQ. EL DORADO	6.20	3	1	23675	77.2	7.4	1.7	1.0	4.8	2.1	2.6	3.2	77.2	7.4	15.4	0.073	0.512
T. IZQ. EL DORADO	6.20	3	2	22582	79.1	7.3	1.9	0.6	4.5	1.5	2.3	2.8	79.1	7.3	13.6	0.074	0.512
T. IZQ. AEROPUERTO	8.70	3	1	17106	83.0	5.6	1.3	0.9	2.1	3.7	1.0	2.4	83.0	5.6	11.4	0.090	0.525
T. IZQ. AEROPUERTO	8.70	3	2	18878	83.5	7.8	1.4	1.0	1.7	1.9	0.8	1.9	83.5	7.8	8.7	0.076	0.525
NAVOLATO	32.40	1	1	7125	87.4	2.3	2.4	1.8	3.1	0.5	0.6	1.9	87.4	2.3	10.3	0.114	0.505
NAVOLATO	32.40	1	2	7264	87.2	2.6	2.4	1.8	3.3	0.5	0.4	1.8	87.2	2.6	10.2	0.074	0.505
NAVOLATO	32.40	3	0	9100	87.7	7.7	1.4	0.4	0.7	0.5	0.3	1.3	87.7	7.7	4.6	0.099	0.505
T. DER. 5 HERMANOS	38.20	3	0	5190	90.6	5.6	1.6	0.6	0.4	0.1	0.1	1.0	90.6	5.6	3.8	0.096	0.504
ALTATA	67.00	1	0	4109	83.2	2.0	1.5	0.8	2.8	6.8	0.9	2.0	83.2	2.0	14.8	0.071	0.508

15 CARR : CULIACAN - EL DORADO

CLAVE: 25044

ruta : SIN-005

AÑO : 2008

L U G A R	E S T A C I O N				C L A S I F I C A C I O N V E H I C U L A R E N P O R C I E N T O .												
	KM	TE	SC	TDPA	A	B	C2	C3	T3S2	T3S3	T3S2R4	OTROS	A	B	C	K'	D
T. C. CULIACAN - ALTATA	0.00	3	1	13142	80.4	4.5	2.7	2.1	2.8	5.1	2.0	0.4	80.4	4.5	15.1	0.086	0.502
T. C. CULIACAN - ALTATA	0.00	3	2	13059	82.1	4.2	2.7	2.2	2.9	4.0	1.5	0.4	82.1	4.2	13.7	0.080	0.502
X. C. CARRIZAL - CAMPO ANIBAL	21.35	1	1	6057	70.0	5.7	3.9	4.5	6.8	2.1	4.3	2.7	70.0	5.7	24.3	0.081	0.501
X. C. CARRIZAL - CAMPO ANIBAL	21.35	1	2	6716	73.0	5.1	3.8	4.1	6.4	1.7	3.7	2.2	73.0	5.1	21.9	0.084	0.501
X. C. CARRIZAL - CAMPO ANIBAL	21.35	3	0	4721	85.7	5.4	2.9	1.4	1.2	2.2	0.2	1.0	85.7	5.4	8.9	0.110	0.515
EL DORADO	55.00	1	0	4275	85.5	3.0	0.7	1.9	3.6	1.1	1.2	3.0	85.5	3.0	11.5	0.102	0.504

16 CARR : EL LIMONCITO - CINCO HERMANOS

CLAVE: 25016

ruta : SIN-016

AÑO : 2008

L U G A R	E S T A C I O N				C L A S I F I C A C I O N V E H I C U L A R E N P O R C I E N T O .												
	KM	TE	SC	TDPA	A	B	C2	C3	T3S2	T3S3	T3S2R4	OTROS	A	B	C	K'	D
T. C. CULIACAN - ALTATA	0.00	3	0	1973	83.2	6.6	0.3	0.5	3.4	0.9	2.5	2.6	83.2	6.6	10.2	0.106	0.514

SINALOA

16 CARR : EL LIMONCITO - CINCO HERMANOS

CLAVE: 25016

RUTA : SIN-016

AÑO : 2008

L U G A R	E S T A C I O N				C L A S I F I C A C I O N V E H I C U L A R E N P O R C I E N T O .												
	KM	TE	SC	TDPA	A	B	C2	C3	T3S2	T3S3	T3S2R4	OTROS	A	B	C	K'	D
CINCO HERMANOS	16.00	1	0	965	83.3	2.3	2.3	1.3	2.0	7.3	0.4	1.1	83.3	2.3	14.4	0.125	0.503

17 CARR : EL SALADO - EL DORADO

CLAVE: 25010

RUTA : SIN-010

AÑO : 2008

L U G A R	E S T A C I O N				C L A S I F I C A C I O N V E H I C U L A R E N P O R C I E N T O .												
	KM	TE	SC	TDPA	A	B	C2	C3	T3S2	T3S3	T3S2R4	OTROS	A	B	C	K'	D
T. C. MAZATLAN - CULIACAN	0.00	3	0	2179	86.7	3.8	1.5	1.8	2.9	2.1	1.0	0.2	86.7	3.8	9.5	0.098	0.508
EL DORADO	31.00	1	0	3029	89.0	2.4	1.2	0.8	3.2	0.9	0.8	1.7	89.0	2.4	8.6	0.131	0.503

18 CARR : ESCUINAPA DE HIDALGO - TEACAPAN

CLAVE: 25001

RUTA : SIN-001

AÑO : 2008

L U G A R	E S T A C I O N				C L A S I F I C A C I O N V E H I C U L A R E N P O R C I E N T O .												
	KM	TE	SC	TDPA	A	B	C2	C3	T3S2	T3S3	T3S2R4	OTROS	A	B	C	K'	D
ESCUINAPA DE HIDALGO	0.00	3	0	3496	64.3	5.7	1.1	4.0	9.9	3.4	6.5	5.1	64.3	5.7	30.0	0.100	0.506
TEACAPAN	41.00	1	0	1850	55.4	6.9	3.0	7.5	13.4	4.8	6.8	2.2	55.4	6.9	37.7	0.080	0.503

19 CARR : ESTACION DIMAS - SAN IGNACIO

CLAVE: 25007

RUTA : SIN-006

AÑO : 2008

L U G A R	E S T A C I O N				C L A S I F I C A C I O N V E H I C U L A R E N P O R C I E N T O .												
	KM	TE	SC	TDPA	A	B	C2	C3	T3S2	T3S3	T3S2R4	OTROS	A	B	C	K'	D
DIMAS	0.00																
X. C. MAZATLAN - CULIACAN	23.15	1	0	771	85.9	5.6	3.2	2.2	1.3	0.9	0.8	0.1	85.9	5.6	8.5	0.100	0.526
X. C. MAZATLAN - CULIACAN	23.15	3	0	1815	84.1	8.2	3.3	1.7	1.6	0.3	0.2	0.6	84.1	8.2	7.7	0.088	0.507
SAN IGNACIO	56.00	1	0	1288	86.7	5.3	2.9	1.7	1.8	0.8	0.2	0.6	86.7	5.3	8.0	0.099	0.517

20 CARR : GUAMUCHIL - MOCORITO

CLAVE: 25021

RUTA : SIN-021

AÑO : 2008

L U G A R	E S T A C I O N				C L A S I F I C A C I O N V E H I C U L A R E N P O R C I E N T O .												
	KM	TE	SC	TDPA	A	B	C2	C3	T3S2	T3S3	T3S2R4	OTROS	A	B	C	K'	D
GUAMUCHIL	0.00	3	0	5288	78.6	3.3	2.3	1.8	6.4	1.5	3.7	2.4	78.6	3.3	18.1	0.118	0.505
MOCORITO	17.00	1	0	3597	84.6	5.0	2.3	0.7	2.9	1.3	0.9	2.3	84.6	5.0	10.4	0.098	0.507

SINALOA

21 CARR : GUASAVE - SINALOA DE LEYVA

CLAVE: 25023

RUTA : SIN-023

AÑO : 2008

L U G A R	E S T A C I O N				C L A S I F I C A C I O N V E H I C U L A R E N P O R C I E N T O .												
	KM	TE	SC	TDPA	A	B	C2	C3	T3S2	T3S3	T3S2R4	OTROS	A	B	C	K'	D
GUASAVE	0.00																
X. C. CULIACAN - LOS MOCHIS	1.15	3	1	3333	84.3	2.2	0.7	0.7	3.1	5.0	0.2	3.8	84.3	2.2	13.5	0.102	0.512
X. C. CULIACAN - LOS MOCHIS	1.15	3	2	3180	85.8	2.6	0.8	0.6	2.7	4.4	0.3	2.8	85.8	2.6	11.6	0.096	0.512
SINALOA DE LEYVA	74.50	1	0	4713	72.9	4.7	1.7	4.4	5.7	3.1	5.1	2.4	72.9	4.7	22.4	0.087	0.513

22 CARR : NAVOLATO - EL CASTILLO

CLAVE: 25004

RUTA : SIN-004

AÑO : 2008

L U G A R	E S T A C I O N				C L A S I F I C A C I O N V E H I C U L A R E N P O R C I E N T O .												
	KM	TE	SC	TDPA	A	B	C2	C3	T3S2	T3S3	T3S2R4	OTROS	A	B	C	K'	D
NAVOLATO	0.00	3	0	4471	85.7	3.5	1.3	0.9	3.7	2.7	0.9	1.3	85.7	3.5	10.8	0.121	0.506
EL CASTILLO	29.00	1	0	1069	86.3	9.5	1.9	1.0	0.7	0.1	0.1	0.4	86.3	9.5	4.2	0.106	0.509

23 CARR : POZOLE - COFRADIA

CLAVE: 25080

RUTA : SIN-080

AÑO : 2008

L U G A R	E S T A C I O N				C L A S I F I C A C I O N V E H I C U L A R E N P O R C I E N T O .												
	KM	TE	SC	TDPA	A	B	C2	C3	T3S2	T3S3	T3S2R4	OTROS	A	B	C	K'	D
T. C. TEPIC - MAZATLAN	0.00	3	0	2434	82.7	2.7	1.7	2.1	2.5	2.1	3.9	2.3	82.7	2.7	14.6	0.080	0.501
COFRADIA	9.10	1	0	861	85.0	3.2	1.4	2.1	1.8	2.1	1.8	2.6	85.0	3.2	11.8	0.087	0.507

24 CARR : RAMAL A CHAMETLA

CLAVE: 25002

RUTA : SIN-002

AÑO : 2008

L U G A R	E S T A C I O N				C L A S I F I C A C I O N V E H I C U L A R E N P O R C I E N T O .												
	KM	TE	SC	TDPA	A	B	C2	C3	T3S2	T3S3	T3S2R4	OTROS	A	B	C	K'	D
T. C. TEPIC - MAZATLAN	0.00	3	0	2395	82.3	2.3	1.3	0.4	6.4	1.2	3.8	2.3	82.3	2.3	15.4	0.110	0.505
CHAMETLA	15.00	1	0	1649	95.5	2.5	0.5	0.1	0.6	0.2	0.1	0.5	95.5	2.5	2.0	0.161	0.575

25 CARR : RAMAL A COSALA

CLAVE: 25008

RUTA : SIN-008

AÑO : 2008

L U G A R	E S T A C I O N				C L A S I F I C A C I O N V E H I C U L A R E N P O R C I E N T O .												
	KM	TE	SC	TDPA	A	B	C2	C3	T3S2	T3S3	T3S2R4	OTROS	A	B	C	K'	D
T. C. MAZATLAN - CULIACAN	0.00	3	0	1104	91.9	5.1	0.0	0.3	0.7	0.3	0.4	1.3	91.9	5.1	3.0	0.092	0.508
COSALA	53.00	1	0	992	91.6	1.3	2.9	2.0	1.3	0.6	0.1	0.2	91.6	1.3	7.1	0.116	0.516

SINALOA

26 CARR : RAMAL A EL QUELITE

CLAVE: 25060

RUTA : SIN-060

AÑO : 2008

L U G A R	E S T A C I O N				C L A S I F I C A C I O N V E H I C U L A R E N P O R C I E N T O .												
	KM	TE	SC	TDPA	A	B	C2	C3	T3S2	T3S3	T3S2R4	OTROS	A	B	C	K'	D
T. C. MAZATLAN - CULIACAN	0.00	3	0	1118	89.0	7.1	1.7	1.0	0.4	0.1	0.1	0.6	89.0	7.1	3.9	0.093	0.515
EL QUELITE	6.00	1	0	1087	90.2	3.0	1.2	1.0	1.6	0.6	1.0	1.4	90.2	3.0	6.8	0.088	0.500

27 CARR : RAMAL A ESTACION BAMOA

CLAVE: 25022

RUTA : SIN-022

AÑO : 2008

L U G A R	E S T A C I O N				C L A S I F I C A C I O N V E H I C U L A R E N P O R C I E N T O .												
	KM	TE	SC	TDPA	A	B	C2	C3	T3S2	T3S3	T3S2R4	OTROS	A	B	C	K'	D
T. C. CULIACAN - LOS MOCHIS	0.00	3	0	2601	88.7	6.3	0.3	0.5	2.0	0.9	0.5	0.8	88.7	6.3	5.0	0.093	0.508
ESTACION BAMOA	22.50	1	0	2350	57.5	7.7	1.4	6.4	9.6	6.7	7.0	3.7	57.5	7.7	34.8	0.090	0.504

28 CARR : RAMAL A LA CRUZ

CLAVE: 25043

RUTA : SIN

AÑO : 2008

L U G A R	E S T A C I O N				C L A S I F I C A C I O N V E H I C U L A R E N P O R C I E N T O .												
	KM	TE	SC	TDPA	A	B	C2	C3	T3S2	T3S3	T3S2R4	OTROS	A	B	C	K'	D
T. C. MAZATLAN - CULIACAN	0.00	3	0	2500	93.5	3.9	1.3	1.3	0.0	0.0	0.0	0.0	93.5	3.9	2.6	0.131	0.503
LA CRUZ	18.00	1	0	2905	92.7	4.2	1.0	1.3	0.3	0.2	0.1	0.2	92.7	4.2	3.1	0.123	0.515

29 CARR : RAMAL A LA NORIA

CLAVE: 25592

RUTA : SIN

AÑO : 2008

L U G A R	E S T A C I O N				C L A S I F I C A C I O N V E H I C U L A R E N P O R C I E N T O .												
	KM	TE	SC	TDPA	A	B	C2	C3	T3S2	T3S3	T3S2R4	OTROS	A	B	C	K'	D
T. C. MAZATLAN - CULIACAN	0.00	3	0	1522	92.6	2.9	1.5	1.1	1.1	0.2	0.2	0.4	92.6	2.9	4.5	0.093	0.508
LA NORIA	25.50	1	0	766	85.9	2.5	3.4	3.3	2.2	1.6	1.1	0.0	85.9	2.5	11.6	0.085	0.515

30 CARR : RAMAL A LA REFORMA

CLAVE: 25041

RUTA : SIN-004

AÑO : 2008

L U G A R	E S T A C I O N				C L A S I F I C A C I O N V E H I C U L A R E N P O R C I E N T O .												
	KM	TE	SC	TDPA	A	B	C2	C3	T3S2	T3S3	T3S2R4	OTROS	A	B	C	K'	D
T. C. CULIACAN - LOS MOCHIS	0.00	3	0	10845	74.8	5.1	1.0	0.9	6.3	1.5	5.2	5.2	74.8	5.1	20.1	0.090	0.516
T. DER. LA ANGOSTURA	14.00	3	0	2194	91.6	2.7	1.3	1.4	1.6	0.3	0.4	0.7	91.6	2.7	5.7	0.100	0.505
LA REFORMA	60.00	1	0	3159	76.6	6.7	4.9	4.8	2.2	2.2	1.6	1.0	76.6	6.7	16.7	0.077	0.512

SINALOA

31 CARR : ROSARIO - CAIMANERO

CLAVE: 25003

RUTA : SIN-003

AÑO : 2008

L U G A R	E S T A C I O N				C L A S I F I C A C I O N V E H I C U L A R E N P O R C I E N T O .												
	KM	TE	SC	TDPA	A	B	C2	C3	T3S2	T3S3	T3S2R4	OTROS	A	B	C	K'	D
ROSARIO	0.00	3	0	2678	89.9	4.3	1.9	1.1	1.2	0.1	0.1	1.4	89.9	4.3	5.8	0.072	0.500
CAIMANERO	30.00	1	0	2206	66.2	4.5	2.6	2.6	10.0	3.4	6.9	3.8	66.2	4.5	29.3	0.100	0.514

32 CARR : SAN PEDRO - CAMPO ANIBAL

CLAVE: 25600

RUTA : SIN

AÑO : 2008

L U G A R	E S T A C I O N				C L A S I F I C A C I O N V E H I C U L A R E N P O R C I E N T O .												
	KM	TE	SC	TDPA	A	B	C2	C3	T3S2	T3S3	T3S2R4	OTROS	A	B	C	K'	D
T. C. CULIACAN - ALTATA	0.00	3	0	2464	85.6	2.3	1.9	0.8	1.2	7.4	0.2	0.6	85.6	2.3	12.1	0.114	0.503
CAMPO ANIBAL	24.50	1	0	1756	83.4	4.8	2.3	1.2	3.2	1.6	1.2	2.3	83.4	4.8	11.8	0.118	0.509
LOS PUENTES	26.50																

33 CARR : TOPOLOBAMPO - CHOIX

CLAVE: 25032

RUTA : SIN-023

AÑO : 2008

L U G A R	E S T A C I O N				C L A S I F I C A C I O N V E H I C U L A R E N P O R C I E N T O .												
	KM	TE	SC	TDPA	A	B	C2	C3	T3S2	T3S3	T3S2R4	OTROS	A	B	C	K'	D
TOPOLOBAMPO	0.00	3	1	2900	82.2	9.4	1.0	1.4	2.8	1.5	0.8	0.9	82.2	9.4	8.4	0.141	0.517
TOPOLOBAMPO	0.00	3	2	3104	83.9	9.5	1.0	1.5	1.0	0.3	0.4	2.4	83.9	9.5	6.6	0.111	0.517
LOS MOCHIS	24.00	1	1	9012	77.0	4.8	1.4	3.0	5.4	2.1	2.2	4.1	77.0	4.8	18.2	0.083	0.501
LOS MOCHIS	24.00	1	2	9034	75.8	4.6	1.3	3.0	5.0	2.8	2.9	4.6	75.8	4.6	19.6	0.091	0.501
X. C. LOS MOCHIS - CD. OBREGON (CUOTA)	29.00	1	1	7916	84.2	4.9	1.9	2.0	3.1	0.7	0.7	2.5	84.2	4.9	10.9	0.105	0.507
X. C. LOS MOCHIS - CD. OBREGON (CUOTA)	29.00	1	2	8131	82.6	5.8	2.2	1.9	3.5	0.6	0.7	2.7	82.6	5.8	11.6	0.104	0.507
X. C. LOS MOCHIS - CD. OBREGON (CUOTA)	29.00	3	1	6461	80.7	8.9	1.9	1.6	3.3	0.9	0.6	2.1	80.7	8.9	10.4	0.081	0.508
X. C. LOS MOCHIS - CD. OBREGON (CUOTA)	29.00	3	2	6365	82.5	8.9	1.8	1.5	2.6	0.7	0.4	1.6	82.5	8.9	8.6	0.090	0.508
SAN BLAS	65.00	1	0	4729	87.0	4.8	2.6	0.5	2.3	1.2	0.6	1.0	87.0	4.8	8.2	0.091	0.536
SAN BLAS	65.00	3	0	1343	84.9	6.5	2.6	1.1	2.1	1.2	0.6	1.0	84.9	6.5	8.6	0.080	0.504
EL FUERTE	107.70	1	0	6443	69.7	5.7	1.7	2.0	7.4	3.4	6.9	3.2	69.7	5.7	24.6	0.108	0.501
EL FUERTE	107.70	3	0	3511	72.5	5.3	2.1	1.7	9.8	5.0	2.4	1.2	72.5	5.3	22.2	0.112	0.506
CHOIX	159.00	1	0	2754	69.1	6.9	1.2	1.8	8.3	2.9	6.3	3.5	69.1	6.9	24.0	0.110	0.511

34 CARR : VILLA UNION - EL WALAMO

CLAVE: 25081

RUTA : SIN-081

AÑO : 2008

L U G A R	E S T A C I O N				C L A S I F I C A C I O N V E H I C U L A R E N P O R C I E N T O .												
	KM	TE	SC	TDPA	A	B	C2	C3	T3S2	T3S3	T3S2R4	OTROS	A	B	C	K'	D
VILLA UNION	0.00	3	0	2363	89.2	3.3	1.7	1.3	2.2	0.5	0.6	1.2	89.2	3.3	7.5	0.131	0.509
WALAMO	7.00	1	0	1932	92.6	2.5	1.2	0.6	1.8	0.2	0.4	0.7	92.6	2.5	4.9	0.138	0.507

SINALOA

35 CARR : VILLA UNION - SIQUEIROS

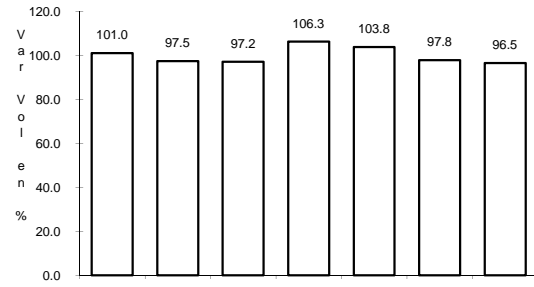
CLAVE: 25063

RUTA : SIN-063

AÑO : 2008

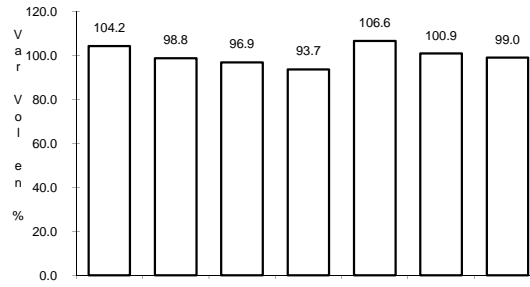
L U G A R	E S T A C I O N				C L A S I F I C A C I O N V E H I C U L A R E N P O R C I E N T O .												
	KM	TE	SC	TDPA	A	B	C2	C3	T3S2	T3S3	T3S2R4	OTROS	A	B	C	K'	D
VILLA UNION	0.00	3	0	2563	89.6	3.3	2.4	1.8	1.3	1.0	0.1	0.5	89.6	3.3	7.1	0.098	0.501
SIQUEIROS	11.00	1	0	627	94.5	3.5	1.1	0.1	0.2	0.0	0.1	0.5	94.5	3.5	2.0	0.091	0.500

1 CARR: CULIACAN - LOS MOCHIS



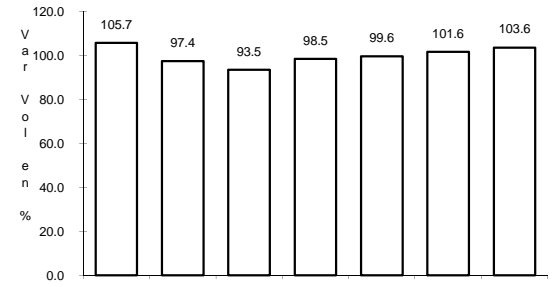
Km: 4.00 Tipo: 1 Sent: 1

CLAVE: 25502



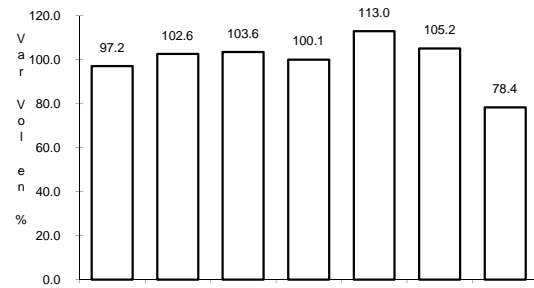
Km: 4.00 Tipo: 1 Sent: 2

RUTA: MEX-015



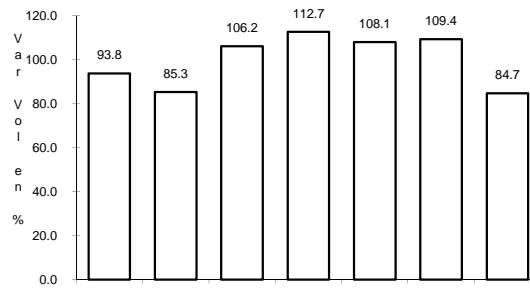
Km: 104.70 Tipo: 1 Sent: 0

2 CARR: DURANGO - VILLA UNION



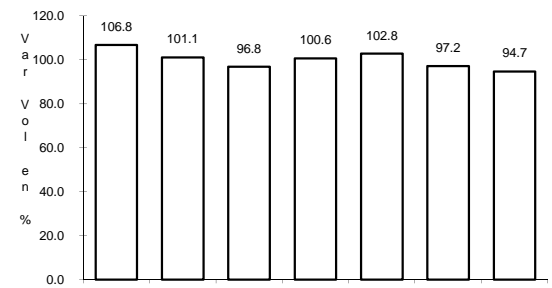
Km: 0.00 Tipo: 3 Sent: 0

CLAVE: 00083



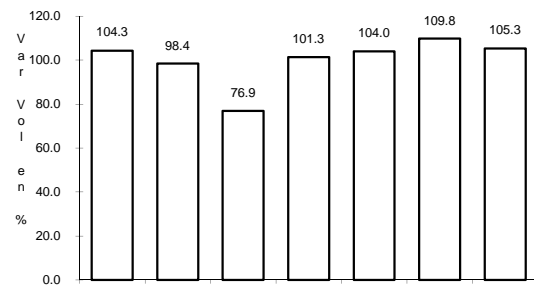
Km: 145.50 Tipo: 1 Sent: 0

RUTA: MEX-040



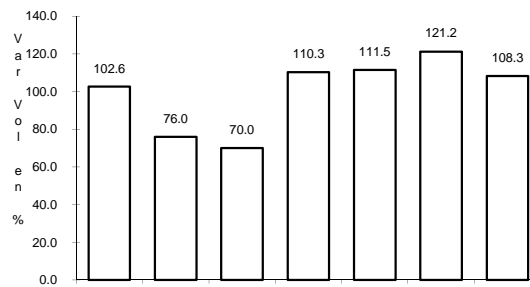
Km: 294.40 Tipo: 1 Sent: 0

3 CARR: LIBRAMIENTO DE MAZATLAN



Km: 0.00 Tipo: 3 Sent: 1

CLAVE: 25604



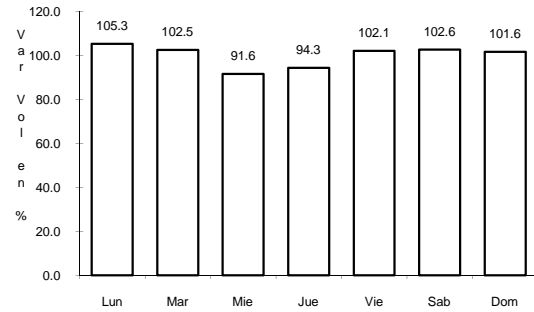
Km: 0.00 Tipo: 3 Sent: 2

RUTA: MEX

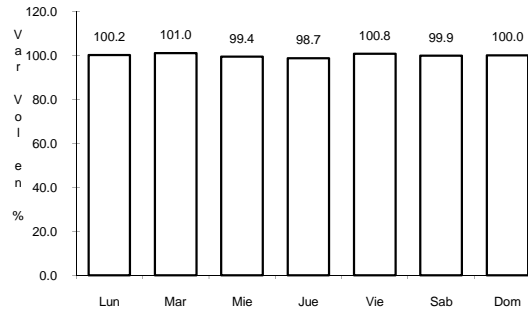
4 CARR: LIBRAMIENTO SUR DE CULIACAN

CLAVE: 25500

ruta: MEX



Km: 0.00 Tipo: 3 Sent: 0

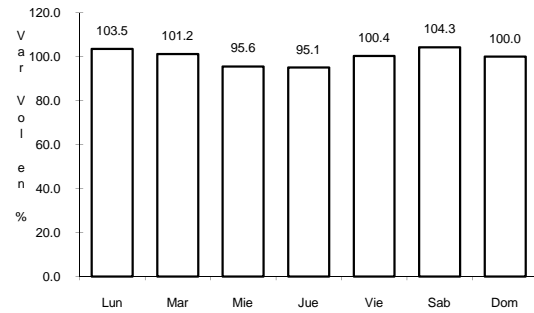


Km: 10.00 Tipo: 1 Sent: 0

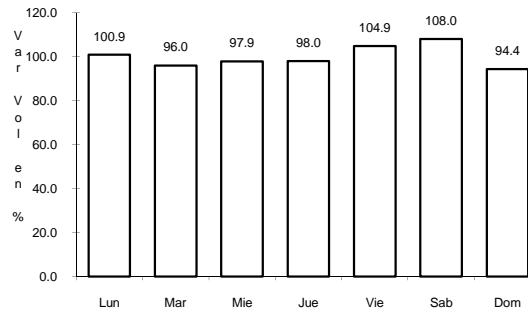
5 CARR: MAZATLAN - CULIACAN

CLAVE: 25501

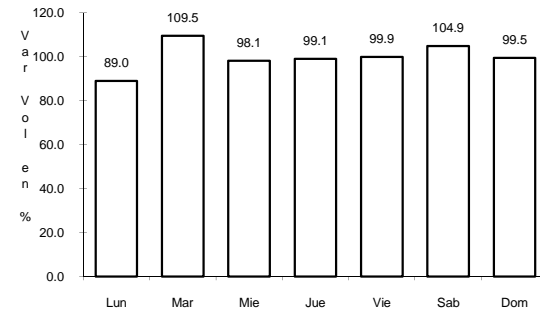
ruta: MEX-015



Km: 6.40 Tipo: 1 Sent: 1



Km: 6.40 Tipo: 1 Sent: 2

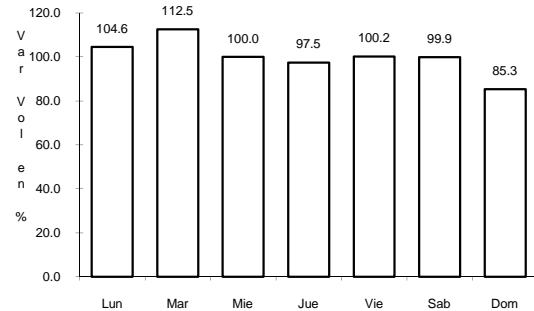


Km: 210.40 Tipo: 1 Sent: 0

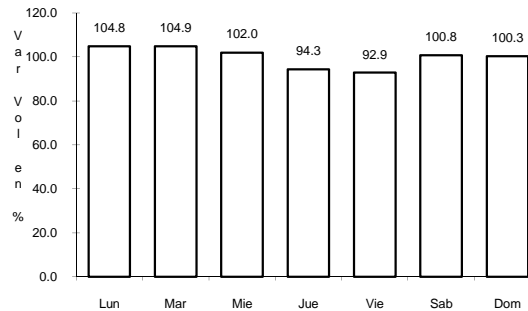
6 CARR: PERICOS - LOS NARANJOS

CLAVE: 25598

ruta: MEX-024

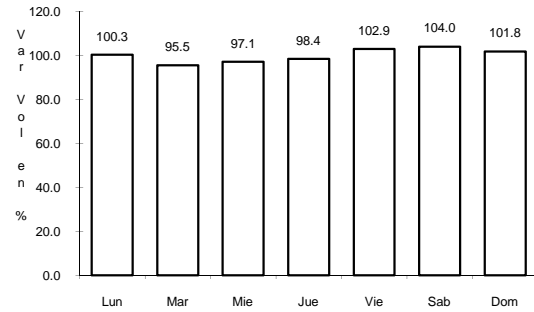


Km: 0.00 Tipo: 3 Sent: 0



Km: 37.50 Tipo: 1 Sent: 0

7 CARR: TEPIC - MAZATLAN

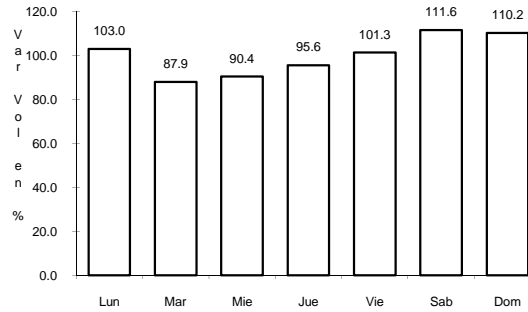


Km: 0.00

Tipo: 3

Sent: 1

CLAVE: 00500

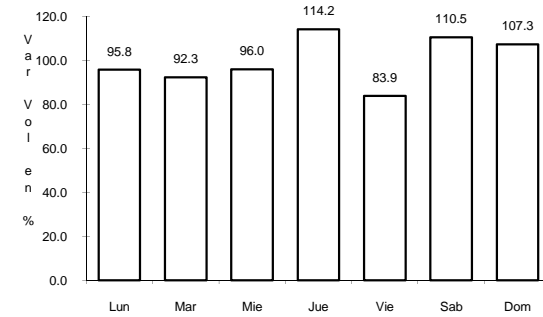


Km: 0.00

Tipo: 3

Sent: 2

RUTA: MEX-015

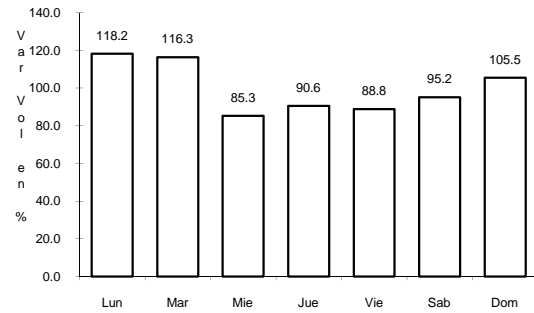


Km: 269.52

Tipo: 3

Sent: 0

8 CARR: CULIACAN - LAS BRISAS (CUOTA)

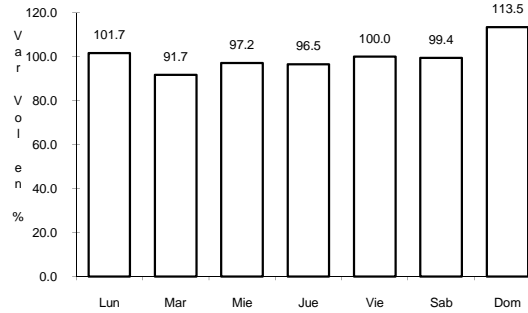


Km: 1.50

Tipo: 3

Sent: 1

CLAVE: 25503



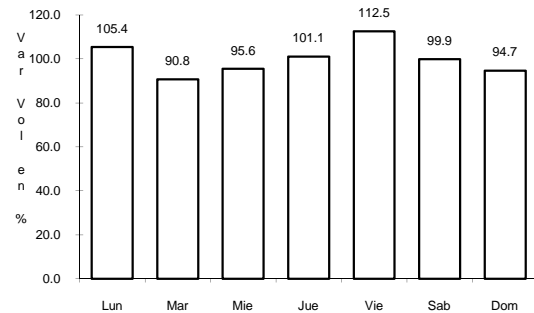
Km: 1.50

Tipo: 3

Sent: 2

RUTA: MEX-015D

9 CARR: DURANGO - VILLA UNION (CUOTA)

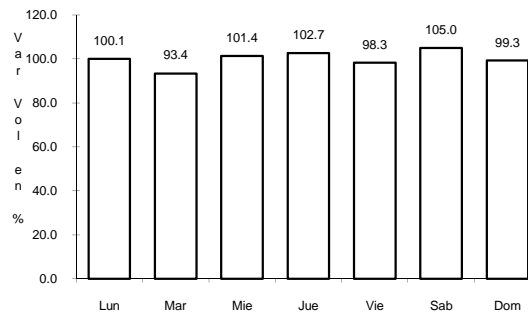


Km: 21.60

Tipo: 3

Sent: 0

CLAVE:

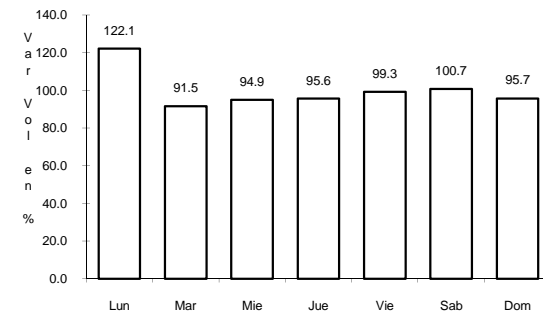


Km: 44.00

Tipo: 3

Sent: 0

RUTA: MEX-040D

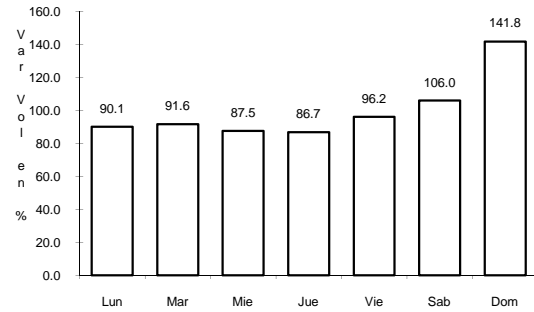


Km: 230.00

Tipo: 1

Sent: 0

13 CARR: CARRIZAL - CAMPO ANIBAL

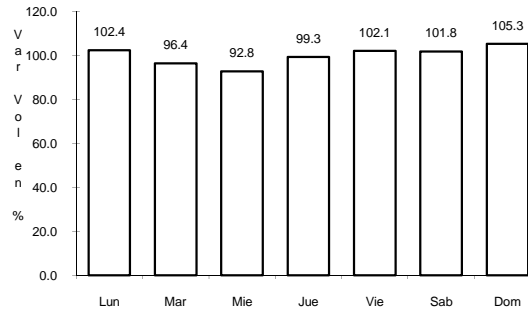


Km: 0.00

Tipo: 3

Sent: 0

CLAVE: 25585

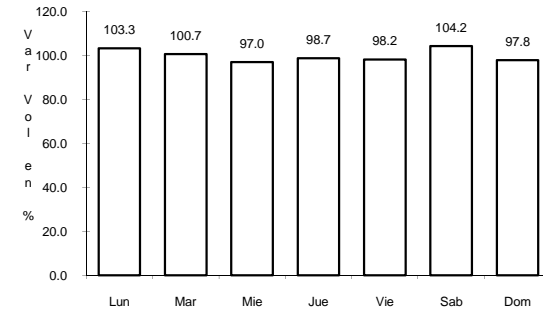


Km: 29.20

Tipo: 1

Sent: 0

ruta: SIN-019

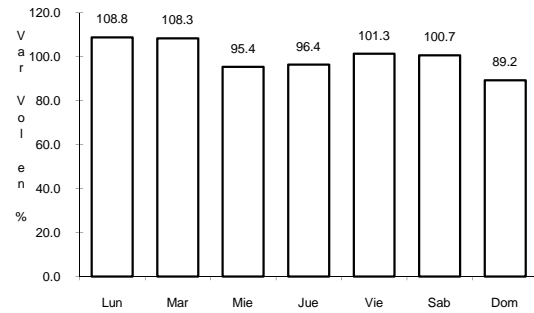


Km: 32.00

Tipo: 1

Sent: 0

14 CARR: CULIACAN - ALTATA

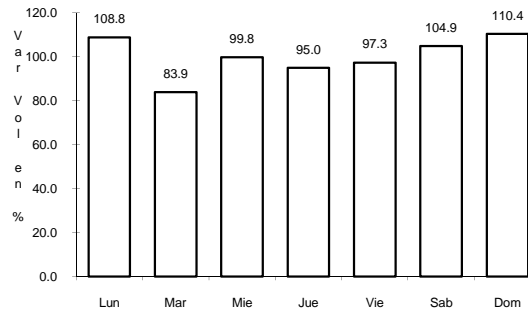


Km: 6.20

Tipo: 1

Sent: 1

CLAVE: 25013

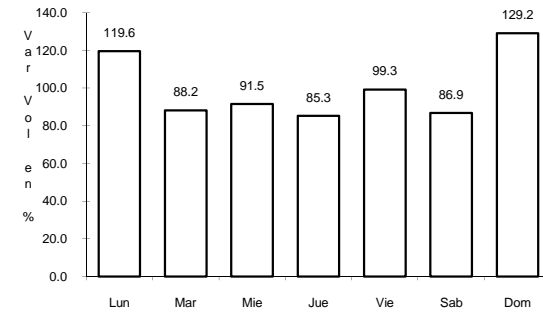


Km: 6.20

Tipo: 1

Sent: 2

ruta: SIN-030

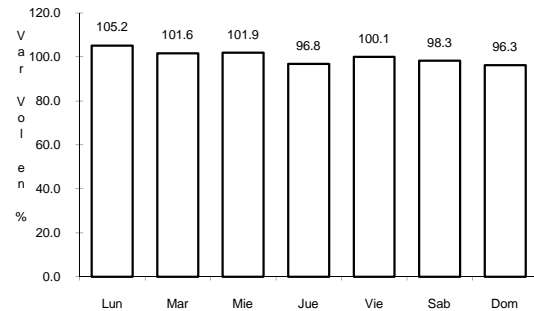


Km: 67.00

Tipo: 1

Sent: 0

15 CARR: CULIACAN - EL DORADO

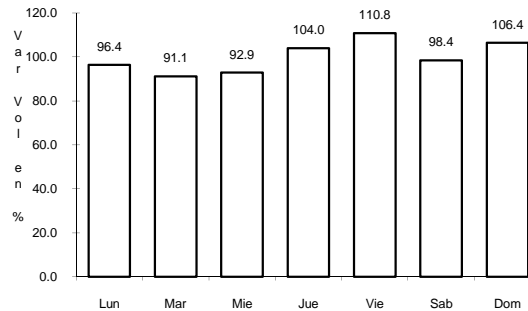


Km: 0.00

Tipo: 3

Sent: 1

CLAVE: 25044

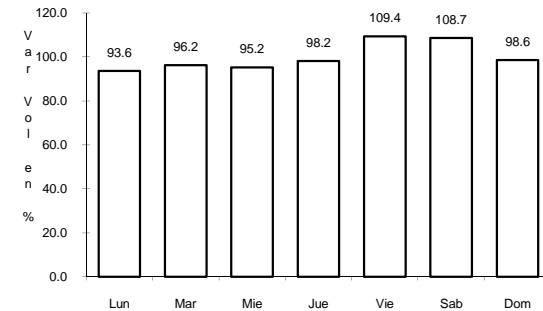


Km: 0.00

Tipo: 3

Sent: 2

ruta: SIN-005



Km: 55.00

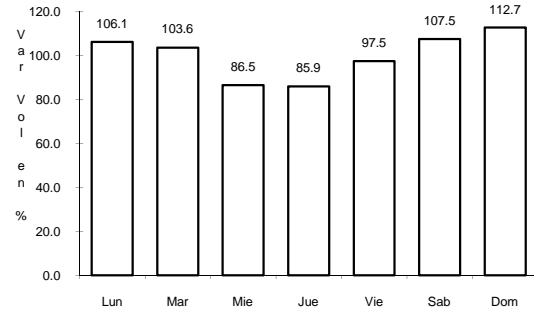
Tipo: 1

Sent: 0

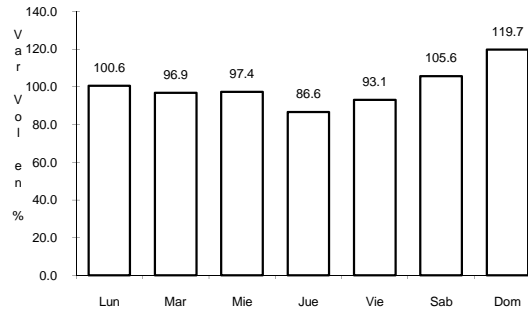
16 CARR: EL LIMONCITO - CINCO HERMANOS

CLAVE: 25016

RUTA: SIN-016



Km: 0.00 Tipo: 3 Sent: 0

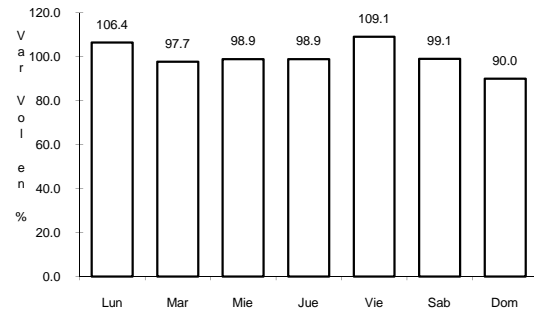


Km: 16.00 Tipo: 1 Sent: 0

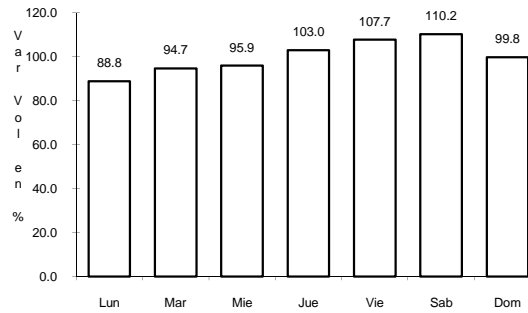
17 CARR: EL SALADO - EL DORADO

CLAVE: 25010

RUTA: SIN-010



Km: 0.00 Tipo: 3 Sent: 0

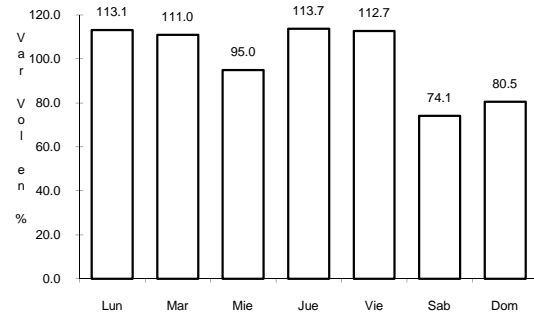


Km: 31.00 Tipo: 1 Sent: 0

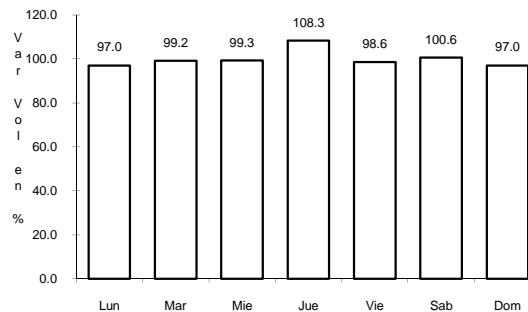
18 CARR: ESCUINAPA DE HIDALGO - TEACAPAN

CLAVE: 25001

RUTA: SIN-001



Km: 0.00 Tipo: 3 Sent: 0

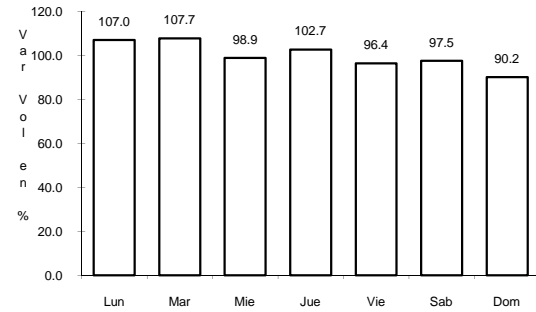


Km: 41.00 Tipo: 1 Sent: 0

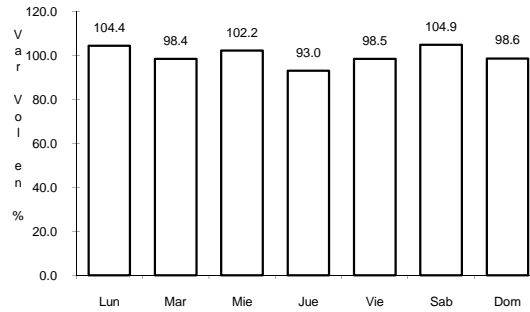
19 CARR: ESTACION DIMAS - SAN IGNACIO

CLAVE: 25007

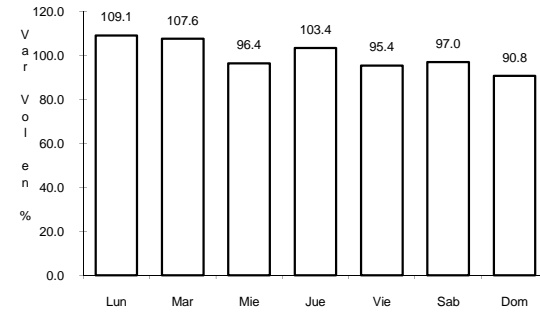
RUTA: SIN-006



Km: 23.15 Tipo: 1 Sent: 0



Km: 23.15 Tipo: 3 Sent: 0

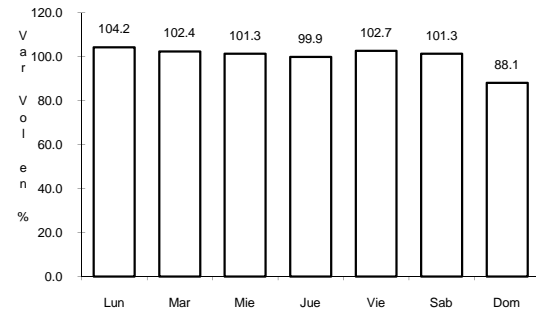


Km: 56.00 Tipo: 1 Sent: 0

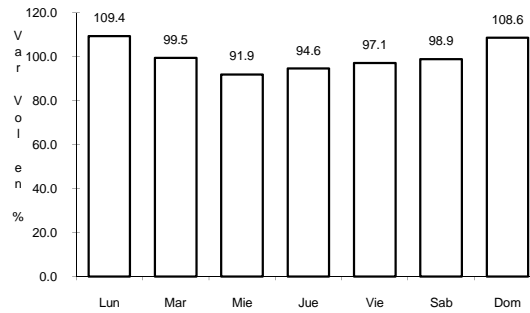
20 CARR: GUAMUCHIL - MOCORITO

CLAVE: 25021

RUTA: SIN-021



Km: 0.00 Tipo: 3 Sent: 0

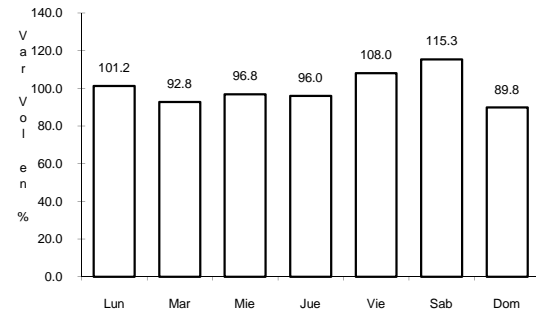


Km: 17.00 Tipo: 1 Sent: 0

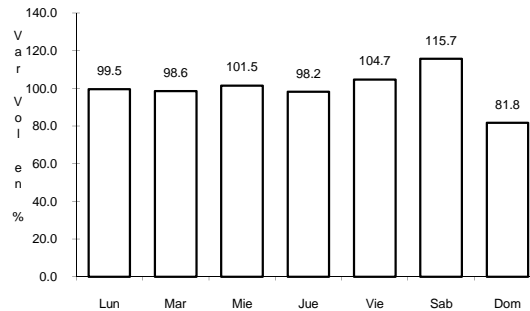
21 CARR: GUASAVE - SINALOA DE LEYVA

CLAVE: 25023

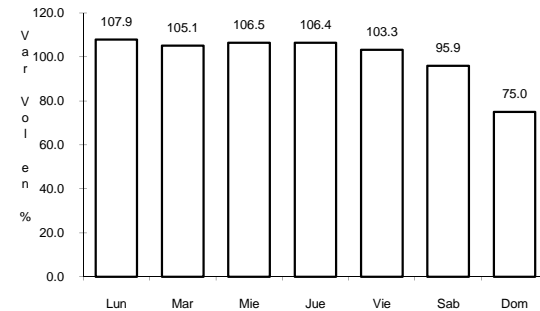
RUTA: SIN-023



Km: 1.15 Tipo: 3 Sent: 1



Km: 1.15 Tipo: 3 Sent: 2

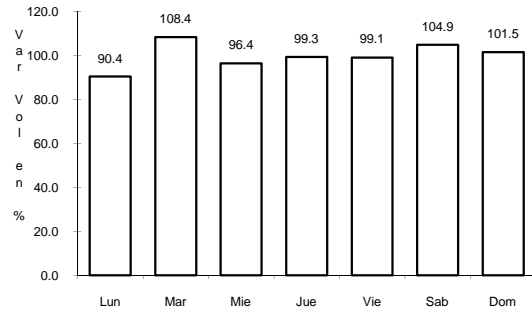


Km: 74.50 Tipo: 1 Sent: 0

22 CARR: NAVOLATO - EL CASTILLO

CLAVE: 25004

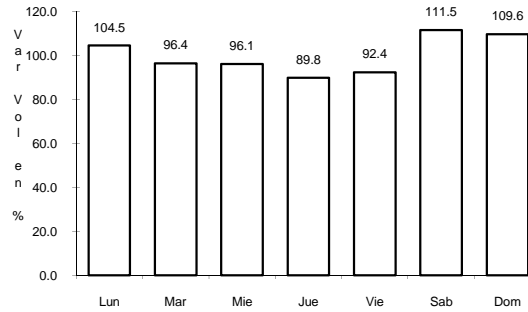
RUTA: SIN-004



Km: 0.00

Tipo: 3

Sent: 0



Km: 29.00

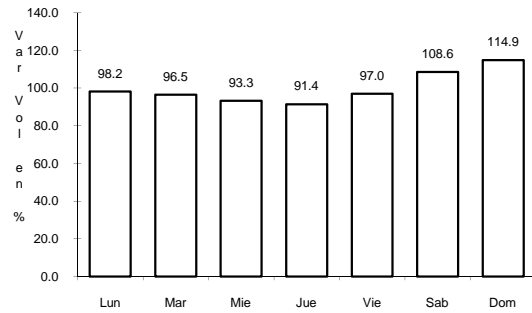
Tipo: 1

Sent: 0

23 CARR: POZOLE - COFRADIA

CLAVE: 25080

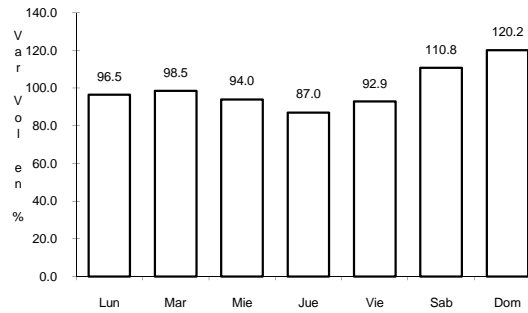
RUTA: SIN-080



Km: 0.00

Tipo: 3

Sent: 0



Km: 9.10

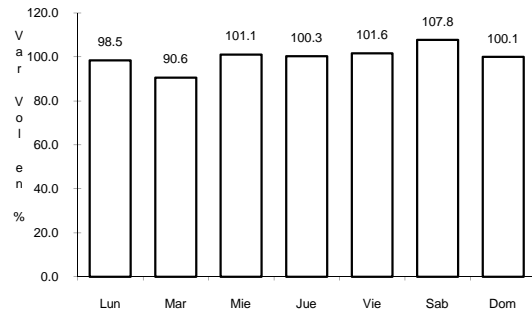
Tipo: 1

Sent: 0

24 CARR: RAMAL A CHAMETLA

CLAVE: 25002

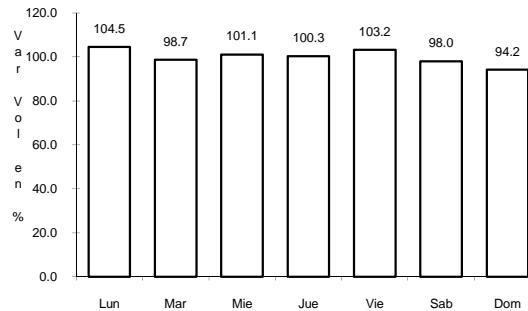
RUTA: SIN-002



Km: 0.00

Tipo: 3

Sent: 0



Km: 15.00

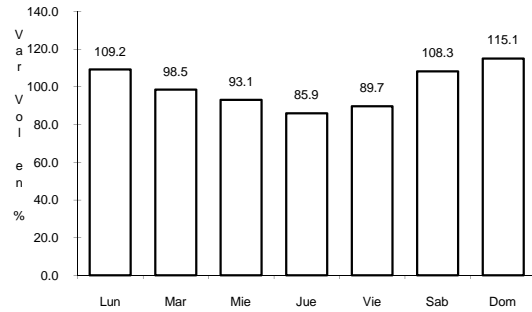
Tipo: 1

Sent: 0

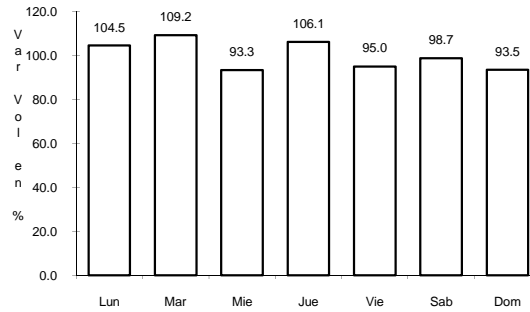
25 CARR: RAMAL A COSALA

CLAVE: 25008

RUTA: SIN-008



Km: 0.00 Tipo: 3 Sent: 0

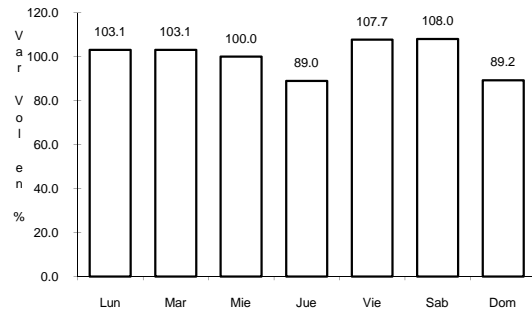


Km: 53.00 Tipo: 1 Sent: 0

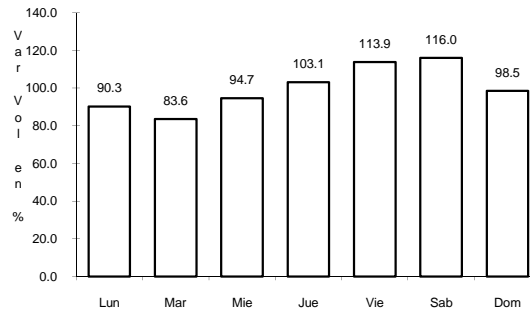
26 CARR: RAMAL A EL QUELITE

CLAVE: 25060

RUTA: SIN-060



Km: 0.00 Tipo: 3 Sent: 0

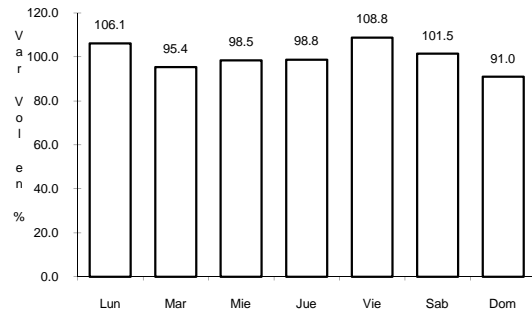


Km: 6.00 Tipo: 1 Sent: 0

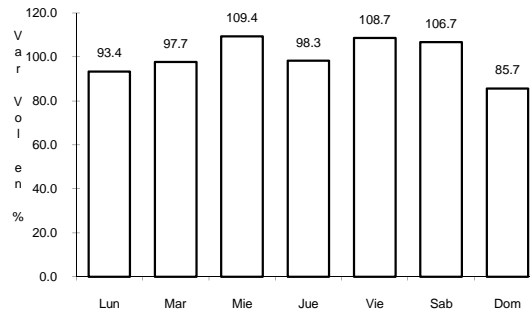
27 CARR: RAMAL A ESTACION BAMOA

CLAVE: 25022

RUTA: SIN-022



Km: 0.00 Tipo: 3 Sent: 0

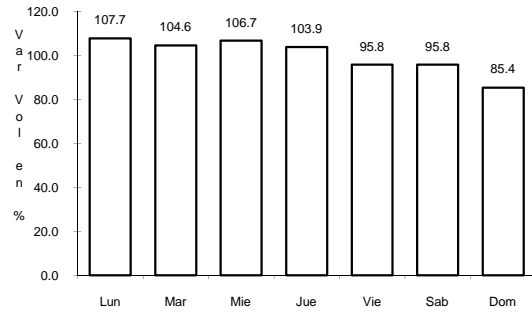


Km: 22.50 Tipo: 1 Sent: 0

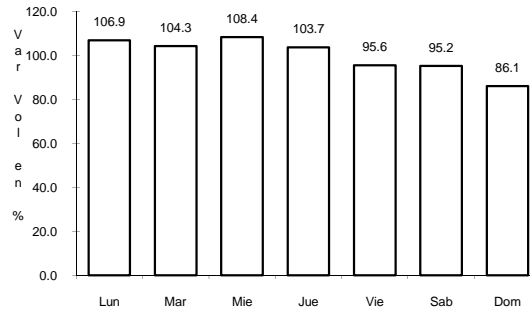
28 CARR: RAMAL A LA CRUZ

CLAVE: 25043

RUTA: SIN



Km: 0.00 Tipo: 3 Sent: 0

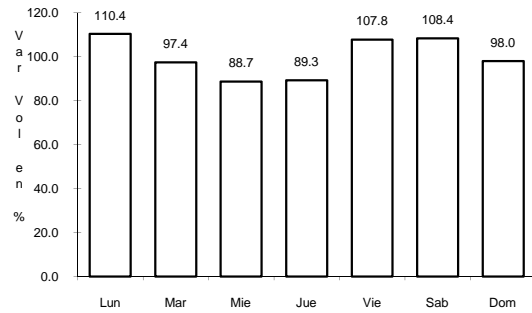


Km: 18.00 Tipo: 1 Sent: 0

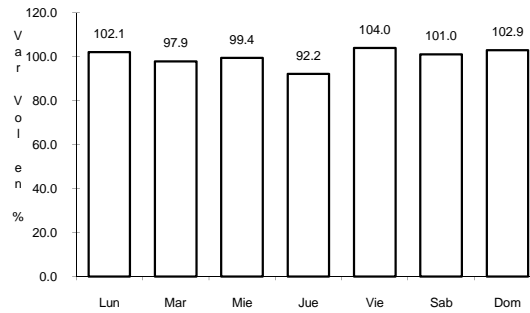
29 CARR: RAMAL A LA NORIA

CLAVE: 25592

RUTA: SIN



Km: 0.00 Tipo: 3 Sent: 0

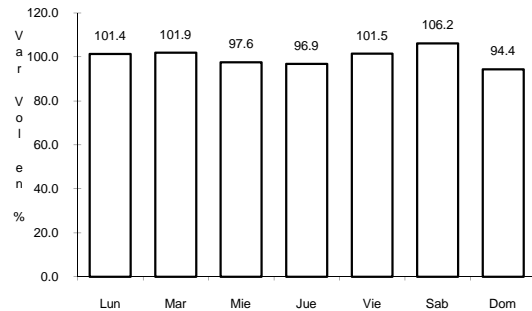


Km: 25.50 Tipo: 1 Sent: 0

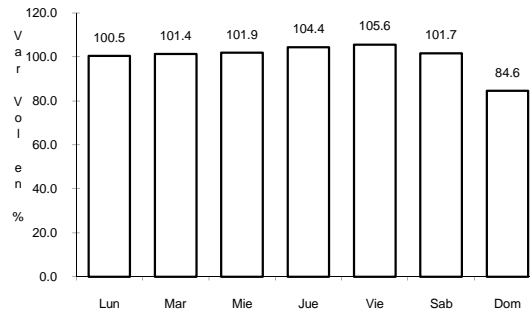
30 CARR: RAMAL A LA REFORMA

CLAVE: 25041

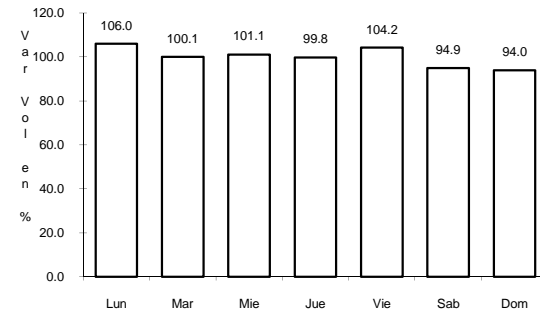
RUTA: SIN-004



Km: 0.00 Tipo: 3 Sent: 0



Km: 14.00 Tipo: 3 Sent: 0

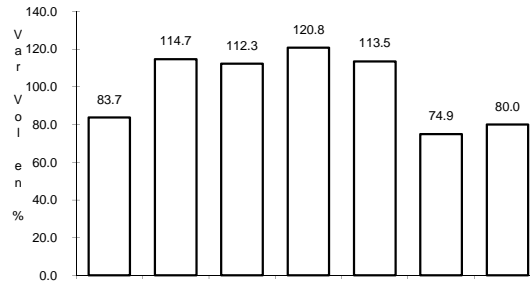
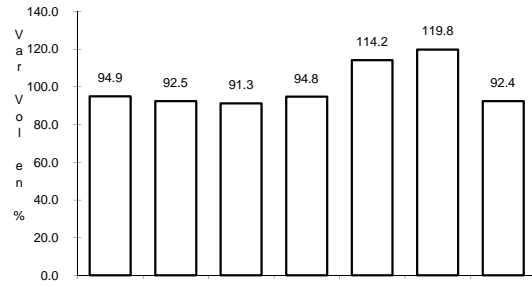


Km: 60.00 Tipo: 1 Sent: 0

31 CARR: ROSARIO - CAIMANERO

CLAVE: 25003

ruta: SIN-003



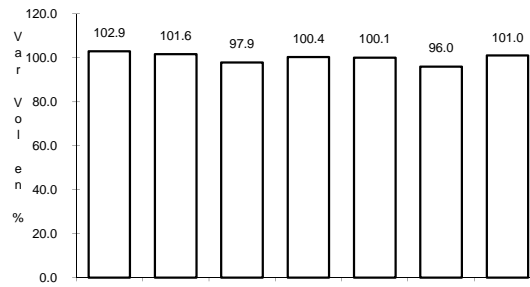
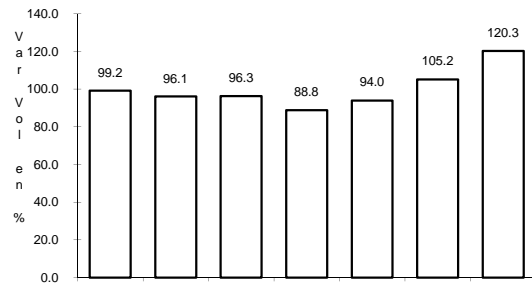
Km: 0.00 Tipo: 3 Sent: 0

Km: 30.00 Tipo: 1 Sent: 0

32 CARR: SAN PEDRO - CAMPO ANIBAL

CLAVE: 25600

ruta: SIN



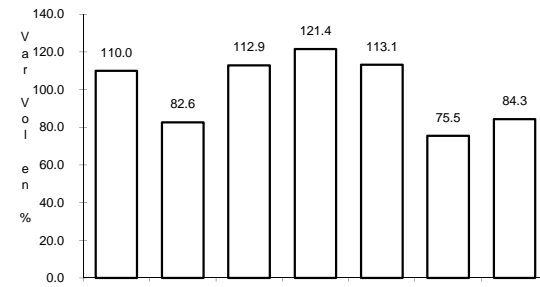
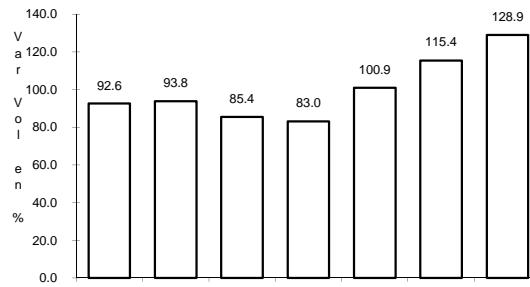
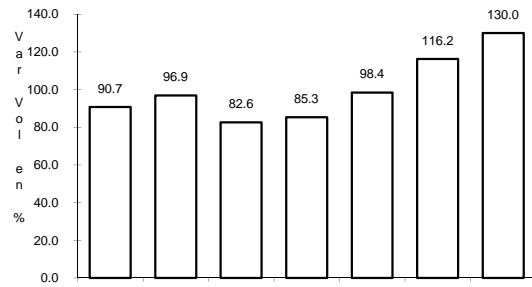
Km: 0.00 Tipo: 3 Sent: 0

Km: 24.50 Tipo: 1 Sent: 0

33 CARR: TOPOLOBAMPO - CHOIX

CLAVE: 25032

ruta: SIN-023



Km: 0.00 Tipo: 3 Sent: 1

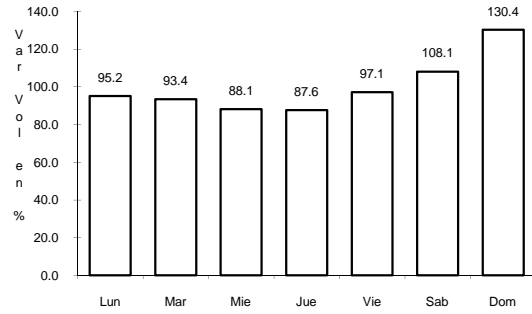
Km: 0.00 Tipo: 3 Sent: 2

Km: 159.00 Tipo: 1 Sent: 0

34 CARR: VILLA UNION - EL WALAMO

CLAVE: 25081

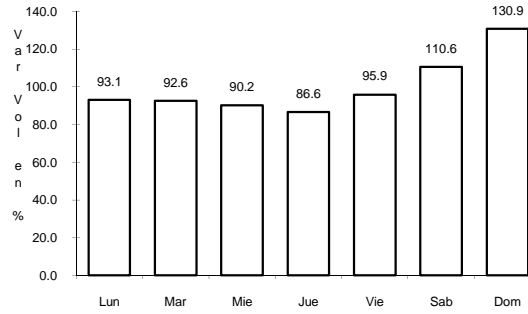
ruta: SIN-081



Km: 0.00

Tipo: 3

Sent: 0



Km: 7.00

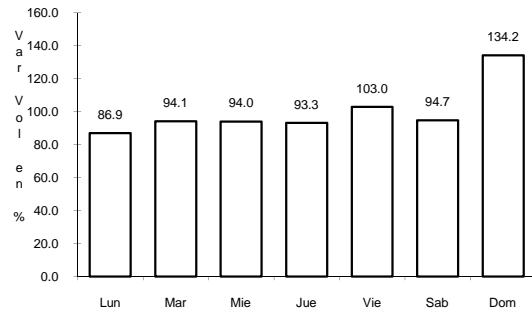
Tipo: 1

Sent: 0

35 CARR: VILLA UNION - SIQUEIROS

CLAVE: 25063

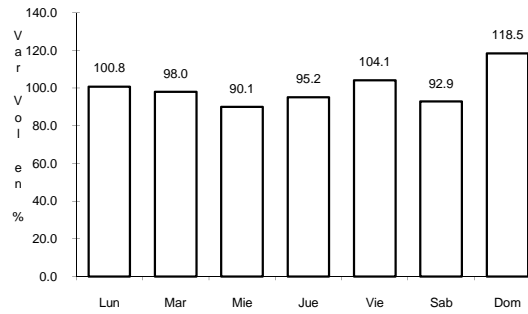
ruta: SIN-063



Km: 0.00

Tipo: 3

Sent: 0



Km: 11.00

Tipo: 1

Sent: 0