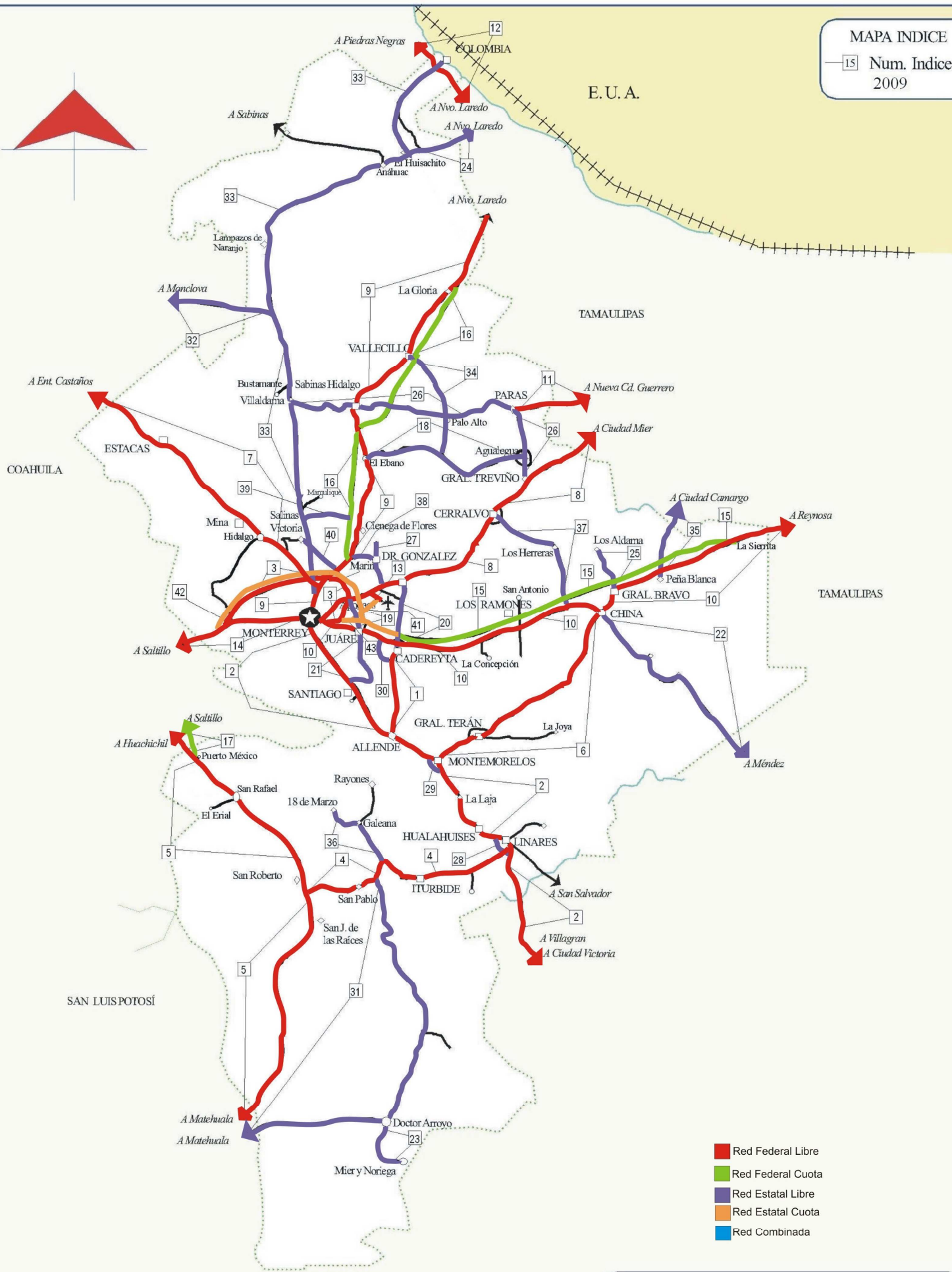
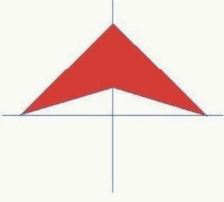


NUEVO LEON

Núm. INDICE	CARRETERA	RUTA
---- FEDERAL LIBRE ----		
1	CADEREYTA DE JIMENEZ - ALLENDE	MEX-009
2	CIUDAD VICTORIA - MONTERREY	MEX-085
3	LIBRAMIENTO NOROESTE DE MONTERREY	MEX-038
4	LINARES - ENT. SAN ROBERTO	MEX-058
5	MATEHUALA - ENT. PUERTO MEXICO	MEX-057
6	MONTEMORELOS - CHINA	MEX
7	MONTERREY - CASTAÑOS	MEX-053
8	MONTERREY - MIER	MEX-054
9	MONTERREY - NUEVO LAREDO (LIBRE)	MEX-085
10	MONTERREY - REYNOSA (LIBRE)	MEX-040
11	PARAS - NUEVA CIUDAD GUERRERO	MEX-030
12	PIEDRAS NEGRAS - NUEVO LAREDO	MEX-002
13	RAMAL A AEROPUERTO MARIANO ESCOBEDO	MEX-054
14	SALTILLO - MONTERREY	MEX-040
---- FEDERAL CUOTA ----		
15	CADEREYTA DE JIMENEZ - LA SIERRITA (CUOTA)	MEX-040D
16	MONTERREY - NUEVO LAREDO (CUOTA)	MEX-085D
17	PUERTO MEXICO - OJO CALIENTE (CUOTA)	MEX-057D
---- ESTATAL LIBRE ----		
18	AGUALEGUAS - EL EBANO	NL-023
19	APODACA - VILLA JUAREZ	NL
20	CADEREYTA DE JIMENEZ - DOCTOR GONZALEZ	NL
21	CD. BENITO JUAREZ - VILLA DE SANTIAGO	NL
22	CHINA - MENDEZ	NL-TAM
23	DOCTOR ARROYO - MIER Y NORIEGA	NL-088
24	ENT. HUISACHITO - NUEVO LAREDO	NL-001-TAM
25	GRAL. BRAVO - LOS ALDAMAS	NL-030
26	GRAL. TREVIÑO - VILLA ALDAMA	NL-003
27	HACIENDA GUADALUPE - HIGUERAS	NL-006
28	LIBRAMIENTO DE LINARES	NL
29	LIBRAMIENTO DE MONTEMORELOS	NL
30	LIBRAMIENTO PONIENTE DE CADEREYTA	NL
31	MATEHUALA - LA POZA	SLP-NL-061
32	MONCLOVA - ESTACION CANDELA	COA-030-NL
33	MONTERREY - COLOMBIA	NL-001
34	PALO ALTO - VALLECILLOS	NL
35	PEÑA BLANCA - CD. CAMARGO	NL-TAM
36	RAMAL A 18 DE MARZO	NL
37	RAMAL A CERRALVO	NL-013
38	RAMAL A MARIN	NL
39	SALINAS VICTORIA - CIENEGA DE FLORES	NL
40	SANTA ROSA - SALINAS VICTORIA	NL
---- ESTATAL CUOTA ----		
41	AEROPUERTO DE MONTERREY (CUOTA)	NL-D
42	ANILLO PERIFERICO DE MONTERREY (CUOTA)	NL-D
43	MONTERREY - CADEREYTA (CUOTA)	NL-D



# 19 NUEVO LEON

NUEVO LEON

1 CARR : CADEREYTA DE JIMENEZ - ALLENDE

CLAVE: 19009

RUTA : MEX-009

AÑO : 2008

L U G A R	E S T A C I O N				C L A S I F I C A C I O N V E H I C U L A R E N P O R C I E N T O .												
	KM	TE	SC	TDPA	A	B	C2	C3	T3S2	T3S3	T3S2R4	OTROS	A	B	C	K'	D
CADEREYTA DE JIMENEZ	0.00	3	0	8231	91.3	3.7	1.5	1.2	1.0	0.3	0.2	0.8	91.3	3.7	5.0	0.075	0.505
ALLENDE	37.00	1	0	6758	91.5	2.7	2.0	1.3	1.1	0.4	0.2	0.8	91.5	2.7	5.8	0.081	0.503

2 CARR : CIUDAD VICTORIA - MONTERREY

CLAVE: 00462

RUTA : MEX-085

AÑO : 2008

L U G A R	E S T A C I O N				C L A S I F I C A C I O N V E H I C U L A R E N P O R C I E N T O .												
	KM	TE	SC	TDPA	A	B	C2	C3	T3S2	T3S3	T3S2R4	OTROS	A	B	C	K'	D
CD. VICTORIA	0.00	3	1	9103	85.6	2.1	1.6	0.5	4.7	1.0	1.0	3.5	85.6	2.1	12.3	0.100	0.505
CD. VICTORIA	0.00	3	2	8930	84.7	2.1	1.7	0.6	5.0	1.1	1.1	3.7	84.7	2.1	13.2	0.105	0.505
T. DER. GÜEMEZ	19.60	3	0	6570	89.3	1.9	2.5	0.2	3.0	0.8	0.9	1.4	89.3	1.9	8.8	0.120	0.501
T. IZQ. SANTA ENGRACIA	27.35	3	0	6788	85.9	2.1	0.9	0.7	4.2	3.2	1.3	1.7	85.9	2.1	12.0	0.090	0.502
BARRETAL	39.00	3	0	6392	92.5	3.2	0.5	1.1	1.0	0.5	0.8	0.4	92.5	3.2	4.3	0.110	0.504
T. IZQ. HIDALGO Y LA MESA	77.50	1	0	6319	74.9	3.4	2.5	4.0	7.1	2.8	4.2	1.1	74.9	3.4	21.7	0.071	0.519
VILLAGRAN	106.00	1	0	4671	71.4	5.6	2.6	1.3	8.8	3.1	6.0	1.2	71.4	5.6	23.0	0.063	0.506
T. IZQ. VILLA MAINERO	118.00	3	0	4649	69.4	6.0	2.0	3.9	8.3	3.2	6.1	1.1	69.4	6.0	24.6	0.061	0.512
LIM. EDOS. TERM. TAMP. PPIA. NL.	126.00																
LINARES	154.00	1	0	6283	65.2	2.7	2.6	3.0	9.6	7.1	8.5	1.3	65.2	2.7	32.1	0.064	0.503
LA LAJA	171.00	3	1	4524	65.7	5.0	4.9	3.2	5.9	3.7	7.2	4.4	65.7	5.0	29.3	0.088	0.503
LA LAJA	171.00	3	2	4476	66.5	5.9	5.1	3.1	6.7	2.9	6.8	3.0	66.5	5.9	27.6	0.071	0.503
MONTEMORELOS	205.00	3	1	6755	68.5	3.3	3.1	3.7	8.5	3.7	8.4	0.8	68.5	3.3	28.2	0.090	0.502
MONTEMORELOS	205.00	3	2	6710	67.4	3.4	2.9	3.8	8.4	3.5	8.8	1.8	67.4	3.4	29.2	0.110	0.502
ALLENDE	227.50	3	1	10258	73.7	2.6	2.8	2.2	7.0	2.2	6.7	2.8	73.7	2.6	23.7	0.073	0.501
ALLENDE	227.50	3	2	10282	78.5	2.4	2.8	2.2	6.7	1.8	3.8	1.8	78.5	2.4	19.1	0.072	0.501
EL CERCADO	249.00	1	1	16264	50.1	2.3	1.5	1.7	9.0	5.3	25.1	5.0	50.1	2.3	47.6	0.064	0.503
EL CERCADO	249.00	1	2	16460	50.8	2.0	0.9	1.7	5.6	3.9	31.0	4.1	50.8	2.0	47.2	0.084	0.503
LA ESTANZUELA	274.80	3	1	28621	52.6	1.3	0.8	1.3	5.5	3.9	30.5	4.1	52.6	1.3	46.1	0.094	0.503
LA ESTANZUELA	274.80	3	2	28971	52.0	1.6	0.8	1.3	9.0	5.3	25.0	5.0	52.0	1.6	46.4	0.072	0.503
MONTERREY	287.00	1	1	22378	83.0	5.2	3.1	2.3	2.6	1.6	0.6	1.6	83.0	5.2	11.8	0.110	0.503
MONTERREY	287.00	1	2	22131	82.0	5.3	3.0	2.4	3.0	2.0	1.3	1.0	82.0	5.3	12.7	0.078	0.503

3 CARR : LIBRAMIENTO NOROESTE DE MONTERREY

CLAVE: 19085

RUTA : MEX-038

AÑO : 2008

L U G A R	E S T A C I O N				C L A S I F I C A C I O N V E H I C U L A R E N P O R C I E N T O .												
	KM	TE	SC	TDPA	A	B	C2	C3	T3S2	T3S3	T3S2R4	OTROS	A	B	C	K'	D
T. C. SALTILLO - MONTERREY	0.00	3	0	10924	66.1	6.0	7.4	3.4	7.5	7.0	1.3	1.3	66.1	6.0	27.9	0.080	0.500



NUEVO LEON

6 CARR : MONTEMORELOS - CHINA

CLAVE: 19280

RUTA : MEX

AÑO : 2008

L U G A R	E S T A C I O N				C L A S I F I C A C I O N V E H I C U L A R E N P O R C I E N T O .												
	KM	TE	SC	TDPA	A	B	C2	C3	T3S2	T3S3	T3S2R4	OTROS	A	B	C	K'	D
MONTEMORELOS	0.00	3	0	6927	85.1	2.6	2.5	1.5	5.1	0.7	1.2	1.3	85.1	2.6	12.3	0.092	0.506
GRAL. TERAN	17.60	3	0	3525	85.4	3.8	2.2	2.5	3.7	0.8	0.6	1.0	85.4	3.8	10.8	0.076	0.502
CHINA	93.00	1	0	2509	82.9	2.8	2.2	2.9	2.2	0.9	4.8	1.3	82.9	2.8	14.3	0.065	0.505

7 CARR : MONTERREY - CASTAÑOS

CLAVE: 00128

RUTA : MEX-053

AÑO : 2008

L U G A R	E S T A C I O N				C L A S I F I C A C I O N V E H I C U L A R E N P O R C I E N T O .												
	KM	TE	SC	TDPA	A	B	C2	C3	T3S2	T3S3	T3S2R4	OTROS	A	B	C	K'	D
T. C. MONTERREY - NUEVO LAREDO	0.00	3	0	11228	84.1	2.8	4.9	2.1	3.1	2.0	0.3	0.7	84.1	2.8	13.1	0.107	0.503
X. C. LIBRAMIENTO NOROESTE DE MONTERREY	3.46	3	0	14030	58.0	5.4	3.0	1.7	9.1	5.1	13.6	4.1	58.0	5.4	36.6	0.068	0.506
T. DER. VILLA DEL CARMEN	13.80	1	0	10846	76.5	6.1	5.4	2.8	4.9	3.0	0.5	0.8	76.5	6.1	17.4	0.082	0.500
T. IZQ. HIDALGO	24.78	1	0	10746	58.0	12.6	3.1	1.8	8.3	7.0	5.8	3.4	58.0	12.6	29.4	0.070	0.522
T. IZQ. HIDALGO	24.78	3	0	6142	77.5	5.9	6.4	2.8	2.8	2.5	1.0	1.1	77.5	5.9	16.6	0.106	0.501
T. IZQ. MINA	34.75	1	0	5840	78.6	4.1	4.1	3.6	4.7	3.4	0.7	0.8	78.6	4.1	17.3	0.096	0.503
T. IZQ. ESPINAZO	91.90	1	0	3490	70.5	5.7	2.1	2.2	8.5	5.9	4.2	0.9	70.5	5.7	23.8	0.080	0.501
T. IZQ. ESPINAZO	91.90	3	0	3580	65.5	6.0	2.9	2.9	9.5	7.1	5.1	1.0	65.5	6.0	28.5	0.065	0.503
LIM. EDOS. TERM. N.L. PPIA. COAH.	124.00																
T. C. SALTILLO - MONCLOVA	172.00	1	0	4749	61.4	5.6	3.9	3.6	9.6	8.7	6.3	0.9	61.4	5.6	33.0	0.079	0.501

8 CARR : MONTERREY - MIER

CLAVE: 00127

RUTA : MEX-054

AÑO : 2008

L U G A R	E S T A C I O N				C L A S I F I C A C I O N V E H I C U L A R E N P O R C I E N T O .												
	KM	TE	SC	TDPA	A	B	C2	C3	T3S2	T3S3	T3S2R4	OTROS	A	B	C	K'	D
MONTERREY	0.00																
APODACA	19.12	1	1	29406	58.8	2.9	3.7	2.3	9.7	6.2	9.1	7.3	58.8	2.9	38.3	0.072	0.507
APODACA	19.12	1	2	28554	51.5	3.1	4.0	2.6	11.4	8.5	9.8	9.1	51.5	3.1	45.4	0.067	0.507
X. C. LIBRAMIENTO NOROESTE DE MONTERREY	21.30	3	1	22328	72.5	3.7	1.8	1.9	8.7	2.7	4.8	3.9	72.5	3.7	23.8	0.069	0.502
X. C. LIBRAMIENTO NOROESTE DE MONTERREY	21.30	3	2	22506	73.0	3.9	1.9	1.7	9.7	2.0	4.0	3.8	73.0	3.9	23.1	0.081	0.502
X. C. ZACATECAS - PESQUERIA	28.15	1	0	10431	74.9	2.8	3.3	3.3	7.0	1.9	5.1	1.7	74.9	2.8	22.3	0.081	0.500
X. C. HACIENDA GUADALUPE - HIGUERAS	38.10	3	0	6927	82.8	2.7	1.4	1.2	3.6	2.1	5.0	1.2	82.8	2.7	14.5	0.060	0.510
T. DER. EMPALME LOS RAMONES	74.10	1	0	3760	76.1	3.9	1.6	2.2	3.4	3.1	8.5	1.2	76.1	3.9	20.0	0.120	0.519
CERRALVO	95.95	1	0	3546	65.5	4.1	1.7	2.5	4.7	6.6	13.2	1.7	65.5	4.1	30.4	0.093	0.503
GRAL. TREVIÑO	115.80	3	0	3875	57.5	5.0	1.5	2.4	4.9	8.0	15.5	5.2	57.5	5.0	37.5	0.120	0.503
LIM. EDOS. TERM. NL. PPIA. TAMPS.	132.80																
MIER	156.20	1	0	4394	70.8	4.0	4.2	1.3	10.2	5.2	3.4	0.9	70.8	4.0	25.2	0.080	0.502

NUEVO LEON

9 CARR : MONTERREY - NUEVO LAREDO (LIBRE)

CLAVE: 00463

RUTA : MEX-085

AÑO : 2008

L U G A R	E S T A C I O N				C L A S I F I C A C I O N V E H I C U L A R E N P O R C I E N T O .												
	KM	TE	SC	TDPA	A	B	C2	C3	T3S2	T3S3	T3S2R4	OTROS	A	B	C	K'	D
MONTERREY	0.00																
T. IZQ. GRAL. ESCOBEDO	12.10	3	1	19146	64.1	2.7	1.7	2.4	7.1	4.7	12.5	4.8	64.1	2.7	33.2	0.060	0.508
T. IZQ. GRAL. ESCOBEDO	12.10	3	2	18531	62.9	2.6	1.7	2.5	5.8	5.6	11.7	7.2	62.9	2.6	34.5	0.090	0.508
X. C. LIBRAMIENTO NOROESTE DE MONTERREY	16.00	1	1	16192	70.1	3.8	2.2	2.4	10.0	3.1	5.1	3.3	70.1	3.8	26.1	0.092	0.503
X. C. LIBRAMIENTO NOROESTE DE MONTERREY	16.00	1	2	16397	71.5	3.6	2.1	2.4	10.0	3.0	4.1	3.3	71.5	3.6	24.9	0.089	0.503
X. C. LIBRAMIENTO NOROESTE DE MONTERREY	16.00	3	1	18991	60.2	3.7	1.5	1.9	16.0	4.7	9.0	3.0	60.2	3.7	36.1	0.091	0.505
X. C. LIBRAMIENTO NOROESTE DE MONTERREY	16.00	3	2	18580	64.0	3.9	1.6	1.9	13.9	4.1	7.5	3.1	64.0	3.9	32.1	0.088	0.505
X. C. SANTA ROSA - SALINAS VICTORIA	20.19	3	1	17853	62.7	5.0	2.0	2.5	15.5	3.0	6.6	2.7	62.7	5.0	32.3	0.095	0.503
X. C. SANTA ROSA - SALINAS VICTORIA	20.19	3	2	17675	62.3	5.0	2.2	2.6	15.5	3.2	6.1	3.1	62.3	5.0	32.7	0.085	0.503
CIENEGA DE FLORES	32.00	1	0	12797	51.8	3.4	3.7	2.0	28.2	1.8	7.8	1.3	51.8	3.4	44.8	0.069	0.503
T. DER. AGUALEGUAS	78.23	3	0	7956	35.3	5.6	3.2	5.1	42.3	2.0	5.1	1.4	35.3	5.6	59.1	0.076	0.500
SABINAS HIDALGO	98.90	3	0	8622	70.1	3.8	3.1	2.5	9.9	2.4	5.2	3.0	70.1	3.8	26.1	0.083	0.501
VALLECILLOS	124.40	3	0	7629	82.2	6.5	2.9	1.7	3.3	1.7	0.6	1.1	82.2	6.5	11.3	0.068	0.528
T. IZQ. ANAHUAC	156.80	1	0	10633	78.6	6.6	3.4	2.5	4.6	1.5	1.2	1.6	78.6	6.6	14.8	0.060	0.534
T. IZQ. ANAHUAC	156.80	3	1	7716	62.0	2.1	0.6	2.6	23.2	2.4	5.2	1.9	62.0	2.1	35.9	0.084	0.502
T. IZQ. ANAHUAC	156.80	3	2	7765	60.3	2.2	0.7	2.8	23.2	2.4	7.1	1.3	60.3	2.2	37.5	0.103	0.502
LIM. EDOS. TERM. NL. PPIA. TAMPS.	184.60																
T. DER. MIER	205.90	1	1	7811	56.8	2.4	2.2	1.6	27.8	1.9	6.1	1.2	56.8	2.4	40.8	0.100	0.504
T. DER. MIER	205.90	1	2	7698	60.0	2.3	2.2	1.5	24.1	2.2	5.8	1.9	60.0	2.3	37.7	0.090	0.504
T. DER. MIER	205.90	3	1	9916	57.6	3.0	1.7	5.5	24.0	2.4	4.5	1.3	57.6	3.0	39.4	0.123	0.504
T. DER. MIER	205.90	3	2	10074	56.7	3.4	1.9	6.1	22.7	3.0	4.9	1.3	56.7	3.4	39.9	0.129	0.504
NUEVO LAREDO	228.00	1	1	9948	82.8	3.6	1.2	1.1	4.6	1.6	2.4	2.7	82.8	3.6	13.6	0.083	0.502
NUEVO LAREDO	228.00	1	2	9863	81.0	3.7	1.8	1.0	4.0	2.5	2.8	3.2	81.0	3.7	15.3	0.074	0.502

10 CARR : MONTERREY - REYNOSA (LIBRE)

CLAVE: 00088

RUTA : MEX-040

AÑO : 2008

L U G A R	E S T A C I O N				C L A S I F I C A C I O N V E H I C U L A R E N P O R C I E N T O .												
	KM	TE	SC	TDPA	A	B	C2	C3	T3S2	T3S3	T3S2R4	OTROS	A	B	C	K'	D
T. C. MONTERREY - MIER	0.00																
VILLA JUAREZ	19.10	1	1	17400	82.1	4.0	1.2	1.2	2.2	2.3	3.7	3.3	82.1	4.0	13.9	0.066	0.500
VILLA JUAREZ	19.10	1	2	17413	56.7	4.7	1.2	1.6	7.8	5.8	17.4	4.8	56.7	4.7	38.6	0.100	0.500
VILLA JUAREZ	19.10	3	1	11966	68.3	1.7	1.9	2.5	5.7	4.8	9.6	5.5	68.3	1.7	30.0	0.064	0.503
VILLA JUAREZ	19.10	3	2	12101	82.2	1.7	1.4	2.1	2.6	1.9	5.8	2.3	82.2	1.7	16.1	0.063	0.503
REFINERIA DE CADEREYTA	33.00	3	0	7035	74.3	0.7	3.5	3.9	3.8	3.2	7.1	3.5	74.3	0.7	25.0	0.077	0.504
T. IZQ. LOS RAMONES	68.78	3	0	4264	59.0	3.6	4.3	4.6	15.6	5.4	6.6	0.9	59.0	3.6	37.4	0.082	0.501

NUEVO LEON

10 CARR : MONTERREY - REYNOSA (LIBRE)

CLAVE: 00088

RUTA : MEX-040

AÑO : 2008

L U G A R	E S T A C I O N				C L A S I F I C A C I O N V E H I C U L A R E N P O R C I E N T O .												
	KM	TE	SC	TDPA	A	B	C2	C3	T3S2	T3S3	T3S2R4	OTROS	A	B	C	K'	D
GRAL. BRAVO	125.00	1	0	6027	62.6	3.5	4.4	2.5	12.4	4.9	8.4	1.3	62.6	3.5	33.9	0.071	0.504
LIM. EDOS. TERM. NL. PPIA. TAMPS.	192.00																
T. IZQ. DIAZ ORDAZ	192.60	1	1	11941	67.2	11.4	1.9	1.2	8.4	3.8	4.8	1.3	67.2	11.4	21.4	0.070	0.501
T. IZQ. DIAZ ORDAZ	192.60	1	2	11892	64.3	11.3	1.9	1.2	9.1	4.2	6.2	1.8	64.3	11.3	24.4	0.090	0.501
REYNOSA	225.00	1	1	10032	82.3	3.7	2.0	1.4	4.6	1.2	1.8	3.0	82.3	3.7	14.0	0.082	0.503
REYNOSA	225.00	1	2	10158	83.7	3.6	2.0	1.3	4.3	1.0	1.4	2.7	83.7	3.6	12.7	0.072	0.503

11 CARR : PARAS - NUEVA CIUDAD GUERRERO

CLAVE: 00476

RUTA : MEX-030

AÑO : 2008

L U G A R	E S T A C I O N				C L A S I F I C A C I O N V E H I C U L A R E N P O R C I E N T O .												
	KM	TE	SC	TDPA	A	B	C2	C3	T3S2	T3S3	T3S2R4	OTROS	A	B	C	K'	D
PARAS	0.00	3	0	748	83.6	4.8	0.3	0.7	1.1	0.7	4.7	4.1	83.6	4.8	11.6	0.118	0.514
LIM. EDOS. TERM. NL. PPIA. TAMS.	17.50																
T. C. REYNOSA - (T. C. MONTERREY - NUEVO LAREDO)	32.00	1	0	549	82.2	2.4	2.9	1.9	1.0	4.3	0.8	4.5	82.2	2.4	15.4	0.122	0.523

12 CARR : PIEDRAS NEGRAS - NUEVO LAREDO

CLAVE: 00503

RUTA : MEX-002

AÑO : 2008

L U G A R	E S T A C I O N				C L A S I F I C A C I O N V E H I C U L A R E N P O R C I E N T O .												
	KM	TE	SC	TDPA	A	B	C2	C3	T3S2	T3S3	T3S2R4	OTROS	A	B	C	K'	D
T. C. MONCLOVA - PIEDRAS NEGRAS	0.00	3	1	2327	84.1	4.2	1.9	2.2	5.5	0.5	0.7	0.9	84.1	4.2	11.7	0.102	0.508
T. C. MONCLOVA - PIEDRAS NEGRAS	0.00	3	2	2402	84.9	4.0	1.7	2.0	4.1	0.8	1.3	1.2	84.9	4.0	11.1	0.124	0.508
EL SAUCITO	16.90	3	0	1810	77.3	3.8	1.9	1.7	5.9	3.3	5.0	1.1	77.3	3.8	18.9	0.110	0.503
GUERRERO	42.00	3	0	1470	59.1	4.8	3.8	4.4	5.9	5.8	12.4	3.8	59.1	4.8	36.1	0.120	0.502
LIM. EDOS. TERM. COAH. PPIA. N.L.	113.00																
LIM. EDOS. TERM. N.L. PPIA. TAMPS.	137.00																
T. DER. LIBRAMIENTO DE NUEVO LAREDO	168.90	1	1	9038	75.4	6.2	3.8	6.2	3.8	1.2	1.3	2.1	75.4	6.2	18.4	0.162	0.502
T. DER. LIBRAMIENTO DE NUEVO LAREDO	168.90	1	2	9113	72.7	6.9	4.5	6.9	4.0	1.3	1.3	2.4	72.7	6.9	20.4	0.090	0.502
NUEVO LAREDO	175.00	1	0	8011	77.8	4.0	2.0	2.0	5.5	3.1	4.6	1.0	77.8	4.0	18.2	0.072	0.502

13 CARR : RAMAL A AEROPUERTO MARIANO ESCOBEDO

CLAVE: 19510

RUTA : MEX-054

AÑO : 2008

L U G A R	E S T A C I O N				C L A S I F I C A C I O N V E H I C U L A R E N P O R C I E N T O .												
	KM	TE	SC	TDPA	A	B	C2	C3	T3S2	T3S3	T3S2R4	OTROS	A	B	C	K'	D
T. C. MONTERREY - CD. MIER	0.00	3	1	13050	83.3	3.5	1.4	1.9	4.0	1.2	1.9	2.8	83.3	3.5	13.2	0.072	0.502
T. C. MONTERREY - CD. MIER	0.00	3	2	13167	80.3	3.4	1.5	1.9	4.9	2.1	2.3	3.6	80.3	3.4	16.3	0.066	0.502





NUEVO LEON

16 CARR : MONTERREY - NUEVO LAREDO (CUOTA)

CLAVE: 19086

RUTA : MEX-085D

AÑO : 2008

L U G A R	E S T A C I O N				C L A S I F I C A C I O N V E H I C U L A R E N P O R C I E N T O .												
	KM	TE	SC	TDPA	A	B	C2	C3	T3S2	T3S3	T3S2R4	OTROS	A	B	C	K'	D
T. C. MONTERREY - NUEVO LAREDO	0.00																
CASETA DE COBRO SABINAS	74.00	1	0	8357	75.2	8.2	1.3	0.3	12.2	0.5	1.4	0.9	75.2	8.2	16.6		
CASETA DE COBRO SABINAS	74.00	2	0	8232	74.9	8.3	1.3	0.3	12.4	0.5	1.4	0.9	74.9	8.3	16.8		
CASETA DE COBRO SABINAS	74.00	3	0	8268	74.9	8.3	1.3	0.3	12.3	0.5	1.4	1.0	74.9	8.3	16.8		
T. C. MONTERREY - NUEVO LAREDO (LIBRE)	120.50																

17 CARR : PUERTO MEXICO - OJO CALIENTE (CUOTA)

CLAVE: 00115

RUTA : MEX-057D

AÑO : 2008

L U G A R	E S T A C I O N				C L A S I F I C A C I O N V E H I C U L A R E N P O R C I E N T O .												
	KM	TE	SC	TDPA	A	B	C2	C3	T3S2	T3S3	T3S2R4	OTROS	A	B	C	K'	D
ENT. PUERTO MEXICO	0.00																
LIM. EDOS. TERM. N.L. PPIA. COAH.	1.50																
CASETA DE COBRO LOS CHORROS	2.50	2	0	11308	44.3	6.4	3.7	2.5	33.3	3.6	4.6	1.6	44.3	6.4	49.3		
T. DER. SAN ANTONIO DE LAS ALAZANAS	23.88	1	1	7002	82.2	3.8	3.6	2.8	2.1	3.2	1.6	0.7	82.2	3.8	14.0	0.072	0.504
T. DER. SAN ANTONIO DE LAS ALAZANAS	23.88	1	2	7125	82.0	3.6	3.5	2.7	2.2	3.4	1.8	0.8	82.0	3.6	14.4	0.077	0.504
T. DER. SAN ANTONIO DE LAS ALAZANAS	23.88	3	1	6868	77.3	3.6	6.3	2.9	2.1	2.6	3.6	1.6	77.3	3.6	19.1	0.069	0.500
T. DER. SAN ANTONIO DE LAS ALAZANAS	23.88	3	2	6870	77.2	3.7	6.2	2.9	2.2	2.5	3.6	1.7	77.2	3.7	19.1	0.075	0.500
LOS LIRIOS	25.88	3	1	6732	76.1	7.5	2.6	4.5	3.3	2.2	2.3	1.5	76.1	7.5	16.4	0.063	0.501
LOS LIRIOS	25.88	3	2	6745	76.0	7.6	2.7	4.6	3.2	2.1	2.2	1.6	76.0	7.6	16.4	0.073	0.501
CASETA DE COBRO LA CARBONERA (OJO CALIENTE)	50.30	2	0	11676	35.5	3.9	6.2	4.3	39.6	4.3	5.1	1.1	35.5	3.9	60.6		
CASETA DE COBRO CARBONERA	50.30	3	0	8388	60.1	5.7	3.2	5.8	2.3	5.9	8.9	8.1	60.1	5.7	34.2	0.077	0.505
T. C. SALTILLO - MONTERREY	59.00																

18 CARR : AGUALEGUAS - EL EBANO

CLAVE: 19004

RUTA : NL-023

AÑO : 2008

L U G A R	E S T A C I O N				C L A S I F I C A C I O N V E H I C U L A R E N P O R C I E N T O .												
	KM	TE	SC	TDPA	A	B	C2	C3	T3S2	T3S3	T3S2R4	OTROS	A	B	C	K'	D
AGUALEGUAS	0.00	3	0	1037	86.4	6.4	1.2	3.5	0.9	1.2	0.0	0.4	86.4	6.4	7.2	0.103	0.519
T. C. MONTERREY - NUEVO LAREDO	54.00	1	0	895	83.6	6.5	4.0	2.6	1.9	0.5	0.5	0.4	83.6	6.5	9.9	0.094	0.510

19 CARR : APODACA - VILLA JUAREZ

CLAVE: 19494

RUTA : NL

AÑO : 2008

L U G A R	E S T A C I O N				C L A S I F I C A C I O N V E H I C U L A R E N P O R C I E N T O .												
	KM	TE	SC	TDPA	A	B	C2	C3	T3S2	T3S3	T3S2R4	OTROS	A	B	C	K'	D
T. C. MONTERREY - CD. MIER	0.00	3	0	12625	66.4	3.2	4.1	1.8	8.5	3.3	9.7	3.0	66.4	3.2	30.4	0.066	0.505







NUEVO LEON

32 CARR : MONCLOVA - ESTACION CANDELA

CLAVE: 00501

RUTA : COA-030-NL

AÑO : 2008

L U G A R	E S T A C I O N				C L A S I F I C A C I O N V E H I C U L A R E N P O R C I E N T O .												
	KM	TE	SC	TDPA	A	B	C2	C3	T3S2	T3S3	T3S2R4	OTROS	A	B	C	K'	D
T. C. MONTERREY - COLOMBIA	125.50	1	0	4061	82.6	3.2	2.7	2.6	3.3	1.8	3.5	0.3	82.6	3.2	14.2	0.110	0.505

33 CARR : MONTERREY - COLOMBIA

CLAVE: 19001

RUTA : NL-001

AÑO : 2008

L U G A R	E S T A C I O N				C L A S I F I C A C I O N V E H I C U L A R E N P O R C I E N T O .												
	KM	TE	SC	TDPA	A	B	C2	C3	T3S2	T3S3	T3S2R4	OTROS	A	B	C	K'	D
T. C. MONTERREY - NUEVO LAREDO	0.00	3	1	14379	79.9	4.5	5.1	2.5	4.0	2.4	0.5	1.1	79.9	4.5	15.6	0.077	0.501
T. C. MONTERREY - NUEVO LAREDO	0.00	3	2	14462	79.9	4.5	4.9	2.7	3.6	2.8	0.6	1.0	79.9	4.5	15.6	0.080	0.501
X. C. LIBRAMIENTO NOROESTE DE MONTERREY	7.30	3	0	11618	84.8	1.7	5.9	3.2	3.2	0.1	0.0	1.1	84.8	1.7	13.5	0.100	0.503
T. IZQ. SALINAS VICTORIA (1° ACCESO)	20.50	3	0	5182	76.0	4.8	2.5	3.6	4.7	2.6	4.3	1.5	76.0	4.8	19.2	0.080	0.504
VILLA ALDAMA	86.50	3	0	2427	75.8	6.2	5.8	4.1	2.2	1.6	3.2	1.1	75.8	6.2	18.0	0.112	0.556
T. IZQ. BUSTAMANTE	92.25	3	0	1567	79.6	5.8	0.3	0.1	3.3	3.3	7.1	0.5	79.6	5.8	14.6	0.110	0.510
T. IZQ. CANDELA	124.00	1	0	1775	71.2	7.0	1.6	2.1	9.1	3.1	3.9	2.0	71.2	7.0	21.8	0.100	0.500
LAMPAZOS DE NARANJO	164.00	1	0	1983	75.5	7.2	0.8	0.6	5.7	2.9	6.7	0.6	75.5	7.2	17.3	0.120	0.503
ANAHUAC	195.00	1	0	2427	85.5	0.5	1.1	2.3	3.8	1.7	4.9	0.2	85.5	0.5	14.0	0.150	0.509
HUIZACHE	212.70	3	0	847	65.7	3.5	3.0	4.5	9.8	4.0	7.7	1.8	65.7	3.5	30.8	0.124	0.528
COLOMBIA	263.00	1	0	1270	78.0	4.3	1.7	2.8	5.0	1.8	3.1	3.3	78.0	4.3	17.7	0.126	0.502

34 CARR : PALO ALTO - VALLECILLOS

CLAVE: 19036

RUTA : NL

AÑO : 2008

L U G A R	E S T A C I O N				C L A S I F I C A C I O N V E H I C U L A R E N P O R C I E N T O .												
	KM	TE	SC	TDPA	A	B	C2	C3	T3S2	T3S3	T3S2R4	OTROS	A	B	C	K'	D
T. C. GRAL. TREVIÑO - VILLA ALDAMA	0.00	3	0	1519	92.2	3.1	0.3	0.9	0.9	1.6	0.1	0.9	92.2	3.1	4.7	0.120	0.535
VALLECILLOS	43.00	1	0	1127	79.7	13.5	2.0	1.0	2.9	0.5	0.2	0.2	79.7	13.5	6.8	0.080	0.503

35 CARR : PEÑA BLANCA - CD. CAMARGO

CLAVE: 00102

RUTA : NL-TAM

AÑO : 2008

L U G A R	E S T A C I O N				C L A S I F I C A C I O N V E H I C U L A R E N P O R C I E N T O .												
	KM	TE	SC	TDPA	A	B	C2	C3	T3S2	T3S3	T3S2R4	OTROS	A	B	C	K'	D
T. C. MONTERREY - REYNOSA	0.00	3	0	2908	68.6	13.0	2.5	2.5	4.4	6.5	0.9	1.6	68.6	13.0	18.4	0.118	0.512
LIM. EDOS. TERM. NL. PPIA. TAMS.	30.00																
LOS COMALES	40.00	3	0	1750	86.3	4.7	0.9	1.2	2.8	2.6	0.6	0.9	86.3	4.7	9.0	0.097	0.501
CD. CAMARGO	65.00	1	0	2461	83.0	3.7	0.7	1.2	2.4	5.4	2.1	1.5	83.0	3.7	13.3	0.087	0.501

NUEVO LEON

36 CARR : RAMAL A 18 DE MARZO

CLAVE: 19475

RUTA : NL

AÑO : 2008

L U G A R	E S T A C I O N				C L A S I F I C A C I O N V E H I C U L A R E N P O R C I E N T O .												
	KM	TE	SC	TDPA	A	B	C2	C3	T3S2	T3S3	T3S2R4	OTROS	A	B	C	K'	D
T. C. LINARES - ENT. SAN ROBERTO	0.00	3	0	2209	86.1	4.8	3.2	0.8	2.1	0.7	0.9	1.4	86.1	4.8	9.1	0.105	0.517
18 DE MARZO	14.00																

37 CARR : RAMAL A CERRALVO

CLAVE: 19013

RUTA : NL-013

AÑO : 2008

L U G A R	E S T A C I O N				C L A S I F I C A C I O N V E H I C U L A R E N P O R C I E N T O .												
	KM	TE	SC	TDPA	A	B	C2	C3	T3S2	T3S3	T3S2R4	OTROS	A	B	C	K'	D
T. C. MONTERREY - REYNOSA	0.00	3	0	740	77.3	2.7	1.4	1.9	1.8	4.1	9.8	1.0	77.3	2.7	20.0	0.097	0.505
CERRALVO	58.00	1	0	1511	83.6	4.4	0.9	1.2	1.9	2.3	5.3	0.4	83.6	4.4	12.0	0.123	0.525

38 CARR : RAMAL A MARIN

CLAVE: 19007

RUTA : NL

AÑO : 2008

L U G A R	E S T A C I O N				C L A S I F I C A C I O N V E H I C U L A R E N P O R C I E N T O .												
	KM	TE	SC	TDPA	A	B	C2	C3	T3S2	T3S3	T3S2R4	OTROS	A	B	C	K'	D
T. C. MONTERREY - NUEVO LAREDO	0.00	3	0	5847	66.3	4.7	4.2	3.1	8.7	3.0	6.8	3.2	66.3	4.7	29.0	0.134	0.502
MARIN	10.00																

39 CARR : SALINAS VICTORIA - CIENEGA DE FLORES

CLAVE:

RUTA : NL

AÑO : 2008

L U G A R	E S T A C I O N				C L A S I F I C A C I O N V E H I C U L A R E N P O R C I E N T O .												
	KM	TE	SC	TDPA	A	B	C2	C3	T3S2	T3S3	T3S2R4	OTROS	A	B	C	K'	D
SALINAS VICTORIA	0.00	3	0	3041	78.6	5.3	2.3	3.0	4.5	1.6	3.5	1.2	78.6	5.3	16.1	0.078	0.506
CIENEGA DE FLORES	10.00																

40 CARR : SANTA ROSA - SALINAS VICTORIA

CLAVE: 19037

RUTA : NL

AÑO : 2008

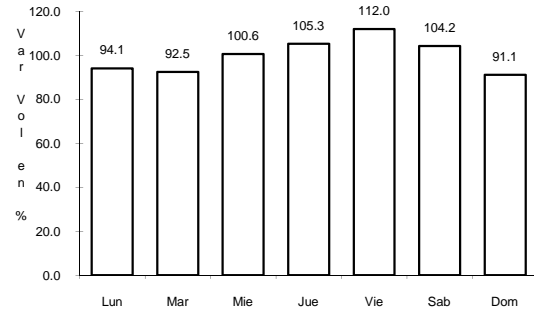
L U G A R	E S T A C I O N				C L A S I F I C A C I O N V E H I C U L A R E N P O R C I E N T O .												
	KM	TE	SC	TDPA	A	B	C2	C3	T3S2	T3S3	T3S2R4	OTROS	A	B	C	K'	D
X. C. LIBRAMIENTO NOROESTE DE MONTERREY	0.00	3	0	6427	60.3	5.4	1.8	3.6	8.8	4.8	10.9	4.4	60.3	5.4	34.3	0.066	0.500
X. C. MONTERREY - NUEVO LAREDO (LIBRE)	3.00	3	0	6284	67.7	5.5	2.5	4.6	6.5	3.0	6.4	3.8	67.7	5.5	26.8	0.075	0.502
SALINAS VICTORIA	16.00	1	1	3602	90.8	0.0	3.8	1.0	3.0	0.2	0.3	0.9	90.8	0.0	9.2	0.071	0.504
SALINAS VICTORIA	16.00	1	2	3661	92.4	0.0	4.1	1.1	1.5	0.1	0.2	0.6	92.4	0.0	7.6	0.081	0.504





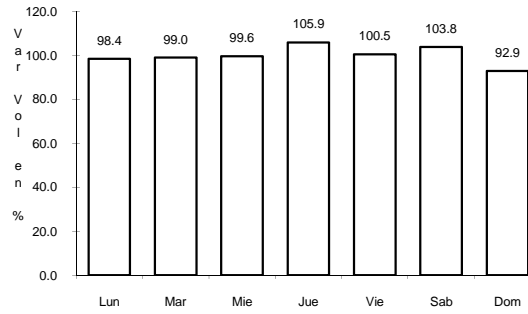


4 CARR: LINARES - ENT. SAN ROBERTO



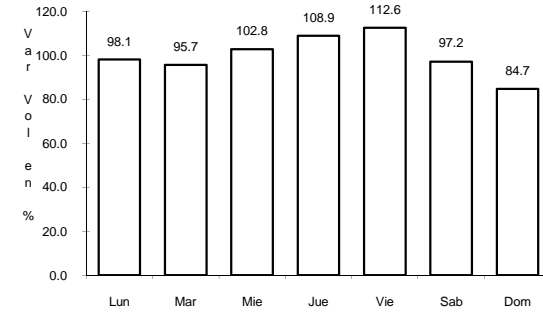
Km: 0.00 Tipo: 3 Sent: 1

CLAVE: 19031



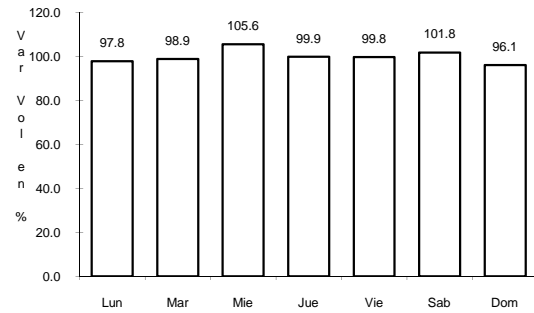
Km: 0.00 Tipo: 3 Sent: 2

ruta: MEX-058



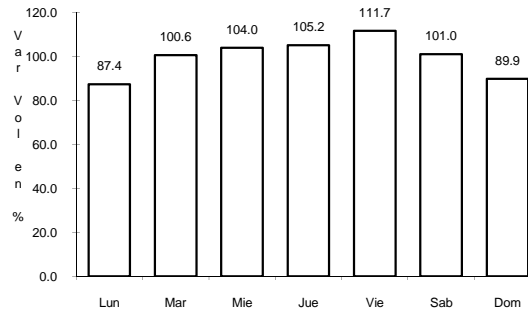
Km: 98.00 Tipo: 1 Sent: 0

5 CARR: MATEHUALA - ENT. PUERTO MEXICO



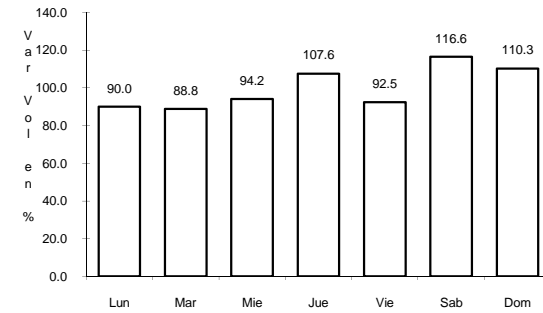
Km: 0.00 Tipo: 3 Sent: 0

CLAVE: 00405



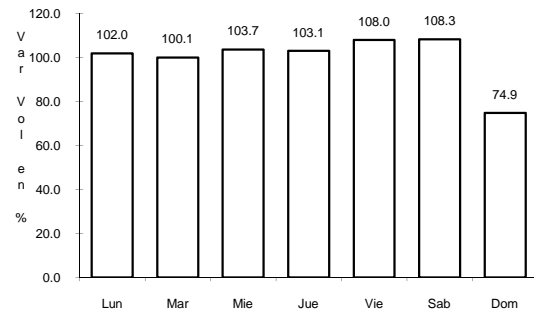
Km: 177.18 Tipo: 1 Sent: 1

ruta: MEX-057



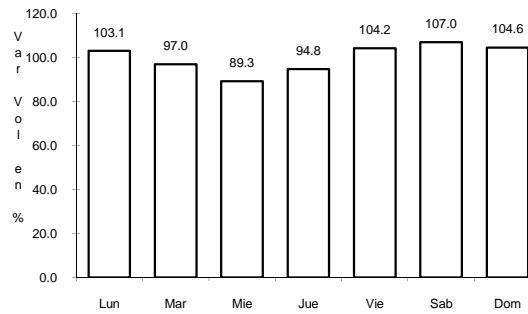
Km: 177.18 Tipo: 1 Sent: 2

6 CARR: MONTEMORELOS - CHINA



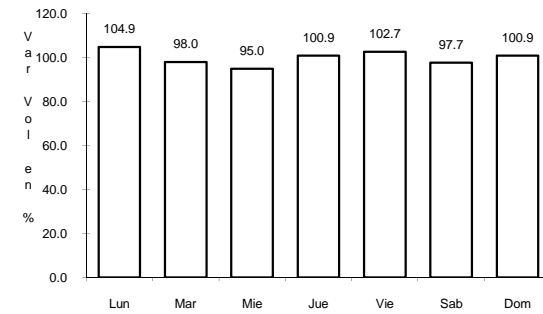
Km: 0.00 Tipo: 3 Sent: 0

CLAVE: 19280



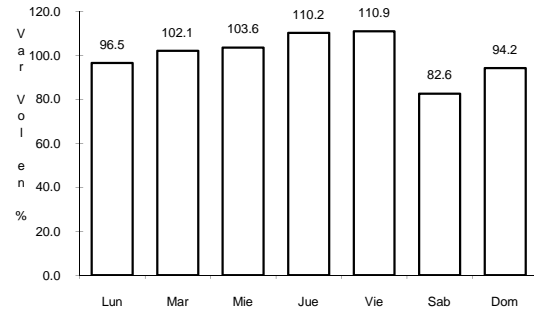
Km: 17.60 Tipo: 3 Sent: 0

ruta: MEX



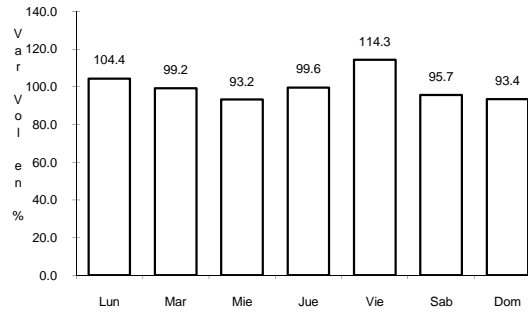
Km: 93.00 Tipo: 1 Sent: 0

7 CARR: MONTERREY - CASTAÑOS



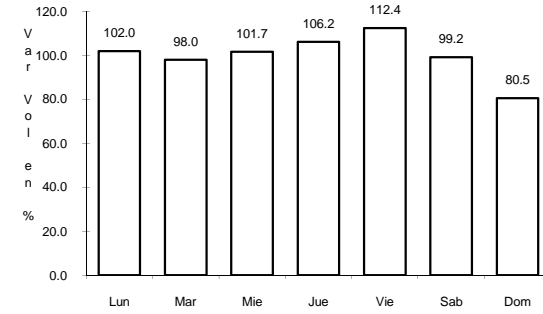
Km: 0.00 Tipo: 3 Sent: 0

CLAVE: 00128



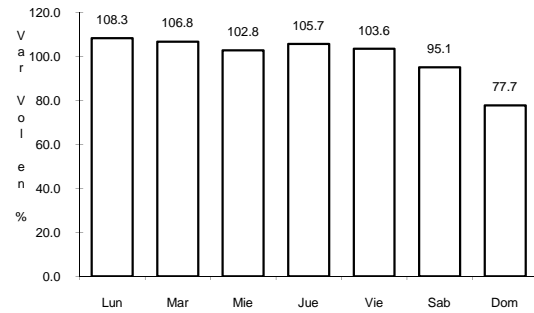
Km: 91.90 Tipo: 1 Sent: 0

RUTA: MEX-053



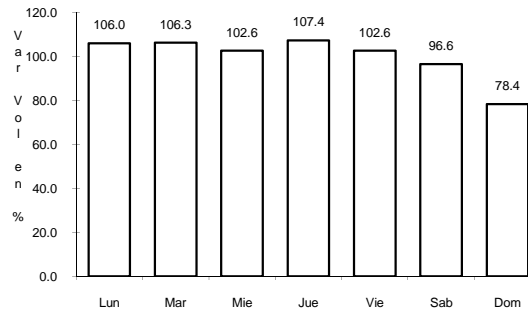
Km: 172.00 Tipo: 1 Sent: 0

8 CARR: MONTERREY - MIER



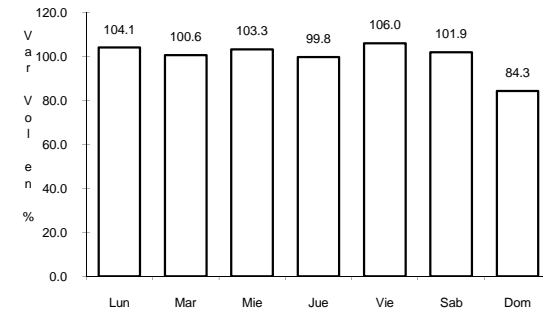
Km: 19.12 Tipo: 1 Sent: 1

CLAVE: 00127



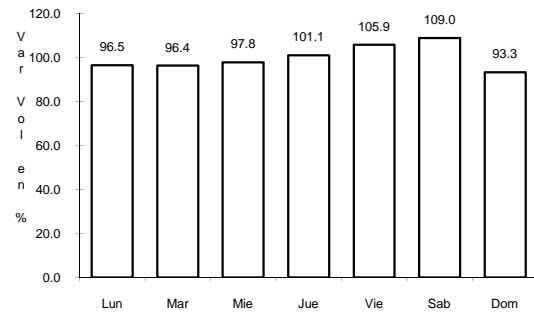
Km: 19.12 Tipo: 1 Sent: 2

RUTA: MEX-054



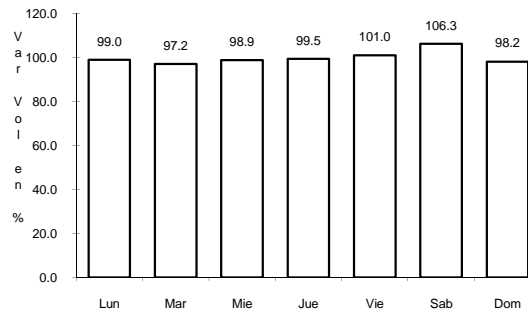
Km: 156.21 Tipo: 1 Sent: 0

9 CARR: MONTERREY - NUEVO LAREDO (LIBRE)



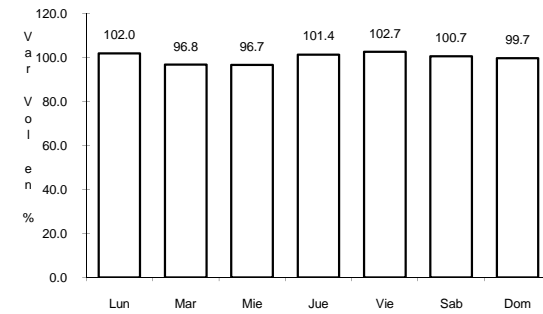
Km: 12.10 Tipo: 3 Sent: 1

CLAVE: 00463



Km: 12.10 Tipo: 3 Sent: 2

RUTA: MEX-085

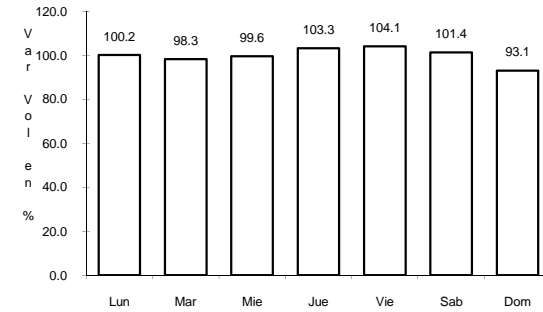
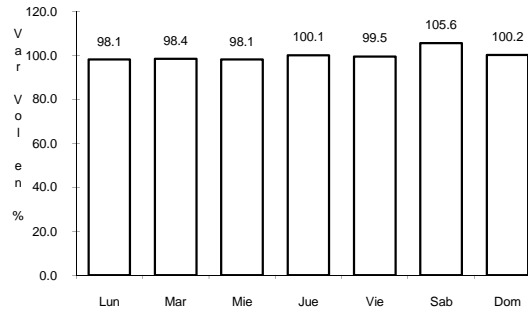
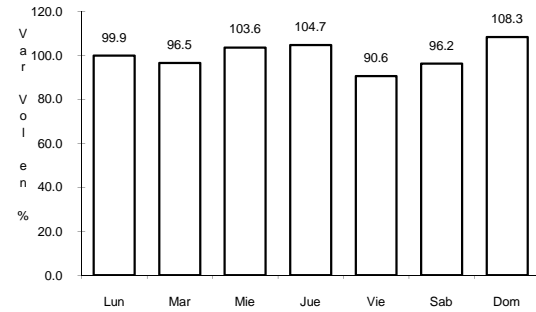


Km: 124.40 Tipo: 3 Sent: 0

10 CARR: MONTERREY - REYNOSA (LIBRE)

CLAVE: 00088

ruta: MEX-040



Km: 19.10

Tipo: 1

Sent: 1

Km: 19.10

Tipo: 1

Sent: 2

Km: 125.00

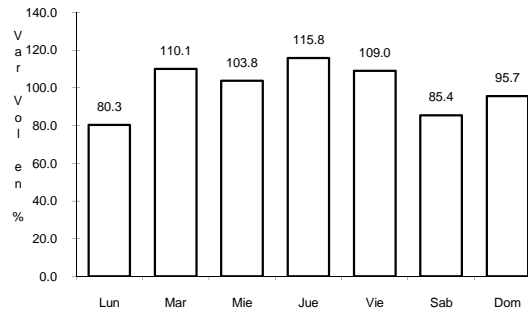
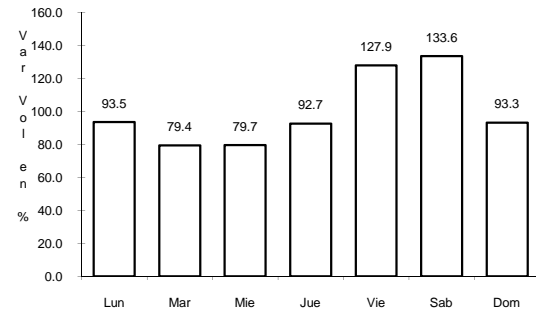
Tipo: 1

Sent: 0

11 CARR: PARAS - NUEVA CIUDAD GUERRERO

CLAVE: 00476

ruta: MEX-030



Km: 0.00

Tipo: 3

Sent: 0

Km: 32.00

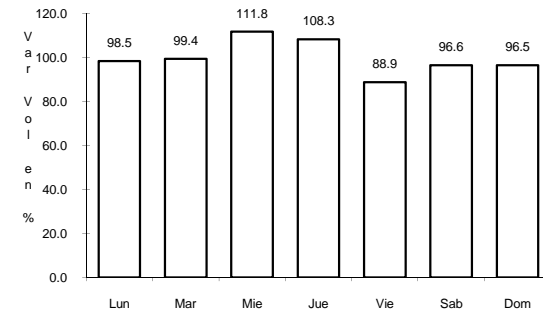
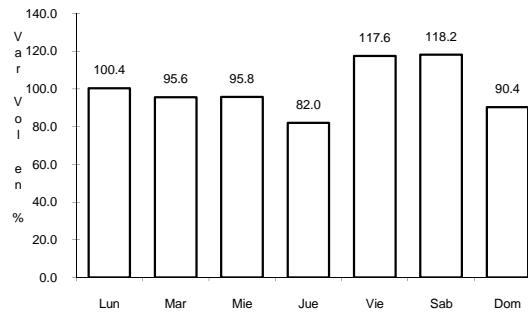
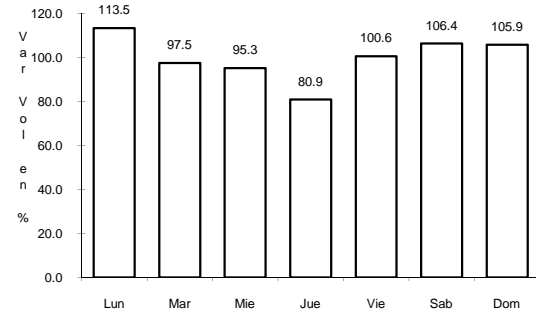
Tipo: 1

Sent: 0

12 CARR: PIEDRAS NEGRAS - NUEVO LAREDO

CLAVE: 00503

ruta: MEX-002



Km: 0.00

Tipo: 3

Sent: 1

Km: 0.00

Tipo: 3

Sent: 2

Km: 175.00

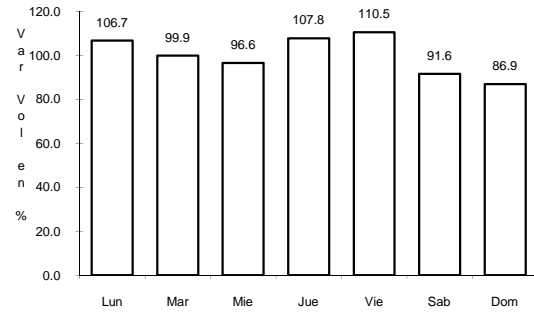
Tipo: 1

Sent: 0

13 CARR: RAMAL A AEROPUERTO MARIANO ESCOBEDO

CLAVE: 19510

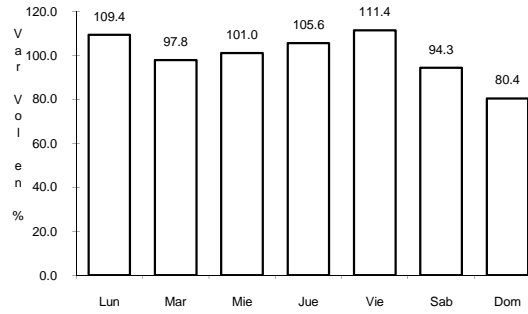
ruta: MEX-054



Km: 0.00

Tipo: 3

Sent: 1



Km: 0.00

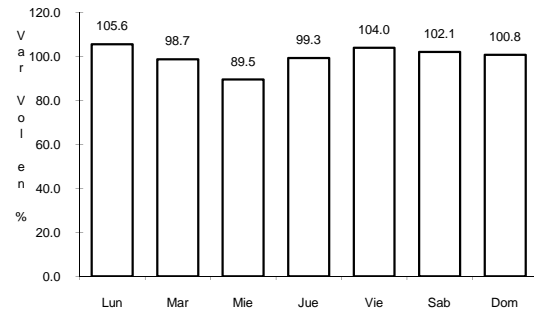
Tipo: 3

Sent: 2

14 CARR: SALTILLO - MONTERREY

CLAVE: 00087

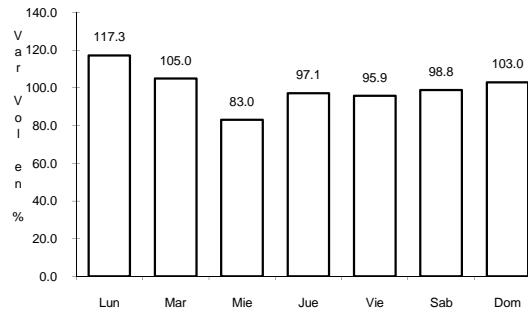
ruta: MEX-040



Km: 4.25

Tipo: 3

Sent: 1



Km: 4.25

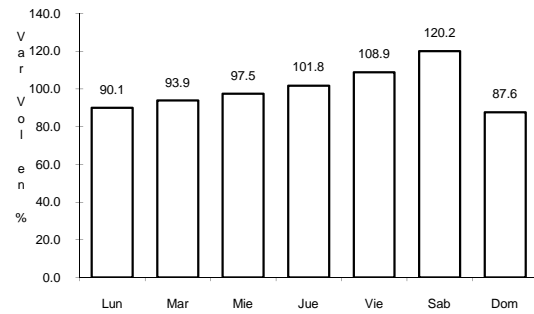
Tipo: 3

Sent: 2

17 CARR: PUERTO MEXICO - OJO CALIENTE (CUOTA)

CLAVE: 00115

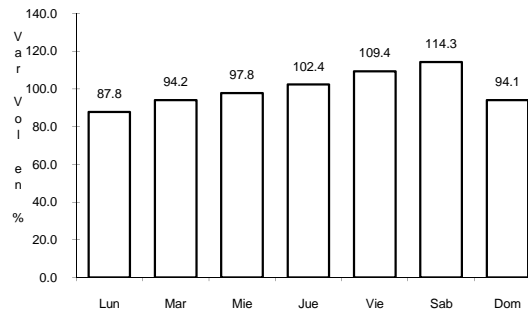
ruta: MEX-057D



Km: 23.88

Tipo: 1

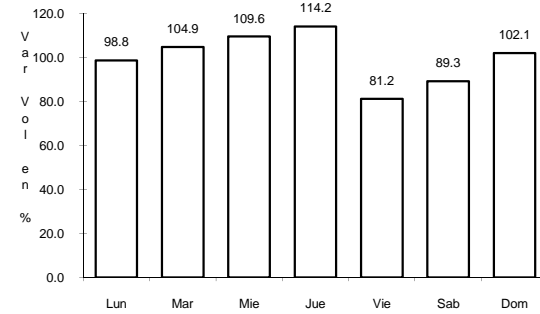
Sent: 1



Km: 23.88

Tipo: 1

Sent: 2

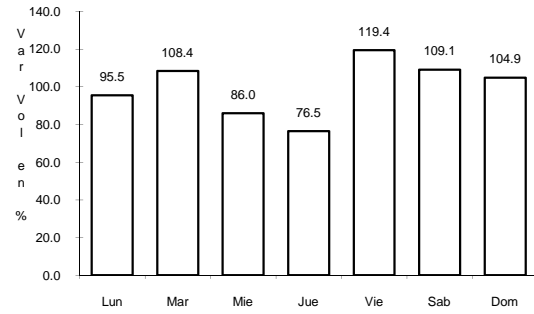


Km: 50.30

Tipo: 3

Sent: 0

18 CARR: AGUALEGUAS - EL EBANO

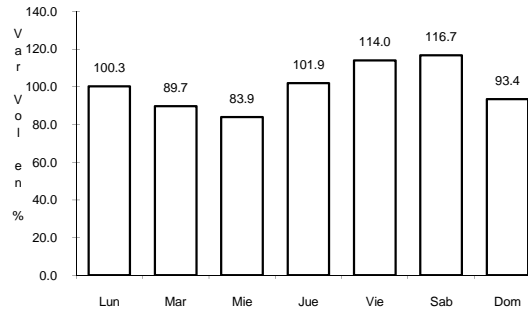


Km: 0.00

Tipo: 3

Sent: 0

CLAVE: 19004



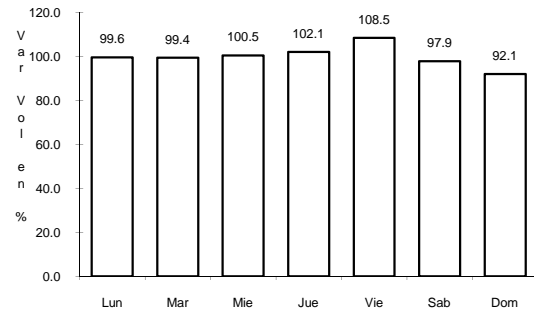
Km: 54.00

Tipo: 1

Sent: 0

RUTA: NL-023

19 CARR: APODACA - VILLA JUAREZ

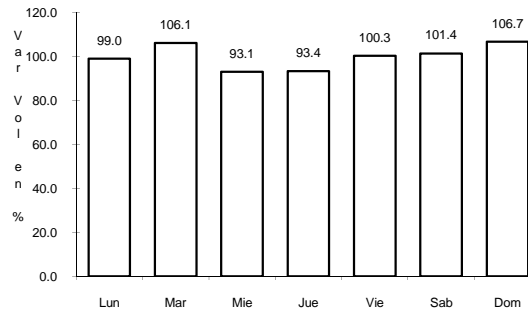


Km: 0.00

Tipo: 3

Sent: 0

CLAVE: 19494

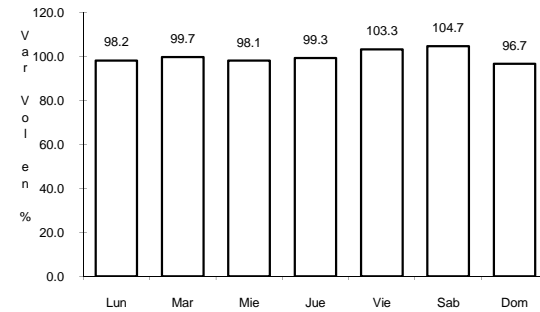


Km: 16.00

Tipo: 1

Sent: 1

RUTA: NL

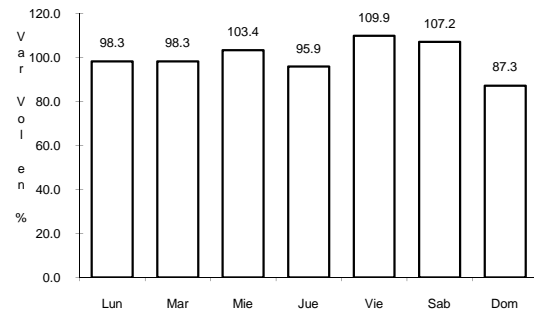


Km: 16.00

Tipo: 1

Sent: 2

20 CARR: CADEREYTA DE JIMENEZ - DOCTOR GONZALEZ

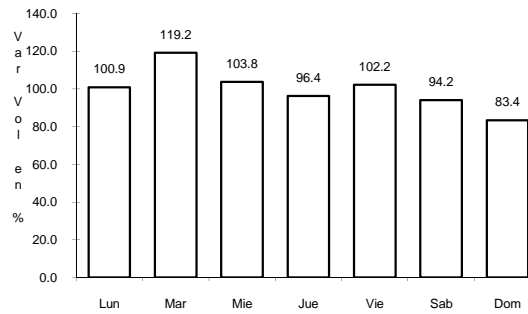


Km: 0.00

Tipo: 3

Sent: 0

CLAVE: 19473

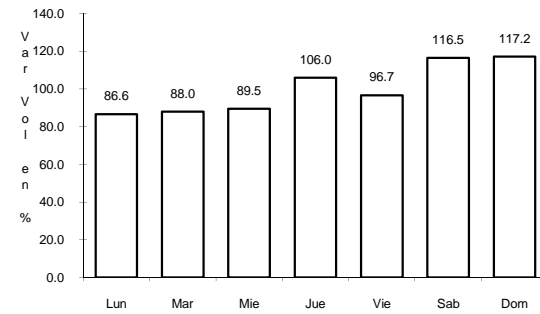


Km: 18.00

Tipo: 3

Sent: 0

RUTA: NL



Km: 30.00

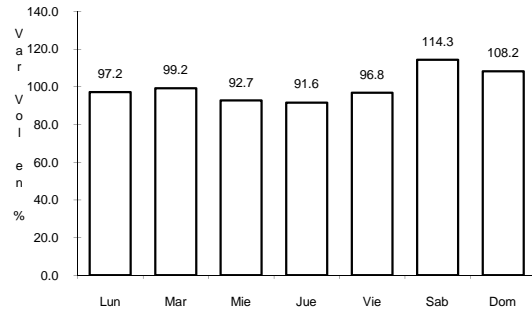
Tipo: 1

Sent: 0

21 CARR: CD. BENITO JUAREZ - VILLA DE SANTIAGO

CLAVE: 19491

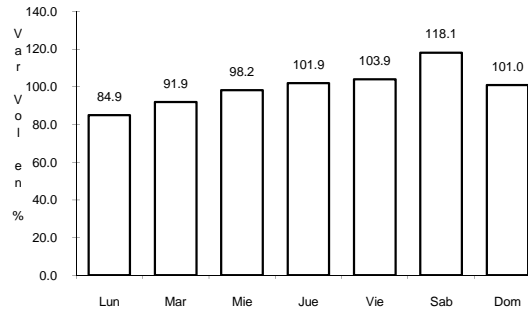
RUTA: NL



Km: 0.00

Tipo: 3

Sent: 0



Km: 39.00

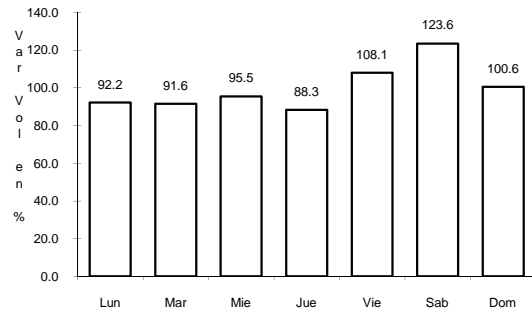
Tipo: 1

Sent: 0

22 CARR: CHINA - MENDEZ

CLAVE: 00191

RUTA: NL-TAM



Km: 0.00

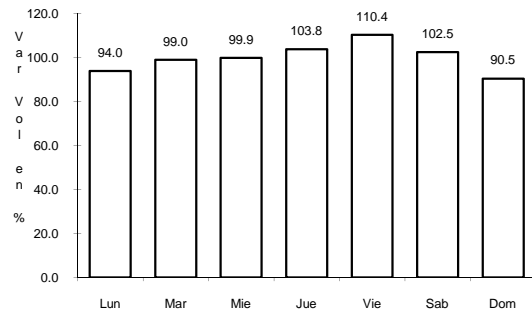
Tipo: 3

Sent: 0

23 CARR: DOCTOR ARROYO - MIER Y NORIEGA

CLAVE: 19088

RUTA: NL-088

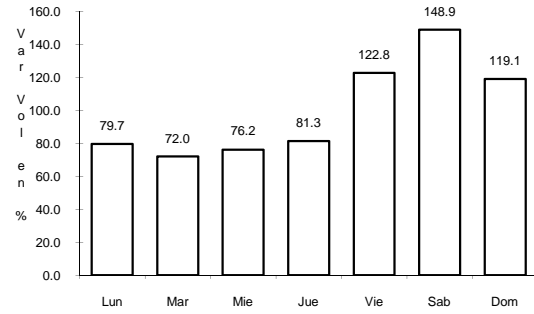


Km: 0.00

Tipo: 3

Sent: 0

24 CARR: ENT. HUISACHITO - NUEVO LAREDO

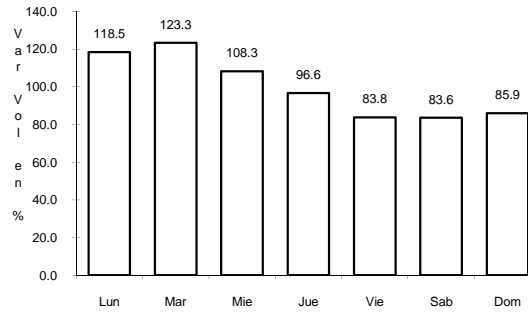


Km: 0.00

Tipo: 3

Sent: 0

CLAVE: 00074

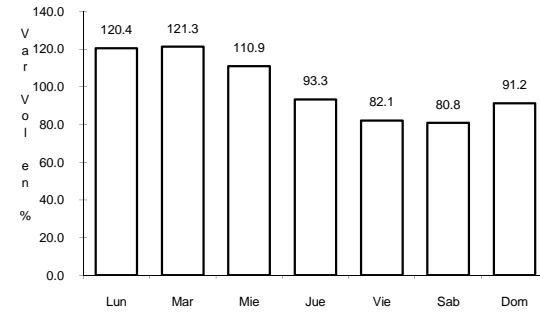


Km: 47.00

Tipo: 1

Sent: 0

RUTA: NL-001-TAM

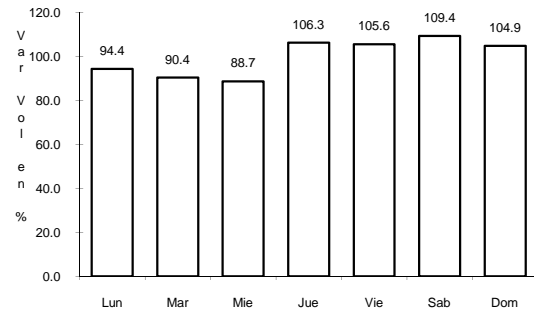


Km: 51.00

Tipo: 1

Sent: 0

25 CARR: GRAL. BRAVO - LOS ALDAMAS



Km: 0.00

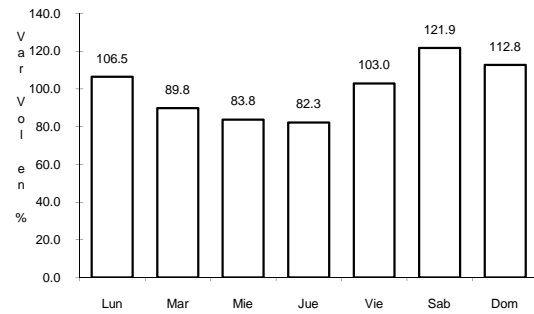
Tipo: 3

Sent: 0

CLAVE: 19030

RUTA: NL-030

26 CARR: GRAL. TREVIÑO - VILLA ALDAMA

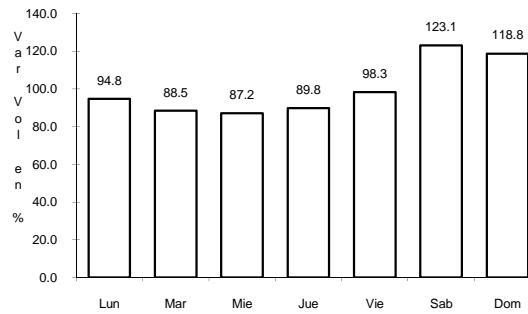


Km: 0.00

Tipo: 3

Sent: 0

CLAVE: 19003

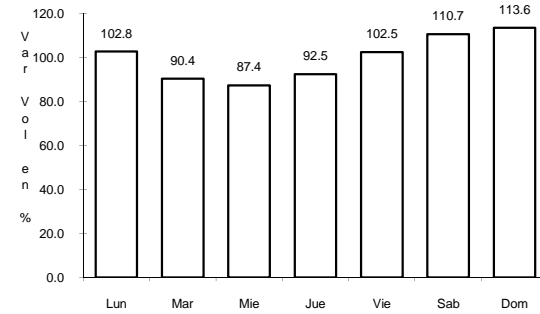


Km: 62.00

Tipo: 1

Sent: 0

RUTA: NL-003



Km: 134.00

Tipo: 1

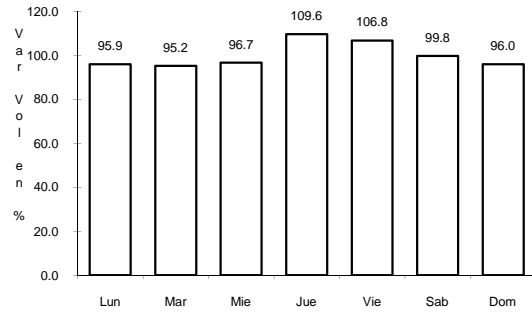
Sent: 0



27 CARR: HACIENDA GUADALUPE - HIGUERAS

CLAVE: 19006

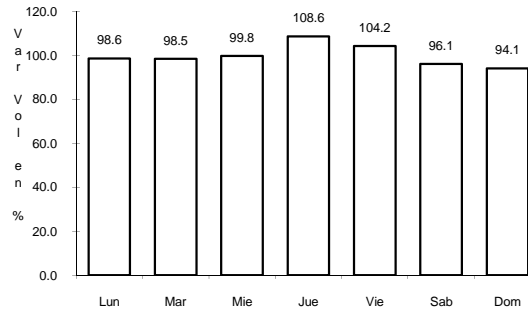
RUTA: NL-006



Km: 3.00

Tipo: 1

Sent: 1



Km: 3.00

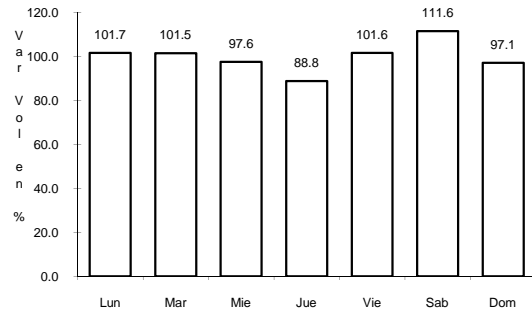
Tipo: 1

Sent: 2

28 CARR: LIBRAMIENTO DE LINARES

CLAVE: 19506

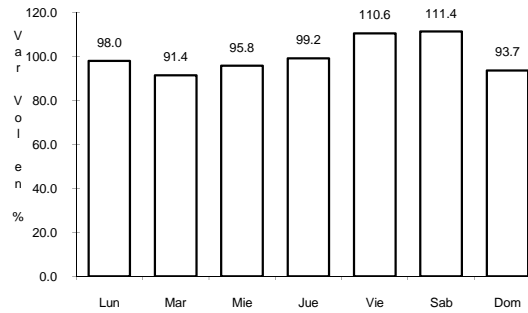
RUTA: NL



Km: 0.00

Tipo: 3

Sent: 0



Km: 2.00

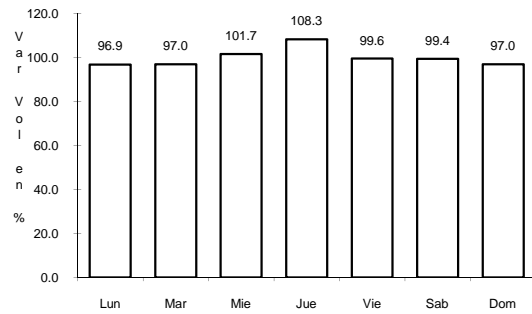
Tipo: 3

Sent: 0

29 CARR: LIBRAMIENTO DE MONTEMORELOS

CLAVE: 19492

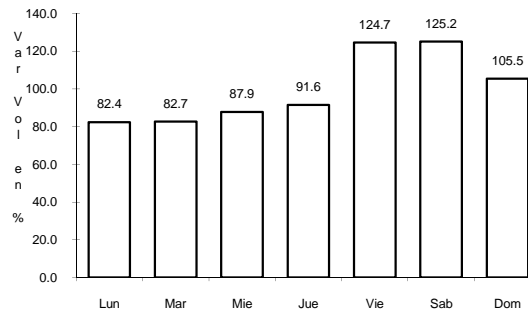
RUTA: NL



Km: 0.00

Tipo: 3

Sent: 1



Km: 0.00

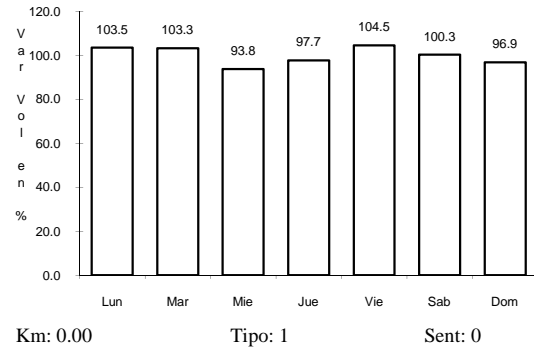
Tipo: 3

Sent: 2

30 CARR: LIBRAMIENTO PONIENTE DE CADEREYTA

CLAVE:

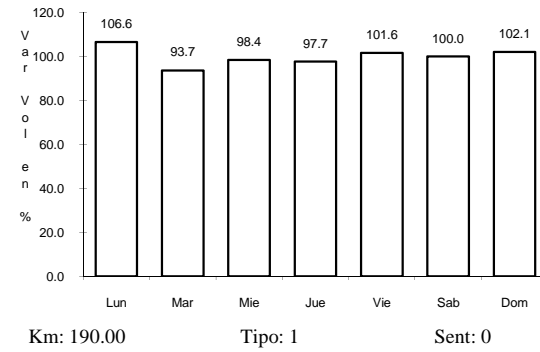
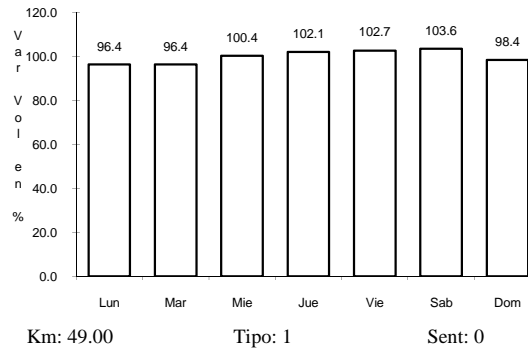
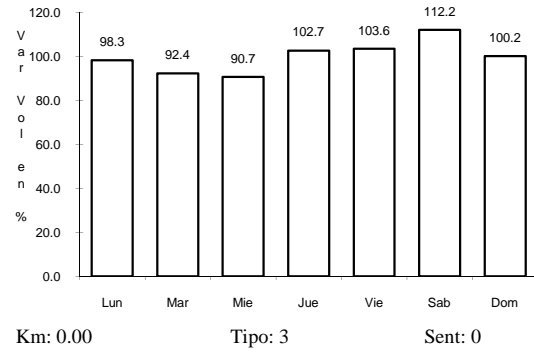
ruta: NL



31 CARR: MATEHUALA - LA POZA

CLAVE: 00086

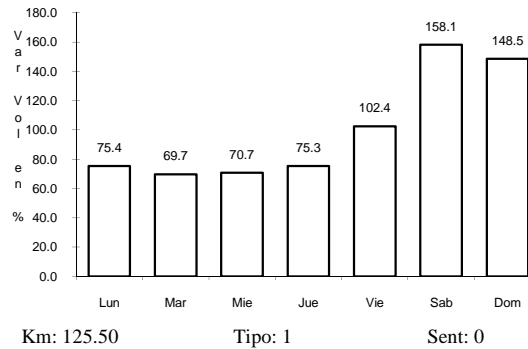
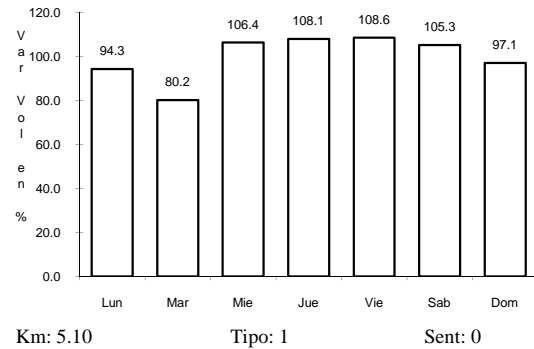
ruta: SLP-NL-061



32 CARR: MONCLOVA - ESTACION CANDELA

CLAVE: 00501

ruta: COA-030-NL

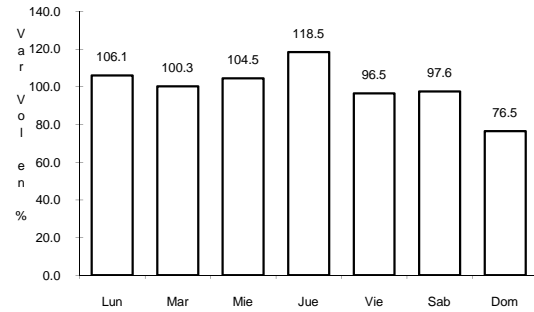




36 CARR: RAMAL A 18 DE MARZO

CLAVE: 19475

RUTA: NL



Km: 0.00

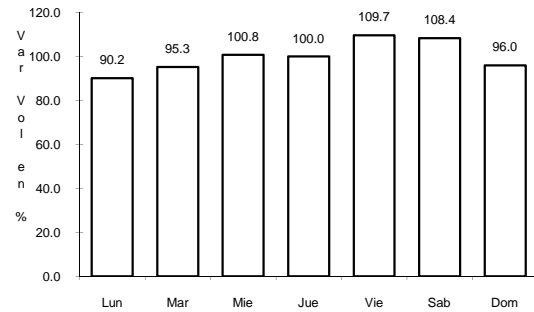
Tipo: 3

Sent: 0

37 CARR: RAMAL A CERRALVO

CLAVE: 19013

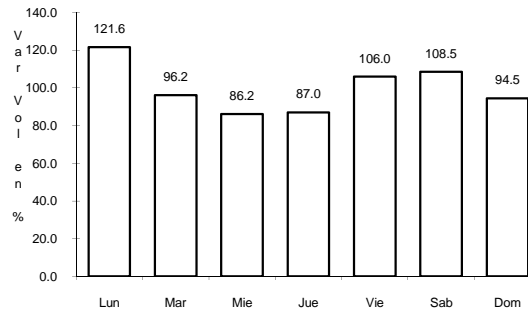
RUTA: NL-013



Km: 0.00

Tipo: 3

Sent: 0



Km: 58.00

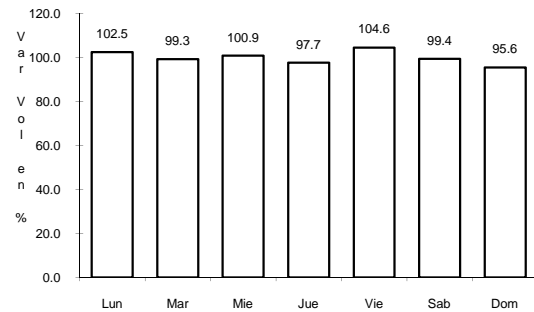
Tipo: 1

Sent: 0

38 CARR: RAMAL A MARIN

CLAVE: 19007

RUTA: NL



Km: 0.00

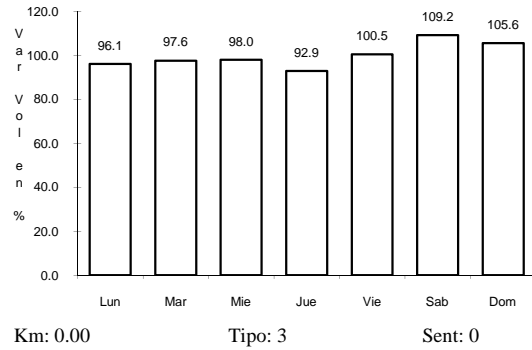
Tipo: 3

Sent: 0

39 CARR: SALINAS VICTORIA - CIENEGA DE FLORES

CLAVE:

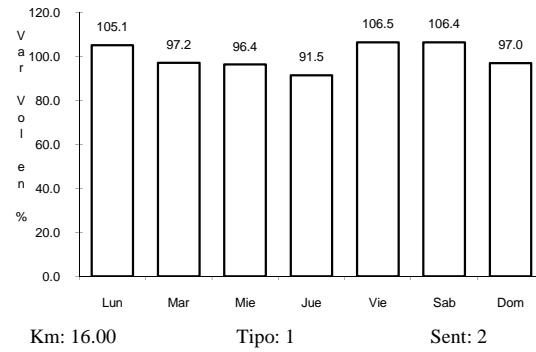
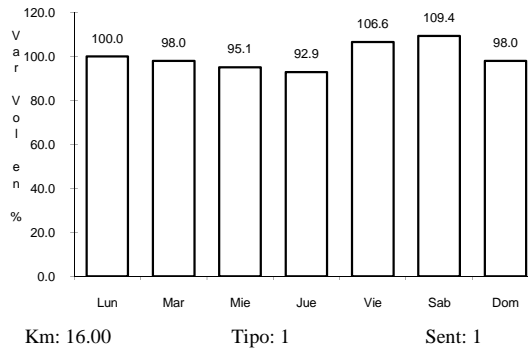
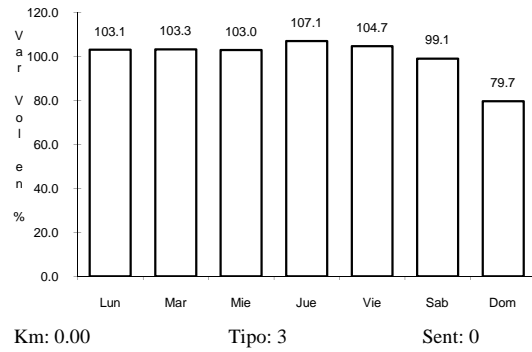
ruta: NL



40 CARR: SANTA ROSA - SALINAS VICTORIA

CLAVE: 19037

ruta: NL



41 CARR: AEROPUERTO DE MONTERREY (CUOTA)

CLAVE:

ruta: NL-D

