

NAYARIT

| Núm. INDICE | CARRETERA | RUTA |
|-------------------------|---|----------|
| ---- FEDERAL LIBRE ---- | | |
| 1 | CRUCERO DE SAN BLAS - SAN BLAS | MEX-074 |
| 2 | ENT. ACAPONETA - EL NOVILLERO | MEX-068 |
| 3 | ENT. SANTIAGO IXCUINTLA - PLAYA LOS CORCHOS | MEX-072 |
| 4 | GUADALAJARA - TEPIC | MEX-015 |
| 5 | LIBRAMIENTO DE TEPIC | MEX |
| 6 | PEÑITAS - TUXPAN | MEX |
| 7 | RAMAL A ACAPONETA | MEX |
| 8 | RAMAL A ESTACION NANCHI | MEX |
| 9 | RAMAL A ESTACION RUIZ | MEX-044 |
| 10 | RAMAL A LA LAGUNA DE SANTA MARIA | MEX |
| 11 | RAMAL A MECATAN | MEX |
| 12 | RAMAL A NUEVO AEROPUERTO DE TEPIC | MEX |
| 13 | RAMAL A PUNTA MITA | MEX |
| 14 | RAMAL A SANTA CRUZ | MEX |
| 15 | SANTA CRUZ - SAN BLAS | MEX |
| 16 | TEPIC - IXTAPAN DE LA CONCEPCION | MEX-076 |
| 17 | TEPIC - MAZATLAN | MEX-015 |
| 18 | TEPIC - PRESA AGUAMILPAS | MEX |
| 19 | TEPIC - PUERTO VALLARTA | MEX-200 |
| ---- FEDERAL CUOTA ---- | | |
| 20 | CHAPALILLA - COMPOSTELA (CUOTA) | MEX-D |
| 21 | GUADALAJARA - TEPIC (CUOTA) | MEX-015D |
| 22 | TEPIC - ENT. SAN BLAS (CUOTA) | MEX-015D |
| 23 | TEPIC - MAZATLAN (CUOTA) | MEX-015D |
| ---- ESTATAL LIBRE ---- | | |
| 24 | EL CARRIZO - LA BATANGA | NAY-078 |
| 25 | NAVARRETE - SAUTA | NAY-013 |
| 26 | RAMAL A AMADO NERVO | NAY |
| 27 | RAMAL A BELLAVISTA | NAY-059 |
| 28 | RAMAL A ESTACION YAGO | NAY |
| 29 | RAMAL A IXTAPAN DE LA CONCEPCION | NAY |
| 30 | RAMAL A MILPAS VIEJAS | NAY |
| 31 | RAMAL A VILLA HIDALGO NAY | NAY |
| 32 | RAMAL A VOLCAN DEL CEBORUCO | NAY |
| 33 | RAMAL EL COLOMO | NAY |
| 34 | TEPIC - FRANCISCO I. MADERO | NAY-MEX |



18 NAYARIT

NAYARIT

1 CARR : CRUCERO DE SAN BLAS - SAN BLAS

CLAVE: 18229

RUTA : MEX-074

AÑO : 2008

| L U G A R | E S T A C I O N | | | | C L A S I F I C A C I O N V E H I C U L A R E N P O R C I E N T O . | | | | | | | | | | | | |
|------------------------|-----------------|----|----|------|---|-----|-----|-----|------|------|--------|-------|------|-----|------|-------|-------|
| | KM | TE | SC | TDPA | A | B | C2 | C3 | T3S2 | T3S3 | T3S2R4 | OTROS | A | B | C | K' | D |
| T. C. TEPIC - MAZATLAN | 0.00 | 3 | 0 | 2846 | 84.3 | 6.7 | 3.2 | 1.7 | 1.4 | 0.8 | 0.7 | 1.2 | 84.3 | 6.7 | 9.0 | 0.092 | 0.515 |
| NAVARRETE | 11.00 | 3 | 0 | 2590 | 93.3 | 2.4 | 0.3 | 0.1 | 1.4 | 0.7 | 0.5 | 1.3 | 93.3 | 2.4 | 4.3 | 0.117 | 0.510 |
| SAN BLAS | 36.00 | 1 | 0 | 3495 | 77.4 | 7.7 | 4.1 | 2.3 | 2.7 | 1.0 | 0.8 | 4.0 | 77.4 | 7.7 | 14.9 | 0.078 | 0.509 |

2 CARR : ENT. ACAPONETA - EL NOVILLERO

CLAVE: 18023

RUTA : MEX-068

AÑO : 2008

| L U G A R | E S T A C I O N | | | | C L A S I F I C A C I O N V E H I C U L A R E N P O R C I E N T O . | | | | | | | | | | | | |
|------------------------|-----------------|----|----|------|---|-----|-----|-----|------|------|--------|-------|------|-----|------|-------|-------|
| | KM | TE | SC | TDPA | A | B | C2 | C3 | T3S2 | T3S3 | T3S2R4 | OTROS | A | B | C | K' | D |
| T. C. TEPIC - MAZATLAN | 0.00 | 3 | 0 | 4280 | 84.2 | 8.2 | 2.4 | 0.7 | 2.3 | 0.4 | 0.8 | 1.0 | 84.2 | 8.2 | 7.6 | 0.083 | 0.508 |
| TECUALA | 13.00 | 1 | 0 | 4261 | 88.4 | 5.1 | 1.1 | 1.3 | 1.6 | 0.7 | 0.9 | 0.9 | 88.4 | 5.1 | 6.5 | 0.093 | 0.509 |
| TECUALA | 13.00 | 3 | 0 | 3086 | 82.0 | 8.1 | 1.8 | 2.0 | 2.5 | 1.7 | 0.9 | 1.0 | 82.0 | 8.1 | 9.9 | 0.090 | 0.513 |
| PLAYA NOVILLERO | 36.00 | | | | | | | | | | | | | | | | |
| EL NOVILLERO | 36.00 | 1 | 0 | 2405 | 81.1 | 6.7 | 3.9 | 1.7 | 4.1 | 0.5 | 0.9 | 1.1 | 81.1 | 6.7 | 12.2 | 0.090 | 0.512 |

3 CARR : ENT. SANTIAGO IXCUINTLA - PLAYA LOS CORCHOS

CLAVE: 18016

RUTA : MEX-072

AÑO : 2008

| L U G A R | E S T A C I O N | | | | C L A S I F I C A C I O N V E H I C U L A R E N P O R C I E N T O . | | | | | | | | | | | | |
|------------------------|-----------------|----|----|------|---|-----|-----|-----|------|------|--------|-------|------|-----|------|-------|-------|
| | KM | TE | SC | TDPA | A | B | C2 | C3 | T3S2 | T3S3 | T3S2R4 | OTROS | A | B | C | K' | D |
| T. C. TEPIC - MAZATLAN | 0.00 | 3 | 0 | 2102 | 78.7 | 6.8 | 3.9 | 2.2 | 3.4 | 0.7 | 0.9 | 3.4 | 78.7 | 6.8 | 14.5 | 0.096 | 0.513 |
| SANTIAGO IXCUINTLA | 8.00 | 1 | 0 | 3341 | 84.9 | 5.2 | 2.2 | 1.5 | 2.6 | 0.5 | 0.6 | 2.5 | 84.9 | 5.2 | 9.9 | 0.098 | 0.508 |
| SANTIAGO IXCUINTLA | 8.00 | 3 | 0 | 5844 | 88.3 | 5.5 | 1.3 | 1.5 | 1.7 | 0.5 | 0.2 | 1.0 | 88.3 | 5.5 | 6.2 | 0.084 | 0.578 |
| T. DER. MEXCALTITAN | 17.00 | 1 | 0 | 3696 | 87.2 | 3.8 | 0.8 | 3.2 | 2.5 | 0.8 | 0.6 | 1.1 | 87.2 | 3.8 | 9.0 | 0.099 | 0.508 |
| T. DER. MEXCALTITAN | 17.00 | 3 | 0 | 3809 | 88.7 | 3.9 | 0.5 | 2.9 | 1.0 | 0.6 | 0.8 | 1.6 | 88.7 | 3.9 | 7.4 | 0.119 | 0.500 |
| PLAYA LOS CORCHOS | 39.00 | 1 | 0 | 1828 | 92.2 | 1.9 | 1.1 | 0.9 | 1.1 | 0.7 | 0.9 | 1.2 | 92.2 | 1.9 | 5.9 | 0.118 | 0.503 |

4 CARR : GUADALAJARA - TEPIC

CLAVE: 00031

RUTA : MEX-015

AÑO : 2008

| L U G A R | E S T A C I O N | | | | C L A S I F I C A C I O N V E H I C U L A R E N P O R C I E N T O . | | | | | | | | | | | | |
|--------------------------|-----------------|----|----|-------|---|-----|-----|-----|------|------|--------|-------|------|-----|------|-------|-------|
| | KM | TE | SC | TDPA | A | B | C2 | C3 | T3S2 | T3S3 | T3S2R4 | OTROS | A | B | C | K' | D |
| GUADALAJARA | 0.00 | | | | | | | | | | | | | | | | |
| T. DER. BASE AEREA No. 2 | 8.30 | 3 | 1 | 14160 | 77.6 | 4.8 | 5.7 | 4.5 | 2.5 | 2.0 | 1.6 | 1.3 | 77.6 | 4.8 | 17.6 | 0.099 | 0.510 |
| T. DER. BASE AEREA No. 2 | 8.30 | 3 | 2 | 13612 | 77.7 | 4.8 | 5.6 | 4.5 | 3.1 | 2.1 | 1.8 | 0.4 | 77.7 | 4.8 | 17.5 | 0.101 | 0.510 |
| T. IZQ. LA PRIMAVERA | 20.50 | 1 | 1 | 11372 | 71.2 | 5.4 | 2.9 | 3.3 | 8.2 | 4.6 | 1.7 | 2.7 | 71.2 | 5.4 | 23.4 | 0.089 | 0.504 |
| T. IZQ. LA PRIMAVERA | 20.50 | 1 | 2 | 11549 | 75.3 | 5.4 | 2.9 | 3.0 | 6.1 | 4.0 | 2.1 | 1.2 | 75.3 | 5.4 | 19.3 | 0.092 | 0.504 |
| EL ARENAL | 36.20 | 1 | 0 | 10031 | 73.1 | 5.6 | 2.2 | 3.0 | 8.1 | 3.1 | 3.2 | 1.7 | 73.1 | 5.6 | 21.3 | 0.069 | 0.508 |

NAYARIT

4 CARR : GUADALAJARA - TEPIC

CLAVE: 00031

RUTA : MEX-015

AÑO : 2008

| L U G A R | E S T A C I O N | | | | C L A S I F I C A C I O N V E H I C U L A R E N P O R C I E N T O . | | | | | | | | | | | | |
|----------------------------------|-----------------|----|----|-------|---|------|-----|-----|------|------|--------|-------|------|------|------|-------|-------|
| | KM | TE | SC | TDPA | A | B | C2 | C3 | T3S2 | T3S3 | T3S2R4 | OTROS | A | B | C | K' | D |
| TEQUILA | 57.50 | 3 | 0 | 9129 | 64.6 | 6.2 | 6.9 | 7.2 | 4.0 | 4.1 | 3.1 | 3.9 | 64.6 | 6.2 | 29.2 | 0.110 | 0.511 |
| MAGDALENA | 76.80 | 3 | 0 | 8415 | 75.3 | 2.4 | 1.9 | 1.4 | 9.9 | 4.9 | 2.7 | 1.5 | 75.3 | 2.4 | 22.3 | 0.090 | 0.504 |
| LIM. EDOS. TERM. JAL. PPIA. NAY. | 123.00 | | | | | | | | | | | | | | | | |
| IXTLAN DEL RIO | 138.80 | 1 | 0 | 9003 | 64.7 | 5.8 | 2.4 | 4.0 | 10.4 | 4.6 | 4.9 | 3.2 | 64.7 | 5.8 | 29.5 | 0.100 | 0.517 |
| IXTLAN DEL RIO | 138.80 | 3 | 0 | 8964 | 78.2 | 3.2 | 3.8 | 2.3 | 5.9 | 2.1 | 3.1 | 1.4 | 78.2 | 3.2 | 18.6 | 0.079 | 0.500 |
| AHUACATLAN | 152.00 | 1 | 0 | 9276 | 70.4 | 5.5 | 4.1 | 1.7 | 9.8 | 3.7 | 3.5 | 1.3 | 70.4 | 5.5 | 24.1 | 0.064 | 0.504 |
| AHUACATLAN | 152.00 | 3 | 0 | 8804 | 58.1 | 5.2 | 5.3 | 6.7 | 10.8 | 5.5 | 4.4 | 4.0 | 58.1 | 5.2 | 36.7 | 0.075 | 0.503 |
| T. IZQ. AMADO NERVO | 167.30 | 1 | 0 | 9491 | 58.9 | 6.4 | 4.0 | 3.9 | 15.1 | 6.2 | 3.2 | 2.3 | 58.9 | 6.4 | 34.7 | 0.065 | 0.504 |
| T. IZQ. COMPOSTELA | 175.50 | 1 | 0 | 10980 | 56.8 | 6.6 | 3.6 | 5.5 | 14.1 | 6.2 | 3.5 | 3.7 | 56.8 | 6.6 | 36.6 | 0.068 | 0.512 |
| T. IZQ. COMPOSTELA | 175.50 | 3 | 0 | 9662 | 49.1 | 7.0 | 3.4 | 5.9 | 16.4 | 7.5 | 7.5 | 3.2 | 49.1 | 7.0 | 43.9 | 0.120 | 0.513 |
| T. DER. SANTA MARIA DEL ORO | 196.00 | 1 | 0 | 11293 | 52.5 | 6.0 | 4.2 | 6.9 | 17.6 | 5.9 | 4.2 | 2.7 | 52.5 | 6.0 | 41.5 | 0.073 | 0.500 |
| T. DER. SANTA MARIA DEL ORO | 196.00 | 3 | 0 | 7107 | 74.4 | 10.8 | 3.1 | 4.1 | 3.8 | 1.5 | 1.1 | 1.2 | 74.4 | 10.8 | 14.8 | 0.091 | 0.504 |
| SAN CAYETANO | 215.90 | 3 | 0 | 9506 | 82.2 | 4.4 | 3.6 | 4.7 | 2.0 | 1.2 | 0.8 | 1.1 | 82.2 | 4.4 | 13.4 | 0.100 | 0.502 |
| T. IZQ. LIBRAMIENTO DE TEPIC | 219.10 | 1 | 1 | 12829 | 72.5 | 5.7 | 3.1 | 1.8 | 5.6 | 3.1 | 2.7 | 5.5 | 72.5 | 5.7 | 21.8 | 0.073 | 0.524 |
| T. IZQ. LIBRAMIENTO DE TEPIC | 219.10 | 1 | 2 | 11640 | 71.4 | 5.8 | 3.1 | 1.9 | 5.0 | 2.8 | 3.9 | 6.1 | 71.4 | 5.8 | 22.8 | 0.077 | 0.524 |
| T. IZQ. LIBRAMIENTO DE TEPIC | 219.10 | 3 | 1 | 10255 | 71.2 | 6.3 | 3.5 | 2.8 | 4.6 | 2.6 | 4.4 | 4.6 | 71.2 | 6.3 | 22.5 | 0.080 | 0.501 |
| T. IZQ. LIBRAMIENTO DE TEPIC | 219.10 | 3 | 2 | 10312 | 71.3 | 6.5 | 3.4 | 2.7 | 5.4 | 2.2 | 4.4 | 4.1 | 71.3 | 6.5 | 22.2 | 0.073 | 0.501 |
| T. IZQ. AEROPUERTO DE TEPIC | 222.90 | 1 | 0 | 11603 | 88.8 | 4.1 | 2.8 | 0.7 | 0.6 | 1.0 | 0.9 | 1.1 | 88.8 | 4.1 | 7.1 | 0.071 | 0.504 |
| TEPIC | 224.80 | 1 | 1 | 15990 | 57.4 | 5.0 | 3.2 | 1.5 | 5.7 | 5.1 | 13.9 | 8.2 | 57.4 | 5.0 | 37.6 | 0.076 | 0.510 |
| TEPIC | 224.80 | 1 | 2 | 16620 | 60.6 | 4.1 | 3.1 | 1.3 | 6.7 | 5.1 | 12.2 | 6.9 | 60.6 | 4.1 | 35.3 | 0.070 | 0.510 |

5 CARR : LIBRAMIENTO DE TEPIC

CLAVE: 18232

RUTA : MEX

AÑO : 2008

| L U G A R | E S T A C I O N | | | | C L A S I F I C A C I O N V E H I C U L A R E N P O R C I E N T O . | | | | | | | | | | | | |
|-------------------------------|-----------------|----|----|-------|---|-----|-----|-----|------|------|--------|-------|------|-----|------|-------|-------|
| | KM | TE | SC | TDPA | A | B | C2 | C3 | T3S2 | T3S3 | T3S2R4 | OTROS | A | B | C | K' | D |
| T. C. GUADALAJARA - TEPIC | 0.00 | | | | | | | | | | | | | | | | |
| X. C. TEPIC - PUERTO VALLARTA | 5.00 | 1 | 1 | 13704 | 78.0 | 3.5 | 2.1 | 1.7 | 4.0 | 3.1 | 2.2 | 5.4 | 78.0 | 3.5 | 18.5 | 0.075 | 0.517 |
| X. C. TEPIC - PUERTO VALLARTA | 5.00 | 1 | 2 | 14689 | 74.4 | 3.6 | 2.7 | 2.3 | 4.4 | 4.0 | 2.7 | 5.9 | 74.4 | 3.6 | 22.0 | 0.077 | 0.517 |
| T. C. TEPIC - MAZATLAN | 18.80 | 1 | 1 | 9644 | 74.2 | 4.8 | 4.4 | 3.5 | 4.3 | 3.0 | 3.1 | 2.7 | 74.2 | 4.8 | 21.0 | 0.104 | 0.530 |
| T. C. TEPIC - MAZATLAN | 18.80 | 1 | 2 | 8547 | 75.7 | 4.2 | 4.5 | 3.2 | 4.5 | 3.3 | 2.5 | 2.1 | 75.7 | 4.2 | 20.1 | 0.097 | 0.530 |

NAYARIT

6 CARR : PEÑITAS - TUXPAN

CLAVE: 18019

RUTA : MEX

AÑO : 2008

| L U G A R | E S T A C I O N | | | | C L A S I F I C A C I O N V E H I C U L A R E N P O R C I E N T O . | | | | | | | | | | | | |
|------------------------|-----------------|----|----|------|---|-----|-----|-----|------|------|--------|-------|------|-----|------|-------|-------|
| | KM | TE | SC | TDPA | A | B | C2 | C3 | T3S2 | T3S3 | T3S2R4 | OTROS | A | B | C | K' | D |
| T. C. TEPIC - MAZATLAN | 0.00 | | | | | | | | | | | | | | | | |
| PEÑITAS | 0.00 | 3 | 0 | 6666 | 86.7 | 4.0 | 1.5 | 1.5 | 1.0 | 0.8 | 2.2 | 2.3 | 86.7 | 4.0 | 9.3 | 0.073 | 0.501 |
| TUXPAN | 9.00 | 1 | 0 | 7363 | 80.5 | 5.1 | 1.5 | 1.5 | 3.6 | 2.5 | 1.4 | 3.9 | 80.5 | 5.1 | 14.4 | 0.102 | 0.501 |

7 CARR : RAMAL A ACAPONETA

CLAVE: 18038

RUTA : MEX

AÑO : 2008

| L U G A R | E S T A C I O N | | | | C L A S I F I C A C I O N V E H I C U L A R E N P O R C I E N T O . | | | | | | | | | | | | |
|------------------------|-----------------|----|----|------|---|-----|-----|-----|------|------|--------|-------|------|-----|-----|-------|-------|
| | KM | TE | SC | TDPA | A | B | C2 | C3 | T3S2 | T3S3 | T3S2R4 | OTROS | A | B | C | K' | D |
| T. C. TEPIC - MAZATLAN | 0.00 | 3 | 1 | 5878 | 88.8 | 4.9 | 1.1 | 1.0 | 1.9 | 0.3 | 0.4 | 1.6 | 88.8 | 4.9 | 6.3 | 0.082 | 0.504 |
| T. C. TEPIC - MAZATLAN | 0.00 | 3 | 2 | 5967 | 90.8 | 4.6 | 1.1 | 0.9 | 0.9 | 0.2 | 0.2 | 1.3 | 90.8 | 4.6 | 4.6 | 0.081 | 0.504 |
| ACAPONETA | 3.00 | | | | | | | | | | | | | | | | |

8 CARR : RAMAL A ESTACION NANCHI

CLAVE: 18068

RUTA : MEX

AÑO : 2008

| L U G A R | E S T A C I O N | | | | C L A S I F I C A C I O N V E H I C U L A R E N P O R C I E N T O . | | | | | | | | | | | | |
|------------------------|-----------------|----|----|------|---|-----|-----|-----|------|------|--------|-------|------|-----|-----|-------|-------|
| | KM | TE | SC | TDPA | A | B | C2 | C3 | T3S2 | T3S3 | T3S2R4 | OTROS | A | B | C | K' | D |
| T. C. TEPIC - MAZATLAN | 0.00 | 3 | 0 | 1062 | 87.6 | 6.2 | 1.3 | 1.6 | 1.0 | 0.4 | 0.2 | 1.7 | 87.6 | 6.2 | 6.2 | 0.095 | 0.503 |
| ESTACION NANCHI | 5.00 | | | | | | | | | | | | | | | | |

9 CARR : RAMAL A ESTACION RUIZ

CLAVE: 18026

RUTA : MEX-044

AÑO : 2008

| L U G A R | E S T A C I O N | | | | C L A S I F I C A C I O N V E H I C U L A R E N P O R C I E N T O . | | | | | | | | | | | | |
|------------------------|-----------------|----|----|------|---|-----|-----|-----|------|------|--------|-------|------|-----|------|-------|-------|
| | KM | TE | SC | TDPA | A | B | C2 | C3 | T3S2 | T3S3 | T3S2R4 | OTROS | A | B | C | K' | D |
| T. C. TEPIC - MAZATLAN | 0.00 | 3 | 0 | 4344 | 85.5 | 3.6 | 2.4 | 1.9 | 2.0 | 2.1 | 0.8 | 1.7 | 85.5 | 3.6 | 10.9 | 0.079 | 0.511 |
| ESTACION RUIZ | 5.50 | 1 | 0 | 5520 | 86.7 | 3.9 | 1.5 | 1.1 | 2.5 | 0.9 | 1.5 | 1.9 | 86.7 | 3.9 | 9.4 | 0.075 | 0.501 |

10 CARR : RAMAL A LA LAGUNA DE SANTA MARIA

CLAVE: 18005

RUTA : MEX

AÑO : 2008

| L U G A R | E S T A C I O N | | | | C L A S I F I C A C I O N V E H I C U L A R E N P O R C I E N T O . | | | | | | | | | | | | |
|---------------------------|-----------------|----|----|------|---|-----|-----|-----|------|------|--------|-------|------|-----|------|-------|-------|
| | KM | TE | SC | TDPA | A | B | C2 | C3 | T3S2 | T3S3 | T3S2R4 | OTROS | A | B | C | K' | D |
| T. C. GUADALAJARA - TEPIC | 0.00 | 3 | 0 | 3506 | 83.8 | 4.4 | 4.0 | 2.4 | 1.6 | 1.5 | 0.6 | 1.7 | 83.8 | 4.4 | 11.8 | 0.090 | 0.502 |
| SANTA MARIA DEL ORO | 11.50 | 1 | 0 | 2920 | 79.2 | 6.5 | 4.3 | 1.4 | 3.1 | 4.8 | 0.4 | 0.3 | 79.2 | 6.5 | 14.3 | 0.110 | 0.505 |
| LAGUNA DE SANTA MARIA | 20.00 | 1 | 0 | 847 | 82.8 | 6.3 | 3.8 | 2.8 | 2.4 | 1.2 | 0.3 | 0.4 | 82.8 | 6.3 | 10.9 | 0.117 | 0.508 |

NAYARIT

11 CARR : RAMAL A MECATAN

CLAVE: 18010

RUTA : MEX

AÑO : 2008

| L U G A R | E S T A C I O N | | | | C L A S I F I C A C I O N V E H I C U L A R E N P O R C I E N T O . | | | | | | | | | | | | |
|---|-----------------|----|----|------|---|-----|-----|-----|------|------|--------|-------|------|-----|-----|-------|-------|
| | KM | TE | SC | TDPA | A | B | C2 | C3 | T3S2 | T3S3 | T3S2R4 | OTROS | A | B | C | K' | D |
| T. C. (TEPIC - MAZATLAN) - IXTAPAN DE LA CONCEPCION | 0.00 | 3 | 0 | 788 | 89.2 | 6.4 | 1.5 | 1.5 | 0.6 | 0.1 | 0.1 | 0.6 | 89.2 | 6.4 | 4.4 | 0.085 | 0.506 |
| MECATAN | 9.00 | | | | | | | | | | | | | | | | |

12 CARR : RAMAL A NUEVO AEROPUERTO DE TEPIC

CLAVE: 18012

RUTA : MEX

AÑO : 2008

| L U G A R | E S T A C I O N | | | | C L A S I F I C A C I O N V E H I C U L A R E N P O R C I E N T O . | | | | | | | | | | | | |
|---------------------------|-----------------|----|----|------|---|-----|-----|-----|------|------|--------|-------|------|-----|------|-------|-------|
| | KM | TE | SC | TDPA | A | B | C2 | C3 | T3S2 | T3S3 | T3S2R4 | OTROS | A | B | C | K' | D |
| T. C. GUADALAJARA - TEPIC | 0.00 | 3 | 0 | 3950 | 83.3 | 4.2 | 3.0 | 2.9 | 3.6 | 1.1 | 1.1 | 0.8 | 83.3 | 4.2 | 12.5 | 0.091 | 0.503 |
| AEROPUERTO DE TEPIC | 5.00 | | | | | | | | | | | | | | | | |

13 CARR : RAMAL A PUNTA MITA

CLAVE: 18020

RUTA : MEX

AÑO : 2008

| L U G A R | E S T A C I O N | | | | C L A S I F I C A C I O N V E H I C U L A R E N P O R C I E N T O . | | | | | | | | | | | | |
|-------------------------------|-----------------|----|----|------|---|------|-----|-----|------|------|--------|-------|------|------|------|-------|-------|
| | KM | TE | SC | TDPA | A | B | C2 | C3 | T3S2 | T3S3 | T3S2R4 | OTROS | A | B | C | K' | D |
| T. C. TEPIC - PUERTO VALLARTA | 0.00 | 3 | 0 | 4682 | 78.1 | 10.2 | 5.0 | 1.6 | 1.9 | 1.2 | 0.5 | 1.5 | 78.1 | 10.2 | 11.7 | 0.082 | 0.501 |
| SAN IGNACIO | 9.00 | 3 | 0 | 4722 | 78.4 | 10.4 | 3.9 | 1.3 | 3.1 | 1.0 | 0.7 | 1.2 | 78.4 | 10.4 | 11.2 | 0.119 | 0.502 |
| PUNTA MITA | 18.00 | | | | | | | | | | | | | | | | |

14 CARR : RAMAL A SANTA CRUZ

CLAVE: 18030

RUTA : MEX

AÑO : 2008

| L U G A R | E S T A C I O N | | | | C L A S I F I C A C I O N V E H I C U L A R E N P O R C I E N T O . | | | | | | | | | | | | |
|--|-----------------|----|----|------|---|-----|-----|-----|------|------|--------|-------|------|-----|------|-------|-------|
| | KM | TE | SC | TDPA | A | B | C2 | C3 | T3S2 | T3S3 | T3S2R4 | OTROS | A | B | C | K' | D |
| T. C. TEPIC - IXTAPAN DE LA CONCEPCION | 0.00 | | | | | | | | | | | | | | | | |
| SANTA CRUZ | 1.30 | 1 | 0 | 1908 | 82.9 | 5.2 | 6.6 | 3.5 | 0.1 | 0.5 | 0.9 | 0.3 | 82.9 | 5.2 | 11.9 | 0.082 | 0.502 |

15 CARR : SANTA CRUZ - SAN BLAS

CLAVE: 18230

RUTA : MEX

AÑO : 2008

| L U G A R | E S T A C I O N | | | | C L A S I F I C A C I O N V E H I C U L A R E N P O R C I E N T O . | | | | | | | | | | | | |
|-----------------------------------|-----------------|----|----|------|---|-----|-----|-----|------|------|--------|-------|------|-----|------|-------|-------|
| | KM | TE | SC | TDPA | A | B | C2 | C3 | T3S2 | T3S3 | T3S2R4 | OTROS | A | B | C | K' | D |
| SANTA CRUZ | 0.00 | 3 | 0 | 1884 | 84.9 | 2.8 | 4.1 | 1.4 | 2.7 | 1.3 | 0.9 | 1.9 | 84.9 | 2.8 | 12.3 | 0.120 | 0.502 |
| PLAYA LOS COCOS | 3.90 | 1 | 0 | 1849 | 85.3 | 2.7 | 4.3 | 3.4 | 2.1 | 0.4 | 0.3 | 1.5 | 85.3 | 2.7 | 12.0 | 0.112 | 0.521 |
| ATICAMA | 5.00 | 3 | 0 | 2689 | 83.9 | 2.7 | 3.0 | 1.6 | 3.9 | 1.5 | 1.0 | 2.4 | 83.9 | 2.7 | 13.4 | 0.083 | 0.505 |
| T. C. CRUCERO SAN BLAS - SAN BLAS | 17.00 | 1 | 0 | 2072 | 77.8 | 9.5 | 5.0 | 3.3 | 1.8 | 1.1 | 1.1 | 0.4 | 77.8 | 9.5 | 12.7 | 0.130 | 0.507 |

NAYARIT

16 CARR : TEPIC - IXTAPAN DE LA CONCEPCION

CLAVE: 18028

RUTA : MEX-076

AÑO : 2008

| L U G A R | E S T A C I O N | | | | C L A S I F I C A C I O N V E H I C U L A R E N P O R C I E N T O . | | | | | | | | | | | | |
|--------------------------|-----------------|----|----|-------|---|-----|-----|-----|------|------|--------|-------|------|-----|------|-------|-------|
| | KM | TE | SC | TDPA | A | B | C2 | C3 | T3S2 | T3S3 | T3S2R4 | OTROS | A | B | C | K' | D |
| T. C. TEPIC - MAZATLAN | 0.00 | 3 | 0 | 12632 | 86.9 | 1.6 | 2.8 | 1.0 | 1.4 | 1.3 | 1.8 | 3.2 | 86.9 | 1.6 | 11.5 | 0.095 | 0.504 |
| T. DER. MECATAN | 19.00 | 1 | 0 | 2411 | 89.6 | 1.8 | 2.2 | 0.8 | 1.1 | 1.0 | 1.4 | 2.1 | 89.6 | 1.8 | 8.6 | 0.092 | 0.521 |
| T. DER. MECATAN | 19.00 | 3 | 0 | 1818 | 89.9 | 4.7 | 1.4 | 1.5 | 1.5 | 0.2 | 0.1 | 0.7 | 89.9 | 4.7 | 5.4 | 0.118 | 0.502 |
| JALCOCOTAN | 27.00 | 1 | 0 | 2298 | 90.1 | 4.6 | 1.0 | 1.0 | 2.0 | 0.3 | 0.3 | 0.7 | 90.1 | 4.6 | 5.3 | 0.090 | 0.502 |
| T. DER. SANTA CRUZ | 50.00 | 3 | 0 | 1504 | 76.6 | 3.3 | 2.8 | 1.8 | 4.0 | 2.1 | 4.3 | 5.1 | 76.6 | 3.3 | 20.1 | 0.089 | 0.502 |
| IXTAPAN DE LA CONCEPCION | 77.42 | 1 | 0 | 1505 | 89.0 | 6.6 | 1.1 | 1.0 | 1.3 | 0.2 | 0.1 | 0.7 | 89.0 | 6.6 | 4.4 | 0.139 | 0.502 |

17 CARR : TEPIC - MAZATLAN

CLAVE: 00500

RUTA : MEX-015

AÑO : 2008

| L U G A R | E S T A C I O N | | | | C L A S I F I C A C I O N V E H I C U L A R E N P O R C I E N T O . | | | | | | | | | | | | |
|--|-----------------|----|----|-------|---|-----|-----|-----|------|------|--------|-------|------|-----|------|-------|-------|
| | KM | TE | SC | TDPA | A | B | C2 | C3 | T3S2 | T3S3 | T3S2R4 | OTROS | A | B | C | K' | D |
| TEPIC | 0.00 | 3 | 1 | 8183 | 80.4 | 1.5 | 4.3 | 3.6 | 4.3 | 1.5 | 1.8 | 2.6 | 80.4 | 1.5 | 18.1 | 0.069 | 0.529 |
| TEPIC | 0.00 | 3 | 2 | 7288 | 81.6 | 1.4 | 3.9 | 3.4 | 3.9 | 1.3 | 2.0 | 2.5 | 81.6 | 1.4 | 17.0 | 0.075 | 0.529 |
| T. IZQ. LIBRAMIENTO DE TEPIC | 2.56 | 1 | 1 | 11102 | 81.6 | 6.3 | 3.3 | 1.0 | 3.3 | 1.3 | 1.8 | 1.4 | 81.6 | 6.3 | 12.1 | 0.091 | 0.532 |
| T. IZQ. LIBRAMIENTO DE TEPIC | 2.56 | 1 | 2 | 9786 | 77.3 | 6.3 | 3.2 | 1.9 | 3.4 | 2.8 | 2.5 | 2.6 | 77.3 | 6.3 | 16.4 | 0.085 | 0.532 |
| T. IZQ. AUT. TEPIC - ENT. SAN BLAS (CUOTA) | 3.70 | 3 | 0 | 8378 | 70.1 | 4.1 | 1.6 | 2.8 | 10.8 | 3.3 | 5.6 | 1.7 | 70.1 | 4.1 | 25.8 | 0.100 | 0.507 |
| LOS OTATES | 19.80 | 3 | 0 | 8265 | 60.1 | 4.3 | 0.8 | 1.6 | 13.6 | 7.9 | 7.9 | 3.8 | 60.1 | 4.3 | 35.6 | 0.100 | 0.510 |
| T. IZQ. JUMATAN | 28.52 | 1 | 0 | 6666 | 75.6 | 5.2 | 1.8 | 2.4 | 3.2 | 2.7 | 5.2 | 3.9 | 75.6 | 5.2 | 19.2 | 0.110 | 0.515 |
| T. IZQ. JUMATAN | 28.52 | 3 | 1 | 7349 | 63.4 | 3.5 | 4.8 | 4.9 | 9.7 | 4.6 | 6.1 | 3.0 | 63.4 | 3.5 | 33.1 | 0.110 | 0.502 |
| T. IZQ. JUMATAN | 28.52 | 3 | 2 | 7398 | 66.9 | 3.5 | 4.8 | 4.9 | 9.0 | 3.4 | 5.7 | 1.8 | 66.9 | 3.5 | 29.6 | 0.110 | 0.502 |
| T. IZQ. SAN BLAS | 33.54 | 1 | 1 | 6276 | 60.2 | 5.6 | 5.1 | 3.6 | 10.7 | 5.1 | 6.4 | 3.3 | 60.2 | 5.6 | 34.2 | 0.069 | 0.500 |
| T. IZQ. SAN BLAS | 33.54 | 1 | 2 | 6280 | 61.9 | 5.4 | 5.2 | 3.6 | 10.0 | 4.6 | 6.2 | 3.1 | 61.9 | 5.4 | 32.7 | 0.071 | 0.500 |
| T. IZQ. VILLA HIDALGO | 48.12 | 1 | 0 | 11878 | 83.1 | 2.8 | 2.9 | 1.8 | 4.1 | 2.9 | 2.0 | 0.4 | 83.1 | 2.8 | 14.1 | 0.075 | 0.505 |
| T. IZQ. VILLA HIDALGO | 48.12 | 3 | 0 | 10286 | 67.0 | 2.3 | 6.9 | 6.9 | 8.1 | 4.5 | 1.5 | 2.8 | 67.0 | 2.3 | 30.7 | 0.077 | 0.506 |
| T. IZQ. SANTIAGO IXCUINTLA | 56.42 | 1 | 0 | 10308 | 64.3 | 5.8 | 4.2 | 3.3 | 8.6 | 4.0 | 6.7 | 3.1 | 64.3 | 5.8 | 29.9 | 0.070 | 0.504 |
| T. IZQ. SANTIAGO IXCUINTLA | 56.42 | 3 | 0 | 10332 | 72.0 | 5.4 | 3.6 | 5.3 | 5.5 | 4.5 | 1.3 | 2.4 | 72.0 | 5.4 | 22.6 | 0.075 | 0.504 |
| T. IZQ. TUXPAN | 70.60 | 1 | 0 | 12719 | 73.6 | 5.8 | 4.5 | 4.4 | 4.1 | 4.5 | 1.2 | 1.9 | 73.6 | 5.8 | 20.6 | 0.072 | 0.504 |
| T. IZQ. TUXPAN | 70.60 | 3 | 0 | 13197 | 72.3 | 7.8 | 4.1 | 1.9 | 4.6 | 3.5 | 1.9 | 3.9 | 72.3 | 7.8 | 19.9 | 0.088 | 0.506 |
| T. DER. ROSAMORADA | 90.70 | 3 | 0 | 10484 | 72.2 | 7.0 | 3.2 | 3.5 | 4.7 | 3.5 | 1.9 | 4.0 | 72.2 | 7.0 | 20.8 | 0.070 | 0.508 |
| TIERRA GENEROSA | 110.40 | 1 | 0 | 7768 | 77.0 | 2.7 | 1.8 | 1.4 | 12.2 | 2.8 | 1.8 | 0.3 | 77.0 | 2.7 | 20.3 | 0.074 | 0.503 |
| T. DER. ACAPONETA | 136.50 | 1 | 0 | 9854 | 71.2 | 7.5 | 4.1 | 3.7 | 6.7 | 3.8 | 1.6 | 1.4 | 71.2 | 7.5 | 21.3 | 0.074 | 0.509 |
| T. DER. ACAPONETA | 136.50 | 3 | 0 | 4527 | 77.7 | 8.4 | 1.8 | 2.1 | 6.3 | 1.4 | 1.2 | 1.1 | 77.7 | 8.4 | 13.9 | 0.076 | 0.508 |
| LIM. EDOS. TERM. NAY. PPIA. SIN. | 147.00 | | | | | | | | | | | | | | | | |
| ESCUINAPA DE HIDALGO | 200.00 | 1 | 0 | 4006 | 74.6 | 3.2 | 1.5 | 2.7 | 7.4 | 2.8 | 4.1 | 3.7 | 74.6 | 3.2 | 22.2 | 0.110 | 0.502 |
| ESCUINAPA DE HIDALGO | 200.00 | 3 | 0 | 4259 | 83.2 | 4.8 | 2.0 | 2.7 | 3.7 | 1.2 | 1.3 | 1.1 | 83.2 | 4.8 | 12.0 | 0.086 | 0.505 |

NAYARIT

17 CARR : TEPIC - MAZATLAN

CLAVE: 00500

RUTA : MEX-015

AÑO : 2008

| L U G A R | E S T A C I O N | | | | C L A S I F I C A C I O N V E H I C U L A R E N P O R C I E N T O . | | | | | | | | | | | | |
|--|-----------------|----|----|-------|---|-----|-----|-----|------|------|--------|-------|------|-----|------|-------|-------|
| | KM | TE | SC | TDPA | A | B | C2 | C3 | T3S2 | T3S3 | T3S2R4 | OTROS | A | B | C | K' | D |
| ROSARIO | 221.70 | 1 | 0 | 10675 | 82.1 | 2.0 | 1.6 | 1.8 | 3.7 | 2.3 | 3.7 | 2.8 | 82.1 | 2.0 | 15.9 | 0.077 | 0.504 |
| ROSARIO | 221.70 | 3 | 0 | 2826 | 85.1 | 3.7 | 1.9 | 2.7 | 3.2 | 1.3 | 1.0 | 1.1 | 85.1 | 3.7 | 11.2 | 0.121 | 0.501 |
| T. DER. DURANGO | 268.00 | 1 | 0 | 3245 | 74.6 | 4.5 | 2.4 | 2.4 | 10.6 | 3.0 | 1.4 | 1.1 | 74.6 | 4.5 | 20.9 | 0.110 | 0.509 |
| T. DER. DURANGO | 268.00 | 3 | 0 | 5549 | 72.7 | 3.7 | 1.3 | 1.4 | 4.9 | 3.6 | 7.9 | 4.5 | 72.7 | 3.7 | 23.6 | 0.091 | 0.503 |
| VILLA UNION | 269.50 | 3 | 0 | 13562 | 62.3 | 4.3 | 2.5 | 2.7 | 9.3 | 4.1 | 11.1 | 3.7 | 62.3 | 4.3 | 33.4 | 0.141 | 0.500 |
| T. DER. LIBRAMIENTO DE MAZATLAN | 288.90 | 1 | 1 | 11528 | 86.0 | 2.8 | 2.7 | 2.3 | 2.1 | 1.6 | 1.0 | 1.5 | 86.0 | 2.8 | 11.2 | 0.109 | 0.501 |
| T. DER. LIBRAMIENTO DE MAZATLAN MAZATLAN | 288.90 | 1 | 2 | 11595 | 87.2 | 3.0 | 2.5 | 2.2 | 1.8 | 1.4 | 0.8 | 1.1 | 87.2 | 3.0 | 9.8 | 0.107 | 0.501 |
| MAZATLAN | 292.00 | | | | | | | | | | | | | | | | |

18 CARR : TEPIC - PRESA AGUAMILPAS

CLAVE: 18029

RUTA : MEX

AÑO : 2008

| L U G A R | E S T A C I O N | | | | C L A S I F I C A C I O N V E H I C U L A R E N P O R C I E N T O . | | | | | | | | | | | | |
|------------------------------|-----------------|----|----|-------|---|-----|-----|-----|------|------|--------|-------|------|-----|------|-------|-------|
| | KM | TE | SC | TDPA | A | B | C2 | C3 | T3S2 | T3S3 | T3S2R4 | OTROS | A | B | C | K' | D |
| T. C. GUADALAJARA - TEPIC | 0.00 | 3 | 0 | 10973 | 78.9 | 3.2 | 3.5 | 2.2 | 3.6 | 3.2 | 1.6 | 3.8 | 78.9 | 3.2 | 17.9 | 0.076 | 0.500 |
| X. C. TEPIC - FCO. I. MADERO | 17.50 | 3 | 0 | 2595 | 87.7 | 2.6 | 1.8 | 2.9 | 3.2 | 0.5 | 0.4 | 0.9 | 87.7 | 2.6 | 9.7 | 0.110 | 0.524 |
| PRESA AGUAMILPA | 54.00 | 1 | 0 | 1411 | 85.4 | 6.9 | 4.2 | 2.7 | 0.0 | 0.0 | 0.8 | 0.0 | 85.4 | 6.9 | 7.7 | 0.089 | 0.503 |

19 CARR : TEPIC - PUERTO VALLARTA

CLAVE: 00068

RUTA : MEX-200

AÑO : 2008

| L U G A R | E S T A C I O N | | | | C L A S I F I C A C I O N V E H I C U L A R E N P O R C I E N T O . | | | | | | | | | | | | |
|--------------------------------|-----------------|----|----|-------|---|-----|-----|-----|------|------|--------|-------|------|-----|------|-------|-------|
| | KM | TE | SC | TDPA | A | B | C2 | C3 | T3S2 | T3S3 | T3S2R4 | OTROS | A | B | C | K' | D |
| TEPIC | 0.00 | 3 | 1 | 12712 | 75.0 | 3.6 | 5.1 | 2.8 | 3.4 | 3.4 | 2.0 | 4.7 | 75.0 | 3.6 | 21.4 | 0.063 | 0.500 |
| TEPIC | 0.00 | 3 | 2 | 12717 | 80.1 | 3.5 | 4.9 | 2.2 | 2.2 | 2.2 | 1.4 | 3.5 | 80.1 | 3.5 | 16.4 | 0.071 | 0.500 |
| LIMITE DE ZONA URBANA TEPIC | 1.80 | 3 | 1 | 10843 | 80.5 | 3.6 | 3.8 | 1.7 | 5.7 | 1.2 | 1.4 | 2.1 | 80.5 | 3.6 | 15.9 | 0.092 | 0.523 |
| LIMITE DE ZONA URBANA TEPIC | 1.80 | 3 | 2 | 9889 | 74.1 | 3.5 | 4.5 | 2.4 | 5.8 | 3.0 | 2.9 | 3.8 | 74.1 | 3.5 | 22.4 | 0.075 | 0.523 |
| X. C. LIBRAMIENTO DE TEPIC | 3.90 | 3 | 1 | 10129 | 70.7 | 4.5 | 1.1 | 1.4 | 9.4 | 3.2 | 4.0 | 5.7 | 70.7 | 4.5 | 24.8 | 0.079 | 0.503 |
| X. C. LIBRAMIENTO DE TEPIC | 3.90 | 3 | 2 | 10258 | 67.1 | 4.2 | 1.7 | 2.2 | 9.8 | 4.3 | 4.2 | 6.5 | 67.1 | 4.2 | 28.7 | 0.064 | 0.503 |
| JALISCO | 7.15 | 3 | 0 | 11216 | 78.6 | 4.1 | 1.9 | 2.1 | 5.7 | 2.6 | 2.2 | 2.8 | 78.6 | 4.1 | 17.3 | 0.083 | 0.504 |
| T. IZQ. EMILIANO ZAPATA | 18.40 | 3 | 0 | 6662 | 68.6 | 7.1 | 4.0 | 2.7 | 6.4 | 3.4 | 3.8 | 4.0 | 68.6 | 7.1 | 24.3 | 0.098 | 0.520 |
| T. IZQ. COMPOSTELA (1° ACCESO) | 35.80 | 1 | 0 | 6393 | 85.1 | 2.7 | 1.3 | 1.3 | 2.7 | 3.2 | 1.2 | 2.5 | 85.1 | 2.7 | 12.2 | 0.073 | 0.515 |
| T. IZQ. COMPOSTELA (1° ACCESO) | 35.80 | 3 | 0 | 3737 | 73.5 | 3.6 | 1.7 | 2.3 | 5.8 | 4.1 | 4.4 | 4.6 | 73.5 | 3.6 | 22.9 | 0.070 | 0.523 |
| LAS VARAS | 71.30 | 1 | 0 | 7909 | 72.7 | 4.8 | 4.7 | 1.8 | 6.5 | 3.2 | 3.7 | 2.6 | 72.7 | 4.8 | 22.5 | 0.095 | 0.501 |
| LAS VARAS | 71.30 | 3 | 0 | 9363 | 72.3 | 5.3 | 2.5 | 3.7 | 6.3 | 3.2 | 3.5 | 3.2 | 72.3 | 5.3 | 22.4 | 0.095 | 0.500 |
| T. DER. RINCON DE GUAYABITOS | 94.50 | 1 | 0 | 10425 | 70.4 | 4.6 | 3.6 | 2.9 | 7.2 | 3.1 | 4.1 | 4.1 | 70.4 | 4.6 | 25.0 | 0.097 | 0.504 |
| T. DER. RINCON DE GUAYABITOS | 94.50 | 3 | 0 | 8598 | 71.4 | 4.5 | 3.3 | 2.2 | 5.6 | 3.5 | 5.6 | 3.9 | 71.4 | 4.5 | 24.1 | 0.103 | 0.510 |

NAYARIT

19 CARR : TEPIC - PUERTO VALLARTA

CLAVE: 00068

RUTA : MEX-200

AÑO : 2008

| L U G A R | E S T A C I O N | | | | C L A S I F I C A C I O N V E H I C U L A R E N P O R C I E N T O . | | | | | | | | | | | | |
|----------------------------------|-----------------|----|----|-------|---|------|-----|-----|------|------|--------|-------|------|------|------|-------|-------|
| | KM | TE | SC | TDPA | A | B | C2 | C3 | T3S2 | T3S3 | T3S2R4 | OTROS | A | B | C | K' | D |
| T. DER. SAYULITA | 122.90 | 1 | 0 | 7814 | 70.1 | 8.9 | 4.5 | 0.8 | 4.7 | 3.5 | 4.2 | 3.3 | 70.1 | 8.9 | 21.0 | 0.094 | 0.501 |
| T. DER. SAYULITA | 122.90 | 3 | 0 | 6863 | 75.6 | 4.0 | 5.3 | 4.1 | 5.9 | 1.5 | 0.8 | 2.8 | 75.6 | 4.0 | 20.4 | 0.103 | 0.501 |
| T. DER. CRUZ DE JUANACAXTLE | 137.30 | 3 | 1 | 4803 | 76.0 | 8.3 | 4.5 | 3.1 | 3.9 | 0.6 | 2.2 | 1.4 | 76.0 | 8.3 | 15.7 | 0.106 | 0.501 |
| T. DER. CRUZ DE JUANACAXTLE | 137.30 | 3 | 2 | 4816 | 76.2 | 8.2 | 4.5 | 3.1 | 3.9 | 0.6 | 2.1 | 1.4 | 76.2 | 8.2 | 15.6 | 0.094 | 0.501 |
| BUCERIAS | 140.80 | 1 | 1 | 6981 | 72.2 | 10.1 | 5.7 | 3.5 | 3.2 | 1.7 | 1.5 | 2.1 | 72.2 | 10.1 | 17.7 | 0.095 | 0.505 |
| BUCERIAS | 140.80 | 1 | 2 | 7112 | 72.5 | 10.1 | 5.8 | 3.4 | 3.1 | 1.7 | 1.4 | 2.0 | 72.5 | 10.1 | 17.4 | 0.095 | 0.505 |
| LIM. EDOS. TERM. NAY. PPIA. JAL. | 152.90 | | | | | | | | | | | | | | | | |
| T. DER. AEROPUERTO DIAZ ORDAZ | 158.40 | 1 | 1 | 12812 | 82.9 | 4.5 | 4.5 | 3.0 | 2.8 | 1.0 | 0.5 | 0.8 | 82.9 | 4.5 | 12.6 | 0.100 | 0.506 |
| T. DER. AEROPUERTO DIAZ ORDAZ | 158.40 | 1 | 2 | 12526 | 83.0 | 4.8 | 4.2 | 2.5 | 2.6 | 1.4 | 0.6 | 0.9 | 83.0 | 4.8 | 12.2 | 0.080 | 0.506 |
| T. DER. AEROPUERTO DIAZ ORDAZ | 158.40 | 3 | 1 | 9585 | 78.2 | 3.6 | 3.8 | 2.3 | 5.4 | 2.2 | 3.2 | 1.3 | 78.2 | 3.6 | 18.2 | 0.086 | 0.501 |
| T. DER. AEROPUERTO DIAZ ORDAZ | 158.40 | 3 | 2 | 9548 | 77.4 | 3.4 | 3.7 | 2.1 | 6.5 | 2.2 | 3.0 | 1.7 | 77.4 | 3.4 | 19.2 | 0.090 | 0.501 |
| PUERTO VALLARTA | 166.90 | | | | | | | | | | | | | | | | |

20 CARR : CHAPALILLA - COMPOSTELA (CUOTA)

CLAVE: 18004

RUTA : MEX-D

AÑO : 2008

| L U G A R | E S T A C I O N | | | | C L A S I F I C A C I O N V E H I C U L A R E N P O R C I E N T O . | | | | | | | | | | | | |
|-------------------------------|-----------------|----|----|------|---|-----|-----|-----|------|------|--------|-------|------|-----|------|-------|-------|
| | KM | TE | SC | TDPA | A | B | C2 | C3 | T3S2 | T3S3 | T3S2R4 | OTROS | A | B | C | K' | D |
| T. C. GUADALAJARA - TEPIC | 0.00 | 3 | 0 | 5158 | 83.4 | 5.5 | 4.7 | 1.5 | 1.5 | 1.2 | 1.8 | 0.4 | 83.4 | 5.5 | 11.1 | 0.095 | 0.513 |
| CASETA DE COBRO COMPOSTELA | 31.50 | 2 | 0 | 4271 | 77.4 | 7.2 | 4.5 | 3.6 | 3.4 | 1.4 | 0.4 | 2.1 | 77.4 | 7.2 | 15.4 | | |
| T. DER. COMPOSTELA | 36.50 | 1 | 0 | 4934 | 85.7 | 5.0 | 2.2 | 1.6 | 2.8 | 0.5 | 0.7 | 1.5 | 85.7 | 5.0 | 9.3 | 0.120 | 0.502 |
| T. C. TEPIC - PUERTO VALLARTA | 38.00 | 1 | 0 | 5241 | 85.1 | 3.0 | 2.4 | 1.2 | 1.7 | 2.6 | 2.6 | 1.4 | 85.1 | 3.0 | 11.9 | 0.108 | 0.543 |

21 CARR : GUADALAJARA - TEPIC (CUOTA)

CLAVE: 00033

RUTA : MEX-015D

AÑO : 2008

| L U G A R | E S T A C I O N | | | | C L A S I F I C A C I O N V E H I C U L A R E N P O R C I E N T O . | | | | | | | | | | | | |
|-----------------------------------|-----------------|----|----|------|---|-----|-----|-----|------|------|--------|-------|------|-----|------|-------|-------|
| | KM | TE | SC | TDPA | A | B | C2 | C3 | T3S2 | T3S3 | T3S2R4 | OTROS | A | B | C | K' | D |
| T. C. GUADALAJARA - TEPIC (LIBRE) | 0.00 | | | | | | | | | | | | | | | | |
| CASETA DE COBRO ARENAL | 10.96 | 2 | 0 | 9575 | 69.9 | 8.8 | 4.1 | 3.6 | 7.2 | 1.2 | 3.4 | 1.8 | 69.9 | 8.8 | 21.3 | | |
| CASETA DE COBRO PLAN DE BARRANCAS | 69.34 | 2 | 0 | 9997 | 65.7 | 8.6 | 4.1 | 5.1 | 9.8 | 1.7 | 3.3 | 1.7 | 65.7 | 8.6 | 25.7 | | |
| LIM. EDOS. TERM. JAL. PPIA. NAY. | 74.84 | | | | | | | | | | | | | | | | |
| CASETA DE COBRO SANTA MA. DEL ORO | 145.10 | 1 | 0 | 6060 | 62.9 | 8.9 | 4.7 | 4.5 | 10.4 | 1.5 | 4.7 | 2.4 | 62.9 | 8.9 | 28.2 | | |
| CASETA DE COBRO SANTA MA. DEL ORO | 145.10 | 2 | 0 | 5657 | 61.9 | 9.4 | 4.8 | 4.1 | 11.0 | 1.5 | 5.0 | 2.3 | 61.9 | 9.4 | 28.7 | | |
| CASETA DE COBRO SANTA MA. DEL ORO | 145.10 | 3 | 0 | 6116 | 64.0 | 8.8 | 4.7 | 3.9 | 10.2 | 1.4 | 4.6 | 2.4 | 64.0 | 8.8 | 27.2 | | |
| CASETA DE COBRO "STA MA. DEL ORO" | 145.30 | 3 | 1 | 3016 | 62.4 | 8.8 | 4.4 | 5.7 | 10.3 | 1.4 | 4.6 | 2.4 | 62.4 | 8.8 | 28.8 | 0.085 | 0.523 |
| CASETA DE COBRO "STA MA. DEL ORO" | 145.30 | 3 | 2 | 3312 | 62.7 | 8.9 | 4.2 | 5.9 | 10.4 | 1.2 | 4.5 | 2.2 | 62.7 | 8.9 | 28.4 | 0.074 | 0.523 |

NAYARIT

21 CARR : GUADALAJARA - TEPIC (CUOTA)

CLAVE: 00033

ruta : MEX-015D

AÑO : 2008

| L U G A R | E S T A C I O N | | | | C L A S I F I C A C I O N V E H I C U L A R E N P O R C I E N T O . | | | | | | | | | | | | | |
|-----------------------------------|-----------------|----|----|------|---|---|----|----|------|------|--------|-------|---|---|---|----|---|--|
| | KM | TE | SC | TDPA | A | B | C2 | C3 | T3S2 | T3S3 | T3S2R4 | OTROS | A | B | C | K' | D | |
| T. C. GUADALAJARA - TEPIC (LIBRE) | 168.60 | | | | | | | | | | | | | | | | | |

22 CARR : TEPIC - ENT. SAN BLAS (CUOTA)

CLAVE: 18008

ruta : MEX-015D

AÑO : 2008

| L U G A R | E S T A C I O N | | | | C L A S I F I C A C I O N V E H I C U L A R E N P O R C I E N T O . | | | | | | | | | | | | | |
|-----------------------------|-----------------|----|----|------|---|-----|-----|-----|------|------|--------|-------|------|-----|------|-------|-------|--|
| | KM | TE | SC | TDPA | A | B | C2 | C3 | T3S2 | T3S3 | T3S2R4 | OTROS | A | B | C | K' | D | |
| T. C. TEPIC - MAZATLAN | 0.00 | | | | | | | | | | | | | | | | | |
| CASETA DE COBRO "EL PICHON" | 5.00 | 1 | 1 | 4689 | 69.0 | 7.8 | 3.7 | 3.4 | 8.6 | 1.6 | 4.7 | 1.2 | 69.0 | 7.8 | 23.2 | 0.100 | 0.530 | |
| CASETA DE COBRO "EL PICHON" | 5.00 | 1 | 2 | 5283 | 70.7 | 8.0 | 3.6 | 3.1 | 7.5 | 1.5 | 4.4 | 1.2 | 70.7 | 8.0 | 21.3 | 0.097 | 0.530 | |
| T. C. TEPIC - MAZATLAN | 21.00 | 1 | 1 | 4443 | 70.4 | 7.7 | 3.5 | 3.6 | 5.1 | 3.8 | 3.3 | 2.6 | 70.4 | 7.7 | 21.9 | 0.090 | 0.512 | |
| T. C. TEPIC - MAZATLAN | 21.00 | 1 | 2 | 3878 | 70.7 | 7.4 | 3.6 | 3.4 | 5.2 | 3.9 | 3.4 | 2.4 | 70.7 | 7.4 | 21.9 | 0.074 | 0.512 | |
| ENT. SAN BLAS | 25.00 | 1 | 1 | 1857 | 82.4 | 3.9 | 3.8 | 2.2 | 2.4 | 0.9 | 0.7 | 3.7 | 82.4 | 3.9 | 13.7 | 0.087 | 0.511 | |
| ENT. SAN BLAS | 25.00 | 1 | 2 | 1938 | 81.6 | 3.6 | 3.7 | 2.1 | 2.9 | 0.9 | 0.8 | 4.4 | 81.6 | 3.6 | 14.8 | 0.077 | 0.511 | |

23 CARR : TEPIC - MAZATLAN (CUOTA)

CLAVE:

ruta : MEX-015D

AÑO : 2008

| L U G A R | E S T A C I O N | | | | C L A S I F I C A C I O N V E H I C U L A R E N P O R C I E N T O . | | | | | | | | | | | | |
|-------------------------------|-----------------|----|----|------|---|------|-----|-----|------|------|--------|-------|------|------|------|-------|-------|
| | KM | TE | SC | TDPA | A | B | C2 | C3 | T3S2 | T3S3 | T3S2R4 | OTROS | A | B | C | K' | D |
| CASETA DE COBRO EL PICHON | 4.70 | 2 | 0 | 8092 | 71.4 | 8.9 | 3.8 | 3.2 | 5.4 | 0.9 | 2.8 | 3.6 | 71.4 | 8.9 | 19.7 | | |
| CRUCERO DE SAN BLAS | 24.50 | 3 | 0 | 2051 | 62.8 | 5.0 | 4.9 | 2.4 | 11.5 | 6.4 | 3.4 | 3.6 | 62.8 | 5.0 | 32.2 | 0.072 | 0.501 |
| CASETA DE COBRO ESTACION RUIZ | 54.70 | 1 | 0 | 2103 | 92.2 | 0.6 | 2.7 | 0.3 | 0.1 | 0.0 | 0.0 | 4.1 | 92.2 | 0.6 | 7.2 | | |
| CASETA DE COBRO ESTACION RUIZ | 54.70 | 2 | 0 | 1677 | 93.6 | 0.6 | 2.4 | 0.3 | 0.1 | 0.0 | 0.0 | 3.0 | 93.6 | 0.6 | 5.8 | | |
| EST. RUIZ | 54.90 | 1 | 0 | 3492 | 88.0 | 5.5 | 2.5 | 1.8 | 1.7 | 0.3 | 0.1 | 0.1 | 88.0 | 5.5 | 6.5 | 0.086 | 0.505 |
| EST. RUIZ | 54.90 | 3 | 0 | 2427 | 88.9 | 4.6 | 2.5 | 1.8 | 1.7 | 0.3 | 0.1 | 0.1 | 88.9 | 4.6 | 6.5 | 0.122 | 0.504 |
| ROSAMORADA | 73.50 | 1 | 0 | 2777 | 88.4 | 4.9 | 2.5 | 2.2 | 1.5 | 0.3 | 0.1 | 0.1 | 88.4 | 4.9 | 6.7 | 0.122 | 0.503 |
| ROSAMORADA | 73.50 | 3 | 0 | 2683 | 88.7 | 4.9 | 2.1 | 2.3 | 1.5 | 0.3 | 0.1 | 0.1 | 88.7 | 4.9 | 6.4 | 0.122 | 0.504 |
| ACAPONETA | 120.20 | 1 | 0 | 3572 | 88.1 | 2.8 | 1.8 | 2.0 | 2.2 | 1.5 | 0.8 | 0.8 | 88.1 | 2.8 | 9.1 | 0.091 | 0.521 |
| ACAPONETA | 120.20 | 3 | 0 | 3263 | 65.2 | 3.9 | 5.0 | 6.6 | 6.3 | 2.2 | 8.6 | 2.2 | 65.2 | 3.9 | 30.9 | 0.076 | 0.515 |
| CASETA DE COBRO ROSARIO | 199.50 | 1 | 0 | 3900 | 56.6 | 10.8 | 3.1 | 3.7 | 13.9 | 2.0 | 6.6 | 3.3 | 56.6 | 10.8 | 32.6 | | |
| CASETA DE COBRO ROSARIO | 199.50 | 2 | 0 | 3516 | 54.7 | 10.8 | 3.0 | 3.9 | 15.3 | 2.2 | 7.3 | 2.8 | 54.7 | 10.8 | 34.5 | | |
| CASETA DE COBRO ROSARIO | 199.50 | 3 | 0 | 3848 | 56.2 | 11.1 | 2.9 | 3.7 | 14.0 | 2.0 | 6.7 | 3.4 | 56.2 | 11.1 | 32.7 | | |
| ESCUINAPA DE HIDALGO | 208.60 | 1 | 0 | 3693 | 64.9 | 5.8 | 4.6 | 5.8 | 6.2 | 2.0 | 8.6 | 2.1 | 64.9 | 5.8 | 29.3 | 0.076 | 0.513 |
| ESCUINAPA DE HIDALGO | 208.60 | 3 | 0 | 2766 | 64.7 | 4.9 | 5.0 | 6.0 | 6.3 | 2.2 | 8.6 | 2.3 | 64.7 | 4.9 | 30.4 | 0.077 | 0.528 |
| ROSARIO | 220.70 | 1 | 0 | 3242 | 60.8 | 2.7 | 4.4 | 5.1 | 7.5 | 3.1 | 9.0 | 7.4 | 60.8 | 2.7 | 36.5 | 0.085 | 0.502 |
| ROSARIO | 220.70 | 3 | 0 | 4809 | 60.3 | 5.8 | 3.8 | 2.8 | 13.6 | 2.8 | 9.1 | 1.8 | 60.3 | 5.8 | 33.9 | 0.067 | 0.500 |

NAYARIT

23 CARR : TEPIC - MAZATLAN (CUOTA)

CLAVE:

RUTA : MEX-015D

AÑO : 2008

| L U G A R | E S T A C I O N | | | | C L A S I F I C A C I O N V E H I C U L A R E N P O R C I E N T O . | | | | | | | | | | | | |
|-------------|-----------------|----|----|------|---|-----|-----|-----|------|------|--------|-------|------|-----|------|-------|-------|
| | KM | TE | SC | TDPA | A | B | C2 | C3 | T3S2 | T3S3 | T3S2R4 | OTROS | A | B | C | K' | D |
| VILLA UNION | 238.40 | 1 | 0 | 4479 | 56.2 | 3.7 | 7.3 | 5.3 | 13.6 | 3.0 | 9.0 | 1.9 | 56.2 | 3.7 | 40.1 | 0.067 | 0.500 |

24 CARR : EL CARRIZO - LA BATANGA

CLAVE: 18107

RUTA : NAY-078

AÑO : 2008

| L U G A R | E S T A C I O N | | | | C L A S I F I C A C I O N V E H I C U L A R E N P O R C I E N T O . | | | | | | | | | | | | |
|---|-----------------|----|----|------|---|-----|-----|-----|------|------|--------|-------|------|-----|------|-------|-------|
| | KM | TE | SC | TDPA | A | B | C2 | C3 | T3S2 | T3S3 | T3S2R4 | OTROS | A | B | C | K' | D |
| T. C. ENT. SANTIAGO IXCUINTLA - PLAYA LOS CORCHOS | 0.00 | 3 | 0 | 2674 | 91.6 | 5.8 | 1.4 | 0.2 | 0.2 | 0.3 | 0.1 | 0.4 | 91.6 | 5.8 | 2.6 | 0.066 | 0.510 |
| SENTISPAC | 9.00 | 1 | 0 | 1683 | 91.3 | 5.2 | 1.6 | 0.2 | 1.0 | 0.1 | 0.1 | 0.5 | 91.3 | 5.2 | 3.5 | 0.071 | 0.504 |
| LA BATANGA | 25.00 | 1 | 0 | 1912 | 83.6 | 4.2 | 3.4 | 3.0 | 1.7 | 0.8 | 0.2 | 3.1 | 83.6 | 4.2 | 12.2 | 0.095 | 0.509 |

25 CARR : NAVARRETE - SAUTA

CLAVE: 18013

RUTA : NAY-013

AÑO : 2008

| L U G A R | E S T A C I O N | | | | C L A S I F I C A C I O N V E H I C U L A R E N P O R C I E N T O . | | | | | | | | | | | | |
|-----------------------------------|-----------------|----|----|------|---|-----|-----|-----|------|------|--------|-------|------|-----|------|-------|-------|
| | KM | TE | SC | TDPA | A | B | C2 | C3 | T3S2 | T3S3 | T3S2R4 | OTROS | A | B | C | K' | D |
| T. C. CRUCERO SAN BLAS - SAN BLAS | 0.00 | 3 | 0 | 1862 | 85.3 | 4.0 | 7.1 | 1.3 | 1.1 | 0.2 | 0.3 | 0.7 | 85.3 | 4.0 | 10.7 | 0.067 | 0.512 |
| SAUTA | 7.00 | 1 | 0 | 1814 | 90.8 | 3.0 | 1.9 | 1.9 | 0.9 | 0.2 | 0.2 | 1.1 | 90.8 | 3.0 | 6.2 | 0.112 | 0.504 |

26 CARR : RAMAL A AMADO NERVO

CLAVE: 18011

RUTA : NAY

AÑO : 2008

| L U G A R | E S T A C I O N | | | | C L A S I F I C A C I O N V E H I C U L A R E N P O R C I E N T O . | | | | | | | | | | | | |
|---------------------------|-----------------|----|----|------|---|-----|-----|-----|------|------|--------|-------|------|-----|-----|-------|-------|
| | KM | TE | SC | TDPA | A | B | C2 | C3 | T3S2 | T3S3 | T3S2R4 | OTROS | A | B | C | K' | D |
| T. C. GUADALAJARA - TEPIC | 0.00 | 3 | 0 | 1388 | 92.3 | 5.2 | 0.4 | 0.2 | 0.9 | 0.0 | 0.3 | 0.7 | 92.3 | 5.2 | 2.5 | 0.111 | 0.518 |
| AMADO NERVO | 15.00 | | | | | | | | | | | | | | | | |

27 CARR : RAMAL A BELLAVISTA

CLAVE: 18059

RUTA : NAY-059

AÑO : 2008

| L U G A R | E S T A C I O N | | | | C L A S I F I C A C I O N V E H I C U L A R E N P O R C I E N T O . | | | | | | | | | | | | |
|----------------------------------|-----------------|----|----|------|---|-----|-----|-----|------|------|--------|-------|------|-----|------|-------|-------|
| | KM | TE | SC | TDPA | A | B | C2 | C3 | T3S2 | T3S3 | T3S2R4 | OTROS | A | B | C | K' | D |
| T. C. TEPIC - FANCISCO I. MADERO | 0.00 | 3 | 0 | 1995 | 68.3 | 2.0 | 5.4 | 5.3 | 7.2 | 4.0 | 4.2 | 3.6 | 68.3 | 2.0 | 29.7 | 0.100 | 0.556 |
| BELLAVISTA | 1.30 | | | | | | | | | | | | | | | | |

28 CARR : RAMAL A ESTACION YAGO

CLAVE: 18224

RUTA : NAY

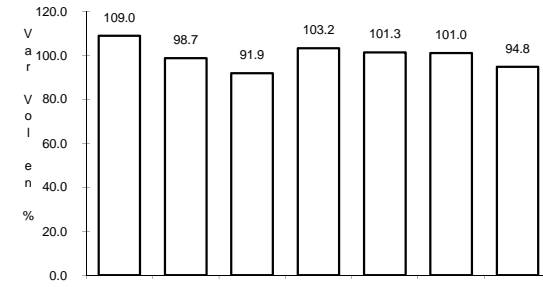
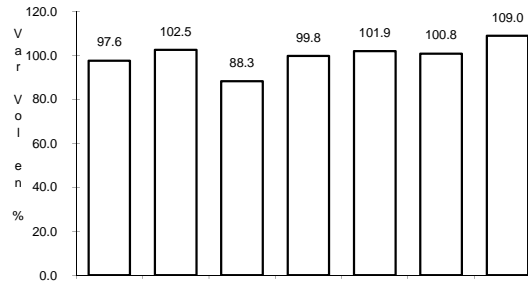
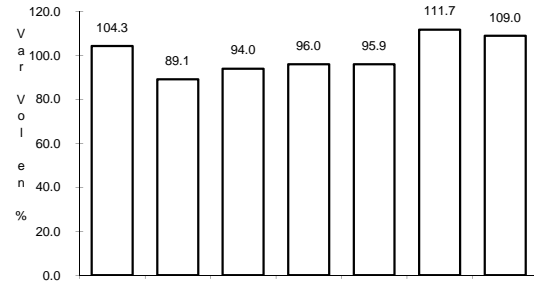
AÑO : 2008

| L U G A R | E S T A C I O N | | | | C L A S I F I C A C I O N V E H I C U L A R E N P O R C I E N T O . | | | | | | | | | | | | |
|------------------------|-----------------|----|----|------|---|-----|-----|-----|------|------|--------|-------|------|-----|------|-------|-------|
| | KM | TE | SC | TDPA | A | B | C2 | C3 | T3S2 | T3S3 | T3S2R4 | OTROS | A | B | C | K' | D |
| T. C. TEPIC - MAZATLAN | 0.00 | 3 | 0 | 1745 | 82.8 | 4.3 | 1.8 | 3.2 | 3.1 | 0.6 | 2.1 | 2.1 | 82.8 | 4.3 | 12.9 | 0.137 | 0.526 |

1 CARR: CRUCERO DE SAN BLAS - SAN BLAS

CLAVE: 18229

ruta: MEX-074



Km: 0.00 Tipo: 3 Sent: 0

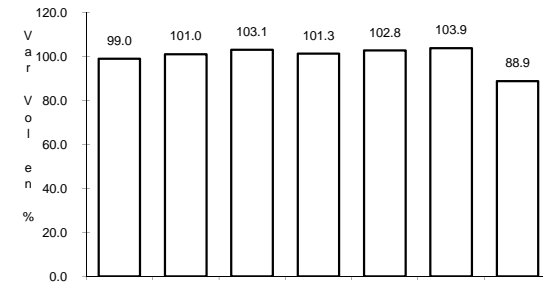
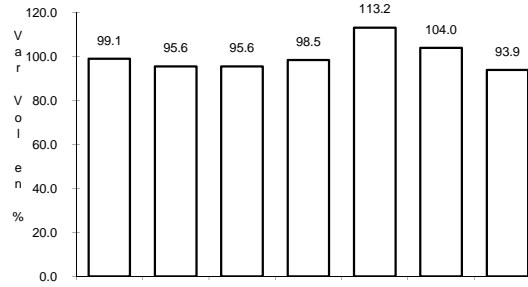
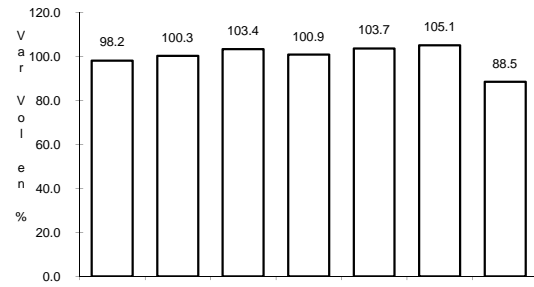
Km: 11.00 Tipo: 3 Sent: 0

Km: 36.00 Tipo: 1 Sent: 0

2 CARR: ENT. ACAPONETA - EL NOVILLERO

CLAVE: 18023

ruta: MEX-068



Km: 0.00 Tipo: 3 Sent: 0

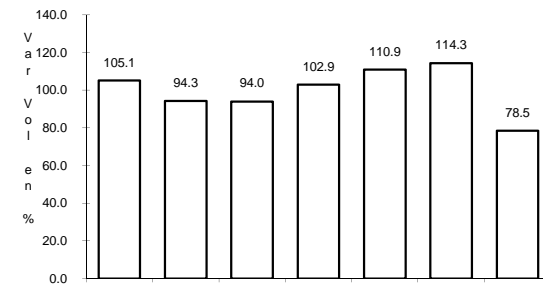
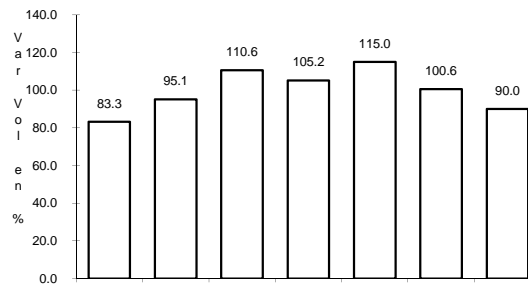
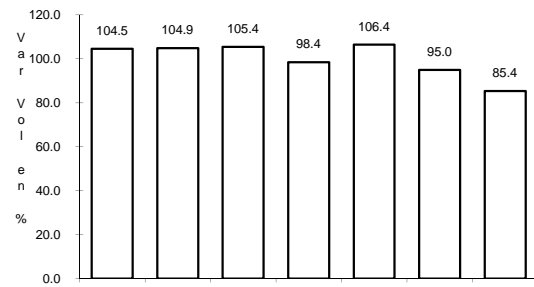
Km: 13.00 Tipo: 1 Sent: 0

Km: 36.00 Tipo: 1 Sent: 0

3 CARR: ENT. SANTIAGO IXCUINTLA - PLAYA LOS CORCHOS

CLAVE: 18016

ruta: MEX-072

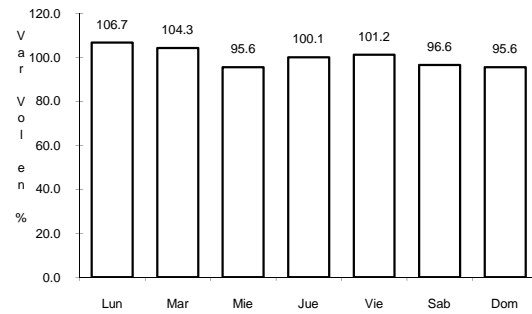


Km: 0.00 Tipo: 3 Sent: 0

Km: 17.00 Tipo: 1 Sent: 0

Km: 39.00 Tipo: 1 Sent: 0

4 CARR: GUADALAJARA - TEPIC

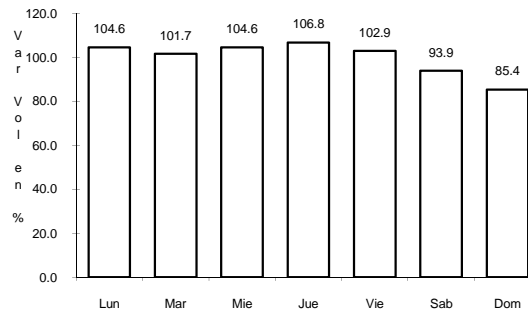


Km: 8.30

Tipo: 3

Sent: 1

CLAVE: 00031

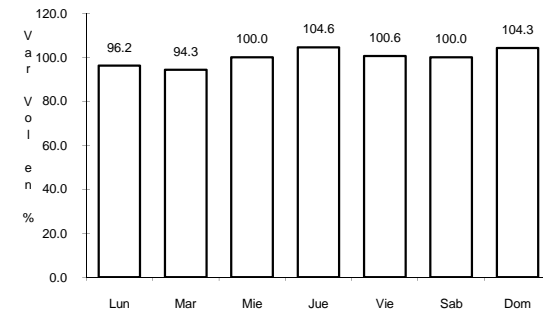


Km: 8.30

Tipo: 3

Sent: 2

RUTA: MEX-015

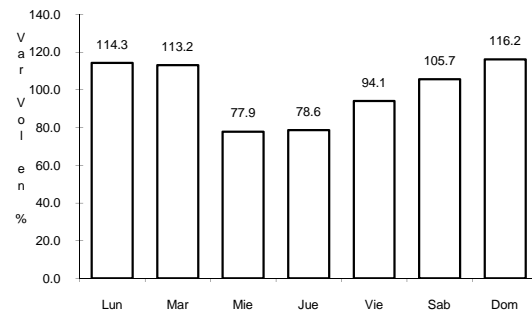


Km: 138.84

Tipo: 1

Sent: 0

5 CARR: LIBRAMIENTO DE TEPIC

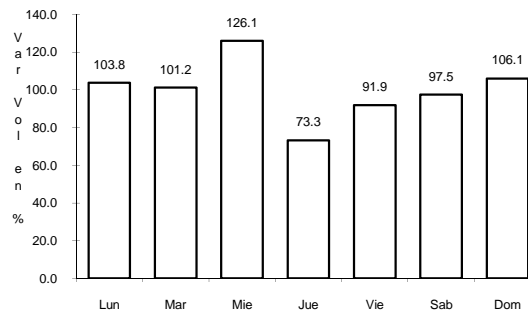


Km: 5.00

Tipo: 1

Sent: 1

CLAVE: 18232



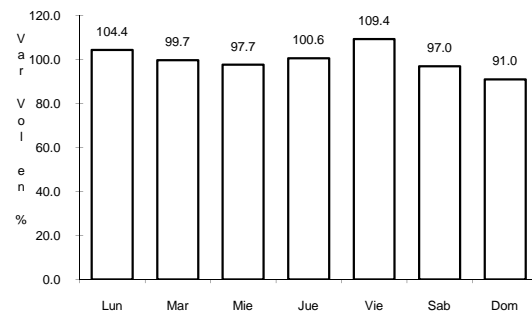
Km: 5.00

Tipo: 1

Sent: 2

RUTA: MEX

6 CARR: PEÑITAS - TUXPAN

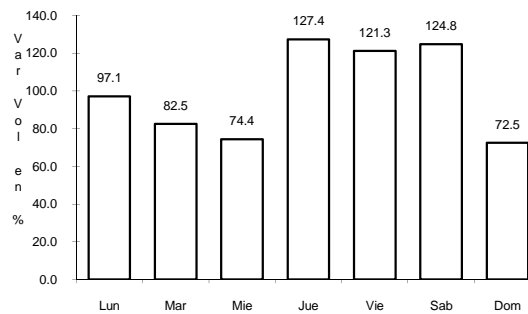


Km: 0.00

Tipo: 3

Sent: 0

CLAVE: 18019



Km: 9.00

Tipo: 1

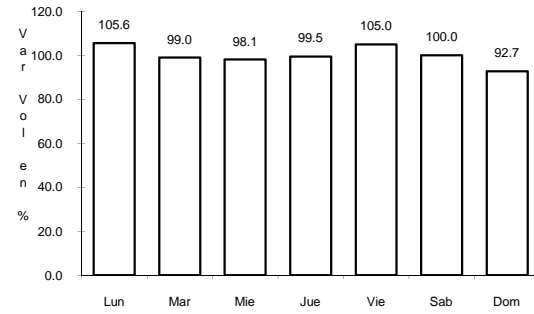
Sent: 0

RUTA: MEX

7 CARR: RAMAL A ACAPONETA

CLAVE: 18038

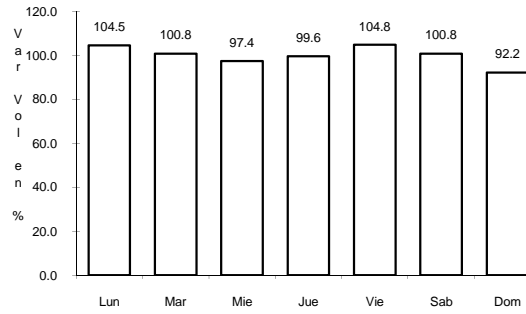
ruta: MEX



Km: 0.00

Tipo: 3

Sent: 1



Km: 0.00

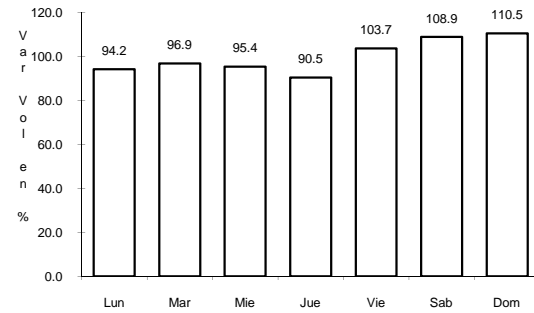
Tipo: 3

Sent: 2

8 CARR: RAMAL A ESTACION NANCHI

CLAVE: 18068

ruta: MEX



Km: 0.00

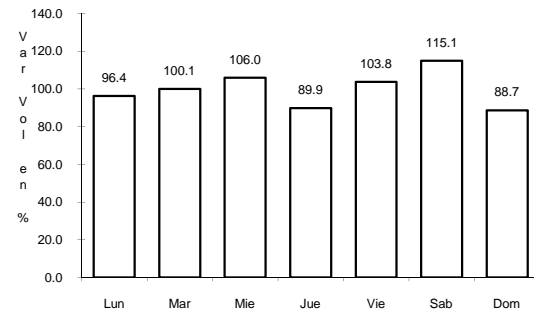
Tipo: 3

Sent: 0

9 CARR: RAMAL A ESTACION RUIZ

CLAVE: 18026

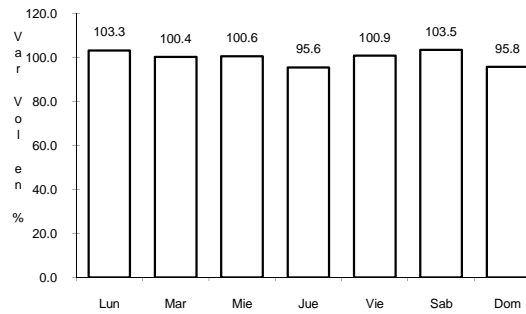
ruta: MEX-044



Km: 0.00

Tipo: 3

Sent: 0



Km: 5.50

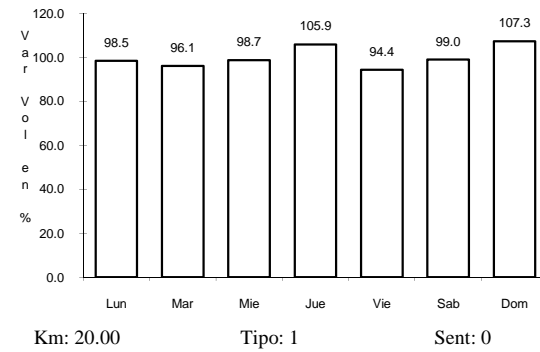
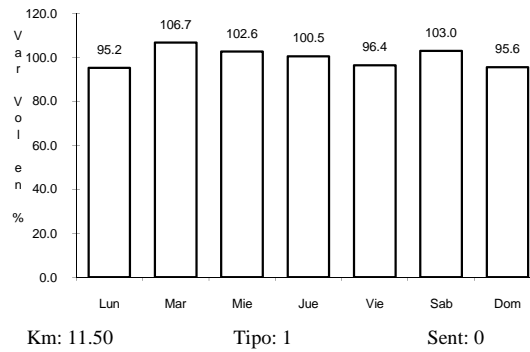
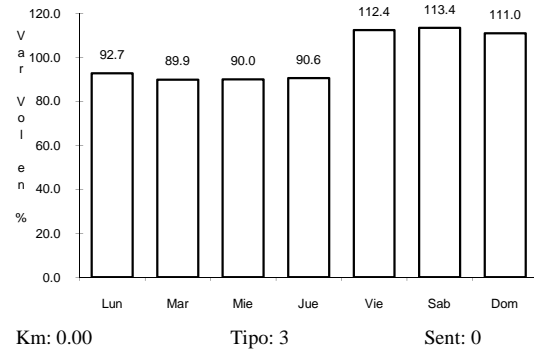
Tipo: 1

Sent: 0

10 CARR: RAMAL A LA LAGUNA DE SANTA MARIA

CLAVE: 18005

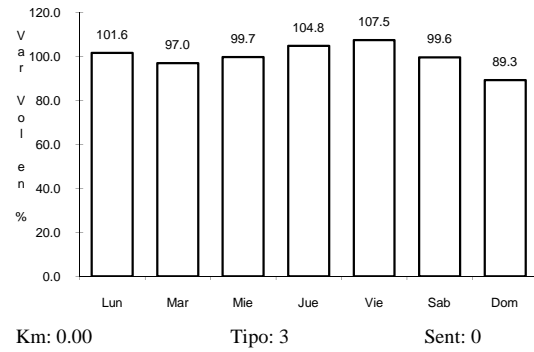
ruta: MEX



11 CARR: RAMAL A MECATAN

CLAVE: 18010

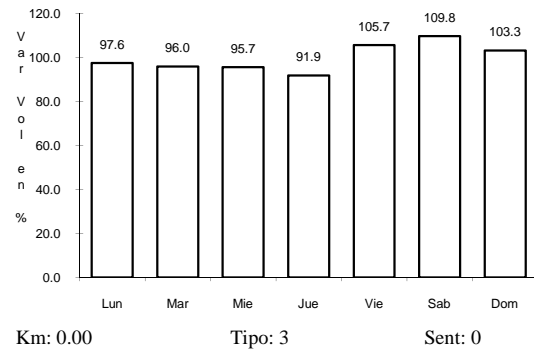
ruta: MEX



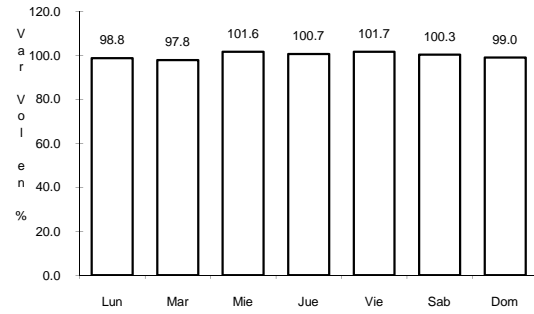
12 CARR: RAMAL A NUEVO AEROPUERTO DE TEPIC

CLAVE: 18012

ruta: MEX



13 CARR: RAMAL A PUNTA MITA

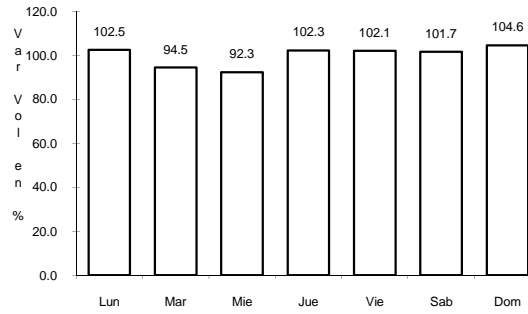


Km: 0.00

Tipo: 3

Sent: 0

CLAVE: 18020



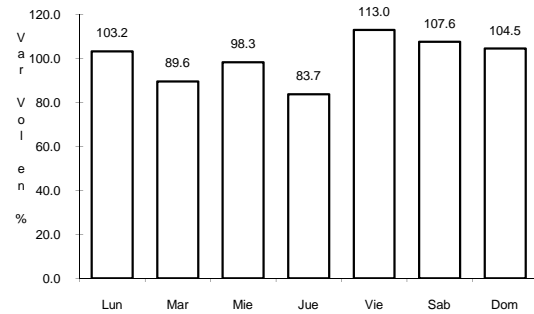
Km: 9.00

Tipo: 3

Sent: 0

RUTA: MEX

14 CARR: RAMAL A SANTA CRUZ



Km: 1.30

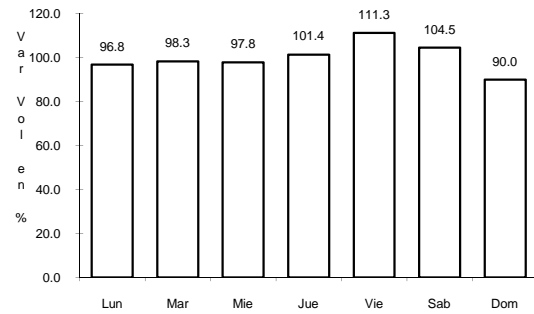
Tipo: 1

Sent: 0

CLAVE: 18030

RUTA: MEX

15 CARR: SANTA CRUZ - SAN BLAS

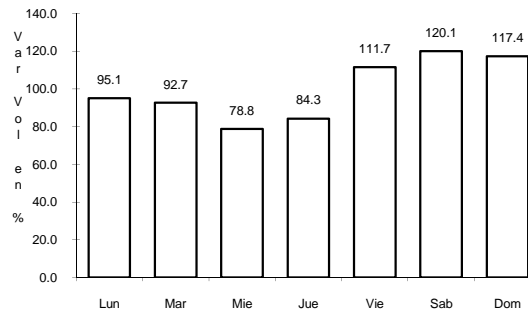


Km: 0.00

Tipo: 3

Sent: 0

CLAVE: 18230

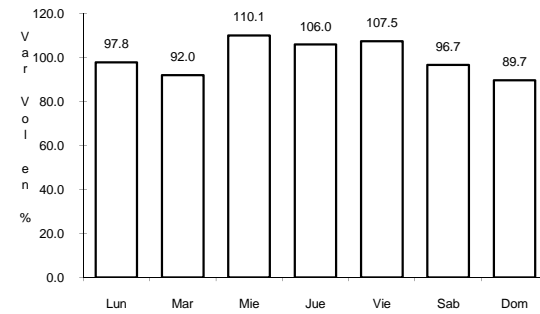


Km: 5.00

Tipo: 3

Sent: 0

RUTA: MEX

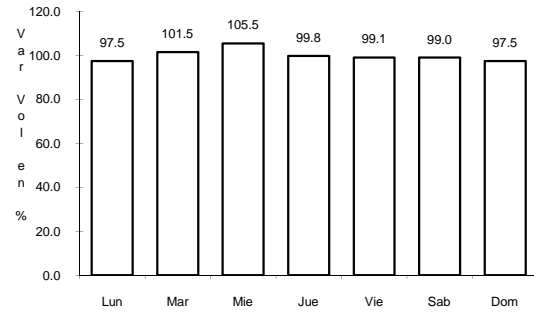


Km: 17.00

Tipo: 1

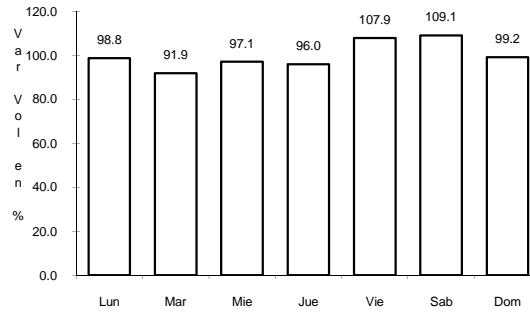
Sent: 0

16 CARR: TEPIC - IXTAPAN DE LA CONCEPCION



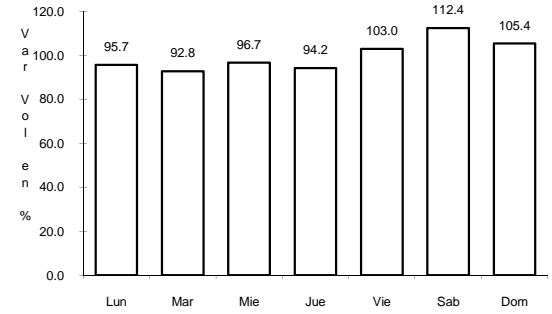
Km: 0.00 Tipo: 3 Sent: 0

CLAVE: 18028



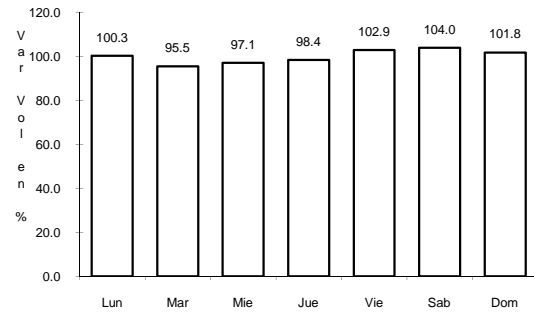
Km: 27.00 Tipo: 1 Sent: 0

RUTA: MEX-076



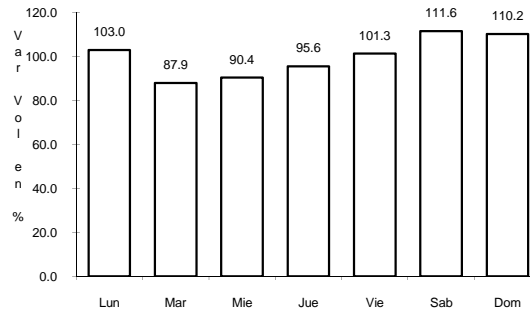
Km: 77.42 Tipo: 1 Sent: 0

17 CARR: TEPIC - MAZATLAN



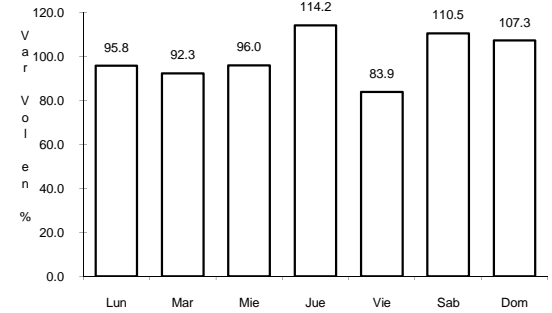
Km: 0.00 Tipo: 3 Sent: 1

CLAVE: 00500



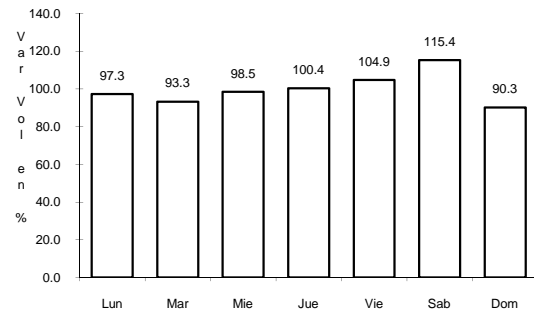
Km: 0.00 Tipo: 3 Sent: 2

RUTA: MEX-015



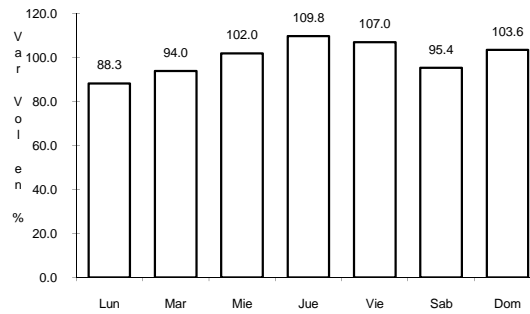
Km: 269.52 Tipo: 3 Sent: 0

18 CARR: TEPIC - PRESA AGUAMILPAS



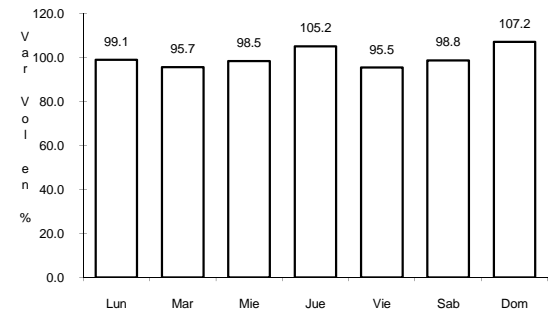
Km: 0.00 Tipo: 3 Sent: 0

CLAVE: 18029



Km: 17.50 Tipo: 3 Sent: 0

RUTA: MEX

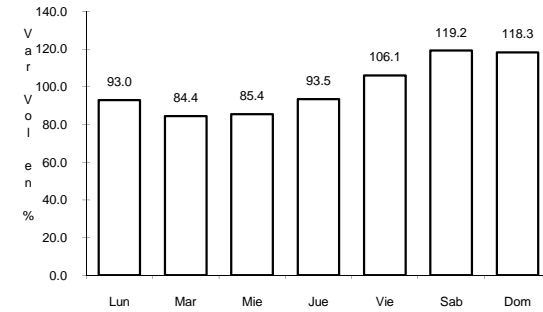
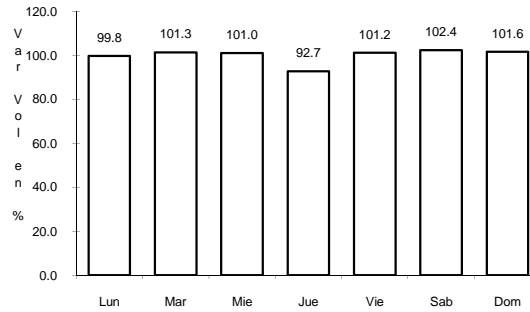
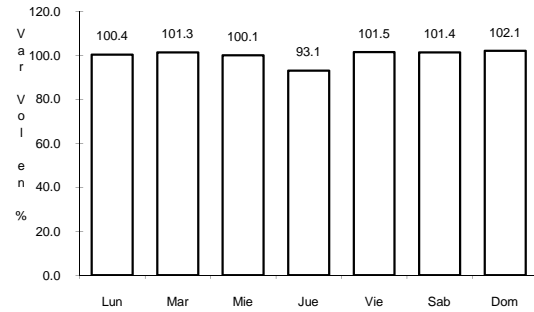


Km: 54.00 Tipo: 1 Sent: 0

19 CARR: TEPIC - PUERTO VALLARTA

CLAVE: 00068

RUTA: MEX-200



Km: 0.00

Tipo: 3

Sent: 1

Km: 0.00

Tipo: 3

Sent: 2

Km: 94.50

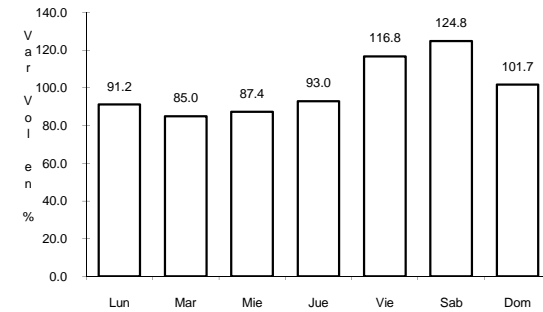
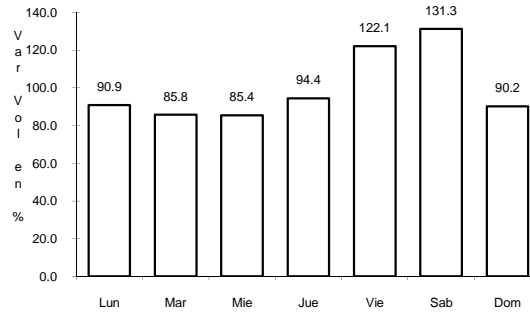
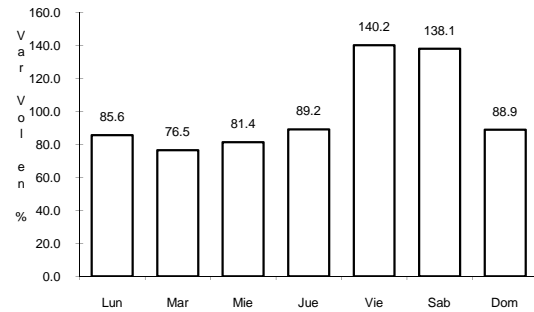
Tipo: 1

Sent: 0

20 CARR: CHAPALILLA - COMPOSTELA (CUOTA)

CLAVE: 18004

RUTA: MEX-D



Km: 0.00

Tipo: 3

Sent: 0

Km: 36.50

Tipo: 1

Sent: 0

Km: 38.00

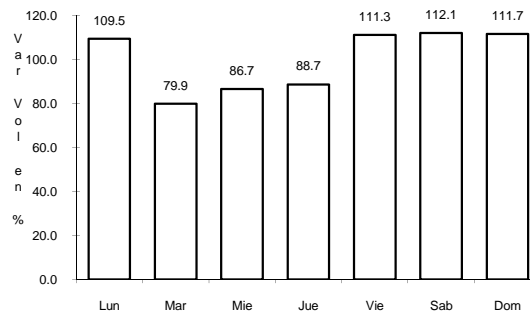
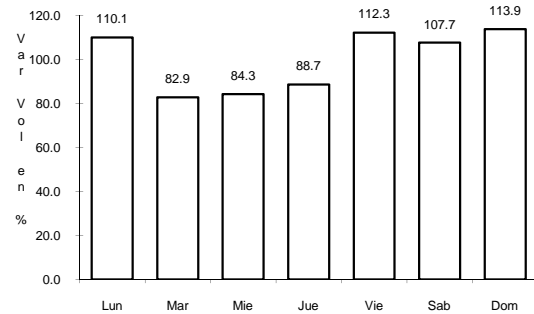
Tipo: 1

Sent: 0

21 CARR: GUADALAJARA - TEPIC (CUOTA)

CLAVE: 00033

RUTA: MEX-015D



Km: 145.32

Tipo: 3

Sent: 1

Km: 145.32

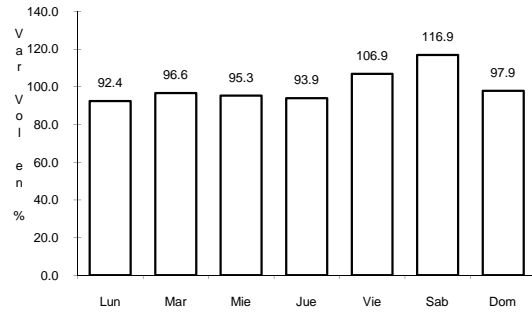
Tipo: 3

Sent: 2

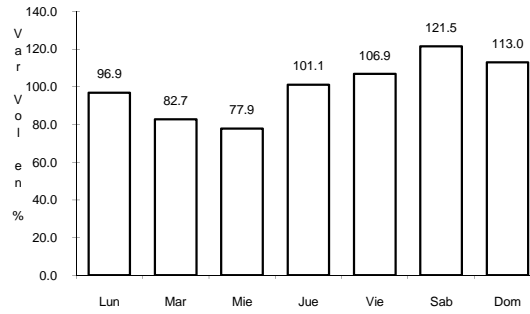
22 CARR: TEPIC - ENT. SAN BLAS (CUOTA)

CLAVE: 18008

ruta: MEX-015D



Km: 5.00 Tipo: 1 Sent: 1

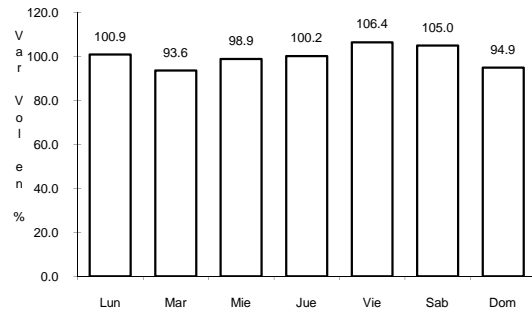


Km: 5.00 Tipo: 1 Sent: 2

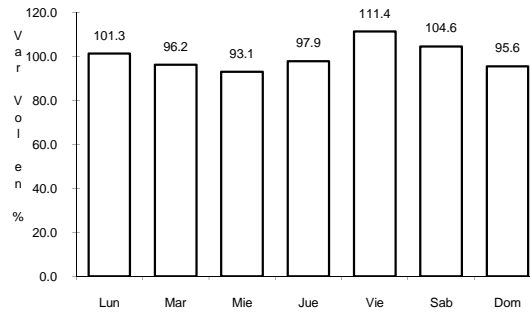
23 CARR: TEPIC - MAZATLAN (CUOTA)

CLAVE:

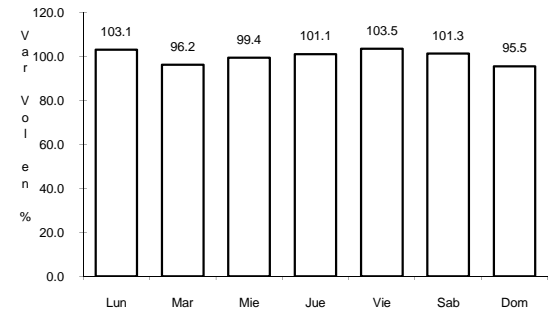
ruta: MEX-015D



Km: 24.50 Tipo: 3 Sent: 0



Km: 120.20 Tipo: 1 Sent: 0

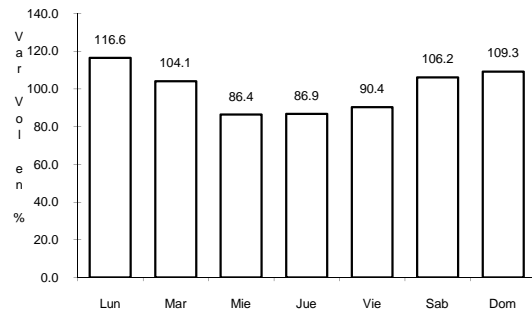


Km: 238.40 Tipo: 1 Sent: 0

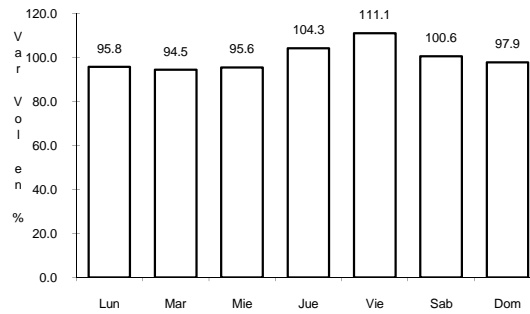
24 CARR: EL CARRIZO - LA BATANGA

CLAVE: 18107

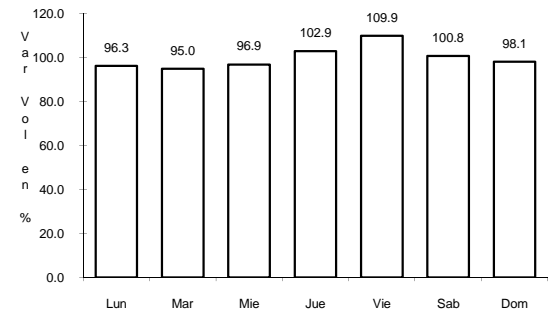
ruta: NAY-078



Km: 0.00 Tipo: 3 Sent: 0



Km: 9.00 Tipo: 1 Sent: 0

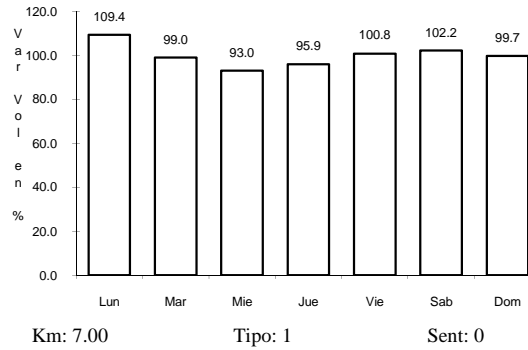
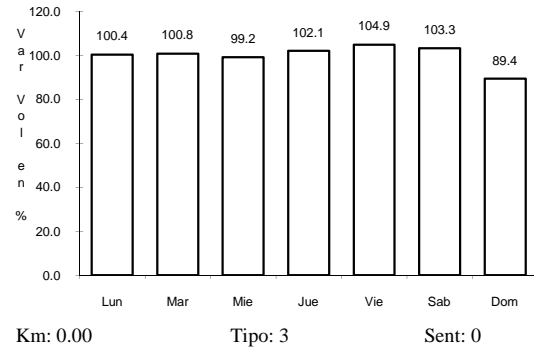


Km: 25.00 Tipo: 1 Sent: 0

25 CARR: NAVARRETE - SAUTA

CLAVE: 18013

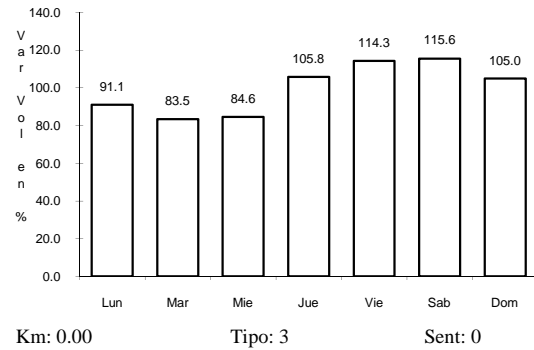
RUTA: NAY-013



26 CARR: RAMAL A AMADO NERVO

CLAVE: 18011

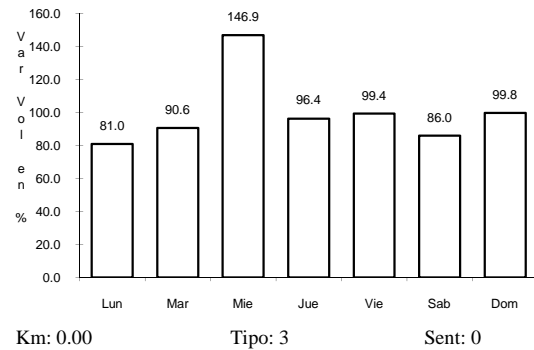
RUTA: NAY



27 CARR: RAMAL A BELLAVISTA

CLAVE: 18059

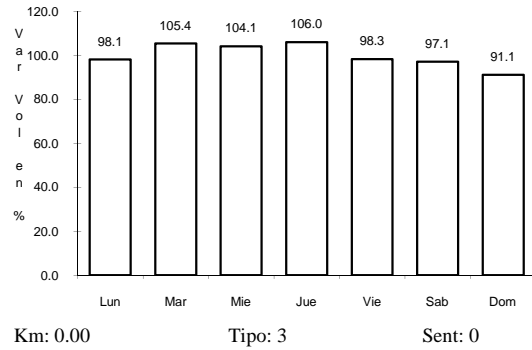
RUTA: NAY-059



28 CARR: RAMAL A ESTACION YAGO

CLAVE: 18224

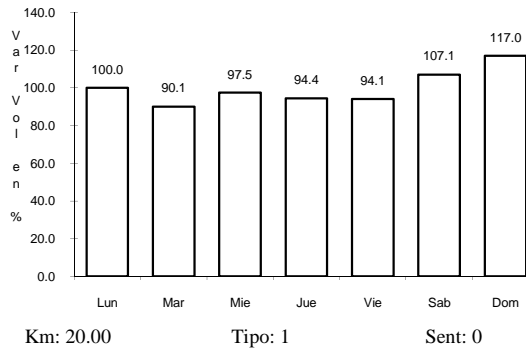
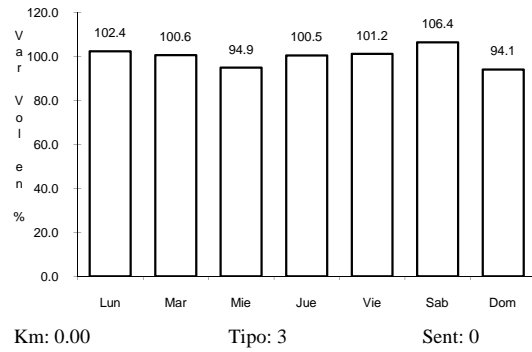
RUTA: NAY



29 CARR: RAMAL A IXTAPAN DE LA CONCEPCION

CLAVE: 18233

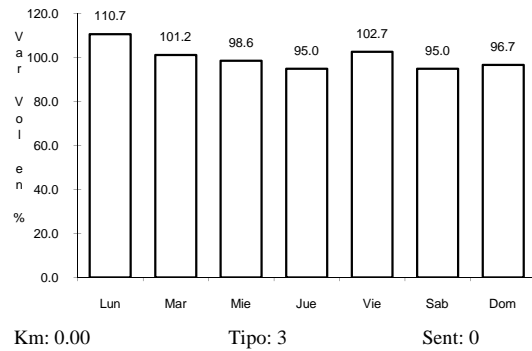
RUTA: NAY



30 CARR: RAMAL A MILPAS VIEJAS

CLAVE: 18007

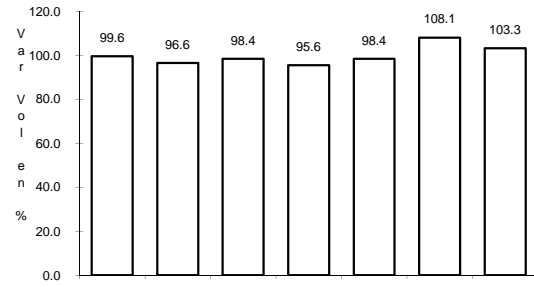
RUTA: NAY



31 CARR: RAMAL A VILLA HIDALGO NAY

CLAVE: 18031

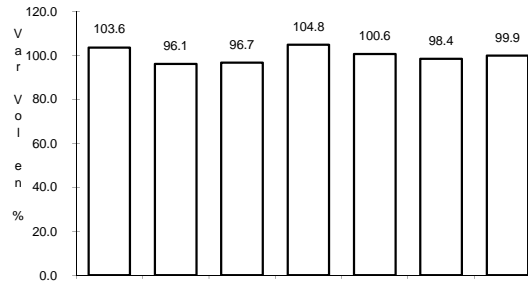
RUTA: NAY



Km: 0.00

Tipo: 3

Sent: 0



Km: 16.00

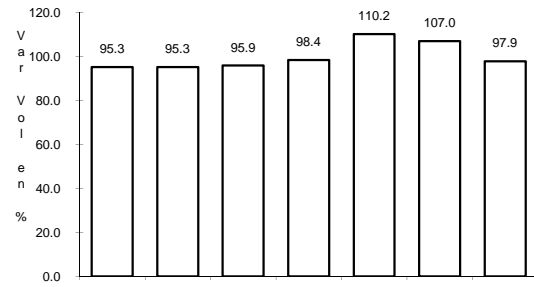
Tipo: 1

Sent: 0

32 CARR: RAMAL A VOLCAN DEL CEBORUCO

CLAVE: 18003

RUTA: NAY



Km: 0.00

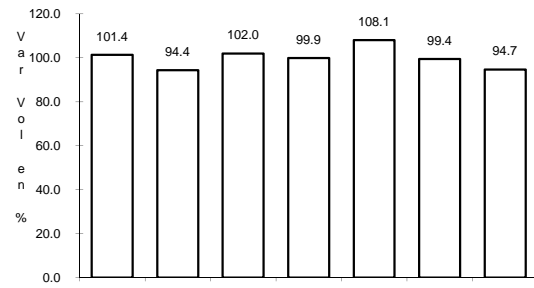
Tipo: 3

Sent: 0

33 CARR: RAMAL EL COLOMO

CLAVE: 18014

RUTA: NAY

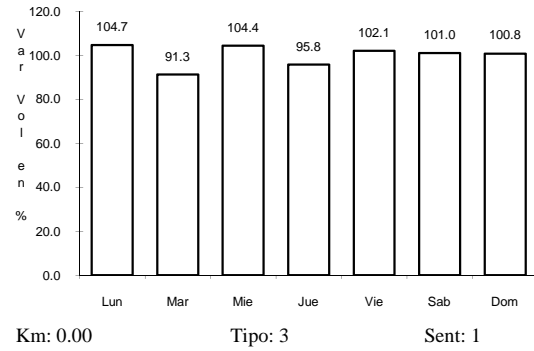


Km: 0.00

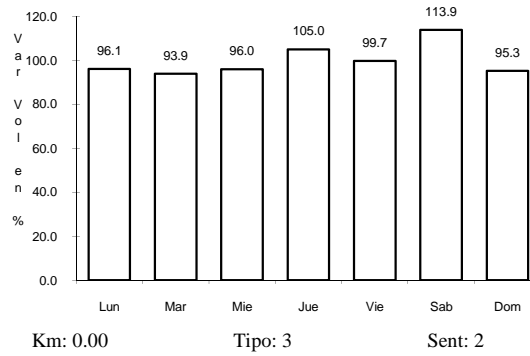
Tipo: 3

Sent: 0

34 CARR: TEPIC - FRANCISCO I. MADERO



CLAVE: 18009



RUTA: NAY-MEX

