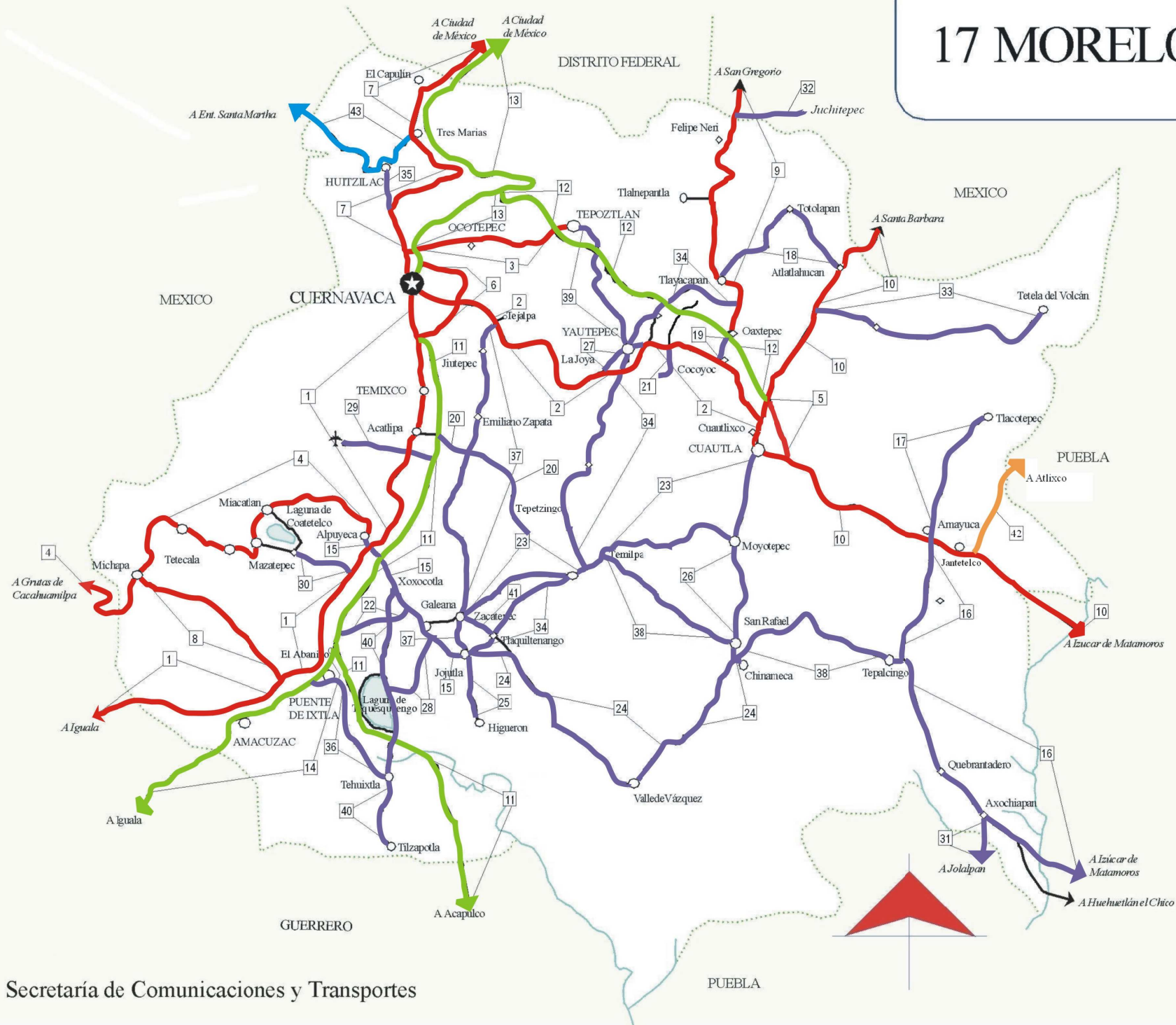


MORELOS

Núm. INDICE	CARRETERA	RUTA
---- FEDERAL LIBRE ----		
1	CUERNAVACA - CHILPANCINGO	MEX-095
2	CUERNAVACA - CUAUTLIXCO	MEX-160
3	CUERNAVACA - TEPOZTLAN	MEX-162
4	ENT. ALPUYECA - GRUTAS DE CACAHUAMILPA	MEX-166
5	LIBRAMIENTO DE CUAUTLA	MEX
6	LIBRAMIENTO DE CUERNAVACA	MEX-095
7	MEXICO - CUERNAVACA (LIBRE)	MEX-095
8	RAMAL A MICHAPA	MEX-103
9	SAN GREGORIO - OAXTEPEC	MEX-142
10	SANTA BARBARA - IZUCAR DE MATAMOROS	MEX-115-160
---- FEDERAL CUOTA ----		
11	CUERNAVACA - ACAPULCO (CUOTA)	MEX-095D
12	LA PERA - CUAUTLA (CUOTA)	MEX-160D
13	MEXICO - CUERNAVACA (CUOTA)	MEX-095D
14	PUENTE DE IXTLA - IGUALA (CUOTA)	MEX-D
---- ESTATAL LIBRE ----		
15	ALPUYECA - JOJUTLA	MOR-021
16	AMAYUCA - IZUCAR DE MATAMOROS	MOR-031-PUE
17	AMAYUCA - TLACOTEPEC	MOR-017
18	ATLATLAHUCAN - TLAYACAPAN	MOR-002
19	COCOYOC - OAXTEPEC	MOR
20	ENT. C. (CUERNAVACA - ACAPULCO CUOTA) - TEPETZINGO	MOR
21	ENT. C. (CUERNAVACA - CUAUTLIXCO) - OACALCO	MOR
22	ENT. CHIVERIAS - ENT. EL ABANICO	MOR
23	GALEANA - CUAUTLA	MOR-004
24	JOJUTLA - CHINAMECA	MOR
25	JOJUTLA - EL HIGUERON	MOR-039
26	MOYOTEPEC - SAN RAFAEL	MOR
27	PASO POR YAUTEPEC	MOR
28	PILARES - T. C. (XOXOCOTLA - TILZAPOTLA)	MOR-008
29	RAMAL A AEROPUERTO DE CUERNAVACA	MOR
30	RAMAL A COATETELCO	MOR
31	RAMAL A JOLALPAN	MOR-PUE
32	RAMAL A JUCHITEPEC	EM
33	RAMAL A TETELA DEL VOLCAN	MOR-010
34	T. C. (SAN GREGORIO - OAXTEPEC) - JOJUTLA	MOR-002
35	T. C. MEXICO - CUERNAVACA (LIBRE) - HUITZILAC	MOR
36	TEHUXTLA - PUENTE DE IXTLA	MOR
37	TEJALPA - JOJUTLA	MOR-014
38	TEMILPA - TEPALCINGO	MOR-009
39	TEPOZTLAN - YAUTEPEC	MOR-013
40	XOXOCOTLA - TILZAPOTLA	MOR-006
41	ZACATEPEC - TLAQUILTENANGO	MOR
---- ESTATAL CUOTA ----		
42	ATLIXCO - JANTETELCO (CUOTA)	PUE-D
---- COMBINADA ----		
43	TRES MARIAS - SANTA MARTHA	MEX-106-EM

17 MORELOS



MAPA INDICE

—15 Num. Indice
2009

Secretaría de Comunicaciones y Transportes

PUEBLA

MORELOS

1 CARR : CUERNAVACA - CHILPANCINGO

CLAVE: 00042

RUTA : MEX-095

AÑO : 2008

L U G A R	E S T A C I O N				C L A S I F I C A C I O N V E H I C U L A R E N P O R C I E N T O .												
	KM	TE	SC	TDPA	A	B	C2	C3	T3S2	T3S3	T3S2R4	OTROS	A	B	C	K'	D
CUERNAVACA	0.00																
TEMIXCO	9.80	1	0	28273	68.3	7.4	3.6	0.9	7.9	2.5	5.2	4.2	68.3	7.4	24.3	0.067	0.507
TEMIXCO	9.80	3	1	13058	75.3	5.4	3.9	2.2	5.3	1.4	1.9	4.6	75.3	5.4	19.3	0.066	0.508
TEMIXCO	9.80	3	2	13474	76.1	5.2	3.6	2.2	6.9	0.9	2.0	3.1	76.1	5.2	18.7	0.065	0.508
ACATLIPA	12.43	1	0	19260	80.7	4.8	6.2	3.0	1.8	2.0	0.8	0.7	80.7	4.8	14.5	0.083	0.502
ACATLIPA	12.43	3	0	13628	81.5	5.5	6.1	1.2	1.8	1.3	1.0	1.6	81.5	5.5	13.0	0.066	0.508
T. IZQ. XOCHITEPEC (REAL DEL PUENTE)	16.05	3	0	11814	83.9	4.6	3.4	1.7	2.9	1.0	1.1	1.4	83.9	4.6	11.5	0.078	0.516
X. C. ALPUYECA - JOJUTLA	24.15	1	0	14329	82.9	4.1	3.7	1.8	3.3	2.1	0.6	1.5	82.9	4.1	13.0	0.061	0.503
T. DER. COATETELCO	28.00	3	0	8458	89.1	2.2	1.8	1.3	2.8	0.9	0.8	1.1	89.1	2.2	8.7	0.100	0.505
T. DER. MICHAPA	44.36	1	0	7010	82.4	3.4	2.5	2.8	2.7	3.5	1.0	1.7	82.4	3.4	14.2	0.080	0.501
T. IZQ. CUERNAVACA - IGUALA (CUOTA)	46.93	1	0	7176	83.2	3.6	2.1	1.4	4.4	2.0	1.7	1.6	83.2	3.6	13.2	0.100	0.503
T. IZQ. CUERNAVACA - IGUALA (CUOTA)	46.93	3	0	6629	90.4	4.2	0.6	0.7	2.1	0.5	0.5	1.0	90.4	4.2	5.4	0.067	0.501
HUAJINTLA	52.00	3	0	6414	87.4	3.2	2.1	1.5	1.3	1.5	1.5	1.5	87.4	3.2	9.4	0.073	0.502
LIM. EDOS. TERM. MOR. PPIA. GRO.	56.55																
T. DER. IXTAPAN DE LA SAL (AXIXINTLA)	63.47	1	0	2814	91.3	2.6	1.2	1.1	1.7	0.7	0.4	1.0	91.3	2.6	6.1	0.100	0.503
TAXCO	89.90	3	0	5476	86.2	2.1	2.9	0.5	2.2	1.4	1.8	2.9	86.2	2.1	11.7	0.067	0.501
IGUALA	119.60	1	0	6059	87.4	2.2	3.4	0.6	3.4	0.5	1.0	1.5	87.4	2.2	10.4	0.078	0.506
T. IZQ. PUENTE DE IXTLA	124.00	3	0	11977	81.0	2.3	1.7	1.9	5.2	1.8	3.7	2.4	81.0	2.3	16.7	0.075	0.507
T. DER. SABANA GRANDE	145.00	1	0	7365	83.4	2.5	3.2	2.6	3.8	1.8	1.9	0.8	83.4	2.5	14.1	0.093	0.505
T. DER. TECUESCONTITLAN	146.80	1	0	10763	79.6	3.3	4.3	2.2	4.5	2.3	2.6	1.2	79.6	3.3	17.1	0.100	0.519
T. DER. MEZCALA	173.10	1	0	7150	80.1	8.2	7.4	1.6	0.0	0.0	0.0	2.7	80.1	8.2	11.7	0.081	0.519
T. DER. FILO DE CABALLO	189.90	3	0	7391	76.3	2.3	4.0	5.2	4.9	3.0	3.1	1.2	76.3	2.3	21.4	0.120	0.513
CHILPANCINGO	223.70	1	1	8434	81.1	3.9	2.4	2.5	4.1	1.3	2.4	2.3	81.1	3.9	15.0	0.106	0.502
CHILPANCINGO	223.70	1	2	8504	79.6	3.6	2.1	2.8	4.1	1.4	3.7	2.7	79.6	3.6	16.8	0.114	0.502

2 CARR : CUERNAVACA - CUAUTLIXCO

CLAVE: 17199

RUTA : MEX-160

AÑO : 2008

L U G A R	E S T A C I O N				C L A S I F I C A C I O N V E H I C U L A R E N P O R C I E N T O .												
	KM	TE	SC	TDPA	A	B	C2	C3	T3S2	T3S3	T3S2R4	OTROS	A	B	C	K'	D
CUERNAVACA	0.00																
T. IZQ. CIVAC PONIENTE	7.78	1	1	31892	82.6	4.2	4.1	3.0	2.0	2.1	0.3	1.7	82.6	4.2	13.2	0.077	0.500
T. IZQ. CIVAC PONIENTE	7.78	1	2	31949	81.5	4.3	4.2	3.1	2.9	2.0	0.4	1.6	81.5	4.3	14.2	0.079	0.500
T. IZQ. CIVAC PONIENTE	7.78	3	1	29222	79.3	4.8	5.3	4.6	2.0	2.0	1.5	0.5	79.3	4.8	15.9	0.073	0.503
T. IZQ. CIVAC PONIENTE	7.78	3	2	28910	77.3	4.8	5.8	5.4	2.4	1.9	1.7	0.7	77.3	4.8	17.9	0.114	0.503
X. C. TEJALPA - JOJUTLA	9.70	3	1	17033	84.8	4.0	1.4	0.9	2.0	2.0	2.5	2.4	84.8	4.0	11.2	0.095	0.500

MORELOS

8 CARR : RAMAL A MICHAPA

CLAVE: 17303

RUTA : MEX-103

AÑO : 2008

L U G A R	E S T A C I O N				C L A S I F I C A C I O N V E H I C U L A R E N P O R C I E N T O .												
	KM	TE	SC	TDPA	A	B	C2	C3	T3S2	T3S3	T3S2R4	OTROS	A	B	C	K'	D
T. C. CUERNAVACA - CHILPANCINGO	0.00	3	0	3141	77.9	2.9	0.1	1.5	2.0	4.1	4.4	7.1	77.9	2.9	19.2	0.079	0.518
MICHAPA	16.22	1	0	1972	89.4	2.4	2.4	3.1	0.2	1.4	0.8	0.3	89.4	2.4	8.2	0.102	0.503

9 CARR : SAN GREGORIO - OAXTEPEC

CLAVE: 00901

RUTA : MEX-142

AÑO : 2008

L U G A R	E S T A C I O N				C L A S I F I C A C I O N V E H I C U L A R E N P O R C I E N T O .												
	KM	TE	SC	TDPA	A	B	C2	C3	T3S2	T3S3	T3S2R4	OTROS	A	B	C	K'	D
SAN GREGORIO	0.00	3	0	8190	88.3	2.7	4.2	2.3	0.9	0.6	0.0	1.0	88.3	2.7	9.0	0.102	0.502
X. C. MILPA ALTA - SAN LORENZO TLACOYUCAN	9.00	3	0	6416	90.7	2.9	2.0	0.5	2.1	0.2	0.5	1.1	90.7	2.9	6.4	0.088	0.504
LIM. EDOS. TERM. D.F. PPIA. MEX.	18.80																
LIM. EDOS. TERM. MEX. PPIA. MOR.	28.50																
T. DER. SAN FELIPE NERI	33.80	1	0	5094	94.5	4.0	0.0	1.5	0.0	0.0	0.0	0.0	94.5	4.0	1.5	0.120	0.509
T. DER. TLALNEPANTLA	40.50	3	0	4932	87.9	3.1	3.2	1.8	1.4	1.1	1.3	0.2	87.9	3.1	9.0	0.087	0.501
TLAYACAPAN	48.50	3	0	5863	90.0	2.8	2.3	1.0	1.1	1.4	1.4	0.0	90.0	2.8	7.2	0.076	0.507
T. DER. YAUTEPEC	53.00	3	0	10374	89.0	2.9	3.1	1.1	1.0	1.3	1.6	0.0	89.0	2.9	8.1	0.072	0.506
OAXTEPEC	56.00																

10 CARR : SANTA BARBARA - IZUCAR DE MATAMOROS

CLAVE: 00451

RUTA : MEX-115-160

AÑO : 2008

L U G A R	E S T A C I O N				C L A S I F I C A C I O N V E H I C U L A R E N P O R C I E N T O .												
	KM	TE	SC	TDPA	A	B	C2	C3	T3S2	T3S3	T3S2R4	OTROS	A	B	C	K'	D
T. C. MEXICO - PUEBLA (LIBRE)	0.00	3	1	14693	74.9	4.2	0.7	1.7	5.0	3.6	4.5	5.4	74.9	4.2	20.9	0.064	0.502
T. C. MEXICO - PUEBLA (LIBRE)	0.00	3	2	14573	72.6	4.3	0.9	1.7	5.7	4.3	4.5	6.0	72.6	4.3	23.1	0.065	0.502
X. C. MEXICO - PUEBLA (CUOTA)	3.61	3	1	27691	83.3	6.5	5.7	3.7	0.0	0.0	0.0	0.8	83.3	6.5	10.2	0.084	0.514
X. C. MEXICO - PUEBLA (CUOTA)	3.61	3	2	26164	81.7	7.7	5.5	4.2	0.0	0.0	0.0	0.9	81.7	7.7	10.6	0.085	0.514
CHALCO	8.00	3	1	19358	86.2	3.8	2.6	1.6	0.0	0.0	0.0	5.8	86.2	3.8	10.0	0.066	0.501
CHALCO	8.00	3	2	19446	85.5	5.6	2.5	1.7	0.0	0.0	0.0	4.7	85.5	5.6	8.9	0.068	0.501
T. DER. JUCHITEPEC	12.46	3	0	24555	83.9	6.7	4.6	3.7	0.0	0.0	0.0	1.1	83.9	6.7	9.4	0.087	0.501
TLALMANALCO	20.51	3	0	16767	85.7	6.2	2.6	1.8	0.0	0.0	0.0	3.7	85.7	6.2	8.1	0.073	0.502
AMECAMECA DE JUAREZ	28.00	1	0	20710	78.8	3.4	2.8	1.1	3.0	3.1	3.1	4.7	78.8	3.4	17.8	0.100	0.526
AMECAMECA DE JUAREZ	34.00	3	0	17026	75.1	0.1	4.0	1.7	7.9	2.1	6.4	2.7	75.1	0.1	24.8	0.062	0.509
T. IZQ. OZUMBA (1º ACCESO)	38.81	1	0	17962	82.6	5.8	5.4	4.8	0.0	0.0	0.0	1.4	82.6	5.8	11.6	0.100	0.500
TEPETLIXPA	42.29	3	0	15788	73.9	5.0	4.5	2.7	6.5	2.1	3.1	2.2	73.9	5.0	21.1	0.069	0.507
LIM. EDOS. TERM. MEX. PPIA. MOR.	51.90																
T. DER. ATLATLAHUACAN	58.95	1	0	10214	88.1	2.0	4.5	1.9	1.6	0.6	0.6	0.7	88.1	2.0	9.9	0.074	0.500

MORELOS

10 CARR : SANTA BARBARA - IZUCAR DE MATAMOROS

CLAVE: 00451

RUTA : MEX-115-160

AÑO : 2008

L U G A R	E S T A C I O N				C L A S I F I C A C I O N V E H I C U L A R E N P O R C I E N T O .												
	KM	TE	SC	TDPA	A	B	C2	C3	T3S2	T3S3	T3S2R4	OTROS	A	B	C	K'	D
T. IZQ. TETELA DEL VOLCAN	62.99	1	0	13037	83.5	4.1	3.9	2.2	1.6	1.7	1.2	1.8	83.5	4.1	12.4	0.079	0.500
T. IZQ. LIBRAMIENTO DE CUAUTLA (1° ACCESO)	67.00	1	1	12062	82.8	4.5	5.6	1.8	1.7	1.7	1.5	0.4	82.8	4.5	12.7	0.105	0.505
T. IZQ. LIBRAMIENTO DE CUAUTLA (1° ACCESO)	67.00	1	2	12314	83.7	4.3	5.3	1.8	1.5	1.9	1.2	0.3	83.7	4.3	12.0	0.103	0.505
T. DER. LA PERA	68.90	3	1	11918	68.9	4.2	9.3	1.7	5.7	3.3	1.4	5.5	68.9	4.2	26.9	0.069	0.508
T. DER. LA PERA	68.90	3	2	11527	66.4	4.1	9.6	1.8	5.2	4.4	2.0	6.5	66.4	4.1	29.5	0.067	0.508
T. IZQ. LIBRAMIENTO DE CUAUTLA (2° ACCESO)	77.05	3	0	15046	65.7	10.4	6.8	5.7	4.9	3.7	0.2	2.6	65.7	10.4	23.9	0.074	0.502
T. DER. TLAYECAC	85.06	3	0	16201	75.0	4.6	6.2	2.9	3.3	2.7	0.8	4.5	75.0	4.6	20.4	0.063	0.510
T. IZQ. AMAYUCA	91.36	3	0	9964	78.0	6.5	6.9	2.4	1.7	1.3	0.1	3.1	78.0	6.5	15.5	0.072	0.502
T. DER. TENANGO	103.00	3	0	6165	62.3	9.5	7.7	3.4	4.1	4.8	5.3	2.9	62.3	9.5	28.2	0.068	0.534
LIM. EDOS. TERM. MOR. PPIA. PUE.	103.20																
X. C. AMAYUCA - IZUCAR DE MATAMOROS	135.00	1	0	7833	82.9	5.5	5.6	4.5	0.0	0.0	0.0	1.5	82.9	5.5	11.6	0.090	0.500
X. C. AMAYUCA - IZUCAR DE MATAMOROS	135.00	3	0	8425	78.4	8.8	8.9	2.7	0.0	0.0	0.0	1.2	78.4	8.8	12.8	0.075	0.501
T. C. PUEBLA - HUAJUAPAN DE LEON	138.10																

11 CARR : CUERNAVACA - ACAPULCO (CUOTA)

CLAVE: 00045

RUTA : MEX-095D

AÑO : 2008

L U G A R	E S T A C I O N				C L A S I F I C A C I O N V E H I C U L A R E N P O R C I E N T O .												
	KM	TE	SC	TDPA	A	B	C2	C3	T3S2	T3S3	T3S2R4	OTROS	A	B	C	K'	D
CUERNAVACA	0.00	3	1	27333	76.4	5.5	4.6	4.5	1.1	2.7	2.8	2.4	76.4	5.5	18.1	0.074	0.518
CUERNAVACA	0.00	3	2	25481	76.1	5.2	4.2	4.3	1.3	3.4	2.7	2.8	76.1	5.2	18.7	0.068	0.518
T. DER. ACATLIPA	15.00	3	1	16860	77.6	5.2	4.7	2.1	3.4	1.6	2.5	2.9	77.6	5.2	17.2	0.088	0.510
T. DER. ACATLIPA	15.00	3	2	16201	78.2	5.0	4.8	2.7	3.2	2.0	2.5	1.6	78.2	5.0	16.8	0.083	0.510
CASETA DE COBRO ALPUYECA	24.95	1	0	17637	78.1	10.9	2.7	2.2	2.1	1.3	1.2	1.5	78.1	10.9	11.0		
CASETA DE COBRO ALPUYECA	24.95	1	1	10388	79.3	10.2	3.7	1.0	1.1	0.8	0.5	3.4	79.3	10.2	10.5	0.100	0.505
CASETA DE COBRO ALPUYECA	24.95	1	2	10179	79.2	11.3	3.3	0.9	1.3	0.5	0.2	3.3	79.2	11.3	9.5	0.070	0.505
CASETA DE COBRO ALPUYECA	24.95	2	0	12539	77.2	10.8	2.6	2.6	2.5	1.4	1.5	1.4	77.2	10.8	12.0		
CASETA DE COBRO ALPUYECA	24.95	3	0	12647	77.2	10.7	2.6	2.7	2.5	1.4	1.5	1.4	77.2	10.7	12.1		
CASETA DE COBRO ALPUYECA	24.95	3	1	7630	79.7	10.3	3.7	1.3	1.2	0.9	0.4	2.5	79.7	10.3	10.0	0.110	0.507
CASETA DE COBRO ALPUYECA	24.95	3	2	7409	78.4	10.6	3.5	1.5	1.3	0.6	0.3	3.8	78.4	10.6	11.0	0.080	0.507
LIM. EDOS. TERM. MOR. PPIA. GRO.	52.05																
CASETA DE COBRO PASO MORELOS	89.43	1	0	7336	83.5	10.4	1.7	0.7	1.2	0.4	1.0	1.1	83.5	10.4	6.1		
CASETA DE COBRO PASO MORELOS	89.43	1	1	3054	84.0	10.2	1.9	0.8	1.0	0.4	0.6	1.1	84.0	10.2	5.8	0.076	0.523
CASETA DE COBRO PASO MORELOS	89.43	1	2	2791	84.1	10.1	2.0	0.9	0.9	0.3	0.5	1.2	84.1	10.1	5.8	0.079	0.523
CASETA DE COBRO PASO MORELOS	89.43	2	0	7028	83.7	10.8	1.5	0.6	1.2	0.4	1.0	0.8	83.7	10.8	5.5		
CASETA DE COBRO PASO MORELOS	89.43	3	0	7317	83.5	10.4	1.7	0.7	1.2	0.5	1.0	1.0	83.5	10.4	6.1		

MORELOS

11 CARR : CUERNAVACA - ACAPULCO (CUOTA)

CLAVE: 00045

RUTA : MEX-095D

AÑO : 2008

L U G A R	E S T A C I O N				C L A S I F I C A C I O N V E H I C U L A R E N P O R C I E N T O .												
	KM	TE	SC	TDPA	A	B	C2	C3	T3S2	T3S3	T3S2R4	OTROS	A	B	C	K'	D
CASETA DE COBRO PALO BLANCO	199.80	1	1	3537	81.3	11.6	1.8	0.7	1.4	0.8	1.4	1.0	81.3	11.6	7.1	0.072	0.500
CASETA DE COBRO PALO BLANCO	199.80	1	2	3530	81.2	11.3	1.5	0.6	1.5	1.0	1.6	1.3	81.2	11.3	7.5	0.064	0.500
CASETA DE COBRO PALO BLANCO	199.80	2	0	8821	81.8	11.3	1.6	0.8	1.3	0.4	1.5	1.3	81.8	11.3	6.9		
X. C. CHILPANCINGO - ACAPULCO (TIERRA COLORADA)	231.70	1	1	3662	75.7	6.3	8.0	3.4	2.4	1.0	2.3	0.9	75.7	6.3	18.0	0.081	0.503
X. C. CHILPANCINGO - ACAPULCO (TIERRA COLORADA)	231.70	1	2	3618	75.6	6.1	8.1	3.3	2.7	0.9	2.6	0.7	75.6	6.1	18.3	0.075	0.503
CASETA DE COBRO LA VENTA	276.10	1	1	3186	80.4	11.8	2.1	0.9	1.6	0.7	1.5	1.0	80.4	11.8	7.8	0.117	0.505
CASETA DE COBRO LA VENTA	276.10	1	2	3253	80.3	11.7	2.3	0.8	1.5	0.8	1.3	1.3	80.3	11.7	8.0	0.093	0.505
CASETA DE COBRO LA VENTA	276.10	2	0	8168	80.4	12.0	1.6	0.8	1.5	0.6	1.9	1.2	80.4	12.0	7.6		
T. C. CHILPANCINGO - ACAPULCO (ENT. LA VENTA)	277.20	1	1	3281	82.9	4.9	2.5	2.4	3.3	3.4	0.4	0.2	82.9	4.9	12.2	0.084	0.508
T. C. CHILPANCINGO - ACAPULCO (ENT. LA VENTA)	277.20	1	2	3395	82.6	4.4	3.0	2.3	3.4	3.6	0.6	0.1	82.6	4.4	13.0	0.071	0.508

12 CARR : LA PERA - CUAUTLA (CUOTA)

CLAVE: 17161

RUTA : MEX-160D

AÑO : 2008

L U G A R	E S T A C I O N				C L A S I F I C A C I O N V E H I C U L A R E N P O R C I E N T O .												
	KM	TE	SC	TDPA	A	B	C2	C3	T3S2	T3S3	T3S2R4	OTROS	A	B	C	K'	D
LA PERA	0.00	3	1	4437	77.1	7.1	8.3	2.2	2.0	1.2	1.3	0.8	77.1	7.1	15.8	0.071	0.501
LA PERA	0.00	3	2	4425	77.3	7.5	8.4	2.4	1.1	1.2	1.4	0.7	77.3	7.5	15.2	0.072	0.501
CASETA DE COBRO TEPOZTLAN	7.958	2	0	9581	86.0	6.7	2.2	1.1	1.3	0.5	1.2	1.0	86.0	6.7	7.3		
CASETA DE COBRO OACALCO	21.21	2	0	9999	85.6	6.4	2.9	1.3	1.2	0.5	1.1	1.0	85.6	6.4	8.0		
X. C. COCOYOC - OAXTEPEC	27.00	3	1	5450	76.3	6.2	7.7	3.8	2.1	2.4	0.5	1.0	76.3	6.2	17.5	0.084	0.502
X. C. COCOYOC - OAXTEPEC	27.00	3	2	5402	76.6	6.1	7.7	3.8	2.1	2.2	0.4	1.1	76.6	6.1	17.3	0.086	0.502
T. C. SANTA BARBARA - IZUCAR DE MATAMOROS	34.16	1	1	7265	81.3	4.8	4.9	1.9	2.1	1.5	1.4	2.1	81.3	4.8	13.9	0.135	0.501
T. C. SANTA BARBARA - IZUCAR DE MATAMOROS	34.16	1	2	7240	81.5	4.9	4.5	1.9	1.7	1.7	1.5	2.3	81.5	4.9	13.6	0.147	0.501

13 CARR : MEXICO - CUERNAVACA (CUOTA)

CLAVE: 00041

RUTA : MEX-095D

AÑO : 2008

L U G A R	E S T A C I O N				C L A S I F I C A C I O N V E H I C U L A R E N P O R C I E N T O .												
	KM	TE	SC	TDPA	A	B	C2	C3	T3S2	T3S3	T3S2R4	OTROS	A	B	C	K'	D
MEXICO	0.00																
T. C. MEXICO - CUERNAVACA (LIBRE)	18.65	3	1	16724	84.3	4.1	3.5	2.6	1.9	1.9	1.3	0.4	84.3	4.1	11.6	0.078	0.502
T. C. MEXICO - CUERNAVACA (LIBRE)	18.65	3	2	16868	84.2	4.3	3.3	2.4	2.3	1.8	1.2	0.5	84.2	4.3	11.5	0.091	0.502
CASETA DE COBRO TLALPAN	23.36	2	0	33018	85.4	7.5	1.8	1.1	1.9	0.6	0.9	0.8	85.4	7.5	7.1		
LIM. EDOS. TERM. D.F. PPIA. MOR.	47.09																
T. IZQ. CUAUTLA	70.50	1	1	22781	80.2	4.6	4.1	3.3	3.8	2.6	0.6	0.8	80.2	4.6	15.2	0.070	0.514
T. IZQ. CUAUTLA	70.50	1	2	21513	80.6	4.3	3.7	3.2	3.9	2.7	0.5	1.1	80.6	4.3	15.1	0.060	0.514

MORELOS

13 CARR : MEXICO - CUERNAVACA (CUOTA)

CLAVE: 00041

RUTA : MEX-095D

AÑO : 2008

L U G A R	E S T A C I O N				C L A S I F I C A C I O N V E H I C U L A R E N P O R C I E N T O .												
	KM	TE	SC	TDPA	A	B	C2	C3	T3S2	T3S3	T3S2R4	OTROS	A	B	C	K'	D
T. IZQ. LIBRAMIENTO DE CUERNAVACA	79.26	1	1	17424	80.2	4.6	3.4	3.7	2.7	2.5	2.3	0.6	80.2	4.6	15.2	0.074	0.500
T. IZQ. LIBRAMIENTO DE CUERNAVACA	79.26	1	2	17412	81.0	4.2	3.2	3.5	2.6	2.4	2.6	0.5	81.0	4.2	14.8	0.064	0.500
T. C. MEXICO - CUERNAVACA (LIBRE)	80.26																

14 CARR : PUENTE DE IXTLA - IGUALA (CUOTA)

CLAVE: 00043

RUTA : MEX-D

AÑO : 2008

L U G A R	E S T A C I O N				C L A S I F I C A C I O N V E H I C U L A R E N P O R C I E N T O .												
	KM	TE	SC	TDPA	A	B	C2	C3	T3S2	T3S3	T3S2R4	OTROS	A	B	C	K'	D
T. C. CUERNAVACA - ACAPULCO (CUOTA)	0.00																
T. IZQ. PUENTE DE IXTLA	2.00	3	0	6614	78.9	6.0	3.4	2.5	2.9	3.8	1.5	1.0	78.9	6.0	15.1	0.073	0.502
T. DER. AMACUZAC	9.63	3	0	7733	80.3	3.9	3.9	2.7	2.6	4.5	1.5	0.6	80.3	3.9	15.8	0.080	0.500
LIM. EDOS. TERM. MOR. PPIA. GRO.	15.33																
T. IZQ. BUENAVISTA	33.58	3	0	5686	76.5	5.0	2.5	4.2	4.3	6.0	0.8	0.7	76.5	5.0	18.5	0.082	0.503
CASETA DE COBRO IGUALA	59.14	2	0	4754	62.8	6.7	8.1	8.8	5.5	4.3	2.5	1.3	62.8	6.7	30.5		
T. DER. IGUALA	59.50	1	0	4556	82.4	5.1	3.6	3.5	2.3	1.7	0.4	1.0	82.4	5.1	12.5	0.088	0.503
T. C. CUERNAVACA - CHILPANCINGO	62.80																

15 CARR : ALPUYECA - JOJUTLA

CLAVE: 17021

RUTA : MOR-021

AÑO : 2008

L U G A R	E S T A C I O N				C L A S I F I C A C I O N V E H I C U L A R E N P O R C I E N T O .												
	KM	TE	SC	TDPA	A	B	C2	C3	T3S2	T3S3	T3S2R4	OTROS	A	B	C	K'	D
T. C. CUERNAVACA - CHILPANCINGO	0.00																
X. C. CUERNAVACA - IGUALA (CUOTA)	2.20	1	0	9814	86.4	2.5	2.8	0.2	4.0	0.7	1.4	2.0	86.4	2.5	11.1	0.092	0.502
XOXOCOTLA	7.70	1	1	6662	89.0	4.3	1.3	0.6	2.6	0.6	0.2	1.4	89.0	4.3	6.7	0.076	0.502
XOXOCOTLA	7.70	1	2	6703	88.7	4.2	1.5	0.5	2.7	0.6	0.2	1.6	88.7	4.2	7.1	0.083	0.502
T. IZQ. ZACATEPEC	11.94	1	1	7819	82.6	6.2	4.0	0.7	3.4	0.6	0.5	2.0	82.6	6.2	11.2	0.064	0.504
T. IZQ. ZACATEPEC	11.94	1	2	7949	81.2	6.1	4.2	0.9	3.7	0.9	0.5	2.5	81.2	6.1	12.7	0.063	0.504
JOJUTLA	17.15	1	1	9097	86.1	5.7	1.1	0.4	3.5	0.4	0.5	2.3	86.1	5.7	8.2	0.078	0.523
JOJUTLA	17.15	1	2	8297	86.2	6.0	1.5	0.4	3.3	0.6	0.3	1.7	86.2	6.0	7.8	0.084	0.523

16 CARR : AMAYUCA - IZUCAR DE MATAMOROS

CLAVE: 00030

RUTA : MOR-031-PUE

AÑO : 2008

L U G A R	E S T A C I O N				C L A S I F I C A C I O N V E H I C U L A R E N P O R C I E N T O .												
	KM	TE	SC	TDPA	A	B	C2	C3	T3S2	T3S3	T3S2R4	OTROS	A	B	C	K'	D
X. C. SANTA BARBARA - IZUCAR DE MATAMOROS	0.66	3	0	7508	82.3	2.6	3.2	2.9	2.7	2.5	0.4	3.4	82.3	2.6	15.1	0.086	0.501

MORELOS

16 CARR : AMAYUCA - IZUCAR DE MATAMOROS

CLAVE: 00030

RUTA : MOR-031-PUE

AÑO : 2008

L U G A R	E S T A C I O N				C L A S I F I C A C I O N V E H I C U L A R E N P O R C I E N T O .												
	KM	TE	SC	TDPA	A	B	C2	C3	T3S2	T3S3	T3S2R4	OTROS	A	B	C	K'	D
JONACATEPEC	3.84	3	0	5078	82.3	4.4	3.4	3.1	3.4	1.9	1.0	0.5	82.3	4.4	13.3	0.084	0.502
T. DER. TEPALCINGO	14.50	3	0	4231	77.9	6.0	4.3	3.0	2.4	2.5	0.5	3.4	77.9	6.0	16.1	0.063	0.502
AXOCHIAPAN	29.50	1	0	3600	83.0	4.7	5.7	2.1	0.8	1.4	1.0	1.3	83.0	4.7	12.3	0.082	0.506
AXOCHIAPAN	29.50	3	1	2774	83.6	4.7	5.7	2.4	0.6	1.1	0.0	1.9	83.6	4.7	11.7	0.077	0.502
AXOCHIAPAN	29.50	3	2	2796	83.8	4.4	5.8	2.4	0.6	1.0	0.1	1.9	83.8	4.4	11.8	0.078	0.502
LIM. EDOS. TERM. MOR. PPIA. PUE.	37.75																
BARRANCA DEL MUERTO	38.40	3	0	3037	87.1	5.6	3.2	2.7	0.0	0.0	0.0	1.4	87.1	5.6	7.3	0.070	0.501
T. DER. CHIETLA	53.00	1	0	5345	90.0	5.1	2.3	1.0	0.0	0.0	0.0	1.6	90.0	5.1	4.9	0.083	0.501
X. C. SANTA BARBARA - IZUCAR DE MATAMOROS	67.50	1	0	7545	87.4	4.8	5.2	1.6	0.0	0.0	0.0	1.0	87.4	4.8	7.8	0.085	0.501
X. C. SANTA BARBARA - IZUCAR DE MATAMOROS	67.50	3	0	13829	81.5	4.5	5.7	1.9	1.6	2.1	1.8	0.9	81.5	4.5	14.0	0.086	0.500
IZUCAR DE MATAMOROS	69.00																

17 CARR : AMAYUCA - TLACOTEPEC

CLAVE: 17020

RUTA : MOR-017

AÑO : 2008

L U G A R	E S T A C I O N				C L A S I F I C A C I O N V E H I C U L A R E N P O R C I E N T O .												
	KM	TE	SC	TDPA	A	B	C2	C3	T3S2	T3S3	T3S2R4	OTROS	A	B	C	K'	D
AMAYUCA	0.00	3	0	5276	94.0	2.8	1.6	0.3	0.2	0.2	0.1	0.8	94.0	2.8	3.2	0.085	0.501
TEMOAC	5.50	3	0	3036	94.2	2.2	0.6	1.8	0.4	0.7	0.1	0.0	94.2	2.2	3.6	0.089	0.503
ZACUALPAN DE AMILPAS	7.50	1	0	3024	96.0	1.7	1.0	0.6	0.1	0.2	0.2	0.2	96.0	1.7	2.3	0.098	0.502
TLACOTEPEC	12.00	1	0	2142	95.0	3.6	0.7	0.4	0.0	0.1	0.1	0.1	95.0	3.6	1.4	0.143	0.501

18 CARR : ATLATLAHUCAN - TLAYACAPAN

CLAVE: 17301

RUTA : MOR-002

AÑO : 2008

L U G A R	E S T A C I O N				C L A S I F I C A C I O N V E H I C U L A R E N P O R C I E N T O .												
	KM	TE	SC	TDPA	A	B	C2	C3	T3S2	T3S3	T3S2R4	OTROS	A	B	C	K'	D
T. C. SANTA BARBARA - IZUCAR DE MATAMOROS	0.00																
ATLATLAHUCAN	1.50	1	0	3269	86.5	4.6	3.6	2.4	1.7	1.0	0.2	0.0	86.5	4.6	8.9	0.075	0.501
TOTOLAPAN	7.00	1	0	2512	88.6	3.9	1.2	0.9	1.5	2.5	0.4	1.0	88.6	3.9	7.5	0.092	0.501
TLAYACAPAN	15.50	1	0	4198	84.5	4.4	0.5	0.3	4.6	1.6	2.1	2.0	84.5	4.4	11.1	0.120	0.512

19 CARR : COCOYOC - OAXTEPEC

CLAVE: 17001

RUTA : MOR

AÑO : 2008

L U G A R	E S T A C I O N				C L A S I F I C A C I O N V E H I C U L A R E N P O R C I E N T O .												
	KM	TE	SC	TDPA	A	B	C2	C3	T3S2	T3S3	T3S2R4	OTROS	A	B	C	K'	D
COCOYOC	0.00	3	0	14390	88.4	4.5	3.1	1.1	0.9	1.1	0.9	0.0	88.4	4.5	7.1	0.072	0.500

MORELOS

19 CARR : COCOYOC - OAXTEPEC

CLAVE: 17001

RUTA : MOR

AÑO : 2008

L U G A R	E S T A C I O N				C L A S I F I C A C I O N V E H I C U L A R E N P O R C I E N T O .												
	KM	TE	SC	TDPA	A	B	C2	C3	T3S2	T3S3	T3S2R4	OTROS	A	B	C	K'	D
OAXTEPEC	3.92	1	0	12677	91.2	3.6	2.0	0.8	0.4	1.0	1.0	0.0	91.2	3.6	5.2	0.074	0.501

20 CARR : ENT. C. (CUERNAVACA - ACAPULCO CUOTA) - TEPETZINGO

CLAVE:

RUTA : MOR

AÑO : 2008

L U G A R	E S T A C I O N				C L A S I F I C A C I O N V E H I C U L A R E N P O R C I E N T O .												
	KM	TE	SC	TDPA	A	B	C2	C3	T3S2	T3S3	T3S2R4	OTROS	A	B	C	K'	D
ENT. C. (CUERNAVACA - ACAPULCO CUOTA)	0.00	3	0	4258	81.1	3.5	8.1	0.7	3.3	0.6	1.1	1.6	81.1	3.5	15.4	0.072	0.506
TEPETZINGO	5.50	1	0	4224	83.3	3.2	6.3	0.7	3.3	0.6	1.0	1.6	83.3	3.2	13.5	0.076	0.505

21 CARR : ENT. C. (CUERNAVACA - CUAUTLIXCO) - OACALCO

CLAVE:

RUTA : MOR

AÑO : 2008

L U G A R	E S T A C I O N				C L A S I F I C A C I O N V E H I C U L A R E N P O R C I E N T O .												
	KM	TE	SC	TDPA	A	B	C2	C3	T3S2	T3S3	T3S2R4	OTROS	A	B	C	K'	D
ENT. C. (CUERNAVACA - CUAUTLIXCO)	0.00	3	0	2700	75.4	13.6	2.7	1.3	3.1	1.3	0.9	1.7	75.4	13.6	11.0	0.071	0.500
OACALCO	10.00	1	0	6975	82.9	2.9	5.6	2.7	1.1	2.1	0.0	2.7	82.9	2.9	14.2	0.069	0.503

22 CARR : ENT. CHIVERIAS - ENT. EL ABANICO

CLAVE: 17302

RUTA : MOR

AÑO : 2008

L U G A R	E S T A C I O N				C L A S I F I C A C I O N V E H I C U L A R E N P O R C I E N T O .												
	KM	TE	SC	TDPA	A	B	C2	C3	T3S2	T3S3	T3S2R4	OTROS	A	B	C	K'	D
T. C. ALPUYECA - JOJUTLA	0.00	3	0	3259	87.0	7.4	1.9	0.9	0.7	0.8	0.2	1.1	87.0	7.4	5.6	0.061	0.509
X. C. XOXOCOTLA - TILZAPOTLA	5.56	3	0	2596	81.2	4.2	2.7	3.6	2.0	2.8	1.1	2.4	81.2	4.2	14.6	0.086	0.510
T. C. CUERNAVACA - ACAPULCO (CUOTA)	14.50	1	0	2575	82.7	5.4	2.5	3.6	1.8	1.4	1.3	1.3	82.7	5.4	11.9	0.073	0.502

23 CARR : GALEANA - CUAUTLA

CLAVE: 17004

RUTA : MOR-004

AÑO : 2008

L U G A R	E S T A C I O N				C L A S I F I C A C I O N V E H I C U L A R E N P O R C I E N T O .												
	KM	TE	SC	TDPA	A	B	C2	C3	T3S2	T3S3	T3S2R4	OTROS	A	B	C	K'	D
GALEANA	0.00	3	1	8851	91.1	3.0	1.9	1.0	0.6	0.5	0.3	1.6	91.1	3.0	5.9	0.078	0.502
GALEANA	0.00	3	2	9740	89.9	3.3	1.7	1.7	0.6	0.8	0.5	1.5	89.9	3.3	6.8	0.074	0.502
ZACATEPEC	4.00	3	0	3949	84.1	3.0	2.5	2.4	2.8	2.3	1.2	1.7	84.1	3.0	12.9	0.146	0.503
TLALTIZAPAN	13.10	3	0	2063	91.0	1.3	1.7	1.7	0.2	0.4	0.4	3.3	91.0	1.3	7.7	0.078	0.500
T. DER. CHINAMECA	16.06	3	0	2237	92.0	3.9	1.7	0.6	0.9	0.1	0.1	0.7	92.0	3.9	4.1	0.090	0.500
MOYOTEPEC	34.00	1	0	2204	90.5	3.3	2.6	1.7	1.0	0.9	0.0	0.0	90.5	3.3	6.2	0.090	0.502
VILLA DE AYALA	38.62	1	0	4360	94.3	2.0	2.0	1.3	0.2	0.2	0.0	0.0	94.3	2.0	3.7	0.079	0.501

MORELOS

23 CARR : GALEANA - CUAUTLA

CLAVE: 17004

RUTA : MOR-004

AÑO : 2008

L U G A R	E S T A C I O N				CLASIFICACION VEHICULAR EN PORCIENTO .												
	KM	TE	SC	TDPA	A	B	C2	C3	T3S2	T3S3	T3S2R4	OTROS	A	B	C	K'	D
T. IZQ. ANENECUILCO	40.50	1	0	6842	82.7	3.9	4.3	2.2	3.4	2.0	0.9	0.6	82.7	3.9	13.4	0.077	0.504
CUAUTLA	46.00	1	1	5119	90.5	3.6	0.6	0.4	2.5	0.3	0.4	1.7	90.5	3.6	5.9	0.100	0.512
CUAUTLA	46.00	1	2	4878	89.5	3.8	0.6	0.5	3.0	0.6	0.7	1.3	89.5	3.8	6.7	0.100	0.512

24 CARR : JOJUTLA - CHINAMECA

CLAVE: 17310

RUTA : MOR

AÑO : 2008

L U G A R	E S T A C I O N				CLASIFICACION VEHICULAR EN PORCIENTO .												
	KM	TE	SC	TDPA	A	B	C2	C3	T3S2	T3S3	T3S2R4	OTROS	A	B	C	K'	D
JOJUTLA	0.00	3	0	1586	88.4	4.0	5.6	1.7	0.0	0.2	0.1	0.0	88.4	4.0	7.6	0.077	0.501
T. C. TEMILPA - TEPALCINGO	32.00	1	0	987	93.9	3.1	1.3	0.1	1.0	0.2	0.1	0.3	93.9	3.1	3.0	0.079	0.503
CHINAMECA	34.00																

25 CARR : JOJUTLA - EL HIGUERON

CLAVE: 17039

RUTA : MOR-039

AÑO : 2008

L U G A R	E S T A C I O N				CLASIFICACION VEHICULAR EN PORCIENTO .												
	KM	TE	SC	TDPA	A	B	C2	C3	T3S2	T3S3	T3S2R4	OTROS	A	B	C	K'	D
JOJUTLA	0.00	3	0	6634	90.6	5.0	1.1	0.9	0.4	0.3	0.2	1.5	90.6	5.0	4.4	0.074	0.544
EL HIGUERON	4.50	1	0	4050	81.7	4.1	4.1	2.1	1.5	2.1	1.1	3.3	81.7	4.1	14.2	0.080	0.501

26 CARR : MOYOTEPEC - SAN RAFAEL

CLAVE: 17306

RUTA : MOR

AÑO : 2008

L U G A R	E S T A C I O N				CLASIFICACION VEHICULAR EN PORCIENTO .												
	KM	TE	SC	TDPA	A	B	C2	C3	T3S2	T3S3	T3S2R4	OTROS	A	B	C	K'	D
T. C. GALEANA - CUAUTLA	0.00	3	0	1242	88.2	2.0	4.4	3.8	0.0	0.7	0.0	0.9	88.2	2.0	9.8	0.075	0.501
T. C. TEMILPA - TEPALCINGO	7.50	1	0	1768	93.4	2.6	2.2	0.5	0.1	0.2	0.0	1.0	93.4	2.6	4.0	0.084	0.505

27 CARR : PASO POR YAUTEPEC

CLAVE: 17025

RUTA : MOR

AÑO : 2008

L U G A R	E S T A C I O N				CLASIFICACION VEHICULAR EN PORCIENTO .												
	KM	TE	SC	TDPA	A	B	C2	C3	T3S2	T3S3	T3S2R4	OTROS	A	B	C	K'	D
T. C. CUERNAVACA - CUAUTLIXCO	0.00	3	1	3310	90.3	4.2	2.7	0.7	0.2	0.3	0.1	1.5	90.3	4.2	5.5	0.133	0.505
T. C. CUERNAVACA - CUAUTLIXCO	0.00	3	2	3249	91.2	4.0	2.4	0.7	0.3	0.2	0.1	1.1	91.2	4.0	4.8	0.140	0.505
T. C. CUERNAVACA - CUAUTLIXCO	5.50	1	0	3388	84.5	5.0	1.4	0.6	0.7	2.0	1.3	4.5	84.5	5.0	10.5	0.163	0.514

MORELOS

37 CARR : TEJALPA - JOJUTLA

CLAVE: 17014

RUTA : MOR-014

AÑO : 2008

L U G A R	E S T A C I O N				C L A S I F I C A C I O N V E H I C U L A R E N P O R C I E N T O .												
	KM	TE	SC	TDPA	A	B	C2	C3	T3S2	T3S3	T3S2R4	OTROS	A	B	C	K'	D
T. C. CUERNAVACA - CUAUTLIXCO	0.00																
JIUTEPEC	1.97	3	0	9689	74.9	7.7	6.8	1.9	2.9	2.2	0.5	3.1	74.9	7.7	17.4	0.072	0.506
EMILIANO ZAPATA	7.00	3	0	6561	77.5	5.6	5.5	3.3	3.0	1.5	0.7	2.9	77.5	5.6	16.9	0.127	0.504
T. IZQ. CHICONCUAC	14.50	1	0	5637	83.7	5.1	1.5	1.6	3.0	1.2	0.9	3.0	83.7	5.1	11.2	0.080	0.504
T. IZQ. CHICONCUAC	14.50	3	0	7336	85.5	5.3	2.4	1.8	2.0	0.5	0.4	2.1	85.5	5.3	9.2	0.090	0.512
X. C. ZACATEPEC - TLAQUILTENANGO	32.90	1	0	6068	86.4	3.3	2.4	2.2	1.5	1.1	0.8	2.3	86.4	3.3	10.3	0.080	0.503
JOJUTLA	35.00	1	0	6571	88.8	5.5	3.2	0.6	0.3	0.4	0.4	0.8	88.8	5.5	5.7	0.087	0.501

38 CARR : TEMILPA - TEPALCINGO

CLAVE: 17009

RUTA : MOR-009

AÑO : 2008

L U G A R	E S T A C I O N				C L A S I F I C A C I O N V E H I C U L A R E N P O R C I E N T O .												
	KM	TE	SC	TDPA	A	B	C2	C3	T3S2	T3S3	T3S2R4	OTROS	A	B	C	K'	D
T. C. GALEANA - CUAUTLA	0.00	3	0	1194	91.4	1.2	3.3	2.5	0.0	1.1	0.2	0.3	91.4	1.2	7.4	0.095	0.501
TEPALCINGO	40.50	1	0	2065	93.7	1.3	2.1	0.8	0.3	0.8	0.2	0.8	93.7	1.3	5.0	0.102	0.503

39 CARR : TEPOZTLAN - YAUTEPEC

CLAVE: 17013

RUTA : MOR-013

AÑO : 2008

L U G A R	E S T A C I O N				C L A S I F I C A C I O N V E H I C U L A R E N P O R C I E N T O .												
	KM	TE	SC	TDPA	A	B	C2	C3	T3S2	T3S3	T3S2R4	OTROS	A	B	C	K'	D
TEPOZTLAN	0.00	3	0	6563	90.0	1.8	1.4	0.8	2.5	0.5	1.0	2.0	90.0	1.8	8.2	0.082	0.516
YAUTEPEC	14.82	1	0	4169	79.8	5.3	3.3	3.6	1.6	1.1	2.5	2.8	79.8	5.3	14.9	0.092	0.513

40 CARR : XOXOCOTLA - TILZAPOTLA

CLAVE: 17005

RUTA : MOR-006

AÑO : 2008

L U G A R	E S T A C I O N				C L A S I F I C A C I O N V E H I C U L A R E N P O R C I E N T O .												
	KM	TE	SC	TDPA	A	B	C2	C3	T3S2	T3S3	T3S2R4	OTROS	A	B	C	K'	D
XOXOCOTLA	0.00	3	1	2307	82.7	6.6	1.2	0.9	3.0	2.5	0.9	2.2	82.7	6.6	10.7	0.085	0.514
XOXOCOTLA	0.00	3	2	2178	85.6	6.8	1.6	0.6	1.8	1.3	0.9	1.4	85.6	6.8	7.6	0.088	0.514
TEHUIXTLA	19.50	1	0	4060	88.6	2.6	1.7	2.4	0.7	1.5	0.9	1.6	88.6	2.6	8.8	0.092	0.535
TEHUIXTLA	19.50	3	0	4160	87.7	2.8	3.0	2.8	0.5	2.0	0.9	0.3	87.7	2.8	9.5	0.096	0.510
TILZAPOTLA	29.50	1	0	4965	84.9	3.8	2.5	2.6	1.2	2.5	1.1	1.4	84.9	3.8	11.3	0.101	0.512

MORELOS

41 CARR : ZACATEPEC - TLAQUILTENANGO

CLAVE: 17300

RUTA : MOR

AÑO : 2008

L U G A R	E S T A C I O N				C L A S I F I C A C I O N V E H I C U L A R E N P O R C I E N T O .												
	KM	TE	SC	TDPA	A	B	C2	C3	T3S2	T3S3	T3S2R4	OTROS	A	B	C	K'	D
ZACATEPEC	0.00	3	0	6000	82.3	3.9	5.1	2.5	1.2	2.2	0.1	2.7	82.3	3.9	13.8	0.075	0.500
TLAQUILTENANGO	4.08	1	0	2660	88.3	3.6	3.9	2.5	0.1	0.1	0.3	1.2	88.3	3.6	8.1	0.080	0.502

42 CARR : ATLIXCO - JANTETELCO (CUOTA)

CLAVE:

RUTA : PUE-D

AÑO : 2008

L U G A R	E S T A C I O N				C L A S I F I C A C I O N V E H I C U L A R E N P O R C I E N T O .												
	KM	TE	SC	TDPA	A	B	C2	C3	T3S2	T3S3	T3S2R4	OTROS	A	B	C	K'	D
T.C. PUEBLA - IZUCAR DE MATAMOROS	0.00	3	0	4728	83.4	2.8	2.4	5.4	1.7	0.9	2.2	1.2	83.4	2.8	13.8	0.090	0.512
T.C. SANTA BARABARA - IZUCAR DE MATAMOROS	34.00	1	0	4502	85.1	3.5	4.7	5.5	0.0	0.0	0.0	1.2	85.1	3.5	11.4	0.083	0.517

43 CARR : TRES MARIAS - SANTA MARTHA

CLAVE: 00172

RUTA : MEX-106-EM

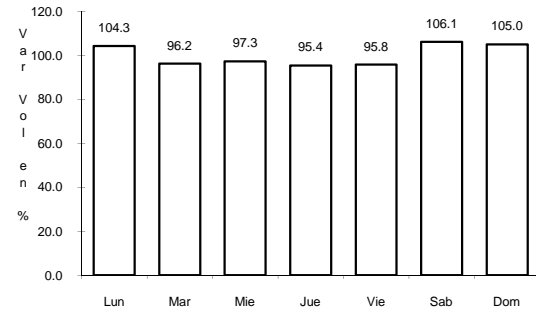
AÑO : 2008

L U G A R	E S T A C I O N				C L A S I F I C A C I O N V E H I C U L A R E N P O R C I E N T O .												
	KM	TE	SC	TDPA	A	B	C2	C3	T3S2	T3S3	T3S2R4	OTROS	A	B	C	K'	D
TRES MARIAS	0.00	3	0	4788	81.8	6.4	5.1	3.2	1.8	1.5	0.0	0.2	81.8	6.4	11.8	0.109	0.502
LAGUNA DE ZEMPOALA	14.00																
LIM. EDOS. TERM. MOR. PPIA. MEX.	14.50																
SANTA MARTHA	28.35	1	0	1865	81.1	6.3	5.5	3.8	1.3	1.1	0.0	0.9	81.1	6.3	12.6	0.113	0.517

4 CARR: ENT. ALPUYECA - GRUTAS DE CACAHUAMILPA

CLAVE: 00421

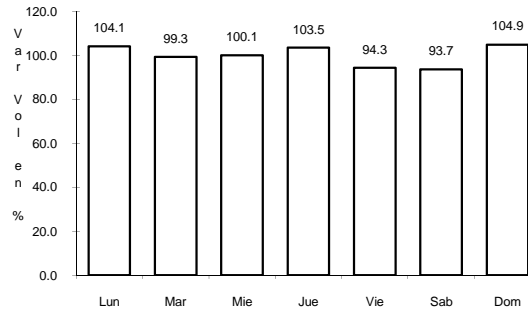
RUTA: MEX-166



Km: 0.00

Tipo: 3

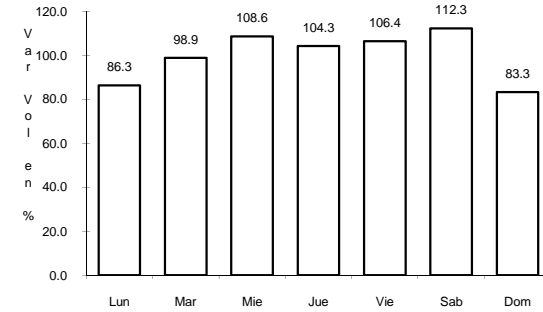
Sent: 0



Km: 25.05

Tipo: 3

Sent: 0



Km: 41.26

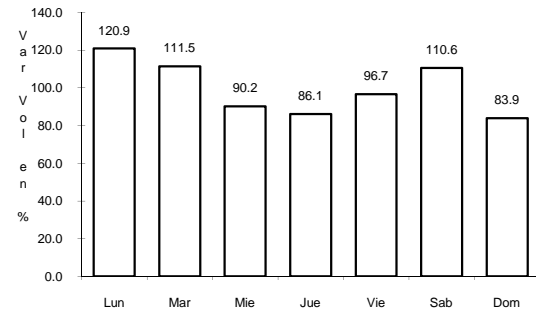
Tipo: 1

Sent: 0

5 CARR: LIBRAMIENTO DE CUAUTLA

CLAVE: 17309

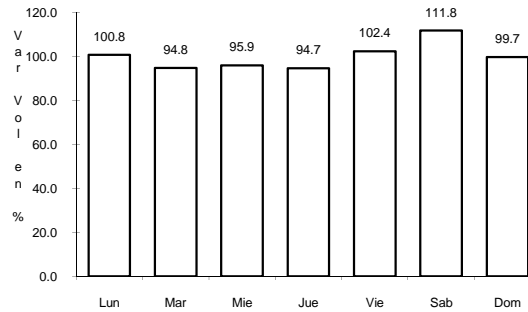
RUTA: MEX



Km: 0.00

Tipo: 3

Sent: 1



Km: 0.00

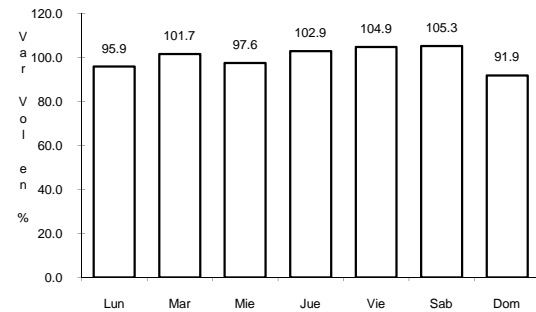
Tipo: 3

Sent: 2

6 CARR: LIBRAMIENTO DE CUERNAVACA

CLAVE: 17400

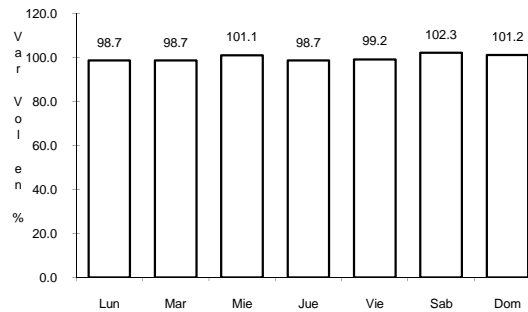
RUTA: MEX-095



Km: 10.54

Tipo: 1

Sent: 1



Km: 10.54

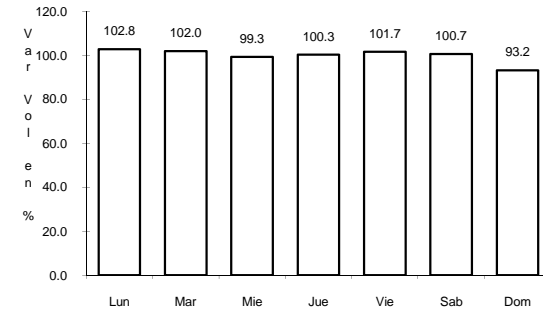
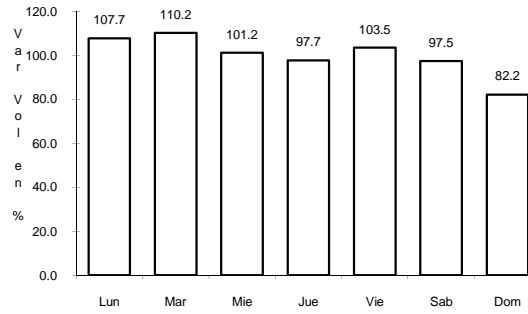
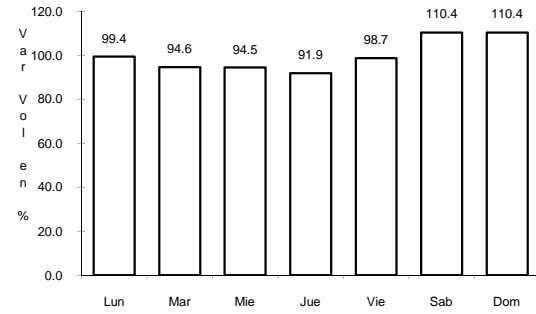
Tipo: 1

Sent: 2

7 CARR: MEXICO - CUERNAVACA (LIBRE)

CLAVE: 00040

RUTA: MEX-095



Km: 28.78

Tipo: 1

Sent: 0

Km: 71.36

Tipo: 3

Sent: 1

Km: 71.36

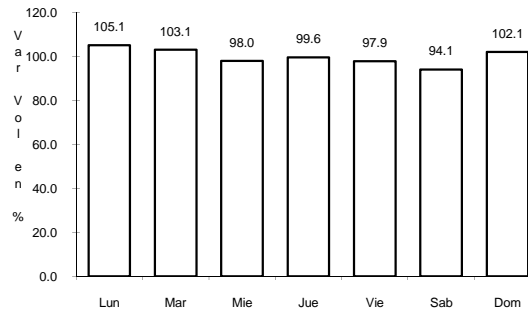
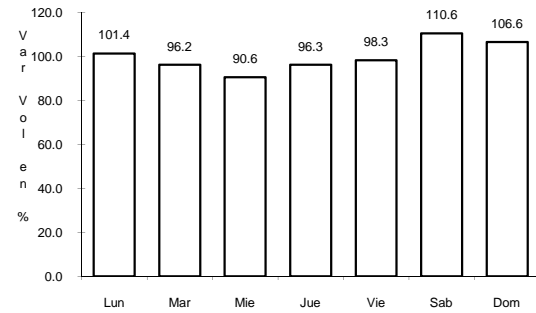
Tipo: 3

Sent: 2

8 CARR: RAMAL A MICHAPA

CLAVE: 17303

RUTA: MEX-103



Km: 0.00

Tipo: 3

Sent: 0

Km: 16.22

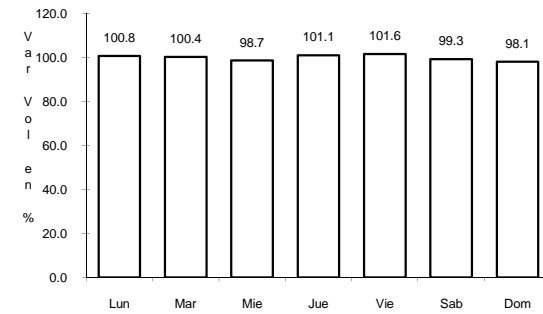
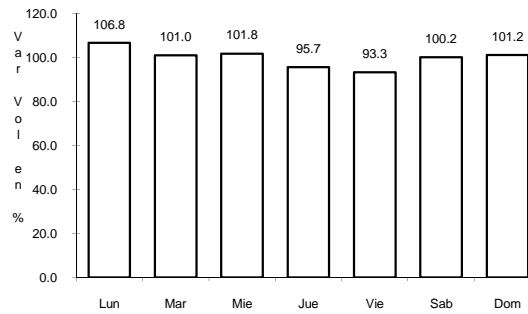
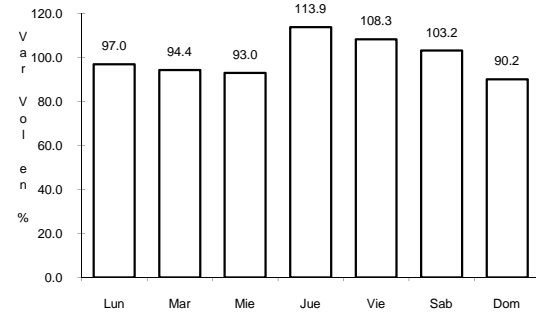
Tipo: 1

Sent: 0

9 CARR: SAN GREGORIO - OAXTEPEC

CLAVE: 00901

RUTA: MEX-142



Km: 0.00

Tipo: 3

Sent: 0

Km: 33.80

Tipo: 1

Sent: 0

Km: 53.00

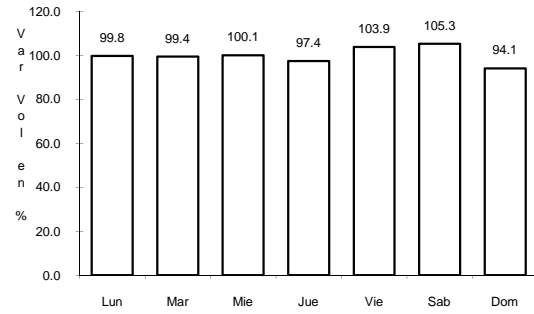
Tipo: 3

Sent: 0

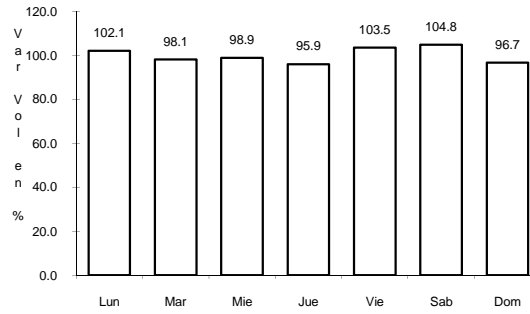
10 CARR: SANTA BARBARA - IZUCAR DE MATAMOROS

CLAVE: 00451

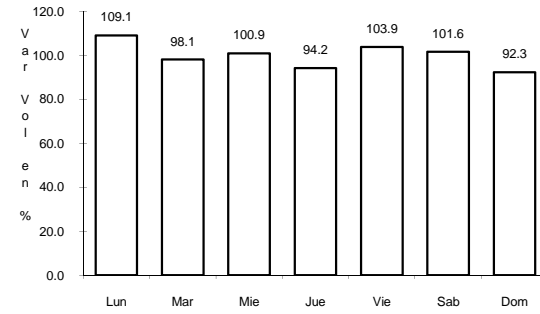
RUTA: MEX-115-160



Km: 0.00 Tipo: 3 Sent: 1



Km: 0.00 Tipo: 3 Sent: 2

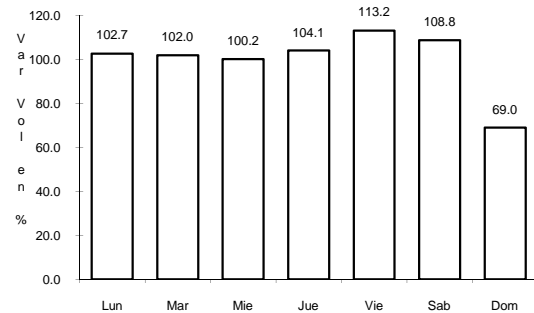


Km: 134.99 Tipo: 3 Sent: 0

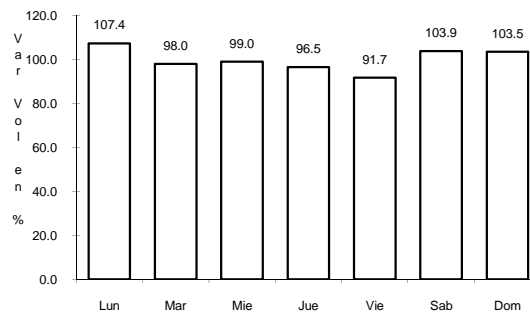
11 CARR: CUERNAVACA - ACAPULCO (CUOTA)

CLAVE: 00045

RUTA: MEX-095D



Km: 0.00 Tipo: 3 Sent: 1

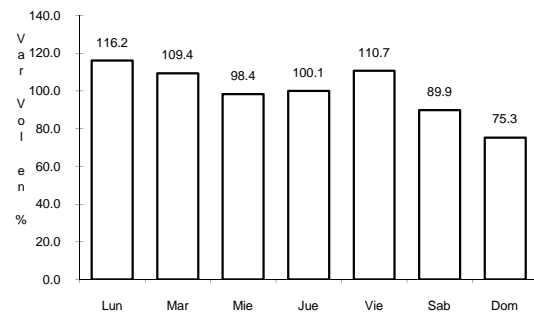


Km: 0.00 Tipo: 3 Sent: 2

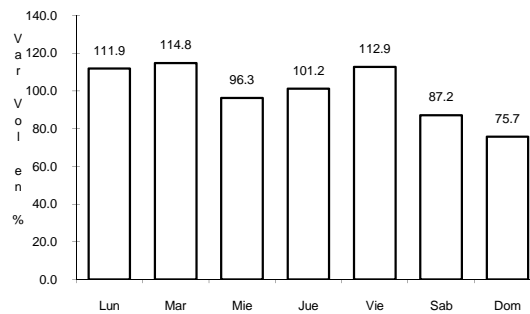
12 CARR: LA PERA - CUAUTLA (CUOTA)

CLAVE: 17161

RUTA: MEX-160D



Km: 0.00 Tipo: 3 Sent: 1

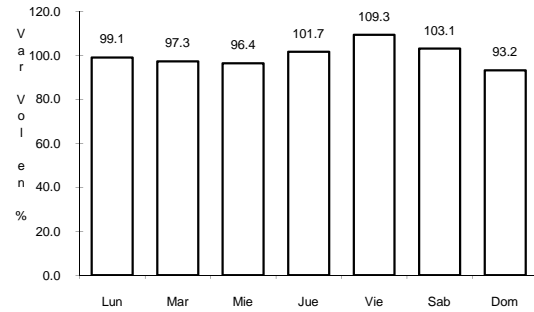


Km: 0.00 Tipo: 3 Sent: 2

13 CARR: MEXICO - CUERNAVACA (CUOTA)

CLAVE: 00041

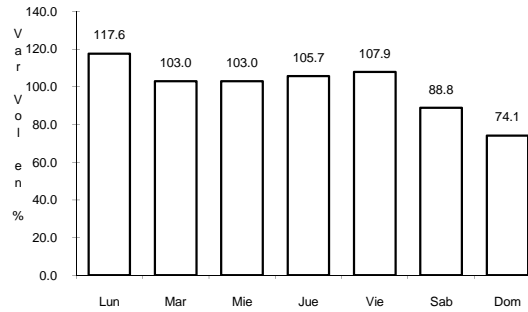
RUTA: MEX-095D



Km: 18.65

Tipo: 3

Sent: 1



Km: 18.65

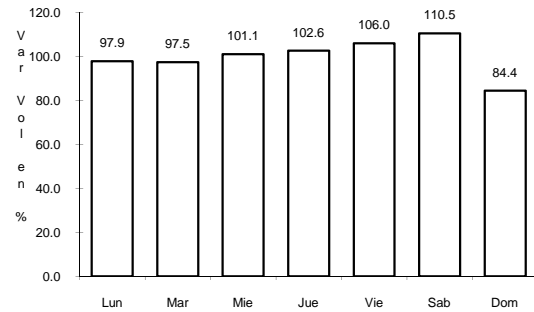
Tipo: 3

Sent: 2

14 CARR: PUENTE DE IXTLA - IGUALA (CUOTA)

CLAVE: 00043

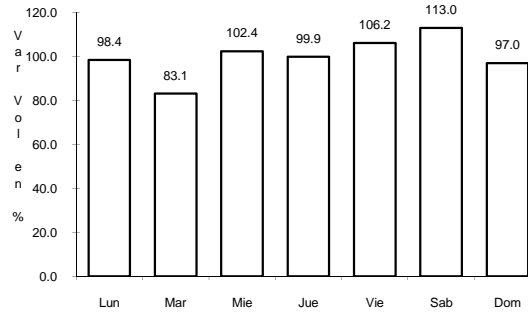
RUTA: MEX-D



Km: 2.00

Tipo: 3

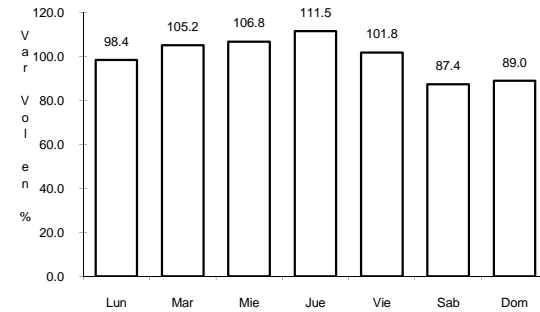
Sent: 0



Km: 33.58

Tipo: 3

Sent: 0



Km: 59.50

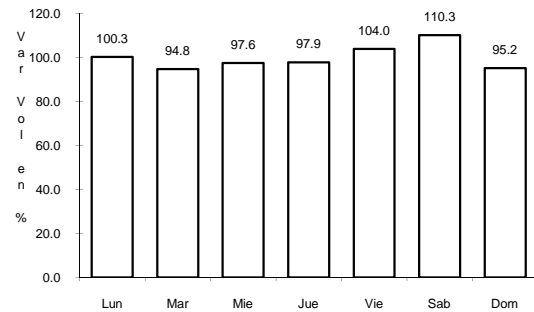
Tipo: 1

Sent: 0

15 CARR: ALPUYECA - JOJUTLA

CLAVE: 17021

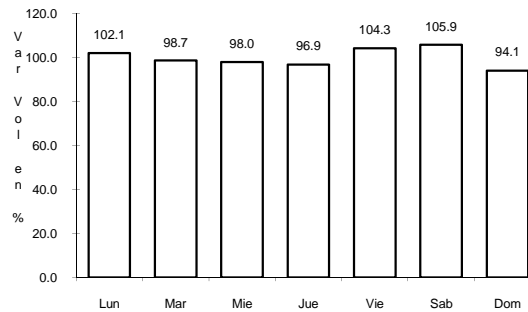
RUTA: MOR-021



Km: 2.20

Tipo: 1

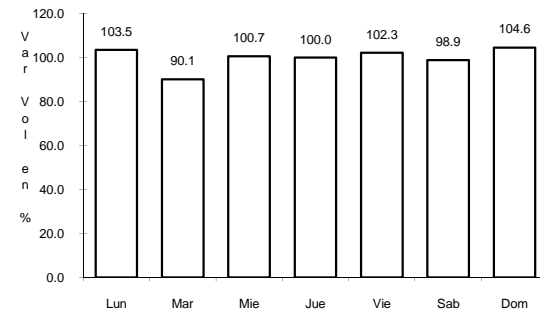
Sent: 0



Km: 17.15

Tipo: 1

Sent: 1



Km: 17.15

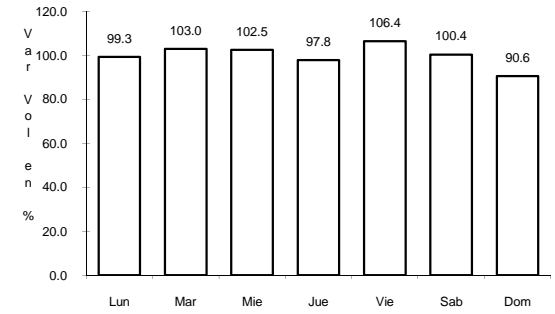
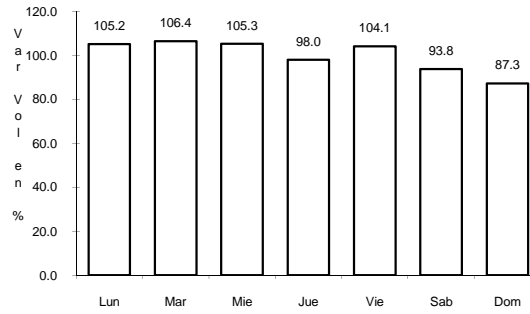
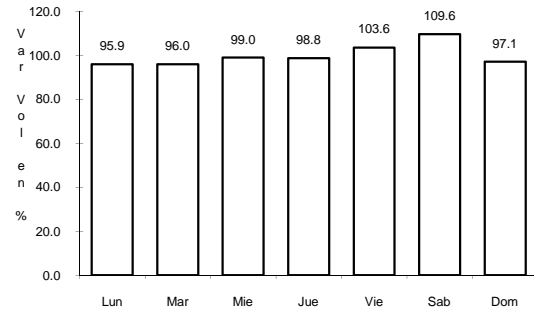
Tipo: 1

Sent: 2

16 CARR: AMAYUCA - IZUCAR DE MATAMOROS

CLAVE: 00030

ruta: MOR-031-PUE



Km: 0.66 Tipo: 3 Sent: 0

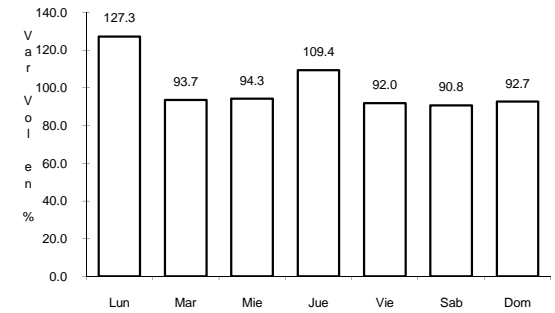
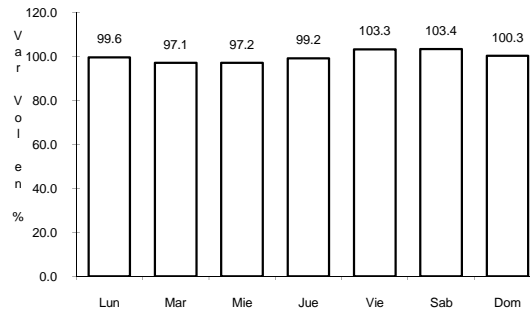
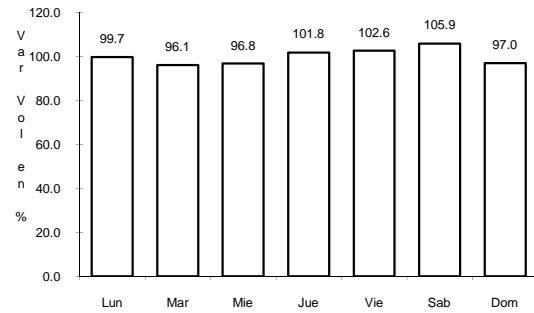
Km: 38.40 Tipo: 3 Sent: 0

Km: 67.50 Tipo: 3 Sent: 0

17 CARR: AMAYUCA - TLACOTEPEC

CLAVE: 17020

ruta: MOR-017



Km: 0.00 Tipo: 3 Sent: 0

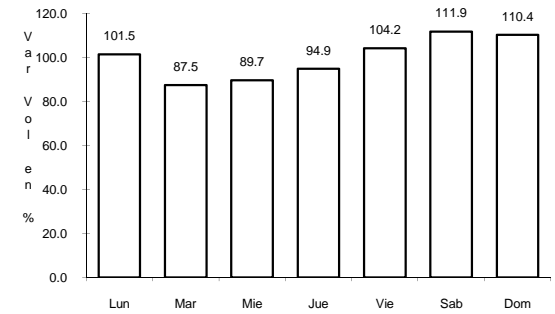
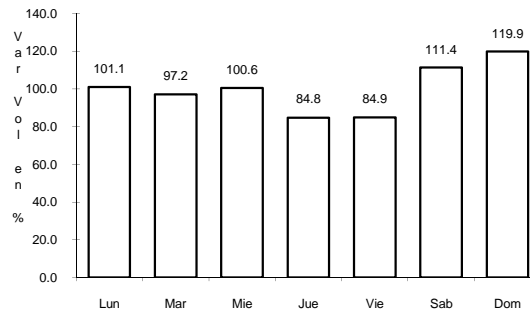
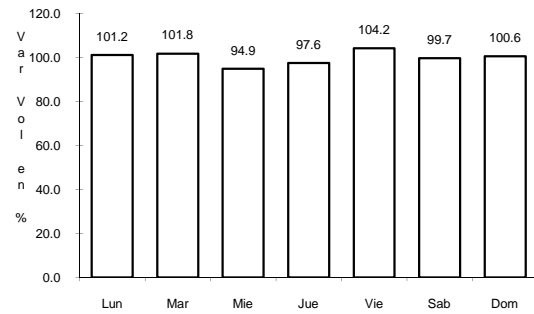
Km: 5.50 Tipo: 3 Sent: 0

Km: 12.00 Tipo: 1 Sent: 0

18 CARR: ATLATLAHUCAN - TLAYACAPAN

CLAVE: 17301

ruta: MOR-002



Km: 1.50 Tipo: 1 Sent: 0

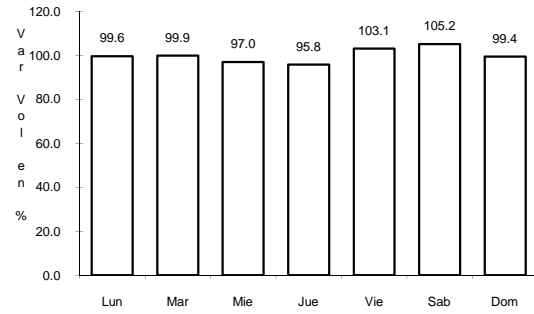
Km: 7.00 Tipo: 1 Sent: 0

Km: 15.50 Tipo: 1 Sent: 0

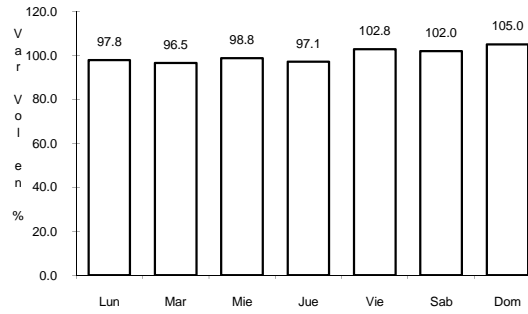
19 CARR: COCOYOC - OAXTEPEC

CLAVE: 17001

RUTA: MOR



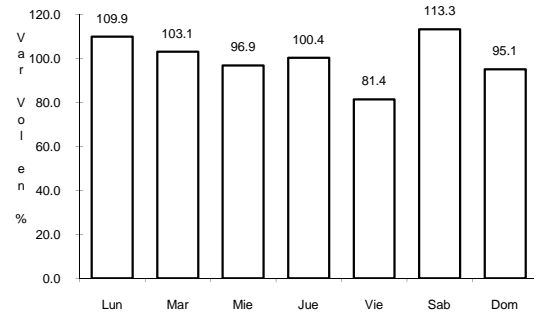
Km: 0.00 Tipo: 3 Sent: 0



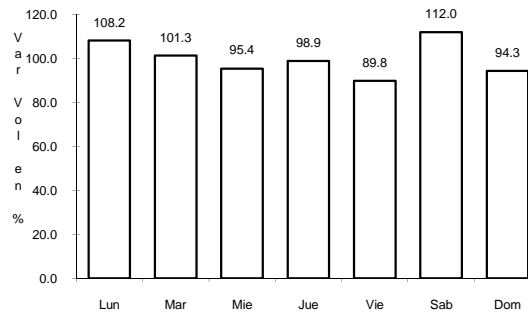
Km: 3.92 Tipo: 1 Sent: 0

20 CARR: ENT. C. (CUERNAVACA - ACAPULCO CUOTA) - TEPETZINGO CLAVE:

RUTA: MOR



Km: 0.00 Tipo: 3 Sent: 0

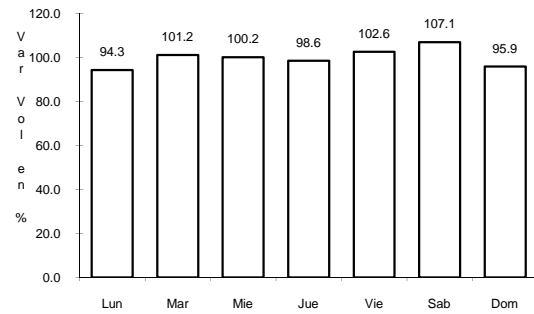


Km: 5.50 Tipo: 1 Sent: 0

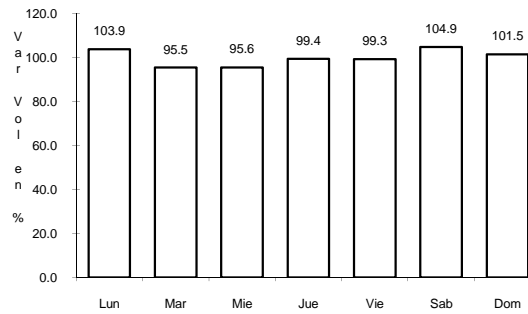
21 CARR: ENT. C. (CUERNAVACA - CUAUTLIXCO) - OACALCO

CLAVE:

RUTA: MOR

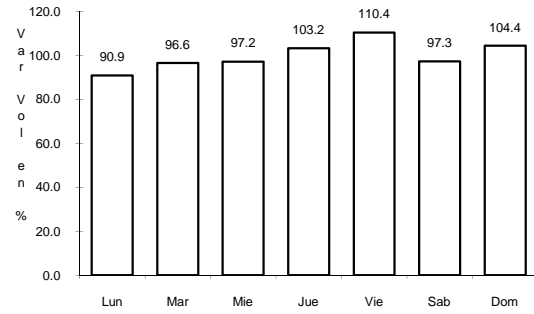


Km: 0.00 Tipo: 3 Sent: 0



Km: 10.00 Tipo: 1 Sent: 0

22 CARR: ENT. CHIVERIAS - ENT. EL ABANICO

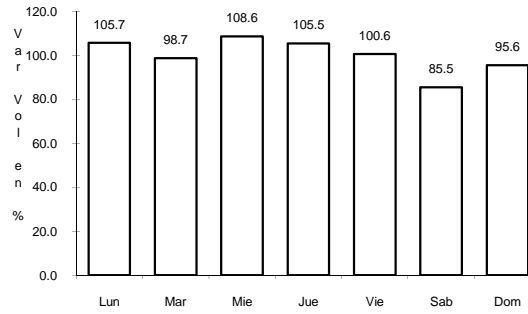


Km: 0.00

Tipo: 3

Sent: 0

CLAVE: 17302

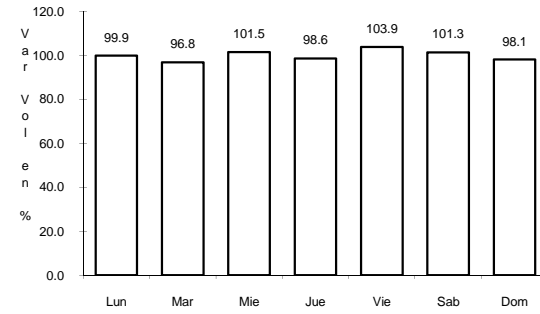


Km: 5.56

Tipo: 3

Sent: 0

RUTA: MOR

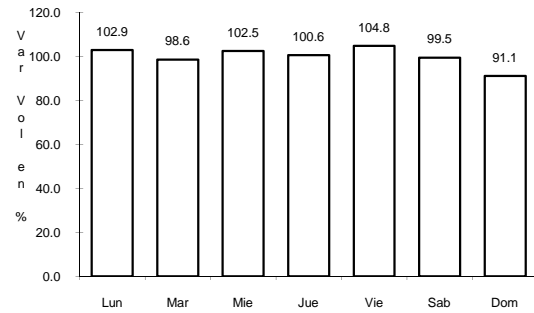


Km: 14.50

Tipo: 1

Sent: 0

23 CARR: GALEANA - CUAUTLA

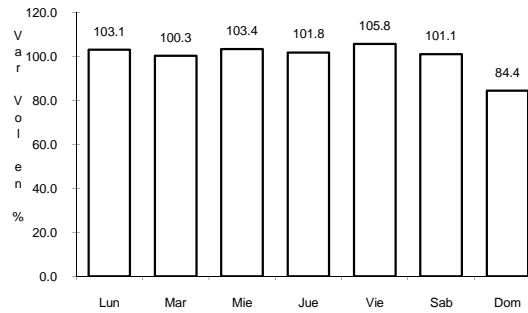


Km: 0.00

Tipo: 3

Sent: 1

CLAVE: 17004

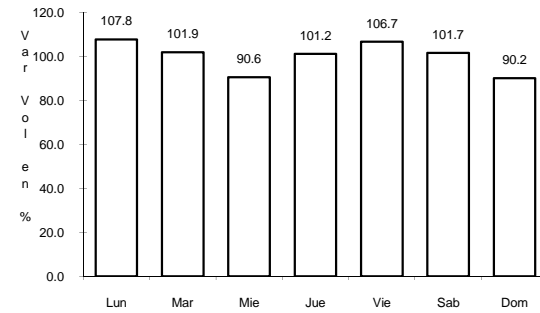


Km: 0.00

Tipo: 3

Sent: 2

RUTA: MOR-004

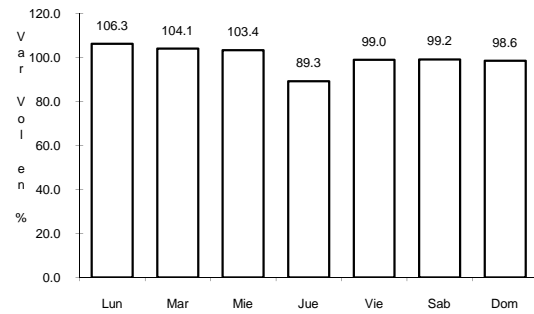


Km: 34.00

Tipo: 1

Sent: 0

24 CARR: JOJUTLA - CHINAMECA

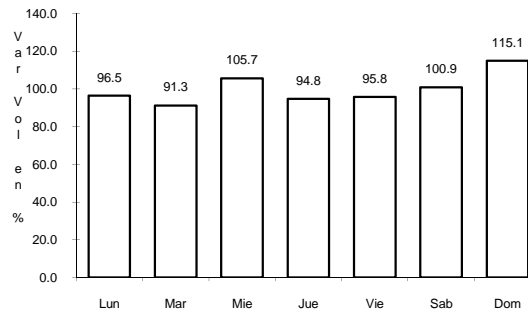


Km: 0.00

Tipo: 3

Sent: 0

CLAVE: 17310



Km: 32.00

Tipo: 1

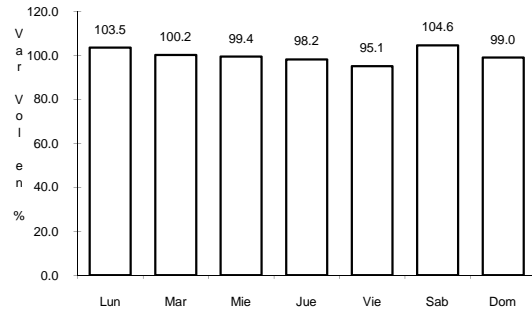
Sent: 0

RUTA: MOR

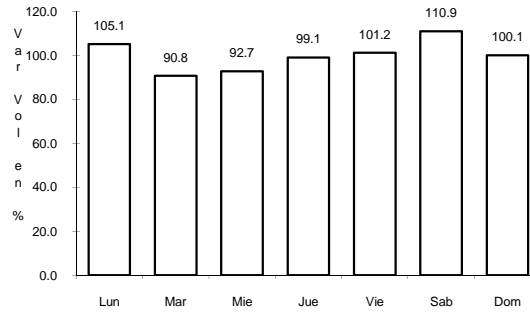
25 CARR: JOJUTLA - EL HIGUERON

CLAVE: 17039

RUTA: MOR-039



Km: 0.00 Tipo: 3 Sent: 0

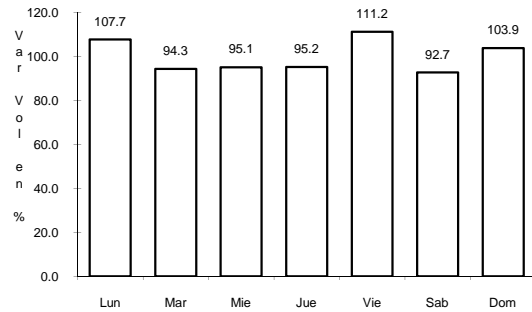


Km: 4.50 Tipo: 1 Sent: 0

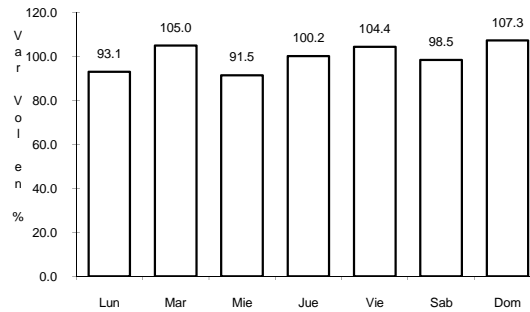
26 CARR: MOYOTEPEC - SAN RAFAEL

CLAVE: 17306

RUTA: MOR



Km: 0.00 Tipo: 3 Sent: 0

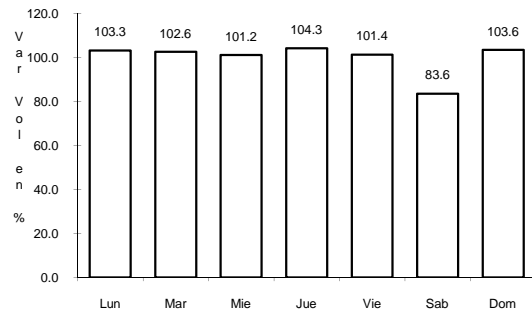


Km: 7.50 Tipo: 1 Sent: 0

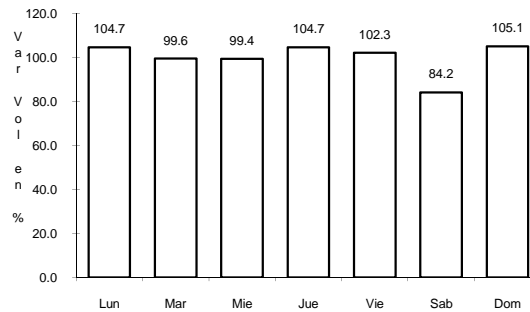
27 CARR: PASO POR YAUTEPEC

CLAVE: 17025

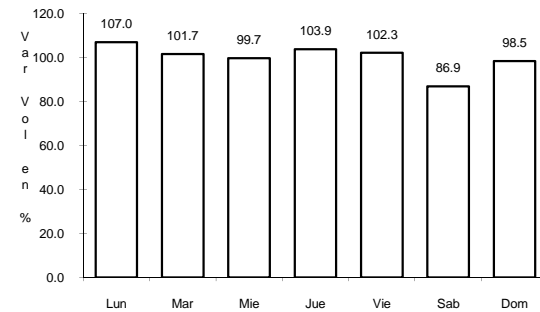
RUTA: MOR



Km: 0.00 Tipo: 3 Sent: 1



Km: 0.00 Tipo: 3 Sent: 2

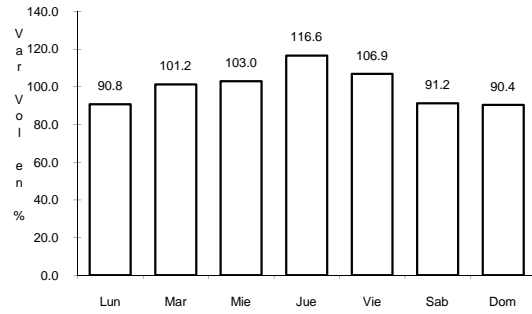


Km: 5.50 Tipo: 1 Sent: 0

28 CARR: PILARES - T. C. (XOXOCOTLA - TILZAPOTLA)

CLAVE: 17008

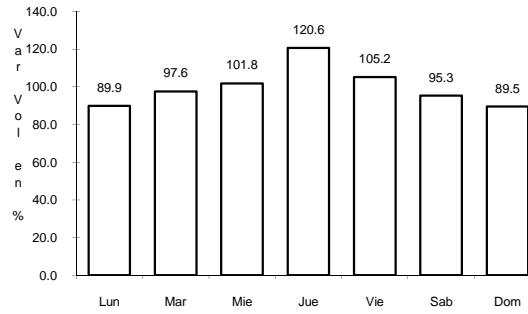
RUTA: MOR-008



Km: 0.00

Tipo: 3

Sent: 1



Km: 0.00

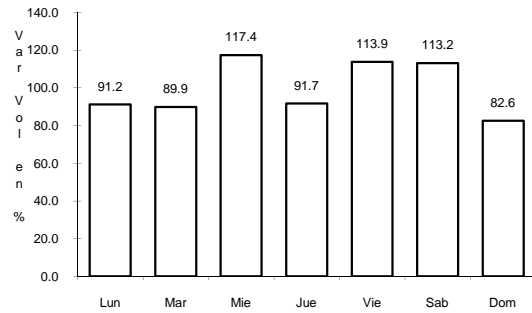
Tipo: 3

Sent: 2

29 CARR: RAMAL A AEROPUERTO DE CUERNAVACA

CLAVE: 17250

RUTA: MOR



Km: 0.00

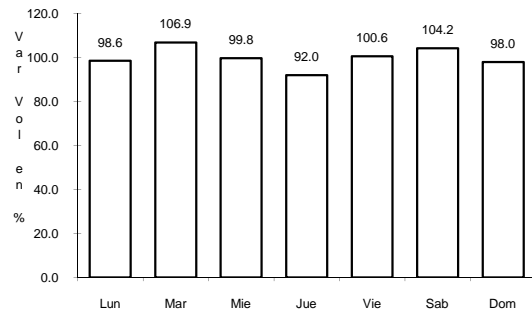
Tipo: 3

Sent: 0

30 CARR: RAMAL A COATETELCO

CLAVE: 17304

RUTA: MOR



Km: 0.00

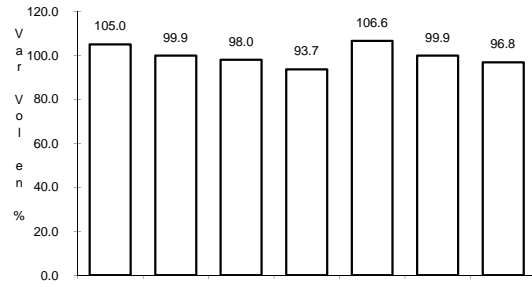
Tipo: 3

Sent: 0

31 CARR: RAMAL A JOLALPAN

CLAVE: 00143

ruta: MOR-PUE



Km: 0.00

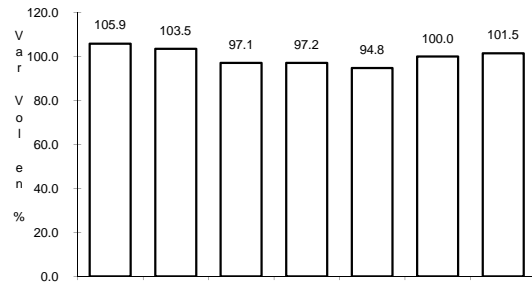
Tipo: 3

Sent: 0

32 CARR: RAMAL A JUCHITEPEC

CLAVE:

ruta: EM



Km: 0.00

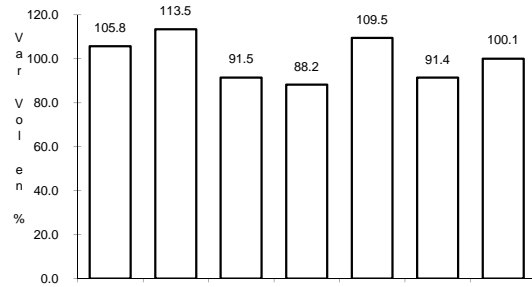
Tipo: 3

Sent: 0

33 CARR: RAMAL A TETELA DEL VOLCAN

CLAVE: 17010

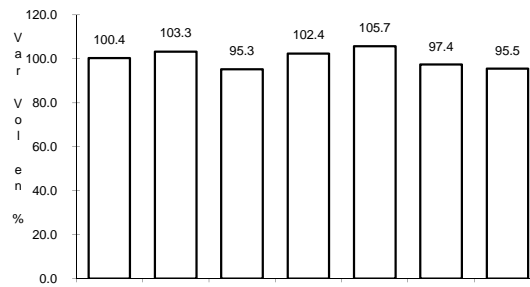
ruta: MOR-010



Km: 0.00

Tipo: 3

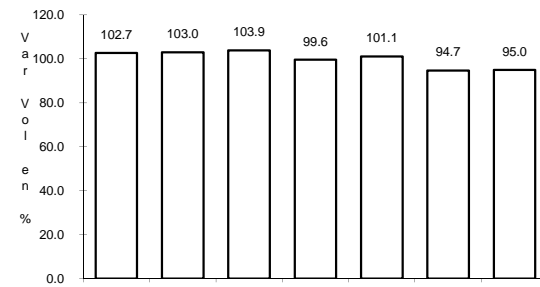
Sent: 0



Km: 15.00

Tipo: 1

Sent: 0



Km: 22.00

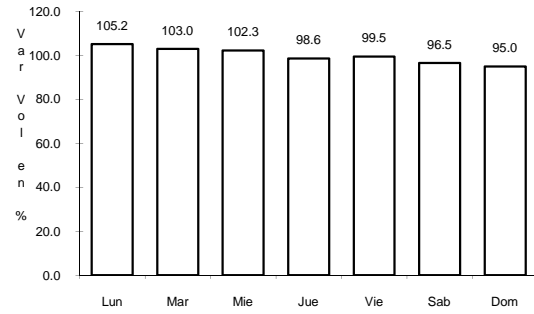
Tipo: 1

Sent: 0

34 CARR: T. C. (SAN GREGORIO - OAXTEPEC) - JOJUTLA

CLAVE: 17002

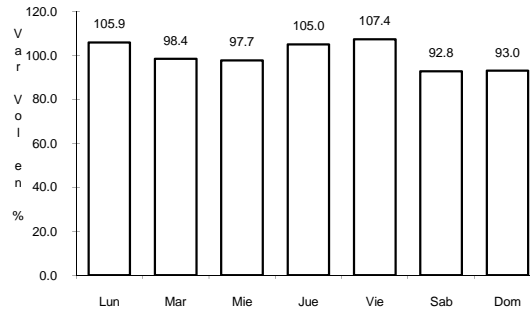
ruta: MOR-002



Km: 0.00

Tipo: 3

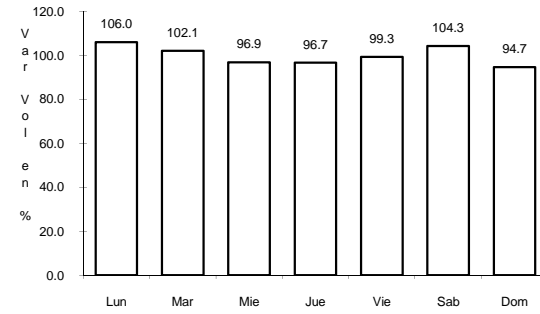
Sent: 0



Km: 32.30

Tipo: 1

Sent: 0



Km: 53.50

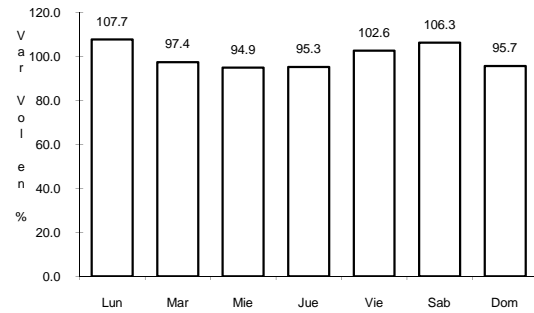
Tipo: 1

Sent: 0

35 CARR: T.C. MEXICO - CUERNAVACA (LIBRE) - HUITZILAC

CLAVE:

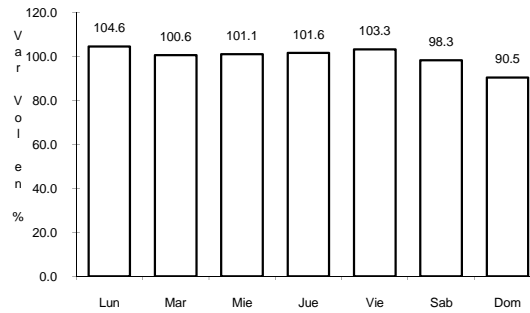
ruta: MOR



Km: 0.00

Tipo: 3

Sent: 0



Km: 4.00

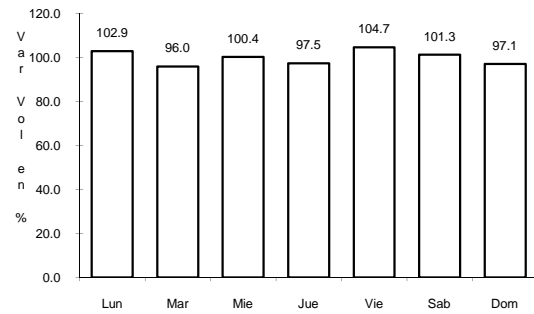
Tipo: 1

Sent: 0

36 CARR: TEHUXTLA - PUENTE DE IXTLA

CLAVE: 17307

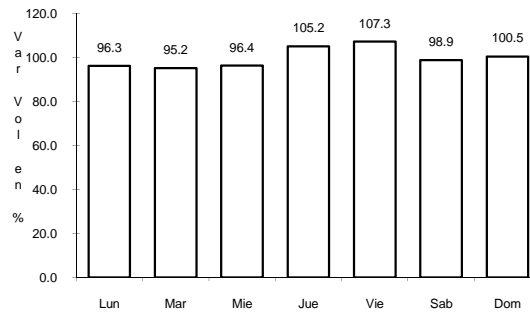
ruta: MOR



Km: 0.00

Tipo: 3

Sent: 0



Km: 9.60

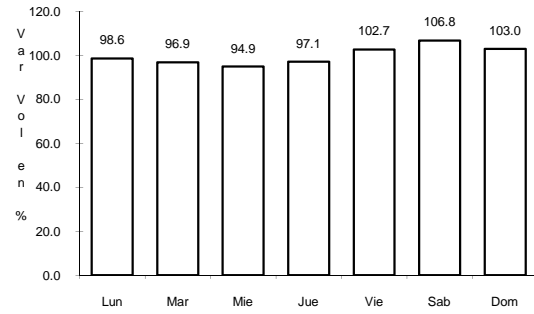
Tipo: 1

Sent: 0

37 CARR: TEJALPA - JOJUTLA

CLAVE: 17014

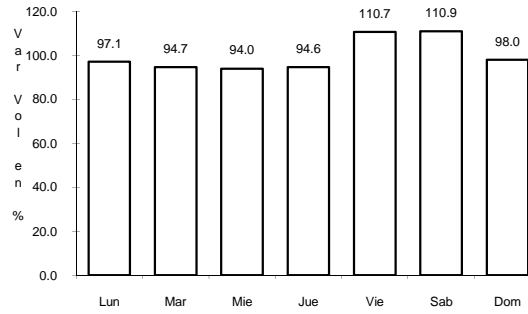
RUTA: MOR-014



Km: 1.97

Tipo: 3

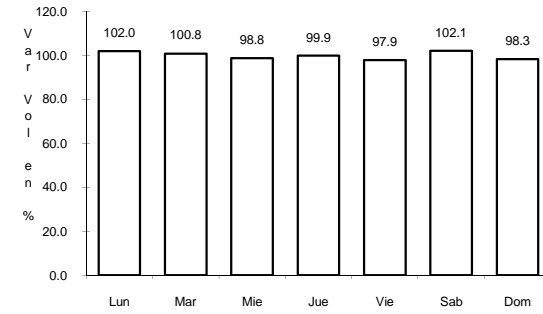
Sent: 0



Km: 14.50

Tipo: 1

Sent: 0



Km: 35.00

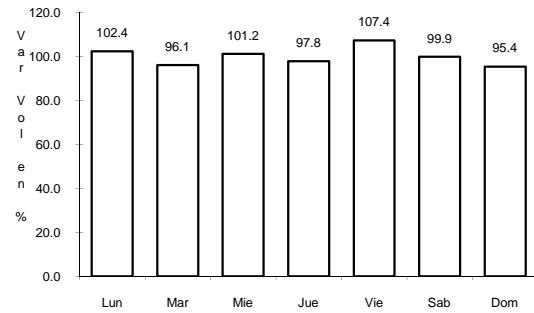
Tipo: 1

Sent: 0

38 CARR: TEMILPA - TEPALCINGO

CLAVE: 17009

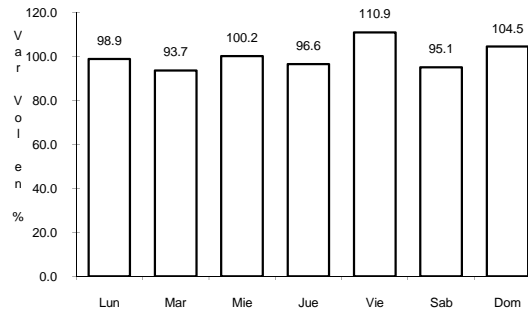
RUTA: MOR-009



Km: 0.00

Tipo: 3

Sent: 0



Km: 40.50

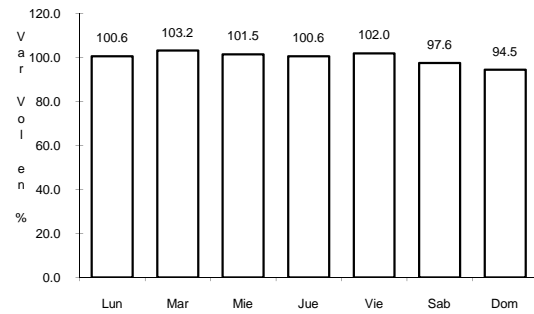
Tipo: 1

Sent: 0

39 CARR: TEPOZTLAN - YAUTEPEC

CLAVE: 17013

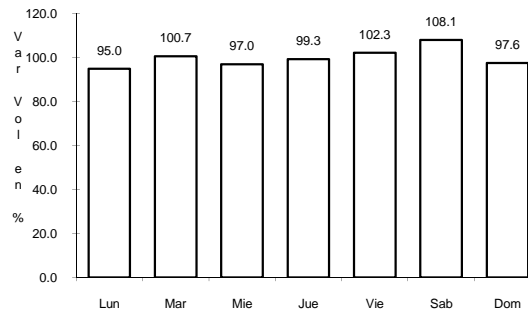
RUTA: MOR-013



Km: 0.00

Tipo: 3

Sent: 0

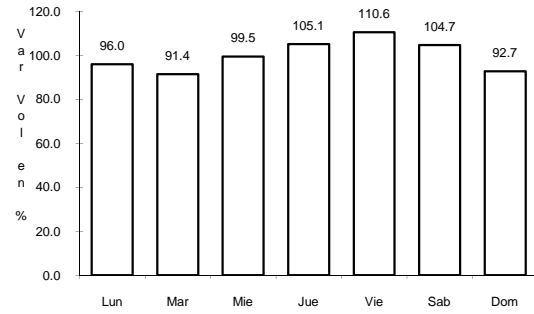


Km: 14.82

Tipo: 1

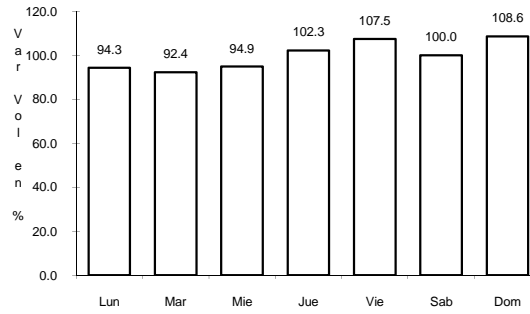
Sent: 0

40 CARR: XOXOCOTLA - TILZAPOTLA



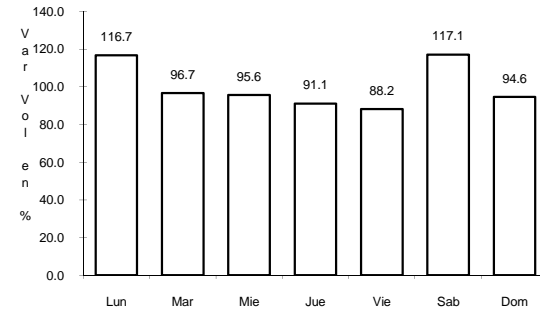
Km: 0.00 Tipo: 3 Sent: 1

CLAVE: 17005



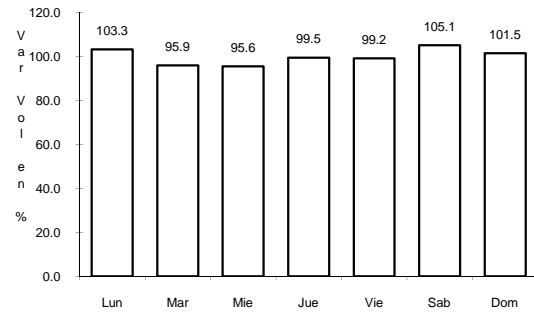
Km: 0.00 Tipo: 3 Sent: 2

RUTA: MOR-006



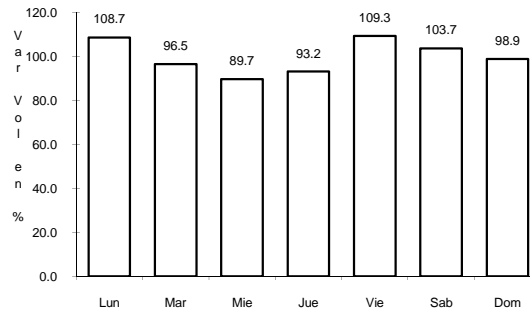
Km: 29.50 Tipo: 1 Sent: 0

41 CARR: ZACATEPEC - TLAQUILTENANGO



Km: 0.00 Tipo: 3 Sent: 0

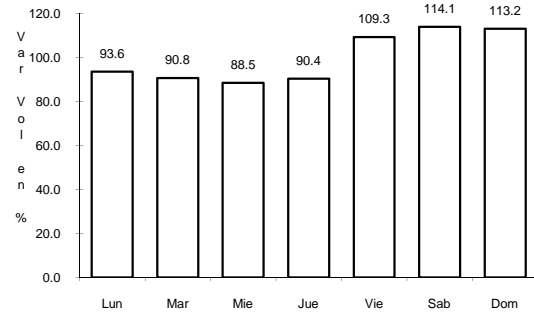
CLAVE: 17300



Km: 4.08 Tipo: 1 Sent: 0

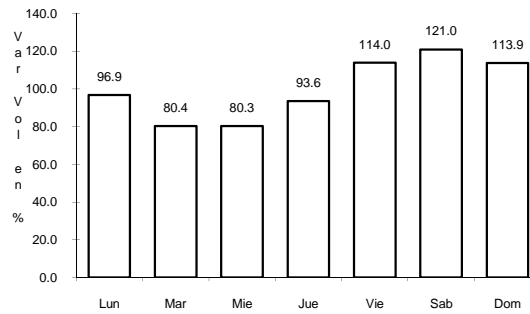
RUTA: MOR

42 CARR: ATlixco - JANTETELCO (CUOTA)



Km: 0.00 Tipo: 3 Sent: 0

CLAVE:



Km: 34.00 Tipo: 1 Sent: 0

RUTA: PUE-D

43 CARR: TRES MARIAS - SANTA MARTHA

CLAVE: 00172

RUTA: MEX-106-EM

