

MICHOACAN

Núm. INDICE	CARRETERA	RUTA
<b>---- FEDERAL LIBRE ----</b>		
1	ACAMBARO - ZINAPECUARO	MEX-120
2	CARAPAN - PLAYA AZUL	MEX-037
3	ENT. PATTI - SAHUAYO	MEX-110
4	ENT. PLAYA AZUL - MANZANILLO	MEX-200
5	HUAJUMBARO - SAN JOSE	MEX-051-120
6	IRAPUATO - ZAPOTLANEJO	MEX-090
7	JIQUILPAN - COLIMA	MEX-110
8	JIQUILPAN - GUADALAJARA	MEX-015
9	LA NORIA - ACAMBARO	MEX-120
10	LA ORILLA - LAS TRUCHAS	MEX
11	LA PIEDAD - CARAPAN	MEX-037
12	MARAVATIO - ACAMBARO	MEX-061
13	MORELIA - JIQUILPAN	MEX-015
14	MORELIA - PATZCUARO	MEX-126
15	MORELIA - SALAMANCA	MEX-043
16	PATZCUARO - URUAPAN	MEX-126
17	QUIROGA - TEPALCATEPEC	MEX-120
18	RINCONADA - LA PIEDAD	MEX
19	T. C. (ZIHUATANEJO - LA MIRA) - LAZARO CARDENAS	MEX
20	TOLUCA - CD. ALTAMIRANO	MEX-134
21	TOLUCA - MORELIA	MEX-015
22	ZAMORA - VISTA HERMOSA	MEX
23	ZIHUATANEJO - LA MIRA	MEX-200
24	ZITACUARO - CD. ALTAMIRANO	MEX-051
<b>---- FEDERAL CUOTA ----</b>		
25	ATLACOMULCO - ZAPOTLANEJO (CUOTA)	MEX-015D
26	ENT. PATZCUARO - URUAPAN (CUOTA)	MEX-126D
27	ENT. URUAPAN - LAZARO CARDENAS (CUOTA)	MEX-037D
28	MORELIA - SALAMANCA (CUOTA)	MEX-043D
<b>---- ESTATAL LIBRE ----</b>		
29	APATZINGAN - AGUILILLA	MICH
30	CHURUMUCO - ZICUIRAN	MICH
31	COMANJA - HUANIQUEO	MICH-024
32	CUITZEO - ZINAPARO	MICH-027
33	EL CORREO - LAGUNILLAS	MICH
34	EL TEMASCAL - EL LIMON	MICH
35	EMILIANO ZAPATA - COTIJA	MICH
36	GABRIEL ZAMORA - DR. MIGUEL SILVA	MICH
37	JACONA - BUENAVISTA TOMATLAN	MICH-016
38	LA PAZ - TEPETONGO	MICH
39	LIBRAMIENTO DE URUAPAN	MICH
40	PATZCUARO - CHUPICUARO	MICH
41	RAMAL A COAHUAYANA	MICH-069
42	RAMAL A INFIERNILLO	MICH-010
43	SAN FELIPE ALZATI - ANGANGUEO	MICH-044
44	SAN JUAN TUMBIO - CHERAN	MICH
45	T. C. (TOLUCA - MORELIA) - MARAVATIO	MICH-122
46	T. C. (V. VICTORIA - EL ORO DE HIDALGO) - ANGANGUEO	EM-003-MICH
47	T.C. (CARAPAN - PLAYA AZUL) - PERIBAN DE RAMOS	MICH
48	TEPALCATEPEC - AQUILA	MICH
49	TIRIPETIO - ERENDIRA	MICH
50	TOCUMBO - COTIJA	MICH-042
51	UCAREO - SAN PEDRO JACUARO	MICH
52	URUAPAN - EL COPETIRO	MICH
53	ZACAPU - VILLACHUATO	MICH-039
<b>---- ESTATAL CUOTA ----</b>		
54	LIBRAMIENTO DE LA PIEDAD (CUOTA)	MICH-D
<b>---- COMBINADA ----</b>		
55	ATLACOMULCO - MORELIA	EM-005-MEX-126
56	OPOPEO - PURUARAN	MEX-041-MICH

# Secretaría de Comunicaciones y Transportes

- Red Federal Libre
- Red Federal Cuota
- Red Estatal Libre
- Red Estatal Cuota
- Red Combinada



MICHOACAN

1 CARR : ACAMBARO - ZINAPECUARO

CLAVE: 00417

ruta : MEX-120

AÑO : 2008

L U G A R	E S T A C I O N				C L A S I F I C A C I O N V E H I C U L A R E N P O R C I E N T O .												
	KM	TE	SC	TDPA	A	B	C2	C3	T3S2	T3S3	T3S2R4	OTROS	A	B	C	K'	D
ACAMBARO	0.00	3	0	5547	81.2	6.8	6.7	3.4	0.7	0.3	0.0	0.9	81.2	6.8	12.0	0.094	0.502
LIM. EDOS. TERM. GTO. PPIA. MICH.	12.80																
ZINAPECUARO	25.00	1	0	3585	84.2	4.6	3.3	0.9	3.5	1.0	1.1	1.4	84.2	4.6	11.2	0.115	0.502

2 CARR : CARAPAN - PLAYA AZUL

CLAVE: 16126

ruta : MEX-037

AÑO : 2008

L U G A R	E S T A C I O N				C L A S I F I C A C I O N V E H I C U L A R E N P O R C I E N T O .												
	KM	TE	SC	TDPA	A	B	C2	C3	T3S2	T3S3	T3S2R4	OTROS	A	B	C	K'	D
T. C. MORELIA - JIQUILPAN	0.00	3	0	6133	69.0	5.6	6.3	4.7	5.7	2.4	4.0	2.3	69.0	5.6	25.4	0.090	0.519
URUAPAN	72.03	1	0	9262	71.9	3.6	4.8	2.6	6.0	2.4	5.6	3.1	71.9	3.6	24.5	0.074	0.520
URUAPAN	72.03	3	0	4749	81.3	4.1	4.3	2.0	3.4	2.2	2.0	0.7	81.3	4.1	14.6	0.085	0.504
GABRIEL ZAMORA	113.70	1	0	4468	74.6	4.6	6.2	3.3	4.5	2.4	2.3	2.1	74.6	4.6	20.8	0.091	0.529
X. C. QUIROGA - TEPALCATEPEC	137.80	1	0	9227	83.6	4.5	1.4	1.9	2.6	1.7	2.0	2.3	83.6	4.5	11.9	0.125	0.502
X. C. QUIROGA - TEPALCATEPEC	137.80	3	0	4257	87.2	4.8	0.6	0.8	3.5	0.7	0.8	1.6	87.2	4.8	8.0	0.112	0.505
SAN PEDRO BARAJAS	171.50	1	0	3129	84.0	3.1	5.0	1.4	1.7	2.0	2.2	0.6	84.0	3.1	12.9	0.101	0.504
SAN PEDRO BARAJAS	171.50	3	0	2911	83.2	4.6	5.7	2.6	1.9	1.3	0.7	0.0	83.2	4.6	12.2	0.071	0.508
T. IZQ. INFIERNILLO	212.60	1	0	2217	80.7	4.7	5.7	2.3	3.0	2.0	1.0	0.6	80.7	4.7	14.6	0.078	0.503
T. IZQ. INFIERNILLO	212.60	3	0	1415	91.9	2.4	3.1	0.7	0.9	0.6	0.1	0.3	91.9	2.4	5.7	0.100	0.516
ARTEAGA	274.50	1	0	1763	92.8	3.4	1.1	0.4	1.3	0.3	0.2	0.5	92.8	3.4	3.8	0.077	0.515
T. IZQ. ZIHUATANEJO	333.80	1	0	2800	85.9	4.2	2.4	1.8	2.8	0.7	1.1	1.1	85.9	4.2	9.9	0.076	0.502
T. IZQ. ZIHUATANEJO	333.80	3	0	6328	86.8	3.3	3.1	0.8	1.3	1.6	1.5	1.6	86.8	3.3	9.9	0.090	0.501
PLAYA AZUL	341.00	1	0	4811	89.4	2.9	2.8	1.5	1.9	0.5	0.3	0.7	89.4	2.9	7.7	0.110	0.503

3 CARR : ENT. PATTI - SAHUAYO

CLAVE: 16181

ruta : MEX-110

AÑO : 2008

L U G A R	E S T A C I O N				C L A S I F I C A C I O N V E H I C U L A R E N P O R C I E N T O .												
	KM	TE	SC	TDPA	A	B	C2	C3	T3S2	T3S3	T3S2R4	OTROS	A	B	C	K'	D
T. C. IRAPUATO - GUADALAJARA	0.00	3	0	6059	64.3	3.9	5.6	7.0	6.4	6.4	2.5	3.9	64.3	3.9	31.8	0.081	0.509
T. IZQ. ZAMORA	44.26	1	0	6247	76.7	3.7	5.3	4.8	2.5	2.9	2.6	1.5	76.7	3.7	19.6	0.073	0.530
VISTA HERMOSA	44.98	3	0	12429	69.1	5.5	4.3	5.2	7.3	3.9	0.7	4.0	69.1	5.5	25.4	0.078	0.501
BRISEÑAS	55.88	3	0	6499	72.4	8.3	5.9	4.8	2.8	3.1	0.3	2.4	72.4	8.3	19.3	0.066	0.511
CUMUATILLO	71.87	3	0	6804	71.3	7.3	5.6	4.9	4.7	4.2	0.2	1.8	71.3	7.3	21.4	0.096	0.503
T. C. JIQUILPAN - GUADALAJARA	88.00	1	0	7630	76.9	4.8	4.8	3.9	3.3	2.5	1.7	2.1	76.9	4.8	18.3	0.079	0.529

MICHOACAN

4 CARR : ENT. PLAYA AZUL - MANZANILLO

CLAVE: 00495

RUTA : MEX-200

AÑO : 2008

L U G A R	E S T A C I O N				C L A S I F I C A C I O N V E H I C U L A R E N P O R C I E N T O .												
	KM	TE	SC	TDPA	A	B	C2	C3	T3S2	T3S3	T3S2R4	OTROS	A	B	C	K'	D
T. C. CARAPAN - PLAYA AZUL	0.00	3	0	3538	85.7	3.7	4.1	2.1	1.1	1.8	0.0	1.5	85.7	3.7	10.6	0.083	0.501
CALETA DE CAMPOS	50.24	1	0	1087	87.4	2.7	4.5	2.2	0.8	0.7	0.7	1.0	87.4	2.7	9.9	0.077	0.506
TIZUAPAN	106.60	1	0	578	87.9	2.8	5.4	0.5	1.0	1.6	0.1	0.7	87.9	2.8	9.3	0.106	0.503
MARUATA	149.80	1	0	716	88.9	3.0	4.9	2.3	0.5	0.1	0.0	0.3	88.9	3.0	8.1	0.113	0.500
MARUATA	149.80	3	0	833	85.5	4.7	5.2	2.7	0.4	0.3	0.4	0.8	85.5	4.7	9.8	0.070	0.505
T. DER. AGUILA	190.10	3	0	1772	83.6	3.6	5.8	2.7	1.8	0.9	1.0	0.6	83.6	3.6	12.8	0.130	0.502
LIM. EDOS. TERM. MICH. PPIA. COL.	229.60																
CERRO DE ORTEGA	233.20	1	0	5053	85.0	1.7	3.4	1.3	2.6	1.9	1.4	2.7	85.0	1.7	13.3	0.078	0.511
EL BALCON	243.00	1	0	5281	81.1	5.3	5.8	3.5	1.0	1.8	0.0	1.5	81.1	5.3	13.6	0.084	0.503
EL BALCON	243.00	3	0	5430	81.8	5.1	5.5	2.6	1.5	2.3	0.2	1.0	81.8	5.1	13.1	0.108	0.506
COFRADIA DE MORELOS	252.50	1	0	11022	83.4	3.7	5.2	2.9	1.7	1.8	0.6	0.7	83.4	3.7	12.9	0.074	0.504
COFRADIA DE MORELOS	252.50	3	0	7700	85.0	3.1	4.8	2.4	1.8	1.6	0.5	0.8	85.0	3.1	11.9	0.086	0.505
T. C. COLIMA - ENT. TECOMAN	263.80	1	1	3974	70.9	8.2	7.5	5.4	5.4	1.8	0.3	0.5	70.9	8.2	20.9	0.098	0.515
T. C. COLIMA - ENT. TECOMAN	263.80	1	2	4217	72.1	8.1	7.6	5.0	4.2	2.2	0.2	0.6	72.1	8.1	19.8	0.094	0.515
T. DER. RINCON DE LOPEZ	269.30	1	0	6951	80.3	6.6	4.9	1.1	2.3	1.8	1.3	1.7	80.3	6.6	13.1	0.078	0.503
ARMERIA	272.50	1	0	6564	75.1	6.0	5.2	3.0	3.3	2.1	3.0	2.3	75.1	6.0	18.9	0.100	0.515
T. IZQ. CUYUTLAN	278.20	1	0	3683	74.0	10.3	5.6	4.4	2.0	0.9	0.7	2.1	74.0	10.3	15.7	0.105	0.506
SANTA RITA	292.50	1	0	3804	68.3	3.8	2.6	4.8	7.5	6.1	3.8	3.1	68.3	3.8	27.9	0.106	0.502
SANTA RITA	292.50	3	0	3935	70.5	4.7	3.2	2.5	8.2	6.2	3.2	1.5	70.5	4.7	24.8	0.066	0.501
LAS NUEVAS JUNTAS	310.70	1	0	5886	71.6	3.9	4.0	3.1	8.0	6.5	1.9	1.0	71.6	3.9	24.5	0.080	0.505
T. DER. LIBRAMIENTO DE MANZANILLO (LIBRE)	312.70	1	0	5682	78.8	10.4	2.5	1.8	1.6	1.6	1.2	2.1	78.8	10.4	10.8	0.090	0.501
T. DER. LIBRAMIENTO DE MANZANILLO (LIBRE)	312.70	3	0	5292	78.1	8.5	1.5	1.4	4.0	2.3	1.3	2.9	78.1	8.5	13.4	0.070	0.503
MANZANILLO	321.10	1	0	7065	87.0	4.6	2.0	2.5	1.9	1.4	0.2	0.4	87.0	4.6	8.4	0.096	0.504

5 CARR : HUAJUMBARO - SAN JOSE

CLAVE: 16555

RUTA : MEX-051-120

AÑO : 2008

L U G A R	E S T A C I O N				C L A S I F I C A C I O N V E H I C U L A R E N P O R C I E N T O .												
	KM	TE	SC	TDPA	A	B	C2	C3	T3S2	T3S3	T3S2R4	OTROS	A	B	C	K'	D
T. C. TOLUCA - MORELIA	0.00	3	0	3962	67.7	11.1	5.8	4.2	3.2	2.6	2.3	3.1	67.7	11.1	21.2	0.087	0.502
X. C. ATLACOMULCO - MORELIA	26.59	3	0	2732	79.5	6.1	5.4	4.2	1.4	1.2	0.4	1.8	79.5	6.1	14.4	0.077	0.500
T. DER. LIBRAMIENTO DE ZINAPECUARO	33.83	3	0	5974	72.8	5.1	5.1	7.5	2.5	2.6	1.5	2.9	72.8	5.1	22.1	0.070	0.502
T. C. MORELIA - SALAMANCA	71.14	1	0	8596	84.3	4.9	4.6	2.2	1.2	1.5	0.2	1.1	84.3	4.9	10.8	0.094	0.506

MICHOACAN

6 CARR : IRAPUATO - ZAPOTLANEJO

CLAVE: 00114

ruta : MEX-090

AÑO : 2008

L U G A R	E S T A C I O N				C L A S I F I C A C I O N V E H I C U L A R E N P O R C I E N T O .												
	KM	TE	SC	TDPA	A	B	C2	C3	T3S2	T3S3	T3S2R4	OTROS	A	B	C	K'	D
IRAPUATO	0.00																
T. IZQ. QUERETARO - IRAPUATO (CUOTA)	2.78	1	1	13247	83.2	5.5	4.2	2.5	1.3	0.9	1.2	1.2	83.2	5.5	11.3	0.104	0.502
T. IZQ. QUERETARO - IRAPUATO (CUOTA)	2.78	1	2	13153	84.0	5.5	4.0	2.6	1.1	0.8	1.2	0.8	84.0	5.5	10.5	0.096	0.502
T. IZQ. QUERETARO - IRAPUATO (CUOTA)	2.78	3	1	10823	82.7	6.2	4.4	3.1	1.6	0.9	0.0	1.1	82.7	6.2	11.1	0.104	0.502
T. IZQ. QUERETARO - IRAPUATO (CUOTA)	2.78	3	2	10729	82.7	6.3	4.4	2.9	1.7	1.0	0.1	0.9	82.7	6.3	11.0	0.102	0.502
T. DER. CUERAMARO	15.00	3	1	10587	72.4	6.2	7.8	3.8	4.3	3.0	0.9	1.6	72.4	6.2	21.4	0.099	0.511
T. DER. CUERAMARO	15.00	3	2	10121	72.2	6.4	8.0	3.7	4.3	2.9	0.9	1.6	72.2	6.4	21.4	0.096	0.511
ABASOLO	30.00	1	1	8580	70.4	8.0	4.9	3.5	4.7	3.2	1.9	3.4	70.4	8.0	21.6	0.110	0.505
ABASOLO	30.00	1	2	8417	69.0	8.0	6.0	3.0	5.0	3.5	1.9	3.6	69.0	8.0	23.0	0.125	0.505
ABASOLO	30.00	3	1	7747	68.4	8.1	6.1	3.7	4.6	2.3	2.2	4.6	68.4	8.1	23.5	0.091	0.513
ABASOLO	30.00	3	2	8177	67.5	8.2	7.1	3.4	5.4	2.9	2.4	3.1	67.5	8.2	24.3	0.093	0.513
PENJAMO	50.65	1	1	13310	72.0	8.7	4.1	5.4	4.8	3.0	0.3	1.7	72.0	8.7	19.3	0.114	0.502
PENJAMO	50.65	1	2	13218	76.1	8.5	4.1	5.2	3.0	1.6	0.4	1.1	76.1	8.5	15.4	0.145	0.502
PENJAMO	50.65	3	0	16465	51.6	6.0	10.2	8.1	9.0	7.0	2.1	6.0	51.6	6.0	42.4	0.075	0.506
T. DER. MANUEL DOBLADO	83.87	1	0	14862	57.6	8.0	8.1	10.3	4.3	4.8	1.0	5.9	57.6	8.0	34.4	0.087	0.517
LIM. EDOS. TERM. GTO. PPIA. MICH.	86.37																
LA PIEDAD	87.00	3	0	13685	66.0	9.7	7.9	7.2	4.2	1.6	0.3	3.1	66.0	9.7	24.3	0.080	0.528
T. IZQ. YURECUARO	100.00	3	0	9456	83.0	6.6	1.9	1.6	2.5	1.6	1.0	1.8	83.0	6.6	10.4	0.074	0.510
LIM. EDOS. TERM. MICH. PPIA. JAL.	102.10																
DEGOLLADO	105.40	1	0	5900	81.4	3.4	2.8	2.0	6.6	1.4	1.2	1.2	81.4	3.4	15.2	0.100	0.510
AYOTLAN	134.00	1	0	5704	86.8	3.8	0.4	1.0	0.8	6.5	0.2	0.5	86.8	3.8	9.4	0.120	0.510
ATOTONILCO EL ALTO	157.00	1	0	5553	79.4	5.2	2.5	3.9	5.4	1.9	1.6	0.1	79.4	5.2	15.4	0.074	0.501
ATOTONILCO EL ALTO	157.00	3	0	8263	82.2	4.7	2.8	3.2	2.9	1.8	1.3	1.1	82.2	4.7	13.1	0.080	0.509
X. C. SAN MIGUEL EL ALTO - LA BARCA	158.60	3	0	8540	73.7	6.3	5.4	3.2	5.4	3.3	1.6	1.1	73.7	6.3	20.0	0.103	0.502
T. IZQ. OCOTLAN	188.00	1	0	7618	78.2	7.1	2.4	3.5	4.6	1.8	1.5	0.9	78.2	7.1	14.7	0.094	0.508
T. DER. LIBRAMIENTO ZAPOTLANEJO	215.80	1	0	13087	80.8	6.1	3.6	2.8	2.7	2.2	1.0	0.8	80.8	6.1	13.1	0.079	0.502
T. DER. LIBRAMIENTO ZAPOTLANEJO	215.80	3	1	6577	74.9	6.0	4.8	6.5	4.1	0.7	1.1	1.9	74.9	6.0	19.1	0.098	0.511
T. DER. LIBRAMIENTO ZAPOTLANEJO	215.80	3	2	6296	77.1	5.2	4.2	5.4	4.7	0.8	0.9	1.7	77.1	5.2	17.7	0.092	0.511
ZAPOTLANEJO	217.60																

7 CARR : JIQUILPAN - COLIMA

CLAVE: 00156

ruta : MEX-110

AÑO : 2008

L U G A R	E S T A C I O N				C L A S I F I C A C I O N V E H I C U L A R E N P O R C I E N T O .												
	KM	TE	SC	TDPA	A	B	C2	C3	T3S2	T3S3	T3S2R4	OTROS	A	B	C	K'	D
JIQUILPAN	0.00	3	0	4938	89.2	4.8	3.2	0.9	1.1	0.1	0.2	0.5	89.2	4.8	6.0	0.110	0.537



MICHOACAN

9 CARR : LA NORIA - ACAMBARO

CLAVE: 00131

ruta : MEX-120

AÑO : 2008

L U G A R	E S T A C I O N				C L A S I F I C A C I O N V E H I C U L A R E N P O R C I E N T O .												
	KM	TE	SC	TDPA	A	B	C2	C3	T3S2	T3S3	T3S2R4	OTROS	A	B	C	K'	D
LA NORIA	0.00	3	0	4571	84.3	3.8	4.5	2.2	2.5	0.9	0.8	1.0	84.3	3.8	11.9	0.115	0.501
AMEALCO	34.66	1	0	2932	81.5	6.2	3.9	2.0	2.8	1.9	0.9	0.8	81.5	6.2	12.3	0.081	0.506
AMEALCO	34.66	3	0	2644	82.3	6.3	3.9	2.0	3.0	1.2	0.5	0.8	82.3	6.3	11.4	0.081	0.506
LIM. EDOS. TERM. QRO. PPIA. MICH.	41.16																
LIM. EDOS. TERM. MICH. PPIA. GTO.	55.45																
CORONEO	59.35	3	0	4121	85.0	4.0	4.4	2.8	1.6	1.2	0.0	1.0	85.0	4.0	11.0	0.090	0.527
JERECUARO	79.70	3	0	4393	84.9	5.2	3.7	2.5	1.8	1.6	0.1	0.2	84.9	5.2	9.9	0.113	0.504
ACAMBARO	111.10	1	0	5780	80.5	6.4	7.5	3.8	0.6	0.3	0.0	0.9	80.5	6.4	13.1	0.096	0.502

10 CARR : LA ORILLA - LAS TRUCHAS

CLAVE: 16557

ruta : MEX

AÑO : 2008

L U G A R	E S T A C I O N				C L A S I F I C A C I O N V E H I C U L A R E N P O R C I E N T O .												
	KM	TE	SC	TDPA	A	B	C2	C3	T3S2	T3S3	T3S2R4	OTROS	A	B	C	K'	D
T. C. ZIHUATANEJO - LA MIRA	0.00	3	1	8393	88.5	1.8	3.7	2.4	1.2	1.3	0.2	0.9	88.5	1.8	9.7	0.113	0.502
T. C. ZIHUATANEJO - LA MIRA	0.00	3	2	8451	87.8	1.7	3.9	2.2	0.9	1.2	0.7	1.6	87.8	1.7	10.5	0.107	0.502
LAZARO CARDENAS	5.50	1	1	8120	88.1	4.2	3.2	1.9	0.9	0.8	0.4	0.5	88.1	4.2	7.7	0.113	0.502
LAZARO CARDENAS	5.50	1	2	8047	85.1	4.4	3.7	1.7	1.1	1.8	0.3	1.9	85.1	4.4	10.5	0.114	0.502
LAS TRUCHAS	7.50	1	0	16414	86.6	3.0	1.3	1.8	1.5	2.4	1.2	2.2	86.6	3.0	10.4	0.072	0.503

11 CARR : LA PIEDAD - CARAPAN

CLAVE: 16476

ruta : MEX-037

AÑO : 2008

L U G A R	E S T A C I O N				C L A S I F I C A C I O N V E H I C U L A R E N P O R C I E N T O .												
	KM	TE	SC	TDPA	A	B	C2	C3	T3S2	T3S3	T3S2R4	OTROS	A	B	C	K'	D
LA PIEDAD	0.00	3	0	8889	74.2	5.3	8.9	4.9	3.4	1.3	1.2	0.8	74.2	5.3	20.5	0.088	0.511
T. IZQ. PURUANDIRO	24.45	3	0	2521	80.5	3.2	3.9	2.8	2.8	2.2	0.8	3.8	80.5	3.2	16.3	0.076	0.546
PUREPERO	64.00	1	0	3976	84.0	3.6	1.1	2.1	4.2	0.9	2.3	1.8	84.0	3.6	12.4	0.104	0.502
T. C. MORELIA - JIQUILPAN	72.61	1	0	4202	85.7	2.2	2.4	2.6	3.7	0.8	1.8	0.8	85.7	2.2	12.1	0.093	0.501

12 CARR : MARAVATIO - ACAMBARO

CLAVE: 00418

ruta : MEX-061

AÑO : 2008

L U G A R	E S T A C I O N				C L A S I F I C A C I O N V E H I C U L A R E N P O R C I E N T O .												
	KM	TE	SC	TDPA	A	B	C2	C3	T3S2	T3S3	T3S2R4	OTROS	A	B	C	K'	D
MARAVATIO	0.00	3	0	7036	75.2	8.2	7.6	3.0	1.8	1.3	0.5	2.4	75.2	8.2	16.6	0.077	0.501
LIM. EDOS. TERM. MICH. PPIA. GTO.	9.00																
TARANDACUAO	13.00	3	0	4801	83.0	4.6	4.8	4.0	1.5	0.9	0.0	1.2	83.0	4.6	12.4	0.117	0.505



MICHOACAN

12 CARR : MARAVATIO - ACAMBARO

CLAVE: 00418

RUTA : MEX-061

AÑO : 2008

L U G A R	E S T A C I O N				C L A S I F I C A C I O N V E H I C U L A R E N P O R C I E N T O .												
	KM	TE	SC	TDPA	A	B	C2	C3	T3S2	T3S3	T3S2R4	OTROS	A	B	C	K'	D
ACAMBARO	39.00	1	0	3706	84.7	3.6	3.7	3.5	1.8	0.7	0.1	1.9	84.7	3.6	11.7	0.099	0.501

13 CARR : MORELIA - JIQUILPAN

CLAVE: 16029

RUTA : MEX-015

AÑO : 2008

L U G A R	E S T A C I O N				C L A S I F I C A C I O N V E H I C U L A R E N P O R C I E N T O .												
	KM	TE	SC	TDPA	A	B	C2	C3	T3S2	T3S3	T3S2R4	OTROS	A	B	C	K'	D
MORELIA	0.00																
T. IZQ. PERIFERICO MORELIA	3.10	3	1	9002	79.0	4.0	6.5	3.4	3.3	2.1	1.0	0.7	79.0	4.0	17.0	0.082	0.514
T. IZQ. PERIFERICO MORELIA	3.10	3	2	9503	79.0	4.1	6.6	3.2	3.4	2.1	1.0	0.6	79.0	4.1	16.9	0.080	0.514
T. IZQ. LAGUNILLAS	24.90	1	0	6050	73.6	4.4	6.2	3.2	4.7	2.9	2.1	2.9	73.6	4.4	22.0	0.090	0.509
T. IZQ. LAGUNILLAS	24.90	3	0	5951	82.5	3.9	4.3	2.3	3.3	2.1	0.9	0.7	82.5	3.9	13.6	0.106	0.504
T. IZQ. LIBRAMIENTO DE QUIROGA	40.95	3	0	6110	81.3	4.9	4.8	2.4	3.7	1.0	0.8	1.1	81.3	4.9	13.8	0.074	0.504
T. DER. ZACAPU Y VILLACHUATO	77.10	1	0	8607	77.0	3.9	4.6	4.3	4.1	3.1	0.0	3.0	77.0	3.9	19.1	0.089	0.502
T. DER. LA PIEDAD	105.00	1	0	3829	77.0	4.9	3.6	2.6	4.7	3.1	1.5	2.6	77.0	4.9	18.1	0.076	0.522
T. DER. LA PIEDAD	105.00	3	0	5574	83.7	3.9	1.1	2.4	3.7	1.2	2.0	2.0	83.7	3.9	12.4	0.091	0.502
T. IZQ. TANGANCICUARO	131.20	1	0	10651	81.0	5.0	2.6	0.5	2.3	2.8	1.5	4.3	81.0	5.0	14.0	0.085	0.502
T. IZQ. TANGANCICUARO	131.20	3	0	9721	85.1	4.0	4.3	2.2	1.3	1.8	0.1	1.2	85.1	4.0	10.9	0.089	0.501
ZAMORA	144.40	1	1	4737	84.2	5.0	1.2	2.1	0.9	1.9	2.0	2.7	84.2	5.0	10.8	0.083	0.528
ZAMORA	144.40	1	2	4234	83.0	5.0	0.9	2.0	1.0	1.8	2.6	3.7	83.0	5.0	12.0	0.075	0.528
JACONA	148.60	3	0	7025	84.0	0.0	4.8	1.1	4.4	1.6	1.8	2.3	84.0	0.0	16.0	0.084	0.505
TANGAMANDAPIO	163.00	3	0	4762	80.2	5.4	5.5	2.2	3.2	1.6	0.9	1.0	80.2	5.4	14.4	0.100	0.502
T. DER. VILLA MAR	186.20	1	0	4115	86.1	4.7	1.5	1.9	2.7	1.2	0.8	1.1	86.1	4.7	9.2	0.079	0.504
T. DER. LIBRAMIENTO DE JIQUILPAN	200.00	1	0	7095	77.3	3.8	5.4	1.9	5.6	2.0	1.9	2.1	77.3	3.8	18.9	0.101	0.509
JIQUILPAN	203.80																

14 CARR : MORELIA - PATZCUARO

CLAVE: 16009

RUTA : MEX-126

AÑO : 2008

L U G A R	E S T A C I O N				C L A S I F I C A C I O N V E H I C U L A R E N P O R C I E N T O .												
	KM	TE	SC	TDPA	A	B	C2	C3	T3S2	T3S3	T3S2R4	OTROS	A	B	C	K'	D
T. C. MORELIA - JIQUILPAN	0.00																
X. PERIFERICO MORELIA	3.00	3	1	7109	80.3	5.1	5.5	2.8	2.5	0.6	1.1	2.1	80.3	5.1	14.6	0.096	0.533
X. PERIFERICO MORELIA	3.00	3	2	6219	81.7	5.1	5.2	2.7	2.4	1.0	0.7	1.2	81.7	5.1	13.2	0.070	0.533
TIRIPETIO	25.00	3	1	6175	79.5	3.6	4.6	3.0	3.2	2.7	2.7	0.7	79.5	3.6	16.9	0.074	0.500
TIRIPETIO	25.00	3	2	6187	79.9	3.7	4.8	2.9	3.5	2.3	2.3	0.6	79.9	3.7	16.4	0.079	0.500
HUIRAMBA	37.00	1	1	6545	85.6	3.9	4.4	3.8	0.0	0.0	0.0	2.3	85.6	3.9	10.5	0.089	0.501

MICHOACAN

14 CARR : MORELIA - PATZCUARO

CLAVE: 16009

RUTA : MEX-126

AÑO : 2008

L U G A R	E S T A C I O N				C L A S I F I C A C I O N V E H I C U L A R E N P O R C I E N T O .												
	KM	TE	SC	TDPA	A	B	C2	C3	T3S2	T3S3	T3S2R4	OTROS	A	B	C	K'	D
HUIRAMBA	37.00	1	2	6561	86.3	3.8	4.3	3.7	0.0	0.0	0.0	1.9	86.3	3.8	9.9	0.104	0.501
TZURUMUTARO	53.00	1	1	3998	81.0	6.3	3.1	2.0	5.2	1.2	0.0	1.2	81.0	6.3	12.7	0.099	0.508
TZURUMUTARO	53.00	1	2	4121	83.7	5.8	3.2	2.0	2.8	1.0	0.4	1.1	83.7	5.8	10.5	0.088	0.508

15 CARR : MORELIA - SALAMANCA

CLAVE: 00124

RUTA : MEX-043

AÑO : 2008

L U G A R	E S T A C I O N				C L A S I F I C A C I O N V E H I C U L A R E N P O R C I E N T O .												
	KM	TE	SC	TDPA	A	B	C2	C3	T3S2	T3S3	T3S2R4	OTROS	A	B	C	K'	D
MORELIA	0.00																
X. PERIFERICO MORELIA	2.70	3	1	19044	74.7	6.8	5.2	2.8	4.3	2.7	3.0	0.5	74.7	6.8	18.5	0.074	0.501
X. PERIFERICO MORELIA	2.70	3	2	18979	76.5	6.7	5.0	2.8	2.4	2.7	2.6	1.3	76.5	6.7	16.8	0.070	0.501
T. DER. ZINAPECUARO	8.85	1	1	11420	67.8	4.0	5.6	2.5	6.5	3.2	4.7	5.7	67.8	4.0	28.2	0.076	0.517
T. DER. ZINAPECUARO	8.85	1	2	10688	57.8	4.0	5.7	2.3	9.1	6.0	6.4	8.7	57.8	4.0	38.2	0.071	0.517
T. DER. ZINAPECUARO	8.85	3	1	7914	76.0	5.5	5.7	3.0	2.5	1.9	2.4	3.0	76.0	5.5	18.5	0.073	0.511
T. DER. ZINAPECUARO	8.85	3	2	7575	76.1	5.6	5.8	2.9	4.0	2.4	2.8	0.4	76.1	5.6	18.3	0.078	0.511
CUITZEO	33.64	1	0	7959	76.4	8.5	6.0	2.8	1.8	1.8	1.0	1.7	76.4	8.5	15.1	0.082	0.504
CUITZEO	33.64	3	0	7451	81.9	3.9	4.0	3.1	2.4	2.3	0.3	2.1	81.9	3.9	14.2	0.083	0.502
LIM. EDOS. TERM. MICH. PPIA. GTO.	47.12																
T. IZQ. MOROLEON	52.36	1	1	2237	76.1	4.9	4.3	5.2	1.8	2.1	0.5	5.1	76.1	4.9	19.0	0.098	0.502
T. IZQ. MOROLEON	52.36	1	2	2219	76.9	4.8	4.4	4.4	2.3	1.3	0.3	5.6	76.9	4.8	18.3	0.105	0.502
URIANGATO	54.22	3	1	2764	87.0	3.6	1.2	1.6	1.1	1.4	1.3	2.8	87.0	3.6	9.4	0.120	0.506
URIANGATO	54.22	3	2	2833	85.7	3.3	1.4	2.2	1.2	1.6	1.6	3.0	85.7	3.3	11.0	0.110	0.506
T. DER. YURIRIA	61.36	3	0	4977	82.0	3.7	2.4	2.8	2.8	2.5	0.2	3.6	82.0	3.7	14.3	0.110	0.503
MAGDALENA DE ARACEO	77.10	1	0	5304	80.8	4.1	5.8	2.4	2.1	2.4	0.2	2.2	80.8	4.1	15.1	0.107	0.509
MAGDALENA DE ARACEO	77.10	3	0	6298	84.6	3.3	6.1	1.6	1.0	0.9	0.0	2.5	84.6	3.3	12.1	0.088	0.510
T. DER. JARAL DEL PROGRESO	87.00	1	0	6451	78.2	0.0	7.0	4.3	4.3	4.6	0.0	1.6	78.2	0.0	21.8	0.089	0.511
T. DER. JARAL DEL PROGRESO	87.00	3	0	8412	73.8	7.2	3.8	2.5	4.0	3.8	1.4	3.5	73.8	7.2	19.0	0.087	0.544
X. C. LIBRAMIENTO DE SALAMANCA	105.10	1	0	12109	69.0	8.7	8.0	5.4	3.4	2.9	1.8	0.8	69.0	8.7	22.3	0.098	0.531
SALAMANCA	108.00	1	1	7943	79.6	4.0	3.7	3.0	2.6	3.7	0.0	3.4	79.6	4.0	16.4	0.094	0.504
SALAMANCA	108.00	1	2	7833	79.8	4.0	3.6	3.5	4.4	3.0	0.0	1.7	79.8	4.0	16.2	0.094	0.504

MICHOACAN

16 CARR : PATZCUARO - URUAPAN

CLAVE: 16484

RUTA : MEX-126

AÑO : 2008

L U G A R	E S T A C I O N				C L A S I F I C A C I O N V E H I C U L A R E N P O R C I E N T O .												
	KM	TE	SC	TDPA	A	B	C2	C3	T3S2	T3S3	T3S2R4	OTROS	A	B	C	K'	D
PATZCUARO	0.00	3	0	6987	74.8	8.6	9.2	2.7	1.3	1.5	1.0	0.9	74.8	8.6	16.6	0.076	0.502
T. IZQ. ZIRAHUEN	17.05	1	0	5182	85.0	5.0	5.0	2.2	0.9	1.0	0.1	0.8	85.0	5.0	10.0	0.088	0.501
TINGAMBATO	35.77	1	0	4867	83.1	6.0	4.1	3.0	1.4	1.4	0.1	0.9	83.1	6.0	10.9	0.086	0.501
TINGAMBATO	35.77	3	0	5648	84.9	4.7	4.4	2.2	1.3	1.2	0.1	1.2	84.9	4.7	10.4	0.094	0.503
T. IZQ. LIBRAMIENTO DE URUAPAN	60.05	1	0	8015	73.6	4.5	5.8	3.3	3.1	2.8	3.5	3.4	73.6	4.5	21.9	0.086	0.519
URUAPAN	62.60	1	1	5158	81.1	4.3	4.0	2.3	3.6	2.1	2.0	0.6	81.1	4.3	14.6	0.080	0.502
URUAPAN	62.60	1	2	5210	80.1	4.5	3.9	1.9	3.3	2.6	3.0	0.7	80.1	4.5	15.4	0.090	0.502

17 CARR : QUIROGA - TEPALCATEPEC

CLAVE: 16125

RUTA : MEX-120

AÑO : 2008

L U G A R	E S T A C I O N				C L A S I F I C A C I O N V E H I C U L A R E N P O R C I E N T O .												
	KM	TE	SC	TDPA	A	B	C2	C3	T3S2	T3S3	T3S2R4	OTROS	A	B	C	K'	D
QUIROGA	0.00	3	0	6092	88.0	3.0	2.3	0.6	3.7	0.5	0.7	1.2	88.0	3.0	9.0	0.087	0.505
ZURUMUTARO	19.00	3	0	11386	82.9	4.8	6.7	1.1	1.4	1.5	0.2	1.4	82.9	4.8	12.3	0.069	0.501
OPOPEO	40.04	1	0	5756	82.4	3.9	4.4	2.3	3.5	2.1	0.9	0.5	82.4	3.9	13.7	0.093	0.510
OPOPEO	40.04	3	0	4000	82.8	3.8	4.3	2.0	3.4	2.0	0.9	0.8	82.8	3.8	13.4	0.085	0.501
ARIO DE ROSALES	72.50	1	0	3456	85.7	3.6	6.6	1.4	0.7	0.6	0.0	1.4	85.7	3.6	10.7	0.099	0.504
ARIO DE ROSALES	72.50	3	0	3599	74.9	7.6	7.9	2.8	3.7	0.7	1.1	1.3	74.9	7.6	17.5	0.099	0.512
LA HUACANA	123.20	3	0	2564	88.1	4.7	1.2	2.3	2.2	0.4	0.5	0.6	88.1	4.7	7.2	0.069	0.514
X. C. CARAPAN - PLAYA AZUL	170.00	1	0	6273	83.6	1.8	2.2	4.0	2.7	1.6	2.6	1.5	83.6	1.8	14.6	0.080	0.501
X. C. CARAPAN - PLAYA AZUL	170.00	3	0	9409	78.2	4.5	6.1	3.6	2.6	1.2	2.5	1.3	78.2	4.5	17.3	0.072	0.507
APATZINGAN	200.90	1	0	11577	77.4	3.1	2.7	1.4	6.1	1.8	3.3	4.2	77.4	3.1	19.5	0.079	0.507
APATZINGAN	200.90	3	0	6664	82.4	3.8	1.1	1.1	5.6	1.4	2.6	2.0	82.4	3.8	13.8	0.098	0.504
SANTA ANA AMATLAN	223.50	1	0	4092	87.2	2.7	2.4	1.8	3.2	1.2	0.6	0.9	87.2	2.7	10.1	0.081	0.511
BUENAVISTA TOMATLAN	233.90	3	0	7423	81.5	4.5	6.1	3.0	2.6	0.8	0.5	1.0	81.5	4.5	14.0	0.105	0.506
TEPALCATEPEC	267.60																

18 CARR : RINCONADA - LA PIEDAD

CLAVE: 16243

RUTA : MEX

AÑO : 2008

L U G A R	E S T A C I O N				C L A S I F I C A C I O N V E H I C U L A R E N P O R C I E N T O .												
	KM	TE	SC	TDPA	A	B	C2	C3	T3S2	T3S3	T3S2R4	OTROS	A	B	C	K'	D
T. C. ZAMORA - VISTA HERMOSA	0.00	3	0	4160	89.5	2.1	1.1	1.0	2.9	0.8	1.6	1.0	89.5	2.1	8.4	0.110	0.505
T. DER. ECUANDUREO (1° ACCESO)	18.40	1	0	3740	89.3	2.8	2.4	1.7	1.2	1.3	0.0	1.3	89.3	2.8	7.9	0.087	0.501
T. C. LA PIEDAD - CARAPAN	46.40	1	0	3968	86.8	3.3	2.3	4.3	1.1	1.2	0.0	1.0	86.8	3.3	9.9	0.101	0.505

MICHOACAN

19 CARR : T. C. (ZIHUATANEJO - LA MIRA) - LAZARO CARDENAS

CLAVE: 16421

RUTA : MEX

AÑO : 2008

L U G A R	E S T A C I O N				C L A S I F I C A C I O N V E H I C U L A R E N P O R C I E N T O .												
	KM	TE	SC	TDPA	A	B	C2	C3	T3S2	T3S3	T3S2R4	OTROS	A	B	C	K'	D
T. C. ZIHUATANEJO - LA MIRA	0.00	3	0	2680	90.0	2.3	3.7	3.1	0.6	0.2	0.1	0.0	90.0	2.3	7.7	0.108	0.501
LAZARO CARDENAS	6.00	1	1	3440	77.0	4.5	0.0	0.6	10.5	2.2	2.4	2.8	77.0	4.5	18.5	0.093	0.500
LAZARO CARDENAS	6.00	1	2	3434	76.6	4.5	0.1	0.7	10.6	2.3	2.5	2.7	76.6	4.5	18.9	0.088	0.500

20 CARR : TOLUCA - CD. ALTAMIRANO

CLAVE: 00020

RUTA : MEX-134

AÑO : 2008

L U G A R	E S T A C I O N				C L A S I F I C A C I O N V E H I C U L A R E N P O R C I E N T O .												
	KM	TE	SC	TDPA	A	B	C2	C3	T3S2	T3S3	T3S2R4	OTROS	A	B	C	K'	D
T. C. TOLUCA - AXIXINTLA	0.00																
T. IZQ. CAPULTITLAN	1.78	3	1	7225	80.2	5.7	5.3	3.1	1.8	1.4	0.5	2.0	80.2	5.7	14.1	0.124	0.504
T. IZQ. CAPULTITLAN	1.78	3	2	7118	78.3	5.5	5.2	3.7	1.5	1.4	0.5	3.9	78.3	5.5	16.2	0.115	0.504
T. DER. ZINACATEPEC	10.21	3	0	12606	77.8	1.8	4.6	1.2	7.2	1.4	3.8	2.2	77.8	1.8	20.4	0.085	0.509
T. IZQ. SULTEPEC	18.72	3	0	7086	74.5	7.4	7.8	3.2	2.3	2.1	0.5	2.2	74.5	7.4	18.1	0.092	0.510
T. DER. VALLE DE BRAVO	52.00	3	0	6472	80.3	5.5	5.8	3.5	2.1	1.5	0.4	0.9	80.3	5.5	14.2	0.094	0.504
TEMASCALTEPEC	68.76	1	0	3212	83.3	3.8	4.9	3.4	2.3	1.3	0.0	1.0	83.3	3.8	12.9	0.080	0.502
TEMASCALTEPEC	68.76	3	0	4012	83.0	3.5	3.7	3.0	2.6	1.9	1.0	1.3	83.0	3.5	13.5	0.078	0.503
T. IZQ. SAN DIEGO CUENTLA	84.34	3	0	3284	84.7	2.2	4.0	2.0	3.2	1.6	1.3	1.0	84.7	2.2	13.1	0.096	0.503
TEJUPILCO DE HIDALGO	100.80	1	0	3244	79.7	6.7	5.0	3.0	1.9	2.1	0.4	1.2	79.7	6.7	13.6	0.077	0.501
TEJUPILCO DE HIDALGO	100.80	3	0	3062	79.4	5.6	5.4	3.1	1.9	2.6	0.5	1.5	79.4	5.6	15.0	0.125	0.505
CUADRILLA DE LOPEZ	113.20	3	0	2417	83.7	3.1	4.5	1.6	2.1	1.9	1.3	1.8	83.7	3.1	13.2	0.092	0.509
T. IZQ. BEJUCOS	147.60	1	0	1939	82.5	5.2	5.8	3.0	1.5	1.2	0.2	0.6	82.5	5.2	12.3	0.097	0.502
LIM. EDOS. TERM. MEX. PPIA. GRO.	148.60																
CUTZAMALA	196.00	1	0	3938	85.5	3.7	4.8	1.7	1.6	1.4	0.8	0.5	85.5	3.7	10.8	0.105	0.501
LIM. EDOS. TERM. GRO. PPIA. MICH.	204.50																
LIM. EDOS. TERM. MICH. PPIA. GRO.	215.20																
CD. ALTAMIRANO	216.00	1	0	4606	90.0	2.9	3.2	1.1	1.2	0.9	0.3	0.4	90.0	2.9	7.1	0.071	0.502

21 CARR : TOLUCA - MORELIA

CLAVE: 00448

RUTA : MEX-015

AÑO : 2008

L U G A R	E S T A C I O N				C L A S I F I C A C I O N V E H I C U L A R E N P O R C I E N T O .												
	KM	TE	SC	TDPA	A	B	C2	C3	T3S2	T3S3	T3S2R4	OTROS	A	B	C	K'	D
TOLUCA	0.00																
X. C. LIBRAMIENTO DE TOLUCA	1.00	3	1	20541	60.9	6.4	2.2	1.9	6.2	5.8	9.6	7.0	60.9	6.4	32.7	0.064	0.504
X. C. LIBRAMIENTO DE TOLUCA	1.00	3	2	20213	61.0	6.3	2.2	1.9	6.2	5.8	9.6	7.0	61.0	6.3	32.7	0.064	0.504
T. DER. ALMOLOYA DE JUAREZ	4.70	3	1	18065	81.7	5.8	5.8	2.4	1.6	1.5	0.4	0.8	81.7	5.8	12.5	0.084	0.505

MICHOACAN

21 CARR : TOLUCA - MORELIA

CLAVE: 00448

RUTA : MEX-015

AÑO : 2008

L U G A R	E S T A C I O N				C L A S I F I C A C I O N V E H I C U L A R E N P O R C I E N T O .												
	KM	TE	SC	TDPA	A	B	C2	C3	T3S2	T3S3	T3S2R4	OTROS	A	B	C	K'	D
T. DER. ALMOLOYA DE JUAREZ	4.70	3	2	18414	81.0	5.8	5.6	2.6	2.3	1.6	0.5	0.6	81.0	5.8	13.2	0.075	0.505
T. IZQ. VALLE DE BRAVO	7.50	3	1	11185	90.5	2.7	2.7	0.5	1.1	0.8	0.5	1.2	90.5	2.7	6.8	0.070	0.505
T. IZQ. VALLE DE BRAVO	7.50	3	2	10984	89.8	2.7	2.8	0.7	0.9	0.8	0.7	1.6	89.8	2.7	7.5	0.080	0.505
T. DER. VILLA VICTORIA	46.39	1	0	9970	80.9	3.3	4.2	1.9	5.4	1.3	1.6	1.4	80.9	3.3	15.8	0.089	0.509
T. DER. VILLA VICTORIA	46.39	3	0	8014	73.2	8.2	2.3	1.9	7.0	2.4	2.5	2.5	73.2	8.2	18.6	0.072	0.501
T. IZQ. VALLE DE BRAVO	54.40	1	0	7242	82.5	6.4	2.0	1.6	3.9	1.0	1.3	1.3	82.5	6.4	11.1	0.075	0.500
T. IZQ. VILLA DE ALLENDE	64.08	1	0	10467	83.4	8.6	1.9	1.7	2.2	1.2	0.5	0.5	83.4	8.6	8.0	0.079	0.501
T. IZQ. VILLA DE ALLENDE	64.08	3	0	8339	88.6	3.3	2.1	1.9	2.0	1.2	0.4	0.5	88.6	3.3	8.1	0.072	0.503
LIM. EDOS. TERM. MEX. PPIA. MICH.	71.02																
T. DER. LIBRAMIENTO DE HEROICA ZITACUARO	92.80	1	0	13207	74.0	8.3	7.1	2.9	2.6	2.1	0.6	2.4	74.0	8.3	17.7	0.084	0.500
T. DER. ANGANGUEO	106.30	3	0	7999	77.5	6.1	3.7	2.2	5.1	1.4	1.8	2.2	77.5	6.1	16.4	0.073	0.502
T. IZQ. JUNGAPAO	114.30	3	0	5843	78.3	6.2	3.9	3.2	2.6	1.3	2.3	2.2	78.3	6.2	15.5	0.073	0.502
CD. HIDALGO	144.60	1	0	8714	70.6	10.6	8.2	3.7	1.8	1.5	0.6	3.0	70.6	10.6	18.8	0.074	0.502
T. IZQ. TZITZIO	188.30	1	0	836	79.5	8.2	6.0	3.9	1.9	0.0	0.1	0.4	79.5	8.2	12.3	0.086	0.517
PERIFERICO DE MORELIA	241.40	1	0	3309	76.4	9.0	6.1	4.4	1.2	0.8	0.0	2.1	76.4	9.0	14.6	0.072	0.519
MORELIA	246.20																

22 CARR : ZAMORA - VISTA HERMOSA

CLAVE: 16242

RUTA : MEX

AÑO : 2008

L U G A R	E S T A C I O N				C L A S I F I C A C I O N V E H I C U L A R E N P O R C I E N T O .												
	KM	TE	SC	TDPA	A	B	C2	C3	T3S2	T3S3	T3S2R4	OTROS	A	B	C	K'	D
ZAMORA	0.00	3	0	15312	56.9	2.0	1.9	0.7	7.6	3.8	21.7	5.4	56.9	2.0	41.1	0.078	0.507
T. DER. LA PIEDAD	6.17	3	0	8312	80.3	4.4	4.3	3.6	1.2	1.9	2.4	1.9	80.3	4.4	15.3	0.080	0.506
T. C. PATTY - SAHUAYO	43.80	1	0	7863	70.1	4.3	6.8	6.4	3.2	3.5	2.7	3.0	70.1	4.3	25.6	0.072	0.507

23 CARR : ZIHUATANEJO - LA MIRA

CLAVE: 00121

RUTA : MEX-200

AÑO : 2008

L U G A R	E S T A C I O N				C L A S I F I C A C I O N V E H I C U L A R E N P O R C I E N T O .												
	KM	TE	SC	TDPA	A	B	C2	C3	T3S2	T3S3	T3S2R4	OTROS	A	B	C	K'	D
ZIHUATANEJO	0.00	3	1	10325	76.6	16.8	3.9	0.5	0.0	0.0	0.0	2.2	76.6	16.8	6.6	0.104	0.528
ZIHUATANEJO	0.00	3	2	9230	75.0	23.9	0.4	0.1	0.0	0.0	0.0	0.6	75.0	23.9	1.1	0.091	0.528
T. IZQ. IXTAPA ZIHUATANEJO	8.00	3	0	12169	72.8	4.3	4.9	2.4	6.5	3.0	3.1	3.0	72.8	4.3	22.9	0.082	0.505
T. DER. CD. ALTAMIRANO	16.30	1	0	5427	84.7	4.0	5.4	3.3	0.0	0.0	0.0	2.6	84.7	4.0	11.3	0.100	0.535
T. DER. CD. ALTAMIRANO	16.30	3	0	5145	83.0	4.6	5.2	4.4	0.0	0.0	0.0	2.8	83.0	4.6	12.4	0.102	0.521
T. DER. LA UNION	52.00	3	0	3670	80.0	2.6	7.4	5.8	0.0	0.0	0.0	4.2	80.0	2.6	17.4	0.077	0.502

MICHOACAN

23 CARR : ZIHUATANEJO - LA MIRA

CLAVE: 00121

RUTA : MEX-200

AÑO : 2008

L U G A R	E S T A C I O N				C L A S I F I C A C I O N V E H I C U L A R E N P O R C I E N T O .												
	KM	TE	SC	TDPA	A	B	C2	C3	T3S2	T3S3	T3S2R4	OTROS	A	B	C	K'	D
ZACATULA	93.50	1	0	4148	92.4	3.9	1.9	1.3	0.0	0.0	0.0	0.5	92.4	3.9	3.7	0.092	0.507
LIM. EDOS. TERM. GRO. PPIA. MICH.	98.50																
LA VILLITA	103.80	3	0	4073	80.4	8.5	4.3	2.5	0.9	2.0	0.1	1.3	80.4	8.5	11.1	0.084	0.500
GUACAMAYAS	107.00	1	1	14342	83.0	5.9	5.6	0.9	1.6	2.1	0.2	0.7	83.0	5.9	11.1	0.085	0.507
GUACAMAYAS	107.00	1	2	14728	82.3	5.9	5.7	0.8	2.0	2.0	0.2	1.1	82.3	5.9	11.8	0.093	0.507
T. IZQ. LAZARO CARDENAS	110.90	1	1	12506	89.4	4.1	0.6	0.8	1.1	0.6	0.8	2.6	89.4	4.1	6.5	0.070	0.501
T. IZQ. LAZARO CARDENAS	110.90	1	2	12571	89.8	4.2	0.6	0.7	1.0	0.4	0.6	2.7	89.8	4.2	6.0	0.063	0.501
LA MIRA	119.50	1	1	5625	87.1	3.0	2.8	2.7	1.8	0.8	0.4	1.4	87.1	3.0	9.9	0.068	0.501
LA MIRA	119.50	1	2	5611	87.2	3.2	2.4	2.7	1.9	1.0	0.5	1.1	87.2	3.2	9.6	0.073	0.501

24 CARR : ZITACUARO - CD. ALTAMIRANO

CLAVE: 16006

RUTA : MEX-051

AÑO : 2008

L U G A R	E S T A C I O N				C L A S I F I C A C I O N V E H I C U L A R E N P O R C I E N T O .												
	KM	TE	SC	TDPA	A	B	C2	C3	T3S2	T3S3	T3S2R4	OTROS	A	B	C	K'	D
ZITACUARO	0.00																
BENITO JUAREZ	26.06	3	0	2710	91.2	1.9	1.5	0.9	1.3	1.3	0.0	1.9	91.2	1.9	6.9	0.085	0.502
TIQUICHEO	104.50	1	0	1340	77.2	5.5	5.2	4.6	1.6	2.2	1.0	2.7	77.2	5.5	17.3	0.090	0.501
TIQUICHEO	104.50	3	0	1184	78.3	5.0	6.9	6.5	1.6	1.5	0.0	0.2	78.3	5.0	16.7	0.087	0.505
HUETAMO	174.60	1	0	1727	91.0	4.5	2.5	0.9	0.5	0.3	0.1	0.2	91.0	4.5	4.5	0.082	0.525
SAN LUCAS	193.80	3	0	1639	68.5	17.0	5.5	3.3	1.6	1.2	0.6	2.3	68.5	17.0	14.5	0.102	0.505
T. C. TOLUCA - CD. ALTAMIRANO	214.50	1	0	2442	80.9	5.1	4.4	3.7	1.7	1.7	0.1	2.4	80.9	5.1	14.0	0.073	0.506

25 CARR : ATLACOMULCO - ZAPOTLANEJO (CUOTA)

CLAVE: 00018

RUTA : MEX-015D

AÑO : 2008

L U G A R	E S T A C I O N				C L A S I F I C A C I O N V E H I C U L A R E N P O R C I E N T O .												
	KM	TE	SC	TDPA	A	B	C2	C3	T3S2	T3S3	T3S2R4	OTROS	A	B	C	K'	D
T. C. TOLUCA - PALMILLAS	0.00																
CASETA DE COBRO SAN JUANICO	3.76	2	0	8510	81.6	6.8	4.6	3.0	2.0	0.7	1.0	0.3	81.6	6.8	11.6		
LIM. EDOS. TERM. MEX. PPIA. MICH.	21.20																
CASETA DE COBRO CONTEPEC	33.10	2	0	7926	80.2	6.3	5.0	3.6	2.5	1.0	1.1	0.3	80.2	6.3	13.5		
CASETA DE COBRO ZINAPECUARO	102.00	1	0	6657	81.6	6.8	3.7	2.3	2.4	0.6	1.3	1.3	81.6	6.8	11.6		
CASETA DE COBRO ZINAPECUARO	102.00	2	0	6097	80.9	7.2	3.7	2.5	2.6	0.6	1.4	1.1	80.9	7.2	11.9		
CASETA DE COBRO ZINAPECUARO	102.00	3	0	7015	81.7	6.5	3.8	2.4	2.4	0.7	1.3	1.2	81.7	6.5	11.8		
CASETA DE COBRO PANINDICUARO	207.00	1	0	5517	81.5	5.0	4.3	2.6	3.0	0.7	1.6	1.3	81.5	5.0	13.5		
CASETA DE COBRO PANINDICUARO	207.00	2	0	4832	80.9	5.5	4.4	2.6	3.1	0.7	1.7	1.1	80.9	5.5	13.6		

MICHOACAN

25 CARR : ATLACOMULCO - ZAPOTLANEJO (CUOTA)

CLAVE: 00018

RUTA : MEX-015D

AÑO : 2008

L U G A R	E S T A C I O N				C L A S I F I C A C I O N V E H I C U L A R E N P O R C I E N T O .												
	KM	TE	SC	TDPA	A	B	C2	C3	T3S2	T3S3	T3S2R4	OTROS	A	B	C	K'	D
CASETA DE COBRO PANINDICUARIO	207.00	3	0	5055	81.0	5.4	4.4	2.6	3.0	0.7	1.7	1.2	81.0	5.4	13.6		
CASETA DE COBRO ECUANDUREO	260.00	1	0	6064	78.5	6.3	4.6	3.5	3.6	0.9	1.6	1.0	78.5	6.3	15.2		
CASETA DE COBRO ECUANDUREO	260.00	2	0	4703	78.1	6.3	4.6	3.4	4.0	0.9	1.8	0.9	78.1	6.3	15.6		
CASETA DE COBRO ECUANDUREO	260.00	3	0	6370	79.1	6.5	4.4	3.2	3.4	0.9	1.5	1.0	79.1	6.5	14.4		
CASETA DE COBRO VISTA HERMOSA	290.00	2	0	5703	43.9	3.4	6.5	8.4	21.1	5.0	10.5	1.2	43.9	3.4	52.7		
LIM. EDOS. TERM. MICH. PPIA. JAL.	297.00																
CASETA DE COBRO OCOTLAN	326.00	1	0	10336	66.4	5.8	4.6	4.2	9.7	2.2	5.8	1.3	66.4	5.8	27.8		
CASETA DE COBRO OCOTLAN	326.00	2	0	8639	70.4	6.8	4.5	3.2	7.3	1.1	5.5	1.2	70.4	6.8	22.8		
CASETA DE COBRO OCOTLAN	326.00	3	0	9402	71.7	6.3	4.4	3.1	6.8	1.0	5.2	1.5	71.7	6.3	22.0		
T. C. ZAPOTLANEJO - GUADALAJARA (CUOTA)	375.00																

26 CARR : ENT. PATZCUARO - URUAPAN (CUOTA)

CLAVE: 16011

RUTA : MEX-126D

AÑO : 2008

L U G A R	E S T A C I O N				C L A S I F I C A C I O N V E H I C U L A R E N P O R C I E N T O .												
	KM	TE	SC	TDPA	A	B	C2	C3	T3S2	T3S3	T3S2R4	OTROS	A	B	C	K'	D
T. C. MORELIA - TZURUMUTARO	0.00																
CASETA DE COBRO ZIRAHUEN	12.55	2	0	8614	83.2	4.7	3.6	1.8	2.2	0.9	2.2	1.4	83.2	4.7	12.1		
CASETA DE COBRO ZURUMUCAPIO	40.00	2	0	8792	84.0	4.5	3.3	1.6	2.2	0.9	2.2	1.3	84.0	4.5	11.5		
CASETA DE COBRO ZURUMUCAPIO	40.00	3	0	9445	84.2	4.2	3.5	1.6	2.1	0.8	2.1	1.5	84.2	4.2	11.6		
T. C. ENT. CARAPAN - PLAYA AZUL	60.00																

27 CARR : ENT. URUAPAN - LAZARO CARDENAS (CUOTA)

CLAVE: 00032

RUTA : MEX-037D

AÑO : 2008

L U G A R	E S T A C I O N				C L A S I F I C A C I O N V E H I C U L A R E N P O R C I E N T O .												
	KM	TE	SC	TDPA	A	B	C2	C3	T3S2	T3S3	T3S2R4	OTROS	A	B	C	K'	D
T. C. ENT. PATZCUARO - URUAPAN (CUOTA)	0.00																
CASETA DE COBRO TARETAN	8.893	1	0	8205	82.8	4.0	3.4	2.2	2.3	1.1	2.7	1.5	82.8	4.0	13.2		
CASETA DE COBRO TARETAN	8.893	2	0	6346	79.5	5.1	3.4	2.7	2.9	1.4	3.4	1.6	79.5	5.1	15.4		
CASETA DE COBRO TARETAN	8.893	3	0	6361	79.5	5.1	3.4	2.7	2.9	1.4	3.4	1.6	79.5	5.1	15.4		
CASETA DE COBRO SANTA CASILDA	39.65	1	0	6137	79.2	5.1	3.3	2.9	3.0	1.4	3.5	1.6	79.2	5.1	15.7		
CASETA DE COBRO SANTA CASILDA	39.65	2	0	5838	79.1	5.4	3.0	2.8	3.0	1.4	3.7	1.6	79.1	5.4	15.5		
CASETA DE COBRO LAS CAÑAS	100.00	2	0	3879	75.6	5.2	3.3	2.9	4.0	2.3	4.8	1.9	75.6	5.2	19.2		
LIM. EDOS. TERM. MICH. PPIA. GRO.	159.20																
CASETA DE COBRO FELICIANO	170.60	1	0	4069	71.2	5.5	3.7	2.9	4.3	2.9	7.0	2.5	71.2	5.5	23.3		
CASETA DE COBRO FELICIANO	170.60	2	0	2555	65.9	5.7	3.9	3.4	5.7	3.5	8.8	3.1	65.9	5.7	28.4		

MICHOACAN

27 CARR : ENT. URUAPAN - LAZARO CARDENAS (CUOTA)

CLAVE: 00032

RUTA : MEX-037D

AÑO : 2008

L U G A R	E S T A C I O N				C L A S I F I C A C I O N V E H I C U L A R E N P O R C I E N T O .												
	KM	TE	SC	TDPA	A	B	C2	C3	T3S2	T3S3	T3S2R4	OTROS	A	B	C	K'	D
CASETA DE COBRO FELICIANO	170.60	3	0	4993	73.9	5.3	3.5	3.3	4.2	2.5	5.1	2.2	73.9	5.3	20.8		
LIM. EDOS. TERM. GRO. PPIA. MICH.	182.00																
T. C. LA ORILLA - LAS TRUCHAS	212.00																

28 CARR : MORELIA - SALAMANCA (CUOTA)

CLAVE:

RUTA : MEX-043D

AÑO : 2008

L U G A R	E S T A C I O N				C L A S I F I C A C I O N V E H I C U L A R E N P O R C I E N T O .												
	KM	TE	SC	TDPA	A	B	C2	C3	T3S2	T3S3	T3S2R4	OTROS	A	B	C	K'	D
T.C. MORELIA - SALAMANCA (LIBRE)	26.50	3	0	5885	86.3	3.8	4.4	3.7	0.0	0.0	0.0	1.8	86.3	3.8	9.9	0.071	0.518
T.C. QUERETARO - IRAPUATO (LIBRE)	104.60	1	0	3534	88.7	3.4	0.3	0.1	2.5	0.9	3.4	0.7	88.7	3.4	7.9	0.107	0.505
T.C. QUERETARO - IRAPUATO ( CUOTA)	109.50	1	0	13342	73.5	5.5	3.5	4.5	7.7	1.5	2.3	1.5	73.5	5.5	21.0	0.095	0.502

29 CARR : APATZINGAN - AGUILILLA

CLAVE: 16591

RUTA : MICH

AÑO : 2008

L U G A R	E S T A C I O N				C L A S I F I C A C I O N V E H I C U L A R E N P O R C I E N T O .												
	KM	TE	SC	TDPA	A	B	C2	C3	T3S2	T3S3	T3S2R4	OTROS	A	B	C	K'	D
APATZINGAN	0.00	3	0	8196	77.3	4.6	5.9	2.9	3.2	2.7	2.6	0.8	77.3	4.6	18.1	0.078	0.530
AGUILILLA	85.00																

30 CARR : CHURUMUCO - ZICUIRAN

CLAVE:

RUTA : MICH

AÑO : 2008

L U G A R	E S T A C I O N				C L A S I F I C A C I O N V E H I C U L A R E N P O R C I E N T O .												
	KM	TE	SC	TDPA	A	B	C2	C3	T3S2	T3S3	T3S2R4	OTROS	A	B	C	K'	D
CHURUMUCO	0.00	3	0	10700	82.5	3.9	2.0	3.3	2.6	1.6	2.6	1.5	82.5	3.9	13.6	0.069	0.503
ZICUIRAN	48.60	1	0	9472	82.5	4.2	2.8	2.1	2.7	1.6	2.6	1.5	82.5	4.2	13.3	0.068	0.501

31 CARR : COMANJA - HUANIQUEO

CLAVE: 16024

RUTA : MICH-024

AÑO : 2008

L U G A R	E S T A C I O N				C L A S I F I C A C I O N V E H I C U L A R E N P O R C I E N T O .												
	KM	TE	SC	TDPA	A	B	C2	C3	T3S2	T3S3	T3S2R4	OTROS	A	B	C	K'	D
T. C. MORELIA - JIQUILPAN	0.00	3	0	1324	86.8	4.0	5.4	1.4	1.2	0.3	0.2	0.7	86.8	4.0	9.2	0.132	0.504
HUANIQUEO	32.00	1	0	849	86.5	4.5	5.3	0.8	1.2	0.3	0.6	0.8	86.5	4.5	9.0	0.125	0.515



MICHOACAN

32 CARR : CUITZEO - ZINAPARO

CLAVE: 16027

ruta : MICH-027

AÑO : 2008

L U G A R	E S T A C I O N				CLASIFICACION VEHICULAR EN PORCIENTO .												
	KM	TE	SC	TDPA	A	B	C2	C3	T3S2	T3S3	T3S2R4	OTROS	A	B	C	K'	D
CUITZEO	0.00	3	0	3824	81.7	5.7	8.4	2.6	0.5	0.6	0.1	0.4	81.7	5.7	12.6	0.091	0.536
PURUANDIRO	61.00	1	0	3591	83.6	5.4	5.7	1.7	1.5	1.0	0.0	1.1	83.6	5.4	11.0	0.112	0.508
PURUANDIRO	61.00	3	0	3733	73.5	10.2	7.1	1.9	1.5	1.9	1.8	2.1	73.5	10.2	16.3	0.104	0.503
T. IZQ. ZACAPU	79.00	3	0	1944	87.4	5.9	2.4	1.4	1.1	0.9	0.5	0.4	87.4	5.9	6.7	0.086	0.502
ZINAPARO	125.60	1	0	2077	84.1	3.7	3.9	1.9	3.2	1.9	0.8	0.5	84.1	3.7	12.2	0.106	0.503

33 CARR : EL CORREO - LAGUNILLAS

CLAVE: 16014

ruta : MICH

AÑO : 2008

L U G A R	E S T A C I O N				CLASIFICACION VEHICULAR EN PORCIENTO .												
	KM	TE	SC	TDPA	A	B	C2	C3	T3S2	T3S3	T3S2R4	OTROS	A	B	C	K'	D
EL CORREO	0.00	3	0	1271	82.6	5.0	5.8	2.5	2.4	1.0	0.2	0.5	82.6	5.0	12.4	0.096	0.502
T. C. MORELIA - PATZCUARO	11.00	1	0	2659	80.2	5.8	6.5	4.1	1.6	0.7	0.3	0.8	80.2	5.8	14.0	0.097	0.504

34 CARR : EL TEMASCAL - EL LIMON

CLAVE:

ruta : MICH

AÑO : 2008

L U G A R	E S T A C I O N				CLASIFICACION VEHICULAR EN PORCIENTO .												
	KM	TE	SC	TDPA	A	B	C2	C3	T3S2	T3S3	T3S2R4	OTROS	A	B	C	K'	D
EL TEMASCAL	0.00	3	0	772	83.5	3.1	6.5	4.3	2.1	0.0	0.1	0.4	83.5	3.1	13.4	0.091	0.518
EL LIMON	92.30	1	0	403	89.8	1.4	5.3	1.5	0.8	0.5	0.3	0.4	89.8	1.4	8.8	0.092	0.505

35 CARR : EMILIANO ZAPATA - COTIJA

CLAVE:

ruta : MICH

AÑO : 2008

L U G A R	E S T A C I O N				CLASIFICACION VEHICULAR EN PORCIENTO .												
	KM	TE	SC	TDPA	A	B	C2	C3	T3S2	T3S3	T3S2R4	OTROS	A	B	C	K'	D
T.C. MORELIA - JIQUILPAN	0.00	3	0	2474	85.3	3.6	3.8	2.9	1.9	1.0	0.5	1.0	85.3	3.6	11.1	0.091	0.510
T. DER. COTIJA DE LA PAZ	40.00	1	0	1911	90.4	2.3	3.4	1.0	1.6	0.4	0.2	0.7	90.4	2.3	7.3	0.095	0.512

36 CARR : GABRIEL ZAMORA - DR. MIGUEL SILVA

CLAVE:

ruta : MICH

AÑO : 2008

L U G A R	E S T A C I O N				CLASIFICACION VEHICULAR EN PORCIENTO .												
	KM	TE	SC	TDPA	A	B	C2	C3	T3S2	T3S3	T3S2R4	OTROS	A	B	C	K'	D
GABRIEL ZAMORA	0.00	3	0	4359	85.1	1.5	1.1	1.6	4.6	1.5	1.8	2.8	85.1	1.5	13.4	0.068	0.504
DR. MIGUEL SILVA	55.20	1	0	4816	85.6	1.8	1.0	1.5	4.5	1.3	1.7	2.6	85.6	1.8	12.6	0.071	0.504

MICHOACAN

37 CARR : JACONA - BUENAVISTA TOMATLAN

CLAVE: 16016

RUTA : MICH-016

AÑO : 2008

L U G A R	E S T A C I O N				C L A S I F I C A C I O N V E H I C U L A R E N P O R C I E N T O .												
	KM	TE	SC	TDPA	A	B	C2	C3	T3S2	T3S3	T3S2R4	OTROS	A	B	C	K'	D
JACONA	0.00	3	0	4403	85.2	2.7	2.3	2.4	3.8	1.1	1.0	1.5	85.2	2.7	12.1	0.104	0.505
T. DER. COTIJA DE LA PAZ	47.00	1	0	4198	87.6	2.9	5.1	3.2	0.0	0.0	0.0	1.2	87.6	2.9	9.5	0.091	0.502
LOS REYES DE SALGADO	60.00	1	0	7503	80.9	5.0	7.0	2.7	1.3	1.1	0.1	1.9	80.9	5.0	14.1	0.081	0.501
LOS REYES DE SALGADO	60.00	3	0	8523	74.3	4.5	1.9	2.3	5.7	5.1	3.8	2.4	74.3	4.5	21.2	0.104	0.501
PERIBAN DE RAMOS	70.00	1	0	5738	81.9	4.8	1.7	1.0	5.9	0.9	1.8	2.0	81.9	4.8	13.3	0.097	0.505
PERIBAN DE RAMOS	70.00	3	0	4027	86.4	4.3	0.9	1.4	2.9	0.7	0.9	2.5	86.4	4.3	9.3	0.114	0.500
BUENAVISTA	123.00	1	0	5560	79.0	6.2	4.9	2.5	3.5	2.3	1.0	0.6	79.0	6.2	14.8	0.137	0.501

38 CARR : LA PAZ - TEPETONGO

CLAVE:

RUTA : MICH

AÑO : 2008

L U G A R	E S T A C I O N				C L A S I F I C A C I O N V E H I C U L A R E N P O R C I E N T O .												
	KM	TE	SC	TDPA	A	B	C2	C3	T3S2	T3S3	T3S2R4	OTROS	A	B	C	K'	D
T.C. LA NORIA - ACAMBARO	0.00	3	0	2022	84.2	3.9	1.2	1.3	2.0	1.2	1.9	4.3	84.2	3.9	11.9	0.088	0.505
HEPITACIO HUERTA	5.20	1	0	2347	85.6	3.3	1.1	1.1	1.8	1.0	1.8	4.3	85.6	3.3	11.1	0.089	0.506
TEPETONGO	45.00	1	0	2309	89.6	3.7	1.5	1.6	2.1	0.6	0.3	0.6	89.6	3.7	6.7	0.080	0.508

39 CARR : LIBRAMIENTO DE URUAPAN

CLAVE: 16425

RUTA : MICH

AÑO : 2008

L U G A R	E S T A C I O N				C L A S I F I C A C I O N V E H I C U L A R E N P O R C I E N T O .												
	KM	TE	SC	TDPA	A	B	C2	C3	T3S2	T3S3	T3S2R4	OTROS	A	B	C	K'	D
T. C. PATZCUARO - URUAPAN	0.00	3	0	8109	72.9	4.8	6.0	3.2	3.4	2.5	3.1	4.1	72.9	4.8	22.3	0.085	0.567
T. C. CARAPAN - PLAYA AZUL	9.20	1	0	7518	80.4	4.1	4.3	2.2	3.4	2.1	2.9	0.6	80.4	4.1	15.5	0.148	0.501

40 CARR : PATZCUARO - CHUPICUARO

CLAVE:

RUTA : MICH

AÑO : 2008

L U G A R	E S T A C I O N				C L A S I F I C A C I O N V E H I C U L A R E N P O R C I E N T O .												
	KM	TE	SC	TDPA	A	B	C2	C3	T3S2	T3S3	T3S2R4	OTROS	A	B	C	K'	D
PATZCUARO	0.00	3	0	4432	89.1	2.2	1.5	0.7	3.7	0.5	0.8	1.5	89.1	2.2	8.7	0.076	0.504
ERONGARICUARO	17.00	1	0	5027	91.3	0.8	1.3	0.6	3.5	0.5	0.7	1.3	91.3	0.8	7.9	0.079	0.506
CHUPICUARO	41.80	1	0	1616	92.7	2.2	1.8	0.3	1.9	0.1	0.2	0.8	92.7	2.2	5.1	0.072	0.506

MICHOACAN

41 CARR : RAMAL A COAHUAYANA

CLAVE: 16069

RUTA : MICH-069

AÑO : 2008

L U G A R	E S T A C I O N				C L A S I F I C A C I O N V E H I C U L A R E N P O R C I E N T O .												
	KM	TE	SC	TDPA	A	B	C2	C3	T3S2	T3S3	T3S2R4	OTROS	A	B	C	K'	D
T. C. ENT. PLAYA AZUL - MANZANILLO COAHUAYANA	0.00	3	0	1264	83.9	5.9	4.6	2.9	0.7	0.8	0.2	1.0	83.9	5.9	10.2	0.087	0.501
	6.50																

42 CARR : RAMAL A INFIERNILLO

CLAVE: 16010

RUTA : MICH-010

AÑO : 2008

L U G A R	E S T A C I O N				C L A S I F I C A C I O N V E H I C U L A R E N P O R C I E N T O .												
	KM	TE	SC	TDPA	A	B	C2	C3	T3S2	T3S3	T3S2R4	OTROS	A	B	C	K'	D
T. C. CARAPAN - PLAYA AZUL INFIERNILLO	0.00	3	0	1399	78.7	4.7	5.6	2.9	3.2	2.5	1.8	0.6	78.7	4.7	16.6	0.069	0.510
	43.00																

43 CARR : SAN FELIPE ALZATI - ANGANGUEO

CLAVE: 16556

RUTA : MICH-044

AÑO : 2008

L U G A R	E S T A C I O N				C L A S I F I C A C I O N V E H I C U L A R E N P O R C I E N T O .												
	KM	TE	SC	TDPA	A	B	C2	C3	T3S2	T3S3	T3S2R4	OTROS	A	B	C	K'	D
T. C. TOLUCA - MORELIA ANGANGUEO	0.00	3	0	2475	84.4	6.4	3.4	1.0	2.3	0.6	0.6	1.3	84.4	6.4	9.2	0.081	0.501
	24.00	1	0	2495	81.4	6.1	4.5	3.1	1.1	1.5	0.1	2.2	81.4	6.1	12.5	0.080	0.506

44 CARR : SAN JUAN TUMBIO - CHERAN

CLAVE:

RUTA : MICH

AÑO : 2008

L U G A R	E S T A C I O N				C L A S I F I C A C I O N V E H I C U L A R E N P O R C I E N T O .												
	KM	TE	SC	TDPA	A	B	C2	C3	T3S2	T3S3	T3S2R4	OTROS	A	B	C	K'	D
SAN JUAN TUMBIO	0.00	3	0	2243	87.4	2.2	3.9	1.1	2.0	1.6	0.5	1.3	87.4	2.2	10.4	0.082	0.508
NAHUATZEN	28.50	1	0	2447	89.5	2.3	2.3	0.8	1.9	1.5	0.5	1.2	89.5	2.3	8.2	0.084	0.508
CHERAN	35.80	1	0	4436	87.1	1.1	2.1	1.3	4.1	1.5	1.2	1.6	87.1	1.1	11.8	0.080	0.508

45 CARR : T. C. (TOLUCA - MORELIA) - MARAVATIO

CLAVE: 16584

RUTA : MICH-122

AÑO : 2008

L U G A R	E S T A C I O N				C L A S I F I C A C I O N V E H I C U L A R E N P O R C I E N T O .												
	KM	TE	SC	TDPA	A	B	C2	C3	T3S2	T3S3	T3S2R4	OTROS	A	B	C	K'	D
T. C. TOLUCA - MORELIA MARAVATIO DE OCAMPO	0.00	3	0	7660	83.2	6.3	2.1	1.8	3.0	1.0	0.8	1.8	83.2	6.3	10.5	0.085	0.501
	29.00	1	0	5341	86.6	2.5	2.4	1.8	3.6	0.9	1.0	1.2	86.6	2.5	10.9	0.080	0.501



MICHOACAN

51 CARR : UCAREO - SAN PEDRO JACUARO

CLAVE:

RUTA : MICH

AÑO : 2008

L U G A R	E S T A C I O N				C L A S I F I C A C I O N V E H I C U L A R E N P O R C I E N T O .												
	KM	TE	SC	TDPA	A	B	C2	C3	T3S2	T3S3	T3S2R4	OTROS	A	B	C	K'	D
UCAREO	0.00	3	0	642	80.2	3.8	7.8	5.0	2.5	0.0	0.2	0.5	80.2	3.8	16.0	0.090	0.518
SAN PEDRO JACUARO	33.00	1	0	748	87.0	3.3	0.8	0.7	1.5	0.6	1.8	4.3	87.0	3.3	9.7	0.088	0.507

52 CARR : URUAPAN - EL COPETIRO

CLAVE:

RUTA : MICH

AÑO : 2008

L U G A R	E S T A C I O N				C L A S I F I C A C I O N V E H I C U L A R E N P O R C I E N T O .												
	KM	TE	SC	TDPA	A	B	C2	C3	T3S2	T3S3	T3S2R4	OTROS	A	B	C	K'	D
URUAPAN	0.00	3	0	6950	79.6	5.2	2.8	1.8	4.2	1.5	1.9	3.0	79.6	5.2	15.2	0.087	0.506
SAN JUAN PARANGARICUTIRO	12.50	1	0	6289	80.0	3.9	4.1	1.1	4.3	1.6	1.9	3.1	80.0	3.9	16.1	0.086	0.501
EL COPETIRO	62.50	1	0	3182	92.2	4.3	1.5	0.8	0.1	0.1	0.1	0.9	92.2	4.3	3.5	0.101	0.507

53 CARR : ZACAPU - VILLACHUATO

CLAVE: 16039

RUTA : MICH-039

AÑO : 2008

L U G A R	E S T A C I O N				C L A S I F I C A C I O N V E H I C U L A R E N P O R C I E N T O .												
	KM	TE	SC	TDPA	A	B	C2	C3	T3S2	T3S3	T3S2R4	OTROS	A	B	C	K'	D
ZACAPU	0.00	3	0	4261	73.3	7.1	7.9	4.0	1.6	1.7	1.9	2.5	73.3	7.1	19.6	0.093	0.515
PANINDICUARO	21.00	3	0	1828	89.2	3.6	3.2	2.1	0.4	0.7	0.1	0.7	89.2	3.6	7.2	0.142	0.504
T. C. CUITZEO - ZINAPARO	43.00	1	0	1413	80.2	3.8	6.6	7.8	0.0	0.0	0.0	1.6	80.2	3.8	16.0	0.094	0.516

54 CARR : LIBRAMIENTO DE LA PIEDAD (CUOTA)

CLAVE: 16015

RUTA : MICH-D

AÑO : 2008

L U G A R	E S T A C I O N				C L A S I F I C A C I O N V E H I C U L A R E N P O R C I E N T O .												
	KM	TE	SC	TDPA	A	B	C2	C3	T3S2	T3S3	T3S2R4	OTROS	A	B	C	K'	D
T. C. IRAPUATO - ZAPOTLANEJO	0.00																
CASETA DE COBRO PUENTE LA PIEDAD	1.30	2	0	7367	35.8	4.3	9.2	12.3	24.7	4.7	2.5	6.5	35.8	4.3	59.9		
T. C. IRAPUATO - ZAPOTLANEJO	3.00																

55 CARR : ATLACOMULCO - MORELIA

CLAVE: 00151

RUTA : EM-005-MEX-126

AÑO : 2008

L U G A R	E S T A C I O N				C L A S I F I C A C I O N V E H I C U L A R E N P O R C I E N T O .												
	KM	TE	SC	TDPA	A	B	C2	C3	T3S2	T3S3	T3S2R4	OTROS	A	B	C	K'	D
ATLACOMULCO	0.00	3	0	9114	79.7	5.8	3.4	4.6	1.6	2.0	0.4	2.5	79.7	5.8	14.5	0.074	0.503
T. IZQ. SAN FELIPE DEL PROGRESO	3.60	3	0	7808	80.5	6.1	5.3	3.8	1.2	2.4	0.2	0.5	80.5	6.1	13.4	0.071	0.502
T. DER. TEMASCALCINGO	16.40	3	0	6352	87.6	4.8	2.2	1.6	1.7	1.1	0.5	0.5	87.6	4.8	7.6	0.088	0.505
EL ORO DE HIDALGO	30.00	1	0	6007	89.1	2.8	2.1	2.2	1.6	1.2	0.5	0.5	89.1	2.8	8.1	0.111	0.505

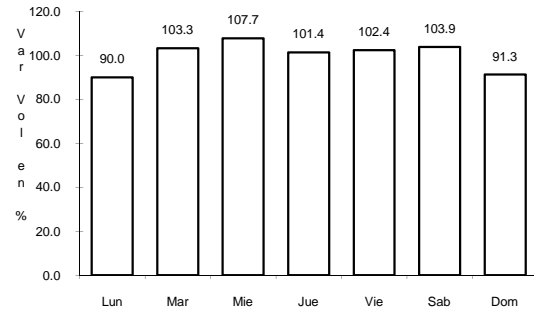




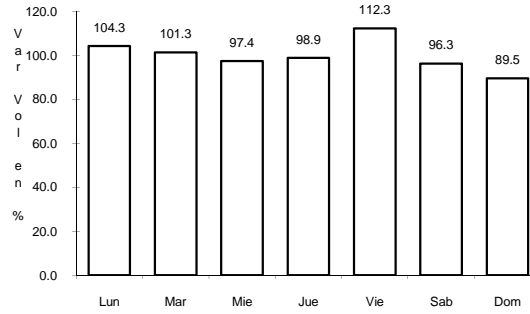
4 CARR: ENT. PLAYA AZUL - MANZANILLO

CLAVE: 00495

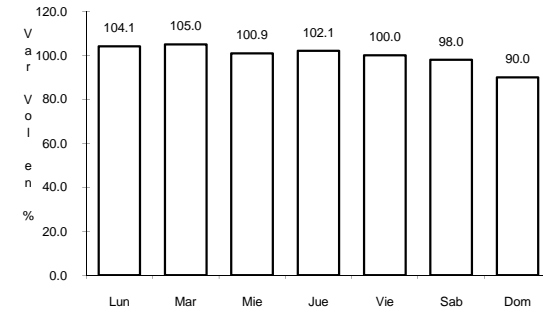
ruta: MEX-200



Km: 0.00 Tipo: 3 Sent: 0



Km: 190.10 Tipo: 3 Sent: 0

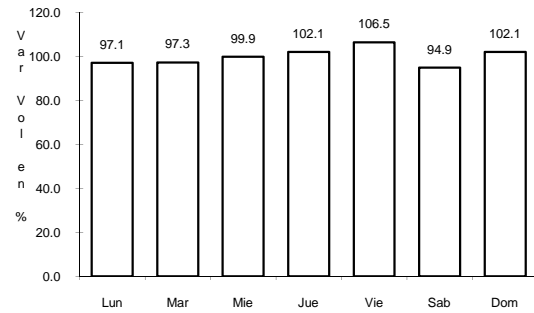


Km: 321.12 Tipo: 1 Sent: 0

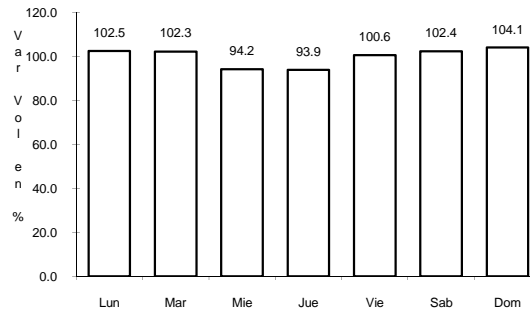
5 CARR: HUAJUMBARO - SAN JOSE

CLAVE: 16555

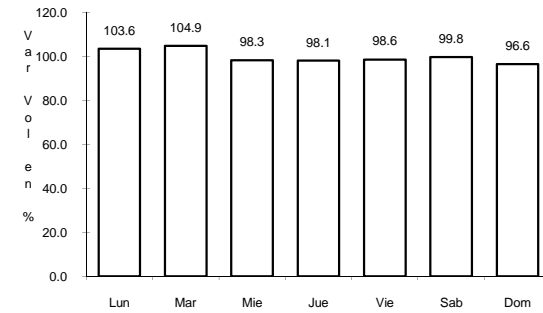
ruta: MEX-051-120



Km: 0.00 Tipo: 3 Sent: 0



Km: 33.83 Tipo: 3 Sent: 0

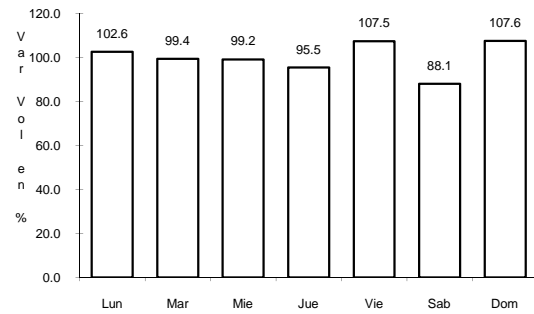


Km: 71.14 Tipo: 1 Sent: 0

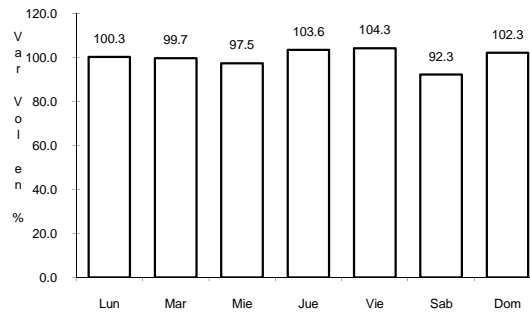
6 CARR: IRAPUATO - ZAPOTLANEJO

CLAVE: 00114

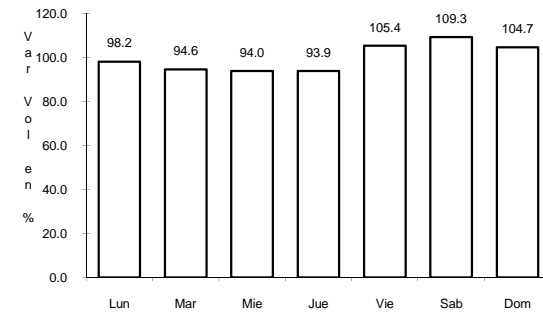
ruta: MEX-090



Km: 2.78 Tipo: 1 Sent: 1



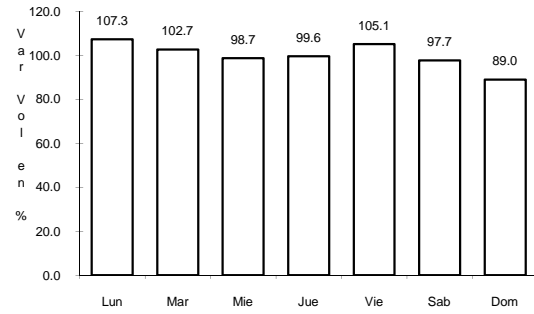
Km: 2.78 Tipo: 1 Sent: 2



Km: 215.80 Tipo: 1 Sent: 0



7 CARR: JIQUILPAN - COLIMA

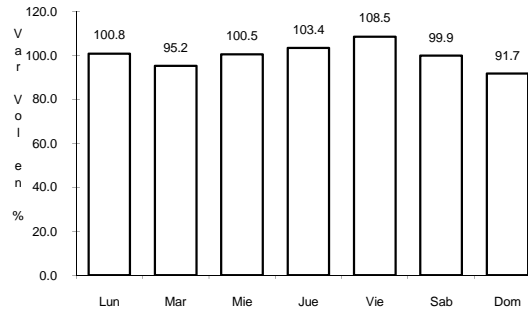


Km: 0.00

Tipo: 3

Sent: 0

CLAVE: 00156

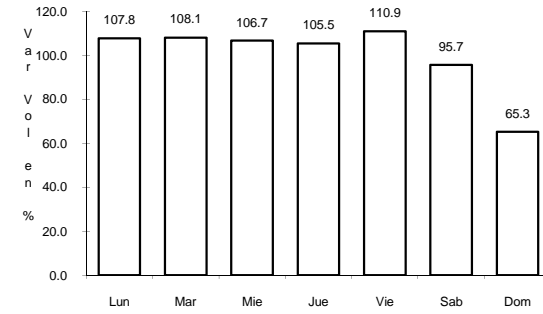


Km: 108.50

Tipo: 3

Sent: 0

RUTA: MEX-110

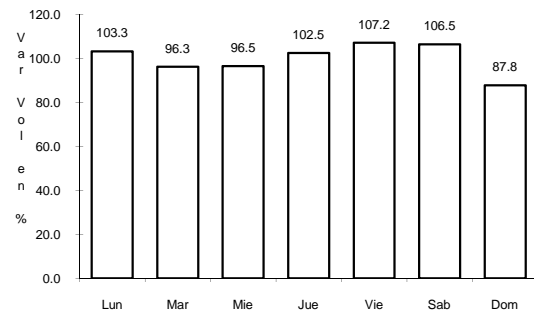


Km: 222.00

Tipo: 1

Sent: 0

8 CARR: JIQUILPAN - GUADALAJARA

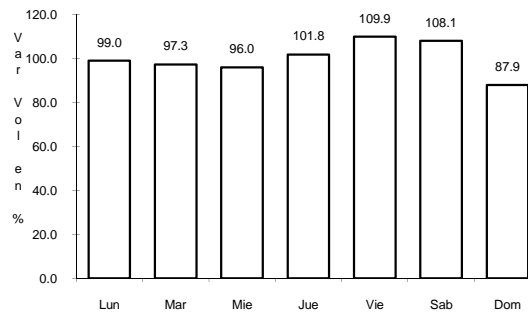


Km: 0.00

Tipo: 3

Sent: 1

CLAVE: 00429

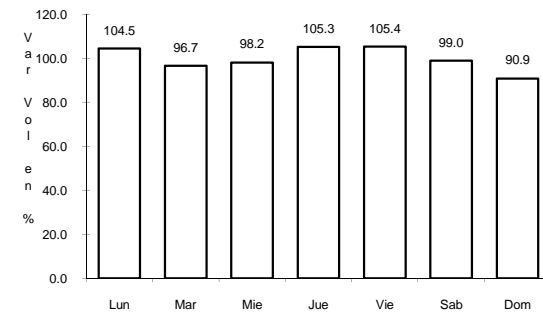


Km: 0.00

Tipo: 3

Sent: 2

RUTA: MEX-015

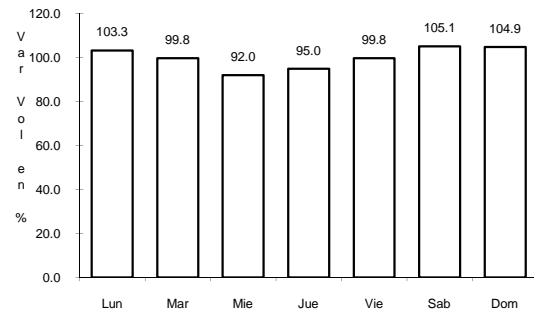


Km: 65.29

Tipo: 1

Sent: 0

9 CARR: LA NORIA - ACAMBARO

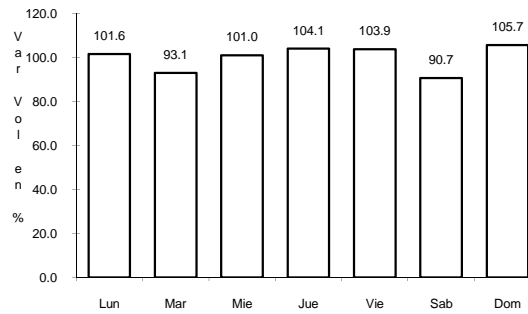


Km: 0.00

Tipo: 3

Sent: 0

CLAVE: 00131

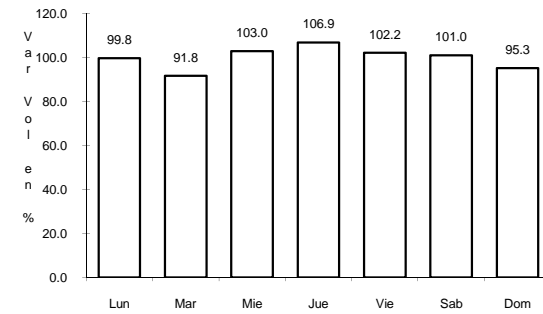


Km: 59.35

Tipo: 3

Sent: 0

RUTA: MEX-120

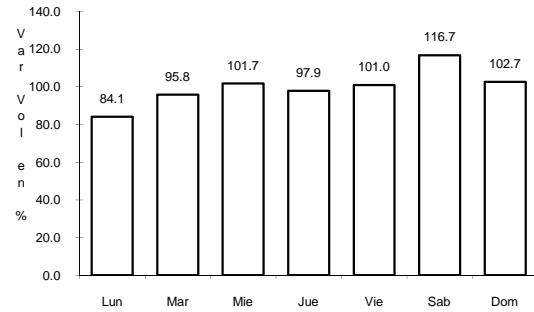


Km: 111.12

Tipo: 1

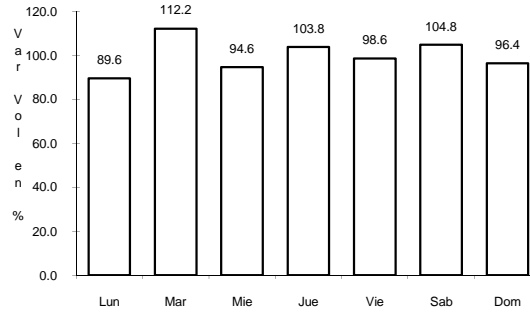
Sent: 0

10 CARR: LA ORILLA - LAS TRUCHAS



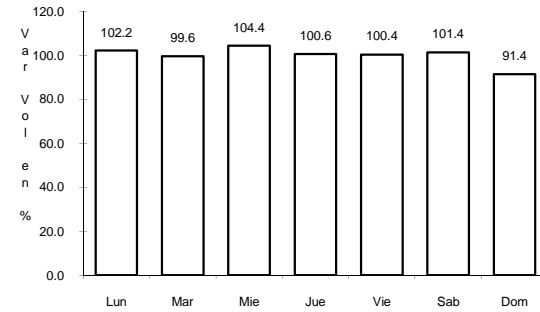
Km: 0.00 Tipo: 3 Sent: 1

CLAVE: 16557



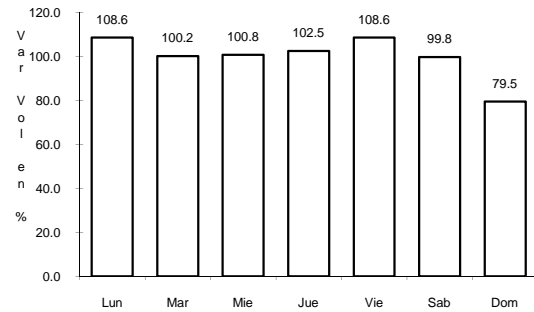
Km: 0.00 Tipo: 3 Sent: 2

RUTA: MEX



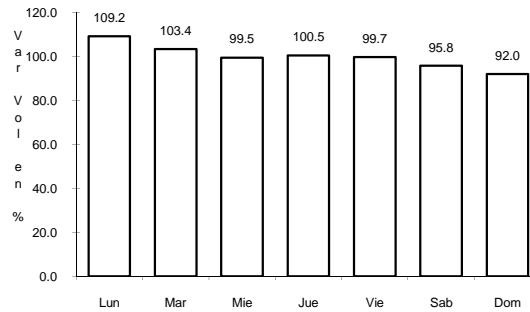
Km: 7.50 Tipo: 1 Sent: 0

11 CARR: LA PIEDAD - CARAPAN



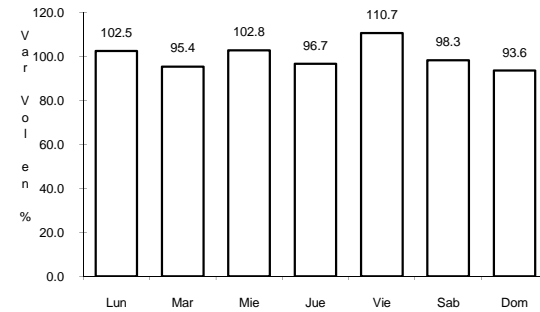
Km: 0.00 Tipo: 3 Sent: 0

CLAVE: 16476



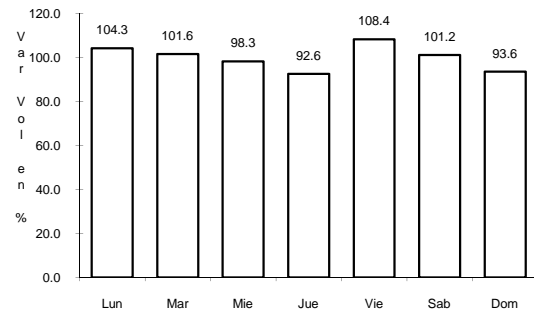
Km: 24.45 Tipo: 3 Sent: 0

RUTA: MEX-037



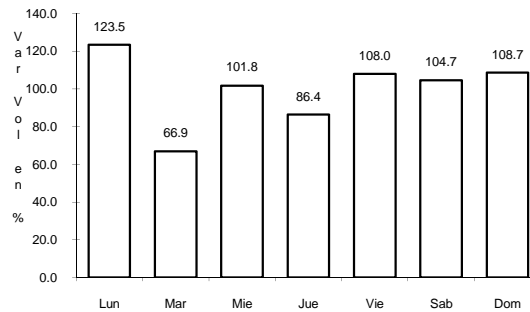
Km: 72.61 Tipo: 1 Sent: 0

12 CARR: MARAVATIO - ACAMBARO



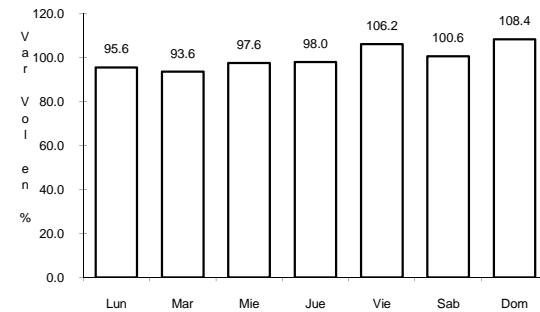
Km: 0.00 Tipo: 3 Sent: 0

CLAVE: 00418



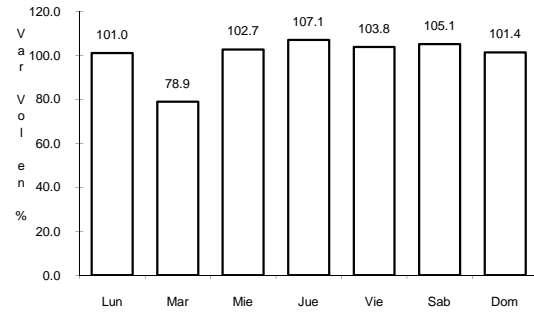
Km: 13.00 Tipo: 3 Sent: 0

RUTA: MEX-061



Km: 39.00 Tipo: 1 Sent: 0

13 CARR: MORELIA - JIQUILPAN

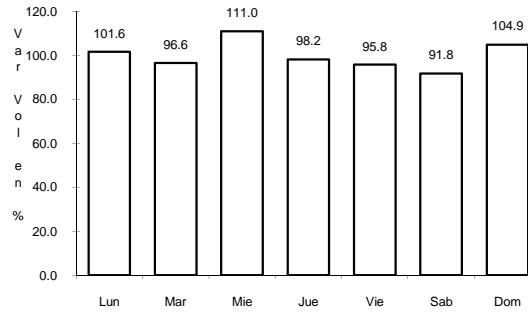


Km: 3.10

Tipo: 3

Sent: 1

CLAVE: 16029

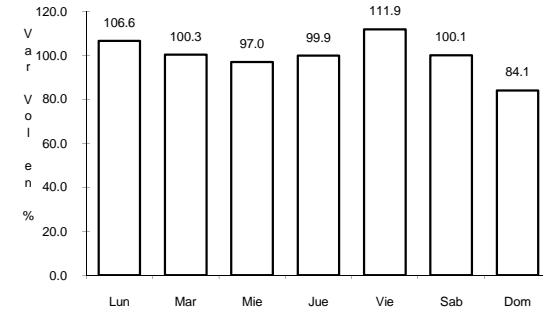


Km: 3.10

Tipo: 3

Sent: 2

RUTA: MEX-015

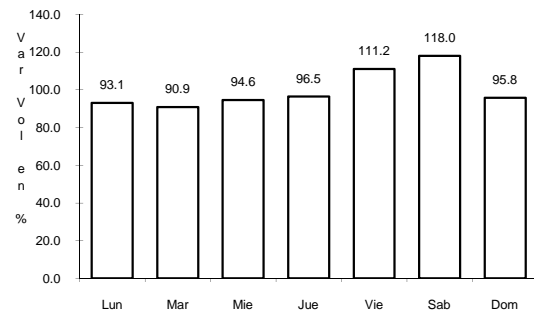


Km: 200.00

Tipo: 1

Sent: 0

14 CARR: MORELIA - PATZCUARO

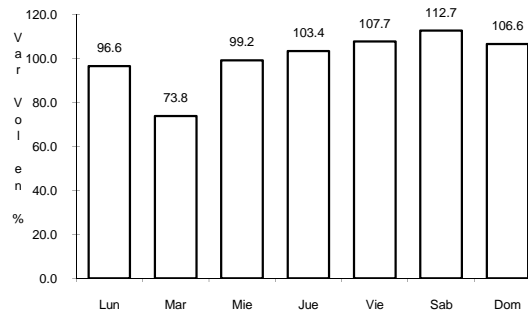


Km: 3.00

Tipo: 3

Sent: 1

CLAVE: 16009



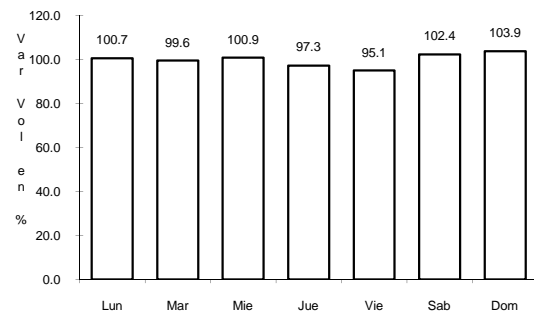
Km: 3.00

Tipo: 3

Sent: 2

RUTA: MEX-126

15 CARR: MORELIA - SALAMANCA

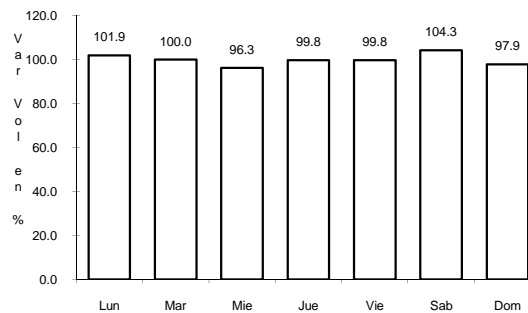


Km: 2.70

Tipo: 3

Sent: 1

CLAVE: 00124

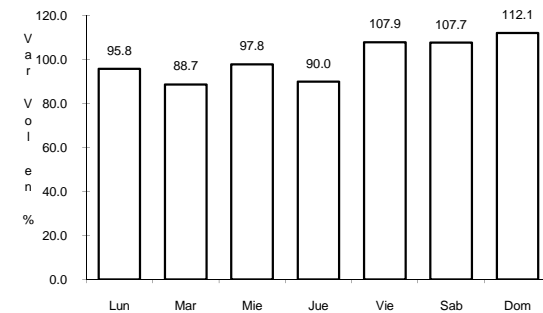


Km: 2.70

Tipo: 3

Sent: 2

RUTA: MEX-043

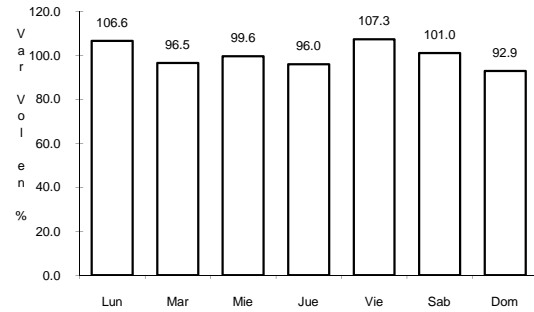


Km: 61.36

Tipo: 3

Sent: 0

16 CARR: PATZCUARO - URUAPAN

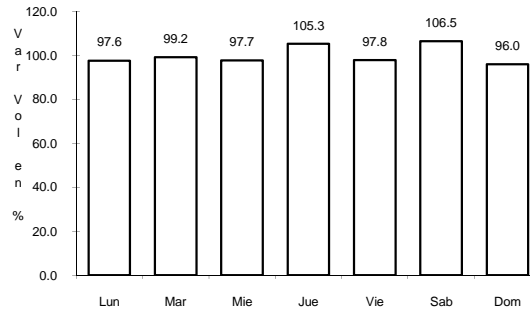


Km: 0.00

Tipo: 3

Sent: 0

CLAVE: 16484

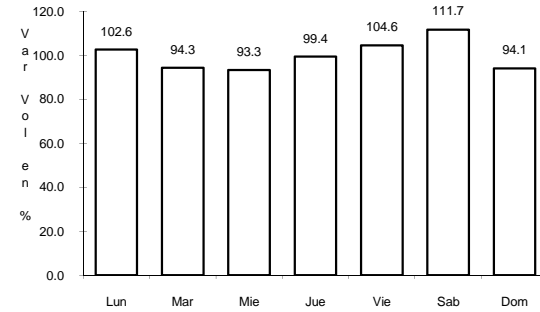


Km: 35.77

Tipo: 1

Sent: 0

RUTA: MEX-126

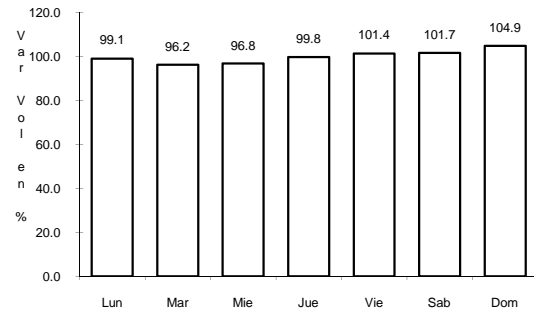


Km: 60.05

Tipo: 1

Sent: 0

17 CARR: QUIROGA - TEPALCATEPEC

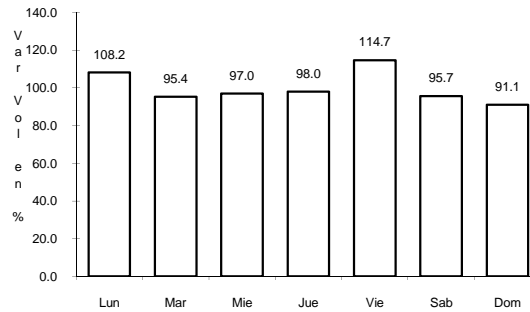


Km: 0.00

Tipo: 3

Sent: 0

CLAVE: 16125

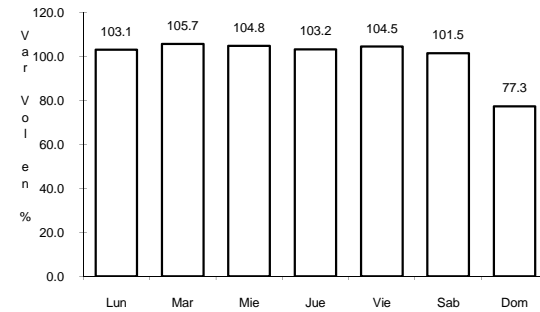


Km: 123.20

Tipo: 3

Sent: 0

RUTA: MEX-120

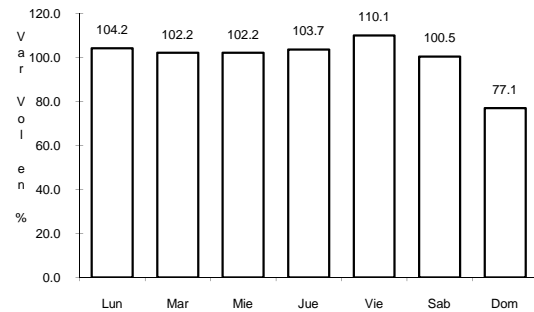


Km: 233.90

Tipo: 3

Sent: 0

18 CARR: RINCONADA - LA PIEDAD

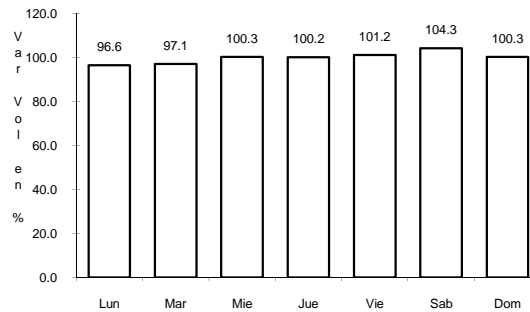


Km: 0.00

Tipo: 3

Sent: 0

CLAVE: 16243

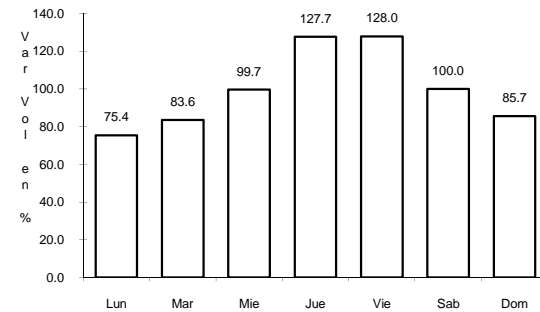


Km: 18.40

Tipo: 1

Sent: 0

RUTA: MEX



Km: 46.40

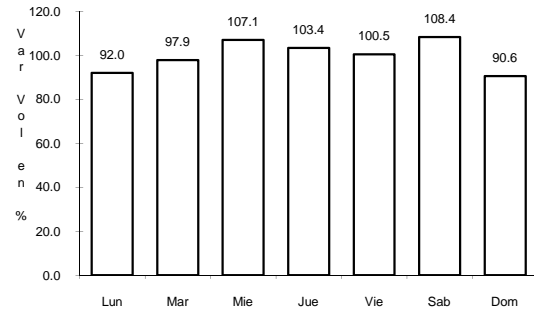
Tipo: 1

Sent: 0

19 CARR: T. C. (ZIHUATANEJO - LA MIRA) - LAZARO CARDENAS

CLAVE: 16421

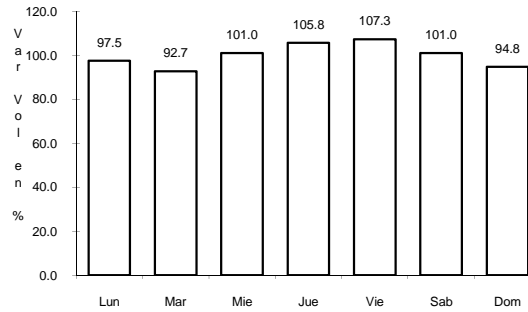
RUTA: MEX



Km: 0.00

Tipo: 3

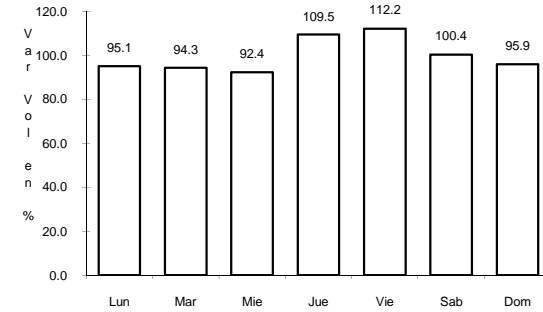
Sent: 0



Km: 6.00

Tipo: 1

Sent: 1



Km: 6.00

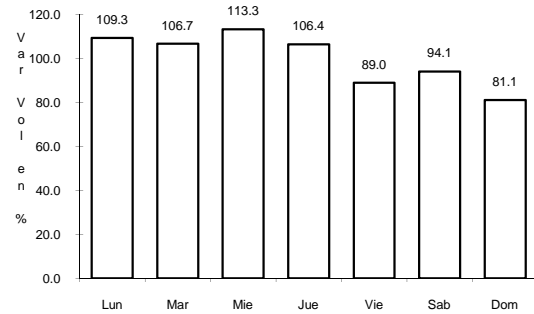
Tipo: 1

Sent: 2

20 CARR: TOLUCA - CD. ALTAMIRANO

CLAVE: 00020

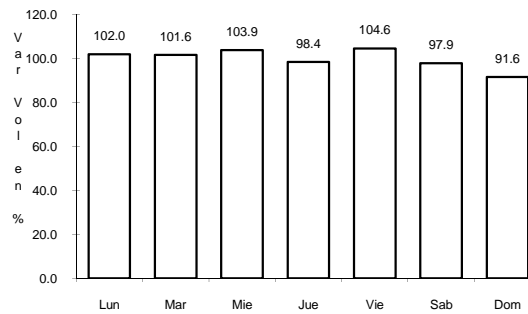
RUTA: MEX-134



Km: 1.78

Tipo: 3

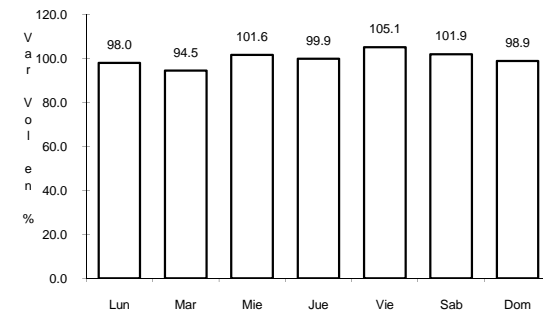
Sent: 1



Km: 1.78

Tipo: 3

Sent: 2



Km: 216.00

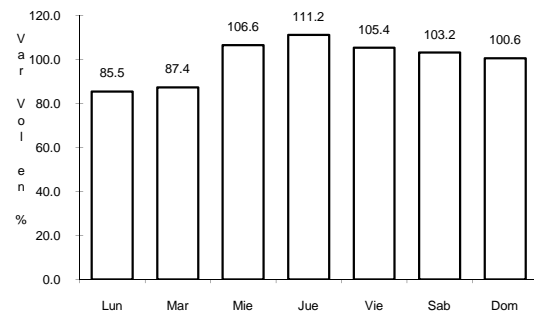
Tipo: 1

Sent: 0

21 CARR: TOLUCA - MORELIA

CLAVE: 00448

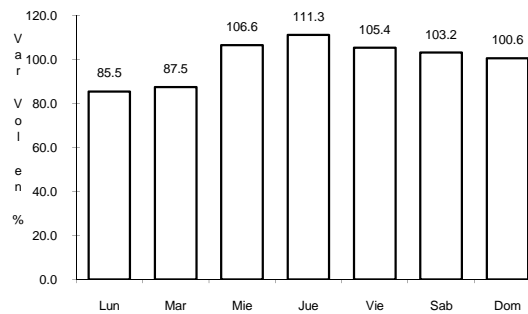
RUTA: MEX-015



Km: 1.00

Tipo: 3

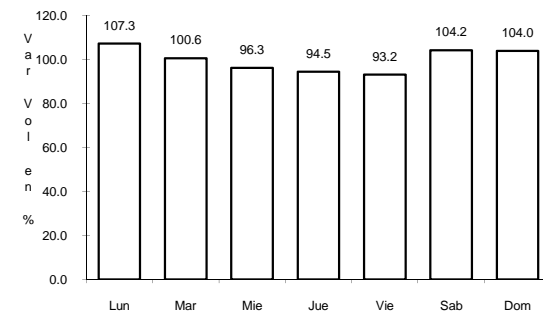
Sent: 1



Km: 1.00

Tipo: 3

Sent: 2



Km: 241.40

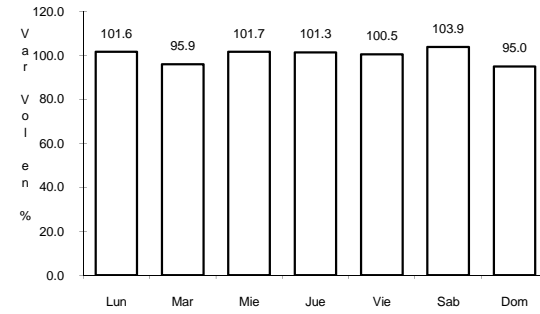
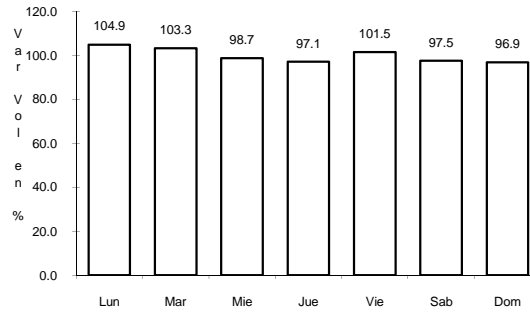
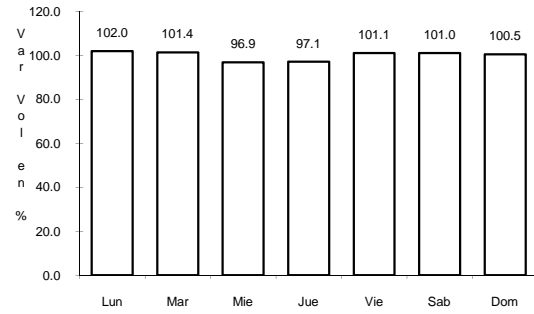
Tipo: 1

Sent: 0

22 CARR: ZAMORA - VISTA HERMOSA

CLAVE: 16242

ruta: MEX



Km: 0.00 Tipo: 3 Sent: 0

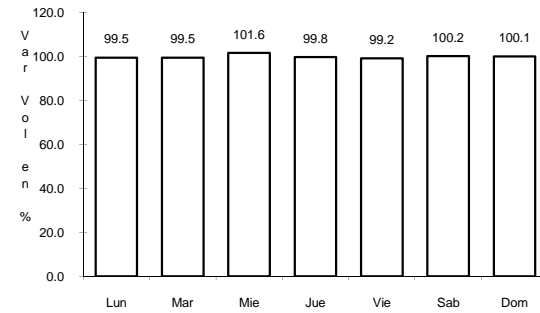
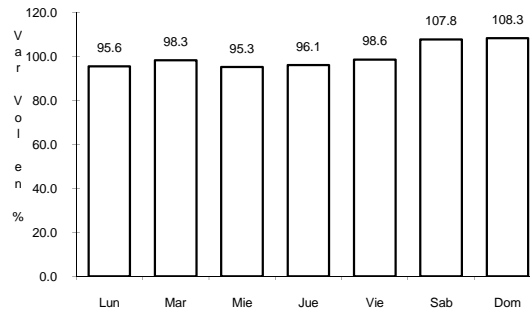
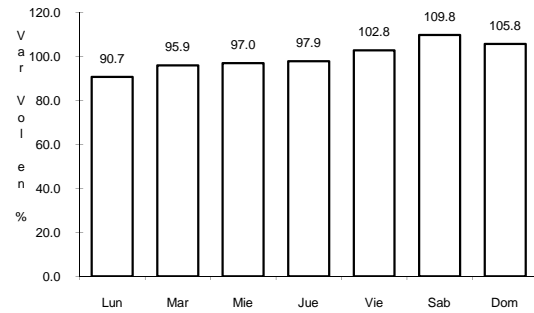
Km: 6.17 Tipo: 3 Sent: 0

Km: 43.80 Tipo: 1 Sent: 0

23 CARR: ZIHUATANEJO - LA MIRA

CLAVE: 00121

ruta: MEX-200



Km: 0.00 Tipo: 3 Sent: 1

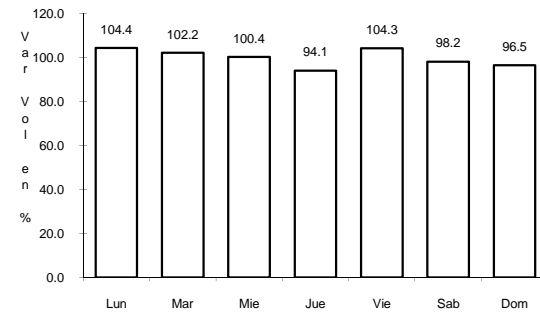
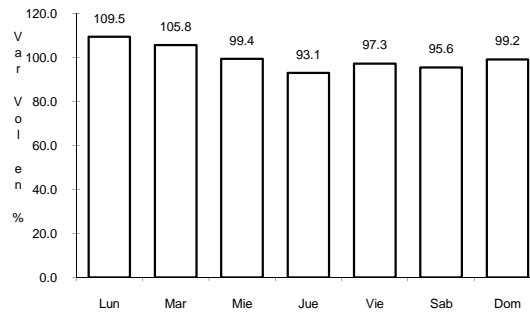
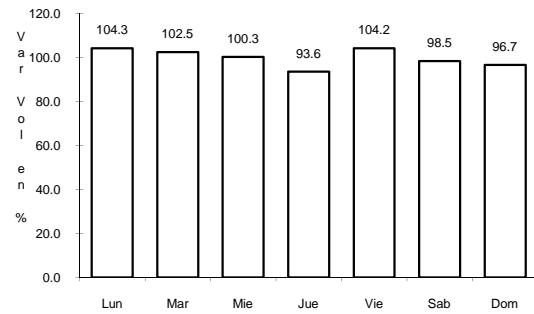
Km: 0.00 Tipo: 3 Sent: 2

Km: 52.00 Tipo: 3 Sent: 0

24 CARR: ZITACUARO - CD. ALTAMIRANO

CLAVE: 16006

ruta: MEX-051



Km: 26.06 Tipo: 3 Sent: 0

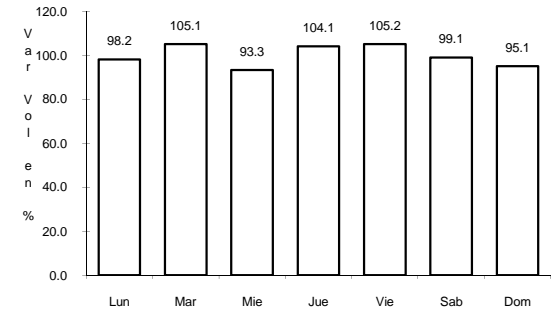
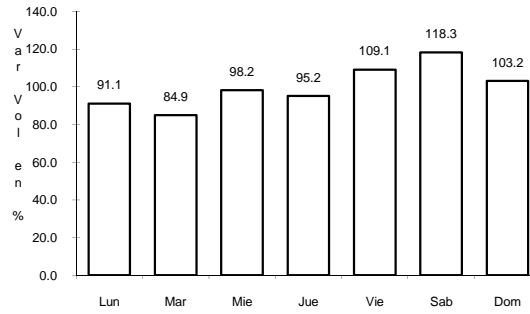
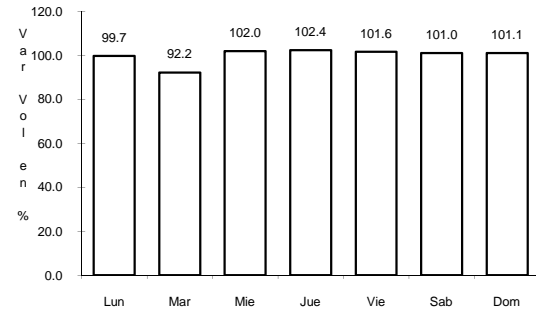
Km: 104.50 Tipo: 1 Sent: 0

Km: 214.50 Tipo: 1 Sent: 0

28 CARR: MORELIA - SALAMANCA (CUOTA)

CLAVE:

RUTA: MEX-043D



Km: 26.50 Tipo: 3 Sent: 0

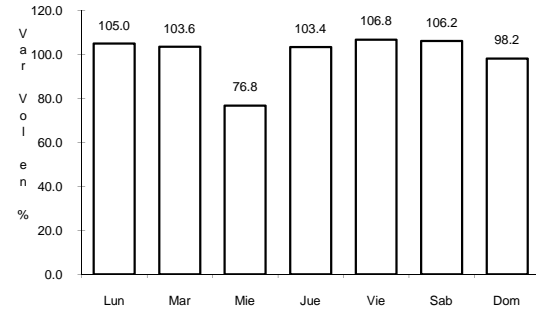
Km: 104.64 Tipo: 1 Sent: 0

Km: 109.49 Tipo: 1 Sent: 0

29 CARR: APATZINGAN - AGUILILLA

CLAVE: 16591

RUTA: MICH

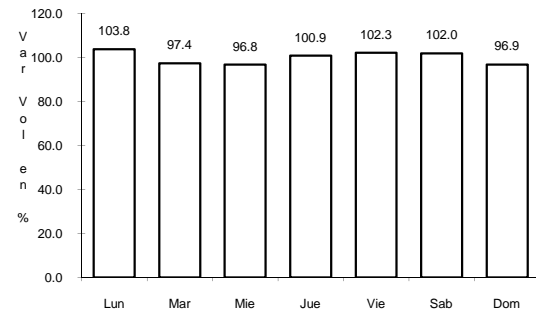


Km: 0.00 Tipo: 3 Sent: 0

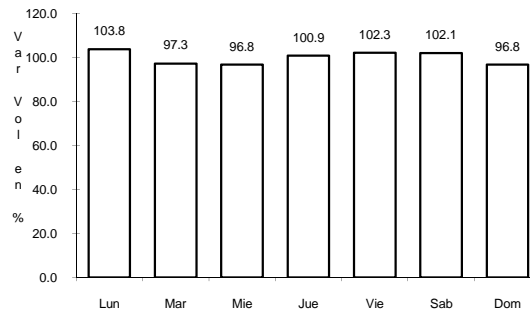
30 CARR: CHURUMUCO - ZICUIRAN

CLAVE:

RUTA: MICH

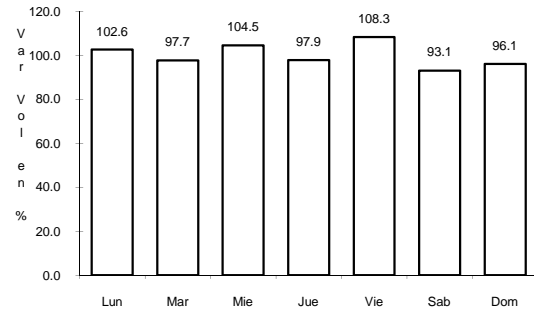


Km: 0.00 Tipo: 3 Sent: 0



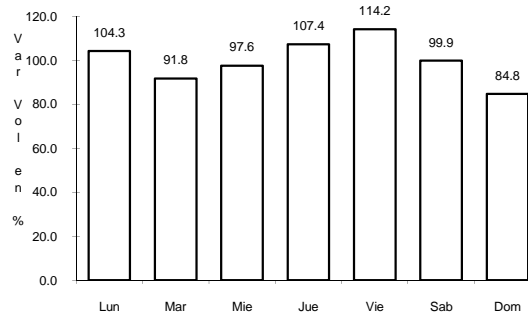
Km: 48.60 Tipo: 1 Sent: 0

31 CARR: COMANJA - HUANIQUEO



Km: 0.00 Tipo: 3 Sent: 0

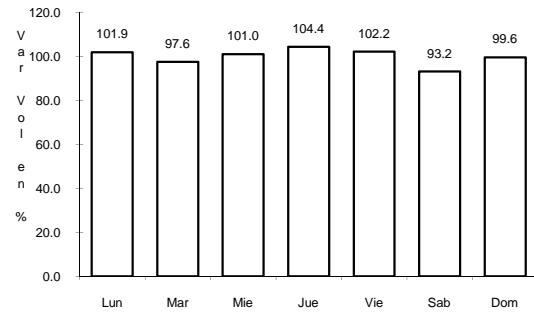
CLAVE: 16024



Km: 32.00 Tipo: 1 Sent: 0

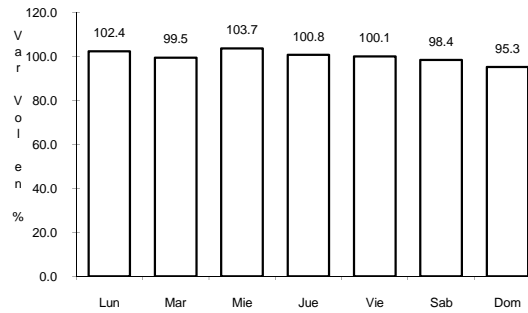
RUTA: MICH-024

32 CARR: CUITZEO - ZINAPARO



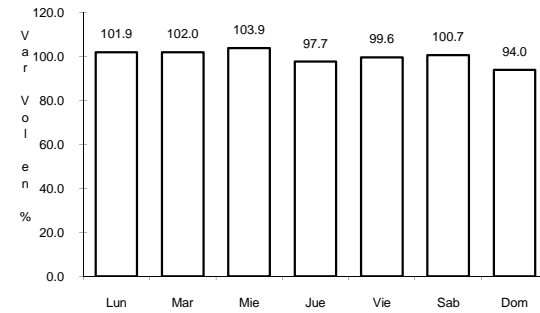
Km: 0.00 Tipo: 3 Sent: 0

CLAVE: 16027



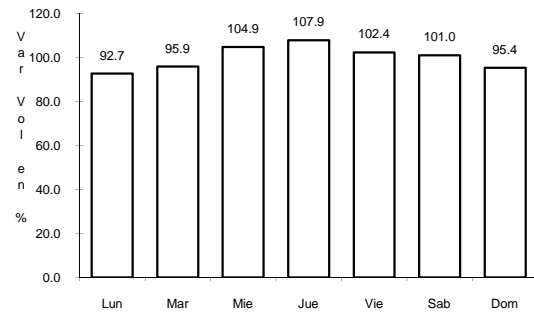
Km: 61.00 Tipo: 1 Sent: 0

RUTA: MICH-027



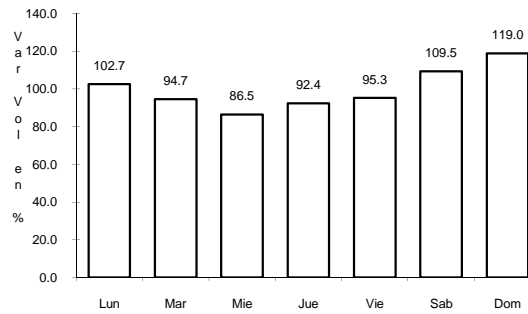
Km: 125.60 Tipo: 1 Sent: 0

33 CARR: EL CORREO - LAGUNILLAS



Km: 0.00 Tipo: 3 Sent: 0

CLAVE: 16014



Km: 11.00 Tipo: 1 Sent: 0

RUTA: MICH

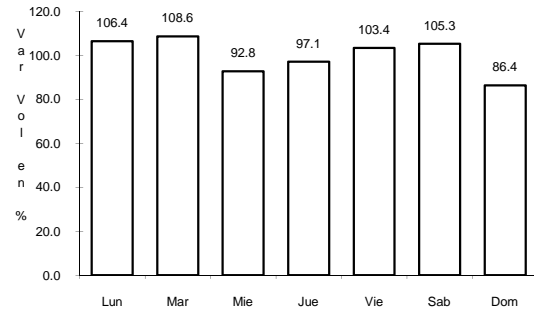




37 CARR: JACONA - BUENAVISTA TOMATLAN

CLAVE: 16016

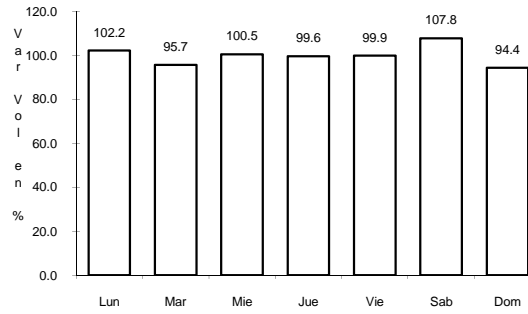
RUTA: MICH-016



Km: 0.00

Tipo: 3

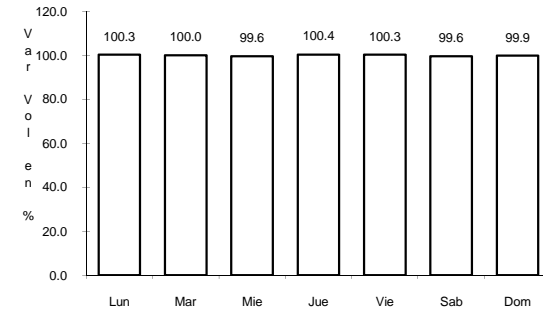
Sent: 0



Km: 60.00

Tipo: 1

Sent: 0



Km: 123.00

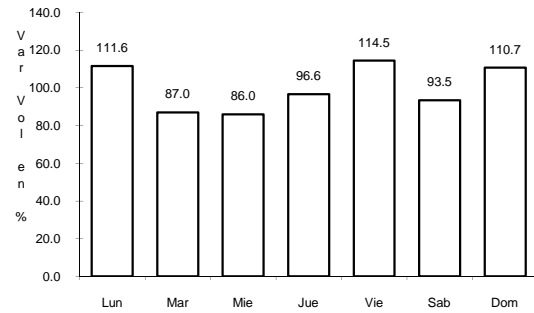
Tipo: 1

Sent: 0

38 CARR: LA PAZ - TEPETONGO

CLAVE:

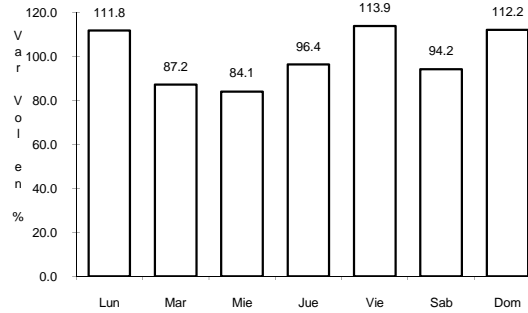
RUTA: MICH



Km: 0.00

Tipo: 3

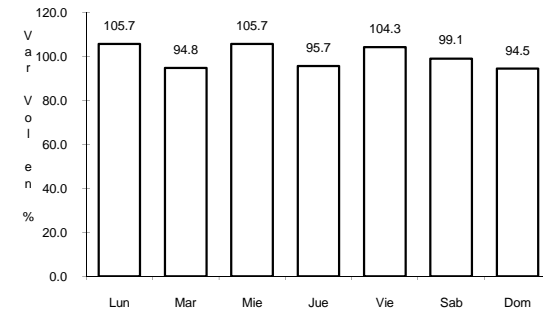
Sent: 0



Km: 5.20

Tipo: 1

Sent: 0



Km: 45.00

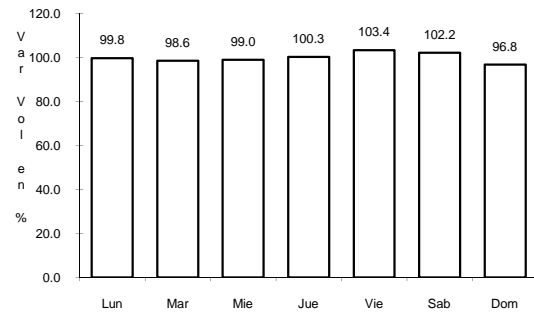
Tipo: 1

Sent: 0

39 CARR: LIBRAMIENTO DE URUAPAN

CLAVE: 16425

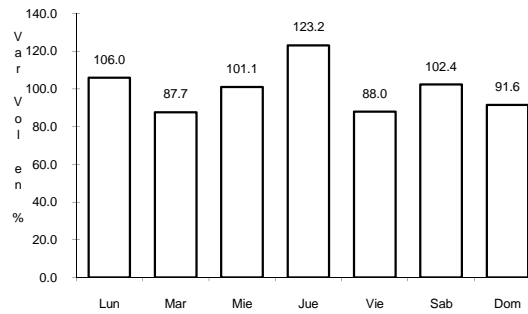
RUTA: MICH



Km: 0.00

Tipo: 3

Sent: 0

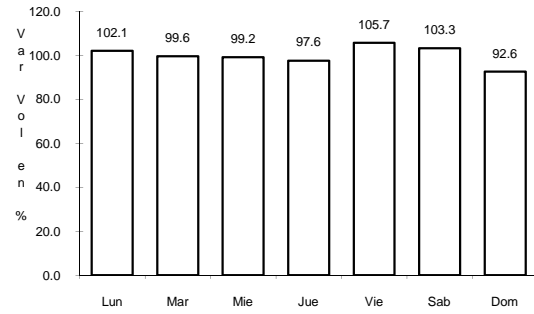


Km: 9.20

Tipo: 1

Sent: 0

40 CARR: PATZCUARO - CHUPICUARO

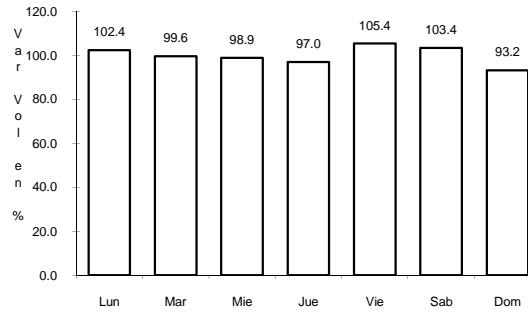


Km: 0.00

Tipo: 3

Sent: 0

CLAVE:

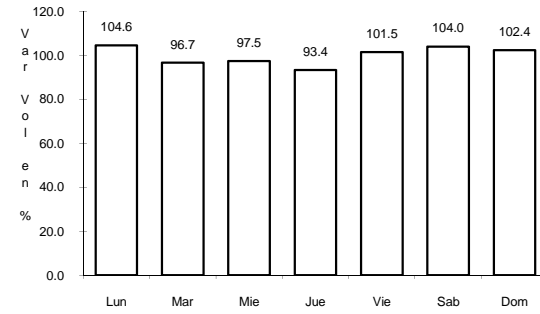


Km: 17.00

Tipo: 1

Sent: 0

RUTA: MICH

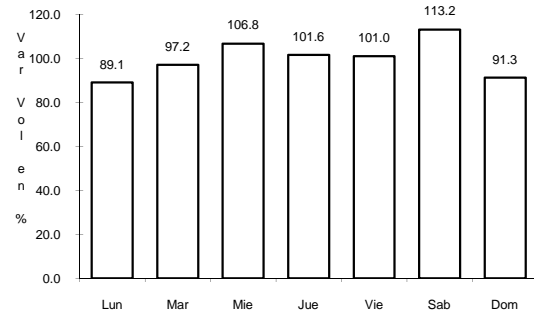


Km: 41.80

Tipo: 1

Sent: 0

41 CARR: RAMAL A COAHUAYANA



Km: 0.00

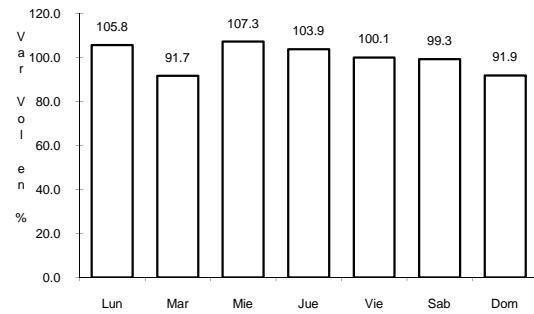
Tipo: 3

Sent: 0

CLAVE: 16069

RUTA: MICH-069

42 CARR: RAMAL A INFIERNILLO



Km: 0.00

Tipo: 3

Sent: 0

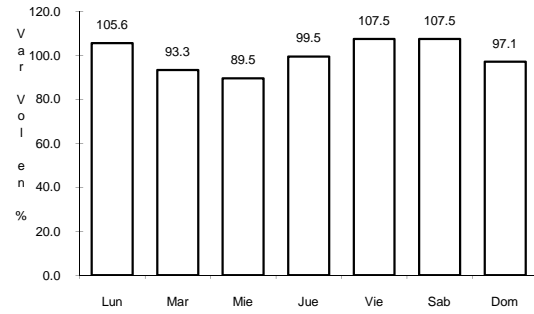
CLAVE: 16010

RUTA: MICH-010

43 CARR: SAN FELIPE ALZATI - ANGANGUEO

CLAVE: 16556

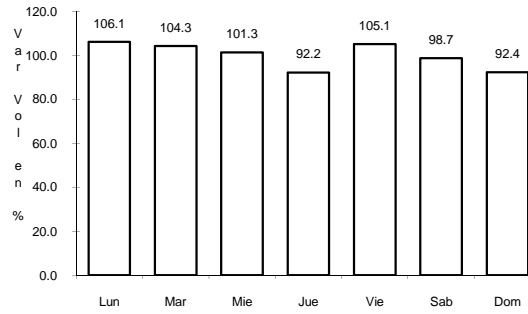
ruta: MICH-044



Km: 0.00

Tipo: 3

Sent: 0



Km: 24.00

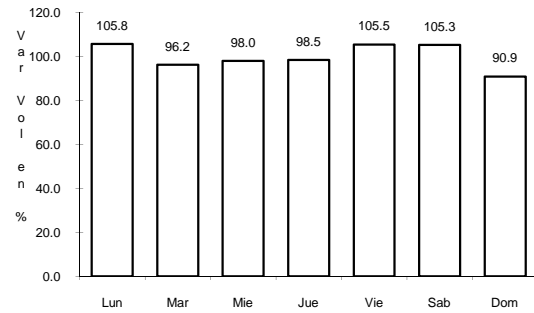
Tipo: 1

Sent: 0

44 CARR: SAN JUAN TUMBIO - CHERAN

CLAVE:

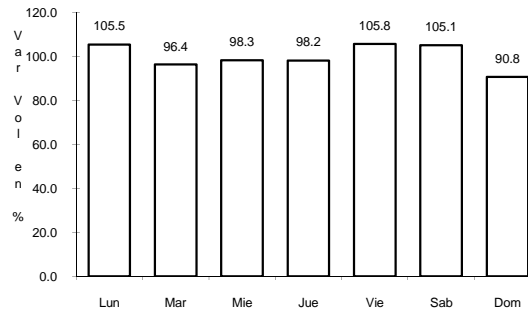
ruta: MICH



Km: 0.00

Tipo: 3

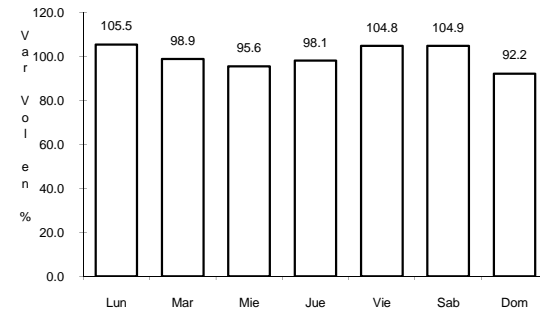
Sent: 0



Km: 28.50

Tipo: 1

Sent: 0



Km: 35.80

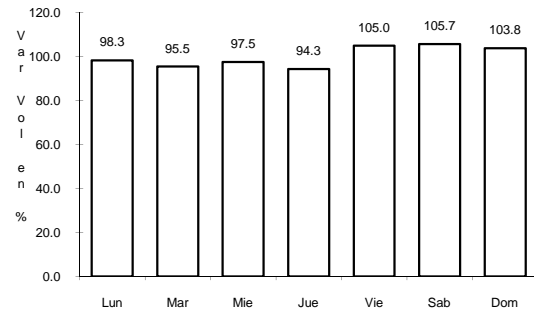
Tipo: 1

Sent: 0

45 CARR: T. C. (TOLUCA - MORELIA) - MARAVATIO

CLAVE: 16584

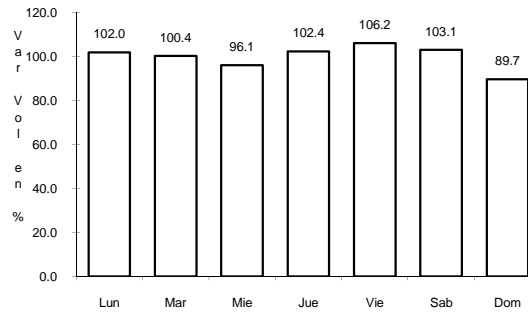
ruta: MICH-122



Km: 0.00

Tipo: 3

Sent: 0



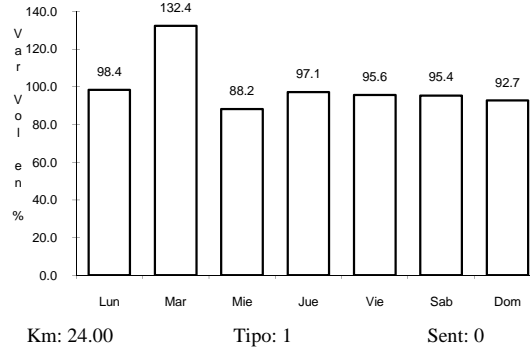
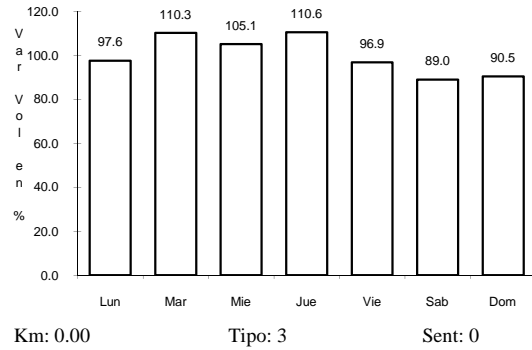
Km: 29.00

Tipo: 1

Sent: 0

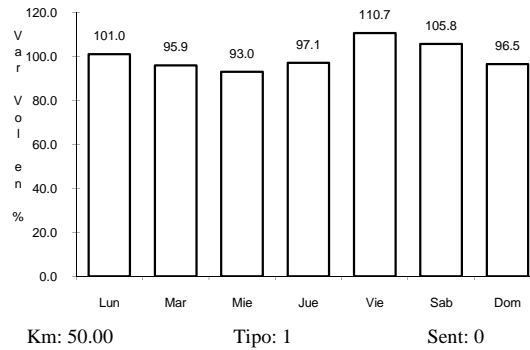
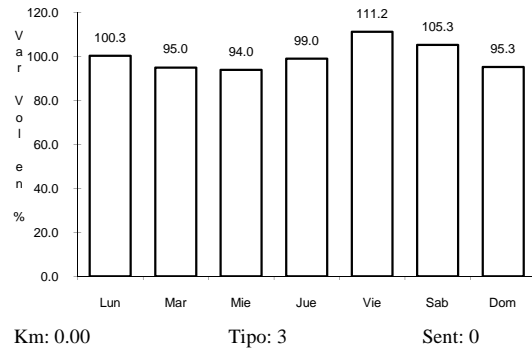
46 CARR: T. C. (V. VICTORIA - EL ORO DE HIDALGO) - ANGANGUEO CLAVE: 00195

RUTA: EM-003-MICH



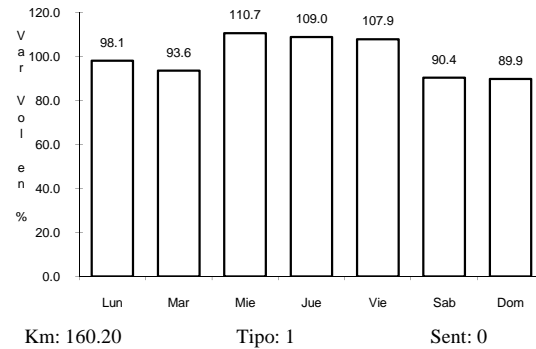
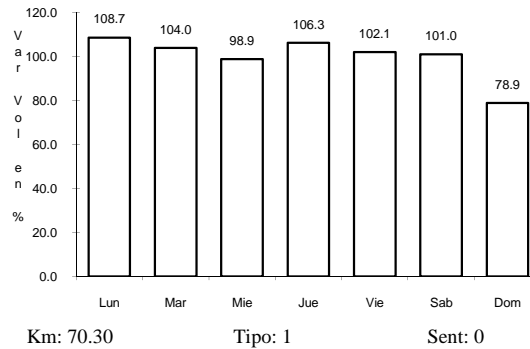
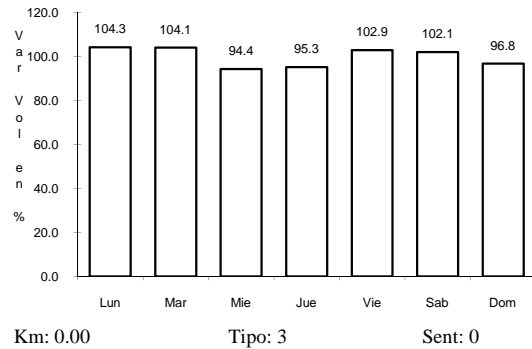
47 CARR: T.C. (CARAPAN - PLAYA AZUL) - PERIBAN DE RAMOS CLAVE:

RUTA: MICH



48 CARR: TEPALCATEPEC - AQUILA CLAVE:

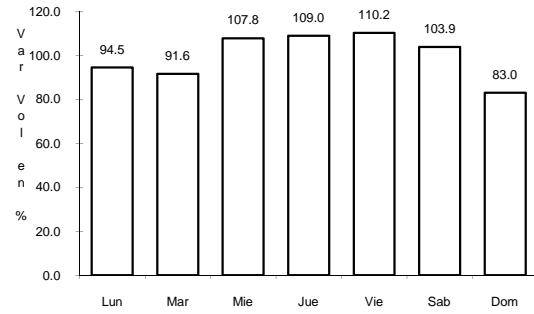
RUTA: MICH



49 CARR: TIRIPETIO - ERENDIRA

CLAVE: 16422

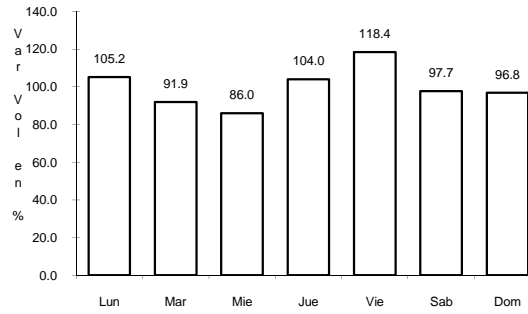
RUTA: MICH



Km: 0.00

Tipo: 3

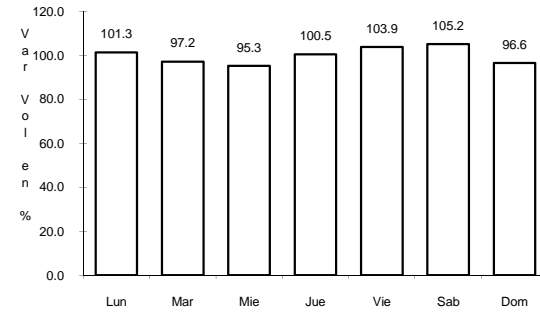
Sent: 0



Km: 23.20

Tipo: 1

Sent: 0



Km: 150.00

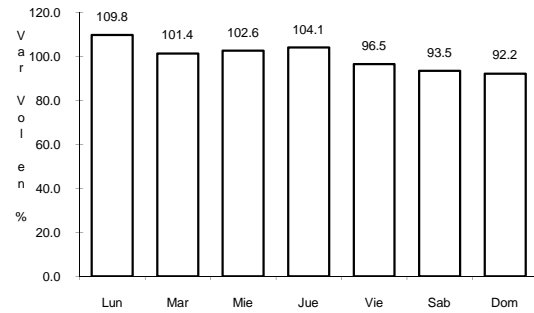
Tipo: 1

Sent: 0

50 CARR: TOCUMBO - COTIJA

CLAVE: 16042

RUTA: MICH-042



Km: 0.00

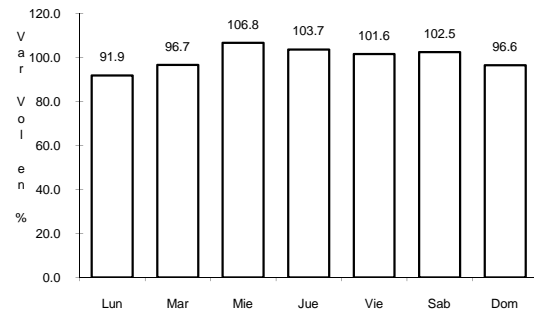
Tipo: 3

Sent: 0

51 CARR: UCAREO - SAN PEDRO JACUARO

CLAVE:

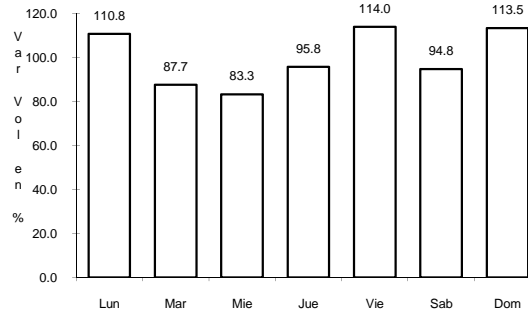
RUTA: MICH



Km: 0.00

Tipo: 3

Sent: 0

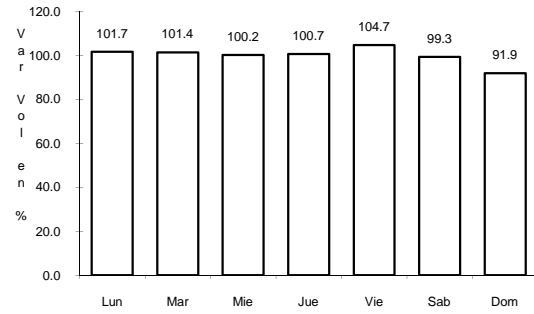


Km: 33.00

Tipo: 1

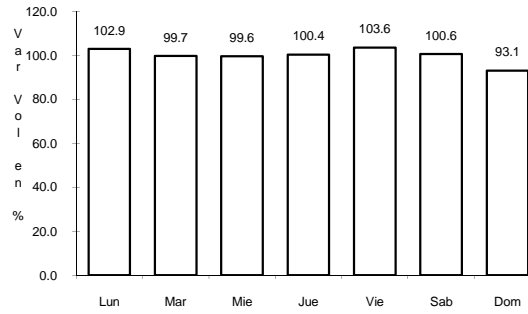
Sent: 0

52 CARR: URUAPAN - EL COPETIRO



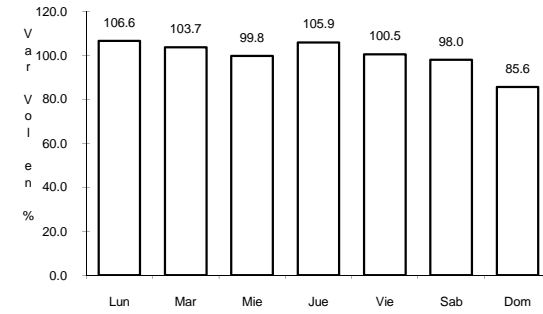
Km: 0.00 Tipo: 3 Sent: 0

CLAVE:



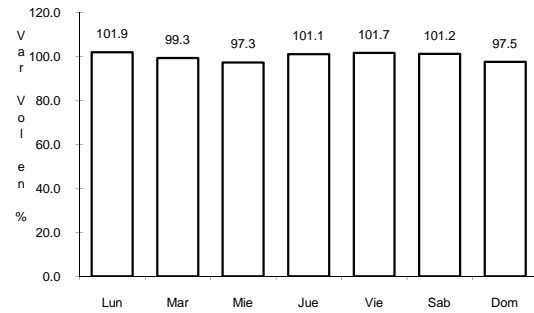
Km: 12.50 Tipo: 1 Sent: 0

RUTA: MICH



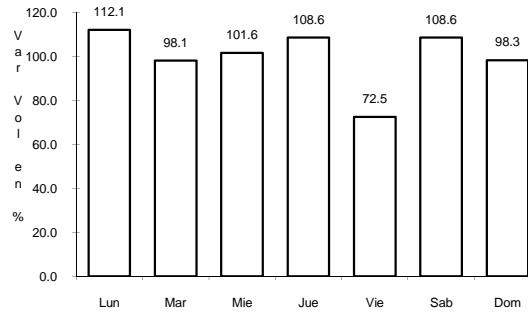
Km: 62.50 Tipo: 1 Sent: 0

53 CARR: ZACAPU - VILLACHUATO



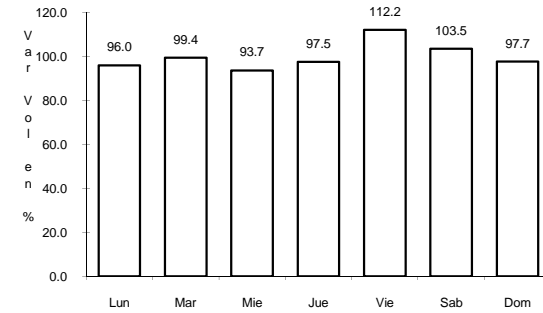
Km: 0.00 Tipo: 3 Sent: 0

CLAVE: 16039



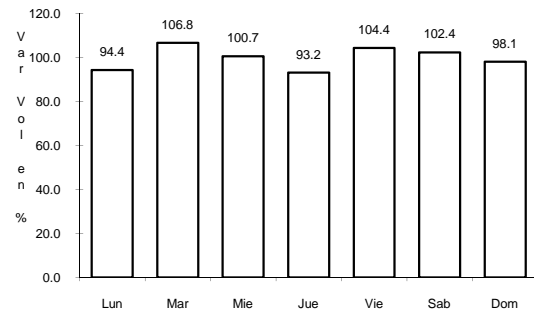
Km: 21.00 Tipo: 3 Sent: 0

RUTA: MICH-039



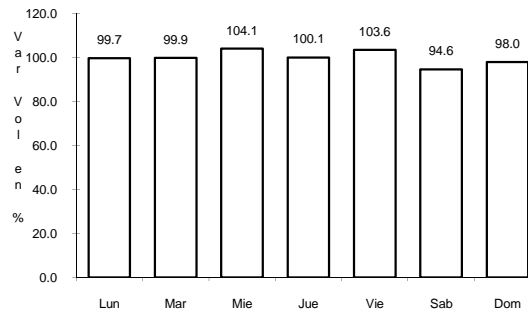
Km: 43.00 Tipo: 1 Sent: 0

55 CARR: ATLACOMULCO - MORELIA



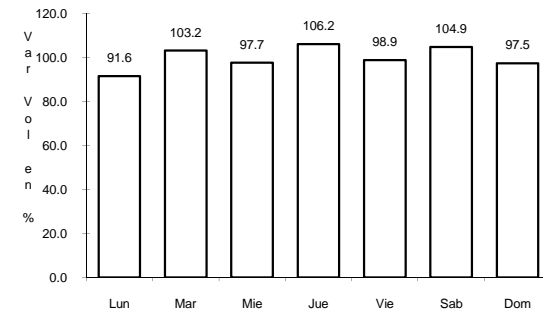
Km: 0.00 Tipo: 3 Sent: 0

CLAVE: 00151



Km: 154.50 Tipo: 1 Sent: 1

RUTA: EM-005-MEX-126



Km: 154.50 Tipo: 1 Sent: 2

56 CARR: OPOPEO - PURUARAN

CLAVE: 16241

RUTA: MEX-041-MICH

