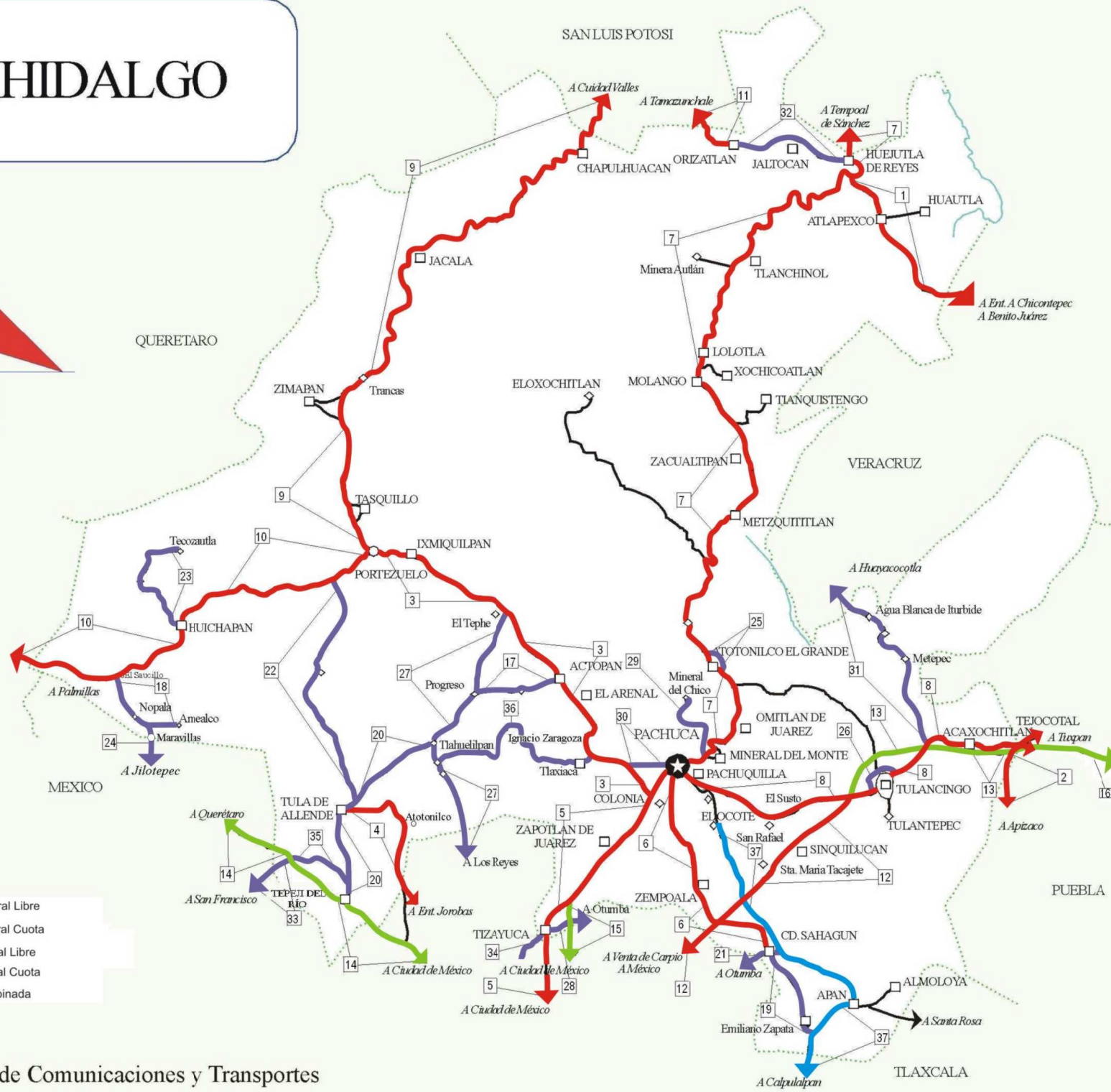
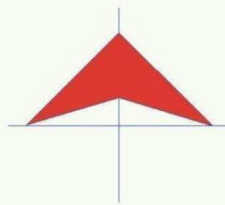


HIDALGO

Núm. INDICE	CARRETERA	RUTA
---- FEDERAL LIBRE ----		
1	ALAMO - HUEJUTLA DE REYES	MEX-102
2	APIZACO - TEJOCOTAL	MEX-119
3	ENT. COLONIA - PORTEZUELO	MEX-085
4	ENT. JOROBAS - TULA	MEX-087
5	MEXICO - PACHUCA (LIBRE)	MEX-085
6	PACHUCA - CD. SAHAGUN	MEX
7	PACHUCA - TEMPOAL	MEX-105
8	PACHUCA - TUXPAM	MEX-130
9	PORTEZUELO - CD. VALLES	MEX-085
10	PORTEZUELO - PALMILLAS	MEX-045
11	TAMAZUNCHALE - SAN FELIPE ORIZATLAN	MEX-102
12	VENTA DE CARPIO - T. C. (PACHUCA - TUXPAM)	MEX-132
---- FEDERAL CUOTA ----		
13	ENT. TULANCINGO - TEJOCOTAL (CUOTA)	MEX-132D
14	MEXICO - QUERETARO (CUOTA)	MEX-057D
15	MEXICO - TIZAYUCA (CUOTA)	MEX-085D
16	TEJOCOTAL - TIHUATLAN (CUOTA)	MEX-130D
---- ESTATAL LIBRE ----		
17	ACTOPAN - PROGRESO	HGO
18	EL SAUCILLO - AMEALCO	HGO-103
19	ENT. EMILIANO ZAPATA - CD. SAHAGUN	HGO
20	ENT. TEPEJI DEL RIO - TLAHUELILPAN	HGO-017
21	ENT. TOLMAN - CD. SAHAGUN	EM-009-HGO
22	FRANCISCO I. MADERO - TULA DE ALLENDE	HGO
23	HUICHAPAN - TECOZAUTLA	HGO-030
24	JILOTEPEC - MARAVILLAS	EM-HGO
25	LIBRAMIENTO DE ATOTONILCO EL GRANDE	HGO
26	LIBRAMIENTO DE TULANCINGO	HGO
27	LOS REYES - EL TEPHE	EM-HGO
28	OTUMBA - TIZAYUCA	EM-HGO
29	RAMAL A EL CHICO	HGO
30	RAMAL A PACHUCA	HGO
31	SAN ALEJO - HUAYACOCOTLA	HGO-051-VER-113
32	SAN FELIPE ORIZATLAN - HUEJUTLA DE REYES	HGO
33	SANTO DOMINGO - T. C. (MEXICO - QUERETARO (CUOTA))	EM-011-HGO
34	T. C. (LOS REYES - EL TEPHE) - TIZAYUCA	EM-HGO
35	TEPEJI DEL RIO - T.C. (MEXICO - QUERETARO)	HGO
36	TLAHUELILPAN - SAN AGUSTIN TLAXIACA	HGO
---- COMBINADA ----		
37	CALPULALPAN - EL OCOTE	MEX-HGO

# 13 HIDALGO



- █ Red Federal Libre
- █ Red Federal Cuota
- █ Red Estatal Libre
- █ Red Estatal Cuota
- █ Red Combinada

HIDALGO

1 CARR : ALAMO - HUEJUTLA DE REYES

CLAVE: 00116

RUTA : MEX-102

AÑO : 2008

L U G A R	E S T A C I O N				C L A S I F I C A C I O N V E H I C U L A R E N P O R C I E N T O .												
	KM	TE	SC	TDPA	A	B	C2	C3	T3S2	T3S3	T3S2R4	OTROS	A	B	C	K'	D
T. C. TIHUATLAN - POTRERO DEL LLANO	0.00	3	0	1900	85.4	3.6	1.6	1.1	3.0	1.2	2.2	1.9	85.4	3.6	11.0	0.107	0.502
BENITO JUAREZ	73.00	1	0	857	91.0	2.8	3.0	0.7	1.4	0.2	0.1	0.8	91.0	2.8	6.2	0.140	0.500
T. DER. CHICONTEPEC DE TEJADA	78.00	3	0	556	89.8	4.5	4.0	0.4	0.7	0.2	0.1	0.3	89.8	4.5	5.7	0.133	0.512
LIM. EDOS. TERM. VER. PPIA. HGO.	78.70																
T. C. PACHUCA - TEMPOAL (HUEJUTLA DE REYES)	110.00																

2 CARR : APIZACO - TEJOCOTAL

CLAVE: 00430

RUTA : MEX-119

AÑO : 2008

L U G A R	E S T A C I O N				C L A S I F I C A C I O N V E H I C U L A R E N P O R C I E N T O .												
	KM	TE	SC	TDPA	A	B	C2	C3	T3S2	T3S3	T3S2R4	OTROS	A	B	C	K'	D
APIZACO	0.00	3	0	11597	70.4	4.6	3.0	1.4	8.2	2.5	6.5	3.4	70.4	4.6	25.0	0.083	0.504
T. DER. TETLA	6.60	3	0	10387	75.9	5.2	4.1	2.0	5.8	1.8	2.9	2.3	75.9	5.2	18.9	0.097	0.504
T. IZQ. ATLANGATEPEC	12.15	1	0	9288	71.5	7.6	5.9	2.7	5.4	1.8	2.8	2.3	71.5	7.6	20.9	0.095	0.508
TLAXCO	23.91	1	0	7533	83.8	5.5	2.1	1.3	3.7	1.2	1.1	1.3	83.8	5.5	10.7	0.080	0.508
TLAXCO	23.91	3	0	4725	89.3	2.9	0.8	1.1	2.1	1.3	1.2	1.3	89.3	2.9	7.8	0.089	0.507
LIM. EDOS. TERM. TLAX. PPIA. PUE.	34.45																
T. DER. TETELA DE OCAMPO	52.20	1	0	5817	82.1	8.7	4.0	1.6	0.4	1.5	1.2	0.5	82.1	8.7	9.2	0.078	0.503
ZACATLAN	71.25	1	0	6834	78.2	8.7	5.8	2.6	0.8	1.2	1.2	1.5	78.2	8.7	13.1	0.080	0.503
LIM. EDOS. TERM. PUE. PPIA. HGO.	110.50																
T. C. PACHUCA - TUXPAM	113.20	1	0	4058	80.8	2.7	4.0	2.4	4.4	1.8	2.6	1.3	80.8	2.7	16.5	0.101	0.500

3 CARR : ENT. COLONIA - PORTEZUELO

CLAVE: 13257

RUTA : MEX-085

AÑO : 2008

L U G A R	E S T A C I O N				C L A S I F I C A C I O N V E H I C U L A R E N P O R C I E N T O .												
	KM	TE	SC	TDPA	A	B	C2	C3	T3S2	T3S3	T3S2R4	OTROS	A	B	C	K'	D
ENT. COLONIA	0.00	3	1	10110	73.9	6.8	3.2	3.1	5.9	3.2	1.8	2.1	73.9	6.8	19.3	0.093	0.503
ENT. COLONIA	0.00	3	2	10243	68.0	6.6	3.5	2.9	7.3	4.1	4.1	3.5	68.0	6.6	25.4	0.073	0.503
T. DER. PACHUCA	8.34	3	1	12490	71.0	4.8	3.8	0.3	6.4	3.4	5.9	4.4	71.0	4.8	24.2	0.090	0.503
T. DER. PACHUCA	8.34	3	2	10741	70.8	4.8	3.8	1.7	5.9	3.2	5.5	4.3	70.8	4.8	24.4	0.116	0.503
ACTOPAN	34.13	1	1	10801	79.2	3.1	3.3	1.0	4.6	2.3	1.6	4.9	79.2	3.1	17.7	0.100	0.500
ACTOPAN	34.13	1	2	10799	79.3	3.1	3.4	1.0	4.7	2.3	1.5	4.7	79.3	3.1	17.6	0.086	0.500
ACTOPAN	34.13	3	1	7525	70.1	5.5	2.7	2.4	6.5	3.6	5.8	3.4	70.1	5.5	24.4	0.094	0.505
ACTOPAN	34.13	3	2	7389	69.8	5.5	2.7	2.4	6.6	3.7	5.9	3.4	69.8	5.5	24.7	0.093	0.505
T. IZQ. TULA	68.20	1	0	10594	63.8	3.8	4.3	2.2	7.3	6.5	8.1	4.0	63.8	3.8	32.4	0.084	0.501
IXMIQUILPAN	75.20	1	0	14681	84.3	2.9	3.1	1.4	3.1	3.7	0.5	1.0	84.3	2.9	12.8	0.093	0.504





HIDALGO

8 CARR : PACHUCA - TUXPAM

CLAVE: 00608

RUTA : MEX-130

AÑO : 2008

L U G A R	E S T A C I O N				C L A S I F I C A C I O N V E H I C U L A R E N P O R C I E N T O .												
	KM	TE	SC	TDPA	A	B	C2	C3	T3S2	T3S3	T3S2R4	OTROS	A	B	C	K'	D
X. C. LIBRAMIENTO DE PACHUCA	2.60	3	1	3980	87.7	2.7	2.1	1.9	1.2	1.8	1.2	1.4	87.7	2.7	9.6	0.074	0.502
X. C. LIBRAMIENTO DE PACHUCA	2.60	3	2	4015	87.2	2.9	2.1	1.9	1.1	2.1	1.2	1.5	87.2	2.9	9.9	0.080	0.502
T. IZQ. PACHUQUILLA (1° ACCESO)	7.00	1	1	6958	87.2	2.7	1.1	0.8	2.8	1.4	1.0	3.0	87.2	2.7	10.1	0.079	0.504
T. IZQ. PACHUQUILLA (1° ACCESO)	7.00	1	2	7059	88.6	2.7	1.1	0.7	2.5	1.0	0.8	2.6	88.6	2.7	8.7	0.084	0.504
T. IZQ. PACHUQUILLA (2° ACCESO)	10.50	1	1	5720	57.9	5.4	5.1	1.8	19.8	5.5	3.5	1.0	57.9	5.4	36.7	0.065	0.502
T. IZQ. PACHUQUILLA (2° ACCESO)	10.50	1	2	5673	54.3	5.5	4.9	1.8	20.5	7.0	3.9	2.1	54.3	5.5	40.2	0.064	0.502
T. DER. CD. SAHAGUN	16.59	1	0	7457	64.8	5.6	5.3	2.9	11.5	4.2	4.4	1.3	64.8	5.6	29.6	0.074	0.502
T. C. VENTA DE CARPIO - TULANCINGO	36.45	1	1	6332	85.8	3.7	1.1	1.1	2.8	1.5	1.0	3.0	85.8	3.7	10.5	0.079	0.502
T. C. VENTA DE CARPIO - TULANCINGO	36.45	1	2	6375	87.6	3.7	1.1	0.7	2.5	1.0	0.8	2.6	87.6	3.7	8.7	0.083	0.502
T. C. VENTA DE CARPIO - TULANCINGO	36.45	3	0	22631	77.7	4.9	7.2	3.1	2.6	1.4	1.6	1.5	77.7	4.9	17.4	0.084	0.502
T. IZQ. LIBRAMIENTO DE TULANCINGO	53.70	3	0	12307	79.0	2.9	2.8	2.4	4.6	1.9	2.4	4.0	79.0	2.9	18.1	0.091	0.508
T. IZQ. HUAYACOCOTLA	66.42	3	0	9011	78.6	5.2	3.4	1.8	5.0	1.9	2.2	1.9	78.6	5.2	16.2	0.075	0.504
LIM. EDOS. TERM. HGO. PPIA. PUE.	83.18																
T. DER. HUAUCHINANGO (1° ACCESO)	94.00	1	0	10892	77.2	3.7	6.1	5.6	3.6	2.0	0.5	1.3	77.2	3.7	19.1	0.113	0.502
T. DER. HUAUCHINANGO (2° ACCESO)	100.00	3	0	7351	80.8	3.6	5.0	0.5	4.2	1.5	2.5	1.9	80.8	3.6	15.6	0.089	0.525
VILLA AVILA CAMACHO	141.80	1	0	7762	75.8	4.8	6.5	4.1	3.1	2.9	1.4	1.4	75.8	4.8	19.4	0.070	0.513
VILLA AVILA CAMACHO	141.80	3	0	7125	71.2	5.5	5.0	5.3	6.3	2.5	2.8	1.4	71.2	5.5	23.3	0.071	0.501
PIEDRAS NEGRAS	158.70	1	0	8117	60.7	6.3	5.3	7.0	7.7	5.0	6.3	1.7	60.7	6.3	33.0	0.069	0.503
T. IZQ. VENUSTIANO CARRANZA	174.10	3	0	6894	72.7	7.7	3.2	2.4	5.5	3.3	3.2	2.0	72.7	7.7	19.6	0.068	0.503
LIM. EDOS. TERM. PUE. PPIA. VER.	180.00																
T. DER. POZA RICA	197.00	1	0	14622	71.6	8.3	6.1	4.2	4.5	3.0	1.4	0.9	71.6	8.3	20.1	0.070	0.501
T. DER. POZA RICA	197.00	3	0	16729	75.7	0.4	9.0	5.0	3.6	3.9	1.3	1.1	75.7	0.4	23.9	0.070	0.503
TIHUATLAN	217.00	1	0	9179	79.2	5.5	6.1	3.8	1.7	2.2	0.6	0.9	79.2	5.5	15.3	0.075	0.503
TIHUATLAN	217.00	3	0	7745	78.0	5.7	6.4	3.1	2.5	2.9	0.6	0.8	78.0	5.7	16.3	0.068	0.506
TUXPAM	247.00	1	0	7490	72.0	6.1	6.9	1.9	5.5	2.1	3.1	2.4	72.0	6.1	21.9	0.071	0.506

9 CARR : PORTEZUELO - CD. VALLES

CLAVE: 00023

RUTA : MEX-085

AÑO : 2008

L U G A R	E S T A C I O N				C L A S I F I C A C I O N V E H I C U L A R E N P O R C I E N T O .												
	KM	TE	SC	TDPA	A	B	C2	C3	T3S2	T3S3	T3S2R4	OTROS	A	B	C	K'	D
PORTEZUELO	0.00	3	0	4812	70.1	3.6	4.2	0.9	6.8	6.9	5.0	2.5	70.1	3.6	26.3	0.071	0.511
T. DER. TASQUILLO (2° ACCESO)	10.50	1	0	3165	86.1	7.4	1.1	1.0	1.2	0.7	0.5	2.0	86.1	7.4	6.5	0.100	0.500
T. IZQ. ZIMAPAN (1° ACCESO)	32.00	1	0	3623	87.0	0.5	1.0	4.3	1.7	1.8	0.6	3.1	87.0	0.5	12.5	0.124	0.504
T. IZQ. ZIMAPAN (1° ACCESO)	32.00	3	0	1605	89.0	3.7	0.0	2.6	2.5	0.8	0.6	0.8	89.0	3.7	7.3	0.107	0.515
LA ESTANCIA	41.00	3	0	1221	77.3	2.7	6.5	1.4	3.5	1.7	1.8	5.1	77.3	2.7	20.0	0.102	0.506

HIDALGO

9 CARR : PORTEZUELO - CD. VALLES

CLAVE: 00023

RUTA : MEX-085

AÑO : 2008

L U G A R	E S T A C I O N				C L A S I F I C A C I O N V E H I C U L A R E N P O R C I E N T O .												
	KM	TE	SC	TDPA	A	B	C2	C3	T3S2	T3S3	T3S2R4	OTROS	A	B	C	K'	D
TRANCAS	51.00	3	0	1597	85.3	0.4	4.4	2.9	3.7	1.3	0.7	1.3	85.3	0.4	14.3	0.100	0.506
JACALA	98.60	3	0	1781	91.1	4.6	0.5	0.0	2.2	0.3	0.4	0.9	91.1	4.6	4.3	0.104	0.504
ZACATE GRANDE	143.10	1	0	1906	85.6	3.0	0.0	1.3	3.8	2.5	1.4	2.4	85.6	3.0	11.4	0.087	0.505
T. IZQ. PISAFLORES	154.00	3	0	1634	69.9	4.1	4.5	0.3	6.7	6.9	5.0	2.6	69.9	4.1	26.0	0.090	0.507
LIM. EDOS. TERM. HGO. PPIA. S.L.P.	168.60																
TAMAZUNCHALE	192.80	1	0	3408	87.7	3.2	3.7	1.8	1.0	1.2	0.9	0.5	87.7	3.2	9.1	0.074	0.501
T. IZQ. XILITLA	228.80	1	0	4095	78.7	3.2	1.0	4.5	4.8	1.7	2.1	4.0	78.7	3.2	18.1	0.084	0.500
T. IZQ. XILITLA	228.80	3	0	1759	80.3	5.5	5.9	3.9	1.9	1.9	0.6	0.0	80.3	5.5	14.2	0.104	0.502
T. IZQ. AQUISMON	252.50	1	0	3960	77.1	7.5	8.3	3.1	1.7	1.5	0.7	0.1	77.1	7.5	15.4	0.089	0.503
AGUA HEDIONDA	265.00	1	0	4180	72.1	8.3	6.8	6.1	3.6	2.0	1.0	0.1	72.1	8.3	19.6	0.088	0.501
CD. VALLES	300.00	1	0	4633	72.9	8.5	6.2	4.9	3.8	2.2	1.4	0.1	72.9	8.5	18.6	0.089	0.502

10 CARR : PORTEZUELO - PALMILLAS

CLAVE: 00194

RUTA : MEX-045

AÑO : 2008

L U G A R	E S T A C I O N				C L A S I F I C A C I O N V E H I C U L A R E N P O R C I E N T O .												
	KM	TE	SC	TDPA	A	B	C2	C3	T3S2	T3S3	T3S2R4	OTROS	A	B	C	K'	D
PORTEZUELO	0.00	3	0	7799	78.4	9.0	1.5	0.4	5.4	1.2	2.5	1.6	78.4	9.0	12.6	0.082	0.505
JONACAPA	29.41	3	0	7669	67.6	13.0	0.1	0.1	3.0	1.1	2.7	12.4	67.6	13.0	19.4	0.084	0.503
HUICHAPAN	45.10	1	0	6532	84.3	4.6	3.9	0.5	2.7	1.6	0.8	1.6	84.3	4.6	11.1	0.100	0.522
T. IZQ. NOPALA	56.15	1	0	6799	76.4	4.4	4.0	2.4	3.9	1.8	1.9	5.2	76.4	4.4	19.2	0.114	0.504
LIM. EDOS. TERM. HGO. PPIA. QRO.	71.40																
PALMILLAS	80.00	1	0	7854	62.4	4.5	3.4	3.3	11.4	6.1	7.5	1.4	62.4	4.5	33.1	0.077	0.508

11 CARR : TAMAZUNCHALE - SAN FELIPE ORIZATLAN

CLAVE: 00609

RUTA : MEX-102

AÑO : 2008

L U G A R	E S T A C I O N				C L A S I F I C A C I O N V E H I C U L A R E N P O R C I E N T O .												
	KM	TE	SC	TDPA	A	B	C2	C3	T3S2	T3S3	T3S2R4	OTROS	A	B	C	K'	D
T. C. PORTEZUELO - CD. VALLES	0.00	3	0	7003	79.2	8.5	1.4	0.7	5.1	1.2	2.3	1.6	79.2	8.5	12.3	0.088	0.506
LIM. EDOS. TERM. S.L.P. PPIA. HGO.	20.00																
SAN FELIPE ORIZATLAN	27.10	1	0	2713	70.2	5.2	1.9	1.5	6.6	7.0	4.9	2.7	70.2	5.2	24.6	0.084	0.505





HIDALGO

14 CARR : MEXICO - QUERETARO (CUOTA)

CLAVE: 00411

RUTA : MEX-057D

AÑO : 2008

L U G A R	E S T A C I O N				C L A S I F I C A C I O N V E H I C U L A R E N P O R C I E N T O .												
	KM	TE	SC	TDPA	A	B	C2	C3	T3S2	T3S3	T3S2R4	OTROS	A	B	C	K'	D
MEXICO	0.00																
LIM. EDOS. TERM. D.F. PPIA. MEX.	11.30																
CASETA DE COBRO TEPOTZOTLAN	43.01	2	0	45945	65.3	6.3	6.8	5.2	11.4	1.2	2.7	1.1	65.3	6.3	28.4		
ENT. JOROBAS	56.18	1	1	27595	69.8	4.2	6.7	3.5	6.5	4.7	0.2	4.4	69.8	4.2	26.0	0.072	0.502
ENT. JOROBAS	56.18	1	2	27416	77.1	4.3	7.5	3.5	3.7	2.2	0.3	1.4	77.1	4.3	18.6	0.093	0.502
ENT. JOROBAS	56.18	3	1	24953	65.8	7.6	5.7	4.4	7.6	4.5	0.0	4.4	65.8	7.6	26.6	0.089	0.502
ENT. JOROBAS	56.18	3	2	25184	74.4	7.3	6.0	4.1	2.7	2.8	0.0	2.7	74.4	7.3	18.3	0.096	0.502
LIM. EDOS. TERM. MEX. PPIA. HGO.	60.00																
T. DER. TEPEJI DEL RIO	69.36	1	1	21528	71.0	7.9	6.9	3.5	4.3	3.3	2.4	0.7	71.0	7.9	21.1	0.115	0.504
T. DER. TEPEJI DEL RIO	69.36	1	2	21885	69.3	8.2	6.6	3.4	5.1	4.2	2.4	0.8	69.3	8.2	22.5	0.098	0.504
T. DER. TEPEJI DEL RIO	69.36	3	1	19051	71.6	8.2	5.8	3.7	4.9	2.3	2.5	1.0	71.6	8.2	20.2	0.083	0.501
T. DER. TEPEJI DEL RIO	69.36	3	2	19091	72.2	8.3	6.2	3.2	4.3	2.5	2.7	0.6	72.2	8.3	19.5	0.108	0.501
T. IZQ. JILOTEPEC	83.75	1	1	14448	72.6	8.1	6.1	3.8	3.4	3.3	2.4	0.3	72.6	8.1	19.3	0.087	0.504
T. IZQ. JILOTEPEC	83.75	1	2	14661	72.5	8.3	6.3	3.5	3.3	3.1	2.6	0.4	72.5	8.3	19.2	0.086	0.504
T. IZQ. JILOTEPEC	83.75	3	1	14520	71.6	7.4	6.1	4.8	4.8	2.5	2.3	0.5	71.6	7.4	21.0	0.085	0.505
T. IZQ. JILOTEPEC	83.75	3	2	14211	71.7	7.2	6.3	4.4	4.2	2.6	2.8	0.8	71.7	7.2	21.1	0.081	0.505
LIM. EDOS. TERM. HGO. PPIA. MEX.	86.00																
X. C. JILOTEPEC - MARAVILLAS	107.00	1	1	18061	48.3	7.0	2.4	8.5	9.5	5.5	14.5	4.3	48.3	7.0	44.7	0.087	0.509
X. C. JILOTEPEC - MARAVILLAS	107.00	1	2	17415	48.2	7.2	2.6	8.3	9.6	5.3	14.6	4.2	48.2	7.2	44.6	0.075	0.509
X. C. JILOTEPEC - MARAVILLAS	107.00	3	1	17120	67.6	7.2	7.3	6.8	4.2	3.8	0.9	2.2	67.6	7.2	25.2	0.080	0.504
X. C. JILOTEPEC - MARAVILLAS	107.00	3	2	16857	68.3	7.5	7.1	6.6	4.1	3.2	0.8	2.4	68.3	7.5	24.2	0.087	0.504
T. IZQ. ACULCO	125.00	1	1	20794	62.7	9.0	8.6	6.5	7.9	3.6	0.2	1.5	62.7	9.0	28.3	0.097	0.502
T. IZQ. ACULCO	125.00	1	2	20984	66.7	9.4	8.2	4.4	5.4	4.0	0.1	1.8	66.7	9.4	23.9	0.078	0.502
T. IZQ. ACULCO	125.00	3	1	18089	66.6	8.2	6.8	5.7	5.6	4.6	0.1	2.4	66.6	8.2	25.2	0.087	0.500
T. IZQ. ACULCO	125.00	3	2	18074	66.6	8.0	6.1	4.9	7.9	4.2	0.7	1.6	66.6	8.0	25.4	0.094	0.500
LIM. EDOS. TERM. MEX. PPIA. QRO.	145.80																
CASETA DE COBRO PALMILLAS	147.90	2	0	39281	57.2	4.6	7.1	7.8	16.3	1.8	4.2	1.0	57.2	4.6	38.2		
T. IZQ. TOLUCA	148.50	1	1	15902	48.3	4.1	5.9	7.4	17.6	3.9	9.7	3.1	48.3	4.1	47.6	0.100	0.503
T. IZQ. TOLUCA	148.50	1	2	16099	48.7	4.4	5.4	7.3	17.6	3.9	9.6	3.1	48.7	4.4	46.9	0.090	0.503
T. IZQ. TOLUCA	148.50	3	1	20683	53.3	5.4	4.8	5.4	14.3	3.8	10.0	3.0	53.3	5.4	41.3	0.072	0.502
T. IZQ. TOLUCA	148.50	3	2	20553	53.4	5.2	4.9	5.2	14.7	3.9	9.5	3.2	53.4	5.2	41.4	0.067	0.502
T. DER. PONIENTE SAN JUAN DEL RIO	164.10	3	1	26105	54.5	7.2	4.7	4.8	12.2	4.5	8.9	3.2	54.5	7.2	38.3	0.073	0.501
T. DER. PONIENTE SAN JUAN DEL RIO	164.10	3	2	25960	54.0	7.2	4.0	3.7	13.0	4.6	10.5	3.0	54.0	7.2	38.8	0.065	0.501
T. IZQ. ACAMBARO	170.50	3	1	23141	52.5	7.0	4.5	6.2	13.8	2.8	8.6	4.6	52.5	7.0	40.5	0.080	0.501
T. IZQ. ACAMBARO	170.50	3	2	23201	51.5	7.5	4.4	4.3	14.3	4.1	9.4	4.5	51.5	7.5	41.0	0.091	0.501



HIDALGO

17 CARR : ACTOPAN - PROGRESO

CLAVE: 13038

RUTA : HGO

AÑO : 2008

L U G A R	E S T A C I O N				C L A S I F I C A C I O N V E H I C U L A R E N P O R C I E N T O .												
	KM	TE	SC	TDPA	A	B	C2	C3	T3S2	T3S3	T3S2R4	OTROS	A	B	C	K'	D
ACTOPAN	0.00	3	1	6735	87.2	3.4	2.5	1.3	3.0	0.4	0.4	1.8	87.2	3.4	9.4	0.093	0.502
ACTOPAN	0.00	3	2	6688	87.3	3.4	2.5	1.3	3.0	0.5	0.4	1.6	87.3	3.4	9.3	0.088	0.502
PROGRESO	23.90	1	1	4983	86.1	3.2	2.7	1.1	3.3	0.8	1.0	1.8	86.1	3.2	10.7	0.092	0.503
PROGRESO	23.90	1	2	5034	88.7	3.4	2.7	1.1	2.0	0.7	0.4	1.0	88.7	3.4	7.9	0.100	0.503

18 CARR : EL SAUCILLO - AMEALCO

CLAVE: 13103

RUTA : HGO-103

AÑO : 2008

L U G A R	E S T A C I O N				C L A S I F I C A C I O N V E H I C U L A R E N P O R C I E N T O .												
	KM	TE	SC	TDPA	A	B	C2	C3	T3S2	T3S3	T3S2R4	OTROS	A	B	C	K'	D
T. C. PORTEZUELO - PALMILLAS	0.00	3	0	3040	71.7	0.2	2.6	6.1	6.9	3.7	3.1	5.7	71.7	0.2	28.1	0.082	0.500
NOPALA	11.00	1	1	1303	79.2	14.7	1.6	0.6	2.5	0.2	0.3	0.9	79.2	14.7	6.1	0.134	0.500
NOPALA	11.00	1	2	1304	86.2	8.3	1.6	0.6	1.9	0.2	0.3	0.9	86.2	8.3	5.5	0.100	0.500
NOPALA	11.00	3	0	2115	82.9	6.1	2.6	1.7	3.0	1.7	1.0	1.0	82.9	6.1	11.0	0.130	0.501
AMEALCO	21.40	1	0	1218	82.3	0.0	2.4	2.4	4.2	6.3	0.9	1.5	82.3	0.0	17.7	0.104	0.509

19 CARR : ENT. EMILIANO ZAPATA - CD. SAHAGUN

CLAVE: 13255

RUTA : HGO

AÑO : 2008

L U G A R	E S T A C I O N				C L A S I F I C A C I O N V E H I C U L A R E N P O R C I E N T O .												
	KM	TE	SC	TDPA	A	B	C2	C3	T3S2	T3S3	T3S2R4	OTROS	A	B	C	K'	D
T. C. CALPULALPAN - EL OCOTE	0.00																
EMILIANO ZAPATA	2.70	1	1	3996	84.0	3.1	4.0	3.5	1.7	1.5	0.9	1.3	84.0	3.1	12.9	0.099	0.501
EMILIANO ZAPATA	2.70	1	2	4012	83.9	3.1	3.8	3.3	1.8	1.7	1.0	1.4	83.9	3.1	13.0	0.109	0.501
T. IZQ. OTUMBA	14.00	1	1	4347	66.4	4.1	5.7	3.1	10.4	4.6	3.9	1.8	66.4	4.1	29.5	0.080	0.500
T. IZQ. OTUMBA	14.00	1	2	4345	64.4	4.3	5.7	3.1	10.9	5.1	4.2	2.3	64.4	4.3	31.3	0.075	0.500
CD. SAHAGUN	17.98	1	0	9433	74.0	3.3	3.6	2.9	8.6	3.2	2.7	1.7	74.0	3.3	22.7	0.105	0.503

20 CARR : ENT. TEPEJI DEL RIO - TLAHUELILPAN

CLAVE: 13017

RUTA : HGO-017

AÑO : 2008

L U G A R	E S T A C I O N				C L A S I F I C A C I O N V E H I C U L A R E N P O R C I E N T O .												
	KM	TE	SC	TDPA	A	B	C2	C3	T3S2	T3S3	T3S2R4	OTROS	A	B	C	K'	D
T. C. MEXICO - QUERETARO (CUOTA)	0.00																
T. IZQ. TEPEJI DEL RIO	3.00	3	0	9179	78.0	4.3	5.1	0.4	5.4	1.8	2.7	2.3	78.0	4.3	17.7	0.078	0.505
TULA DE ALLENDE	18.00	1	0	6606	54.1	5.0	5.1	4.7	13.2	5.9	9.8	2.2	54.1	5.0	40.9	0.074	0.504
TLAHUELILPA DE OCAMPO	32.00	1	1	4864	83.1	2.9	3.2	1.2	3.7	2.1	1.3	2.5	83.1	2.9	14.0	0.098	0.503
TLAHUELILPA DE OCAMPO	32.00	1	2	4804	83.7	2.5	3.5	0.8	3.6	2.1	1.3	2.5	83.7	2.5	13.8	0.092	0.503

HIDALGO

21 CARR : ENT. TOLMAN - CD. SAHAGUN

CLAVE: 00119

RUTA : EM-009-HGO

AÑO : 2008

L U G A R	E S T A C I O N				C L A S I F I C A C I O N V E H I C U L A R E N P O R C I E N T O .												
	KM	TE	SC	TDPA	A	B	C2	C3	T3S2	T3S3	T3S2R4	OTROS	A	B	C	K'	D
T. C. VENTA DE CARPIO - TULANCINGO	0.00	3	0	9749	80.6	3.0	0.5	1.1	4.0	2.9	4.7	3.2	80.6	3.0	16.4	0.088	0.507
OTUMBA	5.00	3	0	5113	85.3	4.8	3.1	0.6	3.2	1.4	0.8	0.8	85.3	4.8	9.9	0.102	0.506
T. DER. JALTEPEC	21.00	3	0	7174	78.7	3.9	5.8	2.7	3.9	2.1	1.5	1.4	78.7	3.9	17.4	0.063	0.513
LIM. EDOS. TERM. MEX. PPIA. HGO.	25.00																
CD. SAHAGUN	32.00	1	1	3810	80.7	4.0	5.4	1.7	4.0	1.5	1.3	1.4	80.7	4.0	15.3	0.069	0.502
CD. SAHAGUN	32.00	1	2	3836	82.0	3.9	5.1	1.4	3.7	1.3	1.2	1.4	82.0	3.9	14.1	0.065	0.502

22 CARR : FRANCISCO I. MADERO - TULA DE ALLENDE

CLAVE: 13043

RUTA : HGO

AÑO : 2008

L U G A R	E S T A C I O N				C L A S I F I C A C I O N V E H I C U L A R E N P O R C I E N T O .												
	KM	TE	SC	TDPA	A	B	C2	C3	T3S2	T3S3	T3S2R4	OTROS	A	B	C	K'	D
T. C. PORTEZUELO - PALMILLAS	0.00	3	0	3092	88.1	0.0	2.6	0.9	3.3	2.0	1.1	2.0	88.1	0.0	11.9	0.078	0.529
GRAL. PEDRO MARIA ANAYA	38.20	1	0	2639	88.6	7.6	0.5	0.9	0.9	0.3	0.3	0.9	88.6	7.6	3.8	0.082	0.508
T. C. (MEXICO - QUERETARO) - TLAHUELILPA DE OCAMPO	52.70	1	0	5490	80.2	2.6	0.9	4.4	4.9	1.8	1.1	4.1	80.2	2.6	17.2	0.108	0.500

23 CARR : HUICHAPAN - TECOZAUTLA

CLAVE: 13030

RUTA : HGO-030

AÑO : 2008

L U G A R	E S T A C I O N				C L A S I F I C A C I O N V E H I C U L A R E N P O R C I E N T O .												
	KM	TE	SC	TDPA	A	B	C2	C3	T3S2	T3S3	T3S2R4	OTROS	A	B	C	K'	D
HUICHAPAN	0.00	3	0	5155	95.2	1.3	0.1	0.4	2.0	0.1	0.2	0.7	95.2	1.3	3.5	0.117	0.501
TECOZAUTLA	30.85																

24 CARR : JILOTEPEC - MARAVILLAS

CLAVE: 00015

RUTA : EM-HGO

AÑO : 2008

L U G A R	E S T A C I O N				C L A S I F I C A C I O N V E H I C U L A R E N P O R C I E N T O .												
	KM	TE	SC	TDPA	A	B	C2	C3	T3S2	T3S3	T3S2R4	OTROS	A	B	C	K'	D
JILOTEPEC	0.00	3	0	4627	88.3	3.6	2.1	0.8	0.9	1.1	0.7	2.5	88.3	3.6	8.1	0.096	0.507
X. C. MEXICO - QUERETARO (CUOTA)	21.30	1	0	1349	87.9	6.7	2.9	0.6	1.0	0.2	0.2	0.5	87.9	6.7	5.4	0.101	0.512
X. C. MEXICO - QUERETARO (CUOTA)	21.30	3	0	2061	83.6	5.3	1.3	1.2	3.5	2.3	1.2	1.6	83.6	5.3	11.1	0.102	0.501
ACAZUCHITLAN	29.00	1	0	2383	81.6	8.7	2.5	1.5	2.1	1.4	0.5	1.7	81.6	8.7	9.7	0.155	0.518
LIM. EDOS. TERM. MEX. PPIA. HGO.	29.30																
MARAVILLAS	36.40	1	0	1357	84.7	4.5	3.9	1.7	1.8	1.7	0.5	1.2	84.7	4.5	10.8	0.092	0.513
T. C. EL SAUCILLO - AMEALCO	40.00	1	0	1519	75.2	5.4	1.3	2.2	5.7	2.7	2.6	4.9	75.2	5.4	19.4	0.112	0.564

HIDALGO

25 CARR : LIBRAMIENTO DE ATOTONILCO EL GRANDE

CLAVE: 13238

RUTA : HGO

AÑO : 2008

L U G A R	E S T A C I O N				C L A S I F I C A C I O N V E H I C U L A R E N P O R C I E N T O .												
	KM	TE	SC	TDPA	A	B	C2	C3	T3S2	T3S3	T3S2R4	OTROS	A	B	C	K'	D
T. C. PACHUCA - TEMPOAL (1er ACCESO)	0.00	3	0	4755	87.1	3.1	0.7	2.0	3.0	1.3	1.6	1.2	87.1	3.1	9.8	0.093	0.501
T. C. PACHUCA - TEMPOAL (2do ACCESO)	6.30	1	0	5750	86.9	4.5	0.4	1.2	2.8	1.2	1.1	1.9	86.9	4.5	8.6	0.083	0.503

26 CARR : LIBRAMIENTO DE TULANCINGO

CLAVE: 00026

RUTA : HGO

AÑO : 2008

L U G A R	E S T A C I O N				C L A S I F I C A C I O N V E H I C U L A R E N P O R C I E N T O .												
	KM	TE	SC	TDPA	A	B	C2	C3	T3S2	T3S3	T3S2R4	OTROS	A	B	C	K'	D
T. C. PACHUCA - TUXPAM	0.00	3	0	4861	79.8	4.4	6.0	3.2	3.2	2.3	0.7	0.4	79.8	4.4	15.8	0.152	0.512
T. C. PACHUCA - TUXPAM	3.62																

27 CARR : LOS REYES - EL TEPHE

CLAVE: 00021

RUTA : EM-HGO

AÑO : 2008

L U G A R	E S T A C I O N				C L A S I F I C A C I O N V E H I C U L A R E N P O R C I E N T O .												
	KM	TE	SC	TDPA	A	B	C2	C3	T3S2	T3S3	T3S2R4	OTROS	A	B	C	K'	D
T. C. MEXICO - PACHUCA (LIBRE)	0.00																
LOS REYES	1.35	3	0	13067	75.1	4.6	5.9	5.6	3.1	2.5	0.1	3.1	75.1	4.6	20.3	0.101	0.501
ZUMPANGO	15.35	1	0	14031	75.2	6.7	3.3	1.7	4.4	3.3	1.7	3.7	75.2	6.7	18.1	0.064	0.505
ZUMPANGO	15.35	3	0	12655	75.0	6.5	5.1	4.9	3.0	3.0	0.2	2.3	75.0	6.5	18.5	0.091	0.502
TEQUIXQUIAC	29.00	1	0	7858	78.4	5.6	5.7	3.6	2.0	2.2	0.0	2.5	78.4	5.6	16.0	0.095	0.508
APAXCO	39.00	3	1	4195	82.0	4.5	3.3	2.7	3.0	1.9	1.3	1.3	82.0	4.5	13.5	0.074	0.501
APAXCO	39.00	3	2	4185	75.2	4.7	3.4	3.0	4.5	4.2	2.6	2.4	75.2	4.7	20.1	0.074	0.501
LIM. EDOS. TERM. MEX. PPIA. HGO.	40.00																
T. IZQ. ATOTONILCO (1° ACCESO)	42.00	1	0	6364	75.3	5.9	6.1	3.1	2.9	3.1	2.1	1.5	75.3	5.9	18.8	0.081	0.503
TLAXCOAPAN	52.00	3	0	8133	80.6	5.7	3.2	1.3	4.5	1.1	1.4	2.2	80.6	5.7	13.7	0.072	0.502
TLAHUELILPA DE OCAMPO	60.00	3	1	6252	85.6	4.2	3.0	1.5	2.6	0.8	0.6	1.7	85.6	4.2	10.2	0.076	0.503
TLAHUELILPA DE OCAMPO	60.00	3	2	6339	86.1	4.1	3.0	1.4	2.5	0.8	0.6	1.5	86.1	4.1	9.8	0.088	0.503
PROGRESO	72.00	1	1	7179	83.4	4.5	3.8	1.3	3.2	0.9	0.9	2.0	83.4	4.5	12.1	0.090	0.500
PROGRESO	72.00	1	2	7175	84.7	4.4	3.9	1.3	2.9	0.7	0.6	1.5	84.7	4.4	10.9	0.091	0.500
EL TEPHE	97.00	1	0	5097	76.5	4.5	1.1	1.1	7.4	3.8	3.6	2.0	76.5	4.5	19.0	0.103	0.570

28 CARR : OTUMBA - TIZAYUCA

CLAVE: 00012

RUTA : EM-HGO

AÑO : 2008

L U G A R	E S T A C I O N				C L A S I F I C A C I O N V E H I C U L A R E N P O R C I E N T O .												
	KM	TE	SC	TDPA	A	B	C2	C3	T3S2	T3S3	T3S2R4	OTROS	A	B	C	K'	D
OTUMBA	0.00	3	0	4804	92.8	4.1	0.0	3.1	0.0	0.0	0.0	0.0	92.8	4.1	3.1	0.141	0.504

HIDALGO

28 CARR : OTUMBA - TIZAYUCA

CLAVE: 00012

RUTA : EM-HGO

AÑO : 2008

L U G A R	E S T A C I O N				C L A S I F I C A C I O N V E H I C U L A R E N P O R C I E N T O .												
	KM	TE	SC	TDPA	A	B	C2	C3	T3S2	T3S3	T3S2R4	OTROS	A	B	C	K'	D
X. C. VENTA DE CARPIO - TULANCINGO	6.00	3	0	3224	85.2	6.2	3.9	2.2	0.7	0.2	0.0	1.6	85.2	6.2	8.6	0.091	0.501
TEMASCALAPA	26.50	3	0	3342	78.8	6.1	6.0	4.6	2.3	0.6	0.0	1.6	78.8	6.1	15.1	0.095	0.516
LIM. EDOS. TERM. MEX. PPIA. HGO.	29.00																
TIZAYUCA	37.10	1	1	3620	79.4	6.6	1.6	1.3	5.1	1.1	1.9	3.0	79.4	6.6	14.0	0.120	0.501
TIZAYUCA	37.10	1	2	3613	81.5	6.2	1.6	1.3	4.3	1.1	1.5	2.5	81.5	6.2	12.3	0.154	0.501

29 CARR : RAMAL A EL CHICO

CLAVE: 13256

RUTA : HGO

AÑO : 2008

L U G A R	E S T A C I O N				C L A S I F I C A C I O N V E H I C U L A R E N P O R C I E N T O .												
	KM	TE	SC	TDPA	A	B	C2	C3	T3S2	T3S3	T3S2R4	OTROS	A	B	C	K'	D
T. C. PACHUCA - TEMPOAL	0.00	3	0	1190	82.8	4.3	3.8	1.9	1.8	2.3	2.5	0.6	82.8	4.3	12.9	0.092	0.501
MINERAL EL CHICO	21.00	1	0	897	88.1	3.7	5.3	0.2	0.3	1.1	0.9	0.4	88.1	3.7	8.2	0.120	0.511

30 CARR : RAMAL A PACHUCA

CLAVE: 13254

RUTA : HGO

AÑO : 2008

L U G A R	E S T A C I O N				C L A S I F I C A C I O N V E H I C U L A R E N P O R C I E N T O .												
	KM	TE	SC	TDPA	A	B	C2	C3	T3S2	T3S3	T3S2R4	OTROS	A	B	C	K'	D
T. C. COLONIA - PORTEZUELO	0.00	3	1	9707	88.9	0.0	2.5	0.8	3.4	0.9	0.9	2.6	88.9	0.0	11.1	0.109	0.506
T. C. COLONIA - PORTEZUELO	0.00	3	2	9490	89.3	0.0	2.3	0.8	3.7	0.7	0.7	2.5	89.3	0.0	10.7	0.109	0.506
PACHUCA	10.00																

31 CARR : SAN ALEJO - HUAYACOCOTLA

CLAVE: 00132

RUTA : HGO-051-VER-11

AÑO : 2008

L U G A R	E S T A C I O N				C L A S I F I C A C I O N V E H I C U L A R E N P O R C I E N T O .												
	KM	TE	SC	TDPA	A	B	C2	C3	T3S2	T3S3	T3S2R4	OTROS	A	B	C	K'	D
T. C. PACHUCA - TUXPAM	0.00	3	0	3817	77.8	4.9	7.3	3.1	2.7	1.2	1.6	1.4	77.8	4.9	17.3	0.109	0.500
METEPEC	11.80	3	0	3083	84.5	3.0	3.3	1.1	3.8	1.6	1.1	1.6	84.5	3.0	12.5	0.103	0.509
AGUA BLANCA	29.48	3	0	2336	84.6	2.8	3.7	3.3	1.6	1.7	1.0	1.3	84.6	2.8	12.6	0.102	0.503
LIM. EDOS. TERM. HGO. PPIA. VER.	36.48																
HUAYACOCOTLA	66.00	1	0	1546	89.7	3.5	3.0	2.1	0.3	0.3	0.5	0.6	89.7	3.5	6.8	0.088	0.501

HIDALGO

32 CARR : SAN FELIPE ORIZATLAN - HUEJUTLA DE REYES

CLAVE: 13258

RUTA : HGO

AÑO : 2008

L U G A R	E S T A C I O N				C L A S I F I C A C I O N V E H I C U L A R E N P O R C I E N T O .												
	KM	TE	SC	TDPA	A	B	C2	C3	T3S2	T3S3	T3S2R4	OTROS	A	B	C	K'	D
SAN FELIPE ORIZATLAN	0.00	3	0	3075	71.9	3.7	2.5	0.9	6.6	6.9	4.8	2.7	71.9	3.7	24.4	0.079	0.512
HUEJUTLA DE REYES	25.00	1	0	3245	90.6	3.0	0.0	0.3	2.1	0.8	1.0	2.2	90.6	3.0	6.4	0.089	0.514

33 CARR : SANTO DOMINGO - T. C. (MEXICO - QUERETARO (CUOTA))

CLAVE: 00433

RUTA : EM-011-HGO

AÑO : 2008

L U G A R	E S T A C I O N				C L A S I F I C A C I O N V E H I C U L A R E N P O R C I E N T O .												
	KM	TE	SC	TDPA	A	B	C2	C3	T3S2	T3S3	T3S2R4	OTROS	A	B	C	K'	D
T. C. TOLUCA - PALMILLAS	0.00	3	0	3166	89.8	2.9	4.0	1.9	0.0	0.0	0.0	1.4	89.8	2.9	7.3	0.110	0.504
X. C. LOS REYES - IXTLAHUACA	6.11	3	0	2986	80.7	6.2	5.3	3.7	1.2	1.0	0.3	1.6	80.7	6.2	13.1	0.080	0.503
X. C. VILLA DEL CARBON - ATLACOMULCO	23.94	3	0	3309	77.7	3.7	3.4	2.6	5.7	2.9	2.7	1.3	77.7	3.7	18.6	0.121	0.504
T. DER. CHAPA DE MOTA	42.70	1	0	6237	83.0	3.2	4.4	2.3	2.8	2.4	0.0	1.9	83.0	3.2	13.8	0.081	0.507
LIM. EDOS. TERM. MEX. PPIA. HGO.	63.34																
T. C. MEXICO - QUERETARO (CUOTA)	65.84	1	0	5694	87.1	0.0	1.1	1.5	4.8	1.6	1.0	2.9	87.1	0.0	12.9	0.067	0.500

34 CARR : T. C. (LOS REYES - EL TEPHE) - TIZAYUCA

CLAVE: 00014

RUTA : EM-HGO

AÑO : 2008

L U G A R	E S T A C I O N				C L A S I F I C A C I O N V E H I C U L A R E N P O R C I E N T O .												
	KM	TE	SC	TDPA	A	B	C2	C3	T3S2	T3S3	T3S2R4	OTROS	A	B	C	K'	D
T. C. LOS REYES - EL TEPHE	0.00	3	0	3486	87.5	2.9	3.0	2.3	1.8	1.1	0.0	1.4	87.5	2.9	9.6	0.100	0.512
LIM. EDOS. TERM. MEX. PPIA. HGO.	6.50																
TIZAYUCA	8.00	1	0	2644	84.3	6.8	3.3	1.9	0.8	1.4	1.0	0.5	84.3	6.8	8.9	0.084	0.509

35 CARR : TEPEJI DEL RIO - T.C. (MEXICO - QUERETARO)

CLAVE: 13104

RUTA : HGO

AÑO : 2008

L U G A R	E S T A C I O N				C L A S I F I C A C I O N V E H I C U L A R E N P O R C I E N T O .												
	KM	TE	SC	TDPA	A	B	C2	C3	T3S2	T3S3	T3S2R4	OTROS	A	B	C	K'	D
T. C. ENT. TEPEJI DEL RIO - TLAHUELILPA DE OCAMPO	0.00	3	0	4642	80.1	4.3	0.1	3.3	4.7	1.6	2.0	3.9	80.1	4.3	15.6	0.088	0.500
T. C. (MEXICO - QUERETARO)	12.40	1	0	3208	86.6	0.0	3.1	1.5	3.2	3.8	0.6	1.2	86.6	0.0	13.4	0.085	0.506

36 CARR : TLAHUELILPAN - SAN AGUSTIN TLAXIACA

CLAVE: 13435

RUTA : HGO

AÑO : 2008

L U G A R	E S T A C I O N				C L A S I F I C A C I O N V E H I C U L A R E N P O R C I E N T O .												
	KM	TE	SC	TDPA	A	B	C2	C3	T3S2	T3S3	T3S2R4	OTROS	A	B	C	K'	D
TLAHUELILPAN	0.00	3	0	1618	83.1	2.8	4.9	2.7	1.8	1.7	2.1	0.9	83.1	2.8	14.1	0.098	0.506
IGNACIO ZARAGOZA	25.50	3	0	2282	84.1	5.7	3.1	1.5	2.1	1.2	1.0	1.3	84.1	5.7	10.2	0.100	0.513



HIDALGO

36 CARR : TLAHUELILPAN - SAN AGUSTIN TLAXIACA

CLAVE: 13435

RUTA : HGO

AÑO : 2008

L U G A R	E S T A C I O N				C L A S I F I C A C I O N V E H I C U L A R E N P O R C I E N T O .												
	KM	TE	SC	TDPA	A	B	C2	C3	T3S2	T3S3	T3S2R4	OTROS	A	B	C	K'	D
T. C. LA COLONIA - PORTEZUELO	48.00	1	0	5291	84.4	4.7	2.7	1.1	1.0	4.4	1.2	0.5	84.4	4.7	10.9	0.076	0.503

37 CARR : CALPULALPAN - EL OCOTE

CLAVE: 00054

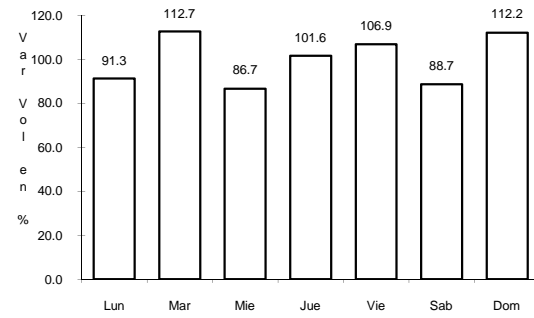
RUTA : MEX-HGO

AÑO : 2008

L U G A R	E S T A C I O N				C L A S I F I C A C I O N V E H I C U L A R E N P O R C I E N T O .												
	KM	TE	SC	TDPA	A	B	C2	C3	T3S2	T3S3	T3S2R4	OTROS	A	B	C	K'	D
CALPULALPAN	0.00	3	0	9004	70.2	6.5	8.6	6.8	2.2	3.1	2.0	0.6	70.2	6.5	23.3	0.076	0.501
LIM. EDOS. TERM. TLAX. PPIA. HGO.	5.00																
APAN	19.58	3	1	2760	84.1	3.1	5.9	2.4	2.5	1.1	0.9	0.0	84.1	3.1	12.8	0.101	0.502
APAN	19.58	3	2	2741	84.0	3.3	5.5	2.5	2.7	1.2	0.8	0.0	84.0	3.3	12.7	0.103	0.502
TEPEAPULCO	34.92	3	0	3962	92.1	2.5	0.6	0.6	2.6	0.4	0.5	0.7	92.1	2.5	5.4	0.098	0.500
X. C. VENTA DE CARPIO - TULANCINGO	51.18	1	0	2959	89.6	4.2	0.8	2.1	1.5	0.7	0.3	0.8	89.6	4.2	6.2	0.099	0.557
X. C. VENTA DE CARPIO - TULANCINGO	51.18	3	0	1797	95.1	1.9	0.1	1.1	1.2	0.2	0.1	0.3	95.1	1.9	3.0	0.104	0.502
EL OCOTE	70.44	1	0	2504	71.4	4.8	6.7	2.8	4.5	2.7	1.9	5.2	71.4	4.8	23.8	0.098	0.501



4 CARR: ENT. JOROBAS - TULA

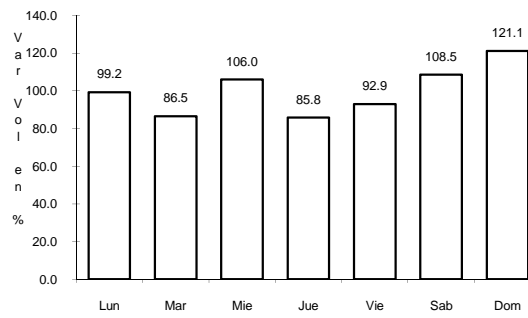


Km: 0.00

Tipo: 3

Sent: 0

CLAVE: 00159

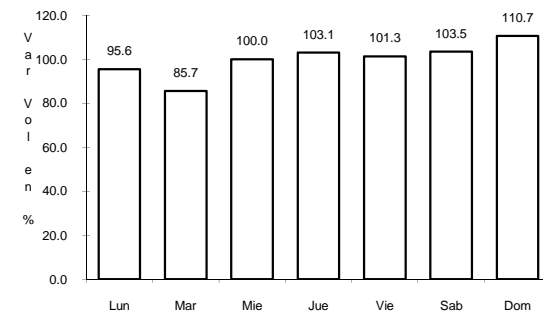


Km: 21.50

Tipo: 1

Sent: 0

RUTA: MEX-087

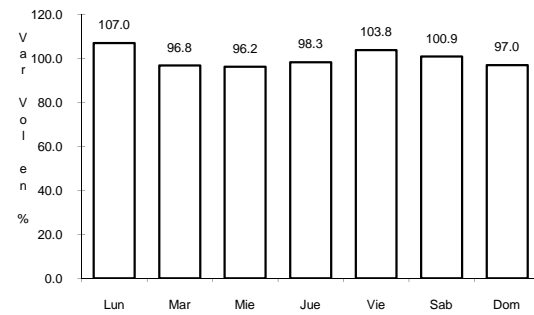


Km: 37.70

Tipo: 1

Sent: 0

5 CARR: MEXICO - PACHUCA (LIBRE)

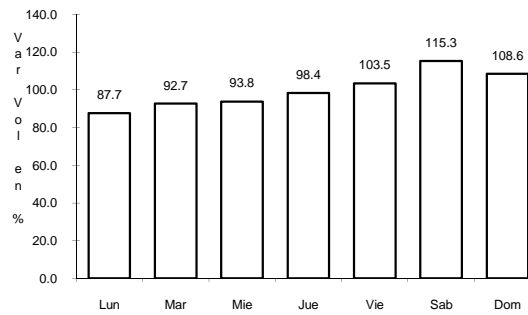


Km: 26.93

Tipo: 1

Sent: 0

CLAVE: 00431

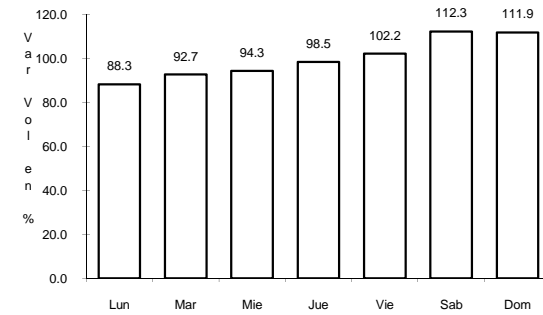


Km: 86.50

Tipo: 1

Sent: 1

RUTA: MEX-085

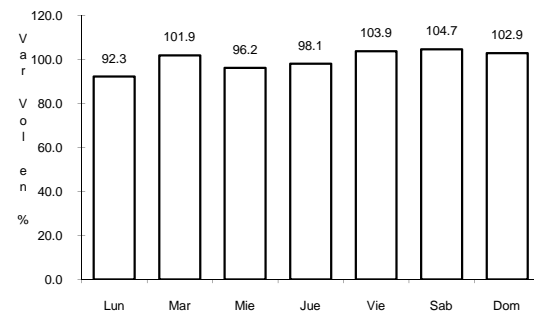


Km: 86.50

Tipo: 1

Sent: 2

6 CARR: PACHUCA - CD. SAHAGUN

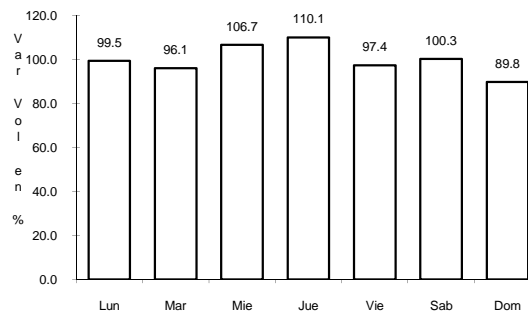


Km: 0.00

Tipo: 3

Sent: 1

CLAVE: 13088

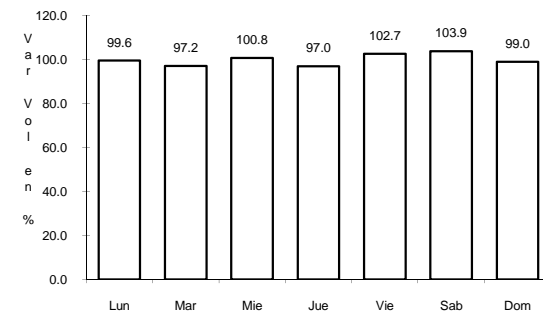


Km: 0.00

Tipo: 3

Sent: 2

RUTA: MEX

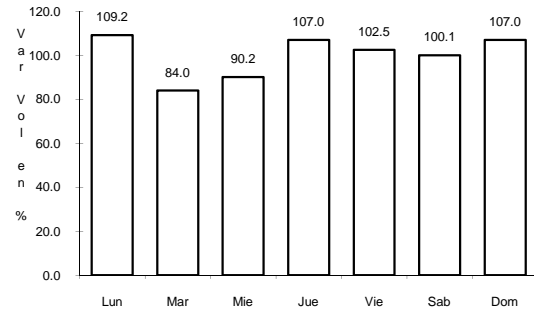


Km: 29.40

Tipo: 3

Sent: 0

7 CARR: PACHUCA - TEMPOAL

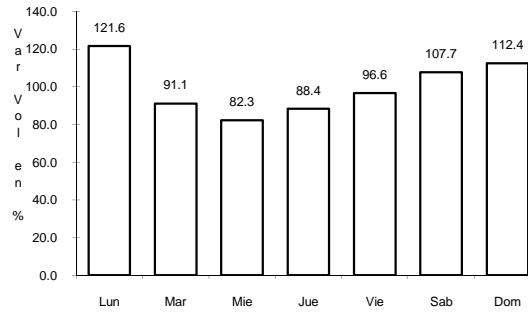


Km: 0.00

Tipo: 3

Sent: 0

CLAVE: 00113

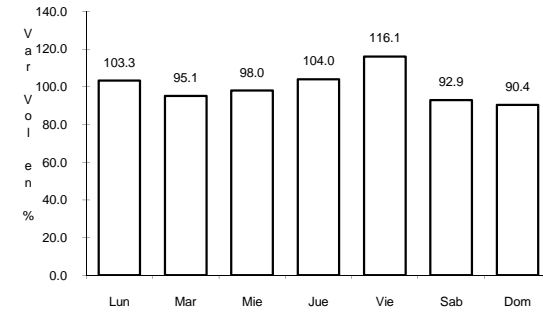


Km: 129.80

Tipo: 1

Sent: 0

RUTA: MEX-105

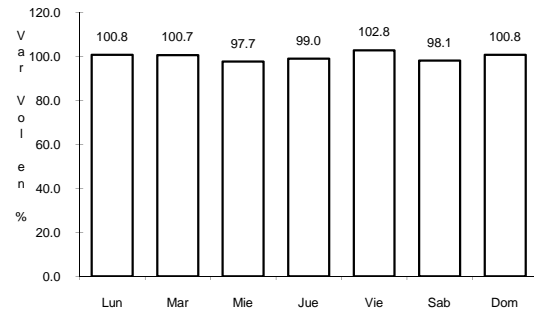


Km: 260.68

Tipo: 1

Sent: 0

8 CARR: PACHUCA - TUXPAM

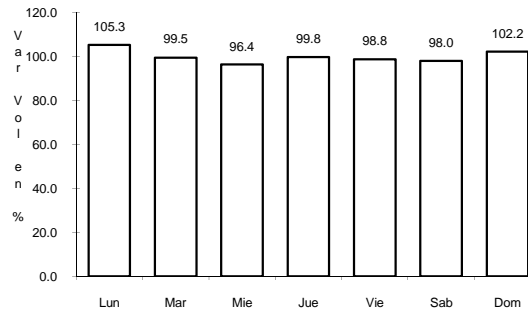


Km: 2.60

Tipo: 3

Sent: 1

CLAVE: 00608

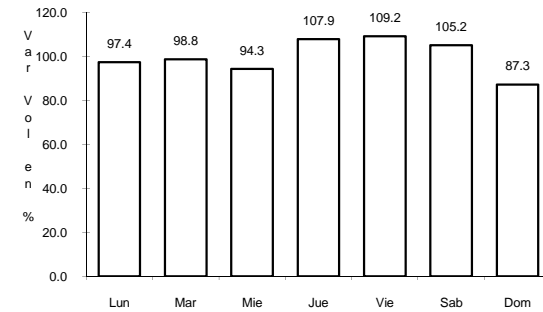


Km: 2.60

Tipo: 3

Sent: 2

RUTA: MEX-130

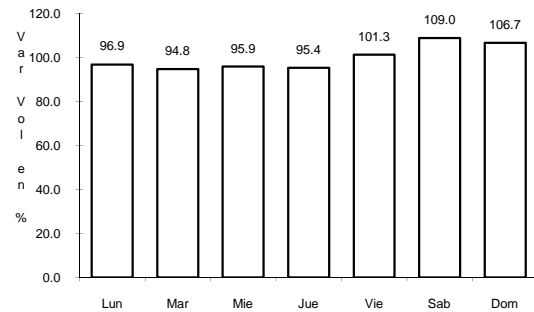


Km: 247.00

Tipo: 1

Sent: 0

9 CARR: PORTEZUELO - CD. VALLES

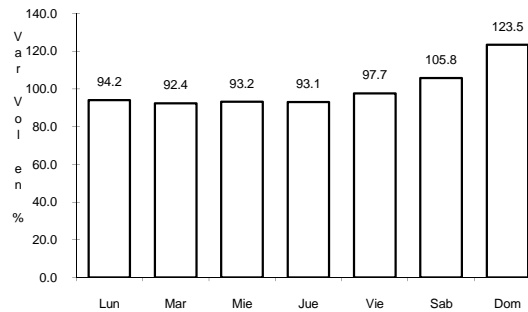


Km: 0.00

Tipo: 3

Sent: 0

CLAVE: 00023

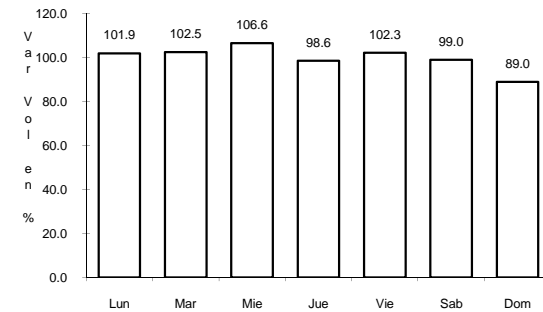


Km: 154.00

Tipo: 3

Sent: 0

RUTA: MEX-085



Km: 300.00

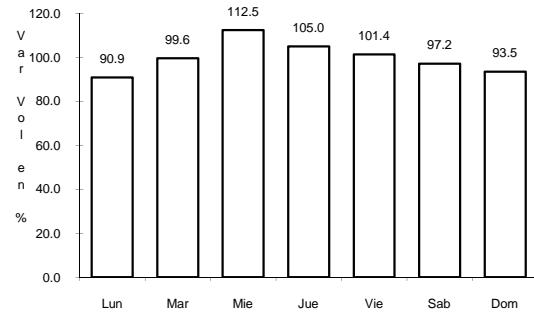
Tipo: 1

Sent: 0

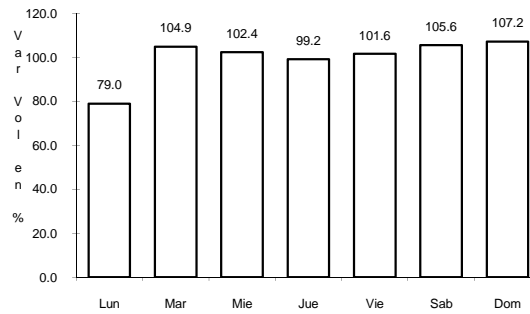
10 CARR: PORTEZUELO - PALMILLAS

CLAVE: 00194

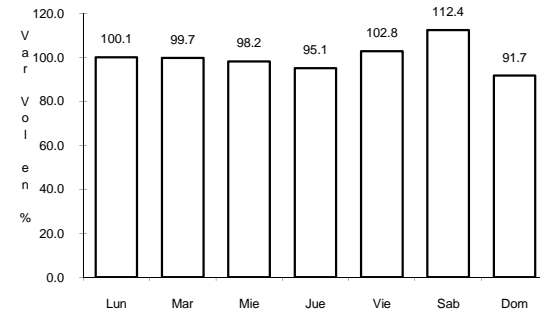
RUTA: MEX-045



Km: 0.00 Tipo: 3 Sent: 0



Km: 45.10 Tipo: 1 Sent: 0

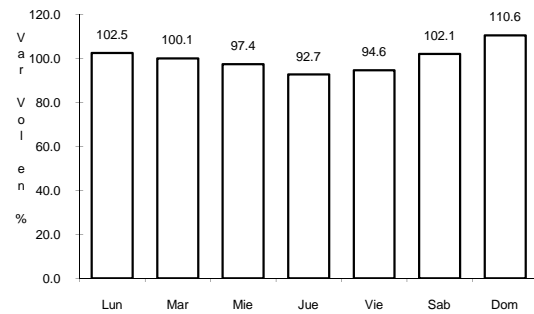


Km: 80.00 Tipo: 1 Sent: 0

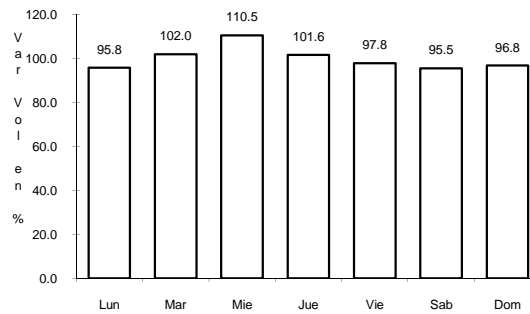
11 CARR: TAMAZUNCHALE - SAN FELIPE ORIZATLAN

CLAVE: 00609

RUTA: MEX-102



Km: 0.00 Tipo: 3 Sent: 0

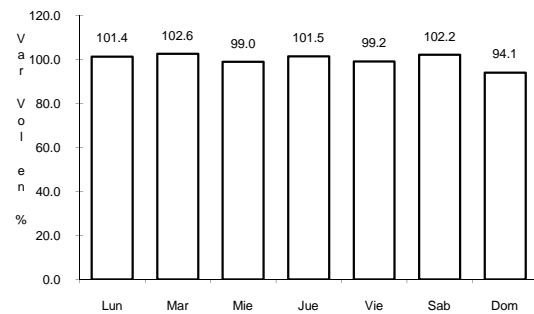


Km: 27.10 Tipo: 1 Sent: 0

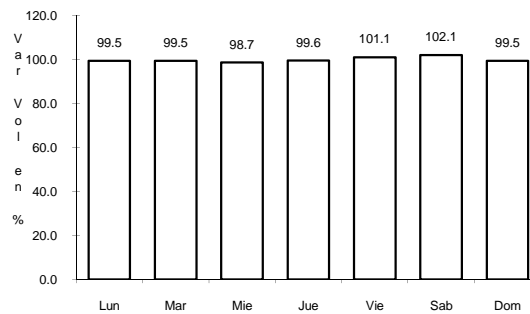
12 CARR: VENTA DE CARPIO - T. C. (PACHUCA - TUXPAM)

CLAVE: 00455

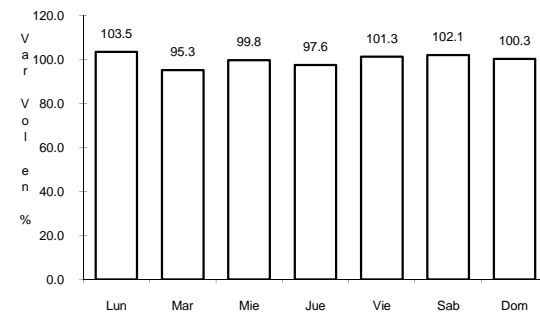
RUTA: MEX-132



Km: 6.42 Tipo: 3 Sent: 0



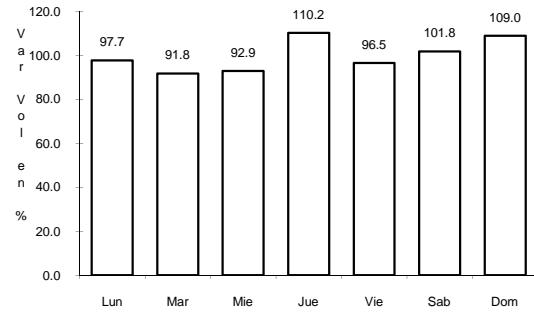
Km: 84.08 Tipo: 1 Sent: 1



Km: 84.08 Tipo: 1 Sent: 2

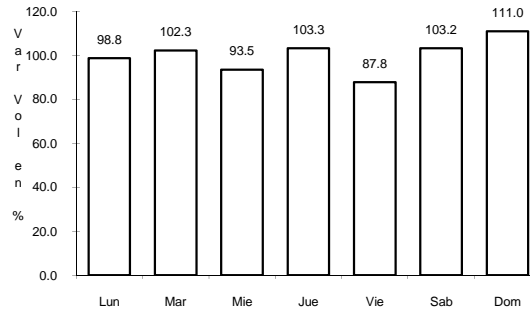


17 CARR: ACTOPAN - PROGRESO



Km: 0.00 Tipo: 3 Sent: 1

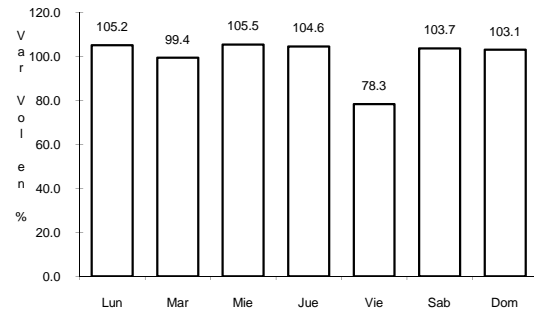
CLAVE: 13038



Km: 0.00 Tipo: 3 Sent: 2

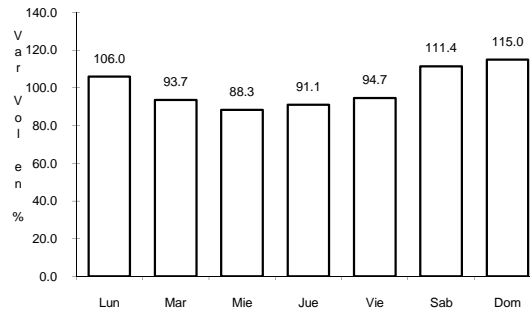
RUTA: HGO

18 CARR: EL SAUCILLO - AMEALCO



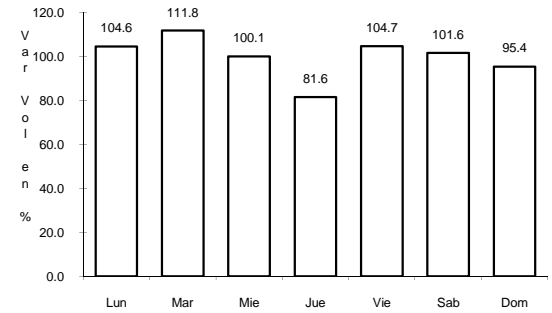
Km: 0.00 Tipo: 3 Sent: 0

CLAVE: 13103



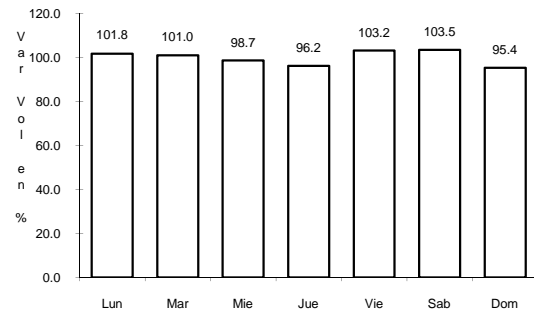
Km: 11.00 Tipo: 3 Sent: 0

RUTA: HGO-103



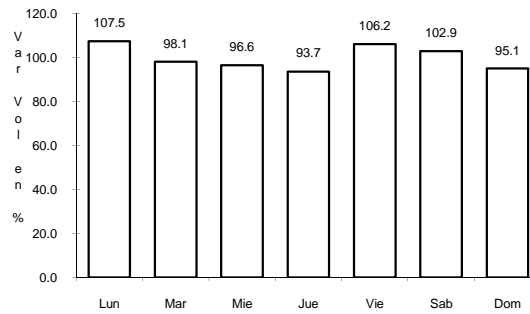
Km: 21.40 Tipo: 1 Sent: 0

19 CARR: ENT. EMILIANO ZAPATA - CD. SAHAGUN



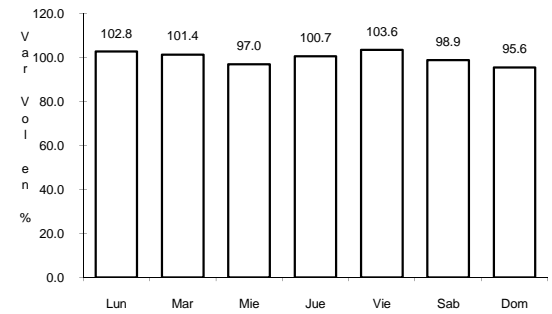
Km: 2.70 Tipo: 1 Sent: 1

CLAVE: 13255



Km: 2.70 Tipo: 1 Sent: 2

RUTA: HGO

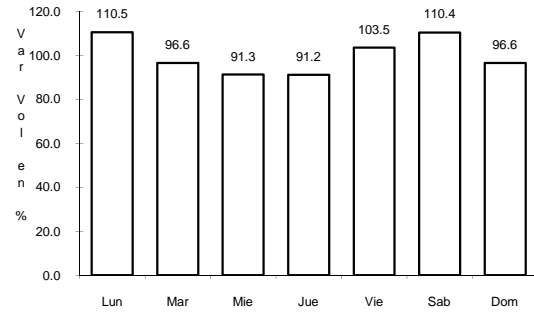


Km: 17.98 Tipo: 1 Sent: 0

20 CARR: ENT. TEPEJI DEL RIO - TLAHUELILPAN

CLAVE: 13017

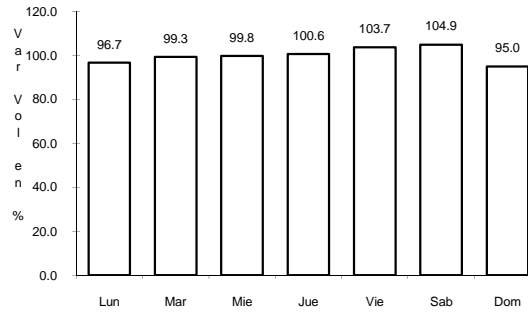
ruta: HGO-017



Km: 3.00

Tipo: 3

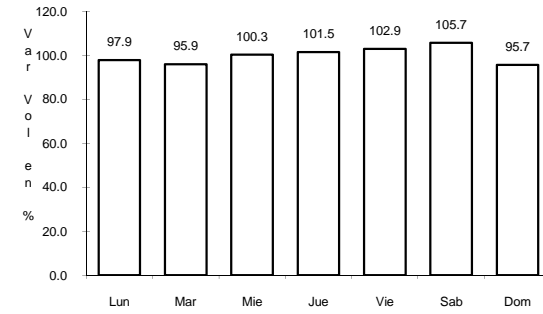
Sent: 0



Km: 32.00

Tipo: 1

Sent: 1



Km: 32.00

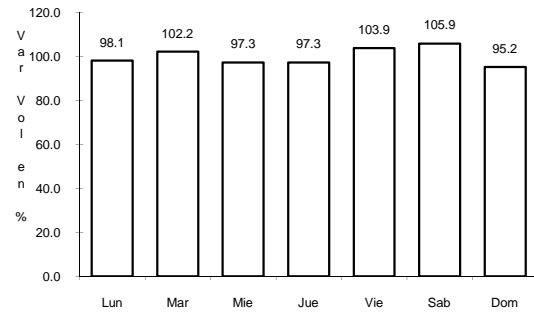
Tipo: 1

Sent: 2

21 CARR: ENT. TOLMAN - CD. SAHAGUN

CLAVE: 00119

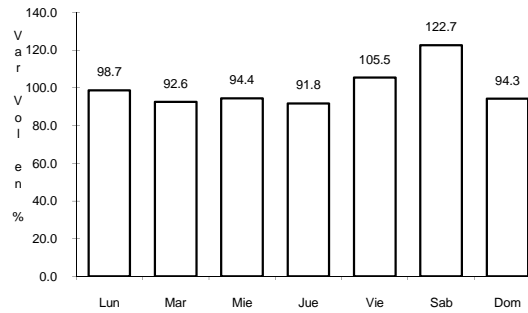
ruta: EM-009-HGO



Km: 0.00

Tipo: 3

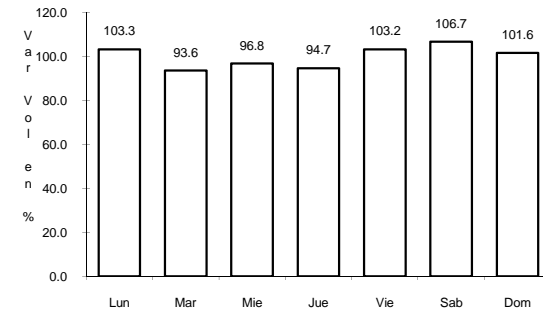
Sent: 0



Km: 32.00

Tipo: 1

Sent: 1



Km: 32.00

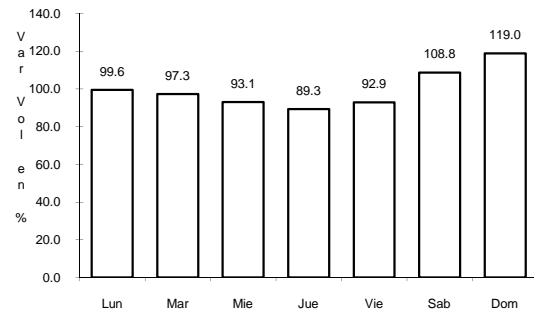
Tipo: 1

Sent: 2

22 CARR: FRANCISCO I. MADERO - TULA DE ALLENDE

CLAVE: 13043

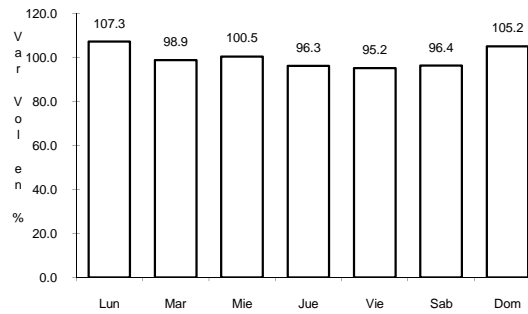
ruta: HGO



Km: 0.00

Tipo: 3

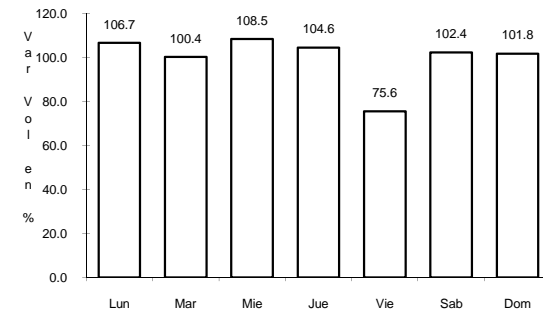
Sent: 0



Km: 38.20

Tipo: 1

Sent: 0



Km: 52.70

Tipo: 1

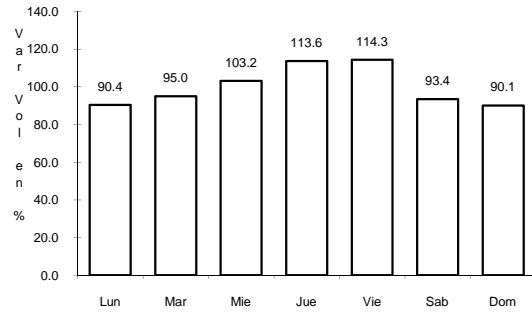
Sent: 0



23 CARR: HUICHAPAN - TECOZAUTLA

CLAVE: 13030

ruta: HGO-030



Km: 0.00

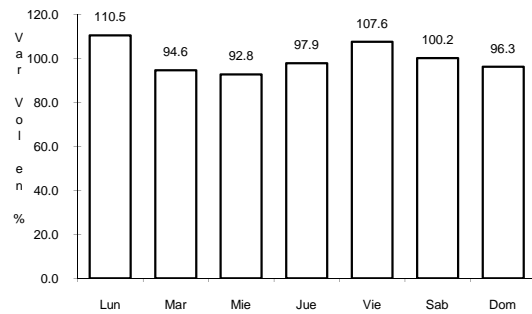
Tipo: 3

Sent: 0

24 CARR: JILOTEPEC - MARAVILLAS

CLAVE: 00015

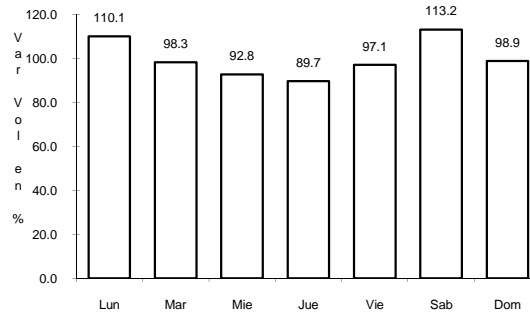
ruta: EM-HGO



Km: 0.00

Tipo: 3

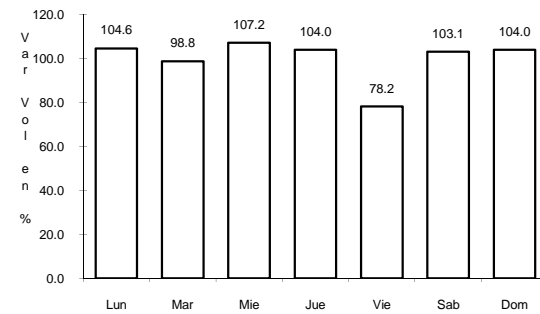
Sent: 0



Km: 21.30

Tipo: 1

Sent: 0



Km: 40.00

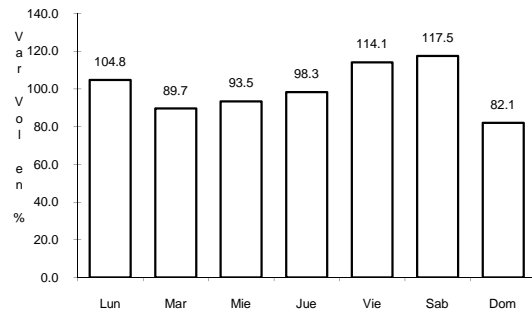
Tipo: 1

Sent: 0

25 CARR: LIBRAMIENTO DE ATOTONILCO EL GRANDE

CLAVE: 13238

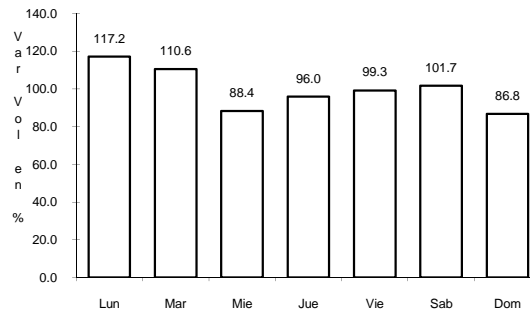
ruta: HGO



Km: 0.00

Tipo: 3

Sent: 0



Km: 6.30

Tipo: 1

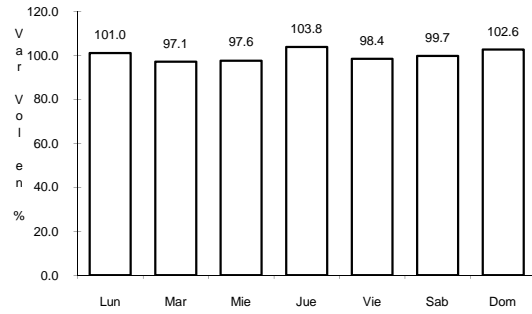
Sent: 0



29 CARR: RAMAL A EL CHICO

CLAVE: 13256

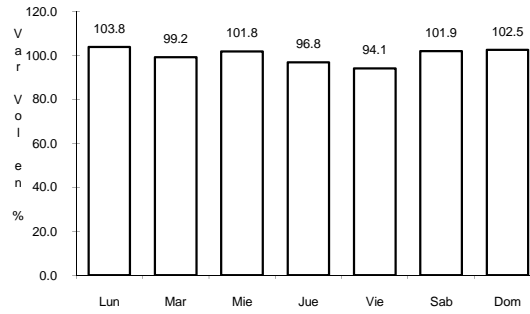
ruta: HGO



Km: 0.00

Tipo: 3

Sent: 0



Km: 21.00

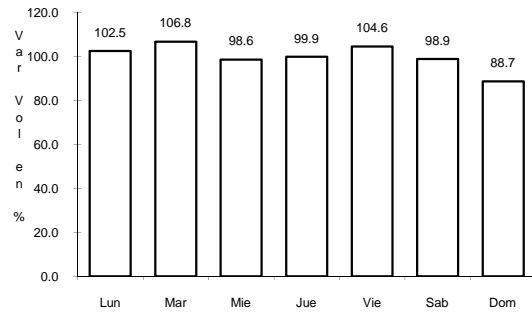
Tipo: 1

Sent: 0

30 CARR: RAMAL A PACHUCA

CLAVE: 13254

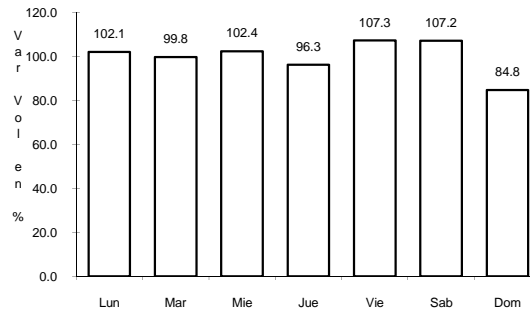
ruta: HGO



Km: 0.00

Tipo: 3

Sent: 1



Km: 0.00

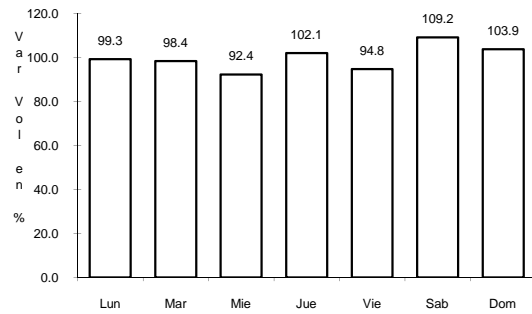
Tipo: 3

Sent: 2

31 CARR: SAN ALEJO - HUAYACOCOTLA

CLAVE: 00132

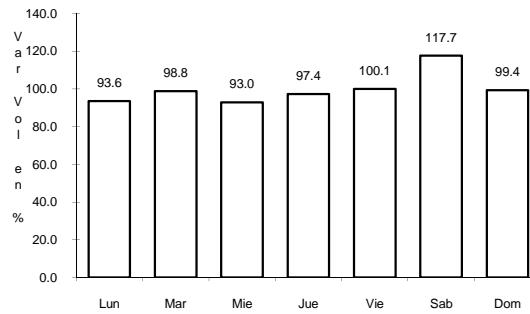
ruta: HGO-051-VER-113



Km: 0.00

Tipo: 3

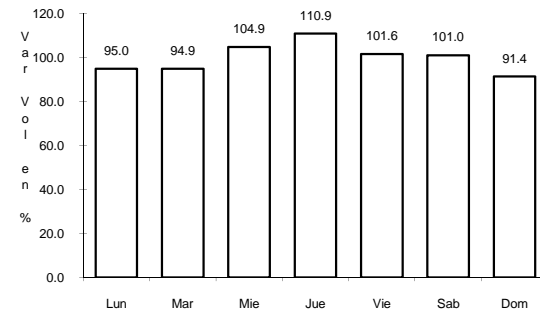
Sent: 0



Km: 29.48

Tipo: 3

Sent: 0



Km: 66.00

Tipo: 1

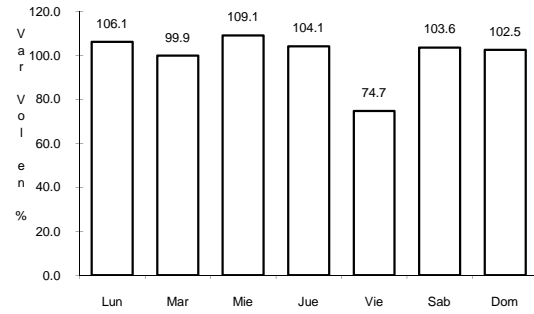
Sent: 0



35 CARR: TEPEJI DEL RIO - T.C. (MEXICO - QUERETARO)

CLAVE: 13104

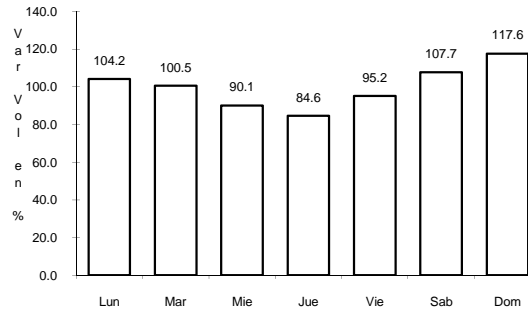
RUTA: HGO



Km: 0.00

Tipo: 3

Sent: 0



Km: 12.40

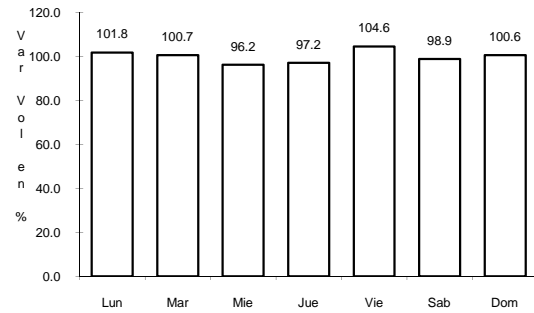
Tipo: 1

Sent: 0

36 CARR: TLAHUELILPAN - SAN AGUSTIN TLAXIACA

CLAVE: 13435

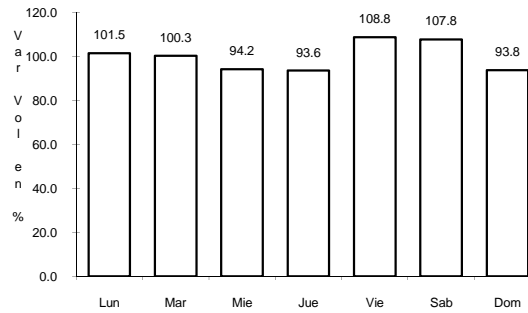
RUTA: HGO



Km: 0.00

Tipo: 3

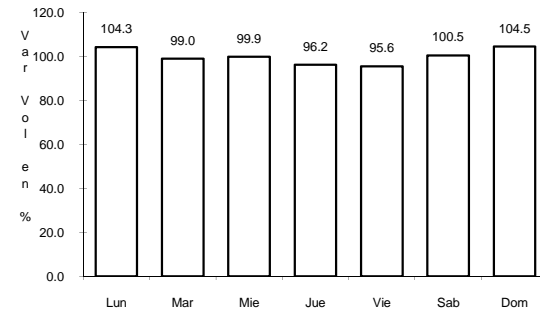
Sent: 0



Km: 25.50

Tipo: 3

Sent: 0



Km: 48.00

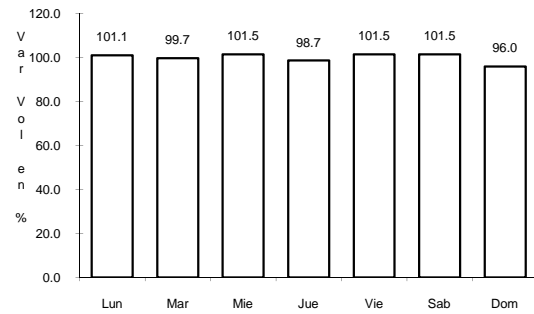
Tipo: 1

Sent: 0

37 CARR: CALPULALPAN - EL OCOTE

CLAVE: 00054

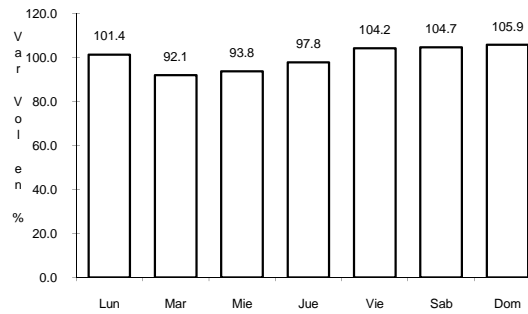
RUTA: MEX-HGO



Km: 0.00

Tipo: 3

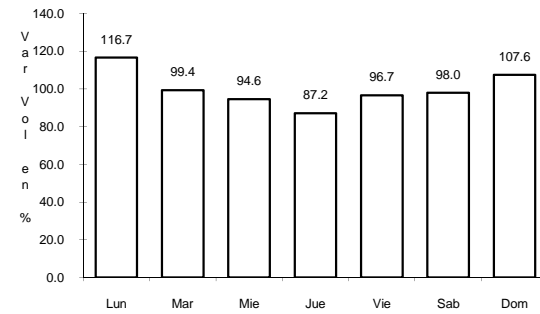
Sent: 0



Km: 34.92

Tipo: 3

Sent: 0



Km: 70.44

Tipo: 1

Sent: 0