

GUERRERO

Núm. INDICE	CARRETERA	RUTA
---- FEDERAL LIBRE ----		
1	ACAPULCO - ZIHUATANEJO	MEX-200
2	CD. ALTAMIRANO - T. C. (ZIHUATANEJO - LA MIRA)	MEX-134
3	CHILPANCINGO - ACAPULCO	MEX-095
4	CHILPANCINGO - CHICHIHUALCO	MEX-196
5	CHILPANCINGO - JILOTEPEC	MEX-093
6	CUERNAVACA - CHILPANCINGO	MEX-095
7	ENT. ALPUYECA - GRUTAS DE CACAHUAMILPA	MEX-166
8	IGUALA - CD. ALTAMIRANO	MEX-051
9	LA SABANA - PUERTO MARQUES	MEX
10	LAS CRUCES - PINOTEPA NACIONAL	MEX-200
11	LIBRAMIENTO NORTE DE ACAPULCO	MEX
12	MILPILLAS - T. C. (ACAPULCO - ZIHUATANEJO)	MEX-196
13	RAMAL A AEROPUERTO ZIHUATANEJO	MEX
14	SAN JUAN DE LOS LLANOS - OMETEPEC	MEX
15	TIERRA COLORADA - CRUZ GRANDE	MEX-198
16	TOLUCA - CD. ALTAMIRANO	MEX-134
17	ZIHUATANEJO - LA MIRA	MEX-200
---- FEDERAL CUOTA ----		
18	CUERNAVACA - ACAPULCO (CUOTA)	MEX-095D
19	ENT. URUAPAN - LAZARO CARDENAS (CUOTA)	MEX-037D
20	PUENTE DE IXTLA - IGUALA (CUOTA)	MEX-D
21	ZACAPALCO - TAXCO (CUOTA)	MEX-D
---- ESTATAL LIBRE ----		
22	ACAPULCO - AEROPUERTO ACAPULCO	GRO
23	ENT. POTRERO - LOMAS DE CHAPULTEPEC	GRO
24	PIE DE LA CUESTA - BARRA DE COYUCA	GRO
25	RAMAL A COCULA	GRO
26	T. C. (IGUALA - CHILPANCINGO) - ATENANGO DEL RIO	GRO-001
27	TAXCO - IXCATEOPAN	GRO
28	TELOLOAPAN - APAXTLA DE CASTREJON	GRO
---- COMBINADA ----		
29	TOLUCA - AXIXINTLA	EM-MEX-055



- █ Red Federal Libre
- █ Red Federal Cuota
- █ Red Estatal Libre
- █ Red Estatal Cuota
- █ Red Combinada

MAPA INDICE
 —15 Num. Indice
 2009

Secretaría de Comunicaciones y Transportes

12 GUERRERERO

GUERRERO

1 CARR : ACAPULCO - ZIHUATANEJO

CLAVE: 12072

RUTA : MEX-200

AÑO : 2008

L U G A R	E S T A C I O N				C L A S I F I C A C I O N V E H I C U L A R E N P O R C I E N T O .												
	KM	TE	SC	TDPA	A	B	C2	C3	T3S2	T3S3	T3S2R4	OTROS	A	B	C	K'	D
ACAPULCO	0.00																
T. IZQ. PIE DE LA CUESTA	10.37	1	0	16535	85.8	2.6	6.4	0.8	0.0	0.0	0.0	4.4	85.8	2.6	11.6	0.070	0.504
T. IZQ. PIE DE LA CUESTA	10.37	3	0	15093	87.6	2.1	6.5	0.8	0.0	0.0	0.0	3.0	87.6	2.1	10.3	0.077	0.506
T. DER. LIBRAMIENTO DE ACAPULCO	21.37	3	0	7281	87.2	3.6	5.8	1.6	0.0	0.0	0.0	1.8	87.2	3.6	9.2	0.069	0.506
COYUCA DE BENITEZ	33.60	3	0	6392	86.1	4.1	6.2	1.7	0.0	0.0	0.0	1.9	86.1	4.1	9.8	0.073	0.506
T. DER. ATOYAC DE ALVAREZ	77.85	3	0	7588	88.9	4.1	3.5	1.3	0.0	0.0	0.0	2.2	88.9	4.1	7.0	0.073	0.501
TECPAN DE GALEANA	103.60	1	0	4945	89.2	3.4	4.7	1.6	0.0	0.0	0.0	1.1	89.2	3.4	7.4	0.094	0.501
TECPAN DE GALEANA	103.60	3	0	5469	90.5	4.3	2.5	0.6	0.0	0.0	0.0	2.1	90.5	4.3	5.2	0.104	0.502
PAPANOA	162.30	1	0	3967	78.4	2.2	6.6	7.0	0.0	0.0	0.0	5.8	78.4	2.2	19.4	0.080	0.529
PETATLAN	206.30	1	0	4564	85.9	3.6	6.9	2.5	0.0	0.0	0.0	1.1	85.9	3.6	10.5	0.064	0.513
ZIHUATANEJO	242.90	1	1	8771	73.3	6.7	2.3	0.7	0.0	0.0	0.0	17.0	73.3	6.7	20.0	0.077	0.508
ZIHUATANEJO	242.90	1	2	8501	76.8	22.4	0.4	0.1	0.0	0.0	0.0	0.3	76.8	22.4	0.8	0.092	0.508

2 CARR : CD. ALTAMIRANO - T. C. (ZIHUATANEJO - LA MIRA)

CLAVE: 12422

RUTA : MEX-134

AÑO : 2008

L U G A R	E S T A C I O N				C L A S I F I C A C I O N V E H I C U L A R E N P O R C I E N T O .												
	KM	TE	SC	TDPA	A	B	C2	C3	T3S2	T3S3	T3S2R4	OTROS	A	B	C	K'	D
CD. ALTAMIRANO	0.00	3	0	7562	83.1	2.8	1.1	1.0	5.9	1.4	1.2	3.5	83.1	2.8	14.1	0.102	0.501
T. DER. ZIRANDARO	15.00	3	0	2806	89.7	3.8	2.6	1.3	1.1	1.1	0.3	0.1	89.7	3.8	6.5	0.103	0.506
T. C. ZIHUATANEJO - LA MIRA	185.30	1	0	961	84.3	7.2	3.1	4.6	0.0	0.0	0.0	0.8	84.3	7.2	8.5	0.120	0.506

3 CARR : CHILPANCINGO - ACAPULCO

CLAVE: 12045

RUTA : MEX-095

AÑO : 2008

L U G A R	E S T A C I O N				C L A S I F I C A C I O N V E H I C U L A R E N P O R C I E N T O .												
	KM	TE	SC	TDPA	A	B	C2	C3	T3S2	T3S3	T3S2R4	OTROS	A	B	C	K'	D
CHILPANCINGO	0.00																
T. C. CUERNAVACA - ACAPULCO (CUOTA)	4.20	1	1	12621	81.7	2.1	1.9	1.7	5.5	1.3	3.0	2.8	81.7	2.1	16.2	0.078	0.503
T. C. CUERNAVACA - ACAPULCO (CUOTA)	4.20	1	2	12769	80.8	2.4	2.3	1.7	5.6	1.3	2.9	3.0	80.8	2.4	16.8	0.085	0.503
T. C. CUERNAVACA - ACAPULCO (CUOTA)	4.20	3	0	17603	83.4	2.2	2.3	2.2	4.7	1.5	1.1	2.6	83.4	2.2	14.4	0.081	0.505
PETAQUILLAS	12.01	1	0	13318	85.2	3.3	1.8	1.9	3.4	1.5	0.9	2.0	85.2	3.3	11.5	0.092	0.505
PETAQUILLAS	12.01	3	0	10783	86.0	2.0	1.2	2.2	4.3	1.7	1.2	1.4	86.0	2.0	12.0	0.100	0.507
EL OCOTITO	50.68	1	0	7958	85.4	2.2	0.9	2.4	4.1	1.8	1.6	1.6	85.4	2.2	12.4	0.078	0.510
EL OCOTITO	50.68	3	0	7894	82.2	1.5	1.6	2.5	4.8	2.3	3.2	1.9	82.2	1.5	16.3	0.080	0.509
T. IZQ. TIERRA COLORADA INICIA	61.18	1	0	7227	80.8	2.4	1.5	3.3	4.2	1.8	4.0	2.0	80.8	2.4	16.8	0.083	0.522
T. IZQ. TIERRA COLORADA TERMINA	65.14	3	0	8652	87.1	5.1	2.2	3.3	0.0	0.0	0.0	2.3	87.1	5.1	7.8	0.090	0.504

GUERRERO

3 CARR : CHILPANCINGO - ACAPULCO

CLAVE: 12045

RUTA : MEX-095

AÑO : 2008

L U G A R	E S T A C I O N				C L A S I F I C A C I O N V E H I C U L A R E N P O R C I E N T O .												
	KM	TE	SC	TDPA	A	B	C2	C3	T3S2	T3S3	T3S2R4	OTROS	A	B	C	K'	D
X. C. CUERNAVACA - ACAPULCO (CUOTA)	70.10	3	0	8965	88.2	2.7	2.2	4.8	0.0	0.0	0.0	2.1	88.2	2.7	9.1	0.110	0.507
T. DER. PABLO GALEANA	88.15	3	0	12844	81.0	5.7	1.8	2.9	4.0	1.8	1.4	1.4	81.0	5.7	13.3	0.070	0.515
T. DER. LIBRAMIENTO NORTE DE ACAPULCO	112.80	1	0	11658	83.9	10.8	1.1	2.5	0.0	0.0	0.0	1.7	83.9	10.8	5.3	0.072	0.556
T. DER. LIBRAMIENTO NORTE DE ACAPULCO	112.80	3	0	13660	88.6	3.7	3.8	1.3	0.0	0.0	0.0	2.6	88.6	3.7	7.7	0.100	0.503
ACAPULCO	132.70																

4 CARR : CHILPANCINGO - CHICHIHUALCO

CLAVE: 12426

RUTA : MEX-196

AÑO : 2008

L U G A R	E S T A C I O N				C L A S I F I C A C I O N V E H I C U L A R E N P O R C I E N T O .												
	KM	TE	SC	TDPA	A	B	C2	C3	T3S2	T3S3	T3S2R4	OTROS	A	B	C	K'	D
T. C. CUERNAVACA - CHILPANCINGO	0.00	3	0	1850	94.2	2.3	0.4	1.1	0.0	0.0	0.0	2.0	94.2	2.3	3.5	0.117	0.508
T. DER. EL PALMAR	15.10	1	0	1809	95.4	1.1	0.8	1.2	0.0	0.0	0.0	1.5	95.4	1.1	3.5	0.084	0.503
CHICHIHUALCO	26.30	1	0	871	94.2	2.6	0.3	1.8	0.0	0.0	0.0	1.1	94.2	2.6	3.2	0.127	0.502

5 CARR : CHILPANCINGO - JILOTEPEC

CLAVE: 12002

RUTA : MEX-093

AÑO : 2008

L U G A R	E S T A C I O N				C L A S I F I C A C I O N V E H I C U L A R E N P O R C I E N T O .												
	KM	TE	SC	TDPA	A	B	C2	C3	T3S2	T3S3	T3S2R4	OTROS	A	B	C	K'	D
CHILPANCINGO	0.00	3	0	5124	93.3	3.0	0.6	0.4	0.0	0.0	0.0	2.7	93.3	3.0	3.7	0.100	0.550
T. DER. TIXTLA DE GUERRERO	16.30	3	0	5270	83.7	10.4	2.3	1.8	0.0	0.0	0.0	1.8	83.7	10.4	5.9	0.094	0.504
T. IZQ. ALMOLONGA	28.20	3	0	3279	91.8	2.8	2.0	1.9	0.0	0.0	0.0	1.5	91.8	2.8	5.4	0.075	0.506
CHILAPA DE ALVAREZ	53.62	3	0	4939	94.8	1.6	0.7	0.5	0.0	0.0	0.0	2.4	94.8	1.6	3.6	0.083	0.513
TLAPA DE COMONFORT	178.50	1	0	2065	93.4	2.8	1.2	0.8	0.0	0.0	0.0	1.8	93.4	2.8	3.8	0.120	0.509
HUAMUXTITLAN	200.60	1	0	1841	84.5	8.6	3.6	2.0	0.0	0.0	0.0	1.3	84.5	8.6	6.9	0.139	0.501
XOCHIHUEHUETLAN	216.80	1	0	2019	86.5	2.1	6.7	3.8	0.0	0.0	0.0	0.9	86.5	2.1	11.4	0.075	0.516
JILOTEPEC	235.00	1	0	1523	87.4	2.4	6.6	3.0	0.0	0.0	0.0	0.6	87.4	2.4	10.2	0.089	0.526

6 CARR : CUERNAVACA - CHILPANCINGO

CLAVE: 00042

RUTA : MEX-095

AÑO : 2008

L U G A R	E S T A C I O N				C L A S I F I C A C I O N V E H I C U L A R E N P O R C I E N T O .												
	KM	TE	SC	TDPA	A	B	C2	C3	T3S2	T3S3	T3S2R4	OTROS	A	B	C	K'	D
CUERNAVACA	0.00																
TEMIXCO	9.80	1	0	28273	68.3	7.4	3.6	0.9	7.9	2.5	5.2	4.2	68.3	7.4	24.3	0.067	0.507
TEMIXCO	9.80	3	1	13058	75.3	5.4	3.9	2.2	5.3	1.4	1.9	4.6	75.3	5.4	19.3	0.066	0.508
TEMIXCO	9.80	3	2	13474	76.1	5.2	3.6	2.2	6.9	0.9	2.0	3.1	76.1	5.2	18.7	0.065	0.508

GUERRERO

10 CARR : LAS CRUCES - PINOTEPA NACIONAL

CLAVE: 00073

RUTA : MEX-200

AÑO : 2008

L U G A R	E S T A C I O N				C L A S I F I C A C I O N V E H I C U L A R E N P O R C I E N T O .												
	KM	TE	SC	TDPA	A	B	C2	C3	T3S2	T3S3	T3S2R4	OTROS	A	B	C	K'	D
T. IZQ. SAN PEDRO ORIZABA	215.00	3	0	1390	86.9	0.0	1.9	4.9	1.9	2.2	1.3	0.9	86.9	0.0	13.1	0.094	0.500
T. IZQ. TLAXIACO	245.50	1	0	2051	84.1	2.1	2.8	2.9	2.6	2.0	1.1	2.4	84.1	2.1	13.8	0.112	0.501
T. IZQ. TLAXIACO	245.50	3	0	4074	82.5	2.8	1.3	1.9	4.3	2.3	1.9	3.0	82.5	2.8	14.7	0.099	0.549
PINOTEPA NACIONAL	252.50																

11 CARR : LIBRAMIENTO NORTE DE ACAPULCO

CLAVE: 12421

RUTA : MEX

AÑO : 2008

L U G A R	E S T A C I O N				C L A S I F I C A C I O N V E H I C U L A R E N P O R C I E N T O .												
	KM	TE	SC	TDPA	A	B	C2	C3	T3S2	T3S3	T3S2R4	OTROS	A	B	C	K'	D
T. C. CHILPANCINGO - ACAPULCO	0.00	3	0	3378	79.7	4.3	7.7	3.3	0.0	0.0	0.0	5.0	79.7	4.3	16.0	0.133	0.503
T. DER. PELILLO	6.40	3	0	2448	83.3	4.0	6.5	3.8	0.0	0.0	0.0	2.4	83.3	4.0	12.7	0.094	0.515
T. C. ACAPULCO - ZIHUATANEJO	21.10	1	0	3493	86.0	4.6	4.7	2.7	0.0	0.0	0.0	2.0	86.0	4.6	9.4	0.103	0.559

12 CARR : MILPILLAS - T. C. (ACAPULCO - ZIHUATANEJO)

CLAVE: 12012

RUTA : MEX-196

AÑO : 2008

L U G A R	E S T A C I O N				C L A S I F I C A C I O N V E H I C U L A R E N P O R C I E N T O .												
	KM	TE	SC	TDPA	A	B	C2	C3	T3S2	T3S3	T3S2R4	OTROS	A	B	C	K'	D
T. C. CUERNAVACA - CHILPANCINGO	0.00	3	0	1032	93.4	2.4	1.5	1.8	0.0	0.0	0.0	0.9	93.4	2.4	4.2	0.074	0.505
LOS MORROS	45.07	1	0	663	90.0	2.3	2.0	5.5	0.0	0.0	0.0	0.2	90.0	2.3	7.7	0.072	0.508
ATOYAC DE ALVAREZ	233.50	1	0	8410	92.8	5.0	0.7	1.0	0.0	0.0	0.0	0.5	92.8	5.0	2.2	0.060	0.519
T. C. ACAPULCO - ZIHUATANEJO	237.00	1	0	6407	92.5	4.2	1.6	0.5	0.0	0.0	0.0	1.2	92.5	4.2	3.3	0.093	0.501

13 CARR : RAMAL A AEROPUERTO ZIHUATANEJO

CLAVE: 12423

RUTA : MEX

AÑO : 2008

L U G A R	E S T A C I O N				C L A S I F I C A C I O N V E H I C U L A R E N P O R C I E N T O .												
	KM	TE	SC	TDPA	A	B	C2	C3	T3S2	T3S3	T3S2R4	OTROS	A	B	C	K'	D
T. C. ACAPULCO - ZIHUATANEJO	0.00	3	0	2550	94.3	3.7	0.9	0.3	0.0	0.0	0.0	0.8	94.3	3.7	2.0	0.092	0.541
AEROPUERTO	2.00																

14 CARR : SAN JUAN DE LOS LLANOS - OMETEPEC

CLAVE: 12011

RUTA : MEX

AÑO : 2008

L U G A R	E S T A C I O N				C L A S I F I C A C I O N V E H I C U L A R E N P O R C I E N T O .												
	KM	TE	SC	TDPA	A	B	C2	C3	T3S2	T3S3	T3S2R4	OTROS	A	B	C	K'	D
T. C. LAS CRUCES - PINOTEPA NACIONAL	0.00	3	0	1788	91.7	2.8	1.7	1.6	0.0	0.0	0.0	2.2	91.7	2.8	5.5	0.080	0.529
OMETEPEC	15.94	1	0	1736	94.2	2.2	1.4	0.8	0.0	0.0	0.0	1.4	94.2	2.2	3.6	0.110	0.506

GUERRERO

15 CARR : TIERRA COLORADA - CRUZ GRANDE

CLAVE: 12420

RUTA : MEX-198

AÑO : 2008

L U G A R	E S T A C I O N				C L A S I F I C A C I O N V E H I C U L A R E N P O R C I E N T O .												
	KM	TE	SC	TDPA	A	B	C2	C3	T3S2	T3S3	T3S2R4	OTROS	A	B	C	K'	D
TIERRA COLORADA	0.00	3	0	2699	90.5	3.6	1.9	2.6	0.0	0.0	0.0	1.4	90.5	3.6	5.9	0.079	0.554
TECOANAPA	61.00	1	0	1368	77.5	0.7	0.6	15.9	0.0	0.0	0.0	5.3	77.5	0.7	21.8	0.108	0.518
AYUTLA DE LOS LIBRES	82.00	1	0	3046	93.8	1.4	1.0	2.4	0.0	0.0	0.0	1.4	93.8	1.4	4.8	0.098	0.510
AYUTLA DE LOS LIBRES	82.00	3	0	2504	92.4	3.0	1.2	2.3	0.0	0.0	0.0	1.1	92.4	3.0	4.6	0.105	0.508
CRUZ GRANDE	113.80	1	0	2557	89.4	3.8	1.6	2.6	0.0	0.0	0.0	2.6	89.4	3.8	6.8	0.084	0.505
T. C. LAS CRUCES - PINOTEPA NACIONAL	114.80																

16 CARR : TOLUCA - CD. ALTAMIRANO

CLAVE: 00020

RUTA : MEX-134

AÑO : 2008

L U G A R	E S T A C I O N				C L A S I F I C A C I O N V E H I C U L A R E N P O R C I E N T O .												
	KM	TE	SC	TDPA	A	B	C2	C3	T3S2	T3S3	T3S2R4	OTROS	A	B	C	K'	D
T. C. TOLUCA - AXIXINTLA	0.00																
T. IZQ. CAPULTITLAN	1.78	3	1	7225	80.2	5.7	5.3	3.1	1.8	1.4	0.5	2.0	80.2	5.7	14.1	0.124	0.504
T. IZQ. CAPULTITLAN	1.78	3	2	7118	78.3	5.5	5.2	3.7	1.5	1.4	0.5	3.9	78.3	5.5	16.2	0.115	0.504
T. DER. ZINACATEPEC	10.21	3	0	12606	77.8	1.8	4.6	1.2	7.2	1.4	3.8	2.2	77.8	1.8	20.4	0.085	0.509
T. IZQ. SULTEPEC	18.72	3	0	7086	74.5	7.4	7.8	3.2	2.3	2.1	0.5	2.2	74.5	7.4	18.1	0.092	0.510
T. DER. VALLE DE BRAVO	52.00	3	0	6472	80.3	5.5	5.8	3.5	2.1	1.5	0.4	0.9	80.3	5.5	14.2	0.094	0.504
TEMASCALTEPEC	68.76	1	0	3212	83.3	3.8	4.9	3.4	2.3	1.3	0.0	1.0	83.3	3.8	12.9	0.080	0.502
TEMASCALTEPEC	68.76	3	0	4012	83.0	3.5	3.7	3.0	2.6	1.9	1.0	1.3	83.0	3.5	13.5	0.078	0.503
T. IZQ. SAN DIEGO CUENTLA	84.34	3	0	3284	84.7	2.2	4.0	2.0	3.2	1.6	1.3	1.0	84.7	2.2	13.1	0.096	0.503
TEJUPILCO DE HIDALGO	100.80	1	0	3244	79.7	6.7	5.0	3.0	1.9	2.1	0.4	1.2	79.7	6.7	13.6	0.077	0.501
TEJUPILCO DE HIDALGO	100.80	3	0	3062	79.4	5.6	5.4	3.1	1.9	2.6	0.5	1.5	79.4	5.6	15.0	0.125	0.505
CUADRILLA DE LOPEZ	113.20	3	0	2417	83.7	3.1	4.5	1.6	2.1	1.9	1.3	1.8	83.7	3.1	13.2	0.092	0.509
T. IZQ. BEJUCOS	147.60	1	0	1939	82.5	5.2	5.8	3.0	1.5	1.2	0.2	0.6	82.5	5.2	12.3	0.097	0.502
LIM. EDOS. TERM. MEX. PPIA. GRO.	148.60																
CUTZAMALA	196.00	1	0	3938	85.5	3.7	4.8	1.7	1.6	1.4	0.8	0.5	85.5	3.7	10.8	0.105	0.501
LIM. EDOS. TERM. GRO. PPIA. MICH.	204.50																
LIM. EDOS. TERM. MICH. PPIA. GRO.	215.20																
CD. ALTAMIRANO	216.00	1	0	4606	90.0	2.9	3.2	1.1	1.2	0.9	0.3	0.4	90.0	2.9	7.1	0.071	0.502

17 CARR : ZIHUATANEJO - LA MIRA

CLAVE: 00121

RUTA : MEX-200

AÑO : 2008

L U G A R	E S T A C I O N				C L A S I F I C A C I O N V E H I C U L A R E N P O R C I E N T O .												
	KM	TE	SC	TDPA	A	B	C2	C3	T3S2	T3S3	T3S2R4	OTROS	A	B	C	K'	D
ZIHUATANEJO	0.00	3	1	10325	76.6	16.8	3.9	0.5	0.0	0.0	0.0	2.2	76.6	16.8	6.6	0.104	0.528

GUERRERO

17 CARR : ZIHUATANEJO - LA MIRA

CLAVE: 00121

RUTA : MEX-200

AÑO : 2008

L U G A R	E S T A C I O N				C L A S I F I C A C I O N V E H I C U L A R E N P O R C I E N T O .												
	KM	TE	SC	TDPA	A	B	C2	C3	T3S2	T3S3	T3S2R4	OTROS	A	B	C	K'	D
ZIHUATANEJO	0.00	3	2	9230	75.0	23.9	0.4	0.1	0.0	0.0	0.0	0.6	75.0	23.9	1.1	0.091	0.528
T. IZQ. IXTAPA ZIHUATANEJO	8.00	3	0	12169	72.8	4.3	4.9	2.4	6.5	3.0	3.1	3.0	72.8	4.3	22.9	0.082	0.505
T. DER. CD. ALTAMIRANO	16.30	1	0	5427	84.7	4.0	5.4	3.3	0.0	0.0	0.0	2.6	84.7	4.0	11.3	0.100	0.535
T. DER. CD. ALTAMIRANO	16.30	3	0	5145	83.0	4.6	5.2	4.4	0.0	0.0	0.0	2.8	83.0	4.6	12.4	0.102	0.521
T. DER. LA UNION	52.00	3	0	3670	80.0	2.6	7.4	5.8	0.0	0.0	0.0	4.2	80.0	2.6	17.4	0.077	0.502
ZACATULA	93.50	1	0	4148	92.4	3.9	1.9	1.3	0.0	0.0	0.0	0.5	92.4	3.9	3.7	0.092	0.507
LIM. EDOS. TERM. GRO. PPIA. MICH.	98.50																
LA VILLITA	103.80	3	0	4073	80.4	8.5	4.3	2.5	0.9	2.0	0.1	1.3	80.4	8.5	11.1	0.084	0.500
GUACAMAYAS	107.00	1	1	14342	83.0	5.9	5.6	0.9	1.6	2.1	0.2	0.7	83.0	5.9	11.1	0.085	0.507
GUACAMAYAS	107.00	1	2	14728	82.3	5.9	5.7	0.8	2.0	2.0	0.2	1.1	82.3	5.9	11.8	0.093	0.507
T. IZQ. LAZARO CARDENAS	110.90	1	1	12506	89.4	4.1	0.6	0.8	1.1	0.6	0.8	2.6	89.4	4.1	6.5	0.070	0.501
T. IZQ. LAZARO CARDENAS	110.90	1	2	12571	89.8	4.2	0.6	0.7	1.0	0.4	0.6	2.7	89.8	4.2	6.0	0.063	0.501
LA MIRA	119.50	1	1	5625	87.1	3.0	2.8	2.7	1.8	0.8	0.4	1.4	87.1	3.0	9.9	0.068	0.501
LA MIRA	119.50	1	2	5611	87.2	3.2	2.4	2.7	1.9	1.0	0.5	1.1	87.2	3.2	9.6	0.073	0.501

18 CARR : CUERNAVACA - ACAPULCO (CUOTA)

CLAVE: 00045

RUTA : MEX-095D

AÑO : 2008

L U G A R	E S T A C I O N				C L A S I F I C A C I O N V E H I C U L A R E N P O R C I E N T O .												
	KM	TE	SC	TDPA	A	B	C2	C3	T3S2	T3S3	T3S2R4	OTROS	A	B	C	K'	D
CUERNAVACA	0.00	3	1	27333	76.4	5.5	4.6	4.5	1.1	2.7	2.8	2.4	76.4	5.5	18.1	0.074	0.518
CUERNAVACA	0.00	3	2	25481	76.1	5.2	4.2	4.3	1.3	3.4	2.7	2.8	76.1	5.2	18.7	0.068	0.518
T. DER. ACATLIPA	15.00	3	1	16860	77.6	5.2	4.7	2.1	3.4	1.6	2.5	2.9	77.6	5.2	17.2	0.088	0.510
T. DER. ACATLIPA	15.00	3	2	16201	78.2	5.0	4.8	2.7	3.2	2.0	2.5	1.6	78.2	5.0	16.8	0.083	0.510
CASETA DE COBRO ALPUYECA	24.95	1	0	17637	78.1	10.9	2.7	2.2	2.1	1.3	1.2	1.5	78.1	10.9	11.0		
CASETA DE COBRO ALPUYECA	24.95	1	1	10388	79.3	10.2	3.7	1.0	1.1	0.8	0.5	3.4	79.3	10.2	10.5	0.100	0.505
CASETA DE COBRO ALPUYECA	24.95	1	2	10179	79.2	11.3	3.3	0.9	1.3	0.5	0.2	3.3	79.2	11.3	9.5	0.070	0.505
CASETA DE COBRO ALPUYECA	24.95	2	0	12539	77.2	10.8	2.6	2.6	2.5	1.4	1.5	1.4	77.2	10.8	12.0		
CASETA DE COBRO ALPUYECA	24.95	3	0	12647	77.2	10.7	2.6	2.7	2.5	1.4	1.5	1.4	77.2	10.7	12.1		
CASETA DE COBRO ALPUYECA	24.95	3	1	7630	79.7	10.3	3.7	1.3	1.2	0.9	0.4	2.5	79.7	10.3	10.0	0.110	0.507
CASETA DE COBRO ALPUYECA	24.95	3	2	7409	78.4	10.6	3.5	1.5	1.3	0.6	0.3	3.8	78.4	10.6	11.0	0.080	0.507
LIM. EDOS. TERM. MOR. PPIA. GRO.	52.05																
CASETA DE COBRO PASO MORELOS	89.43	1	0	7336	83.5	10.4	1.7	0.7	1.2	0.4	1.0	1.1	83.5	10.4	6.1		
CASETA DE COBRO PASO MORELOS	89.43	1	1	3054	84.0	10.2	1.9	0.8	1.0	0.4	0.6	1.1	84.0	10.2	5.8	0.076	0.523
CASETA DE COBRO PASO MORELOS	89.43	1	2	2791	84.1	10.1	2.0	0.9	0.9	0.3	0.5	1.2	84.1	10.1	5.8	0.079	0.523
CASETA DE COBRO PASO MORELOS	89.43	2	0	7028	83.7	10.8	1.5	0.6	1.2	0.4	1.0	0.8	83.7	10.8	5.5		

GUERRERO

20 CARR : PUENTE DE IXTLA - IGUALA (CUOTA)

CLAVE: 00043

RUTA : MEX-D

AÑO : 2008

L U G A R	E S T A C I O N				C L A S I F I C A C I O N V E H I C U L A R E N P O R C I E N T O .												
	KM	TE	SC	TDPA	A	B	C2	C3	T3S2	T3S3	T3S2R4	OTROS	A	B	C	K'	D
T. IZQ. PUENTE DE IXTLA	2.00	3	0	6614	78.9	6.0	3.4	2.5	2.9	3.8	1.5	1.0	78.9	6.0	15.1	0.073	0.502
T. DER. AMACUZAC	9.63	3	0	7733	80.3	3.9	3.9	2.7	2.6	4.5	1.5	0.6	80.3	3.9	15.8	0.080	0.500
LIM. EDOS. TERM. MOR. PPIA. GRO.	15.33																
T. IZQ. BUENAVISTA	33.58	3	0	5686	76.5	5.0	2.5	4.2	4.3	6.0	0.8	0.7	76.5	5.0	18.5	0.082	0.503
CASETA DE COBRO IGUALA	59.14	2	0	4754	62.8	6.7	8.1	8.8	5.5	4.3	2.5	1.3	62.8	6.7	30.5		
T. DER. IGUALA	59.50	1	0	4556	82.4	5.1	3.6	3.5	2.3	1.7	0.4	1.0	82.4	5.1	12.5	0.088	0.503
T. C. CUERNAVACA - CHILPANCINGO	62.80																

21 CARR : ZACAPALCO - TAXCO (CUOTA)

CLAVE: 12010

RUTA : MEX-D

AÑO : 2008

L U G A R	E S T A C I O N				C L A S I F I C A C I O N V E H I C U L A R E N P O R C I E N T O .												
	KM	TE	SC	TDPA	A	B	C2	C3	T3S2	T3S3	T3S2R4	OTROS	A	B	C	K'	D
T. C. PUENTE DE IXTLA - IGUALA (CUOTA)	0.00																
CASETA DE COBRO ZACAPALCO	0.50	2	0	1580	84.5	8.4	3.4	1.5	0.6	0.3	0.0	1.3	84.5	8.4	7.1		
CASETA DE COBRO TAXCO	17.63	2	0	2727	87.8	7.2	2.7	0.6	0.3	0.3	0.0	1.1	87.8	7.2	5.0		
T. C. CUERNAVACA - CHILPANCINGO	25.64																

22 CARR : ACAPULCO - AEROPUERTO ACAPULCO

CLAVE: 12292

RUTA : GRO

AÑO : 2008

L U G A R	E S T A C I O N				C L A S I F I C A C I O N V E H I C U L A R E N P O R C I E N T O .												
	KM	TE	SC	TDPA	A	B	C2	C3	T3S2	T3S3	T3S2R4	OTROS	A	B	C	K'	D
ACAPULCO	0.00																
PUERTO MARQUES	8.70	1	1	11564	82.5	3.1	0.6	0.8	2.8	2.7	3.0	4.5	82.5	3.1	14.4	0.080	0.501
PUERTO MARQUES	8.70	1	2	11629	79.7	3.3	0.4	1.0	3.9	3.3	3.3	5.1	79.7	3.3	17.0	0.072	0.501
PUERTO MARQUES	8.70	3	1	9826	76.2	2.5	1.1	1.3	5.2	3.1	4.5	6.1	76.2	2.5	21.3	0.099	0.509
PUERTO MARQUES	8.70	3	2	9486	78.1	2.6	1.5	1.3	6.8	1.9	3.0	4.8	78.1	2.6	19.3	0.096	0.509
T. DER. LOS AMATES	14.90	3	1	3777	86.5	3.0	5.2	0.7	2.4	0.4	0.4	1.4	86.5	3.0	10.5	0.105	0.512
T. DER. LOS AMATES	14.90	3	2	3598	84.8	3.2	5.6	0.7	2.7	0.5	0.8	1.7	84.8	3.2	12.0	0.094	0.512
AEROPUERTO	16.20																

23 CARR : ENT. POTRERO - LOMAS DE CHAPULTEPEC

CLAVE: 12293

RUTA : GRO

AÑO : 2008

L U G A R	E S T A C I O N				C L A S I F I C A C I O N V E H I C U L A R E N P O R C I E N T O .												
	KM	TE	SC	TDPA	A	B	C2	C3	T3S2	T3S3	T3S2R4	OTROS	A	B	C	K'	D
T. C. ACAPULCO - AEROPUERTO ACAPULCO	0.00	3	0	8146	85.6	3.0	1.4	2.5	2.9	1.3	1.0	2.3	85.6	3.0	11.4	0.097	0.501

GUERRERO

23 CARR : ENT. POTRERO - LOMAS DE CHAPULTEPEC

CLAVE: 12293

RUTA : GRO

AÑO : 2008

L U G A R	E S T A C I O N				C L A S I F I C A C I O N V E H I C U L A R E N P O R C I E N T O .												
	KM	TE	SC	TDPA	A	B	C2	C3	T3S2	T3S3	T3S2R4	OTROS	A	B	C	K'	D
T. C. LAS CRUCES - PINOTEPA NACIONAL	29.00																

24 CARR : PIE DE LA CUESTA - BARRA DE COYUCA

CLAVE: 12427

RUTA : GRO

AÑO : 2008

L U G A R	E S T A C I O N				C L A S I F I C A C I O N V E H I C U L A R E N P O R C I E N T O .												
	KM	TE	SC	TDPA	A	B	C2	C3	T3S2	T3S3	T3S2R4	OTROS	A	B	C	K'	D
T. C. ACAPULCO - ZIHUATANEJO	0.00	3	0	9403	89.3	4.2	3.6	0.7	0.0	0.0	0.0	2.2	89.3	4.2	6.5	0.078	0.511
BARRA DE COYUCA	16.50	1	0	1779	84.7	7.1	6.7	1.4	0.0	0.0	0.0	0.1	84.7	7.1	8.2	0.070	0.500

25 CARR : RAMAL A COCULA

CLAVE: 12082

RUTA : GRO

AÑO : 2008

L U G A R	E S T A C I O N				C L A S I F I C A C I O N V E H I C U L A R E N P O R C I E N T O .												
	KM	TE	SC	TDPA	A	B	C2	C3	T3S2	T3S3	T3S2R4	OTROS	A	B	C	K'	D
T. C. IGUALA - CIUDAD ALTAMIRANO	0.00	3	0	2478	92.6	3.6	0.9	0.2	1.4	0.3	0.4	0.6	92.6	3.6	3.8	0.164	0.509
COCULA	13.00																

26 CARR : T. C. (IGUALA - CHILPANCINGO) - ATENANGO DEL RIO

CLAVE: 12001

RUTA : GRO-001

AÑO : 2008

L U G A R	E S T A C I O N				C L A S I F I C A C I O N V E H I C U L A R E N P O R C I E N T O .												
	KM	TE	SC	TDPA	A	B	C2	C3	T3S2	T3S3	T3S2R4	OTROS	A	B	C	K'	D
T. C. CUERNAVACA - CHILPANCINGO	0.00	3	0	4627	93.9	3.2	1.0	0.5	0.0	0.0	0.0	1.4	93.9	3.2	2.9	0.098	0.504
T. DER. POLOLCINGO	11.20	1	0	2890	90.4	3.7	1.6	0.8	1.2	0.5	0.3	1.5	90.4	3.7	5.9	0.097	0.506
T. DER. POLOLCINGO	11.20	3	0	3350	81.9	3.1	3.0	2.3	2.4	2.8	1.0	3.5	81.9	3.1	15.0	0.115	0.523
HUITZUCO	22.00	3	0	3109	88.6	2.2	4.4	1.3	2.0	0.3	0.2	1.0	88.6	2.2	9.2	0.100	0.502
ATENANGO DEL RIO	62.00	1	0	606	87.7	1.5	4.7	2.5	1.3	1.6	0.3	0.4	87.7	1.5	10.8	0.099	0.509

27 CARR : TAXCO - IXCATEOPAN

CLAVE: 12083

RUTA : GRO

AÑO : 2008

L U G A R	E S T A C I O N				C L A S I F I C A C I O N V E H I C U L A R E N P O R C I E N T O .												
	KM	TE	SC	TDPA	A	B	C2	C3	T3S2	T3S3	T3S2R4	OTROS	A	B	C	K'	D
TAXCO	0.00	3	0	4257	87.9	3.4	0.3	0.9	3.0	1.0	1.3	2.2	87.9	3.4	8.7	0.082	0.502
IXCATEOPAN	36.00	1	0	3800	91.0	3.8	0.3	0.1	2.3	0.5	0.6	1.4	91.0	3.8	5.2	0.110	0.508

GUERRERO

28 CARR : TELOLOAPAN - APAXTLA DE CASTREJON

CLAVE: 12081

RUTA : GRO

AÑO : 2008

L U G A R	E S T A C I O N				C L A S I F I C A C I O N V E H I C U L A R E N P O R C I E N T O .												
	KM	TE	SC	TDPA	A	B	C2	C3	T3S2	T3S3	T3S2R4	OTROS	A	B	C	K'	D
T. C. IGUALA - CIUDAD ALTAMIRANO	0.00	3	0	951	90.7	2.2	1.6	0.1	1.6	1.6	0.0	2.2	90.7	2.2	7.1	0.119	0.510
APAXTLA DE CASTREJON	34.00																

29 CARR : TOLUCA - AXIXINTLA

CLAVE: 00122

RUTA : EM-MEX-055

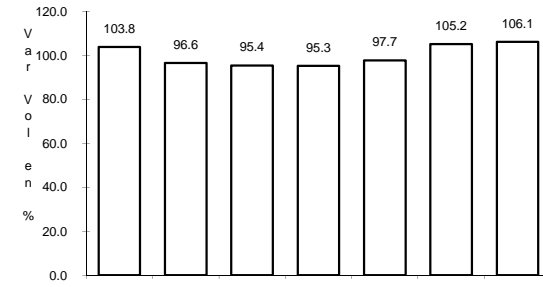
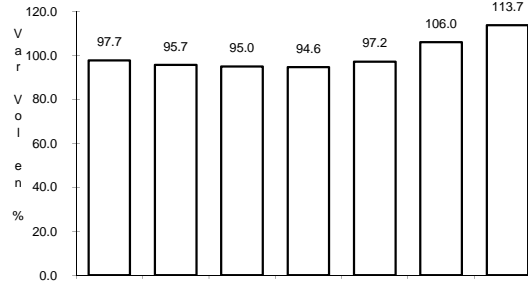
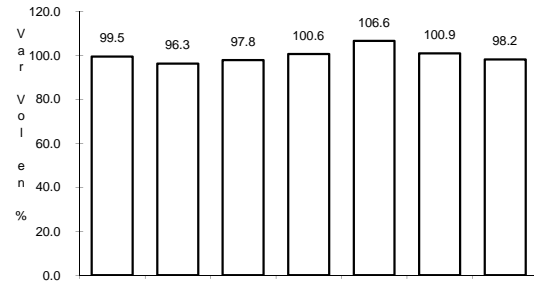
AÑO : 2008

L U G A R	E S T A C I O N				C L A S I F I C A C I O N V E H I C U L A R E N P O R C I E N T O .												
	KM	TE	SC	TDPA	A	B	C2	C3	T3S2	T3S3	T3S2R4	OTROS	A	B	C	K'	D
TOLUCA	0.00																
T. IZQ. METEPEC	4.74	1	1	19938	62.6	4.4	2.3	1.7	7.5	6.3	7.8	7.4	62.6	4.4	33.0	0.062	0.500
T. IZQ. METEPEC	4.74	1	2	19924	65.0	4.4	2.0	1.3	7.0	5.7	7.7	6.9	65.0	4.4	30.6	0.061	0.500
MEXICALcingo	8.80	1	1	19213	82.6	5.3	5.2	1.8	2.0	1.8	0.2	1.1	82.6	5.3	12.1	0.112	0.502
MEXICALcingo	8.80	1	2	19083	82.7	5.1	5.1	2.4	1.7	1.4	0.2	1.4	82.7	5.1	12.2	0.096	0.502
MEXICALcingo	8.80	3	1	15562	83.3	4.3	4.1	2.3	2.3	2.1	0.2	1.4	83.3	4.3	12.4	0.098	0.502
MEXICALcingo	8.80	3	2	15459	83.2	4.1	4.5	2.6	2.0	1.8	0.2	1.6	83.2	4.1	12.7	0.103	0.502
T. DER. CALIMAYA	12.70	3	1	8525	83.2	3.2	5.6	3.2	1.1	1.2	0.1	2.4	83.2	3.2	13.6	0.104	0.501
T. DER. CALIMAYA	12.70	3	2	8507	83.3	3.4	6.1	3.1	1.1	1.0	0.1	1.9	83.3	3.4	13.3	0.159	0.501
TENANCINGO	46.50	3	0	7319	83.7	8.3	1.6	1.2	1.6	1.6	1.0	1.0	83.7	8.3	8.0	0.080	0.501
T. IZQ. VILLA GUERRERO	56.84	3	0	9359	91.3	1.4	0.9	0.5	2.5	0.7	0.9	1.8	91.3	1.4	7.3	0.085	0.504
IXTAPAN DE LA SAL	80.00	1	1	3259	89.7	3.9	1.4	0.7	2.8	0.3	0.3	0.9	89.7	3.9	6.4	0.097	0.504
IXTAPAN DE LA SAL	80.00	1	2	3315	89.8	4.0	1.2	0.7	2.8	0.3	0.3	0.9	89.8	4.0	6.2	0.151	0.504
IXTAPAN DE LA SAL	80.00	3	1	3105	83.4	3.5	1.6	0.9	2.6	1.8	1.5	4.7	83.4	3.5	13.1	0.086	0.504
IXTAPAN DE LA SAL	80.00	3	2	3157	82.1	3.8	1.7	0.9	2.8	1.9	1.6	5.2	82.1	3.8	14.1	0.086	0.504
TONATICO	86.20	3	0	5046	81.4	7.5	3.6	2.0	1.7	1.9	0.3	1.6	81.4	7.5	11.1	0.081	0.506
LIM. EDOS. TERM. MEX. PPIA. GRO.	99.00																
CACAHUAMILPA	120.30	1	0	2553	88.9	2.4	3.3	1.9	1.1	0.9	0.6	0.9	88.9	2.4	8.7	0.111	0.503
T. C. CUERNAVACA - CHILPANCINGO	125.30	1	0	1636	95.3	1.9	0.8	0.8	0.5	0.4	0.0	0.3	95.3	1.9	2.8	0.080	0.502

1 CARR: ACAPULCO - ZIHUATANEJO

CLAVE: 12072

RUTA: MEX-200



Km: 10.37

Tipo: 1

Sent: 0

Km: 242.90

Tipo: 1

Sent: 1

Km: 242.90

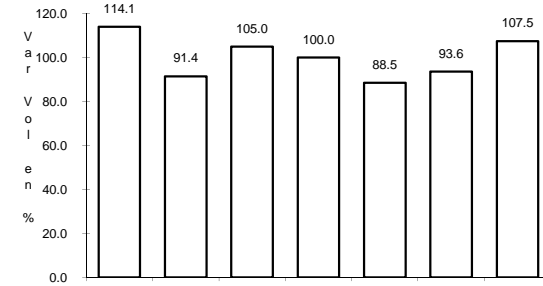
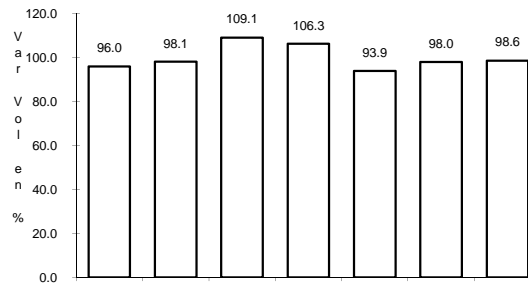
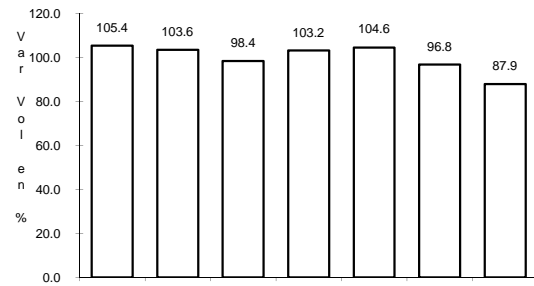
Tipo: 1

Sent: 2

2 CARR: CD. ALTAMIRANO - T. C. (ZIHUATANEJO - LA MIRA)

CLAVE: 12422

RUTA: MEX-134



Km: 0.00

Tipo: 3

Sent: 0

Km: 15.00

Tipo: 3

Sent: 0

Km: 185.30

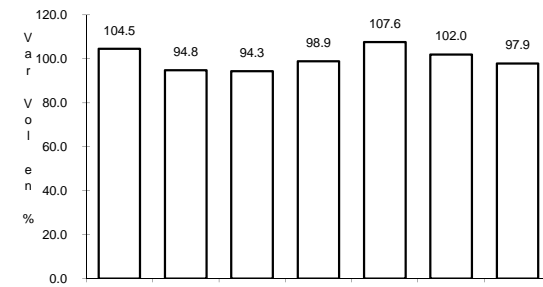
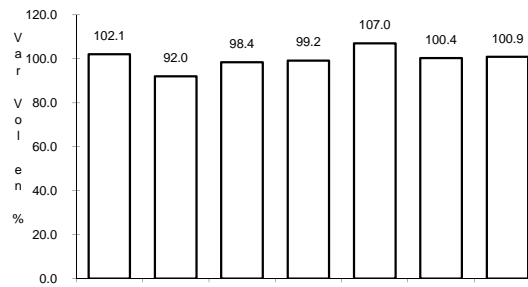
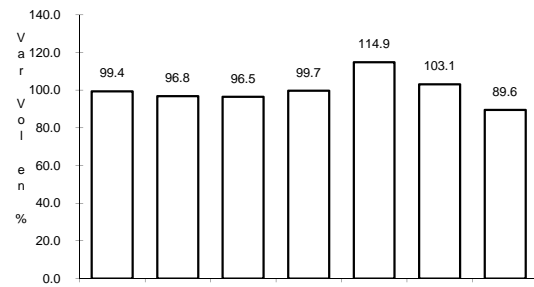
Tipo: 1

Sent: 0

3 CARR: CHILPANCINGO - ACAPULCO

CLAVE: 12045

RUTA: MEX-095



Km: 4.20

Tipo: 1

Sent: 1

Km: 4.20

Tipo: 1

Sent: 2

Km: 112.80

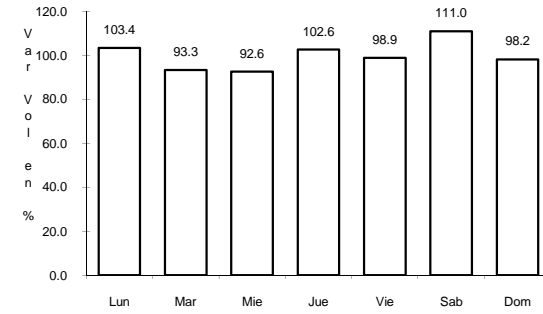
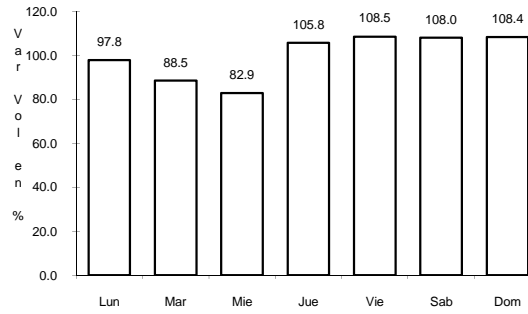
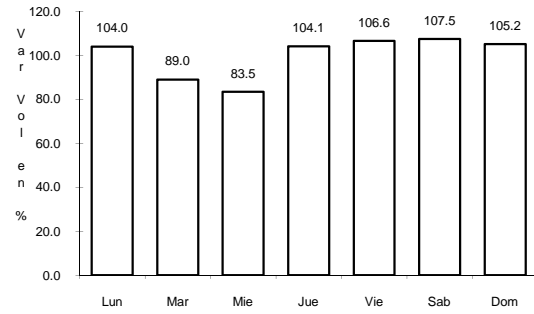
Tipo: 3

Sent: 0

4 CARR: CHILPANCINGO - CHICHIHUALCO

CLAVE: 12426

ruta: MEX-196



Km: 0.00 Tipo: 3 Sent: 0

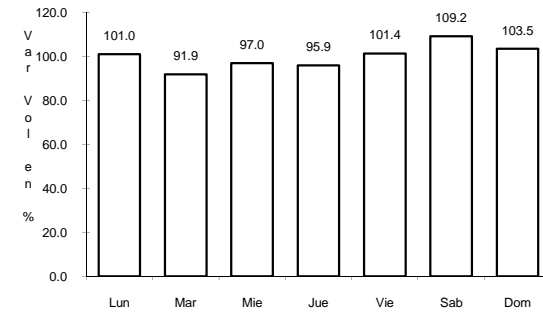
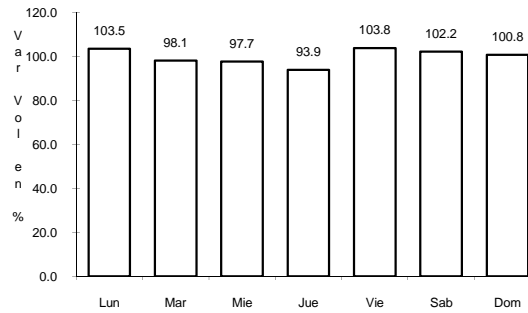
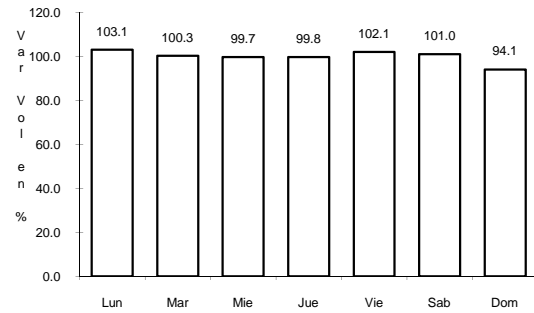
Km: 15.10 Tipo: 1 Sent: 0

Km: 26.30 Tipo: 1 Sent: 0

5 CARR: CHILPANCINGO - JILOTEPEC

CLAVE: 12002

ruta: MEX-093



Km: 0.00 Tipo: 3 Sent: 0

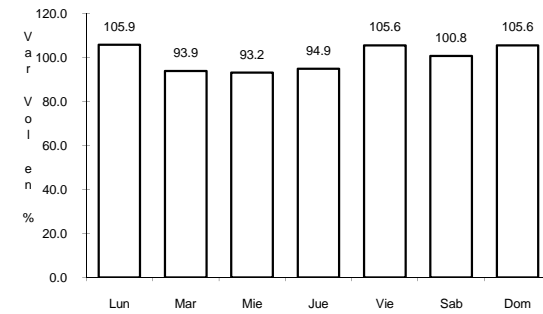
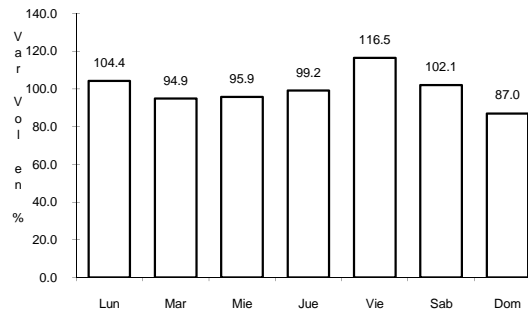
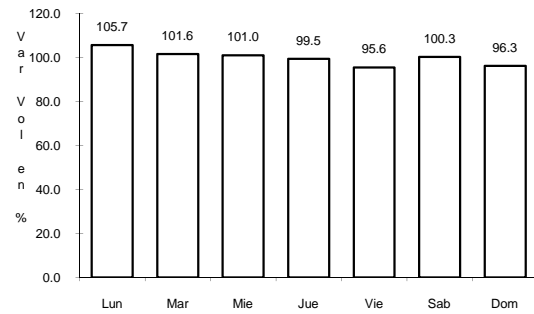
Km: 178.50 Tipo: 1 Sent: 0

Km: 235.00 Tipo: 1 Sent: 0

6 CARR: CUERNAVACA - CHILPANCINGO

CLAVE: 00042

ruta: MEX-095



Km: 9.80 Tipo: 1 Sent: 0

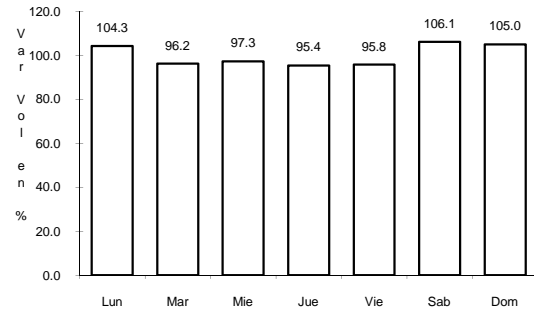
Km: 223.70 Tipo: 1 Sent: 1

Km: 223.70 Tipo: 1 Sent: 2

7 CARR: ENT. ALPUYECA - GRUTAS DE CACAHUAMILPA

CLAVE: 00421

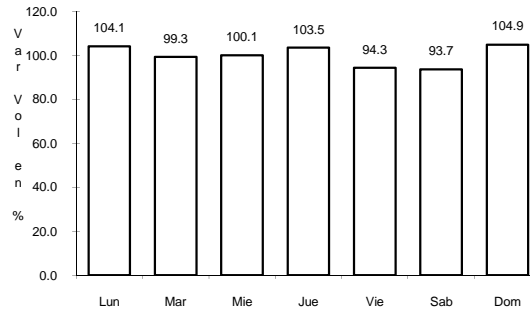
RUTA: MEX-166



Km: 0.00

Tipo: 3

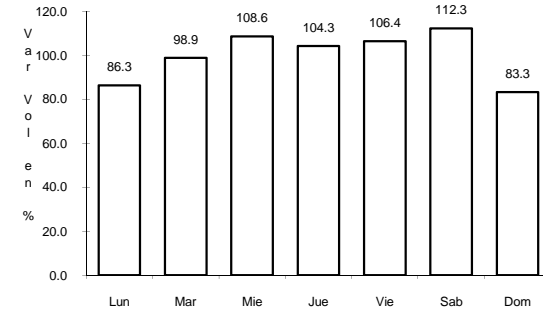
Sent: 0



Km: 25.05

Tipo: 3

Sent: 0



Km: 41.26

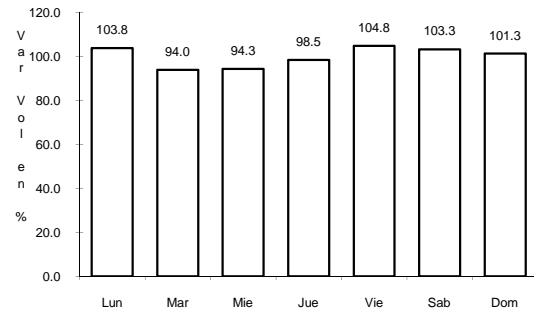
Tipo: 1

Sent: 0

8 CARR: IGUALA - CD. ALTAMIRANO

CLAVE: 12195

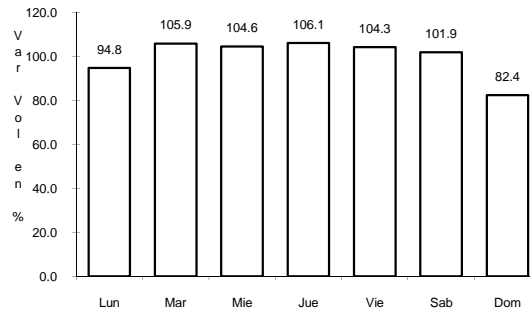
RUTA: MEX-051



Km: 9.40

Tipo: 1

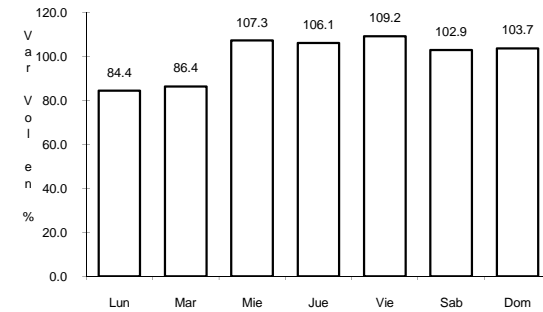
Sent: 0



Km: 184.55

Tipo: 1

Sent: 1



Km: 184.55

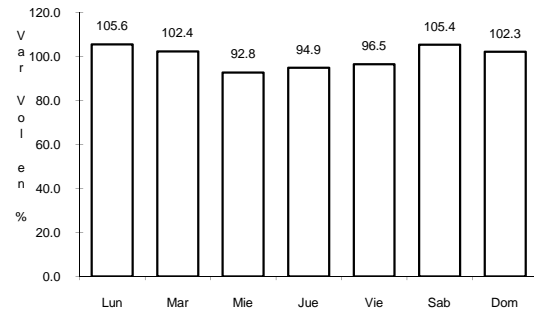
Tipo: 1

Sent: 2

9 CARR: LA SABANA - PUERTO MARQUES

CLAVE: 12291

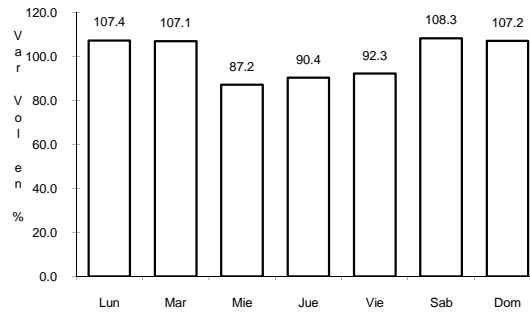
RUTA: MEX



Km: 0.00

Tipo: 3

Sent: 1



Km: 0.00

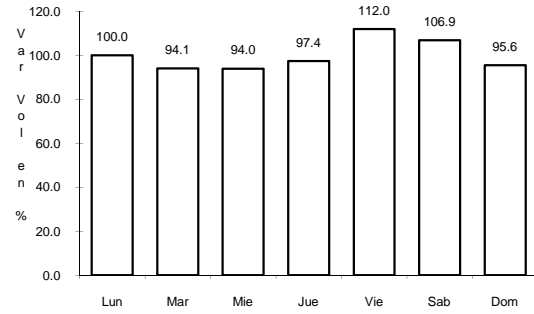
Tipo: 3

Sent: 2

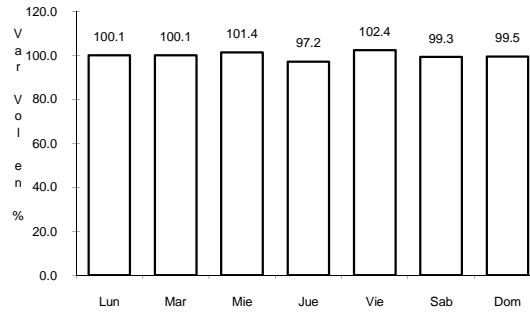
10 CARR: LAS CRUCES - PINOTEPA NACIONAL

CLAVE: 00073

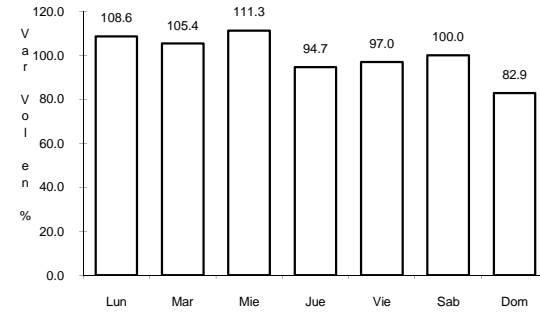
ruta: MEX-200



Km: 0.00 Tipo: 3 Sent: 1



Km: 0.00 Tipo: 3 Sent: 2

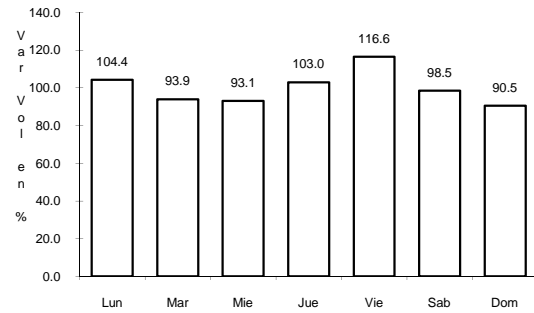


Km: 245.47 Tipo: 3 Sent: 0

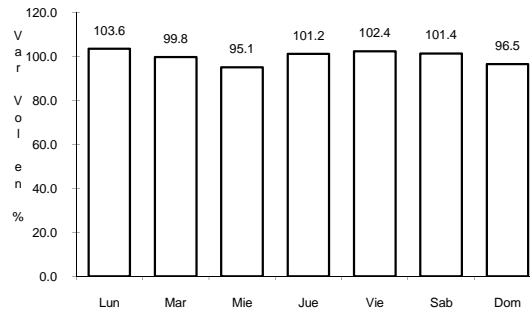
11 CARR: LIBRAMIENTO NORTE DE ACAPULCO

CLAVE: 12421

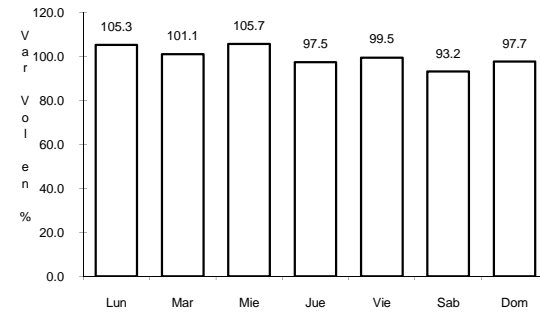
ruta: MEX



Km: 0.00 Tipo: 3 Sent: 0



Km: 6.40 Tipo: 3 Sent: 0

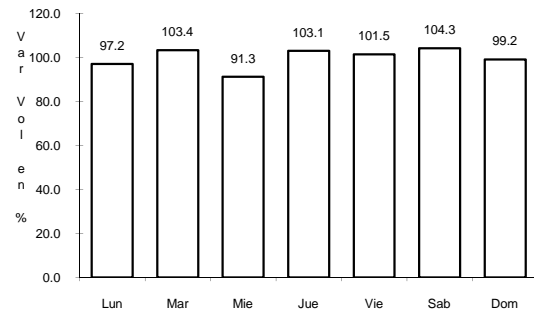


Km: 21.10 Tipo: 1 Sent: 0

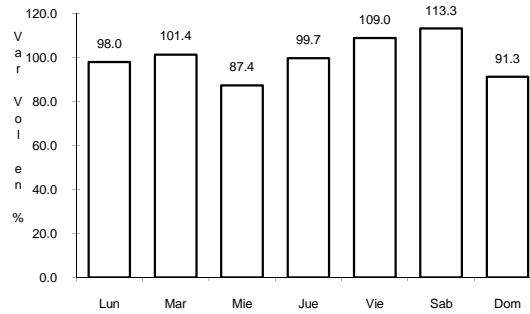
12 CARR: MILPILLAS - T. C. (ACAPULCO - ZIHUATANEJO)

CLAVE: 12012

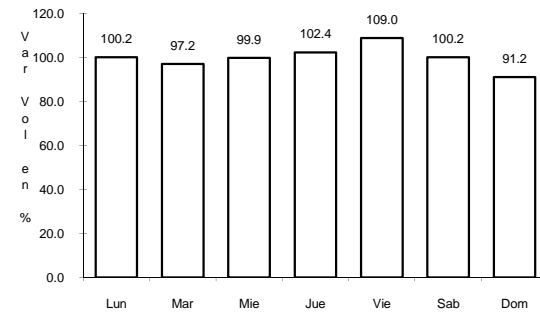
ruta: MEX-196



Km: 0.00 Tipo: 3 Sent: 0



Km: 45.07 Tipo: 1 Sent: 0

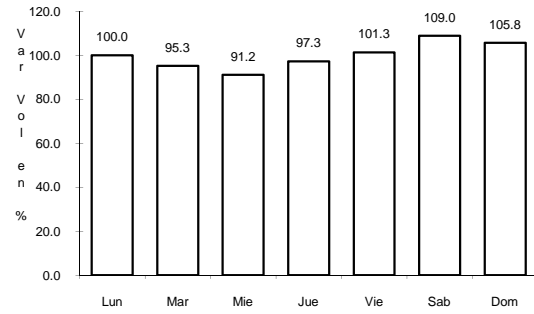


Km: 237.00 Tipo: 1 Sent: 0

13 CARR: RAMAL A AEROPUERTO ZIHUATANEJO

CLAVE: 12423

RUTA: MEX



Km: 0.00

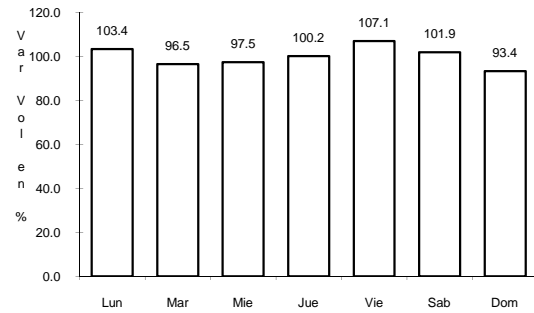
Tipo: 3

Sent: 0

14 CARR: SAN JUAN DE LOS LLANOS - OMETEPEC

CLAVE: 12011

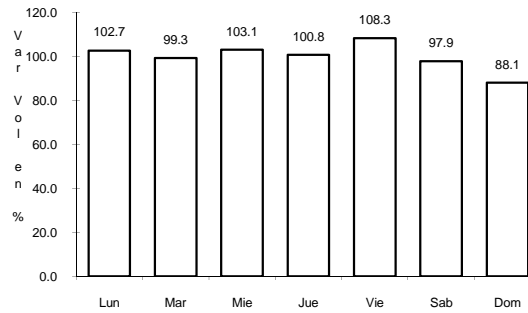
RUTA: MEX



Km: 0.00

Tipo: 3

Sent: 0



Km: 15.94

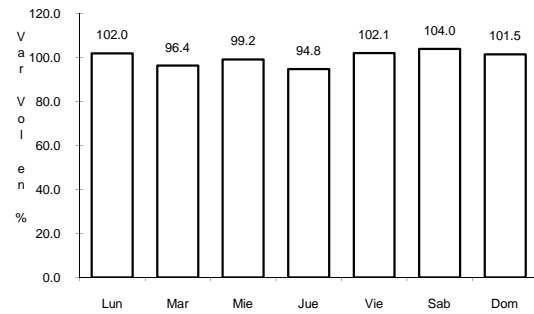
Tipo: 1

Sent: 0

15 CARR: TIERRA COLORADA - CRUZ GRANDE

CLAVE: 12420

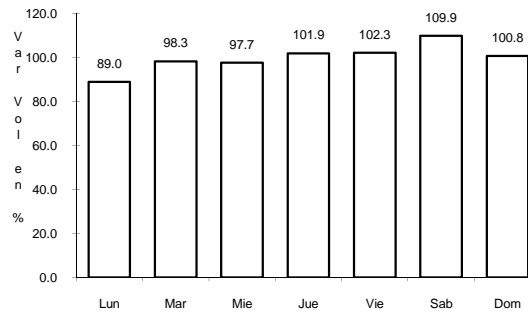
RUTA: MEX-198



Km: 0.00

Tipo: 3

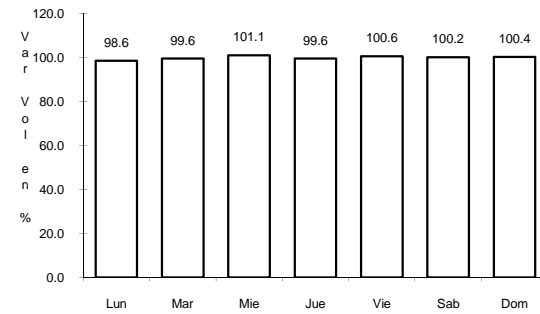
Sent: 0



Km: 61.00

Tipo: 1

Sent: 0

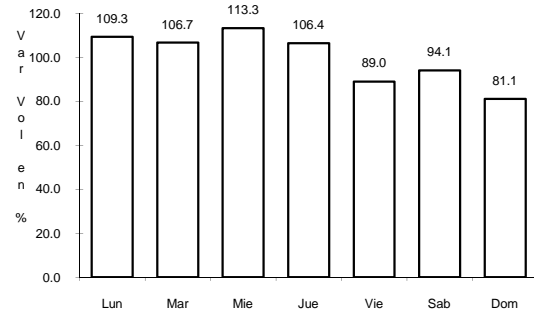


Km: 113.80

Tipo: 1

Sent: 0

16 CARR: TOLUCA - CD. ALTAMIRANO

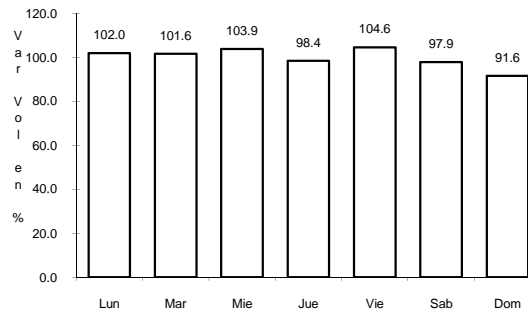


Km: 1.78

Tipo: 3

Sent: 1

CLAVE: 00020

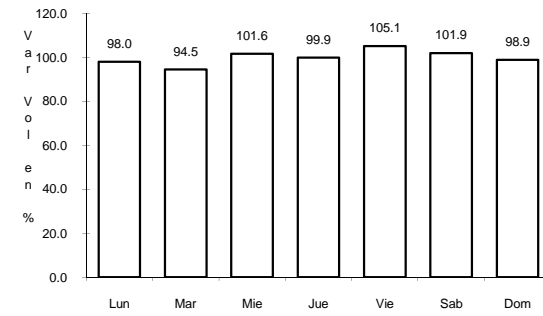


Km: 1.78

Tipo: 3

Sent: 2

RUTA: MEX-134

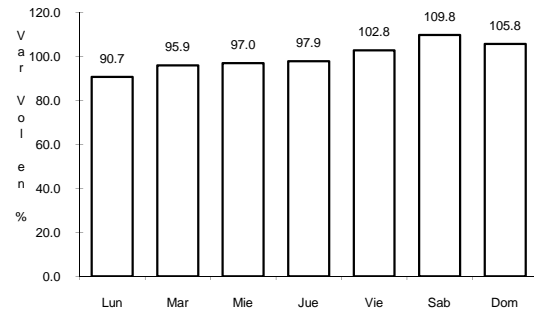


Km: 216.00

Tipo: 1

Sent: 0

17 CARR: ZIHUATANEJO - LA MIRA

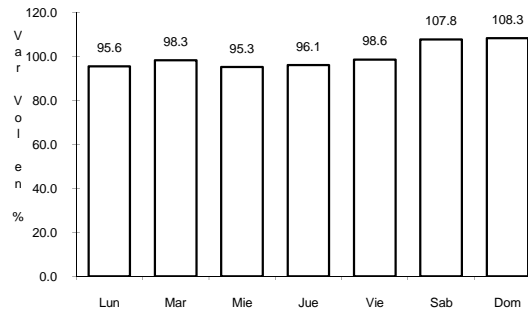


Km: 0.00

Tipo: 3

Sent: 1

CLAVE: 00121

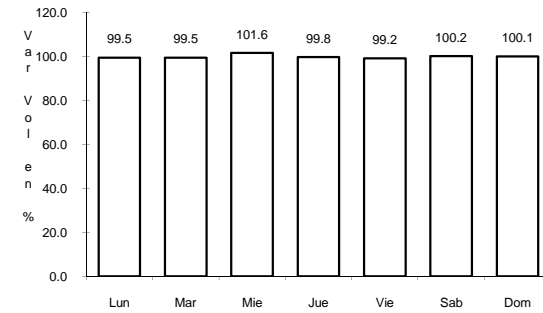


Km: 0.00

Tipo: 3

Sent: 2

RUTA: MEX-200

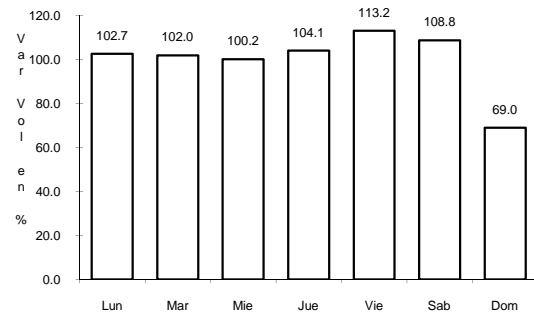


Km: 52.00

Tipo: 3

Sent: 0

18 CARR: CUERNAVACA - ACAPULCO (CUOTA)

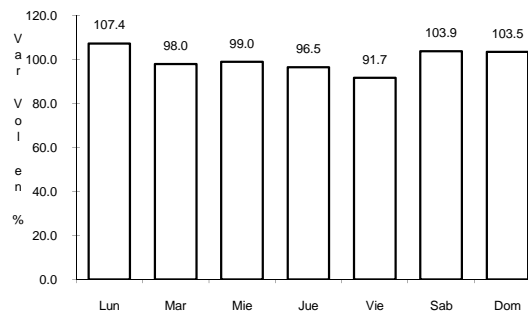


Km: 0.00

Tipo: 3

Sent: 1

CLAVE: 00045



Km: 0.00

Tipo: 3

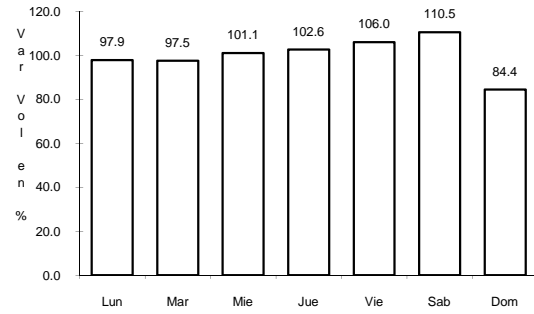
Sent: 2

RUTA: MEX-095D

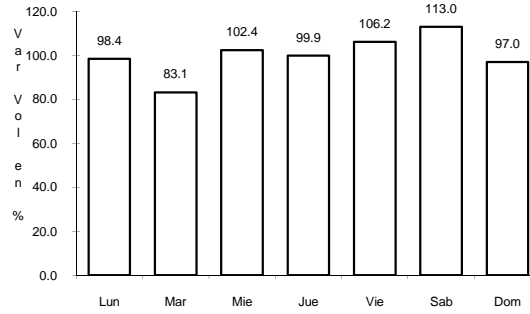
20 CARR: PUENTE DE IXTLA - IGUALA (CUOTA)

CLAVE: 00043

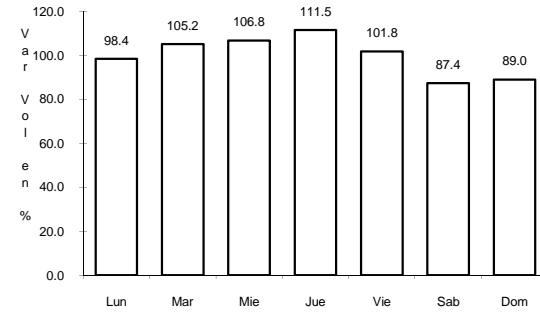
ruta: MEX-D



Km: 2.00 Tipo: 3 Sent: 0



Km: 33.58 Tipo: 3 Sent: 0

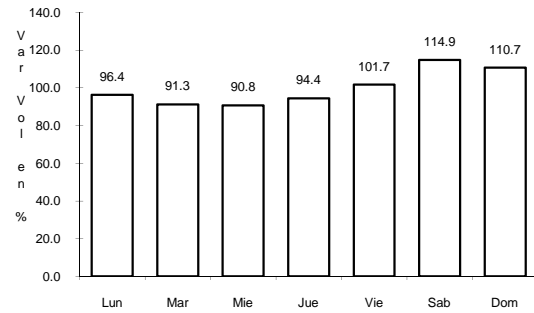


Km: 59.50 Tipo: 1 Sent: 0

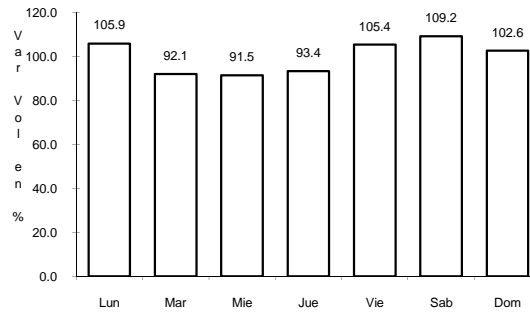
22 CARR: ACAPULCO - AEROPUERTO ACAPULCO

CLAVE: 12292

ruta: GRO



Km: 8.70 Tipo: 1 Sent: 1

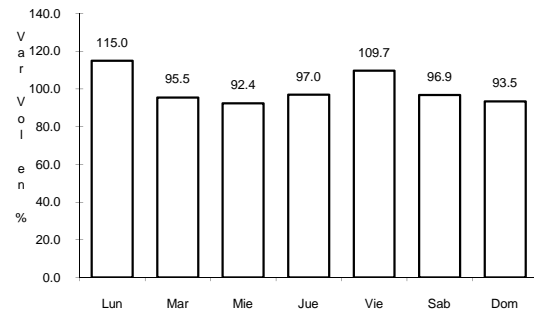


Km: 8.70 Tipo: 1 Sent: 2

23 CARR: ENT. POTRERO - LOMAS DE CHAPULTEPEC

CLAVE: 12293

ruta: GRO

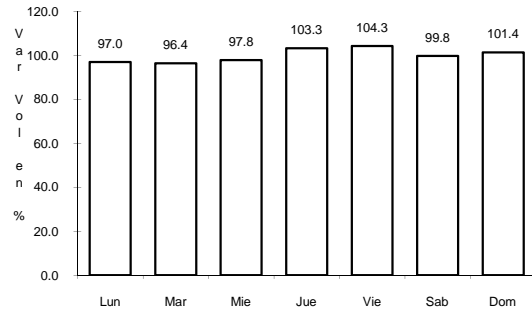


Km: 0.00 Tipo: 3 Sent: 0

24 CARR: PIE DE LA CUESTA - BARRA DE COYUCA

CLAVE: 12427

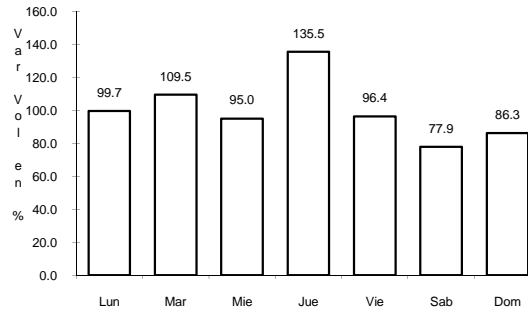
RUTA: GRO



Km: 0.00

Tipo: 3

Sent: 0



Km: 16.50

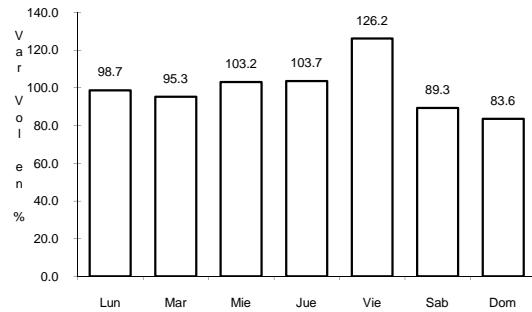
Tipo: 1

Sent: 0

25 CARR: RAMAL A COCULA

CLAVE: 12082

RUTA: GRO



Km: 0.00

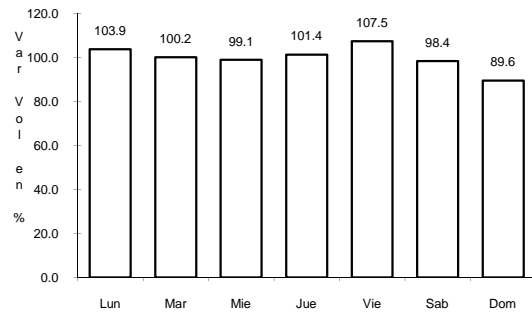
Tipo: 3

Sent: 0

26 CARR: T. C. (IGUALA - CHILPANCINGO) - ATENANGO DEL RIO

CLAVE: 12001

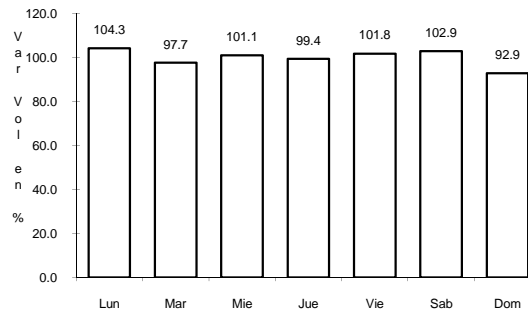
RUTA: GRO-001



Km: 0.00

Tipo: 3

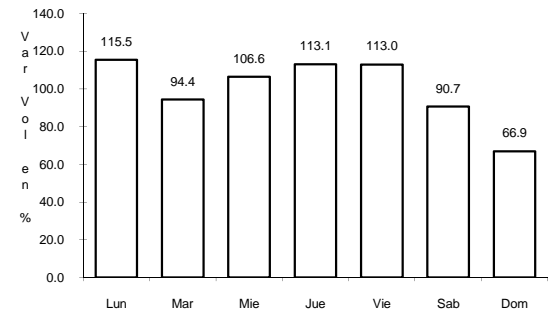
Sent: 0



Km: 22.00

Tipo: 3

Sent: 0



Km: 62.00

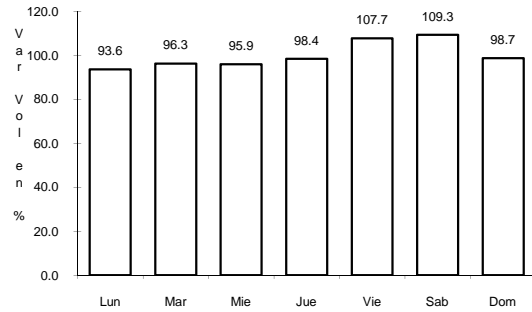
Tipo: 1

Sent: 0

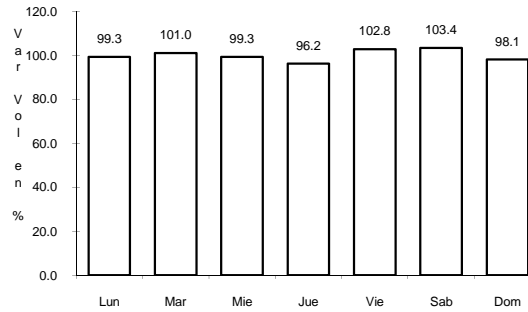
27 CARR: TAXCO - IXCATEOPAN

CLAVE: 12083

ruta: GRO



Km: 0.00 Tipo: 3 Sent: 0

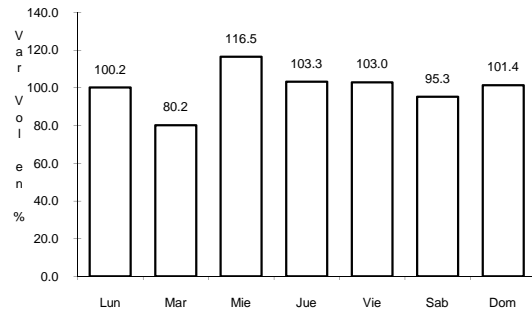


Km: 36.00 Tipo: 1 Sent: 0

28 CARR: TELOLOAPAN - APAXTLA DE CASTREJON

CLAVE: 12081

ruta: GRO

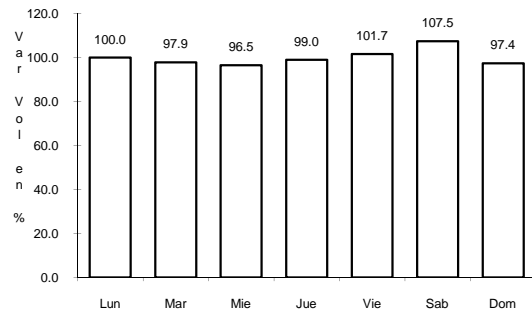


Km: 0.00 Tipo: 3 Sent: 0

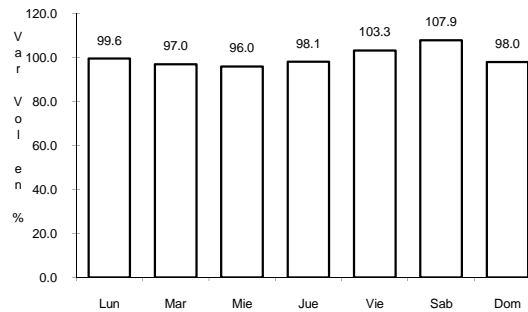
29 CARR: TOLUCA - AXIXINTLA

CLAVE: 00122

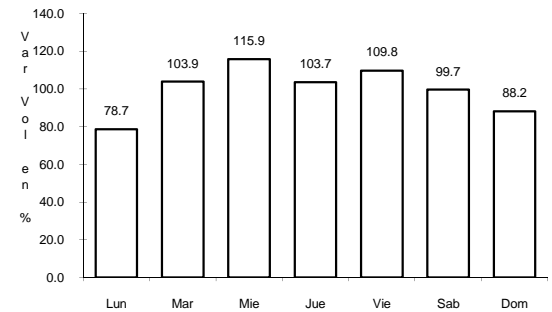
ruta: EM-MEX-055



Km: 4.74 Tipo: 1 Sent: 1



Km: 4.74 Tipo: 1 Sent: 2



Km: 125.30 Tipo: 1 Sent: 0