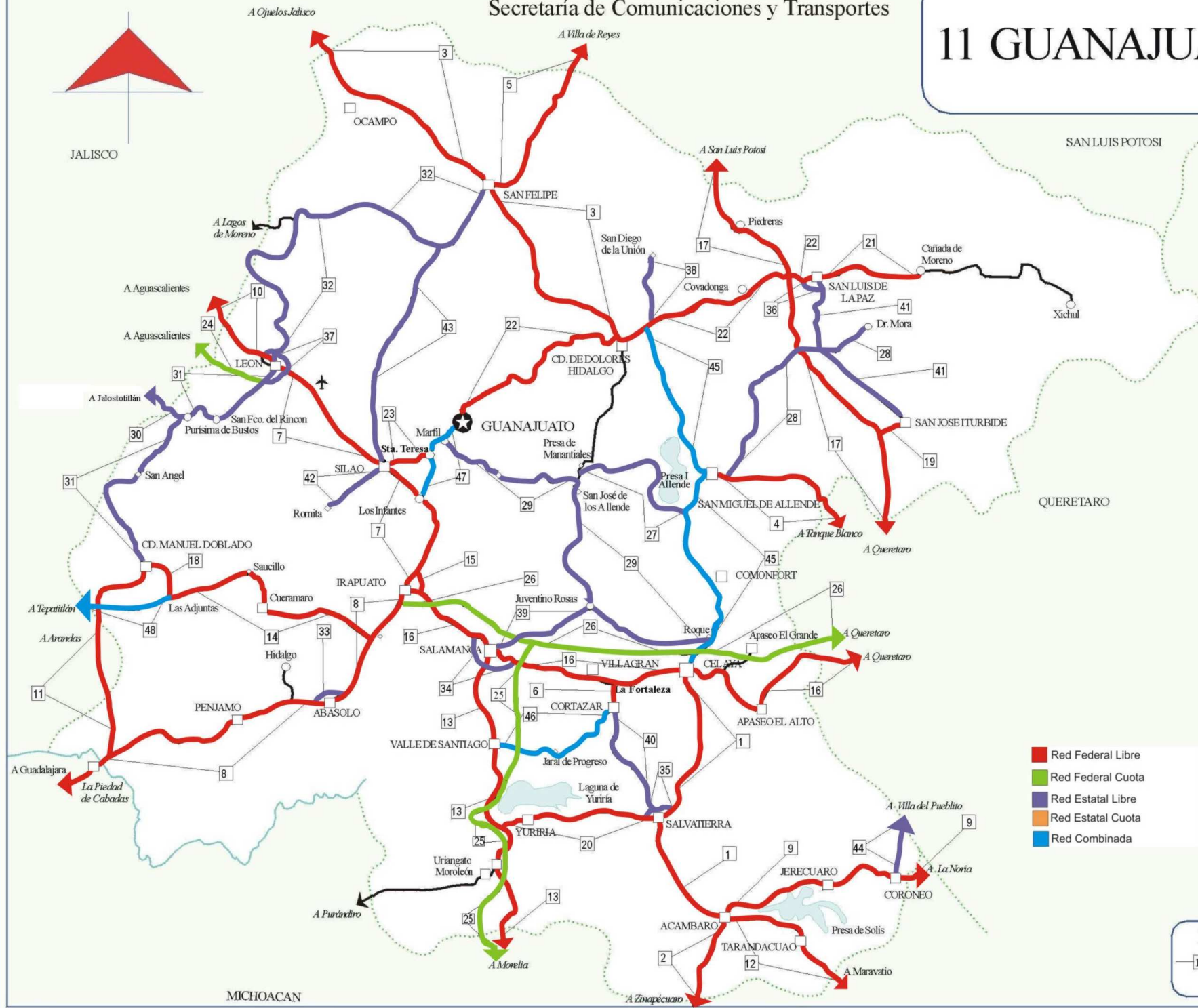
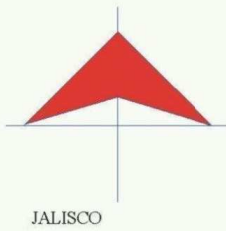


GUANAJUATO

Núm. INDICE	CARRETERA	RUTA
---- FEDERAL LIBRE ----		
1	ACAMBARO - CELAYA	MEX-051
2	ACAMBARO - ZINAPECUARIO	MEX-120
3	DOLORES HIDALGO - OJUELOS DE JALISCO	MEX-051
4	ENT. BUENAVISTA - SAN MIGUEL DE ALLENDE	MEX
5	ENT. DE ZARAGOZA - SAN FELIPE	MEX-037
6	ENT. LA FORTALEZA - CORTAZAR	MEX
7	IRAPUATO - LEON	MEX-045
8	IRAPUATO - ZAPOTLANEJO	MEX-090
9	LA NORIA - ACAMBARO	MEX-120
10	LEON - AGUASCALIENTES	MEX-045
11	MANUEL DOBLADO - LA PIEDAD	MEX-037
12	MARAVATIO - ACAMBARO	MEX-061
13	MORELIA - SALAMANCA	MEX-043
14	MUNGUIA - LAS ADJUNTAS	MEX
15	NUEVO LIBRAMIENTO DE IRAPUATO	MEX
16	QUERETARO - IRAPUATO (LIBRE)	MEX-045
17	QUERETARO - SAN LUIS POTOSI	MEX-057
18	RAMAL A LAS ADJUNTAS	MEX
19	RAMAL A SAN JOSE ITURBIDE	MEX
20	SALVATIERRA - ENT. YURIRIA	MEX
21	SAN LUIS DE LA PAZ - CAÑADA DE MORENO	MEX
22	SAN LUIS DE LA PAZ - GUANAJUATO	MEX-110
23	SANTA TERESA - SILAO	MEX
---- FEDERAL CUOTA ----		
24	LEON - AGUASCALIENTES (CUOTA)	MEX-045D
25	MORELIA - SALAMANCA (CUOTA)	MEX-043D
26	QUERETARO - IRAPUATO (CUOTA)	MEX-045D
---- ESTATAL LIBRE ----		
27	ENT. BEGOÑA - ENT. PRESA DE MANANTIALES	GTO
28	ENT. SAN MIGUEL DE ALLENDE - DR. MORA	GTO-001
29	GUANAJUATO - SANTA RITA	GTO
30	JALOSTOTITLAN - PURISIMA DE BUSTOS	JAL-GTO
31	LEON - MANUEL DOBLADO	GTO-037
32	LEON - SAN FELIPE TORRES MOCHAS	GTO
33	LIBRAMIENTO DE ABASOLO	GTO
34	LIBRAMIENTO DE SALAMANCA	GTO
35	LIBRAMIENTO DE SALVATIERRA	GTO
36	LIBRAMIENTO DE SAN LUIS DE LA PAZ	GTO
37	NUEVO LIBRAMIENTO DE LEON	GTO
38	RAMAL A SAN DIEGO DE LA UNION	GTO
39	SALAMANCA - JUVENTINO ROSAS	GTO
40	SALVATIERRA - CORTAZAR	GTO
41	SAN LUIS DE LA PAZ - SAN JOSE ITURBIDE	GTO
42	SILAO - LA ROMITA	GTO
43	SILAO - LOS ARRASTRES	GTO
44	T. C. (VILLA DEL PUEBLITO - HUIMILPAN) - CORONEO	QRO-GTO
---- COMBINADA ----		
45	CELAYA - DOLORES HIDALGO	MEX-051-GTO
46	CORTAZAR - VALLE DE SANTIAGO	MEX-GTO-017
47	GUANAJUATO - LOS INFANTES	MEX-110-GTO
48	TEPATITLAN - LAS ADJUNTAS	JAL/MEX-084

11 GUANAJUATO



- █ Red Federal Libre
- █ Red Federal Cuota
- █ Red Estatal Libre
- █ Red Estatal Cuota
- █ Red Combinada

MAPA INDICE
 —15 Num. Indice
 2009

GUANAJUATO

4 CARR : ENT. BUENAVISTA - SAN MIGUEL DE ALLENDE

CLAVE: 00111

RUTA : MEX

AÑO : 2008

L U G A R	E S T A C I O N				C L A S I F I C A C I O N V E H I C U L A R E N P O R C I E N T O .												
	KM	TE	SC	TDPA	A	B	C2	C3	T3S2	T3S3	T3S2R4	OTROS	A	B	C	K'	D
T. IZQ. GUADALUPE	12.00	1	0	4057	80.1	5.5	8.5	4.6	0.5	0.2	0.0	0.6	80.1	5.5	14.4	0.109	0.503
SAN MIGUEL DE ALLENDE	35.11	1	0	5524	84.4	3.6	3.5	1.5	3.7	0.7	1.1	1.5	84.4	3.6	12.0	0.127	0.503

5 CARR : ENT. DE ZARAGOZA - SAN FELIPE

CLAVE: 00240

RUTA : MEX-037

AÑO : 2008

L U G A R	E S T A C I O N				C L A S I F I C A C I O N V E H I C U L A R E N P O R C I E N T O .												
	KM	TE	SC	TDPA	A	B	C2	C3	T3S2	T3S3	T3S2R4	OTROS	A	B	C	K'	D
T. C. QUERETARO - SAN LUIS POTOSI	0.00	3	0	2685	73.1	3.7	4.5	3.3	9.0	2.3	2.8	1.3	73.1	3.7	23.2	0.094	0.506
LIM. EDOS. TERM. S.L.P. PPIA. GTO.	32.00																
SAN FELIPE	72.00	1	0	2188	68.1	3.4	4.5	4.3	10.9	3.8	3.1	1.9	68.1	3.4	28.5	0.123	0.506

6 CARR : ENT. LA FORTALEZA - CORTAZAR

CLAVE: 11017

RUTA : MEX

AÑO : 2008

L U G A R	E S T A C I O N				C L A S I F I C A C I O N V E H I C U L A R E N P O R C I E N T O .												
	KM	TE	SC	TDPA	A	B	C2	C3	T3S2	T3S3	T3S2R4	OTROS	A	B	C	K'	D
T. C. QUERETARO - IRAPUATO (LIBRE)	0.00	3	1	10657	79.5	4.5	3.5	1.5	4.5	1.3	1.9	3.3	79.5	4.5	16.0	0.082	0.511
T. C. QUERETARO - IRAPUATO (LIBRE)	0.00	3	2	10188	84.8	3.7	3.0	1.4	2.9	1.0	1.1	2.1	84.8	3.7	11.5	0.079	0.511
CORTAZAR	2.60																

7 CARR : IRAPUATO - LEON

CLAVE: 11123

RUTA : MEX-045

AÑO : 2008

L U G A R	E S T A C I O N				C L A S I F I C A C I O N V E H I C U L A R E N P O R C I E N T O .												
	KM	TE	SC	TDPA	A	B	C2	C3	T3S2	T3S3	T3S2R4	OTROS	A	B	C	K'	D
IRAPUATO	0.00																
T. DER. NUEVO LIBRAMIENTO	8.80	3	1	14398	75.4	3.8	3.5	0.4	6.8	2.6	3.7	3.8	75.4	3.8	20.8	0.080	0.505
T. DER. NUEVO LIBRAMIENTO	8.80	3	2	14702	77.5	3.3	3.6	0.3	6.1	2.4	2.9	3.9	77.5	3.3	19.2	0.084	0.505
T. C. GUANAJUATO - LOS INFANTES	26.44	3	1	15148	73.5	5.8	3.6	4.1	5.6	2.3	1.9	3.2	73.5	5.8	20.7	0.097	0.501
T. C. GUANAJUATO - LOS INFANTES	26.44	3	2	15114	73.2	5.7	3.6	4.3	5.9	2.5	1.4	3.4	73.2	5.7	21.1	0.110	0.501
X. C. SANTA TERESA - SILAO	36.85	1	1	14099	65.7	5.0	4.6	3.9	8.7	4.1	4.1	3.9	65.7	5.0	29.3	0.083	0.503
X. C. SANTA TERESA - SILAO	36.85	1	2	14289	64.8	5.0	5.0	3.9	8.1	4.0	4.5	4.7	64.8	5.0	30.2	0.079	0.503
X. C. SANTA TERESA - SILAO	36.85	3	1	18913	71.9	4.2	2.2	1.9	8.5	2.8	4.7	3.8	71.9	4.2	23.9	0.087	0.519
X. C. SANTA TERESA - SILAO	36.85	3	2	20393	71.0	5.3	1.3	2.7	8.0	2.7	5.1	3.9	71.0	5.3	23.7	0.081	0.519
T. DER. AEROPUERTO	57.77	3	1	20675	65.6	5.5	3.1	4.8	7.5	3.7	4.3	5.5	65.6	5.5	28.9	0.078	0.501
T. DER. AEROPUERTO	57.77	3	2	20724	66.3	5.5	2.1	4.6	8.2	3.9	4.6	4.8	66.3	5.5	28.2	0.071	0.501
LEON	68.99	1	1	20482	67.0	5.1	2.8	3.2	10.0	2.7	5.6	3.6	67.0	5.1	27.9	0.084	0.502

GUANAJUATO

9 CARR : LA NORIA - ACAMBARO

CLAVE: 00131

RUTA : MEX-120

AÑO : 2008

L U G A R	E S T A C I O N			C L A S I F I C A C I O N V E H I C U L A R E N P O R C I E N T O .													
	KM	TE	SC TDPA	A	B	C2	C3	T3S2	T3S3	T3S2R4	OTROS	A	B	C	K'	D	
LA NORIA	0.00	3	0 4571	84.3	3.8	4.5	2.2	2.5	0.9	0.8	1.0	84.3	3.8	11.9	0.115	0.501	
AMEALCO	34.66	1	0 2932	81.5	6.2	3.9	2.0	2.8	1.9	0.9	0.8	81.5	6.2	12.3	0.081	0.506	
AMEALCO	34.66	3	0 2644	82.3	6.3	3.9	2.0	3.0	1.2	0.5	0.8	82.3	6.3	11.4	0.081	0.506	
LIM. EDOS. TERM. QRO. PPIA. MICH.	41.16																
LIM. EDOS. TERM. MICH. PPIA. GTO.	55.45																
CORONEO	59.35	3	0 4121	85.0	4.0	4.4	2.8	1.6	1.2	0.0	1.0	85.0	4.0	11.0	0.090	0.527	
JERECUARO	79.70	3	0 4393	84.9	5.2	3.7	2.5	1.8	1.6	0.1	0.2	84.9	5.2	9.9	0.113	0.504	
ACAMBARO	111.10	1	0 5780	80.5	6.4	7.5	3.8	0.6	0.3	0.0	0.9	80.5	6.4	13.1	0.096	0.502	

10 CARR : LEON - AGUASCALIENTES

CLAVE: 00167

RUTA : MEX-045

AÑO : 2008

L U G A R	E S T A C I O N			C L A S I F I C A C I O N V E H I C U L A R E N P O R C I E N T O .													
	KM	TE	SC TDPA	A	B	C2	C3	T3S2	T3S3	T3S2R4	OTROS	A	B	C	K'	D	
LEON	0.00																
T. DER. LIBRAMIENTO DE LEON	11.00	1	0 10051	81.0	3.6	2.6	3.2	4.0	1.8	1.4	2.4	81.0	3.6	15.4	0.067	0.508	
T. DER. LIBRAMIENTO DE LEON	11.00	3	0 9796	73.8	6.1	9.0	6.3	2.6	0.7	0.6	0.9	73.8	6.1	20.1	0.104	0.517	
T. IZQ. CENTRO DE LEON	12.00	3	1 4808	63.2	6.6	3.8	6.1	9.2	4.1	3.6	3.4	63.2	6.6	30.2	0.086	0.509	
T. IZQ. CENTRO DE LEON	12.00	3	2 4992	64.6	6.0	4.0	5.4	9.1	3.9	3.6	3.4	64.6	6.0	29.4	0.095	0.509	
LIM. EDOS. TERM. GTO. PPIA. JAL.	16.00																
X. C. SAN LUIS POTOSI - LAGOS DE MORENO	44.18	1	0 7611	75.8	5.6	4.0	4.2	4.9	1.7	1.3	2.5	75.8	5.6	18.6	0.084	0.501	
ENCARNACION DE DIAZ	88.20	1	0 8319	80.6	4.9	4.9	2.3	2.8	1.3	0.8	2.4	80.6	4.9	14.5	0.090	0.516	
T. IZQ. LIBRAMIENTO DE ENCARNACION DE DIAZ	89.18	3	0 7120	66.6	4.0	3.3	4.5	7.9	4.1	7.7	1.9	66.6	4.0	29.4	0.080	0.505	
LIM. EDOS. TERM. JAL. PPIA. AGS.	104.20																
T. IZQ. AEROPUERTO DE AGUASCALIENTES	110.20	1	1 8007	63.1	4.5	4.4	7.5	9.3	3.1	6.6	1.5	63.1	4.5	32.4	0.070	0.505	
T. IZQ. AEROPUERTO DE AGUASCALIENTES	110.20	1	2 7841	61.2	4.2	4.7	7.9	9.5	4.0	6.2	2.3	61.2	4.2	34.6	0.067	0.505	
T. IZQ. AEROPUERTO DE AGUASCALIENTES	111.00	3	1 11091	69.2	6.2	3.5	4.9	6.3	2.7	5.2	2.0	69.2	6.2	24.6	0.062	0.502	
T. IZQ. AEROPUERTO DE AGUASCALIENTES	111.00	3	2 10999	70.9	6.0	3.4	4.8	6.2	2.3	4.7	1.7	70.9	6.0	23.1	0.067	0.502	
T. DER. ESTACION ARELLANO	118.40	3	1 12354	69.3	6.0	1.3	3.2	8.1	3.3	5.3	3.5	69.3	6.0	24.7	0.073	0.502	
T. DER. ESTACION ARELLANO	118.40	3	2 12263	71.5	6.0	1.3	2.9	7.7	3.2	4.7	2.7	71.5	6.0	22.5	0.071	0.502	
AGUASCALIENTES	129.40	1	1 16290	73.2	6.0	5.0	1.5	3.5	2.7	1.5	6.6	73.2	6.0	20.8	0.072	0.512	
AGUASCALIENTES	129.40	1	2 15544	74.2	6.2	5.7	1.3	2.7	2.4	2.3	5.2	74.2	6.2	19.6	0.079	0.512	

GUANAJUATO

11 CARR : MANUEL DOBLADO - LA PIEDAD

CLAVE: 11028

RUTA : MEX-037

AÑO : 2008

L U G A R	E S T A C I O N				C L A S I F I C A C I O N V E H I C U L A R E N P O R C I E N T O .												
	KM	TE	SC	TDPA	A	B	C2	C3	T3S2	T3S3	T3S2R4	OTROS	A	B	C	K'	D
MANUEL DOBLADO	0.00	3	0	2609	74.1	6.9	3.5	3.9	4.8	2.9	1.5	2.4	74.1	6.9	19.0	0.120	0.502
LIM. EDOS. TERM. GTO. PPIA. JAL.	11.00																
LIM. EDOS. TERM. JAL. PPIA. GTO.	23.00																
T. DER. SAN JOSE DE LA PAZ	29.00	1	0	2228	79.4	6.7	6.5	2.6	1.5	1.5	0.3	1.5	79.4	6.7	13.9	0.120	0.504
T. DER. SAN JOSE DE LA PAZ	29.00	3	0	2629	76.7	5.1	8.1	4.5	0.8	2.0	1.2	1.6	76.7	5.1	18.2	0.102	0.523
T. C. IRAPUATO - GUADALAJARA	45.00	1	0	5696	77.2	5.4	8.1	3.6	1.6	1.2	0.6	2.3	77.2	5.4	17.4	0.080	0.501

12 CARR : MARAVATIO - ACAMBARO

CLAVE: 00418

RUTA : MEX-061

AÑO : 2008

L U G A R	E S T A C I O N				C L A S I F I C A C I O N V E H I C U L A R E N P O R C I E N T O .												
	KM	TE	SC	TDPA	A	B	C2	C3	T3S2	T3S3	T3S2R4	OTROS	A	B	C	K'	D
MARAVATIO	0.00	3	0	7036	75.2	8.2	7.6	3.0	1.8	1.3	0.5	2.4	75.2	8.2	16.6	0.077	0.501
LIM. EDOS. TERM. MICH. PPIA. GTO.	9.00																
TARANDACUAO	13.00	3	0	4801	83.0	4.6	4.8	4.0	1.5	0.9	0.0	1.2	83.0	4.6	12.4	0.117	0.505
ACAMBARO	39.00	1	0	3706	84.7	3.6	3.7	3.5	1.8	0.7	0.1	1.9	84.7	3.6	11.7	0.099	0.501

13 CARR : MORELIA - SALAMANCA

CLAVE: 00124

RUTA : MEX-043

AÑO : 2008

L U G A R	E S T A C I O N				C L A S I F I C A C I O N V E H I C U L A R E N P O R C I E N T O .												
	KM	TE	SC	TDPA	A	B	C2	C3	T3S2	T3S3	T3S2R4	OTROS	A	B	C	K'	D
MORELIA	0.00																
X. PERIFERICO MORELIA	2.70	3	1	19044	74.7	6.8	5.2	2.8	4.3	2.7	3.0	0.5	74.7	6.8	18.5	0.074	0.501
X. PERIFERICO MORELIA	2.70	3	2	18979	76.5	6.7	5.0	2.8	2.4	2.7	2.6	1.3	76.5	6.7	16.8	0.070	0.501
T. DER. ZINAPECUARIO	8.85	1	1	11420	67.8	4.0	5.6	2.5	6.5	3.2	4.7	5.7	67.8	4.0	28.2	0.076	0.517
T. DER. ZINAPECUARIO	8.85	1	2	10688	57.8	4.0	5.7	2.3	9.1	6.0	6.4	8.7	57.8	4.0	38.2	0.071	0.517
T. DER. ZINAPECUARIO	8.85	3	1	7914	76.0	5.5	5.7	3.0	2.5	1.9	2.4	3.0	76.0	5.5	18.5	0.073	0.511
T. DER. ZINAPECUARIO	8.85	3	2	7575	76.1	5.6	5.8	2.9	4.0	2.4	2.8	0.4	76.1	5.6	18.3	0.078	0.511
CUITZEO	33.64	1	0	7959	76.4	8.5	6.0	2.8	1.8	1.8	1.0	1.7	76.4	8.5	15.1	0.082	0.504
CUITZEO	33.64	3	0	7451	81.9	3.9	4.0	3.1	2.4	2.3	0.3	2.1	81.9	3.9	14.2	0.083	0.502
LIM. EDOS. TERM. MICH. PPIA. GTO.	47.12																
T. IZQ. MOROLEON	52.36	1	1	2237	76.1	4.9	4.3	5.2	1.8	2.1	0.5	5.1	76.1	4.9	19.0	0.098	0.502
T. IZQ. MOROLEON	52.36	1	2	2219	76.9	4.8	4.4	4.4	2.3	1.3	0.3	5.6	76.9	4.8	18.3	0.105	0.502
URIANGATO	54.22	3	1	2764	87.0	3.6	1.2	1.6	1.1	1.4	1.3	2.8	87.0	3.6	9.4	0.120	0.506
URIANGATO	54.22	3	2	2833	85.7	3.3	1.4	2.2	1.2	1.6	1.6	3.0	85.7	3.3	11.0	0.110	0.506
T. DER. YURIRIA	61.36	3	0	4977	82.0	3.7	2.4	2.8	2.8	2.5	0.2	3.6	82.0	3.7	14.3	0.110	0.503

GUANAJUATO

13 CARR : MORELIA - SALAMANCA

CLAVE: 00124

ruta : MEX-043

AÑO : 2008

L U G A R	E S T A C I O N				C L A S I F I C A C I O N V E H I C U L A R E N P O R C I E N T O .												
	KM	TE	SC	TDPA	A	B	C2	C3	T3S2	T3S3	T3S2R4	OTROS	A	B	C	K'	D
MAGDALENA DE ARACEO	77.10	1	0	5304	80.8	4.1	5.8	2.4	2.1	2.4	0.2	2.2	80.8	4.1	15.1	0.107	0.509
MAGDALENA DE ARACEO	77.10	3	0	6298	84.6	3.3	6.1	1.6	1.0	0.9	0.0	2.5	84.6	3.3	12.1	0.088	0.510
T. DER. JARAL DEL PROGRESO	87.00	1	0	6451	78.2	0.0	7.0	4.3	4.3	4.6	0.0	1.6	78.2	0.0	21.8	0.089	0.511
T. DER. JARAL DEL PROGRESO	87.00	3	0	8412	73.8	7.2	3.8	2.5	4.0	3.8	1.4	3.5	73.8	7.2	19.0	0.087	0.544
X. C. LIBRAMIENTO DE SALAMANCA	105.10	1	0	12109	69.0	8.7	8.0	5.4	3.4	2.9	1.8	0.8	69.0	8.7	22.3	0.098	0.531
SALAMANCA	108.00	1	1	7943	79.6	4.0	3.7	3.0	2.6	3.7	0.0	3.4	79.6	4.0	16.4	0.094	0.504
SALAMANCA	108.00	1	2	7833	79.8	4.0	3.6	3.5	4.4	3.0	0.0	1.7	79.8	4.0	16.2	0.094	0.504

14 CARR : MUNGUIA - LAS ADJUNTAS

CLAVE: 11815

ruta : MEX

AÑO : 2008

L U G A R	E S T A C I O N				C L A S I F I C A C I O N V E H I C U L A R E N P O R C I E N T O .												
	KM	TE	SC	TDPA	A	B	C2	C3	T3S2	T3S3	T3S2R4	OTROS	A	B	C	K'	D
T. C. IRAPUATO - GUADALAJARA	0.00	3	0	5119	75.0	10.1	7.6	2.1	2.9	1.1	0.7	0.5	75.0	10.1	14.9	0.094	0.515
T. DER. LA JOYA DE CALVILLO	15.00	1	0	4030	69.1	11.5	7.7	5.8	1.8	1.7	0.0	2.4	69.1	11.5	19.4	0.104	0.510
CUERAMARO	27.00	3	0	3774	75.5	11.9	3.4	2.2	2.8	2.7	0.0	1.5	75.5	11.9	12.6	0.103	0.502
SAUCILLO	38.00	1	0	3051	68.6	9.0	6.1	5.2	4.1	3.6	1.4	2.0	68.6	9.0	22.4	0.112	0.511
SAUCILLO	38.00	3	0	2317	79.6	7.6	6.0	3.6	0.2	0.2	0.2	2.6	79.6	7.6	12.8	0.117	0.510
LAS ADJUNTAS	57.00	1	0	2390	72.9	8.3	8.6	6.7	1.2	0.7	0.8	0.8	72.9	8.3	18.8	0.156	0.501

15 CARR : NUEVO LIBRAMIENTO DE IRAPUATO

CLAVE: 11132

ruta : MEX

AÑO : 2008

L U G A R	E S T A C I O N				C L A S I F I C A C I O N V E H I C U L A R E N P O R C I E N T O .												
	KM	TE	SC	TDPA	A	B	C2	C3	T3S2	T3S3	T3S2R4	OTROS	A	B	C	K'	D
T. C. QUERETARO - IRAPUATO (CUOTA)	0.00	3	1	2794	65.7	5.3	4.3	4.1	8.8	3.5	5.1	3.2	65.7	5.3	29.0	0.090	0.510
T. C. QUERETARO - IRAPUATO (CUOTA)	0.00	3	2	2908	70.6	5.0	4.2	4.1	7.4	2.5	3.8	2.4	70.6	5.0	24.4	0.090	0.510
T. C. IRAPUATO - LEON	11.20	1	1	5947	71.7	0.7	4.6	6.1	8.4	3.4	1.8	3.3	71.7	0.7	27.6	0.100	0.502
T. C. IRAPUATO - LEON	11.20	1	2	5998	72.8	0.6	4.4	5.6	8.1	3.3	1.8	3.4	72.8	0.6	26.6	0.100	0.502

16 CARR : QUERETARO - IRAPUATO (LIBRE)

CLAVE: 00154

ruta : MEX-045

AÑO : 2008

L U G A R	E S T A C I O N				C L A S I F I C A C I O N V E H I C U L A R E N P O R C I E N T O .												
	KM	TE	SC	TDPA	A	B	C2	C3	T3S2	T3S3	T3S2R4	OTROS	A	B	C	K'	D
QUERETARO PONIENTE	0.00	3	1	16406	66.5	2.9	1.9	1.4	6.6	4.2	10.6	5.9	66.5	2.9	30.6	0.074	0.504
QUERETARO PONIENTE	0.00	3	2	16123	63.7	3.4	1.9	1.8	7.2	5.0	10.4	6.6	63.7	3.4	32.9	0.070	0.504
T. DER. VILLA DEL PUEBLITO	6.67	3	1	10150	80.7	4.1	2.2	1.7	5.2	1.8	1.2	3.1	80.7	4.1	15.2	0.072	0.504

GUANAJUATO

16 CARR : QUERETARO - IRAPUATO (LIBRE)

CLAVE: 00154

RUTA : MEX-045

AÑO : 2008

L U G A R	E S T A C I O N				C L A S I F I C A C I O N V E H I C U L A R E N P O R C I E N T O .												
	KM	TE	SC	TDPA	A	B	C2	C3	T3S2	T3S3	T3S2R4	OTROS	A	B	C	K'	D
T. DER. VILLA DEL PUEBLITO	6.67	3	2	10002	83.9	4.0	2.2	1.7	4.4	0.8	0.8	2.2	83.9	4.0	12.1	0.079	0.504
LOS ANGELES	12.60	3	0	14583	77.9	4.0	6.1	4.3	3.3	2.4	0.1	1.9	77.9	4.0	18.1	0.101	0.505
LIM. EDOS. TERM. QRO. PPIA. GTO.	13.49																
T. IZQ. APASEO EL ALTO	28.37	3	0	13049	78.7	7.4	4.1	3.3	2.1	2.5	0.0	1.9	78.7	7.4	13.9	0.074	0.509
T. DER. APASEO EL GRANDE	40.11	3	0	17283	72.7	9.7	7.0	4.8	2.7	1.2	0.5	1.4	72.7	9.7	17.6	0.072	0.529
T. IZQ. LIBRAMIENTO DE CELAYA OTE.	49.90	1	0	22081	66.1	8.5	6.5	7.4	2.7	6.2	0.1	2.5	66.1	8.5	25.4	0.098	0.501
T. IZQ. LIBRAMIENTO DE CELAYA PTE.	55.61	3	0	23086	67.9	6.7	6.5	7.0	4.5	2.8	2.9	1.7	67.9	6.7	25.4	0.085	0.501
T. IZQ. CORTAZAR	67.50	3	1	11099	81.7	4.3	5.1	5.4	0.0	0.0	0.0	3.5	81.7	4.3	14.0	0.093	0.505
T. IZQ. CORTAZAR	67.50	3	2	11341	80.8	5.9	5.4	5.2	0.0	0.0	0.0	2.7	80.8	5.9	13.3	0.091	0.505
T. IZQ. LIBRAMIENTO DE SALAMANCA	93.80	1	1	13058	75.7	4.8	6.6	7.8	0.0	0.0	0.0	5.1	75.7	4.8	19.5	0.064	0.502
T. IZQ. LIBRAMIENTO DE SALAMANCA	93.80	1	2	12934	75.1	4.5	6.8	7.8	0.0	0.0	0.0	5.8	75.1	4.5	20.4	0.066	0.502
IRAPUATO	113.70	1	1	12849	78.1	5.4	3.1	1.8	4.8	1.3	2.2	3.3	78.1	5.4	16.5	0.082	0.501
IRAPUATO	113.70	1	2	12903	77.2	5.3	3.3	1.8	5.5	1.3	2.6	3.0	77.2	5.3	17.5	0.077	0.501

17 CARR : QUERETARO - SAN LUIS POTOSI

CLAVE: 00165

RUTA : MEX-057

AÑO : 2008

L U G A R	E S T A C I O N				C L A S I F I C A C I O N V E H I C U L A R E N P O R C I E N T O .												
	KM	TE	SC	TDPA	A	B	C2	C3	T3S2	T3S3	T3S2R4	OTROS	A	B	C	K'	D
QUERETARO	0.00																
T. DER. LIBRAMIENTO DE QUERETARO	6.28	3	1	17768	60.4	3.8	1.1	1.0	6.1	5.4	12.3	9.9	60.4	3.8	35.8	0.064	0.508
T. DER. LIBRAMIENTO DE QUERETARO	6.28	3	2	18330	60.0	4.9	1.3	1.3	6.5	5.8	13.2	7.0	60.0	4.9	35.1	0.063	0.508
T. IZQ. JURIQUILLA	15.63	3	1	17172	75.0	4.3	3.9	2.3	6.5	1.7	3.0	3.3	75.0	4.3	20.7	0.095	0.502
T. IZQ. JURIQUILLA	15.63	3	2	17303	71.7	5.0	3.8	2.4	7.3	2.5	3.3	4.0	71.7	5.0	23.3	0.081	0.502
T. IZQ. SAN MIGUEL DE ALLENDE	28.53	1	1	13440	67.9	3.6	2.5	4.5	6.7	3.7	5.5	5.6	67.9	3.6	28.5	0.078	0.505
T. IZQ. SAN MIGUEL DE ALLENDE	28.53	1	2	13196	67.8	3.7	2.4	4.6	5.4	3.3	6.3	6.5	67.8	3.7	28.5	0.082	0.505
T. IZQ. SAN MIGUEL DE ALLENDE	28.53	3	1	10773	44.6	4.7	3.4	5.6	7.4	7.9	11.4	15.0	44.6	4.7	50.7	0.089	0.501
T. IZQ. SAN MIGUEL DE ALLENDE	28.53	3	2	10726	45.2	5.0	3.5	5.3	9.7	10.4	11.0	9.9	45.2	5.0	49.8	0.084	0.501
LIM. EDOS. TERM. QRO. PPIA. GTO.	35.53																
X. C. SAN JOSE ITURBIDE - EL ARENAL	46.83	1	1	10237	46.5	3.1	5.5	6.6	19.8	5.8	8.7	4.0	46.5	3.1	50.4	0.071	0.500
X. C. SAN JOSE ITURBIDE - EL ARENAL	46.83	1	2	10253	46.6	3.0	5.4	6.4	20.9	5.7	9.0	3.0	46.6	3.0	50.4	0.081	0.500
X. C. ENT. SAN MIGUEL DE ALLENDE - DR. MORA	61.93	1	1	9943	47.4	3.3	2.4	6.2	23.7	5.5	8.8	2.7	47.4	3.3	49.3	0.071	0.503
X. C. ENT. SAN MIGUEL DE ALLENDE - DR. MORA	61.93	1	2	9820	48.7	2.3	2.8	6.3	22.8	5.8	8.7	2.6	48.7	2.3	49.0	0.063	0.503
X. C. SAN LUIS DE LA PAZ - GUANAJUATO	86.68	1	1	9116	52.9	6.1	5.3	3.6	19.7	3.9	6.8	1.7	52.9	6.1	41.0	0.069	0.503
X. C. SAN LUIS DE LA PAZ - GUANAJUATO	86.68	1	2	9238	51.9	5.8	5.5	3.7	18.8	4.7	6.8	2.8	51.9	5.8	42.3	0.065	0.503
T. IZQ. SAN DIEGO DE LA UNION	119.10	3	1	7978	46.2	4.1	5.3	6.7	21.2	5.2	9.6	1.7	46.2	4.1	49.7	0.072	0.501

GUANAJUATO

17 CARR : QUERETARO - SAN LUIS POTOSI

CLAVE: 00165

RUTA : MEX-057

AÑO : 2008

L U G A R	E S T A C I O N				C L A S I F I C A C I O N V E H I C U L A R E N P O R C I E N T O .												
	KM	TE	SC	TDPA	A	B	C2	C3	T3S2	T3S3	T3S2R4	OTROS	A	B	C	K'	D
T. IZQ. SAN DIEGO DE LA UNION	119.10	3	2	7947	43.4	3.8	5.7	7.1	21.4	6.4	9.4	2.8	43.4	3.8	52.8	0.070	0.501
LIM. EDOS. TERM. GTO. PPIA. S.L.P.	126.30																
T. IZQ. SANTA MARIA DEL RIO	155.90	3	1	7404	45.8	4.7	3.0	7.4	11.3	4.0	12.0	11.8	45.8	4.7	49.5	0.087	0.518
T. IZQ. SANTA MARIA DEL RIO	155.90	3	2	6886	42.4	4.0	3.6	7.9	12.0	5.2	12.5	12.4	42.4	4.0	53.6	0.074	0.518
T. IZQ. VILLA DE REYES	176.40	1	1	8170	73.1	4.0	5.1	4.3	5.6	5.2	0.5	2.2	73.1	4.0	22.9	0.106	0.501
T. IZQ. VILLA DE REYES	176.40	1	2	8124	71.9	4.0	5.2	5.0	5.7	5.1	0.3	2.8	71.9	4.0	24.1	0.107	0.501
T. IZQ. VILLA DE REYES	176.40	3	1	7499	71.4	5.3	4.8	4.6	5.9	5.3	0.5	2.2	71.4	5.3	23.3	0.086	0.502
T. IZQ. VILLA DE REYES	176.40	3	2	7429	70.6	5.8	4.7	4.6	5.8	5.5	0.4	2.6	70.6	5.8	23.6	0.080	0.502
X. C. LIBRAMIENTO DE SAN LUIS POTOSI	184.80	1	1	8457	72.1	5.1	4.7	4.8	5.5	5.4	0.3	2.1	72.1	5.1	22.8	0.093	0.502
X. C. LIBRAMIENTO DE SAN LUIS POTOSI	184.80	1	2	8378	71.2	5.0	4.9	4.9	5.8	5.1	0.4	2.7	71.2	5.0	23.8	0.077	0.502
X. PERIFERICO SAN LUIS POTOSI	197.50	1	1	20217	75.4	4.4	3.2	4.3	7.2	2.5	0.2	2.8	75.4	4.4	20.2	0.099	0.512
X. PERIFERICO SAN LUIS POTOSI	197.50	1	2	21220	75.2	4.4	3.2	4.2	7.2	3.0	0.1	2.7	75.2	4.4	20.4	0.080	0.512
SAN LUIS POTOSI	204.30																

18 CARR : RAMAL A LAS ADJUNTAS

CLAVE: 11820

RUTA : MEX

AÑO : 2008

L U G A R	E S T A C I O N				C L A S I F I C A C I O N V E H I C U L A R E N P O R C I E N T O .												
	KM	TE	SC	TDPA	A	B	C2	C3	T3S2	T3S3	T3S2R4	OTROS	A	B	C	K'	D
T. C. MANUEL DOBLADO - LA PIEDAD	0.00	3	0	1227	81.8	6.7	7.9	1.2	1.4	0.2	0.1	0.7	81.8	6.7	11.5	0.110	0.508
ENT. LAS ADJUNTAS	10.00	1	0	1247	79.2	8.7	5.1	3.0	1.4	1.3	0.5	0.8	79.2	8.7	12.1	0.153	0.502

19 CARR : RAMAL A SAN JOSE ITURBIDE

CLAVE: 11201

RUTA : MEX

AÑO : 2008

L U G A R	E S T A C I O N				C L A S I F I C A C I O N V E H I C U L A R E N P O R C I E N T O .												
	KM	TE	SC	TDPA	A	B	C2	C3	T3S2	T3S3	T3S2R4	OTROS	A	B	C	K'	D
T. C. QUERETARO - SAN LUIS POTOSI	0.00	3	1	6671	81.0	5.2	3.6	2.1	4.5	0.9	0.9	1.8	81.0	5.2	13.8	0.085	0.503
T. C. QUERETARO - SAN LUIS POTOSI	0.00	3	2	6587	77.0	5.4	3.8	2.3	5.6	1.9	1.3	2.7	77.0	5.4	17.6	0.073	0.503
SAN JOSE ITURBIDE	6.00	1	1	8421	81.1	3.4	3.7	1.8	3.8	1.9	1.2	3.1	81.1	3.4	15.5	0.071	0.503
SAN JOSE ITURBIDE	6.00	1	2	8507	84.9	3.1	3.4	1.6	3.0	0.9	0.8	2.3	84.9	3.1	12.0	0.079	0.503

20 CARR : SALVATIERRA - ENT. YURIRIA

CLAVE: 11013

RUTA : MEX

AÑO : 2008

L U G A R	E S T A C I O N				C L A S I F I C A C I O N V E H I C U L A R E N P O R C I E N T O .												
	KM	TE	SC	TDPA	A	B	C2	C3	T3S2	T3S3	T3S2R4	OTROS	A	B	C	K'	D
T. C. ACAMBARO - CELAYA	0.00	3	0	7514	83.2	6.2	3.0	2.5	1.3	2.2	0.1	1.5	83.2	6.2	10.6	0.089	0.501

GUANAJUATO

20 CARR : SALVATIERRA - ENT. YURIRIA

CLAVE: 11013

RUTA : MEX

AÑO : 2008

L U G A R	E S T A C I O N				C L A S I F I C A C I O N V E H I C U L A R E N P O R C I E N T O .												
	KM	TE	SC	TDPA	A	B	C2	C3	T3S2	T3S3	T3S2R4	OTROS	A	B	C	K'	D
T. IZQ. SANTIAGO MARAVATIO	8.00	1	0	6304	78.5	4.6	6.5	2.9	2.4	1.8	0.1	3.2	78.5	4.6	16.9	0.110	0.502
YURIRIA	27.00	1	0	4811	81.0	3.9	7.8	2.6	1.4	2.0	0.1	1.2	81.0	3.9	15.1	0.106	0.500
T. C. MORELIA - SALAMANCA	30.00	1	0	8167	80.9	4.9	3.6	4.9	1.4	1.8	0.1	2.4	80.9	4.9	14.2	0.080	0.501

21 CARR : SAN LUIS DE LA PAZ - CAÑADA DE MORENO

CLAVE: 11134

RUTA : MEX

AÑO : 2008

L U G A R	E S T A C I O N				C L A S I F I C A C I O N V E H I C U L A R E N P O R C I E N T O .												
	KM	TE	SC	TDPA	A	B	C2	C3	T3S2	T3S3	T3S2R4	OTROS	A	B	C	K'	D
SAN LUIS DE LA PAZ	0.00	3	0	2761	88.0	4.6	2.9	0.6	2.4	0.3	0.5	0.7	88.0	4.6	7.4	0.085	0.528
CAÑADA DE MORENO	18.80																

22 CARR : SAN LUIS DE LA PAZ - GUANAJUATO

CLAVE: 11108

RUTA : MEX-110

AÑO : 2008

L U G A R	E S T A C I O N				C L A S I F I C A C I O N V E H I C U L A R E N P O R C I E N T O .												
	KM	TE	SC	TDPA	A	B	C2	C3	T3S2	T3S3	T3S2R4	OTROS	A	B	C	K'	D
SAN LUIS DE LA PAZ	0.00																
T. IZQ. SAN JOSE ITURBIDE	1.74	3	1	4578	82.7	3.4	3.8	1.4	3.4	1.2	0.9	3.2	82.7	3.4	13.9	0.089	0.505
T. IZQ. SAN JOSE ITURBIDE	1.74	3	2	4480	85.7	3.4	3.6	1.0	2.5	0.5	0.6	2.7	85.7	3.4	10.9	0.105	0.505
X. C. QUERETARO - SAN LUIS POTOSI	8.31	3	0	4352	76.8	6.7	3.8	3.9	3.7	1.9	1.2	2.0	76.8	6.7	16.5	0.082	0.506
T. DER. SAN DIEGO DE LA UNION	39.45	1	0	4732	79.4	2.2	3.1	2.9	3.9	2.2	2.3	4.0	79.4	2.2	18.4	0.083	0.504
T. IZQ. SAN MIGUEL DE ALLENDE	42.92	1	0	3250	90.3	2.9	2.1	1.1	1.6	0.6	0.6	0.8	90.3	2.9	6.8	0.110	0.503
T. DER. LIBRAMIENTO DE DOLORES HIDALGO (1° ACCESO)	47.00	1	1	4254	83.2	4.4	3.2	0.5	4.2	0.5	1.0	3.0	83.2	4.4	12.4	0.147	0.509
T. DER. LIBRAMIENTO DE DOLORES HIDALGO (1° ACCESO)	47.00	1	2	3906	80.5	4.8	2.1	0.6	5.2	1.2	2.0	3.6	80.5	4.8	14.7	0.080	0.509
DOLORES HIDALGO	48.40	3	0	3401	84.3	5.6	4.6	1.6	0.7	1.7	0.0	1.5	84.3	5.6	10.1	0.116	0.501
T. DER. OJO DE AGUA	61.29	1	0	1815	79.7	5.9	4.5	2.8	1.5	2.7	0.4	2.5	79.7	5.9	14.4	0.108	0.501
OJO DE AGUA DE CALVILLO	70.80	1	0	1621	91.0	4.0	3.1	0.3	0.7	0.2	0.2	0.5	91.0	4.0	5.0	0.102	0.526
SANTA ROSA	90.40	1	0	1352	92.7	2.0	2.1	0.2	0.8	0.3	0.3	1.6	92.7	2.0	5.3	0.100	0.502
GUANAJUATO	103.30	1	0	2751	80.4	3.7	3.7	0.2	3.7	1.6	3.6	3.1	80.4	3.7	15.9	0.120	0.507

23 CARR : SANTA TERESA - SILAO

CLAVE: 11070

RUTA : MEX

AÑO : 2008

L U G A R	E S T A C I O N				C L A S I F I C A C I O N V E H I C U L A R E N P O R C I E N T O .												
	KM	TE	SC	TDPA	A	B	C2	C3	T3S2	T3S3	T3S2R4	OTROS	A	B	C	K'	D
T. C. GUANAJUATO - LOS INFANTES	0.00	3	0	5976	80.8	4.5	5.3	1.5	3.3	1.0	1.7	1.9	80.8	4.5	14.7	0.086	0.500
X. C. IRAPUATO - LEON	11.30	1	1	6762	81.6	4.4	1.5	1.8	4.2	2.0	1.1	3.4	81.6	4.4	14.0	0.095	0.515

GUANAJUATO

23 CARR : SANTA TERESA - SILAO

CLAVE: 11070

RUTA : MEX

AÑO : 2008

L U G A R	E S T A C I O N				C L A S I F I C A C I O N V E H I C U L A R E N P O R C I E N T O .												
	KM	TE	SC	TDPA	A	B	C2	C3	T3S2	T3S3	T3S2R4	OTROS	A	B	C	K'	D
X. C. IRAPUATO - LEON	11.30	1	2	6357	75.4	4.8	1.4	2.0	7.4	2.9	2.5	3.6	75.4	4.8	19.8	0.099	0.515
SILAO	12.00	1	1	7034	71.8	5.4	3.4	1.0	4.9	5.2	2.6	5.7	71.8	5.4	22.8	0.091	0.537
SILAO	12.00	1	2	6065	63.5	5.0	3.1	3.0	7.6	6.1	3.1	8.6	63.5	5.0	31.5	0.097	0.537

24 CARR : LEON - AGUASCALIENTES (CUOTA)

CLAVE: 00013

RUTA : MEX-045D

AÑO : 2008

L U G A R	E S T A C I O N				C L A S I F I C A C I O N V E H I C U L A R E N P O R C I E N T O .												
	KM	TE	SC	TDPA	A	B	C2	C3	T3S2	T3S3	T3S2R4	OTROS	A	B	C	K'	D
T. C. IRAPUATO - LEON	0.00																
CASETA DE COBRO LEON	23.50	2	0	8820	62.9	9.9	4.4	5.1	8.4	1.7	6.1	1.5	62.9	9.9	27.2		
LIM. EDOS. TERM. GTO. PPIA. JAL.	26.00																
CASETA DE COBRO ENCARNACION	88.84	2	0	5120	65.9	7.1	4.4	3.6	7.2	1.7	8.7	1.4	65.9	7.1	27.0		
CASETA DE COBRO ENCARNACION	88.84	3	0	8441	65.5	8.0	4.3	4.0	7.8	1.8	7.4	1.2	65.5	8.0	26.5		
LIM. EDOS. TERM. JAL. PPIA. AGS.	103.90																

25 CARR : MORELIA - SALAMANCA (CUOTA)

CLAVE:

RUTA : MEX-043D

AÑO : 2008

L U G A R	E S T A C I O N				C L A S I F I C A C I O N V E H I C U L A R E N P O R C I E N T O .												
	KM	TE	SC	TDPA	A	B	C2	C3	T3S2	T3S3	T3S2R4	OTROS	A	B	C	K'	D
T.C. MORELIA - SALAMANCA (LIBRE)	26.50	3	0	5885	86.3	3.8	4.4	3.7	0.0	0.0	0.0	1.8	86.3	3.8	9.9	0.071	0.518
T.C. QUERETARO - IRAPUATO (LIBRE)	104.60	1	0	3534	88.7	3.4	0.3	0.1	2.5	0.9	3.4	0.7	88.7	3.4	7.9	0.107	0.505
T.C. QUERETARO - IRAPUATO (CUOTA)	109.50	1	0	13342	73.5	5.5	3.5	4.5	7.7	1.5	2.3	1.5	73.5	5.5	21.0	0.095	0.502

26 CARR : QUERETARO - IRAPUATO (CUOTA)

CLAVE: 00423

RUTA : MEX-045D

AÑO : 2008

L U G A R	E S T A C I O N				C L A S I F I C A C I O N V E H I C U L A R E N P O R C I E N T O .												
	KM	TE	SC	TDPA	A	B	C2	C3	T3S2	T3S3	T3S2R4	OTROS	A	B	C	K'	D
QUERETARO	0.00	3	1	15482	57.8	1.7	4.5	6.4	12.1	4.4	9.6	3.5	57.8	1.7	40.5	0.086	0.519
QUERETARO	0.00	3	2	14345	60.2	2.0	4.0	6.2	11.9	4.0	8.0	3.7	60.2	2.0	37.8	0.094	0.519
CASETA DE COBRO QUERETARO	7.00	2	0	28621	69.9	3.5	6.5	6.6	7.9	1.2	3.6	0.8	69.9	3.5	26.6		
LIM. EDOS. TERM. QRO. PPIA. GTO.	8.97																
X. C. CELAYA - SAN MIGUEL ALLENDE	44.10	1	1	9577	73.8	8.3	6.4	4.2	3.0	2.5	0.3	1.5	73.8	8.3	17.9	0.072	0.521
X. C. CELAYA - SAN MIGUEL ALLENDE	44.10	1	2	8788	73.6	8.0	6.2	4.4	3.1	2.7	0.2	1.8	73.6	8.0	18.4	0.071	0.521
T. IZQ. SALAMANCA	81.54	1	1	8394	68.4	7.8	5.7	5.6	8.7	1.1	1.5	1.2	68.4	7.8	23.8	0.072	0.501
T. IZQ. SALAMANCA	81.54	1	2	8441	68.4	7.9	5.4	5.5	8.8	1.3	1.7	1.0	68.4	7.9	23.7	0.075	0.501

GUANAJUATO

26 CARR : QUERETARO - IRAPUATO (CUOTA)

CLAVE: 00423

RUTA : MEX-045D

AÑO : 2008

L U G A R	E S T A C I O N				C L A S I F I C A C I O N V E H I C U L A R E N P O R C I E N T O .												
	KM	TE	SC	TDPA	A	B	C2	C3	T3S2	T3S3	T3S2R4	OTROS	A	B	C	K'	D
T. IZQ. SALAMANCA	81.54	3	1	8486	68.1	8.5	4.5	5.8	7.5	1.5	2.2	1.9	68.1	8.5	23.4	0.077	0.504
T. IZQ. SALAMANCA	81.54	3	2	8638	68.3	8.6	4.6	5.7	7.3	1.6	2.1	1.8	68.3	8.6	23.1	0.087	0.504
CASETA DE COBRO SALAMANCA	83.25	1	0	19213	66.5	6.7	5.0	6.1	8.9	1.1	3.9	1.8	66.5	6.7	26.8		
CASETA DE COBRO SALAMANCA	83.25	2	0	18063	65.5	7.1	5.1	6.4	9.2	1.0	4.0	1.7	65.5	7.1	27.4		
CASETA DE COBRO SALAMANCA	83.25	3	0	20890	69.1	6.2	4.7	5.8	8.1	1.0	3.5	1.6	69.1	6.2	24.7		
T. DER. LIBRAMIENTO DE IRAPUATO	96.30	1	1	8665	70.5	9.8	7.2	5.2	2.3	2.2	0.7	2.1	70.5	9.8	19.7	0.114	0.519
T. DER. LIBRAMIENTO DE IRAPUATO	96.30	1	2	8043	70.7	9.7	7.1	5.3	2.4	2.3	0.5	2.0	70.7	9.7	19.6	0.101	0.519
T. DER. LIBRAMIENTO DE IRAPUATO	96.30	3	1	5503	70.7	8.9	6.1	4.2	2.8	3.1	2.0	2.2	70.7	8.9	20.4	0.092	0.501
T. DER. LIBRAMIENTO DE IRAPUATO	96.30	3	2	5536	70.6	8.9	6.4	4.1	2.8	3.1	2.0	2.1	70.6	8.9	20.5	0.098	0.501
T. C. IRAPUATO - ZAPOTLANEJO	104.70																

27 CARR : ENT. BEGOÑA - ENT. PRESA DE MANANTIALES

CLAVE: 11812

RUTA : GTO

AÑO : 2008

L U G A R	E S T A C I O N				C L A S I F I C A C I O N V E H I C U L A R E N P O R C I E N T O .												
	KM	TE	SC	TDPA	A	B	C2	C3	T3S2	T3S3	T3S2R4	OTROS	A	B	C	K'	D
T. C. CELAYA - DOLORES HIDALGO	0.00	3	0	1698	81.4	5.2	7.0	2.1	1.4	0.9	0.0	2.0	81.4	5.2	13.4	0.117	0.503
T. C. GUANAJUATO - SANTA RITA	37.00	1	0	1522	82.4	3.6	1.0	1.9	4.0	1.2	2.5	3.4	82.4	3.6	14.0	0.121	0.502

28 CARR : ENT. SAN MIGUEL DE ALLENDE - DR. MORA

CLAVE: 11001

RUTA : GTO-001

AÑO : 2008

L U G A R	E S T A C I O N				C L A S I F I C A C I O N V E H I C U L A R E N P O R C I E N T O .												
	KM	TE	SC	TDPA	A	B	C2	C3	T3S2	T3S3	T3S2R4	OTROS	A	B	C	K'	D
T. C. ENT. BUENAVISTA - SAN MIGUEL DE ALLENDE	0.00	3	0	2961	79.9	5.1	8.9	4.6	0.4	0.3	0.0	0.8	79.9	5.1	15.0	0.127	0.506
X. C. QUERETARO - SAN LUIS POTOSI	32.00	1	0	2568	76.5	5.8	6.6	5.1	2.2	1.6	0.5	1.7	76.5	5.8	17.7	0.074	0.500
X. C. QUERETARO - SAN LUIS POTOSI	32.00	3	0	4339	76.8	6.3	9.3	4.6	1.1	0.8	0.0	1.1	76.8	6.3	16.9	0.121	0.520
X. C. SAN LUIS DE LA PAZ - SAN JOSE ITURBIDE	38.00	3	0	2694	84.9	1.8	3.9	3.2	2.7	0.9	0.8	1.8	84.9	1.8	13.3	0.132	0.501
DR. MORA	54.00																

29 CARR : GUANAJUATO - SANTA RITA

CLAVE: 11810

RUTA : GTO

AÑO : 2008

L U G A R	E S T A C I O N				C L A S I F I C A C I O N V E H I C U L A R E N P O R C I E N T O .												
	KM	TE	SC	TDPA	A	B	C2	C3	T3S2	T3S3	T3S2R4	OTROS	A	B	C	K'	D
T. C. GUANAJUATO - LOS INFANTES	0.00	3	0	3653	68.4	2.6	1.9	1.5	6.2	5.0	7.5	6.9	68.4	2.6	29.0	0.103	0.540
T. DER. PUENTECILLAS	3.06	1	1	3584	82.7	2.7	3.7	1.0	3.4	1.3	1.5	3.7	82.7	2.7	14.6	0.110	0.519
T. DER. PUENTECILLAS	3.06	1	2	3863	80.1	2.1	2.2	1.0	4.7	2.1	3.0	4.8	80.1	2.1	17.8	0.100	0.519

GUANAJUATO

29 CARR : GUANAJUATO - SANTA RITA

CLAVE: 11810

RUTA : GTO

AÑO : 2008

L U G A R	E S T A C I O N				C L A S I F I C A C I O N V E H I C U L A R E N P O R C I E N T O .												
	KM	TE	SC	TDPA	A	B	C2	C3	T3S2	T3S3	T3S2R4	OTROS	A	B	C	K'	D
T. DER. PUENTECILLAS	3.06	3	0	5524	86.0	2.2	1.7	0.8	3.9	1.0	2.9	1.5	86.0	2.2	11.8	0.139	0.502
T. IZQ. SAN MIGUEL DE ALLENDE	35.45	1	0	3071	87.0	3.4	2.9	1.8	2.8	0.7	0.4	1.0	87.0	3.4	9.6	0.102	0.502
T. IZQ. SAN MIGUEL DE ALLENDE	35.45	3	0	3263	89.3	3.1	3.1	2.0	1.3	0.4	0.1	0.7	89.3	3.1	7.6	0.110	0.515
T. DER. JUVENTINO ROSAS	71.62	1	0	2338	82.0	6.3	2.5	3.1	2.9	1.1	0.9	1.2	82.0	6.3	11.7	0.136	0.511
T. DER. JUVENTINO ROSAS	71.62	3	0	5054	80.2	7.4	5.9	2.8	1.8	1.1	0.2	0.6	80.2	7.4	12.4	0.096	0.522
T. C. CELAYA - DOLORES HIDALGO	92.00	1	0	5462	79.3	8.2	5.1	4.9	0.9	0.4	0.1	1.1	79.3	8.2	12.5	0.104	0.528

30 CARR : JALOSTOTITLAN - PURISIMA DE BUSTOS

CLAVE: 00142

RUTA : JAL-GTO

AÑO : 2008

L U G A R	E S T A C I O N				C L A S I F I C A C I O N V E H I C U L A R E N P O R C I E N T O .												
	KM	TE	SC	TDPA	A	B	C2	C3	T3S2	T3S3	T3S2R4	OTROS	A	B	C	K'	D
JALOSTOTITLAN	0.00	3	0	3134	87.8	4.5	1.1	1.8	1.8	0.4	0.5	2.1	87.8	4.5	7.7	0.102	0.514
SAN MIGUEL EL ALTO	19.00	3	0	3665	79.4	4.3	2.8	3.1	2.4	2.7	1.4	3.9	79.4	4.3	16.3	0.089	0.504
SAN DIEGO DE ALEJANDRIA	63.00	3	0	2941	75.8	5.7	3.4	4.0	3.5	3.2	2.3	2.1	75.8	5.7	18.5	0.084	0.525
LIM. EDOS. TERM. JAL. PPIA. GTO.	66.00																
PURISIMA DE BUSTOS	78.00	1	0	3631	82.8	6.5	5.5	1.4	1.5	1.5	0.1	0.7	82.8	6.5	10.7	0.105	0.501

31 CARR : LEON - MANUEL DOBLADO

CLAVE: 11069

RUTA : GTO-037

AÑO : 2008

L U G A R	E S T A C I O N				C L A S I F I C A C I O N V E H I C U L A R E N P O R C I E N T O .												
	KM	TE	SC	TDPA	A	B	C2	C3	T3S2	T3S3	T3S2R4	OTROS	A	B	C	K'	D
LEON	0.00	3	1	11244	65.6	11.4	3.2	5.6	3.0	8.4	0.2	2.6	65.6	11.4	23.0	0.131	0.508
LEON	0.00	3	2	10907	67.3	11.3	3.4	5.7	2.6	6.9	0.1	2.7	67.3	11.3	21.4	0.121	0.508
X. C. LEON - AGUASCALIENTES (CUOTA)	4.60	3	1	10173	71.7	6.0	4.2	2.8	6.0	2.6	2.0	4.7	71.7	6.0	22.3	0.087	0.502
X. C. LEON - AGUASCALIENTES (CUOTA)	4.60	3	2	10080	71.2	6.0	4.0	2.6	7.1	2.7	2.0	4.4	71.2	6.0	22.8	0.107	0.502
SAN FRANCISCO DEL RINCON	23.00	1	1	7912	64.9	10.2	7.3	6.6	2.6	6.6	0.2	1.6	64.9	10.2	24.9	0.109	0.502
SAN FRANCISCO DEL RINCON	23.00	1	2	7835	67.9	10.7	7.3	6.2	2.8	3.1	0.1	1.9	67.9	10.7	21.4	0.100	0.502
PURISIMA DE BUSTOS	26.00	1	1	8000	77.8	5.4	3.2	2.2	2.3	2.9	1.7	4.5	77.8	5.4	16.8	0.080	0.503
PURISIMA DE BUSTOS	26.00	1	2	7902	78.1	6.0	3.0	2.1	1.9	2.7	1.9	4.3	78.1	6.0	15.9	0.088	0.503
T. DER. SAN JULIAN	29.00	1	0	7417	83.5	8.0	4.3	0.5	2.4	0.2	0.3	0.8	83.5	8.0	8.5	0.097	0.515
T. DER. SAN JULIAN	29.00	3	0	2566	79.9	4.1	4.3	2.6	3.9	1.7	1.3	2.2	79.9	4.1	16.0	0.129	0.505
T. IZQ. GUADALUPE DE JALPA	51.00	3	0	3341	75.0	9.5	5.1	2.2	3.3	3.7	0.2	1.0	75.0	9.5	15.5	0.093	0.503
MANUEL DOBLADO	68.00	1	0	3410	78.2	4.7	8.7	1.7	1.2	0.3	3.4	1.8	78.2	4.7	17.1	0.102	0.505

GUANAJUATO

32 CARR : LEON - SAN FELIPE TORRES MOCHAS

CLAVE: 11036

RUTA : GTO

AÑO : 2008

L U G A R	E S T A C I O N				C L A S I F I C A C I O N V E H I C U L A R E N P O R C I E N T O .												
	KM	TE	SC	TDPA	A	B	C2	C3	T3S2	T3S3	T3S2R4	OTROS	A	B	C	K'	D
LEON	0.00	3	1	3136	79.5	3.9	5.9	4.9	2.2	1.4	0.4	1.8	79.5	3.9	16.6	0.086	0.505
LEON	0.00	3	2	3078	80.2	3.6	5.6	5.1	1.9	1.4	0.2	2.0	80.2	3.6	16.2	0.084	0.505
X. C. LIBRAMIENTO DE LEON	6.50	3	0	4343	71.4	8.6	9.9	4.1	1.1	1.4	1.2	2.3	71.4	8.6	20.0	0.081	0.501
LIM. EDOS. TERM. GTO. PPIA. JAL.	17.00																
LIM. EDOS. TERM. JAL. PPIA. GTO.	38.00																
SAN FELIPE TORRES MOCHAS	98.00	1	0	2331	57.6	6.1	3.9	3.9	19.1	4.7	3.2	1.5	57.6	6.1	36.3	0.100	0.503

33 CARR : LIBRAMIENTO DE ABASOLO

CLAVE: 11011

RUTA : GTO

AÑO : 2008

L U G A R	E S T A C I O N				C L A S I F I C A C I O N V E H I C U L A R E N P O R C I E N T O .												
	KM	TE	SC	TDPA	A	B	C2	C3	T3S2	T3S3	T3S2R4	OTROS	A	B	C	K'	D
T. C. IRAPUATO - GUADALAJARA (1° ACCESO)	0.00	3	1	6850	57.9	14.6	4.5	3.8	7.7	9.3	0.3	1.9	57.9	14.6	27.5	0.112	0.508
T. C. IRAPUATO - GUADALAJARA (1° ACCESO)	0.00	3	2	6645	58.8	14.7	4.1	3.8	7.5	8.3	0.4	2.4	58.8	14.7	26.5	0.105	0.508
T. C. IRAPUATO - ZAPOTLANEJO (2° ACCESO)	2.50																

34 CARR : LIBRAMIENTO DE SALAMANCA

CLAVE: 11002

RUTA : GTO

AÑO : 2008

L U G A R	E S T A C I O N				C L A S I F I C A C I O N V E H I C U L A R E N P O R C I E N T O .												
	KM	TE	SC	TDPA	A	B	C2	C3	T3S2	T3S3	T3S2R4	OTROS	A	B	C	K'	D
T. C. QUERETARO - IRAPUATO LIBRE	0.00	3	0	20300	76.8	5.1	5.6	8.7	0.0	0.0	0.0	3.8	76.8	5.1	18.1	0.061	0.505
T. C. QUERETARO - IRAPUATO LIBRE	11.00	1	0	22157	69.5	7.2	4.5	6.4	4.8	3.1	2.8	1.7	69.5	7.2	23.3	0.093	0.502

35 CARR : LIBRAMIENTO DE SALVATIERRA

CLAVE: 11012

RUTA : GTO

AÑO : 2008

L U G A R	E S T A C I O N				C L A S I F I C A C I O N V E H I C U L A R E N P O R C I E N T O .												
	KM	TE	SC	TDPA	A	B	C2	C3	T3S2	T3S3	T3S2R4	OTROS	A	B	C	K'	D
T. C. ACAMBARO - CELAYA	0.00																
T. C. SALVATIERRA - (T. C. MORELIA - SALAMANCA)	2.50	3	0	1586	89.1	2.9	3.3	0.7	1.2	1.4	0.0	1.4	89.1	2.9	8.0	0.108	0.511
T. C. ACAMBARO - CELAYA	4.50	1	0	9474	84.7	2.5	1.6	1.7	2.5	2.3	2.9	1.8	84.7	2.5	12.8	0.079	0.509

36 CARR : LIBRAMIENTO DE SAN LUIS DE LA PAZ

CLAVE: 11014

RUTA : GTO

AÑO : 2008

L U G A R	E S T A C I O N				C L A S I F I C A C I O N V E H I C U L A R E N P O R C I E N T O .												
	KM	TE	SC	TDPA	A	B	C2	C3	T3S2	T3S3	T3S2R4	OTROS	A	B	C	K'	D
T. C. SAN LUIS DE LA PAZ - GUANAJUATO	0.00	3	1	1734	87.1	5.1	2.3	1.9	1.5	0.8	0.3	1.0	87.1	5.1	7.8	0.092	0.529

GUANAJUATO

36 CARR : LIBRAMIENTO DE SAN LUIS DE LA PAZ

CLAVE: 11014

RUTA : GTO

AÑO : 2008

L U G A R	E S T A C I O N				C L A S I F I C A C I O N V E H I C U L A R E N P O R C I E N T O .												
	KM	TE	SC	TDPA	A	B	C2	C3	T3S2	T3S3	T3S2R4	OTROS	A	B	C	K'	D
T. C. SAN LUIS DE LA PAZ - GUANAJUATO	0.00	3	2	1944	88.7	4.5	2.6	1.7	1.3	0.7	0.1	0.4	88.7	4.5	6.8	0.096	0.529
T. C. SAN LUIS DE LA PAZ - CAÑADA DE MORENO	3.60	1	1	3456	87.0	4.2	3.2	1.5	1.6	0.6	0.4	1.5	87.0	4.2	8.8	0.089	0.506
T. C. SAN LUIS DE LA PAZ - CAÑADA DE MORENO	3.60	1	2	3375	86.1	3.9	3.6	1.4	2.1	0.7	0.5	1.7	86.1	3.9	10.0	0.087	0.506

37 CARR : NUEVO LIBRAMIENTO DE LEON

CLAVE: 11133

RUTA : GTO

AÑO : 2008

L U G A R	E S T A C I O N				C L A S I F I C A C I O N V E H I C U L A R E N P O R C I E N T O .												
	KM	TE	SC	TDPA	A	B	C2	C3	T3S2	T3S3	T3S2R4	OTROS	A	B	C	K'	D
T. C. IRAPUATO - LEON	0.00	3	1	10637	73.7	8.6	7.0	6.1	1.3	0.8	0.4	2.1	73.7	8.6	17.7	0.093	0.502
T. C. IRAPUATO - LEON	0.00	3	2	10540	73.9	8.5	6.9	6.1	1.6	0.6	0.2	2.2	73.9	8.5	17.6	0.087	0.502
T. DER. IBARRILLA	9.58	3	1	8817	69.6	5.4	1.4	2.2	6.9	3.2	6.0	5.3	69.6	5.4	25.0	0.089	0.505
T. DER. IBARRILLA	9.58	3	2	8641	65.6	5.5	1.3	2.1	7.1	3.8	9.3	5.3	65.6	5.5	28.9	0.092	0.505
T. C. LEON - AGUASCALIENTES	18.39	1	0	11443	70.5	10.5	6.5	3.3	3.1	2.3	1.2	2.6	70.5	10.5	19.0	0.098	0.504

38 CARR : RAMAL A SAN DIEGO DE LA UNION

CLAVE: 11818

RUTA : GTO

AÑO : 2008

L U G A R	E S T A C I O N				C L A S I F I C A C I O N V E H I C U L A R E N P O R C I E N T O .												
	KM	TE	SC	TDPA	A	B	C2	C3	T3S2	T3S3	T3S2R4	OTROS	A	B	C	K'	D
T. C. SAN LUIS DE LA PAZ - GUANAJUATO	0.00	3	0	2346	77.0	2.8	17.1	2.3	0.3	0.0	0.0	0.5	77.0	2.8	20.2	0.127	0.506
SAN DIEGO DE LA UNION	31.00																

39 CARR : SALAMANCA - JUVENTINO ROSAS

CLAVE: 11817

RUTA : GTO

AÑO : 2008

L U G A R	E S T A C I O N				C L A S I F I C A C I O N V E H I C U L A R E N P O R C I E N T O .												
	KM	TE	SC	TDPA	A	B	C2	C3	T3S2	T3S3	T3S2R4	OTROS	A	B	C	K'	D
SALAMANCA	0.00	3	0	2987	77.8	7.8	4.5	1.4	3.9	1.4	1.6	1.6	77.8	7.8	14.4	0.114	0.500
JUVENTINO ROSAS	20.00	1	0	1219	68.4	9.1	16.5	2.4	1.1	1.1	0.0	1.4	68.4	9.1	22.5	0.098	0.507

40 CARR : SALVATIERRA - CORTAZAR

CLAVE: 11327

RUTA : GTO

AÑO : 2008

L U G A R	E S T A C I O N				C L A S I F I C A C I O N V E H I C U L A R E N P O R C I E N T O .												
	KM	TE	SC	TDPA	A	B	C2	C3	T3S2	T3S3	T3S2R4	OTROS	A	B	C	K'	D
T. C. ACAMBARO - CELAYA	0.00	3	0	4321	79.1	4.2	4.9	4.5	2.1	2.0	0.2	3.0	79.1	4.2	16.7	0.115	0.502
CORTAZAR	31.80	1	0	2539	74.0	7.3	6.3	5.5	2.6	1.5	1.3	1.5	74.0	7.3	18.7	0.115	0.504

GUANAJUATO

41 CARR : SAN LUIS DE LA PAZ - SAN JOSE ITURBIDE

CLAVE: 11046

RUTA : GTO

AÑO : 2008

L U G A R	E S T A C I O N				CLASIFICACION VEHICULAR EN PORCIENTO .												
	KM	TE	SC	TDPA	A	B	C2	C3	T3S2	T3S3	T3S2R4	OTROS	A	B	C	K'	D
SAN LUIS DE LA PAZ	0.00	3	0	2203	92.2	2.4	1.7	0.2	1.9	0.3	0.5	0.8	92.2	2.4	5.4	0.156	0.503
ESTACION POZO	8.00	3	0	2061	86.1	7.1	4.2	0.1	1.0	0.5	0.1	0.9	86.1	7.1	6.8	0.073	0.562
X. C. ENT. SAN MIGUEL ALLENDE - DR. MORA	21.50	1	0	1518	83.1	6.0	4.6	5.6	0.0	0.2	0.1	0.4	83.1	6.0	10.9	0.130	0.505
SAN JOSE ITURBIDE	36.50	1	0	3552	86.6	1.9	2.8	1.0	4.6	0.7	0.9	1.5	86.6	1.9	11.5	0.160	0.502

42 CARR : SILAO - LA ROMITA

CLAVE: 11029

RUTA : GTO

AÑO : 2008

L U G A R	E S T A C I O N				CLASIFICACION VEHICULAR EN PORCIENTO .												
	KM	TE	SC	TDPA	A	B	C2	C3	T3S2	T3S3	T3S2R4	OTROS	A	B	C	K'	D
SILAO	0.00	3	0	5387	78.1	4.0	1.8	2.4	4.9	2.3	2.4	4.1	78.1	4.0	17.9	0.136	0.505
ROMITA	13.00																

43 CARR : SILAO - LOS ARRASTRES

CLAVE:

RUTA : GTO

AÑO : 2008

L U G A R	E S T A C I O N				CLASIFICACION VEHICULAR EN PORCIENTO .												
	KM	TE	SC	TDPA	A	B	C2	C3	T3S2	T3S3	T3S2R4	OTROS	A	B	C	K'	D
SILAO	0.00	3	0	12460	71.3	4.9	3.0	1.8	7.8	2.6	4.6	4.0	71.3	4.9	23.8	0.081	0.514
T.C. LEON - SAN FELIPE TORRES MOCHAS	49.50	1	0	2347	58.8	8.1	13.9	13.4	0.0	0.0	0.0	5.8	58.8	8.1	33.1	0.072	0.511

44 CARR : T. C. (VILLA DEL PUEBLITO - HUIMILPAN) - CORONEO

CLAVE: 00155

RUTA : QRO-GTO

AÑO : 2008

L U G A R	E S T A C I O N				CLASIFICACION VEHICULAR EN PORCIENTO .												
	KM	TE	SC	TDPA	A	B	C2	C3	T3S2	T3S3	T3S2R4	OTROS	A	B	C	K'	D
T. C. VILLA DEL PUEBLITO - HUIMILPAN	0.00	3	0	1988	85.0	5.7	3.4	0.6	1.9	0.5	1.4	1.5	85.0	5.7	9.3	0.106	0.541
LIM. EDOS. TERM. QRO. PPIA. GTO.	20.00																
CORONEO	45.20	1	0	2524	81.4	6.0	7.0	3.8	0.5	0.3	0.0	1.0	81.4	6.0	12.6	0.115	0.508

45 CARR : CELAYA - DOLORES HIDALGO

CLAVE: 11109

RUTA : MEX-051-GTO

AÑO : 2008

L U G A R	E S T A C I O N				CLASIFICACION VEHICULAR EN PORCIENTO .												
	KM	TE	SC	TDPA	A	B	C2	C3	T3S2	T3S3	T3S2R4	OTROS	A	B	C	K'	D
CELAYA	0.00																
X. C. QUERETARO - IRAPUATO (CUOTA)	3.90	1	1	10408	65.3	7.3	6.8	4.8	7.2	5.9	0.1	2.6	65.3	7.3	27.4	0.098	0.503
X. C. QUERETARO - IRAPUATO (CUOTA)	3.90	1	2	10276	65.4	7.2	6.9	4.6	8.4	5.2	0.2	2.1	65.4	7.2	27.4	0.092	0.503
X. C. QUERETARO - IRAPUATO (CUOTA)	3.90	3	1	11064	74.0	8.3	4.0	6.4	3.2	2.8	0.0	1.3	74.0	8.3	17.7	0.095	0.523

GUANAJUATO

45 CARR : CELAYA - DOLORES HIDALGO

CLAVE: 11109

RUTA : MEX-051-GTO

AÑO : 2008

L U G A R	E S T A C I O N				C L A S I F I C A C I O N V E H I C U L A R E N P O R C I E N T O .												
	KM	TE	SC	TDPA	A	B	C2	C3	T3S2	T3S3	T3S2R4	OTROS	A	B	C	K'	D
X. C. QUERETARO - IRAPUATO (CUOTA)	3.90	3	2	10076	73.7	8.0	3.9	6.3	3.5	3.1	0.1	1.4	73.7	8.0	18.3	0.086	0.523
T. IZQ. JUVENTINO ROSAS	6.92	3	1	5635	80.5	5.8	3.1	2.1	3.4	2.6	0.1	2.4	80.5	5.8	13.7	0.106	0.500
T. IZQ. JUVENTINO ROSAS	6.92	3	2	5645	80.5	5.8	3.0	2.2	3.2	2.1	0.2	3.0	80.5	5.8	13.7	0.099	0.500
X. C. SANTA CRUZ - SAN JUAN DE LA VEGA	12.44	3	1	4100	78.2	8.4	3.9	2.2	3.6	1.2	0.7	1.8	78.2	8.4	13.4	0.103	0.503
X. C. SANTA CRUZ - SAN JUAN DE LA VEGA	12.44	3	2	4153	77.0	9.5	3.9	2.2	3.7	1.2	0.8	1.7	77.0	9.5	13.5	0.101	0.503
COMONFORT	24.50	1	0	6579	76.8	7.3	5.0	1.1	3.1	1.1	1.8	3.8	76.8	7.3	15.9	0.080	0.504
SAN MIGUEL DE ALLENDE	49.90	1	0	5934	86.7	1.5	1.4	0.9	4.2	0.8	3.3	1.2	86.7	1.5	11.8	0.090	0.502
T. IZQ. ATOTONILCO	65.60	1	0	5378	81.9	5.3	4.4	2.3	3.3	0.7	1.0	1.1	81.9	5.3	12.8	0.097	0.593
T. IZQ. ATOTONILCO	65.60	3	0	4436	84.3	4.1	4.7	1.8	2.7	0.9	0.7	0.8	84.3	4.1	11.6	0.106	0.503
T. C. SAN LUIS DE LA PAZ - GUANAJUATO	85.42	1	0	4613	84.7	4.1	4.0	1.6	3.1	0.9	0.6	1.0	84.7	4.1	11.2	0.110	0.503

46 CARR : CORTAZAR - VALLE DE SANTIAGO

CLAVE: 11016

RUTA : MEX-GTO-017

AÑO : 2008

L U G A R	E S T A C I O N				C L A S I F I C A C I O N V E H I C U L A R E N P O R C I E N T O .												
	KM	TE	SC	TDPA	A	B	C2	C3	T3S2	T3S3	T3S2R4	OTROS	A	B	C	K'	D
CORTAZAR	0.00	3	0	4184	87.8	4.7	3.9	1.4	0.8	0.4	0.4	0.6	87.8	4.7	7.5	0.091	0.510
T. C. MORELIA - SALAMANCA	29.20	1	0	4842	85.8	3.1	6.4	2.1	1.0	0.8	0.3	0.5	85.8	3.1	11.1	0.083	0.519

47 CARR : GUANAJUATO - LOS INFANTES

CLAVE: 11067

RUTA : MEX-110-GTO

AÑO : 2008

L U G A R	E S T A C I O N				C L A S I F I C A C I O N V E H I C U L A R E N P O R C I E N T O .												
	KM	TE	SC	TDPA	A	B	C2	C3	T3S2	T3S3	T3S2R4	OTROS	A	B	C	K'	D
GUANAJUATO	0.00	3	0	16415	75.4	6.1	1.9	0.9	3.7	3.0	3.6	5.4	75.4	6.1	18.5	0.100	0.519
T. IZQ. JUVENTINO ROSAS	4.91	1	1	8462	73.2	3.6	3.5	1.8	4.6	4.1	3.2	6.0	73.2	3.6	23.2	0.081	0.509
T. IZQ. JUVENTINO ROSAS	4.91	1	2	8174	74.5	3.5	3.0	1.5	6.0	3.0	2.5	6.0	74.5	3.5	22.0	0.088	0.509
T. DER. SILAO	12.77	1	0	9675	78.9	4.2	2.8	1.1	6.4	1.3	3.0	2.3	78.9	4.2	16.9	0.094	0.547
T. C. IRAPUATO - LEON	22.00	1	0	5745	88.8	2.9	2.7	0.5	2.7	0.6	0.7	1.1	88.8	2.9	8.3	0.077	0.502

48 CARR : TEPATITLAN - LAS ADJUNTAS

CLAVE: 00141

RUTA : JAL/MEX-084

AÑO : 2008

L U G A R	E S T A C I O N				C L A S I F I C A C I O N V E H I C U L A R E N P O R C I E N T O .												
	KM	TE	SC	TDPA	A	B	C2	C3	T3S2	T3S3	T3S2R4	OTROS	A	B	C	K'	D
T. C. LAGOS DE MORENO - ZAPOTLANEJO	0.00	3	0	4913	82.4	3.7	2.0	2.1	3.2	2.4	2.4	1.8	82.4	3.7	13.9	0.080	0.512
X. C. SAN MIGUEL EL ALTO - LA BARCA	34.00	3	1	3911	86.3	3.1	2.7	3.5	1.2	1.4	0.6	1.2	86.3	3.1	10.6	0.093	0.501
X. C. SAN MIGUEL EL ALTO - LA BARCA	34.00	3	2	3922	87.4	3.0	2.3	3.2	1.5	1.2	0.3	1.1	87.4	3.0	9.6	0.101	0.501

GUANAJUATO

48 CARR : TEPATITLAN - LAS ADJUNTAS

CLAVE: 00141

RUTA : JAL/MEX-084

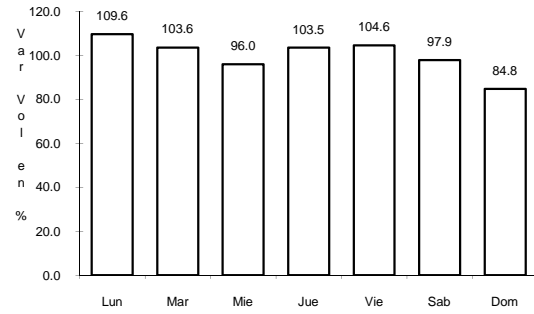
AÑO : 2008

L U G A R	E S T A C I O N				C L A S I F I C A C I O N V E H I C U L A R E N P O R C I E N T O .												
	KM	TE	SC	TDPA	A	B	C2	C3	T3S2	T3S3	T3S2R4	OTROS	A	B	C	K'	D
ARANDAS	46.00	3	0	5530	86.6	4.9	0.9	0.7	3.8	0.7	1.0	1.4	86.6	4.9	8.5	0.097	0.516
T. DER. JESUS MARIA	58.00	3	0	2558	86.7	2.2	2.0	3.2	3.2	1.5	0.7	0.5	86.7	2.2	11.1	0.079	0.511
X. C. MANUEL DOBLADO - LA PIEDAD	91.00	1	0	2688	78.5	6.8	6.7	3.8	1.6	1.3	0.5	0.8	78.5	6.8	14.7	0.119	0.504
LIM. EDOS. TERM. JAL. PPIA. GTO.	95.00																
T. C. MUNGUIA - LAS ADJUNTAS	100.00	1	0	1474	71.3	9.9	7.6	6.5	1.6	1.4	0.4	1.3	71.3	9.9	18.8	0.134	0.505

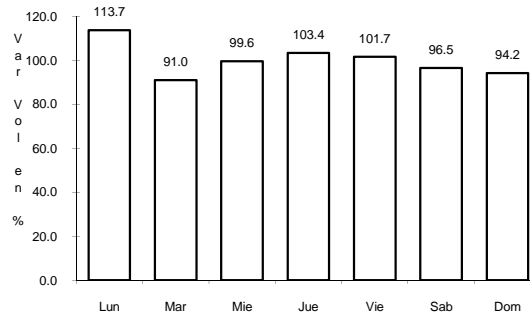
4 CARR: ENT. BUENAVISTA - SAN MIGUEL DE ALLENDE

CLAVE: 00111

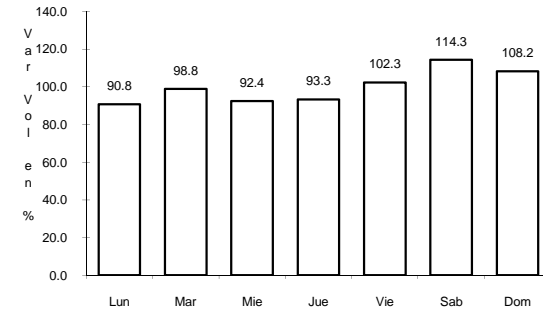
RUTA: MEX



Km: 0.00 Tipo: 3 Sent: 0



Km: 12.00 Tipo: 1 Sent: 0

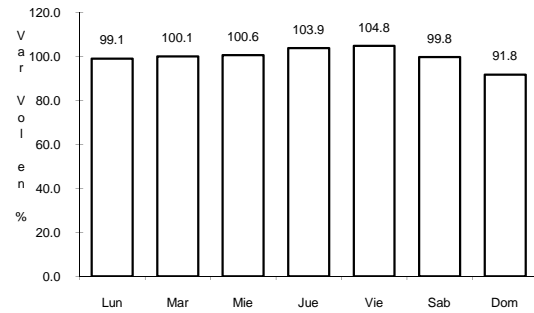


Km: 35.11 Tipo: 1 Sent: 0

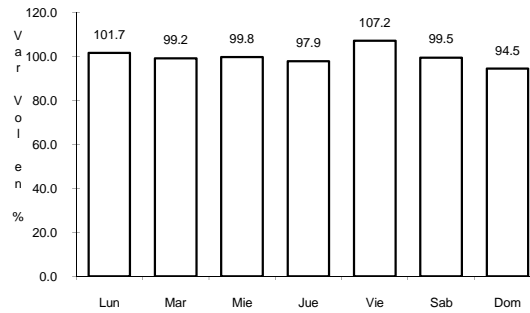
5 CARR: ENT. DE ZARAGOZA - SAN FELIPE

CLAVE: 00240

RUTA: MEX-037



Km: 0.00 Tipo: 3 Sent: 0

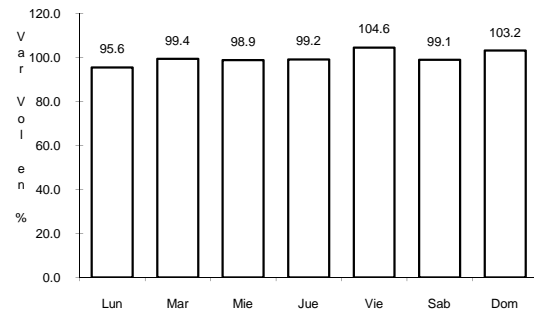


Km: 72.00 Tipo: 1 Sent: 0

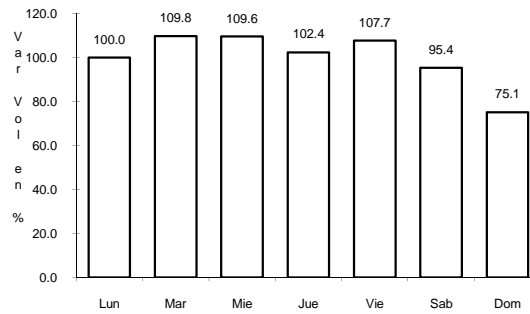
6 CARR: ENT. LA FORTALEZA - CORTAZAR

CLAVE: 11017

RUTA: MEX

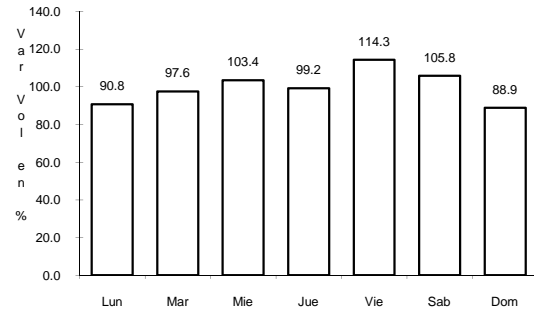


Km: 0.00 Tipo: 3 Sent: 1



Km: 0.00 Tipo: 3 Sent: 2

7 CARR: IRAPUATO - LEON

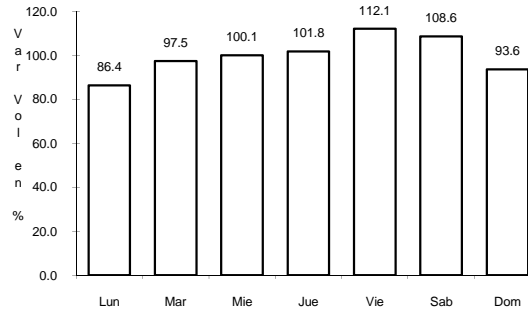


Km: 8.80

Tipo: 3

Sent: 1

CLAVE: 11123



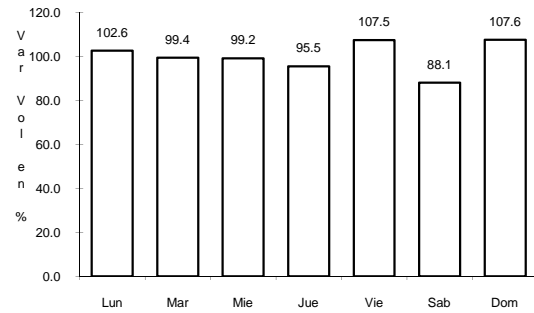
Km: 8.80

Tipo: 3

Sent: 2

RUTA: MEX-045

8 CARR: IRAPUATO - ZAPOTLANEJO

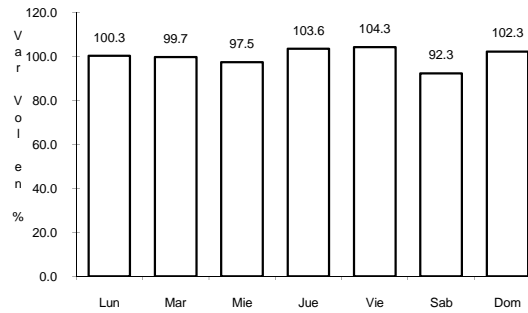


Km: 2.78

Tipo: 1

Sent: 1

CLAVE: 00114

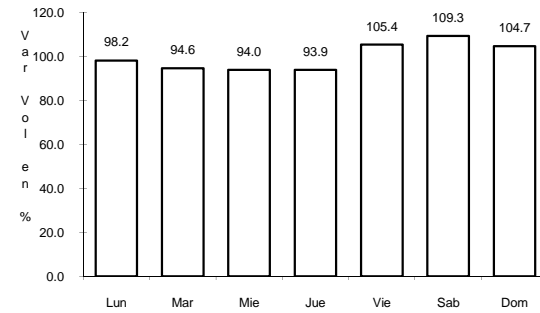


Km: 2.78

Tipo: 1

Sent: 2

RUTA: MEX-090

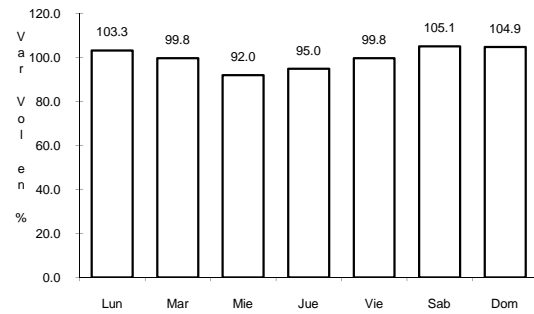


Km: 215.80

Tipo: 1

Sent: 0

9 CARR: LA NORIA - ACAMBARO

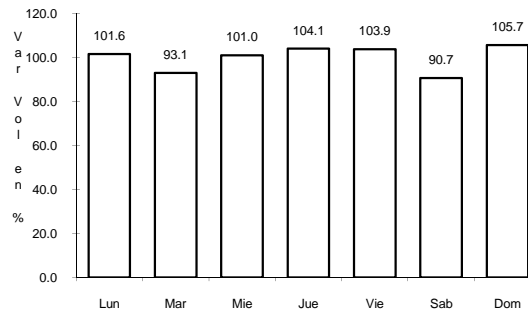


Km: 0.00

Tipo: 3

Sent: 0

CLAVE: 00131

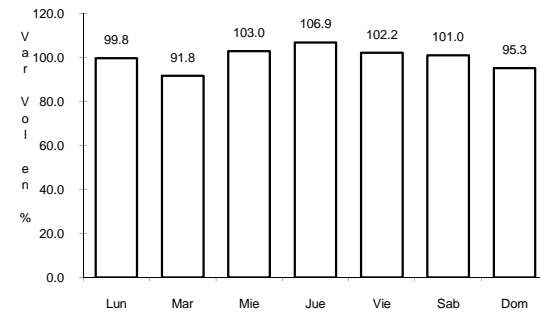


Km: 59.35

Tipo: 3

Sent: 0

RUTA: MEX-120



Km: 111.12

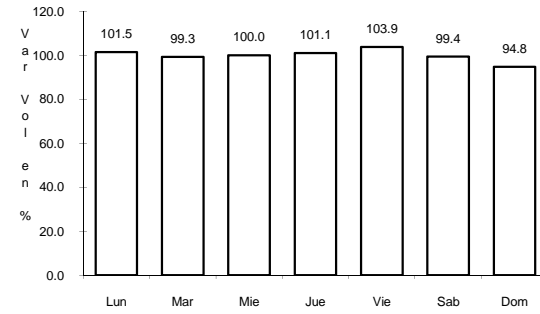
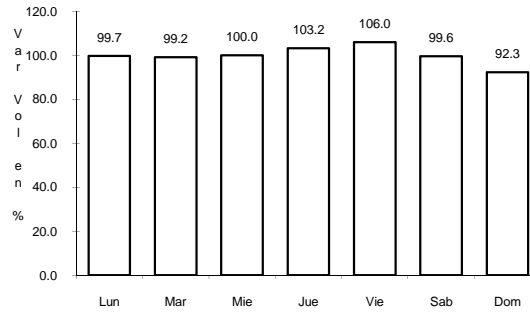
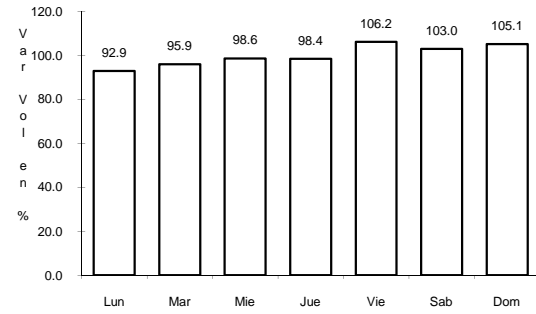
Tipo: 1

Sent: 0

10 CARR: LEON - AGUASCALIENTES

CLAVE: 00167

ruta: MEX-045



Km: 11.00

Tipo: 1

Sent: 0

Km: 129.38

Tipo: 1

Sent: 1

Km: 129.38

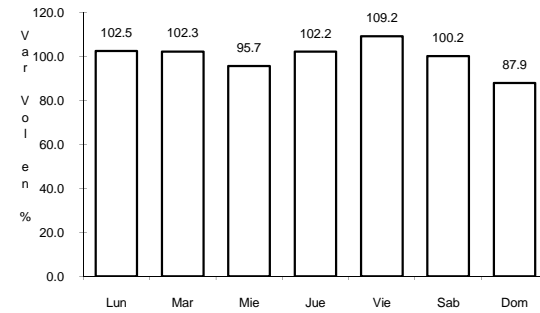
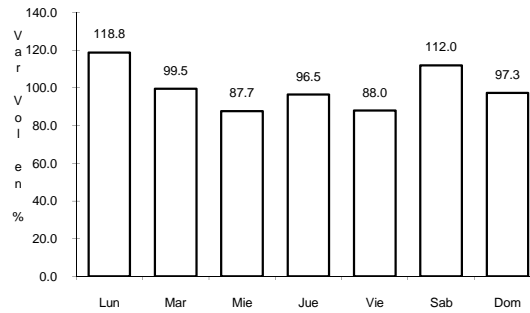
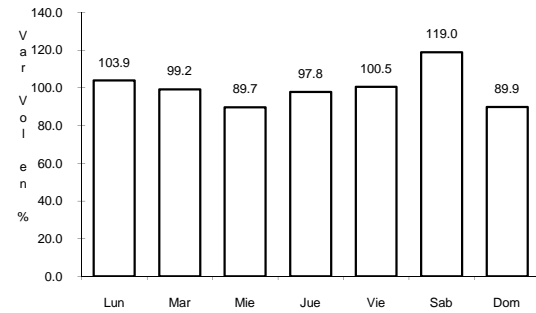
Tipo: 1

Sent: 2

11 CARR: MANUEL DOBLADO - LA PIEDAD

CLAVE: 11028

ruta: MEX-037



Km: 0.00

Tipo: 3

Sent: 0

Km: 29.00

Tipo: 1

Sent: 0

Km: 45.00

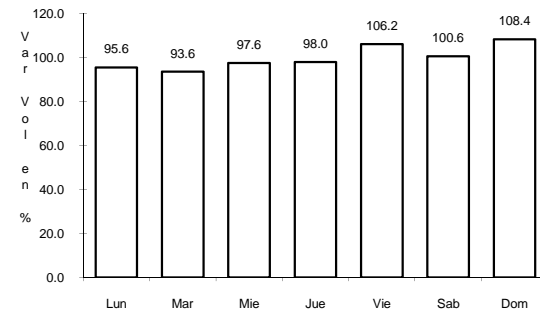
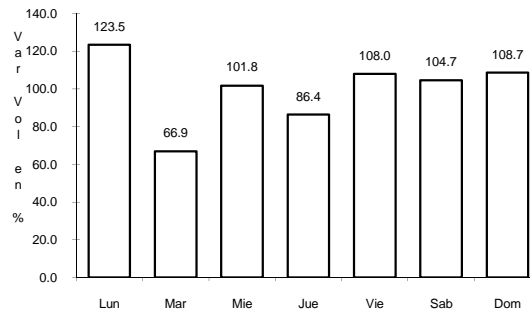
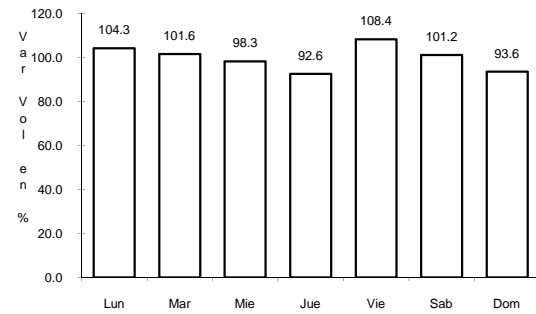
Tipo: 1

Sent: 0

12 CARR: MARAVATIO - ACAMBARO

CLAVE: 00418

ruta: MEX-061



Km: 0.00

Tipo: 3

Sent: 0

Km: 13.00

Tipo: 3

Sent: 0

Km: 39.00

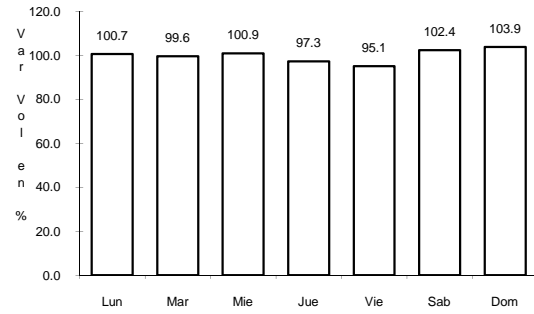
Tipo: 1

Sent: 0

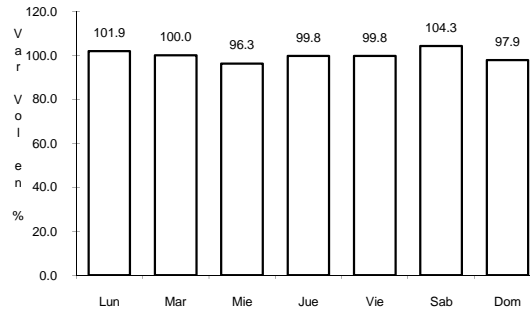
13 CARR: MORELIA - SALAMANCA

CLAVE: 00124

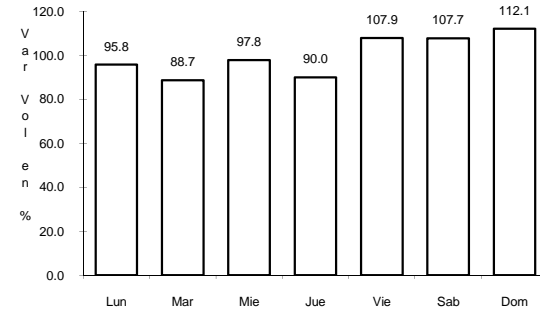
ruta: MEX-043



Km: 2.70 Tipo: 3 Sent: 1



Km: 2.70 Tipo: 3 Sent: 2

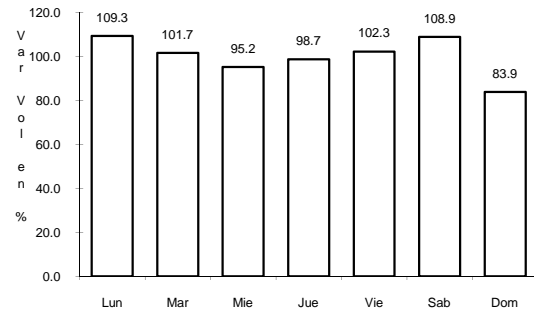


Km: 61.36 Tipo: 3 Sent: 0

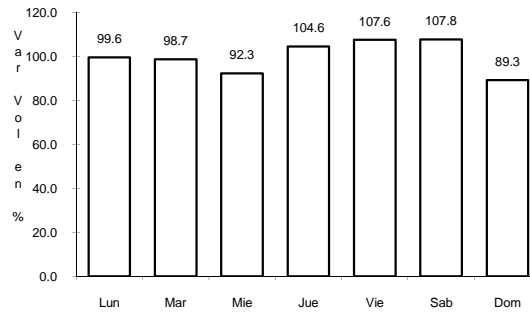
14 CARR: MUNGUIA - LAS ADJUNTAS

CLAVE: 11815

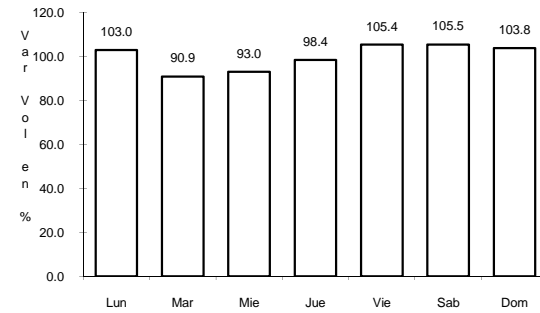
ruta: MEX



Km: 0.00 Tipo: 3 Sent: 0



Km: 27.00 Tipo: 3 Sent: 0

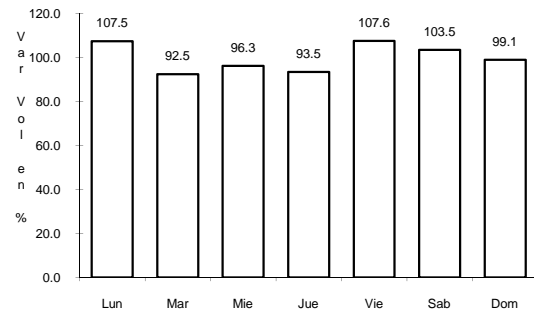


Km: 57.00 Tipo: 1 Sent: 0

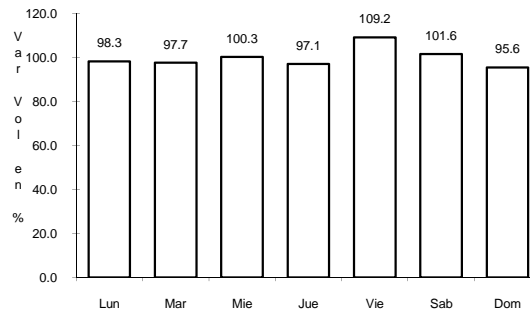
15 CARR: NUEVO LIBRAMIENTO DE IRAPUATO

CLAVE: 11132

ruta: MEX



Km: 0.00 Tipo: 3 Sent: 1

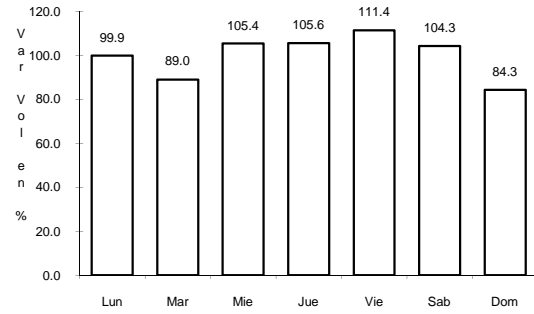


Km: 0.00 Tipo: 3 Sent: 2

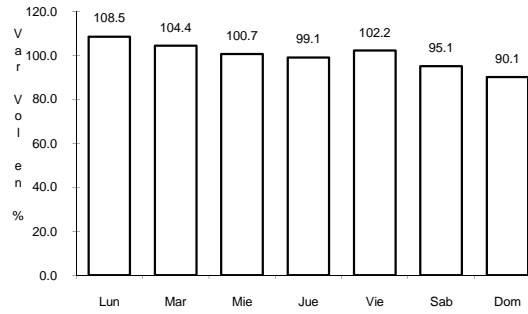
16 CARR: QUERETARO - IRAPUATO (LIBRE)

CLAVE: 00154

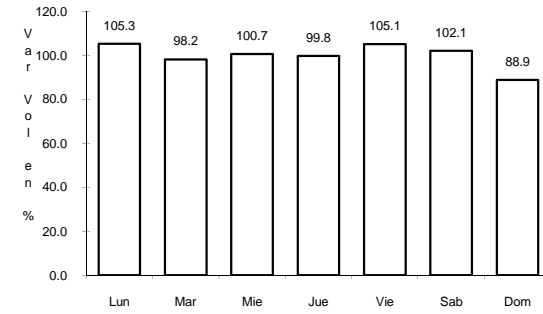
RUTA: MEX-045



Km: 0.00 Tipo: 3 Sent: 1



Km: 0.00 Tipo: 3 Sent: 2

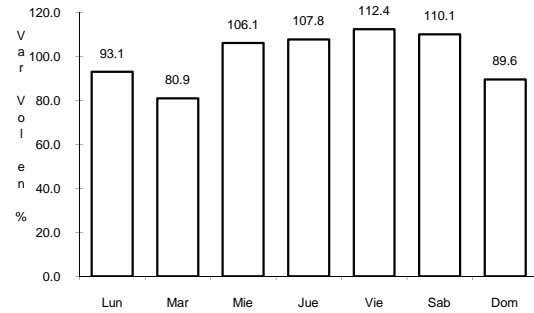


Km: 55.61 Tipo: 3 Sent: 0

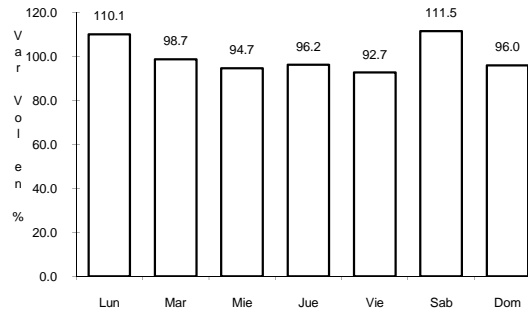
17 CARR: QUERETARO - SAN LUIS POTOSI

CLAVE: 00165

RUTA: MEX-057



Km: 6.28 Tipo: 3 Sent: 1

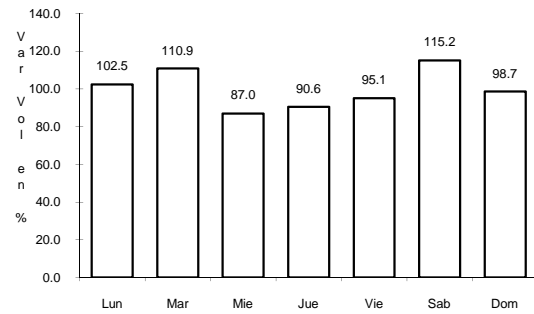


Km: 6.28 Tipo: 3 Sent: 2

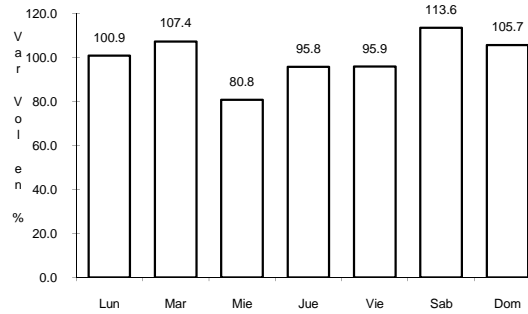
18 CARR: RAMAL A LAS ADJUNTAS

CLAVE: 11820

RUTA: MEX



Km: 0.00 Tipo: 3 Sent: 0

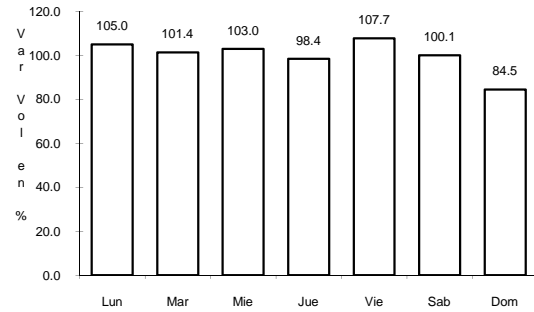


Km: 10.00 Tipo: 1 Sent: 0

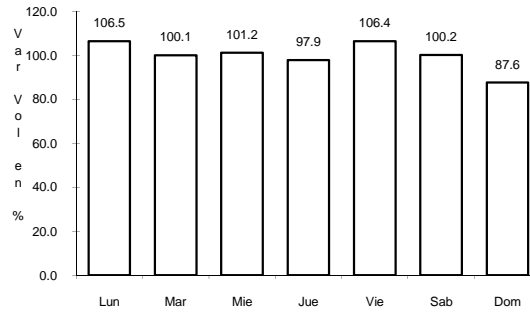
19 CARR: RAMAL A SAN JOSE ITURBIDE

CLAVE: 11201

ruta: MEX



Km: 0.00 Tipo: 3 Sent: 1

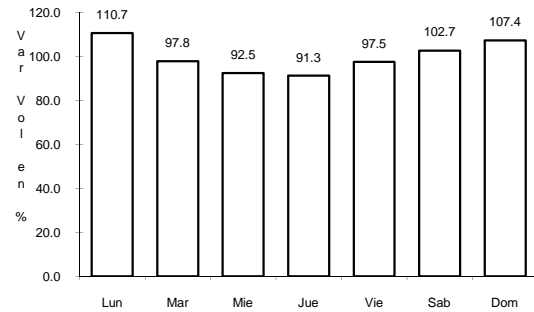


Km: 0.00 Tipo: 3 Sent: 2

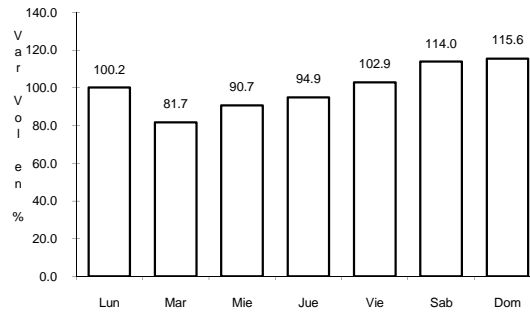
20 CARR: SALVATIERRA - ENT. YURIRIA

CLAVE: 11013

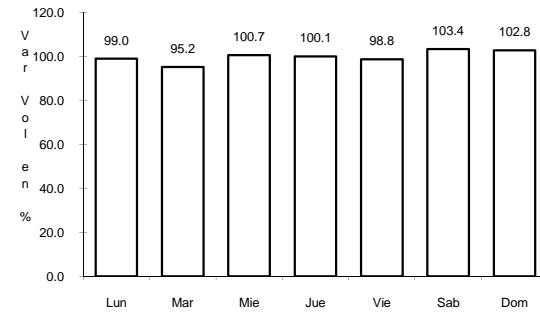
ruta: MEX



Km: 0.00 Tipo: 3 Sent: 0



Km: 8.00 Tipo: 1 Sent: 0

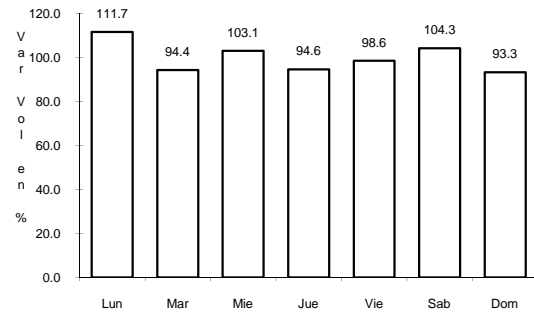


Km: 30.00 Tipo: 1 Sent: 0

21 CARR: SAN LUIS DE LA PAZ - CAÑADA DE MORENO

CLAVE: 11134

ruta: MEX

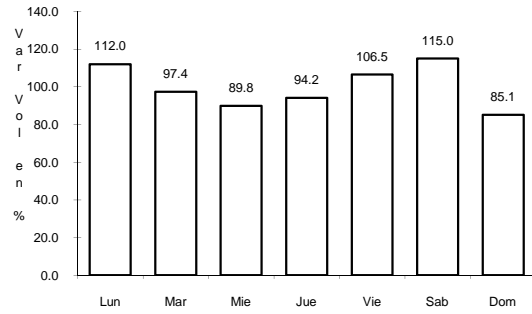


Km: 0.00 Tipo: 3 Sent: 0

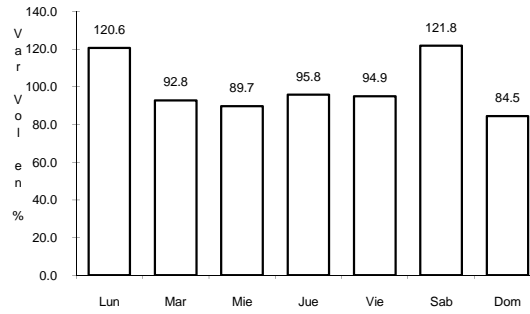
22 CARR: SAN LUIS DE LA PAZ - GUANAJUATO

CLAVE: 11108

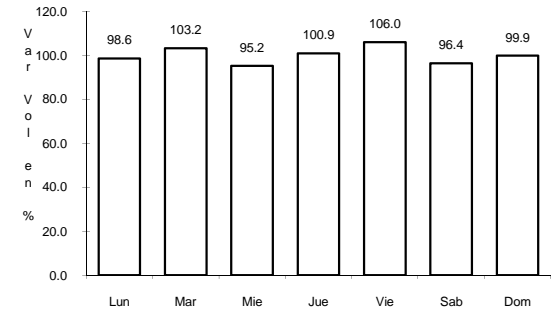
ruta: MEX-110



Km: 1.74 Tipo: 3 Sent: 1



Km: 1.74 Tipo: 3 Sent: 2

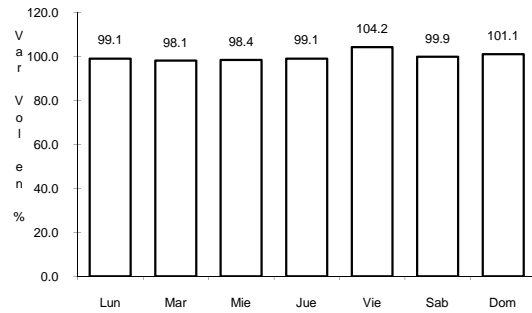


Km: 103.29 Tipo: 1 Sent: 0

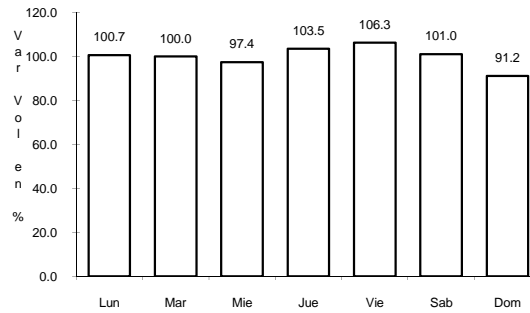
23 CARR: SANTA TERESA - SILAO

CLAVE: 11070

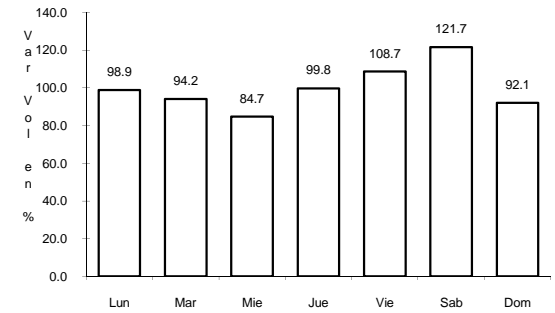
ruta: MEX



Km: 0.00 Tipo: 3 Sent: 0



Km: 12.00 Tipo: 1 Sent: 1

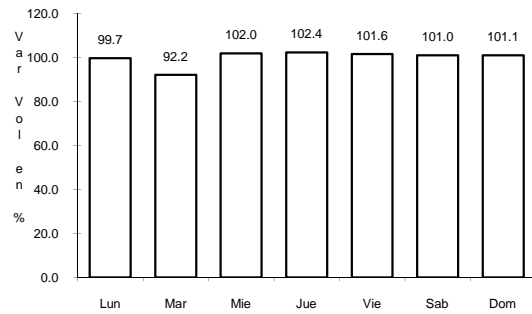


Km: 12.00 Tipo: 1 Sent: 2

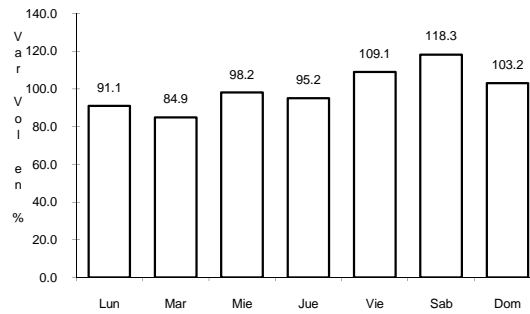
25 CARR: MORELIA - SALAMANCA (CUOTA)

CLAVE:

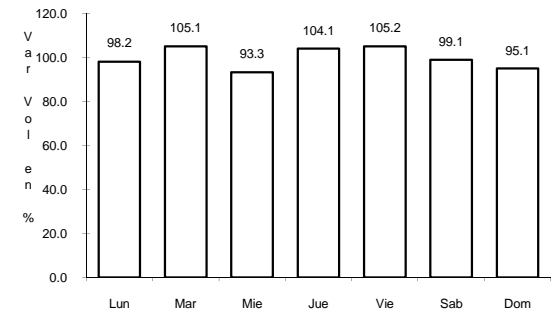
ruta: MEX-043D



Km: 26.50 Tipo: 3 Sent: 0



Km: 104.64 Tipo: 1 Sent: 0

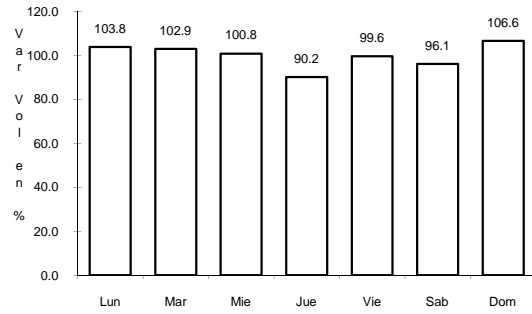


Km: 109.49 Tipo: 1 Sent: 0

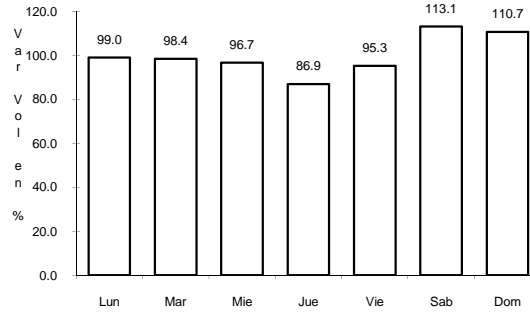
26 CARR: QUERETARO - IRAPUATO (CUOTA)

CLAVE: 00423

ruta: MEX-045D



Km: 0.00 Tipo: 3 Sent: 1

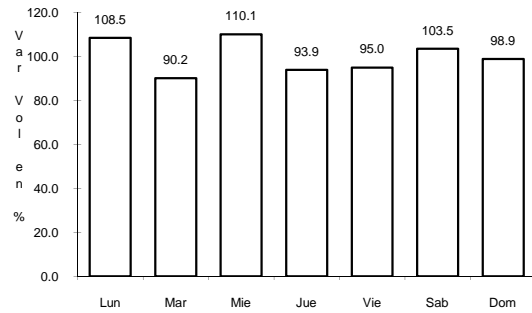


Km: 0.00 Tipo: 3 Sent: 2

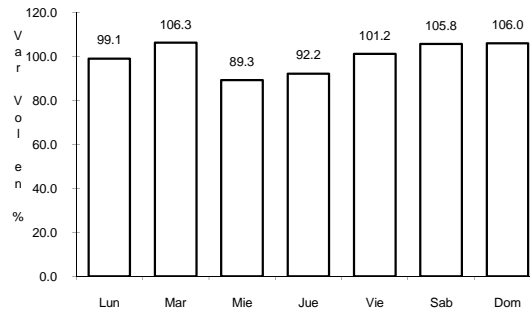
27 CARR: ENT. BEGOÑA - ENT. PRESA DE MANANTIALES

CLAVE: 11812

ruta: GTO



Km: 0.00 Tipo: 3 Sent: 0

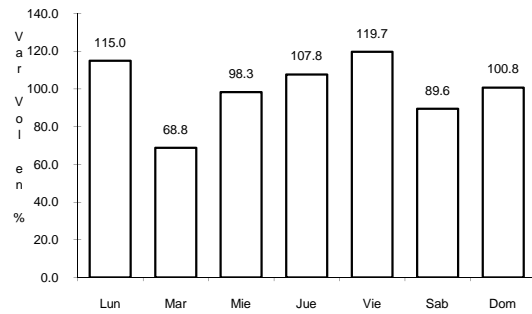


Km: 37.00 Tipo: 1 Sent: 0

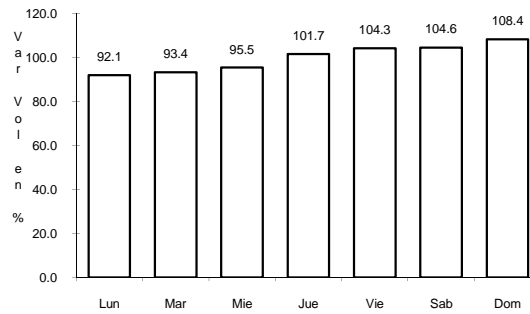
28 CARR: ENT. SAN MIGUEL DE ALLENDE - DR. MORA

CLAVE: 11001

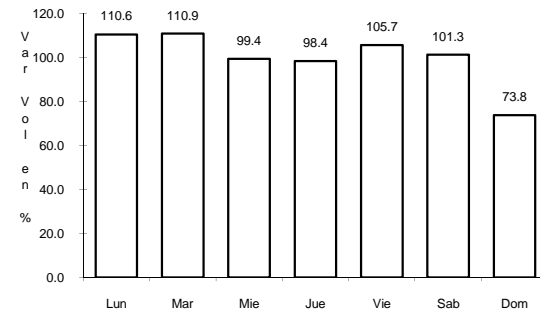
ruta: GTO-001



Km: 0.00 Tipo: 3 Sent: 0

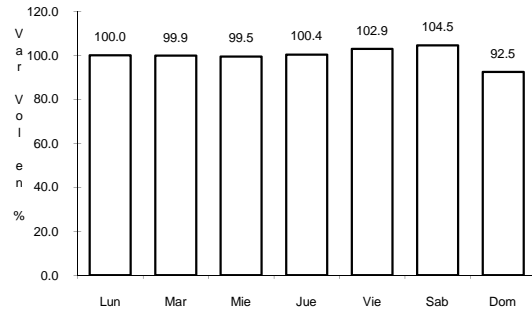


Km: 32.00 Tipo: 1 Sent: 0



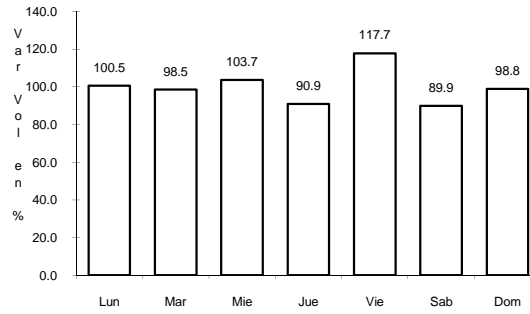
Km: 38.00 Tipo: 3 Sent: 0

29 CARR: GUANAJUATO - SANTA RITA



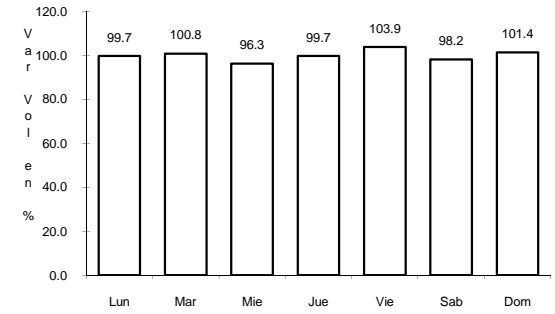
Km: 0.00 Tipo: 3 Sent: 0

CLAVE: 11810



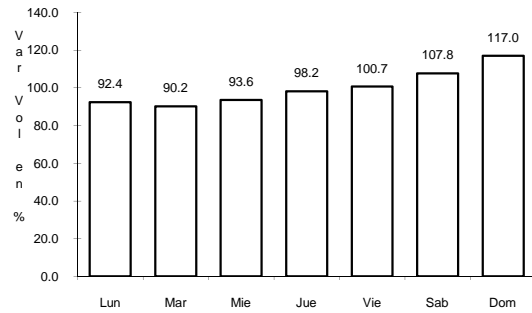
Km: 35.45 Tipo: 1 Sent: 0

ruta: GTO



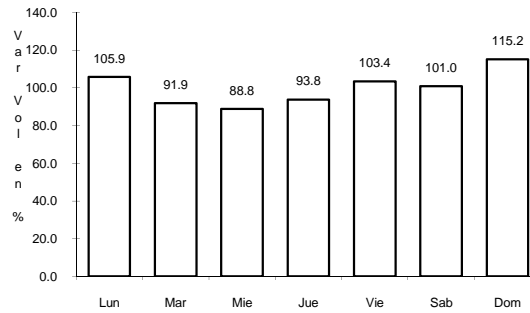
Km: 92.00 Tipo: 1 Sent: 0

30 CARR: JALOSTOTITLAN - PURISIMA DE BUSTOS



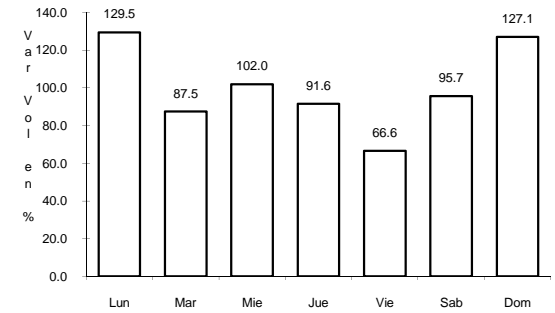
Km: 0.00 Tipo: 3 Sent: 0

CLAVE: 00142



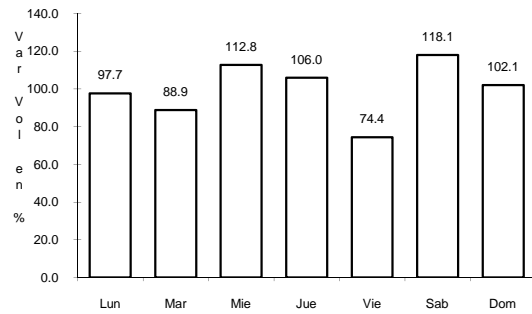
Km: 19.00 Tipo: 3 Sent: 0

ruta: JAL-GTO



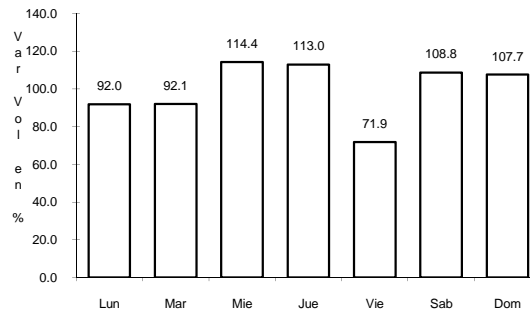
Km: 78.00 Tipo: 1 Sent: 0

31 CARR: LEON - MANUEL DOBLADO



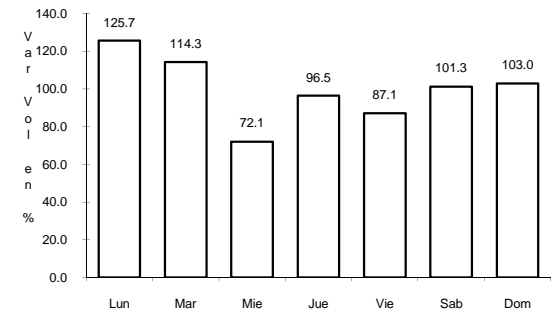
Km: 0.00 Tipo: 3 Sent: 1

CLAVE: 11069



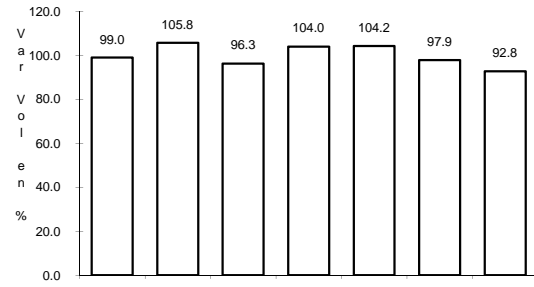
Km: 0.00 Tipo: 3 Sent: 2

ruta: GTO-037



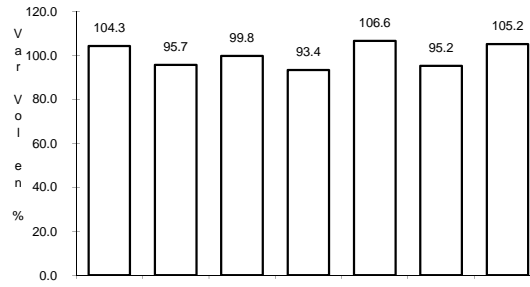
Km: 68.00 Tipo: 1 Sent: 0

32 CARR: LEON - SAN FELIPE TORRES MOCHAS



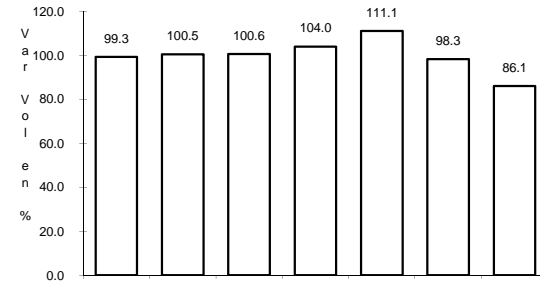
Km: 0.00 Tipo: 3 Sent: 1

CLAVE: 11036



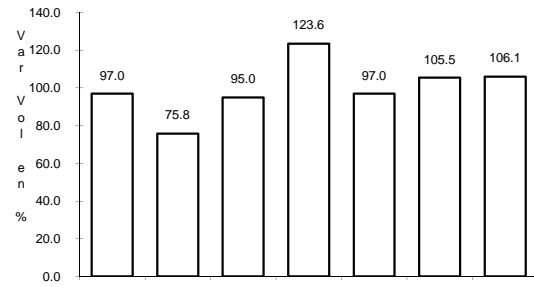
Km: 0.00 Tipo: 3 Sent: 2

RUTA: GTO



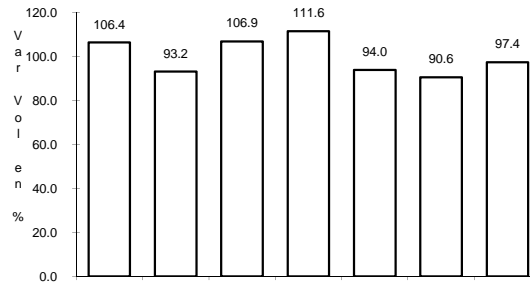
Km: 98.00 Tipo: 1 Sent: 0

33 CARR: LIBRAMIENTO DE ABASOLO



Km: 0.00 Tipo: 3 Sent: 1

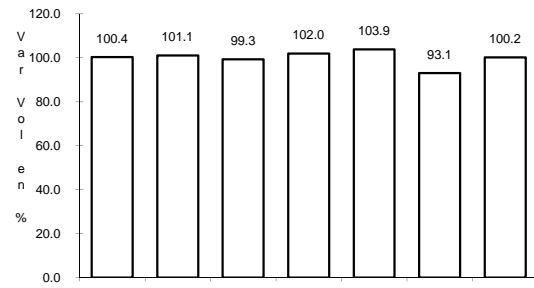
CLAVE: 11011



Km: 0.00 Tipo: 3 Sent: 2

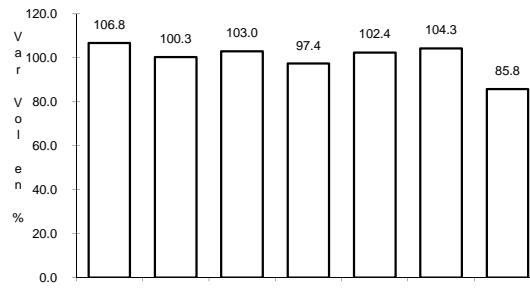
RUTA: GTO

34 CARR: LIBRAMIENTO DE SALAMANCA



Km: 0.00 Tipo: 3 Sent: 0

CLAVE: 11002



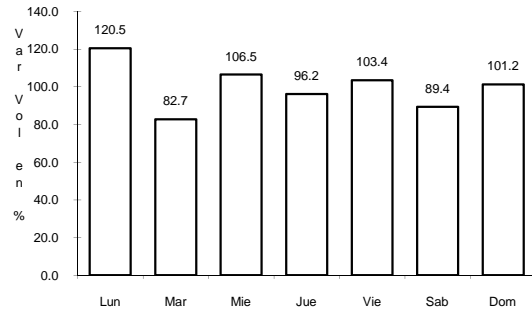
Km: 11.00 Tipo: 1 Sent: 0

RUTA: GTO

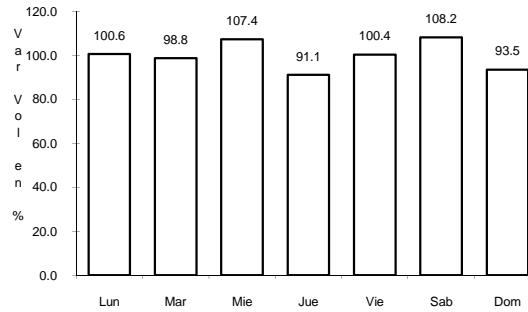
35 CARR: LIBRAMIENTO DE SALVATIERRA

CLAVE: 11012

RUTA: GTO



Km: 2.50 Tipo: 3 Sent: 0

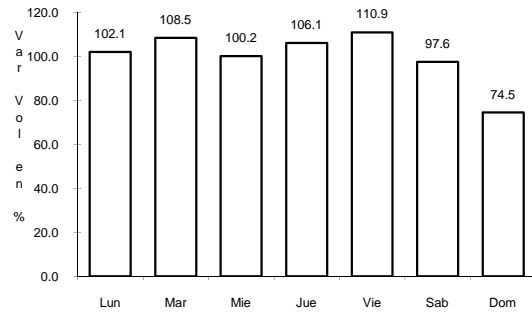


Km: 4.50 Tipo: 1 Sent: 0

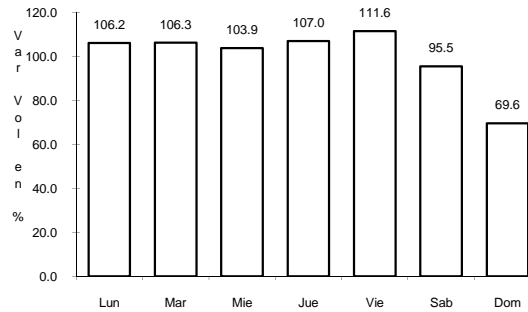
36 CARR: LIBRAMIENTO DE SAN LUIS DE LA PAZ

CLAVE: 11014

RUTA: GTO



Km: 0.00 Tipo: 3 Sent: 1

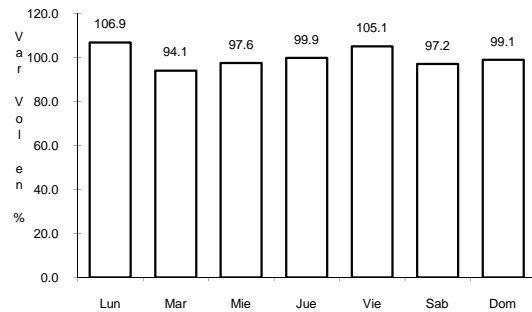


Km: 0.00 Tipo: 3 Sent: 2

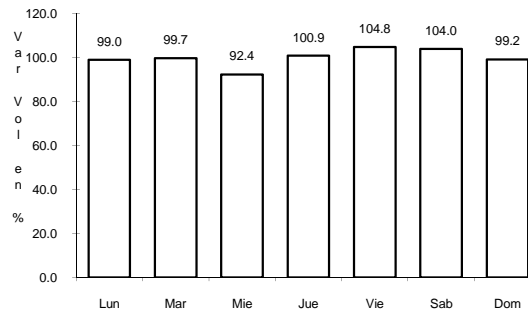
37 CARR: NUEVO LIBRAMIENTO DE LEON

CLAVE: 11133

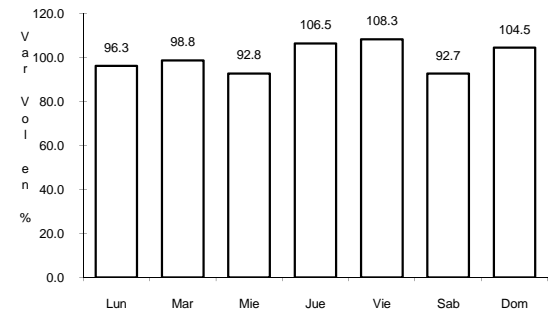
RUTA: GTO



Km: 0.00 Tipo: 3 Sent: 1



Km: 0.00 Tipo: 3 Sent: 2

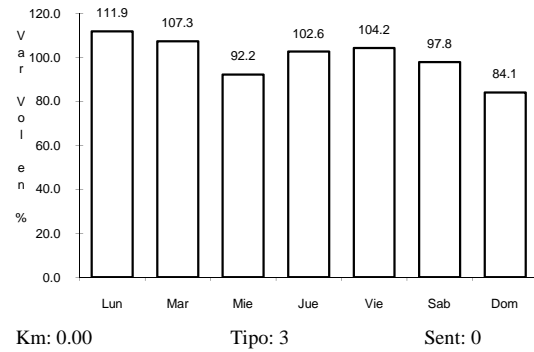


Km: 18.39 Tipo: 1 Sent: 0

38 CARR: RAMAL A SAN DIEGO DE LA UNION

CLAVE: 11818

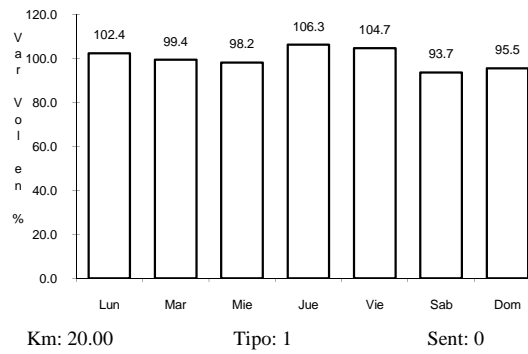
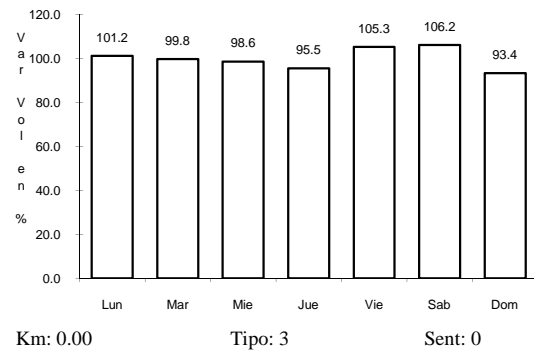
RUTA: GTO



39 CARR: SALAMANCA - JUVENTINO ROSAS

CLAVE: 11817

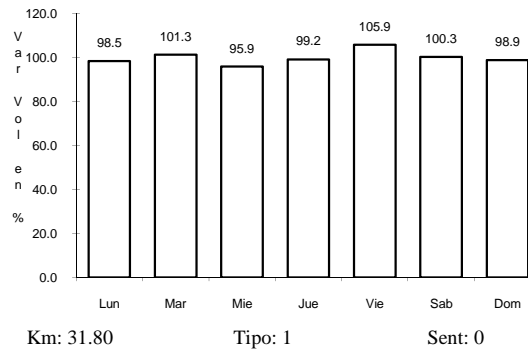
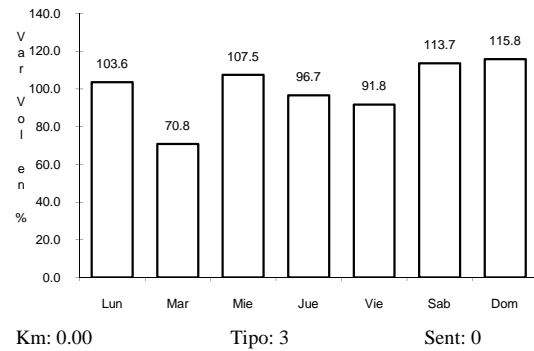
RUTA: GTO



40 CARR: SALVATIERRA - CORTAZAR

CLAVE: 11327

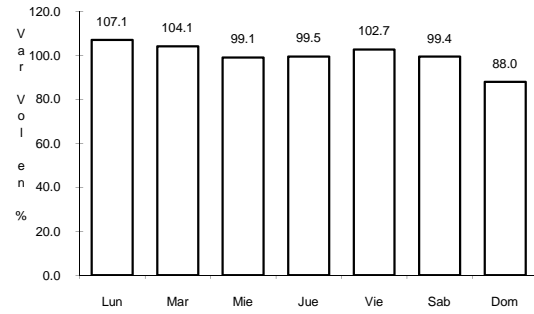
RUTA: GTO



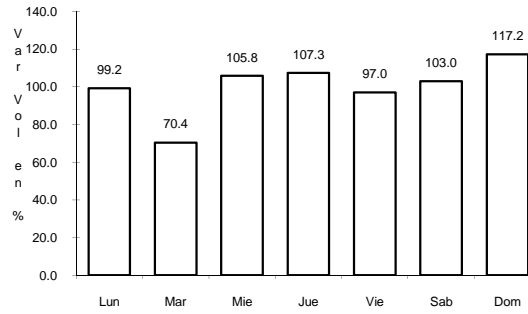
41 CARR: SAN LUIS DE LA PAZ - SAN JOSE ITURBIDE

CLAVE: 11046

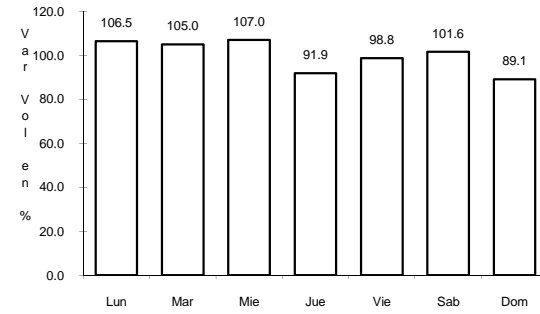
ruta: GTO



Km: 0.00 Tipo: 3 Sent: 0



Km: 21.50 Tipo: 1 Sent: 0

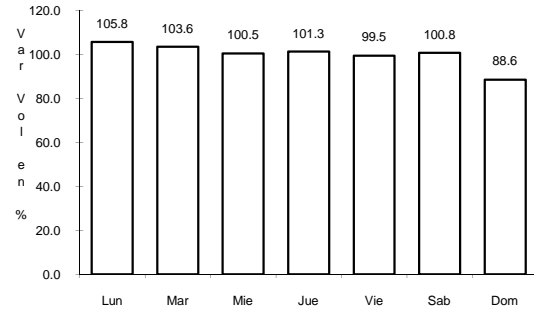


Km: 36.50 Tipo: 1 Sent: 0

42 CARR: SILAO - LA ROMITA

CLAVE: 11029

ruta: GTO

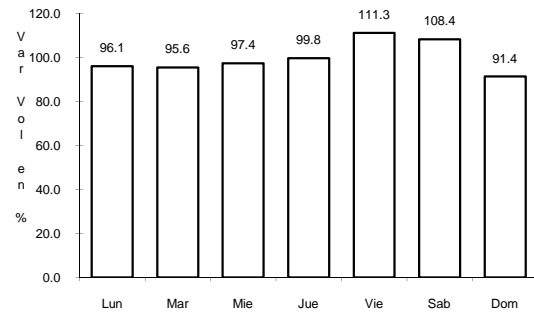


Km: 0.00 Tipo: 3 Sent: 0

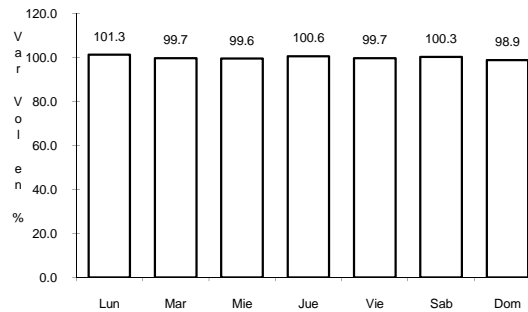
43 CARR: SILAO - LOS ARRASTRES

CLAVE:

ruta: GTO



Km: 0.00 Tipo: 3 Sent: 0

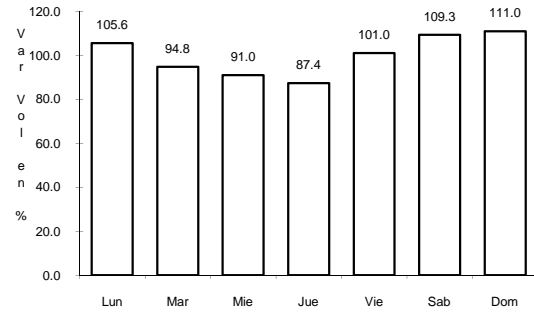


Km: 49.50 Tipo: 1 Sent: 0

44 CARR: T. C. (VILLA DEL PUEBLITO - HUIMILPAN) - CORONEO

CLAVE: 00155

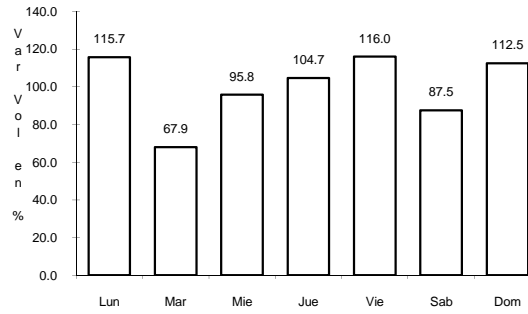
RUTA: QRO-GTO



Km: 0.00

Tipo: 3

Sent: 0



Km: 45.20

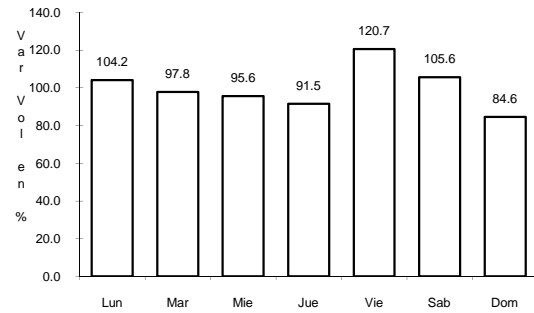
Tipo: 1

Sent: 0

45 CARR: CELAYA - DOLORES HIDALGO

CLAVE: 11109

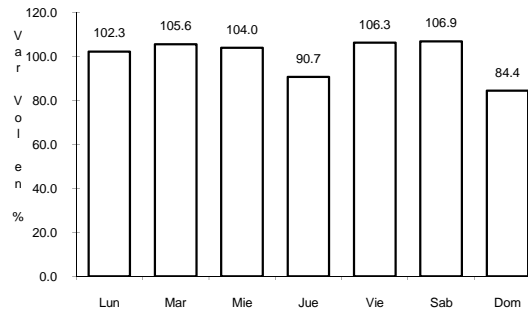
RUTA: MEX-051-GTO



Km: 3.90

Tipo: 1

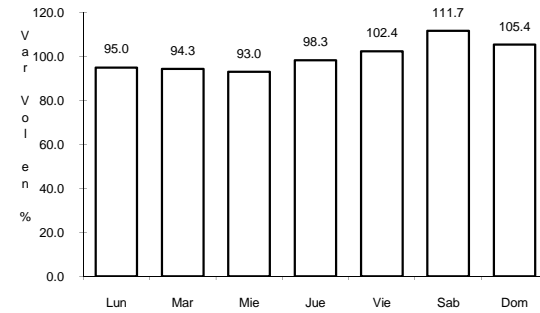
Sent: 1



Km: 3.90

Tipo: 1

Sent: 2



Km: 85.42

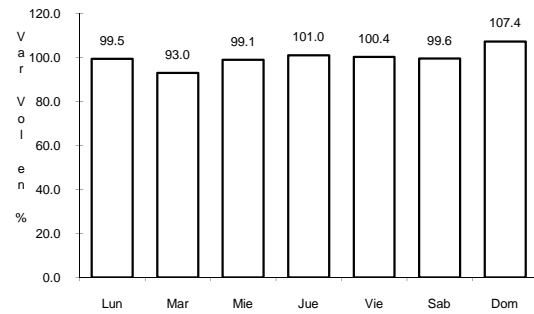
Tipo: 1

Sent: 0

46 CARR: CORTAZAR - VALLE DE SANTIAGO

CLAVE: 11016

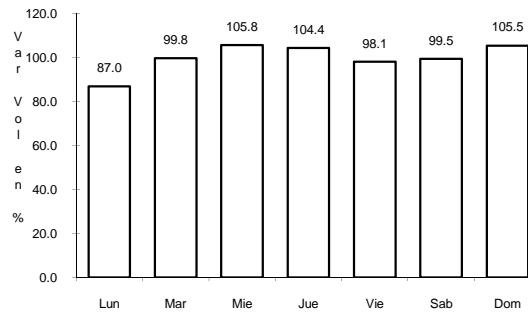
RUTA: MEX-GTO-017



Km: 0.00

Tipo: 3

Sent: 0

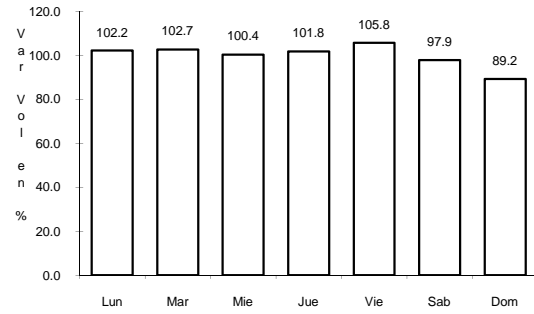


Km: 29.20

Tipo: 1

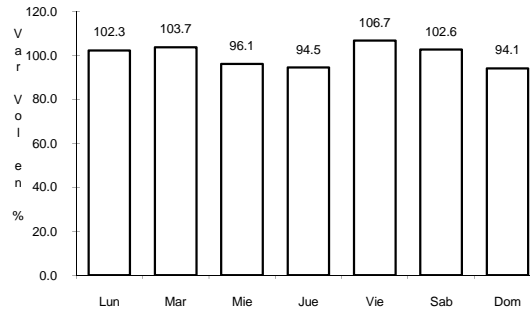
Sent: 0

47 CARR: GUANAJUATO - LOS INFANTES



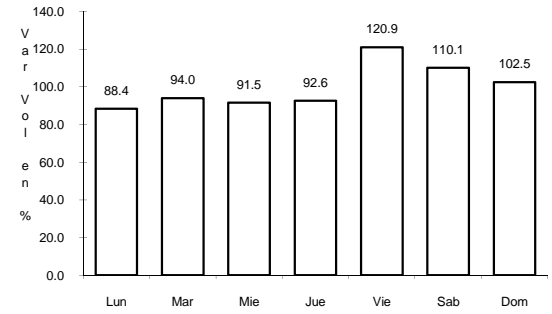
Km: 0.00 Tipo: 3 Sent: 0

CLAVE: 11067



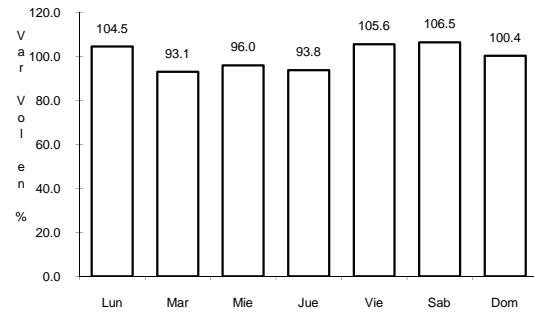
Km: 12.77 Tipo: 1 Sent: 0

RUTA: MEX-110-GTO



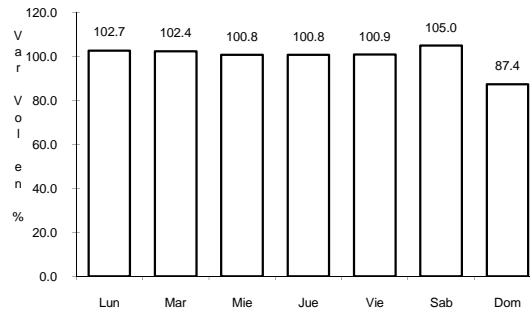
Km: 22.00 Tipo: 1 Sent: 0

48 CARR: TEPATITLAN - LAS ADJUNTAS



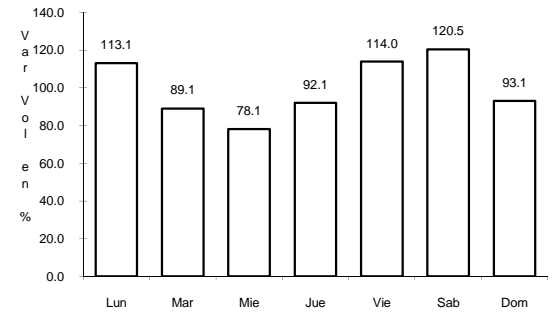
Km: 0.00 Tipo: 3 Sent: 0

CLAVE: 00141



Km: 46.00 Tipo: 3 Sent: 0

RUTA: JAL/MEX-084



Km: 100.00 Tipo: 1 Sent: 0