

DURANGO

Núm. INDICE	CARRETERA	RUTA
---- FEDERAL LIBRE ----		
1	BERMEJILLO - EL PALMITO	MEX-030
2	DURANGO - ENT. LA ZARCA	MEX-045
3	DURANGO - MEZQUITAL	MEX-023
4	DURANGO - TORREON	MEX-040
5	DURANGO - VILLA UNION	MEX-040
6	ENT. LA CHICHARRONA - CUENCAME	MEX-049
7	ENT. LA ZARCA - HIDALGO DEL PARRAL	MEX-045
8	ENT. LOS HERRERA - TOPIA	MEX-036
9	GOMEZ PALACIO - JIMENEZ	MEX-049
10	GOMEZ PALACIO - LA UNION	MEX
11	GOMEZ PALACIO - TLAHUALILLO	MEX
12	GREGORIO GARCIA - FRANCISCO I. MADERO	MEX
13	GUADALUPE AGUILERA - TEPEHUANES	MEX-023
14	HIDALGO DEL PARRAL - GUADALUPE Y CALVO	MEX-024
15	LIBRAMIENTO CUENCAME	MEX
16	PEDRICEÑA - ENT. RODEO	MEX-034
17	RAMAL A SANTA CLARA	MEX
18	RAMAL A VILLA JUAREZ	MEX
19	ZACATECAS - DURANGO	MEX-045
---- FEDERAL CUOTA ----		
20	DURANGO - GOMEZ PALACIO (CUOTA)	MEX-040D
21	DURANGO - VILLA UNION (CUOTA)	MEX-040D
22	GOMEZ PALACIO - JIMENEZ (CUOTA)	MEX-049D
23	LIBRAMIENTO DE DURANGO (CUOTA)	MEX-D
---- ESTATAL LIBRE ----		
24	AMADO NERVO - LA OCHOA	DGO-542
25	CEBALLOS - EL MIRADOR	DGO-044
26	DURANGO - ASERRADERO LA FLOR	DGO-115
27	JABONOSO - ESMERALDA	DGO-363
28	LA TORREÑA - BRITTINGHAM	DGO-325
29	LIBRAMIENTO DE TORREON	COA
30	MEZQUITAL - SAN MIGUEL DE TEMOAYA	DGO
31	RAMAL A SAN JUAN DEL RIO	DGO-290
32	SUCHIL - VILLA UNION	DGO-241
33	TLAHUALILLO DE ZARAGOZA - T.C. GOMEZ PALACIO - JIMENEZ	DGO
34	YERBANIS - PEÑON BLANCO	DGO-316

DURANGO

1 CARR : BERMEJILLO - EL PALMITO

CLAVE: 10105

RUTA : MEX-030

AÑO : 2008

L U G A R	E S T A C I O N				C L A S I F I C A C I O N V E H I C U L A R E N P O R C I E N T O .												
	KM	TE	SC	TDPA	A	B	C2	C3	T3S2	T3S3	T3S2R4	OTROS	A	B	C	K'	D
BERMEJILLO	0.00	3	0	2106	83.2	5.2	3.7	2.5	3.5	0.7	0.6	0.6	83.2	5.2	11.6	0.072	0.505
SANTO DOMINGO	86.00	1	0	879	82.3	3.8	5.5	3.8	2.2	0.9	1.0	0.5	82.3	3.8	13.9	0.075	0.503
SANTO DOMINGO	86.00	3	0	495	81.8	5.0	4.2	3.8	3.0	1.3	0.5	0.4	81.8	5.0	13.2	0.093	0.513
ENT. LA ZARCA	120.00	1	0	454	84.3	5.7	3.6	3.1	0.7	1.0	0.7	0.9	84.3	5.7	10.0	0.110	0.506
ENT. LA ZARCA	120.00	3	0	237	85.6	6.1	5.1	0.8	1.4	0.1	0.0	0.9	85.6	6.1	8.3	0.152	0.502
EL PALMITO	160.00	1	0	175	91.7	3.9	3.4	0.2	0.5	0.0	0.0	0.3	91.7	3.9	4.4	0.149	0.504

2 CARR : DURANGO - ENT. LA ZARCA

CLAVE: 10016

RUTA : MEX-045

AÑO : 2008

L U G A R	E S T A C I O N				C L A S I F I C A C I O N V E H I C U L A R E N P O R C I E N T O .												
	KM	TE	SC	TDPA	A	B	C2	C3	T3S2	T3S3	T3S2R4	OTROS	A	B	C	K'	D
DURANGO	0.00	3	1	9197	80.5	2.8	2.0	1.4	3.6	2.3	3.1	4.3	80.5	2.8	16.7	0.093	0.501
DURANGO	0.00	3	2	9169	83.7	3.0	1.5	1.1	3.8	1.4	1.7	3.8	83.7	3.0	13.3	0.088	0.501
CASETA FISCAL ZONA INDUSTRIAL	5.30	1	1	4915	83.3	5.7	2.4	2.8	2.9	1.1	0.5	1.3	83.3	5.7	11.0	0.101	0.507
CASETA FISCAL ZONA INDUSTRIAL	5.30	1	2	4783	83.2	5.1	2.4	2.8	3.2	1.3	0.7	1.3	83.2	5.1	11.7	0.103	0.507
CASETA FISCAL ZONA INDUSTRIAL	5.30	3	1	4532	81.9	4.6	2.6	4.0	3.4	1.4	0.7	1.4	81.9	4.6	13.5	0.098	0.503
CASETA FISCAL ZONA INDUSTRIAL	5.30	3	2	4484	81.0	4.1	2.5	4.2	3.3	1.5	1.0	2.4	81.0	4.1	14.9	0.101	0.503
X. PERIFERICO DURANGO	6.20	3	1	2766	86.2	2.8	1.5	3.5	3.2	1.5	0.7	0.6	86.2	2.8	11.0	0.104	0.507
X. PERIFERICO DURANGO	6.20	3	2	2840	86.5	2.8	1.4	3.1	3.0	1.6	0.8	0.8	86.5	2.8	10.7	0.126	0.507
T. DER. SAN JOSE DEL MOLINO	28.00	1	0	3900	88.1	6.6	1.4	2.9	0.0	0.0	0.0	1.0	88.1	6.6	5.3	0.104	0.500
T. IZQ. CANATLAN	55.25	1	0	4507	85.8	3.2	2.0	2.0	3.0	1.3	1.8	0.9	85.8	3.2	11.0	0.091	0.501
T. IZQ. CANATLAN	55.25	3	0	1827	84.1	4.9	4.3	1.7	3.1	0.9	0.5	0.5	84.1	4.9	11.0	0.090	0.503
T. DER. SAN JUAN DEL RIO	105.80	1	0	2091	89.1	3.0	2.1	1.5	2.5	1.1	0.3	0.4	89.1	3.0	7.9	0.094	0.501
T. DER. SAN JUAN DEL RIO	105.80	3	0	1379	86.0	3.5	4.7	1.8	2.4	0.9	0.3	0.4	86.0	3.5	10.5	0.091	0.505
T. DER. NAZAS	155.50	3	0	1729	87.4	2.6	3.9	1.5	2.7	1.1	0.3	0.5	87.4	2.6	10.0	0.089	0.504
T. DER. RODEO	160.70	1	0	1965	83.4	3.0	2.6	1.1	3.2	1.4	1.2	4.1	83.4	3.0	13.6	0.098	0.506
T. IZQ. ABASOLO	178.00	3	0	962	83.3	3.9	4.3	2.8	3.3	1.4	0.5	0.5	83.3	3.9	12.8	0.089	0.513
ENT. LA ZARCA	239.50	1	0	927	79.7	4.8	6.0	2.5	4.5	1.9	0.3	0.3	79.7	4.8	15.5	0.079	0.540

3 CARR : DURANGO - MEZQUITAL

CLAVE: 10423

RUTA : MEX-023

AÑO : 2008

L U G A R	E S T A C I O N				C L A S I F I C A C I O N V E H I C U L A R E N P O R C I E N T O .												
	KM	TE	SC	TDPA	A	B	C2	C3	T3S2	T3S3	T3S2R4	OTROS	A	B	C	K'	D
DURANGO	0.00	3	0	5435	83.0	3.1	3.5	4.4	3.1	0.9	1.0	1.0	83.0	3.1	13.9	0.074	0.503
GABINO SANTILLAN	8.00	3	0	3951	77.3	8.3	3.3	3.0	3.9	1.1	1.6	1.5	77.3	8.3	14.4	0.083	0.501

DURANGO

3 CARR : DURANGO - MEZQUITAL

CLAVE: 10423

RUTA : MEX-023

AÑO : 2008

L U G A R	E S T A C I O N				C L A S I F I C A C I O N V E H I C U L A R E N P O R C I E N T O .												
	KM	TE	SC	TDPA	A	B	C2	C3	T3S2	T3S3	T3S2R4	OTROS	A	B	C	K'	D
T. IZQ. MONTE MORELOS	13.00	3	0	2229	87.3	3.4	3.0	2.8	2.2	0.3	0.3	0.7	87.3	3.4	9.3	0.105	0.500
MEZQUITAL	82.00	1	0	2725	68.2	4.6	4.5	6.3	3.7	1.9	9.2	1.6	68.2	4.6	27.2	0.092	0.509

4 CARR : DURANGO - TORREON

CLAVE: 10085

RUTA : MEX-040

AÑO : 2008

L U G A R	E S T A C I O N				C L A S I F I C A C I O N V E H I C U L A R E N P O R C I E N T O .												
	KM	TE	SC	TDPA	A	B	C2	C3	T3S2	T3S3	T3S2R4	OTROS	A	B	C	K'	D
DURANGO	0.00	3	1	9432	84.8	4.3	2.4	1.4	5.1	0.2	0.8	1.0	84.8	4.3	10.9	0.086	0.502
DURANGO	0.00	3	2	9506	82.9	4.4	2.1	1.7	4.9	0.8	1.0	2.2	82.9	4.4	12.7	0.075	0.502
T. DER. CD. DE LOS NIÑOS	7.70	3	1	4355	84.1	3.8	2.4	1.5	3.5	1.3	1.0	2.4	84.1	3.8	12.1	0.111	0.507
T. DER. CD. DE LOS NIÑOS	7.70	3	2	4475	84.6	3.7	2.3	1.3	4.0	1.2	1.0	1.9	84.6	3.7	11.7	0.114	0.507
X. PERIFERICO DURANGO	9.00	3	1	5383	86.2	2.7	5.3	3.5	0.0	0.0	0.0	2.3	86.2	2.7	11.1	0.102	0.514
X. PERIFERICO DURANGO	9.00	3	2	5087	86.7	1.6	5.1	3.3	0.0	0.0	0.0	3.3	86.7	1.6	11.7	0.094	0.514
T. DER. AEROPUERTO	9.42	1	1	6573	83.4	4.6	4.7	5.9	0.0	0.0	0.0	1.4	83.4	4.6	12.0	0.123	0.516
T. DER. AEROPUERTO	9.42	1	2	6157	82.5	6.0	5.2	4.5	0.0	0.0	0.0	1.8	82.5	6.0	11.5	0.125	0.516
T. DER. AEROPUERTO	9.42	3	0	5766	86.1	5.2	4.1	2.3	0.0	0.0	0.0	2.3	86.1	5.2	8.7	0.074	0.506
LA CALDERA	10.85	3	0	5278	83.6	5.9	5.8	3.1	0.0	0.0	0.0	1.6	83.6	5.9	10.5	0.076	0.507
ABRAHAM GONZALEZ	27.10	3	0	4718	83.4	6.2	4.9	4.4	0.0	0.0	0.0	1.1	83.4	6.2	10.4	0.116	0.510
FRANCISCO I. MADERO	56.30	1	0	4487	80.4	8.3	4.8	4.4	0.0	0.0	0.0	2.1	80.4	8.3	11.3	0.100	0.513
FRANCISCO I. MADERO	56.30	3	0	4574	88.5	8.0	0.6	2.1	0.0	0.0	0.0	0.8	88.5	8.0	3.5	0.088	0.500
GUADALUPE VICTORIA	77.50	1	0	4098	81.2	8.1	4.1	4.4	0.0	0.0	0.0	2.2	81.2	8.1	10.7	0.085	0.505
GUADALUPE VICTORIA	77.50	3	0	5119	86.7	6.6	3.3	2.1	0.0	0.0	0.0	1.3	86.7	6.6	6.7	0.088	0.502
T. DER. IGNACIO ALLENDE	90.13	1	0	3871	83.2	7.2	4.0	4.6	0.0	0.0	0.0	1.0	83.2	7.2	9.6	0.096	0.502
T. DER. IGNACIO ALLENDE	90.13	3	0	4118	81.0	8.2	4.1	4.8	0.0	0.0	0.0	1.9	81.0	8.2	10.8	0.066	0.511
T. IZQ. PEÑON BLANCO	120.90	1	0	2806	73.9	8.1	4.9	11.3	0.0	0.0	0.0	1.8	73.9	8.1	18.0	0.120	0.511
T. IZQ. PEÑON BLANCO	120.90	3	0	3988	75.4	7.7	4.5	10.1	0.0	0.0	0.0	2.3	75.4	7.7	16.9	0.074	0.504
CUENCAME	144.30	1	0	3644	84.9	7.3	2.5	4.4	0.0	0.0	0.0	0.9	84.9	7.3	7.8	0.082	0.505
CUENCAME	144.30	3	0	6273	83.5	7.3	3.1	5.3	0.0	0.0	0.0	0.8	83.5	7.3	9.2	0.110	0.521
T. IZQ. NAZAS	171.60	1	0	5600	82.3	7.5	5.6	1.8	0.0	0.0	0.0	2.8	82.3	7.5	10.2	0.072	0.504
T. IZQ. NAZAS	171.60	3	0	4644	73.1	7.0	6.3	11.5	0.0	0.0	0.0	2.1	73.1	7.0	19.9	0.071	0.504
T. DER. VILLA JUAREZ	194.40	3	0	4287	68.2	6.7	6.5	15.1	0.0	0.0	0.0	3.5	68.2	6.7	25.1	0.071	0.505
LEON GUZMAN	229.60	3	0	8321	79.8	4.5	6.5	6.2	0.0	0.0	0.0	3.0	79.8	4.5	15.7	0.078	0.508
CD. LERDO	244.80	1	0	9981	88.2	4.3	2.5	2.0	0.0	0.0	0.0	3.0	88.2	4.3	7.5	0.076	0.522
T. IZQ. GOMEZ PALACIO	248.90	3	1	17933	74.5	8.0	5.0	0.6	2.9	2.7	0.9	5.4	74.5	8.0	17.5	0.065	0.506
T. IZQ. GOMEZ PALACIO	248.90	3	2	17503	75.9	8.3	4.4	0.9	1.1	1.9	2.0	5.5	75.9	8.3	15.8	0.072	0.506

DURANGO

4 CARR : DURANGO - TORREON

CLAVE: 10085

RUTA : MEX-040

AÑO : 2008

L U G A R	E S T A C I O N				C L A S I F I C A C I O N V E H I C U L A R E N P O R C I E N T O .												
	KM	TE	SC	TDPA	A	B	C2	C3	T3S2	T3S3	T3S2R4	OTROS	A	B	C	K'	D
LIM. EDOS. TERM. DGO. PPIA. COAH.	251.00																
TORREON	255.80	1	1	16525	59.9	3.8	2.7	1.9	9.6	5.3	12.2	4.6	59.9	3.8	36.3	0.066	0.515
TORREON	255.80	1	2	15563	56.9	4.2	3.4	2.2	9.5	5.8	12.1	5.9	56.9	4.2	38.9	0.068	0.515

5 CARR : DURANGO - VILLA UNION

CLAVE: 00083

RUTA : MEX-040

AÑO : 2008

L U G A R	E S T A C I O N				C L A S I F I C A C I O N V E H I C U L A R E N P O R C I E N T O .												
	KM	TE	SC	TDPA	A	B	C2	C3	T3S2	T3S3	T3S2R4	OTROS	A	B	C	K'	D
DURANGO	0.00	3	0	4871	79.9	4.7	3.1	5.4	2.2	1.0	2.4	1.3	79.9	4.7	15.4	0.064	0.505
T. DER. PINO	22.86	3	0	4622	82.5	4.8	3.5	3.5	2.1	1.4	1.2	1.0	82.5	4.8	12.7	0.062	0.515
T. IZQ. ESTACION NAVIOS	58.42	3	0	2648	72.8	6.1	1.4	3.7	6.8	4.4	3.0	1.8	72.8	6.1	21.1	0.082	0.502
LLANO GRANDE	77.23	1	0	2728	74.1	7.1	1.5	3.3	7.6	4.3	1.0	1.1	74.1	7.1	18.8	0.086	0.506
EL SALTO	99.76	3	0	2987	74.8	6.6	2.8	2.8	7.7	3.5	0.8	1.0	74.8	6.6	18.6	0.090	0.502
LA CIUDAD	145.50	1	0	1856	79.2	6.4	1.3	3.9	5.0	2.4	0.7	1.1	79.2	6.4	14.4	0.103	0.508
LA CIUDAD	145.50	3	0	1416	75.7	5.2	1.2	5.2	5.6	4.5	1.4	1.2	75.7	5.2	19.1	0.101	0.513
LIM. EDOS. TERM. DGO. PPIA. SIN.	198.50																
T. C. TEPIC - MAZATLAN	294.40	1	0	6401	85.3	3.9	3.5	1.7	3.3	1.2	0.4	0.7	85.3	3.9	10.8	0.085	0.511

6 CARR : ENT. LA CHICHARRONA - CUENCAME

CLAVE: 00152

RUTA : MEX-049

AÑO : 2008

L U G A R	E S T A C I O N				C L A S I F I C A C I O N V E H I C U L A R E N P O R C I E N T O .												
	KM	TE	SC	TDPA	A	B	C2	C3	T3S2	T3S3	T3S2R4	OTROS	A	B	C	K'	D
ENT. LA CHICHARRONA	0.00	3	1	4031	67.8	4.9	3.1	4.7	10.1	3.7	4.2	1.5	67.8	4.9	27.3	0.071	0.506
ENT. LA CHICHARRONA	0.00	3	2	4128	63.7	4.8	3.4	4.7	10.5	5.1	5.1	2.7	63.7	4.8	31.5	0.070	0.506
T. DER. CAÑITAS DE FELIPE PESCADOR	25.86	1	1	3112	63.3	9.0	6.1	3.5	4.8	4.2	3.8	5.3	63.3	9.0	27.7	0.074	0.514
T. DER. CAÑITAS DE FELIPE PESCADOR	25.86	1	2	3288	63.0	9.1	6.1	3.4	4.4	4.0	4.0	6.0	63.0	9.1	27.9	0.073	0.514
RIO GRANDE	60.00	1	0	5725	84.1	5.2	3.2	0.9	2.3	1.4	1.4	1.5	84.1	5.2	10.7	0.090	0.520
RIO GRANDE	60.00	3	0	6428	77.8	4.8	4.0	3.7	3.3	4.0	1.3	1.1	77.8	4.8	17.4	0.089	0.509
T. DER. NIEVES	78.00	3	0	6970	84.3	3.3	3.0	3.5	1.8	1.6	1.1	1.4	84.3	3.3	12.4	0.087	0.501
X. C. JUAN ALDAMA - MIGUEL AUZA	124.50	1	0	6363	66.1	8.7	6.8	4.6	6.1	5.1	1.2	1.4	66.1	8.7	25.2	0.077	0.502
X. C. JUAN ALDAMA - MIGUEL AUZA	124.50	3	0	7105	84.0	2.9	3.7	3.2	1.9	1.8	1.1	1.4	84.0	2.9	13.1	0.082	0.508
LIM. EDOS. TERM. ZAC. PPIA. DGO.	134.30																
T. DER. SANTA CLARA	144.00	1	0	4927	70.9	8.6	5.7	12.4	0.0	0.0	0.0	2.4	70.9	8.6	20.5	0.068	0.505
T. DER. SANTA CLARA	144.00	3	0	4487	69.3	9.2	4.2	14.4	0.0	0.0	0.0	2.9	69.3	9.2	21.5	0.061	0.507
CUENCAME	199.10	1	0	4905	87.1	5.8	3.7	2.2	0.0	0.0	0.0	1.2	87.1	5.8	7.1	0.110	0.520

DURANGO

7 CARR : ENT. LA ZARCA - HIDALGO DEL PARRAL

CLAVE: 00488

RUTA : MEX-045

AÑO : 2008

L U G A R	E S T A C I O N				C L A S I F I C A C I O N V E H I C U L A R E N P O R C I E N T O .												
	KM	TE	SC	TDPA	A	B	C2	C3	T3S2	T3S3	T3S2R4	OTROS	A	B	C	K'	D
ENT. LA ZARCA	0.00	3	0	989	79.7	5.5	1.9	4.4	5.8	2.2	0.2	0.3	79.7	5.5	14.8	0.093	0.506
T. DER. CEBALLOS	47.85	1	0	809	79.2	3.5	5.4	4.0	4.7	2.3	0.5	0.4	79.2	3.5	17.3	0.098	0.501
T. DER. CEBALLOS	47.85	3	0	908	75.4	7.2	4.3	3.9	3.4	2.1	1.3	2.4	75.4	7.2	17.4	0.093	0.515
T. IZQ. CANUTILLO	92.35	3	0	1212	80.8	5.5	4.7	2.7	3.9	1.8	0.2	0.4	80.8	5.5	13.7	0.082	0.503
LAS NIEVES	97.60	3	0	1913	83.8	5.0	2.9	2.4	3.0	1.4	0.3	1.2	83.8	5.0	11.2	0.084	0.502
T. IZQ. OCAMPO	109.20	3	0	1076	81.2	5.1	4.3	2.7	3.8	2.2	0.2	0.5	81.2	5.1	13.7	0.113	0.503
LIM. EDOS. TERM. DGO. PPIA. CHIH.	122.90																
MATAMOROS	148.00	1	0	777	81.9	5.8	2.1	3.3	2.2	2.5	1.6	0.6	81.9	5.8	12.3	0.117	0.506
HIDALGO DEL PARRAL	171.00	1	0	757	83.4	5.9	2.5	2.8	2.5	2.3	0.2	0.4	83.4	5.9	10.7	0.094	0.503
T. DER. JIMENEZ	179.50																

8 CARR : ENT. LOS HERRERA - TOPIA

CLAVE: 10090

RUTA : MEX-036

AÑO : 2008

L U G A R	E S T A C I O N				C L A S I F I C A C I O N V E H I C U L A R E N P O R C I E N T O .												
	KM	TE	SC	TDPA	A	B	C2	C3	T3S2	T3S3	T3S2R4	OTROS	A	B	C	K'	D
T. C. GUADALUPE AGUILERA - TEPEHUANES	0.00	3	0	668	82.7	5.1	3.1	2.8	2.8	2.7	0.3	0.5	82.7	5.1	12.2	0.097	0.501
LOS ALTARES	80.00	1	0	689	80.5	1.9	2.4	3.0	6.1	4.1	1.1	0.9	80.5	1.9	17.6	0.104	0.514
TOPIA	229.00																

9 CARR : GOMEZ PALACIO - JIMENEZ

CLAVE: 00006

RUTA : MEX-049

AÑO : 2008

L U G A R	E S T A C I O N				C L A S I F I C A C I O N V E H I C U L A R E N P O R C I E N T O .												
	KM	TE	SC	TDPA	A	B	C2	C3	T3S2	T3S3	T3S2R4	OTROS	A	B	C	K'	D
GOMEZ PALACIO	0.00	3	1	9165	87.8	4.2	3.1	1.2	0.6	0.6	0.2	2.3	87.8	4.2	8.0	0.095	0.501
GOMEZ PALACIO	0.00	3	2	9199	86.2	4.8	3.1	1.3	1.1	1.1	0.1	2.3	86.2	4.8	9.0	0.087	0.501
X. C. LA TORREÑA - BRITTINGHAM	10.96	1	1	7845	76.7	6.8	5.3	3.4	1.6	1.5	0.5	4.2	76.7	6.8	16.5	0.101	0.506
X. C. LA TORREÑA - BRITTINGHAM	10.96	1	2	7652	78.9	6.1	5.3	2.7	2.1	1.7	0.7	2.5	78.9	6.1	15.0	0.094	0.506
T. IZQ. DINAMITA	26.27	1	1	4649	82.3	3.0	0.0	0.2	6.0	2.0	3.3	3.2	82.3	3.0	14.7	0.077	0.507
T. IZQ. DINAMITA	26.27	1	2	4773	83.8	3.6	0.2	0.3	5.2	1.6	2.4	2.9	83.8	3.6	12.6	0.075	0.507
BERMEJILLO	39.30	1	0	7060	79.7	5.5	3.2	1.2	4.9	1.2	2.6	1.7	79.7	5.5	14.8	0.078	0.503
T. IZQ. ENT. LA ZARCA	40.89	3	0	8096	55.7	12.7	3.8	7.7	5.3	2.6	9.2	3.0	55.7	12.7	31.6	0.064	0.509
YERMO	108.00	1	0	6414	75.1	5.8	6.8	3.3	2.4	2.5	1.5	2.6	75.1	5.8	19.1	0.110	0.503
YERMO	108.00	3	0	5236	78.2	7.9	4.7	2.5	3.1	2.2	0.7	0.7	78.2	7.9	13.9	0.120	0.505
CEBALLOS	127.20	1	0	7132	77.0	4.3	5.9	3.1	4.1	2.2	2.2	1.2	77.0	4.3	18.7	0.060	0.502
CEBALLOS	127.20	3	0	8792	75.4	3.5	6.3	3.9	3.6	2.6	1.6	3.1	75.4	3.5	21.1	0.120	0.502

DURANGO

9 CARR : GOMEZ PALACIO - JIMENEZ

CLAVE: 00006

RUTA : MEX-049

AÑO : 2008

L U G A R	E S T A C I O N				C L A S I F I C A C I O N V E H I C U L A R E N P O R C I E N T O .												
	KM	TE	SC	TDPA	A	B	C2	C3	T3S2	T3S3	T3S2R4	OTROS	A	B	C	K'	D
LIM. EDOS. TERM. DGO. PPIA. CHIH.	146.20																
ESTACION ESCALON	160.90	3	0	5422	73.2	3.9	7.1	5.2	3.5	2.6	2.0	2.5	73.2	3.9	22.9	0.110	0.510
JIMENEZ	234.00																

10 CARR : GOMEZ PALACIO - LA UNION

CLAVE: 10009

RUTA : MEX

AÑO : 2008

L U G A R	E S T A C I O N				C L A S I F I C A C I O N V E H I C U L A R E N P O R C I E N T O .												
	KM	TE	SC	TDPA	A	B	C2	C3	T3S2	T3S3	T3S2R4	OTROS	A	B	C	K'	D
GOMEZ PALACIO	0.00	3	0	5906	80.7	4.6	1.0	5.3	3.9	1.3	1.7	1.5	80.7	4.6	14.7	0.074	0.504
X. C. TORREON - VILLA JUAREZ	4.30	3	0	2171	68.9	10.1	3.4	9.5	2.5	1.2	2.8	1.6	68.9	10.1	21.0	0.098	0.505
NAZARENO	20.90	1	0	2253	69.5	9.5	3.3	9.5	2.6	1.3	2.7	1.6	69.5	9.5	21.0	0.087	0.504
NAZARENO	20.90	3	0	1633	76.5	4.5	12.5	3.3	1.7	0.6	0.3	0.6	76.5	4.5	19.0	0.081	0.507
LA UNION	42.20	1	0	900	76.1	2.6	3.5	9.4	5.8	0.7	1.6	0.3	76.1	2.6	21.3	0.122	0.529

11 CARR : GOMEZ PALACIO - TLAHUALILLO

CLAVE: 10005

RUTA : MEX

AÑO : 2008

L U G A R	E S T A C I O N				C L A S I F I C A C I O N V E H I C U L A R E N P O R C I E N T O .												
	KM	TE	SC	TDPA	A	B	C2	C3	T3S2	T3S3	T3S2R4	OTROS	A	B	C	K'	D
T. C. GOMEZ PALACIO - JIMENEZ	0.00																
T. IZQ. ESMERALDA	5.60	1	0	9895	73.5	4.7	2.6	2.1	7.4	2.2	4.6	2.9	73.5	4.7	21.8	0.072	0.509
T. IZQ. ESMERALDA	5.60	3	0	7214	79.7	5.2	3.8	1.3	4.6	1.4	2.3	1.7	79.7	5.2	15.1	0.073	0.510
GREGORIO GARCIA	26.00	3	0	3406	78.6	6.4	3.7	3.0	4.3	1.2	1.7	1.1	78.6	6.4	15.0	0.104	0.504
T. IZQ. ESMERALDA	31.44	1	0	4711	82.2	5.4	1.5	1.8	4.0	1.2	2.1	1.8	82.2	5.4	12.4	0.097	0.502
SAN FRANCISCO	48.90	1	0	2500	78.6	5.5	5.7	6.5	2.5	0.4	0.4	0.4	78.6	5.5	15.9	0.086	0.502
SAN FRANCISCO	48.90	3	0	2255	76.7	10.2	5.2	4.8	1.9	0.5	0.2	0.5	76.7	10.2	13.1	0.096	0.501
TLAHUALILLO	72.90	1	0	2952	88.5	4.1	3.0	2.2	1.5	0.1	0.2	0.4	88.5	4.1	7.4	0.095	0.511

12 CARR : GREGORIO GARCIA - FRANCISCO I. MADERO

CLAVE: 00110

RUTA : MEX

AÑO : 2008

L U G A R	E S T A C I O N				C L A S I F I C A C I O N V E H I C U L A R E N P O R C I E N T O .												
	KM	TE	SC	TDPA	A	B	C2	C3	T3S2	T3S3	T3S2R4	OTROS	A	B	C	K'	D
T. C. GOMEZ PALACIO - TLAHUALILLO	0.00																
LIM. EDOS. TERM. DGO. PPIA. COAH.	3.60																
FRANCISCO I. MADERO	9.60	1	0	5378	86.2	3.9	2.5	0.5	3.5	0.5	1.5	1.4	86.2	3.9	9.9	0.088	0.508

DURANGO

13 CARR : GUADALUPE AGUILERA - TEPEHUANES

CLAVE: 10220

RUTA : MEX-023

AÑO : 2008

L U G A R	E S T A C I O N				C L A S I F I C A C I O N V E H I C U L A R E N P O R C I E N T O .												
	KM	TE	SC	TDPA	A	B	C2	C3	T3S2	T3S3	T3S2R4	OTROS	A	B	C	K'	D
GUADALUPE AGUILERA	0.00	3	0	3747	82.5	4.0	1.8	2.4	4.5	1.9	1.4	1.5	82.5	4.0	13.5	0.104	0.502
CANATLAN	14.00	3	0	2974	88.0	3.0	1.3	2.2	2.2	1.6	1.0	0.7	88.0	3.0	9.0	0.073	0.505
T. DER. CONETO DE COMONFORT	41.60	1	0	2276	86.1	3.3	2.5	2.1	2.6	2.1	0.6	0.7	86.1	3.3	10.6	0.083	0.504
LA SOLEDAD	45.80	3	0	2305	83.6	4.0	4.7	2.3	2.5	1.9	0.5	0.5	83.6	4.0	12.4	0.093	0.505
JOSE MARIA MORELOS	90.20	1	0	2181	83.9	3.6	3.8	1.8	3.6	1.8	0.7	0.8	83.9	3.6	12.5	0.121	0.504
SANTIAGO PAPASQUIARO	117.00	3	0	5746	87.7	2.9	1.7	2.8	2.8	0.9	0.5	0.7	87.7	2.9	9.4	0.078	0.510
LAS HERRERAS	133.00	3	0	1049	87.6	3.3	3.5	2.4	1.7	0.8	0.5	0.2	87.6	3.3	9.1	0.089	0.511
TEPEHUANES	169.00	1	0	1160	90.6	2.1	2.6	1.8	1.9	0.5	0.1	0.4	90.6	2.1	7.3	0.100	0.507

14 CARR : HIDALGO DEL PARRAL - GUADALUPE Y CALVO

CLAVE: 00802

RUTA : MEX-024

AÑO : 2008

L U G A R	E S T A C I O N				C L A S I F I C A C I O N V E H I C U L A R E N P O R C I E N T O .												
	KM	TE	SC	TDPA	A	B	C2	C3	T3S2	T3S3	T3S2R4	OTROS	A	B	C	K'	D
T. C. HIDALGO DEL PARRAL - SANTA BARBARA	0.00	3	0	2344	84.8	4.8	3.7	1.7	2.3	1.4	0.5	0.8	84.8	4.8	10.4	0.087	0.508
T. DER. GUACHOCHIC	35.00	1	0	1622	81.4	5.0	4.6	2.8	2.5	1.9	0.4	1.4	81.4	5.0	13.6	0.074	0.503
T. DER. GUACHOCHIC	35.00	3	0	683	78.9	6.1	5.0	3.0	2.8	1.7	0.4	2.1	78.9	6.1	15.0	0.094	0.501
LIM. EDOS. TERM. CHIH. PPIA. DGO	38.00																
LIM. EDOS. TERM. DGO. PPIA. CHIH.	57.00																
EL VERGEL	110.00	1	0	827	84.0	6.1	3.1	2.4	1.3	0.9	0.6	1.6	84.0	6.1	9.9	0.157	0.500
PUERTO SABINAL	212.00	1	0	1194	86.4	4.8	3.2	2.7	1.3	0.3	0.2	1.1	86.4	4.8	8.8	0.093	0.507
GUADALUPE Y CALVO	234.00																

15 CARR : LIBRAMIENTO CUENCAME

CLAVE: 10006

RUTA : MEX

AÑO : 2008

L U G A R	E S T A C I O N				C L A S I F I C A C I O N V E H I C U L A R E N P O R C I E N T O .												
	KM	TE	SC	TDPA	A	B	C2	C3	T3S2	T3S3	T3S2R4	OTROS	A	B	C	K'	D
T. C. LA CHICHARRONA - CUENCAME	0.00	3	0	2123	81.8	6.8	3.8	5.8	0.0	0.0	0.0	1.8	81.8	6.8	11.4	0.065	0.511
T. C. DURANGO - TORREON	2.60	3	0	3957	77.4	7.3	3.2	6.4	0.0	0.0	0.0	5.7	77.4	7.3	15.3	0.063	0.517
T. C. DURANGO - TORREON	5.00																

16 CARR : PEDRICEÑA - ENT. RODEO

CLAVE: 10002

RUTA : MEX-034

AÑO : 2008

L U G A R	E S T A C I O N				C L A S I F I C A C I O N V E H I C U L A R E N P O R C I E N T O .												
	KM	TE	SC	TDPA	A	B	C2	C3	T3S2	T3S3	T3S2R4	OTROS	A	B	C	K'	D
T. C. CUENCAME - TORREON	0.00	3	0	1721	88.2	4.8	3.3	3.3	0.0	0.0	0.0	0.4	88.2	4.8	7.0	0.081	0.502

DURANGO

16 CARR : PEDRICEÑA - ENT. RODEO

CLAVE: 10002

RUTA : MEX-034

AÑO : 2008

L U G A R	E S T A C I O N				C L A S I F I C A C I O N V E H I C U L A R E N P O R C I E N T O .												
	KM	TE	SC	TDPA	A	B	C2	C3	T3S2	T3S3	T3S2R4	OTROS	A	B	C	K'	D
NAZAS	45.00	1	0	1788	88.0	4.8	1.7	1.3	2.3	1.0	0.4	0.5	88.0	4.8	7.2	0.105	0.507
NAZAS	45.00	3	0	1743	88.2	3.3	2.0	1.8	2.2	1.5	0.4	0.6	88.2	3.3	8.5	0.110	0.508
T. C. (DURANGO - ENT. LA ZARCA)-ENT. RODEO	98.00	1	0	793	91.9	2.1	2.8	0.2	1.6	0.9	0.3	0.2	91.9	2.1	6.0	0.086	0.507

17 CARR : RAMAL A SANTA CLARA

CLAVE: 10287

RUTA : MEX

AÑO : 2008

L U G A R	E S T A C I O N				C L A S I F I C A C I O N V E H I C U L A R E N P O R C I E N T O .												
	KM	TE	SC	TDPA	A	B	C2	C3	T3S2	T3S3	T3S2R4	OTROS	A	B	C	K'	D
T. C. ENT. LA CHICHARRONA - CUENCAME	0.00	3	0	817	78.1	6.6	11.5	3.5	0.0	0.0	0.0	0.3	78.1	6.6	15.3	0.091	0.506
SANTA CLARA	14.00																

18 CARR : RAMAL A VILLA JUAREZ

CLAVE:

RUTA : MEX

AÑO : 2008

L U G A R	E S T A C I O N				C L A S I F I C A C I O N V E H I C U L A R E N P O R C I E N T O .												
	KM	TE	SC	TDPA	A	B	C2	C3	T3S2	T3S3	T3S2R4	OTROS	A	B	C	K'	D
T.C. GOMEZ PALACIO - LA UNION	1.00	3	0	1616	83.9	4.0	3.6	6.1	0.0	0.0	0.0	2.4	83.9	4.0	12.1	0.079	0.505
VILLA JUAREZ	13.00																

19 CARR : ZACATECAS - DURANGO

CLAVE: 00544

RUTA : MEX-045

AÑO : 2008

L U G A R	E S T A C I O N				C L A S I F I C A C I O N V E H I C U L A R E N P O R C I E N T O .												
	KM	TE	SC	TDPA	A	B	C2	C3	T3S2	T3S3	T3S2R4	OTROS	A	B	C	K'	D
ZACATECAS	0.00																
T. IZQ. GUADALAJARA	6.40	3	1	9651	75.0	4.5	3.6	3.2	5.8	1.9	3.7	2.3	75.0	4.5	20.5	0.076	0.504
T. IZQ. GUADALAJARA	6.40	3	2	9809	79.6	3.2	3.0	4.0	3.2	0.8	3.6	2.6	79.6	3.2	17.2	0.077	0.504
T. DER. SALTILLO (T. MORELOS)	15.00	3	1	9122	58.0	6.0	4.6	7.3	8.3	4.5	6.2	5.1	58.0	6.0	36.0	0.071	0.503
T. DER. SALTILLO (T. MORELOS)	15.00	3	2	8995	64.2	4.5	4.1	5.4	6.0	3.6	6.3	5.9	64.2	4.5	31.3	0.078	0.503
VICTOR ROSALES	28.00	1	1	7041	81.4	4.5	3.3	2.2	4.5	3.2	0.9	0.0	81.4	4.5	14.1	0.084	0.500
VICTOR ROSALES	28.00	1	2	7052	85.2	4.0	2.1	3.2	2.1	2.4	0.8	0.2	85.2	4.0	10.8	0.090	0.500
GRAL. ENRIQUE ESTRADA	34.60	3	1	9002	70.9	5.1	4.4	2.9	8.8	2.9	3.8	1.2	70.9	5.1	24.0	0.078	0.508
GRAL. ENRIQUE ESTRADA	34.60	3	2	8711	72.3	5.0	4.8	2.8	7.1	3.2	3.5	1.3	72.3	5.0	22.7	0.078	0.508
FRESNILLO	58.50	1	1	6468	75.8	7.2	2.8	3.3	5.8	2.1	1.9	1.1	75.8	7.2	17.0	0.100	0.504
FRESNILLO	58.50	1	2	6584	75.9	7.3	2.2	3.6	5.3	2.5	1.8	1.4	75.9	7.3	16.8	0.100	0.504
ENT. LA CHICHARRONA	74.30	1	1	6102	68.0	4.3	3.0	5.3	9.5	3.9	4.7	1.3	68.0	4.3	27.7	0.094	0.502
ENT. LA CHICHARRONA	74.30	1	2	6062	68.4	4.9	3.1	5.5	9.6	3.5	3.9	1.1	68.4	4.9	26.7	0.106	0.502

DURANGO

19 CARR : ZACATECAS - DURANGO

CLAVE: 00544

RUTA : MEX-045

AÑO : 2008

L U G A R	E S T A C I O N				C L A S I F I C A C I O N V E H I C U L A R E N P O R C I E N T O .												
	KM	TE	SC	TDPA	A	B	C2	C3	T3S2	T3S3	T3S2R4	OTROS	A	B	C	K'	D
ENT. LA CHICHARRONA	74.30	3	0	5643	80.2	5.0	3.2	2.1	4.2	2.8	1.5	1.0	80.2	5.0	14.8	0.075	0.502
T. DER. SAIN ALTO	121.00	3	0	2713	79.1	3.0	3.2	3.2	5.4	3.2	2.1	0.8	79.1	3.0	17.9	0.098	0.508
T. IZQ. SOMBRERETE (2° ACCESO)	161.50	3	0	4630	81.3	4.5	5.1	2.8	3.0	1.8	1.1	0.4	81.3	4.5	14.2	0.075	0.502
LIM. EDOS. TERM. ZAC. PPIA. DGO.	190.10																
X. C. VICENTE GUERRERO - VILLA UNION	207.00	1	0	2409	68.7	7.2	5.3	3.5	6.8	4.0	3.1	1.4	68.7	7.2	24.1	0.079	0.505
X. C. VICENTE GUERRERO - VILLA UNION	207.00	3	0	3387	69.6	8.6	5.5	3.9	5.9	3.0	2.0	1.5	69.6	8.6	21.8	0.098	0.504
T. IZQ. GRACEROS	210.00	1	0	3021	70.2	8.1	5.8	2.9	6.3	3.4	1.9	1.4	70.2	8.1	21.7	0.080	0.503
AMADO NERVO	231.50	1	0	2778	71.6	9.4	4.7	4.6	4.6	2.6	1.7	0.8	71.6	9.4	19.0	0.094	0.504
AMADO NERVO	231.50	3	0	3472	84.5	7.5	4.8	1.8	0.0	0.0	0.0	1.4	84.5	7.5	8.0	0.086	0.507
NOMBRE DE DIOS	236.80	1	0	3813	81.9	5.8	6.3	4.4	0.0	0.0	0.0	1.6	81.9	5.8	12.3	0.081	0.501
NOMBRE DE DIOS	236.80	3	0	4569	81.3	6.4	6.7	4.3	0.0	0.0	0.0	1.3	81.3	6.4	12.3	0.083	0.551
T. DER. CONSTANCIA	240.60	3	0	3830	78.8	5.7	7.6	5.5	0.0	0.0	0.0	2.4	78.8	5.7	15.5	0.079	0.508
T. DER. TUITAN	250.80	3	0	4006	79.6	5.9	7.6	5.1	0.0	0.0	0.0	1.8	79.6	5.9	14.5	0.082	0.508
T. DER. INDEPENDENCIA Y LIBERTAD	261.70	1	0	3481	80.6	5.5	7.4	4.6	0.0	0.0	0.0	1.9	80.6	5.5	13.9	0.082	0.507
T. DER. INDEPENDENCIA Y LIBERTAD	261.70	3	0	4450	75.5	7.4	4.7	4.0	2.9	2.4	1.3	1.8	75.5	7.4	17.1	0.088	0.500
T. IZQ. PARRAS DE LA FUENTE	276.60	3	1	2588	81.7	6.6	6.7	3.8	0.0	0.0	0.0	1.2	81.7	6.6	11.7	0.092	0.503
T. IZQ. PARRAS DE LA FUENTE	276.60	3	2	2560	82.7	6.0	6.9	3.0	0.0	0.0	0.0	1.4	82.7	6.0	11.3	0.119	0.503
T. DER. PERIFERICO DURANGO	278.80	1	1	3964	82.2	3.7	4.7	3.5	2.3	1.3	1.3	1.0	82.2	3.7	14.1	0.090	0.501
T. DER. PERIFERICO DURANGO	278.80	1	2	3942	86.2	3.0	4.1	2.6	1.9	0.7	0.6	0.9	86.2	3.0	10.8	0.096	0.501
DURANGO	287.30	1	1	3855	77.0	5.6	4.2	3.1	3.0	1.2	1.6	4.3	77.0	5.6	17.4	0.101	0.502
DURANGO	287.30	1	2	3884	76.9	5.7	4.8	2.6	3.0	3.9	2.8	0.3	76.9	5.7	17.4	0.090	0.502

20 CARR : DURANGO - GOMEZ PALACIO (CUOTA)

CLAVE: 10003

RUTA : MEX-040D

AÑO : 2008

L U G A R	E S T A C I O N				C L A S I F I C A C I O N V E H I C U L A R E N P O R C I E N T O .												
	KM	TE	SC	TDPA	A	B	C2	C3	T3S2	T3S3	T3S2R4	OTROS	A	B	C	K'	D
T. C. DURANGO - TORREON	0.00																
CASETA DE COBRO DURANGO	15.50	2	0	1551	76.3	9.4	2.5	1.4	3.7	1.0	2.0	3.7	76.3	9.4	14.3		
CASETA DE COBRO YERBANIS	112.20	2	0	1219	74.3	10.8	2.6	1.4	4.5	1.0	2.7	2.7	74.3	10.8	14.9		
CASETA DE COBRO CUENCAME	143.20	1	0	1339	72.8	10.8	2.6	1.6	3.6	1.0	2.4	5.2	72.8	10.8	16.4		
CASETA DE COBRO CUENCAME	143.20	2	0	1233	73.8	11.6	2.5	1.5	3.7	1.0	2.6	3.3	73.8	11.6	14.6		
CASETA DE COBRO CUENCAME	143.20	3	0	3413	65.4	12.2	2.9	2.1	6.3	1.4	7.0	2.7	65.4	12.2	22.4		
X. C. CUENCAME - TORREON	180.00	1	1	1510	69.0	5.0	4.9	5.7	3.1	1.9	8.1	2.3	69.0	5.0	26.0	0.087	0.508
X. C. CUENCAME - TORREON	180.00	1	2	1561	67.7	5.2	4.1	7.4	4.1	1.9	8.6	1.0	67.7	5.2	27.1	0.085	0.508
X. C. CUENCAME - TORREON	180.00	3	1	1619	70.6	4.6	3.5	6.3	3.1	1.5	9.3	1.1	70.6	4.6	24.8	0.086	0.513

DURANGO

20 CARR : DURANGO - GOMEZ PALACIO (CUOTA)

CLAVE: 10003

RUTA : MEX-040D

AÑO : 2008

L U G A R	E S T A C I O N				C L A S I F I C A C I O N V E H I C U L A R E N P O R C I E N T O .												
	KM	TE	SC	TDPA	A	B	C2	C3	T3S2	T3S3	T3S2R4	OTROS	A	B	C	K'	D
X. C. CUENCAME - TORREON	180.00	3	2	1539	68.8	4.2	3.8	6.7	3.5	2.3	8.2	2.5	68.8	4.2	27.0	0.090	0.513
CASETA DE COBRO LEON GUZMAN	212.70	1	0	3760	66.8	11.7	2.9	2.2	6.0	1.4	6.3	2.7	66.8	11.7	21.5		
CASETA DE COBRO LEON GUZMAN	212.70	1	1	1562	75.3	6.2	4.6	2.6	2.4	4.2	2.5	2.2	75.3	6.2	18.5	0.083	0.502
CASETA DE COBRO LEON GUZMAN	212.70	1	2	1572	75.2	6.1	4.7	2.4	2.7	4.4	2.4	2.1	75.2	6.1	18.7	0.092	0.502
CASETA DE COBRO LEON GUZMAN	212.70	2	0	2555	61.2	15.2	2.9	2.5	7.4	1.7	6.9	2.2	61.2	15.2	23.6		
CASETA DE COBRO LEON GUZMAN	212.70	3	0	3185	55.1	12.6	3.3	3.8	13.3	2.9	5.8	3.2	55.1	12.6	32.3		
CASETA DE COBRO LEON GUZMAN	212.70	3	1	1500	72.1	6.6	6.2	2.8	3.1	4.6	2.3	2.3	72.1	6.6	21.3	0.062	0.508
CASETA DE COBRO LEON GUZMAN	212.70	3	2	1455	72.3	6.5	6.3	2.7	3.0	4.5	2.5	2.2	72.3	6.5	21.2	0.064	0.508
T. C. GOMEZ PALACIO - JIMENEZ	220.00																

21 CARR : DURANGO - VILLA UNION (CUOTA)

CLAVE:

RUTA : MEX-040D

AÑO : 2008

L U G A R	E S T A C I O N				C L A S I F I C A C I O N V E H I C U L A R E N P O R C I E N T O .												
	KM	TE	SC	TDPA	A	B	C2	C3	T3S2	T3S3	T3S2R4	OTROS	A	B	C	K'	D
LIBRAMIENTO DE DURANGO	21.60	3	0	2461	77.3	4.3	2.7	3.5	5.7	2.8	2.3	1.4	77.3	4.3	18.4	0.091	0.502
T.C. EL SOLDADO - OTINAPA	44.00	3	0	1689	81.8	5.5	5.9	2.2	3.5	0.3	0.2	0.6	81.8	5.5	12.7	0.091	0.510
CONCORDIA	221.50	3	0	545	91.6	2.5	2.3	1.4	0.8	0.4	0.0	1.0	91.6	2.5	5.9	0.163	0.504
VILLA UNION	230.00	1	0	577	91.0	3.5	2.1	1.3	0.8	0.3	0.0	1.0	91.0	3.5	5.5	0.120	0.506

22 CARR : GOMEZ PALACIO - JIMENEZ (CUOTA)

CLAVE: 00016

RUTA : MEX-049D

AÑO : 2008

L U G A R	E S T A C I O N				C L A S I F I C A C I O N V E H I C U L A R E N P O R C I E N T O .												
	KM	TE	SC	TDPA	A	B	C2	C3	T3S2	T3S3	T3S2R4	OTROS	A	B	C	K'	D
T. C. GOMEZ PALACIO - JIMENEZ (LIBRE)	0.00																
CASETA DE COBRO BERMEJILLO	5.00	2	0	2746	49.3	14.9	2.4	1.6	17.7	2.7	8.5	2.9	49.3	14.9	35.8		
CASETA DE COBRO CEBALLOS	89.00	2	0	2714	49.5	15.2	2.3	1.5	17.5	2.7	8.4	2.9	49.5	15.2	35.3		
LIM. EDOS. TERM. DGO. PPIA. CHIH.	112.00																
T. C. LIBRAMIENTO JIMENEZ	150.60																

23 CARR : LIBRAMIENTO DE DURANGO (CUOTA)

CLAVE:

RUTA : MEX-D

AÑO : 2008

L U G A R	E S T A C I O N				C L A S I F I C A C I O N V E H I C U L A R E N P O R C I E N T O .												
	KM	TE	SC	TDPA	A	B	C2	C3	T3S2	T3S3	T3S2R4	OTROS	A	B	C	K'	D
T.C. ZACATECAS - DURANGO	0.00	3	0	1219	74.3	5.0	2.8	3.9	7.0	3.5	2.6	0.9	74.3	5.0	20.7	0.106	0.506
T.C. DURANGO - VILLA UNION	24.00	1	0	2011	82.6	4.3	2.0	3.6	4.0	2.1	0.5	0.9	82.6	4.3	13.1	0.089	0.504

DURANGO

24 CARR : AMADO NERVO - LA OCHOA

CLAVE: 10012

RUTA : DGO-542

AÑO : 2008

L U G A R	E S T A C I O N				C L A S I F I C A C I O N V E H I C U L A R E N P O R C I E N T O .												
	KM	TE	SC	TDPA	A	B	C2	C3	T3S2	T3S3	T3S2R4	OTROS	A	B	C	K'	D
AMADO NERVO	0.00	3	0	1328	85.1	6.5	3.7	1.4	0.7	1.1	1.1	0.4	85.1	6.5	8.4	0.087	0.505
VILLA UNION	25.00	1	0	2457	89.6	4.2	2.4	1.3	0.7	0.4	0.2	1.2	89.6	4.2	6.2	0.100	0.504
LA OCHOA	42.00	1	0	597	86.1	6.0	4.8	0.2	0.5	0.5	0.0	1.9	86.1	6.0	7.9	0.080	0.503

25 CARR : CEBALLOS - EL MIRADOR

CLAVE: 10417

RUTA : DGO-044

AÑO : 2008

L U G A R	E S T A C I O N				C L A S I F I C A C I O N V E H I C U L A R E N P O R C I E N T O .												
	KM	TE	SC	TDPA	A	B	C2	C3	T3S2	T3S3	T3S2R4	OTROS	A	B	C	K'	D
CEBALLOS	0.00	3	0	655	78.8	6.2	5.7	0.9	3.7	3.3	0.7	0.7	78.8	6.2	15.0	0.133	0.512
T. C. ENT. LA ZARCA - HIDALGO DEL PARRAL	113.50	1	0	310	95.1	2.8	1.2	0.4	0.2	0.1	0.1	0.1	95.1	2.8	2.1	0.129	0.503

26 CARR : DURANGO - ASERRADERO LA FLOR

CLAVE: 10422

RUTA : DGO-115

AÑO : 2008

L U G A R	E S T A C I O N				C L A S I F I C A C I O N V E H I C U L A R E N P O R C I E N T O .												
	KM	TE	SC	TDPA	A	B	C2	C3	T3S2	T3S3	T3S2R4	OTROS	A	B	C	K'	D
DURANGO	0.00	3	1	3286	89.6	2.5	1.6	0.8	2.7	0.4	0.5	1.9	89.6	2.5	7.9	0.118	0.502
DURANGO	0.00	3	2	2985	90.1	2.2	1.5	0.6	2.9	0.4	0.5	1.8	90.1	2.2	7.7	0.129	0.502
T. DER. PRESA GUADALUPE VICTORIA	4.00	3	0	4326	86.4	1.9	1.8	1.1	3.7	0.9	1.1	3.1	86.4	1.9	11.7	0.117	0.503
ASERRADERO LA FLOR	39.00	1	0	133	83.1	6.3	0.8	6.1	2.2	0.2	0.5	0.8	83.1	6.3	10.6	0.150	0.503

27 CARR : JABONOSO - ESMERALDA

CLAVE: 10004

RUTA : DGO-363

AÑO : 2008

L U G A R	E S T A C I O N				C L A S I F I C A C I O N V E H I C U L A R E N P O R C I E N T O .												
	KM	TE	SC	TDPA	A	B	C2	C3	T3S2	T3S3	T3S2R4	OTROS	A	B	C	K'	D
JABONOSO	0.00	3	0	9242	72.0	5.6	1.2	2.1	8.4	3.2	4.2	3.3	72.0	5.6	22.4	0.081	0.503
T. IZQ. CHIMAL	10.00	3	0	3664	79.1	6.4	0.8	5.9	3.8	1.0	1.8	1.2	79.1	6.4	14.5	0.083	0.502
ESMERALDA	16.30	1	0	2813	69.9	9.0	3.4	9.5	2.6	1.2	2.8	1.6	69.9	9.0	21.1	0.087	0.505

28 CARR : LA TORREÑA - BRITTINGHAM

CLAVE: 10010

RUTA : DGO-325

AÑO : 2008

L U G A R	E S T A C I O N				C L A S I F I C A C I O N V E H I C U L A R E N P O R C I E N T O .												
	KM	TE	SC	TDPA	A	B	C2	C3	T3S2	T3S3	T3S2R4	OTROS	A	B	C	K'	D
LA TORREÑA	0.00	3	0	2186	70.1	8.8	3.2	9.6	2.7	1.3	2.7	1.6	70.1	8.8	21.1	0.087	0.507
X. C. GOMEZ PALACIO - JIMENEZ	7.00	1	0	1596	72.9	15.1	1.9	5.9	1.6	0.7	1.0	0.9	72.9	15.1	12.0	0.088	0.505
X. C. GOMEZ PALACIO - JIMENEZ	7.00	3	0	1987	67.3	10.6	3.5	9.5	2.9	1.4	3.0	1.8	67.3	10.6	22.1	0.087	0.503

DURANGO

28 CARR : LA TORREÑA - BRITTINGHAM

CLAVE: 10010

RUTA : DGO-325

AÑO : 2008

L U G A R	E S T A C I O N				CLASIFICACION VEHICULAR EN PORCIENTO .												
	KM	TE	SC	TDPA	A	B	C2	C3	T3S2	T3S3	T3S2R4	OTROS	A	B	C	K'	D
CHIMAL	16.00	1	0	1548	71.2	12.6	4.6	6.1	2.9	0.3	1.3	1.0	71.2	12.6	16.2	0.094	0.504
CHIMAL	16.00	3	0	1320	86.5	4.5	6.4	1.4	0.6	0.3	0.0	0.3	86.5	4.5	9.0	0.095	0.509
BRITTINGHAM	33.00	1	0	724	69.0	8.9	4.0	9.3	5.7	0.7	2.0	0.4	69.0	8.9	22.1	0.122	0.508

29 CARR : LIBRAMIENTO DE TORREON

CLAVE: 05516

RUTA : COA

AÑO : 2008

L U G A R	E S T A C I O N				CLASIFICACION VEHICULAR EN PORCIENTO .												
	KM	TE	SC	TDPA	A	B	C2	C3	T3S2	T3S3	T3S2R4	OTROS	A	B	C	K'	D
T. C. DURANGO - TORREON	0.00																
X. C. SALTILLO - TORREON	6.70	1	1	12772	76.7	5.0	4.8	6.3	0.0	0.0	0.0	7.2	76.7	5.0	18.3	0.087	0.510
X. C. SALTILLO - TORREON	6.70	1	2	13286	77.3	4.7	3.4	5.0	0.0	0.0	0.0	9.6	77.3	4.7	18.0	0.063	0.510
X. C. SALTILLO - TORREON	6.70	3	1	13235	81.1	6.2	2.5	4.8	0.0	0.0	0.0	5.4	81.1	6.2	12.7	0.115	0.526
X. C. SALTILLO - TORREON	6.70	3	2	11918	77.8	5.4	4.7	6.1	0.0	0.0	0.0	6.0	77.8	5.4	16.8	0.103	0.526
T. C. LA CUCHILLA - TORREON	12.00	1	1	12634	56.8	8.6	5.7	12.1	0.0	0.0	0.0	16.8	56.8	8.6	34.6	0.091	0.520
T. C. LA CUCHILLA - TORREON	12.00	1	2	11662	70.2	16.9	2.2	3.4	0.0	0.0	0.0	7.3	70.2	16.9	12.9	0.079	0.520
LIM. EDOS. TERM. DGO. PPIA. COAH.	16.50																
T. C. CUENCAME - TORREON	43.00																

30 CARR : MEZQUITAL - SAN MIGUEL DE TEMOAYA

CLAVE:

RUTA : DGO

AÑO : 2008

L U G A R	E S T A C I O N				CLASIFICACION VEHICULAR EN PORCIENTO .												
	KM	TE	SC	TDPA	A	B	C2	C3	T3S2	T3S3	T3S2R4	OTROS	A	B	C	K'	D
T.C. DURANGO - MEZQUITAL	0.00	3	0	335	86.8	5.0	1.9	4.7	0.7	0.4	0.1	0.4	86.8	5.0	8.2	0.113	0.510
SAN MIGUEL TEMOAYA	58.00																

31 CARR : RAMAL A SAN JUAN DEL RIO

CLAVE: 10001

RUTA : DGO-290

AÑO : 2008

L U G A R	E S T A C I O N				CLASIFICACION VEHICULAR EN PORCIENTO .												
	KM	TE	SC	TDPA	A	B	C2	C3	T3S2	T3S3	T3S2R4	OTROS	A	B	C	K'	D
T. C. DURANGO - ENT. LA ZARCA	0.00	3	0	1788	91.1	3.1	1.9	0.8	1.6	0.3	0.3	0.9	91.1	3.1	5.8	0.105	0.500
SAN JUAN DEL RIO	5.00	1	0	1992	92.0	2.8	2.0	0.4	1.7	0.3	0.2	0.6	92.0	2.8	5.2	0.095	0.503

DURANGO

32 CARR : SUCHIL - VILLA UNION

CLAVE: 10419

RUTA : DGO-241

AÑO : 2008

L U G A R	E S T A C I O N				C L A S I F I C A C I O N V E H I C U L A R E N P O R C I E N T O .												
	KM	TE	SC	TDPA	A	B	C2	C3	T3S2	T3S3	T3S2R4	OTROS	A	B	C	K'	D
SUCHIL	0.00	3	0	1096	88.4	4.2	4.4	1.0	1.4	0.1	0.1	0.4	88.4	4.2	7.4	0.107	0.504
VICENTE GUERRERO	13.40	1	0	1594	79.7	3.7	3.8	2.6	3.6	3.8	1.6	1.2	79.7	3.7	16.6	0.094	0.501
X. C. ZACATECAS - DURANGO	14.50	1	1	1992	86.2	3.6	4.5	1.2	2.0	0.8	0.3	1.4	86.2	3.6	10.2	0.116	0.503
X. C. ZACATECAS - DURANGO	14.50	1	2	2018	85.9	3.8	4.3	1.3	2.1	0.8	0.4	1.4	85.9	3.8	10.3	0.113	0.503
X. C. ZACATECAS - DURANGO	14.50	3	0	1429	90.2	2.7	3.0	1.0	1.8	0.4	0.3	0.6	90.2	2.7	7.1	0.112	0.501
VILLA UNION	41.40	1	0	1761	81.5	4.3	5.4	2.8	3.1	1.8	0.6	0.5	81.5	4.3	14.2	0.085	0.502

33 CARR : TLAHUALILLO DE ZARAGOZA - T.C. GOMEZ PALACIO - JIMENEZ

CLAVE:

RUTA : DGO

AÑO : 2008

L U G A R	E S T A C I O N				C L A S I F I C A C I O N V E H I C U L A R E N P O R C I E N T O .												
	KM	TE	SC	TDPA	A	B	C2	C3	T3S2	T3S3	T3S2R4	OTROS	A	B	C	K'	D
TLAHUALILLO DE ZARAGOZA	0.00	3	0	871	87.7	2.4	6.7	2.8	0.0	0.0	0.0	0.4	87.7	2.4	9.9	0.094	0.513
T.C. GOMEZ PALACIO - JIMENEZ	37.00	1	0	982	87.9	2.3	6.8	2.6	0.0	0.0	0.0	0.4	87.9	2.3	9.8	0.088	0.502

34 CARR : YERBANIS - PEÑON BLANCO

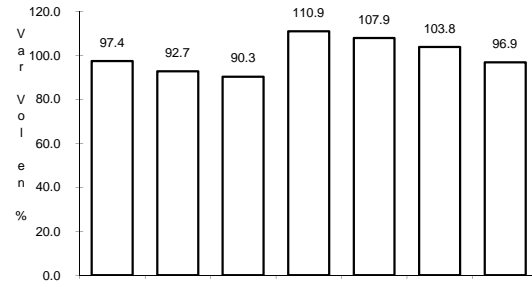
CLAVE: 10032

RUTA : DGO-316

AÑO : 2008

L U G A R	E S T A C I O N				C L A S I F I C A C I O N V E H I C U L A R E N P O R C I E N T O .												
	KM	TE	SC	TDPA	A	B	C2	C3	T3S2	T3S3	T3S2R4	OTROS	A	B	C	K'	D
YERBANIS	0.00	3	0	805	83.4	11.0	3.0	1.7	0.0	0.0	0.0	0.9	83.4	11.0	5.6	0.103	0.500
PEÑON BLANCO	22.00	1	0	1425	86.4	9.0	2.0	1.7	0.0	0.0	0.0	0.9	86.4	9.0	4.6	0.105	0.502

1 CARR: BERMEJILLO - EL PALMITO

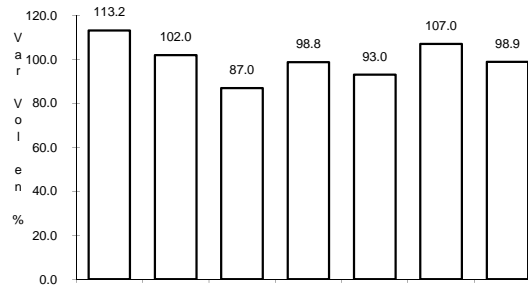


Km: 0.00

Tipo: 3

Sent: 0

CLAVE: 10105

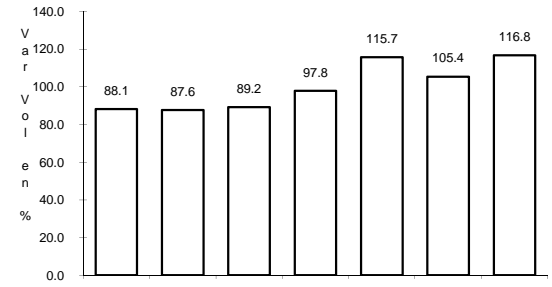


Km: 86.00

Tipo: 1

Sent: 0

RUTA: MEX-030

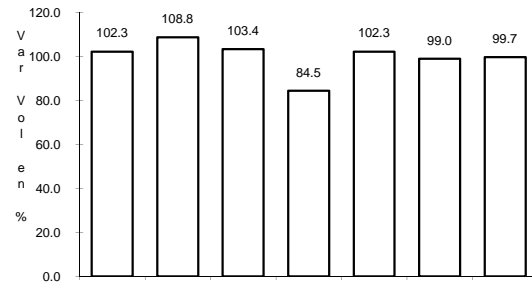


Km: 160.00

Tipo: 1

Sent: 0

2 CARR: DURANGO - ENT. LA ZARCA

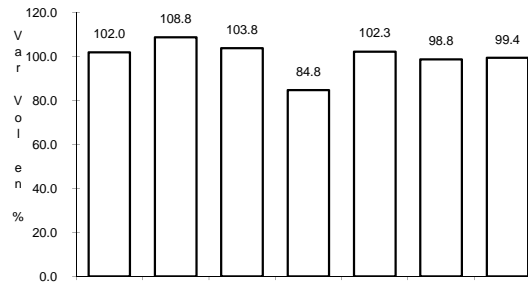


Km: 0.00

Tipo: 3

Sent: 1

CLAVE: 10016

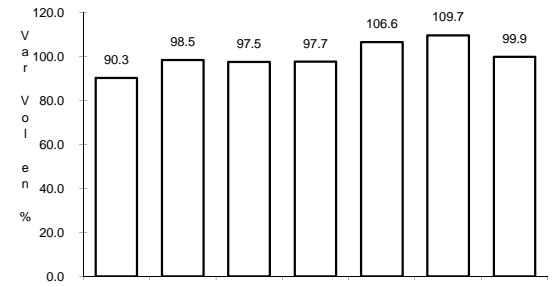


Km: 0.00

Tipo: 3

Sent: 2

RUTA: MEX-045

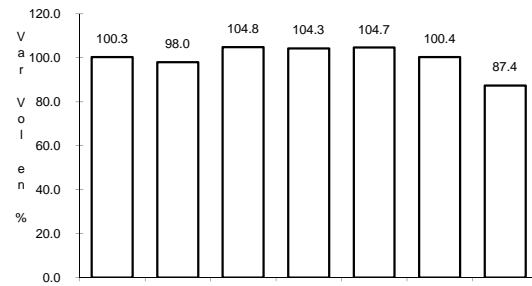


Km: 239.50

Tipo: 1

Sent: 0

3 CARR: DURANGO - MEZQUITAL

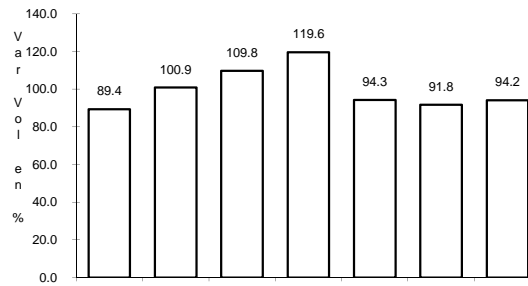


Km: 0.00

Tipo: 3

Sent: 0

CLAVE: 10423

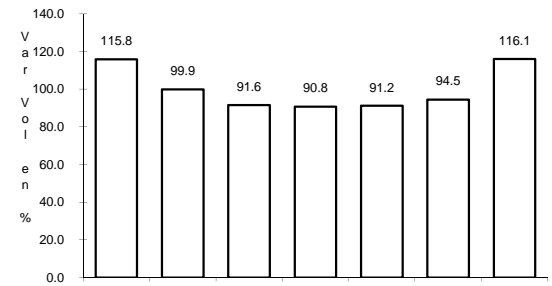


Km: 13.00

Tipo: 3

Sent: 0

RUTA: MEX-023

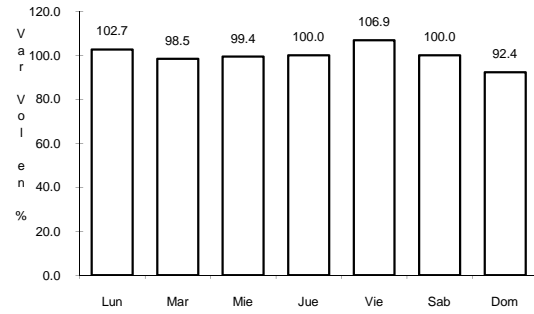


Km: 82.00

Tipo: 1

Sent: 0

4 CARR: DURANGO - TORREON

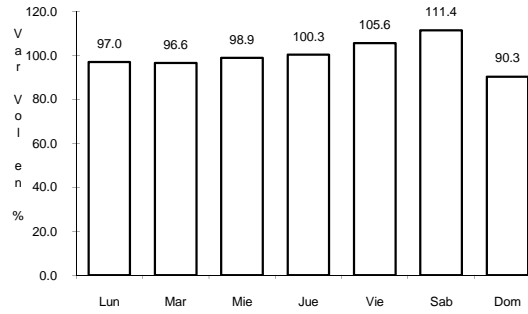


Km: 0.00

Tipo: 3

Sent: 1

CLAVE: 10085

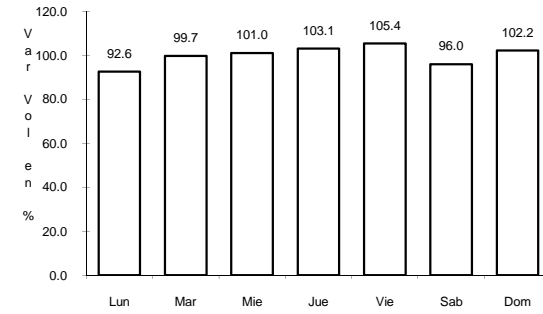


Km: 0.00

Tipo: 3

Sent: 2

RUTA: MEX-040

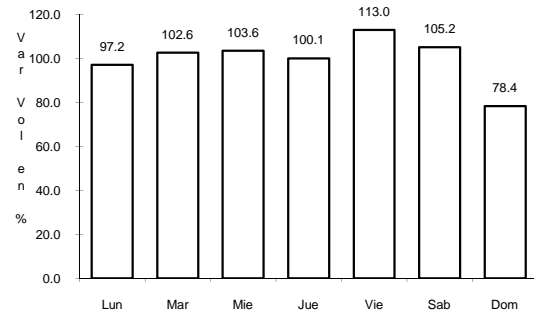


Km: 120.90

Tipo: 1

Sent: 0

5 CARR: DURANGO - VILLA UNION

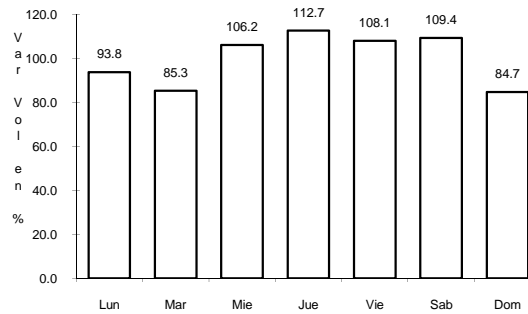


Km: 0.00

Tipo: 3

Sent: 0

CLAVE: 00083

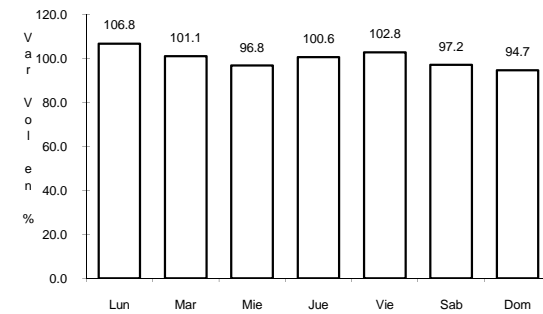


Km: 145.50

Tipo: 1

Sent: 0

RUTA: MEX-040

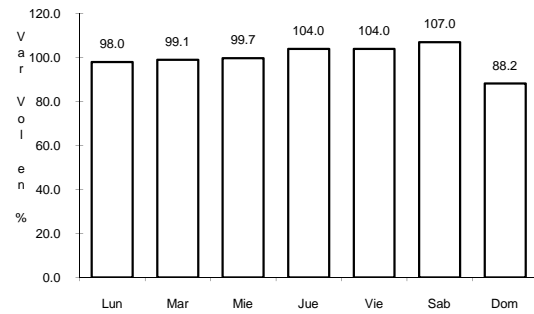


Km: 294.40

Tipo: 1

Sent: 0

6 CARR: ENT. LA CHICHARRONA - CUENCAME

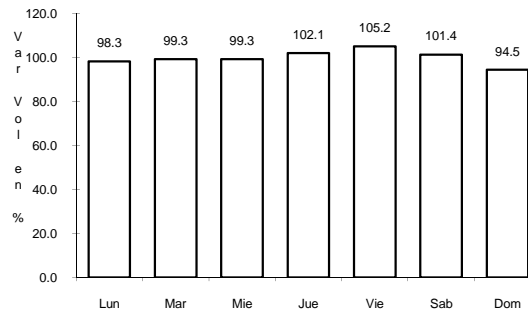


Km: 0.00

Tipo: 3

Sent: 1

CLAVE: 00152

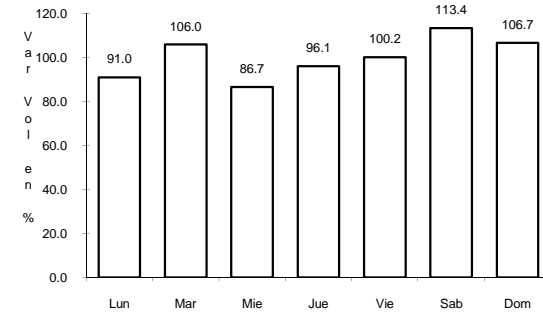


Km: 0.00

Tipo: 3

Sent: 2

RUTA: MEX-049

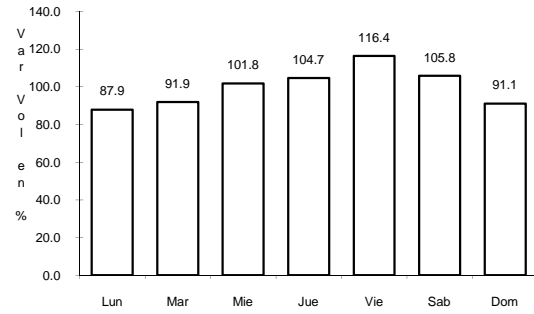


Km: 199.10

Tipo: 1

Sent: 0

7 CARR: ENT. LA ZARCA - HIDALGO DEL PARRAL

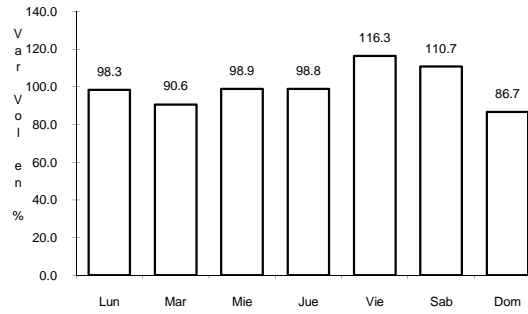


Km: 0.00

Tipo: 3

Sent: 0

CLAVE: 00488

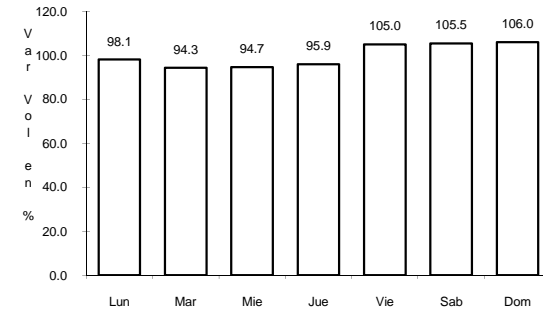


Km: 92.35

Tipo: 3

Sent: 0

RUTA: MEX-045

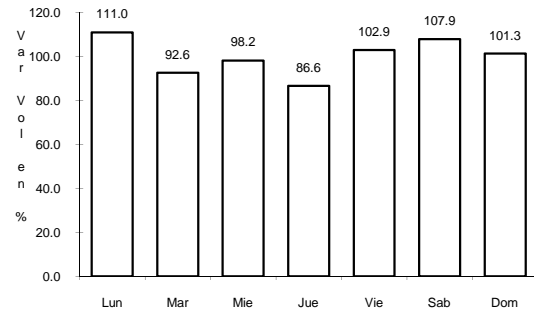


Km: 171.00

Tipo: 1

Sent: 0

8 CARR: ENT. LOS HERRERA - TOPIA

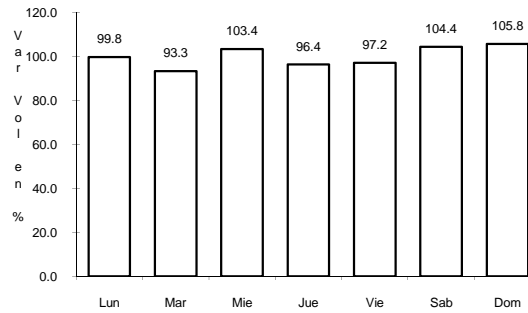


Km: 0.00

Tipo: 3

Sent: 0

CLAVE: 10090



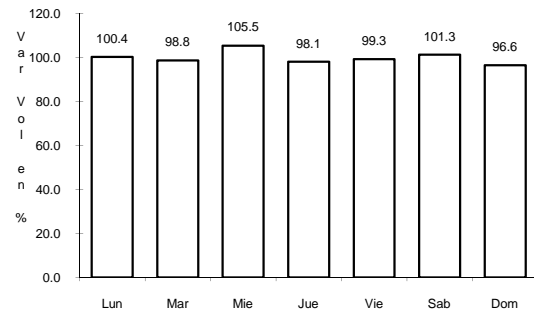
Km: 80.00

Tipo: 1

Sent: 0

RUTA: MEX-036

9 CARR: GOMEZ PALACIO - JIMENEZ

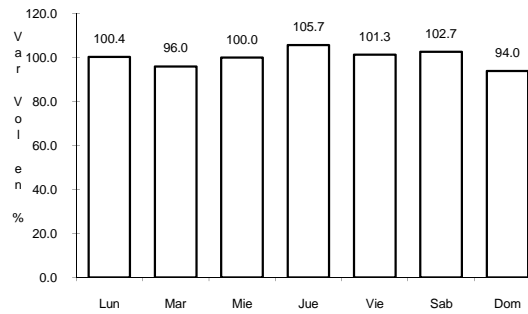


Km: 0.00

Tipo: 3

Sent: 1

CLAVE: 00006

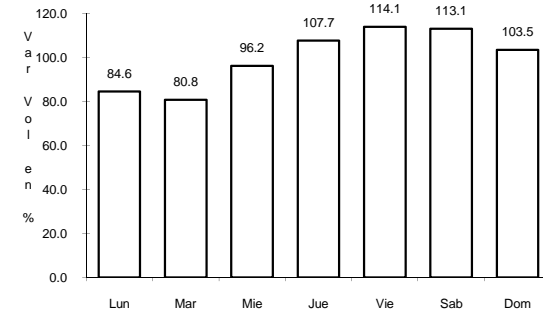


Km: 0.00

Tipo: 3

Sent: 2

RUTA: MEX-049

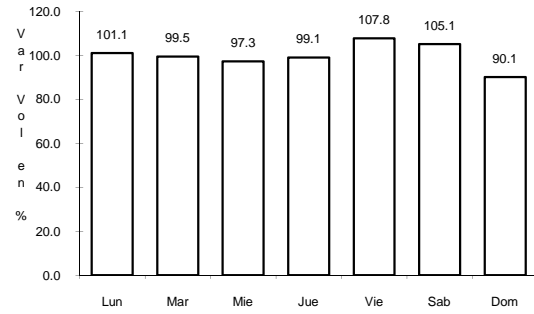


Km: 160.89

Tipo: 3

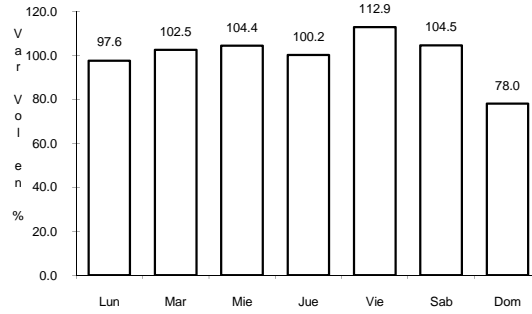
Sent: 0

10 CARR: GOMEZ PALACIO - LA UNION



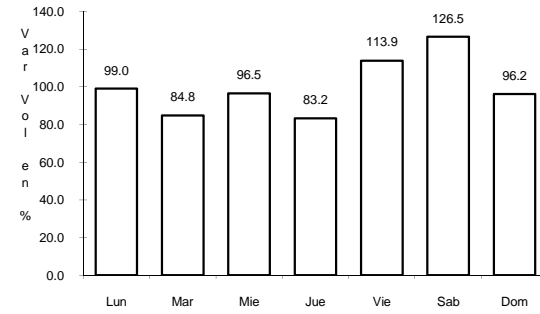
Km: 0.00 Tipo: 3 Sent: 0

CLAVE: 10009



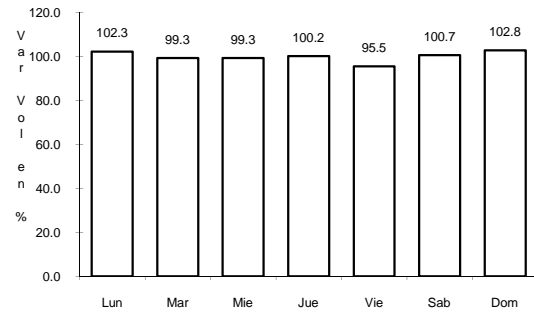
Km: 20.90 Tipo: 1 Sent: 0

RUTA: MEX



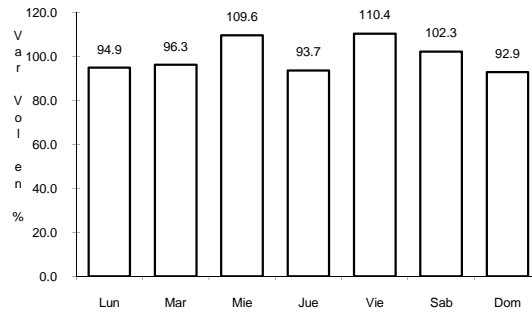
Km: 42.20 Tipo: 1 Sent: 0

11 CARR: GOMEZ PALACIO - TLAHUALILLO



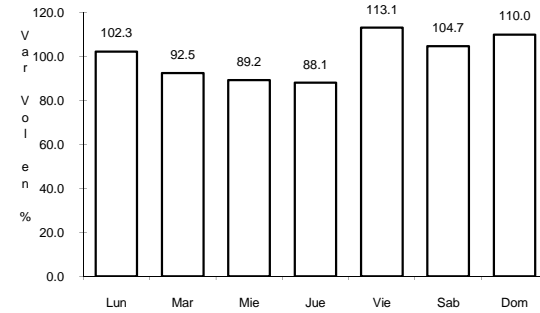
Km: 5.60 Tipo: 1 Sent: 0

CLAVE: 10005



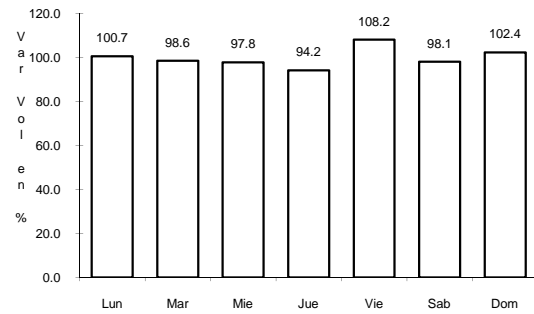
Km: 31.44 Tipo: 1 Sent: 0

RUTA: MEX



Km: 72.90 Tipo: 1 Sent: 0

12 CARR: GREGORIO GARCIA - FRANCISCO I. MADERO



Km: 9.60 Tipo: 1 Sent: 0

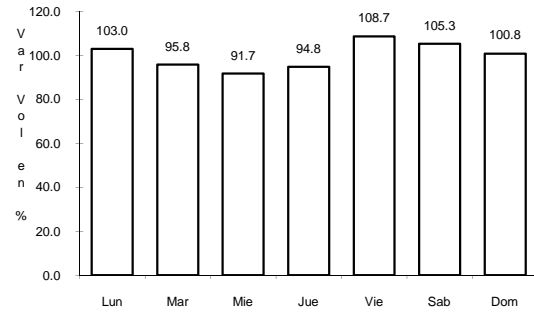
CLAVE: 00110

RUTA: MEX

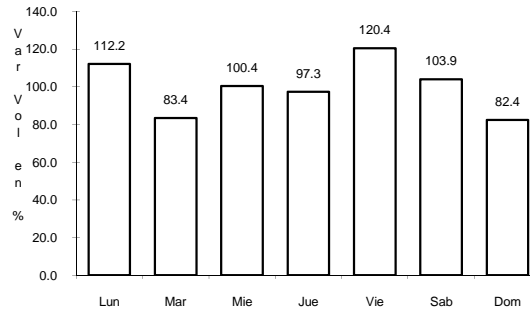
13 CARR: GUADALUPE AGUILERA - TEPEHUANES

CLAVE: 10220

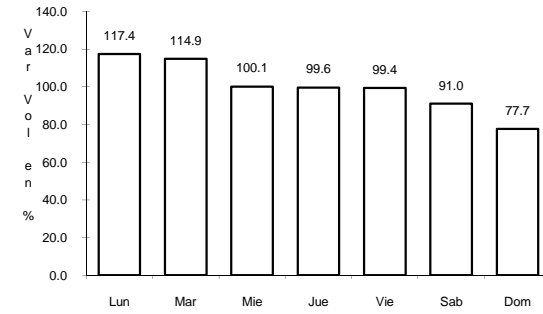
ruta: MEX-023



Km: 0.00 Tipo: 3 Sent: 0



Km: 45.80 Tipo: 3 Sent: 0

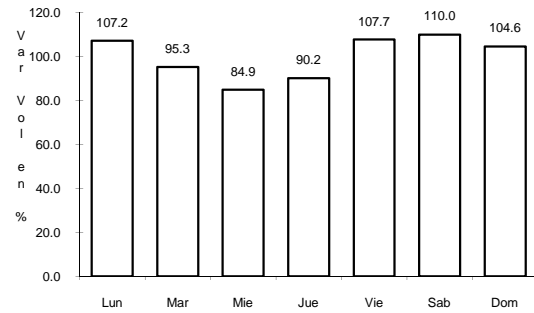


Km: 169.00 Tipo: 1 Sent: 0

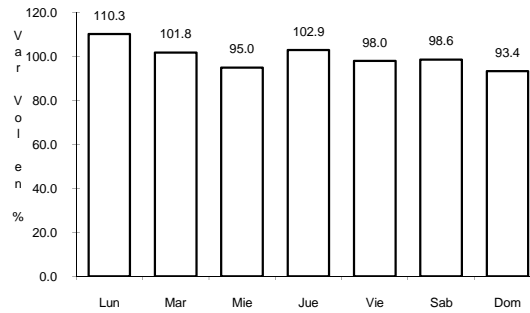
14 CARR: HIDALGO DEL PARRAL - GUADALUPE Y CALVO

CLAVE: 00802

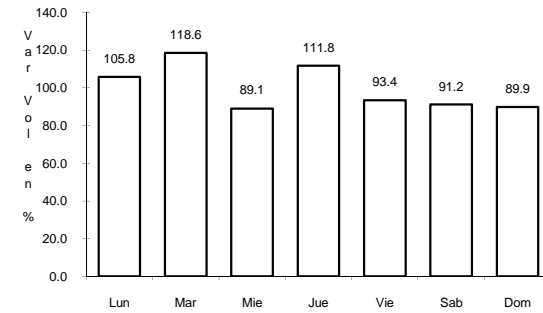
ruta: MEX-024



Km: 0.00 Tipo: 3 Sent: 0



Km: 110.00 Tipo: 1 Sent: 0

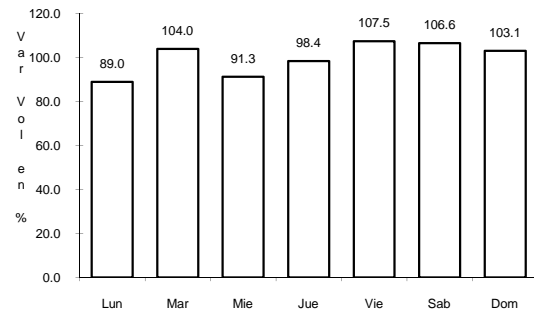


Km: 212.00 Tipo: 1 Sent: 0

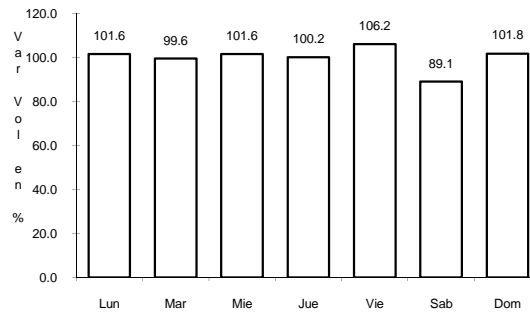
15 CARR: LIBRAMIENTO CUENCAME

CLAVE: 10006

ruta: MEX

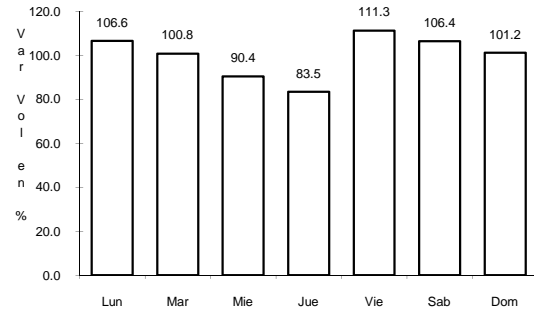


Km: 0.00 Tipo: 3 Sent: 0



Km: 2.60 Tipo: 3 Sent: 0

16 CARR: PEDRICEÑA - ENT. RODEO

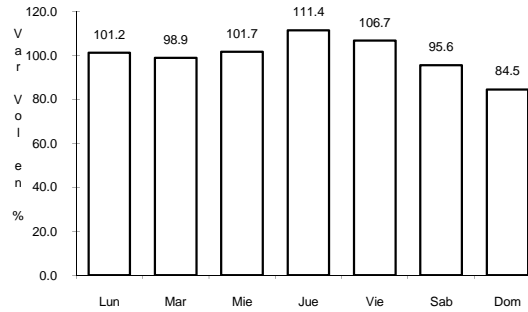


Km: 0.00

Tipo: 3

Sent: 0

CLAVE: 10002

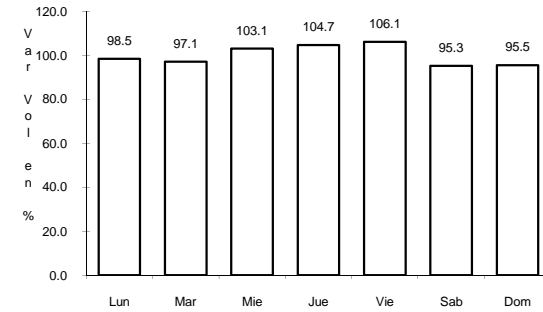


Km: 45.00

Tipo: 1

Sent: 0

RUTA: MEX-034

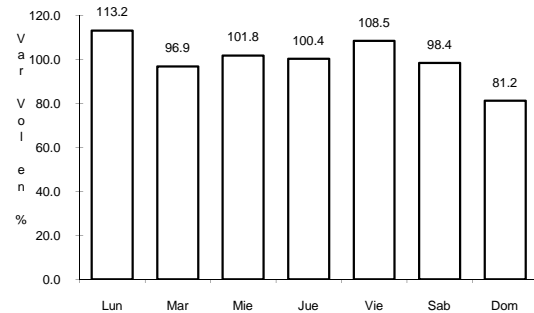


Km: 98.00

Tipo: 1

Sent: 0

17 CARR: RAMAL A SANTA CLARA



Km: 0.00

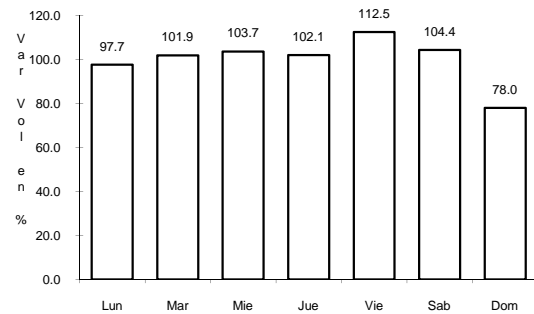
Tipo: 3

Sent: 0

CLAVE: 10287

RUTA: MEX

18 CARR: RAMAL A VILLA JUAREZ



Km: 1.00

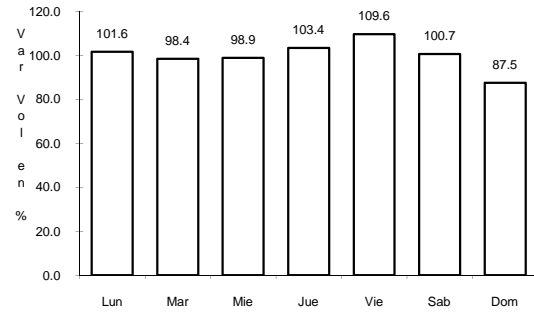
Tipo: 3

Sent: 0

CLAVE:

RUTA: MEX

19 CARR: ZACATECAS - DURANGO

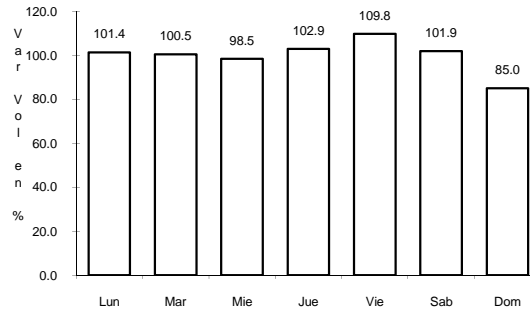


Km: 6.40

Tipo: 3

Sent: 1

CLAVE: 00544

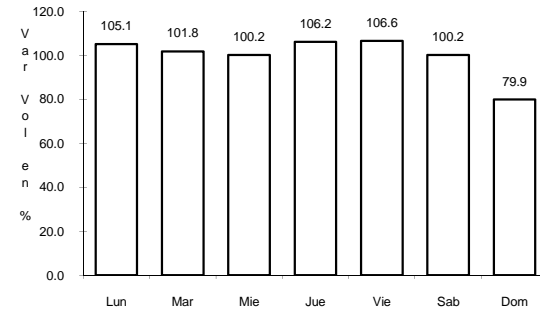


Km: 6.40

Tipo: 3

Sent: 2

RUTA: MEX-045

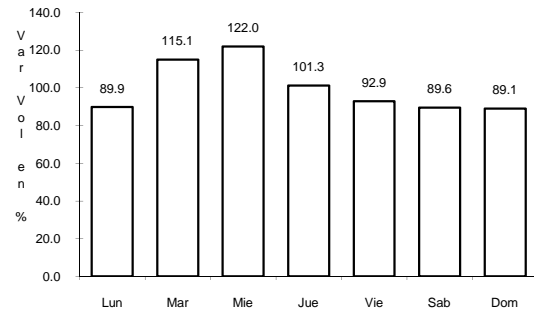


Km: 161.50

Tipo: 3

Sent: 0

20 CARR: DURANGO - GOMEZ PALACIO (CUOTA)

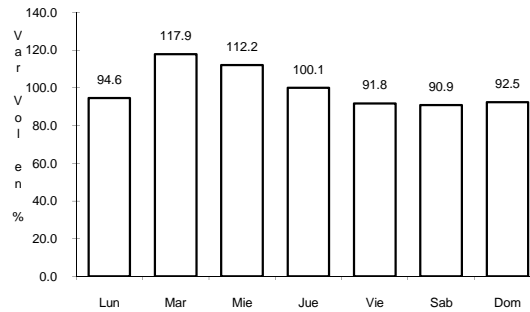


Km: 180.00

Tipo: 1

Sent: 1

CLAVE: 10003



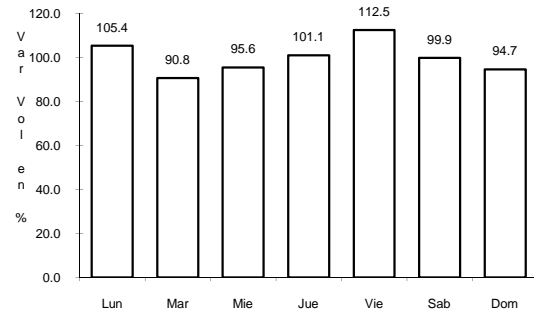
Km: 180.00

Tipo: 1

Sent: 2

RUTA: MEX-040D

21 CARR: DURANGO - VILLA UNION (CUOTA)

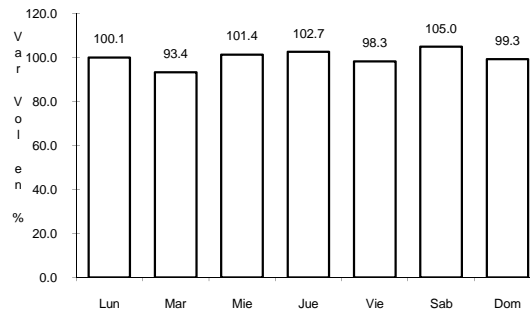


Km: 21.60

Tipo: 3

Sent: 0

CLAVE:

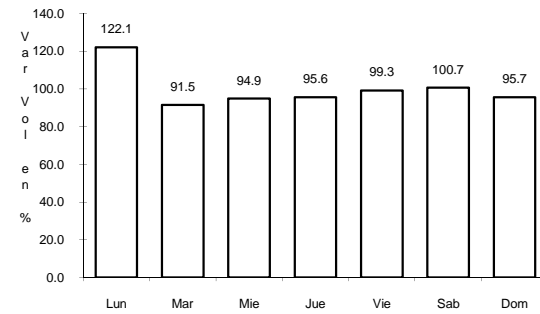


Km: 44.00

Tipo: 3

Sent: 0

RUTA: MEX-040D



Km: 230.00

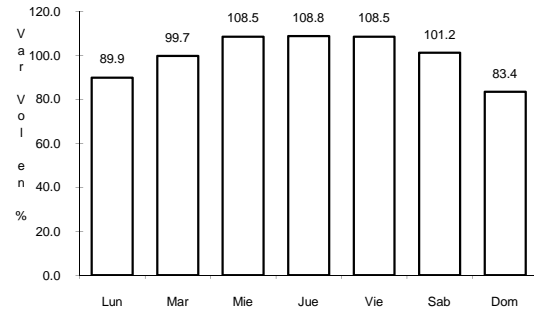
Tipo: 1

Sent: 0

23 CARR: LIBRAMIENTO DE DURANGO (CUOTA)

CLAVE:

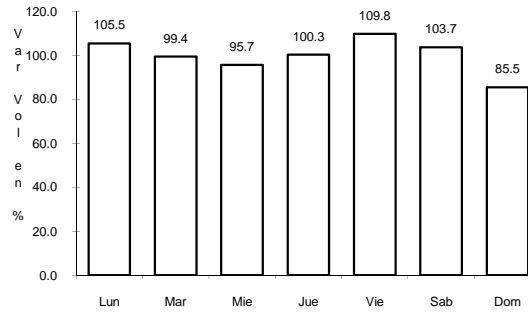
RUTA: MEX-D



Km: 0.00

Tipo: 3

Sent: 0



Km: 24.00

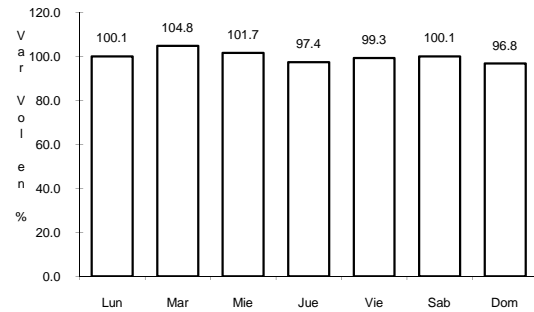
Tipo: 1

Sent: 0

24 CARR: AMADO NERVO - LA OCHOA

CLAVE: 10012

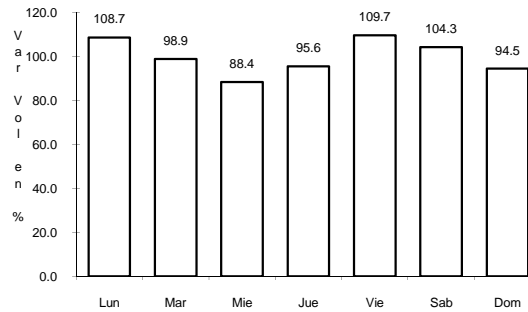
RUTA: DGO-542



Km: 0.00

Tipo: 3

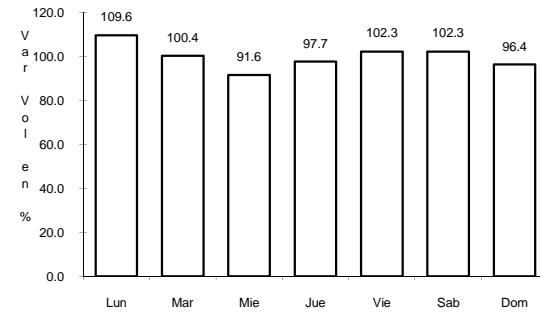
Sent: 0



Km: 25.00

Tipo: 1

Sent: 0



Km: 42.00

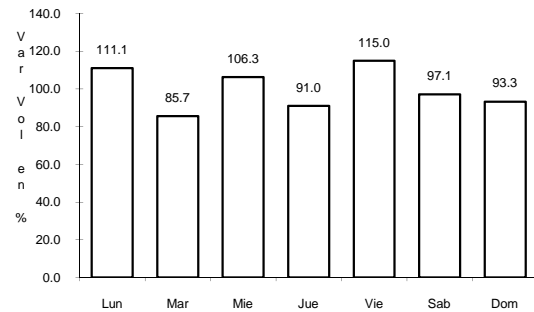
Tipo: 1

Sent: 0

25 CARR: CEBALLOS - EL MIRADOR

CLAVE: 10417

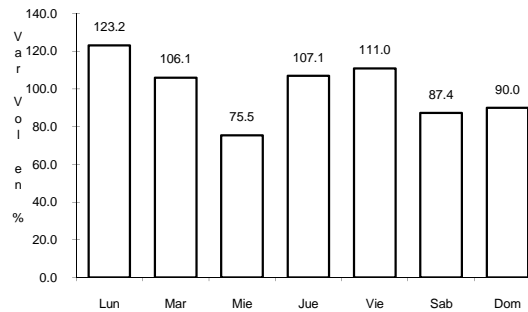
RUTA: DGO-044



Km: 0.00

Tipo: 3

Sent: 0



Km: 113.50

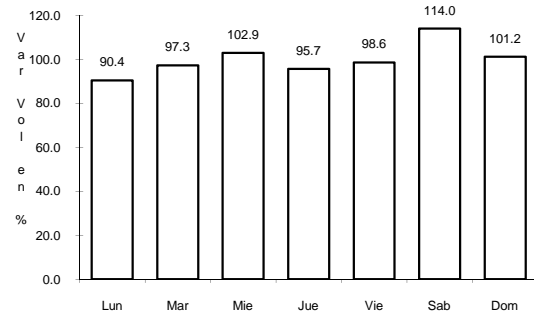
Tipo: 1

Sent: 0

26 CARR: DURANGO - ASERRADERO LA FLOR

CLAVE: 10422

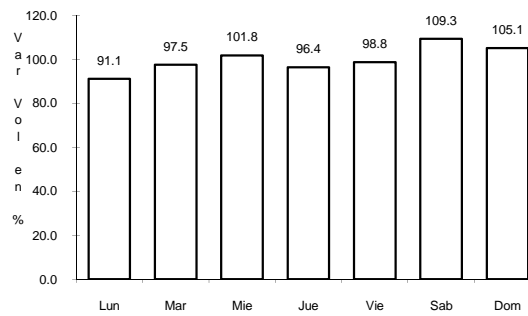
ruta: DGO-115



Km: 0.00

Tipo: 3

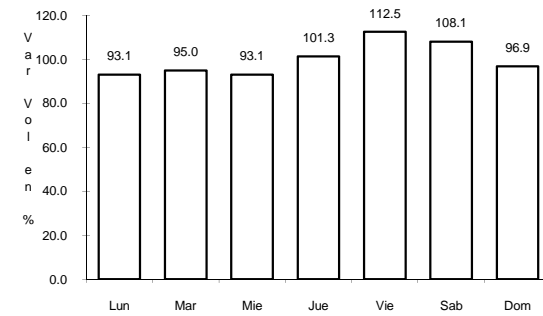
Sent: 1



Km: 0.00

Tipo: 3

Sent: 2



Km: 39.00

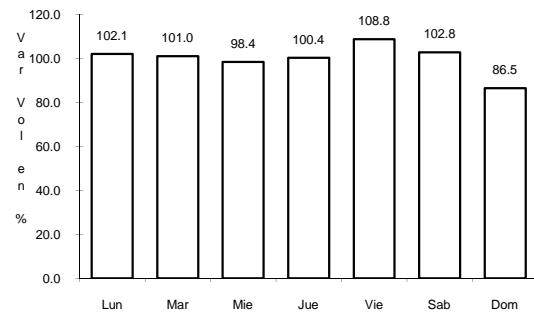
Tipo: 1

Sent: 0

27 CARR: JABONOSO - ESMERALDA

CLAVE: 10004

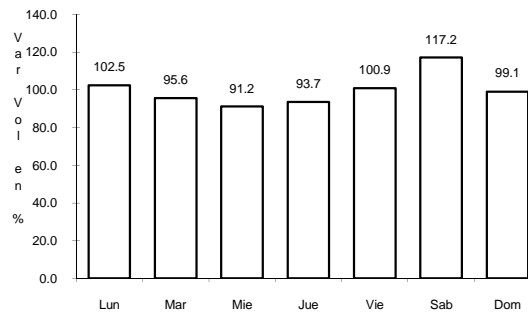
ruta: DGO-363



Km: 0.00

Tipo: 3

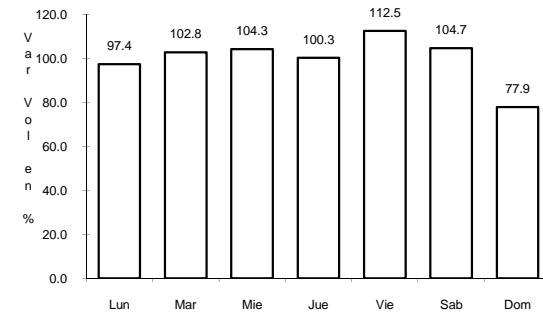
Sent: 0



Km: 10.00

Tipo: 3

Sent: 0



Km: 16.30

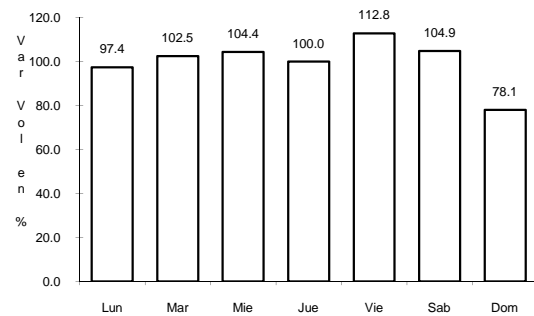
Tipo: 1

Sent: 0

28 CARR: LA TORREÑA - BRITTINGHAM

CLAVE: 10010

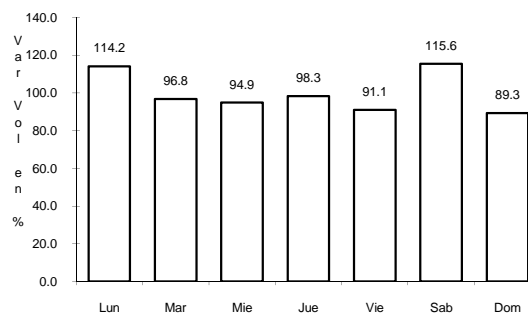
ruta: DGO-325



Km: 0.00

Tipo: 3

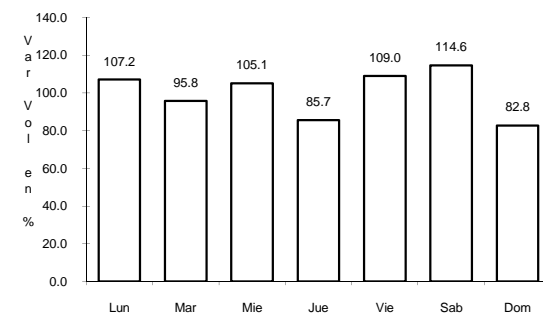
Sent: 0



Km: 16.00

Tipo: 1

Sent: 0



Km: 33.00

Tipo: 1

Sent: 0

