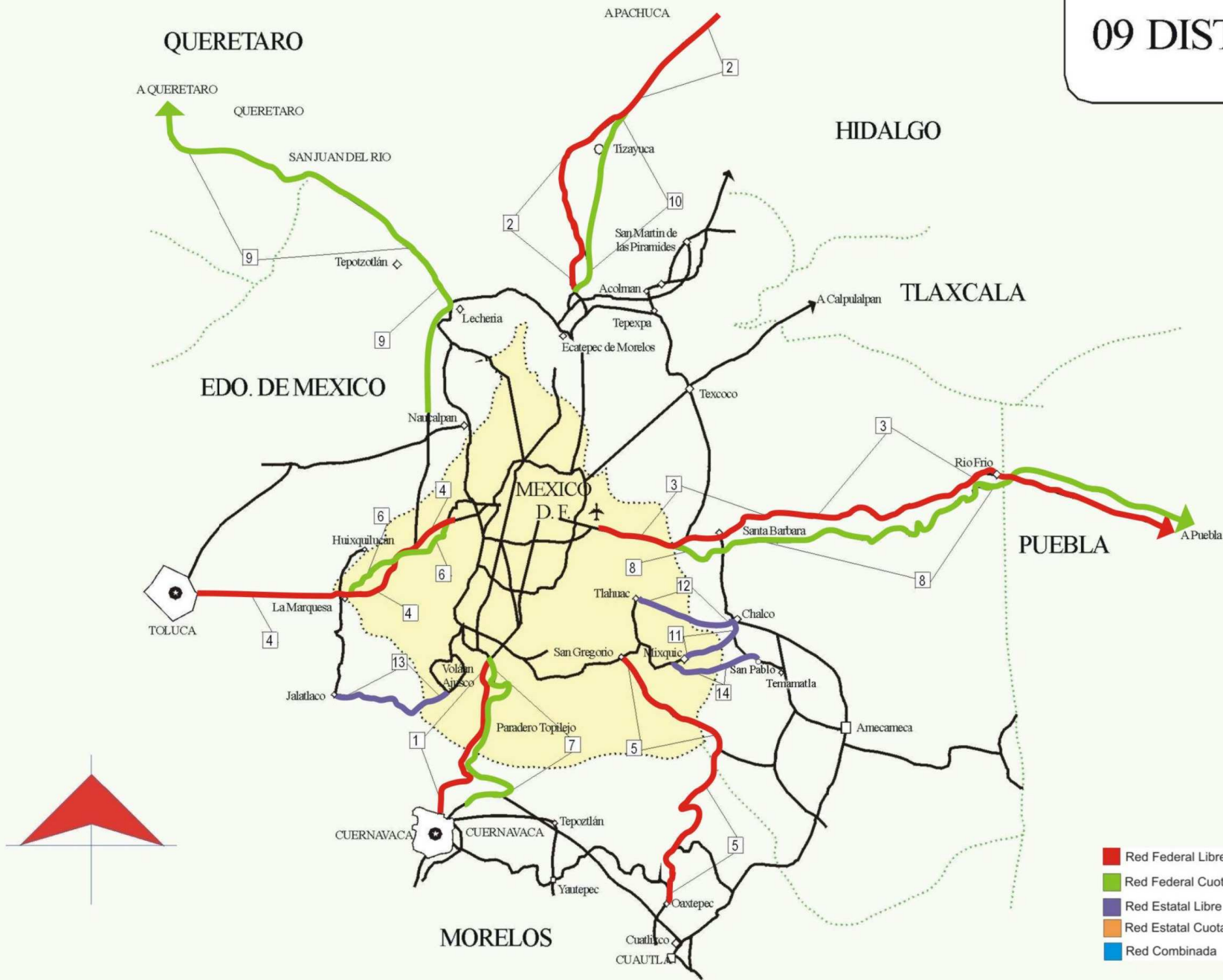


DISTRITO FEDERAL

Núm. INDICE	CARRETERA	RUTA
---- FEDERAL LIBRE ----		
1	MEXICO - CUERNAVACA (LIBRE)	MEX-095
2	MEXICO - PACHUCA (LIBRE)	MEX-085
3	MEXICO - PUEBLA (LIBRE)	MEX-150
4	MEXICO - TOLUCA	MEX-015
5	SAN GREGORIO - OAXTEPEC	MEX-142
---- FEDERAL CUOTA ----		
6	CONSTITUYENTES - LA MARQUESA (CUOTA)	MEX-015D
7	MEXICO - CUERNAVACA (CUOTA)	MEX-095D
8	MEXICO - PUEBLA (CUOTA)	MEX-150D
9	MEXICO - QUERETARO (CUOTA)	MEX-057D
10	MEXICO - TIZAYUCA (CUOTA)	MEX-085D
---- ESTATAL LIBRE ----		
11	CHALCO - MIXQUIC	EM-DF
12	CHALCO - TLAHUAC	EM-DF
13	JALATLACO - EL AJUSCO	EM-DF
14	T. C. (MEXICO - MIXQUIC) - SAN PABLO ATLAZALPAN	EM-106-DF

09 DISTRITO FEDERAL

MAPA INDICE
 15 Num. Indice
 2009



DISTRITO FEDERAL

3 CARR : MEXICO - PUEBLA (LIBRE)

CLAVE: 00449

RUTA : MEX-150

AÑO : 2008

L U G A R	E S T A C I O N				CLASIFICACION VEHICULAR EN PORCIENTO .												
	KM	TE	SC	TDPA	A	B	C2	C3	T3S2	T3S3	T3S2R4	OTROS	A	B	C	K'	D
MEXICO	0.00																
LIM. EDOS. TERM. DF. PPIA. MEX.	18.66																
T. DER. CHALCO	28.85	1	1	29103	78.8	5.1	5.0	3.4	2.6	2.2	0.6	2.3	78.8	5.1	16.1	0.090	0.500
T. DER. CHALCO	28.85	1	2	29063	80.9	5.1	5.0	3.4	1.9	1.8	0.2	1.7	80.9	5.1	14.0	0.070	0.500
T. DER. CHALCO	28.85	3	1	9784	83.9	3.9	1.1	0.9	2.6	1.6	2.7	3.3	83.9	3.9	12.2	0.065	0.502
T. DER. CHALCO	28.85	3	2	9847	81.1	3.9	1.1	1.0	3.4	2.5	2.9	4.1	81.1	3.9	15.0	0.064	0.502
IXTAPALUCA	31.06	3	0	5045	64.3	10.3	6.2	1.6	7.8	5.6	2.6	1.6	64.3	10.3	25.4	0.066	0.503
T. DER. C. MEXICO - PUEBLA (CUOTA) (RIO FRIO)	62.06	1	0	4785	83.1	6.9	5.4	1.8	0.0	0.0	0.0	2.8	83.1	6.9	10.0	0.086	0.516
T. DER. C. MEXICO - PUEBLA (CUOTA) (RIO FRIO)	62.06	3	0	3906	82.0	6.2	4.6	4.5	0.0	0.0	0.0	2.7	82.0	6.2	11.8	0.081	0.501
LIM. EDOS. TERM. MEX. PPIA. PUE.	62.98																
SAN MARTIN TEXMELUCAN	70.00	1	0	13588	77.0	2.6	9.7	5.5	2.4	1.1	0.4	1.3	77.0	2.6	20.4	0.070	0.504
X. C. MEXICO - PUEBLA (CUOTA)	74.10	3	0	18416	67.8	1.4	2.6	1.5	9.2	2.2	12.2	3.1	67.8	1.4	30.8	0.090	0.513
HUEJOTZINGO	88.00	1	0	11549	77.8	5.2	2.9	2.9	5.8	1.2	2.4	1.8	77.8	5.2	17.0	0.071	0.504
HUEJOTZINGO	88.00	3	0	12250	80.0	3.8	3.8	2.3	4.3	1.5	1.3	3.0	80.0	3.8	16.2	0.071	0.504
T. IZQ. AEROPUERTO	92.80	1	0	12528	81.6	3.6	5.1	2.3	3.2	1.0	0.9	2.3	81.6	3.6	14.8	0.069	0.502
T. DER. CHOLULA	101.00	1	0	16377	82.1	2.6	4.2	2.2	4.3	0.9	1.0	2.7	82.1	2.6	15.3	0.072	0.504
T. DER. CHOLULA	101.00	3	1	12041	82.0	4.3	6.6	3.7	1.6	1.1	0.5	0.2	82.0	4.3	13.7	0.086	0.504
T. DER. CHOLULA	101.00	3	2	12026	83.0	4.4	5.5	3.6	1.8	0.9	0.6	0.2	83.0	4.4	12.6	0.079	0.504
PUEBLA	131.00																

4 CARR : MEXICO - TOLUCA

CLAVE: 00447

RUTA : MEX-015

AÑO : 2008

L U G A R	E S T A C I O N				CLASIFICACION VEHICULAR EN PORCIENTO .												
	KM	TE	SC	TDPA	A	B	C2	C3	T3S2	T3S3	T3S2R4	OTROS	A	B	C	K'	D
MEXICO	0.00																
ENT. CONSTITUYENTES Y REFORMA	12.84	3	1	68317	80.4	5.0	2.5	3.8	4.3	2.8	0.1	1.1	80.4	5.0	14.6	0.102	0.508
ENT. CONSTITUYENTES Y REFORMA	12.84	3	2	70471	79.8	5.5	2.6	3.6	4.2	3.4	0.1	0.8	79.8	5.5	14.7	0.086	0.508
T. DER. CUAJIMALPA (1° ACCESO)	20.56	1	1	34353	82.9	4.5	3.2	3.2	1.9	3.1	0.1	1.1	82.9	4.5	12.6	0.122	0.512
T. DER. CUAJIMALPA (1° ACCESO)	20.56	1	2	32782	83.3	4.4	3.4	3.3	1.9	2.8	0.1	0.8	83.3	4.4	12.3	0.115	0.512
T. IZQ. DESIERTO DE LOS LEONES	23.96	1	1	27380	66.9	4.3	2.8	2.4	5.8	3.3	9.0	5.5	66.9	4.3	28.8	0.076	0.506
T. IZQ. DESIERTO DE LOS LEONES	23.96	1	2	26733	64.8	4.7	2.7	2.7	6.2	3.9	9.2	5.8	64.8	4.7	30.5	0.078	0.506
LIM. EDOS. TERM. D.F. PPIA. MEX.	33.44																
T. DER. HUIXQUILUCAN	33.98	1	1	23879	81.3	7.5	2.8	2.2	2.8	2.1	0.0	1.3	81.3	7.5	11.2	0.120	0.512
T. DER. HUIXQUILUCAN	33.98	1	2	25030	81.9	7.8	2.6	3.2	0.3	2.9	0.1	1.2	81.9	7.8	10.3	0.133	0.512
X. C. AMOMOLULCO - STGO. TIANGUISTENCO	47.26	1	1	29805	74.1	11.0	2.6	4.2	2.8	2.4	0.3	2.6	74.1	11.0	14.9	0.078	0.502

DISTRITO FEDERAL

4 CARR : MEXICO - TOLUCA

CLAVE: 00447

RUTA : MEX-015

AÑO : 2008

L U G A R	E S T A C I O N				C L A S I F I C A C I O N V E H I C U L A R E N P O R C I E N T O .												
	KM	TE	SC	TDPA	A	B	C2	C3	T3S2	T3S3	T3S2R4	OTROS	A	B	C	K'	D
X. C. AMOMOLULCO - STGO. TIANGUISTENCO	47.26	1	2	29988	74.2	11.3	2.9	4.0	2.7	2.3	0.2	2.4	74.2	11.3	14.5	0.091	0.502
T. DER. LERMA - IZQ. SAN PEDRO TULTEPEC	51.71	1	1	32110	79.0	8.1	3.8	2.9	1.7	1.9	0.2	2.4	79.0	8.1	12.9	0.078	0.508
T. DER. LERMA - IZQ. SAN PEDRO TULTEPEC	51.71	1	2	31104	80.1	8.2	3.9	3.7	1.6	0.6	0.2	1.7	80.1	8.2	11.7	0.073	0.508
T. IZQ. SAN MATEO ATENCO (ALTA)	52.00	3	1	34151	91.2	2.9	2.1	1.5	0.4	0.4	0.2	1.3	91.2	2.9	5.9	0.103	0.516
T. IZQ. SAN MATEO ATENCO (BAJA)	52.00	3	1	9304	54.9	9.4	6.9	3.9	8.8	4.0	6.0	6.1	54.9	9.4	35.7	0.090	0.503
T. IZQ. SAN MATEO ATENCO (BAJA)	52.00	3	2	9196	52.6	9.3	6.7	4.0	9.4	5.0	6.2	6.8	52.6	9.3	38.1	0.088	0.503
T. IZQ. SAN MATEO ATENCO (ALTA)	52.00	3	2	36398	91.1	3.0	2.2	1.6	0.4	0.3	0.2	1.2	91.1	3.0	5.9	0.096	0.516
X. C. LIBRAMIENTO DE TOLUCA (ALTA)	62.20	1	1	40561	57.9	5.9	3.7	2.2	10.4	5.5	6.9	7.5	57.9	5.9	36.2	0.067	0.505
X. C. LIBRAMIENTO DE TOLUCA (BAJA)	62.20	1	1	10158	70.2	6.6	5.0	2.0	6.3	1.6	3.0	5.3	70.2	6.6	23.2	0.104	0.501
X. C. LIBRAMIENTO DE TOLUCA (ALTA)	62.20	1	2	41402	60.4	5.9	3.8	2.2	9.7	4.5	6.7	6.8	60.4	5.9	33.7	0.066	0.505
X. C. LIBRAMIENTO DE TOLUCA (BAJA)	62.20	1	2	10126	67.7	6.6	5.1	2.5	6.7	2.5	3.2	5.7	67.7	6.6	25.7	0.099	0.501
TOLUCA	66.00																

5 CARR : SAN GREGORIO - OAXTEPEC

CLAVE: 00901

RUTA : MEX-142

AÑO : 2008

L U G A R	E S T A C I O N				C L A S I F I C A C I O N V E H I C U L A R E N P O R C I E N T O .												
	KM	TE	SC	TDPA	A	B	C2	C3	T3S2	T3S3	T3S2R4	OTROS	A	B	C	K'	D
SAN GREGORIO	0.00	3	0	8190	88.3	2.7	4.2	2.3	0.9	0.6	0.0	1.0	88.3	2.7	9.0	0.102	0.502
X. C. MILPA ALTA - SAN LORENZO TLACOYUCAN	9.00	3	0	6416	90.7	2.9	2.0	0.5	2.1	0.2	0.5	1.1	90.7	2.9	6.4	0.088	0.504
LIM. EDOS. TERM. D.F. PPIA. MEX.	18.80																
LIM. EDOS. TERM. MEX. PPIA. MOR.	28.50																
T. DER. SAN FELIPE NERI	33.80	1	0	5094	94.5	4.0	0.0	1.5	0.0	0.0	0.0	0.0	94.5	4.0	1.5	0.120	0.509
T. DER. TLALNEPANTLA	40.50	3	0	4932	87.9	3.1	3.2	1.8	1.4	1.1	1.3	0.2	87.9	3.1	9.0	0.087	0.501
TLAYACAPAN	48.50	3	0	5863	90.0	2.8	2.3	1.0	1.1	1.4	1.4	0.0	90.0	2.8	7.2	0.076	0.507
T. DER. YAUTEPEC	53.00	3	0	10374	89.0	2.9	3.1	1.1	1.0	1.3	1.6	0.0	89.0	2.9	8.1	0.072	0.506
OAXTEPEC	56.00																

6 CARR : CONSTITUYENTES - LA MARQUESA (CUOTA)

CLAVE: 00446

RUTA : MEX-015D

AÑO : 2008

L U G A R	E S T A C I O N				C L A S I F I C A C I O N V E H I C U L A R E N P O R C I E N T O .												
	KM	TE	SC	TDPA	A	B	C2	C3	T3S2	T3S3	T3S2R4	OTROS	A	B	C	K'	D
T. C. MEXICO - TOLUCA (LIBRE) (PUENTE CONAFRUT)	0.00	3	1	28664	88.2	4.2	0.5	2.3	1.1	1.1	1.5	1.1	88.2	4.2	7.6	0.129	0.526
T. C. MEXICO - TOLUCA (LIBRE) (PUENTE CONAFRUT)	0.00	3	2	25875	88.2	4.8	1.2	1.6	1.8	1.4	0.1	0.9	88.2	4.8	7.0	0.123	0.526
CASETA DE COBRO LA VENTA	10.00	1	1	15894	80.8	6.5	4.4	2.2	2.6	1.9	0.0	1.6	80.8	6.5	12.7	0.135	0.524
CASETA DE COBRO LA VENTA	10.00	1	2	14431	82.1	6.6	3.1	2.2	2.4	2.1	0.0	1.5	82.1	6.6	11.3	0.103	0.524

DISTRITO FEDERAL

6 CARR : CONSTITUYENTES - LA MARQUESA (CUOTA)

CLAVE: 00446

RUTA : MEX-015D

AÑO : 2008

L U G A R	E S T A C I O N				C L A S I F I C A C I O N V E H I C U L A R E N P O R C I E N T O .												
	KM	TE	SC	TDPA	A	B	C2	C3	T3S2	T3S3	T3S2R4	OTROS	A	B	C	K'	D
CASETA DE COBRO LA VENTA	10.00	3	1	20549	82.0	6.5	3.0	3.2	2.2	1.8	0.0	1.3	82.0	6.5	11.5	0.130	0.503
CASETA DE COBRO LA VENTA	10.00	3	2	20320	83.6	6.3	3.2	2.5	1.7	1.2	0.1	1.4	83.6	6.3	10.1	0.138	0.503
LIM. EDOS. TERM. D.F. PPIA. MEX.	18.66																
T. C. MEXICO - TOLUCA (LIBRE) (LA MARQUESA)	19.20	1	1	14369	85.7	6.7	1.0	2.0	1.6	1.3	0.6	1.1	85.7	6.7	7.6	0.106	0.543
T. C. MEXICO - TOLUCA (LIBRE) (LA MARQUESA)	19.20	1	2	17096	85.8	6.4	1.6	1.8	1.3	1.0	0.7	1.4	85.8	6.4	7.8	0.096	0.543
CASETA DE COBRO LA VENTA	24.00	1	0	38074	87.9	8.7	1.8	0.5	0.3	0.0	0.1	0.7	87.9	8.7	3.4		
CASETA DE COBRO LA VENTA	24.00	2	0	36170	87.7	9.0	1.8	0.5	0.3	0.0	0.1	0.6	87.7	9.0	3.3		
CASETA DE COBRO LA VENTA	24.00	3	0	53157	88.4	6.9	2.1	0.7	0.6	0.2	0.2	0.9	88.4	6.9	4.7		

7 CARR : MEXICO - CUERNAVACA (CUOTA)

CLAVE: 00041

RUTA : MEX-095D

AÑO : 2008

L U G A R	E S T A C I O N				C L A S I F I C A C I O N V E H I C U L A R E N P O R C I E N T O .												
	KM	TE	SC	TDPA	A	B	C2	C3	T3S2	T3S3	T3S2R4	OTROS	A	B	C	K'	D
MEXICO	0.00																
T. C. MEXICO - CUERNAVACA (LIBRE)	18.65	3	1	16724	84.3	4.1	3.5	2.6	1.9	1.9	1.3	0.4	84.3	4.1	11.6	0.078	0.502
T. C. MEXICO - CUERNAVACA (LIBRE)	18.65	3	2	16868	84.2	4.3	3.3	2.4	2.3	1.8	1.2	0.5	84.2	4.3	11.5	0.091	0.502
CASETA DE COBRO TLALPAN	23.36	2	0	33018	85.4	7.5	1.8	1.1	1.9	0.6	0.9	0.8	85.4	7.5	7.1		
LIM. EDOS. TERM. D.F. PPIA. MOR.	47.09																
T. IZQ. CUAUTLA	70.50	1	1	22781	80.2	4.6	4.1	3.3	3.8	2.6	0.6	0.8	80.2	4.6	15.2	0.070	0.514
T. IZQ. CUAUTLA	70.50	1	2	21513	80.6	4.3	3.7	3.2	3.9	2.7	0.5	1.1	80.6	4.3	15.1	0.060	0.514
T. IZQ. LIBRAMIENTO DE CUERNAVACA	79.26	1	1	17424	80.2	4.6	3.4	3.7	2.7	2.5	2.3	0.6	80.2	4.6	15.2	0.074	0.500
T. IZQ. LIBRAMIENTO DE CUERNAVACA	79.26	1	2	17412	81.0	4.2	3.2	3.5	2.6	2.4	2.6	0.5	81.0	4.2	14.8	0.064	0.500
T. C. MEXICO - CUERNAVACA (LIBRE)	80.26																

8 CARR : MEXICO - PUEBLA (CUOTA)

CLAVE: 00450

RUTA : MEX-150D

AÑO : 2008

L U G A R	E S T A C I O N				C L A S I F I C A C I O N V E H I C U L A R E N P O R C I E N T O .												
	KM	TE	SC	TDPA	A	B	C2	C3	T3S2	T3S3	T3S2R4	OTROS	A	B	C	K'	D
MEXICO	0.00																
LIM. EDOS. TERM. D.F. PPIA. MEX.	17.71																
T. IZQ. LOS REYES	20.00	3	1	55222	77.0	8.0	5.5	4.6	2.0	1.4	0.2	1.3	77.0	8.0	15.0	0.099	0.502
T. IZQ. LOS REYES	20.00	3	2	54785	77.1	8.1	5.2	4.9	1.8	1.7	0.3	0.9	77.1	8.1	14.8	0.094	0.502
X. C. SANTA BARBARA - IZUCAR DE MATAMOROS	32.14	1	1	41589	71.1	10.1	9.0	3.1	2.4	2.1	0.9	1.3	71.1	10.1	18.8	0.127	0.508
X. C. SANTA BARBARA - IZUCAR DE MATAMOROS	32.14	1	2	42890	71.4	10.1	8.8	3.2	2.5	2.0	0.8	1.2	71.4	10.1	18.5	0.119	0.508
X. C. SANTA BARBARA - IZUCAR DE MATAMOROS	32.14	3	1	16867	76.7	8.0	5.9	3.3	3.9	0.4	0.9	0.9	76.7	8.0	15.3	0.095	0.501

DISTRITO FEDERAL

9 CARR : MEXICO - QUERETARO (CUOTA)

CLAVE: 00411

RUTA : MEX-057D

AÑO : 2008

L U G A R	E S T A C I O N				C L A S I F I C A C I O N V E H I C U L A R E N P O R C I E N T O .												
	KM	TE	SC	TDPA	A	B	C2	C3	T3S2	T3S3	T3S2R4	OTROS	A	B	C	K'	D
X. C. JILOTEPEC - MARAVILLAS	107.00	1	1	18061	48.3	7.0	2.4	8.5	9.5	5.5	14.5	4.3	48.3	7.0	44.7	0.087	0.509
X. C. JILOTEPEC - MARAVILLAS	107.00	1	2	17415	48.2	7.2	2.6	8.3	9.6	5.3	14.6	4.2	48.2	7.2	44.6	0.075	0.509
X. C. JILOTEPEC - MARAVILLAS	107.00	3	1	17120	67.6	7.2	7.3	6.8	4.2	3.8	0.9	2.2	67.6	7.2	25.2	0.080	0.504
X. C. JILOTEPEC - MARAVILLAS	107.00	3	2	16857	68.3	7.5	7.1	6.6	4.1	3.2	0.8	2.4	68.3	7.5	24.2	0.087	0.504
T. IZQ. ACULCO	125.00	1	1	20794	62.7	9.0	8.6	6.5	7.9	3.6	0.2	1.5	62.7	9.0	28.3	0.097	0.502
T. IZQ. ACULCO	125.00	1	2	20984	66.7	9.4	8.2	4.4	5.4	4.0	0.1	1.8	66.7	9.4	23.9	0.078	0.502
T. IZQ. ACULCO	125.00	3	1	18089	66.6	8.2	6.8	5.7	5.6	4.6	0.1	2.4	66.6	8.2	25.2	0.087	0.500
T. IZQ. ACULCO	125.00	3	2	18074	66.6	8.0	6.1	4.9	7.9	4.2	0.7	1.6	66.6	8.0	25.4	0.094	0.500
LIM. EDOS. TERM. MEX. PPIA. QRO.	145.80																
CASETA DE COBRO PALMILLAS	147.90	2	0	39281	57.2	4.6	7.1	7.8	16.3	1.8	4.2	1.0	57.2	4.6	38.2		
T. IZQ. TOLUCA	148.50	1	1	15902	48.3	4.1	5.9	7.4	17.6	3.9	9.7	3.1	48.3	4.1	47.6	0.100	0.503
T. IZQ. TOLUCA	148.50	1	2	16099	48.7	4.4	5.4	7.3	17.6	3.9	9.6	3.1	48.7	4.4	46.9	0.090	0.503
T. IZQ. TOLUCA	148.50	3	1	20683	53.3	5.4	4.8	5.4	14.3	3.8	10.0	3.0	53.3	5.4	41.3	0.072	0.502
T. IZQ. TOLUCA	148.50	3	2	20553	53.4	5.2	4.9	5.2	14.7	3.9	9.5	3.2	53.4	5.2	41.4	0.067	0.502
T. DER. PONIENTE SAN JUAN DEL RIO	164.10	3	1	26105	54.5	7.2	4.7	4.8	12.2	4.5	8.9	3.2	54.5	7.2	38.3	0.073	0.501
T. DER. PONIENTE SAN JUAN DEL RIO	164.10	3	2	25960	54.0	7.2	4.0	3.7	13.0	4.6	10.5	3.0	54.0	7.2	38.8	0.065	0.501
T. IZQ. ACAMBARO	170.50	3	1	23141	52.5	7.0	4.5	6.2	13.8	2.8	8.6	4.6	52.5	7.0	40.5	0.080	0.501
T. IZQ. ACAMBARO	170.50	3	2	23201	51.5	7.5	4.4	4.3	14.3	4.1	9.4	4.5	51.5	7.5	41.0	0.091	0.501
T. DER. LIBRAMIENTO DE QUERETARO A SAN LUIS POTOSI	207.00	1	1	23901	65.8	4.3	3.6	4.7	9.2	3.1	6.6	2.7	65.8	4.3	29.9	0.069	0.505
T. DER. LIBRAMIENTO DE QUERETARO A SAN LUIS POTOSI	207.00	1	2	24402	66.1	4.3	3.9	5.5	8.9	3.3	5.4	2.6	66.1	4.3	29.6	0.069	0.505
T. DER. LIBRAMIENTO DE QUERETARO A SAN LUIS POTOSI	207.00	3	1	28662	62.4	4.4	3.6	3.4	10.4	3.9	7.3	4.6	62.4	4.4	33.2	0.072	0.505
T. DER. LIBRAMIENTO DE QUERETARO A SAN LUIS POTOSI	207.00	3	2	28088	63.2	4.3	3.8	3.6	10.6	3.6	6.3	4.6	63.2	4.3	32.5	0.071	0.505
QUERETARO	211.60																

10 CARR : MEXICO - TIZAYUCA (CUOTA)

CLAVE: 00432

RUTA : MEX-085D

AÑO : 2008

L U G A R	E S T A C I O N				C L A S I F I C A C I O N V E H I C U L A R E N P O R C I E N T O .												
	KM	TE	SC	TDPA	A	B	C2	C3	T3S2	T3S3	T3S2R4	OTROS	A	B	C	K'	D
T. C. MEXICO - PACHUCA (LIBRE)	0.00																
LIM. EDOS. TERM. D.F. PPIA. MEX.	9.86																
ENT. MORELOS	23.28	3	1	17876	79.3	6.2	4.6	3.1	2.2	1.9	0.0	2.7	79.3	6.2	14.5	0.111	0.504
ENT. MORELOS	23.28	3	2	18191	79.1	6.4	4.6	3.0	2.3	2.2	0.0	2.4	79.1	6.4	14.5	0.100	0.504
CASETA DE COBRO OJO DE AGUA	25.00	2	0	46335	84.5	9.0	3.0	1.5	0.9	0.2	0.2	0.7	84.5	9.0	6.5		
T. IZQ. TECAMAC	35.62	3	1	9967	80.2	5.3	4.4	3.4	1.7	1.3	0.6	3.1	80.2	5.3	14.5	0.103	0.522
T. IZQ. TECAMAC	35.62	3	2	10877	79.0	5.1	3.9	3.0	1.4	3.1	0.5	4.0	79.0	5.1	15.9	0.118	0.522

DISTRITO FEDERAL

10 CARR : MEXICO - TIZAYUCA (CUOTA)

CLAVE: 00432

RUTA : MEX-085D

AÑO : 2008

L U G A R	E S T A C I O N				CLASIFICACION VEHICULAR EN PORCIENTO .												
	KM	TE	SC	TDPA	A	B	C2	C3	T3S2	T3S3	T3S2R4	OTROS	A	B	C	K'	D
LIM. EDOS. TERM. MEX. PPIA. HGO.	49.25																
X. C. OTUMBA - TIZAYUCA	53.45	1	1	11846	71.4	9.8	6.1	3.0	4.2	2.1	2.1	1.3	71.4	9.8	18.8	0.102	0.501
X. C. OTUMBA - TIZAYUCA	53.45	1	2	11874	71.3	9.7	6.2	2.8	4.0	2.4	2.2	1.4	71.3	9.7	19.0	0.153	0.501
T. C. MEXICO - PACHUCA (LIBRE)	60.50	1	1	12786	78.8	4.2	4.8	2.7	4.5	1.3	1.4	2.3	78.8	4.2	17.0	0.109	0.501
T. C. MEXICO - PACHUCA (LIBRE)	60.50	1	2	12720	79.0	4.1	4.6	2.8	4.4	1.2	1.3	2.6	79.0	4.1	16.9	0.088	0.501

11 CARR : CHALCO - MIXQUIC

CLAVE: 00171

RUTA : EM-DF

AÑO : 2008

L U G A R	E S T A C I O N				CLASIFICACION VEHICULAR EN PORCIENTO .												
	KM	TE	SC	TDPA	A	B	C2	C3	T3S2	T3S3	T3S2R4	OTROS	A	B	C	K'	D
CHALCO	0.00	3	0	15687	85.3	2.8	2.5	1.0	3.3	0.9	1.5	2.7	85.3	2.8	11.9	0.073	0.502
LIM. EDOS. TERM. MEX. PPIA. D.F.	8.00																
MIXQUIC	10.00	1	0	5449	90.5	4.2	0.9	0.3	2.3	0.2	0.5	1.1	90.5	4.2	5.3	0.076	0.501

12 CARR : CHALCO - TLAHUAC

CLAVE: 00170

RUTA : EM-DF

AÑO : 2008

L U G A R	E S T A C I O N				CLASIFICACION VEHICULAR EN PORCIENTO .												
	KM	TE	SC	TDPA	A	B	C2	C3	T3S2	T3S3	T3S2R4	OTROS	A	B	C	K'	D
CHALCO	0.00	3	0	8764	84.8	5.6	3.7	1.5	1.3	1.0	0.4	1.7	84.8	5.6	9.6	0.088	0.503
LIM. EDOS. TERM. MEX. PPIA. D.F.	7.50																
TLAHUAC	12.00	1	0	5184	86.8	3.2	1.9	2.1	1.9	1.4	0.4	2.3	86.8	3.2	10.0	0.093	0.506

13 CARR : JALATLACO - EL AJUSCO

CLAVE: 00017

RUTA : EM-DF

AÑO : 2008

L U G A R	E S T A C I O N				CLASIFICACION VEHICULAR EN PORCIENTO .												
	KM	TE	SC	TDPA	A	B	C2	C3	T3S2	T3S3	T3S2R4	OTROS	A	B	C	K'	D
T. C. ENT. CRUZ DE LA MISION - SAN NICOLAS COATEPEC	0.00	3	0	1833	88.4	6.4	0.5	0.3	2.4	1.0	0.3	0.7	88.4	6.4	5.2	0.113	0.503
LIM. EDOS. TERM. MEX. PPIA. D.F.	17.70																
T. C. CIRCUITO DEL AJUSCO	27.60	1	0	1019	82.1	4.3	2.9	2.4	3.4	3.3	0.0	1.6	82.1	4.3	13.6	0.102	0.518

14 CARR : T. C. (MEXICO - MIXQUIC) - SAN PABLO ATLAZALPAN

CLAVE: 00044

RUTA : EM-106-DF

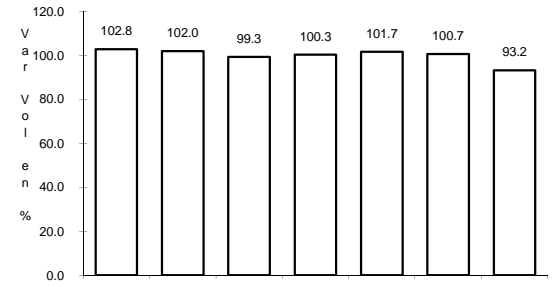
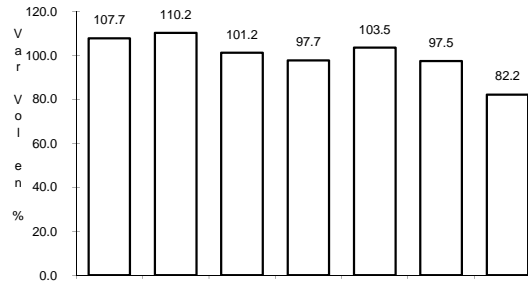
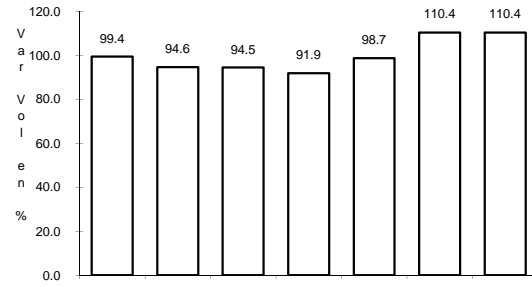
AÑO : 2008

L U G A R	E S T A C I O N				CLASIFICACION VEHICULAR EN PORCIENTO .												
	KM	TE	SC	TDPA	A	B	C2	C3	T3S2	T3S3	T3S2R4	OTROS	A	B	C	K'	D
T. C. MEXICO - MIXQUIC	0.00	3	0	4961	86.0	3.1	3.2	1.5	1.5	1.6	0.7	2.4	86.0	3.1	10.9	0.087	0.507

1 CARR: MEXICO - CUERNAVACA (LIBRE)

CLAVE: 00040

RUTA: MEX-095



Km: 28.78

Tipo: 1

Sent: 0

Km: 71.36

Tipo: 3

Sent: 1

Km: 71.36

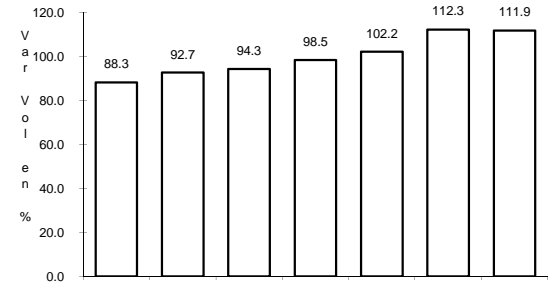
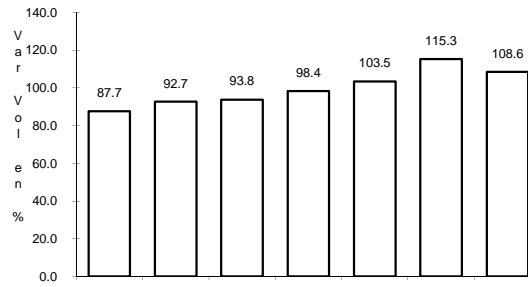
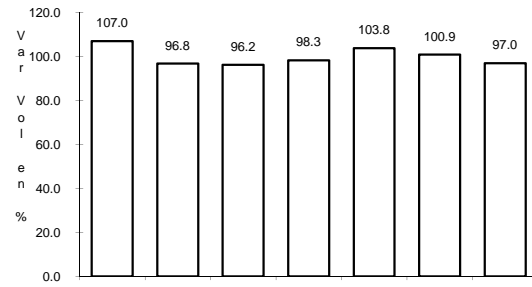
Tipo: 3

Sent: 2

2 CARR: MEXICO - PACHUCA (LIBRE)

CLAVE: 00431

RUTA: MEX-085



Km: 26.93

Tipo: 1

Sent: 0

Km: 86.50

Tipo: 1

Sent: 1

Km: 86.50

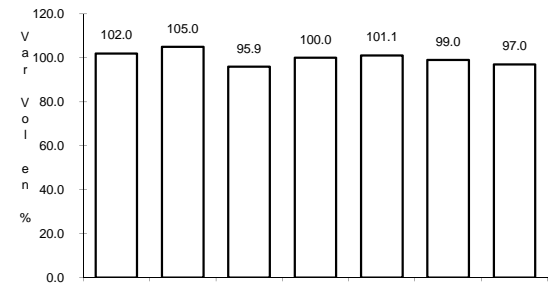
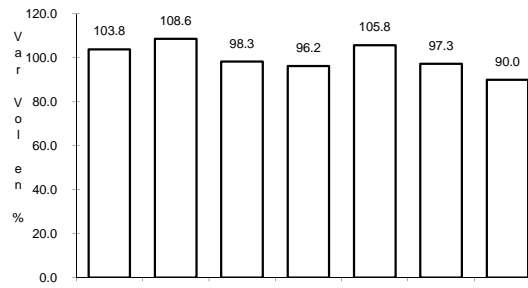
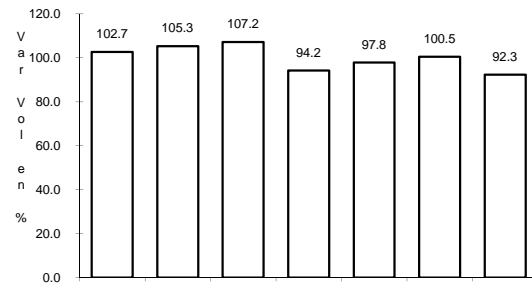
Tipo: 1

Sent: 2

3 CARR: MEXICO - PUEBLA (LIBRE)

CLAVE: 00449

RUTA: MEX-150



Km: 28.85

Tipo: 1

Sent: 1

Km: 28.85

Tipo: 1

Sent: 2

Km: 70.00

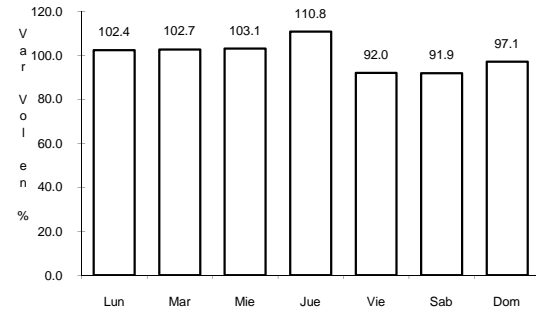
Tipo: 1

Sent: 0

4 CARR: MEXICO - TOLUCA

CLAVE: 00447

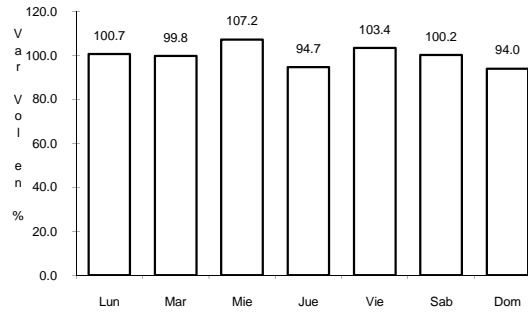
RUTA: MEX-015



Km: 12.84

Tipo: 3

Sent: 1



Km: 12.84

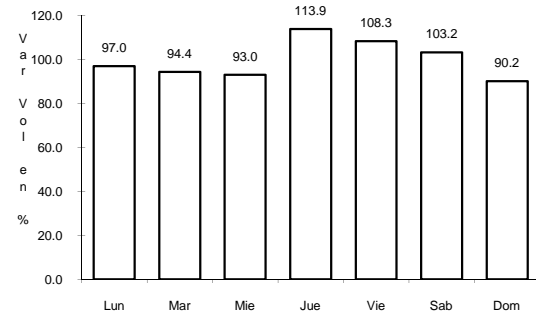
Tipo: 3

Sent: 2

5 CARR: SAN GREGORIO - OAXTEPEC

CLAVE: 00901

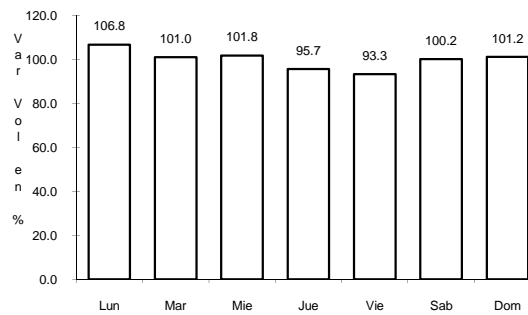
RUTA: MEX-142



Km: 0.00

Tipo: 3

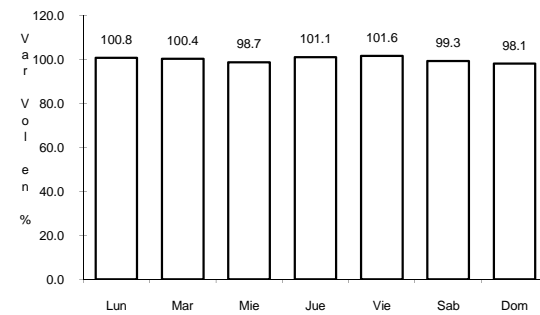
Sent: 0



Km: 33.80

Tipo: 1

Sent: 0



Km: 53.00

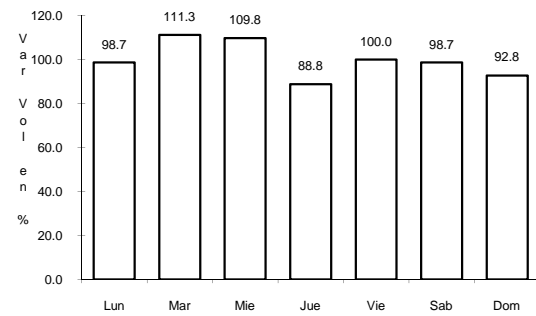
Tipo: 3

Sent: 0

6 CARR: CONSTITUYENTES - LA MARQUESA (CUOTA)

CLAVE: 00446

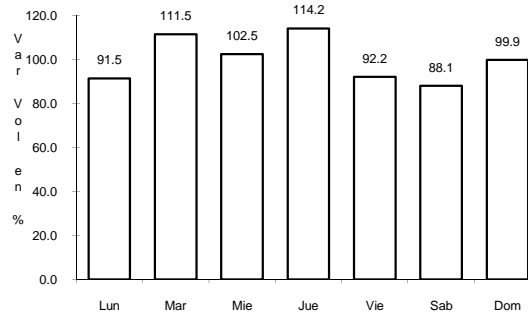
RUTA: MEX-015D



Km: 0.00

Tipo: 3

Sent: 1



Km: 0.00

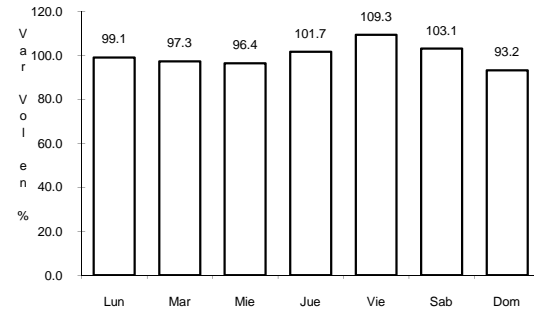
Tipo: 3

Sent: 2

7 CARR: MEXICO - CUERNAVACA (CUOTA)

CLAVE: 00041

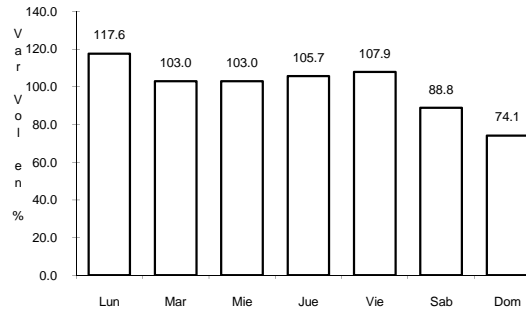
RUTA: MEX-095D



Km: 18.65

Tipo: 3

Sent: 1



Km: 18.65

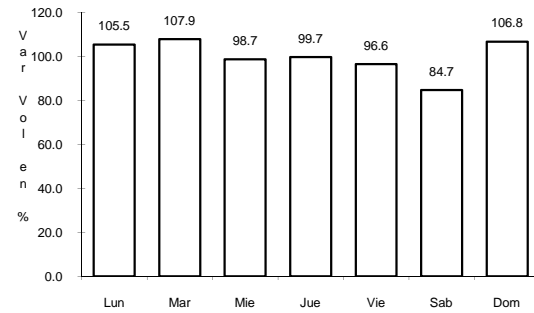
Tipo: 3

Sent: 2

8 CARR: MEXICO - PUEBLA (CUOTA)

CLAVE: 00450

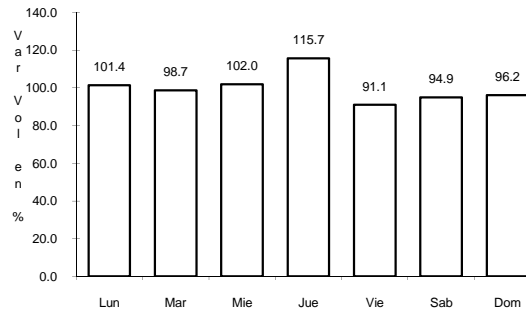
RUTA: MEX-150D



Km: 20.00

Tipo: 3

Sent: 1



Km: 20.00

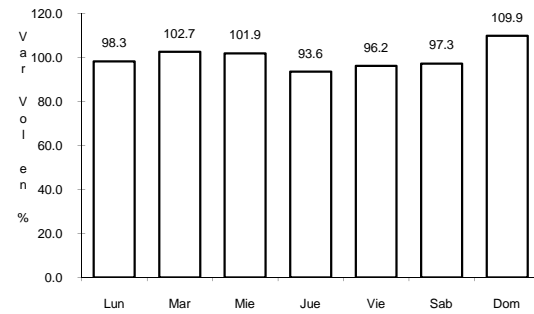
Tipo: 3

Sent: 2

9 CARR: MEXICO - QUERETARO (CUOTA)

CLAVE: 00411

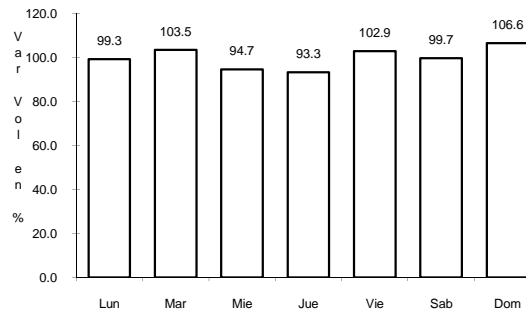
RUTA: MEX-057D



Km: 56.18

Tipo: 1

Sent: 1



Km: 56.18

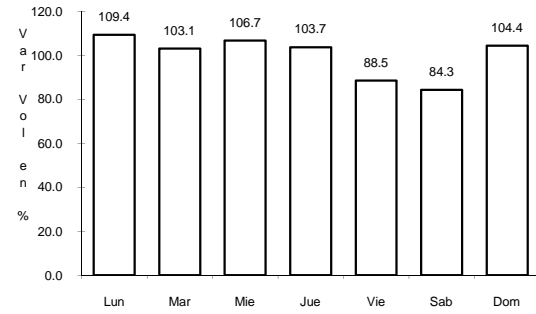
Tipo: 1

Sent: 2

10 CARR: MEXICO - TIZAYUCA (CUOTA)

CLAVE: 00432

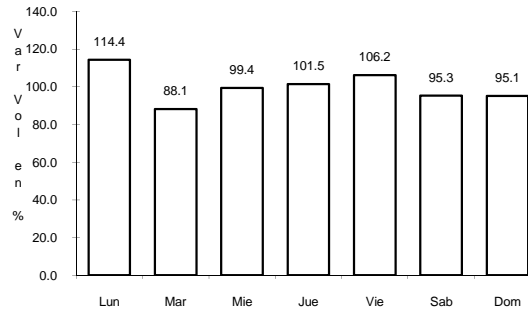
RUTA: MEX-085D



Km: 23.28

Tipo: 3

Sent: 1



Km: 23.28

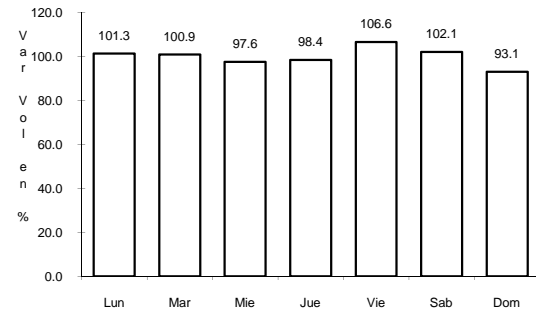
Tipo: 3

Sent: 2

11 CARR: CHALCO - MIXQUIC

CLAVE: 00171

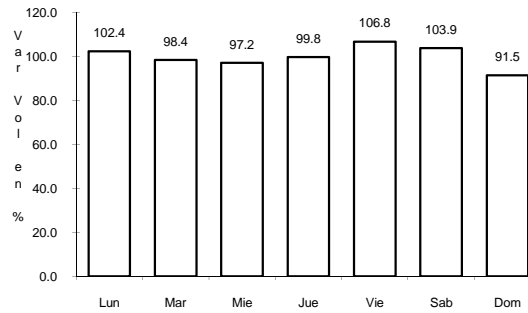
RUTA: EM-DF



Km: 0.00

Tipo: 3

Sent: 0



Km: 10.00

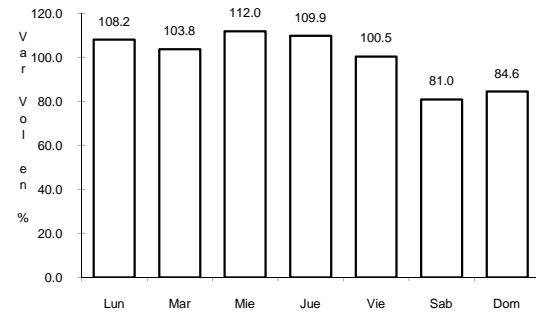
Tipo: 1

Sent: 0

12 CARR: CHALCO - TLAHUAC

CLAVE: 00170

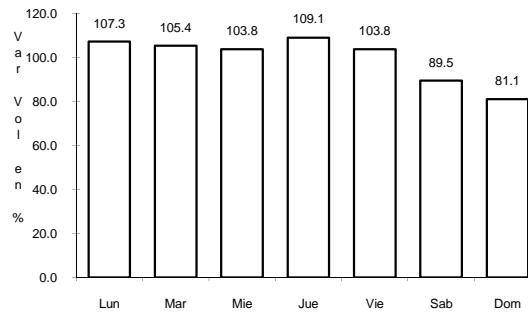
RUTA: EM-DF



Km: 0.00

Tipo: 3

Sent: 0



Km: 12.00

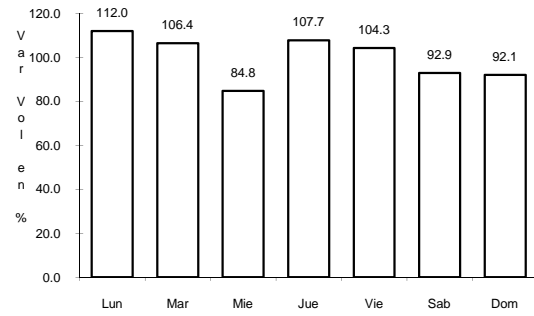
Tipo: 1

Sent: 0

13 CARR: JALATLACO - EL AJUSCO

CLAVE: 00017

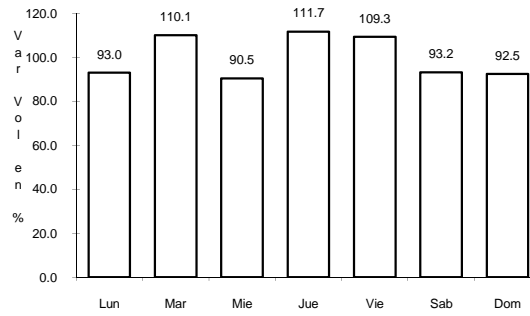
RUTA: EM-DF



Km: 0.00

Tipo: 3

Sent: 0



Km: 27.60

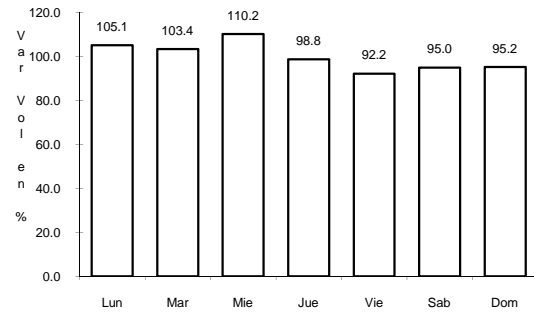
Tipo: 1

Sent: 0

14 CARR: T. C. (MEXICO - MIXQUIC) - SAN PABLO ATLAZALPAN

CLAVE: 00044

RUTA: EM-106-DF



Km: 0.00

Tipo: 3

Sent: 0