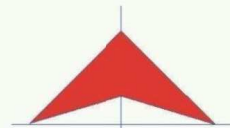


COLIMA

Núm. INDICE	CARRETERA	RUTA
---- FEDERAL LIBRE ----		
1	CD. GUZMAN - COLIMA	MEX-054
2	COLIMA - ENT. TECOMAN	MEX-110
3	ENT. PLAYA AZUL - MANZANILLO	MEX-200
4	JIQUILPAN - COLIMA	MEX-110
5	LIBRAMIENTO DE COLIMA	MEX
6	LIBRAMIENTO DE MANZANILLO (LIBRE)	MEX
7	LIBRAMIENTO DE MANZANILLO NORTE	MEX
8	MANZANILLO - PUERTO VALLARTA	MEX-200
9	MINATITLAN - ENT. PEZ VELA	MEX-098
10	RAMAL A CUYUTLAN	MEX
11	RAMAL CERRO DE LOS JUANES	MEX
12	RAMAL CERRO DE ORTEGA	MEX
13	TECOMAN - BOCA DE PASCUALES	MEX
---- FEDERAL CUOTA ----		
14	ACATLAN DE JUAREZ - EL TRAPICHE (CUOTA)	MEX-054D
15	ARMERIA - MANZANILLO (CUOTA)	MEX-200D
---- ESTATAL LIBRE ----		
16	ARMERIA - PLAYA EL PARAISO	COL
17	COLIMA - COMALA	COL-016
18	COLIMA - COQUIMATLAN	COL-034
19	COMALA - SAN ANTONIO	COL-016
20	COQUIMATLAN - PUEBLO JUAREZ	COL-034
21	COSTERA LAGUNA DE CUYUTLAN	COL
22	CUAUHTEMOC - COLIMA	COL-019
23	LIBRAMIENTO DE TECOMAN	COL
24	LIBRAMIENTO PONIENTE DE COLIMA	COL
25	LOS LIMONES - LOMA DE JUAREZ	COL
26	PASO POR LA SALADA	COL
27	PASO POR LOS ASMOLES	COL
28	PUERTA DE CALERAS - MADRID	COL-014
29	QUESERIA - EL NARANJAL	COL-001
30	RAMAL A AEROPUERTO DE COLIMA	COL
31	RAMAL A AEROPUERTO MANZANILLO	COL
32	RAMAL A IXTLAHUACAN	COL-005
33	RAMAL A LAS BRISAS	COL
34	RAMAL A LOS TEPAMES	COL-004
35	RAMAL A RANCHO VALLE NUEVO	COL
36	RAMAL A RINCON DE LOPEZ	COL
37	RAMAL A TECUANILLO	COL-009
38	RAMAL CAMOTLAN DE MIRAFLORES	COL
39	TECOMAN - LA MASCOTA	COL
40	TRAPICHILLOS - ESTACION ALZADA	COL-003
41	VILLA DE ALVAREZ - MINATITLAN	COL

06 COLIMA



MAPA INDICE

15 Num. Indice
2009

Secretaría de Comunicaciones y Transportes

COLIMA

1 CARR : CD. GUZMAN - COLIMA

CLAVE: 00117

RUTA : MEX-054

AÑO : 2008

L U G A R	E S T A C I O N				C L A S I F I C A C I O N V E H I C U L A R E N P O R C I E N T O .												
	KM	TE	SC	TDPA	A	B	C2	C3	T3S2	T3S3	T3S2R4	OTROS	A	B	C	K'	D
CD. GUZMAN	0.00	3	1	6647	85.1	2.0	4.4	4.0	1.4	1.6	1.2	0.3	85.1	2.0	12.9	0.095	0.502
CD. GUZMAN	0.00	3	2	6596	88.5	1.8	2.8	3.1	1.3	1.0	1.3	0.2	88.5	1.8	9.7	0.102	0.502
T. IZQ. ZAPOTILTIC	4.35	3	0	4219	85.5	2.8	2.9	2.5	2.8	1.2	0.5	1.8	85.5	2.8	11.7	0.100	0.500
T. DER. TEPOZAL Y NEVADO DE COLIMA	10.70	1	1	1930	81.0	3.3	3.9	4.1	2.9	2.5	0.9	1.4	81.0	3.3	15.7	0.106	0.516
T. DER. TEPOZAL Y NEVADO DE COLIMA	10.70	1	2	1809	81.5	3.2	3.2	3.5	3.4	2.1	1.5	1.6	81.5	3.2	15.3	0.108	0.516
ATENQUIQUE	31.90	1	0	2632	69.6	4.2	3.0	7.5	7.4	3.9	2.8	1.6	69.6	4.2	26.2	0.094	0.526
ATENQUIQUE	31.90	3	0	2340	71.3	3.3	2.6	6.3	8.2	4.6	2.1	1.6	71.3	3.3	25.4	0.093	0.501
LIM. EDOS. TERM. JAL. PPIA. COL.	56.50																
T. DER. QUESERIA	58.35	1	0	4072	79.8	7.8	2.3	3.6	2.8	2.1	0.6	1.0	79.8	7.8	12.4	0.086	0.507
CUAUHTEMOC	66.25	1	0	6859	79.8	10.5	2.3	2.2	2.8	0.6	0.7	1.1	79.8	10.5	9.7	0.093	0.510
CUAUHTEMOC	66.25	3	0	4616	86.0	4.5	5.0	1.1	2.2	0.2	0.3	0.7	86.0	4.5	9.5	0.071	0.502
EL TRAPICHE	76.55	3	1	7773	73.4	5.9	2.5	2.9	6.0	2.8	4.6	1.9	73.4	5.9	20.7	0.083	0.505
EL TRAPICHE	76.55	3	2	7616	71.0	5.7	2.9	3.2	6.2	3.3	5.4	2.3	71.0	5.7	23.3	0.077	0.505
T. IZQ. LIBRAMIENTO DE COLIMA	78.05	1	1	9446	71.1	3.3	3.0	2.8	6.2	2.9	6.2	4.5	71.1	3.3	25.6	0.082	0.514
T. IZQ. LIBRAMIENTO DE COLIMA	78.05	1	2	8937	75.4	3.3	3.0	2.9	5.7	2.7	4.7	2.3	75.4	3.3	21.3	0.082	0.514
T. C. CUAUHTEMOC - COLIMA	83.40																

2 CARR : COLIMA - ENT. TECOMAN

CLAVE: 06119

RUTA : MEX-110

AÑO : 2008

L U G A R	E S T A C I O N				C L A S I F I C A C I O N V E H I C U L A R E N P O R C I E N T O .												
	KM	TE	SC	TDPA	A	B	C2	C3	T3S2	T3S3	T3S2R4	OTROS	A	B	C	K'	D
T. C. JIQUILPAN - COLIMA	0.00	3	1	8124	74.3	4.6	2.5	3.2	5.6	2.7	4.7	2.4	74.3	4.6	21.1	0.090	0.507
T. C. JIQUILPAN - COLIMA	0.00	3	2	8370	72.3	4.5	3.0	3.7	6.0	2.8	4.7	3.0	72.3	4.5	23.2	0.094	0.507
T. IZQ. LOS ASMOLES	13.00	3	1	7291	79.2	3.9	3.9	4.2	3.1	2.1	1.3	2.3	79.2	3.9	16.9	0.075	0.514
T. IZQ. LOS ASMOLES	13.00	3	2	6906	79.7	3.8	4.0	4.1	2.4	3.8	0.5	1.7	79.7	3.8	16.5	0.075	0.514
T. DER. CALERAS	34.55	1	1	7122	81.7	5.1	3.4	1.9	2.2	3.4	1.0	1.3	81.7	5.1	13.2	0.082	0.510
T. DER. CALERAS	34.55	1	2	6841	81.3	5.0	3.8	1.8	2.8	3.2	1.2	0.9	81.3	5.0	13.7	0.084	0.510
T. C. ENT. PLAYA AZUL - MANZANILLO	40.10	1	1	9288	77.5	5.7	6.6	3.1	2.7	3.1	0.3	1.0	77.5	5.7	16.8	0.074	0.513
T. C. ENT. PLAYA AZUL - MANZANILLO	40.10	1	2	8813	78.4	5.4	6.4	3.1	2.3	2.0	0.9	1.5	78.4	5.4	16.2	0.069	0.513

3 CARR : ENT. PLAYA AZUL - MANZANILLO

CLAVE: 00495

RUTA : MEX-200

AÑO : 2008

L U G A R	E S T A C I O N				C L A S I F I C A C I O N V E H I C U L A R E N P O R C I E N T O .												
	KM	TE	SC	TDPA	A	B	C2	C3	T3S2	T3S3	T3S2R4	OTROS	A	B	C	K'	D
T. C. CARAPAN - PLAYA AZUL	0.00	3	0	3538	85.7	3.7	4.1	2.1	1.1	1.8	0.0	1.5	85.7	3.7	10.6	0.083	0.501

COLIMA

3 CARR : ENT. PLAYA AZUL - MANZANILLO

CLAVE: 00495

RUTA : MEX-200

AÑO : 2008

L U G A R	E S T A C I O N			C L A S I F I C A C I O N V E H I C U L A R E N P O R C I E N T O .													
	KM	TE	SC	TDPA	A	B	C2	C3	T3S2	T3S3	T3S2R4	OTROS	A	B	C	K'	D
CALETA DE CAMPOS	50.24	1	0	1087	87.4	2.7	4.5	2.2	0.8	0.7	0.7	1.0	87.4	2.7	9.9	0.077	0.506
TIZUAPAN	106.60	1	0	578	87.9	2.8	5.4	0.5	1.0	1.6	0.1	0.7	87.9	2.8	9.3	0.106	0.503
MARUATA	149.80	1	0	716	88.9	3.0	4.9	2.3	0.5	0.1	0.0	0.3	88.9	3.0	8.1	0.113	0.500
MARUATA	149.80	3	0	833	85.5	4.7	5.2	2.7	0.4	0.3	0.4	0.8	85.5	4.7	9.8	0.070	0.505
T. DER. AQUILA	190.10	3	0	1772	83.6	3.6	5.8	2.7	1.8	0.9	1.0	0.6	83.6	3.6	12.8	0.130	0.502
LIM. EDOS. TERM. MICH. PPIA. COL.	229.60																
CERRO DE ORTEGA	233.20	1	0	5053	85.0	1.7	3.4	1.3	2.6	1.9	1.4	2.7	85.0	1.7	13.3	0.078	0.511
EL BALCON	243.00	1	0	5281	81.1	5.3	5.8	3.5	1.0	1.8	0.0	1.5	81.1	5.3	13.6	0.084	0.503
EL BALCON	243.00	3	0	5430	81.8	5.1	5.5	2.6	1.5	2.3	0.2	1.0	81.8	5.1	13.1	0.108	0.506
COFRADIA DE MORELOS	252.50	1	0	11022	83.4	3.7	5.2	2.9	1.7	1.8	0.6	0.7	83.4	3.7	12.9	0.074	0.504
COFRADIA DE MORELOS	252.50	3	0	7700	85.0	3.1	4.8	2.4	1.8	1.6	0.5	0.8	85.0	3.1	11.9	0.086	0.505
T. C. COLIMA - ENT. TECOMAN	263.80	1	1	3974	70.9	8.2	7.5	5.4	5.4	1.8	0.3	0.5	70.9	8.2	20.9	0.098	0.515
T. C. COLIMA - ENT. TECOMAN	263.80	1	2	4217	72.1	8.1	7.6	5.0	4.2	2.2	0.2	0.6	72.1	8.1	19.8	0.094	0.515
T. DER. RINCON DE LOPEZ	269.30	1	0	6951	80.3	6.6	4.9	1.1	2.3	1.8	1.3	1.7	80.3	6.6	13.1	0.078	0.503
ARMERIA	272.50	1	0	6564	75.1	6.0	5.2	3.0	3.3	2.1	3.0	2.3	75.1	6.0	18.9	0.100	0.515
T. IZQ. CUYUTLAN	278.20	1	0	3683	74.0	10.3	5.6	4.4	2.0	0.9	0.7	2.1	74.0	10.3	15.7	0.105	0.506
SANTA RITA	292.50	1	0	3804	68.3	3.8	2.6	4.8	7.5	6.1	3.8	3.1	68.3	3.8	27.9	0.106	0.502
SANTA RITA	292.50	3	0	3935	70.5	4.7	3.2	2.5	8.2	6.2	3.2	1.5	70.5	4.7	24.8	0.066	0.501
LAS NUEVAS JUNTAS	310.70	1	0	5886	71.6	3.9	4.0	3.1	8.0	6.5	1.9	1.0	71.6	3.9	24.5	0.080	0.505
T. DER. LIBRAMIENTO DE MANZANILLO (LIBRE)	312.70	1	0	5682	78.8	10.4	2.5	1.8	1.6	1.6	1.2	2.1	78.8	10.4	10.8	0.090	0.501
T. DER. LIBRAMIENTO DE MANZANILLO (LIBRE)	312.70	3	0	5292	78.1	8.5	1.5	1.4	4.0	2.3	1.3	2.9	78.1	8.5	13.4	0.070	0.503
MANZANILLO	321.10	1	0	7065	87.0	4.6	2.0	2.5	1.9	1.4	0.2	0.4	87.0	4.6	8.4	0.096	0.504

4 CARR : JIQUILPAN - COLIMA

CLAVE: 00156

RUTA : MEX-110

AÑO : 2008

L U G A R	E S T A C I O N			C L A S I F I C A C I O N V E H I C U L A R E N P O R C I E N T O .													
	KM	TE	SC	TDPA	A	B	C2	C3	T3S2	T3S3	T3S2R4	OTROS	A	B	C	K'	D
JIQUILPAN	0.00	3	0	4938	89.2	4.8	3.2	0.9	1.1	0.1	0.2	0.5	89.2	4.8	6.0	0.110	0.537
SAN JOSE DE GRACIA	37.93	1	0	3478	81.9	5.0	3.0	2.8	3.8	1.0	1.3	1.2	81.9	5.0	13.1	0.089	0.506
LIM. EDOS. TERM. MICH. PPIA. JAL.	41.00																
MAZAMITLA	48.65	1	0	2516	77.6	2.9	0.1	3.4	6.9	6.2	2.0	0.9	77.6	2.9	19.5	0.082	0.501
MAZAMITLA	48.65	3	0	2474	75.8	2.2	2.4	3.1	6.5	6.0	2.7	1.3	75.8	2.2	22.0	0.088	0.500
T. IZQ. TAMAZULA DE GORDIANO (2° ACCESO)	96.70	3	0	6462	71.1	3.0	3.0	3.2	7.5	6.9	3.2	2.1	71.1	3.0	25.9	0.081	0.504
T. DER. CD. GUZMAN	108.50	3	0	5611	77.4	3.2	3.9	3.6	5.7	3.3	1.7	1.2	77.4	3.2	19.4	0.120	0.525
TECALITLAN	132.00	3	0	2855	83.1	3.3	4.2	3.4	2.8	1.2	0.7	1.3	83.1	3.3	13.6	0.089	0.511

COLIMA

4 CARR : JIQUILPAN - COLIMA

CLAVE: 00156

RUTA : MEX-110

AÑO : 2008

L U G A R	E S T A C I O N				CLASIFICACION VEHICULAR EN PORCIENTO .												
	KM	TE	SC	TDPA	A	B	C2	C3	T3S2	T3S3	T3S2R4	OTROS	A	B	C	K'	D
T. DER. ATENQUIQUE	137.70	3	0	2723	89.4	3.6	2.3	1.8	2.1	0.3	0.5	0.0	89.4	3.6	7.0	0.099	0.501
PIHUAMO	168.20	3	0	2654	89.3	2.1	2.3	2.2	1.9	0.4	0.3	1.5	89.3	2.1	8.6	0.080	0.513
LIM. EDOS. TERM. JAL. PPIA. COL.	189.60																
T. DER. ESTACION ALZADA	198.60	3	0	2259	82.6	4.4	5.7	3.3	1.7	0.9	0.0	1.4	82.6	4.4	13.0	0.089	0.502
T. IZQ. LOS TEPAMES	214.20	1	0	3536	82.6	7.3	4.4	2.1	1.7	1.2	0.7	0.0	82.6	7.3	10.1	0.099	0.503
X. C. LIBRAMIENTO DE COLIMA	220.00	1	0	5538	83.1	5.8	1.9	1.1	4.2	1.2	1.1	1.6	83.1	5.8	11.1	0.086	0.517
COLIMA	222.00	1	0	5024	72.7	10.7	6.5	4.8	1.9	1.3	0.3	1.8	72.7	10.7	16.6	0.110	0.502

5 CARR : LIBRAMIENTO DE COLIMA

CLAVE: 06573

RUTA : MEX

AÑO : 2008

L U G A R	E S T A C I O N				CLASIFICACION VEHICULAR EN PORCIENTO .												
	KM	TE	SC	TDPA	A	B	C2	C3	T3S2	T3S3	T3S2R4	OTROS	A	B	C	K'	D
T. C. CD. GUZMAN - COLIMA	0.00	3	1	4195	65.5	7.2	3.5	4.1	6.1	3.8	8.0	1.8	65.5	7.2	27.3	0.071	0.504
T. C. CD. GUZMAN - COLIMA	0.00	3	2	4265	63.3	6.8	3.4	4.0	6.5	4.9	8.3	2.8	63.3	6.8	29.9	0.066	0.504
T. C. COLIMA - ENT. TECOMAN	9.00	1	1	3666	72.0	4.5	2.5	2.9	6.3	4.0	5.7	2.1	72.0	4.5	23.5	0.080	0.503
T. C. COLIMA - ENT. TECOMAN	9.00	1	2	3710	76.6	4.7	2.7	2.9	5.0	2.5	3.5	2.1	76.6	4.7	18.7	0.084	0.503

6 CARR : LIBRAMIENTO DE MANZANILLO (LIBRE)

CLAVE: 06574

RUTA : MEX

AÑO : 2008

L U G A R	E S T A C I O N				CLASIFICACION VEHICULAR EN PORCIENTO .												
	KM	TE	SC	TDPA	A	B	C2	C3	T3S2	T3S3	T3S2R4	OTROS	A	B	C	K'	D
T. C. ENT. PLAYA AZUL - MANZANILLO	0.00	3	0	4942	72.1	9.6	1.1	0.6	4.4	6.3	3.6	2.3	72.1	9.6	18.3	0.090	0.505
T. C. MANZANILLO - PUERTO VALLARTA	6.30	1	1	4125	72.8	5.4	5.6	2.6	4.6	4.0	1.3	3.7	72.8	5.4	21.8	0.093	0.510
T. C. MANZANILLO - PUERTO VALLARTA	6.30	1	2	4180	73.7	5.0	5.1	1.7	4.6	4.4	1.0	4.5	73.7	5.0	21.3	0.089	0.510

7 CARR : LIBRAMIENTO DE MANZANILLO NORTE

CLAVE: 06122

RUTA : MEX

AÑO : 2008

L U G A R	E S T A C I O N				CLASIFICACION VEHICULAR EN PORCIENTO .												
	KM	TE	SC	TDPA	A	B	C2	C3	T3S2	T3S3	T3S2R4	OTROS	A	B	C	K'	D
T. C. LIBRAMIENTO DE MANZANILLO (LIBRE)	0.00																
T. C. MINATITLAN - ENT. PEZ VELA	3.00	3	0	7998	82.7	3.0	1.1	2.8	3.4	2.0	1.4	3.6	82.7	3.0	14.3	0.063	0.510
T. C. MANZANILLO - PUERTO VALLARTA	19.00	1	0	6591	84.6	3.5	2.6	2.8	3.3	1.5	0.7	1.0	84.6	3.5	11.9	0.110	0.521

COLIMA

8 CARR : MANZANILLO - PUERTO VALLARTA

CLAVE: 00070

RUTA : MEX-200

AÑO : 2008

L U G A R	E S T A C I O N				C L A S I F I C A C I O N V E H I C U L A R E N P O R C I E N T O .												
	KM	TE	SC	TDPA	A	B	C2	C3	T3S2	T3S3	T3S2R4	OTROS	A	B	C	K'	D
MANZANILLO	0.00	3	1	13885	78.3	8.6	2.1	1.3	2.5	2.5	1.1	3.6	78.3	8.6	13.1	0.083	0.502
MANZANILLO	0.00	3	2	13758	77.4	8.8	2.0	1.4	2.5	3.0	0.8	4.1	77.4	8.8	13.8	0.083	0.502
T. DER. MINATITLAN	3.14	1	1	15495	79.7	3.2	3.2	0.5	4.2	1.6	2.2	5.4	79.7	3.2	17.1	0.079	0.506
T. DER. MINATITLAN	3.14	1	2	15095	75.2	3.0	2.5	0.7	5.4	3.0	3.2	7.0	75.2	3.0	21.8	0.081	0.506
SANTIAGO	13.24	1	1	7820	79.1	5.1	4.6	1.3	2.8	3.3	1.4	2.4	79.1	5.1	15.8	0.081	0.506
SANTIAGO	13.24	1	2	8001	83.7	5.0	4.8	0.7	2.1	1.7	1.0	1.0	83.7	5.0	11.3	0.076	0.506
SANTIAGO	13.24	3	1	3739	82.8	4.5	4.6	2.4	1.9	1.9	0.2	1.7	82.8	4.5	12.7	0.075	0.502
SANTIAGO	13.24	3	2	3705	83.5	4.3	5.0	2.6	1.9	1.3	0.2	1.2	83.5	4.3	12.2	0.074	0.502
SAN JUAN DE CUATRO VIENTOS	39.04	3	0	6388	83.4	4.8	5.2	2.0	1.9	1.3	0.3	1.1	83.4	4.8	11.8	0.089	0.504
T. IZQ. AEROPUERTO MANZANILLO	40.55	3	0	5302	85.7	4.5	3.4	1.7	1.3	2.1	0.1	1.2	85.7	4.5	9.8	0.072	0.500
LIM. EDOS. TERM. COL. PPIA. JAL.	43.50																
CIHUATLAN	47.92	1	0	7056	77.4	7.8	2.6	2.2	3.6	1.4	1.5	3.5	77.4	7.8	14.8	0.086	0.503
CIHUATLAN	47.92	3	0	6918	78.2	7.2	2.6	1.9	3.6	1.5	1.5	3.5	78.2	7.2	14.6	0.086	0.508
T. IZQ. SAN FRANCISCO	50.18	3	0	5470	78.4	7.0	4.1	2.1	3.4	1.2	1.3	2.5	78.4	7.0	14.6	0.100	0.507
MELAQUE	61.64	1	0	7739	75.3	8.8	2.5	1.3	5.2	1.2	2.1	3.6	75.3	8.8	15.9	0.081	0.501
MELAQUE	61.64	3	0	5101	74.0	8.2	2.0	1.9	5.1	1.3	2.0	5.5	74.0	8.2	17.8	0.103	0.505
T. IZQ. TENACATITA	90.44	3	0	3195	81.6	7.0	1.4	3.0	2.3	1.3	1.6	1.8	81.6	7.0	11.4	0.095	0.501
T. DER. TOMATLAN	177.60	1	0	3122	79.9	6.7	2.5	3.2	3.8	1.3	1.4	1.2	79.9	6.7	13.4	0.086	0.501
T. DER. TOMATLAN	177.60	3	0	3308	85.1	3.6	4.3	0.9	3.3	0.6	0.9	1.3	85.1	3.6	11.3	0.158	0.502
T. IZQ. EL TUITO	230.60	3	0	4087	84.9	3.7	4.8	1.8	1.7	1.1	0.5	1.5	84.9	3.7	11.4	0.095	0.503
PUERTO VALLARTA	273.60	1	0	6812	85.2	4.3	3.8	1.2	2.8	0.8	0.7	1.2	85.2	4.3	10.5	0.084	0.502

9 CARR : MINATITLAN - ENT. PEZ VELA

CLAVE: 06015

RUTA : MEX-098

AÑO : 2008

L U G A R	E S T A C I O N				C L A S I F I C A C I O N V E H I C U L A R E N P O R C I E N T O .												
	KM	TE	SC	TDPA	A	B	C2	C3	T3S2	T3S3	T3S2R4	OTROS	A	B	C	K'	D
MINATITLAN	0.00																
T. DER. JALIPA	49.50	1	0	1638	80.5	4.1	8.8	2.5	1.7	2.3	0.0	0.1	80.5	4.1	15.4	0.084	0.503
T. DER. JALIPA	49.50	3	0	2963	80.8	3.4	11.1	2.3	0.8	0.9	0.0	0.7	80.8	3.4	15.8	0.097	0.503
T. C. MANZANILLO - PUERTO VALLARTA	58.50	1	1	3100	79.8	4.1	10.3	2.4	0.9	1.8	0.1	0.6	79.8	4.1	16.1	0.098	0.501
T. C. MANZANILLO - PUERTO VALLARTA	58.50	1	2	3110	81.3	4.2	10.4	1.9	1.2	0.9	0.0	0.1	81.3	4.2	14.5	0.090	0.501

COLIMA

10 CARR : RAMAL A CUYUTLAN

CLAVE: 06225

RUTA : MEX

AÑO : 2008

L U G A R	E S T A C I O N				C L A S I F I C A C I O N V E H I C U L A R E N P O R C I E N T O .												
	KM	TE	SC	TDPA	A	B	C2	C3	T3S2	T3S3	T3S2R4	OTROS	A	B	C	K'	D
T. C. ENT. PLAYA AZUL - MANZANILLO	0.00	3	0	767	87.7	3.3	7.3	1.6	0.0	0.1	0.0	0.0	87.7	3.3	9.0	0.125	0.515
CUYUTLAN	7.00	1	0	416	79.2	3.6	10.1	4.5	0.5	0.2	0.9	1.0	79.2	3.6	17.2	0.132	0.504

11 CARR : RAMAL CERRO DE LOS JUANES

CLAVE:

RUTA : MEX

AÑO : 2008

L U G A R	E S T A C I O N				C L A S I F I C A C I O N V E H I C U L A R E N P O R C I E N T O .												
	KM	TE	SC	TDPA	A	B	C2	C3	T3S2	T3S3	T3S2R4	OTROS	A	B	C	K'	D
T. C. MINATITLAN - ENT. PEZ VELA	0.00	3	0	3252	82.1	7.8	3.7	2.3	1.3	1.5	0.0	1.3	82.1	7.8	10.1	0.110	0.520
CERRO DE LOS JUANES	3.00																

12 CARR : RAMAL CERRO DE ORTEGA

CLAVE:

RUTA : MEX

AÑO : 2008

L U G A R	E S T A C I O N				C L A S I F I C A C I O N V E H I C U L A R E N P O R C I E N T O .												
	KM	TE	SC	TDPA	A	B	C2	C3	T3S2	T3S3	T3S2R4	OTROS	A	B	C	K'	D
T. C. ENT. PLAYA AZUL - MANZANILLO	0.00	3	0	2125	84.0	3.9	3.5	2.3	1.9	1.4	1.4	1.6	84.0	3.9	12.1	0.088	0.501
CERRO DE ORTEGA	1.00																

13 CARR : TECOMAN - BOCA DE PASCUALES

CLAVE: 06226

RUTA : MEX

AÑO : 2008

L U G A R	E S T A C I O N				C L A S I F I C A C I O N V E H I C U L A R E N P O R C I E N T O .												
	KM	TE	SC	TDPA	A	B	C2	C3	T3S2	T3S3	T3S2R4	OTROS	A	B	C	K'	D
TECOMAN	0.00	3	0	2476	82.1	4.7	4.9	2.7	1.7	1.2	1.3	1.4	82.1	4.7	13.2	0.102	0.563
BOCA DE PASCUALES	12.00																

14 CARR : ACATLAN DE JUAREZ - EL TRAPICHE (CUOTA)

CLAVE: 00118

RUTA : MEX-054D

AÑO : 2008

L U G A R	E S T A C I O N				C L A S I F I C A C I O N V E H I C U L A R E N P O R C I E N T O .												
	KM	TE	SC	TDPA	A	B	C2	C3	T3S2	T3S3	T3S2R4	OTROS	A	B	C	K'	D
T. C. ENT. SANTA CRUZ - MELAQUE	0.00																
CASETA DE COBRO "ACATLAN"	0.20	3	1	3681	70.6	3.8	3.7	2.3	6.1	2.7	8.2	2.6	70.6	3.8	25.6	0.082	0.501
CASETA DE COBRO "ACATLAN"	0.20	3	2	3666	70.2	4.0	3.7	2.5	6.1	2.8	8.6	2.1	70.2	4.0	25.8	0.072	0.501
CASETA DE COBRO ACATLAN DE JUAREZ	0.60	2	0	8121	76.2	4.8	3.7	3.4	3.2	1.3	6.0	1.4	76.2	4.8	19.0		
T. IZQ. SAN MARCOS	10.80	1	1	4227	77.7	4.3	3.5	3.4	3.7	2.4	4.0	1.0	77.7	4.3	18.0	0.075	0.501
T. IZQ. SAN MARCOS	10.80	1	2	4218	78.6	4.3	3.0	3.6	3.0	2.4	4.2	0.9	78.6	4.3	17.1	0.078	0.501
T. DER. USMAJAC	67.80	1	1	5325	77.9	3.8	3.6	3.4	4.1	1.8	4.3	1.1	77.9	3.8	18.3	0.077	0.502

COLIMA

18 CARR : COLIMA - COQUIMATLAN

CLAVE: 06034

RUTA : COL-034

AÑO : 2008

L U G A R	E S T A C I O N				C L A S I F I C A C I O N V E H I C U L A R E N P O R C I E N T O .												
	KM	TE	SC	TDPA	A	B	C2	C3	T3S2	T3S3	T3S2R4	OTROS	A	B	C	K'	D
COLIMA	0.00																
T. DER. VILLA ALVAREZ	3.00	3	1	6608	83.7	3.5	1.2	0.2	4.3	1.2	1.5	4.4	83.7	3.5	12.8	0.107	0.508
T. DER. VILLA ALVAREZ	3.00	3	2	6407	77.5	2.8	1.3	0.4	9.6	1.3	3.6	3.5	77.5	2.8	19.7	0.108	0.508
COQUIMATLAN	11.00	1	1	1798	83.5	3.1	4.2	2.9	1.6	1.5	0.5	2.7	83.5	3.1	13.4	0.095	0.509
COQUIMATLAN	11.00	1	2	1860	83.8	3.6	4.1	3.0	1.5	1.4	0.4	2.2	83.8	3.6	12.6	0.099	0.509

19 CARR : COMALA - SAN ANTONIO

CLAVE: 06030

RUTA : COL-016

AÑO : 2008

L U G A R	E S T A C I O N				C L A S I F I C A C I O N V E H I C U L A R E N P O R C I E N T O .												
	KM	TE	SC	TDPA	A	B	C2	C3	T3S2	T3S3	T3S2R4	OTROS	A	B	C	K'	D
COMALA	0.00	3	1	1535	93.2	1.9	2.5	0.0	0.6	0.3	0.2	1.3	93.2	1.9	4.9	0.131	0.505
COMALA	0.00	3	2	1568	91.0	2.0	2.6	0.0	2.1	0.3	0.7	1.3	91.0	2.0	7.0	0.118	0.505
SUCHITLAN	10.00	1	0	2549	91.1	2.4	3.2	0.2	1.3	0.3	0.5	1.0	91.1	2.4	6.5	0.101	0.504
SAN ANTONIO	20.50																

20 CARR : COQUIMATLAN - PUEBLO JUAREZ

CLAVE: 06029

RUTA : COL-034

AÑO : 2008

L U G A R	E S T A C I O N				C L A S I F I C A C I O N V E H I C U L A R E N P O R C I E N T O .												
	KM	TE	SC	TDPA	A	B	C2	C3	T3S2	T3S3	T3S2R4	OTROS	A	B	C	K'	D
COQUIMATLAN	0.00	3	0	4862	90.5	3.2	2.3	0.1	2.3	0.4	0.4	0.8	90.5	3.2	6.3	0.120	0.508
PUEBLO JUAREZ	16.00																

21 CARR : COSTERA LAGUNA DE CUYUTLAN

CLAVE: 06010

RUTA : COL

AÑO : 2008

L U G A R	E S T A C I O N				C L A S I F I C A C I O N V E H I C U L A R E N P O R C I E N T O .												
	KM	TE	SC	TDPA	A	B	C2	C3	T3S2	T3S3	T3S2R4	OTROS	A	B	C	K'	D
T. C. ARMERIA - MANZANILLO (CUOTA)	0.00	3	0	3856	92.8	2.3	0.9	1.3	1.2	0.2	0.9	0.4	92.8	2.3	4.9	0.082	0.502
MANZANILLO	13.00	1	0	3361	88.0	3.8	3.6	2.6	1.2	0.5	0.1	0.2	88.0	3.8	8.2	0.103	0.503

22 CARR : CUAUHTEMOC - COLIMA

CLAVE: 06019

RUTA : COL-019

AÑO : 2008

L U G A R	E S T A C I O N				C L A S I F I C A C I O N V E H I C U L A R E N P O R C I E N T O .												
	KM	TE	SC	TDPA	A	B	C2	C3	T3S2	T3S3	T3S2R4	OTROS	A	B	C	K'	D
CUAUHTEMOC	0.00	3	0	3860	82.0	4.6	3.5	3.0	3.3	2.0	0.9	0.7	82.0	4.6	13.4	0.101	0.506
X. C. LIBRAMIENTO DE COLIMA	19.50	1	1	9363	76.3	4.6	1.6	0.8	5.4	2.2	4.0	5.1	76.3	4.6	19.1	0.087	0.515

COLIMA

27 CARR : PASO POR LOS ASMOLES

CLAVE: 06120

RUTA : COL

AÑO : 2008

L U G A R	E S T A C I O N				CLASIFICACION VEHICULAR EN PORCIENTO .												
	KM	TE	SC	TDPA	A	B	C2	C3	T3S2	T3S3	T3S2R4	OTROS	A	B	C	K'	D
T. C. COLIMA - ENT. TECOMAN	0.00																
LOS ASMOLES	1.80	3	0	1434	85.6	5.5	4.1	1.8	1.2	1.3	0.0	0.5	85.6	5.5	8.9	0.135	0.504
T. C. COLIMA - ENT. TECOMAN	2.90																

28 CARR : PUERTA DE CALERAS - MADRID

CLAVE: 06014

RUTA : COL-014

AÑO : 2008

L U G A R	E S T A C I O N				CLASIFICACION VEHICULAR EN PORCIENTO .												
	KM	TE	SC	TDPA	A	B	C2	C3	T3S2	T3S3	T3S2R4	OTROS	A	B	C	K'	D
T. C. COLIMA - ENT. TECOMAN	0.00	3	0	2199	86.6	4.9	4.5	2.2	0.2	0.7	0.0	0.9	86.6	4.9	8.5	0.111	0.518
MADRID	14.00																

29 CARR : QUESERIA - EL NARANJAL

CLAVE: 06001

RUTA : COL-001

AÑO : 2008

L U G A R	E S T A C I O N				CLASIFICACION VEHICULAR EN PORCIENTO .												
	KM	TE	SC	TDPA	A	B	C2	C3	T3S2	T3S3	T3S2R4	OTROS	A	B	C	K'	D
QUESERIA	0.00	3	0	858	89.6	6.0	1.6	1.2	0.9	0.1	0.3	0.3	89.6	6.0	4.4	0.160	0.504
EL NARANJAL	10.00	1	0	438	91.1	4.1	0.0	2.0	1.6	0.2	0.5	0.5	91.1	4.1	4.8	0.089	0.504

30 CARR : RAMAL A AEROPUERTO DE COLIMA

CLAVE: 06224

RUTA : COL

AÑO : 2008

L U G A R	E S T A C I O N				CLASIFICACION VEHICULAR EN PORCIENTO .												
	KM	TE	SC	TDPA	A	B	C2	C3	T3S2	T3S3	T3S2R4	OTROS	A	B	C	K'	D
T. C. CUAUHTEMOC - COLIMA	0.00	3	0	1148	96.1	2.9	0.1	0.2	0.2	0.0	0.1	0.4	96.1	2.9	1.0	0.084	0.515
AEROPUERTO DE COLIMA	1.00																

31 CARR : RAMAL A AEROPUERTO MANZANILLO

CLAVE: 06582

RUTA : COL

AÑO : 2008

L U G A R	E S T A C I O N				CLASIFICACION VEHICULAR EN PORCIENTO .												
	KM	TE	SC	TDPA	A	B	C2	C3	T3S2	T3S3	T3S2R4	OTROS	A	B	C	K'	D
T. C. MANZANILLO - PUERTO VALLARTA	0.00	3	0	1184	96.9	1.0	1.5	0.5	0.0	0.0	0.0	0.1	96.9	1.0	2.1	0.090	0.501
AEROPUERTO MANZANILLO	5.50	1	0	1334	97.3	1.4	0.2	0.3	0.0	0.2	0.3	0.3	97.3	1.4	1.3	0.091	0.508

COLIMA

32 CARR : RAMAL A IXTLAHUACAN

CLAVE: 06577

RUTA : COL-005

AÑO : 2008

L U G A R	E S T A C I O N				C L A S I F I C A C I O N V E H I C U L A R E N P O R C I E N T O .												
	KM	TE	SC	TDPA	A	B	C2	C3	T3S2	T3S3	T3S2R4	OTROS	A	B	C	K'	D
T. C. COLIMA - ENT. TECOMAN IXTLAHUACAN	0.00	3	0	1474	81.9	8.2	4.9	3.4	0.8	0.4	0.3	0.1	81.9	8.2	9.9	0.107	0.509
	8.50																

33 CARR : RAMAL A LAS BRISAS

CLAVE: 06571

RUTA : COL

AÑO : 2008

L U G A R	E S T A C I O N				C L A S I F I C A C I O N V E H I C U L A R E N P O R C I E N T O .												
	KM	TE	SC	TDPA	A	B	C2	C3	T3S2	T3S3	T3S2R4	OTROS	A	B	C	K'	D
T. C. MANZANILLO - PUERTO VALLARTA LAS BRISAS	0.00	3	0	12555	78.7	8.5	9.8	1.2	0.4	0.4	0.2	0.8	78.7	8.5	12.8	0.074	0.502
	2.30																

34 CARR : RAMAL A LOS TEPAMES

CLAVE: 06004

RUTA : COL-004

AÑO : 2008

L U G A R	E S T A C I O N				C L A S I F I C A C I O N V E H I C U L A R E N P O R C I E N T O .												
	KM	TE	SC	TDPA	A	B	C2	C3	T3S2	T3S3	T3S2R4	OTROS	A	B	C	K'	D
T. C. JIQUILPAN - COLIMA LOS TEPAMES	0.00	3	0	1271	80.8	4.6	5.6	2.7	3.0	1.7	0.9	0.7	80.8	4.6	14.6	0.083	0.504
	9.50																

35 CARR : RAMAL A RANCHO VALLE NUEVO

CLAVE: 06583

RUTA : COL

AÑO : 2008

L U G A R	E S T A C I O N				C L A S I F I C A C I O N V E H I C U L A R E N P O R C I E N T O .												
	KM	TE	SC	TDPA	A	B	C2	C3	T3S2	T3S3	T3S2R4	OTROS	A	B	C	K'	D
T. C. ENT. PLAYA AZUL - MANZANILLO RANCHO VALLE NUEVO	0.00	3	0	1351	86.5	5.6	4.3	2.4	0.4	0.2	0.2	0.4	86.5	5.6	7.9	0.104	0.507
	4.00																

36 CARR : RAMAL A RINCON DE LOPEZ

CLAVE: 06578

RUTA : COL

AÑO : 2008

L U G A R	E S T A C I O N				C L A S I F I C A C I O N V E H I C U L A R E N P O R C I E N T O .												
	KM	TE	SC	TDPA	A	B	C2	C3	T3S2	T3S3	T3S2R4	OTROS	A	B	C	K'	D
T. C. ENT. PLAYA AZUL - MANZANILLO RINCON DE LOPEZ	0.00	3	0	2005	89.6	5.0	3.7	1.4	0.2	0.1	0.0	0.0	89.6	5.0	5.4	0.095	0.508
	14.00																

37 CARR : RAMAL A TECUANILLO

CLAVE: 06009

RUTA : COL-009

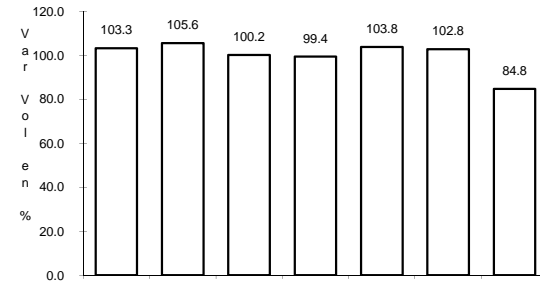
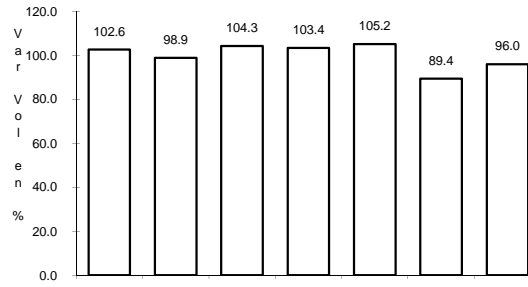
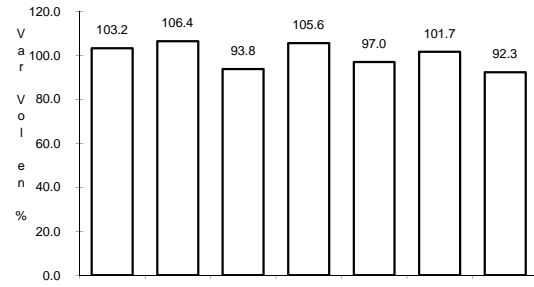
AÑO : 2008

L U G A R	E S T A C I O N				C L A S I F I C A C I O N V E H I C U L A R E N P O R C I E N T O .												
	KM	TE	SC	TDPA	A	B	C2	C3	T3S2	T3S3	T3S2R4	OTROS	A	B	C	K'	D
T. C. ENT. PLAYA AZUL - MANZANILLO	0.00	3	0	1316	87.2	5.3	4.7	1.2	1.0	0.6	0.0	0.0	87.2	5.3	7.5	0.119	0.504

1 CARR: CD. GUZMAN - COLIMA

CLAVE: 00117

RUTA: MEX-054



Km: 0.00

Tipo: 3

Sent: 1

Km: 0.00

Tipo: 3

Sent: 2

Km: 66.25

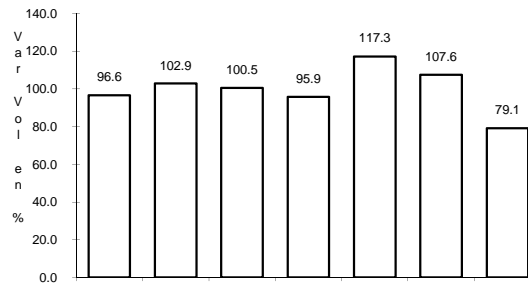
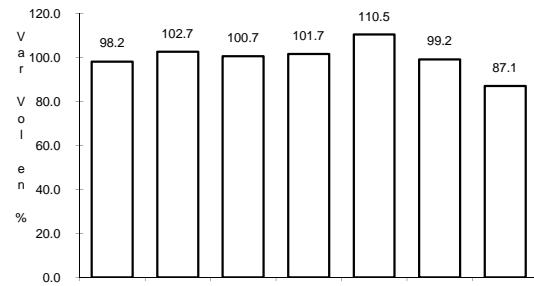
Tipo: 3

Sent: 0

2 CARR: COLIMA - ENT. TECOMAN

CLAVE: 06119

RUTA: MEX-110



Km: 0.00

Tipo: 3

Sent: 1

Km: 0.00

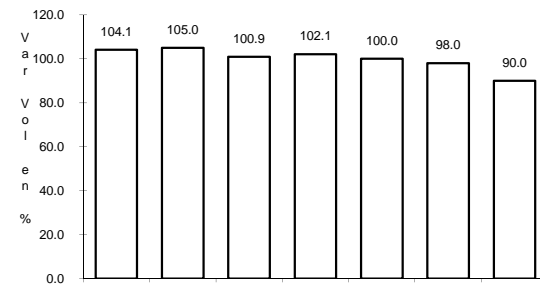
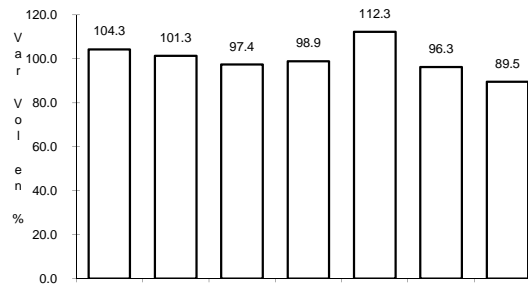
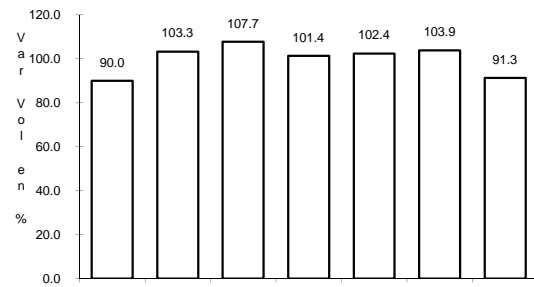
Tipo: 3

Sent: 2

3 CARR: ENT. PLAYA AZUL - MANZANILLO

CLAVE: 00495

RUTA: MEX-200



Km: 0.00

Tipo: 3

Sent: 0

Km: 190.10

Tipo: 3

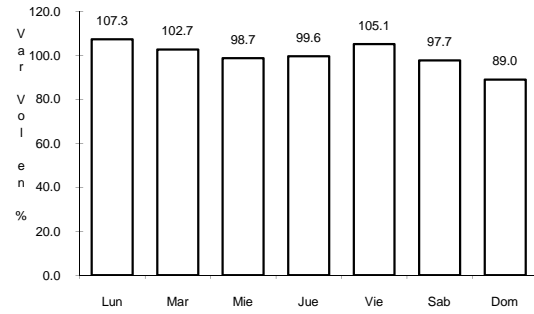
Sent: 0

Km: 321.12

Tipo: 1

Sent: 0

4 CARR: JIQUILPAN - COLIMA

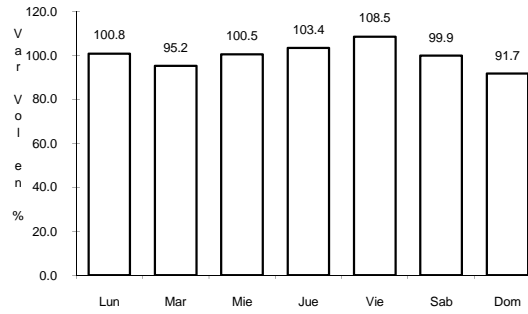


Km: 0.00

Tipo: 3

Sent: 0

CLAVE: 00156

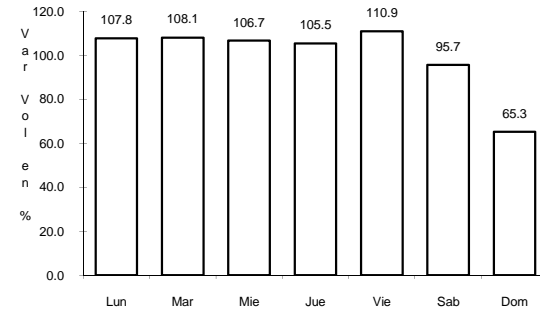


Km: 108.50

Tipo: 3

Sent: 0

RUTA: MEX-110

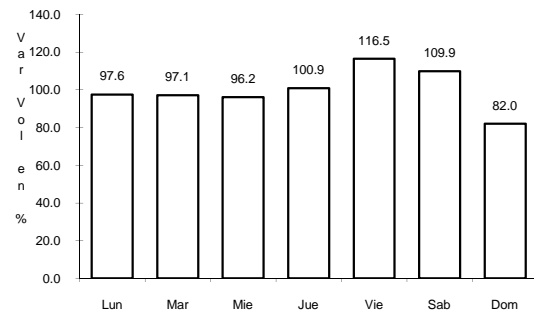


Km: 222.00

Tipo: 1

Sent: 0

5 CARR: LIBRAMIENTO DE COLIMA

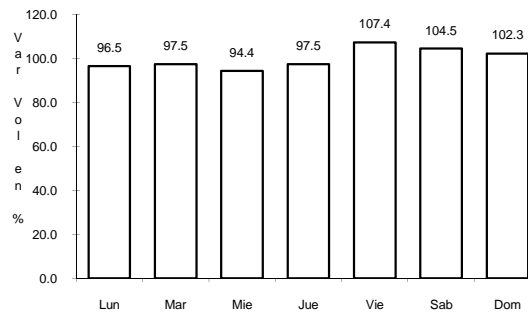


Km: 0.00

Tipo: 3

Sent: 1

CLAVE: 06573



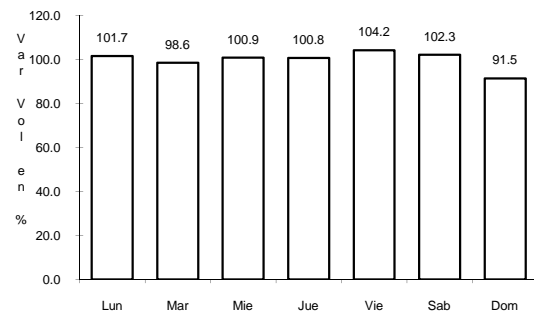
Km: 0.00

Tipo: 3

Sent: 2

RUTA: MEX

6 CARR: LIBRAMIENTO DE MANZANILLO (LIBRE)

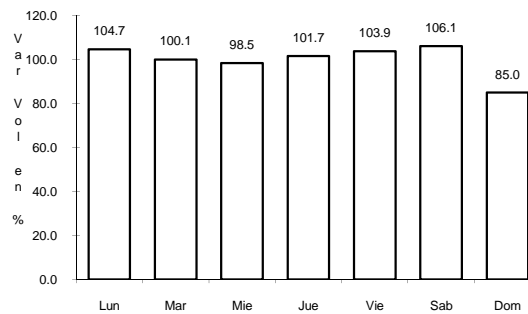


Km: 0.00

Tipo: 3

Sent: 0

CLAVE: 06574

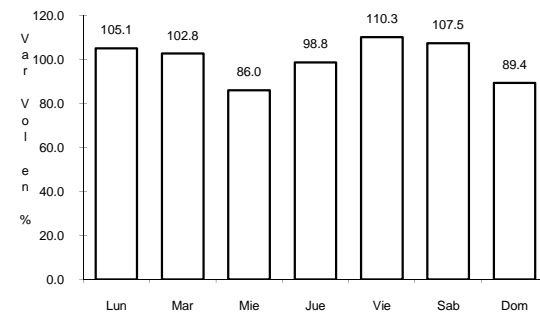


Km: 6.30

Tipo: 1

Sent: 1

RUTA: MEX



Km: 6.30

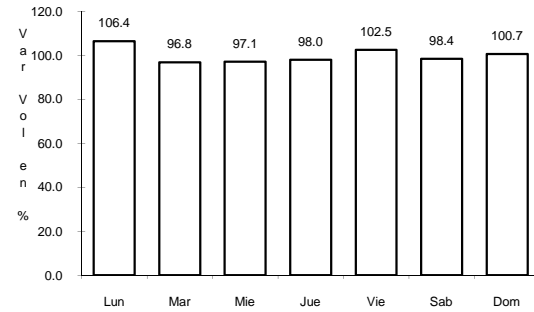
Tipo: 1

Sent: 2

7 CARR: LIBRAMIENTO DE MANZANILLO NORTE

CLAVE: 06122

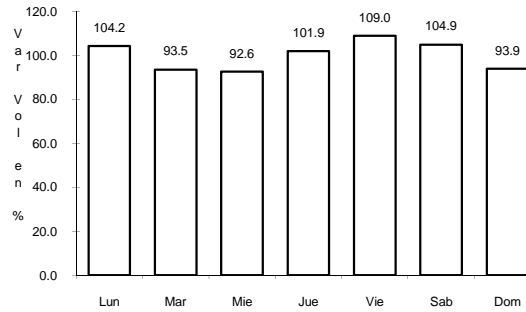
ruta: MEX



Km: 3.00

Tipo: 3

Sent: 0



Km: 19.00

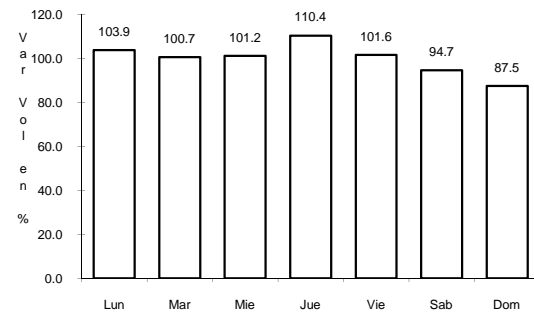
Tipo: 1

Sent: 0

8 CARR: MANZANILLO - PUERTO VALLARTA

CLAVE: 00070

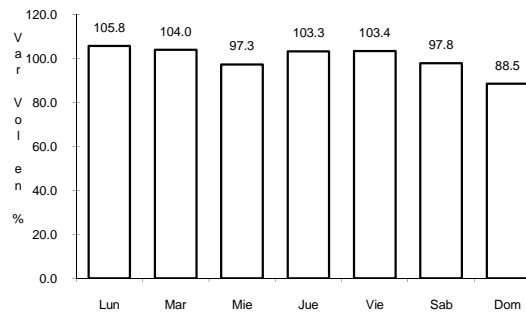
ruta: MEX-200



Km: 0.00

Tipo: 3

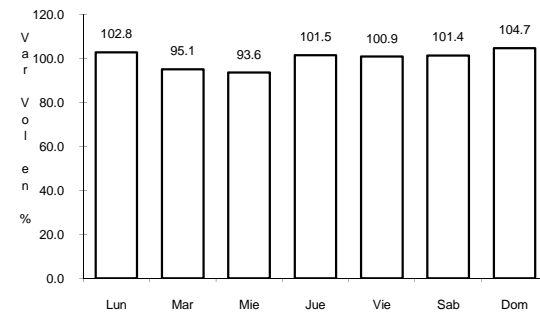
Sent: 1



Km: 0.00

Tipo: 3

Sent: 2



Km: 273.64

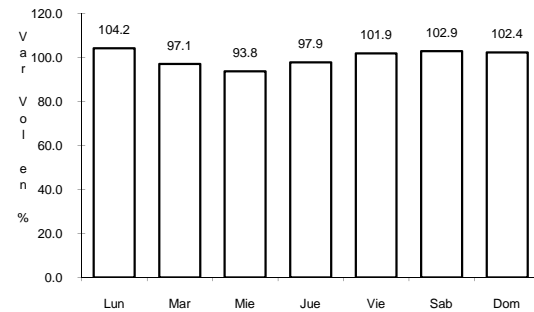
Tipo: 1

Sent: 0

9 CARR: MINATITLAN - ENT. PEZ VELA

CLAVE: 06015

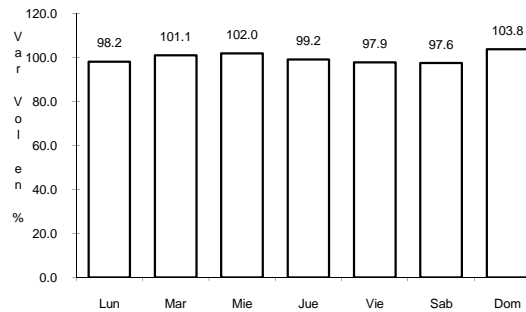
ruta: MEX-098



Km: 49.50

Tipo: 1

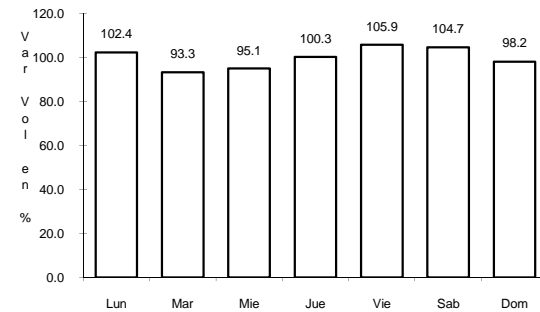
Sent: 0



Km: 58.50

Tipo: 1

Sent: 1



Km: 58.50

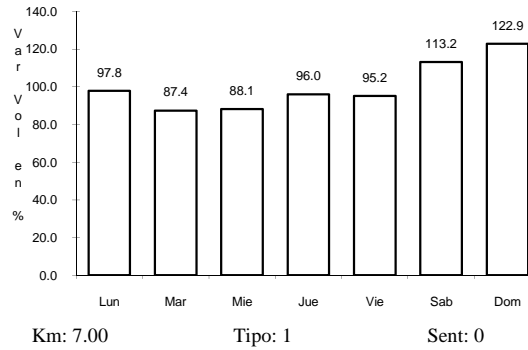
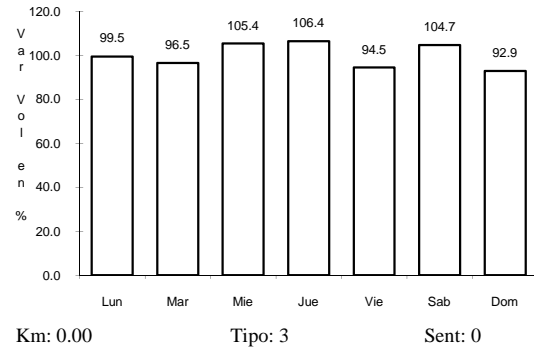
Tipo: 1

Sent: 2

10 CARR: RAMAL A CUYUTLAN

CLAVE: 06225

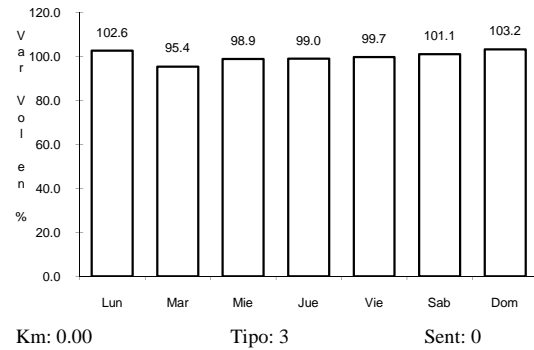
RUTA: MEX



11 CARR: RAMAL CERRO DE LOS JUANES

CLAVE:

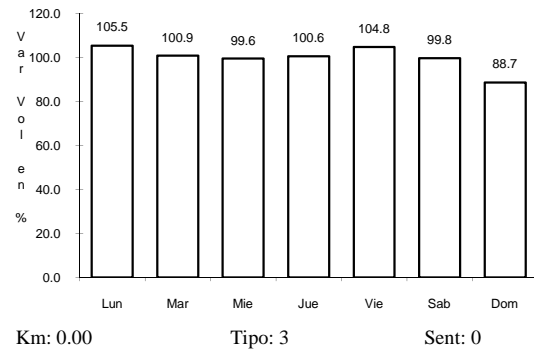
RUTA: MEX



12 CARR: RAMAL CERRO DE ORTEGA

CLAVE:

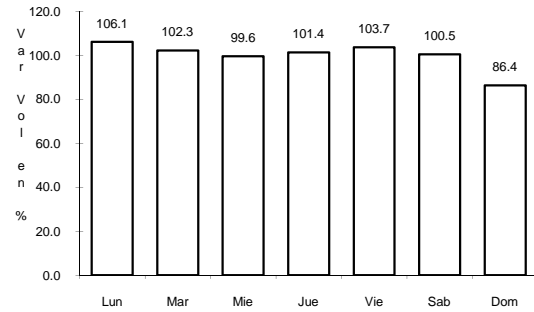
RUTA: MEX



13 CARR: TECOMAN - BOCA DE PASCUALES

CLAVE: 06226

ruta: MEX



Km: 0.00

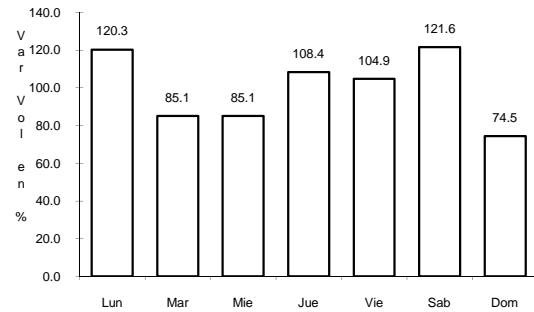
Tipo: 3

Sent: 0

14 CARR: ACATLAN DE JUAREZ - EL TRAPICHE (CUOTA)

CLAVE: 00118

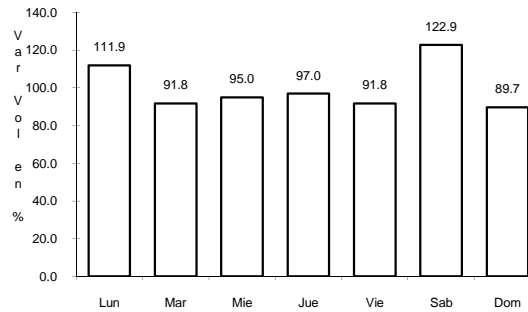
ruta: MEX-054D



Km: 0.20

Tipo: 3

Sent: 1



Km: 0.20

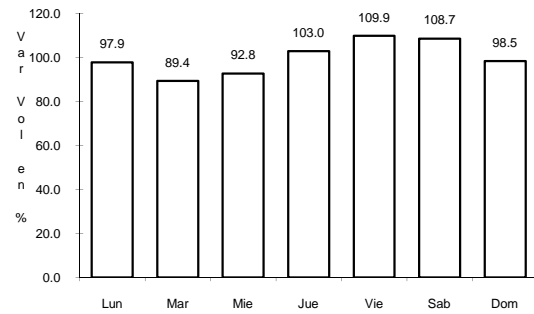
Tipo: 3

Sent: 2

16 CARR: ARMERIA - PLAYA EL PARAISO

CLAVE: 06580

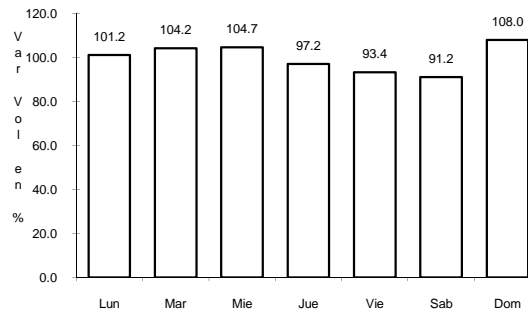
ruta: COL



Km: 0.00

Tipo: 3

Sent: 0

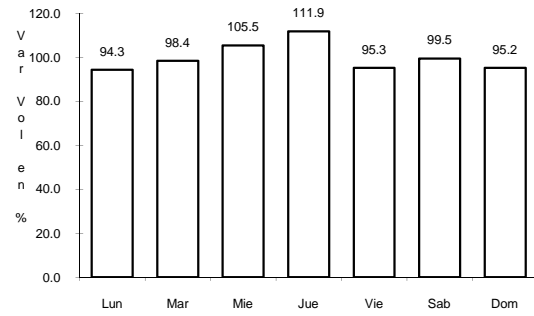


Km: 7.50

Tipo: 1

Sent: 0

17 CARR: COLIMA - COMALA

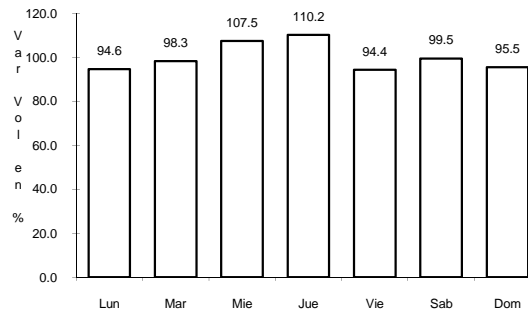


Km: 3.00

Tipo: 3

Sent: 1

CLAVE: 06016



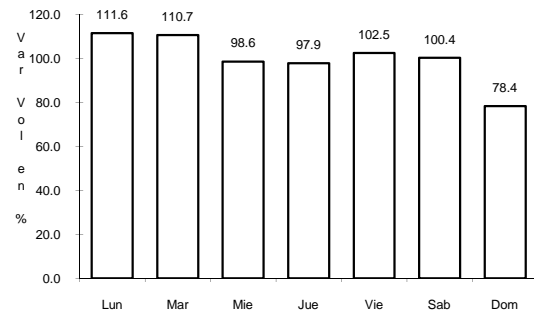
Km: 3.00

Tipo: 3

Sent: 2

RUTA: COL-016

18 CARR: COLIMA - COQUIMATLAN

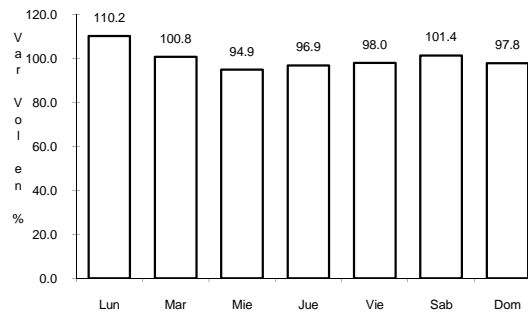


Km: 3.00

Tipo: 3

Sent: 1

CLAVE: 06034



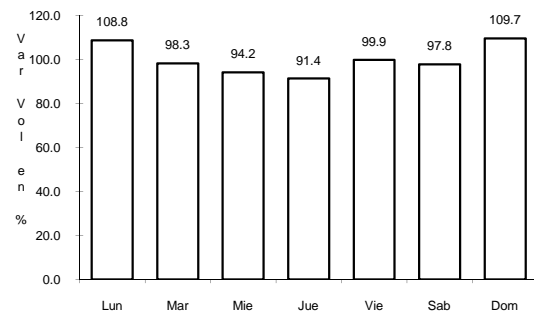
Km: 3.00

Tipo: 3

Sent: 2

RUTA: COL-034

19 CARR: COMALA - SAN ANTONIO

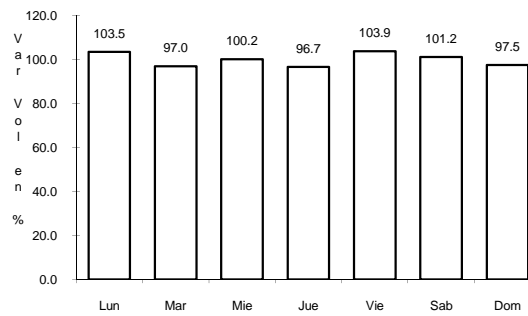


Km: 0.00

Tipo: 3

Sent: 1

CLAVE: 06030

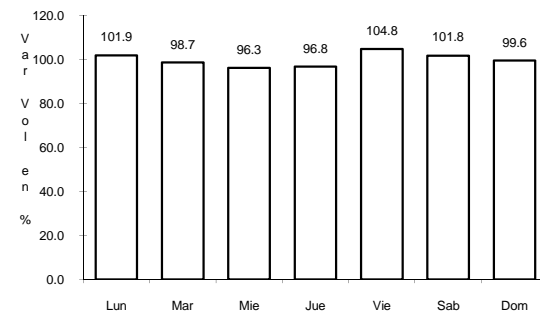


Km: 0.00

Tipo: 3

Sent: 2

RUTA: COL-016



Km: 10.00

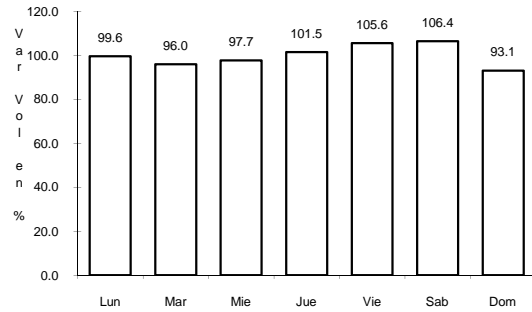
Tipo: 1

Sent: 0

20 CARR: COQUIMATLAN - PUEBLO JUAREZ

CLAVE: 06029

RUTA: COL-034

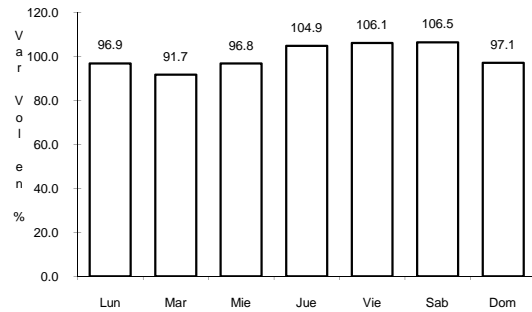


Km: 0.00 Tipo: 3 Sent: 0

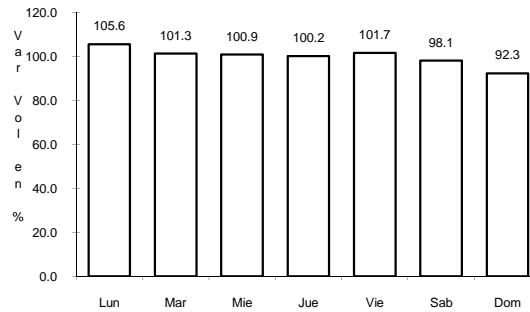
21 CARR: COSTERA LAGUNA DE CUYUTLAN

CLAVE: 06010

RUTA: COL



Km: 0.00 Tipo: 3 Sent: 0

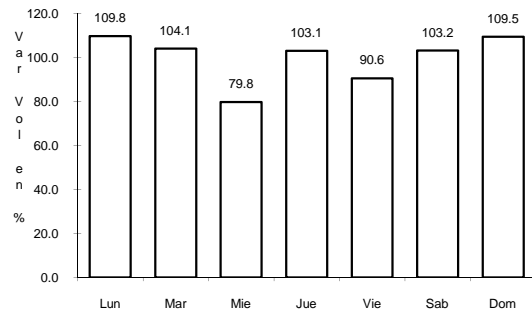


Km: 13.00 Tipo: 1 Sent: 0

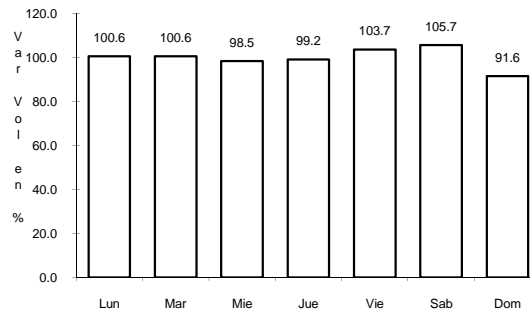
22 CARR: CUAUHEMOC - COLIMA

CLAVE: 06019

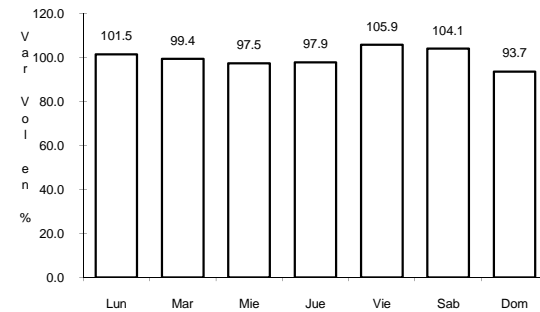
RUTA: COL-019



Km: 0.00 Tipo: 3 Sent: 0



Km: 19.50 Tipo: 1 Sent: 1

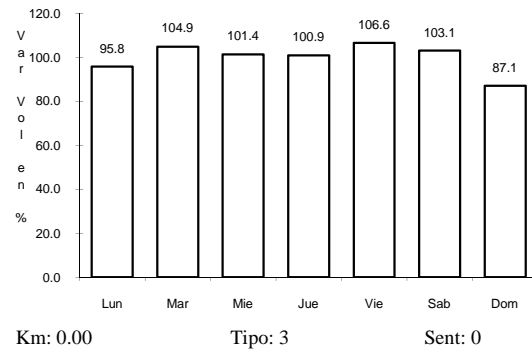


Km: 19.50 Tipo: 1 Sent: 2

26 CARR: PASO POR LA SALADA

CLAVE: 06121

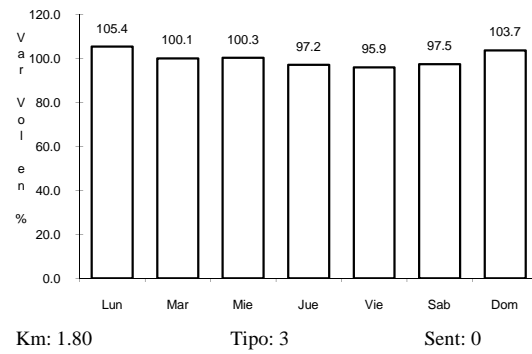
RUTA: COL



27 CARR: PASO POR LOS ASMOLES

CLAVE: 06120

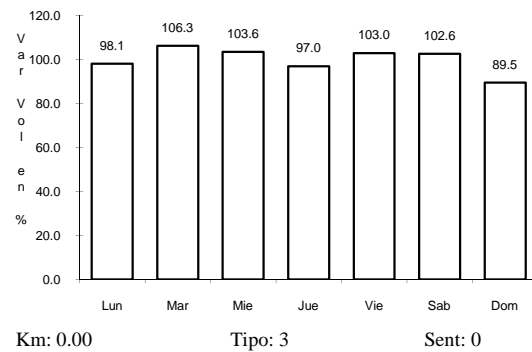
RUTA: COL



28 CARR: PUERTA DE CALERAS - MADRID

CLAVE: 06014

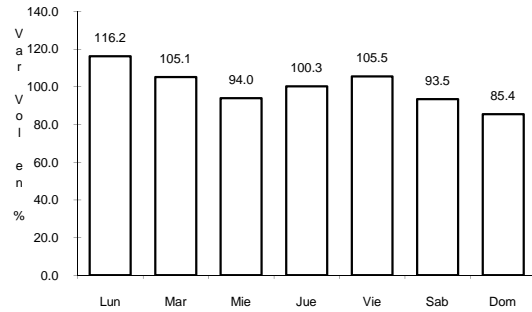
RUTA: COL-014



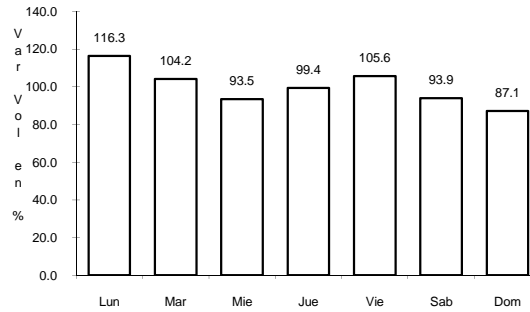
29 CARR: QUESERIA - EL NARANJAL

CLAVE: 06001

ruta: COL-001



Km: 0.00 Tipo: 3 Sent: 0

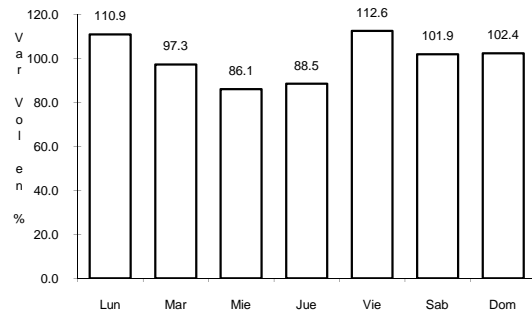


Km: 10.00 Tipo: 1 Sent: 0

30 CARR: RAMAL A AEROPUERTO DE COLIMA

CLAVE: 06224

ruta: COL

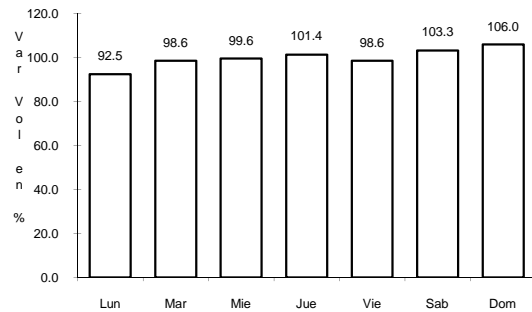


Km: 0.00 Tipo: 3 Sent: 0

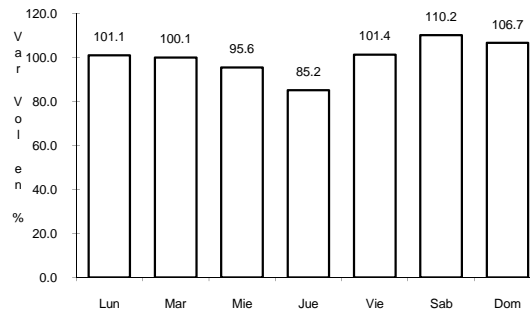
31 CARR: RAMAL A AEROPUERTO MANZANILLO

CLAVE: 06582

ruta: COL



Km: 0.00 Tipo: 3 Sent: 0

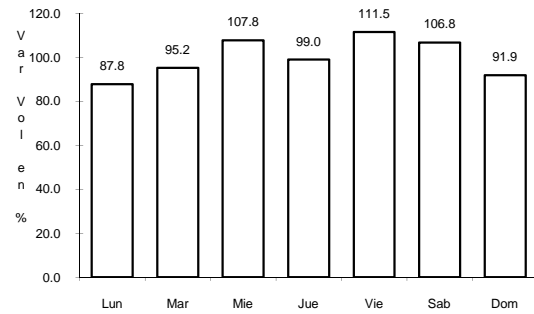


Km: 5.50 Tipo: 1 Sent: 0

35 CARR: RAMAL A RANCHO VALLE NUEVO

CLAVE: 06583

RUTA: COL



Km: 0.00

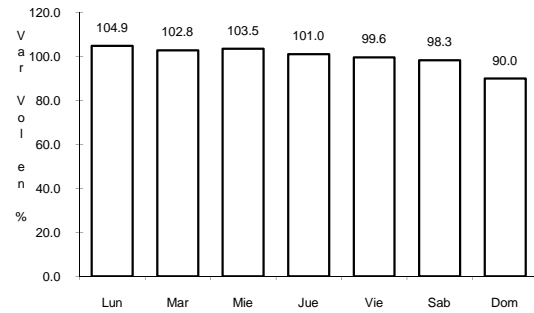
Tipo: 3

Sent: 0

36 CARR: RAMAL A RINCON DE LOPEZ

CLAVE: 06578

RUTA: COL



Km: 0.00

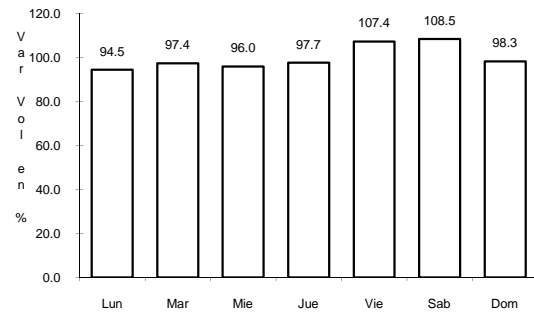
Tipo: 3

Sent: 0

37 CARR: RAMAL A TECUANILLO

CLAVE: 06009

RUTA: COL-009



Km: 0.00

Tipo: 3

Sent: 0

41 CARR: VILLA DE ALVAREZ - MINATITLAN

CLAVE: 06040

RUTA: COL

