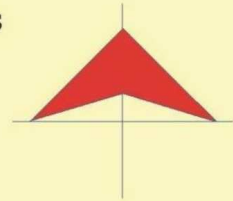


COAHUILA

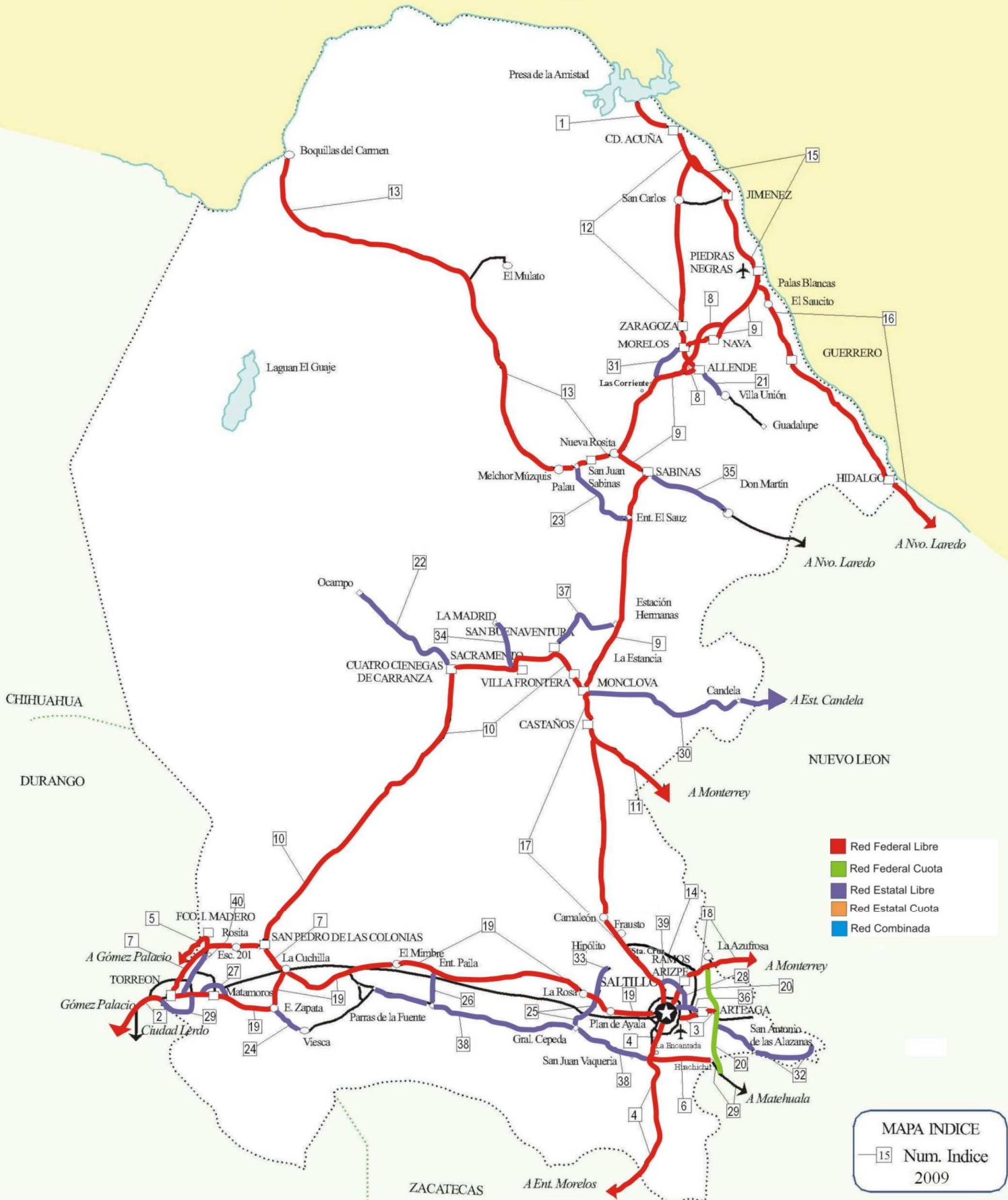
Núm. INDICE	CARRETERA	RUTA
---- FEDERAL LIBRE ----		
1	CD. ACUÑA - PRESA DE LA AMISTAD	MEX
2	DURANGO - TORREON	MEX-040
3	ENT. BELLA UNION - SALTILLO	MEX-057
4	ENT. MORELOS - SALTILLO	MEX-054
5	GREGORIO GARCIA - FRANCISCO I. MADERO	MEX
6	HUACHICHIL - LA ENCANTADA	MEX
7	LA CUCHILLA - TORREON	MEX-030
8	LIBRAMIENTO ALLENDE - NAVA	MEX
9	MONCLOVA - PIEDRAS NEGRAS	MEX-057
10	MONCLOVA - SAN PEDRO DE LAS COLONIAS	MEX-030
11	MONTERREY - CASTAÑOS	MEX-053
12	MORELOS - CD. ACUÑA	MEX-047
13	NUEVA ROSITA - BOQUILLAS DEL CARMEN	MEX-053
14	OJO CALIENTE - SANTA CRUZ	MEX
15	PIEDRAS NEGRAS - CD. ACUÑA	MEX-002
16	PIEDRAS NEGRAS - NUEVO LAREDO	MEX-002
17	SALTILLO - MONCLOVA	MEX-057
18	SALTILLO - MONTERREY	MEX-040
19	SALTILLO - TORREON	MEX-040
---- FEDERAL CUOTA ----		
20	PUERTO MEXICO - OJO CALIENTE (CUOTA)	MEX-057D
---- ESTATAL LIBRE ----		
21	ALLENDE - VILLA UNION	COA-015
22	CUATRO CIENEGAS - OCAMPO	COA-048
23	EL SAUZ - PALAU	COA-022
24	EMILIANO ZAPATA - VIESCA	COA-082
25	ENT. LA ROSA - GENERAL CEPEDA	COA-034
26	ENT. PAILA - PARRAS DE LA FUENTE	COA-102
27	LIBRAMIENTO DE MATAMOROS	COA
28	LIBRAMIENTO DE SALTILLO J.L.P.	COA
29	LIBRAMIENTO DE TORREON	COA
30	MONCLOVA - ESTACION CANDELA	COA-030-NL
31	MORELOS - ENT. LAS CORRIENTES	COA-010
32	PUERTO DE FLORES - EL HONDABLE	COA-112
33	RAMAL A HIPOLITO	COA-114
34	RAMAL A LAMADRID	COA-042
35	SABINAS - DON MARTIN	COA-025
36	SALTILLO - ARTEAGA	COA-106
37	SAN BUENAVENTURA - ESTACION HERMANAS	COA-034
38	T. C. (ENT. MORELOS - SALTILLO) - PARRAS DE LA FUENTE	COA-105
39	T. C. (SALTILLO - MONCLOVA) - RAMOS ARIZPE	COA
40	TORREON - ESCUADRON 201	COA-011

# 05 COAHUILA

Secretaría de Comunicaciones y Transportes



ESTADOS UNIDOS DE AMERICA



COAHUILA

1 CARR : CD. ACUÑA - PRESA DE LA AMISTAD

CLAVE: 05085

RUTA : MEX

AÑO : 2008

L U G A R	E S T A C I O N				C L A S I F I C A C I O N V E H I C U L A R E N P O R C I E N T O .												
	KM	TE	SC	TDPA	A	B	C2	C3	T3S2	T3S3	T3S2R4	OTROS	A	B	C	K'	D
CD. ACUÑA	0.00	3	1	5822	91.0	3.6	2.2	1.1	1.4	0.5	0.0	0.2	91.0	3.6	5.4	0.112	0.504
CD. ACUÑA	0.00	3	2	5732	89.1	3.3	2.9	1.1	2.0	1.4	0.0	0.2	89.1	3.3	7.6	0.087	0.504
T. IZQ. SANTA EULALIA	10.60	1	0	697	93.9	0.0	1.9	0.6	1.1	0.1	0.1	2.3	93.9	0.0	6.1	0.100	0.504
PRESA DE LA AMISTAD	23.00	1	0	1858	71.7	2.5	2.3	1.8	3.2	5.4	10.9	2.2	71.7	2.5	25.8	0.119	0.503

2 CARR : DURANGO - TORREON

CLAVE: 10085

RUTA : MEX-040

AÑO : 2008

L U G A R	E S T A C I O N				C L A S I F I C A C I O N V E H I C U L A R E N P O R C I E N T O .												
	KM	TE	SC	TDPA	A	B	C2	C3	T3S2	T3S3	T3S2R4	OTROS	A	B	C	K'	D
DURANGO	0.00	3	1	9432	84.8	4.3	2.4	1.4	5.1	0.2	0.8	1.0	84.8	4.3	10.9	0.086	0.502
DURANGO	0.00	3	2	9506	82.9	4.4	2.1	1.7	4.9	0.8	1.0	2.2	82.9	4.4	12.7	0.075	0.502
T. DER. CD. DE LOS NIÑOS	7.70	3	1	4355	84.1	3.8	2.4	1.5	3.5	1.3	1.0	2.4	84.1	3.8	12.1	0.111	0.507
T. DER. CD. DE LOS NIÑOS	7.70	3	2	4475	84.6	3.7	2.3	1.3	4.0	1.2	1.0	1.9	84.6	3.7	11.7	0.114	0.507
X. PERIFERICO DURANGO	9.00	3	1	5383	86.2	2.7	5.3	3.5	0.0	0.0	0.0	2.3	86.2	2.7	11.1	0.102	0.514
X. PERIFERICO DURANGO	9.00	3	2	5087	86.7	1.6	5.1	3.3	0.0	0.0	0.0	3.3	86.7	1.6	11.7	0.094	0.514
T. DER. AEROPUERTO	9.42	1	1	6573	83.4	4.6	4.7	5.9	0.0	0.0	0.0	1.4	83.4	4.6	12.0	0.123	0.516
T. DER. AEROPUERTO	9.42	1	2	6157	82.5	6.0	5.2	4.5	0.0	0.0	0.0	1.8	82.5	6.0	11.5	0.125	0.516
T. DER. AEROPUERTO	9.42	3	0	5766	86.1	5.2	4.1	2.3	0.0	0.0	0.0	2.3	86.1	5.2	8.7	0.074	0.506
LA CALDERA	10.85	3	0	5278	83.6	5.9	5.8	3.1	0.0	0.0	0.0	1.6	83.6	5.9	10.5	0.076	0.507
ABRAHAM GONZALEZ	27.10	3	0	4718	83.4	6.2	4.9	4.4	0.0	0.0	0.0	1.1	83.4	6.2	10.4	0.116	0.510
FRANCISCO I. MADERO	56.30	1	0	4487	80.4	8.3	4.8	4.4	0.0	0.0	0.0	2.1	80.4	8.3	11.3	0.100	0.513
FRANCISCO I. MADERO	56.30	3	0	4574	88.5	8.0	0.6	2.1	0.0	0.0	0.0	0.8	88.5	8.0	3.5	0.088	0.500
GUADALUPE VICTORIA	77.50	1	0	4098	81.2	8.1	4.1	4.4	0.0	0.0	0.0	2.2	81.2	8.1	10.7	0.085	0.505
GUADALUPE VICTORIA	77.50	3	0	5119	86.7	6.6	3.3	2.1	0.0	0.0	0.0	1.3	86.7	6.6	6.7	0.088	0.502
T. DER. IGNACIO ALLENDE	90.13	1	0	3871	83.2	7.2	4.0	4.6	0.0	0.0	0.0	1.0	83.2	7.2	9.6	0.096	0.502
T. DER. IGNACIO ALLENDE	90.13	3	0	4118	81.0	8.2	4.1	4.8	0.0	0.0	0.0	1.9	81.0	8.2	10.8	0.066	0.511
T. IZQ. PEÑON BLANCO	120.90	1	0	2806	73.9	8.1	4.9	11.3	0.0	0.0	0.0	1.8	73.9	8.1	18.0	0.120	0.511
T. IZQ. PEÑON BLANCO	120.90	3	0	3988	75.4	7.7	4.5	10.1	0.0	0.0	0.0	2.3	75.4	7.7	16.9	0.074	0.504
CUENCAME	144.30	1	0	3644	84.9	7.3	2.5	4.4	0.0	0.0	0.0	0.9	84.9	7.3	7.8	0.082	0.505
CUENCAME	144.30	3	0	6273	83.5	7.3	3.1	5.3	0.0	0.0	0.0	0.8	83.5	7.3	9.2	0.110	0.521
T. IZQ. NAZAS	171.60	1	0	5600	82.3	7.5	5.6	1.8	0.0	0.0	0.0	2.8	82.3	7.5	10.2	0.072	0.504
T. IZQ. NAZAS	171.60	3	0	4644	73.1	7.0	6.3	11.5	0.0	0.0	0.0	2.1	73.1	7.0	19.9	0.071	0.504
T. DER. VILLA JUAREZ	194.40	3	0	4287	68.2	6.7	6.5	15.1	0.0	0.0	0.0	3.5	68.2	6.7	25.1	0.071	0.505
LEON GUZMAN	229.60	3	0	8321	79.8	4.5	6.5	6.2	0.0	0.0	0.0	3.0	79.8	4.5	15.7	0.078	0.508
CD. LERDO	244.80	1	0	9981	88.2	4.3	2.5	2.0	0.0	0.0	0.0	3.0	88.2	4.3	7.5	0.076	0.522

COAHUILA

2 CARR : DURANGO - TORREON

CLAVE: 10085

RUTA : MEX-040

AÑO : 2008

L U G A R	E S T A C I O N				C L A S I F I C A C I O N V E H I C U L A R E N P O R C I E N T O .												
	KM	TE	SC	TDPA	A	B	C2	C3	T3S2	T3S3	T3S2R4	OTROS	A	B	C	K'	D
T. IZQ. GOMEZ PALACIO	248.90	3	1	17933	74.5	8.0	5.0	0.6	2.9	2.7	0.9	5.4	74.5	8.0	17.5	0.065	0.506
T. IZQ. GOMEZ PALACIO	248.90	3	2	17503	75.9	8.3	4.4	0.9	1.1	1.9	2.0	5.5	75.9	8.3	15.8	0.072	0.506
LIM. EDOS. TERM. DGO. PPIA. COAH.	251.00																
TORREON	255.80	1	1	16525	59.9	3.8	2.7	1.9	9.6	5.3	12.2	4.6	59.9	3.8	36.3	0.066	0.515
TORREON	255.80	1	2	15563	56.9	4.2	3.4	2.2	9.5	5.8	12.1	5.9	56.9	4.2	38.9	0.068	0.515

3 CARR : ENT. BELLA UNION - SALTILLO

CLAVE: 05003

RUTA : MEX-057

AÑO : 2008

L U G A R	E S T A C I O N				C L A S I F I C A C I O N V E H I C U L A R E N P O R C I E N T O .												
	KM	TE	SC	TDPA	A	B	C2	C3	T3S2	T3S3	T3S2R4	OTROS	A	B	C	K'	D
T. C. ENT. PUERTO MEXICO - ENT. OJO CALIENTE (CUOTA)	0.00																
T. DER. ARTEAGA	4.61	1	1	6368	78.9	5.1	1.8	2.6	7.2	1.4	1.8	1.2	78.9	5.1	16.0	0.103	0.507
T. DER. ARTEAGA	4.61	1	2	6204	80.5	5.6	2.1	2.8	4.1	1.0	2.7	1.2	80.5	5.6	13.9	0.089	0.507
SALTILLO	24.00	1	1	14591	74.3	3.6	4.9	5.6	6.8	1.8	1.8	1.2	74.3	3.6	22.1	0.074	0.507
SALTILLO	24.00	1	2	14202	75.6	4.1	4.7	5.5	5.2	1.7	1.5	1.7	75.6	4.1	20.3	0.069	0.507

4 CARR : ENT. MORELOS - SALTILLO

CLAVE: 00149

RUTA : MEX-054

AÑO : 2008

L U G A R	E S T A C I O N				C L A S I F I C A C I O N V E H I C U L A R E N P O R C I E N T O .												
	KM	TE	SC	TDPA	A	B	C2	C3	T3S2	T3S3	T3S2R4	OTROS	A	B	C	K'	D
T. C. ZACATECAS - DURANGO	0.00	3	0	6355	77.4	2.5	2.1	4.0	4.7	1.9	5.7	1.7	77.4	2.5	20.1	0.080	0.511
T. DER. STA. MONICA	11.00	1	0	4993	74.6	5.2	3.8	4.9	3.7	1.8	4.1	1.9	74.6	5.2	20.2	0.074	0.508
T. DER. STA. MONICA	11.00	3	0	4646	80.1	3.1	5.3	2.5	1.8	4.7	2.4	0.1	80.1	3.1	16.8	0.075	0.502
T. IZQ. VILLA DE COSS	53.90	1	0	4475	81.7	2.4	6.7	1.5	1.2	5.4	0.9	0.2	81.7	2.4	15.9	0.075	0.501
T. IZQ. VILLA DE COSS	53.90	3	0	3720	76.2	3.5	4.9	2.9	3.8	4.0	1.5	3.2	76.2	3.5	20.3	0.105	0.516
SIERRA VIEJA	85.50	3	0	3487	84.6	2.9	3.6	1.3	1.0	3.8	2.3	0.5	84.6	2.9	12.5	0.080	0.501
T. DER. MAJOMA	144.50	3	0	3543	69.3	9.0	7.8	6.3	2.6	2.9	1.8	0.3	69.3	9.0	21.7	0.078	0.503
T. DER. SAN TIBURCIO	185.30	1	0	3265	70.6	8.3	5.5	4.3	2.5	5.6	2.8	0.4	70.6	8.3	21.1	0.077	0.501
T. DER. SAN TIBURCIO	185.30	3	0	3083	74.1	6.1	7.4	3.5	2.7	3.9	2.0	0.3	74.1	6.1	19.8	0.076	0.511
T. IZQ. CONCEPCION DEL ORO	240.00	1	0	3867	72.9	6.4	8.3	3.2	1.2	6.2	1.4	0.4	72.9	6.4	20.7	0.081	0.500
T. IZQ. CONCEPCION DEL ORO	240.00	3	0	4300	68.7	5.7	3.5	3.3	9.2	2.5	4.7	2.4	68.7	5.7	25.6	0.090	0.532
LIM. EDOS. TERM. ZAC. PPIA. COAH.	266.50																
AGUA NUEVA	322.00	1	0	3750	78.5	3.3	4.5	1.6	1.7	7.4	1.8	1.2	78.5	3.3	18.2	0.080	0.519
T. DER. DERRAMADERO	333.00	3	0	11106	74.5	5.6	3.2	3.4	7.4	1.8	2.1	2.0	74.5	5.6	19.9	0.078	0.511
X. C. LIBRAMIENTO DE SALTILLO	348.00	1	1	8036	78.1	3.8	5.0	2.1	5.2	1.6	2.5	1.7	78.1	3.8	18.1	0.071	0.513

COAHUILA

4 CARR : ENT. MORELOS - SALTILLO

CLAVE: 00149

RUTA : MEX-054

AÑO : 2008

L U G A R	E S T A C I O N				C L A S I F I C A C I O N V E H I C U L A R E N P O R C I E N T O .												
	KM	TE	SC	TDPA	A	B	C2	C3	T3S2	T3S3	T3S2R4	OTROS	A	B	C	K'	D
X. C. LIBRAMIENTO DE SALTILLO	348.00	1	2	8474	79.2	3.8	3.5	2.2	4.2	2.6	2.5	2.0	79.2	3.8	17.0	0.066	0.513
SALTILLO	354.00	1	1	10175	67.0	8.0	6.5	6.2	3.0	2.6	1.3	5.4	67.0	8.0	25.0	0.078	0.518
SALTILLO	354.00	1	2	10946	71.2	8.0	7.1	4.0	3.4	2.0	1.2	3.1	71.2	8.0	20.8	0.071	0.518

5 CARR : GREGORIO GARCIA - FRANCISCO I. MADERO

CLAVE: 00110

RUTA : MEX

AÑO : 2008

L U G A R	E S T A C I O N				C L A S I F I C A C I O N V E H I C U L A R E N P O R C I E N T O .												
	KM	TE	SC	TDPA	A	B	C2	C3	T3S2	T3S3	T3S2R4	OTROS	A	B	C	K'	D
T. C. GOMEZ PALACIO - TLAHUALILLO	0.00																
LIM. EDOS. TERM. DGO. PPIA. COAH.	3.60																
FRANCISCO I. MADERO	9.60	1	0	5378	86.2	3.9	2.5	0.5	3.5	0.5	1.5	1.4	86.2	3.9	9.9	0.088	0.508

6 CARR : HUACHICHIL - LA ENCANTADA

CLAVE: 05002

RUTA : MEX

AÑO : 2008

L U G A R	E S T A C I O N				C L A S I F I C A C I O N V E H I C U L A R E N P O R C I E N T O .												
	KM	TE	SC	TDPA	A	B	C2	C3	T3S2	T3S3	T3S2R4	OTROS	A	B	C	K'	D
T. C. AUT. PUERTO MEXICO - OJO CALIENTE	0.00	3	0	2649	75.7	6.2	7.1	3.8	2.0	2.3	2.3	0.6	75.7	6.2	18.1	0.073	0.504
T. C. ENT. MORELOS - SALTILLO	37.00	1	0	2116	82.5	7.2	4.4	1.8	1.3	1.6	0.9	0.3	82.5	7.2	10.3	0.074	0.502

7 CARR : LA CUCHILLA - TORREON

CLAVE: 05021

RUTA : MEX-030

AÑO : 2008

L U G A R	E S T A C I O N				C L A S I F I C A C I O N V E H I C U L A R E N P O R C I E N T O .												
	KM	TE	SC	TDPA	A	B	C2	C3	T3S2	T3S3	T3S2R4	OTROS	A	B	C	K'	D
LA CUCHILLA	0.00	3	0	1928	74.9	3.5	5.5	4.7	6.4	2.7	1.6	0.7	74.9	3.5	21.6	0.061	0.520
T. DER. MAYRAN	3.30	3	0	2706	76.2	6.1	4.7	2.4	6.9	1.8	1.3	0.6	76.2	6.1	17.7	0.080	0.504
SAN PEDRO DE LAS COLONIAS	18.70	1	1	2297	83.1	3.9	6.2	1.7	2.3	0.8	0.6	1.4	83.1	3.9	13.0	0.088	0.508
SAN PEDRO DE LAS COLONIAS	18.70	1	2	2199	83.5	2.9	6.4	1.3	3.0	1.1	0.7	1.1	83.5	2.9	13.6	0.089	0.508
SAN PEDRO DE LAS COLONIAS	18.70	3	1	4473	81.8	3.7	5.4	2.2	3.7	1.0	1.0	1.2	81.8	3.7	14.5	0.102	0.510
SAN PEDRO DE LAS COLONIAS	18.70	3	2	4647	83.0	3.5	5.0	2.1	3.5	0.9	0.9	1.1	83.0	3.5	13.5	0.086	0.510
URQUIZO	33.00	3	1	3760	79.4	6.8	3.3	2.7	4.8	1.0	1.2	0.8	79.4	6.8	13.8	0.088	0.502
URQUIZO	33.00	3	2	3785	79.6	6.8	3.2	2.7	4.5	1.2	1.2	0.8	79.6	6.8	13.6	0.093	0.502
T. DER. FCO. I. MADERO	43.80	1	0	9969	82.4	3.2	4.8	3.3	2.8	1.2	0.8	1.5	82.4	3.2	14.4	0.087	0.507
T. DER. FCO. I. MADERO	43.80	3	0	7972	79.9	7.1	2.2	3.3	3.8	1.4	1.1	1.2	79.9	7.1	13.0	0.078	0.510
T. IZQ. ESCUADRON 201	62.40	3	1	8371	76.9	8.2	2.8	2.8	3.2	2.2	1.3	2.6	76.9	8.2	14.9	0.067	0.501
T. IZQ. ESCUADRON 201	62.40	3	2	8420	77.4	8.3	2.8	2.7	4.0	1.2	1.2	2.4	77.4	8.3	14.3	0.077	0.501

COAHUILA

7 CARR : LA CUCHILLA - TORREON

CLAVE: 05021

ruta : MEX-030

AÑO : 2008

L U G A R	E S T A C I O N				C L A S I F I C A C I O N V E H I C U L A R E N P O R C I E N T O .												
	KM	TE	SC	TDPA	A	B	C2	C3	T3S2	T3S3	T3S2R4	OTROS	A	B	C	K'	D
TORREON	84.00	1	1	12920	72.5	4.5	2.0	2.6	6.1	2.8	5.2	4.3	72.5	4.5	23.0	0.100	0.501
TORREON	84.00	1	2	12869	75.9	4.8	2.6	1.5	8.0	1.5	2.9	2.8	75.9	4.8	19.3	0.102	0.501

8 CARR : LIBRAMIENTO ALLENDE - NAVA

CLAVE: 05518

ruta : MEX

AÑO : 2008

L U G A R	E S T A C I O N				C L A S I F I C A C I O N V E H I C U L A R E N P O R C I E N T O .												
	KM	TE	SC	TDPA	A	B	C2	C3	T3S2	T3S3	T3S2R4	OTROS	A	B	C	K'	D
T. C. MONCLOVA - PIEDRAS NEGRAS	0.00	3	0	4597	72.6	2.7	1.7	1.7	9.6	5.3	4.6	1.8	72.6	2.7	24.7	0.086	0.516
X. DER. ALLENDE - IZQ. MORELOS	6.06	3	1	3844	79.5	3.0	2.4	1.4	5.7	4.1	2.8	1.1	79.5	3.0	17.5	0.085	0.503
X. DER. ALLENDE - IZQ. MORELOS	6.06	3	2	3804	78.2	3.7	2.0	1.2	7.0	3.8	3.0	1.1	78.2	3.7	18.1	0.089	0.503
T. C. MONCLOVA - PIEDRAS NEGRAS	17.55	1	1	3559	79.3	3.1	1.4	1.4	7.2	2.7	3.8	1.1	79.3	3.1	17.6	0.115	0.513
T. C. MONCLOVA - PIEDRAS NEGRAS	17.55	1	2	3742	80.0	2.8	1.3	1.3	7.1	2.7	3.8	1.0	80.0	2.8	17.2	0.115	0.513

9 CARR : MONCLOVA - PIEDRAS NEGRAS

CLAVE: 05407

ruta : MEX-057

AÑO : 2008

L U G A R	E S T A C I O N				C L A S I F I C A C I O N V E H I C U L A R E N P O R C I E N T O .												
	KM	TE	SC	TDPA	A	B	C2	C3	T3S2	T3S3	T3S2R4	OTROS	A	B	C	K'	D
MONCLOVA	0.00	3	1	6196	77.9	4.7	4.9	2.1	6.5	1.0	1.7	1.2	77.9	4.7	17.4	0.081	0.502
MONCLOVA	0.00	3	2	6150	77.8	4.6	4.7	2.2	4.4	1.2	2.4	2.7	77.8	4.6	17.6	0.083	0.502
T. DER. LIBRAMIENTO DE MONCLOVA	10.80	3	1	3475	75.6	4.3	5.4	4.8	4.3	1.8	2.3	1.5	75.6	4.3	20.1	0.101	0.522
T. DER. LIBRAMIENTO DE MONCLOVA	10.80	3	2	3187	73.2	4.2	5.2	4.7	3.2	3.3	3.1	3.1	73.2	4.2	22.6	0.093	0.522
T. DER. PROGRESO	61.50	1	1	2421	74.1	3.0	3.1	3.7	8.7	2.7	3.5	1.2	74.1	3.0	22.9	0.083	0.507
T. DER. PROGRESO	61.50	1	2	2353	74.8	2.9	3.0	3.3	7.9	2.1	3.6	2.4	74.8	2.9	22.3	0.105	0.507
T. IZQ. PALAU	88.50	1	1	2381	66.6	5.5	3.6	3.9	6.6	4.5	4.8	4.5	66.6	5.5	27.9	0.079	0.508
T. IZQ. PALAU	88.50	1	2	2456	68.4	5.0	4.5	3.8	7.3	4.1	3.6	3.3	68.4	5.0	26.6	0.094	0.508
T. IZQ. PALAU	88.50	3	1	2765	64.2	3.2	4.9	3.1	8.9	4.9	3.7	7.1	64.2	3.2	32.6	0.083	0.510
T. IZQ. PALAU	88.50	3	2	2656	61.5	4.8	2.9	3.9	9.2	3.9	3.3	10.5	61.5	4.8	33.7	0.088	0.510
T. DER. SABINAS (2° ACCESO)	115.00	1	1	5447	82.6	2.7	1.4	2.0	5.5	2.1	2.7	1.0	82.6	2.7	14.7	0.087	0.502
T. DER. SABINAS (2° ACCESO)	115.00	1	2	5495	81.6	2.3	1.6	2.4	6.3	1.8	3.1	0.9	81.6	2.3	16.1	0.085	0.502
AGUJITA	118.90	1	1	8720	70.0	3.0	4.8	1.9	11.6	2.1	4.2	2.4	70.0	3.0	27.0	0.064	0.500
AGUJITA	118.90	1	2	8721	70.1	3.3	4.3	1.7	10.6	2.1	4.2	3.7	70.1	3.3	26.6	0.061	0.500
T. IZQ. NUEVA ROSITA (1° ACCESO)	126.30	3	0	8203	75.4	3.1	1.3	1.7	7.6	4.3	4.9	1.7	75.4	3.1	21.5	0.090	0.506
T. IZQ. LIBRAMIENTO DE ALLENDE	182.00	1	0	7046	85.2	2.3	2.1	1.5	3.7	2.1	1.3	1.8	85.2	2.3	12.5	0.078	0.516
ALLENDE	187.20	3	1	4371	85.3	3.2	3.3	1.7	3.4	1.2	0.8	1.1	85.3	3.2	11.5	0.081	0.504
ALLENDE	187.20	3	2	4439	86.9	3.2	3.1	1.7	2.5	0.8	0.6	1.2	86.9	3.2	9.9	0.085	0.504

COAHUILA

9 CARR : MONCLOVA - PIEDRAS NEGRAS

CLAVE: 05407

RUTA : MEX-057

AÑO : 2008

L U G A R	E S T A C I O N				C L A S I F I C A C I O N V E H I C U L A R E N P O R C I E N T O .												
	KM	TE	SC	TDPA	A	B	C2	C3	T3S2	T3S3	T3S2R4	OTROS	A	B	C	K'	D
NAVA	206.90	1	0	6318	85.2	4.8	6.0	0.2	2.5	0.4	0.4	0.5	85.2	4.8	10.0	0.100	0.524
NAVA	206.90	3	1	4887	76.0	2.1	3.4	1.6	7.7	4.5	3.5	1.2	76.0	2.1	21.9	0.098	0.507
NAVA	206.90	3	2	5024	75.8	2.2	3.5	1.6	6.6	5.5	3.5	1.3	75.8	2.2	22.0	0.092	0.507
T. DER. GUERRERO	240.30	1	1	5465	84.0	5.1	1.4	1.3	4.8	1.2	1.2	1.0	84.0	5.1	10.9	0.095	0.510
T. DER. GUERRERO	240.30	1	2	5682	84.2	5.3	1.2	1.4	5.0	0.8	1.1	1.0	84.2	5.3	10.5	0.086	0.510
PIEDRAS NEGRAS	248.00																

10 CARR : MONCLOVA - SAN PEDRO DE LAS COLONIAS

CLAVE: 05062

RUTA : MEX-030

AÑO : 2008

L U G A R	E S T A C I O N				C L A S I F I C A C I O N V E H I C U L A R E N P O R C I E N T O .												
	KM	TE	SC	TDPA	A	B	C2	C3	T3S2	T3S3	T3S2R4	OTROS	A	B	C	K'	D
MONCLOVA	0.00																
FRONTERA	2.00	3	1	7166	84.7	3.2	4.0	2.5	2.5	0.6	1.0	1.5	84.7	3.2	12.1	0.100	0.508
FRONTERA	2.00	3	2	6942	85.5	3.1	4.0	2.3	2.5	0.5	0.6	1.5	85.5	3.1	11.4	0.085	0.508
8 DE ENERO	11.00	3	1	4998	84.1	3.1	3.0	1.6	4.2	1.1	1.4	1.5	84.1	3.1	12.8	0.080	0.508
8 DE ENERO	11.00	3	2	4847	84.5	3.1	3.1	1.4	4.1	1.4	0.8	1.6	84.5	3.1	12.4	0.110	0.508
NADADORES	27.00	3	1	2004	77.3	4.2	3.4	7.7	2.3	1.1	2.9	1.1	77.3	4.2	18.5	0.099	0.519
NADADORES	27.00	3	2	1860	77.5	3.8	3.3	7.7	3.6	1.1	2.2	0.8	77.5	3.8	18.7	0.093	0.519
SACRAMENTO	45.27	1	0	3007	79.8	4.8	5.2	2.1	5.0	1.5	1.0	0.6	79.8	4.8	15.4	0.092	0.505
CUATRO CIENEGAS	80.15	3	0	1884	78.5	4.6	3.2	2.2	7.0	2.5	1.4	0.6	78.5	4.6	16.9	0.092	0.502
SAN PEDRO DE LAS COLONIAS	267.00	1	1	834	79.7	2.1	5.5	3.0	3.4	1.8	2.3	2.2	79.7	2.1	18.2	0.106	0.553
SAN PEDRO DE LAS COLONIAS	267.00	1	2	674	77.8	2.1	5.3	3.5	4.7	2.3	2.6	1.7	77.8	2.1	20.1	0.114	0.553

11 CARR : MONTERREY - CASTAÑOS

CLAVE: 00128

RUTA : MEX-053

AÑO : 2008

L U G A R	E S T A C I O N				C L A S I F I C A C I O N V E H I C U L A R E N P O R C I E N T O .												
	KM	TE	SC	TDPA	A	B	C2	C3	T3S2	T3S3	T3S2R4	OTROS	A	B	C	K'	D
T. C. MONTERREY - NUEVO LAREDO	0.00	3	0	11228	84.1	2.8	4.9	2.1	3.1	2.0	0.3	0.7	84.1	2.8	13.1	0.107	0.503
X. C. LIBRAMIENTO NOROESTE DE MONTERREY	3.46	3	0	14030	58.0	5.4	3.0	1.7	9.1	5.1	13.6	4.1	58.0	5.4	36.6	0.068	0.506
T. DER. VILLA DEL CARMEN	13.80	1	0	10846	76.5	6.1	5.4	2.8	4.9	3.0	0.5	0.8	76.5	6.1	17.4	0.082	0.500
T. IZQ. HIDALGO	24.78	1	0	10746	58.0	12.6	3.1	1.8	8.3	7.0	5.8	3.4	58.0	12.6	29.4	0.070	0.522
T. IZQ. HIDALGO	24.78	3	0	6142	77.5	5.9	6.4	2.8	2.8	2.5	1.0	1.1	77.5	5.9	16.6	0.106	0.501
T. IZQ. MINA	34.75	1	0	5840	78.6	4.1	4.1	3.6	4.7	3.4	0.7	0.8	78.6	4.1	17.3	0.096	0.503
T. IZQ. ESPINAZO	91.90	1	0	3490	70.5	5.7	2.1	2.2	8.5	5.9	4.2	0.9	70.5	5.7	23.8	0.080	0.501
T. IZQ. ESPINAZO	91.90	3	0	3580	65.5	6.0	2.9	2.9	9.5	7.1	5.1	1.0	65.5	6.0	28.5	0.065	0.503



COAHUILA

11 CARR : MONTERREY - CASTAÑOS

CLAVE: 00128

RUTA : MEX-053

AÑO : 2008

L U G A R	E S T A C I O N				C L A S I F I C A C I O N V E H I C U L A R E N P O R C I E N T O .												
	KM	TE	SC	TDPA	A	B	C2	C3	T3S2	T3S3	T3S2R4	OTROS	A	B	C	K'	D
LIM. EDOS. TERM. N.L. PPIA. COAH.	124.00																
T. C. SALTILLO - MONCLOVA	172.00	1	0	4749	61.4	5.6	3.9	3.6	9.6	8.7	6.3	0.9	61.4	5.6	33.0	0.079	0.501

12 CARR : MORELOS - CD. ACUÑA

CLAVE: 05029

RUTA : MEX-047

AÑO : 2008

L U G A R	E S T A C I O N				C L A S I F I C A C I O N V E H I C U L A R E N P O R C I E N T O .												
	KM	TE	SC	TDPA	A	B	C2	C3	T3S2	T3S3	T3S2R4	OTROS	A	B	C	K'	D
MORELOS	0.00	3	1	2606	86.8	2.7	2.3	2.0	3.9	1.3	0.5	0.5	86.8	2.7	10.5	0.096	0.507
MORELOS	0.00	3	2	2529	86.6	2.4	2.2	2.0	4.5	1.4	0.5	0.4	86.6	2.4	11.0	0.106	0.507
SAN CARLOS	69.00	1	0	1971	87.1	3.8	1.9	1.1	3.0	1.3	0.5	1.3	87.1	3.8	9.1	0.142	0.510
T. DER. PIEDRAS NEGRAS	87.00	3	1	3139	71.9	4.7	1.5	1.0	9.1	2.1	6.4	3.3	71.9	4.7	23.4	0.120	0.507
T. DER. PIEDRAS NEGRAS	87.00	3	2	3224	72.6	4.4	1.5	1.1	8.1	2.1	5.5	4.7	72.6	4.4	23.0	0.120	0.507
CD. ACUÑA	104.00	1	1	3466	88.3	2.4	1.9	1.1	2.9	0.6	0.8	2.0	88.3	2.4	9.3	0.103	0.507
CD. ACUÑA	104.00	1	2	3568	88.5	2.4	1.8	1.1	3.1	0.4	0.6	2.1	88.5	2.4	9.1	0.102	0.507

13 CARR : NUEVA ROSITA - BOQUILLAS DEL CARMEN

CLAVE: 05028

RUTA : MEX-053

AÑO : 2008

L U G A R	E S T A C I O N				C L A S I F I C A C I O N V E H I C U L A R E N P O R C I E N T O .												
	KM	TE	SC	TDPA	A	B	C2	C3	T3S2	T3S3	T3S2R4	OTROS	A	B	C	K'	D
NUEVA ROSITA	0.00	3	0	7454	88.3	1.8	2.1	0.4	3.2	1.2	2.1	0.9	88.3	1.8	9.9	0.080	0.505
PALAU	25.00	1	1	3434	81.7	2.7	5.3	2.3	2.7	2.0	1.2	2.1	81.7	2.7	15.6	0.079	0.514
PALAU	25.00	1	2	3251	80.7	2.4	5.6	2.3	3.6	2.0	1.7	1.7	80.7	2.4	16.9	0.080	0.514
PALAU	25.00	3	1	3502	84.5	3.5	2.8	2.5	2.8	1.3	0.9	1.7	84.5	3.5	12.0	0.086	0.503
PALAU	25.00	3	2	3454	85.1	3.8	2.7	2.7	2.4	1.4	1.0	0.9	85.1	3.8	11.1	0.078	0.503
MELCHOR MUZQUIZ	35.00	3	0	2130	83.2	3.5	3.4	3.4	2.3	1.5	1.3	1.4	83.2	3.5	13.3	0.089	0.502
BOQUILLAS DEL CARMEN	250.00																

14 CARR : OJO CALIENTE - SANTA CRUZ

CLAVE: 05007

RUTA : MEX

AÑO : 2008

L U G A R	E S T A C I O N				C L A S I F I C A C I O N V E H I C U L A R E N P O R C I E N T O .												
	KM	TE	SC	TDPA	A	B	C2	C3	T3S2	T3S3	T3S2R4	OTROS	A	B	C	K'	D
T. C. SALTILLO - MONTERREY	0.00	3	0	3193	71.9	4.3	6.0	4.3	8.6	3.5	0.1	1.3	71.9	4.3	23.8	0.075	0.506
T. C. SALTILLO - MONCLOVA	34.00	1	0	2750	70.6	5.4	5.2	4.4	5.2	2.8	4.6	1.8	70.6	5.4	24.0	0.109	0.515

COAHUILA

15 CARR : PIEDRAS NEGRAS - CD. ACUÑA

CLAVE: 05061

RUTA : MEX-002

AÑO : 2008

L U G A R	E S T A C I O N				C L A S I F I C A C I O N V E H I C U L A R E N P O R C I E N T O .												
	KM	TE	SC	TDPA	A	B	C2	C3	T3S2	T3S3	T3S2R4	OTROS	A	B	C	K'	D
PIEDRAS NEGRAS	0.00	3	0	4109	72.4	4.5	1.5	0.9	8.6	2.1	6.0	4.0	72.4	4.5	23.1	0.080	0.512
T. C. MORELOS - CD. ACUÑA	83.30	1	0	3298	81.6	6.9	3.5	1.2	3.2	1.4	1.0	1.2	81.6	6.9	11.5	0.065	0.506

16 CARR : PIEDRAS NEGRAS - NUEVO LAREDO

CLAVE: 00503

RUTA : MEX-002

AÑO : 2008

L U G A R	E S T A C I O N				C L A S I F I C A C I O N V E H I C U L A R E N P O R C I E N T O .												
	KM	TE	SC	TDPA	A	B	C2	C3	T3S2	T3S3	T3S2R4	OTROS	A	B	C	K'	D
T. C. MONCLOVA - PIEDRAS NEGRAS	0.00	3	1	2327	84.1	4.2	1.9	2.2	5.5	0.5	0.7	0.9	84.1	4.2	11.7	0.102	0.508
T. C. MONCLOVA - PIEDRAS NEGRAS	0.00	3	2	2402	84.9	4.0	1.7	2.0	4.1	0.8	1.3	1.2	84.9	4.0	11.1	0.124	0.508
EL SAUCITO	16.90	3	0	1810	77.3	3.8	1.9	1.7	5.9	3.3	5.0	1.1	77.3	3.8	18.9	0.110	0.503
GUERRERO	42.00	3	0	1470	59.1	4.8	3.8	4.4	5.9	5.8	12.4	3.8	59.1	4.8	36.1	0.120	0.502
LIM. EDOS. TERM. COAH. PPIA. N.L.	113.00																
LIM. EDOS. TERM. N.L. PPIA. TAMPS.	137.00																
T. DER. LIBRAMIENTO DE NUEVO LAREDO	168.90	1	1	9038	75.4	6.2	3.8	6.2	3.8	1.2	1.3	2.1	75.4	6.2	18.4	0.162	0.502
T. DER. LIBRAMIENTO DE NUEVO LAREDO	168.90	1	2	9113	72.7	6.9	4.5	6.9	4.0	1.3	1.3	2.4	72.7	6.9	20.4	0.090	0.502
NUEVO LAREDO	175.00	1	0	8011	77.8	4.0	2.0	2.0	5.5	3.1	4.6	1.0	77.8	4.0	18.2	0.072	0.502

17 CARR : SALTILLO - MONCLOVA

CLAVE: 05406

RUTA : MEX-057

AÑO : 2008

L U G A R	E S T A C I O N				C L A S I F I C A C I O N V E H I C U L A R E N P O R C I E N T O .												
	KM	TE	SC	TDPA	A	B	C2	C3	T3S2	T3S3	T3S2R4	OTROS	A	B	C	K'	D
SALTILLO	0.00																
T. DER. RAMOS ARIZPE	13.00	1	0	7614	78.2	5.6	1.7	2.7	6.2	2.5	1.5	1.6	78.2	5.6	16.2	0.073	0.508
T. DER. RAMOS ARIZPE	13.00	3	0	2216	76.2	6.7	4.4	6.7	3.4	0.9	0.9	0.8	76.2	6.7	17.1	0.106	0.506
T. DER. MONTERREY	164.80	1	0	3771	61.0	5.9	3.7	5.4	2.2	5.3	8.5	8.0	61.0	5.9	33.1	0.078	0.517
T. DER. MONTERREY	164.80	3	1	3110	72.0	4.9	3.8	2.7	5.2	5.0	2.2	4.2	72.0	4.9	23.1	0.093	0.513
T. DER. MONTERREY	164.80	3	2	2952	62.6	5.1	5.0	2.8	8.4	7.3	2.4	6.4	62.6	5.1	32.3	0.103	0.513
T. DER. LIBRAMIENTO DE CASTAÑOS (1° ACCESO)	175.20	1	1	5341	71.6	5.3	4.5	3.9	7.0	2.5	3.9	1.3	71.6	5.3	23.1	0.119	0.512
T. DER. LIBRAMIENTO DE CASTAÑOS (1° ACCESO)	175.20	1	2	5088	71.0	5.3	4.6	3.7	5.8	3.6	3.8	2.2	71.0	5.3	23.7	0.095	0.512
T. DER. LIBRAMIENTO DE CASTAÑOS (2° ACCESO)	177.10	3	1	5279	73.1	6.1	4.3	3.8	5.4	2.8	2.7	1.8	73.1	6.1	20.8	0.090	0.528
T. DER. LIBRAMIENTO DE CASTAÑOS (2° ACCESO)	177.10	3	2	4711	74.6	6.1	4.3	3.8	4.7	2.5	1.8	2.2	74.6	6.1	19.3	0.081	0.528
MONCLOVA	192.00	1	1	8353	70.6	4.4	3.0	3.4	7.7	4.6	3.3	3.0	70.6	4.4	25.0	0.073	0.501
MONCLOVA	192.00	1	2	8387	75.1	4.4	3.0	3.4	5.6	2.6	4.3	1.6	75.1	4.4	20.5	0.080	0.501

COAHUILA

18 CARR : SALTILLO - MONTERREY

CLAVE: 00087

RUTA : MEX-040

AÑO : 2008

L U G A R	E S T A C I O N				C L A S I F I C A C I O N V E H I C U L A R E N P O R C I E N T O .												
	KM	TE	SC	TDPA	A	B	C2	C3	T3S2	T3S3	T3S2R4	OTROS	A	B	C	K'	D
T. C. SALTILLO - ARTEAGA	0.00																
T. IZQ. SINCAMEX	4.25	3	1	17993	77.1	4.9	4.9	4.0	3.4	2.9	1.2	1.6	77.1	4.9	18.0	0.077	0.517
T. IZQ. SINCAMEX	4.25	3	2	16788	77.3	4.7	5.0	4.1	2.9	2.9	1.4	1.7	77.3	4.7	18.0	0.075	0.517
RAMOS ARIZPE	11.30	1	1	17440	68.9	4.0	4.3	1.4	9.2	3.3	5.3	3.6	68.9	4.0	27.1	0.093	0.502
RAMOS ARIZPE	11.30	1	2	17292	62.4	4.0	3.6	1.4	7.4	5.5	8.9	6.8	62.4	4.0	33.6	0.097	0.502
T. DER. AEROPUERTO	13.00	3	1	15987	65.9	7.6	5.2	4.6	9.3	4.6	0.5	2.3	65.9	7.6	26.5	0.080	0.501
T. DER. AEROPUERTO	13.00	3	2	16065	67.0	7.6	5.0	4.5	8.5	4.3	0.6	2.5	67.0	7.6	25.4	0.070	0.501
T. DER. LIBRAMIENTO J.L.P.	16.00	3	1	15125	71.3	4.6	3.0	2.3	8.3	3.0	5.7	1.8	71.3	4.6	24.1	0.082	0.507
T. DER. LIBRAMIENTO J.L.P.	16.00	3	2	14690	74.4	4.0	3.0	2.6	5.7	3.1	5.5	1.7	74.4	4.0	21.6	0.084	0.507
OJO CALIENTE	26.30	1	1	13842	61.4	6.7	3.9	3.6	8.5	4.5	9.9	1.5	61.4	6.7	31.9	0.096	0.501
OJO CALIENTE	26.30	1	2	13877	64.6	6.5	3.7	3.4	8.0	4.0	8.2	1.6	64.6	6.5	28.9	0.083	0.501
LIM. EDOS. TERM. COAH. PPIA. N.L.	35.50																
T. IZQ. LIBRAMIENTO NOROESTE DE MONTERREY	54.00	1	1	12699	50.7	4.7	3.6	4.1	16.7	6.2	10.5	3.5	50.7	4.7	44.6	0.066	0.508
T. IZQ. LIBRAMIENTO NOROESTE DE MONTERREY	54.00	1	2	13107	54.7	4.4	3.3	3.9	19.0	5.2	7.3	2.2	54.7	4.4	40.9	0.078	0.508
T. DER. SANTA CATARINA (1° ACCESO)	62.46	1	1	19220	52.2	4.3	4.2	2.1	9.8	6.8	13.8	6.8	52.2	4.3	43.5	0.063	0.503
T. DER. SANTA CATARINA (1° ACCESO)	62.46	1	2	18981	59.6	4.2	4.9	2.1	7.6	5.1	10.8	5.7	59.6	4.2	36.2	0.100	0.503
PPIA. MONTERREY	79.20	1	1	20091	82.6	4.3	4.3	2.2	3.3	2.1	0.5	0.7	82.6	4.3	13.1	0.093	0.501
PPIA. MONTERREY	79.20	1	2	20137	82.2	4.3	4.4	2.2	3.2	2.2	0.6	0.9	82.2	4.3	13.5	0.080	0.501

19 CARR : SALTILLO - TORREON

CLAVE: 05086

RUTA : MEX-040

AÑO : 2008

L U G A R	E S T A C I O N				C L A S I F I C A C I O N V E H I C U L A R E N P O R C I E N T O .												
	KM	TE	SC	TDPA	A	B	C2	C3	T3S2	T3S3	T3S2R4	OTROS	A	B	C	K'	D
SALTILLO	0.00																
T. DER. MONCLOVA	6.10	3	1	9666	75.5	5.6	3.5	5.1	4.1	2.1	2.2	1.9	75.5	5.6	18.9	0.073	0.506
T. DER. MONCLOVA	6.10	3	2	9919	76.9	5.6	3.2	4.4	3.8	2.1	2.2	1.8	76.9	5.6	17.5	0.073	0.506
T. IZQ. GENERAL CEPEDA	44.14	1	0	5663	54.0	8.1	5.8	4.0	14.0	7.8	4.0	2.3	54.0	8.1	37.9	0.072	0.518
T. IZQ. GENERAL CEPEDA	44.14	3	0	5343	76.5	5.8	6.2	5.0	2.6	2.0	0.7	1.2	76.5	5.8	17.7	0.071	0.506
T. DER. ESTACION MARTE	91.20	1	0	5939	76.4	4.7	5.0	3.9	3.2	2.3	1.9	2.6	76.4	4.7	18.9	0.110	0.523
ENT. PAILA	127.90	1	1	3379	56.0	3.0	5.3	3.7	15.2	6.7	8.4	1.7	56.0	3.0	41.0	0.085	0.517
ENT. PAILA	127.90	1	2	3621	58.1	2.8	4.9	3.4	14.2	6.0	8.2	2.4	58.1	2.8	39.1	0.086	0.517
T. DER. SAN PEDRO DE LAS COLONIAS (LA CUCHILLA)	204.60	1	1	2706	45.4	4.7	3.2	5.7	21.9	7.2	10.6	1.3	45.4	4.7	49.9	0.089	0.501
T. DER. SAN PEDRO DE LAS COLONIAS (LA CUCHILLA)	204.60	1	2	2699	48.8	4.6	3.4	5.7	19.9	6.6	9.7	1.3	48.8	4.6	46.6	0.071	0.501
EMILIANO ZAPATA	221.70	1	0	2337	75.7	8.1	4.4	6.9	2.0	1.3	1.2	0.4	75.7	8.1	16.2	0.076	0.506
EMILIANO ZAPATA	221.70	3	0	2802	87.9	6.9	0.1	0.8	3.0	0.5	0.3	0.5	87.9	6.9	5.2	0.108	0.505



COAHUILA

22 CARR : CUATRO CIENEGAS - OCAMPO

CLAVE: 05026

RUTA : COA-048

AÑO : 2008

L U G A R	E S T A C I O N				CLASIFICACION VEHICULAR EN PORCIENTO .												
	KM	TE	SC	TDPA	A	B	C2	C3	T3S2	T3S3	T3S2R4	OTROS	A	B	C	K'	D
CUATRO CIENEGAS	0.00	3	0	937	95.6	0.0	0.2	1.1	0.8	0.2	0.3	1.8	95.6	0.0	4.4	0.117	0.503
OCAMPO	50.00																

23 CARR : EL SAUZ - PALAU

CLAVE: 05060

RUTA : COA-022

AÑO : 2008

L U G A R	E S T A C I O N				CLASIFICACION VEHICULAR EN PORCIENTO .												
	KM	TE	SC	TDPA	A	B	C2	C3	T3S2	T3S3	T3S2R4	OTROS	A	B	C	K'	D
EL SAUZ	0.00	3	0	2425	79.9	3.5	3.6	2.2	4.0	3.9	1.9	1.0	79.9	3.5	16.6	0.082	0.506
MINAS DE BARROTERAN	31.00	3	0	1870	79.8	2.7	7.1	2.3	3.2	2.8	1.5	0.6	79.8	2.7	17.5	0.089	0.505
PALAU	42.50	1	0	1722	82.6	2.7	4.1	2.3	3.5	3.0	1.2	0.6	82.6	2.7	14.7	0.094	0.504

24 CARR : EMILIANO ZAPATA - VIESCA

CLAVE: 05521

RUTA : COA-082

AÑO : 2008

L U G A R	E S T A C I O N				CLASIFICACION VEHICULAR EN PORCIENTO .												
	KM	TE	SC	TDPA	A	B	C2	C3	T3S2	T3S3	T3S2R4	OTROS	A	B	C	K'	D
EMILIANO ZAPATA	0.00	3	0	749	86.9	4.1	6.0	0.7	1.3	0.6	0.2	0.2	86.9	4.1	9.0	0.132	0.501
VIESCA	24.00																

25 CARR : ENT. LA ROSA - GENERAL CEPEDA

CLAVE: 05034

RUTA : COA-034

AÑO : 2008

L U G A R	E S T A C I O N				CLASIFICACION VEHICULAR EN PORCIENTO .												
	KM	TE	SC	TDPA	A	B	C2	C3	T3S2	T3S3	T3S2R4	OTROS	A	B	C	K'	D
T. C. SALTILLO - TORREON	0.00	3	0	994	87.1	4.3	3.8	1.8	1.7	0.6	0.1	0.6	87.1	4.3	8.6	0.100	0.511
GRAL. CEPEDA	21.00	1	0	873	87.6	4.0	4.2	1.7	1.3	0.4	0.3	0.5	87.6	4.0	8.4	0.123	0.502

26 CARR : ENT. PAILA - PARRAS DE LA FUENTE

CLAVE: 05014

RUTA : COA-102

AÑO : 2008

L U G A R	E S T A C I O N				CLASIFICACION VEHICULAR EN PORCIENTO .												
	KM	TE	SC	TDPA	A	B	C2	C3	T3S2	T3S3	T3S2R4	OTROS	A	B	C	K'	D
ENT. PAILA	0.00	3	0	2073	82.3	5.2	3.7	1.9	3.0	1.0	1.6	1.3	82.3	5.2	12.5	0.087	0.503
PARRAS DE LA FUENTE	20.05	1	0	2682	86.6	5.1	1.7	1.6	2.6	0.7	0.6	1.1	86.6	5.1	8.3	0.097	0.516





COAHUILA

35 CARR : SABINAS - DON MARTIN

CLAVE: 05501

RUTA : COA-025

AÑO : 2008

L U G A R	E S T A C I O N				C L A S I F I C A C I O N V E H I C U L A R E N P O R C I E N T O .												
	KM	TE	SC	TDPA	A	B	C2	C3	T3S2	T3S3	T3S2R4	OTROS	A	B	C	K'	D
SABINAS	0.00	3	0	1473	90.4	1.6	0.6	1.2	3.5	0.7	1.4	0.6	90.4	1.6	8.0	0.122	0.501
JUAREZ	53.00	3	0	551	82.3	2.8	1.3	1.1	7.5	1.3	2.1	1.6	82.3	2.8	14.9	0.120	0.507
DON MARTIN	66.00	1	0	569	78.9	3.2	1.3	1.5	7.8	1.5	3.2	2.6	78.9	3.2	17.9	0.093	0.503

36 CARR : SALTILLO - ARTEAGA

CLAVE: 05008

RUTA : COA-106

AÑO : 2008

L U G A R	E S T A C I O N				C L A S I F I C A C I O N V E H I C U L A R E N P O R C I E N T O .												
	KM	TE	SC	TDPA	A	B	C2	C3	T3S2	T3S3	T3S2R4	OTROS	A	B	C	K'	D
SALTILLO	0.00	3	1	10058	75.2	4.4	6.3	4.4	4.8	3.6	1.0	0.3	75.2	4.4	20.4	0.070	0.508
SALTILLO	0.00	3	2	10396	70.7	4.4	6.2	4.4	4.8	7.4	1.8	0.3	70.7	4.4	24.9	0.072	0.508
X. C. LIBRAMIENTO DE MATEHUALA - MONTERREY	9.00	1	1	8252	83.0	4.3	4.0	2.0	4.7	0.5	0.6	0.9	83.0	4.3	12.7	0.081	0.505
X. C. LIBRAMIENTO DE MATEHUALA - MONTERREY	9.00	1	2	8490	85.0	3.5	3.0	1.6	4.8	0.5	0.5	1.1	85.0	3.5	11.5	0.084	0.505
X. C. LIBRAMIENTO DE MATEHUALA - MONTERREY	9.00	3	0	7753	86.7	2.7	4.0	3.7	1.1	0.2	0.4	1.2	86.7	2.7	10.6	0.088	0.534
ARTEAGA	12.00	1	1	4719	86.7	4.7	4.0	1.5	1.5	0.3	0.2	1.1	86.7	4.7	8.6	0.091	0.513
ARTEAGA	12.00	1	2	4479	87.3	4.5	4.0	1.3	1.7	0.1	0.1	1.0	87.3	4.5	8.2	0.095	0.513
T. C. ENT. BELLA UNION - SALTILLO	18.00																

37 CARR : SAN BUENAVENTURA - ESTACION HERMANAS

CLAVE: 05004

RUTA : COA-034

AÑO : 2008

L U G A R	E S T A C I O N				C L A S I F I C A C I O N V E H I C U L A R E N P O R C I E N T O .												
	KM	TE	SC	TDPA	A	B	C2	C3	T3S2	T3S3	T3S2R4	OTROS	A	B	C	K'	D
SAN BUENAVENTURA	0.00	3	0	1812	94.2	2.6	0.8	0.8	0.8	0.2	0.3	0.3	94.2	2.6	3.2	0.102	0.504
ESTACION HERMANAS	50.00	1	0	1205	94.2	2.9	0.6	1.2	0.5	0.4	0.1	0.1	94.2	2.9	2.9	0.115	0.502

38 CARR : T. C. (ENT. MORELOS - SALTILLO) - PARRAS DE LA FUENTE

CLAVE: 05510

RUTA : COA-105

AÑO : 2008

L U G A R	E S T A C I O N				C L A S I F I C A C I O N V E H I C U L A R E N P O R C I E N T O .												
	KM	TE	SC	TDPA	A	B	C2	C3	T3S2	T3S3	T3S2R4	OTROS	A	B	C	K'	D
T. C. MORELOS - SALTILLO	0.00	3	0	3487	81.5	7.1	5.0	2.3	1.1	1.5	1.4	0.1	81.5	7.1	11.4	0.070	0.503
GRAL. CEPEDA	40.00	1	0	1501	86.9	3.5	6.3	1.4	0.9	0.7	0.3	0.0	86.9	3.5	9.6	0.093	0.506
GRAL. CEPEDA	40.00	3	0	593	85.3	5.1	4.2	3.1	1.1	0.7	0.5	0.0	85.3	5.1	9.6	0.130	0.504
PARRAS DE LA FUENTE	102.00	1	0	1382	89.2	2.7	4.2	1.5	0.8	0.7	0.9	0.0	89.2	2.7	8.1	0.108	0.501



COAHUILA

39 CARR : T. C. (SALTILLO - MONCLOVA) - RAMOS ARIZPE

CLAVE: 05508

RUTA : COA

AÑO : 2008

L U G A R	E S T A C I O N				C L A S I F I C A C I O N V E H I C U L A R E N P O R C I E N T O .												
	KM	TE	SC	TDPA	A	B	C2	C3	T3S2	T3S3	T3S2R4	OTROS	A	B	C	K'	D
T. C. SALTILLO - MONCLOVA	0.00	3	0	6322	63.2	4.3	2.2	3.8	6.1	9.1	7.8	3.5	63.2	4.3	32.5	0.100	0.505
RAMOS ARIZPE	12.00																

40 CARR : TORREON - ESCUADRON 201

CLAVE: 05022

RUTA : COA-011

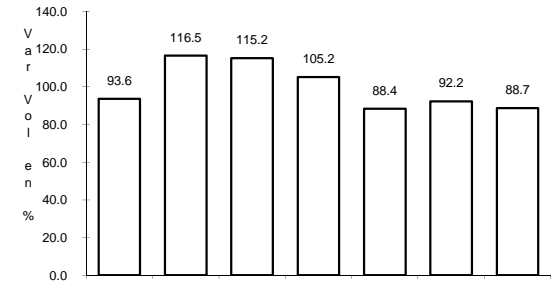
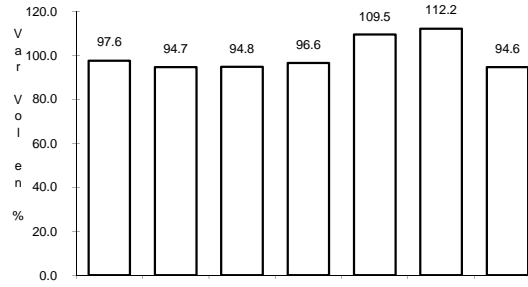
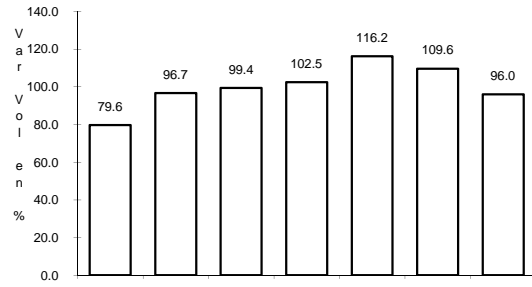
AÑO : 2008

L U G A R	E S T A C I O N				C L A S I F I C A C I O N V E H I C U L A R E N P O R C I E N T O .												
	KM	TE	SC	TDPA	A	B	C2	C3	T3S2	T3S3	T3S2R4	OTROS	A	B	C	K'	D
TORREON	0.00	3	1	8810	80.2	5.3	2.9	1.9	3.5	1.8	1.2	3.2	80.2	5.3	14.5	0.074	0.526
TORREON	0.00	3	2	7941	79.4	5.3	3.0	2.1	3.7	1.9	1.3	3.3	79.4	5.3	15.3	0.078	0.526
EL AGUILA	11.35	1	0	4323	87.9	3.7	1.4	0.5	3.1	0.8	1.1	1.5	87.9	3.7	8.4	0.105	0.500
ESCUADRON 201	17.06	1	0	1610	84.4	1.2	8.4	1.6	2.3	0.9	0.7	0.5	84.4	1.2	14.4	0.160	0.525

1 CARR: CD. ACUÑA - PRESA DE LA AMISTAD

CLAVE: 05085

RUTA: MEX



Km: 0.00

Tipo: 3

Sent: 1

Km: 0.00

Tipo: 3

Sent: 2

Km: 23.00

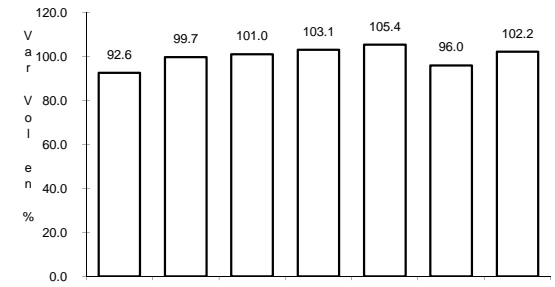
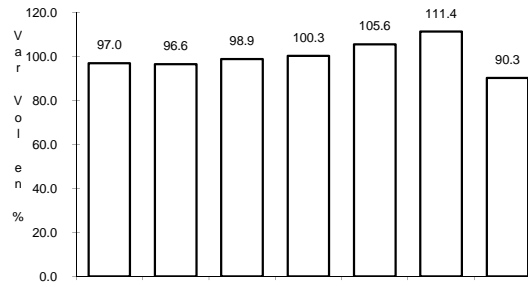
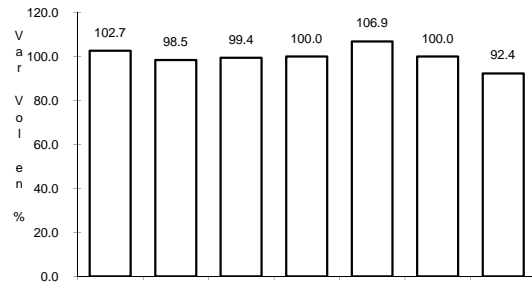
Tipo: 1

Sent: 0

2 CARR: DURANGO - TORREON

CLAVE: 10085

RUTA: MEX-040



Km: 0.00

Tipo: 3

Sent: 1

Km: 0.00

Tipo: 3

Sent: 2

Km: 120.90

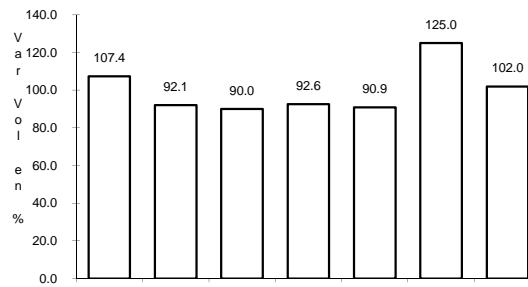
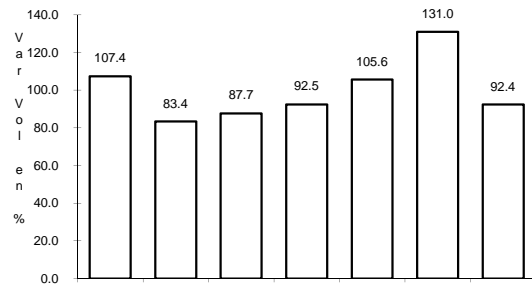
Tipo: 1

Sent: 0

3 CARR: ENT. BELLA UNION - SALTILLO

CLAVE: 05003

RUTA: MEX-057



Km: 4.61

Tipo: 1

Sent: 1

Km: 4.61

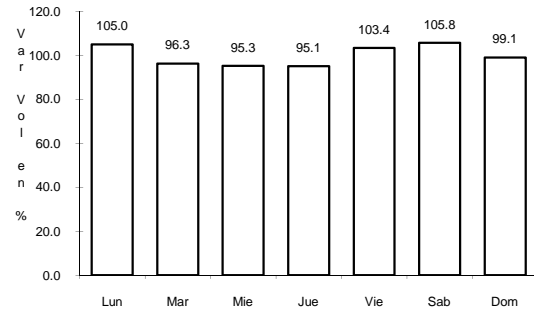
Tipo: 1

Sent: 2

4 CARR: ENT. MORELOS - SALTILLO

CLAVE: 00149

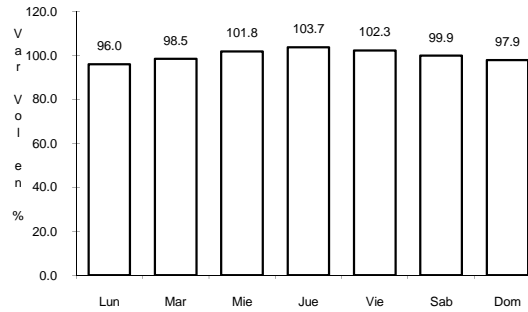
RUTA: MEX-054



Km: 0.00

Tipo: 3

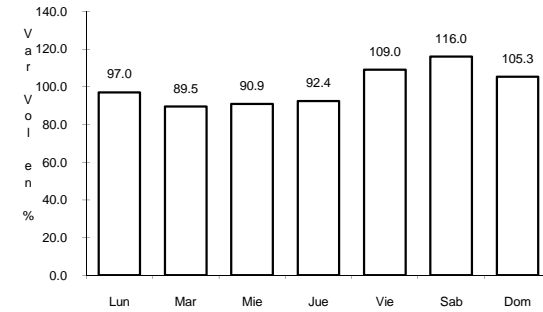
Sent: 0



Km: 185.25

Tipo: 1

Sent: 0



Km: 333.00

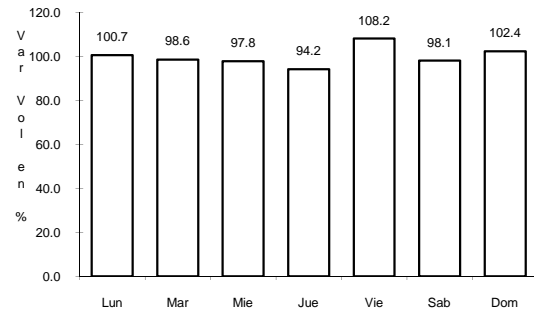
Tipo: 3

Sent: 0

5 CARR: GREGORIO GARCIA - FRANCISCO I. MADERO

CLAVE: 00110

RUTA: MEX



Km: 9.60

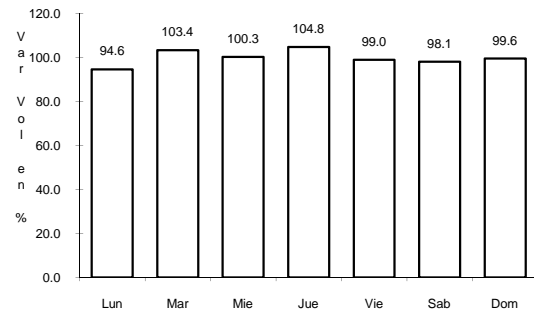
Tipo: 1

Sent: 0

6 CARR: HUACHICHIL - LA ENCANTADA

CLAVE: 05002

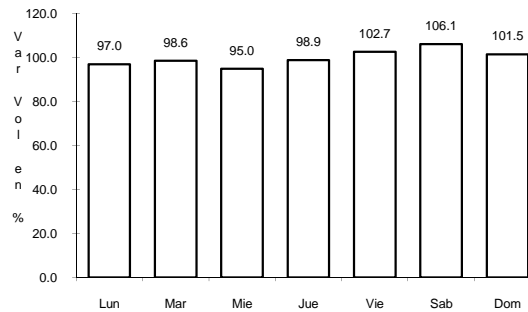
RUTA: MEX



Km: 0.00

Tipo: 3

Sent: 0

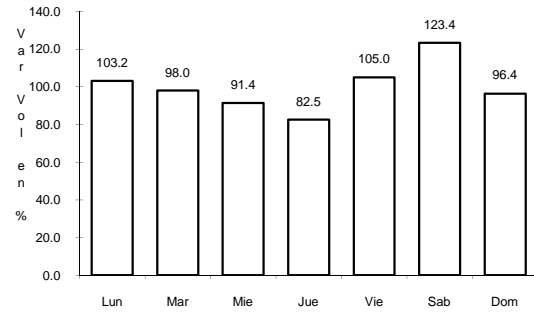


Km: 37.00

Tipo: 1

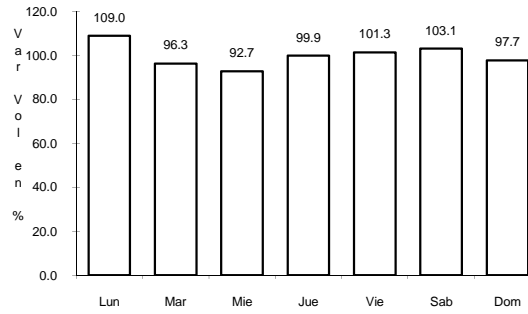
Sent: 0

7 CARR: LA CUCHILLA - TORREON



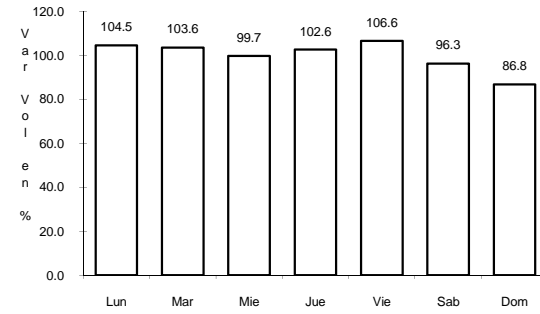
Km: 0.00 Tipo: 3 Sent: 0

CLAVE: 05021



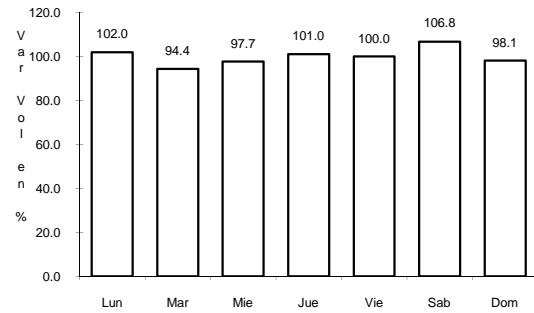
Km: 84.00 Tipo: 1 Sent: 1

ruta: MEX-030



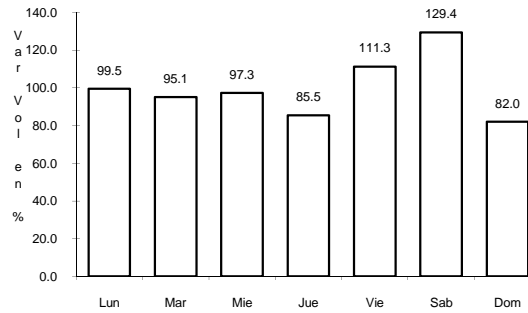
Km: 84.00 Tipo: 1 Sent: 2

8 CARR: LIBRAMIENTO ALLENDE - NAVA



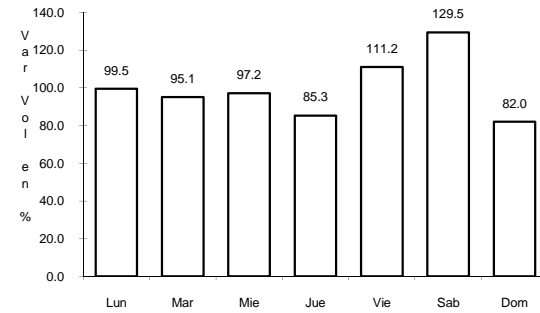
Km: 0.00 Tipo: 3 Sent: 0

CLAVE: 05518



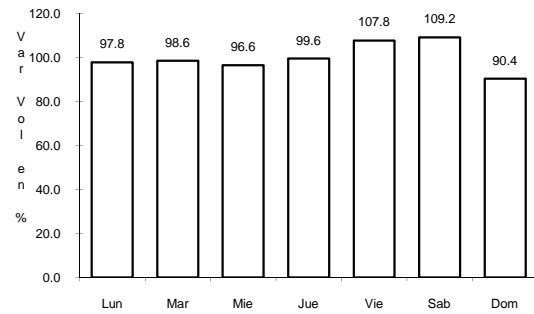
Km: 17.55 Tipo: 1 Sent: 1

ruta: MEX



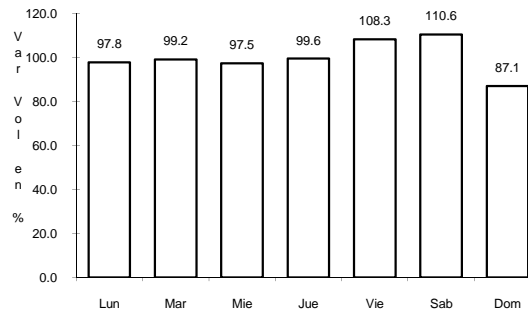
Km: 17.55 Tipo: 1 Sent: 2

9 CARR: MONCLOVA - PIEDRAS NEGRAS



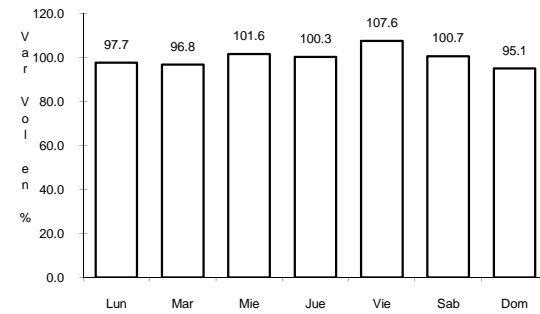
Km: 0.00 Tipo: 3 Sent: 1

CLAVE: 05407



Km: 0.00 Tipo: 3 Sent: 2

ruta: MEX-057

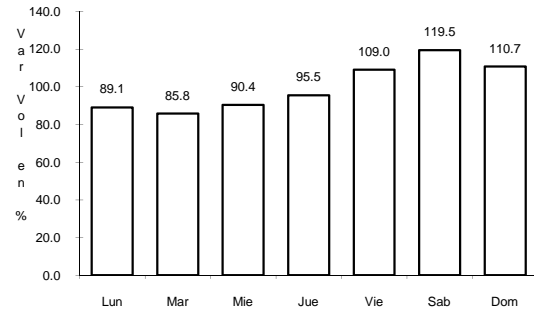


Km: 126.30 Tipo: 3 Sent: 0

10 CARR: MONCLOVA - SAN PEDRO DE LAS COLONIAS

CLAVE: 05062

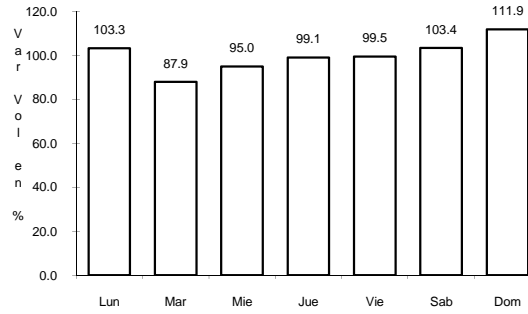
ruta: MEX-030



Km: 2.00

Tipo: 3

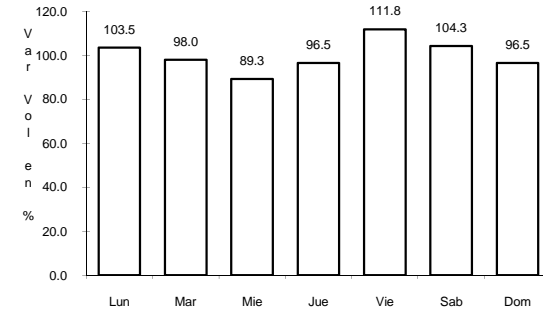
Sent: 1



Km: 2.00

Tipo: 3

Sent: 2



Km: 80.15

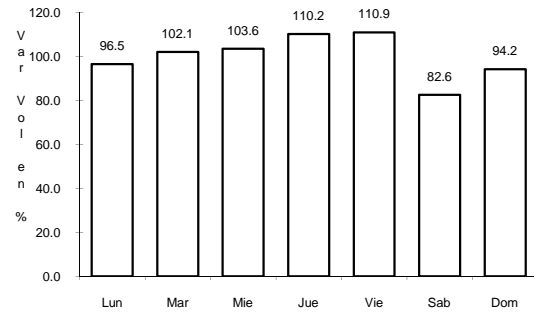
Tipo: 3

Sent: 0

11 CARR: MONTERREY - CASTAÑOS

CLAVE: 00128

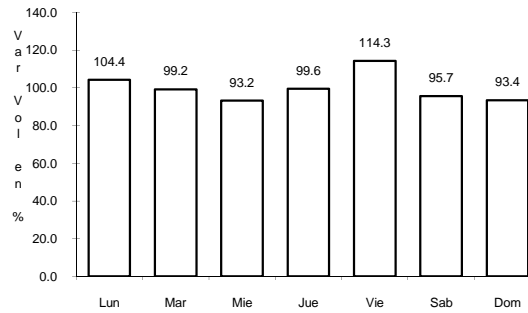
ruta: MEX-053



Km: 0.00

Tipo: 3

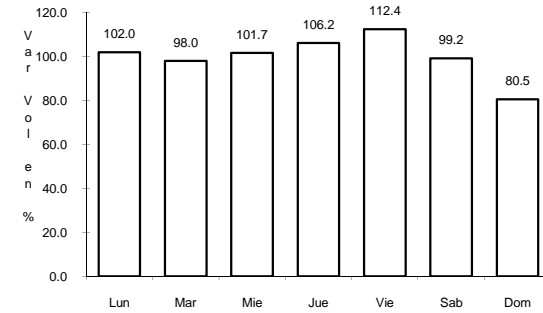
Sent: 0



Km: 91.90

Tipo: 1

Sent: 0



Km: 172.00

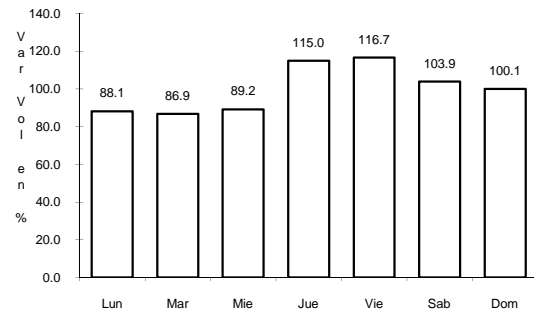
Tipo: 1

Sent: 0

12 CARR: MORELOS - CD. ACUÑA

CLAVE: 05029

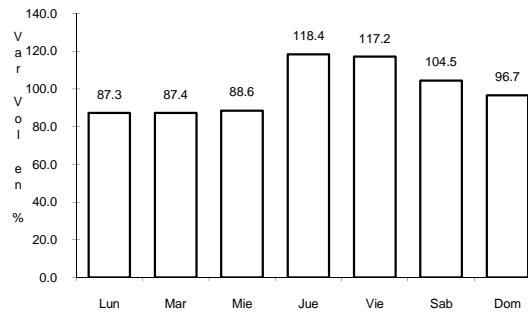
ruta: MEX-047



Km: 0.00

Tipo: 3

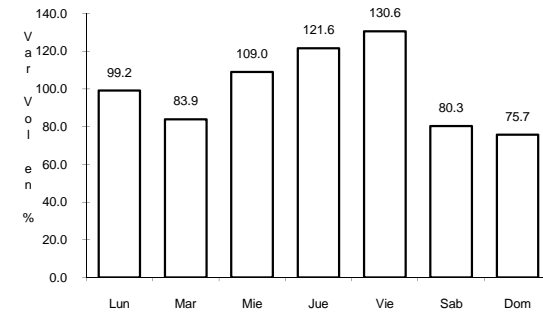
Sent: 1



Km: 0.00

Tipo: 3

Sent: 2



Km: 69.00

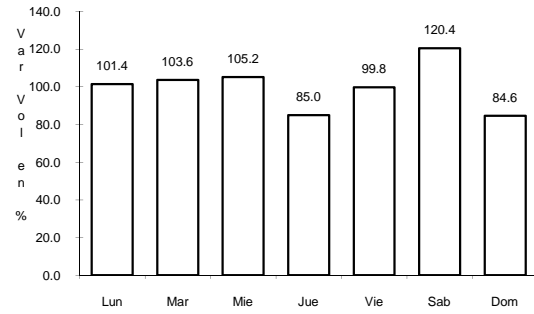
Tipo: 1

Sent: 0

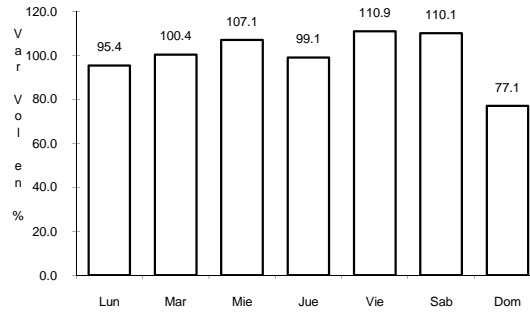
13 CARR: NUEVA ROSITA - BOQUILLAS DEL CARMEN

CLAVE: 05028

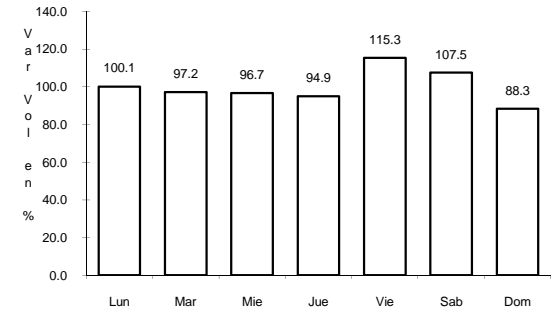
RUTA: MEX-053



Km: 0.00 Tipo: 3 Sent: 0



Km: 25.00 Tipo: 3 Sent: 1

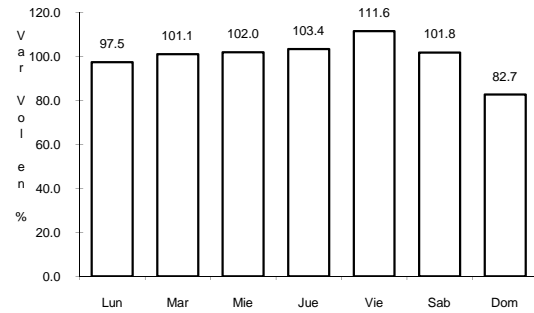


Km: 25.00 Tipo: 3 Sent: 2

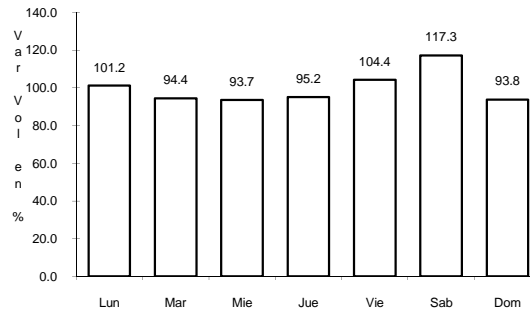
14 CARR: OJO CALIENTE - SANTA CRUZ

CLAVE: 05007

RUTA: MEX



Km: 0.00 Tipo: 3 Sent: 0

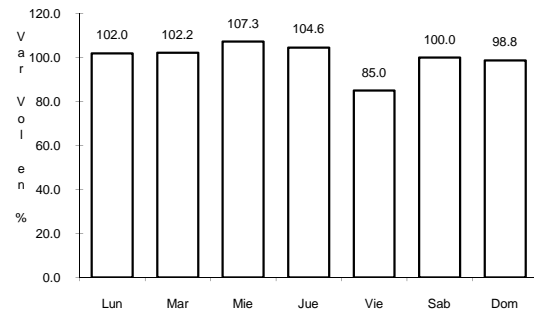


Km: 34.00 Tipo: 1 Sent: 0

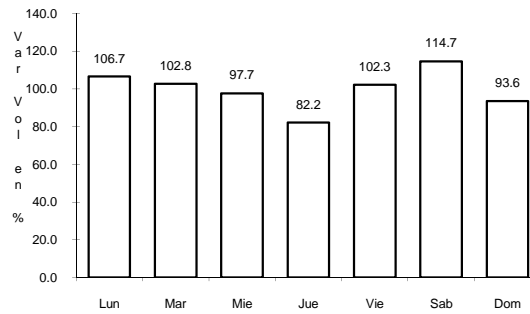
15 CARR: PIEDRAS NEGRAS - CD. ACUÑA

CLAVE: 05061

RUTA: MEX-002

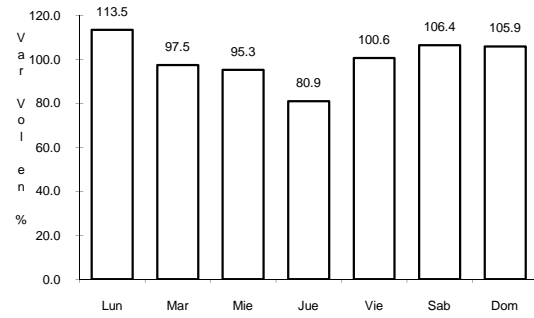


Km: 0.00 Tipo: 3 Sent: 0



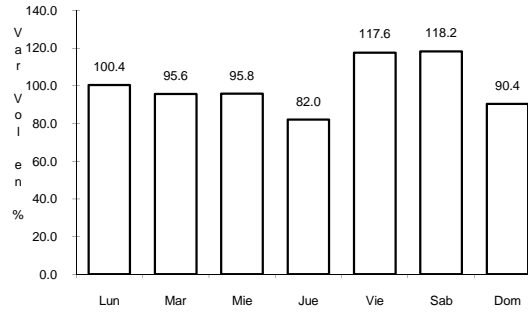
Km: 83.30 Tipo: 1 Sent: 0

16 CARR: PIEDRAS NEGRAS - NUEVO LAREDO



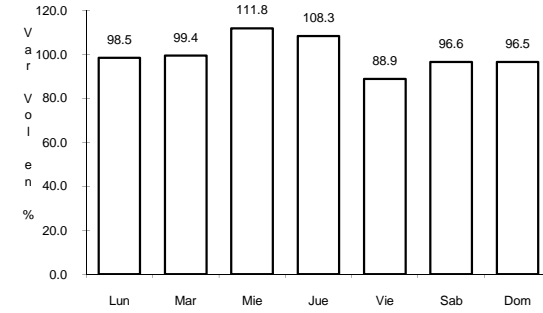
Km: 0.00 Tipo: 3 Sent: 1

CLAVE: 00503



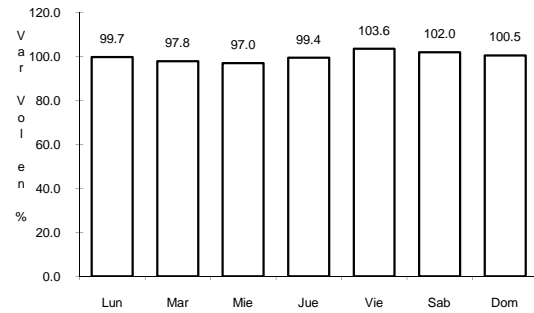
Km: 0.00 Tipo: 3 Sent: 2

RUTA: MEX-002



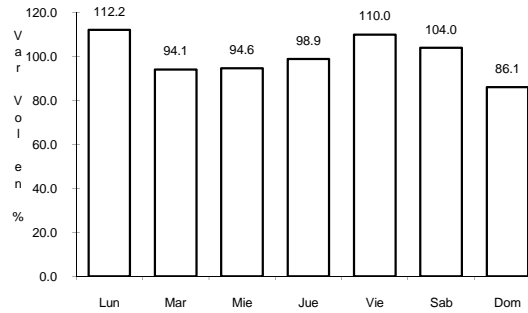
Km: 175.00 Tipo: 1 Sent: 0

17 CARR: SALTILLO - MONCLOVA



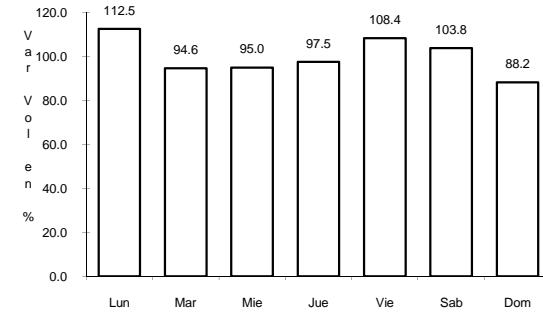
Km: 13.00 Tipo: 1 Sent: 0

CLAVE: 05406



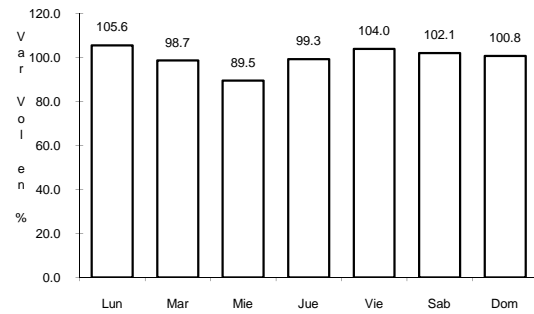
Km: 192.00 Tipo: 1 Sent: 1

RUTA: MEX-057



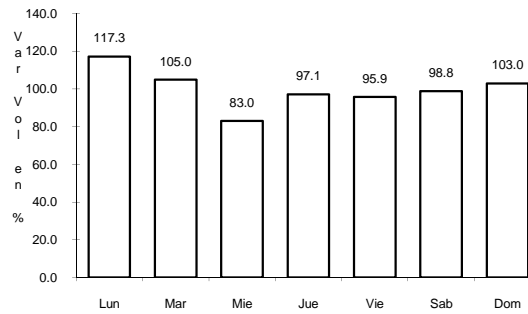
Km: 192.00 Tipo: 1 Sent: 2

18 CARR: SALTILLO - MONTERREY



Km: 4.25 Tipo: 3 Sent: 1

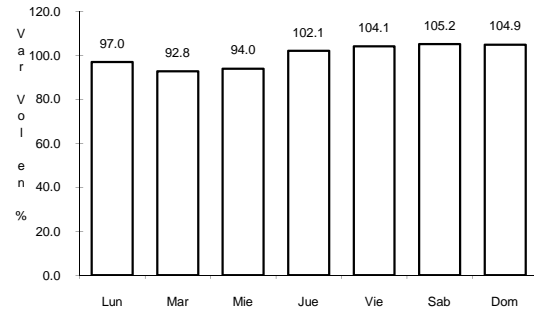
CLAVE: 00087



Km: 4.25 Tipo: 3 Sent: 2

RUTA: MEX-040

19 CARR: SALTILLO - TORREON

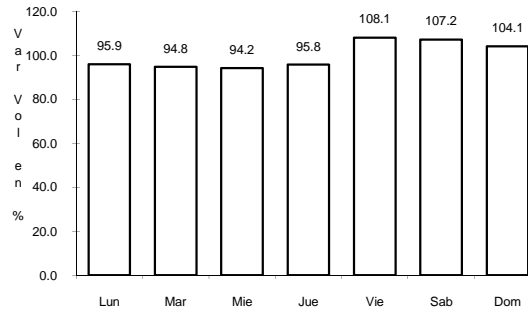


Km: 6.10

Tipo: 3

Sent: 1

CLAVE: 05086

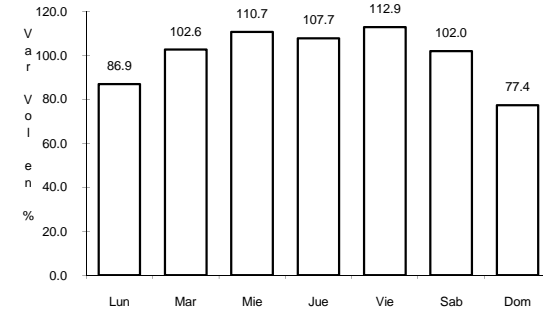


Km: 6.10

Tipo: 3

Sent: 2

RUTA: MEX-040

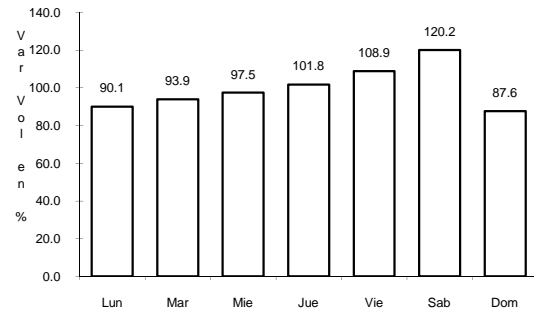


Km: 221.68

Tipo: 1

Sent: 0

20 CARR: PUERTO MEXICO - OJO CALIENTE (CUOTA)

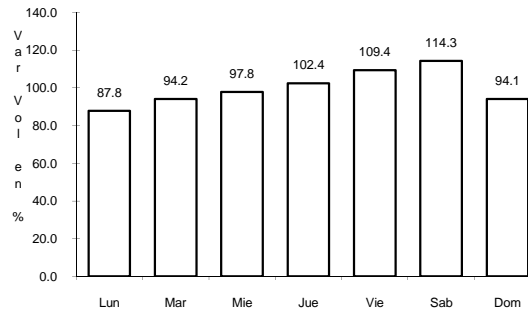


Km: 23.88

Tipo: 1

Sent: 1

CLAVE: 00115

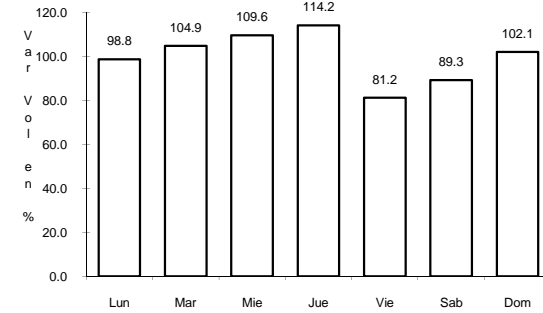


Km: 23.88

Tipo: 1

Sent: 2

RUTA: MEX-057D

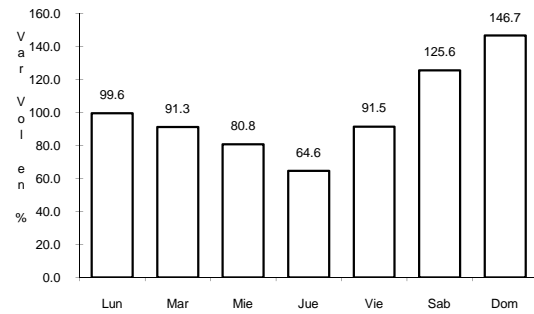


Km: 50.30

Tipo: 3

Sent: 0

21 CARR: ALLENDE - VILLA UNION



Km: 0.00

Tipo: 3

Sent: 0

CLAVE: 05001

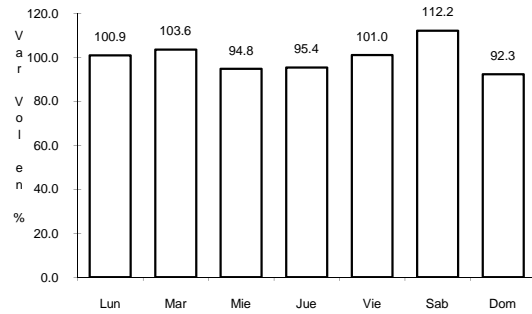
RUTA: COA-015



22 CARR: CUATRO CIENEGAS - OCAMPO

CLAVE: 05026

ruta: COA-048



Km: 0.00

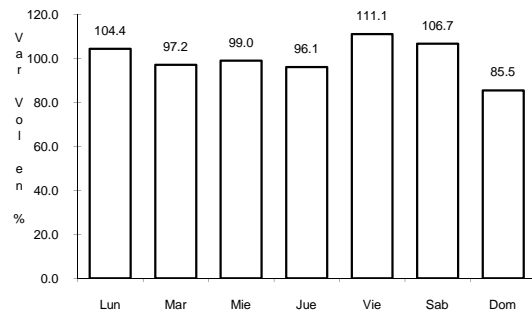
Tipo: 3

Sent: 0

23 CARR: EL SAUZ - PALAU

CLAVE: 05060

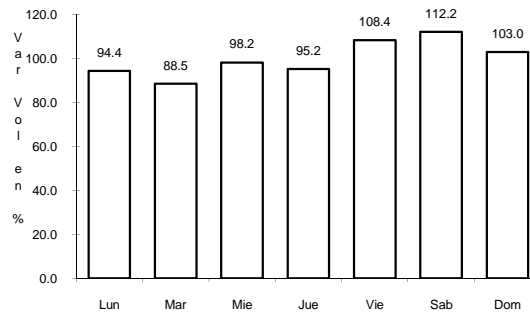
ruta: COA-022



Km: 0.00

Tipo: 3

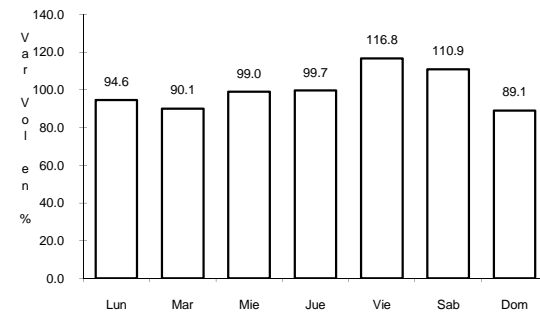
Sent: 0



Km: 31.00

Tipo: 3

Sent: 0



Km: 42.50

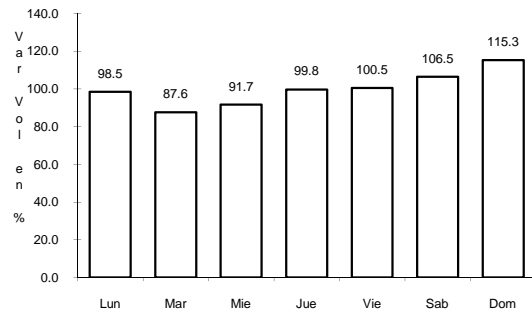
Tipo: 1

Sent: 0

24 CARR: EMILIANO ZAPATA - VIESCA

CLAVE: 05521

ruta: COA-082



Km: 0.00

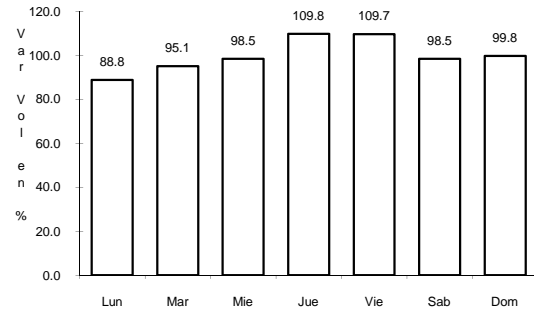
Tipo: 3

Sent: 0

25 CARR: ENT. LA ROSA - GENERAL CEPEDA

CLAVE: 05034

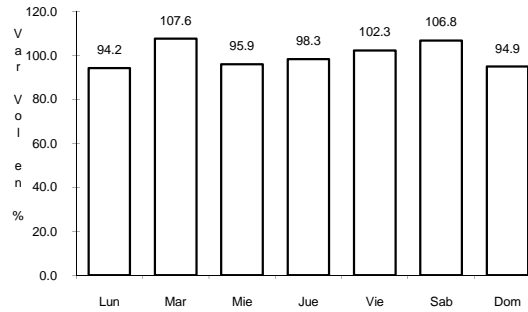
ruta: COA-034



Km: 0.00

Tipo: 3

Sent: 0



Km: 21.00

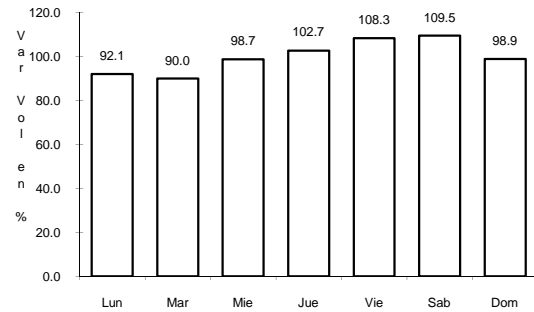
Tipo: 1

Sent: 0

26 CARR: ENT. PAILA - PARRAS DE LA FUENTE

CLAVE: 05014

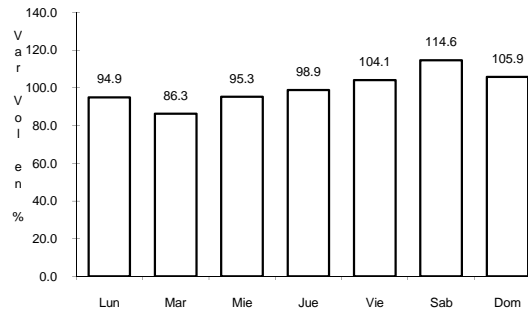
ruta: COA-102



Km: 0.00

Tipo: 3

Sent: 0



Km: 20.05

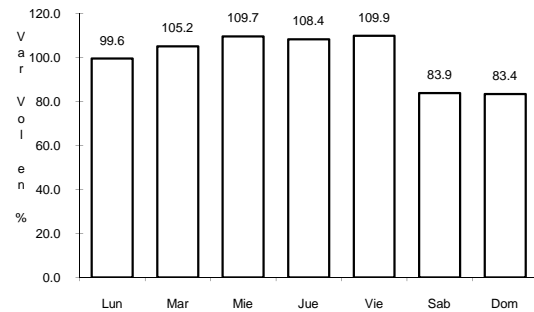
Tipo: 1

Sent: 0

27 CARR: LIBRAMIENTO DE MATAMOROS

CLAVE: 05032

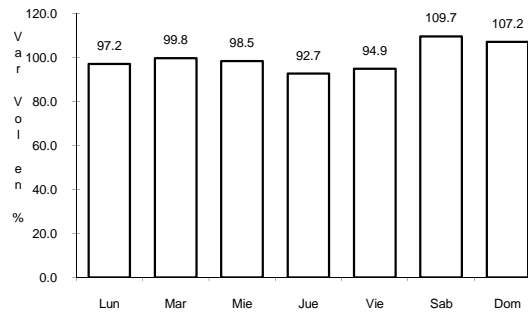
ruta: COA



Km: 0.00

Tipo: 3

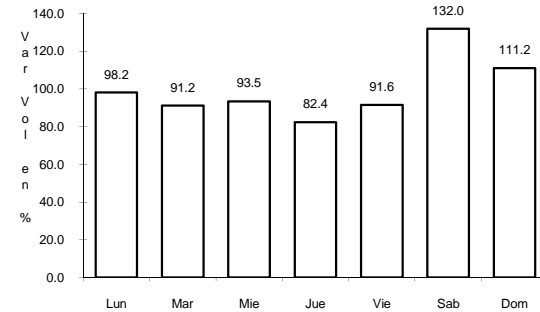
Sent: 0



Km: 5.32

Tipo: 1

Sent: 1



Km: 5.32

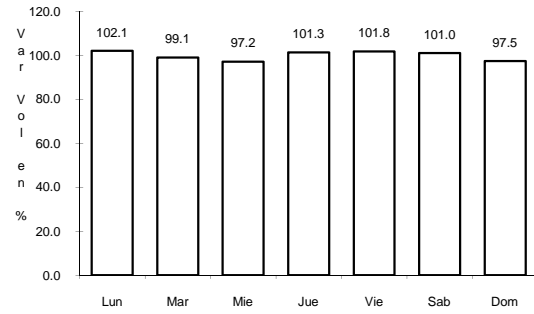
Tipo: 1

Sent: 2

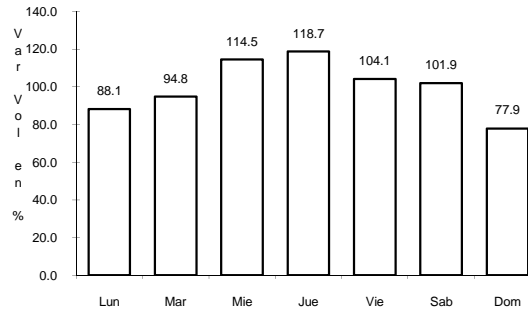
28 CARR: LIBRAMIENTO DE SALTILLO J.L.P.

CLAVE: 05031

RUTA: COA



Km: 2.50 Tipo: 3 Sent: 0

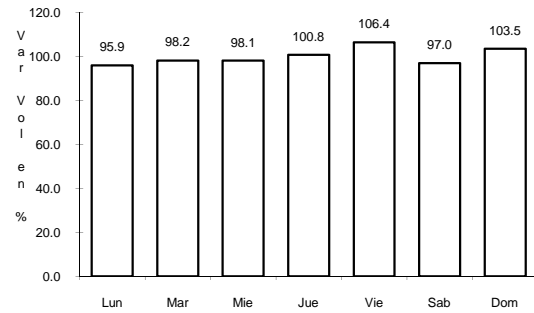


Km: 18.00 Tipo: 1 Sent: 0

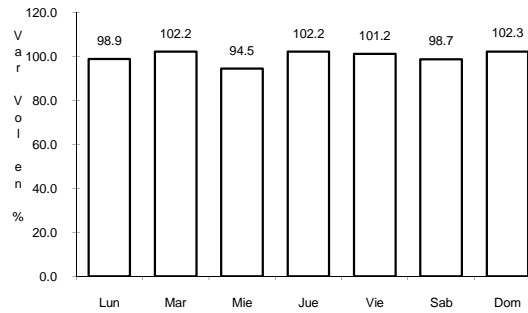
29 CARR: LIBRAMIENTO DE TORREON

CLAVE: 05516

RUTA: COA



Km: 6.70 Tipo: 1 Sent: 1

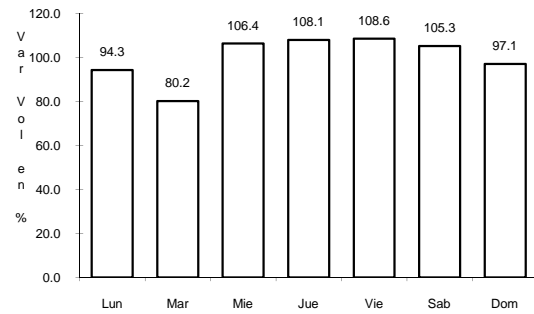


Km: 6.70 Tipo: 1 Sent: 2

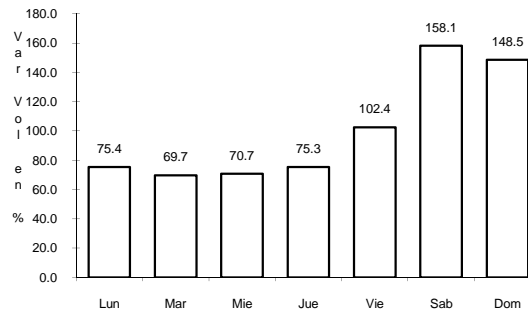
30 CARR: MONCLOVA - ESTACION CANDELA

CLAVE: 00501

RUTA: COA-030-NL



Km: 5.10 Tipo: 1 Sent: 0



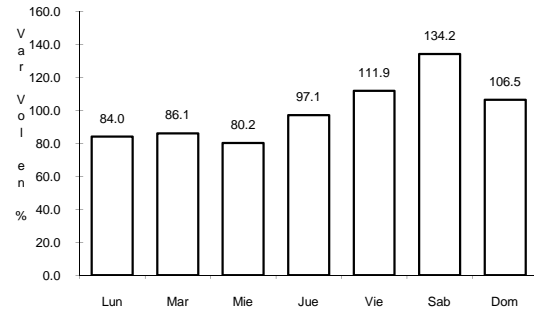
Km: 125.50 Tipo: 1 Sent: 0



34 CARR: RAMAL A LAMADRID

CLAVE: 05522

ruta: COA-042



Km: 0.00

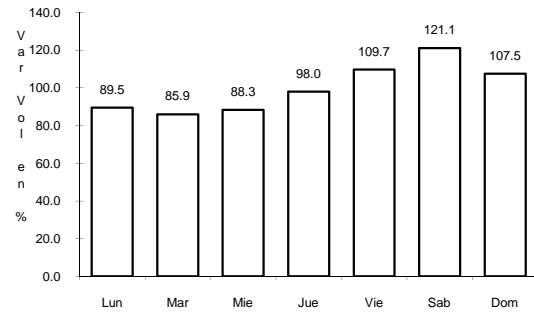
Tipo: 3

Sent: 0

35 CARR: SABINAS - DON MARTIN

CLAVE: 05501

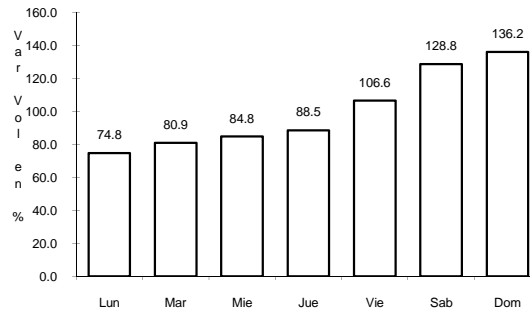
ruta: COA-025



Km: 0.00

Tipo: 3

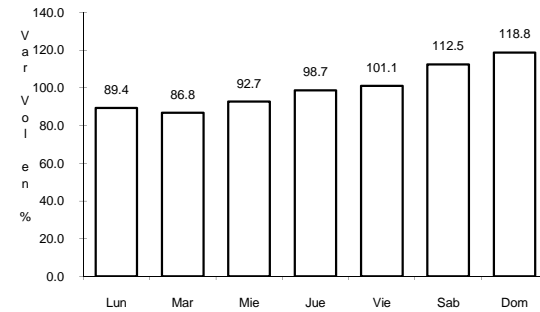
Sent: 0



Km: 53.00

Tipo: 3

Sent: 0



Km: 66.00

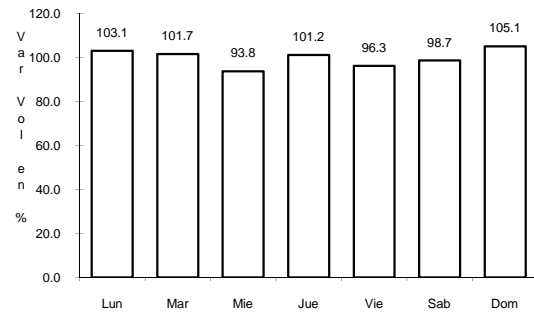
Tipo: 1

Sent: 0

36 CARR: SALTILLO - ARTEAGA

CLAVE: 05008

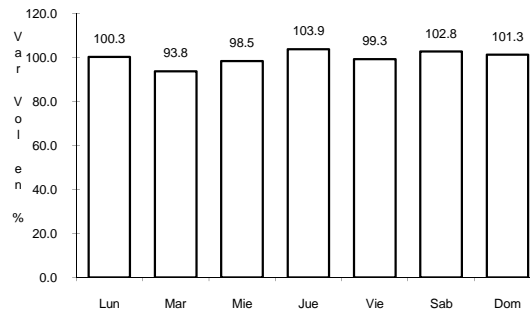
ruta: COA-106



Km: 0.00

Tipo: 3

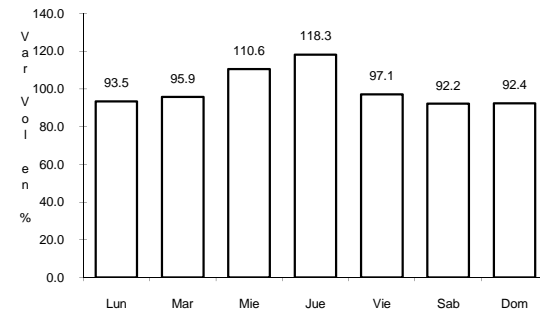
Sent: 1



Km: 0.00

Tipo: 3

Sent: 2



Km: 9.00

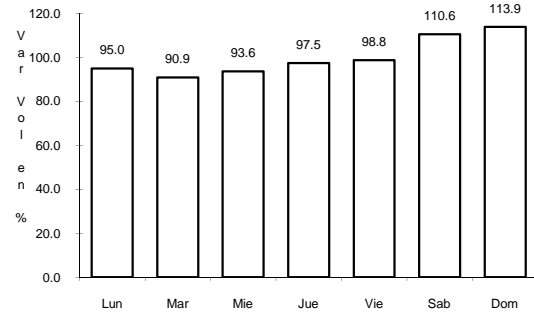
Tipo: 1

Sent: 1

37 CARR: SAN BUENAVENTURA - ESTACION HERMANAS

CLAVE: 05004

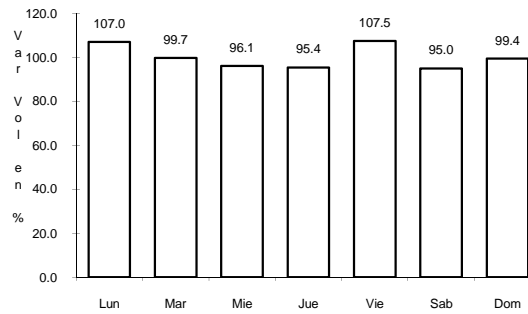
ruta: COA-034



Km: 0.00

Tipo: 3

Sent: 0



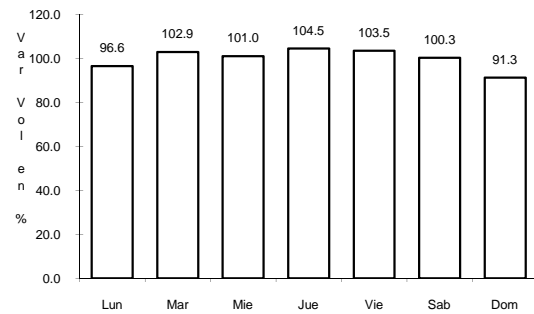
Km: 50.00

Tipo: 1

Sent: 0

38 CARR: T. C. (ENT. MORELOS - SALTILLO) - PARRAS DE LA FUENTE CLAVE: 05510

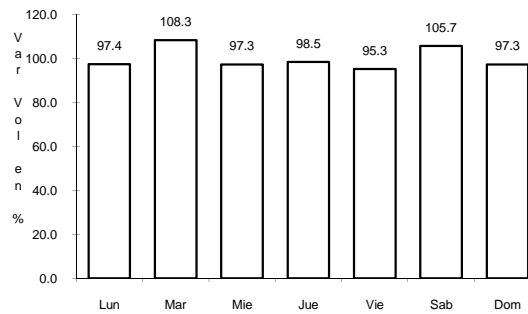
ruta: COA-105



Km: 0.00

Tipo: 3

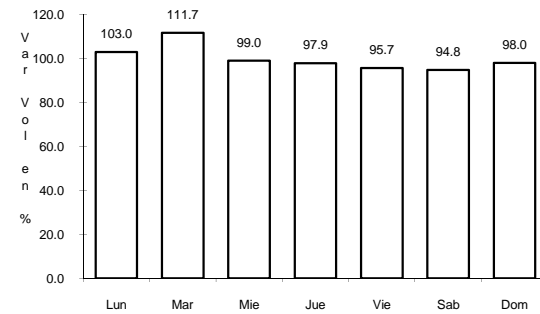
Sent: 0



Km: 40.00

Tipo: 1

Sent: 0



Km: 102.00

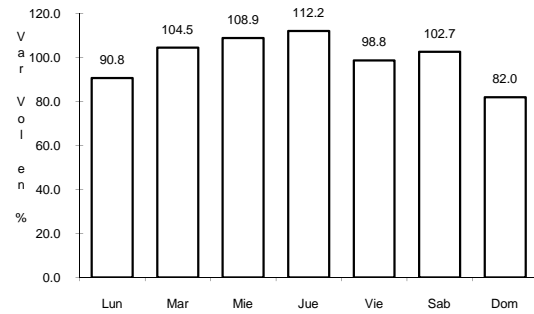
Tipo: 1

Sent: 0

39 CARR: T. C. (SALTILLO - MONCLOVA) - RAMOS ARIZPE

CLAVE: 05508

ruta: COA

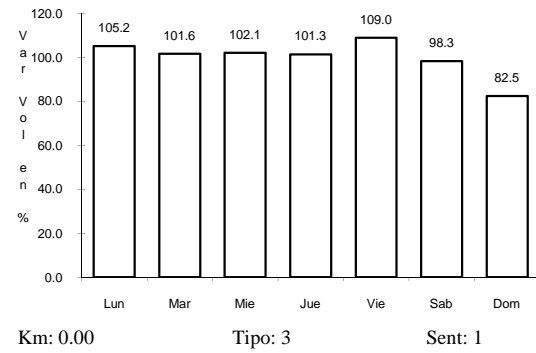


Km: 0.00

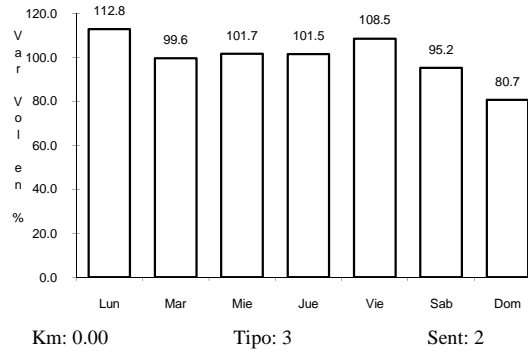
Tipo: 3

Sent: 0

40 CARR: TORREON - ESCUADRON 201



CLAVE: 05022



RUTA: COA-011

