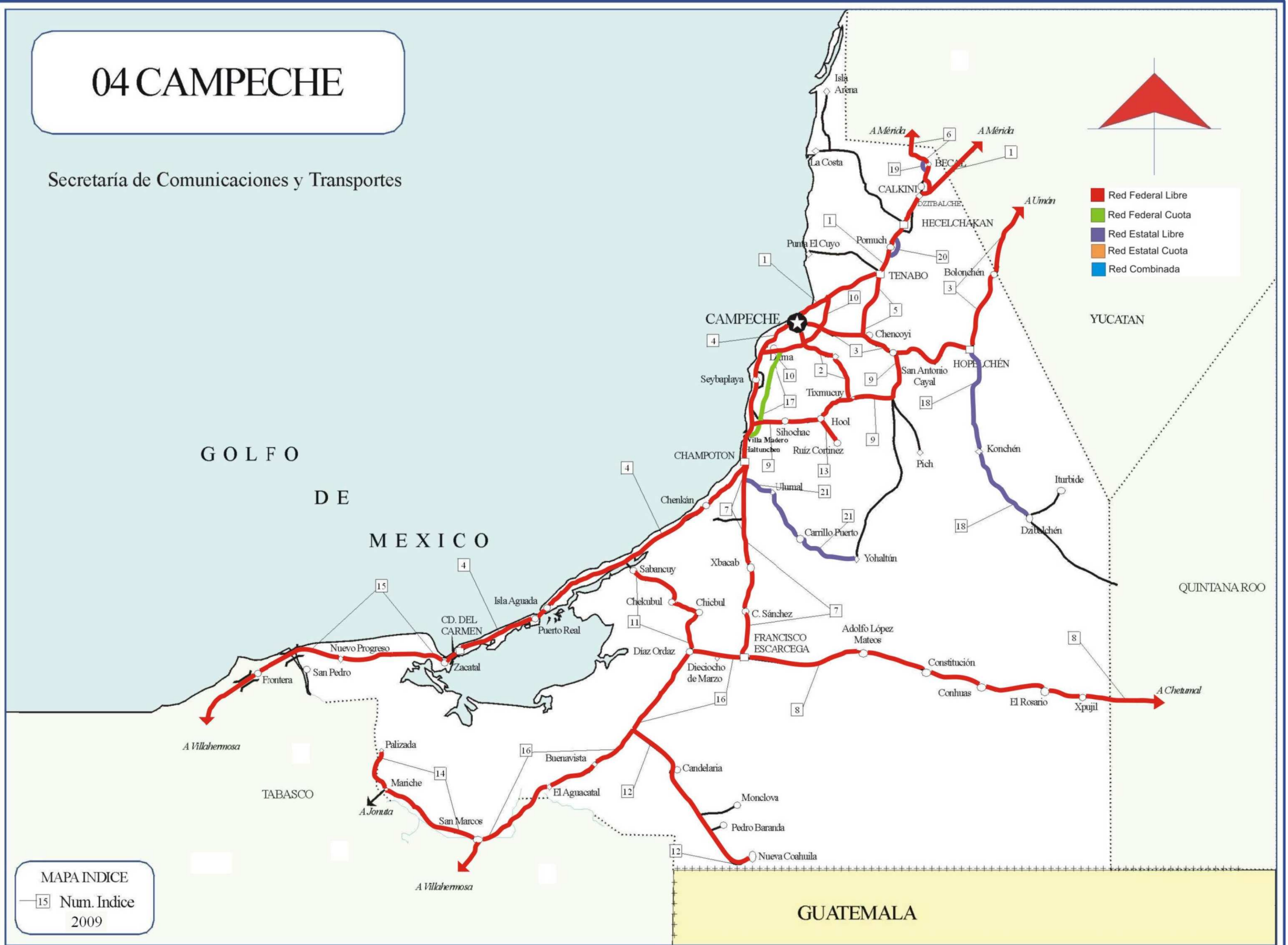


CAMPECHE

Núm. INDICE	CARRETERA	RUTA
---- FEDERAL LIBRE ----		
1	CAMPECHE - MERIDA	MEX-180
2	CAMPECHE - TIXMUCUY	MEX
3	CAMPECHE - UMAN	MEX-261
4	CD. DEL CARMEN - CAMPECHE	MEX-180
5	CHENCOYI - TENABO	MEX-263
6	DZITBALCHE - ENT. SAN BERNARDO	MEX-265
7	FRANCISCO ESCARCEGA - CHAMPOTON	MEX-261
8	FRANCISCO ESCARCEGA - CHETUMAL	MEX-186
9	HALTUNCHEN - SAN ANTONIO CAYAL	MEX-188
10	LIBRAMIENTO DE CAMPECHE	MEX-202
11	PRESIDENTE DIAZ ORDAZ - SABANCUY	MEX-259
12	RAMAL A NUEVO COAHUILA	MEX-221
13	RAMAL A RUIZ CORTINES	MEX
14	SAN MARCO - PALIZADA	MEX-217
15	VILLAHERMOSA - CD. DEL CARMEN	MEX-180
16	VILLAHERMOSA - FRANCISCO ESCARCEGA	MEX-186
---- FEDERAL CUOTA ----		
17	ENT. VILLA MADERO - CAMPECHE (CUOTA)	MEX-180D
---- ESTATAL LIBRE ----		
18	HOPELCHEN - DZIBALCHEN	CAM-261
19	LIBRAMIENTO DE BECAL	CAM
20	LIBRAMIENTO DE POMUCH	CAM
21	T. C. (FRANCISCO ESCARCEGA - CHAMPOTON) - YOHALTUN	CAM

04 CAMPECHE

Secretaría de Comunicaciones y Transportes



MAPA INDICE

—15 Num. Indice
2009

CAMPECHE

1 CARR : CAMPECHE - MERIDA

CLAVE: 00066

RUTA : MEX-180

AÑO : 2008

L U G A R	E S T A C I O N				C L A S I F I C A C I O N V E H I C U L A R E N P O R C I E N T O .												
	KM	TE	SC	TDPA	A	B	C2	C3	T3S2	T3S3	T3S2R4	OTROS	A	B	C	K'	D
CAMPECHE	0.00	3	1	2786	88.6	3.7	5.0	1.2	0.0	0.0	0.0	1.5	88.6	3.7	7.7	0.105	0.505
CAMPECHE	0.00	3	2	2731	87.2	3.9	6.4	1.4	0.0	0.0	0.0	1.1	87.2	3.9	8.9	0.108	0.505
T. DER. LIBRAMIENTO DE CAMPECHE	7.00	3	0	6975	84.3	4.5	5.8	4.5	0.0	0.0	0.0	0.9	84.3	4.5	11.2	0.067	0.503
TENABO	40.00	1	0	5206	87.1	4.2	3.2	3.4	0.0	0.0	0.0	2.1	87.1	4.2	8.7	0.106	0.502
T. DER. LIBRAMIENTO DE POMUCH (2° ACCESO)	50.00	3	0	4627	83.3	3.9	7.5	4.2	0.0	0.0	0.0	1.1	83.3	3.9	12.8	0.101	0.503
LIM. EDOS. TERM. CAMP. PPIA. YUC.	97.30																
KOPIOMA	124.30	3	0	4664	73.4	11.1	6.0	2.5	2.0	4.1	0.0	0.9	73.4	11.1	15.5	0.076	0.503
T. DER. LIBRAMIENTO DE CHOCHOLA (1° ACCESO)	137.90	1	0	4260	83.1	4.3	3.5	2.2	2.3	2.6	0.1	1.9	83.1	4.3	12.6	0.065	0.501
T. IZQ. UMAN	147.00	3	0	3429	81.0	6.6	7.1	3.9	0.2	0.4	0.1	0.7	81.0	6.6	12.4	0.096	0.504
X. C. CAMPECHE - UMAN	160.50	1	0	5967	78.3	6.1	5.8	3.6	0.0	0.0	0.0	6.2	78.3	6.1	15.6	0.100	0.561
T. C. PERIFERICO DE MERIDA	171.20																

2 CARR : CAMPECHE - TIXMUCUY

CLAVE: 04575

RUTA : MEX

AÑO : 2008

L U G A R	E S T A C I O N				C L A S I F I C A C I O N V E H I C U L A R E N P O R C I E N T O .												
	KM	TE	SC	TDPA	A	B	C2	C3	T3S2	T3S3	T3S2R4	OTROS	A	B	C	K'	D
CAMPECHE	0.00	3	1	2272	87.6	3.4	6.4	1.7	0.0	0.0	0.0	0.9	87.6	3.4	9.0	0.110	0.510
CAMPECHE	0.00	3	2	2367	86.1	3.5	6.9	2.0	0.0	0.0	0.0	1.5	86.1	3.5	10.4	0.128	0.510
X. C. LIBRAMIENTO DE CAMPECHE	4.00	3	0	2260	90.1	4.0	2.7	2.7	0.0	0.0	0.0	0.5	90.1	4.0	5.9	0.128	0.504
X. C. HALTUNCHEN - CAYAL	39.00	1	0	750	88.7	3.7	5.4	1.6	0.0	0.0	0.0	0.6	88.7	3.7	7.6	0.100	0.591
TIXMUCUY	42.00	1	0	541	96.8	2.5	0.3	0.2	0.0	0.0	0.0	0.2	96.8	2.5	0.7	0.118	0.511

3 CARR : CAMPECHE - UMAN

CLAVE: 00164

RUTA : MEX-261

AÑO : 2008

L U G A R	E S T A C I O N				C L A S I F I C A C I O N V E H I C U L A R E N P O R C I E N T O .												
	KM	TE	SC	TDPA	A	B	C2	C3	T3S2	T3S3	T3S2R4	OTROS	A	B	C	K'	D
CAMPECHE	0.00																
X. C. LIBRAMIENTO DE CAMPECHE	7.00	1	0	3032	88.7	3.9	4.4	2.5	0.0	0.0	0.0	0.5	88.7	3.9	7.4	0.107	0.519
X. C. LIBRAMIENTO DE CAMPECHE	7.00	3	0	1779	89.4	3.6	4.2	2.4	0.0	0.0	0.0	0.4	89.4	3.6	7.0	0.104	0.502
T. DER. TENABO	30.88	1	0	1231	84.2	4.7	10.1	0.6	0.0	0.0	0.0	0.4	84.2	4.7	11.1	0.136	0.502
T. DER. TENABO	30.88	3	0	1131	85.1	4.8	2.8	2.8	0.0	0.0	0.0	4.5	85.1	4.8	10.1	0.087	0.508
T. DER. EDZNA	44.51	1	0	1066	87.5	3.5	6.3	1.8	0.0	0.0	0.0	0.9	87.5	3.5	9.0	0.096	0.514
T. DER. EDZNA	44.51	3	0	1070	85.9	3.2	2.0	7.7	0.0	0.0	0.0	1.2	85.9	3.2	10.9	0.105	0.506
HOPELCHEN	84.88	1	0	885	86.4	3.8	8.2	0.8	0.0	0.0	0.0	0.8	86.4	3.8	9.8	0.108	0.507
BOLONCHEN DE REJON	117.90	3	0	572	88.9	3.0	4.5	2.4	0.0	0.0	0.0	1.2	88.9	3.0	8.1	0.094	0.524

CAMPECHE

3 CARR : CAMPECHE - UMAN

CLAVE: 00164

RUTA : MEX-261

AÑO : 2008

L U G A R	E S T A C I O N				C L A S I F I C A C I O N V E H I C U L A R E N P O R C I E N T O .												
	KM	TE	SC	TDPA	A	B	C2	C3	T3S2	T3S3	T3S2R4	OTROS	A	B	C	K'	D
LIM. EDOS. TERM. CAMP. PPIA. YUC.	126.90																
T. DER. SAYIL	140.90	1	0	526	89.3	4.0	5.1	1.6	0.0	0.0	0.0	0.0	89.3	4.0	6.7	0.129	0.511
SANTA ELENA	158.90	1	0	755	90.1	3.3	1.1	1.5	0.0	0.0	0.0	4.0	90.1	3.3	6.6	0.078	0.502
T. IZQ. RUINAS DE UXMAL	172.50	1	0	772	85.4	7.1	5.7	1.5	0.0	0.0	0.0	0.3	85.4	7.1	7.5	0.082	0.510
MUNA	187.40	1	0	995	86.2	6.3	4.4	3.0	0.0	0.0	0.0	0.1	86.2	6.3	7.5	0.140	0.503
MUNA	187.40	3	0	3363	88.6	4.9	2.2	2.3	0.0	0.0	0.0	2.0	88.6	4.9	6.5	0.072	0.505
XPETEN	225.40	1	0	3806	91.5	3.5	2.3	0.9	0.6	0.2	0.4	0.6	91.5	3.5	5.0	0.114	0.503
UMAN	230.80	1	0	2774	84.6	4.2	4.1	6.0	0.0	0.0	0.0	1.1	84.6	4.2	11.2	0.080	0.503

4 CARR : CD. DEL CARMEN - CAMPECHE

CLAVE: 04065

RUTA : MEX-180

AÑO : 2008

L U G A R	E S T A C I O N				C L A S I F I C A C I O N V E H I C U L A R E N P O R C I E N T O .												
	KM	TE	SC	TDPA	A	B	C2	C3	T3S2	T3S3	T3S2R4	OTROS	A	B	C	K'	D
CD. DEL CARMEN	0.00	3	1	3652	74.0	3.3	2.2	3.9	3.5	2.3	4.6	6.2	74.0	3.3	22.7	0.110	0.505
CD. DEL CARMEN	0.00	3	2	3582	74.6	3.7	2.3	3.6	4.4	2.2	3.9	5.3	74.6	3.7	21.7	0.143	0.505
ISLA AGUADA	37.75	3	0	3370	71.1	2.8	3.1	5.4	5.2	2.8	8.1	1.5	71.1	2.8	26.1	0.083	0.502
T. DER. SABANCUY	78.05	3	0	2720	62.2	3.3	4.1	6.8	8.9	2.8	11.0	0.9	62.2	3.3	34.5	0.071	0.513
CHAMPOTON	141.80	1	0	3561	71.6	3.4	9.5	0.8	6.2	0.9	1.2	6.4	71.6	3.4	25.0	0.096	0.519
CHAMPOTON	141.80	3	1	2704	77.3	3.6	9.2	0.8	1.7	0.8	0.7	5.9	77.3	3.6	19.1	0.089	0.502
CHAMPOTON	141.80	3	2	2722	74.7	3.7	9.1	0.2	5.0	0.5	0.4	6.4	74.7	3.7	21.6	0.080	0.502
T. DER. LIBRAMIENTO DE SEYBAPLAYA (1° ACCESO)	175.70	1	0	2723	78.4	3.7	6.6	3.2	3.7	1.4	0.8	2.2	78.4	3.7	17.9	0.070	0.502
T. DER. LIBRAMIENTO DE SEYBAPLAYA (1° ACCESO)	175.70	3	0	2674	81.2	2.8	4.2	4.3	2.9	1.4	0.5	2.7	81.2	2.8	16.0	0.122	0.502
T. DER. LIBRAMIENTO DE CAMPECHE	195.70	1	0	3840	82.7	6.3	3.7	3.0	0.0	0.0	0.0	4.3	82.7	6.3	11.0	0.120	0.508
LERMA	199.50	1	0	4221	90.0	5.7	2.7	0.8	0.0	0.0	0.0	0.8	90.0	5.7	4.3	0.119	0.501
CAMPECHE	203.20																

5 CARR : CHENCOYI - TENABO

CLAVE: 04576

RUTA : MEX-263

AÑO : 2008

L U G A R	E S T A C I O N				C L A S I F I C A C I O N V E H I C U L A R E N P O R C I E N T O .												
	KM	TE	SC	TDPA	A	B	C2	C3	T3S2	T3S3	T3S2R4	OTROS	A	B	C	K'	D
T. C. CAMPECHE - UMAN	0.00																
TENABO	28.00	1	0	717	89.0	4.2	4.4	2.0	0.0	0.0	0.0	0.4	89.0	4.2	6.8	0.099	0.511

CAMPECHE

6 CARR : DZITBALCHE - ENT. SAN BERNARDO

CLAVE: 00162

ruta : MEX-265

AÑO : 2008

L U G A R	E S T A C I O N				CLASIFICACION VEHICULAR EN PORCIENTO .												
	KM	TE	SC	TDPA	A	B	C2	C3	T3S2	T3S3	T3S2R4	OTROS	A	B	C	K'	D
T. C. CAMPECHE - MERIDA	0.00																
T. IZQ. LIBRAMIENTO DE BECAL (1° ACCESO)	28.76	1	0	2702	76.0	2.7	14.7	5.0	0.0	0.0	0.0	1.6	76.0	2.7	21.3	0.076	0.509
LIM. EDOS. TERM. CAMP. PPIA. YUC.	30.30																
T. IZQ. LIBRAMIENTO DE BECAL (2° ACCESO)	30.86	3	0	3088	88.5	4.5	5.4	0.4	0.0	0.0	0.0	1.2	88.5	4.5	7.0	0.072	0.503
HALACHO	34.59	1	0	3766	82.9	8.2	2.8	3.6	0.0	0.0	0.0	2.5	82.9	8.2	8.9	0.120	0.507
T. IZQ. LIBRAMIENTO DE MAXCANU (1° ACCESO)	47.88	1	0	3303	79.1	5.4	6.4	3.2	2.4	1.8	0.0	1.7	79.1	5.4	15.5	0.091	0.503
T. DER. MUNA	53.86	3	0	3320	81.0	4.5	6.4	3.0	1.8	1.6	0.0	1.7	81.0	4.5	14.5	0.101	0.505
T. C. CAMPECHE - MERIDA	59.70																

7 CARR : FRANCISCO ESCARCEGA - CHAMPOTON

CLAVE: 04103

ruta : MEX-261

AÑO : 2008

L U G A R	E S T A C I O N				CLASIFICACION VEHICULAR EN PORCIENTO .												
	KM	TE	SC	TDPA	A	B	C2	C3	T3S2	T3S3	T3S2R4	OTROS	A	B	C	K'	D
FRANCISCO ESCARCEGA	0.00	3	0	2790	77.8	3.5	2.9	3.0	4.3	3.2	0.3	5.0	77.8	3.5	18.7	0.071	0.501
T. IZQ. LEY FEDERAL DE LA REFORMA AGRARIA	51.40	1	0	2853	70.3	3.2	11.2	1.6	3.7	0.5	0.4	9.1	70.3	3.2	26.5	0.067	0.504
T. DER. ULUMAL Y PATZAJOL	77.00	1	0	2227	67.2	3.5	12.1	1.0	5.4	0.4	0.2	10.2	67.2	3.5	29.3	0.070	0.509
CHAMPOTON	81.40	1	1	1566	90.1	3.7	3.3	0.8	1.0	0.3	0.4	0.4	90.1	3.7	6.2	0.096	0.521
CHAMPOTON	81.40	1	2	1728	91.2	3.3	2.2	0.9	1.1	0.2	0.4	0.7	91.2	3.3	5.5	0.074	0.521

8 CARR : FRANCISCO ESCARCEGA - CHETUMAL

CLAVE: 00093

ruta : MEX-186

AÑO : 2008

L U G A R	E S T A C I O N				CLASIFICACION VEHICULAR EN PORCIENTO .												
	KM	TE	SC	TDPA	A	B	C2	C3	T3S2	T3S3	T3S2R4	OTROS	A	B	C	K'	D
FRANCISCO ESCARCEGA	0.00	3	0	2384	68.1	5.0	8.8	1.8	6.3	2.0	2.2	5.8	68.1	5.0	26.9	0.110	0.501
ADOLFO LOPEZ M.	41.50	1	0	2278	85.4	4.5	4.6	4.9	0.0	0.0	0.0	0.6	85.4	4.5	10.1	0.071	0.501
T. DER. SILVITUC	55.70	1	0	1655	87.3	4.9	2.5	5.1	0.0	0.0	0.0	0.2	87.3	4.9	7.8	0.108	0.503
T. DER. SILVITUC	55.70	3	0	1506	86.7	4.7	4.7	2.7	0.0	0.0	0.0	1.2	86.7	4.7	8.6	0.094	0.502
CONHUAS	100.00	1	0	1149	87.5	4.6	4.8	2.5	0.0	0.0	0.0	0.6	87.5	4.6	7.9	0.103	0.503
XPUJIL	155.70	1	0	1560	81.1	4.0	6.7	4.3	0.0	0.0	0.0	3.9	81.1	4.0	14.9	0.079	0.508
LIM. EDOS. TERM. CAMP. PPIA. QROO.	156.80																
NICOLAS BRAVO	206.00	1	0	1727	81.0	4.6	8.2	4.7	0.0	0.0	0.0	1.5	81.0	4.6	14.4	0.061	0.504
NICOLAS BRAVO	206.00	3	0	2109	85.7	3.4	5.5	4.0	0.0	0.0	0.0	1.4	85.7	3.4	10.9	0.094	0.502
T. IZQ. MOROCOY	214.90	1	0	1630	86.5	3.9	5.7	3.7	0.0	0.0	0.0	0.2	86.5	3.9	9.6	0.106	0.515
T. IZQ. MOROCOY	214.90	3	0	1764	85.6	4.3	6.3	3.8	0.0	0.0	0.0	0.0	85.6	4.3	10.1	0.098	0.501
T. DER. UNION	247.50	1	0	2534	88.3	3.5	4.6	3.1	0.0	0.0	0.0	0.5	88.3	3.5	8.2	0.103	0.502

CAMPECHE

8 CARR : FRANCISCO ESCARCEGA - CHETUMAL

CLAVE: 00093

RUTA : MEX-186

AÑO : 2008

L U G A R	E S T A C I O N				C L A S I F I C A C I O N V E H I C U L A R E N P O R C I E N T O .												
	KM	TE	SC	TDPA	A	B	C2	C3	T3S2	T3S3	T3S2R4	OTROS	A	B	C	K'	D
T. DER. UNION	247.50	3	0	3052	88.9	3.5	3.8	3.3	0.0	0.0	0.0	0.5	88.9	3.5	7.6	0.084	0.503
T. IZQ. FPE. CARRILLO PUERTO	255.20	1	0	3531	87.3	4.4	3.7	4.1	0.0	0.0	0.0	0.5	87.3	4.4	8.3	0.113	0.502
T. DER. SUBTENIENTE LOPEZ	268.60	1	0	8771	82.7	7.9	6.1	2.2	0.0	0.0	0.0	1.1	82.7	7.9	9.4	0.100	0.500
T. IZQ. AV. INSURGENTES	270.00	1	1	3015	86.7	6.3	2.4	2.0	0.0	0.0	0.0	2.6	86.7	6.3	7.0	0.120	0.509
T. IZQ. AV. INSURGENTES	270.00	1	2	3123	86.8	6.3	2.3	1.7	0.0	0.0	0.0	2.9	86.8	6.3	6.9	0.100	0.509
T. IZQ. AV. INSURGENTES	270.00	3	1	5265	85.9	5.2	6.9	0.6	0.0	0.0	0.0	1.4	85.9	5.2	8.9	0.061	0.501
T. IZQ. AV. INSURGENTES	270.00	3	2	5282	85.9	5.2	6.9	0.6	0.0	0.0	0.0	1.4	85.9	5.2	8.9	0.066	0.501
CHETUMAL	277.40	1	1	5668	90.4	3.5	1.0	1.7	0.0	0.0	0.0	3.4	90.4	3.5	6.1	0.110	0.505
CHETUMAL	277.40	1	2	5562	90.4	3.4	1.0	1.8	0.0	0.0	0.0	3.4	90.4	3.4	6.2	0.105	0.505

9 CARR : HALTUNCHEN - SAN ANTONIO CAYAL

CLAVE: 04009

RUTA : MEX-188

AÑO : 2008

L U G A R	E S T A C I O N				C L A S I F I C A C I O N V E H I C U L A R E N P O R C I E N T O .												
	KM	TE	SC	TDPA	A	B	C2	C3	T3S2	T3S3	T3S2R4	OTROS	A	B	C	K'	D
T. C. CD. DEL CARMEN - CAMPECHE	0.00	3	0	864	91.8	2.1	4.0	1.1	0.0	0.0	0.0	1.0	91.8	2.1	6.1	0.103	0.507
SIHOCHAC	14.00	3	0	989	93.2	1.8	3.0	1.1	0.0	0.0	0.0	0.9	93.2	1.8	5.0	0.124	0.500
X. C. CHINA - TIXMUCUY	47.10	1	0	1185	83.9	5.7	9.5	0.9	0.0	0.0	0.0	0.0	83.9	5.7	10.4	0.060	0.503
EDZNA	59.00	1	0	825	96.6	3.0	0.2	0.1	0.0	0.0	0.0	0.1	96.6	3.0	0.4	0.099	0.504
T. DER. PICHUCALCO	60.00	3	0	493	95.0	4.3	0.3	0.2	0.0	0.0	0.0	0.2	95.0	4.3	0.7	0.128	0.519
SAN ANTONIO CAYAL	79.00	1	0	355	88.6	3.3	3.5	2.7	0.0	0.0	0.0	1.9	88.6	3.3	8.1	0.085	0.523

10 CARR : LIBRAMIENTO DE CAMPECHE

CLAVE: 04573

RUTA : MEX-202

AÑO : 2008

L U G A R	E S T A C I O N				C L A S I F I C A C I O N V E H I C U L A R E N P O R C I E N T O .												
	KM	TE	SC	TDPA	A	B	C2	C3	T3S2	T3S3	T3S2R4	OTROS	A	B	C	K'	D
ENT. LERMA	0.00	3	0	3571	90.4	5.3	2.8	0.7	0.0	0.0	0.0	0.8	90.4	5.3	4.3	0.101	0.507
X. C. CAMPECHE - UMAN	21.00	1	0	3488	72.7	4.8	10.5	1.0	0.0	0.0	0.0	11.0	72.7	4.8	22.5	0.099	0.522
T. C. CAMPECHE - MERIDA	26.00	1	0	4916	87.7	3.5	7.2	0.8	0.0	0.0	0.0	0.8	87.7	3.5	8.8	0.077	0.507

11 CARR : PRESIDENTE DIAZ ORDAZ - SABANCUY

CLAVE: 04570

RUTA : MEX-259

AÑO : 2008

L U G A R	E S T A C I O N				C L A S I F I C A C I O N V E H I C U L A R E N P O R C I E N T O .												
	KM	TE	SC	TDPA	A	B	C2	C3	T3S2	T3S3	T3S2R4	OTROS	A	B	C	K'	D
T. C. VILLAHERMOSA - FRANCISCO ESCARCEGA	0.00	3	0	2258	66.6	2.9	2.8	0.8	8.8	5.0	8.6	4.5	66.6	2.9	30.5	0.079	0.524
CHEKOBUL	30.00	1	0	1063	86.9	3.7	5.0	3.2	0.6	0.5	0.0	0.1	86.9	3.7	9.4	0.123	0.507

CAMPECHE

15 CARR : VILLAHERMOSA - CD. DEL CARMEN

CLAVE: 00064

ruta : MEX-180

AÑO : 2008

L U G A R	E S T A C I O N				C L A S I F I C A C I O N V E H I C U L A R E N P O R C I E N T O .												
	KM	TE	SC	TDPA	A	B	C2	C3	T3S2	T3S3	T3S2R4	OTROS	A	B	C	K'	D
VILLAHERMOSA	0.00																
T. IZQ. CD. INDUSTRIAL	4.30	3	0	27784	82.9	7.7	1.3	1.7	1.7	1.6	0.5	2.6	82.9	7.7	9.4	0.109	0.501
MACULTEPEC	18.60	1	0	12600	69.2	4.6	0.2	0.1	10.0	2.5	10.2	3.2	69.2	4.6	26.2	0.073	0.507
MACULTEPEC	18.60	3	0	11985	69.5	7.7	3.7	1.7	4.8	5.6	1.7	5.3	69.5	7.7	22.8	0.060	0.507
EL ESPINO	33.20	1	0	4664	73.2	4.8	5.6	2.7	4.7	1.7	5.3	2.0	73.2	4.8	22.0	0.107	0.506
EL ESPINO	33.20	3	0	4759	74.0	4.4	4.8	2.5	4.0	1.7	5.9	2.7	74.0	4.4	21.6	0.111	0.501
T. IZQ. EL BELLOTE	49.67	3	0	4937	78.5	4.1	2.9	2.0	4.4	1.6	4.7	1.8	78.5	4.1	17.4	0.114	0.510
FRONTERA	74.59	1	0	6678	75.6	4.6	4.7	2.6	4.1	1.8	4.9	1.7	75.6	4.6	19.8	0.080	0.503
FRONTERA	74.59	3	0	3707	78.6	4.4	3.5	1.8	4.4	1.8	4.6	0.9	78.6	4.4	17.0	0.127	0.519
T. IZQ. ESCOLLERAS	78.00	3	0	3878	81.4	3.6	2.6	1.6	3.4	1.5	4.0	1.9	81.4	3.6	15.0	0.083	0.512
PUENTE SAN PEDRO	96.50	3	0	3326	78.8	2.2	4.4	3.3	4.3	2.1	3.3	1.6	78.8	2.2	19.0	0.114	0.500
LIM. EDOS. TERM. TAB. PPIA. CAMP.	97.44																
NUEVO CAMPECHITO	98.00	1	0	3852	69.5	4.8	4.1	4.8	5.9	2.3	7.4	1.2	69.5	4.8	25.7	0.088	0.503
NUEVO PROGRESO	116.60	1	0	3387	69.0	2.6	5.5	5.4	6.1	2.3	7.9	1.2	69.0	2.6	28.4	0.083	0.504
ZACATAL	163.20	1	0	3512	70.8	4.1	3.0	4.8	5.9	2.3	7.9	1.2	70.8	4.1	25.1	0.109	0.505
CD. DEL CARMEN	167.50																

16 CARR : VILLAHERMOSA - FRANCISCO ESCARCEGA

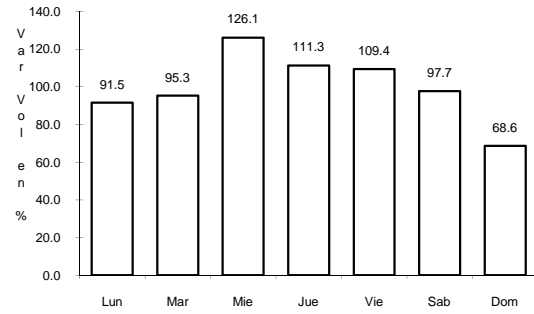
CLAVE: 00092

ruta : MEX-186

AÑO : 2008

L U G A R	E S T A C I O N				C L A S I F I C A C I O N V E H I C U L A R E N P O R C I E N T O .												
	KM	TE	SC	TDPA	A	B	C2	C3	T3S2	T3S3	T3S2R4	OTROS	A	B	C	K'	D
VILLAHERMOSA	0.00	3	1	8925	73.2	4.6	1.0	4.3	8.8	2.3	3.4	2.4	73.2	4.6	22.2	0.097	0.503
VILLAHERMOSA	0.00	3	2	8827	70.8	4.8	0.9	4.2	10.2	3.5	3.7	1.9	70.8	4.8	24.4	0.084	0.503
T. IZQ. AEROPUERTO	12.00	1	1	9595	85.0	0.0	1.7	1.8	4.4	2.2	1.4	3.5	85.0	0.0	15.0	0.075	0.501
T. IZQ. AEROPUERTO	12.00	1	2	9554	88.7	0.0	1.0	1.3	3.9	1.3	1.0	2.8	88.7	0.0	11.3	0.085	0.501
X. C. CACAOS - LA GRANJA	32.46	1	0	9309	58.0	14.6	2.3	3.3	9.5	3.8	5.4	3.1	58.0	14.6	27.4	0.110	0.513
X. C. CACAOS - LA GRANJA	32.46	3	0	7344	75.3	14.5	3.4	2.3	1.4	1.1	0.3	1.7	75.3	14.5	10.2	0.115	0.502
X. C. JALAPA - JONUTA	40.00	3	0	6326	68.8	9.8	7.5	6.8	4.4	1.7	0.2	0.8	68.8	9.8	21.4	0.075	0.511
T. IZQ. MACUSPANA	46.20	1	0	6719	74.0	5.9	5.6	4.6	4.6	2.2	1.7	1.4	74.0	5.9	20.1	0.078	0.508
T. IZQ. MACUSPANA	46.20	3	0	7466	47.8	7.3	3.0	5.1	5.8	3.8	15.3	11.9	47.8	7.3	44.9	0.074	0.505
X. C. ESTACION MACUSPANA - VERNET	54.30	1	0	6588	62.6	4.9	6.2	5.7	9.0	3.3	6.7	1.6	62.6	4.9	32.5	0.074	0.507
T. DER. CHIVALITO (EST. PINO SUAREZ)	70.00	1	0	6297	62.5	5.3	6.1	5.0	9.2	3.4	6.9	1.6	62.5	5.3	32.2	0.076	0.506
T. DER. CHIVALITO (EST. PINO SUAREZ)	70.00	3	0	7130	61.4	8.3	4.7	4.1	9.4	3.5	7.0	1.6	61.4	8.3	30.3	0.069	0.512
T. DER. ESTACION ZOPO	71.00	1	0	5846	63.8	5.0	5.1	4.8	9.7	2.9	7.2	1.5	63.8	5.0	31.2	0.075	0.509
T. DER. ESTACION ZOPO	71.00	3	0	7196	68.6	7.4	5.3	4.8	5.9	2.2	4.9	0.9	68.6	7.4	24.0	0.081	0.501

4 CARR: CD. DEL CARMEN - CAMPECHE

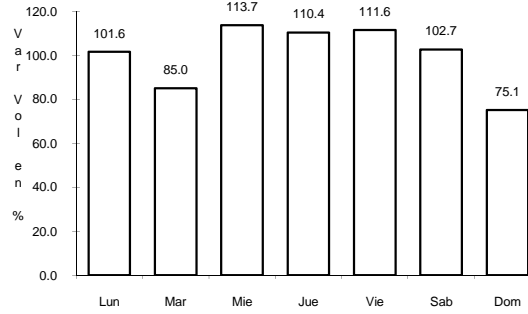


Km: 0.00

Tipo: 3

Sent: 1

CLAVE: 04065

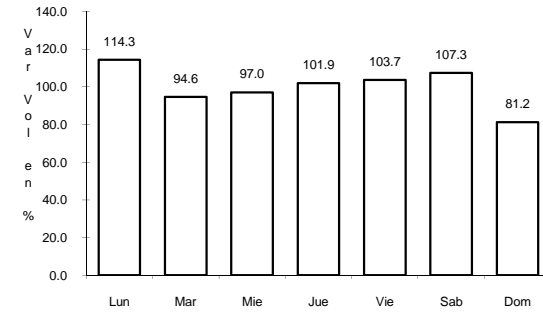


Km: 0.00

Tipo: 3

Sent: 2

RUTA: MEX-180

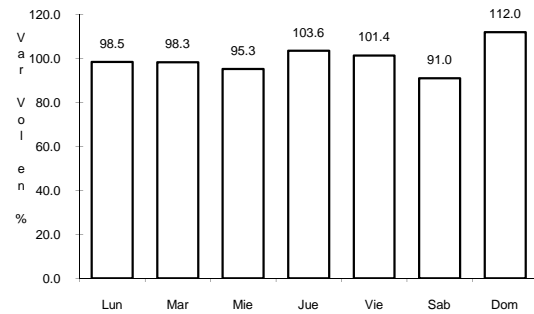


Km: 199.51

Tipo: 1

Sent: 0

5 CARR: CHENCOYI - TENABO



Km: 28.00

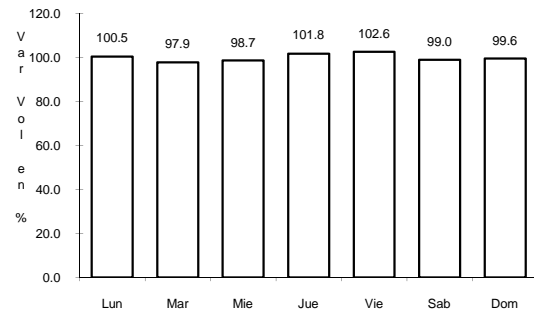
Tipo: 1

Sent: 0

CLAVE: 04576

RUTA: MEX-263

6 CARR: DZITBALCHE - ENT. SAN BERNARDO

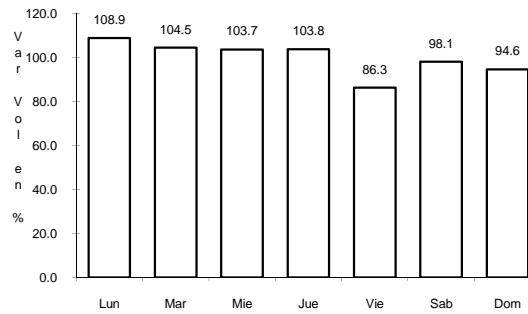


Km: 28.76

Tipo: 1

Sent: 0

CLAVE: 00162

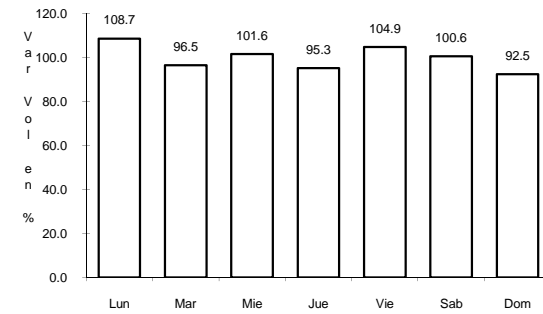


Km: 34.59

Tipo: 1

Sent: 0

RUTA: MEX-265

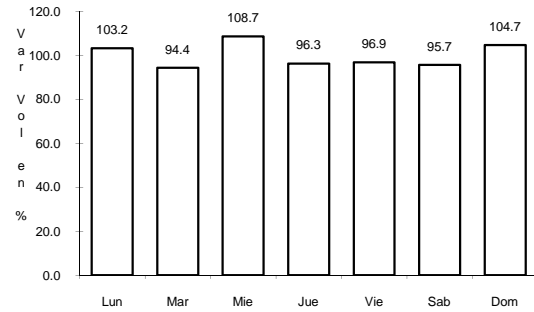


Km: 53.86

Tipo: 3

Sent: 0

7 CARR: FRANCISCO ESCARCEGA - CHAMPOTON

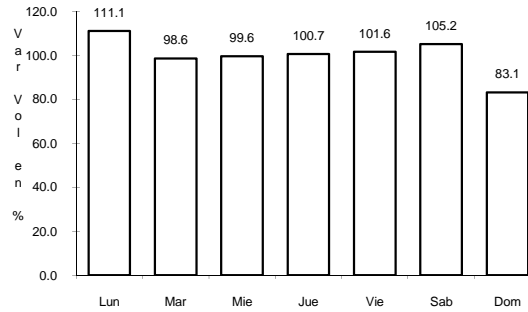


Km: 0.00

Tipo: 3

Sent: 0

CLAVE: 04103

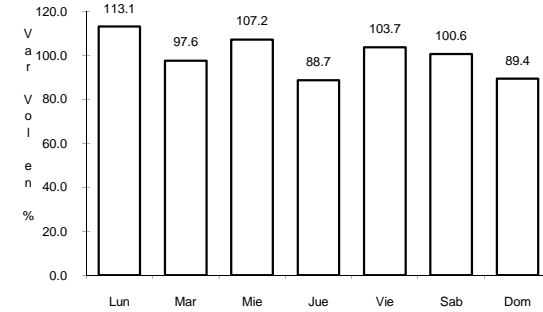


Km: 81.40

Tipo: 1

Sent: 1

RUTA: MEX-261

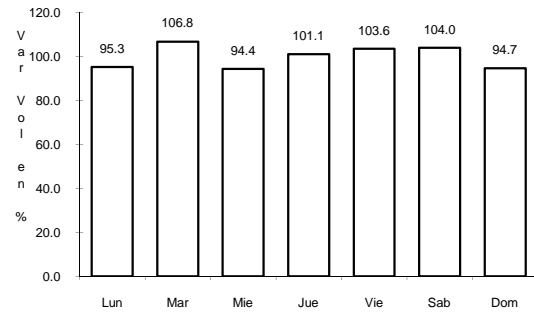


Km: 81.40

Tipo: 1

Sent: 2

8 CARR: FRANCISCO ESCARCEGA - CHETUMAL

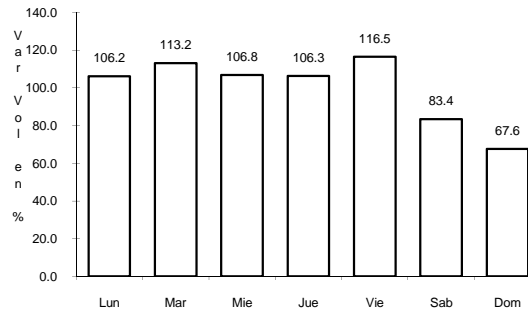


Km: 0.00

Tipo: 3

Sent: 0

CLAVE: 00093

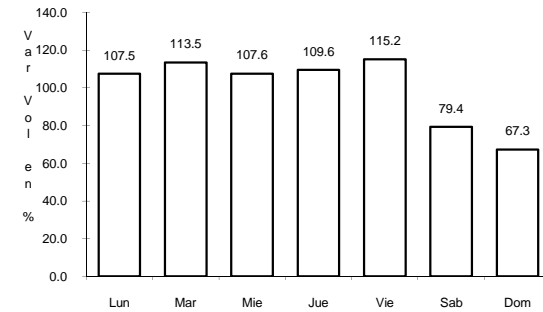


Km: 277.36

Tipo: 1

Sent: 1

RUTA: MEX-186

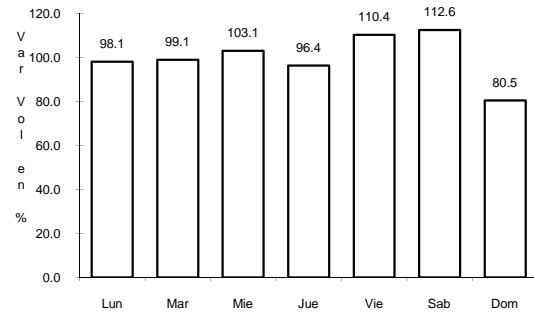


Km: 277.36

Tipo: 1

Sent: 2

9 CARR: HALTUNCHEN - SAN ANTONIO CAYAL

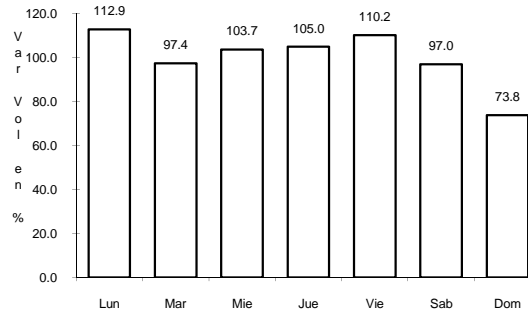


Km: 0.00

Tipo: 3

Sent: 0

CLAVE: 04009

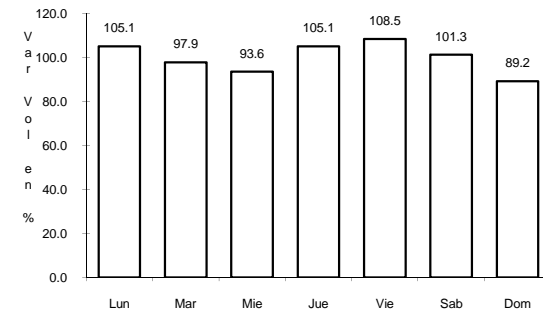


Km: 47.10

Tipo: 1

Sent: 0

RUTA: MEX-188



Km: 79.00

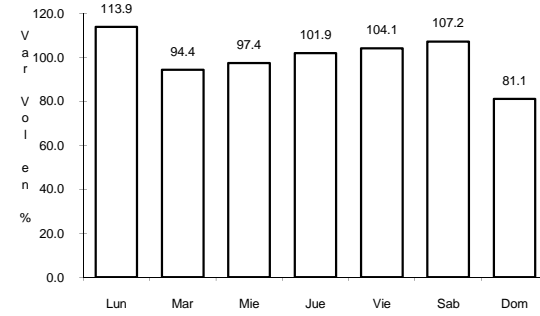
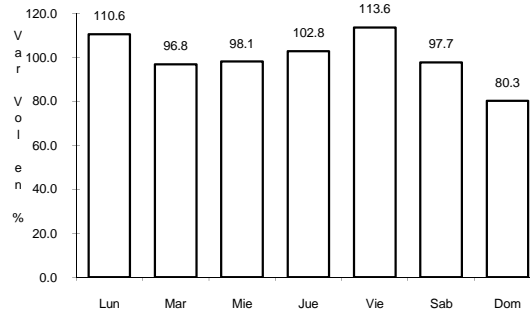
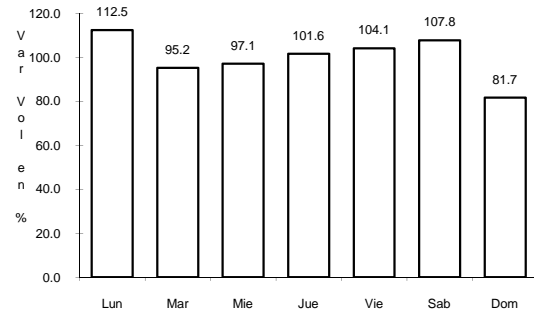
Tipo: 1

Sent: 0

10 CARR: LIBRAMIENTO DE CAMPECHE

CLAVE: 04573

RUTA: MEX-202



Km: 0.00 Tipo: 3 Sent: 0

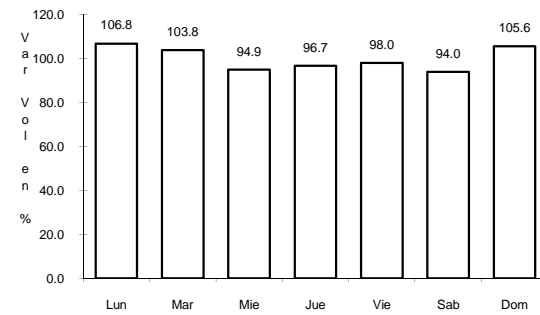
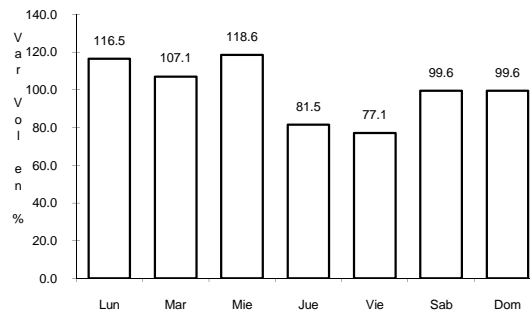
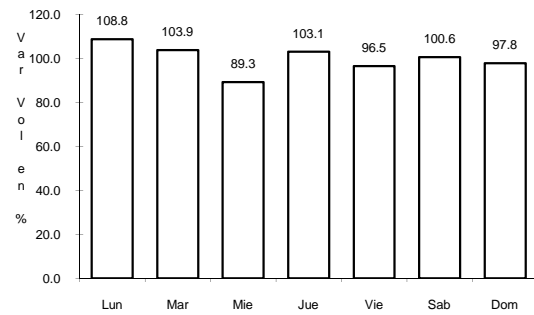
Km: 21.00 Tipo: 1 Sent: 0

Km: 26.00 Tipo: 1 Sent: 0

11 CARR: PRESIDENTE DIAZ ORDAZ - SABANCUY

CLAVE: 04570

RUTA: MEX-259



Km: 0.00 Tipo: 3 Sent: 0

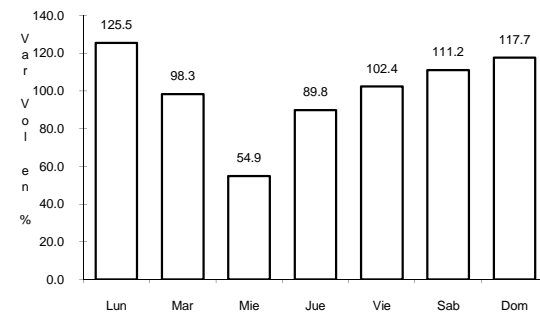
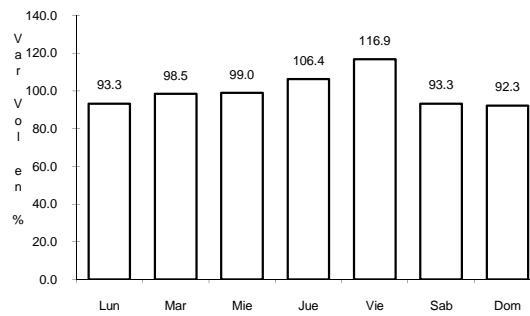
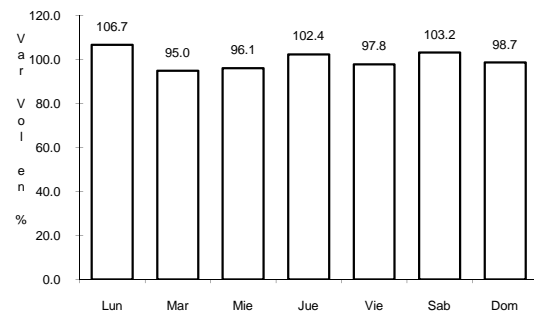
Km: 30.00 Tipo: 1 Sent: 0

Km: 57.00 Tipo: 1 Sent: 0

12 CARR: RAMAL A NUEVO COAHUILA

CLAVE: 04015

RUTA: MEX-221



Km: 0.00 Tipo: 3 Sent: 0

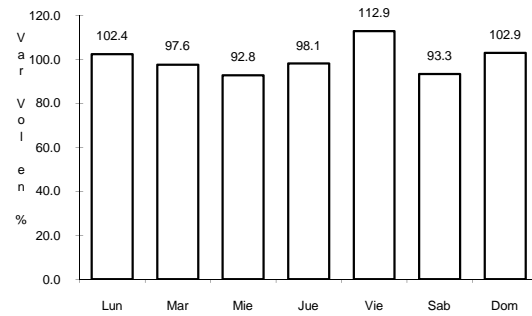
Km: 44.50 Tipo: 3 Sent: 0

Km: 70.00 Tipo: 1 Sent: 0

13 CARR: RAMAL A RUIZ CORTINES

CLAVE: 04101

ruta: MEX



Km: 1.00

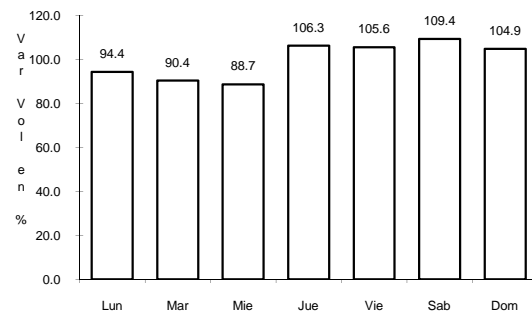
Tipo: 3

Sent: 0

14 CARR: SAN MARCO - PALIZADA

CLAVE: 00490

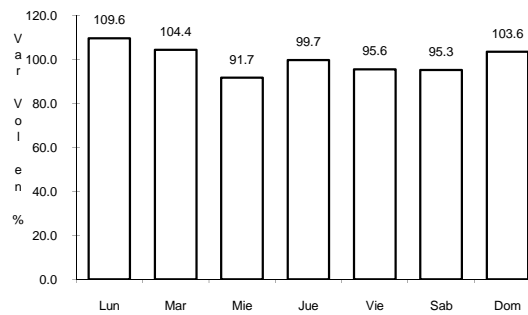
ruta: MEX-217



Km: 0.00

Tipo: 3

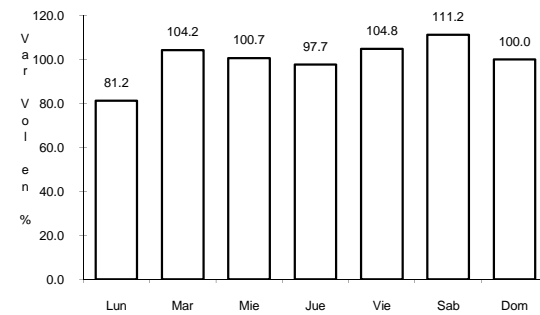
Sent: 0



Km: 46.20

Tipo: 1

Sent: 0



Km: 46.20

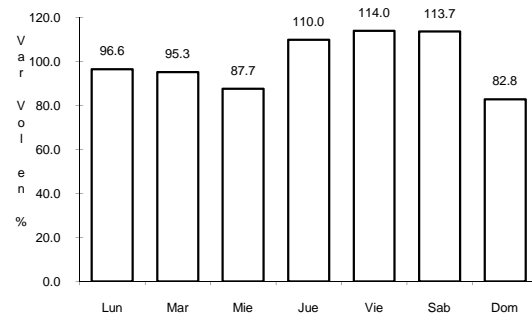
Tipo: 3

Sent: 0

15 CARR: VILLAHERMOSA - CD. DEL CARMEN

CLAVE: 00064

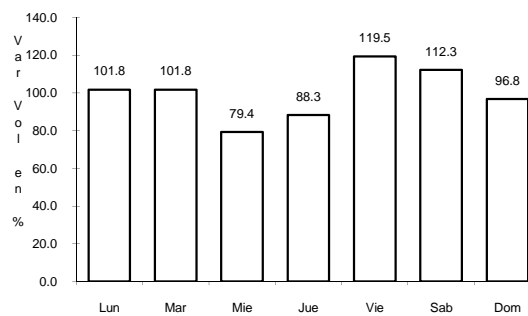
ruta: MEX-180



Km: 4.30

Tipo: 3

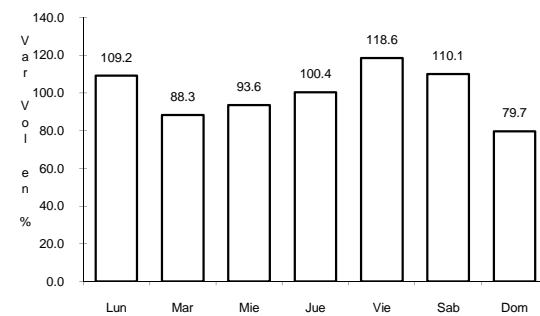
Sent: 0



Km: 78.00

Tipo: 3

Sent: 0



Km: 163.17

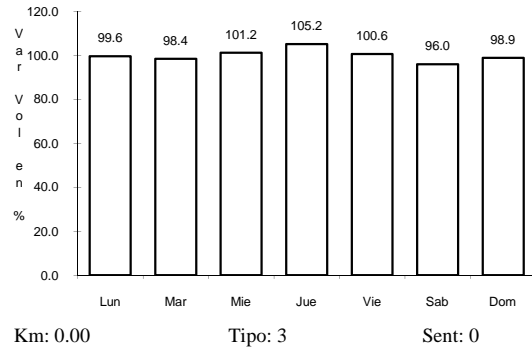
Tipo: 1

Sent: 0

20 CARR: LIBRAMIENTO DE POMUCH

CLAVE: 04579

RUTA: CAM



21 CARR: T. C. (FRANCISCO ESCARCEGA - CHAMPOTON) - YOHALTUN CLAVE: 04581

RUTA: CAM

