

**BAJA CALIFORNIA SUR**

Núm. INDICE	CARRETERA	RUTA
---- FEDERAL LIBRE ----		
1	CABO SAN LUCAS - LA PAZ	MEX-001
2	CD. CONSTITUCION - PUERTO SAN CARLOS	MEX-022
3	CD. INSURGENTES - LORETO	MEX-001
4	LA PAZ - CD. INSURGENTES	MEX-001
5	LA PAZ - PICHILINGUE	MEX-011
6	LIBRAMIENTO DE CABO SAN LUCAS	MEX
7	LORETO - SANTA ROSALIA	MEX-001
8	PUNTA PRIETA - GUERRERO NEGRO	MEX-001
9	RAMAL A AEROPUERTO DE LA PAZ	MEX
10	RAMAL A AEROPUERTO DE LOS CABOS	MEX
11	RAMAL A LOS PAREDONES	MEX
12	RAMAL A MIRAFLORES	MEX
13	RAMAL A PUERTO ESCONDIDO	MEX
14	RAMAL A SAN IGNACIO	MEX
15	RAMAL A SANTIAGO	MEX
16	RAMAL AEROPISTA SAN IGNACIO	MEX
17	RAMAL AEROPISTA SANTA ROSALIA	MEX
18	SAN PEDRO - CABO SAN LUCAS	MEX-019
19	SANTA ROSALIA - GUERRERO NEGRO	MEX-001
---- FEDERAL CUOTA ----		
20	SAN JOSE DEL CABO - AEROPUERTO LOS CABOS (CUOTA)	MEX-001D
---- ESTATAL LIBRE ----		
21	CAMPO FISHER - PUNTA ABREOJOS	BCS
22	CD. INSURGENTES - LA PURISIMA	BCS-001
23	CD. INSURGENTES - PTO. ADOLFO LOPEZ MATEOS	BCS
24	LA PAZ - ENSENADA DE MUERTOS	BCS-246
25	LIBRAMIENTO DE LA PAZ	BCS
26	LIBRAMIENTO NORTE DE LA PAZ	BCS
27	RAMAL A BENITO JUAREZ	BCS
28	RAMAL A EJIDO LEY FEDERAL DE AGUAS NUMERO CUATRO	BCS
29	RAMAL A EL CARRIZAL	BCS
30	RAMAL A GUERRERO NEGRO	BCS
31	RAMAL A LA RIBERA	BCS
32	RAMAL A MELITON ALBAÑEZ	BCS
33	RAMAL A SANTA CATARINA	BCS
---- COMBINADA ----		
34	RAMAL A BAHIA DE TORTUGAS	MEX-BCS
35	RAMAL A EJIDO LEY FEDERAL DE AGUAS NUMERO DOS	BCS-MEX
36	RAMAL A LEY FEDERAL DE AGUAS NUMERO CINCO	BCS-MEX
37	RAMAL A SAN JUAN DE LA COSTA	BCS-163-MEX





BAJA CALIFORNIA SUR

3 CARR : CD. INSURGENTES - LORETO

CLAVE: 03092

RUTA : MEX-001

AÑO : 2008

L U G A R	E S T A C I O N				C L A S I F I C A C I O N V E H I C U L A R E N P O R C I E N T O .												
	KM	TE	SC	TDPA	A	B	C2	C3	T3S2	T3S3	T3S2R4	OTROS	A	B	C	K'	D
CD. INSURGENTES	0.00	3	0	3961	88.5	2.7	3.6	1.4	1.9	1.0	0.5	0.4	88.5	2.7	8.8	0.074	0.506
T. DER. LEY FEDERAL DE AGUAS NUMERO UNO	7.00	3	0	2012	86.0	3.4	4.0	3.1	1.5	1.4	0.2	0.4	86.0	3.4	10.6	0.094	0.509
T. DER. LEY FEDERAL DE AGUAS NUMERO DOS	17.00	3	0	1443	89.9	1.8	2.9	2.8	1.3	0.8	0.3	0.2	89.9	1.8	8.3	0.099	0.520
T. DER. PUERTO AGUA VERDE	65.00	1	0	1777	86.8	0.3	4.4	2.6	2.8	1.9	0.9	0.3	86.8	0.3	12.9	0.091	0.511
T. DER. PUERTO AGUA VERDE	65.00	3	0	1609	79.1	5.8	3.3	1.7	7.9	1.0	0.9	0.3	79.1	5.8	15.1	0.094	0.503
EL LIGUI	84.50	1	0	1981	80.8	4.6	6.8	2.6	2.4	1.5	0.7	0.6	80.8	4.6	14.6	0.090	0.510
T. DER. PUERTO ESCONDIDO	95.40	1	0	1974	83.0	3.7	5.1	2.8	1.5	1.3	0.3	2.3	83.0	3.7	13.3	0.068	0.503
T. DER. PUERTO ESCONDIDO	95.40	3	0	2103	86.4	0.0	1.7	1.3	8.6	0.8	0.7	0.5	86.4	0.0	13.6	0.087	0.515
NOPOLO	109.50	1	0	2446	83.8	4.1	4.1	1.6	2.4	1.6	1.1	1.3	83.8	4.1	12.1	0.096	0.506
T. DER. AEROPUERTO DE LORETO	117.30	1	0	4251	80.6	3.5	0.8	3.3	4.6	1.5	1.9	3.8	80.6	3.5	15.9	0.098	0.500
T. DER. LORETO	119.00	1	0	5230	81.9	3.8	5.0	2.5	3.1	1.9	0.9	0.9	81.9	3.8	14.3	0.094	0.503

4 CARR : LA PAZ - CD. INSURGENTES

CLAVE: 03101

RUTA : MEX-001

AÑO : 2008

L U G A R	E S T A C I O N				C L A S I F I C A C I O N V E H I C U L A R E N P O R C I E N T O .												
	KM	TE	SC	TDPA	A	B	C2	C3	T3S2	T3S3	T3S2R4	OTROS	A	B	C	K'	D
LA PAZ	0.00	3	1	7053	83.3	5.3	3.4	2.2	1.9	1.5	1.4	1.0	83.3	5.3	11.4	0.072	0.503
LA PAZ	0.00	3	2	6970	81.4	5.6	3.6	2.9	2.2	2.0	1.1	1.2	81.4	5.6	13.0	0.070	0.503
T. IZQ. AEROPUERTO	8.90	1	1	7850	85.9	4.7	1.5	0.8	3.3	1.0	0.8	2.0	85.9	4.7	9.4	0.083	0.530
T. IZQ. AEROPUERTO	8.90	1	2	8842	84.1	4.8	1.6	0.8	5.5	0.9	0.8	1.5	84.1	4.8	11.1	0.073	0.530
T. IZQ. AEROPUERTO	8.90	3	0	9812	88.3	3.6	1.7	1.0	1.8	1.2	0.6	1.8	88.3	3.6	8.1	0.066	0.500
EL CENTENARIO	13.50	3	0	6224	80.9	5.3	2.7	2.2	5.6	1.1	1.0	1.2	80.9	5.3	13.8	0.074	0.516
T. DER. SAN JUAN DE LA COSTA	17.00	1	0	5436	86.9	2.7	4.1	1.5	2.5	1.6	0.6	0.1	86.9	2.7	10.4	0.075	0.500
T. DER. SAN JUAN DE LA COSTA	17.00	3	0	2614	59.6	2.7	3.7	1.5	5.4	3.6	1.5	22.0	59.6	2.7	37.7	0.073	0.513
T. DER. ALFREDO V. BONFIL	24.00	3	0	2995	89.0	2.7	4.2	1.9	1.2	0.9	0.1	0.0	89.0	2.7	8.3	0.073	0.500
T. IZQ. EL CONEJO	79.60	1	0	1784	72.0	4.1	3.1	1.2	11.1	3.4	3.0	2.1	72.0	4.1	23.9	0.088	0.507
T. IZQ. EL CONEJO	79.60	3	0	2566	81.1	2.1	2.9	0.6	9.0	1.5	2.1	0.7	81.1	2.1	16.8	0.064	0.504
EL CIENTO VEINTIOCHO	118.20	1	0	2455	74.2	2.5	9.0	0.8	4.8	1.1	0.3	7.3	74.2	2.5	23.3	0.078	0.523
SANTA RITA	156.70	1	0	2289	76.9	4.7	2.8	2.7	9.1	2.0	1.2	0.6	76.9	4.7	18.4	0.077	0.510
SANTA RITA	156.70	3	0	2703	75.5	5.4	3.1	1.2	10.8	1.9	1.4	0.7	75.5	5.4	19.1	0.069	0.500
CD. CONSTITUCION	213.00	1	0	4704	82.9	4.2	2.4	2.3	4.8	0.9	1.0	1.5	82.9	4.2	12.9	0.077	0.519
CD. CONSTITUCION	213.00	3	0	5349	85.7	3.8	3.7	2.6	2.3	1.3	0.5	0.1	85.7	3.8	10.5	0.072	0.503
T. DER. LEY FEDERAL DE AGUAS NUMERO CUATRO	229.00	1	0	4703	86.6	2.9	3.8	2.5	2.2	1.4	0.5	0.1	86.6	2.9	10.5	0.080	0.504
CD. INSURGENTES	236.50	1	1	2529	83.7	3.9	2.7	2.4	1.5	2.4	1.8	1.6	83.7	3.9	12.4	0.092	0.505
CD. INSURGENTES	236.50	1	2	2476	80.9	3.9	2.5	2.2	2.7	2.4	1.4	4.0	80.9	3.9	15.2	0.085	0.505





BAJA CALIFORNIA SUR

13 CARR : RAMAL A PUERTO ESCONDIDO

CLAVE:

RUTA : MEX

AÑO : 2008

L U G A R	E S T A C I O N				CLASIFICACION VEHICULAR EN PORCIENTO .												
	KM	TE	SC	TDPA	A	B	C2	C3	T3S2	T3S3	T3S2R4	OTROS	A	B	C	K'	D
T.C. CD. INSURGENTES - LORETO PUERTO ESCONDIDO	0.00	3	0	371	96.1	0.0	2.4	1.1	0.0	0.3	0.1	0.0	96.1	0.0	3.9	0.086	0.504
	2.20																

14 CARR : RAMAL A SAN IGNACIO

CLAVE: 03413

RUTA : MEX

AÑO : 2008

L U G A R	E S T A C I O N				CLASIFICACION VEHICULAR EN PORCIENTO .												
	KM	TE	SC	TDPA	A	B	C2	C3	T3S2	T3S3	T3S2R4	OTROS	A	B	C	K'	D
T. C. SANTA ROSALIA - GUERRERO NEGRO SAN IGNACIO	0.00	3	0	2223	86.4	0.0	1.7	1.3	8.6	0.8	0.7	0.5	86.4	0.0	13.6	0.085	0.507
	2.80																

15 CARR : RAMAL A SANTIAGO

CLAVE: 03051

RUTA : MEX

AÑO : 2008

L U G A R	E S T A C I O N				CLASIFICACION VEHICULAR EN PORCIENTO .												
	KM	TE	SC	TDPA	A	B	C2	C3	T3S2	T3S3	T3S2R4	OTROS	A	B	C	K'	D
T. C. CABO SAN LUCAS - LA PAZ SANTIAGO	0.00	3	0	1494	86.7	4.9	0.4	1.5	1.5	0.1	2.3	2.6	86.7	4.9	8.4	0.104	0.504
	2.00																

16 CARR : RAMAL AEROPISTA SAN IGNACIO

CLAVE:

RUTA : MEX

AÑO : 2008

L U G A R	E S T A C I O N				CLASIFICACION VEHICULAR EN PORCIENTO .												
	KM	TE	SC	TDPA	A	B	C2	C3	T3S2	T3S3	T3S2R4	OTROS	A	B	C	K'	D
T.C. CD. SANTA ROSALIA - GUERRERO NEGRO SAN IGNACIO	0.00	3	0	291	96.3	3.7	0.0	0.0	0.0	0.0	0.0	0.0	96.3	3.7	0.0	0.086	0.505
	2.50																

17 CARR : RAMAL AEROPISTA SANTA ROSALIA

CLAVE:

RUTA : MEX

AÑO : 2008

L U G A R	E S T A C I O N				CLASIFICACION VEHICULAR EN PORCIENTO .												
	KM	TE	SC	TDPA	A	B	C2	C3	T3S2	T3S3	T3S2R4	OTROS	A	B	C	K'	D
T.C. CD. SANTA ROSALIA - GUERRERO NEGRO SANTA ROSALIA	0.00	3	0	108	92.7	1.2	2.8	3.1	0.2	0.0	0.0	0.0	92.7	1.2	6.1	0.102	0.530
	1.50																

18 CARR : SAN PEDRO - CABO SAN LUCAS

CLAVE: 03003

RUTA : MEX-019

AÑO : 2008

L U G A R	E S T A C I O N				CLASIFICACION VEHICULAR EN PORCIENTO .												
	KM	TE	SC	TDPA	A	B	C2	C3	T3S2	T3S3	T3S2R4	OTROS	A	B	C	K'	D
T. C. CABO SAN LUCAS - LA PAZ	0.00	3	0	5449	88.9	3.0	2.9	1.9	1.5	1.3	0.5	0.0	88.9	3.0	8.1	0.080	0.501





BAJA CALIFORNIA SUR

21 CARR : CAMPO FISHER - PUNTA ABREOJOS

CLAVE: 03411

RUTA : BCS

AÑO : 2008

L U G A R	E S T A C I O N				C L A S I F I C A C I O N V E H I C U L A R E N P O R C I E N T O .												
	KM	TE	SC	TDPA	A	B	C2	C3	T3S2	T3S3	T3S2R4	OTROS	A	B	C	K'	D
T. C. SANTA ROSALIA - PARALELO 28	0.00	3	0	1414	76.2	3.7	3.9	3.4	4.0	1.8	1.9	5.1	76.2	3.7	20.1	0.110	0.510
PUNTA ABREOJOS	85.00																

22 CARR : CD. INSURGENTES - LA PURISIMA

CLAVE: 03005

RUTA : BCS-001

AÑO : 2008

L U G A R	E S T A C I O N				C L A S I F I C A C I O N V E H I C U L A R E N P O R C I E N T O .												
	KM	TE	SC	TDPA	A	B	C2	C3	T3S2	T3S3	T3S2R4	OTROS	A	B	C	K'	D
CD. INSURGENTES	0.00	3	0	2693	87.0	5.6	2.2	1.3	2.1	0.5	0.4	0.9	87.0	5.6	7.4	0.106	0.517
IGNACIO ZARAGOZA	18.00	1	0	1589	88.7	5.7	1.9	1.1	1.7	0.1	0.1	0.7	88.7	5.7	5.6	0.070	0.516
IGNACIO ZARAGOZA	18.00	3	0	1462	82.9	6.8	3.6	2.1	2.8	1.4	0.3	0.1	82.9	6.8	10.3	0.092	0.501
T. IZQ. SANTO DOMINGO	28.70	1	0	1006	92.4	3.0	2.5	1.0	0.5	0.1	0.2	0.3	92.4	3.0	4.6	0.091	0.519
FRANCISCO VILLA	64.00	3	0	681	87.2	4.0	3.5	1.5	2.3	1.0	0.5	0.0	87.2	4.0	8.8	0.103	0.519
LA PURISIMA	107.00	1	0	484	83.8	5.6	4.3	2.1	2.6	0.9	0.7	0.0	83.8	5.6	10.6	0.101	0.519

23 CARR : CD. INSURGENTES - PTO. ADOLFO LOPEZ MATEOS

CLAVE: 03404

RUTA : BCS

AÑO : 2008

L U G A R	E S T A C I O N				C L A S I F I C A C I O N V E H I C U L A R E N P O R C I E N T O .												
	KM	TE	SC	TDPA	A	B	C2	C3	T3S2	T3S3	T3S2R4	OTROS	A	B	C	K'	D
T. C. CD. INSURGENTES - LA PURISIMA	0.00	3	0	516	90.6	5.6	2.5	0.1	0.9	0.0	0.1	0.2	90.6	5.6	3.8	0.126	0.507
PUERTO ADOLFO LOPEZ MATEOS	35.50	1	0	876	93.3	3.5	1.3	0.5	1.0	0.2	0.0	0.2	93.3	3.5	3.2	0.102	0.510

24 CARR : LA PAZ - ENSENADA DE MUERTOS

CLAVE: 03103

RUTA : BCS-246

AÑO : 2008

L U G A R	E S T A C I O N				C L A S I F I C A C I O N V E H I C U L A R E N P O R C I E N T O .												
	KM	TE	SC	TDPA	A	B	C2	C3	T3S2	T3S3	T3S2R4	OTROS	A	B	C	K'	D
LA PAZ	0.00	3	0	4685	79.8	2.0	1.1	1.6	7.4	1.4	4.4	2.3	79.8	2.0	18.2	0.081	0.501
T. IZQ. EL SARGENTO	37.00	1	0	1575	94.2	1.8	1.0	1.3	1.2	0.1	0.1	0.3	94.2	1.8	4.0	0.104	0.514
T. IZQ. EL SARGENTO	37.00	3	0	1544	95.0	2.0	1.3	0.3	0.9	0.1	0.1	0.3	95.0	2.0	3.0	0.097	0.511
ENSENADA DE MUERTOS	49.00	1	0	1279	93.5	2.5	2.7	0.8	0.3	0.1	0.1	0.0	93.5	2.5	4.0	0.100	0.500

25 CARR : LIBRAMIENTO DE LA PAZ

CLAVE: 03004

RUTA : BCS

AÑO : 2008

L U G A R	E S T A C I O N				C L A S I F I C A C I O N V E H I C U L A R E N P O R C I E N T O .												
	KM	TE	SC	TDPA	A	B	C2	C3	T3S2	T3S3	T3S2R4	OTROS	A	B	C	K'	D
T. C. CABO SAN LUCAS - LA PAZ	0.00	3	0	13220	77.9	4.1	8.0	3.1	2.6	1.3	1.6	1.4	77.9	4.1	18.0	0.092	0.503





BAJA CALIFORNIA SUR

35 CARR : RAMAL A EJIDO LEY FEDERAL DE AGUAS NUMERO DOS

CLAVE: 03050

RUTA : BCS-MEX

AÑO : 2008

L U G A R	E S T A C I O N				CLASIFICACION VEHICULAR EN PORCIENTO .												
	KM	TE	SC	TDPA	A	B	C2	C3	T3S2	T3S3	T3S2R4	OTROS	A	B	C	K'	D
T. C. CD. INSURGENTES - LORETO	0.00	3	0	878	84.9	3.3	4.5	4.3	1.6	1.3	0.1	0.0	84.9	3.3	11.8	0.096	0.505
EJIDO LEY FEDERAL DE AGUAS NUMERO DOS	9.00																

36 CARR : RAMAL A LEY FEDERAL DE AGUAS NUMERO CINCO

CLAVE: 03407

RUTA : BCS-MEX

AÑO : 2008

L U G A R	E S T A C I O N				CLASIFICACION VEHICULAR EN PORCIENTO .												
	KM	TE	SC	TDPA	A	B	C2	C3	T3S2	T3S3	T3S2R4	OTROS	A	B	C	K'	D
CD. CONSTITUCION	0.00	3	0	7684	89.3	3.2	1.8	2.4	2.0	0.3	0.3	0.7	89.3	3.2	7.5	0.092	0.535
LEY FEDERAL DE AGUAS NUMERO CINCO	16.00																

37 CARR : RAMAL A SAN JUAN DE LA COSTA

CLAVE: 03403

RUTA : BCS-163-MEX

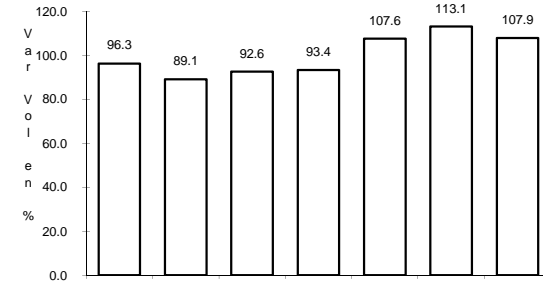
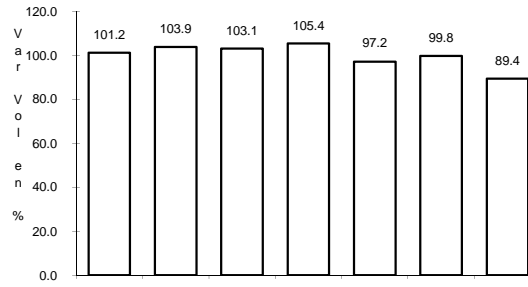
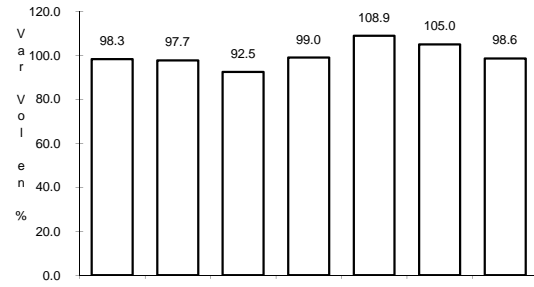
AÑO : 2008

L U G A R	E S T A C I O N				CLASIFICACION VEHICULAR EN PORCIENTO .												
	KM	TE	SC	TDPA	A	B	C2	C3	T3S2	T3S3	T3S2R4	OTROS	A	B	C	K'	D
T. C. LA PAZ - CD. INSURGENTES	0.00	3	0	1602	88.4	4.1	3.2	1.8	0.8	0.4	0.1	1.2	88.4	4.1	7.5	0.085	0.500
PUERTO CAJETE	23.00	3	0	560	85.2	0.6	8.5	3.3	1.1	0.7	0.2	0.4	85.2	0.6	14.2	0.118	0.502
SAN JUAN DE LA COSTA	40.70	1	0	406	95.8	1.3	1.8	1.0	0.0	0.1	0.0	0.0	95.8	1.3	2.9	0.111	0.516

1 CARR: CABO SAN LUCAS - LA PAZ

CLAVE: 03102

RUTA: MEX-001



Km: 0.00      Tipo: 3      Sent: 1

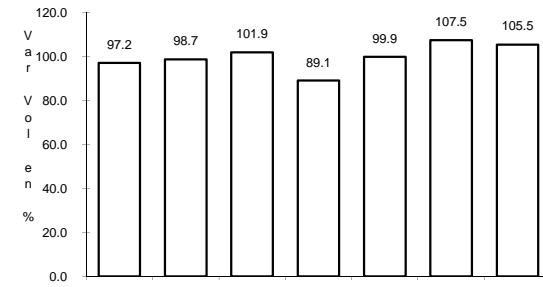
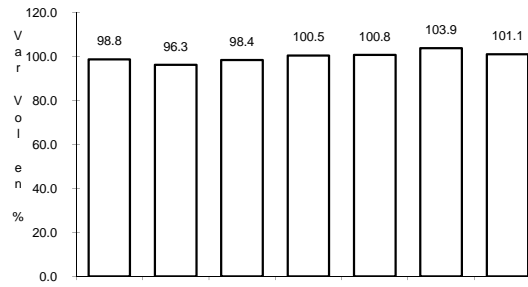
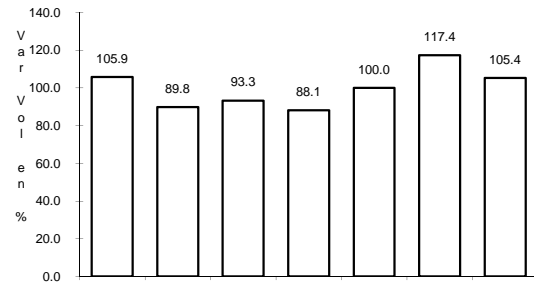
Km: 0.00      Tipo: 3      Sent: 2

Km: 211.00      Tipo: 1      Sent: 0

2 CARR: CD. CONSTITUCION - PUERTO SAN CARLOS

CLAVE: 03231

RUTA: MEX-022



Km: 0.00      Tipo: 3      Sent: 0

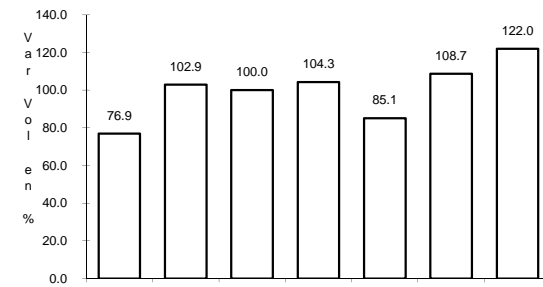
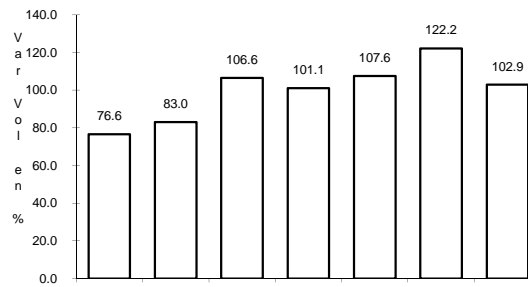
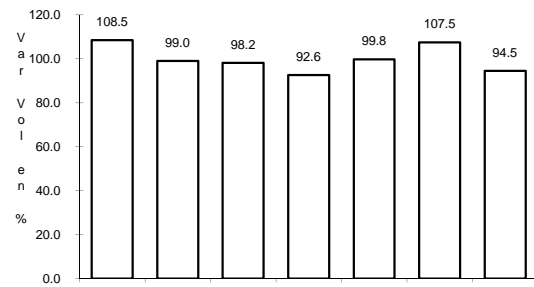
Km: 10.00      Tipo: 1      Sent: 0

Km: 10.00      Tipo: 3      Sent: 0

3 CARR: CD. INSURGENTES - LORETO

CLAVE: 03092

RUTA: MEX-001



Km: 0.00      Tipo: 3      Sent: 0

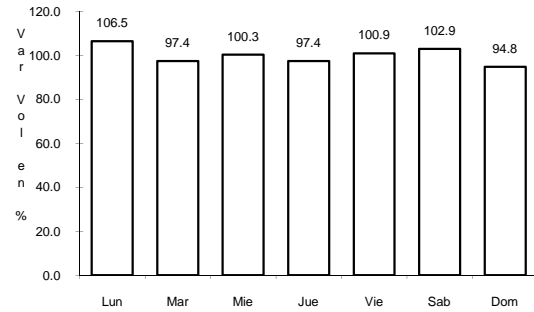
Km: 65.00      Tipo: 1      Sent: 0

Km: 119.00      Tipo: 1      Sent: 0

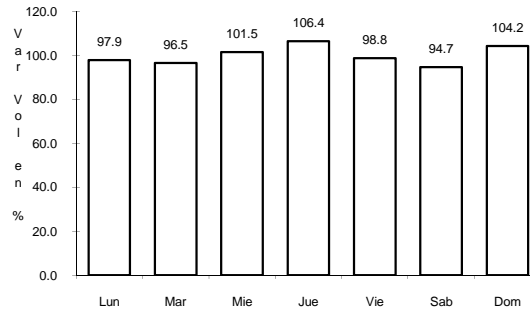
4 CARR: LA PAZ - CD. INSURGENTES

CLAVE: 03101

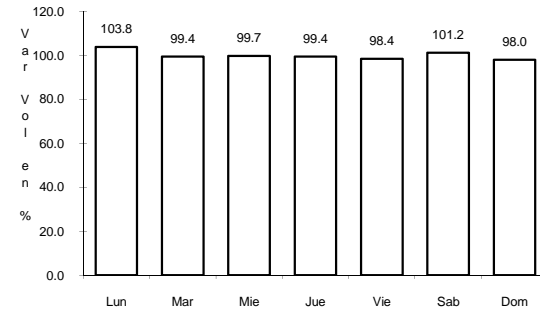
RUTA: MEX-001



Km: 0.00 Tipo: 3 Sent: 1



Km: 0.00 Tipo: 3 Sent: 2

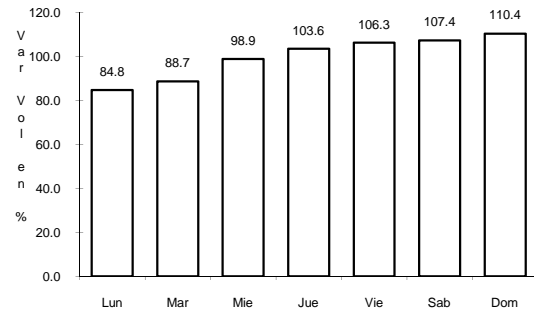


Km: 229.00 Tipo: 1 Sent: 0

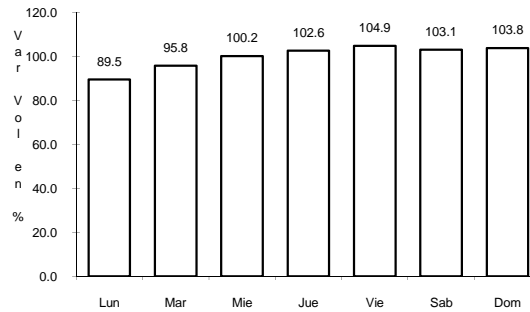
5 CARR: LA PAZ - PICHILINGUE

CLAVE: 03230

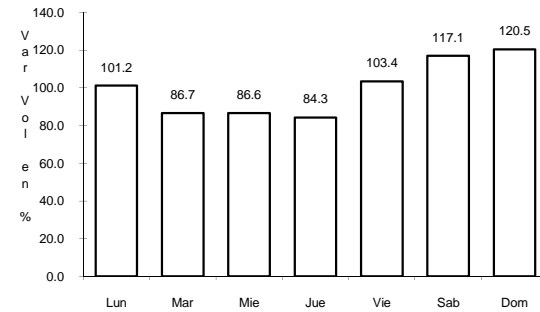
RUTA: MEX-011



Km: 0.00 Tipo: 3 Sent: 1



Km: 0.00 Tipo: 3 Sent: 2

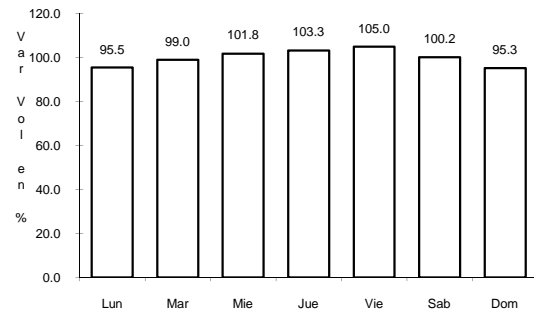


Km: 17.07 Tipo: 1 Sent: 0

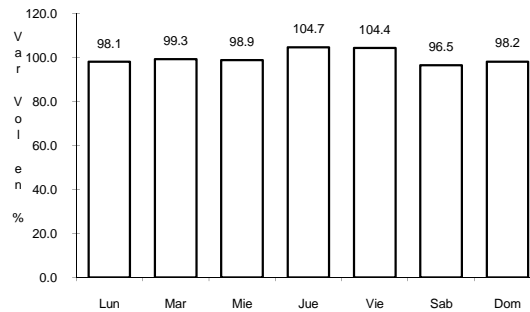
6 CARR: LIBRAMIENTO DE CABO SAN LUCAS

CLAVE: 03100

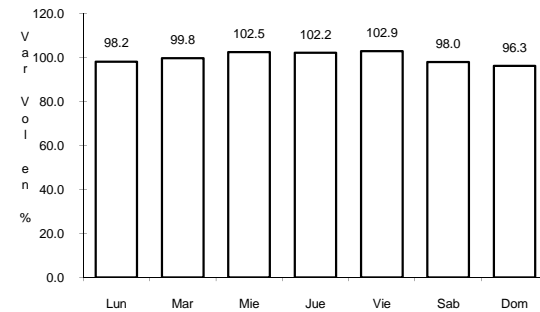
RUTA: MEX



Km: 0.00 Tipo: 3 Sent: 1

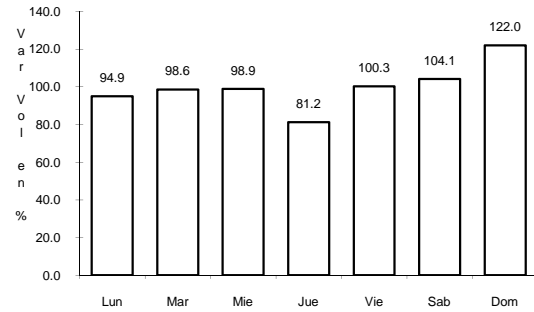


Km: 0.00 Tipo: 3 Sent: 2



Km: 3.00 Tipo: 1 Sent: 0

7 CARR: LORETO - SANTA ROSALIA

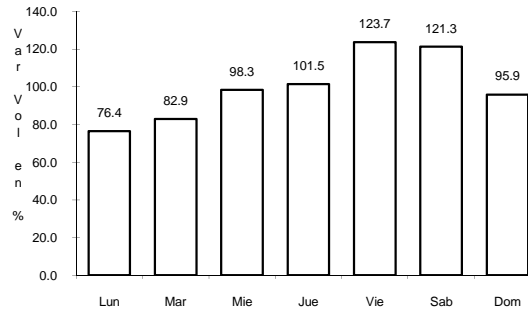


Km: 0.00

Tipo: 3

Sent: 0

CLAVE: 03393

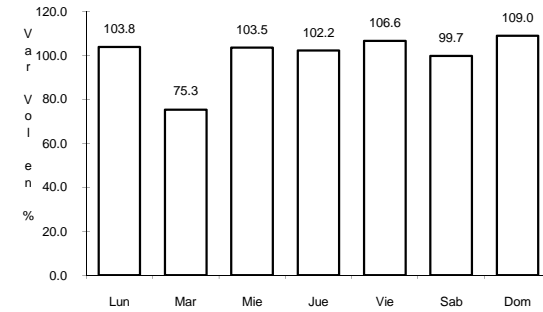


Km: 135.00

Tipo: 1

Sent: 0

ruta: MEX-001

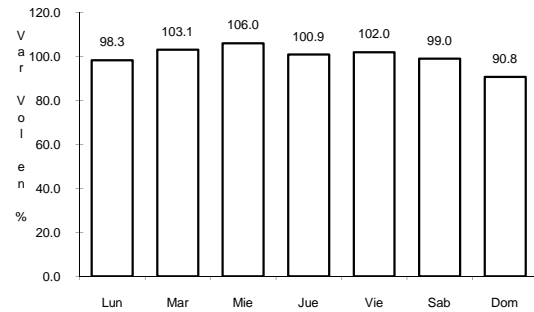


Km: 197.00

Tipo: 1

Sent: 0

8 CARR: PUNTA PRIETA - GUERRERO NEGRO

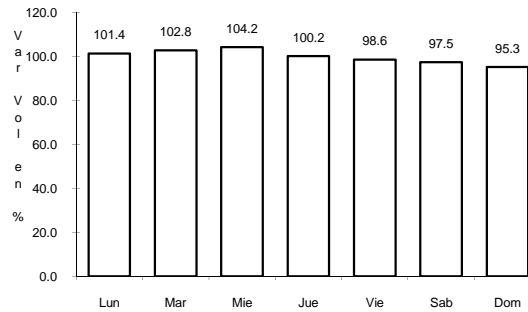


Km: 0.00

Tipo: 3

Sent: 0

CLAVE: 00321

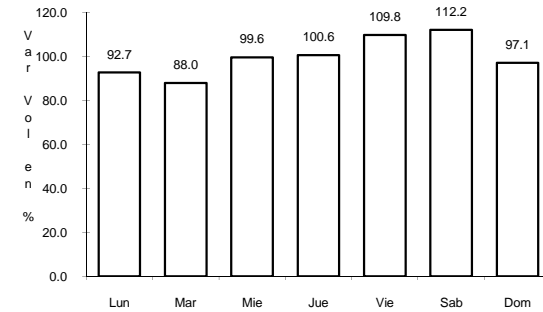


Km: 70.10

Tipo: 3

Sent: 0

ruta: MEX-001

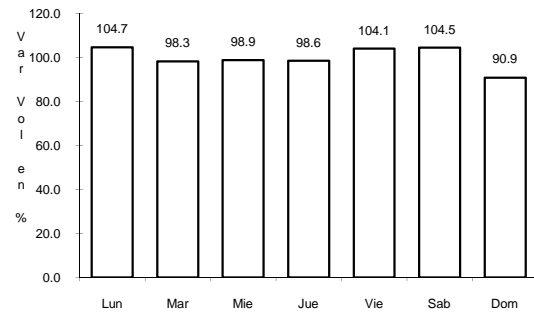


Km: 130.00

Tipo: 1

Sent: 0

9 CARR: RAMAL A AEROPUERTO DE LA PAZ

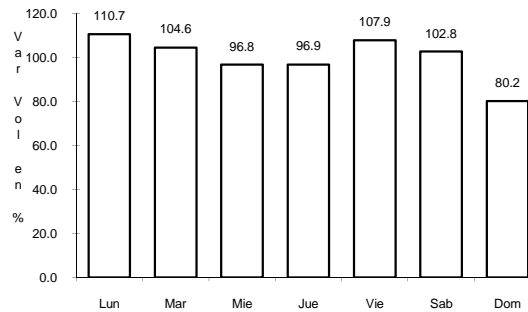


Km: 0.00

Tipo: 3

Sent: 1

CLAVE: 03396



Km: 0.00

Tipo: 3

Sent: 2

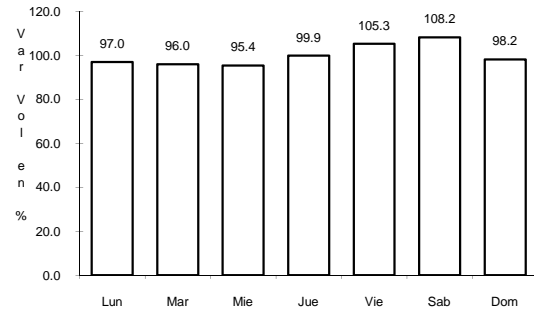
ruta: MEX



10 CARR: RAMAL A AEROPUERTO DE LOS CABOS

CLAVE: 03394

RUTA: MEX



Km: 0.00

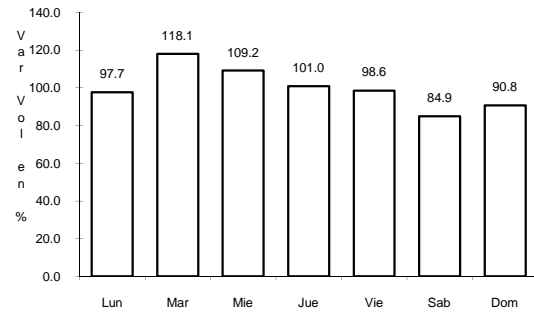
Tipo: 3

Sent: 0

11 CARR: RAMAL A LOS PAREDONES

CLAVE:

RUTA: MEX



Km: 0.00

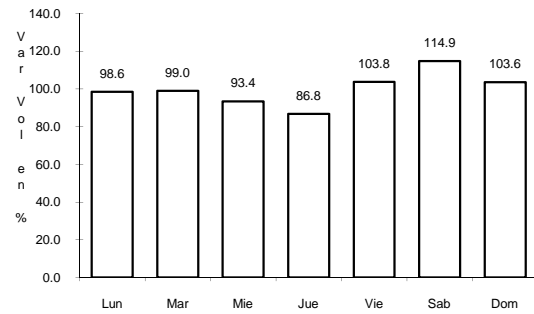
Tipo: 3

Sent: 0

12 CARR: RAMAL A MIRAFLORES

CLAVE:

RUTA: MEX



Km: 0.00

Tipo: 3

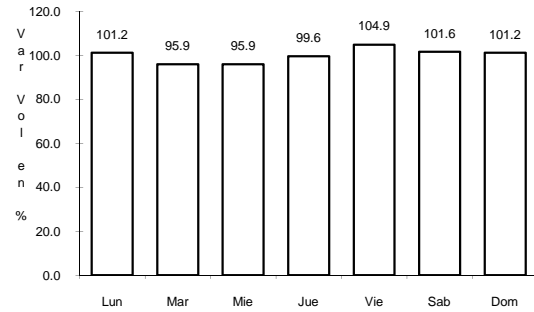
Sent: 0



16 CARR: RAMAL AEROPISTA SAN IGNACIO

CLAVE:

RUTA: MEX



Km: 0.00

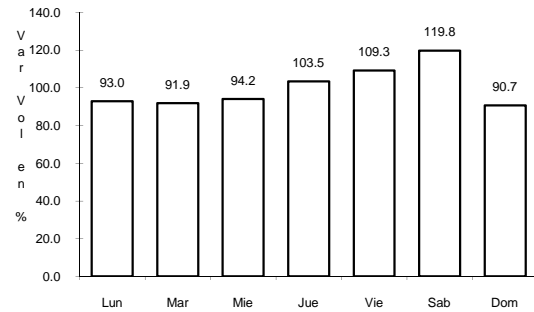
Tipo: 3

Sent: 0

17 CARR: RAMAL AEROPISTA SANTA ROSALIA

CLAVE:

RUTA: MEX



Km: 0.00

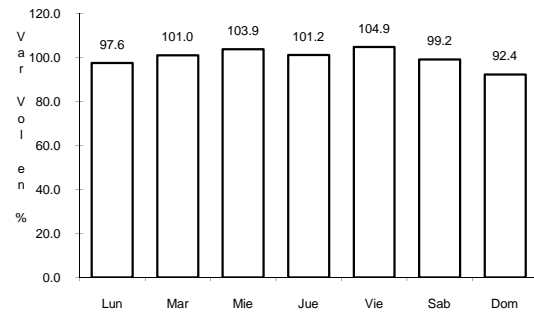
Tipo: 3

Sent: 0

18 CARR: SAN PEDRO - CABO SAN LUCAS

CLAVE: 03003

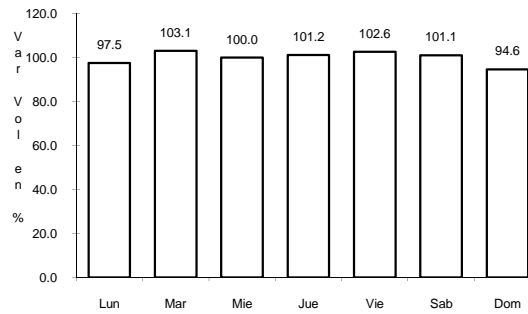
RUTA: MEX-019



Km: 0.00

Tipo: 3

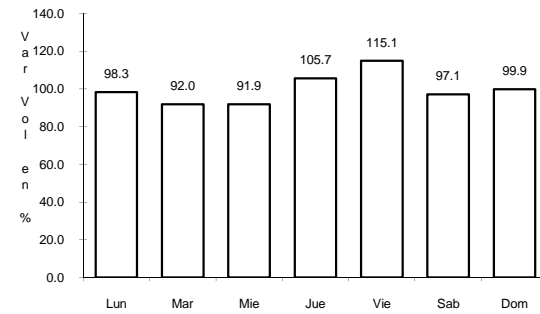
Sent: 0



Km: 62.00

Tipo: 1

Sent: 0



Km: 131.00

Tipo: 1

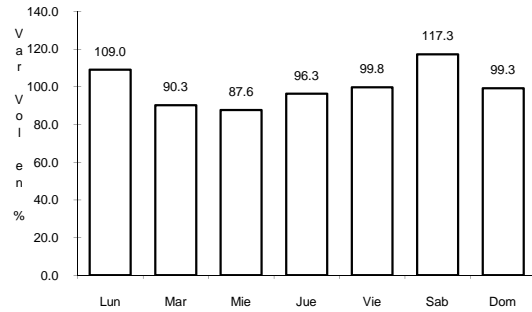
Sent: 0



23 CARR: CD. INSURGENTES - PTO. ADOLFO LOPEZ MATEOS

CLAVE: 03404

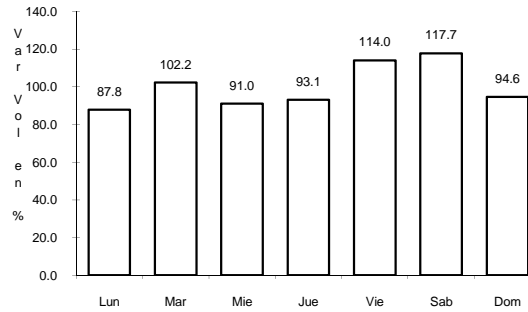
ruta: BCS



Km: 0.00

Tipo: 3

Sent: 0



Km: 35.50

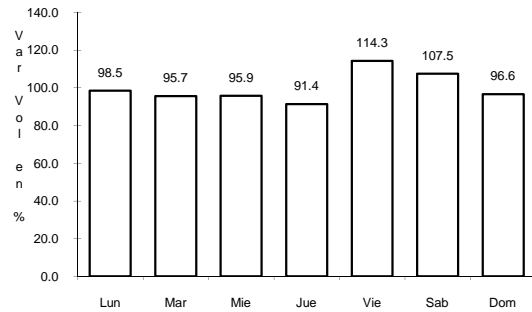
Tipo: 1

Sent: 0

24 CARR: LA PAZ - ENSENADA DE MUERTOS

CLAVE: 03103

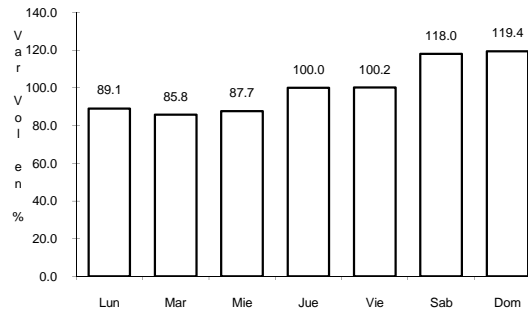
ruta: BCS-246



Km: 0.00

Tipo: 3

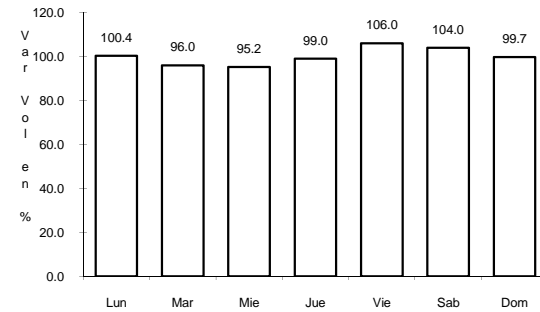
Sent: 0



Km: 37.00

Tipo: 1

Sent: 0



Km: 49.00

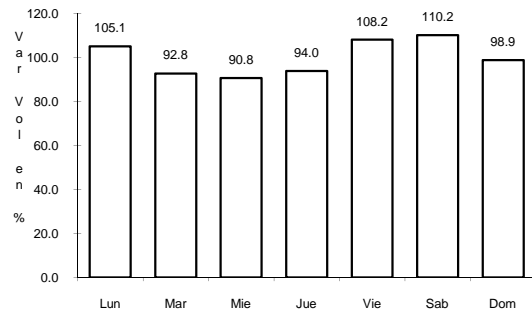
Tipo: 1

Sent: 0

25 CARR: LIBRAMIENTO DE LA PAZ

CLAVE: 03004

ruta: BCS



Km: 0.00

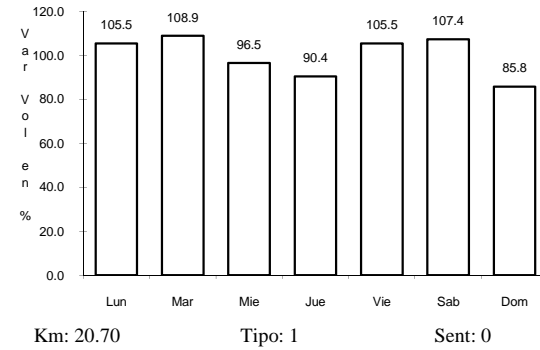
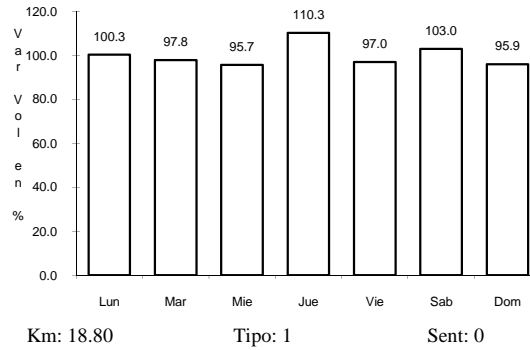
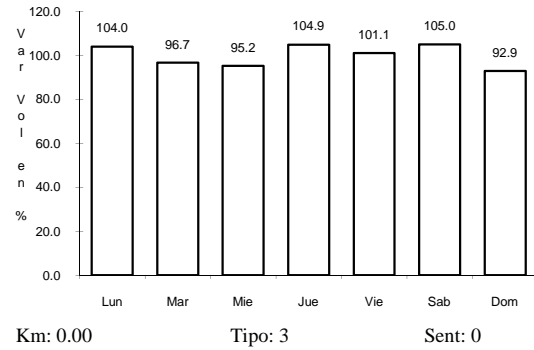
Tipo: 3

Sent: 0

26 CARR: LIBRAMIENTO NORTE DE LA PAZ

CLAVE: 03006

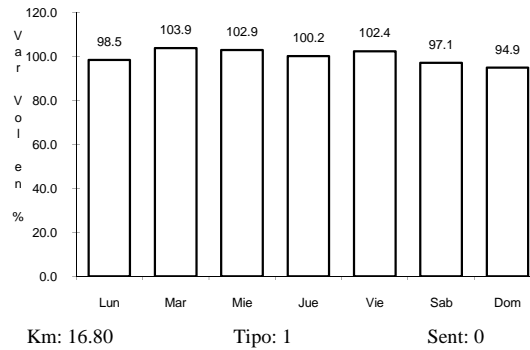
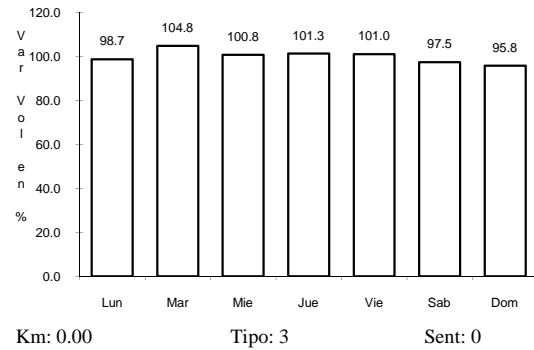
RUTA: BCS



27 CARR: RAMAL A BENITO JUAREZ

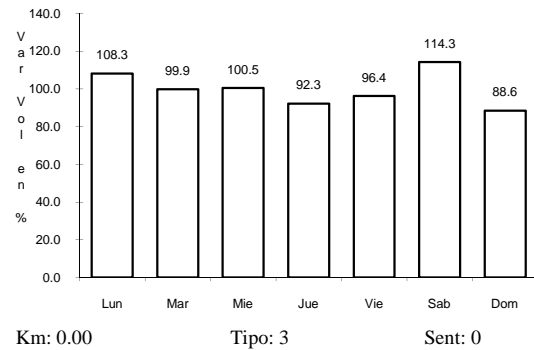
CLAVE: 03405

RUTA: BCS



28 CARR: RAMAL A EJIDO LEY FEDERAL DE AGUAS NUMERO CUATRO (CLAVE: 03007)

RUTA: BCS

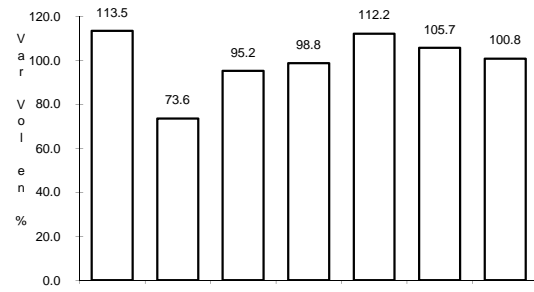




32 CARR: RAMAL A MELITON ALBAÑEZ

CLAVE:

RUTA: BCS



Km: 0.00

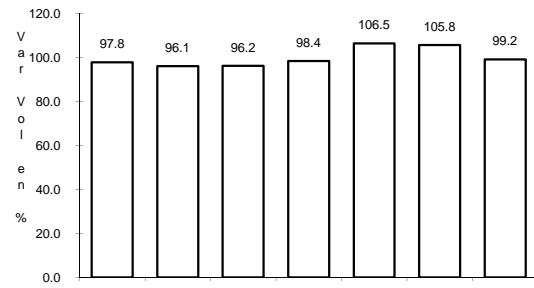
Tipo: 3

Sent: 0

33 CARR: RAMAL A SANTA CATARINA

CLAVE: 03052

RUTA: BCS



Km: 0.00

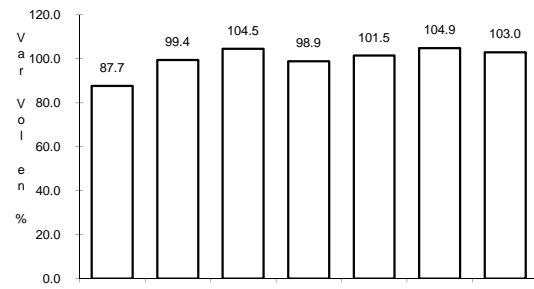
Tipo: 3

Sent: 0

34 CARR: RAMAL A BAHIA DE TORTUGAS

CLAVE: 03397

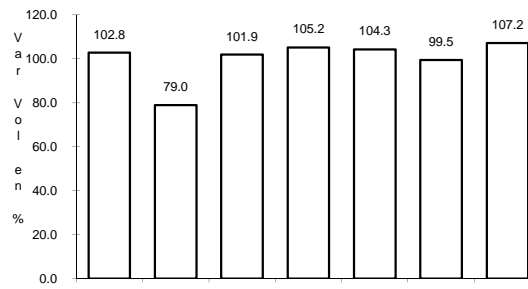
RUTA: MEX-BCS



Km: 0.00

Tipo: 3

Sent: 0



Km: 6.00

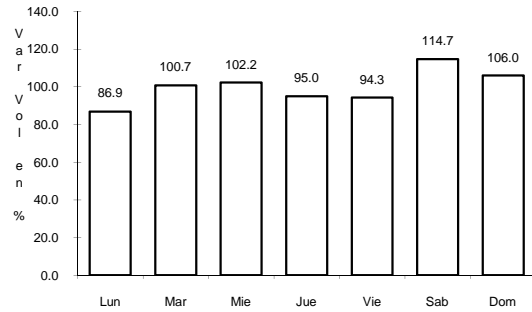
Tipo: 3

Sent: 0



35 CARR: RAMAL A EJIDO LEY FEDERAL DE AGUAS NUMERO DOS CLAVE: 03050

RUTA: BCS-MEX

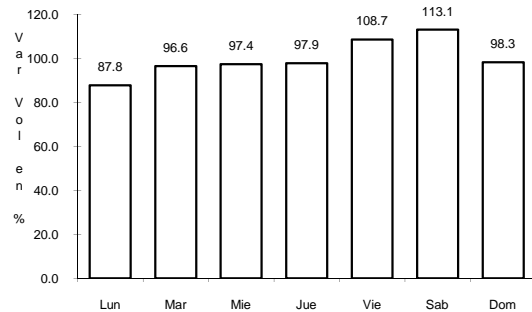


Km: 0.00 Tipo: 3 Sent: 0

36 CARR: RAMAL A LEY FEDERAL DE AGUAS NUMERO CINCO

CLAVE: 03407

RUTA: BCS-MEX

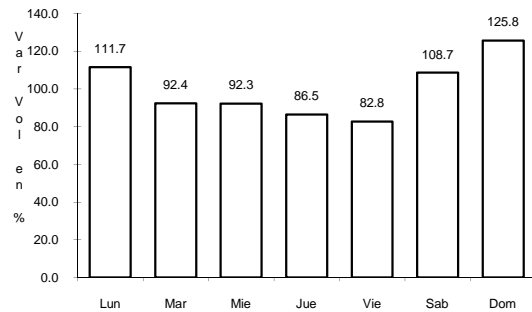


Km: 0.00 Tipo: 3 Sent: 0

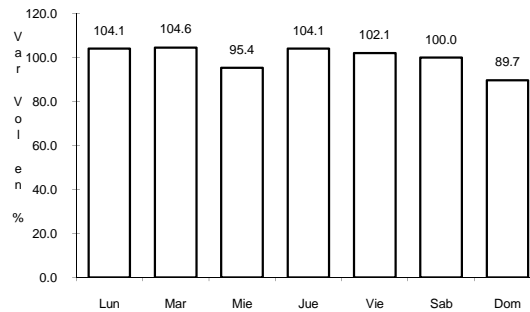
37 CARR: RAMAL A SAN JUAN DE LA COSTA

CLAVE: 03403

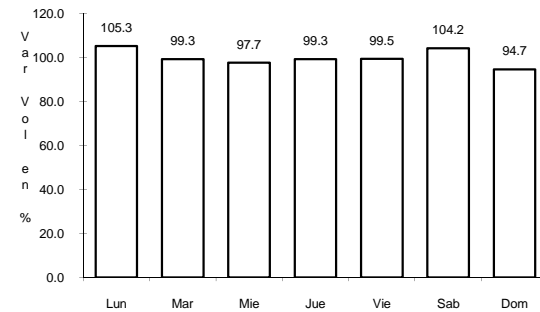
RUTA: BCS-163-MEX



Km: 0.00 Tipo: 3 Sent: 0



Km: 23.00 Tipo: 3 Sent: 0



Km: 40.70 Tipo: 1 Sent: 0