

BAJA CALIFORNIA

Núm. INDICE	CARRETERA	RUTA
---- FEDERAL LIBRE ----		
1	ENSENADA - EL CHINERO	MEX-003
2	ENSENADA - LAZARO CARDENAS	MEX-001
3	LAZARO CARDENAS - PUNTA PRIETA	MEX-001
4	MEXICALI - SAN FELIPE	MEX-005
5	MEXICALI - TIJUANA	MEX-002
6	PARADOR PUNTA PRIETA - BAHIA DE LOS ANGELES	MEX-012
7	PUNTA PRIETA - GUERRERO NEGRO	MEX-001
8	RAMAL A AEROPUERTO DE MEXICALI	MEX
9	RAMAL A SANTA MARIA	MEX
10	SAN FELIPE - CHAPALA	MEX-005
11	SONOITA - MEXICALI	MEX-002
12	TECATE - EL SAUZAL	MEX-003
13	TIJUANA - ENSENADA (LIBRE)	MEX-001
---- FEDERAL CUOTA ----		
14	LIBRAMIENTO MEXICALI (CUOTA)	MEX-D
15	MEXICALI - TIJUANA (CUOTA)	MEX-002D
16	TIJUANA - SAN MIGUEL (CUOTA)	MEX-001D
---- ESTATAL LIBRE ----		
17	ALGODONES - ISLAS AGRARIAS GRUPO B	BC-008
18	EJIDO BENITO JUAREZ - EJIDO CHIAPAS	BC-061
19	EJIDO MONTERREY - MAZON	BC-003
20	EL FARO - ESTACION COAHUILA	BC-004
21	LA PUERTA - T. C. (MEXICALI - ESTACION COAHUILA)	BC-010
22	MEXICALI - ALGODONES	BC-002
23	MEXICALI - ESTACION COAHUILA	BC-001
24	MEXICALI - PROGRESO	BC-005
25	SANTA ROSA - ENT. PACHUCA	BC-006

BAJA CALIFORNIA

3 CARR : LAZARO CARDENAS - PUNTA PRIETA

CLAVE: 02319

RUTA : MEX-001

AÑO : 2008

L U G A R	E S T A C I O N				C L A S I F I C A C I O N V E H I C U L A R E N P O R C I E N T O .												
	KM	TE	SC	TDPA	A	B	C2	C3	T3S2	T3S3	T3S2R4	OTROS	A	B	C	K'	D
LAZARO CARDENAS	0.00	3	0	9475	75.5	5.6	6.6	3.7	4.0	2.6	1.8	0.2	75.5	5.6	18.9	0.077	0.503
ROSARIO DE ARRIBA	53.70	1	0	2526	79.8	4.4	3.2	1.0	8.3	1.4	1.1	0.8	79.8	4.4	15.8	0.060	0.511
ROSARIO DE ARRIBA	53.70	3	0	4157	77.1	3.1	0.9	3.2	3.4	1.8	7.8	2.7	77.1	3.1	19.8	0.082	0.503
T. DER. EMILIANO ZAPATA	80.00	3	0	1132	86.4	2.7	5.2	1.1	2.3	0.9	1.0	0.4	86.4	2.7	10.9	0.070	0.502
SAN AGUSTIN	140.00	1	0	1510	81.9	4.3	5.1	3.0	2.8	1.7	0.9	0.3	81.9	4.3	13.8	0.066	0.505
SAN AGUSTIN	140.00	3	0	1200	78.3	6.0	6.3	2.4	3.8	2.1	1.0	0.1	78.3	6.0	15.7	0.110	0.504
SAN LUIS	173.00	1	0	1554	79.0	5.4	5.8	2.9	3.8	1.8	0.9	0.4	79.0	5.4	15.6	0.064	0.508
RANCHO CHAPALA	222.80	1	0	1609	89.0	5.6	3.1	1.2	0.1	0.2	0.4	0.4	89.0	5.6	5.4	0.083	0.502
PARADOR PUNTA PRIETA	275.70	1	0	1534	78.2	6.0	5.8	3.4	3.4	1.8	1.0	0.4	78.2	6.0	15.8	0.065	0.501

4 CARR : MEXICALI - SAN FELIPE

CLAVE: 02096

RUTA : MEX-005

AÑO : 2008

L U G A R	E S T A C I O N				C L A S I F I C A C I O N V E H I C U L A R E N P O R C I E N T O .												
	KM	TE	SC	TDPA	A	B	C2	C3	T3S2	T3S3	T3S2R4	OTROS	A	B	C	K'	D
MEXICALI	0.00	3	1	15770	78.1	4.9	4.7	4.3	3.5	2.4	0.7	1.4	78.1	4.9	17.0	0.070	0.501
MEXICALI	0.00	3	2	15728	79.1	4.5	4.5	4.4	2.7	2.7	1.0	1.1	79.1	4.5	16.4	0.070	0.501
LA PUERTA	32.00	1	1	4998	80.7	3.6	3.6	3.0	3.7	2.9	1.2	1.3	80.7	3.6	15.7	0.076	0.503
LA PUERTA	32.00	1	2	4943	78.8	3.6	3.6	2.9	5.9	2.5	1.6	1.1	78.8	3.6	17.6	0.077	0.503
T. IZQ. ESTACION COAHUILA	39.00	1	1	3719	80.1	6.6	3.8	3.5	3.3	0.9	1.8	0.0	80.1	6.6	13.3	0.074	0.502
T. IZQ. ESTACION COAHUILA	39.00	1	2	3744	79.0	6.3	3.8	3.6	3.1	1.0	2.3	0.9	79.0	6.3	14.7	0.072	0.502
T. IZQ. ESTACION COAHUILA	39.00	3	0	4117	86.4	2.9	2.1	2.2	2.4	0.8	2.1	1.1	86.4	2.9	10.7	0.073	0.505
EL CHINERO	141.00	1	0	2592	83.6	3.8	5.7	2.1	1.5	0.6	2.2	0.5	83.6	3.8	12.6	0.097	0.503
EL CHINERO	141.00	3	0	2415	91.9	2.6	1.2	0.2	1.2	1.1	1.3	0.5	91.9	2.6	5.5	0.088	0.504
SAN FELIPE	189.60	1	0	6874	89.4	3.1	1.6	1.6	1.0	1.1	1.3	0.9	89.4	3.1	7.5	0.094	0.501

5 CARR : MEXICALI - TIJUANA

CLAVE: 02082

RUTA : MEX-002

AÑO : 2008

L U G A R	E S T A C I O N				C L A S I F I C A C I O N V E H I C U L A R E N P O R C I E N T O .												
	KM	TE	SC	TDPA	A	B	C2	C3	T3S2	T3S3	T3S2R4	OTROS	A	B	C	K'	D
MEXICALI	0.00																
COLONIA PROGRESO	7.80	3	1	7678	76.6	6.0	5.2	5.4	2.6	2.2	1.8	0.2	76.6	6.0	17.4	0.069	0.502
COLONIA PROGRESO	7.80	3	2	7731	77.6	6.1	5.1	5.6	2.2	1.8	1.6	0.0	77.6	6.1	16.3	0.067	0.502
LAGUNA SALADA	25.00	1	1	6418	83.8	3.9	4.7	2.7	2.3	1.4	1.2	0.0	83.8	3.9	12.3	0.073	0.506
LAGUNA SALADA	25.00	1	2	6274	83.8	3.9	4.5	2.8	1.8	1.6	1.5	0.1	83.8	3.9	12.3	0.067	0.506
LA RUMOROSA	67.60	1	0	6157	69.9	5.8	6.8	4.1	7.2	4.3	1.9	0.0	69.9	5.8	24.3	0.065	0.501

BAJA CALIFORNIA

5 CARR : MEXICALI - TIJUANA

CLAVE: 02082

RUTA : MEX-002

AÑO : 2008

L U G A R	E S T A C I O N				C L A S I F I C A C I O N V E H I C U L A R E N P O R C I E N T O .												
	KM	TE	SC	TDPA	A	B	C2	C3	T3S2	T3S3	T3S2R4	OTROS	A	B	C	K'	D
T. DER. ESTACION DE MICROONDAS	69.62	3	0	5560	73.8	5.0	4.8	4.3	6.1	4.2	1.8	0.0	73.8	5.0	21.2	0.068	0.502
AGUA HECHICERA	87.00	1	0	5248	72.8	4.1	6.2	6.1	4.9	4.1	1.8	0.0	72.8	4.1	23.1	0.068	0.502
EL ENCINAL	112.20	1	0	4812	72.4	7.4	2.2	2.1	7.6	5.3	2.2	0.8	72.4	7.4	20.2	0.068	0.502
TECATE	132.00	1	1	6068	79.6	5.0	5.6	2.6	3.1	2.5	1.5	0.1	79.6	5.0	15.4	0.095	0.502
TECATE	132.00	1	2	6104	79.6	5.7	5.7	2.9	2.7	1.9	1.3	0.2	79.6	5.7	14.7	0.097	0.502
TECATE	132.00	3	1	7888	81.1	5.8	4.7	1.7	3.3	2.2	0.0	1.2	81.1	5.8	13.1	0.070	0.507
TECATE	132.00	3	2	7684	81.0	5.4	4.8	1.8	2.8	2.1	0.0	2.1	81.0	5.4	13.6	0.076	0.507
PRESA ABELARDO L. RODRIGUEZ	165.00	3	0	11653	80.2	4.6	5.3	2.7	3.4	2.1	1.0	0.7	80.2	4.6	15.2	0.084	0.502
TIJUANA	182.60																

6 CARR : PARADOR PUNTA PRIETA - BAHIA DE LOS ANGELES

CLAVE: 02322

RUTA : MEX-012

AÑO : 2008

L U G A R	E S T A C I O N				C L A S I F I C A C I O N V E H I C U L A R E N P O R C I E N T O .												
	KM	TE	SC	TDPA	A	B	C2	C3	T3S2	T3S3	T3S2R4	OTROS	A	B	C	K'	D
PARADOR PUNTA PRIETA	0.00	3	0	184	100.0	0.0	0.0	0.0	0.0	0.0	0.0	0.0	100.0	0.0	0.0	0.125	0.506
BAHIA DE LOS ANGELES	68.00	1	0	231	91.8	3.7	4.5	0.0	0.0	0.0	0.0	0.0	91.8	3.7	4.5	0.130	0.550

7 CARR : PUNTA PRIETA - GUERRERO NEGRO

CLAVE: 00321

RUTA : MEX-001

AÑO : 2008

L U G A R	E S T A C I O N				C L A S I F I C A C I O N V E H I C U L A R E N P O R C I E N T O .												
	KM	TE	SC	TDPA	A	B	C2	C3	T3S2	T3S3	T3S2R4	OTROS	A	B	C	K'	D
PARADOR PUNTA PRIETA	0.00	3	0	1408	78.1	5.7	8.0	1.9	2.4	3.0	0.7	0.2	78.1	5.7	16.2	0.075	0.503
ROSARITO	50.60	3	0	1842	85.4	2.6	3.8	1.2	3.3	2.2	1.3	0.2	85.4	2.6	12.0	0.072	0.502
TANATAN	70.10	3	0	1584	80.3	4.0	6.0	2.7	3.6	2.0	1.2	0.2	80.3	4.0	15.7	0.073	0.502
TAMPICO	105.00	1	0	1602	69.2	4.2	2.6	1.2	20.2	1.5	0.4	0.7	69.2	4.2	26.6	0.100	0.502
LIM. EDOS. TERM. B.C. PPIA. B.C.S. (PARALELO 28)	128.60																
LIM. EDOS. TERM. B.C. PPIA. B.C.S. (PARALELO 28)	128.60																
ENT. GUERRERO NEGRO	130.00	1	0	2532	84.9	3.3	2.6	1.0	6.5	0.7	0.6	0.4	84.9	3.3	11.8	0.080	0.509

8 CARR : RAMAL A AEROPUERTO DE MEXICALI

CLAVE: 02321

RUTA : MEX

AÑO : 2008

L U G A R	E S T A C I O N				C L A S I F I C A C I O N V E H I C U L A R E N P O R C I E N T O .												
	KM	TE	SC	TDPA	A	B	C2	C3	T3S2	T3S3	T3S2R4	OTROS	A	B	C	K'	D
T. C. MEXICALI - ESTACION COAHUILA	0.00	3	0	9290	89.2	3.7	2.7	1.1	0.4	1.1	1.6	0.2	89.2	3.7	7.1	0.066	0.500
AEROPUERTO	10.00	1	0	3904	95.0	1.7	0.9	0.7	0.0	0.8	0.7	0.2	95.0	1.7	3.3	0.082	0.502

BAJA CALIFORNIA

8 CARR : RAMAL A AEROPUERTO DE MEXICALI

CLAVE: 02321

RUTA : MEX

AÑO : 2008

L U G A R	E S T A C I O N				C L A S I F I C A C I O N V E H I C U L A R E N P O R C I E N T O .													
	KM	TE	SC	TDPA	A	B	C2	C3	T3S2	T3S3	T3S2R4	OTROS	A	B	C	K'	D	
T. C. ALGODONES - ISLAS AGRARIAS GRUPO B	12.10																	

9 CARR : RAMAL A SANTA MARIA

CLAVE: 02506

RUTA : MEX

AÑO : 2008

L U G A R	E S T A C I O N				C L A S I F I C A C I O N V E H I C U L A R E N P O R C I E N T O .													
	KM	TE	SC	TDPA	A	B	C2	C3	T3S2	T3S3	T3S2R4	OTROS	A	B	C	K'	D	
T. C. LAZARO CARDENAS - PUNTA PRIETA	0.00	3	0	2480	85.3	4.4	6.9	0.8	1.0	0.4	0.2	1.0	85.3	4.4	10.3	0.098	0.510	
T. C. LAZARO CARDENAS - PARADOR PUNTA PRIETA	9.50																	

10 CARR : SAN FELIPE - CHAPALA

CLAVE: 02503

RUTA : MEX-005

AÑO : 2008

L U G A R	E S T A C I O N				C L A S I F I C A C I O N V E H I C U L A R E N P O R C I E N T O .													
	KM	TE	SC	TDPA	A	B	C2	C3	T3S2	T3S3	T3S2R4	OTROS	A	B	C	K'	D	
SAN FELIPE	0.00	3	0	2177	90.4	3.0	2.3	1.0	0.7	0.8	1.4	0.4	90.4	3.0	6.6	0.078	0.504	
PLAYA CURBINA	75.46	3	0	959	87.6	3.4	3.1	0.3	1.4	1.1	2.6	0.5	87.6	3.4	9.0	0.113	0.501	
T. C. LAZARO CARDENAS - PARADOR PUNTA PRIETA	213.00																	

11 CARR : SONOITA - MEXICALI

CLAVE: 00081

RUTA : MEX-002

AÑO : 2008

L U G A R	E S T A C I O N				C L A S I F I C A C I O N V E H I C U L A R E N P O R C I E N T O .													
	KM	TE	SC	TDPA	A	B	C2	C3	T3S2	T3S3	T3S2R4	OTROS	A	B	C	K'	D	
SONOITA	0.00	3	0	8766	75.0	8.0	6.4	3.5	4.5	0.8	0.2	1.6	75.0	8.0	17.0	0.073	0.503	
LOS VIDRIOS	58.75	3	0	6557	75.0	7.6	3.6	1.7	2.3	5.0	2.6	2.2	75.0	7.6	17.4	0.085	0.500	
SAN LUIS RIO COLORADO	200.00	1	0	7476	79.4	4.4	2.5	1.5	2.2	4.3	3.6	2.1	79.4	4.4	16.2	0.087	0.502	
SAN LUIS RIO COLORADO	200.00	3	1	7413	79.1	4.0	1.8	2.5	5.8	2.0	3.1	1.7	79.1	4.0	16.9	0.074	0.503	
SAN LUIS RIO COLORADO	200.00	3	2	7319	80.3	3.8	1.6	2.5	5.1	2.1	3.2	1.4	80.3	3.8	15.9	0.085	0.503	
LIM. EDOS. TERM. SON. PPIA. B.C.	203.70																	
X. C. MEXICALI - ALGODONES	206.80	1	1	9241	81.8	4.9	2.2	0.4	1.9	0.9	1.1	6.8	81.8	4.9	13.3	0.069	0.501	
X. C. MEXICALI - ALGODONES	206.80	1	2	9261	81.6	5.0	2.4	0.4	6.0	1.8	1.8	1.0	81.6	5.0	13.4	0.069	0.501	
X. C. MEXICALI - ALGODONES	206.80	3	1	7715	78.2	7.0	1.1	2.0	3.8	4.1	2.0	1.8	78.2	7.0	14.8	0.064	0.505	
X. C. MEXICALI - ALGODONES	206.80	3	2	7560	80.6	7.1	1.2	2.0	4.0	2.2	2.2	0.7	80.6	7.1	12.3	0.082	0.505	
T. IZQ. EJIDO HERMOSILLO	214.80	3	1	6582	79.5	6.2	3.5	2.6	2.9	3.0	1.1	1.2	79.5	6.2	14.3	0.066	0.501	
T. IZQ. EJIDO HERMOSILLO	214.80	3	2	6608	78.3	6.4	3.6	2.8	3.2	3.3	0.9	1.5	78.3	6.4	15.3	0.062	0.501	
EJIDO MONTERREY	228.60	3	1	8620	80.8	5.9	3.0	2.1	3.5	2.2	1.2	1.3	80.8	5.9	13.3	0.061	0.501	
EJIDO MONTERREY	228.60	3	2	8580	81.4	5.7	2.9	2.0	3.5	2.1	1.3	1.1	81.4	5.7	12.9	0.080	0.501	

BAJA CALIFORNIA

14 CARR : LIBRAMIENTO MEXICALI (CUOTA)

CLAVE:

RUTA : MEX-D

AÑO : 2008

L U G A R	E S T A C I O N				C L A S I F I C A C I O N V E H I C U L A R E N P O R C I E N T O .												
	KM	TE	SC	TDPA	A	B	C2	C3	T3S2	T3S3	T3S2R4	OTROS	A	B	C	K'	D
T.C. SONOITA - MEXICALI	0.00	3	0	2663	85.8	3.9	2.0	1.4	3.2	1.0	1.8	0.9	85.8	3.9	10.3	0.080	0.505
CASETA DE COBRO MEXICALI	16.00	1	0	2749	67.6	1.3	2.6	3.4	16.8	3.5	3.7	1.1	67.6	1.3	31.1		
CASETA DE COBRO MEXICALI	16.00	2	0	2106	63.5	1.7	2.6	3.6	19.5	3.1	4.7	1.3	63.5	1.7	34.8		
T.C. MEXICALI - TIJUANA	41.00	1	0	2141	85.4	3.8	2.6	1.4	3.1	0.9	1.8	1.0	85.4	3.8	10.8	0.090	0.504

15 CARR : MEXICALI - TIJUANA (CUOTA)

CLAVE: 02011

RUTA : MEX-002D

AÑO : 2008

L U G A R	E S T A C I O N				C L A S I F I C A C I O N V E H I C U L A R E N P O R C I E N T O .												
	KM	TE	SC	TDPA	A	B	C2	C3	T3S2	T3S3	T3S2R4	OTROS	A	B	C	K'	D
T. C. MEXICALI - TIJUANA	0.00																
LA RUMOROSA	19.35	3	1	4297	71.6	5.1	5.8	4.6	6.3	4.4	2.0	0.2	71.6	5.1	23.3	0.080	0.501
LA RUMOROSA	19.35	3	2	4314	72.0	5.1	6.0	4.9	5.6	3.9	2.2	0.3	72.0	5.1	22.9	0.083	0.501
CASETA DE COBRO CENTINELA	22.00	2	0	9145	68.8	10.2	0.0	0.0	12.8	1.5	1.9	4.8	68.8	10.2	21.0		
CASETA DE COBRO EL HONGO	68.76	1	0	5875	77.6	7.4	3.4	1.0	6.1	0.6	2.5	1.4	77.6	7.4	15.0		
CASETA DE COBRO EL HONGO	68.76	2	0	5716	77.4	7.6	3.4	1.0	6.2	0.6	2.6	1.2	77.4	7.6	15.0		
CASETA DE COBRO EL HONGO	68.76	3	0	6321	78.3	7.1	3.3	1.0	5.8	0.6	2.4	1.5	78.3	7.1	14.6		
CASETA DE COBRO EL HONGO	68.76	3	1	3949	71.5	6.6	4.9	4.5	6.9	3.6	1.8	0.2	71.5	6.6	21.9	0.076	0.505
CASETA DE COBRO EL HONGO	68.76	3	2	4036	69.8	6.9	5.0	4.2	7.4	2.6	3.5	0.6	69.8	6.9	23.3	0.071	0.505
CASETA DE COBRO TIJUANA	124.60	1	0	8158	80.0	5.2	3.2	1.9	5.7	0.5	1.5	2.0	80.0	5.2	14.8		
CASETA DE COBRO TIJUANA	124.60	2	0	7244	80.8	5.4	3.3	1.9	4.7	0.4	1.5	2.0	80.8	5.4	13.8		
CASETA DE COBRO TIJUANA	124.60	3	0	8921	80.4	5.1	3.0	1.7	5.7	0.6	1.3	2.2	80.4	5.1	14.5		
CASETA DE COBRO TIJUANA	124.60	3	1	4413	74.0	8.5	6.7	2.7	3.7	2.6	1.6	0.2	74.0	8.5	17.5	0.069	0.503
CASETA DE COBRO TIJUANA	124.60	3	2	4364	72.6	8.8	6.4	2.7	4.0	3.1	2.1	0.3	72.6	8.8	18.6	0.066	0.503
TERMINA AUTOPISTA PRINCIPIA TIJUANA	138.00																

16 CARR : TIJUANA - SAN MIGUEL (CUOTA)

CLAVE: 02100

RUTA : MEX-001D

AÑO : 2008

L U G A R	E S T A C I O N				C L A S I F I C A C I O N V E H I C U L A R E N P O R C I E N T O .												
	KM	TE	SC	TDPA	A	B	C2	C3	T3S2	T3S3	T3S2R4	OTROS	A	B	C	K'	D
TIJUANA	0.00																
CASETA DE COBRO PLAYAS DE TIJUANA	9.70	2	0	11193	96.9	1.2	0.6	0.4	0.5	0.0	0.0	0.4	96.9	1.2	1.9		
CASETA DE COBRO ROSARITO	35.43	2	0	9739	91.0	2.3	2.3	0.4	2.8	0.1	0.2	0.9	91.0	2.3	6.7		
T. C. TIJUANA - ENSENADA (LIBRE)	98.20																
CASETA DE COBRO ENSENADA	98.60	2	0	12068	87.0	2.5	3.3	0.6	5.0	0.4	0.6	0.6	87.0	2.5	10.5		

BAJA CALIFORNIA

17 CARR : ALGODONES - ISLAS AGRARIAS GRUPO B

CLAVE: 02006

RUTA : BC-008

AÑO : 2008

L U G A R	E S T A C I O N				C L A S I F I C A C I O N V E H I C U L A R E N P O R C I E N T O .												
	KM	TE	SC	TDPA	A	B	C2	C3	T3S2	T3S3	T3S2R4	OTROS	A	B	C	K'	D
ALGODONES	0.00	3	0	6027	91.7	2.2	1.9	1.1	0.7	0.5	1.2	0.7	91.7	2.2	6.1	0.067	0.503
T. IZQ. CD. MORELOS	14.00	1	0	5589	89.1	2.8	2.7	1.0	1.1	0.8	1.0	1.5	89.1	2.8	8.1	0.066	0.503
MERIDA	20.30	3	0	2344	81.0	5.0	5.5	3.8	1.6	0.7	2.0	0.4	81.0	5.0	14.0	0.071	0.506
T. IZQ. EJIDO LAZARO CARDENAS	31.50	1	0	2922	80.3	9.4	6.2	1.4	0.8	0.9	0.7	0.3	80.3	9.4	10.3	0.069	0.503
ISLAS AGRARIAS GRUPO B	55.50	1	0	5117	89.0	4.2	2.4	1.3	0.6	0.7	1.2	0.6	89.0	4.2	6.8	0.087	0.502

18 CARR : EJIDO BENITO JUAREZ - EJIDO CHIAPAS

CLAVE: 02501

RUTA : BC-061

AÑO : 2008

L U G A R	E S T A C I O N				C L A S I F I C A C I O N V E H I C U L A R E N P O R C I E N T O .												
	KM	TE	SC	TDPA	A	B	C2	C3	T3S2	T3S3	T3S2R4	OTROS	A	B	C	K'	D
EJIDO BENITO JUAREZ	0.00	3	0	2619	86.8	3.8	3.1	2.1	1.5	0.7	1.4	0.6	86.8	3.8	9.4	0.080	0.504
EJIDO MEXICO	7.00	1	0	1368	85.6	4.0	4.3	2.5	1.2	0.3	1.7	0.4	85.6	4.0	10.4	0.078	0.501
EJIDO CHIAPAS	10.56	1	0	1049	80.7	7.5	5.1	3.1	1.7	0.4	1.4	0.1	80.7	7.5	11.8	0.106	0.508

19 CARR : EJIDO MONTERREY - MAZON

CLAVE: 02004

RUTA : BC-003

AÑO : 2008

L U G A R	E S T A C I O N				C L A S I F I C A C I O N V E H I C U L A R E N P O R C I E N T O .												
	KM	TE	SC	TDPA	A	B	C2	C3	T3S2	T3S3	T3S2R4	OTROS	A	B	C	K'	D
T. C. SONOITA - MEXICALI	0.00	3	0	4792	87.9	2.6	2.4	1.7	2.3	1.1	1.2	0.8	87.9	2.6	9.5	0.087	0.502
X. C. MEXICALI - ALGODONES	15.16	1	0	3736	83.5	5.2	3.4	2.1	1.9	1.3	1.4	1.2	83.5	5.2	11.3	0.086	0.505
X. C. MEXICALI - ALGODONES	15.16	3	0	7402	81.7	4.0	4.4	2.2	2.9	1.3	1.8	1.7	81.7	4.0	14.3	0.075	0.500
GUADALUPE VICTORIA	30.47	1	0	8641	86.1	3.6	3.1	2.4	1.4	1.1	1.3	1.0	86.1	3.6	10.3	0.082	0.501
MAZON	35.00	1	0	5892	77.1	4.6	4.2	4.0	3.8	2.6	2.2	1.5	77.1	4.6	18.3	0.097	0.502

20 CARR : EL FARO - ESTACION COAHUILA

CLAVE: 02013

RUTA : BC-004

AÑO : 2008

L U G A R	E S T A C I O N				C L A S I F I C A C I O N V E H I C U L A R E N P O R C I E N T O .												
	KM	TE	SC	TDPA	A	B	C2	C3	T3S2	T3S3	T3S2R4	OTROS	A	B	C	K'	D
T. C. MEXICALI - SAN FELIPE	0.00	3	0	4573	83.9	5.6	2.8	1.3	2.9	0.9	1.7	0.9	83.9	5.6	10.5	0.080	0.502
X. C. MEXICALI - ESTACION COAHUILA	16.30	1	0	4726	84.2	5.4	1.8	1.3	1.7	2.4	1.8	1.4	84.2	5.4	10.4	0.090	0.501
X. C. MEXICALI - ESTACION COAHUILA	16.30	3	0	9324	79.5	4.6	4.7	4.3	2.1	1.6	1.8	1.4	79.5	4.6	15.9	0.067	0.501
T. IZQ. CARR. EJIDO MONTERREY - MAZON	26.70	3	0	6291	87.3	4.8	1.7	1.8	1.1	0.6	1.8	0.9	87.3	4.8	7.9	0.065	0.502
FRANCISCO MURGUIA	30.00	3	0	4014	86.7	4.3	2.6	0.9	1.0	1.0	1.8	1.7	86.7	4.3	9.0	0.076	0.502
ESTACION COAHUILA	34.50	1	0	6368	89.3	3.5	1.6	1.0	1.6	0.7	1.4	0.9	89.3	3.5	7.2	0.067	0.503

BAJA CALIFORNIA

21 CARR : LA PUERTA - T. C. (MEXICALI - ESTACION COAHUILA)

CLAVE: 02502

RUTA : BC-010

AÑO : 2008

L U G A R	E S T A C I O N				C L A S I F I C A C I O N V E H I C U L A R E N P O R C I E N T O .												
	KM	TE	SC	TDPA	A	B	C2	C3	T3S2	T3S3	T3S2R4	OTROS	A	B	C	K'	D
T. C. MEXICALI - SAN FELIPE	0.00																
ZAKAMOTO	4.60	1	0	2293	88.9	3.9	2.4	1.2	1.8	0.6	0.8	0.4	88.9	3.9	7.2	0.075	0.502
NAYARIT	9.00	3	0	2193	90.4	2.5	3.0	1.8	0.9	0.3	0.6	0.5	90.4	2.5	7.1	0.091	0.503
T. C. MEXICALI - ESTACION COAHUILA	15.00																

22 CARR : MEXICALI - ALGODONES

CLAVE: 02012

RUTA : BC-002

AÑO : 2008

L U G A R	E S T A C I O N				C L A S I F I C A C I O N V E H I C U L A R E N P O R C I E N T O .												
	KM	TE	SC	TDPA	A	B	C2	C3	T3S2	T3S3	T3S2R4	OTROS	A	B	C	K'	D
T. C. MEXICALI - SAN FELIPE	0.00																
EJIDO PUEBLA	12.00	3	0	8825	81.1	3.7	4.8	3.7	2.2	1.6	1.5	1.4	81.1	3.7	15.2	0.070	0.500
T. C. GEOTERMICA - ESTACION DELTA	31.50	1	0	5898	84.6	2.5	4.3	2.2	2.0	1.2	2.0	1.2	84.6	2.5	12.9	0.083	0.502
X. C. MEXICALI - ESTACION COAHUILA	37.70	1	0	6460	86.8	3.2	3.4	2.2	1.3	1.1	1.3	0.7	86.8	3.2	10.0	0.063	0.502
X. C. MEXICALI - ESTACION COAHUILA	37.70	3	0	5456	87.4	3.3	3.0	2.0	1.2	0.8	1.2	1.1	87.4	3.3	9.3	0.086	0.506
X. C. EJIDO MONTERREY - MAZON	49.65	1	0	5293	84.2	4.6	3.3	2.3	1.8	1.3	1.2	1.3	84.2	4.6	11.2	0.068	0.505
X. C. EJIDO MONTERREY - MAZON	49.65	3	0	1935	86.7	4.9	2.6	3.4	1.1	0.9	0.0	0.4	86.7	4.9	8.4	0.063	0.510
T. IZQ. TRES DE MARZO	60.50	1	0	2305	84.8	4.6	4.3	2.0	1.7	0.9	1.0	0.7	84.8	4.6	10.6	0.073	0.500
X. C. SONOITA - MEXICALI	72.00	1	0	2610	87.6	4.4	2.2	1.1	1.8	0.4	2.1	0.4	87.6	4.4	8.0	0.064	0.501
X. C. SONOITA - MEXICALI	72.00	3	0	4098	85.7	5.5	2.1	1.3	1.5	1.3	1.7	0.9	85.7	5.5	8.8	0.069	0.504
PACHUCA	83.00	1	0	4499	84.1	5.2	4.4	2.0	1.6	0.8	1.4	0.5	84.1	5.2	10.7	0.067	0.501
ALGODONES	94.46	1	0	3280	81.8	7.1	4.2	2.5	1.4	0.7	1.5	0.8	81.8	7.1	11.1	0.077	0.502

23 CARR : MEXICALI - ESTACION COAHUILA

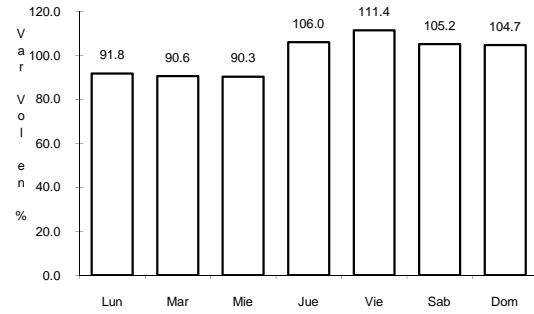
CLAVE: 02016

RUTA : BC-001

AÑO : 2008

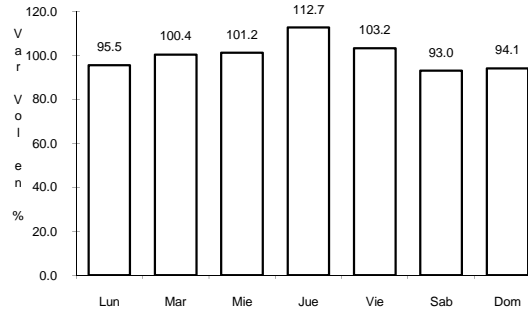
L U G A R	E S T A C I O N				C L A S I F I C A C I O N V E H I C U L A R E N P O R C I E N T O .												
	KM	TE	SC	TDPA	A	B	C2	C3	T3S2	T3S3	T3S2R4	OTROS	A	B	C	K'	D
MEXICALI	0.00	3	1	11830	78.4	4.2	6.5	3.3	2.1	2.4	2.4	0.7	78.4	4.2	17.4	0.083	0.502
MEXICALI	0.00	3	2	11732	78.8	4.5	6.7	3.2	2.1	2.1	2.1	0.5	78.8	4.5	16.7	0.076	0.502
T. IZQ. AEROPUERTO	11.30	1	1	6518	80.5	3.6	7.7	3.3	0.9	2.0	1.2	0.8	80.5	3.6	15.9	0.084	0.503
T. IZQ. AEROPUERTO	11.30	1	2	6590	80.0	3.8	7.1	3.1	2.0	2.1	1.9	0.0	80.0	3.8	16.2	0.090	0.503
ISLAS AGRARIAS GRUPO A	14.10	1	0	13014	80.2	5.2	6.1	1.2	1.8	3.0	1.9	0.6	80.2	5.2	14.6	0.066	0.502
X. C. SONOITA - MEXICALI	30.79	1	0	4942	86.5	3.9	3.4	1.4	1.8	1.4	0.8	0.8	86.5	3.9	9.6	0.081	0.501
X. C. SONOITA - MEXICALI	30.79	3	0	4547	88.8	3.5	2.2	1.4	1.2	1.1	1.3	0.5	88.8	3.5	7.7	0.079	0.502
EJIDO NUEVO LEON	46.83	1	0	6324	73.3	6.4	5.6	3.7	3.5	3.8	1.9	1.8	73.3	6.4	20.3	0.080	0.509
EJIDO NUEVO LEON	46.83	3	0	7801	90.5	2.3	2.4	1.2	0.9	0.8	1.2	0.7	90.5	2.3	7.2	0.065	0.501

4 CARR: MEXICALI - SAN FELIPE



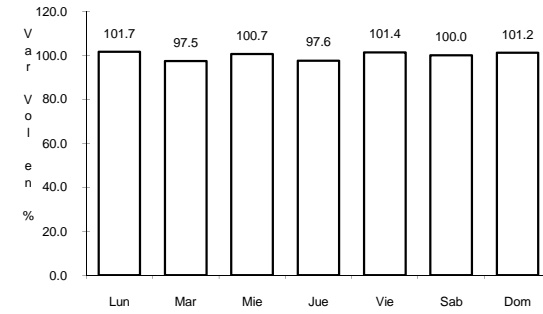
Km: 0.00 Tipo: 3 Sent: 1

CLAVE: 02096



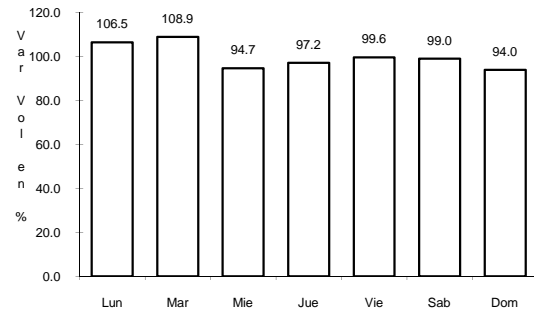
Km: 0.00 Tipo: 3 Sent: 2

RUTA: MEX-005



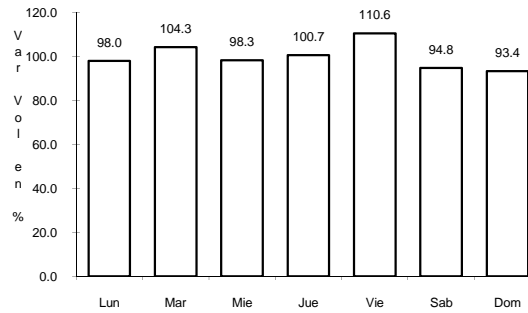
Km: 189.60 Tipo: 1 Sent: 0

5 CARR: MEXICALI - TIJUANA



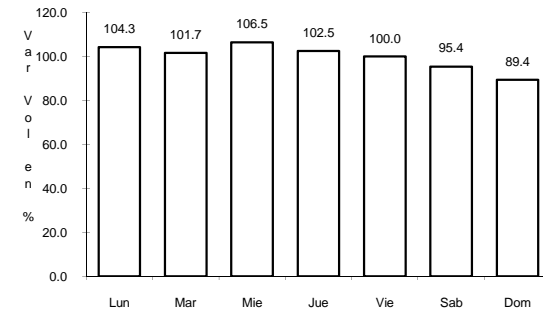
Km: 7.80 Tipo: 3 Sent: 1

CLAVE: 02082



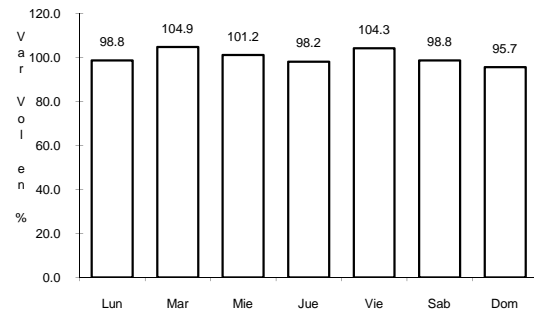
Km: 7.80 Tipo: 3 Sent: 2

RUTA: MEX-002



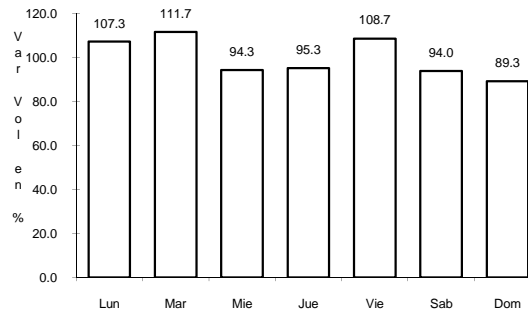
Km: 165.00 Tipo: 3 Sent: 0

6 CARR: PARADOR PUNTA PRIETA - BAHIA DE LOS ANGELES



Km: 0.00 Tipo: 3 Sent: 0

CLAVE: 02322



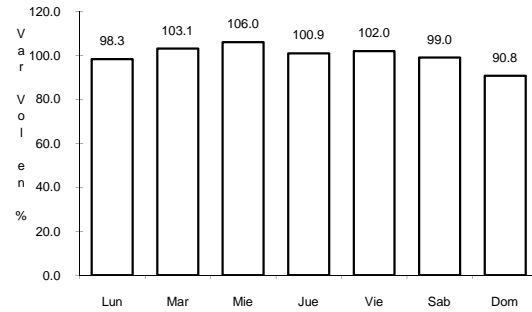
Km: 68.00 Tipo: 1 Sent: 0

RUTA: MEX-012

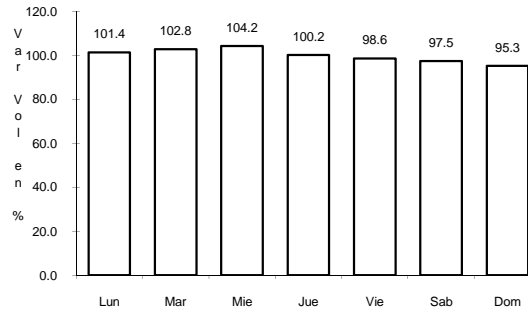
7 CARR: PUNTA PRIETA - GUERRERO NEGRO

CLAVE: 00321

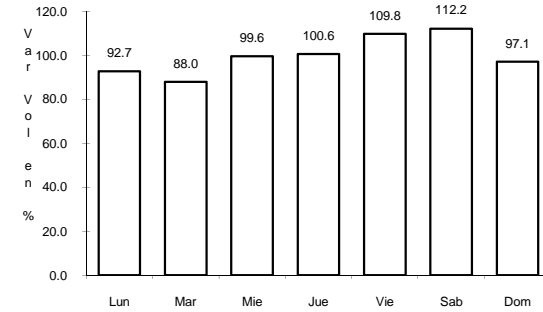
RUTA: MEX-001



Km: 0.00 Tipo: 3 Sent: 0



Km: 70.10 Tipo: 3 Sent: 0

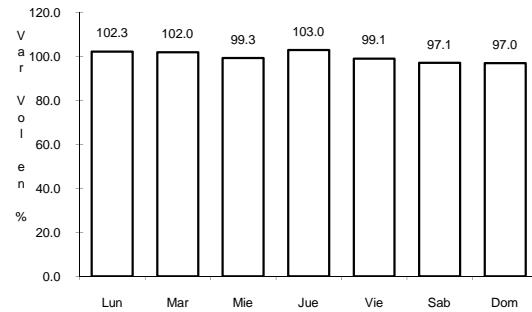


Km: 130.00 Tipo: 1 Sent: 0

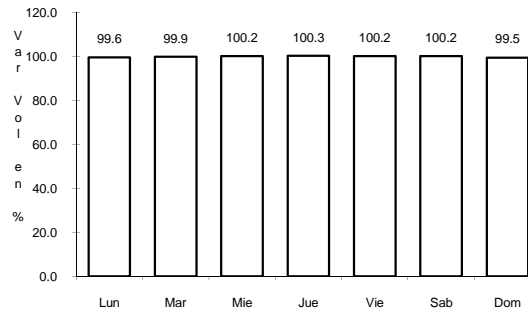
8 CARR: RAMAL A AEROPUERTO DE MEXICALI

CLAVE: 02321

RUTA: MEX



Km: 0.00 Tipo: 3 Sent: 0

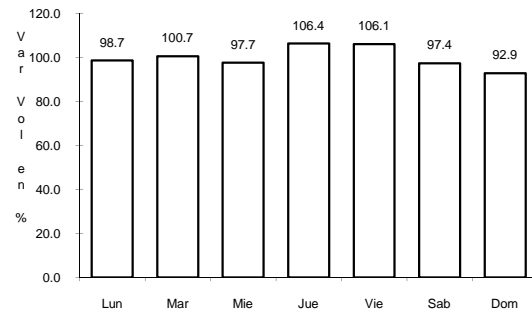


Km: 10.00 Tipo: 1 Sent: 0

9 CARR: RAMAL A SANTA MARIA

CLAVE: 02506

RUTA: MEX

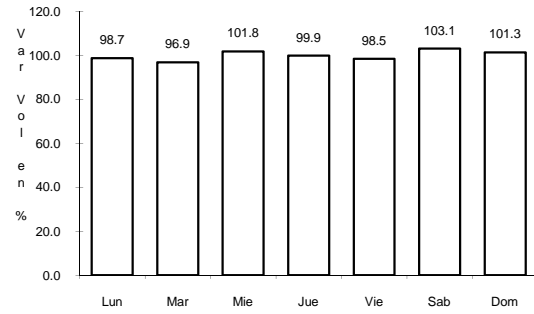


Km: 0.00 Tipo: 3 Sent: 0

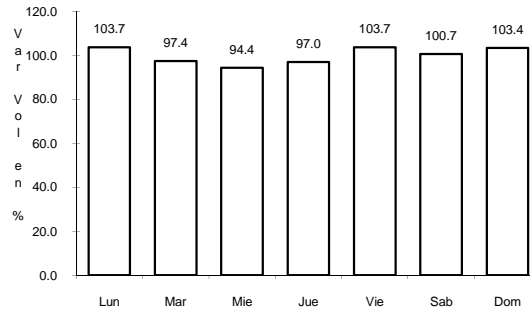
10 CARR: SAN FELIPE - CHAPALA

CLAVE: 02503

RUTA: MEX-005



Km: 0.00 Tipo: 3 Sent: 0

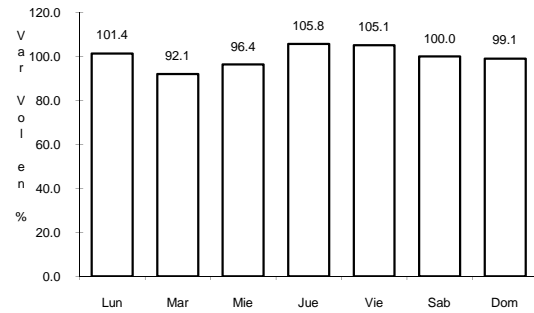


Km: 75.46 Tipo: 3 Sent: 0

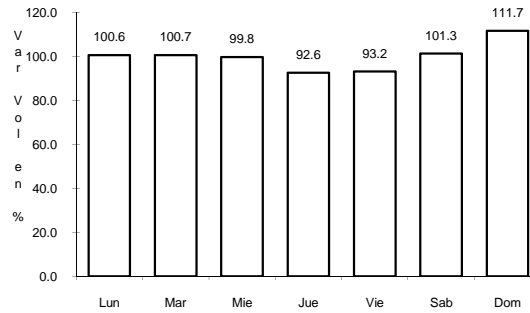
11 CARR: SONOITA - MEXICALI

CLAVE: 00081

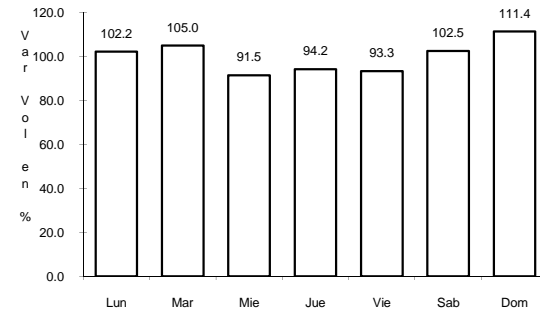
RUTA: MEX-002



Km: 0.00 Tipo: 3 Sent: 0



Km: 256.47 Tipo: 1 Sent: 1

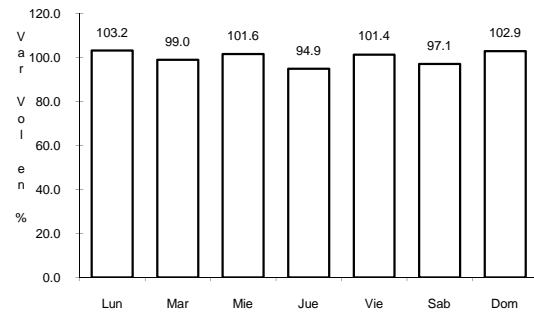


Km: 256.47 Tipo: 1 Sent: 2

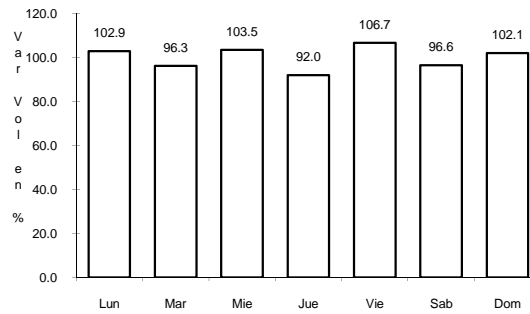
12 CARR: TECATE - EL SAUZAL

CLAVE: 02097

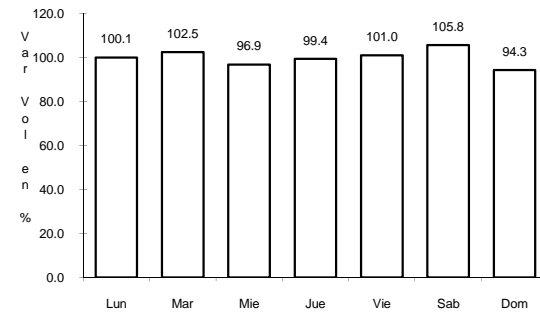
RUTA: MEX-003



Km: 0.00 Tipo: 3 Sent: 0



Km: 48.80 Tipo: 3 Sent: 0

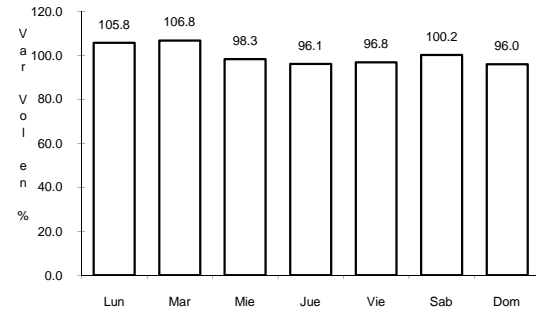


Km: 104.53 Tipo: 1 Sent: 0

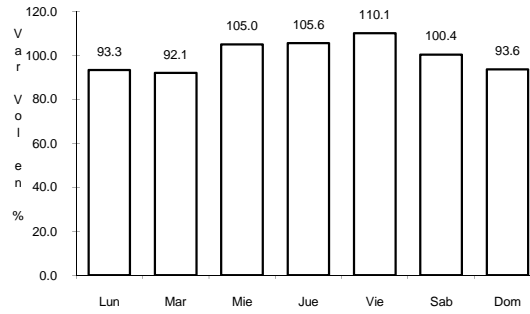
13 CARR: TIJUANA - ENSENADA (LIBRE)

CLAVE: 02099

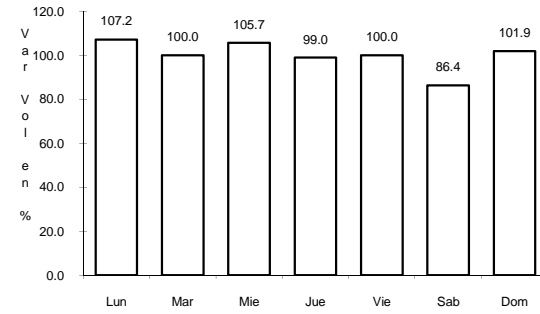
RUTA: MEX-001



Km: 22.00 Tipo: 1 Sent: 1



Km: 22.00 Tipo: 1 Sent: 2

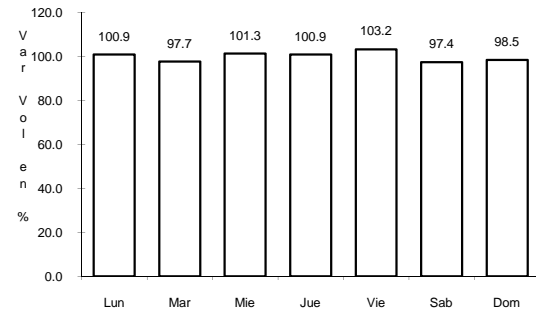


Km: 95.80 Tipo: 1 Sent: 0

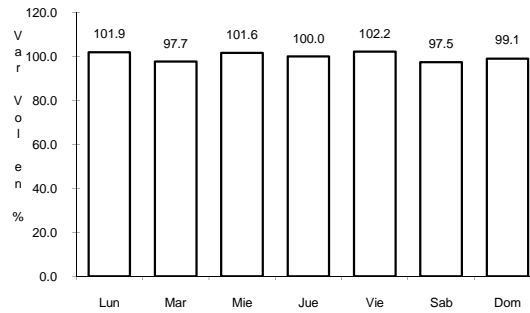
14 CARR: LIBRAMIENTO MEXICALI (CUOTA)

CLAVE:

RUTA: MEX-D



Km: 0.00 Tipo: 3 Sent: 0

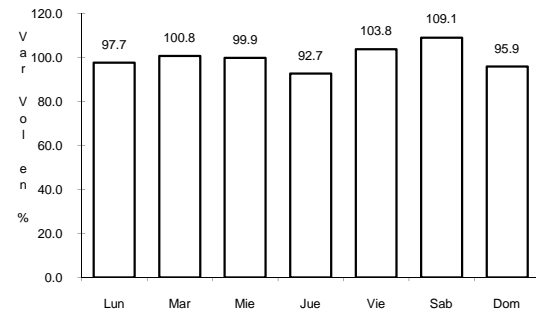


Km: 41.00 Tipo: 1 Sent: 0

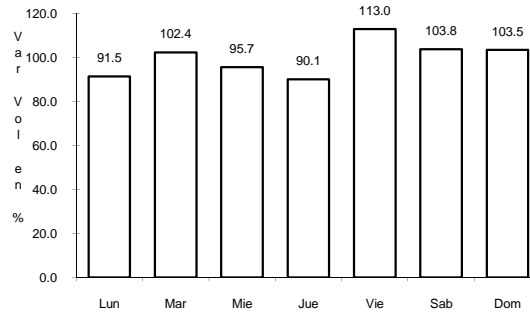
15 CARR: MEXICALI - TIJUANA (CUOTA)

CLAVE: 02011

RUTA: MEX-002D



Km: 19.35 Tipo: 3 Sent: 1

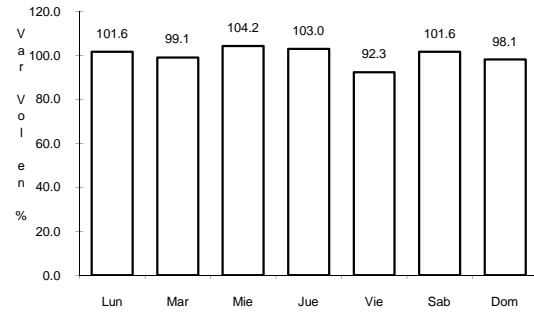


Km: 19.35 Tipo: 3 Sent: 2

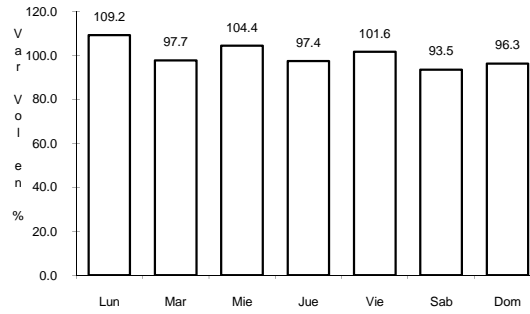
17 CARR: ALGODONES - ISLAS AGRARIAS GRUPO B

CLAVE: 02006

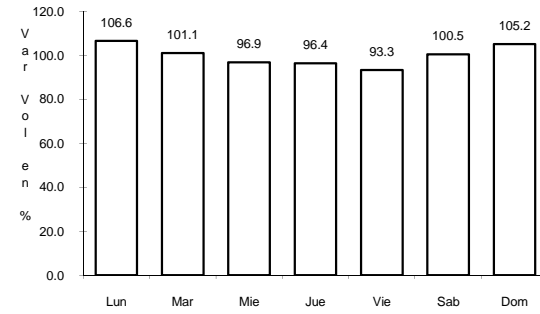
ruta: BC-008



Km: 0.00 Tipo: 3 Sent: 0



Km: 31.50 Tipo: 1 Sent: 0

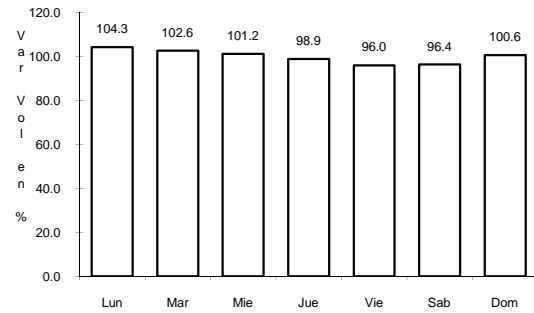


Km: 55.50 Tipo: 1 Sent: 0

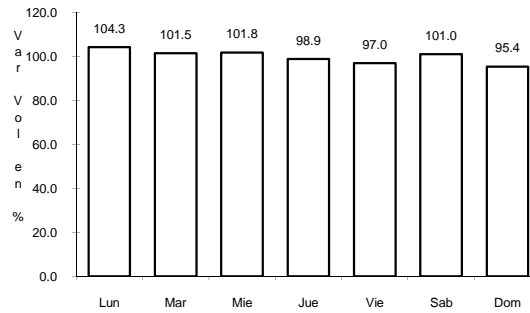
18 CARR: EJIDO BENITO JUAREZ - EJIDO CHIAPAS

CLAVE: 02501

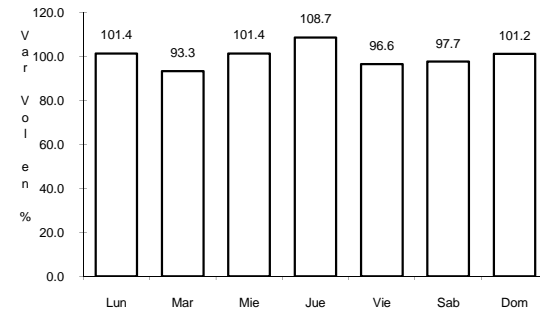
ruta: BC-061



Km: 0.00 Tipo: 3 Sent: 0



Km: 7.00 Tipo: 1 Sent: 0

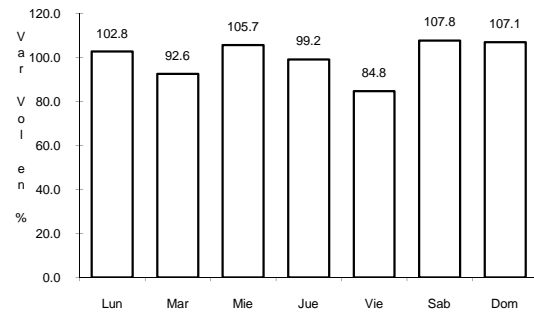


Km: 10.56 Tipo: 1 Sent: 0

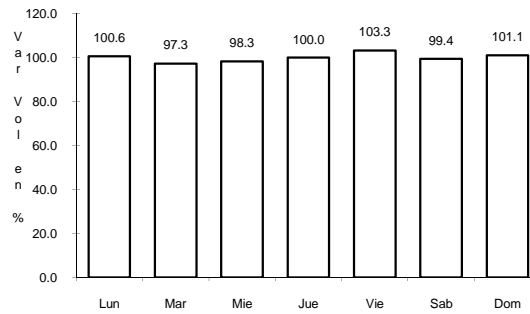
19 CARR: EJIDO MONTERREY - MAZON

CLAVE: 02004

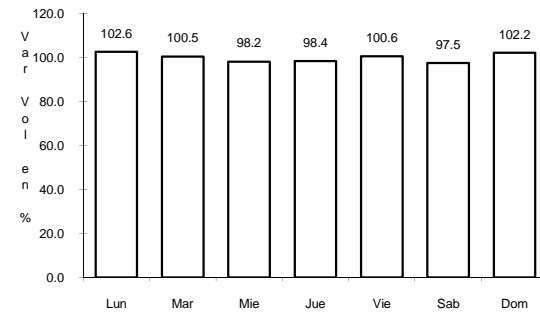
ruta: BC-003



Km: 0.00 Tipo: 3 Sent: 0



Km: 15.16 Tipo: 1 Sent: 0

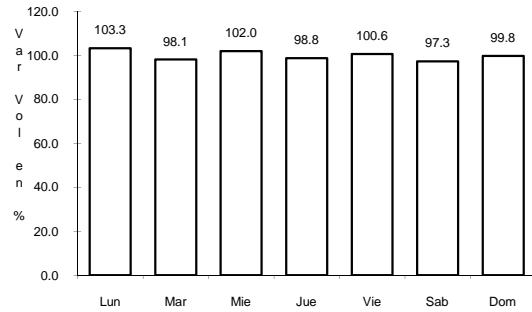


Km: 35.00 Tipo: 1 Sent: 0

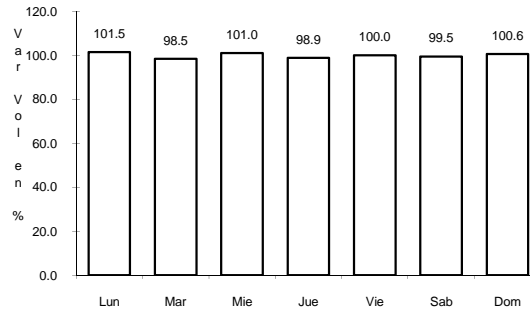
20 CARR: EL FARO - ESTACION COAHUILA

CLAVE: 02013

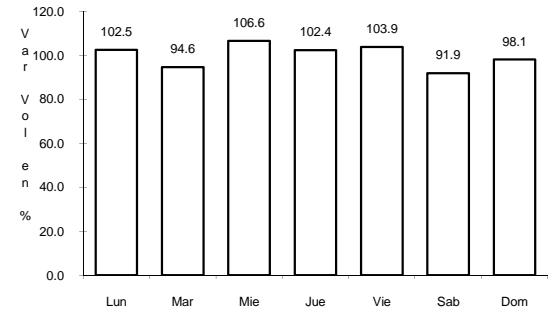
RUTA: BC-004



Km: 0.00 Tipo: 3 Sent: 0



Km: 16.30 Tipo: 1 Sent: 0

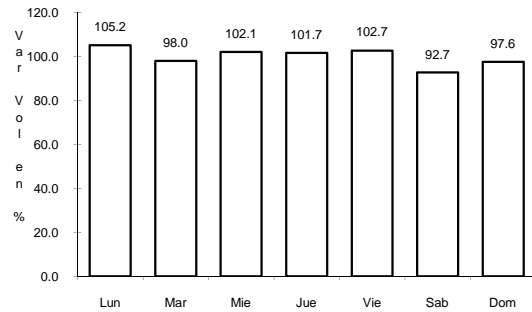


Km: 34.50 Tipo: 1 Sent: 0

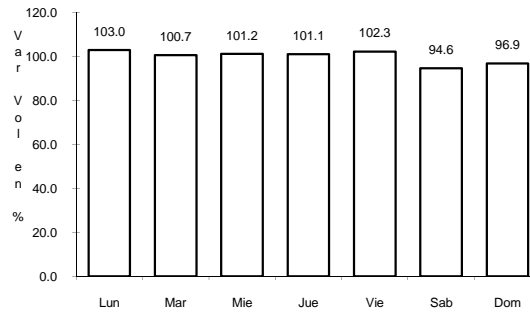
21 CARR: LA PUERTA - T. C. (MEXICALI - ESTACION COAHUILA)

CLAVE: 02502

RUTA: BC-010



Km: 4.60 Tipo: 1 Sent: 0

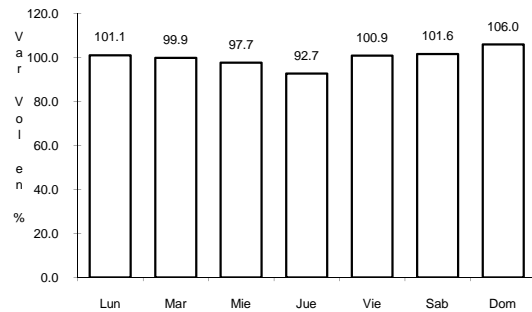


Km: 9.00 Tipo: 3 Sent: 0

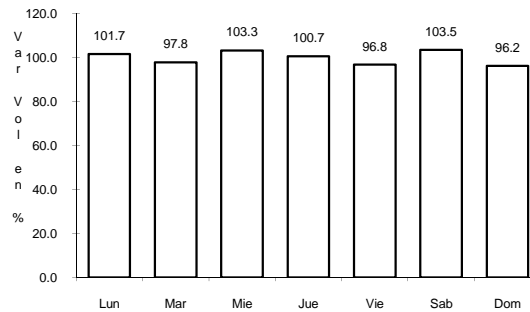
22 CARR: MEXICALI - ALGODONES

CLAVE: 02012

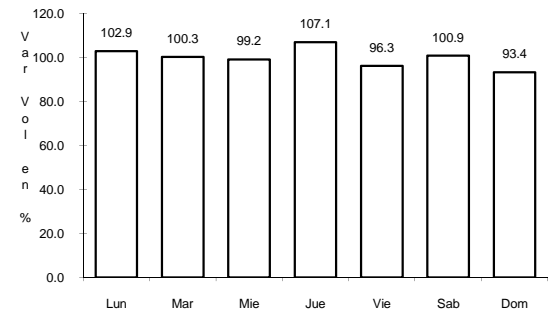
RUTA: BC-002



Km: 12.00 Tipo: 3 Sent: 0



Km: 49.65 Tipo: 1 Sent: 0

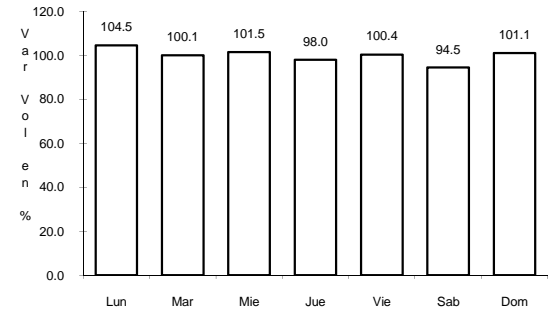
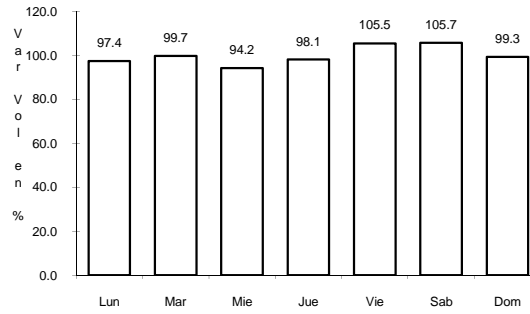
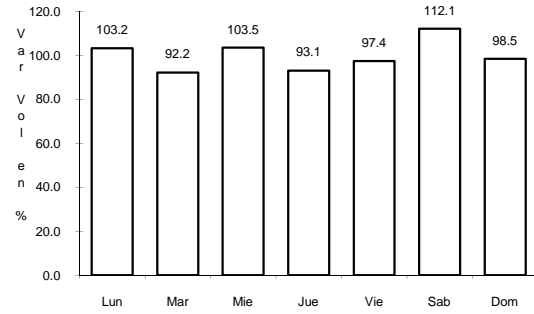


Km: 94.46 Tipo: 1 Sent: 0

23 CARR: MEXICALI - ESTACION COAHUILA

CLAVE: 02016

RUTA: BC-001



Km: 0.00 Tipo: 3 Sent: 1

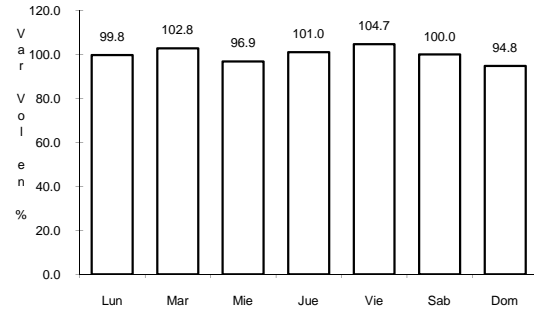
Km: 0.00 Tipo: 3 Sent: 2

Km: 96.65 Tipo: 1 Sent: 0

24 CARR: MEXICALI - PROGRESO

CLAVE: 02507

RUTA: BC-005

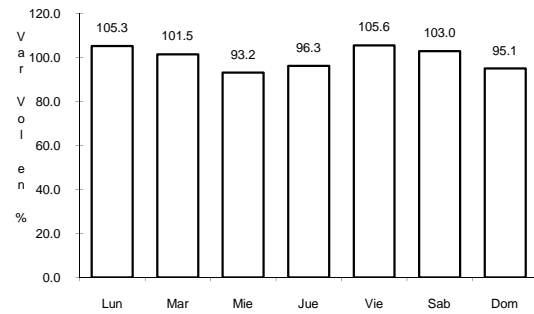


Km: 15.30 Tipo: 1 Sent: 0

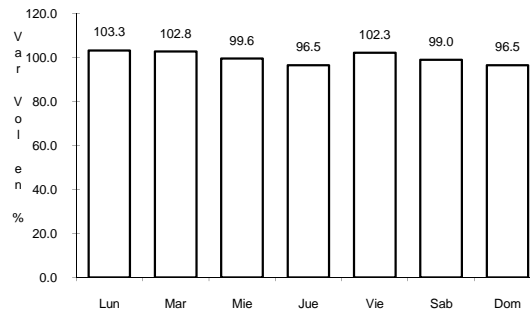
25 CARR: SANTA ROSA - ENT. PACHUCA

CLAVE: 02015

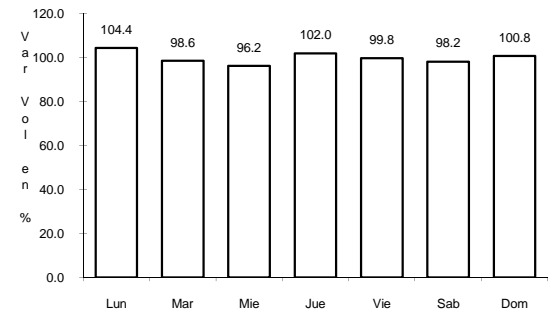
RUTA: BC-006



Km: 0.00 Tipo: 3 Sent: 0



Km: 10.90 Tipo: 3 Sent: 0



Km: 18.00 Tipo: 3 Sent: 0