

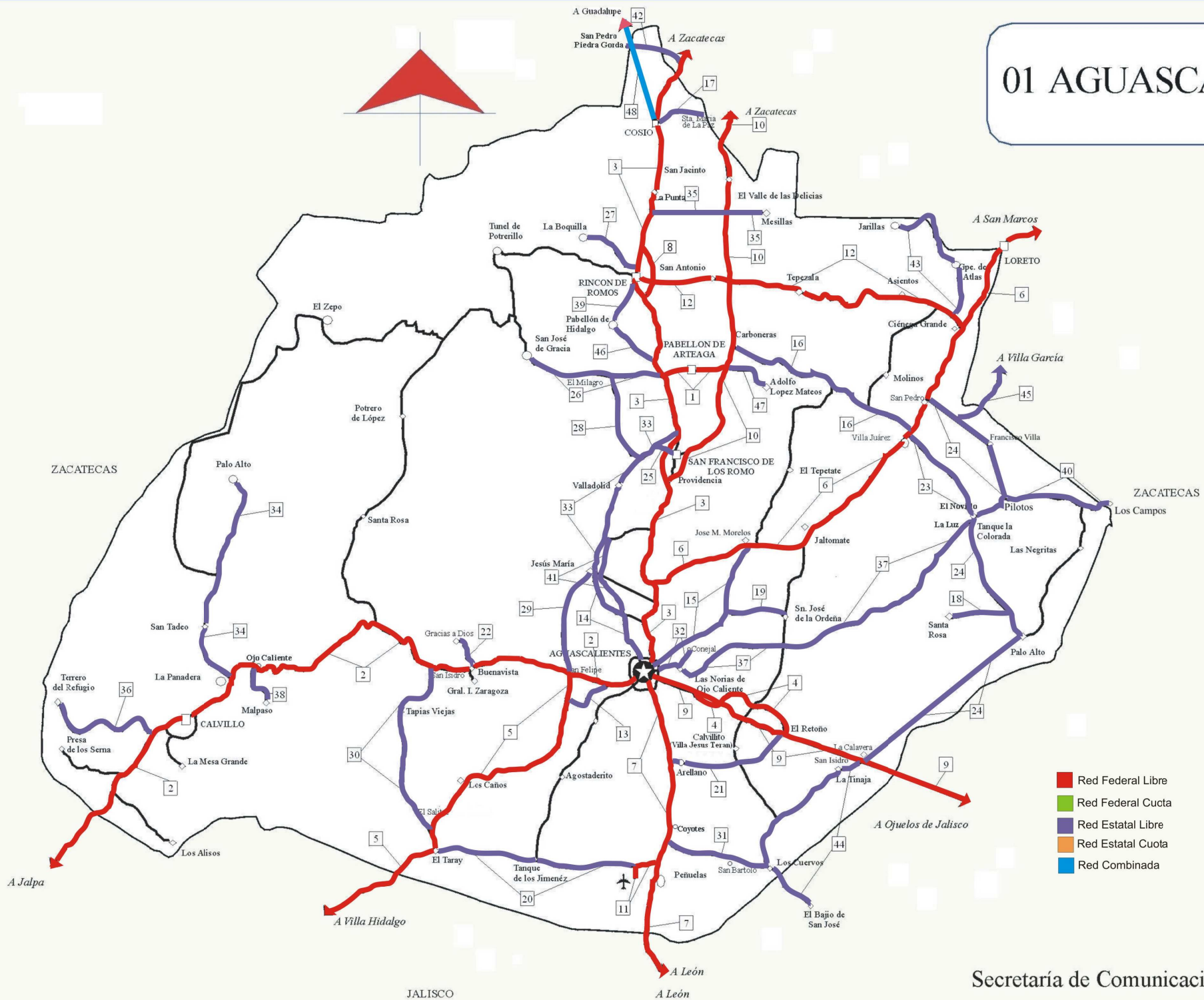
AGUASCALIENTES

Núm. INDICE	CARRETERA	RUTA
<b>---- FEDERAL LIBRE ----</b>		
1	ACCESO A PABELLON DE ARTEAGA	MEX
2	AGUASCALIENTES - JALPA	MEX-070
3	AGUASCALIENTES - ZACATECAS	MEX-045
4	EL RETOÑO - ENT. ASTURIAS	MEX
5	ENT. PENITENCIARIA - VILLA HIDALGO	MEX-071
6	ENT. RIVIER - SAN MARCOS	MEX-066
7	LEON - AGUASCALIENTES	MEX-045
8	LIBRAMIENTO RINCON DE ROMOS	MEX
9	OJUELOS - AGUASCALIENTES	MEX-070
10	PROVIDENCIA - LUIS MOYA	MEX-071
11	RAMAL A AEROPUERTO DE AGUASCALIENTES	MEX
12	RINCON DE ROMOS - CIENEGA GRANDE	MEX-039
<b>---- ESTATAL LIBRE ----</b>		
13	AGUASCALIENTES - ENT. CD. DE LOS NIÑOS	AGS
14	AGUASCALIENTES - JESUS MARIA	AGS-095
15	AGUASCALIENTES - JOSE MARIA MORELOS	AGS
16	CARBONERAS - VILLA JUAREZ	AGS-004
17	COSIO - SANTA MARIA DE LA PAZ	AGS
18	CRUCERO OJO DE AGUA DE CRUCITAS - SANTA ROSA	AGS
19	EL TANQUE - SAN JOSE DE LA ORDEÑA	AGS
20	EL TARAY - T. C.(RAMAL AEROPUERTO DE AGUASCALIENTES)	AGS-002
21	ENT. ARELLANO - EL RETOÑO	AGS
22	ENT. BUENAVISTA - GRACIAS A DIOS	AGS
23	ENT. EL NOVILLO - VILLA JUAREZ	AGS-005
24	ENT. LA CALAVERA - ENT. SAN PEDRO	AGS-043
25	ENT. LA CHIRIDA - SAN FRANCISCO DE LOS ROMOS	AGS
26	ENT. PABELLON DE ART. - SAN JOSE DE GRACIA	AGS-019
27	ENT. RINCON DE ROMOS - LA BOQUILLA	AGS
28	ENT. SAN CARLOS - ENT. EL MILAGRO	AGS-010
29	ENT. SAN FELIPE - JESUS MARIA	AGS
30	ENT. SAN ISIDRO - ENT. EL SALITRE	AGS-016
31	EST. COYOTES - ENT. SAN BARTOLO	AGS-069
32	FRACC. OJO CALIENTE - EL CONEJAL	AGS-079
33	JESUS MARIA - PALOMAS	AGS-018
34	LA PANADERA - PALO ALTO	AGS-017
35	LA PUNTA - MESILLAS	AGS-026
36	LA RINCONADA - EL TERRERO DEL REFUGIO	AGS-007
37	LAS NORIAS DE OJO CALIENTE - LA LUZ	AGS-068
38	OJO CALIENTE - MALPASO	AGS
39	PABELLON DE HIDALGO - RINCON DE ROMOS	AGS
40	PILOTOS - LOS CAMPOS	AGS-030
41	POCITOS - GRANJA MIRAVALLE	AGS-053
42	RAMAL A SAN PEDRO PIEDRA GORDA	ZAC-AGS
43	SAN GIL - JARILLAS	AGS-012-ZAC
44	SAN ISIDRO EL GRANDE - BAJIO DE SAN JOSE	AGS-036
45	SAN RAFAEL - VILLA GARCIA	AGS-ZAC
46	SANTA ROSA - PABELLON DE HIDALGO	AGS
47	VIÑEDOS DE CALIFORNIA - ADOLFO LOPEZ MATEOS	AGS
<b>---- COMBINADA ----</b>		
48	COSIO - GUADALUPE	MEX-ZAC

# 01 AGUASCALIENTES

MAPA INDICE

15 Num. Indice  
2009



AGUASCALIENTES

1 CARR : ACCESO A PABELLON DE ARTEAGA

CLAVE: 01113

RUTA : MEX

AÑO : 2008

L U G A R	E S T A C I O N				C L A S I F I C A C I O N V E H I C U L A R E N P O R C I E N T O .												
	KM	TE	SC	TDPA	A	B	C2	C3	T3S2	T3S3	T3S2R4	OTROS	A	B	C	K'	D
T. C. AGUASCALIENTES - ZACATECAS	0.00	3	1	4198	85.7	2.1	1.8	1.2	3.7	1.9	1.0	2.6	85.7	2.1	12.2	0.072	0.506
T. C. AGUASCALIENTES - ZACATECAS	0.00	3	2	4106	83.9	2.3	2.3	1.7	4.0	1.7	1.8	2.3	83.9	2.3	13.8	0.077	0.506
PABELLON DE ARTEAGA	1.80	1	1	4881	80.8	3.2	2.5	1.9	3.4	3.1	1.6	3.5	80.8	3.2	16.0	0.115	0.514
PABELLON DE ARTEAGA	1.80	1	2	5159	82.6	3.1	2.4	1.7	3.1	3.0	1.4	2.7	82.6	3.1	14.3	0.123	0.514
T. C. PROVIDENCIA - LUIS MOYA	4.70																

2 CARR : AGUASCALIENTES - JALPA

CLAVE: 00095

RUTA : MEX-070

AÑO : 2008

L U G A R	E S T A C I O N				C L A S I F I C A C I O N V E H I C U L A R E N P O R C I E N T O .												
	KM	TE	SC	TDPA	A	B	C2	C3	T3S2	T3S3	T3S2R4	OTROS	A	B	C	K'	D
AGUASCALIENTES	0.00	3	1	9596	76.2	3.3	1.8	1.4	8.7	1.6	3.7	3.3	76.2	3.3	20.5	0.098	0.551
AGUASCALIENTES	0.00	3	2	9643	66.9	3.0	2.1	1.6	6.9	3.8	9.8	5.9	66.9	3.0	30.1	0.082	0.551
T. IZQ. VILLA HIDALGO	7.80	3	0	8992	86.8	3.5	4.7	2.3	0.9	1.2	0.5	0.1	86.8	3.5	9.7	0.079	0.501
T. DER. GRACIAS A DIOS	20.00	3	0	5235	84.6	3.0	2.7	1.7	4.2	1.3	0.9	1.6	84.6	3.0	12.4	0.125	0.510
T. IZQ. MALPASO	45.10	1	0	5403	89.1	2.6	2.3	1.0	2.8	0.6	0.8	0.8	89.1	2.6	8.3	0.088	0.502
T. DER. PRESA LA CODORNIZ	49.30	3	1	5925	86.6	3.7	4.3	2.5	1.1	0.8	1.0	0.0	86.6	3.7	9.7	0.085	0.501
T. DER. PRESA LA CODORNIZ	49.30	3	2	5908	87.0	3.6	4.0	2.6	0.8	0.7	1.1	0.2	87.0	3.6	9.4	0.081	0.501
CALVILLO	52.30	3	0	7469	85.8	4.6	3.4	2.2	1.1	1.9	0.9	0.1	85.8	4.6	9.6	0.077	0.502
T. DER. JALTICHE DE ABAJO	63.80	3	0	2119	86.0	3.5	2.4	2.5	2.3	1.8	0.8	0.7	86.0	3.5	10.5	0.091	0.503
LIM. EDOS. TERM. AGS. PPIA. ZAC.	66.00																
T. C. GUADALAJARA - ZACATECAS	91.10	1	0	4954	82.2	7.1	2.4	1.7	3.1	1.2	0.8	1.5	82.2	7.1	10.7	0.073	0.500

3 CARR : AGUASCALIENTES - ZACATECAS

CLAVE: 00524

RUTA : MEX-045

AÑO : 2008

L U G A R	E S T A C I O N				C L A S I F I C A C I O N V E H I C U L A R E N P O R C I E N T O .												
	KM	TE	SC	TDPA	A	B	C2	C3	T3S2	T3S3	T3S2R4	OTROS	A	B	C	K'	D
AGUASCALIENTES	0.00																
T. IZQ. POCITOS	6.00	1	1	18988	66.7	3.0	1.1	1.6	6.1	4.6	11.7	5.2	66.7	3.0	30.3	0.087	0.505
T. IZQ. POCITOS	6.00	1	2	18577	72.9	3.0	1.3	1.8	5.9	3.6	6.3	5.2	72.9	3.0	24.1	0.085	0.505
T. DER. LORETO	9.83	3	1	13451	55.3	4.2	1.7	2.5	9.3	4.8	18.0	4.2	55.3	4.2	40.5	0.070	0.503
T. DER. LORETO	9.83	3	2	13295	52.0	4.0	1.6	2.5	6.3	5.8	22.7	5.1	52.0	4.0	44.0	0.069	0.503
SANTA FE	16.00	3	1	13159	73.9	4.5	2.3	3.3	6.7	2.5	3.8	3.0	73.9	4.5	21.6	0.092	0.504
SANTA FE	16.00	3	2	12934	74.6	4.5	2.2	3.5	5.7	2.3	3.8	3.4	74.6	4.5	20.9	0.096	0.504
SAN FRANCISCO DE LOS ROMO	22.73	1	1	10019	77.9	3.6	2.7	3.3	5.9	2.2	2.6	1.8	77.9	3.6	18.5	0.073	0.501
SAN FRANCISCO DE LOS ROMO	22.73	1	2	10046	78.0	3.5	2.8	3.3	5.9	1.9	2.7	1.9	78.0	3.5	18.5	0.076	0.501

AGUASCALIENTES

3 CARR : AGUASCALIENTES - ZACATECAS

CLAVE: 00524

RUTA : MEX-045

AÑO : 2008

L U G A R	E S T A C I O N				C L A S I F I C A C I O N V E H I C U L A R E N P O R C I E N T O .												
	KM	TE	SC	TDPA	A	B	C2	C3	T3S2	T3S3	T3S2R4	OTROS	A	B	C	K'	D
T. DER. ESTACION PABELLON	31.00	1	1	8745	77.7	3.0	2.6	3.4	4.7	1.6	3.7	3.3	77.7	3.0	19.3	0.090	0.516
T. DER. ESTACION PABELLON	31.00	1	2	8201	72.7	3.0	4.2	6.4	4.5	1.7	4.0	3.5	72.7	3.0	24.3	0.085	0.516
T. DER. ESTACION PABELLON	31.00	3	1	7667	72.6	0.0	4.0	5.8	7.2	3.8	3.3	3.3	72.6	0.0	27.4	0.097	0.503
T. DER. ESTACION PABELLON	31.00	3	2	7571	71.2	0.0	4.3	5.6	7.2	4.1	3.8	3.8	71.2	0.0	28.8	0.101	0.503
RINCON DE ROMOS	40.90	3	0	6348	83.1	3.6	4.4	1.7	2.8	1.6	1.1	1.7	83.1	3.6	13.3	0.076	0.503
LA PUNTA	51.00	1	0	8435	87.3	4.0	3.5	1.5	1.9	1.3	0.4	0.1	87.3	4.0	8.7	0.094	0.534
COSIO	56.00	3	0	6596	75.6	4.0	2.3	3.7	7.9	3.4	2.3	0.8	75.6	4.0	20.4	0.080	0.517
LIM. EDOS. TERM. AGS. PPIA. ZAC.	62.15																
LUIS MOYA	65.80	3	0	5097	83.6	3.7	4.0	2.2	3.2	1.6	1.2	0.5	83.6	3.7	12.7	0.088	0.501
T. DER. SAN LUIS POTOSI	100.00	1	0	5084	77.4	2.9	2.0	2.4	7.3	3.1	3.8	1.1	77.4	2.9	19.7	0.080	0.501
T. DER. SAN LUIS POTOSI	100.00	3	1	5107	63.6	3.6	4.0	5.8	10.5	4.6	5.0	2.9	63.6	3.6	32.8	0.077	0.516
T. DER. SAN LUIS POTOSI	100.00	3	2	4798	62.4	4.5	4.6	5.3	10.6	4.7	5.1	2.8	62.4	4.5	33.1	0.081	0.516
T. IZQ. AGUASCALIENTES (CUOTA)	113.50	1	1	8217	71.5	3.0	3.5	4.1	7.0	3.6	4.1	3.2	71.5	3.0	25.5	0.073	0.502
T. IZQ. AGUASCALIENTES (CUOTA)	113.50	1	2	8279	69.0	4.0	4.3	4.6	7.3	3.6	4.1	3.1	69.0	4.0	27.0	0.075	0.502
T. IZQ. LIBRAMIENTO DE GUADALUPE Y ZACATECAS	118.20	1	1	10881	75.7	4.5	1.6	3.6	4.4	1.5	5.2	3.5	75.7	4.5	19.8	0.075	0.530
T. IZQ. LIBRAMIENTO DE GUADALUPE Y ZACATECAS	118.20	1	2	12292	81.6	4.3	2.6	2.7	3.9	1.3	1.6	2.0	81.6	4.3	14.1	0.071	0.530
ZACATECAS	126.80																

4 CARR : EL RETOÑO - ENT. ASTURIAS

CLAVE: 01124

RUTA : MEX

AÑO : 2008

L U G A R	E S T A C I O N				C L A S I F I C A C I O N V E H I C U L A R E N P O R C I E N T O .												
	KM	TE	SC	TDPA	A	B	C2	C3	T3S2	T3S3	T3S2R4	OTROS	A	B	C	K'	D
EL RETOÑO	0.00	3	0	410	91.8	2.7	1.2	3.4	0.5	0.1	0.1	0.2	91.8	2.7	5.5	0.110	0.524
ENT. ASTURIAS	8.40	1	0	3037	81.4	3.3	5.9	4.3	2.1	1.7	1.2	0.1	81.4	3.3	15.3	0.082	0.502

5 CARR : ENT. PENITENCIARIA - VILLA HIDALGO

CLAVE: 00120

RUTA : MEX-071

AÑO : 2008

L U G A R	E S T A C I O N				C L A S I F I C A C I O N V E H I C U L A R E N P O R C I E N T O .												
	KM	TE	SC	TDPA	A	B	C2	C3	T3S2	T3S3	T3S2R4	OTROS	A	B	C	K'	D
T. C. AGUASCALIENTES - JALPA	0.00	3	0	3774	80.6	3.4	5.8	2.3	3.8	1.3	1.4	1.4	80.6	3.4	16.0	0.084	0.523
T. IZQ. EL NIAGARA	9.20	3	0	2393	83.7	5.0	1.0	2.3	2.8	1.4	1.3	2.5	83.7	5.0	11.3	0.088	0.503
EL TARAY	27.00	3	0	2367	90.7	3.6	3.3	1.4	0.0	0.0	0.0	1.0	90.7	3.6	5.7	0.132	0.506
LIM. EDOS. TERM. AGS. PPIA. JAL.	30.00																
VILLA HIDALGO	38.00	1	0	2900	88.4	3.1	3.2	2.2	0.9	1.1	0.7	0.4	88.4	3.1	8.5	0.105	0.504

AGUASCALIENTES

6 CARR : ENT. RIVIER - SAN MARCOS

CLAVE: 00285

RUTA : MEX-066

AÑO : 2008

L U G A R	E S T A C I O N				C L A S I F I C A C I O N V E H I C U L A R E N P O R C I E N T O .												
	KM	TE	SC	TDPA	A	B	C2	C3	T3S2	T3S3	T3S2R4	OTROS	A	B	C	K'	D
T. C. AGUASCALIENTES - ZACATECAS	0.00	3	0	12186	73.2	3.6	3.4	2.6	6.3	2.1	5.9	2.9	73.2	3.6	23.2	0.062	0.536
T. IZQ. EL TEPETATE	10.50	3	0	7288	79.8	5.9	4.7	2.6	1.2	1.3	1.9	2.6	79.8	5.9	14.3	0.067	0.502
T. DER. JILOTEPEC	23.60	3	0	6579	85.7	3.8	2.3	2.9	2.5	0.5	1.0	1.3	85.7	3.8	10.5	0.076	0.503
VILLA JUAREZ	30.00	3	0	6809	76.9	5.6	2.8	1.8	4.5	2.7	2.7	3.0	76.9	5.6	17.5	0.085	0.502
CIENEGA GRANDE	41.50	1	0	6619	85.3	2.7	3.8	2.6	3.3	0.6	0.7	1.0	85.3	2.7	12.0	0.074	0.502
CIENEGA GRANDE	41.50	3	0	5945	76.6	3.8	4.6	3.6	5.0	2.1	1.7	2.6	76.6	3.8	19.6	0.073	0.502
LIM. EDOS. TERM. AGS. PPIA. ZAC.	45.75																
SAN MARCOS	56.00	1	0	6994	80.2	3.0	2.2	1.8	5.5	2.4	2.4	2.5	80.2	3.0	16.8	0.074	0.503

7 CARR : LEON - AGUASCALIENTES

CLAVE: 00167

RUTA : MEX-045

AÑO : 2008

L U G A R	E S T A C I O N				C L A S I F I C A C I O N V E H I C U L A R E N P O R C I E N T O .												
	KM	TE	SC	TDPA	A	B	C2	C3	T3S2	T3S3	T3S2R4	OTROS	A	B	C	K'	D
LEON	0.00																
T. DER. LIBRAMIENTO DE LEON	11.00	1	0	10051	81.0	3.6	2.6	3.2	4.0	1.8	1.4	2.4	81.0	3.6	15.4	0.067	0.508
T. DER. LIBRAMIENTO DE LEON	11.00	3	0	9796	73.8	6.1	9.0	6.3	2.6	0.7	0.6	0.9	73.8	6.1	20.1	0.104	0.517
T. IZQ. CENTRO DE LEON	12.00	3	1	4808	63.2	6.6	3.8	6.1	9.2	4.1	3.6	3.4	63.2	6.6	30.2	0.086	0.509
T. IZQ. CENTRO DE LEON	12.00	3	2	4992	64.6	6.0	4.0	5.4	9.1	3.9	3.6	3.4	64.6	6.0	29.4	0.095	0.509
LIM. EDOS. TERM. GTO. PPIA. JAL.	16.00																
X. C. SAN LUIS POTOSI - LAGOS DE MORENO	44.18	1	0	7611	75.8	5.6	4.0	4.2	4.9	1.7	1.3	2.5	75.8	5.6	18.6	0.084	0.501
ENCARNACION DE DIAZ	88.20	1	0	8319	80.6	4.9	4.9	2.3	2.8	1.3	0.8	2.4	80.6	4.9	14.5	0.090	0.516
T. IZQ. LIBRAMIENTO DE ENCARNACION DE DIAZ	89.18	3	0	7120	66.6	4.0	3.3	4.5	7.9	4.1	7.7	1.9	66.6	4.0	29.4	0.080	0.505
LIM. EDOS. TERM. JAL. PPIA. AGS.	104.20																
T. IZQ. AEROPUERTO DE AGUASCALIENTES	110.20	1	1	8007	63.1	4.5	4.4	7.5	9.3	3.1	6.6	1.5	63.1	4.5	32.4	0.070	0.505
T. IZQ. AEROPUERTO DE AGUASCALIENTES	110.20	1	2	7841	61.2	4.2	4.7	7.9	9.5	4.0	6.2	2.3	61.2	4.2	34.6	0.067	0.505
T. IZQ. AEROPUERTO DE AGUASCALIENTES	111.00	3	1	11091	69.2	6.2	3.5	4.9	6.3	2.7	5.2	2.0	69.2	6.2	24.6	0.062	0.502
T. IZQ. AEROPUERTO DE AGUASCALIENTES	111.00	3	2	10999	70.9	6.0	3.4	4.8	6.2	2.3	4.7	1.7	70.9	6.0	23.1	0.067	0.502
T. DER. ESTACION ARELLANO	118.40	3	1	12354	69.3	6.0	1.3	3.2	8.1	3.3	5.3	3.5	69.3	6.0	24.7	0.073	0.502
T. DER. ESTACION ARELLANO	118.40	3	2	12263	71.5	6.0	1.3	2.9	7.7	3.2	4.7	2.7	71.5	6.0	22.5	0.071	0.502
AGUASCALIENTES	129.40	1	1	16290	73.2	6.0	5.0	1.5	3.5	2.7	1.5	6.6	73.2	6.0	20.8	0.072	0.512
AGUASCALIENTES	129.40	1	2	15544	74.2	6.2	5.7	1.3	2.7	2.4	2.3	5.2	74.2	6.2	19.6	0.079	0.512

AGUASCALIENTES

8 CARR : LIBRAMIENTO RINCON DE ROMOS

CLAVE:

RUTA : MEX

AÑO : 2008

L U G A R	E S T A C I O N				C L A S I F I C A C I O N V E H I C U L A R E N P O R C I E N T O .												
	KM	TE	SC	TDPA	A	B	C2	C3	T3S2	T3S3	T3S2R4	OTROS	A	B	C	K'	D
T. C. AGUASCALIENTES - ZACATECAS	0.00	3	1	4033	85.5	3.3	4.0	1.3	1.6	1.4	0.7	2.2	85.5	3.3	11.2	0.077	0.504
T. C. AGUASCALIENTES - ZACATECAS	0.00	3	2	4211	83.3	3.4	4.1	1.4	1.8	2.0	1.0	3.0	83.3	3.4	13.3	0.075	0.504
T. C. AGUASCALIENTES - ZACATECAS	10.00	1	0	9212	81.5	4.2	2.1	1.3	2.5	3.4	2.5	2.5	81.5	4.2	14.3	0.073	0.504

9 CARR : OJUELOS - AGUASCALIENTES

CLAVE: 00094

RUTA : MEX-070

AÑO : 2008

L U G A R	E S T A C I O N				C L A S I F I C A C I O N V E H I C U L A R E N P O R C I E N T O .												
	KM	TE	SC	TDPA	A	B	C2	C3	T3S2	T3S3	T3S2R4	OTROS	A	B	C	K'	D
OJUELOS	0.00	3	0	3510	82.0	4.4	4.5	3.3	1.5	1.4	0.5	2.4	82.0	4.4	13.6	0.075	0.502
MATANCILLAS	6.92	3	0	2475	72.6	2.6	4.4	5.3	6.5	4.2	2.9	1.5	72.6	2.6	24.8	0.080	0.510
VERGEL	40.70	3	0	3685	76.9	3.8	3.0	3.6	3.1	2.8	5.0	1.8	76.9	3.8	19.3	0.091	0.507
LIM. EDOS. TERM. JAL. PPIA. AGS.	56.00																
T. DER. PALO ALTO	60.80	1	0	4769	73.5	3.3	4.5	3.6	6.7	2.8	3.3	2.3	73.5	3.3	23.2	0.069	0.509
EL RETOÑO	68.00	1	0	5485	78.3	4.0	3.7	2.9	4.7	2.2	1.9	2.3	78.3	4.0	17.7	0.079	0.508
T. C. EL RETOÑO - ASTURIAS	78.00	1	0	8354	75.1	3.2	5.2	4.6	4.4	2.7	2.2	2.6	75.1	3.2	21.7	0.080	0.503
T. C. EL RETOÑO - ASTURIAS	78.00	3	0	7736	81.7	2.3	3.4	1.9	4.9	1.7	1.9	2.2	81.7	2.3	16.0	0.087	0.536
SALTO DEL OJO CALIENTE	81.00	1	1	7320	79.2	4.4	3.5	1.7	4.2	1.8	1.5	3.7	79.2	4.4	16.4	0.121	0.520
SALTO DEL OJO CALIENTE	81.00	1	2	6746	77.6	4.5	3.1	1.5	4.1	3.4	1.3	4.5	77.6	4.5	17.9	0.103	0.520

10 CARR : PROVIDENCIA - LUIS MOYA

CLAVE: 00112

RUTA : MEX-071

AÑO : 2008

L U G A R	E S T A C I O N				C L A S I F I C A C I O N V E H I C U L A R E N P O R C I E N T O .												
	KM	TE	SC	TDPA	A	B	C2	C3	T3S2	T3S3	T3S2R4	OTROS	A	B	C	K'	D
T. C. AGUASCALIENTES - ZACATECAS	0.00	3	0	8597	75.7	4.2	1.8	1.4	4.3	3.6	4.3	4.7	75.7	4.2	20.1	0.078	0.501
T. IZQ. PABELLON DE ARTEAGA	12.10	1	0	3676	73.9	5.5	3.6	2.4	4.0	4.0	4.5	2.1	73.9	5.5	20.6	0.085	0.510
T. DER. VILLA JUAREZ	14.90	3	0	5395	76.9	4.5	2.7	3.3	4.4	3.2	2.7	2.3	76.9	4.5	18.6	0.070	0.504
X. C. RINCON DE ROMOS - CIENEGA GRANDE	21.22	3	0	4407	76.4	6.0	2.9	2.9	4.0	2.6	2.5	2.7	76.4	6.0	17.6	0.069	0.502
X. C. LA PUNTA - MESILLAS	30.35	3	0	3728	79.1	3.4	2.8	2.7	3.7	3.5	2.8	2.0	79.1	3.4	17.5	0.080	0.506
SAN JACINTO	34.25	3	0	3723	83.8	2.3	4.5	2.2	1.8	2.5	2.4	0.5	83.8	2.3	13.9	0.067	0.501
LIM. EDOS. TERM. AGS. PPIA. ZAC.	37.48																
LUIS MOYA	43.50	1	0	3391	88.9	3.2	1.3	1.4	2.4	0.7	1.2	0.9	88.9	3.2	7.9	0.089	0.540

AGUASCALIENTES

11 CARR : RAMAL A AEROPUERTO DE AGUASCALIENTES

CLAVE: 01116

RUTA : MEX

AÑO : 2008

L U G A R	E S T A C I O N				C L A S I F I C A C I O N V E H I C U L A R E N P O R C I E N T O .												
	KM	TE	SC	TDPA	A	B	C2	C3	T3S2	T3S3	T3S2R4	OTROS	A	B	C	K'	D
T. C. LEON - AGUASCALIENTES	0.00																
AEROPUERTO	6.10	1	1	1355	95.7	1.1	2.0	0.8	0.2	0.1	0.1	0.0	95.7	1.1	3.2	0.106	0.502
AEROPUERTO	6.10	1	2	1343	96.2	0.9	1.8	0.5	0.1	0.2	0.1	0.2	96.2	0.9	2.9	0.103	0.502

12 CARR : RINCON DE ROMOS - CIENEGA GRANDE

CLAVE: 01002

RUTA : MEX-039

AÑO : 2008

L U G A R	E S T A C I O N				C L A S I F I C A C I O N V E H I C U L A R E N P O R C I E N T O .												
	KM	TE	SC	TDPA	A	B	C2	C3	T3S2	T3S3	T3S2R4	OTROS	A	B	C	K'	D
RINCON DE ROMOS	0.00	3	0	10068	84.1	4.0	2.4	2.1	2.6	2.2	2.1	0.5	84.1	4.0	11.9	0.086	0.511
X. C. PROVIDENCIA - LUIS MOYA	8.00	3	0	2552	82.9	4.3	4.1	2.7	2.4	2.0	1.3	0.3	82.9	4.3	12.8	0.094	0.503
TEPEZALA	15.00	3	0	979	79.0	4.7	6.0	2.5	3.3	1.9	2.0	0.6	79.0	4.7	16.3	0.136	0.514
ASIENTOS	27.70	3	0	1577	78.5	3.8	3.3	1.7	3.8	4.6	4.0	0.3	78.5	3.8	17.7	0.118	0.514
CIENEGA GRANDE	36.00	1	0	3275	84.5	3.0	3.1	2.0	3.0	1.8	0.8	1.8	84.5	3.0	12.5	0.070	0.504

13 CARR : AGUASCALIENTES - ENT. CD. DE LOS NIÑOS

CLAVE: 01130

RUTA : AGS

AÑO : 2008

L U G A R	E S T A C I O N				C L A S I F I C A C I O N V E H I C U L A R E N P O R C I E N T O .												
	KM	TE	SC	TDPA	A	B	C2	C3	T3S2	T3S3	T3S2R4	OTROS	A	B	C	K'	D
T. C. AGUASCALIENTES - JALPA	0.00	3	0	4725	81.3	4.3	3.2	3.2	2.1	1.9	1.7	2.3	81.3	4.3	14.4	0.073	0.501
T. C. ENT. PENITENCIARIA - VILLA HIDALGO	8.00	1	0	1842	75.7	4.5	1.8	1.3	4.2	3.6	4.3	4.6	75.7	4.5	19.8	0.120	0.500

14 CARR : AGUASCALIENTES - JESUS MARIA

CLAVE: 01112

RUTA : AGS-095

AÑO : 2008

L U G A R	E S T A C I O N				C L A S I F I C A C I O N V E H I C U L A R E N P O R C I E N T O .												
	KM	TE	SC	TDPA	A	B	C2	C3	T3S2	T3S3	T3S2R4	OTROS	A	B	C	K'	D
T. C. AGUASCALIENTES - ZACATECAS	0.00																
POCITOS	3.30	3	1	13394	68.8	3.1	0.8	1.0	5.6	4.1	10.8	5.8	68.8	3.1	28.1	0.074	0.502
POCITOS	3.30	3	2	13280	71.4	3.0	0.9	0.9	6.5	3.3	8.5	5.5	71.4	3.0	25.6	0.073	0.502
T. DER. MARAVILLAS	7.00	3	1	7511	89.8	2.6	3.3	1.7	0.6	0.4	0.7	0.9	89.8	2.6	7.6	0.091	0.503
T. DER. MARAVILLAS	7.00	3	2	7587	89.8	2.5	3.3	1.5	0.7	0.1	1.1	1.0	89.8	2.5	7.7	0.083	0.503
JESUS MARIA	8.10	1	1	11461	80.9	4.8	0.9	1.1	5.3	1.6	2.4	3.0	80.9	4.8	14.3	0.094	0.510
JESUS MARIA	8.10	1	2	11019	84.5	4.6	1.0	0.7	3.8	0.9	1.2	3.3	84.5	4.6	10.9	0.092	0.510





AGUASCALIENTES

20 CARR : EL TARAY - T. C.(RAMAL AEROPUERTO DE AGUASCALIENTES)

CLAVE: 01121

RUTA : AGS-002

AÑO : 2008

L U G A R	E S T A C I O N				CLASIFICACION VEHICULAR EN PORCIENTO .												
	KM	TE	SC	TDPA	A	B	C2	C3	T3S2	T3S3	T3S2R4	OTROS	A	B	C	K'	D
T. C. ENT. PENITENCIARIA - VILLA HIDALGO	0.00	3	0	612	89.2	3.0	6.2	1.4	0.2	0.0	0.0	0.0	89.2	3.0	7.8	0.098	0.517
T. C. RAMAL AEROPUERTO DE AGUASCALIENTES	22.00	1	0	969	89.7	3.6	2.0	1.9	1.1	0.3	0.8	0.6	89.7	3.6	6.7	0.085	0.509

21 CARR : ENT. ARELLANO - EL RETOÑO

CLAVE:

RUTA : AGS

AÑO : 2008

L U G A R	E S T A C I O N				CLASIFICACION VEHICULAR EN PORCIENTO .												
	KM	TE	SC	TDPA	A	B	C2	C3	T3S2	T3S3	T3S2R4	OTROS	A	B	C	K'	D
T. C. LEON - AGUASCALIENTES	0.00	3	0	2079	81.9	6.1	2.2	3.8	2.8	0.7	1.9	0.6	81.9	6.1	12.0	0.076	0.505
T. C. OJUELOS - AGUASCALIENTES	5.70	1	0	1110	85.2	2.2	2.8	3.6	4.0	1.2	0.6	0.4	85.2	2.2	12.6	0.063	0.516
T.IZQ. VILLA JESUS TERAN (CALVILLITO)	12.20	1	0	2325	80.6	3.5	2.9	7.3	2.6	0.7	1.8	0.6	80.6	3.5	15.9	0.076	0.507
T.IZQ. VILLA JESUS TERAN (CALVILLITO)	12.20	3	0	813	83.6	0.2	4.1	5.1	4.6	1.2	0.7	0.5	83.6	0.2	16.2	0.084	0.518
EL RETOÑO	16.20																

22 CARR : ENT. BUENAVISTA - GRACIAS A DIOS

CLAVE: 01138

RUTA : AGS

AÑO : 2008

L U G A R	E S T A C I O N				CLASIFICACION VEHICULAR EN PORCIENTO .												
	KM	TE	SC	TDPA	A	B	C2	C3	T3S2	T3S3	T3S2R4	OTROS	A	B	C	K'	D
T. C. AGUASCALIENTES - JALPA	0.00	3	0	1068	83.4	7.2	3.3	2.8	1.5	1.4	0.3	0.1	83.4	7.2	9.4	0.096	0.501
GRACIAS A DIOS	6.30																

23 CARR : ENT. EL NOVILLO - VILLA JUAREZ

CLAVE: 01103

RUTA : AGS-005

AÑO : 2008

L U G A R	E S T A C I O N				CLASIFICACION VEHICULAR EN PORCIENTO .												
	KM	TE	SC	TDPA	A	B	C2	C3	T3S2	T3S3	T3S2R4	OTROS	A	B	C	K'	D
T. C. ENT. LA CALAVERA - ENT. SAN PEDRO	0.00																
VILLA JUAREZ	12.60	1	0	1644	89.7	3.4	2.0	2.5	1.0	0.2	0.9	0.3	89.7	3.4	6.9	0.112	0.501

24 CARR : ENT. LA CALAVERA - ENT. SAN PEDRO

CLAVE: 01102

RUTA : AGS-043

AÑO : 2008

L U G A R	E S T A C I O N				CLASIFICACION VEHICULAR EN PORCIENTO .												
	KM	TE	SC	TDPA	A	B	C2	C3	T3S2	T3S3	T3S2R4	OTROS	A	B	C	K'	D
T. C. OJUELOS - AGUASCALIENTES	0.00	3	0	2343	83.2	6.2	3.8	2.6	2.1	0.6	0.6	0.9	83.2	6.2	10.6	0.080	0.507
T. DER. PALO ALTO	15.00	1	0	2094	84.2	6.9	4.8	1.7	0.1	0.1	1.8	0.4	84.2	6.9	8.9	0.119	0.508
T. DER. PALO ALTO	15.00	3	0	2154	88.2	5.0	2.1	1.2	1.5	0.3	0.6	1.1	88.2	5.0	6.8	0.080	0.514
T. IZQ. ENT. EL NOVILLO - VILLA JUAREZ	28.10	1	0	1907	79.3	5.2	5.2	5.3	2.4	0.9	0.5	1.2	79.3	5.2	15.5	0.099	0.509

AGUASCALIENTES

24 CARR : ENT. LA CALAVERA - ENT. SAN PEDRO

CLAVE: 01102

RUTA : AGS-043

AÑO : 2008

L U G A R	E S T A C I O N				C L A S I F I C A C I O N V E H I C U L A R E N P O R C I E N T O .												
	KM	TE	SC	TDPA	A	B	C2	C3	T3S2	T3S3	T3S2R4	OTROS	A	B	C	K'	D
T. IZQ. ENT. EL NOVILLO - VILLA JUAREZ	28.10	3	0	1728	84.2	6.4	5.4	2.4	1.0	0.2	0.4	0.0	84.2	6.4	9.4	0.099	0.501
PILOTOS	33.50	3	0	1420	86.6	6.9	1.3	2.7	1.2	0.2	0.2	0.9	86.6	6.9	6.5	0.078	0.504
T. C. RIVIER - SAN MARCOS	47.60	1	0	2368	83.3	4.4	3.7	2.9	2.3	1.1	0.9	1.4	83.3	4.4	12.3	0.075	0.507

25 CARR : ENT. LA CHIRIDA - SAN FRANCISCO DE LOS ROMOS

CLAVE: 01016

RUTA : AGS

AÑO : 2008

L U G A R	E S T A C I O N				C L A S I F I C A C I O N V E H I C U L A R E N P O R C I E N T O .												
	KM	TE	SC	TDPA	A	B	C2	C3	T3S2	T3S3	T3S2R4	OTROS	A	B	C	K'	D
T. C. JESUS MARIA - PALOMAS	0.00																
T. C. EL HUIZACHE - ANT. MORELOS	0.00	3	0	2440	82.5	1.5	2.5	8.6	2.1	1.1	1.5	0.2	82.5	1.5	16.0	0.092	0.501
SAN FRANCISCO DE LOS ROMO	1.50	1	0	2271	88.2	6.1	4.3	1.2	0.0	0.0	0.0	0.2	88.2	6.1	5.7	0.096	0.503

26 CARR : ENT. PABELLON DE ART. - SAN JOSE DE GRACIA

CLAVE: 01031

RUTA : AGS-019

AÑO : 2008

L U G A R	E S T A C I O N				C L A S I F I C A C I O N V E H I C U L A R E N P O R C I E N T O .												
	KM	TE	SC	TDPA	A	B	C2	C3	T3S2	T3S3	T3S2R4	OTROS	A	B	C	K'	D
T. C. AGUASCALIENTES - ZACATECAS	0.00	3	0	4807	80.5	4.0	3.2	2.1	4.0	1.6	1.8	2.8	80.5	4.0	15.5	0.095	0.506
T. DER. LA CIENEGUITA	10.00	3	0	2449	82.7	4.1	4.6	1.2	2.7	1.6	0.8	2.3	82.7	4.1	13.2	0.129	0.503
SAN JOSE DE GRACIA	13.80	1	0	2760	93.3	2.4	2.8	1.1	0.2	0.1	0.1	0.0	93.3	2.4	4.3	0.121	0.503

27 CARR : ENT. RINCON DE ROMOS - LA BOQUILLA

CLAVE: 01139

RUTA : AGS

AÑO : 2008

L U G A R	E S T A C I O N				C L A S I F I C A C I O N V E H I C U L A R E N P O R C I E N T O .												
	KM	TE	SC	TDPA	A	B	C2	C3	T3S2	T3S3	T3S2R4	OTROS	A	B	C	K'	D
T. C. AGUASCALIENTES - ZACATECAS	0.00	3	0	1410	84.6	2.6	2.2	1.8	2.4	3.0	2.5	0.9	84.6	2.6	12.8	0.099	0.501
LA BOQUILLA	6.90																

28 CARR : ENT. SAN CARLOS - ENT. EL MILAGRO

CLAVE: 01141

RUTA : AGS-010

AÑO : 2008

L U G A R	E S T A C I O N				C L A S I F I C A C I O N V E H I C U L A R E N P O R C I E N T O .												
	KM	TE	SC	TDPA	A	B	C2	C3	T3S2	T3S3	T3S2R4	OTROS	A	B	C	K'	D
T. C. JESUS MARIA - PALOMAS	0.00	3	0	1560	91.7	2.5	3.7	1.1	0.4	0.3	0.2	0.1	91.7	2.5	5.8	0.098	0.502
T. C. (T. C-(AGS. - ZAC.)- SAN JOSE DE GRACIA)	13.60	1	0	1042	89.5	2.1	3.1	2.1	0.8	0.7	0.2	1.5	89.5	2.1	8.4	0.089	0.503

AGUASCALIENTES

29 CARR : ENT. SAN FELIPE - JESUS MARIA

CLAVE: 01144

RUTA : AGS

AÑO : 2008

L U G A R	E S T A C I O N				C L A S I F I C A C I O N V E H I C U L A R E N P O R C I E N T O .												
	KM	TE	SC	TDPA	A	B	C2	C3	T3S2	T3S3	T3S2R4	OTROS	A	B	C	K'	D
T. C. AGUASCALIENTES - JALPA	0.00	3	0	4321	86.9	5.1	3.7	2.0	1.2	0.9	0.1	0.1	86.9	5.1	8.0	0.084	0.503
JESUS MARIA	12.70	1	0	4356	89.3	3.5	4.1	1.7	0.4	0.8	0.1	0.1	89.3	3.5	7.2	0.092	0.504

30 CARR : ENT. SAN ISIDRO - ENT. EL SALITRE

CLAVE: 01142

RUTA : AGS-016

AÑO : 2008

L U G A R	E S T A C I O N				C L A S I F I C A C I O N V E H I C U L A R E N P O R C I E N T O .												
	KM	TE	SC	TDPA	A	B	C2	C3	T3S2	T3S3	T3S2R4	OTROS	A	B	C	K'	D
T. C. AGUASCALIENTES - JALPA	0.00	3	0	1695	89.0	5.3	2.6	0.8	1.4	0.2	0.2	0.5	89.0	5.3	5.7	0.097	0.505
T. C. ENT. PENITENCIARIA - VILLA HIDALGO	20.40	1	0	1819	91.8	4.2	1.3	2.1	0.3	0.1	0.0	0.2	91.8	4.2	4.0	0.110	0.512

31 CARR : EST. COYOTES - ENT. SAN BARTOLO

CLAVE: 01134

RUTA : AGS-069

AÑO : 2008

L U G A R	E S T A C I O N				C L A S I F I C A C I O N V E H I C U L A R E N P O R C I E N T O .												
	KM	TE	SC	TDPA	A	B	C2	C3	T3S2	T3S3	T3S2R4	OTROS	A	B	C	K'	D
T. C. LEON - AGUASCALIENTES	0.00	3	0	2370	83.2	3.2	3.4	5.3	2.2	0.6	1.6	0.5	83.2	3.2	13.6	0.088	0.506
T. C. SAN ISIDRO EL GRANDE - BAJIO DE SAN JOSE	13.10																

32 CARR : FRACC. OJO CALIENTE - EL CONEJAL

CLAVE: 01129

RUTA : AGS-079

AÑO : 2008

L U G A R	E S T A C I O N				C L A S I F I C A C I O N V E H I C U L A R E N P O R C I E N T O .												
	KM	TE	SC	TDPA	A	B	C2	C3	T3S2	T3S3	T3S2R4	OTROS	A	B	C	K'	D
FRACC. OJO CALIENTE	0.00																
LAS NORIAS DE OJO CALIENTE	3.50	1	0	3421	83.3	4.4	2.6	1.8	3.7	1.0	1.3	1.9	83.3	4.4	12.3	0.123	0.505
LAS NORIAS DE OJO CALIENTE	3.50	3	0	1342	82.2	3.8	4.6	2.4	2.2	1.2	0.8	2.8	82.2	3.8	14.0	0.090	0.512
EL CONEJAL	7.50																

33 CARR : JESUS MARIA - PALOMAS

CLAVE: 01018

RUTA : AGS-018

AÑO : 2008

L U G A R	E S T A C I O N				C L A S I F I C A C I O N V E H I C U L A R E N P O R C I E N T O .												
	KM	TE	SC	TDPA	A	B	C2	C3	T3S2	T3S3	T3S2R4	OTROS	A	B	C	K'	D
JESUS MARIA	0.00	3	0	6399	85.7	4.7	2.8	0.9	3.9	0.4	0.8	0.8	85.7	4.7	9.6	0.113	0.501
VALLADOLID	7.30	3	0	2820	84.8	6.0	4.8	2.8	0.7	0.4	0.3	0.2	84.8	6.0	9.2	0.091	0.506
PALOMAS	21.70	1	0	1414	91.1	2.8	3.8	2.3	0.0	0.0	0.0	0.0	91.1	2.8	6.1	0.095	0.504

AGUASCALIENTES

34 CARR : LA PANADERA - PALO ALTO

CLAVE: 01105

RUTA : AGS-017

AÑO : 2008

L U G A R	E S T A C I O N				C L A S I F I C A C I O N V E H I C U L A R E N P O R C I E N T O .												
	KM	TE	SC	TDPA	A	B	C2	C3	T3S2	T3S3	T3S2R4	OTROS	A	B	C	K'	D
T. C. AGUASCALIENTES - JALPA	0.00	3	0	2929	86.7	2.6	0.5	1.5	4.5	0.9	1.6	1.7	86.7	2.6	10.7	0.081	0.503
T. IZQ. LA ORDEÑA	8.40	3	0	1833	87.2	3.2	4.1	3.6	1.0	0.6	0.3	0.0	87.2	3.2	9.6	0.089	0.501
LA LABOR	12.80	3	0	1140	87.6	4.1	3.4	3.6	1.0	0.3	0.0	0.0	87.6	4.1	8.3	0.086	0.502
PALO ALTO	23.30	1	0	1239	85.8	3.9	5.0	3.9	1.0	0.3	0.1	0.0	85.8	3.9	10.3	0.082	0.508

35 CARR : LA PUNTA - MESILLAS

CLAVE: 01104

RUTA : AGS-026

AÑO : 2008

L U G A R	E S T A C I O N				C L A S I F I C A C I O N V E H I C U L A R E N P O R C I E N T O .												
	KM	TE	SC	TDPA	A	B	C2	C3	T3S2	T3S3	T3S2R4	OTROS	A	B	C	K'	D
T. C. AGUASCALIENTES - ZACATECAS	0.00	3	0	1428	92.6	2.1	0.9	1.0	1.1	0.2	1.5	0.6	92.6	2.1	5.3	0.076	0.504
X. C. PROVIDENCIA - LUIS MOYA	6.50	3	0	1713	82.9	6.1	5.0	2.4	2.4	1.1	0.1	0.0	82.9	6.1	11.0	0.095	0.505
MESILLAS	13.50	1	0	1618	82.5	5.1	4.2	2.5	2.8	1.3	0.7	0.9	82.5	5.1	12.4	0.093	0.507

36 CARR : LA RINCONADA - EL TERRERO DEL REFUGIO

CLAVE: 01133

RUTA : AGS-007

AÑO : 2008

L U G A R	E S T A C I O N				C L A S I F I C A C I O N V E H I C U L A R E N P O R C I E N T O .												
	KM	TE	SC	TDPA	A	B	C2	C3	T3S2	T3S3	T3S2R4	OTROS	A	B	C	K'	D
T. C. AGUASCALIENTES - JALPA	0.00	3	0	1178	89.3	5.4	2.1	0.8	1.0	0.7	0.4	0.3	89.3	5.4	5.3	0.094	0.501
EL TERRERO DEL REFUGIO	15.00																

37 CARR : LAS NORIAS DE OJO CALIENTE - LA LUZ

CLAVE: 01122

RUTA : AGS-068

AÑO : 2008

L U G A R	E S T A C I O N				C L A S I F I C A C I O N V E H I C U L A R E N P O R C I E N T O .												
	KM	TE	SC	TDPA	A	B	C2	C3	T3S2	T3S3	T3S2R4	OTROS	A	B	C	K'	D
LAS NORIAS DE OJO CALIENTE	0.00	3	0	1862	85.0	3.1	3.4	1.9	3.5	0.5	1.1	1.5	85.0	3.1	11.9	0.083	0.503
T. DER. SANDOVALES	10.50	3	0	1544	86.2	3.3	3.8	3.5	1.6	0.3	1.1	0.2	86.2	3.3	10.5	0.087	0.510
LA LUZ	27.60	1	0	1431	87.3	3.4	3.1	3.5	1.5	0.1	0.5	0.6	87.3	3.4	9.3	0.083	0.501

38 CARR : OJO CALIENTE - MALPASO

CLAVE: 01123

RUTA : AGS

AÑO : 2008

L U G A R	E S T A C I O N				C L A S I F I C A C I O N V E H I C U L A R E N P O R C I E N T O .												
	KM	TE	SC	TDPA	A	B	C2	C3	T3S2	T3S3	T3S2R4	OTROS	A	B	C	K'	D
T. C. AGUASCALIENTES - JALPA	0.00	3	0	1978	91.9	4.2	0.4	0.3	2.2	0.2	0.2	0.6	91.9	4.2	3.9	0.108	0.532
MALPASO	3.10																
MALPASO	3.10	1	0	1728	87.8	3.5	3.5	3.2	0.8	0.6	0.6	0.0	87.8	3.5	8.7	0.093	0.511





AGUASCALIENTES

48 CARR : COSIO - GUADALUPE

CLAVE:

RUTA : MEX-ZAC

AÑO : 2008

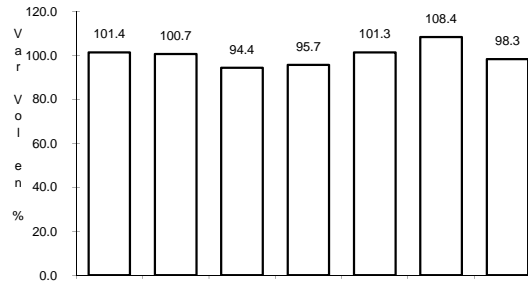
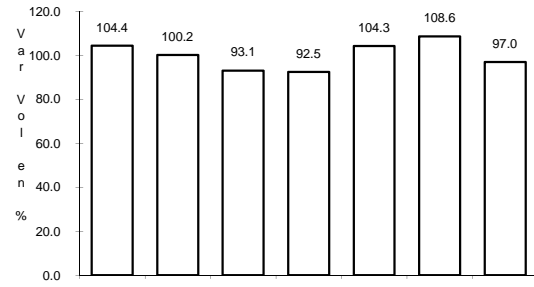
L U G A R	E S T A C I O N				C L A S I F I C A C I O N V E H I C U L A R E N P O R C I E N T O .												
	KM	TE	SC	TDPA	A	B	C2	C3	T3S2	T3S3	T3S2R4	OTROS	A	B	C	K'	D
T.C.(ENT. CUAUHTEMOC - ENT. OSIRIS (CUOTA))	0.00	3	0	1259	90.8	3.0	2.5	2.2	0.9	0.3	0.1	0.2	90.8	3.0	6.2	0.095	0.504
T.C. LIBRAMIENTO DE GUADALUPE - ZACATECAS	38.00	1	0	7605	73.0	3.6	4.3	2.6	6.5	3.0	3.9	3.1	73.0	3.6	23.4	0.081	0.514



1 CARR: ACCESO A PABELLON DE ARTEAGA

CLAVE: 01113

RUTA: MEX



Km: 0.00

Tipo: 3

Sent: 1

Km: 0.00

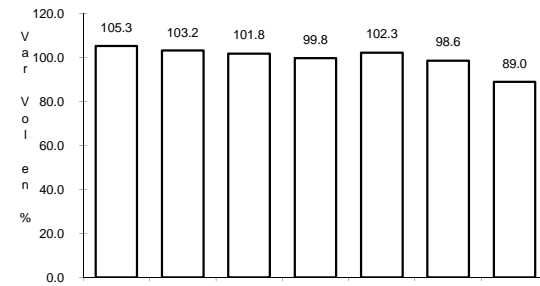
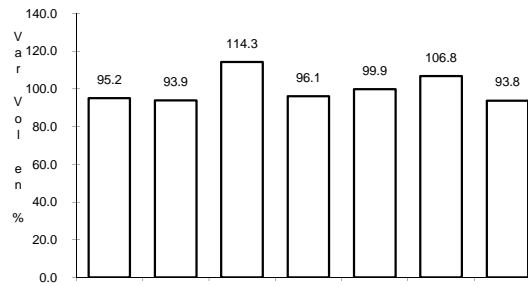
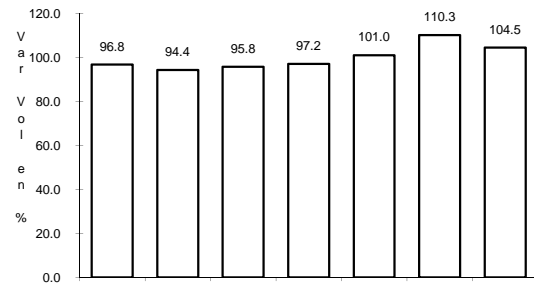
Tipo: 3

Sent: 2

2 CARR: AGUASCALIENTES - JALPA

CLAVE: 00095

RUTA: MEX-070



Km: 0.00

Tipo: 3

Sent: 1

Km: 0.00

Tipo: 3

Sent: 2

Km: 91.10

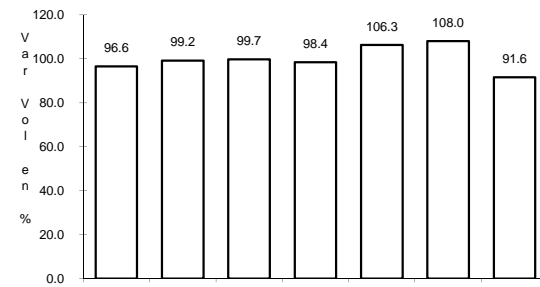
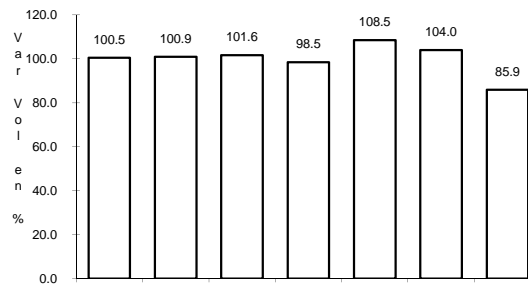
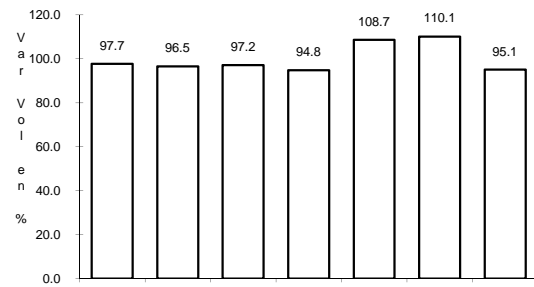
Tipo: 1

Sent: 0

3 CARR: AGUASCALIENTES - ZACATECAS

CLAVE: 00524

RUTA: MEX-045



Km: 6.00

Tipo: 1

Sent: 1

Km: 6.00

Tipo: 1

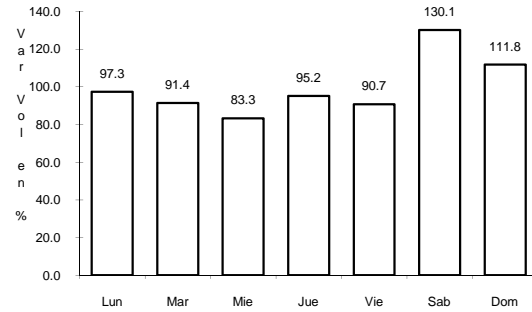
Sent: 2

Km: 56.00

Tipo: 3

Sent: 0

4 CARR: EL RETOÑO - ENT. ASTURIAS

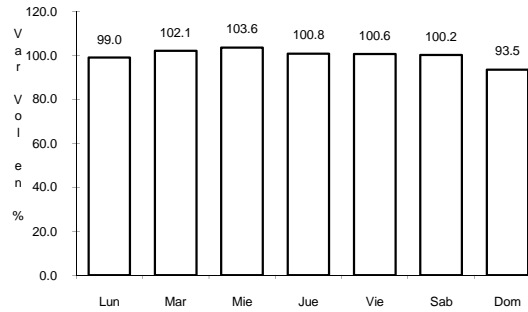


Km: 0.00

Tipo: 3

Sent: 0

CLAVE: 01124



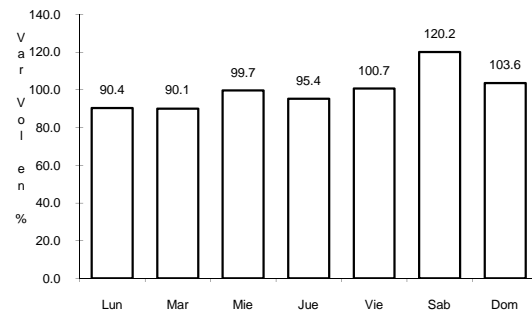
Km: 8.40

Tipo: 1

Sent: 0

RUTA: MEX

5 CARR: ENT. PENITENCIARIA - VILLA HIDALGO

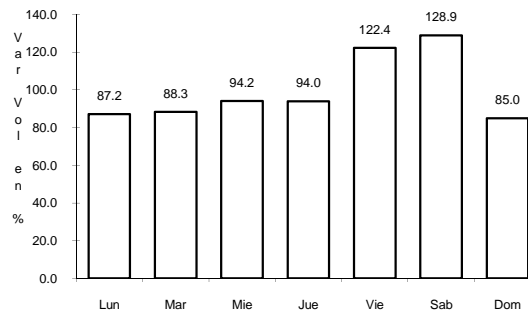


Km: 0.00

Tipo: 3

Sent: 0

CLAVE: 00120

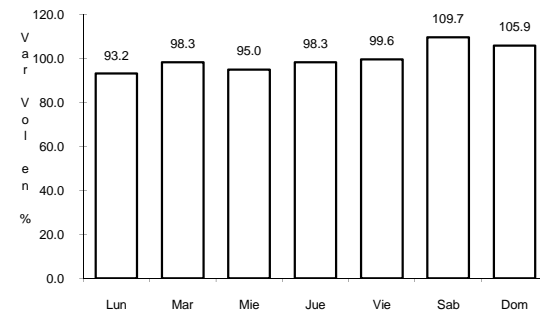


Km: 27.00

Tipo: 3

Sent: 0

RUTA: MEX-071

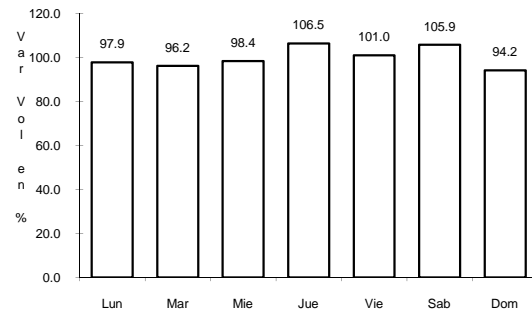


Km: 38.00

Tipo: 1

Sent: 0

6 CARR: ENT. RIVIER - SAN MARCOS

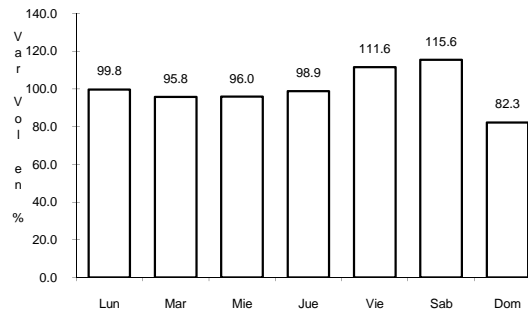


Km: 0.00

Tipo: 3

Sent: 0

CLAVE: 00285

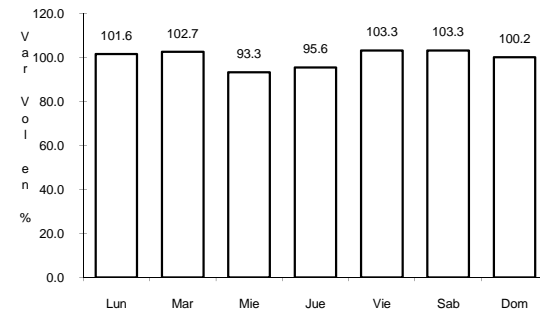


Km: 30.00

Tipo: 3

Sent: 0

RUTA: MEX-066



Km: 56.00

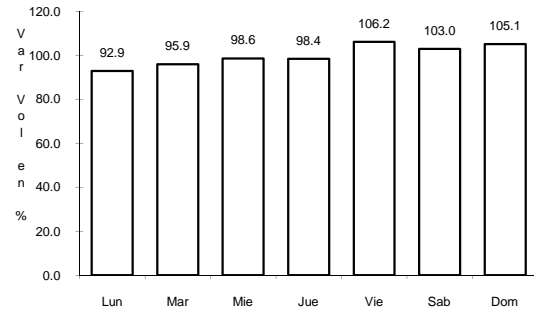
Tipo: 1

Sent: 0

7 CARR: LEON - AGUASCALIENTES

CLAVE: 00167

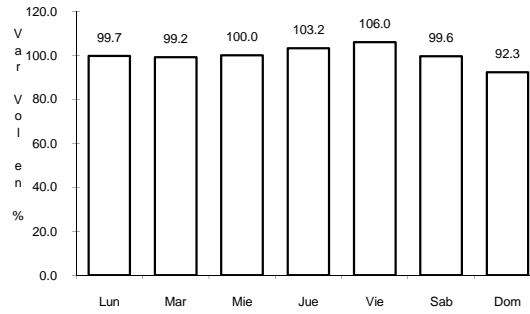
ruta: MEX-045



Km: 11.00

Tipo: 1

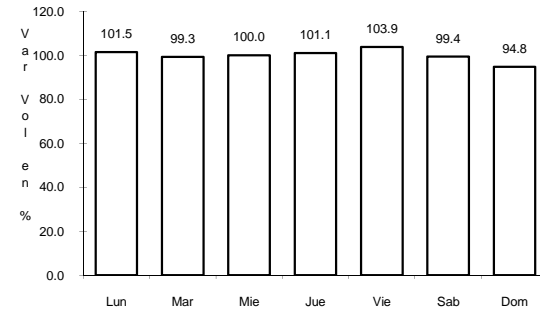
Sent: 0



Km: 129.38

Tipo: 1

Sent: 1



Km: 129.38

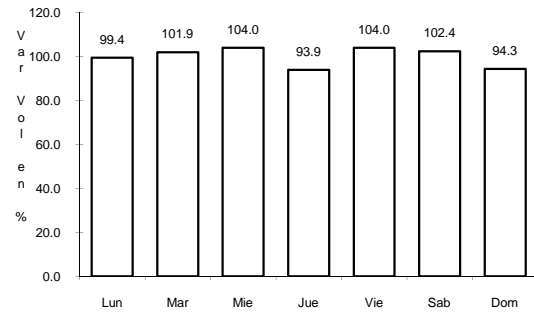
Tipo: 1

Sent: 2

8 CARR: LIBRAMIENTO RINCON DE ROMOS

CLAVE:

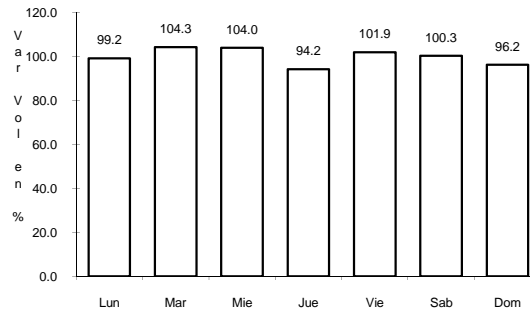
ruta: MEX



Km: 0.00

Tipo: 3

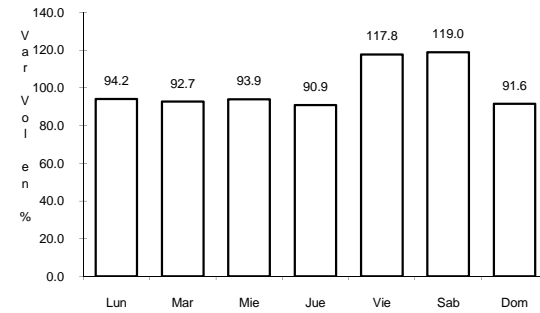
Sent: 1



Km: 0.00

Tipo: 3

Sent: 2



Km: 10.00

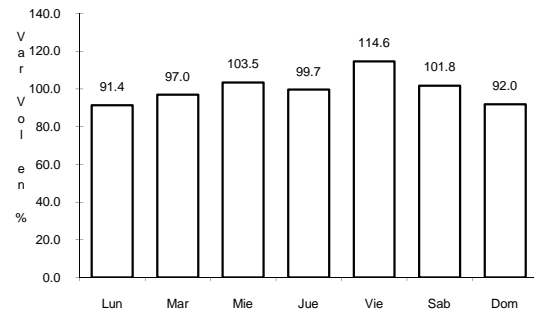
Tipo: 1

Sent: 0

9 CARR: OJUELOS - AGUASCALIENTES

CLAVE: 00094

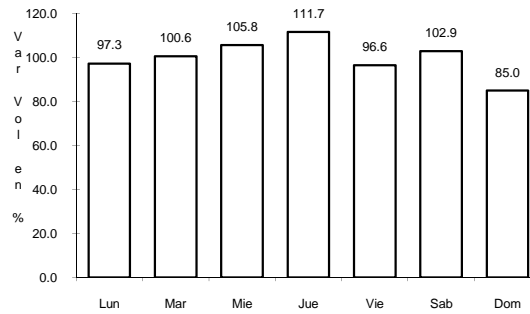
ruta: MEX-070



Km: 0.00

Tipo: 3

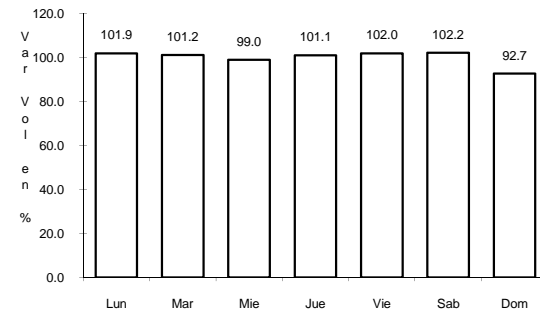
Sent: 0



Km: 40.70

Tipo: 3

Sent: 0



Km: 78.00

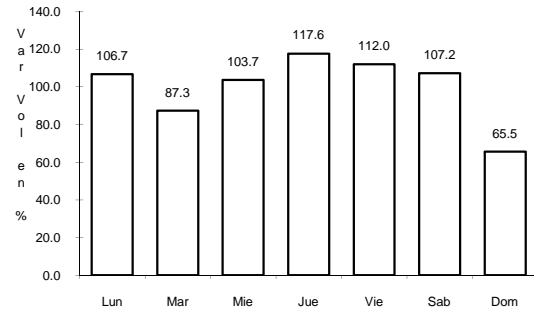
Tipo: 3

Sent: 0

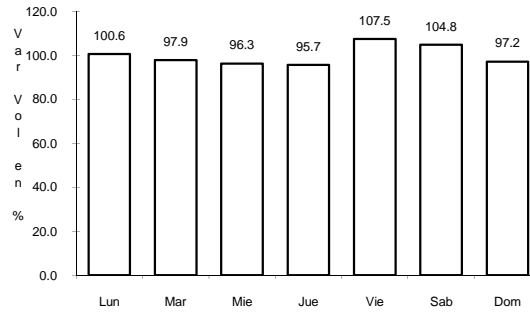
10 CARR: PROVIDENCIA - LUIS MOYA

CLAVE: 00112

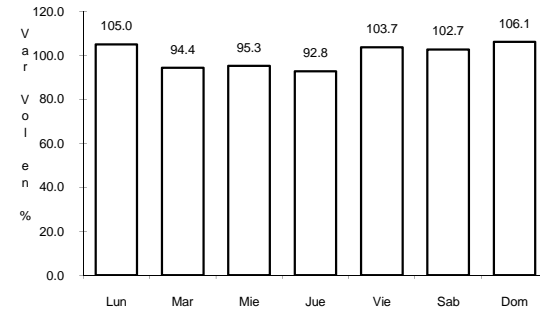
ruta: MEX-071



Km: 0.00 Tipo: 3 Sent: 0



Km: 21.22 Tipo: 3 Sent: 0

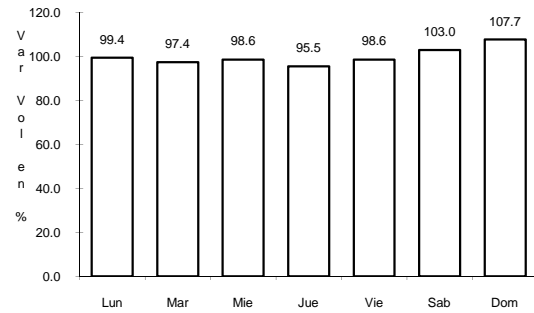


Km: 43.50 Tipo: 1 Sent: 0

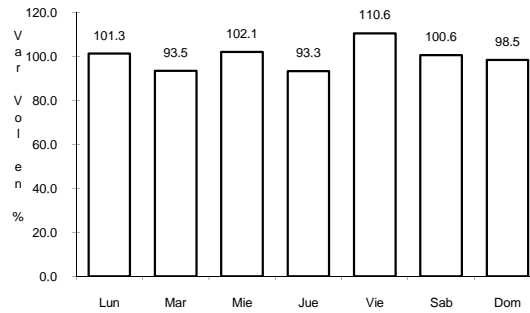
11 CARR: RAMAL A AEROPUERTO DE AGUASCALIENTES

CLAVE: 01116

ruta: MEX



Km: 6.10 Tipo: 1 Sent: 1

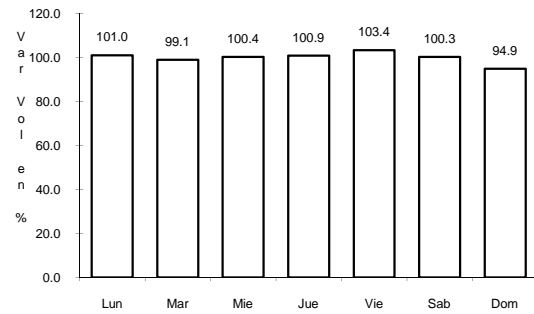


Km: 6.10 Tipo: 1 Sent: 2

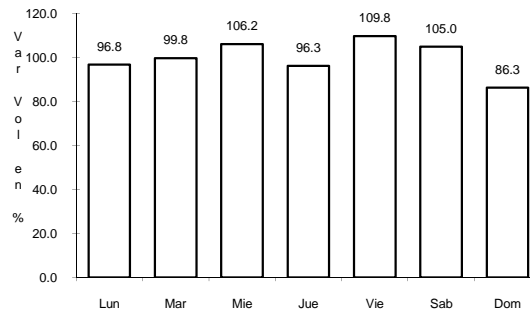
12 CARR: RINCON DE ROMOS - CIENEGA GRANDE

CLAVE: 01002

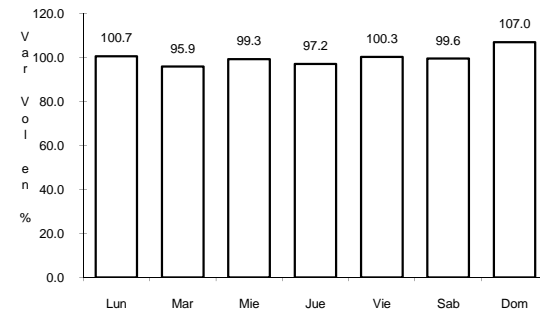
ruta: MEX-039



Km: 0.00 Tipo: 3 Sent: 0



Km: 15.00 Tipo: 3 Sent: 0

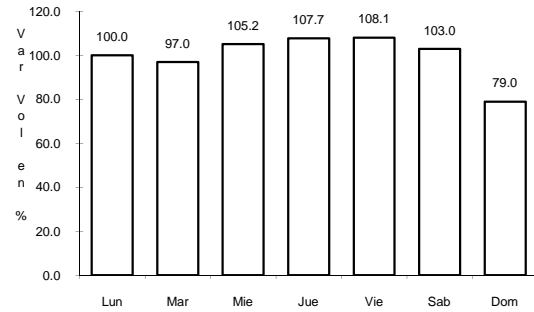


Km: 36.00 Tipo: 1 Sent: 0

13 CARR: AGUASCALIENTES - ENT. CD. DE LOS NIÑOS

CLAVE: 01130

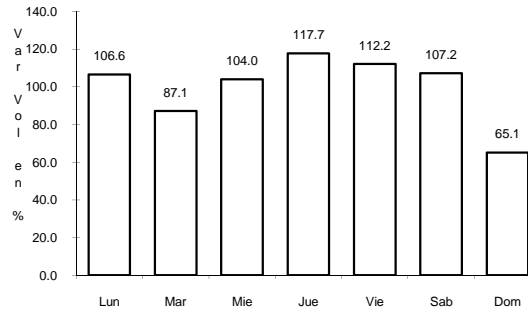
RUTA: AGS



Km: 0.00

Tipo: 3

Sent: 0



Km: 8.00

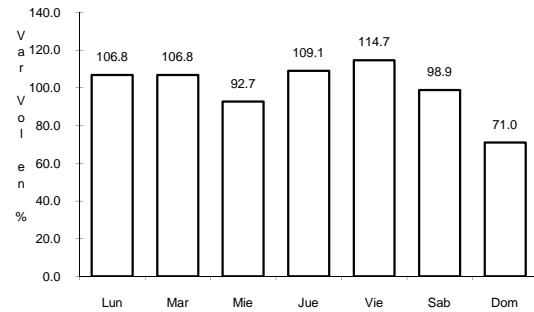
Tipo: 1

Sent: 0

14 CARR: AGUASCALIENTES - JESUS MARIA

CLAVE: 01112

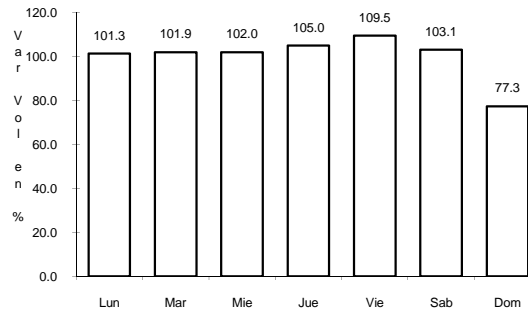
RUTA: AGS-095



Km: 3.30

Tipo: 3

Sent: 1



Km: 3.30

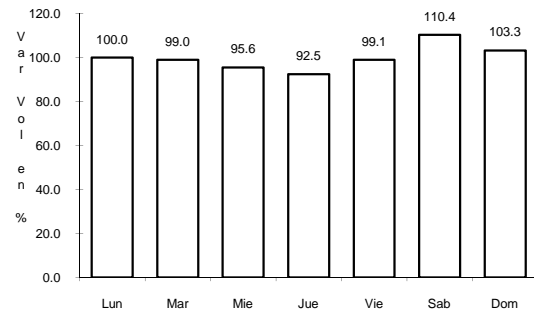
Tipo: 3

Sent: 2

15 CARR: AGUASCALIENTES - JOSE MARIA MORELOS

CLAVE: 01131

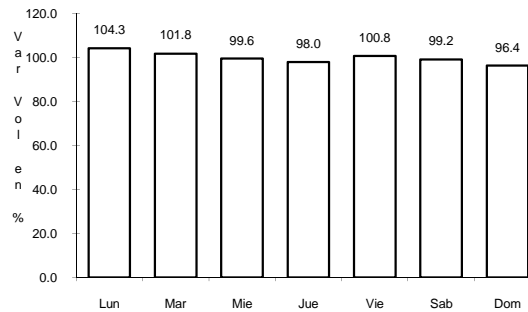
RUTA: AGS



Km: 0.00

Tipo: 3

Sent: 0



Km: 8.00

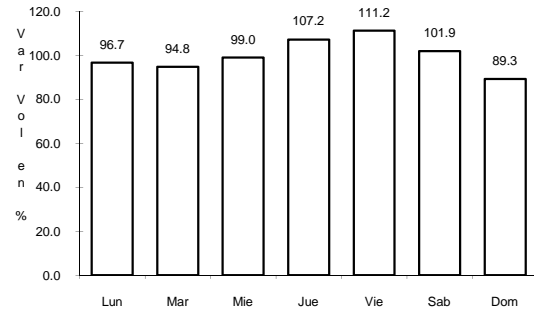
Tipo: 3

Sent: 0

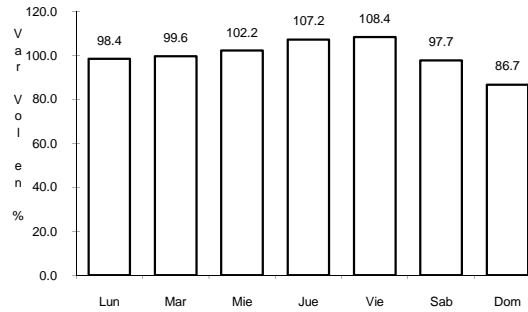
16 CARR: CARBONERAS - VILLA JUAREZ

CLAVE: 01111

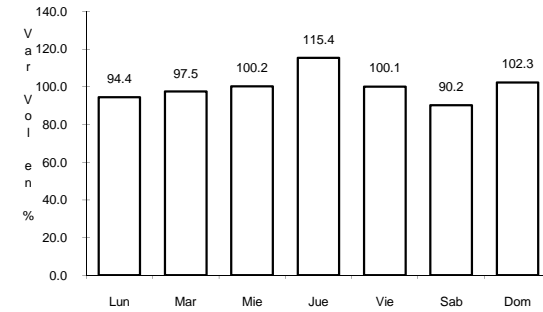
RUTA: AGS-004



Km: 0.00 Tipo: 3 Sent: 0



Km: 14.00 Tipo: 1 Sent: 0

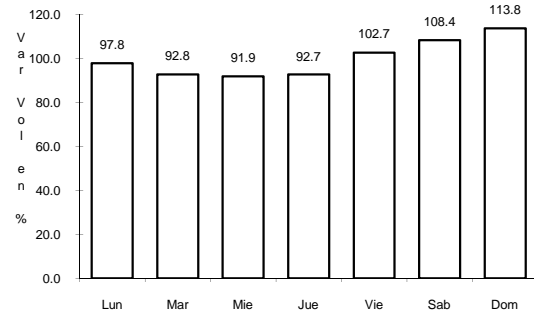


Km: 23.10 Tipo: 1 Sent: 0

17 CARR: COSIO - SANTA MARIA DE LA PAZ

CLAVE: 01132

RUTA: AGS

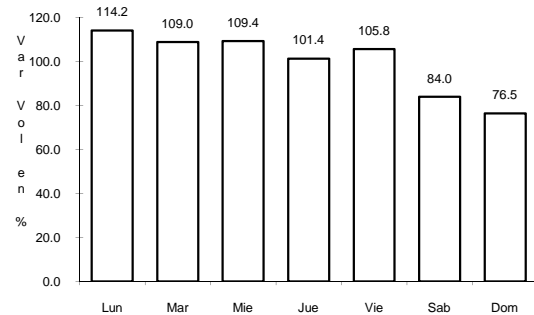


Km: 0.00 Tipo: 3 Sent: 0

18 CARR: CRUCERO OJO DE AGUA DE CRUCITAS - SANTA ROSA

CLAVE: 01140

RUTA: AGS

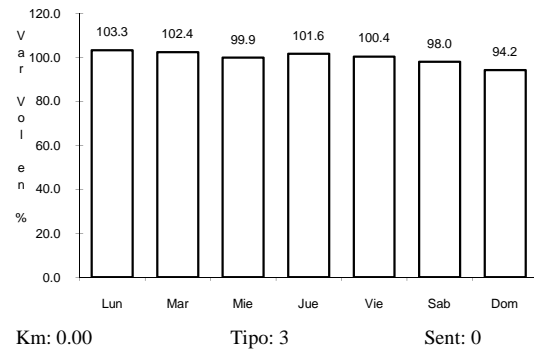


Km: 0.00 Tipo: 3 Sent: 0

19 CARR: EL TANQUE - SAN JOSE DE LA ORDEÑA

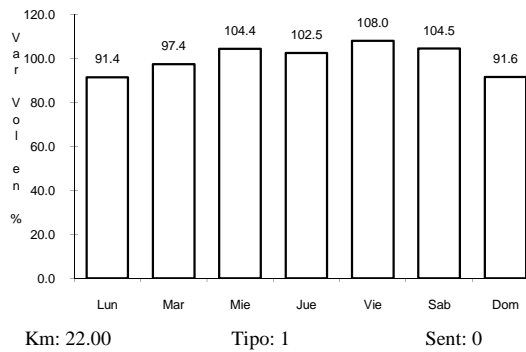
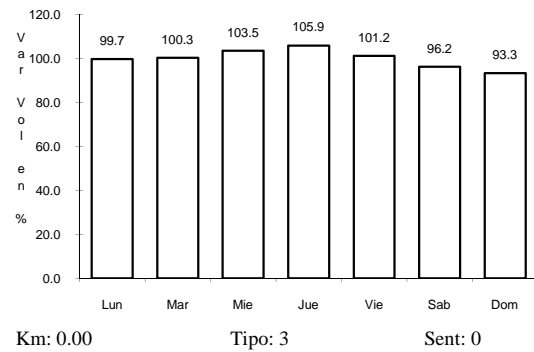
CLAVE: 01143

ruta: AGS



20 CARR: EL TARAY - T. C.(RAMAL AEROPUERTO DE AGUASCALIENTICLAVE: 01121

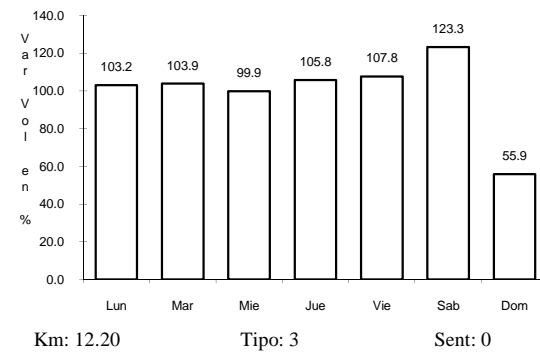
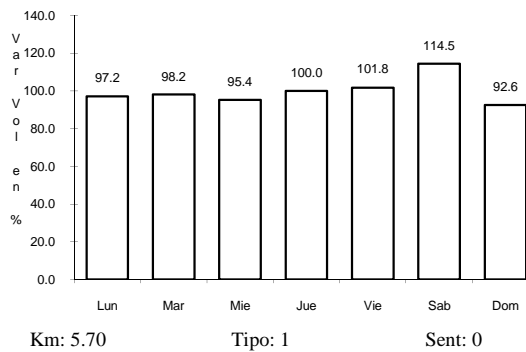
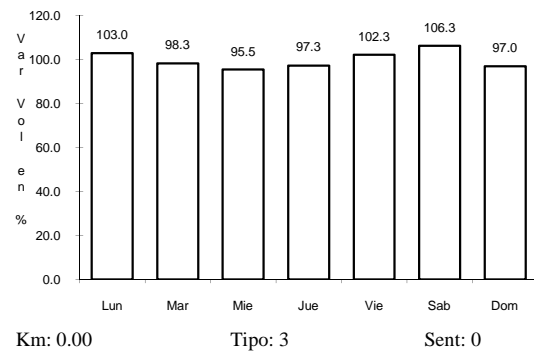
ruta: AGS-002



21 CARR: ENT. ARELLANO - EL RETOÑO

CLAVE:

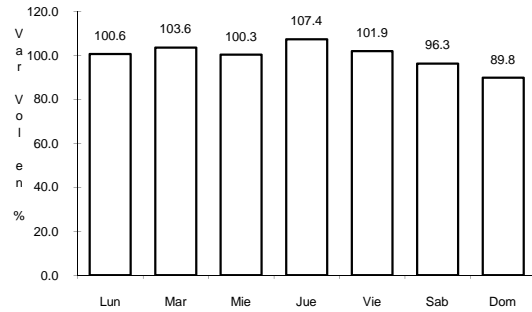
ruta: AGS



22 CARR: ENT. BUENAVISTA - GRACIAS A DIOS

CLAVE: 01138

RUTA: AGS



Km: 0.00

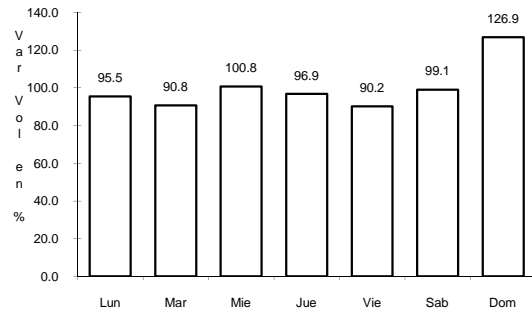
Tipo: 3

Sent: 0

23 CARR: ENT. EL NOVILLO - VILLA JUAREZ

CLAVE: 01103

RUTA: AGS-005



Km: 12.60

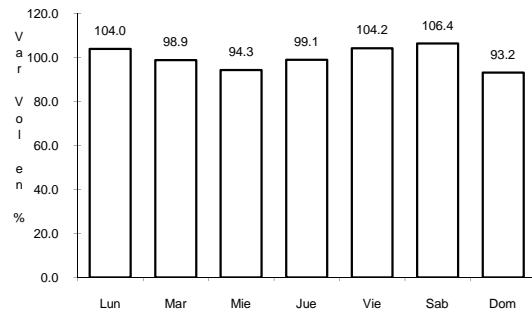
Tipo: 1

Sent: 0

24 CARR: ENT. LA CALAVERA - ENT. SAN PEDRO

CLAVE: 01102

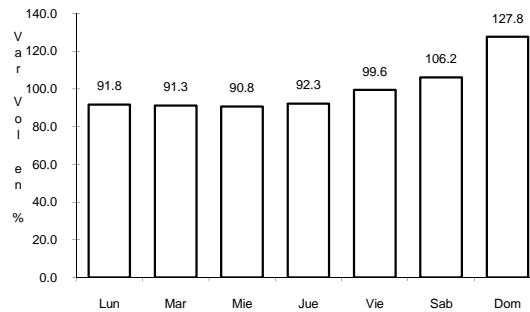
RUTA: AGS-043



Km: 0.00

Tipo: 3

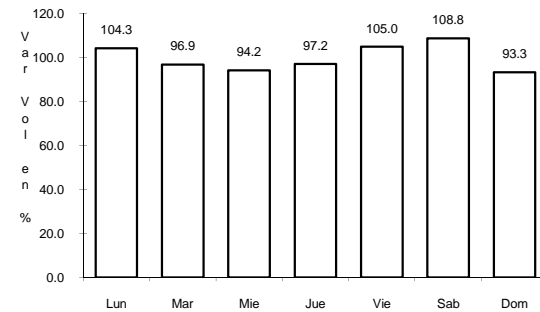
Sent: 0



Km: 28.10

Tipo: 1

Sent: 0



Km: 47.60

Tipo: 1

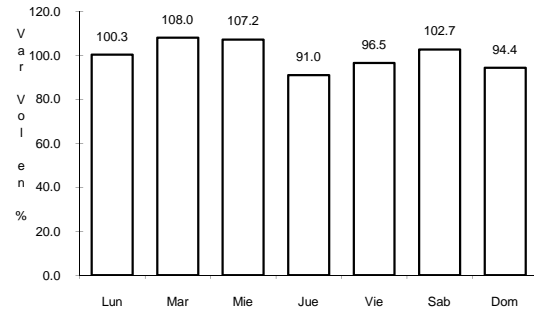
Sent: 0



25 CARR: ENT. LA CHIRIDA - SAN FRANCISCO DE LOS ROMOS

CLAVE: 01016

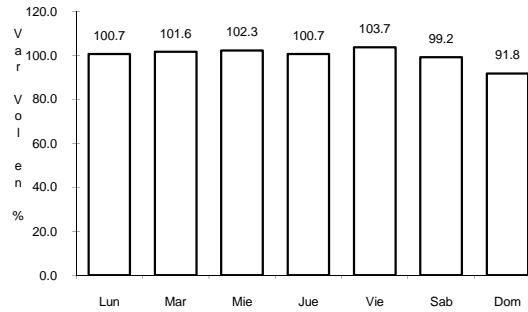
RUTA: AGS



Km: 0.00

Tipo: 3

Sent: 0



Km: 1.50

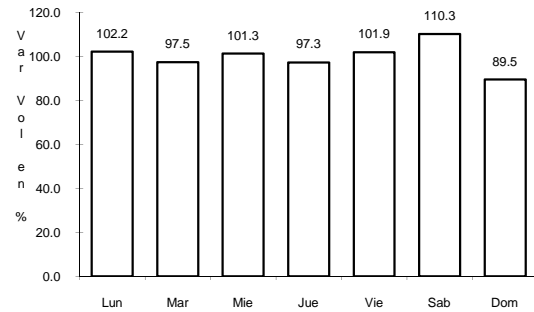
Tipo: 1

Sent: 0

26 CARR: ENT. PABELLON DE ART. - SAN JOSE DE GRACIA

CLAVE: 01031

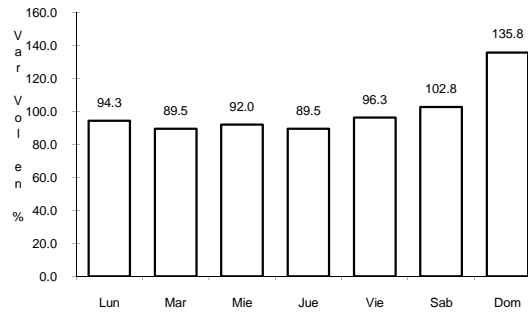
RUTA: AGS-019



Km: 0.00

Tipo: 3

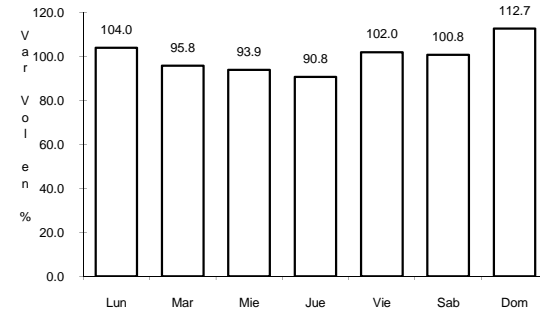
Sent: 0



Km: 10.00

Tipo: 3

Sent: 0



Km: 13.80

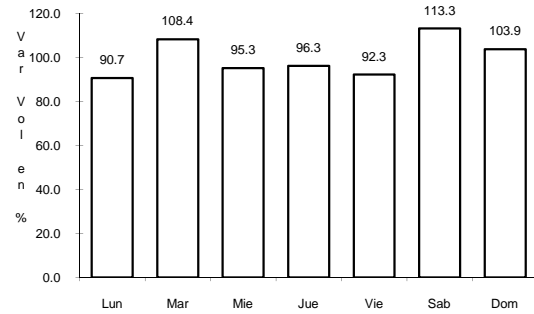
Tipo: 1

Sent: 0

27 CARR: ENT. RINCON DE ROMOS - LA BOQUILLA

CLAVE: 01139

RUTA: AGS



Km: 0.00

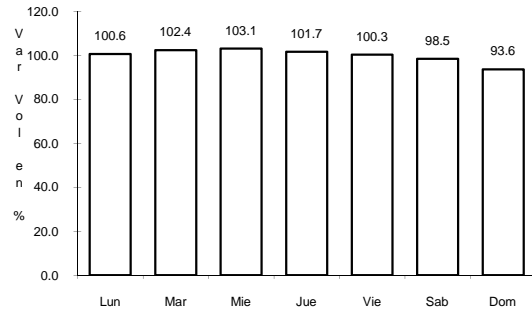
Tipo: 3

Sent: 0

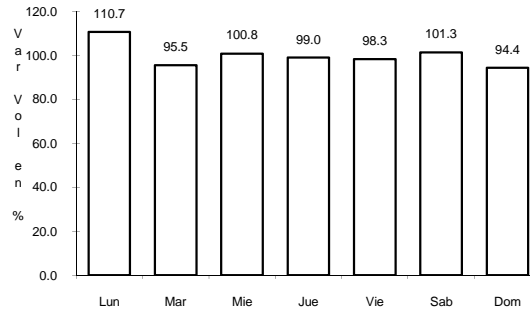
28 CARR: ENT. SAN CARLOS - ENT. EL MILAGRO

CLAVE: 01141

RUTA: AGS-010



Km: 0.00 Tipo: 3 Sent: 0

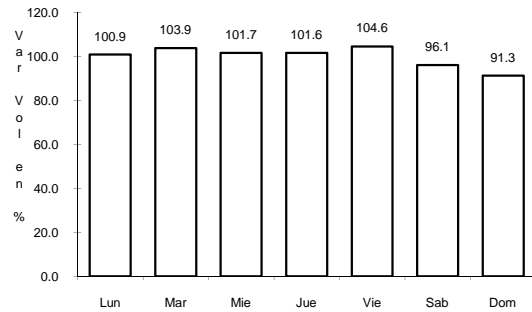


Km: 13.60 Tipo: 1 Sent: 0

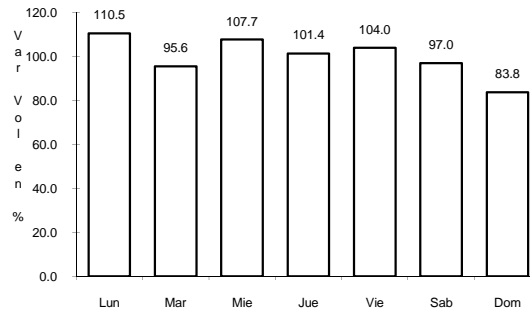
29 CARR: ENT. SAN FELIPE - JESUS MARIA

CLAVE: 01144

RUTA: AGS



Km: 0.00 Tipo: 3 Sent: 0

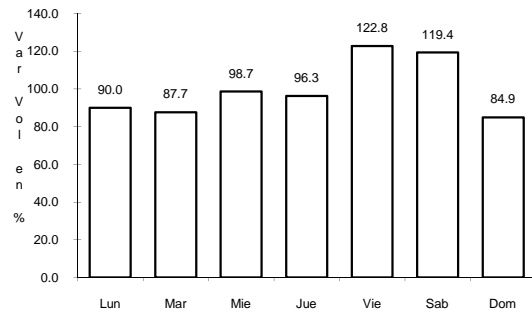


Km: 12.70 Tipo: 1 Sent: 0

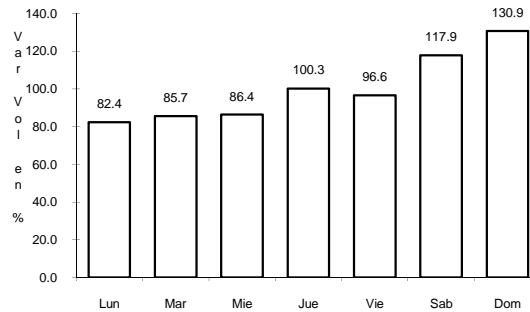
30 CARR: ENT. SAN ISIDRO - ENT. EL SALITRE

CLAVE: 01142

RUTA: AGS-016



Km: 0.00 Tipo: 3 Sent: 0



Km: 20.40 Tipo: 1 Sent: 0

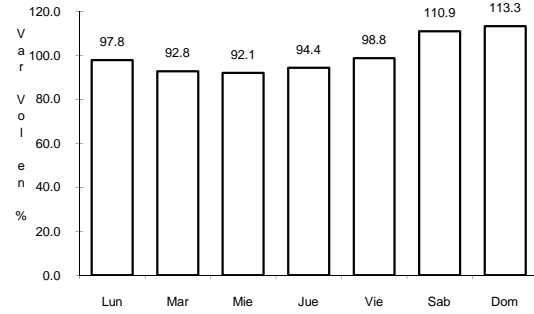




37 CARR: LAS NORIAS DE OJO CALIENTE - LA LUZ

CLAVE: 01122

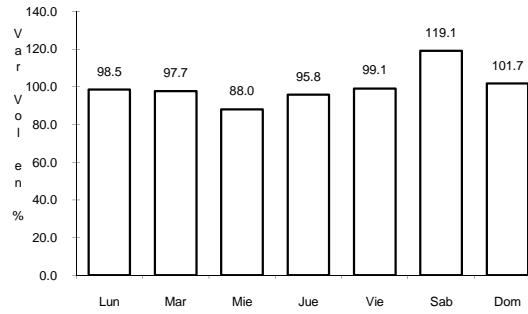
ruta: AGS-068



Km: 0.00

Tipo: 3

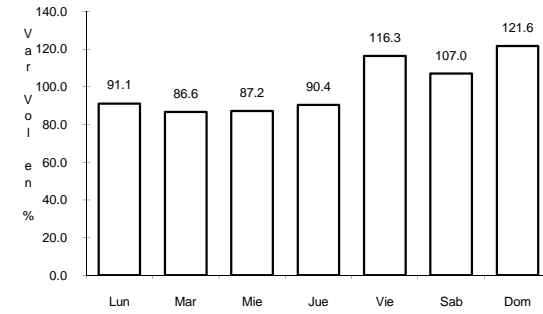
Sent: 0



Km: 10.50

Tipo: 3

Sent: 0



Km: 27.60

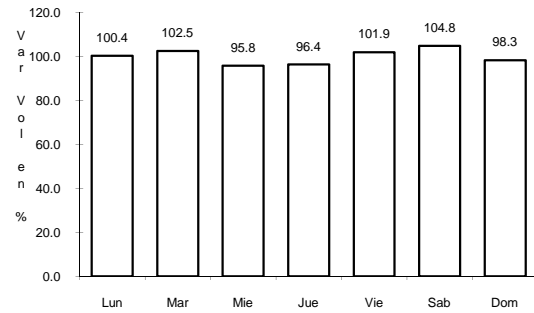
Tipo: 1

Sent: 0

38 CARR: OJO CALIENTE - MALPASO

CLAVE: 01123

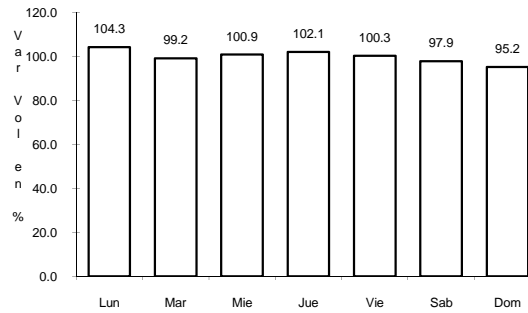
ruta: AGS



Km: 0.00

Tipo: 3

Sent: 0



Km: 3.10

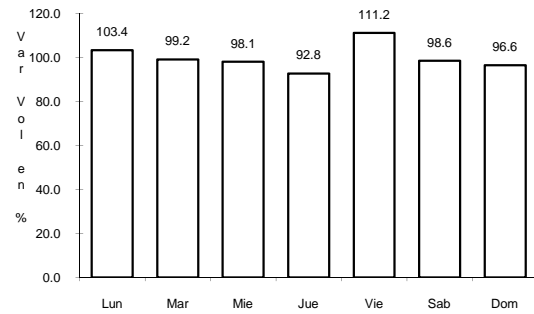
Tipo: 1

Sent: 0

39 CARR: PABELLON DE HIDALGO - RINCON DE ROMOS

CLAVE: 01136

ruta: AGS



Km: 0.00

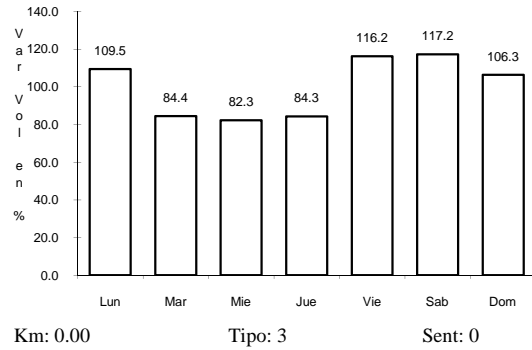
Tipo: 3

Sent: 0

40 CARR: PILOTOS - LOS CAMPOS

CLAVE: 00007

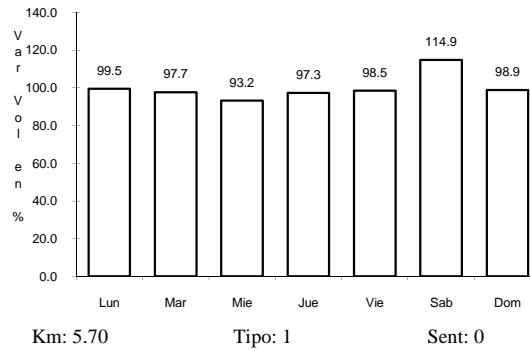
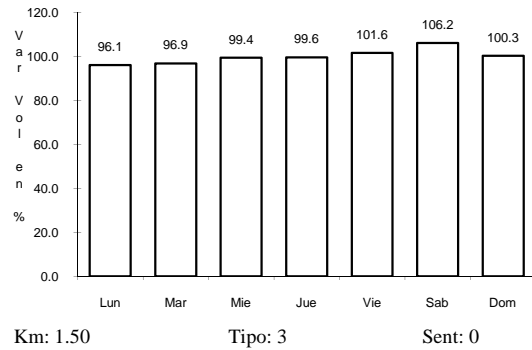
RUTA: AGS-030



41 CARR: POCITOS - GRANJA MIRAVALLE

CLAVE: 01109

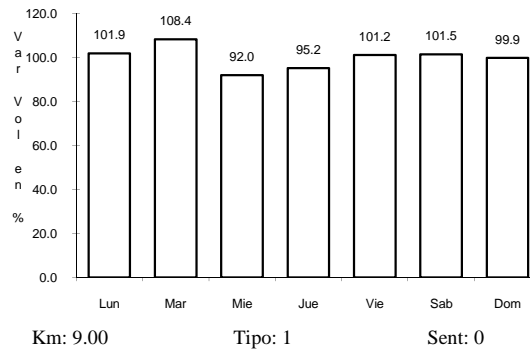
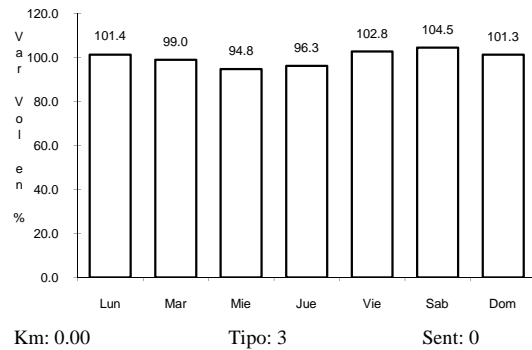
RUTA: AGS-053



42 CARR: RAMAL A SAN PEDRO PIEDRA GORDA

CLAVE: 00553

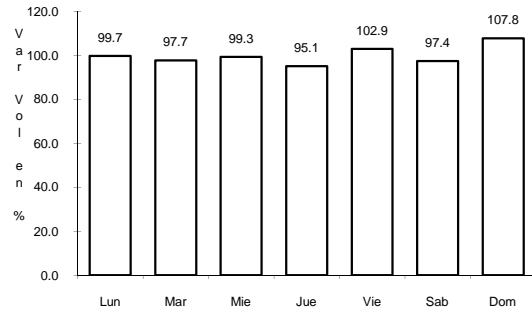
RUTA: ZAC-AGS



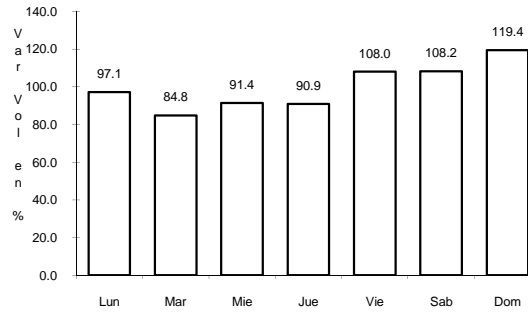
43 CARR: SAN GIL - JARILLAS

CLAVE: 00527

ruta: AGS-012-ZAC



Km: 0.00 Tipo: 3 Sent: 0

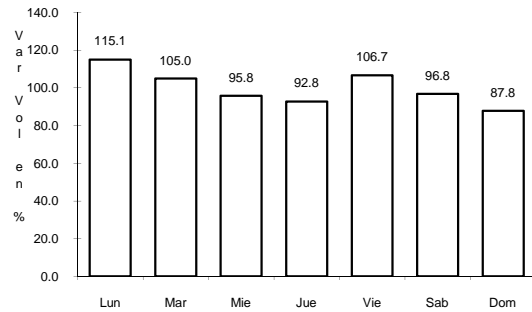


Km: 5.40 Tipo: 1 Sent: 0

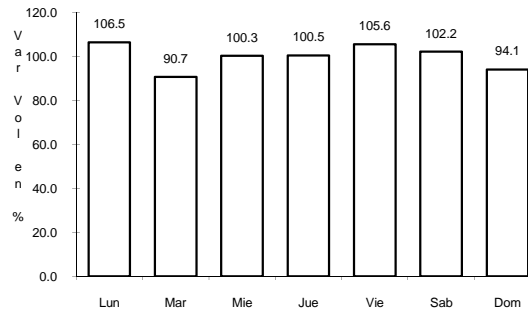
44 CARR: SAN ISIDRO EL GRANDE - BAJIO DE SAN JOSE

CLAVE: 00526

ruta: AGS-036



Km: 0.00 Tipo: 3 Sent: 0

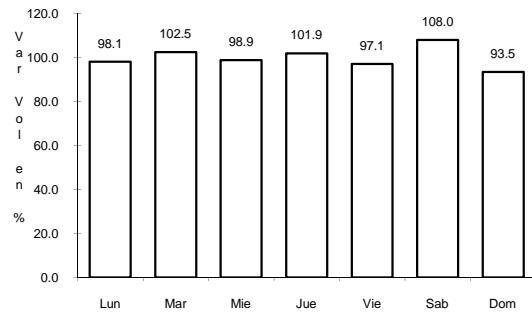


Km: 11.50 Tipo: 3 Sent: 0

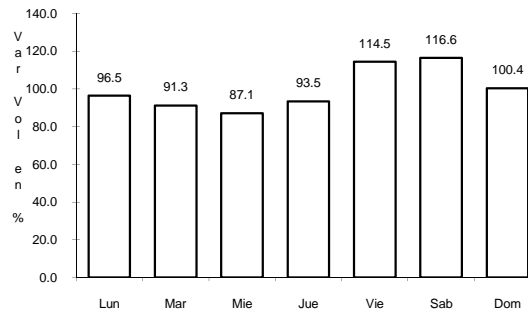
45 CARR: SAN RAFAEL - VILLA GARCIA

CLAVE: 00525

ruta: AGS-ZAC



Km: 0.00 Tipo: 3 Sent: 0

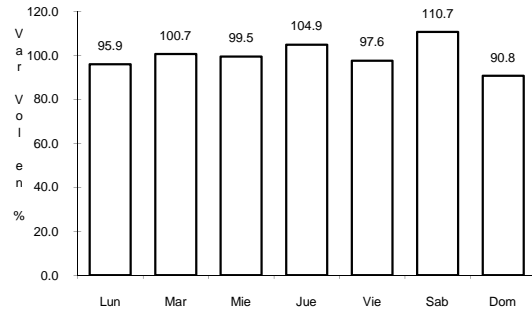


Km: 10.00 Tipo: 1 Sent: 0

46 CARR: SANTA ROSA - PABELLON DE HIDALGO

CLAVE: 01135

RUTA: AGS



Km: 0.00

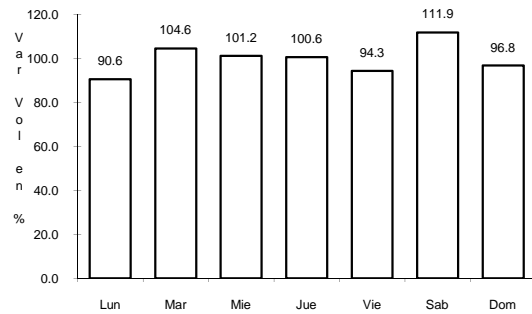
Tipo: 3

Sent: 0

47 CARR: VIÑEDOS DE CALIFORNIA - ADOLFO LOPEZ MATEOS

CLAVE: 01137

RUTA: AGS



Km: 0.00

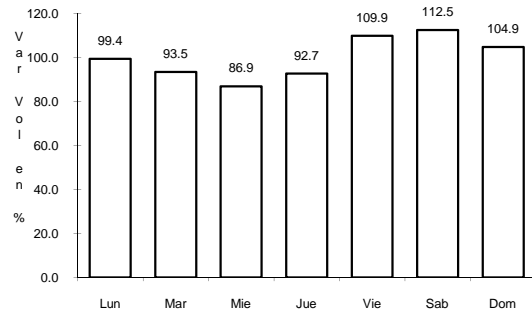
Tipo: 3

Sent: 0

48 CARR: COSIO - GUADALUPE

CLAVE:

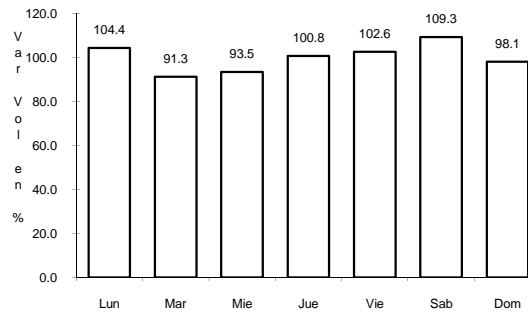
RUTA: MEX-ZAC



Km: 0.00

Tipo: 3

Sent: 0



Km: 38.00

Tipo: 1

Sent: 0