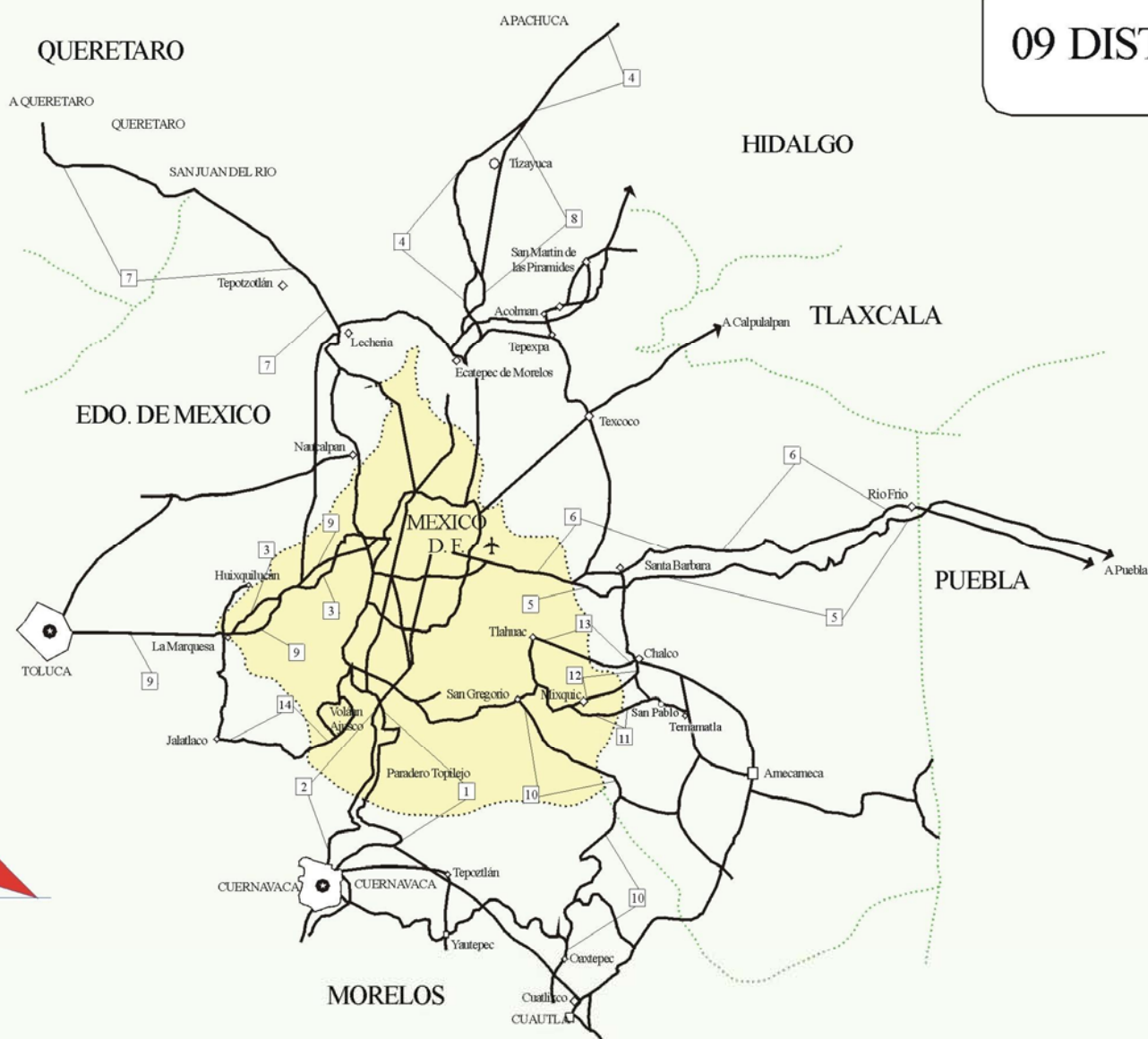


09 DISTRITO FEDERAL

MAPA INDICE
15 Num. Indice
2008



CARRETERAS AFORADAS

Num. INDICE	CARRETERA
1	MEXICO - CUERNAVACA (CUOTA)
2	MEXICO - CUERNAVACA (LIBRE)
3	CONSTITUYENTES - LA MARQUESA (CUOTA)
4	MEXICO - PACHUCA (LIBRE)
5	MEXICO - PUEBLA (CUOTA)
6	MEXICO - PUEBLA (LIBRE)
7	MEXICO - QUERETARO (CUOTA)
8	MEXICO - TIZAYUCA (CUOTA)
9	MEXICO - TOLUCA
10	SAN GREGORIO - OAXTEPEC
11	T. C. (MEXICO - MIXQUIC) - SAN PABLO ATLAZALPAN
12	CHALCO - MIXQUIC
13	CHALCO - TLAHUAC
14	JALATLACO - EL AJUSCO

DISTRITO FEDERAL

1 CARR : MEXICO - CUERNAVACA (CUOTA)

CLAVE: 00041

RUTA : MEX-095D

AÑO : 2007

L U G A R	E S T A C I O N			C L A S I F I C A C I O N V E H I C U L A R E N P O R C I E N T O .												
	KM	TE	SC TDPA	A	B	C2	C3	T3S2	T3S3	T3S2R4	OTROS	A	B	C	K'	D
MEXICO	0.00	0	0													
T. C. MEXICO - CUERNAVACA (LIBRE)	18.65	3	1 15686	85.6	5	3.1	2.3	1.8	1.3	0.3	0.6	85.6	5	9.4	0.094	0.503
T. C. MEXICO - CUERNAVACA (LIBRE)	18.65	3	2 15504	86.4	4.8	2.9	2.4	1.7	0.9	0.2	0.7	86.4	4.8	8.8	0.099	0.503
CASETA DE COBRO TLALPAN	23.30	2	0 31953													
LIM. EDOS. TERM. D.F. PPIA. MOR.	47.09	0	0													
T. IZQ. CUAUTLA	70.50	1	1 22239	80.3	5.6	4.8	3.7	2.3	1.7	0.6	1	80.3	5.6	14.1	0.08	0.5
T. IZQ. CUAUTLA	70.50	1	2 22245	81.3	4.5	5	2.5	2.8	1.4	0.6	1.9	81.3	4.5	14.2	0.077	0.5
T. IZQ. LIBRAMIENTO DE CUERNAVACA	79.26	1	1 15798	81.1	4.8	3.5	2.6	2.9	2.4	0.4	2.3	81.1	4.8	14.1	0.114	0.507
T. IZQ. LIBRAMIENTO DE CUERNAVACA	79.26	1	2 15344	82.6	4.8	3.2	2.6	2.9	2.7	0.2	1	82.6	4.8	12.6	0.082	0.507
T. C. MEXICO - CUERNAVACA (LIBRE)	80.26	0	0													

2 CARR : MEXICO - CUERNAVACA (LIBRE)

CLAVE: 00040

RUTA : MEX-095

AÑO : 2007

L U G A R	E S T A C I O N			C L A S I F I C A C I O N V E H I C U L A R E N P O R C I E N T O .												
	KM	TE	SC TDPA	A	B	C2	C3	T3S2	T3S3	T3S2R4	OTROS	A	B	C	K'	D
MEXICO	0.00	0	0													
T. IZQ. SAN MIGUEL TOPILEJO	28.78	1	0 21010	82.7	5.3	3.3	2.9	3	2	0.2	0.6	82.7	5.3	12	0.072	0.502
T. IZQ. SAN MIGUEL TOPILEJO	28.78	3	0 15963	82.3	4.4	6.9	2.6	2.1	1	0.1	0.6	82.3	4.4	13.3	0.071	0.504
LIM. EDOS. TERM. D.F. PPIA. MOR.	45.44	0	0													
T. DER. ZEMPOALA	51.40	3	0 6431	84	7.1	2.6	2	2.4	1.7	0.1	0.1	84	7.1	8.9	0.093	0.501
T. IZQ. COAJOMULCO	57.12	3	0 6970	84	8.1	2	1.7	2.4	1.6	0.1	0.1	84	8.1	7.9	0.093	0.501
T. DER. HUITZILAC	64.20	3	0 9575	85.5	3	6.4	2.5	1.5	0.9	0	0.2	85.5	3	11.5	0.09	0.502
T. IZQ. TEPOZTLAN	71.36	3	1 8209	91.7	2.1	3.4	1.2	0.9	0.5	0	0.2	91.7	2.1	6.2	0.131	0.504
T. IZQ. TEPOZTLAN	71.36	3	2 8073	91.9	1.5	3.7	1.3	1	0.4	0	0.2	91.9	1.5	6.6	0.096	0.504
CUERNAVACA	75.42	0	0													

3 CARR : CONSTITUYENTES - LA MARQUESA (CUOTA)

CLAVE: 00446

RUTA : MEX-DF

AÑO : 2007

L U G A R	E S T A C I O N			C L A S I F I C A C I O N V E H I C U L A R E N P O R C I E N T O .												
	KM	TE	SC TDPA	A	B	C2	C3	T3S2	T3S3	T3S2R4	OTROS	A	B	C	K'	D
T. C. MEXICO - TOLUCA (LIBRE) (PUENTE CONAFRUT)	0.00	3	1 28548	87.6	4.7	0.5	2.3	1.1	1.2	1.5	1.1	87.6	4.7	7.7	0.129	0.525
T. C. MEXICO - TOLUCA (LIBRE) (PUENTE CONAFRUT)	0.00	3	2 25863	87.7	4.8	1.7	1.6	1.8	1.4	0.1	0.9	87.7	4.8	7.5	0.145	0.525
CASETA DE COBRO LA VENTA	10.00	1	1 15135	81	6.3	4.4	2.2	2.6	1.9	0	1.6	81	6.3	12.7	0.099	0.525
CASETA DE COBRO LA VENTA	10.00	1	2 13716	81.9	6.8	3.1	2.2	2.4	2.1	0	1.5	81.9	6.8	11.3	0.106	0.525
CASETA DE COBRO LA VENTA	10.00	3	1 20222	82.4	6.3	3	3.1	2.1	1.8	0	1.3	82.4	6.3	11.3	0.153	0.505

DISTRITO FEDERAL

3 CARR : CONSTITUYENTES - LA MARQUESA (CUOTA)

CLAVE: 00446

RUTA : MEX-DF

AÑO : 2007

L U G A R	E S T A C I O N				C L A S I F I C A C I O N V E H I C U L A R E N P O R C I E N T O .												
	KM	TE	SC	TDPA	A	B	C2	C3	T3S2	T3S3	T3S2R4	OTROS	A	B	C	K'	D
CASETA DE COBRO LA VENTA	10.00	3	2	19855	83.1	6.7	3.2	2.5	1.7	1.2	0.2	1.4	83.1	6.7	10.2	0.135	0.505
LIM. EDOS. TERM. D.F. PPIA. MEX.	18.66	0	0														
T. C. MEXICO - TOLUCA (LIBRE) (LA MARQUESA)	19.20	1	1	14966	85.6	6.8	1	2	1.6	1.3	0.6	1.1	85.6	6.8	7.6	0.116	0.543
T. C. MEXICO - TOLUCA (LIBRE) (LA MARQUESA)	19.20	1	2	17760	85.1	7	1.6	1.8	1.3	1.1	0.7	1.4	85.1	7	7.9	0.109	0.543

4 CARR : MEXICO - PACHUCA (LIBRE)

CLAVE: 00431

RUTA : MEX-085

AÑO : 2007

L U G A R	E S T A C I O N				C L A S I F I C A C I O N V E H I C U L A R E N P O R C I E N T O .												
	KM	TE	SC	TDPA	A	B	C2	C3	T3S2	T3S3	T3S2R4	OTROS	A	B	C	K'	D
MEXICO	0.00	0	0														
LIM. EDOS. TERM. D.F. PPIA. MEX.	9.89	0	0														
T. DER. PIRAMIDES	26.93	1	0	37985	84.8	4.6	4.1	0.4	2.6	2.3	0.3	0.9	84.8	4.6	10.6	0.077	0.509
VENTA DE CARPIO	27.00	3	1	22803	74.6	10.6	3.9	2	3.1	2.7	0.2	2.9	74.6	10.6	14.8	0.069	0.506
VENTA DE CARPIO	27.00	3	2	23034	74.2	10.8	4	2.2	2.7	2.7	0.2	3.2	74.2	10.8	15	0.071	0.506
T. DER. AUTOPISTA MEXICO - TECAMAC (CUOTA)	37.52	1	1	12837	66.3	8.5	7.2	7.6	3.3	2.1	0.4	4.6	66.3	8.5	25.2	0.08	0.503
T. DER. AUTOPISTA MEXICO - TECAMAC (CUOTA)	37.52	1	2	12680	67.4	8.4	7.1	8.2	3.2	1.6	0.3	3.8	67.4	8.4	24.2	0.072	0.503
T. IZQ. ZUMPANGO	44.68	1	0	18027	71.2	5.3	6.5	5.6	3.7	3.1	0.4	4.2	71.2	5.3	23.5	0.098	0.508
T. IZQ. ZUMPANGO	44.68	3	0	14535	73.1	5.9	5.9	5.5	3.4	1.9	0.5	3.8	73.1	5.9	21	0.084	0.503
LIM. EDOS. TERM. MEX. PPIA. HGO.	49.25	0	0														
TIZAYUCA	52.50	3	0	7473	78.3	8.2	6.6	2.1	1	2.7	1	0.1	78.3	8.2	13.5	0.079	0.501
T. C. MEXICO - TIZAYUCA (CUOTA)	61.00	3	1	10440	76.9	6.1	5.6	2	4.7	1	1.1	2.6	76.9	6.1	17	0.124	0.502
T. C. MEXICO - TIZAYUCA (CUOTA)	61.00	3	2	10513	77.3	7.5	4.5	1.8	4.2	1.2	1	2.5	77.3	7.5	15.2	0.105	0.502
ENT. COLONIA	83.97	1	1	15854	67.3	5.8	3.3	1.6	9.2	2.8	5.1	4.9	67.3	5.8	26.9	0.105	0.502
ENT. COLONIA	83.97	1	2	15709	66.8	8.8	3.3	1.5	7.5	2.5	4.5	5.1	66.8	8.8	24.4	0.102	0.502
X. C. LIBRAMIENTO DE PACHUCA	86.50	1	1	14244	73.7	2.1	1.5	1.4	7.1	3.3	5.4	5.5	73.7	2.1	24.2	0.108	0.501
X. C. LIBRAMIENTO DE PACHUCA	86.50	1	2	14319	78.5	3.1	1	1	4.9	2.9	4.3	4.3	78.5	3.1	18.4	0.104	0.501
PACHUCA	94.00	0	0														

5 CARR : MEXICO - PUEBLA (CUOTA)

CLAVE: 00450

RUTA : MEX-150D

AÑO : 2007

L U G A R	E S T A C I O N				C L A S I F I C A C I O N V E H I C U L A R E N P O R C I E N T O .												
	KM	TE	SC	TDPA	A	B	C2	C3	T3S2	T3S3	T3S2R4	OTROS	A	B	C	K'	D
MEXICO	0.00	0	0														
LIM. EDOS. TERM. D.F. PPIA. MEX.	17.71	0	0														
T. IZQ. LOS REYES	20.00	3	1	56971	77.3	7.8	6	4.5	1.7	1.6	0.3	0.8	77.3	7.8	14.9	0.092	0.504

DISTRITO FEDERAL

5 CARR : MEXICO - PUEBLA (CUOTA)

CLAVE: 00450

RUTA : MEX-150D

AÑO : 2007

L U G A R	E S T A C I O N				C L A S I F I C A C I O N V E H I C U L A R E N P O R C I E N T O .												
	KM	TE	SC	TDPA	A	B	C2	C3	T3S2	T3S3	T3S2R4	OTROS	A	B	C	K'	D
T. IZQ. LOS REYES	20.00	3	2	56000	78.4	7.6	5.1	4.3	1.9	1.3	0.2	1.2	78.4	7.6	14	0.099	0.504
X. C. SANTA BARBARA - IZUCAR DE MATAMOROS	32.14	1	1	41903	72.4	10	9	2.9	2.3	1.9	0.1	1.4	72.4	10	17.6	0.12	0.513
X. C. SANTA BARBARA - IZUCAR DE MATAMOROS	32.14	1	2	39823	70.8	10	10.7	3.1	2.2	2	0.1	1.1	70.8	10	19.2	0.138	0.513
X. C. SANTA BARBARA - IZUCAR DE MATAMOROS	32.14	3	1	17952	77.1	7.9	6.1	3.1	0.8	0.6	0.2	4.2	77.1	7.9	15	0.072	0.501
X. C. SANTA BARBARA - IZUCAR DE MATAMOROS	32.14	3	2	18010	76.2	8	6.7	4.2	0.7	0.4	0.2	3.6	76.2	8	15.8	0.088	0.501
CASETA DE COBRO SAN MARCOS	34.00	2	1	15361													
CASETA DE COBRO SAN MARCOS	34.00	2	2	15360													
T. IZQ. RIO FRIO	63.79	3	1	21152	73.6	9	6.8	4.6	2.6	2.2	0.3	0.9	73.6	9	17.4	0.09	0.507
T. IZQ. RIO FRIO	63.79	3	2	20599	71.7	9	5.3	5.8	3.2	2.6	0.3	2.1	71.7	9	19.3	0.077	0.507
LIM. EDOS. TERM. MEX. PPIA. PUE.	63.85	0	0														
T. IZQ. TLAXCALA	90.61	1	1	14844	69.3	12.1	7	3.7	3.4	2	0.9	1.6	69.3	12.1	18.6	0.071	0.504
T. IZQ. TLAXCALA	90.61	1	2	15092	75	8.9	6.8	2.8	2.2	1.9	1	1.4	75	8.9	16.1	0.072	0.504
T. IZQ. TLAXCALA	90.61	3	1	13660	75.5	6	8	3.1	3.3	1.1	1	2	75.5	6	18.5	0.071	0.502
T. IZQ. TLAXCALA	90.61	3	2	13559	77.4	8	3.5	3.8	3.2	1.9	0.8	1.4	77.4	8	14.6	0.076	0.502
LIM. EDOS. TERM. PUE. PPIA. TLAX.	103.00	0	0														
LIM. EDOS. TERM. TLAX. PPIA. PUE.	107.00	0	0														
T. C. PUEBLA - TLAXCALA	124.90	0	0														

6 CARR : MEXICO - PUEBLA (LIBRE)

CLAVE: 00449

RUTA : MEX-150

AÑO : 2007

L U G A R	E S T A C I O N				C L A S I F I C A C I O N V E H I C U L A R E N P O R C I E N T O .												
	KM	TE	SC	TDPA	A	B	C2	C3	T3S2	T3S3	T3S2R4	OTROS	A	B	C	K'	D
MEXICO	0.00	0	0														
LIM. EDOS. TERM. DF. PPIA. MEX.	18.66	0	0														
T. DER. CHALCO	28.85	1	1	30726	80.4	4.9	4.8	4.6	1.8	1.7	0.2	1.6	80.4	4.9	14.7	0.063	0.501
T. DER. CHALCO	28.85	1	2	30891	82.6	4.8	5.1	2.9	1.7	1.3	0.2	1.4	82.6	4.8	12.6	0.061	0.501
T. DER. CHALCO	28.85	3	1	9589	82.3	4.1	4.6	3.9	1.3	1.3	0.4	2.1	82.3	4.1	13.6	0.146	0.5
T. DER. CHALCO	28.85	3	2	9604	80.9	4.1	5.6	4.5	1.5	1.4	0.4	1.6	80.9	4.1	15	0.12	0.5
IXTAPALUCA	31.06	3	0	5340	78.1	6.5	8.3	1.7	2.1	1.3	0.2	1.8	78.1	6.5	15.4	0.078	0.509
T. DER. C. MEXICO - PUEBLA (CUOTA) (RIO FRIO)	62.06	1	0	5153	77.8	6.4	8.3	1.9	2.2	1.3	0.2	1.9	77.8	6.4	15.8	0.078	0.509
T. DER. C. MEXICO - PUEBLA (CUOTA) (RIO FRIO)	62.06	3	0	4168	75	5.6	4.8	4.3	3.4	3.5	0.9	2.5	75	5.6	19.4	0.074	0.502
LIM. EDOS. TERM. MEX. PPIA. PUE.	62.98	0	0														
SAN MARTIN TEXMELUCAN	70.00	1	0	12952	76.9	2.7	9.7	5.5	2.4	1.1	0.4	1.3	76.9	2.7	20.4	0.069	0.504
X. C. MEXICO - PUEBLA (CUOTA)	74.10	3	0	17821	77.6	4.2	5.9	3	3.3	2.5	2.9	0.6	77.6	4.2	18.2	0.074	0.502
HUEJOTZINGO	88.00	1	0	11052	76.4	6.2	3.2	3	5.8	1.2	2.4	1.8	76.4	6.2	17.4	0.069	0.504

DISTRITO FEDERAL

6 CARR : MEXICO - PUEBLA (LIBRE)

CLAVE: 00449

RUTA : MEX-150

AÑO : 2007

L U G A R	E S T A C I O N				C L A S I F I C A C I O N V E H I C U L A R E N P O R C I E N T O .												
	KM	TE	SC	TDPA	A	B	C2	C3	T3S2	T3S3	T3S2R4	OTROS	A	B	C	K'	D
HUEJOTZINGO	88.00	3	0	12076	72.5	8.9	10.4	2.9	2	1.3	1.3	0.7	72.5	8.9	18.6	0.066	0.5
T. IZQ. AEROPUERTO	92.80	1	0	11627	76.3	3.7	8.1	4.8	2.3	2.5	1.4	0.9	76.3	3.7	20	0.067	0.501
T. DER. CHOLULA	101.00	1	0	14898	78	4.3	6.2	4.7	3.6	2.5	0.5	0.2	78	4.3	17.7	0.085	0.503
T. DER. CHOLULA	101.00	3	1	11356	81.9	4.3	6.6	3.7	1.7	1.1	0.5	0.2	81.9	4.3	13.8	0.085	0.5
T. DER. CHOLULA	101.00	3	2	11341	82.9	4.5	5.5	3.6	1.8	0.9	0.6	0.2	82.9	4.5	12.6	0.077	0.5
PUEBLA	131.00	0	0														

7 CARR : MEXICO - QUERETARO (CUOTA)

CLAVE: 00411

RUTA : MEX-057D

AÑO : 2007

L U G A R	E S T A C I O N				C L A S I F I C A C I O N V E H I C U L A R E N P O R C I E N T O .												
	KM	TE	SC	TDPA	A	B	C2	C3	T3S2	T3S3	T3S2R4	OTROS	A	B	C	K'	D
MEXICO	0.00	0	0														
LIM. EDOS. TERM. D.F. PPIA. MEX.	11.30	0	0														
CASETA DE COBRO TEPOTZOTLAN	43.01	2	1	21887													
CASETA DE COBRO TEPOTZOTLAN	43.01	2	2	21886													
ENT. JOROBAS	56.18	1	1	28666	70.4	8.5	7.6	6.4	3.4	2.1	0.3	1.3	70.4	8.5	21.1	0.083	0.512
ENT. JOROBAS	56.18	1	2	30040	63.9	8.5	6.8	6.4	5.9	4.3	0.2	4	63.9	8.5	27.6	0.065	0.512
ENT. JOROBAS	56.18	3	1	23700	74.3	7	6.2	4.8	2.5	2.7	0	2.5	74.3	7	18.7	0.095	0.506
ENT. JOROBAS	56.18	3	2	23117	62.6	9.2	6.5	6.7	6.9	4.1	0	4	62.6	9.2	28.2	0.088	0.506
LIM. EDOS. TERM. MEX. PPIA. HGO.	60.00	0	0														
T. DER. TEPEJI DEL RIO	69.36	1	1	20917	69.2	7.7	7.6	3.9	4.7	3.9	2.2	0.8	69.2	7.7	23.1	0.096	0.503
T. DER. TEPEJI DEL RIO	69.36	1	2	20671	70.4	8.2	7.9	3.6	4	3	2.2	0.7	70.4	8.2	21.4	0.114	0.503
T. DER. TEPEJI DEL RIO	69.36	3	1	17822	71.5	7.8	6.7	4.2	4.5	2.1	2.3	0.9	71.5	7.8	20.7	0.085	0.5
T. DER. TEPEJI DEL RIO	69.36	3	2	17838	72.7	7	7.2	3.7	4	2.3	2.5	0.6	72.7	7	20.3	0.158	0.5
T. IZQ. JILOTEPEC	83.75	1	1	14042	72.9	8	7.1	3.2	3.1	3.3	2.2	0.2	72.9	8	19.1	0.112	0.5
T. IZQ. JILOTEPEC	83.75	1	2	14046	73.8	7.5	5.3	4.1	3.7	3.3	2.1	0.2	73.8	7.5	18.7	0.094	0.5
T. IZQ. JILOTEPEC	83.75	3	1	14121	71.3	7.1	6.2	4.8	5.2	2.3	2.5	0.6	71.3	7.1	21.6	0.104	0.501
T. IZQ. JILOTEPEC	83.75	3	2	14076	70.5	6.7	6.6	5.3	4.6	3.2	2.1	1	70.5	6.7	22.8	0.084	0.501
LIM. EDOS. TERM. HGO. PPIA. MEX.	86.00	0	0														
X. C. JILOTEPEC - MARAVILLAS	107.00	1	1	19079	67.5	7	6.9	8.9	4	3.6	0.1	2	67.5	7	25.5	0.079	0.509
X. C. JILOTEPEC - MARAVILLAS	107.00	1	2	18395	69	7	7.3	6.2	5.2	2.8	0.1	2.4	69	7	24	0.068	0.509
X. C. JILOTEPEC - MARAVILLAS	107.00	3	1	18014	48.1	7.2	2.4	8.6	9.3	5.5	14.7	4.2	48.1	7.2	44.7	0.093	0.506
X. C. JILOTEPEC - MARAVILLAS	107.00	3	2	17554	46	7.2	3.2	9.1	11.9	5.6	12.7	4.3	46	7.2	46.8	0.079	0.506
T. IZQ. ACULCO	125.00	1	1	21963	62.6	9	8.6	6.5	7.9	3.7	0.2	1.5	62.6	9	28.4	0.088	0.502
T. IZQ. ACULCO	125.00	1	2	22164	67.1	9	8.2	4.4	5.4	4	0.1	1.8	67.1	9	23.9	0.07	0.502

DISTRITO FEDERAL

7 CARR : MEXICO - QUERETARO (CUOTA)

CLAVE: 00411

RUTA : MEX-057D

AÑO : 2007

L U G A R	E S T A C I O N				C L A S I F I C A C I O N V E H I C U L A R E N P O R C I E N T O .												
	KM	TE	SC	TDPA	A	B	C2	C3	T3S2	T3S3	T3S2R4	OTROS	A	B	C	K'	D
T. IZQ. ACULCO	125.00	3	1	17518	66.8	8	6.8	5.7	5.6	4.6	0.1	2.4	66.8	8	25.2	0.085	0.5
T. IZQ. ACULCO	125.00	3	2	17503	66.7	7.9	6.1	4.9	7.9	4.2	0.7	1.6	66.7	7.9	25.4	0.091	0.5
LIM. EDOS. TERM. MEX. PPIA. QRO.	145.80	0	0														
CASETA DE COBRO PALMILLAS	147.90	2	1	18880													
CASETA DE COBRO PALMILLAS	147.90	2	2	18879													
T. IZQ. TOLUCA	148.50	1	1	15412	47.2	4.4	5.9	8.2	17.6	3.9	9.6	3.2	47.2	4.4	48.4	0.076	0.503
T. IZQ. TOLUCA	148.50	1	2	15603	47.5	4.2	6	8.1	17.6	3.9	9.6	3.1	47.5	4.2	48.3	0.076	0.503
T. IZQ. TOLUCA	148.50	3	1	20175	55.6	6.1	4.9	5.4	12.9	3.4	9	2.7	55.6	6.1	38.3	0.073	0.506
T. IZQ. TOLUCA	148.50	3	2	19735	51.6	6.5	5.4	5.2	14.7	3.9	9.5	3.2	51.6	6.5	41.9	0.066	0.506
T. DER. PONIENTE SAN JUAN DEL RIO	164.10	3	1	24670	53.3	9.9	4.5	4.6	11.7	4.4	8.5	3.1	53.3	9.9	36.8	0.073	0.511
T. DER. PONIENTE SAN JUAN DEL RIO	164.10	3	2	23653	51.5	9.5	4.4	3.7	12.9	4.6	10.4	3	51.5	9.5	39	0.068	0.511
T. IZQ. ACAMBARO	170.50	3	1	20241	51.5	7.6	4.9	6.2	12.8	3.8	8.6	4.6	51.5	7.6	40.9	0.087	0.501
T. IZQ. ACAMBARO	170.50	3	2	20359	51.2	7.8	4.4	6.3	12.3	4.1	9.4	4.5	51.2	7.8	41	0.098	0.501
T. DER. LIBRAMIENTO DE QUERETARO A SAN LUIS POTOSI	207.00	1	1	24782	68.2	4.5	3.6	4	9.1	2.2	4.1	4.3	68.2	4.5	27.3	0.068	0.501
T. DER. LIBRAMIENTO DE QUERETARO A SAN LUIS POTOSI	207.00	1	2	24705	60.2	4.7	3.3	2.6	9.9	3.9	9.2	6.2	60.2	4.7	35.1	0.063	0.501
T. DER. LIBRAMIENTO DE QUERETARO A SAN LUIS POTOSI	207.00	3	1	27695	67.4	4.9	3.7	2.8	8.4	3.2	5.9	3.7	67.4	4.9	27.7	0.073	0.5
T. DER. LIBRAMIENTO DE QUERETARO A SAN LUIS POTOSI	207.00	3	2	27675	61.2	4.9	5.4	3.6	10.5	3.5	6.3	4.6	61.2	4.9	33.9	0.071	0.5
QUERETARO	211.60	0	0														

8 CARR : MEXICO - TIZAYUCA (CUOTA)

CLAVE: 00432

RUTA : MEX-085D

AÑO : 2007

L U G A R	E S T A C I O N				C L A S I F I C A C I O N V E H I C U L A R E N P O R C I E N T O .												
	KM	TE	SC	TDPA	A	B	C2	C3	T3S2	T3S3	T3S2R4	OTROS	A	B	C	K'	D
T. C. MEXICO - PACHUCA (LIBRE)	0.00	0	0														
LIM. EDOS. TERM. D.F. PPIA. MEX.	9.86	0	0														
ENT. MORELOS	23.28	3	1	17118	79.7	6	4.6	3	2.1	1.9	0	2.7	79.7	6	14.3	0.106	0.504
ENT. MORELOS	23.28	3	2	17414	79.5	5.5	5.1	3	2.3	2.2	0	2.4	79.5	5.5	15	0.095	0.504
CASETA DE COBRO OJO DE AGUA	25.00	2	1	20823													
CASETA DE COBRO OJO DE AGUA	25.00	2	2	20822													
T. IZQ. TECAMAC	35.62	3	1	9740	80.3	5.4	4.4	3.4	1.6	1.3	0.6	3	80.3	5.4	14.3	0.127	0.519
T. IZQ. TECAMAC	35.62	3	2	10525	80.3	3.9	3.9	2.9	1.4	3.1	0.5	4	80.3	3.9	15.8	0.107	0.519
LIM. EDOS. TERM. MEX. PPIA. HGO.	49.25	0	0														
X. C. OTUMBA - TIZAYUCA	53.45	1	1	11599	70.4	10.4	7.3	2.1	4.1	1.9	1.9	1.9	70.4	10.4	19.2	0.086	0.501
X. C. OTUMBA - TIZAYUCA	53.45	1	2	11644	73.6	9.5	4.8	2.3	4	2.1	1.8	1.9	73.6	9.5	16.9	0.085	0.501
T. C. MEXICO - PACHUCA (LIBRE)	60.50	1	1	12382	79.4	3.6	5.1	2.5	4.6	1.2	1.2	2.4	79.4	3.6	17	0.081	0.503

DISTRITO FEDERAL

8 CARR : MEXICO - TIZAYUCA (CUOTA)

CLAVE: 00432

RUTA : MEX-085D

AÑO : 2007

L U G A R	E S T A C I O N				C L A S I F I C A C I O N V E H I C U L A R E N P O R C I E N T O .												
	KM	TE	SC	TDPA	A	B	C2	C3	T3S2	T3S3	T3S2R4	OTROS	A	B	C	K'	D
T. C. MEXICO - PACHUCA (LIBRE)	60.50	1	2	12214	78	5.1	5.1	2.5	4.5	1.2	1.2	2.4	78	5.1	16.9	0.087	0.503

9 CARR : MEXICO - TOLUCA

CLAVE: 00447

RUTA : MEX-015

AÑO : 2007

L U G A R	E S T A C I O N				C L A S I F I C A C I O N V E H I C U L A R E N P O R C I E N T O .												
	KM	TE	SC	TDPA	A	B	C2	C3	T3S2	T3S3	T3S2R4	OTROS	A	B	C	K'	D
MEXICO	0.00	0	0														
ENT. CONSTITUYENTES Y REFORMA	12.84	3	1	71377	78.4	5.6	2.4	5.3	4.3	2.8	0.1	1.1	78.4	5.6	16	0.118	0.51
ENT. CONSTITUYENTES Y REFORMA	12.84	3	2	73180	77.3	5.3	5.4	3.5	4.2	3.4	0.1	0.8	77.3	5.3	17.4	0.091	0.51
T. DER. CUAJIMALPA (1° ACCESO)	20.56	1	1	36663	83.5	4.3	3.1	3.1	1.8	3	0.1	1.1	83.5	4.3	12.2	0.091	0.517
T. DER. CUAJIMALPA (1° ACCESO)	20.56	1	2	33895	81.3	6	3.8	3.3	1.9	2.8	0.1	0.8	81.3	6	12.7	0.112	0.517
T. IZQ. DESIERTO DE LOS LEONES	23.96	1	1	25377	80.3	7.1	4.3	2.7	1.9	2.2	0.2	1.3	80.3	7.1	12.6	0.147	0.539
T. IZQ. DESIERTO DE LOS LEONES	23.96	1	2	29322	82.9	6.9	2.9	1.5	1.6	2.9	0.1	1.2	82.9	6.9	10.2	0.134	0.539
LIM. EDOS. TERM. D.F. PPIA. MEX.	33.44	0	0														
T. DER. HUIXQUILUCAN	33.98	1	1	23481	81.7	7.1	2.8	2.2	2.8	2.1	0	1.3	81.7	7.1	11.2	0.135	0.516
T. DER. HUIXQUILUCAN	33.98	1	2	24746	81.6	7	3.7	3.2	0.3	2.9	0.1	1.2	81.6	7	11.4	0.149	0.516
X. C. AMOMOLULCO - STGO. TIANGUISTENCO	47.26	1	1	27908	73.4	11.5	2.6	4.2	2.9	2.5	0.3	2.6	73.4	11.5	15.1	0.077	0.505
X. C. AMOMOLULCO - STGO. TIANGUISTENCO	47.26	1	2	28081	73.7	11.5	3.2	4	2.7	2.3	0.2	2.4	73.7	11.5	14.8	0.091	0.505
T. DER. LERMA - IZQ. SAN PEDRO TULTEPEC	51.71	1	1	29273	78.7	8.4	3.8	2.9	1.7	1.9	0.2	2.4	78.7	8.4	12.9	0.08	0.503
T. DER. LERMA - IZQ. SAN PEDRO TULTEPEC	51.71	1	2	28361	79.1	8.3	4.8	3.7	1.6	0.6	0.2	1.7	79.1	8.3	12.6	0.076	0.503
T. IZQ. SAN MATEO ATENCO (BAJA)	52.00	3	1	8865	71.5	8.6	5.8	3.9	3.3	2.8	0.4	3.7	71.5	8.6	19.9	0.109	0.505
T. IZQ. SAN MATEO ATENCO (ALTA)	52.00	3	1	35067	91.6	2.3	2.4	1.6	0.4	0.3	0.2	1.2	91.6	2.3	6.1	0.09	0.523
T. IZQ. SAN MATEO ATENCO (BAJA)	52.00	3	2	8941	68.6	8.6	6.5	5.5	3.6	2.8	0.4	4	68.6	8.6	22.8	0.115	0.505
T. IZQ. SAN MATEO ATENCO (ALTA)	52.00	3	2	37813	91.6	2.3	2.3	1.5	0.4	0.4	0.2	1.3	91.6	2.3	6.1	0.097	0.523
X. C. LIBRAMIENTO DE TOLUCA (BAJA)	62.20	1	1	8839	80.6	7.3	5.3	2.8	1.1	1	0.1	1.8	80.6	7.3	12.1	0.148	0.502
X. C. LIBRAMIENTO DE TOLUCA (ALTA)	62.20	1	1	38297	88.3	4	3.3	1.9	0.4	0.4	0.2	1.5	88.3	4	7.7	0.102	0.51
X. C. LIBRAMIENTO DE TOLUCA (ALTA)	62.20	1	2	36952	88.8	4	3.1	1.7	0.4	0.4	0.2	1.4	88.8	4	7.2	0.088	0.51
X. C. LIBRAMIENTO DE TOLUCA (BAJA)	62.20	1	2	8855	79.5	7.3	5.3	3.2	1.1	1.2	0.1	2.3	79.5	7.3	13.2	0.106	0.502
TOLUCA	66.00	0	0														

10 CARR : SAN GREGORIO - OAXTEPEC

CLAVE: 00901

RUTA : MEX-142

AÑO : 2007

L U G A R	E S T A C I O N				C L A S I F I C A C I O N V E H I C U L A R E N P O R C I E N T O .												
	KM	TE	SC	TDPA	A	B	C2	C3	T3S2	T3S3	T3S2R4	OTROS	A	B	C	K'	D
SAN GREGORIO	0.00	3	0	8554	88	2.8	4.2	2.3	0.9	0.7	0	1.1	88	2.8	9.2	0.086	0.502

DISTRITO FEDERAL

10 CARR : SAN GREGORIO - OAXTEPEC

CLAVE: 00901

RUTA : MEX-142

AÑO : 2007

L U G A R	E S T A C I O N				CLASIFICACION VEHICULAR EN PORCIENTO .												
	KM	TE	SC	TDPA	A	B	C2	C3	T3S2	T3S3	T3S2R4	OTROS	A	B	C	K'	D
X. C. MILPA ALTA - SAN LORENZO TLACOYUCAN	9.00	3	0	6105	85.1	2.8	5.8	2.9	1.2	1.1	0.1	1	85.1	2.8	12.1	0.091	0.511
LIM. EDOS. TERM. D.F. PPIA. MEX.	18.80	0	0														
LIM. EDOS. TERM. MEX. PPIA. MOR.	28.50	0	0														
T. DER. SAN FELIPE NERI	33.80	1	0	4906	89.6	4.8	2	1.6	0.9	0.4	0.1	0.6	89.6	4.8	5.6	0.068	0.505
T. DER. TLALNEPANTLA	40.50	3	0	4561	84.8	3.1	5	2	1.8	1.4	1.6	0.3	84.8	3.1	12.1	0.088	0.501
TLAYACAPAN	48.50	3	0	5312	89.6	2.7	2.3	1.1	1.2	1.5	1.5	0.1	89.6	2.7	7.7	0.076	0.502
T. DER. YAUTEPEC	53.00	3	0	9549	88.5	2.5	3.7	1.4	1.1	1.3	1.5	0	88.5	2.5	9	0.07	0.501
OAXTEPEC	56.00	0	0														

11 CARR : T. C. (MEXICO - MIXQUIC) - SAN PABLO ATLAZALPAN

CLAVE: 00044

RUTA : EM-106-DF

AÑO : 2007

L U G A R	E S T A C I O N				CLASIFICACION VEHICULAR EN PORCIENTO .												
	KM	TE	SC	TDPA	A	B	C2	C3	T3S2	T3S3	T3S2R4	OTROS	A	B	C	K'	D
T. C. MEXICO - MIXQUIC	0.00	3	0	5027	85.1	3	3.6	1.6	1.6	1.7	0.8	2.6	85.1	3	11.9	0.079	0.506
LIM. EDOS. TERM. D.F. PPIA. MEX.	2.00	0	0														
SAN PABLO ATLAZALPAN	7.00	0	0														

12 CARR : CHALCO - MIXQUIC

CLAVE: 00171

RUTA : EM-DF

AÑO : 2007

L U G A R	E S T A C I O N				CLASIFICACION VEHICULAR EN PORCIENTO .												
	KM	TE	SC	TDPA	A	B	C2	C3	T3S2	T3S3	T3S2R4	OTROS	A	B	C	K'	D
CHALCO	0.00	3	0	16114	84.9	2.8	2.7	1	3.4	0.9	1.5	2.8	84.9	2.8	12.3	0.068	0.514
LIM. EDOS. TERM. MEX. PPIA. D.F.	8.00	0	0														
MIXQUIC	10.00	1	0	5375	90.3	4.1	1	0.3	2.4	0.2	0.5	1.2	90.3	4.1	5.6	0.069	0.512

13 CARR : CHALCO - TLAHUAC

CLAVE: 00170

RUTA : EM-DF

AÑO : 2007

L U G A R	E S T A C I O N				CLASIFICACION VEHICULAR EN PORCIENTO .												
	KM	TE	SC	TDPA	A	B	C2	C3	T3S2	T3S3	T3S2R4	OTROS	A	B	C	K'	D
CHALCO	0.00	3	0	9355	83.6	5.7	4.6	1.6	1.3	1.1	0.4	1.7	83.6	5.7	10.7	0.079	0.501
LIM. EDOS. TERM. MEX. PPIA. D.F.	7.50	0	0														
TLAHUAC	12.00	1	0	5214	85.9	3.3	2.4	2.2	2	1.4	0.4	2.4	85.9	3.3	10.8	0.088	0.5

DISTRITO FEDERAL

14 CARR : JALATLACO - EL AJUSCO

CLAVE: 00017

RUTA : EM-DF

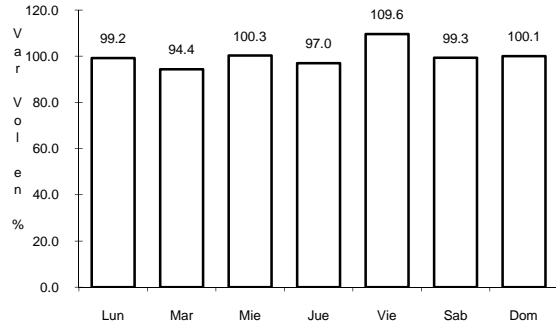
AÑO : 2007

L U G A R	E S T A C I O N				C L A S I F I C A C I O N V E H I C U L A R E N P O R C I E N T O .												
	KM	TE	SC	TDPA	A	B	C2	C3	T3S2	T3S3	T3S2R4	OTROS	A	B	C	K'	D
T. C. ENT. CRUZ DE LA MISION - SAN NICOLAS COATEPEC	0.00	3	0	1889	86.8	7.8	0.5	0.4	2.5	1	0.3	0.7	86.8	7.8	5.4	0.104	0.509
LIM. EDOS. TERM. MEX. PPIA. D.F.	17.70	0	0														
T. C. CIRCUITO DEL AJUSCO	27.60	1	0	1026	81.2	4.5	3.1	2.5	3.5	3.5	0	1.7	81.2	4.5	14.3	0.096	0.518

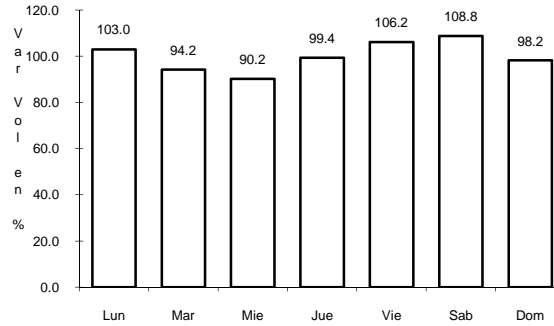
1 CARR: MEXICO - CUERNAVACA (CUOTA)

CLAVE: 00041

RUTA: MEX-095D



Km: 18.65 Tipo: 3 Sent: 1

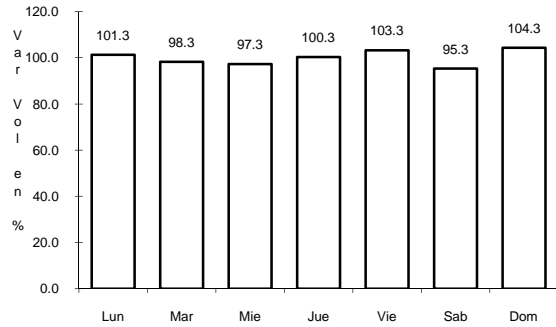


Km: 18.65 Tipo: 3 Sent: 2

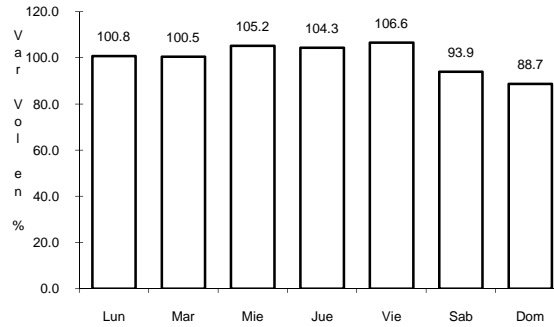
2 CARR: MEXICO - CUERNAVACA (LIBRE)

CLAVE: 00040

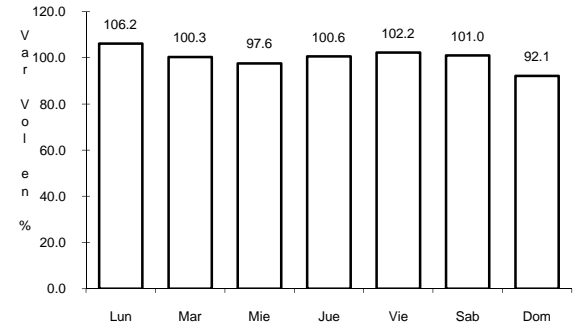
RUTA: MEX-095



Km: 28.78 Tipo: 1 Sent: 0



Km: 71.36 Tipo: 3 Sent: 1

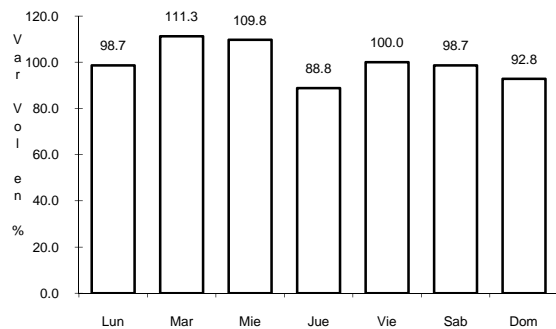


Km: 71.36 Tipo: 3 Sent: 2

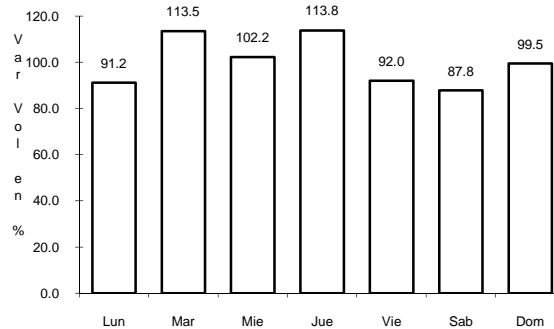
3 CARR: CONSTITUYENTES - LA MARQUESA (CUOTA)

CLAVE: 00446

RUTA: MEX-DF



Km: 0.00 Tipo: 3 Sent: 1

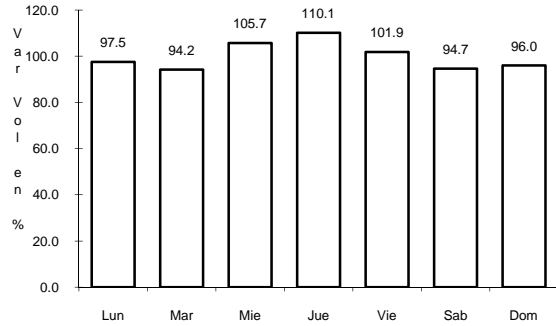


Km: 0.00 Tipo: 3 Sent: 2

4 CARR: MEXICO - PACHUCA (LIBRE)

CLAVE: 00431

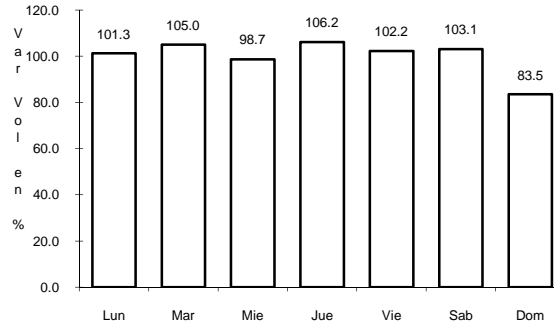
RUTA: MEX-085



Km: 26.93

Tipo: 1

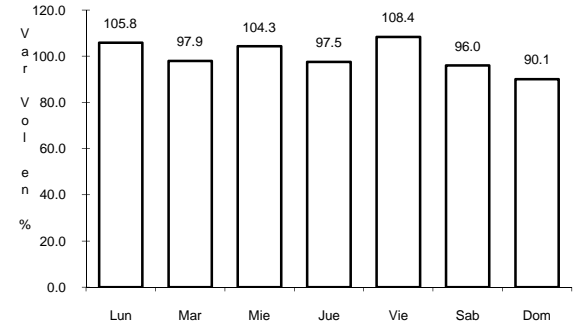
Sent: 0



Km: 86.50

Tipo: 1

Sent: 1



Km: 86.50

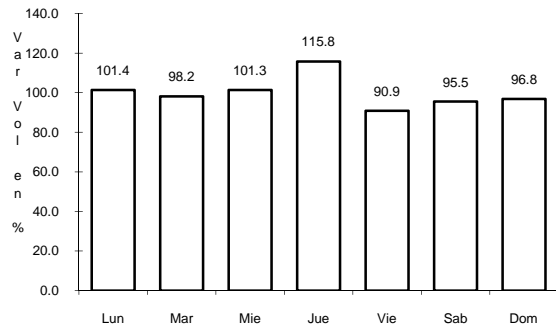
Tipo: 1

Sent: 2

5 CARR: MEXICO - PUEBLA (CUOTA)

CLAVE: 00450

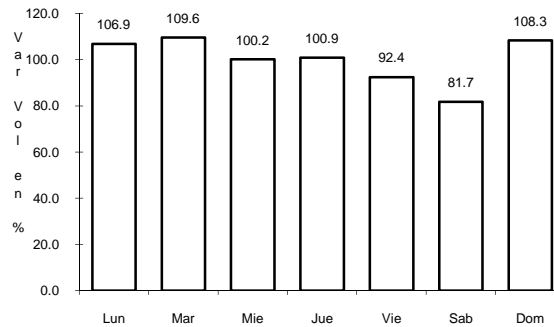
RUTA: MEX-150D



Km: 20.00

Tipo: 3

Sent: 1



Km: 20.00

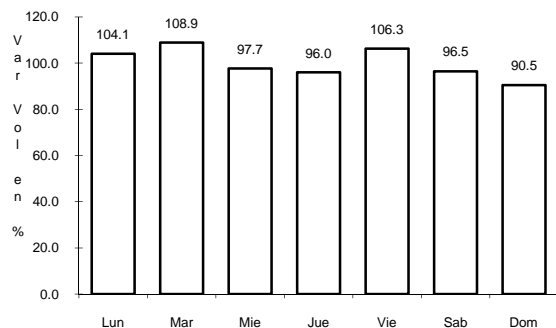
Tipo: 3

Sent: 2

6 CARR: MEXICO - PUEBLA (LIBRE)

CLAVE: 00449

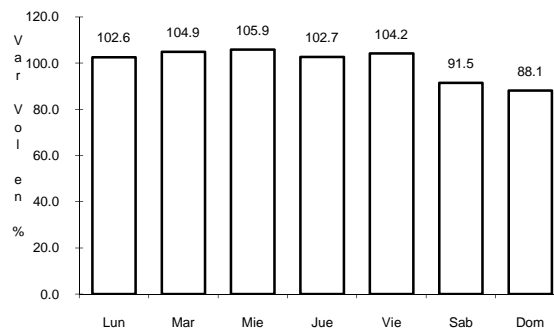
RUTA: MEX-150



Km: 28.85

Tipo: 1

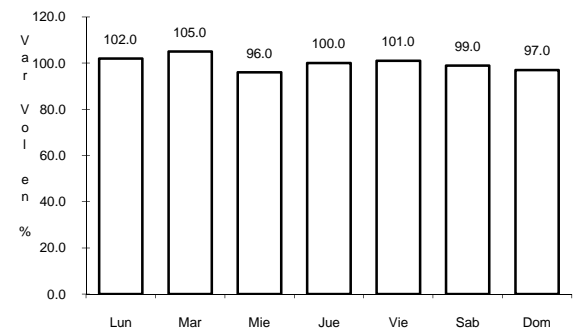
Sent: 1



Km: 28.85

Tipo: 1

Sent: 2



Km: 70.00

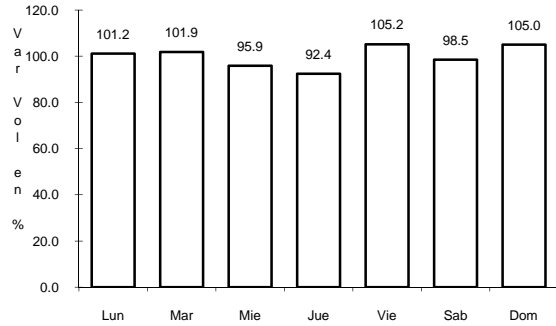
Tipo: 1

Sent: 0

7 CARR: MEXICO - QUERETARO (CUOTA)

CLAVE: 00411

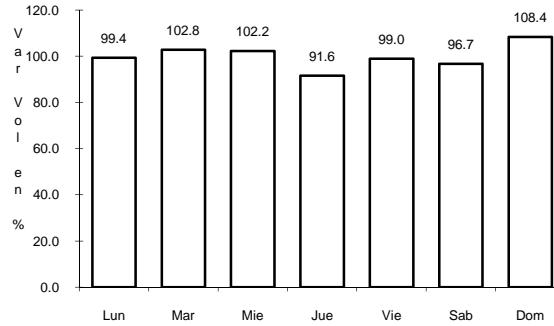
RUTA: MEX-057D



Km: 56.18

Tipo: 1

Sent: 1



Km: 56.18

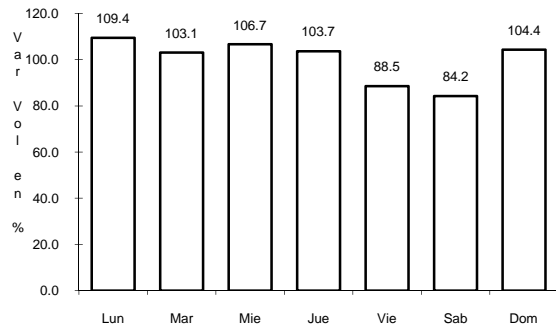
Tipo: 1

Sent: 2

8 CARR: MEXICO - TIZAYUCA (CUOTA)

CLAVE: 00432

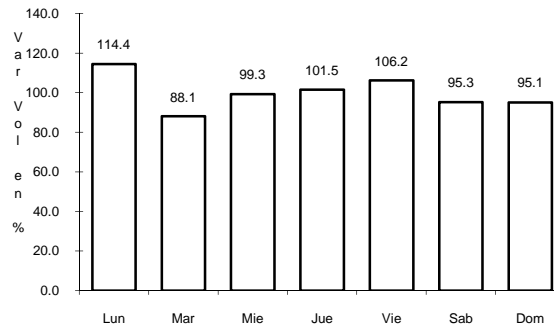
RUTA: MEX-085D



Km: 23.28

Tipo: 3

Sent: 1



Km: 23.28

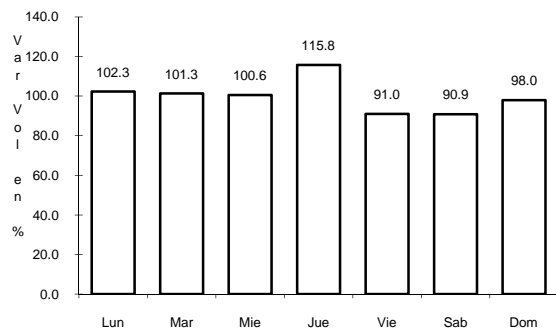
Tipo: 3

Sent: 2

9 CARR: MEXICO - TOLUCA

CLAVE: 00447

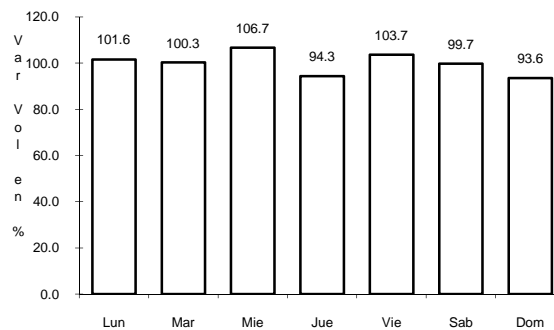
RUTA: MEX-015



Km: 12.84

Tipo: 3

Sent: 1



Km: 12.84

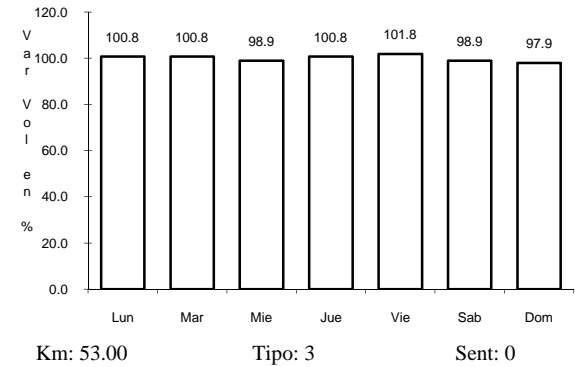
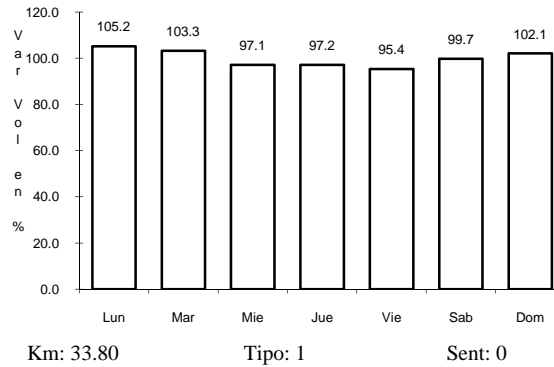
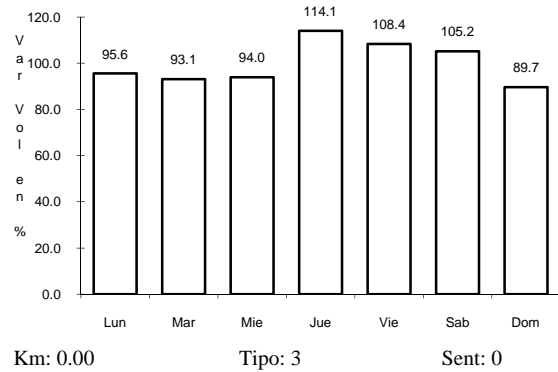
Tipo: 3

Sent: 2

10 CARR: SAN GREGORIO - OAXTEPEC

CLAVE: 00901

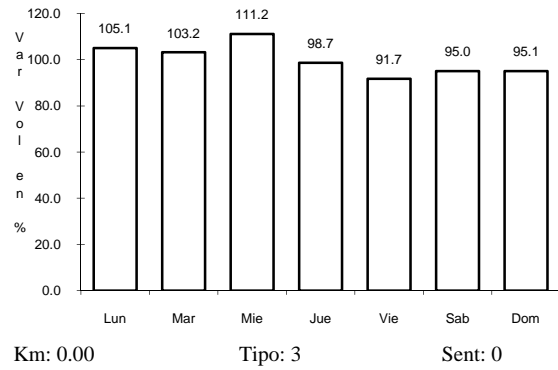
RUTA: MEX-142



11 CARR: T. C. (MEXICO - MIXQUIC) - SAN PABLO ATLAZALPAN

CLAVE: 00044

RUTA: EM-106-DF



12 CARR: CHALCO - MIXQUIC

CLAVE: 00171

RUTA: EM-DF

