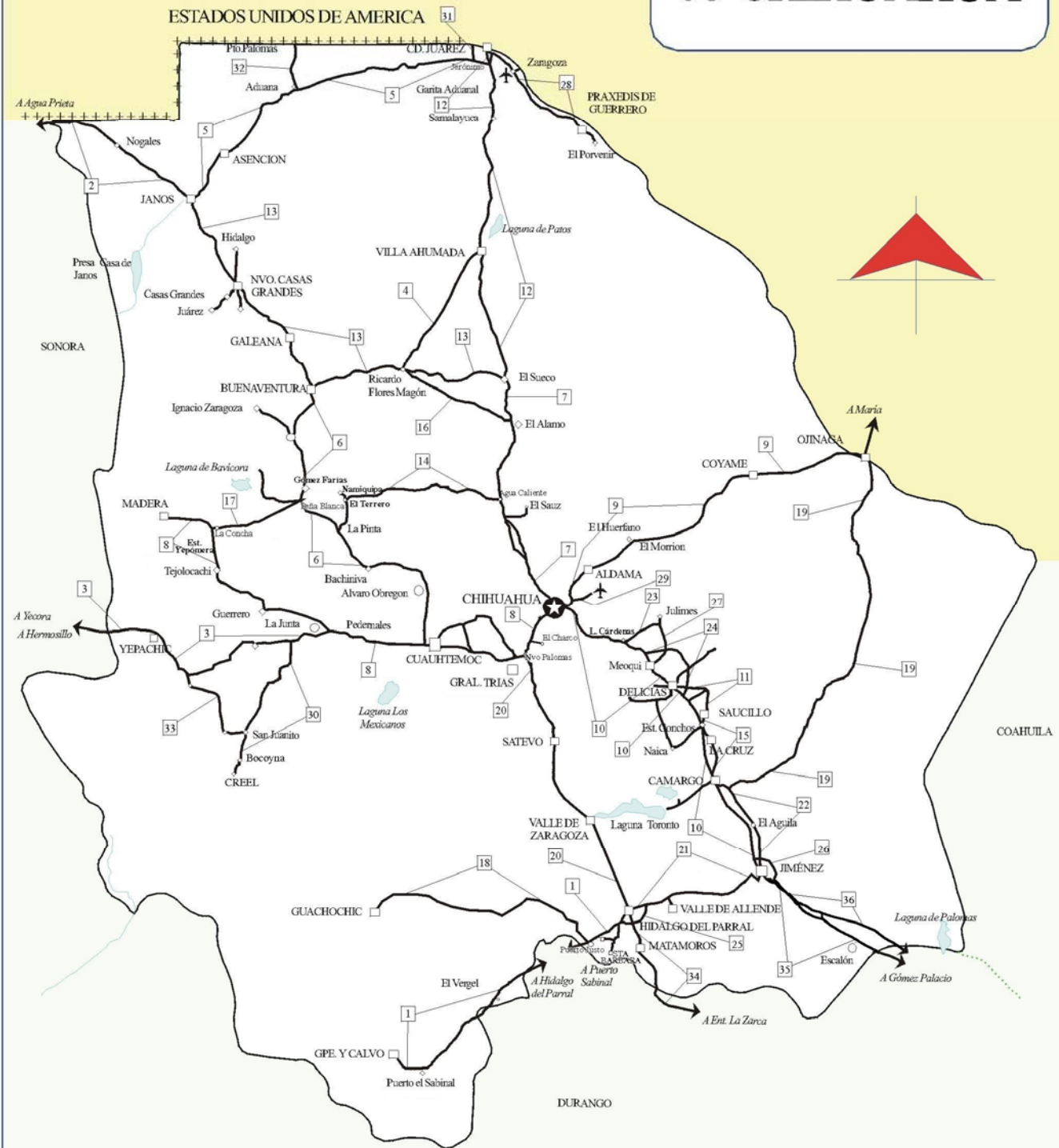


08 CHIHUAHUA



Secretaría de Comunicaciones y Transportes

MAPA INDICE

15 Num. Indice
2008

CARRETERAS AFORADAS

Num. INDICE	CARRETERA
1	HIDALGO DEL PARRAL - GUADALUPE Y CALVO
2	JANOS - AGUA PRIETA
3	LA JUNTA - YECORA
4	AHUMADA - RICARDO FLORES MAGON
5	CD. JUAREZ - JANOS
6	CUAUHTEMOC - BUENAVENTURA
7	CHIHUAHUA - EL SUECO
8	CHIHUAHUA - MADERA
9	CHIHUAHUA - OJINAGA
10	JIMENEZ - CHIHUAHUA (CUOTA)
11	DELICIAS - SAUCILLO
12	EL SUECO - CD. JUAREZ
13	EL SUECO - JANOS
14	T. C. (CHIHUAHUA - EL SUECO) - EL TERRERO
15	CIUDAD CAMARGO - SAUCILLO
16	EL ALAMO - RICARDO FLORES MAGON
17	ENT. LA CONCHA - ENT. PEÑA BLANCA
18	PUERTO JUSTO - GUACHOCHIC
19	T. C. (JIMENEZ - CAMARGO) - OJINAGA
20	HIDALGO DEL PARRAL - NUEVO PALOMAS (VIA CORTA)
21	HIDALGO DEL PARRAL - JIMENEZ
22	JIMENEZ - CAMARGO
23	LAZARO CARDENAS - ENT. COLONIA SAN JOSE
24	LIBRAMIENTO DE DELICIAS - MEOQUI
25	LIBRAMIENTO DE HIDALGO DEL PARRAL
26	LIBRAMIENTO DE JIMENEZ
27	MEOQUI - JULIMES
28	PORVENIR - CD. JUAREZ
29	RAMAL A AEROPUERTO DE CHIHUAHUA
30	RAMAL A CREEL
31	JERONIMO - STA. TERESA
32	RAMAL A PALOMAS
33	SAN JUANITO - BASASEACHIC
34	ENT. LA ZARCA - HIDALGO DEL PARRAL
35	GOMEZ PALACIO - JIMENEZ
36	GOMEZ PALACIO - JIMENEZ (CUOTA)

CHIHUAHUA

1 CARR : HIDALGO DEL PARRAL - GUADALUPE Y CALVO

CLAVE: 00802

RUTA : MEX-024

AÑO : 2007

L U G A R	E S T A C I O N				C L A S I F I C A C I O N V E H I C U L A R E N P O R C I E N T O .												
	KM	TE	SC	TDPA	A	B	C2	C3	T3S2	T3S3	T3S2R4	OTROS	A	B	C	K'	D
T. C. HIDALGO DEL PARRAL - SANTA BARBARA	0.00	3	0	2075	79	4.3	3.4	3.8	4.4	2.7	1.1	1.3	79	4.3	16.7	0.081	0.511
T. DER. GUACHOCHIC	35.00	1	0	1626	79.1	4.1	3.6	1.9	5	3.3	1.4	1.6	79.1	4.1	16.8	0.08	0.508
T. DER. GUACHOCHIC	35.00	3	0	667	75.2	5.1	6.3	3.3	4.5	3.9	0.9	0.8	75.2	5.1	19.7	0.097	0.512
LIM. EDOS. TERM. CHIH. PPIA. DGO	38.00	0	0														
LIM. EDOS. TERM. DGO. PPIA. CHIH.	57.00	0	0														
EL VERGEL	110.00	1	0	770	78.9	5.1	5.9	3.1	3.3	2.5	0.5	0.7	78.9	5.1	16	0.108	0.505
PUERTO SABINAL	212.00	1	0	1120	81.5	4.7	2.7	0.5	5.9	2	2.1	0.6	81.5	4.7	13.8	0.078	0.505
GUADALUPE Y CALVO	234.00	0	0														

2 CARR : JANOS - AGUA PRIETA

CLAVE: 00220

RUTA : MEX-002

AÑO : 2007

L U G A R	E S T A C I O N				C L A S I F I C A C I O N V E H I C U L A R E N P O R C I E N T O .												
	KM	TE	SC	TDPA	A	B	C2	C3	T3S2	T3S3	T3S2R4	OTROS	A	B	C	K'	D
T. C. CD. JUAREZ - JANOS	0.00	3	0	3942	62.3	3.5	2.9	3.3	14.5	3.6	8.3	1.6	62.3	3.5	34.2	0.088	0.504
LOS MIMBRES	56.00	3	0	1781	76.3	6	1.1	4	3.5	5.1	1.3	2.7	76.3	6	17.7	0.074	0.502
LIM. EDOS. TERM. CHIH. PPIA. SON.	82.40	0	0														
AGUA PRIETA	156.40	1	0	2138	88.4	4	5.5	0.7	0.7	0.4	0.1	0.2	88.4	4	7.6	0.127	0.513

3 CARR : LA JUNTA - YECORA

CLAVE: 00065

RUTA : MEX-016

AÑO : 2007

L U G A R	E S T A C I O N				C L A S I F I C A C I O N V E H I C U L A R E N P O R C I E N T O .												
	KM	TE	SC	TDPA	A	B	C2	C3	T3S2	T3S3	T3S2R4	OTROS	A	B	C	K'	D
T. C. CHIHUAHUA - MADERA	0.00	3	0	2754	85.6	3	3.4	1.7	2.3	1.6	0.7	1.7	85.6	3	11.4	0.119	0.534
T. IZQ. SAN JUANITO	16.00	1	0	2019	80.2	4.3	2.8	3	5.1	2	1.2	1.4	80.2	4.3	15.5	0.078	0.51
T. IZQ. SAN JUANITO	16.00	3	0	1033	82	5.5	2.9	2.3	3.6	1.6	0.3	1.8	82	5.5	12.5	0.096	0.509
TONACHIC	70.00	3	0	911	82.2	5.1	4.5	1	3.5	1.5	0.4	1.8	82.2	5.1	12.7	0.109	0.522
LIM. EDOS. TERM. CHIH. PPIA. SON.	190.00	0	0														
YECORA	253.00	1	0	693	82.6	4.3	4.9	2.3	4.1	0.9	0.4	0.5	82.6	4.3	13.1	0.095	0.509

4 CARR : AHUMADA - RICARDO FLORES MAGON

CLAVE: 08804

RUTA : CHIH

AÑO : 2007

L U G A R	E S T A C I O N				C L A S I F I C A C I O N V E H I C U L A R E N P O R C I E N T O .												
	KM	TE	SC	TDPA	A	B	C2	C3	T3S2	T3S3	T3S2R4	OTROS	A	B	C	K'	D
AHUMADA	0.00	3	0	2138	77	4.5	8.3	5.5	1.5	1.6	1.4	0.2	77	4.5	18.5	0.094	0.51
RICARDO FLORES MAGON	96.00	1	0	1709	77.4	4.8	5.6	6.5	1.7	2	1.7	0.3	77.4	4.8	17.8	0.095	0.511

CHIHUAHUA

5 CARR : CD. JUAREZ - JANOS

CLAVE: 08041

RUTA : MEX-002

AÑO : 2007

L U G A R	E S T A C I O N				C L A S I F I C A C I O N V E H I C U L A R E N P O R C I E N T O .												
	KM	TE	SC	TDPA	A	B	C2	C3	T3S2	T3S3	T3S2R4	OTROS	A	B	C	K'	D
T. C. EL SUECO - CD. JUAREZ	0.00	3	0	9549	80.3	3.7	4.8	2.6	4.4	1	1.2	2	80.3	3.7	16	0.141	0.5
T. DER. PALOMAS	112.00	1	0	2656	78.8	5.1	4.7	2.5	4.3	1.4	1.2	2	78.8	5.1	16.1	0.124	0.5
ASCENCION	171.00	1	0	1839	78.9	3.5	6.4	0.3	2.8	0.5	0.3	7.3	78.9	3.5	17.6	0.08	0.508
JANOS	205.00	1	0	2453	77.4	3.3	3.6	2.4	7.5	1.4	3.8	0.6	77.4	3.3	19.3	0.078	0.502

6 CARR : CUAUHTEMOC - BUENAVENTURA

CLAVE: 08015

RUTA : CHIH

AÑO : 2007

L U G A R	E S T A C I O N				C L A S I F I C A C I O N V E H I C U L A R E N P O R C I E N T O .												
	KM	TE	SC	TDPA	A	B	C2	C3	T3S2	T3S3	T3S2R4	OTROS	A	B	C	K'	D
T. C. CHIHUAHUA - MADERA	0.00	3	1	5007	82.3	3.5	2	1.9	3.7	2.7	1.3	2.6	82.3	3.5	14.2	0.106	0.504
T. C. CHIHUAHUA - MADERA	0.00	3	2	5083	87.1	3.4	2.5	2.4	2.2	1.1	0.4	0.9	87.1	3.4	9.5	0.138	0.504
ALVARO OBREGON	42.00	3	0	4733	91.1	2.5	1.8	1.4	1.1	1.6	0.3	0.2	91.1	2.5	6.4	0.101	0.517
BACHINIVA	77.50	1	0	3389	90.4	4.3	1.7	1.2	1.1	1.2	0	0.1	90.4	4.3	5.3	0.082	0.52
T. DER. NAMIQUIPA	112.10	3	0	2630	83.9	4.2	3.9	2.9	2.3	2.5	0.2	0.1	83.9	4.2	11.9	0.092	0.517
T. IZQ. MADERA	150.50	3	0	2660	83.9	4.2	3.4	2.4	2.4	3.6	0.1	0	83.9	4.2	11.9	0.08	0.516
BUENAVENTURA	253.30	1	0	1503	82.7	5.3	2.5	2.2	2.8	4.2	0.3	0	82.7	5.3	12	0.106	0.524

7 CARR : CHIHUAHUA - EL SUECO

CLAVE: 08419

RUTA : MEX-045

AÑO : 2007

L U G A R	E S T A C I O N				C L A S I F I C A C I O N V E H I C U L A R E N P O R C I E N T O .												
	KM	TE	SC	TDPA	A	B	C2	C3	T3S2	T3S3	T3S2R4	OTROS	A	B	C	K'	D
CHIHUAHUA	0.00	0	0														
TERMINA ZONA URBANA	7.20	3	1	11226	73.2	6.3	4.5	2.1	6	6.2	0.6	1.1	73.2	6.3	20.5	0.07	0.507
TERMINA ZONA URBANA	7.20	3	2	11562	72.7	6.2	5.3	3.7	4.4	5.5	0.8	1.4	72.7	6.2	21.1	0.075	0.507
T. DER. EL SAUZ	55.38	1	1	3755	60.9	6.5	2.6	1.8	18.5	3.5	3.7	2.5	60.9	6.5	32.6	0.075	0.506
T. DER. EL SAUZ	55.38	1	2	3842	63.2	6.8	2.7	2.3	15.8	3.3	4	1.9	63.2	6.8	30	0.086	0.506
ENT. EL SUECO	155.90	1	1	4590	74.4	8.7	5.2	3.4	2.1	2.3	2.6	1.3	74.4	8.7	16.9	0.102	0.501
ENT. EL SUECO	155.90	1	2	4563	74.4	8.8	6.2	3.2	1.8	1.7	2.1	1.8	74.4	8.8	16.8	0.1	0.501

8 CARR : CHIHUAHUA - MADERA

CLAVE: 08038

RUTA : CHIH-D-MEX-01

AÑO : 2007

L U G A R	E S T A C I O N				C L A S I F I C A C I O N V E H I C U L A R E N P O R C I E N T O .												
	KM	TE	SC	TDPA	A	B	C2	C3	T3S2	T3S3	T3S2R4	OTROS	A	B	C	K'	D
CHIHUAHUA	0.00	0	0														
T. DER. PRESA CHIHUAHUA	10.50	1	1	8699	84.8	5.1	2.3	2.1	1.4	2.5	0.6	1.2	84.8	5.1	10.1	0.092	0.504

CHIHUAHUA

8 CARR : CHIHUAHUA - MADERA

CLAVE: 08038

RUTA : CHIH-D-MEX-01

AÑO : 2007

L U G A R	E S T A C I O N				C L A S I F I C A C I O N V E H I C U L A R E N P O R C I E N T O .												
	KM	TE	SC	TDPA	A	B	C2	C3	T3S2	T3S3	T3S2R4	OTROS	A	B	C	K'	D
T. DER. PRESA CHIHUAHUA	10.50	1	2	8854	84.6	4.5	2.2	1.6	1.8	3.6	0.3	1.4	84.6	4.5	10.9	0.085	0.504
T. DER. PRESA CHIHUAHUA	10.50	3	1	6038	78.7	3.7	3.1	3.4	6.3	2	1.6	1.2	78.7	3.7	17.6	0.089	0.508
T. DER. PRESA CHIHUAHUA	10.50	3	2	6229	78.4	3.8	3	3.2	6.9	2	1.4	1.3	78.4	3.8	17.8	0.119	0.508
T. IZQ. HIDALGO DEL PARRAL (VIA CORTA)	36.20	1	1	4521	79.8	3.7	3.8	2.8	5.6	2.2	1.2	0.9	79.8	3.7	16.5	0.088	0.508
T. IZQ. HIDALGO DEL PARRAL (VIA CORTA)	36.20	1	2	4664	79.9	3.3	3.7	2.6	5.1	2.4	1.4	1.6	79.9	3.3	16.8	0.142	0.508
T. IZQ. HIDALGO DEL PARRAL (VIA CORTA)	36.20	3	1	3795	78.1	5.2	4.4	2.4	5.1	2.1	1.2	1.5	78.1	5.2	16.7	0.1	0.503
T. IZQ. HIDALGO DEL PARRAL (VIA CORTA)	36.20	3	2	3755	78.4	4.9	3.3	2.3	5.8	2.3	1.6	1.4	78.4	4.9	16.7	0.097	0.503
CUAUHTEMOC	103.50	1	1	3534	86.7	4.3	1.2	0.6	1.9	2	1	2.3	86.7	4.3	9	0.113	0.532
CUAUHTEMOC	103.50	1	2	4014	90.9	4.8	1.3	0.4	0.9	0.4	0.3	1	90.9	4.8	4.3	0.089	0.532
CUAUHTEMOC	103.50	3	1	8332	77.5	5.1	6.1	2.6	3.4	4.5	0.4	0.4	77.5	5.1	17.4	0.085	0.502
CUAUHTEMOC	103.50	3	2	8257	76.1	5.3	6.7	2.6	3.3	5.1	0.3	0.6	76.1	5.3	18.6	0.077	0.502
T. DER. ALVARO OBREGON	107.10	3	1	5973	77.9	5.2	4.1	3.1	2.7	5.4	0.4	1.2	77.9	5.2	16.9	0.105	0.501
T. DER. ALVARO OBREGON	107.10	3	2	5951	79	5.5	3.4	2.9	2.7	5.3	0.5	0.7	79	5.5	15.5	0.111	0.501
T. IZQ. YEPACHIC	150.80	1	0	4644	76.8	6.2	2.1	1.5	5.2	6.2	0.4	1.6	76.8	6.2	17	0.095	0.503
GUERRERO	169.80	3	0	2727	88.7	4.4	1.8	1.2	1.6	1.1	0.2	1	88.7	4.4	6.9	0.082	0.508
T. DER. PEÑA BLANCA	261.30	1	0	1032	81.1	5.4	1.3	2.4	3.3	4.1	2.3	0.1	81.1	5.4	13.5	0.099	0.564
T. DER. PEÑA BLANCA	261.30	3	0	1339	79.7	7.4	1.3	2.9	4.6	3.2	0.7	0.2	79.7	7.4	12.9	0.103	0.573
MADERA	279.00	0	0														

9 CARR : CHIHUAHUA - OJINAGA

CLAVE: 08042

RUTA : MEX-016

AÑO : 2007

L U G A R	E S T A C I O N				C L A S I F I C A C I O N V E H I C U L A R E N P O R C I E N T O .												
	KM	TE	SC	TDPA	A	B	C2	C3	T3S2	T3S3	T3S2R4	OTROS	A	B	C	K'	D
CHIHUAHUA	0.00	0	0														
T. DER. AEROPUERTO	6.50	1	1	8264	80.5	5.1	1.2	1.1	5.1	2.7	2.3	2	80.5	5.1	14.4	0.103	0.503
T. DER. AEROPUERTO	6.50	1	2	8177	83.3	5.3	1	1	4.5	1.9	1.9	1.1	83.3	5.3	11.4	0.122	0.503
T. DER. AEROPUERTO	6.50	3	1	6799	86.4	5.1	1.5	1	1.5	1.3	0.7	2.5	86.4	5.1	8.5	0.073	0.501
T. DER. AEROPUERTO	6.50	3	2	6826	89.5	5	1.4	0.8	0.8	0.5	0.3	1.7	89.5	5	5.5	0.076	0.501
ALDAMA	26.80	1	1	4447	82.5	7.6	2.8	1.2	3	0.9	0.5	1.5	82.5	7.6	9.9	0.089	0.514
ALDAMA	26.80	1	2	4206	82.7	7.5	2.7	1.1	2.8	1	0.5	1.7	82.7	7.5	9.8	0.105	0.514
ALDAMA	26.80	3	0	954	91	4.3	1.2	0.4	0.4	1.3	0	1.4	91	4.3	4.7	0.111	0.511
COYAME	141.00	1	0	420	87.6	4.3	3.4	2	1.6	0.5	0.1	0.5	87.6	4.3	8.1	0.133	0.504
OJINAGA	224.00	1	0	2045	89.6	3.7	1.5	1.4	2.3	0.4	0.6	0.5	89.6	3.7	6.7	0.118	0.5

CHIHUAHUA

10 CARR : JIMENEZ - CHIHUAHUA (CUOTA)

CLAVE: 08418

RUTA : MEX-045-D

AÑO : 2007

L U G A R	E S T A C I O N				C L A S I F I C A C I O N V E H I C U L A R E N P O R C I E N T O .												
	KM	TE	SC	TDPA	A	B	C2	C3	T3S2	T3S3	T3S2R4	OTROS	A	B	C	K'	D
JIMENEZ	0.00	3	1	2920	48	2.9	5.3	7.8	20.7	5.5	8.7	1.1	48	2.9	49.1	0.081	0.5
JIMENEZ	0.00	3	2	2926	49.6	3	4.8	6.7	22	5.3	7.8	0.8	49.6	3	47.4	0.068	0.5
CASETA DE COBRO JIMENEZ	11.00	2	0	4533													
CAMARGO	68.98	1	1	3589	67.6	4.8	1	4.9	11	3.6	5.8	1.3	67.6	4.8	27.6	0.07	0.516
CAMARGO	68.98	1	2	3364	61.6	5.9	1.6	5	15.7	3.6	5.5	1.1	61.6	5.9	32.5	0.065	0.516
CASETA DE COBRO SAUCILLO (CAMARGO)	73.30	2	0	6566													
SAUCILLO	111.50	3	1	2789	60	2.5	4.8	6.6	15.9	2.8	6.4	1	60	2.5	37.5	0.104	0.52
SAUCILLO	111.50	3	2	3016	61.2	2.8	4.8	5.6	14.6	3.8	5.9	1.3	61.2	2.8	36	0.087	0.52
CASETA DE COBRO ALTAVISTA (SAUCILLO)	116.30	2	0	4325													
DELICIAS	138.00	1	1	5844	75.9	5	2.4	3.7	4.4	2.5	4.2	1.9	75.9	5	19.1	0.084	0.501
DELICIAS	138.00	1	2	5861	79.7	5.4	3.2	2.5	3.1	2.5	3.2	0.4	79.7	5.4	14.9	0.067	0.501
T. DER. LAZARO CARDENAS	166.90	1	1	6483	69.8	5	1.7	3.6	9.2	2.5	7	1.2	69.8	5	25.2	0.106	0.52
T. DER. LAZARO CARDENAS	166.90	1	2	7037	73.8	5	1.7	2.5	10.2	2.1	3.7	1	73.8	5	21.2	0.084	0.52
T. DER. LAZARO CARDENAS	166.90	3	1	6673	78.8	5.1	2.7	3.4	2.6	2.5	4	0.9	78.8	5.1	16.1	0.096	0.501
T. DER. LAZARO CARDENAS	166.90	3	2	6698	82.8	5	2.7	1.6	2.7	1.5	2.6	1.1	82.8	5	12.2	0.078	0.501
T. DER. AQUILES SERDAN	210.00	1	1	6045	70.4	4.4	2.6	3.3	12.1	2.5	3.8	0.9	70.4	4.4	25.2	0.083	0.505
T. DER. AQUILES SERDAN	210.00	1	2	5927	72.7	4.5	1.9	2.8	10.5	2.3	4.1	1.2	72.7	4.5	22.8	0.077	0.505
CHIHUAHUA	222.60	0	0														

11 CARR : DELICIAS - SAUCILLO

CLAVE: 08007

RUTA : CHIH-007

AÑO : 2007

L U G A R	E S T A C I O N				C L A S I F I C A C I O N V E H I C U L A R E N P O R C I E N T O .												
	KM	TE	SC	TDPA	A	B	C2	C3	T3S2	T3S3	T3S2R4	OTROS	A	B	C	K'	D
DELICIAS	0.00	3	0	5753	86.6	3	5.9	1.8	1	0.4	0.6	0.7	86.6	3	10.4	0.082	0.535
LAS VARAS	17.00	1	0	2677	87	4.6	3.4	1.1	2.3	0.5	0.4	0.7	87	4.6	8.4	0.101	0.51
SAUCILLO	33.00	1	0	2314	81.8	4.1	1.3	2.9	5.6	1.2	1.8	1.3	81.8	4.1	14.1	0.128	0.515

12 CARR : EL SUECO - CD. JUAREZ

CLAVE: 08420

RUTA : MEX-045

AÑO : 2007

L U G A R	E S T A C I O N				C L A S I F I C A C I O N V E H I C U L A R E N P O R C I E N T O .												
	KM	TE	SC	TDPA	A	B	C2	C3	T3S2	T3S3	T3S2R4	OTROS	A	B	C	K'	D
ENT. EL SUECO	0.00	3	1	3352	78.1	9	2.4	2.3	3.4	2.1	1.7	1	78.1	9	12.9	0.088	0.503
ENT. EL SUECO	0.00	3	2	3398	78	9.1	2.5	2	3.3	2.3	2	0.8	78	9.1	12.9	0.085	0.503
CASETA DE COBRO VILLA AHUMADA	77.50	2	0	6440													
AHUMADA	83.63	3	1	3829	76.9	5.4	5.2	3.4	3.3	2.2	2.5	1.1	76.9	5.4	17.7	0.101	0.504

CHIHUAHUA

12 CARR : EL SUECO - CD. JUAREZ

CLAVE: 08420

RUTA : MEX-045

AÑO : 2007

L U G A R	E S T A C I O N				C L A S I F I C A C I O N V E H I C U L A R E N P O R C I E N T O .												
	KM	TE	SC	TDPA	A	B	C2	C3	T3S2	T3S3	T3S2R4	OTROS	A	B	C	K'	D
AHUMADA	83.63	3	2	3761	77.7	5.7	6.2	3.2	4.1	1	0.9	1.2	77.7	5.7	16.6	0.097	0.504
SAMALAYUCA	167.70	3	1	4800	79	5.4	4.9	2	2.6	2	1.7	2.4	79	5.4	15.6	0.087	0.502
SAMALAYUCA	167.70	3	2	4840	78.8	5.2	5.2	2.1	2.5	2.3	1.9	2	78.8	5.2	16	0.083	0.502
T. IZQ. JANOS	197.90	1	1	5490	67.4	7.2	4.6	3.1	12.3	2	2.3	1.1	67.4	7.2	25.4	0.101	0.503
T. IZQ. JANOS	197.90	1	2	5548	71	7.3	5.5	2.8	3.6	1	0.8	8	71	7.3	21.7	0.099	0.503
T. DER. ANTIGUO AEROPUERTO	201.40	1	1	5330	71.2	4.1	5.7	4.5	8.4	1.8	1.5	2.8	71.2	4.1	24.7	0.087	0.502
T. DER. ANTIGUO AEROPUERTO	201.40	1	2	5372	70.4	4.2	6.3	3.9	7.9	2.1	1.7	3.5	70.4	4.2	25.4	0.086	0.502
CD. JUAREZ	219.00	0	0														

13 CARR : EL SUECO - JANOS

CLAVE: 08037

RUTA : MEX-010

AÑO : 2007

L U G A R	E S T A C I O N				C L A S I F I C A C I O N V E H I C U L A R E N P O R C I E N T O .												
	KM	TE	SC	TDPA	A	B	C2	C3	T3S2	T3S3	T3S2R4	OTROS	A	B	C	K'	D
ENT. EL SUECO	0.00	0	0														
RICARDO FLORES MAGON	59.00	3	0	2783	87	4.6	3	0.9	2.2	0.9	0.1	1.3	87	4.6	8.4	0.124	0.502
BUENAVENTURA	114.00	1	0	2481	73.2	10.1	1.8	1.7	6.6	2.9	1	2.7	73.2	10.1	16.7	0.111	0.508
BUENAVENTURA	114.00	3	0	5484	76.6	6.4	2.7	1.6	6.5	2.7	0.9	2.6	76.6	6.4	17	0.112	0.508
NUEVO CASAS GRANDES	195.00	3	0	3393	62.1	7	2.5	2	15.7	4	5.1	1.6	62.1	7	30.9	0.082	0.508
JANOS	257.00	1	0	3160	56.5	8.7	4.1	2.7	14.1	3.8	5.3	4.8	56.5	8.7	34.8	0.076	0.5

14 CARR : T. C. (CHIHUAHUA - EL SUECO) - EL TERRERO

CLAVE: 08170

RUTA : CHIH-MEX

AÑO : 2007

L U G A R	E S T A C I O N				C L A S I F I C A C I O N V E H I C U L A R E N P O R C I E N T O .												
	KM	TE	SC	TDPA	A	B	C2	C3	T3S2	T3S3	T3S2R4	OTROS	A	B	C	K'	D
T. C. CHIHUAHUA - EL SUECO	0.00	3	0	787	92.8	1.9	3.3	0.2	0.9	0.8	0.1	0	92.8	1.9	5.3	0.116	0.524
NUEVAS DELICIAS	22.00	1	0	568	70	8.6	13.6	0.7	2.1	4.9	0.1	0	70	8.6	21.4	0.121	0.512
EL TERRERO	120.00	1	0	1202	89.2	4.7	2.3	2.1	0.9	0.8	0	0	89.2	4.7	6.1	0.097	0.516

15 CARR : CIUDAD CAMARGO - SAUCILLO

CLAVE: 08417

RUTA : MEX

AÑO : 2007

L U G A R	E S T A C I O N				C L A S I F I C A C I O N V E H I C U L A R E N P O R C I E N T O .												
	KM	TE	SC	TDPA	A	B	C2	C3	T3S2	T3S3	T3S2R4	OTROS	A	B	C	K'	D
CAMARGO	0.00	3	0	4213	68.9	9	0.4	1.7	12	4	2.8	1.2	68.9	9	22.1	0.084	0.502
T. DER. LA CRUZ	20.92	3	0	2361	55.6	8	2.1	4.1	15.9	7.5	4.6	2.2	55.6	8	36.4	0.08	0.503
SAUCILLO	42.52	1	0	3824	75.6	4.2	3.5	2.3	7.9	2.8	1.6	2.1	75.6	4.2	20.2	0.079	0.501

CHIHUAHUA

16 CARR : EL ALAMO - RICARDO FLORES MAGON

CLAVE: 08046

RUTA : CHIH

AÑO : 2007

L U G A R	E S T A C I O N				C L A S I F I C A C I O N V E H I C U L A R E N P O R C I E N T O .												
	KM	TE	SC	TDPA	A	B	C2	C3	T3S2	T3S3	T3S2R4	OTROS	A	B	C	K'	D
T. C. CHIHUAHUA - EL SUECO	0.00	3	0	1487	75.6	6.7	5.8	2.6	4.3	2.9	0.7	1.4	75.6	6.7	17.7	0.128	0.501
T. C. EL SUECO - JANOS	75.00	0	0														

17 CARR : ENT. LA CONCHA - ENT. PEÑA BLANCA

CLAVE: 08493

RUTA : CHIH

AÑO : 2007

L U G A R	E S T A C I O N				C L A S I F I C A C I O N V E H I C U L A R E N P O R C I E N T O .												
	KM	TE	SC	TDPA	A	B	C2	C3	T3S2	T3S3	T3S2R4	OTROS	A	B	C	K'	D
T. C. CHIHUAHUA - MADERA	0.00	3	0	467	87.5	5.4	2.6	0.3	1.8	2	0.1	0.3	87.5	5.4	7.1	0.107	0.508
T. C. CUAUHTEMOC - BUENAVENTURA	17.00	1	0	1079	79.3	7.5	1.3	1	3.3	6.1	1.5	0	79.3	7.5	13.2	0.12	0.52

18 CARR : PUERTO JUSTO - GUACHOCHIC

CLAVE: 08044

RUTA : CHIH

AÑO : 2007

L U G A R	E S T A C I O N				C L A S I F I C A C I O N V E H I C U L A R E N P O R C I E N T O .												
	KM	TE	SC	TDPA	A	B	C2	C3	T3S2	T3S3	T3S2R4	OTROS	A	B	C	K'	D
T. C. HIDALGO DEL PARRAL - PTO. SABINAL	0.00	3	0	681	82.5	4.8	3.5	1.5	2.8	1.9	2.1	0.9	82.5	4.8	12.7	0.101	0.524
GUACHOCHIC	130.00	0	0														

19 CARR : T. C. (JIMENEZ - CAMARGO) - OJINAGA

CLAVE: 08009

RUTA : CHIH-018

AÑO : 2007

L U G A R	E S T A C I O N				C L A S I F I C A C I O N V E H I C U L A R E N P O R C I E N T O .												
	KM	TE	SC	TDPA	A	B	C2	C3	T3S2	T3S3	T3S2R4	OTROS	A	B	C	K'	D
T. C. JIMENEZ - CAMARGO	0.00	3	0	854	82.2	4.4	2.6	1.9	5	1.6	1.8	0.5	82.2	4.4	13.4	0.104	0.513
T. DER. LA PERLA	97.00	3	0	541	85.3	3.1	0.7	1.4	5.6	1.9	1.3	0.7	85.3	3.1	11.6	0.085	0.543
T. DER. MAJOMA	174.20	3	0	374	77.4	5	1.4	3.5	7.5	2.3	1.9	1	77.4	5	17.6	0.107	0.506
T. DER. MANUEL BENAVIDES	218.00	3	0	1347	89.1	3.5	1.8	1.1	3.3	0.4	0.4	0.4	89.1	3.5	7.4	0.127	0.501
OJINAGA	247.00	1	0	1741	87.5	3.5	1.7	1.6	4.1	0.4	0.6	0.6	87.5	3.5	9	0.107	0.508

20 CARR : HIDALGO DEL PARRAL - NUEVO PALOMAS (VIA CORTA)

CLAVE: 08811

RUTA : MEX-024

AÑO : 2007

L U G A R	E S T A C I O N				C L A S I F I C A C I O N V E H I C U L A R E N P O R C I E N T O .												
	KM	TE	SC	TDPA	A	B	C2	C3	T3S2	T3S3	T3S2R4	OTROS	A	B	C	K'	D
HIDALGO DEL PARRAL	0.00	3	0	5700	80.2	4.7	1.7	1.8	5.9	2.3	2.3	1.1	80.2	4.7	15.1	0.077	0.504
VALLE ZARAGOZA	66.00	1	0	2429	71.2	3.6	2.9	2.7	11.4	4.6	2.5	1.1	71.2	3.6	25.2	0.092	0.523
SATEVO	126.00	3	0	2737	69.2	4.6	5.1	3.7	9.3	4.2	2.6	1.3	69.2	4.6	26.2	0.088	0.511
T. C. CHIHUAHUA - MADERA	182.40	1	0	3036	69.9	4.8	4.7	3.6	9.1	4.6	2.2	1.1	69.9	4.8	25.3	0.085	0.507

CHIHUAHUA

21 CARR : HIDALGO DEL PARRAL - JIMENEZ

CLAVE: 08444

RUTA : MEX-045

AÑO : 2007

L U G A R	E S T A C I O N				C L A S I F I C A C I O N V E H I C U L A R E N P O R C I E N T O .												
	KM	TE	SC	TDPA	A	B	C2	C3	T3S2	T3S3	T3S2R4	OTROS	A	B	C	K'	D
HIDALGO DEL PARRAL	0.00	3	1	2611	84.1	2.2	1.5	1.2	5.8	2.4	1.8	1	84.1	2.2	13.7	0.105	0.501
HIDALGO DEL PARRAL	0.00	3	2	2600	85.9	2.2	1.8	1.3	3.6	2	2	1.2	85.9	2.2	11.9	0.121	0.501
JIMENEZ	76.63	1	1	4988	70.7	6.8	2.6	2.4	9.4	3.7	3.4	1	70.7	6.8	22.5	0.101	0.507
JIMENEZ	76.63	1	2	4843	68.9	6.8	2.6	2.5	9.6	4.1	3.6	1.9	68.9	6.8	24.3	0.074	0.507

22 CARR : JIMENEZ - CAMARGO

CLAVE: 08021

RUTA : CHIH-049

AÑO : 2007

L U G A R	E S T A C I O N				C L A S I F I C A C I O N V E H I C U L A R E N P O R C I E N T O .												
	KM	TE	SC	TDPA	A	B	C2	C3	T3S2	T3S3	T3S2R4	OTROS	A	B	C	K'	D
JIMENEZ	0.00	3	0	4639	80.2	7.2	5.9	2.7	1.9	1.2	0.2	0.7	80.2	7.2	12.6	0.105	0.505
T. DER. OJINAGA	65.80	3	0	3354	69.1	2.9	6.9	4.8	9.1	2.6	2.7	1.9	69.1	2.9	28	0.082	0.515
T. C. JIMENEZ - CHIHUAHUA (CUOTA)	78.20	1	0	3628	67.4	7.9	2.4	5.3	8.9	2.9	3.3	1.9	67.4	7.9	24.7	0.076	0.515

23 CARR : LAZARO CARDENAS - ENT. COLONIA SAN JOSE

CLAVE: 08004

RUTA : CHIH-004

AÑO : 2007

L U G A R	E S T A C I O N				C L A S I F I C A C I O N V E H I C U L A R E N P O R C I E N T O .												
	KM	TE	SC	TDPA	A	B	C2	C3	T3S2	T3S3	T3S2R4	OTROS	A	B	C	K'	D
T. C. JIMENEZ - CHIHUAHUA	0.00	3	0	2954	85.3	4.6	2.2	3.3	1.8	0.6	1.7	0.5	85.3	4.6	10.1	0.126	0.514
T. C. MEOQUI - JULIMES	16.00	1	0	1505	90.8	2.5	2.5	1.7	1.2	0.4	0.3	0.6	90.8	2.5	6.7	0.153	0.5

24 CARR : LIBRAMIENTO DE DELICIAS - MEOQUI

CLAVE: 08813

RUTA : MEX

AÑO : 2007

L U G A R	E S T A C I O N				C L A S I F I C A C I O N V E H I C U L A R E N P O R C I E N T O .												
	KM	TE	SC	TDPA	A	B	C2	C3	T3S2	T3S3	T3S2R4	OTROS	A	B	C	K'	D
T. C. JIMENEZ - CHIHUAHUA	0.00	3	1	8863	71.6	5.1	3.2	3.3	10.3	1.9	3.4	1.2	71.6	5.1	23.3	0.078	0.503
T. C. JIMENEZ - CHIHUAHUA	0.00	3	2	8749	75	5.1	3.6	3.1	7.4	2.1	2.5	1.2	75	5.1	19.9	0.078	0.503
T. C. JIMENEZ - CHIHUAHUA	13.60	1	1	6167	70.9	5.5	2.6	3.5	10.5	2.3	3.4	1.3	70.9	5.5	23.6	0.095	0.502
T. C. JIMENEZ - CHIHUAHUA	13.60	1	2	6225	72.1	5.5	1.7	3	9.9	2.4	3.8	1.6	72.1	5.5	22.4	0.079	0.502

25 CARR : LIBRAMIENTO DE HIDALGO DEL PARRAL

CLAVE: 08221

RUTA : CHIH

AÑO : 2007

L U G A R	E S T A C I O N				C L A S I F I C A C I O N V E H I C U L A R E N P O R C I E N T O .												
	KM	TE	SC	TDPA	A	B	C2	C3	T3S2	T3S3	T3S2R4	OTROS	A	B	C	K'	D
T. C. HIDALGO DEL PARRAL - SANTA BARBARA	0.00	0	0														
T. C. ENT. LA ZARCA - HIDALGO DEL PARRAL	8.00	3	0	3401	86.1	7.3	3.1	2.1	0.6	0.6	0.2	0	86.1	7.3	6.6	0.091	0.514

CHIHUAHUA

25 CARR : LIBRAMIENTO DE HIDALGO DEL PARRAL

CLAVE: 08221

RUTA : CHIH

AÑO : 2007

L U G A R	E S T A C I O N			C L A S I F I C A C I O N V E H I C U L A R E N P O R C I E N T O .															
	KM	TE	SC TDPA	A	B	C2	C3	T3S2	T3S3	T3S2R4	OTROS	A	B	C	K'	D			
T. C. HIDALGO DEL PARRAL - JIMENEZ	10.00	0	0																

26 CARR : LIBRAMIENTO DE JIMENEZ

CLAVE: 08047

RUTA : CHIH

AÑO : 2007

L U G A R	E S T A C I O N			C L A S I F I C A C I O N V E H I C U L A R E N P O R C I E N T O .															
	KM	TE	SC TDPA	A	B	C2	C3	T3S2	T3S3	T3S2R4	OTROS	A	B	C	K'	D			
T. C. GOMEZ PALACIO - JIMENEZ	0.00	3	1 2937	50.1	6.5	3.1	4.2	21.1	6.1	7.5	1.4	50.1	6.5	43.4	0.074	0.502			
T. C. GOMEZ PALACIO - JIMENEZ	0.00	3	2 2910	50.7	6.7	3.6	4	19.2	6.8	6.8	2.2	50.7	6.7	42.6	0.06	0.502			
T. C. JIMENEZ - DELICIAS (CUOTA)	6.00	0	0																

27 CARR : MEOQUI - JULIMES

CLAVE: 08005

RUTA : CHIH-005

AÑO : 2007

L U G A R	E S T A C I O N			C L A S I F I C A C I O N V E H I C U L A R E N P O R C I E N T O .															
	KM	TE	SC TDPA	A	B	C2	C3	T3S2	T3S3	T3S2R4	OTROS	A	B	C	K'	D			
MEOQUI	0.00	3	0 6970	77.9	3.9	1.7	2.6	10.6	1.9	0	1.4	77.9	3.9	18.2	0.079	0.516			
REGINA	15.40	3	0 3070	77	7.6	6.4	3.3	1.5	2.6	0.2	1.4	77	7.6	15.4	0.096	0.503			
JULIMES	23.00	1	0 2836	77.4	8.4	7	4.1	0.8	0.7	0	1.6	77.4	8.4	14.2	0.097	0.507			

28 CARR : PORVENIR - CD. JUAREZ

CLAVE: 08169

RUTA : MEX-002

AÑO : 2007

L U G A R	E S T A C I O N			C L A S I F I C A C I O N V E H I C U L A R E N P O R C I E N T O .															
	KM	TE	SC TDPA	A	B	C2	C3	T3S2	T3S3	T3S2R4	OTROS	A	B	C	K'	D			
PORVENIR	0.00	0	0																
T. DER. PUENTE PORVENIR	1.67	3	0 2319	80.2	3.5	6	4.1	2.3	1.5	1.3	1.1	80.2	3.5	16.3	0.111	0.518			
GUADALUPE	30.54	1	0 4744	82.3	4.1	4.3	4	2.1	1.3	1.1	0.8	82.3	4.1	13.6	0.088	0.506			
SAN ISIDRO	55.93	1	0 5946	83.6	5.7	3.6	2.1	1.5	0.8	0.8	1.9	83.6	5.7	10.7	0.073	0.5			
ZARAGOZA	70.32	1	0 15153	86.4	5.2	3.8	1	1.4	0.5	0.5	1.2	86.4	5.2	8.4	0.087	0.505			
T. DER. PUENTE RIO BRAVO	73.43	1	0 10398	82.9	4.6	5.9	1.7	1.5	0.8	0.8	1.8	82.9	4.6	12.5	0.089	0.5			
T. C. EL SUECO - CD. JUAREZ	81.43	1	1 14410	87.6	3.3	3	2.1	1.4	0.7	0.6	1.3	87.6	3.3	9.1	0.081	0.5			
T. C. EL SUECO - CD. JUAREZ	81.43	1	2 14401	84.3	3.2	3.9	2.1	1.7	1.1	1	2.7	84.3	3.2	12.5	0.08	0.5			

CHIHUAHUA

29 CARR : RAMAL A AEROPUERTO DE CHIHUAHUA

CLAVE: 08421

RUTA : MEX

AÑO : 2007

L U G A R	E S T A C I O N				C L A S I F I C A C I O N V E H I C U L A R E N P O R C I E N T O .												
	KM	TE	SC	TDPA	A	B	C2	C3	T3S2	T3S3	T3S2R4	OTROS	A	B	C	K'	D
T. C. CHIHUAHUA - OJINAGA	0.00	3	0	6481	88.4	3.4	0.7	1	3.6	0.7	0.7	1.5	88.4	3.4	8.2	0.075	0.501
AEROPUERTO	5.00	0	0														

30 CARR : RAMAL A CREEL

CLAVE: 08812

RUTA : CHIH

AÑO : 2007

L U G A R	E S T A C I O N				C L A S I F I C A C I O N V E H I C U L A R E N P O R C I E N T O .												
	KM	TE	SC	TDPA	A	B	C2	C3	T3S2	T3S3	T3S2R4	OTROS	A	B	C	K'	D
T. C. LA JUNTA - YEPACHIC	0.00	3	0	2920	87.7	4.5	1.5	1.2	1.2	3.8	0.1	0	87.7	4.5	7.8	0.084	0.535
SAN JUANITO	58.00	3	0	2262	85.3	4.8	2.7	1.7	1	3.4	1.1	0	85.3	4.8	9.9	0.089	0.527
CREEL	85.00	0	0														

31 CARR : JERONIMO - STA. TERESA

CLAVE: 08043

RUTA : MEX

AÑO : 2007

L U G A R	E S T A C I O N				C L A S I F I C A C I O N V E H I C U L A R E N P O R C I E N T O .												
	KM	TE	SC	TDPA	A	B	C2	C3	T3S2	T3S3	T3S2R4	OTROS	A	B	C	K'	D
X. C. CD. JUAREZ - JANOS	0.00	3	0	2095	83.3	4.5	3.1	1.5	4.5	0.8	0.7	1.6	83.3	4.5	12.2	0.081	0.5
EL MIRADOR	20.00	0	0														

32 CARR : RAMAL A PALOMAS

CLAVE: 08019

RUTA : MEX

AÑO : 2007

L U G A R	E S T A C I O N				C L A S I F I C A C I O N V E H I C U L A R E N P O R C I E N T O .												
	KM	TE	SC	TDPA	A	B	C2	C3	T3S2	T3S3	T3S2R4	OTROS	A	B	C	K'	D
T. C. CD. JUAREZ - JANOS	0.00	3	0	1387	83.9	6.5	3.4	1.1	3.6	0.4	0.1	1	83.9	6.5	9.6	0.093	0.5
T. IZQ. GUADALUPE VICTORIA	7.50	3	0	1332	76.7	8.6	3.5	2.5	3.6	3.6	0.7	0.8	76.7	8.6	14.7	0.089	0.502
PALOMAS	34.10	0	0														

33 CARR : SAN JUANITO - BASASEACHIC

CLAVE: 08045

RUTA : CHIH

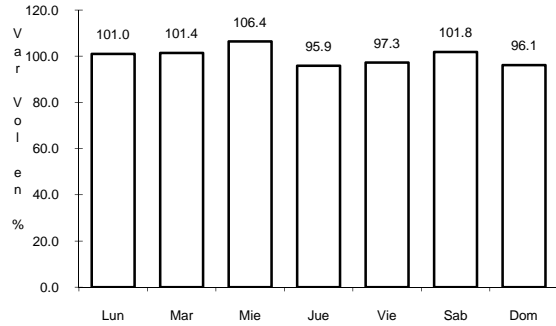
AÑO : 2007

L U G A R	E S T A C I O N				C L A S I F I C A C I O N V E H I C U L A R E N P O R C I E N T O .												
	KM	TE	SC	TDPA	A	B	C2	C3	T3S2	T3S3	T3S2R4	OTROS	A	B	C	K'	D
SAN JUANITO	0.00	3	0	1454	88.5	3.4	3.1	1.2	1.3	2.2	0.3	0	88.5	3.4	8.1	0.107	0.543
T. C. LA JUNTA - YECORA	84.00	1	0	297	91.3	5.2	1.5	1	0.6	0	0	0.4	91.3	5.2	3.5	0.098	0.503

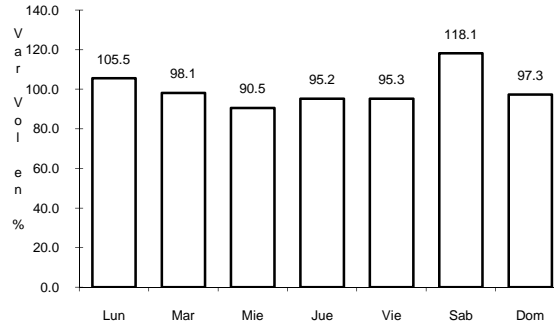
1 CARR: HIDALGO DEL PARRAL - GUADALUPE Y CALVO

CLAVE: 00802

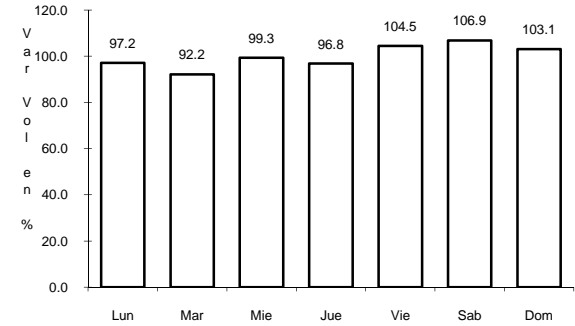
ruta: MEX-024



Km: 0.00 Tipo: 3 Sent: 0



Km: 110.00 Tipo: 1 Sent: 0

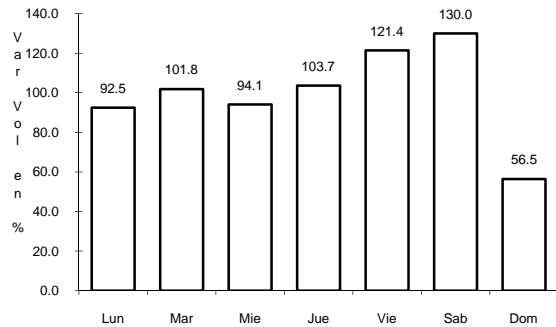


Km: 212.00 Tipo: 1 Sent: 0

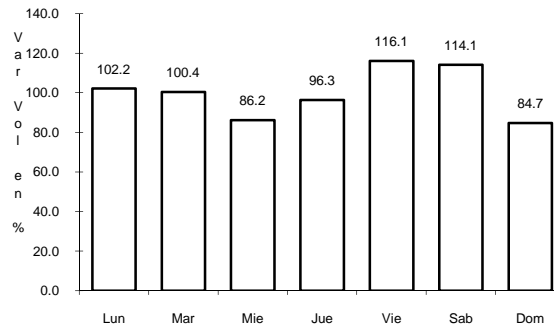
2 CARR: JANOS - AGUA PRIETA

CLAVE: 00220

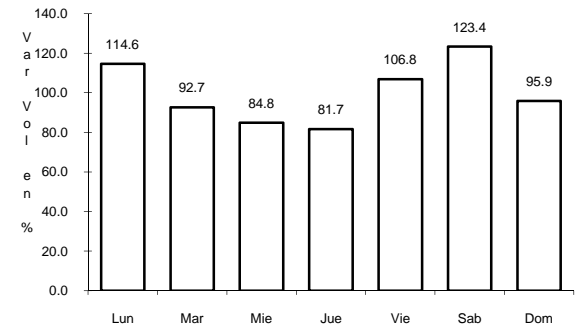
ruta: MEX-002



Km: 0.00 Tipo: 3 Sent: 0



Km: 56.00 Tipo: 3 Sent: 0

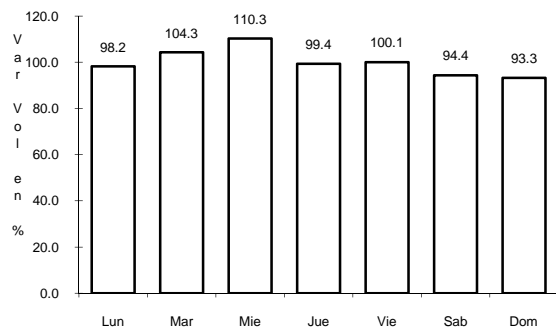


Km: 156.40 Tipo: 1 Sent: 0

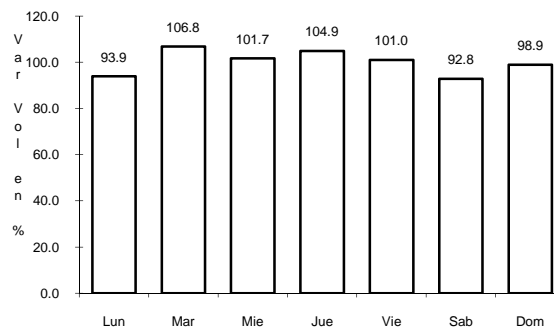
3 CARR: LA JUNTA - YECORA

CLAVE: 00065

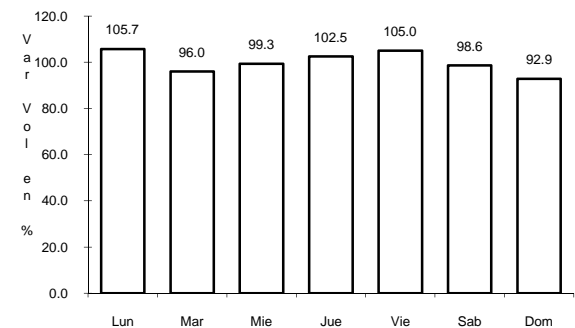
ruta: MEX-016



Km: 0.00 Tipo: 3 Sent: 0



Km: 70.00 Tipo: 3 Sent: 0

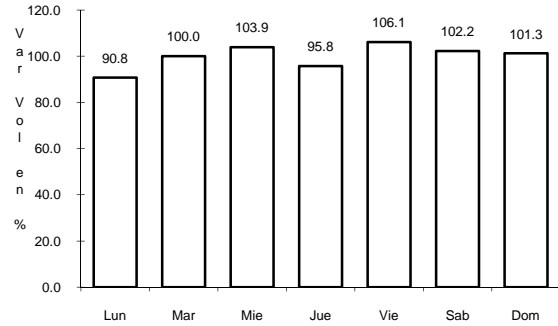


Km: 253.00 Tipo: 1 Sent: 0

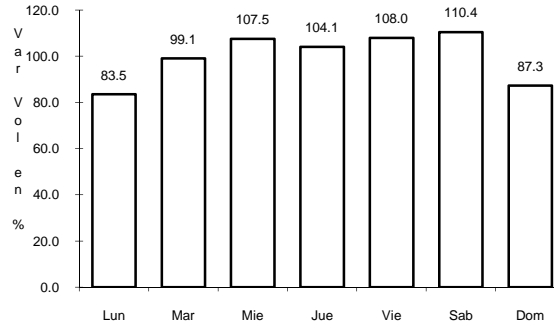
10 CARR: JIMENEZ - CHIHUAHUA (CUOTA)

CLAVE: 08418

RUTA: MEX-045-D



Km: 0.00 Tipo: 3 Sent: 1

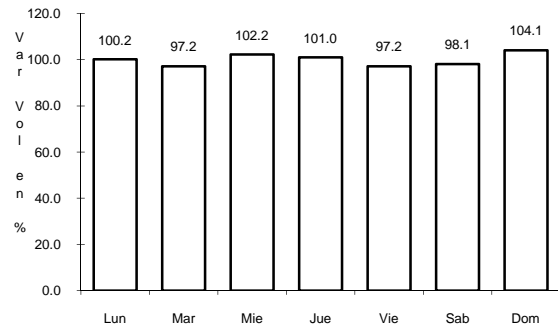


Km: 0.00 Tipo: 3 Sent: 2

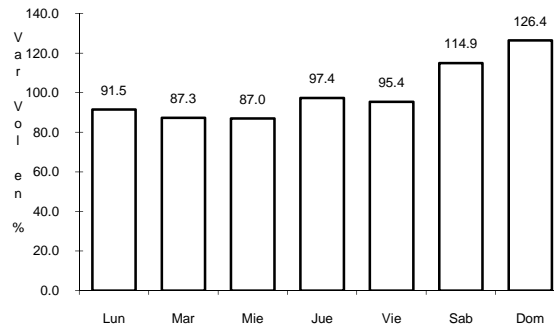
11 CARR: DELICIAS - SAUCILLO

CLAVE: 08007

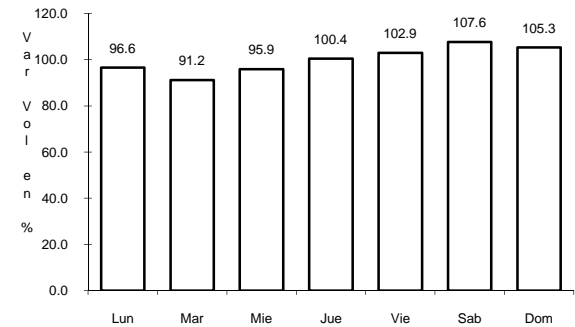
RUTA: CHIH-007



Km: 0.00 Tipo: 3 Sent: 0



Km: 17.00 Tipo: 1 Sent: 0

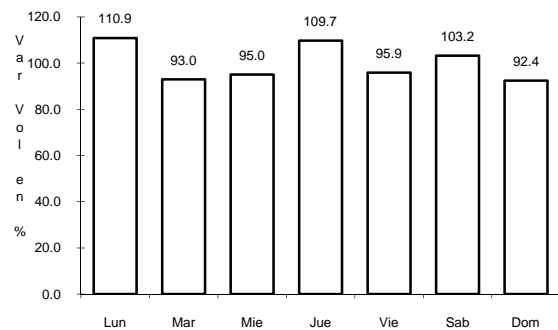


Km: 33.00 Tipo: 1 Sent: 0

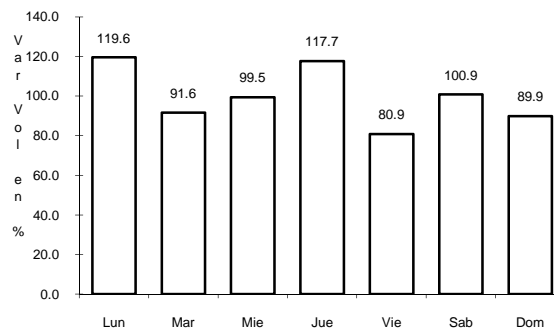
12 CARR: EL SUECO - CD. JUAREZ

CLAVE: 08420

RUTA: MEX-045



Km: 0.00 Tipo: 3 Sent: 1

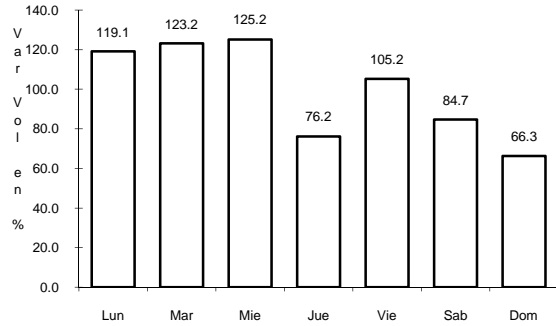


Km: 0.00 Tipo: 3 Sent: 2

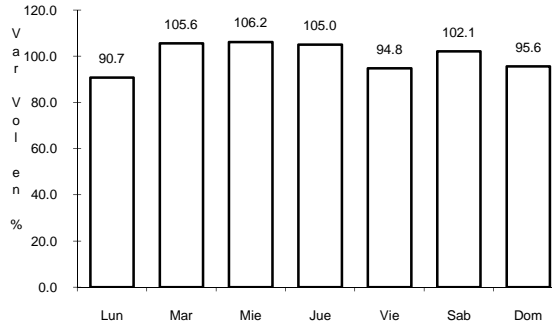
13 CARR: EL SUECO - JANOS

CLAVE: 08037

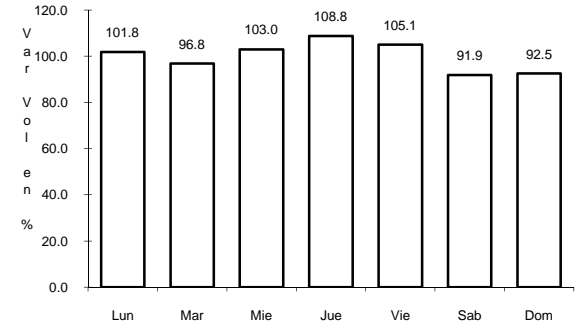
RUTA: MEX-010



Km: 59.00 Tipo: 3 Sent: 0



Km: 114.00 Tipo: 1 Sent: 0

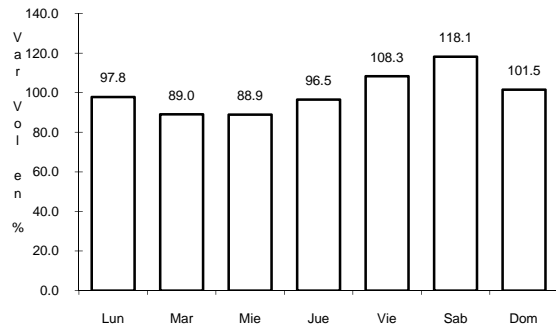


Km: 257.00 Tipo: 1 Sent: 0

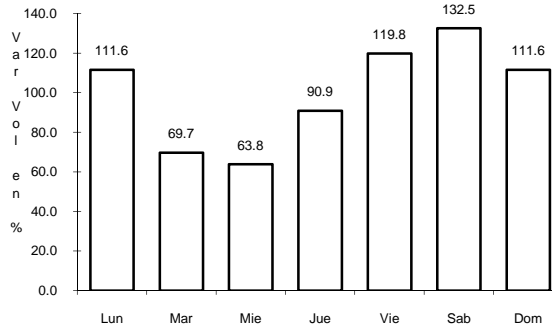
14 CARR: T. C. (CHIHUAHUA - EL SUECO) - EL TERRERO

CLAVE: 08170

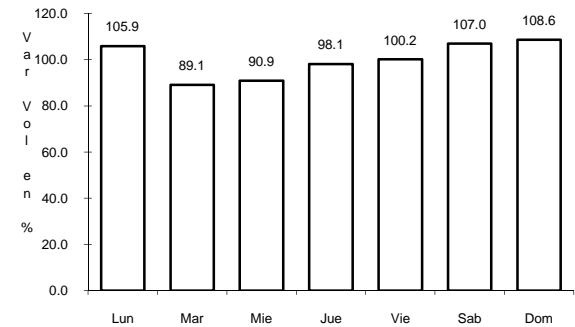
RUTA: CHIH-MEX



Km: 0.00 Tipo: 3 Sent: 0



Km: 22.00 Tipo: 1 Sent: 0

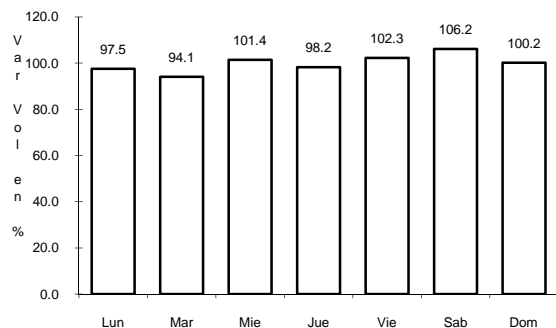


Km: 120.00 Tipo: 1 Sent: 0

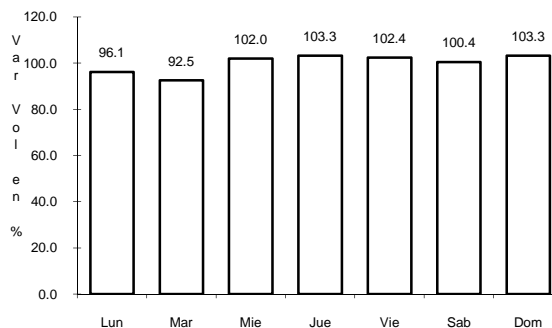
15 CARR: CIUDAD CAMARGO - SAUCILLO

CLAVE: 08417

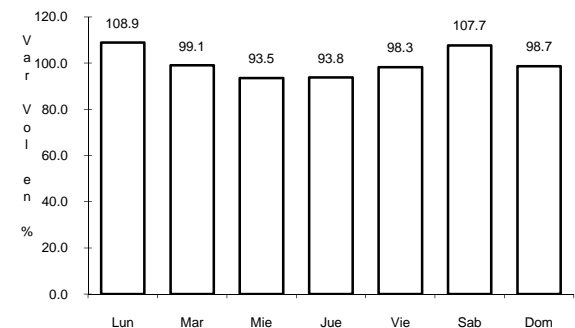
RUTA: MEX



Km: 0.00 Tipo: 3 Sent: 0



Km: 20.92 Tipo: 3 Sent: 0

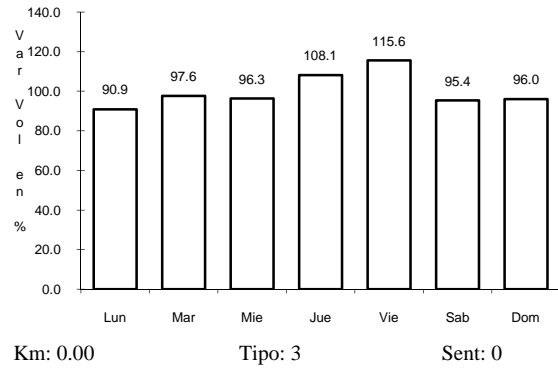


Km: 42.52 Tipo: 1 Sent: 0

16 CARR: EL ALAMO - RICARDO FLORES MAGON

CLAVE: 08046

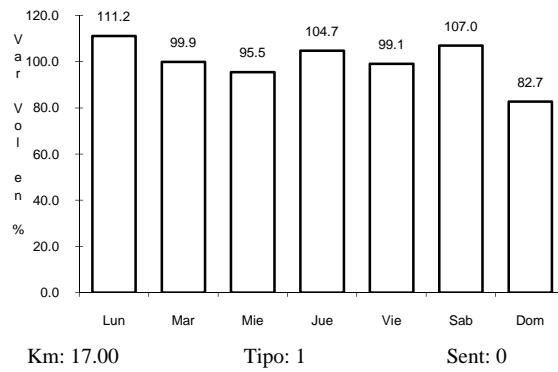
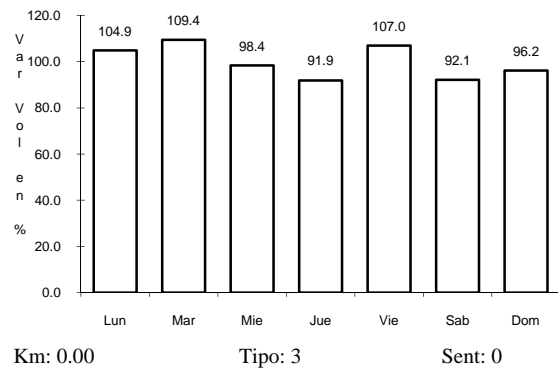
RUTA: CHIH



17 CARR: ENT. LA CONCHA - ENT. PEÑA BLANCA

CLAVE: 08493

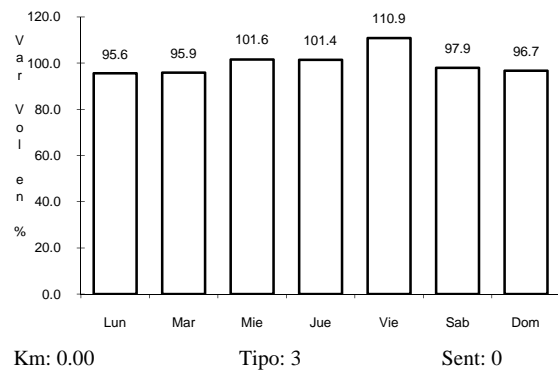
RUTA: CHIH



18 CARR: PUERTO JUSTO - GUACHOCHIC

CLAVE: 08044

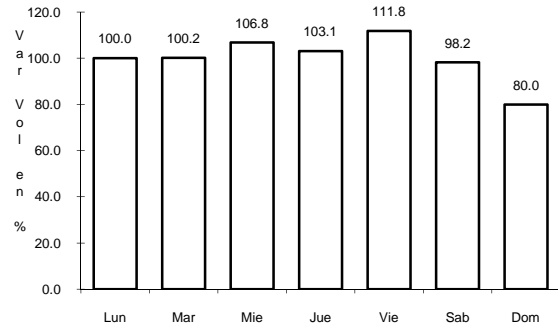
RUTA: CHIH



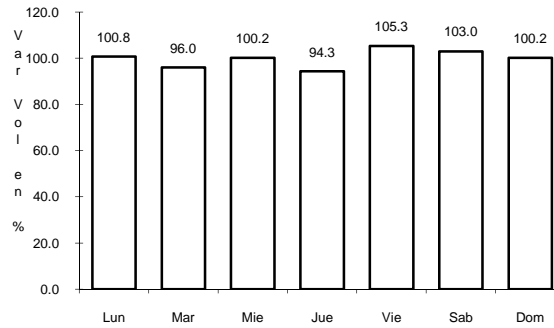
19 CARR: T. C. (JIMENEZ - CAMARGO) - OJINAGA

CLAVE: 08009

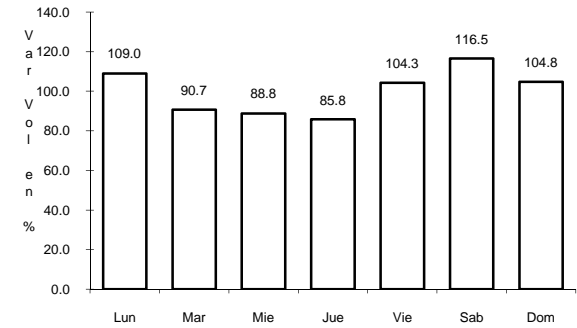
ruta: CHIH-018



Km: 0.00 Tipo: 3 Sent: 0



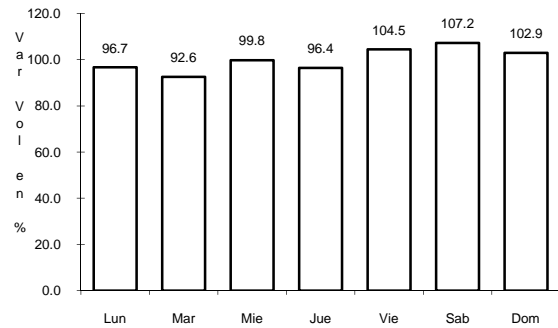
Km: 174.20 Tipo: 3 Sent: 0



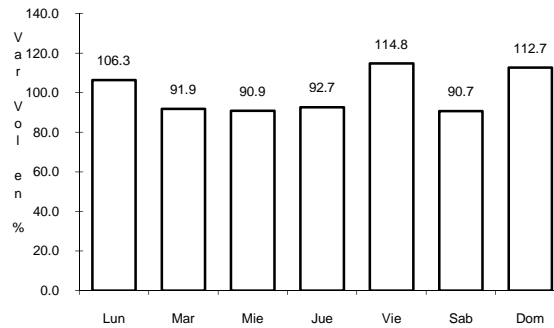
Km: 247.00 Tipo: 1 Sent: 0

20 CARR: HIDALGO DEL PARRAL - NUEVO PALOMAS (VIA CORTA) CLAVE: 08811

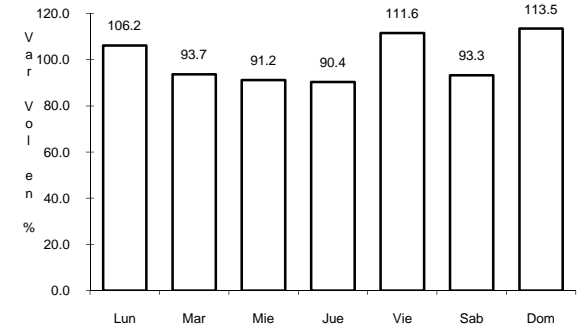
ruta: MEX-024



Km: 0.00 Tipo: 3 Sent: 0



Km: 126.00 Tipo: 3 Sent: 0

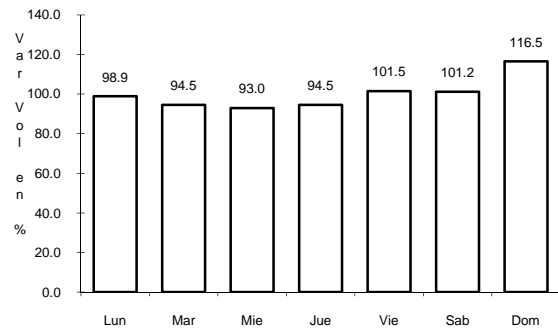


Km: 182.40 Tipo: 1 Sent: 0

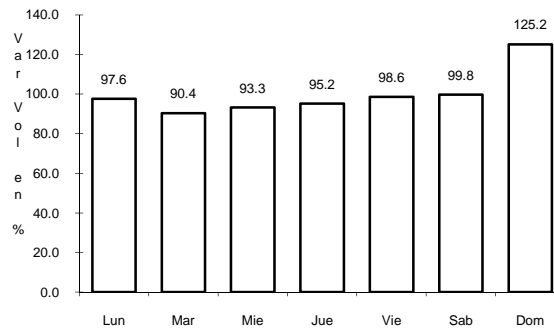
21 CARR: HIDALGO DEL PARRAL - JIMENEZ

CLAVE: 08444

ruta: MEX-045



Km: 0.00 Tipo: 3 Sent: 1

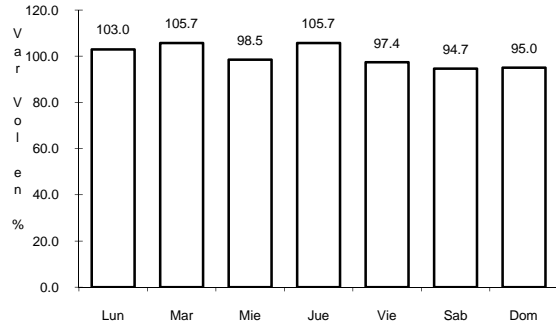


Km: 0.00 Tipo: 3 Sent: 2

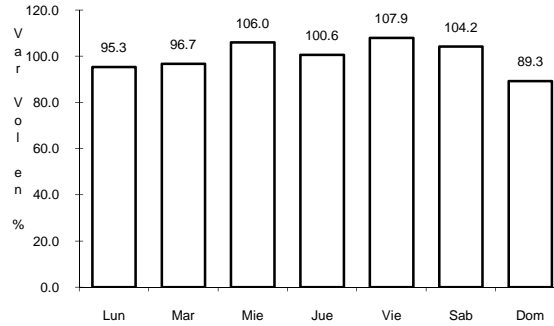
22 CARR: JIMENEZ - CAMARGO

CLAVE: 08021

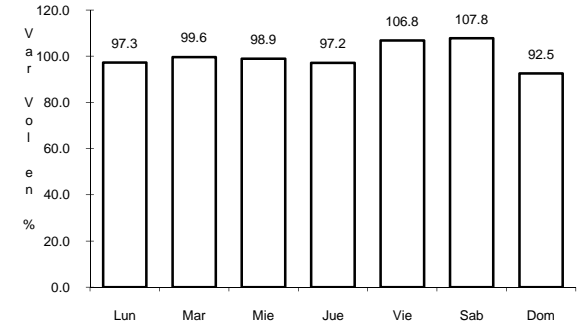
RUTA: CHIH-049



Km: 0.00 Tipo: 3 Sent: 0



Km: 65.80 Tipo: 3 Sent: 0

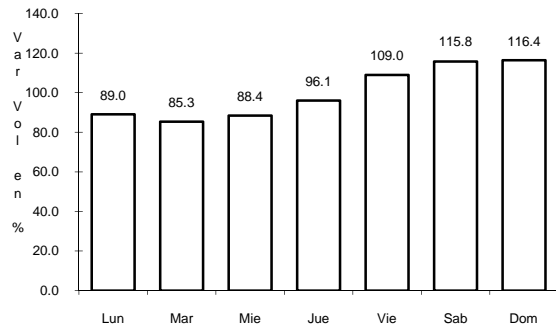


Km: 78.20 Tipo: 1 Sent: 0

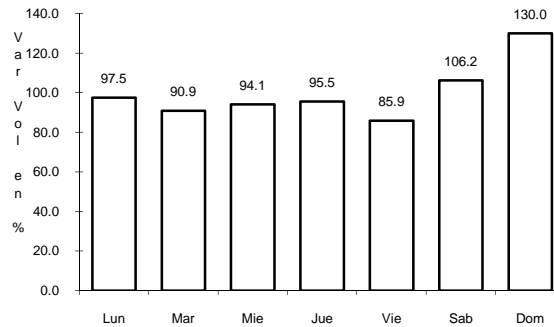
23 CARR: LAZARO CARDENAS - ENT. COLONIA SAN JOSE

CLAVE: 08004

RUTA: CHIH-004



Km: 0.00 Tipo: 3 Sent: 0

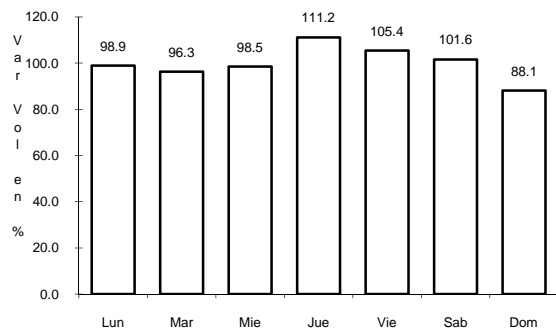


Km: 16.00 Tipo: 1 Sent: 0

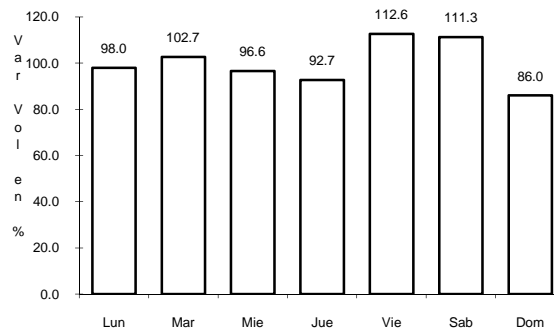
24 CARR: LIBRAMIENTO DE DELICIAS - MEOQUI

CLAVE: 08813

RUTA: MEX



Km: 0.00 Tipo: 3 Sent: 1

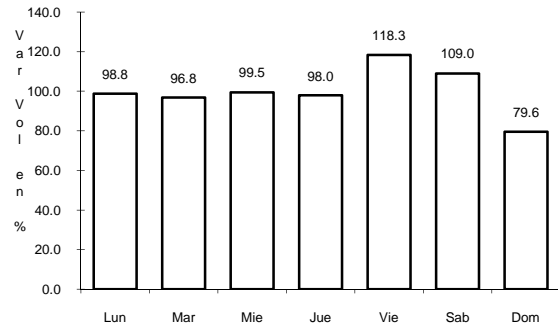


Km: 0.00 Tipo: 3 Sent: 2

25 CARR: LIBRAMIENTO DE HIDALGO DEL PARRAL

CLAVE: 08221

RUTA: CHIH



Km: 8.00

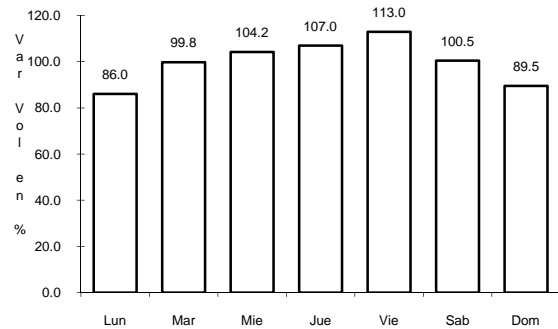
Tipo: 3

Sent: 0

26 CARR: LIBRAMIENTO DE JIMENEZ

CLAVE: 08047

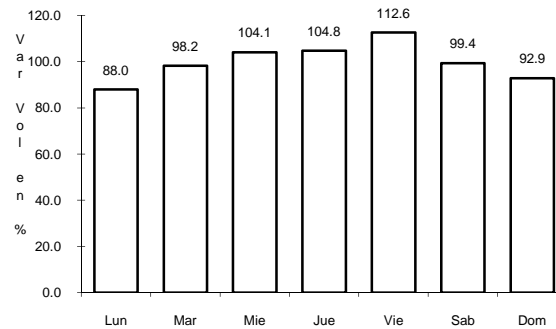
RUTA: CHIH



Km: 0.00

Tipo: 3

Sent: 1



Km: 0.00

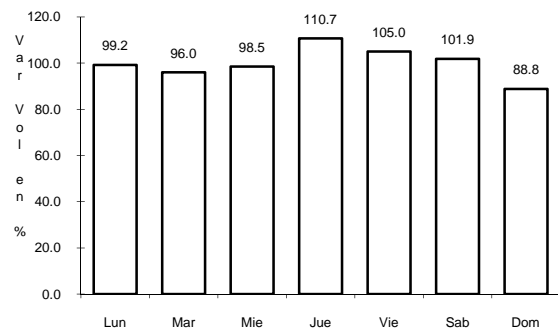
Tipo: 3

Sent: 2

27 CARR: MEOQUI - JULIMES

CLAVE: 08005

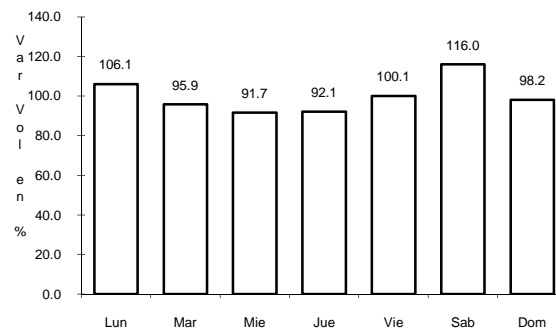
RUTA: CHIH-005



Km: 0.00

Tipo: 3

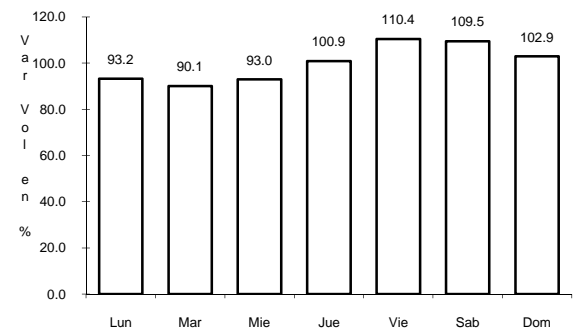
Sent: 0



Km: 15.40

Tipo: 3

Sent: 0



Km: 23.00

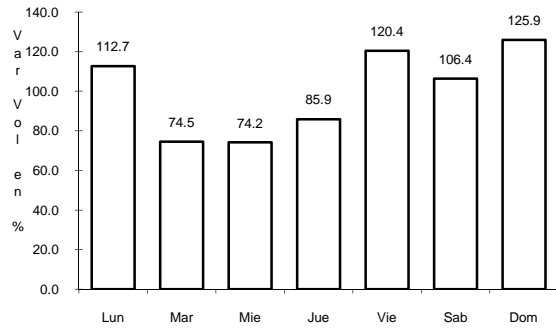
Tipo: 1

Sent: 0

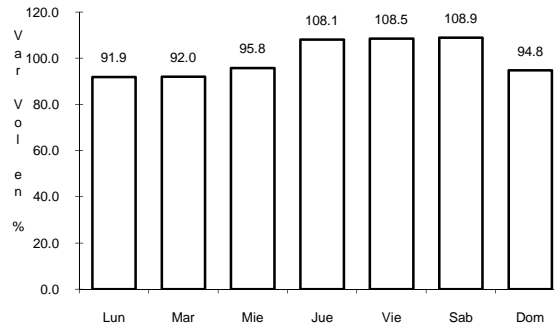
28 CARR: PORVENIR - CD. JUAREZ

CLAVE: 08169

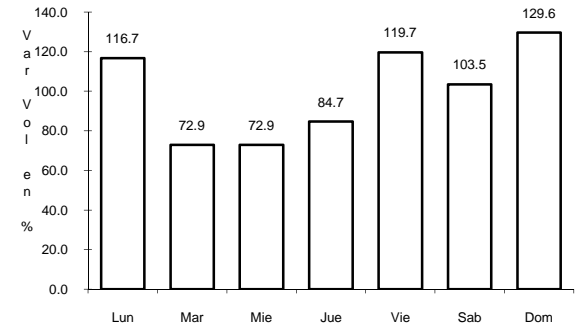
RUTA: MEX-002



Km: 1.67 Tipo: 3 Sent: 0



Km: 55.93 Tipo: 1 Sent: 0

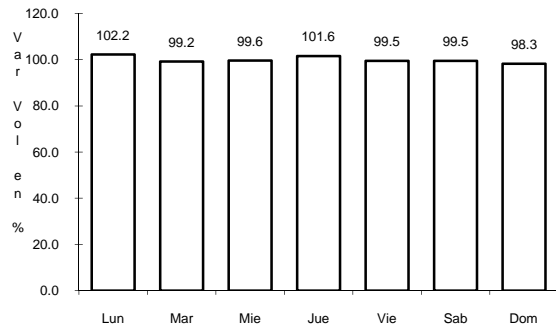


Km: 73.43 Tipo: 1 Sent: 0

29 CARR: RAMAL A AEROPUERTO DE CHIHUAHUA

CLAVE: 08421

RUTA: MEX

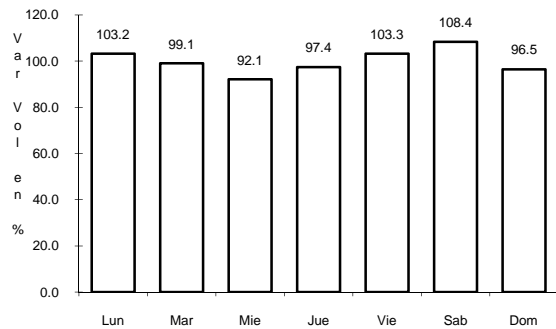


Km: 0.00 Tipo: 3 Sent: 0

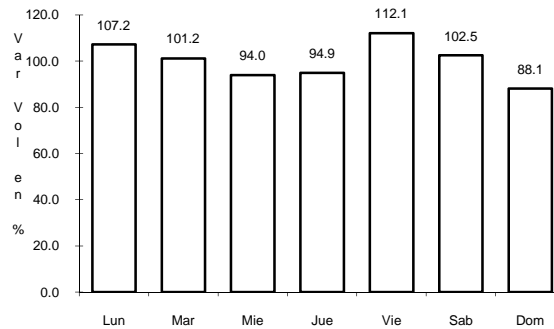
30 CARR: RAMAL A CREEL

CLAVE: 08812

RUTA: CHIH



Km: 0.00 Tipo: 3 Sent: 0

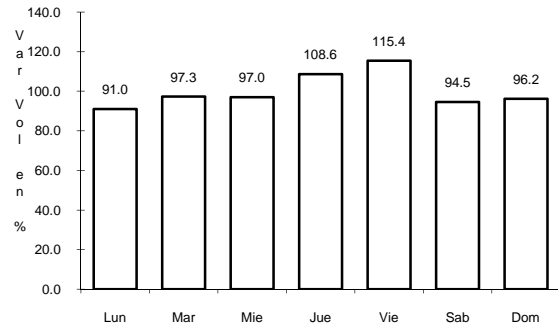


Km: 58.00 Tipo: 3 Sent: 0

31 CARR: JERONIMO - STA. TERESA

CLAVE: 08043

ruta: MEX



Km: 0.00

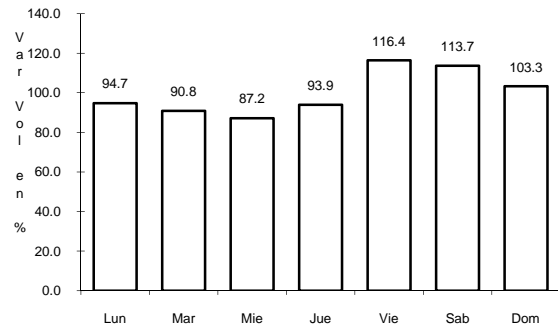
Tipo: 3

Sent: 0

32 CARR: RAMAL A PALOMAS

CLAVE: 08019

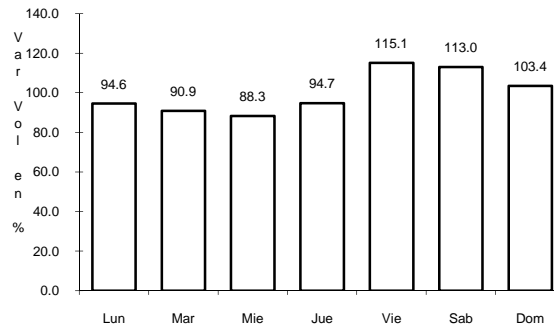
ruta: MEX



Km: 0.00

Tipo: 3

Sent: 0



Km: 7.50

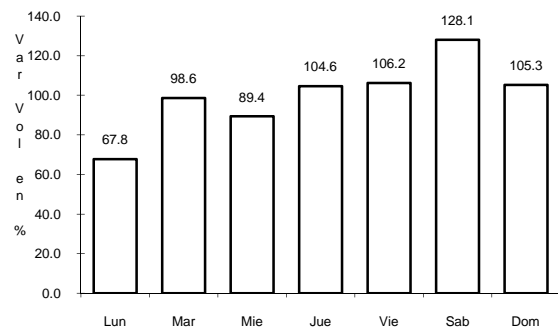
Tipo: 3

Sent: 0

33 CARR: SAN JUANITO - BASASEACHIC

CLAVE: 08045

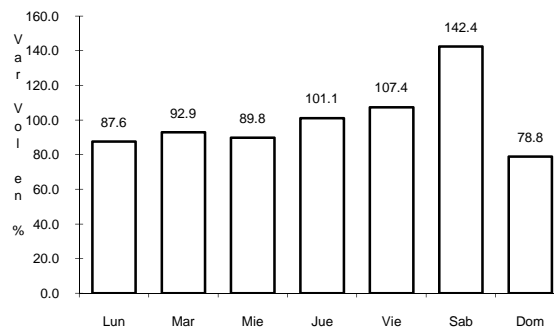
ruta: CHIH



Km: 0.00

Tipo: 3

Sent: 0



Km: 84.00

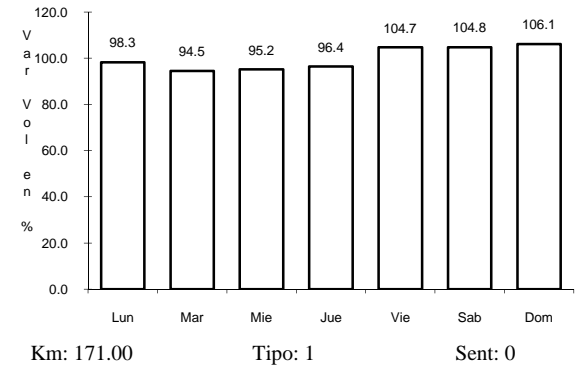
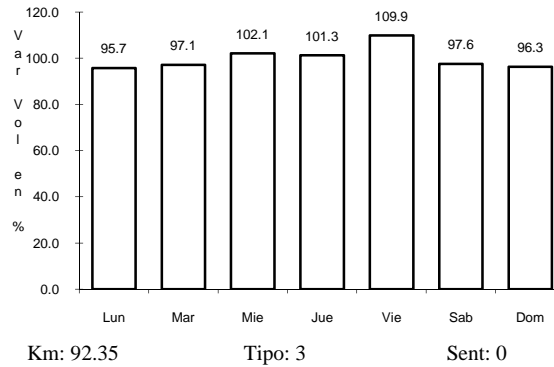
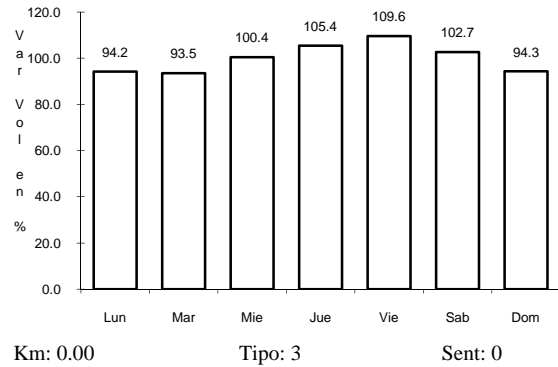
Tipo: 1

Sent: 0

34 CARR: ENT. LA ZARCA - HIDALGO DEL PARRAL

CLAVE: 00488

ruta: MEX-045



35 CARR: GOMEZ PALACIO - JIMENEZ

CLAVE: 00006

ruta: MEX-049

