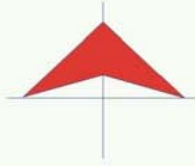


06 COLIMA



MAPA INDICE

15 Num. Indice
2008

Secretaría de Comunicaciones y Transportes

CARRETERAS AFORADAS

Num. INDICE	CARRETERA
1	MANZANILLO - PUERTO VALLARTA
2	ARMERIA - MANZANILLO (CUOTA)
3	ARMERIA - PLAYA EL PARAISO
4	COLIMA - COMALA
5	COLIMA - COQUIMATLAN
6	COLIMA - ENT. TECOMAN
7	COMALA - SAN ANTONIO
8	COQUIMATLAN - PUEBLO JUAREZ
9	COSTERA LAGUNA DE CUYUTLAN
10	CUAUHTEMOC - COLIMA
11	LIBRAMIENTO DE COLIMA
12	LIBRAMIENTO DE MANZANILLO NORTE
13	LIBRAMIENTO DE MANZANILLO (LIBRE)
14	MINATITLAN - ENT. PEZ VELA
15	PASO POR LA SALADA
16	PASO POR LOS ASMOLES
17	PUERTA DE CALERAS - MADRID
18	QUESERIA - EL NARANJAL
19	RAMAL A AEROPUERTO DE COLIMA
20	RAMAL A AEROPUERTO MANZANILLO
21	RAMAL A CUYUTLAN
22	RAMAL A IXTLAHUACAN
23	RAMAL A LAS BRISAS
24	RAMAL A LOS TEPAMES
25	RAMAL A RANCHO VALLE NUEVO
26	RAMAL A RINCON DE LOPEZ
27	RAMAL A TECUANILLO
28	TECOMAN - BOCA DE PASCUALES
29	TECOMAN - LA MASCOTA
30	TRAPICHILLOS - ESTACION ALZADA
31	VILLA DE ALVAREZ - MINATITLAN
32	ACATLAN DE JUAREZ - EL TRAPICHE (CUOTA)
33	CD. GUZMAN - COLIMA
34	ENT. PLAYA AZUL - MANZANILLO
35	JIQUILPAN - COLIMA

COLIMA

3 CARR : ARMERIA - PLAYA EL PARAISO

CLAVE: 06580

RUTA : COL

AÑO : 2007

L U G A R	E S T A C I O N				CLASIFICACION VEHICULAR EN PORCIENTO .													
	KM	TE	SC	TDPA	A	B	C2	C3	T3S2	T3S3	T3S2R4	OTROS	A	B	C	K'	D	
T. C. ENT. PLAYA AZUL - MANZANILLO	0.00	3	0	2293	86.9	3.3	6.5	3.1	0.2	0	0	0	86.9	3.3	9.8	0.088	0.535	
PLAYA PARAISO	7.50	1	0	1540	90.7	3	4.7	1.5	0	0.1	0	0	90.7	3	6.3	0.111	0.541	

4 CARR : COLIMA - COMALA

CLAVE: 06016

RUTA : COL-016

AÑO : 2007

L U G A R	E S T A C I O N				CLASIFICACION VEHICULAR EN PORCIENTO .													
	KM	TE	SC	TDPA	A	B	C2	C3	T3S2	T3S3	T3S2R4	OTROS	A	B	C	K'	D	
COLIMA	0.00	0	0															
VILLA ALVAREZ	0.00	3	1	6377	86.9	2.9	5	1.2	1	1.4	0.1	1.5	86.9	2.9	10.2	0.121	0.502	
VILLA ALVAREZ	0.00	3	2	6332	89.2	2.9	4.5	1.3	0.5	1.2	0.2	0.2	89.2	2.9	7.9	0.099	0.502	
COMALA	10.00	0	0															

5 CARR : COLIMA - COQUIMATLAN

CLAVE: 06034

RUTA : COL-034

AÑO : 2007

L U G A R	E S T A C I O N				CLASIFICACION VEHICULAR EN PORCIENTO .													
	KM	TE	SC	TDPA	A	B	C2	C3	T3S2	T3S3	T3S2R4	OTROS	A	B	C	K'	D	
COLIMA	0.00	0	0															
T. DER. VILLA ALVAREZ	3.00	3	1	5722	88.4	3.3	4.2	1.1	0.7	1.2	0	1.1	88.4	3.3	8.3	0.119	0.512	
T. DER. VILLA ALVAREZ	3.00	3	2	5445	88.4	3.5	3.5	1.3	0.7	1.3	0	1.3	88.4	3.5	8.1	0.093	0.512	
COQUIMATLAN	11.00	1	1	1775	73.3	4.4	10.4	5.7	1.9	1.8	0	2.5	73.3	4.4	22.3	0.115	0.501	
COQUIMATLAN	11.00	1	2	1783	75.1	4.5	8.2	5.4	2.1	2.1	0	2.6	75.1	4.5	20.4	0.083	0.501	

6 CARR : COLIMA - ENT. TECOMAN

CLAVE: 06119

RUTA : MEX-110

AÑO : 2007

L U G A R	E S T A C I O N				CLASIFICACION VEHICULAR EN PORCIENTO .													
	KM	TE	SC	TDPA	A	B	C2	C3	T3S2	T3S3	T3S2R4	OTROS	A	B	C	K'	D	
T. C. JIQUILPAN - COLIMA	0.00	3	1	7310	83.9	4.3	4.8	3.4	1.9	1.5	0.2	0	83.9	4.3	11.8	0.104	0.501	
T. C. JIQUILPAN - COLIMA	0.00	3	2	7330	83.4	4.5	4.9	3.1	1.7	1.3	0.1	1	83.4	4.5	12.1	0.106	0.501	
T. IZQ. LOS ASMOLES	13.00	3	1	6686	78.1	3.9	4.7	3.5	3.4	3.9	0.2	2.3	78.1	3.9	18	0.078	0.503	
T. IZQ. LOS ASMOLES	13.00	3	2	6597	79.4	3.8	4.7	3.3	3	3.6	0.2	2	79.4	3.8	16.8	0.092	0.503	
T. DER. CALERAS	34.55	1	1	6789	82.1	4.1	5.5	1.6	1.5	3.5	0.1	1.6	82.1	4.1	13.8	0.082	0.513	
T. DER. CALERAS	34.55	1	2	6452	83.4	4.1	4.9	1.7	1.7	2.6	0.1	1.5	83.4	4.1	12.5	0.091	0.513	
T. C. ENT. PLAYA AZUL - MANZANILLO	40.10	1	1	8123	79.7	6.8	6.4	3.2	1.3	1.8	0.1	0.7	79.7	6.8	13.5	0.085	0.584	
T. C. ENT. PLAYA AZUL - MANZANILLO	40.10	1	2	8138	80.9	5	6	3.1	1.6	2.2	0.4	0.8	80.9	5	14.1	0.075	0.5	

COLIMA

7 CARR : COMALA - SAN ANTONIO

CLAVE: 06030

ruta : COL-016

AÑO : 2007

L U G A R	E S T A C I O N				CLASIFICACION VEHICULAR EN PORCIENTO .												
	KM	TE	SC	TDPA	A	B	C2	C3	T3S2	T3S3	T3S2R4	OTROS	A	B	C	K'	D
COMALA	0.00	3	1	1298	84.1	2.4	6	3.9	1.5	1.4	0.2	0.5	84.1	2.4	13.5	0.134	0.5
COMALA	0.00	3	2	1296	86.4	1.7	5.1	3.6	1.1	1.2	0.1	0.8	86.4	1.7	11.9	0.154	0.5
SUCHITLAN	10.00	1	0	2324	89.2	2.7	4.5	1.7	0.9	0.6	0.1	0.3	89.2	2.7	8.1	0.09	0.501
SAN ANTONIO	20.50	0	0														

8 CARR : COQUIMATLAN - PUEBLO JUAREZ

CLAVE: 06029

ruta : COL-034

AÑO : 2007

L U G A R	E S T A C I O N				CLASIFICACION VEHICULAR EN PORCIENTO .												
	KM	TE	SC	TDPA	A	B	C2	C3	T3S2	T3S3	T3S2R4	OTROS	A	B	C	K'	D
COQUIMATLAN	0.00	3	0	4806	78.3	5.6	7.8	3	1.8	1.6	0	1.9	78.3	5.6	16.1	0.086	0.505
PUEBLO JUAREZ	16.00	0	0														

9 CARR : COSTERA LAGUNA DE CUYUTLAN

CLAVE: 06010

ruta : COL

AÑO : 2007

L U G A R	E S T A C I O N				CLASIFICACION VEHICULAR EN PORCIENTO .												
	KM	TE	SC	TDPA	A	B	C2	C3	T3S2	T3S3	T3S2R4	OTROS	A	B	C	K'	D
T. C. ARMERIA - MANZANILLO (CUOTA)	0.00	3	0	3374	84.3	2.7	5.4	4.2	1.7	0.8	0.2	0.7	84.3	2.7	13	0.077	0.502
MANZANILLO	13.00	1	0	3117	84.1	5.1	5.3	3.4	1.3	0.5	0.1	0.2	84.1	5.1	10.8	0.106	0.502

10 CARR : CUAUHTEMOC - COLIMA

CLAVE: 06019

ruta : COL-019

AÑO : 2007

L U G A R	E S T A C I O N				CLASIFICACION VEHICULAR EN PORCIENTO .												
	KM	TE	SC	TDPA	A	B	C2	C3	T3S2	T3S3	T3S2R4	OTROS	A	B	C	K'	D
CUAUHTEMOC	0.00	3	0	3744	80	4.2	5.9	2.9	3.3	2	1	0.7	80	4.2	15.8	0.095	0.502
X. C. LIBRAMIENTO DE COLIMA	19.50	1	1	8069	72.8	5.4	2.8	1.1	3.4	2.9	4.8	6.8	72.8	5.4	21.8	0.1	0.577
X. C. LIBRAMIENTO DE COLIMA	19.50	1	2	9632	77.7	5.7	3.6	0.5	4	1.5	1.9	5.1	77.7	5.7	16.6	0.089	0.577
COLIMA	22.40	0	0														

11 CARR : LIBRAMIENTO DE COLIMA

CLAVE: 06573

ruta : MEX

AÑO : 2007

L U G A R	E S T A C I O N				CLASIFICACION VEHICULAR EN PORCIENTO .												
	KM	TE	SC	TDPA	A	B	C2	C3	T3S2	T3S3	T3S2R4	OTROS	A	B	C	K'	D
T. C. CD. GUZMAN - COLIMA	0.00	3	1	3829	74.9	9.4	6.2	3.9	3.4	2.1	0.1	0	74.9	9.4	15.7	0.11	0.501
T. C. CD. GUZMAN - COLIMA	0.00	3	2	3807	76.2	9	5.5	4.1	3.1	2	0.1	0	76.2	9	14.8	0.109	0.501

COLIMA

11 CARR : LIBRAMIENTO DE COLIMA

CLAVE: 06573

RUTA : MEX

AÑO : 2007

L U G A R	E S T A C I O N				C L A S I F I C A C I O N V E H I C U L A R E N P O R C I E N T O .												
	KM	TE	SC	TDPA	A	B	C2	C3	T3S2	T3S3	T3S2R4	OTROS	A	B	C	K'	D
T. C. COLIMA - ENT. TECOMAN	9.00	1	1	3579	68.5	0.7	23.4	2.9	1.4	1.4	0	1.7	68.5	0.7	30.8	0.1	0.5
T. C. COLIMA - ENT. TECOMAN	9.00	1	2	3581	67.3	0.9	23.8	2.9	1.4	1.4	0	2.3	67.3	0.9	31.8	0.092	0.5

12 CARR : LIBRAMIENTO DE MANZANILLO NORTE

CLAVE: 06122

RUTA : S/N

AÑO : 2007

L U G A R	E S T A C I O N				C L A S I F I C A C I O N V E H I C U L A R E N P O R C I E N T O .												
	KM	TE	SC	TDPA	A	B	C2	C3	T3S2	T3S3	T3S2R4	OTROS	A	B	C	K'	D
T. C. LIBRAMIENTO DE MANZANILLO (LIBRE)	90.83	0	0														
T. C. MINATITLAN - ENT. PEZ VELA	94.65	1	0	6152	79.7	5.6	7	2.1	1.1	2.9	0.1	1.5	79.7	5.6	14.7	0.089	0.502
T. C. MANZANILLO - PUERTO VALLARTA	110.30	1	0	3279	77.9	2.5	1.8	2.2	5.4	2.5	5.9	1.8	77.9	2.5	19.6	0.075	0.516

13 CARR : LIBRAMIENTO DE MANZANILLO (LIBRE)

CLAVE: 06574

RUTA : MEX

AÑO : 2007

L U G A R	E S T A C I O N				C L A S I F I C A C I O N V E H I C U L A R E N P O R C I E N T O .												
	KM	TE	SC	TDPA	A	B	C2	C3	T3S2	T3S3	T3S2R4	OTROS	A	B	C	K'	D
T. C. ENT. PLAYA AZUL - MANZANILLO	0.00	3	0	4706	74.4	10.3	7.1	2.4	2	2.3	0.2	1.3	74.4	10.3	15.3	0.088	0.502
T. C. MANZANILLO - PUERTO VALLARTA	6.30	1	1	3978	78.8	5.9	7.1	2.5	1	3.2	0	1.5	78.8	5.9	15.3	0.091	0.501
T. C. MANZANILLO - PUERTO VALLARTA	6.30	1	2	3996	81.9	5	6.9	1.8	1.1	2.3	0	1	81.9	5	13.1	0.078	0.501

14 CARR : MINATITLAN - ENT. PEZ VELA

CLAVE: 06015

RUTA : MEX-098

AÑO : 2007

L U G A R	E S T A C I O N				C L A S I F I C A C I O N V E H I C U L A R E N P O R C I E N T O .												
	KM	TE	SC	TDPA	A	B	C2	C3	T3S2	T3S3	T3S2R4	OTROS	A	B	C	K'	D
MINATITLAN	0.00	0	0														
T. DER. JALIPA	49.50	1	0	1584	79.4	4.4	9.2	2.6	1.8	2.5	0	0.1	79.4	4.4	16.2	0.078	0.501
T. DER. JALIPA	49.50	3	0	2768	80.3	3.5	11.1	2.4	0.9	1	0	0.8	80.3	3.5	16.2	0.096	0.503
T. C. MANZANILLO - PUERTO VALLARTA	58.50	1	1	2820	79.5	4.2	10.2	2.5	0.9	1.9	0.2	0.6	79.5	4.2	16.3	0.1	0.501
T. C. MANZANILLO - PUERTO VALLARTA	58.50	1	2	2830	81.1	4.3	10.4	2	1.2	0.9	0	0.1	81.1	4.3	14.6	0.092	0.501

15 CARR : PASO POR LA SALADA

CLAVE: 06121

RUTA : COL

AÑO : 2007

L U G A R	E S T A C I O N				C L A S I F I C A C I O N V E H I C U L A R E N P O R C I E N T O .												
	KM	TE	SC	TDPA	A	B	C2	C3	T3S2	T3S3	T3S2R4	OTROS	A	B	C	K'	D
LA SALADA	0.00	3	0	1349	85.1	3.8	4.8	3.2	1.2	1.2	0	0.7	85.1	3.8	11.1	0.109	0.549

COLIMA

30 CARR : TRAPICHILLOS - ESTACION ALZADA

CLAVE: 06003

RUTA : COL-003

AÑO : 2007

L U G A R	E S T A C I O N				C L A S I F I C A C I O N V E H I C U L A R E N P O R C I E N T O .												
	KM	TE	SC	TDPA	A	B	C2	C3	T3S2	T3S3	T3S2R4	OTROS	A	B	C	K'	D
T. C. JIQUILPAN - COLIMA	0.00	3	0	704	79	8.3	6.6	2.8	1.3	1.5	0	0.5	79	8.3	12.7	0.087	0.502
ESTACION ALZADA	12.50	1	0	373	80.8	4.1	6.1	2.2	3.3	1.7	1.2	0.6	80.8	4.1	15.1	0.099	0.508

31 CARR : VILLA DE ALVAREZ - MINATITLAN

CLAVE: 06040

RUTA : COL

AÑO : 2007

L U G A R	E S T A C I O N				C L A S I F I C A C I O N V E H I C U L A R E N P O R C I E N T O .												
	KM	TE	SC	TDPA	A	B	C2	C3	T3S2	T3S3	T3S2R4	OTROS	A	B	C	K'	D
T. C. COLIMA - COMALA	0.00	3	0	1727	86.9	2	5.2	2.8	1.7	1.2	0.1	0.1	86.9	2	11.1	0.107	0.502
T. C. MINATITLAN - ENT. PEZ VELA	55.00	0	0														

32 CARR : ACATLAN DE JUAREZ - EL TRAPICHE (CUOTA)

CLAVE: 00118

RUTA : MEX-054D

AÑO : 2007

L U G A R	E S T A C I O N				C L A S I F I C A C I O N V E H I C U L A R E N P O R C I E N T O .												
	KM	TE	SC	TDPA	A	B	C2	C3	T3S2	T3S3	T3S2R4	OTROS	A	B	C	K'	D
T. C. ENT. SANTA CRUZ - MELAQUE	0.00	0	0														
CASETA DE COBRO ACATLAN DE JUAREZ	0.20	2	0	7710													
CASETA DE COBRO "ACATLAN"	0.20	3	1	3375	87.8	2	3.6	2.3	2	1.6	0.5	0.2	87.8	2	10.2	0.103	0.501
CASETA DE COBRO "ACATLAN"	0.20	3	2	3358	85.3	2.3	3.7	2.7	2.8	1.7	1.4	0.1	85.3	2.3	12.4	0.092	0.501
T. IZQ. SAN MARCOS	10.80	1	1	3818	82.8	2	5.4	3	3	2.4	1.1	0.3	82.8	2	15.2	0.097	0.501
T. IZQ. SAN MARCOS	10.80	1	2	3800	84.6	2.2	5.5	2.6	2.4	1.8	0.8	0.1	84.6	2.2	13.2	0.102	0.501
T. DER. USMAJAC	67.80	1	1	5083	81.4	2.9	4.5	4.5	3.1	2.6	0.3	0.7	81.4	2.9	15.7	0.096	0.501
T. DER. USMAJAC	67.80	1	2	5095	80.1	4.5	5	4.3	3.1	2.2	0.2	0.6	80.1	4.5	15.4	0.107	0.501
T. IZQ. CD. GUZMAN	86.70	1	1	4278	82.4	5.1	4	4	1.7	1.2	0.7	0.9	82.4	5.1	12.5	0.088	0.502
T. IZQ. CD. GUZMAN	86.70	1	2	4243	79.9	6.7	4.3	4	2.2	1.6	0.5	0.8	79.9	6.7	13.4	0.099	0.502
CASETA DE COBRO SAN MARCOS	122.00	2	0	7167													
LIM. EDOS. TERM. JAL. PPIA. COL.	129.00	0	0														
T. C. CD. GUZMAN - COLIMA	148.00	0	0														

33 CARR : CD. GUZMAN - COLIMA

CLAVE: 00117

RUTA : MEX-054

AÑO : 2007

L U G A R	E S T A C I O N				C L A S I F I C A C I O N V E H I C U L A R E N P O R C I E N T O .												
	KM	TE	SC	TDPA	A	B	C2	C3	T3S2	T3S3	T3S2R4	OTROS	A	B	C	K'	D
CD. GUZMAN	0.00	3	1	6605	83.8	1.7	5.4	4.4	1.4	1.7	1.3	0.3	83.8	1.7	14.5	0.088	0.502
CD. GUZMAN	0.00	3	2	6556	85.9	2.8	3.7	3.5	1.4	1.1	1.4	0.2	85.9	2.8	11.3	0.094	0.502

COLIMA

33 CARR : CD. GUZMAN - COLIMA

CLAVE: 00117

ruta : MEX-054

AÑO : 2007

L U G A R	E S T A C I O N				CLASIFICACION VEHICULAR EN PORCIENTO													
	KM	TE	SC	TDPA	A	B	C2	C3	T3S2	T3S3	T3S2R4	OTROS	A	B	C	K'	D	
T. IZQ. ZAPOTILTIC	4.35	3	0	4205	83.8	4.1	3	2.5	2.8	1.3	0.6	1.9	83.8	4.1	12.1	0.093	0.501	
T. DER. TEPOZAL Y NEVADO DE COLIMA	10.70	1	1	1848	79.4	3.2	2.1	2.1	4.1	1.9	2.6	4.6	79.4	3.2	17.4	0.104	0.502	
T. DER. TEPOZAL Y NEVADO DE COLIMA	10.70	1	2	1863	85	3	2.7	2.4	2.3	1.8	1.2	1.6	85	3	12	0.104	0.502	
ATENQUIQUE	31.90	1	0	2538	68.4	4.2	2.7	7.7	8.3	4.9	2.3	1.5	68.4	4.2	27.4	0.095	0.501	
ATENQUIQUE	31.90	3	0	2198	68.2	4.2	2.7	7.8	8.3	4.8	2.3	1.7	68.2	4.2	27.6	0.091	0.5	
LIM. EDOS. TERM. JAL. PPIA. COL.	56.50	0	0															
T. DER. QUESERIA	58.35	1	0	3964	74.9	8.6	6.8	3.4	2.7	2	0.6	1	74.9	8.6	16.5	0.083	0.504	
CUAUHTEMOC	66.25	1	0	6371	70.1	9.7	2	2.2	9.3	3	2.2	1.5	70.1	9.7	20.2	0.083	0.502	
CUAUHTEMOC	66.25	3	0	4303	64.9	7.4	14.2	6.3	3.7	1.5	0.1	1.9	64.9	7.4	27.7	0.07	0.502	
EL TRAPICHE	76.55	3	1	7010	76.1	6.3	4.8	4	4.1	2.6	0.1	2	76.1	6.3	17.6	0.103	0.5	
EL TRAPICHE	76.55	3	2	7022	76.8	6.3	5.1	4.6	3.4	3.1	0.1	0.6	76.8	6.3	16.9	0.097	0.5	
T. IZQ. LIBRAMIENTO DE COLIMA	78.05	1	1	8418	84.2	3	4.4	3.4	1.8	1	0.2	2	84.2	3	12.8	0.084	0.5	
T. IZQ. LIBRAMIENTO DE COLIMA	78.05	1	2	8415	85	2.3	4.5	3	2.2	1.2	0.1	1.7	85	2.3	12.7	0.099	0.5	
T. C. CUAUHTEMOC - COLIMA	83.40	0	0															

34 CARR : ENT. PLAYA AZUL - MANZANILLO

CLAVE: 00495

ruta : MEX-200

AÑO : 2007

L U G A R	E S T A C I O N				CLASIFICACION VEHICULAR EN PORCIENTO													
	KM	TE	SC	TDPA	A	B	C2	C3	T3S2	T3S3	T3S2R4	OTROS	A	B	C	K'	D	
T. C. CARAPAN - PLAYA AZUL	0.00	3	0	3250	85.6	3.3	4.2	2.3	1.1	1.9	0	1.6	85.6	3.3	11.1	0.082	0.501	
CALETA DE CAMPOS	50.24	1	0	979	87.8	2.6	5.5	2.5	1	0.6	0	0	87.8	2.6	9.6	0.088	0.5	
TIZUAPAN	106.60	1	0	570	87.3	2.2	6	0.6	1.2	1.8	0.1	0.8	87.3	2.2	10.5	0.091	0.5	
MARUATA	149.80	1	0	623	88.1	2.6	5.5	2.7	0.5	0.2	0	0.4	88.1	2.6	9.3	0.109	0.5	
MARUATA	149.80	3	0	785	89.6	4.1	4.5	1.4	0.1	0.2	0	0.1	89.6	4.1	6.3	0.101	0.502	
T. DER. AQUILA	190.10	3	0	1641	86.1	3.2	5.5	3	0.6	0.6	0.3	0.7	86.1	3.2	10.7	0.105	0.503	
LIM. EDOS. TERM. MICH. PPIA. COL.	229.60	0	0															
CERRO DE ORTEGA	233.20	1	0	4548	91.9	1.5	3.3	1	0.7	0.8	0.3	0.5	91.9	1.5	6.6	0.081	0.502	
EL BALCON	243.00	1	0	4784	80.9	5.1	5.7	3.7	1.1	1.9	0	1.6	80.9	5.1	14	0.084	0.5	
EL BALCON	243.00	3	0	4782	82.5	4.2	5.5	2.8	1.5	2.3	0.2	1	82.5	4.2	13.3	0.11	0.504	
COFRADIA DE MORELOS	252.50	1	0	10228	83.3	3.3	5.6	3.1	1.7	1.7	0.6	0.7	83.3	3.3	13.4	0.075	0.5	
COFRADIA DE MORELOS	252.50	3	0	6932	84.5	2.6	5.3	2.7	1.9	1.7	0.5	0.8	84.5	2.6	12.9	0.088	0.502	
T. C. COLIMA - ENT. TECOMAN	263.80	1	1	3910	84.9	4.6	1.8	1.6	3.4	1.4	1.1	1.2	84.9	4.6	10.5	0.078	0.501	
T. C. COLIMA - ENT. TECOMAN	263.80	1	2	4594	72.2	7.7	7.6	5	5	1.7	0.3	0.5	72.2	7.7	20.1	0.083	0.509	
T. DER. RINCON DE LOPEZ	269.30	1	0	6541	85.4	6.1	2.6	1.8	1.6	1.6	0	0.9	85.4	6.1	8.5	0.08	0.514	

COLIMA

34 CARR : ENT. PLAYA AZUL - MANZANILLO

CLAVE: 00495

RUTA : MEX-200

AÑO : 2007

L U G A R	E S T A C I O N				CLASIFICACION VEHICULAR EN PORCIENTO .													
	KM	TE	SC	TDPA	A	B	C2	C3	T3S2	T3S3	T3S2R4	OTROS	A	B	C	K'	D	
ARMERIA	272.50	1	0	6686	82.4	4.4	4.4	2.9	1.9	2.2	0.1	1.7	82.4	4.4	13.2	0.091	0.517	
T. IZQ. CUYUTLAN	278.20	1	0	3609	78	9.9	5.3	4.1	1.1	1.3	0	0.3	78	9.9	12.1	0.112	0.516	
SANTA RITA	292.50	1	0	3463	73.3	8.8	8.2	4.4	1.9	2.4	0.9	0.1	73.3	8.8	17.9	0.102	0.501	
SANTA RITA	292.50	3	0	3422	73.2	8.7	8.3	4.4	2	2.4	0.9	0.1	73.2	8.7	18.1	0.098	0.502	
LAS NUEVAS JUNTAS	310.70	1	0	5392	83	5.1	5.6	2.1	1.1	1.1	0.1	1.9	83	5.1	11.9	0.081	0.5	
T. DER. LIBRAMIENTO DE MANZANILLO (LIBRE)	312.70	1	0	5253	77.2	9.5	6.2	2.9	1.2	1.5	0.3	1.2	77.2	9.5	13.3	0.115	0.503	
T. DER. LIBRAMIENTO DE MANZANILLO (LIBRE)	312.70	3	0	5183	80.7	8.4	5.1	2.3	1.3	1.1	0.2	0.9	80.7	8.4	10.9	0.089	0.501	
MANZANILLO	321.10	1	0	6510	77.7	10.5	5	2.6	2	1.5	0.2	0.5	77.7	10.5	11.8	0.103	0.505	

35 CARR : JIQUILPAN - COLIMA

CLAVE: 00156

RUTA : MEX-110

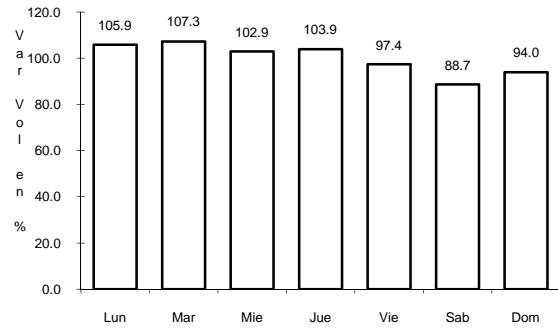
AÑO : 2007

L U G A R	E S T A C I O N				CLASIFICACION VEHICULAR EN PORCIENTO .													
	KM	TE	SC	TDPA	A	B	C2	C3	T3S2	T3S3	T3S2R4	OTROS	A	B	C	K'	D	
JIQUILPAN	0.00	3	0	4499	87.3	4.7	0.6	0.3	3.7	0.5	1.1	1.8	87.3	4.7	8	0.092	0.506	
SAN JOSE DE GRACIA	37.93	1	0	3400	81.4	4.6	3.3	3.3	3.8	1	1.3	1.3	81.4	4.6	14	0.084	0.504	
LIM. EDOS. TERM. MICH. PPIA. JAL.	41.00	0	0															
MAZAMITLA	48.65	1	0	2214	75	3.1	1.9	4	6.8	6.1	2.1	1	75	3.1	21.9	0.086	0.504	
MAZAMITLA	48.65	3	0	2324	71.9	5.4	2.4	4.1	6.3	5.8	2.7	1.4	71.9	5.4	22.7	0.09	0.5	
T. IZQ. TAMAZULA DE GORDIANO (2º ACCESO)	96.70	3	0	6053	70.1	4.5	2.8	3.6	7.1	6.6	3.1	2.2	70.1	4.5	25.4	0.081	0.504	
T. DER. CD. GUZMAN	108.50	3	0	5503	75.3	5.3	4.3	3.5	5.4	3.2	1.7	1.3	75.3	5.3	19.4	0.095	0.501	
TECALITLAN	132.00	3	0	2723	86.8	3.1	5	2.3	1.4	0.2	0.2	1	86.8	3.1	10.1	0.101	0.502	
T. DER. ATENQUIQUE	137.70	3	0	2651	88.4	4	2.5	1.9	2.3	0.4	0.5	0	88.4	4	7.6	0.094	0.502	
PIHUAMO	168.20	3	0	2931	89.8	3.7	1.9	1.6	1.4	0.3	0.2	1.1	89.8	3.7	6.5	0.095	0.502	
LIM. EDOS. TERM. JAL. PPIA. COL.	189.60	0	0															
T. DER. ESTACION ALZADA	198.60	3	0	2064	83.5	3.8	5.1	3.1	1.8	1	0	1.7	83.5	3.8	12.7	0.091	0.501	
T. IZQ. LOS TEPAMES	214.20	1	0	3229	81.8	5.8	6.8	2.1	1.7	1.1	0.7	0	81.8	5.8	12.4	0.1	0.501	
X. C. LIBRAMIENTO DE COLIMA	220.00	1	0	5247	77.7	7	5.9	4.6	1.6	1.3	0	1.9	77.7	7	15.3	0.089	0.504	
COLIMA	222.00	1	0	4857	70.7	7.7	10.6	5.9	1.8	1.3	0.3	1.7	70.7	7.7	21.6	0.097	0.5	

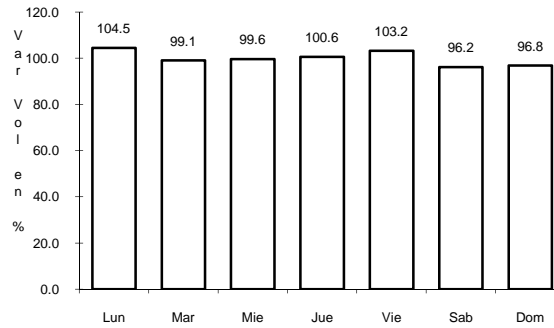
11 CARR: LIBRAMIENTO DE COLIMA

CLAVE: 06573

RUTA: MEX



Km: 0.00 Tipo: 3 Sent: 1

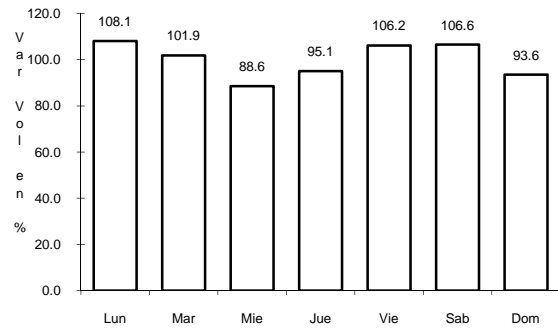


Km: 0.00 Tipo: 3 Sent: 2

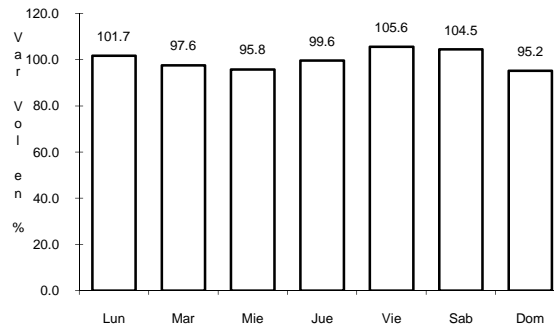
12 CARR: LIBRAMIENTO DE MANZANILLO NORTE

CLAVE: 06122

RUTA: S/N



Km: 94.65 Tipo: 1 Sent: 0

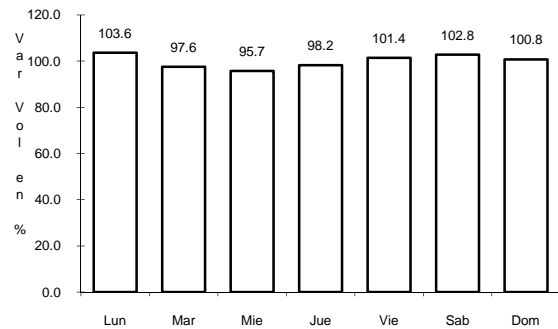


Km: 110.33 Tipo: 1 Sent: 0

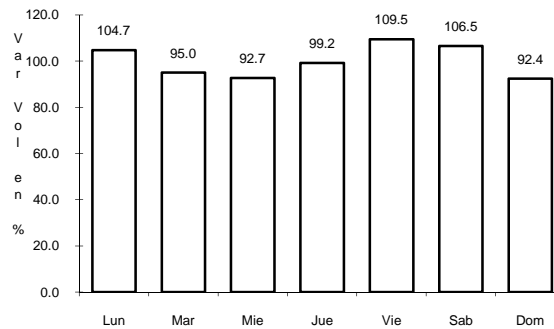
13 CARR: LIBRAMIENTO DE MANZANILLO (LIBRE)

CLAVE: 06574

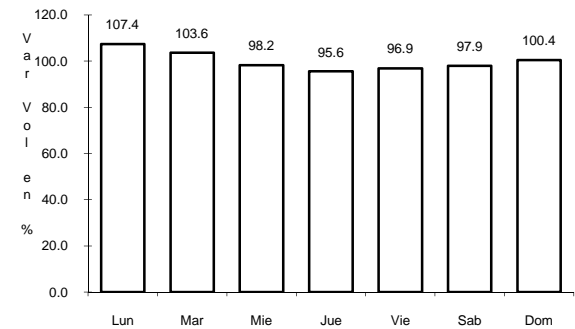
RUTA: MEX



Km: 0.00 Tipo: 3 Sent: 0



Km: 6.30 Tipo: 1 Sent: 1

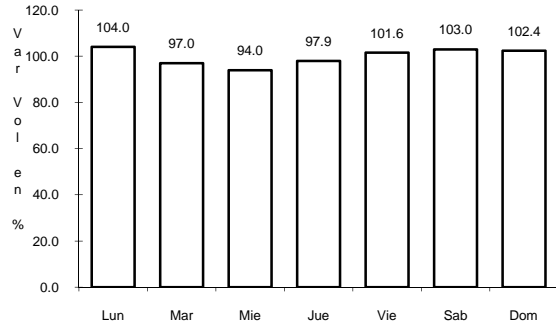


Km: 6.30 Tipo: 1 Sent: 2

14 CARR: MINATITLAN - ENT. PEZ VELA

CLAVE: 06015

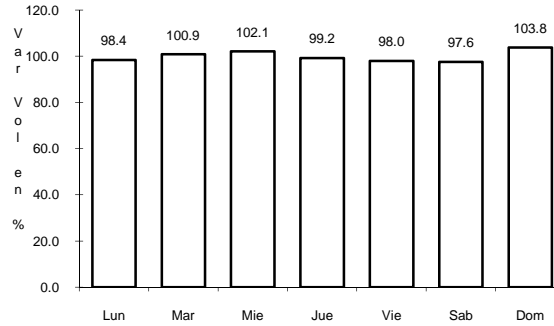
RUTA: MEX-098



Km: 49.50

Tipo: 1

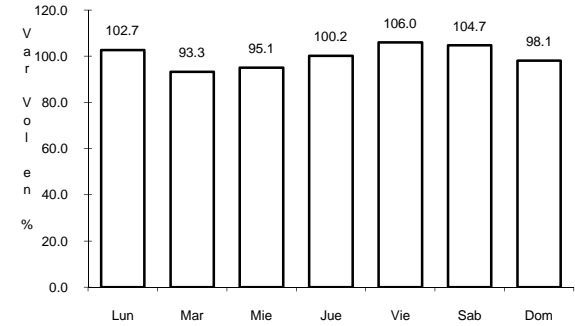
Sent: 0



Km: 58.50

Tipo: 1

Sent: 1



Km: 58.50

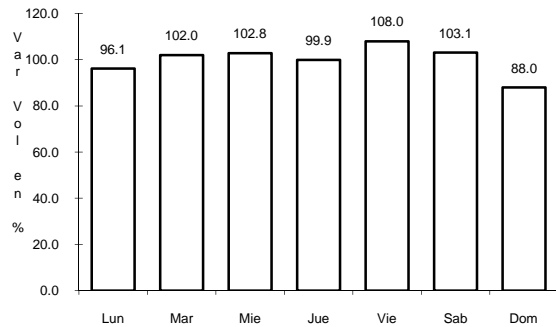
Tipo: 1

Sent: 2

15 CARR: PASO POR LA SALADA

CLAVE: 06121

RUTA: COL



Km: 0.00

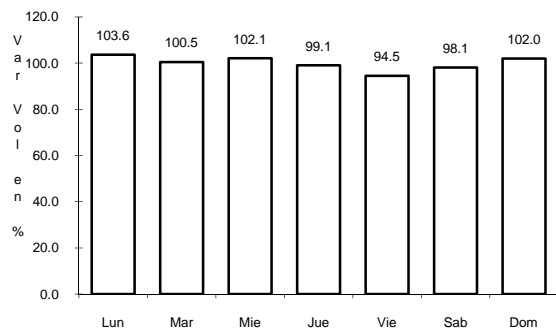
Tipo: 3

Sent: 0

16 CARR: PASO POR LOS ASMOLES

CLAVE: 06120

RUTA: COL



Km: 0.00

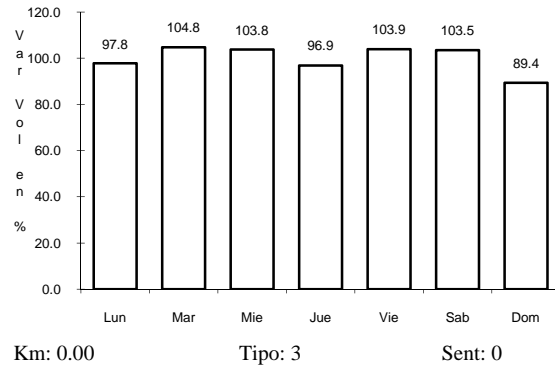
Tipo: 3

Sent: 0

17 CARR: PUERTA DE CALERAS - MADRID

CLAVE: 06014

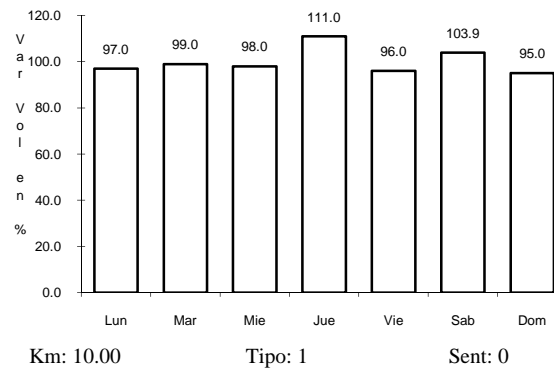
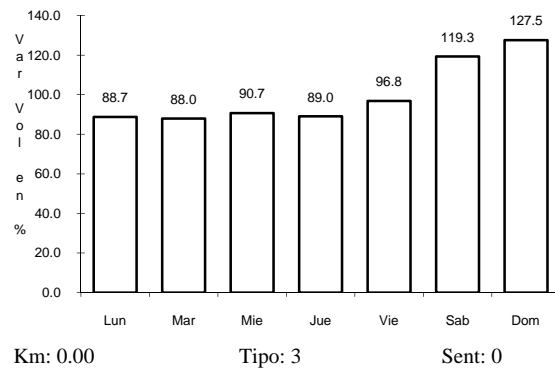
RUTA: COL-014



18 CARR: QUESERIA - EL NARANJAL

CLAVE: 06001

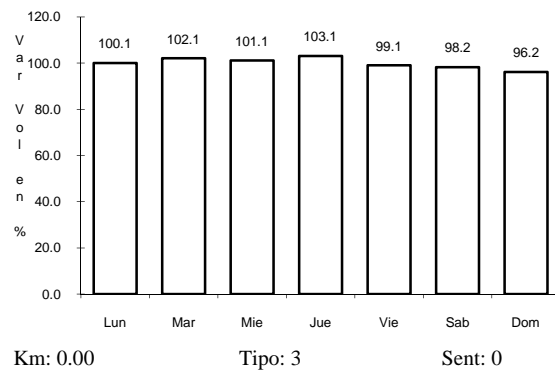
RUTA: COL-001



19 CARR: RAMAL A AEROPUERTO DE COLIMA

CLAVE: 06224

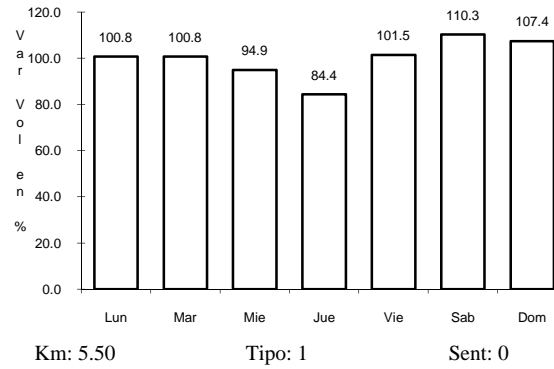
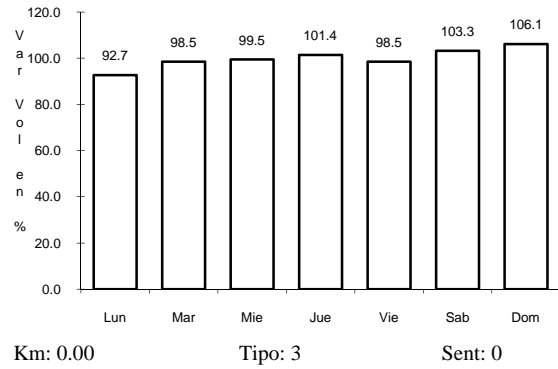
RUTA: COL



20 CARR: RAMAL A AEROPUERTO MANZANILLO

CLAVE: 06582

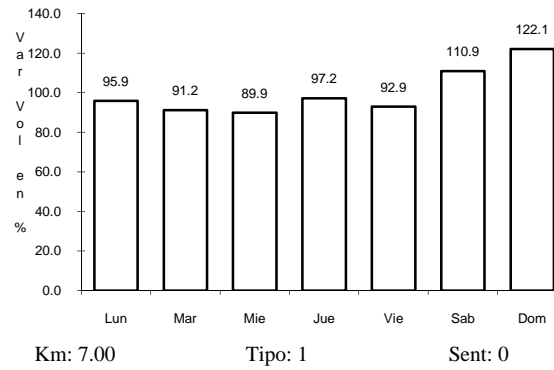
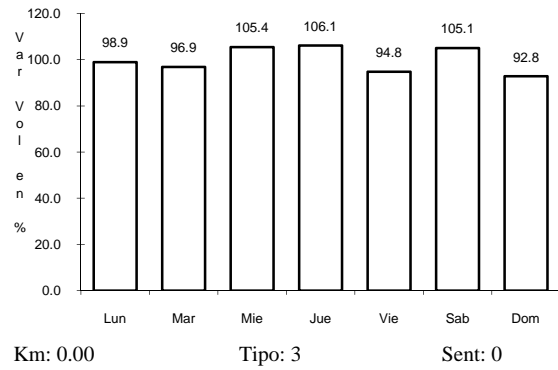
ruta: COL



21 CARR: RAMAL A CUYUTLAN

CLAVE: 06225

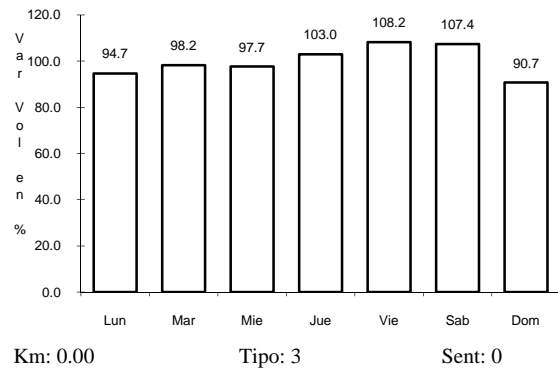
ruta: MEX



22 CARR: RAMAL A IXTLAHUACAN

CLAVE: 06577

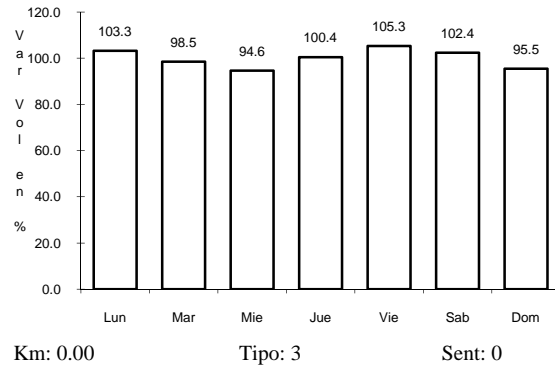
ruta: COL-005



23 CARR: RAMAL A LAS BRISAS

CLAVE: 06571

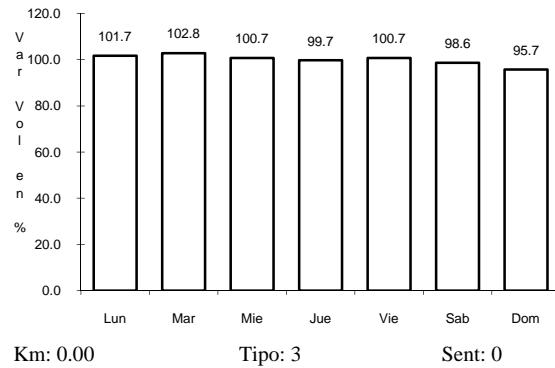
RUTA: COL



24 CARR: RAMAL A LOS TEPAMES

CLAVE: 06004

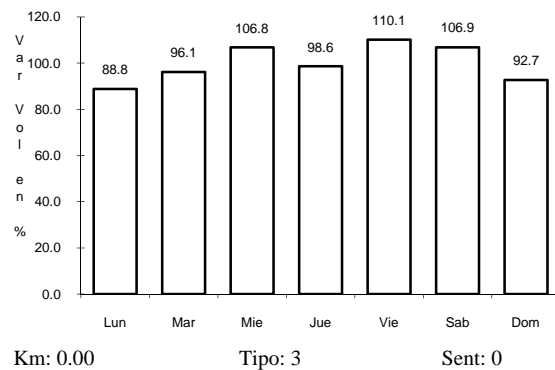
RUTA: COL-004



25 CARR: RAMAL A RANCHO VALLE NUEVO

CLAVE: 06583

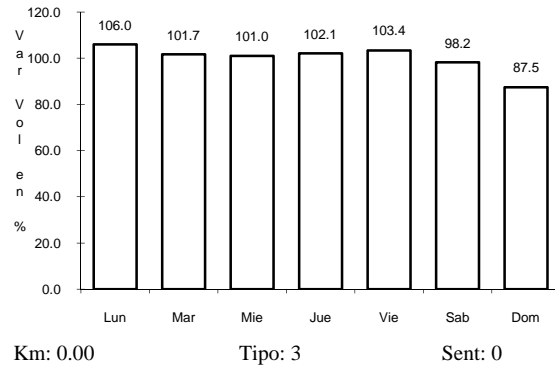
RUTA: COL



26 CARR: RAMAL A RINCON DE LOPEZ

CLAVE: 06578

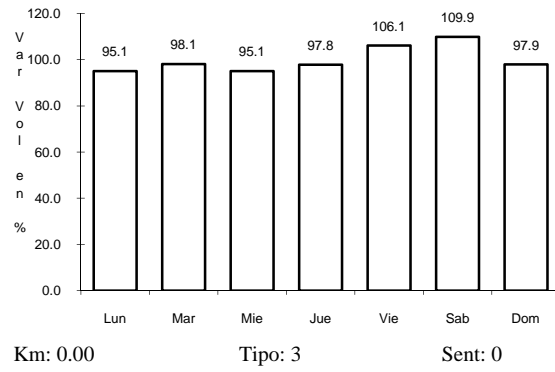
RUTA: COL



27 CARR: RAMAL A TECUANILLO

CLAVE: 06009

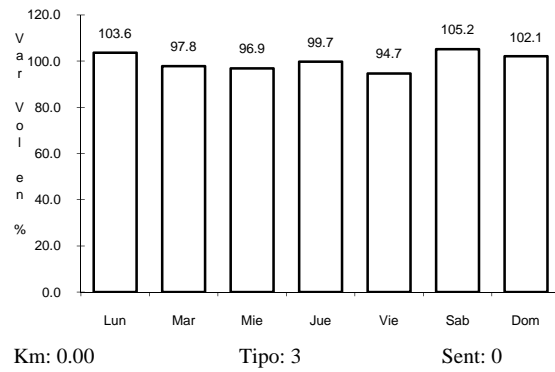
RUTA: COL-009



28 CARR: TECOMAN - BOCA DE PASCUALES

CLAVE: 06226

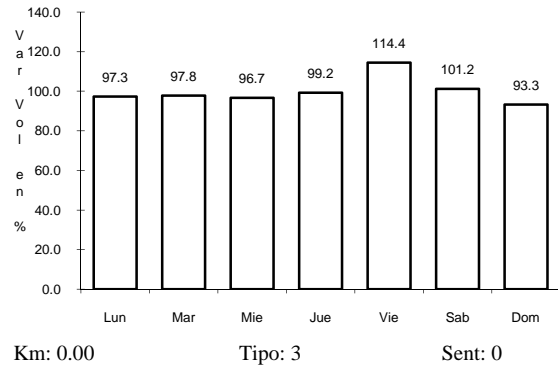
RUTA: MEX



29 CARR: TECOMAN - LA MASCOTA

CLAVE: 06572

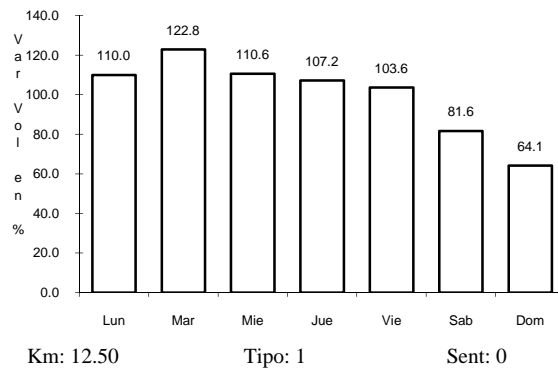
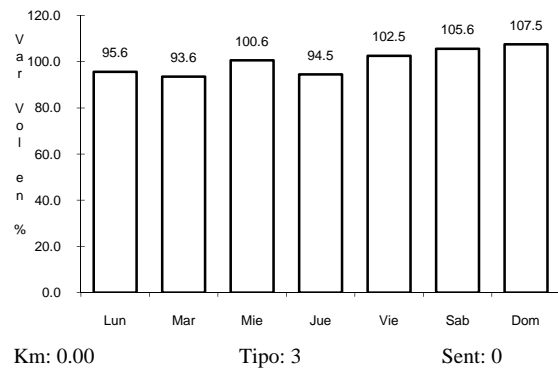
RUTA: COL



30 CARR: TRAPICHILLOS - ESTACION ALZADA

CLAVE: 06003

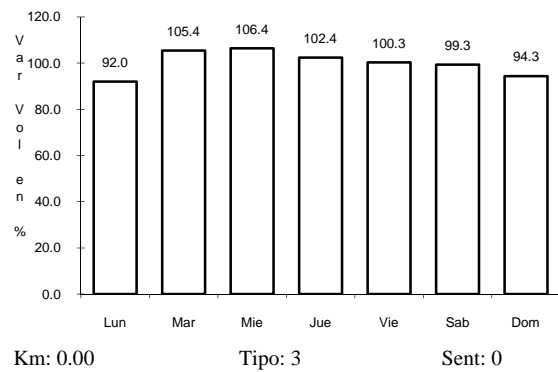
RUTA: COL-003



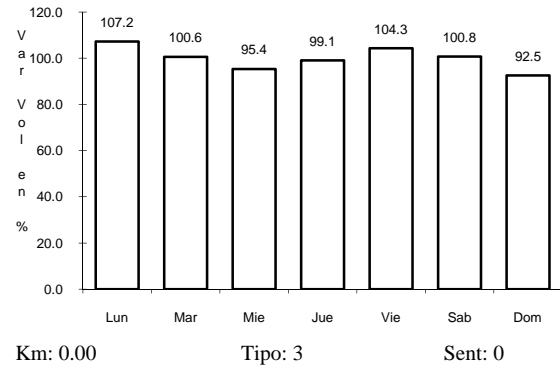
31 CARR: VILLA DE ALVAREZ - MINATITLAN

CLAVE: 06040

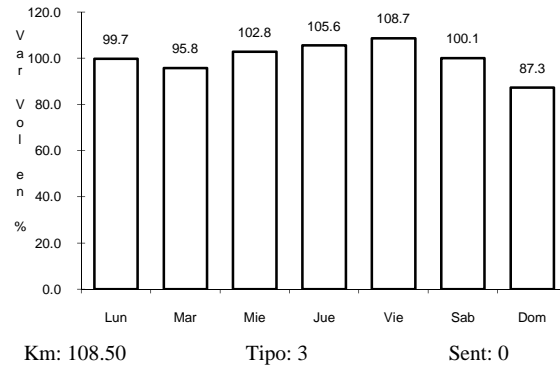
RUTA: COL



35 CARR: JIQUILPAN - COLIMA



CLAVE: 00156



RUTA: MEX-110

