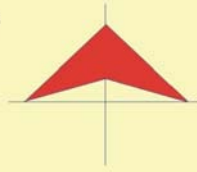
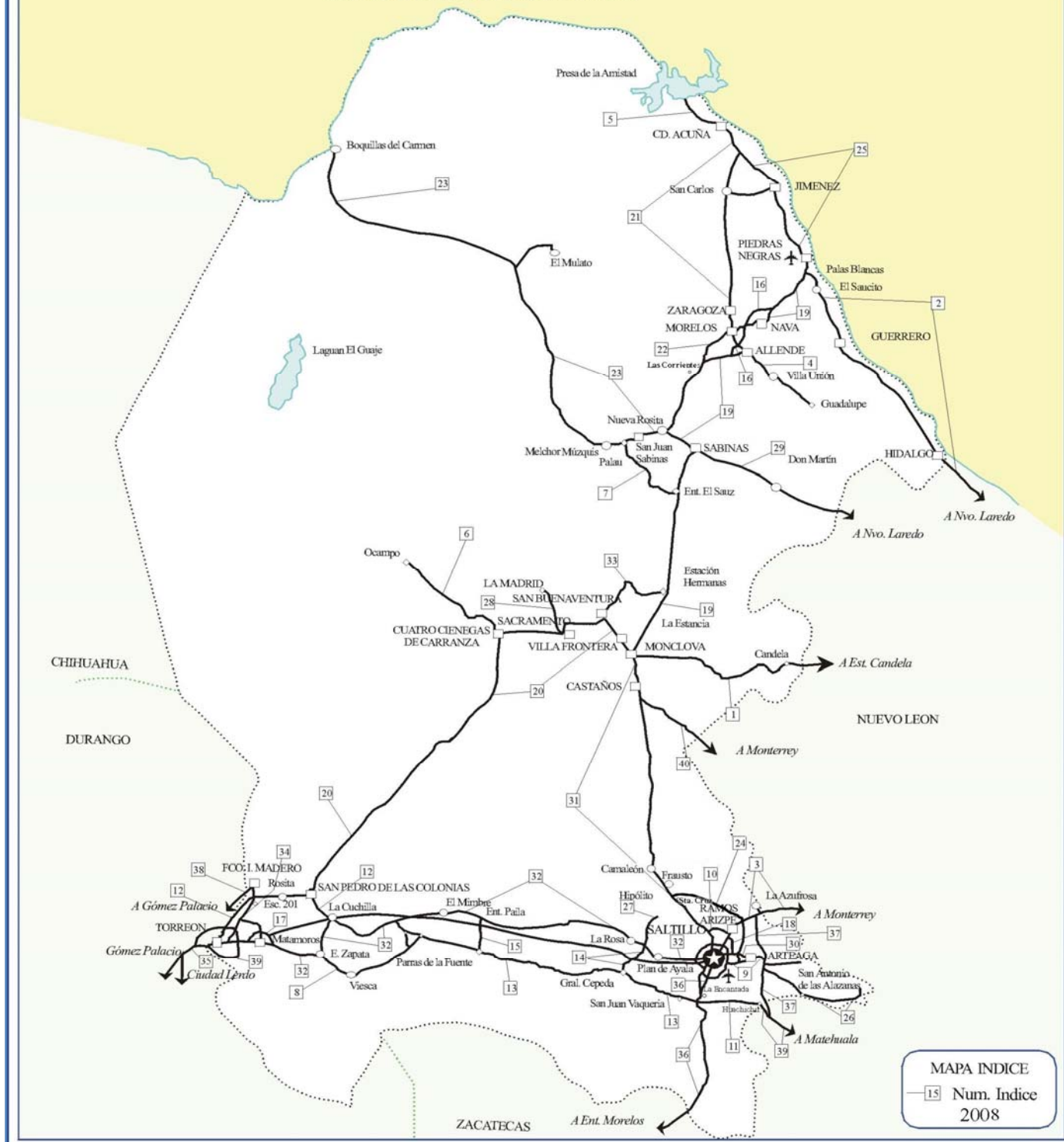


05 COAHUILA

Secretaría de Comunicaciones y Transportes



ESTADOS UNIDOS DE AMERICA



MAPA INDICE
—15 Num. Indice
2008

CARRETERAS AFORADAS

Num. INDICE	CARRETERA
1	MONCLOVA - ESTACION CANDELA
2	PIEDRAS NEGRAS - NUEVO LAREDO
3	SALTILLO - MONTERREY
4	ALLENDE - VILLA UNION
5	CD. ACUÑA - PRESA DE LA AMISTAD
6	CUATRO CIENEGAS - OCAMPO
7	EL SAUZ - PALAU
8	EMILIANO ZAPATA - VIESCA
9	ENT. BELLA UNION - SALTILLO
10	T. C. (SALTILLO - MONCLOVA) - RAMOS ARIZPE
11	HUACHICHIL - LA ENCANTADA
12	LA CUCHILLA - TORREON
13	T. C. (ENT. MORELOS - SALTILLO) - PARRAS DE LA FUENTE
14	ENT. LA ROSA - GENERAL CEPEDA
15	ENT. PAILA - PARRAS DE LA FUENTE
16	LIBRAMIENTO ALLENDE - NAVA
17	LIBRAMIENTO DE MATAMOROS
18	LIBRAMIENTO DE SALTILLO J.L.P.
19	MONCLOVA - PIEDRAS NEGRAS
20	MONCLOVA - SAN PEDRO DE LAS COLONIAS
21	MORELOS - CD. ACUÑA
22	MORELOS - ENT. LAS CORRIENTES
23	NUEVA ROSITA - BOQUILLAS DEL CARMEN
24	OJO CALIENTE - SANTA CRUZ
25	PIEDRAS NEGRAS - CD. ACUÑA
26	PUERTO DE FLORES - EL HONDABLE
27	RAMAL A HIPOLITO
28	RAMAL A LAMADRID
29	SABINAS - DON MARTIN
30	SALTILLO - ARTEAGA
31	SALTILLO - MONCLOVA
32	SALTILLO - TORREON
33	SAN BUENAVENTURA - ESTACION HERMANAS
34	TORREON - ESCUADRON 201
35	DURANGO - TORREON
36	ENT. MORELOS - SALTILLO
37	AUT. PUERTO MEXICO - OJO CALIENTE
38	GREGORIO GARCIA - FRANCISCO I. MADERO
39	LIBRAMIENTO DE TORREON
40	MONTERREY - CASTAÑOS

COAHUILA

1 CARR : MONCLOVA - ESTACION CANDELA

CLAVE: 00501

RUTA : COA-030-NL

AÑO : 2007

L U G A R	E S T A C I O N				C L A S I F I C A C I O N V E H I C U L A R E N P O R C I E N T O .												
	KM	TE	SC	TDPA	A	B	C2	C3	T3S2	T3S3	T3S2R4	OTROS	A	B	C	K'	D
T. C. MONCLOVA - PIEDRAS NEGRAS	0.00	0	0														
T. IZQ. LIBRAMIENTO DE MONCLOVA	5.10	1	0	3378	90	2.6	1.7	2.4	1.3	0.2	0.2	1.6	90	2.6	7.4	0.144	0.501
LIM. EDOS. TERM. COAH. PPIA. N.L.	118.00	0	0														
T. C. MONTERREY - COLOMBIA	125.50	1	0	3610	73.9	0	4.2	3.5	10.7	2.7	3.9	1.1	73.9	0	26.1	0.108	0.515

2 CARR : PIEDRAS NEGRAS - NUEVO LAREDO

CLAVE: 00503

RUTA : MEX-002

AÑO : 2007

L U G A R	E S T A C I O N				C L A S I F I C A C I O N V E H I C U L A R E N P O R C I E N T O .												
	KM	TE	SC	TDPA	A	B	C2	C3	T3S2	T3S3	T3S2R4	OTROS	A	B	C	K'	D
T. C. MONCLOVA - PIEDRAS NEGRAS	0.00	3	1	2454	66.7	3.9	2.2	3.1	6.5	3.6	7	7	66.7	3.9	29.4	0.076	0.501
T. C. MONCLOVA - PIEDRAS NEGRAS	0.00	3	2	2443	69.7	3.4	2.4	2	7.1	3	6.6	5.8	69.7	3.4	26.9	0.061	0.501
EL SAUCITO	16.90	3	0	1619	76.8	3.6	2.4	2.2	5.7	3.3	4.9	1.1	76.8	3.6	19.6	0.075	0.5
GUERRERO	42.00	3	0	1289	59.8	4.8	3.8	5	5.8	5.6	11.6	3.6	59.8	4.8	35.4	0.088	0.53
LIM. EDOS. TERM. COAH. PPIA. N.L.	113.00	0	0														
LIM. EDOS. TERM. N.L. PPIA. TAMPS.	137.00	0	0														
T. DER. LIBRAMIENTO DE NUEVO LAREDO	168.90	1	1	8128	72.5	5.7	1.9	2.3	4.2	3.1	5.1	5.2	72.5	5.7	21.8	0.076	0.513
T. DER. LIBRAMIENTO DE NUEVO LAREDO	168.90	1	2	7728	72.5	5.7	1.9	2.3	4.2	3.1	5.1	5.2	72.5	5.7	21.8	0.076	0.513
NUEVO LAREDO	175.00	1	0	7395	76.4	4.2	2.4	2.2	5.7	3.2	4.9	1	76.4	4.2	19.4	0.075	0.5

3 CARR : SALTILLO - MONTERREY

CLAVE: 00087

RUTA : MEX-040

AÑO : 2007

L U G A R	E S T A C I O N				C L A S I F I C A C I O N V E H I C U L A R E N P O R C I E N T O .												
	KM	TE	SC	TDPA	A	B	C2	C3	T3S2	T3S3	T3S2R4	OTROS	A	B	C	K'	D
T. C. SALTILLO - ARTEAGA	0.00	0	0														
T. IZQ. SINCAMEX	4.25	3	1	17187	77.9	4.6	4.8	3.7	2.9	2.9	1.4	1.8	77.9	4.6	17.5	0.075	0.5
T. IZQ. SINCAMEX	4.25	3	2	17169	77.6	4.2	4.7	4.4	3.4	2.9	1.2	1.6	77.6	4.2	18.2	0.074	0.5
RAMOS ARIZPE	11.30	1	1	16359	65.3	3.3	3.8	0.9	11.9	3.1	8.5	3.2	65.3	3.3	31.4	0.104	0.505
RAMOS ARIZPE	11.30	1	2	16696	70.8	3.3	3.1	0.4	9	2.7	7.4	3.3	70.8	3.3	25.9	0.092	0.505
T. DER. AEROPUERTO	13.00	3	1	15342	70.6	7.5	5.4	5	7.1	3.1	0	1.3	70.6	7.5	21.9	0.085	0.5
T. DER. AEROPUERTO	13.00	3	2	15367	69.5	6.3	6.7	4.6	8.5	3.3	0.1	1	69.5	6.3	24.2	0.088	0.5
T. DER. LIBRAMIENTO J.L.P.	16.00	3	1	13353	68.9	4.6	4.8	3.7	7.9	2.9	5.4	1.8	68.9	4.6	26.5	0.084	0.501
T. DER. LIBRAMIENTO J.L.P.	16.00	3	2	13296	71.5	5.2	4.7	3.4	5.4	2.9	5.2	1.7	71.5	5.2	23.3	0.085	0.501
OJO CALIENTE	26.30	1	1	14702	65	6.2	4.3	4	7.5	3.8	7.7	1.5	65	6.2	28.8	0.076	0.501
OJO CALIENTE	26.30	1	2	14735	63	5.6	4.1	4.2	8	4.3	9.3	1.5	63	5.6	31.4	0.085	0.501

COAHUILA

7 CARR : EL SAUZ - PALAU

CLAVE: 05060

RUTA : COA-022

AÑO : 2007

L U G A R	E S T A C I O N				CLASIFICACION VEHICULAR EN PORCIENTO .												
	KM	TE	SC	TDPA	A	B	C2	C3	T3S2	T3S3	T3S2R4	OTROS	A	B	C	K'	D
EL SAUZ	0.00	3	0	2252	75.6	3	4.7	1.9	6.1	5.4	2.3	1	75.6	3	21.4	0.084	0.503
MINAS DE BARROTERAN	31.00	3	0	1955	77.2	5.7	5.6	2.3	3.5	3.4	1.5	0.8	77.2	5.7	17.1	0.077	0.512
PALAU	42.50	1	0	1711	79.6	6.5	2.6	2.1	3.9	3.8	0.7	0.8	79.6	6.5	13.9	0.081	0.501

8 CARR : EMILIANO ZAPATA - VIESCA

CLAVE: 05521

RUTA : COA-082

AÑO : 2007

L U G A R	E S T A C I O N				CLASIFICACION VEHICULAR EN PORCIENTO .												
	KM	TE	SC	TDPA	A	B	C2	C3	T3S2	T3S3	T3S2R4	OTROS	A	B	C	K'	D
EMILIANO ZAPATA	0.00	3	0	684	86.9	3.6	6.4	0.7	1.4	0.6	0.2	0.2	86.9	3.6	9.5	0.136	0.503
VIESCA	24.00	0	0														

9 CARR : ENT. BELLA UNION - SALTILLO

CLAVE: 05003

RUTA : MEX-057

AÑO : 2007

L U G A R	E S T A C I O N				CLASIFICACION VEHICULAR EN PORCIENTO .												
	KM	TE	SC	TDPA	A	B	C2	C3	T3S2	T3S3	T3S2R4	OTROS	A	B	C	K'	D
T. C. ENT. PUERTO MEXICO - ENT. OJO CALIENTE (CUOTA)	0.00	0	0														
T. DER. ARTEAGA	4.61	1	1	6269	78.8	4.2	2.9	2.7	7	1.4	1.8	1.2	78.8	4.2	17	0.095	0.501
T. DER. ARTEAGA	4.61	1	2	6297	77.4	7.1	1.9	5	3.9	1	2.5	1.2	77.4	7.1	15.5	0.085	0.501
SALTILLO	24.00	1	1	14433	78	3.1	4.4	5.3	4.8	1.7	1.5	1.2	78	3.1	18.9	0.085	0.5
SALTILLO	24.00	1	2	14417	71.5	3.9	3.9	5.8	5.9	2.5	4.4	2.1	71.5	3.9	24.6	0.067	0.5

10 CARR : T. C. (SALTILLO - MONCLOVA) - RAMOS ARIZPE

CLAVE: 05508

RUTA : COA

AÑO : 2007

L U G A R	E S T A C I O N				CLASIFICACION VEHICULAR EN PORCIENTO .												
	KM	TE	SC	TDPA	A	B	C2	C3	T3S2	T3S3	T3S2R4	OTROS	A	B	C	K'	D
T. C. SALTILLO - MONCLOVA	0.00	3	0	6918	87.3	3.2	3.6	2.1	1.1	1.7	1	0	87.3	3.2	9.5	0.075	0.503
RAMOS ARIZPE	12.00	0	0														

11 CARR : HUACHICHIL - LA ENCANTADA

CLAVE: 05002

RUTA : COA

AÑO : 2007

L U G A R	E S T A C I O N				CLASIFICACION VEHICULAR EN PORCIENTO .												
	KM	TE	SC	TDPA	A	B	C2	C3	T3S2	T3S3	T3S2R4	OTROS	A	B	C	K'	D
T. C. AUT. PUERTO MEXICO - OJO CALIENTE	205.50	3	0	2759	76.9	6.1	6.3	3.2	2.1	2.4	2.4	0.6	76.9	6.1	17	0.072	0.501
T. C. ENT. MORELOS - SALTILLO	242.70	1	0	1852	82.8	6.4	4.4	1.9	1.4	1.8	1	0.3	82.8	6.4	10.8	0.074	0.501

COAHUILA

12 CARR : LA CUCHILLA - TORREON

CLAVE: 05021

RUTA : MEX-030

AÑO : 2007

L U G A R	E S T A C I O N				CLASIFICACION VEHICULAR EN PORCIENTO .													
	KM	TE	SC	TDPA	A	B	C2	C3	T3S2	T3S3	T3S2R4	OTROS	A	B	C	K'	D	
LA CUCHILLA	0.00	3	0	1897	72.5	5.2	6.1	3.3	7.6	2.4	2.1	0.8	72.5	5.2	22.3	0.088	0.503	
T. DER. MAYRAN	3.30	3	0	2408	75.2	5.8	5.8	2.6	6.6	1.9	1.4	0.7	75.2	5.8	19	0.087	0.506	
SAN PEDRO DE LAS COLONIAS	18.70	1	1	2147	82.8	5.9	3.3	0.5	2.7	0.7	3.4	0.7	82.8	5.9	11.3	0.091	0.501	
SAN PEDRO DE LAS COLONIAS	18.70	1	2	2155	82.1	6.2	2.6	0.1	3.5	0.5	3.5	1.5	82.1	6.2	11.7	0.097	0.501	
SAN PEDRO DE LAS COLONIAS	18.70	3	1	4394	77.1	6.1	6.1	2.5	4.3	1	1.8	1.1	77.1	6.1	16.8	0.083	0.505	
SAN PEDRO DE LAS COLONIAS	18.70	3	2	4479	77.4	6.2	6.6	2.4	4.1	0.9	1.7	0.7	77.4	6.2	16.4	0.078	0.505	
URQUIZO	33.00	3	1	3964	79.5	6.7	3.7	2.8	4.2	1.2	1.1	0.8	79.5	6.7	13.8	0.079	0.505	
URQUIZO	33.00	3	2	4044	79.6	6.6	3.8	2.5	4.5	1	1.2	0.8	79.6	6.6	13.8	0.077	0.505	
T. DER. FCO. I. MADERO	43.80	1	0	9712	79	7	3.7	2.2	4.4	1.2	1.2	1.3	79	7	14	0.073	0.506	
T. DER. FCO. I. MADERO	43.80	3	0	8395	81.9	6.9	1.6	2.6	4	1.3	0.8	0.9	81.9	6.9	11.2	0.075	0.513	
T. IZQ. ESCUADRON 201	62.40	3	1	7558	79.3	6	2.8	1.5	6	1.5	1.5	1.4	79.3	6	14.7	0.091	0.501	
T. IZQ. ESCUADRON 201	62.40	3	2	7599	80.8	6.2	2.7	1.1	5.2	1.4	1.4	1.2	80.8	6.2	13	0.091	0.501	
TORREON	84.00	1	1	12055	73.5	4.5	1.9	2.5	5.8	2.6	5	4.2	73.5	4.5	22	0.099	0.5	
TORREON	84.00	1	2	12051	76.6	4.8	2.5	1.5	7.6	1.5	2.8	2.7	76.6	4.8	18.6	0.101	0.5	

13 CARR : T. C. (ENT. MORELOS - SALTILLO) - PARRAS DE LA FUENTE

CLAVE: 05510

RUTA : COA-105

AÑO : 2007

L U G A R	E S T A C I O N				CLASIFICACION VEHICULAR EN PORCIENTO .													
	KM	TE	SC	TDPA	A	B	C2	C3	T3S2	T3S3	T3S2R4	OTROS	A	B	C	K'	D	
T. C. MORELOS - SALTILLO	0.00	3	0	3693	83	6.3	4.3	2.1	1.2	1.5	1.5	0.1	83	6.3	10.7	0.064	0.502	
GRAL. CEPEDA	40.00	1	0	1319	87.3	3.3	5.9	1.4	0.9	0.8	0.4	0	87.3	3.3	9.4	0.089	0.501	
GRAL. CEPEDA	40.00	3	0	597	85.5	5.2	3.9	3	1.2	0.7	0.5	0	85.5	5.2	9.3	0.117	0.503	
PARRAS DE LA FUENTE	102.00	1	0	1330	90.7	2.1	3.6	1.1	0.9	0.7	0.9	0	90.7	2.1	7.2	0.096	0.502	

14 CARR : ENT. LA ROSA - GENERAL CEPEDA

CLAVE: 05034

RUTA : COA-034

AÑO : 2007

L U G A R	E S T A C I O N				CLASIFICACION VEHICULAR EN PORCIENTO .													
	KM	TE	SC	TDPA	A	B	C2	C3	T3S2	T3S3	T3S2R4	OTROS	A	B	C	K'	D	
T. C. SALTILLO - TORREON	0.00	3	0	1171	88.3	5.9	3.3	0.7	1	0.4	0	0.4	88.3	5.9	5.8	0.092	0.503	
GRAL. CEPEDA	21.00	1	0	804	88.7	4.1	3.8	0.7	1.4	0.5	0.3	0.5	88.7	4.1	7.2	0.122	0.502	

COAHUILA

15 CARR : ENT. PAILA - PARRAS DE LA FUENTE

CLAVE: 05014

RUTA : COA-102

AÑO : 2007

L U G A R	E S T A C I O N				C L A S I F I C A C I O N V E H I C U L A R E N P O R C I E N T O .												
	KM	TE	SC	TDPA	A	B	C2	C3	T3S2	T3S3	T3S2R4	OTROS	A	B	C	K'	D
ENT. PAILA	0.00	3	0	2071	83.6	4.4	3.4	1.6	4.6	1.3	0.7	0.4	83.6	4.4	12	0.109	0.502
PARRAS DE LA FUENTE	20.05	1	0	2591	87.5	5.1	1.7	1.1	3	0.6	0.4	0.6	87.5	5.1	7.4	0.099	0.504

16 CARR : LIBRAMIENTO ALLENDE - NAVA

CLAVE: 05518

RUTA : MEX

AÑO : 2007

L U G A R	E S T A C I O N				C L A S I F I C A C I O N V E H I C U L A R E N P O R C I E N T O .												
	KM	TE	SC	TDPA	A	B	C2	C3	T3S2	T3S3	T3S2R4	OTROS	A	B	C	K'	D
T. C. MONCLOVA - PIEDRAS NEGRAS	0.00	3	0	4810	70	2.8	2.7	1.8	10.1	5.6	5.7	1.3	70	2.8	27.2	0.081	0.506
X. DER. ALLENDE - IZQ. MORELOS	6.06	3	1	3560	80.4	2.3	2.4	1.4	5.6	4	2.7	1.2	80.4	2.3	17.3	0.085	0.503
X. DER. ALLENDE - IZQ. MORELOS	6.06	3	2	3514	79.9	2.1	2	1.3	6.8	3.8	2.9	1.2	79.9	2.1	18	0.09	0.503
T. C. MONCLOVA - PIEDRAS NEGRAS	17.55	1	1	3562	75.3	2.5	1.5	1.3	8.1	5.4	4.7	1.2	75.3	2.5	22.2	0.088	0.505
T. C. MONCLOVA - PIEDRAS NEGRAS	17.55	1	2	3489	75.4	2.5	1.6	1	9.5	4.3	4.4	1.3	75.4	2.5	22.1	0.095	0.505

17 CARR : LIBRAMIENTO DE MATAMOROS

CLAVE: 05032

RUTA : COA

AÑO : 2007

L U G A R	E S T A C I O N				C L A S I F I C A C I O N V E H I C U L A R E N P O R C I E N T O .												
	KM	TE	SC	TDPA	A	B	C2	C3	T3S2	T3S3	T3S2R4	OTROS	A	B	C	K'	D
T. C. SALTILLO - TORREON	0.00	3	0	6382	58.7	4.1	6.5	5.4	12.3	5.6	5.5	1.9	58.7	4.1	37.2	0.073	0.511
X. C. MATAMOROS - LA UNION	3.70	3	1	5400	65.5	3.2	3.5	4.4	9.6	3.4	8.3	2.1	65.5	3.2	31.3	0.068	0.501
X. C. MATAMOROS - LA UNION	3.70	3	2	5425	62.6	3	4.5	6.2	11.1	4.2	6.8	1.6	62.6	3	34.4	0.075	0.501
T. C. SALTILLO - TORREON	5.32	1	1	5788	77.1	6	3.5	0.4	3.7	2.1	1.8	5.4	77.1	6	16.9	0.095	0.506
T. C. SALTILLO - TORREON	5.32	1	2	5936	64.6	6	3.3	3.7	7.4	4.2	8.9	1.9	64.6	6	29.4	0.07	0.506

18 CARR : LIBRAMIENTO DE SALTILLO J.L.P.

CLAVE: 05031

RUTA : COA

AÑO : 2007

L U G A R	E S T A C I O N				C L A S I F I C A C I O N V E H I C U L A R E N P O R C I E N T O .												
	KM	TE	SC	TDPA	A	B	C2	C3	T3S2	T3S3	T3S2R4	OTROS	A	B	C	K'	D
T. C. ENT. BELLA UNION - SALTILLO	0.00	0	0														
X. C. SALTILLO - ARTEAGA	2.50	3	0	6088	64.1	3.2	4.8	5.6	14.3	2.4	4.3	1.3	64.1	3.2	32.7	0.078	0.501
T. C. SALTILLO - MONTERREY	18.00	1	0	6856	60.6	4.5	5.4	8.9	12.7	2.6	4.1	1.2	60.6	4.5	34.9	0.075	0.502

COAHUILA

19 CARR : MONCLOVA - PIEDRAS NEGRAS

CLAVE: 05407

RUTA : MEX-057

AÑO : 2007

L U G A R	E S T A C I O N				CLASIFICACION VEHICULAR EN PORCIENTO													
	KM	TE	SC	TDPA	A	B	C2	C3	T3S2	T3S3	T3S2R4	OTROS	A	B	C	K'	D	
MONCLOVA	0.00	3	1	5861	77.9	4	5	2.6	4.3	1.2	2.3	2.7	77.9	4	18.1	0.084	0.501	
MONCLOVA	0.00	3	2	5878	78.8	4	5.2	2	6.2	1	1.6	1.2	78.8	4	17.2	0.082	0.501	
T. DER. LIBRAMIENTO DE MONCLOVA	10.80	3	1	3626	78.3	4.1	5.1	4.4	2.8	2.3	1.9	1.1	78.3	4.1	17.6	0.085	0.519	
T. DER. LIBRAMIENTO DE MONCLOVA	10.80	3	2	3366	74.1	4.3	5	4.2	3.8	3.4	2.6	2.6	74.1	4.3	21.6	0.079	0.519	
T. DER. PROGRESO	61.50	1	1	2512	64.1	4	5.9	5.3	11.9	4.2	3.3	1.3	64.1	4	31.9	0.075	0.502	
T. DER. PROGRESO	61.50	1	2	2534	68.7	4.1	4.5	4.6	8	2.4	4.5	3.2	68.7	4.1	27.2	0.109	0.502	
T. IZQ. PALAU	88.50	1	1	2341	83.4	4.5	4.1	3.4	1.9	1.4	0.7	0.6	83.4	4.5	12.1	0.078	0.509	
T. IZQ. PALAU	88.50	1	2	2425	79.7	4.5	4.4	3.2	3.1	2.7	1.2	1.2	79.7	4.5	15.8	0.073	0.509	
T. IZQ. PALAU	88.50	3	1	2550	80.2	4.6	4.3	3.2	2.9	2.5	1.1	1.2	80.2	4.6	15.2	0.082	0.508	
T. IZQ. PALAU	88.50	3	2	2469	83.9	4.7	4	3.4	1.7	1.2	0.6	0.5	83.9	4.7	11.4	0.087	0.508	
T. DER. SABINAS (2° ACCESO)	115.00	1	1	5353	83.1	2.5	1.4	1.9	5.3	2.1	2.6	1.1	83.1	2.5	14.4	0.082	0.502	
T. DER. SABINAS (2° ACCESO)	115.00	1	2	5406	81.7	2.7	1.6	2.3	6.1	1.7	3	0.9	81.7	2.7	15.6	0.081	0.502	
AGUJITA	118.90	1	1	8369	70.8	4.9	4.2	1.7	9.1	2	4.2	3.1	70.8	4.9	24.3	0.072	0.505	
AGUJITA	118.90	1	2	8195	73.4	5.1	1.8	3.3	5.5	2.3	4.9	3.7	73.4	5.1	21.5	0.098	0.505	
T. IZQ. NUEVA ROSITA (1° ACCESO)	126.30	3	0	8890	64.9	5	2.3	2	10.9	7.8	6	1.1	64.9	5	30.1	0.08	0.505	
T. IZQ. LIBRAMIENTO DE ALLENDE	182.00	1	0	6578	82.3	5.3	2.1	1.5	3.5	2.1	1.4	1.8	82.3	5.3	12.4	0.08	0.516	
ALLENDE	187.20	3	1	4070	84.7	4.2	3.9	1.8	3.3	0.4	0.4	1.3	84.7	4.2	11.1	0.083	0.502	
ALLENDE	187.20	3	2	4030	85.9	4.2	3.8	1.8	2.7	0.4	0.3	0.9	85.9	4.2	9.9	0.093	0.502	
NAVA	206.90	1	0	6334	88.1	4.5	6.8	0.1	0.1	0	0	0.4	88.1	4.5	7.4	0.086	0.501	
NAVA	206.90	3	1	5052	75.8	1.2	4.3	2	6.5	5.4	3.5	1.3	75.8	1.2	23	0.083	0.512	
NAVA	206.90	3	2	4819	75.6	1	4.7	2	7.6	4.5	3.4	1.2	75.6	1	23.4	0.089	0.512	
T. DER. GUERRERO	240.30	1	1	5894	82.5	4.6	1.2	1.1	4.4	1.4	2.2	2.6	82.5	4.6	12.9	0.133	0.541	
T. DER. GUERRERO	240.30	1	2	4996	82.4	4.4	1.7	1.5	3.3	1.7	2.5	2.5	82.4	4.4	13.2	0.131	0.541	
PIEDRAS NEGRAS	248.00	0	0															

20 CARR : MONCLOVA - SAN PEDRO DE LAS COLONIAS

CLAVE: 05062

RUTA : MEX-030

AÑO : 2007

L U G A R	E S T A C I O N				CLASIFICACION VEHICULAR EN PORCIENTO													
	KM	TE	SC	TDPA	A	B	C2	C3	T3S2	T3S3	T3S2R4	OTROS	A	B	C	K'	D	
MONCLOVA	0.00	0	0															
FRONTERA	2.00	3	1	6725	86.2	4.1	3	0.2	4.3	0.5	0.5	1.2	86.2	4.1	9.7	0.11	0.501	
FRONTERA	2.00	3	2	6701	86.6	4.1	2.6	0.2	4.5	0.5	0.5	1	86.6	4.1	9.3	0.104	0.501	
8 DE ENERO	11.00	3	1	5285	83.7	2.9	3.8	1.7	4.1	1.4	0.8	1.6	83.7	2.9	13.4	0.1	0.506	
8 DE ENERO	11.00	3	2	5166	84.1	2.2	3.2	2	4.2	1.2	1.5	1.6	84.1	2.2	13.7	0.072	0.506	

COAHUILA

20 CARR : MONCLOVA - SAN PEDRO DE LAS COLONIAS

CLAVE: 05062

RUTA : MEX-030

AÑO : 2007

L U G A R	E S T A C I O N				C L A S I F I C A C I O N V E H I C U L A R E N P O R C I E N T O .												
	KM	TE	SC	TDPA	A	B	C2	C3	T3S2	T3S3	T3S2R4	OTROS	A	B	C	K'	D
NADADORES	27.00	3	1	1895	78.9	3.2	2.9	7.7	2.1	0.2	4.3	0.7	78.9	3.2	17.9	0.087	0.506
NADADORES	27.00	3	2	1848	79.8	3.3	2.9	5.8	1.6	0.9	4.6	1.1	79.8	3.3	16.9	0.083	0.506
SACRAMENTO	45.27	1	0	3247	79.6	4.6	5.5	2.2	5	1.5	1	0.6	79.6	4.6	15.8	0.079	0.506
CUATRO CIENEGAS	80.15	3	0	1945	78	4.3	3.6	2.5	6.9	2.6	1.5	0.6	78	4.3	17.7	0.081	0.507
SAN PEDRO DE LAS COLONIAS	267.00	1	1	759	76.7	1.8	5.3	2.6	7.4	3.2	2.1	0.9	76.7	1.8	21.5	0.09	0.51
SAN PEDRO DE LAS COLONIAS	267.00	1	2	728	75.6	1.7	5.2	2.9	8.9	2.5	2.3	0.9	75.6	1.7	22.7	0.121	0.51

21 CARR : MORELOS - CD. ACUÑA

CLAVE: 05029

RUTA : MEX-047

AÑO : 2007

L U G A R	E S T A C I O N				C L A S I F I C A C I O N V E H I C U L A R E N P O R C I E N T O .												
	KM	TE	SC	TDPA	A	B	C2	C3	T3S2	T3S3	T3S2R4	OTROS	A	B	C	K'	D
MORELOS	0.00	3	1	2535	87.1	2.5	2	1.6	4.5	1.4	0.5	0.4	87.1	2.5	10.4	0.08	0.506
MORELOS	0.00	3	2	2594	87.6	2.3	2	1.5	4.1	1.4	0.5	0.6	87.6	2.3	10.1	0.08	0.506
SAN CARLOS	69.00	1	0	1904	84.8	4.5	2.6	1.7	3.1	1.4	0.5	1.4	84.8	4.5	10.7	0.126	0.502
T. DER. PIEDRAS NEGRAS	87.00	3	1	2772	72.9	4.3	1.8	1.3	7.8	2.1	5.3	4.5	72.9	4.3	22.8	0.069	0.516
T. DER. PIEDRAS NEGRAS	87.00	3	2	2952	72.8	4.2	1.6	1.1	8.8	2.1	6.2	3.2	72.8	4.2	23	0.084	0.516
CD. ACUÑA	104.00	1	1	3140	89.9	2.2	2.2	1	1.9	2.1	0.3	0.4	89.9	2.2	7.9	0.087	0.518
CD. ACUÑA	104.00	1	2	2923	87.3	2.3	3.7	1.8	2	2.3	0.3	0.3	87.3	2.3	10.4	0.093	0.518

22 CARR : MORELOS - ENT. LAS CORRIENTES

CLAVE: 05500

RUTA : COA-010

AÑO : 2007

L U G A R	E S T A C I O N				C L A S I F I C A C I O N V E H I C U L A R E N P O R C I E N T O .												
	KM	TE	SC	TDPA	A	B	C2	C3	T3S2	T3S3	T3S2R4	OTROS	A	B	C	K'	D
T. C. MORELOS - CD. ACUÑA	0.00	3	0	890	93.1	2.4	1.8	0.8	1.1	0.4	0.1	0.3	93.1	2.4	4.5	0.099	0.502
LOS ALAMOS	9.20	1	0	698	93	1.3	2.3	1.2	1	0.4	0.4	0.4	93	1.3	5.7	0.106	0.506
T. C. MONCLOVA - PIEDRAS NEGRAS	20.00	0	0														

23 CARR : NUEVA ROSITA - BOQUILLAS DEL CARMEN

CLAVE: 05028

RUTA : MEX-020

AÑO : 2007

L U G A R	E S T A C I O N				C L A S I F I C A C I O N V E H I C U L A R E N P O R C I E N T O .												
	KM	TE	SC	TDPA	A	B	C2	C3	T3S2	T3S3	T3S2R4	OTROS	A	B	C	K'	D
NUEVA ROSITA	0.00	3	0	6904	86.8	2.5	2.7	0.4	3.2	1.3	2.1	1	86.8	2.5	10.7	0.081	0.501
PALAU	25.00	1	1	3079	82.4	2.2	5.1	2.7	3.3	2.4	1.1	0.8	82.4	2.2	15.4	0.096	0.501
PALAU	25.00	1	2	3087	82.2	2.2	4.8	2.9	3.9	2	1.1	0.9	82.2	2.2	15.6	0.091	0.501

COAHUILA

28 CARR : RAMAL A LAMADRID

CLAVE: 05522

RUTA : COA-042

AÑO : 2007

L U G A R	E S T A C I O N			C L A S I F I C A C I O N V E H I C U L A R E N P O R C I E N T O .													
	KM	TE	SC	TDPA	A	B	C2	C3	T3S2	T3S3	T3S2R4	OTROS	A	B	C	K'	D
T. C. MONCLOVA - SAN PEDRO DE LAS COLONIAS	0.00	3	0	893	88.2	4.9	4.3	0.7	0.5	0.6	0.2	0.6	88.2	4.9	6.9	0.094	0.502
LAMADRID	4.00	0	0														

29 CARR : SABINAS - DON MARTIN

CLAVE: 05501

RUTA : COA-025

AÑO : 2007

L U G A R	E S T A C I O N			C L A S I F I C A C I O N V E H I C U L A R E N P O R C I E N T O .													
	KM	TE	SC	TDPA	A	B	C2	C3	T3S2	T3S3	T3S2R4	OTROS	A	B	C	K'	D
SABINAS	0.00	3	0	1320	90.2	1.2	0.6	1.3	3.7	0.8	1.5	0.7	90.2	1.2	8.6	0.126	0.5
JUAREZ	53.00	3	0	542	81.6	1.6	1.4	1.2	8.6	1.4	2.4	1.8	81.6	1.6	16.8	0.151	0.508
DON MARTIN	66.00	1	0	526	79.5	1.4	1.3	1.6	8.4	1.6	3.4	2.8	79.5	1.4	19.1	0.116	0.501

30 CARR : SALTILLO - ARTEAGA

CLAVE: 05008

RUTA : COA-106

AÑO : 2007

L U G A R	E S T A C I O N			C L A S I F I C A C I O N V E H I C U L A R E N P O R C I E N T O .													
	KM	TE	SC	TDPA	A	B	C2	C3	T3S2	T3S3	T3S2R4	OTROS	A	B	C	K'	D
SALTILLO	0.00	3	1	10163	71.5	3.1	6.2	4	5.1	7.9	1.9	0.3	71.5	3.1	25.4	0.07	0.502
SALTILLO	0.00	3	2	10062	75.7	4.2	5.1	4.9	4.9	3.7	1.1	0.4	75.7	4.2	20.1	0.073	0.502
X. C. LIBRAMIENTO DE MATEHUALA - MONTERREY	9.00	1	0	8297	84.8	3.5	3.6	1.7	4.4	0.5	0.5	1	84.8	3.5	11.7	0.104	0.507
X. C. LIBRAMIENTO DE MATEHUALA - MONTERREY	9.00	3	0	8249	85.7	2.6	4.1	4	0.9	1.3	1.2	0.2	85.7	2.6	11.7	0.076	0.503
ARTEAGA	12.00	1	1	4528	88.5	4	3.7	1.3	1.6	0	0.3	0.6	88.5	4	7.5	0.096	0.504
ARTEAGA	12.00	1	2	4465	87.9	5	3.4	1.2	1.4	0.1	0.3	0.7	87.9	5	7.1	0.074	0.504
T. C. ENT. BELLA UNION - SALTILLO	18.00	0	0														

31 CARR : SALTILLO - MONCLOVA

CLAVE: 05406

RUTA : MEX-057-053

AÑO : 2007

L U G A R	E S T A C I O N			C L A S I F I C A C I O N V E H I C U L A R E N P O R C I E N T O .													
	KM	TE	SC	TDPA	A	B	C2	C3	T3S2	T3S3	T3S2R4	OTROS	A	B	C	K'	D
SALTILLO	0.00	0	0														
T. DER. RAMOS ARIZPE	13.00	1	0	7544	77.7	5.6	2.4	3.9	5.5	1.3	2.2	1.4	77.7	5.6	16.7	0.08	0.501
T. DER. RAMOS ARIZPE	13.00	3	0	2183	60.6	5.6	3.9	5.5	2	5.5	8.8	8.1	60.6	5.6	33.8	0.07	0.501
T. DER. MONTERREY	164.80	1	0	3430	60.5	5.5	3.8	5.5	2.1	5.6	8.8	8.2	60.5	5.5	34	0.068	0.502
T. DER. MONTERREY	164.80	3	1	2865	78.9	4.2	4.8	2.8	5.4	1.5	0.9	1.5	78.9	4.2	16.9	0.086	0.5
T. DER. MONTERREY	164.80	3	2	2870	80.5	4.1	4.5	2.2	4	1.8	1.5	1.4	80.5	4.1	15.4	0.102	0.5
T. DER. LIBRAMIENTO DE CASTAÑOS (1° ACCESO)	175.20	1	1	5129	72.1	5.2	4.4	3.4	6.4	3	3.9	1.6	72.1	5.2	22.7	0.11	0.502

COAHUILA

33 CARR : SAN BUENAVENTURA - ESTACION HERMANAS

CLAVE: 05004

RUTA : COA-034

AÑO : 2007

L U G A R	E S T A C I O N				C L A S I F I C A C I O N V E H I C U L A R E N P O R C I E N T O .													
	KM	TE	SC	TDPA	A	B	C2	C3	T3S2	T3S3	T3S2R4	OTROS	A	B	C	K'	D	
SAN BUENAVENTURA	0.00	3	0	1688	92.5	4.2	0.8	0.8	0.9	0.2	0.3	0.3	92.5	4.2	3.3	0.105	0.504	
ESTACION HERMANAS	50.00	1	0	1123	88.3	4.4	2.7	3.4	0.8	0.2	0.1	0.1	88.3	4.4	7.3	0.098	0.515	

34 CARR : TORREON - ESCUADRON 201

CLAVE: 05022

RUTA : COA-011

AÑO : 2007

L U G A R	E S T A C I O N				C L A S I F I C A C I O N V E H I C U L A R E N P O R C I E N T O .													
	KM	TE	SC	TDPA	A	B	C2	C3	T3S2	T3S3	T3S2R4	OTROS	A	B	C	K'	D	
TORREON	0.00	3	1	8559	70.2	5	2.9	1.8	8.4	2.3	6.1	3.3	70.2	5	24.8	0.105	0.502	
TORREON	0.00	3	2	8625	74.6	5	2.6	2.4	6.6	2.2	3.6	3	74.6	5	20.4	0.096	0.502	
EL AGUILA	11.35	1	0	4582	86.2	4.6	2.2	0.5	3	0.9	1.1	1.5	86.2	4.6	9.2	0.089	0.501	
ESCUADRON 201	17.06	1	0	1568	78.2	6.7	8.6	1.8	2.5	0.8	0.9	0.5	78.2	6.7	15.1	0.11	0.541	

35 CARR : DURANGO - TORREON

CLAVE: 10085

RUTA : MEX-040

AÑO : 2007

L U G A R	E S T A C I O N				C L A S I F I C A C I O N V E H I C U L A R E N P O R C I E N T O .													
	KM	TE	SC	TDPA	A	B	C2	C3	T3S2	T3S3	T3S2R4	OTROS	A	B	C	K'	D	
DURANGO	0.00	3	1	8943	78.8	4.9	2.7	1.5	3.9	1.9	2.2	4.1	78.8	4.9	16.3	0.078	0.503	
DURANGO	0.00	3	2	8955	82.4	4.6	2.6	1.3	4.5	1	1	2.6	82.4	4.6	13	0.084	0.503	
T. DER. CD. DE LOS NIÑOS	7.70	3	1	4028	83.7	3.4	2	0.9	4.3	1.4	2.5	1.8	83.7	3.4	12.9	0.079	0.513	
T. DER. CD. DE LOS NIÑOS	7.70	3	2	4200	84.1	3.6	2.1	1.2	4.7	1.6	1.4	1.3	84.1	3.6	12.3	0.088	0.513	
X. PERIFERICO DURANGO	9.00	3	1	5032	85.9	3.2	1.8	1.6	3.4	1.1	1.5	1.5	85.9	3.2	10.9	0.099	0.501	
X. PERIFERICO DURANGO	9.00	3	2	5016	84.4	3.1	2	1.5	4.1	1.5	1.5	1.9	84.4	3.1	12.5	0.101	0.501	
T. DER. AEROPUERTO	9.42	1	1	6329	83.3	3.9	3.4	2.3	3.4	1.5	0.8	1.4	83.3	3.9	12.8	0.081	0.506	
T. DER. AEROPUERTO	9.42	1	2	6117	82.3	4	3.4	1.9	3.6	1.3	1.4	2.1	82.3	4	13.7	0.078	0.506	
T. DER. AEROPUERTO	9.42	3	0	5696	75.1	2	3.6	2	7.5	2.8	5	2	75.1	2	22.9	0.073	0.504	
LA CALDERA	10.85	3	0	5136	73.9	4.5	5.2	2.8	5.7	2.5	3.9	1.5	73.9	4.5	21.6	0.075	0.504	
ABRAHAM GONZALEZ	27.10	3	0	4544	68.8	4.8	4.6	4.1	9.2	5	2.3	1.2	68.8	4.8	26.4	0.117	0.507	
FRANCISCO I. MADERO	56.30	1	0	4324	72	3.9	3.6	3.6	9	4.6	2.3	1	72	3.9	24.1	0.088	0.505	
FRANCISCO I. MADERO	56.30	3	0	4864	74.8	5.2	1.3	2.4	9.1	4.5	1.8	0.9	74.8	5.2	20	0.078	0.503	
GUADALUPE VICTORIA	77.50	1	0	3682	76.8	3.2	2.1	2.7	8.3	4	1.9	1	76.8	3.2	20	0.08	0.504	
GUADALUPE VICTORIA	77.50	3	0	5298	77.5	3.4	2.9	1.9	7.8	3.2	2.1	1.2	77.5	3.4	19.1	0.082	0.507	
T. DER. IGNACIO ALLENDE	90.13	1	0	3535	75.1	2.2	3.6	4	8.6	4	1.6	0.9	75.1	2.2	22.7	0.1	0.504	
T. DER. IGNACIO ALLENDE	90.13	3	0	3918	65.2	4.5	4.6	5.2	11.6	5.8	2	1.1	65.2	4.5	30.3	0.076	0.507	
TORREON	111.00	1	1	16124	65	3.9	3	0.6	8.2	3.2	11.7	4.4	65	3.9	31.1	0.065	0.507	

COAHUILA

35 CARR : DURANGO - TORREON

CLAVE: 10085

RUTA : MEX-040

AÑO : 2007

L U G A R	E S T A C I O N				CLASIFICACION VEHICULAR EN PORCIENTO													
	KM	TE	SC	TDPA	A	B	C2	C3	T3S2	T3S3	T3S2R4	OTROS	A	B	C	K'	D	
TORREON	111.00	1	2	16551	70.4	3.4	2.3	0.7	2.9	2.3	13.5	4.5	70.4	3.4	26.2	0.061	0.507	
T. IZQ. PEÑON BLANCO	120.90	1	0	2831	59.4	3.6	3.6	8.2	14.2	7.3	2.5	1.2	59.4	3.6	37	0.083	0.504	
T. IZQ. PEÑON BLANCO	120.90	3	0	3501	57.3	5.3	3.3	7.8	13.4	7.1	4.2	1.6	57.3	5.3	37.4	0.082	0.501	
CUENCAME	144.30	1	0	3409	75.1	3.7	3.4	4.6	7.3	3.3	1.6	1	75.1	3.7	21.2	0.084	0.503	
CUENCAME	144.30	3	0	7242	49.9	6.4	0.8	5	5.8	7.5	16.2	8.4	49.9	6.4	43.7	0.104	0.504	
T. IZQ. NAZAS	171.60	1	0	5602	42	3.6	3.1	8.8	23.2	9.4	8.4	1.5	42	3.6	54.4	0.067	0.509	
T. IZQ. NAZAS	171.60	3	0	4296	77.4	3.8	5	2.3	4.3	3	2.3	1.9	77.4	3.8	18.8	0.073	0.508	
T. DER. VILLA JUAREZ	194.40	3	0	4167	76	3.6	5	4	3.6	4.7	1.9	1.2	76	3.6	20.4	0.078	0.504	
LEON GUZMAN	229.60	3	0	8908	54.4	6.5	5	4.6	13.5	5.2	8.6	2.2	54.4	6.5	39.1	0.069	0.514	
CD. LERDO	244.80	1	0	10606	74.5	4.9	2.2	1.9	7.4	1.7	4.8	2.6	74.5	4.9	20.6	0.071	0.519	
T. IZQ. GOMEZ PALACIO	248.90	3	1	17957	71.9	4	5.2	0.5	2.7	4.1	6.6	5	71.9	4	24.1	0.066	0.502	
T. IZQ. GOMEZ PALACIO	248.90	3	2	17592	80.2	5.2	3.1	1.2	3.8	1.3	1.4	3.8	80.2	5.2	14.6	0.072	0.502	
LIM. EDOS. TERM. DGO. PPIA. COAH.	251.00	0	0															

36 CARR : ENT. MORELOS - SALTILLO

CLAVE: 00149

RUTA : MEX-054

AÑO : 2007

L U G A R	E S T A C I O N				CLASIFICACION VEHICULAR EN PORCIENTO													
	KM	TE	SC	TDPA	A	B	C2	C3	T3S2	T3S3	T3S2R4	OTROS	A	B	C	K'	D	
T. C. ZACATECAS - DURANGO	0.00	3	0	5888	72	5.1	2.6	4.6	4.6	1.9	5.4	3.8	72	5.1	22.9	0.084	0.523	
T. DER. STA. MONICA	11.00	1	0	4847	77.1	6.3	8	1	1.1	4.5	1.4	0.6	77.1	6.3	16.6	0.07	0.501	
T. DER. STA. MONICA	11.00	3	0	4644	76.9	4.5	7.1	2.6	1.8	4.6	2.4	0.1	76.9	4.5	18.6	0.07	0.501	
T. IZQ. VILLA DE COSS	53.90	1	0	4573	76.3	6.7	7.7	1.8	1.3	5	1	0.2	76.3	6.7	17	0.07	0.501	
T. IZQ. VILLA DE COSS	53.90	3	0	3849	78.6	3.9	5.4	1.7	2	5.7	2.4	0.3	78.6	3.9	17.5	0.071	0.503	
SIERRA VIEJA	85.50	3	0	3699	81.3	4.1	4.9	1.9	1.1	3.8	2.4	0.5	81.3	4.1	14.6	0.071	0.501	
T. DER. MAJOMA	144.50	3	0	3312	70.9	9.1	7.1	5.1	2.7	3	2	0.1	70.9	9.1	20	0.069	0.504	
T. DER. SAN TIBURCIO	185.30	1	0	3376	71.7	8.3	4.9	3.2	2.7	5.9	2.9	0.4	71.7	8.3	20	0.073	0.501	
T. DER. SAN TIBURCIO	185.30	3	0	3313	75.5	5.7	6.7	3.2	2.7	3.9	2	0.3	75.5	5.7	18.8	0.071	0.502	
T. IZQ. CONCEPCION DEL ORO	240.00	1	0	4013	74	6.3	7.2	2.7	1.3	6.6	1.5	0.4	74	6.3	19.7	0.074	0.501	
T. IZQ. CONCEPCION DEL ORO	240.00	3	0	3969	58.1	5.3	3.5	3	7.4	2.5	17	3.2	58.1	5.3	36.6	0.08	0.503	
LIM. EDOS. TERM. ZAC. PPIA. COAH.	266.50	0	0															
AGUA NUEVA	322.00	1	0	3617	79.8	3.8	4.7	1.8	1.9	6.1	1.8	0.1	79.8	3.8	16.4	0.072	0.501	
T. DER. DERRAMADERO	333.00	3	0	10460	75.1	5.6	3.1	3	7.7	1.6	2.3	1.6	75.1	5.6	19.3	0.072	0.506	
X. C. LIBRAMIENTO DE SALTILLO	348.00	1	1	8237	77	3.9	5.2	3	5.9	1.3	2.1	1.6	77	3.9	19.1	0.093	0.503	
X. C. LIBRAMIENTO DE SALTILLO	348.00	1	2	8321	72.3	3.8	5.8	3.9	7	2.2	2.7	2.3	72.3	3.8	23.9	0.088	0.503	

COAHUILA

36 CARR : ENT. MORELOS - SALTILLO

CLAVE: 00149

RUTA : MEX-054

AÑO : 2007

L U G A R	E S T A C I O N				CLASIFICACION VEHICULAR EN PORCIENTO .												
	KM	TE	SC	TDPA	A	B	C2	C3	T3S2	T3S3	T3S2R4	OTROS	A	B	C	K'	D
SALTILLO	354.00	1	1	9787	80.6	3.1	6.2	4	2	2.8	1	0.3	80.6	3.1	16.3	0.067	0.501
SALTILLO	354.00	1	2	9741	80.7	3.2	6.1	3.9	1.9	2.7	1.1	0.4	80.7	3.2	16.1	0.073	0.501

37 CARR : AUT. PUERTO MEXICO - OJO CALIENTE

CLAVE: 00115

RUTA : MEX-057

AÑO : 2007

L U G A R	E S T A C I O N				CLASIFICACION VEHICULAR EN PORCIENTO .												
	KM	TE	SC	TDPA	A	B	C2	C3	T3S2	T3S3	T3S2R4	OTROS	A	B	C	K'	D
ENT. PUERTO MEXICO	0.00	0	0														
LIM. EDOS. TERM. N.L. PPIA. COAH.	1.50	0	0														
CASETA DE COBRO LOS CHORROS	2.50	2	1	4061													
CASETA DE COBRO LOS CHORROS	2.50	2	2	4060													
T. DER. SAN ANTONIO DE LAS ALAZANAS	23.88	1	1	6612	82.3	3.9	3.8	2.9	2	3.1	1.5	0.5	82.3	3.9	13.8	0.073	0.503
T. DER. SAN ANTONIO DE LAS ALAZANAS	23.88	1	2	6539	80.6	3.8	5.4	2.8	2	2.4	2.6	0.4	80.6	3.8	15.6	0.075	0.503
T. DER. SAN ANTONIO DE LAS ALAZANAS	23.88	3	1	7111	73.3	3.5	6	4.1	4.2	4.2	3.2	1.5	73.3	3.5	23.2	0.078	0.501
T. DER. SAN ANTONIO DE LAS ALAZANAS	23.88	3	2	7087	73.4	3.4	6.2	4.2	4.3	4.1	3.1	1.3	73.4	3.4	23.2	0.073	0.501
LOS LIRIOS	25.88	3	1	7047	76.4	7.5	2.9	4.1	3	1.9	2.7	1.5	76.4	7.5	16.1	0.075	0.5
LOS LIRIOS	25.88	3	2	7053	76.4	7.4	3	4.2	3.1	2.1	2.5	1.3	76.4	7.4	16.2	0.076	0.5
CASETA DE COBRO OJO CALIENTE	50.30	2	1	3445													
CASETA DE COBRO OJO CALIENTE	50.30	2	2	3445													
CASETA DE COBRO CARBONERA	50.30	3	0	9063	59.8	5.6	3.9	5.5	2.4	5.8	8.8	8.2	59.8	5.6	34.6	0.069	0.505
T. C. SALTILLO - MONTERREY	59.00	0	0														

38 CARR : GREGORIO GARCIA - FRANCISCO I. MADERO

CLAVE: 00110

RUTA : MEX

AÑO : 2007

L U G A R	E S T A C I O N				CLASIFICACION VEHICULAR EN PORCIENTO .												
	KM	TE	SC	TDPA	A	B	C2	C3	T3S2	T3S3	T3S2R4	OTROS	A	B	C	K'	D
T. C. GOMEZ PALACIO - TLAHUALILLO	0.00	0	0														
LIM. EDOS. TERM. DGO. PPIA. COAH.	3.60	0	0														
FRANCISCO I. MADERO	9.60	1	0	5256	83.7	4.3	3.7	1.5	3.4	0.5	1.5	1.4	83.7	4.3	12	0.084	0.509

COAHUILA

39 CARR : LIBRAMIENTO DE TORREON

CLAVE: 05516

RUTA : COA

AÑO : 2007

L U G A R	E S T A C I O N				CLASIFICACION VEHICULAR EN PORCIENTO												
	KM	TE	SC	TDPA	A	B	C2	C3	T3S2	T3S3	T3S2R4	OTROS	A	B	C	K'	D
T. C. DURANGO - TORREON	0.00	0	0														
X. C. SALTILLO - TORREON	6.70	1	1	11725	77.6	4.7	3.7	2.5	3.2	2.8	2.2	3.3	77.6	4.7	17.7	0.061	0.501
X. C. SALTILLO - TORREON	6.70	1	2	11770	77.7	4.8	4.1	2.9	3.3	2.8	2	2.4	77.7	4.8	17.5	0.062	0.501
X. C. SALTILLO - TORREON	6.70	3	1	11968	72.4	3.7	2.4	2.5	8	2.9	5.2	2.9	72.4	3.7	23.9	0.108	0.517
X. C. SALTILLO - TORREON	6.70	3	2	11190	73	3.5	2.3	2.3	8.4	3.4	4.6	2.5	73	3.5	23.5	0.083	0.517
T. C. LA CUCHILLA - TORREON	12.00	1	1	12079	73.3	3.5	2.7	3.9	8.5	2.7	3.6	1.8	73.3	3.5	23.2	0.125	0.509
T. C. LA CUCHILLA - TORREON	12.00	1	2	12538	73.9	3.9	2.4	3.1	8.3	2.6	3.7	2.1	73.9	3.9	22.2	0.081	0.509
LIM. EDOS. TERM. DGO. PPIA. COAH.	16.50	0	0														
T. C. CUENCAME - TORREON	43.00	0	0														

40 CARR : MONTERREY - CASTAÑOS

CLAVE: 00128

RUTA : MEX-053

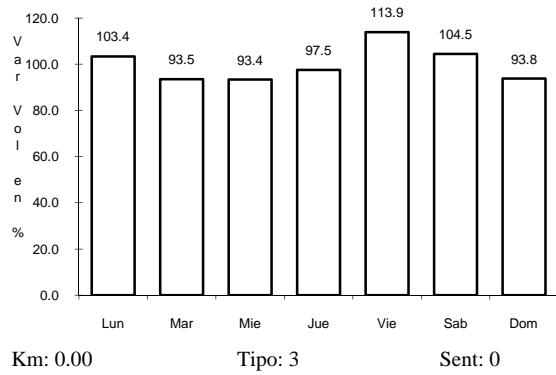
AÑO : 2007

L U G A R	E S T A C I O N				CLASIFICACION VEHICULAR EN PORCIENTO												
	KM	TE	SC	TDPA	A	B	C2	C3	T3S2	T3S3	T3S2R4	OTROS	A	B	C	K'	D
T. C. MONTERREY - NUEVO LAREDO	0.00	3	0	11022	83.3	2.6	5.3	2.5	3.1	2	0.4	0.8	83.3	2.6	14.1	0.098	0.501
X. C. LIBRAMIENTO NOROESTE DE MONTERREY	3.46	3	0	14338	85.5	5.1	2.9	1.6	1.6	1.9	0.5	0.9	85.5	5.1	9.4	0.088	0.5
T. DER. VILLA DEL CARMEN	13.80	1	0	11293	76.7	5.9	5.6	3	4.6	2.9	0.5	0.8	76.7	5.9	17.4	0.074	0.5
T. IZQ. HIDALGO	24.78	1	0	10605	76.6	5.8	8.1	2.7	3.1	1.8	0.8	1.1	76.6	5.8	17.6	0.081	0.503
T. IZQ. HIDALGO	24.78	3	0	6658	77.2	5.7	6.7	3.1	2.7	2.4	1.1	1.1	77.2	5.7	17.1	0.093	0.501
T. IZQ. MINA	34.75	1	0	6177	77.6	3.9	4.7	4.3	4.6	3.3	0.8	0.8	77.6	3.9	18.5	0.083	0.502
T. IZQ. ESPINAZO	91.90	1	0	3393	61.9	5.4	3.6	3.9	10.1	8.5	5.2	1.4	61.9	5.4	32.7	0.079	0.506
T. IZQ. ESPINAZO	91.90	3	0	3244	61.4	4.8	4.2	4	10.5	8.4	5.3	1.4	61.4	4.8	33.8	0.082	0.501
LIM. EDOS. TERM. N.L. PPIA. COAH.	124.00	0	0														
T. C. SALTILLO - MONCLOVA	172.00	1	0	4894	70.6	5.4	3.6	3.1	6.8	4.9	4.2	1.4	70.6	5.4	24	0.076	0.504

4 CARR: ALLENDE - VILLA UNION

CLAVE: 05001

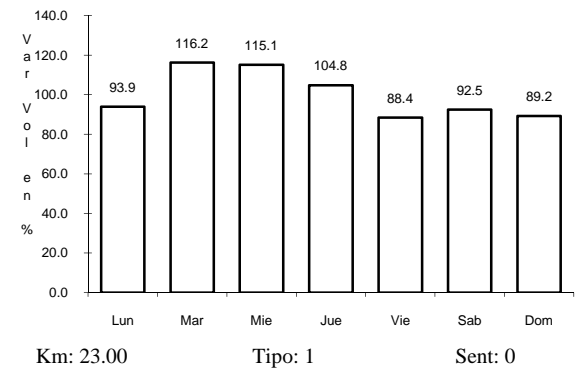
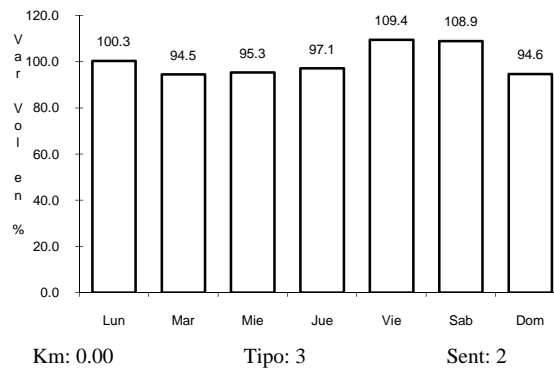
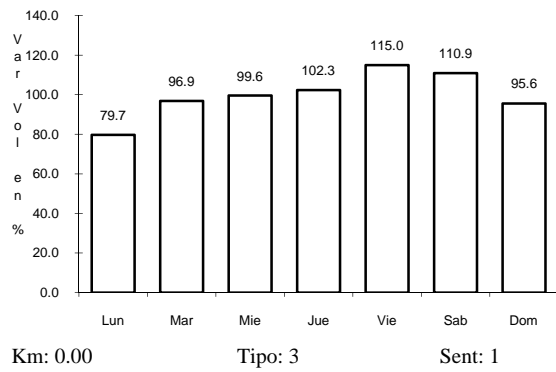
RUTA: COA-015



5 CARR: CD. ACUÑA - PRESA DE LA AMISTAD

CLAVE: 05085

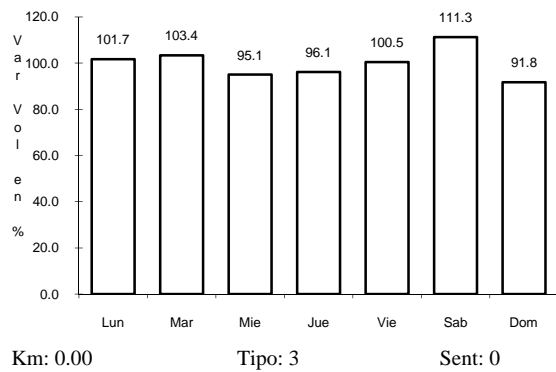
RUTA: MEX



6 CARR: CUATRO CIENEGAS - OCAMPO

CLAVE: 05026

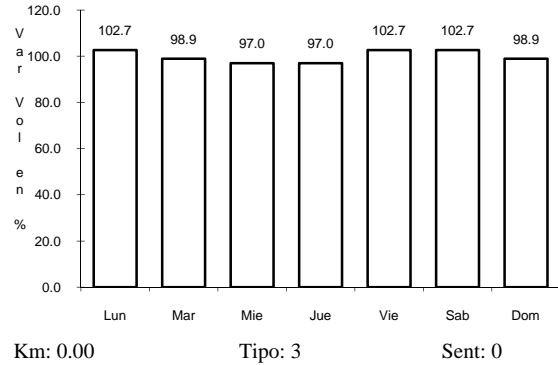
RUTA: COA-048



10 CARR: T. C. (SALTILLO - MONCLOVA) - RAMOS ARIZPE

CLAVE: 05508

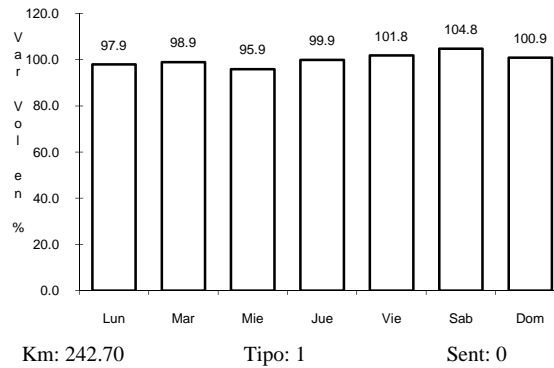
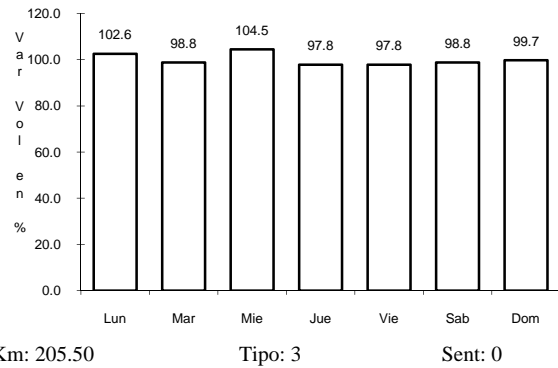
RUTA: COA



11 CARR: HUACHICHIL - LA ENCANTADA

CLAVE: 05002

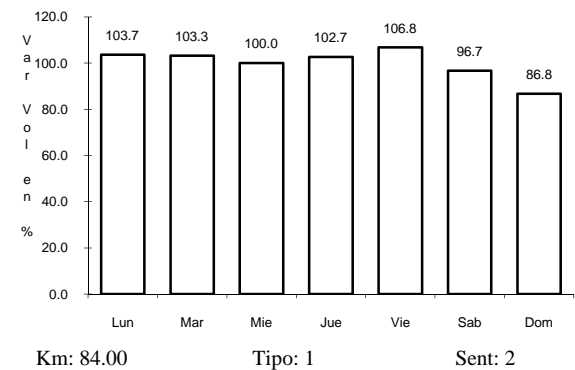
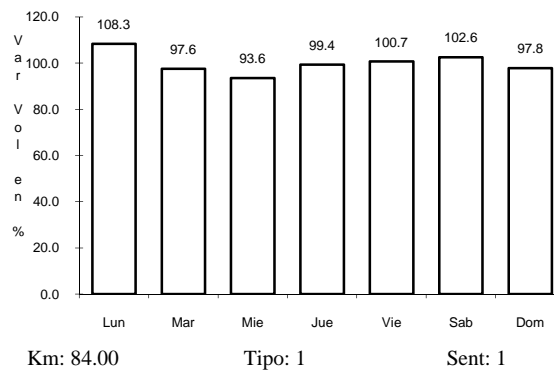
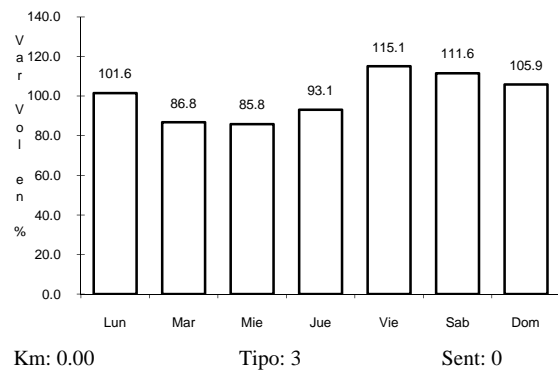
RUTA: COA



12 CARR: LA CUCHILLA - TORREON

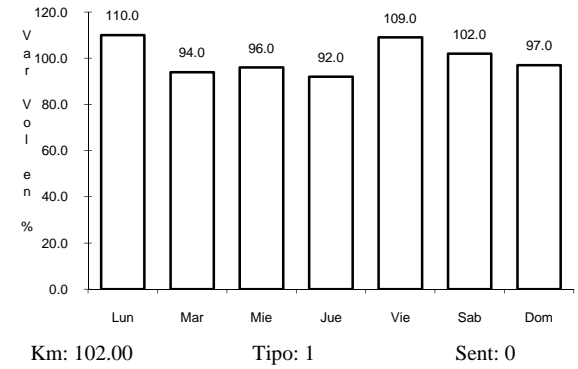
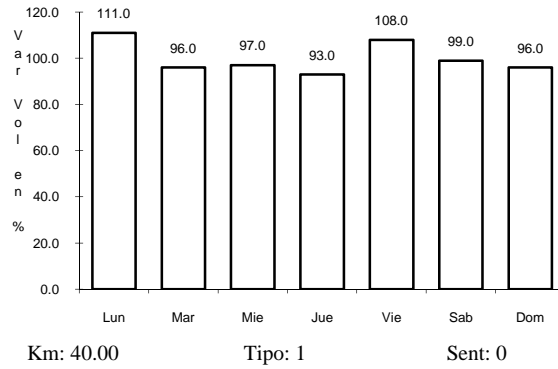
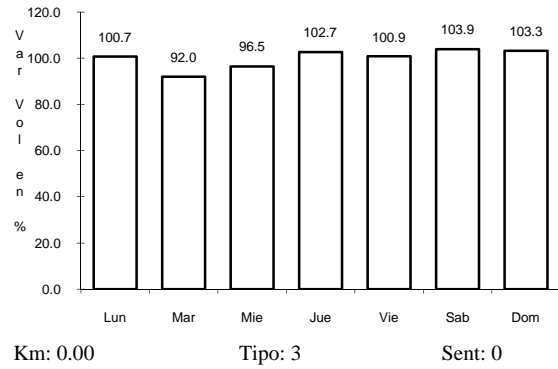
CLAVE: 05021

RUTA: MEX-030



13 CARR: T. C. (ENT. MORELOS - SALTILLO) - PARRAS DE LA FUENTE CLAVE: 05510

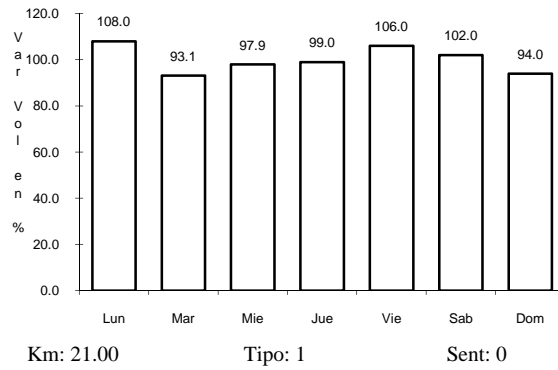
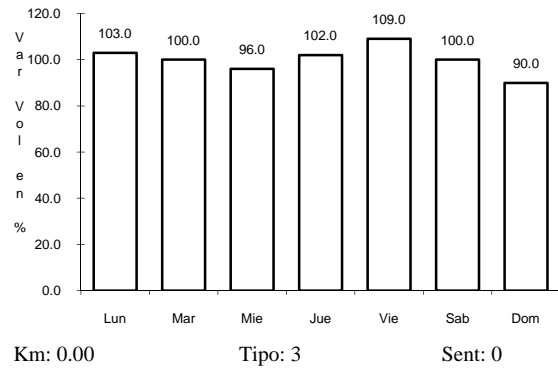
RUTA: COA-105



14 CARR: ENT. LA ROSA - GENERAL CEPEDA

CLAVE: 05034

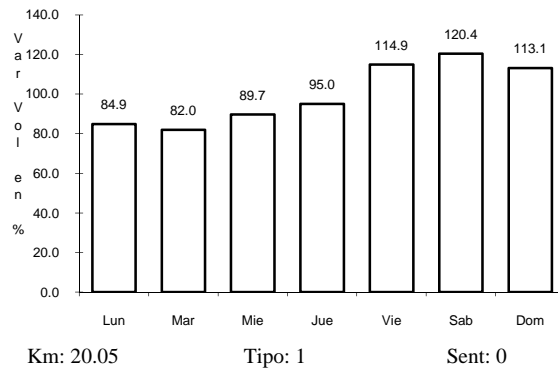
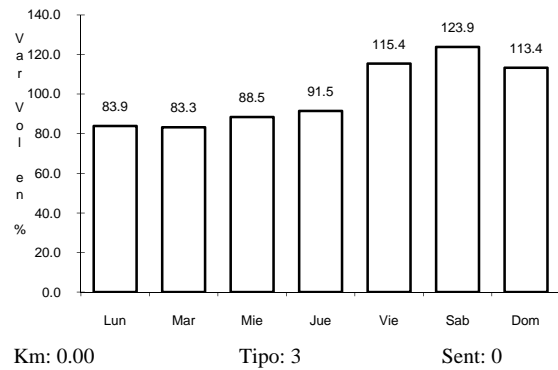
RUTA: COA-034



15 CARR: ENT. PAILA - PARRAS DE LA FUENTE

CLAVE: 05014

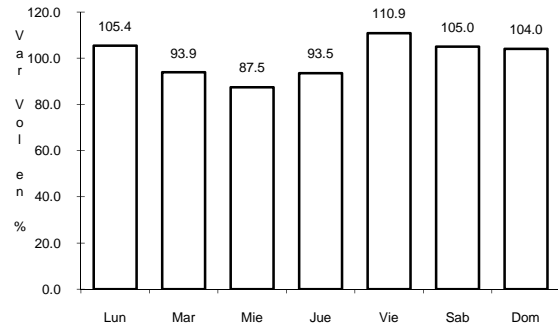
RUTA: COA-102



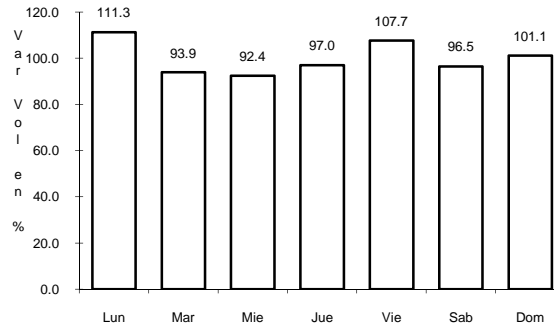
16 CARR: LIBRAMIENTO ALLENDE - NAVA

CLAVE: 05518

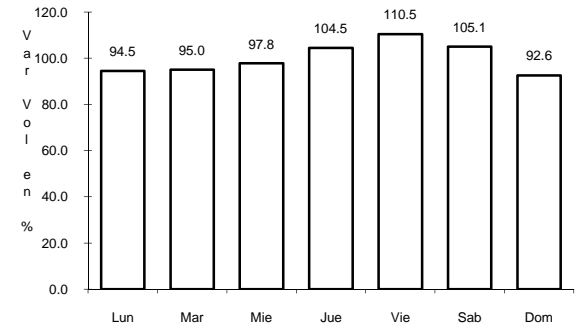
RUTA: MEX



Km: 0.00 Tipo: 3 Sent: 0



Km: 17.55 Tipo: 1 Sent: 1

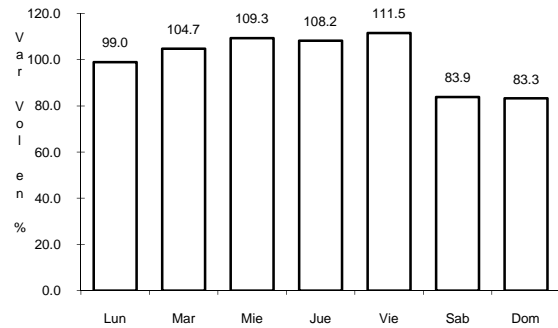


Km: 17.55 Tipo: 1 Sent: 2

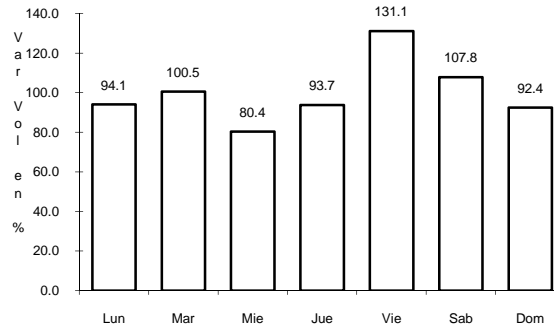
17 CARR: LIBRAMIENTO DE MATAMOROS

CLAVE: 05032

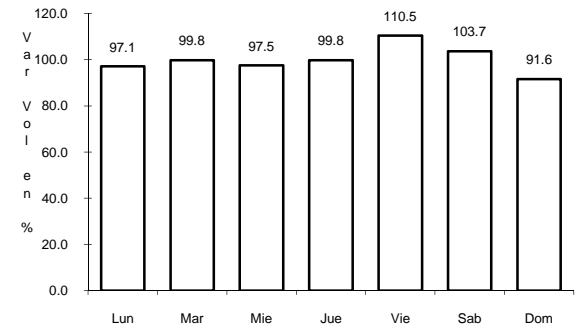
RUTA: COA



Km: 0.00 Tipo: 3 Sent: 0



Km: 5.32 Tipo: 1 Sent: 1

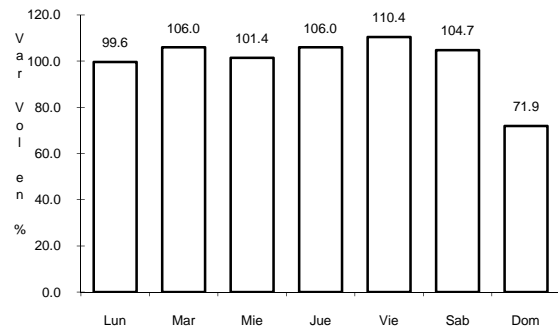


Km: 5.32 Tipo: 1 Sent: 2

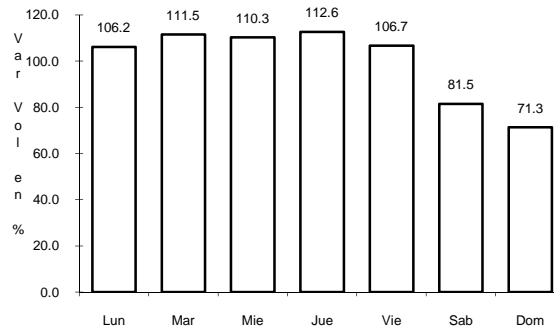
18 CARR: LIBRAMIENTO DE SALTILLO J.L.P.

CLAVE: 05031

RUTA: COA



Km: 2.50 Tipo: 3 Sent: 0

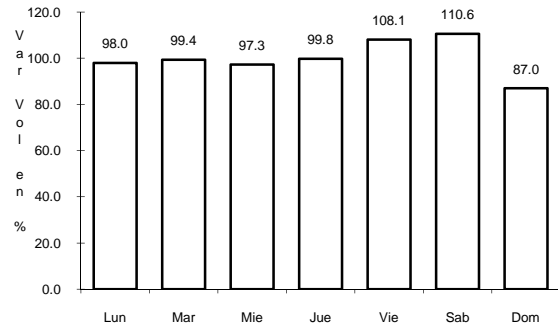


Km: 18.00 Tipo: 1 Sent: 0

19 CARR: MONCLOVA - PIEDRAS NEGRAS

CLAVE: 05407

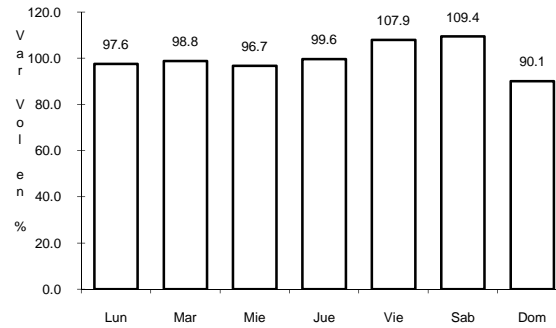
RUTA: MEX-057



Km: 0.00

Tipo: 3

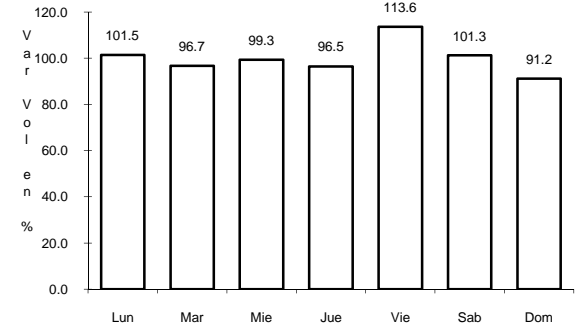
Sent: 1



Km: 0.00

Tipo: 3

Sent: 2



Km: 126.30

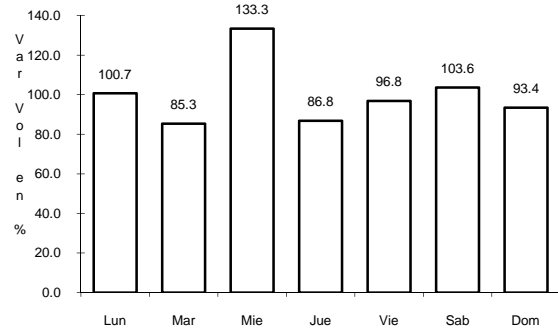
Tipo: 3

Sent: 0

20 CARR: MONCLOVA - SAN PEDRO DE LAS COLONIAS

CLAVE: 05062

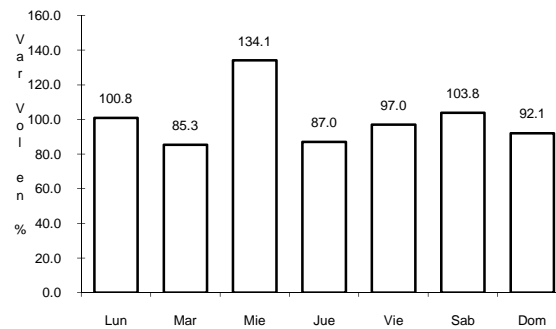
RUTA: MEX-030



Km: 2.00

Tipo: 3

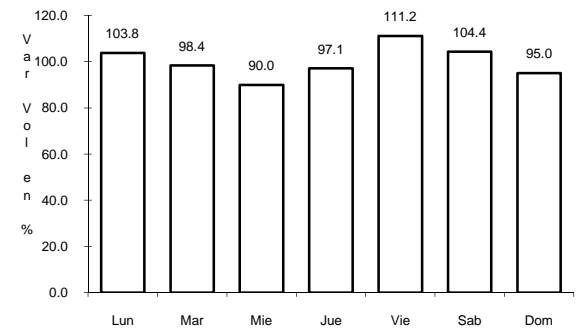
Sent: 1



Km: 2.00

Tipo: 3

Sent: 2



Km: 80.15

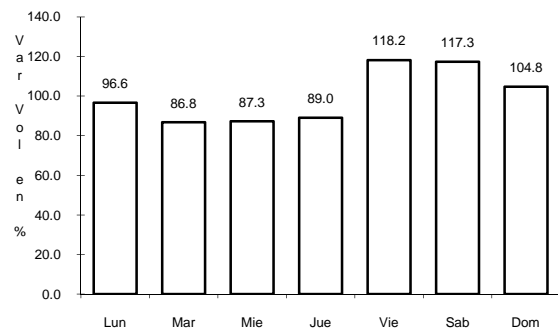
Tipo: 3

Sent: 0

21 CARR: MORELOS - CD. ACUÑA

CLAVE: 05029

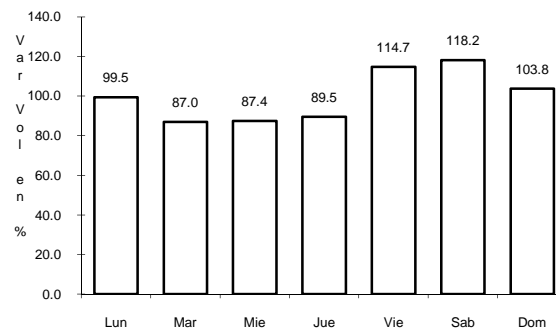
RUTA: MEX-047



Km: 0.00

Tipo: 3

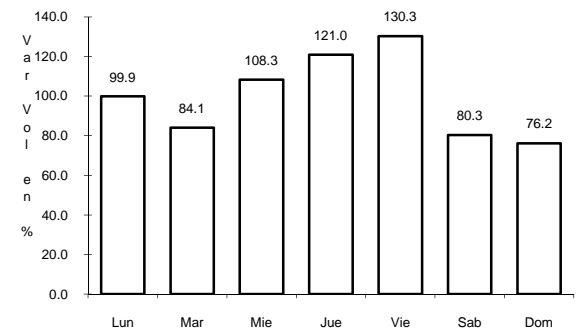
Sent: 1



Km: 0.00

Tipo: 3

Sent: 2



Km: 69.00

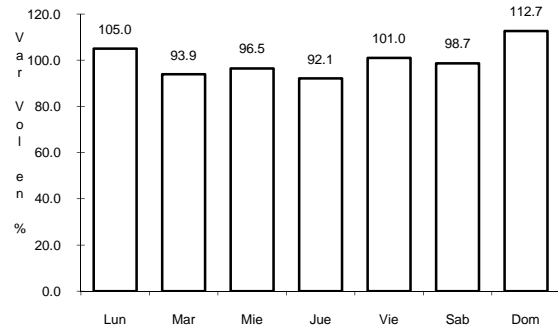
Tipo: 1

Sent: 0

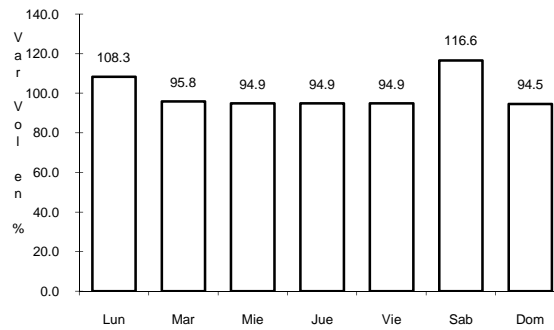
22 CARR: MORELOS - ENT. LAS CORRIENTES

CLAVE: 05500

ruta: COA-010



Km: 0.00 Tipo: 3 Sent: 0

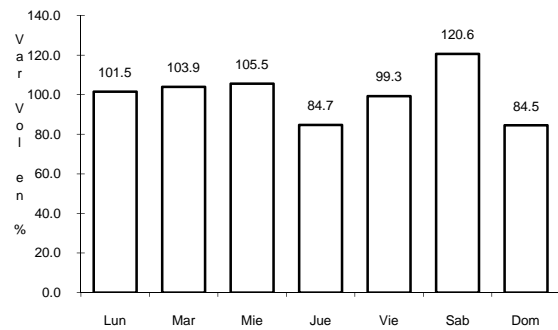


Km: 9.20 Tipo: 1 Sent: 0

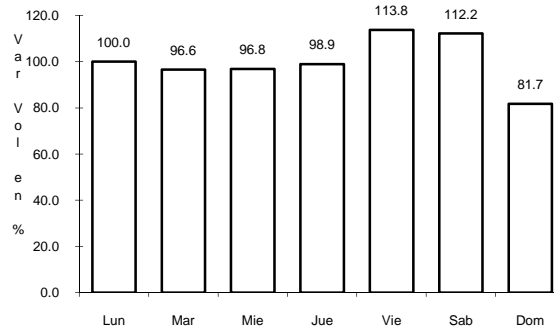
23 CARR: NUEVA ROSITA - BOQUILLAS DEL CARMEN

CLAVE: 05028

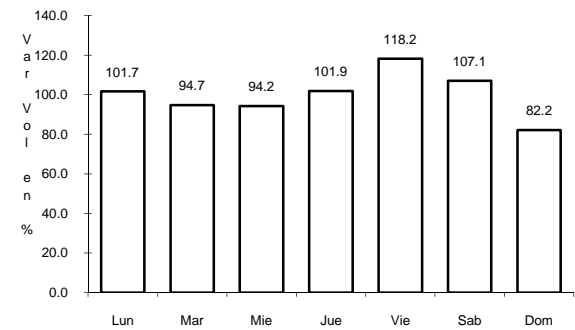
ruta: MEX-020



Km: 0.00 Tipo: 3 Sent: 0



Km: 25.00 Tipo: 3 Sent: 1

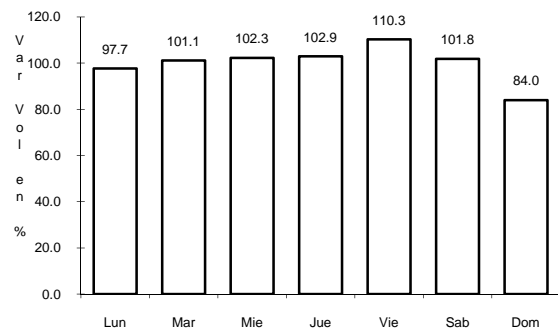


Km: 25.00 Tipo: 3 Sent: 2

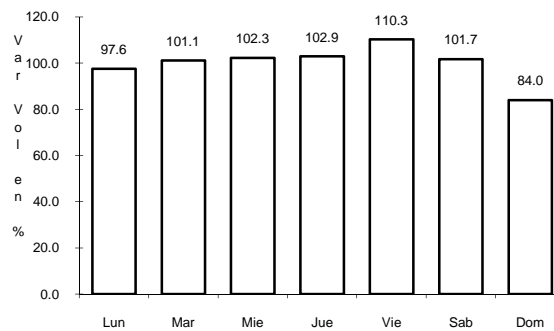
24 CARR: OJO CALIENTE - SANTA CRUZ

CLAVE: 05007

ruta: COA



Km: 0.00 Tipo: 3 Sent: 0

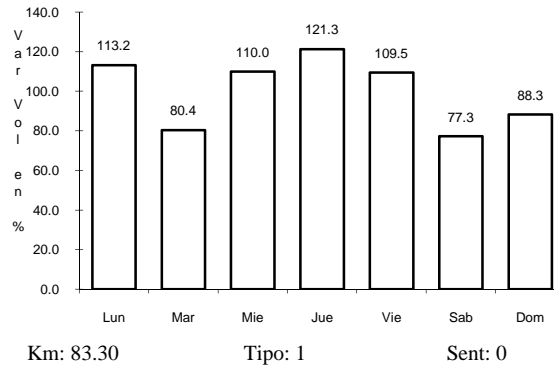
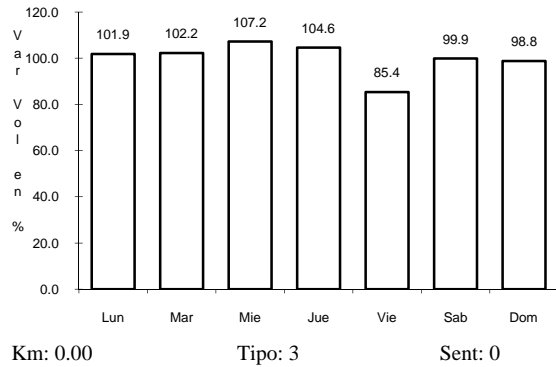


Km: 34.00 Tipo: 1 Sent: 0

25 CARR: PIEDRAS NEGRAS - CD. ACUÑA

CLAVE: 05061

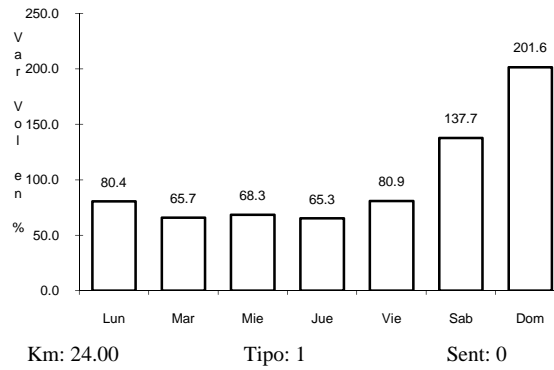
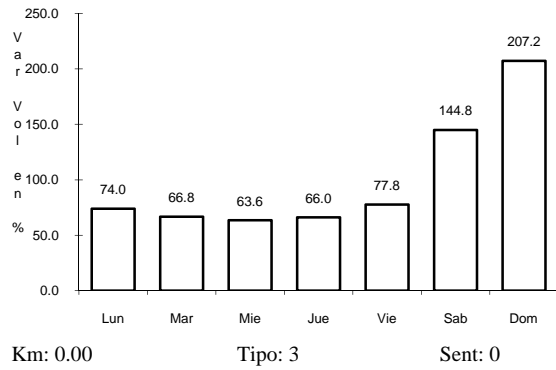
RUTA: MEX-002



26 CARR: PUERTO DE FLORES - EL HONDABLE

CLAVE: 05512

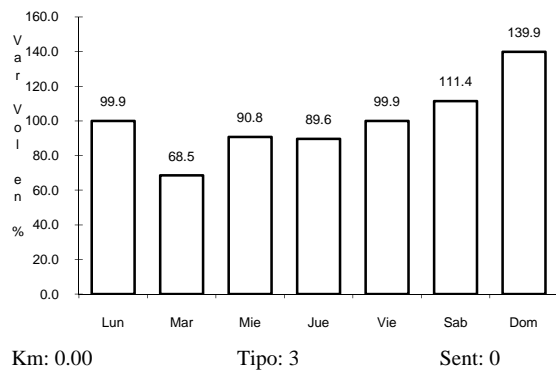
RUTA: COA-112



27 CARR: RAMAL A HIPOLITO

CLAVE: 05509

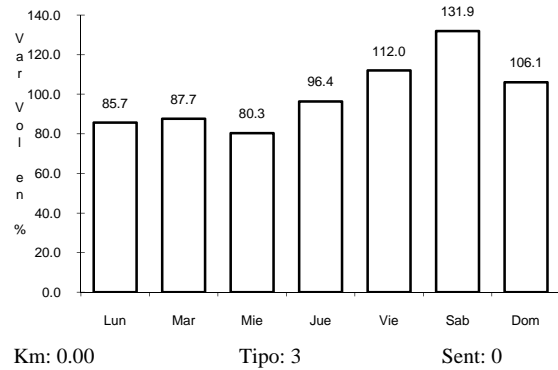
RUTA: COA-114



28 CARR: RAMAL A LAMADRID

CLAVE: 05522

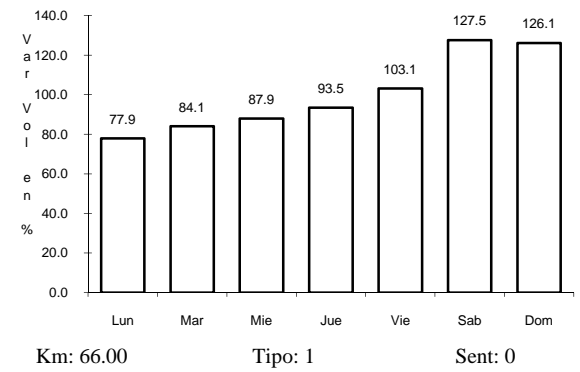
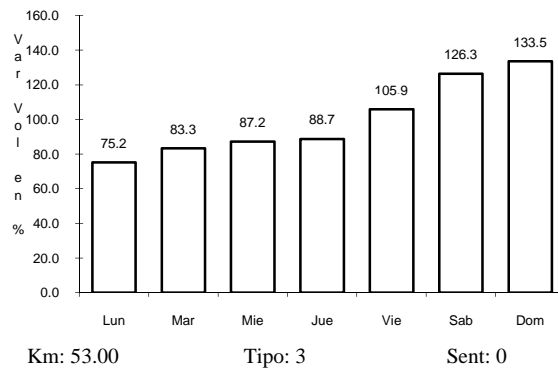
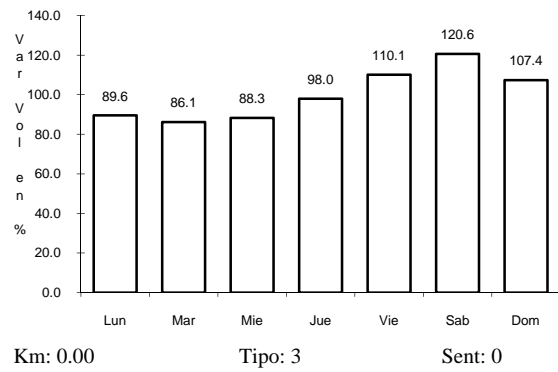
RUTA: COA-042



29 CARR: SABINAS - DON MARTIN

CLAVE: 05501

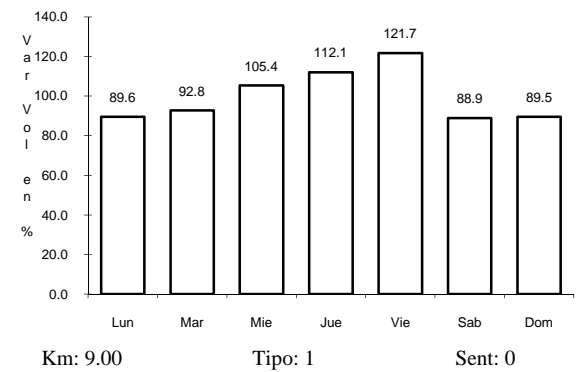
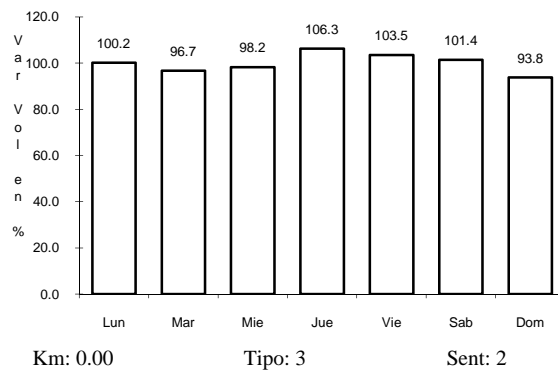
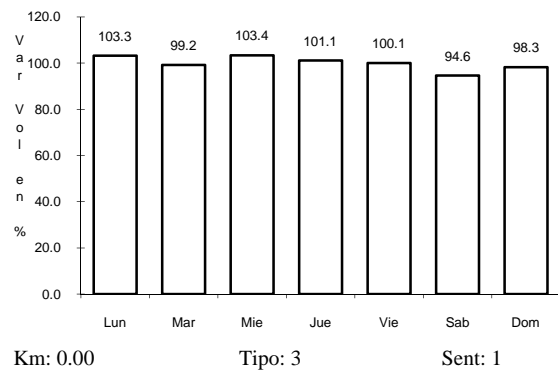
RUTA: COA-025



30 CARR: SALTILLO - ARTEAGA

CLAVE: 05008

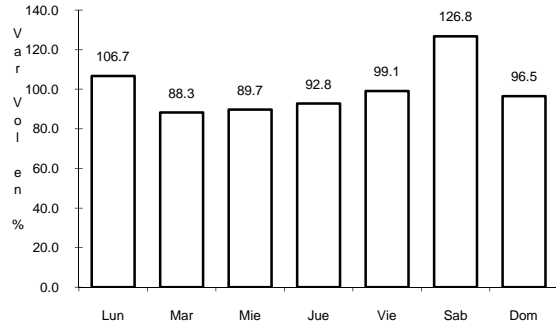
RUTA: COA-106



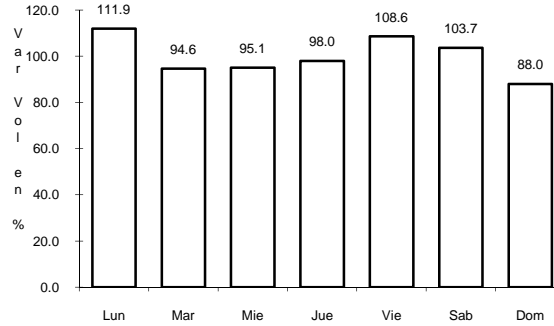
31 CARR: SALTILLO - MONCLOVA

CLAVE: 05406

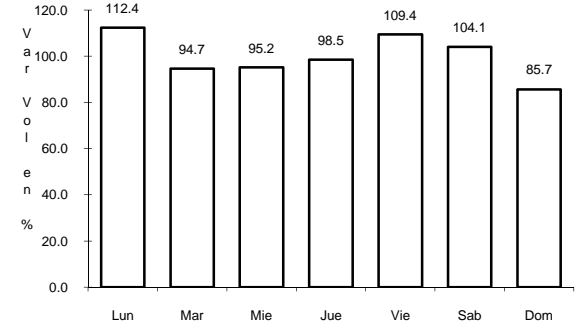
ruta: MEX-057-053



Km: 13.00 Tipo: 1 Sent: 0



Km: 192.00 Tipo: 1 Sent: 1

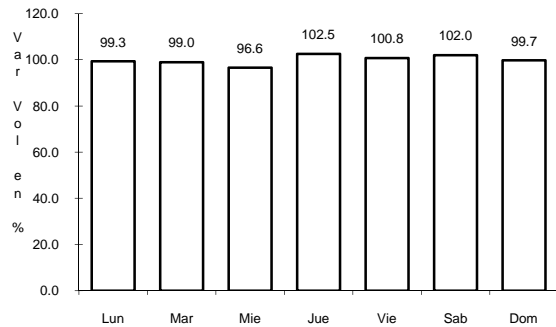


Km: 192.00 Tipo: 1 Sent: 2

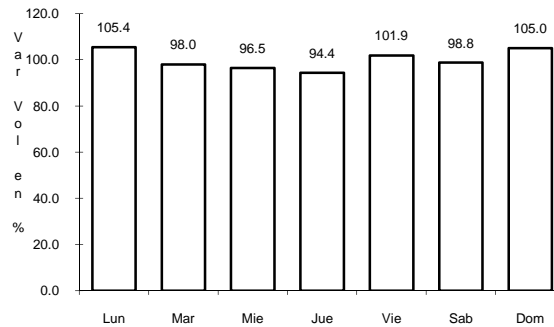
32 CARR: SALTILLO - TORREON

CLAVE: 05086

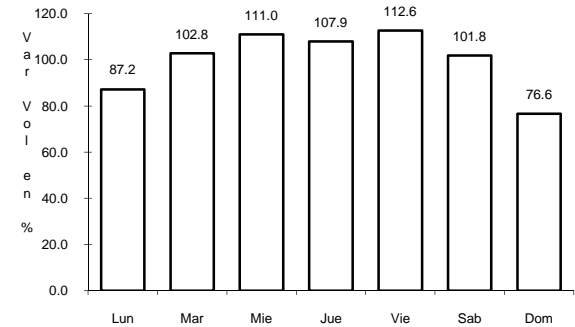
ruta: MEX-040



Km: 6.10 Tipo: 3 Sent: 1



Km: 6.10 Tipo: 3 Sent: 2

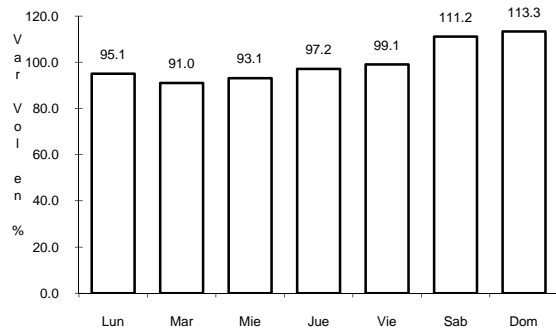


Km: 221.68 Tipo: 1 Sent: 0

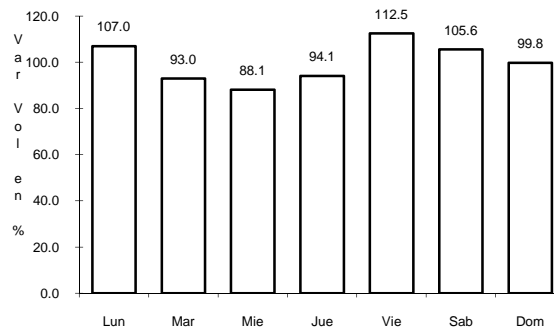
33 CARR: SAN BUENAVENTURA - ESTACION HERMANAS

CLAVE: 05004

ruta: COA-034



Km: 0.00 Tipo: 3 Sent: 0

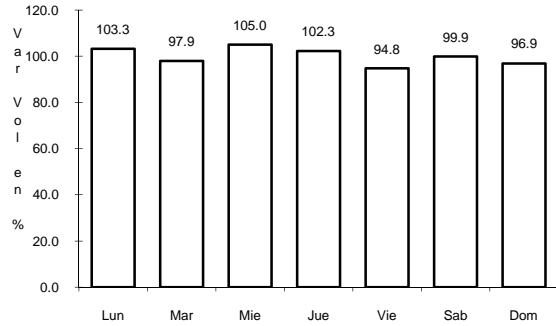


Km: 50.00 Tipo: 1 Sent: 0

37 CARR: AUT. PUERTO MEXICO - OJO CALIENTE

CLAVE: 00115

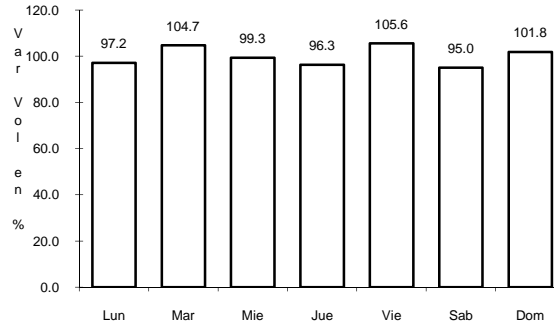
RUTA: MEX-057



Km: 23.88

Tipo: 1

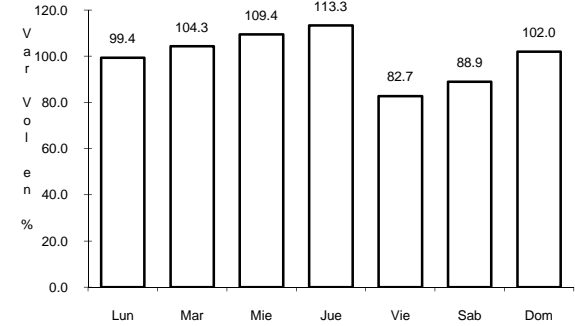
Sent: 1



Km: 23.88

Tipo: 1

Sent: 2



Km: 50.30

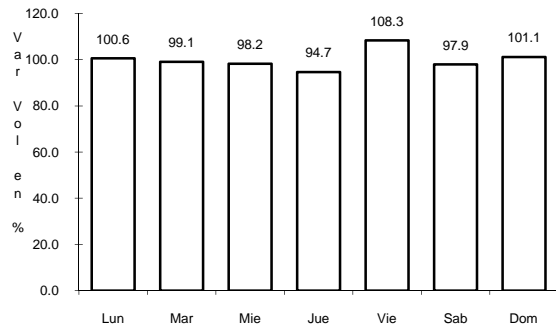
Tipo: 3

Sent: 0

38 CARR: GREGORIO GARCIA - FRANCISCO I. MADERO

CLAVE: 00110

RUTA: MEX



Km: 9.60

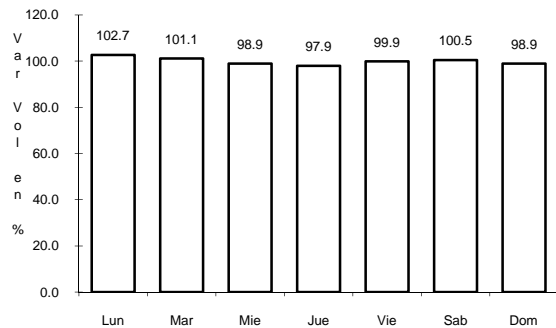
Tipo: 1

Sent: 0

39 CARR: LIBRAMIENTO DE TORREON

CLAVE: 05516

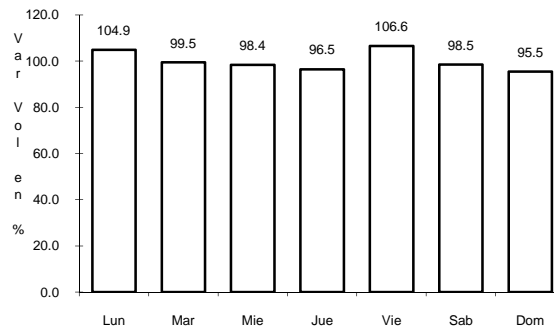
RUTA: COA



Km: 6.70

Tipo: 1

Sent: 1

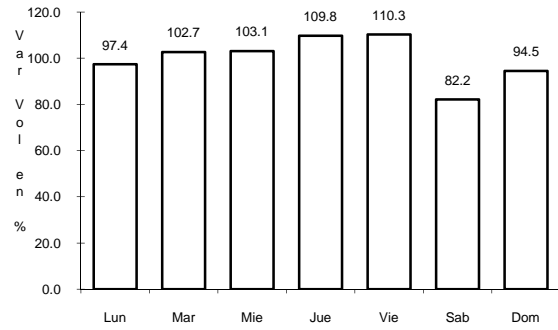


Km: 6.70

Tipo: 1

Sent: 2

40 CARR: MONTERREY - CASTAÑOS

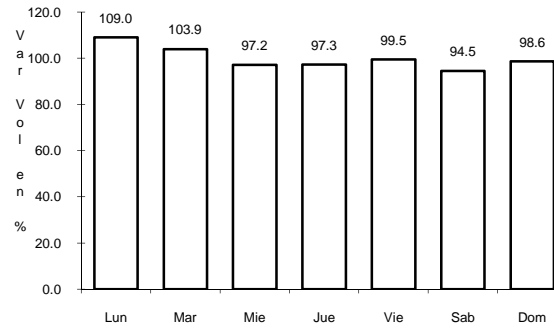


Km: 0.00

Tipo: 3

Sent: 0

CLAVE: 00128

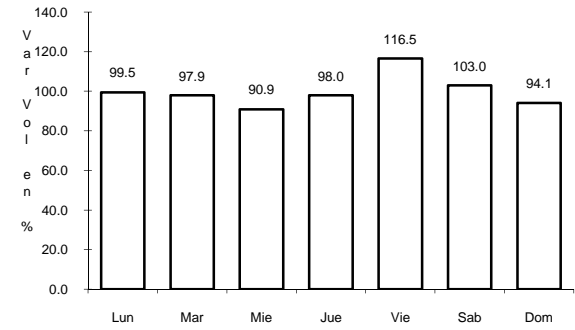


Km: 91.90

Tipo: 1

Sent: 0

RUTA: MEX-053



Km: 172.00

Tipo: 1

Sent: 0