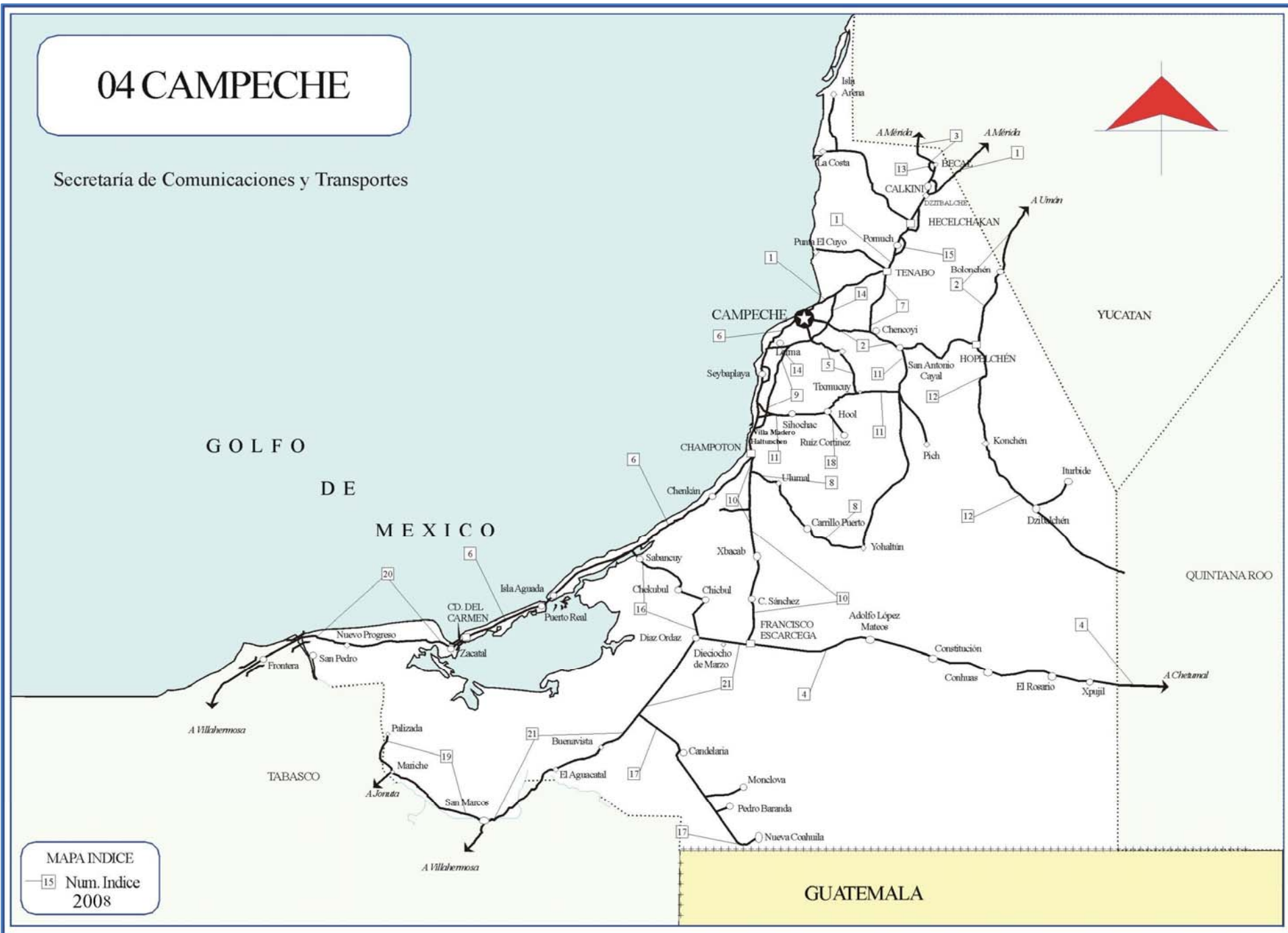
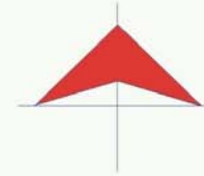


04 CAMPECHE

Secretaría de Comunicaciones y Transportes



MAPA INDICE
— 15 — Num. Indice
2008

CARRETERAS AFORADAS

Num. INDICE	CARRETERA
1	CAMPECHE - MERIDA
2	CAMPECHE - UMAN
3	DZITBALCHE - ENT. SAN BERNARDO
4	FRANCISCO ESCARCEGA - CHETUMAL
5	CAMPECHE - TIXMUCUY
6	CD. DEL CARMEN - CAMPECHE
7	CHENCOYI - TENABO
8	T. C. (FRANCISCO ESCARCEGA - CHAMPOTON) - YOHALTUN
9	ENT. VILLA MADERO - CAMPECHE (CUOTA)
10	FRANCISCO ESCARCEGA - CHAMPOTON
11	HALTUNCHEN - SAN ANTONIO CAYAL
12	HOPELCHEN - DZIBALCHEN
13	LIBRAMIENTO DE BECAL
14	LIBRAMIENTO DE CAMPECHE
15	LIBRAMIENTO DE POMUCH
16	PRESIDENTE DIAZ ORDAZ - SABANCUY
17	RAMAL A NUEVO COAHUILA
18	RAMAL A RUIZ CORTINES
19	SAN MARCO - PALIZADA
20	VILLAHERMOSA - CD. DEL CARMEN
21	VILLAHERMOSA - FRANCISCO ESCARCEGA

CAMPECHE

1 CARR : CAMPECHE - MERIDA

CLAVE: 00066

RUTA : MEX-180

AÑO : 2007

L U G A R	E S T A C I O N				CLASIFICACION VEHICULAR EN PORCIENTO .													
	KM	TE	SC	TDPA	A	B	C2	C3	T3S2	T3S3	T3S2R4	OTROS	A	B	C	K'	D	
CAMPECHE	0.00	3	1	2285	81.7	3.8	6.4	6.4	0.3	0.2	0.1	1.1	81.7	3.8	14.5	0.101	0.517	
CAMPECHE	0.00	3	2	2444	85	3.6	4.5	5.2	0.3	0.1	0.1	1.2	85	3.6	11.4	0.086	0.517	
T. DER. LIBRAMIENTO DE CAMPECHE	7.00	3	0	7160	79.2	5.7	5.7	4.4	2.2	1.5	0.4	0.9	79.2	5.7	15.1	0.062	0.502	
TENABO	40.00	1	0	5122	71.6	5.1	3.9	3.5	4.9	2	7.1	1.9	71.6	5.1	23.3	0.094	0.504	
T. DER. LIBRAMIENTO DE POMUCH (2° ACCESO)	50.00	3	0	4638	74.8	7.4	7.2	4	3	2.5	0	1.1	74.8	7.4	17.8	0.097	0.507	
LIM. EDOS. TERM. CAMP. PPIA. YUC.	97.30	0	0															
KOPOMA	124.30	3	0	4948	72.6	11.3	6.3	2.6	2.1	4.2	0	0.9	72.6	11.3	16.1	0.067	0.502	
T. DER. LIBRAMIENTO DE CHOCHOLA (1° ACCESO)	137.90	1	0	4107	90.4	3.9	2.1	1.2	0.8	0.3	0.5	0.8	90.4	3.9	5.7	0.07	0.559	
T. IZQ. UMAN	147.00	3	0	3317	80.6	6.2	7.7	4	0.2	0.5	0.1	0.7	80.6	6.2	13.2	0.096	0.502	
X. C. CAMPECHE - UMAN	160.50	1	0	5973	75.8	3.5	4.5	2.3	4.8	2.1	3.7	3.3	75.8	3.5	20.7	0.087	0.521	
T. C. PERIFERICO DE MERIDA	171.20	0	0															

2 CARR : CAMPECHE - UMAN

CLAVE: 00164

RUTA : MEX-261

AÑO : 2007

L U G A R	E S T A C I O N				CLASIFICACION VEHICULAR EN PORCIENTO .													
	KM	TE	SC	TDPA	A	B	C2	C3	T3S2	T3S3	T3S2R4	OTROS	A	B	C	K'	D	
CAMPECHE	0.00	0	0															
X. C. LIBRAMIENTO DE CAMPECHE	7.00	1	0	3282	86.9	5.8	4.6	1	0.9	0.2	0.1	0.5	86.9	5.8	7.3	0.087	0.502	
X. C. LIBRAMIENTO DE CAMPECHE	7.00	3	0	1892	90.4	2.7	4.4	0.9	0.8	0.2	0.1	0.5	90.4	2.7	6.9	0.087	0.502	
T. DER. TENABO	30.88	1	0	1080	77.4	9.1	11.4	0.8	0.4	0.3	0.1	0.5	77.4	9.1	13.5	0.117	0.515	
T. DER. TENABO	30.88	3	0	1112	79.7	8	10.4	0.7	0.3	0.3	0.1	0.5	79.7	8	12.3	0.117	0.514	
T. DER. EDZNA	44.51	1	0	1003	81.9	6.3	6.1	1.8	1.5	1.2	0.4	0.8	81.9	6.3	11.8	0.099	0.503	
T. DER. EDZNA	44.51	3	0	1124	80.6	5.6	2.5	8.2	0.8	0.4	0.4	1.5	80.6	5.6	13.8	0.075	0.51	
HOPELCHEN	84.88	1	0	862	85.1	3.8	8.6	0.7	0.6	0.1	0.1	1	85.1	3.8	11.1	0.092	0.509	
BOLONCHEN DE REJON	117.90	3	0	617	81.4	6	5.4	2.8	2.1	0.3	0.7	1.3	81.4	6	12.6	0.076	0.519	
LIM. EDOS. TERM. CAMP. PPIA. YUC.	126.90	0	0															
T. DER. SAYIL	140.90	1	0	505	83.9	8.9	5.2	1.7	0.2	0	0	0.1	83.9	8.9	7.2	0.119	0.505	
SANTA ELENA	158.90	1	0	705	87.6	3	6.6	1.8	0	0	0	1	87.6	3	9.4	0.105	0.502	
T. IZQ. RUINAS DE UXMAL	172.50	1	0	780	79.1	7.1	7.5	4.9	0.6	0.6	0	0.2	79.1	7.1	13.8	0.115	0.514	
MUNA	187.40	1	0	924	83.3	7.9	4.6	3.2	0.7	0.2	0	0.1	83.3	7.9	8.8	0.135	0.503	
MUNA	187.40	3	0	3443	84.6	5	2.7	2.4	1.4	1	0.9	2	84.6	5	10.4	0.066	0.511	
XPETEN	225.40	1	0	3600	86.3	3.3	5.2	2.6	1	1.1	0.5	0	86.3	3.3	10.4	0.086	0.501	
UMAN	230.80	1	0	2561	88.3	3.7	5.1	0	0.8	0.2	0.2	1.7	88.3	3.7	8	0.066	0.576	

CAMPECHE

3 CARR : DZITBALCHE - ENT. SAN BERNARDO

CLAVE: 00162

RUTA : MEX-265

AÑO : 2007

L U G A R	E S T A C I O N				CLASIFICACION VEHICULAR EN PORCIENTO .													
	KM	TE	SC	TDPA	A	B	C2	C3	T3S2	T3S3	T3S2R4	OTROS	A	B	C	K'	D	
T. C. CAMPECHE - MERIDA	0.00	0	0															
T. IZQ. LIBRAMIENTO DE BECAL (1° ACCESO)	28.76	1	0	2648	75.2	2.9	14.6	5.2	0.3	0.1	0	1.7	75.2	2.9	21.9	0.073	0.504	
LIM. EDOS. TERM. CAMP. PPIA. YUC.	30.30	0	0															
T. IZQ. LIBRAMIENTO DE BECAL (2° ACCESO)	30.86	3	0	3117	84.2	4.9	7.4	0.5	0.6	0.9	0.3	1.2	84.2	4.9	10.9	0.064	0.5	
HALACHO	34.59	1	0	3821	80.4	8.5	4.5	3.2	0.8	0.4	0.1	2.1	80.4	8.5	11.1	0.074	0.5	
T. IZQ. LIBRAMIENTO DE MAXCANU (1° ACCESO)	47.88	1	0	3264	78.9	5.1	6.7	3.2	2.4	1.9	0	1.8	78.9	5.1	16	0.084	0.502	
T. DER. MUNA	53.86	3	0	3253	80.5	4.3	6.7	3	2	1.7	0	1.8	80.5	4.3	15.2	0.094	0.505	
T. C. CAMPECHE - MERIDA	59.70	0	0															

4 CARR : FRANCISCO ESCARCEGA - CHETUMAL

CLAVE: 00093

RUTA : MEX-186

AÑO : 2007

L U G A R	E S T A C I O N				CLASIFICACION VEHICULAR EN PORCIENTO .													
	KM	TE	SC	TDPA	A	B	C2	C3	T3S2	T3S3	T3S2R4	OTROS	A	B	C	K'	D	
FRANCISCO ESCARCEGA	0.00	3	0	2308	64.9	7.4	8.9	2.2	6.4	2.1	2.4	5.7	64.9	7.4	27.7	0.076	0.502	
ADOLFO LOPEZ M.	41.50	1	0	2229	77.7	6.6	4.7	5.2	2.2	2.9	0	0.7	77.7	6.6	15.7	0.066	0.501	
T. DER. SILVITUC	55.70	1	0	1551	75.2	9.5	2.6	4.9	3.4	4.2	0	0.2	75.2	9.5	15.3	0.103	0.5	
T. DER. SILVITUC	55.70	3	0	1400	74.3	7.4	4.5	2.7	4.4	2.6	2.9	1.2	74.3	7.4	18.3	0.092	0.5	
CONHUAS	100.00	1	0	1126	80.6	4.1	6.2	3	3.3	1.6	0.5	0.7	80.6	4.1	15.3	0.1	0.522	
XPUJIL	155.70	1	0	1465	61.5	5.2	6.8	3.6	8.7	4.3	5.1	4.8	61.5	5.2	33.3	0.08	0.503	
LIM. EDOS. TERM. CAMP. PPIA. QROO.	156.80	0	0															
NICOLAS BRAVO	206.00	1	0	1573	73.3	8.1	7	5.8	3.6	1.7	0.1	0.4	73.3	8.1	18.6	0.09	0.5	
NICOLAS BRAVO	206.00	3	0	1957	76.6	4.4	6.6	4.7	3.6	2.7	0	1.4	76.6	4.4	19	0.095	0.5	
T. IZQ. MOROCOY	214.90	1	0	1484	76.2	7	5.7	4.1	4.3	2.3	0.1	0.3	76.2	7	16.8	0.092	0.501	
T. IZQ. MOROCOY	214.90	3	0	1614	81.7	4.3	6.3	4	2.2	1.4	0.1	0	81.7	4.3	14	0.096	0.5	
T. DER. UNION	247.50	1	0	2428	83.4	3.9	4.8	3.2	2.4	1.8	0	0.5	83.4	3.9	12.7	0.102	0.501	
T. DER. UNION	247.50	3	0	3015	84.9	3.5	3.8	3.3	2	2	0	0.5	84.9	3.5	11.6	0.082	0.502	
T. IZQ. FPE. CARRILLO PUERTO	255.20	1	0	3460	84.1	4	3.8	4.2	1.8	1.6	0	0.5	84.1	4	11.9	0.11	0.501	
T. DER. SUBTENIENTE LOPEZ	268.60	1	0	8090	75.2	7.2	5.6	2.1	3.2	4.7	1	1	75.2	7.2	17.6	0.076	0.5	
T. IZQ. AV. INSURGENTES	270.00	1	1	2977	75.8	6.6	6.1	5	3.1	2.3	0.1	1	75.8	6.6	17.6	0.09	0.501	
T. IZQ. AV. INSURGENTES	270.00	1	2	2985	78	7.3	5.9	2.9	2.5	2.5	0	0.9	78	7.3	14.7	0.107	0.501	
T. IZQ. AV. INSURGENTES	270.00	3	1	4833	82.7	7.7	6.9	0.7	0.4	0.2	0	1.4	82.7	7.7	9.6	0.07	0.503	
T. IZQ. AV. INSURGENTES	270.00	3	2	4771	79.6	10.7	6.9	0.7	0.5	0.2	0	1.4	79.6	10.7	9.7	0.065	0.503	
CHETUMAL	277.40	1	1	5192	81.7	7.8	3.4	0.8	1.1	0.9	2.2	2.1	81.7	7.8	10.5	0.068	0.503	
CHETUMAL	277.40	1	2	5254	81.9	7.9	3.6	1	1.1	0.8	1.9	1.8	81.9	7.9	10.2	0.069	0.503	

CAMPECHE

5 CARR : CAMPECHE - TIXMUCUY

CLAVE: 04575

RUTA : CAM-233

AÑO : 2007

L U G A R	E S T A C I O N				C L A S I F I C A C I O N V E H I C U L A R E N P O R C I E N T O .													
	KM	TE	SC	TDPA	A	B	C2	C3	T3S2	T3S3	T3S2R4	OTROS	A	B	C	K'	D	
CAMPECHE	0.00	3	1	1685	82.1	4.1	10	1.2	0.5	0.4	0.3	1.4	82.1	4.1	13.8	0.103	0.508	
CAMPECHE	0.00	3	2	1740	90.6	4.6	2.7	0.7	0.5	0.2	0.4	0.3	90.6	4.6	4.8	0.12	0.508	
X. C. LIBRAMIENTO DE CAMPECHE	4.00	3	0	2070	89.8	4.5	2.8	1	1	0.2	0.1	0.6	89.8	4.5	5.7	0.124	0.502	
X. C. HALTUNCHEN - CAYAL	39.00	1	0	674	84.4	5.2	5.7	1.8	1.1	0.8	0.3	0.7	84.4	5.2	10.4	0.093	0.563	
TIXMUCUY	42.00	1	0	490	94.4	4.4	0.4	0.2	0.1	0.2	0.1	0.2	94.4	4.4	1.2	0.114	0.51	

6 CARR : CD. DEL CARMEN - CAMPECHE

CLAVE: 04065

RUTA : MEX-180

AÑO : 2007

L U G A R	E S T A C I O N				C L A S I F I C A C I O N V E H I C U L A R E N P O R C I E N T O .													
	KM	TE	SC	TDPA	A	B	C2	C3	T3S2	T3S3	T3S2R4	OTROS	A	B	C	K'	D	
CD. DEL CARMEN	0.00	3	1	3198	58.9	4.1	5.2	4.4	9.6	4.9	8.7	4.2	58.9	4.1	37	0.091	0.503	
CD. DEL CARMEN	0.00	3	2	3231	59.1	4.1	4.6	3.7	7.4	4.4	10.4	6.3	59.1	4.1	36.8	0.07	0.503	
ISLA AGUADA	37.75	3	0	3228	70.2	3.9	3.1	5.3	5.3	2.9	7.8	1.5	70.2	3.9	25.9	0.082	0.503	
T. DER. SABANCUY	78.05	3	0	2597	62.4	3.5	4.2	6.8	8.7	2.8	10.6	1	62.4	3.5	34.1	0.071	0.508	
CHAMPOTON	141.80	1	0	3214	65.4	7.8	10.2	1.1	6.5	1	1.4	6.6	65.4	7.8	26.8	0.099	0.561	
CHAMPOTON	141.80	3	1	2694	70.2	6.1	10.9	0.2	5.2	0.5	0.4	6.5	70.2	6.1	23.7	0.078	0.523	
CHAMPOTON	141.80	3	2	2318	74.4	6	9.2	0.9	1.9	0.9	0.8	5.9	74.4	6	19.6	0.093	0.523	
T. DER. LIBRAMIENTO DE SEYBAPLAYA (1° ACCESO)	175.70	1	0	2885	76.9	3.7	7.4	3.4	3.9	1.5	0.8	2.4	76.9	3.7	19.4	0.08	0.501	
T. DER. LIBRAMIENTO DE SEYBAPLAYA (1° ACCESO)	175.70	3	0	2564	80.2	4	4.4	3.8	4.2	1.2	0.3	1.9	80.2	4	15.8	0.123	0.501	
T. DER. LIBRAMIENTO DE CAMPECHE	195.70	1	0	3913	86.7	5.2	5.2	1	0.5	0.3	0.3	0.8	86.7	5.2	8.1	0.102	0.508	
LERMA	199.50	1	0	4102	87.6	4.3	5.2	1	0.5	0.3	0.3	0.8	87.6	4.3	8.1	0.109	0.508	
CAMPECHE	203.20	0	0															

7 CARR : CHENCOYI - TENABO

CLAVE: 04576

RUTA : MEX-263

AÑO : 2007

L U G A R	E S T A C I O N				C L A S I F I C A C I O N V E H I C U L A R E N P O R C I E N T O .													
	KM	TE	SC	TDPA	A	B	C2	C3	T3S2	T3S3	T3S2R4	OTROS	A	B	C	K'	D	
T. C. CAMPECHE - UMAN	0.00	0	0															
TENABO	28.00	1	0	658	87.6	3.1	4.5	2.2	1.4	0.8	0	0.4	87.6	3.1	9.3	0.096	0.501	

CAMPECHE

8 CARR : T. C. (FRANCISCO ESCARCEGA - CHAMPOTON) - YOHALTUN

CLAVE: 04581

RUTA : CAM

AÑO : 2007

L U G A R	E S T A C I O N				C L A S I F I C A C I O N V E H I C U L A R E N P O R C I E N T O .												
	KM	TE	SC	TDPA	A	B	C2	C3	T3S2	T3S3	T3S2R4	OTROS	A	B	C	K'	D
T. C. FRANCISCO ESCARCEGA - CHAMPOTON	0.00	3	0	975	82.7	7.6	5.4	1.2	1.4	1.2	0	0.5	82.7	7.6	9.7	0.09	0.504
FELIPE CARRILLO PUERTO	36.50	1	0	393	87.3	5.6	5.8	0.7	0	0.1	0	0.5	87.3	5.6	7.1	0.099	0.503
FELIPE CARRILLO PUERTO	36.50	3	0	476	87.2	7.4	1.9	1.6	1	0.9	0	0	87.2	7.4	5.4	0.116	0.501
YOHALTUN	70.60	0	0														

9 CARR : ENT. VILLA MADERO - CAMPECHE (CUOTA)

CLAVE: 04014

RUTA : MEX-180

AÑO : 2007

L U G A R	E S T A C I O N				C L A S I F I C A C I O N V E H I C U L A R E N P O R C I E N T O .												
	KM	TE	SC	TDPA	A	B	C2	C3	T3S2	T3S3	T3S2R4	OTROS	A	B	C	K'	D
T. C. CD. DEL CARMEN - CAMPECHE (VILLA MADERO)	0.00	0	0														
CASETA DE COBRO SEYBAPLAYA	32.00	2	0	4913													
X. LIBRAMIENTO DE CAMPECHE	39.00	0	0														

10 CARR : FRANCISCO ESCARCEGA - CHAMPOTON

CLAVE: 04103

RUTA : MEX-261

AÑO : 2007

L U G A R	E S T A C I O N				C L A S I F I C A C I O N V E H I C U L A R E N P O R C I E N T O .												
	KM	TE	SC	TDPA	A	B	C2	C3	T3S2	T3S3	T3S2R4	OTROS	A	B	C	K'	D
FRANCISCO ESCARCEGA	0.00	3	0	2722	74.2	7.4	3	3	4.1	3.1	0.4	4.8	74.2	7.4	18.4	0.067	0.503
T. IZQ. LEY FEDERAL DE LA REFORMA AGRARIA	51.40	1	0	2992	65.6	6.9	12.2	1.2	4	0.5	0.4	9.2	65.6	6.9	27.5	0.078	0.501
T. DER. ULUMAL Y PATZAJOL	77.00	1	0	2400	67.3	4.8	11.6	0	5.6	0.4	0.2	10.1	67.3	4.8	27.9	0.08	0.505
CHAMPOTON	81.40	1	1	1628	89.6	3.5	1.9	1.5	0.7	0.6	0.4	1.8	89.6	3.5	6.9	0.076	0.527
CHAMPOTON	81.40	1	2	1812	90.8	3.3	3.3	0.8	0.7	0.3	0.4	0.4	90.8	3.3	5.9	0.083	0.527

11 CARR : HALTUNCHEN - SAN ANTONIO CAYAL

CLAVE: 04009

RUTA : MEX-188

AÑO : 2007

L U G A R	E S T A C I O N				C L A S I F I C A C I O N V E H I C U L A R E N P O R C I E N T O .												
	KM	TE	SC	TDPA	A	B	C2	C3	T3S2	T3S3	T3S2R4	OTROS	A	B	C	K'	D
T. C. CD. DEL CARMEN - CAMPECHE	0.00	3	0	948	88.9	2.7	5.3	1.3	0.4	0.2	0.2	1	88.9	2.7	8.4	0.084	0.513
SIHOCHAC	14.00	3	0	943	91.7	1.7	4	1.1	0.3	0.1	0.2	0.9	91.7	1.7	6.6	0.115	0.51
X. C. CHINA - TIXMUCUY	47.10	1	0	1056	78.6	8.5	10.2	1	0.5	0.4	0.1	0.7	78.6	8.5	12.9	0.086	0.514
EDZNA	59.00	1	0	790	94.4	4.5	0.3	0.2	0.1	0.2	0.1	0.2	94.4	4.5	1.1	0.084	0.511
T. DER. PICHUCALCO	60.00	3	0	417	94.5	4.2	0.4	0.2	0.1	0.3	0.1	0.2	94.5	4.2	1.3	0.11	0.511
SAN ANTONIO CAYAL	79.00	1	0	305	81.6	6.3	4	3.1	1.7	0.8	0.3	2.2	81.6	6.3	12.1	0.092	0.511

CAMPECHE

12 CARR : HOPELCHEN - DZIBALCHEN

CLAVE: 04572

RUTA : CAM-261

AÑO : 2007

L U G A R	E S T A C I O N				CLASIFICACION VEHICULAR EN PORCIENTO .													
	KM	TE	SC	TDPA	A	B	C2	C3	T3S2	T3S3	T3S2R4	OTROS	A	B	C	K'	D	
HOPELCHEN	0.00	3	0	1006	77.8	7.8	11.6	1	0.5	0.5	0.1	0.7	77.8	7.8	14.4	0.085	0.51	
DZIBALCHEN	41.00	0	0															

13 CARR : LIBRAMIENTO DE BECAL

CLAVE: 04010

RUTA : CAM

AÑO : 2007

L U G A R	E S T A C I O N				CLASIFICACION VEHICULAR EN PORCIENTO .													
	KM	TE	SC	TDPA	A	B	C2	C3	T3S2	T3S3	T3S2R4	OTROS	A	B	C	K'	D	
T. C. DZITBALCHE - ENT. SAN BERNARDO (1° ACCESO)	0.00	0	0															
T. C. CAMPECHE - MERIDA (2° ACCESO)	2.30	1	0	5264	75.8	8.5	7	1.5	3.2	3.4	0	0.6	75.8	8.5	15.7	0.077	0.503	

14 CARR : LIBRAMIENTO DE CAMPECHE

CLAVE: 04573

RUTA : MEX-202

AÑO : 2007

L U G A R	E S T A C I O N				CLASIFICACION VEHICULAR EN PORCIENTO .													
	KM	TE	SC	TDPA	A	B	C2	C3	T3S2	T3S3	T3S2R4	OTROS	A	B	C	K'	D	
ENT. LERMA	0.00	3	0	3278	87	4.9	5.2	1	0.5	0.3	0.3	0.8	87	4.9	8.1	0.103	0.508	
X. C. CAMPECHE - UMAN	21.00	1	0	3272	63	6.7	9.2	0.7	7.8	1.5	1.2	9.9	63	6.7	30.3	0.102	0.596	
T. C. CAMPECHE - MERIDA	26.00	1	0	4588	83.6	6.7	6.4	1	0.6	0.4	0.4	0.9	83.6	6.7	9.7	0.076	0.508	

15 CARR : LIBRAMIENTO DE POMUCH

CLAVE: 04579

RUTA : CAM

AÑO : 2007

L U G A R	E S T A C I O N				CLASIFICACION VEHICULAR EN PORCIENTO .													
	KM	TE	SC	TDPA	A	B	C2	C3	T3S2	T3S3	T3S2R4	OTROS	A	B	C	K'	D	
T. C. CAMPECHE - MERIDA (1° ACCESO)	0.00	3	0	5222	84.3	3.8	4.9	2.6	1.9	2.2	0	0.3	84.3	3.8	11.9	0.065	0.502	
T. C. CAMPECHE - MERIDA (2° ACCESO)	4.10	0	0															

16 CARR : PRESIDENTE DIAZ ORDAZ - SABANCUY

CLAVE: 04570

RUTA : MEX-259

AÑO : 2007

L U G A R	E S T A C I O N				CLASIFICACION VEHICULAR EN PORCIENTO .													
	KM	TE	SC	TDPA	A	B	C2	C3	T3S2	T3S3	T3S2R4	OTROS	A	B	C	K'	D	
T. C. VILLAHERMOSA - FRANCISCO ESCARCEGA	0.00	3	0	2143	62.5	7.8	3	0.9	8.5	5	7.8	4.5	62.5	7.8	29.7	0.08	0.5	
CHEKOBUL	30.00	1	0	995	81.7	7.2	5.4	4.2	0.7	0.6	0	0.2	81.7	7.2	11.1	0.093	0.501	
T. C. CD. DEL CARMEN - CAMPECHE	57.00	1	0	1528	63.9	6.3	4.9	5.5	6.2	6.9	5.3	1	63.9	6.3	29.8	0.089	0.505	

CAMPECHE

17 CARR : RAMAL A NUEVO COAHUILA

CLAVE: 04015

ruta : MEX-221

AÑO : 2007

L U G A R	E S T A C I O N				CLASIFICACION VEHICULAR EN PORCIENTO .												
	KM	TE	SC	TDPA	A	B	C2	C3	T3S2	T3S3	T3S2R4	OTROS	A	B	C	K'	D
T. C. VILLAHERMOSA - FRANCISCO ESCARCEGA	0.00	3	0	773	85.5	3.2	4.1	2.6	2.3	1.5	0	0.8	85.5	3.2	11.3	0.111	0.505
CANDELARIA	28.00	3	0	1361	89.4	4.6	2	1.3	0.6	0.5	0.4	1.2	89.4	4.6	6	0.096	0.503
REFORMA	44.50	3	0	622	90	2.6	3.8	0.6	0.9	0.8	0.4	0.9	90	2.6	7.4	0.127	0.508
T. IZQ. PEDRO BARANDA	54.80	1	0	671	85.2	6.3	4.8	0.4	0.9	0.9	0.5	1	85.2	6.3	8.5	0.089	0.509
T. IZQ. PEDRO BARANDA	54.80	3	0	488	87.9	4.9	3.5	0.4	0.9	0.9	0.5	1	87.9	4.9	7.2	0.102	0.51
NUEVO COAHUILA	70.00	1	0	618	89.1	4.3	0.9	0.7	1.5	1.2	0.6	1.7	89.1	4.3	6.6	0.099	0.504

18 CARR : RAMAL A RUIZ CORTINES

CLAVE: 04101

ruta : MEX

AÑO : 2007

L U G A R	E S T A C I O N				CLASIFICACION VEHICULAR EN PORCIENTO .												
	KM	TE	SC	TDPA	A	B	C2	C3	T3S2	T3S3	T3S2R4	OTROS	A	B	C	K'	D
HOOL	0.00	0	0														
T. DER. HOOL	1.00	3	0	166	91.2	5.4	1.1	0.6	0.2	0.7	0.2	0.6	91.2	5.4	3.4	0.12	0.524
RUIZ CORTINES	12.00	0	0														

19 CARR : SAN MARCO - PALIZADA

CLAVE: 00490

ruta : MEX-217

AÑO : 2007

L U G A R	E S T A C I O N				CLASIFICACION VEHICULAR EN PORCIENTO .												
	KM	TE	SC	TDPA	A	B	C2	C3	T3S2	T3S3	T3S2R4	OTROS	A	B	C	K'	D
T. C. VILLAHERMOSA - FRANCISCO ESCARCEGA	0.00	3	0	945	84.8	0	8.4	4.3	1.1	0.7	0	0.7	84.8	0	15.2	0.111	0.51
LIM. EDOS. TERM. TAB. PPIA. CAMP.	1.50	0	0														
T. IZQ. JONUTA	46.20	1	0	595	83	6.9	4.7	2.1	1	0.4	0.4	1.5	83	6.9	10.1	0.069	0.506
T. IZQ. JONUTA	46.20	3	0	820	76	10.3	9.5	1	1.7	1	0	0.5	76	10.3	13.7	0.085	0.526
PALIZADA	68.00	0	0														

20 CARR : VILLAHERMOSA - CD. DEL CARMEN

CLAVE: 00064

ruta : MEX-180

AÑO : 2007

L U G A R	E S T A C I O N				CLASIFICACION VEHICULAR EN PORCIENTO .												
	KM	TE	SC	TDPA	A	B	C2	C3	T3S2	T3S3	T3S2R4	OTROS	A	B	C	K'	D
VILLAHERMOSA	0.00	0	0														
T. IZQ. CD. INDUSTRIAL	4.30	3	0	14407	74.6	7.3	1.4	1.7	6.2	1.7	3.5	3.6	74.6	7.3	18.1	0.075	0.504
MACULTEPEC	18.60	1	0	12109	70.9	4.5	0.3	0.1	9.3	2.4	9.5	3	70.9	4.5	24.6	0.074	0.509
MACULTEPEC	18.60	3	0	10861	77.7	4.8	3.9	1.9	4.5	1.5	4.1	1.6	77.7	4.8	17.5	0.071	0.561
EL ESPINO	33.20	1	0	4586	74.6	4.8	5.7	2.8	4.2	1.6	4.5	1.8	74.6	4.8	20.6	0.106	0.508

CAMPECHE

20 CARR : VILLAHERMOSA - CD. DEL CARMEN

CLAVE: 00064

ruta : MEX-180

AÑO : 2007

L U G A R	E S T A C I O N				CLASIFICACION VEHICULAR EN PORCIENTO												
	KM	TE	SC	TDPA	A	B	C2	C3	T3S2	T3S3	T3S2R4	OTROS	A	B	C	K'	D
EL ESPINO	33.20	3	0	4649	76.2	4.1	5.3	2.7	4.1	1.5	4.4	1.7	76.2	4.1	19.7	0.107	0.502
T. IZQ. EL BELLOTE	49.67	3	0	4559	75.2	6	4.4	2.3	4.2	1.6	4.5	1.8	75.2	6	18.8	0.108	0.512
FRONTERA	74.59	1	0	6103	74.8	4.1	5.1	3.6	4.1	1.8	4.7	1.8	74.8	4.1	21.1	0.08	0.502
FRONTERA	74.59	3	0	3376	74.8	7.2	4.6	2.4	4.1	1.8	4.2	0.9	74.8	7.2	18	0.12	0.5
T. IZQ. ESCOLLERAS	78.00	3	0	3739	77.6	6.7	3.5	2.1	3.2	1.4	3.7	1.8	77.6	6.7	15.7	0.091	0.511
PUENTE SAN PEDRO	96.50	3	0	3063	70.4	7.2	5.3	3.4	5	1.8	5.9	1	70.4	7.2	22.4	0.103	0.549
LIM. EDOS. TERM. TAB. PPIA. CAMP.	97.44	0	0														
NUEVO CAMPECHITO	98.00	1	0	3380	69.2	5.4	4.2	4.8	5.8	2.4	7	1.2	69.2	5.4	25.4	0.094	0.503
NUEVO PROGRESO	116.60	1	0	3309	68.6	3.1	5.5	5.4	6.1	2.3	7.8	1.2	68.6	3.1	28.3	0.083	0.505
ZACATAL	163.20	1	0	3458	68.3	7.3	3.4	4.7	5.6	2.2	7.2	1.3	68.3	7.3	24.4	0.103	0.505
CD. DEL CARMEN	167.50	0	0														

21 CARR : VILLAHERMOSA - FRANCISCO ESCARCEGA

CLAVE: 00092

ruta : MEX-186

AÑO : 2007

L U G A R	E S T A C I O N				CLASIFICACION VEHICULAR EN PORCIENTO												
	KM	TE	SC	TDPA	A	B	C2	C3	T3S2	T3S3	T3S2R4	OTROS	A	B	C	K'	D
VILLAHERMOSA	0.00	3	1	7905	72.6	4.5	0.2	3.2	5.1	2.1	5.9	6.4	72.6	4.5	22.9	0.115	0.504
VILLAHERMOSA	0.00	3	2	7784	81	4.7	1.2	1.6	5.2	1.3	2.6	2.4	81	4.7	14.3	0.115	0.504
T. IZQ. AEROPUERTO	12.00	1	1	9338	76.3	3.2	3.9	2.9	6.1	2.2	2.8	2.6	76.3	3.2	20.5	0.078	0.504
T. IZQ. AEROPUERTO	12.00	1	2	9188	75.5	3.6	4	2.9	6.2	2.2	2.8	2.8	75.5	3.6	20.9	0.08	0.504
X. C. CACAOS - LA GRANJA	32.46	1	0	8790	75.1	5.7	2.2	3.2	6.3	1.8	4.1	1.6	75.1	5.7	19.2	0.083	0.506
X. C. CACAOS - LA GRANJA	32.46	3	0	7313	75.8	14.3	3.4	2.4	1.3	1	0.3	1.5	75.8	14.3	9.9	0.092	0.521
X. C. JALAPA - JONUTA	40.00	3	0	6256	70	9.4	7.5	6.8	4	1.6	0.1	0.6	70	9.4	20.6	0.075	0.505
T. IZQ. MACUSPANA	46.20	1	0	5961	76.9	5.7	6.1	4.8	2.6	2.3	0	1.6	76.9	5.7	17.4	0.084	0.501
T. IZQ. MACUSPANA	46.20	3	0	6694	55.7	3.8	4.6	5.2	4.5	2.8	12.6	10.8	55.7	3.8	40.5	0.079	0.512
X. C. ESTACION MACUSPANA - VERNET	54.30	1	0	5864	63.8	4.3	6.2	5.8	8.6	3.3	6.4	1.6	63.8	4.3	31.9	0.082	0.501
T. DER. CHIVALITO (EST. PINO SUAREZ)	70.00	1	0	6229	64	4.9	6.3	5	8.6	3.2	6.4	1.6	64	4.9	31.1	0.076	0.507
T. DER. CHIVALITO (EST. PINO SUAREZ)	70.00	3	0	6204	63.2	8	4.7	4.3	8.6	3.2	6.4	1.6	63.2	8	28.8	0.076	0.507
T. DER. ESTACION ZOPO	71.00	1	0	5262	64.1	4.9	5.5	5	9.3	2.9	6.8	1.5	64.1	4.9	31	0.078	0.509
T. DER. ESTACION ZOPO	71.00	3	0	7063	69.8	6.7	5.6	5.1	5.4	2.1	4.4	0.9	69.8	6.7	23.5	0.094	0.508
LIM. EDOS. TERM. TAB. PPIA. CHIS.	76.90	0	0														
T. IZQ. BONANZA	88.00	1	0	4392	74.9	4.2	3.7	2.6	7.5	4.5	0	2.6	74.9	4.2	20.9	0.103	0.503
T. IZQ. JONUTA	101.00	1	0	4356	62.7	4	10.7	1.8	4	2.4	1.8	12.6	62.7	4	33.3	0.076	0.501
T. IZQ. JONUTA	101.00	3	0	4060	76.9	4.3	2.5	1.3	4.2	2.4	2	6.4	76.9	4.3	18.8	0.082	0.507

CAMPECHE

21 CARR : VILLAHERMOSA - FRANCISCO ESCARCEGA

CLAVE: 00092

RUTA : MEX-186

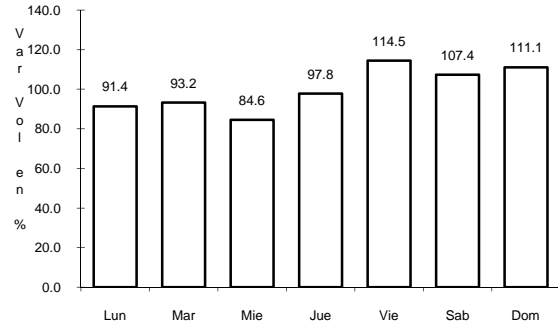
AÑO : 2007

L U G A R	E S T A C I O N				CLASIFICACION VEHICULAR EN PORCIENTO													
	KM	TE	SC	TDPA	A	B	C2	C3	T3S2	T3S3	T3S2R4	OTROS	A	B	C	K'	D	
X. C. CATAZAJA - PALENQUE	114.00	1	0	4570	72.3	4	6.8	1.6	5.9	1.9	2.6	4.9	72.3	4	23.7	0.086	0.504	
X. C. CATAZAJA - PALENQUE	114.00	3	0	3934	64.3	4.8	12.3	0.7	5.1	1	1.2	10.6	64.3	4.8	30.9	0.074	0.513	
T. DER. EMILIANO ZAPATA	134.70	1	0	3535	61.9	6.2	8.4	3	5.5	3.3	3.6	8.1	61.9	6.2	31.9	0.082	0.502	
T. DER. EMILIANO ZAPATA	134.70	3	0	2984	61.8	7.1	9.6	0.4	6.6	1.1	0.8	12.6	61.8	7.1	31.1	0.079	0.5	
LIM. EDOS. TERM. CHIS. PPIA. TAB.	140.70	0	0															
LIM. EDOS. TERM. TAB. PPIA. CAMP.	152.50	0	0															
T. IZQ. PALIZADA	154.10	1	0	2533	52.2	5.5	10.6	2.5	9.6	3.6	4.7	11.3	52.2	5.5	42.3	0.077	0.503	
T. IZQ. PALIZADA	154.10	3	0	2897	56	4.6	6.8	2.4	9.9	3.4	4.8	12.1	56	4.6	39.4	0.078	0.504	
T. DER. CANDELARIA	233.40	1	0	2831	81.7	5	5.2	4.7	1.5	0.7	0	1.2	81.7	5	13.3	0.097	0.514	
T. DER. FELIPE ANGELES	253.00	1	0	2395	54.4	4	9.9	3.5	8.8	3.5	6.6	9.3	54.4	4	41.6	0.117	0.514	
T. IZQ. SABANCUY	274.10	1	0	2985	77.7	7.1	4.6	3.5	2.5	2.4	0	2.2	77.7	7.1	15.2	0.087	0.505	
FRANCISCO ESCARCEGA	297.00	1	0	4939	79.1	5.9	1.9	3.6	2.9	2.6	1.2	2.8	79.1	5.9	15	0.064	0.504	

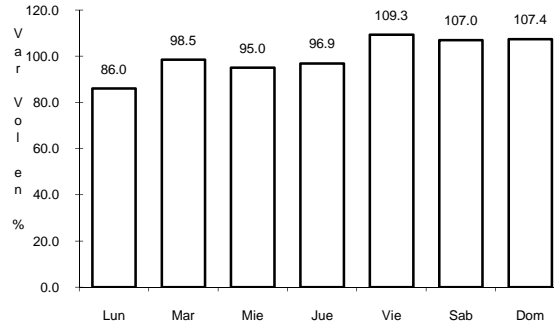
1 CARR: CAMPECHE - MERIDA

CLAVE: 00066

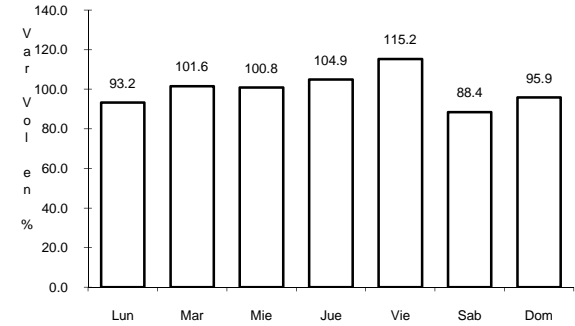
RUTA: MEX-180



Km: 0.00 Tipo: 3 Sent: 1



Km: 0.00 Tipo: 3 Sent: 2

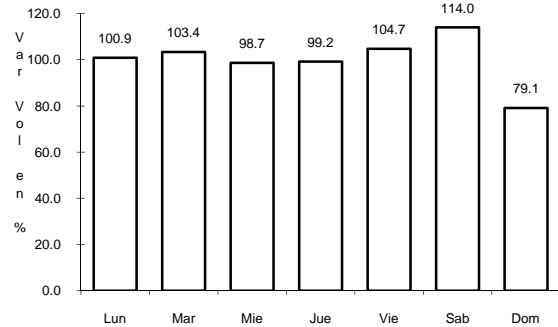


Km: 160.49 Tipo: 1 Sent: 0

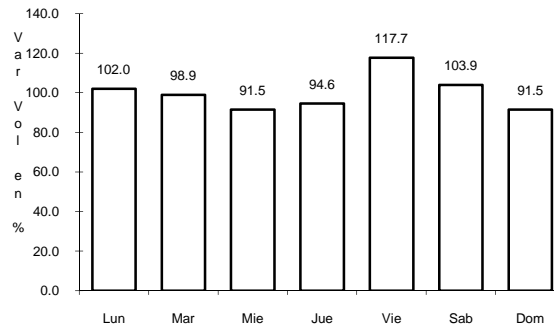
2 CARR: CAMPECHE - UMAN

CLAVE: 00164

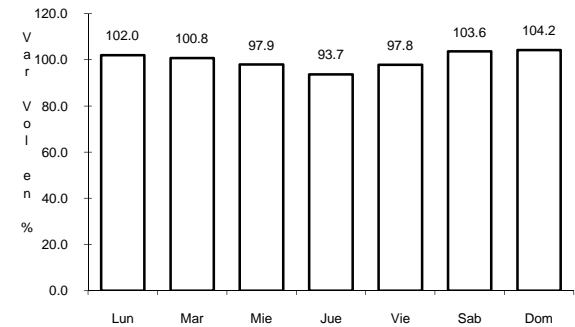
RUTA: MEX-261



Km: 7.00 Tipo: 1 Sent: 0



Km: 117.88 Tipo: 3 Sent: 0

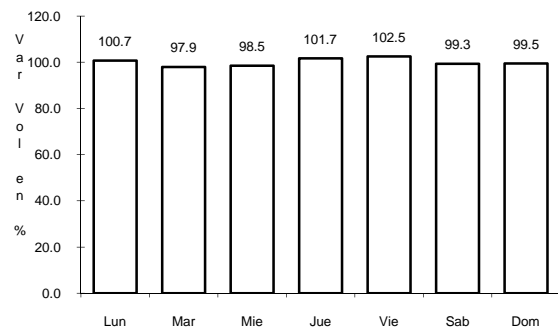


Km: 230.83 Tipo: 1 Sent: 0

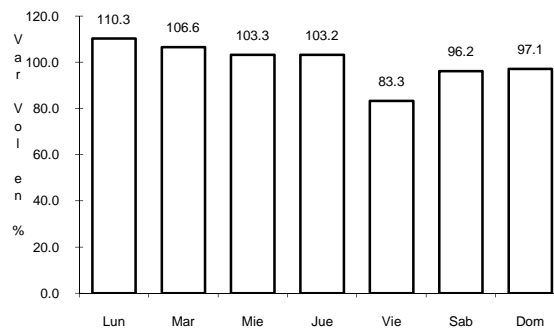
3 CARR: DZITBALCHE - ENT. SAN BERNARDO

CLAVE: 00162

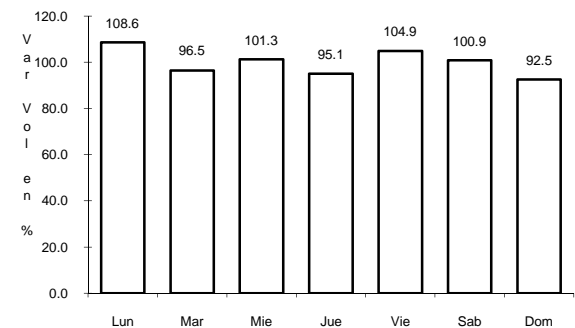
RUTA: MEX-265



Km: 28.76 Tipo: 1 Sent: 0



Km: 34.59 Tipo: 1 Sent: 0

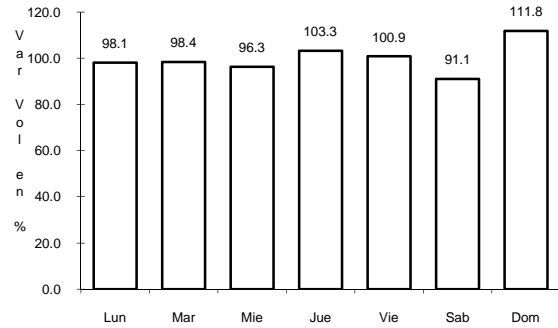


Km: 53.86 Tipo: 3 Sent: 0

7 CARR: CHENCOYI - TENABO

CLAVE: 04576

RUTA: MEX-263



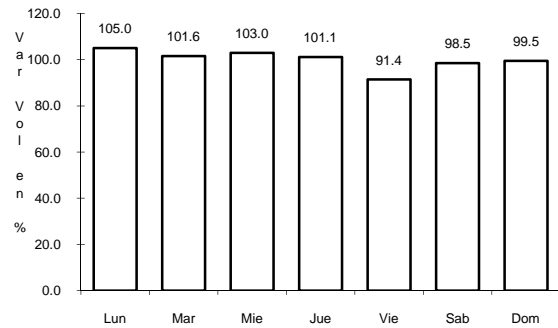
Km: 28.00

Tipo: 1

Sent: 0

8 CARR: T. C. (FRANCISCO ESCARCEGA - CHAMPOTON) - YOHALTU CLAVE: 04581

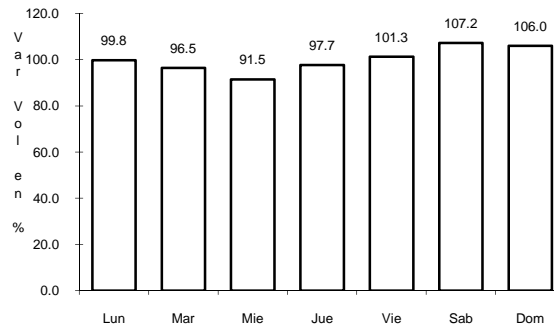
RUTA: CAM



Km: 0.00

Tipo: 3

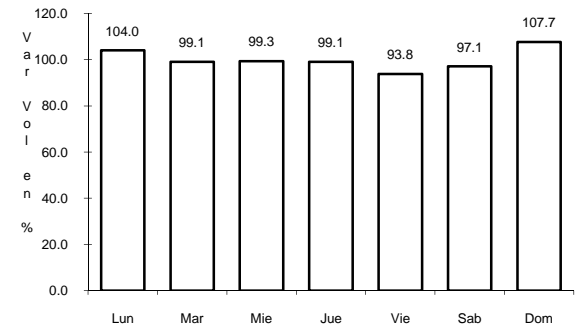
Sent: 0



Km: 36.50

Tipo: 1

Sent: 0



Km: 36.50

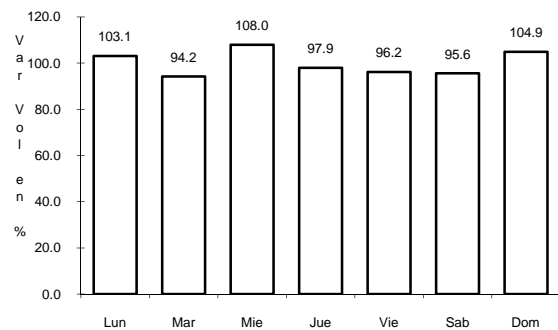
Tipo: 3

Sent: 0

10 CARR: FRANCISCO ESCARCEGA - CHAMPOTON

CLAVE: 04103

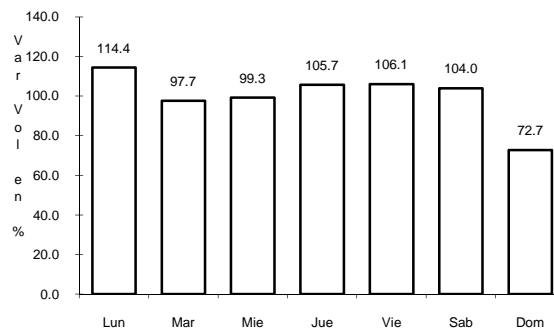
RUTA: MEX-261



Km: 0.00

Tipo: 3

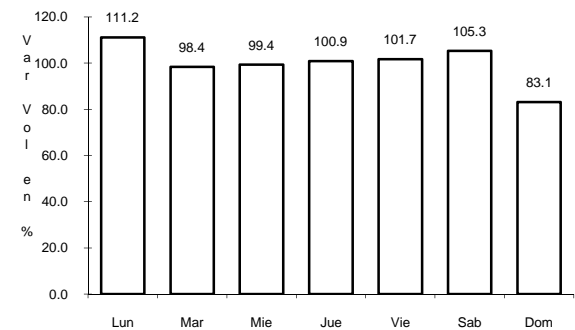
Sent: 0



Km: 81.40

Tipo: 1

Sent: 1



Km: 81.40

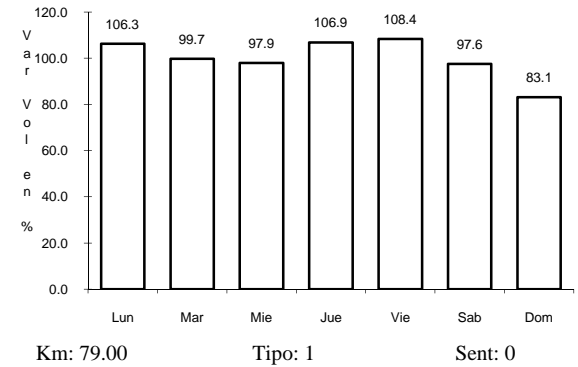
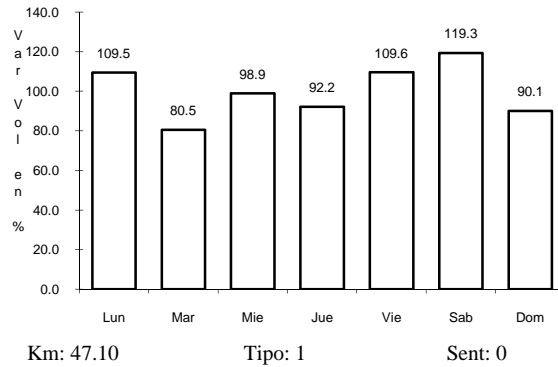
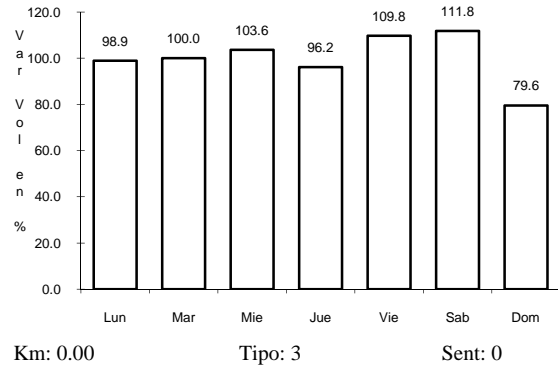
Tipo: 1

Sent: 2

11 CARR: HALTUNCHEN - SAN ANTONIO CAYAL

CLAVE: 04009

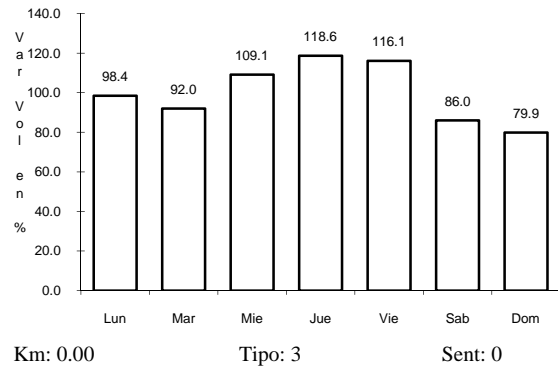
RUTA: MEX-188



12 CARR: HOPELCHEN - DZIBALCHEN

CLAVE: 04572

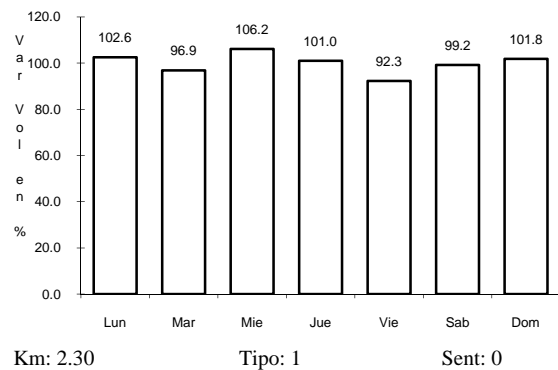
RUTA: CAM-261



13 CARR: LIBRAMIENTO DE BECAL

CLAVE: 04010

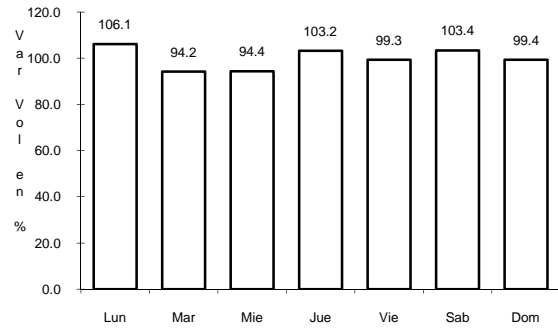
RUTA: CAM



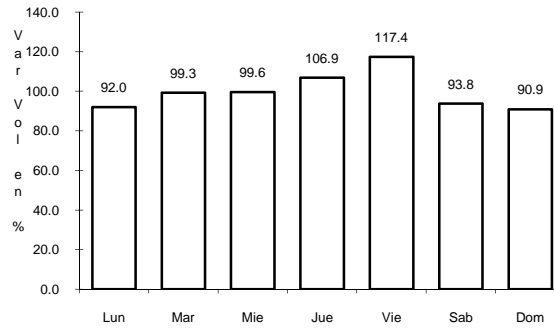
17 CARR: RAMAL A NUEVO COAHUILA

CLAVE: 04015

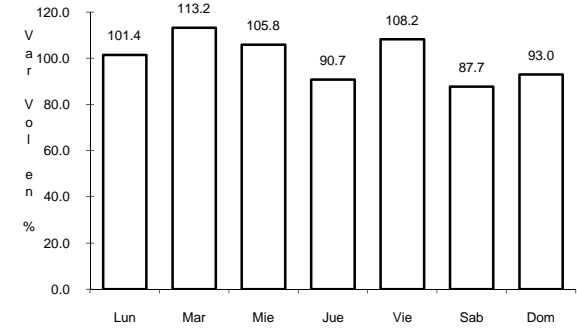
RUTA: MEX-221



Km: 0.00 Tipo: 3 Sent: 0



Km: 44.50 Tipo: 3 Sent: 0

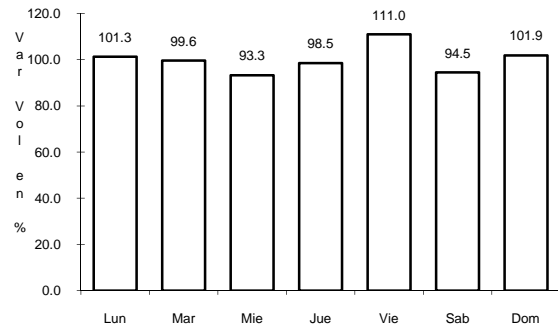


Km: 70.00 Tipo: 1 Sent: 0

18 CARR: RAMAL A RUIZ CORTINES

CLAVE: 04101

RUTA: MEX

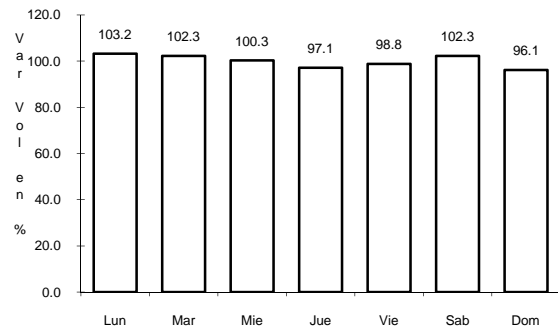


Km: 1.00 Tipo: 3 Sent: 0

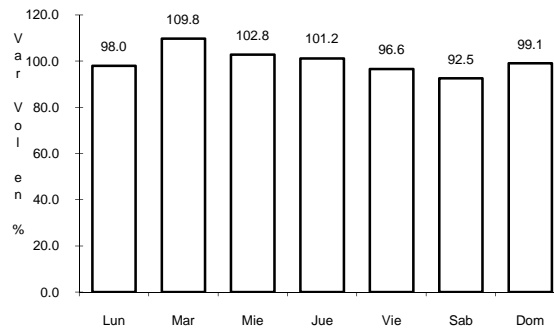
19 CARR: SAN MARCO - PALIZADA

CLAVE: 00490

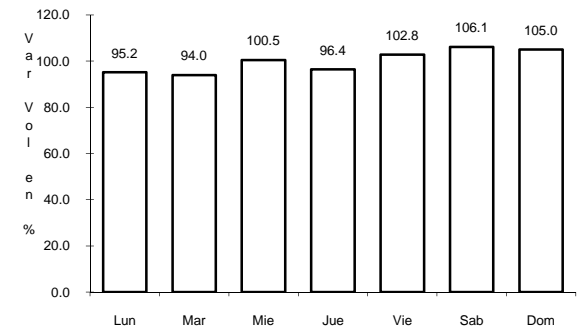
RUTA: MEX-217



Km: 0.00 Tipo: 3 Sent: 0



Km: 46.20 Tipo: 1 Sent: 0

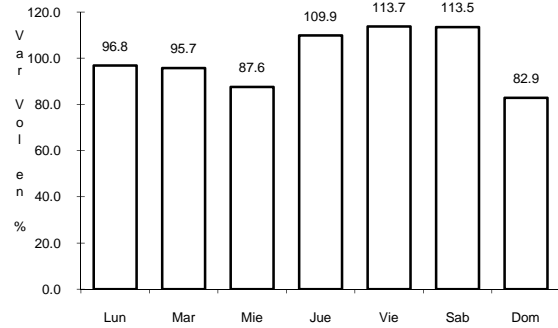


Km: 46.20 Tipo: 3 Sent: 0

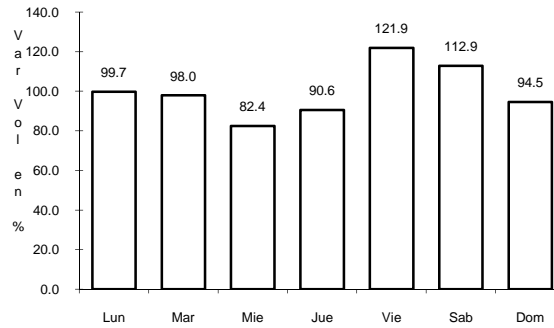
20 CARR: VILLAHERMOSA - CD. DEL CARMEN

CLAVE: 00064

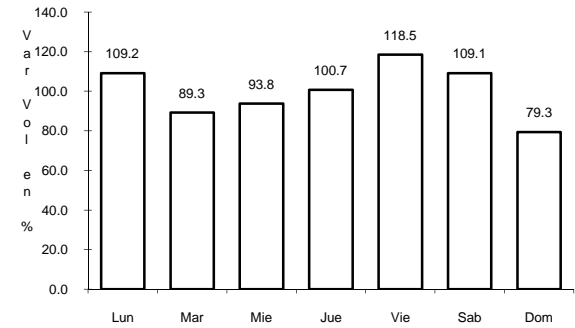
ruta: MEX-180



Km: 4.30 Tipo: 3 Sent: 0



Km: 78.00 Tipo: 3 Sent: 0

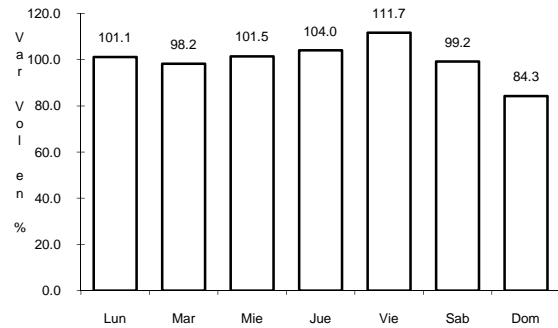


Km: 163.17 Tipo: 1 Sent: 0

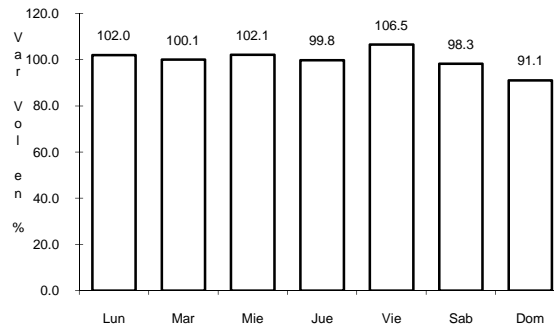
21 CARR: VILLAHERMOSA - FRANCISCO ESCARCEGA

CLAVE: 00092

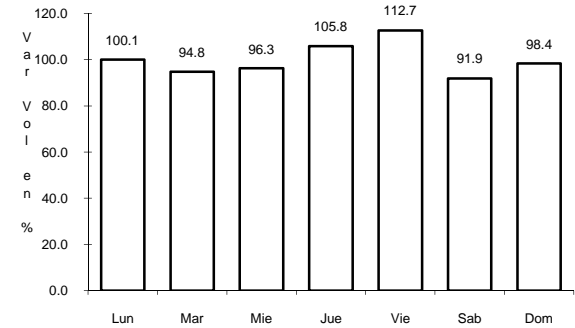
ruta: MEX-186



Km: 0.00 Tipo: 3 Sent: 1



Km: 0.00 Tipo: 3 Sent: 2



Km: 297.04 Tipo: 1 Sent: 0