

03 BAJA CALIFORNIA SUR



OCEANO

PACIFICO

GOLFO

DE

CALIFORNIA

MAPA INDICE

15 Num. Indice
2008

CARRETERAS AFORADAS

Num. INDICE	CARRETERA
1	CABO SAN LUCAS - LA PAZ
2	CD. CONSTITUCION - PUERTO SAN CARLOS
3	CD. INSURGENTES - LA PURISIMA
4	CD. INSURGENTES - LORETO
5	CD. INSURGENTES - PTO. ADOLFO LOPEZ MATEOS
6	LA PAZ - CD. INSURGENTES
7	LA PAZ - ENSENADA DE MUERTOS
8	LA PAZ - PICHILINGUE
9	LIBRAMIENTO DE CABO SAN LUCAS
10	LIBRAMIENTO DE LA PAZ
11	LIBRAMIENTO NORTE DE LA PAZ
12	LORETO - SANTA ROSALIA
13	RAMAL A AEROPUERTO DE LA PAZ
14	RAMAL A AEROPUERTO DE LOS CABOS
15	RAMAL A BAHIA DE TORTUGAS
16	RAMAL A BENITO JUAREZ
17	RAMAL A EJIDO LEY FEDERAL DE AGUAS NUMERO DOS
18	RAMAL A EJIDO LEY FEDERAL DE AGUAS NUMERO CUATRO
19	RAMAL A GUERRERO NEGRO
20	RAMAL A LA RIBERA
21	RAMAL A LEY FEDERAL DE AGUAS NUMERO CINCO
22	CAMPO FISHER - PUNTA ABREOJOS
23	RAMAL A SAN IGNACIO
24	RAMAL A SAN JUAN DE LA COSTA
25	RAMAL A SANTA CATARINA
26	RAMAL A SANTIAGO
27	SAN JOSE DEL CABO - AEROPUERTO LOS CABOS (CUOTA)
28	SAN PEDRO - CABO SAN LUCAS
29	SANTA ROSALIA - GUERRERO NEGRO
30	PUNTA PRIETA - GUERRERO NEGRO

BAJA CALIFORNIA SUR

1 CARR : CABO SAN LUCAS - LA PAZ

CLAVE: 03102

RUTA : MEX-001

AÑO : 2007

L U G A R	E S T A C I O N				CLASIFICACION VEHICULAR EN PORCIENTO													
	KM	TE	SC	TDPA	A	B	C2	C3	T3S2	T3S3	T3S2R4	OTROS	A	B	C	K'	D	
CABO SAN LUCAS	0.00	3	1	13137	93.1	1.5	2.3	1.5	0.6	0.5	0.2	0.3	93.1	1.5	5.4	0.063	0.503	
CABO SAN LUCAS	0.00	3	2	12996	93	1.6	2.4	1.4	0.5	0.6	0.3	0.2	93	1.6	5.4	0.062	0.503	
EL TULE	13.00	3	1	8888	91.7	1.6	2.6	1.3	0.5	0.5	0.2	1.6	91.7	1.6	6.7	0.077	0.502	
EL TULE	13.00	3	2	8944	91	2	2.8	1.6	0.6	0.4	0.4	1.2	91	2	7	0.067	0.502	
SAN JOSE DEL CABO	33.00	1	1	15056	89.5	1.4	3.5	3	0.5	0.2	0.8	1.1	89.5	1.4	9.1	0.073	0.502	
SAN JOSE DEL CABO	33.00	1	2	15192	86.7	1.7	4.9	3.1	1.1	0.1	0.9	1.5	86.7	1.7	11.6	0.071	0.502	
SAN JOSE DEL CABO	33.00	3	1	17491	77.2	2.1	2.1	2.8	3.6	3.5	4.2	4.5	77.2	2.1	20.7	0.073	0.5	
SAN JOSE DEL CABO	33.00	3	2	17507	81.4	2.4	3	3.3	2.8	2.4	1.8	2.9	81.4	2.4	16.2	0.063	0.5	
T. DER. SANTA CATARINA	41.00	1	1	12320	92.2	1.3	3	1.2	0.5	0.3	0.4	1.1	92.2	1.3	6.5	0.067	0.501	
T. DER. SANTA CATARINA	41.00	1	2	12392	91.6	1.4	2.6	2	0.6	0.3	0.5	1	91.6	1.4	7	0.101	0.501	
T. IZQ. AEROPUERTO	43.46	1	1	8430	90.9	1.3	4.1	2	0.4	0.1	0.2	1	90.9	1.3	7.8	0.069	0.5	
T. IZQ. AEROPUERTO	43.46	1	2	8431	91.6	1.8	2.8	1.3	0.4	0.7	0.7	0.7	91.6	1.8	6.6	0.122	0.5	
SANTA ANITA	46.00	1	0	5462	85.5	2.4	5.7	2.6	1	0.7	0.6	1.5	85.5	2.4	12.1	0.103	0.502	
SANTA ANITA	46.00	3	0	4298	91	2.8	2.9	1.5	0.8	0.4	0.6	0	91	2.8	6.2	0.073	0.503	
T. IZQ. MIRAFLORES	71.50	3	0	2032	92.7	1.4	1.7	1.5	0.6	0.3	0.5	1.3	92.7	1.4	5.9	0.103	0.501	
T. IZQ. SANTIAGO	84.00	3	0	2604	85.3	2.6	2.5	0.7	2.1	1.2	0.6	5	85.3	2.6	12.1	0.097	0.503	
LA CUEVA	95.20	3	0	2453	90.3	1.7	2.3	1.3	1.5	0.7	0.9	1.3	90.3	1.7	8	0.098	0.5	
T. DER. BAHIA DE LAS PALMAS	110.00	3	0	1623	85	2.3	5.9	0.7	0.7	1.8	0.1	3.5	85	2.3	12.7	0.112	0.559	
SAN BARTOLO	128.50	1	0	1866	90.8	2.7	2.5	2.2	1.1	0.6	0	0.1	90.8	2.7	6.5	0.103	0.501	
SAN ANTONIO	156.00	3	0	2337	88.3	1.7	3.2	1.6	1.7	1.3	1	1.2	88.3	1.7	10	0.084	0.5	
EL TRIUNFO	162.80	1	0	1843	91.8	1.9	2.7	1.4	0.9	0.6	0.6	0.1	91.8	1.9	6.3	0.1	0.502	
T. IZQ. TODOS SANTOS	184.40	3	0	5547	87.1	3.2	3.6	2.7	1.6	1.2	0.5	0.1	87.1	3.2	9.7	0.081	0.5	
SAN PEDRO	191.00	1	0	5355	87.9	3	3.5	2.5	1.4	1.3	0.4	0	87.9	3	9.1	0.082	0.503	
SAN PEDRO	191.00	3	0	6662	87.8	3	3.4	2.7	1.3	1.4	0.4	0	87.8	3	9.2	0.082	0.504	
LIMITE ZONA URBANA DE LA PAZ	211.00	1	0	7754	82	2.1	3.4	2	4.2	2.4	1.6	2.3	82	2.1	15.9	0.071	0.502	
LA PAZ	213.00	0	0															

2 CARR : CD. CONSTITUCION - PUERTO SAN CARLOS

CLAVE: 03231

RUTA : MEX-022

AÑO : 2007

L U G A R	E S T A C I O N				CLASIFICACION VEHICULAR EN PORCIENTO													
	KM	TE	SC	TDPA	A	B	C2	C3	T3S2	T3S3	T3S2R4	OTROS	A	B	C	K'	D	
CD. CONSTITUCION	0.00	3	0	3175	93.1	1.4	2.4	1.2	0.9	0.4	0.5	0.1	93.1	1.4	5.5	0.077	0.502	
T. DER. BENITO JUAREZ	10.00	1	0	1285	93.6	1.2	1.9	1.6	0.6	0.4	0.5	0.2	93.6	1.2	5.2	0.079	0.501	
T. DER. BENITO JUAREZ	10.00	3	0	1834	92.6	1.9	1.8	1.7	1	0.4	0.5	0.1	92.6	1.9	5.5	0.078	0.502	

BAJA CALIFORNIA SUR

2 CARR : CD. CONSTITUCION - PUERTO SAN CARLOS

CLAVE: 03231

RUTA : MEX-022

AÑO : 2007

L U G A R	E S T A C I O N				C L A S I F I C A C I O N V E H I C U L A R E N P O R C I E N T O .												
	KM	TE	SC	TDPA	A	B	C2	C3	T3S2	T3S3	T3S2R4	OTROS	A	B	C	K'	D
PUERTO SAN CARLOS	58.00	0	0														

3 CARR : CD. INSURGENTES - LA PURISIMA

CLAVE: 03005

RUTA : BCS-001

AÑO : 2007

L U G A R	E S T A C I O N				C L A S I F I C A C I O N V E H I C U L A R E N P O R C I E N T O .												
	KM	TE	SC	TDPA	A	B	C2	C3	T3S2	T3S3	T3S2R4	OTROS	A	B	C	K'	D
CD. INSURGENTES	0.00	3	0	2815	85.1	5.4	3.3	2.3	2.1	1.1	0.4	0.3	85.1	5.4	9.5	0.087	0.502
IGNACIO ZARAGOZA	18.00	1	0	1620	83.5	5.7	3.8	2.3	2.9	1.5	0.3	0	83.5	5.7	10.8	0.083	0.5
IGNACIO ZARAGOZA	18.00	3	0	1475	83.6	4.6	4.4	2.4	2.9	1.5	0.4	0.2	83.6	4.6	11.8	0.086	0.5
T. IZQ. SANTO DOMINGO	28.70	1	0	914	90.3	1.9	4.5	1.6	0.7	0.6	0.4	0	90.3	1.9	7.8	0.09	0.5
FRANCISCO VILLA	64.00	3	0	676	87.4	3.3	3.6	1.7	2.5	0.9	0.6	0	87.4	3.3	9.3	0.096	0.501
LA PURISIMA	107.00	1	0	470	84.9	3.7	4.7	2.2	2.8	0.9	0.8	0	84.9	3.7	11.4	0.096	0.5

4 CARR : CD. INSURGENTES - LORETO

CLAVE: 03092

RUTA : MEX-001

AÑO : 2007

L U G A R	E S T A C I O N				C L A S I F I C A C I O N V E H I C U L A R E N P O R C I E N T O .												
	KM	TE	SC	TDPA	A	B	C2	C3	T3S2	T3S3	T3S2R4	OTROS	A	B	C	K'	D
CD. INSURGENTES	0.00	3	0	3589	88.1	2.5	3.8	1.7	1.9	1.1	0.5	0.4	88.1	2.5	9.4	0.078	0.501
T. DER. LEY FEDERAL DE AGUAS NUMERO UNO	7.00	3	0	1755	85.4	3	4	3.4	1.8	1.7	0.2	0.5	85.4	3	11.6	0.085	0.5
T. DER. LEY FEDERAL DE AGUAS NUMERO DOS	17.00	3	0	1385	89.1	1.7	3.2	3.1	1.4	0.9	0.4	0.2	89.1	1.7	9.2	0.092	0.501
T. DER. PUERTO AGUA VERDE	65.00	1	0	1578	81.2	4.8	4.5	3.2	3	2	1	0.3	81.2	4.8	14	0.091	0.501
T. DER. PUERTO AGUA VERDE	65.00	3	0	1573	85.4	5.6	5	1.8	1.8	0.1	0.3	0	85.4	5.6	9	0.083	0.501
EL LIGUI	84.50	1	0	1924	80.7	4.1	6.8	2.8	2.6	1.6	0.7	0.7	80.7	4.1	15.2	0.081	0.5
T. DER. PUERTO ESCONDIDO	95.40	1	0	1929	84.1	2.5	3.6	2.9	3.2	2	1.1	0.6	84.1	2.5	13.4	0.081	0.503
T. DER. PUERTO ESCONDIDO	95.40	3	0	1982	83	3.2	6.3	1.9	1.6	2.7	0.9	0.4	83	3.2	13.8	0.079	0.502
NOPOLO	109.50	1	0	2468	83.6	3.6	4.6	1.7	2.4	1.6	1.1	1.4	83.6	3.6	12.8	0.091	0.504
T. DER. AEROPUERTO DE LORETO	117.30	1	0	3907	83.4	3.2	4.5	2.5	2.9	1.9	0.8	0.8	83.4	3.2	13.4	0.109	0.503
T. DER. LORETO	119.00	1	0	5337	81.8	3.6	5.1	2.6	3.1	1.9	1	0.9	81.8	3.6	14.6	0.08	0.5

5 CARR : CD. INSURGENTES - PTO. ADOLFO LOPEZ MATEOS

CLAVE: 03404

RUTA : BCS

AÑO : 2007

L U G A R	E S T A C I O N				C L A S I F I C A C I O N V E H I C U L A R E N P O R C I E N T O .												
	KM	TE	SC	TDPA	A	B	C2	C3	T3S2	T3S3	T3S2R4	OTROS	A	B	C	K'	D
T. C. CD. INSURGENTES - LA PURISIMA	0.00	3	0	486	89.9	4.4	4.4	0.1	0.4	0	0.4	0.4	89.9	4.4	5.7	0.113	0.503

BAJA CALIFORNIA SUR

5 CARR : CD. INSURGENTES - PTO. ADOLFO LOPEZ MATEOS

CLAVE: 03404

RUTA : BCS

AÑO : 2007

L U G A R	E S T A C I O N				C L A S I F I C A C I O N V E H I C U L A R E N P O R C I E N T O .												
	KM	TE	SC	TDPA	A	B	C2	C3	T3S2	T3S3	T3S2R4	OTROS	A	B	C	K'	D
PUERTO ADOLFO LOPEZ MATEOS	35.50	1	0	826	95.8	1	1.3	0.5	0	0.7	0.2	0.5	95.8	1	3.2	0.09	0.502

6 CARR : LA PAZ - CD. INSURGENTES

CLAVE: 03101

RUTA : MEX-001

AÑO : 2007

L U G A R	E S T A C I O N				C L A S I F I C A C I O N V E H I C U L A R E N P O R C I E N T O .												
	KM	TE	SC	TDPA	A	B	C2	C3	T3S2	T3S3	T3S2R4	OTROS	A	B	C	K'	D
LA PAZ	0.00	3	1	6158	84.7	4.5	3.2	2	1.8	1.4	1.4	1	84.7	4.5	10.8	0.077	0.5
LA PAZ	0.00	3	2	6149	81.3	5.5	4.3	2.7	2.1	1.9	1	1.2	81.3	5.5	13.2	0.075	0.5
T. IZQ. AEROPUERTO	8.90	1	1	7960	87.6	4.3	3.4	0.8	1.3	1.2	0.6	0.8	87.6	4.3	8.1	0.071	0.503
T. IZQ. AEROPUERTO	8.90	1	2	7874	86.5	3.5	3.8	1.3	1.6	1.6	0.9	0.8	86.5	3.5	10	0.069	0.503
T. IZQ. AEROPUERTO	8.90	3	0	10017	85.1	3.2	4	1.7	2	2.4	1.5	0.1	85.1	3.2	11.7	0.07	0.502
EL CENTENARIO	13.50	3	0	5516	84.3	5.1	3.9	2.4	1.8	1.8	0.6	0.1	84.3	5.1	10.6	0.067	0.501
T. DER. SAN JUAN DE LA COSTA	17.00	1	0	5138	86.6	2.8	4	1.7	2.5	1.7	0.6	0.1	86.6	2.8	10.6	0.069	0.5
T. DER. SAN JUAN DE LA COSTA	17.00	3	0	2590	58	5.1	3.8	1.6	5.4	3.8	1.6	20.7	58	5.1	36.9	0.071	0.52
T. DER. ALFREDO V. BONFIL	24.00	3	0	2652	88.4	2.5	4.5	2.1	1.3	1	0.2	0	88.4	2.5	9.1	0.075	0.5
T. IZQ. EL CONEJO	79.60	1	0	1801	75	4	5.7	1.8	2.6	0.9	0.3	9.7	75	4	21	0.072	0.5
T. IZQ. EL CONEJO	79.60	3	0	2463	87.6	2.4	4.4	2.7	1.1	1.1	0.7	0	87.6	2.4	10	0.075	0.5
EL CIENTO VEINTIOCHO	118.20	1	0	2204	75.5	0	9.8	0.8	4.9	1.2	0.4	7.4	75.5	0	24.5	0.083	0.503
SANTA RITA	156.70	1	0	2408	81.5	4.5	6.3	2.9	2.5	1.6	0.7	0	81.5	4.5	14	0.072	0.5
SANTA RITA	156.70	3	0	2611	74.4	5.2	6.3	1.8	3.1	1.2	0.5	7.5	74.4	5.2	20.4	0.083	0.515
CD. CONSTITUCION	213.00	1	0	4747	82.8	4	5.8	2.7	2.4	1.7	0.5	0.1	82.8	4	13.2	0.069	0.501
CD. CONSTITUCION	213.00	3	0	5052	85.6	3.7	3.9	2.7	2.2	1.3	0.5	0.1	85.6	3.7	10.7	0.071	0.502
T. DER. LEY FEDERAL DE AGUAS NUMERO CUATRO	229.00	1	0	4268	86.5	2.7	3.9	2.7	2.2	1.4	0.5	0.1	86.5	2.7	10.8	0.082	0.501
CD. INSURGENTES	236.50	1	1	2330	83.8	3.5	2.8	2.5	1.5	2.5	1.8	1.6	83.8	3.5	12.7	0.094	0.502
CD. INSURGENTES	236.50	1	2	2316	80.7	3.9	2.6	2.2	2.7	2.5	1.4	4	80.7	3.9	15.4	0.089	0.502

7 CARR : LA PAZ - ENSENADA DE MUERTOS

CLAVE: 03103

RUTA : BCS-246

AÑO : 2007

L U G A R	E S T A C I O N				C L A S I F I C A C I O N V E H I C U L A R E N P O R C I E N T O .												
	KM	TE	SC	TDPA	A	B	C2	C3	T3S2	T3S3	T3S2R4	OTROS	A	B	C	K'	D
LA PAZ	0.00	3	0	4456	91	1.9	3.3	1.7	1	0.9	0.2	0	91	1.9	7.1	0.077	0.501
T. IZQ. EL SARGENTO	37.00	1	0	1520	92.6	1.7	3	1.3	0.8	0.6	0	0	92.6	1.7	5.7	0.077	0.502
T. IZQ. EL SARGENTO	37.00	3	0	1650	94.9	1.6	2.6	0.4	0.2	0.1	0.2	0	94.9	1.6	3.5	0.088	0.502
ENSENADA DE MUERTOS	49.00	1	0	831	93.6	1.5	3.2	1	0.3	0.2	0.2	0	93.6	1.5	4.9	0.131	0.502

BAJA CALIFORNIA SUR

8 CARR : LA PAZ - PICHILINGUE

CLAVE: 03230

RUTA : MEX-011

AÑO : 2007

L U G A R	E S T A C I O N				C L A S I F I C A C I O N V E H I C U L A R E N P O R C I E N T O .													
	KM	TE	SC	TDPA	A	B	C2	C3	T3S2	T3S3	T3S2R4	OTROS	A	B	C	K'	D	
LA PAZ	0.00	3	1	5642	88.7	2.7	4.1	1.2	1.1	0.7	0.4	1.1	88.7	2.7	8.6	0.11	0.501	
LA PAZ	0.00	3	2	5610	87.8	3	4.3	1.3	1	1.1	0.7	0.8	87.8	3	9.2	0.079	0.501	
ESCUELA TECNICA PESQUERA	9.30	3	0	3843	84.6	2.5	3.8	3.3	1.7	1.8	1	1.3	84.6	2.5	12.9	0.088	0.504	
PICHILINGUE	17.07	1	0	2715	93.1	1.5	2.4	1	1	0.4	0.6	0	93.1	1.5	5.4	0.109	0.502	

9 CARR : LIBRAMIENTO DE CABO SAN LUCAS

CLAVE: 03100

RUTA : MEX

AÑO : 2007

L U G A R	E S T A C I O N				C L A S I F I C A C I O N V E H I C U L A R E N P O R C I E N T O .													
	KM	TE	SC	TDPA	A	B	C2	C3	T3S2	T3S3	T3S2R4	OTROS	A	B	C	K'	D	
T. C. SAN PEDRO - CABO SAN LUCAS	0.00	3	1	14525	90.7	1.9	2.6	1.7	1.5	1.1	0.4	0.1	90.7	1.9	7.4	0.068	0.502	
T. C. SAN PEDRO - CABO SAN LUCAS	0.00	3	2	14388	90.6	2	2.7	1.5	1.3	1.3	0.5	0.1	90.6	2	7.4	0.066	0.502	
T. C. CABO SAN LUCAS - LA PAZ	3.00	1	0	25651	88.3	2	3.2	3	1.5	1.2	0.7	0.1	88.3	2	9.7	0.076	0.502	

10 CARR : LIBRAMIENTO DE LA PAZ

CLAVE: 03004

RUTA : BCS

AÑO : 2007

L U G A R	E S T A C I O N				C L A S I F I C A C I O N V E H I C U L A R E N P O R C I E N T O .													
	KM	TE	SC	TDPA	A	B	C2	C3	T3S2	T3S3	T3S2R4	OTROS	A	B	C	K'	D	
T. C. CABO SAN LUCAS - LA PAZ	0.00	3	0	12525	77.7	4.3	7.9	3.1	2.6	1.4	1.5	1.5	77.7	4.3	18	0.088	0.503	
T. C. LA PAZ - CD. INSURGENTES	10.00		0	0														

11 CARR : LIBRAMIENTO NORTE DE LA PAZ

CLAVE: 03006

RUTA : BCS

AÑO : 2007

L U G A R	E S T A C I O N				C L A S I F I C A C I O N V E H I C U L A R E N P O R C I E N T O .													
	KM	TE	SC	TDPA	A	B	C2	C3	T3S2	T3S3	T3S2R4	OTROS	A	B	C	K'	D	
T. C. LA PAZ - PICHILINGUE	0.00	3	0	1949	80.8	3.8	6.5	2.9	2.9	2.6	0.1	0.4	80.8	3.8	15.4	0.071	0.502	
T. C. LA PAZ - ENSENADA DE MUERTOS	18.80	1	0	9275	76.2	4.8	1.6	1.7	4.9	4.2	2.7	3.9	76.2	4.8	19	0.074	0.501	
T. C. LA PAZ - ENSENADA DE MUERTOS	18.80	3	0	6732	82.9	3.4	6.2	2.6	2.4	1.7	0.8	0	82.9	3.4	13.7	0.076	0.5	
T. C. CABO SAN LUCAS - LA PAZ	20.70	1	0	7802	83.3	3	5.9	2.4	2.8	1.5	1	0.1	83.3	3	13.7	0.078	0.502	

12 CARR : LORETO - SANTA ROSALIA

CLAVE: 03393

RUTA : MEX-001

AÑO : 2007

L U G A R	E S T A C I O N				C L A S I F I C A C I O N V E H I C U L A R E N P O R C I E N T O .													
	KM	TE	SC	TDPA	A	B	C2	C3	T3S2	T3S3	T3S2R4	OTROS	A	B	C	K'	D	
LORETO	0.00	3	0	2123	81.7	3.7	5.7	2.5	3.3	2	0.9	0.2	81.7	3.7	14.6	0.127	0.503	

BAJA CALIFORNIA SUR

26 CARR : RAMAL A SANTIAGO

CLAVE: 03051

RUTA : MEX

AÑO : 2007

L U G A R	E S T A C I O N				CLASIFICACION VEHICULAR EN PORCIENTO .												
	KM	TE	SC	TDPA	A	B	C2	C3	T3S2	T3S3	T3S2R4	OTROS	A	B	C	K'	D
T. C. CABO SAN LUCAS - LA PAZ	0.00	3	0	1343	85.5	4.6	5.1	2.3	0.8	0.6	0.9	0.2	85.5	4.6	9.9	0.098	0.501
SANTIAGO	2.00	0	0														

27 CARR : SAN JOSE DEL CABO - AEROPUERTO LOS CABOS (CUOTA)

CLAVE: 03392

RUTA : MEX-001D

AÑO : 2007

L U G A R	E S T A C I O N				CLASIFICACION VEHICULAR EN PORCIENTO .												
	KM	TE	SC	TDPA	A	B	C2	C3	T3S2	T3S3	T3S2R4	OTROS	A	B	C	K'	D
T. C. CABO SAN LUCAS - LA PAZ	0.00	0	0														
CASETA DE COBRO LOS CABOS	1.52	2	0	2719													
AEROPUERTO DE LOS CABOS	19.50	0	0														

28 CARR : SAN PEDRO - CABO SAN LUCAS

CLAVE: 03003

RUTA : MEX-019

AÑO : 2007

L U G A R	E S T A C I O N				CLASIFICACION VEHICULAR EN PORCIENTO .												
	KM	TE	SC	TDPA	A	B	C2	C3	T3S2	T3S3	T3S2R4	OTROS	A	B	C	K'	D
T. C. CABO SAN LUCAS - LA PAZ	0.00	3	0	5407	89	2.4	3.1	2	1.6	1.3	0.6	0	89	2.4	8.6	0.078	0.502
T. DER. MELITON ALBAÑES	16.00	1	0	4035	87.4	3	3.5	2.4	1.7	1.3	0.7	0	87.4	3	9.6	0.08	0.5
T. DER. MELITON ALBAÑES	16.00	3	0	4675	87.9	3	3.4	2.5	1.5	1.2	0.5	0	87.9	3	9.1	0.076	0.502
TODOS SANTOS	52.00	1	0	4750	88.2	2.5	3.3	2.6	1.4	1.1	0.6	0.3	88.2	2.5	9.3	0.09	0.501
TODOS SANTOS	52.00	3	0	5707	87.5	3.9	2.7	2.1	1.7	1.2	0.7	0.2	87.5	3.9	8.6	0.077	0.502
EL PESCADERO	62.00	1	0	5004	88.5	2.3	3.5	2.3	1.6	1.1	0.6	0.1	88.5	2.3	9.2	0.073	0.501
EL PESCADERO	62.00	3	0	4575	87.9	2.5	3.7	2.3	1.6	1.2	0.7	0.1	87.9	2.5	9.6	0.074	0.502
MIGRIÑO	102.50	1	0	3745	87.3	1.5	3.8	2.5	2.7	1.5	0.6	0.1	87.3	1.5	11.2	0.098	0.502
CABO SAN LUCAS	131.00	1	0	20078	85.1	3	4.5	2	2.4	1.8	1	0.2	85.1	3	11.9	0.064	0.503

29 CARR : SANTA ROSALIA - GUERRERO NEGRO

CLAVE: 03095

RUTA : MEX-001

AÑO : 2007

L U G A R	E S T A C I O N				CLASIFICACION VEHICULAR EN PORCIENTO .												
	KM	TE	SC	TDPA	A	B	C2	C3	T3S2	T3S3	T3S2R4	OTROS	A	B	C	K'	D
SANTA ROSALIA	0.00	3	0	2157	75.6	2.6	10.4	1.5	5.1	0.7	0.2	3.9	75.6	2.6	21.8	0.074	0.502
CUESTA INFIERNILLO	12.00	1	0	1168	84.4	3	4.2	3.3	2.3	1.4	0.7	0.7	84.4	3	12.6	0.08	0.5
CUESTA INFIERNILLO	12.00	3	0	1405	89.9	1.8	4.1	1.1	1.2	0	1.9	0	89.9	1.8	8.3	0.078	0.501
T. IZQ. SAN IGNACIO	73.60	1	0	1942	85.6	2.5	3.9	2.1	2.6	1.8	1.1	0.4	85.6	2.5	11.9	0.123	0.503
T. IZQ. SAN IGNACIO	73.60	3	0	2111	82	3.1	5.8	3.1	2.2	1.9	0.8	1.1	82	3.1	14.9	0.085	0.502

BAJA CALIFORNIA SUR

29 CARR : SANTA ROSALIA - GUERRERO NEGRO

CLAVE: 03095

RUTA : MEX-001

AÑO : 2007

L U G A R	E S T A C I O N				CLASIFICACION VEHICULAR EN PORCIENTO												
	KM	TE	SC	TDPA	A	B	C2	C3	T3S2	T3S3	T3S2R4	OTROS	A	B	C	K'	D
T. IZQ. PUNTA ABREOJOS	95.70	1	0	1361	82.9	4	4.8	2.5	2.3	2.4	0.9	0.2	82.9	4	13.1	0.087	0.502
T. IZQ. PUNTA ABREOJOS	95.70	3	0	1431	81.1	4.7	6.1	3.1	2.4	1.1	1.1	0.4	81.1	4.7	14.2	0.076	0.501
LOS ANGELES	117.90	1	0	1826	85.5	4.3	3	2.4	2.1	1.2	1.2	0.3	85.5	4.3	10.2	0.082	0.501
LOS ANGELES	117.90	3	0	2049	76.4	5.8	7.4	3.4	2.9	2.6	1.3	0.2	76.4	5.8	17.8	0.08	0.502
T. IZQ. VIZCAINO	144.00	1	0	2413	80.2	4.5	5.2	3.3	2.7	2.4	1.4	0.3	80.2	4.5	15.3	0.074	0.503
T. IZQ. VIZCAINO	144.00	3	0	2062	82	4.2	5.9	2.4	2.1	1.9	1.3	0.2	82	4.2	13.8	0.081	0.502
T. DER. EL ARCO	189.00	1	0	1855	85.2	2.8	3.7	1.8	3	2	1.3	0.2	85.2	2.8	12	0.074	0.502
T. DER. EL ARCO	189.00	3	0	1292	85.1	3.3	3.5	2.2	2.7	1.9	1.2	0.1	85.1	3.3	11.6	0.075	0.501
ENT. GUERRERO NEGRO	216.90	1	0	2188	84	3.1	4.5	2.6	2	2	1.6	0.2	84	3.1	12.9	0.08	0.501

30 CARR : PUNTA PRIETA - GUERRERO NEGRO

CLAVE: 00321

RUTA : MEX-001

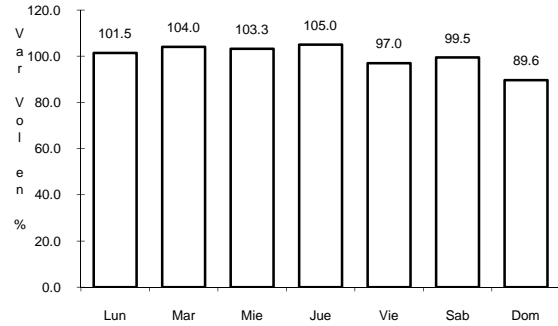
AÑO : 2007

L U G A R	E S T A C I O N				CLASIFICACION VEHICULAR EN PORCIENTO												
	KM	TE	SC	TDPA	A	B	C2	C3	T3S2	T3S3	T3S2R4	OTROS	A	B	C	K'	D
PARADOR PUNTA PRIETA	0.00	3	0	1323	77.2	5.8	8.3	2	2.6	3.2	0.7	0.2	77.2	5.8	17	0.074	0.504
ROSARITO	50.60	3	0	1728	84.9	2.2	4.2	1.2	3.6	2.3	1.4	0.2	84.9	2.2	12.9	0.071	0.502
TANATAN	70.10	3	0	1491	79.1	3.9	6.3	2.9	4	2.3	1.2	0.3	79.1	3.9	17	0.071	0.504
TAMPICO	105.00	1	0	1549	77.1	4.8	5.5	2.8	5.3	3.1	1.2	0.2	77.1	4.8	18.1	0.07	0.501
LIM. EDOS. TERM. B.C. PPIA. B.C.S. (PARALELO 28)	128.60	0	0														
LIM. EDOS. TERM. B.C. PPIA. B.C.S. (PARALELO 28)	128.60	0	0														
ENT. GUERRERO NEGRO	130.00	1	0	2362	83.3	3.1	4.6	3	2.6	2	1.1	0.3	83.3	3.1	13.6	0.071	0.501

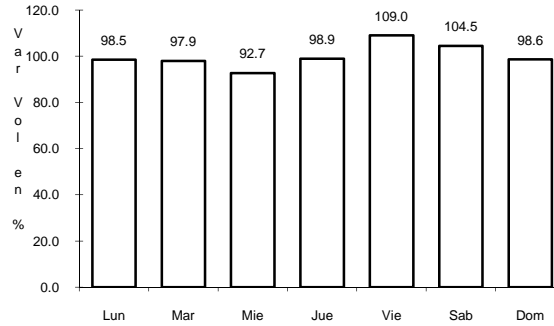
1 CARR: CABO SAN LUCAS - LA PAZ

CLAVE: 03102

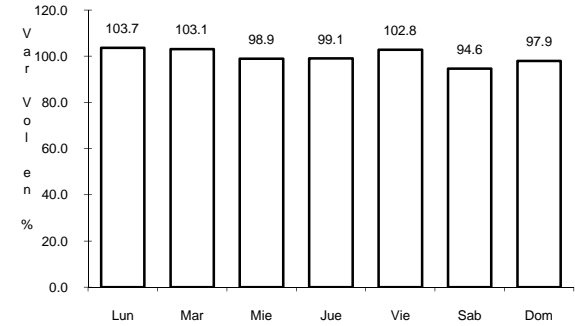
ruta: MEX-001



Km: 0.00 Tipo: 3 Sent: 1



Km: 0.00 Tipo: 3 Sent: 2

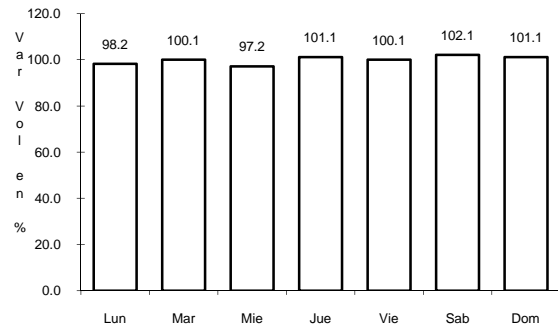


Km: 211.00 Tipo: 1 Sent: 0

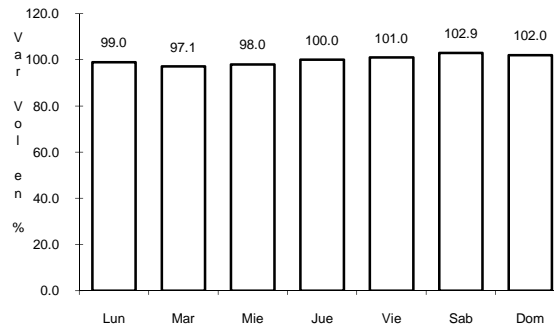
2 CARR: CD. CONSTITUCION - PUERTO SAN CARLOS

CLAVE: 03231

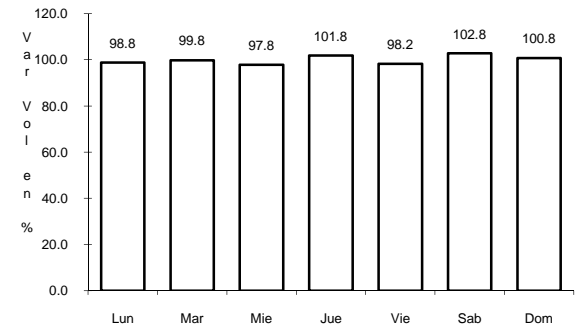
ruta: MEX-022



Km: 0.00 Tipo: 3 Sent: 0



Km: 10.00 Tipo: 1 Sent: 0

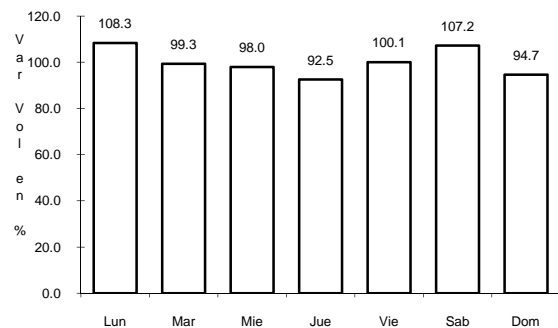


Km: 10.00 Tipo: 3 Sent: 0

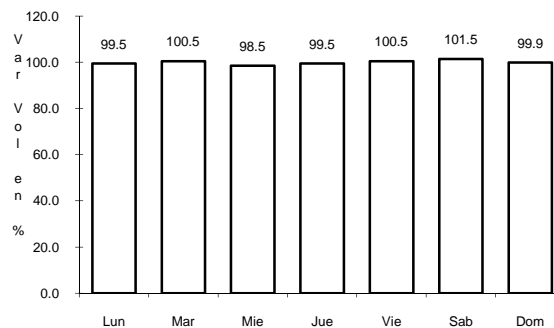
3 CARR: CD. INSURGENTES - LA PURISIMA

CLAVE: 03005

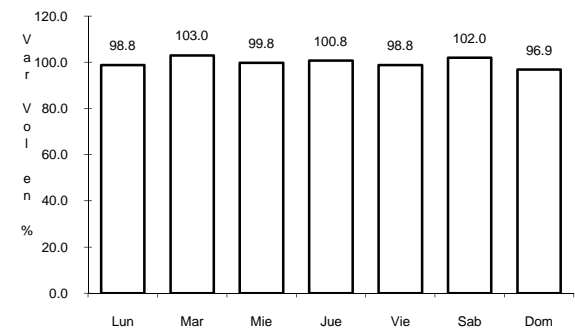
ruta: BCS-001



Km: 0.00 Tipo: 3 Sent: 0



Km: 64.00 Tipo: 3 Sent: 0

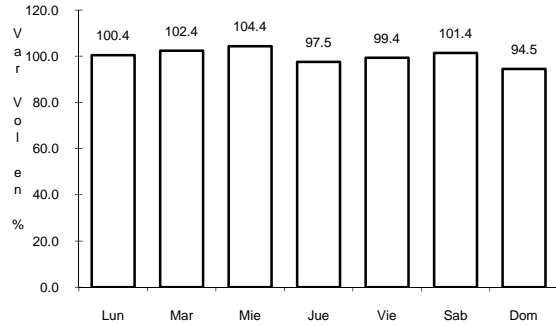


Km: 107.00 Tipo: 1 Sent: 0

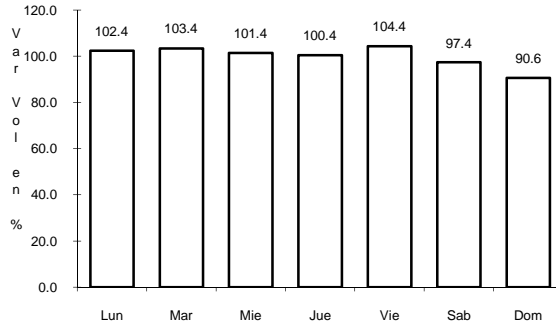
7 CARR: LA PAZ - ENSENADA DE MUERTOS

CLAVE: 03103

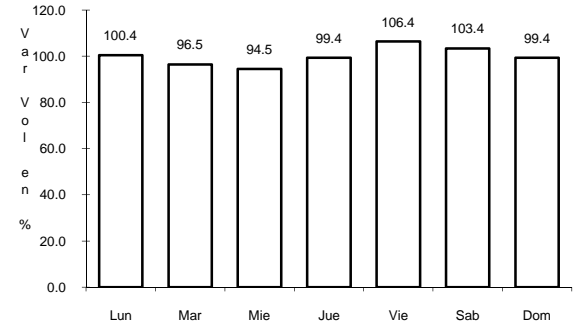
ruta: BCS-246



Km: 0.00 Tipo: 3 Sent: 0



Km: 37.00 Tipo: 1 Sent: 0

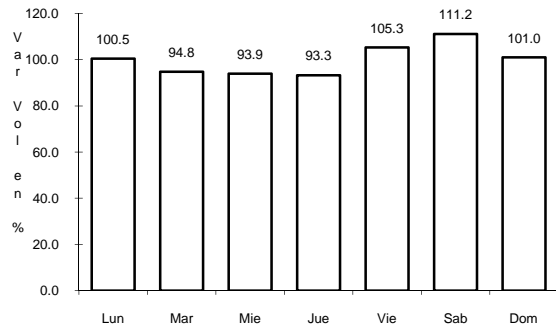


Km: 49.00 Tipo: 1 Sent: 0

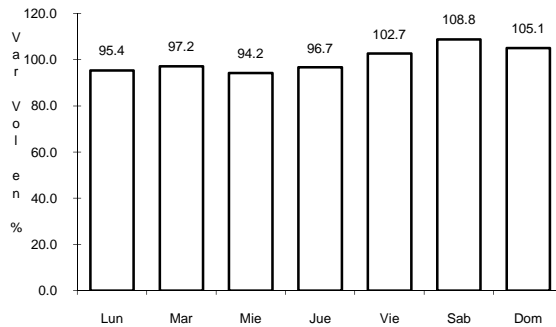
8 CARR: LA PAZ - PICHILINGUE

CLAVE: 03230

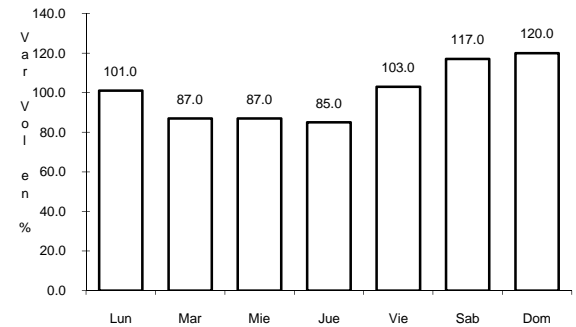
ruta: MEX-011



Km: 0.00 Tipo: 3 Sent: 1



Km: 0.00 Tipo: 3 Sent: 2

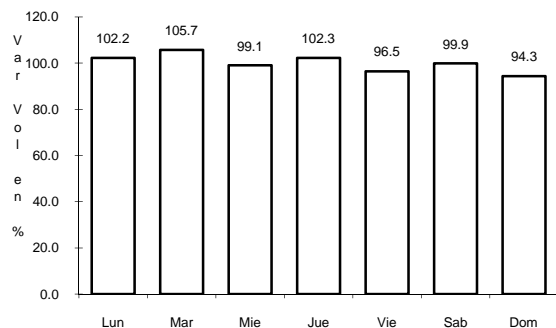


Km: 17.07 Tipo: 1 Sent: 0

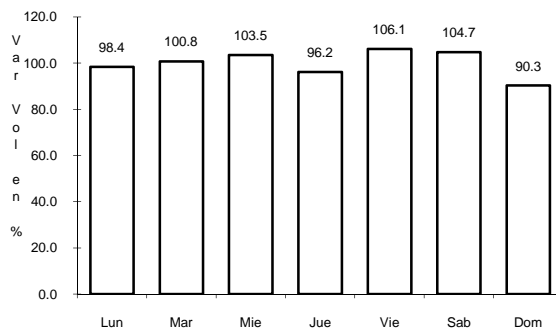
9 CARR: LIBRAMIENTO DE CABO SAN LUCAS

CLAVE: 03100

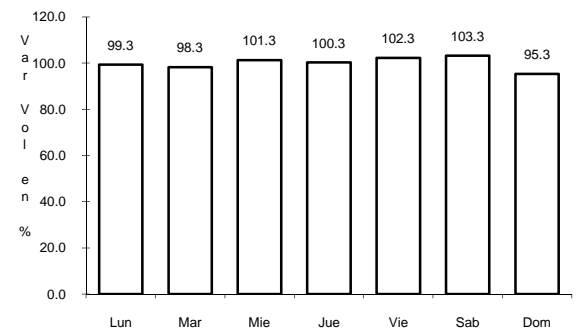
ruta: MEX



Km: 0.00 Tipo: 3 Sent: 1



Km: 0.00 Tipo: 3 Sent: 2

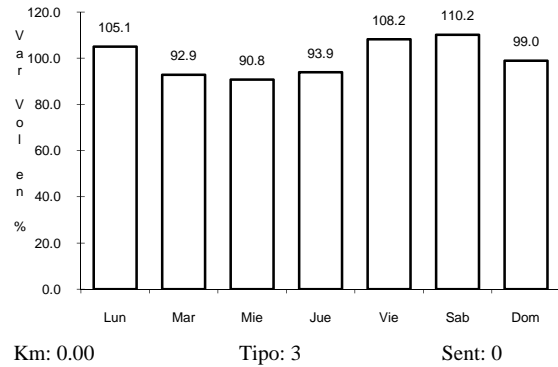


Km: 3.00 Tipo: 1 Sent: 0

10 CARR: LIBRAMIENTO DE LA PAZ

CLAVE: 03004

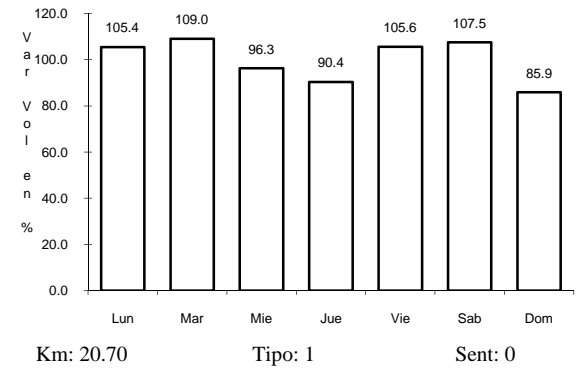
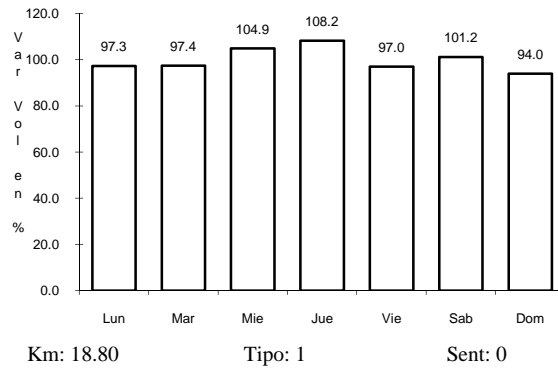
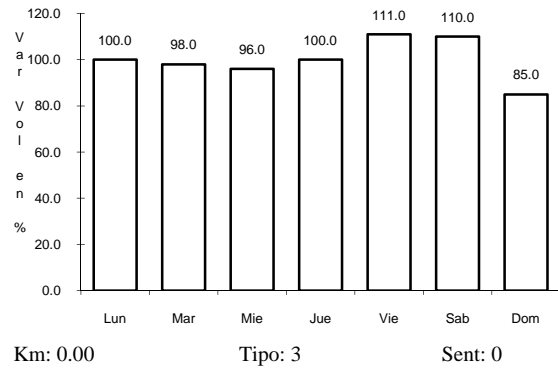
ruta: BCS



11 CARR: LIBRAMIENTO NORTE DE LA PAZ

CLAVE: 03006

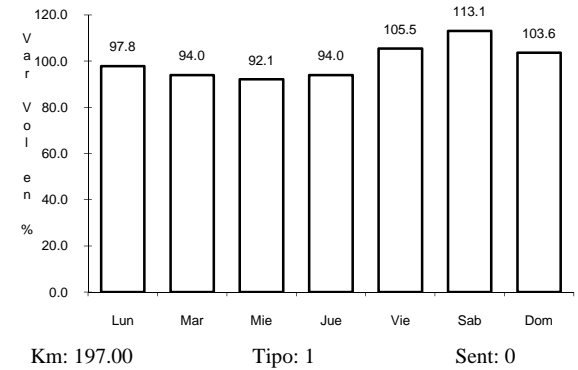
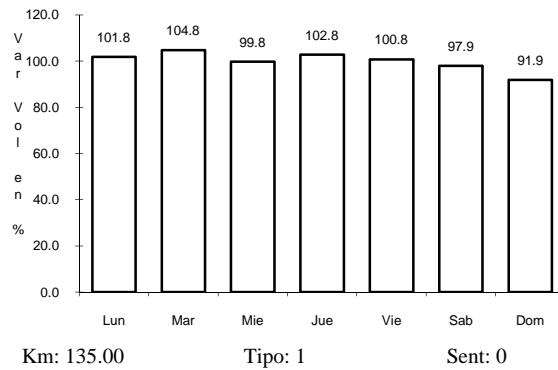
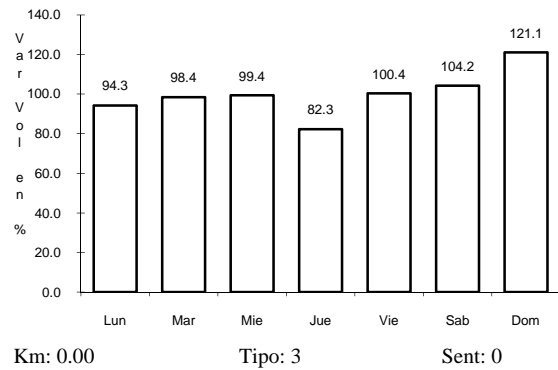
ruta: BCS



12 CARR: LORETO - SANTA ROSALIA

CLAVE: 03393

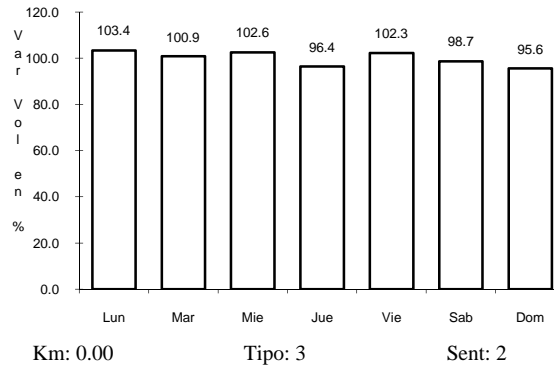
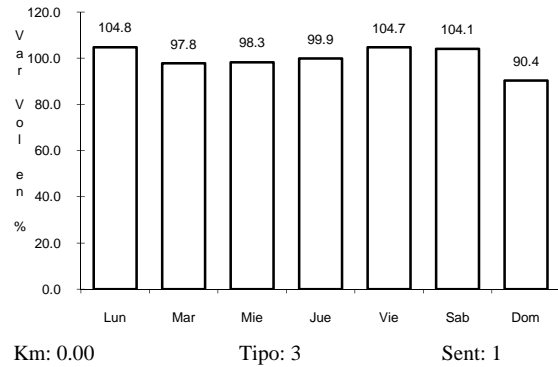
ruta: MEX-001



13 CARR: RAMAL A AEROPUERTO DE LA PAZ

CLAVE: 03396

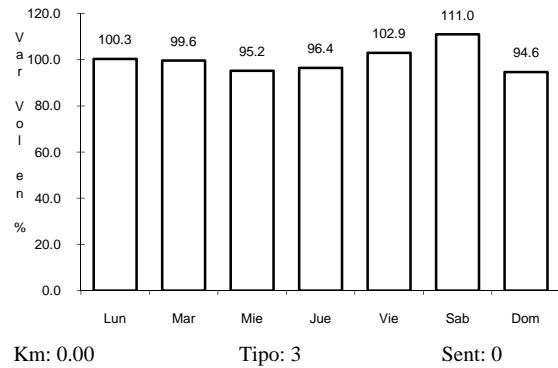
RUTA: MEX



14 CARR: RAMAL A AEROPUERTO DE LOS CABOS

CLAVE: 03394

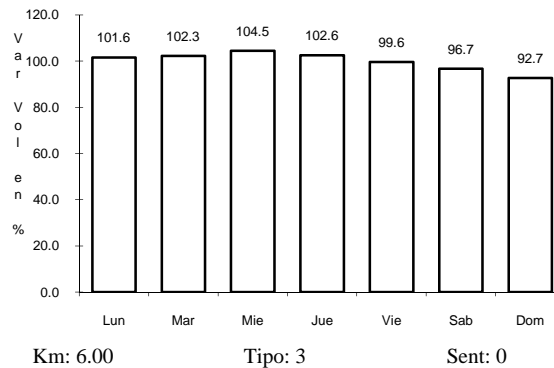
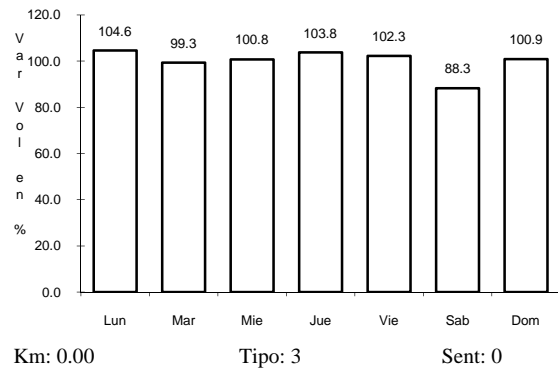
RUTA: MEX



15 CARR: RAMAL A BAHIA DE TORTUGAS

CLAVE: 03397

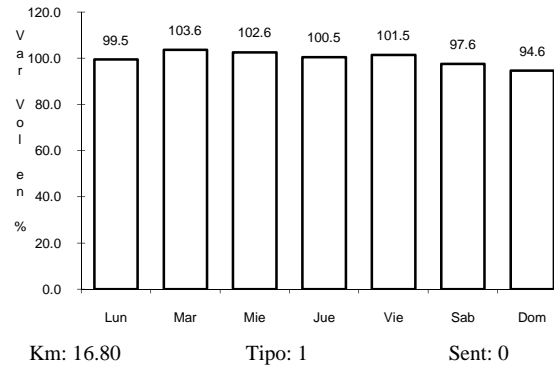
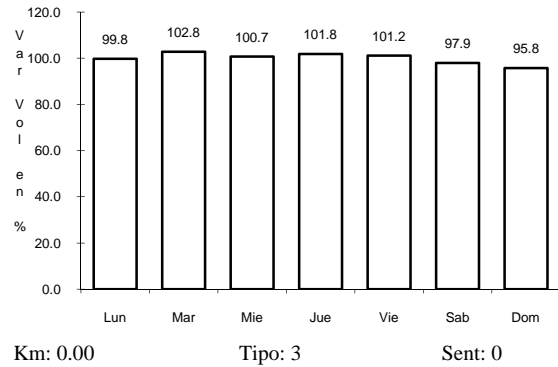
RUTA: MEX-BCS



16 CARR: RAMAL A BENITO JUAREZ

CLAVE: 03405

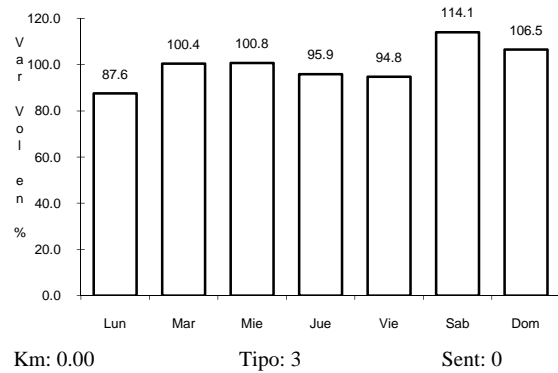
RUTA: BCS



17 CARR: RAMAL A EJIDO LEY FEDERAL DE AGUAS NUMERO DOS

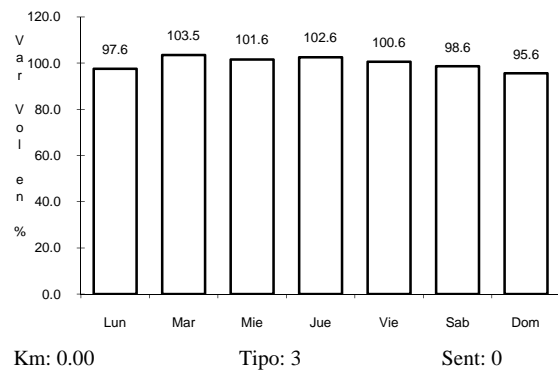
CLAVE: 03050

RUTA: BCS-MEX



18 CARR: RAMAL A EJIDO LEY FEDERAL DE AGUAS NUMERO CUATRO CLAVE: 03007

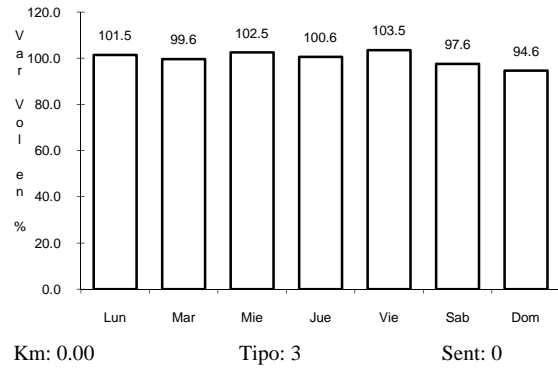
RUTA: BCS



19 CARR: RAMAL A GUERRERO NEGRO

CLAVE: 03395

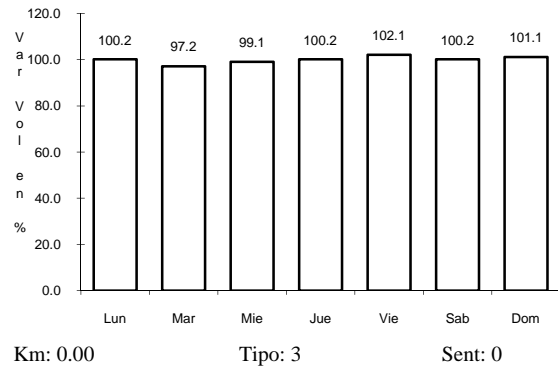
RUTA: BCS



20 CARR: RAMAL A LA RIBERA

CLAVE: 03406

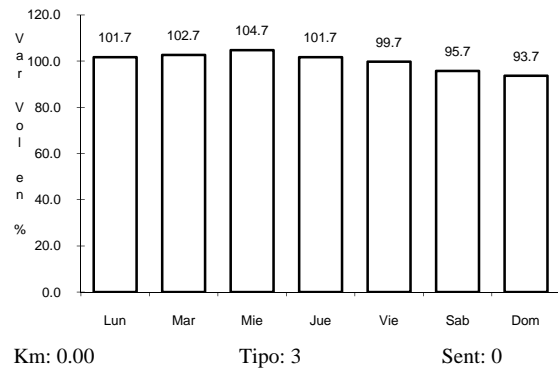
RUTA: BCS



21 CARR: RAMAL A LEY FEDERAL DE AGUAS NUMERO CINCO

CLAVE: 03407

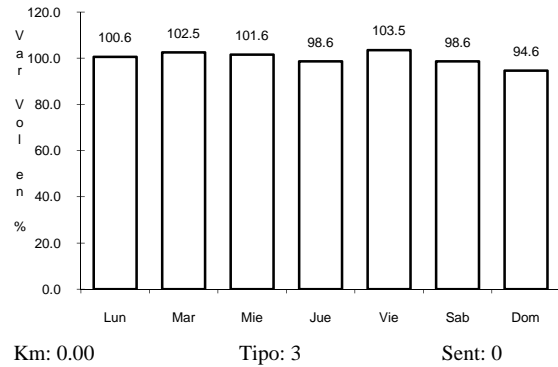
RUTA: BCS-MEX



22 CARR: CAMPO FISHER - PUNTA ABREOJOS

CLAVE: 03411

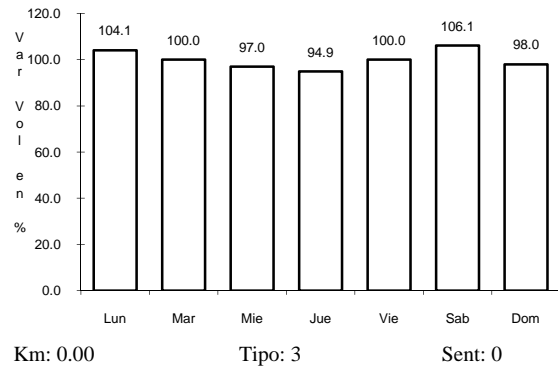
RUTA: BCS



23 CARR: RAMAL A SAN IGNACIO

CLAVE: 03413

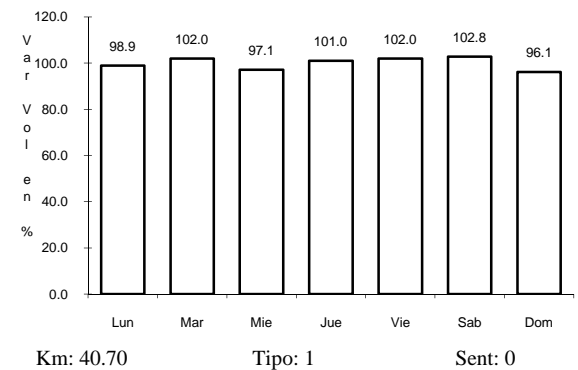
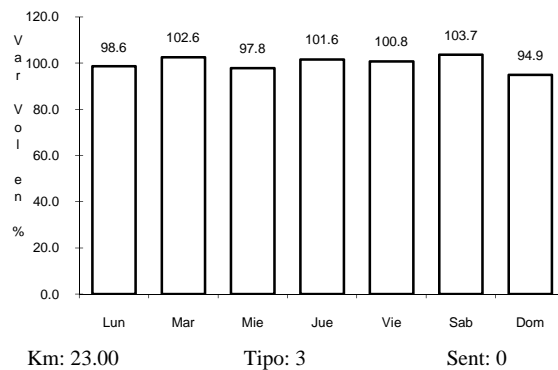
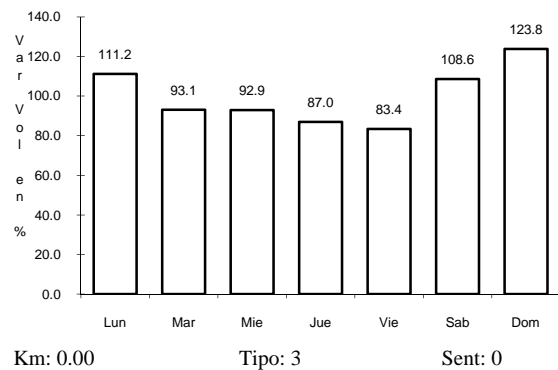
RUTA: MEX



24 CARR: RAMAL A SAN JUAN DE LA COSTA

CLAVE: 03403

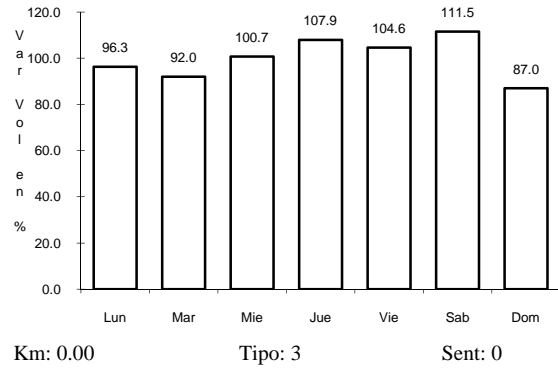
RUTA: BCS-163-MEX



25 CARR: RAMAL A SANTA CATARINA

CLAVE: 03052

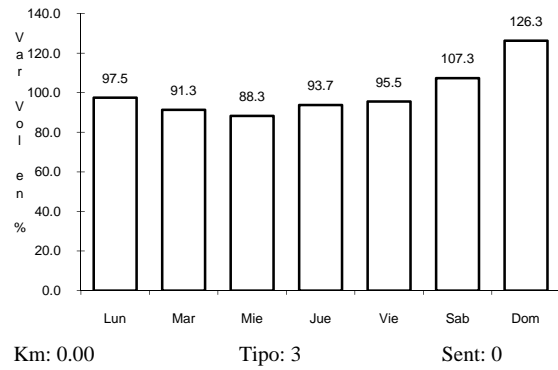
RUTA: BCS



26 CARR: RAMAL A SANTIAGO

CLAVE: 03051

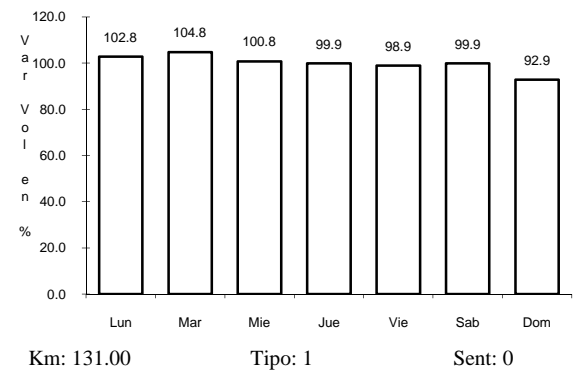
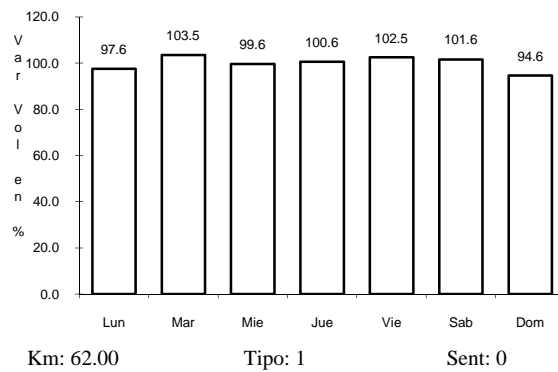
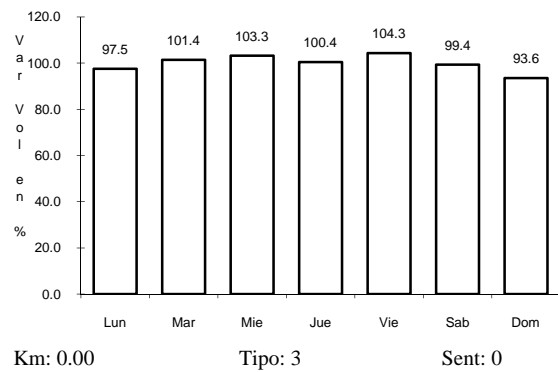
RUTA: MEX



28 CARR: SAN PEDRO - CABO SAN LUCAS

CLAVE: 03003

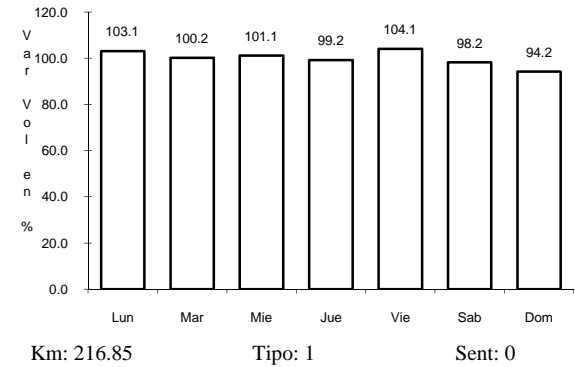
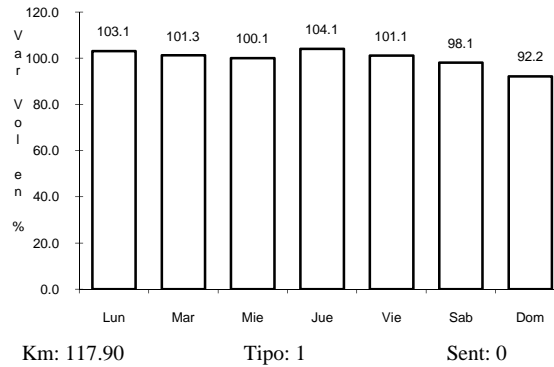
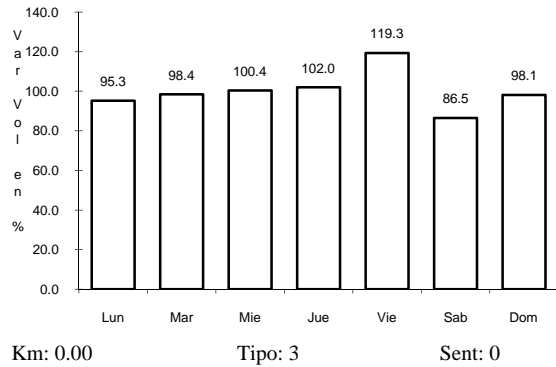
RUTA: MEX-019



29 CARR: SANTA ROSALIA - GUERRERO NEGRO

CLAVE: 03095

RUTA: MEX-001



30 CARR: PUNTA PRIETA - GUERRERO NEGRO

CLAVE: 00321

RUTA: MEX-001

