

MAPA INDICE

15 Num. Indice
2008

Secretaría de Comunicaciones y Transportes

29 TLAXCALA

CARRETERAS AFORADAS

Num. INDICE	CARRETERA
1	APIZACO - TEJOCOTAL
2	CALPULALPAN - EL OCOTE
3	APIZACO - EMILIANO ZAPATA
4	CALPULALPAN - NANACAMILPA
5	ACOCOTLA - VICENTE GUERRERO
6	APIZACO - SAN PABLO APETATITLAN
7	HUAMANTLA - LA VENTA
8	HUAMANTLA - TERRENATE
9	RAMAL A ALTZAYANCA DE HIDALGO
10	RAMAL A SAN FELIPE DE HIDALGO
11	RAMAL A SAN PEDRO ECATEPEC
12	RAMAL A XALOSTOC
13	TLAXCALA - BELEM
14	VILLA ALTA - T. C. (PUEBLA - TLAXCALA)
15	XALOSTOC - TERRENATE
16	AMAZOC - TEZIUTLAN
17	LOS REYES - ZACATEPEC
18	MEXICO - PUEBLA (CUOTA)
19	PUEBLA - BELEM
20	PUEBLA - TLAXCALA
21	SAN MARTIN TEXMELUCAN - OCOTOXCO (CUOTA)
22	SAN MARTIN TEXMELUCAN - TLAXCALA
23	LIBRAMIENTO DE APIZACO

TLAXCALA

1 CARR : APIZACO - TEJOCOTAL

CLAVE: 00430

RUTA : MEX-119

AÑO : 2007

L U G A R	E S T A C I O N				C L A S I F I C A C I O N V E H I C U L A R E N P O R C I E N T O .												
	KM	TE	SC	TDPA	A	B	C2	C3	T3S2	T3S3	T3S2R4	OTROS	A	B	C	K'	D
APIZACO	0.00	3	0	10699	79.5	4.1	3.8	1.4	3.8	2.5	2.9	2	79.5	4.1	16.4	0.099	0.502
T. DER. TETLA	6.60	3	0	9697	80	5.1	5.3	2.6	1.9	2.2	1.4	1.5	80	5.1	14.9	0.103	0.502
T. IZQ. ATLANGATEPEC	12.15	1	0	8566	75.1	7	6.9	3.5	1.5	2	1.8	2.2	75.1	7	17.9	0.085	0.501
TLAXCO	23.91	1	0	6729	86.4	5.1	2.2	1.4	1.1	1.3	1.2	1.3	86.4	5.1	8.5	0.08	0.502
TLAXCO	23.91	3	0	4645	87.1	2.7	1.5	1.6	2.5	1.6	1.5	1.5	87.1	2.7	10.2	0.09	0.503
LIM. EDOS. TERM. TLAX. PPIA. PUE.	34.45	0	0														
T. DER. TETELA DE OCAMPO	52.20	1	0	5072	82.7	8	4.1	1.7	0.4	1.5	1.1	0.5	82.7	8	9.3	0.086	0.503
ZACATLAN	71.25	1	0	6712	77.8	8.5	5.9	2.7	0.9	1.4	1.2	1.6	77.8	8.5	13.7	0.09	0.501
LIM. EDOS. TERM. PUE. PPIA. HGO.	110.50	0	0														
T. C. PACHUCA - TUXPAM	113.20	1	0	3775	78.6	2	5.1	3.2	4.8	2	2.9	1.4	78.6	2	19.4	0.083	0.501

2 CARR : CALPULALPAN - EL OCOTE

CLAVE: 00054

RUTA : MEX-HGO

AÑO : 2007

L U G A R	E S T A C I O N				C L A S I F I C A C I O N V E H I C U L A R E N P O R C I E N T O .												
	KM	TE	SC	TDPA	A	B	C2	C3	T3S2	T3S3	T3S2R4	OTROS	A	B	C	K'	D
CALPULALPAN	0.00	3	0	9022	70.1	6.5	8.9	6.9	2.1	3	2	0.5	70.1	6.5	23.4	0.076	0.503
LIM. EDOS. TERM. TLAX. PPIA. HGO.	5.00	0	0														
APAN	19.58	3	1	2529	83.9	3.1	5.9	2.4	2.5	1.2	1	0	83.9	3.1	13	0.101	0.502
APAN	19.58	3	2	2513	83.8	2.8	6	2.5	2.7	1.3	0.9	0	83.8	2.8	13.4	0.101	0.502
TEPEAPULCO	34.92	3	0	3800	91.3	2.9	0.7	0.6	2.8	0.5	0.5	0.7	91.3	2.9	5.8	0.093	0.5
X. C. VENTA DE CARPIO - TULANCINGO	51.18	1	0	2148	90.7	3.1	0.4	2.1	1.7	0.7	0.4	0.9	90.7	3.1	6.2	0.12	0.506
X. C. VENTA DE CARPIO - TULANCINGO	51.18	3	0	1719	95.8	1	0	1.2	1.3	0.2	0.1	0.4	95.8	1	3.2	0.099	0.502
EL OCOTE	70.44	1	0	2465	78.1	4.3	8	3.1	2.4	1.2	1.6	1.3	78.1	4.3	17.6	0.086	0.504

3 CARR : APIZACO - EMILIANO ZAPATA

CLAVE: 29033

RUTA : TLAX-MEX

AÑO : 2007

L U G A R	E S T A C I O N				C L A S I F I C A C I O N V E H I C U L A R E N P O R C I E N T O .												
	KM	TE	SC	TDPA	A	B	C2	C3	T3S2	T3S3	T3S2R4	OTROS	A	B	C	K'	D
APIZACO	0.00	3	0	6220	82.4	4.4	4.7	2	1.1	1.2	2.2	2	82.4	4.4	13.2	0.091	0.501
CAPULA	16.00	1	0	2096	92.2	4.7	1.2	0.4	1.5	0	0	0	92.2	4.7	3.1	0.093	0.501
EMILIANO ZAPATA	37.00	1	0	1154	87.2	7	3.1	2.7	0	0	0	0	87.2	7	5.8	0.093	0.501

TLAXCALA

4 CARR : CALPULALPAN - NANACAMILPA

CLAVE: 29034

RUTA : TLAX-MEX

AÑO : 2007

L U G A R	E S T A C I O N				C L A S I F I C A C I O N V E H I C U L A R E N P O R C I E N T O .												
	KM	TE	SC	TDPA	A	B	C2	C3	T3S2	T3S3	T3S2R4	OTROS	A	B	C	K'	D
CALPULALPAN	0.00	3	0	2383	89.5	2.9	3.3	1	1.1	1.1	1.1	0	89.5	2.9	7.6	0.106	0.503
NANACAMILPA	15.50	1	0	1664	88.1	3.4	3	2.3	0.7	1.3	1.2	0	88.1	3.4	8.5	0.094	0.5

5 CARR : ACOCOTLA - VICENTE GUERRERO

CLAVE: 29560

RUTA : MEX-TLAX

AÑO : 2007

L U G A R	E S T A C I O N				C L A S I F I C A C I O N V E H I C U L A R E N P O R C I E N T O .												
	KM	TE	SC	TDPA	A	B	C2	C3	T3S2	T3S3	T3S2R4	OTROS	A	B	C	K'	D
T. C. LOS REYES - ZACATEPEC	0.00	3	0	13420	80.4	6	1.6	0.7	4.6	1.2	1.6	3.9	80.4	6	13.6	0.075	0.501
T. C. PUEBLA - BELEM	37.70	1	0	6327	77.9	3.5	4.3	1.7	6.1	1.2	2.8	2.5	77.9	3.5	18.6	0.082	0.524

6 CARR : APIZACO - SAN PABLO APETATITLAN

CLAVE: 29035

RUTA : MEX

AÑO : 2007

L U G A R	E S T A C I O N				C L A S I F I C A C I O N V E H I C U L A R E N P O R C I E N T O .												
	KM	TE	SC	TDPA	A	B	C2	C3	T3S2	T3S3	T3S2R4	OTROS	A	B	C	K'	D
T. C. LOS REYES - ZACATEPEC	0.00	3	0	5521	86.8	2.9	5.5	1	1.1	1.3	1.1	0.3	86.8	2.9	10.3	0.072	0.502
T. DER. TECNOLOGICO	0.55	3	0	5751	87.8	3.4	4.9	1.2	0.1	1.1	1.5	0	87.8	3.4	8.8	0.07	0.501
CUAXOMULCO	9.10	3	0	1697	89.7	2.6	4.6	1.1	0.6	0.4	0.9	0.1	89.7	2.6	7.7	0.087	0.502
SANTA CRUZ TLAXCALA	14.50	3	0	4256	86	4	7.2	1.4	0.2	0.2	0.7	0.3	86	4	10	0.09	0.503
T. IZQ. CONTLA	18.90	1	0	6419	89.9	2.6	4.5	1.2	0.6	0.4	0.7	0.1	89.9	2.6	7.5	0.101	0.503
SAN PABLO APETATITLAN	20.00	1	0	9218	82.9	4.7	6.7	2.9	0.6	0.8	1.3	0.1	82.9	4.7	12.4	0.082	0.505

7 CARR : HUAMANTLA - LA VENTA

CLAVE: 29564

RUTA : MEX

AÑO : 2007

L U G A R	E S T A C I O N				C L A S I F I C A C I O N V E H I C U L A R E N P O R C I E N T O .												
	KM	TE	SC	TDPA	A	B	C2	C3	T3S2	T3S3	T3S2R4	OTROS	A	B	C	K'	D
HUAMANTLA	0.00	3	1	3943	82.7	5.7	4.7	1.1	0.8	1.5	3.3	0.2	82.7	5.7	11.6	0.075	0.502
HUAMANTLA	0.00	3	2	3916	84.5	4.5	3.6	2.2	0.7	1.4	3	0.1	84.5	4.5	11	0.073	0.502
ZITLALTEPEC	11.06	1	0	3078	85.4	3.3	4.8	2.2	0.8	2.1	1	0.4	85.4	3.3	11.3	0.085	0.504
T. C. AMOZOC - TEZIUTLAN	16.30	0	0														

8 CARR : HUAMANTLA - TERRENATE

CLAVE: 29036

RUTA : MEX

AÑO : 2007

L U G A R	E S T A C I O N				C L A S I F I C A C I O N V E H I C U L A R E N P O R C I E N T O .												
	KM	TE	SC	TDPA	A	B	C2	C3	T3S2	T3S3	T3S2R4	OTROS	A	B	C	K'	D
HUAMANTLA	0.00	3	0	1668	87	3.8	2.9	2.8	0.8	1.1	1.2	0.4	87	3.8	9.2	0.101	0.501

TLAXCALA

8 CARR : HUAMANTLA - TERRENATE

CLAVE: 29036

RUTA : MEX

AÑO : 2007

L U G A R	E S T A C I O N				C L A S I F I C A C I O N V E H I C U L A R E N P O R C I E N T O .												
	KM	TE	SC	TDPA	A	B	C2	C3	T3S2	T3S3	T3S2R4	OTROS	A	B	C	K'	D
T. IZQ. XICOHTENCATL	12.50	1	0	1193	89.4	2	3.5	2.3	0.8	0.8	0.7	0.5	89.4	2	8.6	0.075	0.502
TERRENATE	21.00	1	0	979	83.4	4.2	4.6	3.2	1.3	1.3	2	0	83.4	4.2	12.4	0.079	0.502

9 CARR : RAMAL A ALTZAYANCA DE HIDALGO

CLAVE: 29562

RUTA : TLAX

AÑO : 2007

L U G A R	E S T A C I O N				C L A S I F I C A C I O N V E H I C U L A R E N P O R C I E N T O .												
	KM	TE	SC	TDPA	A	B	C2	C3	T3S2	T3S3	T3S2R4	OTROS	A	B	C	K'	D
T. C. LOS REYES - ZACATEPEC	0.00	3	0	1609	73.4	7.1	10.6	3.5	1.2	2.1	2.1	0	73.4	7.1	19.5	0.068	0.5
XICOTENCATL	6.50	3	0	1898	80	6.9	5.5	2.9	0.5	1.8	2.2	0.2	80	6.9	13.1	0.079	0.504
ALTZAYANCA DE HIDALGO	15.00	1	0	1876	84.9	3.5	5.2	2.6	0.5	1.8	1	0.5	84.9	3.5	11.6	0.074	0.502

10 CARR : RAMAL A SAN FELIPE DE HIDALGO

CLAVE: 29565

RUTA : MEX

AÑO : 2007

L U G A R	E S T A C I O N				C L A S I F I C A C I O N V E H I C U L A R E N P O R C I E N T O .												
	KM	TE	SC	TDPA	A	B	C2	C3	T3S2	T3S3	T3S2R4	OTROS	A	B	C	K'	D
T. C. LOS REYES - ZACATEPEC	0.00	3	0	2385	85.3	4.9	3	2.8	1.4	1.5	0.9	0.2	85.3	4.9	9.8	0.076	0.501
SAN FELIPE DE HIDALGO	10.50	1	0	1550	76.8	6	7.2	5.1	2.1	1.6	1.2	0	76.8	6	17.2	0.094	0.503

11 CARR : RAMAL A SAN PEDRO ECATEPEC

CLAVE: 29561

RUTA : TLAX

AÑO : 2007

L U G A R	E S T A C I O N				C L A S I F I C A C I O N V E H I C U L A R E N P O R C I E N T O .												
	KM	TE	SC	TDPA	A	B	C2	C3	T3S2	T3S3	T3S2R4	OTROS	A	B	C	K'	D
T. C. APIZACO - TEJOCOTAL	0.00	3	0	1548	88.8	8.5	2.6	0	0.1	0	0	0	88.8	8.5	2.7	0.083	0.501
SAN PEDRO ECATEPEC	4.60	1	0	1368	90.1	7.4	2.5	0	0	0	0	0	90.1	7.4	2.5	0.104	0.501

12 CARR : RAMAL A XALOSTOC

CLAVE: 29563

RUTA : TLAX

AÑO : 2007

L U G A R	E S T A C I O N				C L A S I F I C A C I O N V E H I C U L A R E N P O R C I E N T O .												
	KM	TE	SC	TDPA	A	B	C2	C3	T3S2	T3S3	T3S2R4	OTROS	A	B	C	K'	D
T. C. LOS REYES - ZACATEPEC	0.00	3	0	6657	87.3	3.2	3.6	2.1	1.1	1.7	1	0	87.3	3.2	9.5	0.073	0.502
XALOSTOC	2.50	1	0	4830	76.3	3.7	7.6	1.9	1.1	4	4.4	1	76.3	3.7	20	0.076	0.501

TLAXCALA

13 CARR : TLAXCALA - BELEM

CLAVE: 29389

RUTA : MEX

AÑO : 2007

L U G A R	E S T A C I O N				C L A S I F I C A C I O N V E H I C U L A R E N P O R C I E N T O .												
	KM	TE	SC	TDPA	A	B	C2	C3	T3S2	T3S3	T3S2R4	OTROS	A	B	C	K'	D
TLAXCALA	0.00	0	0														
T. DER. OCOTLAN	3.91	1	1	17175	81.9	4	0.3	0.8	2.7	2.2	3.6	4.5	81.9	4	14.1	0.072	0.501
T. DER. OCOTLAN	3.91	1	2	17131	84.6	5.2	0.2	0.6	2.3	1.3	2	3.8	84.6	5.2	10.2	0.072	0.501
X. C. PUEBLA - BELEM	4.55	1	1	16029	83.6	5.1	5.5	2.4	0.9	0.4	1.1	1	83.6	5.1	11.3	0.072	0.502
X. C. PUEBLA - BELEM	4.55	1	2	15872	89.5	1.9	2.6	2	1	1	0.8	1.2	89.5	1.9	8.6	0.069	0.502
SANTA ANA CHIAUTEMPAN	5.82	1	1	7516	84	2.2	0.3	0.8	4.6	0	3.6	4.5	84	2.2	13.8	0.084	0.503
SANTA ANA CHIAUTEMPAN	5.82	1	2	7440	86.8	1.3	0.2	0.5	5.3	0	2	3.9	86.8	1.3	11.9	0.081	0.503
BELEM	10.06	1	1	6260	87.4	1	3.7	2.5	1.8	1.5	1	1.1	87.4	1	11.6	0.113	0.501
BELEM	10.06	1	2	6240	88.5	0.1	3.3	2.2	1	1.5	1.5	1.9	88.5	0.1	11.4	0.074	0.501

14 CARR : VILLA ALTA - T. C. (PUEBLA - TLAXCALA)

CLAVE: 29566

RUTA : MEX

AÑO : 2007

L U G A R	E S T A C I O N				C L A S I F I C A C I O N V E H I C U L A R E N P O R C I E N T O .												
	KM	TE	SC	TDPA	A	B	C2	C3	T3S2	T3S3	T3S2R4	OTROS	A	B	C	K'	D
T. C. SAN MARTIN TEXMELUCAN - TLAXCALA	0.00	3	0	5740	77.4	3.4	3	1.3	5.4	1.3	2.7	5.5	77.4	3.4	19.2	0.075	0.518
NATIVITAS	10.50	3	0	6505	88.5	3.8	4.3	0.3	0.8	0.6	1	0.7	88.5	3.8	7.7	0.078	0.504
T. C. PUEBLA - TLAXCALA	22.05	1	0	6360	87.6	1.5	2.2	0.3	4	0.9	1.6	1.9	87.6	1.5	10.9	0.071	0.501

15 CARR : XALOSTOC - TERRENATE

CLAVE: 29390

RUTA : TLAX

AÑO : 2007

L U G A R	E S T A C I O N				C L A S I F I C A C I O N V E H I C U L A R E N P O R C I E N T O .												
	KM	TE	SC	TDPA	A	B	C2	C3	T3S2	T3S3	T3S2R4	OTROS	A	B	C	K'	D
XALOSTOC	0.00	3	0	2166	81.8	7.6	5	0.6	1.5	1.9	1.3	0.3	81.8	7.6	10.6	0.069	0.501
SAN FRANCISCO TEOMETITLA	7.10	3	0	663	75.2	11.3	6.3	3.7	0.8	1	1.1	0.6	75.2	11.3	13.5	0.09	0.503
T. C. HUAMANTLA - TERRENATE	17.50	1	0	859	76.9	15.3	5.2	0.2	0	1	1.2	0.2	76.9	15.3	7.8	0.071	0.501

16 CARR : AMOZOC - TEZIUTLAN

CLAVE: 00210

RUTA : MEX-129

AÑO : 2007

L U G A R	E S T A C I O N				C L A S I F I C A C I O N V E H I C U L A R E N P O R C I E N T O .												
	KM	TE	SC	TDPA	A	B	C2	C3	T3S2	T3S3	T3S2R4	OTROS	A	B	C	K'	D
AMOZOC	0.00	0	0														
X. C. PUEBLA - CORDOBA (CUOTA)	1.40	3	0	10314	70.1	4.4	8.1	3.3	4.9	3.4	3.4	2.4	70.1	4.4	25.5	0.064	0.5
ACAJETE	12.00	3	0	8373	72.6	6.6	5.1	2.1	5.6	2.8	3.7	1.5	72.6	6.6	20.8	0.088	0.526
RAFAEL LARA GRAJALES	35.50	1	0	4627	73.7	10.2	2.5	2	4.5	3	2.8	1.3	73.7	10.2	16.1	0.072	0.5
RAFAEL LARA GRAJALES	35.50	3	0	9178	75.8	4.1	6.1	4	4.2	2.1	2.4	1.3	75.8	4.1	20.1	0.082	0.501

TLAXCALA

16 CARR : AMOZOC - TEZIUTLAN

CLAVE: 00210

RUTA : MEX-129

AÑO : 2007

L U G A R	E S T A C I O N			C L A S I F I C A C I O N V E H I C U L A R E N P O R C I E N T O .													
	KM	TE	SC TDPA	A	B	C2	C3	T3S2	T3S3	T3S2R4	OTROS	A	B	C	K'	D	
LIM. EDOS. TERM. PUE. PPIA. TLAX.	50.54	0	0														
X. C. LOS REYES - ZACATEPEC	56.31	1	0 3508	71.4	8.2	7.9	3.7	2.3	4.6	1.5	0.4	71.4	8.2	20.4	0.082	0.503	
LIM. EDOS. TERM. TLAX. PPIA. PUE.	60.22	0	0														
ORIENTAL	62.62	1	0 6766	77.6	5.2	7.4	2.4	3.6	1	1.2	1.6	77.6	5.2	17.2	0.096	0.506	
ORIENTAL	62.62	3	0 5958	74.4	8	8	2.5	1.2	2.9	2.1	0.9	74.4	8	17.6	0.084	0.502	
LIBRES	76.35	3	0 4369	82.2	4.5	4.7	2.1	1	1.2	2.3	2	82.2	4.5	13.3	0.125	0.502	
T. IZQ. ZACAPOAXTLA	114.80	1	0 5522	81.3	4.9	2.5	1.5	4.3	1.2	2.3	2	81.3	4.9	13.8	0.086	0.507	
T. IZQ. ZACAPOAXTLA	114.80	3	0 5669	78.7	3.2	4.9	1.2	2.4	1.7	4.7	3.2	78.7	3.2	18.1	0.084	0.503	
TEZIUTLAN	157.80	1	0 9382	83	3	3.9	1.3	3.7	0.9	1.9	2.3	83	3	14	0.07	0.511	

17 CARR : LOS REYES - ZACATEPEC

CLAVE: 00052

RUTA : MEX-138-136

AÑO : 2007

L U G A R	E S T A C I O N			C L A S I F I C A C I O N V E H I C U L A R E N P O R C I E N T O .													
	KM	TE	SC TDPA	A	B	C2	C3	T3S2	T3S3	T3S2R4	OTROS	A	B	C	K'	D	
T. C. MEXICO - PUEBLA (LIBRE)	0.00	0	0														
T. IZQ. LA MAGDALENA	3.35	3	1 37137	78.2	7	6.5	3.1	2.1	1.2	0.3	1.6	78.2	7	14.8	0.081	0.502	
T. IZQ. LA MAGDALENA	3.35	3	2 36881	78.6	7	6.2	2.8	1.9	1.3	0.2	2	78.6	7	14.4	0.092	0.502	
T. IZQ. CHIMALHUACAN	8.45	1	1 19884	72.6	3.8	1.8	0.6	9.4	3	5.2	3.6	72.6	3.8	23.6	0.079	0.512	
T. IZQ. CHIMALHUACAN	8.45	1	2 20844	75	3.9	2	0.6	7.9	2.8	4.9	2.9	75	3.9	21.1	0.078	0.512	
T. C. SAN BERNARDINO - TEPEXPAN	17.00	3	0 31880	72.6	7.2	5.3	6.1	2.8	2.4	0.3	3.3	72.6	7.2	20.2	0.074	0.512	
TEXCOCO	23.02	3	1 11386	61.9	8.3	1	1.7	10.6	3.9	8.7	3.9	61.9	8.3	29.8	0.076	0.512	
TEXCOCO	23.02	3	2 11941	58.9	8.6	1.5	1.9	11.2	4.5	9	4.4	58.9	8.6	32.5	0.077	0.512	
T. IZQ. TEPETLAOXTOC	30.03	1	1 14178	65.9	9	1.7	3.9	8.2	3.1	6.5	1.7	65.9	9	25.1	0.063	0.513	
T. IZQ. TEPETLAOXTOC	30.03	1	2 13447	62.8	9	2	3.8	8.9	4	6.8	2.7	62.8	9	28.2	0.078	0.513	
T. DER. TOTOLAPAN	42.00	3	0 8633	40.7	12.4	1.4	4.6	17.9	5.8	14.9	2.3	40.7	12.4	46.9	0.071	0.507	
LIM. EDOS. TERM. MEX. PPIA. TLAX.	43.15	0	0														
CALPULALPAN	59.58	3	0 9238	65.7	8.4	7.1	5	3.9	6.6	2.2	1.1	65.7	8.4	25.9	0.105	0.501	
T. DER. NANACAMILPA	71.76	3	0 13402	58	14.1	9	5.1	4	5.8	2.8	1.2	58	14.1	27.9	0.065	0.502	
HUEYOTLIPAN	88.21	3	0 10377	66.7	8.4	9.5	6.7	3.9	2.8	1.5	0.5	66.7	8.4	24.9	0.076	0.5	
XALTOCAN	108.10	1	0 12232	63.7	6.8	6.8	7.6	6.3	6.2	1.9	0.7	63.7	6.8	29.5	0.068	0.501	
APIZACO	117.70	1	1 14434	81.5	4.1	4.9	3.2	0.7	3	2.5	0.1	81.5	4.1	14.4	0.084	0.503	
APIZACO	117.70	1	2 14610	82.2	3.5	6	2.3	0.4	2.8	2.7	0.1	82.2	3.5	14.3	0.079	0.503	
APIZACO	117.70	3	0 16936	72.5	4.4	2.9	0.9	8.2	1.9	6.3	2.9	72.5	4.4	23.1	0.063	0.508	
T. DER. CUAXOMULCO	119.90	3	0 13263	79.5	7	1.6	0.6	4.6	1.2	1.6	3.9	79.5	7	13.5	0.077	0.501	
T. IZQ. XALOSTOC	126.70	3	1 7575	79.2	7.1	1.6	0.7	4.6	1.2	1.6	4	79.2	7.1	13.7	0.066	0.502	

TLAXCALA

21 CARR : SAN MARTIN TEXMELUCAN - OCOTOXCO (CUOTA)

CLAVE: 00212

RUTA : MEX-D

AÑO : 2007

L U G A R	E S T A C I O N			C L A S I F I C A C I O N V E H I C U L A R E N P O R C I E N T O .												
	KM	TE	SC TDPA	A	B	C2	C3	T3S2	T3S3	T3S2R4	OTROS	A	B	C	K'	D
X. C. SAN MARTIN TEXMELUCAN - TLAXCALA	1.80	1	0 6310	80.4	8.8	3.8	1.8	1.9	1.1	1.5	0.7	80.4	8.8	10.8	0.081	0.501
LIM. EDOS. TERM. PUE. PPIA. TLAX.	4.05	0	0													
CASETA DE COBRO SAN MARTIN TEXMELUCAN	5.40	2	0 6183													
X. C. SAN MARTIN TEXMELUCAN - TLAXCALA (TREBOL)	24.75	1	1 11332	78.9	4.5	5.9	3.6	3.3	2.2	1	0.6	78.9	4.5	16.6	0.097	0.503
X. C. SAN MARTIN TEXMELUCAN - TLAXCALA (TREBOL)	24.75	1	2 11391	80.5	3.9	6	2.8	3.2	2	0.9	0.7	80.5	3.9	15.6	0.083	0.503
X. C. SAN MARTIN TEXMELUCAN - TLAXCALA (TREBOL)	24.75	3	1 9938	84.6	3	4.5	2	1.8	1.5	1.4	1.2	84.6	3	12.4	0.077	0.501
X. C. SAN MARTIN TEXMELUCAN - TLAXCALA (TREBOL)	24.75	3	2 9864	84.2	2.6	5.5	2.2	1.6	1.7	1.2	1	84.2	2.6	13.2	0.075	0.501
T. IZQ. TIZATLAN	29.00	3	1 17421	84.9	3.2	4.2	1.9	2.2	1.4	1.2	1	84.9	3.2	11.9	0.066	0.501
T. IZQ. TIZATLAN	29.00	3	2 17262	84	3.6	5.1	2	2.1	1.3	1	0.9	84	3.6	12.4	0.073	0.501
T. DER. SAN PABLO APETATITLAN	31.65	3	1 17529	79	7.4	5.6	2.3	1.8	1.3	1.3	1.3	79	7.4	13.6	0.074	0.503
T. DER. SAN PABLO APETATITLAN	31.65	3	2 17330	78.9	7.9	5.8	2.2	1.6	1.3	1.4	0.9	78.9	7.9	13.2	0.069	0.503
OCOTOXCO	35.20	1	1 17431	83.2	3.3	5.7	2.3	1.9	1.2	0.6	1.8	83.2	3.3	13.5	0.068	0.5
OCOTOXCO	35.20	1	2 17408	85.8	2.7	5	2.4	2.1	0.7	0.6	0.7	85.8	2.7	11.5	0.065	0.5

22 CARR : SAN MARTIN TEXMELUCAN - TLAXCALA

CLAVE: 00158

RUTA : MEX-117

AÑO : 2007

L U G A R	E S T A C I O N			C L A S I F I C A C I O N V E H I C U L A R E N P O R C I E N T O .												
	KM	TE	SC TDPA	A	B	C2	C3	T3S2	T3S3	T3S2R4	OTROS	A	B	C	K'	D
SAN MARTIN TEXMELUCAN	0.00	3	0 12112	80.6	4	7.5	2.2	2.5	1	0.7	1.5	80.6	4	15.4	0.062	0.5
X. C. SAN MARTIN TEXMELUCAN - OCOTOXCO (CUOTA)	1.65	1	0 14265	84.7	3.3	4.7	2.7	1.8	1.4	1.3	0.1	84.7	3.3	12	0.086	0.502
LIM. EDOS. TERM. PUE. PPIA. TLAX.	2.84	0	0													
T. DER. TEPETITLA	3.45	3	0 8214	79.9	4	6	3.2	2.1	2.1	1.5	1.2	79.9	4	16.1	0.089	0.502
SAN DIEGO XOCOYUCAN	7.21	3	0 5670	88.7	3.8	4.3	0.3	0.8	0.5	0.9	0.7	88.7	3.8	7.5	0.09	0.506
T. DER. PANOTLA	19.72	1	0 6005	89	3.7	4.2	0.3	0.8	0.5	0.9	0.6	89	3.7	7.3	0.085	0.503
T. DER. PANOTLA	19.72	3	0 7549	86.5	2.5	3.3	3.6	1.4	1.2	0.9	0.6	86.5	2.5	11	0.071	0.5
TOTOLAC	21.38	1	0 5959	90	1.5	3.8	1.5	1	0.8	1.1	0.3	90	1.5	8.5	0.086	0.5
TOTOLAC	21.38	3	0 6859	87.2	2.3	4.7	1.5	1.1	1.4	1	0.8	87.2	2.3	10.5	0.085	0.5
TLAXCALA	24.81	1	0 6476	90	2.2	3.8	1.1	0.4	0.4	0.7	1.4	90	2.2	7.8	0.068	0.501

23 CARR : LIBRAMIENTO DE APIZACO

CLAVE: 29567

RUTA : MEX-119

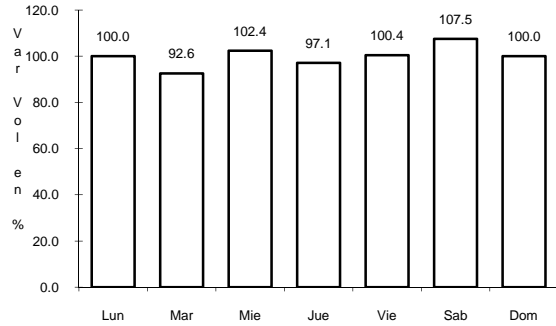
AÑO : 2007

L U G A R	E S T A C I O N			C L A S I F I C A C I O N V E H I C U L A R E N P O R C I E N T O .												
	KM	TE	SC TDPA	A	B	C2	C3	T3S2	T3S3	T3S2R4	OTROS	A	B	C	K'	D
T. DER. AHUAHUASTEPEC	8.00	1	0 12226	68.3	1.5	7.1	5.3	8.3	4.5	4.6	0.4	68.3	1.5	30.2	0.07	0.509
T. DER. AHUAHUASTEPEC	8.00	3	0 11143	66.3	1.6	7	5.7	9	4.9	5	0.5	66.3	1.6	32.1	0.069	0.507

7 CARR: HUAMANTLA - LA VENTA

CLAVE: 29564

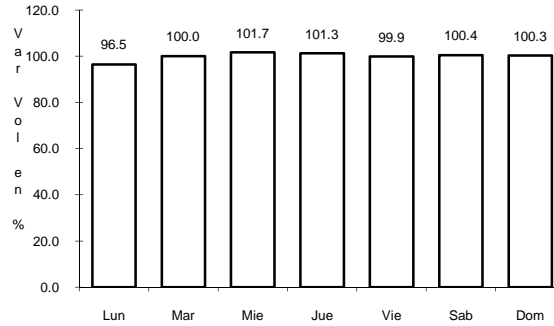
RUTA: MEX



Km: 0.00

Tipo: 3

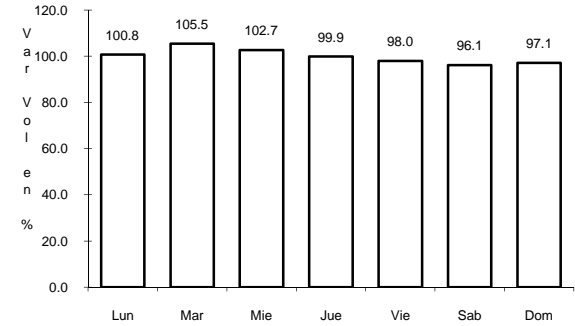
Sent: 1



Km: 0.00

Tipo: 3

Sent: 2



Km: 11.06

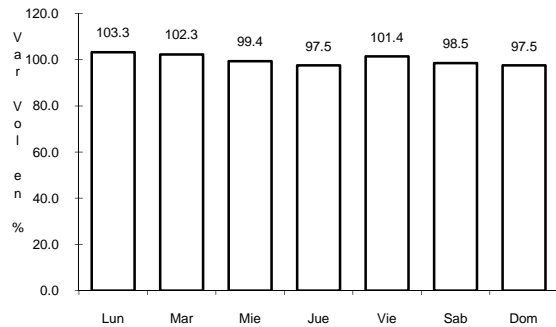
Tipo: 1

Sent: 0

8 CARR: HUAMANTLA - TERRENATE

CLAVE: 29036

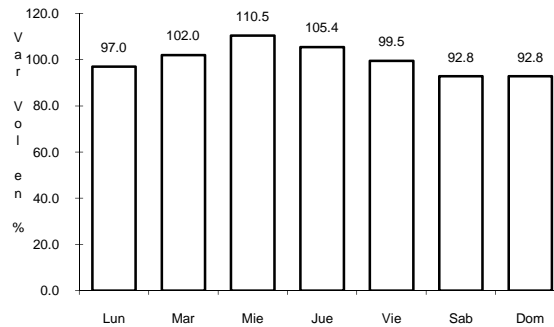
RUTA: MEX



Km: 0.00

Tipo: 3

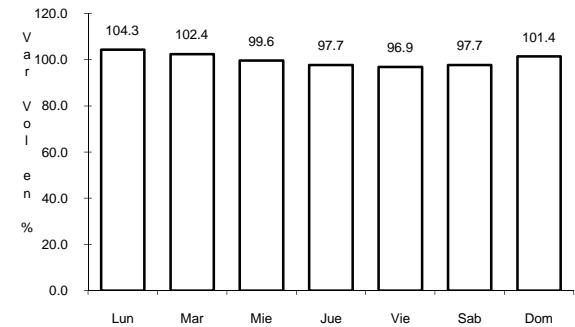
Sent: 0



Km: 12.50

Tipo: 1

Sent: 0



Km: 21.00

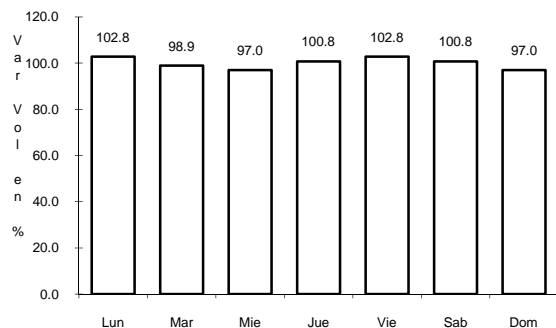
Tipo: 1

Sent: 0

9 CARR: RAMAL A ALTZAYANCA DE HIDALGO

CLAVE: 29562

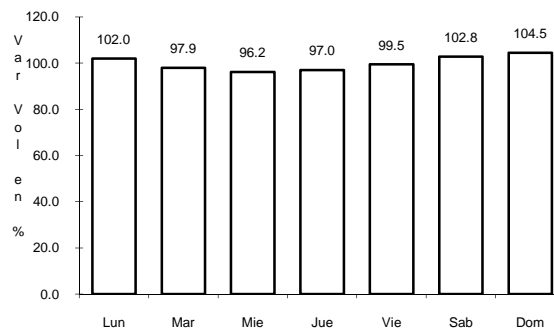
RUTA: TLAX



Km: 0.00

Tipo: 3

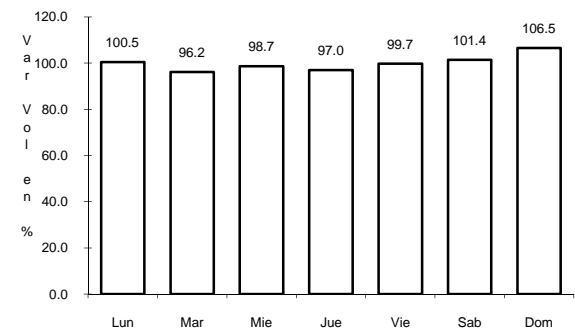
Sent: 0



Km: 6.50

Tipo: 3

Sent: 0



Km: 15.00

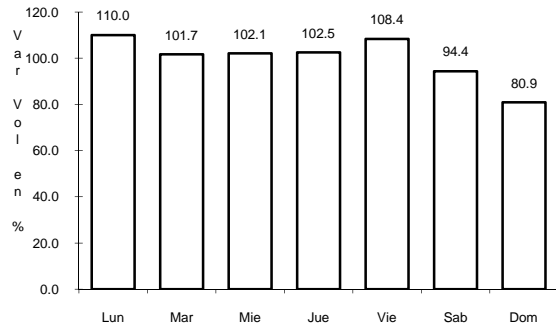
Tipo: 1

Sent: 0

13 CARR: TLAXCALA - BELEM

CLAVE: 29389

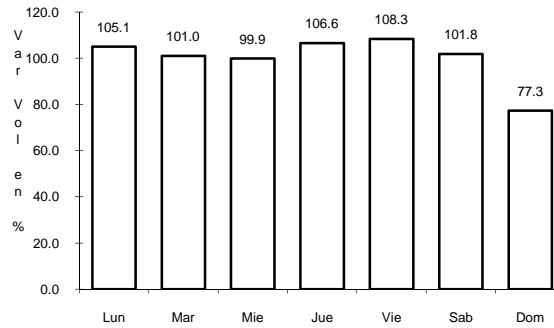
RUTA: MEX



Km: 3.91

Tipo: 1

Sent: 1



Km: 3.91

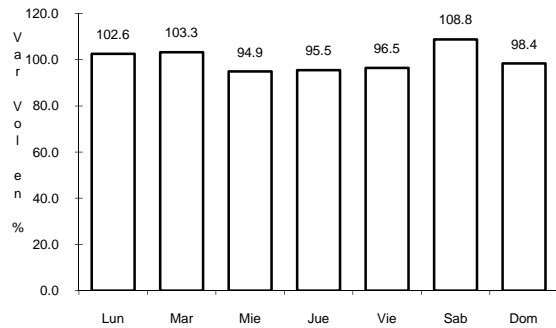
Tipo: 1

Sent: 2

14 CARR: VILLA ALTA - T. C. (PUEBLA - TLAXCALA)

CLAVE: 29566

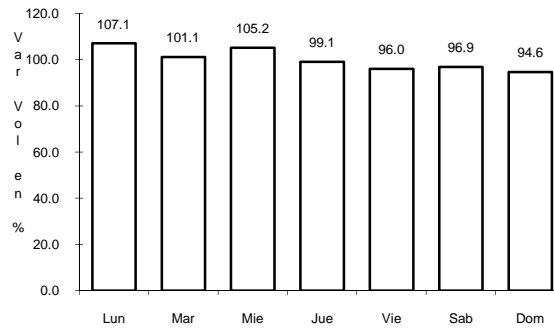
RUTA: MEX



Km: 0.00

Tipo: 3

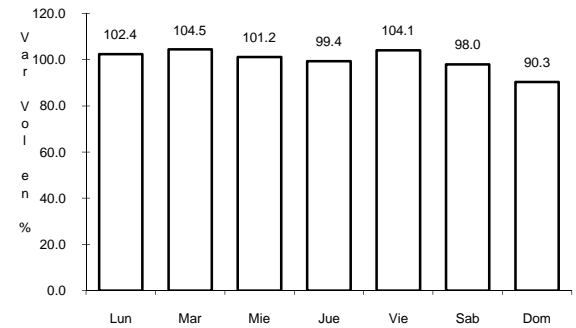
Sent: 0



Km: 10.50

Tipo: 3

Sent: 0



Km: 22.05

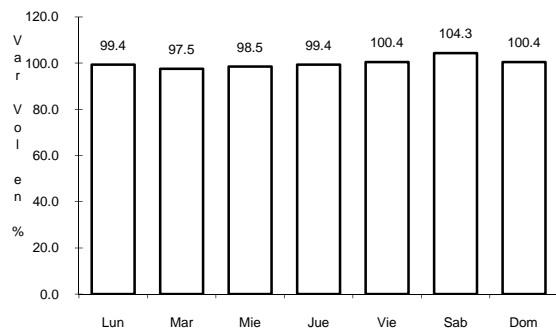
Tipo: 1

Sent: 0

15 CARR: XALOSTOC - TERRENATE

CLAVE: 29390

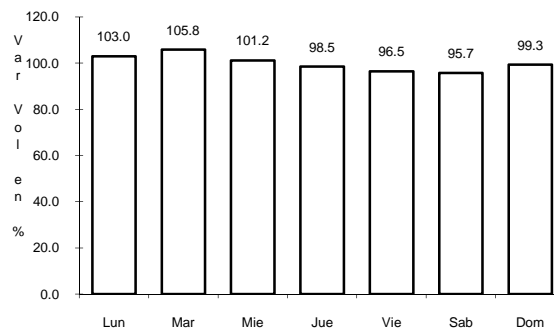
RUTA: TLAX



Km: 0.00

Tipo: 3

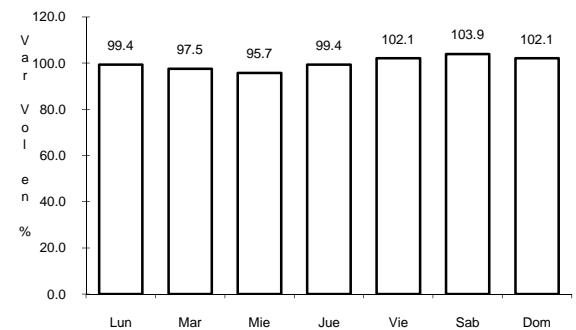
Sent: 0



Km: 7.10

Tipo: 3

Sent: 0



Km: 17.50

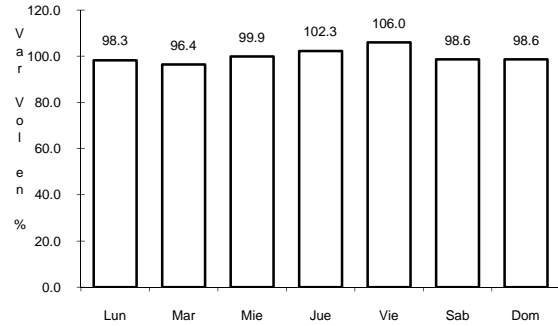
Tipo: 1

Sent: 0

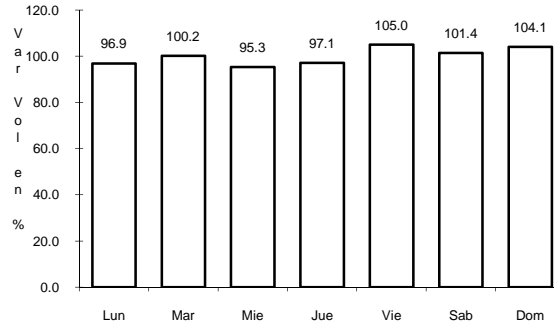
16 CARR: AMOZOC - TEZIUTLAN

CLAVE: 00210

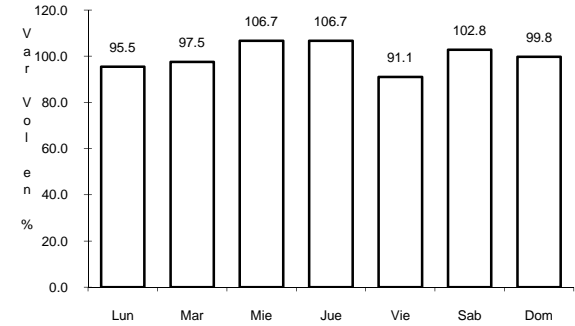
ruta: MEX-129



Km: 1.40 Tipo: 3 Sent: 0



Km: 76.35 Tipo: 3 Sent: 0

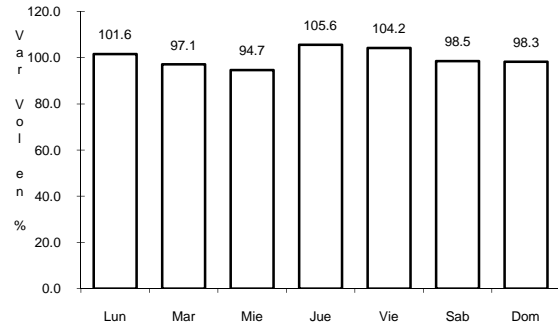


Km: 157.80 Tipo: 1 Sent: 0

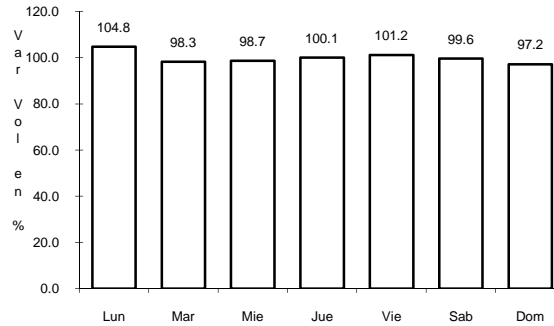
17 CARR: LOS REYES - ZACATEPEC

CLAVE: 00052

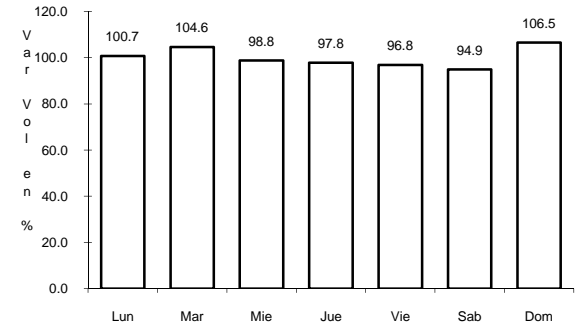
ruta: MEX-138-136



Km: 3.35 Tipo: 3 Sent: 1



Km: 3.35 Tipo: 3 Sent: 2

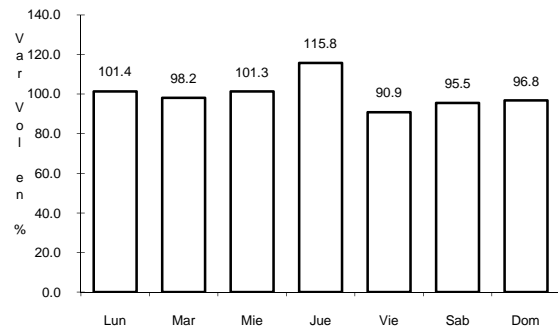


Km: 187.67 Tipo: 1 Sent: 0

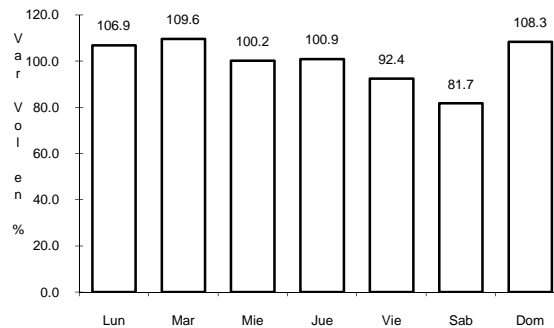
18 CARR: MEXICO - PUEBLA (CUOTA)

CLAVE: 00450

ruta: MEX-150D



Km: 20.00 Tipo: 3 Sent: 1

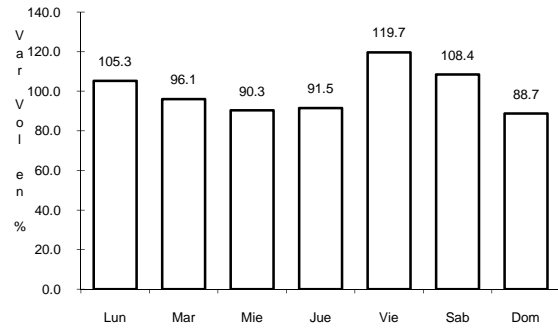


Km: 20.00 Tipo: 3 Sent: 2

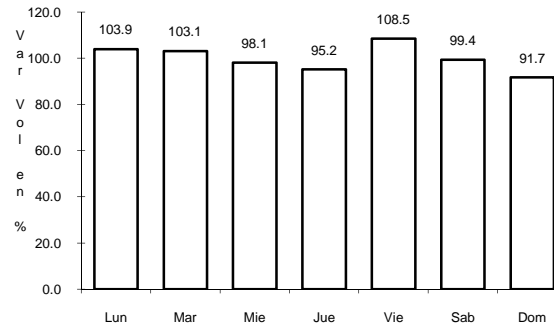
19 CARR: PUEBLA - BELEM

CLAVE: 00055

RUTA: MEX-121



Km: 4.00 Tipo: 3 Sent: 1

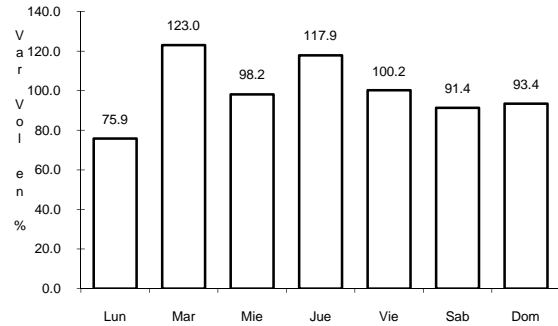


Km: 4.00 Tipo: 3 Sent: 2

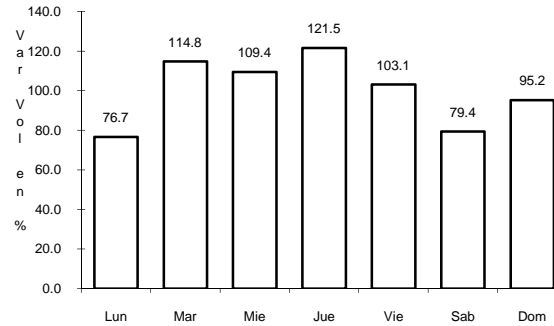
20 CARR: PUEBLA - TLAXCALA

CLAVE: 00475

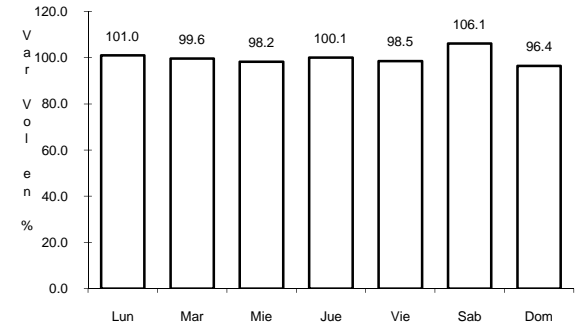
RUTA: MEX-119



Km: 5.41 Tipo: 3 Sent: 1



Km: 5.41 Tipo: 3 Sent: 2

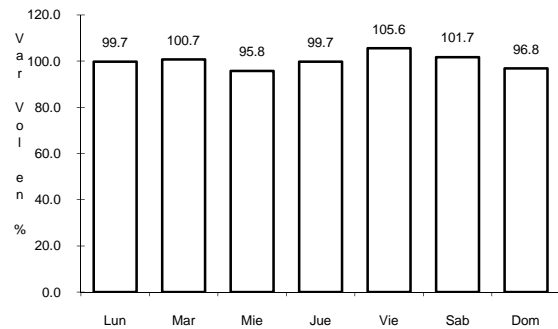


Km: 16.10 Tipo: 3 Sent: 0

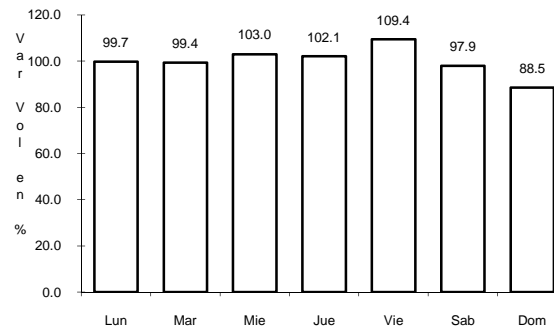
21 CARR: SAN MARTIN TEXMELUCAN - OCOTOXCO (CUOTA)

CLAVE: 00212

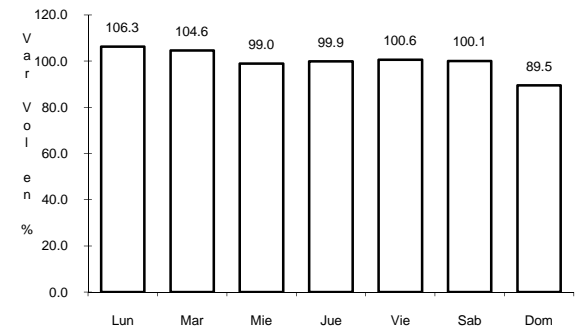
RUTA: MEX-D



Km: 1.80 Tipo: 1 Sent: 0



Km: 35.20 Tipo: 1 Sent: 1



Km: 35.20 Tipo: 1 Sent: 2

