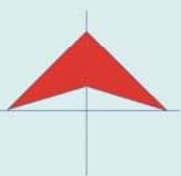


27 TABASCO

Secretaría de Comunicaciones y Transportes

MAPA INDICE

15 Num. Indice
2008



GOLFO DE MEXICO



CARRETERAS AFORADAS

Num. INDICE	CARRETERA
1	BENITO JUAREZ - AGUA DULCE
2	T. C. (EL SUSPIRO - TENOSIQUE) - LA LIBERTAD
3	GREGORIO MENDEZ MAGAÑA - REFORMA DE OCAMPO
4	PASO DE CUNDUACAN - ESTACION JUAREZ
5	SAN MARCO - PALIZADA
6	RAMAL A SALTO DEL AGUA
7	VILLAHERMOSA - CD. DEL CARMEN
8	VILLAHERMOSA - ESCOPETAZO
9	VILLAHERMOSA - FRANCISCO ESCARCEGA
10	BENITO JUAREZ - TEPETITAN
11	CACAOS - LA GRANJA
12	CARDENAS - PARAISO
13	COMALCALCO - EL GOLPE
14	CHICHICAPA - ENT. LA LIBERTAD
15	EL BELLOTE - SANTA CRUZ
16	FRONTERA - T. C. (JALAPA - JONUTA)
17	NICOLAS BRAVO - T. C. (EL BELLOTE - SANTA CRUZ)
18	T. C. (CARDENAS - PARAISO) - CARLOS GREEN
19	ESTACION MACUSPANA - VERNET
20	JALAPA - JONUTA
21	PAILEBOT - CUAUHEMOTZIN
22	PARAISO - EL LIMON
23	PLAYAS DEL ROSARIO - TEAPA
24	RAMAL A BALANCAN
25	RAMAL A SAN ANTONIO
26	RAMAL A LAZARO CARDENAS
27	RAMAL A LIBERTAD
28	RAMAL A SANCHEZ MAGALLANES
29	RAMAL A TAMULTE DE LAS SABANAS
30	RAMAL A TAPIJULAPA
31	REYES HERNANDEZ - VILLA ALDAMA
32	SAMARIA - AMATITAN
33	TIERRA NUEVA - FRANCISCO RUEDA
34	TULIPAN - CUNDUACAN
35	VILLAHERMOSA - COMALCALCO
36	VILLAHERMOSA - T. C. (P. DE CUNDUACAN - ESTACION JUAREZ)
37	VILLAHERMOSA - LUIS GIL PEREZ
38	COATZACOALCOS - VILLAHERMOSA
39	EL SUSPIRO - TENOSIQUE
40	MALPASO - EL BELLOTE
41	ZAPATERO - T. C. (JALAPA - JONUTA)

TABASCO

1 CARR : BENITO JUAREZ - AGUA DULCE

CLAVE: 00202

RUTA : TAB-VER

AÑO : 2007

L U G A R	E S T A C I O N				C L A S I F I C A C I O N V E H I C U L A R E N P O R C I E N T O .												
	KM	TE	SC	TDPA	A	B	C2	C3	T3S2	T3S3	T3S2R4	OTROS	A	B	C	K'	D
BENITO JUAREZ	0.00	3	0	1523	75.3	8.4	8.1	3.8	2	1.3	0.5	0.6	75.3	8.4	16.3	0.089	0.5
LA VENTA	18.00	1	0	2581	85.6	5.2	3.4	0.8	2.5	0.5	0.8	1.2	85.6	5.2	9.2	0.118	0.5
LA VENTA	18.00	3	0	2572	85.5	5.1	3.5	0.9	2.5	0.5	0.8	1.2	85.5	5.1	9.4	0.122	0.508
LIM. EDOS. TERM. TAB. PPIA. VER.	26.00	0	0														
AGUA DULCE	33.00	1	0	2902	77.5	4.9	1.6	0.8	5.3	1.4	2.3	6.2	77.5	4.9	17.6	0.093	0.512

2 CARR : T. C. (EL SUSPIRO - TENOSIQUE) - LA LIBERTAD

CLAVE: 00062

RUTA : CHIS-TAB

AÑO : 2007

L U G A R	E S T A C I O N				C L A S I F I C A C I O N V E H I C U L A R E N P O R C I E N T O .												
	KM	TE	SC	TDPA	A	B	C2	C3	T3S2	T3S3	T3S2R4	OTROS	A	B	C	K'	D
T. C. EL SUSPIRO - TENOSIQUE	0.00	3	0	1546	80.5	5.7	1.6	2.7	5.3	2.1	0	2.1	80.5	5.7	13.8	0.118	0.505
LIM. EDOS. TERM. TAB. PPIA. CHIS.	8.00	0	0														
LA LIBERTAD	10.00	1	0	1113	78.8	7.9	2.2	2.6	4	3.7	0.7	0.1	78.8	7.9	13.3	0.113	0.538

3 CARR : GREGORIO MENDEZ MAGAÑA - REFORMA DE OCAMPO

CLAVE: 00103

RUTA : CHIS

AÑO : 2007

L U G A R	E S T A C I O N				C L A S I F I C A C I O N V E H I C U L A R E N P O R C I E N T O .												
	KM	TE	SC	TDPA	A	B	C2	C3	T3S2	T3S3	T3S2R4	OTROS	A	B	C	K'	D
GREGORIO MENDEZ MAGAÑA	0.00	3	0	1322	81.8	4.3	5.6	2.2	2.7	3.1	0.1	0.2	81.8	4.3	13.9	0.082	0.501
LIM. EDOS. TERM. TAB. PPIA. CHIS.	3.00	0	0														
T. C. BENEMERITO DE LAS AMERICAS - PALENQUE	21.00	1	0	1399	89.8	8.3	1.2	0.3	0.1	0	0	0.3	89.8	8.3	1.9	0.082	0.54
REFORMA DE OCAMPO	22.00	0	0														

4 CARR : PASO DE CUNDUACAN - ESTACION JUAREZ

CLAVE: 00588

RUTA : TAB-CHIS

AÑO : 2007

L U G A R	E S T A C I O N				C L A S I F I C A C I O N V E H I C U L A R E N P O R C I E N T O .												
	KM	TE	SC	TDPA	A	B	C2	C3	T3S2	T3S3	T3S2R4	OTROS	A	B	C	K'	D
PASO DE CUNDUACAN	0.00	3	0	6507	79.3	3.7	6.4	5	1.8	1.7	1.3	0.8	79.3	3.7	17	0.076	0.502
LIM. EDOS. TERM. TAB. PPIA. CHIS.	9.00	0	0														
SANTA TERESA 2° SECC.	18.00	3	0	2916	86.1	4.7	2	2.3	1.4	2.3	0	1.2	86.1	4.7	9.2	0.096	0.5
ESTACION JUAREZ	57.80	1	0	2641	83.7	5.3	3	1.9	1.9	0.3	0.7	3.2	83.7	5.3	11	0.075	0.502

TABASCO

8 CARR : VILLAHERMOSA - ESCOPETAZO

CLAVE: 00104

RUTA : MEX-195

AÑO : 2007

L U G A R	E S T A C I O N				C L A S I F I C A C I O N V E H I C U L A R E N P O R C I E N T O .												
	KM	TE	SC	TDPA	A	B	C2	C3	T3S2	T3S3	T3S2R4	OTROS	A	B	C	K'	D
VILLAHERMOSA	0.00	3	0	13951	78.4	9.2	3.2	2.7	1.7	1.9	0.2	2.7	78.4	9.2	12.4	0.106	0.52
PARRILLA	10.00	1	0	14962	76.8	9.8	4	1.8	2.5	2.9	1.4	0.8	76.8	9.8	13.4	0.082	0.503
PARRILLA	10.00	3	0	12168	76.1	11.2	4	2.1	2.2	2.1	1.6	0.7	76.1	11.2	12.7	0.074	0.503
T. IZQ. SUBTE. GARCIA	20.00	3	0	5804	86.5	5.4	2.1	1.6	1.5	1.3	1.1	0.5	86.5	5.4	8.1	0.102	0.501
LA ARENA	44.00	1	0	4088	80.5	4.8	3.6	2.5	3.6	2.1	1.8	1.1	80.5	4.8	14.7	0.08	0.521
T. IZQ. TEAPA	54.80	1	0	6205	78.5	6.7	5.1	3.1	2.7	1.9	1.3	0.7	78.5	6.7	14.8	0.093	0.501
T. IZQ. TEAPA	54.80	3	0	3770	88.7	5.5	1.2	0.1	2.5	0.5	0.5	1	88.7	5.5	5.8	0.083	0.504
LIM. EDOS. TERM. TAB. PPIA. CHIS.	61.42	0	0														
PICHUCALCO	76.00	1	0	3406	81.3	5.3	0.9	0.3	5.6	1.1	3.1	2.4	81.3	5.3	13.4	0.106	0.507
PICHUCALCO	76.00	3	0	2670	92.8	4	2.8	0.1	0.1	0	0	0.2	92.8	4	3.2	0.067	0.511
SOLUSUCHIAPA	112.00	1	0	1594	78.7	4.9	5.3	3.4	2.1	1.8	1.4	2.4	78.7	4.9	16.4	0.105	0.503
SOLUSUCHIAPA	112.00	3	0	1369	77.1	4.1	6.6	4.7	2.3	1.8	0	3.4	77.1	4.1	18.8	0.106	0.516
RAYON	146.00	1	0	1278	70.1	8.4	7	5.3	2.5	3.2	2	1.5	70.1	8.4	21.5	0.091	0.51
JITOTOL	197.80	1	0	1267	78	4.4	6.3	3.4	2.2	3.4	0.7	1.6	78	4.4	17.6	0.127	0.516
BOCHIL	211.00	1	0	1971	77.2	4.3	4.5	3.5	2.9	3.4	1.2	3	77.2	4.3	18.5	0.106	0.514
IXTAPA	247.00	1	0	2063	79.9	4.8	4.8	2.1	1.7	3.1	1.5	2.1	79.9	4.8	15.3	0.1	0.512
ESCOPETAZO	259.00	1	0	2352	82.6	3.8	3.1	2.2	3	2.8	1	1.5	82.6	3.8	13.6	0.099	0.503

9 CARR : VILLAHERMOSA - FRANCISCO ESCARCEGA

CLAVE: 00092

RUTA : MEX-186

AÑO : 2007

L U G A R	E S T A C I O N				C L A S I F I C A C I O N V E H I C U L A R E N P O R C I E N T O .												
	KM	TE	SC	TDPA	A	B	C2	C3	T3S2	T3S3	T3S2R4	OTROS	A	B	C	K'	D
VILLAHERMOSA	0.00	3	1	7905	72.6	4.5	0.2	3.2	5.1	2.1	5.9	6.4	72.6	4.5	22.9	0.115	0.504
VILLAHERMOSA	0.00	3	2	7784	81	4.7	1.2	1.6	5.2	1.3	2.6	2.4	81	4.7	14.3	0.115	0.504
T. IZQ. AEROPUERTO	12.00	1	1	9338	76.3	3.2	3.9	2.9	6.1	2.2	2.8	2.6	76.3	3.2	20.5	0.078	0.504
T. IZQ. AEROPUERTO	12.00	1	2	9188	75.5	3.6	4	2.9	6.2	2.2	2.8	2.8	75.5	3.6	20.9	0.08	0.504
X. C. CACAOS - LA GRANJA	32.46	1	0	8790	75.1	5.7	2.2	3.2	6.3	1.8	4.1	1.6	75.1	5.7	19.2	0.083	0.506
X. C. CACAOS - LA GRANJA	32.46	3	0	7313	75.8	14.3	3.4	2.4	1.3	1	0.3	1.5	75.8	14.3	9.9	0.092	0.521
X. C. JALAPA - JONUTA	40.00	3	0	6256	70	9.4	7.5	6.8	4	1.6	0.1	0.6	70	9.4	20.6	0.075	0.505
T. IZQ. MACUSPANA	46.20	1	0	5961	76.9	5.7	6.1	4.8	2.6	2.3	0	1.6	76.9	5.7	17.4	0.084	0.501
T. IZQ. MACUSPANA	46.20	3	0	6694	55.7	3.8	4.6	5.2	4.5	2.8	12.6	10.8	55.7	3.8	40.5	0.079	0.512
X. C. ESTACION MACUSPANA - VERNET	54.30	1	0	5864	63.8	4.3	6.2	5.8	8.6	3.3	6.4	1.6	63.8	4.3	31.9	0.082	0.501
T. DER. CHIVALITO (EST. PINO SUAREZ)	70.00	1	0	6229	64	4.9	6.3	5	8.6	3.2	6.4	1.6	64	4.9	31.1	0.076	0.507
T. DER. CHIVALITO (EST. PINO SUAREZ)	70.00	3	0	6204	63.2	8	4.7	4.3	8.6	3.2	6.4	1.6	63.2	8	28.8	0.076	0.507
T. DER. ESTACION ZOPO	71.00	1	0	5262	64.1	4.9	5.5	5	9.3	2.9	6.8	1.5	64.1	4.9	31	0.078	0.509

TABASCO

9 CARR : VILLAHERMOSA - FRANCISCO ESCARCEGA

CLAVE: 00092

RUTA : MEX-186

AÑO : 2007

L U G A R	E S T A C I O N				C L A S I F I C A C I O N V E H I C U L A R E N P O R C I E N T O .												
	KM	TE	SC	TDPA	A	B	C2	C3	T3S2	T3S3	T3S2R4	OTROS	A	B	C	K'	D
T. DER. ESTACION ZOPO	71.00	3	0	7063	69.8	6.7	5.6	5.1	5.4	2.1	4.4	0.9	69.8	6.7	23.5	0.094	0.508
LIM. EDOS. TERM. TAB. PPIA. CHIS.	76.90	0	0														
T. IZQ. BONANZA	88.00	1	0	4392	74.9	4.2	3.7	2.6	7.5	4.5	0	2.6	74.9	4.2	20.9	0.103	0.503
T. IZQ. JONUTA	101.00	1	0	4356	62.7	4	10.7	1.8	4	2.4	1.8	12.6	62.7	4	33.3	0.076	0.501
T. IZQ. JONUTA	101.00	3	0	4060	76.9	4.3	2.5	1.3	4.2	2.4	2	6.4	76.9	4.3	18.8	0.082	0.507
X. C. CATAZAJA - PALENQUE	114.00	1	0	4570	72.3	4	6.8	1.6	5.9	1.9	2.6	4.9	72.3	4	23.7	0.086	0.504
X. C. CATAZAJA - PALENQUE	114.00	3	0	3934	64.3	4.8	12.3	0.7	5.1	1	1.2	10.6	64.3	4.8	30.9	0.074	0.513
T. DER. EMILIANO ZAPATA	134.70	1	0	3535	61.9	6.2	8.4	3	5.5	3.3	3.6	8.1	61.9	6.2	31.9	0.082	0.502
T. DER. EMILIANO ZAPATA	134.70	3	0	2984	61.8	7.1	9.6	0.4	6.6	1.1	0.8	12.6	61.8	7.1	31.1	0.079	0.5
LIM. EDOS. TERM. CHIS. PPIA. TAB.	140.70	0	0														
LIM. EDOS. TERM. TAB. PPIA. CAMP.	152.50	0	0														
T. IZQ. PALIZADA	154.10	1	0	2533	52.2	5.5	10.6	2.5	9.6	3.6	4.7	11.3	52.2	5.5	42.3	0.077	0.503
T. IZQ. PALIZADA	154.10	3	0	2897	56	4.6	6.8	2.4	9.9	3.4	4.8	12.1	56	4.6	39.4	0.078	0.504
T. DER. CANDELARIA	233.40	1	0	2831	81.7	5	5.2	4.7	1.5	0.7	0	1.2	81.7	5	13.3	0.097	0.514
T. DER. FELIPE ANGELES	253.00	1	0	2395	54.4	4	9.9	3.5	8.8	3.5	6.6	9.3	54.4	4	41.6	0.117	0.514
T. IZQ. SABANCUY	274.10	1	0	2985	77.7	7.1	4.6	3.5	2.5	2.4	0	2.2	77.7	7.1	15.2	0.087	0.505
FRANCISCO ESCARCEGA	297.00	1	0	4939	79.1	5.9	1.9	3.6	2.9	2.6	1.2	2.8	79.1	5.9	15	0.064	0.504

10 CARR : BENITO JUAREZ - TEPETITAN

CLAVE: 27204

RUTA : TAB

AÑO : 2007

L U G A R	E S T A C I O N				C L A S I F I C A C I O N V E H I C U L A R E N P O R C I E N T O .												
	KM	TE	SC	TDPA	A	B	C2	C3	T3S2	T3S3	T3S2R4	OTROS	A	B	C	K'	D
BENITO JUAREZ	0.00	0	0														
X. C. JALAPA - JONUTA	1.50	3	0	2964	91	2.4	2.3	0.3	2.3	0.3	0.4	1	91	2.4	6.6	0.079	0.502
LIMBANO BLANDIN	18.50	1	0	696	82.3	2.8	8	4.2	0.6	0.6	0.2	1.3	82.3	2.8	14.9	0.109	0.502
LIMBANO BLANDIN	18.50	3	0	429	91	6.3	1.3	0.4	0.5	0	0.1	0.4	91	6.3	2.7	0.096	0.501
TEPETITAN	20.00	1	0	637	90.2	2.3	4.4	1.4	0.4	0.5	0.2	0.6	90.2	2.3	7.5	0.097	0.503

11 CARR : CACAOS - LA GRANJA

CLAVE: 27002

RUTA : TAB

AÑO : 2007

L U G A R	E S T A C I O N				C L A S I F I C A C I O N V E H I C U L A R E N P O R C I E N T O .												
	KM	TE	SC	TDPA	A	B	C2	C3	T3S2	T3S3	T3S2R4	OTROS	A	B	C	K'	D
CACAOS	0.00	3	0	1168	88.9	3.2	1.6	1.7	1.1	2.3	0.2	1	88.9	3.2	7.9	0.143	0.536
X. C. VILLAHERMOSA - FRANCISCO ESCARCEGA	16.00	3	0	3297	83.8	2.4	6.1	2.8	2	0.9	0.8	1.2	83.8	2.4	13.8	0.099	0.507
T. C. JALAPA - JONUTA	39.00	1	0	3906	88.1	5	0.2	0.4	2.8	0.9	1.5	1.1	88.1	5	6.9	0.107	0.5

TABASCO

12 CARR : CARDENAS - PARAISO

CLAVE: 27117

RUTA : TAB

AÑO : 2007

L U G A R	E S T A C I O N				C L A S I F I C A C I O N V E H I C U L A R E N P O R C I E N T O .												
	KM	TE	SC	TDPA	A	B	C2	C3	T3S2	T3S3	T3S2R4	OTROS	A	B	C	K'	D
T. C. COATZACOALCOS - VILLAHERMOSA	0.00	3	0	4291	90	2.6	2.5	3.1	0.3	0.2	0	1.3	90	2.6	7.4	0.092	0.501
T. IZQ. EL GOLPE	22.00	1	0	1085	81.6	5.3	4.5	3.6	0.7	0.7	0	3.6	81.6	5.3	13.1	0.095	0.504
T. IZQ. EL GOLPE	22.00	3	0	796	73.5	8.4	7.8	4.4	2.9	0.7	0.6	1.7	73.5	8.4	18.1	0.075	0.5
COMALCALCO	37.00	3	0	5192	86.8	3.5	1	1.1	3.6	1.9	1.1	1	86.8	3.5	9.7	0.081	0.504
PARAISO	52.00	1	0	3333	80.6	2.6	2.7	1.5	5.5	1.8	3.2	2.1	80.6	2.6	16.8	0.082	0.5

13 CARR : COMALCALCO - EL GOLPE

CLAVE: 27102

RUTA : TAB

AÑO : 2007

L U G A R	E S T A C I O N				C L A S I F I C A C I O N V E H I C U L A R E N P O R C I E N T O .												
	KM	TE	SC	TDPA	A	B	C2	C3	T3S2	T3S3	T3S2R4	OTROS	A	B	C	K'	D
T. C. MALPASO - BELLOTE	0.00	0	0														
COMALCALCO	0.00	3	0	9522	77.7	3.1	4.1	0.2	6.4	1.8	2.6	4.1	77.7	3.1	19.2	0.069	0.516
TECOLUTILLA	15.00	1	0	4134	81.7	6.3	3.4	0.5	4.2	0.7	1	2.2	81.7	6.3	12	0.073	0.503
TECOLUTILLA	15.00	3	0	3144	82.9	6.3	2.4	0.4	3.7	0.9	1.1	2.3	82.9	6.3	10.8	0.084	0.53
T. DER. LAZARO CARDENAS	20.00	3	0	1611	80.8	5.5	7.5	0.5	1.9	1.5	0.4	1.9	80.8	5.5	13.7	0.097	0.501
CARLOS GREEN	24.00	3	0	1233	86.1	4.2	3.8	0.2	2.2	0.8	0.6	2.1	86.1	4.2	9.7	0.088	0.508
EL GOLPE	34.00	1	0	241	76.2	7.4	10.2	1.8	1.4	0.4	0	2.6	76.2	7.4	16.4	0.104	0.516

14 CARR : CHICHICAPA - ENT. LA LIBERTAD

CLAVE: 27100

RUTA : TAB

AÑO : 2007

L U G A R	E S T A C I O N				C L A S I F I C A C I O N V E H I C U L A R E N P O R C I E N T O .												
	KM	TE	SC	TDPA	A	B	C2	C3	T3S2	T3S3	T3S2R4	OTROS	A	B	C	K'	D
CHICHICAPA	0.00	3	0	2527	88.2	1.4	4.5	0.8	2.4	0.4	0.7	1.6	88.2	1.4	10.4	0.072	0.509
NICOLAS BRAVO	10.00	3	0	2273	91.9	2	1.9	0.4	1.6	0.4	0.6	1.2	91.9	2	6.1	0.098	0.507
ENT. LA LIBERTAD	18.00	1	0	2381	88.6	4.5	3.4	0.6	0.8	0.2	0.3	1.6	88.6	4.5	6.9	0.101	0.51

15 CARR : EL BELLOTE - SANTA CRUZ

CLAVE: 27105

RUTA : TAB

AÑO : 2007

L U G A R	E S T A C I O N				C L A S I F I C A C I O N V E H I C U L A R E N P O R C I E N T O .												
	KM	TE	SC	TDPA	A	B	C2	C3	T3S2	T3S3	T3S2R4	OTROS	A	B	C	K'	D
BELLOTE	0.00	3	0	2743	87	3.6	1.9	0.6	3.4	1.1	0.9	1.5	87	3.6	9.4	0.109	0.514
T. DER. CHICHICAPA	8.00	3	0	2079	84.9	5.9	2.8	1	2.5	0.6	0.9	1.4	84.9	5.9	9.2	0.094	0.508
IGNACIO ALLENDE	35.00	1	0	2118	83.4	4	5.6	2.3	2.1	0.5	1	1.1	83.4	4	12.6	0.114	0.503
IGNACIO ALLENDE	35.00	3	0	1948	89.5	1.6	5.1	1.2	0.8	0.9	0.7	0.2	89.5	1.6	8.9	0.093	0.508
SANTA CRUZ	40.00	1	0	2109	79.5	6.6	6.7	0.9	3.6	0.9	0.7	1.1	79.5	6.6	13.9	0.11	0.502

TABASCO

16 CARR : FRONTERA - T. C. (JALAPA - JONUTA)

CLAVE: 27081

RUTA : TAB

AÑO : 2007

L U G A R	E S T A C I O N				C L A S I F I C A C I O N V E H I C U L A R E N P O R C I E N T O .												
	KM	TE	SC	TDPA	A	B	C2	C3	T3S2	T3S3	T3S2R4	OTROS	A	B	C	K'	D
X. C. VILLAHERMOSA - CD. DEL CARMEN	1.00	3	0	772	91.2	2	4.1	0.6	1	0.1	0.2	0.8	91.2	2	6.8	0.11	0.501
T. C. JALAPA - JONUTA	123.00	1	0	1611	88.1	3.5	4.5	2.9	0.2	0.2	0	0.6	88.1	3.5	8.4	0.097	0.501

17 CARR : NICOLAS BRAVO - T. C. (EL BELLOTE - SANTA CRUZ)

CLAVE: 27010

RUTA : TAB

AÑO : 2007

L U G A R	E S T A C I O N				C L A S I F I C A C I O N V E H I C U L A R E N P O R C I E N T O .												
	KM	TE	SC	TDPA	A	B	C2	C3	T3S2	T3S3	T3S2R4	OTROS	A	B	C	K'	D
NICOLAS BRAVO	0.00	3	0	1101	75.9	9.6	10	3.1	0	0.1	0.1	1.2	75.9	9.6	14.5	0.095	0.512
T. C. BELLOTE - SANTA CRUZ	22.00	1	0	631	87.9	4.5	5.2	0.5	1	0.1	0.2	0.6	87.9	4.5	7.6	0.098	0.503

18 CARR : T. C. (CARDENAS - PARAISO) - CARLOS GREEN

CLAVE: 27111

RUTA : TAB

AÑO : 2007

L U G A R	E S T A C I O N				C L A S I F I C A C I O N V E H I C U L A R E N P O R C I E N T O .												
	KM	TE	SC	TDPA	A	B	C2	C3	T3S2	T3S3	T3S2R4	OTROS	A	B	C	K'	D
T. C. MALPASO - EL BELLOTE	0.00	0	0														
T. C. CARDENAS - PARAISO	0.00	3	0	1799	88.1	3.6	1.5	1.1	1.7	0.4	2.2	1.4	88.1	3.6	8.3	0.091	0.51
T. DER. REYES HERNANDEZ	12.50	3	0	1784	75.6	5.8	3.8	8.5	3.6	0.4	0.9	1.4	75.6	5.8	18.6	0.083	0.506
CARLOS GREEN	15.70	1	0	1248	79.3	5.4	1.1	2.5	1.5	2.6	1.1	6.5	79.3	5.4	15.3	0.122	0.501

19 CARR : ESTACION MACUSPANA - VERNET

CLAVE: 27091

RUTA : TAB-041

AÑO : 2007

L U G A R	E S T A C I O N				C L A S I F I C A C I O N V E H I C U L A R E N P O R C I E N T O .												
	KM	TE	SC	TDPA	A	B	C2	C3	T3S2	T3S3	T3S2R4	OTROS	A	B	C	K'	D
ESTACION MACUSPANA	0.00	0	0														
X. C. VILLAHERMOSA - FRANCISCO ESCARCEGA	11.00	1	0	1395	78.8	5.3	7.2	4.3	2.3	0.6	0.5	1	78.8	5.3	15.9	0.119	0.501
X. C. VILLAHERMOSA - FRANCISCO ESCARCEGA	11.00	3	0	1616	89.5	5.3	2.9	0.7	0.9	0	0.1	0.6	89.5	5.3	5.2	0.092	0.516
BELEM	20.50	1	0	6248	89	3.7	1.2	0.5	2.5	0.5	0.6	2	89	3.7	7.3	0.078	0.507
BELEM	20.50	3	0	2102	91.8	2.6	2.8	0.4	1.2	0.4	0.1	0.7	91.8	2.6	5.6	0.091	0.506
X. C. CACAOS - LA GRANJA	25.50	3	0	922	80.3	7.4	6.9	3.2	1.3	0.3	0	0.6	80.3	7.4	12.3	0.111	0.506
VERNET	32.50	1	0	625	88.5	5.4	4.1	0.8	0.4	0.4	0	0.4	88.5	5.4	6.1	0.101	0.512

TABASCO

20 CARR : JALAPA - JONUTA

CLAVE: 27107

RUTA : TAB

AÑO : 2007

L U G A R	E S T A C I O N				C L A S I F I C A C I O N V E H I C U L A R E N P O R C I E N T O .												
	KM	TE	SC	TDPA	A	B	C2	C3	T3S2	T3S3	T3S2R4	OTROS	A	B	C	K'	D
JALAPA	0.00	3	0	2142	92.6	3	0.4	0.1	2.4	0.2	0.3	1	92.6	3	4.4	0.101	0.502
X. C. VILLAHERMOSA - FRANCISCO ESCARCEGA	15.00	1	0	1688	96	1.9	0	0	1.1	0.1	0.2	0.7	96	1.9	2.1	0.104	0.509
X. C. VILLAHERMOSA - FRANCISCO ESCARCEGA	15.00	3	0	1632	96.3	1.7	0.1	0	1	0.1	0.2	0.6	96.3	1.7	2	0.113	0.507
BELEM	24.00	1	0	1376	92.8	3.9	1	0.5	0.9	0.1	0.2	0.6	92.8	3.9	3.3	0.107	0.509
T. IZQ. CACAOS	39.00	1	0	3199	93.7	1.2	1.7	0.4	1.6	0.4	0.2	0.8	93.7	1.2	5.1	0.083	0.502
CD. PEMEX	43.00	1	1	3441	86.8	3.6	1	0.8	2.3	0.9	1.7	2.9	86.8	3.6	9.6	0.149	0.516
CD. PEMEX	43.00	1	2	3673	88.8	3	1.4	0.5	2.8	0.5	0.9	2.1	88.8	3	8.2	0.117	0.516
CD. PEMEX	43.00	3	0	3370	89.8	4.2	1	0.2	2.6	0.6	0.5	1.1	89.8	4.2	6	0.093	0.505
JONUTA	97.50	1	0	1676	90.5	3.3	2.8	1.7	0.7	0.6	0	0.4	90.5	3.3	6.2	0.119	0.504

21 CARR : PAILEBOT - CUAUHTEMOTZIN

CLAVE: 27112

RUTA : TAB

AÑO : 2007

L U G A R	E S T A C I O N				C L A S I F I C A C I O N V E H I C U L A R E N P O R C I E N T O .												
	KM	TE	SC	TDPA	A	B	C2	C3	T3S2	T3S3	T3S2R4	OTROS	A	B	C	K'	D
PAILEBOT	0.00	3	0	735	91.6	5	1.8	0.6	0.1	0.2	0.1	0.6	91.6	5	3.4	0.101	0.501
CUAUHTEMOTZIN	23.00	1	0	330	95.7	1.7	1.2	0.5	0	0.7	0	0.2	95.7	1.7	2.6	0.088	0.501

22 CARR : PARAISO - EL LIMON

CLAVE: 27108

RUTA : TAB

AÑO : 2007

L U G A R	E S T A C I O N				C L A S I F I C A C I O N V E H I C U L A R E N P O R C I E N T O .												
	KM	TE	SC	TDPA	A	B	C2	C3	T3S2	T3S3	T3S2R4	OTROS	A	B	C	K'	D
PARAISO	0.00	3	0	2017	74.7	4.3	1.1	1.3	5.1	9.3	2.2	2	74.7	4.3	21	0.083	0.508
LIMON	6.00	1	0	1680	72.4	4.9	4.3	1.1	6.5	4.2	3.8	2.8	72.4	4.9	22.7	0.11	0.503

23 CARR : PLAYAS DEL ROSARIO - TEAPA

CLAVE: 27203

RUTA : TAB-001

AÑO : 2007

L U G A R	E S T A C I O N				C L A S I F I C A C I O N V E H I C U L A R E N P O R C I E N T O .												
	KM	TE	SC	TDPA	A	B	C2	C3	T3S2	T3S3	T3S2R4	OTROS	A	B	C	K'	D
T. C. VILLAHERMOSA - ESCOPETAZO	0.00	3	0	4502	79.3	6.2	2.9	2.9	3.5	2.4	0.3	2.5	79.3	6.2	14.5	0.081	0.541
X. C. VILLAHERMOSA - ESCOPETAZO	3.00	3	0	4491	78.2	7.1	3.2	2.2	2.2	3.7	0.3	3.1	78.2	7.1	14.7	0.073	0.503
CACAOS	7.00	3	0	3075	76.7	8	3.2	4.5	2.1	3.7	0.2	1.6	76.7	8	15.3	0.084	0.521
JALAPA	23.00	1	0	3463	87.5	4.1	1.4	0.4	3.2	1.1	0.9	1.4	87.5	4.1	8.4	0.101	0.501
JALAPA	23.00	3	0	2994	88.5	4.3	1.6	0	3.1	1.1	0.5	0.9	88.5	4.3	7.2	0.096	0.511
T. IZQ. TACOTALPA	39.00	1	0	2119	87.7	4.6	2.9	0.3	2.5	1	0.6	0.4	87.7	4.6	7.7	0.096	0.504
T. IZQ. TACOTALPA	39.00	3	0	2736	86.5	4	4.1	1.8	1.4	1	0.3	0.9	86.5	4	9.5	0.103	0.515

TABASCO

23 CARR : PLAYAS DEL ROSARIO - TEAPA

CLAVE: 27203

RUTA : TAB-001

AÑO : 2007

L U G A R	E S T A C I O N				C L A S I F I C A C I O N V E H I C U L A R E N P O R C I E N T O .												
	KM	TE	SC	TDPA	A	B	C2	C3	T3S2	T3S3	T3S2R4	OTROS	A	B	C	K'	D
TEAPA	54.00	1	0	3691	90.6	3.1	1.1	0	2.6	0.5	0.7	1.4	90.6	3.1	6.3	0.099	0.501

24 CARR : RAMAL A BALANCAN

CLAVE: 27078

RUTA : TAB

AÑO : 2007

L U G A R	E S T A C I O N				C L A S I F I C A C I O N V E H I C U L A R E N P O R C I E N T O .												
	KM	TE	SC	TDPA	A	B	C2	C3	T3S2	T3S3	T3S2R4	OTROS	A	B	C	K'	D
T. C. EL SUSPIRO - TENOSIQUE	0.00	3	0	1294	82.5	5.2	5	1.2	0.3	3.8	0.9	1.1	82.5	5.2	12.3	0.096	0.503
BALANCAN	24.00	1	0	1213	82.5	6.3	0.4	1.9	2.1	1.6	0.8	4.4	82.5	6.3	11.2	0.124	0.503

25 CARR : RAMAL A SAN ANTONIO

CLAVE: 27003

RUTA : TAB

AÑO : 2007

L U G A R	E S T A C I O N				C L A S I F I C A C I O N V E H I C U L A R E N P O R C I E N T O .												
	KM	TE	SC	TDPA	A	B	C2	C3	T3S2	T3S3	T3S2R4	OTROS	A	B	C	K'	D
T. C. VILLAHERMOSA - FRANCISCO ESCARCEGA	0.00	3	0	438	85.7	0.1	2.5	2	4.1	2.5	1.3	1.8	85.7	0.1	14.2	0.114	0.509
T. DER. BALANCAN	24.00	1	0	871	73.7	4.5	10.5	2.1	1.7	2.3	1.4	3.8	73.7	4.5	21.8	0.088	0.502
T. DER. BALANCAN	24.00	3	0	1462	77.9	6	8.7	1.2	1	1.3	1	2.9	77.9	6	16.1	0.098	0.529
EL TRIUNFO	72.00	0	0														

26 CARR : RAMAL A LAZARO CARDENAS

CLAVE: 27208

RUTA : TAB

AÑO : 2007

L U G A R	E S T A C I O N				C L A S I F I C A C I O N V E H I C U L A R E N P O R C I E N T O .												
	KM	TE	SC	TDPA	A	B	C2	C3	T3S2	T3S3	T3S2R4	OTROS	A	B	C	K'	D
T. C. COMALCALCO - EL GOLPE	0.00	3	0	1147	83	6	2.5	1.8	1.7	0.7	0.6	3.7	83	6	11	0.11	0.504
LAZARO CARDENAS	14.00	1	0	739	93.6	5	0.4	0.6	0	0	0	0.4	93.6	5	1.4	0.092	0.503

27 CARR : RAMAL A LIBERTAD

CLAVE: 27205

RUTA : TAB

AÑO : 2007

L U G A R	E S T A C I O N				C L A S I F I C A C I O N V E H I C U L A R E N P O R C I E N T O .												
	KM	TE	SC	TDPA	A	B	C2	C3	T3S2	T3S3	T3S2R4	OTROS	A	B	C	K'	D
T. C. CARDENAS - PARAISO	0.00	3	0	3163	88.6	3.4	2.8	0.7	1.8	0.5	0.5	1.7	88.6	3.4	8	0.148	0.506
LIBERTAD	8.50	1	0	2309	84.8	4.8	1.7	4.1	2	2	0	0.6	84.8	4.8	10.4	0.089	0.503

TABASCO

28 CARR : RAMAL A SANCHEZ MAGALLANES

CLAVE: 27016

RUTA : TAB

AÑO : 2007

L U G A R	E S T A C I O N				C L A S I F I C A C I O N V E H I C U L A R E N P O R C I E N T O .												
	KM	TE	SC	TDPA	A	B	C2	C3	T3S2	T3S3	T3S2R4	OTROS	A	B	C	K'	D
T. C. COATZACOALCOS - VILLAHERMOSA	0.00	3	0	1278	88.7	5.1	2.3	1.2	0.6	0.5	0	1.6	88.7	5.1	6.2	0.11	0.5
CAMPO MAGALLANES	13.00	1	0	883	79.4	7.7	5	4.3	1.4	1.1	0	1.1	79.4	7.7	12.9	0.095	0.5
CAMPO MAGALLANES	13.00	3	0	1393	70.8	13	5.3	8.2	1.5	1	0	0.2	70.8	13	16.2	0.082	0.502
SANCHEZ MAGALLANES	33.00	1	0	1096	92.5	3.4	0.8	0.3	0.5	0.5	0	2	92.5	3.4	4.1	0.092	0.503

29 CARR : RAMAL A TAMULTE DE LAS SABANAS

CLAVE: 27080

RUTA : TAB

AÑO : 2007

L U G A R	E S T A C I O N				C L A S I F I C A C I O N V E H I C U L A R E N P O R C I E N T O .												
	KM	TE	SC	TDPA	A	B	C2	C3	T3S2	T3S3	T3S2R4	OTROS	A	B	C	K'	D
T. C. VILLAHERMOSA - CD. DEL CARMEN	0.00	3	0	2036	93.2	2.1	2.1	0.3	1.4	0.1	0.2	0.6	93.2	2.1	4.7	0.086	0.513
TAMULTE DE LAS SABANAS	7.00	0	0														

30 CARR : RAMAL A TAPIJULAPA

CLAVE: 27200

RUTA : TAB

AÑO : 2007

L U G A R	E S T A C I O N				C L A S I F I C A C I O N V E H I C U L A R E N P O R C I E N T O .												
	KM	TE	SC	TDPA	A	B	C2	C3	T3S2	T3S3	T3S2R4	OTROS	A	B	C	K'	D
T. C. PLAYAS DEL ROSARIO - TEAPA	0.00	3	0	1754	87.1	4.4	2.8	1.4	1.5	1.9	0.6	0.3	87.1	4.4	8.5	0.111	0.526
TAPIJULAPA	20.00	1	0	1231	89.6	3.2	4.6	2.6	0	0	0	0	89.6	3.2	7.2	0.068	0.503

31 CARR : REYES HERNANDEZ - VILLA ALDAMA

CLAVE: 27119

RUTA : TAB

AÑO : 2007

L U G A R	E S T A C I O N				C L A S I F I C A C I O N V E H I C U L A R E N P O R C I E N T O .												
	KM	TE	SC	TDPA	A	B	C2	C3	T3S2	T3S3	T3S2R4	OTROS	A	B	C	K'	D
REYES HERNANDEZ	0.00	3	0	2267	78.4	6.1	2.5	0.4	4.3	1.5	3.5	3.3	78.4	6.1	15.5	0.098	0.509
T. C. (CARDENAS - PARAISO) - CARLOS GREEN	9.00	1	0	2345	72.8	5.9	3.7	0.9	5.9	5.1	3.1	2.6	72.8	5.9	21.3	0.075	0.501

32 CARR : SAMARIA - AMATITAN

CLAVE: 27114

RUTA : TAB

AÑO : 2007

L U G A R	E S T A C I O N				C L A S I F I C A C I O N V E H I C U L A R E N P O R C I E N T O .												
	KM	TE	SC	TDPA	A	B	C2	C3	T3S2	T3S3	T3S2R4	OTROS	A	B	C	K'	D
T. C. COATZACOALCOS - VILLAHERMOSA	0.00	3	0	2812	75.6	8.7	6.4	2.7	1.8	1.8	1.1	1.9	75.6	8.7	15.7	0.08	0.502
CUNDUACAN	17.00	1	0	2967	86	7.7	2.4	1.2	0.5	0.5	0.5	1.2	86	7.7	6.3	0.076	0.502
CUNDUACAN	17.00	3	0	2252	85.7	6.4	2.8	1.8	0.6	0.3	0.5	1.9	85.7	6.4	7.9	0.077	0.504
AMATITAN	31.40	1	0	3751	79.7	8	2.7	2.5	3.9	0.5	1.1	1.6	79.7	8	12.3	0.108	0.504

TABASCO

33 CARR : TIERRA NUEVA - FRANCISCO RUEDA

CLAVE: 27110

RUTA : TAB

AÑO : 2007

L U G A R	E S T A C I O N				C L A S I F I C A C I O N V E H I C U L A R E N P O R C I E N T O .												
	KM	TE	SC	TDPA	A	B	C2	C3	T3S2	T3S3	T3S2R4	OTROS	A	B	C	K'	D
TIERRA NUEVA	0.00	3	0	1438	84.7	5.3	3.3	2.1	2.2	0.5	0.8	1.1	84.7	5.3	10	0.096	0.501
OCUAPAN	14.00	3	0	697	81.7	4.2	4.3	4	2	1	1.4	1.4	81.7	4.2	14.1	0.138	0.506
T. IZQ. ENCOMENDADERO	31.00	1	0	633	76.1	3.6	11.1	4.2	2.3	1.1	0.9	0.7	76.1	3.6	20.3	0.112	0.508
T. IZQ. ENCOMENDADERO	31.00	3	0	646	75.5	5.8	9	3.9	1.8	1.2	1.7	1.1	75.5	5.8	18.7	0.118	0.508
FRANCISCO RUEDA	71.00	1	0	418	87.8	3	5.4	2.6	0.8	0	0.4	0	87.8	3	9.2	0.096	0.503

34 CARR : TULIPAN - CUNDUACAN

CLAVE: 27115

RUTA : TAB

AÑO : 2007

L U G A R	E S T A C I O N				C L A S I F I C A C I O N V E H I C U L A R E N P O R C I E N T O .												
	KM	TE	SC	TDPA	A	B	C2	C3	T3S2	T3S3	T3S2R4	OTROS	A	B	C	K'	D
T. C. MALPASO - BELLOTE	0.00	3	0	4789	67.5	9.9	7.2	5.9	3.4	3.1	1.3	1.7	67.5	9.9	22.6	0.075	0.503
T. DER. MOTE	14.00	1	0	6470	67	8.2	8.9	5.9	3.1	2.4	1.6	2.9	67	8.2	24.8	0.081	0.501
CUNDUACAN	15.00	1	0	2723	77.4	5.7	4.8	5.5	2.2	1.9	1.6	0.9	77.4	5.7	16.9	0.083	0.503

35 CARR : VILLAHERMOSA - COMALCALCO

CLAVE: 27021

RUTA : TAB

AÑO : 2007

L U G A R	E S T A C I O N				C L A S I F I C A C I O N V E H I C U L A R E N P O R C I E N T O .												
	KM	TE	SC	TDPA	A	B	C2	C3	T3S2	T3S3	T3S2R4	OTROS	A	B	C	K'	D
T. C. VILLAHERMOSA - CD. DEL CARMEN	0.00	3	1	6274	80.6	3.4	1.5	1.2	3.6	2.4	2.9	4.4	80.6	3.4	16	0.11	0.502
T. C. VILLAHERMOSA - CD. DEL CARMEN	0.00	3	2	6229	79.1	3.2	1	0.9	4.3	3.3	3.1	5.1	79.1	3.2	17.7	0.102	0.502
SALOYA	13.00	1	0	8813	82.6	6.4	1	0.5	3.7	1	2.3	2.5	82.6	6.4	11	0.096	0.5
SALOYA	13.00	3	0	8314	83.6	5.5	1.8	0.8	4	0.7	1.5	2.1	83.6	5.5	10.9	0.088	0.504
NACAJUCA	21.00	1	0	6519	78.2	9.1	1.3	0.8	4.9	1.4	1.7	2.6	78.2	9.1	12.7	0.088	0.509
NACAJUCA	21.00	3	1	3689	81.6	9	2	2.3	2.1	0.6	0.4	2	81.6	9	9.4	0.092	0.51
NACAJUCA	21.00	3	2	3832	86.1	8.1	0.9	1.2	1.7	0.2	0.3	1.5	86.1	8.1	5.8	0.09	0.51
JALPA DE MENDEZ	27.00	3	0	7190	75.9	6.7	1.8	2.5	6.6	1	2.7	2.8	75.9	6.7	17.4	0.095	0.509
CUPILCO	40.00	1	0	3467	80.2	5.1	4.2	5.4	2.7	0.6	0.6	1.2	80.2	5.1	14.7	0.094	0.504
CUPILCO	40.00	3	0	3306	82.8	7.3	2.4	3.4	2.3	0.4	0.3	1.1	82.8	7.3	9.9	0.1	0.509
CHICHICAPA	46.50	1	0	3956	81	5.2	1.4	0.4	2.6	0.3	7.9	1.2	81	5.2	13.8	0.086	0.501
T. C. MALPASO - BELLOTE	50.70	1	0	6526	83.8	5.2	5.6	2.9	0.5	0.8	0.8	0.4	83.8	5.2	11	0.072	0.503

TABASCO

36 CARR : VILLAHERMOSA - T. C. (P. DE CUNDUACAN - ESTACION JUAREZ)

CLAVE: 27106

RUTA : TAB

AÑO : 2007

L U G A R	E S T A C I O N				C L A S I F I C A C I O N V E H I C U L A R E N P O R C I E N T O .												
	KM	TE	SC	TDPA	A	B	C2	C3	T3S2	T3S3	T3S2R4	OTROS	A	B	C	K'	D
VILLAHERMOSA	0.00	3	0	23188	78.1	5.3	0.9	0.9	3.2	3.1	3.9	4.6	78.1	5.3	16.6	0.083	0.508
SAN JOAQUIN	4.00	3	0	11367	79.7	8.4	4.7	4.2	0.7	0.5	0.9	0.9	79.7	8.4	11.9	0.072	0.502
T. IZQ. LUIS GIL PEREZ	19.00	3	0	1927	88.3	5.8	1.8	0.9	1.6	0.4	0.3	0.9	88.3	5.8	5.9	0.093	0.509
T. C. PASO DE CUNDUACAN - ESTACION JUAREZ	25.20	1	0	1661	84	6.4	4	1.8	1.5	0.3	0.5	1.5	84	6.4	9.6	0.092	0.515

37 CARR : VILLAHERMOSA - LUIS GIL PEREZ

CLAVE: 27206

RUTA : TAB

AÑO : 2007

L U G A R	E S T A C I O N				C L A S I F I C A C I O N V E H I C U L A R E N P O R C I E N T O .												
	KM	TE	SC	TDPA	A	B	C2	C3	T3S2	T3S3	T3S2R4	OTROS	A	B	C	K'	D
VILLAHERMOSA	0.00	3	0	7131	84.1	4.7	2.2	2.3	2.6	2.2	0.5	1.4	84.1	4.7	11.2	0.076	0.516
LUIS GIL PEREZ	22.00	1	0	2047	87.4	5.3	2.1	1.5	0.5	0.5	0.1	2.6	87.4	5.3	7.3	0.103	0.536

38 CARR : COATZACOALCOS - VILLAHERMOSA

CLAVE: 00528

RUTA : MEX-180

AÑO : 2007

L U G A R	E S T A C I O N				C L A S I F I C A C I O N V E H I C U L A R E N P O R C I E N T O .												
	KM	TE	SC	TDPA	A	B	C2	C3	T3S2	T3S3	T3S2R4	OTROS	A	B	C	K'	D
COATZACOALCOS	0.00	0	0														
CASETA DE COBRO	3.00	1	0	12508	69.9	5.3	3.5	1	6.1	3	7.7	3.5	69.9	5.3	24.8	0.081	0.503
CASETA DE COBRO PTE. COATZACOALCOS	3.00	2	0	20079													
X. C. PAJARITOS - NANCHITAL	6.53	1	0	13863	70.8	2.9	7.5	1.8	5.7	2.5	6.1	2.7	70.8	2.9	26.3	0.114	0.513
X. C. PAJARITOS - NANCHITAL	6.53	3	0	10857	71.7	2.7	4.9	1.2	6.3	3	7.9	2.3	71.7	2.7	25.6	0.099	0.509
T. DER. PUENTE ANTONIO DOVALI JAIMES	14.60	1	0	7623	75	3.4	5.3	2	4.1	3.1	5.6	1.5	75	3.4	21.6	0.096	0.501
T. DER. PUENTE ANTONIO DOVALI JAIMES	14.60	3	1	5528	49.8	6.2	4.1	7	12	4.5	12.7	3.7	49.8	6.2	44	0.155	0.506
T. DER. PUENTE ANTONIO DOVALI JAIMES	14.60	3	2	5657	58.2	6.2	5.5	5.7	11.1	3.1	8.9	1.3	58.2	6.2	35.6	0.099	0.506
T. DER. LAS CHOAPAS	36.00	3	1	5574	63.6	8	3	4.4	9.6	3.1	6.8	1.5	63.6	8	28.4	0.087	0.5
T. DER. LAS CHOAPAS	36.00	3	2	5572	60.8	8	4	4.6	10.1	3	8	1.5	60.8	8	31.2	0.085	0.5
LIM. EDOS. TERM. VER. PPIA. TAB.	41.48	0	0														
T. IZQ. VILLA LA VENTA	47.26	3	0	2698	75.7	5	6.5	3.8	2.8	4.5	1.5	0.2	75.7	5	19.3	0.081	0.503
T. IZQ. CAMPO MAGALLANES	65.20	1	0	3105	63.3	8.5	7.9	11.7	3	3.3	0.6	1.7	63.3	8.5	28.2	0.084	0.503
T. IZQ. CAMPO MAGALLANES	65.20	3	0	5701	66.9	10.3	6.9	7.3	3.5	3	1.2	0.9	66.9	10.3	22.8	0.08	0.501
PICO DE ORO	88.50	1	0	6898	76.9	4.5	6.5	5.2	2.9	2.5	0.4	1.1	76.9	4.5	18.6	0.081	0.502
PICO DE ORO	88.50	3	0	6407	77	4	6.6	4.7	3.6	2.3	0.5	1.3	77	4	19	0.079	0.502
CARDENAS	122.10	1	0	8231	77.7	5.4	6	3.5	3.6	2.2	0.5	1.1	77.7	5.4	16.9	0.069	0.504
CARDENAS	122.10	3	1	8716	72.1	9.7	4.9	4.3	3.8	2.8	1.2	1.2	72.1	9.7	18.2	0.074	0.504
CARDENAS	122.10	3	2	8849	71.7	9	4.7	4	4.9	3.1	0.9	1.7	71.7	9	19.3	0.074	0.504

TABASCO

40 CARR : MALPASO - EL BELLOTE

CLAVE: 00137

RUTA : MEX-187

AÑO : 2007

L U G A R	E S T A C I O N				C L A S I F I C A C I O N V E H I C U L A R E N P O R C I E N T O .												
	KM	TE	SC	TDPA	A	B	C2	C3	T3S2	T3S3	T3S2R4	OTROS	A	B	C	K'	D
MACABIL (LA ESTRELLA)	70.12	1	0	2339	78.1	4.5	5.4	2.9	2.9	1.1	1.2	3.9	78.1	4.5	17.4	0.091	0.501
ESTACION CHONTALPA	75.69	1	0	3425	83.4	5.3	2.6	2.3	3.3	0.9	0.8	1.4	83.4	5.3	11.3	0.094	0.511
ESTACION CHONTALPA	75.69	3	0	3802	75.1	5	2.2	6.9	3.4	2	3.1	2.3	75.1	5	19.9	0.094	0.503
T. IZQ. FRANCISCO RUEDA	90.49	1	0	3032	85.4	5	3	1.7	1.3	1.3	0	2.3	85.4	5	9.6	0.091	0.506
T. IZQ. FRANCISCO RUEDA	90.49	3	0	4480	81.3	4.9	3	1.5	3.9	1.3	2.2	1.9	81.3	4.9	13.8	0.107	0.505
HUIMANGUILLO	98.03	1	0	5953	81.9	5	5.4	1.1	2.4	2.3	0	1.9	81.9	5	13.1	0.082	0.501
HUIMANGUILLO	98.03	3	0	6873	73.1	8	7.4	7.7	2.1	0.4	0	1.3	73.1	8	18.9	0.09	0.502
CARDENAS	117.60	1	0	9710	75.4	9	6.1	5.3	1.8	1	0	1.4	75.4	9	15.6	0.072	0.5
CARDENAS	117.60	3	0	9234	58.6	15.1	13	6.1	4.2	1.5	0.2	1.3	58.6	15.1	26.3	0.077	0.501
TULIPAN	134.70	3	0	7206	78.4	5.2	7	3.5	2	1.7	0	2.2	78.4	5.2	16.4	0.086	0.5
T. DER. CUNDUACAN	141.70	1	0	6085	81.3	4.3	7.2	2.8	1.4	1.5	0	1.5	81.3	4.3	14.4	0.09	0.502
T. DER. CUNDUACAN	141.70	3	0	6345	75.9	6	6.9	3.5	2.6	1.7	1.2	2.2	75.9	6	18.1	0.081	0.505
T. DER. JALPA	153.50	1	0	7304	82	5	3.2	0.1	4.7	1	1.9	2.1	82	5	13	0.079	0.504
T. DER. JALPA	153.50	3	0	11304	73.3	4.7	1.2	0.8	7.2	2.1	6.3	4.4	73.3	4.7	22	0.075	0.504
PARAISO	176.90	1	0	12047	75.9	6.2	1.8	0.7	7.1	1.3	3.6	3.4	75.9	6.2	17.9	0.078	0.503
PARAISO	176.90	3	0	6994	84.6	2.9	1.2	0.7	3.6	2	2.4	2.6	84.6	2.9	12.5	0.121	0.501
CEIBA	182.00	3	0	5658	90.5	4.3	2.5	0.6	0.9	0.4	0.2	0.6	90.5	4.3	5.2	0.099	0.501
EL BELLOTE	185.50	0	0														

41 CARR : ZAPATERO - T. C. (JALAPA - JONUTA)

CLAVE: 00061

RUTA : CHIS-TAB

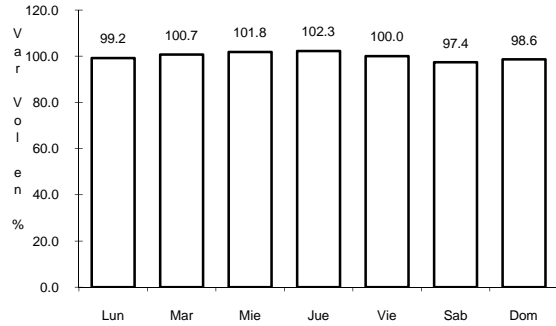
AÑO : 2007

L U G A R	E S T A C I O N				C L A S I F I C A C I O N V E H I C U L A R E N P O R C I E N T O .												
	KM	TE	SC	TDPA	A	B	C2	C3	T3S2	T3S3	T3S2R4	OTROS	A	B	C	K'	D
T. C. VILLAHERMOSA - FRANCISCO ESCARCEGA	0.00	3	0	521	80.1	5.7	5.7	2.5	2.5	2.7	0	0.8	80.1	5.7	14.2	0.1	0.511
LIM. EDOS. TERM. CHIS. PPIA. TAB.	16.00	0	0														
T. C. JALAPA - JONUTA	41.00	1	0	760	94.4	0.5	3.5	0.1	0.4	0.2	0	0.9	94.4	0.5	5.1	0.108	0.506

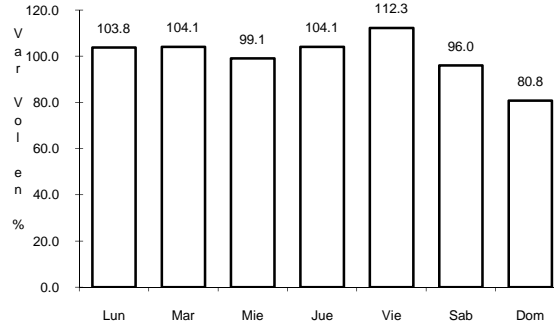
1 CARR: BENITO JUAREZ - AGUA DULCE

CLAVE: 00202

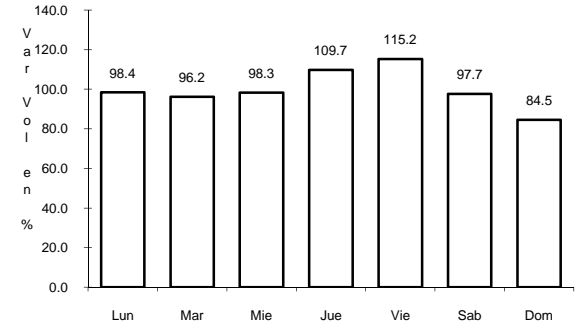
RUTA: TAB-VER



Km: 0.00 Tipo: 3 Sent: 0



Km: 18.00 Tipo: 1 Sent: 0

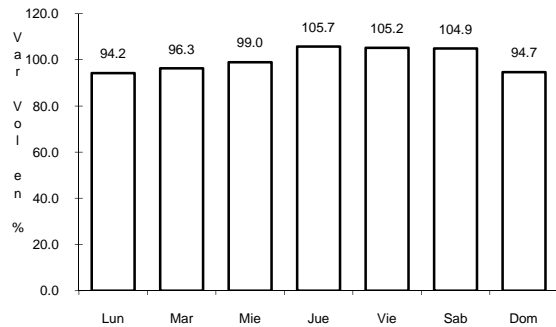


Km: 33.00 Tipo: 1 Sent: 0

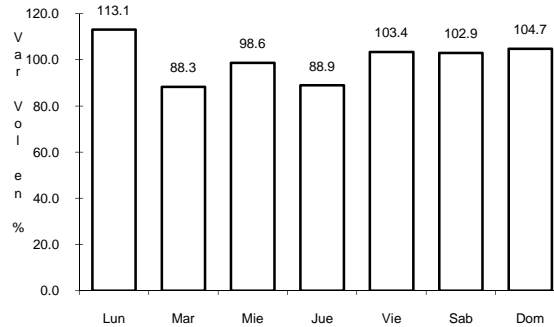
2 CARR: T. C. (EL SUSPIRO - TENOSIQUE) - LA LIBERTAD

CLAVE: 00062

RUTA: CHIS-TAB



Km: 0.00 Tipo: 3 Sent: 0

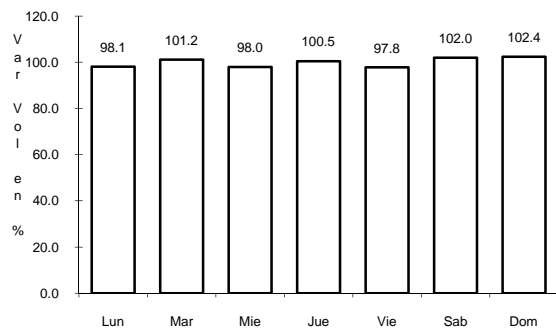


Km: 10.00 Tipo: 1 Sent: 0

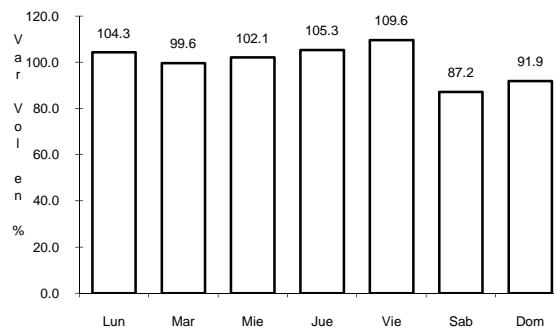
3 CARR: GREGORIO MENDEZ MAGAÑA - REFORMA DE OCAMPO

CLAVE: 00103

RUTA: CHIS



Km: 0.00 Tipo: 3 Sent: 0

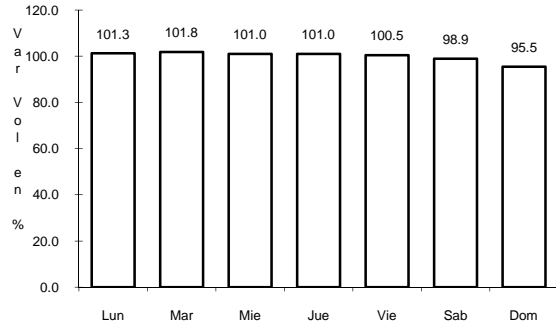


Km: 21.00 Tipo: 1 Sent: 0

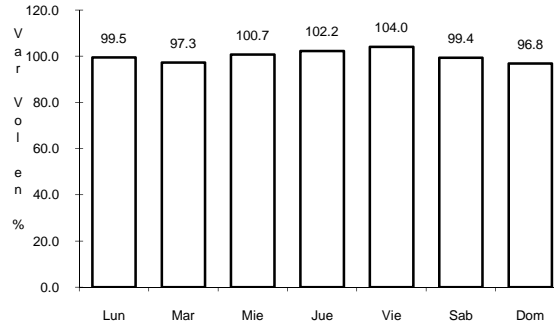
4 CARR: PASO DE CUNDUACAN - ESTACION JUAREZ

CLAVE: 00588

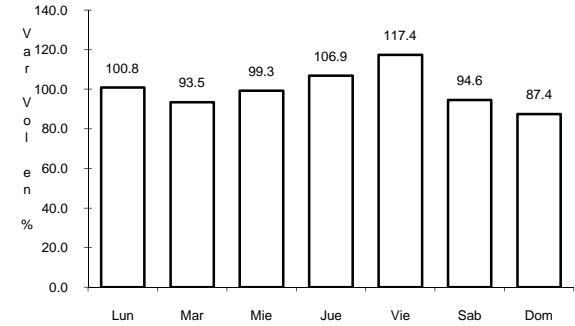
ruta: TAB-CHIS



Km: 0.00 Tipo: 3 Sent: 0



Km: 18.00 Tipo: 3 Sent: 0

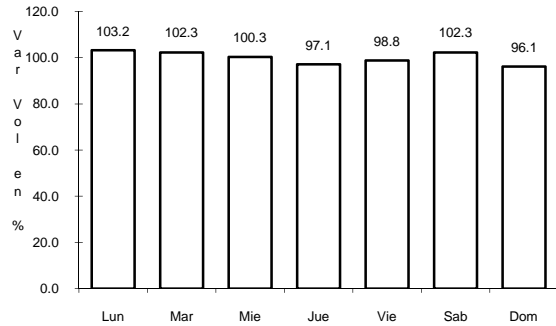


Km: 57.80 Tipo: 1 Sent: 0

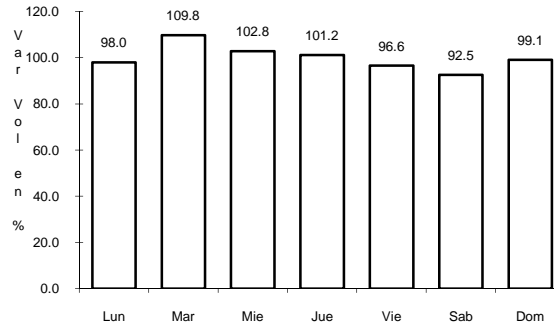
5 CARR: SAN MARCO - PALIZADA

CLAVE: 00490

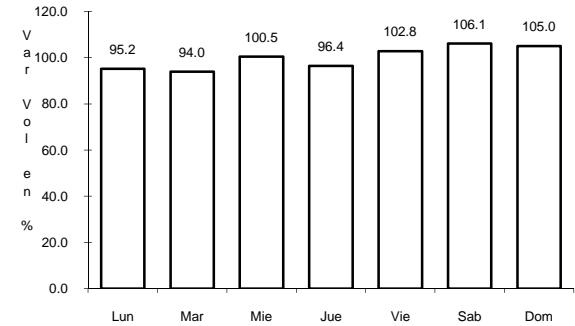
ruta: MEX-217



Km: 0.00 Tipo: 3 Sent: 0



Km: 46.20 Tipo: 1 Sent: 0

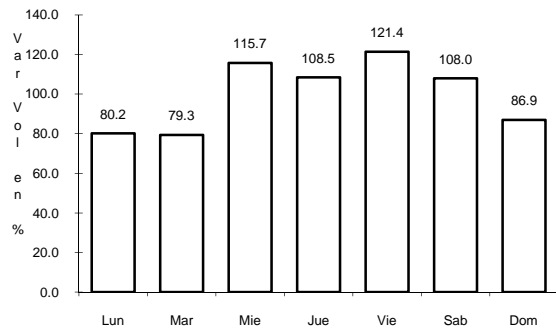


Km: 46.20 Tipo: 3 Sent: 0

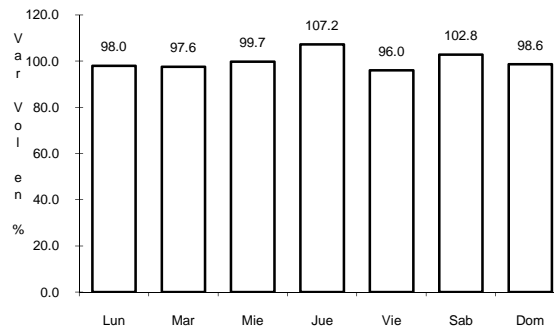
6 CARR: RAMAL A SALTO DEL AGUA

CLAVE: 00069

ruta: TAB-CHIS



Km: 0.00 Tipo: 3 Sent: 0

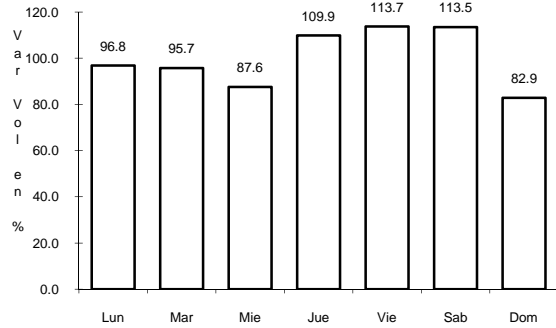


Km: 17.00 Tipo: 1 Sent: 0

7 CARR: VILLAHERMOSA - CD. DEL CARMEN

CLAVE: 00064

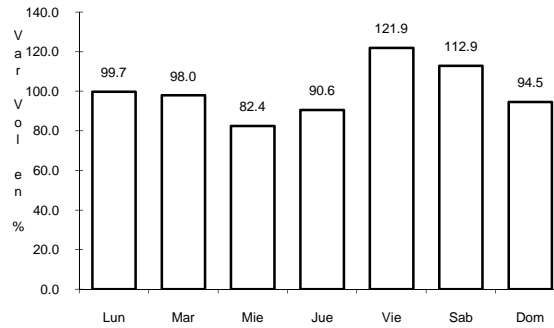
RUTA: MEX-180



Km: 4.30

Tipo: 3

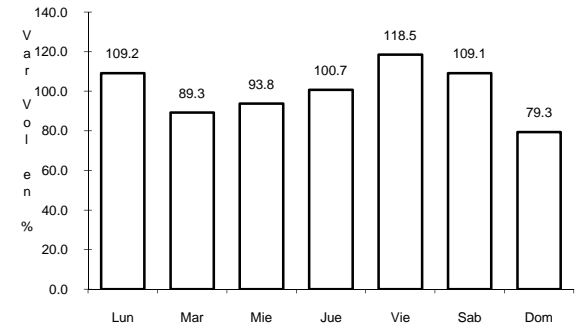
Sent: 0



Km: 78.00

Tipo: 3

Sent: 0



Km: 163.17

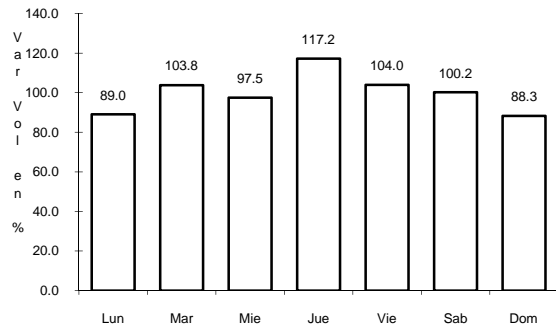
Tipo: 1

Sent: 0

8 CARR: VILLAHERMOSA - ESCOPETAZO

CLAVE: 00104

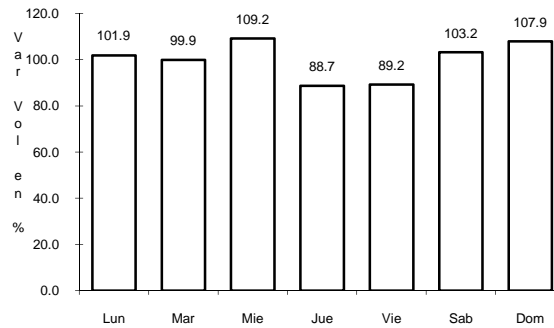
RUTA: MEX-195



Km: 0.00

Tipo: 3

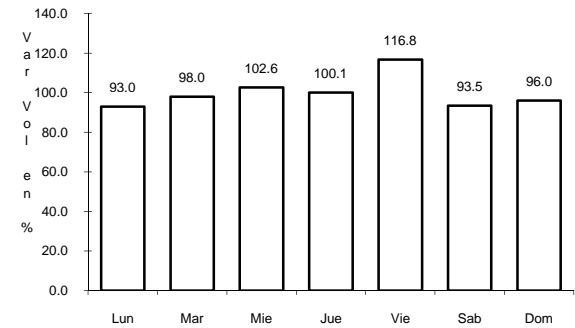
Sent: 0



Km: 112.00

Tipo: 3

Sent: 0



Km: 259.00

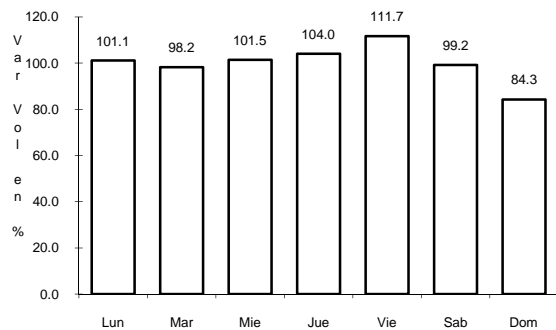
Tipo: 1

Sent: 0

9 CARR: VILLAHERMOSA - FRANCISCO ESCARCEGA

CLAVE: 00092

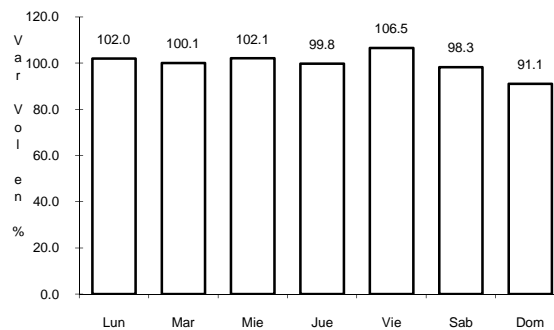
RUTA: MEX-186



Km: 0.00

Tipo: 3

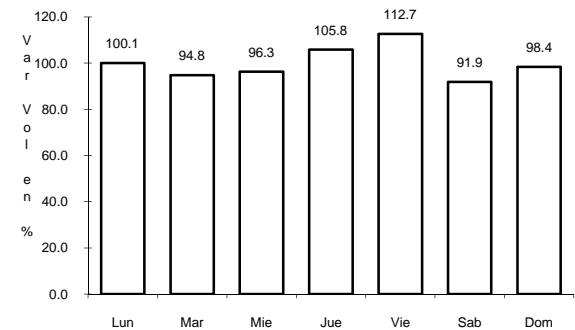
Sent: 1



Km: 0.00

Tipo: 3

Sent: 2



Km: 297.04

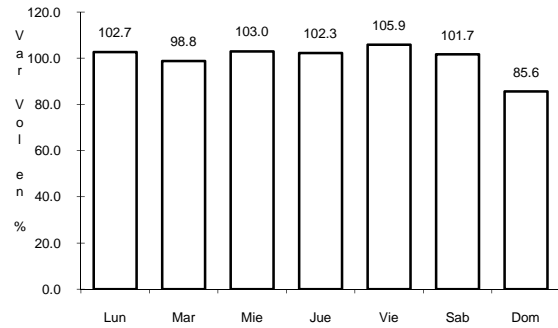
Tipo: 1

Sent: 0

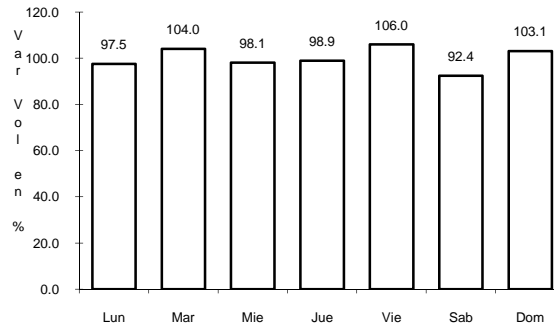
10 CARR: BENITO JUAREZ - TEPETITAN

CLAVE: 27204

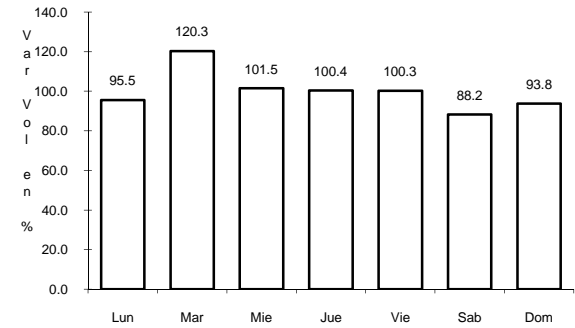
RUTA: TAB



Km: 1.50 Tipo: 3 Sent: 0



Km: 18.50 Tipo: 1 Sent: 0

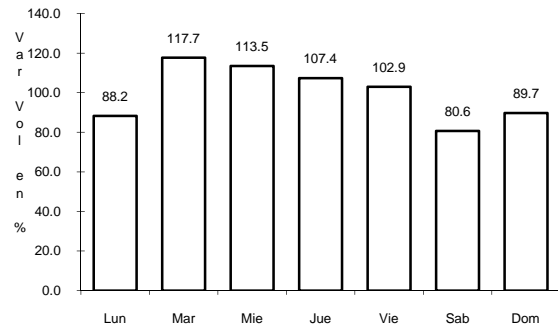


Km: 20.00 Tipo: 1 Sent: 0

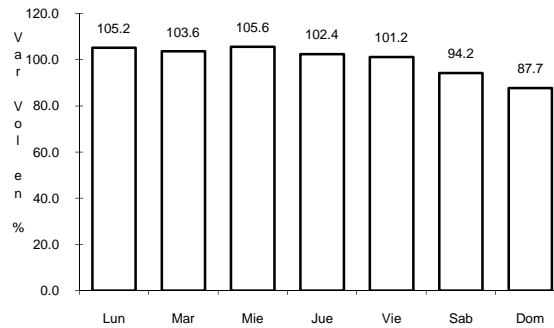
11 CARR: CACAOS - LA GRANJA

CLAVE: 27002

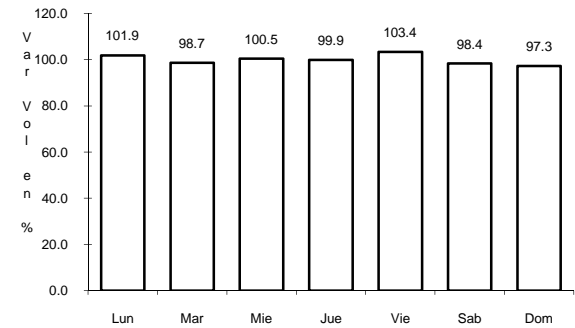
RUTA: TAB



Km: 0.00 Tipo: 3 Sent: 0



Km: 16.00 Tipo: 3 Sent: 0

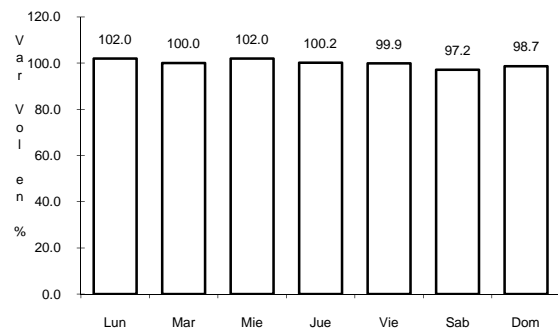


Km: 39.00 Tipo: 1 Sent: 0

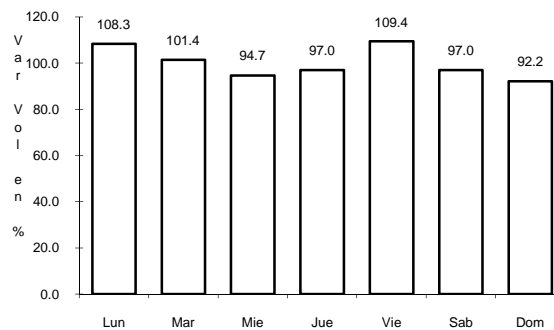
12 CARR: CARDENAS - PARAISO

CLAVE: 27117

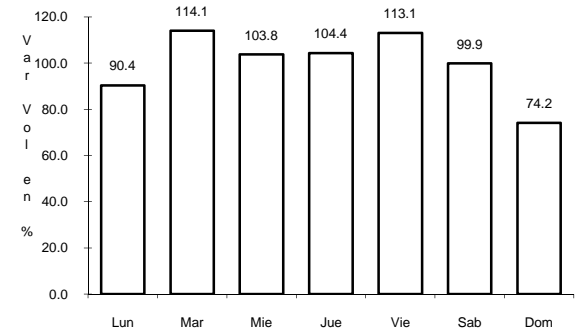
RUTA: TAB



Km: 0.00 Tipo: 3 Sent: 0



Km: 22.00 Tipo: 3 Sent: 0

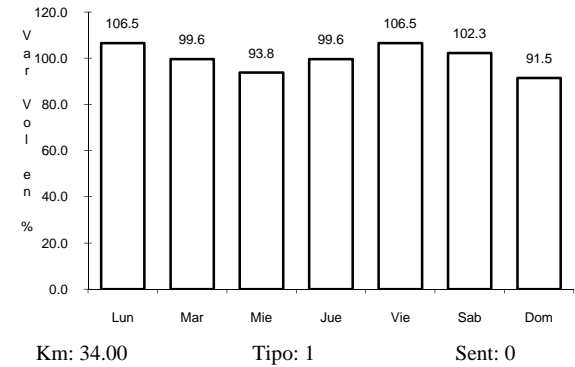
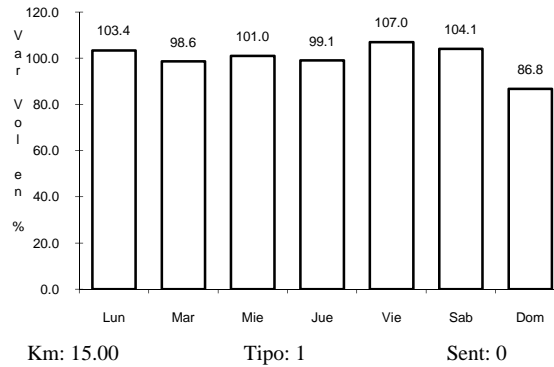
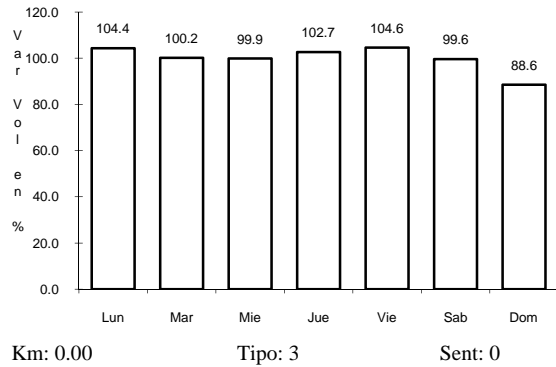


Km: 52.00 Tipo: 1 Sent: 0

13 CARR: COMALCALCO - EL GOLPE

CLAVE: 27102

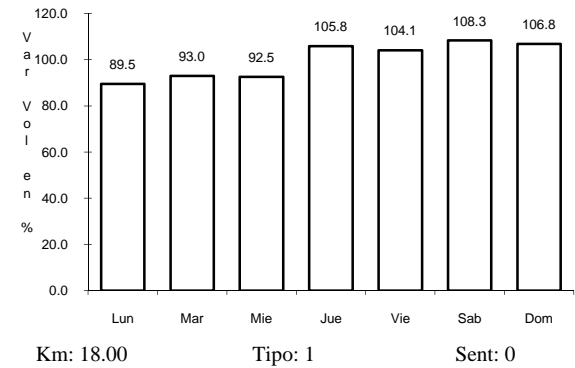
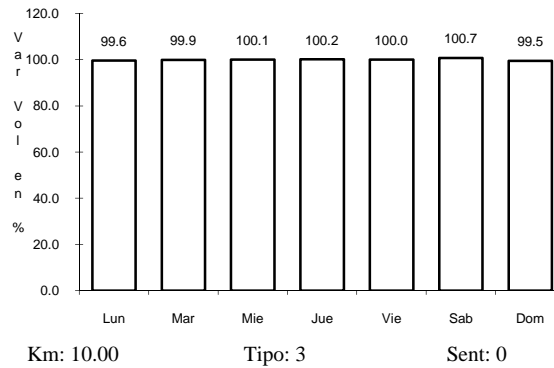
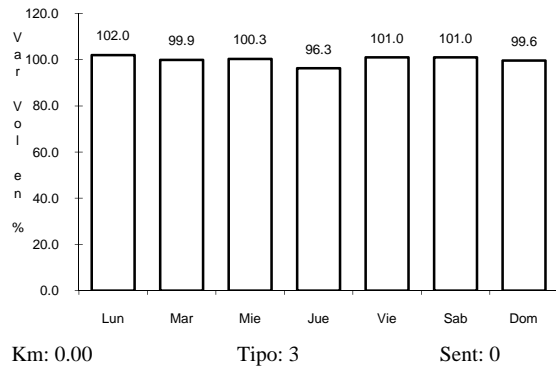
RUTA: TAB



14 CARR: CHICHICAPA - ENT. LA LIBERTAD

CLAVE: 27100

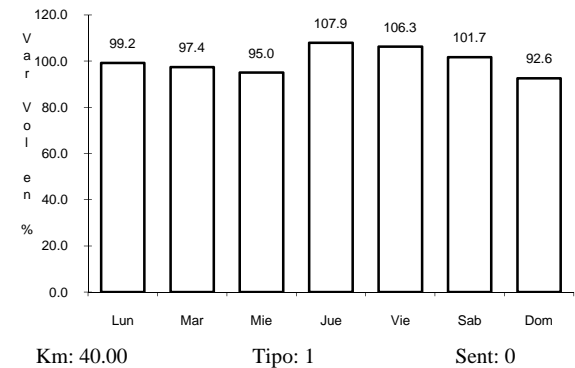
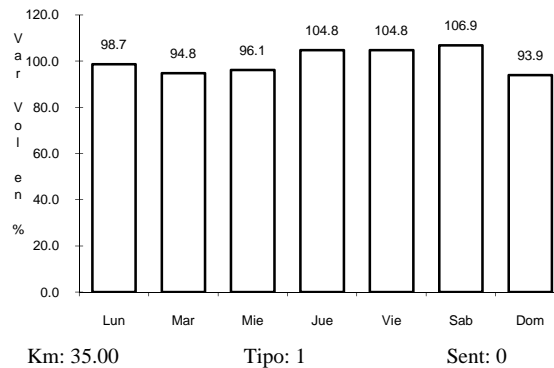
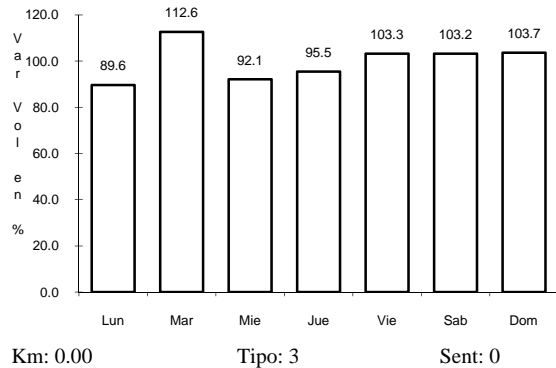
RUTA: TAB



15 CARR: EL BELLOTE - SANTA CRUZ

CLAVE: 27105

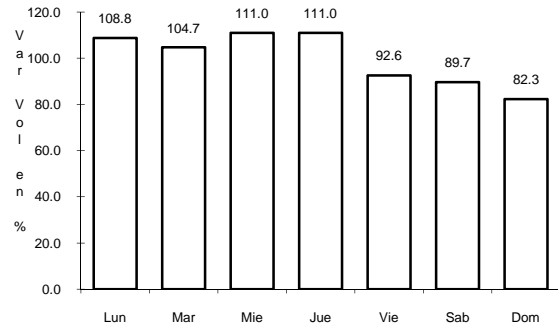
RUTA: TAB



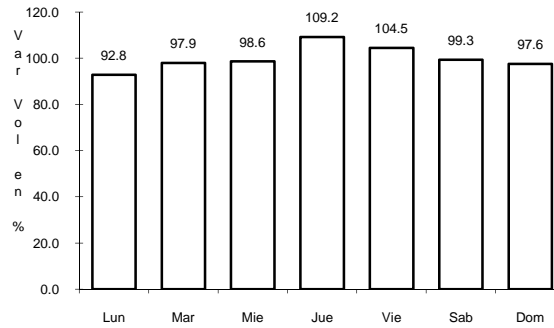
16 CARR: FRONTERA - T. C. (JALAPA - JONUTA)

CLAVE: 27081

RUTA: TAB



Km: 1.00 Tipo: 3 Sent: 0

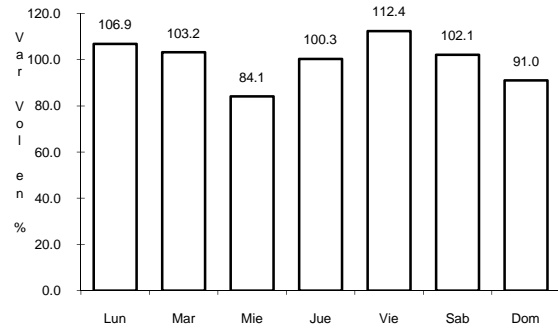


Km: 123.00 Tipo: 1 Sent: 0

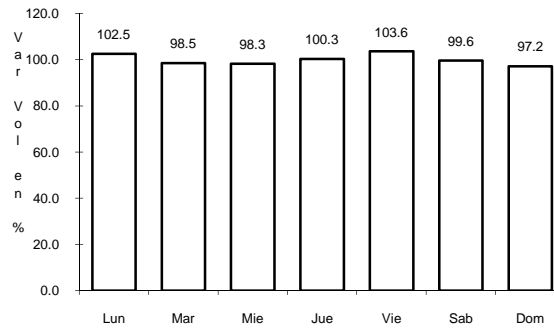
17 CARR: NICOLAS BRAVO - T. C. (EL BELLOTE - SANTA CRUZ)

CLAVE: 27010

RUTA: TAB



Km: 0.00 Tipo: 3 Sent: 0

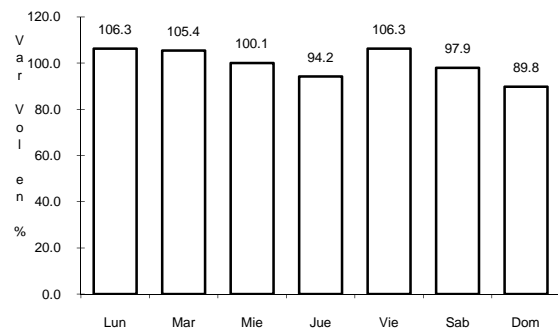


Km: 22.00 Tipo: 1 Sent: 0

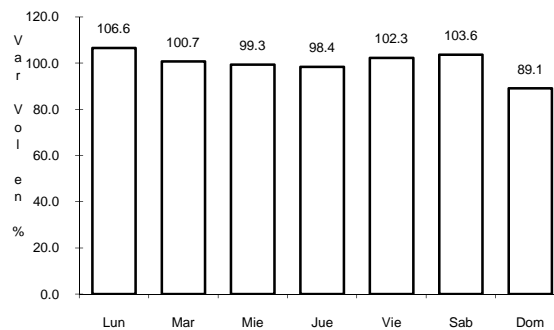
18 CARR: T. C. (CARDENAS - PARAISO) - CARLOS GREEN

CLAVE: 27111

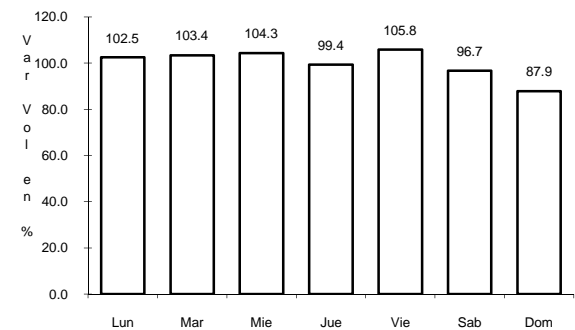
RUTA: TAB



Km: 0.00 Tipo: 3 Sent: 0



Km: 12.50 Tipo: 3 Sent: 0

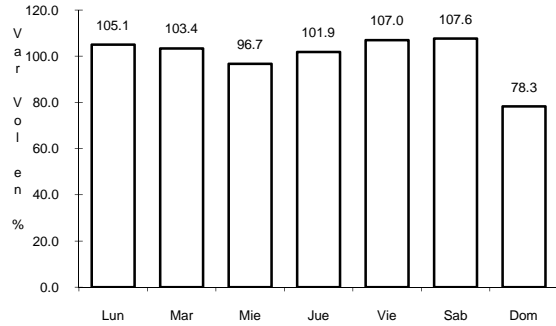


Km: 15.70 Tipo: 1 Sent: 0

19 CARR: ESTACION MACUSPANA - VERNET

CLAVE: 27091

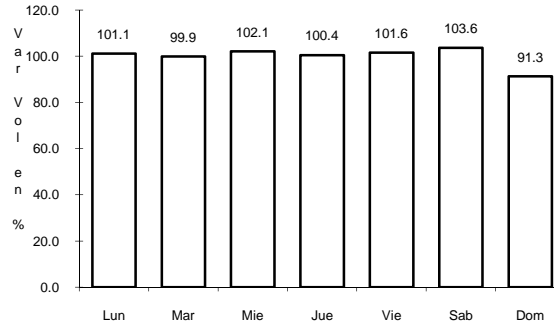
RUTA: TAB-041



Km: 11.00

Tipo: 1

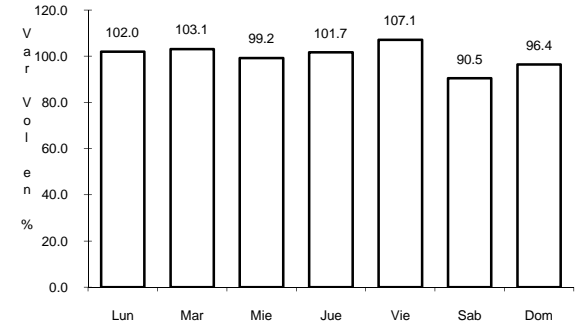
Sent: 0



Km: 20.50

Tipo: 1

Sent: 0



Km: 32.50

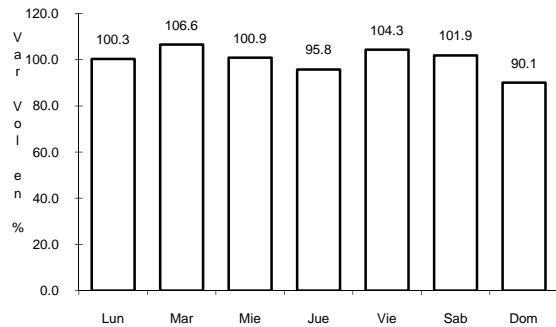
Tipo: 1

Sent: 0

20 CARR: JALAPA - JONUTA

CLAVE: 27107

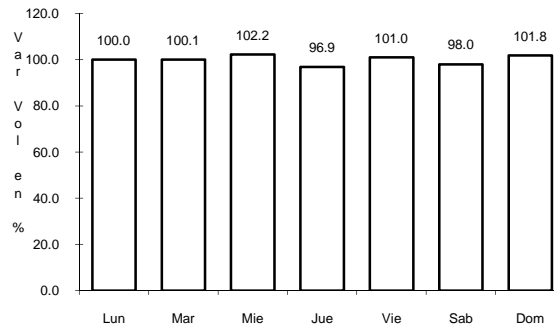
RUTA: TAB



Km: 0.00

Tipo: 3

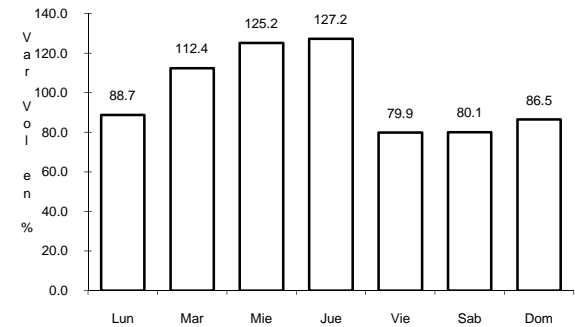
Sent: 0



Km: 39.00

Tipo: 1

Sent: 0



Km: 97.50

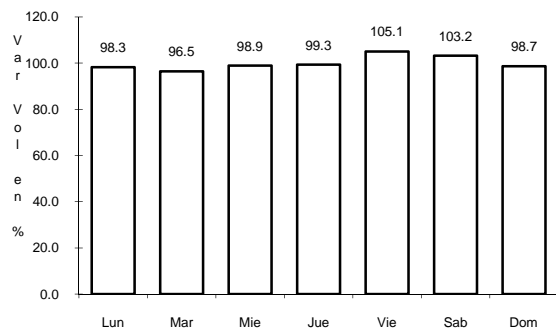
Tipo: 1

Sent: 0

21 CARR: PAILEBOT - CUAUHTEMOTZIN

CLAVE: 27112

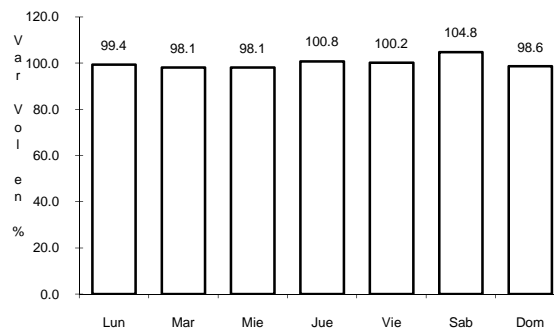
RUTA: TAB



Km: 0.00

Tipo: 3

Sent: 0



Km: 23.00

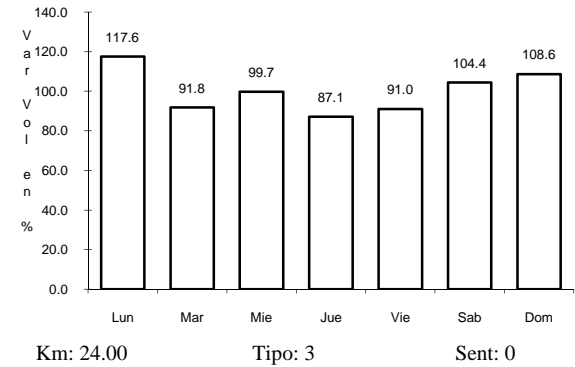
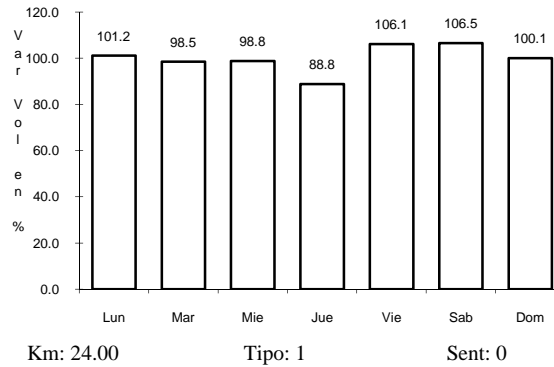
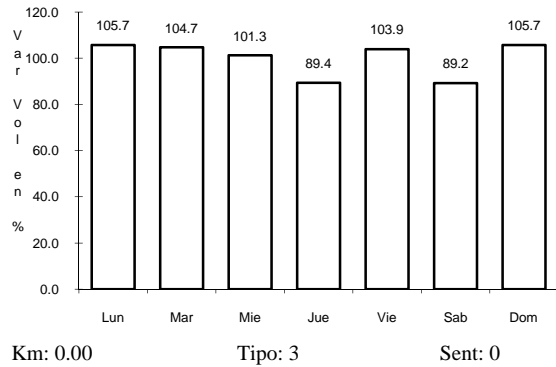
Tipo: 1

Sent: 0

25 CARR: RAMAL A SAN ANTONIO

CLAVE: 27003

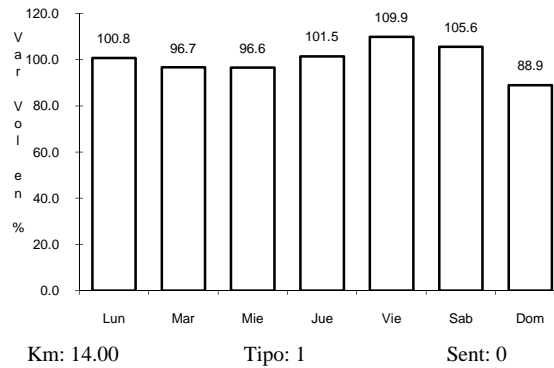
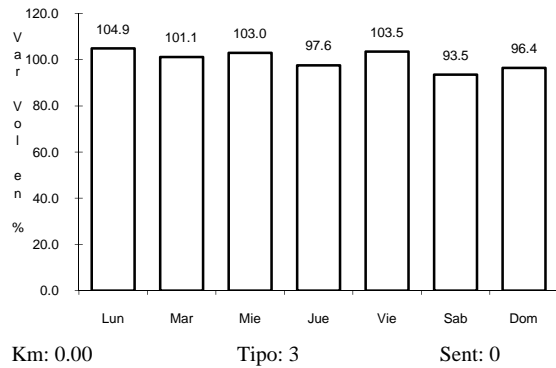
RUTA: TAB



26 CARR: RAMAL A LAZARO CARDENAS

CLAVE: 27208

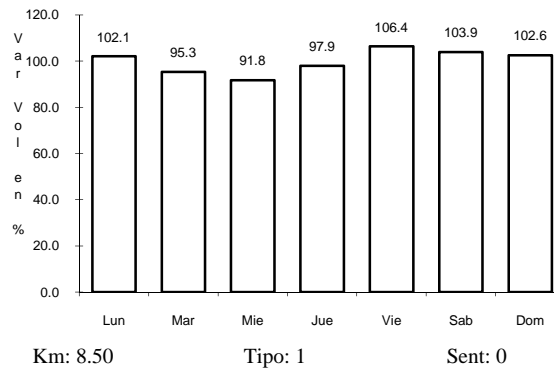
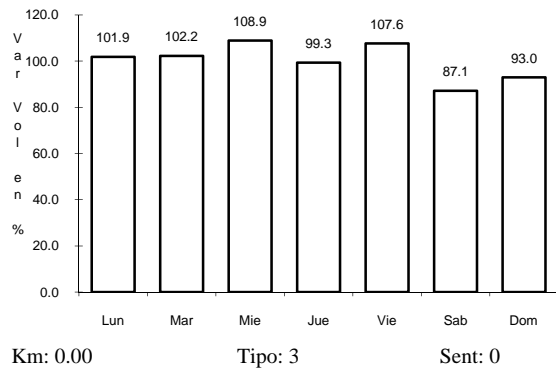
RUTA: TAB



27 CARR: RAMAL A LIBERTAD

CLAVE: 27205

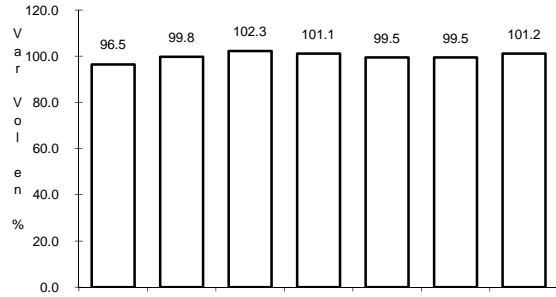
RUTA: TAB



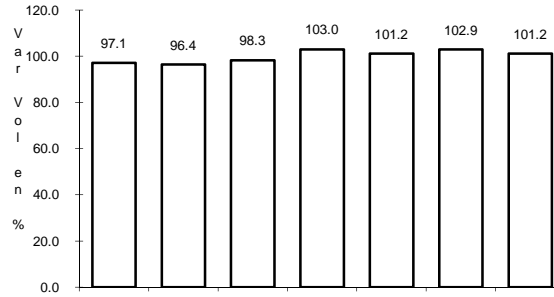
28 CARR: RAMAL A SANCHEZ MAGALLANES

CLAVE: 27016

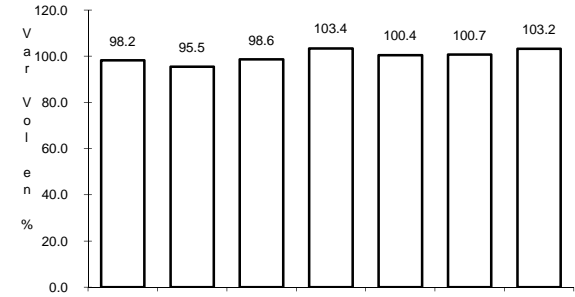
RUTA: TAB



Km: 0.00 Tipo: 3 Sent: 0



Km: 13.00 Tipo: 1 Sent: 0

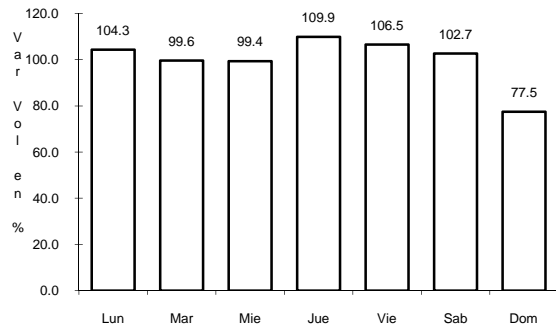


Km: 33.00 Tipo: 1 Sent: 0

29 CARR: RAMAL A TAMULTE DE LAS SABANAS

CLAVE: 27080

RUTA: TAB

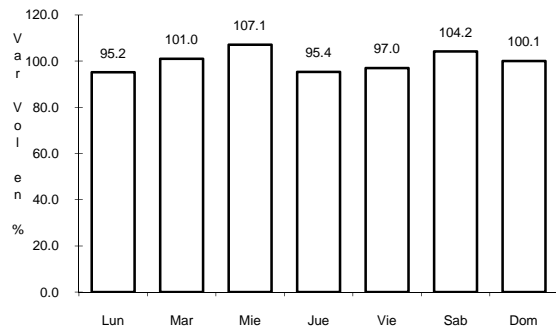


Km: 0.00 Tipo: 3 Sent: 0

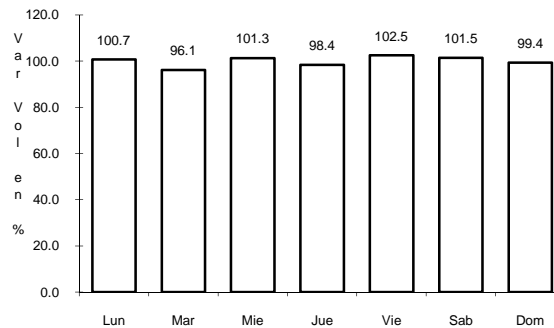
30 CARR: RAMAL A TAPIJULAPA

CLAVE: 27200

RUTA: TAB



Km: 0.00 Tipo: 3 Sent: 0

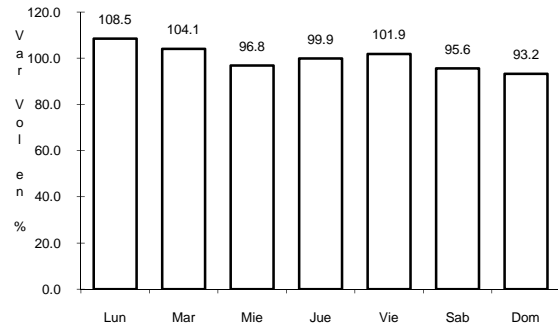


Km: 20.00 Tipo: 1 Sent: 0

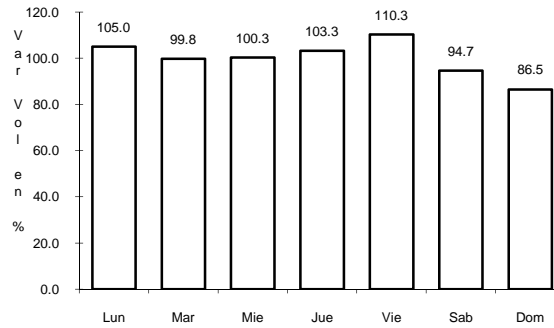
34 CARR: TULIPAN - CUNDUACAN

CLAVE: 27115

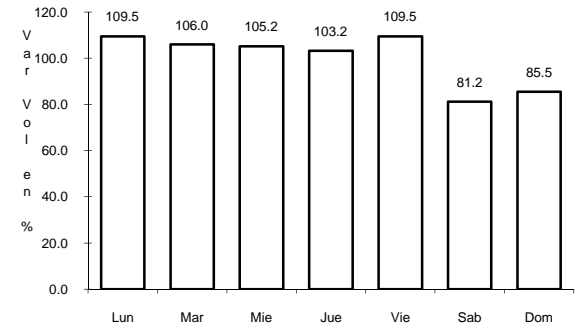
RUTA: TAB



Km: 0.00 Tipo: 3 Sent: 0



Km: 14.00 Tipo: 1 Sent: 0

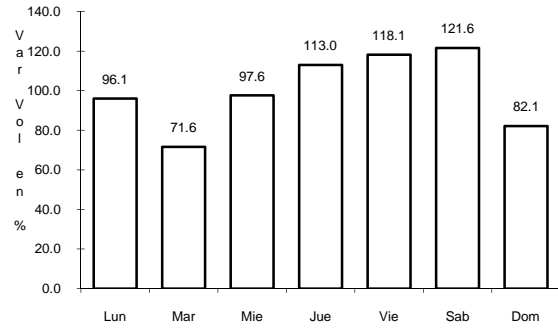


Km: 15.00 Tipo: 1 Sent: 0

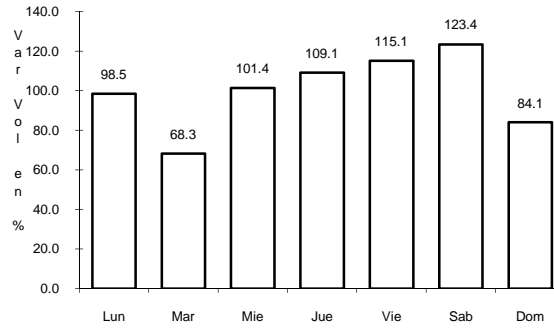
35 CARR: VILLAHERMOSA - COMALCALCO

CLAVE: 27021

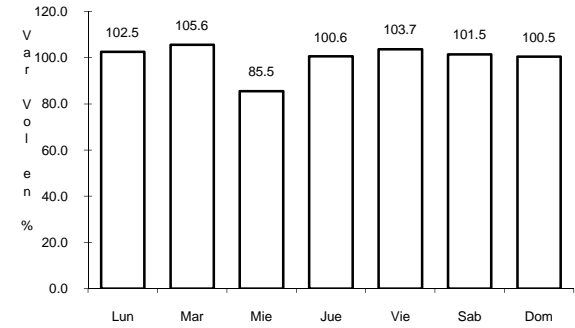
RUTA: TAB



Km: 0.00 Tipo: 3 Sent: 1



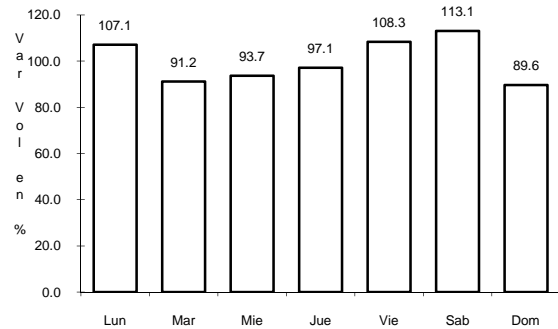
Km: 0.00 Tipo: 3 Sent: 2



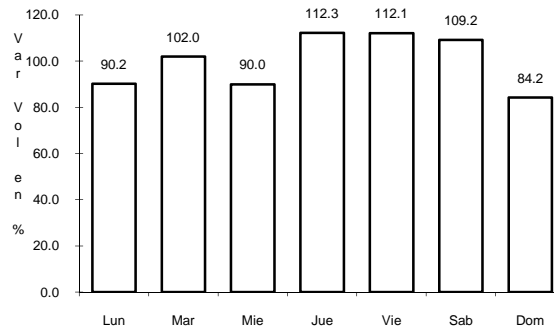
Km: 50.70 Tipo: 1 Sent: 0

36 CARR: VILLAHERMOSA - T. C. (P. DE CUNDUACAN - ESTACION JU^CLAVE: 27106

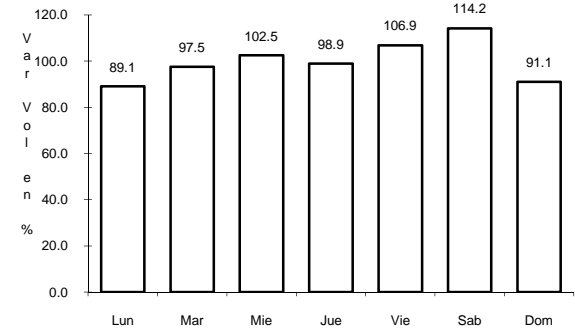
RUTA: TAB



Km: 0.00 Tipo: 3 Sent: 0



Km: 19.00 Tipo: 3 Sent: 0

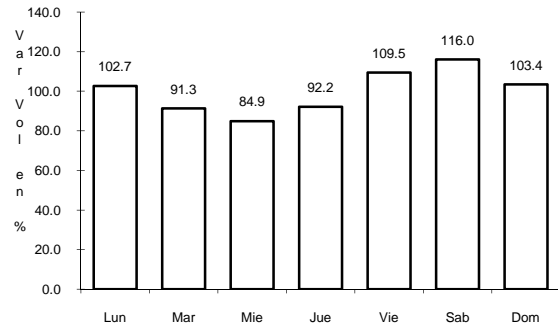


Km: 25.20 Tipo: 1 Sent: 0

40 CARR: MALPASO - EL BELLOTE

CLAVE: 00137

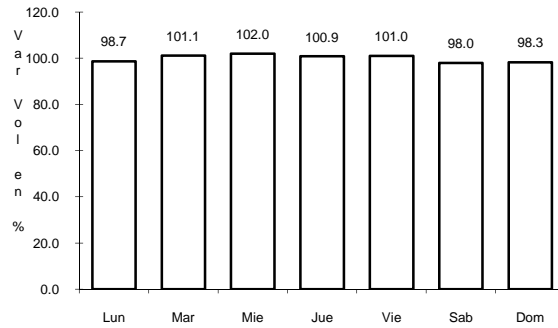
ruta: MEX-187



Km: 70.12

Tipo: 1

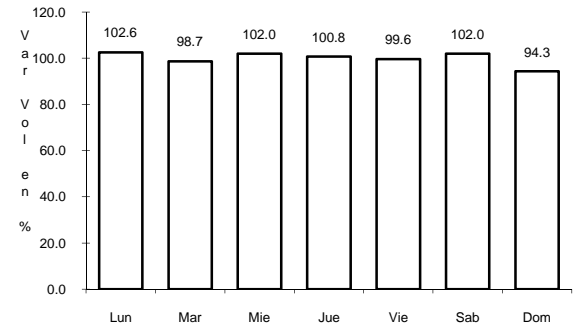
Sent: 0



Km: 134.70

Tipo: 3

Sent: 0



Km: 182.00

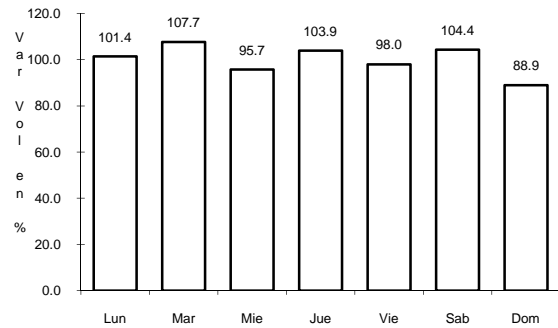
Tipo: 3

Sent: 0

41 CARR: ZAPATERO - T. C. (JALAPA - JONUTA)

CLAVE: 00061

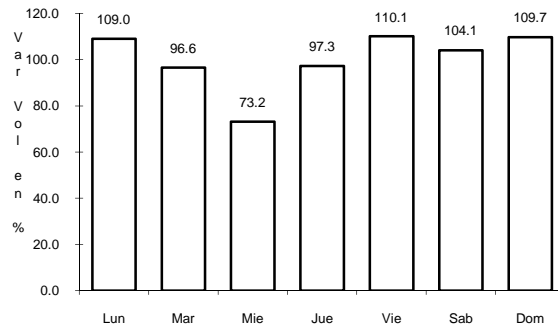
ruta: CHIS-TAB



Km: 0.00

Tipo: 3

Sent: 0



Km: 41.00

Tipo: 1

Sent: 0