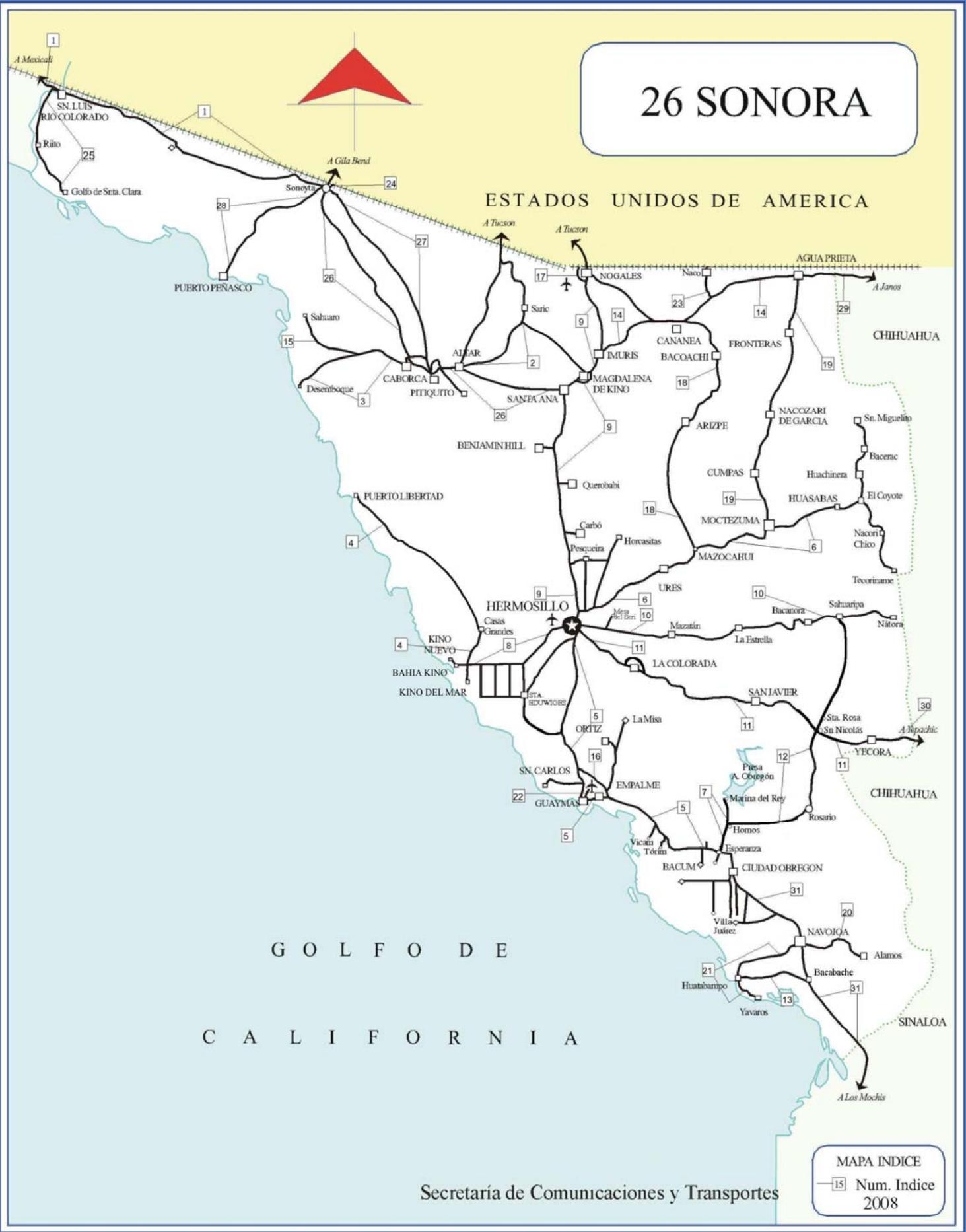


26 SONORA

ESTADOS UNIDOS DE AMERICA



GOLFO DE CALIFORNIA

Secretaría de Comunicaciones y Transportes

MAPA INDICE
1:500,000
2008

CARRETERAS AFORADAS

Num. INDICE	CARRETERA
1	SONOYTA - MEXICALI
2	ALTAR - SARIC
3	CABORCA - EL DESEMBOQUE
4	CALLE 36 NORTE - PUERTO DE LA LIBERTAD
5	CD. OBREGON - HERMOSILLO
6	T. C. (HERMOSILLO - NOGALES) - HUASABAS
7	ESPERANZA - PRESA ALVARO OBREGON
8	HERMOSILLO - BAHIA KINO
9	HERMOSILLO - NOGALES
10	HERMOSILLO - SAHUARIPA
11	HERMOSILLO - YECORA
12	HORNOS - SAN NICOLAS
13	HUATABAMPO - BACABACHE
14	IMURIS - AGUA PRIETA
15	LA ALAMEDA - EL SAHUARO
16	LIBRAMIENTO DE EMPALME - GUAYMAS (CUOTA)
17	LIBRAMIENTO DE NOGALES
18	MAZOCAHUI - CANANEA
19	MOCTEZUMA - AGUA PRIETA
20	NAVOJOA - ALAMOS
21	NAVOJOA - YAVAROS
22	RAMAL A AEROPUERTO DE GUAYMAS
23	RAMAL A NACO
24	RAMAL A PUERTA DE MEXICO
25	SAN LUIS RIO COLORADO - GOLFO DE SANTA CLARA
26	SANTA ANA - SONOYTA
27	SONOYTA - PITIQUITO
28	SONOYTA - PUERTO PEÑASCO
29	JANOS - AGUA PRIETA
30	LA JUNTA - YECORA
31	LOS MOCHIS - CD. OBREGON (CUOTA)

SONORA

4 CARR : CALLE 36 NORTE - PUERTO DE LA LIBERTAD

CLAVE: 26117

RUTA : SON-029

AÑO : 2007

L U G A R	E S T A C I O N				C L A S I F I C A C I O N V E H I C U L A R E N P O R C I E N T O .												
	KM	TE	SC	TDPA	A	B	C2	C3	T3S2	T3S3	T3S2R4	OTROS	A	B	C	K'	D
T. C. HERMOSILLO - BAHIA KINO	0.00	3	0	434	81.4	3.9	8.5	2.6	1.8	0.9	0.7	0.2	81.4	3.9	14.7	0.097	0.519
CASAS GRANDES	45.00	3	0	318	83.6	7.9	4.1	3.6	0.4	0.3	0.1	0	83.6	7.9	8.5	0.091	0.519
PUERTO DE LA LIBERTAD	156.00	0	0														

5 CARR : CD. OBREGON - HERMOSILLO

CLAVE: 26444

RUTA : MEX-015D-015

AÑO : 2007

L U G A R	E S T A C I O N				C L A S I F I C A C I O N V E H I C U L A R E N P O R C I E N T O .												
	KM	TE	SC	TDPA	A	B	C2	C3	T3S2	T3S3	T3S2R4	OTROS	A	B	C	K'	D
CD. OBREGON	0.00	0	0														
ESPERANZA	7.96	1	1	8042	78.2	6.5	4.5	3.3	3.2	2.4	0.5	1.4	78.2	6.5	15.3	0.093	0.5
ESPERANZA	7.96	1	2	8027	80.7	8.8	3.6	2.5	2.4	1	0.6	0.4	80.7	8.8	10.5	0.086	0.5
ESPERANZA	7.96	3	1	5438	69.3	7.8	3.3	3.9	6.3	2.8	2.4	4.2	69.3	7.8	22.9	0.091	0.502
ESPERANZA	7.96	3	2	5472	72.5	7.7	3.3	3.8	5.6	2	2.1	3	72.5	7.7	19.8	0.1	0.502
T. DER. ESTACION CORRAL	13.80	1	1	1703	60.9	12	9.7	2.2	1.9	0.9	0.5	11.9	60.9	12	27.1	0.093	0.546
T. DER. ESTACION CORRAL	13.80	1	2	2047	53.8	15.9	7.5	3.8	5.7	2.4	4.1	6.8	53.8	15.9	30.3	0.083	0.546
T. DER. ESTACION CORRAL	13.80	3	1	2327	55.3	8	3	5.5	11.9	6.5	4.6	5.2	55.3	8	36.7	0.087	0.511
T. DER. ESTACION CORRAL	13.80	3	2	2428	57.6	7.9	6.2	4.8	12.7	2.4	4.6	3.8	57.6	7.9	34.5	0.085	0.511
T. IZQ. BACUM	25.46	1	1	1280	50.6	15.5	12	2.9	2.5	1.2	0.7	14.6	50.6	15.5	33.9	0.088	0.599
T. IZQ. BACUM	25.46	1	2	1914	53.7	15.5	7.5	3.9	5.8	2.5	4.2	6.9	53.7	15.5	30.8	0.084	0.599
T. IZQ. BACUM	25.46	3	1	3884	64.9	10.1	7.8	2.8	6	1.7	2.1	4.6	64.9	10.1	25	0.097	0.504
T. IZQ. BACUM	25.46	3	2	3951	67.9	7.2	5.6	3	9.9	1.8	3.5	1.1	67.9	7.2	24.9	0.099	0.504
VICAM	47.28	3	1	3738	84	5.5	2.7	1.6	3	2.4	0.6	0.2	84	5.5	10.5	0.091	0.513
VICAM	47.28	3	2	3939	70.7	5.9	4.3	3.3	7.8	2.2	3.2	2.6	70.7	5.9	23.4	0.102	0.513
T. IZQ. POTAM	57.10	1	1	4142	81.9	5.1	0.7	1	4.4	3.1	2.4	1.4	81.9	5.1	13	0.096	0.512
T. IZQ. POTAM	57.10	1	2	3944	81.9	5.1	0.7	0.9	4.3	3.1	2.2	1.8	81.9	5.1	13	0.085	0.512
T. IZQ. POTAM	57.10	3	1	4334	78.6	7.6	1.3	1.1	4.5	3.1	2.4	1.4	78.6	7.6	13.8	0.093	0.5
T. IZQ. POTAM	57.10	3	2	4339	76.8	7.6	1.2	1	4.8	3.3	2.9	2.4	76.8	7.6	15.6	0.092	0.5
T. DER. LIBRAMIENTO DE GUAYMAS	107.70	1	1	4467	76.6	8.2	1.3	1.1	5.4	3.5	1.4	2.5	76.6	8.2	15.2	0.079	0.506
T. DER. LIBRAMIENTO DE GUAYMAS	107.70	1	2	4566	77.5	8.1	1.3	1.2	5.4	3.1	1.2	2.2	77.5	8.1	14.4	0.081	0.506
T. DER. LIBRAMIENTO DE GUAYMAS	107.70	3	0	5737	72.5	9.3	1.2	1.2	6.3	4.4	1.8	3.3	72.5	9.3	18.2	0.075	0.505
EMPALME	115.00	1	0	6140	82.5	6.7	0.7	0.4	3.9	1.9	1.4	2.5	82.5	6.7	10.8	0.078	0.506
EMPALME	115.00	3	1	6767	83	4.8	3.4	1.6	2.9	1.3	1.2	1.8	83	4.8	12.2	0.096	0.507
EMPALME	115.00	3	2	6968	82.5	4.8	3.5	1.6	3.2	1.4	1.1	1.9	82.5	4.8	12.7	0.082	0.507
T. IZQ. SAN CARLOS	132.20	1	1	4331	81	6.1	3.3	1.8	2.7	1.1	0.8	3.2	81	6.1	12.9	0.115	0.509
T. IZQ. SAN CARLOS	132.20	1	2	4185	72.1	5.8	4.2	4.4	4.9	2.2	2	4.4	72.1	5.8	22.1	0.095	0.509

SONORA

5 CARR : CD. OBREGON - HERMOSILLO

CLAVE: 26444

ruta : MEX-015D-015

AÑO : 2007

L U G A R	E S T A C I O N				C L A S I F I C A C I O N V E H I C U L A R E N P O R C I E N T O .												
	KM	TE	SC	TDPA	A	B	C2	C3	T3S2	T3S3	T3S2R4	OTROS	A	B	C	K'	D
T. IZQ. SAN CARLOS	132.20	3	1	2703	76.6	8.7	1.2	4.5	5.6	1.4	1.3	0.7	76.6	8.7	14.7	0.115	0.503
T. IZQ. SAN CARLOS	132.20	3	2	2666	72.4	8.5	1.4	4.9	6.6	2.2	2.2	1.8	72.4	8.5	19.1	0.081	0.503
T. IZQ. BAHIA KINO	171.10	1	1	3963	65	8.6	5.3	2.4	4.3	2.4	1.6	10.4	65	8.6	26.4	0.131	0.507
T. IZQ. BAHIA KINO	171.10	1	2	4075	70.4	8.6	0.6	2.6	10.1	2.3	4	1.4	70.4	8.6	21	0.117	0.507
T. IZQ. BAHIA KINO	171.10	3	1	3953	67.4	7.1	3.1	3	9	2.2	3.2	5	67.4	7.1	25.5	0.087	0.501
T. IZQ. BAHIA KINO	171.10	3	2	3932	64.4	7.2	3.9	3.1	8.9	3	3.4	6.1	64.4	7.2	28.4	0.083	0.501
HERMOSILLO	252.80	1	1	7510	81.3	4.1	2.8	1.7	5.2	1.2	2.4	1.3	81.3	4.1	14.6	0.118	0.502
HERMOSILLO	252.80	1	2	7571	77.1	4.3	3.2	1.9	6.1	2.1	2.9	2.4	77.1	4.3	18.6	0.097	0.502

6 CARR : T. C. (HERMOSILLO - NOGALES) - HUASABAS

CLAVE: 26231

ruta : MEX-SON

AÑO : 2007

L U G A R	E S T A C I O N				C L A S I F I C A C I O N V E H I C U L A R E N P O R C I E N T O .												
	KM	TE	SC	TDPA	A	B	C2	C3	T3S2	T3S3	T3S2R4	OTROS	A	B	C	K'	D
T. C. HERMOSILLO - NOGALES	0.00	3	0	5618	89.2	4.3	2.7	1	0.7	0.4	0.3	1.4	89.2	4.3	6.5	0.145	0.505
T. IZQ. EL CARRIZO	19.00	3	0	3040	90.8	3	2.5	1.1	1	0.3	0.3	1	90.8	3	6.2	0.135	0.503
URES	63.00	3	0	2789	90	3.2	2.7	1.2	1.1	0.3	0.4	1.1	90	3.2	6.8	0.134	0.503
MAZOCAHUI	99.00	3	0	1002	80	4.4	4.5	2.6	3.3	2.7	1.7	0.8	80	4.4	15.6	0.14	0.506
MOCTEZUMA	165.00	1	0	1381	84.1	3.6	3.9	2.4	2.4	1.9	1.2	0.5	84.1	3.6	12.3	0.133	0.501
MOCTEZUMA	165.00	3	0	1628	89.3	4.4	3	0.8	0.5	0.4	0.1	1.5	89.3	4.4	6.3	0.097	0.502
HUASABAS	212.50	1	0	721	89.2	6.4	2.4	1.1	0.4	0.1	0.1	0.3	89.2	6.4	4.4	0.14	0.518

7 CARR : ESPERANZA - PRESA ALVARO OBREGON

CLAVE: 26242

ruta : SON-011

AÑO : 2007

L U G A R	E S T A C I O N				C L A S I F I C A C I O N V E H I C U L A R E N P O R C I E N T O .												
	KM	TE	SC	TDPA	A	B	C2	C3	T3S2	T3S3	T3S2R4	OTROS	A	B	C	K'	D
ESPERANZA	0.00	3	0	3814	85.1	7.1	2.5	1.9	1.2	1.2	0.5	0.5	85.1	7.1	7.8	0.137	0.552
T. DER. LOS HORNOS	17.00	3	0	1179	93.4	2.3	1.6	1.2	0.3	0.2	0.1	0.9	93.4	2.3	4.3	0.137	0.515
PRESA ALVARO OBREGON	32.00	0	0														

8 CARR : HERMOSILLO - BAHIA KINO

CLAVE: 26109

ruta : SON

AÑO : 2007

L U G A R	E S T A C I O N				C L A S I F I C A C I O N V E H I C U L A R E N P O R C I E N T O .												
	KM	TE	SC	TDPA	A	B	C2	C3	T3S2	T3S3	T3S2R4	OTROS	A	B	C	K'	D
HERMOSILLO	0.00	3	1	15280	65	6.2	4.3	4	7.5	3.8	7.7	1.5	65	6.2	28.8	0.078	0.502
HERMOSILLO	0.00	3	2	15426	63.4	5.5	4	4.2	8	4.2	9.3	1.4	63.4	5.5	31.1	0.087	0.502

SONORA

8 CARR : HERMOSILLO - BAHIA KINO

CLAVE: 26109

RUTA : SON

AÑO : 2007

L U G A R	E S T A C I O N				C L A S I F I C A C I O N V E H I C U L A R E N P O R C I E N T O .												
	KM	TE	SC	TDPA	A	B	C2	C3	T3S2	T3S3	T3S2R4	OTROS	A	B	C	K'	D
T. DER. AEROPUERTO	11.00	1	1	7827	78.4	5.9	4.8	3.4	3.2	2.4	0.5	1.4	78.4	5.9	15.7	0.093	0.5
T. DER. AEROPUERTO	11.00	1	2	7814	80.8	8.4	3.8	2.6	2.4	1	0.6	0.4	80.8	8.4	10.8	0.087	0.5
T. DER. AEROPUERTO	11.00	3	1	4920	81.2	3.2	1.9	4.6	3.6	1.2	2.1	2.2	81.2	3.2	15.6	0.109	0.501
T. DER. AEROPUERTO	11.00	3	2	4898	84.4	3.3	2.7	3	3.2	0.9	0.6	1.9	84.4	3.3	12.3	0.107	0.501
T. IZQ. CALLE 4 SUR	53.00	3	0	4290	86.8	3.3	2.4	3.2	2.1	0.9	0.4	0.9	86.8	3.3	9.9	0.094	0.513
EL TRIUNFO	55.50	1	0	3907	85.6	2.1	3.5	2.8	2.6	1	0.5	1.9	85.6	2.1	12.3	0.103	0.503
T. DER. CALLE 36	84.40	1	0	2191	78.1	4.3	3.7	3.3	2.7	1.8	1.4	4.7	78.1	4.3	17.6	0.089	0.506
T. DER. CALLE 36	84.40	3	0	2860	77.7	4.6	1.6	3.9	2.9	2.5	1.6	5.2	77.7	4.6	17.7	0.091	0.506
BAHIA KINO	106.50	1	0	1822	88.1	5.4	2.6	0.4	0.8	0.8	0.3	1.6	88.1	5.4	6.5	0.125	0.503

9 CARR : HERMOSILLO - NOGALES

CLAVE: 26445

RUTA : MEX-015D-015

AÑO : 2007

L U G A R	E S T A C I O N				C L A S I F I C A C I O N V E H I C U L A R E N P O R C I E N T O .												
	KM	TE	SC	TDPA	A	B	C2	C3	T3S2	T3S3	T3S2R4	OTROS	A	B	C	K'	D
HERMOSILLO	0.00	3	1	11634	75.7	7	4	3.5	3.8	2.9	0	3.1	75.7	7	17.3	0.136	0.504
HERMOSILLO	0.00	3	2	11803	76.9	6.5	3.7	3.6	3.5	2.8	0.1	2.9	76.9	6.5	16.6	0.124	0.504
T. DER. URES	8.60	1	1	8527	75.9	6.9	7.6	3.3	4.2	1.6	0	0.5	75.9	6.9	17.2	0.1	0.501
T. DER. URES	8.60	1	2	8490	75.4	5.4	6.9	4.1	4.3	1.8	1.1	1	75.4	5.4	19.2	0.086	0.501
T. DER. URES	8.60	3	1	4929	81	5.3	4.3	4	3.4	1.3	0.3	0.4	81	5.3	13.7	0.088	0.502
T. DER. URES	8.60	3	2	4963	77.9	6.8	4.6	3.4	4.7	2.2	0	0.4	77.9	6.8	15.3	0.075	0.502
CASETA DE COBRO HERMOSILLO	14.00	2	0	9495													
T. DER. PESQUEIRA	32.39	3	1	5053	81	5.3	4.3	4	3.4	1.3	0.3	0.4	81	5.3	13.7	0.088	0.506
T. DER. PESQUEIRA	32.39	3	2	5172	78.1	6.7	4.6	3.4	4.6	2.2	0	0.4	78.1	6.7	15.2	0.084	0.506
T. DER. CARBO	68.90	1	1	6243	78.6	5.9	4.7	3.4	3.2	2.4	0.5	1.3	78.6	5.9	15.5	0.093	0.5
T. DER. CARBO	68.90	1	2	6243	80.8	8	4	2.7	2.4	1	0.6	0.5	80.8	8	11.2	0.086	0.5
T. DER. CARBO	68.90	3	1	4701	81	4.7	5.4	2.3	4.1	1.9	0.2	0.4	81	4.7	14.3	0.088	0.514
T. DER. CARBO	68.90	3	2	4450	82.9	5	4.2	1.8	3	2.4	0.5	0.2	82.9	5	12.1	0.091	0.514
T. IZQ. BENJAMIN HILL	125.40	1	1	4365	80.5	7	3.4	3.6	3.4	1.3	0.3	0.5	80.5	7	12.5	0.088	0.5
T. IZQ. BENJAMIN HILL	125.40	1	2	4364	77.6	6.8	4.7	3.4	4.7	2.3	0	0.5	77.6	6.8	15.6	0.076	0.5
T. IZQ. BENJAMIN HILL	125.40	3	1	4417	79.7	5.8	4.1	3.9	4.1	1.3	0.5	0.6	79.7	5.8	14.5	0.085	0.51
T. IZQ. BENJAMIN HILL	125.40	3	2	4589	78.4	6.2	5.4	3.3	3.7	1.3	0.6	1.1	78.4	6.2	15.4	0.087	0.51
SANTA ANA	167.30	1	1	5834	75.6	4.3	3	3	6.8	2.7	3.5	1.1	75.6	4.3	20.1	0.096	0.523
SANTA ANA	167.30	1	2	5321	73.4	5.4	2.9	3.8	7.6	2.2	3.2	1.5	73.4	5.4	21.2	0.099	0.523
SANTA ANA	167.30	3	1	5124	77.8	8	3.7	3	3.2	2.4	0.5	1.4	77.8	8	14.2	0.093	0.5
SANTA ANA	167.30	3	2	5125	80.8	8	4	2.7	2.4	1	0.6	0.5	80.8	8	11.2	0.088	0.5

SONORA

9 CARR : HERMOSILLO - NOGALES

CLAVE: 26445

ruta : MEX-015D-015

AÑO : 2007

L U G A R	E S T A C I O N				C L A S I F I C A C I O N V E H I C U L A R E N P O R C I E N T O .												
	KM	TE	SC	TDPA	A	B	C2	C3	T3S2	T3S3	T3S2R4	OTROS	A	B	C	K'	D
MAGDALENA DE KINO	182.70	1	1	3953	81.3	4.3	5.5	2.3	4	1.9	0.2	0.5	81.3	4.3	14.4	0.088	0.514
MAGDALENA DE KINO	182.70	1	2	3738	84.7	3.8	3.7	1.6	3	2.4	0.6	0.2	84.7	3.8	11.5	0.091	0.514
MAGDALENA DE KINO	182.70	3	1	2312	82.5	4.5	3.4	0.2	2.2	0.5	0.4	6.3	82.5	4.5	13	0.096	0.501
MAGDALENA DE KINO	182.70	3	2	2301	84.9	4.3	3.1	0.2	1	0.3	0.3	5.9	84.9	4.3	10.8	0.111	0.501
IMURIS	208.00	1	1	4816	80.9	5.1	3.5	2.6	4.7	1.9	0.6	0.7	80.9	5.1	14	0.094	0.508
IMURIS	208.00	1	2	4964	77.8	6.1	4.6	2.6	5.7	1.5	0.5	1.2	77.8	6.1	16.1	0.095	0.508
T. DER. AGUA PRIETA	208.80	3	1	4708	85.8	4.3	3.3	1.5	3	1.2	0.3	0.6	85.8	4.3	9.9	0.105	0.514
T. DER. AGUA PRIETA	208.80	3	2	4975	87	3.9	2.3	2	2.6	1.1	0.6	0.5	87	3.9	9.1	0.098	0.514
T. IZQ. SARIC	255.90	1	1	6310	80.5	4.7	2.3	2.1	5.8	1.8	1.7	1.1	80.5	4.7	14.8	0.09	0.5
T. IZQ. SARIC	255.90	1	2	6302	80.2	4.9	4.1	2.4	3.9	1.9	1.1	1.5	80.2	4.9	14.9	0.086	0.5
T. IZQ. SARIC	255.90	3	1	6583	80.5	4.7	2.3	2.1	5.8	1.8	1.7	1.1	80.5	4.7	14.8	0.087	0.501
T. IZQ. SARIC	255.90	3	2	6610	80.5	4.9	4.1	2.4	3.8	1.9	1	1.4	80.5	4.9	14.6	0.083	0.501
T. IZQ. LIBRAMIENTO DE NOGALES	270.60	1	1	7012	82.7	4.7	2.3	2.1	3.8	1.7	1.7	1	82.7	4.7	12.6	0.085	0.504
T. IZQ. LIBRAMIENTO DE NOGALES	270.60	1	2	7129	82.6	3.9	3	2.4	3.8	1.9	1	1.4	82.6	3.9	13.5	0.089	0.504
T. IZQ. LIBRAMIENTO DE NOGALES	270.60	3	1	7968	85.5	4.3	2.5	2	2.4	1.8	0.9	0.6	85.5	4.3	10.2	0.1	0.503
T. IZQ. LIBRAMIENTO DE NOGALES	270.60	3	2	8065	86.8	4.6	2.6	1.8	2.2	1.1	0.3	0.6	86.8	4.6	8.6	0.096	0.503
NOGALES	277.00	1	1	10585	76.3	7	5.3	4.3	3.9	1.3	0.8	1.1	76.3	7	16.7	0.091	0.518
NOGALES	277.00	1	2	11364	81.1	6.3	3.5	3	2.9	2.1	0.5	0.6	81.1	6.3	12.6	0.072	0.518

10 CARR : HERMOSILLO - SAHUARIPA

CLAVE: 26230

ruta : SON-020

AÑO : 2007

L U G A R	E S T A C I O N				C L A S I F I C A C I O N V E H I C U L A R E N P O R C I E N T O .												
	KM	TE	SC	TDPA	A	B	C2	C3	T3S2	T3S3	T3S2R4	OTROS	A	B	C	K'	D
T. C. LIBRAMIENTO DE HERMOSILLO	0.00	3	0	11233	77.6	7.6	5.1	2.6	3.5	2	0.8	0.8	77.6	7.6	14.8	0.101	0.514
MAZATAN	88.00	1	0	802	90.5	6.3	1.2	1.1	0.4	0	0.1	0.4	90.5	6.3	3.2	0.14	0.518
MAZATAN	88.00	3	0	676	86.8	8.1	3.8	1.2	0.1	0	0	0	86.8	8.1	5.1	0.12	0.508
SAHUARIPA	199.00	0	0														

11 CARR : HERMOSILLO - YECORA

CLAVE: 26251

ruta : MEX-016

AÑO : 2007

L U G A R	E S T A C I O N				C L A S I F I C A C I O N V E H I C U L A R E N P O R C I E N T O .												
	KM	TE	SC	TDPA	A	B	C2	C3	T3S2	T3S3	T3S2R4	OTROS	A	B	C	K'	D
T. C. CD. OBREGON - HERMOSILLO	0.00	0	0														
T. IZQ. SAHUARIPA	4.00	3	1	1544	82.1	7.7	5.3	0.7	2.1	0	0.8	1.3	82.1	7.7	10.2	0.1	0.501
T. IZQ. SAHUARIPA	4.00	3	2	1549	80.9	7.8	6.1	0.6	2.7	0.1	0.6	1.2	80.9	7.8	11.3	0.112	0.501

SONORA

11 CARR : HERMOSILLO - YECORA

CLAVE: 26251

RUTA : MEX-016

AÑO : 2007

L U G A R	E S T A C I O N				C L A S I F I C A C I O N V E H I C U L A R E N P O R C I E N T O .												
	KM	TE	SC	TDPA	A	B	C2	C3	T3S2	T3S3	T3S2R4	OTROS	A	B	C	K'	D
LA COLORADA	47.00	3	0	880	90.8	5.1	2.3	1	0.3	0	0.1	0.4	90.8	5.1	4.1	0.14	0.518
TECORIPA	138.00	3	0	436	87.1	5.6	3.5	0.8	0.9	1.2	0.9	0	87.1	5.6	7.3	0.142	0.502
YECORA	250.60	0	0														

12 CARR : HORNOS - SAN NICOLAS

CLAVE: 26243

RUTA : SON-017

AÑO : 2007

L U G A R	E S T A C I O N				C L A S I F I C A C I O N V E H I C U L A R E N P O R C I E N T O .												
	KM	TE	SC	TDPA	A	B	C2	C3	T3S2	T3S3	T3S2R4	OTROS	A	B	C	K'	D
HORNOS	0.00	3	0	822	78.7	4.9	3.4	2.7	4.3	2.2	1.3	2.5	78.7	4.9	16.4	0.156	0.508
ROSARIO	58.00	1	0	642	78.9	5.2	2.5	1.9	4.9	2.6	1.7	2.3	78.9	5.2	15.9	0.106	0.515
SAN NICOLAS	137.20	0	0														

13 CARR : HUATABAMPO - BACABACHE

CLAVE: 26237

RUTA : SON-019

AÑO : 2007

L U G A R	E S T A C I O N				C L A S I F I C A C I O N V E H I C U L A R E N P O R C I E N T O .												
	KM	TE	SC	TDPA	A	B	C2	C3	T3S2	T3S3	T3S2R4	OTROS	A	B	C	K'	D
HUATABAMPO	0.00	3	0	4734	68.6	7.5	7.6	5.5	5.3	3	0.6	1.9	68.6	7.5	23.9	0.081	0.506
T. C. LOS MOCHIS - CD. OBREGON (CUOTA)	29.00	1	0	2016	85.1	8.6	3.3	2.5	0.4	0.1	0	0	85.1	8.6	6.3	0.138	0.502

14 CARR : IMURIS - AGUA PRIETA

CLAVE: 26079

RUTA : MEX-002

AÑO : 2007

L U G A R	E S T A C I O N				C L A S I F I C A C I O N V E H I C U L A R E N P O R C I E N T O .												
	KM	TE	SC	TDPA	A	B	C2	C3	T3S2	T3S3	T3S2R4	OTROS	A	B	C	K'	D
IMURIS	0.00	3	0	3998	69.3	7.1	7.2	5.3	5.3	3	0.7	2.1	69.3	7.1	23.6	0.078	0.507
T. DER. CANANEA	80.93	1	0	5037	68.3	9.5	6.1	4.9	5.3	3.1	0.7	2.1	68.3	9.5	22.2	0.077	0.507
T. DER. CANANEA	80.93	3	0	5683	69.1	7	7.3	5.6	5.3	3.1	0.6	2	69.1	7	23.9	0.078	0.507
AGUA PRIETA	164.70	1	0	4369	68.4	7.1	7.8	5.4	5.4	3.1	0.7	2.1	68.4	7.1	24.5	0.081	0.506

15 CARR : LA ALAMEDA - EL SAHUARO

CLAVE: 26234

RUTA : SON-038

AÑO : 2007

L U G A R	E S T A C I O N				C L A S I F I C A C I O N V E H I C U L A R E N P O R C I E N T O .												
	KM	TE	SC	TDPA	A	B	C2	C3	T3S2	T3S3	T3S2R4	OTROS	A	B	C	K'	D
T. C. CABORCA - EL DESEMBOQUE	0.00	3	0	948	92.1	0	2.8	2.7	1	0.4	0.1	0.9	92.1	0	7.9	0.103	0.506
ESTACION EL SAHUARO	47.00	1	0	1291	88	4.2	5.2	2	0.1	0.5	0	0	88	4.2	7.8	0.1	0.501

SONORA

16 CARR : LIBRAMIENTO DE EMPALME - GUAYMAS (CUOTA)

CLAVE: 26256

RUTA : MEX-015D

AÑO : 2007

L U G A R	E S T A C I O N				C L A S I F I C A C I O N V E H I C U L A R E N P O R C I E N T O .												
	KM	TE	SC	TDPA	A	B	C2	C3	T3S2	T3S3	T3S2R4	OTROS	A	B	C	K'	D
T. C. CD. OBREGON - HERMOSILLO	0.00	3	1	2365	81.2	8	1.7	0.7	2.7	3.6	0.6	1.5	81.2	8	10.8	0.11	0.519
T. C. CD. OBREGON - HERMOSILLO	0.00	3	2	2551	80.4	8.2	1.8	1.2	2.8	3.5	0.6	1.5	80.4	8.2	11.4	0.094	0.519
T. C. CD. OBREGON - HERMOSILLO	21.50	1	1	2492	59.3	7.4	4.1	3.9	12.9	2.9	6	3.5	59.3	7.4	33.3	0.093	0.505
T. C. CD. OBREGON - HERMOSILLO	21.50	1	2	2545	62.1	7.3	4.8	2	11.9	2.9	5.3	3.7	62.1	7.3	30.6	0.084	0.505

17 CARR : LIBRAMIENTO DE NOGALES

CLAVE: 26100

RUTA : MEX

AÑO : 2007

L U G A R	E S T A C I O N				C L A S I F I C A C I O N V E H I C U L A R E N P O R C I E N T O .												
	KM	TE	SC	TDPA	A	B	C2	C3	T3S2	T3S3	T3S2R4	OTROS	A	B	C	K'	D
T. C. HERMOSILLO - NOGALES	0.00	3	1	1813	85.8	2.5	4.7	3.2	1.5	0.6	0.6	1.1	85.8	2.5	11.7	0.126	0.501
T. C. HERMOSILLO - NOGALES	0.00	3	2	1823	87.1	2.7	4.1	3.1	1.6	0.5	0.4	0.5	87.1	2.7	10.2	0.152	0.501
FRONTERA E.U.A.	6.73	1	1	1475	86.8	2.7	3.8	2.1	2.9	0.9	0.5	0.3	86.8	2.7	10.5	0.131	0.511
FRONTERA E.U.A.	6.73	1	2	1538	87.7	2.6	3.9	2.2	2.4	0.6	0.4	0.2	87.7	2.6	9.7	0.131	0.511

18 CARR : MAZOCAHUI - CANANEA

CLAVE: 26118

RUTA : SON-118

AÑO : 2007

L U G A R	E S T A C I O N				C L A S I F I C A C I O N V E H I C U L A R E N P O R C I E N T O .												
	KM	TE	SC	TDPA	A	B	C2	C3	T3S2	T3S3	T3S2R4	OTROS	A	B	C	K'	D
T. C. HERMOSILLO - MOCTEZUMA	0.00	3	0	1109	89.8	5.2	2.8	1.2	0.5	0.1	0.1	0.3	89.8	5.2	5	0.139	0.518
BAVIACORA	15.20	3	0	1669	85	7.7	4	2.8	0.4	0.1	0	0	85	7.7	7.3	0.138	0.502
ARIZPE	98.00	1	0	814	87.9	4.2	5.6	0.7	0.8	0.4	0.1	0.3	87.9	4.2	7.9	0.127	0.513
T. C. IMURIS - AGUA PRIETA	204.00	1	0	1550	88	1	0.9	0.9	3.2	1.3	1.6	3.1	88	1	11	0.096	0.503

19 CARR : MOCTEZUMA - AGUA PRIETA

CLAVE: 26027

RUTA : MEX-017

AÑO : 2007

L U G A R	E S T A C I O N				C L A S I F I C A C I O N V E H I C U L A R E N P O R C I E N T O .												
	KM	TE	SC	TDPA	A	B	C2	C3	T3S2	T3S3	T3S2R4	OTROS	A	B	C	K'	D
MOCTEZUMA	0.00	3	0	1308	84.5	7.8	4.1	2.9	0.5	0.1	0	0.1	84.5	7.8	7.7	0.141	0.502
NACUZARI DE GARCIA	81.00	3	0	1673	87.8	4.7	2.9	1.4	1.4	0.8	0.3	0.7	87.8	4.7	7.5	0.112	0.507
TURUCACHI	111.00	1	0	2925	81	5.1	4.6	1.9	3	1.7	1.8	0.9	81	5.1	13.9	0.115	0.523
T. C. IMURIS - AGUA PRIETA	197.60	1	0	3627	73.7	9.3	1.9	2.1	3.9	1.7	3.2	4.2	73.7	9.3	17	0.101	0.506

SONORA

20 CARR : NAVOJOA - ALAMOS

CLAVE: 26240

RUTA : SON-013

AÑO : 2007

L U G A R	E S T A C I O N				C L A S I F I C A C I O N V E H I C U L A R E N P O R C I E N T O .												
	KM	TE	SC	TDPA	A	B	C2	C3	T3S2	T3S3	T3S2R4	OTROS	A	B	C	K'	D
NAVOJOA	0.00	3	0	3313	81.9	7.8	5.7	0.6	2.2	0.1	0.6	1.1	81.9	7.8	10.3	0.091	0.501
ALAMOS	52.80	1	0	1477	84.9	7.7	3.9	2.8	0.5	0.1	0	0.1	84.9	7.7	7.4	0.133	0.501

21 CARR : NAVOJOA - YAVAROS

CLAVE: 26229

RUTA : SON-056

AÑO : 2007

L U G A R	E S T A C I O N				C L A S I F I C A C I O N V E H I C U L A R E N P O R C I E N T O .												
	KM	TE	SC	TDPA	A	B	C2	C3	T3S2	T3S3	T3S2R4	OTROS	A	B	C	K'	D
NAVOJOA	0.00	3	0	6321	50	6.6	2.5	5	9.7	5.7	8.5	12	50	6.6	43.4	0.089	0.502
YAVAROS	55.00	1	0	1150	83.7	7.7	3.6	2	1.6	0.3	0.4	0.7	83.7	7.7	8.6	0.097	0.508

22 CARR : RAMAL A AEROPUERTO DE GUAYMAS

CLAVE: 26568

RUTA : SON

AÑO : 2007

L U G A R	E S T A C I O N				C L A S I F I C A C I O N V E H I C U L A R E N P O R C I E N T O .												
	KM	TE	SC	TDPA	A	B	C2	C3	T3S2	T3S3	T3S2R4	OTROS	A	B	C	K'	D
T. C. CD. OBREGON - HERMOSILLO	0.00	3	0	3085	83.2	6.4	1.5	1.2	2.8	2.4	1.5	1	83.2	6.4	10.4	0.095	0.504
AEROPUERTO DE GUAYMAS	3.00	0	0														

23 CARR : RAMAL A NACO

CLAVE: 26579

RUTA : MEX

AÑO : 2007

L U G A R	E S T A C I O N				C L A S I F I C A C I O N V E H I C U L A R E N P O R C I E N T O .												
	KM	TE	SC	TDPA	A	B	C2	C3	T3S2	T3S3	T3S2R4	OTROS	A	B	C	K'	D
T. C. IMURIS - AGUA PRIETA	0.00	3	0	813	82.7	7.9	3.9	2.2	1.8	0.3	0.4	0.8	82.7	7.9	9.4	0.127	0.508
NACO	15.00	0	0														

24 CARR : RAMAL A PUERTA DE MEXICO

CLAVE: 26577

RUTA : MEX

AÑO : 2007

L U G A R	E S T A C I O N				C L A S I F I C A C I O N V E H I C U L A R E N P O R C I E N T O .												
	KM	TE	SC	TDPA	A	B	C2	C3	T3S2	T3S3	T3S2R4	OTROS	A	B	C	K'	D
T. C. SONOYTA - MEXICALI	0.00	3	0	7395	91.3	3.8	0.6	1.1	0.7	0.5	0.3	1.7	91.3	3.8	4.9	0.081	0.501
FRONTERA E.U.A	3.15	0	0														

25 CARR : SAN LUIS RIO COLORADO - GOLFO DE SANTA CLARA

CLAVE: 26226

RUTA : SON-040

AÑO : 2007

L U G A R	E S T A C I O N				C L A S I F I C A C I O N V E H I C U L A R E N P O R C I E N T O .												
	KM	TE	SC	TDPA	A	B	C2	C3	T3S2	T3S3	T3S2R4	OTROS	A	B	C	K'	D
SAN LUIS RIO COLORADO	0.00	3	0	5168	79.2	3.9	2.9	2.1	2.2	4.1	3.4	2.2	79.2	3.9	16.9	0.09	0.501

SONORA

25 CARR : SAN LUIS RIO COLORADO - GOLFO DE SANTA CLARA

CLAVE: 26226

RUTA : SON-040

AÑO : 2007

L U G A R	E S T A C I O N				C L A S I F I C A C I O N V E H I C U L A R E N P O R C I E N T O .												
	KM	TE	SC	TDPA	A	B	C2	C3	T3S2	T3S3	T3S2R4	OTROS	A	B	C	K'	D
T. IZQ. LAGUNITAS	25.50	3	0	3758	74.5	8.2	5.4	4.9	2.1	1.2	2	1.7	74.5	8.2	17.3	0.087	0.503
GOLFO DE SANTA CLARA	114.30	1	0	1036	80.1	4.7	4.1	3.9	2.9	1.6	2.3	0.4	80.1	4.7	15.2	0.097	0.5

26 CARR : SANTA ANA - SONOYTA

CLAVE: 26080

RUTA : MEX-002

AÑO : 2007

L U G A R	E S T A C I O N				C L A S I F I C A C I O N V E H I C U L A R E N P O R C I E N T O .												
	KM	TE	SC	TDPA	A	B	C2	C3	T3S2	T3S3	T3S2R4	OTROS	A	B	C	K'	D
SANTA ANA	0.00	3	0	9124	70.5	6.1	5.5	3.8	7.8	4.3	0.4	1.6	70.5	6.1	23.4	0.064	0.501
ALTAR	73.00	1	0	6890	66.2	5.5	7.9	2.7	5.9	4.6	3.3	3.9	66.2	5.5	28.3	0.084	0.505
ALTAR	73.00	3	0	8477	75.7	7.8	5.5	4.4	4.2	0.5	0.3	1.6	75.7	7.8	16.5	0.08	0.5
T. IZQ. ESTACION PITIQUITO	94.28	1	0	8804	75.8	7.8	5.5	4.4	4.2	0.4	0.3	1.6	75.8	7.8	16.4	0.08	0.501
CABORCA	103.80	1	0	10443	77.2	4.4	2.7	3.1	7.4	1.8	2.7	0.7	77.2	4.4	18.4	0.075	0.502
COZON	180.30	1	0	5003	79.1	4	3.4	3	2.7	2	3.5	2.3	79.1	4	16.9	0.089	0.502
SONOYTA	251.10	1	0	4724	71.9	3.9	3	2.2	8.8	4.3	3.5	2.4	71.9	3.9	24.2	0.087	0.502

27 CARR : SONOYTA - PITIQUITO

CLAVE: 26022

RUTA : SON

AÑO : 2007

L U G A R	E S T A C I O N				C L A S I F I C A C I O N V E H I C U L A R E N P O R C I E N T O .												
	KM	TE	SC	TDPA	A	B	C2	C3	T3S2	T3S3	T3S2R4	OTROS	A	B	C	K'	D
SONOYTA	0.00	3	0	1518	90.1	4.2	1.8	2.2	0	1.3	0.4	0	90.1	4.2	5.7	0.127	0.501
PITIQUITO	170.00	1	0	845	87.5	3.3	5.4	2	0.1	0.6	0.5	0.6	87.5	3.3	9.2	0.127	0.504

28 CARR : SONOYTA - PUERTO PEÑASCO

CLAVE: 26232

RUTA : MEX-008

AÑO : 2007

L U G A R	E S T A C I O N				C L A S I F I C A C I O N V E H I C U L A R E N P O R C I E N T O .												
	KM	TE	SC	TDPA	A	B	C2	C3	T3S2	T3S3	T3S2R4	OTROS	A	B	C	K'	D
SONOYTA	0.00	3	0	3244	91	2.6	1.4	1.1	1.7	0.6	0.6	1	91	2.6	6.4	0.107	0.505
PUERTO PEÑASCO	100.40	0	0														

29 CARR : JANOS - AGUA PRIETA

CLAVE: 00220

RUTA : MEX-002

AÑO : 2007

L U G A R	E S T A C I O N				C L A S I F I C A C I O N V E H I C U L A R E N P O R C I E N T O .												
	KM	TE	SC	TDPA	A	B	C2	C3	T3S2	T3S3	T3S2R4	OTROS	A	B	C	K'	D
T. C. CD. JUAREZ - JANOS	0.00	3	0	3942	62.3	3.5	2.9	3.3	14.5	3.6	8.3	1.6	62.3	3.5	34.2	0.088	0.504
LOS MIMBRES	56.00	3	0	1781	76.3	6	1.1	4	3.5	5.1	1.3	2.7	76.3	6	17.7	0.074	0.502

SONORA

31 CARR : LOS MOCHIS - CD. OBREGON (CUOTA)

CLAVE: 00452

RUTA : MEX-015D

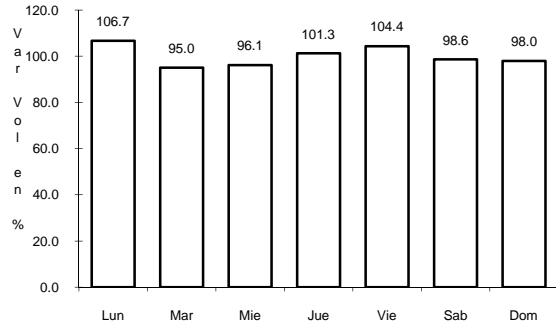
AÑO : 2007

L U G A R	E S T A C I O N				C L A S I F I C A C I O N V E H I C U L A R E N P O R C I E N T O .													
	KM	TE	SC	TDPA	A	B	C2	C3	T3S2	T3S3	T3S2R4	OTROS	A	B	C	K'	D	
T. IZQ. HUATABAMPO	128.00	1	1	2201	57.9	10.5	3.9	5.8	8.2	3.1	4.2	6.4	57.9	10.5	31.6	0.077	0.506	
T. IZQ. HUATABAMPO	128.00	1	2	2255	59.1	10.6	3.7	5.7	8.1	2.5	4.1	6.2	59.1	10.6	30.3	0.097	0.506	
NAVOJOA	155.00	1	1	5082	81	4.9	3.8	3.4	2.5	1.4	0.8	2.2	81	4.9	14.1	0.089	0.505	
NAVOJOA	155.00	1	2	5181	84.9	4	3.9	3.2	1.7	0.6	0.4	1.3	84.9	4	11.1	0.095	0.505	
NAVOJOA	155.00	3	1	5014	84.6	5	3.2	2.8	1.6	0.7	0.6	1.5	84.6	5	10.4	0.082	0.511	
NAVOJOA	155.00	3	2	4807	84.2	4.6	3.9	2.9	1.7	0.8	0.6	1.3	84.2	4.6	11.2	0.088	0.511	
T. IZQ. VILLA JUAREZ	167.30	3	1	3989	80.8	6	4.6	2	4	1.9	0.2	0.5	80.8	6	13.2	0.087	0.515	
T. IZQ. VILLA JUAREZ	167.30	3	2	3751	84.1	6	2.7	1	3	2.4	0.6	0.2	84.1	6	9.9	0.09	0.515	
T. DER. FUNDICION	196.90	1	1	3052	61.3	6.9	2.7	6.6	10.8	2.6	5.1	4	61.3	6.9	31.8	0.097	0.502	
T. DER. FUNDICION	196.90	1	2	3025	75.5	8.1	4.8	3.3	4.5	2.2	1.3	0.3	75.5	8.1	16.4	0.106	0.502	
CASETA DE COBRO FUNDICION	196.90	2	1	2438														
CASETA DE COBRO FUNDICION	196.90	2	2	2438														
CD. OBREGON	222.80	1	1	8427	74.1	5.5	3.9	3.4	6.2	1.6	2.6	2.7	74.1	5.5	20.4	0.086	0.555	
CD. OBREGON	222.80	1	2	10502	71.3	6.1	2.8	3.5	6.1	2	3.6	4.6	71.3	6.1	22.6	0.078	0.555	

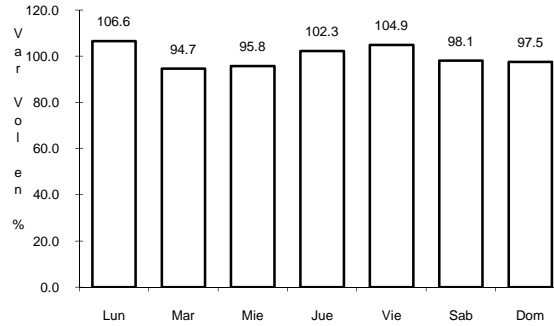
4 CARR: CALLE 36 NORTE - PUERTO DE LA LIBERTAD

CLAVE: 26117

RUTA: SON-029



Km: 0.00 Tipo: 3 Sent: 0

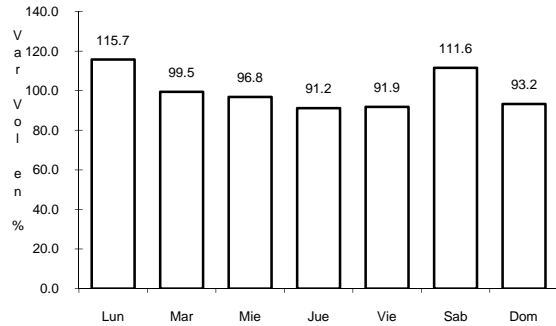


Km: 45.00 Tipo: 3 Sent: 0

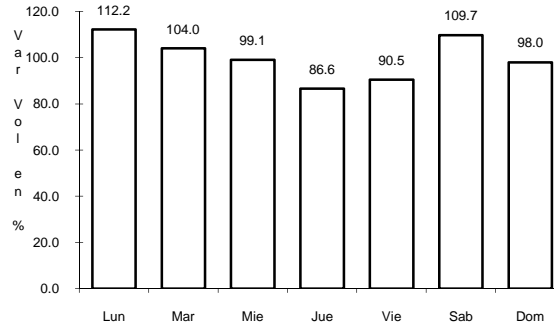
5 CARR: CD. OBREGON - HERMOSILLO

CLAVE: 26444

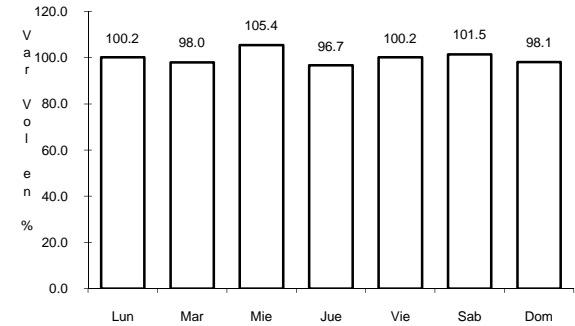
RUTA: MEX-015D-015



Km: 7.96 Tipo: 1 Sent: 1



Km: 7.96 Tipo: 1 Sent: 2

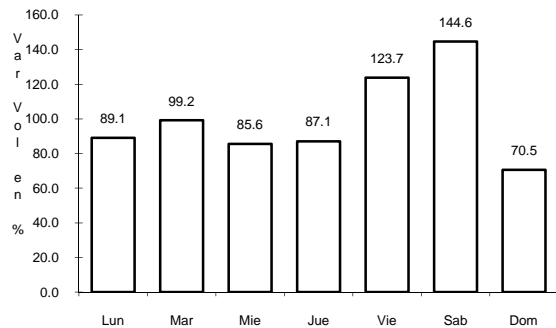


Km: 107.70 Tipo: 3 Sent: 0

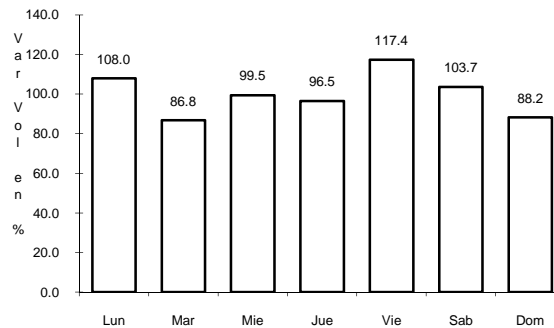
6 CARR: T. C. (HERMOSILLO - NOGALES) - HUASABAS

CLAVE: 26231

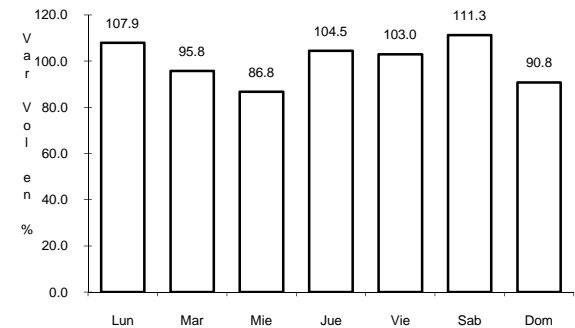
RUTA: MEX-SON



Km: 0.00 Tipo: 3 Sent: 0



Km: 99.00 Tipo: 3 Sent: 0

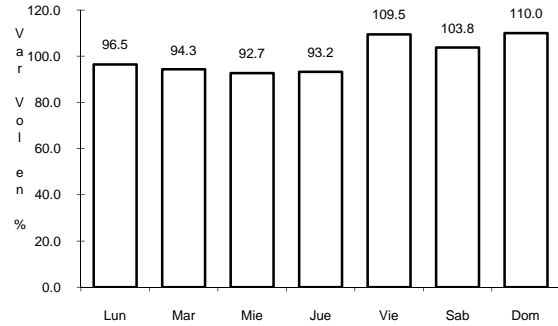


Km: 212.50 Tipo: 1 Sent: 0

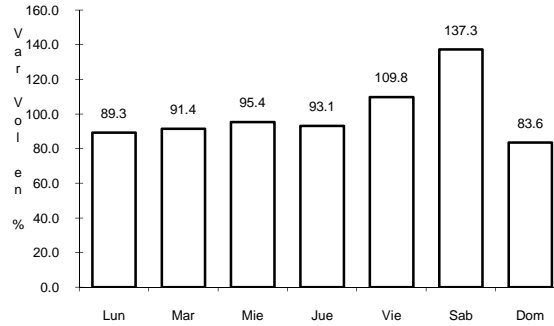
7 CARR: ESPERANZA - PRESA ALVARO OBREGON

CLAVE: 26242

ruta: SON-011



Km: 0.00 Tipo: 3 Sent: 0

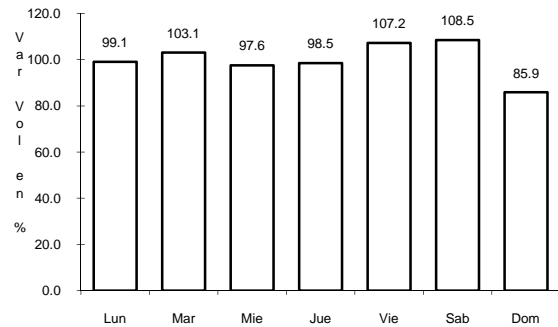


Km: 17.00 Tipo: 3 Sent: 0

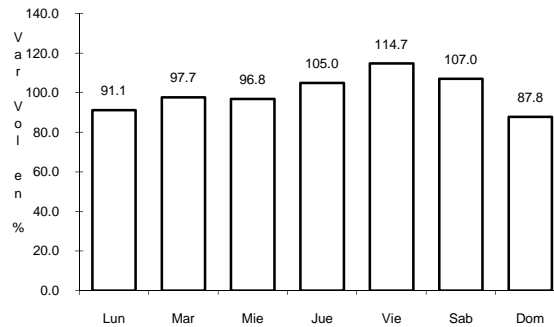
8 CARR: HERMOSILLO - BAHIA KINO

CLAVE: 26109

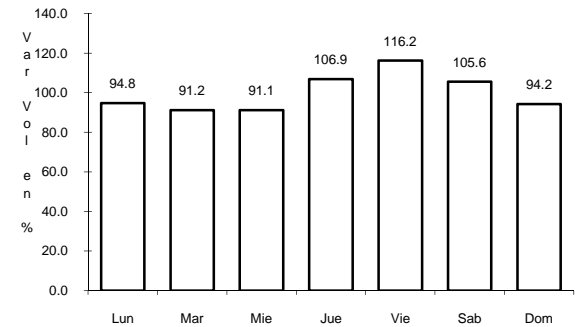
ruta: SON



Km: 0.00 Tipo: 3 Sent: 1



Km: 0.00 Tipo: 3 Sent: 2

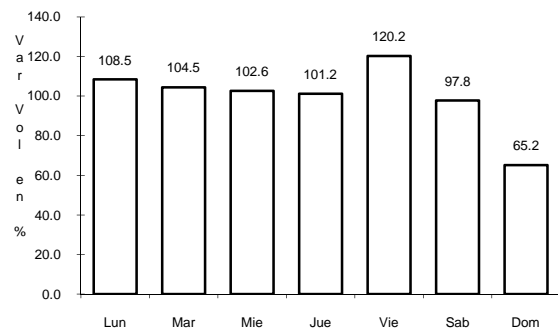


Km: 106.50 Tipo: 1 Sent: 0

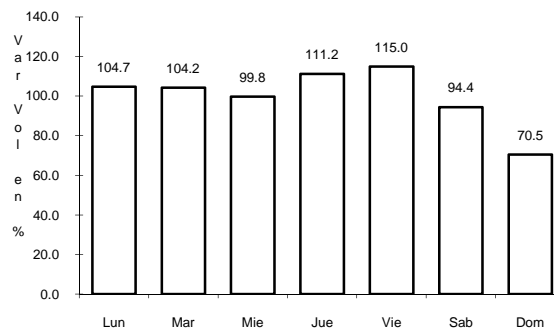
9 CARR: HERMOSILLO - NOGALES

CLAVE: 26445

ruta: MEX-015D-015



Km: 0.00 Tipo: 3 Sent: 1

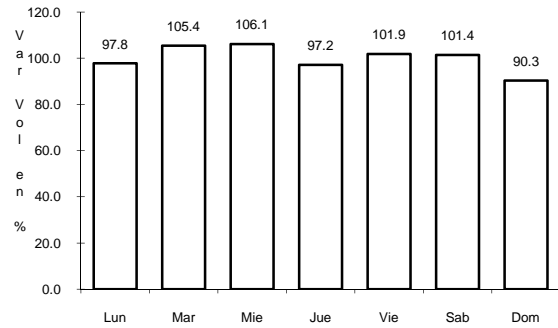


Km: 0.00 Tipo: 3 Sent: 2

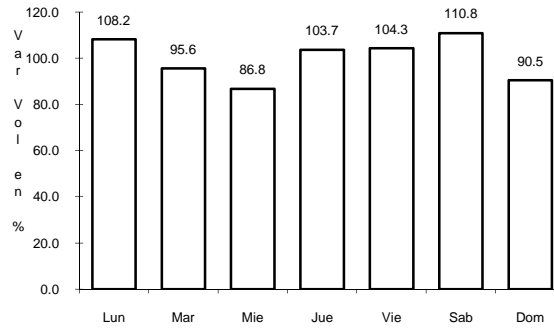
10 CARR: HERMOSILLO - SAHUARIPA

CLAVE: 26230

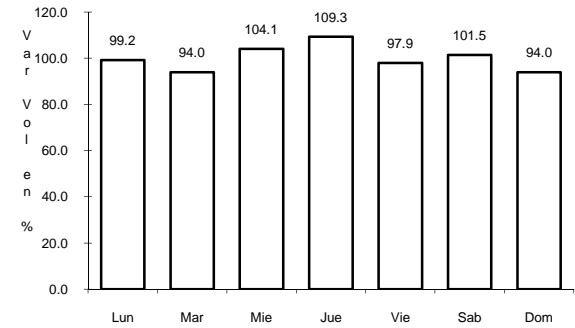
ruta: SON-020



Km: 0.00 Tipo: 3 Sent: 0



Km: 88.00 Tipo: 1 Sent: 0

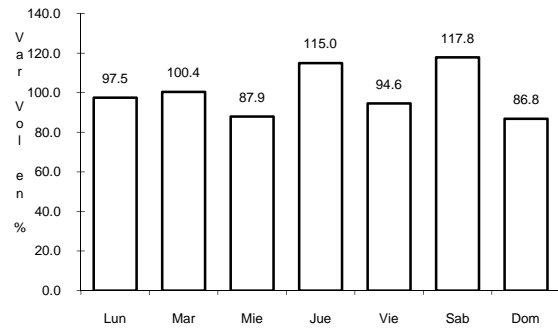


Km: 88.00 Tipo: 3 Sent: 0

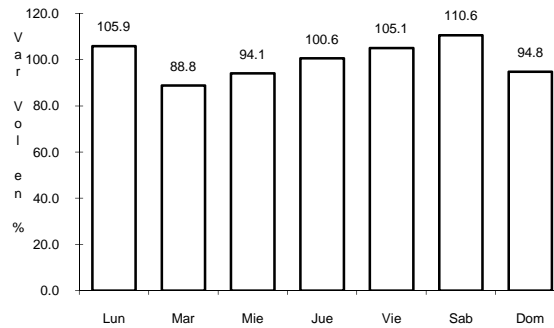
11 CARR: HERMOSILLO - YECORA

CLAVE: 26251

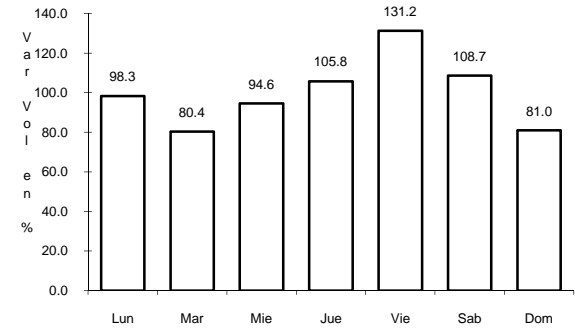
ruta: MEX-016



Km: 4.00 Tipo: 3 Sent: 1



Km: 4.00 Tipo: 3 Sent: 2

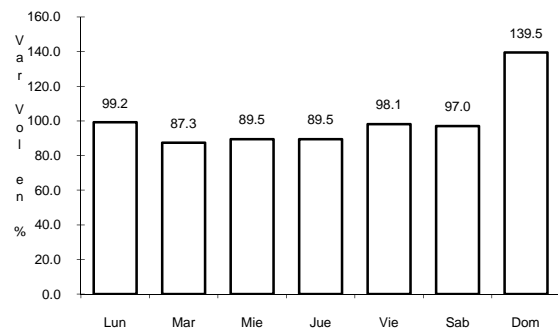


Km: 138.00 Tipo: 3 Sent: 0

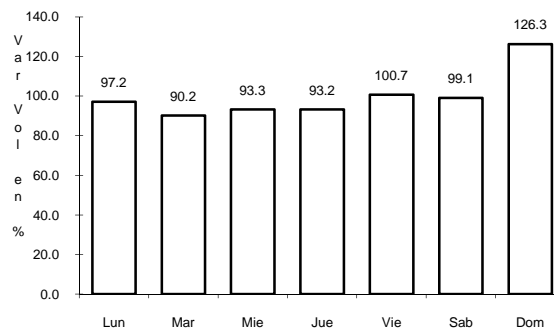
12 CARR: HORNOS - SAN NICOLAS

CLAVE: 26243

ruta: SON-017



Km: 0.00 Tipo: 3 Sent: 0

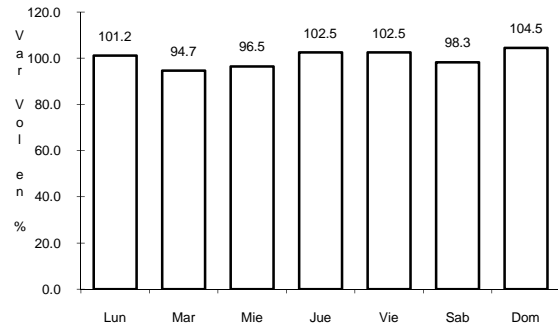


Km: 58.00 Tipo: 1 Sent: 0

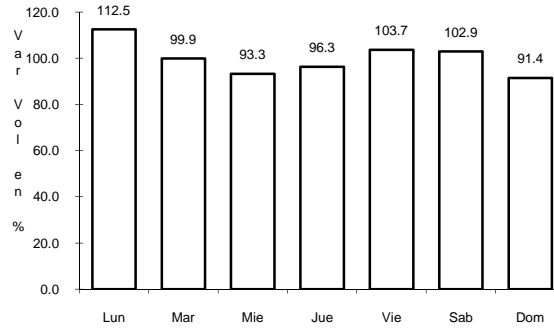
19 CARR: MOCTEZUMA - AGUA PRIETA

CLAVE: 26027

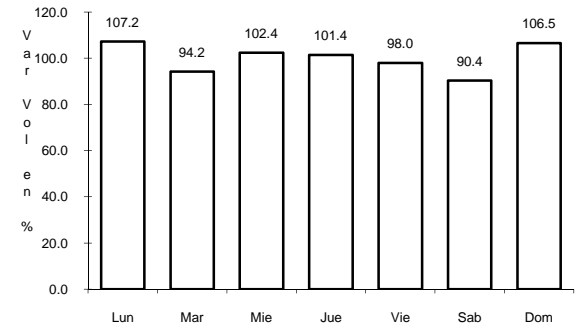
RUTA: MEX-017



Km: 0.00 Tipo: 3 Sent: 0



Km: 81.00 Tipo: 3 Sent: 0

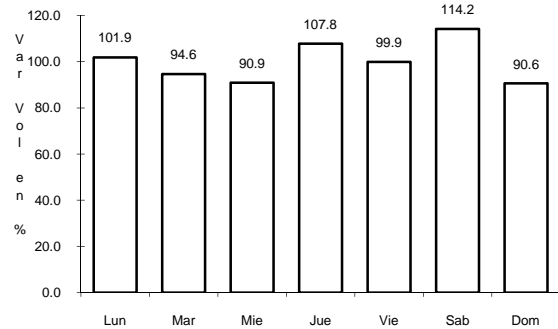


Km: 197.60 Tipo: 1 Sent: 0

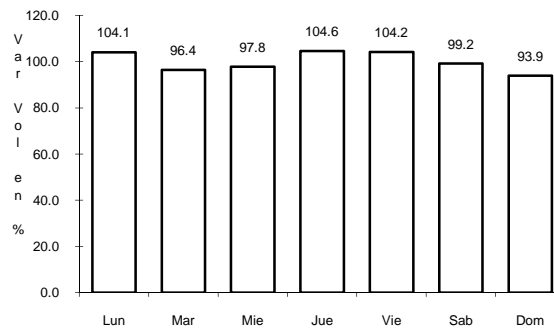
20 CARR: NAVOJOA - ALAMOS

CLAVE: 26240

RUTA: SON-013



Km: 0.00 Tipo: 3 Sent: 0

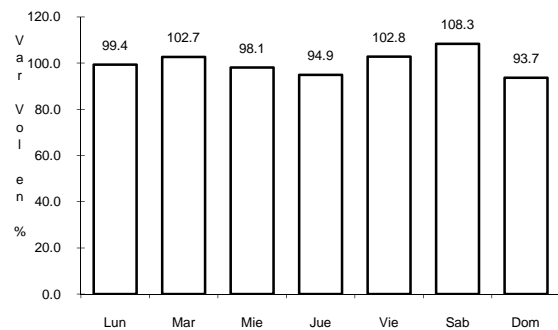


Km: 52.80 Tipo: 1 Sent: 0

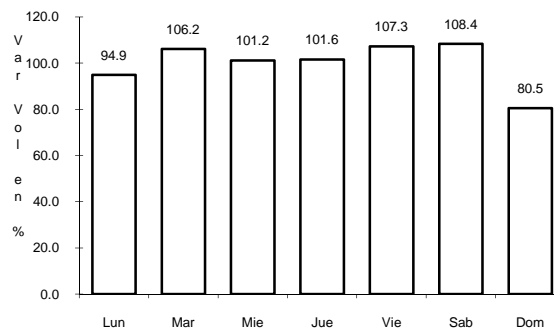
21 CARR: NAVOJOA - YAVAROS

CLAVE: 26229

RUTA: SON-056



Km: 0.00 Tipo: 3 Sent: 0

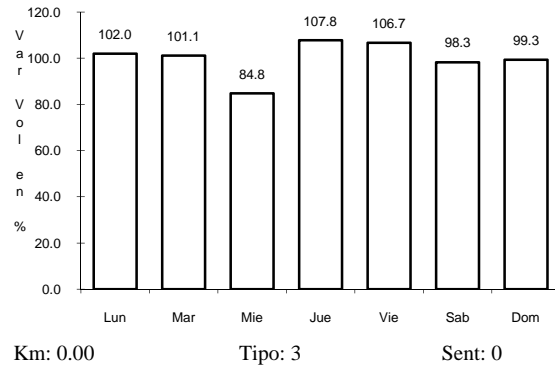


Km: 55.00 Tipo: 1 Sent: 0

22 CARR: RAMAL A AEROPUERTO DE GUAYMAS

CLAVE: 26568

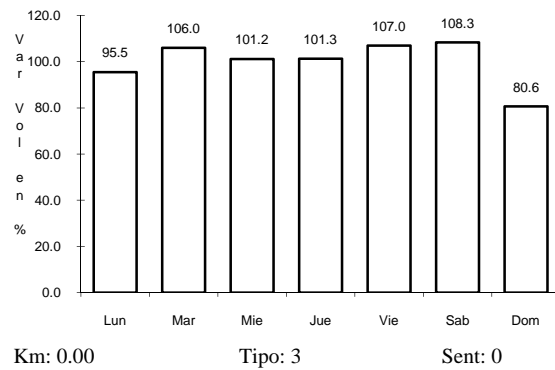
RUTA: SON



23 CARR: RAMAL A NACO

CLAVE: 26579

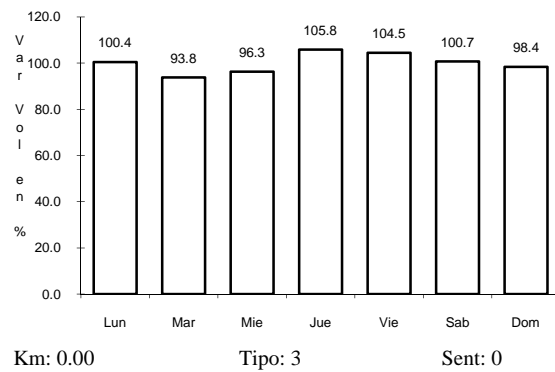
RUTA: MEX



24 CARR: RAMAL A PUERTA DE MEXICO

CLAVE: 26577

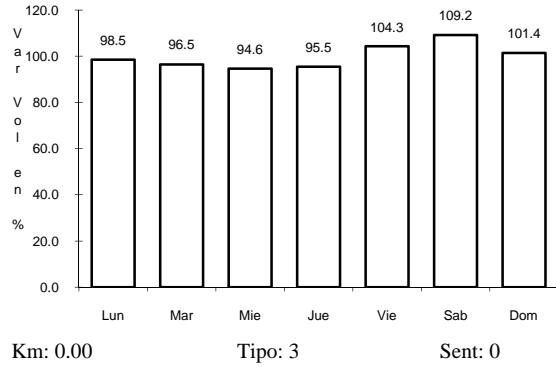
RUTA: MEX



28 CARR: SONOYTA - PUERTO PEÑASCO

CLAVE: 26232

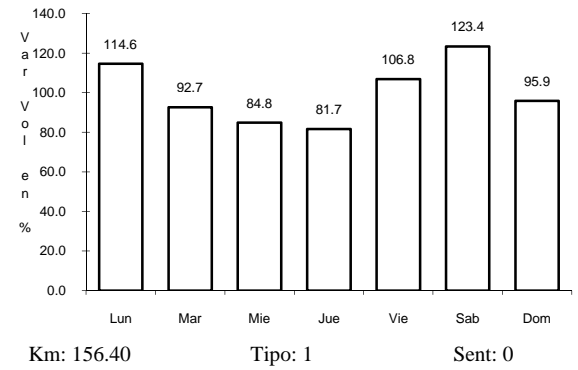
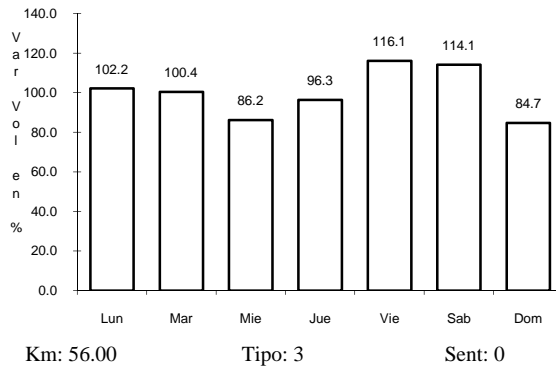
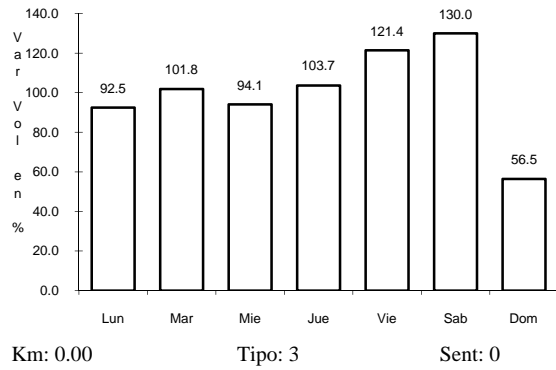
RUTA: MEX-008



29 CARR: JANOS - AGUA PRIETA

CLAVE: 00220

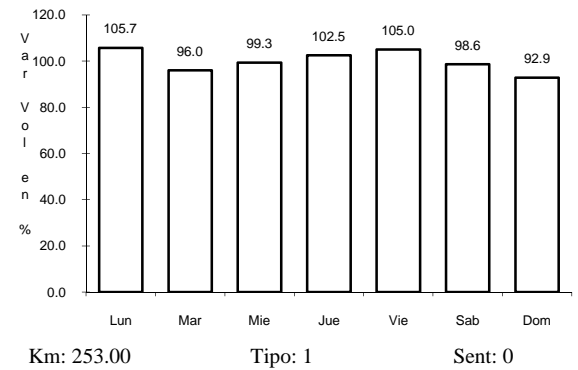
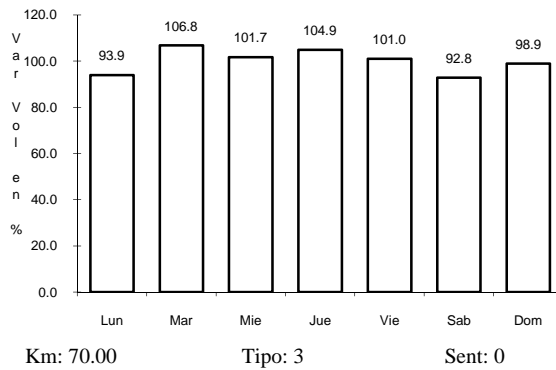
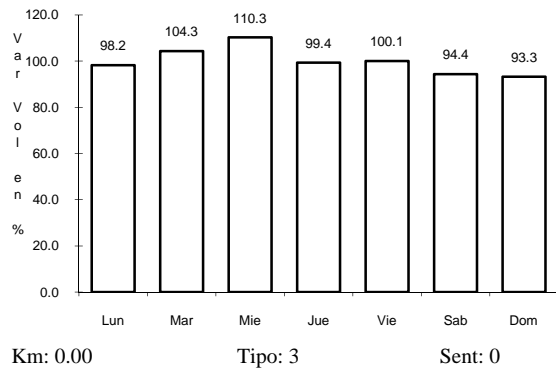
RUTA: MEX-002



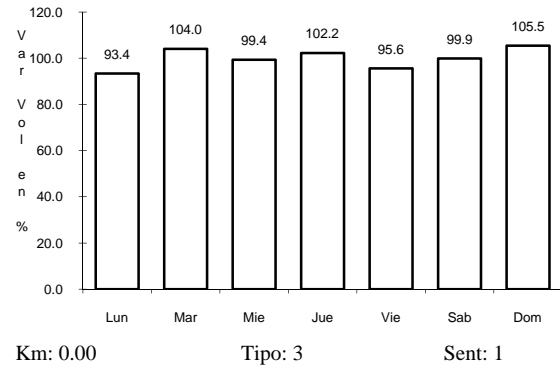
30 CARR: LA JUNTA - YECORA

CLAVE: 00065

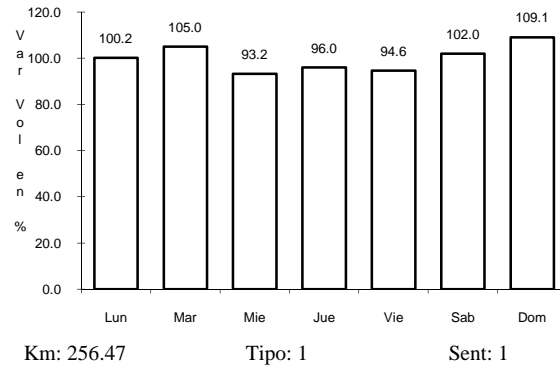
RUTA: MEX-016



31 CARR: LOS MOCHIS - CD. OBREGON (CUOTA)



CLAVE: 00452



RUTA: MEX-015D

