

MAPA INDICE

15 Num. Indice  
2008

Secretaría de Comunicaciones y Transportes

# 25 SINALOA



## CARRETERAS AFORADAS

Num. INDICE	CARRETERA
1	LOS MOCHIS - CD. OBREGON (CUOTA)
2	CARRIZAL - CAMPO ANIBAL
3	CULIACAN - ALTATA
4	CULIACAN - EL DORADO
5	CULIACAN - LAS BRISAS (CUOTA)
6	CULIACAN - LOS MOCHIS
7	EL LIMONCITO - CINCO HERMANOS
8	EL SALADO - EL DORADO
9	ESCUINAPA - VILLA UNION (CUOTA)
10	ESCUINAPA DE HIDALGO - TEACAPAN
11	ESTACION DIMAS - SAN IGNACIO
12	GUAMUCHIL - MOCORITO
13	GUASAVE - SINALOA DE LEYVA
14	LIBRAMIENTO DE MAZATLAN
15	LIBRAMIENTO SUR DE CULIACAN
16	MAZATLAN - CULIACAN
17	MAZATLAN - CULIACAN (CUOTA)
18	NAVOLATO - EL CASTILLO
19	PERICOS - LOS NARANJOS
20	POZOLE - COFRADIA
21	RAMAL A COSALA
22	RAMAL A CHAMETLA
23	RAMAL A EL QUELITE
24	RAMAL A ESTACION BAMOA
25	RAMAL A LA CRUZ
26	RAMAL A LA NORIA
27	RAMAL A LA REFORMA
28	ROSARIO - CAIMANERO
29	SAN PEDRO - CAMPO ANIBAL
30	TOPOLOBAMPO - CHOIX
31	VILLA UNION - EL WALAMO
32	VILLA UNION - SIQUEIROS
33	DURANGO - VILLA UNION
34	TEPIC - MAZATLAN

## SINALOA

1 CARR : LOS MOCHIS - CD. OBREGON (CUOTA)

CLAVE: 00452

RUTA : MEX-015D

AÑO : 2007

L U G A R	E S T A C I O N				C L A S I F I C A C I O N V E H I C U L A R E N P O R C I E N T O .												
	KM	TE	SC	TDPA	A	B	C2	C3	T3S2	T3S3	T3S2R4	OTROS	A	B	C	K'	D
T. C. TOPOLOBAMPO - CHOIX	0.00	3	1	6800	75.3	9.6	3.4	2.1	5.2	2.5	1.3	0.6	75.3	9.6	15.1	0.068	0.514
T. C. TOPOLOBAMPO - CHOIX	0.00	3	2	7199	75.7	9.1	3.2	1.9	4.9	2.7	1.9	0.6	75.7	9.1	15.2	0.067	0.514
T. IZQ. AHOME	17.13	3	1	4356	61.2	8.2	2.1	1.8	11.4	4.8	7.7	2.8	61.2	8.2	30.6	0.07	0.502
T. IZQ. AHOME	17.13	3	2	4323	64.5	8.4	1.8	1.7	10.4	4	7.4	1.8	64.5	8.4	27.1	0.076	0.502
T. IZQ. COHUIBAMPO	19.00	1	1	6344	76.5	8.4	3.1	2.6	4.1	4.1	0.6	0.6	76.5	8.4	15.1	0.071	0.5
T. IZQ. COHUIBAMPO	19.00	1	2	6354	76.5	8.3	3.4	2.1	4.6	3	1.3	0.8	76.5	8.3	15.2	0.07	0.5
T. IZQ. COHUIBAMPO	19.00	3	1	7304	78.7	6.7	0.5	1	6	1.8	2.6	2.7	78.7	6.7	14.6	0.105	0.501
T. IZQ. COHUIBAMPO	19.00	3	2	7285	63.5	7.1	1.1	1.8	11.1	4.9	7.8	2.7	63.5	7.1	29.4	0.111	0.501
POBLADO CHICO	50.00	3	1	5161	71.3	8.1	2.1	2.5	6.4	8.6	0.4	0.6	71.3	8.1	20.6	0.07	0.514
POBLADO CHICO	50.00	3	2	4883	70.9	8.1	2.8	2.7	6.6	8.1	0.4	0.4	70.9	8.1	21	0.07	0.514
T. DER. EL FUERTE	54.80	1	1	7296	74.1	8	1	1.1	6.8	2.2	3.7	3.1	74.1	8	17.9	0.107	0.529
T. DER. EL FUERTE	54.80	1	2	8179	74.1	8.3	0.7	1.1	6.4	2.5	3.6	3.3	74.1	8.3	17.6	0.099	0.529
T. DER. EL FUERTE	54.80	3	1	4933	70.3	8	3.2	2.5	6.7	8.2	0.5	0.6	70.3	8	21.7	0.065	0.505
T. DER. EL FUERTE	54.80	3	2	4836	70.5	8.8	3.4	2.3	6.1	7.9	0.4	0.6	70.5	8.8	20.7	0.069	0.505
LIM. EDOS. TERM. SIN. PPIA. SON.	68.84	0	0														
CASETA DE COBRO ESTACION DON (LA JAULA)	70.80	2	1	1991													
CASETA DE COBRO ESTACION DON (LA JAULA)	70.80	2	2	1990													
T. IZQ. HUATABAMPO	128.00	1	1	2201	57.9	10.5	3.9	5.8	8.2	3.1	4.2	6.4	57.9	10.5	31.6	0.077	0.506
T. IZQ. HUATABAMPO	128.00	1	2	2255	59.1	10.6	3.7	5.7	8.1	2.5	4.1	6.2	59.1	10.6	30.3	0.097	0.506
NAVOJOA	155.00	1	1	5082	81	4.9	3.8	3.4	2.5	1.4	0.8	2.2	81	4.9	14.1	0.089	0.505
NAVOJOA	155.00	1	2	5181	84.9	4	3.9	3.2	1.7	0.6	0.4	1.3	84.9	4	11.1	0.095	0.505
NAVOJOA	155.00	3	1	5014	84.6	5	3.2	2.8	1.6	0.7	0.6	1.5	84.6	5	10.4	0.082	0.511
NAVOJOA	155.00	3	2	4807	84.2	4.6	3.9	2.9	1.7	0.8	0.6	1.3	84.2	4.6	11.2	0.088	0.511
T. IZQ. VILLA JUAREZ	167.30	3	1	3989	80.8	6	4.6	2	4	1.9	0.2	0.5	80.8	6	13.2	0.087	0.515
T. IZQ. VILLA JUAREZ	167.30	3	2	3751	84.1	6	2.7	1	3	2.4	0.6	0.2	84.1	6	9.9	0.09	0.515
T. DER. FUNDICION	196.90	1	1	3052	61.3	6.9	2.7	6.6	10.8	2.6	5.1	4	61.3	6.9	31.8	0.097	0.502
T. DER. FUNDICION	196.90	1	2	3025	75.5	8.1	4.8	3.3	4.5	2.2	1.3	0.3	75.5	8.1	16.4	0.106	0.502
CASETA DE COBRO FUNDICION	196.90	2	1	2438													
CASETA DE COBRO FUNDICION	196.90	2	2	2438													
CD. OBREGON	222.80	1	1	8427	74.1	5.5	3.9	3.4	6.2	1.6	2.6	2.7	74.1	5.5	20.4	0.086	0.555
CD. OBREGON	222.80	1	2	10502	71.3	6.1	2.8	3.5	6.1	2	3.6	4.6	71.3	6.1	22.6	0.078	0.555

## SINALOA

2 CARR : CARRIZAL - CAMPO ANIBAL

CLAVE: 25585

RUTA : SIN-019

AÑO : 2007

L U G A R	E S T A C I O N				C L A S I F I C A C I O N V E H I C U L A R E N P O R C I E N T O .												
	KM	TE	SC	TDPA	A	B	C2	C3	T3S2	T3S3	T3S2R4	OTROS	A	B	C	K'	D
T. C. MAZATLAN - CULIACAN	0.00	3	0	1452	87.3	6.3	2.1	1.8	1.1	0.2	0.8	0.4	87.3	6.3	6.4	0.1	0.518
X. C. CULIACAN - EL DORADO	29.20	1	0	5771	83.2	5.4	1.4	1	3.7	3	0.9	1.4	83.2	5.4	11.4	0.078	0.501
X. C. CULIACAN - EL DORADO	29.20	3	0	4340	87	4.7	1.9	1.2	1.8	1.2	0.6	1.6	87	4.7	8.3	0.082	0.508
T. C. SAN PEDRO - CAMPO ANIBAL	32.00	1	0	6489	85	4.4	1.5	1	3.4	2.3	1	1.4	85	4.4	10.6	0.078	0.501

3 CARR : CULIACAN - ALTATA

CLAVE: 25013

RUTA : SIN-030

AÑO : 2007

L U G A R	E S T A C I O N				C L A S I F I C A C I O N V E H I C U L A R E N P O R C I E N T O .												
	KM	TE	SC	TDPA	A	B	C2	C3	T3S2	T3S3	T3S2R4	OTROS	A	B	C	K'	D
CULIACAN	0.00	0	0														
T. IZQ. EL DORADO	6.20	1	1	17905	81.7	3.5	4.2	3.7	3.1	1.8	0.7	1.3	81.7	3.5	14.8	0.077	0.504
T. IZQ. EL DORADO	6.20	1	2	18176	83.8	3.9	4.4	3.5	2.3	1.1	0.4	0.6	83.8	3.9	12.3	0.09	0.504
T. IZQ. EL DORADO	6.20	3	1	20687	84	3.7	1.9	1.9	1.7	3.2	1.5	2.1	84	3.7	12.3	0.066	0.532
T. IZQ. EL DORADO	6.20	3	2	23556	85.9	3.3	1.9	1.5	2.1	2.2	1.5	1.6	85.9	3.3	10.8	0.066	0.532
T. IZQ. AEROPUERTO	8.70	3	1	17711	82.8	6	1.4	1.4	4.5	0.7	1.3	1.9	82.8	6	11.2	0.074	0.522
T. IZQ. AEROPUERTO	8.70	3	2	19316	84.9	6.1	1.3	1.3	3.3	1.5	1.4	0.2	84.9	6.1	9	0.076	0.522
NAVOLATO	32.40	1	1	6790	86.9	6.1	0.8	0.8	2.1	1.5	0.3	1.5	86.9	6.1	7	0.102	0.509
NAVOLATO	32.40	1	2	6545	84	5.7	0.5	1.9	2.8	1.8	0.8	2.5	84	5.7	10.3	0.128	0.509
NAVOLATO	32.40	3	0	8458	84.6	4.6	1.6	1.7	2.7	2.6	0.6	1.6	84.6	4.6	10.8	0.118	0.51
T. DER. 5 HERMANOS	38.20	3	0	5204	87.6	5.5	1.6	1.2	1.1	2	0.1	0.9	87.6	5.5	6.9	0.114	0.504
ALTATA	67.00	1	0	4081	84.1	4.3	1.5	0.6	2.2	5.6	0.5	1.2	84.1	4.3	11.6	0.155	0.509

4 CARR : CULIACAN - EL DORADO

CLAVE: 25044

RUTA : SIN-005

AÑO : 2007

L U G A R	E S T A C I O N				C L A S I F I C A C I O N V E H I C U L A R E N P O R C I E N T O .												
	KM	TE	SC	TDPA	A	B	C2	C3	T3S2	T3S3	T3S2R4	OTROS	A	B	C	K'	D
T. C. CULIACAN - ALTATA	0.00	3	1	13219	78.3	5.7	3.8	2	2.8	5	2	0.4	78.3	5.7	16	0.075	0.509
T. C. CULIACAN - ALTATA	0.00	3	2	13699	80.9	5.3	2.5	3	2.8	3.7	1.4	0.4	80.9	5.3	13.8	0.074	0.509
X. C. CARRIZAL - CAMPO ANIBAL	21.35	1	1	5301	79.5	4.5	5.9	2.3	2.5	3.6	1.6	0.1	79.5	4.5	16	0.072	0.517
X. C. CARRIZAL - CAMPO ANIBAL	21.35	1	2	5684	78.8	4.5	5.3	2.4	2.5	4.6	1.6	0.3	78.8	4.5	16.7	0.078	0.517
X. C. CARRIZAL - CAMPO ANIBAL	21.35	3	0	4588	86.1	5.3	2.9	1.3	1.1	2.2	0.2	0.9	86.1	5.3	8.6	0.113	0.504
EL DORADO	55.00	1	0	3915	84.6	3.1	1.3	1.1	1.6	7.1	0.3	0.9	84.6	3.1	12.3	0.089	0.519

SINALOA

5 CARR : CULIACAN - LAS BRISAS (CUOTA)

CLAVE: 25503

RUTA : MEX-015D

AÑO : 2007

L U G A R	E S T A C I O N				C L A S I F I C A C I O N V E H I C U L A R E N P O R C I E N T O .													
	KM	TE	SC	TDPA	A	B	C2	C3	T3S2	T3S3	T3S2R4	OTROS	A	B	C	K'	D	
T. C. CULIACAN - EL DORADO	0.00		0	0														
CASETA DE COBRO "CULIACAN"	1.50	3	1	2240	63.3	10.4	1.5	1.7	11.6	10.1	1.3	0.1	63.3	10.4	26.3	0.104	0.54	
CASETA DE COBRO "CULIACAN"	1.50	3	2	1908	63.1	10.1	1.5	1.8	12.8	8.8	1.8	0.1	63.1	10.1	26.8	0.103	0.54	
T. C. CULIACAN - LOS MOCHIS	125.70		0	0														

6 CARR : CULIACAN - LOS MOCHIS

CLAVE: 25502

RUTA : MEX-015

AÑO : 2007

L U G A R	E S T A C I O N				C L A S I F I C A C I O N V E H I C U L A R E N P O R C I E N T O .													
	KM	TE	SC	TDPA	A	B	C2	C3	T3S2	T3S3	T3S2R4	OTROS	A	B	C	K'	D	
CULIACAN	0.00		0	0														
T. DER. LOS MONZONES	4.00	1	1	6206	82.1	4.9	2.3	2.6	3.7	1.8	0.8	1.8	82.1	4.9	13	0.075	0.501	
T. DER. LOS MONZONES	4.00	1	2	6188	82.4	4.1	2.6	2.2	4	1.6	1	2.1	82.4	4.1	13.5	0.077	0.501	
T. DER. PRESA LOPEZ MATEOS	27.20	3	0	7356	64.6	11.6	10.8	4.9	3.5	2.7	0.4	1.5	64.6	11.6	23.8	0.071	0.52	
X. C. PERICOS - LOS NARANJOS	43.60	3	0	6298	56.4	12	8.4	11	4.5	4.2	1.4	2.1	56.4	12	31.6	0.07	0.504	
GUAMUCHIL	104.70	1	0	6843	65.7	9.6	10.7	4.1	3.1	2.4	2.1	2.3	65.7	9.6	24.7	0.064	0.507	
GUAMUCHIL	104.70	3	0	11067	61	10.1	7.9	9.7	4.5	3.1	1.6	2.1	61	10.1	28.9	0.072	0.514	
T. IZQ. AUT. CULIACAN - LAS BRISAS	121.20	1	0	10820	67.3	7.1	2.1	4.8	8.3	2.7	5.1	2.6	67.3	7.1	25.6	0.073	0.527	
T. IZQ. AUT. CULIACAN - LAS BRISAS	121.20	3	1	5930	68.2	6.9	2.4	4.9	8.5	2.6	4.9	1.6	68.2	6.9	24.9	0.081	0.527	
T. IZQ. AUT. CULIACAN - LAS BRISAS	121.20	3	2	6599	67.2	7.2	1.8	4.7	8	2.6	5.1	3.4	67.2	7.2	25.6	0.074	0.527	
T. DER. ESTACION BAMOA	133.20	3	1	5205	68.4	5.9	2.9	5.1	8.5	2.6	4.9	1.7	68.4	5.9	25.7	0.081	0.527	
T. DER. ESTACION BAMOA	133.20	3	2	5791	67.4	6.1	2.3	5	8	2.6	5.1	3.5	67.4	6.1	26.5	0.074	0.527	
GUASAVE	146.30	3	1	9163	74.9	8	0.9	2.3	6.6	1.9	3.1	2.3	74.9	8	17.1	0.09	0.517	
GUASAVE	146.30	3	2	9810	74.4	8	1.1	2	7.6	2.2	2.8	1.9	74.4	8	17.6	0.073	0.517	
T. IZQ. LOS MOCHIS (1° ACCESO)	202.00	1	1	10545	75	8	0.9	2.3	6.6	1.9	3	2.3	75	8	17	0.09	0.517	
T. IZQ. LOS MOCHIS (1° ACCESO)	202.00	1	2	11290	74.6	8.1	1	2	7.5	2.1	2.8	1.9	74.6	8.1	17.3	0.073	0.517	
T. IZQ. LOS MOCHIS (1° ACCESO)	202.00	3	1	10172	75	8	0.9	2.3	6.6	1.9	3	2.3	75	8	17	0.09	0.517	
T. IZQ. LOS MOCHIS (1° ACCESO)	202.00	3	2	10888	74.6	8	1.1	2	7.5	2.1	2.8	1.9	74.6	8	17.4	0.073	0.517	
T. C. TOPOLOBAMPO - CHOIX	205.20		0	0														

7 CARR : EL LIMONCITO - CINCO HERMANOS

CLAVE: 25016

RUTA : SIN-016

AÑO : 2007

L U G A R	E S T A C I O N				C L A S I F I C A C I O N V E H I C U L A R E N P O R C I E N T O .												
	KM	TE	SC	TDPA	A	B	C2	C3	T3S2	T3S3	T3S2R4	OTROS	A	B	C	K'	D
T. C. CULIACAN - ALTATA	0.00	3	0	1804	83.4	5.7	0.6	0.7	1.5	7.1	0.2	0.8	83.4	5.7	10.9	0.118	0.519
CINCO HERMANOS	16.00	1	0	953	78.3	6.5	2.5	1.4	2.2	7.5	0.4	1.2	78.3	6.5	15.2	0.116	0.518

SINALOA

8 CARR : EL SALADO - EL DORADO

CLAVE: 25010

RUTA : SIN-010

AÑO : 2007

L U G A R	E S T A C I O N				C L A S I F I C A C I O N V E H I C U L A R E N P O R C I E N T O .												
	KM	TE	SC	TDPA	A	B	C2	C3	T3S2	T3S3	T3S2R4	OTROS	A	B	C	K'	D
T. C. MAZATLAN - CULIACAN	0.00	3	0	2153	87	3.3	1.4	1.8	3.2	2.2	1	0.1	87	3.3	9.7	0.099	0.505
EL DORADO	31.00	1	0	2927	87.1	2	2.3	1.6	3.4	2.5	1	0.1	87.1	2	10.9	0.125	0.506

9 CARR : ESCUINAPA - VILLA UNION (CUOTA)

CLAVE: 25009

RUTA : MEX-015D

AÑO : 2007

L U G A R	E S T A C I O N				C L A S I F I C A C I O N V E H I C U L A R E N P O R C I E N T O .												
	KM	TE	SC	TDPA	A	B	C2	C3	T3S2	T3S3	T3S2R4	OTROS	A	B	C	K'	D
T. C. TEPIC - MAZATLAN	169.90		0	0													
T. C. DURANGO - VILLA UNION	234.00		0	0													

10 CARR : ESCUINAPA DE HIDALGO - TEACAPAN

CLAVE: 25001

RUTA : SIN-001

AÑO : 2007

L U G A R	E S T A C I O N				C L A S I F I C A C I O N V E H I C U L A R E N P O R C I E N T O .												
	KM	TE	SC	TDPA	A	B	C2	C3	T3S2	T3S3	T3S2R4	OTROS	A	B	C	K'	D
ESCUINAPA DE HIDALGO	0.00	3	0	3374	66.6	5.5	1.3	4.4	8.8	3.2	6.2	4	66.6	5.5	27.9	0.109	0.504
TEACAPAN	41.00	1	0	1802	55.4	6.4	3.1	9.6	12.5	4.5	6.4	2.1	55.4	6.4	38.2	0.1	0.5

11 CARR : ESTACION DIMAS - SAN IGNACIO

CLAVE: 25007

RUTA : SIN-006

AÑO : 2007

L U G A R	E S T A C I O N				C L A S I F I C A C I O N V E H I C U L A R E N P O R C I E N T O .												
	KM	TE	SC	TDPA	A	B	C2	C3	T3S2	T3S3	T3S2R4	OTROS	A	B	C	K'	D
DIMAS	0.00		0	0													
X. C. MAZATLAN - CULIACAN	23.15	1	0	773	86.5	5.2	2.9	1.4	1.9	1.1	0.9	0.1	86.5	5.2	8.3	0.101	0.504
X. C. MAZATLAN - CULIACAN	23.15	3	0	1826	87.9	5	4	1.3	1.1	0.1	0.1	0.5	87.9	5	7.1	0.1	0.503
SAN IGNACIO	56.00	1	0	1307	87.2	5.1	3	1.2	1.9	0.8	0.2	0.6	87.2	5.1	7.7	0.101	0.502

12 CARR : GUAMUCHIL - MOCORITO

CLAVE: 25021

RUTA : SIN-021

AÑO : 2007

L U G A R	E S T A C I O N				C L A S I F I C A C I O N V E H I C U L A R E N P O R C I E N T O .												
	KM	TE	SC	TDPA	A	B	C2	C3	T3S2	T3S3	T3S2R4	OTROS	A	B	C	K'	D
GUAMUCHIL	0.00	3	0	5173	79.1	3.5	2.2	1.7	6.2	1.5	3.5	2.3	79.1	3.5	17.4	0.112	0.504
MOCORITO	17.00	1	0	3288	85.7	3.9	2.3	1.5	2.8	1.5	0.8	1.5	85.7	3.9	10.4	0.101	0.503

## SINALOA

13 CARR : GUASAVE - SINALOA DE LEYVA

CLAVE: 25023

RUTA : SIN-023

AÑO : 2007

L U G A R	E S T A C I O N				C L A S I F I C A C I O N V E H I C U L A R E N P O R C I E N T O .													
	KM	TE	SC	TDPA	A	B	C2	C3	T3S2	T3S3	T3S2R4	OTROS	A	B	C	K'	D	
GUASAVE	0.00		0	0														
X. C. CULIACAN - LOS MOCHIS	1.15	3	1	3576	98.1	1.9	0	0	0	0	0	0	98.1	1.9	0	0.099	0.545	
X. C. CULIACAN - LOS MOCHIS	1.15	3	2	2989	98.5	1.4	0	0.1	0	0	0	0	98.5	1.4	0.1	0.107	0.545	
SINALOA DE LEYVA	74.50	1	0	4841	72.1	4.7	2.1	5.4	5.5	3	4.8	2.4	72.1	4.7	23.2	0.078	0.517	

14 CARR : LIBRAMIENTO DE MAZATLAN

CLAVE: 25604

RUTA : MEX

AÑO : 2007

L U G A R	E S T A C I O N				C L A S I F I C A C I O N V E H I C U L A R E N P O R C I E N T O .												
	KM	TE	SC	TDPA	A	B	C2	C3	T3S2	T3S3	T3S2R4	OTROS	A	B	C	K'	D
T. C. TEPIC - MAZATLAN	0.00	3	1	15180	63.6	7.1	2.4	3.4	10.4	4	7.3	1.8	63.6	7.1	29.3	0.076	0.501
T. C. TEPIC - MAZATLAN	0.00	3	2	15123	61.1	7	2.5	3.5	11	4.7	7.6	2.6	61.1	7	31.9	0.074	0.501
T. C. MAZATLAN - CULIACAN	3.40	1	1	14645	86.6	4	2.5	1.2	1.9	1	0.9	1.9	86.6	4	9.4	0.082	0.511
T. C. MAZATLAN - CULIACAN	3.40	1	2	14021	85.2	4	2.2	1.3	2.1	1.6	1.1	2.5	85.2	4	10.8	0.079	0.511

15 CARR : LIBRAMIENTO SUR DE CULIACAN

CLAVE: 25500

RUTA : MEX

AÑO : 2007

L U G A R	E S T A C I O N				C L A S I F I C A C I O N V E H I C U L A R E N P O R C I E N T O .												
	KM	TE	SC	TDPA	A	B	C2	C3	T3S2	T3S3	T3S2R4	OTROS	A	B	C	K'	D
T. C. MAZATLAN - CULIACAN	0.00	3	0	8509	78.8	3.6	4.9	3.8	3.1	2.4	1.3	2.1	78.8	3.6	17.6	0.08	0.505
T. C. CULIACAN - EL DORADO	10.00	1	0	7720	80.8	4.6	1	1.3	6.8	2.6	1.1	1.8	80.8	4.6	14.6	0.096	0.501

16 CARR : MAZATLAN - CULIACAN

CLAVE: 25501

RUTA : MEX-015

AÑO : 2007

L U G A R	E S T A C I O N				C L A S I F I C A C I O N V E H I C U L A R E N P O R C I E N T O .													
	KM	TE	SC	TDPA	A	B	C2	C3	T3S2	T3S3	T3S2R4	OTROS	A	B	C	K'	D	
MAZATLAN	0.00		0	0														
T. DER. LIBRAMIENTO DE MAZATLAN	6.40	1	1	13298	84.9	4	2.5	1.9	2.1	1.8	0.9	1.9	84.9	4	11.1	0.089	0.514	
T. DER. LIBRAMIENTO DE MAZATLAN	6.40	1	2	12573	84.4	4.1	2.2	1.9	2.4	2.1	1.1	1.8	84.4	4.1	11.5	0.088	0.514	
T. DER. LA NORIA	10.92	1	0	7523	72.8	10	1.4	3.4	4.6	4.3	0.9	2.6	72.8	10	17.2	0.069	0.503	
T. DER. LA NORIA	10.92	3	0	6420	72.5	9.1	2.7	3.2	4.6	4.3	0.9	2.7	72.5	9.1	18.4	0.069	0.502	
T. IZQ. PLAYA LOS CERRITOS	11.08	3	0	6188	74.2	9.3	2.4	2.5	4.8	4.5	1	1.3	74.2	9.3	16.5	0.069	0.502	
T. DER. EL QUELITE	33.00	1	0	6277	72.9	7.3	2.1	1.7	8.8	3.6	2	1.6	72.9	7.3	19.8	0.076	0.505	
T. DER. EL QUELITE	33.00	3	0	6650	75	9.6	2.2	2	4.7	4.4	0.9	1.2	75	9.6	15.4	0.07	0.502	
X. C. ESTACION DIMAS - SAN IGNACIO	66.77	1	0	5260	77.1	7.1	2.7	5.3	2.6	2.6	1.4	1.2	77.1	7.1	15.8	0.079	0.503	
X. C. ESTACION DIMAS - SAN IGNACIO	66.77	3	0	5520	52.6	9.4	2.3	5.8	17.9	7.3	2.6	2.1	52.6	9.4	38	0.076	0.502	





SINALOA

20 CARR : POZOLE - COFRADIA

CLAVE: 25080

RUTA : SIN-080

AÑO : 2007

L U G A R	E S T A C I O N				C L A S I F I C A C I O N V E H I C U L A R E N P O R C I E N T O .												
	KM	TE	SC	TDPA	A	B	C2	C3	T3S2	T3S3	T3S2R4	OTROS	A	B	C	K'	D
T. C. TEPIC - MAZATLAN	0.00	3	0	2280	77.3	6.9	1.7	2.9	2.5	2.2	4.1	2.4	77.3	6.9	15.8	0.083	0.501
COFRADIA	9.10	1	0	775	79.5	7.5	1.5	2.2	1.9	1.6	3.9	1.9	79.5	7.5	13	0.085	0.501

21 CARR : RAMAL A COSALA

CLAVE: 25008

RUTA : SIN-008

AÑO : 2007

L U G A R	E S T A C I O N				C L A S I F I C A C I O N V E H I C U L A R E N P O R C I E N T O .												
	KM	TE	SC	TDPA	A	B	C2	C3	T3S2	T3S3	T3S2R4	OTROS	A	B	C	K'	D
T. C. MAZATLAN - CULIACAN	0.00	3	0	1074	92.1	5.6	0.6	0.2	1	0.2	0.1	0.2	92.1	5.6	2.3	0.111	0.502
COSALA	53.00	1	0	903	93.2	0	3.1	1.3	1.4	0.7	0.1	0.2	93.2	0	6.8	0.146	0.502

22 CARR : RAMAL A CHAMETLA

CLAVE: 25002

RUTA : SIN-002

AÑO : 2007

L U G A R	E S T A C I O N				C L A S I F I C A C I O N V E H I C U L A R E N P O R C I E N T O .												
	KM	TE	SC	TDPA	A	B	C2	C3	T3S2	T3S3	T3S2R4	OTROS	A	B	C	K'	D
T. C. TEPIC - MAZATLAN	0.00	3	0	2206	79.5	4.5	1.3	0.4	6.7	1.3	3.9	2.4	79.5	4.5	16	0.097	0.502
CHAMETLA	15.00	1	0	1503	89.2	5.7	1.6	0.1	1.6	0.2	0.4	1.2	89.2	5.7	5.1	0.092	0.503

23 CARR : RAMAL A EL QUELITE

CLAVE: 25060

RUTA : SIN-060

AÑO : 2007

L U G A R	E S T A C I O N				C L A S I F I C A C I O N V E H I C U L A R E N P O R C I E N T O .												
	KM	TE	SC	TDPA	A	B	C2	C3	T3S2	T3S3	T3S2R4	OTROS	A	B	C	K'	D
T. C. MAZATLAN - CULIACAN	0.00	3	0	987	89.3	7.1	1.8	0.3	0.5	0.2	0.1	0.7	89.3	7.1	3.6	0.095	0.527
EL QUELITE	6.00	1	0	1151	89.9	2.3	0.7	0	3.4	2.9	0.1	0.7	89.9	2.3	7.8	0.151	0.524

24 CARR : RAMAL A ESTACION BAMOA

CLAVE: 25022

RUTA : SIN-022

AÑO : 2007

L U G A R	E S T A C I O N				C L A S I F I C A C I O N V E H I C U L A R E N P O R C I E N T O .												
	KM	TE	SC	TDPA	A	B	C2	C3	T3S2	T3S3	T3S2R4	OTROS	A	B	C	K'	D
T. C. CULIACAN - LOS MOCHIS	0.00	3	0	2687	88.5	6.1	0.3	0.6	2.1	0.9	0.6	0.9	88.5	6.1	5.4	0.086	0.511
ESTACION BAMOA	22.50	1	0	2347	58.8	7.6	1.9	7	8.7	6.2	6.3	3.5	58.8	7.6	33.6	0.106	0.501

25 CARR : RAMAL A LA CRUZ

CLAVE: 25043

RUTA : SIN

AÑO : 2007

L U G A R	E S T A C I O N				C L A S I F I C A C I O N V E H I C U L A R E N P O R C I E N T O .												
	KM	TE	SC	TDPA	A	B	C2	C3	T3S2	T3S3	T3S2R4	OTROS	A	B	C	K'	D
T. C. MAZATLAN - CULIACAN	0.00	3	0	2453	94.3	3.6	1.1	1	0	0	0	0	94.3	3.6	2.1	0.111	0.528



SINALOA

30 CARR : TOPOLOBAMPO - CHOIX

CLAVE: 25032

RUTA : SIN-023

AÑO : 2007

L U G A R	E S T A C I O N				C L A S I F I C A C I O N V E H I C U L A R E N P O R C I E N T O .												
	KM	TE	SC	TDPA	A	B	C2	C3	T3S2	T3S3	T3S2R4	OTROS	A	B	C	K'	D
TOPOLOBAMPO	0.00	3	1	2828	64	9.3	1	1.8	10.5	4.1	7.4	1.9	64	9.3	26.7	0.115	0.5
TOPOLOBAMPO	0.00	3	2	2831	60.7	9.4	1.2	1.7	11.5	5	7.9	2.6	60.7	9.4	29.9	0.11	0.5
LOS MOCHIS	24.00	1	1	6630	72.1	4.1	1.5	3.1	7.2	4.4	4.5	3.1	72.1	4.1	23.8	0.11	0.52
LOS MOCHIS	24.00	1	2	7183	76	4.4	1.8	2.8	6.3	3.5	2.8	2.4	76	4.4	19.6	0.107	0.52
X. C. LOS MOCHIS - CD. OBREGON (CUOTA)	29.00	1	1	6468	75.4	4.8	2.3	2.6	5	2.1	4	3.8	75.4	4.8	19.8	0.098	0.513
X. C. LOS MOCHIS - CD. OBREGON (CUOTA)	29.00	1	2	6804	72.2	4.6	2.3	2.5	8.4	2.6	4	3.4	72.2	4.6	23.2	0.147	0.513
X. C. LOS MOCHIS - CD. OBREGON (CUOTA)	29.00	3	1	7745	70.1	8.9	1.9	1.6	5.1	3.3	4.2	4.9	70.1	8.9	21	0.107	0.5
X. C. LOS MOCHIS - CD. OBREGON (CUOTA)	29.00	3	2	7757	73.6	8.7	1.6	1.3	4.2	2.5	3.9	4.2	73.6	8.7	17.7	0.104	0.5
SAN BLAS	65.00	1	0	4460	86.8	4.8	1.6	1.1	2.6	1.3	0.7	1.1	86.8	4.8	8.4	0.082	0.505
SAN BLAS	65.00	3	0	1232	89.1	5.9	2	0.7	1	0.1	0.1	1.1	89.1	5.9	5	0.116	0.501
EL FUERTE	107.70	1	0	6258	70.2	5.3	2.1	2.5	7	3.3	6.5	3.1	70.2	5.3	24.5	0.104	0.504
EL FUERTE	107.70	3	0	3395	72.8	5.1	2.4	2	9.3	4.7	2.4	1.3	72.8	5.1	22.1	0.108	0.501
CHOIX	159.00	1	0	2508	68.1	6.1	1.5	2.6	8.6	3	6.5	3.6	68.1	6.1	25.8	0.12	0.524

31 CARR : VILLA UNION - EL WALAMO

CLAVE: 25081

RUTA : SIN-081

AÑO : 2007

L U G A R	E S T A C I O N				C L A S I F I C A C I O N V E H I C U L A R E N P O R C I E N T O .												
	KM	TE	SC	TDPA	A	B	C2	C3	T3S2	T3S3	T3S2R4	OTROS	A	B	C	K'	D
VILLA UNION	0.00	3	0	2131	88.3	4.3	1.8	1.3	2.1	0.5	0.6	1.1	88.3	4.3	7.4	0.137	0.505
WALAMO	7.00	1	0	1697	86.5	8.5	1.3	0.6	1.8	0.2	0.4	0.7	86.5	8.5	5	0.146	0.503

32 CARR : VILLA UNION - SIQUEIROS

CLAVE: 25063

RUTA : SIN-063

AÑO : 2007

L U G A R	E S T A C I O N				C L A S I F I C A C I O N V E H I C U L A R E N P O R C I E N T O .												
	KM	TE	SC	TDPA	A	B	C2	C3	T3S2	T3S3	T3S2R4	OTROS	A	B	C	K'	D
VILLA UNION	0.00	3	0	2288	78.7	10.3	5.8	2.1	1.4	1.1	0.1	0.5	78.7	10.3	11	0.101	0.509
SIQUEIROS	11.00	1	0	576	90.4	7.2	1.3	0.1	0.3	0.1	0.1	0.5	90.4	7.2	2.4	0.101	0.508

33 CARR : DURANGO - VILLA UNION

CLAVE: 00083

RUTA : MEX-040

AÑO : 2007

L U G A R	E S T A C I O N				C L A S I F I C A C I O N V E H I C U L A R E N P O R C I E N T O .												
	KM	TE	SC	TDPA	A	B	C2	C3	T3S2	T3S3	T3S2R4	OTROS	A	B	C	K'	D
DURANGO	0.00	3	0	5013	84.8	3.5	1.2	3.4	3.1	1.8	1.3	0.9	84.8	3.5	11.7	0.099	0.501
T. DER. PINO	22.86	3	0	4893	76.5	4.2	2.5	3.3	6.8	3.7	1.8	1.2	76.5	4.2	19.3	0.108	0.502
T. IZQ. ESTACION NAVIOS	58.42	3	0	2458	71.9	6.3	1.5	3.9	6.9	4.5	3.1	1.9	71.9	6.3	21.8	0.08	0.503

SINALOA

33 CARR : DURANGO - VILLA UNION

CLAVE: 00083

ruta : MEX-040

AÑO : 2007

L U G A R	E S T A C I O N				C L A S I F I C A C I O N V E H I C U L A R E N P O R C I E N T O .												
	KM	TE	SC	TDPA	A	B	C2	C3	T3S2	T3S3	T3S2R4	OTROS	A	B	C	K'	D
LLANO GRANDE	77.23	1	0	2593	73.4	7.1	1.6	3.4	7.7	4.5	1.1	1.2	73.4	7.1	19.5	0.083	0.505
EL SALTO	99.76	3	0	2693	72.8	7.7	3.1	3.1	5.3	2.4	3.9	1.7	72.8	7.7	19.5	0.101	0.503
LA CIUDAD	145.50	1	0	1719	68.6	6.6	1.7	4.2	8.9	4.7	3.8	1.5	68.6	6.6	24.8	0.098	0.509
LA CIUDAD	145.50	3	0	1455	65.6	5.3	1.6	5.3	12.7	6.3	1.7	1.5	65.6	5.3	29.1	0.084	0.505
LIM. EDOS. TERM. DGO. PPIA. SIN.	198.50	0	0														
T. C. TEPIC - MAZATLAN	294.40	1	0	6818	59.2	6.2	5.3	5.1	10.9	3.1	8	2.2	59.2	6.2	34.6	0.065	0.505

34 CARR : TEPIC - MAZATLAN

CLAVE: 00500

ruta : MEX-015

AÑO : 2007

L U G A R	E S T A C I O N				C L A S I F I C A C I O N V E H I C U L A R E N P O R C I E N T O .												
	KM	TE	SC	TDPA	A	B	C2	C3	T3S2	T3S3	T3S2R4	OTROS	A	B	C	K'	D
TEPIC	0.00	3	1	7569	72.9	10	4.7	4.5	3.2	1.4	2	1.3	72.9	10	17.1	0.08	0.501
TEPIC	0.00	3	2	7740	76.5	8.1	5	3	3.3	1.3	1.5	1.3	76.5	8.1	15.4	0.091	0.501
T. IZQ. LIBRAMIENTO DE TEPIC	2.56	1	1	10329	70.5	8.6	6.3	4.3	4	2.8	1.9	1.6	70.5	8.6	20.9	0.084	0.501
T. IZQ. LIBRAMIENTO DE TEPIC	2.56	1	2	10384	81.5	1.8	2	4.6	1.4	1.3	4.9	2.5	81.5	1.8	16.7	0.093	0.501
T. IZQ. AUT. TEPIC - ENT. SAN BLAS (CUOTA)	3.70	3	0	8640	70.6	3.9	2.1	2.9	10.4	3.2	5.2	1.7	70.6	3.9	25.5	0.069	0.546
LOS OTATES	19.80	3	0	8162	84.2	4.1	0.3	0.6	1.8	0.8	6.4	1.8	84.2	4.1	11.7	0.082	0.515
T. IZQ. JUMATAN	28.52	1	0	6820	65.4	4.5	1.9	4.2	13.8	4.4	4.1	1.7	65.4	4.5	30.1	0.073	0.501
T. IZQ. JUMATAN	28.52	3	1	6816	67.5	3	4.9	5	8.8	3.4	5.5	1.9	67.5	3	29.5	0.08	0.502
T. IZQ. JUMATAN	28.52	3	2	6768	63.9	3	5.4	5.1	9.4	4.4	5.8	3	63.9	3	33.1	0.068	0.502
T. IZQ. SAN BLAS	33.54	1	1	6301	63	5	5.4	3.9	9.5	4.4	5.8	3	63	5	32	0.068	0.503
T. IZQ. SAN BLAS	33.54	1	2	6365	61	5.4	5.3	4.2	10.1	4.8	6	3.2	61	5.4	33.6	0.067	0.503
T. IZQ. VILLA HIDALGO	48.12	1	0	11464	80	5.4	3.2	2.1	4	2.9	2	0.4	80	5.4	14.6	0.072	0.503
T. IZQ. VILLA HIDALGO	48.12	3	0	10030	62.9	7.3	6.9	7.2	7.5	4.2	1.4	2.6	62.9	7.3	29.8	0.076	0.509
T. IZQ. SANTIAGO IXCUINTLA	56.42	1	0	10793	64.3	5.5	4.6	3.8	8.4	3.7	6.1	3.6	64.3	5.5	30.2	0.071	0.51
T. IZQ. SANTIAGO IXCUINTLA	56.42	3	0	10196	72.6	5	3.7	5.7	5.4	4.1	1.2	2.3	72.6	5	22.4	0.073	0.508
T. IZQ. TUXPAN	70.60	1	0	11978	73.5	5.6	4.5	5.2	3.9	4.2	1.2	1.9	73.5	5.6	20.9	0.073	0.507
T. IZQ. TUXPAN	70.60	3	0	12186	73.9	7.3	4.3	1.8	4.2	3.2	1.7	3.6	73.9	7.3	18.8	0.09	0.501
T. DER. ROSAMORADA	90.70	3	0	10396	73.3	6.8	3.2	3.8	4.3	3.2	1.7	3.7	73.3	6.8	19.9	0.089	0.501
TIERRA GENEROSA	110.40	1	0	7686	74.2	4.2	2.9	2.2	11.7	2.7	1.8	0.3	74.2	4.2	21.6	0.072	0.501
T. DER. ACAPONETA	136.50	1	0	8879	70.8	9.6	3.7	3.7	6	3.4	1.5	1.3	70.8	9.6	19.6	0.082	0.508
T. DER. ACAPONETA	136.50	3	0	4303	77.4	8.1	2.1	2.6	5.9	1.5	1.2	1.2	77.4	8.1	14.5	0.073	0.501
LIM. EDOS. TERM. NAY. PPIA. SIN.	147.00	0	0														
ESCUINAPA DE HIDALGO	200.00	1	0	3965	73.1	5	1.5	3.2	7	2.7	3.9	3.6	73.1	5	21.9	0.115	0.5
ESCUINAPA DE HIDALGO	200.00	3	0	3990	79.8	8.4	2.1	2.7	3.5	1.2	1.2	1.1	79.8	8.4	11.8	0.084	0.507

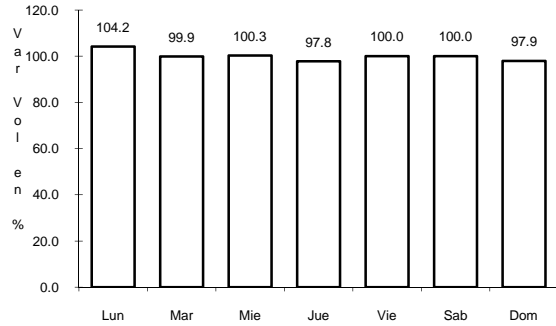




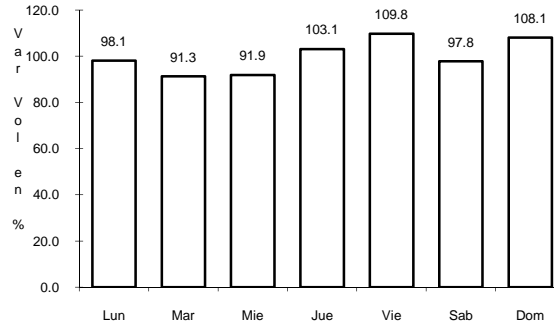
4 CARR: CULIACAN - EL DORADO

CLAVE: 25044

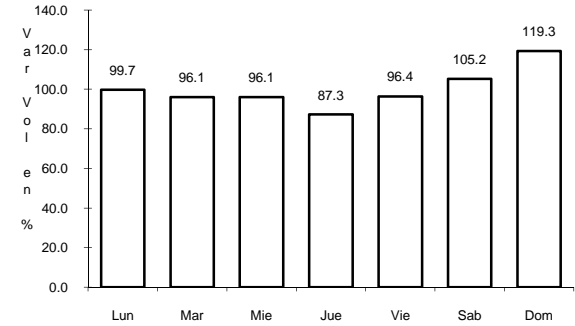
RUTA: SIN-005



Km: 0.00 Tipo: 3 Sent: 1



Km: 0.00 Tipo: 3 Sent: 2

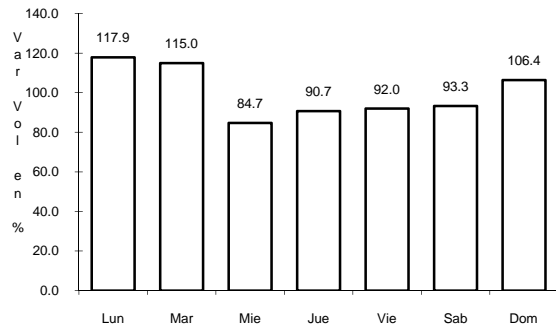


Km: 55.00 Tipo: 1 Sent: 0

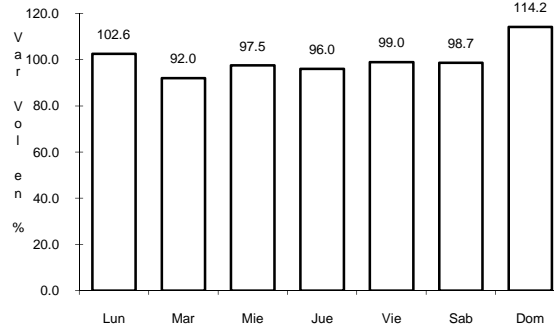
5 CARR: CULIACAN - LAS BRISAS (CUOTA)

CLAVE: 25503

RUTA: MEX-015D



Km: 1.50 Tipo: 3 Sent: 1

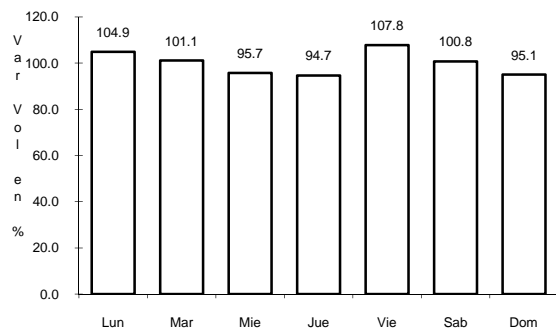


Km: 1.50 Tipo: 3 Sent: 2

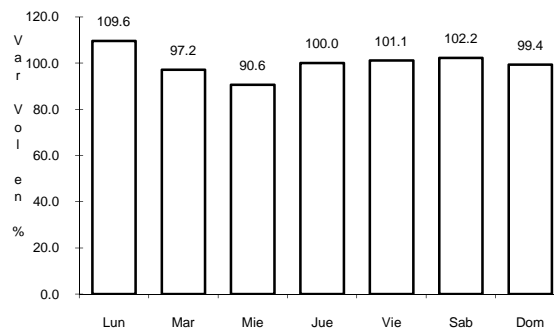
6 CARR: CULIACAN - LOS MOCHIS

CLAVE: 25502

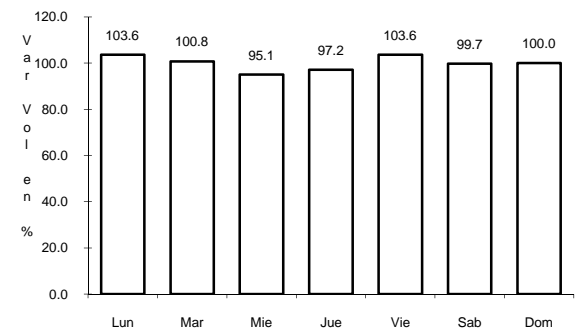
RUTA: MEX-015



Km: 4.00 Tipo: 1 Sent: 1



Km: 4.00 Tipo: 1 Sent: 2

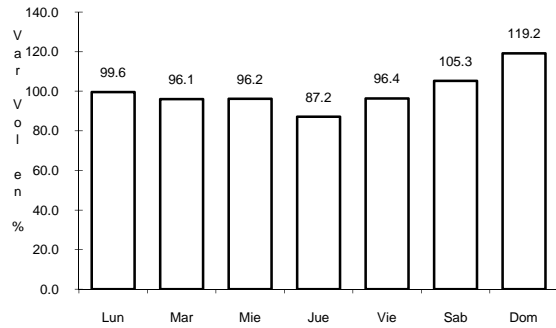


Km: 104.70 Tipo: 1 Sent: 0

7 CARR: EL LIMONCITO - CINCO HERMANOS

CLAVE: 25016

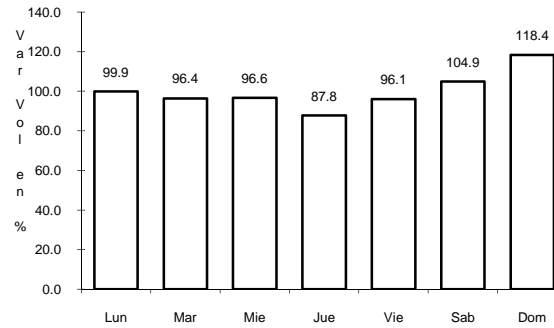
RUTA: SIN-016



Km: 0.00

Tipo: 3

Sent: 0



Km: 16.00

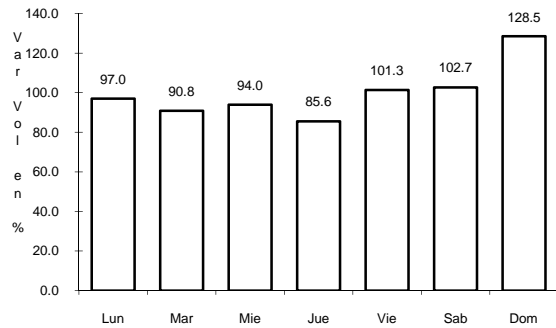
Tipo: 1

Sent: 0

8 CARR: EL SALADO - EL DORADO

CLAVE: 25010

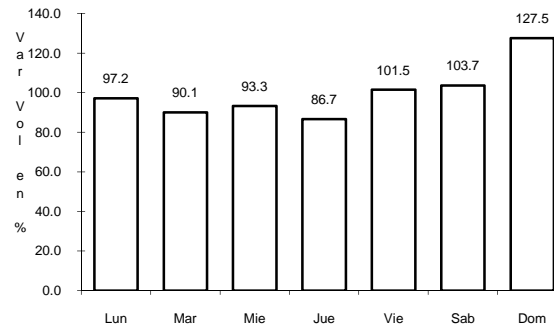
RUTA: SIN-010



Km: 0.00

Tipo: 3

Sent: 0



Km: 31.00

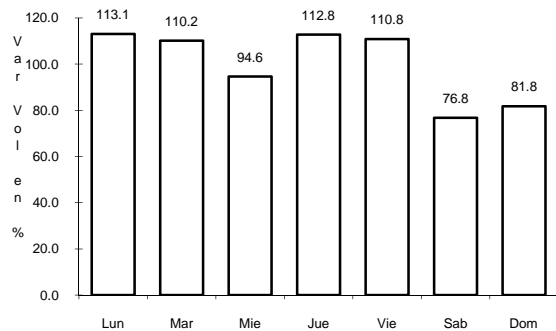
Tipo: 1

Sent: 0

10 CARR: ESCUINAPA DE HIDALGO - TEACAPAN

CLAVE: 25001

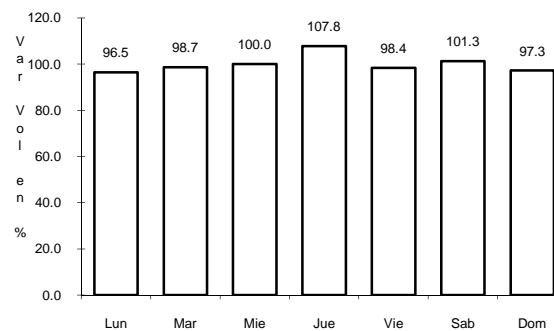
RUTA: SIN-001



Km: 0.00

Tipo: 3

Sent: 0



Km: 41.00

Tipo: 1

Sent: 0

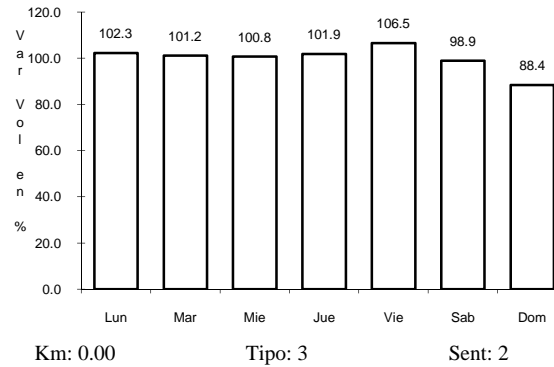
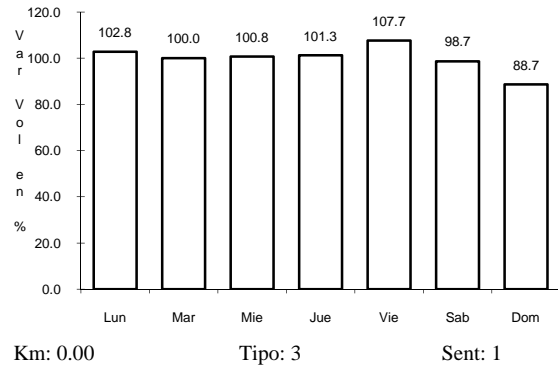




14 CARR: LIBRAMIENTO DE MAZATLAN

CLAVE: 25604

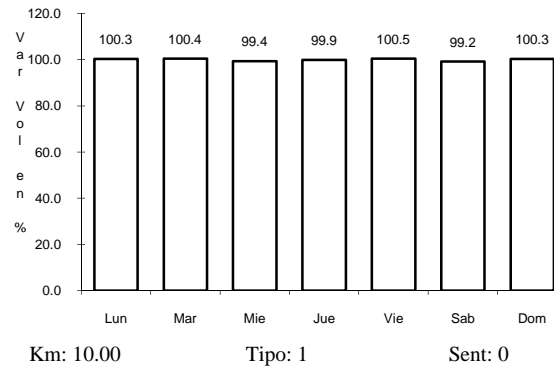
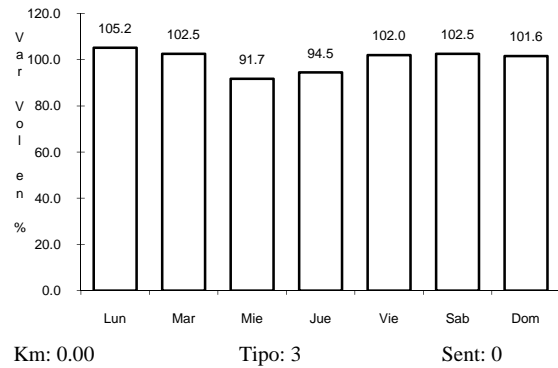
RUTA: MEX



15 CARR: LIBRAMIENTO SUR DE CULIACAN

CLAVE: 25500

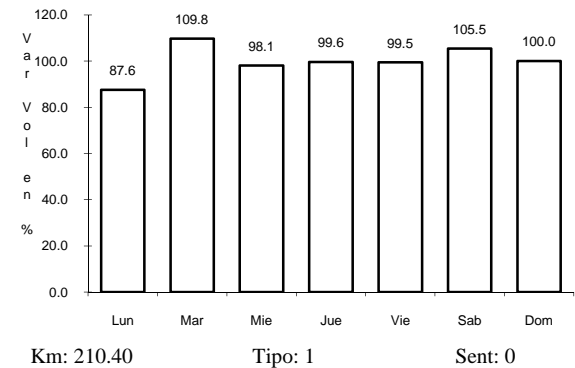
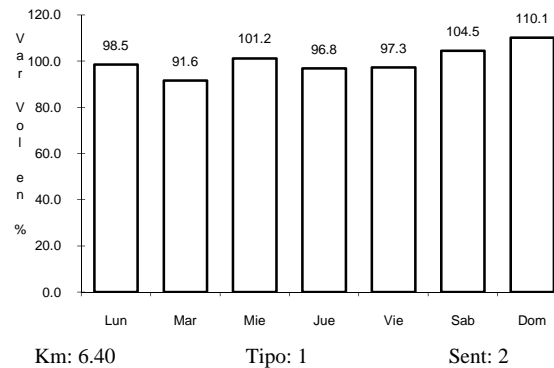
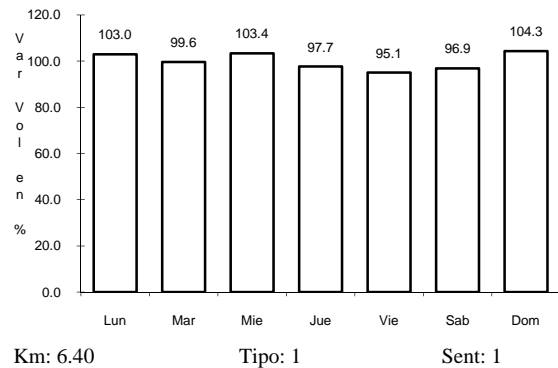
RUTA: MEX



16 CARR: MAZATLAN - CULIACAN

CLAVE: 25501

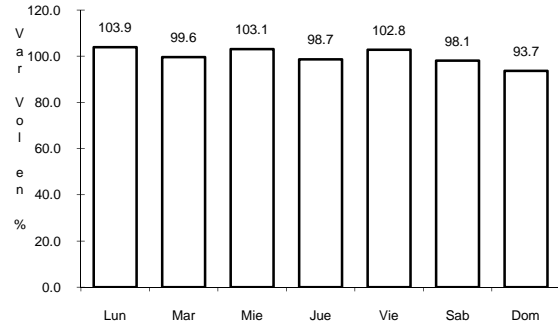
RUTA: MEX-015



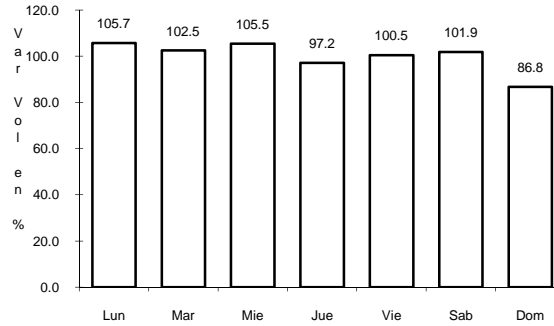
17 CARR: MAZATLAN - CULIACAN (CUOTA)

CLAVE: 25045

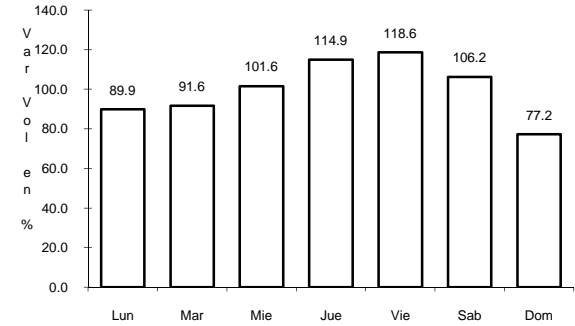
RUTA: MEX-015D



Km: 0.00 Tipo: 3 Sent: 0



Km: 205.00 Tipo: 1 Sent: 1

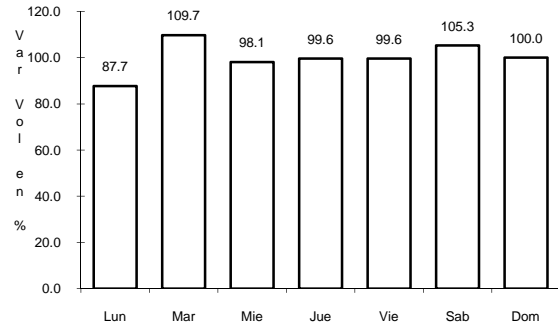


Km: 205.00 Tipo: 1 Sent: 2

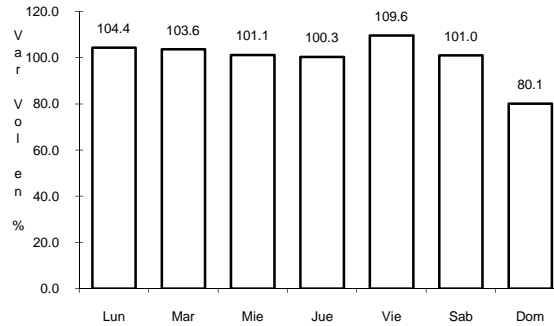
18 CARR: NAVOLATO - EL CASTILLO

CLAVE: 25004

RUTA: SIN-004



Km: 0.00 Tipo: 3 Sent: 0

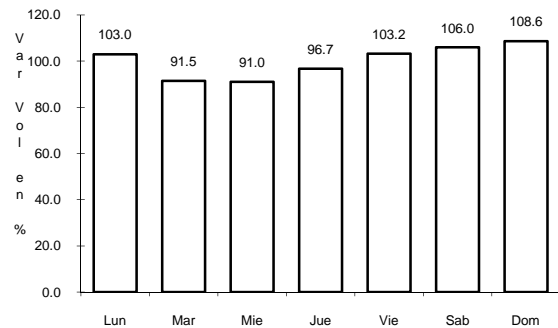


Km: 29.00 Tipo: 1 Sent: 0

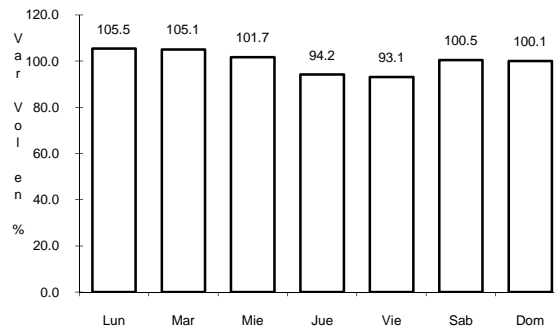
19 CARR: PERICOS - LOS NARANJOS

CLAVE: 25598

RUTA: MEX-024



Km: 0.00 Tipo: 3 Sent: 0



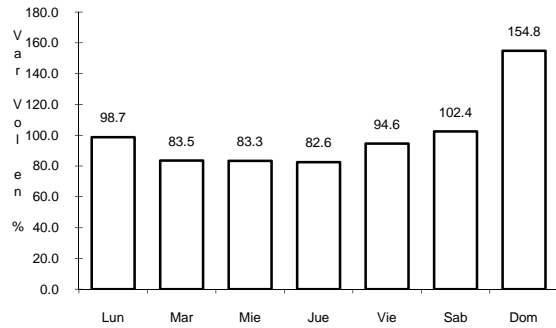
Km: 37.50 Tipo: 1 Sent: 0



23 CARR: RAMAL A EL QUELITE

CLAVE: 25060

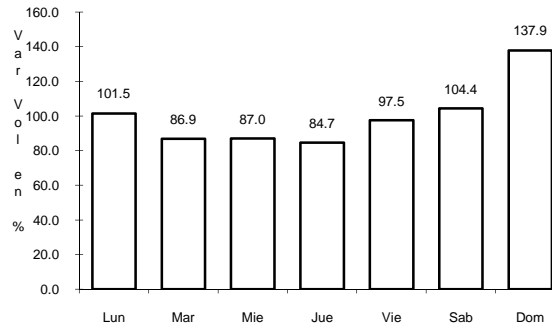
RUTA: SIN-060



Km: 0.00

Tipo: 3

Sent: 0



Km: 6.00

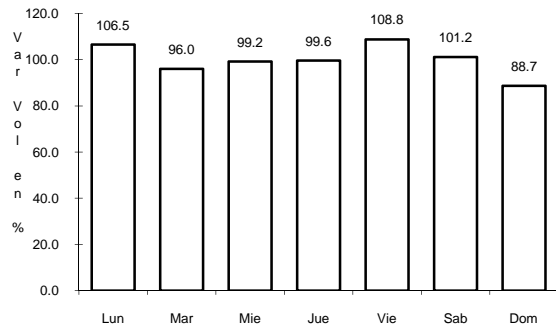
Tipo: 1

Sent: 0

24 CARR: RAMAL A ESTACION BAMOA

CLAVE: 25022

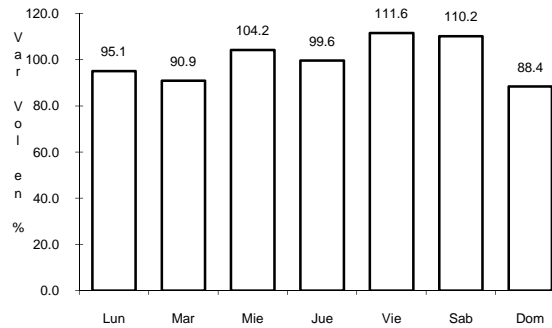
RUTA: SIN-022



Km: 0.00

Tipo: 3

Sent: 0



Km: 22.50

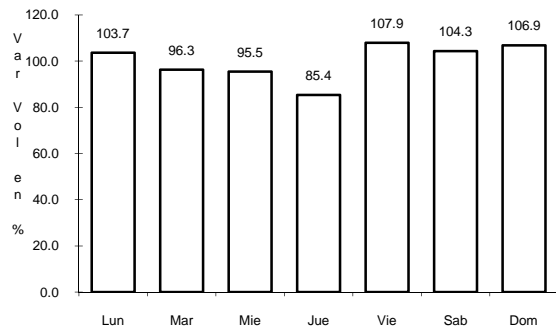
Tipo: 1

Sent: 0

25 CARR: RAMAL A LA CRUZ

CLAVE: 25043

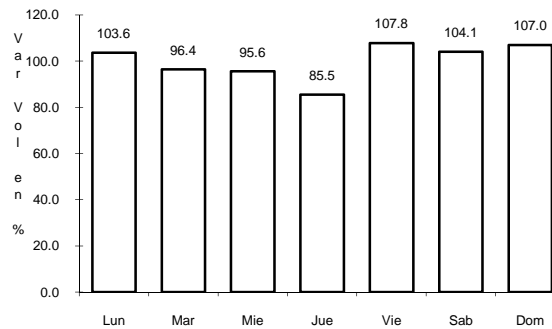
RUTA: SIN



Km: 0.00

Tipo: 3

Sent: 0



Km: 18.00

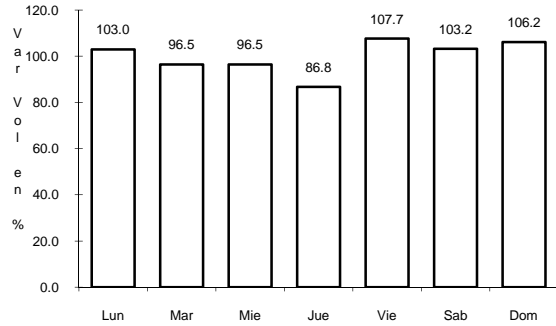
Tipo: 1

Sent: 0

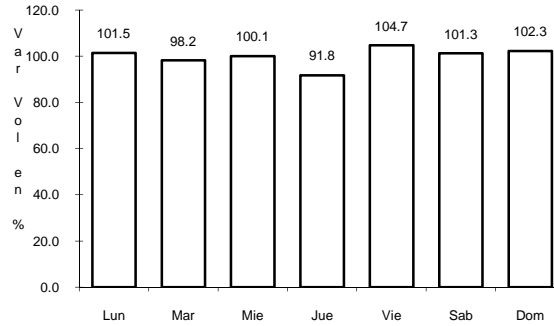
26 CARR: RAMAL A LA NORIA

CLAVE: 25592

RUTA: SIN



Km: 0.00 Tipo: 3 Sent: 0

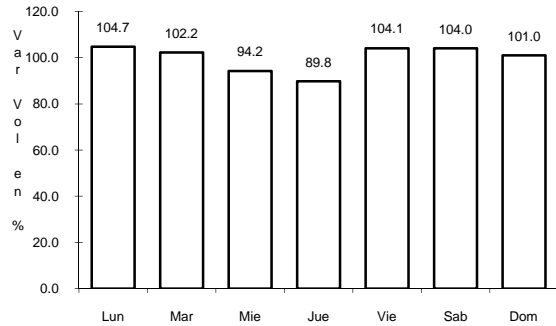


Km: 25.50 Tipo: 1 Sent: 0

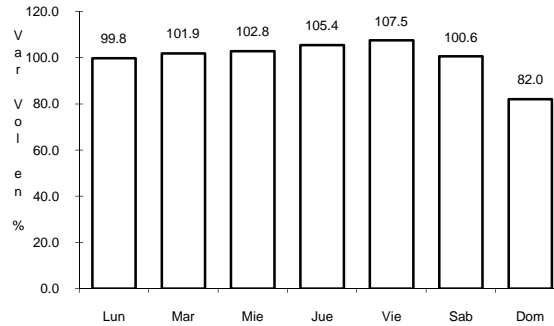
27 CARR: RAMAL A LA REFORMA

CLAVE: 25041

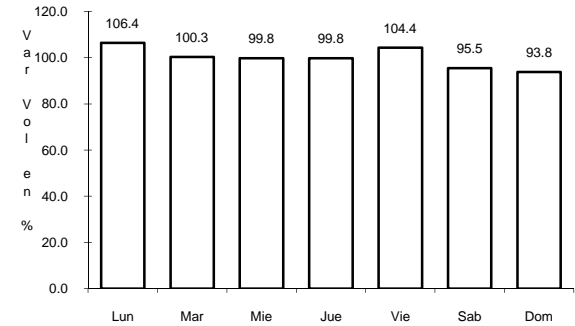
RUTA: SIN-004



Km: 0.00 Tipo: 3 Sent: 0



Km: 14.00 Tipo: 3 Sent: 0

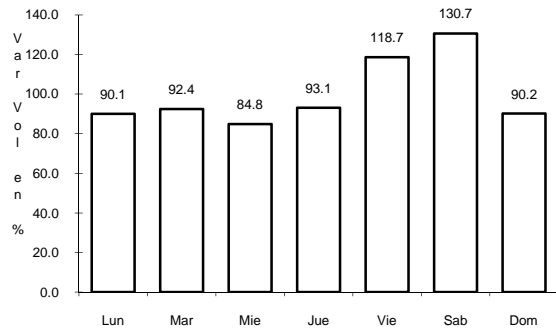


Km: 60.00 Tipo: 1 Sent: 0

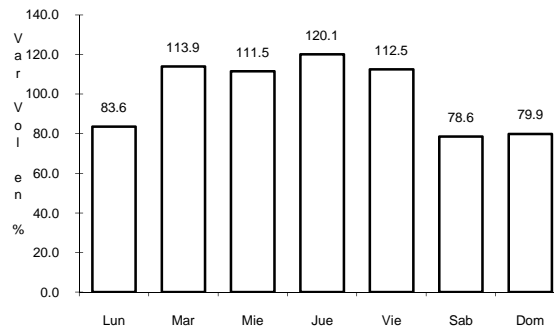
28 CARR: ROSARIO - CAIMANERO

CLAVE: 25003

RUTA: SIN-003



Km: 0.00 Tipo: 3 Sent: 0



Km: 30.00 Tipo: 1 Sent: 0



