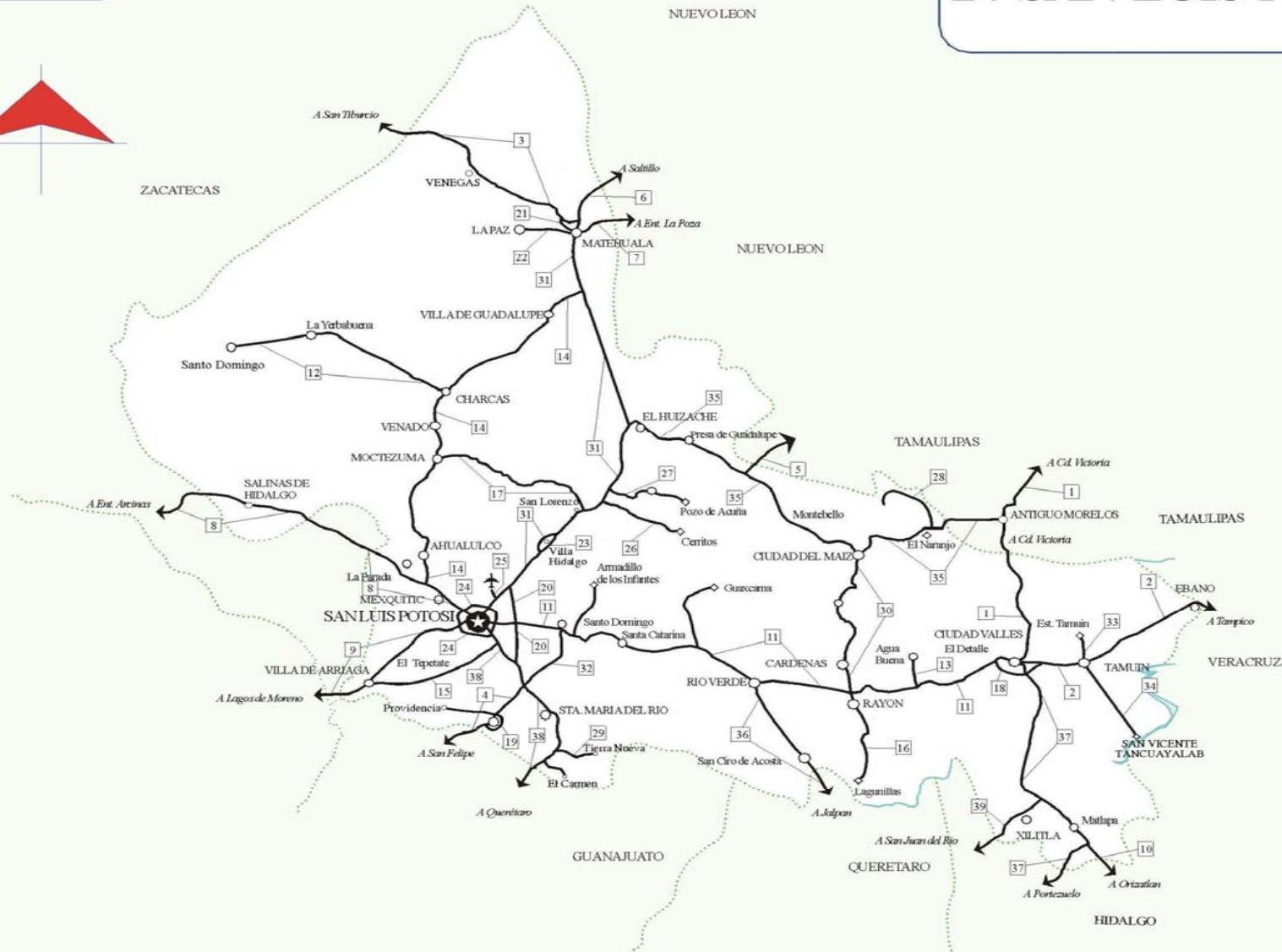
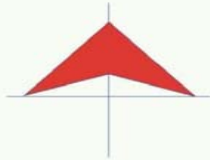


MAPA INDICE

15 Num. Indice
2008

Secretaría de Comunicaciones y Transportes

24 SAN LUIS POTOSI



CARRETERAS AFORADAS

Num. INDICE	CARRETERA
1	CD. VALLES - CD. VICTORIA
2	CD. VALLES - TAMPICO
3	CARBONERA - T. C. (ENT. MORELOS - SALTILLO)
4	ENT. DE ZARAGOZA - SAN FELIPE
5	ENT. TULA - CD. VICTORIA
6	MATEHUALA - ENT. PUERTO MEXICO
7	MATEHUALA - LA POZA
8	SAN LUIS POTOSI - ENT. ARCINAS
9	SAN LUIS POTOSI - LAGOS DE MORENO
10	TAMAZUNCHALE - SAN FELIPE ORIZATLAN
11	CD. VALLES - SAN LUIS POTOSI
12	CHARCAS - VILLA SANTO DOMINGO
13	EL CLARIN - AGUA BUENA
14	ENT. AHUALULCO - ENT. LA BONITA
15	SAN LUIS POTOSI - VILLA DE ARRIAGA (CUOTA)
16	RAYON - LAGUNILLAS
17	SAN LORENZO - MOCTEZUMA
18	LIBRAMIENTO DE CD. VALLES
19	LIBRAMIENTO DE VILLA DE REYES
20	LIBRAMIENTO ORIENTE DE SAN LUIS POTOSI (CUOTA)
21	RAMAL A OJO DE AGUA
22	MATEHUALA - LA PAZ
23	T. C. (S.L.P. - MATEHUALA) - VILLA HIDALGO
24	PERIFERICO DE SAN LUIS POTOSI
25	RAMAL A AEROPUERTO DE S. L. P.
26	RAMAL A CERRITOS
27	RAMAL A POZO DE ACUÑA
28	T. C. (ENT. EL HUIZACHE- ANT. MORELOS)-EL SALTO
29	T. C. (QRO - S.L.P.) - TIERRA NUEVA
30	RAYON - CD. DEL MAIZ
31	SAN LUIS POTOSI - MATEHUALA
32	SANTO DOMINGO - CERRO GORDO
33	TAMUIN - ESTACION F.F.C.C. TAMUIN
34	TAMUIN - SAN VICENTE TANCUAYALAB
35	ANTIGUO MORELOS - ENT. EL HUIZACHE
36	JALPAN DE SERRA - RIO VERDE
37	PORTEZUELO - CD. VALLES
38	QUERETARO - SAN LUIS POTOSI
39	SAN JUAN DEL RIO - XILITLA

SAN LUIS POTOSI

1 CARR : CD. VALLES - CD. VICTORIA

CLAVE: 00509

RUTA : MEX-085

AÑO : 2007

L U G A R	E S T A C I O N				C L A S I F I C A C I O N V E H I C U L A R E N P O R C I E N T O .												
	KM	TE	SC	TDPA	A	B	C2	C3	T3S2	T3S3	T3S2R4	OTROS	A	B	C	K'	D
CD. VALLES	0.00	3	0	4688	83.2	4	4.6	2.7	2.1	1.7	1.6	0.1	83.2	4	12.8	0.106	0.503
LIM. EDOS. TERM. S.L.P. PPIA. TAMP.	50.40	0	0														
ANTIGUO MORELOS	66.90	1	0	3730	70.6	2.6	4.7	4.5	7.8	3	5.1	1.7	70.6	2.6	26.8	0.087	0.501
ANTIGUO MORELOS	66.90	3	0	3644	86.3	6.2	4	0.4	1.5	0.8	0.3	0.5	86.3	6.2	7.5	0.144	0.502
CD. MANTE	98.00	1	0	4436	84.1	4.9	3.1	1.2	3.4	0.9	1	1.4	84.1	4.9	11	0.081	0.503
T. IZQ. OCAMPO	110.00	3	0	3266	81.6	7.8	5.8	0.6	2.4	0.1	0.6	1.1	81.6	7.8	10.6	0.094	0.501
T. IZQ. GOMEZ FARIAS	132.80	3	0	2955	79.6	4.7	7.6	1.3	2.3	0.8	0.4	3.3	79.6	4.7	15.7	0.089	0.5
T. IZQ. LLERA DE CANALES	170.00	3	0	4922	60	4.2	4.6	5.1	11.4	5.2	8.2	1.3	60	4.2	35.8	0.068	0.504
T. DER. GONZALEZ	172.50	3	0	3705	61.8	4.8	4	4.6	10.4	4.9	8.2	1.3	61.8	4.8	33.4	0.097	0.501
CD. VICTORIA	232.00	1	0	5349	62	5.2	3.9	5.2	9.6	4.6	8.3	1.2	62	5.2	32.8	0.063	0.501

2 CARR : CD. VALLES - TAMPICO

CLAVE: 00138

RUTA : MEX-070

AÑO : 2007

L U G A R	E S T A C I O N				C L A S I F I C A C I O N V E H I C U L A R E N P O R C I E N T O .												
	KM	TE	SC	TDPA	A	B	C2	C3	T3S2	T3S3	T3S2R4	OTROS	A	B	C	K'	D
CD. VALLES	0.00	3	0	7341	83.8	2.4	5.4	2.9	2	2.1	1.3	0.1	83.8	2.4	13.8	0.078	0.501
T. DER. SANTA ELENA	15.25	3	0	5826	83	2.6	5.6	2.8	2.1	2.3	1.5	0.1	83	2.6	14.4	0.079	0.502
TAMUIN	29.60	1	0	5242	73.7	2.5	2.7	3.6	5.9	2.9	6.5	2.2	73.7	2.5	23.8	0.083	0.515
EBANO	79.00	1	0	7508	79.6	3	0.4	1.2	6.8	2.4	4.6	2	79.6	3	17.4	0.086	0.501
EBANO	79.00	3	0	5686	83.3	2.6	4.6	2.9	1.9	2.3	2.3	0.1	83.3	2.6	14.1	0.076	0.501
LIM. EDOS. TERM. S.L.P. PPIA. VER.	83.00	0	0														
T. DER. PANUCO	103.00	1	0	3864	89.4	2.8	1	1.1	3	0.6	0.9	1.2	89.4	2.8	7.8	0.093	0.502
T. DER. PANUCO	103.00	3	0	3407	87.7	3.1	3.1	0.8	2.6	0.6	0.7	1.4	87.7	3.1	9.2	0.107	0.502
T. C. ANAHUAC - EL PRIETO	128.40	1	0	8426	85.4	4.6	4	2.1	1.6	1.1	0.4	0.8	85.4	4.6	10	0.103	0.5
T. C. ANAHUAC - EL PRIETO	128.40	3	1	6956	73.8	3.4	3.8	1.7	6.2	4.1	2.1	4.9	73.8	3.4	22.8	0.104	0.5
T. C. ANAHUAC - EL PRIETO	128.40	3	2	6948	79.2	3.1	4.1	0.9	5.1	2.7	1.3	3.6	79.2	3.1	17.7	0.111	0.5
LIM. EDOS. TERM. VER. PPIA. TAMP.	133.80	0	0														
TAMPICO	138.00	1	0	13542	66.8	4.2	3.3	2.3	7.4	2.9	10	3.1	66.8	4.2	29	0.07	0.501

3 CARR : CARBONERA - T. C. (ENT. MORELOS - SALTILLO)

CLAVE: 00218

RUTA : MEX-062

AÑO : 2007

L U G A R	E S T A C I O N				C L A S I F I C A C I O N V E H I C U L A R E N P O R C I E N T O .												
	KM	TE	SC	TDPA	A	B	C2	C3	T3S2	T3S3	T3S2R4	OTROS	A	B	C	K'	D
CARBONERA	0.00	3	0	2333	83.9	4.4	5.2	2.9	1.4	1.4	0.2	0.6	83.9	4.4	11.7	0.088	0.504
CEDRAL	18.00	1	0	1982	87.2	2	4.1	2	1.5	1.2	0.7	1.3	87.2	2	10.8	0.084	0.502

SAN LUIS POTOSI

6 CARR : MATEHUALA - ENT. PUERTO MEXICO

CLAVE: 00405

RUTA : MEX-057

AÑO : 2007

L U G A R	E S T A C I O N				C L A S I F I C A C I O N V E H I C U L A R E N P O R C I E N T O .												
	KM	TE	SC	TDPA	A	B	C2	C3	T3S2	T3S3	T3S2R4	OTROS	A	B	C	K'	D
SANTA ANA	59.65	1	1	5608	32.9	6.4	6.9	11.1	26.8	6.3	7.8	1.8	32.9	6.4	60.7	0.069	0.504
SANTA ANA	59.65	1	2	5701	33.5	4.2	4.7	6.8	35.3	5.9	8.7	0.9	33.5	4.2	62.3	0.067	0.504
T. DER. LINARES	129.00	3	1	5408	34.6	4.9	3	6.3	34.5	5.6	10.1	1	34.6	4.9	60.5	0.074	0.528
T. DER. LINARES	129.00	3	2	6057	37.6	4.8	3.9	5.6	33.5	5.8	7.9	0.9	37.6	4.8	57.6	0.064	0.528
SAN RAFAEL	177.20	1	1	5874	37.8	4.2	3.9	6.4	33.6	4.7	7.2	2.2	37.8	4.2	58	0.082	0.517
SAN RAFAEL	177.20	1	2	6295	44.5	4.7	3.4	5.6	28.1	4.9	6.6	2.2	44.5	4.7	50.8	0.062	0.517
ENT. PUERTO MEXICO	204.00	0	0														

7 CARR : MATEHUALA - LA POZA

CLAVE: 00086

RUTA : SLP-NL-061

AÑO : 2007

L U G A R	E S T A C I O N				C L A S I F I C A C I O N V E H I C U L A R E N P O R C I E N T O .												
	KM	TE	SC	TDPA	A	B	C2	C3	T3S2	T3S3	T3S2R4	OTROS	A	B	C	K'	D
MATEHUALA	0.00	3	0	2912	80	6.4	6	2.5	1.5	1.5	0.8	1.3	80	6.4	13.6	0.072	0.501
LIM. EDOS. TERM. S.L.P. PPIA. NL.	12.00	0	0														
DOCTOR ARROYO	49.00	1	0	2246	91.1	3.1	4	0.3	0.3	0.3	0.1	0.8	91.1	3.1	5.8	0.081	0.506
LA POZA	190.00	1	0	999	89.9	2.2	5.4	0.8	0.4	0.2	0	1.1	89.9	2.2	7.9	0.112	0.506

8 CARR : SAN LUIS POTOSI - ENT. ARCINAS

CLAVE: 00134

RUTA : MEX-049

AÑO : 2007

L U G A R	E S T A C I O N				C L A S I F I C A C I O N V E H I C U L A R E N P O R C I E N T O .												
	KM	TE	SC	TDPA	A	B	C2	C3	T3S2	T3S3	T3S2R4	OTROS	A	B	C	K'	D
T. C. SAN LUIS POTOSI - MATEHUALA	0.00	0	0														
T. IZQ. PERIFERICO DE SAN LUIS POTOSI	9.35	3	0	9878	67.4	11.9	10.7	3.5	1.6	2.8	0.2	1.9	67.4	11.9	20.7	0.094	0.501
MEXQUITIC	22.50	1	0	8667	68.8	8.2	9.9	4.7	3.5	1.7	0	3.2	68.8	8.2	23	0.081	0.501
T. DER. CHARCAS	30.90	1	0	7358	83	2.7	7.6	2.1	1.3	1.1	0	2.2	83	2.7	14.3	0.073	0.502
LIM. EDOS. TERM. S.L.P. PPIA. ZAC.	55.13	0	0														
LIM. EDOS. TERM. ZAC. PPIA. S.L.P.	89.30	0	0														
T. DER. SALINAS	99.00	1	0	4500	71.4	7.7	7.1	4.8	4.5	2.1	0	2.4	71.4	7.7	20.9	0.102	0.501
T. DER. SALINAS	99.00	3	0	4740	70.3	8.9	6.8	3.6	6.4	1.8	0	2.2	70.3	8.9	20.8	0.069	0.501
LIM. EDOS. TERM. S.L.P. PPIA. ZAC.	122.50	0	0														
T. IZQ. PANFILO NATERA	139.00	1	0	5241	80	4.2	5.9	2.9	3.3	2	1	0.7	80	4.2	15.8	0.093	0.505
ENT. ARCINAS	163.00	1	0	5480	78.6	4.2	6	2.9	3.3	2.1	2.3	0.6	78.6	4.2	17.2	0.077	0.506

SAN LUIS POTOSI

9 CARR : SAN LUIS POTOSI - LAGOS DE MORENO

CLAVE: 00133

RUTA : MEX-070-080

AÑO : 2007

L U G A R	E S T A C I O N				C L A S I F I C A C I O N V E H I C U L A R E N P O R C I E N T O .												
	KM	TE	SC	TDPA	A	B	C2	C3	T3S2	T3S3	T3S2R4	OTROS	A	B	C	K'	D
SAN LUIS POTOSI	0.00	3	1	6149	72.4	7.2	7	3.2	4.5	2.1	0.3	3.3	72.4	7.2	20.4	0.091	0.504
SAN LUIS POTOSI	0.00	3	2	6245	73.8	6.3	7.2	3.1	4.5	1.6	0.4	3.1	73.8	6.3	19.9	0.081	0.504
X. PERIFERICO SAN LUIS POTOSI	8.41	3	0	7443	73.1	5.2	6.5	5.4	4.3	3.2	0.3	2	73.1	5.2	21.7	0.073	0.501
EL TEPETATE	41.90	1	0	4636	78.7	3.5	5	3.5	3.3	1.7	0	4.3	78.7	3.5	17.8	0.128	0.548
EL TEPETATE	41.90	3	0	4845	76.4	2.8	6.8	4.6	3.4	2	0.1	3.9	76.4	2.8	20.8	0.073	0.503
VILLA DE ARRIAGA	61.90	3	0	5187	72	9.1	7.5	3	3	3.9	0.1	1.4	72	9.1	18.9	0.07	0.504
LIM. EDOS. TERM. S.L.P. PPIA. ZAC.	71.00	0	0														
LIM. EDOS. TERM. ZAC. PPIA. JAL.	81.70	0	0														
OJUELOS DE JALISCO	82.00	1	0	6094	75.2	6.1	6.1	3.8	3.6	2.2	2.1	0.9	75.2	6.1	18.7	0.085	0.504
OJUELOS DE JALISCO	82.00	3	0	4843	66.9	9.2	6.3	6.2	5.9	2.6	1.5	1.4	66.9	9.2	23.9	0.092	0.5
X. C. LEON - AGUASCALIENTES	146.90	1	0	5291	55.7	8.4	2.4	2	14.2	5.5	10.1	1.7	55.7	8.4	35.9	0.075	0.501
LAGOS DE MORENO	150.00	0	0														

10 CARR : TAMAZUNCHALE - SAN FELIPE ORIZATLAN

CLAVE: 00609

RUTA : MEX-102

AÑO : 2007

L U G A R	E S T A C I O N				C L A S I F I C A C I O N V E H I C U L A R E N P O R C I E N T O .												
	KM	TE	SC	TDPA	A	B	C2	C3	T3S2	T3S3	T3S2R4	OTROS	A	B	C	K'	D
T. C. PORTEZUELO - CD. VALLES	0.00	3	0	6797	65	16.8	1.2	2.4	5.5	2	4.6	2.5	65	16.8	18.2	0.073	0.513
LIM. EDOS. TERM. S.L.P. PPIA. HGO.	20.00	0	0														
SAN FELIPE ORIZATLAN	27.10	1	0	2582	87.2	4.1	1.3	0.2	3.7	0.7	1.3	1.5	87.2	4.1	8.7	0.087	0.524

11 CARR : CD. VALLES - SAN LUIS POTOSI

CLAVE: 24135

RUTA : MEX-070

AÑO : 2007

L U G A R	E S T A C I O N				C L A S I F I C A C I O N V E H I C U L A R E N P O R C I E N T O .												
	KM	TE	SC	TDPA	A	B	C2	C3	T3S2	T3S3	T3S2R4	OTROS	A	B	C	K'	D
CD. VALLES	0.00	3	0	8121	85.2	2.9	1	1	4.9	1.1	2.3	1.6	85.2	2.9	11.9	0.082	0.502
T. DER. DAMIAN CARMONA	31.25	3	0	3536	76.2	4.9	7	4.5	3	2.6	1.7	0.1	76.2	4.9	18.9	0.083	0.5
T. DER. CANOAS	75.40	1	0	3325	77.2	6	6	5.3	2.4	1.8	1.2	0.1	77.2	6	16.8	0.097	0.5
X. C. CARDENAS - RAYON	93.00	1	0	4128	77.9	5.1	6.1	3.5	3.1	3.2	1.1	0	77.9	5.1	17	0.082	0.501
X. C. CARDENAS - RAYON	93.00	3	0	4686	79.9	3.6	5	4.1	2.9	3.5	0.9	0.1	79.9	3.6	16.5	0.09	0.501
RIO VERDE	133.80	1	0	5349	87.4	3.3	0.3	0.8	3.7	1.1	0.9	2.5	87.4	3.3	9.3	0.077	0.506
RIO VERDE	133.80	3	0	6714	82.9	4	4.4	3.2	2.2	1.9	1.3	0.1	82.9	4	13.1	0.098	0.5
T. DER. GUAXCAMA	161.00	3	0	3194	84.7	3.4	4.4	3.7	1.6	1.2	1	0	84.7	3.4	11.9	0.088	0.5
T. IZQ. ZARAGOZA	239.50	1	0	3111	73.8	5.1	7.9	5.1	2.2	2.2	0.1	3.6	73.8	5.1	21.1	0.086	0.502
T. IZQ. ZARAGOZA	239.50	3	0	3912	76.4	5.6	5.4	4.5	2.7	3.5	0.3	1.6	76.4	5.6	18	0.084	0.502

SAN LUIS POTOSI

11 CARR : CD. VALLES - SAN LUIS POTOSI

CLAVE: 24135

RUTA : MEX-070

AÑO : 2007

L U G A R	E S T A C I O N				C L A S I F I C A C I O N V E H I C U L A R E N P O R C I E N T O .												
	KM	TE	SC	TDPA	A	B	C2	C3	T3S2	T3S3	T3S2R4	OTROS	A	B	C	K'	D
X. LIB. OTE. DE SAN LUIS POTOSI	255.00	1	0	3915	74.4	4.1	9	5.3	1.9	2.6	0.2	2.5	74.4	4.1	21.5	0.096	0.502
X. PERIFERICO DE SAN LUIS POTOSI	257.40	1	1	8844	70.6	6	5.4	3.3	5	2	1.9	5.8	70.6	6	23.4	0.091	0.506
X. PERIFERICO DE SAN LUIS POTOSI	257.40	1	2	9074	81.8	5	1.5	1.6	4.8	1.3	1.3	2.7	81.8	5	13.2	0.102	0.506
SAN LUIS POTOSI	261.90	0	0														

12 CARR : CHARCAS - VILLA SANTO DOMINGO

CLAVE: 24624

RUTA : SLP

AÑO : 2007

L U G A R	E S T A C I O N				C L A S I F I C A C I O N V E H I C U L A R E N P O R C I E N T O .												
	KM	TE	SC	TDPA	A	B	C2	C3	T3S2	T3S3	T3S2R4	OTROS	A	B	C	K'	D
CHARCAS	0.00	3	0	829	74.1	7.9	8.2	8.5	0	0.3	0.1	0.9	74.1	7.9	18	0.089	0.503
VILLA SANTO DOMINGO	72.00	0	0														

13 CARR : EL CLARIN - AGUA BUENA

CLAVE: 24283

RUTA : MEX

AÑO : 2007

L U G A R	E S T A C I O N				C L A S I F I C A C I O N V E H I C U L A R E N P O R C I E N T O .												
	KM	TE	SC	TDPA	A	B	C2	C3	T3S2	T3S3	T3S2R4	OTROS	A	B	C	K'	D
T. C. CD. VALLES - SAN LUIS POTOSI	0.00	3	0	1357	93.1	1.5	1.1	0.5	1.2	0.7	0.5	1.4	93.1	1.5	5.4	0.102	0.508
AGUA BUENA	11.00	1	0	1966	93.1	1.2	2.1	0.1	2.1	0.2	0.4	0.8	93.1	1.2	5.7	0.11	0.502

14 CARR : ENT. AHUALULCO - ENT. LA BONITA

CLAVE: 24258

RUTA : MEX-063

AÑO : 2007

L U G A R	E S T A C I O N				C L A S I F I C A C I O N V E H I C U L A R E N P O R C I E N T O .												
	KM	TE	SC	TDPA	A	B	C2	C3	T3S2	T3S3	T3S2R4	OTROS	A	B	C	K'	D
T. C. SAN LUIS POTOSI - ENT. ARCINAS	0.00	3	0	3592	74.6	9.8	8.8	3.6	0.5	0.6	0.1	2	74.6	9.8	15.6	0.083	0.504
AHUALULCO	11.00	3	0	3057	66	9	13.9	8.5	0.2	0.4	0	2	66	9	25	0.115	0.502
MOCTEZUMA	59.00	1	0	1724	85.8	3	7.3	3.3	0	0.2	0	0.4	85.8	3	11.2	0.091	0.502
CHARCAS	100.00	1	0	1842	84.5	5.2	7.1	3.1	0	0	0.1	0	84.5	5.2	10.3	0.072	0.503
CHARCAS	100.00	3	0	1123	80.4	9.1	7.7	2.2	0	0	0	0.6	80.4	9.1	10.5	0.086	0.501
T. C. SAN LUIS POTOSI - MATEHUALA	169.00	1	0	794	82.4	4.3	5.5	2.9	2	1.4	0.6	0.9	82.4	4.3	13.3	0.084	0.503

15 CARR : SAN LUIS POTOSI - VILLA DE ARRIAGA (CUOTA)

CLAVE: 24209

RUTA : SLP

AÑO : 2007

L U G A R	E S T A C I O N				C L A S I F I C A C I O N V E H I C U L A R E N P O R C I E N T O .												
	KM	TE	SC	TDPA	A	B	C2	C3	T3S2	T3S3	T3S2R4	OTROS	A	B	C	K'	D
T. C. QUERETARO - SAN LUIS POTOSI	0.00	3	0	2410	74.1	5.2	6.9	4.3	3.2	3.5	0.2	2.6	74.1	5.2	20.7	0.09	0.5

SAN LUIS POTOSI

15 CARR : SAN LUIS POTOSI - VILLA DE ARRIAGA (CUOTA)

CLAVE: 24209

RUTA : SLP

AÑO : 2007

L U G A R	E S T A C I O N				C L A S I F I C A C I O N V E H I C U L A R E N P O R C I E N T O .												
	KM	TE	SC	TDPA	A	B	C2	C3	T3S2	T3S3	T3S2R4	OTROS	A	B	C	K'	D
VILLA DE ARRIAGA	76.50	1	0	2263	67.3	11.9	5.2	4.4	4	4.7	0.1	2.4	67.3	11.9	20.8	0.09	0.503

16 CARR : RAYON - LAGUNILLAS

CLAVE: 24008

RUTA : SLP-008

AÑO : 2007

L U G A R	E S T A C I O N				C L A S I F I C A C I O N V E H I C U L A R E N P O R C I E N T O .												
	KM	TE	SC	TDPA	A	B	C2	C3	T3S2	T3S3	T3S2R4	OTROS	A	B	C	K'	D
RAYON	0.00	3	0	879	93.9	2	0	0.7	2.1	0.2	0.3	0.8	93.9	2	4.1	0.082	0.503
LAGUNILLAS	38.00	0	0														

17 CARR : SAN LORENZO - MOCTEZUMA

CLAVE: 24016

RUTA : MEX-069-SLP

AÑO : 2007

L U G A R	E S T A C I O N				C L A S I F I C A C I O N V E H I C U L A R E N P O R C I E N T O .												
	KM	TE	SC	TDPA	A	B	C2	C3	T3S2	T3S3	T3S2R4	OTROS	A	B	C	K'	D
T. C. SAN LUIS POTOSI - MATEHUALA	0.00	3	0	972	84.5	5.1	6.5	2.8	0.4	0.7	0	0	84.5	5.1	10.4	0.095	0.502
MOCTEZUMA	54.00	1	0	572	78.6	9.3	6.8	2.9	0.7	1	0	0.7	78.6	9.3	12.1	0.087	0.502

18 CARR : LIBRAMIENTO DE CD. VALLES

CLAVE: 24205

RUTA : MEX

AÑO : 2007

L U G A R	E S T A C I O N				C L A S I F I C A C I O N V E H I C U L A R E N P O R C I E N T O .												
	KM	TE	SC	TDPA	A	B	C2	C3	T3S2	T3S3	T3S2R4	OTROS	A	B	C	K'	D
T. C. CD. VALLES - SAN LUIS POTOSI	0.00	3	0	5549	80.2	2.4	2.4	3.8	5.4	2.2	2.2	1.4	80.2	2.4	17.4	0.081	0.511
T. C. CD. VALLES - TAMPICO	11.60	1	0	3626	71.7	3.7	4.9	6.9	6.2	3.4	2.2	1	71.7	3.7	24.6	0.073	0.51

19 CARR : LIBRAMIENTO DE VILLA DE REYES

CLAVE: 24010

RUTA : SLP

AÑO : 2007

L U G A R	E S T A C I O N				C L A S I F I C A C I O N V E H I C U L A R E N P O R C I E N T O .												
	KM	TE	SC	TDPA	A	B	C2	C3	T3S2	T3S3	T3S2R4	OTROS	A	B	C	K'	D
T. C. ENT. ZARAGOZA - SAN FELIPE	0.00	3	0	2265	76.9	5.8	7.9	4.4	1.6	1.6	0.2	1.6	76.9	5.8	17.3	0.098	0.504
T. C. VILLA DE REYES - BLEDOS	4.50	0	0														

20 CARR : LIBRAMIENTO ORIENTE DE SAN LUIS POTOSI (CUOTA)

CLAVE: 24009

RUTA : MEX-057D

AÑO : 2007

L U G A R	E S T A C I O N				C L A S I F I C A C I O N V E H I C U L A R E N P O R C I E N T O .												
	KM	TE	SC	TDPA	A	B	C2	C3	T3S2	T3S3	T3S2R4	OTROS	A	B	C	K'	D
T. C. QUERETARO - SAN LUIS POTOSI	0.00	0	0														
X. C. CD. VALLES - SAN LUIS POTOSI	11.20	1	1	3908	70.4	7.2	4.5	3.4	6.4	6.1	0	2	70.4	7.2	22.4	0.088	0.502

SAN LUIS POTOSI

20 CARR : LIBRAMIENTO ORIENTE DE SAN LUIS POTOSI (CUOTA)

CLAVE: 24009

RUTA : MEX-057D

AÑO : 2007

L U G A R	E S T A C I O N				C L A S I F I C A C I O N V E H I C U L A R E N P O R C I E N T O .												
	KM	TE	SC	TDPA	A	B	C2	C3	T3S2	T3S3	T3S2R4	OTROS	A	B	C	K'	D
X. C. CD. VALLES - SAN LUIS POTOSI	11.20	1	2	3934	69.1	6.3	6.1	4.7	6.4	6.3	0	1.1	69.1	6.3	24.6	0.081	0.502
CASETA DE COBRO SAN NICOLAS DE LOS JASSOS	11.20	2	1	4939													
CASETA DE COBRO SAN NICOLAS DE LOS JASSOS	11.20	2	2	4938													
T. C. SAN LUIS POTOSI - MATEHUALA	33.76	1	1	3908	62.6	6.2	9.9	5.7	7.6	6.7	0	1.3	62.6	6.2	31.2	0.079	0.502
T. C. SAN LUIS POTOSI - MATEHUALA	33.76	1	2	3940	66.5	5.5	8	5.7	6.3	5.7	0.8	1.5	66.5	5.5	28	0.076	0.502

21 CARR : RAMAL A OJO DE AGUA

CLAVE: 24023

RUTA : MEX

AÑO : 2007

L U G A R	E S T A C I O N				C L A S I F I C A C I O N V E H I C U L A R E N P O R C I E N T O .												
	KM	TE	SC	TDPA	A	B	C2	C3	T3S2	T3S3	T3S2R4	OTROS	A	B	C	K'	D
T. C. ENT. CARBONERA - ENT. SAN TIBURCIO	0.00	3	0	2754	83.8	5.3	4.1	1.8	1.6	1.3	0.6	1.5	83.8	5.3	10.9	0.079	0.502
T. C. ENT. CARBONERA - ENT. SAN TIBURCIO	5.80	0	0														

22 CARR : MATEHUALA - LA PAZ

CLAVE: 24621

RUTA : SLP

AÑO : 2007

L U G A R	E S T A C I O N				C L A S I F I C A C I O N V E H I C U L A R E N P O R C I E N T O .												
	KM	TE	SC	TDPA	A	B	C2	C3	T3S2	T3S3	T3S2R4	OTROS	A	B	C	K'	D
MATEHUALA	0.00	3	0	3424	83.5	5.2	5	2	1.5	0.7	0.6	1.5	83.5	5.2	11.3	0.079	0.502
LA PAZ	10.00	1	1	1433	89	3.3	4.1	1.1	0.6	0.6	0.8	0.5	89	3.3	7.7	0.093	0.501
LA PAZ	10.00	1	2	1439	88.4	3.2	4.4	1.1	0.5	0.9	0.9	0.6	88.4	3.2	8.4	0.092	0.501

23 CARR : T. C. (S.L.P. - MATEHUALA) - VILLA HIDALGO

CLAVE: 24619

RUTA : MEX

AÑO : 2007

L U G A R	E S T A C I O N				C L A S I F I C A C I O N V E H I C U L A R E N P O R C I E N T O .												
	KM	TE	SC	TDPA	A	B	C2	C3	T3S2	T3S3	T3S2R4	OTROS	A	B	C	K'	D
PASO POR VILLA HIDALGO	0.00	3	0	1862	65.9	7.9	6.3	5.6	7.3	4.5	0.1	2.4	65.9	7.9	26.2	0.09	0.5
PASO POR VILLA HIDALGO	10.00	1	0	1866	65.2	8.8	5.7	6.3	7.1	4.6	0	2.3	65.2	8.8	26	0.083	0.502

24 CARR : PERIFERICO DE SAN LUIS POTOSI

CLAVE: 24618

RUTA : SLP

AÑO : 2007

L U G A R	E S T A C I O N				C L A S I F I C A C I O N V E H I C U L A R E N P O R C I E N T O .												
	KM	TE	SC	TDPA	A	B	C2	C3	T3S2	T3S3	T3S2R4	OTROS	A	B	C	K'	D
T. C. SAN LUIS POTOSI - ENT. ARCINAS	0.00	0	0														
X. C. QUERETARO - SAN LUIS POTOSI	22.00	3	1	15894	69.3	10	3	8	3.2	4	0.3	2.2	69.3	10	20.7	0.063	0.502
X. C. QUERETARO - SAN LUIS POTOSI	22.00	3	2	15799	73	6.4	6.3	4.2	3.9	3.4	0.2	2.6	73	6.4	20.6	0.079	0.502

SAN LUIS POTOSI

29 CARR : T. C. (QRO - S.L.P.) - TIERRA NUEVA

CLAVE: 24203

RUTA : SLP

AÑO : 2007

L U G A R	E S T A C I O N				C L A S I F I C A C I O N V E H I C U L A R E N P O R C I E N T O .												
	KM	TE	SC	TDPA	A	B	C2	C3	T3S2	T3S3	T3S2R4	OTROS	A	B	C	K'	D
T. C. QUERETARO - SAN LUIS POTOSI	0.00	3	0	8266	74.9	4.3	4.2	5.2	6	2.9	0.1	2.4	74.9	4.3	20.8	0.093	0.502
TIERRA NUEVA	13.00	0	0														

30 CARR : RAYON - CD. DEL MAIZ

CLAVE: 24257

RUTA : SLP

AÑO : 2007

L U G A R	E S T A C I O N				C L A S I F I C A C I O N V E H I C U L A R E N P O R C I E N T O .												
	KM	TE	SC	TDPA	A	B	C2	C3	T3S2	T3S3	T3S2R4	OTROS	A	B	C	K'	D
RAYON	0.00	3	0	2983	84.2	3.2	4.5	3.1	2.1	1.6	1.2	0.1	84.2	3.2	12.6	0.101	0.503
CARDENAS	19.00	1	0	2296	85.5	4	4	2.3	1.7	1.5	0.9	0.1	85.5	4	10.5	0.107	0.501
CD. DEL MAIZ	79.00	1	0	2365	83.9	5.9	3.1	3.2	1.2	1.4	0.2	1.1	83.9	5.9	10.2	0.076	0.501

31 CARR : SAN LUIS POTOSI - MATEHUALA

CLAVE: 24508

RUTA : MEX-057-080

AÑO : 2007

L U G A R	E S T A C I O N				C L A S I F I C A C I O N V E H I C U L A R E N P O R C I E N T O .												
	KM	TE	SC	TDPA	A	B	C2	C3	T3S2	T3S3	T3S2R4	OTROS	A	B	C	K'	D
SAN LUIS POTOSI	0.00	0	0														
X. PERIFERICO DE SAN LUIS POTOSI	7.36	3	1	9824	75.7	4.2	5.9	4.4	4.2	3.6	0.1	1.9	75.7	4.2	20.1	0.072	0.503
X. PERIFERICO DE SAN LUIS POTOSI	7.36	3	2	9721	76.6	4.2	5.8	4	4.2	3.4	0	1.8	76.6	4.2	19.2	0.069	0.503
VENTURA (X. NUEVO LIBRAMIENTO DE SLP.)	33.20	3	1	4800	73	5.9	5.9	4.4	5	4.3	0.1	1.4	73	5.9	21.1	0.101	0.502
VENTURA (X. NUEVO LIBRAMIENTO DE SLP.)	33.20	3	2	4766	72.8	5.6	7	3.9	4.7	4.8	0	1.2	72.8	5.6	21.6	0.098	0.502
T. DER. VILLA HIDALGO	45.94	1	1	5576	59.5	8.1	8.5	6.2	9.5	6.7	0	1.5	59.5	8.1	32.4	0.087	0.5
T. DER. VILLA HIDALGO	45.94	1	2	5579	66.3	5.9	5.4	6.2	9.9	5	0	1.3	66.3	5.9	27.8	0.084	0.5
T. IZQ. VILLA ARISTA	61.35	1	1	5895	70.3	6.5	3.9	4.3	9.1	3.8	0.2	1.9	70.3	6.5	23.2	0.1	0.501
T. IZQ. VILLA ARISTA	61.35	1	2	5861	68.5	7.1	4.9	4.4	9.7	4.1	0.1	1.2	68.5	7.1	24.4	0.101	0.501
T. DER. GUADALCAZAR	75.70	1	1	5881	33.4	1.5	3.2	2.8	0.4	51.2	1	6.5	33.4	1.5	65.1	0.086	0.503
T. DER. GUADALCAZAR	75.70	1	2	5812	33.3	1.6	3.1	2.7	0.3	51.5	1.1	6.4	33.3	1.6	65.1	0.079	0.503
T. DER. GUADALCAZAR	75.70	3	1	5858	72.8	5.8	4	4	7.5	4.9	1	0	72.8	5.8	21.4	0.079	0.501
T. DER. GUADALCAZAR	75.70	3	2	5836	72.9	5.9	3.8	3.9	7.4	5	1.1	0	72.9	5.9	21.2	0.085	0.501
T. DER. CD. DEL MAIZ	109.60	3	1	5689	65.5	5.3	6.5	5.2	9	5.8	1.1	1.6	65.5	5.3	29.2	0.081	0.501
T. DER. CD. DEL MAIZ	109.60	3	2	5674	65.6	5.4	6.6	5.1	8.9	5.9	1	1.5	65.6	5.4	29	0.08	0.501
LA BONITA	171.40	1	1	5039	73.1	10.3	6.4	4.3	2.6	2.1	1.2	0	73.1	10.3	16.6	0.075	0.504
LA BONITA	171.40	1	2	4964	74.8	8.8	5.9	5.1	2	2.4	1	0	74.8	8.8	16.4	0.088	0.504
MATEHUALA	187.40	1	1	6098	73	10.4	6.2	4.3	2.7	2.2	1.2	0	73	10.4	16.6	0.08	0.503
MATEHUALA	187.40	1	2	6022	74.6	9	6	5.2	2	2.2	1	0	74.6	9	16.4	0.085	0.503

SAN LUIS POTOSI

32 CARR : SANTO DOMINGO - CERRO GORDO

CLAVE: 24614

RUTA : SLP

AÑO : 2007

L U G A R	E S T A C I O N				C L A S I F I C A C I O N V E H I C U L A R E N P O R C I E N T O .												
	KM	TE	SC	TDPA	A	B	C2	C3	T3S2	T3S3	T3S2R4	OTROS	A	B	C	K'	D
T. C. CD. VALLES - SAN LUIS POTOSI	0.00	3	0	1826	78.2	4	6.1	6.5	2.9	1.1	0.1	1.1	78.2	4	17.8	0.095	0.503
T. C. QUERETARO - SAN LUIS POTOSI	18.00	1	0	1207	76.2	7.8	5.3	4.8	0.9	1.1	0.2	3.7	76.2	7.8	16	0.091	0.503

33 CARR : TAMUIN - ESTACION F.F.C.C. TAMUIN

CLAVE: 24022

RUTA : SLP

AÑO : 2007

L U G A R	E S T A C I O N				C L A S I F I C A C I O N V E H I C U L A R E N P O R C I E N T O .												
	KM	TE	SC	TDPA	A	B	C2	C3	T3S2	T3S3	T3S2R4	OTROS	A	B	C	K'	D
TAMUIN	0.00	3	0	3786	85.2	4.8	0.8	0.5	4.4	0.9	1.4	2	85.2	4.8	10	0.093	0.508
ESTACION F.F.C.C. TAMUIN	10.00	1	0	1419	95.2	2.4	0.2	0	1.3	0.3	0.1	0.5	95.2	2.4	2.4	0.109	0.501

34 CARR : TAMUIN - SAN VICENTE TANCUAYALAB

CLAVE: 24027

RUTA : SLP

AÑO : 2007

L U G A R	E S T A C I O N				C L A S I F I C A C I O N V E H I C U L A R E N P O R C I E N T O .												
	KM	TE	SC	TDPA	A	B	C2	C3	T3S2	T3S3	T3S2R4	OTROS	A	B	C	K'	D
TAMUIN	0.00	3	0	3284	80.8	7	5.3	2.6	1.6	1.7	1	0	80.8	7	12.2	0.095	0.504
SAN VICENTE TANCUAYALAB	37.62	0	0														

35 CARR : ANTIGUO MORELOS - ENT. EL HUIZACHE

CLAVE: 00136

RUTA : MEX-080

AÑO : 2007

L U G A R	E S T A C I O N				C L A S I F I C A C I O N V E H I C U L A R E N P O R C I E N T O .												
	KM	TE	SC	TDPA	A	B	C2	C3	T3S2	T3S3	T3S2R4	OTROS	A	B	C	K'	D
ANTIGUO MORELOS	0.00	3	0	2996	70.4	6.2	2.6	3.2	8.1	2.9	5.5	1.1	70.4	6.2	23.4	0.101	0.506
NUEVO MORELOS	19.28	1	0	3370	68.2	6.2	3.2	3.9	8.1	3.2	6.1	1.1	68.2	6.2	25.6	0.082	0.502
LIM. EDOS. TERM. TAMPS. PPIA. S.L.P.	25.00	0	0														
EL NARANJO	32.00	1	0	3489	73.8	7.7	7	4.1	2	3.1	1.1	1.2	73.8	7.7	18.5	0.068	0.501
EL NARANJO	32.00	3	0	3168	74.1	8.4	5	3.5	3.1	4.2	1.1	0.6	74.1	8.4	17.5	0.066	0.501
CD. DEL MAIZ	86.00	3	0	1293	78.7	5	7.1	2.4	2	3.1	0.3	1.4	78.7	5	16.3	0.085	0.502
T. DER. TULA	141.20	3	0	2207	69.7	5.9	7.6	5.6	3.9	5.8	1	0.5	69.7	5.9	24.4	0.075	0.502
T. C. SAN LUIS POTOSI - MATEHUALA (ENT. EL HUIZACHE)	198.80	1	0	3117	64.8	8.2	7.2	7.1	4.2	6.9	1.1	0.5	64.8	8.2	27	0.074	0.501

36 CARR : JALPAN DE SERRA - RIO VERDE

CLAVE: 00265

RUTA : MEX-069

AÑO : 2007

L U G A R	E S T A C I O N				C L A S I F I C A C I O N V E H I C U L A R E N P O R C I E N T O .												
	KM	TE	SC	TDPA	A	B	C2	C3	T3S2	T3S3	T3S2R4	OTROS	A	B	C	K'	D
JALPAN DE SERRA	0.00	3	0	3143	90.1	2.7	1.3	0.9	1.9	0.5	0.8	1.8	90.1	2.7	7.2	0.101	0.537

SAN LUIS POTOSI

36 CARR : JALPAN DE SERRA - RIO VERDE

CLAVE: 00265

RUTA : MEX-069

AÑO : 2007

L U G A R	E S T A C I O N				C L A S I F I C A C I O N V E H I C U L A R E N P O R C I E N T O .												
	KM	TE	SC	TDPA	A	B	C2	C3	T3S2	T3S3	T3S2R4	OTROS	A	B	C	K'	D
T. IZQ. CONCA	35.01	1	0	1600	89.5	3.4	3	1.4	1.6	0.4	0.2	0.5	89.5	3.4	7.1	0.092	0.501
ARROYO SECO	48.60	1	0	1002	90.3	2.6	3.2	1.5	1.3	0.6	0.1	0.4	90.3	2.6	7.1	0.111	0.512
LIM. EDOS. TERM. QRO. PPIA. S.L.P.	57.27	0	0														
SAN CIRO DE ACOSTA	69.42	1	0	780	86.9	3.3	4.4	2.2	1.7	1.1	0.4	0	86.9	3.3	9.8	0.092	0.503
SAN CIRO DE ACOSTA	69.42	3	0	2787	91.5	2.5	1.2	0.4	2.5	0.4	0.6	0.9	91.5	2.5	6	0.088	0.502
RIO VERDE	105.50	1	0	5174	85.6	3.1	4.5	2.3	1.8	1.6	0.9	0.2	85.6	3.1	11.3	0.09	0.501

37 CARR : PORTEZUELO - CD. VALLES

CLAVE: 00023

RUTA : MEX-085

AÑO : 2007

L U G A R	E S T A C I O N				C L A S I F I C A C I O N V E H I C U L A R E N P O R C I E N T O .												
	KM	TE	SC	TDPA	A	B	C2	C3	T3S2	T3S3	T3S2R4	OTROS	A	B	C	K'	D
PORTEZUELO	0.00	3	0	4189	84.1	4.3	3.6	1.2	3.6	1.1	0.9	1.2	84.1	4.3	11.6	0.085	0.511
T. DER. TASQUILLO (2° ACCESO)	10.50	1	0	3012	84.2	4.2	4.1	1.5	3.3	1.4	0.5	0.8	84.2	4.2	11.6	0.094	0.507
T. IZQ. ZIMAPAN (1° ACCESO)	32.00	1	0	3321	85.5	4.1	3.3	1.2	3.3	1.1	0.6	0.9	85.5	4.1	10.4	0.112	0.51
T. IZQ. ZIMAPAN (1° ACCESO)	32.00	3	0	1483	87	5.2	2.9	1.7	1.9	0.9	0.1	0.3	87	5.2	7.8	0.103	0.519
LA ESTANCIA	41.00	3	0	1193	81.9	5.9	5.9	2.6	1.2	0.7	0.4	1.4	81.9	5.9	12.2	0.096	0.511
TRANCAS	51.00	3	0	1451	82.8	9	1.8	2	0.9	1.7	0	1.8	82.8	9	8.2	0.099	0.501
JACALA	98.60	3	0	1745	84.2	4.2	5.5	1.6	1.7	0.9	0.6	1.3	84.2	4.2	11.6	0.088	0.504
ZACATE GRANDE	143.10	1	0	1809	84.5	5.3	3.4	2.7	0.9	1.6	0	1.6	84.5	5.3	10.2	0.088	0.501
T. IZQ. PISAFLORES	154.00	3	0	1507	84.9	4.6	4.5	2.4	1.4	0.7	0.4	1.1	84.9	4.6	10.5	0.094	0.5
LIM. EDOS. TERM. HGO. PPIA. S.L.P.	168.60	0	0														
TAMAZUNCHALE	192.80	1	0	3099	86.9	2.8	4.2	2.1	1.1	1.3	1	0.6	86.9	2.8	10.3	0.074	0.5
T. IZQ. XILITLA	228.80	1	0	3804	78.2	3.8	6.6	3.8	2.1	2.9	1	1.6	78.2	3.8	18	0.074	0.502
T. IZQ. XILITLA	228.80	3	0	1711	78.2	6	6.4	4.3	2.2	2.2	0.7	0	78.2	6	15.8	0.088	0.502
T. IZQ. AQUISMON	252.50	1	0	3503	76.1	7.7	8.3	3.3	2	1.7	0.8	0.1	76.1	7.7	16.2	0.087	0.501
AGUA HEDIONDA	265.00	1	0	3864	71.6	8.5	6.8	6.1	3.7	2.1	1.1	0.1	71.6	8.5	19.9	0.087	0.501
CD. VALLES	300.00	1	0	4529	72.4	8	7	5.6	3.5	2	1.4	0.1	72.4	8	19.6	0.087	0.502

38 CARR : QUERETARO - SAN LUIS POTOSI

CLAVE: 00165

RUTA : MEX-057

AÑO : 2007

L U G A R	E S T A C I O N				C L A S I F I C A C I O N V E H I C U L A R E N P O R C I E N T O .												
	KM	TE	SC	TDPA	A	B	C2	C3	T3S2	T3S3	T3S2R4	OTROS	A	B	C	K'	D
QUERETARO	0.00	0	0														
T. DER. LIBRAMIENTO DE QUERETARO	6.28	3	1	17555	58.9	4.6	1.4	2.5	7.8	5	13	6.8	58.9	4.6	36.5	0.068	0.505
T. DER. LIBRAMIENTO DE QUERETARO	6.28	3	2	17901	57.9	4.5	1.4	2.1	7.8	5.6	14	6.7	57.9	4.5	37.6	0.071	0.505

SAN LUIS POTOSI

38 CARR : QUERETARO - SAN LUIS POTOSI

CLAVE: 00165

RUTA : MEX-057

AÑO : 2007

L U G A R	E S T A C I O N				C L A S I F I C A C I O N V E H I C U L A R E N P O R C I E N T O .												
	KM	TE	SC	TDPA	A	B	C2	C3	T3S2	T3S3	T3S2R4	OTROS	A	B	C	K'	D
T. IZQ. JURQUILLA	15.63	3	1	16550	69.6	4.8	4.3	2.6	7.4	2.8	4	4.5	69.6	4.8	25.6	0.085	0.501
T. IZQ. JURQUILLA	15.63	3	2	16641	65.7	4.2	4.3	3	8	3.4	6.2	5.2	65.7	4.2	30.1	0.076	0.501
T. IZQ. SAN MIGUEL DE ALLENDE	28.53	1	1	12070	70.4	3.2	2.6	5.2	4.5	2.4	5.9	5.8	70.4	3.2	26.4	0.078	0.501
T. IZQ. SAN MIGUEL DE ALLENDE	28.53	1	2	12108	71.2	3.1	3.1	4.1	5.7	2.8	5.2	4.8	71.2	3.1	25.7	0.078	0.501
T. IZQ. SAN MIGUEL DE ALLENDE	28.53	3	1	10079	52	4.1	3.4	5	17.9	4.7	10.3	2.6	52	4.1	43.9	0.072	0.518
T. IZQ. SAN MIGUEL DE ALLENDE	28.53	3	2	10838	58.1	4.6	2	5.2	16.1	4.2	7.3	2.5	58.1	4.6	37.3	0.079	0.518
LIM. EDOS. TERM. QRO. PPIA. GTO.	35.53	0	0														
X. C. SAN JOSE ITURBIDE - EL ARENAL	46.83	1	1	9161	46.2	3.3	5.5	6.6	19.8	5.8	8.7	4.1	46.2	3.3	50.5	0.074	0.5
X. C. SAN JOSE ITURBIDE - EL ARENAL	46.83	1	2	9178	47.1	2.6	5.4	6.3	20.9	5.7	9	3	47.1	2.6	50.3	0.085	0.5
X. C. ENT. SAN MIGUEL DE ALLENDE - DR. MORA	61.93	1	1	8962	43.8	6.4	2.3	6.8	23.7	5.5	8.8	2.7	43.8	6.4	49.8	0.074	0.503
X. C. ENT. SAN MIGUEL DE ALLENDE - DR. MORA	61.93	1	2	8853	44.1	6.8	2.8	6.3	22.8	5.8	8.7	2.7	44.1	6.8	49.1	0.066	0.503
X. C. SAN LUIS DE LA PAZ - GUANAJUATO	86.68	1	1	8959	42.2	8.7	5	5.9	23.8	4.5	8.5	1.4	42.2	8.7	49.1	0.065	0.527
X. C. SAN LUIS DE LA PAZ - GUANAJUATO	86.68	1	2	8042	43.8	9.1	4.6	4.7	20.4	5.3	9.8	2.3	43.8	9.1	47.1	0.071	0.527
T. IZQ. SAN DIEGO DE LA UNION	119.10	3	1	7672	70.1	8.4	6.3	4	4.7	3.9	0.2	2.4	70.1	8.4	21.5	0.061	0.505
T. IZQ. SAN DIEGO DE LA UNION	119.10	3	2	7506	40.7	8.4	5.7	4.8	22.3	5	8	5.1	40.7	8.4	50.9	0.078	0.505
LIM. EDOS. TERM. GTO. PPIA. S.L.P.	126.30	0	0														
T. IZQ. SANTA MARIA DEL RIO	155.90	3	1	7218	71.2	4.6	7	6.1	3.9	4.1	0.3	2.8	71.2	4.6	24.2	0.106	0.501
T. IZQ. SANTA MARIA DEL RIO	155.90	3	2	7194	71.7	7.4	5	5.4	3.7	3.7	0.2	2.9	71.7	7.4	20.9	0.094	0.501
T. IZQ. VILLA DE REYES	176.40	1	1	8734	72	5	5.1	4.3	5.6	5.2	0.5	2.3	72	5	23	0.093	0.502
T. IZQ. VILLA DE REYES	176.40	1	2	8681	70.1	5.5	5.2	5	5.7	5.2	0.4	2.9	70.1	5.5	24.4	0.094	0.502
T. IZQ. VILLA DE REYES	176.40	3	1	7245	72.3	5.1	5	4.3	5.6	5	0.6	2.1	72.3	5.1	22.6	0.084	0.502
T. IZQ. VILLA DE REYES	176.40	3	2	7189	71	5.3	5.2	4.8	5.5	5.3	0.4	2.5	71	5.3	23.7	0.08	0.502
X. C. LIBRAMIENTO DE SAN LUIS POTOSI	184.80	1	1	8250	72.8	4.9	5	4.6	5.2	5.1	0.3	2.1	72.8	4.9	22.3	0.093	0.501
X. C. LIBRAMIENTO DE SAN LUIS POTOSI	184.80	1	2	8229	70.5	5.6	5.4	5.1	5.5	4.9	0.4	2.6	70.5	5.6	23.9	0.076	0.501
X. PERIFERICO SAN LUIS POTOSI	197.50	1	1	19219	74.2	7	3	4	6.7	2.3	0.2	2.6	74.2	7	18.8	0.097	0.514
X. PERIFERICO SAN LUIS POTOSI	197.50	1	2	20157	74.2	6.9	3	3.9	6.7	2.7	0.1	2.5	74.2	6.9	18.9	0.079	0.514
SAN LUIS POTOSI	204.30	0	0														

39 CARR : SAN JUAN DEL RIO - XILITLA

CLAVE: 00183

RUTA : MEX-120

AÑO : 2007

L U G A R	E S T A C I O N				C L A S I F I C A C I O N V E H I C U L A R E N P O R C I E N T O .												
	KM	TE	SC	TDPA	A	B	C2	C3	T3S2	T3S3	T3S2R4	OTROS	A	B	C	K'	D
SAN JUAN DEL RIO	0.00	0	0														
T. DER. LIBRAMIENTO DE SAN JUAN DEL RIO	5.20	3	1	6816	84.8	3	2.3	2.6	2.9	1.1	1	2.3	84.8	3	12.2	0.088	0.509
T. DER. LIBRAMIENTO DE SAN JUAN DEL RIO	5.20	3	2	6586	87.4	2.5	2.6	2.6	2.4	0.7	0.4	1.4	87.4	2.5	10.1	0.078	0.509

SAN LUIS POTOSI

39 CARR : SAN JUAN DEL RIO - XILITLA

CLAVE: 00183

RUTA : MEX-120

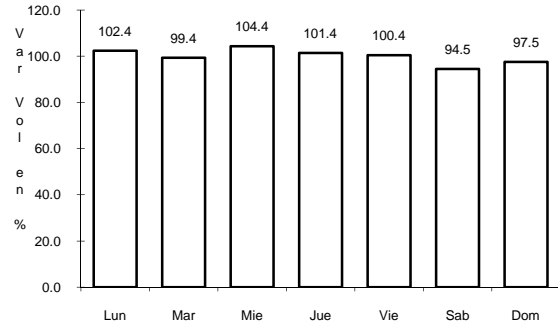
AÑO : 2007

L U G A R	E S T A C I O N				C L A S I F I C A C I O N V E H I C U L A R E N P O R C I E N T O .												
	KM	TE	SC	TDPA	A	B	C2	C3	T3S2	T3S3	T3S2R4	OTROS	A	B	C	K'	D
T. DER. TEQUISQUIAPAN	19.80	1	1	4575	86.1	2.1	2.5	2.1	3.4	0.8	1	2	86.1	2.1	11.8	0.114	0.51
T. DER. TEQUISQUIAPAN	19.80	1	2	4394	85.9	2.3	2.6	2.2	2.6	1	1	2.4	85.9	2.3	11.8	0.112	0.51
T. DER. TEQUISQUIAPAN	19.80	3	0	5939	76	3.1	2.5	1.5	7.2	2.1	3.9	3.7	76	3.1	20.9	0.076	0.513
EZEQUIEL MONTES	36.50	1	1	3581	85.9	2.5	2.2	3.6	2.3	0.8	0.9	1.8	85.9	2.5	11.6	0.125	0.513
EZEQUIEL MONTES	36.50	1	2	3402	85	2.2	1.7	2.4	3.3	1	1.6	2.8	85	2.2	12.8	0.135	0.513
EZEQUIEL MONTES	36.50	3	0	4365	83.8	1.9	2.8	3	3.4	1.3	1.7	2.1	83.8	1.9	14.3	0.09	0.506
CADEREYTA	47.90	3	0	2716	85.4	1.9	4.2	2.2	2.9	1.1	1	1.3	85.4	1.9	12.7	0.11	0.506
VIZARRON DE MONTES	73.50	3	0	2068	86.9	2.6	2.5	2.2	2.8	0.9	0.9	1.2	86.9	2.6	10.5	0.101	0.506
T. DER. SAN JOAQUIN	79.50	3	0	987	87.1	4	5.6	1.5	1	0.4	0.1	0.3	87.1	4	8.9	0.091	0.502
T. IZQ. HIGUERILLAS	89.10	3	0	1085	88.6	3.4	4.2	1.3	1.1	0.6	0.1	0.7	88.6	3.4	8	0.109	0.503
T. IZQ. PEÑAMILLER	103.00	3	0	752	89.8	4.4	1.1	1.5	1.3	0.6	0.2	1.1	89.8	4.4	5.8	0.122	0.502
PINAL DE AMOLES	140.00	3	0	1044	88.7	3.4	3.5	0.9	1.6	0.5	0.4	1	88.7	3.4	7.9	0.112	0.504
JALPAN DE SERRA	179.30	1	0	1143	90.8	3	1.5	0.3	2	0.5	0.6	1.3	90.8	3	6.2	0.078	0.503
JALPAN DE SERRA	179.30	3	0	1253	89.6	3.2	1.7	0.6	2.5	0.5	0.6	1.3	89.6	3.2	7.2	0.086	0.506
LANDA DE MATAMOROS	201.60	3	0	1664	88.3	3.9	4.5	1.3	1.2	0.3	0.1	0.4	88.3	3.9	7.8	0.101	0.521
EL LOBO	236.40	3	0	808	82	7.2	6.1	2.3	1.4	0.4	0.1	0.5	82	7.2	10.8	0.119	0.501
LIM. EDOS. TERM. QRO. PPIA. S.L.P.	238.30	0	0														
XILITLA	266.40	1	0	1061	81.6	7.3	6.2	3.3	0.8	0.7	0.1	0	81.6	7.3	11.1	0.102	0.501
T. C. PORTEZUELO - CD. VALLES	280.00	1	0	1384	84.4	4.1	5.9	3.5	0.9	0.7	0.5	0	84.4	4.1	11.5	0.101	0.504

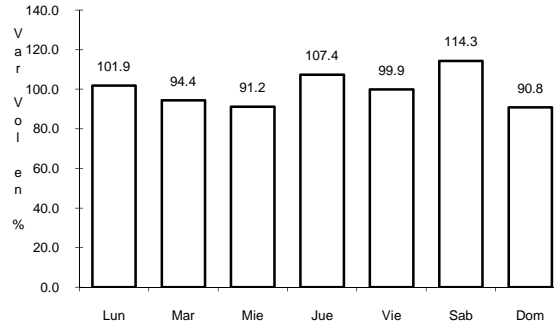
1 CARR: CD. VALLES - CD. VICTORIA

CLAVE: 00509

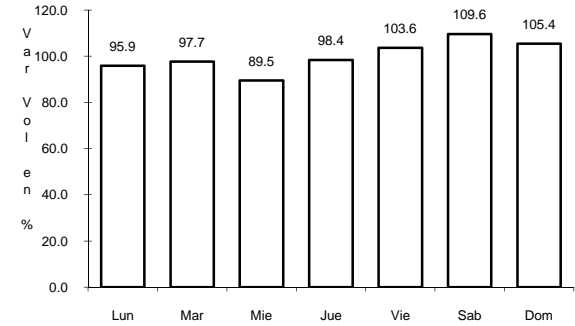
RUTA: MEX-085



Km: 0.00 Tipo: 3 Sent: 0



Km: 110.00 Tipo: 3 Sent: 0

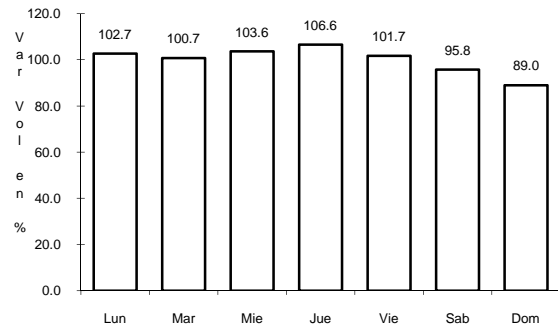


Km: 232.00 Tipo: 1 Sent: 0

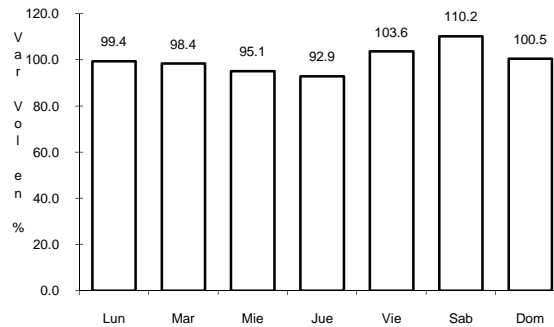
2 CARR: CD. VALLES - TAMPICO

CLAVE: 00138

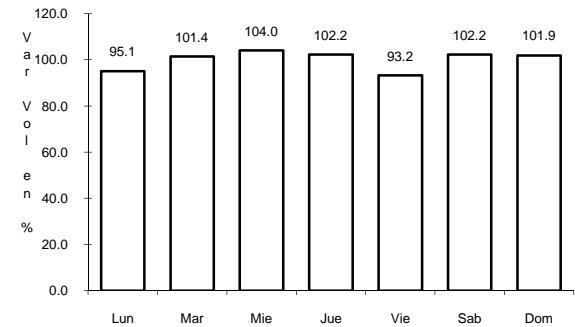
RUTA: MEX-070



Km: 0.00 Tipo: 3 Sent: 0



Km: 79.00 Tipo: 1 Sent: 0

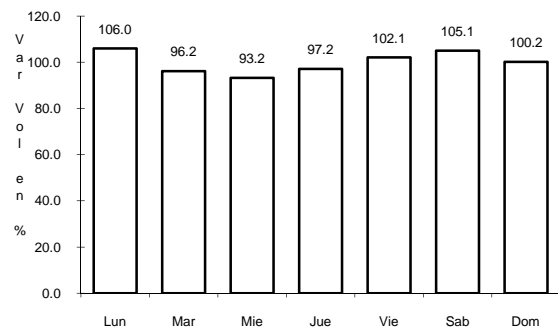


Km: 138.00 Tipo: 1 Sent: 0

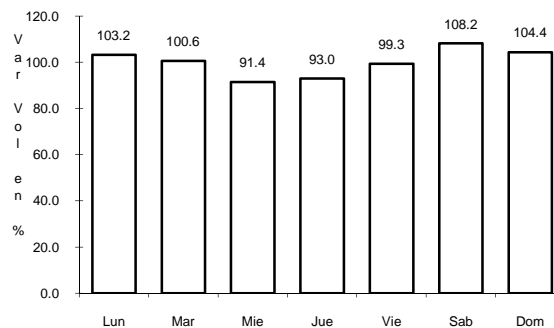
3 CARR: CARBONERA - T. C. (ENT. MORELOS - SALTILLO)

CLAVE: 00218

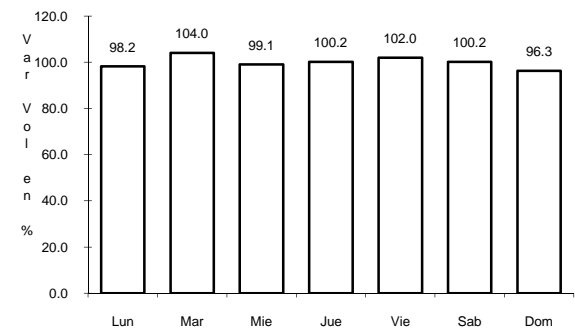
RUTA: MEX-062



Km: 0.00 Tipo: 3 Sent: 0



Km: 18.00 Tipo: 1 Sent: 0

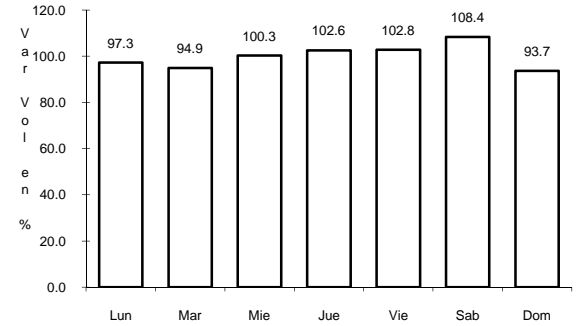
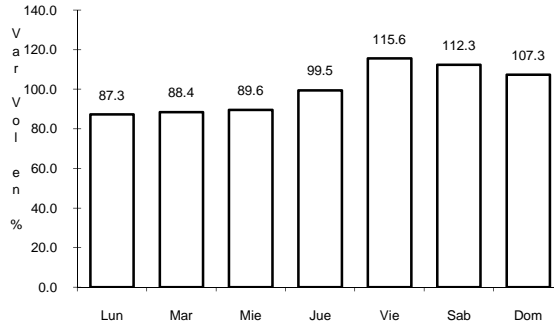
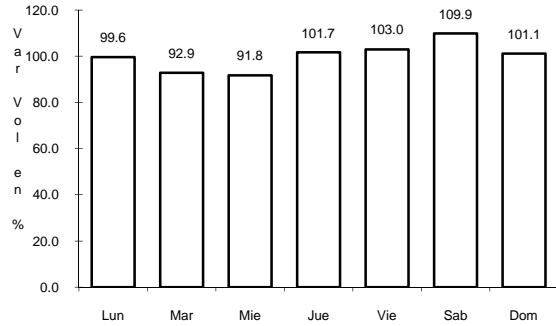


Km: 112.00 Tipo: 1 Sent: 0

7 CARR: MATEHUALA - LA POZA

CLAVE: 00086

ruta: SLP-NL-061



Km: 0.00 Tipo: 3 Sent: 0

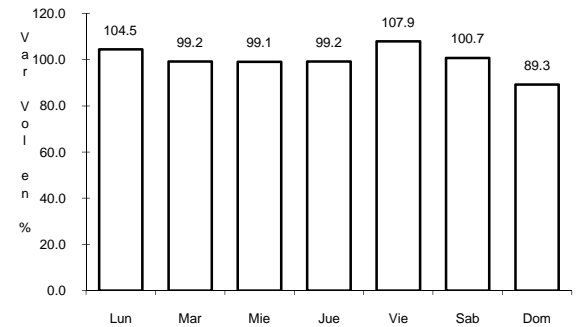
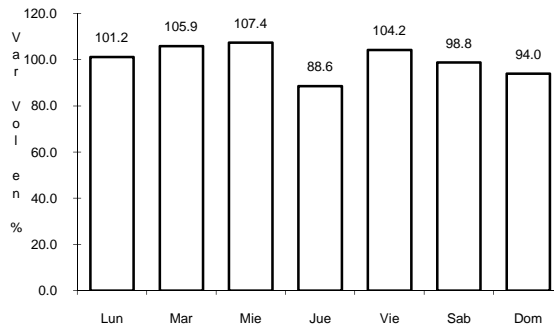
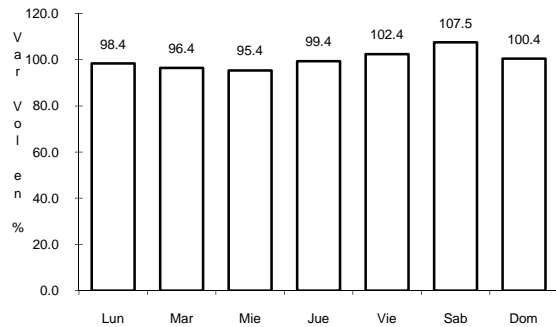
Km: 49.00 Tipo: 1 Sent: 0

Km: 190.00 Tipo: 1 Sent: 0

8 CARR: SAN LUIS POTOSI - ENT. ARCINAS

CLAVE: 00134

ruta: MEX-049



Km: 9.35 Tipo: 3 Sent: 0

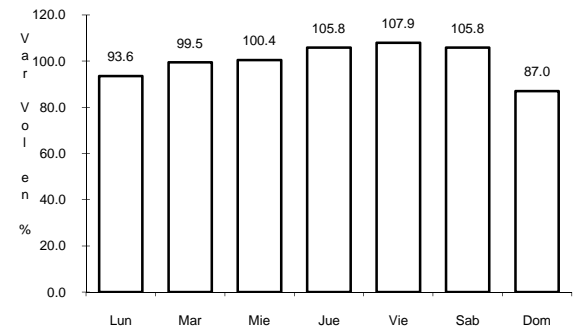
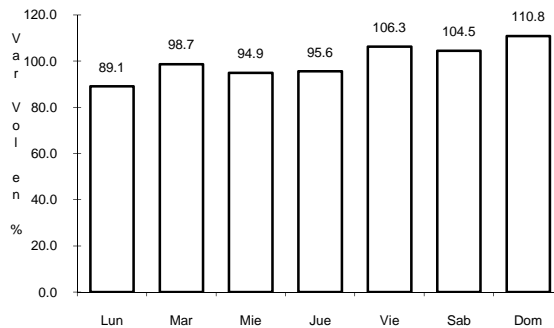
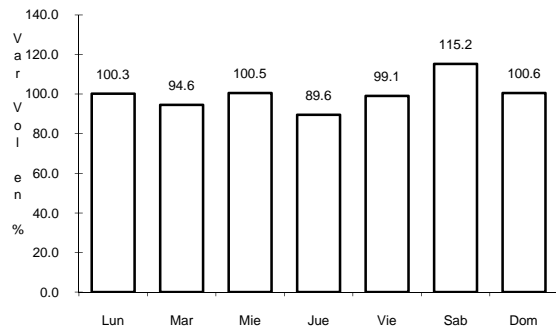
Km: 99.00 Tipo: 1 Sent: 0

Km: 162.98 Tipo: 1 Sent: 0

9 CARR: SAN LUIS POTOSI - LAGOS DE MORENO

CLAVE: 00133

ruta: MEX-070-080



Km: 0.00 Tipo: 3 Sent: 1

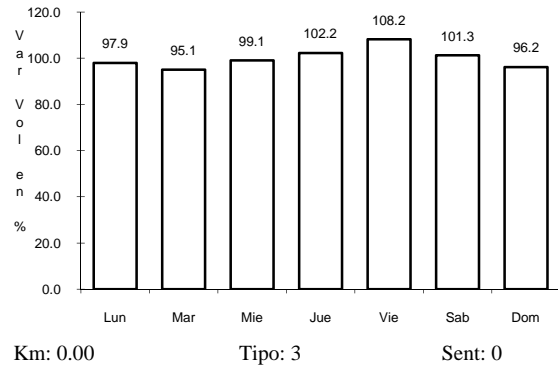
Km: 0.00 Tipo: 3 Sent: 2

Km: 146.90 Tipo: 1 Sent: 0

16 CARR: RAYON - LAGUNILLAS

CLAVE: 24008

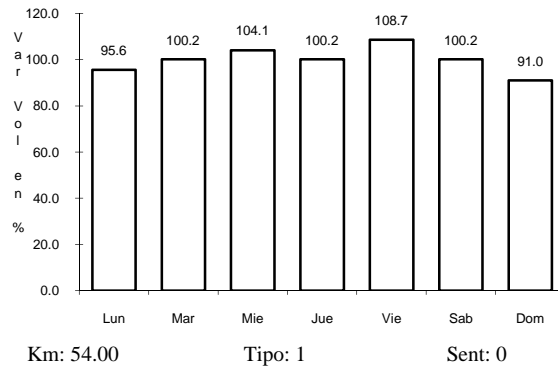
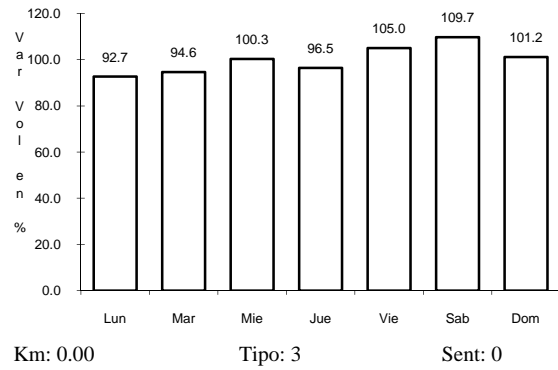
RUTA: SLP-008



17 CARR: SAN LORENZO - MOCTEZUMA

CLAVE: 24016

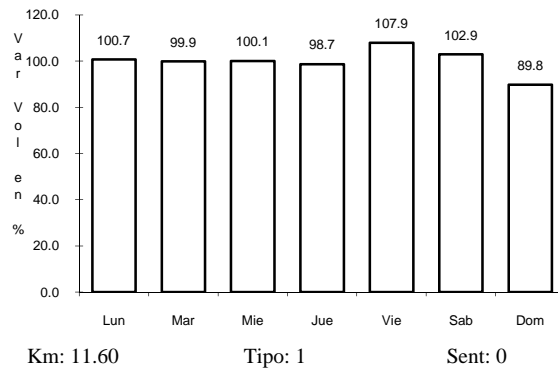
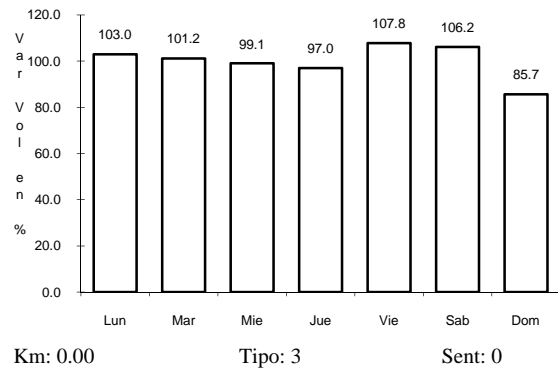
RUTA: MEX-069-SLP



18 CARR: LIBRAMIENTO DE CD. VALLES

CLAVE: 24205

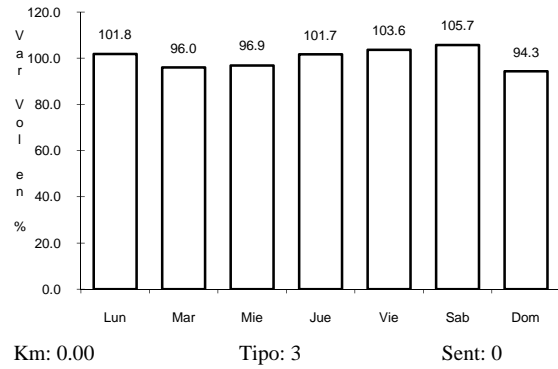
RUTA: MEX



19 CARR: LIBRAMIENTO DE VILLA DE REYES

CLAVE: 24010

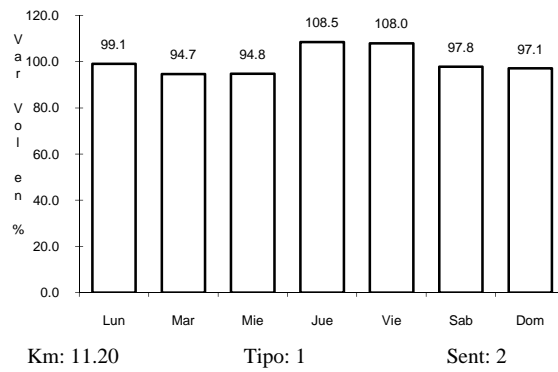
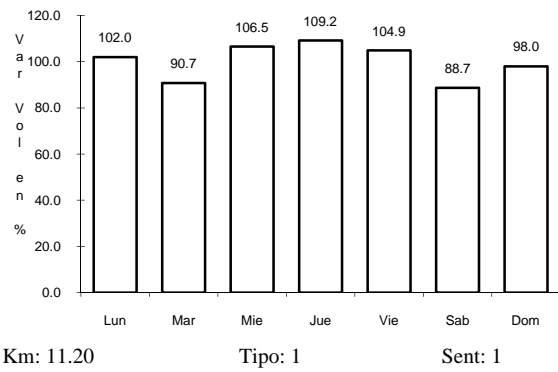
RUTA: SLP



20 CARR: LIBRAMIENTO ORIENTE DE SAN LUIS POTOSI (CUOTA)

CLAVE: 24009

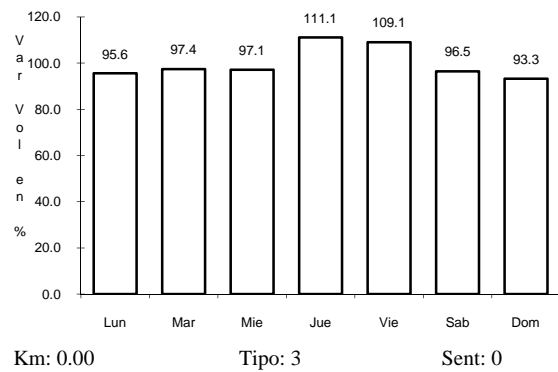
RUTA: MEX-057D



21 CARR: RAMAL A OJO DE AGUA

CLAVE: 24023

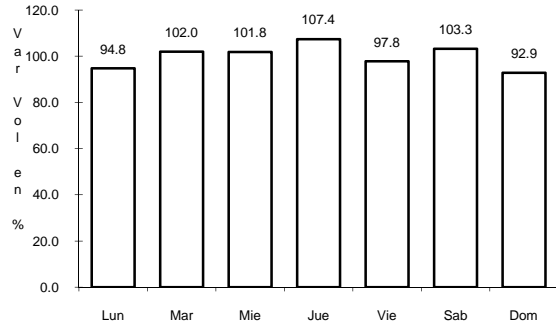
RUTA: MEX



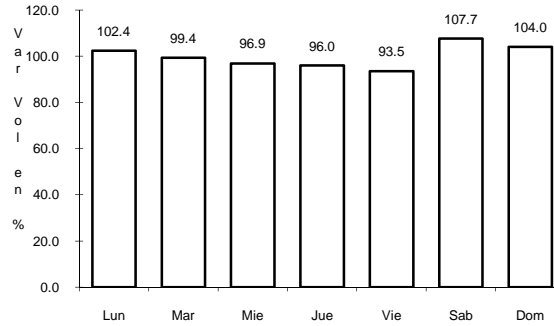
22 CARR: MATEHUALA - LA PAZ

CLAVE: 24621

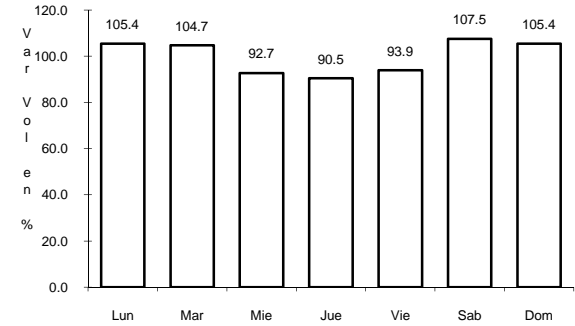
RUTA: SLP



Km: 0.00 Tipo: 3 Sent: 0



Km: 10.00 Tipo: 1 Sent: 1

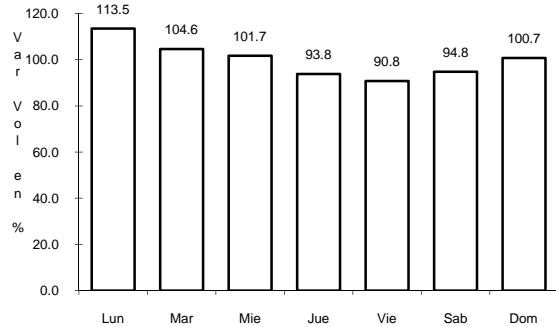


Km: 10.00 Tipo: 1 Sent: 2

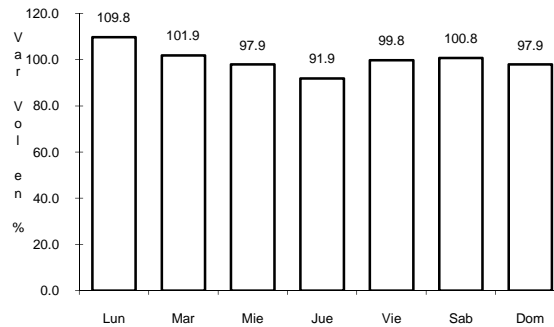
23 CARR: T. C. (S.L.P. - MATEHUALA) - VILLA HIDALGO

CLAVE: 24619

RUTA: MEX



Km: 0.00 Tipo: 3 Sent: 0

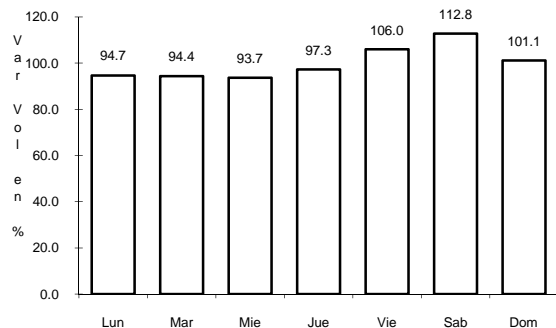


Km: 10.00 Tipo: 1 Sent: 0

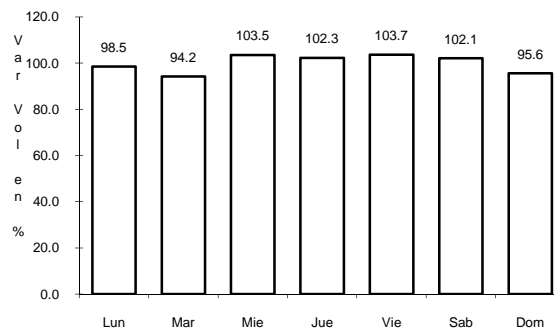
24 CARR: PERIFERICO DE SAN LUIS POTOSI

CLAVE: 24618

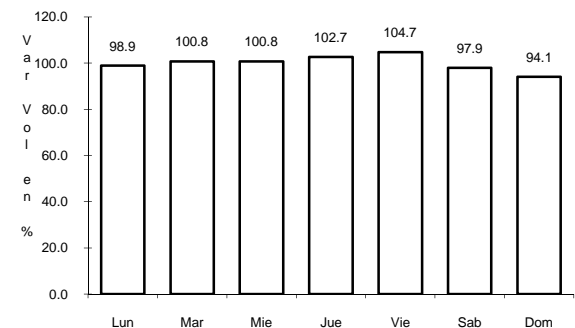
RUTA: SLP



Km: 22.00 Tipo: 3 Sent: 1



Km: 22.00 Tipo: 3 Sent: 2

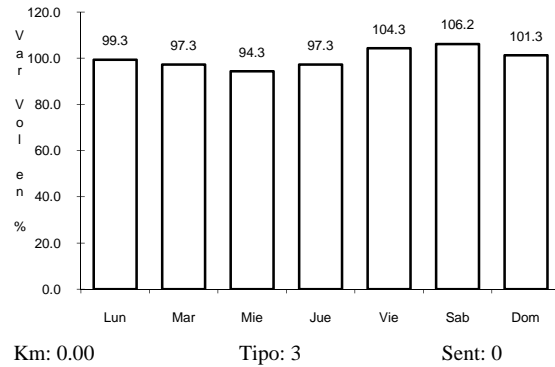


Km: 30.70 Tipo: 1 Sent: 0

25 CARR: RAMAL A AEROPUERTO DE S. L. P.

CLAVE: 24206

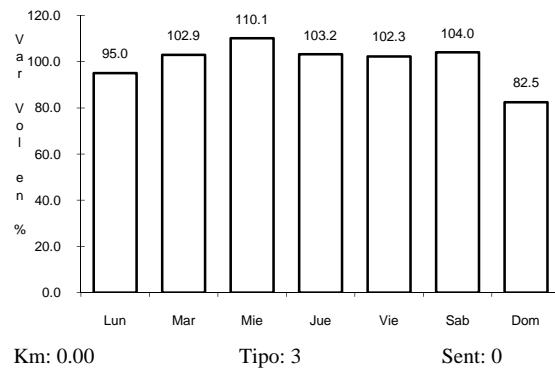
RUTA: SLP



26 CARR: RAMAL A CERRITOS

CLAVE: 24615

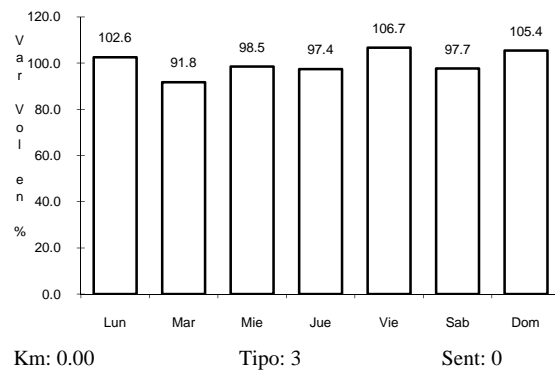
RUTA: SLP



27 CARR: RAMAL A POZO DE ACUÑA

CLAVE: 24626

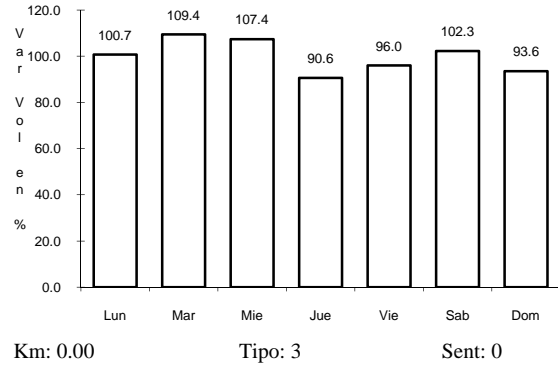
RUTA: SLP



28 CARR: T. C. (ENT. EL HUIZACHE- ANT. MORELOS)-EL SALTO

CLAVE: 24204

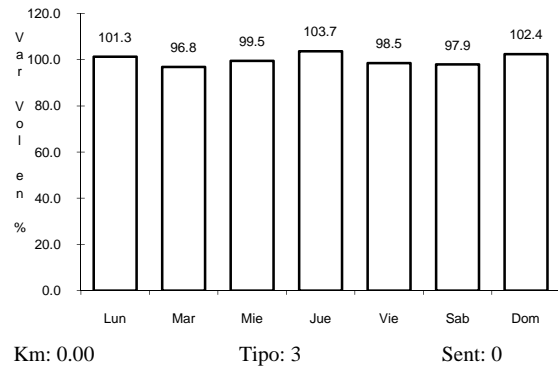
RUTA: MEX



29 CARR: T. C. (QRO - S.L.P.) - TIERRA NUEVA

CLAVE: 24203

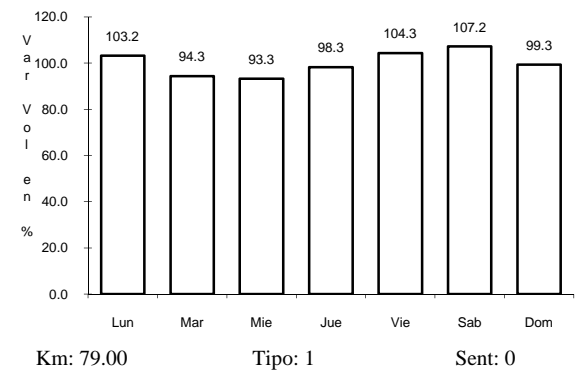
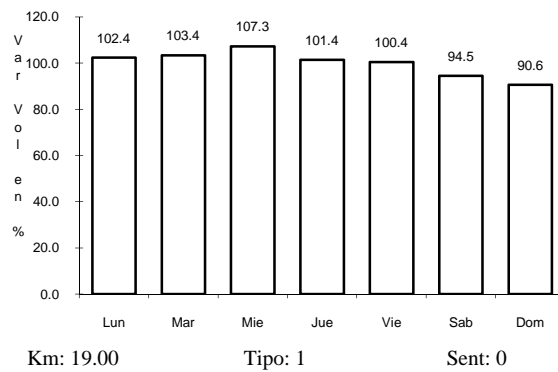
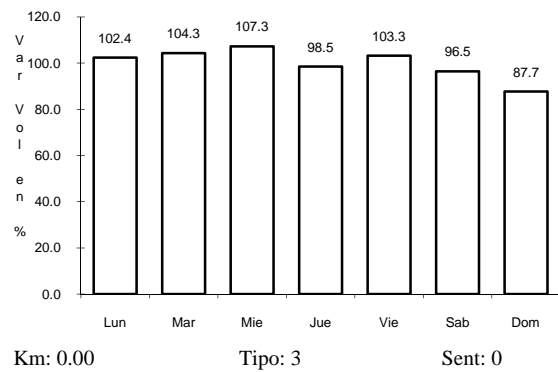
RUTA: SLP



30 CARR: RAYON - CD. DEL MAIZ

CLAVE: 24257

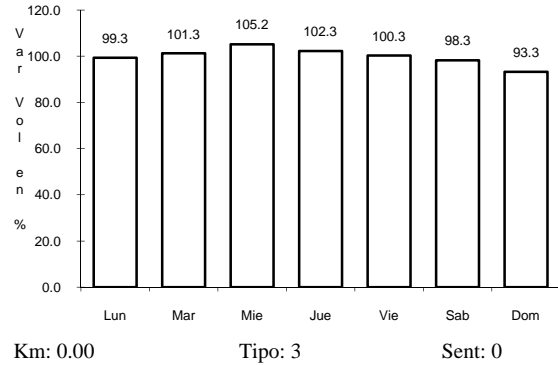
RUTA: SLP



34 CARR: TAMUIN - SAN VICENTE TANCUAYALAB

CLAVE: 24027

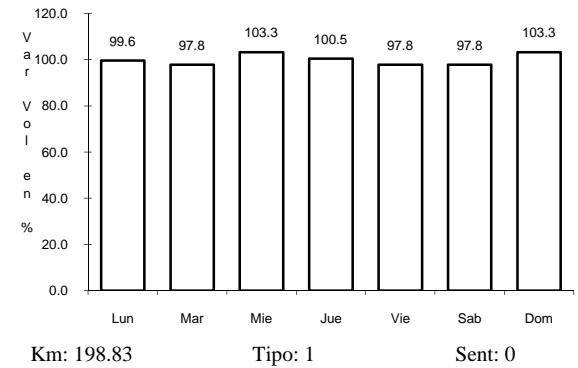
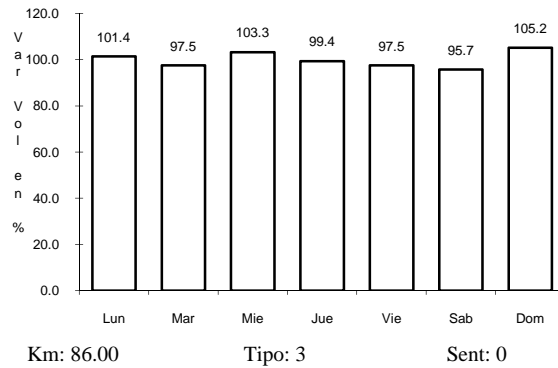
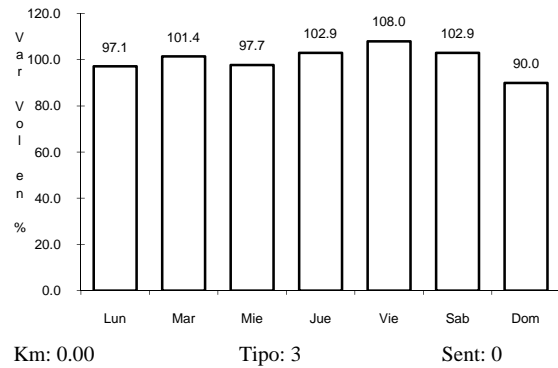
ruta: SLP



35 CARR: ANTIGUO MORELOS - ENT. EL HUIZACHE

CLAVE: 00136

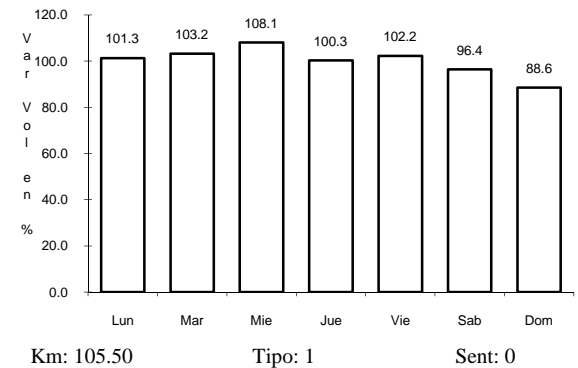
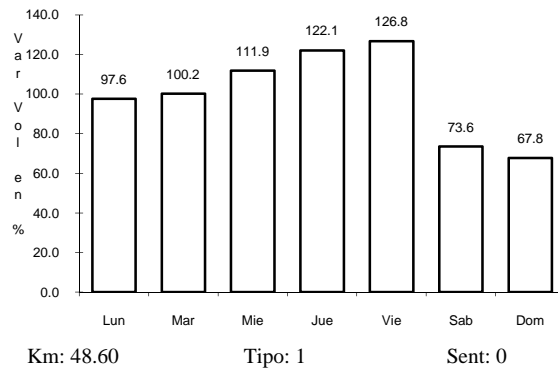
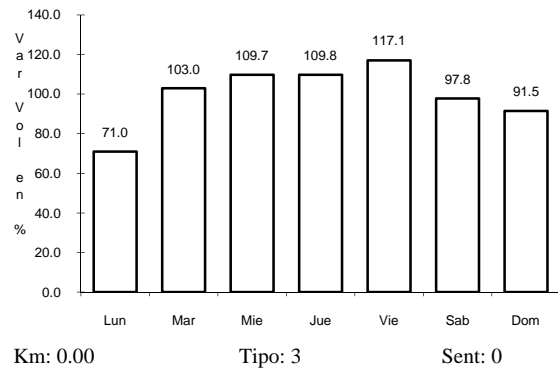
ruta: MEX-080



36 CARR: JALPAN DE SERRA - RIO VERDE

CLAVE: 00265

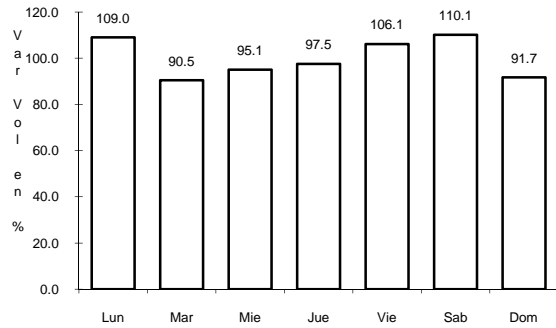
ruta: MEX-069



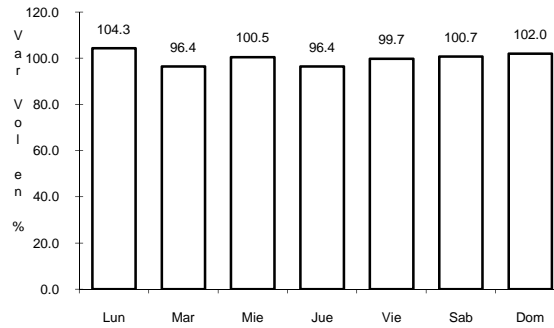
37 CARR: PORTEZUELO - CD. VALLES

CLAVE: 00023

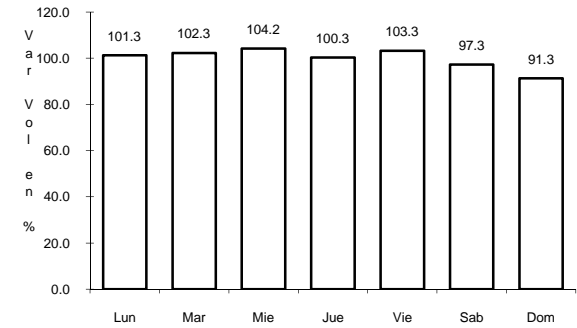
RUTA: MEX-085



Km: 0.00 Tipo: 3 Sent: 0



Km: 154.00 Tipo: 3 Sent: 0

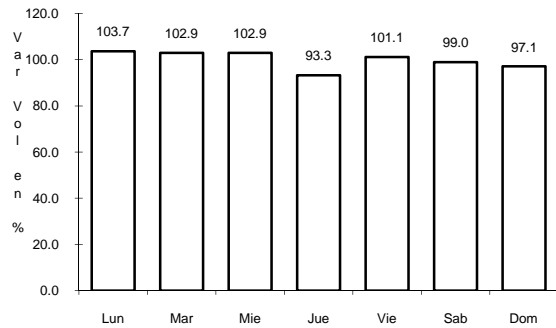


Km: 300.00 Tipo: 1 Sent: 0

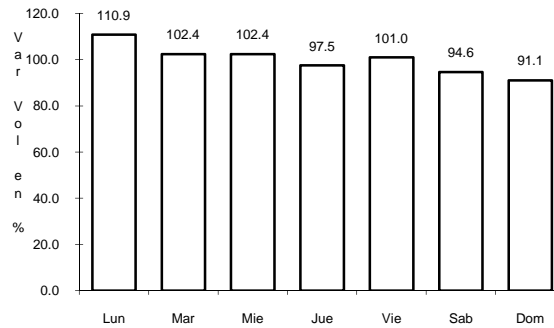
38 CARR: QUERETARO - SAN LUIS POTOSI

CLAVE: 00165

RUTA: MEX-057



Km: 6.28 Tipo: 3 Sent: 1

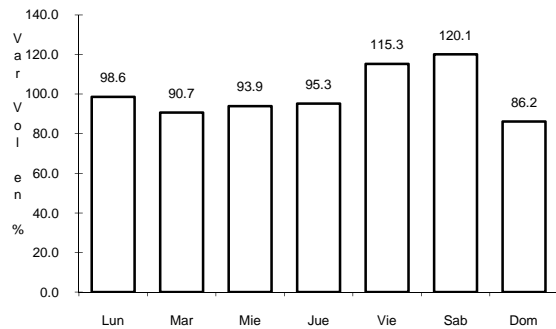


Km: 6.28 Tipo: 3 Sent: 2

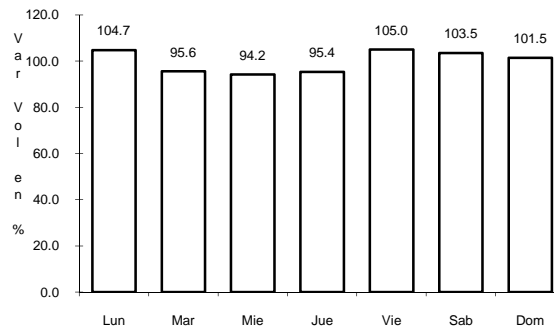
39 CARR: SAN JUAN DEL RIO - XILITLA

CLAVE: 00183

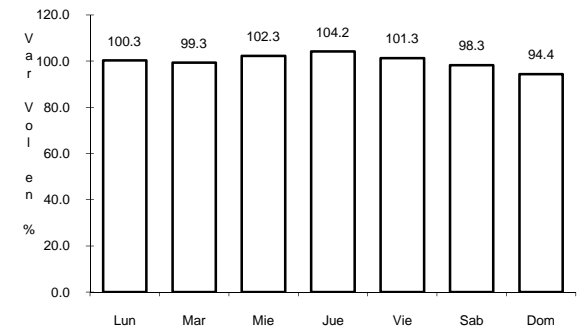
RUTA: MEX-120



Km: 5.20 Tipo: 3 Sent: 1



Km: 5.20 Tipo: 3 Sent: 2



Km: 280.00 Tipo: 1 Sent: 0