

# 23 QUINTANA ROO

Secretaría de Comunicaciones y Transportes



## CARRETERAS AFORADAS

Num. INDICE	CARRETERA
1	CANCUN - PUNTA CANCUN
2	CHETUMAL - CALDERITAS
3	EL IDEAL - CHIQUILA
4	TIHOSUCO - DZIUCHE
5	LIBRAMIENTO DE CHETUMAL
6	POLYUC - T. C. (REFORMA AGRARIA - PUERTO JUAREZ)
7	RAMAL A AEROPUERTO CANCUN
8	RAMAL A CANDELARIA
9	RAMAL A EL NARANJAL
10	RAMAL A LAGUNA DE KANA
11	RAMAL A MAHAHUAL
12	RAMAL A PETCACAB
13	RAMAL A PUERTO MORELOS
14	RAMAL A PUNTA ALLEN
15	RAMAL A PUNTA PIEDRA
16	RAMAL A PUNTA SAM
17	RAMAL A REFORMA
18	RAMAL A SUBTENIENTE LOPEZ
19	RAMAL A TRES GARANTIAS
20	REFORMA AGRARIA - PUERTO JUAREZ
21	TULUM - NUEVO X-CAN
22	UCUM - UNION
23	FRANCISCO ESCARCEGA - CHETUMAL
24	KANTUNIL - CANCUN (CUOTA)
25	MERIDA - PUERTO JUAREZ
26	MUNA - FELIPE CARRILLO PUERTO
27	VALLADOLID - FELIPE CARRILLO PUERTO

QUINTANA ROO

1 CARR : CANCUN - PUNTA CANCUN

CLAVE: 23581

RUTA : QR

AÑO : 2007

L U G A R	E S T A C I O N				C L A S I F I C A C I O N V E H I C U L A R E N P O R C I E N T O .												
	KM	TE	SC	TDPA	A	B	C2	C3	T3S2	T3S3	T3S2R4	OTROS	A	B	C	K'	D
CANCUN	0.00	3	1	21449	85.2	3.8	5.2	2	1.1	0.9	0.3	1.5	85.2	3.8	11	0.072	0.502
CANCUN	0.00	3	2	21636	87	3	4.3	2	1.5	1	0.2	1	87	3	10	0.08	0.502
PUNTA CANCUN	8.00	1	1	13425	83.3	3.4	7	2	1.5	1	0.3	1.5	83.3	3.4	13.3	0.085	0.501
PUNTA CANCUN	8.00	1	2	13466	84.9	3.1	6.1	1.8	0.9	0.9	0.3	2	84.9	3.1	12	0.077	0.501

2 CARR : CHETUMAL - CALDERITAS

CLAVE: 23004

RUTA : QR-004

AÑO : 2007

L U G A R	E S T A C I O N				C L A S I F I C A C I O N V E H I C U L A R E N P O R C I E N T O .												
	KM	TE	SC	TDPA	A	B	C2	C3	T3S2	T3S3	T3S2R4	OTROS	A	B	C	K'	D
CHETUMAL	0.00	3	1	3813	84.7	0.7	5.9	2.7	2.9	1.8	0.8	0.5	84.7	0.7	14.6	0.082	0.501
CHETUMAL	0.00	3	2	3804	84.4	0.4	5.8	3	3.2	1.9	0.9	0.4	84.4	0.4	15.2	0.09	0.501
CALDERITAS	9.00	1	1	3366	80.2	4.4	5.8	3	3.3	1.9	1	0.4	80.2	4.4	15.4	0.088	0.5
CALDERITAS	9.00	1	2	3368	81.1	3.8	5.9	2.8	3.1	1.8	0.9	0.6	81.1	3.8	15.1	0.08	0.5

3 CARR : EL IDEAL - CHIQUILA

CLAVE: 23005

RUTA : QR-005

AÑO : 2007

L U G A R	E S T A C I O N				C L A S I F I C A C I O N V E H I C U L A R E N P O R C I E N T O .												
	KM	TE	SC	TDPA	A	B	C2	C3	T3S2	T3S3	T3S2R4	OTROS	A	B	C	K'	D
T. C. MERIDA - PUERTO JUAREZ	0.00	3	0	940	86.4	5.5	6.1	0.6	0.8	0.3	0.1	0.2	86.4	5.5	8.1	0.085	0.505
KANTUNILKIN	31.20	1	0	1311	85.4	3.7	6.5	2.6	1.1	0.3	0.2	0.2	85.4	3.7	10.9	0.098	0.503
KANTUNILKIN	31.20	3	0	990	85.8	3.6	5.4	3	0.8	0.7	0.2	0.5	85.8	3.6	10.6	0.095	0.501
CHIQUILA	75.60	1	0	773	90.5	3.4	4.3	0.8	0.1	0.2	0.2	0.5	90.5	3.4	6.1	0.119	0.5

4 CARR : TIHOSUCO - DZIUCHE

CLAVE: 23576

RUTA : QR

AÑO : 2007

L U G A R	E S T A C I O N				C L A S I F I C A C I O N V E H I C U L A R E N P O R C I E N T O .												
	KM	TE	SC	TDPA	A	B	C2	C3	T3S2	T3S3	T3S2R4	OTROS	A	B	C	K'	D
T. C. VALLADOLID - FELIPE CARRILLO PUERTO	0.00	3	0	158	87.1	0	2.4	1.5	1.6	3.2	2.7	1.5	87.1	0	12.9	0.095	0.5
DZIUCHE	60.50	1	0	277	97	1.2	0.6	0.3	0.1	0.4	0.1	0.3	97	1.2	1.8	0.126	0.524

5 CARR : LIBRAMIENTO DE CHETUMAL

CLAVE: 23130

RUTA : QR

AÑO : 2007

L U G A R	E S T A C I O N				C L A S I F I C A C I O N V E H I C U L A R E N P O R C I E N T O .												
	KM	TE	SC	TDPA	A	B	C2	C3	T3S2	T3S3	T3S2R4	OTROS	A	B	C	K'	D
T. C. FRANCISCO ESCARCEGA - CHETUMAL	0.00	3	1	3051	86.3	3.9	7	0.7	0.4	0.2	0	1.5	86.3	3.9	9.8	0.098	0.504



QUINTANA ROO

9 CARR : RAMAL A EL NARANJAL

CLAVE: 23579

RUTA : QR

AÑO : 2007

L U G A R	E S T A C I O N				C L A S I F I C A C I O N V E H I C U L A R E N P O R C I E N T O .												
	KM	TE	SC	TDPA	A	B	C2	C3	T3S2	T3S3	T3S2R4	OTROS	A	B	C	K'	D
JOSE MARIA MORELOS	0.00	3	0	275	92.6	2.4	3.2	0.1	0.5	0.5	0.1	0.6	92.6	2.4	5	0.127	0.501
EL NARANJAL	16.00	0	0														

10 CARR : RAMAL A LAGUNA DE KANA

CLAVE: 23213

RUTA : MEX-QR

AÑO : 2007

L U G A R	E S T A C I O N				C L A S I F I C A C I O N V E H I C U L A R E N P O R C I E N T O .												
	KM	TE	SC	TDPA	A	B	C2	C3	T3S2	T3S3	T3S2R4	OTROS	A	B	C	K'	D
T. C. MUNA - FELIPE CARRILLO PUERTO	0.00	3	0	469	90.5	3.3	5.6	0.5	0	0	0	0.1	90.5	3.3	6.2	0.104	0.502
LAGUNA DE KANA	12.20	0	0														

11 CARR : RAMAL A MAHAHUAL

CLAVE: 23583

RUTA : QR

AÑO : 2007

L U G A R	E S T A C I O N				C L A S I F I C A C I O N V E H I C U L A R E N P O R C I E N T O .												
	KM	TE	SC	TDPA	A	B	C2	C3	T3S2	T3S3	T3S2R4	OTROS	A	B	C	K'	D
T. C. REFORMA AGRARIA - PUERTO JUAREZ	0.00	3	0	363	81.5	8.4	3.6	1.1	0.7	1.4	2.6	0.7	81.5	8.4	10.1	0.075	0.503
MAHAHUAL	60.09	0	0														

12 CARR : RAMAL A PETCACAB

CLAVE: 23018

RUTA : QR-018

AÑO : 2007

L U G A R	E S T A C I O N				C L A S I F I C A C I O N V E H I C U L A R E N P O R C I E N T O .												
	KM	TE	SC	TDPA	A	B	C2	C3	T3S2	T3S3	T3S2R4	OTROS	A	B	C	K'	D
T. C. REFORMA AGRARIA - PUERTO JUAREZ	0.00	3	0	557	88.9	4	1.7	0.9	0.7	1.5	1.3	1	88.9	4	7.1	0.079	0.502
PETCACAB	37.00	0	0														

13 CARR : RAMAL A PUERTO MORELOS

CLAVE: 23569

RUTA : MEX

AÑO : 2007

L U G A R	E S T A C I O N				C L A S I F I C A C I O N V E H I C U L A R E N P O R C I E N T O .												
	KM	TE	SC	TDPA	A	B	C2	C3	T3S2	T3S3	T3S2R4	OTROS	A	B	C	K'	D
T. C. REFORMA AGRARIA - PUERTO JUAREZ	0.00	3	0	5870	88.7	4	3.4	3	0	0	0.1	0.8	88.7	4	7.3	0.088	0.501
PUERTO MORELOS	2.20	0	0														

14 CARR : RAMAL A PUNTA ALLEN

CLAVE: 23015

RUTA : QR-015

AÑO : 2007

L U G A R	E S T A C I O N				C L A S I F I C A C I O N V E H I C U L A R E N P O R C I E N T O .												
	KM	TE	SC	TDPA	A	B	C2	C3	T3S2	T3S3	T3S2R4	OTROS	A	B	C	K'	D
T. C. REFORMA AGRARIA - PUERTO JUAREZ	0.00	3	0	1386	82.2	4.2	5.8	2.9	2.8	1.8	0.3	0	82.2	4.2	13.6	0.086	0.501





QUINTANA ROO

21 CARR : TULUM - NUEVO X-CAN

CLAVE: 23570

RUTA : QR

AÑO : 2007

L U G A R	E S T A C I O N				C L A S I F I C A C I O N V E H I C U L A R E N P O R C I E N T O .												
	KM	TE	SC	TDPA	A	B	C2	C3	T3S2	T3S3	T3S2R4	OTROS	A	B	C	K'	D
T. C. REFORMA AGRARIA - PUERTO JUAREZ	0.00	3	0	1363	96.5	3.2	0.2	0	0	0	0	0.1	96.5	3.2	0.3	0.087	0.5
T. IZQ. RUINAS COBA	42.95	1	0	1209	90.7	7.6	0.9	0	0	0.2	0.2	0.4	90.7	7.6	1.7	0.085	0.5
T. IZQ. RUINAS COBA	42.95	3	0	381	85.7	6.9	1.7	0.9	0.8	1.4	1.7	0.9	85.7	6.9	7.4	0.068	0.502
NUEVO X-CAN	87.40	1	0	345	96.1	0	1.6	1.8	0	0	0.5	0	96.1	0	3.9	0.125	0.514

22 CARR : UCUM - UNION

CLAVE: 23571

RUTA : QR

AÑO : 2007

L U G A R	E S T A C I O N				C L A S I F I C A C I O N V E H I C U L A R E N P O R C I E N T O .												
	KM	TE	SC	TDPA	A	B	C2	C3	T3S2	T3S3	T3S2R4	OTROS	A	B	C	K'	D
UCUM	0.00	3	0	1873	90.4	3.7	2	3.1	0	0.2	0.2	0.4	90.4	3.7	5.9	0.094	0.502
T. DER. INGENIO ALVARO OBREGON	31.00	1	0	1267	85.7	4.1	6.1	2.4	0.7	0.3	0.3	0.4	85.7	4.1	10.2	0.098	0.502
T. DER. INGENIO ALVARO OBREGON	31.00	3	0	1088	80.9	5.2	5.4	3.8	2	1.2	0.3	1.2	80.9	5.2	13.9	0.115	0.502
T. DER. U. A. GALERAS	75.00	1	0	874	85.2	4.9	5.4	2.1	1.2	0.6	0	0.6	85.2	4.9	9.9	0.111	0.501
T. DER. U. A. GALERAS	75.00	3	0	754	81.9	5.9	5.5	3.3	2	0.7	0	0.7	81.9	5.9	12.2	0.118	0.5
UNION	88.00	1	0	404	89.7	2.5	6.1	0	1	0.5	0	0.2	89.7	2.5	7.8	0.124	0.506

23 CARR : FRANCISCO ESCARCEGA - CHETUMAL

CLAVE: 00093

RUTA : MEX-186

AÑO : 2007

L U G A R	E S T A C I O N				C L A S I F I C A C I O N V E H I C U L A R E N P O R C I E N T O .												
	KM	TE	SC	TDPA	A	B	C2	C3	T3S2	T3S3	T3S2R4	OTROS	A	B	C	K'	D
FRANCISCO ESCARCEGA	0.00	3	0	2308	64.9	7.4	8.9	2.2	6.4	2.1	2.4	5.7	64.9	7.4	27.7	0.076	0.502
ADOLFO LOPEZ M.	41.50	1	0	2229	77.7	6.6	4.7	5.2	2.2	2.9	0	0.7	77.7	6.6	15.7	0.066	0.501
T. DER. SILVITUC	55.70	1	0	1551	75.2	9.5	2.6	4.9	3.4	4.2	0	0.2	75.2	9.5	15.3	0.103	0.5
T. DER. SILVITUC	55.70	3	0	1400	74.3	7.4	4.5	2.7	4.4	2.6	2.9	1.2	74.3	7.4	18.3	0.092	0.5
CONHUAS	100.00	1	0	1126	80.6	4.1	6.2	3	3.3	1.6	0.5	0.7	80.6	4.1	15.3	0.1	0.522
XPUJIL	155.70	1	0	1465	61.5	5.2	6.8	3.6	8.7	4.3	5.1	4.8	61.5	5.2	33.3	0.08	0.503
LIM. EDOS. TERM. CAMP. PPIA. QROO.	156.80	0	0														
NICOLAS BRAVO	206.00	1	0	1573	73.3	8.1	7	5.8	3.6	1.7	0.1	0.4	73.3	8.1	18.6	0.09	0.5
NICOLAS BRAVO	206.00	3	0	1957	76.6	4.4	6.6	4.7	3.6	2.7	0	1.4	76.6	4.4	19	0.095	0.5
T. IZQ. MOROCOY	214.90	1	0	1484	76.2	7	5.7	4.1	4.3	2.3	0.1	0.3	76.2	7	16.8	0.092	0.501
T. IZQ. MOROCOY	214.90	3	0	1614	81.7	4.3	6.3	4	2.2	1.4	0.1	0	81.7	4.3	14	0.096	0.5
T. DER. UNION	247.50	1	0	2428	83.4	3.9	4.8	3.2	2.4	1.8	0	0.5	83.4	3.9	12.7	0.102	0.501
T. DER. UNION	247.50	3	0	3015	84.9	3.5	3.8	3.3	2	2	0	0.5	84.9	3.5	11.6	0.082	0.502
T. IZQ. FPE. CARRILLO PUERTO	255.20	1	0	3460	84.1	4	3.8	4.2	1.8	1.6	0	0.5	84.1	4	11.9	0.11	0.501
T. DER. SUBTENIENTE LOPEZ	268.60	1	0	8090	75.2	7.2	5.6	2.1	3.2	4.7	1	1	75.2	7.2	17.6	0.076	0.5



QUINTANA ROO

23 CARR : FRANCISCO ESCARCEGA - CHETUMAL

CLAVE: 00093

RUTA : MEX-186

AÑO : 2007

L U G A R	E S T A C I O N				CLASIFICACION VEHICULAR EN PORCIENTO .												
	KM	TE	SC	TDPA	A	B	C2	C3	T3S2	T3S3	T3S2R4	OTROS	A	B	C	K'	D
T. IZQ. AV. INSURGENTES	270.00	1	1	2977	75.8	6.6	6.1	5	3.1	2.3	0.1	1	75.8	6.6	17.6	0.09	0.501
T. IZQ. AV. INSURGENTES	270.00	1	2	2985	78	7.3	5.9	2.9	2.5	2.5	0	0.9	78	7.3	14.7	0.107	0.501
T. IZQ. AV. INSURGENTES	270.00	3	1	4833	82.7	7.7	6.9	0.7	0.4	0.2	0	1.4	82.7	7.7	9.6	0.07	0.503
T. IZQ. AV. INSURGENTES	270.00	3	2	4771	79.6	10.7	6.9	0.7	0.5	0.2	0	1.4	79.6	10.7	9.7	0.065	0.503
CHETUMAL	277.40	1	1	5192	81.7	7.8	3.4	0.8	1.1	0.9	2.2	2.1	81.7	7.8	10.5	0.068	0.503
CHETUMAL	277.40	1	2	5254	81.9	7.9	3.6	1	1.1	0.8	1.9	1.8	81.9	7.9	10.2	0.069	0.503

24 CARR : KANTUNIL - CANCUN (CUOTA)

CLAVE: 00071

RUTA : MEX-180D

AÑO : 2007

L U G A R	E S T A C I O N				CLASIFICACION VEHICULAR EN PORCIENTO .												
	KM	TE	SC	TDPA	A	B	C2	C3	T3S2	T3S3	T3S2R4	OTROS	A	B	C	K'	D
T. C. MERIDA - PUERTO JUAREZ	0.00	0	0														
CASETA DE COBRO "PISTE"	51.00	1	1	1037	79.5	5.9	5.8	3.7	2.2	2.3	0	0.6	79.5	5.9	14.6	0.109	0.501
CASETA DE COBRO "PISTE"	51.00	1	2	1033	81.3	4.8	4.9	3.9	2	2.3	0	0.8	81.3	4.8	13.9	0.125	0.501
CASETA DE COBRO "X-CAN"	155.00	1	1	1657	82.8	3.7	2.1	0.8	3.4	1.4	4.3	1.5	82.8	3.7	13.5	0.141	0.506
CASETA DE COBRO "X-CAN"	155.00	1	2	1614	85.9	4.1	1.7	0.6	1.1	0.6	5.5	0.5	85.9	4.1	10	0.141	0.506
LIM. EDOS. TERM. YUC. PPIA. QROO.	160.00	0	0														
T. C. MERIDA - PUERTO JUAREZ	292.00	3	1	1154	85.6	3.7	5	3	1.2	1.1	0.3	0.1	85.6	3.7	10.7	0.152	0.502
T. C. MERIDA - PUERTO JUAREZ	292.00	3	2	1161	85.1	4.1	5.5	2.8	1	0.5	0.4	0.6	85.1	4.1	10.8	0.16	0.502
T. C. REFORMA AGRARIA - PUERTO JUAREZ	308.10	1	0	1391	85.2	5.5	5.3	2.6	1.4	0	0	0	85.2	5.5	9.3	0.088	0.5

25 CARR : MERIDA - PUERTO JUAREZ

CLAVE: 00067

RUTA : MEX-180

AÑO : 2007

L U G A R	E S T A C I O N				CLASIFICACION VEHICULAR EN PORCIENTO .												
	KM	TE	SC	TDPA	A	B	C2	C3	T3S2	T3S3	T3S2R4	OTROS	A	B	C	K'	D
MERIDA	0.00	0	0														
X. PERIFERICO DE MERIDA	5.60	1	1	7030	89	3.1	3	1.2	0.8	0.7	0.4	1.8	89	3.1	7.9	0.094	0.517
X. PERIFERICO DE MERIDA	5.60	1	2	3940	89.4	3.2	3.1	1.1	0.8	0.6	0.3	1.5	89.4	3.2	7.4	0.075	0.517
X. PERIFERICO DE MERIDA	5.60	3	1	4342	83.1	3.9	3.1	2.8	2.2	1.3	2.2	1.4	83.1	3.9	13	0.084	0.504
X. PERIFERICO DE MERIDA	5.60	3	2	4269	83.8	4	2.2	1.4	2.8	1.5	1.9	2.4	83.8	4	12.2	0.086	0.504
TEYA	13.00	1	1	4061	77.9	6.4	5.7	4.2	2.3	2.2	0.1	1.2	77.9	6.4	15.7	0.071	0.501
TEYA	13.00	1	2	4042	79	5.8	5.6	4.2	2.2	1.8	0.1	1.3	79	5.8	15.2	0.071	0.501
T. DER. SEYE	28.79	1	0	8257	80.1	5.2	6.7	0.7	2.6	0.3	0.3	4.1	80.1	5.2	14.7	0.068	0.512
T. DER. SEYE	28.79	3	0	6804	82.3	6	3.4	2.9	2.4	2.1	0.9	0	82.3	6	11.7	0.088	0.502
TAHMEK	42.00	1	0	7009	81.3	3.9	5.2	2.9	2.8	1.6	0.6	1.7	81.3	3.9	14.8	0.123	0.503

QUINTANA ROO

25 CARR : MERIDA - PUERTO JUAREZ

CLAVE: 00067

RUTA : MEX-180

AÑO : 2007

L U G A R	E S T A C I O N				C L A S I F I C A C I O N V E H I C U L A R E N P O R C I E N T O .												
	KM	TE	SC	TDPA	A	B	C2	C3	T3S2	T3S3	T3S2R4	OTROS	A	B	C	K'	D
T. IZQ. HOCTUN (1° ACCESO)	46.65	1	0	4591	81.1	2.6	5.8	3.1	2.2	2.2	1.4	1.6	81.1	2.6	16.3	0.087	0.504
T. IZQ. HOCTUN (2° ACCESO)	48.62	1	0	4175	78.7	5.2	6.5	0.9	3.1	0.9	1.7	3	78.7	5.2	16.1	0.098	0.504
T. IZQ. HOCTUN (2° ACCESO)	48.62	3	0	5594	75.2	7	6.3	5.1	2.8	2.1	0.4	1.1	75.2	7	17.8	0.135	0.502
KANTUNIL	67.28	3	0	1985	75.7	2.7	5.2	3.9	3.3	2.6	2	4.6	75.7	2.7	21.6	0.095	0.533
LIBRE UNION	92.91	1	0	1995	79.6	5.7	5.5	3	2.8	2.1	0.5	0.8	79.6	5.7	14.7	0.094	0.504
LIBRE UNION	92.91	3	0	1852	80.2	5.9	5.8	2.8	2.8	1.4	0.5	0.6	80.2	5.9	13.9	0.105	0.501
PISTE	116.30	3	0	3648	68.5	5.4	2.1	2.1	7.5	3.9	2.5	8	68.5	5.4	26.1	0.087	0.502
CHICHEN ITZA	118.60	1	0	4343	75.8	5	2.9	2.2	2.8	6.2	1.9	3.2	75.8	5	19.2	0.115	0.507
CHICHEN ITZA	118.60	3	0	4783	80.2	7.1	5.2	2.5	1.6	2.1	0	1.3	80.2	7.1	12.7	0.072	0.503
T. DER. CHANKOM	127.00	1	0	3905	81.3	8.3	5.3	1.3	1.4	1.1	0	1.3	81.3	8.3	10.4	0.078	0.501
T. DER. CHANKOM	127.00	3	0	3039	81.6	4.4	5	3	1.9	2.1	0.6	1.4	81.6	4.4	14	0.085	0.505
VALLADOLID	160.70	1	0	4101	80.3	6.2	4.7	3.2	2.3	1.8	0.8	0.7	80.3	6.2	13.5	0.062	0.502
T. DER. CHEMAX	189.80	3	0	3985	90.7	2.3	2.5	1.6	1.2	0.6	1.1	0	90.7	2.3	7	0.063	0.503
X-CAN	225.00	3	0	2824	81.4	5.2	6.4	2.7	2.3	1.6	0.3	0.1	81.4	5.2	13.4	0.093	0.504
LIM. EDOS. TERM. YUC. PPIA. QROO.	230.40	0	0														
NUEVO X-CAN	231.90	3	0	2594	82.8	2.9	6.2	3.5	2.7	1.4	0.3	0.2	82.8	2.9	14.3	0.095	0.501
ZARAGOZA	239.00	1	0	3552	75.8	7.6	6.3	5	2.8	2	0.1	0.4	75.8	7.6	16.6	0.105	0.503
VICENTE GUERRERO	261.00	1	0	2780	78.2	5.2	7.5	2.7	2.6	1.1	1.3	1.4	78.2	5.2	16.6	0.092	0.506
LEONA VICARIO	275.50	1	0	3835	79.3	7.2	5.9	2	1.9	0.9	1	1.8	79.3	7.2	13.5	0.089	0.502
LEONA VICARIO	275.50	3	0	4596	77.7	6	7.9	3.7	1.9	1.6	0.1	1.1	77.7	6	16.3	0.103	0.504
T. DER. ALFREDO V. BONFIL	310.00	1	1	6869	83.1	3	5	3	2.2	1.6	0.1	2	83.1	3	13.9	0.089	0.501
T. DER. ALFREDO V. BONFIL	310.00	1	2	6840	82.5	3.5	4.8	2.8	2	1.7	0.3	2.4	82.5	3.5	14	0.079	0.501
PUERTO JUAREZ	321.40	0	0														

26 CARR : MUNA - FELIPE CARRILLO PUERTO

CLAVE: 00148

RUTA : MEX-184

AÑO : 2007

L U G A R	E S T A C I O N				C L A S I F I C A C I O N V E H I C U L A R E N P O R C I E N T O .												
	KM	TE	SC	TDPA	A	B	C2	C3	T3S2	T3S3	T3S2R4	OTROS	A	B	C	K'	D
MUNA	0.00	3	0	3197	80	4.8	7.5	3.7	1.3	1.4	0	1.3	80	4.8	15.2	0.086	0.503
TICUL	19.10	1	0	4277	81.7	3.2	8	2.5	1.1	1.4	0	2.1	81.7	3.2	15.1	0.072	0.501
TICUL	19.10	3	0	3048	79.6	10.8	3	3.8	0.6	0.3	0.2	1.7	79.6	10.8	9.6	0.076	0.504
OXKUTZCAB	40.50	3	0	3097	92.2	4.4	1.8	0.6	0.4	0	0.1	0.5	92.2	4.4	3.4	0.09	0.5
TEKAX	53.90	3	0	2422	90.2	5.5	2.8	0.9	0.2	0	0	0.4	90.2	5.5	4.3	0.064	0.5
TZUCACAB	86.60	1	0	1430	86.6	4.6	4.3	3	0.7	0.3	0.1	0.4	86.6	4.6	8.8	0.089	0.506
TZUCACAB	86.60	3	0	1068	93.8	3.3	2.3	0.1	0.2	0	0	0.3	93.8	3.3	2.9	0.067	0.501

QUINTANA ROO

26 CARR : MUNA - FELIPE CARRILLO PUERTO

CLAVE: 00148

RUTA : MEX-184

AÑO : 2007

L U G A R	E S T A C I O N				C L A S I F I C A C I O N V E H I C U L A R E N P O R C I E N T O .												
	KM	TE	SC	TDPA	A	B	C2	C3	T3S2	T3S3	T3S2R4	OTROS	A	B	C	K'	D
SANTA ROSA	109.60	3	0	1394	87.5	3.3	4.3	3.2	0.8	0.3	0.1	0.5	87.5	3.3	9.2	0.09	0.505
LIM. EDOS. TERM. YUC. PPIA. QROO.	117.00	0	0														
DZIUCHE	118.00	1	0	1596	80.2	4.2	4.4	3.5	2.4	1.3	3.2	0.8	80.2	4.2	15.6	0.082	0.517
DZIUCHE	118.00	3	0	2192	82.9	4	6	3.4	1.6	1.2	0	0.9	82.9	4	13.1	0.086	0.501
JOSE MARIA MORELOS	138.60	1	0	2362	85.7	4.1	4.9	2.9	0.7	1.1	0	0.6	85.7	4.1	10.2	0.063	0.5
JOSE MARIA MORELOS	138.60	3	0	2121	76.9	5.3	5.5	4	2.3	2.4	1.9	1.7	76.9	5.3	17.8	0.075	0.503
POLYUC	161.90	1	0	1441	81.2	3.4	5.6	3.1	2.1	1.8	2.6	0.2	81.2	3.4	15.4	0.087	0.501
POLYUC	161.90	3	0	1597	80.2	3.3	3.1	2.3	2.7	3.4	2.9	2.1	80.2	3.3	16.5	0.091	0.502
T. DER. DZULA	178.10	3	0	1091	76	6.8	6	3.1	3.3	1.6	1.7	1.5	76	6.8	17.2	0.105	0.501
FELIPE CARRILLO PUERTO	217.00	1	0	1086	80.8	6.4	6	2.8	1	1.3	1.4	0.3	80.8	6.4	12.8	0.084	0.5

27 CARR : VALLADOLID - FELIPE CARRILLO PUERTO

CLAVE: 00010

RUTA : MEX-295

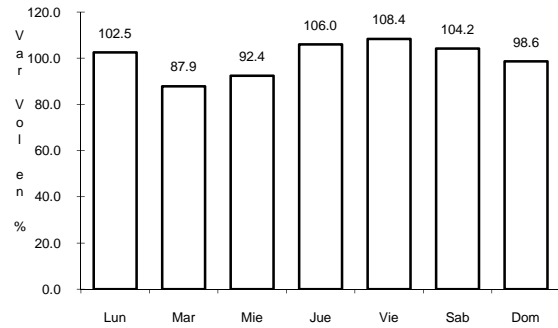
AÑO : 2007

L U G A R	E S T A C I O N				C L A S I F I C A C I O N V E H I C U L A R E N P O R C I E N T O .												
	KM	TE	SC	TDPA	A	B	C2	C3	T3S2	T3S3	T3S2R4	OTROS	A	B	C	K'	D
VALLADOLID	0.00	3	0	2981	89.7	4	0.4	0.4	3.2	0.8	0.4	1.1	89.7	4	6.3	0.104	0.5
CHICHIMILA	6.90	3	0	2215	88.3	2.4	0.8	0.8	5.4	0.4	0.1	1.8	88.3	2.4	9.3	0.064	0.51
TEKOM	12.05	3	0	1268	84.9	4.4	4.8	3.6	1.8	0.5	0	0	84.9	4.4	10.7	0.089	0.502
TIXCACALCUPUL	19.80	3	0	618	89.6	2.8	6.8	0	0.8	0	0	0	89.6	2.8	7.6	0.089	0.501
LIM. EDOS. TERM. YUC. PPIA. QROO.	40.00	0	0														
TEPICH	51.40	1	0	668	86.9	4.6	1.7	1	0.8	1.7	2.4	0.9	86.9	4.6	8.5	0.08	0.501
TIHOSUCO	65.00	1	0	463	87.6	3.7	3.9	0.6	0.6	1.1	1.4	1.1	87.6	3.7	8.7	0.071	0.501
TIHOSUCO	65.00	3	0	550	92.3	4.1	1.8	0.7	0.2	0.1	0.3	0.5	92.3	4.1	3.6	0.12	0.551
T. IZQ. SAN FELIPE BERRIOZABAL	99.00	1	0	395	86.2	6.5	4.9	0	0.2	1	1.1	0.1	86.2	6.5	7.3	0.094	0.502
T. IZQ. SAN FELIPE BERRIOZABAL	99.00	3	0	539	89.9	2.1	3.6	1.3	0.2	1	1.3	0.6	89.9	2.1	8	0.083	0.5
SEÑOR	116.50	1	0	981	91.5	2.4	1.4	2.2	0.3	1	0.5	0.7	91.5	2.4	6.1	0.081	0.502
SEÑOR	116.50	3	0	617	85.4	5.6	3	1.3	1.3	0.9	1.2	1.3	85.4	5.6	9	0.066	0.501
FELIPE CARRILLO PUERTO	147.70	1	0	704	83.5	6.1	5.7	2	1.1	0	1.6	0	83.5	6.1	10.4	0.082	0.502

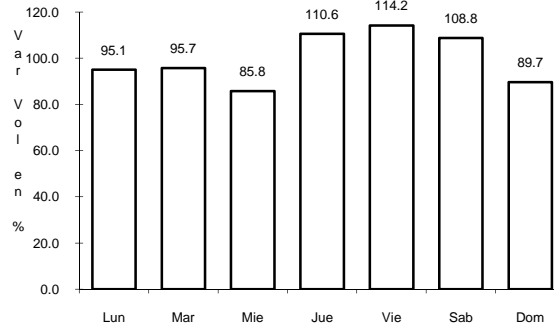
1 CARR: CANCUN - PUNTA CANCUN

CLAVE: 23581

RUTA: QR



Km: 0.00      Tipo: 3      Sent: 1

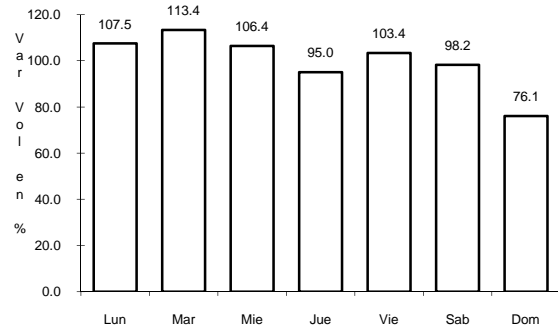


Km: 0.00      Tipo: 3      Sent: 2

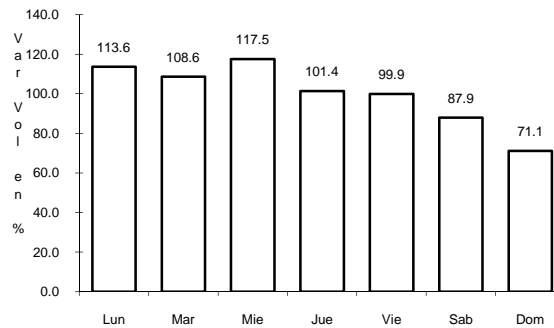
2 CARR: CHETUMAL - CALDERITAS

CLAVE: 23004

RUTA: QR-004



Km: 0.00      Tipo: 3      Sent: 1

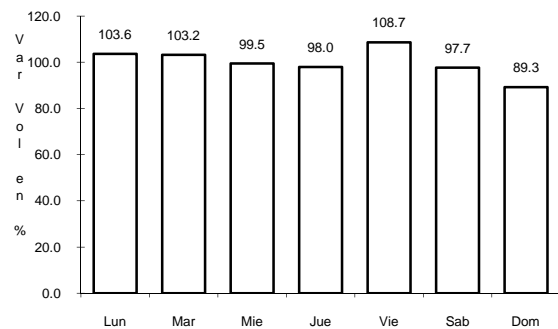


Km: 0.00      Tipo: 3      Sent: 2

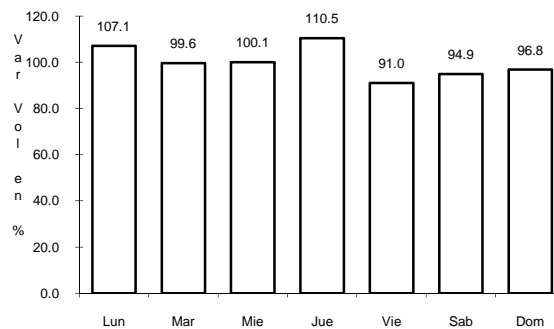
3 CARR: EL IDEAL - CHIQUILA

CLAVE: 23005

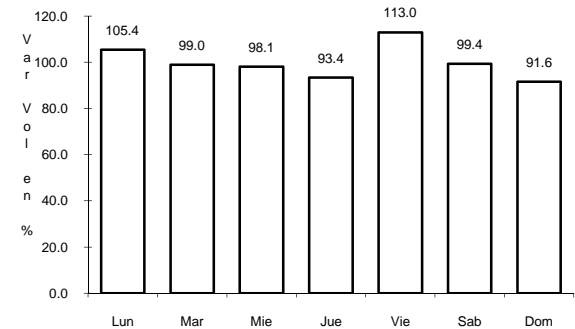
RUTA: QR-005



Km: 0.00      Tipo: 3      Sent: 0



Km: 31.20      Tipo: 1      Sent: 0



Km: 75.60      Tipo: 1      Sent: 0

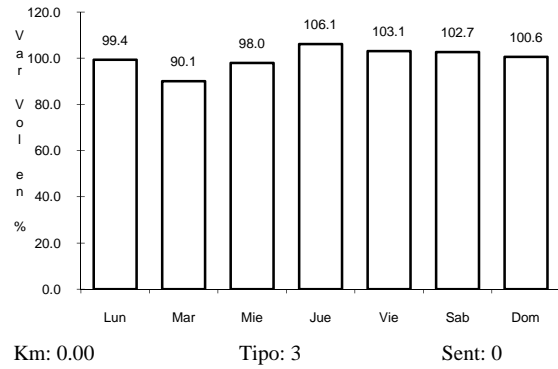




10 CARR: RAMAL A LAGUNA DE KANA

CLAVE: 23213

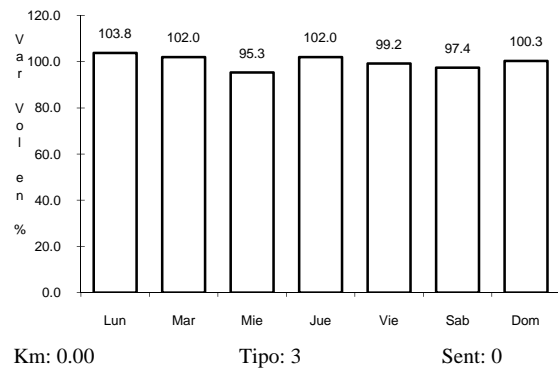
RUTA: MEX-QR



11 CARR: RAMAL A MAHAHUAL

CLAVE: 23583

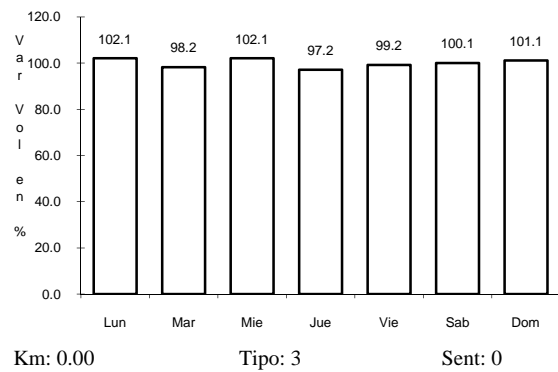
RUTA: QR



12 CARR: RAMAL A PETCACAB

CLAVE: 23018

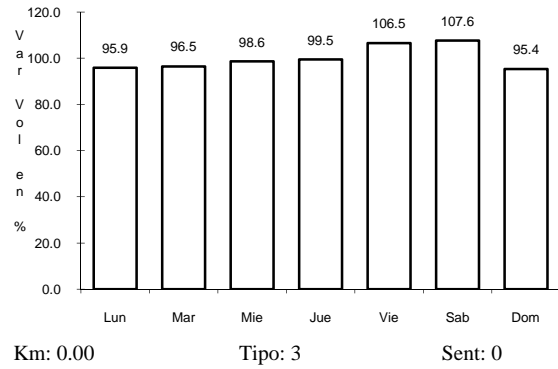
RUTA: QR-018



13 CARR: RAMAL A PUERTO MORELOS

CLAVE: 23569

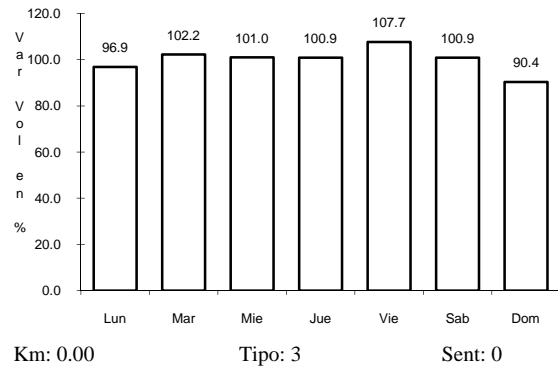
RUTA: MEX



14 CARR: RAMAL A PUNTA ALLEN

CLAVE: 23015

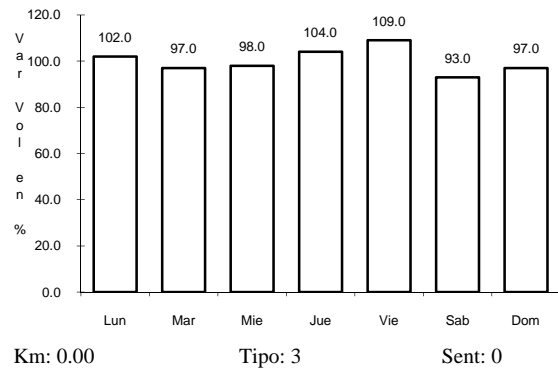
RUTA: QR-015



15 CARR: RAMAL A PUNTA PIEDRA

CLAVE: 23575

RUTA: MEX



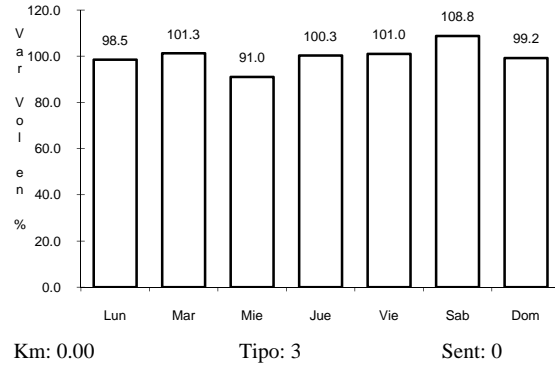




19 CARR: RAMAL A TRES GARANTIAS

CLAVE: 23585

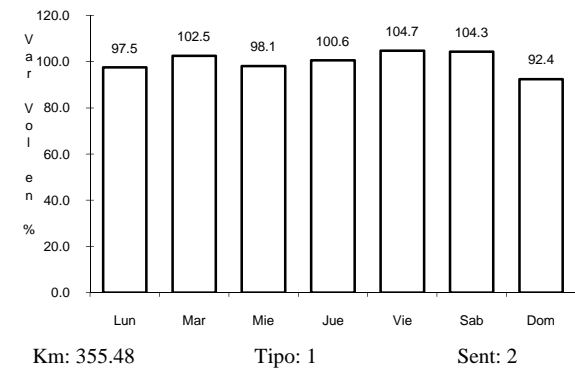
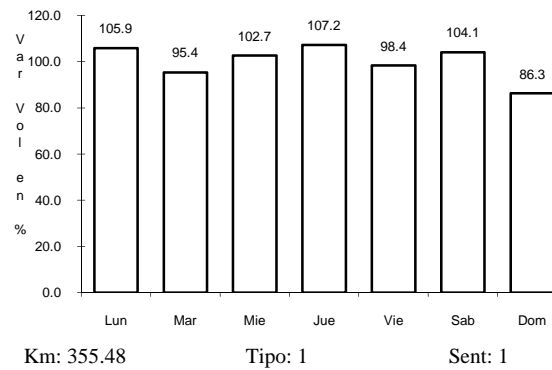
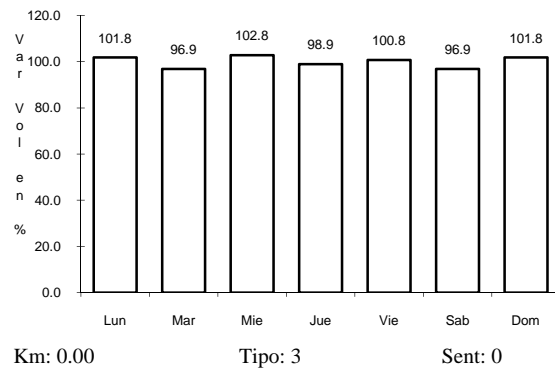
RUTA: QR



20 CARR: REFORMA AGRARIA - PUERTO JUAREZ

CLAVE: 23132

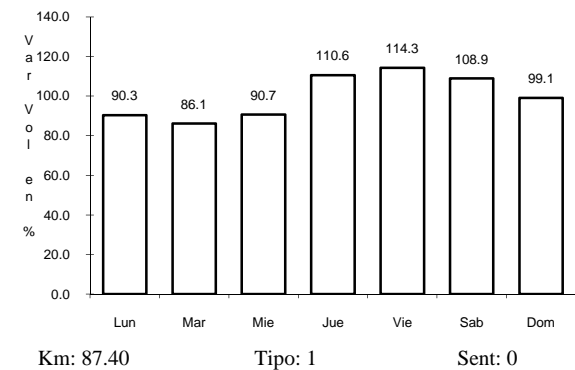
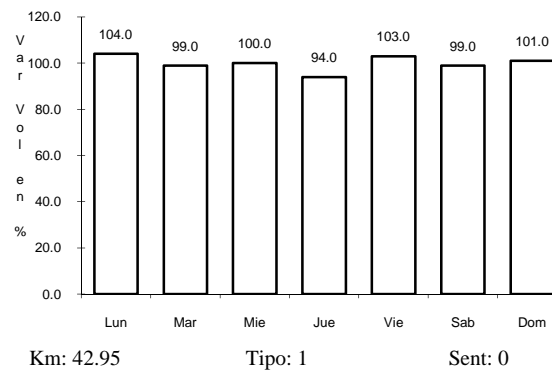
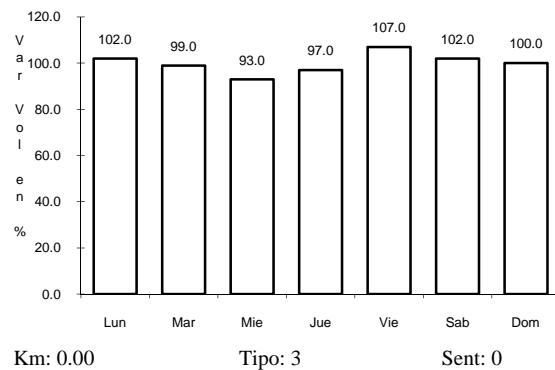
RUTA: MEX-307



21 CARR: TULUM - NUEVO X-CAN

CLAVE: 23570

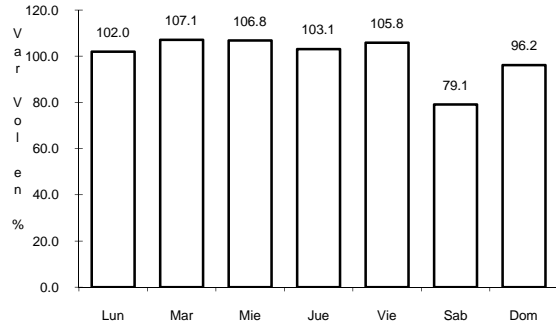
RUTA: QR



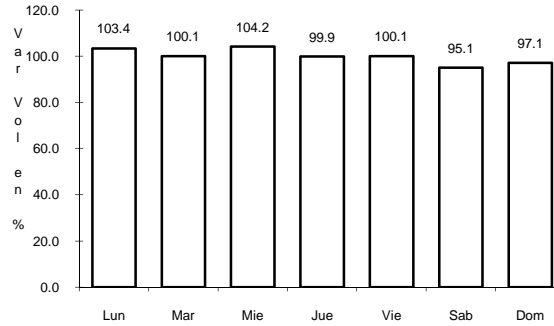
22 CARR: UCUM - UNION

CLAVE: 23571

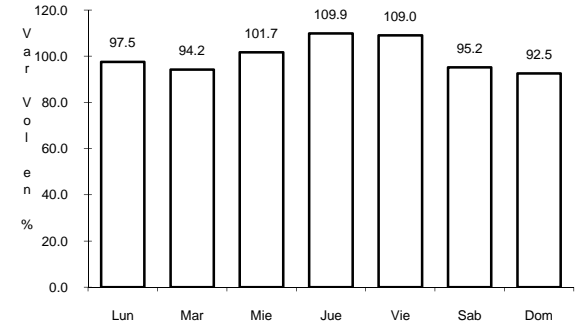
RUTA: QR



Km: 0.00 Tipo: 3 Sent: 0



Km: 31.00 Tipo: 1 Sent: 0

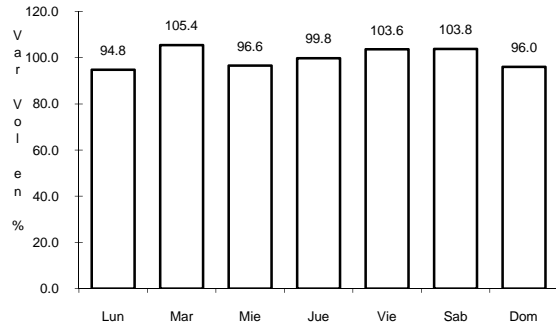


Km: 88.00 Tipo: 1 Sent: 0

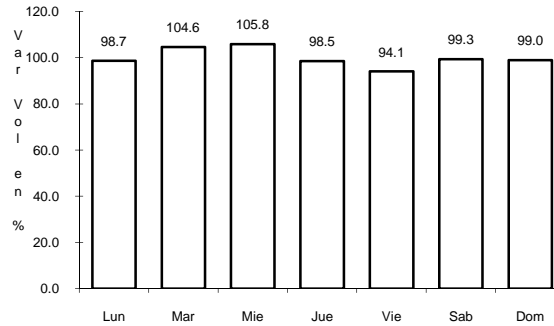
23 CARR: FRANCISCO ESCARCEGA - CHETUMAL

CLAVE: 00093

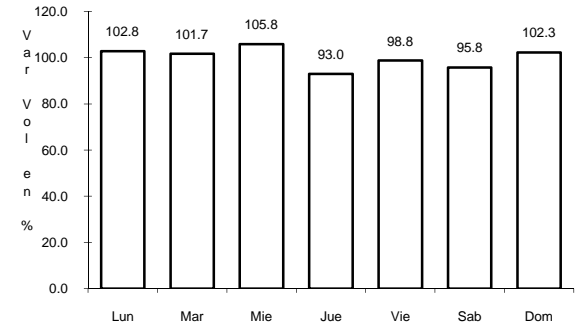
RUTA: MEX-186



Km: 0.00 Tipo: 3 Sent: 0



Km: 277.36 Tipo: 1 Sent: 1

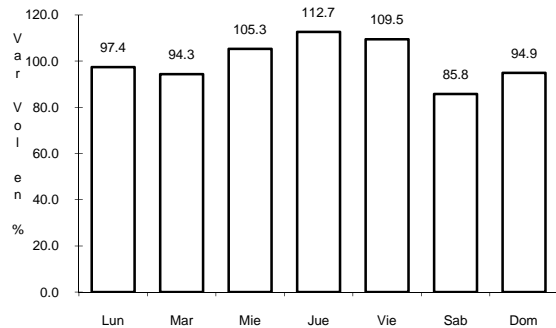


Km: 277.36 Tipo: 1 Sent: 2

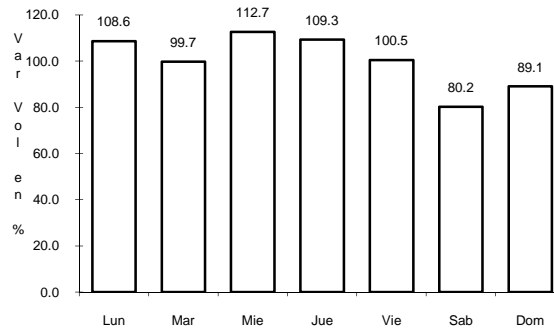
24 CARR: KANTUNIL - CANCUN (CUOTA)

CLAVE: 00071

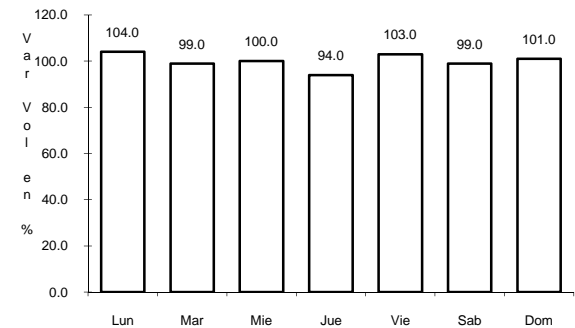
RUTA: MEX-180D



Km: 51.00 Tipo: 1 Sent: 1



Km: 51.00 Tipo: 1 Sent: 2

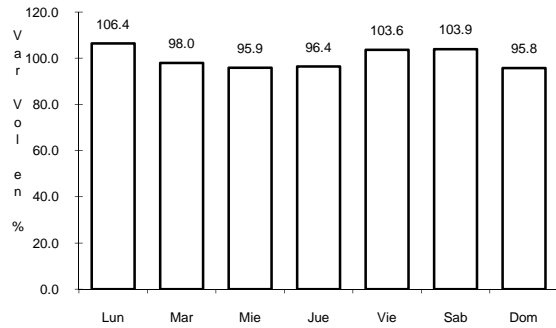


Km: 308.10 Tipo: 1 Sent: 0

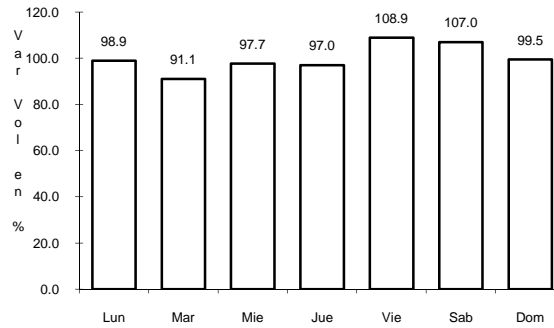
25 CARR: MERIDA - PUERTO JUAREZ

CLAVE: 00067

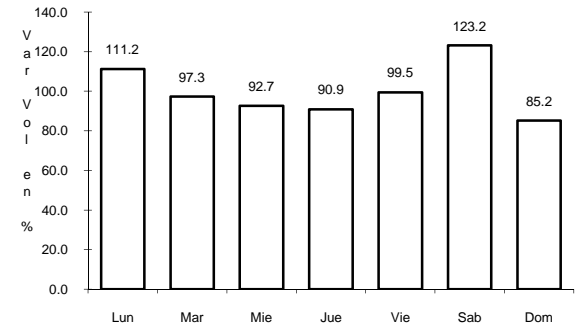
ruta: MEX-180



Km: 5.60 Tipo: 1 Sent: 1



Km: 5.60 Tipo: 1 Sent: 2

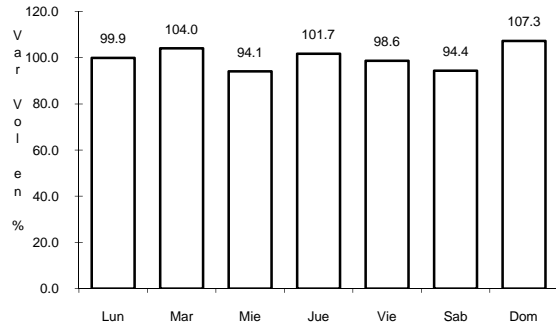


Km: 275.50 Tipo: 3 Sent: 0

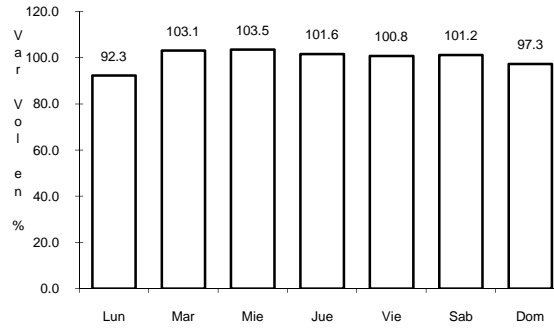
26 CARR: MUNA - FELIPE CARRILLO PUERTO

CLAVE: 00148

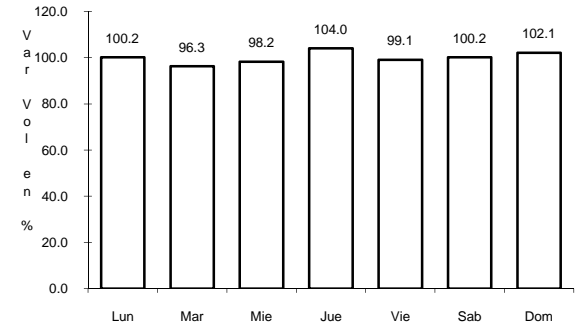
ruta: MEX-184



Km: 0.00 Tipo: 3 Sent: 0



Km: 109.60 Tipo: 3 Sent: 0

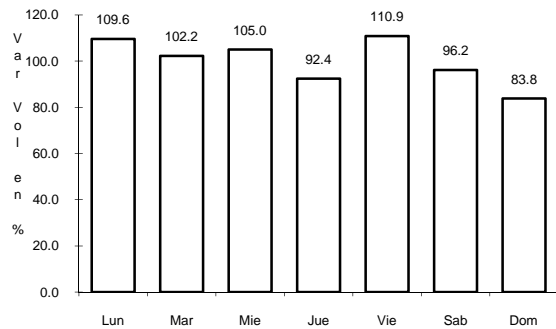


Km: 216.97 Tipo: 1 Sent: 0

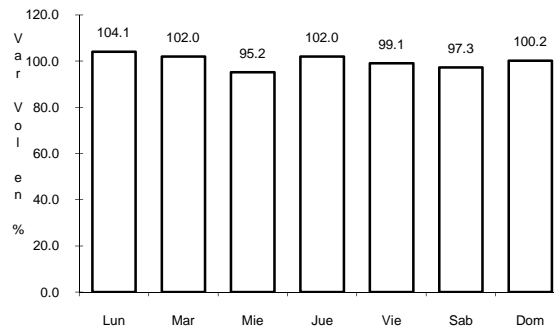
27 CARR: VALLADOLID - FELIPE CARRILLO PUERTO

CLAVE: 00010

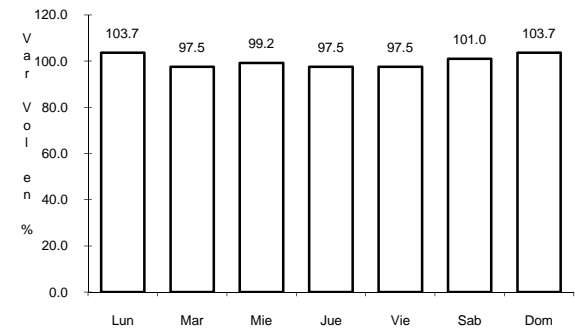
ruta: MEX-295



Km: 0.00 Tipo: 3 Sent: 0



Km: 65.00 Tipo: 1 Sent: 0



Km: 147.70 Tipo: 1 Sent: 0