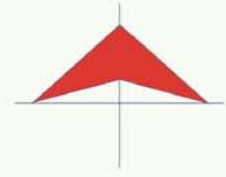


22 QUERETARO



MAPA INDICE
—15 Num. Indice
2008

Secretaría de Comunicaciones y Transportes

CARRETERAS AFORADAS

Num. INDICE	CARRETERA
1	ENT. BUENAVISTA - SAN MIGUEL DE ALLENDE
2	T. C. (VILLA DEL PUEBLITO - HUIMILPAN) - CORONEO
3	JALPAN DE SERRA - RIO VERDE
4	LA NORIA - ACAMBARO
5	QUERETARO - IRAPUATO (CUOTA)
6	QUERETARO - IRAPUATO (LIBRE)
7	QUERETARO - SAN LUIS POTOSI
8	SAN JUAN DEL RIO - XILITLA
9	AJUCHITLAN - COLON
10	EL COLORADO - HIGUERILLAS
11	AJUCHITLAN - EZEQUIEL MONTES
12	SAN JUAN DEL RIO - AMEALCO
13	HACIENDA PARAISO - CHICHIMEQUILLAS
14	LIBRAMIENTO DE SAN JUAN DEL RIO
15	LIBRAMIENTO NORTE DE QUERETARO
16	PEÑA COLORADA - EL RODEO
17	QUERETARO - ENT. SAN MARTIN
18	QUERETARO - ESTACION CHICHIMEQUILLAS
19	QUERETARO - TEQUISQUIAPAN
20	QUERETARO - TLACOTE EL BAJO
21	RAMAL A LA ESTANCIA
22	LA CULATA - SAN JOAQUIN
23	RAMAL A TOLIMAN
24	VILLA DEL PUEBLITO - HUIMILPAN
25	MEXICO - QUERETARO (CUOTA)
26	PORTEZUELO - PALMILLAS
27	TOLUCA - PALMILLAS

QUERETARO

1 CARR : ENT. BUENAVISTA - SAN MIGUEL DE ALLENDE

CLAVE: 00111

RUTA : MEX

AÑO : 2007

L U G A R	E S T A C I O N				C L A S I F I C A C I O N V E H I C U L A R E N P O R C I E N T O .												
	KM	TE	SC	TDPA	A	B	C2	C3	T3S2	T3S3	T3S2R4	OTROS	A	B	C	K'	D
T. C. QUERETARO - SAN LUIS POTOSI	0.00	3	0	7728	86	2.7	2.9	1.4	3.6	0.7	1.1	1.6	86	2.7	11.3	0.114	0.502
LIM. EDOS. TERM. QRO. PPIA. GTO.	9.30	0	0														
T. IZQ. GUADALUPE	12.00	1	0	3961	75.2	9.5	9.6	4.3	0.5	0.2	0	0.7	75.2	9.5	15.3	0.1	0.505
SAN MIGUEL DE ALLENDE	35.11	1	0	5270	87.4	5.1	0.9	0.5	2.2	0.9	1.1	1.9	87.4	5.1	7.5	0.099	0.506

2 CARR : T. C. (VILLA DEL PUEBLITO - HUIMILPAN) - CORONEO

CLAVE: 00155

RUTA : QRO-GTO

AÑO : 2007

L U G A R	E S T A C I O N				C L A S I F I C A C I O N V E H I C U L A R E N P O R C I E N T O .												
	KM	TE	SC	TDPA	A	B	C2	C3	T3S2	T3S3	T3S2R4	OTROS	A	B	C	K'	D
T. C. VILLA DEL PUEBLITO - HUIMILPAN	0.00	3	0	1910	81.2	6.7	5.4	4	1.5	1.2	0	0	81.2	6.7	12.1	0.157	0.509
LIM. EDOS. TERM. QRO. PPIA. GTO.	20.00	0	0														
CORONEO	45.20	1	0	2356	74.9	9.7	9	4.6	0.5	0.3	0	1	74.9	9.7	15.4	0.118	0.509

3 CARR : JALPAN DE SERRA - RIO VERDE

CLAVE: 00265

RUTA : MEX-069

AÑO : 2007

L U G A R	E S T A C I O N				C L A S I F I C A C I O N V E H I C U L A R E N P O R C I E N T O .												
	KM	TE	SC	TDPA	A	B	C2	C3	T3S2	T3S3	T3S2R4	OTROS	A	B	C	K'	D
JALPAN DE SERRA	0.00	3	0	3143	90.1	2.7	1.3	0.9	1.9	0.5	0.8	1.8	90.1	2.7	7.2	0.101	0.537
T. IZQ. CONCA	35.01	1	0	1600	89.5	3.4	3	1.4	1.6	0.4	0.2	0.5	89.5	3.4	7.1	0.092	0.501
ARROYO SECO	48.60	1	0	1002	90.3	2.6	3.2	1.5	1.3	0.6	0.1	0.4	90.3	2.6	7.1	0.111	0.512
LIM. EDOS. TERM. QRO. PPIA. S.L.P.	57.27	0	0														
SAN CIRO DE ACOSTA	69.42	1	0	780	86.9	3.3	4.4	2.2	1.7	1.1	0.4	0	86.9	3.3	9.8	0.092	0.503
SAN CIRO DE ACOSTA	69.42	3	0	2787	91.5	2.5	1.2	0.4	2.5	0.4	0.6	0.9	91.5	2.5	6	0.088	0.502
RIO VERDE	105.50	1	0	5174	85.6	3.1	4.5	2.3	1.8	1.6	0.9	0.2	85.6	3.1	11.3	0.09	0.501

4 CARR : LA NORIA - ACAMBARO

CLAVE: 00131

RUTA : MEX-120

AÑO : 2007

L U G A R	E S T A C I O N				C L A S I F I C A C I O N V E H I C U L A R E N P O R C I E N T O .												
	KM	TE	SC	TDPA	A	B	C2	C3	T3S2	T3S3	T3S2R4	OTROS	A	B	C	K'	D
LA NORIA	0.00	3	0	4282	76.3	10.1	5.9	2.3	2.7	0.9	0.8	1	76.3	10.1	13.6	0.115	0.501
AMEALCO	34.66	1	0	3062	82.1	5.8	4.5	2.2	2.8	1.2	0.6	0.8	82.1	5.8	12.1	0.117	0.5
AMEALCO	34.66	3	0	2560	68.7	8.3	9.2	7.7	2.1	2.8	0	1.2	68.7	8.3	23	0.096	0.503
LIM. EDOS. TERM. QRO. PPIA. MICH.	41.16	0	0														
LIM. EDOS. TERM. MICH. PPIA. GTO.	55.45	0	0														
CORONEO	59.35	3	0	3878	80.2	6.5	6.2	3.2	1.6	1.3	0	1	80.2	6.5	13.3	0.091	0.556

QUERETARO

4 CARR : LA NORIA - ACAMBARO

CLAVE: 00131

ruta : MEX-120

AÑO : 2007

L U G A R	E S T A C I O N				C L A S I F I C A C I O N V E H I C U L A R E N P O R C I E N T O .												
	KM	TE	SC	TDPA	A	B	C2	C3	T3S2	T3S3	T3S2R4	OTROS	A	B	C	K'	D
JERECUARO	79.70	3	0	4470	80	7.2	5.8	3.5	1.7	1.5	0.1	0.2	80	7.2	12.8	0.108	0.501
ACAMBARO	111.10	1	0	5327	74.7	9.8	9.4	4.4	0.6	0.3	0	0.8	74.7	9.8	15.5	0.094	0.503

5 CARR : QUERETARO - IRAPUATO (CUOTA)

CLAVE: 00423

ruta : MEX-045D

AÑO : 2007

L U G A R	E S T A C I O N				C L A S I F I C A C I O N V E H I C U L A R E N P O R C I E N T O .												
	KM	TE	SC	TDPA	A	B	C2	C3	T3S2	T3S3	T3S2R4	OTROS	A	B	C	K'	D
QUERETARO	0.00	3	1	13824	63.6	1	4	6.2	10.1	3.6	7.9	3.6	63.6	1	35.4	0.101	0.51
QUERETARO	0.00	3	2	13285	55.6	0.9	4.5	9	12.9	4.4	9.5	3.2	55.6	0.9	43.5	0.092	0.51
CASETA DE COBRO QUERETARO	7.00	2	1	11877													
CASETA DE COBRO QUERETARO	7.00	2	2	11876													
LIM. EDOS. TERM. QRO. PPIA. GTO.	8.97	0	0														
X. C. CELAYA - SAN MIGUEL ALLENDE	44.10	1	1	8383	74.2	8	6.3	4.1	3.4	1.8	0.2	2	74.2	8	17.8	0.099	0.505
X. C. CELAYA - SAN MIGUEL ALLENDE	44.10	1	2	8548	74.6	7.9	7.4	4	3.1	2.1	0.1	0.8	74.6	7.9	17.5	0.099	0.505
T. IZQ. SALAMANCA	81.54	1	1	7473	67.6	8.8	4.6	5.9	7.7	1.4	2.4	1.6	67.6	8.8	23.6	0.095	0.502
T. IZQ. SALAMANCA	81.54	1	2	7428	67.4	9.1	4.5	6	7.7	1.7	2.3	1.3	67.4	9.1	23.5	0.093	0.502
T. IZQ. SALAMANCA	81.54	3	1	8341	68.3	8	5.7	5.8	8.1	1.1	1.6	1.4	68.3	8	23.7	0.102	0.503
T. IZQ. SALAMANCA	81.54	3	2	8444	68.5	8	5.6	5.7	8	1.1	1.7	1.4	68.5	8	23.5	0.102	0.503
CASETA DE COBRO SALAMANCA	87.20	2	1	9491													
CASETA DE COBRO SALAMANCA	87.20	2	2	9490													
T. DER. LIBRAMIENTO DE IRAPUATO	96.30	1	1	7594	70.4	9.6	7.1	5.1	2.4	2.1	0.8	2.5	70.4	9.6	20	0.105	0.501
T. DER. LIBRAMIENTO DE IRAPUATO	96.30	1	2	7564	70.5	9.4	7.3	5.3	2.3	2	0.9	2.3	70.5	9.4	20.1	0.098	0.501
T. DER. LIBRAMIENTO DE IRAPUATO	96.30	3	1	5153	70.1	8.6	7.3	4.7	2.6	2.9	1.9	1.9	70.1	8.6	21.3	0.1	0.502
T. DER. LIBRAMIENTO DE IRAPUATO	96.30	3	2	5111	70.3	8.4	7	4.8	2.7	2.9	1.9	2	70.3	8.4	21.3	0.095	0.502
T. C. IRAPUATO - ZAPOTLANEJO	104.70	0	0														

6 CARR : QUERETARO - IRAPUATO (LIBRE)

CLAVE: 00154

ruta : MEX-045

AÑO : 2007

L U G A R	E S T A C I O N				C L A S I F I C A C I O N V E H I C U L A R E N P O R C I E N T O .												
	KM	TE	SC	TDPA	A	B	C2	C3	T3S2	T3S3	T3S2R4	OTROS	A	B	C	K'	D
QUERETARO PONIENTE	0.00	3	1	17738	77	4	4.7	3.6	4.7	2.7	0.1	3.2	77	4	19	0.125	0.509
QUERETARO PONIENTE	0.00	3	2	17093	75.3	4.2	4.8	4.7	4	3.6	0.1	3.3	75.3	4.2	20.5	0.086	0.509
T. DER. VILLA DEL PUEBLITO	6.67	3	1	8857	76.2	5	5	3.9	3.8	3	0	3.1	76.2	5	18.8	0.126	0.504
T. DER. VILLA DEL PUEBLITO	6.67	3	2	8988	77.2	4.6	4.7	4	3.5	2.9	0.1	3	77.2	4.6	18.2	0.114	0.504
LOS ANGELES	12.60	3	0	14253	77.9	3.9	6.1	4.6	3.2	2.4	0.1	1.8	77.9	3.9	18.2	0.099	0.507

QUERETARO

7 CARR : QUERETARO - SAN LUIS POTOSI

CLAVE: 00165

RUTA : MEX-057

AÑO : 2007

L U G A R	E S T A C I O N				C L A S I F I C A C I O N V E H I C U L A R E N P O R C I E N T O .												
	KM	TE	SC	TDPA	A	B	C2	C3	T3S2	T3S3	T3S2R4	OTROS	A	B	C	K'	D
T. IZQ. SANTA MARIA DEL RIO	155.90	3	1	7218	71.2	4.6	7	6.1	3.9	4.1	0.3	2.8	71.2	4.6	24.2	0.106	0.501
T. IZQ. SANTA MARIA DEL RIO	155.90	3	2	7194	71.7	7.4	5	5.4	3.7	3.7	0.2	2.9	71.7	7.4	20.9	0.094	0.501
T. IZQ. VILLA DE REYES	176.40	1	1	8734	72	5	5.1	4.3	5.6	5.2	0.5	2.3	72	5	23	0.093	0.502
T. IZQ. VILLA DE REYES	176.40	1	2	8681	70.1	5.5	5.2	5	5.7	5.2	0.4	2.9	70.1	5.5	24.4	0.094	0.502
T. IZQ. VILLA DE REYES	176.40	3	1	7245	72.3	5.1	5	4.3	5.6	5	0.6	2.1	72.3	5.1	22.6	0.084	0.502
T. IZQ. VILLA DE REYES	176.40	3	2	7189	71	5.3	5.2	4.8	5.5	5.3	0.4	2.5	71	5.3	23.7	0.08	0.502
X. C. LIBRAMIENTO DE SAN LUIS POTOSI	184.80	1	1	8250	72.8	4.9	5	4.6	5.2	5.1	0.3	2.1	72.8	4.9	22.3	0.093	0.501
X. C. LIBRAMIENTO DE SAN LUIS POTOSI	184.80	1	2	8229	70.5	5.6	5.4	5.1	5.5	4.9	0.4	2.6	70.5	5.6	23.9	0.076	0.501
X. PERIFERICO SAN LUIS POTOSI	197.50	1	1	19219	74.2	7	3	4	6.7	2.3	0.2	2.6	74.2	7	18.8	0.097	0.514
X. PERIFERICO SAN LUIS POTOSI	197.50	1	2	20157	74.2	6.9	3	3.9	6.7	2.7	0.1	2.5	74.2	6.9	18.9	0.079	0.514
SAN LUIS POTOSI	204.30	0	0														

8 CARR : SAN JUAN DEL RIO - XILITLA

CLAVE: 00183

RUTA : MEX-120

AÑO : 2007

L U G A R	E S T A C I O N				C L A S I F I C A C I O N V E H I C U L A R E N P O R C I E N T O .												
	KM	TE	SC	TDPA	A	B	C2	C3	T3S2	T3S3	T3S2R4	OTROS	A	B	C	K'	D
SAN JUAN DEL RIO	0.00	0	0														
T. DER. LIBRAMIENTO DE SAN JUAN DEL RIO	5.20	3	1	6816	84.8	3	2.3	2.6	2.9	1.1	1	2.3	84.8	3	12.2	0.088	0.509
T. DER. LIBRAMIENTO DE SAN JUAN DEL RIO	5.20	3	2	6586	87.4	2.5	2.6	2.6	2.4	0.7	0.4	1.4	87.4	2.5	10.1	0.078	0.509
T. DER. TEQUISQUIAPAN	19.80	1	1	4575	86.1	2.1	2.5	2.1	3.4	0.8	1	2	86.1	2.1	11.8	0.114	0.51
T. DER. TEQUISQUIAPAN	19.80	1	2	4394	85.9	2.3	2.6	2.2	2.6	1	1	2.4	85.9	2.3	11.8	0.112	0.51
T. DER. TEQUISQUIAPAN	19.80	3	0	5939	76	3.1	2.5	1.5	7.2	2.1	3.9	3.7	76	3.1	20.9	0.076	0.513
EZEQUIEL MONTES	36.50	1	1	3581	85.9	2.5	2.2	3.6	2.3	0.8	0.9	1.8	85.9	2.5	11.6	0.125	0.513
EZEQUIEL MONTES	36.50	1	2	3402	85	2.2	1.7	2.4	3.3	1	1.6	2.8	85	2.2	12.8	0.135	0.513
EZEQUIEL MONTES	36.50	3	0	4365	83.8	1.9	2.8	3	3.4	1.3	1.7	2.1	83.8	1.9	14.3	0.09	0.506
CADEREYTA	47.90	3	0	2716	85.4	1.9	4.2	2.2	2.9	1.1	1	1.3	85.4	1.9	12.7	0.11	0.506
VIZARRON DE MONTES	73.50	3	0	2068	86.9	2.6	2.5	2.2	2.8	0.9	0.9	1.2	86.9	2.6	10.5	0.101	0.506
T. DER. SAN JOAQUIN	79.50	3	0	987	87.1	4	5.6	1.5	1	0.4	0.1	0.3	87.1	4	8.9	0.091	0.502
T. IZQ. HIGUERILLAS	89.10	3	0	1085	88.6	3.4	4.2	1.3	1.1	0.6	0.1	0.7	88.6	3.4	8	0.109	0.503
T. IZQ. PEÑAMILLER	103.00	3	0	752	89.8	4.4	1.1	1.5	1.3	0.6	0.2	1.1	89.8	4.4	5.8	0.122	0.502
PINAL DE AMOLES	140.00	3	0	1044	88.7	3.4	3.5	0.9	1.6	0.5	0.4	1	88.7	3.4	7.9	0.112	0.504
JALPAN DE SERRA	179.30	1	0	1143	90.8	3	1.5	0.3	2	0.5	0.6	1.3	90.8	3	6.2	0.078	0.503
JALPAN DE SERRA	179.30	3	0	1253	89.6	3.2	1.7	0.6	2.5	0.5	0.6	1.3	89.6	3.2	7.2	0.086	0.506
LANDA DE MATAMOROS	201.60	3	0	1664	88.3	3.9	4.5	1.3	1.2	0.3	0.1	0.4	88.3	3.9	7.8	0.101	0.521
EL LOBO	236.40	3	0	808	82	7.2	6.1	2.3	1.4	0.4	0.1	0.5	82	7.2	10.8	0.119	0.501

QUERETARO

8 CARR : SAN JUAN DEL RIO - XILITLA

CLAVE: 00183

RUTA : MEX-120

AÑO : 2007

L U G A R	E S T A C I O N			C L A S I F I C A C I O N V E H I C U L A R E N P O R C I E N T O .												
	KM	TE	SC TDPA	A	B	C2	C3	T3S2	T3S3	T3S2R4	OTROS	A	B	C	K'	D
LIM. EDOS. TERM. QRO. PPIA. S.L.P.	238.30	0	0													
XILITLA	266.40	1	0 1061	81.6	7.3	6.2	3.3	0.8	0.7	0.1	0	81.6	7.3	11.1	0.102	0.501
T. C. PORTEZUELO - CD. VALLES	280.00	1	0 1384	84.4	4.1	5.9	3.5	0.9	0.7	0.5	0	84.4	4.1	11.5	0.101	0.504

9 CARR : AJUCHITLAN - COLON

CLAVE: 22010

RUTA : QRO-005

AÑO : 2007

L U G A R	E S T A C I O N			C L A S I F I C A C I O N V E H I C U L A R E N P O R C I E N T O .												
	KM	TE	SC TDPA	A	B	C2	C3	T3S2	T3S3	T3S2R4	OTROS	A	B	C	K'	D
T. C. EL COLORADO - HIGUERILLAS	0.00	3	0 2464	85.9	5.5	5.3	1.6	0.5	0.2	0	1	85.9	5.5	8.6	0.121	0.503
COLON	14.00	1	0 1692	87.3	4.3	4.9	3.2	0	0	0	0.3	87.3	4.3	8.4	0.119	0.504

10 CARR : EL COLORADO - HIGUERILLAS

CLAVE: 22004

RUTA : QRO-004

AÑO : 2007

L U G A R	E S T A C I O N			C L A S I F I C A C I O N V E H I C U L A R E N P O R C I E N T O .												
	KM	TE	SC TDPA	A	B	C2	C3	T3S2	T3S3	T3S2R4	OTROS	A	B	C	K'	D
T. C. MEXICO - QUERETARO (CUOTA)	0.00	3	0 7752	81.7	2.9	2.5	2.3	4.5	1.6	2.1	2.4	81.7	2.9	15.4	0.084	0.504
T. IZQ. CHICHIMEQUILLAS	3.80	3	0 6392	78	3.6	4.9	3.4	3.6	1.9	1.9	2.7	78	3.6	18.4	0.114	0.5
X. C. QUERETARO - TEQUISQUIAPAN	9.10	3	0 4052	70.7	7.7	10.1	7	1.6	1.5	0.1	1.3	70.7	7.7	21.6	0.128	0.502
T. DER. EZEQUIEL MONTES	31.90	1	0 5156	72.9	1.4	5.2	4.8	4.3	3.9	4.3	3.2	72.9	1.4	25.7	0.14	0.5
T. DER. EZEQUIEL MONTES	31.90	3	0 3069	89.3	2.4	3.1	1.7	0.5	1.3	0	1.7	89.3	2.4	8.3	0.108	0.505
T. IZQ. SAN PABLO TOLIMAN	57.00	3	0 718	92.3	1.3	3.2	1.6	0	0.8	0.3	0.5	92.3	1.3	6.4	0.124	0.508
T. C. SAN JUAN DEL RIO - XILITLA	81.90	1	0 778	88.1	3.1	5.3	2	0	0.4	0.3	0.8	88.1	3.1	8.8	0.116	0.501

11 CARR : AJUCHITLAN - EZEQUIEL MONTES

CLAVE: 22005

RUTA : QRO-005

AÑO : 2007

L U G A R	E S T A C I O N			C L A S I F I C A C I O N V E H I C U L A R E N P O R C I E N T O .												
	KM	TE	SC TDPA	A	B	C2	C3	T3S2	T3S3	T3S2R4	OTROS	A	B	C	K'	D
T. C. EL COLORADO - HIGUERILLAS	0.00	3	0 5387	79.5	5.9	3.6	2.2	3.5	1.9	1.7	1.7	79.5	5.9	14.6	0.124	0.504
EZEQUIEL MONTES	10.60	1	0 4728	72.8	4.6	2.3	1.9	6.9	2.1	6.2	3.2	72.8	4.6	22.6	0.074	0.509

12 CARR : SAN JUAN DEL RIO - AMEALCO

CLAVE: 22011

RUTA : QRO

AÑO : 2007

L U G A R	E S T A C I O N			C L A S I F I C A C I O N V E H I C U L A R E N P O R C I E N T O .												
	KM	TE	SC TDPA	A	B	C2	C3	T3S2	T3S3	T3S2R4	OTROS	A	B	C	K'	D
T. C. MEXICO - QUERETARO	0.00	3	0 3553	88.2	3.1	1.8	0.6	3.5	0.5	1	1.3	88.2	3.1	8.7	0.094	0.505

QUERETARO

12 CARR : SAN JUAN DEL RIO - AMEALCO

CLAVE: 22011

RUTA : QRO

AÑO : 2007

L U G A R	E S T A C I O N				C L A S I F I C A C I O N V E H I C U L A R E N P O R C I E N T O .												
	KM	TE	SC	TDPA	A	B	C2	C3	T3S2	T3S3	T3S2R4	OTROS	A	B	C	K'	D
AMEALCO	28.00	1	0	3027	85.8	3.6	3.8	0.6	3.4	0.5	1	1.3	85.8	3.6	10.6	0.112	0.502

13 CARR : HACIENDA PARAISO - CHICHIMEQUILLAS

CLAVE: 22001

RUTA : QRO-001

AÑO : 2007

L U G A R	E S T A C I O N				C L A S I F I C A C I O N V E H I C U L A R E N P O R C I E N T O .												
	KM	TE	SC	TDPA	A	B	C2	C3	T3S2	T3S3	T3S2R4	OTROS	A	B	C	K'	D
HACIENDA PARAISO	0.00	3	0	6531	78.8	2	4.2	4.3	5.6	1.2	2.5	1.4	78.8	2	19.2	0.094	0.503
T. DER. NAVAJAS	7.90	3	0	3388	77.5	1.3	7.3	4.2	4.7	1.2	2.3	1.5	77.5	1.3	21.2	0.098	0.501
LA GRIEGA	10.35	3	0	2100	83.4	2.5	8.5	2.9	1.9	0.8	0	0	83.4	2.5	14.1	0.115	0.518
AMASCALA	15.45	3	0	2109	85.2	2.4	9.6	0.6	0.9	0.2	0.2	0.9	85.2	2.4	12.4	0.125	0.507
CHICHIMEQUILLAS	26.61	0	0														

14 CARR : LIBRAMIENTO DE SAN JUAN DEL RIO

CLAVE: 22266

RUTA : QRO

AÑO : 2007

L U G A R	E S T A C I O N				C L A S I F I C A C I O N V E H I C U L A R E N P O R C I E N T O .												
	KM	TE	SC	TDPA	A	B	C2	C3	T3S2	T3S3	T3S2R4	OTROS	A	B	C	K'	D
T. C. MEXICO - QUERETARO (DESPUES DEL F.F.C.C.)	0.00	3	0	18912	72.7	1.6	2.6	1.9	6.3	3.3	6.9	4.7	72.7	1.6	25.7	0.069	0.561
T. C. SAN JUAN DEL RIO - XILITLA	5.05	1	1	6455	77.2	2.7	1.7	2	4	2.7	5.1	4.6	77.2	2.7	20.1	0.098	0.523
T. C. SAN JUAN DEL RIO - XILITLA	5.05	1	2	5877	84.9	2.5	2.1	2.1	3.6	1.1	1.3	2.4	84.9	2.5	12.6	0.112	0.523

15 CARR : LIBRAMIENTO NORTE DE QUERETARO

CLAVE: 22500

RUTA : MEX

AÑO : 2007

L U G A R	E S T A C I O N				C L A S I F I C A C I O N V E H I C U L A R E N P O R C I E N T O .												
	KM	TE	SC	TDPA	A	B	C2	C3	T3S2	T3S3	T3S2R4	OTROS	A	B	C	K'	D
T. C. QUERETARO - SAN LUIS POTOSI	0.00	3	1	26094	77.9	3.1	8.4	3.1	2.4	2	0.6	2.5	77.9	3.1	19	0.09	0.502
T. C. QUERETARO - SAN LUIS POTOSI	0.00	3	2	25849	78.4	3.3	8	3.2	2.7	2	0.3	2.1	78.4	3.3	18.3	0.125	0.502
T. C. MEXICO - QUERETARO	8.00	1	1	24766	81.1	3.5	4.1	3.4	3.4	3.3	0	1.2	81.1	3.5	15.4	0.126	0.504
T. C. MEXICO - QUERETARO	8.00	1	2	25134	75.6	4	7.8	4.6	3.2	2.1	0	2.7	75.6	4	20.4	0.135	0.504

16 CARR : PEÑA COLORADA - EL RODEO

CLAVE: 22002

RUTA : QRO

AÑO : 2007

L U G A R	E S T A C I O N				C L A S I F I C A C I O N V E H I C U L A R E N P O R C I E N T O .												
	KM	TE	SC	TDPA	A	B	C2	C3	T3S2	T3S3	T3S2R4	OTROS	A	B	C	K'	D
T. C. MEXICO - QUERETARO	0.00	3	0	8917	79.2	2.9	2.4	3.3	5.7	1.4	3.2	1.9	79.2	2.9	17.9	0.074	0.501
X. C. QUERETARO - TEQUISQUIAPAN	9.00	1	0	1252	82.8	3	3.9	2.4	3.3	1.4	1.2	2	82.8	3	14.2	0.109	0.501

QUERETARO

16 CARR : PEÑA COLORADA - EL RODEO

CLAVE: 22002

RUTA : QRO

AÑO : 2007

L U G A R	E S T A C I O N				C L A S I F I C A C I O N V E H I C U L A R E N P O R C I E N T O .												
	KM	TE	SC	TDPA	A	B	C2	C3	T3S2	T3S3	T3S2R4	OTROS	A	B	C	K'	D
EL RODEO	11.00	1	0	1049	91.2	2.5	1.7	1.1	1.4	0.8	0.4	0.9	91.2	2.5	6.3	0.105	0.507

17 CARR : QUERETARO - ENT. SAN MARTIN

CLAVE: 22067

RUTA : QRO

AÑO : 2007

L U G A R	E S T A C I O N				C L A S I F I C A C I O N V E H I C U L A R E N P O R C I E N T O .												
	KM	TE	SC	TDPA	A	B	C2	C3	T3S2	T3S3	T3S2R4	OTROS	A	B	C	K'	D
T. C. MEXICO - QUERETARO	0.00	3	0	2581	83.8	2.7	2.7	3.5	3.1	2	0	2.2	83.8	2.7	13.5	0.114	0.507
LAGUNILLAS	18.70	1	0	1327	87.8	3.7	3.2	3	0.2	0.5	0	1.6	87.8	3.7	8.5	0.109	0.502
T. DER. HUIMILPAN	32.70	1	0	1184	91.2	3.3	1.6	3.1	0	0.5	0	0.3	91.2	3.3	5.5	0.131	0.501
ENT. SAN MARTIN	53.00	1	0	1184	86.4	4.4	4.8	3.1	0	0	0	1.3	86.4	4.4	9.2	0.128	0.5

18 CARR : QUERETARO - ESTACION CHICHIMEQUILLAS

CLAVE: 22270

RUTA : QRO

AÑO : 2007

L U G A R	E S T A C I O N				C L A S I F I C A C I O N V E H I C U L A R E N P O R C I E N T O .												
	KM	TE	SC	TDPA	A	B	C2	C3	T3S2	T3S3	T3S2R4	OTROS	A	B	C	K'	D
T. C. LIBRAMIENTO DE QUERETARO	0.00	3	0	11640	70.1	2.2	3	1	6	3	9.2	5.5	70.1	2.2	27.7	0.067	0.503
X. C. HACIENDA PARAISO - CHICHIMEQUILLAS	18.00	1	0	8674	86.9	4.3	3	1.6	1.4	1.5	0.1	1.2	86.9	4.3	8.8	0.092	0.512
ESTACION CHICHIMEQUILLAS	19.20	0	0														

19 CARR : QUERETARO - TEQUISQUIAPAN

CLAVE: 22502

RUTA : QRO

AÑO : 2007

L U G A R	E S T A C I O N				C L A S I F I C A C I O N V E H I C U L A R E N P O R C I E N T O .												
	KM	TE	SC	TDPA	A	B	C2	C3	T3S2	T3S3	T3S2R4	OTROS	A	B	C	K'	D
QUERETARO	0.00	3	0	5107	71.6	3.3	3.6	1.9	4.8	2.7	5.4	6.7	71.6	3.3	25.1	0.098	0.506
X. C. PEÑA COLORADA - EL RODEO	14.00	1	0	5515	81.1	4.1	5.2	2.2	3.7	0.8	1.3	1.6	81.1	4.1	14.8	0.089	0.503
T. IZQ. LA GRIEGA	16.60	3	0	2783	84.2	3.1	3.8	3.5	2.4	1.4	0.7	0.9	84.2	3.1	12.7	0.126	0.506
X. C. EL COLORADO - HIGUERILLAS	25.70	1	0	3822	86.1	2.2	3.9	2.9	1.6	1	0.5	1.8	86.1	2.2	11.7	0.108	0.503
X. C. SAN JUAN DEL RIO - XILITLA	56.90	1	0	5055	84.4	3.2	3.5	1.4	3.5	0.9	1.4	1.7	84.4	3.2	12.4	0.108	0.504
TEQUISQUIAPAN	57.40	1	0	4915	89.3	3.2	0.9	0.9	1.2	0.9	0.9	2.7	89.3	3.2	7.5	0.104	0.507

20 CARR : QUERETARO - TLACOTE EL BAJO

CLAVE: 22069

RUTA : QRO

AÑO : 2007

L U G A R	E S T A C I O N				C L A S I F I C A C I O N V E H I C U L A R E N P O R C I E N T O .												
	KM	TE	SC	TDPA	A	B	C2	C3	T3S2	T3S3	T3S2R4	OTROS	A	B	C	K'	D
QUERETARO	0.00	3	0	1955	77.7	3.6	2.5	1.1	4.2	2.2	4.6	4.1	77.7	3.6	18.7	0.071	0.504

QUERETARO

25 CARR : MEXICO - QUERETARO (CUOTA)

CLAVE: 00411

ruta : MEX-057D

AÑO : 2007

LUGAR	ESTACION				CLASIFICACION VEHICULAR EN PORCIENTO .												
	KM	TE	SC	TDPA	A	B	C2	C3	T3S2	T3S3	T3S2R4	OTROS	A	B	C	K'	D
CASETA DE COBRO TEPOTZOTLAN	43.01	2	1	21887													
CASETA DE COBRO TEPOTZOTLAN	43.01	2	2	21886													
ENT. JOROBAS	56.18	1	1	28666	70.4	8.5	7.6	6.4	3.4	2.1	0.3	1.3	70.4	8.5	21.1	0.083	0.512
ENT. JOROBAS	56.18	1	2	30040	63.9	8.5	6.8	6.4	5.9	4.3	0.2	4	63.9	8.5	27.6	0.065	0.512
ENT. JOROBAS	56.18	3	1	23700	74.3	7	6.2	4.8	2.5	2.7	0	2.5	74.3	7	18.7	0.095	0.506
ENT. JOROBAS	56.18	3	2	23117	62.6	9.2	6.5	6.7	6.9	4.1	0	4	62.6	9.2	28.2	0.088	0.506
LIM. EDOS. TERM. MEX. PPIA. HGO.	60.00	0	0														
T. DER. TEPEJI DEL RIO	69.36	1	1	20917	69.2	7.7	7.6	3.9	4.7	3.9	2.2	0.8	69.2	7.7	23.1	0.096	0.503
T. DER. TEPEJI DEL RIO	69.36	1	2	20671	70.4	8.2	7.9	3.6	4	3	2.2	0.7	70.4	8.2	21.4	0.114	0.503
T. DER. TEPEJI DEL RIO	69.36	3	1	17822	71.5	7.8	6.7	4.2	4.5	2.1	2.3	0.9	71.5	7.8	20.7	0.085	0.5
T. DER. TEPEJI DEL RIO	69.36	3	2	17838	72.7	7	7.2	3.7	4	2.3	2.5	0.6	72.7	7	20.3	0.158	0.5
T. IZQ. JILOTEPEC	83.75	1	1	14042	72.9	8	7.1	3.2	3.1	3.3	2.2	0.2	72.9	8	19.1	0.112	0.5
T. IZQ. JILOTEPEC	83.75	1	2	14046	73.8	7.5	5.3	4.1	3.7	3.3	2.1	0.2	73.8	7.5	18.7	0.094	0.5
T. IZQ. JILOTEPEC	83.75	3	1	14121	71.3	7.1	6.2	4.8	5.2	2.3	2.5	0.6	71.3	7.1	21.6	0.104	0.501
T. IZQ. JILOTEPEC	83.75	3	2	14076	70.5	6.7	6.6	5.3	4.6	3.2	2.1	1	70.5	6.7	22.8	0.084	0.501
LIM. EDOS. TERM. HGO. PPIA. MEX.	86.00	0	0														
X. C. JILOTEPEC - MARAVILLAS	107.00	1	1	19079	67.5	7	6.9	8.9	4	3.6	0.1	2	67.5	7	25.5	0.079	0.509
X. C. JILOTEPEC - MARAVILLAS	107.00	1	2	18395	69	7	7.3	6.2	5.2	2.8	0.1	2.4	69	7	24	0.068	0.509
X. C. JILOTEPEC - MARAVILLAS	107.00	3	1	18014	48.1	7.2	2.4	8.6	9.3	5.5	14.7	4.2	48.1	7.2	44.7	0.093	0.506
X. C. JILOTEPEC - MARAVILLAS	107.00	3	2	17554	46	7.2	3.2	9.1	11.9	5.6	12.7	4.3	46	7.2	46.8	0.079	0.506
T. IZQ. ACULCO	125.00	1	1	21963	62.6	9	8.6	6.5	7.9	3.7	0.2	1.5	62.6	9	28.4	0.088	0.502
T. IZQ. ACULCO	125.00	1	2	22164	67.1	9	8.2	4.4	5.4	4	0.1	1.8	67.1	9	23.9	0.07	0.502
T. IZQ. ACULCO	125.00	3	1	17518	66.8	8	6.8	5.7	5.6	4.6	0.1	2.4	66.8	8	25.2	0.085	0.5
T. IZQ. ACULCO	125.00	3	2	17503	66.7	7.9	6.1	4.9	7.9	4.2	0.7	1.6	66.7	7.9	25.4	0.091	0.5
LIM. EDOS. TERM. MEX. PPIA. QRO.	145.80	0	0														
CASETA DE COBRO PALMILLAS	147.90	2	1	18880													
CASETA DE COBRO PALMILLAS	147.90	2	2	18879													
T. IZQ. TOLUCA	148.50	1	1	15412	47.2	4.4	5.9	8.2	17.6	3.9	9.6	3.2	47.2	4.4	48.4	0.076	0.503
T. IZQ. TOLUCA	148.50	1	2	15603	47.5	4.2	6	8.1	17.6	3.9	9.6	3.1	47.5	4.2	48.3	0.076	0.503
T. IZQ. TOLUCA	148.50	3	1	20175	55.6	6.1	4.9	5.4	12.9	3.4	9	2.7	55.6	6.1	38.3	0.073	0.506
T. IZQ. TOLUCA	148.50	3	2	19735	51.6	6.5	5.4	5.2	14.7	3.9	9.5	3.2	51.6	6.5	41.9	0.066	0.506
T. DER. PONIENTE SAN JUAN DEL RIO	164.10	3	1	24670	53.3	9.9	4.5	4.6	11.7	4.4	8.5	3.1	53.3	9.9	36.8	0.073	0.511
T. DER. PONIENTE SAN JUAN DEL RIO	164.10	3	2	23653	51.5	9.5	4.4	3.7	12.9	4.6	10.4	3	51.5	9.5	39	0.068	0.511
T. IZQ. ACAMBARO	170.50	3	1	20241	51.5	7.6	4.9	6.2	12.8	3.8	8.6	4.6	51.5	7.6	40.9	0.087	0.501
T. IZQ. ACAMBARO	170.50	3	2	20359	51.2	7.8	4.4	6.3	12.3	4.1	9.4	4.5	51.2	7.8	41	0.098	0.501

QUERETARO

25 CARR : MEXICO - QUERETARO (CUOTA)

CLAVE: 00411

RUTA : MEX-057D

AÑO : 2007

L U G A R	E S T A C I O N				C L A S I F I C A C I O N V E H I C U L A R E N P O R C I E N T O .												
	KM	TE	SC	TDPA	A	B	C2	C3	T3S2	T3S3	T3S2R4	OTROS	A	B	C	K'	D
T. DER. LIBRAMIENTO DE QUERETARO A SAN LUIS POTOSI	207.00	1	1	24782	68.2	4.5	3.6	4	9.1	2.2	4.1	4.3	68.2	4.5	27.3	0.068	0.501
T. DER. LIBRAMIENTO DE QUERETARO A SAN LUIS POTOSI	207.00	1	2	24705	60.2	4.7	3.3	2.6	9.9	3.9	9.2	6.2	60.2	4.7	35.1	0.063	0.501
T. DER. LIBRAMIENTO DE QUERETARO A SAN LUIS POTOSI	207.00	3	1	27695	67.4	4.9	3.7	2.8	8.4	3.2	5.9	3.7	67.4	4.9	27.7	0.073	0.5
T. DER. LIBRAMIENTO DE QUERETARO A SAN LUIS POTOSI	207.00	3	2	27675	61.2	4.9	5.4	3.6	10.5	3.5	6.3	4.6	61.2	4.9	33.9	0.071	0.5
QUERETARO	211.60	0	0														

26 CARR : PORTEZUELO - PALMILLAS

CLAVE: 00194

RUTA : MEX-045

AÑO : 2007

L U G A R	E S T A C I O N				C L A S I F I C A C I O N V E H I C U L A R E N P O R C I E N T O .												
	KM	TE	SC	TDPA	A	B	C2	C3	T3S2	T3S3	T3S2R4	OTROS	A	B	C	K'	D
PORTEZUELO	0.00	3	0	6828	60.7	3	3.7	5.8	12.2	5.5	6.8	2.3	60.7	3	36.3	0.082	0.511
JONACAPA	29.41	3	0	6701	57.8	4.2	3.9	5.5	13.2	7.3	6.3	1.8	57.8	4.2	38	0.067	0.505
HUICHAPAN	45.10	1	0	6114	92.6	3.2	1.6	0.2	1.4	0.3	0.1	0.6	92.6	3.2	4.2	0.085	0.505
T. IZQ. NOPALA	56.15	1	0	6159	62.8	4.2	2.4	5	11.5	6.3	6.2	1.6	62.8	4.2	33	0.089	0.504
LIM. EDOS. TERM. HGO. PPIA. QRO.	71.40	0	0														
PALMILLAS	80.00	1	0	6947	59.6	5.4	4.2	3.1	12.5	6.1	7.7	1.4	59.6	5.4	35	0.087	0.516

27 CARR : TOLUCA - PALMILLAS

CLAVE: 00496

RUTA : EM(D)-MEX-055

AÑO : 2007

L U G A R	E S T A C I O N				C L A S I F I C A C I O N V E H I C U L A R E N P O R C I E N T O .												
	KM	TE	SC	TDPA	A	B	C2	C3	T3S2	T3S3	T3S2R4	OTROS	A	B	C	K'	D
TOLUCA	0.00	0	0														
T. IZQ. CALIXTLAHUACA DE RAYON (ALTA)	7.21	3	1	12480	88.9	3.2	3.1	1.2	0.5	0.6	0.2	2.3	88.9	3.2	7.9	0.089	0.5
T. IZQ. CALIXTLAHUACA DE RAYON (BAJA)	7.21	3	1	4567	59.3	11.3	11.4	8.4	4	2.2	1.1	2.3	59.3	11.3	29.4	0.095	0.503
T. IZQ. CALIXTLAHUACA DE RAYON (BAJA)	7.21	3	2	4772	61.1	10	11.1	8	3.4	3.6	0.9	1.9	61.1	10	28.9	0.091	0.503
T. IZQ. CALIXTLAHUACA DE RAYON (ALTA)	7.21	3	2	12497	86.2	3.1	4.8	1.3	1.1	1.1	0.1	2.3	86.2	3.1	10.7	0.082	0.5
EL DORADO	16.00	1	1	14144	77.5	7	7.7	2.5	2.2	1	1	1.1	77.5	7	15.5	0.075	0.501
EL DORADO	16.00	1	2	14198	78.4	6.3	7.4	2.5	2.2	1	1.1	1.1	78.4	6.3	15.3	0.068	0.501
IXTLAHUACA DE RAYON	35.58	3	0	24340	77.9	9.2	4.2	2.1	2.7	1.2	0.9	1.8	77.9	9.2	12.9	0.09	0.5
PASTEJE	45.20	1	1	8677	75.8	6.9	7.6	3.3	4.2	1.6	0	0.6	75.8	6.9	17.3	0.088	0.501
PASTEJE	45.20	1	2	8644	75.3	5.1	7.1	4.1	4.3	1.8	1.2	1.1	75.3	5.1	19.6	0.076	0.501
ATLACOMULCO	65.00	1	1	11200	81.4	3.6	4.5	2.5	3.9	1.4	1.6	1.1	81.4	3.6	15	0.1	0.502
ATLACOMULCO	65.00	1	2	11105	81.5	4.6	3.5	2.5	3.9	1.4	1.5	1.1	81.5	4.6	13.9	0.114	0.502
ATLACOMULCO	65.00	3	0	8542	78	9.2	4.6	2.3	2.1	1.2	0.6	2	78	9.2	12.8	0.079	0.504
ACAMBAY	85.64	3	0	6109	77.8	8.2	5.3	3.9	1.4	2.4	0.3	0.7	77.8	8.2	14	0.073	0.502

QUERETARO

27 CARR : TOLUCA - PALMILLAS

CLAVE: 00496

RUTA : EM(D)-MEX-055

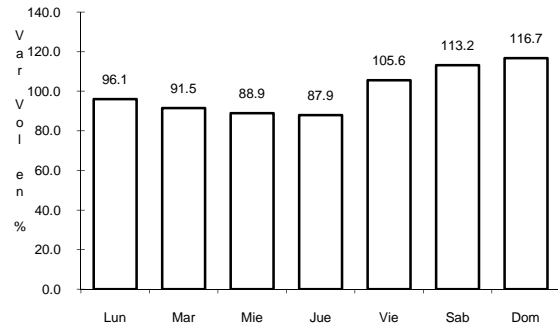
AÑO : 2007

L U G A R	E S T A C I O N				C L A S I F I C A C I O N V E H I C U L A R E N P O R C I E N T O .												
	KM	TE	SC	TDPA	A	B	C2	C3	T3S2	T3S3	T3S2R4	OTROS	A	B	C	K'	D
T. DER. ACULCO DE ESPINOZA	104.40	3	0	4700	75.8	11.1	5.5	2.9	1.6	1.9	0.3	0.9	75.8	11.1	13.1	0.071	0.503
T. DER. POLOTITLAN	122.70	1	0	4232	88.1	2.6	3	2.2	1.2	0.7	0.7	1.5	88.1	2.6	9.3	0.09	0.501
LIM. EDOS. TERM. MEX. PPIA. QRO.	128.30	0	0														
T. C. MEXICO - QUERETARO	131.50	1	0	8547	65.4	5.4	4.7	3	9.5	3.2	5.6	3.2	65.4	5.4	29.2	0.078	0.5

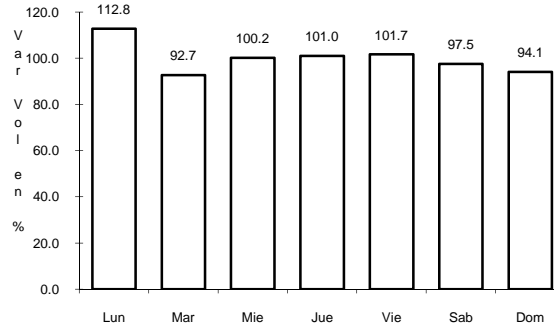
1 CARR: ENT. BUENAVISTA - SAN MIGUEL DE ALLENDE

CLAVE: 00111

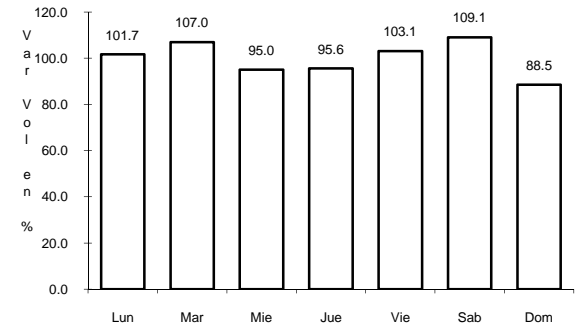
RUTA: MEX



Km: 0.00 Tipo: 3 Sent: 0



Km: 12.00 Tipo: 1 Sent: 0

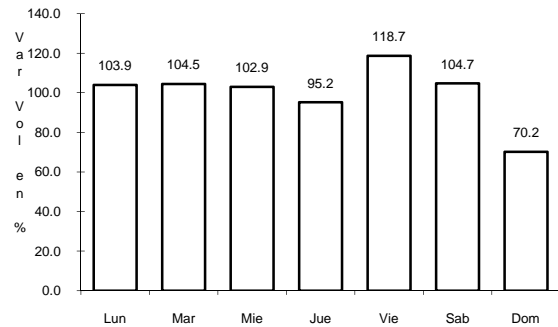


Km: 35.11 Tipo: 1 Sent: 0

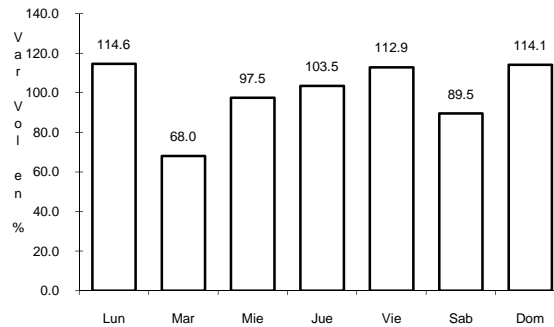
2 CARR: T. C. (VILLA DEL PUEBLITO - HUIMILPAN) - CORONEO

CLAVE: 00155

RUTA: QRO-GTO



Km: 0.00 Tipo: 3 Sent: 0

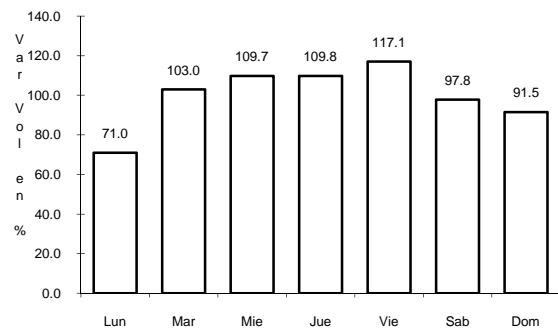


Km: 45.20 Tipo: 1 Sent: 0

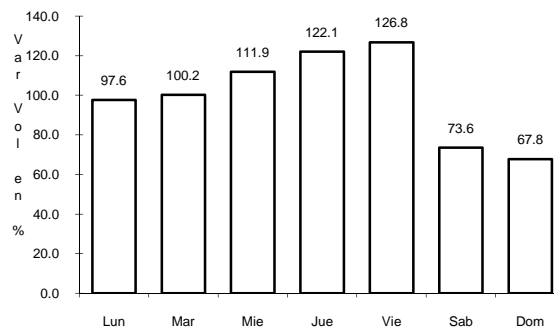
3 CARR: JALPAN DE SERRA - RIO VERDE

CLAVE: 00265

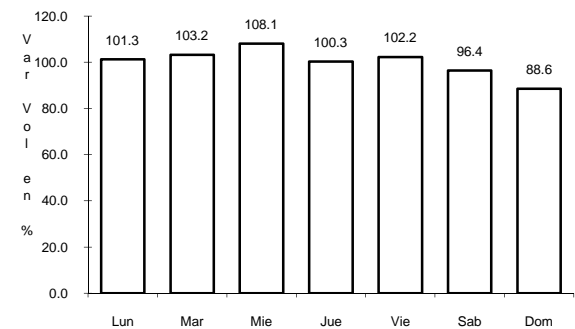
RUTA: MEX-069



Km: 0.00 Tipo: 3 Sent: 0



Km: 48.60 Tipo: 1 Sent: 0

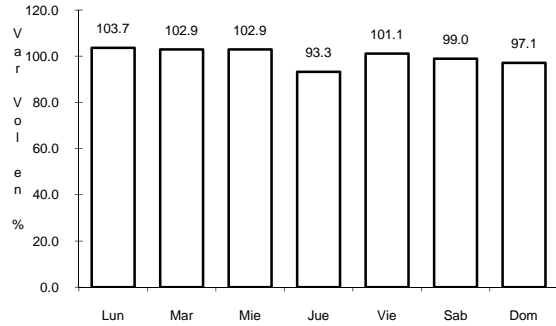


Km: 105.50 Tipo: 1 Sent: 0

7 CARR: QUERETARO - SAN LUIS POTOSI

CLAVE: 00165

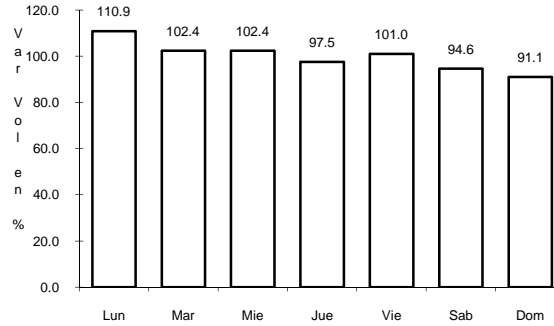
ruta: MEX-057



Km: 6.28

Tipo: 3

Sent: 1



Km: 6.28

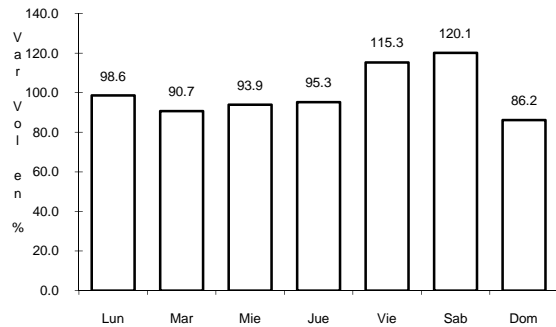
Tipo: 3

Sent: 2

8 CARR: SAN JUAN DEL RIO - XILITLA

CLAVE: 00183

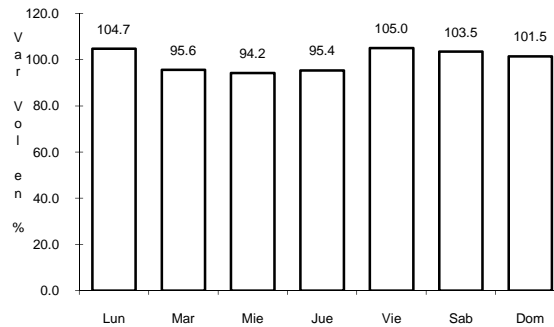
ruta: MEX-120



Km: 5.20

Tipo: 3

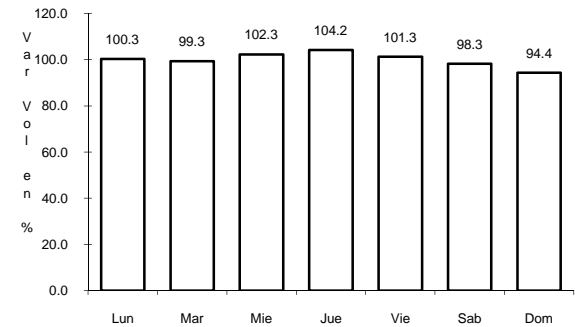
Sent: 1



Km: 5.20

Tipo: 3

Sent: 2



Km: 280.00

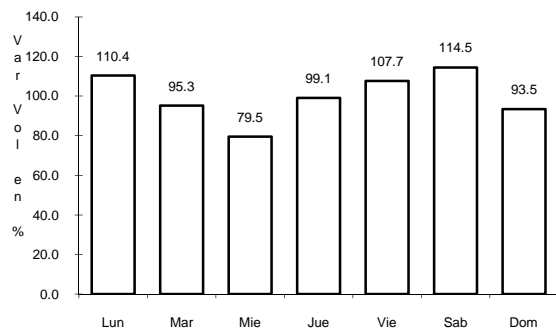
Tipo: 1

Sent: 0

9 CARR: AJUCHITLAN - COLON

CLAVE: 22010

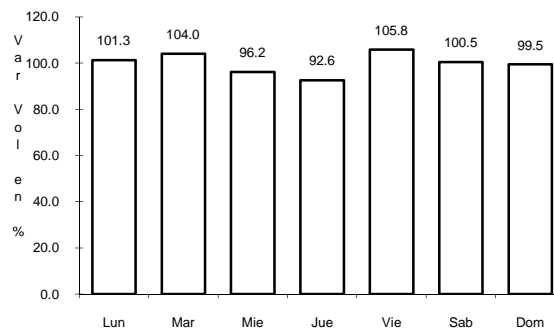
ruta: QRO-005



Km: 0.00

Tipo: 3

Sent: 0



Km: 14.00

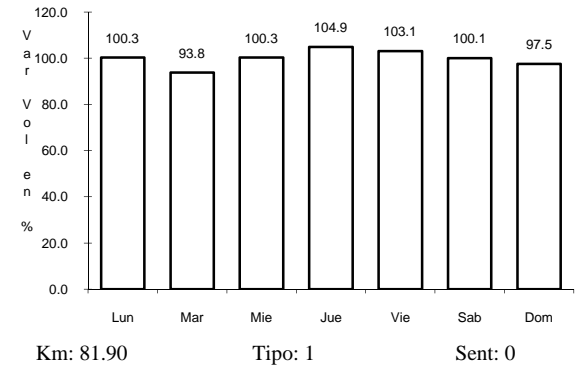
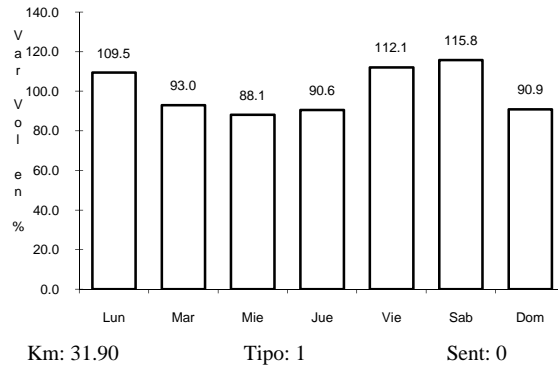
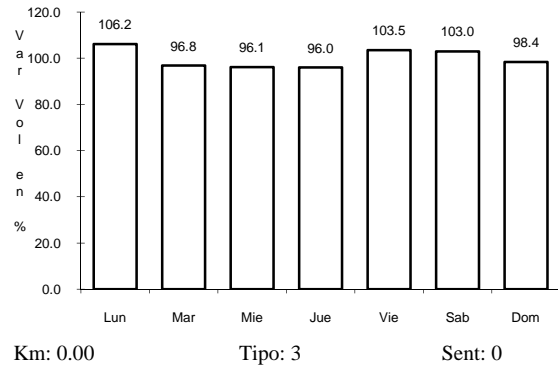
Tipo: 1

Sent: 0

10 CARR: EL COLORADO - HIGUERILLAS

CLAVE: 22004

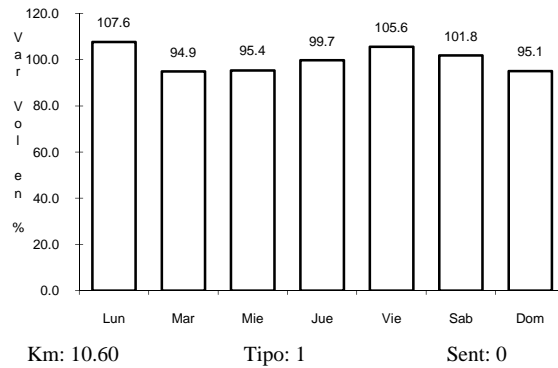
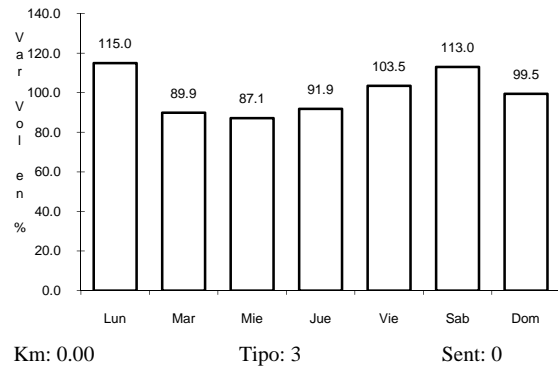
RUTA: QRO-004



11 CARR: AJUCHITLAN - EZEQUIEL MONTES

CLAVE: 22005

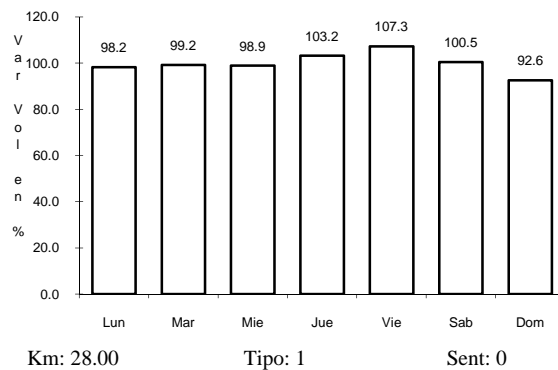
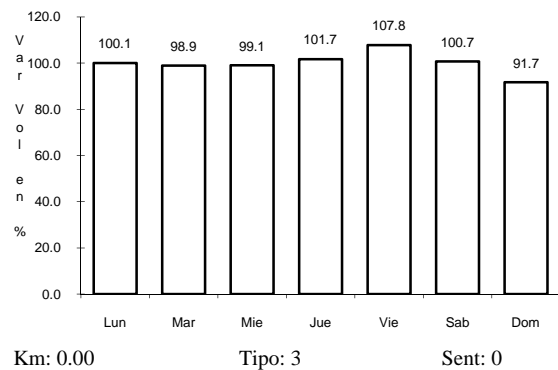
RUTA: QRO-005



12 CARR: SAN JUAN DEL RIO - AMEALCO

CLAVE: 22011

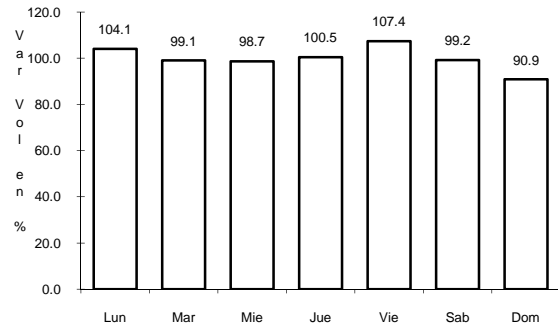
RUTA: QRO



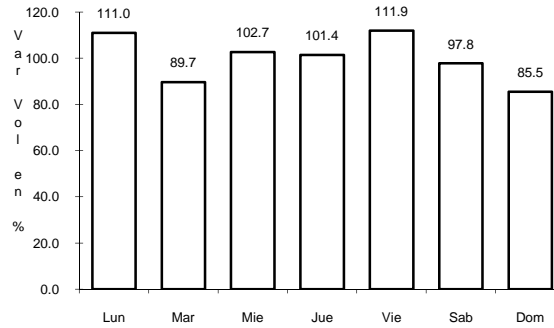
13 CARR: HACIENDA PARAISO - CHICHIMEQUILLAS

CLAVE: 22001

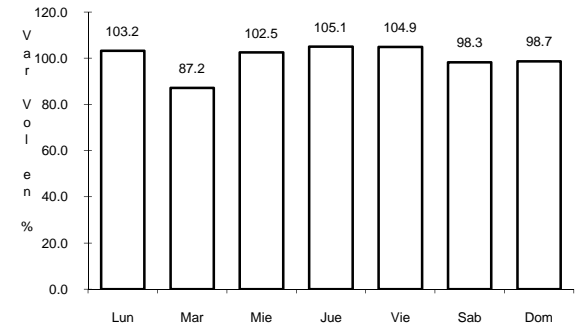
ruta: QRO-001



Km: 0.00 Tipo: 3 Sent: 0



Km: 7.90 Tipo: 3 Sent: 0

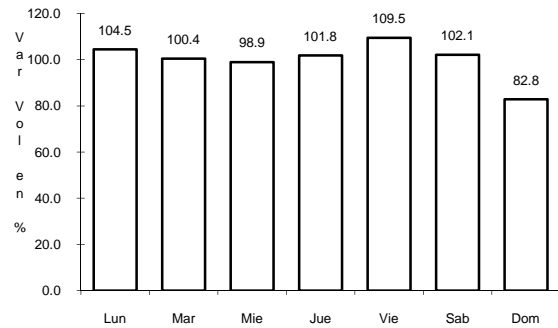


Km: 15.45 Tipo: 3 Sent: 0

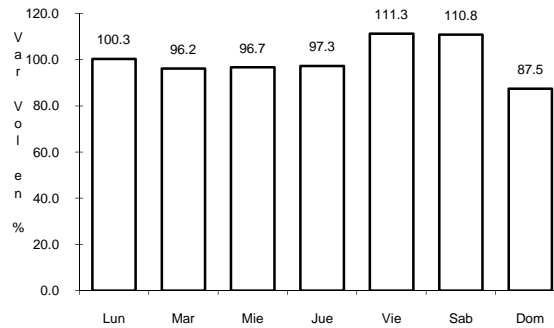
14 CARR: LIBRAMIENTO DE SAN JUAN DEL RIO

CLAVE: 22266

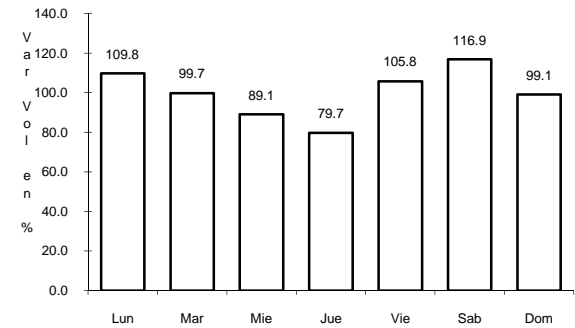
ruta: QRO



Km: 0.00 Tipo: 3 Sent: 0



Km: 5.05 Tipo: 1 Sent: 1

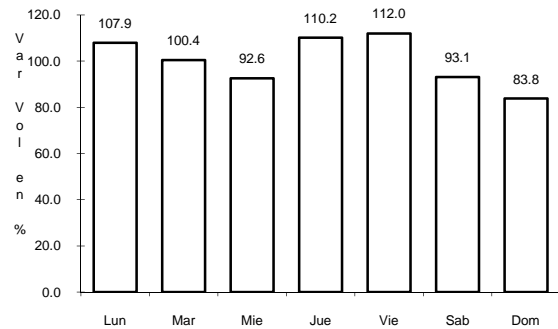


Km: 5.05 Tipo: 1 Sent: 2

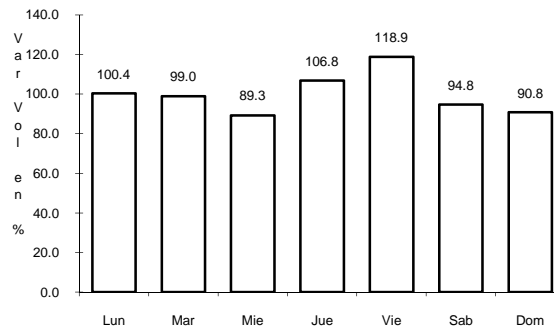
15 CARR: LIBRAMIENTO NORTE DE QUERETARO

CLAVE: 22500

ruta: MEX



Km: 0.00 Tipo: 3 Sent: 1

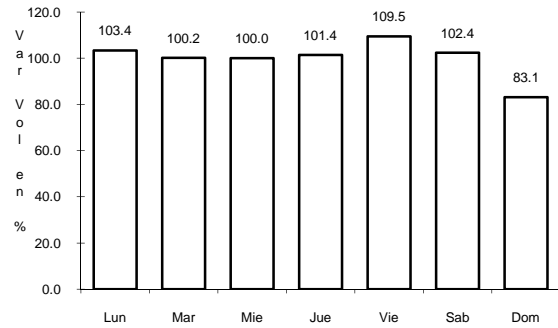


Km: 0.00 Tipo: 3 Sent: 2

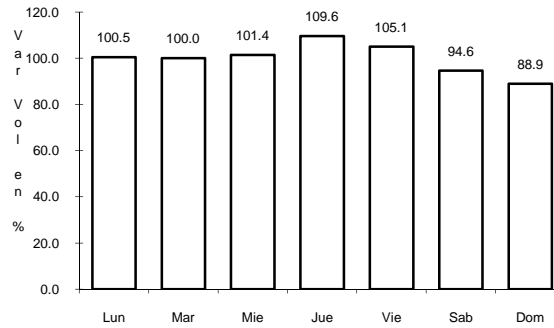
16 CARR: PEÑA COLORADA - EL RODEO

CLAVE: 22002

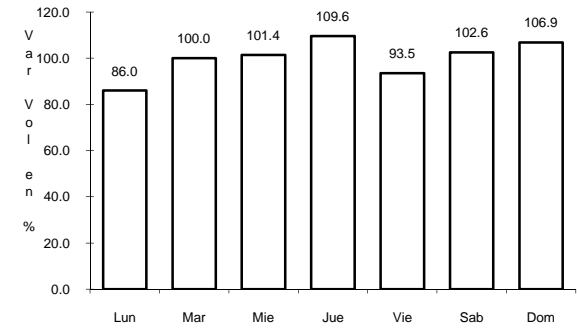
RUTA: QRO



Km: 0.00 Tipo: 3 Sent: 0



Km: 9.00 Tipo: 1 Sent: 0

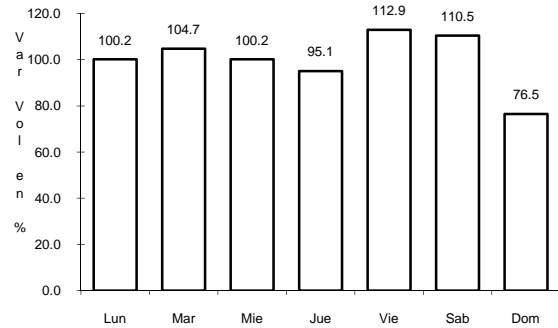


Km: 11.00 Tipo: 1 Sent: 0

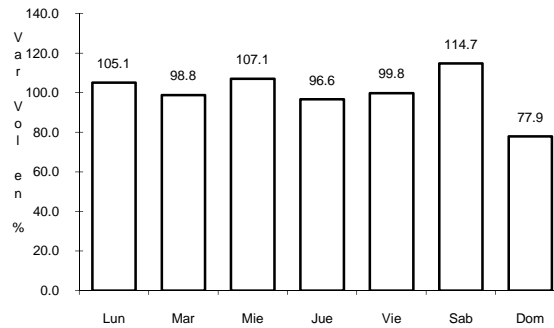
17 CARR: QUERETARO - ENT. SAN MARTIN

CLAVE: 22067

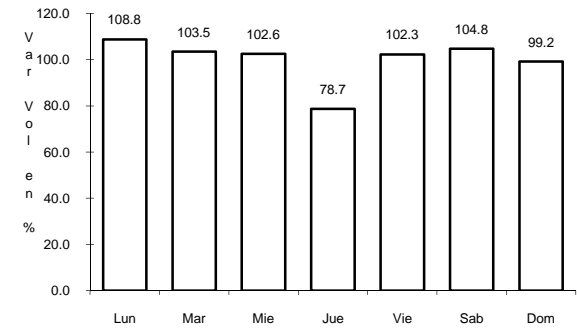
RUTA: QRO



Km: 0.00 Tipo: 3 Sent: 0



Km: 18.70 Tipo: 1 Sent: 0

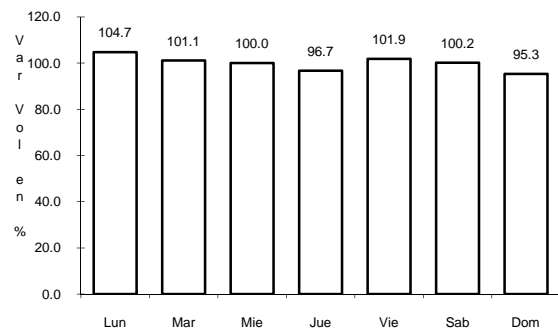


Km: 53.00 Tipo: 1 Sent: 0

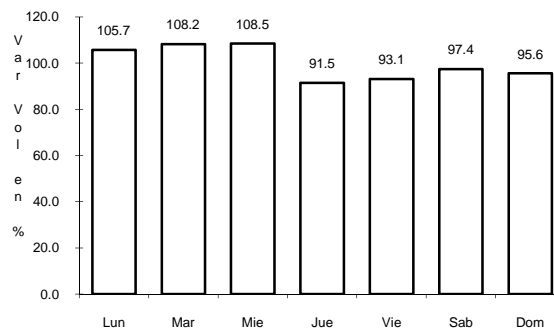
18 CARR: QUERETARO - ESTACION CHICHIMEQUILLAS

CLAVE: 22270

RUTA: QRO



Km: 0.00 Tipo: 3 Sent: 0

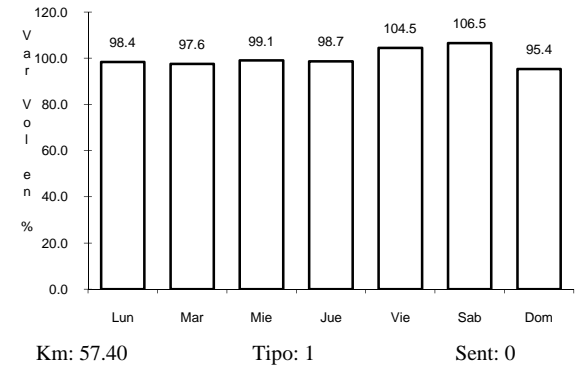
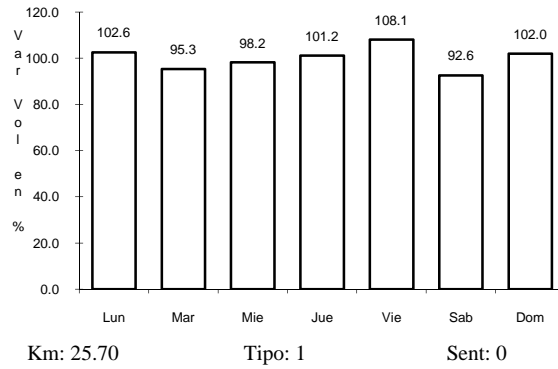
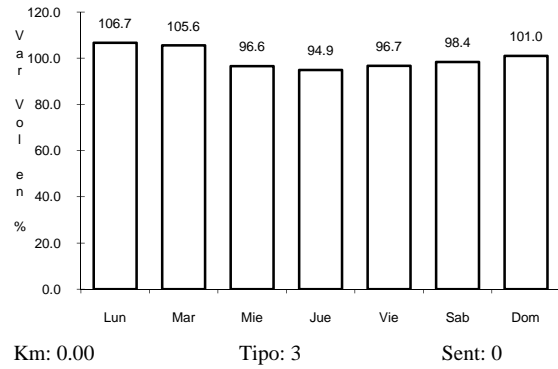


Km: 18.00 Tipo: 1 Sent: 0

19 CARR: QUERETARO - TEQUISQUIAPAN

CLAVE: 22502

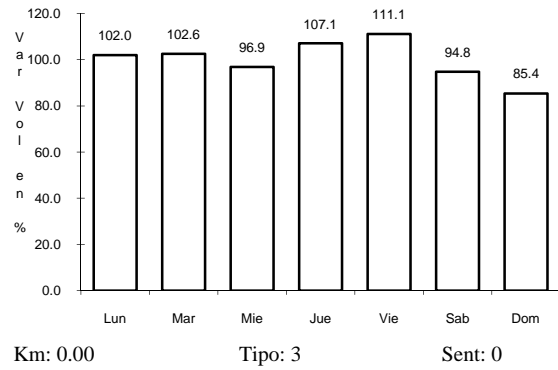
RUTA: QRO



20 CARR: QUERETARO - TLACOTE EL BAJO

CLAVE: 22069

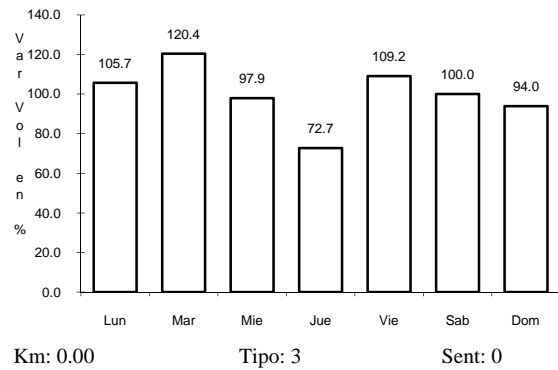
RUTA: QRO



21 CARR: RAMAL A LA ESTANCIA

CLAVE: 22504

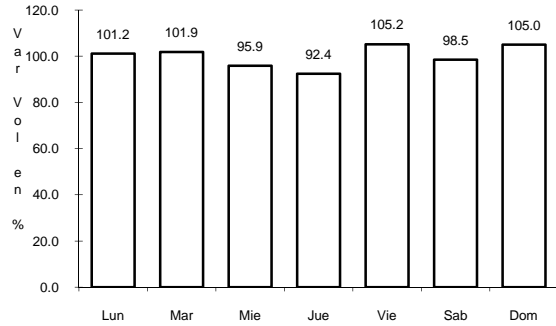
RUTA: QRO



25 CARR: MEXICO - QUERETARO (CUOTA)

CLAVE: 00411

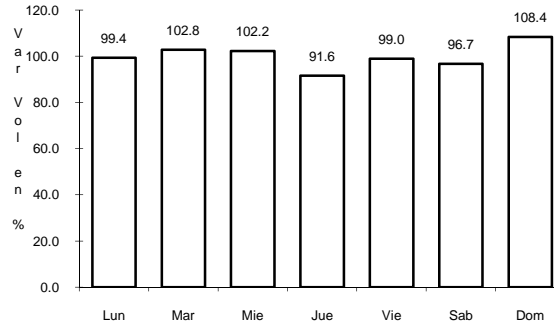
RUTA: MEX-057D



Km: 56.18

Tipo: 1

Sent: 1



Km: 56.18

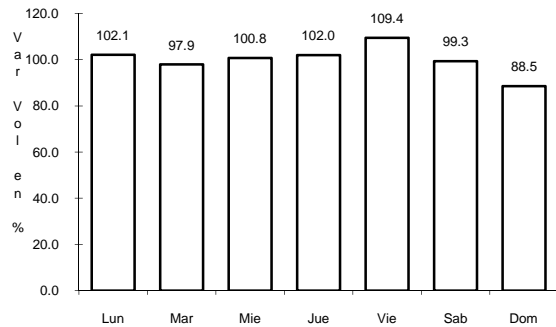
Tipo: 1

Sent: 2

26 CARR: PORTEZUELO - PALMILLAS

CLAVE: 00194

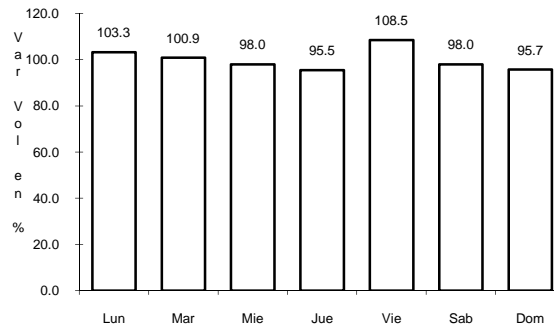
RUTA: MEX-045



Km: 0.00

Tipo: 3

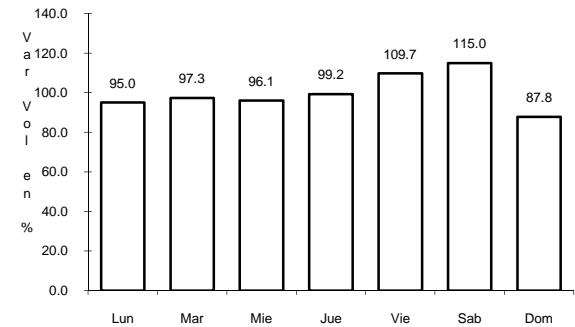
Sent: 0



Km: 45.10

Tipo: 1

Sent: 0



Km: 80.00

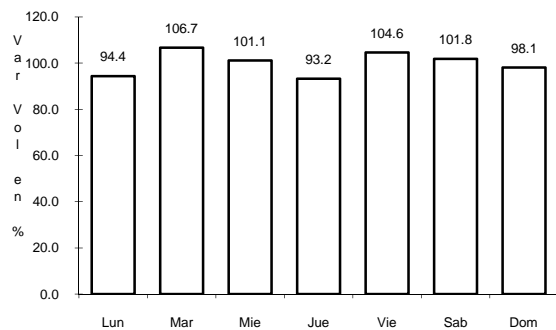
Tipo: 1

Sent: 0

27 CARR: TOLUCA - PALMILLAS

CLAVE: 00496

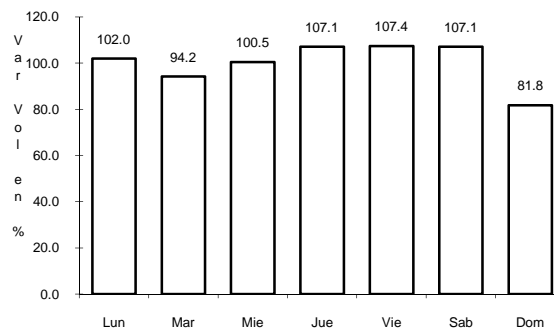
RUTA: EM(D)-MEX-055



Km: 65.00

Tipo: 3

Sent: 0



Km: 131.52

Tipo: 1

Sent: 0