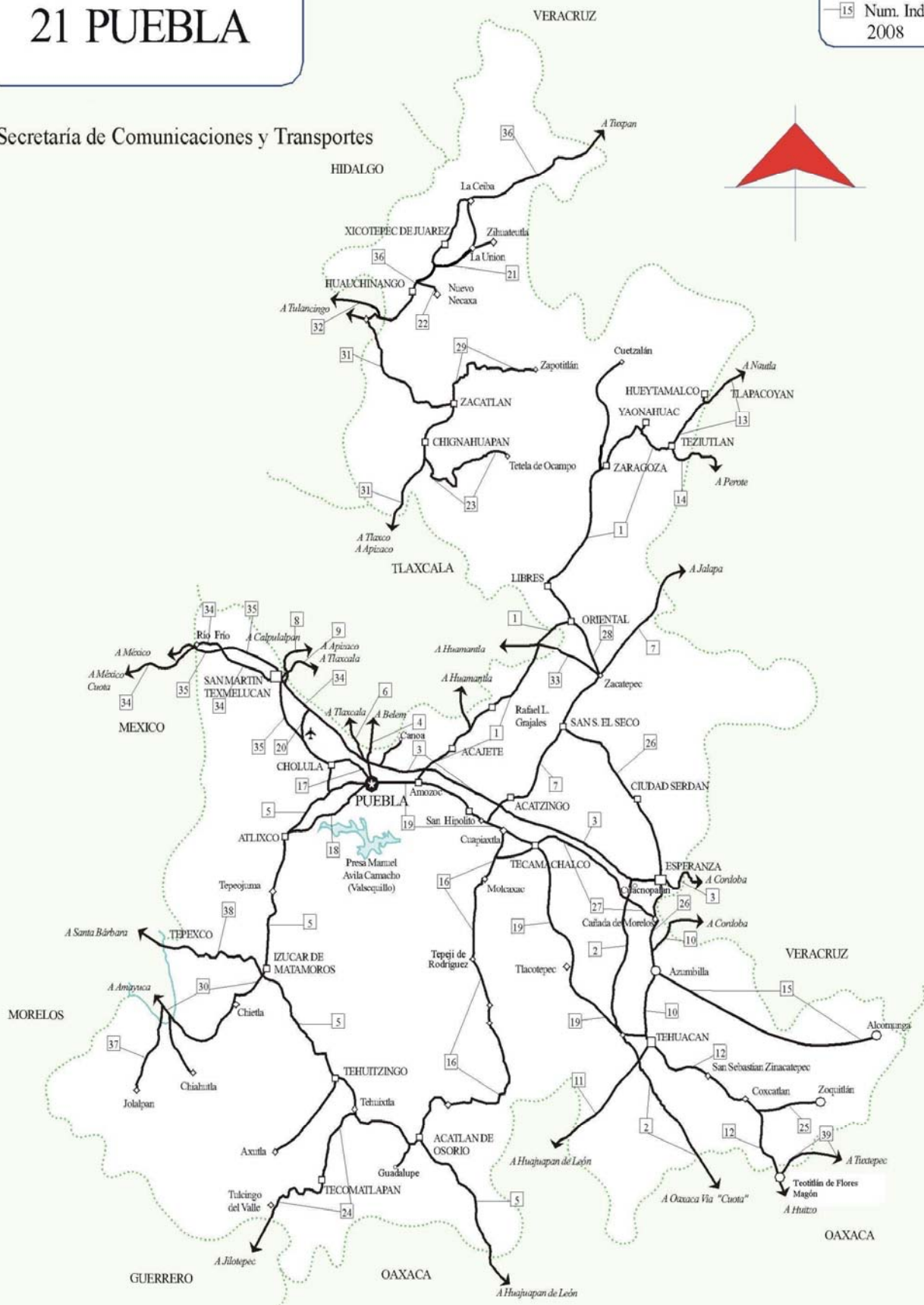


21 PUEBLA

MAPA INDICE

15 Num. Indice
2008

Secretaría de Comunicaciones y Transportes



CARRETERAS AFORADAS

Num. INDICE	CARRETERA
1	AMOZOC - TEZIUTLAN
2	CUACNOPALAN - OAXACA (CUOTA)
3	PUEBLA - CORDOBA (CUOTA)
4	PUEBLA - BELEM
5	PUEBLA - HUAJUAPAN DE LEON
6	PUEBLA - TLAXCALA
7	SAN HIPOLITO - JALAPA
8	SAN MARTIN TEXMELUCAN - OCOTOXCO (CUOTA)
9	SAN MARTIN TEXMELUCAN - TLAXCALA
10	TEHUACAN - CORDOBA
11	TEHUACAN - HUAJUAPAN DE LEON
12	TEHUACAN - HUITZO
13	TEZIUTLAN - NAUTLA
14	TEZIUTLAN - PEROTE
15	AZUMBILLA - ALCOMUNGA
16	CUAPIAXTLA - ACATLAN DE OSORIO
17	CHOLULA - PUEBLA (VIA QUETZALCOATL)
18	PUEBLA - ATLIXCO (CUOTA)
19	PUEBLA - TEHUACAN
20	RAMAL A AEROPUERTO HNOS. SERDAN
21	RAMAL A ZIHUATEUTLA
22	RAMAL A NUEVO NECAXA
23	RAMAL A TETELA DE OCAMPO
24	RAMAL A TULCINGO DEL VALLE
25	RAMAL A ZOQUITLAN
26	SAN SALVADOR EL SECO - AZUMBILLA
27	TECAMACHALCO - CAÑADA MORELOS
28	ZACATEPEC - ORIENTAL
29	ZACATLAN - ZAPOTITLAN
30	AMAYUCA - IZUCAR DE MATAMOROS
31	APIZACO - TEJOCOTAL
32	ENT. TULANCINGO - TEJOCOTAL (CUOTA)
33	LOS REYES - ZACATEPEC
34	MEXICO - PUEBLA (CUOTA)
35	MEXICO - PUEBLA (LIBRE)
36	PACHUCA - TUXPAM
37	RAMAL A JOLALPAN
38	SANTA BARBARA - IZUCAR DE MATAMOROS
39	TEOTITLAN DE FLORES MAGON - TUXTEPEC

PUEBLA

1 CARR : AMOZOC - TEZIUTLAN

CLAVE: 00210

RUTA : MEX-129

AÑO : 2007

L U G A R	E S T A C I O N			C L A S I F I C A C I O N V E H I C U L A R E N P O R C I E N T O .													
	KM	TE	SC TDPA	A	B	C2	C3	T3S2	T3S3	T3S2R4	OTROS	A	B	C	K'	D	
AMOZOC	0.00	0	0														
X. C. PUEBLA - CORDOBA (CUOTA)	1.40	3	0 10314	70.1	4.4	8.1	3.3	4.9	3.4	3.4	2.4	70.1	4.4	25.5	0.064	0.5	
ACAJETE	12.00	3	0 8373	72.6	6.6	5.1	2.1	5.6	2.8	3.7	1.5	72.6	6.6	20.8	0.088	0.526	
RAFAEL LARA GRAJALES	35.50	1	0 4627	73.7	10.2	2.5	2	4.5	3	2.8	1.3	73.7	10.2	16.1	0.072	0.5	
RAFAEL LARA GRAJALES	35.50	3	0 9178	75.8	4.1	6.1	4	4.2	2.1	2.4	1.3	75.8	4.1	20.1	0.082	0.501	
LIM. EDOS. TERM. PUE. PPIA. TLAX.	50.54	0	0														
X. C. LOS REYES - ZACATEPEC	56.31	1	0 3508	71.4	8.2	7.9	3.7	2.3	4.6	1.5	0.4	71.4	8.2	20.4	0.082	0.503	
LIM. EDOS. TERM. TLAX. PPIA. PUE.	60.22	0	0														
ORIENTAL	62.62	1	0 6766	77.6	5.2	7.4	2.4	3.6	1	1.2	1.6	77.6	5.2	17.2	0.096	0.506	
ORIENTAL	62.62	3	0 5958	74.4	8	8	2.5	1.2	2.9	2.1	0.9	74.4	8	17.6	0.084	0.502	
LIBRES	76.35	3	0 4369	82.2	4.5	4.7	2.1	1	1.2	2.3	2	82.2	4.5	13.3	0.125	0.502	
T. IZQ. ZACAPOAXTLA	114.80	1	0 5522	81.3	4.9	2.5	1.5	4.3	1.2	2.3	2	81.3	4.9	13.8	0.086	0.507	
T. IZQ. ZACAPOAXTLA	114.80	3	0 5669	78.7	3.2	4.9	1.2	2.4	1.7	4.7	3.2	78.7	3.2	18.1	0.084	0.503	
TEZIUTLAN	157.80	1	0 9382	83	3	3.9	1.3	3.7	0.9	1.9	2.3	83	3	14	0.07	0.511	

2 CARR : CUACNOPALAN - OAXACA (CUOTA)

CLAVE: 00109

RUTA : MEX-135D

AÑO : 2007

L U G A R	E S T A C I O N			C L A S I F I C A C I O N V E H I C U L A R E N P O R C I E N T O .													
	KM	TE	SC TDPA	A	B	C2	C3	T3S2	T3S3	T3S2R4	OTROS	A	B	C	K'	D	
T. C. PUEBLA - CORDOBA (CUOTA)	0.00	3	0 5319	82	7	4.2	3.1	0.2	1.8	1.7	0	82	7	11	0.07	0.502	
T. C. PUEBLA - TEHUACAN	40.00	3	0 3562	68.8	10.5	8.1	5.7	2.5	2.7	0.8	0.9	68.8	10.5	20.7	0.085	0.503	
CASETA DE COBRO TEHUACAN	41.05	2	0 6536														
CASETA DE COBRO MIAHUATLAN	71.42	2	0 3651														
LIM. EDOS. TERM. PUE. PPIA. OAX.	84.00	0	0														
CASETA DE COBRO HUITZO	217.00	2	0 4673														
T. C. HUAJUAPAN DE LEON - OAXACA	243.00	0	0														

3 CARR : PUEBLA - CORDOBA (CUOTA)

CLAVE: 00485

RUTA : MEX-150D

AÑO : 2007

L U G A R	E S T A C I O N			C L A S I F I C A C I O N V E H I C U L A R E N P O R C I E N T O .													
	KM	TE	SC TDPA	A	B	C2	C3	T3S2	T3S3	T3S2R4	OTROS	A	B	C	K'	D	
PUEBLA	0.00	3	1 19590	76	4.2	5.7	3.2	3.5	3.4	3.3	0.7	76	4.2	19.8	0.113	0.501	
PUEBLA	0.00	3	2 19530	76.3	3.7	5.8	2.9	3.3	2.8	4.4	0.8	76.3	3.7	20	0.085	0.501	
T. DER. AMOZOC (CASETA DE COBRO)	21.55	1	1 15996	77.9	4.5	5.9	3.1	3.4	2.1	2.5	0.6	77.9	4.5	17.6	0.082	0.501	
T. DER. AMOZOC (CASETA DE COBRO)	21.55	1	2 15947	79	3.9	6	2.8	3.2	2	2.4	0.7	79	3.9	17.1	0.088	0.501	

PUEBLA

5 CARR : PUEBLA - HUAJUAPAN DE LEON

CLAVE: 00049

RUTA : MEX-190

AÑO : 2007

L U G A R	E S T A C I O N				C L A S I F I C A C I O N V E H I C U L A R E N P O R C I E N T O .												
	KM	TE	SC	TDPA	A	B	C2	C3	T3S2	T3S3	T3S2R4	OTROS	A	B	C	K'	D
PUEBLA	0.00	3	1	12668	81.6	5.7	7.1	1.4	1.3	1.1	0.6	1.2	81.6	5.7	12.7	0.102	0.502
PUEBLA	0.00	3	2	12753	81.8	4.7	6.2	2.8	1.6	1.3	0.6	1	81.8	4.7	13.5	0.07	0.502
ATLIXCO	29.88	1	0	12040	84.9	2.8	6.8	2.2	1.3	1.2	0.3	0.5	84.9	2.8	12.3	0.082	0.5
ATLIXCO	29.88	3	0	11957	79.9	6	6.2	2.9	1.5	1.3	1.3	0.9	79.9	6	14.1	0.096	0.503
TEPEOJUMA	51.90	1	0	9411	75.9	8.4	6.6	4.1	1.8	1.5	0.8	0.9	75.9	8.4	15.7	0.07	0.502
IZUCAR DE MATAMOROS	67.00	1	0	9878	79.9	5.3	5.8	3.6	1.9	1.7	0.8	1	79.9	5.3	14.8	0.086	0.501
T. DER. CUAUTLA	70.00	3	0	7459	73.7	8.9	9.1	2.9	2.3	1.1	0.8	1.2	73.7	8.9	17.4	0.082	0.509
TEHUITZINGO	113.30	1	0	4639	80.8	4.5	4.9	3.1	1.7	1.7	2.1	1.2	80.8	4.5	14.7	0.068	0.503
ACATLAN DE OSORIO	154.20	1	0	5737	76.1	7.9	6.1	3.5	1.9	2.8	1.6	0.1	76.1	7.9	16	0.069	0.502
CHILA	192.30	3	0	2131	88.4	2.2	3.8	1.7	1.7	0.6	1	0.6	88.4	2.2	9.4	0.102	0.5
LIM. EDOS. TERM. PUE. PPIA. OAX.	200.30	0	0														
T. IZQ. LAS PALMAS	202.10	1	0	1869	88.4	5.7	2	0.6	1.2	0.8	1	0.3	88.4	5.7	5.9	0.089	0.5
HUAJUAPAN DE LEON	217.50	1	0	1957	87.8	6.2	1.7	0.5	1.5	0.8	1.2	0.3	87.8	6.2	6	0.094	0.505

6 CARR : PUEBLA - TLAXCALA

CLAVE: 00475

RUTA : MEX-119

AÑO : 2007

L U G A R	E S T A C I O N				C L A S I F I C A C I O N V E H I C U L A R E N P O R C I E N T O .												
	KM	TE	SC	TDPA	A	B	C2	C3	T3S2	T3S3	T3S2R4	OTROS	A	B	C	K'	D
PUEBLA	0.00	0	0														
X. C. PUEBLA - CORDOBA (CUOTA)	5.41	3	1	15639	77.4	4.5	5.9	3.1	3.4	2.1	3	0.6	77.4	4.5	18.1	0.094	0.501
X. C. PUEBLA - CORDOBA (CUOTA)	5.41	3	2	15680	78.8	3.8	5.9	2.8	3.1	2	2.9	0.7	78.8	3.8	17.4	0.086	0.501
LIM. EDOS. TERM. PUE. PPIA. TLAX.	11.83	0	0														
PANZACOLA	13.14	3	0	16936	72.5	4.4	2.9	0.9	8.2	1.9	6.3	2.9	72.5	4.4	23.1	0.063	0.508
SAN TORIBIO XICOHTZINGO	16.10	3	0	16702	72.9	4.7	2.7	0.8	8.1	1.6	6.4	2.8	72.9	4.7	22.4	0.064	0.507
ZACATELCO	20.78	1	0	16810	73	4.6	2.7	0.8	8.1	1.6	6.4	2.8	73	4.6	22.4	0.064	0.506
T. IZQ. SAN MARTIN TEXMELUCAN	22.99	1	0	14756	72.8	4.6	2.7	0.8	8.1	1.7	6.4	2.9	72.8	4.6	22.6	0.064	0.507
T. DER. TEPEYANCO (2º ACCESO)	24.97	3	0	14986	72.2	5	2.6	0.8	8.2	1.9	6.3	3	72.2	5	22.8	0.064	0.501
T. DER. OCOTLAN	32.45	1	1	9289	88.2	3.5	3.4	1.5	1.3	1.1	0.5	0.5	88.2	3.5	8.3	0.072	0.502
T. DER. OCOTLAN	32.45	1	2	9351	88	3.6	3	1.9	1.1	1	0.1	1.3	88	3.6	8.4	0.068	0.502
TLAXCALA	33.22	1	1	8620	85.2	2.9	3.8	2.3	2	1.5	1.5	0.8	85.2	2.9	11.9	0.079	0.502
TLAXCALA	33.22	1	2	8546	89.7	2.5	2.9	0.9	1.2	1.7	0.6	0.5	89.7	2.5	7.8	0.082	0.502

PUEBLA

7 CARR : SAN HIPOLITO - JALAPA

CLAVE: 00486

RUTA : MEX-140

AÑO : 2007

L U G A R	E S T A C I O N				C L A S I F I C A C I O N V E H I C U L A R E N P O R C I E N T O .												
	KM	TE	SC	TDPA	A	B	C2	C3	T3S2	T3S3	T3S2R4	OTROS	A	B	C	K'	D
T. C. PUEBLA - TEHUACAN	0.00	3	0	10062	80.6	2.4	5.5	4.8	0.9	2.6	3	0.2	80.6	2.4	17	0.068	0.503
X. C. PUEBLA - CORDOBA (CUOTA)	7.86	3	0	15308	80.9	3.3	5.2	3.7	1.8	2.2	1.7	1.2	80.9	3.3	15.8	0.06	0.502
SAN SALVADOR EL SECO	35.35	1	0	6399	79.8	4.8	7.1	1.8	2	2.4	2	0.1	79.8	4.8	15.4	0.074	0.501
ZACATEPEC	54.20	1	0	8852	78.1	4.1	6.3	3.4	2.3	3.3	1.8	0.7	78.1	4.1	17.8	0.065	0.502
ZACATEPEC	54.20	3	1	5949	73.4	5.9	7.9	4.5	4.5	2.8	0.5	0.5	73.4	5.9	20.7	0.08	0.501
ZACATEPEC	54.20	3	2	5923	78.2	5.5	6	3.1	2.4	2.8	1.9	0.1	78.2	5.5	16.3	0.075	0.501
ALCHICHICA	80.00	3	1	5315	67.8	8.5	5.7	7.3	3.8	3.4	2.5	1	67.8	8.5	23.7	0.077	0.504
ALCHICHICA	80.00	3	2	5229	68.4	9.3	7.2	4.8	2.8	4.5	2	1	68.4	9.3	22.3	0.08	0.504
LIM. EDOS. TERM. PUE. PPIA. VER.	83.25	0	0														
SAN ANTONIO LIMON	89.60	1	0	6987	58.8	5	3.5	5.3	8.8	4.8	9.8	4	58.8	5	36.2	0.09	0.508
PEROTE	101.70	1	0	8061	70.2	3.5	5.7	4.7	5.8	3.1	4.8	2.2	70.2	3.5	26.3	0.075	0.503
PEROTE	101.70	3	0	8963	74.6	5.2	5.2	3.6	5.3	2.1	2.6	1.4	74.6	5.2	20.2	0.084	0.501
T. IZQ. VILLA ALDAMA	109.50	1	0	7756	78.4	4.8	4.2	2.8	5.6	2.9	0.5	0.8	78.4	4.8	16.8	0.094	0.503
BANDERILLA	145.00	1	0	10857	68.7	5.4	5.3	3.1	7.4	2.8	4.3	3	68.7	5.4	25.9	0.075	0.5
T. IZQ. NAOLINCO	146.00	3	1	9596	74.6	5.1	9.8	5	2.7	1.1	0.9	0.8	74.6	5.1	20.3	0.075	0.501
T. IZQ. NAOLINCO	146.00	3	2	9565	69.2	7.1	8	6.4	3.9	2.9	1.1	1.4	69.2	7.1	23.7	0.074	0.501
JALAPA	151.20	1	1	14134	74	4.9	5.6	1.8	2.2	2.4	4.4	4.7	74	4.9	21.1	0.082	0.5
JALAPA	151.20	1	2	14142	74.9	5.9	4.2	1.7	5	1.6	2.7	4	74.9	5.9	19.2	0.082	0.5

8 CARR : SAN MARTIN TEXMELUCAN - OCOTOXCO (CUOTA)

CLAVE: 00212

RUTA : MEX-D

AÑO : 2007

L U G A R	E S T A C I O N				C L A S I F I C A C I O N V E H I C U L A R E N P O R C I E N T O .												
	KM	TE	SC	TDPA	A	B	C2	C3	T3S2	T3S3	T3S2R4	OTROS	A	B	C	K'	D
T. C. MEXICO - PUEBLA (CUOTA)	0.00	0	0														
X. C. SAN MARTIN TEXMELUCAN - TLAXCALA	1.80	1	0	6310	80.4	8.8	3.8	1.8	1.9	1.1	1.5	0.7	80.4	8.8	10.8	0.081	0.501
LIM. EDOS. TERM. PUE. PPIA. TLAX.	4.05	0	0														
CASETA DE COBRO SAN MARTIN TEXMELUCAN	5.40	2	0	6183													
X. C. SAN MARTIN TEXMELUCAN - TLAXCALA (TREBOL)	24.75	1	1	11332	78.9	4.5	5.9	3.6	3.3	2.2	1	0.6	78.9	4.5	16.6	0.097	0.503
X. C. SAN MARTIN TEXMELUCAN - TLAXCALA (TREBOL)	24.75	1	2	11391	80.5	3.9	6	2.8	3.2	2	0.9	0.7	80.5	3.9	15.6	0.083	0.503
X. C. SAN MARTIN TEXMELUCAN - TLAXCALA (TREBOL)	24.75	3	1	9938	84.6	3	4.5	2	1.8	1.5	1.4	1.2	84.6	3	12.4	0.077	0.501
X. C. SAN MARTIN TEXMELUCAN - TLAXCALA (TREBOL)	24.75	3	2	9864	84.2	2.6	5.5	2.2	1.6	1.7	1.2	1	84.2	2.6	13.2	0.075	0.501
T. IZQ. TIZATLAN	29.00	3	1	17421	84.9	3.2	4.2	1.9	2.2	1.4	1.2	1	84.9	3.2	11.9	0.066	0.501
T. IZQ. TIZATLAN	29.00	3	2	17262	84	3.6	5.1	2	2.1	1.3	1	0.9	84	3.6	12.4	0.073	0.501
T. DER. SAN PABLO APETATITLAN	31.65	3	1	17529	79	7.4	5.6	2.3	1.8	1.3	1.3	1.3	79	7.4	13.6	0.074	0.503
T. DER. SAN PABLO APETATITLAN	31.65	3	2	17330	78.9	7.9	5.8	2.2	1.6	1.3	1.4	0.9	78.9	7.9	13.2	0.069	0.503

PUEBLA

8 CARR : SAN MARTIN TEXMELUCAN - OCOTOXCO (CUOTA)

CLAVE: 00212

RUTA : MEX-D

AÑO : 2007

L U G A R	E S T A C I O N				C L A S I F I C A C I O N V E H I C U L A R E N P O R C I E N T O .												
	KM	TE	SC	TDPA	A	B	C2	C3	T3S2	T3S3	T3S2R4	OTROS	A	B	C	K'	D
OCOTOXCO	35.20	1	1	17431	83.2	3.3	5.7	2.3	1.9	1.2	0.6	1.8	83.2	3.3	13.5	0.068	0.5
OCOTOXCO	35.20	1	2	17408	85.8	2.7	5	2.4	2.1	0.7	0.6	0.7	85.8	2.7	11.5	0.065	0.5

9 CARR : SAN MARTIN TEXMELUCAN - TLAXCALA

CLAVE: 00158

RUTA : MEX-117

AÑO : 2007

L U G A R	E S T A C I O N				C L A S I F I C A C I O N V E H I C U L A R E N P O R C I E N T O .												
	KM	TE	SC	TDPA	A	B	C2	C3	T3S2	T3S3	T3S2R4	OTROS	A	B	C	K'	D
SAN MARTIN TEXMELUCAN	0.00	3	0	12112	80.6	4	7.5	2.2	2.5	1	0.7	1.5	80.6	4	15.4	0.062	0.5
X. C. SAN MARTIN TEXMELUCAN - OCOTOXCO (CUOTA)	1.65	1	0	14265	84.7	3.3	4.7	2.7	1.8	1.4	1.3	0.1	84.7	3.3	12	0.086	0.502
LIM. EDOS. TERM. PUE. PPIA. TLAX.	2.84	0	0														
T. DER. TEPETITLA	3.45	3	0	8214	79.9	4	6	3.2	2.1	2.1	1.5	1.2	79.9	4	16.1	0.089	0.502
SAN DIEGO XOCOYUCAN	7.21	3	0	5670	88.7	3.8	4.3	0.3	0.8	0.5	0.9	0.7	88.7	3.8	7.5	0.09	0.506
T. DER. PANOTLA	19.72	1	0	6005	89	3.7	4.2	0.3	0.8	0.5	0.9	0.6	89	3.7	7.3	0.085	0.503
T. DER. PANOTLA	19.72	3	0	7549	86.5	2.5	3.3	3.6	1.4	1.2	0.9	0.6	86.5	2.5	11	0.071	0.5
TOTOLAC	21.38	1	0	5959	90	1.5	3.8	1.5	1	0.8	1.1	0.3	90	1.5	8.5	0.086	0.5
TOTOLAC	21.38	3	0	6859	87.2	2.3	4.7	1.5	1.1	1.4	1	0.8	87.2	2.3	10.5	0.085	0.5
TLAXCALA	24.81	1	0	6476	90	2.2	3.8	1.1	0.4	0.4	0.7	1.4	90	2.2	7.8	0.068	0.501

10 CARR : TEHUACAN - CORDOBA

CLAVE: 00534

RUTA : MEX-150

AÑO : 2007

L U G A R	E S T A C I O N				C L A S I F I C A C I O N V E H I C U L A R E N P O R C I E N T O .												
	KM	TE	SC	TDPA	A	B	C2	C3	T3S2	T3S3	T3S2R4	OTROS	A	B	C	K'	D
TEHUACAN	0.00	3	0	9562	80.3	4.5	7.3	3.5	1.4	2	0.5	0.5	80.3	4.5	15.2	0.076	0.501
CHAPULCO	18.27	3	0	5889	62.6	9.9	13.9	5.1	3.2	3.4	1.8	0.1	62.6	9.9	27.5	0.069	0.5
T. IZQ. AZUMBILLA	20.51	3	0	2568	73.9	5.9	8.2	4.1	4.4	3.1	0.3	0.1	73.9	5.9	20.2	0.079	0.5
LIM. EDOS. TERM. PUE. PPIA. VER.	26.58	0	0														
CD. MENDOZA	53.31	1	0	8769	69.1	7.2	7.8	1	6	1.4	4.3	3.2	69.1	7.2	23.7	0.09	0.503
CD. MENDOZA	53.31	3	1	6836	68.9	8.1	12.5	5	1.7	0.5	0.9	2.4	68.9	8.1	23	0.074	0.502
CD. MENDOZA	53.31	3	2	5655	69.1	7.4	11.5	4.5	3.1	0.6	1	2.8	69.1	7.4	23.5	0.075	0.502
ORIZABA	63.52	1	1	9295	71.2	2.9	4.7	0.8	3.1	3.4	9.1	4.8	71.2	2.9	25.9	0.071	0.533
ORIZABA	63.52	1	2	10614	69.5	2.8	6.9	1	4.9	2.7	6	6.2	69.5	2.8	27.7	0.069	0.533
ORIZABA	63.52	3	1	9847	70.7	1.8	12.3	1.4	5.9	1.2	2.2	4.5	70.7	1.8	27.5	0.077	0.501
ORIZABA	63.52	3	2	9872	69.2	2.6	11.3	3.5	4.7	1.9	2.7	4.1	69.2	2.6	28.2	0.078	0.501
FORTIN	80.24	1	0	8586	82.9	4.4	2.8	2.8	1.9	1	1.9	2.3	82.9	4.4	12.7	0.098	0.51
FORTIN	80.24	3	1	6677	64.6	2.3	3	1.3	8.2	3.4	11	6.2	64.6	2.3	33.1	0.074	0.503

PUEBLA

10 CARR : TEHUACAN - CORDOBA

CLAVE: 00534

RUTA : MEX-150

AÑO : 2007

L U G A R	E S T A C I O N				C L A S I F I C A C I O N V E H I C U L A R E N P O R C I E N T O .													
	KM	TE	SC	TDPA	A	B	C2	C3	T3S2	T3S3	T3S2R4	OTROS	A	B	C	K'	D	
FORTIN	80.24	3	2	6764	62.5	2.4	3.2	1.8	8.5	4.1	10.7	6.8	62.5	2.4	35.1	0.07	0.503	
CORDOBA	86.76	1	1	7957	55.9	11.8	1	1.8	3.2	4.7	13.4	8.2	55.9	11.8	32.3	0.129	0.5	
CORDOBA	86.76	1	2	7964	69.3	12.1	1	1.4	4.8	2.5	3.6	5.3	69.3	12.1	18.6	0.075	0.5	

11 CARR : TEHUACAN - HUAJUAPAN DE LEON

CLAVE: 00211

RUTA : PUE-MEX-125

AÑO : 2007

L U G A R	E S T A C I O N				C L A S I F I C A C I O N V E H I C U L A R E N P O R C I E N T O .													
	KM	TE	SC	TDPA	A	B	C2	C3	T3S2	T3S3	T3S2R4	OTROS	A	B	C	K'	D	
TEHUACAN	0.00	3	0	4315	81.7	6.1	6.9	2.4	1	1.2	0.5	0.2	81.7	6.1	12.2	0.079	0.501	
ZAPOTITLAN SALINAS	28.00	1	0	1917	78.6	4.3	11.1	3	0.9	1.3	0.8	0	78.6	4.3	17.1	0.072	0.503	
LIM. EDOS. TERM. PUE. PPIA. OAX.	52.70	0	0															
SANTIAGO CHAZUMBA	63.02	1	0	984	85.7	3.8	4.9	2.3	0.9	0.8	0.9	0.7	85.7	3.8	10.5	0.089	0.501	
SANTIAGO CHAZUMBA	63.02	3	0	799	87.9	0.5	6.2	2.8	0.9	0.8	0.7	0.2	87.9	0.5	11.6	0.088	0.501	
T. IZQ. SANTA MARIA CAMOTLAN	103.10	1	0	1255	88.6	4.5	3.3	0.3	1.2	1.3	0.8	0	88.6	4.5	6.9	0.117	0.501	
T. C. HUAJUAPAN DE LEON - OAXACA	119.90	1	0	5090	91.5	3.6	2.5	0.5	1	0.8	0.1	0	91.5	3.6	4.9	0.112	0.507	

12 CARR : TEHUACAN - HUITZO

CLAVE: 00211

RUTA : PUE-MEX-135

AÑO : 2007

L U G A R	E S T A C I O N				C L A S I F I C A C I O N V E H I C U L A R E N P O R C I E N T O .													
	KM	TE	SC	TDPA	A	B	C2	C3	T3S2	T3S3	T3S2R4	OTROS	A	B	C	K'	D	
TEHUACAN	0.00	3	0	6050	73.8	8.6	4.9	3.9	2	4.6	2	0.2	73.8	8.6	17.6	0.072	0.5	
T. DER. SAN GABRIEL CHILAC	14.40	1	0	5442	77.5	3.7	9.5	4.2	1.2	1.8	1.9	0.2	77.5	3.7	18.8	0.065	0.502	
SAN SEBASTIAN ZINACATEPEC	23.00	3	0	2914	68.6	8.3	15.6	4.3	0.4	1.7	0.9	0.2	68.6	8.3	23.1	0.072	0.5	
LIM. EDOS. TERM. PUE. PPIA. OAX.	60.00	0	0															
TEOTITLAN DEL CAMINO	63.15	3	0	1731	90.1	2.2	3.8	3.2	0.3	0.1	0.1	0.2	90.1	2.2	7.7	0.09	0.504	
SANTA MARIA TECOMAVACA	88.34	1	0	1065	84.8	7.6	4.1	2.5	0.4	0.1	0.2	0.3	84.8	7.6	7.6	0.094	0.507	
SANTA MARIA TECOMAVACA	88.34	3	0	1053	87.2	5.8	6.1	0	0.4	0.2	0.1	0.2	87.2	5.8	7	0.098	0.502	
T. IZQ. CUICATLAN	118.80	1	0	1258	84.8	5.3	3.6	1.8	3.8	0.2	0.2	0.3	84.8	5.3	9.9	0.092	0.506	
T. IZQ. NACALTEPEC	169.80	1	0	1329	84.1	4.4	5.9	4.6	0.5	0.2	0.2	0.1	84.1	4.4	11.5	0.09	0.502	
T. C. HUAJUAPAN DE LEON - OAXACA	202.70	1	0	2567	81	5.6	8.6	2.6	1	0.6	0.1	0.5	81	5.6	13.4	0.083	0.501	

PUEBLA

13 CARR : TEZIUTLAN - NAUTLA

CLAVE: 00144

RUTA : MEX-129

AÑO : 2007

L U G A R	E S T A C I O N				C L A S I F I C A C I O N V E H I C U L A R E N P O R C I E N T O .												
	KM	TE	SC	TDPA	A	B	C2	C3	T3S2	T3S3	T3S2R4	OTROS	A	B	C	K'	D
TEZIUTLAN	0.00	3	0	4573	80.8	2.6	6.4	1	1.8	1.2	3.2	3	80.8	2.6	16.6	0.079	0.503
LIM. EDOS. TERM. PUE. PPIA. VER.	17.50	0	0														
TLAPACOYAN	33.20	1	0	3492	84.3	4.1	6.6	1.1	2.1	0.6	0.2	1	84.3	4.1	11.6	0.08	0.504
TLAPACOYAN	33.20	3	0	7317	78.9	2.1	6	2.9	4.1	1.3	2.7	2	78.9	2.1	19	0.083	0.501
MARTINEZ DE LA TORRE	58.00	3	0	10016	80.1	3.1	2.5	1.1	6.9	1.3	3	2	80.1	3.1	16.8	0.088	0.503
SAN RAFAEL	84.40	3	0	6737	81.7	4.1	2.7	1.5	5.2	1.6	1.8	1.4	81.7	4.1	14.2	0.081	0.5
T. C. POZA RICA - VERACRUZ	93.20	1	0	5242	79.6	4.1	4.6	2.7	4.8	1.7	1.4	1.1	79.6	4.1	16.3	0.083	0.5

14 CARR : TEZIUTLAN - PEROTE

CLAVE: 00209

RUTA : MEX-131

AÑO : 2007

L U G A R	E S T A C I O N				C L A S I F I C A C I O N V E H I C U L A R E N P O R C I E N T O .												
	KM	TE	SC	TDPA	A	B	C2	C3	T3S2	T3S3	T3S2R4	OTROS	A	B	C	K'	D
TEZIUTLAN	0.00	3	0	8062	83.6	2.6	2.2	0.7	2.3	1.5	4.1	3	83.6	2.6	13.8	0.077	0.501
LIM. EDOS. TERM. PUE. PPIA. VER.	11.30	0	0														
JALACINGO	12.50	3	0	4231	80.7	4.5	5.4	2.6	3.1	0.9	1.1	1.7	80.7	4.5	14.8	0.104	0.5
T. IZQ. ATZALAN	23.00	3	0	3896	80.1	4.5	6.2	3.3	2.9	1	0.8	1.2	80.1	4.5	15.4	0.096	0.503
T. IZQ. ALTOTONGA II	26.90	3	0	5844	72.7	4.4	6.1	4.6	4.5	1.8	2.4	3.5	72.7	4.4	22.9	0.086	0.509
T. IZQ. VILLA ALDAMA	37.60	3	0	5155	76.5	4.2	4.8	5.6	4.3	1.8	1.4	1.4	76.5	4.2	19.3	0.092	0.502
PEROTE	49.10	1	0	5118	78.9	2.1	7.3	3.5	3.7	1.6	1.5	1.4	78.9	2.1	19	0.085	0.503

15 CARR : AZUMBILLA - ALCOMUNGA

CLAVE: 21001

RUTA : PUE

AÑO : 2007

L U G A R	E S T A C I O N				C L A S I F I C A C I O N V E H I C U L A R E N P O R C I E N T O .												
	KM	TE	SC	TDPA	A	B	C2	C3	T3S2	T3S3	T3S2R4	OTROS	A	B	C	K'	D
T. C. TEHUACAN - CORDOBA	0.00	3	0	898	80.5	3.3	8.4	2	1.7	0.7	0.3	3.1	80.5	3.3	16.2	0.095	0.515
ALCOMUNGA	65.00	0	0														

16 CARR : CUAPIAXTLA - ACATLAN DE OSORIO

CLAVE: 21014

RUTA : PUE

AÑO : 2007

L U G A R	E S T A C I O N				C L A S I F I C A C I O N V E H I C U L A R E N P O R C I E N T O .												
	KM	TE	SC	TDPA	A	B	C2	C3	T3S2	T3S3	T3S2R4	OTROS	A	B	C	K'	D
T. C. PUEBLA - TEHUACAN	0.00	3	0	6433	86.9	3	5.1	2	0.7	1.1	1.2	0	86.9	3	10.1	0.071	0.501
MOLCAXAC	23.18	1	0	3667	80.2	5.1	6.7	3.1	1.3	2	1.5	0.1	80.2	5.1	14.7	0.096	0.504
TEPEXI DE RODRIGUEZ	45.35	1	0	2780	80	5.1	6.8	3.1	1.4	2.1	1.5	0	80	5.1	14.9	0.103	0.501
TEPEXI DE RODRIGUEZ	45.35	3	0	3407	79	5.8	6.8	3.2	1.7	2	1.4	0.1	79	5.8	15.2	0.087	0.5

PUEBLA

16 CARR : CUAPIAXTLA - ACATLAN DE OSORIO

CLAVE: 21014

RUTA : PUE

AÑO : 2007

L U G A R	E S T A C I O N				C L A S I F I C A C I O N V E H I C U L A R E N P O R C I E N T O .												
	KM	TE	SC	TDPA	A	B	C2	C3	T3S2	T3S3	T3S2R4	OTROS	A	B	C	K'	D
ACATLAN DE OSORIO	127.00	1	0	2809	88.6	2.6	4.2	1.2	1.5	0.6	0.4	0.9	88.6	2.6	8.8	0.072	0.52

17 CARR : CHOLULA - PUEBLA (VIA QUETZALCOATL)

CLAVE: 21203

RUTA : PUE

AÑO : 2007

L U G A R	E S T A C I O N				C L A S I F I C A C I O N V E H I C U L A R E N P O R C I E N T O .												
	KM	TE	SC	TDPA	A	B	C2	C3	T3S2	T3S3	T3S2R4	OTROS	A	B	C	K'	D
CHOLULA	0.00	3	1	14524	84.6	3.4	5.1	2.6	1.1	1.6	1.4	0.2	84.6	3.4	12	0.1	0.502
CHOLULA	0.00	3	2	14381	83.1	4.1	5.7	2.8	1.3	1.7	1.1	0.2	83.1	4.1	12.8	0.091	0.502
PUEBLA	12.00	1	1	18332	85.5	4.6	3.6	2.8	1.1	1.2	1.1	0.1	85.5	4.6	9.9	0.095	0.515
PUEBLA	12.00	1	2	18557	89.8	2.9	2.6	1.5	1	1.1	0.9	0.2	89.8	2.9	7.3	0.091	0.515

18 CARR : PUEBLA - ATLIXCO (CUOTA)

CLAVE: 21585

RUTA : PUE-D

AÑO : 2007

L U G A R	E S T A C I O N				C L A S I F I C A C I O N V E H I C U L A R E N P O R C I E N T O .												
	KM	TE	SC	TDPA	A	B	C2	C3	T3S2	T3S3	T3S2R4	OTROS	A	B	C	K'	D
PUEBLA	0.00	3	1	17529	85.2	4.3	5.4	2.7	1	0.6	0.5	0.3	85.2	4.3	10.5	0.073	0.501
PUEBLA	0.00	3	2	17485	86.8	4.5	4.4	2.4	1	0.5	0.2	0.2	86.8	4.5	8.7	0.07	0.501
ATLIXCO	25.30	1	1	4525	82.7	9	3	2	1.6	0.9	0.5	0.3	82.7	9	8.3	0.107	0.5
ATLIXCO	25.30	1	2	4529	81	9.7	3.6	1.8	1.4	1.1	1.1	0.3	81	9.7	9.3	0.109	0.5

19 CARR : PUEBLA - TEHUACAN

CLAVE: 21047

RUTA : MEX-150

AÑO : 2007

L U G A R	E S T A C I O N				C L A S I F I C A C I O N V E H I C U L A R E N P O R C I E N T O .												
	KM	TE	SC	TDPA	A	B	C2	C3	T3S2	T3S3	T3S2R4	OTROS	A	B	C	K'	D
PUEBLA	0.00	0	0														
T. IZQ. A ENLACE CON AUT. PUEBLA - C RDOBA	5.83	3	1	16043	78.2	4.5	5.9	3.1	3.4	2.1	2	0.8	78.2	4.5	17.3	0.071	0.503
T. IZQ. A ENLACE CON AUT. PUEBLA - C RDOBA	5.83	3	2	15862	77.9	3.9	6	2.8	3.2	2.4	2.7	1.1	77.9	3.9	18.2	0.066	0.503
CHACHAPA	8.40	3	1	12516	71	7.6	11.1	4.3	2.5	2.3	0.5	0.7	71	7.6	21.4	0.064	0.504
CHACHAPA	8.40	3	2	12333	73.8	7.8	8.3	4.2	2.5	2.4	0.5	0.5	73.8	7.8	18.4	0.069	0.504
AMAZOC	17.86	1	0	17056	71.6	8.2	8.1	3.6	3.8	2.5	1.2	1	71.6	8.2	20.2	0.073	0.504
AMAZOC	17.86	3	0	15390	73	8.1	9.2	3.2	2.9	2	0.5	1.1	73	8.1	18.9	0.077	0.5
TEPEACA	35.30	1	0	16660	79	4.8	5.1	3.7	2.9	2.7	0.9	0.9	79	4.8	16.2	0.064	0.502
TEPEACA	35.30	3	0	14501	79.1	5.5	6	3.3	2	2.4	0.7	1	79.1	5.5	15.4	0.068	0.502
T. IZQ. ACATZINGO	41.80	3	0	15154	73.6	10.4	5.9	3.9	0.9	2.3	2.3	0.7	73.6	10.4	16	0.074	0.501
T. DER. SAN JUAN IXCAQUIXTLA	45.25	1	0	15927	72.7	10.3	6.4	4.7	2	1.9	1.8	0.2	72.7	10.3	17	0.064	0.502

PUEBLA

19 CARR : PUEBLA - TEHUACAN

CLAVE: 21047

RUTA : MEX-150

AÑO : 2007

L U G A R	E S T A C I O N				C L A S I F I C A C I O N V E H I C U L A R E N P O R C I E N T O .												
	KM	TE	SC	TDPA	A	B	C2	C3	T3S2	T3S3	T3S2R4	OTROS	A	B	C	K'	D
T. DER. SAN JUAN IXCAQUIXTLA	45.25	3	0	15773	70.1	12	7	4.4	2.1	2.2	1.9	0.3	70.1	12	17.9	0.061	0.501
TECAMACHALCO	57.40	1	0	15115	72.7	9.6	5.3	4	2.1	3.2	2	1.1	72.7	9.6	17.7	0.068	0.501
TECAMACHALCO	57.40	3	0	14020	73.2	8.7	6	5	1	3.4	1.8	0.9	73.2	8.7	18.1	0.072	0.503
TEPANCO DE LOPEZ	97.40	1	0	6297	71.7	9.7	7.1	4.8	2.3	2.5	1	0.9	71.7	9.7	18.6	0.08	0.502
TEPANCO DE LOPEZ	97.40	3	0	6094	76.3	7	5.1	5.5	2.3	2.3	0.7	0.8	76.3	7	16.7	0.074	0.501
T. C. TEHUACAN - CORDOBA	115.70	1	0	12260	70.4	10.9	6	4.5	2.7	4	0.3	1.2	70.4	10.9	18.7	0.067	0.503

20 CARR : RAMAL A AEROPUERTO HNOS. SERDAN

CLAVE: 21591

RUTA : PUE

AÑO : 2007

L U G A R	E S T A C I O N				C L A S I F I C A C I O N V E H I C U L A R E N P O R C I E N T O .												
	KM	TE	SC	TDPA	A	B	C2	C3	T3S2	T3S3	T3S2R4	OTROS	A	B	C	K'	D
T. AUT. MEXICO - PUEBLA (CUOTA)	0.00	3	0	3712	76.6	9.5	8.3	1.7	0.9	1.8	0.9	0.3	76.6	9.5	13.9	0.088	0.501
T. MEXICO - PUEBLA (LIBRE)	9.00	1	0	3845	79.8	4.3	5.8	3	3.3	2.2	1	0.6	79.8	4.3	15.9	0.098	0.501

21 CARR : RAMAL A ZIHUATEUTLA

CLAVE: 21590

RUTA : PUE

AÑO : 2007

L U G A R	E S T A C I O N				C L A S I F I C A C I O N V E H I C U L A R E N P O R C I E N T O .												
	KM	TE	SC	TDPA	A	B	C2	C3	T3S2	T3S3	T3S2R4	OTROS	A	B	C	K'	D
T. C. PACHUCA - TUXPAM	0.00	3	0	1356	95.1	1.9	0.7	0.6	0.8	0.3	0.2	0.4	95.1	1.9	3	0.1	0.502
LA UNION	13.00	0	0														
ZIHUATEHUTLA	22.00	0	0														

22 CARR : RAMAL A NUEVO NECAXA

CLAVE: 21592

RUTA : PUE

AÑO : 2007

L U G A R	E S T A C I O N				C L A S I F I C A C I O N V E H I C U L A R E N P O R C I E N T O .												
	KM	TE	SC	TDPA	A	B	C2	C3	T3S2	T3S3	T3S2R4	OTROS	A	B	C	K'	D
T. C. PACHUCA - ENT. CAÑADA RICA	0.00	0	0														
NUEVO NECAXA	1.50	1	0	2321	91.3	3.9	1.5	1.1	0.8	0.5	0.9	0	91.3	3.9	4.8	0.081	0.501

23 CARR : RAMAL A TETELA DE OCAMPO

CLAVE: 21587

RUTA : PUE

AÑO : 2007

L U G A R	E S T A C I O N				C L A S I F I C A C I O N V E H I C U L A R E N P O R C I E N T O .												
	KM	TE	SC	TDPA	A	B	C2	C3	T3S2	T3S3	T3S2R4	OTROS	A	B	C	K'	D
T. C. APIZACO - TEJOCOTAL	0.00	3	0	1735	91.9	2.2	2.2	1.4	1.3	0.4	0.2	0.4	91.9	2.2	5.9	0.099	0.503
TETELA DE OCAMPO	45.00	1	0	1377	88.1	2.1	6	2.1	0.4	0.5	0.5	0.3	88.1	2.1	9.8	0.099	0.501

PUEBLA

29 CARR : ZACATLAN - ZAPOTITLAN

CLAVE: 21580

RUTA : PUE

AÑO : 2007

L U G A R	E S T A C I O N				C L A S I F I C A C I O N V E H I C U L A R E N P O R C I E N T O .												
	KM	TE	SC	TDPA	A	B	C2	C3	T3S2	T3S3	T3S2R4	OTROS	A	B	C	K'	D
T. C. APIZACO - TEJOCOTAL	0.00	3	0	3249	90.7	4	1.7	1.1	0.8	0.8	0.9	0	90.7	4	5.3	0.079	0.501
ZAPOTITLAN	45.00	0	0														

30 CARR : AMAYUCA - IZUCAR DE MATAMOROS

CLAVE: 00030

RUTA : MOR-031-PUE

AÑO : 2007

L U G A R	E S T A C I O N				C L A S I F I C A C I O N V E H I C U L A R E N P O R C I E N T O .												
	KM	TE	SC	TDPA	A	B	C2	C3	T3S2	T3S3	T3S2R4	OTROS	A	B	C	K'	D
X. C. SANTA BARBARA - IZUCAR DE MATAMOROS	0.66	3	0	6994	81.8	3.3	3.1	2.8	2.6	2.5	0.5	3.4	81.8	3.3	14.9	0.086	0.501
JONACATEPEC	3.84	3	0	4786	80.1	4.2	5.9	2.9	3.3	2	1	0.6	80.1	4.2	15.7	0.084	0.501
T. DER. TEPALCINGO	14.50	3	0	4439	77.7	5.8	4.4	3	2.4	2.5	0.5	3.7	77.7	5.8	16.5	0.076	0.5
AXOCHIAPAN	29.50	1	0	3293	83.3	4.1	5.7	2.2	0.9	1.4	1	1.4	83.3	4.1	12.6	0.08	0.502
AXOCHIAPAN	29.50	3	1	3009	83.6	4.4	5.7	2.4	0.6	1.1	0.1	2.1	83.6	4.4	12	0.066	0.5
AXOCHIAPAN	29.50	3	2	3009	83.4	4.6	5.5	2.6	0.6	1.2	0	2.1	83.4	4.6	12	0.065	0.5
LIM. EDOS. TERM. MOR. PPIA. PUE.	37.75	0	0														
BARRANCA DEL MUERTO	38.40	3	0	3092	76.2	8.7	5.5	5	1.3	1.6	1.6	0.1	76.2	8.7	15.1	0.072	0.502
T. DER. CHIETLA	53.00	1	0	5135	87.9	3.3	3.9	1.8	0.4	1.1	1.1	0.5	87.9	3.3	8.8	0.077	0.504
X. C. SANTA BARBARA - IZUCAR DE MATAMOROS	67.50	1	0	6981	84.8	3.6	5.2	1.7	0.7	1.5	1.6	0.9	84.8	3.6	11.6	0.091	0.501
X. C. SANTA BARBARA - IZUCAR DE MATAMOROS	67.50	3	0	12897	81.4	4.4	5.7	1.9	1.7	2.1	1.8	1	81.4	4.4	14.2	0.088	0.502
IZUCAR DE MATAMOROS	69.00	0	0														

31 CARR : APIZACO - TEJOCOTAL

CLAVE: 00430

RUTA : MEX-119

AÑO : 2007

L U G A R	E S T A C I O N				C L A S I F I C A C I O N V E H I C U L A R E N P O R C I E N T O .												
	KM	TE	SC	TDPA	A	B	C2	C3	T3S2	T3S3	T3S2R4	OTROS	A	B	C	K'	D
APIZACO	0.00	3	0	10699	79.5	4.1	3.8	1.4	3.8	2.5	2.9	2	79.5	4.1	16.4	0.099	0.502
T. DER. TETLA	6.60	3	0	9697	80	5.1	5.3	2.6	1.9	2.2	1.4	1.5	80	5.1	14.9	0.103	0.502
T. IZQ. ATLANGATEPEC	12.15	1	0	8566	75.1	7	6.9	3.5	1.5	2	1.8	2.2	75.1	7	17.9	0.085	0.501
TLAXCO	23.91	1	0	6729	86.4	5.1	2.2	1.4	1.1	1.3	1.2	1.3	86.4	5.1	8.5	0.08	0.502
TLAXCO	23.91	3	0	4645	87.1	2.7	1.5	1.6	2.5	1.6	1.5	1.5	87.1	2.7	10.2	0.09	0.503
LIM. EDOS. TERM. TLAX. PPIA. PUE.	34.45	0	0														
T. DER. TETELA DE OCAMPO	52.20	1	0	5072	82.7	8	4.1	1.7	0.4	1.5	1.1	0.5	82.7	8	9.3	0.086	0.503
ZACATLAN	71.25	1	0	6712	77.8	8.5	5.9	2.7	0.9	1.4	1.2	1.6	77.8	8.5	13.7	0.09	0.501
LIM. EDOS. TERM. PUE. PPIA. HGO.	110.50	0	0														
T. C. PACHUCA - TUXPAM	113.20	1	0	3775	78.6	2	5.1	3.2	4.8	2	2.9	1.4	78.6	2	19.4	0.083	0.501

PUEBLA

32 CARR : ENT. TULANCINGO - TEJOCOTAL (CUOTA)

CLAVE: 00026

RUTA : MEX-132D

AÑO : 2007

L U G A R	E S T A C I O N				C L A S I F I C A C I O N V E H I C U L A R E N P O R C I E N T O .												
	KM	TE	SC	TDPA	A	B	C2	C3	T3S2	T3S3	T3S2R4	OTROS	A	B	C	K'	D
T. C. PACHUCA - ENT. CAÑADA RICA	0.00	0	0														
CASETA DE COBRO SAN ALEJO	37.00	2	0	9329													
LIM. EDOS. TERM. HGO. PPIA. PUE.	38.00	0	0														
TEJOCOTAL	39.40	0	0														

33 CARR : LOS REYES - ZACATEPEC

CLAVE: 00052

RUTA : MEX-138-136

AÑO : 2007

L U G A R	E S T A C I O N				C L A S I F I C A C I O N V E H I C U L A R E N P O R C I E N T O .												
	KM	TE	SC	TDPA	A	B	C2	C3	T3S2	T3S3	T3S2R4	OTROS	A	B	C	K'	D
T. C. MEXICO - PUEBLA (LIBRE)	0.00	0	0														
T. IZQ. LA MAGDALENA	3.35	3	1	37137	78.2	7	6.5	3.1	2.1	1.2	0.3	1.6	78.2	7	14.8	0.081	0.502
T. IZQ. LA MAGDALENA	3.35	3	2	36881	78.6	7	6.2	2.8	1.9	1.3	0.2	2	78.6	7	14.4	0.092	0.502
T. IZQ. CHIMALHUACAN	8.45	1	1	19884	72.6	3.8	1.8	0.6	9.4	3	5.2	3.6	72.6	3.8	23.6	0.079	0.512
T. IZQ. CHIMALHUACAN	8.45	1	2	20844	75	3.9	2	0.6	7.9	2.8	4.9	2.9	75	3.9	21.1	0.078	0.512
T. C. SAN BERNARDINO - TEPEXPAN	17.00	3	0	31880	72.6	7.2	5.3	6.1	2.8	2.4	0.3	3.3	72.6	7.2	20.2	0.074	0.512
TEXCOCO	23.02	3	1	11386	61.9	8.3	1	1.7	10.6	3.9	8.7	3.9	61.9	8.3	29.8	0.076	0.512
TEXCOCO	23.02	3	2	11941	58.9	8.6	1.5	1.9	11.2	4.5	9	4.4	58.9	8.6	32.5	0.077	0.512
T. IZQ. TEPETLAOXTOC	30.03	1	1	14178	65.9	9	1.7	3.9	8.2	3.1	6.5	1.7	65.9	9	25.1	0.063	0.513
T. IZQ. TEPETLAOXTOC	30.03	1	2	13447	62.8	9	2	3.8	8.9	4	6.8	2.7	62.8	9	28.2	0.078	0.513
T. DER. TOTOLAPAN	42.00	3	0	8633	40.7	12.4	1.4	4.6	17.9	5.8	14.9	2.3	40.7	12.4	46.9	0.071	0.507
LIM. EDOS. TERM. MEX. PPIA. TLAX.	43.15	0	0														
CALPULALPAN	59.58	3	0	9238	65.7	8.4	7.1	5	3.9	6.6	2.2	1.1	65.7	8.4	25.9	0.105	0.501
T. DER. NANACAMILPA	71.76	3	0	13402	58	14.1	9	5.1	4	5.8	2.8	1.2	58	14.1	27.9	0.065	0.502
HUEYOTLIPAN	88.21	3	0	10377	66.7	8.4	9.5	6.7	3.9	2.8	1.5	0.5	66.7	8.4	24.9	0.076	0.5
XALTOCAN	108.10	1	0	12232	63.7	6.8	6.8	7.6	6.3	6.2	1.9	0.7	63.7	6.8	29.5	0.068	0.501
APIZACO	117.70	1	1	14434	81.5	4.1	4.9	3.2	0.7	3	2.5	0.1	81.5	4.1	14.4	0.084	0.503
APIZACO	117.70	1	2	14610	82.2	3.5	6	2.3	0.4	2.8	2.7	0.1	82.2	3.5	14.3	0.079	0.503
APIZACO	117.70	3	0	16936	72.5	4.4	2.9	0.9	8.2	1.9	6.3	2.9	72.5	4.4	23.1	0.063	0.508
T. DER. CUAXOMULCO	119.90	3	0	13263	79.5	7	1.6	0.6	4.6	1.2	1.6	3.9	79.5	7	13.5	0.077	0.501
T. IZQ. XALOSTOC	126.70	3	1	7575	79.2	7.1	1.6	0.7	4.6	1.2	1.6	4	79.2	7.1	13.7	0.066	0.502
T. IZQ. XALOSTOC	126.70	3	2	7644	78.3	8	1.6	0.6	4.7	1.2	1.6	4	78.3	8	13.7	0.069	0.502
T. IZQ. LIBRAMIENTO DE HUAMANTLA	141.70	1	1	6501	67	9.2	8	5.7	4	3.2	2.3	0.6	67	9.2	23.8	0.083	0.501
T. IZQ. LIBRAMIENTO DE HUAMANTLA	141.70	1	2	6515	66.9	5.3	6.9	7.6	4.6	3.6	3.5	1.6	66.9	5.3	27.8	0.079	0.501
HUAMANTLA	143.00	3	0	9035	79.3	3.4	4.9	6	1.9	2.2	2	0.3	79.3	3.4	17.3	0.074	0.5
T. DER. CUAPIAXTLA	159.40	1	0	8588	68.9	9.4	6.5	4	3.8	2.3	3	2.1	68.9	9.4	21.7	0.082	0.503

PUEBLA

35 CARR : MEXICO - PUEBLA (LIBRE)

CLAVE: 00449

RUTA : MEX-150

AÑO : 2007

L U G A R	E S T A C I O N				C L A S I F I C A C I O N V E H I C U L A R E N P O R C I E N T O .													
	KM	TE	SC	TDPA	A	B	C2	C3	T3S2	T3S3	T3S2R4	OTROS	A	B	C	K'	D	
LIM. EDOS. TERM. DF. PPIA. MEX.	18.66	0	0															
T. DER. CHALCO	28.85	1	1	30726	80.4	4.9	4.8	4.6	1.8	1.7	0.2	1.6	80.4	4.9	14.7	0.063	0.501	
T. DER. CHALCO	28.85	1	2	30891	82.6	4.8	5.1	2.9	1.7	1.3	0.2	1.4	82.6	4.8	12.6	0.061	0.501	
T. DER. CHALCO	28.85	3	1	9589	82.3	4.1	4.6	3.9	1.3	1.3	0.4	2.1	82.3	4.1	13.6	0.146	0.5	
T. DER. CHALCO	28.85	3	2	9604	80.9	4.1	5.6	4.5	1.5	1.4	0.4	1.6	80.9	4.1	15	0.12	0.5	
IXTAPALUCA	31.06	3	0	5340	78.1	6.5	8.3	1.7	2.1	1.3	0.2	1.8	78.1	6.5	15.4	0.078	0.509	
T. DER. C. MEXICO - PUEBLA (CUOTA) (RIO FRIO)	62.06	1	0	5153	77.8	6.4	8.3	1.9	2.2	1.3	0.2	1.9	77.8	6.4	15.8	0.078	0.509	
T. DER. C. MEXICO - PUEBLA (CUOTA) (RIO FRIO)	62.06	3	0	4168	75	5.6	4.8	4.3	3.4	3.5	0.9	2.5	75	5.6	19.4	0.074	0.502	
LIM. EDOS. TERM. MEX. PPIA. PUE.	62.98	0	0															
SAN MARTIN TEXMELUCAN	70.00	1	0	12952	76.9	2.7	9.7	5.5	2.4	1.1	0.4	1.3	76.9	2.7	20.4	0.069	0.504	
X. C. MEXICO - PUEBLA (CUOTA)	74.10	3	0	17821	77.6	4.2	5.9	3	3.3	2.5	2.9	0.6	77.6	4.2	18.2	0.074	0.502	
HUEJOTZINGO	88.00	1	0	11052	76.4	6.2	3.2	3	5.8	1.2	2.4	1.8	76.4	6.2	17.4	0.069	0.504	
HUEJOTZINGO	88.00	3	0	12076	72.5	8.9	10.4	2.9	2	1.3	1.3	0.7	72.5	8.9	18.6	0.066	0.5	
T. IZQ. AEROPUERTO	92.80	1	0	11627	76.3	3.7	8.1	4.8	2.3	2.5	1.4	0.9	76.3	3.7	20	0.067	0.501	
T. DER. CHOLULA	101.00	1	0	14898	78	4.3	6.2	4.7	3.6	2.5	0.5	0.2	78	4.3	17.7	0.085	0.503	
T. DER. CHOLULA	101.00	3	1	11356	81.9	4.3	6.6	3.7	1.7	1.1	0.5	0.2	81.9	4.3	13.8	0.085	0.5	
T. DER. CHOLULA	101.00	3	2	11341	82.9	4.5	5.5	3.6	1.8	0.9	0.6	0.2	82.9	4.5	12.6	0.077	0.5	
PUEBLA	131.00	0	0															

36 CARR : PACHUCA - TUXPAM

CLAVE: 00608

RUTA : MEX-130

AÑO : 2007

L U G A R	E S T A C I O N				C L A S I F I C A C I O N V E H I C U L A R E N P O R C I E N T O .													
	KM	TE	SC	TDPA	A	B	C2	C3	T3S2	T3S3	T3S2R4	OTROS	A	B	C	K'	D	
PACHUCA	0.00	0	0															
X. C. LIBRAMIENTO DE PACHUCA	2.60	3	1	3528	87.3	2.3	2.2	2	1.2	2.1	1.3	1.6	87.3	2.3	10.4	0.082	0.503	
X. C. LIBRAMIENTO DE PACHUCA	2.60	3	2	3570	87	3	2.2	2	1.3	1.8	1.2	1.5	87	3	10	0.082	0.503	
T. IZQ. PACHUQUILLA (1° ACCESO)	7.00	1	1	6632	88.2	2.4	3.8	1.7	1	1.5	1.1	0.3	88.2	2.4	9.4	0.082	0.502	
T. IZQ. PACHUQUILLA (1° ACCESO)	7.00	1	2	6591	87.3	3.4	3.4	1.5	1.1	1.7	1.2	0.4	87.3	3.4	9.3	0.081	0.502	
T. IZQ. PACHUQUILLA (2° ACCESO)	10.50	1	1	5247	41.2	2.5	2.3	1.6	0.2	50.6	0	1.6	41.2	2.5	56.3	0.085	0.502	
T. IZQ. PACHUQUILLA (2° ACCESO)	10.50	1	2	5296	39	2.8	2.5	2.1	0.2	50.8	0	2.6	39	2.8	58.2	0.084	0.502	
T. DER. CD. SAHAGUN	16.59	1	0	7052	76.8	5.4	6	3.7	2	2.8	1.1	2.2	76.8	5.4	17.8	0.081	0.502	
T. C. VENTA DE CARPIO - TULANCINGO	36.45	1	1	6187	81.6	3.5	6.5	2.6	2.9	2.1	0.6	0.2	81.6	3.5	14.9	0.083	0.501	
T. C. VENTA DE CARPIO - TULANCINGO	36.45	1	2	6220	81.5	3.7	6.3	2.8	2.5	2.3	0.4	0.5	81.5	3.7	14.8	0.083	0.501	
T. C. VENTA DE CARPIO - TULANCINGO	36.45	3	0	20913	77.5	4.4	7.9	3.1	2.6	1.4	1.6	1.5	77.5	4.4	18.1	0.085	0.501	
T. IZQ. LIBRAMIENTO DE TULANCINGO	53.70	3	0	10391	79.7	3	2.9	1.8	5	2.2	3.2	2.2	79.7	3	17.3	0.073	0.511	

PUEBLA

36 CARR : PACHUCA - TUXPAM

CLAVE: 00608

RUTA : MEX-130

AÑO : 2007

L U G A R	E S T A C I O N				C L A S I F I C A C I O N V E H I C U L A R E N P O R C I E N T O .												
	KM	TE	SC	TDPA	A	B	C2	C3	T3S2	T3S3	T3S2R4	OTROS	A	B	C	K'	D
T. IZQ. HUAYACOCOTLA	66.42	3	0	8730	82.8	5	1.1	1.1	4.2	1.8	2.2	1.8	82.8	5	12.2	0.078	0.51
LIM. EDOS. TERM. HGO. PPIA. PUE.	83.18	0	0														
T. DER. HUAUCHINANGO (1° ACCESO)	94.00	1	0	9533	78.8	3.5	6.9	5.7	2.9	1.3	0.2	0.7	78.8	3.5	17.7	0.082	0.502
T. DER. HUAUCHINANGO (2° ACCESO)	100.00	3	0	6969	81.8	3.1	5	0.5	3.5	0.9	2.3	2.9	81.8	3.1	15.1	0.087	0.502
VILLA AVILA CAMACHO	141.80	1	0	7088	76.2	4.5	6.5	4.2	3	2.8	1.4	1.4	76.2	4.5	19.3	0.073	0.503
VILLA AVILA CAMACHO	141.80	3	0	7318	67.6	5.4	5	5.7	7.3	4	3.5	1.5	67.6	5.4	27	0.08	0.502
PIEDRAS NEGRAS	158.70	1	0	7759	62	6	5.3	7.1	7.3	4.7	5.9	1.7	62	6	32	0.066	0.5
T. IZQ. VENUSTIANO CARRANZA	174.10	3	0	6570	78.5	6.1	3.5	2.6	2.2	2.8	2.7	1.6	78.5	6.1	15.4	0.063	0.501
LIM. EDOS. TERM. PUE. PPIA. VER.	180.00	0	0														
T. DER. POZA RICA	197.00	1	0	12897	72.3	8.2	6.1	4.3	4.1	2.8	1.3	0.9	72.3	8.2	19.5	0.08	0.501
T. DER. POZA RICA	197.00	3	0	15109	76.1	0.2	9	5.1	3.5	3.8	1.3	1	76.1	0.2	23.7	0.077	0.5
TIHUATLAN	217.00	1	0	8113	79.1	5.4	6.4	4	1.6	2.1	0.6	0.8	79.1	5.4	15.5	0.079	0.501
TIHUATLAN	217.00	3	0	6830	78.8	5.1	6.5	3.2	2.4	2.8	0.5	0.7	78.8	5.1	16.1	0.079	0.5
TUXPAM	247.00	1	0	7137	72.7	6.6	6.9	1.9	4.9	2	2.8	2.2	72.7	6.6	20.7	0.073	0.501

37 CARR : RAMAL A JOLALPAN

CLAVE: 00143

RUTA : MOR-PUE

AÑO : 2007

L U G A R	E S T A C I O N				C L A S I F I C A C I O N V E H I C U L A R E N P O R C I E N T O .												
	KM	TE	SC	TDPA	A	B	C2	C3	T3S2	T3S3	T3S2R4	OTROS	A	B	C	K'	D
AXOCHIAPAN	0.00	3	0	1980	75.8	14.8	3.1	1.4	0.7	1.9	1.2	1.1	75.8	14.8	9.4	0.083	0.503
LIM. EDOS. TERM. MOR. PPIA. PUE.	1.60	0	0														
JOLALPAN	24.00	0	0														

38 CARR : SANTA BARBARA - IZUCAR DE MATAMOROS

CLAVE: 00451

RUTA : MEX-115-160

AÑO : 2007

L U G A R	E S T A C I O N				C L A S I F I C A C I O N V E H I C U L A R E N P O R C I E N T O .												
	KM	TE	SC	TDPA	A	B	C2	C3	T3S2	T3S3	T3S2R4	OTROS	A	B	C	K'	D
T. C. MEXICO - PUEBLA (LIBRE)	0.00	3	1	12786	80.8	4.5	6.3	5.4	0.8	0.9	0.4	0.9	80.8	4.5	14.7	0.095	0.5
T. C. MEXICO - PUEBLA (LIBRE)	0.00	3	2	12801	80.4	4.5	6.4	5.5	1.1	0.8	0.2	1.1	80.4	4.5	15.1	0.111	0.5
X. C. MEXICO - PUEBLA (CUOTA)	3.61	3	1	26641	79	6.8	5.6	4.1	1.6	1.7	0.3	0.9	79	6.8	14.2	0.081	0.516
X. C. MEXICO - PUEBLA (CUOTA)	3.61	3	2	28380	74.6	8.5	8.3	3.5	1.7	2.4	0.3	0.7	74.6	8.5	16.9	0.082	0.516
CHALCO	8.00	3	1	19183	75.9	3.5	2.2	1.4	7	2.2	3.7	4.1	75.9	3.5	20.6	0.069	0.517
CHALCO	8.00	3	2	17945	72.1	3.6	2.8	2.1	7	3.3	4.1	5	72.1	3.6	24.3	0.067	0.517
T. DER. JUCHITEPEC	12.46	3	0	24974	79.4	6.2	4.5	3.6	2.6	2.3	0.3	1.1	79.4	6.2	14.4	0.083	0.501
TLALMANALCO	20.51	3	0	17438	75.1	4	2.4	1.6	5.3	2.1	6.3	3.2	75.1	4	20.9	0.068	0.525

PUEBLA

38 CARR : SANTA BARBARA - IZUCAR DE MATAMOROS

CLAVE: 00451

RUTA : MEX-115-160

AÑO : 2007

L U G A R	E S T A C I O N				C L A S I F I C A C I O N V E H I C U L A R E N P O R C I E N T O .												
	KM	TE	SC	TDPA	A	B	C2	C3	T3S2	T3S3	T3S2R4	OTROS	A	B	C	K'	D
AMECAMECA DE JUAREZ	28.00	1	0	20360	72.5	3	2.7	1.1	8.6	2.2	7.1	2.8	72.5	3	24.5	0.078	0.519
AMECAMECA DE JUAREZ	34.00	3	0	18122	78.9	5.6	5.3	4.4	2	1.4	0	2.4	78.9	5.6	15.5	0.074	0.504
T. IZQ. OZUMBA (1° ACCESO)	38.81	1	0	19417	82	3.9	5.3	4.7	1.8	1.2	0	1.1	82	3.9	14.1	0.09	0.5
TEPETLIXPA	42.29	3	0	14694	80.5	4.9	5.9	3.2	2.8	1.6	0.1	1	80.5	4.9	14.6	0.097	0.501
LIM. EDOS. TERM. MEX. PPIA. MOR.	51.90	0	0														
T. DER. ATLATLAHUACAN	58.95	1	0	10383	87	1.8	5.4	2.3	1.6	0.6	0.6	0.7	87	1.8	11.2	0.068	0.5
T. IZQ. TETELA DEL VOLCAN	62.99	1	0	13283	80.5	3.8	5.2	3.8	2.6	2.4	1.1	0.6	80.5	3.8	15.7	0.068	0.5
T. IZQ. LIBRAMIENTO DE CUAUTLA (1° ACCESO)	67.00	1	1	10789	79.5	4	5.6	4.9	1.8	2.8	0.8	0.6	79.5	4	16.5	0.086	0.502
T. IZQ. LIBRAMIENTO DE CUAUTLA (1° ACCESO)	67.00	1	2	10697	79.4	4.1	5.5	5	1.7	2.9	0.7	0.7	79.4	4.1	16.5	0.089	0.502
T. DER. LA PERA	68.90	3	1	10472	82.5	3.8	4.5	4.7	1.7	1.7	0.6	0.5	82.5	3.8	13.7	0.082	0.5
T. DER. LA PERA	68.90	3	2	10490	80.6	4.1	5.7	4.8	1.7	2	0.3	0.8	80.6	4.1	15.3	0.141	0.5
T. IZQ. LIBRAMIENTO DE CUAUTLA (2° ACCESO)	77.05	3	0	16188	66.4	10	7.7	5.8	4.4	3.3	0.1	2.3	66.4	10	23.6	0.068	0.502
T. DER. TLAYECAC	85.06	3	0	14594	80.2	4.2	5.9	2.9	3.3	2	0.9	0.6	80.2	4.2	15.6	0.07	0.501
T. IZQ. AMAYUCA	91.36	3	0	9494	78.8	6	6.8	2.3	1.7	1.3	0.1	3	78.8	6	15.2	0.071	0.501
T. DER. TENANGO	103.00	3	0	5547	67.9	9.3	9.4	3.4	3.3	2.4	0.2	4.1	67.9	9.3	22.8	0.07	0.501
LIM. EDOS. TERM. MOR. PPIA. PUE.	103.20	0	0														
X. C. AMAYUCA - IZUCAR DE MATAMOROS	135.00	1	0	7171	78.6	5.4	5.4	4.4	1.6	2	1.1	1.5	78.6	5.4	16	0.063	0.502
X. C. AMAYUCA - IZUCAR DE MATAMOROS	135.00	3	0	7781	74.6	8.7	8.8	2.8	2.2	1	0.7	1.2	74.6	8.7	16.7	0.08	0.504
T. C. PUEBLA - HUAJUAPAN DE LEON	138.10	0	0														

39 CARR : TEOTITLAN DE FLORES MAGON - TUXTEPEC

CLAVE: 00108

RUTA : OAX-PUE-MEX

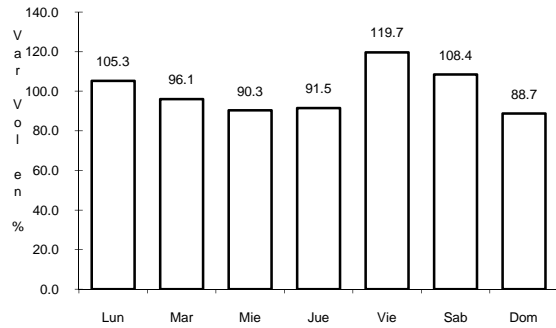
AÑO : 2007

L U G A R	E S T A C I O N				C L A S I F I C A C I O N V E H I C U L A R E N P O R C I E N T O .												
	KM	TE	SC	TDPA	A	B	C2	C3	T3S2	T3S3	T3S2R4	OTROS	A	B	C	K'	D
TEOTITLAN DEL CAMINO	0.00	3	0	1433	82.6	5.4	7.1	3.6	0.4	0.4	0.2	0.3	82.6	5.4	12	0.086	0.504
LIM. EDOS. TERM. OAX. PPIA. PUE.	2.00	0	0														
LIM. EDOS. TERM. PUE. PPIA. OAX.	10.00	0	0														
HUAUTLA	65.00	1	0	814	91	3.8	3.6	1.3	0	0.3	0	0	91	3.8	5.2	0.115	0.504
SAN FELIPE JALAPA DE DIAZ	140.00	3	0	2071	92.5	1.4	1.7	0.5	1.9	0.2	0.5	1.3	92.5	1.4	6.1	0.14	0.501
TUXTEPEC	200.00	1	0	2360	74.6	3.9	4	0.4	3.8	10.2	1.1	2	74.6	3.9	21.5	0.098	0.51

4 CARR: PUEBLA - BELEM

CLAVE: 00055

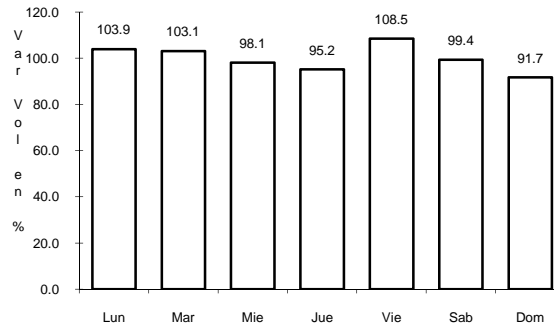
RUTA: MEX-121



Km: 4.00

Tipo: 3

Sent: 1



Km: 4.00

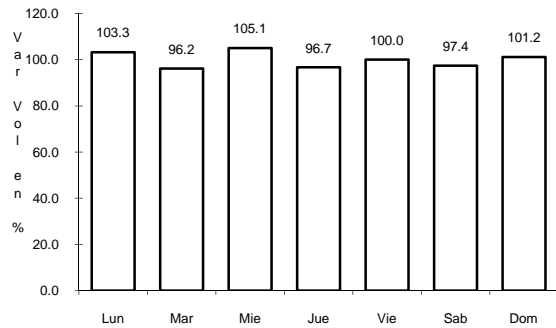
Tipo: 3

Sent: 2

5 CARR: PUEBLA - HUAJUAPAN DE LEON

CLAVE: 00049

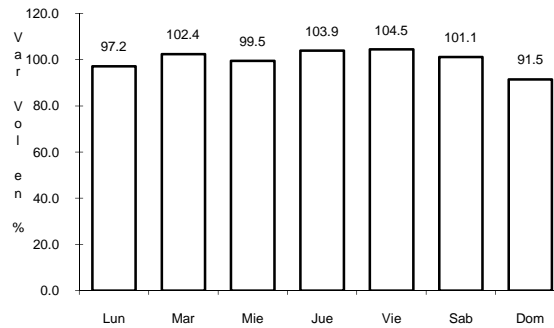
RUTA: MEX-190



Km: 0.00

Tipo: 3

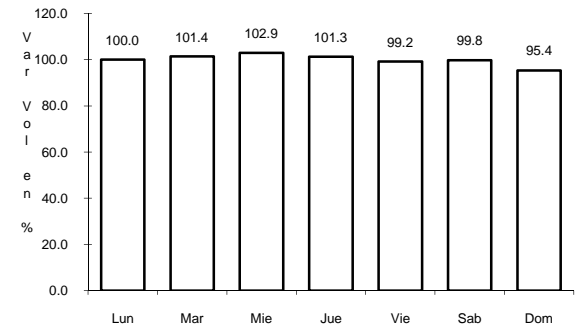
Sent: 1



Km: 0.00

Tipo: 3

Sent: 2



Km: 217.50

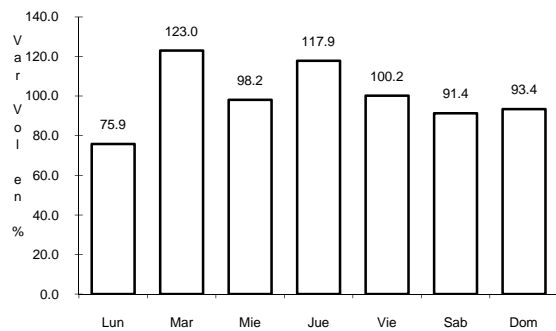
Tipo: 1

Sent: 0

6 CARR: PUEBLA - TLAXCALA

CLAVE: 00475

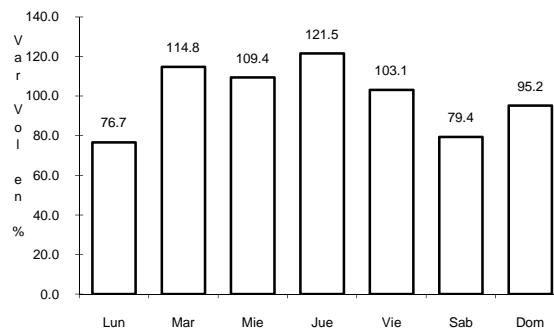
RUTA: MEX-119



Km: 5.41

Tipo: 3

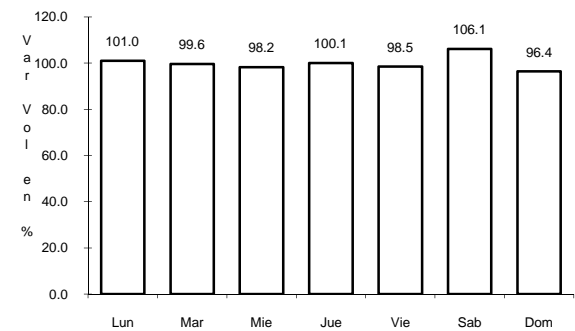
Sent: 1



Km: 5.41

Tipo: 3

Sent: 2



Km: 16.10

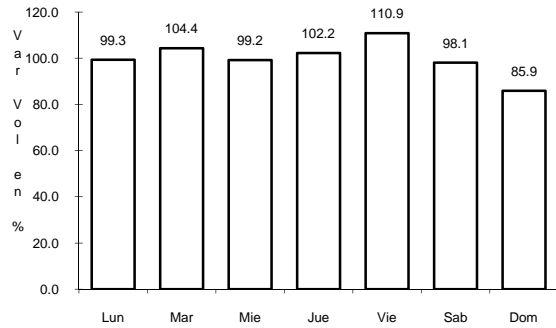
Tipo: 3

Sent: 0

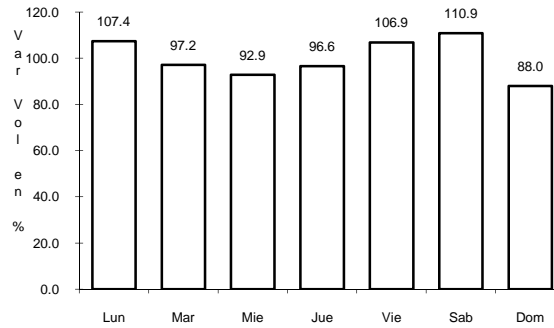
7 CARR: SAN HIPOLITO - JALAPA

CLAVE: 00486

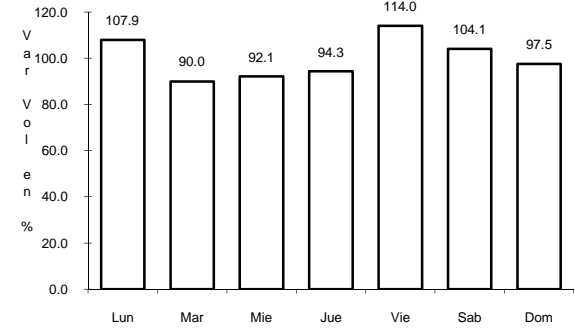
RUTA: MEX-140



Km: 0.00 Tipo: 3 Sent: 0



Km: 151.20 Tipo: 1 Sent: 1

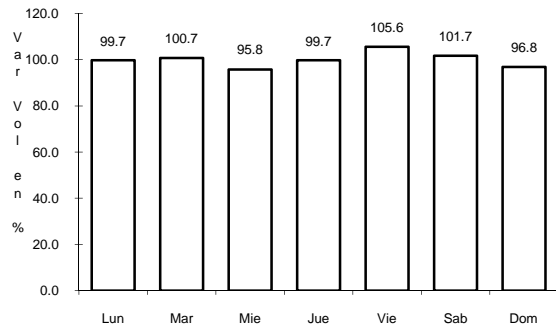


Km: 151.20 Tipo: 1 Sent: 2

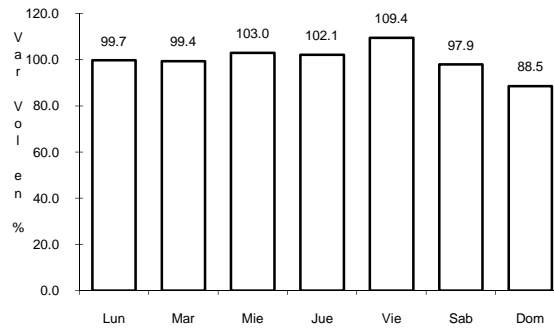
8 CARR: SAN MARTIN TEXMELUCAN - OCOTOXCO (CUOTA)

CLAVE: 00212

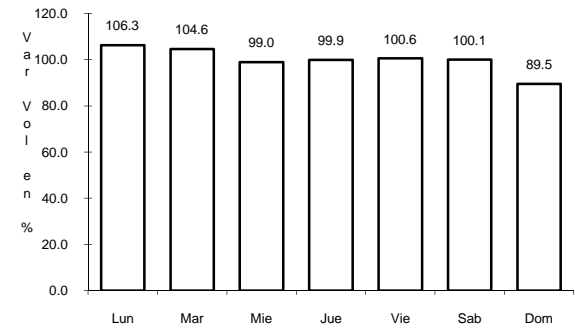
RUTA: MEX-D



Km: 1.80 Tipo: 1 Sent: 0



Km: 35.20 Tipo: 1 Sent: 1

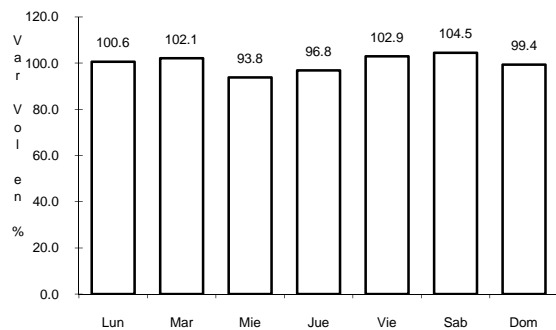


Km: 35.20 Tipo: 1 Sent: 2

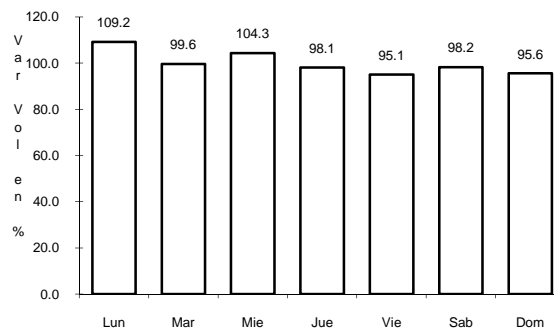
9 CARR: SAN MARTIN TEXMELUCAN - TLAXCALA

CLAVE: 00158

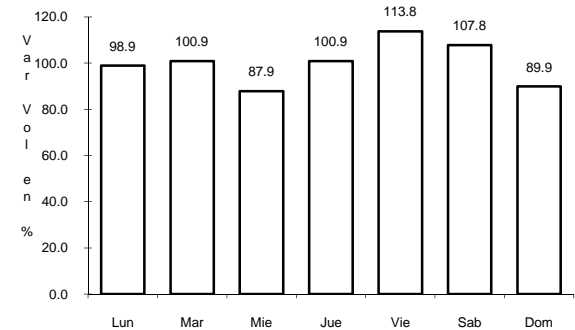
RUTA: MEX-117



Km: 0.00 Tipo: 3 Sent: 0



Km: 7.21 Tipo: 3 Sent: 0

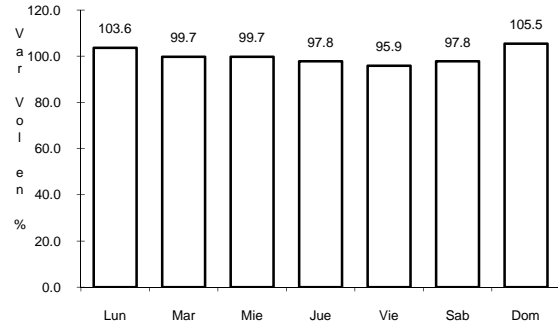


Km: 24.81 Tipo: 1 Sent: 0

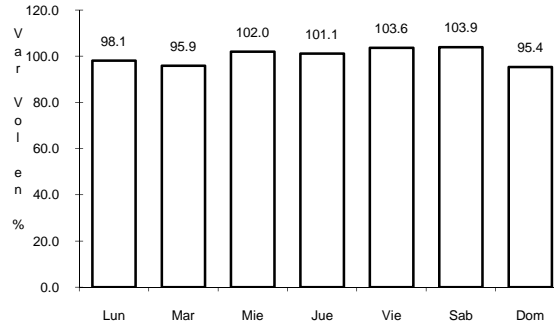
10 CARR: TEHUACAN - CORDOBA

CLAVE: 00534

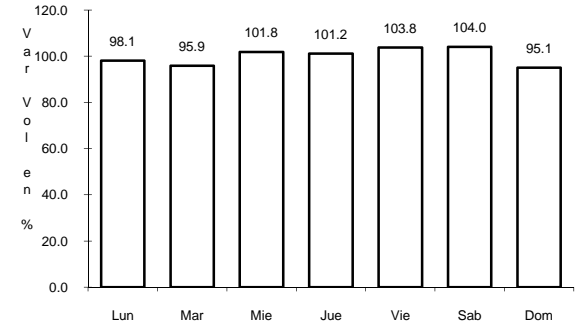
RUTA: MEX-150



Km: 0.00 Tipo: 3 Sent: 0



Km: 86.76 Tipo: 1 Sent: 1

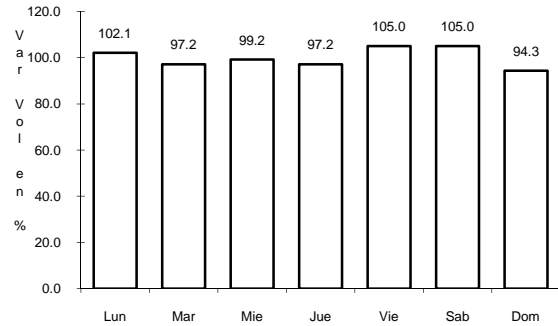


Km: 86.76 Tipo: 1 Sent: 2

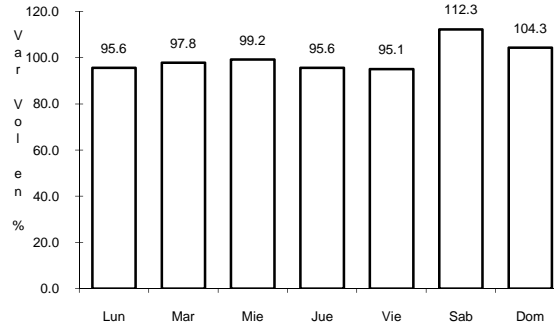
11 CARR: TEHUACAN - HUAJUAPAN DE LEON

CLAVE: 00211

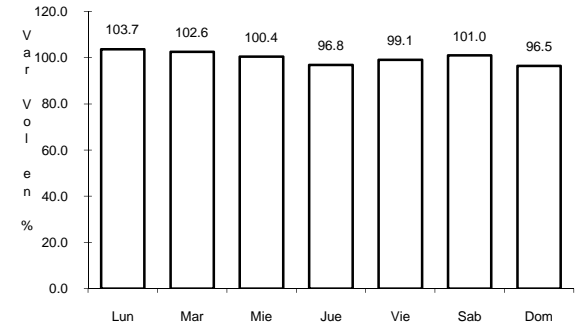
RUTA: PUE-MEX-125



Km: 0.00 Tipo: 3 Sent: 0



Km: 63.02 Tipo: 1 Sent: 0

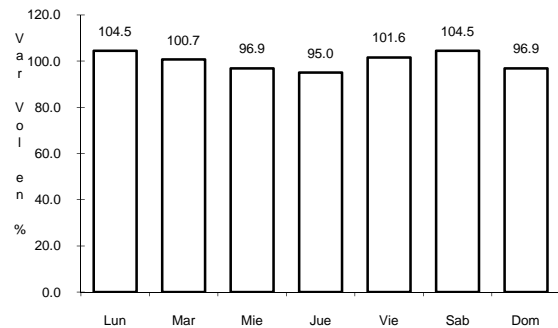


Km: 119.90 Tipo: 1 Sent: 0

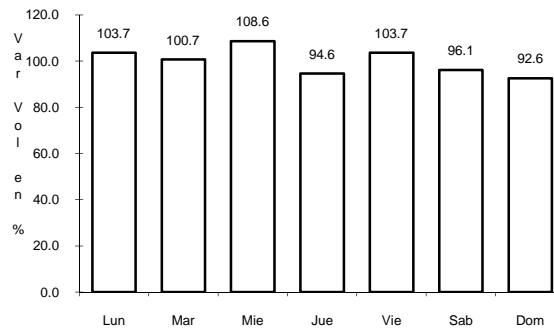
12 CARR: TEHUACAN - HUITZO

CLAVE: 00211

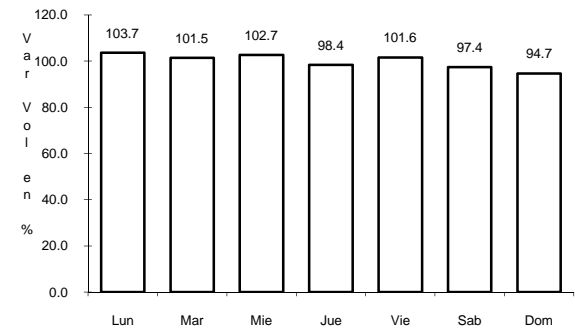
RUTA: PUE-MEX-135



Km: 0.00 Tipo: 3 Sent: 0



Km: 118.80 Tipo: 1 Sent: 0

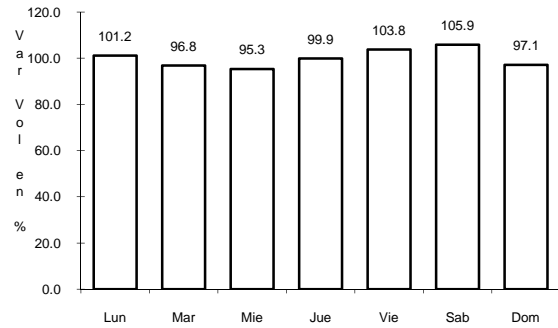


Km: 202.70 Tipo: 1 Sent: 0

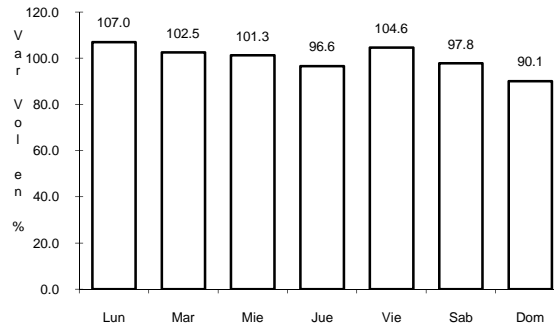
13 CARR: TEZIUTLAN - NAUTLA

CLAVE: 00144

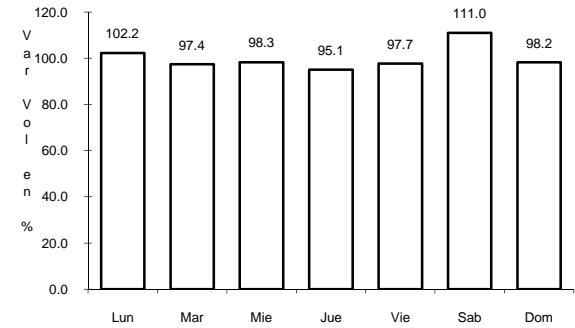
ruta: MEX-129



Km: 0.00 Tipo: 3 Sent: 0



Km: 58.00 Tipo: 3 Sent: 0

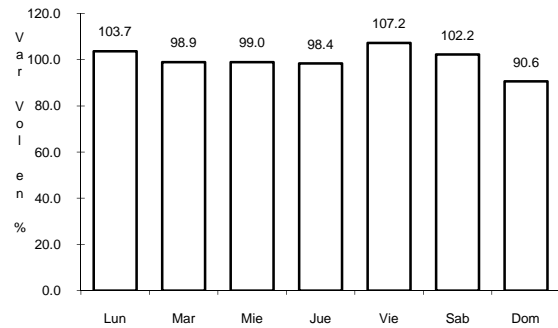


Km: 93.20 Tipo: 1 Sent: 0

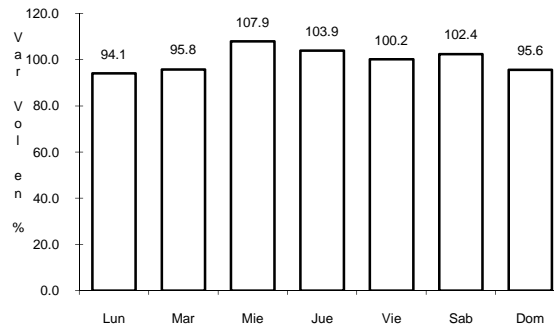
14 CARR: TEZIUTLAN - PEROTE

CLAVE: 00209

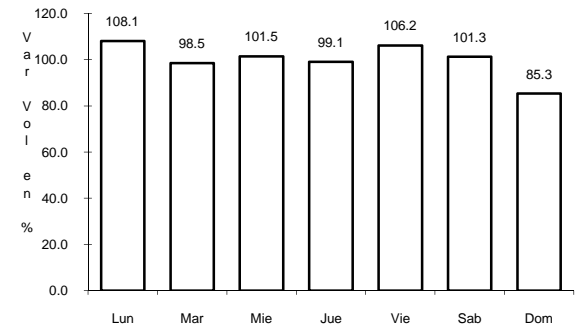
ruta: MEX-131



Km: 0.00 Tipo: 3 Sent: 0



Km: 26.90 Tipo: 3 Sent: 0

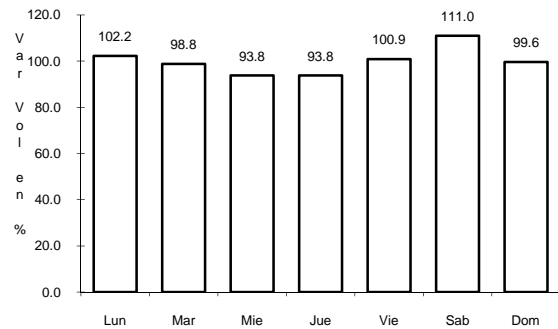


Km: 49.10 Tipo: 1 Sent: 0

15 CARR: AZUMBILLA - ALCOMUNGA

CLAVE: 21001

ruta: PUE

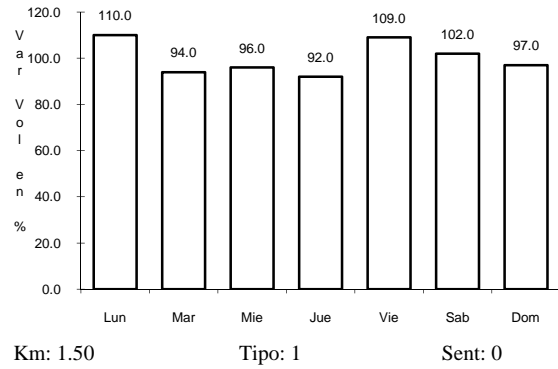


Km: 0.00 Tipo: 3 Sent: 0

22 CARR: RAMAL A NUEVO NECAXA

CLAVE: 21592

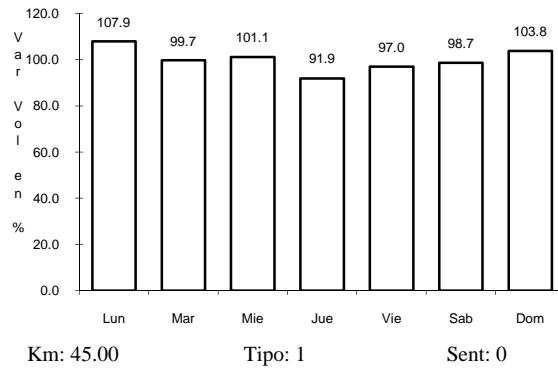
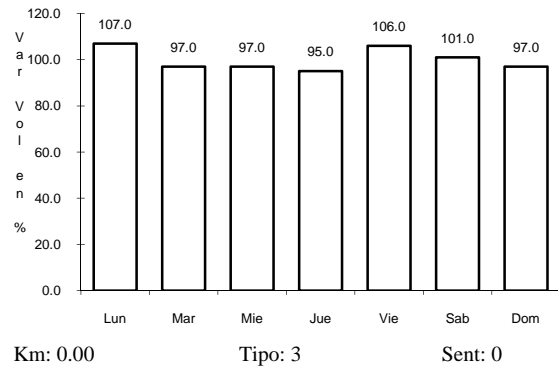
RUTA: PUE



23 CARR: RAMAL A TETELA DE OCAMPO

CLAVE: 21587

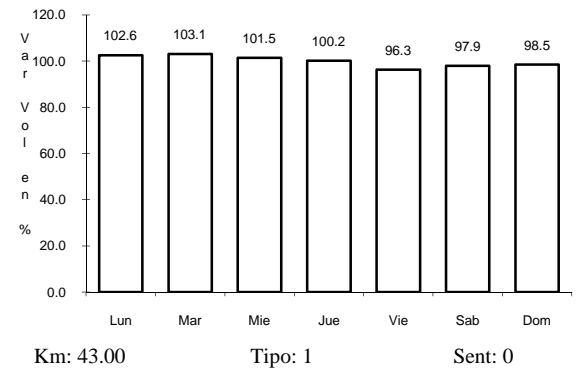
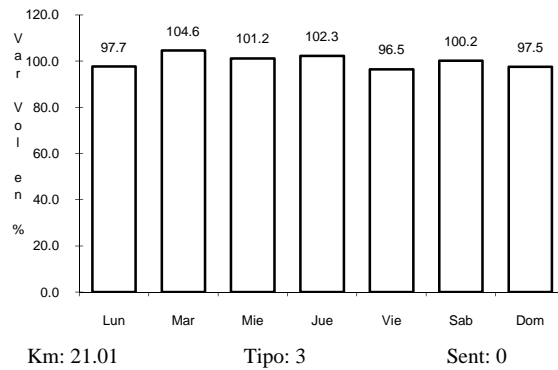
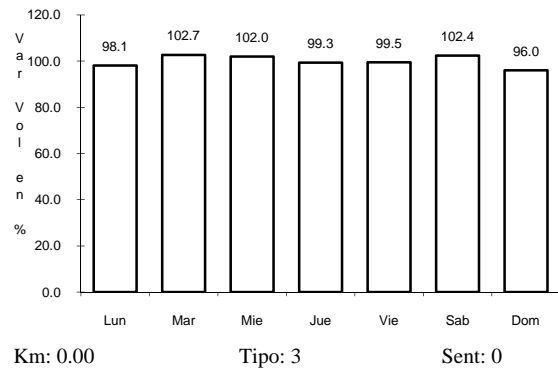
RUTA: PUE



24 CARR: RAMAL A TULCINGO DEL VALLE

CLAVE: 21578

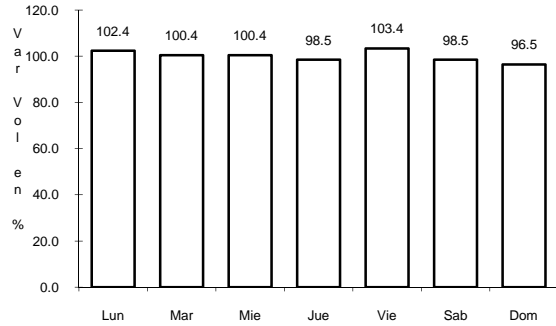
RUTA: PUE-MEX-093



25 CARR: RAMAL A ZOQUITLAN

CLAVE: 21003

ruta: PUE



Km: 0.00

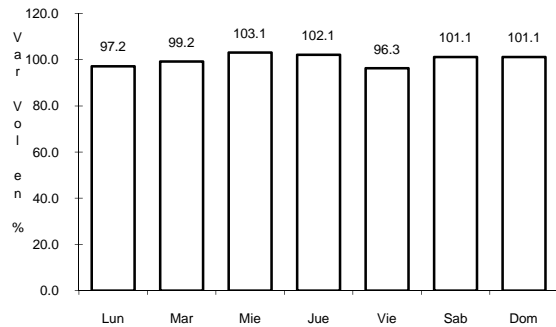
Tipo: 3

Sent: 0

26 CARR: SAN SALVADOR EL SECO - AZUMBILLA

CLAVE: 21004

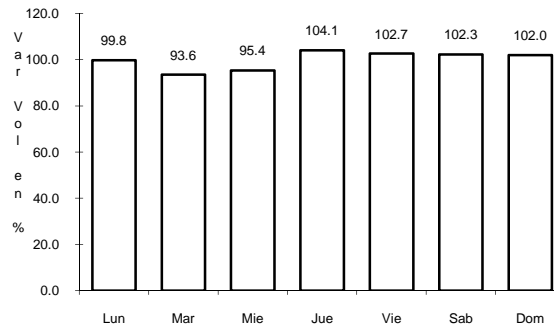
ruta: MEX-144



Km: 0.00

Tipo: 3

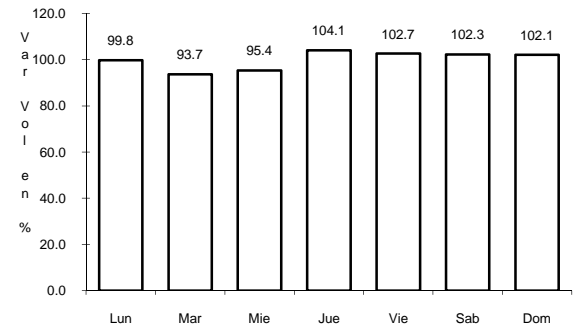
Sent: 0



Km: 45.94

Tipo: 3

Sent: 0



Km: 73.67

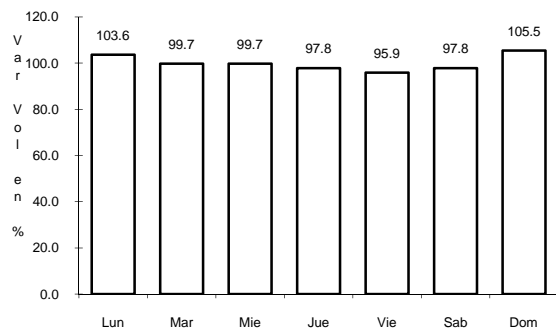
Tipo: 1

Sent: 0

27 CARR: TECAMACHALCO - CAÑADA MORELOS

CLAVE: 21002

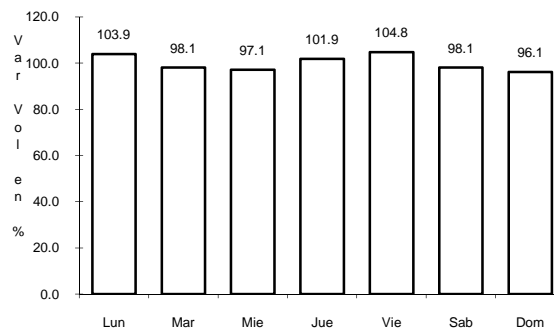
ruta: PUE



Km: 0.00

Tipo: 3

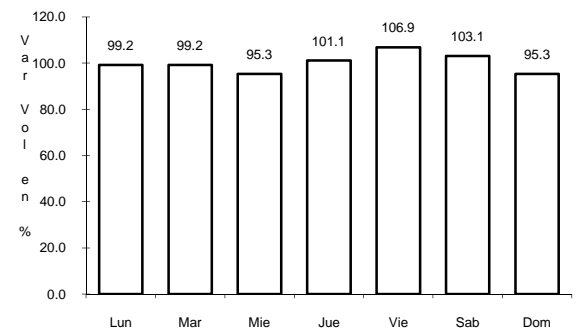
Sent: 0



Km: 8.00

Tipo: 1

Sent: 0



Km: 44.46

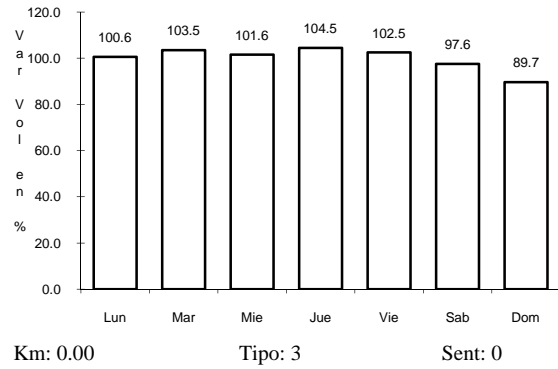
Tipo: 1

Sent: 0

28 CARR: ZACATEPEC - ORIENTAL

CLAVE: 21189

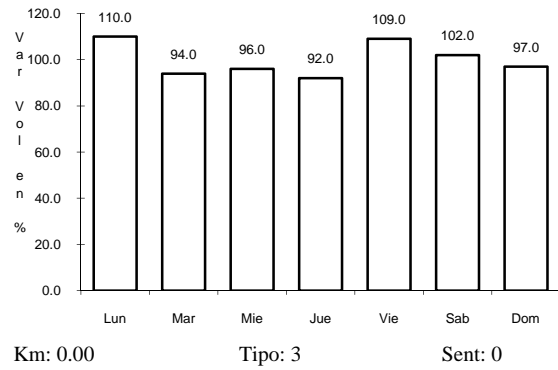
RUTA: MEX



29 CARR: ZACATLAN - ZAPOTITLAN

CLAVE: 21580

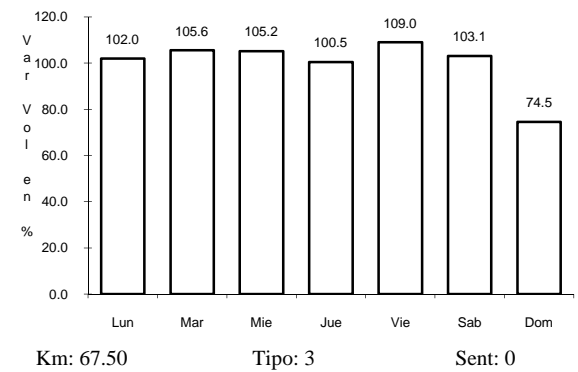
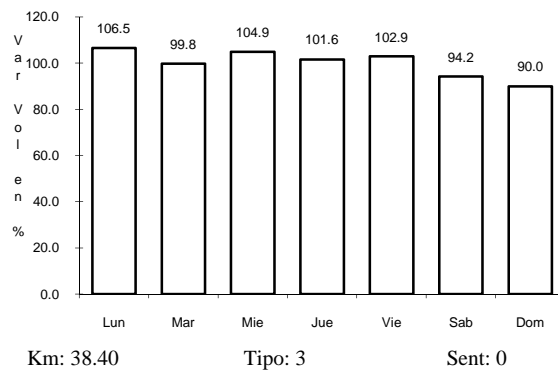
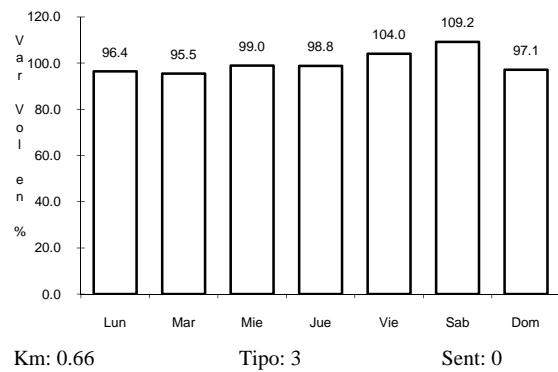
RUTA: PUE



30 CARR: AMAYUCA - IZUCAR DE MATAMOROS

CLAVE: 00030

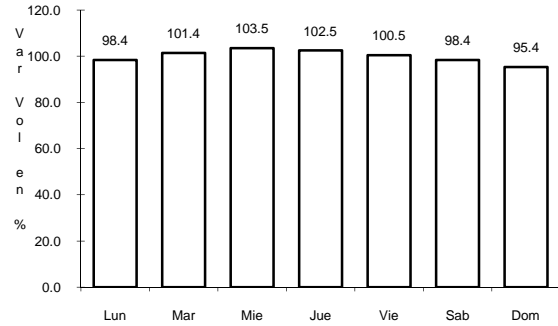
RUTA: MOR-031-PUE



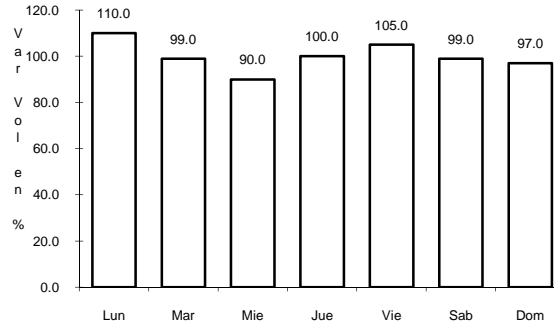
31 CARR: APIZACO - TEJOCOTAL

CLAVE: 00430

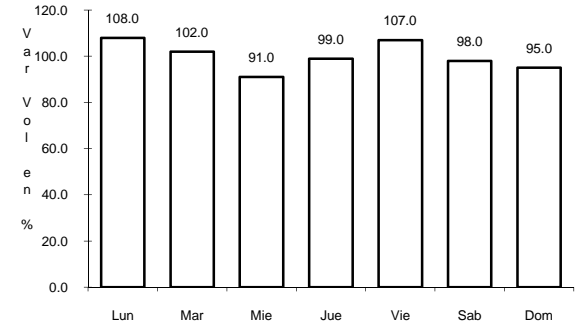
RUTA: MEX-119



Km: 0.00 Tipo: 3 Sent: 0



Km: 52.20 Tipo: 1 Sent: 0

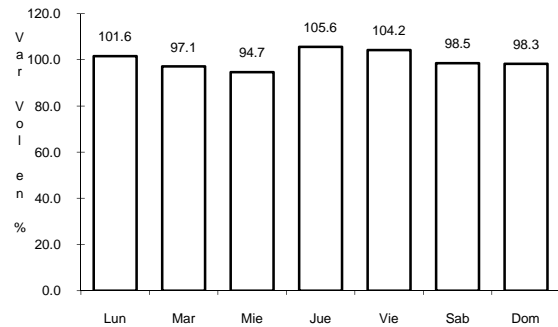


Km: 113.15 Tipo: 1 Sent: 0

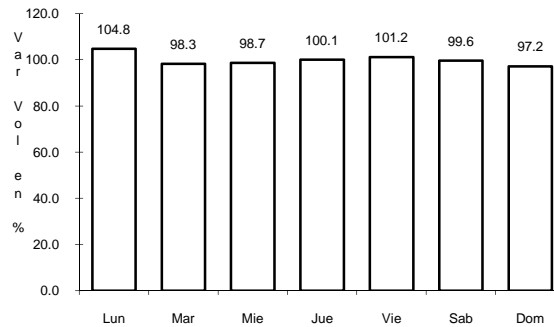
33 CARR: LOS REYES - ZACATEPEC

CLAVE: 00052

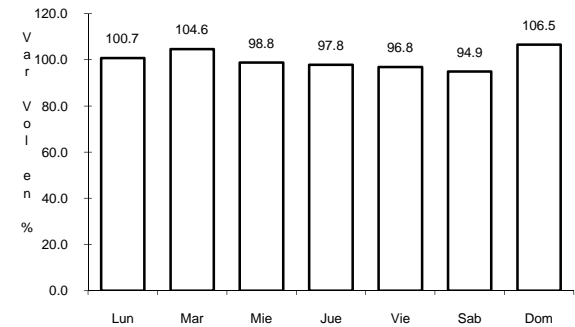
RUTA: MEX-138-136



Km: 3.35 Tipo: 3 Sent: 1



Km: 3.35 Tipo: 3 Sent: 2

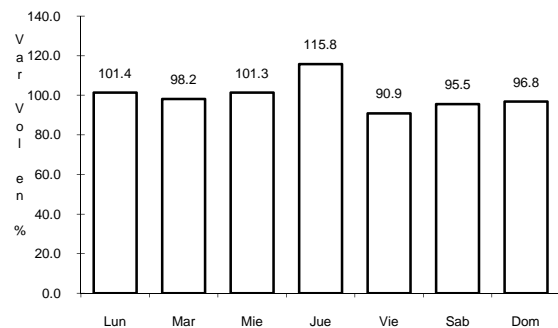


Km: 187.67 Tipo: 1 Sent: 0

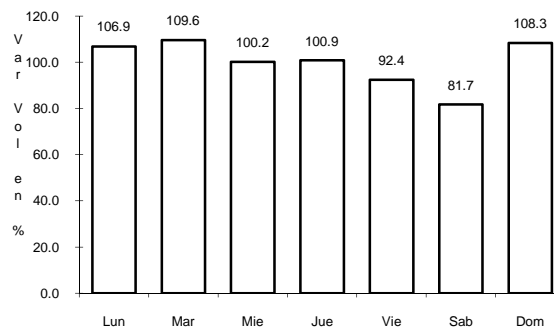
34 CARR: MEXICO - PUEBLA (CUOTA)

CLAVE: 00450

RUTA: MEX-150D



Km: 20.00 Tipo: 3 Sent: 1

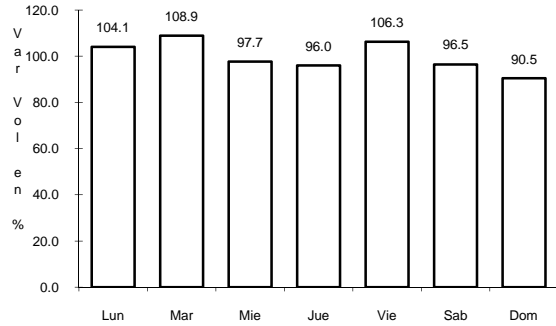


Km: 20.00 Tipo: 3 Sent: 2

35 CARR: MEXICO - PUEBLA (LIBRE)

CLAVE: 00449

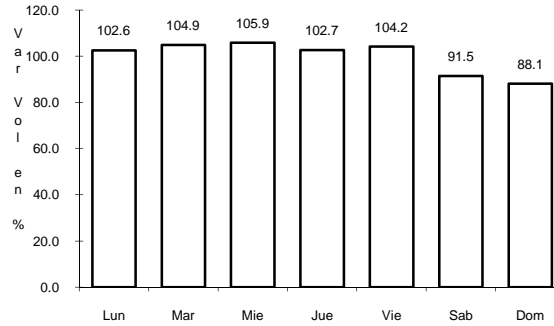
RUTA: MEX-150



Km: 28.85

Tipo: 1

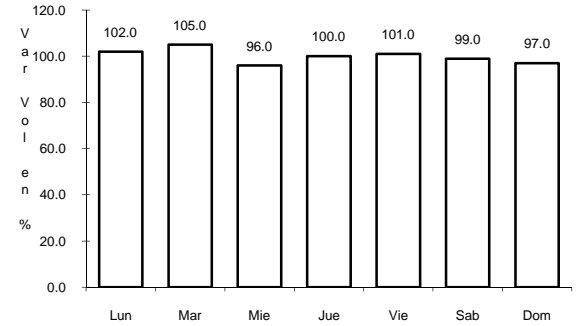
Sent: 1



Km: 28.85

Tipo: 1

Sent: 2



Km: 70.00

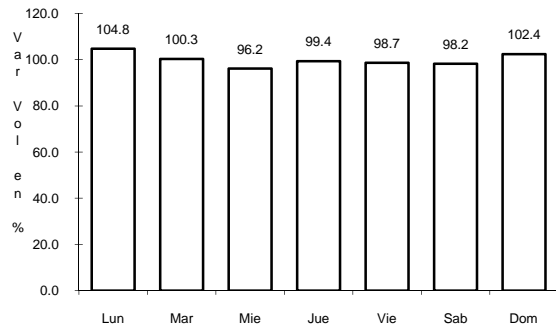
Tipo: 1

Sent: 0

36 CARR: PACHUCA - TUXPAM

CLAVE: 00608

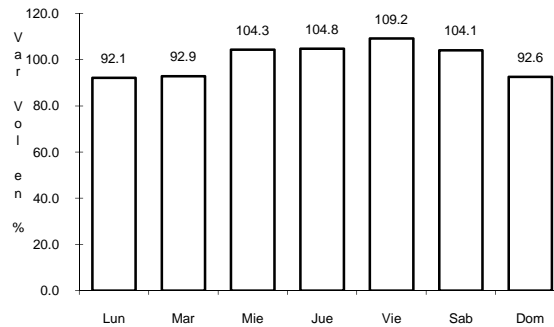
RUTA: MEX-130



Km: 2.60

Tipo: 3

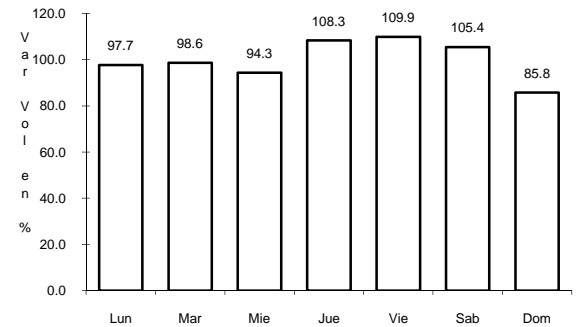
Sent: 1



Km: 2.60

Tipo: 3

Sent: 2



Km: 247.00

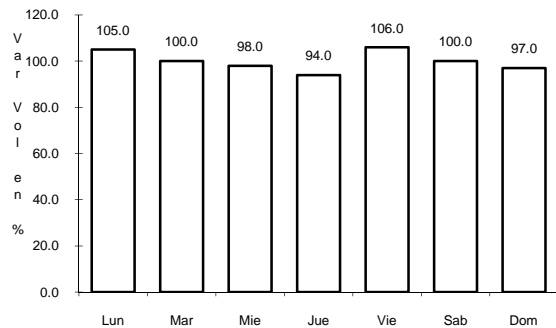
Tipo: 1

Sent: 0

37 CARR: RAMAL A JOLALPAN

CLAVE: 00143

RUTA: MOR-PUE



Km: 0.00

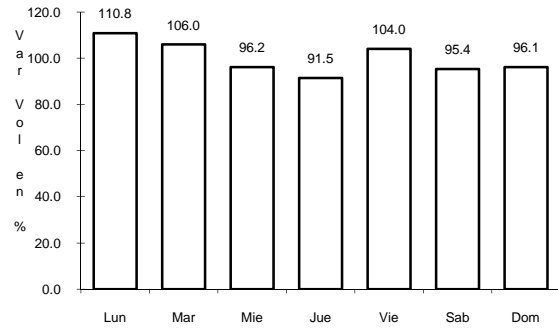
Tipo: 3

Sent: 0

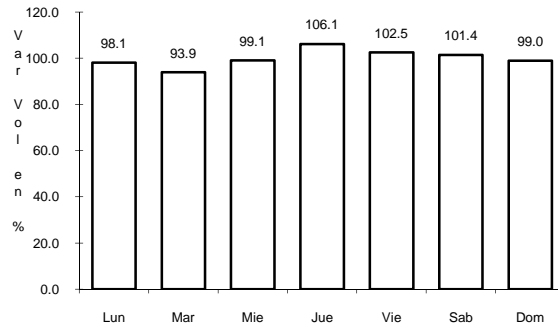
38 CARR: SANTA BARBARA - IZUCAR DE MATAMOROS

CLAVE: 00451

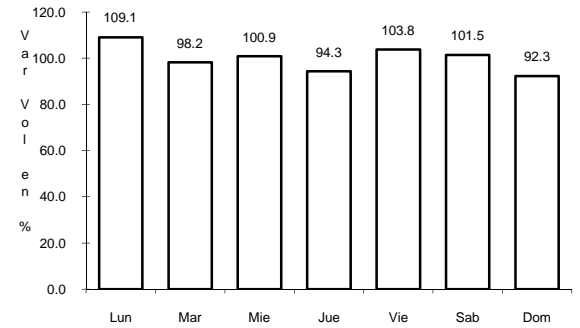
RUTA: MEX-115-160



Km: 0.00 Tipo: 3 Sent: 1



Km: 0.00 Tipo: 3 Sent: 2

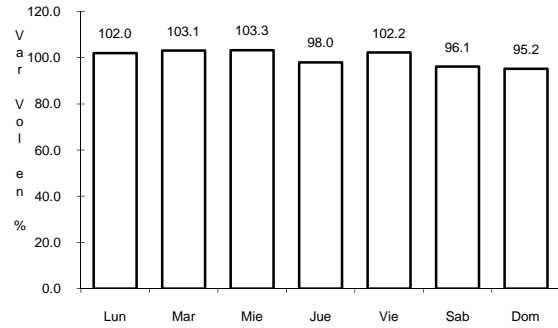


Km: 134.99 Tipo: 3 Sent: 0

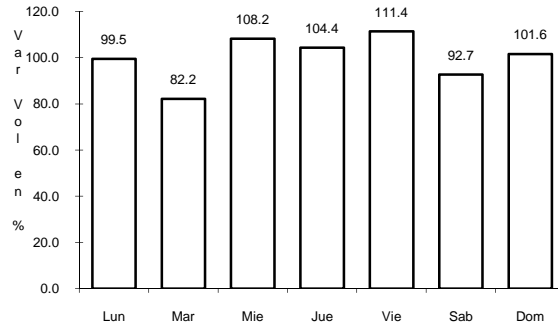
39 CARR: TEOTITLAN DE FLORES MAGON - TUXTEPEC

CLAVE: 00108

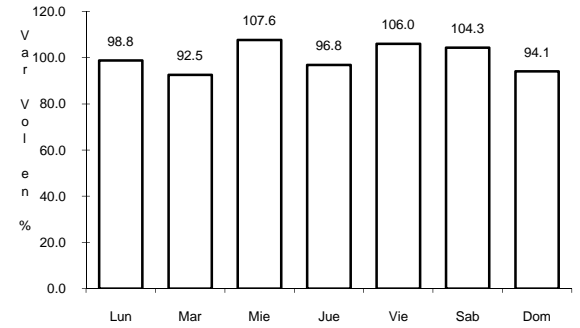
RUTA: OAX-PUE-MEX



Km: 0.00 Tipo: 3 Sent: 0



Km: 140.00 Tipo: 3 Sent: 0



Km: 200.00 Tipo: 1 Sent: 0