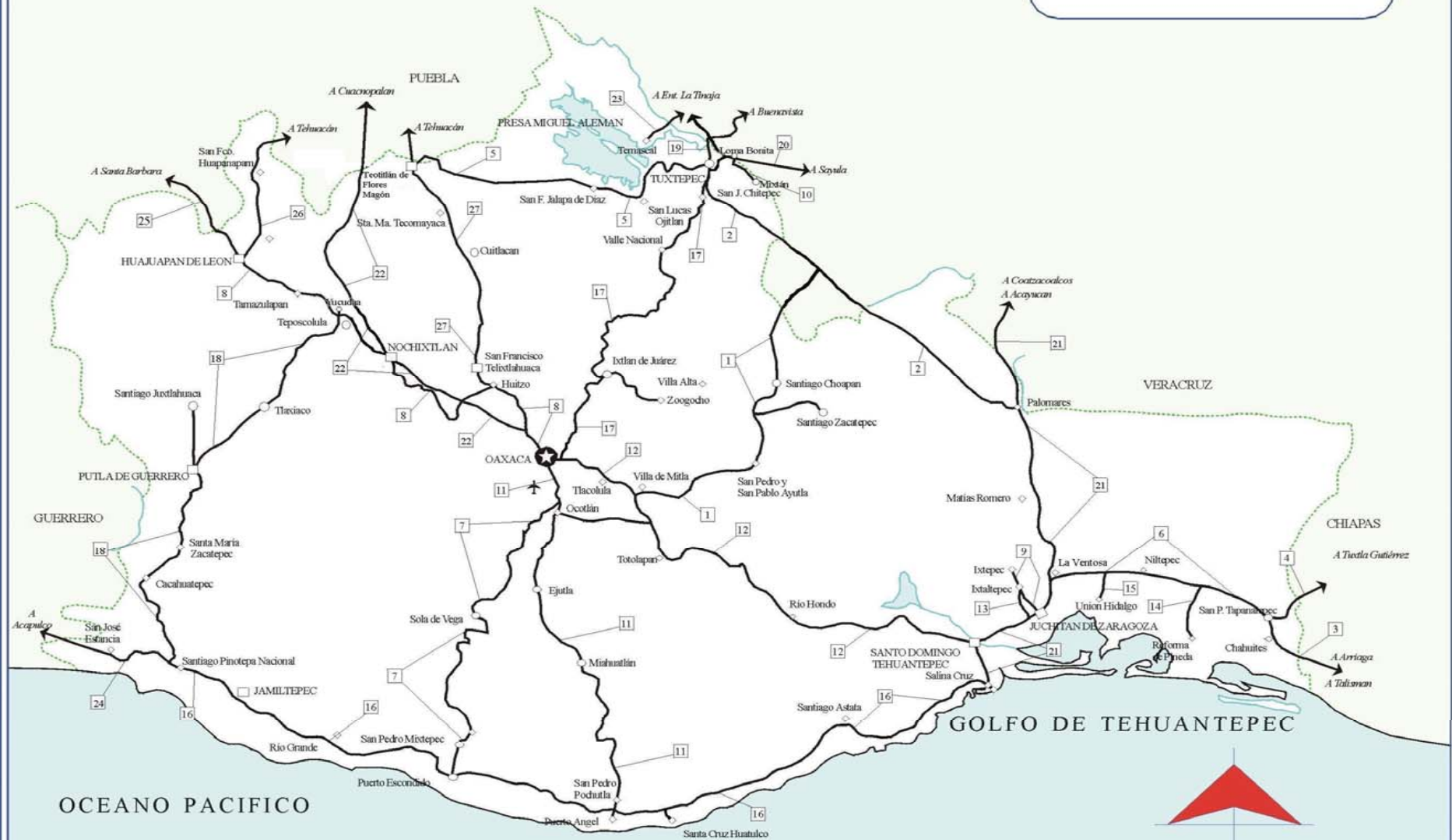


MAPA INDICE

15 Num. Indice
2008

Secretaría de Comunicaciones y Transportes

20 OAXACA



CARRETERAS AFORADAS

Num. INDICE	CARRETERA
1	SAN PABLO VILLA DE MITLA - T. C. (TUXTEPEC - PALOMARES)
2	TUXTEPEC - ENT. PALOMARES
3	TAPANATEPEC - TALISMAN
4	TAPANATEPEC - TUXTLA GUTIERREZ
5	TEOTITLAN DE FLORES MAGON - TUXTEPEC
6	LA VENTOSA - SAN PEDRO TAPANATEPEC
7	T. C. (OAXACA - PUERTO ANGEL) - PUERTO ESCONDIDO
8	HUAJUAPAN DE LEON - OAXACA
9	JUCHITAN - IXTEPEC
10	LOMA BONITA - MIXTAN
11	OAXACA - PUERTO ANGEL
12	OAXACA - TEHUANTEPEC
13	RAMAL A ASUNCION IXTALTEPEC
14	RAMAL A REFORMA DE PINEDA
15	RAMAL A UNION HIDALGO
16	SANTIAGO PINOTEPANACIONAL - SALINA CRUZ
17	TUXTEPEC - T. C. (OAXACA - TEHUANTEPEC)
18	YUCUDAA - SANTIAGO PINOTEPANACIONAL
19	BUENAVISTA - TUXTEPEC
20	CD. ALEMAN - SAYULA
21	COATZACOALCOS - SALINA CRUZ
22	CUACNOPALAN - OAXACA (CUOTA)
23	LA GRANJA - TEMAZCAL
24	LAS CRUCES - PINOTEPANACIONAL
25	PUEBLA - HUAJUAPAN DE LEON
26	TEHUACAN - HUAJUAPAN DE LEON
27	TEHUACAN - HUITZO

OAXACA

1 CARR : SAN PABLO VILLA DE MITLA - T. C. (TUXTEPEC - PALOMARES)

CLAVE: 00106

RUTA : MEX-179

AÑO : 2007

L U G A R	E S T A C I O N				C L A S I F I C A C I O N V E H I C U L A R E N P O R C I E N T O .												
	KM	TE	SC	TDPA	A	B	C2	C3	T3S2	T3S3	T3S2R4	OTROS	A	B	C	K'	D
T. C. OAXACA - TEHUANTEPEC	0.00	3	0	1377	83.6	5	5	4.4	0.9	0.5	0	0.6	83.6	5	11.4	0.069	0.5
SAN PEDRO Y SAN PABLO AYUTLA	55.00	1	0	1065	82.5	5.2	4.1	3.5	1.9	1.4	0	1.4	82.5	5.2	12.3	0.091	0.5
T. DER. ZACATEPEC	90.00	1	0	933	82.5	4.3	4.4	3.8	2	1.7	0	1.3	82.5	4.3	13.2	0.089	0.502
LIM. EDOS. TERM. OAX. PPIA. VER.	217.70	0	0														
T. C. TUXTEPEC - ENT. PALOMARES	238.70	1	0	1413	82.7	6.2	4.5	1.6	2.5	1.2	0.7	0.6	82.7	6.2	11.1	0.095	0.5

2 CARR : TUXTEPEC - ENT. PALOMARES

CLAVE: 00180

RUTA : MEX-147

AÑO : 2007

L U G A R	E S T A C I O N				C L A S I F I C A C I O N V E H I C U L A R E N P O R C I E N T O .												
	KM	TE	SC	TDPA	A	B	C2	C3	T3S2	T3S3	T3S2R4	OTROS	A	B	C	K'	D
T. C. TUXTEPEC - OAXACA	0.00	3	0	2862	75.9	6.2	6	2.7	4	1.4	2	1.8	75.9	6.2	17.9	0.106	0.51
X. C. EL RODEO - REFORMA	15.20	3	0	1611	78.5	4.6	6.4	3.2	4.4	1.3	0.7	0.9	78.5	4.6	16.9	0.118	0.501
LIM. EDOS. TERM. OAX. PPIA. VER.	40.00	0	0														
X. C. PLAYA VICENTE - EL TOMATE	48.16	1	0	1702	78.5	4.8	6.2	3.2	4.5	1.3	0.7	0.8	78.5	4.8	16.7	0.113	0.502
X. C. PLAYA VICENTE - EL TOMATE	48.16	3	0	2148	76.7	5.8	6	3	3.4	1.4	0.8	2.9	76.7	5.8	17.5	0.151	0.503
T. DER. XOCHIAPA	65.00	3	0	1171	78	4.4	5.7	3.9	5	1.3	0.8	0.9	78	4.4	17.6	0.099	0.528
LIM. EDOS. TERM. VER. PPIA. OAX.	87.00	0	0														
T. IZQ. SAN JUAN EVANGELISTA	87.00	1	0	1204	87.7	4.1	1.4	1.9	1.6	1.4	1.4	0.5	87.7	4.1	8.2	0.112	0.504
MARIA LOMBARDO DE CASO	110.50	1	0	1694	84.4	4.3	3	2.2	3.6	1.1	0.5	0.9	84.4	4.3	11.3	0.115	0.508
T. C. COATZACOALCOS - SALINA CRUZ	194.00	1	0	1187	80.3	4.6	3.4	2.1	4.7	1.5	1.7	1.7	80.3	4.6	15.1	0.116	0.508

3 CARR : TAPANATEPEC - TALISMAN

CLAVE: 00075

RUTA : MEX-200

AÑO : 2007

L U G A R	E S T A C I O N				C L A S I F I C A C I O N V E H I C U L A R E N P O R C I E N T O .												
	KM	TE	SC	TDPA	A	B	C2	C3	T3S2	T3S3	T3S2R4	OTROS	A	B	C	K'	D
TAPANATEPEC	0.00	3	0	3360	71.8	5.4	11.9	3	3.1	2.7	1.7	0.4	71.8	5.4	22.8	0.072	0.5
LIM. EDOS. TERM. OAX. PPIA. CHIS.	25.90	0	0														
T. DER. EMILIANO ZAPATA	26.20	1	0	4476	67.2	6.2	3.4	2.8	7.2	1.4	1.1	10.7	67.2	6.2	26.6	0.062	0.503
T. DER. EMILIANO ZAPATA	26.20	3	0	3223	74.4	6.3	3.4	0.5	5.8	0.8	0.8	8	74.4	6.3	19.3	0.081	0.511
ARRIAGA	45.00	1	0	3942	89.3	4.5	3.1	0.8	0.7	0.4	0.4	0.8	89.3	4.5	6.2	0.09	0.505
ARRIAGA	45.00	3	1	3349	89.5	5	1.3	1.2	0.8	0.6	0.3	1.3	89.5	5	5.5	0.085	0.508
ARRIAGA	45.00	3	2	3452	88.3	4.7	1.7	1.8	1.1	0.9	0.4	1.1	88.3	4.7	7	0.082	0.508
T. DER. PUERTO ARISTA	73.00	3	1	2127	73.4	4.7	7.3	1.9	3	1.7	1.9	6.1	73.4	4.7	21.9	0.07	0.501
T. DER. PUERTO ARISTA	73.00	3	2	2120	72.4	4.7	7.5	1.2	3.9	1.7	1.8	6.8	72.4	4.7	22.9	0.074	0.501
T. DER. LOS PATOS	114.80	1	0	1520	71.9	7.1	10.9	3.2	2.9	2.9	0	1.1	71.9	7.1	21	0.094	0.505

OAXACA

3 CARR : TAPANATEPEC - TALISMAN

CLAVE: 00075

RUTA : MEX-200

AÑO : 2007

L U G A R	E S T A C I O N				C L A S I F I C A C I O N V E H I C U L A R E N P O R C I E N T O .												
	KM	TE	SC	TDPA	A	B	C2	C3	T3S2	T3S3	T3S2R4	OTROS	A	B	C	K'	D
T. DER. LOS PATOS	114.80	3	0	2315	76.8	6.7	6.4	2.6	3	3.6	0.1	0.8	76.8	6.7	16.5	0.063	0.501
PIJIAPAN	144.50	1	0	2177	76.7	6.5	2.5	1.1	3.5	1.5	0.8	7.4	76.7	6.5	16.8	0.079	0.502
T. DER. MAPASTEPEC	188.90	3	0	2927	75.3	3.6	6.6	1.7	3.7	1.9	1.1	6.1	75.3	3.6	21.1	0.077	0.504
T. DER. ESTACION SOCONUSCO	213.30	1	0	5877	71.3	10.1	2.5	2.1	6.2	3.4	2.1	2.3	71.3	10.1	18.6	0.063	0.507
T. DER. ESTACION SOCONUSCO	213.30	3	0	6075	74.5	6.1	5.8	2.1	3.7	1.2	1.3	5.3	74.5	6.1	19.4	0.062	0.501
HUIXTLA	250.50	1	0	5415	80.7	4.7	2.2	1.9	4.8	1.9	0.3	3.5	80.7	4.7	14.6	0.123	0.506
HUIXTLA	250.50	3	1	3471	87.1	3.7	4.8	2.5	0.3	0.2	0.1	1.3	87.1	3.7	9.2	0.104	0.506
HUIXTLA	250.50	3	2	3555	85.5	3.3	4.6	2.7	0.9	0.7	0.4	1.9	85.5	3.3	11.2	0.09	0.506
T. IZQ. HAMBURGO	262.70	3	1	3778	82.6	7.9	2.5	0.8	3.1	1.4	1.1	0.6	82.6	7.9	9.5	0.08	0.502
T. IZQ. HAMBURGO	262.70	3	2	3752	82.9	7.6	2.6	0.9	2.7	1.4	1.1	0.8	82.9	7.6	9.5	0.106	0.502
T. IZQ. HUEHUETAN	273.70	1	1	3962	80.9	3.7	2.1	1.5	4.2	3	1.9	2.7	80.9	3.7	15.4	0.084	0.505
T. IZQ. HUEHUETAN	273.70	1	2	3885	79.7	3.6	2.3	1.5	3.8	3.1	2.2	3.8	79.7	3.6	16.7	0.087	0.505
TAPACHULA	292.30	1	1	6922	86.3	6.1	4.4	1.3	0.5	0.1	0.1	1.2	86.3	6.1	7.6	0.068	0.506
TAPACHULA	292.30	1	2	6752	83.2	6.3	5	1.8	0.7	0.4	0.2	2.4	83.2	6.3	10.5	0.069	0.506
T. DER. CD. HIDALGO	302.80	1	0	1463	82.1	4.4	3.1	2.1	3.6	0.4	0.2	4.1	82.1	4.4	13.5	0.089	0.503
TUXTLA CHICO	307.00	1	0	6528	79.7	8.5	2.5	2.1	2.6	0.7	0.2	3.7	79.7	8.5	11.8	0.087	0.509
TALISMAN	310.80	1	0	3988	86.3	6.3	1.2	1	2	1.2	0.8	1.2	86.3	6.3	7.4	0.062	0.512

4 CARR : TAPANATEPEC - TUXTLA GUTIERREZ

CLAVE: 00060

RUTA : MEX-190

AÑO : 2007

L U G A R	E S T A C I O N				C L A S I F I C A C I O N V E H I C U L A R E N P O R C I E N T O .												
	KM	TE	SC	TDPA	A	B	C2	C3	T3S2	T3S3	T3S2R4	OTROS	A	B	C	K'	D
TAPANATEPEC	0.00	3	0	1971	72.2	5	11.2	1.5	3.4	2.4	0	4.3	72.2	5	22.8	0.101	0.503
LIM. EDOS. TERM. OAX. PPIA. CHIS.	17.90	0	0														
RIZO DE ORO	26.60	1	0	1896	78.1	6.4	7.6	2	3	1.8	0	1.1	78.1	6.4	15.5	0.095	0.505
T. DER. ARRIAGA	56.80	1	0	4109	81.6	5.1	2.6	2.1	3	1.8	2.1	1.7	81.6	5.1	13.3	0.104	0.501
T. DER. ARRIAGA	56.80	3	0	4844	76	4.5	3.2	3.7	4.4	3.7	3.1	1.4	76	4.5	19.5	0.07	0.501
T. DER. JIQUIPILAS	82.00	1	0	6023	82.3	5.1	3.1	1.2	3.5	1.3	1.8	1.7	82.3	5.1	12.6	0.098	0.515
T. DER. JIQUIPILAS	82.00	3	0	3802	78.6	6	5.6	2.9	2	2.2	1.1	1.6	78.6	6	15.4	0.119	0.507
OCOZOCOAUTLA	123.30	1	0	4302	71.1	8.6	8.1	5.2	1.1	2.8	1.6	1.5	71.1	8.6	20.3	0.083	0.501
OCOZOCOAUTLA	123.30	3	0	7060	82.1	7.8	0.8	2.4	3.6	3.1	0	0.2	82.1	7.8	10.1	0.079	0.506
T. IZQ. AEROPUERTO	132.70	1	0	8003	84	3.9	5.9	2.6	1.4	1.1	0	1.1	84	3.9	12.1	0.077	0.5
T. IZQ. BERRIOZABAL (1° ACCESO)	136.40	1	0	7267	78.4	4	4.9	1.9	3.5	1.6	3.5	2.2	78.4	4	17.6	0.081	0.501
T. IZQ. BERRIOZABAL (1° ACCESO)	136.40	3	0	5834	76.8	5.2	7.5	3.6	2.8	1.9	0	2.2	76.8	5.2	18	0.089	0.506
T. IZQ. SAN FERNANDO	151.70	1	1	8132	80.7	4	1.8	2.4	4.8	1.7	2.3	2.3	80.7	4	15.3	0.061	0.502

O A X A C A

4 CARR : TAPANATEPEC - TUXTLA GUTIERREZ

CLAVE: 00060

RUTA : MEX-190

AÑO : 2007

L U G A R	E S T A C I O N				C L A S I F I C A C I O N V E H I C U L A R E N P O R C I E N T O .												
	KM	TE	SC	TDPA	A	B	C2	C3	T3S2	T3S3	T3S2R4	OTROS	A	B	C	K'	D
T. IZQ. SAN FERNANDO	151.70	1	2	8182	72.2	4.1	2.9	2.5	5.8	2.8	5.4	4.3	72.2	4.1	23.7	0.061	0.502
TUXTLA GUTIERREZ	159.00	1	1	7979	73.9	3.8	1.8	2.2	5	2.8	6	4.5	73.9	3.8	22.3	0.088	0.503
TUXTLA GUTIERREZ	159.00	1	2	8081	76.3	4	1.5	1.9	4.2	2.5	4.1	5.5	76.3	4	19.7	0.083	0.503

5 CARR : TEOTITLAN DE FLORES MAGON - TUXTEPEC

CLAVE: 00108

RUTA : OAX-PUE-MEX

AÑO : 2007

L U G A R	E S T A C I O N				C L A S I F I C A C I O N V E H I C U L A R E N P O R C I E N T O .												
	KM	TE	SC	TDPA	A	B	C2	C3	T3S2	T3S3	T3S2R4	OTROS	A	B	C	K'	D
TEOTITLAN DEL CAMINO	0.00	3	0	1433	82.6	5.4	7.1	3.6	0.4	0.4	0.2	0.3	82.6	5.4	12	0.086	0.504
LIM. EDOS. TERM. OAX. PPIA. PUE.	2.00	0	0														
LIM. EDOS. TERM. PUE. PPIA. OAX.	10.00	0	0														
HUAUTLA	65.00	1	0	814	91	3.8	3.6	1.3	0	0.3	0	0	91	3.8	5.2	0.115	0.504
SAN FELIPE JALAPA DE DIAZ	140.00	3	0	2071	92.5	1.4	1.7	0.5	1.9	0.2	0.5	1.3	92.5	1.4	6.1	0.14	0.501
TUXTEPEC	200.00	1	0	2360	74.6	3.9	4	0.4	3.8	10.2	1.1	2	74.6	3.9	21.5	0.098	0.51

6 CARR : LA VENTOSA - SAN PEDRO TAPANATEPEC

CLAVE: 20059

RUTA : MEX-190

AÑO : 2007

L U G A R	E S T A C I O N				C L A S I F I C A C I O N V E H I C U L A R E N P O R C I E N T O .												
	KM	TE	SC	TDPA	A	B	C2	C3	T3S2	T3S3	T3S2R4	OTROS	A	B	C	K'	D
LA VENTOSA	0.00	3	0	4867	72.3	3.6	6.4	5.6	6.1	4.5	1.1	0.4	72.3	3.6	24.1	0.104	0.5
T. IZQ. NILTEPEC	38.01	3	0	4410	72.7	6.5	4.4	2.3	6.1	5.3	1.6	1.1	72.7	6.5	20.8	0.083	0.501
SANTO DOMINGO ZANATEPEC	68.25	3	0	4318	73.8	7.8	2.4	2.2	4.6	4.2	1.3	3.7	73.8	7.8	18.4	0.084	0.523
SAN PEDRO TAPANATEPEC	91.78	1	0	4369	78.8	4.5	5.2	4.1	4	2.1	0.9	0.4	78.8	4.5	16.7	0.081	0.502

7 CARR : T. C. (OAXACA - PUERTO ANGEL) - PUERTO ESCONDIDO

CLAVE: 20009

RUTA : MEX-131-OAX-1

AÑO : 2007

L U G A R	E S T A C I O N				C L A S I F I C A C I O N V E H I C U L A R E N P O R C I E N T O .												
	KM	TE	SC	TDPA	A	B	C2	C3	T3S2	T3S3	T3S2R4	OTROS	A	B	C	K'	D
T. C. OAXACA - PUERTO ANGEL	0.00	3	0	6093	81.4	5.8	4.7	1	2.8	0.8	1.2	2.3	81.4	5.8	12.8	0.13	0.501
T. IZQ. SAN PABLO HUIXTEPEC	16.80	1	0	3273	75.2	4	4.8	3.6	3.8	4.1	1.2	3.3	75.2	4	20.8	0.097	0.51
T. IZQ. SAN PABLO HUIXTEPEC	16.80	3	0	4149	81.1	4.5	5.7	1.3	3.5	0.8	1.3	1.8	81.1	4.5	14.4	0.085	0.504
T. DER. EL TRAPICHE	30.00	1	0	2423	77.9	8	3.7	2.7	2.1	2.4	0.9	2.3	77.9	8	14.1	0.102	0.527
T. DER. EL TRAPICHE	30.00	3	0	2096	82.4	4.1	8.9	1.6	1.3	0.4	0.3	1	82.4	4.1	13.5	0.093	0.509
T. DER. COFRADIA SAN PEDRO	53.00	3	0	935	75.3	7.3	7.6	3.7	2.5	1.5	1.1	1	75.3	7.3	17.4	0.108	0.532
SOLA DE VEGA	80.00	3	0	883	77.8	6.7	7.5	4.3	1.6	1.3	0.7	0.1	77.8	6.7	15.5	0.104	0.52

OAXACA

7 CARR : T. C. (OAXACA - PUERTO ANGEL) - PUERTO ESCONDIDO

CLAVE: 20009

RUTA : MEX-131-OAX-1

AÑO : 2007

L U G A R	E S T A C I O N				C L A S I F I C A C I O N V E H I C U L A R E N P O R C I E N T O .												
	KM	TE	SC	TDPA	A	B	C2	C3	T3S2	T3S3	T3S2R4	OTROS	A	B	C	K'	D
T. DER. YALOTEPEC	134.50	1	0	710	88.6	3.3	3.1	2.5	0	0.3	0	2.2	88.6	3.3	8.1	0.099	0.503
SAN GABRIEL MIXTEPEC	208.00	1	0	648	83.8	4.9	5.8	1.7	1.1	1	0.6	1.1	83.8	4.9	11.3	0.123	0.534
PUERTO ESCONDIDO	248.00	1	0	5449	76.4	4.1	1.6	0.8	5	8.1	1.7	2.3	76.4	4.1	19.5	0.097	0.505

8 CARR : HUAJUAPAN DE LEON - OAXACA

CLAVE: 20056

RUTA : MEX-190

AÑO : 2007

L U G A R	E S T A C I O N				C L A S I F I C A C I O N V E H I C U L A R E N P O R C I E N T O .												
	KM	TE	SC	TDPA	A	B	C2	C3	T3S2	T3S3	T3S2R4	OTROS	A	B	C	K'	D
HUAJUAPAN DE LEON	0.00	0	0														
T. IZQ. TEHUACAN	1.35	1	0	6930	85.4	3.1	4.1	1.8	2.3	2.4	0.6	0.3	85.4	3.1	11.5	0.08	0.503
T. IZQ. TEHUACAN	1.35	3	0	4636	87.1	3.5	2.7	1.9	2.3	1.5	0.7	0.3	87.1	3.5	9.4	0.082	0.5
TAMAZULAPAN	38.61	1	0	3330	87.9	2.4	5	1.2	1.3	1	0.8	0.4	87.9	2.4	9.7	0.089	0.503
TAMAZULAPAN	38.61	3	0	3127	84.1	4.3	3.1	1.4	2.5	3.7	0.7	0.2	84.1	4.3	11.6	0.088	0.504
T. IZQ. SANTIAGO TEJUPAN	49.62	3	0	2228	84.5	4.8	3.1	1.5	1.9	3.5	0.5	0.2	84.5	4.8	10.7	0.086	0.504
T. DER. TLAXIACO	61.43	3	0	2460	83.2	5.5	1.3	1.1	5.5	1.3	0.8	1.3	83.2	5.5	11.3	0.096	0.504
ASUNCION NOCHIXTLAN	90.40	1	0	3498	79.8	5.6	2.7	2.3	3.5	4.9	0.2	1	79.8	5.6	14.6	0.087	0.506
T. IZQ. TEHUACAN	161.70	1	0	2923	85.4	2.2	5.4	2.6	1.7	1.3	0	1.4	85.4	2.2	12.4	0.083	0.504
T. IZQ. TEHUACAN	161.70	3	0	3686	85.2	5.5	4.6	1.6	0.9	0.9	0.3	1	85.2	5.5	9.3	0.094	0.505
T. DER. TLALTINANGO	170.30	1	0	5438	83.1	3.9	5.8	1.4	2.6	0.9	0.9	1.4	83.1	3.9	13	0.088	0.503
T. DER. TLALTINANGO	170.30	3	0	5470	81.5	4.1	5.8	1.6	2.8	1.2	1.2	1.8	81.5	4.1	14.4	0.08	0.501
T. DER. NAZARENO ETLA	179.20	3	1	10696	83.2	3.8	3.6	1.3	3.4	1	0.9	2.8	83.2	3.8	13	0.083	0.504
T. DER. NAZARENO ETLA	179.20	3	2	10544	82.8	3.7	3.7	1.4	3.5	1.1	0.9	2.9	82.8	3.7	13.5	0.083	0.504
T. AUT. CUACNOPALAN - OAXACA	181.80	3	1	14223	77.2	4.1	3.7	1.9	5.1	1.8	2.2	4	77.2	4.1	18.7	0.089	0.517
T. AUT. CUACNOPALAN - OAXACA	181.80	3	2	13266	74.8	3.8	3.6	2.2	4.9	2.7	3.1	4.9	74.8	3.8	21.4	0.083	0.517
OAXACA	191.90	1	1	17842	67.2	4.4	4.2	1.5	5.9	3.7	6.2	6.9	67.2	4.4	28.4	0.073	0.506
OAXACA	191.90	1	2	17415	67.9	4.2	3.7	1.4	4.9	3.8	8.1	6	67.9	4.2	27.9	0.073	0.506

9 CARR : JUCHITAN - IXTEPEC

CLAVE: 20359

RUTA : MEX

AÑO : 2007

L U G A R	E S T A C I O N				C L A S I F I C A C I O N V E H I C U L A R E N P O R C I E N T O .												
	KM	TE	SC	TDPA	A	B	C2	C3	T3S2	T3S3	T3S2R4	OTROS	A	B	C	K'	D
JUCHITAN DE ZARAGOZA	0.00	0	0														
X. C. COATZACOALCOS - SALINA CRUZ	0.15	3	0	8693	70.4	13.6	6.6	4.5	1.4	1.3	1.3	0.9	70.4	13.6	16	0.085	0.502
IXTEPEC	16.00	1	0	4445	86.7	3.2	6.4	0.1	1.3	0.7	0.4	1.2	86.7	3.2	10.1	0.111	0.506

OAXACA

10 CARR : LOMA BONITA - MIXTAN

CLAVE: 20043

RUTA : OAX

AÑO : 2007

L U G A R	E S T A C I O N			C L A S I F I C A C I O N V E H I C U L A R E N P O R C I E N T O .												
	KM	TE	SC TDPA	A	B	C2	C3	T3S2	T3S3	T3S2R4	OTROS	A	B	C	K'	D
LOMA BONITA	0.00	0	0													
X. C. CD. ALEMAN - SAYULA	1.00	1	1 3408	76.5	4.6	3.7	1.5	1.4	9	1.1	2.2	76.5	4.6	18.9	0.101	0.51
X. C. CD. ALEMAN - SAYULA	1.00	1	2 3542	78.6	4.1	4.5	1.1	1.2	7.7	0.6	2.2	78.6	4.1	17.3	0.101	0.51
X. C. CD. ALEMAN - SAYULA	1.00	3	0 1800	86.9	4.7	2.2	1.9	1.3	0.6	0.6	1.8	86.9	4.7	8.4	0.097	0.501
T. IZQ. AEROPUERTO	12.00	3	0 737	89.4	4.1	3.7	2.4	0.1	0	0	0.3	89.4	4.1	6.5	0.133	0.505
MIXTAN	27.00	0	0													

11 CARR : OAXACA - PUERTO ANGEL

CLAVE: 20091

RUTA : MEX-175

AÑO : 2007

L U G A R	E S T A C I O N			C L A S I F I C A C I O N V E H I C U L A R E N P O R C I E N T O .												
	KM	TE	SC TDPA	A	B	C2	C3	T3S2	T3S3	T3S2R4	OTROS	A	B	C	K'	D
OAXACA	0.00	3	1 14092	74.3	5.8	5.1	1.3	3.5	2.3	2.9	4.8	74.3	5.8	19.9	0.074	0.503
OAXACA	0.00	3	2 13949	73.6	5.4	3.7	1.2	3	2.6	6.2	4.3	73.6	5.4	21	0.075	0.503
T. DER. AEROPUERTO	10.46	1	1 13479	69	5	3.7	1.4	5.9	2.7	6.7	5.6	69	5	26	0.077	0.503
T. DER. AEROPUERTO	10.46	1	2 13297	70.1	3.7	3.2	1.3	4.9	3.5	7.5	5.8	70.1	3.7	26.2	0.075	0.503
T. DER. PUERTO ESCONDIDO	19.07	1	0 13990	78.5	5.5	5.8	1.2	3.8	1.1	0.8	3.3	78.5	5.5	16	0.089	0.512
T. DER. PUERTO ESCONDIDO	19.07	3	0 7113	80	4.6	4.5	1.6	4.5	1	1.8	2	80	4.6	15.4	0.106	0.503
OCOTLAN	35.67	3	0 5070	85.2	3.5	3.4	1.3	3.2	0.7	1	1.7	85.2	3.5	11.3	0.12	0.509
EJUTLA DE CRESPO	64.04	1	0 2686	80.2	6.2	5.4	2	1.9	2	0.8	1.5	80.2	6.2	13.6	0.093	0.546
EJUTLA DE CRESPO	64.04	3	0 2170	74.7	7.1	6	4.2	3.1	3.1	0.8	1	74.7	7.1	18.2	0.104	0.523
MIAHUATLAN DE PORFIRIO DIAZ	100.60	3	0 1353	73.3	7.5	6.2	2.3	3.4	2.9	1.1	3.3	73.3	7.5	19.2	0.112	0.501
SAN MIGUEL SUCHIXTEPEC	144.00	1	0 1133	80.2	4.6	6	3.1	1.5	1.8	1.2	1.6	80.2	4.6	15.2	0.111	0.515
CANDELARIA LOXICHA	195.00	1	0 669	91.2	3.9	2.3	0.6	0.6	0.5	0.3	0.6	91.2	3.9	4.9	0.093	0.503
SAN PEDRO POCHUTLA	238.00	1	0 2817	81.8	4.7	2.1	1.1	1.9	0.6	6.1	1.7	81.8	4.7	13.5	0.083	0.503
PUERTO ANGEL	250.00	1	0 3430	81	3	0.5	0.3	2.4	0.7	10.2	1.9	81	3	16	0.11	0.505

12 CARR : OAXACA - TEHUANTEPEC

CLAVE: 20057

RUTA : MEX-190

AÑO : 2007

L U G A R	E S T A C I O N			C L A S I F I C A C I O N V E H I C U L A R E N P O R C I E N T O .												
	KM	TE	SC TDPA	A	B	C2	C3	T3S2	T3S3	T3S2R4	OTROS	A	B	C	K'	D
OAXACA	0.00	3	1 11767	83.5	2.4	4.3	2.7	2.6	1.9	1.1	1.5	83.5	2.4	14.1	0.076	0.521
OAXACA	0.00	3	2 12813	85.4	2.1	3.4	2.3	2.3	2.3	0.6	1.6	85.4	2.1	12.5	0.075	0.521
T. IZQ. GUELATAO	8.69	3	1 10314	84.2	3	3.8	0.5	2.8	1.1	1	3.6	84.2	3	12.8	0.093	0.567
T. IZQ. GUELATAO	8.69	3	2 7888	90.7	2.9	0.5	0	0.9	1.2	0.5	3.3	90.7	2.9	6.4	0.101	0.567
TEOTITLAN DEL VALLE	26.50	1	0 9831	84.1	2.9	3.8	1	3.8	1	1.7	1.7	84.1	2.9	13	0.083	0.503

OAXACA

16 CARR : SANTIAGO PINOTEPA NACIONAL - SALINA CRUZ

CLAVE: 20074

RUTA : MEX-200

AÑO : 2007

L U G A R	E S T A C I O N				C L A S I F I C A C I O N V E H I C U L A R E N P O R C I E N T O .												
	KM	TE	SC	TDPA	A	B	C2	C3	T3S2	T3S3	T3S2R4	OTROS	A	B	C	K'	D
SANTIAGO PINOTEPA NACIONAL	0.00	3	0	2854	92.1	3.5	1.5	1.2	0.5	0.3	0.2	0.7	92.1	3.5	4.4	0.116	0.5
SAN ANDRES HUAXPALTEPEC	18.07	3	0	2263	81	4	2.5	2.6	2.3	0.7	5.4	1.5	81	4	15	0.104	0.506
SAN JOSE DEL PROGRESO	59.51	1	0	2266	85.2	4.2	3	3.3	1.6	1.1	0.3	1.3	85.2	4.2	10.6	0.11	0.516
T. IZQ. TUTUTEPEC	65.85	3	0	2337	85.4	4.8	5	0.8	1.3	1	0.3	1.4	85.4	4.8	9.8	0.092	0.504
T. IZQ. BAJOS DE CHILA	131.90	1	0	2239	80.4	4.5	1.3	1.7	3.3	1.2	5.9	1.7	80.4	4.5	15.1	0.101	0.502
PUERTO ESCONDIDO	141.50	1	0	3737	82.2	4.4	2.7	1.4	2.9	1.2	3.7	1.5	82.2	4.4	13.4	0.101	0.506
PUERTO ESCONDIDO	141.50	3	0	3895	71.8	3.6	1.8	0.5	6.9	6.3	5.6	3.5	71.8	3.6	24.6	0.073	0.502
X. C. OAXACA - PUERTO ANGEL	210.00	1	0	3333	82.4	4.8	1.6	1.2	2.9	1.1	4.5	1.5	82.4	4.8	12.8	0.122	0.502
X. C. OAXACA - PUERTO ANGEL	210.00	3	0	2462	81.7	5.6	2.4	2.1	3	2	1.4	1.8	81.7	5.6	12.7	0.105	0.501
SALINA CRUZ	383.00	0	0														

17 CARR : TUXTEPEC - T. C. (OAXACA - TEHUANTEPEC)

CLAVE: 20090

RUTA : MEX-175

AÑO : 2007

L U G A R	E S T A C I O N				C L A S I F I C A C I O N V E H I C U L A R E N P O R C I E N T O .												
	KM	TE	SC	TDPA	A	B	C2	C3	T3S2	T3S3	T3S2R4	OTROS	A	B	C	K'	D
TUXTEPEC	0.00	3	1	6987	78.7	5.6	5.3	1.4	2.9	1.3	1.6	3.2	78.7	5.6	15.7	0.082	0.504
TUXTEPEC	0.00	3	2	6875	80.1	6	4.1	1.3	3.5	0.9	1.4	2.7	80.1	6	13.9	0.086	0.504
T. IZQ. PALOMARES	5.75	3	0	4479	82.2	3.9	4	1.5	2.9	0.9	2	2.6	82.2	3.9	13.9	0.091	0.501
SAN JOSE CHILTEPEC	17.93	3	0	2172	80.8	5.5	4.9	0.7	1.5	0.3	5.5	0.8	80.8	5.5	13.7	0.087	0.503
VALLE NACIONAL	47.07	1	0	1558	85.7	6.9	4.1	0.7	1.6	0.2	0.2	0.6	85.7	6.9	7.4	0.111	0.508
VALLE NACIONAL	47.07	3	0	1201	80.2	4.1	2.8	0.6	1	0.1	10.2	1	80.2	4.1	15.7	0.115	0.503
LA ESPERANZA	79.85	3	0	338	84.6	4.3	7.4	2.7	0.4	0.1	0	0.5	84.6	4.3	11.1	0.112	0.515
PUERTA DEL SOL	125.00	3	0	447	83.6	4.8	7.7	2.3	0.8	0.1	0	0.7	83.6	4.8	11.6	0.141	0.505
T. DER. IXTEPEJI	181.40	3	0	1058	81.5	6.2	4.8	2.4	1.7	1.5	0.1	1.8	81.5	6.2	12.3	0.084	0.501
T. IZQ. YUVILA	193.70	1	0	1399	76.8	8.6	5.6	3.2	1.7	1.9	0.1	2.1	76.8	8.6	14.6	0.092	0.502
T. C. OAXACA - TEHUANTEPEC	212.80	1	0	6147	85.5	4	6	0.5	1.9	0.5	0.3	1.3	85.5	4	10.5	0.104	0.505

18 CARR : YUCUDAA - SANTIAGO PINOTEPA NACIONAL

CLAVE: 20030

RUTA : MEX-126

AÑO : 2007

L U G A R	E S T A C I O N				C L A S I F I C A C I O N V E H I C U L A R E N P O R C I E N T O .												
	KM	TE	SC	TDPA	A	B	C2	C3	T3S2	T3S3	T3S2R4	OTROS	A	B	C	K'	D
T. C. HUAJUAPAN DE LEON - OAXACA	0.00	3	0	1624	87	1	4.4	3.7	2	0.8	0.1	1	87	1	12	0.123	0.515
YOLOMECATL	24.40	3	0	1422	84.5	4.3	3.1	2.2	3.1	1.6	0.1	1.1	84.5	4.3	11.2	0.125	0.507
TLAXIACO	57.00	3	0	1792	86.6	3.3	3.3	2	2.1	1.8	0.3	0.6	86.6	3.3	10.1	0.116	0.503
T. DER. SANTIAGO JUXCATLAN	104.00	1	0	1054	93.6	3.2	1.1	0.7	0.4	0.2	0	0.8	93.6	3.2	3.2	0.149	0.512

OAXACA

18 CARR : YUCUDAA - SANTIAGO PINOTEPA NACIONAL

CLAVE: 20030

RUTA : MEX-126

AÑO : 2007

L U G A R	E S T A C I O N				C L A S I F I C A C I O N V E H I C U L A R E N P O R C I E N T O .												
	KM	TE	SC	TDPA	A	B	C2	C3	T3S2	T3S3	T3S2R4	OTROS	A	B	C	K'	D
PUTLA DE GUERRERO	145.00	1	0	1531	87.1	3.5	3.3	1.8	2.5	0.8	0	1	87.1	3.5	9.4	0.091	0.509
CACAHUATEPEC	229.00	1	0	1786	94.5	1.4	1.4	1.2	0.2	0.3	0	1	94.5	1.4	4.1	0.094	0.501
T. C. LAS CRUCES - PINOTEPA NACIONAL	268.00	1	0	1996	93.6	2.3	1.6	1.3	0.3	0.4	0.1	0.4	93.6	2.3	4.1	0.112	0.5

19 CARR : BUENAVISTA - TUXTEPEC

CLAVE: 00624

RUTA : MEX-175

AÑO : 2007

L U G A R	E S T A C I O N				C L A S I F I C A C I O N V E H I C U L A R E N P O R C I E N T O .												
	KM	TE	SC	TDPA	A	B	C2	C3	T3S2	T3S3	T3S2R4	OTROS	A	B	C	K'	D
T. C. PASO DEL TORO - ACAYUCAN	0.00	3	0	1082	86.6	4.9	5	1.6	0.8	0.4	0.2	0.5	86.6	4.9	8.5	0.096	0.503
TLACOTALPAN	18.00	1	0	1164	84.7	4.6	4.4	4.2	1.3	0.2	0.1	0.5	84.7	4.6	10.7	0.095	0.502
TLACOTALPAN	18.00	3	0	1634	78.6	8.7	5.1	3.2	1.8	0.3	0.4	1.9	78.6	8.7	12.7	0.094	0.501
CARLOS A. CARRILLO	56.00	1	0	3044	82	3.3	2.7	2.6	2.2	0.4	0.4	6.4	82	3.3	14.7	0.085	0.5
COSAMALOAPAN	60.00	1	0	5843	76.3	4.6	5.6	4.6	3.8	0.6	1.1	3.4	76.3	4.6	19.1	0.081	0.501
COSAMALOAPAN	60.00	3	0	9128	71.4	5.6	6.2	5.3	4.9	1	2.2	3.4	71.4	5.6	23	0.077	0.502
T. C. LA TINAJA - SANTA CRUZ	107.00	1	0	4444	85.1	6.3	3.2	1.2	1.5	0.6	0.6	1.5	85.1	6.3	8.6	0.084	0.501
T. C. CD. ALEMAN - SAYULA	108.90	1	0	3775	74.8	9.6	8.9	1.4	2.7	0.8	0.6	1.2	74.8	9.6	15.6	0.082	0.501
T. C. CD. ALEMAN - SAYULA	108.90	3	0	5473	73.3	6.6	5.3	2.8	4.2	1	5.6	1.2	73.3	6.6	20.1	0.081	0.502
LIM. EDOS. TERM. VER. PPIA. OAX.	115.00	0	0														
TUXTEPEC	119.70	1	0	5576	64.3	7.4	4.4	3.6	5.1	4.2	8.1	2.9	64.3	7.4	28.3	0.101	0.505

20 CARR : CD. ALEMAN - SAYULA

CLAVE: 00301

RUTA : MEX-145

AÑO : 2007

L U G A R	E S T A C I O N				C L A S I F I C A C I O N V E H I C U L A R E N P O R C I E N T O .												
	KM	TE	SC	TDPA	A	B	C2	C3	T3S2	T3S3	T3S2R4	OTROS	A	B	C	K'	D
CD. ALEMAN	0.00	3	0	3623	49.9	6	7.4	9.6	11.5	6.1	8.1	1.4	49.9	6	44.1	0.081	0.506
LIM. EDOS. TERM. VER. PPIA. OAX.	1.80	0	0														
T. IZQ. LOMA BONITA	36.70	1	0	5445	50	5.4	4.2	8	14.7	4.9	10.6	2.2	50	5.4	44.6	0.07	0.508
T. DER. VILLA AZUETA	41.50	1	0	4571	49.7	4.9	5	9.2	16.3	4.6	8.8	1.5	49.7	4.9	45.4	0.082	0.5
LIM. EDOS. TERM. OAX. PPIA. VER.	43.16	0	0														
T. IZQ. TESECHOACAN	56.70	1	0	3733	42.4	4.7	5.1	13	16.5	6.2	10.7	1.4	42.4	4.7	52.9	0.076	0.502
X. C. SANTIAGO TUXTLA - PLAYA VICENTE	71.40	1	0	4179	52.9	4.8	3.4	8.1	12.7	5.3	9.1	3.7	52.9	4.8	42.3	0.083	0.5
SAN JUAN EVANGELISTA	118.40	1	0	4251	46.7	4	6	11.5	14.5	6.3	9.7	1.3	46.7	4	49.3	0.075	0.503
SAYULA DE ALEMAN	136.40	1	0	5131	52.6	6	3.4	3.5	14.8	6.4	9.9	3.4	52.6	6	41.4	0.071	0.501

OAXACA

25 CARR : PUEBLA - HUAJUAPAN DE LEON

CLAVE: 00049

RUTA : MEX-190

AÑO : 2007

L U G A R	E S T A C I O N				C L A S I F I C A C I O N V E H I C U L A R E N P O R C I E N T O .												
	KM	TE	SC	TDPA	A	B	C2	C3	T3S2	T3S3	T3S2R4	OTROS	A	B	C	K'	D
PUEBLA	0.00	3	1	12668	81.6	5.7	7.1	1.4	1.3	1.1	0.6	1.2	81.6	5.7	12.7	0.102	0.502
PUEBLA	0.00	3	2	12753	81.8	4.7	6.2	2.8	1.6	1.3	0.6	1	81.8	4.7	13.5	0.07	0.502
ATLIXCO	29.88	1	0	12040	84.9	2.8	6.8	2.2	1.3	1.2	0.3	0.5	84.9	2.8	12.3	0.082	0.5
ATLIXCO	29.88	3	0	11957	79.9	6	6.2	2.9	1.5	1.3	1.3	0.9	79.9	6	14.1	0.096	0.503
TEPEOJUMA	51.90	1	0	9411	75.9	8.4	6.6	4.1	1.8	1.5	0.8	0.9	75.9	8.4	15.7	0.07	0.502
IZUCAR DE MATAMOROS	67.00	1	0	9878	79.9	5.3	5.8	3.6	1.9	1.7	0.8	1	79.9	5.3	14.8	0.086	0.501
T. DER. CUAUTLA	70.00	3	0	7459	73.7	8.9	9.1	2.9	2.3	1.1	0.8	1.2	73.7	8.9	17.4	0.082	0.509
TEHUITZINGO	113.30	1	0	4639	80.8	4.5	4.9	3.1	1.7	1.7	2.1	1.2	80.8	4.5	14.7	0.068	0.503
ACATLAN DE OSORIO	154.20	1	0	5737	76.1	7.9	6.1	3.5	1.9	2.8	1.6	0.1	76.1	7.9	16	0.069	0.502
CHILA	192.30	3	0	2131	88.4	2.2	3.8	1.7	1.7	0.6	1	0.6	88.4	2.2	9.4	0.102	0.5
LIM. EDOS. TERM. PUE. PPIA. OAX.	200.30	0	0														
T. IZQ. LAS PALMAS	202.10	1	0	1869	88.4	5.7	2	0.6	1.2	0.8	1	0.3	88.4	5.7	5.9	0.089	0.5
HUAJUAPAN DE LEON	217.50	1	0	1957	87.8	6.2	1.7	0.5	1.5	0.8	1.2	0.3	87.8	6.2	6	0.094	0.505

26 CARR : TEHUACAN - HUAJUAPAN DE LEON

CLAVE: 00211

RUTA : PUE-MEX-125

AÑO : 2007

L U G A R	E S T A C I O N				C L A S I F I C A C I O N V E H I C U L A R E N P O R C I E N T O .												
	KM	TE	SC	TDPA	A	B	C2	C3	T3S2	T3S3	T3S2R4	OTROS	A	B	C	K'	D
TEHUACAN	0.00	3	0	4315	81.7	6.1	6.9	2.4	1	1.2	0.5	0.2	81.7	6.1	12.2	0.079	0.501
ZAPOTITLAN SALINAS	28.00	1	0	1917	78.6	4.3	11.1	3	0.9	1.3	0.8	0	78.6	4.3	17.1	0.072	0.503
LIM. EDOS. TERM. PUE. PPIA. OAX.	52.70	0	0														
SANTIAGO CHAZUMBA	63.02	1	0	984	85.7	3.8	4.9	2.3	0.9	0.8	0.9	0.7	85.7	3.8	10.5	0.089	0.501
SANTIAGO CHAZUMBA	63.02	3	0	799	87.9	0.5	6.2	2.8	0.9	0.8	0.7	0.2	87.9	0.5	11.6	0.088	0.501
T. IZQ. SANTA MARIA CAMOTLAN	103.10	1	0	1255	88.6	4.5	3.3	0.3	1.2	1.3	0.8	0	88.6	4.5	6.9	0.117	0.501
T. C. HUAJUAPAN DE LEON - OAXACA	119.90	1	0	5090	91.5	3.6	2.5	0.5	1	0.8	0.1	0	91.5	3.6	4.9	0.112	0.507

27 CARR : TEHUACAN - HUITZO

CLAVE: 00211

RUTA : PUE-MEX-135

AÑO : 2007

L U G A R	E S T A C I O N				C L A S I F I C A C I O N V E H I C U L A R E N P O R C I E N T O .												
	KM	TE	SC	TDPA	A	B	C2	C3	T3S2	T3S3	T3S2R4	OTROS	A	B	C	K'	D
TEHUACAN	0.00	3	0	6050	73.8	8.6	4.9	3.9	2	4.6	2	0.2	73.8	8.6	17.6	0.072	0.5
T. DER. SAN GABRIEL CHILAC	14.40	1	0	5442	77.5	3.7	9.5	4.2	1.2	1.8	1.9	0.2	77.5	3.7	18.8	0.065	0.502
SAN SEBASTIAN ZINACATEPEC	23.00	3	0	2914	68.6	8.3	15.6	4.3	0.4	1.7	0.9	0.2	68.6	8.3	23.1	0.072	0.5
LIM. EDOS. TERM. PUE. PPIA. OAX.	60.00	0	0														
TEOTITLAN DEL CAMINO	63.15	3	0	1731	90.1	2.2	3.8	3.2	0.3	0.1	0.1	0.2	90.1	2.2	7.7	0.09	0.504

O A X A C A

27 CARR : TEHUACAN - HUITZO

CLAVE: 00211

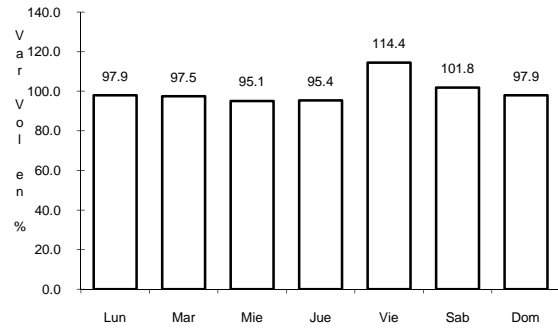
RUTA : PUE-MEX-135

AÑO : 2007

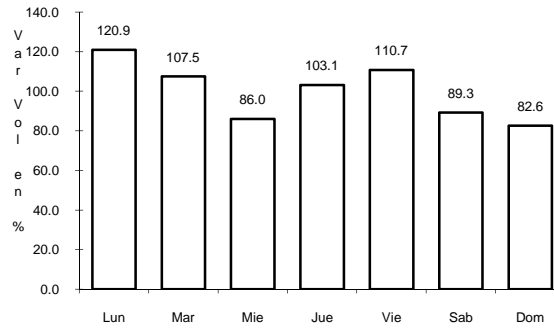
L U G A R	E S T A C I O N				C L A S I F I C A C I O N V E H I C U L A R E N P O R C I E N T O .												
	KM	TE	SC	TDPA	A	B	C2	C3	T3S2	T3S3	T3S2R4	OTROS	A	B	C	K'	D
SANTA MARIA TECOMAVACA	88.34	1	0	1065	84.8	7.6	4.1	2.5	0.4	0.1	0.2	0.3	84.8	7.6	7.6	0.094	0.507
SANTA MARIA TECOMAVACA	88.34	3	0	1053	87.2	5.8	6.1	0	0.4	0.2	0.1	0.2	87.2	5.8	7	0.098	0.502
T. IZQ. CUICATLAN	118.80	1	0	1258	84.8	5.3	3.6	1.8	3.8	0.2	0.2	0.3	84.8	5.3	9.9	0.092	0.506
T. IZQ. NACALTEPEC	169.80	1	0	1329	84.1	4.4	5.9	4.6	0.5	0.2	0.2	0.1	84.1	4.4	11.5	0.09	0.502
T. C. HUAJUAPAN DE LEON - OAXACA	202.70	1	0	2567	81	5.6	8.6	2.6	1	0.6	0.1	0.5	81	5.6	13.4	0.083	0.501

1 CARR: SAN PABLO VILLA DE MITLA - T. C. (TUXTEPEC - PALOMARCLAVE: 00106

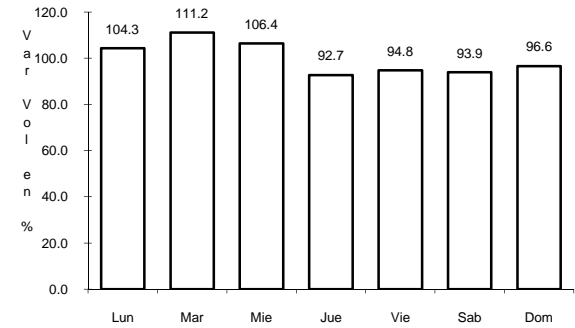
RUTA: MEX-179



Km: 0.00 Tipo: 3 Sent: 0



Km: 90.00 Tipo: 1 Sent: 0

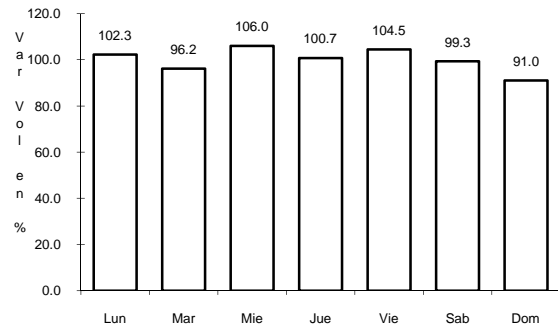


Km: 238.70 Tipo: 1 Sent: 0

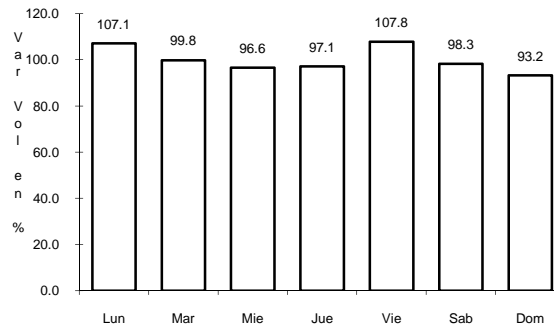
2 CARR: TUXTEPEC - ENT. PALOMARES

CLAVE: 00180

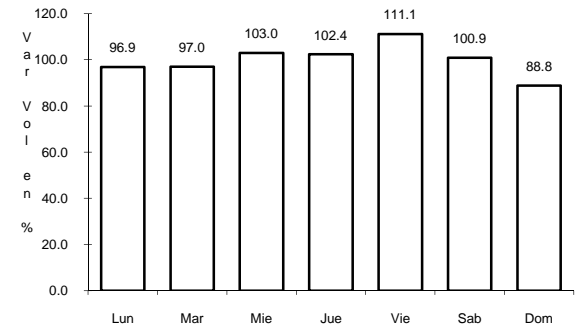
RUTA: MEX-147



Km: 0.00 Tipo: 3 Sent: 0



Km: 110.50 Tipo: 1 Sent: 0

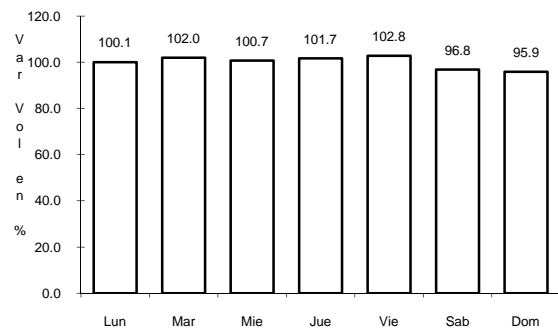


Km: 194.00 Tipo: 1 Sent: 0

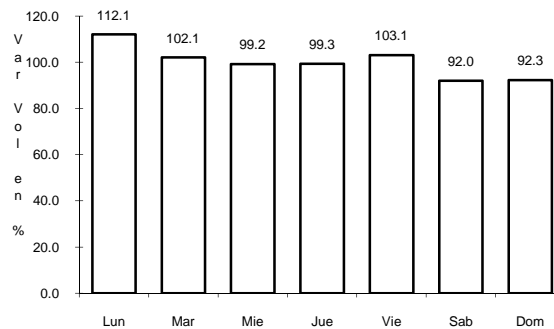
3 CARR: TAPANATEPEC - TALISMAN

CLAVE: 00075

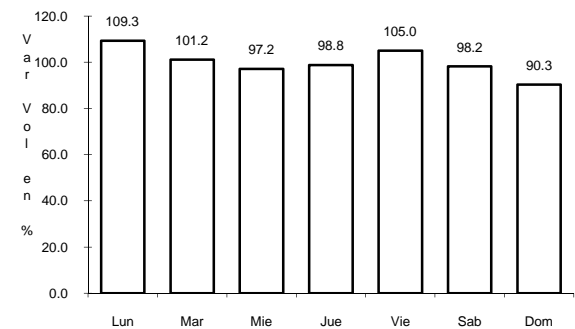
RUTA: MEX-200



Km: 0.00 Tipo: 3 Sent: 0



Km: 144.45 Tipo: 1 Sent: 0

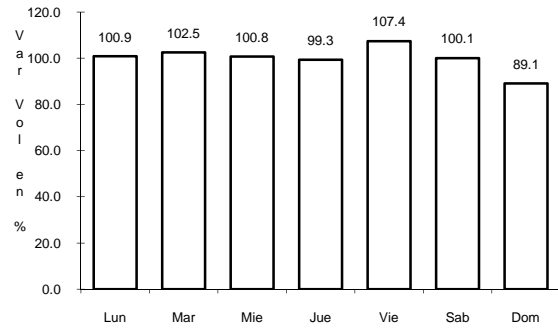


Km: 310.77 Tipo: 1 Sent: 0

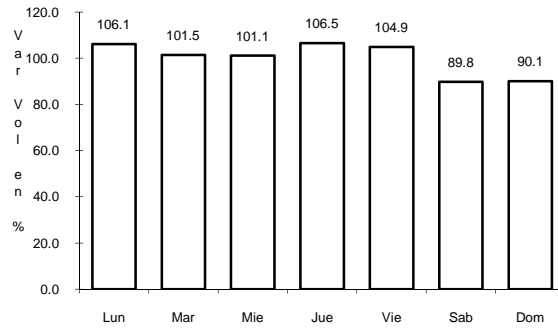
7 CARR: T. C. (OAXACA - PUERTO ANGEL) - PUERTO ESCONDIDO

CLAVE: 20009

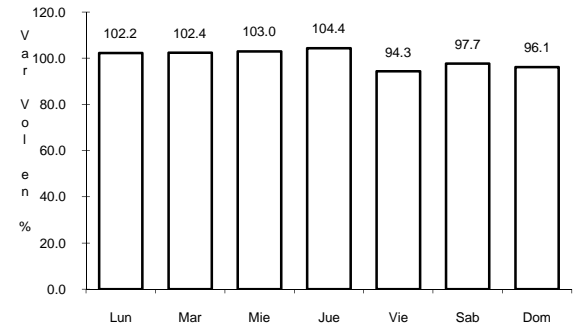
RUTA: MEX-131-OAX-161



Km: 0.00 Tipo: 3 Sent: 0



Km: 134.50 Tipo: 1 Sent: 0

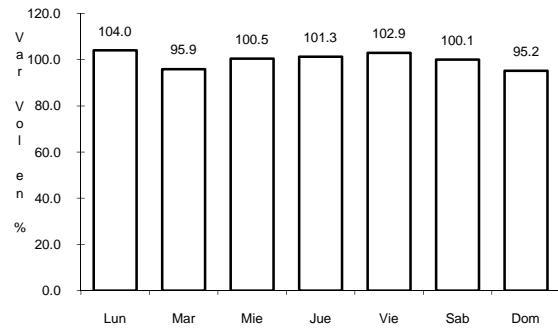


Km: 248.00 Tipo: 1 Sent: 0

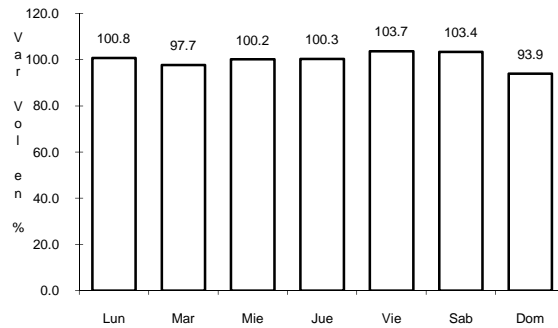
8 CARR: HUAJUAPAN DE LEON - OAXACA

CLAVE: 20056

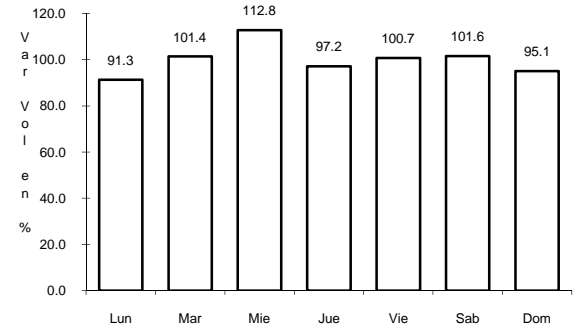
RUTA: MEX-190



Km: 1.35 Tipo: 1 Sent: 0



Km: 191.86 Tipo: 1 Sent: 1

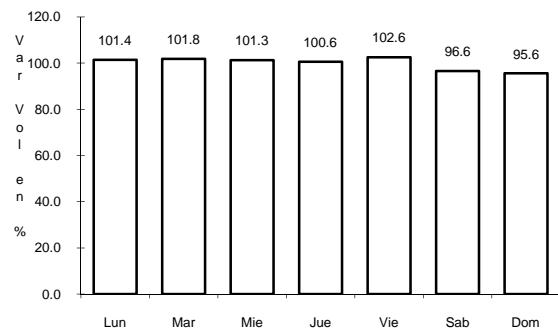


Km: 191.86 Tipo: 1 Sent: 2

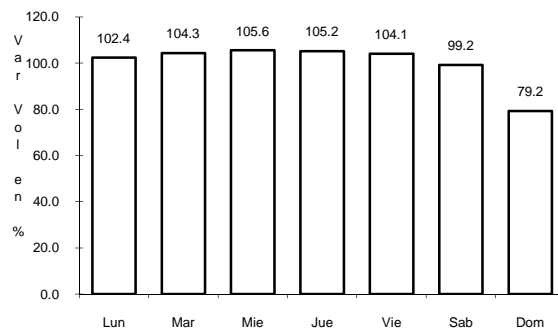
9 CARR: JUCHITAN - IXTEPEC

CLAVE: 20359

RUTA: MEX



Km: 0.15 Tipo: 3 Sent: 0

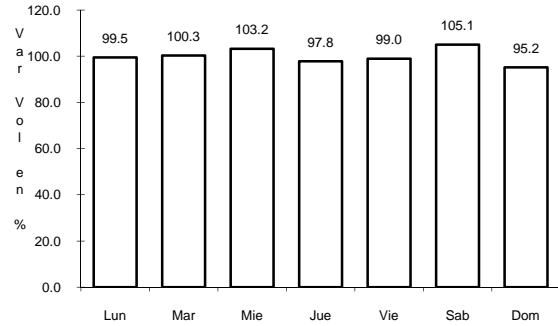


Km: 16.00 Tipo: 1 Sent: 0

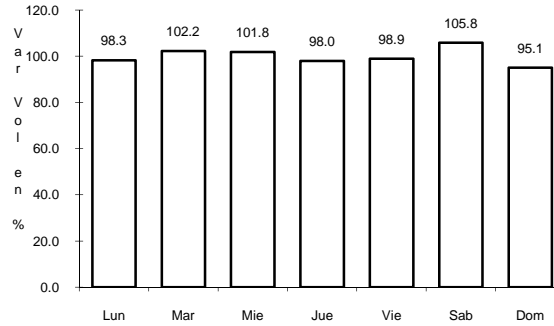
10 CARR: LOMA BONITA - MIXTAN

CLAVE: 20043

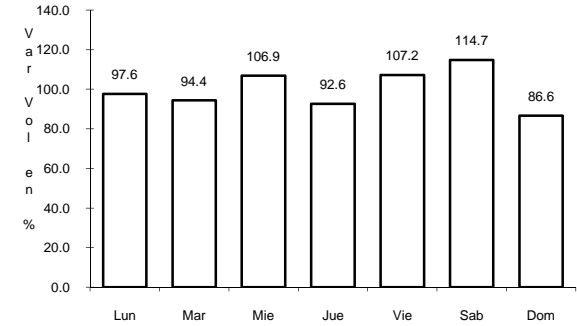
RUTA: OAX



Km: 1.00 Tipo: 1 Sent: 1



Km: 1.00 Tipo: 1 Sent: 2

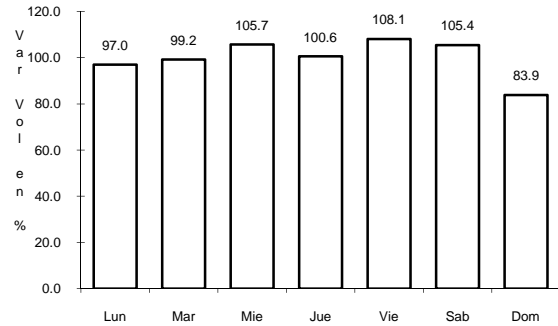


Km: 12.00 Tipo: 3 Sent: 0

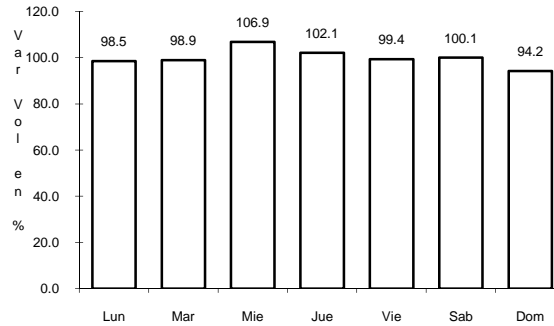
11 CARR: OAXACA - PUERTO ANGEL

CLAVE: 20091

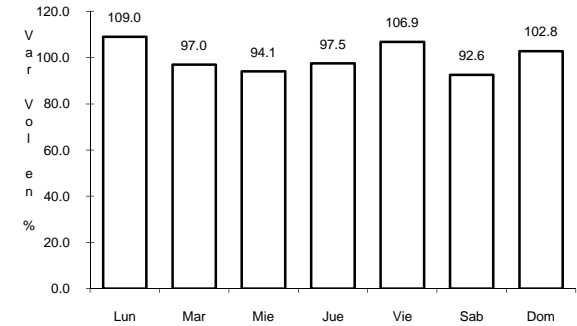
RUTA: MEX-175



Km: 0.00 Tipo: 3 Sent: 1



Km: 0.00 Tipo: 3 Sent: 2

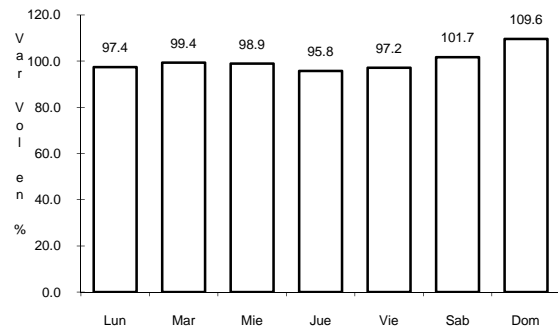


Km: 250.00 Tipo: 1 Sent: 0

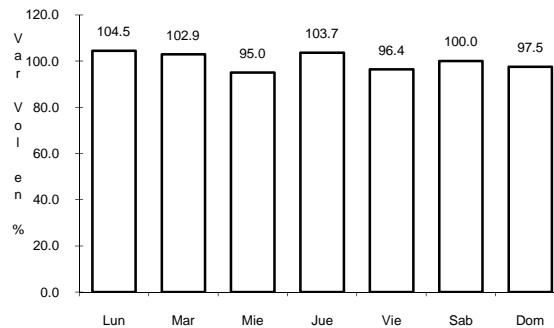
12 CARR: OAXACA - TEHUANTEPEC

CLAVE: 20057

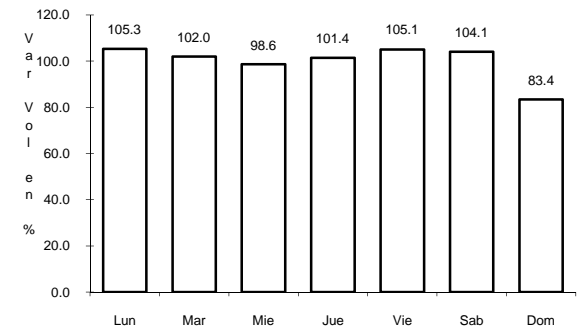
RUTA: MEX-190



Km: 0.00 Tipo: 3 Sent: 1



Km: 0.00 Tipo: 3 Sent: 2

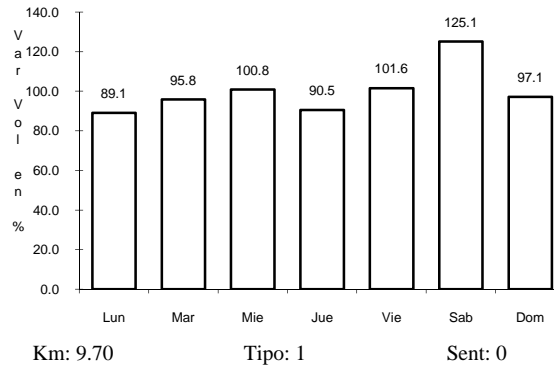
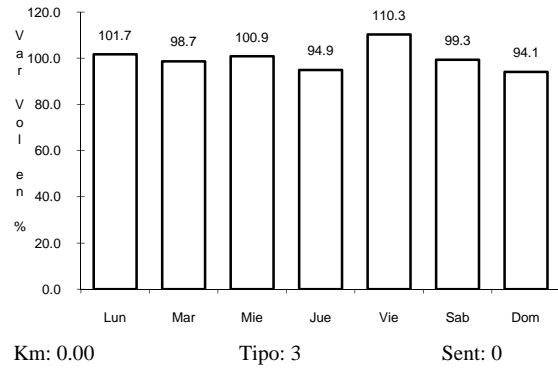


Km: 254.26 Tipo: 1 Sent: 0

13 CARR: RAMAL A ASUNCION IXTALTEPEC

CLAVE: 20624

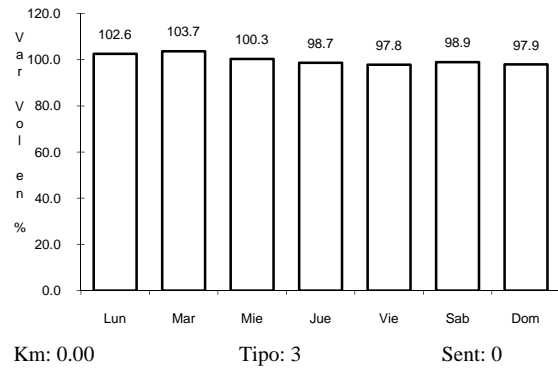
RUTA: MEX



14 CARR: RAMAL A REFORMA DE PINEDA

CLAVE: 20010

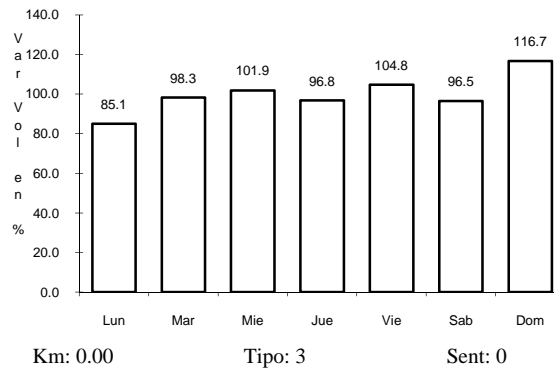
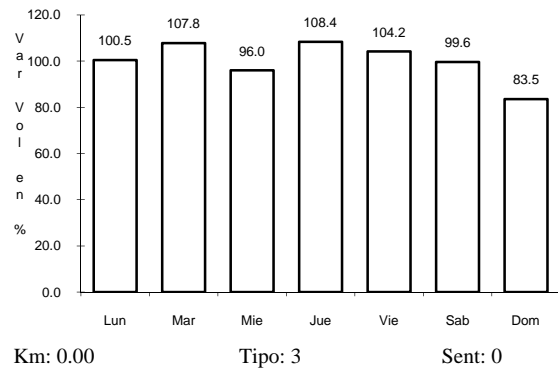
RUTA: OAX



15 CARR: RAMAL A UNION HIDALGO

CLAVE: 20044

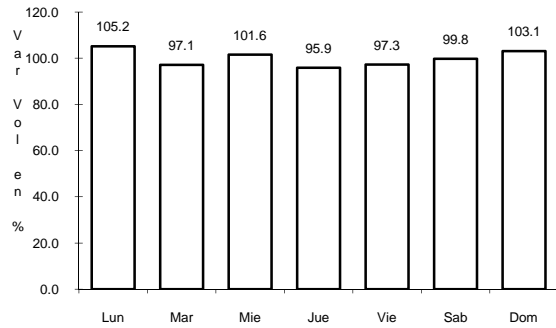
RUTA: OAX



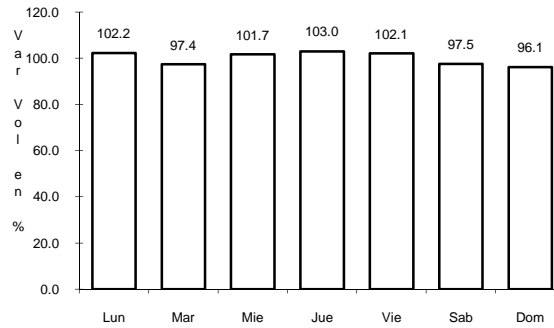
16 CARR: SANTIAGO PINOTEPA NACIONAL - SALINA CRUZ

CLAVE: 20074

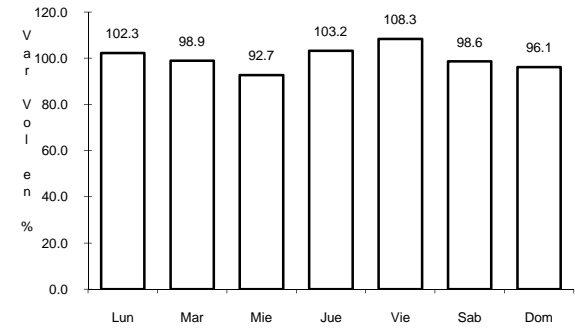
RUTA: MEX-200



Km: 0.00 Tipo: 3 Sent: 0



Km: 131.94 Tipo: 1 Sent: 0

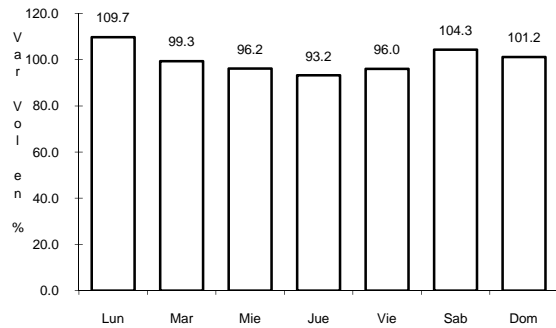


Km: 209.95 Tipo: 3 Sent: 0

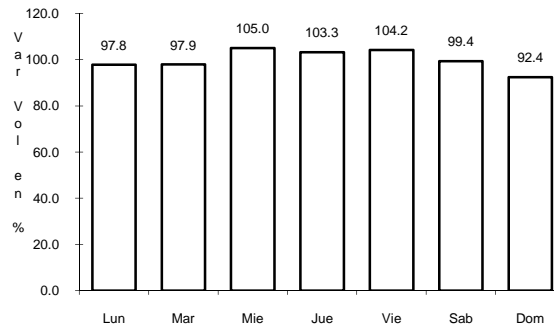
17 CARR: TUXTEPEC - T. C. (OAXACA - TEHUANTEPEC)

CLAVE: 20090

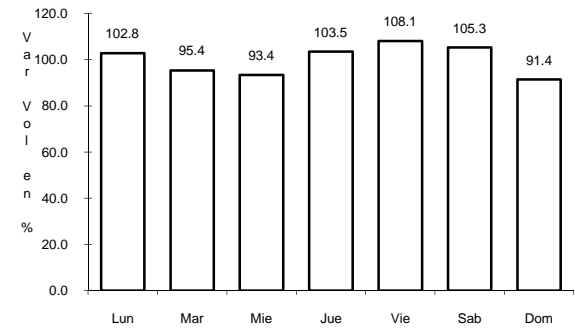
RUTA: MEX-175



Km: 0.00 Tipo: 3 Sent: 1



Km: 0.00 Tipo: 3 Sent: 2

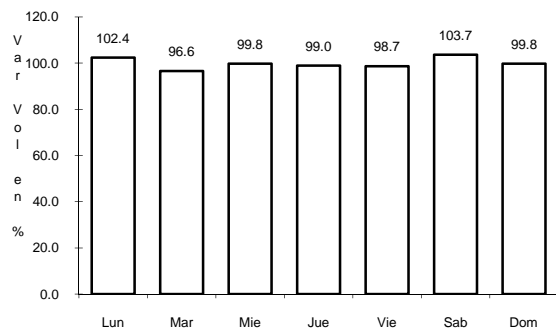


Km: 212.76 Tipo: 1 Sent: 0

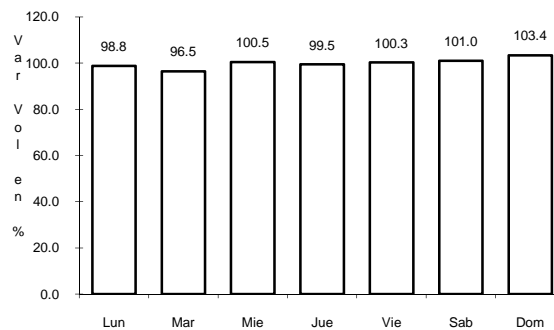
18 CARR: YUCUDAA - SANTIAGO PINOTEPA NACIONAL

CLAVE: 20030

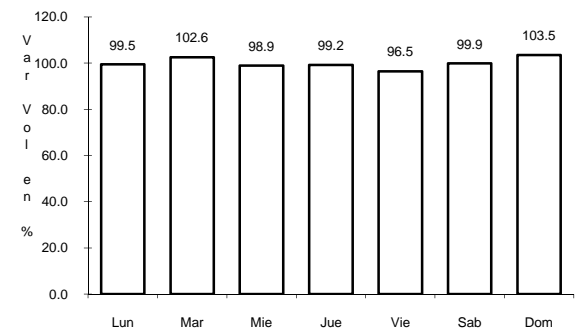
RUTA: MEX-126



Km: 0.00 Tipo: 3 Sent: 0



Km: 145.00 Tipo: 1 Sent: 0

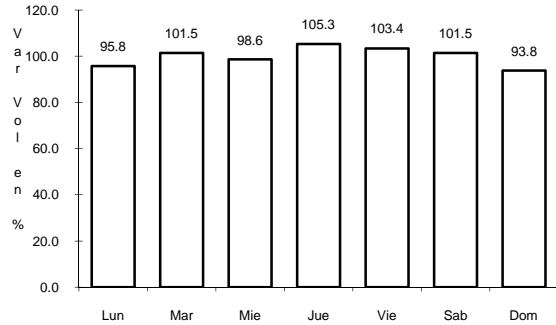


Km: 268.00 Tipo: 1 Sent: 0

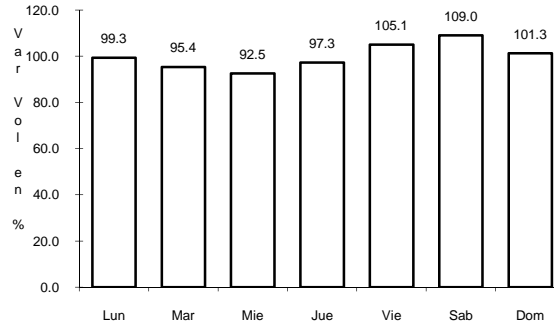
22 CARR: CUACNOPALAN - OAXACA (CUOTA)

CLAVE: 00109

RUTA: MEX-135D



Km: 0.00 Tipo: 3 Sent: 0

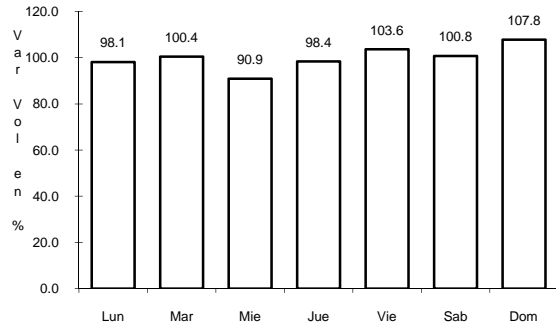


Km: 40.00 Tipo: 3 Sent: 0

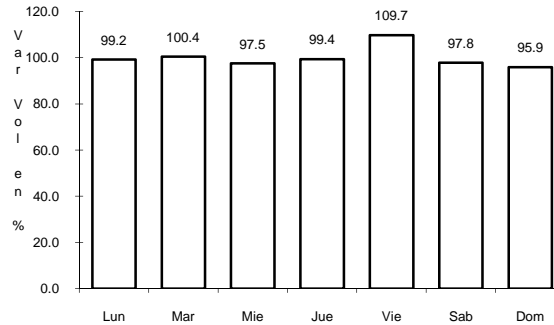
23 CARR: LA GRANJA - TEMAZCAL

CLAVE: 00275

RUTA: MEX



Km: 0.00 Tipo: 3 Sent: 0

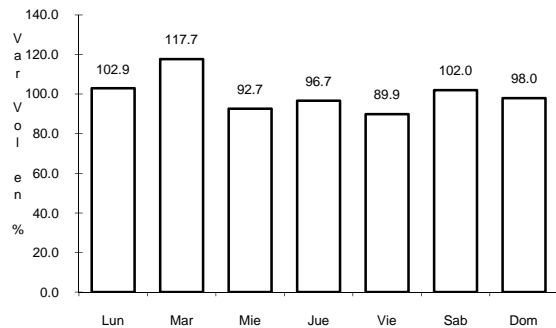


Km: 23.00 Tipo: 1 Sent: 0

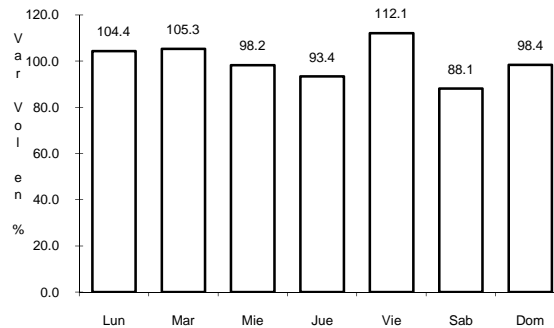
24 CARR: LAS CRUCES - PINOTEPA NACIONAL

CLAVE: 00073

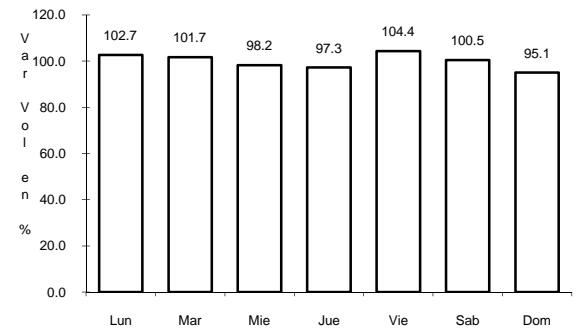
RUTA: MEX-200



Km: 0.00 Tipo: 3 Sent: 1



Km: 0.00 Tipo: 3 Sent: 2

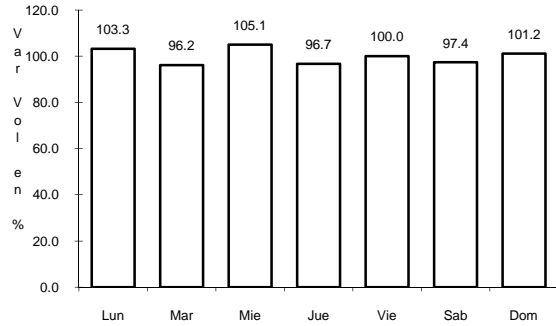


Km: 245.47 Tipo: 3 Sent: 0

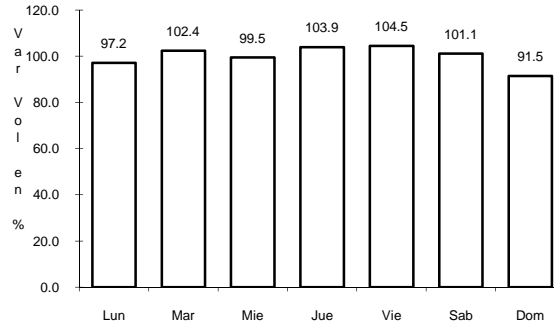
25 CARR: PUEBLA - HUAJUAPAN DE LEON

CLAVE: 00049

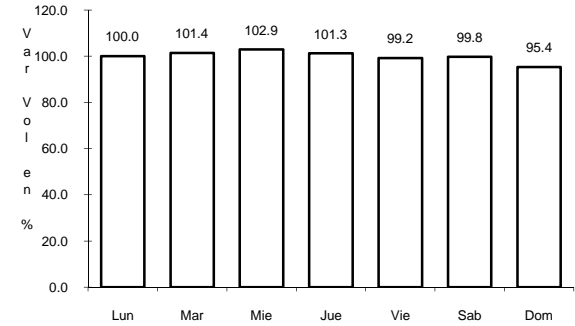
ruta: MEX-190



Km: 0.00 Tipo: 3 Sent: 1



Km: 0.00 Tipo: 3 Sent: 2

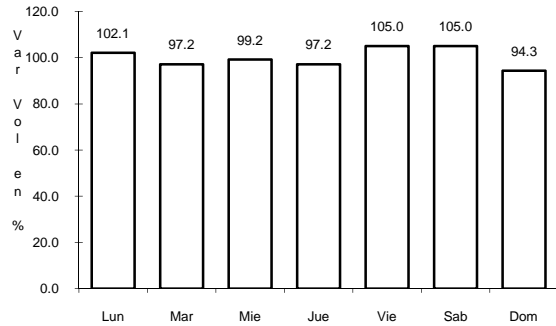


Km: 217.50 Tipo: 1 Sent: 0

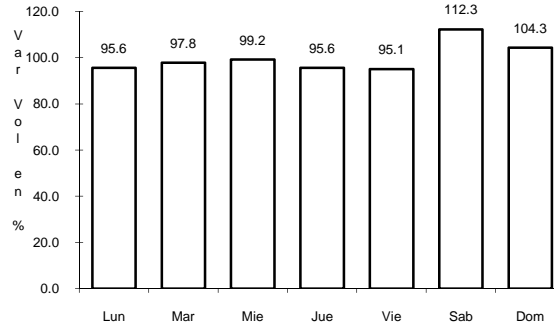
26 CARR: TEHUACAN - HUAJUAPAN DE LEON

CLAVE: 00211

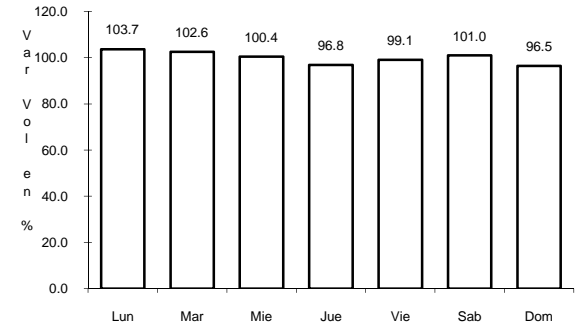
ruta: PUE-MEX-125



Km: 0.00 Tipo: 3 Sent: 0



Km: 63.02 Tipo: 1 Sent: 0

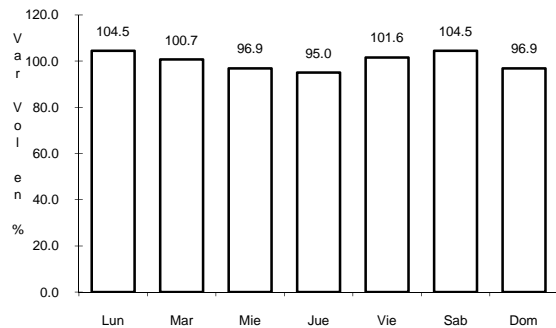


Km: 119.90 Tipo: 1 Sent: 0

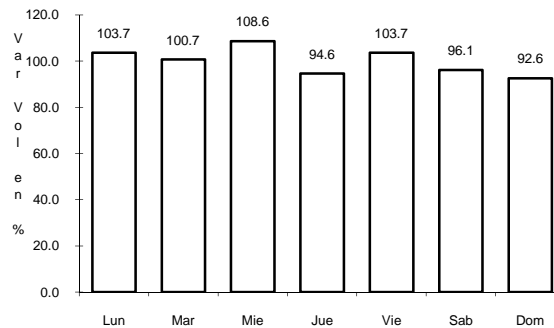
27 CARR: TEHUACAN - HUITZO

CLAVE: 00211

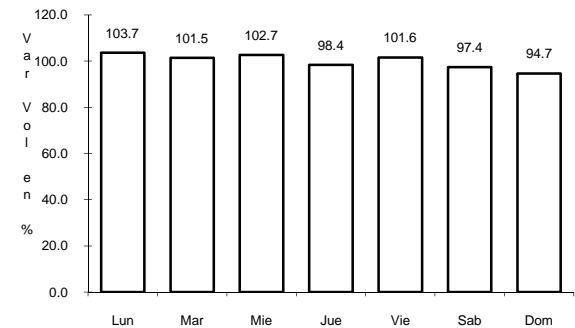
ruta: PUE-MEX-135



Km: 0.00 Tipo: 3 Sent: 0



Km: 118.80 Tipo: 1 Sent: 0



Km: 202.70 Tipo: 1 Sent: 0