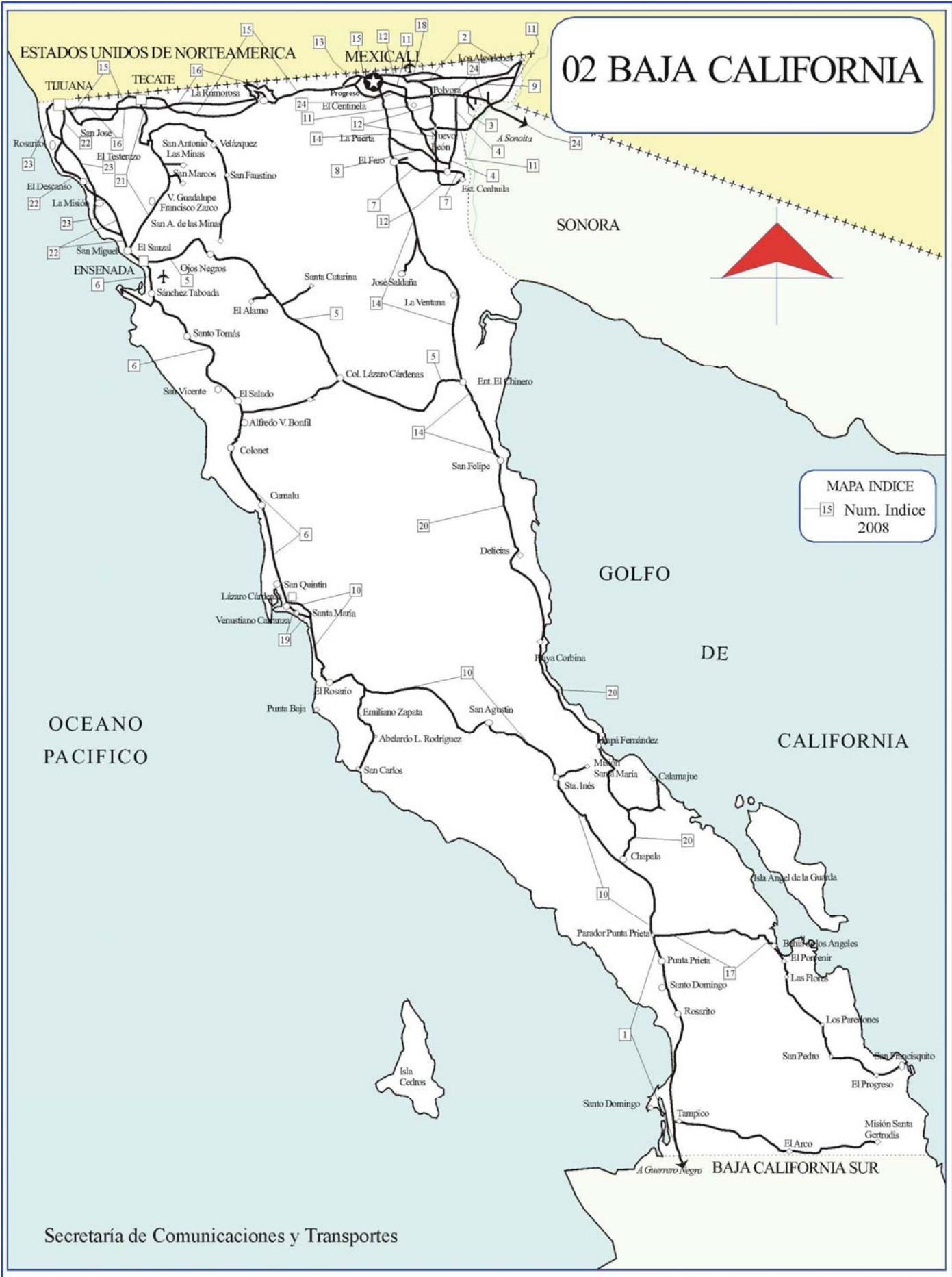


02 BAJA CALIFORNIA



MAPA INDICE
15 Num. Indice
2008

CARRETERAS AFORADAS

Num. INDICE	CARRETERA
1	PUNTA PRIETA - GUERRERO NEGRO
2	ALGODONES - ISLAS AGRARIAS GRUPO B
3	EJIDO BENITO JUAREZ - EJIDO CHIAPAS
4	EJIDO MONTERREY - MAZON
5	ENSENADA - EL CHINERO
6	ENSENADA - LAZARO CARDENAS
7	EL FARO - ESTACION COAHUILA
8	LA PUERTA - T. C. (MEXICALI - ESTACION COAHUILA)
9	SANTA ROSA - ENT. PACHUCA
10	LAZARO CARDENAS - PUNTA PRIETA
11	MEXICALI - ALGODONES
12	MEXICALI - ESTACION COAHUILA
13	MEXICALI - PROGRESO
14	MEXICALI - SAN FELIPE
15	MEXICALI - TIJUANA
16	MEXICALI - TIJUANA (CUOTA)
17	PARADOR PUNTA PRIETA - BAHIA DE LOS ANGELES
18	RAMAL A AEROPUERTO DE MEXICALI
19	RAMAL A SANTA MARIA
20	SAN FELIPE - CHAPALA
21	TECATE - EL SAUZAL
22	TIJUANA - ENSENADA (LIBRE)
23	TIJUANA - SAN MIGUEL (CUOTA)
24	SONOYTA - MEXICALI

BAJA CALIFORNIA

1 CARR : PUNTA PRIETA - GUERRERO NEGRO

CLAVE: 00321

RUTA : MEX-001

AÑO : 2007

L U G A R	E S T A C I O N				C L A S I F I C A C I O N V E H I C U L A R E N P O R C I E N T O .												
	KM	TE	SC	TDPA	A	B	C2	C3	T3S2	T3S3	T3S2R4	OTROS	A	B	C	K'	D
PARADOR PUNTA PRIETA	0.00	3	0	1323	77.2	5.8	8.3	2	2.6	3.2	0.7	0.2	77.2	5.8	17	0.074	0.504
ROSARITO	50.60	3	0	1728	84.9	2.2	4.2	1.2	3.6	2.3	1.4	0.2	84.9	2.2	12.9	0.071	0.502
TANATAN	70.10	3	0	1491	79.1	3.9	6.3	2.9	4	2.3	1.2	0.3	79.1	3.9	17	0.071	0.504
TAMPICO	105.00	1	0	1549	77.1	4.8	5.5	2.8	5.3	3.1	1.2	0.2	77.1	4.8	18.1	0.07	0.501
LIM. EDOS. TERM. B.C. PPIA. B.C.S. (PARALELO 28)	128.60	0	0														
LIM. EDOS. TERM. B.C. PPIA. B.C.S. (PARALELO 28)	128.60	0	0														
ENT. GUERRERO NEGRO	130.00	1	0	2362	83.3	3.1	4.6	3	2.6	2	1.1	0.3	83.3	3.1	13.6	0.071	0.501

2 CARR : ALGODONES - ISLAS AGRARIAS GRUPO B

CLAVE: 02006

RUTA : BC-008

AÑO : 2007

L U G A R	E S T A C I O N				C L A S I F I C A C I O N V E H I C U L A R E N P O R C I E N T O .												
	KM	TE	SC	TDPA	A	B	C2	C3	T3S2	T3S3	T3S2R4	OTROS	A	B	C	K'	D
ALGODONES	0.00	3	0	5497	91.8	2	2	1.1	0.7	0.5	1.2	0.7	91.8	2	6.2	0.071	0.502
T. IZQ. CD. MORELOS	14.00	1	0	5019	89	2.5	2.8	1.1	1.1	0.8	1.1	1.6	89	2.5	8.5	0.069	0.502
MERIDA	20.30	3	0	2141	80.7	4.7	5.7	3.9	1.6	0.8	2.1	0.5	80.7	4.7	14.6	0.072	0.5
T. IZQ. EJIDO LAZARO CARDENAS	31.50	1	0	2723	80.5	9.2	5.9	1.7	0.8	0.9	0.7	0.3	80.5	9.2	10.3	0.073	0.502
ISLAS AGRARIAS GRUPO B	55.50	1	0	4688	89.2	3.6	2.5	1.4	0.6	0.8	1.3	0.6	89.2	3.6	7.2	0.085	0.502

3 CARR : EJIDO BENITO JUAREZ - EJIDO CHIAPAS

CLAVE: 02501

RUTA : BC-061

AÑO : 2007

L U G A R	E S T A C I O N				C L A S I F I C A C I O N V E H I C U L A R E N P O R C I E N T O .												
	KM	TE	SC	TDPA	A	B	C2	C3	T3S2	T3S3	T3S2R4	OTROS	A	B	C	K'	D
EJIDO BENITO JUAREZ	0.00	3	0	2518	86.4	3.6	3.2	2.3	1.6	0.7	1.5	0.7	86.4	3.6	10	0.077	0.5
EJIDO MEXICO	7.00	1	0	1226	85	3.9	4.5	2.7	1.3	0.3	1.8	0.5	85	3.9	11.1	0.078	0.501
EJIDO CHIAPAS	10.56	1	0	1027	81.2	6.1	5.5	3.4	1.8	0.4	1.5	0.1	81.2	6.1	12.7	0.095	0.5

4 CARR : EJIDO MONTERREY - MAZON

CLAVE: 02004

RUTA : BC-003

AÑO : 2007

L U G A R	E S T A C I O N				C L A S I F I C A C I O N V E H I C U L A R E N P O R C I E N T O .												
	KM	TE	SC	TDPA	A	B	C2	C3	T3S2	T3S3	T3S2R4	OTROS	A	B	C	K'	D
T. C. SONOYTA - MEXICALI	0.00	3	0	4578	87.6	2.4	2.5	1.8	2.4	1.2	1.3	0.8	87.6	2.4	10	0.087	0.502
X. C. MEXICALI - ALGODONES	15.16	1	0	3640	83.4	4.8	3.5	2.5	1.9	1.3	1.4	1.2	83.4	4.8	11.8	0.087	0.503
X. C. MEXICALI - ALGODONES	15.16	3	0	6479	81.6	3.8	4.6	2.2	2.9	1.3	1.9	1.7	81.6	3.8	14.6	0.083	0.501
GUADALUPE VICTORIA	30.47	1	0	8436	85.8	3.4	3.3	2.5	1.5	1.2	1.3	1	85.8	3.4	10.8	0.08	0.502

BAJA CALIFORNIA

4 CARR : EJIDO MONTERREY - MAZON

CLAVE: 02004

ruta : BC-003

AÑO : 2007

L U G A R	E S T A C I O N				CLASIFICACION VEHICULAR EN PORCIENTO .												
	KM	TE	SC	TDPA	A	B	C2	C3	T3S2	T3S3	T3S2R4	OTROS	A	B	C	K'	D
MAZON	35.00	1	0	5579	77.1	4.2	4.4	4.2	3.7	2.6	2.2	1.6	77.1	4.2	18.7	0.097	0.501

5 CARR : ENSENADA - EL CHINERO

CLAVE: 02009

ruta : MEX-003

AÑO : 2007

L U G A R	E S T A C I O N				CLASIFICACION VEHICULAR EN PORCIENTO .												
	KM	TE	SC	TDPA	A	B	C2	C3	T3S2	T3S3	T3S2R4	OTROS	A	B	C	K'	D
ENSENADA	0.00	3	0	3604	79.7	3.5	4.5	2.6	3.2	2.6	2.6	1.3	79.7	3.5	16.8	0.099	0.5
OJOS NEGROS	38.50	1	0	3476	78.4	4.1	5.9	2.9	3.3	2.2	2.4	0.8	78.4	4.1	17.5	0.094	0.501
SAN SALVADOR	60.50	1	0	3345	78.5	3.8	4.8	2.8	3.4	2.8	2.6	1.3	78.5	3.8	17.7	0.097	0.502
HEROES DE LA INDEPENDENCIA	93.00	3	0	3292	78.8	3.6	4.6	2.9	3.4	2.8	2.6	1.3	78.8	3.6	17.6	0.098	0.501
LEYES DE REFORMA	103.00	3	0	1296	84.1	2.5	4.2	1.9	3	1.3	1.4	1.6	84.1	2.5	13.4	0.12	0.502
LAZARO CARDENAS	122.00	3	0	2681	78.9	4.2	5.9	3	3.2	2.2	1.9	0.7	78.9	4.2	16.9	0.109	0.501
FRANCISCO R. SERRANO	137.50	3	0	2198	79.3	4.2	4.9	3.1	3.5	2.3	1.9	0.8	79.3	4.2	16.5	0.114	0.5
EL CHINERO	196.00	1	0	855	86.2	4.1	2.9	2	1.8	0.5	1.7	0.8	86.2	4.1	9.7	0.085	0.503

6 CARR : ENSENADA - LAZARO CARDENAS

CLAVE: 02098

ruta : MEX-001

AÑO : 2007

L U G A R	E S T A C I O N				CLASIFICACION VEHICULAR EN PORCIENTO .												
	KM	TE	SC	TDPA	A	B	C2	C3	T3S2	T3S3	T3S2R4	OTROS	A	B	C	K'	D
ENSENADA	0.00	3	1	8871	77.3	5.1	5.9	3.1	2.3	2.6	2.5	1.2	77.3	5.1	17.6	0.063	0.502
ENSENADA	0.00	3	2	8930	76	6.5	5.5	2.8	3.8	2.3	2.7	0.4	76	6.5	17.5	0.072	0.502
T. DER. AEROPUERTO	13.50	3	1	10533	76.3	6.3	5.4	2.8	3.8	2.3	2.7	0.4	76.3	6.3	17.4	0.08	0.5
T. DER. AEROPUERTO	13.50	3	2	10554	77.3	5.1	5.9	3.1	2.3	2.6	2.5	1.2	77.3	5.1	17.6	0.089	0.5
T. DER. LA BUFADORA	21.16	1	1	10848	74.4	4.6	4.4	3	4.4	2.8	3	3.4	74.4	4.6	21	0.083	0.503
T. DER. LA BUFADORA	21.16	1	2	10988	72.8	4.6	4.3	3.2	4.8	3.1	3.2	4	72.8	4.6	22.6	0.075	0.503
T. DER. LA BUFADORA	21.16	3	0	16216	80.6	4.9	3.3	1.2	2.8	1.9	1.3	4	80.6	4.9	14.5	0.066	0.505
SANTO TOMAS	52.00	1	0	5819	83.9	2.5	5	1.7	1.7	2.3	2.5	0.4	83.9	2.5	13.6	0.093	0.5
MISION SAN VICENTE	90.00	1	0	5368	77	5.8	5.6	2.8	3.2	2.3	2.5	0.8	77	5.8	17.2	0.089	0.502
EL SALADO	104.50	1	0	4796	81.7	4.4	5.5	2.3	1.6	2	2.5	0	81.7	4.4	13.9	0.092	0.502
PUNTA COLNETT	128.00	1	0	7262	79.8	4.1	5.7	2.9	3.4	2	1.5	0.6	79.8	4.1	16.1	0.089	0.501
PUNTA COLNETT	128.00	3	0	7084	81	4.4	5.5	2.3	1.8	2.3	2.4	0.3	81	4.4	14.6	0.089	0.501
CAMALU	159.00	1	0	7031	81.5	4.7	6.1	3.1	1.7	1.6	1.1	0.2	81.5	4.7	13.8	0.081	0.501
COLONIA VICENTE GUERRERO (LAZARO CARDENAS)	172.40	3	0	9870	82.5	4.1	5	2.2	3	2	1	0.2	82.5	4.1	13.4	0.085	0.501
SAN QUINTIN	193.00	1	0	11442	83.1	4.6	5.3	3.1	1.7	1.1	1	0.1	83.1	4.6	12.3	0.081	0.501

BAJA CALIFORNIA

10 CARR : LAZARO CARDENAS - PUNTA PRIETA

CLAVE: 02319

ruta : MEX-001

AÑO : 2007

L U G A R	E S T A C I O N				CLASIFICACION VEHICULAR EN PORCIENTO												
	KM	TE	SC	TDPA	A	B	C2	C3	T3S2	T3S3	T3S2R4	OTROS	A	B	C	K'	D
LAZARO CARDENAS	0.00	3	0	9065	74.7	5.8	7	3.8	4	2.7	1.8	0.2	74.7	5.8	19.5	0.076	0.503
ROSARIO DE ARRIBA	53.70	1	0	2276	79.7	4.4	5.2	2.5	3.6	2.8	1.6	0.2	79.7	4.4	15.9	0.072	0.501
ROSARIO DE ARRIBA	53.70	3	0	4120	83.8	3.6	3.7	3	3	1.6	1.1	0.2	83.8	3.6	12.6	0.067	0.502
T. DER. EMILIANO ZAPATA	80.00	3	0	1059	85.4	2.7	5.7	1.2	2.5	1	1.1	0.4	85.4	2.7	11.9	0.069	0.502
SAN AGUSTIN	140.00	1	0	1413	80.5	4.5	5.5	3.3	3	1.9	1	0.3	80.5	4.5	15	0.06	0.506
SAN AGUSTIN	140.00	3	0	1126	77.5	5.6	6.8	2.6	4	2.3	1.1	0.1	77.5	5.6	16.9	0.078	0.503
SAN LUIS	173.00	1	0	1452	77.6	5.5	6.3	3.1	4	2	1	0.5	77.6	5.5	16.9	0.062	0.509
RANCHO CHAPALA	222.80	1	0	1500	77.9	5.8	6.1	3.5	3.4	1.9	1	0.4	77.9	5.8	16.3	0.062	0.502
PARADOR PUNTA PRIETA	275.70	1	0	1437	76.8	6	6.3	3.7	3.7	1.9	1.1	0.5	76.8	6	17.2	0.063	0.502

11 CARR : MEXICALI - ALGODONES

CLAVE: 02012

ruta : BC-002

AÑO : 2007

L U G A R	E S T A C I O N				CLASIFICACION VEHICULAR EN PORCIENTO												
	KM	TE	SC	TDPA	A	B	C2	C3	T3S2	T3S3	T3S2R4	OTROS	A	B	C	K'	D
T. C. MEXICALI - SAN FELIPE	0.00	0	0														
EJIDO PUEBLA	12.00	3	0	8932	80.7	3.4	5.1	4	2.2	1.6	1.5	1.5	80.7	3.4	15.9	0.066	0.501
T. C. GEOTERMICA - ESTACION DELTA	31.50	1	0	6236	84.4	2.1	4.7	2.3	2	1.2	2	1.3	84.4	2.1	13.5	0.075	0.502
X. C. MEXICALI - ESTACION COAHUILA	37.70	1	0	5803	86.5	2.9	3.6	2.5	1.4	1.1	1.3	0.7	86.5	2.9	10.6	0.067	0.501
X. C. MEXICALI - ESTACION COAHUILA	37.70	3	0	5619	87.3	3.1	3.2	2.1	1.2	0.8	1.2	1.1	87.3	3.1	9.6	0.081	0.501
X. C. EJIDO MONTERREY - MAZON	49.65	1	0	4822	84	4.2	3.4	2.6	1.9	1.4	1.2	1.3	84	4.2	11.8	0.071	0.505
X. C. EJIDO MONTERREY - MAZON	49.65	3	0	1717	90	3.1	2.2	0.9	1.6	0.9	1	0.3	90	3.1	6.9	0.073	0.504
T. IZQ. TRES DE MARZO	60.50	1	0	2113	84.6	4.4	4.4	2.1	1.8	0.9	1.1	0.7	84.6	4.4	11	0.074	0.5
X. C. SONOITA - MEXICALI	72.00	1	0	2312	87.3	4.1	2.4	1.2	1.9	0.4	2.3	0.4	87.3	4.1	8.6	0.067	0.5
X. C. SONOITA - MEXICALI	72.00	3	0	4198	85.3	5.1	2.6	1.4	1.6	1.4	1.7	0.9	85.3	5.1	9.6	0.065	0.503
PACHUCA	83.00	1	0	4007	83.7	4.7	4.7	2.4	1.7	0.8	1.5	0.5	83.7	4.7	11.6	0.07	0.502
ALGODONES	94.46	1	0	2998	81.2	6.9	4.5	2.9	1.5	0.7	1.5	0.8	81.2	6.9	11.9	0.091	0.5

12 CARR : MEXICALI - ESTACION COAHUILA

CLAVE: 02016

ruta : BC-001

AÑO : 2007

L U G A R	E S T A C I O N				CLASIFICACION VEHICULAR EN PORCIENTO												
	KM	TE	SC	TDPA	A	B	C2	C3	T3S2	T3S3	T3S2R4	OTROS	A	B	C	K'	D
MEXICALI	0.00	3	1	12314	78.2	3.9	7.1	4.3	2	2	2	0.5	78.2	3.9	17.9	0.069	0.503
MEXICALI	0.00	3	2	12456	80	3.1	6.3	3.2	2	2.4	2.3	0.7	80	3.1	16.9	0.076	0.503
T. IZQ. AEROPUERTO	11.30	1	1	6240	77.4	3	9.9	3.8	2	2.1	1.8	0	77.4	3	19.6	0.091	0.501

BAJA CALIFORNIA

12 CARR : MEXICALI - ESTACION COAHUILA

CLAVE: 02016

RUTA : BC-001

AÑO : 2007

L U G A R	E S T A C I O N				CLASIFICACION VEHICULAR EN PORCIENTO													
	KM	TE	SC	TDPA	A	B	C2	C3	T3S2	T3S3	T3S2R4	OTROS	A	B	C	K'	D	
T. IZQ. AEROPUERTO	11.30	1	2	6170	81.2	2.8	7.5	3.5	0.9	2	1.3	0.8	81.2	2.8	16	0.085	0.501	
ISLAS AGRARIAS GRUPO A	14.10	1	0	12063	80.2	4.8	6.5	1.4	1.8	2.9	1.8	0.6	80.2	4.8	15	0.07	0.502	
X. C. SONOITA - MEXICALI	30.79	1	0	4644	86.3	3.7	3.5	1.5	1.9	1.5	0.8	0.8	86.3	3.7	10	0.081	0.5	
X. C. SONOITA - MEXICALI	30.79	3	0	4353	88.3	3.4	2.7	1.5	1.2	1.1	1.3	0.5	88.3	3.4	8.3	0.078	0.503	
EJIDO NUEVO LEON	46.83	1	0	4918	75.2	6.1	6.1	3.8	3.6	2.2	2.1	0.9	75.2	6.1	18.7	0.106	0.504	
EJIDO NUEVO LEON	46.83	3	0	7175	90.8	1.8	2.5	1.2	1	0.8	1.2	0.7	90.8	1.8	7.4	0.069	0.501	
T. DER. LA PUERTA	60.26	1	0	3575	88	2.7	2.5	1.6	1.3	1.2	1.6	1.1	88	2.7	9.3	0.076	0.503	
X. C. EL FARO - ESTACION COAHUILA	71.30	1	0	1854	90.5	3.8	2.1	0.8	1.4	0.6	0.5	0.3	90.5	3.8	5.7	0.074	0.504	
T. DER. LEONA VICARIO	80.50	1	0	1778	85.6	3	4.2	2.5	1.9	1.1	1	0.7	85.6	3	11.4	0.079	0.5	
ESTACION COAHUILA	96.65	1	0	1717	90	3.1	2.2	0.9	1.6	0.9	1	0.3	90	3.1	6.9	0.073	0.504	

13 CARR : MEXICALI - PROGRESO

CLAVE: 02507

RUTA : BC-005

AÑO : 2007

L U G A R	E S T A C I O N				CLASIFICACION VEHICULAR EN PORCIENTO													
	KM	TE	SC	TDPA	A	B	C2	C3	T3S2	T3S3	T3S2R4	OTROS	A	B	C	K'	D	
T. C. MEXICALI - TIJUANA	0.00	0	0															
PROGRESO	15.30	1	0	4138	74.9	5.6	9	5.1	2.1	1.7	1.5	0.1	74.9	5.6	19.5	0.064	0.501	

14 CARR : MEXICALI - SAN FELIPE

CLAVE: 02096

RUTA : MEX-005

AÑO : 2007

L U G A R	E S T A C I O N				CLASIFICACION VEHICULAR EN PORCIENTO													
	KM	TE	SC	TDPA	A	B	C2	C3	T3S2	T3S3	T3S2R4	OTROS	A	B	C	K'	D	
MEXICALI	0.00	3	1	15251	78.5	4.1	5.4	4.7	2.6	2.6	1	1.1	78.5	4.1	17.4	0.069	0.502	
MEXICALI	0.00	3	2	15129	80.2	3.2	4.6	4.2	3.4	2.3	0.7	1.4	80.2	3.2	16.6	0.07	0.502	
LA PUERTA	32.00	1	1	4846	78.7	3.1	3.8	3.2	5.8	2.6	1.6	1.2	78.7	3.1	18.2	0.077	0.504	
LA PUERTA	32.00	1	2	4778	78.1	3.4	5.8	3.6	3.6	2.8	1.3	1.4	78.1	3.4	18.5	0.075	0.504	
T. IZQ. ESTACION COAHUILA	39.00	1	1	3368	78.1	6.1	4	4.8	2.9	1	2.1	1	78.1	6.1	15.8	0.074	0.502	
T. IZQ. ESTACION COAHUILA	39.00	1	2	3341	78.1	4.9	7.6	3.4	3.2	0.9	1.9	0	78.1	4.9	17	0.078	0.502	
T. IZQ. ESTACION COAHUILA	39.00	3	0	3717	85.5	2.7	2.5	2.5	2.6	0.8	2.2	1.2	85.5	2.7	11.8	0.075	0.504	
EL CHINERO	141.00	1	0	2409	83.3	3.4	5.9	2.4	1.6	0.6	2.3	0.5	83.3	3.4	13.3	0.099	0.502	
EL CHINERO	141.00	3	0	2221	91.7	2.4	1.3	0.2	1.3	1.2	1.4	0.5	91.7	2.4	5.9	0.089	0.503	
SAN FELIPE	189.60	1	0	6367	89.2	2.6	1.7	1.9	1.1	1.1	1.4	1	89.2	2.6	8.2	0.094	0.504	

BAJA CALIFORNIA

17 CARR : PARADOR PUNTA PRIETA - BAHIA DE LOS ANGELES

CLAVE: 02322

RUTA : MEX

AÑO : 2007

L U G A R	E S T A C I O N				CLASIFICACION VEHICULAR EN PORCIENTO .												
	KM	TE	SC	TDPA	A	B	C2	C3	T3S2	T3S3	T3S2R4	OTROS	A	B	C	K'	D
PARADOR PUNTA PRIETA	0.00	3	0	178	100	0	0	0	0	0	0	0	100	0	0	0.107	0.503
BAHIA DE LOS ANGELES	68.00	1	0	216	92.7	3.4	3.8	0.1	0	0	0	0	92.7	3.4	3.9	0.125	0.536

18 CARR : RAMAL A AEROPUERTO DE MEXICALI

CLAVE: 02321

RUTA : MEX

AÑO : 2007

L U G A R	E S T A C I O N				CLASIFICACION VEHICULAR EN PORCIENTO .												
	KM	TE	SC	TDPA	A	B	C2	C3	T3S2	T3S3	T3S2R4	OTROS	A	B	C	K'	D
T. C. MEXICALI - ESTACION COAHUILA	0.00	3	0	8640	89.1	3.5	2.8	1.2	0.4	1.2	1.6	0.2	89.1	3.5	7.4	0.069	0.501
AEROPUERTO	10.00	1	0	3641	86	2.8	3.5	3.7	2.5	1.1	0	0.4	86	2.8	11.2	0.09	0.5
T. C. ALGODONES - ISLAS AGRARIAS GRUPO B	12.10	0	0														

19 CARR : RAMAL A SANTA MARIA

CLAVE: 02506

RUTA : MEX

AÑO : 2007

L U G A R	E S T A C I O N				CLASIFICACION VEHICULAR EN PORCIENTO .												
	KM	TE	SC	TDPA	A	B	C2	C3	T3S2	T3S3	T3S2R4	OTROS	A	B	C	K'	D
T. C. LAZARO CARDENAS - PUNTA PRIETA	0.00	3	0	2429	83.8	3.1	5.9	3.1	1.7	1.2	1	0.2	83.8	3.1	13.1	0.079	0.503
T. C. LAZARO CARDENAS - PARADOR PUNTA PRIETA	9.50	0	0														

20 CARR : SAN FELIPE - CHAPALA

CLAVE: 02503

RUTA : MEX

AÑO : 2007

L U G A R	E S T A C I O N				CLASIFICACION VEHICULAR EN PORCIENTO .												
	KM	TE	SC	TDPA	A	B	C2	C3	T3S2	T3S3	T3S2R4	OTROS	A	B	C	K'	D
SAN FELIPE	0.00	3	0	1965	89.7	2.9	2.7	1.1	0.7	0.9	1.5	0.5	89.7	2.9	7.4	0.079	0.503
PLAYA CURBINA	75.46	3	0	926	87.1	2.9	3.4	0.4	1.6	1.2	2.8	0.6	87.1	2.9	10	0.106	0.502
T. C. LAZARO CARDENAS - PARADOR PUNTA PRIETA	213.00	0	0														

21 CARR : TECATE - EL SAUZAL

CLAVE: 02097

RUTA : MEX-003

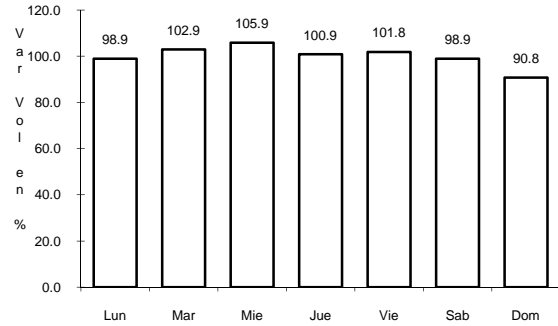
AÑO : 2007

L U G A R	E S T A C I O N				CLASIFICACION VEHICULAR EN PORCIENTO .												
	KM	TE	SC	TDPA	A	B	C2	C3	T3S2	T3S3	T3S2R4	OTROS	A	B	C	K'	D
TECATE	0.00	3	0	7910	78.9	4.6	2.1	1.8	4.7	3.1	1.6	3.2	78.9	4.6	16.5	0.08	0.505
T. DER. VALLE DE LAS PALMAS	27.80	1	0	4193	71.4	4.3	2.9	1.8	11	5.8	1.3	1.5	71.4	4.3	24.3	0.076	0.503
EL TEZTERAZO	48.80	3	0	3122	72.6	4.7	4.1	2	12.2	1.8	1.1	1.5	72.6	4.7	22.7	0.094	0.509
T. IZQ. SAN MARCOS	63.50	1	0	2458	69.2	6.1	14.8	3.3	4.2	1.5	0	0.9	69.2	6.1	24.7	0.091	0.529

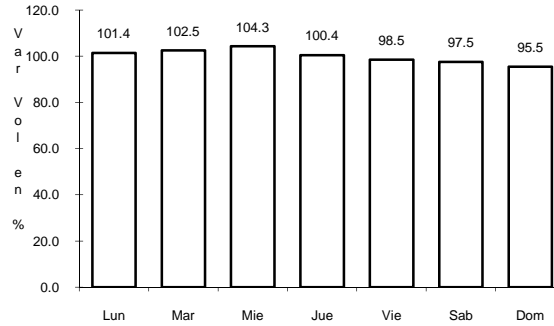
1 CARR: PUNTA PRIETA - GUERRERO NEGRO

CLAVE: 00321

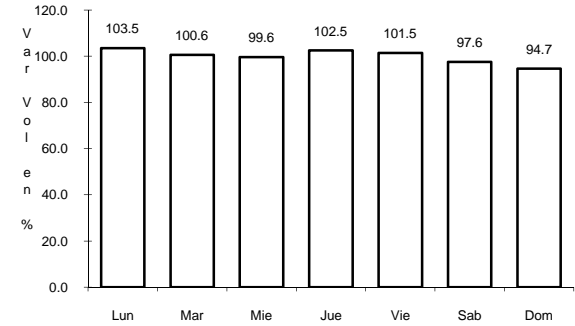
RUTA: MEX-001



Km: 0.00 Tipo: 3 Sent: 0



Km: 70.10 Tipo: 3 Sent: 0

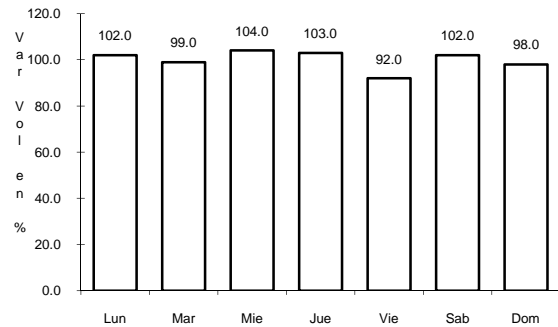


Km: 130.00 Tipo: 1 Sent: 0

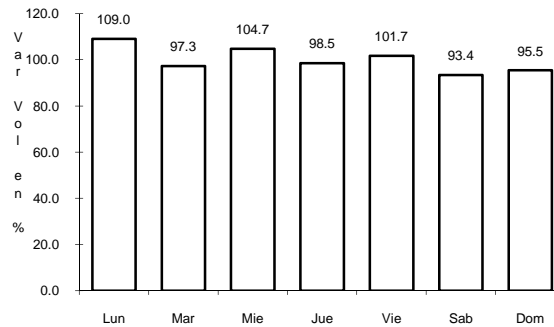
2 CARR: ALGODONES - ISLAS AGRARIAS GRUPO B

CLAVE: 02006

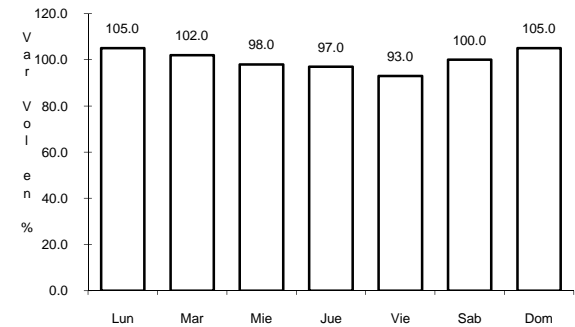
RUTA: BC-008



Km: 0.00 Tipo: 3 Sent: 0



Km: 31.50 Tipo: 1 Sent: 0

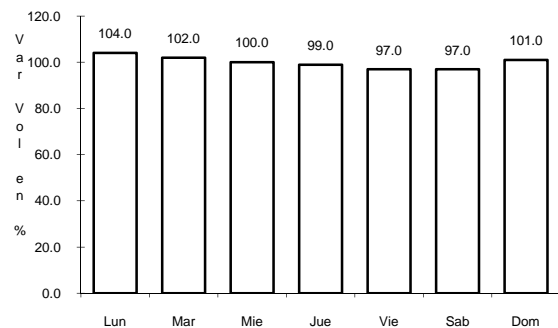


Km: 55.50 Tipo: 1 Sent: 0

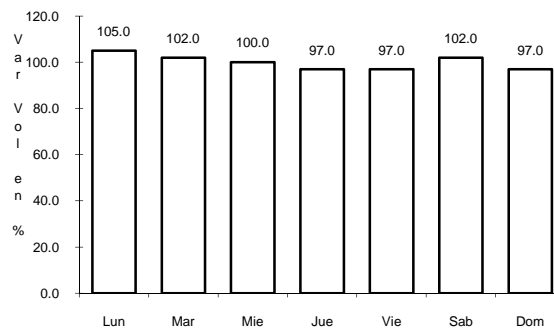
3 CARR: EJIDO BENITO JUAREZ - EJIDO CHIAPAS

CLAVE: 02501

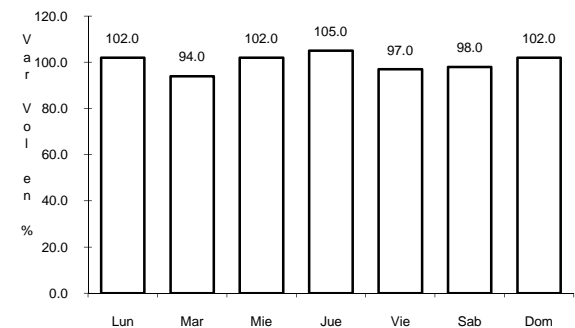
RUTA: BC-061



Km: 0.00 Tipo: 3 Sent: 0



Km: 7.00 Tipo: 1 Sent: 0

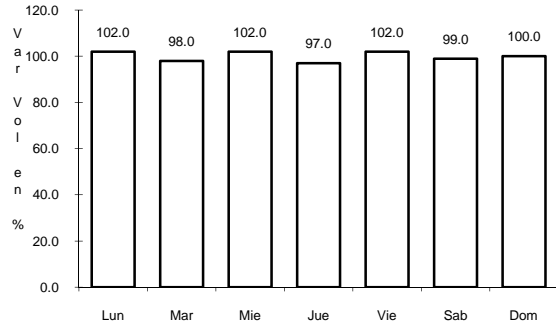


Km: 10.56 Tipo: 1 Sent: 0

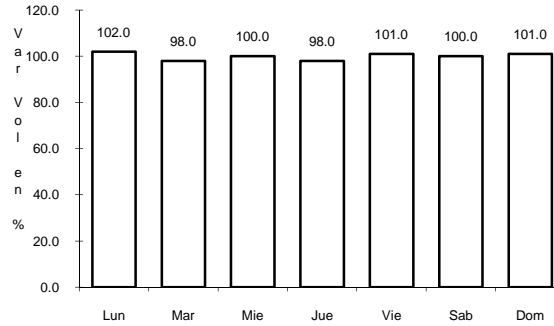
7 CARR: EL FARO - ESTACION COAHUILA

CLAVE: 02013

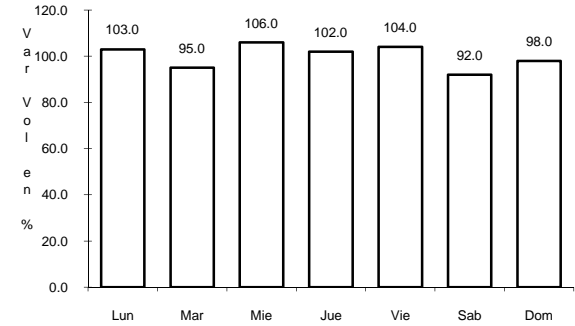
RUTA: BC-004



Km: 0.00 Tipo: 3 Sent: 0



Km: 16.30 Tipo: 1 Sent: 0

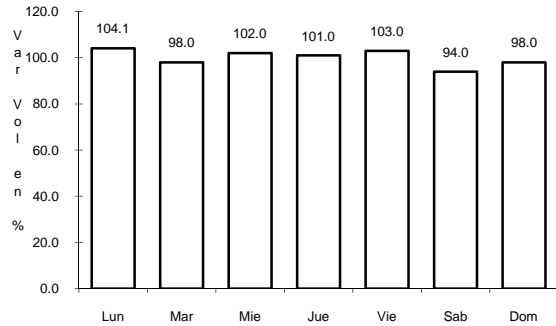


Km: 34.50 Tipo: 1 Sent: 0

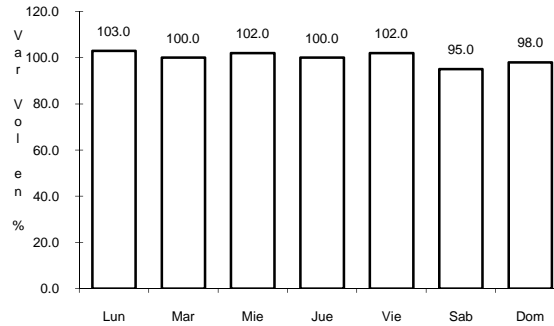
8 CARR: LA PUERTA - T. C. (MEXICALI - ESTACION COAHUILA)

CLAVE: 02502

RUTA: BC-010



Km: 4.60 Tipo: 1 Sent: 0

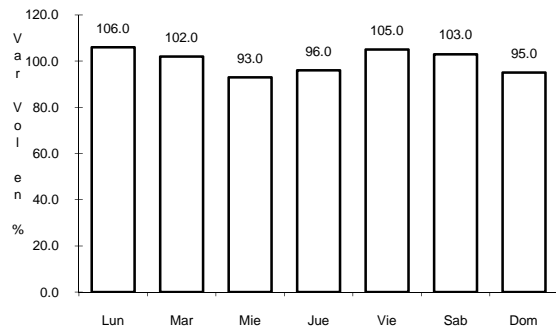


Km: 9.00 Tipo: 3 Sent: 0

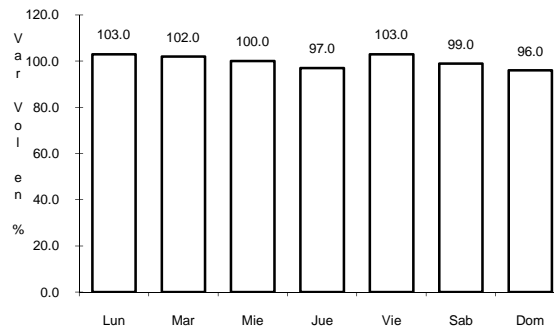
9 CARR: SANTA ROSA - ENT. PACHUCA

CLAVE: 02015

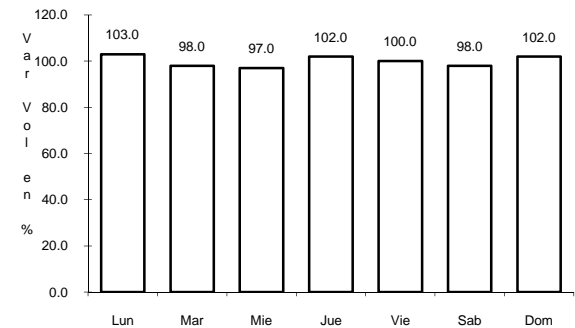
RUTA: BC-006



Km: 0.00 Tipo: 3 Sent: 0



Km: 10.90 Tipo: 3 Sent: 0

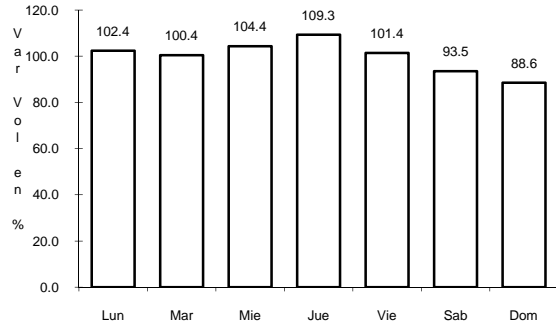


Km: 18.00 Tipo: 3 Sent: 0

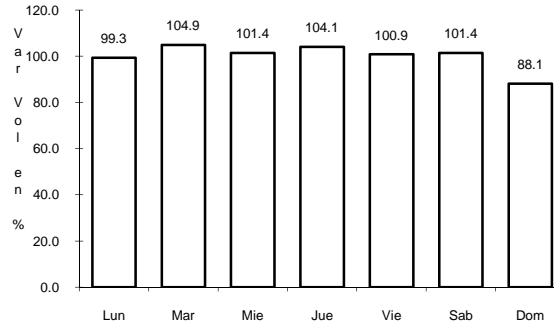
10 CARR: LAZARO CARDENAS - PUNTA PRIETA

CLAVE: 02319

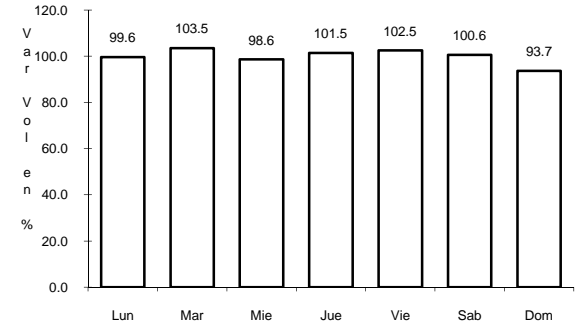
RUTA: MEX-001



Km: 0.00 Tipo: 3 Sent: 0



Km: 140.00 Tipo: 1 Sent: 0

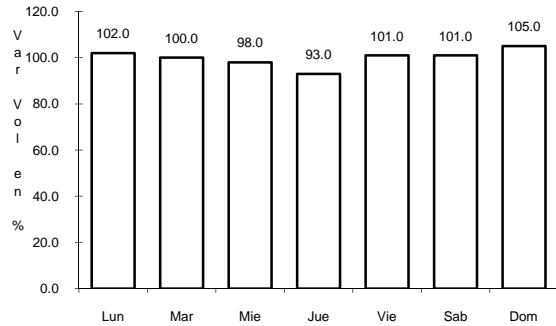


Km: 275.66 Tipo: 1 Sent: 0

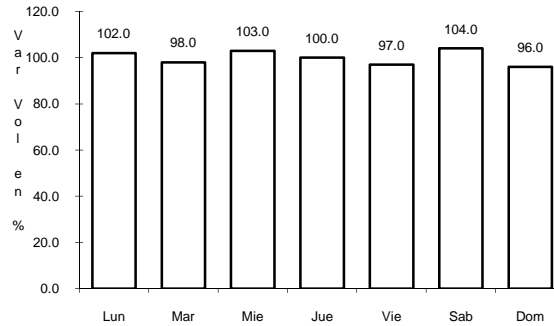
11 CARR: MEXICALI - ALGODONES

CLAVE: 02012

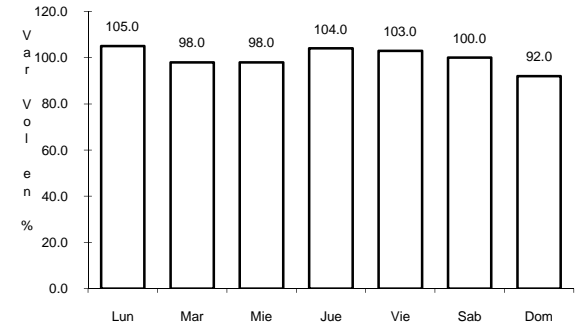
RUTA: BC-002



Km: 12.00 Tipo: 3 Sent: 0



Km: 49.65 Tipo: 1 Sent: 0

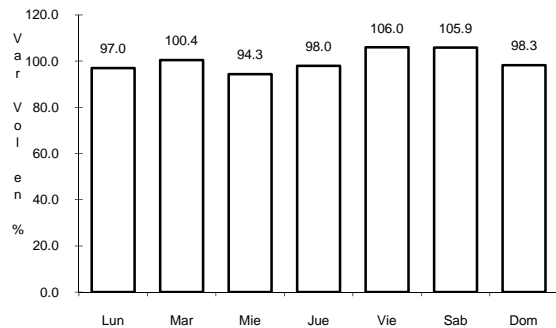


Km: 94.46 Tipo: 1 Sent: 0

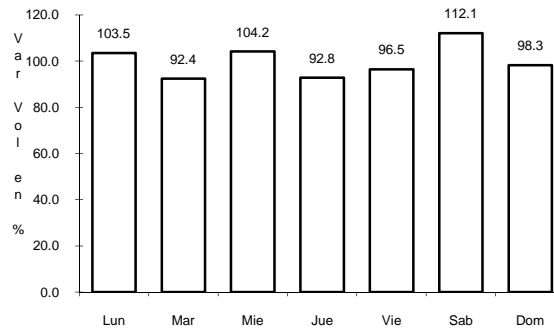
12 CARR: MEXICALI - ESTACION COAHUILA

CLAVE: 02016

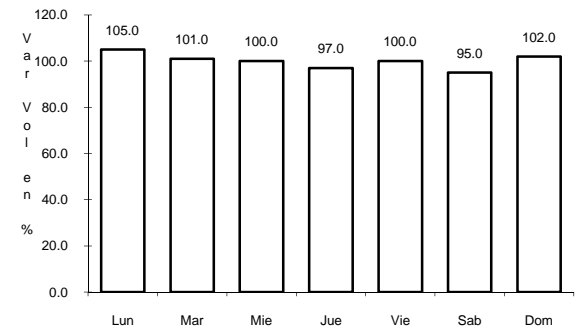
RUTA: BC-001



Km: 0.00 Tipo: 3 Sent: 1



Km: 0.00 Tipo: 3 Sent: 2

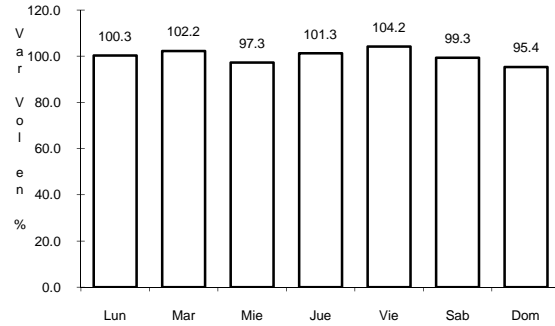


Km: 96.65 Tipo: 1 Sent: 0

13 CARR: MEXICALI - PROGRESO

CLAVE: 02507

RUTA: BC-005

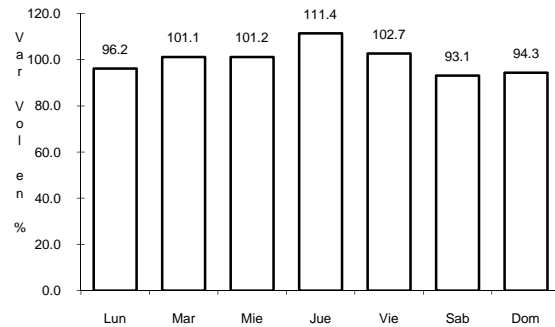


Km: 15.30 Tipo: 1 Sent: 0

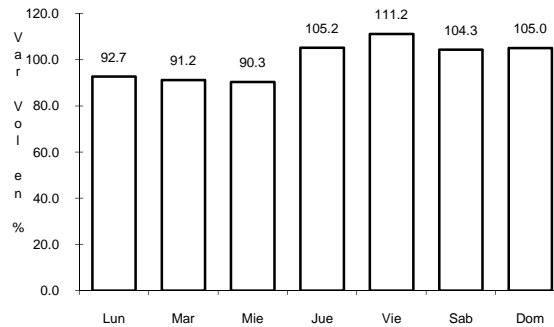
14 CARR: MEXICALI - SAN FELIPE

CLAVE: 02096

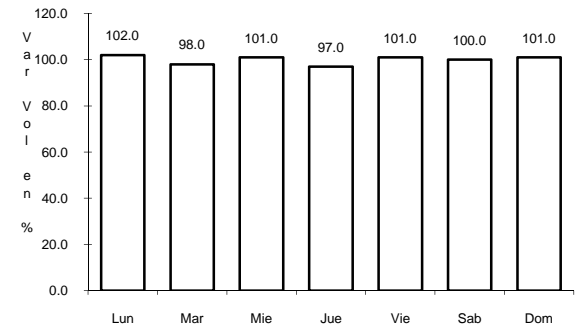
RUTA: MEX-005



Km: 0.00 Tipo: 3 Sent: 1



Km: 0.00 Tipo: 3 Sent: 2

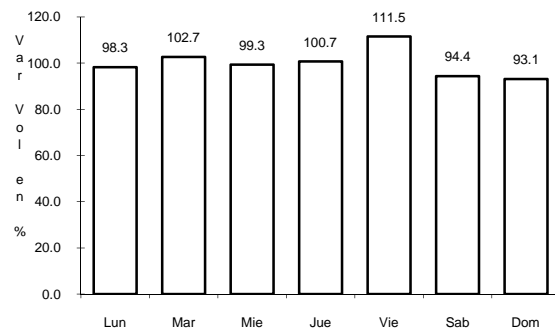


Km: 189.60 Tipo: 1 Sent: 0

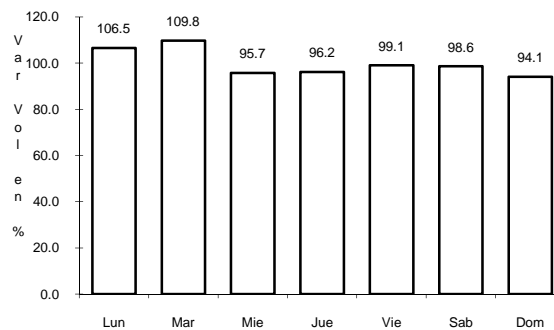
15 CARR: MEXICALI - TIJUANA

CLAVE: 02082

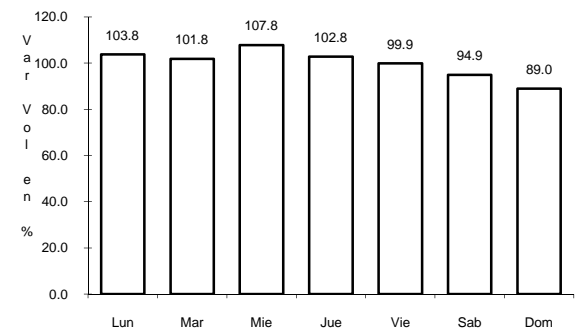
RUTA: MEX-002



Km: 7.80 Tipo: 3 Sent: 1



Km: 7.80 Tipo: 3 Sent: 2

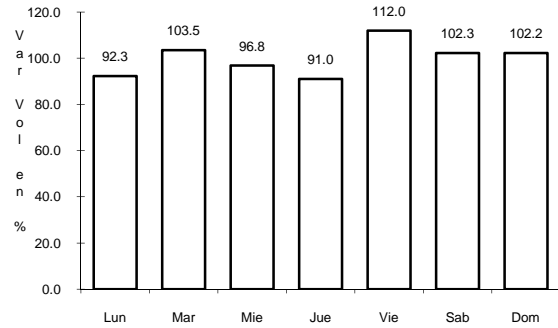


Km: 165.00 Tipo: 3 Sent: 0

16 CARR: MEXICALI - TIJUANA (CUOTA)

CLAVE: 02011

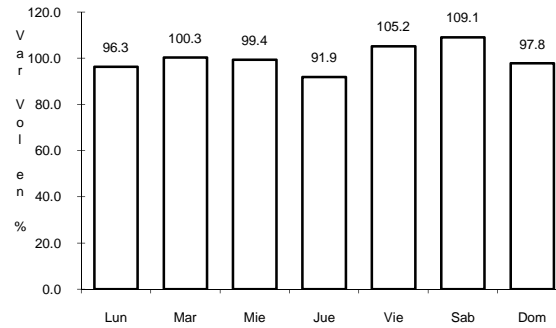
RUTA: MEX-002D



Km: 19.35

Tipo: 3

Sent: 1



Km: 19.35

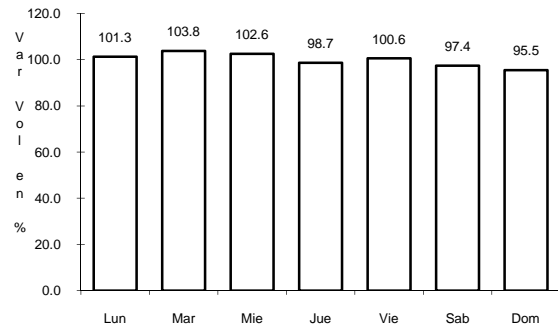
Tipo: 3

Sent: 2

17 CARR: PARADOR PUNTA PRIETA - BAHIA DE LOS ANGELES

CLAVE: 02322

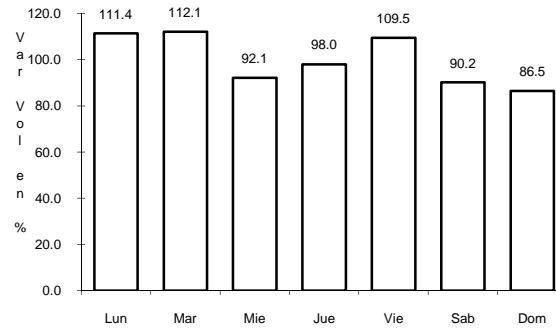
RUTA: MEX



Km: 0.00

Tipo: 3

Sent: 0



Km: 68.00

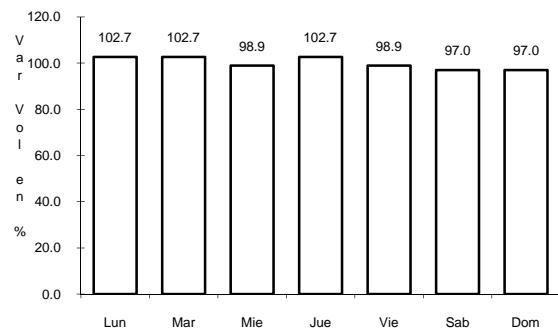
Tipo: 1

Sent: 0

18 CARR: RAMAL A AEROPUERTO DE MEXICALI

CLAVE: 02321

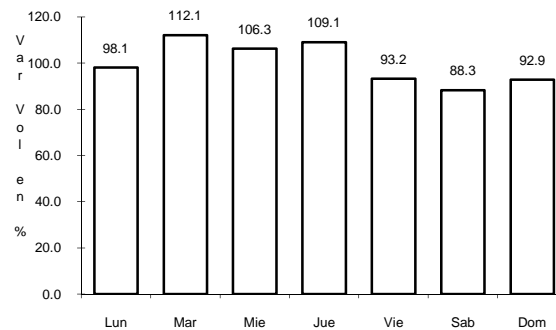
RUTA: MEX



Km: 0.00

Tipo: 3

Sent: 0



Km: 10.00

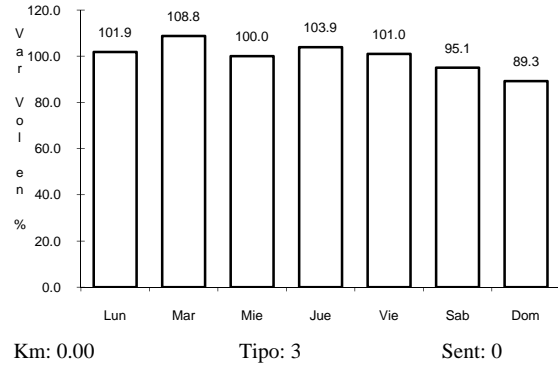
Tipo: 1

Sent: 0

19 CARR: RAMAL A SANTA MARIA

CLAVE: 02506

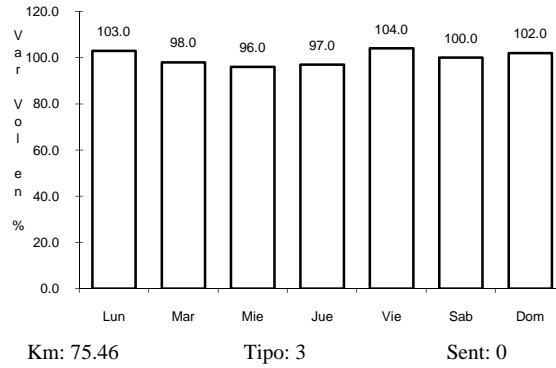
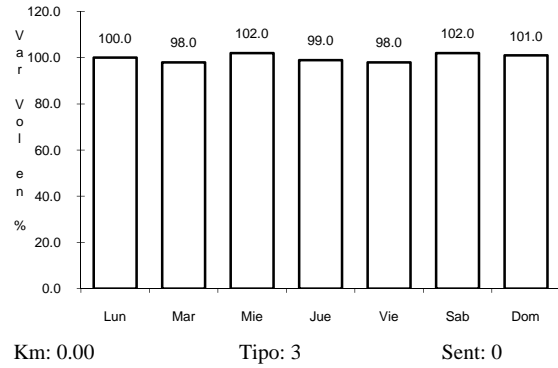
RUTA: MEX



20 CARR: SAN FELIPE - CHAPALA

CLAVE: 02503

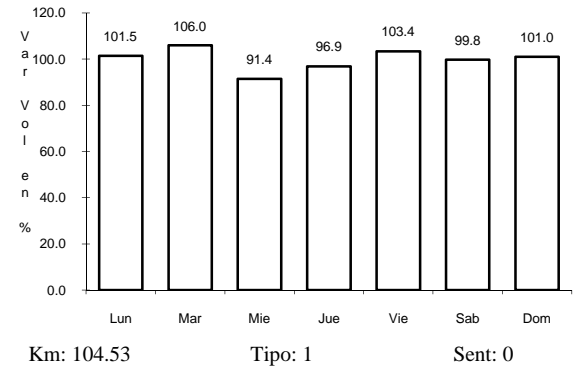
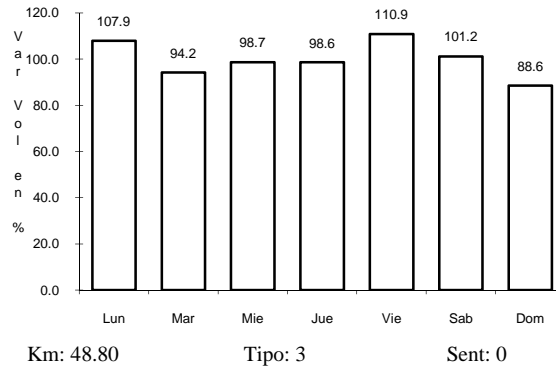
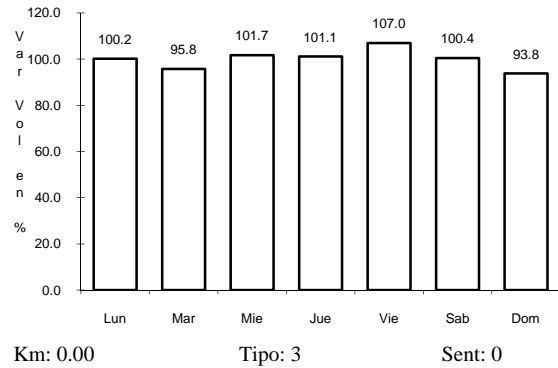
RUTA: MEX



21 CARR: TECATE - EL SAUZAL

CLAVE: 02097

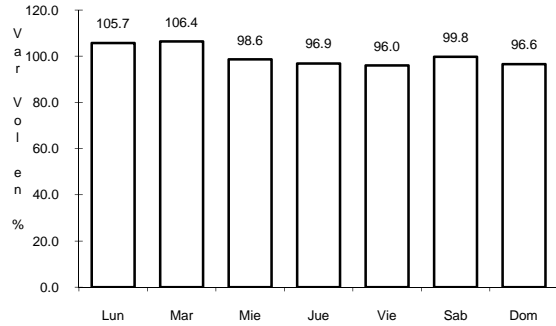
RUTA: MEX-003



22 CARR: TIJUANA - ENSENADA (LIBRE)

CLAVE: 02099

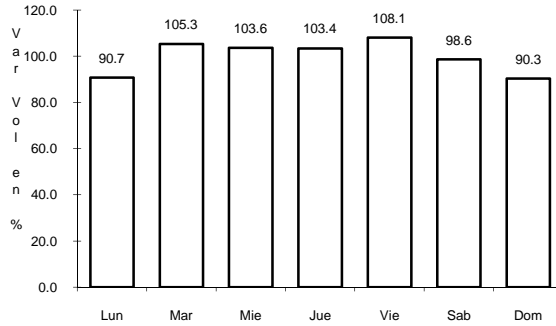
ruta: MEX-001



Km: 22.00

Tipo: 1

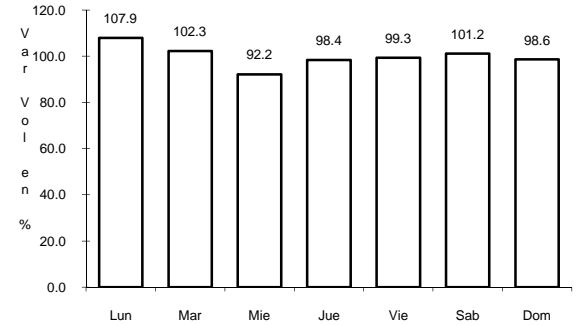
Sent: 1



Km: 22.00

Tipo: 1

Sent: 2



Km: 95.80

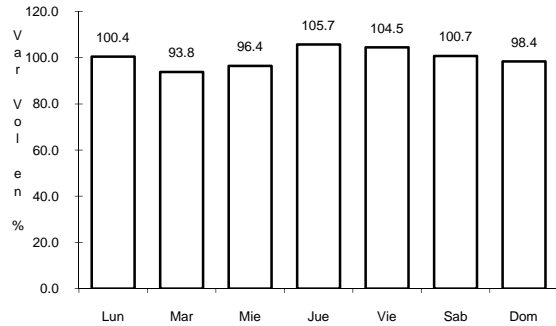
Tipo: 1

Sent: 0

24 CARR: SONOYTA - MEXICALI

CLAVE: 00081

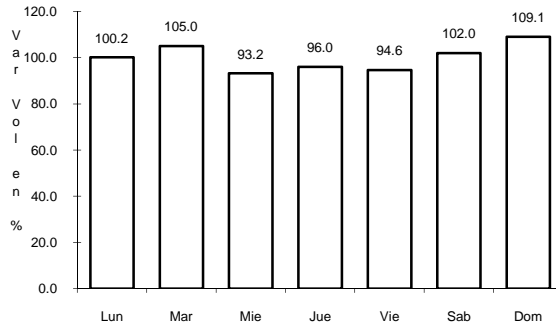
ruta: MEX-002



Km: 0.00

Tipo: 3

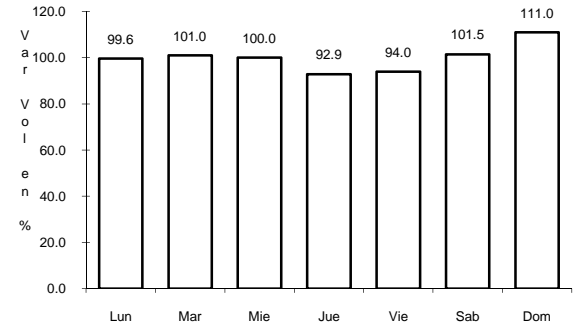
Sent: 0



Km: 256.47

Tipo: 1

Sent: 1



Km: 256.47

Tipo: 1

Sent: 2