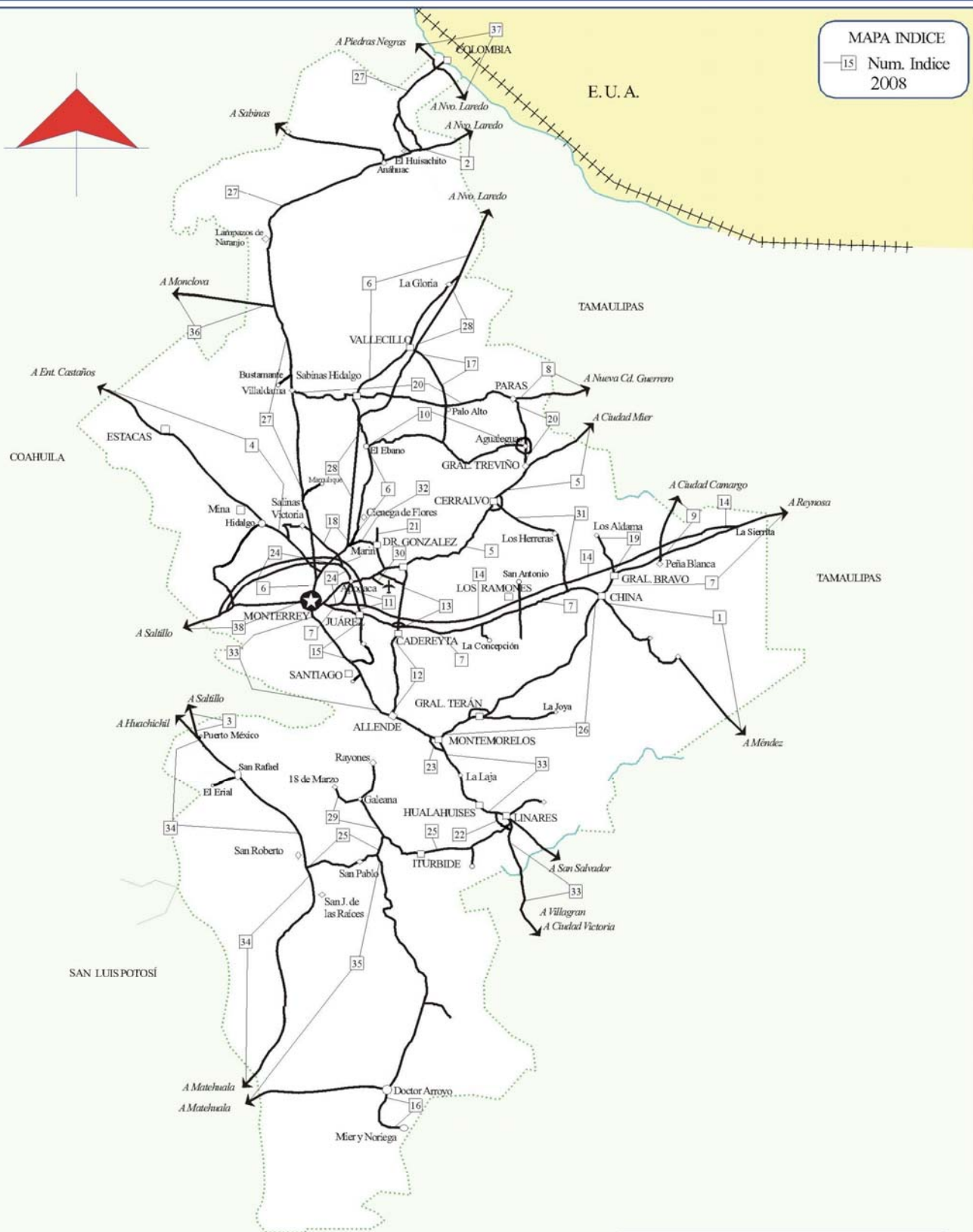
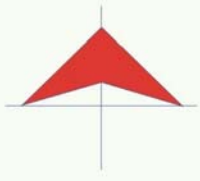


MAPA INDICE

15 Num. Indice  
2008



# 19 NUEVO LEON

Secretaría de Comunicaciones y Transportes

## CARRETERAS AFORADAS

Num. INDICE	CARRETERA
1	CHINA - MENDEZ
2	ENT. HUISACHITO - NUEVO LAREDO
3	AUT. PUERTO MEXICO - OJO CALIENTE
4	MONTERREY - CASTAÑOS
5	MONTERREY - MIER
6	MONTERREY - NUEVO LAREDO (LIBRE)
7	MONTERREY - REYNOSA (LIBRE)
8	PARAS - NUEVA CIUDAD GUERRERO
9	PEÑA BLANCA - CD. CAMARGO
10	AGUALEGUAS - EL EBANO
11	APODACA - VILLA JUAREZ
12	CADEREYTA DE JIMENEZ - ALLENDE
13	CADEREYTA DE JIMENEZ - DOCTOR GONZALEZ
14	CADEREYTA DE JIMENEZ - LA SIERRITA (CUOTA)
15	CD. BENITO JUAREZ - VILLA DE SANTIAGO
16	DOCTOR ARROYO - MIER Y NORIEGA
17	PALO ALTO - VALLECILLOS
18	SANTA ROSA - SALINAS VICTORIA
19	GRAL. BRAVO - LOS ALDAMAS
20	GRAL. TREVIÑO - VILLA ALDAMA
21	HACIENDA GUADALUPE - HIGUERAS
22	LIBRAMIENTO DE LINARES
23	LIBRAMIENTO DE MONTEMORELOS
24	LIBRAMIENTO NOROESTE DE MONTERREY
25	LINARES - ENT. SAN ROBERTO
26	MONTEMORELOS - CHINA
27	MONTERREY - COLOMBIA
28	MONTERREY - NUEVO LAREDO (CUOTA)
29	RAMAL A 18 DE MARZO
30	RAMAL A AEROPUERTO MARIANO ESCOBEDO
31	RAMAL A CERRALVO
32	RAMAL A MARIN
33	CIUDAD VICTORIA - MONTERREY
34	MATEHUALA - ENT. PUERTO MEXICO
35	MATEHUALA - LA POZA
36	MONCLOVA - ESTACION CANDELA
37	PIEDRAS NEGRAS - NUEVO LAREDO
38	SALTILLO - MONTERREY



NUEVO LEON

4 CARR : MONTERREY - CASTAÑOS

CLAVE: 00128

RUTA : MEX-053

AÑO : 2007

L U G A R	E S T A C I O N				C L A S I F I C A C I O N V E H I C U L A R E N P O R C I E N T O .												
	KM	TE	SC	TDPA	A	B	C2	C3	T3S2	T3S3	T3S2R4	OTROS	A	B	C	K'	D
T. C. MONTERREY - NUEVO LAREDO	0.00	3	0	11022	83.3	2.6	5.3	2.5	3.1	2	0.4	0.8	83.3	2.6	14.1	0.098	0.501
X. C. LIBRAMIENTO NOROESTE DE MONTERREY	3.46	3	0	14338	85.5	5.1	2.9	1.6	1.6	1.9	0.5	0.9	85.5	5.1	9.4	0.088	0.5
T. DER. VILLA DEL CARMEN	13.80	1	0	11293	76.7	5.9	5.6	3	4.6	2.9	0.5	0.8	76.7	5.9	17.4	0.074	0.5
T. IZQ. HIDALGO	24.78	1	0	10605	76.6	5.8	8.1	2.7	3.1	1.8	0.8	1.1	76.6	5.8	17.6	0.081	0.503
T. IZQ. HIDALGO	24.78	3	0	6658	77.2	5.7	6.7	3.1	2.7	2.4	1.1	1.1	77.2	5.7	17.1	0.093	0.501
T. IZQ. MINA	34.75	1	0	6177	77.6	3.9	4.7	4.3	4.6	3.3	0.8	0.8	77.6	3.9	18.5	0.083	0.502
T. IZQ. ESPINAZO	91.90	1	0	3393	61.9	5.4	3.6	3.9	10.1	8.5	5.2	1.4	61.9	5.4	32.7	0.079	0.506
T. IZQ. ESPINAZO	91.90	3	0	3244	61.4	4.8	4.2	4	10.5	8.4	5.3	1.4	61.4	4.8	33.8	0.082	0.501
LIM. EDOS. TERM. N.L. PPIA. COAH.	124.00	0	0														
T. C. SALTILLO - MONCLOVA	172.00	1	0	4894	70.6	5.4	3.6	3.1	6.8	4.9	4.2	1.4	70.6	5.4	24	0.076	0.504

5 CARR : MONTERREY - MIER

CLAVE: 00127

RUTA : MEX-054

AÑO : 2007

L U G A R	E S T A C I O N				C L A S I F I C A C I O N V E H I C U L A R E N P O R C I E N T O .												
	KM	TE	SC	TDPA	A	B	C2	C3	T3S2	T3S3	T3S2R4	OTROS	A	B	C	K'	D
MONTERREY	0.00	0	0														
APODACA	19.12	1	1	26597	69.7	2.8	3.5	1.8	9.9	2.6	5.7	4	69.7	2.8	27.5	0.08	0.501
APODACA	19.12	1	2	26514	67.8	3	2.9	1.8	11.1	2.7	6.6	4.1	67.8	3	29.2	0.079	0.501
X. C. LIBRAMIENTO NOROESTE DE MONTERREY	21.30	3	1	22251	73.3	3.7	2.3	2.1	9.3	1.9	3.8	3.6	73.3	3.7	23	0.078	0.503
X. C. LIBRAMIENTO NOROESTE DE MONTERREY	21.30	3	2	22522	74	2.7	2.1	2.2	8.2	2.6	4.5	3.7	74	2.7	23.3	0.067	0.503
X. C. ZACATECAS - PESQUERIA	28.15	1	0	9192	72.8	2.3	3.5	5.6	8	2.2	3.8	1.8	72.8	2.3	24.9	0.088	0.504
X. C. HACIENDA GUADALUPE - HIGUERAS	38.10	3	0	6386	82.6	2.4	1.7	1.5	3.6	2.1	4.9	1.2	82.6	2.4	15	0.083	0.515
T. DER. EMPALME LOS RAMONES	74.10	1	0	3956	76.8	3.1	1.8	2.5	4	4.2	7	0.6	76.8	3.1	20.1	0.084	0.512
CERRALVO	95.95	1	0	3684	71.7	3.6	1.5	2.2	3.5	5	11.8	0.7	71.7	3.6	24.7	0.094	0.505
GRAL. TREVIÑO	115.80	3	0	3738	64.7	4.4	1.3	2	4.7	7.1	15.4	0.4	64.7	4.4	30.9	0.078	0.501
LIM. EDOS. TERM. NL. PPIA. TAMP.	132.80	0	0														
MIER	156.20	1	0	3916	60	3.9	13.9	1.7	3.1	5.3	9.7	2.4	60	3.9	36.1	0.085	0.503

6 CARR : MONTERREY - NUEVO LAREDO (LIBRE)

CLAVE: 00463

RUTA : MEX-085

AÑO : 2007

L U G A R	E S T A C I O N				C L A S I F I C A C I O N V E H I C U L A R E N P O R C I E N T O .												
	KM	TE	SC	TDPA	A	B	C2	C3	T3S2	T3S3	T3S2R4	OTROS	A	B	C	K'	D
MONTERREY	0.00	0	0														
T. IZQ. GRAL. ESCOBEDO	12.10	3	1	18719	67.3	2.4	2.1	2.9	8.8	3.2	8.4	4.9	67.3	2.4	30.3	0.081	0.523
T. IZQ. GRAL. ESCOBEDO	12.10	3	2	17065	64.3	2.8	2.7	2.4	9.8	3.8	9.8	4.4	64.3	2.8	32.9	0.064	0.523

NUEVO LEON

6 CARR : MONTERREY - NUEVO LAREDO (LIBRE)

CLAVE: 00463

RUTA : MEX-085

AÑO : 2007

L U G A R	E S T A C I O N				C L A S I F I C A C I O N V E H I C U L A R E N P O R C I E N T O .												
	KM	TE	SC	TDPA	A	B	C2	C3	T3S2	T3S3	T3S2R4	OTROS	A	B	C	K'	D
X. C. LIBRAMIENTO NOROESTE DE MONTERREY	16.00	1	1	16481	71	3.3	2.6	3.3	9.7	2.9	4	3.2	71	3.3	25.7	0.085	0.506
X. C. LIBRAMIENTO NOROESTE DE MONTERREY	16.00	1	2	16870	70.4	3.6	2.7	2.5	9.7	3	4.9	3.2	70.4	3.6	26	0.088	0.506
X. C. LIBRAMIENTO NOROESTE DE MONTERREY	16.00	3	1	20628	62.9	3.4	3	3.7	13.4	3.3	7.3	3	62.9	3.4	33.7	0.079	0.509
X. C. LIBRAMIENTO NOROESTE DE MONTERREY	16.00	3	2	19864	59.8	3.6	2.5	3.5	15.4	3.6	8.7	2.9	59.8	3.6	36.6	0.082	0.509
X. C. SANTA ROSA - SALINAS VICTORIA	20.19	3	1	18397	62.3	4.9	3	3.5	14.6	3	5.8	2.9	62.3	4.9	32.8	0.08	0.509
X. C. SANTA ROSA - SALINAS VICTORIA	20.19	3	2	17744	64.2	4.5	2.1	2.6	14.8	2.9	6.3	2.6	64.2	4.5	31.3	0.089	0.509
CIENEGA DE FLORES	32.00	1	0	13545	52.4	3.1	3.9	2.6	27.3	1.8	7.6	1.3	52.4	3.1	44.5	0.063	0.502
T. DER. AGUALEGUAS	78.23	3	0	8328	35.6	5.5	3	5	40.7	2.3	6.7	1.2	35.6	5.5	58.9	0.064	0.513
SABINAS HIDALGO	98.90	3	0	8288	33.5	8.1	0.5	1.7	46.3	3.1	5.9	0.9	33.5	8.1	58.4	0.064	0.519
VALLECILLOS	124.40	3	0	8018	82.4	6.3	2.7	1.6	3.5	1.7	0.6	1.2	82.4	6.3	11.3	0.076	0.528
T. IZQ. ANAHUAC	156.80	1	0	10199	79.3	6.5	3.2	2.5	4.4	1.4	1.1	1.6	79.3	6.5	14.2	0.078	0.534
T. IZQ. ANAHUAC	156.80	3	1	7483	80.6	4	3.6	1.5	4.4	1.2	1.7	3	80.6	4	15.4	0.1	0.503
T. IZQ. ANAHUAC	156.80	3	2	7398	78.8	3.7	5.9	1.7	4.5	1.1	1.5	2.8	78.8	3.7	17.5	0.091	0.503
LIM. EDOS. TERM. NL. PPIA. TAMPS.	184.60	0	0														
T. DER. MIER	205.90	1	1	6455	70	2.7	1.2	1.6	6.6	3.8	7	7.1	70	2.7	27.3	0.114	0.501
T. DER. MIER	205.90	1	2	6476	72.2	2.7	1.2	1.4	7.1	3	6.6	5.8	72.2	2.7	25.1	0.095	0.501
T. DER. MIER	205.90	3	1	8595	83.2	3.2	2.6	0.8	4.8	0.9	1	3.5	83.2	3.2	13.6	0.074	0.5
T. DER. MIER	205.90	3	2	8595	77	3.3	3.4	1.5	5.7	2.2	3.9	3	77	3.3	19.7	0.08	0.5
NUEVO LAREDO	228.00	1	1	9055	82.2	5	1.2	1.1	4.3	1.5	2.2	2.5	82.2	5	12.8	0.087	0.507
NUEVO LAREDO	228.00	1	2	8800	78.5	5.8	1.8	1	4.1	2.6	2.9	3.3	78.5	5.8	15.7	0.078	0.507

7 CARR : MONTERREY - REYNOSA (LIBRE)

CLAVE: 00088

RUTA : MEX-040

AÑO : 2007

L U G A R	E S T A C I O N				C L A S I F I C A C I O N V E H I C U L A R E N P O R C I E N T O .												
	KM	TE	SC	TDPA	A	B	C2	C3	T3S2	T3S3	T3S2R4	OTROS	A	B	C	K'	D
T. C. MONTERREY - MIER	0.00	0	0														
VILLA JUAREZ	19.10	1	1	16681	68.9	4	3.7	1.7	8.2	2.6	6.2	4.7	68.9	4	27.1	0.065	0.501
VILLA JUAREZ	19.10	1	2	16749	74.8	4	3.1	1.9	5.1	2	4.9	4.2	74.8	4	21.2	0.066	0.501
VILLA JUAREZ	19.10	3	1	10692	68.5	1.6	3.7	2.8	8.5	3.2	8.3	3.4	68.5	1.6	29.9	0.065	0.5
VILLA JUAREZ	19.10	3	2	10687	77.1	1.6	4	2.3	5.4	2.4	4.1	3.1	77.1	1.6	21.3	0.076	0.5
REFINERIA DE CADEREYTA	33.00	3	0	6155	63	0.5	5.8	4.3	13.1	5.4	6.4	1.5	63	0.5	36.5	0.069	0.501
T. IZQ. LOS RAMONES	68.78	3	0	4235	59.9	3.4	4.5	4.6	15.1	5.2	6.4	0.9	59.9	3.4	36.7	0.079	0.501
GRAL. BRAVO	125.00	1	0	5741	62.6	3.2	5	2.9	12	4.8	8.2	1.3	62.6	3.2	34.2	0.068	0.5
LIM. EDOS. TERM. NL. PPIA. TAMPS.	192.00	0	0														
T. IZQ. DIAZ ORDAZ	192.60	1	1	13996	70.1	11.3	1.9	1.2	4.6	1.9	2	7	70.1	11.3	18.6	0.071	0.503

NUEVO LEON

7 CARR : MONTERREY - REYNOSA (LIBRE)

CLAVE: 00088

RUTA : MEX-040

AÑO : 2007

L U G A R	E S T A C I O N				C L A S I F I C A C I O N V E H I C U L A R E N P O R C I E N T O .												
	KM	TE	SC	TDPA	A	B	C2	C3	T3S2	T3S3	T3S2R4	OTROS	A	B	C	K'	D
T. IZQ. DIAZ ORDAZ	192.60	1	2	14164	67.2	11.7	2.1	1.4	4.8	2.1	3.2	7.5	67.2	11.7	21.1	0.073	0.503
REYNOSA	225.00	1	1	9122	82.4	3.4	2.6	1.7	4.5	1.1	1.5	2.8	82.4	3.4	14.2	0.074	0.5
REYNOSA	225.00	1	2	9108	82.4	3.6	2.2	1.5	4.4	1.2	1.7	3	82.4	3.6	14	0.083	0.5

8 CARR : PARAS - NUEVA CIUDAD GUERRERO

CLAVE: 00476

RUTA : MEX-030

AÑO : 2007

L U G A R	E S T A C I O N				C L A S I F I C A C I O N V E H I C U L A R E N P O R C I E N T O .												
	KM	TE	SC	TDPA	A	B	C2	C3	T3S2	T3S3	T3S2R4	OTROS	A	B	C	K'	D
PARAS	0.00	3	0	753	84.7	4.6	1	2.3	3.1	1.4	2.1	0.8	84.7	4.6	10.7	0.112	0.508
LIM. EDOS. TERM. NL. PPIA. TAMS.	17.50	0	0														
T. C. REYNOSA - (T. C. MONTERREY - NUEVO LAREDO)	32.00	1	0	557	84.6	1.5	1	0.8	1.3	4.9	1	4.9	84.6	1.5	13.9	0.122	0.502

9 CARR : PEÑA BLANCA - CD. CAMARGO

CLAVE: 00102

RUTA : MEX

AÑO : 2007

L U G A R	E S T A C I O N				C L A S I F I C A C I O N V E H I C U L A R E N P O R C I E N T O .												
	KM	TE	SC	TDPA	A	B	C2	C3	T3S2	T3S3	T3S2R4	OTROS	A	B	C	K'	D
T. C. MONTERREY - REYNOSA	0.00	3	0	2862	64.6	12.2	8.5	5.5	3.7	2	2.5	1	64.6	12.2	23.2	0.075	0.5
LIM. EDOS. TERM. NL. PPIA. TAMS.	30.00	0	0														
LOS COMALES	40.00	3	0	1799	86	4.4	0.9	1.2	2.8	2.1	0.9	1.7	86	4.4	9.6	0.093	0.5
CD. CAMARGO	65.00	1	0	2960	84.7	3	2.7	1.8	3.6	1.8	0.7	1.7	84.7	3	12.3	0.085	0.502

10 CARR : AGUALEGUAS - EL EBANO

CLAVE: 19004

RUTA : NL-023

AÑO : 2007

L U G A R	E S T A C I O N				C L A S I F I C A C I O N V E H I C U L A R E N P O R C I E N T O .												
	KM	TE	SC	TDPA	A	B	C2	C3	T3S2	T3S3	T3S2R4	OTROS	A	B	C	K'	D
AGUALEGUAS	0.00	3	0	1115	75.1	5.3	1.3	3.2	3.2	2.8	8.4	0.7	75.1	5.3	19.6	0.085	0.505
T. C. MONTERREY - NUEVO LAREDO	54.00	1	0	906	85.1	6.5	3	1.7	1.9	0.5	0.5	0.8	85.1	6.5	8.4	0.093	0.512

11 CARR : APODACA - VILLA JUAREZ

CLAVE: 19494

RUTA : NL

AÑO : 2007

L U G A R	E S T A C I O N				C L A S I F I C A C I O N V E H I C U L A R E N P O R C I E N T O .												
	KM	TE	SC	TDPA	A	B	C2	C3	T3S2	T3S3	T3S2R4	OTROS	A	B	C	K'	D
T. C. MONTERREY - CD. MIER	0.00	3	0	11810	65.9	3	5.8	2.2	8.2	2.6	9.4	2.9	65.9	3	31.1	0.067	0.508
VILLA JUAREZ	16.00	1	1	8152	73.2	4	5.1	2.5	5	2.7	4.7	2.8	73.2	4	22.8	0.082	0.521
VILLA JUAREZ	16.00	1	2	8872	70.3	4	3.7	2.4	6.3	2.5	7.7	3.1	70.3	4	25.7	0.08	0.521



NUEVO LEON

17 CARR : PALO ALTO - VALLECILLOS

CLAVE: 19036

RUTA : NL

AÑO : 2007

L U G A R	E S T A C I O N				C L A S I F I C A C I O N V E H I C U L A R E N P O R C I E N T O .												
	KM	TE	SC	TDPA	A	B	C2	C3	T3S2	T3S3	T3S2R4	OTROS	A	B	C	K'	D
T. C. GRAL. TREVIÑO - VILLA ALDAMA	0.00	3	0	1366	91.1	3	3.3	0.7	0.5	0.9	0.3	0.2	91.1	3	5.9	0.105	0.512
VALLECILLOS	43.00	1	0	1189	75.2	4	1.9	2	8.5	2.9	3.6	1.9	75.2	4	20.8	0.085	0.501

18 CARR : SANTA ROSA - SALINAS VICTORIA

CLAVE: 19037

RUTA : MEX

AÑO : 2007

L U G A R	E S T A C I O N				C L A S I F I C A C I O N V E H I C U L A R E N P O R C I E N T O .												
	KM	TE	SC	TDPA	A	B	C2	C3	T3S2	T3S3	T3S2R4	OTROS	A	B	C	K'	D
X. C. LIBRAMIENTO NOROESTE DE MONTERREY	0.00	3	0	6275	79.2	4.7	7	3.5	1.3	2.7	1.3	0.3	79.2	4.7	16.1	0.089	0.503
X. C. MONTERREY - NUEVO LAREDO (LIBRE)	3.00	3	0	6455	64	5.3	4.7	5.9	12.3	1.8	3.5	2.5	64	5.3	30.7	0.079	0.517
SALINAS VICTORIA	16.00	1	1	3238	88.1	4.5	3.9	1.1	1.5	0.1	0.2	0.6	88.1	4.5	7.4	0.086	0.502
SALINAS VICTORIA	16.00	1	2	3207	86.9	4.1	3.7	1	2.9	0.2	0.3	0.9	86.9	4.1	9	0.074	0.502

19 CARR : GRAL. BRAVO - LOS ALDAMAS

CLAVE: 19030

RUTA : NL-030

AÑO : 2007

L U G A R	E S T A C I O N				C L A S I F I C A C I O N V E H I C U L A R E N P O R C I E N T O .												
	KM	TE	SC	TDPA	A	B	C2	C3	T3S2	T3S3	T3S2R4	OTROS	A	B	C	K'	D
GRAL. BRAVO	0.00	3	0	1139	91.9	3.3	2.3	0.9	0.3	0.3	0.1	0.9	91.9	3.3	4.8	0.094	0.501
LOS ALDAMAS	31.00	0	0														

20 CARR : GRAL. TREVIÑO - VILLA ALDAMA

CLAVE: 19003

RUTA : NL-003

AÑO : 2007

L U G A R	E S T A C I O N				C L A S I F I C A C I O N V E H I C U L A R E N P O R C I E N T O .												
	KM	TE	SC	TDPA	A	B	C2	C3	T3S2	T3S3	T3S2R4	OTROS	A	B	C	K'	D
GRAL. TREVIÑO	0.00	3	0	855	88.8	4.3	1.2	1.6	1.3	1.2	1.2	0.4	88.8	4.3	6.9	0.101	0.504
AGUALEGUAS	13.00	3	0	569	90.8	4.8	0.6	1.1	0.9	0.9	0.5	0.4	90.8	4.8	4.4	0.09	0.504
PARAS	34.00	3	0	389	84.1	3.2	0.1	5.5	1.5	0.3	3.7	1.6	84.1	3.2	12.7	0.1	0.513
EL ALAMO	62.00	1	0	436	85.9	4	2.8	1.6	2.2	1.2	0.8	1.5	85.9	4	10.1	0.122	0.556
VILLA ALDAMA	134.00	1	0	1665	87.5	5.4	1.2	2.1	1.4	0.4	1.4	0.6	87.5	5.4	7.1	0.082	0.509

21 CARR : HACIENDA GUADALUPE - HIGUERAS

CLAVE: 19006

RUTA : NL-006

AÑO : 2007

L U G A R	E S T A C I O N				C L A S I F I C A C I O N V E H I C U L A R E N P O R C I E N T O .												
	KM	TE	SC	TDPA	A	B	C2	C3	T3S2	T3S3	T3S2R4	OTROS	A	B	C	K'	D
HACIENDA GUADALUPE	0.00	0	0														
MARIN	3.00	1	1	2501	78.3	1.7	2.8	2.3	9.9	1.9	2.4	0.7	78.3	1.7	20	0.096	0.503



NUEVO LEON

21 CARR : HACIENDA GUADALUPE - HIGUERAS

CLAVE: 19006

RUTA : NL-006

AÑO : 2007

L U G A R	E S T A C I O N				C L A S I F I C A C I O N V E H I C U L A R E N P O R C I E N T O .												
	KM	TE	SC	TDPA	A	B	C2	C3	T3S2	T3S3	T3S2R4	OTROS	A	B	C	K'	D
MARIN	3.00	1	2	2470	74.7	1.6	3.3	2.7	11	2.4	3.4	0.9	74.7	1.6	23.7	0.094	0.503
HIGUERAS	15.00	0	0														

22 CARR : LIBRAMIENTO DE LINARES

CLAVE: 19506

RUTA : NL

AÑO : 2007

L U G A R	E S T A C I O N				C L A S I F I C A C I O N V E H I C U L A R E N P O R C I E N T O .												
	KM	TE	SC	TDPA	A	B	C2	C3	T3S2	T3S3	T3S2R4	OTROS	A	B	C	K'	D
T. C. CD. VICTORIA - MONTERREY (1° ACCESO)	0.00	3	0	7962	67.7	3.3	3.9	4	7.9	3	8.3	1.9	67.7	3.3	29	0.072	0.506
T. C. LINARES - ENT. SAN ROBERTO	2.00	3	0	8898	66.9	3.1	4	4.1	7.7	3.2	9.1	1.9	66.9	3.1	30	0.073	0.513
T. C. CD. VICTORIA - MONTERREY (2° ACCESO)	6.50	0	0														

23 CARR : LIBRAMIENTO DE MONTEMORELOS

CLAVE: 19492

RUTA : NL

AÑO : 2007

L U G A R	E S T A C I O N				C L A S I F I C A C I O N V E H I C U L A R E N P O R C I E N T O .												
	KM	TE	SC	TDPA	A	B	C2	C3	T3S2	T3S3	T3S2R4	OTROS	A	B	C	K'	D
T. C. CD. VICTORIA - MONTERREY (1° ACCESO)	0.00	3	1	3741	68.6	2.6	3.7	4.1	8.2	3.5	8.4	0.9	68.6	2.6	28.8	0.125	0.501
T. C. CD. VICTORIA - MONTERREY (1° ACCESO)	0.00	3	2	3753	65.2	2.6	2	2.7	4	3.4	13.7	6.4	65.2	2.6	32.2	0.106	0.501
T. C. CD. VICTORIA - MONTERREY (2° ACCESO)	3.70	0	0														

24 CARR : LIBRAMIENTO NOROESTE DE MONTERREY

CLAVE: 19085

RUTA : NL

AÑO : 2007

L U G A R	E S T A C I O N				C L A S I F I C A C I O N V E H I C U L A R E N P O R C I E N T O .												
	KM	TE	SC	TDPA	A	B	C2	C3	T3S2	T3S3	T3S2R4	OTROS	A	B	C	K'	D
T. C. SALTILLO - MONTERREY	0.00	3	0	9783	65.2	5.8	8.7	4	7.1	6.6	1.3	1.3	65.2	5.8	29	0.084	0.503
X. C. MONTERREY - CASTAÑOS	31.00	1	0	10268	70	5.3	7.6	3.8	5.4	5.7	0.9	1.3	70	5.3	24.7	0.073	0.526
APODACA	41.50	1	1	8561	76.2	2.8	4.1	3.4	6.2	1.8	2.7	2.8	76.2	2.8	21	0.092	0.525
APODACA	41.50	1	2	7759	74.1	2.2	3.2	2.5	4	3.3	5.8	4.9	74.1	2.2	23.7	0.108	0.525
T. C. MONTERREY - REYNOSA	48.00	1	0	7798	73	3.9	3.9	2.9	6.8	2.4	5.2	1.9	73	3.9	23.1	0.069	0.518

25 CARR : LINARES - ENT. SAN ROBERTO

CLAVE: 19031

RUTA : MEX-057

AÑO : 2007

L U G A R	E S T A C I O N				C L A S I F I C A C I O N V E H I C U L A R E N P O R C I E N T O .												
	KM	TE	SC	TDPA	A	B	C2	C3	T3S2	T3S3	T3S2R4	OTROS	A	B	C	K'	D
LINARES	0.00	3	1	2762	87	4.2	3.2	1.7	1	0.6	1.1	1.2	87	4.2	8.8	0.097	0.513
LINARES	0.00	3	2	2686	80.4	3	1.5	2	6.4	1.7	2.8	2.2	80.4	3	16.6	0.095	0.504



NUEVO LEON

28 CARR : MONTERREY - NUEVO LAREDO (CUOTA)

CLAVE: 19086

RUTA : MEX-085D

AÑO : 2007

L U G A R	E S T A C I O N				C L A S I F I C A C I O N V E H I C U L A R E N P O R C I E N T O .												
	KM	TE	SC	TDPA	A	B	C2	C3	T3S2	T3S3	T3S2R4	OTROS	A	B	C	K'	D
T. C. MONTERREY - NUEVO LAREDO (LIBRE)	120.50		0	0													

29 CARR : RAMAL A 18 DE MARZO

CLAVE: 19475

RUTA : NL

AÑO : 2007

L U G A R	E S T A C I O N				C L A S I F I C A C I O N V E H I C U L A R E N P O R C I E N T O .												
	KM	TE	SC	TDPA	A	B	C2	C3	T3S2	T3S3	T3S2R4	OTROS	A	B	C	K'	D
T. C. LINARES - ENT. SAN ROBERTO	0.00	3	0	2109	88.9	4.4	3.4	0.9	1.3	0.3	0.2	0.6	88.9	4.4	6.7	0.096	0.502
18 DE MARZO	14.00		0	0													

30 CARR : RAMAL A AEROPUERTO MARIANO ESCOBEDO

CLAVE: 19510

RUTA : MEX-054

AÑO : 2007

L U G A R	E S T A C I O N				C L A S I F I C A C I O N V E H I C U L A R E N P O R C I E N T O .												
	KM	TE	SC	TDPA	A	B	C2	C3	T3S2	T3S3	T3S2R4	OTROS	A	B	C	K'	D
T. C. MONTERREY - CD. MIER	0.00	3	1	12028	80.4	3	1.5	2	6.4	1.7	2.8	2.2	80.4	3	16.6	0.085	0.504
T. C. MONTERREY - CD. MIER	0.00	3	2	11852	80.9	2.5	1	2.7	5.1	1.9	2.5	3.4	80.9	2.5	16.6	0.078	0.504
AEROPUERTO	2.00		0	0													

31 CARR : RAMAL A CERRALVO

CLAVE: 19013

RUTA : NL-013

AÑO : 2007

L U G A R	E S T A C I O N				C L A S I F I C A C I O N V E H I C U L A R E N P O R C I E N T O .												
	KM	TE	SC	TDPA	A	B	C2	C3	T3S2	T3S3	T3S2R4	OTROS	A	B	C	K'	D
T. C. MONTERREY - REYNOSA	0.00	3	0	714	76.6	1.9	1.7	2.5	2	4.4	9.8	1.1	76.6	1.9	21.5	0.092	0.502
CERRALVO	58.00	1	0	1483	83.6	3.6	0.9	1.4	2	2.4	5.6	0.5	83.6	3.6	12.8	0.109	0.503

32 CARR : RAMAL A MARIN

CLAVE: 19007

RUTA : NL

AÑO : 2007

L U G A R	E S T A C I O N				C L A S I F I C A C I O N V E H I C U L A R E N P O R C I E N T O .												
	KM	TE	SC	TDPA	A	B	C2	C3	T3S2	T3S3	T3S2R4	OTROS	A	B	C	K'	D
T. C. MONTERREY - NUEVO LAREDO	0.00	3	0	5614	69.3	4.3	4.6	3.5	10.4	1.9	4.1	1.9	69.3	4.3	26.4	0.134	0.51
MARIN	10.00		0	0													

33 CARR : CIUDAD VICTORIA - MONTERREY

CLAVE: 00462

RUTA : MEX-085

AÑO : 2007

L U G A R	E S T A C I O N				C L A S I F I C A C I O N V E H I C U L A R E N P O R C I E N T O .												
	KM	TE	SC	TDPA	A	B	C2	C3	T3S2	T3S3	T3S2R4	OTROS	A	B	C	K'	D
CD. VICTORIA	0.00	3	1	8206	82.2	4	2.7	0.9	4.7	1	1	3.5	82.2	4	13.8	0.112	0.506

NUEVO LEON

33 CARR : CIUDAD VICTORIA - MONTERREY

CLAVE: 00462

RUTA : MEX-085

AÑO : 2007

L U G A R	E S T A C I O N				C L A S I F I C A C I O N V E H I C U L A R E N P O R C I E N T O .												
	KM	TE	SC	TDPA	A	B	C2	C3	T3S2	T3S3	T3S2R4	OTROS	A	B	C	K'	D
CD. VICTORIA	0.00	3	2	8020	76.2	3.9	2.5	1.1	6.2	1.9	2.8	5.4	76.2	3.9	19.9	0.111	0.506
T. DER. GÜEMEZ	19.60	3	0	6405	85.6	4.3	3	0.9	3	0.8	0.9	1.5	85.6	4.3	10.1	0.08	0.503
T. IZQ. SANTA ENGRACIA	27.35	3	0	7225	85.6	4	1.1	0.7	3.4	2.7	1.1	1.4	85.6	4	10.4	0.09	0.503
BARRETAL	39.00	3	0	6083	84.5	6.2	2.9	2.1	1.6	0.8	1.3	0.6	84.5	6.2	9.3	0.092	0.503
T. IZQ. HIDALGO Y LA MESA	77.50	1	0	6126	71.3	5.7	2.2	3.8	7.9	3.1	4.9	1.1	71.3	5.7	23	0.104	0.507
VILLAGRAN	106.00	1	0	4867	70.6	6.1	2.6	3.2	8.1	2.9	5.4	1.1	70.6	6.1	23.3	0.087	0.512
T. IZQ. VILLA MAINERO	118.00	3	0	5160	68.4	6	3.2	4	8	3.2	6.1	1.1	68.4	6	25.6	0.081	0.512
LIM. EDOS. TERM. TAMPS. PPIA. NL.	126.00	0	0														
LINARES	154.00	1	0	6424	69.6	3	4.2	3.1	7.7	3.3	7.8	1.3	69.6	3	27.4	0.106	0.501
LA LAJA	171.00	3	1	4654	69.5	4.3	5.2	3.2	7.5	2.9	6.6	0.8	69.5	4.3	26.2	0.118	0.501
LA LAJA	171.00	3	2	4643	67	4.3	5.1	3.5	5.6	3.1	9.3	2.1	67	4.3	28.7	0.107	0.501
MONTEMORELOS	205.00	3	1	6274	70.5	2.5	3.6	3.9	7.7	3.3	7.7	0.8	70.5	2.5	27	0.128	0.5
MONTEMORELOS	205.00	3	2	6263	69.1	2.6	3.4	4.1	7.7	3.3	8.1	1.7	69.1	2.6	28.3	0.147	0.5
ALLENDE	227.50	3	1	9351	75.5	2.1	2.8	2.2	6.5	2	6.2	2.7	75.5	2.1	22.4	0.084	0.504
ALLENDE	227.50	3	2	9500	79.2	2	2.8	2.4	6.4	1.7	3.7	1.8	79.2	2	18.8	0.095	0.504
EL CERCADO	249.00	1	1	16891	52.1	2	1.5	1.8	8.6	5.1	24.1	4.8	52.1	2	45.9	0.061	0.504
EL CERCADO	249.00	1	2	17142	52.2	2.1	0.9	1.6	5.4	3.8	30	4	52.2	2.1	45.7	0.079	0.504
LA ESTANZUELA	274.80	3	1	27694	52.9	1.4	1.5	1.6	8.6	5.1	24.1	4.8	52.9	1.4	45.7	0.072	0.504
LA ESTANZUELA	274.80	3	2	28097	52.8	1.6	0.8	1.6	5.4	3.8	30	4	52.8	1.6	45.6	0.094	0.504
MONTERREY	287.00	1	1	21600	81.9	5.1	3.6	2.5	2.8	1.9	1.2	1	81.9	5.1	13	0.078	0.503
MONTERREY	287.00	1	2	21341	82.7	5.1	3.7	2.4	2.5	1.5	0.6	1.5	82.7	5.1	12.2	0.107	0.503

34 CARR : MATEHUALA - ENT. PUERTO MEXICO

CLAVE: 00405

RUTA : MEX-057

AÑO : 2007

L U G A R	E S T A C I O N				C L A S I F I C A C I O N V E H I C U L A R E N P O R C I E N T O .												
	KM	TE	SC	TDPA	A	B	C2	C3	T3S2	T3S3	T3S2R4	OTROS	A	B	C	K'	D
MATEHUALA	0.00	3	0	12411	83.2	3.8	5.1	2.1	2.3	1.9	1.2	0.4	83.2	3.8	13	0.067	0.503
T. IZQ. CEDRAL	8.47	1	0	11308	84.5	3.1	4.1	2	2.3	2.2	0.8	1	84.5	3.1	12.4	0.075	0.502
T. IZQ. CEDRAL	8.47	3	1	5475	85.7	2.7	3.9	1.3	2	2.2	1.1	1.1	85.7	2.7	11.6	0.085	0.502
T. IZQ. CEDRAL	8.47	3	2	5514	84.6	3.3	4.3	1.1	2	2.4	1	1.3	84.6	3.3	12.1	0.094	0.502
LIM. EDOS. TERM. S.L.P. PPIA. N.L.	24.63	0	0														
SANTA ANA	59.65	1	1	5608	32.9	6.4	6.9	11.1	26.8	6.3	7.8	1.8	32.9	6.4	60.7	0.069	0.504
SANTA ANA	59.65	1	2	5701	33.5	4.2	4.7	6.8	35.3	5.9	8.7	0.9	33.5	4.2	62.3	0.067	0.504
T. DER. LINARES	129.00	3	1	5408	34.6	4.9	3	6.3	34.5	5.6	10.1	1	34.6	4.9	60.5	0.074	0.528
T. DER. LINARES	129.00	3	2	6057	37.6	4.8	3.9	5.6	33.5	5.8	7.9	0.9	37.6	4.8	57.6	0.064	0.528

NUEVO LEON

34 CARR : MATEHUALA - ENT. PUERTO MEXICO

CLAVE: 00405

RUTA : MEX-057

AÑO : 2007

L U G A R	E S T A C I O N				C L A S I F I C A C I O N V E H I C U L A R E N P O R C I E N T O .												
	KM	TE	SC	TDPA	A	B	C2	C3	T3S2	T3S3	T3S2R4	OTROS	A	B	C	K'	D
SAN RAFAEL	177.20	1	1	5874	37.8	4.2	3.9	6.4	33.6	4.7	7.2	2.2	37.8	4.2	58	0.082	0.517
SAN RAFAEL	177.20	1	2	6295	44.5	4.7	3.4	5.6	28.1	4.9	6.6	2.2	44.5	4.7	50.8	0.062	0.517
ENT. PUERTO MEXICO	204.00	0	0														

35 CARR : MATEHUALA - LA POZA

CLAVE: 00086

RUTA : SLP-NL-061

AÑO : 2007

L U G A R	E S T A C I O N				C L A S I F I C A C I O N V E H I C U L A R E N P O R C I E N T O .												
	KM	TE	SC	TDPA	A	B	C2	C3	T3S2	T3S3	T3S2R4	OTROS	A	B	C	K'	D
MATEHUALA	0.00	3	0	2912	80	6.4	6	2.5	1.5	1.5	0.8	1.3	80	6.4	13.6	0.072	0.501
LIM. EDOS. TERM. S.L.P. PPIA. NL.	12.00	0	0														
DOCTOR ARROYO	49.00	1	0	2246	91.1	3.1	4	0.3	0.3	0.3	0.1	0.8	91.1	3.1	5.8	0.081	0.506
LA POZA	190.00	1	0	999	89.9	2.2	5.4	0.8	0.4	0.2	0	1.1	89.9	2.2	7.9	0.112	0.506

36 CARR : MONCLOVA - ESTACION CANDELA

CLAVE: 00501

RUTA : COA-030-NL

AÑO : 2007

L U G A R	E S T A C I O N				C L A S I F I C A C I O N V E H I C U L A R E N P O R C I E N T O .												
	KM	TE	SC	TDPA	A	B	C2	C3	T3S2	T3S3	T3S2R4	OTROS	A	B	C	K'	D
T. C. MONCLOVA - PIEDRAS NEGRAS	0.00	0	0														
T. IZQ. LIBRAMIENTO DE MONCLOVA	5.10	1	0	3378	90	2.6	1.7	2.4	1.3	0.2	0.2	1.6	90	2.6	7.4	0.144	0.501
LIM. EDOS. TERM. COAH. PPIA. N.L.	118.00	0	0														
T. C. MONTERREY - COLOMBIA	125.50	1	0	3610	73.9	0	4.2	3.5	10.7	2.7	3.9	1.1	73.9	0	26.1	0.108	0.515

37 CARR : PIEDRAS NEGRAS - NUEVO LAREDO

CLAVE: 00503

RUTA : MEX-002

AÑO : 2007

L U G A R	E S T A C I O N				C L A S I F I C A C I O N V E H I C U L A R E N P O R C I E N T O .												
	KM	TE	SC	TDPA	A	B	C2	C3	T3S2	T3S3	T3S2R4	OTROS	A	B	C	K'	D
T. C. MONCLOVA - PIEDRAS NEGRAS	0.00	3	1	2454	66.7	3.9	2.2	3.1	6.5	3.6	7	7	66.7	3.9	29.4	0.076	0.501
T. C. MONCLOVA - PIEDRAS NEGRAS	0.00	3	2	2443	69.7	3.4	2.4	2	7.1	3	6.6	5.8	69.7	3.4	26.9	0.061	0.501
EL SAUCITO	16.90	3	0	1619	76.8	3.6	2.4	2.2	5.7	3.3	4.9	1.1	76.8	3.6	19.6	0.075	0.5
GUERRERO	42.00	3	0	1289	59.8	4.8	3.8	5	5.8	5.6	11.6	3.6	59.8	4.8	35.4	0.088	0.53
LIM. EDOS. TERM. COAH. PPIA. N.L.	113.00	0	0														
LIM. EDOS. TERM. N.L. PPIA. TAMPS.	137.00	0	0														
T. DER. LIBRAMIENTO DE NUEVO LAREDO	168.90	1	1	8128	72.5	5.7	1.9	2.3	4.2	3.1	5.1	5.2	72.5	5.7	21.8	0.076	0.513
T. DER. LIBRAMIENTO DE NUEVO LAREDO	168.90	1	2	7728	72.5	5.7	1.9	2.3	4.2	3.1	5.1	5.2	72.5	5.7	21.8	0.076	0.513
NUEVO LAREDO	175.00	1	0	7395	76.4	4.2	2.4	2.2	5.7	3.2	4.9	1	76.4	4.2	19.4	0.075	0.5

NUEVO LEON

38 CARR : SALTILLO - MONTERREY

CLAVE: 00087

RUTA : MEX-040

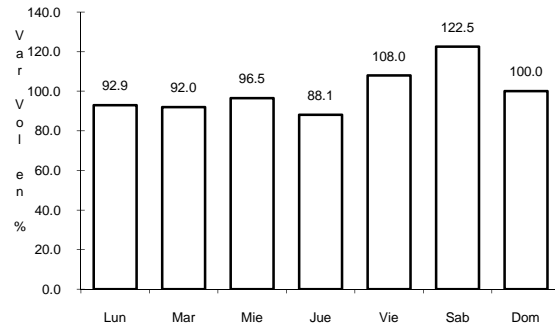
AÑO : 2007

L U G A R	E S T A C I O N			C L A S I F I C A C I O N V E H I C U L A R E N P O R C I E N T O .													
	KM	TE	SC TDPA	A	B	C2	C3	T3S2	T3S3	T3S2R4	OTROS	A	B	C	K'	D	
T. C. SALTILLO - ARTEAGA	0.00	0	0														
T. IZQ. SINCAMEX	4.25	3	1 17187	77.9	4.6	4.8	3.7	2.9	2.9	1.4	1.8	77.9	4.6	17.5	0.075	0.5	
T. IZQ. SINCAMEX	4.25	3	2 17169	77.6	4.2	4.7	4.4	3.4	2.9	1.2	1.6	77.6	4.2	18.2	0.074	0.5	
RAMOS ARIZPE	11.30	1	1 16359	65.3	3.3	3.8	0.9	11.9	3.1	8.5	3.2	65.3	3.3	31.4	0.104	0.505	
RAMOS ARIZPE	11.30	1	2 16696	70.8	3.3	3.1	0.4	9	2.7	7.4	3.3	70.8	3.3	25.9	0.092	0.505	
T. DER. AEROPUERTO	13.00	3	1 15342	70.6	7.5	5.4	5	7.1	3.1	0	1.3	70.6	7.5	21.9	0.085	0.5	
T. DER. AEROPUERTO	13.00	3	2 15367	69.5	6.3	6.7	4.6	8.5	3.3	0.1	1	69.5	6.3	24.2	0.088	0.5	
T. DER. LIBRAMIENTO J.L.P.	16.00	3	1 13353	68.9	4.6	4.8	3.7	7.9	2.9	5.4	1.8	68.9	4.6	26.5	0.084	0.501	
T. DER. LIBRAMIENTO J.L.P.	16.00	3	2 13296	71.5	5.2	4.7	3.4	5.4	2.9	5.2	1.7	71.5	5.2	23.3	0.085	0.501	
OJO CALIENTE	26.30	1	1 14702	65	6.2	4.3	4	7.5	3.8	7.7	1.5	65	6.2	28.8	0.076	0.501	
OJO CALIENTE	26.30	1	2 14735	63	5.6	4.1	4.2	8	4.3	9.3	1.5	63	5.6	31.4	0.085	0.501	
LIM. EDOS. TERM. COAH. PPIA. N.L.	35.50	0	0														
T. IZQ. LIBRAMIENTO NOROESTE DE MONTERREY	54.00	1	1 11836	52.6	4.4	4.1	4.8	20.2	4	8.5	1.4	52.6	4.4	43	0.081	0.502	
T. IZQ. LIBRAMIENTO NOROESTE DE MONTERREY	54.00	1	2 11910	51.2	4.6	4.4	4.1	18.2	4.4	11.5	1.6	51.2	4.6	44.2	0.082	0.502	
T. DER. SANTA CATARINA (1° ACCESO)	62.46	1	1 17453	82.6	3.9	5.2	2.2	2.5	1.5	0.6	1.5	82.6	3.9	13.5	0.092	0.5	
T. DER. SANTA CATARINA (1° ACCESO)	62.46	1	2 17458	82	3.5	5	2.6	2.8	1.9	1.2	1	82	3.5	14.5	0.075	0.5	
PPIA. MONTERREY	79.20	1	1 18271	81.9	4	4.7	2.7	3.1	2.1	0.6	0.9	81.9	4	14.1	0.08	0.501	
PPIA. MONTERREY	79.20	1	2 18205	82.6	3.8	4.6	2.6	3.2	2	0.5	0.7	82.6	3.8	13.6	0.091	0.501	

1 CARR: CHINA - MENDEZ

CLAVE: 00191

ruta: NL-TAM



Km: 0.00

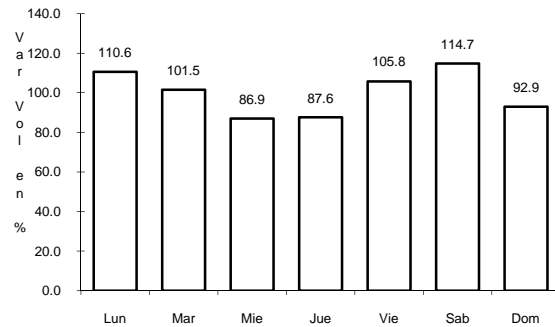
Tipo: 3

Sent: 0

2 CARR: ENT. HUISACHITO - NUEVO LAREDO

CLAVE: 00074

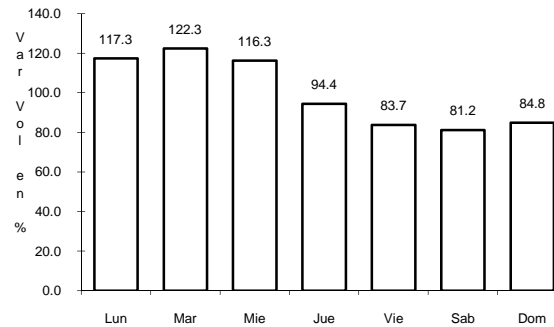
ruta: NL-001-TAM



Km: 0.00

Tipo: 3

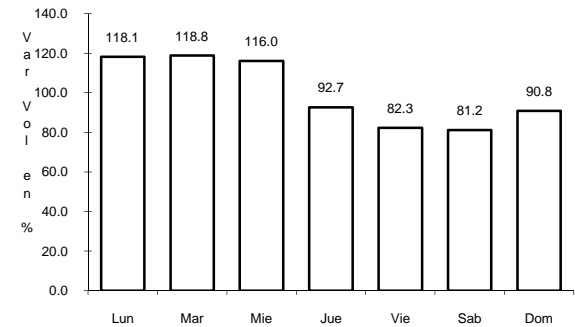
Sent: 0



Km: 47.00

Tipo: 1

Sent: 0



Km: 51.00

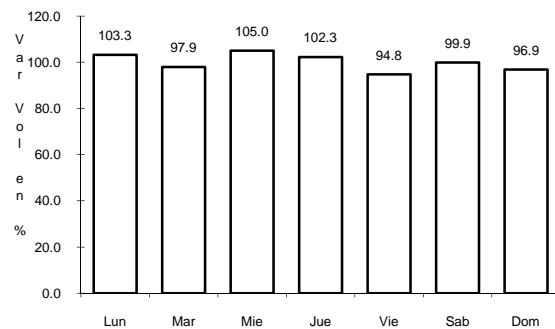
Tipo: 1

Sent: 0

3 CARR: AUT. PUERTO MEXICO - OJO CALIENTE

CLAVE: 00115

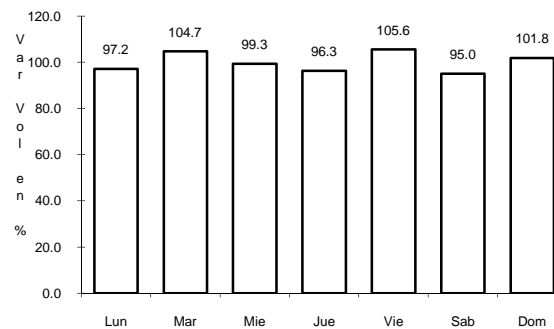
ruta: MEX-057



Km: 23.88

Tipo: 1

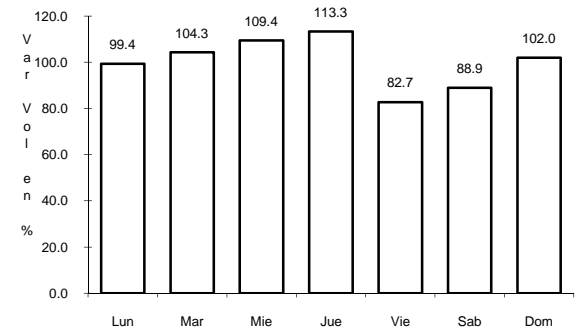
Sent: 1



Km: 23.88

Tipo: 1

Sent: 2



Km: 50.30

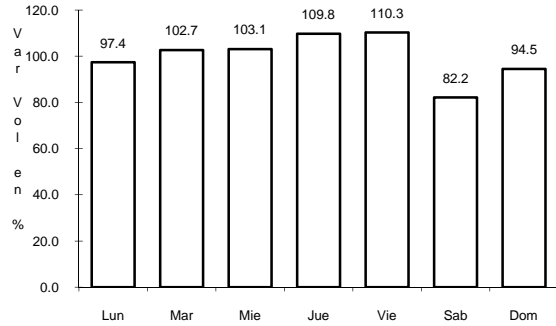
Tipo: 3

Sent: 0

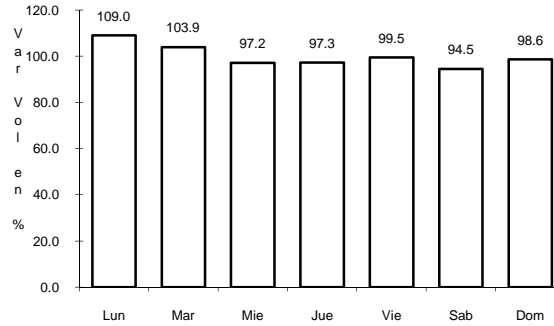
4 CARR: MONTERREY - CASTAÑOS

CLAVE: 00128

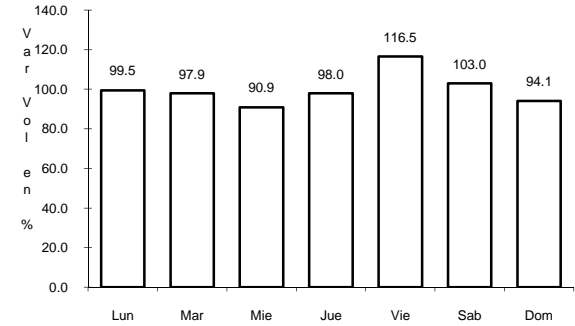
RUTA: MEX-053



Km: 0.00 Tipo: 3 Sent: 0



Km: 91.90 Tipo: 1 Sent: 0

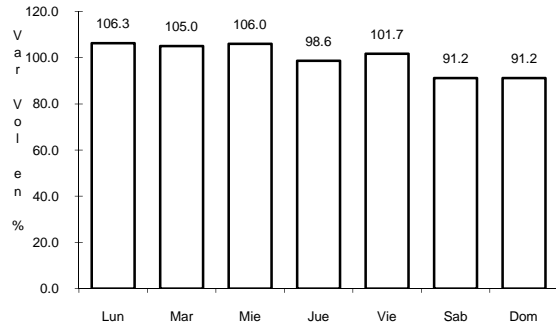


Km: 172.00 Tipo: 1 Sent: 0

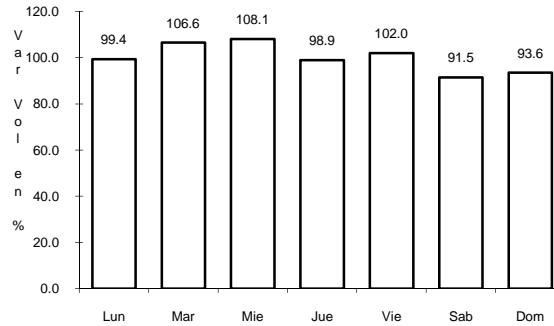
5 CARR: MONTERREY - MIER

CLAVE: 00127

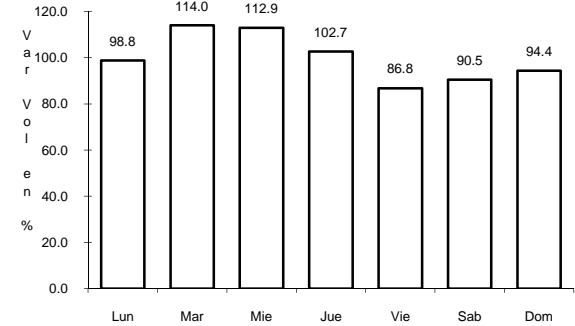
RUTA: MEX-054



Km: 19.12 Tipo: 1 Sent: 1



Km: 19.12 Tipo: 1 Sent: 2

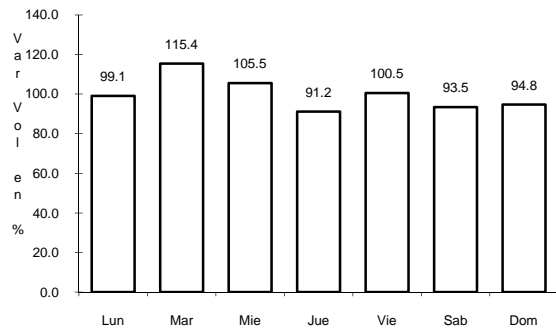


Km: 156.21 Tipo: 1 Sent: 0

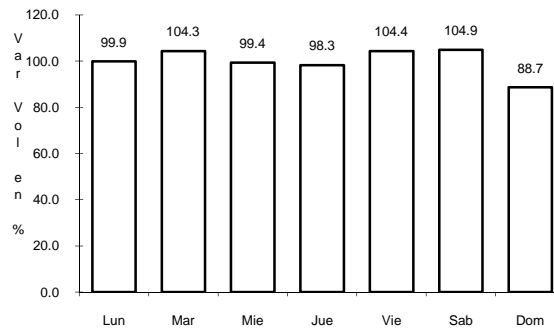
6 CARR: MONTERREY - NUEVO LAREDO (LIBRE)

CLAVE: 00463

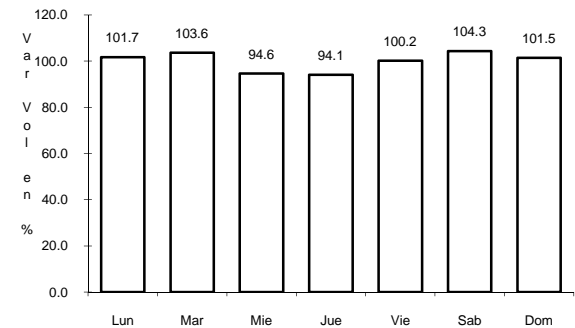
RUTA: MEX-085



Km: 12.10 Tipo: 3 Sent: 1



Km: 12.10 Tipo: 3 Sent: 2



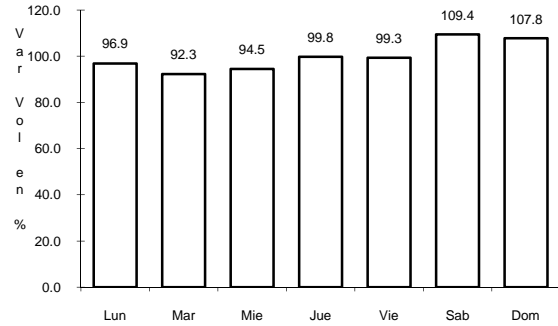
Km: 124.40 Tipo: 3 Sent: 0



7 CARR: MONTERREY - REYNOSA (LIBRE)

CLAVE: 00088

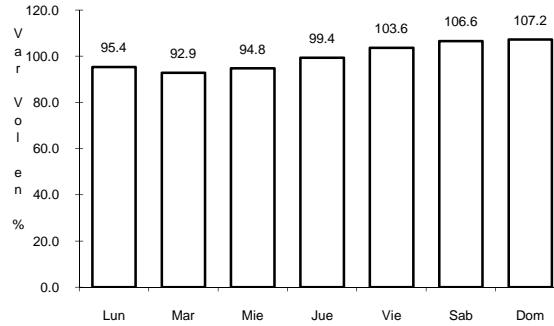
RUTA: MEX-040



Km: 19.10

Tipo: 1

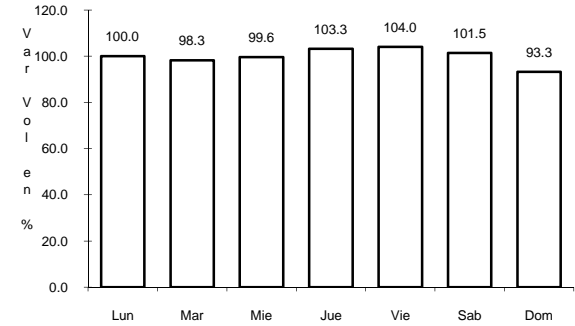
Sent: 1



Km: 19.10

Tipo: 1

Sent: 2



Km: 125.00

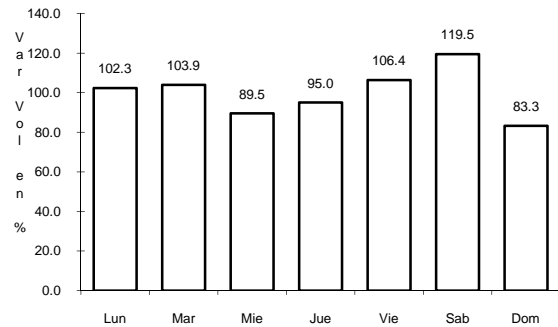
Tipo: 1

Sent: 0

8 CARR: PARAS - NUEVA CIUDAD GUERRERO

CLAVE: 00476

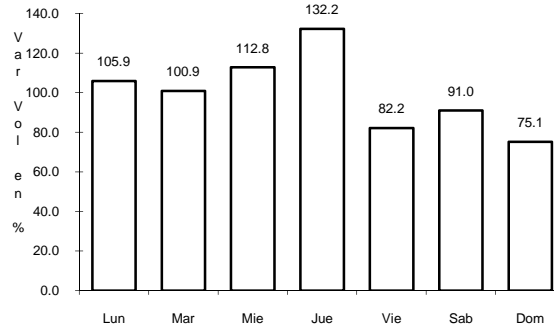
RUTA: MEX-030



Km: 0.00

Tipo: 3

Sent: 0



Km: 32.00

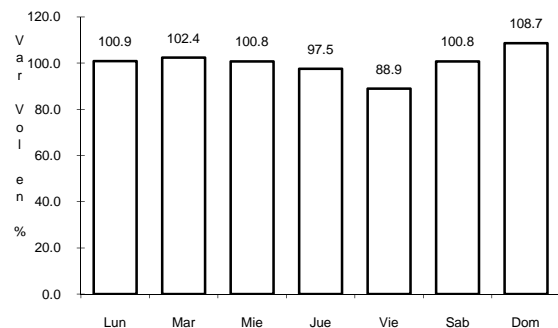
Tipo: 1

Sent: 0

9 CARR: PEÑA BLANCA - CD. CAMARGO

CLAVE: 00102

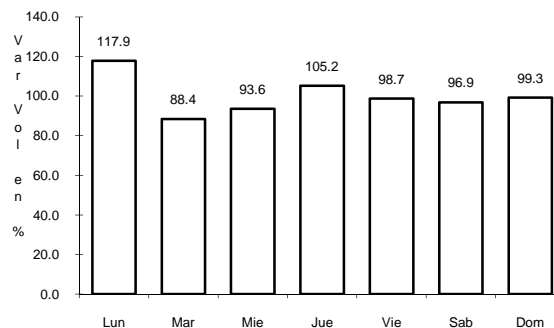
RUTA: MEX



Km: 0.00

Tipo: 3

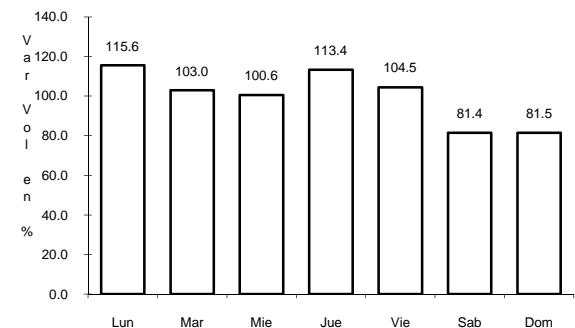
Sent: 0



Km: 40.00

Tipo: 3

Sent: 0



Km: 65.00

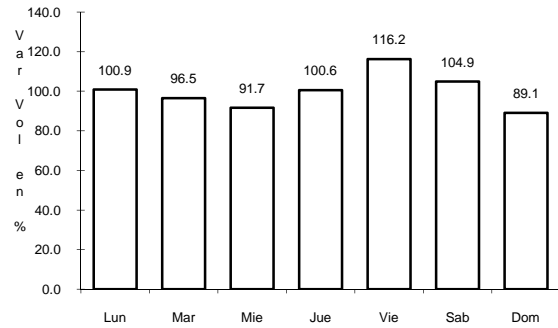
Tipo: 1

Sent: 0

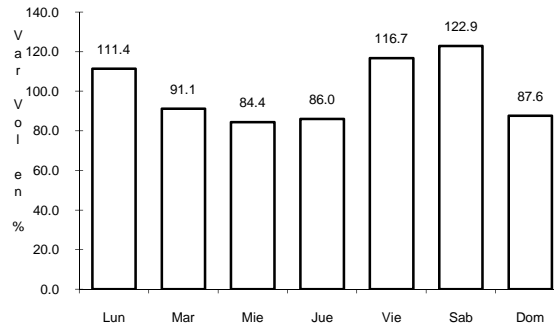
10 CARR: AGUALEGUAS - EL EBANO

CLAVE: 19004

RUTA: NL-023



Km: 0.00 Tipo: 3 Sent: 0

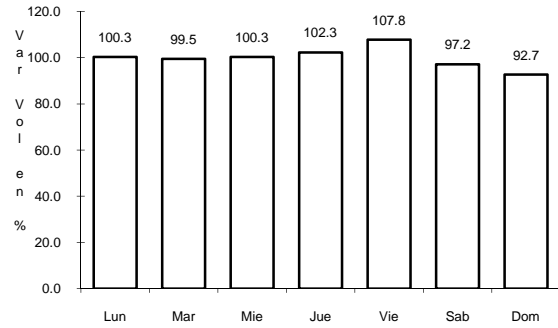


Km: 54.00 Tipo: 1 Sent: 0

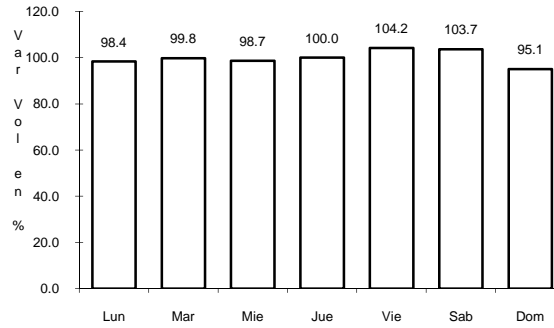
11 CARR: APODACA - VILLA JUAREZ

CLAVE: 19494

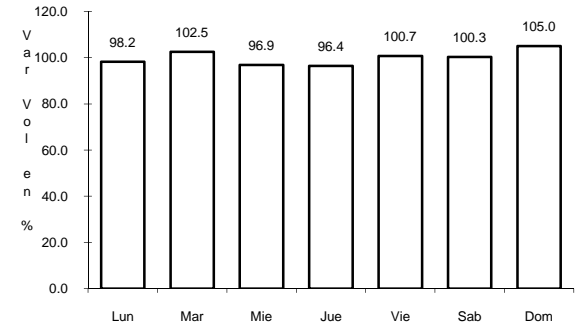
RUTA: NL



Km: 0.00 Tipo: 3 Sent: 0



Km: 16.00 Tipo: 1 Sent: 1

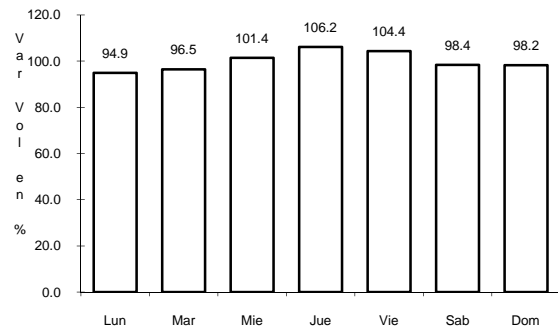


Km: 16.00 Tipo: 1 Sent: 2

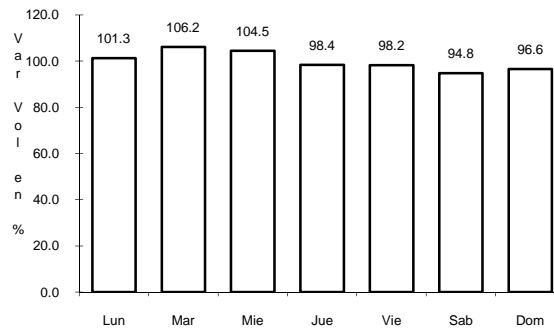
12 CARR: CADEREYTA DE JIMENEZ - ALLENDE

CLAVE: 19009

RUTA: MEX-009



Km: 0.00 Tipo: 3 Sent: 0

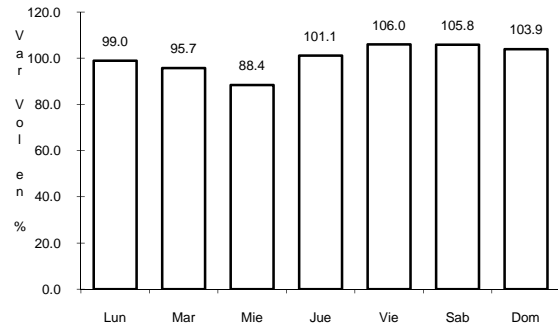


Km: 37.00 Tipo: 1 Sent: 0

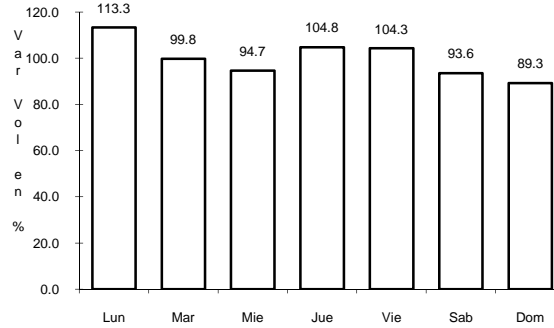
13 CARR: CADEREYTA DE JIMENEZ - DOCTOR GONZALEZ

CLAVE: 19473

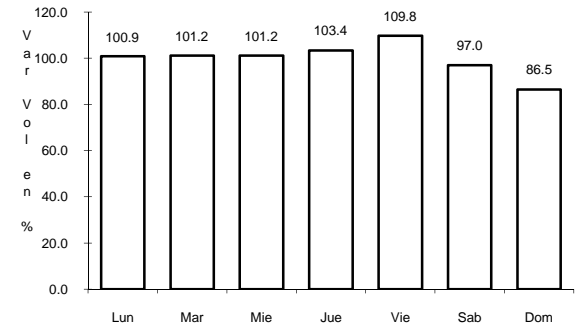
RUTA: NL



Km: 0.00 Tipo: 3 Sent: 0



Km: 18.00 Tipo: 3 Sent: 0

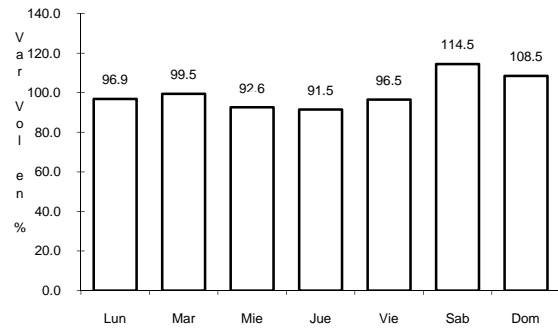


Km: 30.00 Tipo: 1 Sent: 0

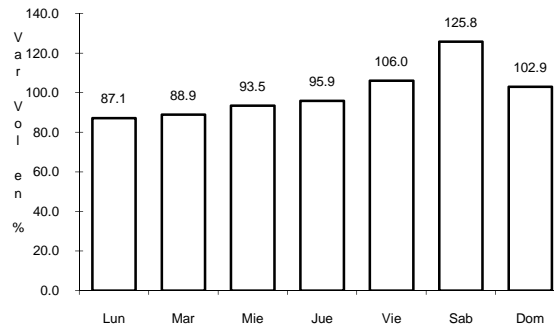
15 CARR: CD. BENITO JUAREZ - VILLA DE SANTIAGO

CLAVE: 19491

RUTA: NL



Km: 0.00 Tipo: 3 Sent: 0

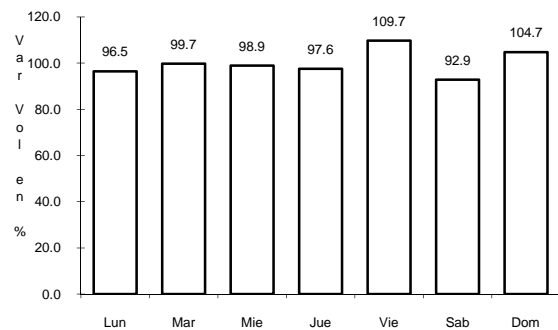


Km: 39.00 Tipo: 1 Sent: 0

16 CARR: DOCTOR ARROYO - MIER Y NORIEGA

CLAVE: 19088

RUTA: NL-088

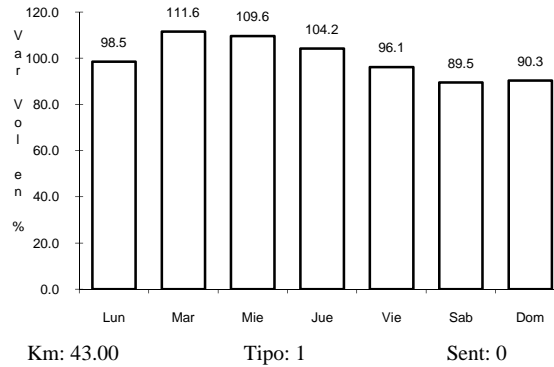
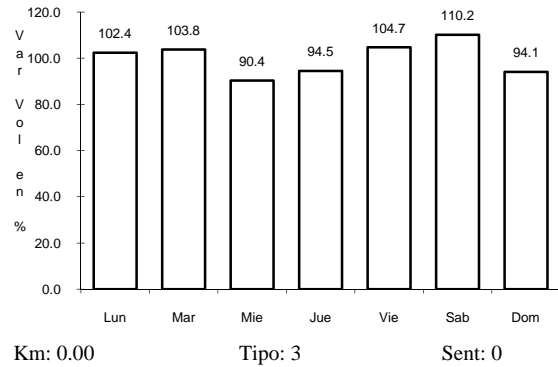


Km: 0.00 Tipo: 3 Sent: 0

17 CARR: PALO ALTO - VALLECILLOS

CLAVE: 19036

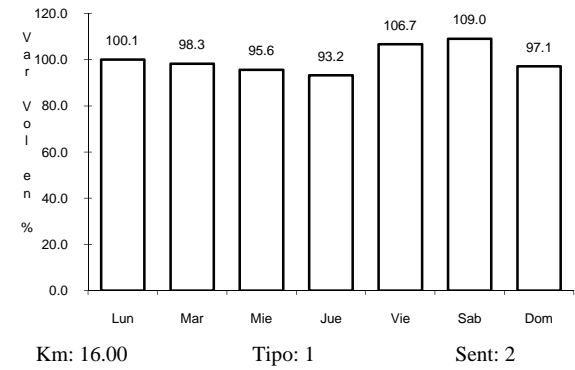
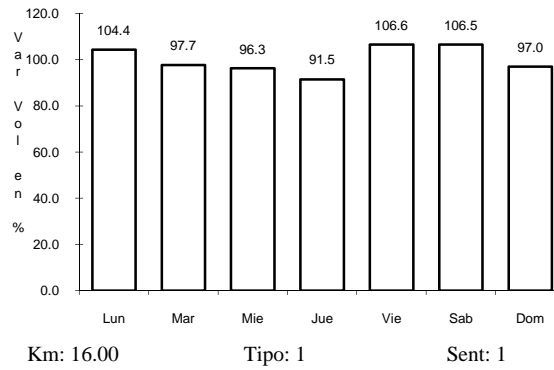
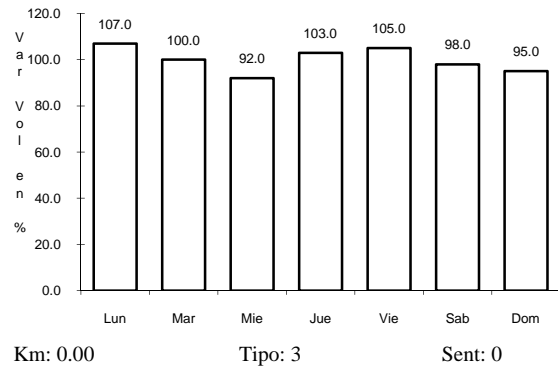
RUTA: NL



18 CARR: SANTA ROSA - SALINAS VICTORIA

CLAVE: 19037

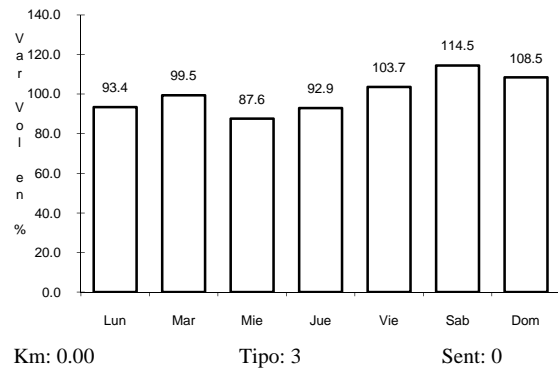
RUTA: MEX



19 CARR: GRAL. BRAVO - LOS ALDAMAS

CLAVE: 19030

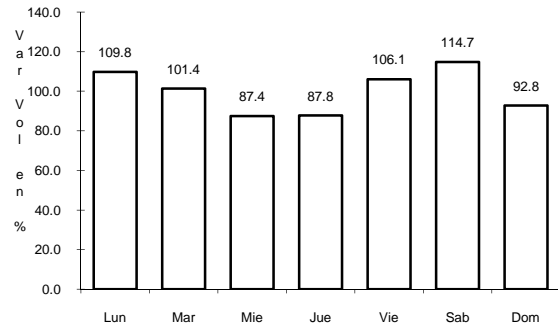
RUTA: NL-030



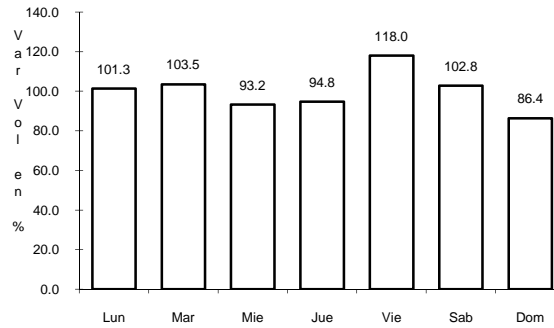
20 CARR: GRAL. TREVIÑO - VILLA ALDAMA

CLAVE: 19003

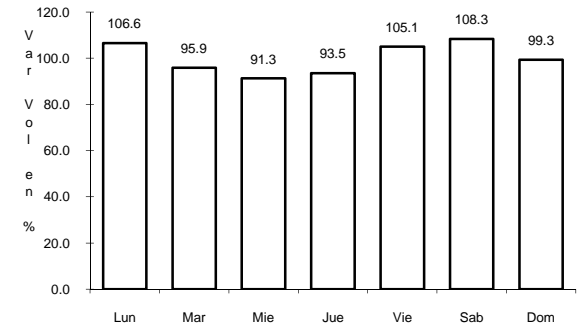
ruta: NL-003



Km: 0.00 Tipo: 3 Sent: 0



Km: 62.00 Tipo: 1 Sent: 0

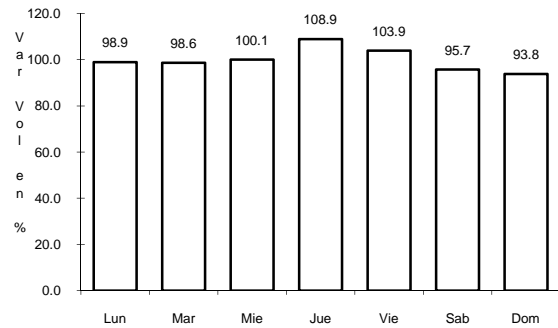


Km: 134.00 Tipo: 1 Sent: 0

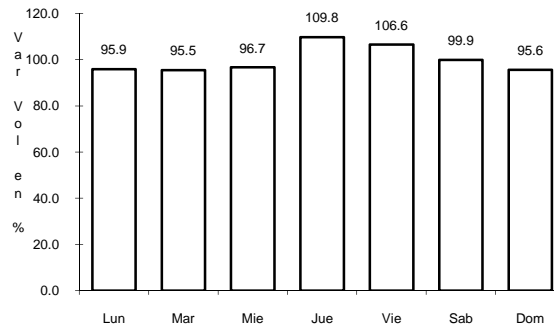
21 CARR: HACIENDA GUADALUPE - HIGUERAS

CLAVE: 19006

ruta: NL-006



Km: 3.00 Tipo: 1 Sent: 1

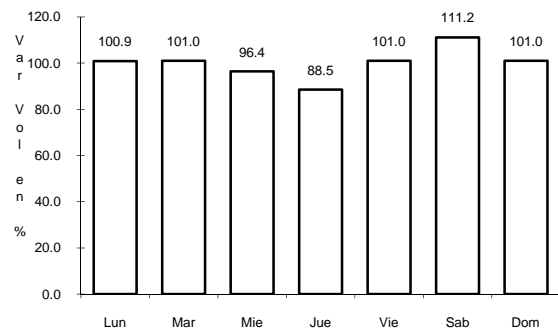


Km: 3.00 Tipo: 1 Sent: 2

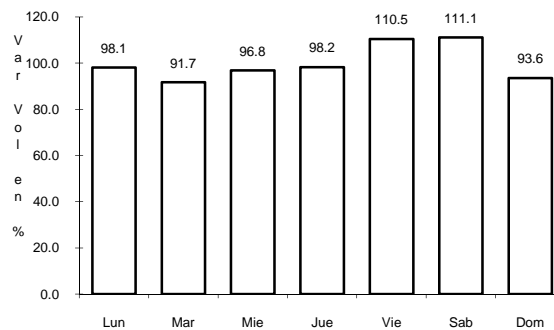
22 CARR: LIBRAMIENTO DE LINARES

CLAVE: 19506

ruta: NL



Km: 0.00 Tipo: 3 Sent: 0



Km: 2.00 Tipo: 3 Sent: 0

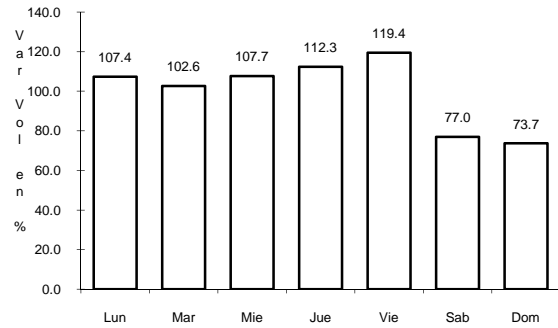




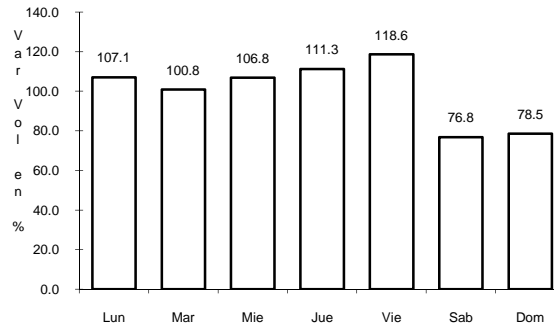
30 CARR: RAMAL A AEROPUERTO MARIANO ESCOBEDO

CLAVE: 19510

RUTA: MEX-054



Km: 0.00 Tipo: 3 Sent: 1

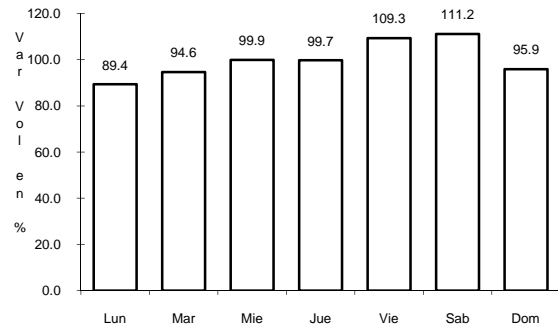


Km: 0.00 Tipo: 3 Sent: 2

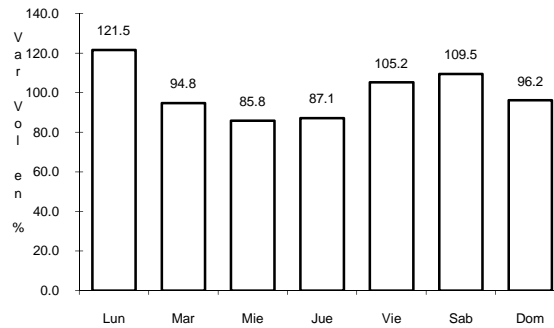
31 CARR: RAMAL A CERRALVO

CLAVE: 19013

RUTA: NL-013



Km: 0.00 Tipo: 3 Sent: 0

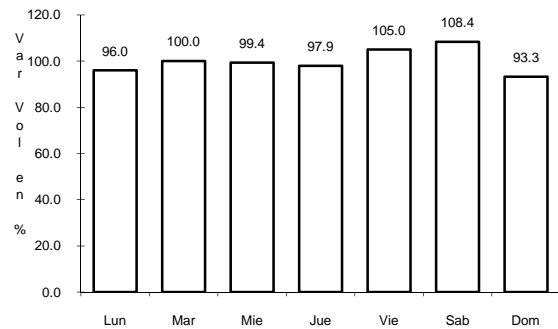


Km: 58.00 Tipo: 1 Sent: 0

32 CARR: RAMAL A MARIN

CLAVE: 19007

RUTA: NL



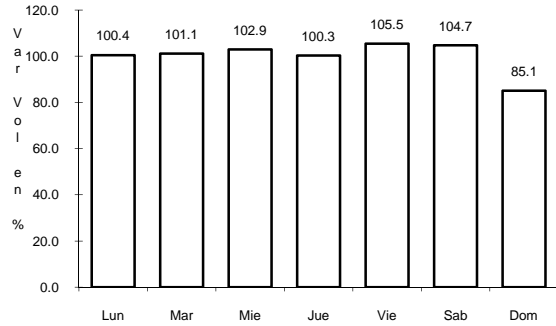
Km: 0.00 Tipo: 3 Sent: 0



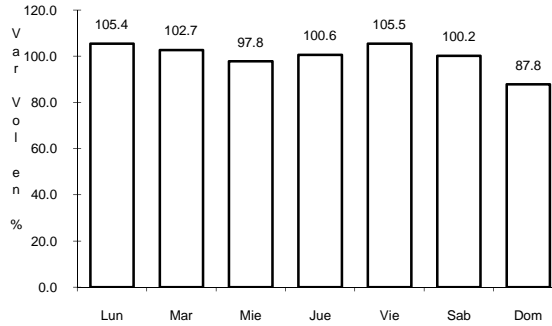
33 CARR: CIUDAD VICTORIA - MONTERREY

CLAVE: 00462

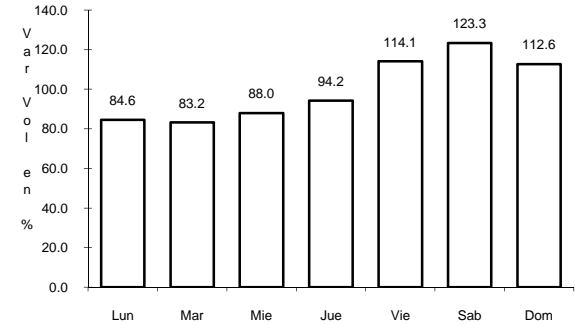
RUTA: MEX-085



Km: 0.00 Tipo: 3 Sent: 1



Km: 0.00 Tipo: 3 Sent: 2

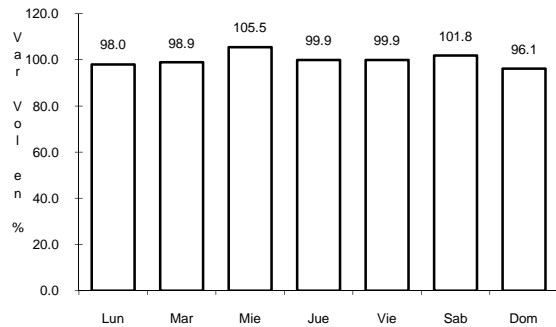


Km: 154.00 Tipo: 1 Sent: 0

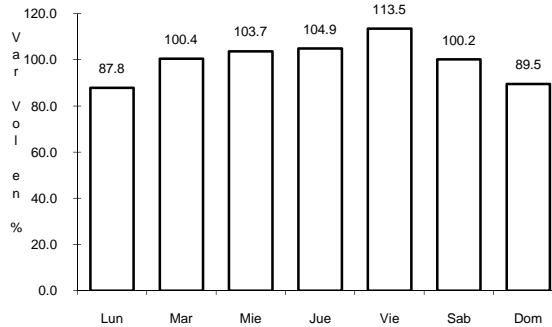
34 CARR: MATEHUALA - ENT. PUERTO MEXICO

CLAVE: 00405

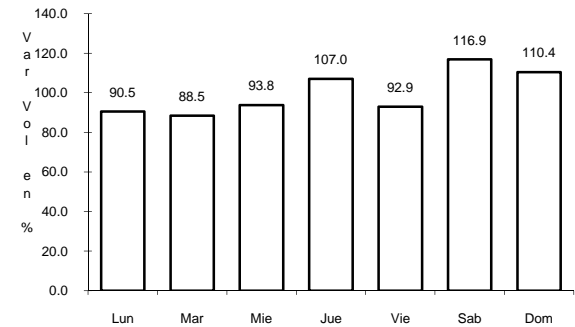
RUTA: MEX-057



Km: 0.00 Tipo: 3 Sent: 0



Km: 177.18 Tipo: 1 Sent: 1

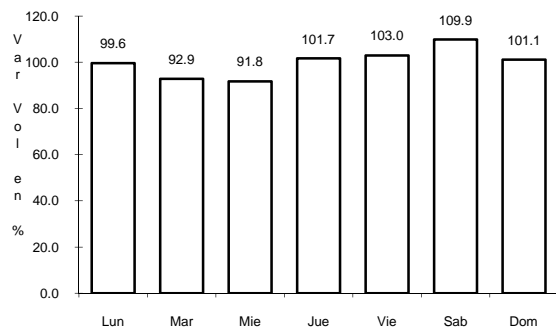


Km: 177.18 Tipo: 1 Sent: 2

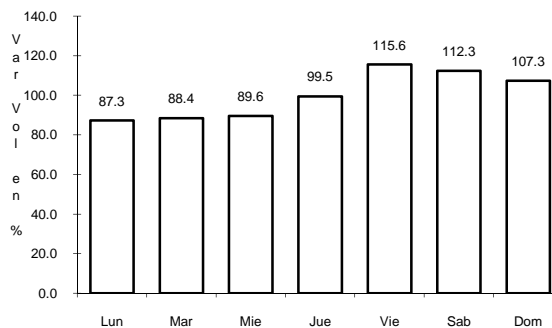
35 CARR: MATEHUALA - LA POZA

CLAVE: 00086

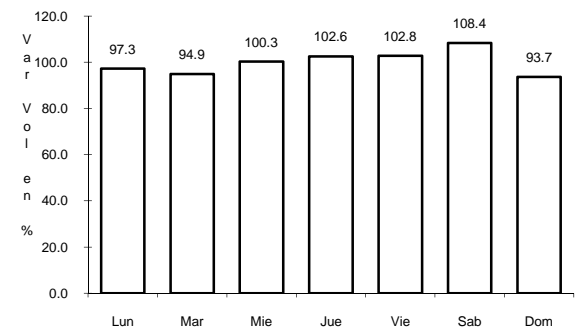
RUTA: SLP-NL-061



Km: 0.00 Tipo: 3 Sent: 0



Km: 49.00 Tipo: 1 Sent: 0

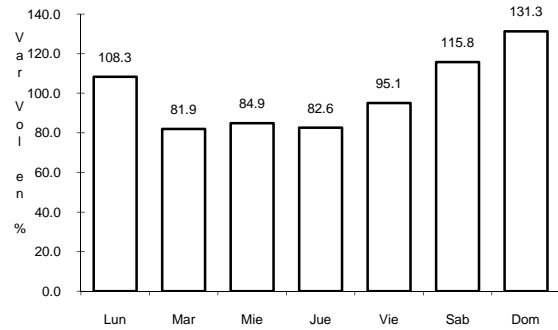


Km: 190.00 Tipo: 1 Sent: 0

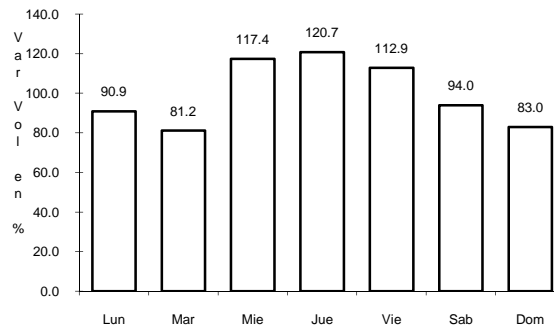
36 CARR: MONCLOVA - ESTACION CANDELA

CLAVE: 00501

ruta: COA-030-NL



Km: 5.10      Tipo: 1      Sent: 0

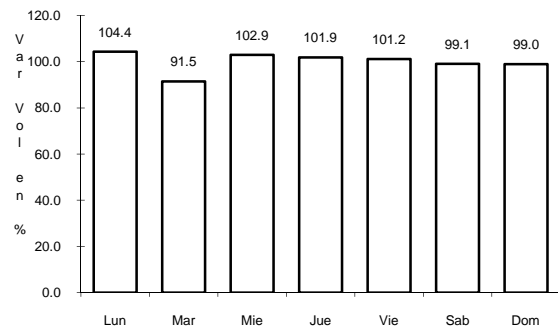


Km: 125.50      Tipo: 1      Sent: 0

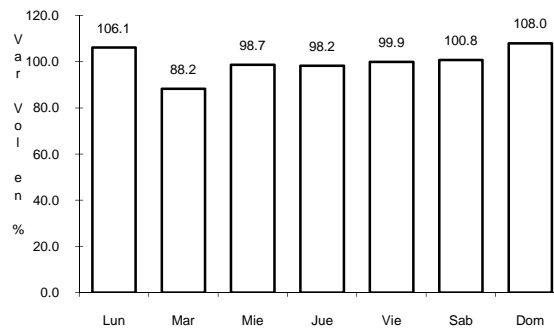
37 CARR: PIEDRAS NEGRAS - NUEVO LAREDO

CLAVE: 00503

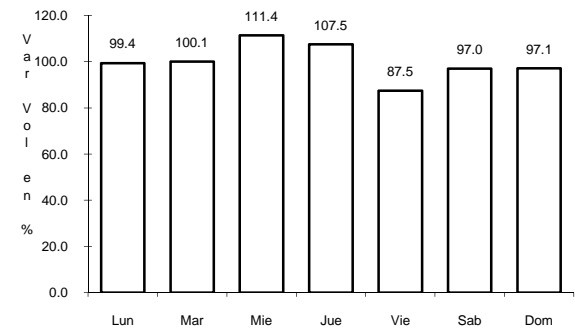
ruta: MEX-002



Km: 0.00      Tipo: 3      Sent: 1



Km: 0.00      Tipo: 3      Sent: 2

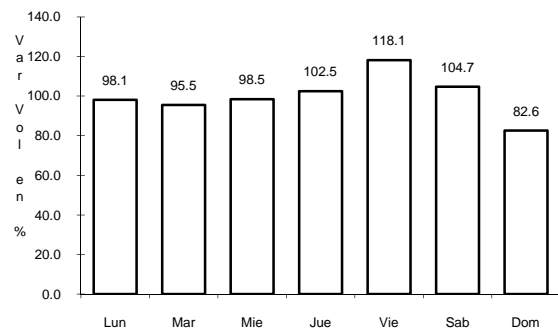


Km: 175.00      Tipo: 1      Sent: 0

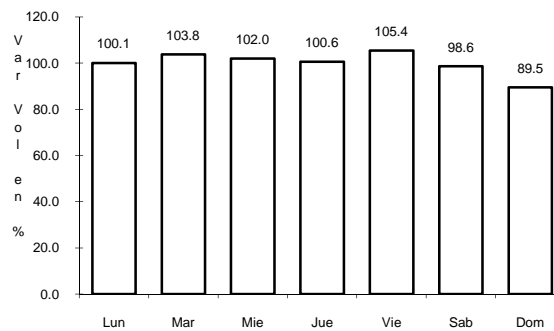
38 CARR: SALTILLO - MONTERREY

CLAVE: 00087

ruta: MEX-040



Km: 4.25      Tipo: 3      Sent: 1



Km: 4.25      Tipo: 3      Sent: 2