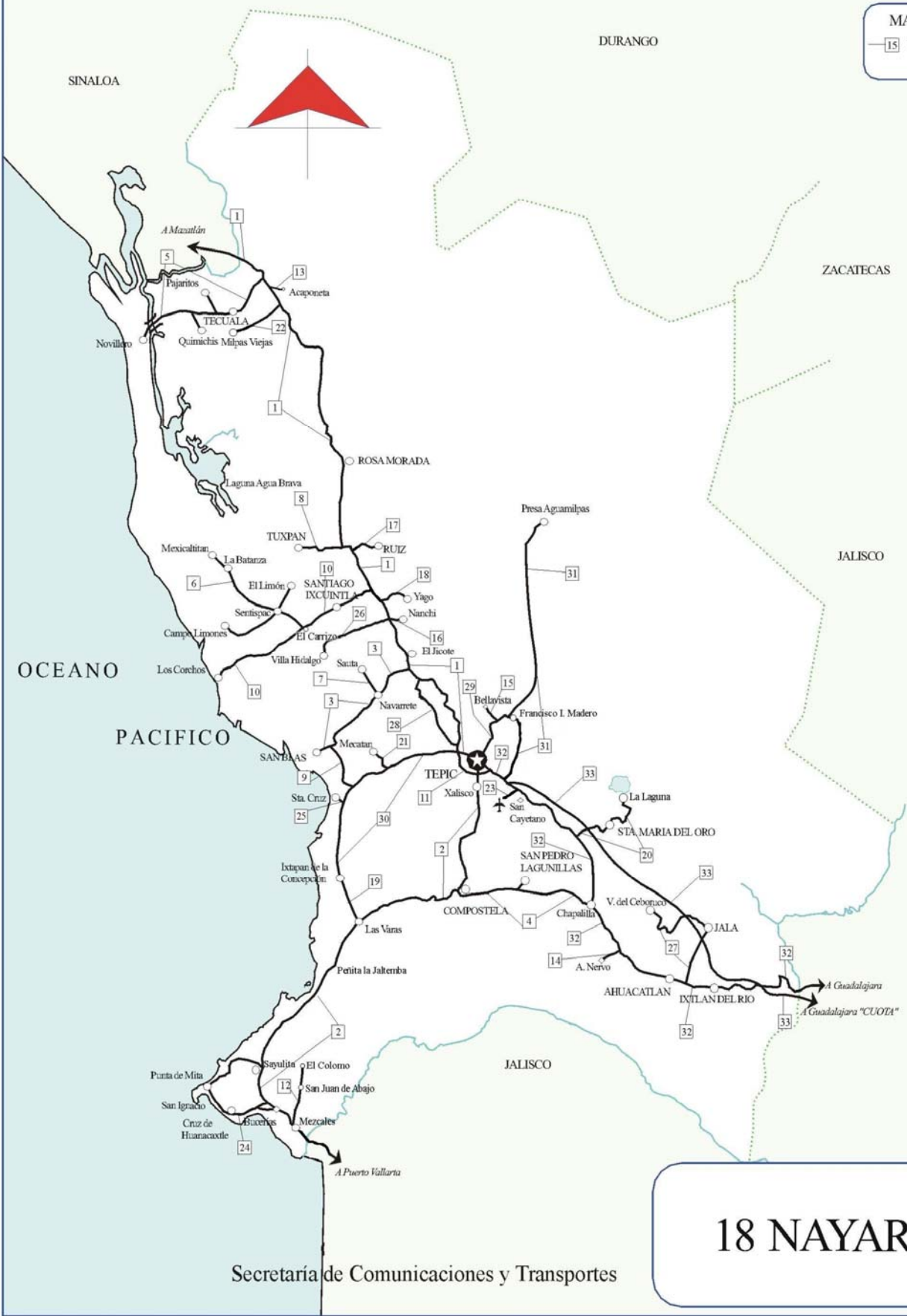


MAPA INDICE
15 Num. Indice
2008



Secretaría de Comunicaciones y Transportes

18 NAYARIT

CARRETERAS AFORADAS

Num. INDICE	CARRETERA
1	TEPIC - MAZATLAN
2	TEPIC - PUERTO VALLARTA
3	CRUCERO DE SAN BLAS - SAN BLAS
4	CHAPALILLA - COMPOSTELA (CUOTA)
5	ENT. ACAPONETA - EL NOVILLERO
6	EL CARRIZO - MEXCALTITAN
7	NAVARRETE - SAUTA
8	PEÑITAS - TUXPAN
9	SANTA CRUZ - SAN BLAS
10	ENT. SANTIAGO IXCUINTLA - PLAYA LOS CORCHOS
11	LIBRAMIENTO DE TEPIC
12	RAMAL EL COLOMO
13	RAMAL A ACAPONETA
14	RAMAL A AMADO NERVO
15	RAMAL A BELLAVISTA
16	RAMAL A ESTACION NANCHI
17	RAMAL A ESTACION RUIZ
18	RAMAL A ESTACION YAGO
19	RAMAL A IXTAPAN DE LA CONCEPCION
20	RAMAL A LA LAGUNA DE SANTA MARIA
21	RAMAL A MECATAN
22	RAMAL A MILPAS VIEJAS
23	RAMAL A NUEVO AEROPUERTO DE TEPIC
24	RAMAL A PUNTA MITA
25	RAMAL A SANTA CRUZ
26	RAMAL A VILLA HIDALGO NAY
27	RAMAL A VOLCAN DEL CEBORUCO
28	TEPIC - ENT. SAN BLAS (CUOTA)
29	TEPIC - FRANCISCO I. MADERO
30	TEPIC - IXTAPAN DE LA CONCEPCION
31	TEPIC - PRESA AGUAMILPAS
32	GUADALAJARA - TEPIC
33	GUADALAJARA - TEPIC (CUOTA)

NAYARIT

2 CARR : TEPIC - PUERTO VALLARTA

CLAVE: 00068

RUTA : MEX-200

AÑO : 2007

L U G A R	E S T A C I O N				C L A S I F I C A C I O N V E H I C U L A R E N P O R C I E N T O .												
	KM	TE	SC	TDPA	A	B	C2	C3	T3S2	T3S3	T3S2R4	OTROS	A	B	C	K'	D
TEPIC	0.00	3	1	12180	77.6	6.2	5.2	4.9	2.7	1.2	0.9	1.3	77.6	6.2	16.2	0.095	0.504
TEPIC	0.00	3	2	11990	78.2	5.9	5.6	4.9	2.5	1.5	0.4	1	78.2	5.9	15.9	0.099	0.504
LIMITE DE ZONA URBANA TEPIC	1.80	3	1	10080	71.1	3	3.7	0.8	5.6	3.4	6.8	5.6	71.1	3	25.9	0.085	0.504
LIMITE DE ZONA URBANA TEPIC	1.80	3	2	9929	70.9	3.1	2.6	0.7	6	2.7	8.7	5.3	70.9	3.1	26	0.084	0.504
X. C. LIBRAMIENTO DE TEPIC	3.90	3	1	8969	80.7	3.1	0.1	0.4	5.4	1.6	5.9	2.8	80.7	3.1	16.2	0.08	0.5
X. C. LIBRAMIENTO DE TEPIC	3.90	3	2	8957	72.7	2.6	0.1	0.8	6	3.9	8.1	5.8	72.7	2.6	24.7	0.072	0.5
JALISCO	7.15	3	0	9775	80.6	3.9	1.3	1.7	3.2	3.4	1.6	4.3	80.6	3.9	15.5	0.065	0.511
T. IZQ. EMILIANO ZAPATA	18.40	3	0	6100	76.1	10.2	3	4	3.3	1.2	1.1	1.1	76.1	10.2	13.7	0.085	0.501
T. IZQ. COMPOSTELA (1° ACCESO)	35.80	1	0	5732	80.3	8.3	3.7	2.1	2.6	1.3	0.6	1.1	80.3	8.3	11.4	0.08	0.5
T. IZQ. COMPOSTELA (1° ACCESO)	35.80	3	0	3482	79.8	4.3	4.1	2.7	3.5	2.3	1.6	1.7	79.8	4.3	15.9	0.085	0.502
LAS VARAS	71.30	1	0	7715	84.8	4	4.1	1.5	2.8	0.9	0.7	1.2	84.8	4	11.2	0.078	0.501
LAS VARAS	71.30	3	0	9540	81.4	5	2.1	5.1	1.8	1.3	1.4	1.9	81.4	5	13.6	0.087	0.503
T. DER. RINCON DE GUAYABITOS	94.50	1	0	9302	78.1	4	5.5	5.4	2.2	1.5	1.8	1.5	78.1	4	17.9	0.086	0.501
T. DER. RINCON DE GUAYABITOS	94.50	3	0	7906	71	10	4.1	2.4	5.8	2.1	3	1.6	71	10	19	0.077	0.503
T. DER. SAYULITA	122.90	1	0	6870	78.5	10	4.5	0.9	3.3	0.6	0.9	1.3	78.5	10	11.5	0.078	0.503
T. DER. SAYULITA	122.90	3	0	6613	76.9	4	6.1	5.1	4.3	2.3	0.4	0.9	76.9	4	19.1	0.085	0.501
T. DER. CRUZ DE JUANACAXTLE	137.30	3	1	4827	76.6	8	4.6	3.1	3.6	0.6	2	1.5	76.6	8	15.4	0.087	0.504
T. DER. CRUZ DE JUANACAXTLE	137.30	3	2	4900	76.5	8.1	4.6	3.1	3.6	0.6	2	1.5	76.5	8.1	15.4	0.098	0.504
BUCERIAS	140.80	1	1	6523	78.7	9.1	4.4	3.5	2.4	1	0.4	0.5	78.7	9.1	12.2	0.088	0.501
BUCERIAS	140.80	1	2	6489	78	9.5	4.3	2.9	2.9	1	0.5	0.9	78	9.5	12.5	0.089	0.501
LIM. EDOS. TERM. NAY. PPIA. JAL.	152.90	0	0														
T. DER. AEROPUERTO DIAZ ORDAZ	158.40	1	1	14638	80.9	4.3	4.5	4.2	2.8	1.6	0.7	1	80.9	4.3	14.8	0.109	0.503
T. DER. AEROPUERTO DIAZ ORDAZ	158.40	1	2	14797	83.1	4.8	4.2	2.8	2.8	1	0.5	0.8	83.1	4.8	12.1	0.105	0.503
T. DER. AEROPUERTO DIAZ ORDAZ	158.40	3	1	8795	77.4	3	4	2.3	6.3	2.2	3	1.8	77.4	3	19.6	0.093	0.5
T. DER. AEROPUERTO DIAZ ORDAZ	158.40	3	2	8793	78.6	3	4.1	2.5	5.3	2.1	3.1	1.3	78.6	3	18.4	0.089	0.5
PUERTO VALLARTA	166.90	0	0														

3 CARR : CRUCERO DE SAN BLAS - SAN BLAS

CLAVE: 18229

RUTA : MEX-074

AÑO : 2007

L U G A R	E S T A C I O N				C L A S I F I C A C I O N V E H I C U L A R E N P O R C I E N T O .												
	KM	TE	SC	TDPA	A	B	C2	C3	T3S2	T3S3	T3S2R4	OTROS	A	B	C	K'	D
T. C. TEPIC - MAZATLAN	0.00	3	0	2808	79.7	6.3	3.4	2.2	2.9	1.7	1.1	2.7	79.7	6.3	14	0.076	0.502
NAVARRETE	11.00	3	0	2507	88.6	4.6	1.9	0.7	1.5	0.8	0.5	1.4	88.6	4.6	6.8	0.108	0.501
SAN BLAS	36.00	1	0	3106	78.9	7.4	4.2	2.4	2.7	1	0.9	2.5	78.9	7.4	13.7	0.08	0.507

NAYARIT

8 CARR : PEÑITAS - TUXPAN

CLAVE: 18019

RUTA : MEX

AÑO : 2007

L U G A R	E S T A C I O N				C L A S I F I C A C I O N V E H I C U L A R E N P O R C I E N T O .												
	KM	TE	SC	TDPA	A	B	C2	C3	T3S2	T3S3	T3S2R4	OTROS	A	B	C	K'	D
PEÑITAS	0.00	3	0	6032	88.1	3.8	1.6	1.3	1	0.8	2.1	1.3	88.1	3.8	8.1	0.077	0.5
TUXPAN	9.00	1	0	6536	83.7	4.9	1.5	0.6	4.3	0.8	2	2.2	83.7	4.9	11.4	0.081	0.5

9 CARR : SANTA CRUZ - SAN BLAS

CLAVE: 18230

RUTA : MEX

AÑO : 2007

L U G A R	E S T A C I O N				C L A S I F I C A C I O N V E H I C U L A R E N P O R C I E N T O .												
	KM	TE	SC	TDPA	A	B	C2	C3	T3S2	T3S3	T3S2R4	OTROS	A	B	C	K'	D
SANTA CRUZ	0.00	3	0	1796	89.9	2.6	3.4	1.1	1.7	0.4	0.3	0.6	89.9	2.6	7.5	0.093	0.501
PLAYA LOS COCOS	3.90	1	0	1721	80.7	5.9	5.1	3.5	2.4	0.4	0.4	1.6	80.7	5.9	13.4	0.103	0.502
ATICAMA	5.00	3	0	2445	86	2.6	4.2	3.7	1	0.5	1.2	0.8	86	2.6	11.4	0.098	0.502
T. C. CRUCERO SAN BLAS - SAN BLAS	17.00	1	0	2030	77.5	9.1	5.2	3.8	1.8	1.1	1.1	0.4	77.5	9.1	13.4	0.126	0.503

10 CARR : ENT. SANTIAGO IXCUINTLA - PLAYA LOS CORCHOS

CLAVE: 18016

RUTA : MEX-072

AÑO : 2007

L U G A R	E S T A C I O N				C L A S I F I C A C I O N V E H I C U L A R E N P O R C I E N T O .												
	KM	TE	SC	TDPA	A	B	C2	C3	T3S2	T3S3	T3S2R4	OTROS	A	B	C	K'	D
T. C. TEPIC - MAZATLAN	0.00	3	1	1931	86.9	6.1	3.2	1.8	0.8	0.2	0.2	0.8	86.9	6.1	7	0.094	0.509
T. C. TEPIC - MAZATLAN	0.00	3	2	2005	86.8	6.4	3	1.8	0.8	0.2	0.2	0.8	86.8	6.4	6.8	0.096	0.509
SANTIAGO IXCUINTLA	8.00	1	1	3227	88.5	4.8	2.3	1.3	1.6	0.3	0.2	1	88.5	4.8	6.7	0.092	0.506
SANTIAGO IXCUINTLA	8.00	1	2	3156	87.5	5	2.4	1.6	1.6	0.3	0.3	1.3	87.5	5	7.5	0.089	0.506
SANTIAGO IXCUINTLA	8.00	3	0	5725	89.5	4.2	1.1	1.6	1.7	0.4	0.3	1.2	89.5	4.2	6.3	0.079	0.506
T. DER. MEXCALTITAN	17.00	1	0	3552	87.8	3	0.5	3.5	1.9	0.5	1	1.8	87.8	3	9.2	0.086	0.501
T. DER. MEXCALTITAN	17.00	3	0	3363	89	3.4	0.6	3.1	1	0.6	0.7	1.6	89	3.4	7.6	0.116	0.52
PLAYA LOS CORCHOS	39.00	1	0	1685	88.6	4.9	1.3	1	1.2	0.8	0.9	1.3	88.6	4.9	6.5	0.112	0.523

11 CARR : LIBRAMIENTO DE TEPIC

CLAVE: 18232

RUTA : MEX

AÑO : 2007

L U G A R	E S T A C I O N				C L A S I F I C A C I O N V E H I C U L A R E N P O R C I E N T O .												
	KM	TE	SC	TDPA	A	B	C2	C3	T3S2	T3S3	T3S2R4	OTROS	A	B	C	K'	D
T. C. GUADALAJARA - TEPIC	0.00	0	0														
X. C. TEPIC - PUERTO VALLARTA	5.00	1	1	14558	79.3	3.1	1.9	3.9	3.8	2.2	3.1	2.7	79.3	3.1	17.6	0.107	0.502
X. C. TEPIC - PUERTO VALLARTA	5.00	1	2	14451	77.6	3.3	2.4	3.7	3.4	2.6	3.7	3.3	77.6	3.3	19.1	0.077	0.502
T. C. TEPIC - MAZATLAN	17.09	1	1	9192	77.6	4.4	2.9	3.4	5.2	2.2	2.2	2.1	77.6	4.4	18	0.066	0.501
T. C. TEPIC - MAZATLAN	17.09	1	2	9161	79.2	4.5	2.6	2.9	4.6	1.9	2	2.3	79.2	4.5	16.3	0.072	0.501

NAYARIT

22 CARR : RAMAL A MILPAS VIEJAS

CLAVE: 18007

RUTA : NAY

AÑO : 2007

L U G A R	E S T A C I O N				CLASIFICACION VEHICULAR EN PORCIENTO .												
	KM	TE	SC	TDPA	A	B	C2	C3	T3S2	T3S3	T3S2R4	OTROS	A	B	C	K'	D
T. CARR. TEPIC - MAZATLAN	0.00	3	0	1958	88.6	6.4	1.4	0.7	1	0.7	0.3	0.9	88.6	6.4	5	0.116	0.505
MILPAS VIEJAS	17.00	0	0														

23 CARR : RAMAL A NUEVO AEROPUERTO DE TEPIC

CLAVE: 18012

RUTA : MEX

AÑO : 2007

L U G A R	E S T A C I O N				CLASIFICACION VEHICULAR EN PORCIENTO .												
	KM	TE	SC	TDPA	A	B	C2	C3	T3S2	T3S3	T3S2R4	OTROS	A	B	C	K'	D
T. C. GUADALAJARA - TEPIC	0.00	3	0	3623	83.3	3.9	3.2	2.9	3.5	1.2	1.2	0.8	83.3	3.9	12.8	0.09	0.501
AEROPUERTO DE TEPIC	5.00	0	0														

24 CARR : RAMAL A PUNTA MITA

CLAVE: 18020

RUTA : MEX

AÑO : 2007

L U G A R	E S T A C I O N				CLASIFICACION VEHICULAR EN PORCIENTO .												
	KM	TE	SC	TDPA	A	B	C2	C3	T3S2	T3S3	T3S2R4	OTROS	A	B	C	K'	D
T. C. TEPIC - PUERTO VALLARTA	0.00	3	0	4093	83.8	4.5	3.1	1.7	2.2	1.7	0.8	2.2	83.8	4.5	11.7	0.077	0.503
SAN IGNACIO	9.00	3	0	4444	78.8	10	4.1	1.4	2.7	1	0.7	1.3	78.8	10	11.2	0.115	0.501
PUNTA MITA	18.00	0	0														

25 CARR : RAMAL A SANTA CRUZ

CLAVE: 18030

RUTA : MEX

AÑO : 2007

L U G A R	E S T A C I O N				CLASIFICACION VEHICULAR EN PORCIENTO .												
	KM	TE	SC	TDPA	A	B	C2	C3	T3S2	T3S3	T3S2R4	OTROS	A	B	C	K'	D
T. C. TEPIC - IXTAPAN DE LA CONCEPCION	0.00	0	0														
SANTA CRUZ	1.30	1	0	1699	81.7	4.6	7.9	3.9	0.1	0.5	1	0.3	81.7	4.6	13.7	0.083	0.504

26 CARR : RAMAL A VILLA HIDALGO NAY

CLAVE: 18031

RUTA : NAY

AÑO : 2007

L U G A R	E S T A C I O N				CLASIFICACION VEHICULAR EN PORCIENTO .												
	KM	TE	SC	TDPA	A	B	C2	C3	T3S2	T3S3	T3S2R4	OTROS	A	B	C	K'	D
T. C. TEPIC - MAZATLAN	0.00	3	0	1924	86	3.6	3.5	1.6	2	0.8	1	1.5	86	3.6	10.4	0.089	0.507
VILLA HIDALGO	16.00	1	0	4151	86	5.2	0.8	2	2.4	1.1	0.9	1.6	86	5.2	8.8	0.089	0.505

NAYARIT

27 CARR : RAMAL A VOLCAN DEL CEBORUCO

CLAVE: 18003

RUTA : NAY

AÑO : 2007

L U G A R	E S T A C I O N				C L A S I F I C A C I O N V E H I C U L A R E N P O R C I E N T O .												
	KM	TE	SC	TDPA	A	B	C2	C3	T3S2	T3S3	T3S2R4	OTROS	A	B	C	K'	D
T. C. GUADALAJARA - TEPIC	0.00	3	0	3247	83.6	6	2.6	5.4	1.8	0.3	0.2	0.1	83.6	6	10.4	0.084	0.5
VOLCAN CEBORUCO	25.00	0	0														

28 CARR : TEPIC - ENT. SAN BLAS (CUOTA)

CLAVE: 18008

RUTA : MEX-015D

AÑO : 2007

L U G A R	E S T A C I O N				C L A S I F I C A C I O N V E H I C U L A R E N P O R C I E N T O .												
	KM	TE	SC	TDPA	A	B	C2	C3	T3S2	T3S3	T3S2R4	OTROS	A	B	C	K'	D
T. C. TEPIC - MAZATLAN	0.00	0	0														
CASETA DE COBRO "EL PICHON"	5.00	1	1	4591	71.6	9	3.4	2.8	5.8	1.9	3.6	1.9	71.6	9	19.4	0.08	0.507
CASETA DE COBRO "EL PICHON"	5.00	1	2	4729	70.2	10.3	3.2	2.9	5.6	2.1	3.6	2.1	70.2	10.3	19.5	0.085	0.507
T. C. TEPIC - MAZATLAN	21.00	1	1	4135	70.9	7.9	3.6	3.1	5.6	3.7	3.1	2.1	70.9	7.9	21.2	0.084	0.502
T. C. TEPIC - MAZATLAN	21.00	1	2	4105	67.1	8.4	3.7	3.1	6.3	4.8	3.2	3.4	67.1	8.4	24.5	0.068	0.502

29 CARR : TEPIC - FRANCISCO I. MADERO

CLAVE: 18009

RUTA : NAY-MEX

AÑO : 2007

L U G A R	E S T A C I O N				C L A S I F I C A C I O N V E H I C U L A R E N P O R C I E N T O .												
	KM	TE	SC	TDPA	A	B	C2	C3	T3S2	T3S3	T3S2R4	OTROS	A	B	C	K'	D
TEPIC	0.00	3	1	7810	82.1	5.1	1.6	0.8	1.4	1.6	4.7	2.7	82.1	5.1	12.8	0.079	0.5
TEPIC	0.00	3	2	7795	84.1	5	2	0.2	1.6	1.2	3.7	2.2	84.1	5	10.9	0.071	0.5
BELLAVISTA	9.00	3	0	4140	87.1	5	4.9	0	1.5	0.1	0.3	1.1	87.1	5	7.9	0.106	0.502
FRANCISCO I. MADERO	16.00	0	0														

30 CARR : TEPIC - IXTAPAN DE LA CONCEPCION

CLAVE: 18028

RUTA : MEX-076

AÑO : 2007

L U G A R	E S T A C I O N				C L A S I F I C A C I O N V E H I C U L A R E N P O R C I E N T O .												
	KM	TE	SC	TDPA	A	B	C2	C3	T3S2	T3S3	T3S2R4	OTROS	A	B	C	K'	D
T. C. TEPIC - MAZATLAN	0.00	3	0	12818	86.5	2	2.8	1	1.4	1.3	1.8	3.2	86.5	2	11.5	0.079	0.504
T. DER. MECATAN	19.00	1	0	2294	85.8	3.7	2.7	1	1.3	1.2	1.7	2.6	85.8	3.7	10.5	0.082	0.502
T. DER. MECATAN	19.00	3	0	1773	89.5	4.3	1.8	1.6	1.6	0.2	0.2	0.8	89.5	4.3	6.2	0.109	0.505
JALCOCOTAN	27.00	1	0	2039	89.4	4.2	1.5	1.4	2.1	0.3	0.4	0.7	89.4	4.2	6.4	0.094	0.501
T. DER. SANTA CRUZ	50.00	3	0	1386	89.1	3.5	3.5	0.9	1.8	0.3	0.3	0.6	89.1	3.5	7.4	0.091	0.502
IXTAPAN DE LA CONCEPCION	77.42	1	0	1458	88.4	6.1	1.6	1.5	1.4	0.2	0.1	0.7	88.4	6.1	5.5	0.133	0.501

NAYARIT

31 CARR : TEPIC - PRESA AGUAMILPAS

CLAVE: 18029

RUTA : MEX

AÑO : 2007

L U G A R	E S T A C I O N				C L A S I F I C A C I O N V E H I C U L A R E N P O R C I E N T O .												
	KM	TE	SC	TDPA	A	B	C2	C3	T3S2	T3S3	T3S2R4	OTROS	A	B	C	K'	D
T. C. GUADALAJARA - TEPIC	0.00	3	0	9544	79.1	0	5.6	2.4	4.4	2.4	2.7	3.4	79.1	0	20.9	0.078	0.502
X. C. TEPIC - FCO. I. MADERO	17.50	3	0	2272	86.1	5	1.9	2.8	1.8	1.1	0.5	0.8	86.1	5	8.9	0.104	0.503
PRESA AGUAMILPA	54.00	1	0	1354	84.3	6.3	5.3	3	0	0.1	0.9	0.1	84.3	6.3	9.4	0.082	0.501

32 CARR : GUADALAJARA - TEPIC

CLAVE: 00031

RUTA : MEX-015

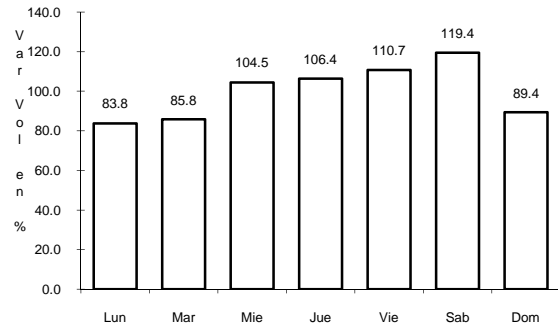
AÑO : 2007

L U G A R	E S T A C I O N				C L A S I F I C A C I O N V E H I C U L A R E N P O R C I E N T O .												
	KM	TE	SC	TDPA	A	B	C2	C3	T3S2	T3S3	T3S2R4	OTROS	A	B	C	K'	D
GUADALAJARA	0.00	0	0														
T. DER. BASE AEREA No. 2	8.30	3	1	13332	79.4	4.5	5.6	4.3	2.1	2.1	1.6	0.4	79.4	4.5	16.1	0.105	0.502
T. DER. BASE AEREA No. 2	8.30	3	2	13450	80	3.9	4.8	3.7	3.2	2.2	1.8	0.4	80	3.9	16.1	0.104	0.502
T. IZQ. LA PRIMAVERA	20.50	1	1	10987	74.6	5.5	2.9	2.8	7.2	4.2	1.9	0.9	74.6	5.5	19.9	0.095	0.513
T. IZQ. LA PRIMAVERA	20.50	1	2	11415	76.9	5	2.3	2.9	6	3.9	2	1	76.9	5	18.1	0.091	0.513
EL ARENAL	36.20	1	0	10586	70.4	5.4	1.7	2.5	7	3.3	6.6	3.1	70.4	5.4	24.2	0.078	0.505
TEQUILA	57.50	3	0	9278	55.8	6.7	5.4	6.4	11.4	4.8	5	4.5	55.8	6.7	37.5	0.072	0.501
MAGDALENA	76.80	3	0	7329	71.8	6.5	2.2	1.7	9.2	4.7	2.5	1.4	71.8	6.5	21.7	0.09	0.504
LIM. EDOS. TERM. JAL. PPIA. NAY.	123.00	0	0														
IXTLAN DEL RIO	138.80	1	0	9481	59.9	11	2.1	3.1	8	5.2	4	6.7	59.9	11	29.1	0.069	0.5
IXTLAN DEL RIO	138.80	3	0	8653	78.3	3	4.1	2.3	5.8	2	3	1.5	78.3	3	18.7	0.076	0.502
AHUACATLAN	152.00	1	0	8612	83.8	5	4.1	1.4	2.8	1	0.7	1.2	83.8	5	11.2	0.079	0.501
AHUACATLAN	152.00	3	0	8927	83.9	5	4.1	1.4	2.8	0.9	0.7	1.2	83.9	5	11.1	0.08	0.501
T. IZQ. AMADO NERVO	167.30	1	0	9572	77	5.6	3.6	3.8	6.3	1.4	1.1	1.2	77	5.6	17.4	0.076	0.5
T. IZQ. COMPOSTELA	175.50	1	0	11432	65.9	6.8	3.1	6.3	9	4.8	2.6	1.5	65.9	6.8	27.3	0.08	0.503
T. IZQ. COMPOSTELA	175.50	3	0	9520	68.7	6.9	4.6	5.4	6.8	3.3	0.8	3.5	68.7	6.9	24.4	0.073	0.501
T. DER. SANTA MARIA DEL ORO	196.00	1	0	11334	68.8	10.4	2.4	4.3	4.6	2.5	4.5	2.5	68.8	10.4	20.8	0.078	0.501
T. DER. SANTA MARIA DEL ORO	196.00	3	0	6645	76	10.2	2.9	4	3.4	1.4	1	1.1	76	10.2	13.8	0.093	0.5
SAN CAYETANO	215.90	3	0	10184	82.3	4	3.7	5.1	1.9	1.1	0.8	1.1	82.3	4	13.7	0.077	0.503
T. IZQ. LIBRAMIENTO DE TEPIC	219.10	1	1	11467	68.6	5.4	7.8	3.9	7.1	2.6	2.5	2.1	68.6	5.4	26	0.075	0.502
T. IZQ. LIBRAMIENTO DE TEPIC	219.10	1	2	11371	74.8	4.2	4.2	4.6	4.4	2.4	2.8	2.6	74.8	4.2	21	0.081	0.502
T. IZQ. LIBRAMIENTO DE TEPIC	219.10	3	1	10978	68.8	6.1	6.3	3.7	5.1	2.1	4.1	3.8	68.8	6.1	25.1	0.065	0.502
T. IZQ. LIBRAMIENTO DE TEPIC	219.10	3	2	11069	69.5	10	3.2	2.5	4.2	2.4	4	4.2	69.5	10	20.5	0.072	0.502
T. IZQ. AEROPUERTO DE TEPIC	222.90	1	0	11012	66.5	6.9	5.4	9.2	4.1	3.8	2	2.1	66.5	6.9	26.6	0.075	0.501
TEPIC	224.80	1	1	15290	72.6	6.4	5.2	5.1	3.8	2.5	2.4	2	72.6	6.4	21	0.104	0.501
TEPIC	224.80	1	2	15238	77.7	3.3	4.3	5.2	3.4	2	2.3	1.8	77.7	3.3	19	0.09	0.501

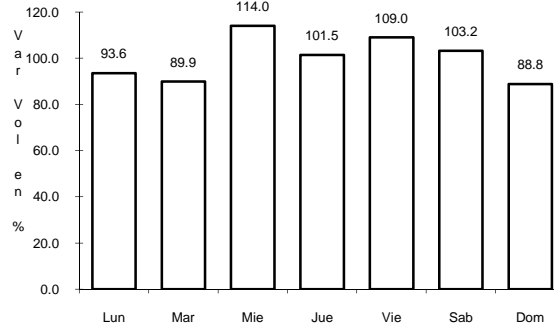
1 CARR: TEPIC - MAZATLAN

CLAVE: 00500

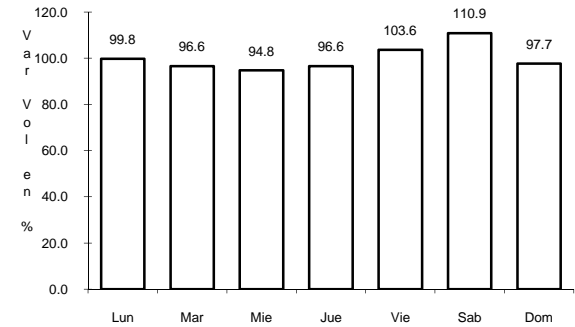
ruta: MEX-015



Km: 0.00 Tipo: 3 Sent: 1



Km: 0.00 Tipo: 3 Sent: 2

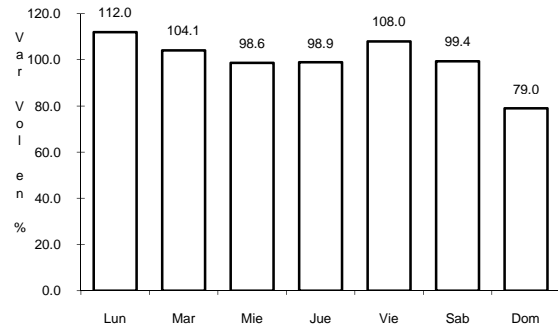


Km: 269.52 Tipo: 3 Sent: 0

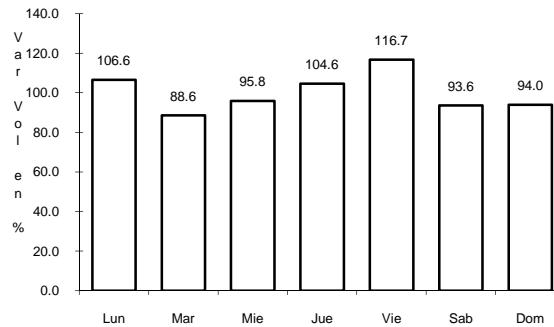
2 CARR: TEPIC - PUERTO VALLARTA

CLAVE: 00068

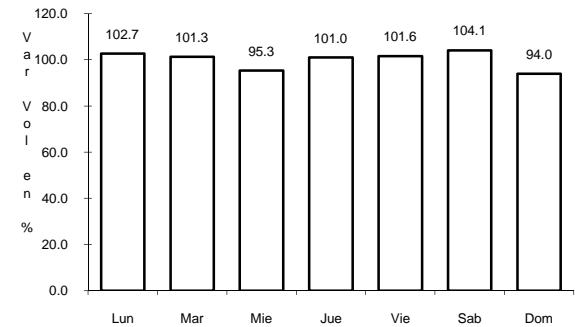
ruta: MEX-200



Km: 0.00 Tipo: 3 Sent: 1



Km: 0.00 Tipo: 3 Sent: 2

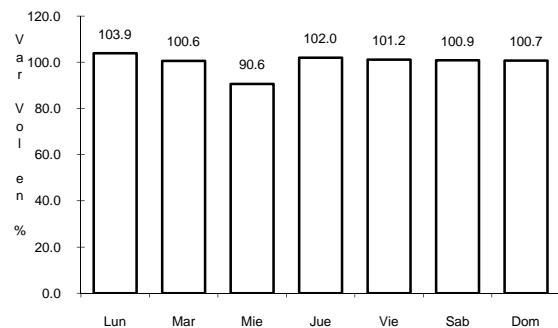


Km: 94.50 Tipo: 1 Sent: 0

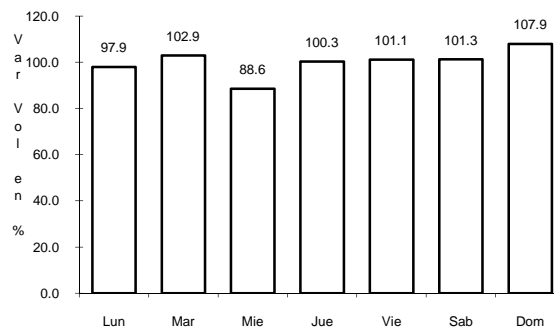
3 CARR: CRUCERO DE SAN BLAS - SAN BLAS

CLAVE: 18229

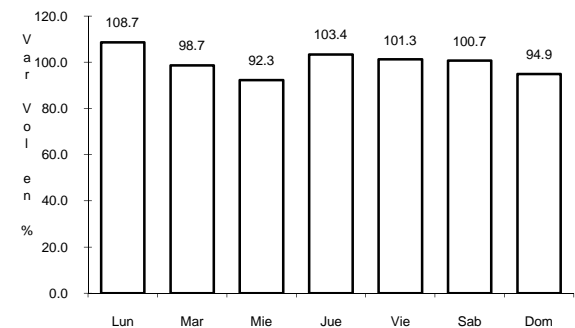
ruta: MEX-074



Km: 0.00 Tipo: 3 Sent: 0



Km: 11.00 Tipo: 3 Sent: 0

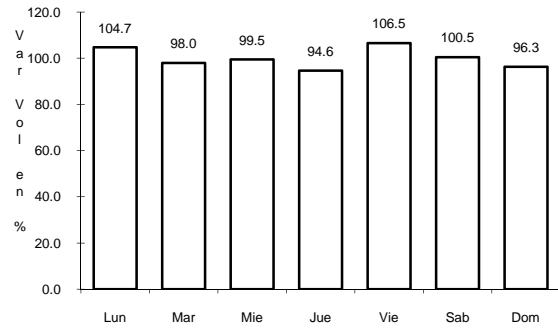


Km: 36.00 Tipo: 1 Sent: 0

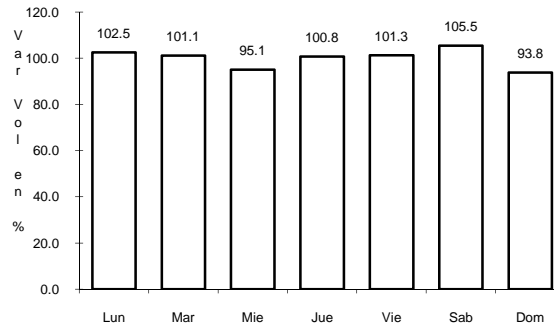
4 CARR: CHAPALILLA - COMPOSTELA (CUOTA)

CLAVE: 18004

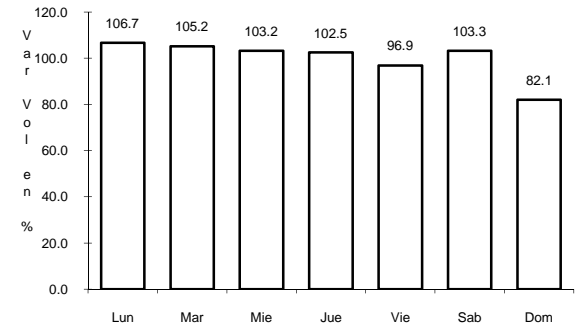
RUTA: MEX-68D



Km: 0.00 Tipo: 3 Sent: 0



Km: 36.50 Tipo: 1 Sent: 0

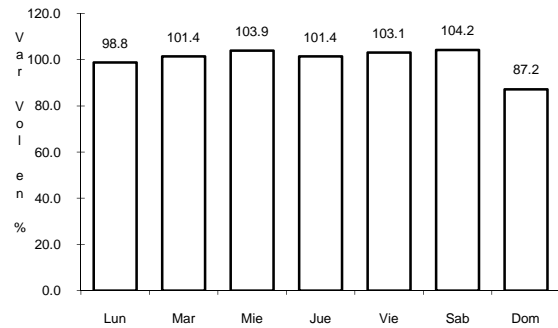


Km: 38.00 Tipo: 1 Sent: 0

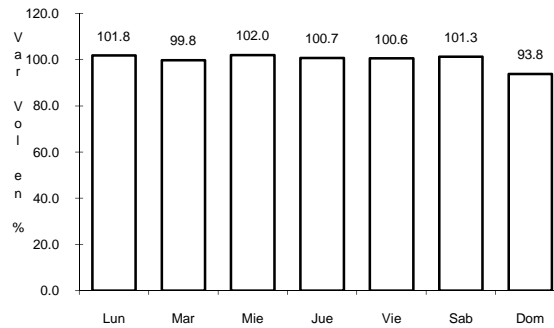
5 CARR: ENT. ACAPONETA - EL NOVILLERO

CLAVE: 18023

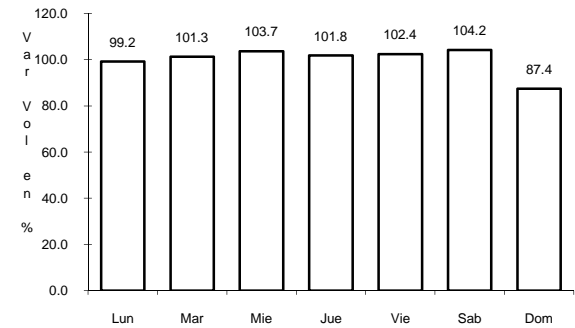
RUTA: MEX-068



Km: 0.00 Tipo: 3 Sent: 0



Km: 13.00 Tipo: 1 Sent: 0

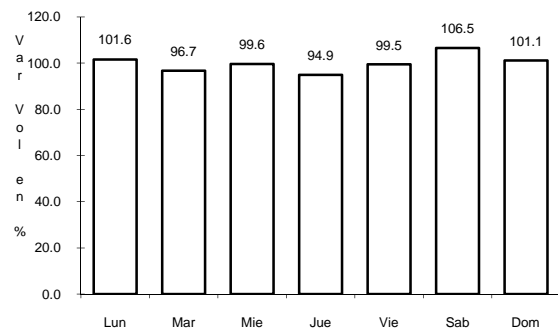


Km: 36.00 Tipo: 1 Sent: 0

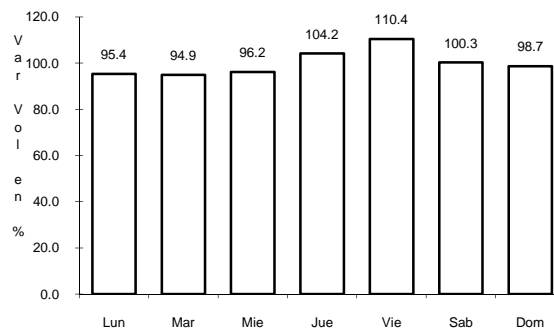
6 CARR: EL CARRIZO - MEXCALTITAN

CLAVE: 18107

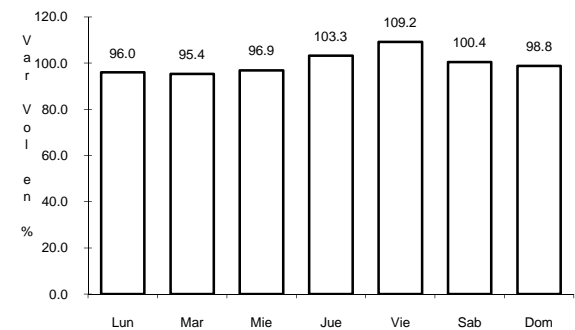
RUTA: NAY-078



Km: 0.00 Tipo: 3 Sent: 0



Km: 9.00 Tipo: 1 Sent: 0

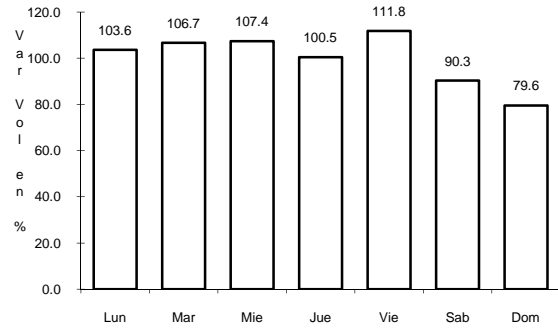


Km: 25.00 Tipo: 1 Sent: 0

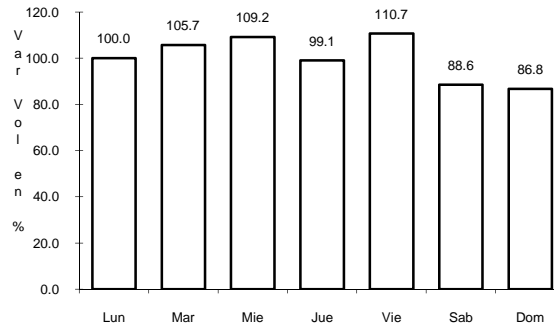
10 CARR: ENT. SANTIAGO IXCUINTLA - PLAYA LOS CORCHOS

CLAVE: 18016

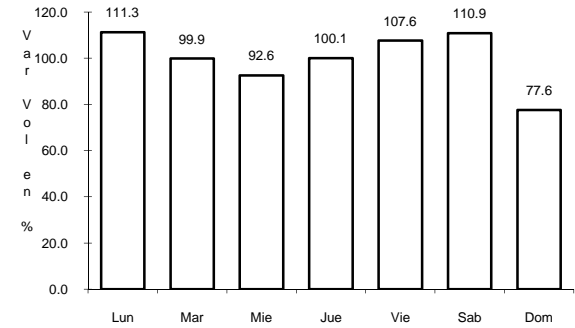
ruta: MEX-072



Km: 0.00 Tipo: 3 Sent: 1



Km: 0.00 Tipo: 3 Sent: 2

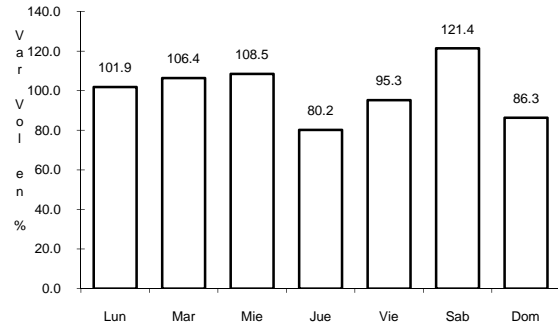


Km: 39.00 Tipo: 1 Sent: 0

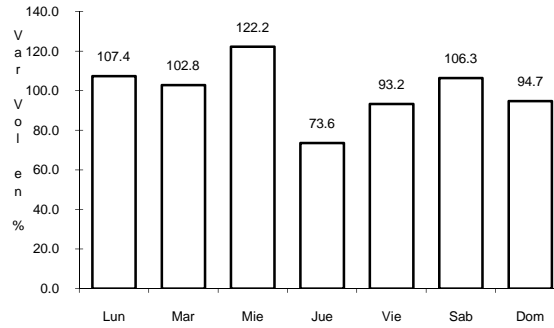
11 CARR: LIBRAMIENTO DE TEPIC

CLAVE: 18232

ruta: MEX



Km: 5.00 Tipo: 1 Sent: 1

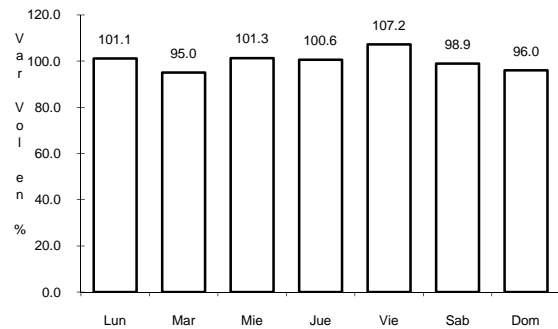


Km: 5.00 Tipo: 1 Sent: 2

12 CARR: RAMAL EL COLOMO

CLAVE: 18014

ruta: NAY

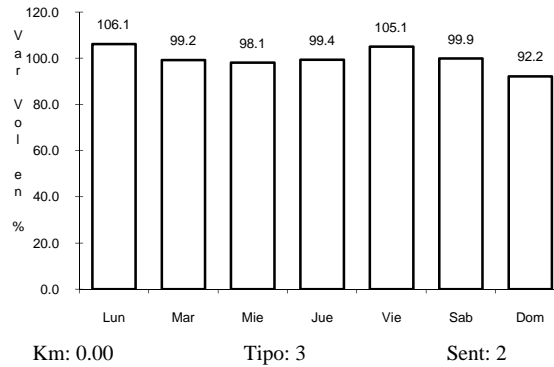
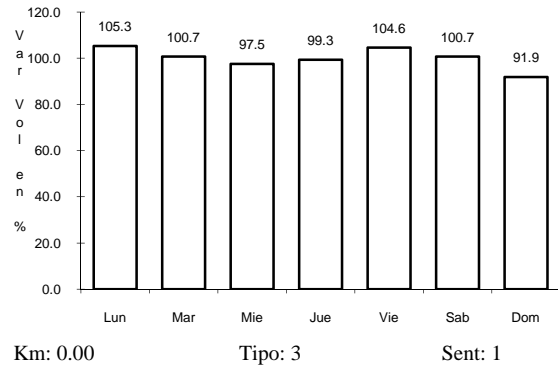


Km: 0.00 Tipo: 3 Sent: 0

13 CARR: RAMAL A ACAPONETA

CLAVE: 18038

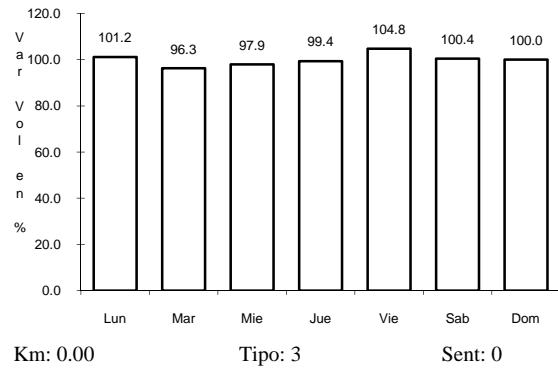
RUTA: MEX



14 CARR: RAMAL A AMADO NERVO

CLAVE: 18011

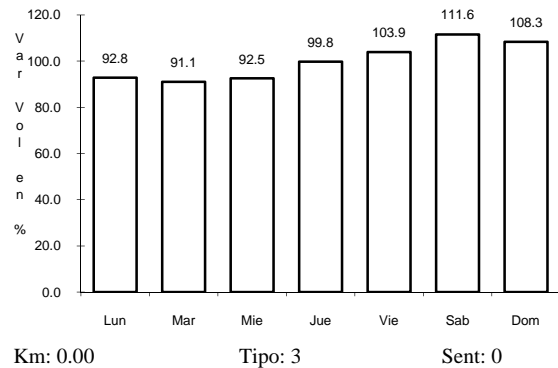
RUTA: NAY



15 CARR: RAMAL A BELLAVISTA

CLAVE: 18059

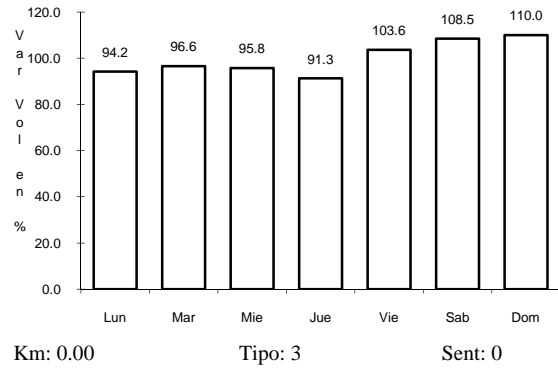
RUTA: NAY-059



16 CARR: RAMAL A ESTACION NANCHI

CLAVE: 18068

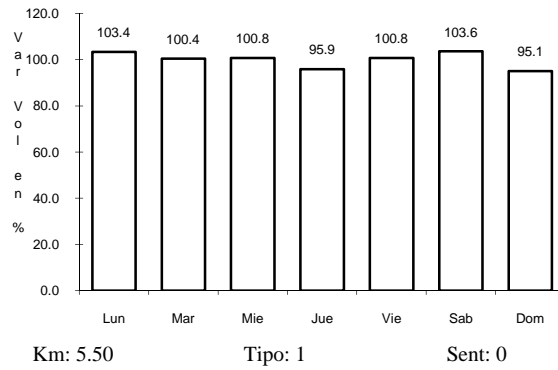
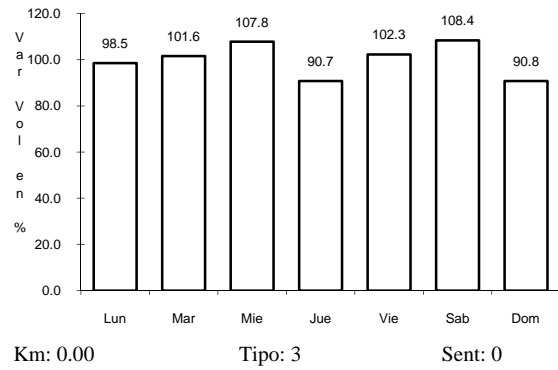
RUTA: MEX



17 CARR: RAMAL A ESTACION RUIZ

CLAVE: 18026

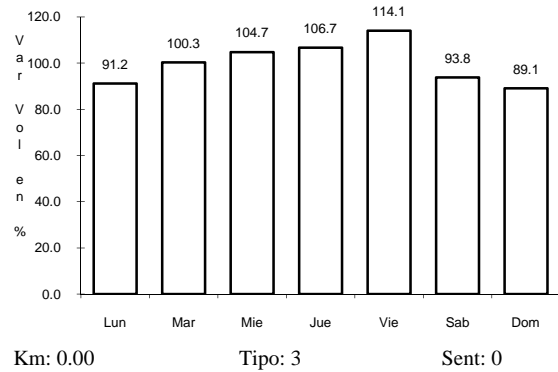
RUTA: MEX-044



18 CARR: RAMAL A ESTACION YAGO

CLAVE: 18224

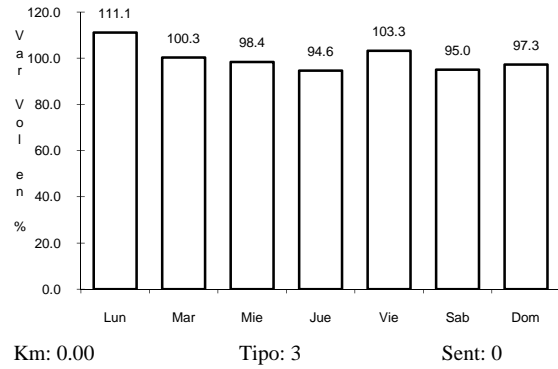
RUTA: NAY



22 CARR: RAMAL A MILPAS VIEJAS

CLAVE: 18007

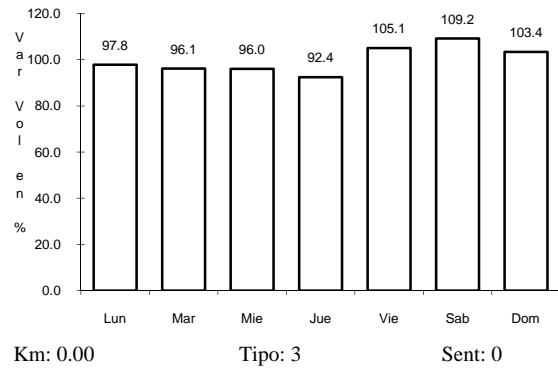
RUTA: NAY



23 CARR: RAMAL A NUEVO AEROPUERTO DE TEPIC

CLAVE: 18012

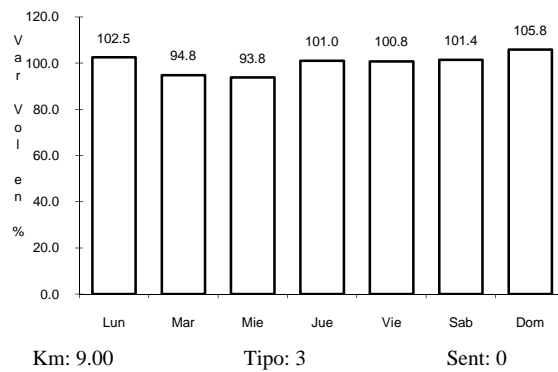
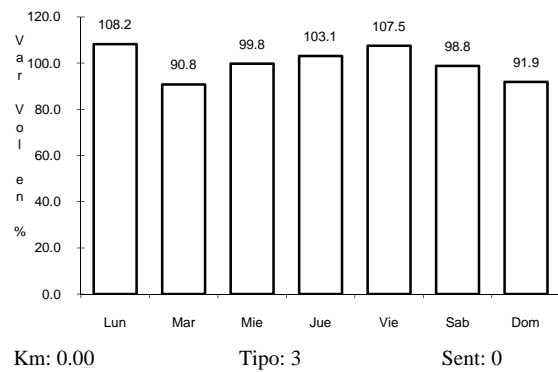
RUTA: MEX



24 CARR: RAMAL A PUNTA MITA

CLAVE: 18020

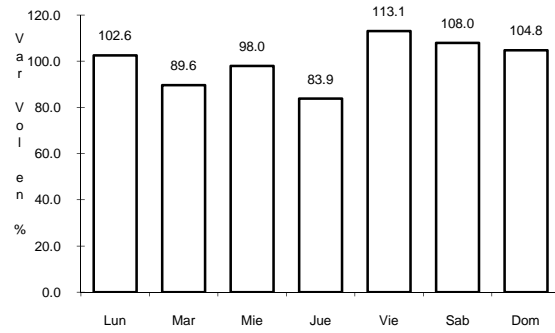
RUTA: MEX



25 CARR: RAMAL A SANTA CRUZ

CLAVE: 18030

RUTA: MEX



Km: 1.30

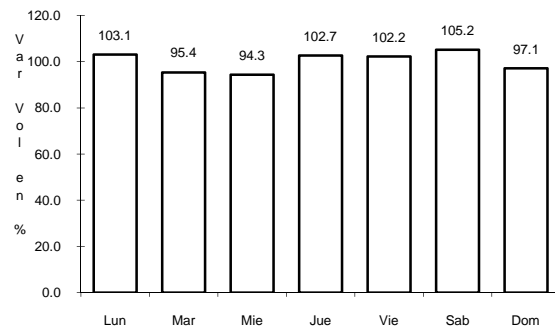
Tipo: 1

Sent: 0

26 CARR: RAMAL A VILLA HIDALGO NAY

CLAVE: 18031

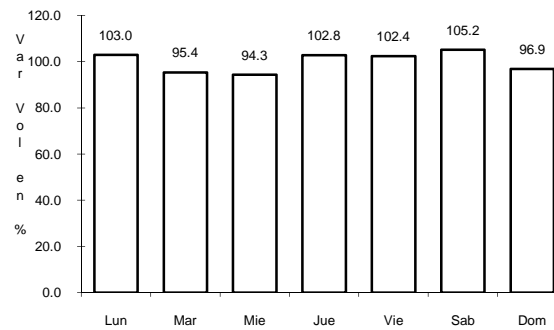
RUTA: NAY



Km: 0.00

Tipo: 3

Sent: 0



Km: 16.00

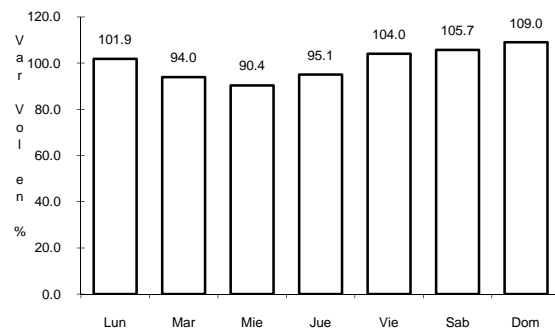
Tipo: 1

Sent: 0

27 CARR: RAMAL A VOLCAN DEL CEBORUCO

CLAVE: 18003

RUTA: NAY



Km: 0.00

Tipo: 3

Sent: 0

