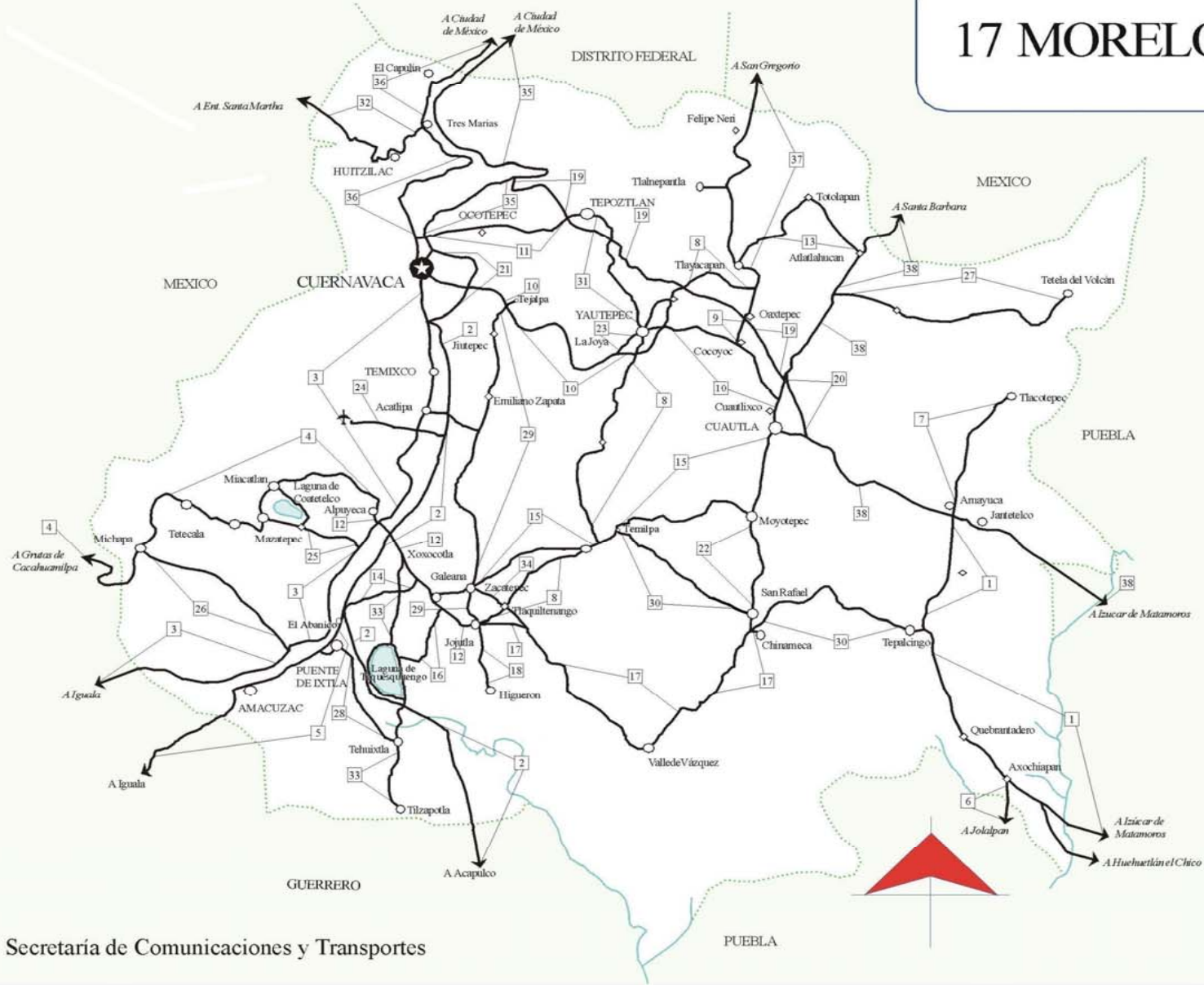


17 MORELOS



MAPA INDICE
—15 Num. Indice
2008

Secretaria de Comunicaciones y Transportes

CARRETERAS AFORADAS

Num. INDICE	CARRETERA
1	AMAYUCA - IZUCAR DE MATAMOROS
2	CUERNAVACA - ACAPULCO (CUOTA)
3	CUERNAVACA - CHILPANCINGO
4	ENT. ALPUYECA - GRUTAS DE CACAHUAMILPA
5	PUENTE DE IXTLA - IGUALA (CUOTA)
6	RAMAL A JOLALPAN
7	AMAYUCA - TLACOTEPEC
8	T. C. (SAN GREGORIO - OAXTEPEC) - JOJUTLA
9	COCOYOC - OAXTEPEC
10	CUERNAVACA - CUAUTLIXCO
11	CUERNAVACA - TEPOZTLAN
12	ALPUYECA - JOJUTLA
13	ATLATLAHUCAN - TLAYACAPAN
14	ENT. CHIVERIAS - ENT. EL ABANICO
15	GALEANA - CUAUTLA
16	PILARES - T. C. (XOXOCOTLA - TILZAPOTLA)
17	JOJUTLA - CHINAMECA
18	JOJUTLA - EL HIGUERON
19	LA PERA - CUAUTLA (CUOTA)
20	LIBRAMIENTO DE CUAUTLA
21	LIBRAMIENTO DE CUERNAVACA
22	MOYOTEPEC - SAN RAFAEL
23	PASO POR YAUTEPEC
24	RAMAL A AEROPUERTO DE CUERNAVACA
25	RAMAL A COATETELCO
26	RAMAL A MICHAPA
27	RAMAL A TETELA DEL VOLCAN
28	TEHUIXTLA - PUENTE DE IXTLA
29	TEJALPA - JOJUTLA
30	TEMILPA - TEPALCINGO
31	TEPOZTLAN - YAUTEPEC
32	TRES MARIAS - SANTA MARTHA
33	XOXOCOTLA - TILZAPOTLA
34	ZACATEPEC - TLAQUILTENANGO
35	MEXICO - CUERNAVACA (CUOTA)
36	MEXICO - CUERNAVACA (LIBRE)
37	SAN GREGORIO - OAXTEPEC
38	SANTA BARBARA - IZUCAR DE MATAMOROS

MORELOS

2 CARR : CUERNAVACA - ACAPULCO (CUOTA)

CLAVE: 00045

RUTA : MEX-095D

AÑO : 2007

L U G A R	E S T A C I O N				C L A S I F I C A C I O N V E H I C U L A R E N P O R C I E N T O .												
	KM	TE	SC	TDPA	A	B	C2	C3	T3S2	T3S3	T3S2R4	OTROS	A	B	C	K'	D
CASETA DE COBRO PALO BLANCO	199.80	2	2	3942													
X. C. CHILPANCINGO - ACAPULCO (TIERRA COLORADA)	231.70	1	1	3597	75.4	6.2	9	3.4	2.4	0.7	2.2	0.7	75.4	6.2	18.4	0.074	0.503
X. C. CHILPANCINGO - ACAPULCO (TIERRA COLORADA)	231.70	1	2	3646	75.8	6.1	7.8	3.5	2.7	1	2.3	0.8	75.8	6.1	18.1	0.067	0.503
CASETA DE COBRO "LA VENTA"	276.10	1	1	3411	84	6	2.7	2.3	1.6	1.8	1.3	0.3	84	6	10	0.104	0.501
CASETA DE COBRO "LA VENTA"	276.10	1	2	3429	83.5	6.2	2.5	3	2	1.6	1	0.2	83.5	6.2	10.3	0.107	0.501
CASETA DE COBRO LA VENTA	276.10	2	1	3693													
CASETA DE COBRO LA VENTA	276.10	2	2	3693													
T. C. CHILPANCINGO - ACAPULCO (ENT. LA VENTA)	277.20	1	1	2980	82.2	4.4	2.9	2.3	3.8	3.6	0.7	0.1	82.2	4.4	13.4	0.093	0.511
T. C. CHILPANCINGO - ACAPULCO (ENT. LA VENTA)	277.20	1	2	3117	82.1	4.4	2.4	2	4.2	4.1	0.8	0	82.1	4.4	13.5	0.099	0.511

3 CARR : CUERNAVACA - CHILPANCINGO

CLAVE: 00042

RUTA : MEX-095

AÑO : 2007

L U G A R	E S T A C I O N				C L A S I F I C A C I O N V E H I C U L A R E N P O R C I E N T O .												
	KM	TE	SC	TDPA	A	B	C2	C3	T3S2	T3S3	T3S2R4	OTROS	A	B	C	K'	D
CUERNAVACA	0.00	0	0														
TEMIXCO	9.80	1	0	26058	75.4	8.9	3.8	3.4	2.7	2.1	1.5	2.2	75.4	8.9	15.7	0.073	0.501
TEMIXCO	9.80	3	1	12630	80	5.1	3.5	4.8	0.9	2.6	2.5	0.6	80	5.1	14.9	0.087	0.501
TEMIXCO	9.80	3	2	12661	82.3	5.4	3.9	3.1	0.5	2.4	2.3	0.1	82.3	5.4	12.3	0.089	0.501
ACATLIPA	12.43	1	0	17745	81.2	4.6	6.1	2.9	1.7	2	0.8	0.7	81.2	4.6	14.2	0.082	0.503
ACATLIPA	12.43	3	0	14809	76.5	6.1	6.1	4.1	2.5	2.2	1.3	1.2	76.5	6.1	17.4	0.072	0.502
T. IZQ. XOCHITEPEC (REAL DEL PUENTE)	16.05	3	0	11084	79.8	3.4	6.2	3.7	2.7	1.2	1	2	79.8	3.4	16.8	0.118	0.501
X. C. ALPUYECA - JOJUTLA	24.15	1	0	14143	84	4.3	3.1	1.2	4.2	0.8	1	1.4	84	4.3	11.7	0.08	0.501
T. DER. COATETELCO	28.00	3	0	8665	83.4	6.4	3.1	1.8	2.8	0.9	0.6	1	83.4	6.4	10.2	0.077	0.501
T. DER. MICHAPA	44.36	1	0	7603	79.1	7.2	2.4	2.6	2.6	3.2	1.1	1.8	79.1	7.2	13.7	0.072	0.501
T. IZQ. CUERNAVACA - IGUALA (CUOTA)	46.93	1	0	7017	85	4.1	2.3	2.4	2	1.8	1	1.4	85	4.1	10.9	0.074	0.504
T. IZQ. CUERNAVACA - IGUALA (CUOTA)	46.93	3	0	6682	85.9	3.9	1.5	2	1.9	2.1	1	1.7	85.9	3.9	10.2	0.08	0.501
HUAJINTLA	52.00	3	0	6885	85.8	4.2	2.1	1.7	1.4	1.6	1.6	1.6	85.8	4.2	10	0.061	0.503
LIM. EDOS. TERM. MOR. PPIA. GRO.	56.55	0	0														
T. DER. IXTAPAN DE LA SAL (AXIXINTLA)	63.47	1	0	2957	80.1	4.7	4.5	6.8	1.2	0.5	1.2	1	80.1	4.7	15.2	0.113	0.541
TAXCO	89.90	3	0	5235	85.5	2.6	2.7	0.8	3.2	1.1	1.7	2.4	85.5	2.6	11.9	0.079	0.504
IGUALA	119.60	1	0	5904	78.5	5.1	3	2.5	4.9	1	2	3	78.5	5.1	16.4	0.082	0.501
T. IZQ. PUENTE DE IXTLA	124.00	3	0	11488	92.1	1.7	1.7	1.4	1.8	0.3	0.4	0.6	92.1	1.7	6.2	0.083	0.518
T. DER. SABANA GRANDE	145.00	1	0	7158	81.9	2.7	5.3	2.2	2	2.2	0.6	3.1	81.9	2.7	15.4	0.077	0.509
T. DER. TECUESCONTITLAN	146.80	1	0	10339	84	2.6	4.5	2.3	1.9	1.7	0.4	2.6	84	2.6	13.4	0.071	0.514
T. DER. MEZCALA	173.10	1	0	7039	82	2.8	7.1	1.6	1.7	1.7	0.4	2.7	82	2.8	15.2	0.08	0.519

MORELOS

6 CARR : RAMAL A JOLALPAN

CLAVE: 00143

RUTA : MOR-PUE

AÑO : 2007

L U G A R	E S T A C I O N				C L A S I F I C A C I O N V E H I C U L A R E N P O R C I E N T O .												
	KM	TE	SC	TDPA	A	B	C2	C3	T3S2	T3S3	T3S2R4	OTROS	A	B	C	K'	D
AXOCHIAPAN	0.00	3	0	1980	75.8	14.8	3.1	1.4	0.7	1.9	1.2	1.1	75.8	14.8	9.4	0.083	0.503
LIM. EDOS. TERM. MOR. PPIA. PUE.	1.60	0	0														
JOLALPAN	24.00	0	0														

7 CARR : AMAYUCA - TLACOTEPEC

CLAVE: 17020

RUTA : MOR-017

AÑO : 2007

L U G A R	E S T A C I O N				C L A S I F I C A C I O N V E H I C U L A R E N P O R C I E N T O .												
	KM	TE	SC	TDPA	A	B	C2	C3	T3S2	T3S3	T3S2R4	OTROS	A	B	C	K'	D
AMAYUCA	0.00	3	0	5064	93.6	3.1	1.7	0.3	0.2	0.2	0.1	0.8	93.6	3.1	3.3	0.083	0.501
TEMOAC	5.50	3	0	2776	93	2.3	0.7	2.8	0.4	0.7	0.1	0	93	2.3	4.7	0.09	0.502
ZACUALPAN DE AMILPAS	7.50	1	0	2970	95.8	1.9	1	0.6	0.1	0.2	0.2	0.2	95.8	1.9	2.3	0.093	0.502
TLACOTEPEC	12.00	1	0	1971	95.4	3	0.8	0.4	0.1	0.1	0.1	0.1	95.4	3	1.6	0.132	0.504

8 CARR : T. C. (SAN GREGORIO - OAXTEPEC) - JOJUTLA

CLAVE: 17002

RUTA : MOR-002

AÑO : 2007

L U G A R	E S T A C I O N				C L A S I F I C A C I O N V E H I C U L A R E N P O R C I E N T O .												
	KM	TE	SC	TDPA	A	B	C2	C3	T3S2	T3S3	T3S2R4	OTROS	A	B	C	K'	D
T. C. SAN GREGORIO - OAXTEPEC	0.00	3	0	2132	90.5	2.8	3.2	1.1	0.1	1.1	1.1	0.1	90.5	2.8	6.7	0.089	0.502
X. C. LA PERA - CUAUTLA	7.50	3	0	3047	91.1	4.2	2.9	0.5	0.2	0.3	0.6	0.2	91.1	4.2	4.7	0.089	0.504
YAUTEPEC	14.00	1	0	4913	91.8	2.6	2.8	0.7	0.2	0.4	0.4	1.1	91.8	2.6	5.6	0.077	0.503
YAUTEPEC	14.00	3	0	5888	88.4	3.5	3	1.1	0.8	1.5	1.1	0.6	88.4	3.5	8.1	0.082	0.501
TICUMAN	32.30	1	0	3132	93.4	2.3	3.3	1	0	0	0	0	93.4	2.3	4.3	0.096	0.501
X. C. GALEANA - CUAUTLA	40.50	3	0	4041	88	3.1	3.1	1.6	0	0.1	0.3	3.8	88	3.1	8.9	0.086	0.504
TLAQUILTENANGO	50.50	1	0	5332	67.1	12	14.5	2.7	0.4	0.1	0.7	2.5	67.1	12	20.9	0.062	0.501
JOJUTLA	53.50	1	0	8500	81.2	5.2	5.4	2.2	1.6	1.3	0.3	2.8	81.2	5.2	13.6	0.08	0.5

9 CARR : COCOYOC - OAXTEPEC

CLAVE: 17001

RUTA : MOR

AÑO : 2007

L U G A R	E S T A C I O N				C L A S I F I C A C I O N V E H I C U L A R E N P O R C I E N T O .												
	KM	TE	SC	TDPA	A	B	C2	C3	T3S2	T3S3	T3S2R4	OTROS	A	B	C	K'	D
COCOYOC	0.00	3	0	15548	88.5	4.4	3	1.1	0.9	1.2	0.9	0	88.5	4.4	7.1	0.063	0.5
OAXTEPEC	3.92	1	0	12957	90.9	3.4	2.2	1	0.4	1.1	1	0	90.9	3.4	5.7	0.065	0.502

MORELOS

10 CARR : CUERNAVACA - CUAUTLIXCO

CLAVE: 17199

RUTA : MEX-160

AÑO : 2007

L U G A R	E S T A C I O N			C L A S I F I C A C I O N V E H I C U L A R E N P O R C I E N T O .													
	KM	TE	SC TDPA	A	B	C2	C3	T3S2	T3S3	T3S2R4	OTROS	A	B	C	K'	D	
CUERNAVACA	0.00	0	0														
T. IZQ. CIVAC PONIENTE	7.78	1	1 30042	82.4	4.1	4	3	2.7	1.9	0.4	1.5	82.4	4.1	13.5	0.089	0.5	
T. IZQ. CIVAC PONIENTE	7.78	1	2 30066	83.2	3.9	3.9	3.2	1.9	2	0.3	1.6	83.2	3.9	12.9	0.106	0.5	
T. IZQ. CIVAC PONIENTE	7.78	3	1 30427	78.2	4.7	5.5	5.2	2.3	1.8	1.6	0.7	78.2	4.7	17.1	0.097	0.505	
T. IZQ. CIVAC PONIENTE	7.78	3	2 31054	80.7	4.2	5.1	4.4	1.9	1.9	1.4	0.4	80.7	4.2	15.1	0.062	0.505	
X. C. TEJALPA - JOJUTLA	9.70	3	1 16332	83.2	3.8	4	0.3	2.3	2.3	1.7	2.4	83.2	3.8	13	0.076	0.503	
X. C. TEJALPA - JOJUTLA	9.70	3	2 16143	83.4	3.7	4.2	0.4	2.1	2.4	1.8	2	83.4	3.7	12.9	0.077	0.503	
T. IZQ. YAUTEPEC (1° ACCESO)	24.75	1	1 7204	82.1	4.7	5.8	1.4	1.7	1.6	0.7	2	82.1	4.7	13.2	0.08	0.501	
T. IZQ. YAUTEPEC (1° ACCESO)	24.75	1	2 7242	81.2	5	6	1.3	1.9	1.8	0.9	1.9	81.2	5	13.8	0.078	0.501	
X. C. (SAN GREGORIO - OAXTEPEC) - JOJUTLA	27.10	1	1 7278	80.6	4.7	8.4	1	1.2	1.8	1.4	0.9	80.6	4.7	14.7	0.078	0.5	
X. C. (SAN GREGORIO - OAXTEPEC) - JOJUTLA	27.10	1	2 7284	80.7	4.6	8.5	1.1	1.1	1.9	1.3	0.8	80.7	4.6	14.7	0.082	0.5	
X. C. (SAN GREGORIO - OAXTEPEC) - JOJUTLA	27.10	3	1 6028	82.4	3.6	5.6	2.9	1.4	1.8	2.2	0.1	82.4	3.6	14	0.076	0.502	
X. C. (SAN GREGORIO - OAXTEPEC) - JOJUTLA	27.10	3	2 6078	82.4	3.4	5.4	3	1.3	1.9	2.3	0.3	82.4	3.4	14.2	0.08	0.502	
T. IZQ. OAXTEPEC	36.11	3	1 6276	83.1	4.4	6	3.4	0.8	0.9	1	0.4	83.1	4.4	12.5	0.077	0.501	
T. IZQ. OAXTEPEC	36.11	3	2 6299	83.2	4.6	6.1	3.3	0.6	1	0.9	0.3	83.2	4.6	12.2	0.074	0.501	
T. C. SANTA BARBARA - IZUCAR DE MATAMOROS	43.15	1	1 25491	79.4	4.2	5.1	5.1	2.2	1.7	1.4	0.9	79.4	4.2	16.4	0.073	0.502	
T. C. SANTA BARBARA - IZUCAR DE MATAMOROS	43.15	1	2 25311	82.3	5.6	3.2	2.9	1.7	2.1	1.1	1.1	82.3	5.6	12.1	0.071	0.502	

11 CARR : CUERNAVACA - TEPOZTLAN

CLAVE: 17198

RUTA : MEX-162

AÑO : 2007

L U G A R	E S T A C I O N			C L A S I F I C A C I O N V E H I C U L A R E N P O R C I E N T O .													
	KM	TE	SC TDPA	A	B	C2	C3	T3S2	T3S3	T3S2R4	OTROS	A	B	C	K'	D	
T. C. MEXICO - CUERNAVACA (LIBRE)	0.00	0	0														
OCOTEPEC	2.83	1	1 7089	87.1	1.9	6	1	0.7	1	0.3	2	87.1	1.9	11	0.082	0.502	
OCOTEPEC	2.83	1	2 7145	86.8	1.6	5.8	1.2	1.1	1.1	0.2	2.2	86.8	1.6	11.6	0.081	0.502	
AHUATEPEC	4.16	3	0 6936	85.3	3.4	3	2	1.4	1.2	1.5	2.2	85.3	3.4	11.3	0.09	0.5	
X. C. LA PERA - CUAUTLA	16.34	1	0 6881	87	3.4	3	2	1.3	1.1	0	2.2	87	3.4	9.6	0.091	0.503	
TEPOZTLAN	18.20	1	0 8653	86.5	1.7	3.8	0.1	3.8	0.7	1.6	1.8	86.5	1.7	11.8	0.064	0.507	

12 CARR : ALPUYECA - JOJUTLA

CLAVE: 17021

RUTA : MOR-021

AÑO : 2007

L U G A R	E S T A C I O N			C L A S I F I C A C I O N V E H I C U L A R E N P O R C I E N T O .													
	KM	TE	SC TDPA	A	B	C2	C3	T3S2	T3S3	T3S2R4	OTROS	A	B	C	K'	D	
T. C. CUERNAVACA - CHILPANCINGO	0.00	0	0														
X. C. CUERNAVACA - IGUALA (CUOTA)	2.20	1	0 9119	85.6	2	3.5	0.9	3.9	0.7	1.4	2	85.6	2	12.4	0.091	0.502	

MORELOS

12 CARR : ALPUYECA - JOJUTLA

CLAVE: 17021

RUTA : MOR-021

AÑO : 2007

L U G A R	E S T A C I O N				C L A S I F I C A C I O N V E H I C U L A R E N P O R C I E N T O .												
	KM	TE	SC	TDPA	A	B	C2	C3	T3S2	T3S3	T3S2R4	OTROS	A	B	C	K'	D
XOXOCOTLA	7.70	1	1	6272	81.1	4	3.6	0.9	3.8	2.8	1.6	2.2	81.1	4	14.9	0.087	0.503
XOXOCOTLA	7.70	1	2	6207	76.9	4.9	2.9	0.9	4.7	3.4	3	3.3	76.9	4.9	18.2	0.12	0.503
T. IZQ. ZACATEPEC	11.94	1	1	7758	84.2	6.9	4.1	1.6	1.4	0.6	0.8	0.4	84.2	6.9	8.9	0.078	0.502
T. IZQ. ZACATEPEC	11.94	1	2	7810	82.8	8	4.3	1.7	1	1.1	0.7	0.4	82.8	8	9.2	0.076	0.502
JOJUTLA	17.15	1	1	8603	82.1	9	1.4	0.4	4	0.4	0.5	2.2	82.1	9	8.9	0.076	0.501
JOJUTLA	17.15	1	2	8577	82.5	9.2	1.6	0.4	3.5	0.6	0.4	1.8	82.5	9.2	8.3	0.077	0.501

13 CARR : ATLATLAHUCAN - TLAYACAPAN

CLAVE: 17301

RUTA : MOR-002

AÑO : 2007

L U G A R	E S T A C I O N				C L A S I F I C A C I O N V E H I C U L A R E N P O R C I E N T O .												
	KM	TE	SC	TDPA	A	B	C2	C3	T3S2	T3S3	T3S2R4	OTROS	A	B	C	K'	D
T. C. SANTA BARBARA - IZUCAR DE MATAMOROS	0.00	0	0														
ATLATLAHUCAN	1.50	1	0	2982	82	6.6	6	2.4	1.8	1	0.2	0	82	6.6	11.4	0.08	0.502
TOTOLAPAN	7.00	1	0	2331	85	8	1	0.7	1.5	2.4	0.4	1	85	8	7	0.097	0.504
TLAYACAPAN	15.50	1	0	4176	84.6	4.2	1	0.3	4.4	1.6	2	1.9	84.6	4.2	11.2	0.118	0.51

14 CARR : ENT. CHIVERIAS - ENT. EL ABANICO

CLAVE: 17302

RUTA : MOR

AÑO : 2007

L U G A R	E S T A C I O N				C L A S I F I C A C I O N V E H I C U L A R E N P O R C I E N T O .												
	KM	TE	SC	TDPA	A	B	C2	C3	T3S2	T3S3	T3S2R4	OTROS	A	B	C	K'	D
T. C. ALPUYECA - JOJUTLA	0.00	3	0	3114	82.4	7	2.1	1.1	2.7	1.2	1.2	2.3	82.4	7	10.6	0.075	0.503
X. C. XOXOCOTLA - TILZAPOTLA	5.56	3	0	2270	77.9	5.6	4.2	4.2	1.9	2.8	1.1	2.3	77.9	5.6	16.5	0.094	0.51
T. C. CUERNAVACA - ACAPULCO (CUOTA)	14.50	1	0	2619	78.4	6.6	4.7	4.5	1.8	1.4	1.3	1.3	78.4	6.6	15	0.07	0.5

15 CARR : GALEANA - CUAUTLA

CLAVE: 17004

RUTA : MOR-004

AÑO : 2007

L U G A R	E S T A C I O N				C L A S I F I C A C I O N V E H I C U L A R E N P O R C I E N T O .												
	KM	TE	SC	TDPA	A	B	C2	C3	T3S2	T3S3	T3S2R4	OTROS	A	B	C	K'	D
GALEANA	0.00	3	1	7854	86.3	3	2.9	0.6	3.1	0.7	0.8	2.6	86.3	3	10.7	0.085	0.5
GALEANA	0.00	3	2	7854	85.8	3	2.6	0.6	4.3	0.5	0.8	2.4	85.8	3	11.2	0.081	0.5
ZACATEPEC	4.00	3	0	3778	91	3	2	1.7	1	0.9	0.4	0	91	3	6	0.084	0.502
TLALTIZAPAN	13.10	3	0	1873	91.4	1	1.7	1.7	0.2	0.4	0.4	3.2	91.4	1	7.6	0.086	0.501
T. DER. CHINAMECA	16.06	3	0	2090	95.6	2.9	1.2	0.2	0.1	0	0	0	95.6	2.9	1.5	0.084	0.504
MOYOTEPEC	34.00	1	0	2147	85.1	6	4.4	2.6	1	0.9	0	0	85.1	6	8.9	0.089	0.501
VILLA DE AYALA	38.62	1	0	4065	93.9	2.2	2.1	1.4	0.2	0.2	0	0	93.9	2.2	3.9	0.078	0.5

MORELOS

19 CARR : LA PERA - CUAUTLA (CUOTA)

CLAVE: 17161

RUTA : MEX-160D

AÑO : 2007

L U G A R	E S T A C I O N				C L A S I F I C A C I O N V E H I C U L A R E N P O R C I E N T O .												
	KM	TE	SC	TDPA	A	B	C2	C3	T3S2	T3S3	T3S2R4	OTROS	A	B	C	K'	D
CASETA DE COBRO OACALCO	21.21	2	0	9305													
X. C. COCOYOC - OAXTEPEC	27.00	3	1	4972	76.6	6.1	7.9	3.7	2	2.1	0.4	1.2	76.6	6.1	17.3	0.09	0.5
X. C. COCOYOC - OAXTEPEC	27.00	3	2	4972	76.6	6	8	3.6	1.9	2.3	0.5	1.1	76.6	6	17.4	0.086	0.5
T. C. SANTA BARBARA - IZUCAR DE MATAMOROS	34.16	1	1	6719	82.3	4.2	5.7	1.9	1.7	1.5	0.6	2.1	82.3	4.2	13.5	0.091	0.501
T. C. SANTA BARBARA - IZUCAR DE MATAMOROS	34.16	1	2	6686	81.1	4.6	6.3	1.7	1.9	1.6	0.6	2.2	81.1	4.6	14.3	0.077	0.501

20 CARR : LIBRAMIENTO DE CUAUTLA

CLAVE: 17309

RUTA : MEX

AÑO : 2007

L U G A R	E S T A C I O N				C L A S I F I C A C I O N V E H I C U L A R E N P O R C I E N T O .												
	KM	TE	SC	TDPA	A	B	C2	C3	T3S2	T3S3	T3S2R4	OTROS	A	B	C	K'	D
T. C. SANTA BARBARA - IZUCAR DE MATAMOROS	0.00	3	1	9640	88.6	2.7	2.6	1.2	1.6	1.2	0.5	1.6	88.6	2.7	8.7	0.087	0.501
T. C. SANTA BARBARA - IZUCAR DE MATAMOROS	0.00	3	2	9616	88.2	1.6	4	1.5	1.3	1.4	0.3	1.7	88.2	1.6	10.2	0.076	0.501
T. C. SANTA BARBARA - IZUCAR DE MATAMOROS	4.00	0	0														

21 CARR : LIBRAMIENTO DE CUERNAVACA

CLAVE: 17400

RUTA : MEX

AÑO : 2007

L U G A R	E S T A C I O N				C L A S I F I C A C I O N V E H I C U L A R E N P O R C I E N T O .												
	KM	TE	SC	TDPA	A	B	C2	C3	T3S2	T3S3	T3S2R4	OTROS	A	B	C	K'	D
T. C. MEXICO - CUERNAVACA (CUOTA)	0.00	0	0														
X. C. CUERNAVACA - CUAUTLIXCO	10.54	1	1	28978	88.2	2.4	2.9	1.8	1.5	0.9	0.3	2	88.2	2.4	9.4	0.066	0.504
X. C. CUERNAVACA - CUAUTLIXCO	10.54	1	2	28572	88.8	2.3	2.8	1.9	1.3	0.7	0.4	1.8	88.8	2.3	8.9	0.071	0.504
X. C. CUERNAVACA - CUAUTLIXCO	10.54	3	1	39246	79.4	4.5	5.9	3.1	3.4	2.1	1	0.6	79.4	4.5	16.1	0.073	0.504
X. C. CUERNAVACA - CUAUTLIXCO	10.54	3	2	39868	80.5	3.9	6	2.8	3.2	2	0.9	0.7	80.5	3.9	15.6	0.067	0.504
T. C. CUERNAVACA - CHILPANCINGO	11.70	0	0														

22 CARR : MOYOTEPEC - SAN RAFAEL

CLAVE: 17306

RUTA : MOR

AÑO : 2007

L U G A R	E S T A C I O N				C L A S I F I C A C I O N V E H I C U L A R E N P O R C I E N T O .												
	KM	TE	SC	TDPA	A	B	C2	C3	T3S2	T3S3	T3S2R4	OTROS	A	B	C	K'	D
T. C. GALEANA - CUAUTLA	0.00	3	0	1162	85.3	2.7	6	4.3	0	0.8	0	0.9	85.3	2.7	12	0.073	0.501
T. C. TEMILPA - TEPALCINGO	7.50	1	0	1778	86.8	2.6	3.5	4.8	0.6	1.6	0	0.1	86.8	2.6	10.6	0.091	0.501

MORELOS

23 CARR : PASO POR YAUTEPEC

CLAVE: 17025

RUTA : MOR

AÑO : 2007

L U G A R	E S T A C I O N				CLASIFICACION VEHICULAR EN PORCIENTO .												
	KM	TE	SC	TDPA	A	B	C2	C3	T3S2	T3S3	T3S2R4	OTROS	A	B	C	K'	D
T. C. CUERNAVACA - CUAUTLIXCO	0.00	3	1	3200	81.6	3.8	6.7	2	1.3	1.5	0.6	2.5	81.6	3.8	14.6	0.081	0.501
T. C. CUERNAVACA - CUAUTLIXCO	0.00	3	2	3210	81.3	3.7	6.8	1.9	1.2	1.7	0.7	2.7	81.3	3.7	15	0.074	0.501
T. C. CUERNAVACA - CUAUTLIXCO	5.50	1	0	3164	84.4	4.5	1.1	0.8	7.9	0.1	0.2	1	84.4	4.5	11.1	0.066	0.54

24 CARR : RAMAL A AEROPUERTO DE CUERNAVACA

CLAVE: 17250

RUTA : MOR

AÑO : 2007

L U G A R	E S T A C I O N				CLASIFICACION VEHICULAR EN PORCIENTO .												
	KM	TE	SC	TDPA	A	B	C2	C3	T3S2	T3S3	T3S2R4	OTROS	A	B	C	K'	D
T. C. CUERNAVACA - CHILPANCINGO	0.00	3	0	3250	76.4	6.6	5.1	4.2	2.9	2.4	1	1.4	76.4	6.6	17	0.072	0.502
AEROPUERTO DE CUERNAVACA	5.64	0	0														

25 CARR : RAMAL A COATETELCO

CLAVE: 17304

RUTA : MOR

AÑO : 2007

L U G A R	E S T A C I O N				CLASIFICACION VEHICULAR EN PORCIENTO .												
	KM	TE	SC	TDPA	A	B	C2	C3	T3S2	T3S3	T3S2R4	OTROS	A	B	C	K'	D
T. C. CUERNAVACA - CHILPANCINGO	0.00	3	0	2988	91.3	2	3.6	0.4	1.4	0.2	0.3	0.8	91.3	2	6.7	0.086	0.5
COATETELCO	7.00	0	0														

26 CARR : RAMAL A MICHAPA

CLAVE: 17303

RUTA : MEX-103

AÑO : 2007

L U G A R	E S T A C I O N				CLASIFICACION VEHICULAR EN PORCIENTO .												
	KM	TE	SC	TDPA	A	B	C2	C3	T3S2	T3S3	T3S2R4	OTROS	A	B	C	K'	D
T. C. CUERNAVACA - CHILPANCINGO	0.00	3	0	2804	85	2.9	4.8	3.3	0.9	1.2	1.1	0.8	85	2.9	12.1	0.081	0.502
MICHAPA	16.22	1	0	1872	87.3	2	3.9	3.7	0.3	1.6	0.9	0.3	87.3	2	10.7	0.096	0.503

27 CARR : RAMAL A TETELA DEL VOLCAN

CLAVE: 17010

RUTA : MOR-010

AÑO : 2007

L U G A R	E S T A C I O N				CLASIFICACION VEHICULAR EN PORCIENTO .												
	KM	TE	SC	TDPA	A	B	C2	C3	T3S2	T3S3	T3S2R4	OTROS	A	B	C	K'	D
T. C. SANTA BARBARA - IZUCAR DE MATAMOROS	0.00	3	0	5793	95.4	0.6	3.5	0	0.5	0	0	0	95.4	0.6	4	0.09	0.501
YECAPIXTLA	5.50	3	0	2877	95.8	1.5	1.6	0.8	0.1	0.2	0	0	95.8	1.5	2.7	0.148	0.5
OCUITUCO	15.00	1	0	3759	96.9	1	1.4	0.7	0	0	0	0	96.9	1	2.1	0.095	0.503
TETELA DEL VOLCAN	22.00	1	0	2906	95.9	0.9	2.4	0.8	0	0	0	0	95.9	0.9	3.2	0.082	0.502

MORELOS

28 CARR : TEHUIXTLA - PUENTE DE IXTLA

CLAVE: 17307

RUTA : MOR

AÑO : 2007

L U G A R	E S T A C I O N				C L A S I F I C A C I O N V E H I C U L A R E N P O R C I E N T O .												
	KM	TE	SC	TDPA	A	B	C2	C3	T3S2	T3S3	T3S2R4	OTROS	A	B	C	K'	D
TEHUIXTLA	0.00	3	0	1960	88.7	1.5	5.2	3	0.4	0.5	0	0.7	88.7	1.5	9.8	0.091	0.501
PUENTE DE IXTLA	9.60	1	0	2438	89.1	2.4	5.5	1.5	0.3	0.2	0.7	0.3	89.1	2.4	8.5	0.086	0.503
T. C. CUERNAVACA - CHILPANCINGO	10.60	0	0														

29 CARR : TEJALPA - JOJUTLA

CLAVE: 17014

RUTA : MOR-014

AÑO : 2007

L U G A R	E S T A C I O N				C L A S I F I C A C I O N V E H I C U L A R E N P O R C I E N T O .												
	KM	TE	SC	TDPA	A	B	C2	C3	T3S2	T3S3	T3S2R4	OTROS	A	B	C	K'	D
T. C. CUERNAVACA - CUAUTLIXCO	0.00	0	0														
JIUTEPEC	1.97	3	0	8841	75.8	7.4	6.7	1.8	2.8	2.1	0.5	2.9	75.8	7.4	16.8	0.073	0.502
EMILIANO ZAPATA	7.00	3	0	5913	74.5	6.9	6	2.5	3.7	2.8	2.1	1.5	74.5	6.9	18.6	0.095	0.503
T. IZQ. CHICONCUAC	14.50	1	0	2807	79.3	5.4	1.7	1.2	4.5	3.6	2.2	2.1	79.3	5.4	15.3	0.095	0.502
T. IZQ. CHICONCUAC	14.50	3	0	2874	79.2	6.1	2.4	1.8	2.6	3.6	3	1.3	79.2	6.1	14.7	0.083	0.501
X. C. ZACATEPEC - TLAQUILTENANGO	32.90	1	0	2941	87.9	3	4.4	1.2	1.1	1.3	0.7	0.4	87.9	3	9.1	0.155	0.502
JOJUTLA	35.00	1	0	6142	90.7	1.6	5.1	0.6	0.3	0.4	0.4	0.9	90.7	1.6	7.7	0.086	0.502

30 CARR : TEMILPA - TEPALCINGO

CLAVE: 17009

RUTA : MOR-009

AÑO : 2007

L U G A R	E S T A C I O N				C L A S I F I C A C I O N V E H I C U L A R E N P O R C I E N T O .												
	KM	TE	SC	TDPA	A	B	C2	C3	T3S2	T3S3	T3S2R4	OTROS	A	B	C	K'	D
T. C. GALEANA - CUAUTLA	0.00	3	0	1087	90.1	0.9	4.4	2.8	0	1.2	0.2	0.4	90.1	0.9	9	0.095	0.502
TEPALCINGO	40.50	1	0	1096	93.6	0.9	2.3	0.9	0.3	0.9	0.2	0.9	93.6	0.9	5.5	0.098	0.501

31 CARR : TEPOZTLAN - YAUTEPEC

CLAVE: 17013

RUTA : MOR-013

AÑO : 2007

L U G A R	E S T A C I O N				C L A S I F I C A C I O N V E H I C U L A R E N P O R C I E N T O .												
	KM	TE	SC	TDPA	A	B	C2	C3	T3S2	T3S3	T3S2R4	OTROS	A	B	C	K'	D
TEPOZTLAN	0.00	3	0	5983	90.5	1.6	1.8	0	2.6	0.5	1	2	90.5	1.6	7.9	0.081	0.518
YAUTEPEC	14.82	1	0	2717	84.1	4.5	5	3.1	0.9	0.7	0.4	1.3	84.1	4.5	11.4	0.079	0.502

32 CARR : TRES MARIAS - SANTA MARTHA

CLAVE: 00172

RUTA : MEX-106-EM

AÑO : 2007

L U G A R	E S T A C I O N				C L A S I F I C A C I O N V E H I C U L A R E N P O R C I E N T O .												
	KM	TE	SC	TDPA	A	B	C2	C3	T3S2	T3S3	T3S2R4	OTROS	A	B	C	K'	D
TRES MARIAS	0.00	3	0	2398	82.2	6.3	5	3.2	1.7	1.5	0	0.1	82.2	6.3	11.5	0.09	0.502

MORELOS

36 CARR : MEXICO - CUERNAVACA (LIBRE)

CLAVE: 00040

RUTA : MEX-095

AÑO : 2007

L U G A R	E S T A C I O N				C L A S I F I C A C I O N V E H I C U L A R E N P O R C I E N T O .												
	KM	TE	SC	TDPA	A	B	C2	C3	T3S2	T3S3	T3S2R4	OTROS	A	B	C	K'	D
MEXICO	0.00	0	0														
T. IZQ. SAN MIGUEL TOPILEJO	28.78	1	0	21010	82.7	5.3	3.3	2.9	3	2	0.2	0.6	82.7	5.3	12	0.072	0.502
T. IZQ. SAN MIGUEL TOPILEJO	28.78	3	0	15963	82.3	4.4	6.9	2.6	2.1	1	0.1	0.6	82.3	4.4	13.3	0.071	0.504
LIM. EDOS. TERM. D.F. PPIA. MOR.	45.44	0	0														
T. DER. ZEMPOALA	51.40	3	0	6431	84	7.1	2.6	2	2.4	1.7	0.1	0.1	84	7.1	8.9	0.093	0.501
T. IZQ. COAJOMULCO	57.12	3	0	6970	84	8.1	2	1.7	2.4	1.6	0.1	0.1	84	8.1	7.9	0.093	0.501
T. DER. HUITZILAC	64.20	3	0	9575	85.5	3	6.4	2.5	1.5	0.9	0	0.2	85.5	3	11.5	0.09	0.502
T. IZQ. TEPOZTLAN	71.36	3	1	8209	91.7	2.1	3.4	1.2	0.9	0.5	0	0.2	91.7	2.1	6.2	0.131	0.504
T. IZQ. TEPOZTLAN	71.36	3	2	8073	91.9	1.5	3.7	1.3	1	0.4	0	0.2	91.9	1.5	6.6	0.096	0.504
CUERNAVACA	75.42	0	0														

37 CARR : SAN GREGORIO - OAXTEPEC

CLAVE: 00901

RUTA : MEX-142

AÑO : 2007

L U G A R	E S T A C I O N				C L A S I F I C A C I O N V E H I C U L A R E N P O R C I E N T O .												
	KM	TE	SC	TDPA	A	B	C2	C3	T3S2	T3S3	T3S2R4	OTROS	A	B	C	K'	D
SAN GREGORIO	0.00	3	0	8554	88	2.8	4.2	2.3	0.9	0.7	0	1.1	88	2.8	9.2	0.086	0.502
X. C. MILPA ALTA - SAN LORENZO TLACOYUCAN	9.00	3	0	6105	85.1	2.8	5.8	2.9	1.2	1.1	0.1	1	85.1	2.8	12.1	0.091	0.511
LIM. EDOS. TERM. D.F. PPIA. MEX.	18.80	0	0														
LIM. EDOS. TERM. MEX. PPIA. MOR.	28.50	0	0														
T. DER. SAN FELIPE NERI	33.80	1	0	4906	89.6	4.8	2	1.6	0.9	0.4	0.1	0.6	89.6	4.8	5.6	0.068	0.505
T. DER. TLALNEPANTLA	40.50	3	0	4561	84.8	3.1	5	2	1.8	1.4	1.6	0.3	84.8	3.1	12.1	0.088	0.501
TLAYACAPAN	48.50	3	0	5312	89.6	2.7	2.3	1.1	1.2	1.5	1.5	0.1	89.6	2.7	7.7	0.076	0.502
T. DER. YAUTEPEC	53.00	3	0	9549	88.5	2.5	3.7	1.4	1.1	1.3	1.5	0	88.5	2.5	9	0.07	0.501
OAXTEPEC	56.00	0	0														

38 CARR : SANTA BARBARA - IZUCAR DE MATAMOROS

CLAVE: 00451

RUTA : MEX-115-160

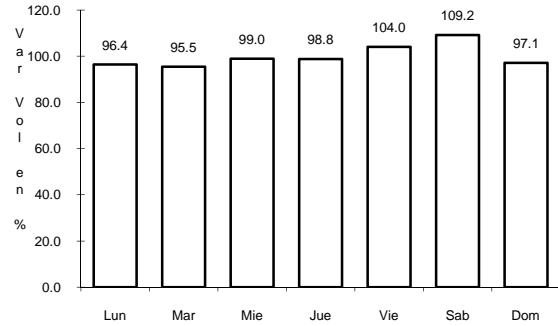
AÑO : 2007

L U G A R	E S T A C I O N				C L A S I F I C A C I O N V E H I C U L A R E N P O R C I E N T O .												
	KM	TE	SC	TDPA	A	B	C2	C3	T3S2	T3S3	T3S2R4	OTROS	A	B	C	K'	D
T. C. MEXICO - PUEBLA (LIBRE)	0.00	3	1	12786	80.8	4.5	6.3	5.4	0.8	0.9	0.4	0.9	80.8	4.5	14.7	0.095	0.5
T. C. MEXICO - PUEBLA (LIBRE)	0.00	3	2	12801	80.4	4.5	6.4	5.5	1.1	0.8	0.2	1.1	80.4	4.5	15.1	0.111	0.5
X. C. MEXICO - PUEBLA (CUOTA)	3.61	3	1	26641	79	6.8	5.6	4.1	1.6	1.7	0.3	0.9	79	6.8	14.2	0.081	0.516
X. C. MEXICO - PUEBLA (CUOTA)	3.61	3	2	28380	74.6	8.5	8.3	3.5	1.7	2.4	0.3	0.7	74.6	8.5	16.9	0.082	0.516
CHALCO	8.00	3	1	19183	75.9	3.5	2.2	1.4	7	2.2	3.7	4.1	75.9	3.5	20.6	0.069	0.517
CHALCO	8.00	3	2	17945	72.1	3.6	2.8	2.1	7	3.3	4.1	5	72.1	3.6	24.3	0.067	0.517

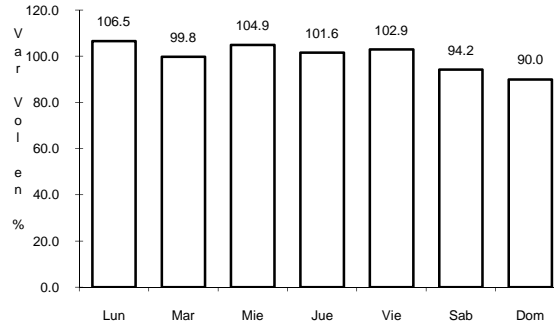
1 CARR: AMAYUCA - IZUCAR DE MATAMOROS

CLAVE: 00030

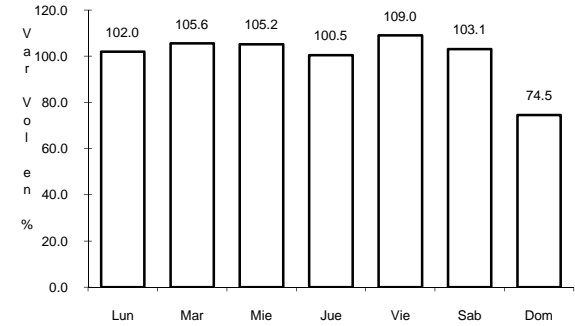
RUTA: MOR-031-PUE



Km: 0.66 Tipo: 3 Sent: 0



Km: 38.40 Tipo: 3 Sent: 0

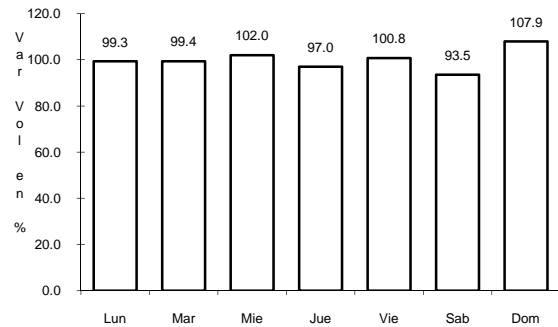


Km: 67.50 Tipo: 3 Sent: 0

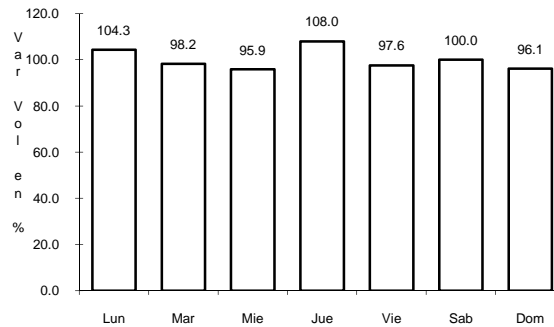
2 CARR: CUERNAVACA - ACAPULCO (CUOTA)

CLAVE: 00045

RUTA: MEX-095D



Km: 0.00 Tipo: 3 Sent: 1

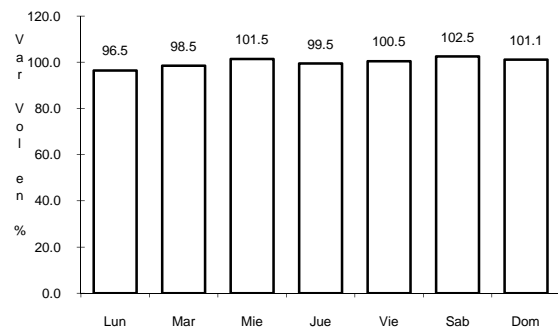


Km: 0.00 Tipo: 3 Sent: 2

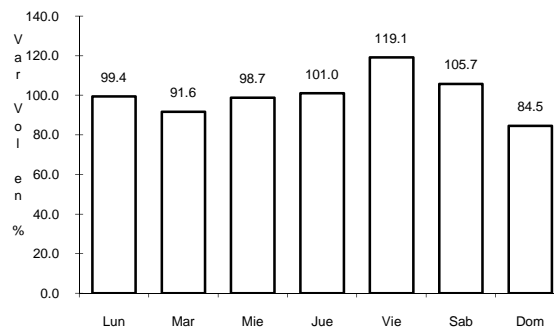
3 CARR: CUERNAVACA - CHILPANCINGO

CLAVE: 00042

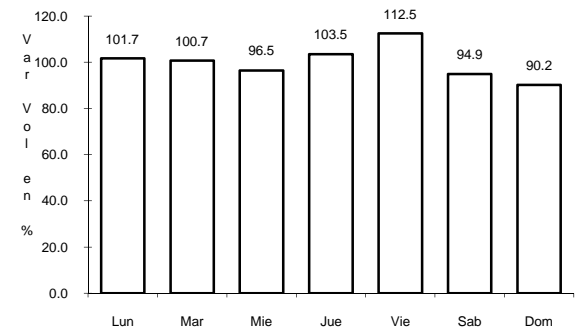
RUTA: MEX-095



Km: 9.80 Tipo: 1 Sent: 0



Km: 223.70 Tipo: 1 Sent: 1

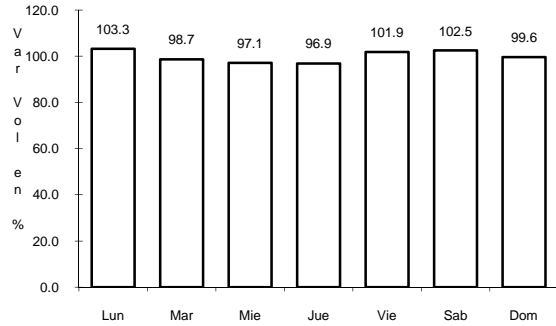


Km: 223.70 Tipo: 1 Sent: 2

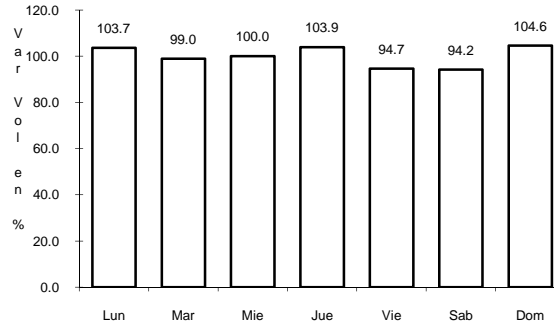
4 CARR: ENT. ALPUYECA - GRUTAS DE CACAHUAMILPA

CLAVE: 00421

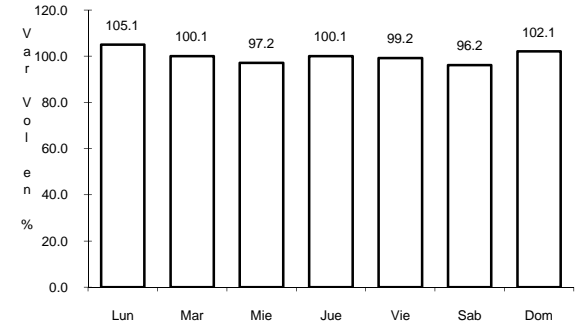
ruta: MEX-166



Km: 0.00 Tipo: 3 Sent: 0



Km: 25.05 Tipo: 3 Sent: 0

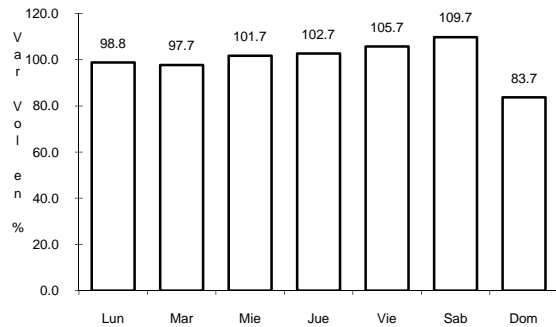


Km: 41.26 Tipo: 1 Sent: 0

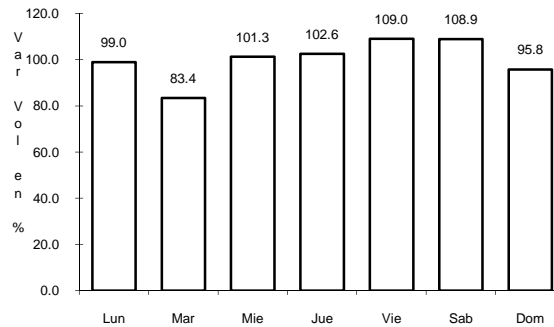
5 CARR: PUENTE DE IXTLA - IGUALA (CUOTA)

CLAVE: 00043

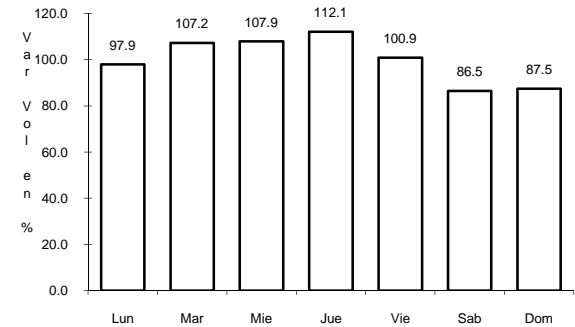
ruta: MEX-D



Km: 2.00 Tipo: 3 Sent: 0



Km: 33.58 Tipo: 3 Sent: 0

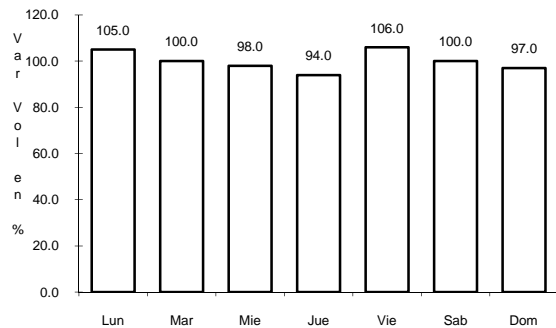


Km: 59.50 Tipo: 1 Sent: 0

6 CARR: RAMAL A JOLALPAN

CLAVE: 00143

ruta: MOR-PUE

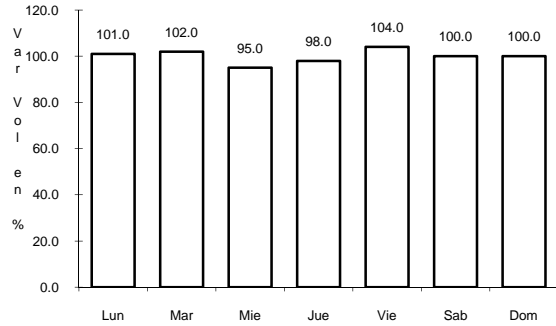


Km: 0.00 Tipo: 3 Sent: 0

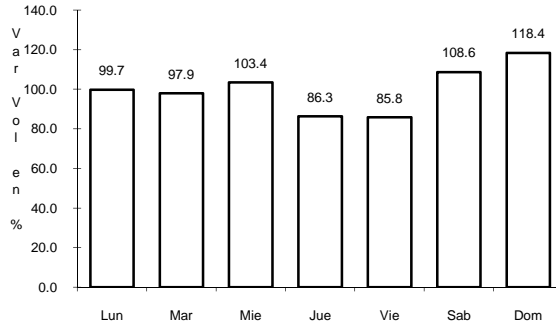
13 CARR: ATLATLAHUCAN - TLAYACAPAN

CLAVE: 17301

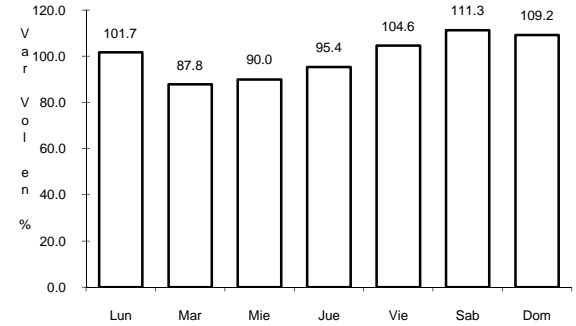
RUTA: MOR-002



Km: 1.50 Tipo: 1 Sent: 0



Km: 7.00 Tipo: 1 Sent: 0

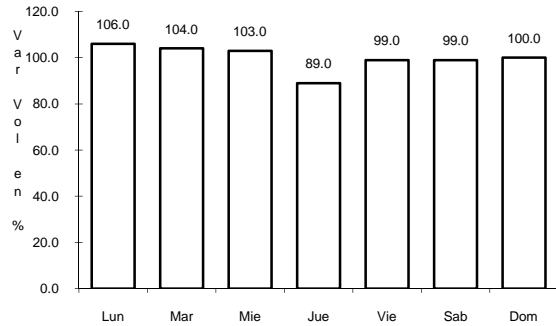


Km: 15.50 Tipo: 1 Sent: 0

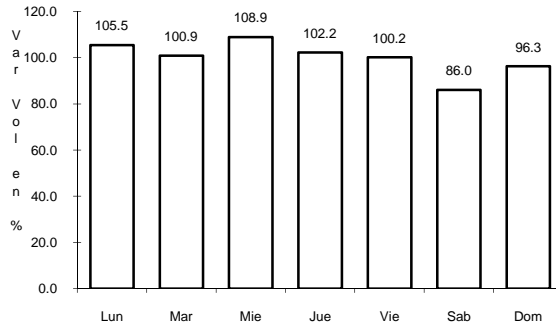
14 CARR: ENT. CHIVERIAS - ENT. EL ABANICO

CLAVE: 17302

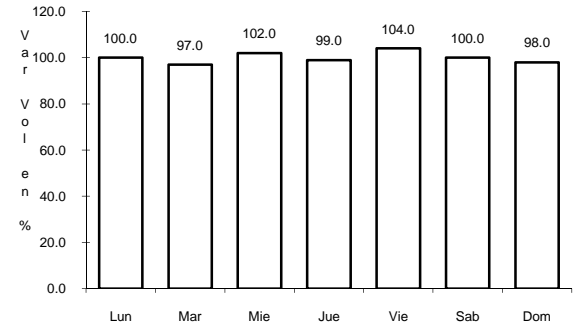
RUTA: MOR



Km: 0.00 Tipo: 3 Sent: 0



Km: 5.56 Tipo: 3 Sent: 0

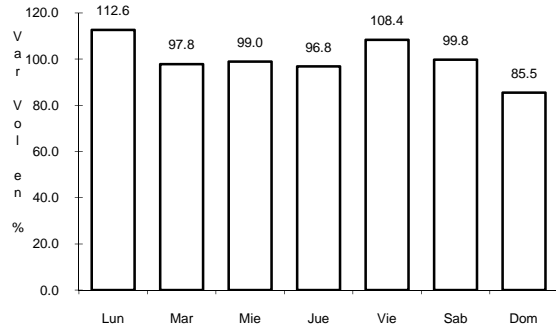


Km: 14.50 Tipo: 1 Sent: 0

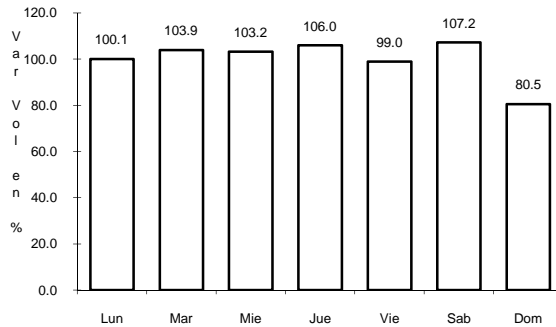
15 CARR: GALEANA - CUAUTLA

CLAVE: 17004

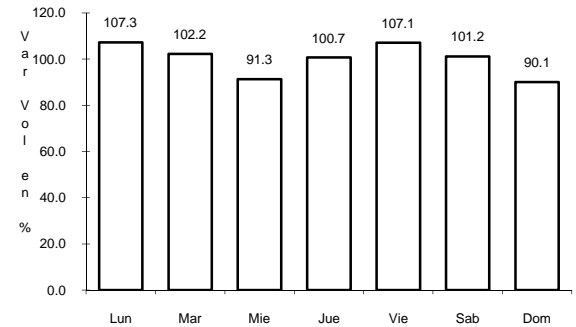
RUTA: MOR-004



Km: 0.00 Tipo: 3 Sent: 1



Km: 0.00 Tipo: 3 Sent: 2

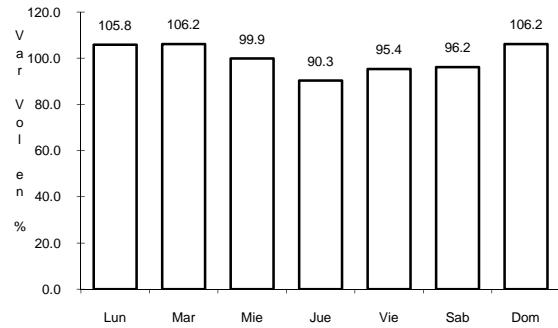


Km: 34.00 Tipo: 1 Sent: 0

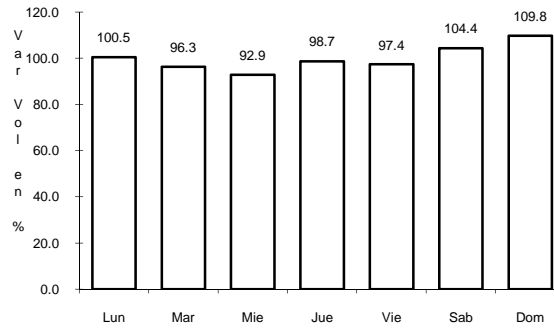
19 CARR: LA PERA - CUAUTLA (CUOTA)

CLAVE: 17161

RUTA: MEX-160D



Km: 0.00 Tipo: 3 Sent: 1

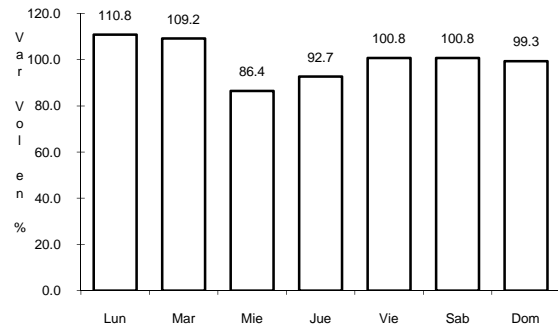


Km: 0.00 Tipo: 3 Sent: 2

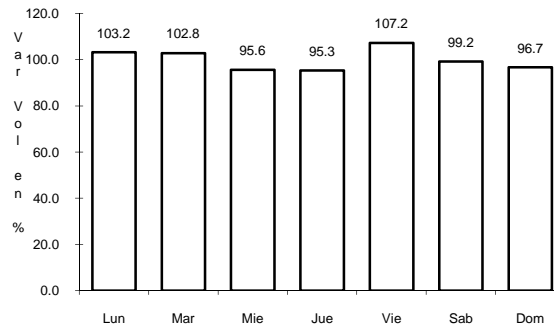
20 CARR: LIBRAMIENTO DE CUAUTLA

CLAVE: 17309

RUTA: MEX



Km: 0.00 Tipo: 3 Sent: 1

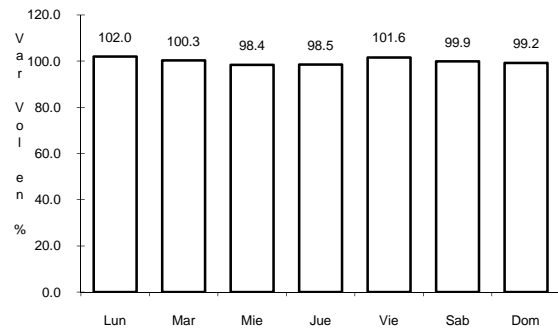


Km: 0.00 Tipo: 3 Sent: 2

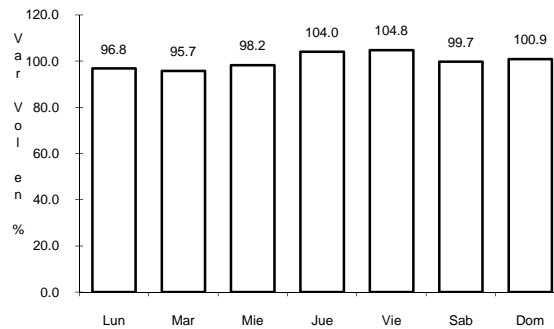
21 CARR: LIBRAMIENTO DE CUERNAVACA

CLAVE: 17400

RUTA: MEX



Km: 10.54 Tipo: 1 Sent: 1

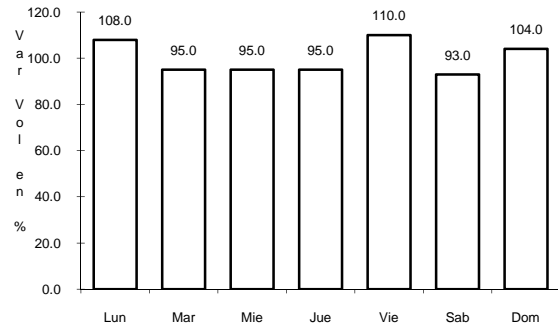


Km: 10.54 Tipo: 1 Sent: 2

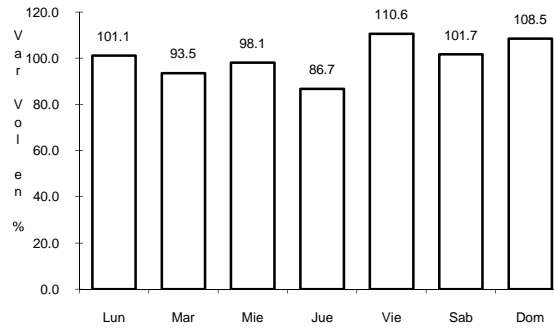
22 CARR: MOYOTEPEC - SAN RAFAEL

CLAVE: 17306

RUTA: MOR



Km: 0.00 Tipo: 3 Sent: 0

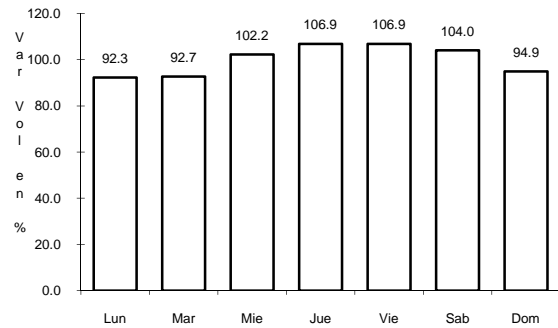


Km: 7.50 Tipo: 1 Sent: 0

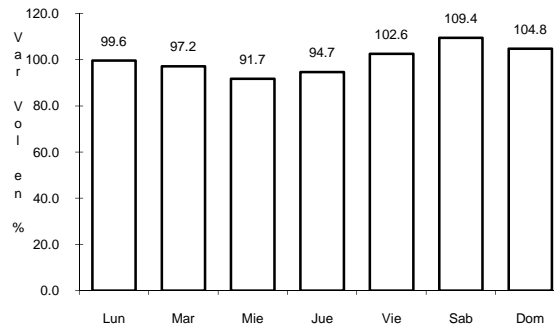
23 CARR: PASO POR YAUTEPEC

CLAVE: 17025

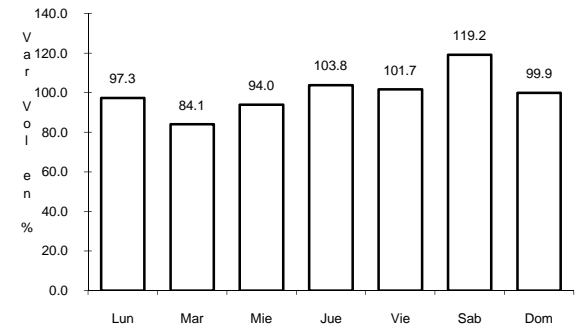
RUTA: MOR



Km: 0.00 Tipo: 3 Sent: 1



Km: 0.00 Tipo: 3 Sent: 2

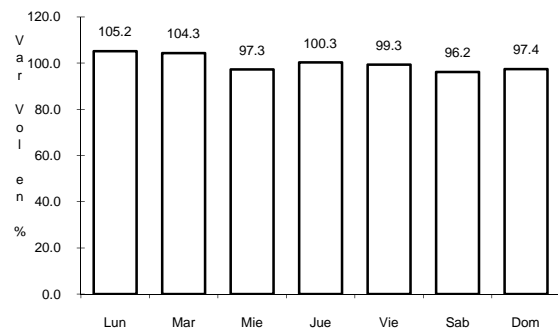


Km: 5.50 Tipo: 1 Sent: 0

24 CARR: RAMAL A AEROPUERTO DE CUERNAVACA

CLAVE: 17250

RUTA: MOR

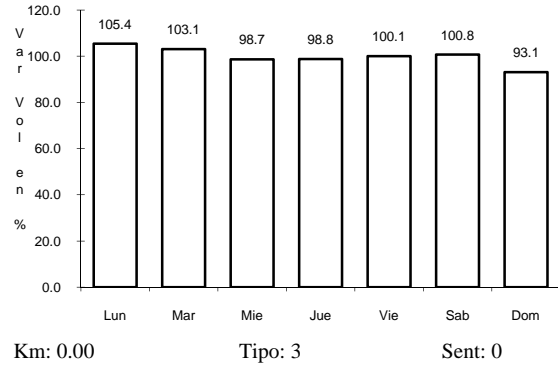


Km: 0.00 Tipo: 3 Sent: 0

25 CARR: RAMAL A COATETELCO

CLAVE: 17304

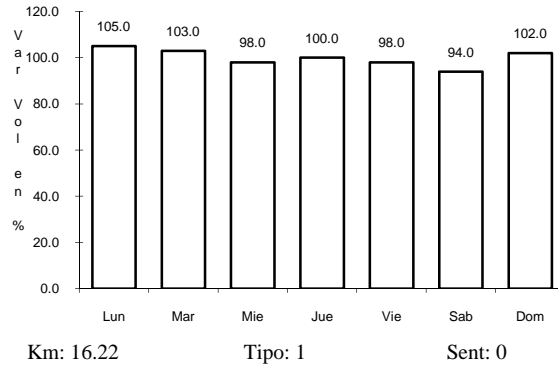
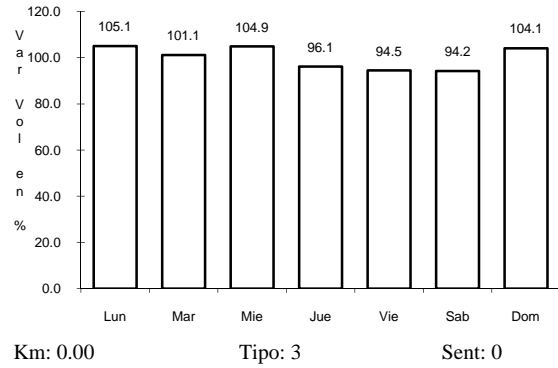
RUTA: MOR



26 CARR: RAMAL A MICHAPA

CLAVE: 17303

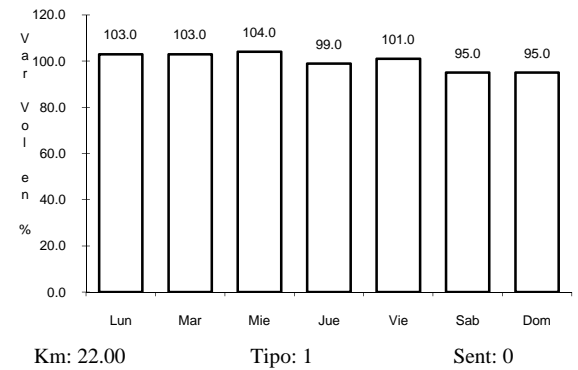
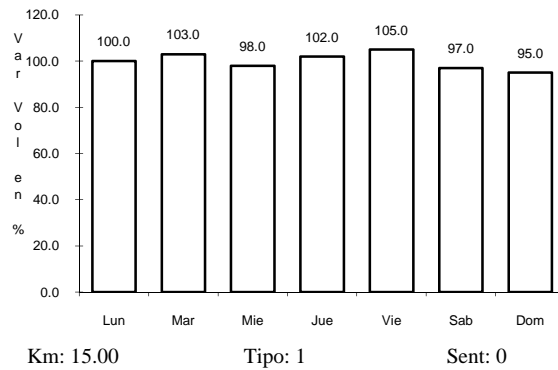
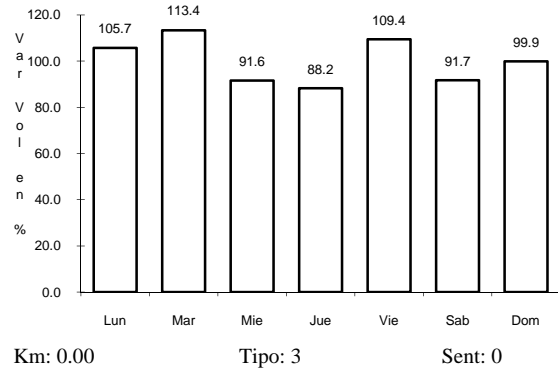
RUTA: MEX-103



27 CARR: RAMAL A TETELA DEL VOLCAN

CLAVE: 17010

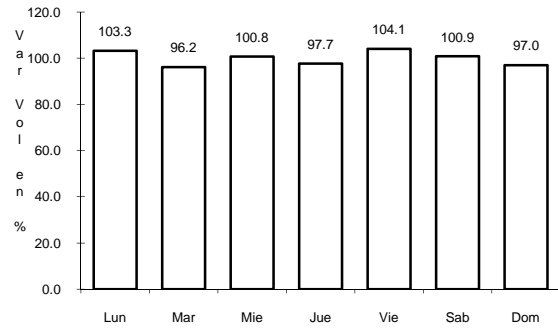
RUTA: MOR-010



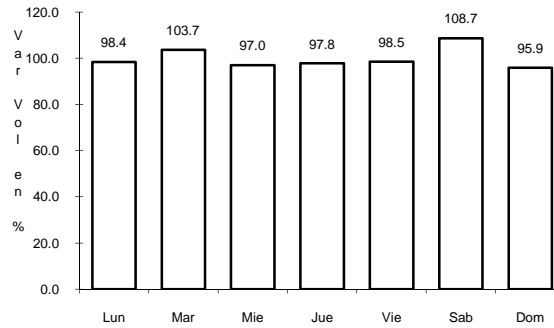
28 CARR: TEHUIXTLA - PUENTE DE IXTLA

CLAVE: 17307

RUTA: MOR



Km: 0.00 Tipo: 3 Sent: 0

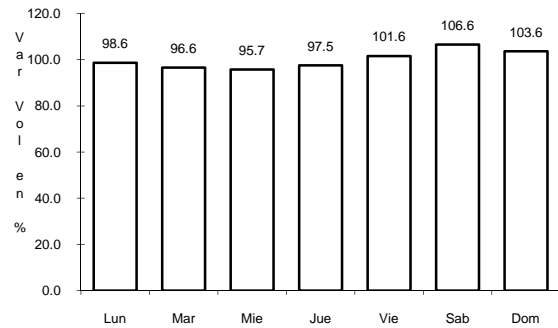


Km: 9.60 Tipo: 1 Sent: 0

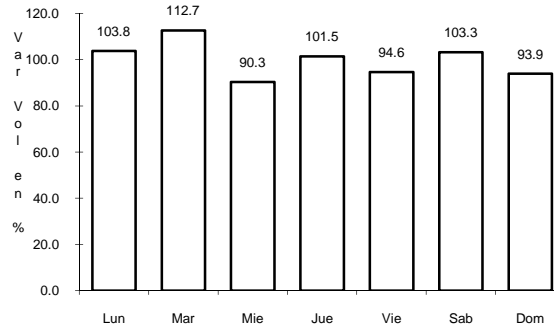
29 CARR: TEJALPA - JOJUTLA

CLAVE: 17014

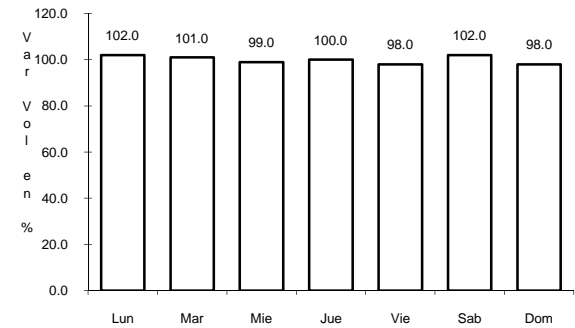
RUTA: MOR-014



Km: 1.97 Tipo: 3 Sent: 0



Km: 14.50 Tipo: 1 Sent: 0

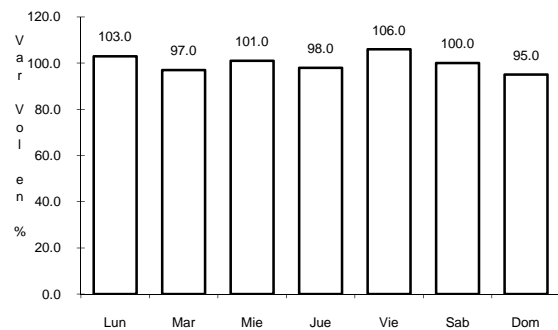


Km: 35.00 Tipo: 1 Sent: 0

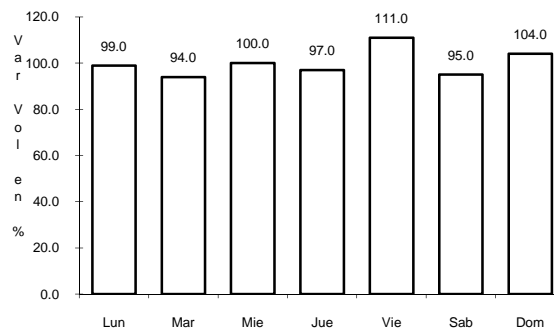
30 CARR: TEMILPA - TEPALCINGO

CLAVE: 17009

RUTA: MOR-009



Km: 0.00 Tipo: 3 Sent: 0

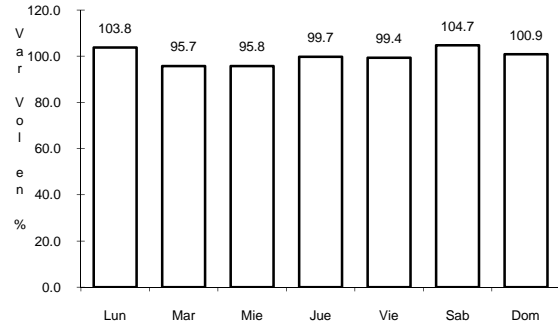


Km: 40.50 Tipo: 1 Sent: 0

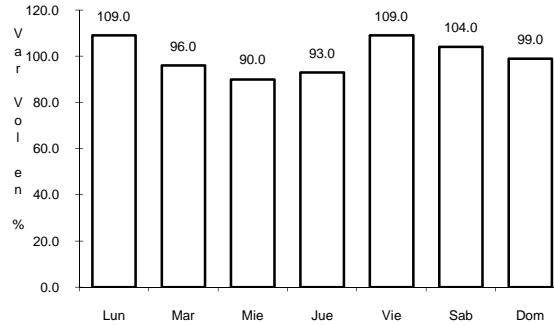
34 CARR: ZACATEPEC - TLAQUILTENANGO

CLAVE: 17300

RUTA: MOR



Km: 0.00 Tipo: 3 Sent: 0

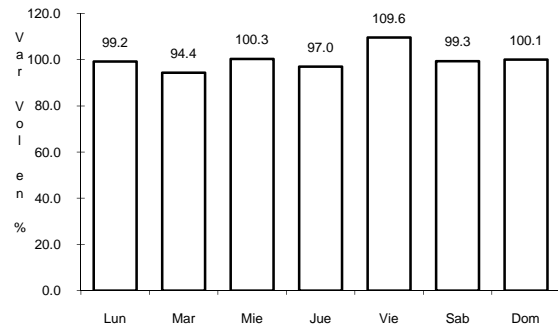


Km: 4.08 Tipo: 1 Sent: 0

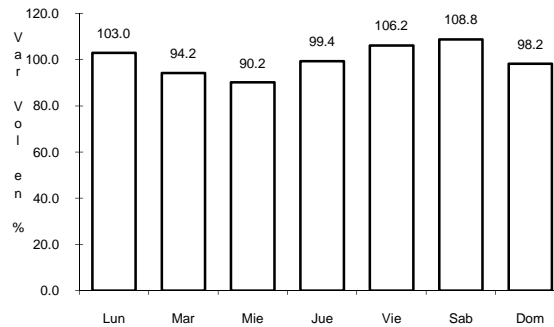
35 CARR: MEXICO - CUERNAVACA (CUOTA)

CLAVE: 00041

RUTA: MEX-095D



Km: 18.65 Tipo: 3 Sent: 1

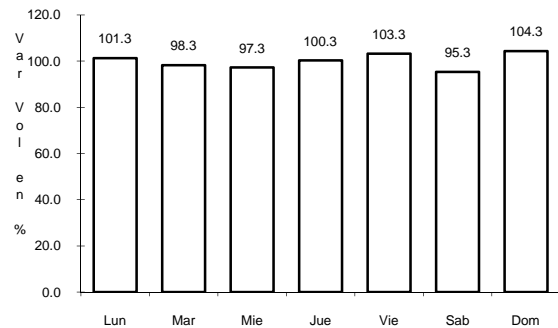


Km: 18.65 Tipo: 3 Sent: 2

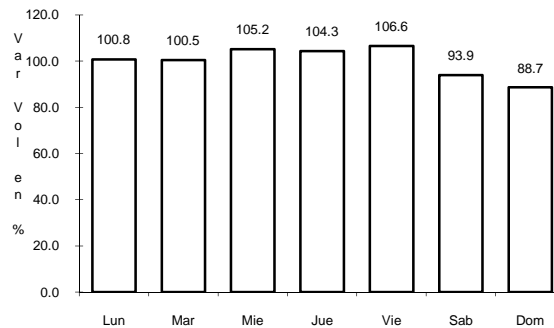
36 CARR: MEXICO - CUERNAVACA (LIBRE)

CLAVE: 00040

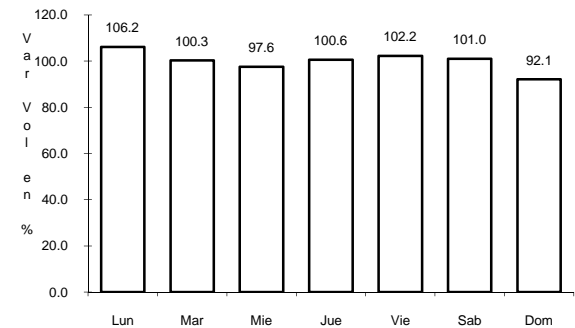
RUTA: MEX-095



Km: 28.78 Tipo: 1 Sent: 0



Km: 71.36 Tipo: 3 Sent: 1

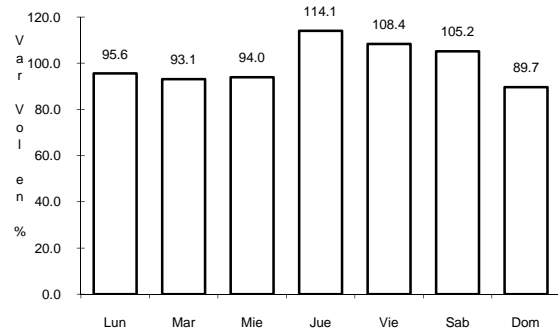


Km: 71.36 Tipo: 3 Sent: 2

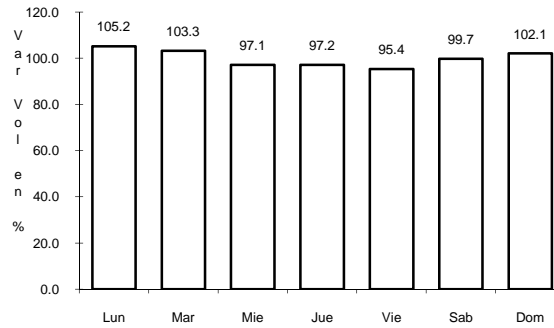
37 CARR: SAN GREGORIO - OAXTEPEC

CLAVE: 00901

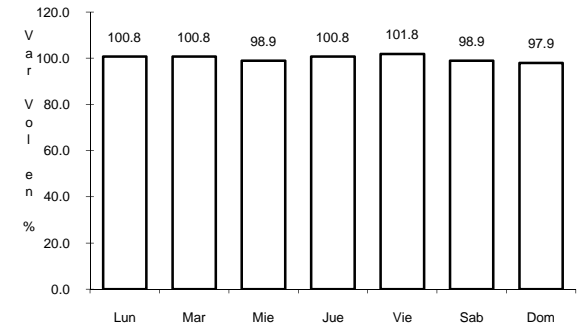
ruta: MEX-142



Km: 0.00 Tipo: 3 Sent: 0



Km: 33.80 Tipo: 1 Sent: 0

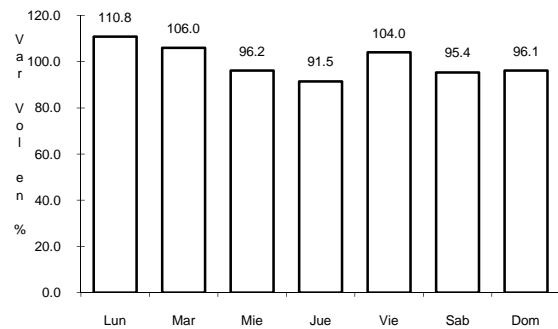


Km: 53.00 Tipo: 3 Sent: 0

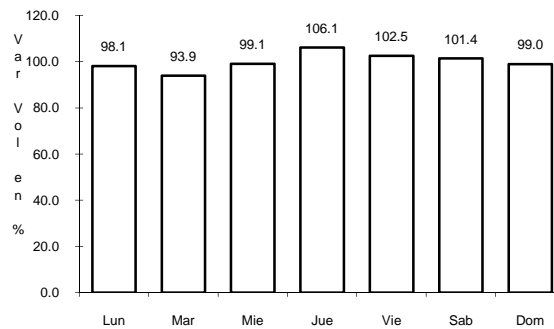
38 CARR: SANTA BARBARA - IZUCAR DE MATAMOROS

CLAVE: 00451

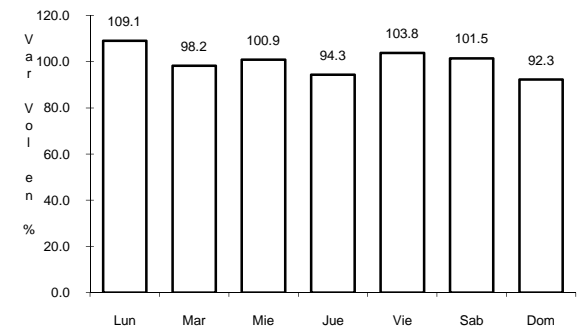
ruta: MEX-115-160



Km: 0.00 Tipo: 3 Sent: 1



Km: 0.00 Tipo: 3 Sent: 2



Km: 134.99 Tipo: 3 Sent: 0