

Secretaría de Comunicaciones y Transportes



MAPA INDICE
15 Num. Indice
2008

16 MICHUACAN

CARRETERAS AFORADAS

Num. INDICE	CARRETERA
1	ENT. PLAYA AZUL - MANZANILLO
2	ENT. URUAPAN - LAZARO CARDENAS (CUOTA)
3	JIQUILPAN - COLIMA
4	JIQUILPAN - GUADALAJARA
5	MARAVATIO - ACAMBARO
6	MORELIA - SALAMANCA
7	APATZINGAN - AGUILILLA
8	CUITZEO - ZINAPARO
9	CARAPAN - PLAYA AZUL
10	T. C. (TOLUCA - MORELIA) - MARAVATIO
11	COMANJA - HUANIQUEO
12	EL CORREO - LAGUNILLAS
13	HUAJUMBARO - SAN JOSE
14	ENT. PATTI - SAHUAYO
15	ENT. PATZCUARO - URUAPAN (CUOTA)
16	TIRIPETIO - ERENDIRA
17	TOCUMBO - COTIJA
18	ZACAPU - VILLACHUATO
19	JACONA - BUENAVISTA TOMATLAN
20	LA ORILLA - LAS TRUCHAS
21	LA PIEDAD - CARAPAN
22	LIBRAMIENTO DE LA PIEDAD
23	LIBRAMIENTO DE URUAPAN
24	MORELIA - JIQUILPAN
25	MORELIA - PATZCUARO
26	OPOPEO - PURUARAN
27	PATZCUARO - URUAPAN
28	QUIROGA - TEPALCATEPEC
29	RAMAL A COAHUAYANA
30	RAMAL A INFIERNILLO
31	T. C. (ZIHUATANEJO - LA MIRA) - LAZARO CARDENAS
32	RINCONADA - LA PIEDAD
33	SAN FELIPE ALZATI - ANGANGUEO
34	ZAMORA - VISTA HERMOSA
35	ZITACUARO - CD. ALTAMIRANO
36	ACAMBARO - ZINAPECUARO
37	ATLACOMULCO - MORELIA
38	ATLACOMULCO - ZAPOTLANEJO (CUOTA)
39	T. C. (V. VICTORIA - EL ORO DE HIDALGO) - ANGANGUEO
40	IRAPUATO - GUADALAJARA
41	LA NORIA - ACAMBARO
42	TOLUCA - CD. ALTAMIRANO
43	TOLUCA - MORELIA
44	ZIHUATANEJO - LA MIRA

MICHOACAN

5 CARR : MARAVATIO - ACAMBARO

CLAVE: 00418

RUTA : MEX-061

AÑO : 2007

L U G A R	E S T A C I O N				C L A S I F I C A C I O N V E H I C U L A R E N P O R C I E N T O .												
	KM	TE	SC	TDPA	A	B	C2	C3	T3S2	T3S3	T3S2R4	OTROS	A	B	C	K'	D
MARAVATIO	0.00	3	0	6458	75.5	8	7.7	2.8	1.8	1.3	0.5	2.4	75.5	8	16.5	0.079	0.503
LIM. EDOS. TERM. MICH. PPIA. GTO.	9.00	0	0														
TARANDACUAO	13.00	3	0	4444	77.5	8.7	6	4.5	1.4	0.8	0	1.1	77.5	8.7	13.8	0.125	0.505
ACAMBARO	39.00	1	0	3744	81.2	6.2	4.6	3.5	1.8	0.7	0.1	1.9	81.2	6.2	12.6	0.095	0.502

6 CARR : MORELIA - SALAMANCA

CLAVE: 00124

RUTA : MEX-043

AÑO : 2007

L U G A R	E S T A C I O N				C L A S I F I C A C I O N V E H I C U L A R E N P O R C I E N T O .												
	KM	TE	SC	TDPA	A	B	C2	C3	T3S2	T3S3	T3S2R4	OTROS	A	B	C	K'	D
MORELIA	0.00	0	0														
X. PERIFERICO MORELIA	2.70	3	1	18027	76.1	6.5	5.5	2.8	3.8	2.3	2.7	0.3	76.1	6.5	17.4	0.084	0.502
X. PERIFERICO MORELIA	2.70	3	2	18161	77.3	5.1	5.9	3.1	2.3	2.6	2.5	1.2	77.3	5.1	17.6	0.077	0.502
T. DER. ZINAPECUARO	8.85	1	1	10441	79.4	4.5	5.9	3.1	3.4	2.1	1	0.6	79.4	4.5	16.1	0.082	0.5
T. DER. ZINAPECUARO	8.85	1	2	10457	80.5	3.9	6	2.8	3.2	2	0.9	0.7	80.5	3.9	15.6	0.076	0.5
T. DER. ZINAPECUARO	8.85	3	1	7536	77.3	5.1	5.9	3.1	2.3	2.6	2.5	1.2	77.3	5.1	17.6	0.075	0.501
T. DER. ZINAPECUARO	8.85	3	2	7500	76	6.5	5.5	2.8	3.8	2.3	2.7	0.4	76	6.5	17.5	0.086	0.501
CUITZEO	33.64	1	0	7613	76.4	8.2	6.5	3	2	2	0	1.9	76.4	8.2	15.4	0.077	0.503
CUITZEO	33.64	3	0	7212	75.1	9.1	5.5	3.6	2.2	2.1	0.3	2.1	75.1	9.1	15.8	0.076	0.501
LIM. EDOS. TERM. MICH. PPIA. GTO.	47.12	0	0														
T. IZQ. MOROLEON	52.36	1	1	2186	68	11.7	6	5.4	1.8	2	0.5	4.6	68	11.7	20.3	0.101	0.503
T. IZQ. MOROLEON	52.36	1	2	2217	67.2	13.7	5.8	4.7	2.1	1.3	0.3	4.9	67.2	13.7	19.1	0.096	0.503
URIANGATO	54.22	3	1	2623	84.5	5.5	1.3	1.7	1.2	1.5	1.3	3	84.5	5.5	10	0.072	0.528
URIANGATO	54.22	3	2	2932	83	5.6	1.4	2.3	1.3	1.7	1.6	3.1	83	5.6	11.4	0.073	0.528
T. DER. YURIRIA	61.36	3	0	5098	67	15.8	3.7	3.7	3	2.7	0.2	3.9	67	15.8	17.2	0.103	0.504
MAGDALENA DE ARACEO	77.10	1	0	5135	72	9.3	8	3.4	2.3	2.5	0.2	2.3	72	9.3	18.7	0.097	0.511
MAGDALENA DE ARACEO	77.10	3	0	5604	76.1	9.7	6.6	2.7	1.1	1	0	2.8	76.1	9.7	14.2	0.091	0.51
T. DER. JARAL DEL PROGRESO	87.00	1	0	5840	68.5	10.3	6.6	4.1	4.3	4.6	0	1.6	68.5	10.3	21.2	0.098	0.511
T. DER. JARAL DEL PROGRESO	87.00	3	0	7483	74.9	8.8	1.5	1.9	4.1	3.9	1.4	3.5	74.9	8.8	16.3	0.097	0.535
X. C. LIBRAMIENTO DE SALAMANCA	105.10	1	0	11694	69.1	11.5	6.5	4.3	3.3	2.8	1.7	0.8	69.1	11.5	19.4	0.086	0.501
SALAMANCA	108.00	1	1	7340	72.3	10.5	5.1	3.4	2.3	3.3	0	3.1	72.3	10.5	17.2	0.093	0.504
SALAMANCA	108.00	1	2	7237	72.4	10.5	5	4	3.9	2.7	0	1.5	72.4	10.5	17.1	0.098	0.504

MICHOACAN

7 CARR : APATZINGAN - AGUILILLA

CLAVE: 16591

ruta : MICH

AÑO : 2007

L U G A R	E S T A C I O N				C L A S I F I C A C I O N V E H I C U L A R E N P O R C I E N T O .												
	KM	TE	SC	TDPA	A	B	C2	C3	T3S2	T3S3	T3S2R4	OTROS	A	B	C	K'	D
APATZINGAN	0.00	3	0	7815	77.7	4.2	5.9	3	3.3	2.7	2.5	0.7	77.7	4.2	18.1	0.08	0.5
AGUILILLA	85.00	0	0														

8 CARR : CUITZEO - ZINAPARO

CLAVE: 16027

ruta : MICH-027

AÑO : 2007

L U G A R	E S T A C I O N				C L A S I F I C A C I O N V E H I C U L A R E N P O R C I E N T O .												
	KM	TE	SC	TDPA	A	B	C2	C3	T3S2	T3S3	T3S2R4	OTROS	A	B	C	K'	D
CUITZEO	0.00	3	0	3433	81.7	5.4	8.5	2.5	0.6	0.7	0.1	0.5	81.7	5.4	12.9	0.089	0.502
PURUANDIRO	61.00	1	0	3341	77.8	8	8.2	2.2	1.6	1	0	1.2	77.8	8	14.2	0.107	0.509
PURUANDIRO	61.00	3	0	3535	79.5	10.1	7	1.1	0.4	0.5	0.6	0.8	79.5	10.1	10.4	0.107	0.505
T. IZQ. ZACAPU	79.00	3	0	1743	81.3	10.8	5.4	1.3	0.5	0.4	0	0.3	81.3	10.8	7.9	0.122	0.506
ZINAPARO	125.60	1	0	1887	81	4.2	5.5	2.7	3.2	2	0.8	0.6	81	4.2	14.8	0.103	0.501

9 CARR : CARAPAN - PLAYA AZUL

CLAVE: 16126

ruta : MEX-038

AÑO : 2007

L U G A R	E S T A C I O N				C L A S I F I C A C I O N V E H I C U L A R E N P O R C I E N T O .												
	KM	TE	SC	TDPA	A	B	C2	C3	T3S2	T3S3	T3S2R4	OTROS	A	B	C	K'	D
T. C. MORELIA - JIQUILPAN	0.00	3	0	6310	71.4	5.3	6.2	4.6	4.9	1.9	3.7	2	71.4	5.3	23.3	0.083	0.506
URUAPAN	72.03	1	0	8437	82	3.5	4.8	2.5	2.8	1.8	2	0.6	82	3.5	14.5	0.088	0.503
URUAPAN	72.03	3	0	4457	78.8	4.1	6	2.9	3.2	2.2	2.1	0.7	78.8	4.1	17.1	0.083	0.503
GABRIEL ZAMORA	113.70	1	0	4184	79.1	4.2	6.2	3	3.3	2	1.6	0.6	79.1	4.2	16.7	0.082	0.5
X. C. QUIROGA - TEPALCATEPEC	137.80	1	0	8564	79.1	4.2	5.9	3	3.3	2.1	1.7	0.7	79.1	4.2	16.7	0.08	0.502
X. C. QUIROGA - TEPALCATEPEC	137.80	3	0	4132	78.6	4.2	6	3	3.2	1.8	2.7	0.5	78.6	4.2	17.2	0.148	0.501
SAN PEDRO BARAJAS	171.50	1	0	2825	83.8	2.6	5.1	1.6	1.8	2.2	2.3	0.6	83.8	2.6	13.6	0.094	0.502
SAN PEDRO BARAJAS	171.50	3	0	2659	83.3	4.6	5.7	2.5	1.9	1.3	0.7	0	83.3	4.6	12.1	0.083	0.503
T. IZQ. INFIERNILLO	212.60	1	0	2090	80.5	4.1	5.9	2.7	3.1	2	1	0.7	80.5	4.1	15.4	0.087	0.503
T. IZQ. INFIERNILLO	212.60	3	0	1425	91.6	1.7	3.7	0.8	1	0.7	0.1	0.4	91.6	1.7	6.7	0.067	0.521
ARTEAGA	274.50	1	0	1595	91.9	3	1.2	1.2	1.4	0.4	0.3	0.6	91.9	3	5.1	0.09	0.523
T. IZQ. ZIHUATANEJO	333.80	1	0	2559	86.8	3.9	2.5	0.8	3	0.7	1.1	1.2	86.8	3.9	9.3	0.077	0.505
T. IZQ. ZIHUATANEJO	333.80	3	0	6269	87.5	3	4.2	1.7	1	1.2	0.2	1.2	87.5	3	9.5	0.085	0.503
PLAYA AZUL	341.00	1	0	5118	87	2.8	4.1	2.1	1.1	1.2	0.2	1.5	87	2.8	10.2	0.092	0.5

MICHOACAN

10 CARR : T. C. (TOLUCA - MORELIA) - MARAVATIO

CLAVE: 16584

RUTA : MICH-122

AÑO : 2007

L U G A R	E S T A C I O N				C L A S I F I C A C I O N V E H I C U L A R E N P O R C I E N T O .												
	KM	TE	SC	TDPA	A	B	C2	C3	T3S2	T3S3	T3S2R4	OTROS	A	B	C	K'	D
T. C. TOLUCA - MORELIA	0.00	3	0	8255	80.7	6.2	2	1.9	2.8	2.1	0.9	3.4	80.7	6.2	13.1	0.077	0.501
MARAVATIO DE OCAMPO	29.00	1	0	5514	86.7	2.4	2.7	1.9	1.6	1.6	0.6	2.5	86.7	2.4	10.9	0.081	0.501

11 CARR : COMANJA - HUANIQUEO

CLAVE: 16024

RUTA : MICH-024

AÑO : 2007

L U G A R	E S T A C I O N				C L A S I F I C A C I O N V E H I C U L A R E N P O R C I E N T O .												
	KM	TE	SC	TDPA	A	B	C2	C3	T3S2	T3S3	T3S2R4	OTROS	A	B	C	K'	D
T. C. MORELIA - JIQUILPAN	0.00	3	0	1247	83	5.2	7.7	1.5	1.3	0.3	0.2	0.8	83	5.2	11.8	0.127	0.503
HUANIQUEO	32.00	1	0	785	83.5	4.5	7.9	0.9	1.3	0.4	0.7	0.8	83.5	4.5	12	0.121	0.515

12 CARR : EL CORREO - LAGUNILLAS

CLAVE: 16014

RUTA : MICH

AÑO : 2007

L U G A R	E S T A C I O N				C L A S I F I C A C I O N V E H I C U L A R E N P O R C I E N T O .												
	KM	TE	SC	TDPA	A	B	C2	C3	T3S2	T3S3	T3S2R4	OTROS	A	B	C	K'	D
EL CORREO	0.00	3	0	1291	83.1	4.9	5.5	2.4	2.4	1	0.2	0.5	83.1	4.9	12	0.094	0.501
T. C. MORELIA - PATZCUARO	11.00	1	0	2405	78.8	5.7	6.3	3	2	2	0.5	1.7	78.8	5.7	15.5	0.078	0.501

13 CARR : HUAJUMBARO - SAN JOSE

CLAVE: 16555

RUTA : MEX-051-120

AÑO : 2007

L U G A R	E S T A C I O N				C L A S I F I C A C I O N V E H I C U L A R E N P O R C I E N T O .												
	KM	TE	SC	TDPA	A	B	C2	C3	T3S2	T3S3	T3S2R4	OTROS	A	B	C	K'	D
T. C. TOLUCA - MORELIA	0.00	3	0	3906	67.6	10.6	5.7	4	3.5	2.8	2.5	3.3	67.6	10.6	21.8	0.082	0.502
X. C. ATLACOMULCO - MORELIA	26.59	3	0	2541	79	5.8	5.6	4.1	1.6	1.4	0.4	2.1	79	5.8	15.2	0.073	0.5
T. DER. LIBRAMIENTO DE ZINAPECUARO	33.83	3	0	5587	72.5	4.8	5.3	8.1	2.5	2.5	1.5	2.8	72.5	4.8	22.7	0.077	0.5
T. C. MORELIA - SALAMANCA	71.14	1	0	8197	84.5	4.7	4.6	2.3	1.1	1.4	0.2	1.2	84.5	4.7	10.8	0.086	0.501

14 CARR : ENT. PATTI - SAHUAYO

CLAVE: 16181

RUTA : MEX-110

AÑO : 2007

L U G A R	E S T A C I O N				C L A S I F I C A C I O N V E H I C U L A R E N P O R C I E N T O .												
	KM	TE	SC	TDPA	A	B	C2	C3	T3S2	T3S3	T3S2R4	OTROS	A	B	C	K'	D
T. C. IRAPUATO - GUADALAJARA	0.00	3	0	5525	75.8	3.1	5.8	4.6	3.5	4.1	0.4	2.7	75.8	3.1	21.1	0.096	0.505
T. IZQ. ZAMORA	44.26	1	0	6524	75.5	3.7	5.2	4.4	3.3	4.1	0.4	3.4	75.5	3.7	20.8	0.078	0.502
VISTA HERMOSA	44.98	3	0	10885	69.9	5.1	4.5	5.4	6.9	3.7	0.7	3.8	69.9	5.1	25	0.086	0.502
BRISEÑAS	55.88	3	0	6018	71.6	8.3	5.8	6.3	3.6	2.4	0.1	1.9	71.6	8.3	20.1	0.094	0.506
CUMUATILLO	71.87	3	0	6344	71.6	7.2	5.7	5.3	4.4	3.9	0.2	1.7	71.6	7.2	21.2	0.093	0.516

MICHOACAN

14 CARR : ENT. PATTI - SAHUAYO

CLAVE: 16181

RUTA : MEX-110

AÑO : 2007

L U G A R	E S T A C I O N				C L A S I F I C A C I O N V E H I C U L A R E N P O R C I E N T O .												
	KM	TE	SC	TDPA	A	B	C2	C3	T3S2	T3S3	T3S2R4	OTROS	A	B	C	K'	D
T. C. JIQUILPAN - GUADALAJARA	88.00	1	0	6963	79.2	4.1	4.3	3.7	3.1	2.8	0.5	2.3	79.2	4.1	16.7	0.093	0.501

15 CARR : ENT. PATZCUARO - URUAPAN (CUOTA)

CLAVE: 16011

RUTA : MEX-126D

AÑO : 2007

L U G A R	E S T A C I O N				C L A S I F I C A C I O N V E H I C U L A R E N P O R C I E N T O .												
	KM	TE	SC	TDPA	A	B	C2	C3	T3S2	T3S3	T3S2R4	OTROS	A	B	C	K'	D
T. C. MORELIA - TZURUMUTARO	0.00		0	0													
CASETA DE COBRO ZIRAHUEN	12.55		2	0 7594													
CASETA DE COBRO ZURUMUCAPIO	39.50		2	0 8612													
T. C. ENT. CARAPAN - PLAYA AZUL	60.00		0	0													

16 CARR : TIRIPETIO - ERENDIRA

CLAVE: 16422

RUTA : MICH

AÑO : 2007

L U G A R	E S T A C I O N				C L A S I F I C A C I O N V E H I C U L A R E N P O R C I E N T O .												
	KM	TE	SC	TDPA	A	B	C2	C3	T3S2	T3S3	T3S2R4	OTROS	A	B	C	K'	D
T. C. MORELIA - PATZCUARO	0.00	3	0	1571	78.7	4.4	5.7	3	3.4	1.7	2.4	0.7	78.7	4.4	16.9	0.099	0.503
ACUITZIO DEL CANJE	7.90	3	0	2249	76.3	6.8	6.8	3.6	2.9	1.9	0.6	1.1	76.3	6.8	16.9	0.112	0.501
VILLA MADERO	23.20	1	0	2218	77.5	4.5	6	3.1	3.5	2.1	2.4	0.9	77.5	4.5	18	0.107	0.502
T. C. ZITACUARO - CD. ALTAMIRANO	150.00	1	0	3510	86.6	2.6	2.9	2	1.3	1.7	0.6	2.3	86.6	2.6	10.8	0.075	0.503

17 CARR : TOCUMBO - COTIJA

CLAVE: 16042

RUTA : MICH-042

AÑO : 2007

L U G A R	E S T A C I O N				C L A S I F I C A C I O N V E H I C U L A R E N P O R C I E N T O .												
	KM	TE	SC	TDPA	A	B	C2	C3	T3S2	T3S3	T3S2R4	OTROS	A	B	C	K'	D
T. C. JACONA - BUENAVISTA	0.00	3	0	2573	77.3	4.7	3.2	5.4	2.3	1.5	1.1	4.5	77.3	4.7	18	0.083	0.51
COTIJA DE LA PAZ	28.99		0	0													

18 CARR : ZACAPU - VILLACHUATO

CLAVE: 16039

RUTA : MICH-039

AÑO : 2007

L U G A R	E S T A C I O N				C L A S I F I C A C I O N V E H I C U L A R E N P O R C I E N T O .												
	KM	TE	SC	TDPA	A	B	C2	C3	T3S2	T3S3	T3S2R4	OTROS	A	B	C	K'	D
ZACAPU	0.00	3	0	4161	77.3	6.9	7.5	3.9	1.4	1.6	0.2	1.2	77.3	6.9	15.8	0.09	0.506
PANINDICUARO	21.00	3	0	1790	85.7	4.6	5	2.7	0.5	0.7	0.1	0.7	85.7	4.6	9.7	0.132	0.505
T. C. CUITZEO - ZINAPARO	43.00	1	0	1331	90.4	2.6	4	1.9	0.4	0.5	0	0.2	90.4	2.6	7	0.095	0.506

MICHOACAN

23 CARR : LIBRAMIENTO DE URUAPAN

CLAVE: 16425

ruta : MICH

AÑO : 2007

L U G A R	E S T A C I O N				C L A S I F I C A C I O N V E H I C U L A R E N P O R C I E N T O .												
	KM	TE	SC	TDPA	A	B	C2	C3	T3S2	T3S3	T3S2R4	OTROS	A	B	C	K'	D
T. C. PATZCUARO - URUAPAN	0.00	3	0	7341	78.3	4.4	5.9	3	3.3	2	2.4	0.7	78.3	4.4	17.3	0.154	0.502
T. C. CARAPAN - PLAYA AZUL	9.20	1	0	6927	78.1	4.2	5.9	3	3.3	2.1	2.7	0.7	78.1	4.2	17.7	0.148	0.501

24 CARR : MORELIA - JIQUILPAN

CLAVE: 16029

ruta : MEX-015

AÑO : 2007

L U G A R	E S T A C I O N				C L A S I F I C A C I O N V E H I C U L A R E N P O R C I E N T O .												
	KM	TE	SC	TDPA	A	B	C2	C3	T3S2	T3S3	T3S2R4	OTROS	A	B	C	K'	D
MORELIA	0.00	0	0														
T. IZQ. PERIFERICO MORELIA	3.10	3	1	9594	79.4	4.5	5.9	3.1	3.4	2.1	1	0.6	79.4	4.5	16.1	0.077	0.501
T. IZQ. PERIFERICO MORELIA	3.10	3	2	9631	80.5	3.9	6	2.8	3.2	2	0.9	0.7	80.5	3.9	15.6	0.084	0.501
T. IZQ. LAGUNILLAS	24.90	1	0	5269	80	4.2	6	2.9	3.3	2	1	0.6	80	4.2	15.8	0.092	0.501
T. IZQ. LAGUNILLAS	24.90	3	0	5760	80.2	4.1	5.9	3	3.2	2	0.9	0.7	80.2	4.1	15.7	0.098	0.501
T. IZQ. LIBRAMIENTO DE QUIROGA	40.95	3	0	5454	80.8	5.2	7.2	1.9	1.1	1.9	1	0.9	80.8	5.2	14	0.075	0.503
T. DER. ZACAPU Y VILLACHUATO	77.10	1	0	8290	73.7	5.4	6.2	4.8	4	3	0	2.9	73.7	5.4	20.9	0.087	0.503
T. DER. LA PIEDAD	105.00	1	0	3543	79.6	5.9	3.9	3.6	3.7	1.3	0.9	1.1	79.6	5.9	14.5	0.085	0.503
T. DER. LA PIEDAD	105.00	3	0	5173	79.5	5.4	3	3.1	3.7	1.3	2	2	79.5	5.4	15.1	0.087	0.517
T. IZQ. TANGANCICUARO	131.20	1	0	10749	74.6	8.9	4.7	1.6	2.2	2.6	1.4	4	74.6	8.9	16.5	0.083	0.502
T. IZQ. TANGANCICUARO	131.20	3	0	9170	80.8	5.9	6	2.9	1.3	1.8	0.1	1.2	80.8	5.9	13.3	0.084	0.502
ZAMORA	144.40	1	1	4211	73.6	4.5	0.6	1.2	5.3	3.1	6.9	4.8	73.6	4.5	21.9	0.079	0.505
ZAMORA	144.40	1	2	4122	75.1	4.3	0.5	0.8	6.5	1.6	6.7	4.5	75.1	4.3	20.6	0.085	0.505
JACONA	148.60	3	0	6463	83.3	4.3	4	0.6	3.4	0.9	1.4	2.1	83.3	4.3	12.4	0.1	0.506
TANGAMANDAPIO	163.00	3	0	4444	85.4	4.7	4.5	0.8	1.4	2	0.5	0.7	85.4	4.7	9.9	0.089	0.508
T. DER. VILLA MAR	186.20	1	0	3673	85.4	4.6	1.6	2.2	2.8	1.3	0.9	1.2	85.4	4.6	10	0.081	0.507
T. DER. LIBRAMIENTO DE JIQUILPAN	200.00	1	0	6815	75.1	3.8	2	1.3	5.7	2.2	5	4.9	75.1	3.8	21.1	0.099	0.507
JIQUILPAN	203.80	0	0														

25 CARR : MORELIA - PATZCUARO

CLAVE: 16009

ruta : MEX-126

AÑO : 2007

L U G A R	E S T A C I O N				C L A S I F I C A C I O N V E H I C U L A R E N P O R C I E N T O .												
	KM	TE	SC	TDPA	A	B	C2	C3	T3S2	T3S3	T3S2R4	OTROS	A	B	C	K'	D
T. C. MORELIA - JIQUILPAN	0.00	0	0														
X. PERIFERICO MORELIA	3.00	3	1	6286	77.1	4.9	5.7	3.1	3.6	2.3	2.3	1	77.1	4.9	18	0.074	0.501
X. PERIFERICO MORELIA	3.00	3	2	6252	77.4	4.9	5.5	2.7	3.4	2.2	2.9	1	77.4	4.9	17.7	0.084	0.501
TIRIPETIO	25.00	3	1	5502	79.7	3.5	4.9	3.1	3.5	2.3	2.3	0.7	79.7	3.5	16.8	0.083	0.503
TIRIPETIO	25.00	3	2	5434	77.8	3.9	5.8	2.8	3.3	2.8	2.7	0.9	77.8	3.9	18.3	0.078	0.503

MICHOACAN

25 CARR : MORELIA - PATZCUARO

CLAVE: 16009

RUTA : MEX-126

AÑO : 2007

L U G A R	E S T A C I O N				C L A S I F I C A C I O N V E H I C U L A R E N P O R C I E N T O .												
	KM	TE	SC	TDPA	A	B	C2	C3	T3S2	T3S3	T3S2R4	OTROS	A	B	C	K'	D
HUIRAMBA	37.00	1	1	6154	77	4.5	5.9	3.1	3.5	2.2	3.1	0.7	77	4.5	18.5	0.084	0.503
HUIRAMBA	37.00	1	2	6092	77.8	3.9	6	2.8	3.3	2.9	2.5	0.8	77.8	3.9	18.3	0.077	0.503
TZURUMUTARO	53.00	1	1	3842	80.8	9	4.2	2	1.5	1	0.2	1.3	80.8	9	10.2	0.098	0.502
TZURUMUTARO	53.00	1	2	3866	81.3	7.5	4.4	2	2.4	1.2	0	1.2	81.3	7.5	11.2	0.089	0.502

26 CARR : OPOPEO - PURUARAN

CLAVE: 16241

RUTA : MEX-041-MICH

AÑO : 2007

L U G A R	E S T A C I O N				C L A S I F I C A C I O N V E H I C U L A R E N P O R C I E N T O .												
	KM	TE	SC	TDPA	A	B	C2	C3	T3S2	T3S3	T3S2R4	OTROS	A	B	C	K'	D
T. C. QUIROGA - TEPALCATEPEC	0.00	3	0	2906	79.9	4.3	5.9	3	3.3	2.1	0.9	0.6	79.9	4.3	15.8	0.107	0.502
PURUARAN	71.00	0	0														

27 CARR : PATZCUARO - URUAPAN

CLAVE: 16484

RUTA : MEX-126

AÑO : 2007

L U G A R	E S T A C I O N				C L A S I F I C A C I O N V E H I C U L A R E N P O R C I E N T O .												
	KM	TE	SC	TDPA	A	B	C2	C3	T3S2	T3S3	T3S2R4	OTROS	A	B	C	K'	D
PATZCUARO	0.00	3	0	6329	75.9	8.5	9	2.6	1.2	1.1	0.1	1.6	75.9	8.5	15.6	0.09	0.502
T. IZQ. ZIRAHUEN	17.05	1	0	5075	80	7.1	6.9	3.2	0.9	1	0.1	0.8	80	7.1	12.9	0.086	0.5
TINGAMBATO	35.77	1	0	4781	78.2	7.3	6.7	4	1.4	1.4	0.1	0.9	78.2	7.3	14.5	0.085	0.501
TINGAMBATO	35.77	3	0	5458	80.8	5.8	6.4	3.1	1.3	1.2	0.1	1.3	80.8	5.8	13.4	0.094	0.504
T. IZQ. LIBRAMIENTO DE URUAPAN	60.05	1	0	7313	83	4	3.1	1.5	2.3	2.8	2.8	0.5	83	4	13	0.091	0.508
URUAPAN	62.60	1	1	4557	78.8	4.5	5.9	3	3.3	2	1.9	0.6	78.8	4.5	16.7	0.085	0.501
URUAPAN	62.60	1	2	4543	78.1	3.9	6	2.8	3.1	2.5	2.9	0.7	78.1	3.9	18	0.094	0.501

28 CARR : QUIROGA - TEPALCATEPEC

CLAVE: 16125

RUTA : MEX-120

AÑO : 2007

L U G A R	E S T A C I O N				C L A S I F I C A C I O N V E H I C U L A R E N P O R C I E N T O .												
	KM	TE	SC	TDPA	A	B	C2	C3	T3S2	T3S3	T3S2R4	OTROS	A	B	C	K'	D
QUIROGA	0.00	3	0	5580	89.4	2.8	2.4	0	3.6	0.3	0.5	1	89.4	2.8	7.8	0.115	0.505
ZURUMUTARO	19.00	3	0	10262	77.5	7.6	8.5	1.9	1.4	1.5	0.2	1.4	77.5	7.6	14.9	0.075	0.501
OPOPEO	40.04	1	0	5556	80.1	4.2	6	3	3.3	2	0.9	0.5	80.1	4.2	15.7	0.096	0.502
OPOPEO	40.04	3	0	3809	79.7	4.2	5.9	2.8	3.4	2.1	1	0.9	79.7	4.2	16.1	0.083	0.503
ARIO DE ROSALES	72.50	1	0	3336	81.8	5.3	8.1	2	0.7	0.6	0	1.5	81.8	5.3	12.9	0.102	0.502
ARIO DE ROSALES	72.50	3	0	3173	78.1	7.6	7.9	2.5	1.3	1.2	0	1.4	78.1	7.6	14.3	0.111	0.502
LA HUACANA	123.20	3	0	2761	80.2	4.3	6	3.2	1.8	2.4	2.1	0	80.2	4.3	15.5	0.08	0.504

MICHOACAN

28 CARR : QUIROGA - TEPALCATEPEC

CLAVE: 16125

RUTA : MEX-120

AÑO : 2007

L U G A R	E S T A C I O N				C L A S I F I C A C I O N V E H I C U L A R E N P O R C I E N T O .												
	KM	TE	SC	TDPA	A	B	C2	C3	T3S2	T3S3	T3S2R4	OTROS	A	B	C	K'	D
X. C. CARAPAN - PLAYA AZUL	170.00	1	0	5849	84.1	1.7	2.1	3.8	4.1	1.6	1.3	1.3	84.1	1.7	14.2	0.082	0.503
X. C. CARAPAN - PLAYA AZUL	170.00	3	0	8674	82.8	4.4	6	2.9	1	1.2	0.5	1.2	82.8	4.4	12.8	0.083	0.502
APATZINGAN	200.90	1	0	10639	78.1	3	1.9	1.4	6.1	1.8	3.4	4.3	78.1	3	18.9	0.09	0.501
APATZINGAN	200.90	3	0	4772	78.7	4.2	6	3	2.1	2.5	2.7	0.8	78.7	4.2	17.1	0.112	0.501
SANTA ANA AMATLAN	223.50	1	0	3917	84.3	2.7	2.2	2.4	4.1	2	0.9	1.4	84.3	2.7	13	0.083	0.508
BUENAVISTA TOMATLAN	233.90	3	0	7065	79.4	4.1	5.9	2.7	2.3	2.4	2.5	0.7	79.4	4.1	16.5	0.08	0.501
TEPALCATEPEC	267.60	0	0														

29 CARR : RAMAL A COAHUAYANA

CLAVE: 16069

RUTA : MICH-069

AÑO : 2007

L U G A R	E S T A C I O N				C L A S I F I C A C I O N V E H I C U L A R E N P O R C I E N T O .												
	KM	TE	SC	TDPA	A	B	C2	C3	T3S2	T3S3	T3S2R4	OTROS	A	B	C	K'	D
T. C. ENT. PLAYA AZUL - MANZANILLO	0.00	3	0	1120	83.7	5.7	4.8	2.9	0.7	0.9	0.2	1.1	83.7	5.7	10.6	0.107	0.504
COAHUAYANA	6.50	0	0														

30 CARR : RAMAL A INFIERNILLO

CLAVE: 16010

RUTA : MICH-010

AÑO : 2007

L U G A R	E S T A C I O N				C L A S I F I C A C I O N V E H I C U L A R E N P O R C I E N T O .												
	KM	TE	SC	TDPA	A	B	C2	C3	T3S2	T3S3	T3S2R4	OTROS	A	B	C	K'	D
T. C. CARAPAN - PLAYA AZUL	0.00	3	0	1287	77.6	4.4	6.1	3.1	3.5	2.7	2	0.6	77.6	4.4	18	0.066	0.503
INFIERNILLO	43.00	0	0														

31 CARR : T. C. (ZIHUATANEJO - LA MIRA) - LAZARO CARDENAS

CLAVE: 16421

RUTA : MEX

AÑO : 2007

L U G A R	E S T A C I O N				C L A S I F I C A C I O N V E H I C U L A R E N P O R C I E N T O .												
	KM	TE	SC	TDPA	A	B	C2	C3	T3S2	T3S3	T3S2R4	OTROS	A	B	C	K'	D
T. C. ZIHUATANEJO - LA MIRA	0.00	3	0	2467	89.5	2.4	3.8	3.4	0.6	0.2	0.1	0	89.5	2.4	8.1	0.106	0.501
LAZARO CARDENAS	6.00	1	1	2996	83.1	6.2	0.1	0.7	3.4	2	2.1	2.4	83.1	6.2	10.7	0.107	0.505
LAZARO CARDENAS	6.00	1	2	2937	82.3	6.3	0	0.7	3.5	2.2	2.3	2.7	82.3	6.3	11.4	0.102	0.505

32 CARR : RINCONADA - LA PIEDAD

CLAVE: 16243

RUTA : MEX

AÑO : 2007

L U G A R	E S T A C I O N				C L A S I F I C A C I O N V E H I C U L A R E N P O R C I E N T O .												
	KM	TE	SC	TDPA	A	B	C2	C3	T3S2	T3S3	T3S2R4	OTROS	A	B	C	K'	D
T. C. ZAMORA - VISTA HERMOSA	0.00	3	0	4137	77.3	5	3.3	2.8	5.6	1.3	3	1.7	77.3	5	17.7	0.082	0.505

MICHOACAN

32 CARR : RINCONADA - LA PIEDAD

CLAVE: 16243

RUTA : MEX

AÑO : 2007

L U G A R	E S T A C I O N				C L A S I F I C A C I O N V E H I C U L A R E N P O R C I E N T O .												
	KM	TE	SC	TDPA	A	B	C2	C3	T3S2	T3S3	T3S2R4	OTROS	A	B	C	K'	D
T. DER. ECUANDUREO (1° ACCESO)	18.40	1	0	3621	86.2	3	3.9	2.5	1.4	1.5	0	1.5	86.2	3	10.8	0.077	0.504
T. C. LA PIEDAD - CARAPAN	46.40	1	0	3833	83.2	4.8	4	4.6	1.1	1.2	0	1.1	83.2	4.8	12	0.096	0.504

33 CARR : SAN FELIPE ALZATI - ANGANGUEO

CLAVE: 16556

RUTA : MICH-044

AÑO : 2007

L U G A R	E S T A C I O N				C L A S I F I C A C I O N V E H I C U L A R E N P O R C I E N T O .												
	KM	TE	SC	TDPA	A	B	C2	C3	T3S2	T3S3	T3S2R4	OTROS	A	B	C	K'	D
T. C. TOLUCA - MORELIA	0.00	3	0	2309	75.9	6.2	5.4	3.6	2.5	1.8	1.6	3	75.9	6.2	17.9	0.078	0.501
ANGANGUEO	24.00	1	0	2287	81.1	5.9	4.4	3.2	1.2	1.7	0.1	2.4	81.1	5.9	13	0.08	0.502

34 CARR : ZAMORA - VISTA HERMOSA

CLAVE: 16242

RUTA : MEX

AÑO : 2007

L U G A R	E S T A C I O N				C L A S I F I C A C I O N V E H I C U L A R E N P O R C I E N T O .												
	KM	TE	SC	TDPA	A	B	C2	C3	T3S2	T3S3	T3S2R4	OTROS	A	B	C	K'	D
ZAMORA	0.00	3	0	13884	56.1	4.3	2	0.8	7.2	3.6	20.8	5.2	56.1	4.3	39.6	0.078	0.508
T. DER. LA PIEDAD	6.17	3	0	8547	84.1	3.8	3.8	3.2	1.8	1.4	0.1	1.8	84.1	3.8	12.1	0.118	0.505
T. C. PATTY - SAHUAYO	43.80	1	0	7976	73.2	3.1	6.5	6.2	3.2	2.8	0.7	4.3	73.2	3.1	23.7	0.075	0.504

35 CARR : ZITACUARO - CD. ALTAMIRANO

CLAVE: 16006

RUTA : MEX-051

AÑO : 2007

L U G A R	E S T A C I O N				C L A S I F I C A C I O N V E H I C U L A R E N P O R C I E N T O .												
	KM	TE	SC	TDPA	A	B	C2	C3	T3S2	T3S3	T3S2R4	OTROS	A	B	C	K'	D
ZITACUARO	0.00	0	0														
BENITO JUAREZ	26.06	3	0	2700	90.9	1.7	1.6	1	1.4	1.4	0	2	90.9	1.7	7.4	0.079	0.501
TIQUICHEO	104.50	1	0	1229	76.2	5.7	5.4	4.8	1.7	2.3	1	2.9	76.2	5.7	18.1	0.093	0.501
TIQUICHEO	104.50	3	0	1105	76	6.8	5.5	5.3	1.7	1.5	0	3.2	76	6.8	17.2	0.09	0.5
HUETAMO	174.60	1	0	1614	90.2	3.7	4	1.5	0	0.6	0	0	90.2	3.7	6.1	0.082	0.502
SAN LUCAS	193.80	3	0	1540	68	7.8	5.5	5.2	4.8	3.6	2.9	2.2	68	7.8	24.2	0.076	0.501
T. C. TOLUCA - CD. ALTAMIRANO	214.50	1	0	2175	79.9	5.3	4.6	3.9	1.8	1.8	0.2	2.5	79.9	5.3	14.8	0.077	0.504

36 CARR : ACAMBARO - ZINAPECUARO

CLAVE: 00417

RUTA : MEX-120

AÑO : 2007

L U G A R	E S T A C I O N				C L A S I F I C A C I O N V E H I C U L A R E N P O R C I E N T O .												
	KM	TE	SC	TDPA	A	B	C2	C3	T3S2	T3S3	T3S2R4	OTROS	A	B	C	K'	D
ACAMBARO	0.00	3	0	5202	75.3	9.5	8.9	4.4	0.7	0.3	0	0.9	75.3	9.5	15.2	0.093	0.501

MICHOACAN

39 CARR : T. C. (V. VICTORIA - EL ORO DE HIDALGO) - ANGANGUEO

CLAVE: 00195

RUTA : EM-003-MICH

AÑO : 2007

L U G A R	E S T A C I O N				C L A S I F I C A C I O N V E H I C U L A R E N P O R C I E N T O .												
	KM	TE	SC	TDPA	A	B	C2	C3	T3S2	T3S3	T3S2R4	OTROS	A	B	C	K'	D
T. C. V. VICTORIA - EL ORO DE HIDALGO	0.00	3	0	4618	80.4	3.7	6	3	3.3	2	1	0.6	80.4	3.7	15.9	0.066	0.506
LIM. EDOS. TERM. MEX. PPIA. MICH	17.70	0	0														
ANGANGUEO	24.00	1	0	1434	64.2	7.7	7.1	5.7	2.9	5	2	5.4	64.2	7.7	28.1	0.086	0.501

40 CARR : IRAPUATO - GUADALAJARA

CLAVE: 00114

RUTA : MEX-090-110

AÑO : 2007

L U G A R	E S T A C I O N				C L A S I F I C A C I O N V E H I C U L A R E N P O R C I E N T O .												
	KM	TE	SC	TDPA	A	B	C2	C3	T3S2	T3S3	T3S2R4	OTROS	A	B	C	K'	D
IRAPUATO	0.00	0	0														
T. IZQ. QUERETARO - IRAPUATO (CUOTA)	2.78	1	1	13208	83.4	5.4	4.7	2.7	1.1	0.8	1.1	0.8	83.4	5.4	11.2	0.089	0.501
T. IZQ. QUERETARO - IRAPUATO (CUOTA)	2.78	1	2	13270	83.3	5.2	4.4	2.6	1.3	0.9	1.2	1.1	83.3	5.2	11.5	0.096	0.501
T. IZQ. QUERETARO - IRAPUATO (CUOTA)	2.78	3	1	10153	80.2	5.9	5.9	4.5	1.6	1	0.1	0.8	80.2	5.9	13.9	0.101	0.501
T. IZQ. QUERETARO - IRAPUATO (CUOTA)	2.78	3	2	10174	83.3	5.3	4.6	3.2	1.6	0.9	0	1.1	83.3	5.3	11.4	0.103	0.501
T. DER. CUERAMARO	15.00	3	1	9447	71.8	6.5	7.8	4	4.7	3.2	0.2	1.8	71.8	6.5	21.7	0.078	0.521
T. DER. CUERAMARO	15.00	3	2	8700	72.1	6.3	8.4	3.8	5.1	2.9	0.3	1.1	72.1	6.3	21.6	0.099	0.521
ABASOLO	30.00	1	1	8229	75.5	8.5	5.6	3.3	3.5	2.6	0.2	0.8	75.5	8.5	16	0.137	0.503
ABASOLO	30.00	1	2	8869	76.2	8.6	4.1	2.9	3.8	2.1	0.3	2	76.2	8.6	15.2	0.12	0.503
ABASOLO	30.00	3	1	8138	73.2	8.4	7.3	4.1	3	2.6	0.1	1.3	73.2	8.4	18.4	0.107	0.506
ABASOLO	30.00	3	2	8322	73.9	8.2	4.4	3.6	5	3.7	0.1	1.1	73.9	8.2	17.9	0.098	0.506
PENJAMO	50.65	1	1	12639	76.4	8.5	4.1	5.3	2.7	1.5	0.4	1.1	76.4	8.5	15.1	0.143	0.501
PENJAMO	50.65	1	2	12614	70.4	8.8	4.7	7	4.4	2.8	0.3	1.6	70.4	8.8	20.8	0.114	0.501
PENJAMO	50.65	3	0	14551	57.8	9.5	10.2	7.8	6.3	4.3	0.8	3.3	57.8	9.5	32.7	0.074	0.501
T. DER. MANUEL DOBLADO	83.87	1	0	14270	66.3	8.1	8.9	7.4	3.7	3.2	0.8	1.6	66.3	8.1	25.6	0.081	0.501
LIM. EDOS. TERM. GTO. PPIA. MICH.	86.37	0	0														
LA PIEDAD	87.00	3	0	12870	69.1	9.6	7.4	6.9	4.1	2	0.2	0.7	69.1	9.6	21.3	0.089	0.511
T. IZQ. YURECUARO	100.00	3	0	8567	73.2	9.2	5.7	5.3	3.8	1.7	0.3	0.8	73.2	9.2	17.6	0.089	0.512
LIM. EDOS. TERM. MICH. PPIA. JAL.	102.10	0	0														
DEGOLLADO	105.40	1	0	6102	71.3	13.4	3.6	2.2	5.9	1.3	1.1	1.2	71.3	13.4	15.3	0.095	0.51
AYOTLAN	134.00	1	0	5243	82.7	7.5	0.5	1.1	0.9	6.6	0.2	0.5	82.7	7.5	9.8	0.127	0.511
ATOTONILCO EL ALTO	157.00	1	0	5039	76	5.4	5	4.8	5.2	1.9	1.6	0.1	76	5.4	18.6	0.087	0.502
ATOTONILCO EL ALTO	157.00	3	0	7751	78.4	6.9	4.9	3.1	2.7	1.7	1.3	1	78.4	6.9	14.7	0.083	0.503
X. C. SAN MIGUEL EL ALTO - LA BARCA	158.60	3	0	7861	71.1	7.4	5.4	5.4	5	3.1	1.5	1.1	71.1	7.4	21.5	0.108	0.503
T. IZQ. OCOTLAN	188.00	1	0	7449	73.1	8.3	5.6	4.6	4.3	1.8	1.4	0.9	73.1	8.3	18.6	0.094	0.508
T. DER. LIBRAMIENTO ZAPOTLANEJO	215.80	1	0	11569	73.7	10.4	6	3.7	2.4	2	1	0.8	73.7	10.4	15.9	0.081	0.502
T. DER. LIBRAMIENTO ZAPOTLANEJO	215.80	3	1	6222	67	12.5	6.8	6.7	3.6	0.7	1	1.7	67	12.5	20.5	0.092	0.508

MICHOACAN

40 CARR : IRAPUATO - GUADALAJARA

CLAVE: 00114

ruta : MEX-090-110

AÑO : 2007

L U G A R	E S T A C I O N				C L A S I F I C A C I O N V E H I C U L A R E N P O R C I E N T O .												
	KM	TE	SC	TDPA	A	B	C2	C3	T3S2	T3S3	T3S2R4	OTROS	A	B	C	K'	D
T. DER. LIBRAMIENTO ZAPOTLANEJO	215.80	3	2	6017	68	13.3	6.7	4.7	4.1	0.8	0.8	1.6	68	13.3	18.7	0.093	0.508
ZAPOTLANEJO	217.60	0	0														

41 CARR : LA NORIA - ACAMBARO

CLAVE: 00131

ruta : MEX-120

AÑO : 2007

L U G A R	E S T A C I O N				C L A S I F I C A C I O N V E H I C U L A R E N P O R C I E N T O .												
	KM	TE	SC	TDPA	A	B	C2	C3	T3S2	T3S3	T3S2R4	OTROS	A	B	C	K'	D
LA NORIA	0.00	3	0	4282	76.3	10.1	5.9	2.3	2.7	0.9	0.8	1	76.3	10.1	13.6	0.115	0.501
AMEALCO	34.66	1	0	3062	82.1	5.8	4.5	2.2	2.8	1.2	0.6	0.8	82.1	5.8	12.1	0.117	0.5
AMEALCO	34.66	3	0	2560	68.7	8.3	9.2	7.7	2.1	2.8	0	1.2	68.7	8.3	23	0.096	0.503
LIM. EDOS. TERM. QRO. PPIA. MICH.	41.16	0	0														
LIM. EDOS. TERM. MICH. PPIA. GTO.	55.45	0	0														
CORONEO	59.35	3	0	3878	80.2	6.5	6.2	3.2	1.6	1.3	0	1	80.2	6.5	13.3	0.091	0.556
JERECUARO	79.70	3	0	4470	80	7.2	5.8	3.5	1.7	1.5	0.1	0.2	80	7.2	12.8	0.108	0.501
ACAMBARO	111.10	1	0	5327	74.7	9.8	9.4	4.4	0.6	0.3	0	0.8	74.7	9.8	15.5	0.094	0.503

42 CARR : TOLUCA - CD. ALTAMIRANO

CLAVE: 00020

ruta : MEX-134

AÑO : 2007

L U G A R	E S T A C I O N				C L A S I F I C A C I O N V E H I C U L A R E N P O R C I E N T O .												
	KM	TE	SC	TDPA	A	B	C2	C3	T3S2	T3S3	T3S2R4	OTROS	A	B	C	K'	D
T. C. TOLUCA - AXIXINTLA	0.00	0	0														
T. IZQ. CAPULTITLAN	1.78	3	1	7821	78.6	5.3	5.4	3.5	1.5	1.4	0.5	3.8	78.6	5.3	16.1	0.102	0.507
T. IZQ. CAPULTITLAN	1.78	3	2	7594	81	4.8	5.6	2.9	1.8	1.4	0.5	2	81	4.8	14.2	0.109	0.507
T. DER. ZINACATEPEC	10.21	3	0	11773	78.6	6.5	6.3	2.7	1.8	1.5	0.5	2.1	78.6	6.5	14.9	0.089	0.516
T. IZQ. SULTEPEC	18.72	3	0	7441	74.2	7.4	7.8	3.3	2.3	2.2	0.5	2.3	74.2	7.4	18.4	0.085	0.509
T. DER. VALLE DE BRAVO	52.00	3	0	6865	80.3	5.2	6	3.6	2.1	1.5	0.4	0.9	80.3	5.2	14.5	0.086	0.501
TEMASCALTEPEC	68.76	1	0	2825	82.7	3.6	5.3	3.7	2.4	1.3	0	1	82.7	3.6	13.7	0.087	0.502
TEMASCALTEPEC	68.76	3	0	3590	82.6	3.6	3.8	3.1	2.6	2	1	1.3	82.6	3.6	13.8	0.085	0.502
T. IZQ. SAN DIEGO CUENTLA	84.34	3	0	3156	80.3	3.6	6.8	4.5	2	1.3	0.6	0.9	80.3	3.6	16.1	0.093	0.502
TEJUPILCO DE HIDALGO	100.80	1	0	3072	79	6.9	5.2	3.1	2	2.2	0.4	1.2	79	6.9	14.1	0.078	0.502
TEJUPILCO DE HIDALGO	100.80	3	0	2740	77.8	5.7	5.6	3.5	2.2	3	0.5	1.7	77.8	5.7	16.5	0.094	0.505
CUADRILLA DE LOPEZ	113.20	3	0	2162	82.7	5.8	5.4	3.7	1.6	0.8	0	0	82.7	5.8	11.5	0.082	0.503
T. IZQ. BEJUCOS	147.60	1	0	1905	81.5	5.4	6.1	3.2	1.6	1.3	0.2	0.7	81.5	5.4	13.1	0.093	0.502
LIM. EDOS. TERM. MEX. PPIA. GRO.	148.60	0	0														
CUTZAMALA	196.00	1	0	3572	83	3.5	6.5	2.4	1.6	1.5	0.9	0.6	83	3.5	13.5	0.107	0.502

MICHOACAN

42 CARR : TOLUCA - CD. ALTAMIRANO

CLAVE: 00020

RUTA : MEX-134

AÑO : 2007

L U G A R	E S T A C I O N			C L A S I F I C A C I O N V E H I C U L A R E N P O R C I E N T O .												
	KM	TE	SC TDPA	A	B	C2	C3	T3S2	T3S3	T3S2R4	OTROS	A	B	C	K'	D
LIM. EDOS. TERM. GRO. PPIA. MICH.	204.50	0	0													
CD. ALTAMIRANO	210.30	1	0 4176	89	3.7	3.1	1.1	1.3	0.9	0.4	0.5	89	3.7	7.3	0.074	0.502
LIM. EDOS. TERM. MICH. PPIA. GRO.	215.20	0	0													

43 CARR : TOLUCA - MORELIA

CLAVE: 00448

RUTA : MEX-015

AÑO : 2007

L U G A R	E S T A C I O N			C L A S I F I C A C I O N V E H I C U L A R E N P O R C I E N T O .												
	KM	TE	SC TDPA	A	B	C2	C3	T3S2	T3S3	T3S2R4	OTROS	A	B	C	K'	D
TOLUCA	0.00	0	0													
X. C. LIBRAMIENTO DE TOLUCA	1.00	3	1 20424	78.8	6	6.1	2.9	1.9	1.8	0.4	2.1	78.8	6	15.2	0.104	0.51
X. C. LIBRAMIENTO DE TOLUCA	1.00	3	2 19643	78.5	5.5	5.7	3.4	2.1	2	0.5	2.3	78.5	5.5	16	0.094	0.51
T. DER. ALMOLOYA DE JUAREZ	4.70	3	1 19279	81.4	5.4	5.9	2.7	2.1	1.5	0.4	0.6	81.4	5.4	13.2	0.069	0.51
T. DER. ALMOLOYA DE JUAREZ	4.70	3	2 20104	82.4	5.1	6.1	2.3	1.5	1.4	0.4	0.8	82.4	5.1	12.5	0.075	0.51
T. IZQ. VALLE DE BRAVO	7.50	3	1 10531	85.9	5.4	3.8	0.7	1	0.8	0.7	1.7	85.9	5.4	8.7	0.087	0.503
T. IZQ. VALLE DE BRAVO	7.50	3	2 10651	87.2	5	3.6	0.6	1.1	0.8	0.5	1.2	87.2	5	7.8	0.095	0.503
T. DER. VILLA VICTORIA	46.39	1	0 9962	66.9	10.7	8.2	5.1	4.1	2.8	1.6	0.6	66.9	10.7	22.4	0.085	0.5
T. DER. VILLA VICTORIA	46.39	3	0 7305	80.4	11.8	2	1.8	2	1.1	0.5	0.4	80.4	11.8	7.8	0.075	0.5
T. IZQ. VALLE DE BRAVO	54.40	1	0 6888	81.7	10.5	2	1.8	2	1.1	0.4	0.5	81.7	10.5	7.8	0.082	0.502
T. IZQ. VILLA DE ALLENDE	64.08	1	0 9714	83.5	8.5	2.1	1.9	2	1.1	0.4	0.5	83.5	8.5	8	0.086	0.503
T. IZQ. VILLA DE ALLENDE	64.08	3	0 8341	88.8	3	2.1	1.9	2.1	1.2	0.4	0.5	88.8	3	8.2	0.07	0.501
LIM. EDOS. TERM. MEX. PPIA. MICH.	71.02	0	0													
T. DER. LIBRAMIENTO DE HEROICA ZITACUARO	92.80	1	0 12378	72.3	10.4	7.1	3.1	2.4	1.9	0.6	2.2	72.3	10.4	17.3	0.083	0.501
T. DER. ANGANGUEO	106.30	3	0 7731	80.4	6.2	4.6	2.3	2.2	1.4	0.7	2.2	80.4	6.2	13.4	0.08	0.502
T. IZQ. JUNGAPAO	114.30	3	0 5712	73	6.1	8.7	3.4	2.6	2.4	0.4	3.4	73	6.1	20.9	0.077	0.502
CD. HIDALGO	144.60	1	0 8065	71.4	10.5	8.1	3.3	1.7	1.5	0.6	2.9	71.4	10.5	18.1	0.075	0.501
T. IZQ. TZITZIO	188.30	1	0 805	80.3	7.9	5.4	3.8	2.1	0	0.1	0.4	80.3	7.9	11.8	0.096	0.503
PERIFERICO DE MORELIA	241.40	1	0 2970	78.1	8.1	5.2	4.3	1.3	0.8	0	2.2	78.1	8.1	13.8	0.089	0.501
MORELIA	246.20	0	0													

44 CARR : ZIHUATANEJO - LA MIRA

CLAVE: 00121

RUTA : MEX-200

AÑO : 2007

L U G A R	E S T A C I O N			C L A S I F I C A C I O N V E H I C U L A R E N P O R C I E N T O .												
	KM	TE	SC TDPA	A	B	C2	C3	T3S2	T3S3	T3S2R4	OTROS	A	B	C	K'	D
ZIHUATANEJO	0.00	3	1 9644	70.6	3.5	0.8	1.1	5.8	3.9	9.2	5.1	70.6	3.5	25.9	0.074	0.501
ZIHUATANEJO	0.00	3	2 9698	70	3.7	0.9	1.2	5.8	3.9	9.4	5.1	70	3.7	26.3	0.074	0.501

MICHOACAN

44 CARR : ZIHUATANEJO - LA MIRA

CLAVE: 00121

RUTA : MEX-200

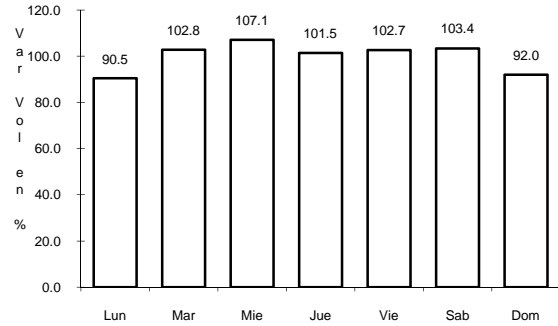
AÑO : 2007

L U G A R	E S T A C I O N				C L A S I F I C A C I O N V E H I C U L A R E N P O R C I E N T O .													
	KM	TE	SC	TDPA	A	B	C2	C3	T3S2	T3S3	T3S2R4	OTROS	A	B	C	K'	D	
T. IZQ. IXTAPA ZIHUATANEJO	8.00	3	0	12348	84.6	4.7	2.7	0.2	2.7	2.6	0.4	2.1	84.6	4.7	10.7	0.076	0.5	
T. DER. CD. ALTAMIRANO	16.30	1	0	5155	81.6	6.2	2.7	1.4	3.6	1.3	1.7	1.5	81.6	6.2	12.2	0.089	0.509	
T. DER. CD. ALTAMIRANO	16.30	3	0	4695	81.1	5.3	3.4	1.6	3.8	1.4	1.8	1.6	81.1	5.3	13.6	0.088	0.509	
T. DER. LA UNION	52.00	3	0	3644	80.3	5.2	3.6	1.7	4	1.6	1.9	1.7	80.3	5.2	14.5	0.086	0.507	
ZACATULA	93.50	1	0	4031	81.2	5.6	3.2	1.6	3.7	1.5	1.7	1.5	81.2	5.6	13.2	0.089	0.508	
LIM. EDOS. TERM. GRO. PPIA. MICH.	98.50	0	0															
LA VILLITA	103.80	3	0	3993	80.4	8.3	4.4	2.5	1	2	0.1	1.3	80.4	8.3	11.3	0.081	0.501	
GUACAMAYAS	107.00	1	1	12568	82.7	5.4	5.4	1.4	1.9	1.9	0.2	1.1	82.7	5.4	11.9	0.097	0.503	
GUACAMAYAS	107.00	1	2	12412	82.7	6	5.3	1.6	1.5	2	0.2	0.7	82.7	6	11.3	0.087	0.503	
T. IZQ. LAZARO CARDENAS	110.90	1	1	14794	91.2	4	0.6	0.2	1.5	0.6	0.6	1.3	91.2	4	4.8	0.069	0.541	
T. IZQ. LAZARO CARDENAS	110.90	1	2	12574	90.5	4	1.7	0.1	1.4	0.5	0.5	1.3	90.5	4	5.5	0.074	0.541	
LA MIRA	119.50	1	1	5303	84.7	2.9	4.5	3.2	1.4	1.6	0.1	1.6	84.7	2.9	12.4	0.091	0.5	
LA MIRA	119.50	1	2	5300	84.6	2.9	5	2	1.5	2	0.2	1.8	84.6	2.9	12.5	0.099	0.5	

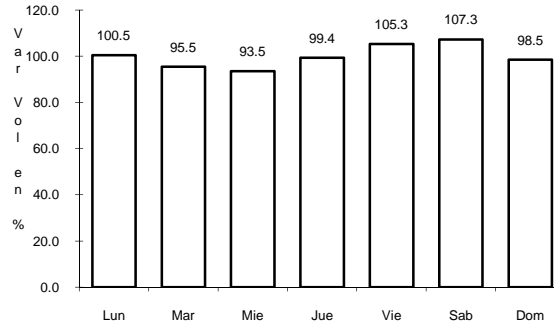
1 CARR: ENT. PLAYA AZUL - MANZANILLO

CLAVE: 00495

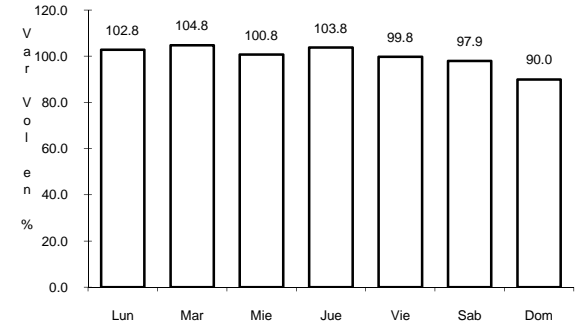
ruta: MEX-200



Km: 0.00 Tipo: 3 Sent: 0



Km: 190.10 Tipo: 3 Sent: 0

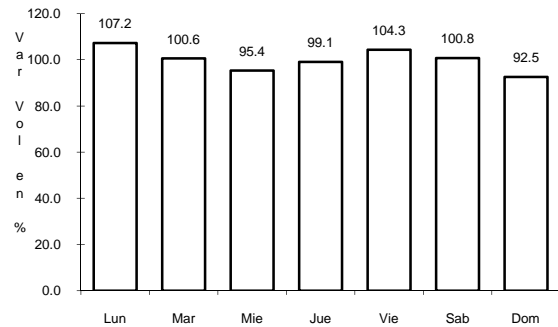


Km: 321.12 Tipo: 1 Sent: 0

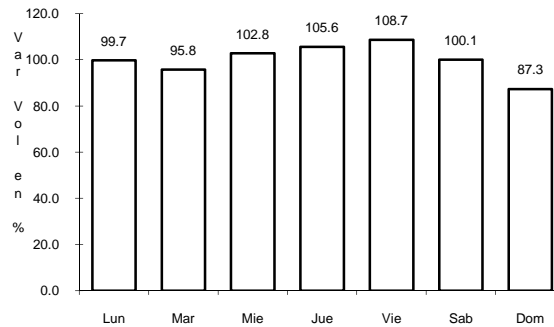
3 CARR: JIQUILPAN - COLIMA

CLAVE: 00156

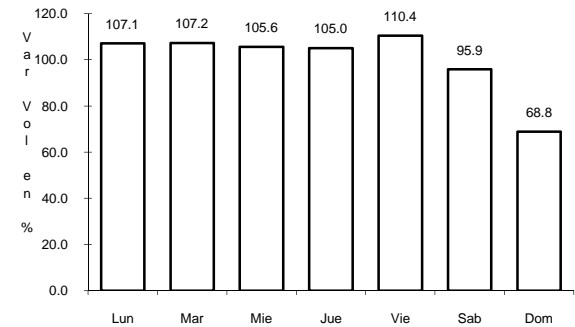
ruta: MEX-110



Km: 0.00 Tipo: 3 Sent: 0



Km: 108.50 Tipo: 3 Sent: 0

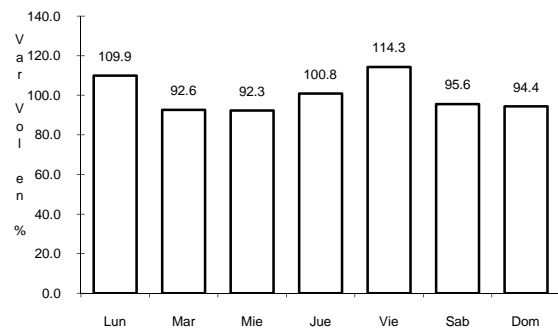


Km: 222.00 Tipo: 1 Sent: 0

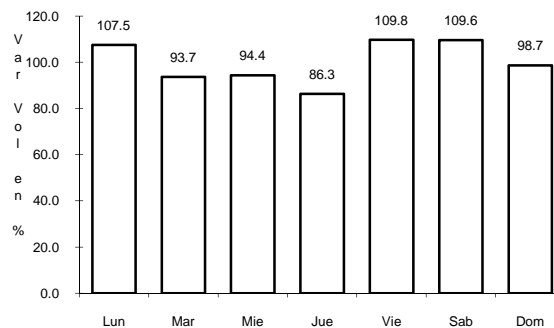
4 CARR: JIQUILPAN - GUADALAJARA

CLAVE: 00429

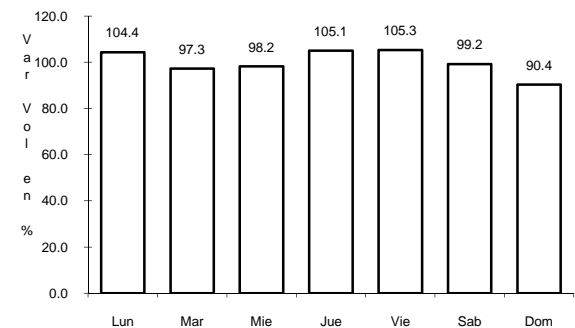
ruta: MEX-015



Km: 0.00 Tipo: 3 Sent: 1



Km: 0.00 Tipo: 3 Sent: 2

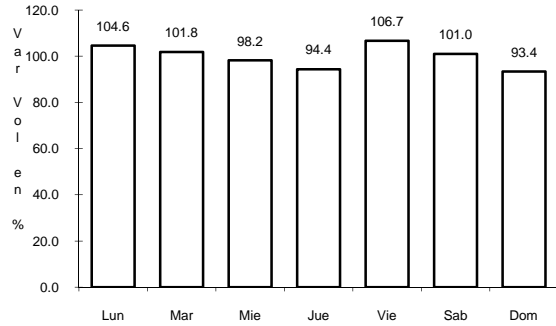


Km: 65.29 Tipo: 1 Sent: 0

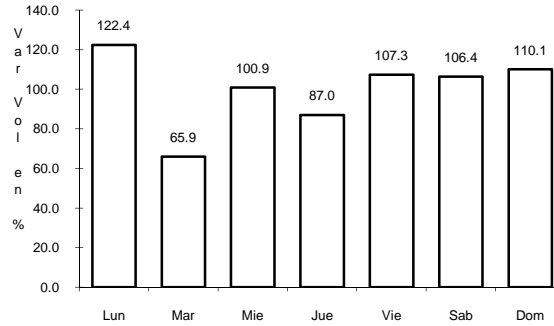
5 CARR: MARAVATIO - ACAMBARO

CLAVE: 00418

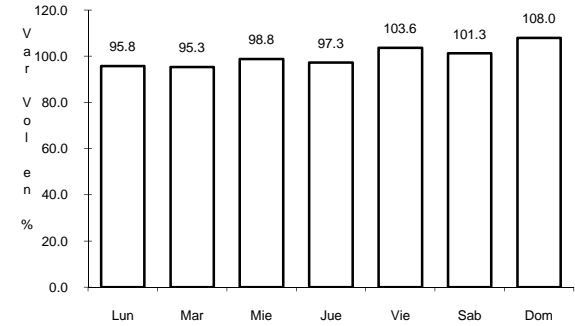
RUTA: MEX-061



Km: 0.00 Tipo: 3 Sent: 0



Km: 13.00 Tipo: 3 Sent: 0

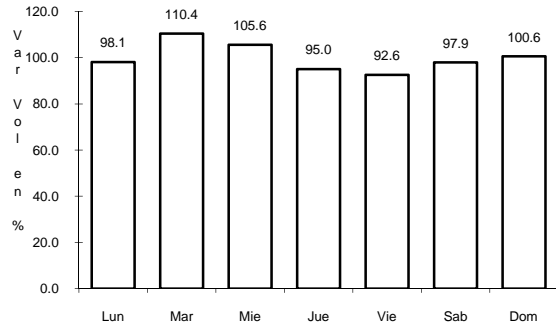


Km: 39.00 Tipo: 1 Sent: 0

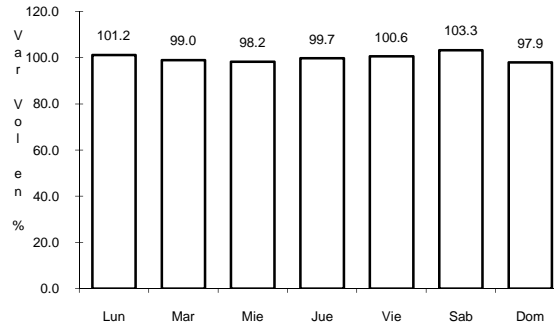
6 CARR: MORELIA - SALAMANCA

CLAVE: 00124

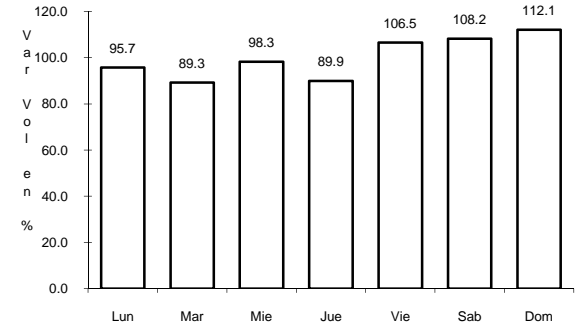
RUTA: MEX-043



Km: 2.70 Tipo: 3 Sent: 1



Km: 2.70 Tipo: 3 Sent: 2

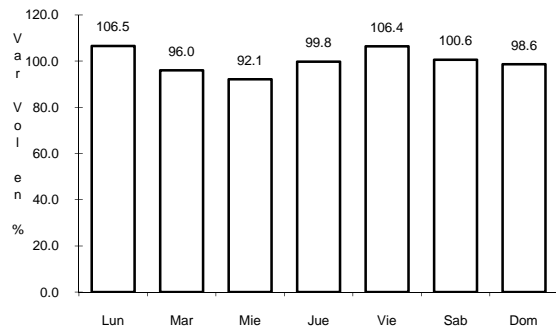


Km: 61.36 Tipo: 3 Sent: 0

7 CARR: APATZINGAN - AGUILILLA

CLAVE: 16591

RUTA: MICH

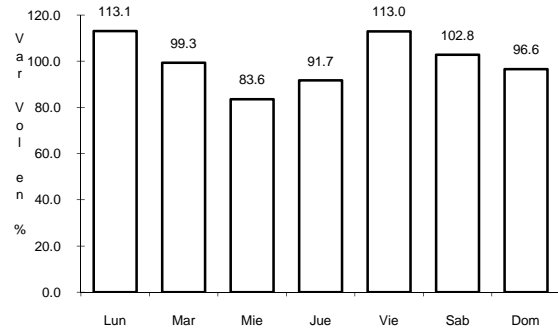


Km: 0.00 Tipo: 3 Sent: 0

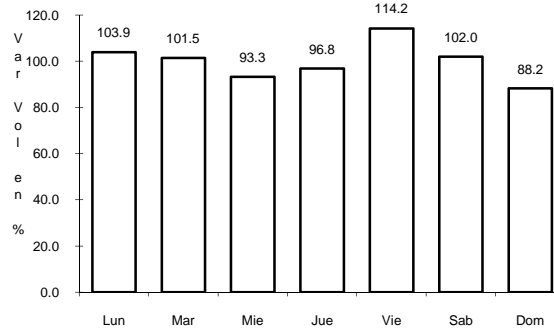
14 CARR: ENT. PATTI - SAHUAYO

CLAVE: 16181

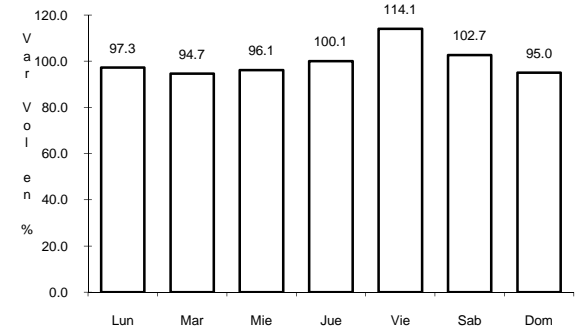
ruta: MEX-110



Km: 0.00 Tipo: 3 Sent: 0



Km: 44.26 Tipo: 1 Sent: 0

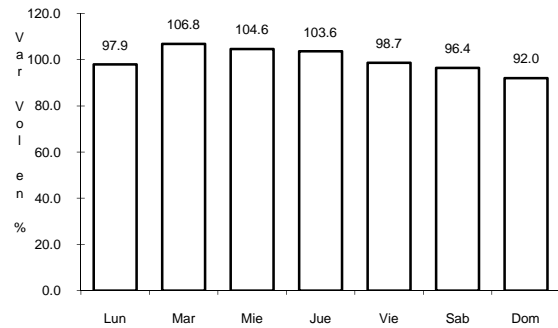


Km: 88.00 Tipo: 1 Sent: 0

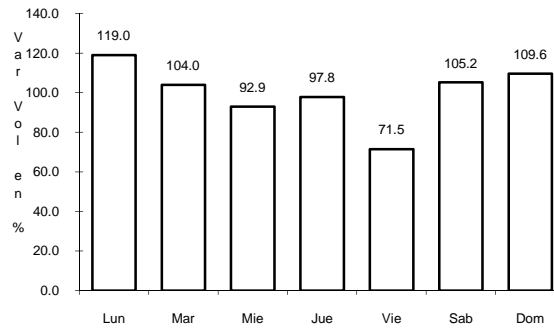
16 CARR: TIRIPETIO - ERENDIRA

CLAVE: 16422

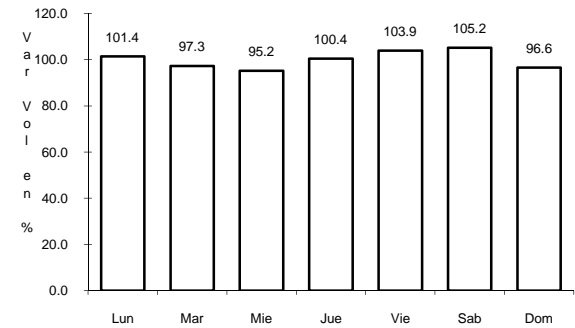
ruta: MICH



Km: 0.00 Tipo: 3 Sent: 0



Km: 23.20 Tipo: 1 Sent: 0

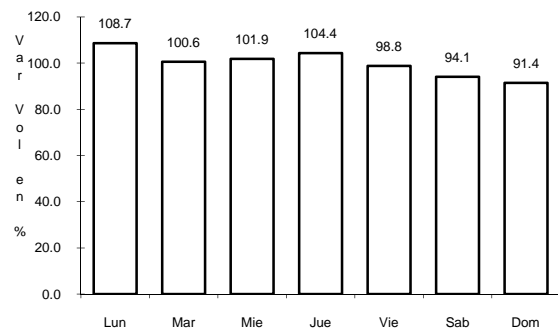


Km: 150.00 Tipo: 1 Sent: 0

17 CARR: TOCUMBO - COTIJA

CLAVE: 16042

ruta: MICH-042

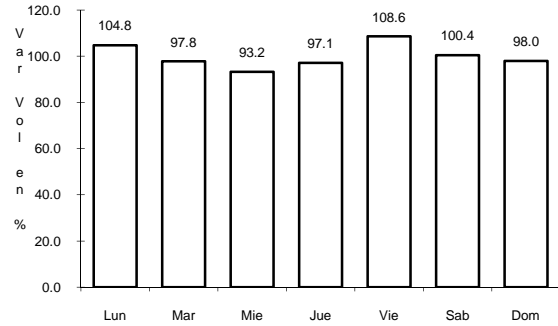


Km: 0.00 Tipo: 3 Sent: 0

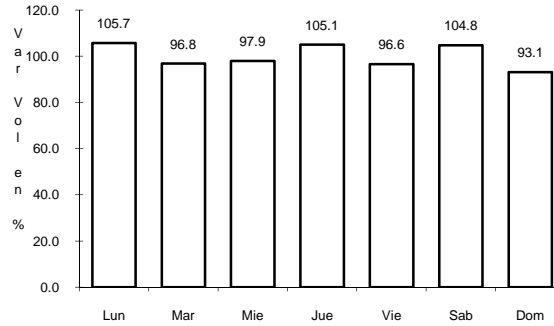
18 CARR: ZACAPU - VILLACHUATO

CLAVE: 16039

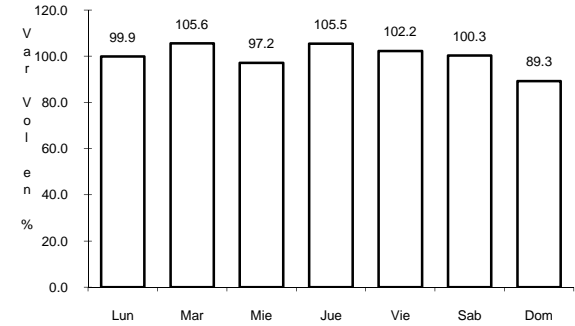
RUTA: MICH-039



Km: 0.00 Tipo: 3 Sent: 0



Km: 21.00 Tipo: 3 Sent: 0

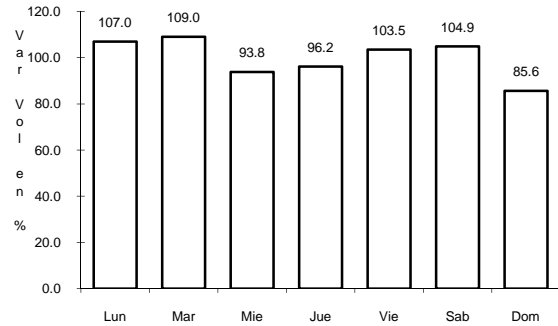


Km: 43.00 Tipo: 1 Sent: 0

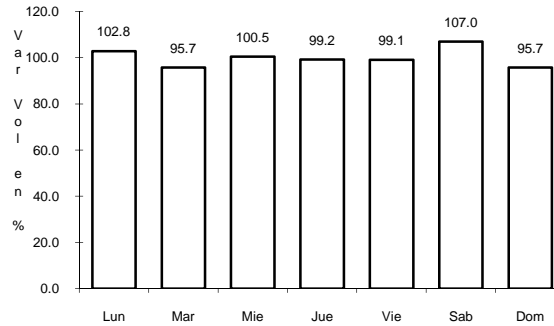
19 CARR: JACONA - BUENAVISTA TOMATLAN

CLAVE: 16016

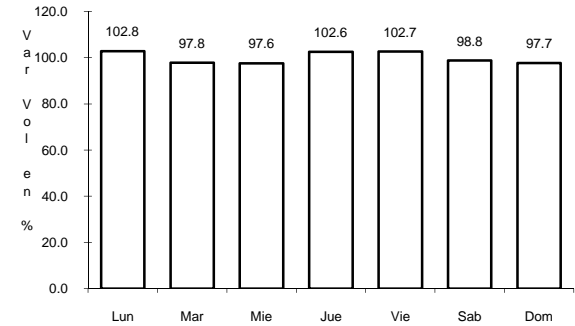
RUTA: MICH-016



Km: 0.00 Tipo: 3 Sent: 0



Km: 60.00 Tipo: 1 Sent: 0

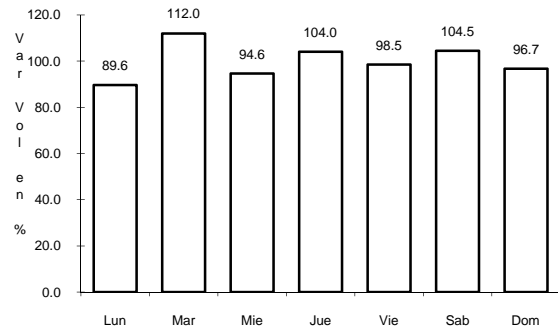


Km: 123.00 Tipo: 1 Sent: 0

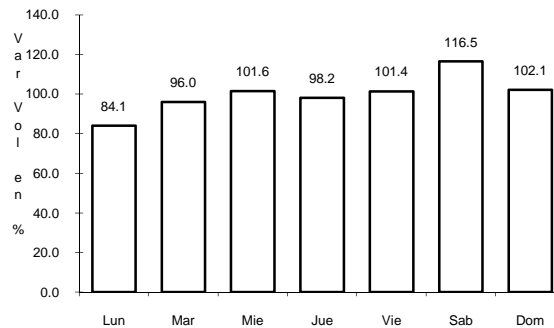
20 CARR: LA ORILLA - LAS TRUCHAS

CLAVE: 16557

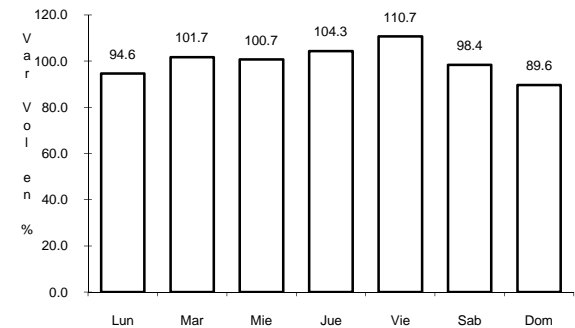
RUTA: MEX



Km: 0.00 Tipo: 3 Sent: 1



Km: 0.00 Tipo: 3 Sent: 2

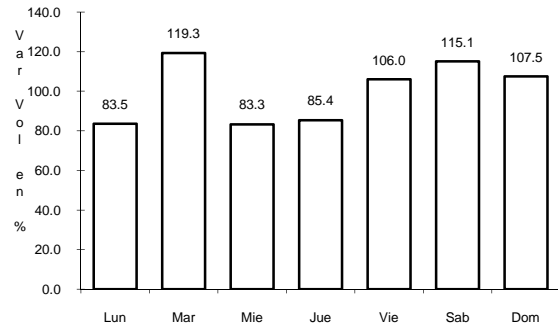


Km: 7.50 Tipo: 1 Sent: 0

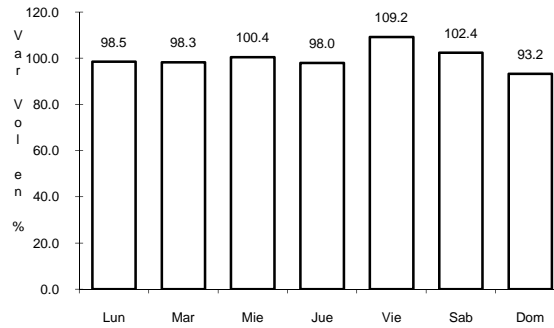
21 CARR: LA PIEDAD - CARAPAN

CLAVE: 16476

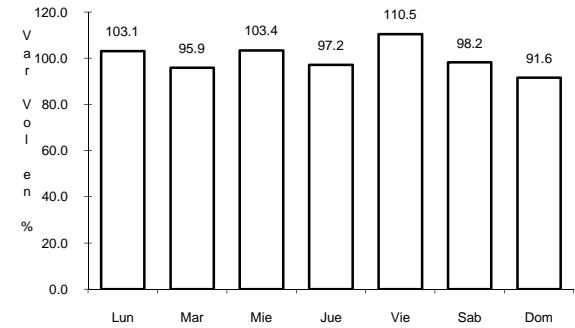
RUTA: MEX-037



Km: 0.00 Tipo: 3 Sent: 0



Km: 24.45 Tipo: 3 Sent: 0

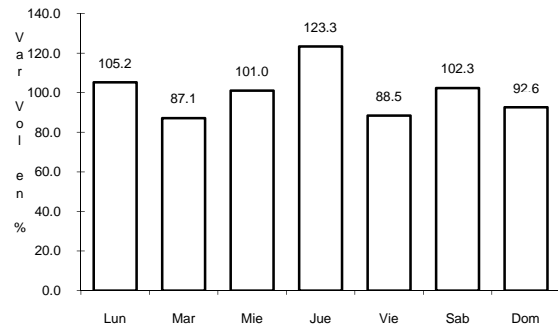


Km: 72.61 Tipo: 1 Sent: 0

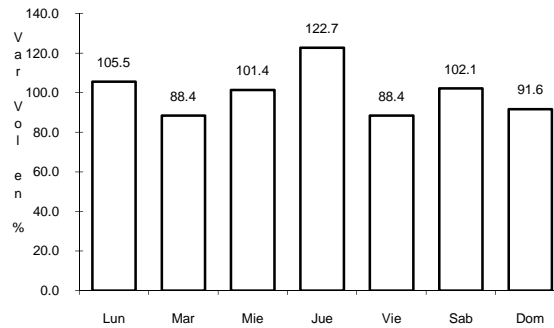
23 CARR: LIBRAMIENTO DE URUAPAN

CLAVE: 16425

RUTA: MICH



Km: 0.00 Tipo: 3 Sent: 0

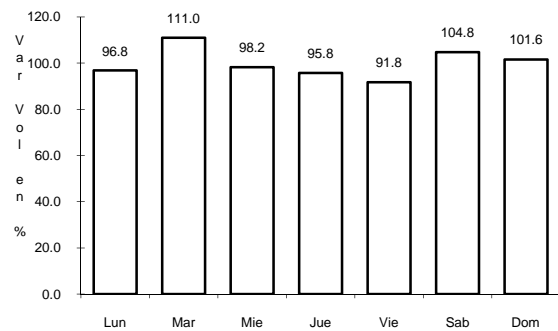


Km: 9.20 Tipo: 1 Sent: 0

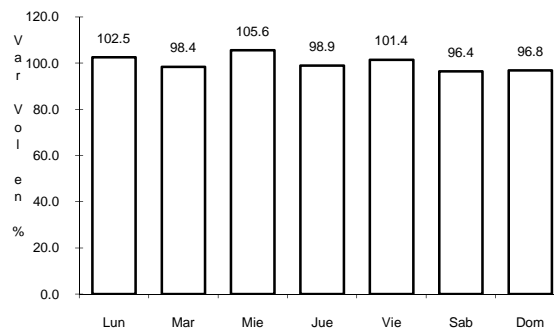
24 CARR: MORELIA - JIQUILPAN

CLAVE: 16029

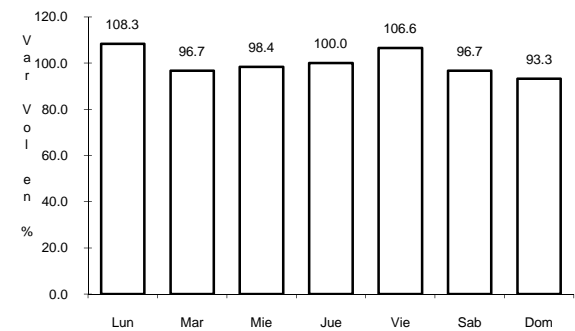
RUTA: MEX-015



Km: 3.10 Tipo: 3 Sent: 1



Km: 3.10 Tipo: 3 Sent: 2

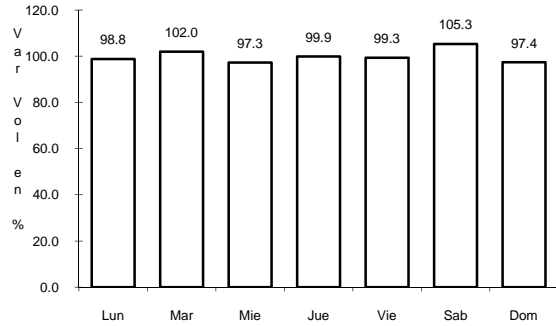


Km: 200.00 Tipo: 1 Sent: 0

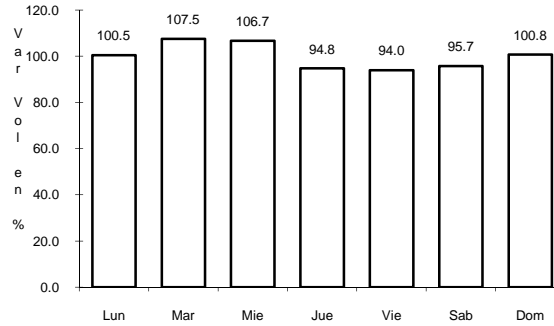
25 CARR: MORELIA - PATZCUARO

CLAVE: 16009

RUTA: MEX-126



Km: 3.00 Tipo: 3 Sent: 1

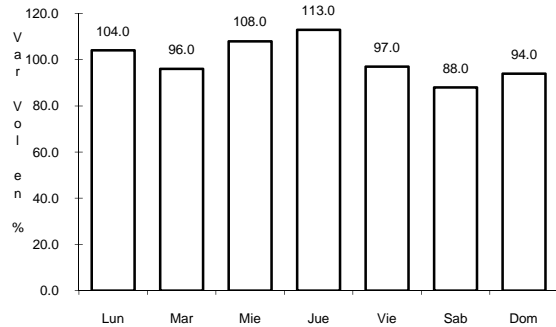


Km: 3.00 Tipo: 3 Sent: 2

26 CARR: OPOPEO - PURUARAN

CLAVE: 16241

RUTA: MEX-041-MICH

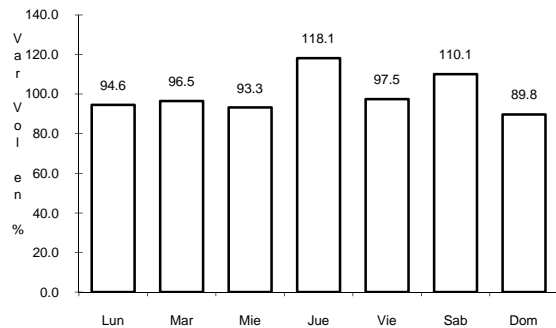


Km: 0.00 Tipo: 3 Sent: 0

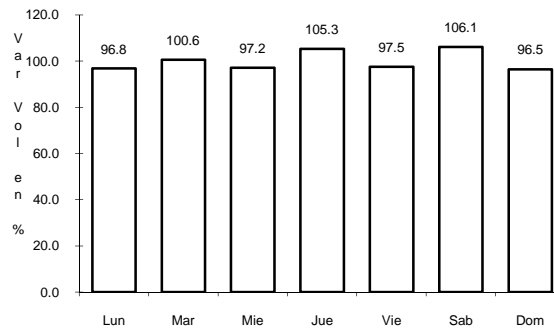
27 CARR: PATZCUARO - URUAPAN

CLAVE: 16484

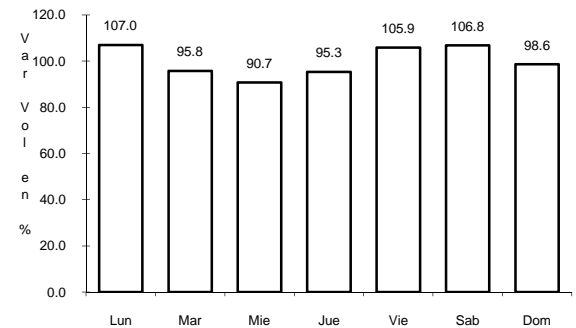
RUTA: MEX-126



Km: 0.00 Tipo: 3 Sent: 0



Km: 35.77 Tipo: 1 Sent: 0

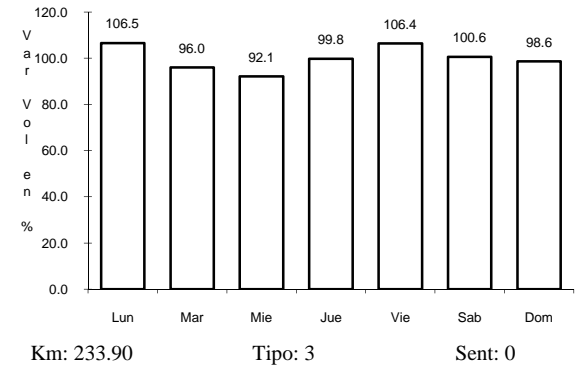
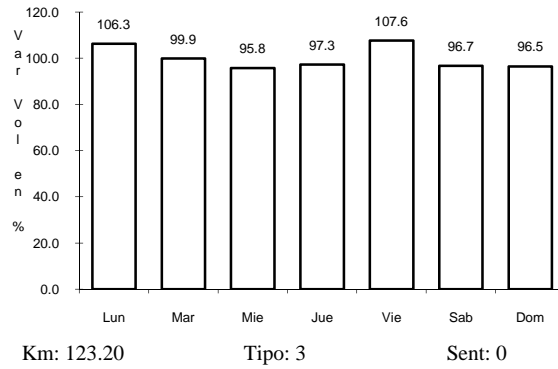
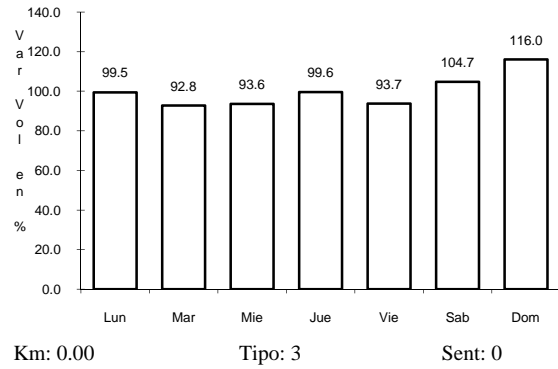


Km: 60.05 Tipo: 1 Sent: 0

28 CARR: QUIROGA - TEPALCATEPEC

CLAVE: 16125

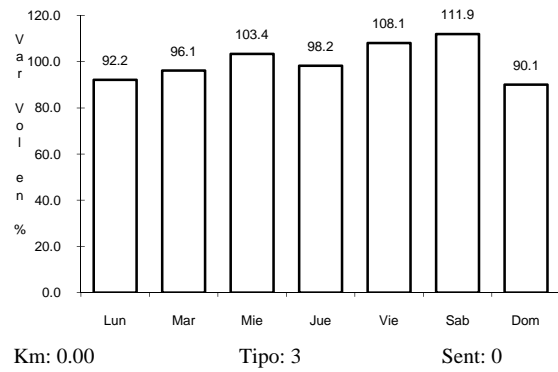
RUTA: MEX-120



29 CARR: RAMAL A COAHUAYANA

CLAVE: 16069

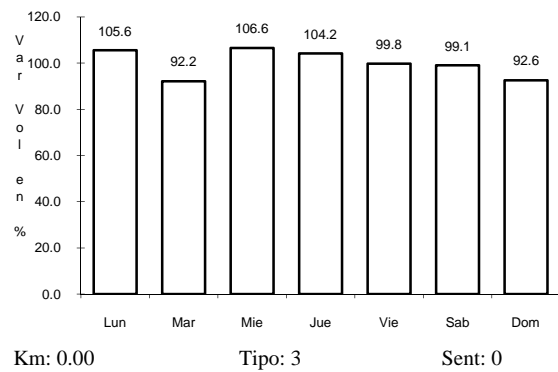
RUTA: MICH-069



30 CARR: RAMAL A INFIERNILLO

CLAVE: 16010

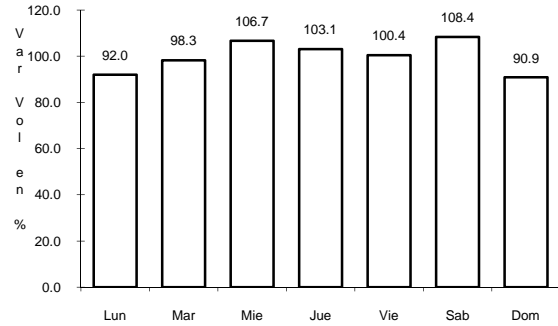
RUTA: MICH-010



31 CARR: T. C. (ZIHUATANEJO - LA MIRA) - LAZARO CARDENAS

CLAVE: 16421

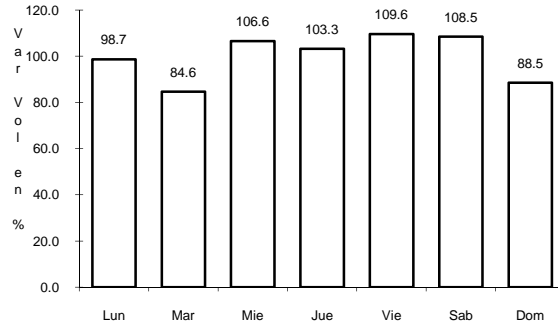
ruta: MEX



Km: 0.00

Tipo: 3

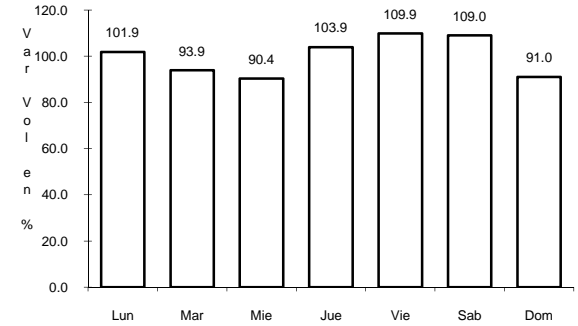
Sent: 0



Km: 6.00

Tipo: 1

Sent: 1



Km: 6.00

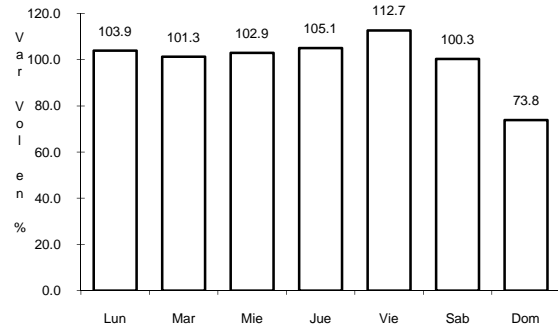
Tipo: 1

Sent: 2

32 CARR: RINCONADA - LA PIEDAD

CLAVE: 16243

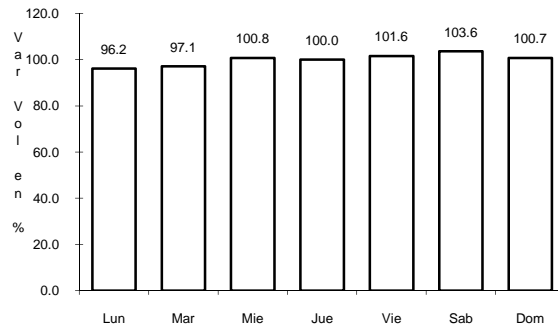
ruta: MEX



Km: 0.00

Tipo: 3

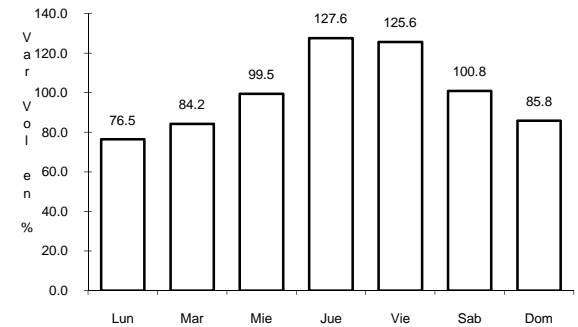
Sent: 0



Km: 18.40

Tipo: 1

Sent: 0



Km: 46.40

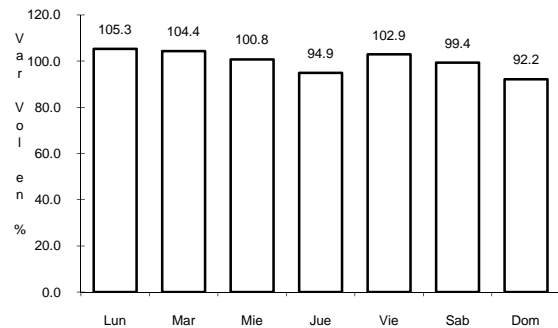
Tipo: 1

Sent: 0

33 CARR: SAN FELIPE ALZATI - ANGANGUEO

CLAVE: 16556

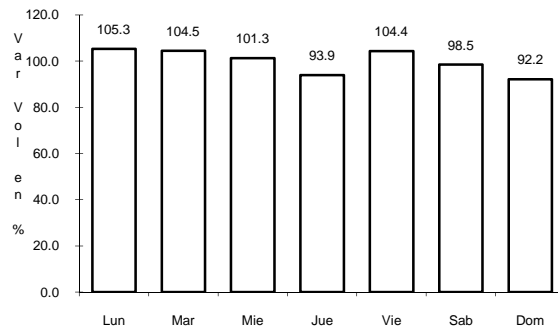
ruta: MICH-044



Km: 0.00

Tipo: 3

Sent: 0



Km: 24.00

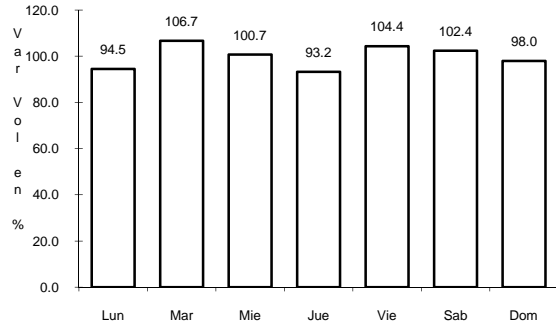
Tipo: 1

Sent: 0

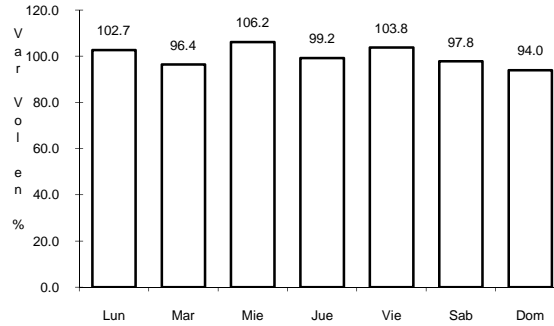
37 CARR: ATLACOMULCO - MORELIA

CLAVE: 00151

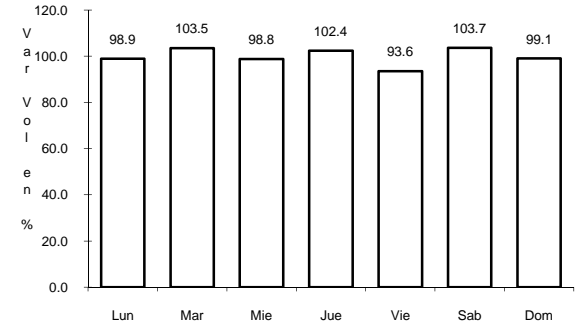
RUTA: EM-005-MEX-126



Km: 0.00 Tipo: 3 Sent: 0



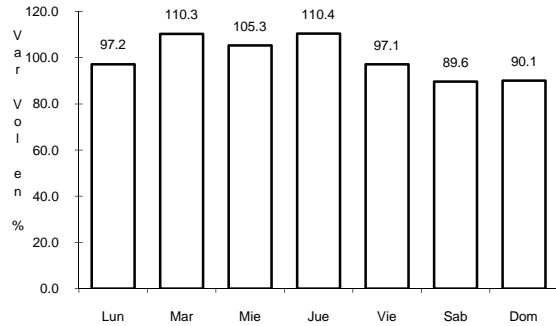
Km: 154.50 Tipo: 1 Sent: 1



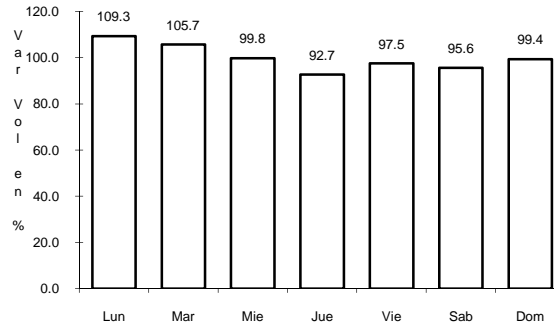
Km: 154.50 Tipo: 1 Sent: 2

39 CARR: T. C. (V. VICTORIA - EL ORO DE HIDALGO) - ANGANGUEO CLAVE: 00195

RUTA: EM-003-MICH



Km: 0.00 Tipo: 3 Sent: 0

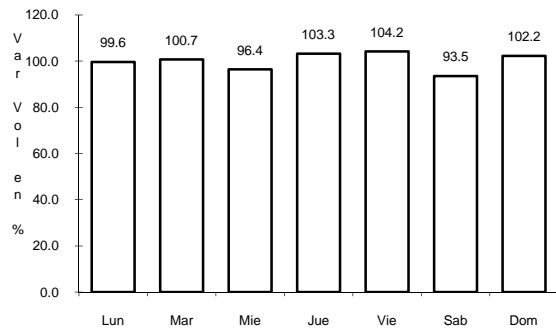


Km: 24.00 Tipo: 1 Sent: 0

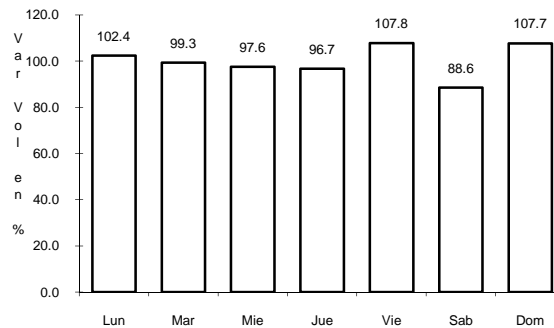
40 CARR: IRAPUATO - GUADALAJARA

CLAVE: 00114

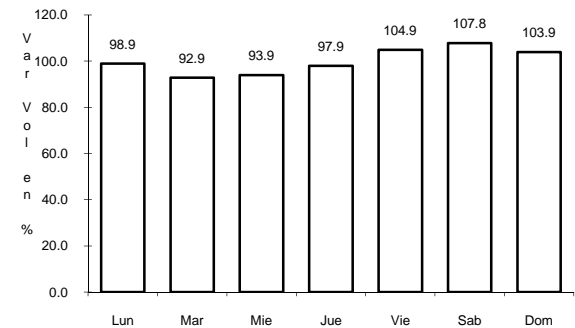
RUTA: MEX-090-110



Km: 2.78 Tipo: 1 Sent: 1



Km: 2.78 Tipo: 1 Sent: 2

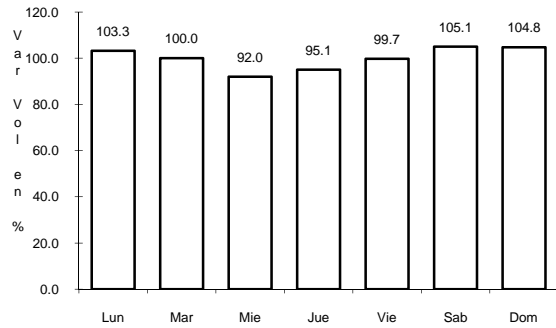


Km: 215.80 Tipo: 1 Sent: 0

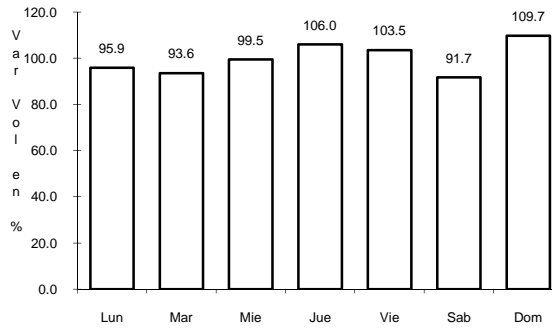
41 CARR: LA NORIA - ACAMBARO

CLAVE: 00131

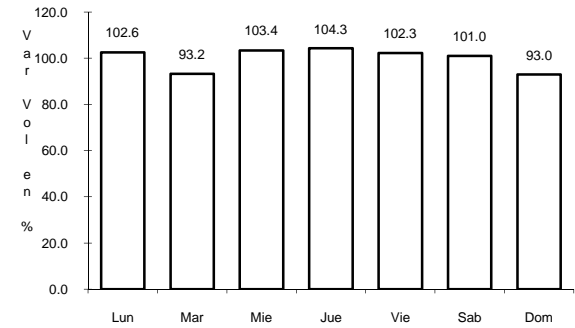
RUTA: MEX-120



Km: 0.00 Tipo: 3 Sent: 0



Km: 59.35 Tipo: 3 Sent: 0

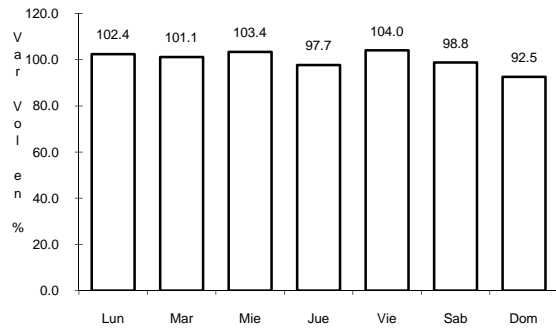


Km: 111.12 Tipo: 1 Sent: 0

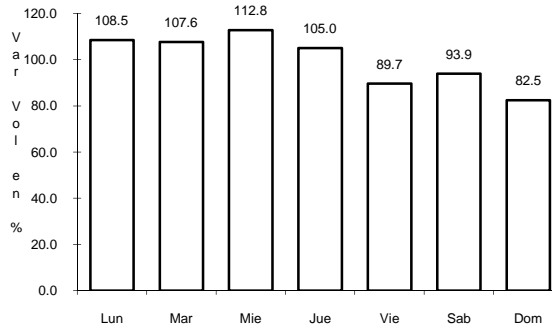
42 CARR: TOLUCA - CD. ALTAMIRANO

CLAVE: 00020

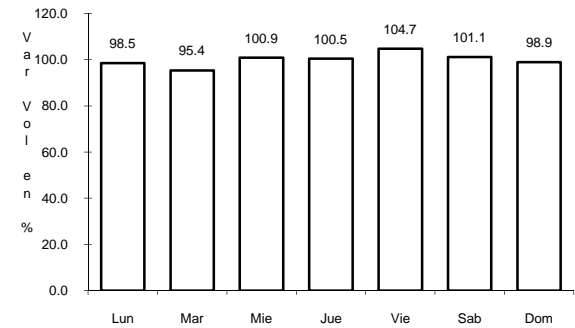
RUTA: MEX-134



Km: 1.78 Tipo: 3 Sent: 1



Km: 1.78 Tipo: 3 Sent: 2

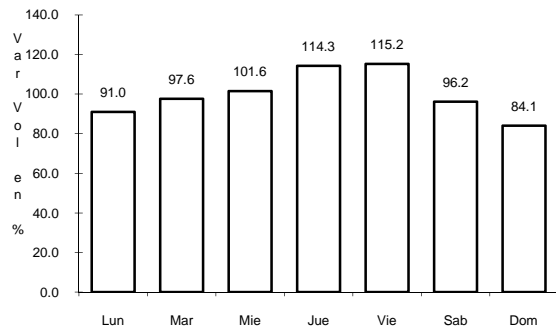


Km: 210.30 Tipo: 1 Sent: 0

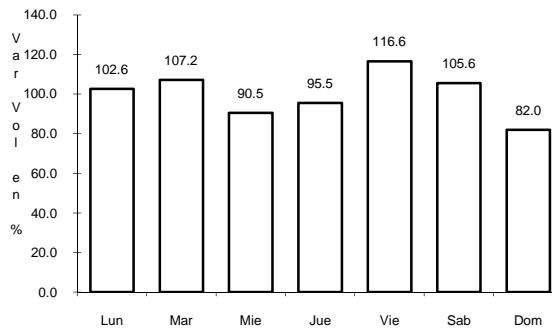
43 CARR: TOLUCA - MORELIA

CLAVE: 00448

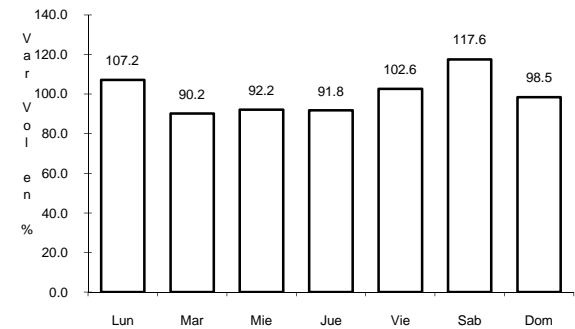
RUTA: MEX-015



Km: 1.00 Tipo: 3 Sent: 1

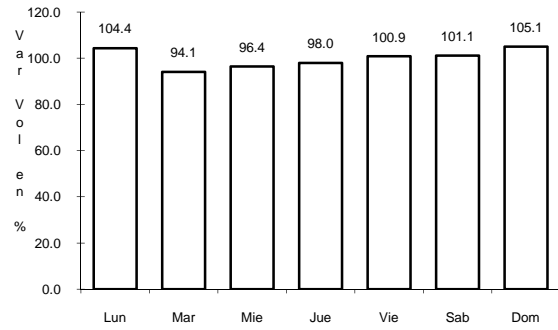


Km: 1.00 Tipo: 3 Sent: 2



Km: 241.40 Tipo: 1 Sent: 0

44 CARR: ZIHUATANEJO - LA MIRA

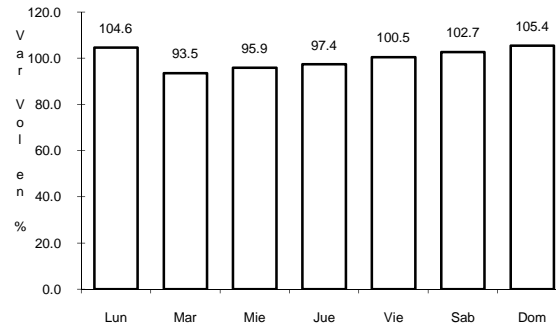


Km: 0.00

Tipo: 3

Sent: 1

CLAVE: 00121

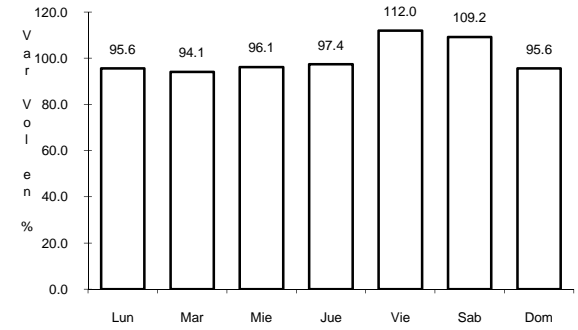


Km: 0.00

Tipo: 3

Sent: 2

RUTA: MEX-200



Km: 52.00

Tipo: 3

Sent: 0