

14 JALISCO

Secretaría de Comunicaciones y Transportes

MAPA INDICE
15 Num. Indice
2008



CARRETERAS AFORADAS

Num. INDICE	CARRETERA
1	ACATLAN DE JUAREZ - EL TRAPICHE (CUOTA)
2	CD. GUZMAN - COLIMA
3	TEPATITLAN - JARALILLO
4	TEPATITLAN - LAS ADJUNTAS
5	ENT. TESISTAN - ENT. MALPASO
6	GUADALAJARA - TEPIC
7	GUADALAJARA - TEPIC (CUOTA)
8	GUADALAJARA - ZACATECAS
9	JALOSTOTITLAN - PURISIMA DE BUSTOS
10	OJUELOS - AGUASCALIENTES
11	ACATLAN DE JUAREZ - CD. GUZMAN
12	AMECA - MASCOTA
13	ATENQUIQUE - SAN PEDRO
14	AUTLAN DE NAVARRO - T. C. (ACATLAN DE J. - COLIMA)
15	CRUCERO DE SANTA MARIA - AMECA
16	EL REFUGIO - SAN MARCOS
17	T. C. (JIQUILPAN - COLIMA) - EST. HUESCALAPA
18	ENT. JALOSTOTITLAN - VILLA HIDALGO
19	SAN MIGUEL EL ALTO - LA BARCA
20	ENT. SANTA CRUZ - MELAQUE
21	GUADALAJARA - ENT. JOCOTEPEC
22	GUADALAJARA - TESISTAN
23	IXTLAHUACAN DEL RIO - T. C. (TEPATITLAN - JARALILLO)
24	LAGOS DE MORENO - GUADALAJARA
25	LAGOS DE MORENO - UNION DE SAN ANTONIO
26	LIBRAMIENTO DE MAZAMITLA
27	LIBRAMIENTO DE ZAPOTLANEJO
28	MAZAMITLA - TUXCUECA
29	RAMAL A AMECA
30	RAMAL A JESUS MARIA
31	RAMAL A TAPALPA
32	RAMAL A TEOCUIATLAN DE CORONA
33	RAMAL A TOMATLAN
34	SAN CLEMENTE - ENT. LAS CRUCES
35	SANTA ROSA - LA BARCA
36	SAYULA - VENUSTIANO CARRANZA
37	TOTOTLAN - OCOTLAN
38	VALLE DE GUADALUPE - MEXTICACAN
39	LAGOS DE MORENO - ZAPOTLANEJO (CUOTA)
40	ZAPOTLANEJO - GUADALAJARA (CUOTA)
41	ATLACOMULCO - ZAPOTLANEJO (CUOTA)
42	DOLORES HIDALGO - OJUELOS DE JALISCO
43	ENT. OJO CALIENTE - ENT. OJUELOS DE JALISCO
44	ENT. PENITENCIARIA - VILLA HIDALGO
45	IRAPUATO - GUADALAJARA
46	JIQUILPAN - COLIMA
47	JIQUILPAN - GUADALAJARA
48	LEON - AGUASCALIENTES
49	LEON - AGUASCALIENTES (CUOTA)
50	LEON - SAN FELIPE TORRES MOCHAS
51	MANUEL DOBLADO - LA PIEDAD
52	MANZANILLO - PUERTO VALLARTA
53	PILOTOS - LOS CAMPOS
54	SAN ISIDRO EL GRANDE - BAJIO DE SAN JOSE
55	SAN LUIS POTOSI - LAGOS DE MORENO
56	TEPIC - PUERTO VALLARTA

JALISCO

5 CARR : ENT. TESISTAN - ENT. MALPASO

CLAVE: 00584

ruta : MEX-023

AÑO : 2007

L U G A R	E S T A C I O N			C L A S I F I C A C I O N V E H I C U L A R E N P O R C I E N T O .												
	KM	TE	SC TDPA	A	B	C2	C3	T3S2	T3S3	T3S2R4	OTROS	A	B	C	K'	D
LIM. EDOS. TERM. ZAC. PPIA. JAL.	215.50	0	0													
LIM. EDOS. TERM. JAL. PPIA. ZAC.	226.60	0	0													
TEPETONGO	235.00	3	0 3214	78.5	4.9	7.4	3.5	2.4	0.9	1	1.4	78.5	4.9	16.6	0.077	0.502
JEREZ DE GARCIA SALINAS	249.00	1	0 5325	76.8	10	3.4	2.7	2.9	3.5	0.7	0	76.8	10	13.2	0.076	0.505
T. C. GUADALAJARA - ZACATECAS	275.00	1	0 5176	77.3	8.3	5.7	3.6	1.7	1.7	0.9	0.8	77.3	8.3	14.4	0.08	0.507

6 CARR : GUADALAJARA - TEPIC

CLAVE: 00031

ruta : MEX-015

AÑO : 2007

L U G A R	E S T A C I O N			C L A S I F I C A C I O N V E H I C U L A R E N P O R C I E N T O .												
	KM	TE	SC TDPA	A	B	C2	C3	T3S2	T3S3	T3S2R4	OTROS	A	B	C	K'	D
GUADALAJARA	0.00	0	0													
T. DER. BASE AEREA No. 2	8.30	3	1 13332	79.4	4.5	5.6	4.3	2.1	2.1	1.6	0.4	79.4	4.5	16.1	0.105	0.502
T. DER. BASE AEREA No. 2	8.30	3	2 13450	80	3.9	4.8	3.7	3.2	2.2	1.8	0.4	80	3.9	16.1	0.104	0.502
T. IZQ. LA PRIMAVERA	20.50	1	1 10987	74.6	5.5	2.9	2.8	7.2	4.2	1.9	0.9	74.6	5.5	19.9	0.095	0.513
T. IZQ. LA PRIMAVERA	20.50	1	2 11415	76.9	5	2.3	2.9	6	3.9	2	1	76.9	5	18.1	0.091	0.513
EL ARENAL	36.20	1	0 10586	70.4	5.4	1.7	2.5	7	3.3	6.6	3.1	70.4	5.4	24.2	0.078	0.505
TEQUILA	57.50	3	0 9278	55.8	6.7	5.4	6.4	11.4	4.8	5	4.5	55.8	6.7	37.5	0.072	0.501
MAGDALENA	76.80	3	0 7329	71.8	6.5	2.2	1.7	9.2	4.7	2.5	1.4	71.8	6.5	21.7	0.09	0.504
LIM. EDOS. TERM. JAL. PPIA. NAY.	123.00	0	0													
IXTLAN DEL RIO	138.80	1	0 9481	59.9	11	2.1	3.1	8	5.2	4	6.7	59.9	11	29.1	0.069	0.5
IXTLAN DEL RIO	138.80	3	0 8653	78.3	3	4.1	2.3	5.8	2	3	1.5	78.3	3	18.7	0.076	0.502
AHUACATLAN	152.00	1	0 8612	83.8	5	4.1	1.4	2.8	1	0.7	1.2	83.8	5	11.2	0.079	0.501
AHUACATLAN	152.00	3	0 8927	83.9	5	4.1	1.4	2.8	0.9	0.7	1.2	83.9	5	11.1	0.08	0.501
T. IZQ. AMADO NERVO	167.30	1	0 9572	77	5.6	3.6	3.8	6.3	1.4	1.1	1.2	77	5.6	17.4	0.076	0.5
T. IZQ. COMPOSTELA	175.50	1	0 11432	65.9	6.8	3.1	6.3	9	4.8	2.6	1.5	65.9	6.8	27.3	0.08	0.503
T. IZQ. COMPOSTELA	175.50	3	0 9520	68.7	6.9	4.6	5.4	6.8	3.3	0.8	3.5	68.7	6.9	24.4	0.073	0.501
T. DER. SANTA MARIA DEL ORO	196.00	1	0 11334	68.8	10.4	2.4	4.3	4.6	2.5	4.5	2.5	68.8	10.4	20.8	0.078	0.501
T. DER. SANTA MARIA DEL ORO	196.00	3	0 6645	76	10.2	2.9	4	3.4	1.4	1	1.1	76	10.2	13.8	0.093	0.5
SAN CAYETANO	215.90	3	0 10184	82.3	4	3.7	5.1	1.9	1.1	0.8	1.1	82.3	4	13.7	0.077	0.503
T. IZQ. LIBRAMIENTO DE TEPIC	219.10	1	1 11467	68.6	5.4	7.8	3.9	7.1	2.6	2.5	2.1	68.6	5.4	26	0.075	0.502
T. IZQ. LIBRAMIENTO DE TEPIC	219.10	1	2 11371	74.8	4.2	4.2	4.6	4.4	2.4	2.8	2.6	74.8	4.2	21	0.081	0.502
T. IZQ. LIBRAMIENTO DE TEPIC	219.10	3	1 10978	68.8	6.1	6.3	3.7	5.1	2.1	4.1	3.8	68.8	6.1	25.1	0.065	0.502
T. IZQ. LIBRAMIENTO DE TEPIC	219.10	3	2 11069	69.5	10	3.2	2.5	4.2	2.4	4	4.2	69.5	10	20.5	0.072	0.502
T. IZQ. AEROPUERTO DE TEPIC	222.90	1	0 11012	66.5	6.9	5.4	9.2	4.1	3.8	2	2.1	66.5	6.9	26.6	0.075	0.501
TEPIC	224.80	1	1 15290	72.6	6.4	5.2	5.1	3.8	2.5	2.4	2	72.6	6.4	21	0.104	0.501

JALISCO

6 CARR : GUADALAJARA - TEPIC

CLAVE: 00031

RUTA : MEX-015

AÑO : 2007

L U G A R	E S T A C I O N				C L A S I F I C A C I O N V E H I C U L A R E N P O R C I E N T O .													
	KM	TE	SC	TDPA	A	B	C2	C3	T3S2	T3S3	T3S2R4	OTROS	A	B	C	K'	D	
TEPIC	224.80	1	2	15238	77.7	3.3	4.3	5.2	3.4	2	2.3	1.8	77.7	3.3	19	0.09	0.501	

7 CARR : GUADALAJARA - TEPIC (CUOTA)

CLAVE: 00033

RUTA : MEX-015D

AÑO : 2007

L U G A R	E S T A C I O N				C L A S I F I C A C I O N V E H I C U L A R E N P O R C I E N T O .													
	KM	TE	SC	TDPA	A	B	C2	C3	T3S2	T3S3	T3S2R4	OTROS	A	B	C	K'	D	
T. C. GUADALAJARA - TEPIC (LIBRE)	0.00	0	0															
CASETA DE COBRO PLAN DE BARRANCAS	69.34	2	1	4476														
CASETA DE COBRO PLAN DE BARRANCAS	69.34	2	2	4476														
LIM. EDOS. TERM. JAL. PPIA. NAY.	74.84	0	0															
CASETA DE COBRO "STA MA. DEL ORO"	145.30	3	1	2714	67.9	9.3	3.3	5.7	5.5	4	2.4	1.9	67.9	9.3	22.8	0.098	0.504	
CASETA DE COBRO "STA MA. DEL ORO"	145.30	3	2	2672	67.8	9.3	3.3	5.8	5.5	4	2.3	2	67.8	9.3	22.9	0.091	0.504	
T. C. GUADALAJARA - TEPIC (LIBRE)	168.60	0	0															

8 CARR : GUADALAJARA - ZACATECAS

CLAVE: 00150

RUTA : MEX-054

AÑO : 2007

L U G A R	E S T A C I O N				C L A S I F I C A C I O N V E H I C U L A R E N P O R C I E N T O .													
	KM	TE	SC	TDPA	A	B	C2	C3	T3S2	T3S3	T3S2R4	OTROS	A	B	C	K'	D	
GUADALAJARA	0.00	0	0															
X. PERIFERICO GUADALAJARA	6.19	3	0	12089	74.9	8.9	7.3	3.3	1.6	1.6	1.7	0.7	74.9	8.9	16.2	0.075	0.503	
T. DER. IXTLAHUACAN DEL RIO	49.46	3	0	3445	71.5	10.7	4.6	3.5	4.5	3.5	1.5	0.2	71.5	10.7	17.8	0.097	0.501	
LIM. EDOS. TERM. JAL. PPIA. ZAC.	76.49	0	0															
T. IZQ. MOYAHUA	106.40	1	0	2563	79.9	4.1	3.4	4.2	3.9	2.1	1.1	1.3	79.9	4.1	16	0.071	0.526	
APOZOL	129.30	1	0	2912	78.9	4.5	2.5	3.5	3.4	2.6	2.6	2	78.9	4.5	16.6	0.079	0.504	
JALPA	159.40	1	0	3145	80.2	5.2	4.5	3.4	3.4	1.5	1.1	0.7	80.2	5.2	14.6	0.077	0.503	
TABASCO	189.40	1	0	3164	78.3	5	5	2.8	3.7	3.2	1.3	0.7	78.3	5	16.7	0.084	0.503	
TABASCO	189.40	3	0	3093	80.2	5.2	4.7	2.3	3.6	2.6	1.2	0.2	80.2	5.2	14.6	0.083	0.501	
VILLANUEVA	255.70	3	0	4359	78.7	4.6	4.1	2.9	3.2	4.7	1.8	0	78.7	4.6	16.7	0.077	0.503	
T. IZQ. JEREZ DE GARCIA SALINAS	289.10	1	0	4760	75.4	5	5	3	5.2	4.4	1.5	0.5	75.4	5	19.6	0.078	0.508	
T. IZQ. JEREZ DE GARCIA SALINAS	289.10	3	0	5555	77.2	4.4	4.9	3.4	5.7	2.2	1.4	0.8	77.2	4.4	18.4	0.09	0.502	
T. C. ZACATECAS - DURANGO	311.80	1	0	9119	75	7.3	9.3	2.7	1.9	1.6	1.2	1	75	7.3	17.7	0.08	0.504	

JALISCO

12 CARR : AMECA - MASCOTA

CLAVE: 14071

RUTA : MEX

AÑO : 2007

L U G A R	E S T A C I O N				C L A S I F I C A C I O N V E H I C U L A R E N P O R C I E N T O .												
	KM	TE	SC	TDPA	A	B	C2	C3	T3S2	T3S3	T3S2R4	OTROS	A	B	C	K'	D
AMECA	0.00	3	0	2811	86.6	7.6	1.5	1.3	1.9	0.3	0.1	0.7	86.6	7.6	5.8	0.099	0.506
T. IZQ. SAN CLEMENTE	74.30	1	0	1984	93.1	2.1	2.1	1	1.7	0	0	0	93.1	2.1	4.8	0.104	0.501
MASCOTA	118.10	1	0	1984	93.3	2.1	2.1	1	1.5	0	0	0	93.3	2.1	4.6	0.103	0.501

13 CARR : ATENQUIQUE - SAN PEDRO

CLAVE: 14224

RUTA : MEX

AÑO : 2007

L U G A R	E S T A C I O N				C L A S I F I C A C I O N V E H I C U L A R E N P O R C I E N T O .												
	KM	TE	SC	TDPA	A	B	C2	C3	T3S2	T3S3	T3S2R4	OTROS	A	B	C	K'	D
X. CUATRO CAMINOS	0.00	3	0	1999	70	2.2	2.7	7.7	8.3	5	2.3	1.8	70	2.2	27.8	0.095	0.503
T. C. JIQUILPAN - COLIMA	24.20	1	0	2036	71.1	1.3	2.7	7.7	8.2	5	2.2	1.8	71.1	1.3	27.6	0.094	0.502

14 CARR : AUTLAN DE NAVARRO - T. C. (ACATLAN DE J. - COLIMA)

CLAVE: 14589

RUTA : JAL

AÑO : 2007

L U G A R	E S T A C I O N				C L A S I F I C A C I O N V E H I C U L A R E N P O R C I E N T O .												
	KM	TE	SC	TDPA	A	B	C2	C3	T3S2	T3S3	T3S2R4	OTROS	A	B	C	K'	D
AUTLAN DE NAVARRO	0.00	3	0	5451	83.3	3.4	4.6	0.9	3.3	2.3	0.9	1.3	83.3	3.4	13.3	0.09	0.502
EL GRULLO	16.00	3	0	3847	86	2.9	4.4	0.8	3.2	0.7	0.8	1.2	86	2.9	11.1	0.091	0.5
T. IZQ. SAYULA	70.00	1	0	2055	69.7	3.3	2.7	7.7	8.3	4.7	2.4	1.2	69.7	3.3	27	0.089	0.503
T. IZQ. SAYULA	70.00	3	0	1914	88.7	2.9	3	2.6	1.7	0.4	0.3	0.4	88.7	2.9	8.4	0.093	0.502
T. C. CD. GUZMAN - COLIMA	106.00	1	0	3934	89	2.7	4.3	2.3	0.7	0.7	0.3	0	89	2.7	8.3	0.101	0.5

15 CARR : CRUCERO DE SANTA MARIA - AMECA

CLAVE: 14573

RUTA : JAL

AÑO : 2007

L U G A R	E S T A C I O N				C L A S I F I C A C I O N V E H I C U L A R E N P O R C I E N T O .												
	KM	TE	SC	TDPA	A	B	C2	C3	T3S2	T3S3	T3S2R4	OTROS	A	B	C	K'	D
CRUCERO DE SANTA MARIA	0.00	3	0	3707	81.9	4	4.9	2.7	3	1.1	1	1.4	81.9	4	14.1	0.082	0.502
SAN MARTIN HIDALGO	10.00	3	0	1827	89.7	3.5	2.1	1.1	1.7	0.4	0.4	1.1	89.7	3.5	6.8	0.112	0.501
T. C. RAMAL A AMECA	26.00	1	0	3045	89.9	2	1.9	1.3	2.5	0.2	0.7	1.5	89.9	2	8.1	0.091	0.501

16 CARR : EL REFUGIO - SAN MARCOS

CLAVE: 14027

RUTA : JAL-004

AÑO : 2007

L U G A R	E S T A C I O N				C L A S I F I C A C I O N V E H I C U L A R E N P O R C I E N T O .												
	KM	TE	SC	TDPA	A	B	C2	C3	T3S2	T3S3	T3S2R4	OTROS	A	B	C	K'	D
T. C. RAMAL A AMECA	0.00	3	0	6841	84.5	3.5	4.6	1.2	3.4	0.8	0.8	1.2	84.5	3.5	12	0.098	0.502
T. IZQ. AHUALULCO DE MERCADO	24.50	1	0	5008	83.7	6.3	2.3	1.6	2.9	1.1	0.8	1.3	83.7	6.3	10	0.088	0.502

JALISCO

16 CARR : EL REFUGIO - SAN MARCOS

CLAVE: 14027

RUTA : JAL-004

AÑO : 2007

L U G A R	E S T A C I O N				C L A S I F I C A C I O N V E H I C U L A R E N P O R C I E N T O .												
	KM	TE	SC	TDPA	A	B	C2	C3	T3S2	T3S3	T3S2R4	OTROS	A	B	C	K'	D
T. IZQ. AHUALULCO DE MERCADO	24.50	3	0	3791	81.8	8.1	2.7	2	1.9	1.3	0.6	1.6	81.8	8.1	10.1	0.093	0.503
SAN MARCOS	54.00	1	0	2211	87.3	2.5	3.8	1.1	2.6	0.9	0.6	1.2	87.3	2.5	10.2	0.098	0.501

17 CARR : T. C. (JIQUILPAN - COLIMA) - EST. HUESCALAPA

CLAVE: 14225

RUTA : MEX

AÑO : 2007

L U G A R	E S T A C I O N				C L A S I F I C A C I O N V E H I C U L A R E N P O R C I E N T O .												
	KM	TE	SC	TDPA	A	B	C2	C3	T3S2	T3S3	T3S2R4	OTROS	A	B	C	K'	D
T. C. JIQUILPAN - COLIMA	0.00	3	0	4130	83.7	3.8	4.1	3.1	2	2.1	0.5	0.7	83.7	3.8	12.5	0.096	0.501
ZAPOTILTIC	9.48	3	0	3628	85.5	2.2	2.3	2.1	2.6	1.8	0.9	2.6	85.5	2.2	12.3	0.093	0.504
T. C. CD.GUZMAN - COLIMA	18.79	1	0	7730	84.3	2.1	2.9	3	2.3	1.4	0.7	3.3	84.3	2.1	13.6	0.11	0.502

18 CARR : ENT. JALOSTOTITLAN - VILLA HIDALGO

CLAVE: 14009

RUTA : JAL-009

AÑO : 2007

L U G A R	E S T A C I O N				C L A S I F I C A C I O N V E H I C U L A R E N P O R C I E N T O .												
	KM	TE	SC	TDPA	A	B	C2	C3	T3S2	T3S3	T3S2R4	OTROS	A	B	C	K'	D
T. C. LAGOS DE MORENO - ZAPOTLANEJO	0.00	3	0	2658	78.4	3.4	6.8	2.7	4.1	3.4	0.8	0.4	78.4	3.4	18.2	0.092	0.502
TEOCALTICHE	36.00	1	0	1885	81.9	2	4.7	2.1	4.1	3.7	1	0.5	81.9	2	16.1	0.093	0.501
TEOCALTICHE	36.00	3	0	2750	80.4	2.8	5.3	2.5	4.4	2.8	1.6	0.2	80.4	2.8	16.8	0.089	0.5
VILLA HIDALGO	63.00	1	0	4257	84.5	3	4.5	3.2	1.4	2.4	1	0	84.5	3	12.5	0.093	0.5

19 CARR : SAN MIGUEL EL ALTO - LA BARCA

CLAVE: 14005

RUTA : JAL-005-MEX-07

AÑO : 2007

L U G A R	E S T A C I O N				C L A S I F I C A C I O N V E H I C U L A R E N P O R C I E N T O .												
	KM	TE	SC	TDPA	A	B	C2	C3	T3S2	T3S3	T3S2R4	OTROS	A	B	C	K'	D
T. C. JALOSTOTITLAN - PURISIMA DE BUSTOS	0.00	3	0	2836	84.2	3.2	4	2.9	2.1	1.3	1.6	0.7	84.2	3.2	12.6	0.108	0.506
X. C. TEPATITLAN - LAS ADJUNTAS	36.00	1	0	3804	73.7	9.3	1.9	2.1	3.9	1.7	3.2	4.2	73.7	9.3	17	0.097	0.506
X. C. TEPATITLAN - LAS ADJUNTAS	36.00	3	0	4150	82.4	3	5	3.6	2.1	2	1.3	0.6	82.4	3	14.6	0.091	0.502
ATOTONILCO EL ALTO	58.60	1	0	4895	78.4	5.2	4	4.4	2.4	3.2	1.9	0.5	78.4	5.2	16.4	0.076	0.503
ATOTONILCO EL ALTO	58.60	3	0	4383	80.4	3.9	5.2	4.7	1.6	2	1.6	0.6	80.4	3.9	15.7	0.082	0.501
LA BARCA	90.00	1	0	10174	79.3	5.5	4.9	3.7	2.5	1.8	1.5	0.8	79.3	5.5	15.2	0.068	0.503

JALISCO

20 CARR : ENT. SANTA CRUZ - MELAQUE

CLAVE: 14118

RUTA : MEX-080

AÑO : 2007

L U G A R	E S T A C I O N			C L A S I F I C A C I O N V E H I C U L A R E N P O R C I E N T O .												
	KM	TE	SC TDPA	A	B	C2	C3	T3S2	T3S3	T3S2R4	OTROS	A	B	C	K'	D
T. C. JIQUILPAN - GUADALAJARA	0.00	0	0													
T. IZQ. ACATLAN DE JUAREZ (1° ACCESO)	4.80	3	0 8081	84.6	3.5	5.4	2.6	1.7	1.3	0.4	0.5	84.6	3.5	11.9	0.088	0.504
T. IZQ. ACATLAN DE JUAREZ (2° ACCESO)	7.60	3	0 6574	81.1	5.1	2.1	1.7	4	1.9	2.4	1.7	81.1	5.1	13.8	0.09	0.502
COCULA	35.00	1	0 6800	79.4	4.3	2.2	1.4	5.8	2.2	3.1	1.6	79.4	4.3	16.3	0.086	0.506
COCULA	35.00	3	0 7185	78.2	3	4	2.3	5.8	2.1	3	1.6	78.2	3	18.8	0.085	0.501
TECOLOTLAN	73.31	3	0 4936	83.4	5.3	3.8	2.7	2.2	1.2	0.5	0.9	83.4	5.3	11.3	0.083	0.509
T. DER. AYUTLA	103.30	3	0 4689	82.5	5.1	4.3	3.4	2.1	1.1	0.5	1	82.5	5.1	12.4	0.1	0.5
T. IZQ. EL GRULLO	138.60	3	0 2918	81.7	5.8	3.4	2.7	2.9	1.1	1.1	1.3	81.7	5.8	12.5	0.083	0.506
AUTLAN DE NAVARRO	153.20	3	0 4600	84	4.6	1.8	2.1	3.1	2.7	0.7	1	84	4.6	11.4	0.089	0.502
ESTACION MAESTRA SAN PATRICIO	257.10	2	0 5847	81.9	2.9	5	1.7	4.5	1	1.5	1.5	81.9	2.9	15.2	0.086	0.501
T. C. MANZANILLO - PUERTO VALLARTA	257.40	1	0 3166	90.1	1.9	1.9	1.3	2.5	0.2	0.7	1.4	90.1	1.9	8	0.091	0.501

21 CARR : GUADALAJARA - ENT. JOCOTEPEC

CLAVE: 14222

RUTA : MEX-023

AÑO : 2007

L U G A R	E S T A C I O N			C L A S I F I C A C I O N V E H I C U L A R E N P O R C I E N T O .												
	KM	TE	SC TDPA	A	B	C2	C3	T3S2	T3S3	T3S2R4	OTROS	A	B	C	K'	D
GUADALAJARA	0.00	0	0													
X. PERIFERICO GUADALAJARA	4.14	3	1 26642	73.8	3.8	5.4	5.2	5.8	2.9	2	1.1	73.8	3.8	22.4	0.089	0.5
X. PERIFERICO GUADALAJARA	4.14	3	2 26595	75.5	4.3	4.5	4.7	3	3.4	2	2.6	75.5	4.3	20.2	0.092	0.5
T. DER. AEROPUERTO	11.38	3	1 16330	77.7	3.5	5.8	5.1	2.6	2.6	0.9	1.8	77.7	3.5	18.8	0.104	0.502
T. DER. AEROPUERTO	11.38	3	2 16478	72.2	5	6.5	5.5	4.3	2.1	1.8	2.6	72.2	5	22.8	0.107	0.502
T. IZQ. OCOTLAN	28.50	1	1 12593	74.1	3.5	3.9	1.8	5.3	3.7	3.3	4.4	74.1	3.5	22.4	0.102	0.504
T. IZQ. OCOTLAN	28.50	1	2 12814	73	3.4	3.7	1.8	5.6	4.1	3.5	4.9	73	3.4	23.6	0.091	0.504
T. IZQ. OCOTLAN	28.50	3	1 6243	83.3	3.4	3.5	2.3	2.5	2.1	1.9	1	83.3	3.4	13.3	0.104	0.501
T. IZQ. OCOTLAN	28.50	3	2 6280	81.9	3	5	2.7	2.3	2.3	1.6	1.2	81.9	3	15.1	0.106	0.501
CHAPALA	48.50	1	1 4775	90.7	2.6	2.5	0.5	2	0.2	0.2	1.3	90.7	2.6	6.7	0.103	0.537
CHAPALA	48.50	1	2 4116	86.9	2.5	3	1	2.8	1.1	0.6	2.1	86.9	2.5	10.6	0.115	0.537
CHAPALA	48.50	3	0 9788	87.6	1.6	3.2	2.9	1.8	0.9	1	1	87.6	1.6	10.8	0.084	0.501
T. C. JIQUILPAN - GUADALAJARA	76.50	1	1 3671	88.6	4.7	1.9	1.1	1.5	1.6	0.3	0.3	88.6	4.7	6.7	0.124	0.509
T. C. JIQUILPAN - GUADALAJARA	76.50	1	2 3773	88.1	4.7	1.8	1.1	1.5	1.9	0.3	0.6	88.1	4.7	7.2	0.105	0.509

JALISCO

25 CARR : LAGOS DE MORENO - UNION DE SAN ANTONIO

CLAVE: 14581

RUTA : JAL

AÑO : 2007

L U G A R	E S T A C I O N				C L A S I F I C A C I O N V E H I C U L A R E N P O R C I E N T O .												
	KM	TE	SC	TDPA	A	B	C2	C3	T3S2	T3S3	T3S2R4	OTROS	A	B	C	K'	D
LAGOS DE MORENO	0.00	3	0	3855	76.2	4	13.5	3.3	1	0.5	1.4	0.1	76.2	4	19.8	0.095	0.5
UNION DE SAN ANTONIO	27.00	1	0	1697	80.5	3.6	10.4	4.9	0.3	0	0.3	0	80.5	3.6	15.9	0.114	0.503

26 CARR : LIBRAMIENTO DE MAZAMITLA

CLAVE: 14014

RUTA : JAL

AÑO : 2007

L U G A R	E S T A C I O N				C L A S I F I C A C I O N V E H I C U L A R E N P O R C I E N T O .												
	KM	TE	SC	TDPA	A	B	C2	C3	T3S2	T3S3	T3S2R4	OTROS	A	B	C	K'	D
T. C. JIQUILPAN - COLIMA	0.00	0	0														
T. C. JIQUILPAN - COLIMA	3.00	1	0	3484	82.9	2.1	2.5	2.3	3.2	1.9	1.9	3.2	82.9	2.1	15	0.1	0.504

27 CARR : LIBRAMIENTO DE ZAPOTLANEJO

CLAVE: 14013

RUTA : JAL

AÑO : 2007

L U G A R	E S T A C I O N				C L A S I F I C A C I O N V E H I C U L A R E N P O R C I E N T O .												
	KM	TE	SC	TDPA	A	B	C2	C3	T3S2	T3S3	T3S2R4	OTROS	A	B	C	K'	D
T. C. LAGOS DE MORENO - ZAPOTLANEJO	0.00	3	1	7063	71.5	11	5.2	4.9	3.1	2.1	1.5	0.7	71.5	11	17.5	0.078	0.501
T. C. LAGOS DE MORENO - ZAPOTLANEJO	0.00	3	2	7085	73.5	9	6.3	4.3	2.9	2	1.4	0.6	73.5	9	17.5	0.087	0.501
T. C. IRAPUATO - GUADALAJARA	1.80	1	1	6472	74.8	9	5.6	3.9	1.8	2.2	2.1	0.6	74.8	9	16.2	0.103	0.501
T. C. IRAPUATO - GUADALAJARA	1.80	1	2	6448	73.2	9.6	6.8	4.1	1.8	2	1.9	0.6	73.2	9.6	17.2	0.085	0.501

28 CARR : MAZAMITLA - TUXCUECA

CLAVE: 14011

RUTA : JAL

AÑO : 2007

L U G A R	E S T A C I O N				C L A S I F I C A C I O N V E H I C U L A R E N P O R C I E N T O .												
	KM	TE	SC	TDPA	A	B	C2	C3	T3S2	T3S3	T3S2R4	OTROS	A	B	C	K'	D
MAZAMITLA	0.00	3	0	1920	92	2	2.3	1.1	1.6	0.1	0.2	0.7	92	2	6	0.122	0.501
T. C. JIQUILPAN - GUADALAJARA	42.00	1	0	2145	89.4	2	2.4	1.9	2.3	0.6	0.7	0.7	89.4	2	8.6	0.111	0.501

29 CARR : RAMAL A AMECA

CLAVE: 14223

RUTA : MEX

AÑO : 2007

L U G A R	E S T A C I O N				C L A S I F I C A C I O N V E H I C U L A R E N P O R C I E N T O .												
	KM	TE	SC	TDPA	A	B	C2	C3	T3S2	T3S3	T3S2R4	OTROS	A	B	C	K'	D
T. C. GUADALAJARA - TEPIC	0.00	3	0	8555	83.4	3.6	5.1	4.3	1.3	1.1	0.4	0.8	83.4	3.6	13	0.09	0.502
TALA	15.00	3	0	6130	84.2	4.5	2.4	1.3	3.8	1.3	1	1.5	84.2	4.5	11.3	0.088	0.5
AMECA	53.00	1	0	8477	85.5	2.5	4.6	1.2	3.4	0.8	0.8	1.2	85.5	2.5	12	0.095	0.503

JALISCO

30 CARR : RAMAL A JESUS MARIA

CLAVE: 14004

RUTA : JAL-004

AÑO : 2007

L U G A R	E S T A C I O N				C L A S I F I C A C I O N V E H I C U L A R E N P O R C I E N T O .												
	KM	TE	SC	TDPA	A	B	C2	C3	T3S2	T3S3	T3S2R4	OTROS	A	B	C	K'	D
T. C. TEPATITLAN - LAS ADJUNTAS	0.00	3	0	2208	88.9	2.1	4.1	2.6	1.4	0.6	0.3	0	88.9	2.1	9	0.103	0.501
JESUS MARIA	9.00	1	0	2425	89.8	3.1	1.7	1.6	2	0.5	0.4	0.9	89.8	3.1	7.1	0.101	0.502

31 CARR : RAMAL A TAPALPA

CLAVE: 14022

RUTA : JAL-022

AÑO : 2007

L U G A R	E S T A C I O N				C L A S I F I C A C I O N V E H I C U L A R E N P O R C I E N T O .												
	KM	TE	SC	TDPA	A	B	C2	C3	T3S2	T3S3	T3S2R4	OTROS	A	B	C	K'	D
T. C. ACATLAN DE JUAREZ - CD. GUZMAN	0.00	3	0	1510	90.6	3	3	1.9	0.4	0.2	0.1	0.8	90.6	3	6.4	0.111	0.503
TAPALPA	32.00	1	0	1578	91	2.9	2.8	1.8	0.3	0.3	0.1	0.8	91	2.9	6.1	0.101	0.501

32 CARR : RAMAL A TEOCUIATLAN DE CORONA

CLAVE: 14566

RUTA : JAL

AÑO : 2007

L U G A R	E S T A C I O N				C L A S I F I C A C I O N V E H I C U L A R E N P O R C I E N T O .												
	KM	TE	SC	TDPA	A	B	C2	C3	T3S2	T3S3	T3S2R4	OTROS	A	B	C	K'	D
T. C. ACATLAN DE JUAREZ - CD. GUZMAN	0.00	3	0	1381	87.7	1.4	4.7	2.4	1.9	1.3	0.4	0.2	87.7	1.4	10.9	0.112	0.502
TEOCUIATLAN DE CORONA	18.00	0	0														

33 CARR : RAMAL A TOMATLAN

CLAVE: 14558

RUTA : MEX

AÑO : 2007

L U G A R	E S T A C I O N				C L A S I F I C A C I O N V E H I C U L A R E N P O R C I E N T O .												
	KM	TE	SC	TDPA	A	B	C2	C3	T3S2	T3S3	T3S2R4	OTROS	A	B	C	K'	D
T. C. MANZANILLO - PUERTO VALLARTA	0.00	3	0	2006	87.5	2	4.1	3.1	1.6	0.4	0.4	0.9	87.5	2	10.5	0.102	0.501
TOMATLAN	13.00	1	0	2578	86.2	2	4.6	1.9	3.4	0.6	0.9	0.4	86.2	2	11.8	0.098	0.501

34 CARR : SAN CLEMENTE - ENT. LAS CRUCES

CLAVE: 14070

RUTA : JAL

AÑO : 2007

L U G A R	E S T A C I O N				C L A S I F I C A C I O N V E H I C U L A R E N P O R C I E N T O .												
	KM	TE	SC	TDPA	A	B	C2	C3	T3S2	T3S3	T3S2R4	OTROS	A	B	C	K'	D
T. C. SANTA CRUZ - MELAQUE	0.00	3	0	2252	88.4	6	1.4	1.6	1	0.2	0.3	1.1	88.4	6	5.6	0.077	0.501
T. C. AMECA - MASCOTA	64.00	0	0														

35 CARR : SANTA ROSA - LA BARCA

CLAVE: 14007

RUTA : MEX-035

AÑO : 2007

L U G A R	E S T A C I O N				C L A S I F I C A C I O N V E H I C U L A R E N P O R C I E N T O .												
	KM	TE	SC	TDPA	A	B	C2	C3	T3S2	T3S3	T3S2R4	OTROS	A	B	C	K'	D
SANTA ROSA	0.00	3	0	18695	79.5	3.6	5.9	3.2	3.3	2	1.5	1	79.5	3.6	16.9	0.069	0.5

JALISCO

39 CARR : LAGOS DE MORENO - ZAPOTLANEJO (CUOTA)

CLAVE: 14116

RUTA : MEX-080D

AÑO : 2007

L U G A R	E S T A C I O N				C L A S I F I C A C I O N V E H I C U L A R E N P O R C I E N T O .												
	KM	TE	SC	TDPA	A	B	C2	C3	T3S2	T3S3	T3S2R4	OTROS	A	B	C	K'	D
CASETA DE COBRO JALOSTOTITLAN	90.80	2	2	4740													
T. C. LAGOS DE MORENO - GUADALAJARA	116.80	0	0														
T. C. IRAPUATO - GUADALAJARA	139.00	1	1	5725	70.2	11	5.3	5.2	3.6	2.1	1.4	1.2	70.2	11	18.8	0.091	0.503
T. C. IRAPUATO - GUADALAJARA	139.00	1	2	5662	72.9	8	5.5	4.8	3.8	2.3	1.6	1.1	72.9	8	19.1	0.095	0.503

40 CARR : ZAPOTLANEJO - GUADALAJARA (CUOTA)

CLAVE: 14114

RUTA : MEX-090-110

AÑO : 2007

L U G A R	E S T A C I O N				C L A S I F I C A C I O N V E H I C U L A R E N P O R C I E N T O .												
	KM	TE	SC	TDPA	A	B	C2	C3	T3S2	T3S3	T3S2R4	OTROS	A	B	C	K'	D
ZAPOTLANEJO	0.00	0	0														
CASETA DE COBRO ZAPOTLANEJO (LA JOYA)	19.00	2	0	34757													
T. C. LAGOS DE MORENO - GUADALAJARA	26.00	0	0														

41 CARR : ATLACOMULCO - ZAPOTLANEJO (CUOTA)

CLAVE: 00018

RUTA : MEX-015D

AÑO : 2007

L U G A R	E S T A C I O N				C L A S I F I C A C I O N V E H I C U L A R E N P O R C I E N T O .												
	KM	TE	SC	TDPA	A	B	C2	C3	T3S2	T3S3	T3S2R4	OTROS	A	B	C	K'	D
T. C. TOLUCA - PALMILLAS	0.00	0	0														
CASETA DE COBRO SAN JUANICO	3.76	2	0	8300													
LIM. EDOS. TERM. MEX. PPIA. MICH.	21.20	0	0														
CASETA DE COBRO ZINAPECUARO	102.20	2	0	6842													
CASETA DE COBRO PANINDICUARO	207.00	2	0	5003													
CASETA DE COBRO ECUANDUREO	260.00	2	0	7257													
LIM. EDOS. TERM. MICH. PPIA. JAL.	297.00	0	0														
CASETA DE COBRO OCOTLAN	326.00	2	0	9596													
T. C. ZAPOTLANEJO - GUADALAJARA (CUOTA)	375.00	0	0														

42 CARR : DOLORES HIDALGO - OJUELOS DE JALISCO

CLAVE: 00107

RUTA : MEX-051

AÑO : 2007

L U G A R	E S T A C I O N				C L A S I F I C A C I O N V E H I C U L A R E N P O R C I E N T O .												
	KM	TE	SC	TDPA	A	B	C2	C3	T3S2	T3S3	T3S2R4	OTROS	A	B	C	K'	D
DOLORES HIDALGO	0.00	3	0	3870	76.3	9.4	5	2.5	3.6	1.2	0.8	1.2	76.3	9.4	14.3	0.084	0.5
X. C. LEON - SAN FELIPE	51.38	1	0	2847	76	11.1	5.1	2.6	2.9	0.8	0.7	0.8	76	11.1	12.9	0.091	0.502
X. C. LEON - SAN FELIPE	51.38	3	0	2274	78.2	9.8	4.3	2.4	2.1	2.1	0	1.1	78.2	9.8	12	0.087	0.514
T. IZQ. OCAMPO	87.47	1	0	2010	75.6	7.6	7.4	4.8	1.6	1.5	0	1.5	75.6	7.6	16.8	0.095	0.506

JALISCO

42 CARR : DOLORES HIDALGO - OJUELOS DE JALISCO

CLAVE: 00107

RUTA : MEX-051

AÑO : 2007

L U G A R	E S T A C I O N				C L A S I F I C A C I O N V E H I C U L A R E N P O R C I E N T O .												
	KM	TE	SC	TDPA	A	B	C2	C3	T3S2	T3S3	T3S2R4	OTROS	A	B	C	K'	D
T. IZQ. OCAMPO	87.47	3	0	1802	76.3	7.8	7.5	3.8	1.9	1.5	0	1.2	76.3	7.8	15.9	0.095	0.51
LIM. EDOS. TERM. GTO. PPIA. JAL.	104.10	0	0														
T. C. SAN LUIS POTOSI - LAGOS DE MORENO	113.50	1	0	1537	78	5.7	7.9	6.4	1	0.1	0.6	0.3	78	5.7	16.3	0.098	0.501

43 CARR : ENT. OJO CALIENTE - ENT. OJUELOS DE JALISCO

CLAVE: 00126

RUTA : ZAC

AÑO : 2007

L U G A R	E S T A C I O N				C L A S I F I C A C I O N V E H I C U L A R E N P O R C I E N T O .												
	KM	TE	SC	TDPA	A	B	C2	C3	T3S2	T3S3	T3S2R4	OTROS	A	B	C	K'	D
T. C. AGUASCALIENTES - ZACATECAS	0.00	3	0	2445	79.8	4.1	6	3	2.6	2.3	1.5	0.7	79.8	4.1	16.1	0.085	0.501
GRAL. PANFILO NATERA	16.00	3	0	1677	85.2	2.8	5.6	1.7	1	1.6	1.4	0.7	85.2	2.8	12	0.088	0.502
LIM. EDOS. TERM. ZAC. PPIA. JAL.	124.30	0	0														
T. C. SAN LUIS POTOSI - LAGOS DE MORENO	127.30	0	0														

44 CARR : ENT. PENITENCIARIA - VILLA HIDALGO

CLAVE: 00120

RUTA : MEX-071

AÑO : 2007

L U G A R	E S T A C I O N				C L A S I F I C A C I O N V E H I C U L A R E N P O R C I E N T O .												
	KM	TE	SC	TDPA	A	B	C2	C3	T3S2	T3S3	T3S2R4	OTROS	A	B	C	K'	D
T. C. AGUASCALIENTES - JALPA	0.00	3	0	3715	83.3	3.7	6.2	2.6	1.4	1.4	1.2	0.2	83.3	3.7	13	0.093	0.5
T. IZQ. EL NIAGARA	9.20	3	0	2550	82.7	4.7	1.1	3	2.9	1.5	1.4	2.7	82.7	4.7	12.6	0.078	0.504
EL TARAY	27.00	3	0	2327	83.4	3.4	7	2.9	1.3	1.2	0.7	0.1	83.4	3.4	13.2	0.094	0.503
LIM. EDOS. TERM. AGS. PPIA. JAL.	30.00	0	0														
VILLA HIDALGO	38.00	1	0	2731	84.9	4.9	4.5	2.6	0.9	1.1	0.7	0.4	84.9	4.9	10.2	0.103	0.504

45 CARR : IRAPUATO - GUADALAJARA

CLAVE: 00114

RUTA : MEX-090-110

AÑO : 2007

L U G A R	E S T A C I O N				C L A S I F I C A C I O N V E H I C U L A R E N P O R C I E N T O .												
	KM	TE	SC	TDPA	A	B	C2	C3	T3S2	T3S3	T3S2R4	OTROS	A	B	C	K'	D
IRAPUATO	0.00	0	0														
T. IZQ. QUERETARO - IRAPUATO (CUOTA)	2.78	1	1	13208	83.4	5.4	4.7	2.7	1.1	0.8	1.1	0.8	83.4	5.4	11.2	0.089	0.501
T. IZQ. QUERETARO - IRAPUATO (CUOTA)	2.78	1	2	13270	83.3	5.2	4.4	2.6	1.3	0.9	1.2	1.1	83.3	5.2	11.5	0.096	0.501
T. IZQ. QUERETARO - IRAPUATO (CUOTA)	2.78	3	1	10153	80.2	5.9	5.9	4.5	1.6	1	0.1	0.8	80.2	5.9	13.9	0.101	0.501
T. IZQ. QUERETARO - IRAPUATO (CUOTA)	2.78	3	2	10174	83.3	5.3	4.6	3.2	1.6	0.9	0	1.1	83.3	5.3	11.4	0.103	0.501
T. DER. CUERAMARO	15.00	3	1	9447	71.8	6.5	7.8	4	4.7	3.2	0.2	1.8	71.8	6.5	21.7	0.078	0.521
T. DER. CUERAMARO	15.00	3	2	8700	72.1	6.3	8.4	3.8	5.1	2.9	0.3	1.1	72.1	6.3	21.6	0.099	0.521
ABASOLO	30.00	1	1	8229	75.5	8.5	5.6	3.3	3.5	2.6	0.2	0.8	75.5	8.5	16	0.137	0.503

JALISCO

45 CARR : IRAPUATO - GUADALAJARA

CLAVE: 00114

RUTA : MEX-090-110

AÑO : 2007

L U G A R	E S T A C I O N				C L A S I F I C A C I O N V E H I C U L A R E N P O R C I E N T O .												
	KM	TE	SC	TDPA	A	B	C2	C3	T3S2	T3S3	T3S2R4	OTROS	A	B	C	K'	D
ABASOLO	30.00	1	2	8869	76.2	8.6	4.1	2.9	3.8	2.1	0.3	2	76.2	8.6	15.2	0.12	0.503
ABASOLO	30.00	3	1	8138	73.2	8.4	7.3	4.1	3	2.6	0.1	1.3	73.2	8.4	18.4	0.107	0.506
ABASOLO	30.00	3	2	8322	73.9	8.2	4.4	3.6	5	3.7	0.1	1.1	73.9	8.2	17.9	0.098	0.506
PENJAMO	50.65	1	1	12639	76.4	8.5	4.1	5.3	2.7	1.5	0.4	1.1	76.4	8.5	15.1	0.143	0.501
PENJAMO	50.65	1	2	12614	70.4	8.8	4.7	7	4.4	2.8	0.3	1.6	70.4	8.8	20.8	0.114	0.501
PENJAMO	50.65	3	0	14551	57.8	9.5	10.2	7.8	6.3	4.3	0.8	3.3	57.8	9.5	32.7	0.074	0.501
T. DER. MANUEL DOBLADO	83.87	1	0	14270	66.3	8.1	8.9	7.4	3.7	3.2	0.8	1.6	66.3	8.1	25.6	0.081	0.501
LIM. EDOS. TERM. GTO. PPIA. MICH.	86.37	0	0														
LA PIEDAD	87.00	3	0	12870	69.1	9.6	7.4	6.9	4.1	2	0.2	0.7	69.1	9.6	21.3	0.089	0.511
T. IZQ. YURECUARO	100.00	3	0	8567	73.2	9.2	5.7	5.3	3.8	1.7	0.3	0.8	73.2	9.2	17.6	0.089	0.512
LIM. EDOS. TERM. MICH. PPIA. JAL.	102.10	0	0														
DEGOLLADO	105.40	1	0	6102	71.3	13.4	3.6	2.2	5.9	1.3	1.1	1.2	71.3	13.4	15.3	0.095	0.51
AYOTLAN	134.00	1	0	5243	82.7	7.5	0.5	1.1	0.9	6.6	0.2	0.5	82.7	7.5	9.8	0.127	0.511
ATOTONILCO EL ALTO	157.00	1	0	5039	76	5.4	5	4.8	5.2	1.9	1.6	0.1	76	5.4	18.6	0.087	0.502
ATOTONILCO EL ALTO	157.00	3	0	7751	78.4	6.9	4.9	3.1	2.7	1.7	1.3	1	78.4	6.9	14.7	0.083	0.503
X. C. SAN MIGUEL EL ALTO - LA BARCA	158.60	3	0	7861	71.1	7.4	5.4	5.4	5	3.1	1.5	1.1	71.1	7.4	21.5	0.108	0.503
T. IZQ. OCOTLAN	188.00	1	0	7449	73.1	8.3	5.6	4.6	4.3	1.8	1.4	0.9	73.1	8.3	18.6	0.094	0.508
T. DER. LIBRAMIENTO ZAPOTLANEJO	215.80	1	0	11569	73.7	10.4	6	3.7	2.4	2	1	0.8	73.7	10.4	15.9	0.081	0.502
T. DER. LIBRAMIENTO ZAPOTLANEJO	215.80	3	1	6222	67	12.5	6.8	6.7	3.6	0.7	1	1.7	67	12.5	20.5	0.092	0.508
T. DER. LIBRAMIENTO ZAPOTLANEJO	215.80	3	2	6017	68	13.3	6.7	4.7	4.1	0.8	0.8	1.6	68	13.3	18.7	0.093	0.508
ZAPOTLANEJO	217.60	0	0														

46 CARR : JIQUILPAN - COLIMA

CLAVE: 00156

RUTA : MEX-110

AÑO : 2007

L U G A R	E S T A C I O N				C L A S I F I C A C I O N V E H I C U L A R E N P O R C I E N T O .												
	KM	TE	SC	TDPA	A	B	C2	C3	T3S2	T3S3	T3S2R4	OTROS	A	B	C	K'	D
JIQUILPAN	0.00	3	0	4499	87.3	4.7	0.6	0.3	3.7	0.5	1.1	1.8	87.3	4.7	8	0.092	0.506
SAN JOSE DE GRACIA	37.93	1	0	3400	81.4	4.6	3.3	3.3	3.8	1	1.3	1.3	81.4	4.6	14	0.084	0.504
LIM. EDOS. TERM. MICH. PPIA. JAL.	41.00	0	0														
MAZAMITLA	48.65	1	0	2214	75	3.1	1.9	4	6.8	6.1	2.1	1	75	3.1	21.9	0.086	0.504
MAZAMITLA	48.65	3	0	2324	71.9	5.4	2.4	4.1	6.3	5.8	2.7	1.4	71.9	5.4	22.7	0.09	0.5
T. IZQ. TAMAZULA DE GORDIANO (2º ACCESO)	96.70	3	0	6053	70.1	4.5	2.8	3.6	7.1	6.6	3.1	2.2	70.1	4.5	25.4	0.081	0.504
T. DER. CD. GUZMAN	108.50	3	0	5503	75.3	5.3	4.3	3.5	5.4	3.2	1.7	1.3	75.3	5.3	19.4	0.095	0.501
TECALITLAN	132.00	3	0	2723	86.8	3.1	5	2.3	1.4	0.2	0.2	1	86.8	3.1	10.1	0.101	0.502
T. DER. ATENQUIQUE	137.70	3	0	2651	88.4	4	2.5	1.9	2.3	0.4	0.5	0	88.4	4	7.6	0.094	0.502

JALISCO

46 CARR : JIQUILPAN - COLIMA

CLAVE: 00156

RUTA : MEX-110

AÑO : 2007

L U G A R	E S T A C I O N				C L A S I F I C A C I O N V E H I C U L A R E N P O R C I E N T O .												
	KM	TE	SC	TDPA	A	B	C2	C3	T3S2	T3S3	T3S2R4	OTROS	A	B	C	K'	D
PIHUAMO	168.20	3	0	2931	89.8	3.7	1.9	1.6	1.4	0.3	0.2	1.1	89.8	3.7	6.5	0.095	0.502
LIM. EDOS. TERM. JAL. PPIA. COL.	189.60	0	0														
T. DER. ESTACION ALZADA	198.60	3	0	2064	83.5	3.8	5.1	3.1	1.8	1	0	1.7	83.5	3.8	12.7	0.091	0.501
T. IZQ. LOS TEPAMES	214.20	1	0	3229	81.8	5.8	6.8	2.1	1.7	1.1	0.7	0	81.8	5.8	12.4	0.1	0.501
X. C. LIBRAMIENTO DE COLIMA	220.00	1	0	5247	77.7	7	5.9	4.6	1.6	1.3	0	1.9	77.7	7	15.3	0.089	0.504
COLIMA	222.00	1	0	4857	70.7	7.7	10.6	5.9	1.8	1.3	0.3	1.7	70.7	7.7	21.6	0.097	0.5

47 CARR : JIQUILPAN - GUADALAJARA

CLAVE: 00429

RUTA : MEX-015

AÑO : 2007

L U G A R	E S T A C I O N				C L A S I F I C A C I O N V E H I C U L A R E N P O R C I E N T O .												
	KM	TE	SC	TDPA	A	B	C2	C3	T3S2	T3S3	T3S2R4	OTROS	A	B	C	K'	D
JIQUILPAN	0.00	3	1	6007	77.9	5.3	4.8	3.3	3	3.2	0.5	2	77.9	5.3	16.8	0.093	0.502
JIQUILPAN	0.00	3	2	6048	76.4	5.8	5.3	3.4	3.1	3.1	0.5	2.4	76.4	5.8	17.8	0.087	0.502
SAHUAYO	7.00	1	1	7605	88.4	4.5	0.8	1.2	1.3	1.2	0.5	2.1	88.4	4.5	7.1	0.091	0.513
SAHUAYO	7.00	1	2	8017	88.8	4.3	0.7	1.6	1.5	0.8	0.5	1.8	88.8	4.3	6.9	0.1	0.513
COJUMATLAN DE REGULES	25.94	3	0	2995	84.3	5	3	3.2	2.4	0.6	0.7	0.8	84.3	5	10.7	0.094	0.503
LIM. EDOS. TERM. MICH. PPIA. JAL.	36.11	0	0														
TUXCUECA	65.29	1	0	2497	86.7	3.1	3.4	2.2	2.5	0.8	0.6	0.7	86.7	3.1	10.2	0.096	0.501
T. DER. JOCOTEPEC	98.22	1	0	3669	85.8	3.4	3.9	0.3	2.1	2.9	0.3	1.3	85.8	3.4	10.8	0.087	0.5
ENT. SANTA CRUZ	119.00	1	0	8800	84.8	4.5	2.4	0.1	5.4	0.4	1.1	1.3	84.8	4.5	10.7	0.096	0.509
ENT. SANTA CRUZ	119.00	3	1	12083	76	4.6	3	2.4	4.6	2.6	4.2	2.6	76	4.6	19.4	0.083	0.502
ENT. SANTA CRUZ	119.00	3	2	12178	72.2	4.5	3.2	2.7	5.6	3.6	4.9	3.3	72.2	4.5	23.3	0.084	0.502
X. PERIFERICO GUADALAJARA	140.00	1	1	17211	83.9	5.4	3.5	2.4	1.7	1.6	0.5	1	83.9	5.4	10.7	0.087	0.501
X. PERIFERICO GUADALAJARA	140.00	1	2	17250	84.2	5.4	3.3	2.3	1.8	1.4	0.8	0.8	84.2	5.4	10.4	0.085	0.501
T. C. GUADALAJARA - TEPIC	166.00	0	0														

48 CARR : LEON - AGUASCALIENTES

CLAVE: 00167

RUTA : MEX-045

AÑO : 2007

L U G A R	E S T A C I O N				C L A S I F I C A C I O N V E H I C U L A R E N P O R C I E N T O .												
	KM	TE	SC	TDPA	A	B	C2	C3	T3S2	T3S3	T3S2R4	OTROS	A	B	C	K'	D
LEON	0.00	0	0														
T. DER. LIBRAMIENTO DE LEON	11.00	1	0	9449	76.1	2.9	8.7	5.8	3.4	1.6	0.3	1.2	76.1	2.9	21	0.1	0.502
T. DER. LIBRAMIENTO DE LEON	11.00	3	0	8619	73	5.8	9.4	7.2	2.4	0.7	0.6	0.9	73	5.8	21.2	0.111	0.502
T. IZQ. CENTRO DE LEON	12.00	3	1	4630	73.8	6.3	5.1	5.8	5.2	2	0.7	1.1	73.8	6.3	19.9	0.1	0.502
T. IZQ. CENTRO DE LEON	12.00	3	2	4590	74	6.2	5	5.7	5.1	2.2	0.9	0.9	74	6.2	19.8	0.141	0.502

JALISCO

48 CARR : LEON - AGUASCALIENTES

CLAVE: 00167

RUTA : MEX-045

AÑO : 2007

L U G A R	E S T A C I O N			C L A S I F I C A C I O N V E H I C U L A R E N P O R C I E N T O .												
	KM	TE	SC TDPA	A	B	C2	C3	T3S2	T3S3	T3S2R4	OTROS	A	B	C	K'	D
LIM. EDOS. TERM. GTO. PPIA. JAL.	16.00	0	0													
X. C. SAN LUIS POTOSI - LAGOS DE MORENO	44.18	1	0 7350	71.5	8.2	5.1	5.5	4.4	1.7	1.2	2.4	71.5	8.2	20.3	0.084	0.501
ENCARNACION DE DIAZ	88.20	1	0 7817	78.9	4.8	5.7	3.2	3.6	1.7	1.1	1	78.9	4.8	16.3	0.077	0.502
T. IZQ. LIBRAMIENTO DE ENCARNACION DE DIAZ	89.18	3	0 6481	70.1	9.7	2	2.2	9.3	3	2.2	1.5	70.1	9.7	20.2	0.081	0.502
LIM. EDOS. TERM. JAL. PPIA. AGS.	104.20	0	0													
T. IZQ. AEROPUERTO DE AGUASCALIENTES	110.20	1	1 7676	78.6	4.8	5.9	3.3	3.6	2.2	1	0.6	78.6	4.8	16.6	0.091	0.501
T. IZQ. AEROPUERTO DE AGUASCALIENTES	110.20	1	2 7694	80.4	3.9	6	2.8	3.2	2.1	0.9	0.7	80.4	3.9	15.7	0.081	0.501
T. IZQ. AEROPUERTO DE AGUASCALIENTES	111.00	3	1 10034	74.2	7.4	4.9	4.6	4.7	1.6	1.5	1.1	74.2	7.4	18.4	0.077	0.502
T. IZQ. AEROPUERTO DE AGUASCALIENTES	111.00	3	2 9936	76.8	5.9	4	4.7	3.5	2	1.6	1.5	76.8	5.9	17.3	0.085	0.502
T. DER. ESTACION ARELLANO	118.40	3	1 11671	72.8	5.4	1.2	4.5	8.1	2.2	4.3	1.5	72.8	5.4	21.8	0.08	0.501
T. DER. ESTACION ARELLANO	118.40	3	2 11697	73.2	5.5	1.1	4.4	7.6	2.3	4.2	1.7	73.2	5.5	21.3	0.079	0.501
AGUASCALIENTES	129.40	1	1 15188	72.8	6.8	5.9	5.8	4.1	2.7	1.7	0.2	72.8	6.8	20.4	0.073	0.502
AGUASCALIENTES	129.40	1	2 15087	73.9	5.9	6	5.9	3.9	2.6	1.5	0.3	73.9	5.9	20.2	0.079	0.502

49 CARR : LEON - AGUASCALIENTES (CUOTA)

CLAVE: 00013

RUTA : MEX-45D

AÑO : 2007

L U G A R	E S T A C I O N			C L A S I F I C A C I O N V E H I C U L A R E N P O R C I E N T O .												
	KM	TE	SC TDPA	A	B	C2	C3	T3S2	T3S3	T3S2R4	OTROS	A	B	C	K'	D
T. C. IRAPUATO - LEON	0.00	0	0													
CASETA DE COBRO LEON	23.50	2	0 8500													
LIM. EDOS. TERM. GTO. PPIA. JAL.	26.00	0	0													
CASETA DE COBRO ENCARNACION	88.74	2	0 8241													
LIM. EDOS. TERM. JAL. PPIA. AGS.	103.90	0	0													

50 CARR : LEON - SAN FELIPE TORRES MOCHAS

CLAVE: 11036

RUTA : GTO

AÑO : 2007

L U G A R	E S T A C I O N			C L A S I F I C A C I O N V E H I C U L A R E N P O R C I E N T O .												
	KM	TE	SC TDPA	A	B	C2	C3	T3S2	T3S3	T3S2R4	OTROS	A	B	C	K'	D
LEON	0.00	3	1 2755	79.4	3.5	6	5.4	2	1.4	0.2	2.1	79.4	3.5	17.1	0.087	0.5
LEON	0.00	3	2 2753	79.3	3.4	6.3	5.2	2.2	1.4	0.4	1.8	79.3	3.4	17.3	0.089	0.5
X. C. LIBRAMIENTO DE LEON	6.50	3	0 3839	71.2	8.2	10	4.4	1.2	1.5	1.3	2.2	71.2	8.2	20.6	0.085	0.501
LIM. EDOS. TERM. GTO. PPIA. JAL.	17.00	0	0													
LIM. EDOS. TERM. JAL. PPIA. GTO.	38.00	0	0													
SAN FELIPE TORRES MOCHAS	98.00	1	0 2261	74.4	7.4	7.4	6.8	1.4	1.4	0.2	1	74.4	7.4	18.2	0.101	0.5

JALISCO

51 CARR : MANUEL DOBLADO - LA PIEDAD

CLAVE: 11028

RUTA : MEX-037

AÑO : 2007

L U G A R	E S T A C I O N				C L A S I F I C A C I O N V E H I C U L A R E N P O R C I E N T O .												
	KM	TE	SC	TDPA	A	B	C2	C3	T3S2	T3S3	T3S2R4	OTROS	A	B	C	K'	D
MANUEL DOBLADO	0.00	3	0	2375	78.8	6.5	7.6	2.6	1.9	1.7	0.4	0.5	78.8	6.5	14.7	0.117	0.513
LIM. EDOS. TERM. GTO. PPIA. JAL.	11.00	0	0														
LIM. EDOS. TERM. JAL. PPIA. GTO.	23.00	0	0														
T. DER. SAN JOSE DE LA PAZ	29.00	1	0	2075	79.1	6.2	6.9	2.9	1.6	1.5	0.3	1.5	79.1	6.2	14.7	0.121	0.513
T. DER. SAN JOSE DE LA PAZ	29.00	3	0	2558	75.7	5.4	9.4	4.6	1.1	1.2	0.5	2.1	75.7	5.4	18.9	0.106	0.504
T. C. IRAPUATO - GUADALAJARA	45.00	1	0	5234	76.7	5.1	8.5	3.8	1.7	1.3	0.6	2.3	76.7	5.1	18.2	0.081	0.502

52 CARR : MANZANILLO - PUERTO VALLARTA

CLAVE: 00070

RUTA : MEX-200

AÑO : 2007

L U G A R	E S T A C I O N				C L A S I F I C A C I O N V E H I C U L A R E N P O R C I E N T O .												
	KM	TE	SC	TDPA	A	B	C2	C3	T3S2	T3S3	T3S2R4	OTROS	A	B	C	K'	D
MANZANILLO	0.00	3	1	12814	79.5	8.5	4.5	2	1.7	1.6	0.3	1.9	79.5	8.5	12	0.085	0.501
MANZANILLO	0.00	3	2	12882	80.3	8.1	4.8	1.8	1.6	1.5	0.2	1.7	80.3	8.1	11.6	0.083	0.501
T. DER. MINATITLAN	3.14	1	1	14410	82.7	4.6	4.1	2.9	2	1.8	0.1	1.8	82.7	4.6	12.7	0.092	0.5
T. DER. MINATITLAN	3.14	1	2	14416	82.9	5.1	4.7	2.8	1.7	1.4	0.1	1.3	82.9	5.1	12	0.082	0.5
SANTIAGO	13.24	1	1	7351	82.9	4.2	5.5	2.1	1.6	1.1	0.2	2.4	82.9	4.2	12.9	0.075	0.501
SANTIAGO	13.24	1	2	7375	83.3	5.5	4.7	1.6	1.3	1.2	0.1	2.3	83.3	5.5	11.2	0.074	0.501
SANTIAGO	13.24	3	1	3344	80.4	6.6	4.6	2.5	2	1.9	0.2	1.8	80.4	6.6	13	0.077	0.502
SANTIAGO	13.24	3	2	3314	80.9	6.4	5	2.6	2	1.5	0.3	1.3	80.9	6.4	12.7	0.076	0.502
SAN JUAN DE CUATRO VIENTOS	39.04	3	0	6128	77.8	10.1	5.1	2.1	2	1.4	0.4	1.1	77.8	10.1	12.1	0.085	0.504
T. IZQ. AEROPUERTO MANZANILLO	40.55	3	0	4866	77.3	9.6	6.4	1.7	1.4	2.2	0.1	1.3	77.3	9.6	13.1	0.075	0.5
LIM. EDOS. TERM. COL. PPIA. JAL.	43.50	0	0														
CIHUATLAN	47.92	1	0	6628	79	7.5	4.5	1.9	3.8	0.9	1.1	1.3	79	7.5	13.5	0.09	0.501
CIHUATLAN	47.92	3	0	6628	78.9	7.5	4.5	1.9	3.8	1	1.1	1.3	78.9	7.5	13.6	0.09	0.504
T. IZQ. SAN FRANCISCO	50.18	3	0	5274	78.7	6.6	4.5	2.2	3.2	1.2	1.2	2.4	78.7	6.6	14.7	0.098	0.503
MELAQUE	61.64	1	0	7250	80.7	8.5	2.2	1.4	4.3	0.9	0.9	1.1	80.7	8.5	10.8	0.09	0.503
MELAQUE	61.64	3	0	4798	75.5	8.1	1.9	1.5	5.7	1.5	3.6	2.2	75.5	8.1	16.4	0.1	0.502
T. IZQ. TENACATITA	90.44	3	0	2989	80.2	6.5	2.6	3.9	2.2	1.3	1.5	1.8	80.2	6.5	13.3	0.093	0.503
T. DER. TOMATLAN	177.60	1	0	2996	80	6.6	2.6	4	2.1	1.3	1.6	1.8	80	6.6	13.4	0.091	0.502
T. DER. TOMATLAN	177.60	3	0	3109	85	3.5	4.5	0.9	3.2	0.6	1	1.3	85	3.5	11.5	0.095	0.501
T. IZQ. EL TUITO	230.60	3	0	3589	84.6	3.5	5	1.9	1.7	1.1	0.6	1.6	84.6	3.5	11.9	0.098	0.502
PUERTO VALLARTA	273.60	1	0	6907	85	4	4.1	1.4	2.8	0.8	0.7	1.2	85	4	11	0.106	0.502

JALISCO

53 CARR : PILOTOS - LOS CAMPOS

CLAVE: 00007

RUTA : AGS-030

AÑO : 2007

L U G A R	E S T A C I O N				C L A S I F I C A C I O N V E H I C U L A R E N P O R C I E N T O .												
	KM	TE	SC	TDPA	A	B	C2	C3	T3S2	T3S3	T3S2R4	OTROS	A	B	C	K'	D
T. C. ENT. LA CALAVERA - ENT. SAN PEDRO	0.00	3	0	1459	81.4	5.5	8.6	2.6	0.1	0.7	0.9	0.2	81.4	5.5	13.1	0.11	0.502
LIM. EDOS. TERM. AGS. PPIA. JAL.	10.50	0	0														
LOS CAMPOS	12.00	0	0														

54 CARR : SAN ISIDRO EL GRANDE - BAJIO DE SAN JOSE

CLAVE: 00526

RUTA : AGS-036

AÑO : 2007

L U G A R	E S T A C I O N				C L A S I F I C A C I O N V E H I C U L A R E N P O R C I E N T O .												
	KM	TE	SC	TDPA	A	B	C2	C3	T3S2	T3S3	T3S2R4	OTROS	A	B	C	K'	D
T. C. OJUELOS - AGUASCALIENTES	0.00	3	0	972	85.8	3.3	2.7	3.2	2.1	0.9	1.4	0.6	85.8	3.3	10.9	0.099	0.503
ENT. SAN BARTOLO	11.50	3	0	1329	82.9	7.3	5.3	1.6	0.4	0.3	1.9	0.3	82.9	7.3	9.8	0.076	0.502
LIM. EDOS. TERM. AGS. PPIA. JAL.	17.50	0	0														
BAJIO DE SAN JOSE	22.50	0	0														

55 CARR : SAN LUIS POTOSI - LAGOS DE MORENO

CLAVE: 00133

RUTA : MEX-070-080

AÑO : 2007

L U G A R	E S T A C I O N				C L A S I F I C A C I O N V E H I C U L A R E N P O R C I E N T O .												
	KM	TE	SC	TDPA	A	B	C2	C3	T3S2	T3S3	T3S2R4	OTROS	A	B	C	K'	D
SAN LUIS POTOSI	0.00	3	1	6149	72.4	7.2	7	3.2	4.5	2.1	0.3	3.3	72.4	7.2	20.4	0.091	0.504
SAN LUIS POTOSI	0.00	3	2	6245	73.8	6.3	7.2	3.1	4.5	1.6	0.4	3.1	73.8	6.3	19.9	0.081	0.504
X. PERIFERICO SAN LUIS POTOSI	8.41	3	0	7443	73.1	5.2	6.5	5.4	4.3	3.2	0.3	2	73.1	5.2	21.7	0.073	0.501
EL TEPETATE	41.90	1	0	4636	78.7	3.5	5	3.5	3.3	1.7	0	4.3	78.7	3.5	17.8	0.128	0.548
EL TEPETATE	41.90	3	0	4845	76.4	2.8	6.8	4.6	3.4	2	0.1	3.9	76.4	2.8	20.8	0.073	0.503
VILLA DE ARRIAGA	61.90	3	0	5187	72	9.1	7.5	3	3	3.9	0.1	1.4	72	9.1	18.9	0.07	0.504
LIM. EDOS. TERM. S.L.P. PPIA. ZAC.	71.00	0	0														
LIM. EDOS. TERM. ZAC. PPIA. JAL.	81.70	0	0														
OJUELOS DE JALISCO	82.00	1	0	6094	75.2	6.1	6.1	3.8	3.6	2.2	2.1	0.9	75.2	6.1	18.7	0.085	0.504
OJUELOS DE JALISCO	82.00	3	0	4843	66.9	9.2	6.3	6.2	5.9	2.6	1.5	1.4	66.9	9.2	23.9	0.092	0.5
X. C. LEON - AGUASCALIENTES	146.90	1	0	5291	55.7	8.4	2.4	2	14.2	5.5	10.1	1.7	55.7	8.4	35.9	0.075	0.501
LAGOS DE MORENO	150.00	0	0														

56 CARR : TEPIC - PUERTO VALLARTA

CLAVE: 00068

RUTA : MEX-200

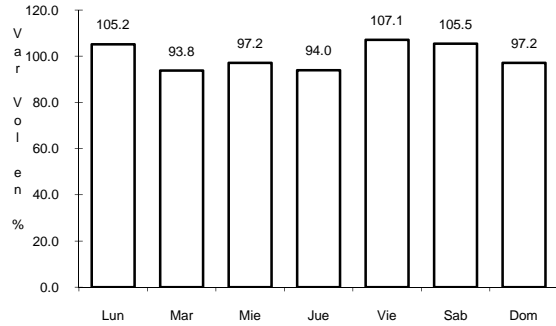
AÑO : 2007

L U G A R	E S T A C I O N				C L A S I F I C A C I O N V E H I C U L A R E N P O R C I E N T O .												
	KM	TE	SC	TDPA	A	B	C2	C3	T3S2	T3S3	T3S2R4	OTROS	A	B	C	K'	D
TEPIC	0.00	3	1	12180	77.6	6.2	5.2	4.9	2.7	1.2	0.9	1.3	77.6	6.2	16.2	0.095	0.504

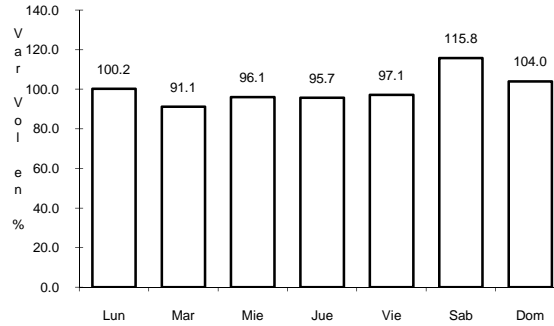
4 CARR: TEPATITLAN - LAS ADJUNTAS

CLAVE: 00141

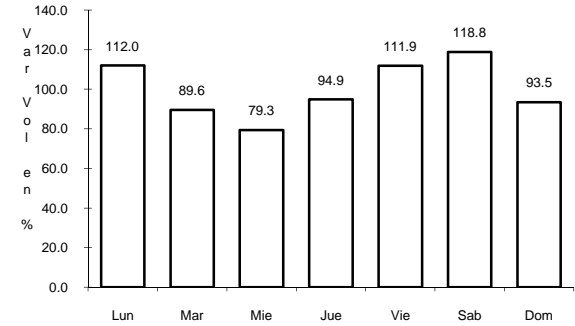
ruta: JAL/MEX-084



Km: 0.00 Tipo: 3 Sent: 0



Km: 46.00 Tipo: 3 Sent: 0

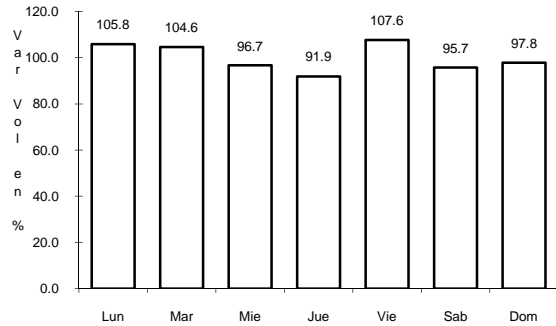


Km: 100.00 Tipo: 1 Sent: 0

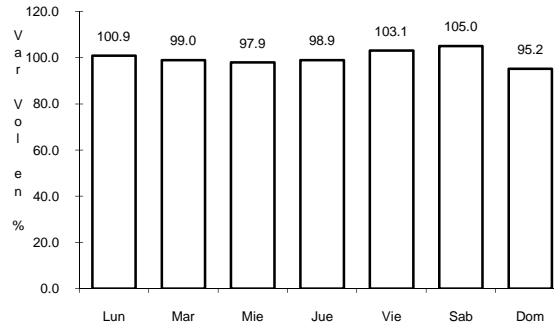
5 CARR: ENT. TESISTAN - ENT. MALPASO

CLAVE: 00584

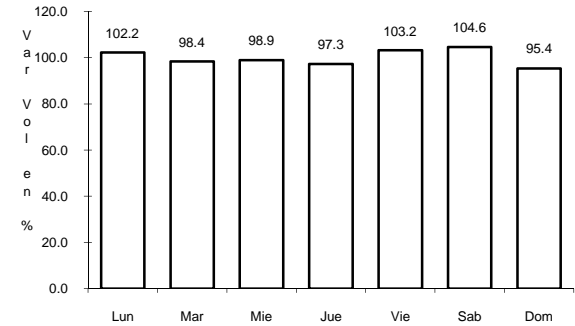
ruta: MEX-023



Km: 0.00 Tipo: 3 Sent: 0



Km: 147.50 Tipo: 3 Sent: 0

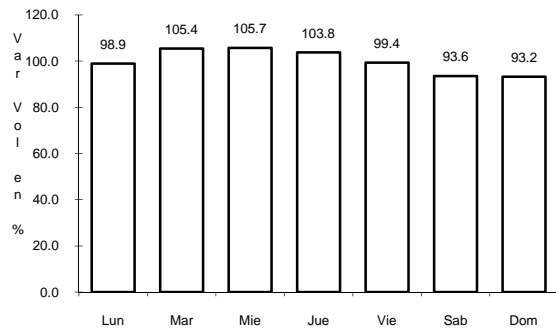


Km: 275.00 Tipo: 1 Sent: 0

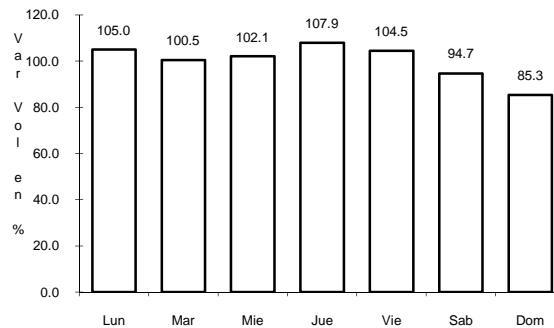
6 CARR: GUADALAJARA - TEPIC

CLAVE: 00031

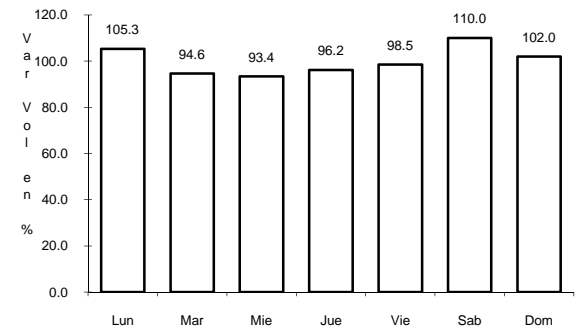
ruta: MEX-015



Km: 8.30 Tipo: 3 Sent: 1



Km: 8.30 Tipo: 3 Sent: 2

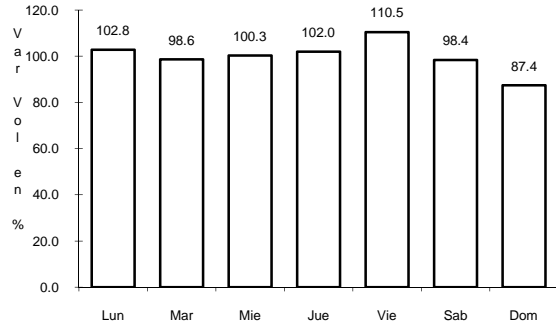


Km: 138.84 Tipo: 1 Sent: 0

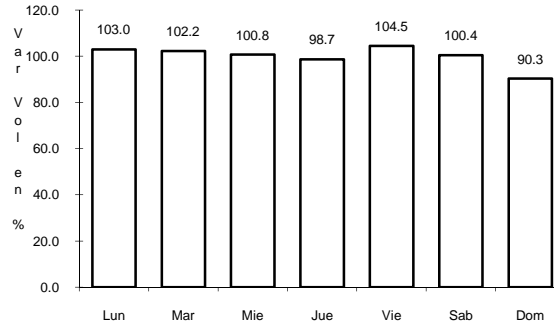
7 CARR: GUADALAJARA - TEPIC (CUOTA)

CLAVE: 00033

RUTA: MEX-015D



Km: 145.32 Tipo: 3 Sent: 1

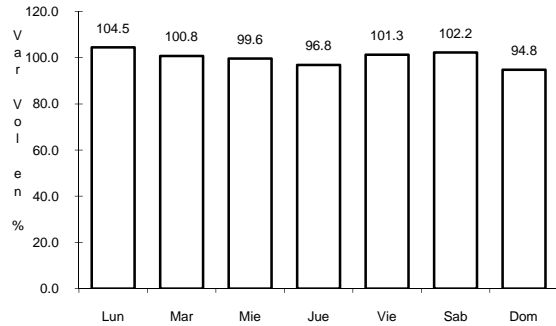


Km: 145.32 Tipo: 3 Sent: 2

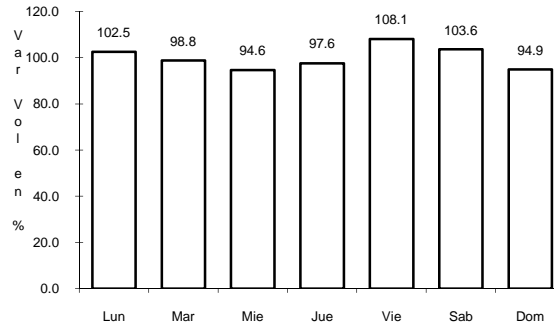
8 CARR: GUADALAJARA - ZACATECAS

CLAVE: 00150

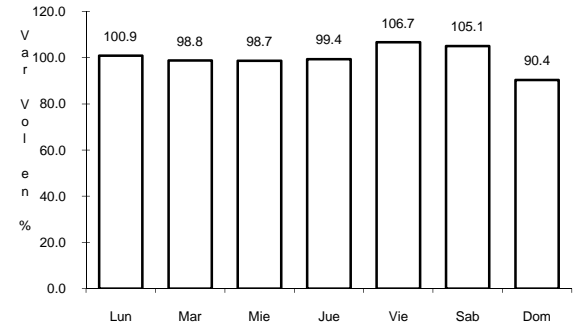
RUTA: MEX-054



Km: 6.19 Tipo: 3 Sent: 0



Km: 159.39 Tipo: 1 Sent: 0

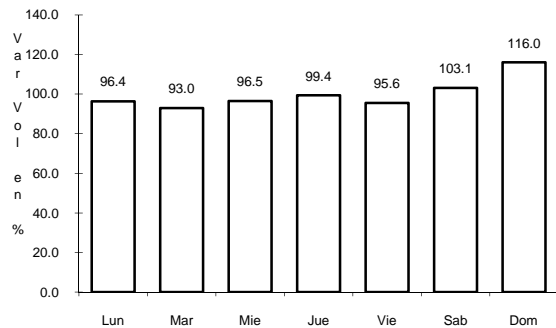


Km: 311.83 Tipo: 1 Sent: 0

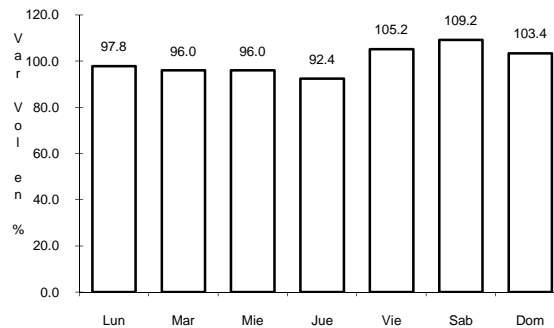
9 CARR: JALOSTOTITLAN - PURISIMA DE BUSTOS

CLAVE: 00142

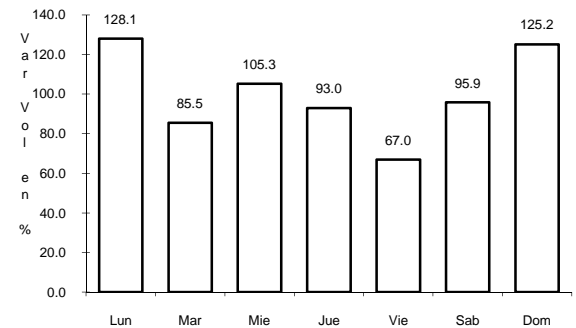
RUTA: JAL-GTO



Km: 0.00 Tipo: 3 Sent: 0



Km: 19.00 Tipo: 3 Sent: 0

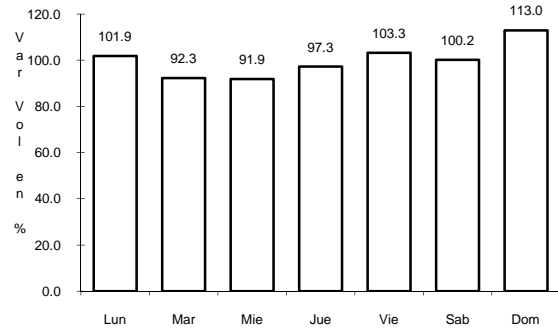


Km: 78.00 Tipo: 1 Sent: 0

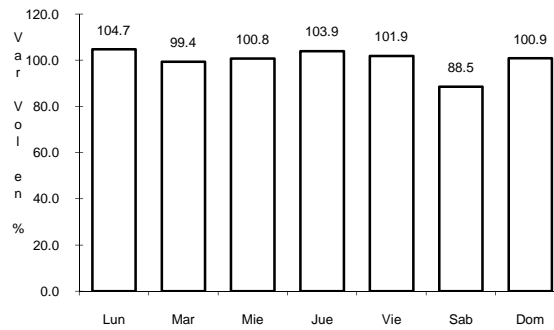
10 CARR: OJUELOS - AGUASCALIENTES

CLAVE: 00094

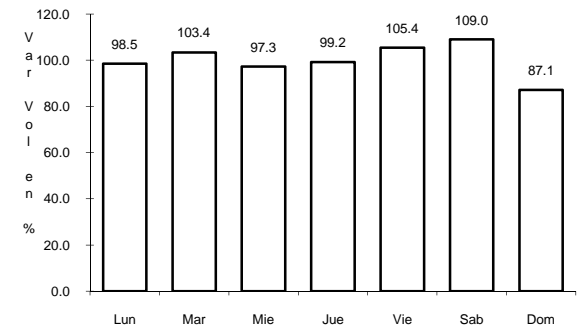
RUTA: MEX-070



Km: 0.00 Tipo: 3 Sent: 0



Km: 40.70 Tipo: 3 Sent: 0

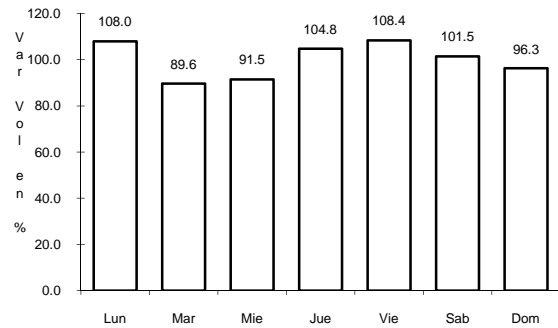


Km: 78.00 Tipo: 3 Sent: 0

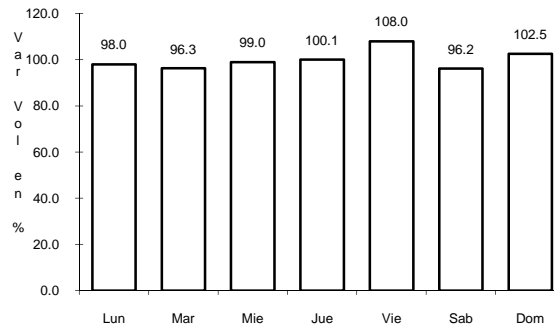
11 CARR: ACATLAN DE JUAREZ - CD. GUZMAN

CLAVE: 14221

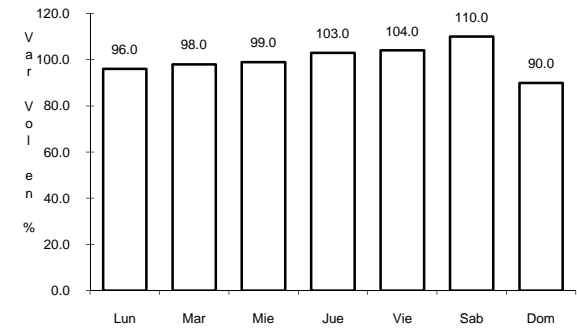
RUTA: JAL



Km: 0.00 Tipo: 3 Sent: 0



Km: 42.00 Tipo: 3 Sent: 0

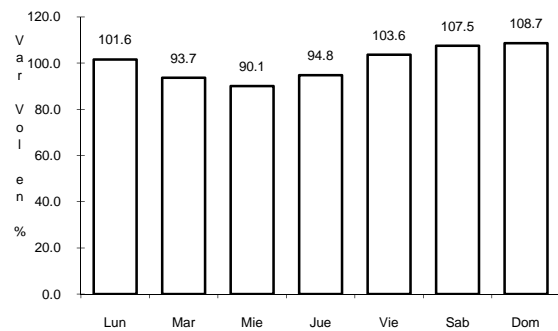


Km: 65.34 Tipo: 3 Sent: 0

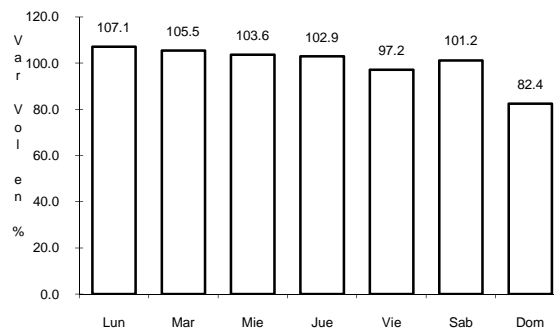
12 CARR: AMECA - MASCOTA

CLAVE: 14071

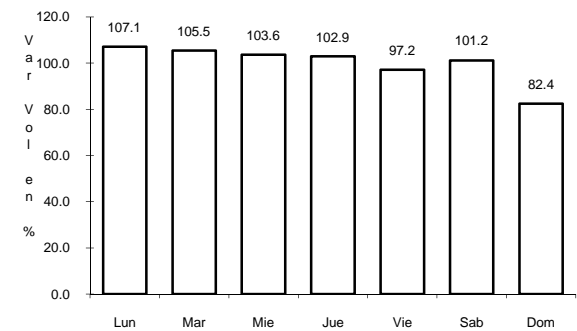
RUTA: MEX



Km: 0.00 Tipo: 3 Sent: 0



Km: 74.30 Tipo: 1 Sent: 0

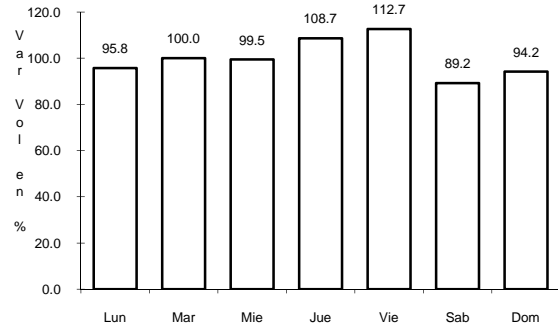


Km: 118.10 Tipo: 1 Sent: 0

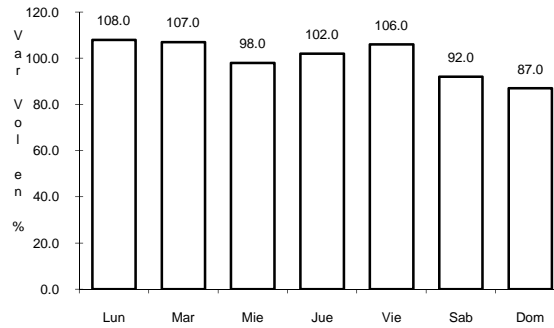
13 CARR: ATENQUIQUE - SAN PEDRO

CLAVE: 14224

RUTA: MEX



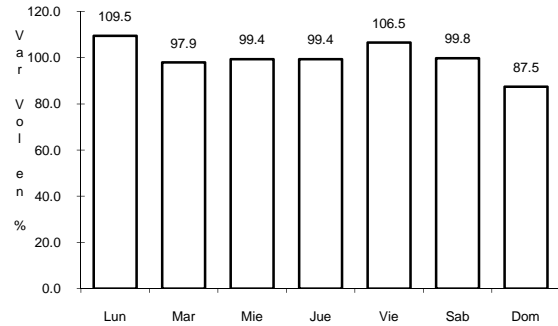
Km: 0.00 Tipo: 3 Sent: 0



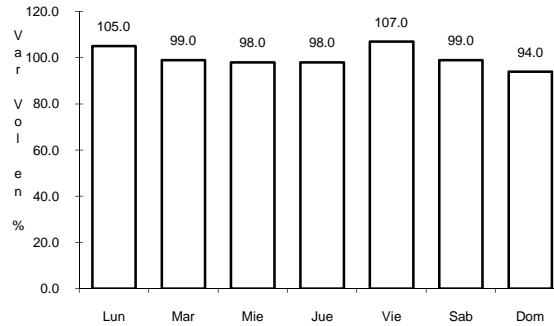
Km: 24.20 Tipo: 1 Sent: 0

14 CARR: AUTLAN DE NAVARRO - T. C. (ACATLAN DE J. - COLIMA) CLAVE: 14589

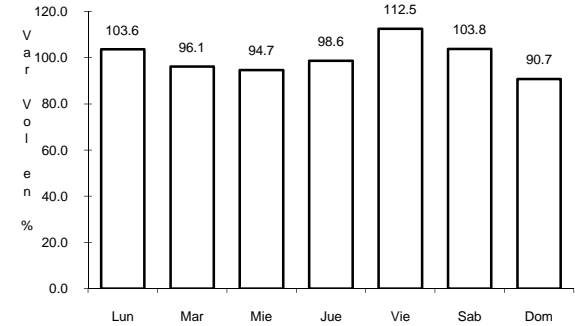
RUTA: JAL



Km: 0.00 Tipo: 3 Sent: 0



Km: 70.00 Tipo: 1 Sent: 0

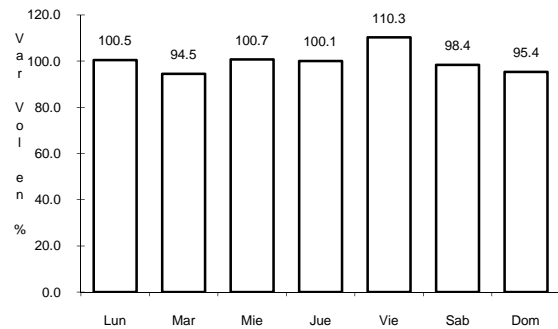


Km: 106.00 Tipo: 1 Sent: 0

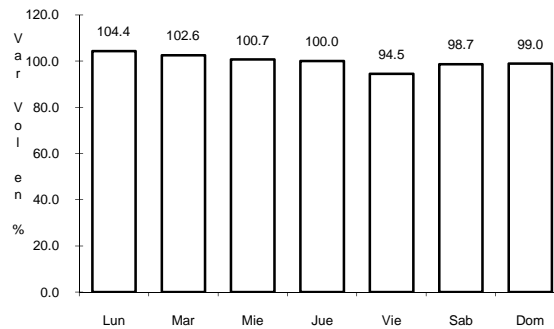
15 CARR: CRUCERO DE SANTA MARIA - AMECA

CLAVE: 14573

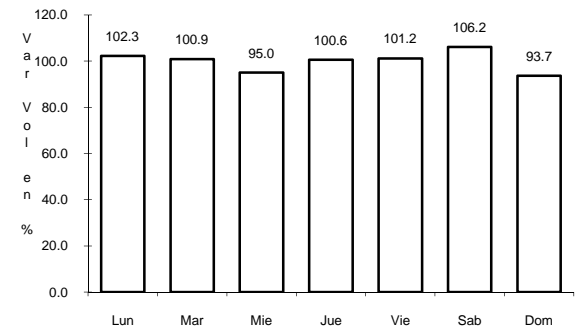
RUTA: JAL



Km: 0.00 Tipo: 3 Sent: 0



Km: 10.00 Tipo: 3 Sent: 0

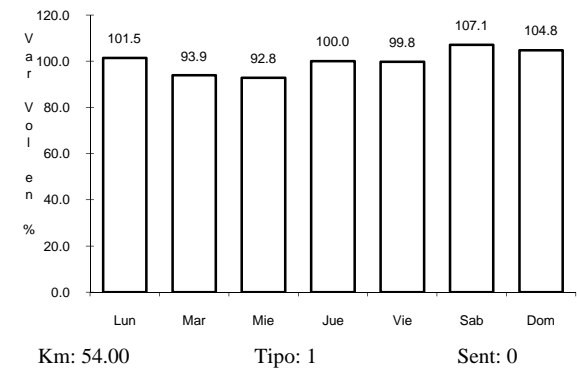
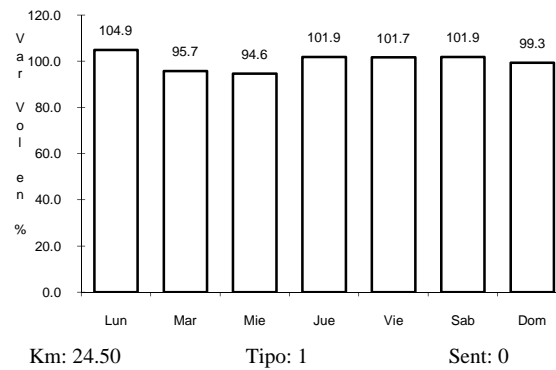
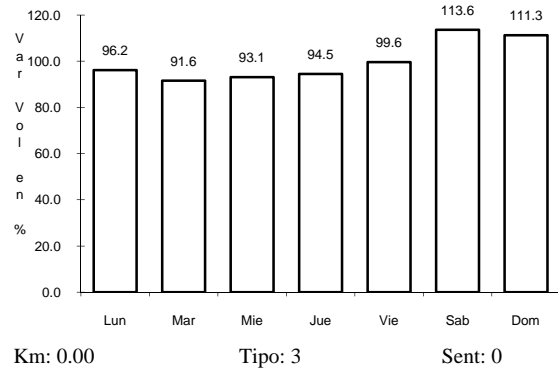


Km: 26.00 Tipo: 1 Sent: 0

16 CARR: EL REFUGIO - SAN MARCOS

CLAVE: 14027

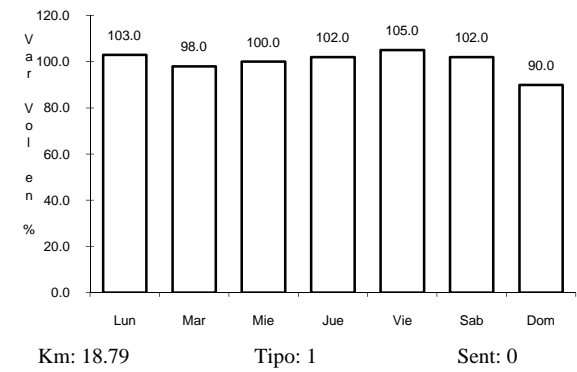
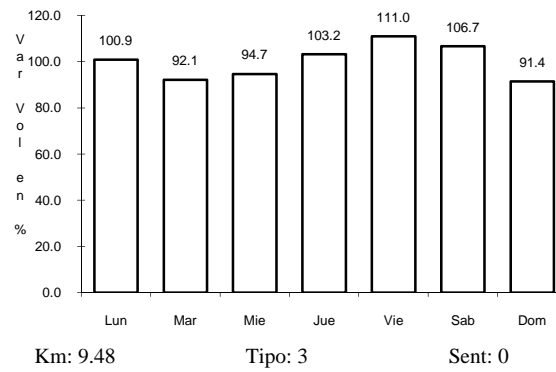
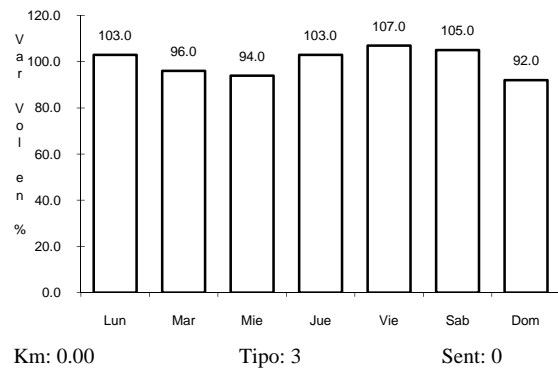
RUTA: JAL-004



17 CARR: T. C. (JIQUILPAN - COLIMA) - EST. HUESCALAPA

CLAVE: 14225

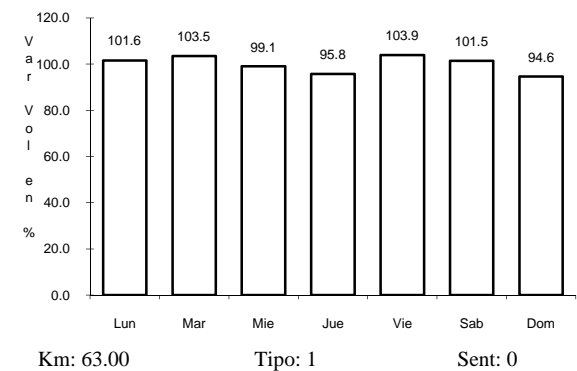
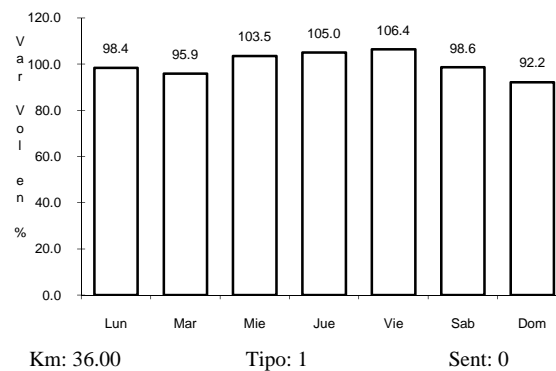
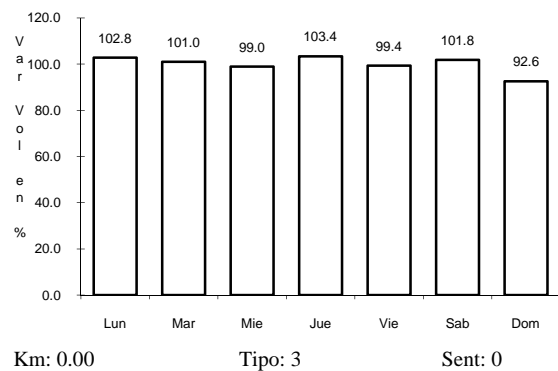
RUTA: MEX



18 CARR: ENT. JALOSTOTITLAN - VILLA HIDALGO

CLAVE: 14009

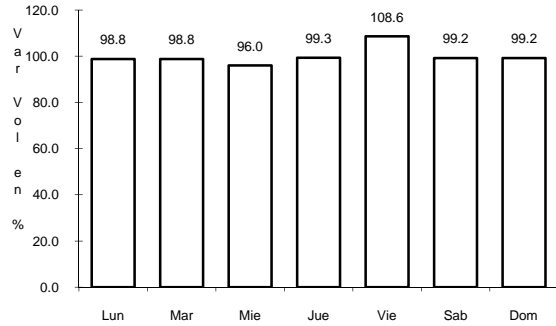
RUTA: JAL-009



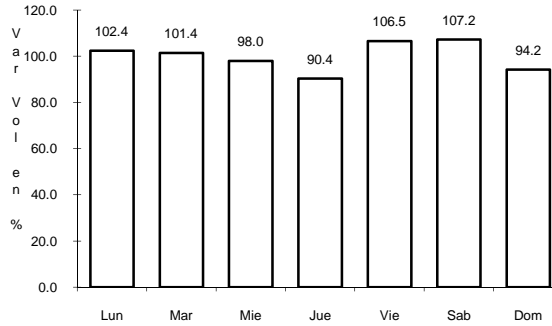
19 CARR: SAN MIGUEL EL ALTO - LA BARCA

CLAVE: 14005

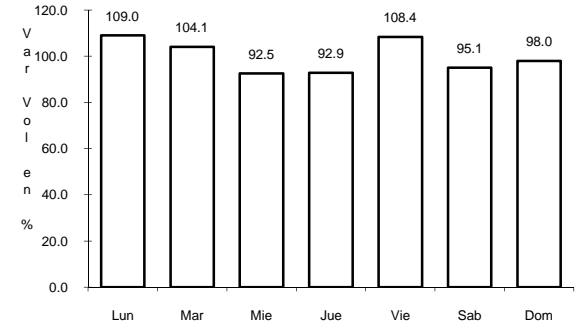
ruta: JAL-005-MEX-071



Km: 0.00 Tipo: 3 Sent: 0



Km: 36.00 Tipo: 1 Sent: 0

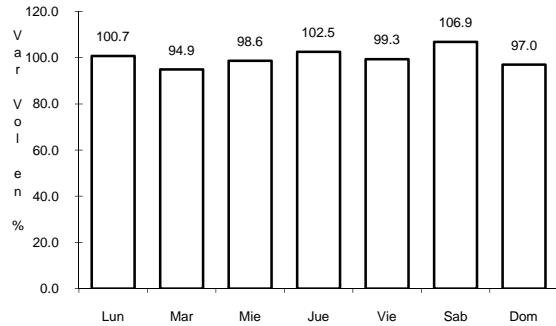


Km: 90.00 Tipo: 1 Sent: 0

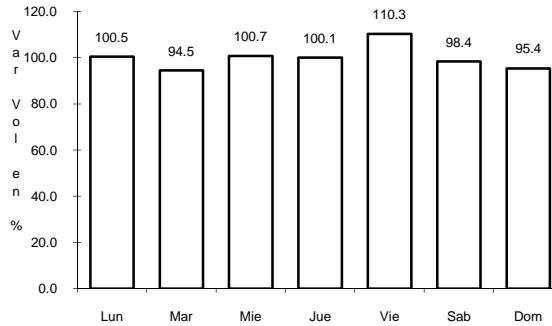
20 CARR: ENT. SANTA CRUZ - MELAQUE

CLAVE: 14118

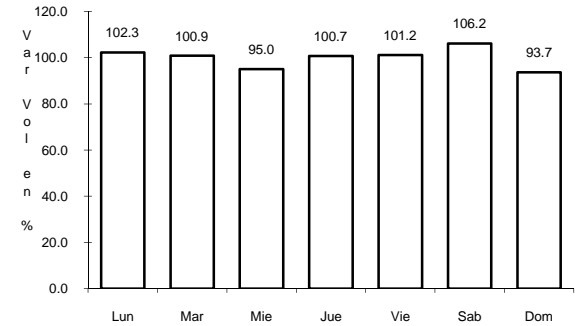
ruta: MEX-080



Km: 4.80 Tipo: 3 Sent: 0



Km: 138.60 Tipo: 3 Sent: 0

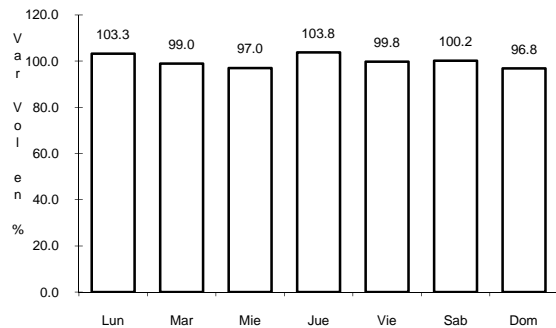


Km: 257.40 Tipo: 1 Sent: 0

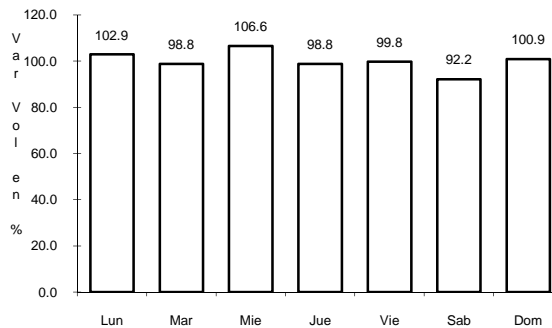
21 CARR: GUADALAJARA - ENT. JOCOTEPEC

CLAVE: 14222

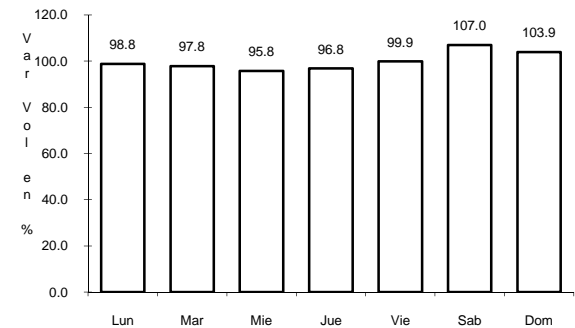
ruta: MEX-023



Km: 4.14 Tipo: 3 Sent: 1



Km: 4.14 Tipo: 3 Sent: 2

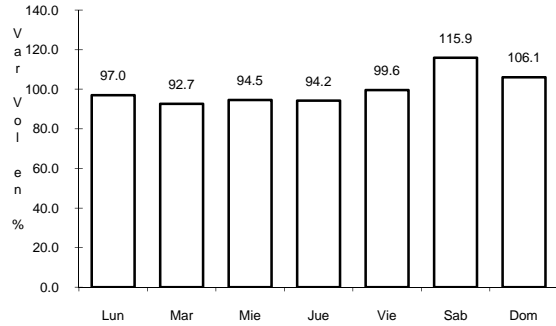


Km: 48.50 Tipo: 3 Sent: 0

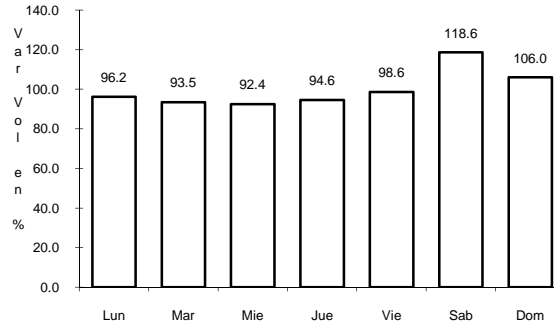
22 CARR: GUADALAJARA - TESISTAN

CLAVE: 14012

ruta: MEX-023



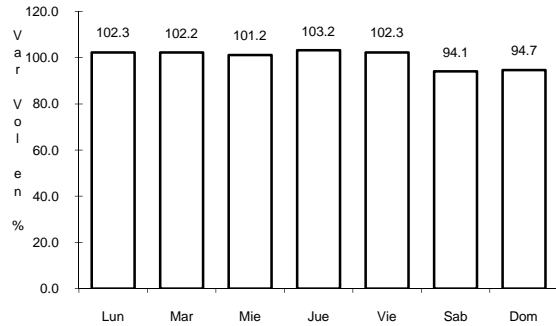
Km: 9.00 Tipo: 3 Sent: 1



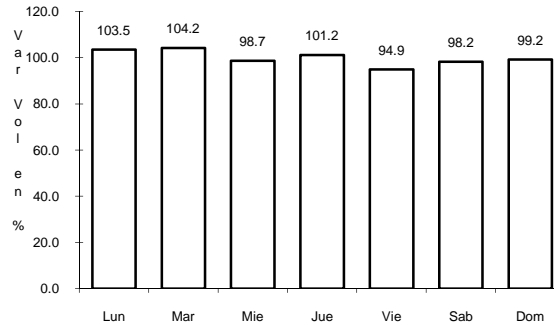
Km: 9.00 Tipo: 3 Sent: 2

23 CARR: IXTLAHUACAN DEL RIO - T. C. (TEPATITLAN - JARALILLO) CLAVE: 14582

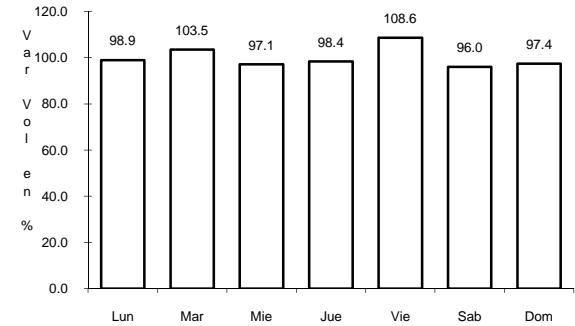
ruta: JAL



Km: 0.00 Tipo: 3 Sent: 0



Km: 27.00 Tipo: 1 Sent: 0

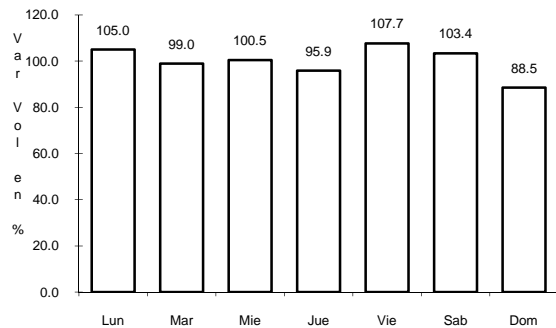


Km: 52.00 Tipo: 1 Sent: 0

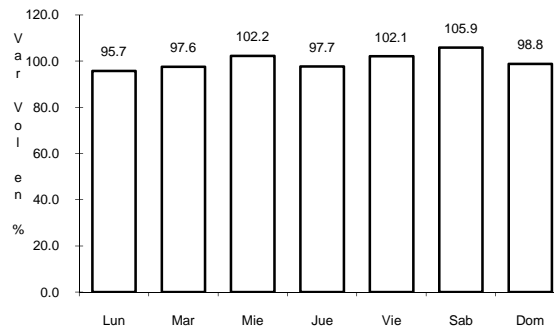
24 CARR: LAGOS DE MORENO - GUADALAJARA

CLAVE: 14115

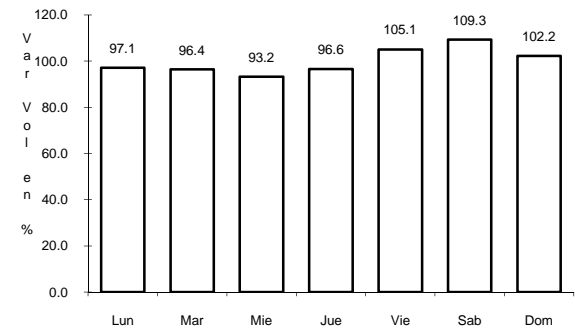
ruta: MEX-080



Km: 0.00 Tipo: 3 Sent: 1



Km: 0.00 Tipo: 3 Sent: 2

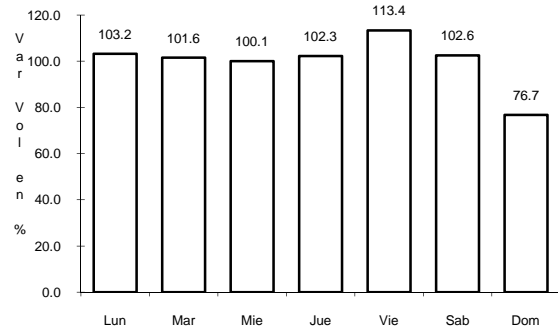


Km: 186.17 Tipo: 1 Sent: 0

25 CARR: LAGOS DE MORENO - UNION DE SAN ANTONIO

CLAVE: 14581

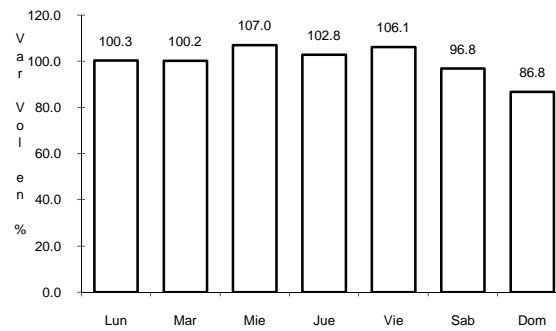
RUTA: JAL



Km: 0.00

Tipo: 3

Sent: 0



Km: 27.00

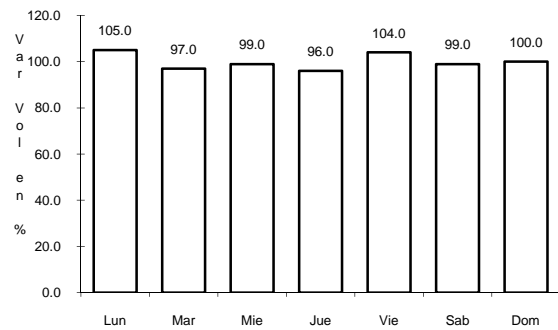
Tipo: 1

Sent: 0

26 CARR: LIBRAMIENTO DE MAZAMITLA

CLAVE: 14014

RUTA: JAL



Km: 3.00

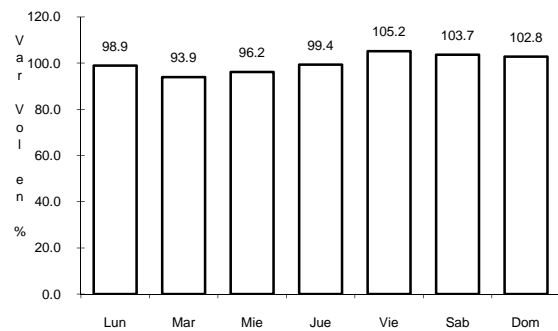
Tipo: 1

Sent: 0

27 CARR: LIBRAMIENTO DE ZAPOTLANEJO

CLAVE: 14013

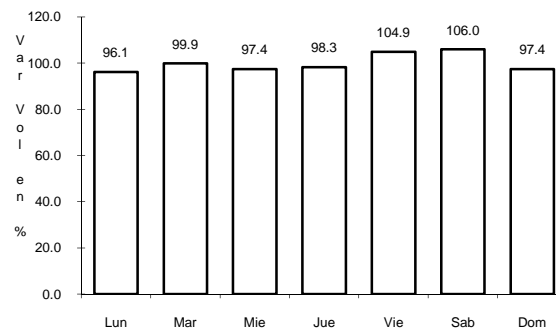
RUTA: JAL



Km: 0.00

Tipo: 3

Sent: 1



Km: 0.00

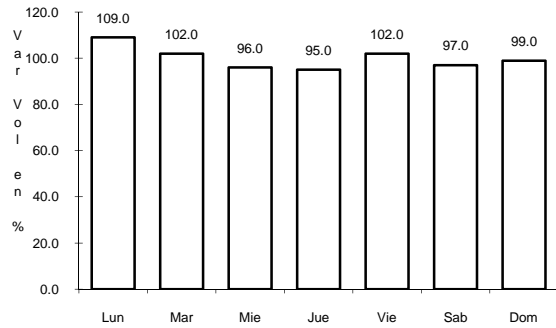
Tipo: 3

Sent: 2

28 CARR: MAZAMITLA - TUXCUECA

CLAVE: 14011

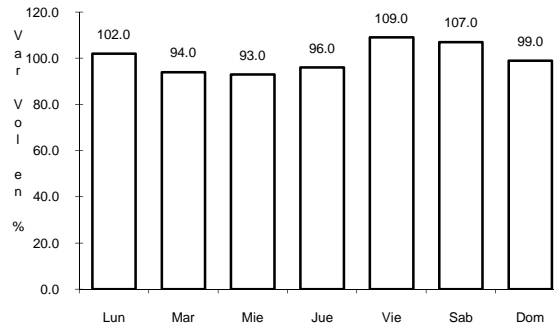
ruta: JAL



Km: 0.00

Tipo: 3

Sent: 0



Km: 42.00

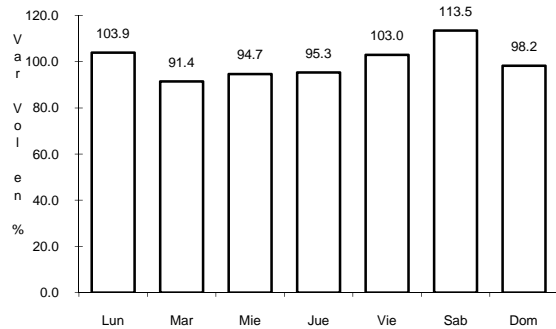
Tipo: 1

Sent: 0

29 CARR: RAMAL A AMECA

CLAVE: 14223

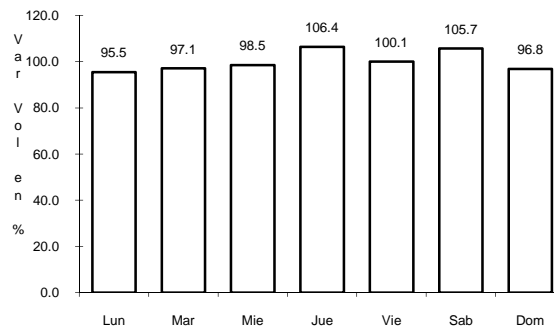
ruta: MEX



Km: 0.00

Tipo: 3

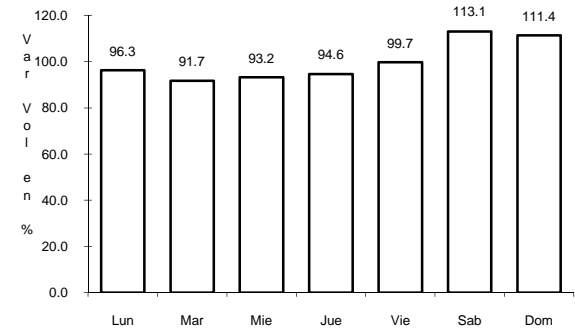
Sent: 0



Km: 15.00

Tipo: 3

Sent: 0



Km: 53.00

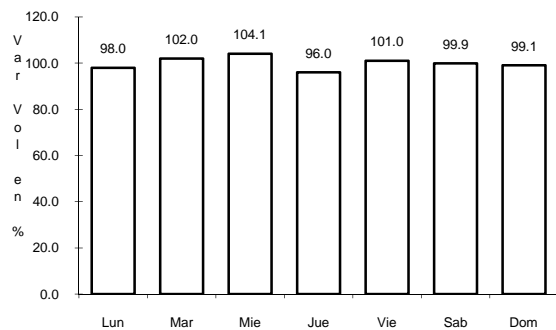
Tipo: 1

Sent: 0

30 CARR: RAMAL A JESUS MARIA

CLAVE: 14004

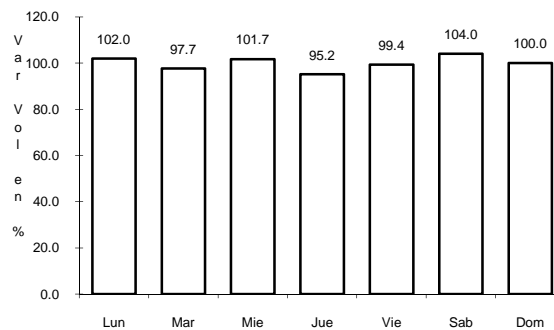
ruta: JAL-004



Km: 0.00

Tipo: 3

Sent: 0



Km: 9.00

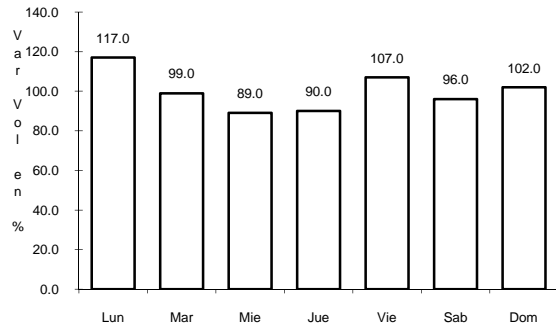
Tipo: 1

Sent: 0

31 CARR: RAMAL A TAPALPA

CLAVE: 14022

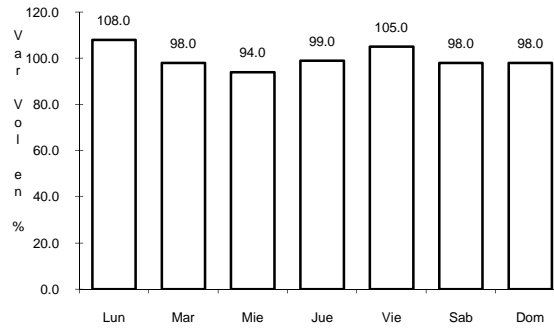
RUTA: JAL-022



Km: 0.00

Tipo: 3

Sent: 0



Km: 32.00

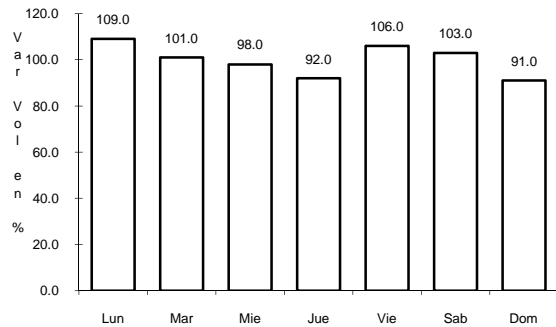
Tipo: 1

Sent: 0

32 CARR: RAMAL A TEOCUIATLAN DE CORONA

CLAVE: 14566

RUTA: JAL



Km: 0.00

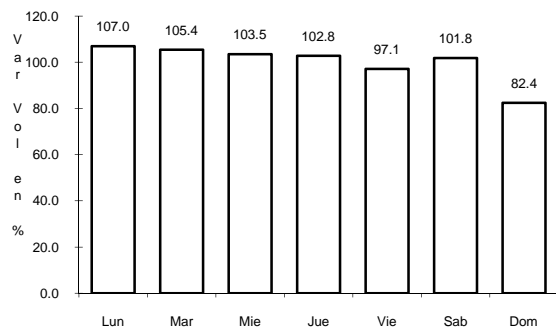
Tipo: 3

Sent: 0

33 CARR: RAMAL A TOMATLAN

CLAVE: 14558

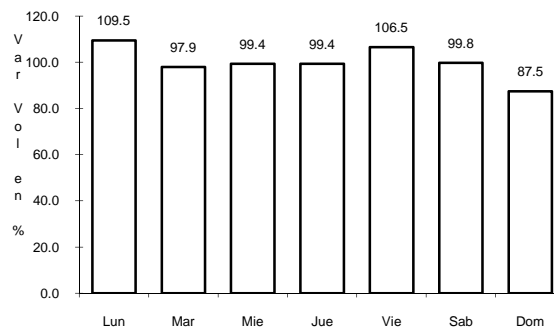
RUTA: MEX



Km: 0.00

Tipo: 3

Sent: 0



Km: 13.00

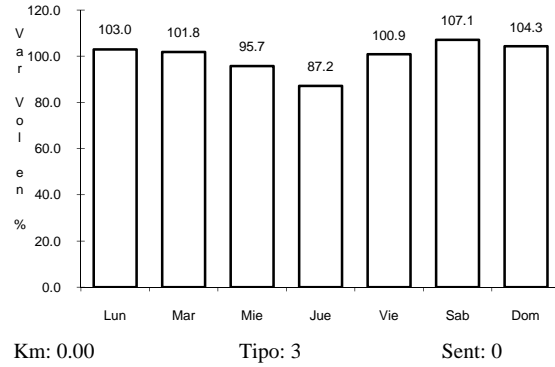
Tipo: 1

Sent: 0

34 CARR: SAN CLEMENTE - ENT. LAS CRUCES

CLAVE: 14070

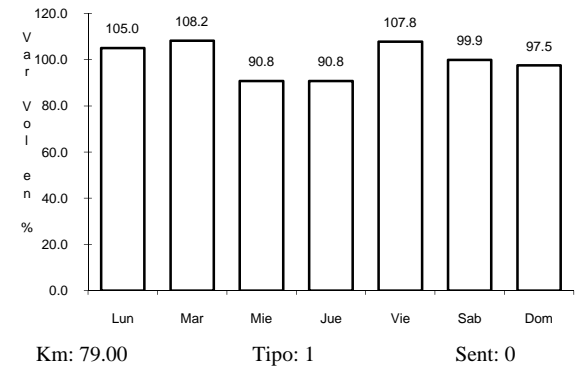
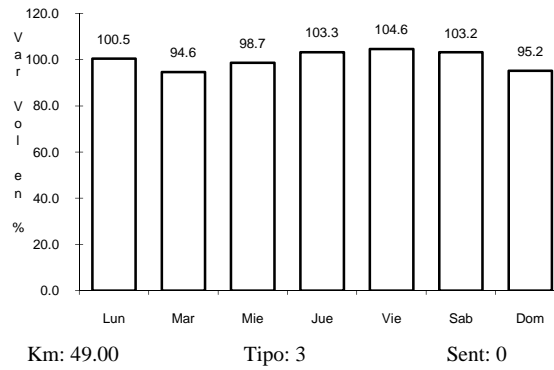
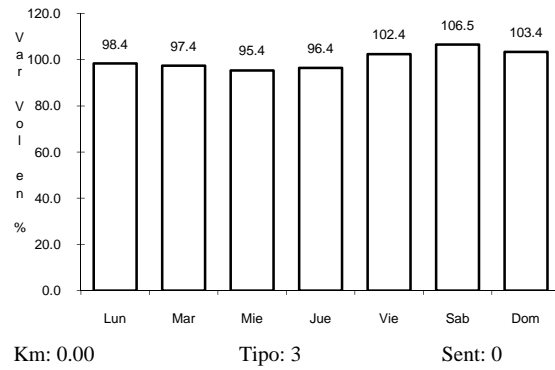
ruta: JAL



35 CARR: SANTA ROSA - LA BARCA

CLAVE: 14007

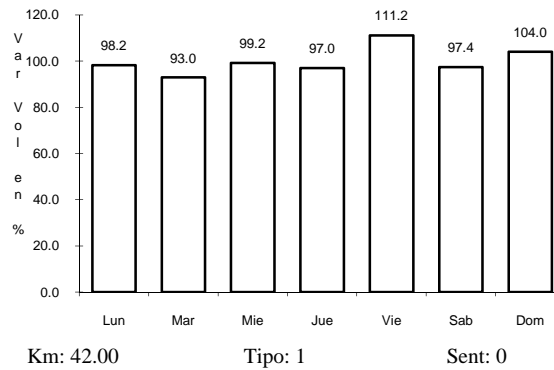
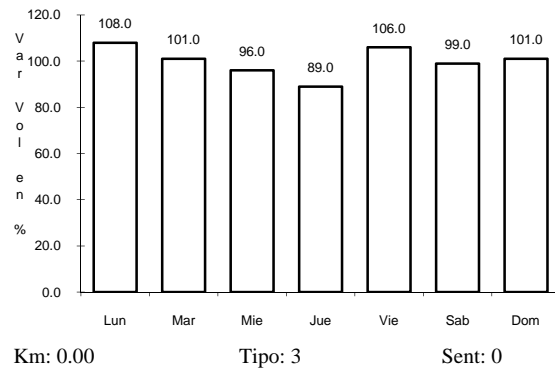
ruta: MEX-035



36 CARR: SAYULA - VENUSTIANO CARRANZA

CLAVE: 14585

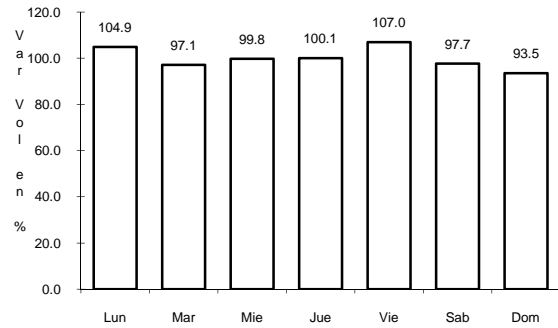
ruta: JAL



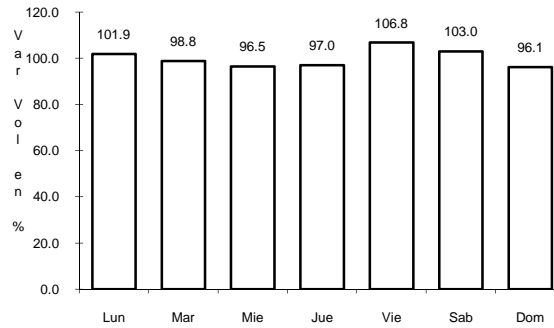
42 CARR: DOLORES HIDALGO - OJUELOS DE JALISCO

CLAVE: 00107

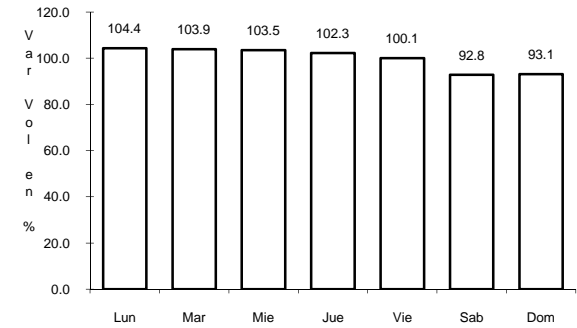
RUTA: MEX-051



Km: 0.00 Tipo: 3 Sent: 0



Km: 51.38 Tipo: 1 Sent: 0

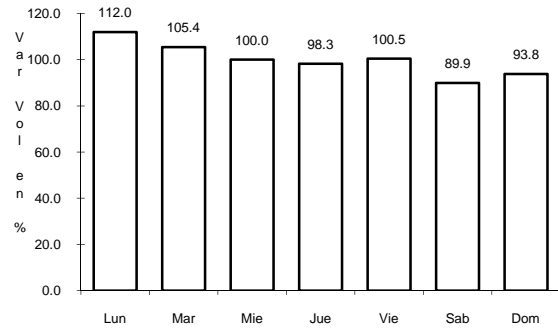


Km: 113.49 Tipo: 1 Sent: 0

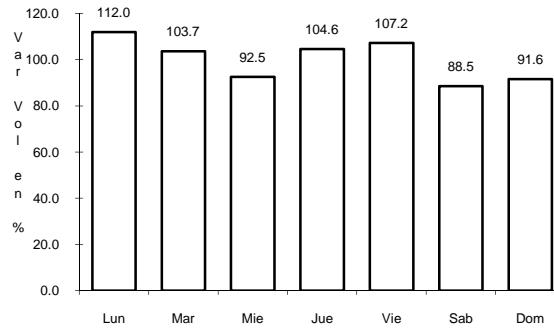
43 CARR: ENT. OJO CALIENTE - ENT. OJUELOS DE JALISCO

CLAVE: 00126

RUTA: ZAC



Km: 0.00 Tipo: 3 Sent: 0

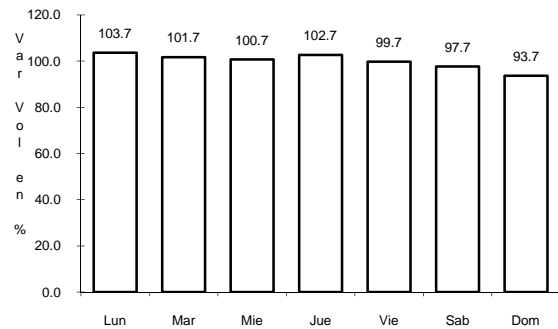


Km: 16.00 Tipo: 3 Sent: 0

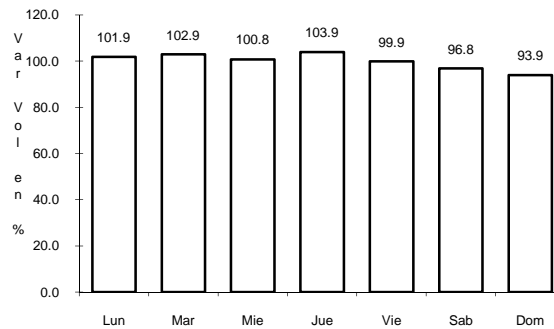
44 CARR: ENT. PENITENCIARIA - VILLA HIDALGO

CLAVE: 00120

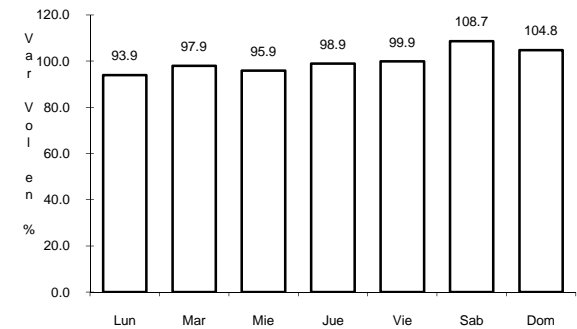
RUTA: MEX-071



Km: 0.00 Tipo: 3 Sent: 0



Km: 27.00 Tipo: 3 Sent: 0

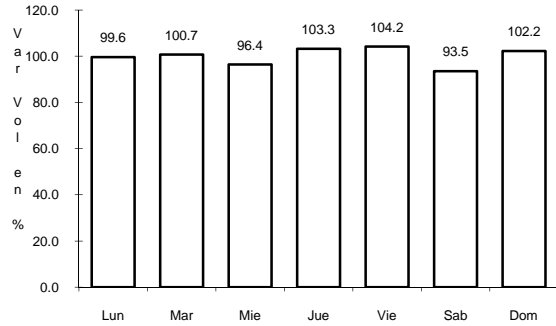


Km: 38.00 Tipo: 1 Sent: 0

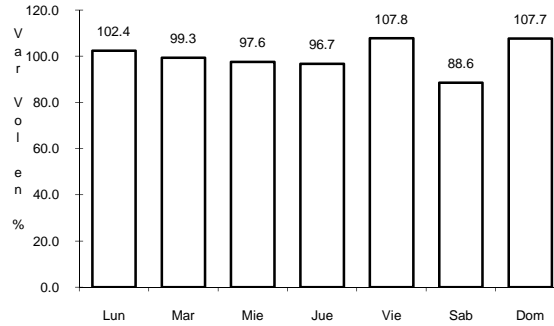
45 CARR: IRAPUATO - GUADALAJARA

CLAVE: 00114

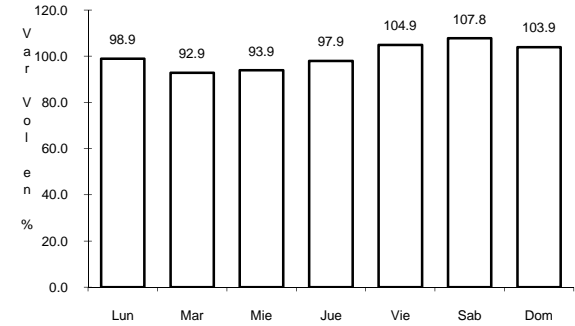
RUTA: MEX-090-110



Km: 2.78 Tipo: 1 Sent: 1



Km: 2.78 Tipo: 1 Sent: 2

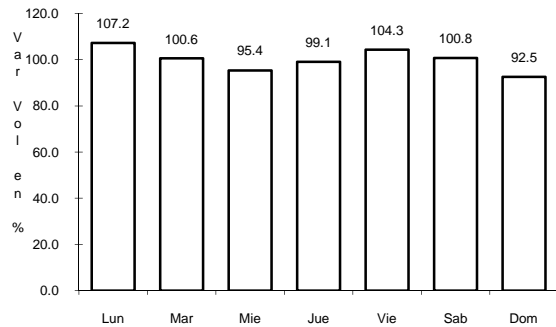


Km: 215.80 Tipo: 1 Sent: 0

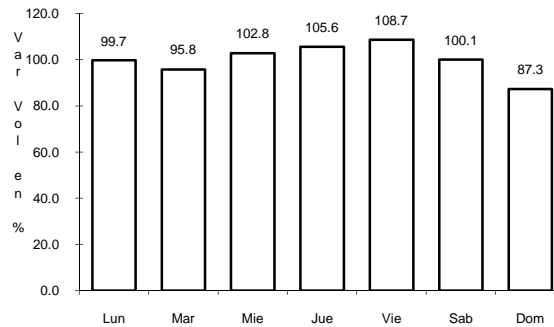
46 CARR: JIQUILPAN - COLIMA

CLAVE: 00156

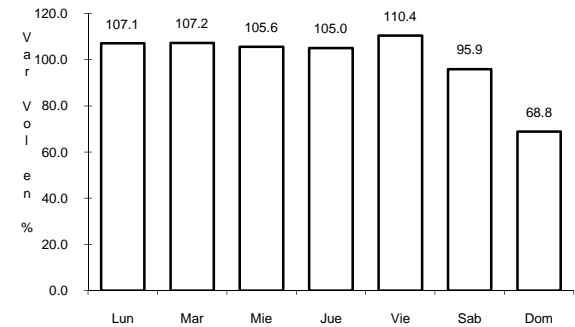
RUTA: MEX-110



Km: 0.00 Tipo: 3 Sent: 0



Km: 108.50 Tipo: 3 Sent: 0

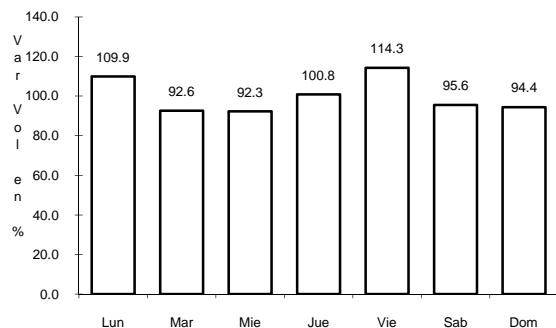


Km: 222.00 Tipo: 1 Sent: 0

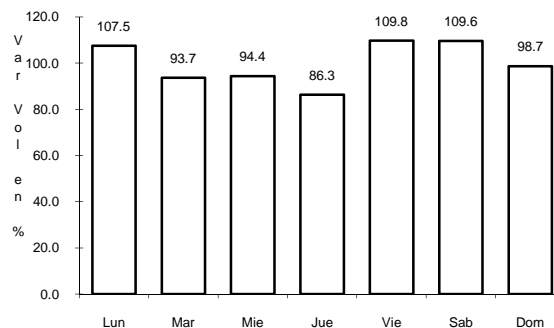
47 CARR: JIQUILPAN - GUADALAJARA

CLAVE: 00429

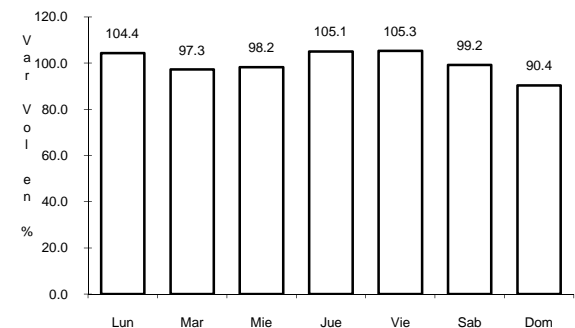
RUTA: MEX-015



Km: 0.00 Tipo: 3 Sent: 1



Km: 0.00 Tipo: 3 Sent: 2

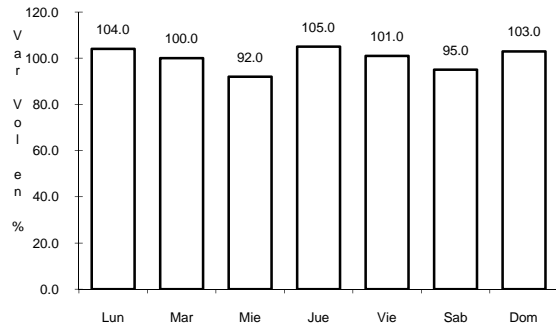


Km: 65.29 Tipo: 1 Sent: 0

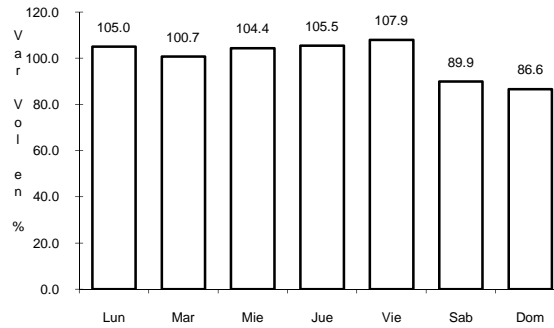
48 CARR: LEON - AGUASCALIENTES

CLAVE: 00167

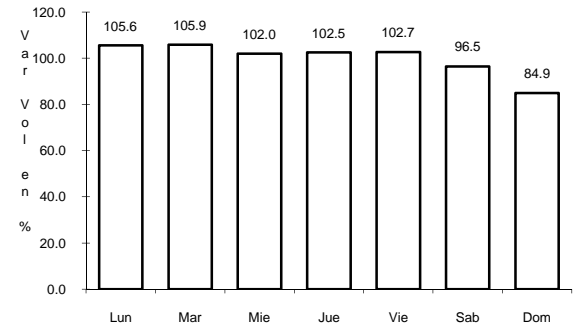
RUTA: MEX-045



Km: 11.00 Tipo: 1 Sent: 0



Km: 129.38 Tipo: 1 Sent: 1

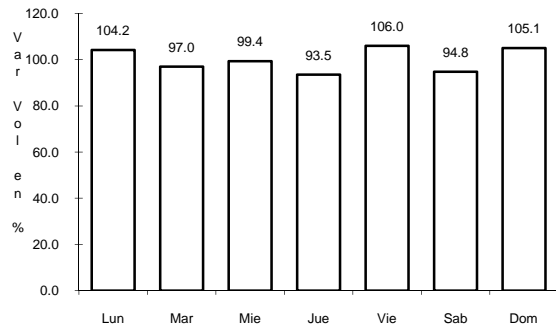


Km: 129.38 Tipo: 1 Sent: 2

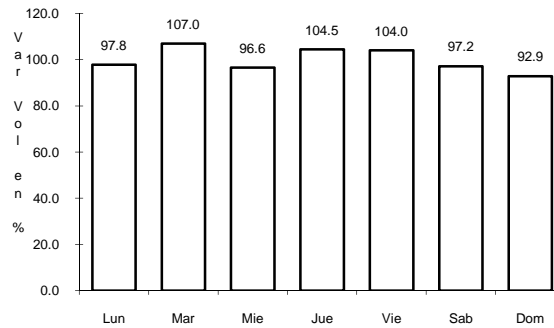
50 CARR: LEON - SAN FELIPE TORRES MOCHAS

CLAVE: 11036

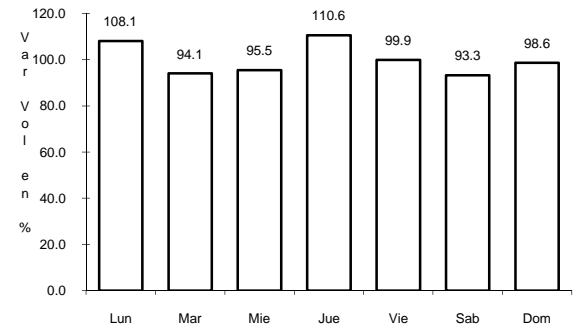
RUTA: GTO



Km: 0.00 Tipo: 3 Sent: 1



Km: 0.00 Tipo: 3 Sent: 2

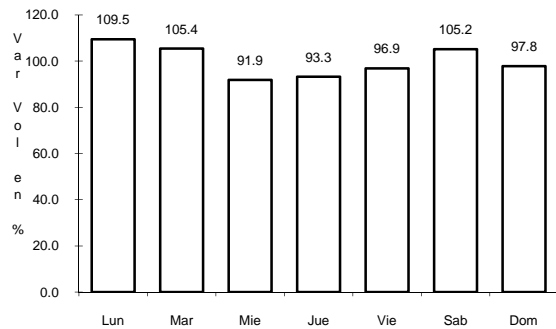


Km: 98.00 Tipo: 1 Sent: 0

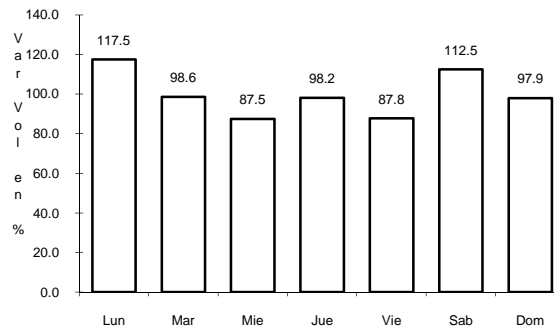
51 CARR: MANUEL DOBLADO - LA PIEDAD

CLAVE: 11028

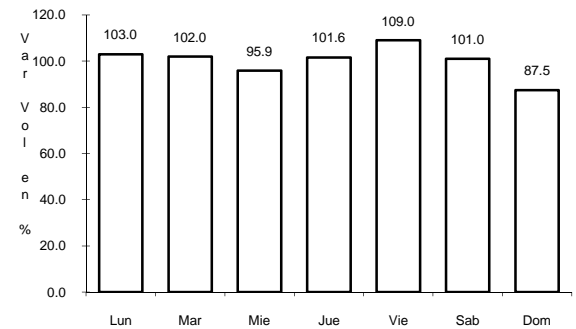
RUTA: MEX-037



Km: 0.00 Tipo: 3 Sent: 0



Km: 29.00 Tipo: 1 Sent: 0

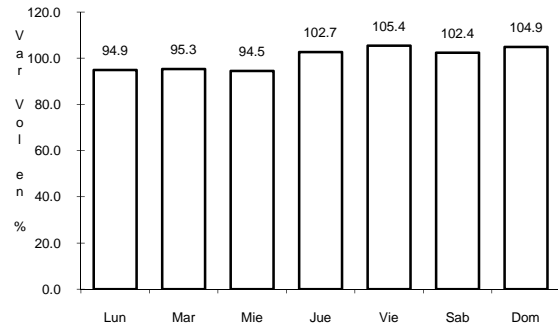


Km: 45.00 Tipo: 1 Sent: 0

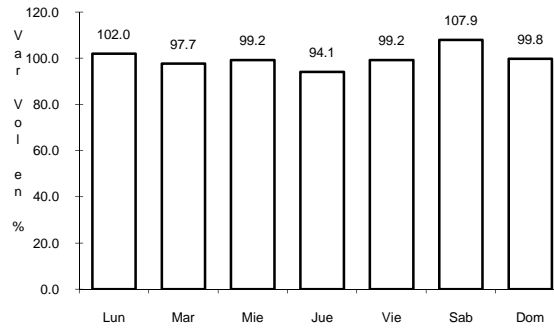
52 CARR: MANZANILLO - PUERTO VALLARTA

CLAVE: 00070

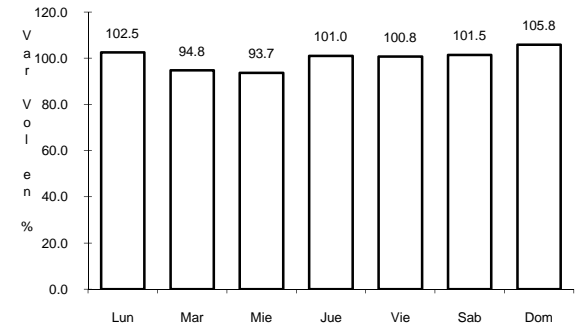
RUTA: MEX-200



Km: 0.00 Tipo: 3 Sent: 1



Km: 0.00 Tipo: 3 Sent: 2

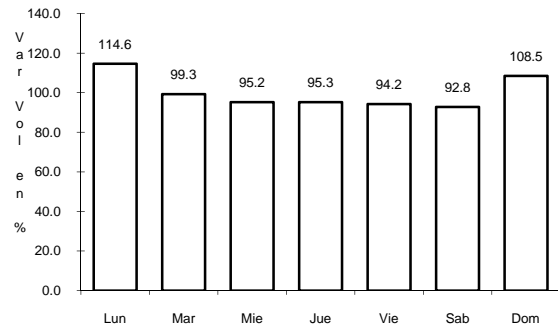


Km: 273.64 Tipo: 1 Sent: 0

53 CARR: PILOTOS - LOS CAMPOS

CLAVE: 00007

RUTA: AGS-030

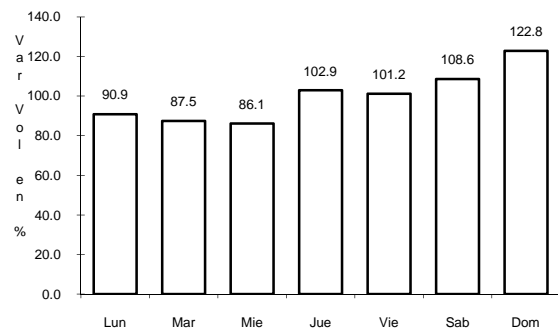


Km: 0.00 Tipo: 3 Sent: 0

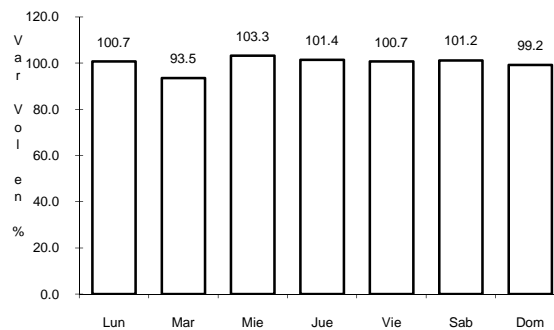
54 CARR: SAN ISIDRO EL GRANDE - BAJIO DE SAN JOSE

CLAVE: 00526

RUTA: AGS-036



Km: 0.00 Tipo: 3 Sent: 0

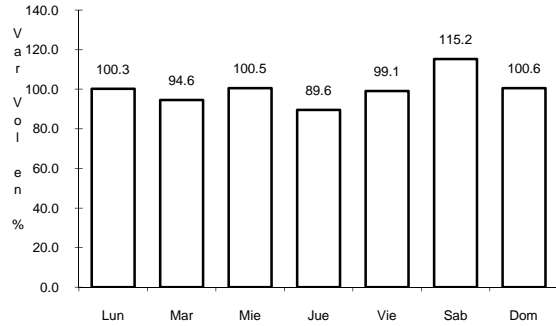


Km: 11.50 Tipo: 3 Sent: 0

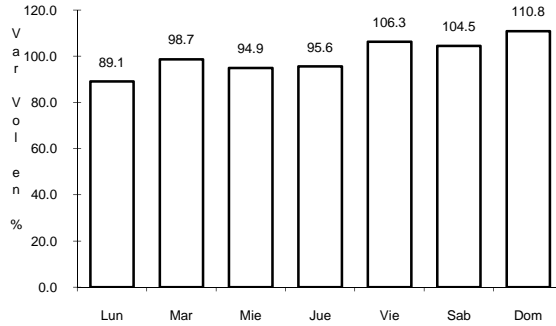
55 CARR: SAN LUIS POTOSI - LAGOS DE MORENO

CLAVE: 00133

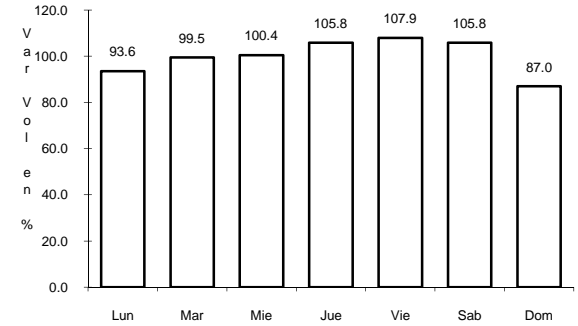
ruta: MEX-070-080



Km: 0.00 Tipo: 3 Sent: 1



Km: 0.00 Tipo: 3 Sent: 2

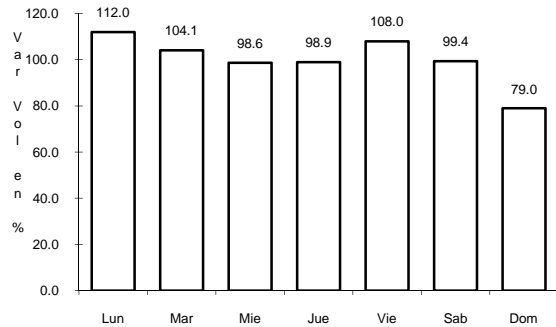


Km: 146.90 Tipo: 1 Sent: 0

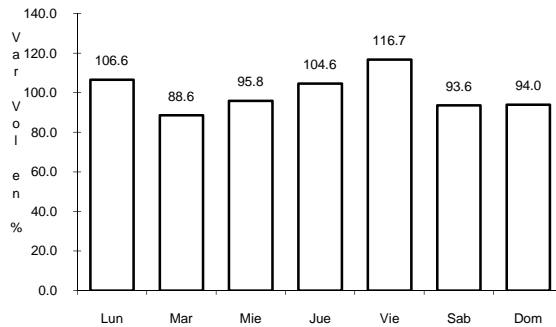
56 CARR: TEPIC - PUERTO VALLARTA

CLAVE: 00068

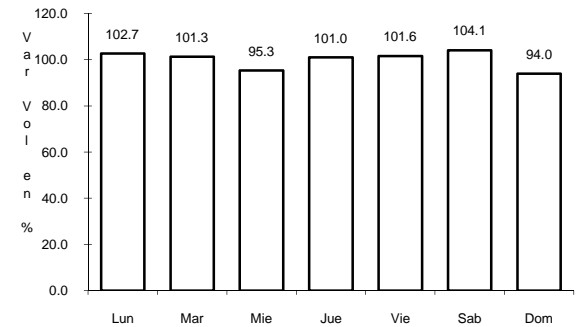
ruta: MEX-200



Km: 0.00 Tipo: 3 Sent: 1



Km: 0.00 Tipo: 3 Sent: 2



Km: 94.50 Tipo: 1 Sent: 0