

CARRETERAS AFORADAS

Num. INDICE	CARRETERA
1	ENT. TULANCINGO - TEJOCOTAL (CUOTA)
2	PACHUCA - TUXPAM
3	PACHUCA - TEMPOAL
4	PORTEZUELO - CD. VALLES
5	PORTEZUELO - PALMILLAS
6	SAN ALEJO - HUAYACOCOTLA
7	ACTOPAN - PROGRESO
8	ENT. COLONIA - PORTEZUELO
9	EL SAUCILLO - AMEALCO
10	ENT. EMILIANO ZAPATA - CD. SAHAGUN
11	ENT. TEPEJI DEL RIO - TLAHUELILPAN
12	TEPEJI DEL RIO - T.C. (MEXICO - QUERÉTARO)
13	FRANCISCO I. MADERO - TULA DE ALLENDE
14	HUICHAPAN - TECOZAUTLA
15	LIBRAMIENTO DE ATOTONILCO EL GRANDE
16	LIBRAMIENTO DE TULANCINGO (CUOTA)
17	PACHUCA - CD. SAHAGUN
18	RAMAL A EL CHICO
19	RAMAL A PACHUCA
20	SAN FELIPE ORIZATLAN - HUEJUTLA DE REYES
21	TLAHUELILPAN - SAN AGUSTIN TLAXIACA
22	ALAMO - HUEJUTLA DE REYES
23	APIZACO - TEJOCOTAL
24	CALPULALPAN - EL OCOTE
25	ENT. JOROBAS - TULA
26	T. C. (LOS REYES - EL TEPHE) - TIZAYUCA
27	ENT. TOLMAN - CD. SAHAGUN
28	JILOTEPEC - MARAVILLAS
29	LOS REYES - EL TEPHE
30	MEXICO - PACHUCA (LIBRE)
31	MEXICO - QUERETARO (CUOTA)
32	MEXICO - TIZAYUCA (CUOTA)
33	OTUMBA - TIZAYUCA
34	SANTO DOMINGO - T. C. (MEXICO - QUERETARO (CUOTA))
35	TAMAZUNCHALE - SAN FELIPE ORIZATLAN
36	VENTA DE CARPIO - T. C. (PACHUCA - TUXPAM)

HIDALGO

1 CARR : ENT. TULANCINGO - TEJOCOTAL (CUOTA)

CLAVE: 00026

RUTA : MEX-132D

AÑO : 2007

L U G A R	E S T A C I O N				C L A S I F I C A C I O N V E H I C U L A R E N P O R C I E N T O .												
	KM	TE	SC	TDPA	A	B	C2	C3	T3S2	T3S3	T3S2R4	OTROS	A	B	C	K'	D
T. C. PACHUCA - ENT. CAÑADA RICA	0.00	0	0														
CASETA DE COBRO SAN ALEJO	37.00	2	0	9329													
LIM. EDOS. TERM. HGO. PPIA. PUE.	38.00	0	0														
TEJOCOTAL	39.40	0	0														

2 CARR : PACHUCA - TUXPAM

CLAVE: 00608

RUTA : MEX-130

AÑO : 2007

L U G A R	E S T A C I O N				C L A S I F I C A C I O N V E H I C U L A R E N P O R C I E N T O .												
	KM	TE	SC	TDPA	A	B	C2	C3	T3S2	T3S3	T3S2R4	OTROS	A	B	C	K'	D
PACHUCA	0.00	0	0														
X. C. LIBRAMIENTO DE PACHUCA	2.60	3	1	3528	87.3	2.3	2.2	2	1.2	2.1	1.3	1.6	87.3	2.3	10.4	0.082	0.503
X. C. LIBRAMIENTO DE PACHUCA	2.60	3	2	3570	87	3	2.2	2	1.3	1.8	1.2	1.5	87	3	10	0.082	0.503
T. IZQ. PACHUQUILLA (1° ACCESO)	7.00	1	1	6632	88.2	2.4	3.8	1.7	1	1.5	1.1	0.3	88.2	2.4	9.4	0.082	0.502
T. IZQ. PACHUQUILLA (1° ACCESO)	7.00	1	2	6591	87.3	3.4	3.4	1.5	1.1	1.7	1.2	0.4	87.3	3.4	9.3	0.081	0.502
T. IZQ. PACHUQUILLA (2° ACCESO)	10.50	1	1	5247	41.2	2.5	2.3	1.6	0.2	50.6	0	1.6	41.2	2.5	56.3	0.085	0.502
T. IZQ. PACHUQUILLA (2° ACCESO)	10.50	1	2	5296	39	2.8	2.5	2.1	0.2	50.8	0	2.6	39	2.8	58.2	0.084	0.502
T. DER. CD. SAHAGUN	16.59	1	0	7052	76.8	5.4	6	3.7	2	2.8	1.1	2.2	76.8	5.4	17.8	0.081	0.502
T. C. VENTA DE CARPIO - TULANCINGO	36.45	1	1	6187	81.6	3.5	6.5	2.6	2.9	2.1	0.6	0.2	81.6	3.5	14.9	0.083	0.501
T. C. VENTA DE CARPIO - TULANCINGO	36.45	1	2	6220	81.5	3.7	6.3	2.8	2.5	2.3	0.4	0.5	81.5	3.7	14.8	0.083	0.501
T. C. VENTA DE CARPIO - TULANCINGO	36.45	3	0	20913	77.5	4.4	7.9	3.1	2.6	1.4	1.6	1.5	77.5	4.4	18.1	0.085	0.501
T. IZQ. LIBRAMIENTO DE TULANCINGO	53.70	3	0	10391	79.7	3	2.9	1.8	5	2.2	3.2	2.2	79.7	3	17.3	0.073	0.511
T. IZQ. HUAYACOCOTLA	66.42	3	0	8730	82.8	5	1.1	1.1	4.2	1.8	2.2	1.8	82.8	5	12.2	0.078	0.51
LIM. EDOS. TERM. HGO. PPIA. PUE.	83.18	0	0														
T. DER. HUAUCHINANGO (1° ACCESO)	94.00	1	0	9533	78.8	3.5	6.9	5.7	2.9	1.3	0.2	0.7	78.8	3.5	17.7	0.082	0.502
T. DER. HUAUCHINANGO (2° ACCESO)	100.00	3	0	6969	81.8	3.1	5	0.5	3.5	0.9	2.3	2.9	81.8	3.1	15.1	0.087	0.502
VILLA AVILA CAMACHO	141.80	1	0	7088	76.2	4.5	6.5	4.2	3	2.8	1.4	1.4	76.2	4.5	19.3	0.073	0.503
VILLA AVILA CAMACHO	141.80	3	0	7318	67.6	5.4	5	5.7	7.3	4	3.5	1.5	67.6	5.4	27	0.08	0.502
PIEDRAS NEGRAS	158.70	1	0	7759	62	6	5.3	7.1	7.3	4.7	5.9	1.7	62	6	32	0.066	0.5
T. IZQ. VENUSTIANO CARRANZA	174.10	3	0	6570	78.5	6.1	3.5	2.6	2.2	2.8	2.7	1.6	78.5	6.1	15.4	0.063	0.501
LIM. EDOS. TERM. PUE. PPIA. VER.	180.00	0	0														
T. DER. POZA RICA	197.00	1	0	12897	72.3	8.2	6.1	4.3	4.1	2.8	1.3	0.9	72.3	8.2	19.5	0.08	0.501
T. DER. POZA RICA	197.00	3	0	15109	76.1	0.2	9	5.1	3.5	3.8	1.3	1	76.1	0.2	23.7	0.077	0.5
TIHUATLAN	217.00	1	0	8113	79.1	5.4	6.4	4	1.6	2.1	0.6	0.8	79.1	5.4	15.5	0.079	0.501
TIHUATLAN	217.00	3	0	6830	78.8	5.1	6.5	3.2	2.4	2.8	0.5	0.7	78.8	5.1	16.1	0.079	0.5
TUXPAM	247.00	1	0	7137	72.7	6.6	6.9	1.9	4.9	2	2.8	2.2	72.7	6.6	20.7	0.073	0.501

HIDALGO

3 CARR : PACHUCA - TEMPOAL

CLAVE: 00113

RUTA : MEX-105

AÑO : 2007

L U G A R	E S T A C I O N				C L A S I F I C A C I O N V E H I C U L A R E N P O R C I E N T O .												
	KM	TE	SC	TDPA	A	B	C2	C3	T3S2	T3S3	T3S2R4	OTROS	A	B	C	K'	D
PACHUCA	0.00	3	0	4886	81.3	0.3	0.8	0	6.1	2.1	6.6	2.8	81.3	0.3	18.4	0.079	0.567
T. DER. OMITLAN DE JUAREZ (1° ACCESO)	18.20	1	0	6024	87.1	3.2	3.6	2.1	1.2	1.8	1	0	87.1	3.2	9.7	0.08	0.503
ATOTONILCO EL GRANDE	33.85	3	0	5076	82.9	3.2	3.9	2.5	1.2	3.2	1.4	1.7	82.9	3.2	13.9	0.079	0.504
T. IZQ. METZTITLAN	63.70	1	0	4266	85.3	2.9	2	1.9	3.2	1.6	1.5	1.6	85.3	2.9	11.8	0.094	0.518
T. IZQ. METZTITLAN	63.70	3	0	2895	84.5	3.3	5.2	2.9	1	1.9	1	0.2	84.5	3.3	12.2	0.078	0.503
METZQUITITLAN	75.00	1	0	3626	82.2	3.4	1.1	2.3	2.3	1.4	1.4	5.9	82.2	3.4	14.4	0.103	0.516
T. IZQ. ZACUALTIPAN	96.50	1	0	5730	84.8	2.4	0.5	0.5	5.1	1.4	3.2	2.1	84.8	2.4	12.8	0.092	0.503
T. IZQ. ZACUALTIPAN	96.50	3	0	2899	87.2	2.7	4.2	2.1	1.1	1.2	0.9	0.6	87.2	2.7	10.1	0.079	0.501
X. C. MOLANGO - XOCHICOATLAN	129.80	1	0	2871	86.1	2.4	3.1	1.7	2.9	1.3	1.2	1.3	86.1	2.4	11.5	0.099	0.527
X. C. MOLANGO - XOCHICOATLAN	129.80	3	0	2113	86.5	3.5	2.5	1.3	2.6	1.2	1	1.4	86.5	3.5	10	0.12	0.505
T. IZQ. TEPEHUACAN DE GUERRERO	157.70	1	0	1903	84.2	2.6	3.5	2.6	2.4	1.4	1.6	1.7	84.2	2.6	13.2	0.081	0.519
TEHUETLAN	199.20	1	0	1626	82.9	2.1	3.1	2.2	3.8	2.6	2.5	0.8	82.9	2.1	15	0.099	0.508
T. IZQ. HUEJUTLA (1° ACCESO)	214.60	1	0	7916	74.7	2.4	1.7	0	8.1	2.3	8.1	2.7	74.7	2.4	22.9	0.081	0.503
T. IZQ. HUEJUTLA (1° ACCESO)	214.60	3	0	9007	73.7	2.5	1.5	0	7.7	2.6	9	3	73.7	2.5	23.8	0.08	0.522
LIM. EDOS. TERM. HGO. PPIA. VER.	217.20	0	0														
T. C. ALAZAN - CANOAS	260.70	1	0	2680	77.3	4.4	4.3	2.7	2.9	3.4	3.5	1.5	77.3	4.4	18.3	0.09	0.508

4 CARR : PORTEZUELO - CD. VALLES

CLAVE: 00023

RUTA : MEX-085

AÑO : 2007

L U G A R	E S T A C I O N				C L A S I F I C A C I O N V E H I C U L A R E N P O R C I E N T O .												
	KM	TE	SC	TDPA	A	B	C2	C3	T3S2	T3S3	T3S2R4	OTROS	A	B	C	K'	D
PORTEZUELO	0.00	3	0	4189	84.1	4.3	3.6	1.2	3.6	1.1	0.9	1.2	84.1	4.3	11.6	0.085	0.511
T. DER. TASQUILLO (2° ACCESO)	10.50	1	0	3012	84.2	4.2	4.1	1.5	3.3	1.4	0.5	0.8	84.2	4.2	11.6	0.094	0.507
T. IZQ. ZIMAPAN (1° ACCESO)	32.00	1	0	3321	85.5	4.1	3.3	1.2	3.3	1.1	0.6	0.9	85.5	4.1	10.4	0.112	0.51
T. IZQ. ZIMAPAN (1° ACCESO)	32.00	3	0	1483	87	5.2	2.9	1.7	1.9	0.9	0.1	0.3	87	5.2	7.8	0.103	0.519
LA ESTANCIA	41.00	3	0	1193	81.9	5.9	5.9	2.6	1.2	0.7	0.4	1.4	81.9	5.9	12.2	0.096	0.511
TRANCAS	51.00	3	0	1451	82.8	9	1.8	2	0.9	1.7	0	1.8	82.8	9	8.2	0.099	0.501
JACALA	98.60	3	0	1745	84.2	4.2	5.5	1.6	1.7	0.9	0.6	1.3	84.2	4.2	11.6	0.088	0.504
ZACATE GRANDE	143.10	1	0	1809	84.5	5.3	3.4	2.7	0.9	1.6	0	1.6	84.5	5.3	10.2	0.088	0.501
T. IZQ. PISAFLORES	154.00	3	0	1507	84.9	4.6	4.5	2.4	1.4	0.7	0.4	1.1	84.9	4.6	10.5	0.094	0.5
LIM. EDOS. TERM. HGO. PPIA. S.L.P.	168.60	0	0														
TAMAZUNCHALE	192.80	1	0	3099	86.9	2.8	4.2	2.1	1.1	1.3	1	0.6	86.9	2.8	10.3	0.074	0.5
T. IZQ. XILITLA	228.80	1	0	3804	78.2	3.8	6.6	3.8	2.1	2.9	1	1.6	78.2	3.8	18	0.074	0.502
T. IZQ. XILITLA	228.80	3	0	1711	78.2	6	6.4	4.3	2.2	2.2	0.7	0	78.2	6	15.8	0.088	0.502
T. IZQ. AQUISMON	252.50	1	0	3503	76.1	7.7	8.3	3.3	2	1.7	0.8	0.1	76.1	7.7	16.2	0.087	0.501

HIDALGO

4 CARR : PORTEZUELO - CD. VALLES

CLAVE: 00023

RUTA : MEX-085

AÑO : 2007

L U G A R	E S T A C I O N				C L A S I F I C A C I O N V E H I C U L A R E N P O R C I E N T O .												
	KM	TE	SC	TDPA	A	B	C2	C3	T3S2	T3S3	T3S2R4	OTROS	A	B	C	K'	D
AGUA HEDIONDA	265.00	1	0	3864	71.6	8.5	6.8	6.1	3.7	2.1	1.1	0.1	71.6	8.5	19.9	0.087	0.501
CD. VALLES	300.00	1	0	4529	72.4	8	7	5.6	3.5	2	1.4	0.1	72.4	8	19.6	0.087	0.502

5 CARR : PORTEZUELO - PALMILLAS

CLAVE: 00194

RUTA : MEX-045

AÑO : 2007

L U G A R	E S T A C I O N				C L A S I F I C A C I O N V E H I C U L A R E N P O R C I E N T O .												
	KM	TE	SC	TDPA	A	B	C2	C3	T3S2	T3S3	T3S2R4	OTROS	A	B	C	K'	D
PORTEZUELO	0.00	3	0	6828	60.7	3	3.7	5.8	12.2	5.5	6.8	2.3	60.7	3	36.3	0.082	0.511
JONACAPA	29.41	3	0	6701	57.8	4.2	3.9	5.5	13.2	7.3	6.3	1.8	57.8	4.2	38	0.067	0.505
HUICHAPAN	45.10	1	0	6114	92.6	3.2	1.6	0.2	1.4	0.3	0.1	0.6	92.6	3.2	4.2	0.085	0.505
T. IZQ. NOPALA	56.15	1	0	6159	62.8	4.2	2.4	5	11.5	6.3	6.2	1.6	62.8	4.2	33	0.089	0.504
LIM. EDOS. TERM. HGO. PPIA. QRO.	71.40	0	0														
PALMILLAS	80.00	1	0	6947	59.6	5.4	4.2	3.1	12.5	6.1	7.7	1.4	59.6	5.4	35	0.087	0.516

6 CARR : SAN ALEJO - HUAYACOCOTLA

CLAVE: 00132

RUTA : HGO-051-VER-11

AÑO : 2007

L U G A R	E S T A C I O N				C L A S I F I C A C I O N V E H I C U L A R E N P O R C I E N T O .												
	KM	TE	SC	TDPA	A	B	C2	C3	T3S2	T3S3	T3S2R4	OTROS	A	B	C	K'	D
T. C. PACHUCA - TUXPAM	0.00	3	0	3596	77.8	4.3	7.9	3.1	2.6	1.3	1.6	1.4	77.8	4.3	17.9	0.114	0.5
METEPEC	11.80	3	0	2822	86.6	3.1	3.2	1.4	2.9	1.1	0.8	0.9	86.6	3.1	10.3	0.091	0.506
AGUA BLANCA	29.48	3	0	2237	84.1	2.5	4	3.4	1.7	1.8	1.1	1.4	84.1	2.5	13.4	0.097	0.502
LIM. EDOS. TERM. HGO. PPIA. VER.	36.48	0	0														
HUAYACOCOTLA	66.00	1	0	1345	88.8	3.5	3.7	2.3	0.3	0.3	0.5	0.6	88.8	3.5	7.7	0.095	0.509

7 CARR : ACTOPAN - PROGRESO

CLAVE: 13038

RUTA : HGO

AÑO : 2007

L U G A R	E S T A C I O N				C L A S I F I C A C I O N V E H I C U L A R E N P O R C I E N T O .												
	KM	TE	SC	TDPA	A	B	C2	C3	T3S2	T3S3	T3S2R4	OTROS	A	B	C	K'	D
ACTOPAN	0.00	3	1	5869	86.9	3	3.1	1.3	2.9	0.5	0.5	1.8	86.9	3	10.1	0.099	0.502
ACTOPAN	0.00	3	2	5819	87.1	3	3	1.4	3	0.5	0.4	1.6	87.1	3	9.9	0.095	0.502
PROGRESO	23.90	1	1	4376	87.2	3.1	4.4	1.3	1.9	0.7	0.4	1	87.2	3.1	9.7	0.106	0.502
PROGRESO	23.90	1	2	4407	85.9	3	2.9	1.3	3.2	0.8	1	1.9	85.9	3	11.1	0.096	0.502

HIDALGO

8 CARR : ENT. COLONIA - PORTEZUELO

CLAVE: 13257

RUTA : MEX-085

AÑO : 2007

L U G A R	E S T A C I O N				C L A S I F I C A C I O N V E H I C U L A R E N P O R C I E N T O .												
	KM	TE	SC	TDPA	A	B	C2	C3	T3S2	T3S3	T3S2R4	OTROS	A	B	C	K'	D
ENT. COLONIA	0.00	3	1	9274	68.6	6.4	3.7	3.4	6.8	3.9	3.9	3.3	68.6	6.4	25	0.074	0.501
ENT. COLONIA	0.00	3	2	9328	71.4	6.2	5.9	4.1	5.6	3.1	1.7	2	71.4	6.2	22.4	0.092	0.501
T. DER. PACHUCA	8.34	3	1	11520	77.8	6.1	2.9	3.2	2.7	2.7	1.8	2.8	77.8	6.1	16.1	0.093	0.502
T. DER. PACHUCA	8.34	3	2	11412	78	7.2	4.8	2.4	2.7	2.5	1.2	1.2	78	7.2	14.8	0.087	0.502
ACTOPAN	34.13	1	1	9674	70.8	6.2	4.2	2.7	6.2	2.9	3.4	3.6	70.8	6.2	23	0.087	0.503
ACTOPAN	34.13	1	2	9562	70.4	8.5	4.7	3	6	2.3	2.1	3	70.4	8.5	21.1	0.092	0.503
ACTOPAN	34.13	3	1	6692	70.4	5.4	2.8	2.8	6.2	3.5	5.6	3.3	70.4	5.4	24.2	0.098	0.501
ACTOPAN	34.13	3	2	6678	70.5	5.5	2.8	2.8	6.2	3.4	5.5	3.3	70.5	5.5	24	0.099	0.501
T. IZQ. TULA	68.20	1	0	9659	71.3	4.4	4.3	3.7	8.3	3.3	3	1.7	71.3	4.4	24.3	0.094	0.51
IXMIQUILPAN	75.20	1	0	13672	74.5	3.6	4.1	2.8	6.7	2.9	3	2.4	74.5	3.6	21.9	0.087	0.506
IXMIQUILPAN	75.20	3	0	9826	69.4	2.7	2	2.9	9.8	3.8	7.2	2.2	69.4	2.7	27.9	0.081	0.501
PORTEZUELO	82.00	0	0														

9 CARR : EL SAUCILLO - AMEALCO

CLAVE: 13103

RUTA : HGO-103

AÑO : 2007

L U G A R	E S T A C I O N				C L A S I F I C A C I O N V E H I C U L A R E N P O R C I E N T O .												
	KM	TE	SC	TDPA	A	B	C2	C3	T3S2	T3S3	T3S2R4	OTROS	A	B	C	K'	D
T. C. PORTEZUELO - PALMILLAS	0.00	3	0	2670	70.8	9.3	7.6	3.2	3.8	2.3	2.4	0.6	70.8	9.3	19.9	0.118	0.504
NOPALA	11.00	1	1	1213	72.6	7.6	5.5	4.8	4.6	2.8	1.9	0.2	72.6	7.6	19.8	0.108	0.503
NOPALA	11.00	1	2	1200	74	7.1	6.2	3.8	3.8	2.4	2	0.7	74	7.1	18.9	0.137	0.503
NOPALA	11.00	3	0	2045	77.1	5.8	5.3	4.7	3.1	1.4	1.9	0.7	77.1	5.8	17.1	0.082	0.501
AMEALCO	21.40	1	0	1110	73.7	6.8	6.7	5.4	2.5	2.5	2	0.4	73.7	6.8	19.5	0.099	0.501

10 CARR : ENT. EMILIANO ZAPATA - CD. SAHAGUN

CLAVE: 13255

RUTA : HGO

AÑO : 2007

L U G A R	E S T A C I O N				C L A S I F I C A C I O N V E H I C U L A R E N P O R C I E N T O .												
	KM	TE	SC	TDPA	A	B	C2	C3	T3S2	T3S3	T3S2R4	OTROS	A	B	C	K'	D
T. C. CALPULALPAN - EL OCOTE	0.00	0	0														
EMILIANO ZAPATA	2.70	1	1	3522	84.3	2.6	4	3.4	1.8	1.6	1	1.3	84.3	2.6	13.1	0.102	0.501
EMILIANO ZAPATA	2.70	1	2	3536	84	2.5	3.8	3.3	1.9	1.9	1.1	1.5	84	2.5	13.5	0.113	0.501
T. IZQ. OTUMBA	14.00	1	1	4300	79.5	4.5	5.9	3.1	3.4	2.1	1	0.5	79.5	4.5	16	0.08	0.5
T. IZQ. OTUMBA	14.00	1	2	4308	80.5	3.9	6	2.8	3.2	2	0.9	0.7	80.5	3.9	15.6	0.088	0.5
CD. SAHAGUN	17.98	1	0	8535	74.2	4.6	3.9	5.4	2.9	3.6	2.1	3.3	74.2	4.6	21.2	0.075	0.501

HIDALGO

11 CARR : ENT. TEPEJI DEL RIO - TLAHUELILPAN

CLAVE: 13017

RUTA : HGO-017

AÑO : 2007

L U G A R	E S T A C I O N				CLASIFICACION VEHICULAR EN PORCIENTO .												
	KM	TE	SC	TDPA	A	B	C2	C3	T3S2	T3S3	T3S2R4	OTROS	A	B	C	K'	D
T. C. MEXICO - QUERETARO (CUOTA)	0.00	0	0														
T. IZQ. TEPEJI DEL RIO	3.00	3	0	8380	77.8	3.9	5.8	0.4	5.3	1.8	2.7	2.3	77.8	3.9	18.3	0.079	0.506
TULA DE ALLENDE	18.00	1	0	6293	75.9	7.1	4	4.2	2.1	3.4	2.1	1.2	75.9	7.1	17	0.083	0.503
TLAHUELILPA DE OCAMPO	32.00	1	1	4481	85.4	2.9	2.9	1.3	3	1.4	1.1	2	85.4	2.9	11.7	0.128	0.505
TLAHUELILPA DE OCAMPO	32.00	1	2	4390	87.2	2.9	3.8	0.9	2.5	0.8	0.6	1.3	87.2	2.9	9.9	0.153	0.505

12 CARR : TEPEJI DEL RIO - T.C. (MEXICO - QUERÉTARO)

CLAVE: 13104

RUTA : HGO

AÑO : 2007

L U G A R	E S T A C I O N				CLASIFICACION VEHICULAR EN PORCIENTO .												
	KM	TE	SC	TDPA	A	B	C2	C3	T3S2	T3S3	T3S2R4	OTROS	A	B	C	K'	D
T. C. ENT. TEPEJI DEL RIO - TLAHUELILPA DE OCAMPO	0.00	3	0	4561	65.8	4.8	5.7	3	5.9	6.4	4.4	4	65.8	4.8	29.4	0.081	0.506
T. C. (MEXICO - QUERETARO)	12.40	1	0	3086	68	10.7	6	5	4.2	3.1	2	1	68	10.7	21.3	0.089	0.504

13 CARR : FRANCISCO I. MADERO - TULA DE ALLENDE

CLAVE: 13043

RUTA : HGO

AÑO : 2007

L U G A R	E S T A C I O N				CLASIFICACION VEHICULAR EN PORCIENTO .												
	KM	TE	SC	TDPA	A	B	C2	C3	T3S2	T3S3	T3S2R4	OTROS	A	B	C	K'	D
T. C. PORTEZUELO - PALMILLAS	0.00	3	0	2781	81.1	5.7	2.8	3.2	2.7	2.2	0	2.3	81.1	5.7	13.2	0.101	0.514
GRAL. PEDRO MARIA ANAYA	38.20	1	0	2405	80.2	5.8	4.4	2	2.6	2.4	2	0.6	80.2	5.8	14	0.084	0.501
T. C. (MEXICO - QUERETARO) - TLAHUELILPA DE OCAMPO	52.70	1	0	5037	86	2.9	1	1.1	3.5	1.3	2.7	1.5	86	2.9	11.1	0.103	0.508

14 CARR : HUICHAPAN - TECOZAUTLA

CLAVE: 13030

RUTA : HGO-030

AÑO : 2007

L U G A R	E S T A C I O N				CLASIFICACION VEHICULAR EN PORCIENTO .												
	KM	TE	SC	TDPA	A	B	C2	C3	T3S2	T3S3	T3S2R4	OTROS	A	B	C	K'	D
HUICHAPAN	0.00	3	0	4518	85.6	2.5	2.3	0.8	4.3	1.2	1.5	1.8	85.6	2.5	11.9	0.096	0.502
TECOZAUTLA	30.85	0	0														

15 CARR : LIBRAMIENTO DE ATOTONILCO EL GRANDE

CLAVE: 13238

RUTA : HGO

AÑO : 2007

L U G A R	E S T A C I O N				CLASIFICACION VEHICULAR EN PORCIENTO .												
	KM	TE	SC	TDPA	A	B	C2	C3	T3S2	T3S3	T3S2R4	OTROS	A	B	C	K'	D
T. C. PACHUCA - TEMPOAL (1er ACCESO)	0.00	3	0	4581	86.5	2.9	0.8	2.6	3	1.3	1.6	1.3	86.5	2.9	10.6	0.093	0.517
T. C. PACHUCA - TEMPOAL (2do ACCESO)	6.30	1	0	5094	86.3	4	0.2	1.8	3	1.3	1.3	2.1	86.3	4	9.7	0.095	0.515

HIDALGO

20 CARR : SAN FELIPE ORIZATLAN - HUEJUTLA DE REYES

CLAVE: 13258

RUTA : MEX

AÑO : 2007

L U G A R	E S T A C I O N				C L A S I F I C A C I O N V E H I C U L A R E N P O R C I E N T O .												
	KM	TE	SC	TDPA	A	B	C2	C3	T3S2	T3S3	T3S2R4	OTROS	A	B	C	K'	D
SAN FELIPE ORIZATLAN	0.00	3	0	2861	87.2	3.2	3.2	0.1	3.1	0.7	0.9	1.6	87.2	3.2	9.6	0.091	0.5
HUEJUTLA DE REYES	25.00	1	0	2846	90.7	2.5	0.1	0.3	2.2	0.8	1.1	2.3	90.7	2.5	6.8	0.09	0.521

21 CARR : TLAHUELILPAN - SAN AGUSTIN TLAXIACA

CLAVE: 13435

RUTA : HGO

AÑO : 2007

L U G A R	E S T A C I O N				C L A S I F I C A C I O N V E H I C U L A R E N P O R C I E N T O .												
	KM	TE	SC	TDPA	A	B	C2	C3	T3S2	T3S3	T3S2R4	OTROS	A	B	C	K'	D
TLAHUELILPAN	0.00	3	0	1434	81.7	2.2	5.6	3.4	2	1.8	2.3	1	81.7	2.2	16.1	0.099	0.502
IGNACIO ZARAGOZA	25.50	3	0	2154	82.3	5.4	4.5	2.4	1.4	2.4	1.2	0.4	82.3	5.4	12.3	0.078	0.501
T. C. LA COLONIA - PORTEZUELO	48.00	1	0	4900	83.9	4.3	3	1.5	1.1	4.3	1.3	0.6	83.9	4.3	11.8	0.075	0.503

22 CARR : ALAMO - HUEJUTLA DE REYES

CLAVE: 00116

RUTA : MEX

AÑO : 2007

L U G A R	E S T A C I O N				C L A S I F I C A C I O N V E H I C U L A R E N P O R C I E N T O .												
	KM	TE	SC	TDPA	A	B	C2	C3	T3S2	T3S3	T3S2R4	OTROS	A	B	C	K'	D
T. C. TIHUATLAN - POTRERO DEL LLANO	0.00	3	0	1861	90.7	3	2.6	1.1	0.9	0.8	0.9	0	90.7	3	6.3	0.095	0.503
BENITO JUAREZ	73.00	1	0	850	89.8	2.5	3.3	0.7	0.8	0.4	0.1	2.4	89.8	2.5	7.7	0.121	0.511
T. DER. CHICONTEPEC DE TEJADA	78.00	3	0	519	89.4	3.5	5.2	0.6	0.7	0.3	0.1	0.2	89.4	3.5	7.1	0.121	0.512
LIM. EDOS. TERM. VER. PPIA. HGO.	78.70	0	0														
T. C. PACHUCA - TEMPOAL (HUEJUTLA DE REYES)	110.00	0	0														

23 CARR : APIZACO - TEJOCOTAL

CLAVE: 00430

RUTA : MEX-119

AÑO : 2007

L U G A R	E S T A C I O N				C L A S I F I C A C I O N V E H I C U L A R E N P O R C I E N T O .												
	KM	TE	SC	TDPA	A	B	C2	C3	T3S2	T3S3	T3S2R4	OTROS	A	B	C	K'	D
APIZACO	0.00	3	0	10699	79.5	4.1	3.8	1.4	3.8	2.5	2.9	2	79.5	4.1	16.4	0.099	0.502
T. DER. TETLA	6.60	3	0	9697	80	5.1	5.3	2.6	1.9	2.2	1.4	1.5	80	5.1	14.9	0.103	0.502
T. IZQ. ATLANGATEPEC	12.15	1	0	8566	75.1	7	6.9	3.5	1.5	2	1.8	2.2	75.1	7	17.9	0.085	0.501
TLAXCO	23.91	1	0	6729	86.4	5.1	2.2	1.4	1.1	1.3	1.2	1.3	86.4	5.1	8.5	0.08	0.502
TLAXCO	23.91	3	0	4645	87.1	2.7	1.5	1.6	2.5	1.6	1.5	1.5	87.1	2.7	10.2	0.09	0.503
LIM. EDOS. TERM. TLAX. PPIA. PUE.	34.45	0	0														
T. DER. TETELA DE OCAMPO	52.20	1	0	5072	82.7	8	4.1	1.7	0.4	1.5	1.1	0.5	82.7	8	9.3	0.086	0.503
ZACATLAN	71.25	1	0	6712	77.8	8.5	5.9	2.7	0.9	1.4	1.2	1.6	77.8	8.5	13.7	0.09	0.501
LIM. EDOS. TERM. PUE. PPIA. HGO.	110.50	0	0														
T. C. PACHUCA - TUXPAM	113.20	1	0	3775	78.6	2	5.1	3.2	4.8	2	2.9	1.4	78.6	2	19.4	0.083	0.501

HIDALGO

24 CARR : CALPULALPAN - EL OCOTE

CLAVE: 00054

RUTA : MEX-HGO

AÑO : 2007

L U G A R	E S T A C I O N				C L A S I F I C A C I O N V E H I C U L A R E N P O R C I E N T O .												
	KM	TE	SC	TDPA	A	B	C2	C3	T3S2	T3S3	T3S2R4	OTROS	A	B	C	K'	D
CALPULALPAN	0.00	3	0	9022	70.1	6.5	8.9	6.9	2.1	3	2	0.5	70.1	6.5	23.4	0.076	0.503
LIM. EDOS. TERM. TLAX. PPIA. HGO.	5.00	0	0														
APAN	19.58	3	1	2529	83.9	3.1	5.9	2.4	2.5	1.2	1	0	83.9	3.1	13	0.101	0.502
APAN	19.58	3	2	2513	83.8	2.8	6	2.5	2.7	1.3	0.9	0	83.8	2.8	13.4	0.101	0.502
TEPEAPULCO	34.92	3	0	3800	91.3	2.9	0.7	0.6	2.8	0.5	0.5	0.7	91.3	2.9	5.8	0.093	0.5
X. C. VENTA DE CARPIO - TULANCINGO	51.18	1	0	2148	90.7	3.1	0.4	2.1	1.7	0.7	0.4	0.9	90.7	3.1	6.2	0.12	0.506
X. C. VENTA DE CARPIO - TULANCINGO	51.18	3	0	1719	95.8	1	0	1.2	1.3	0.2	0.1	0.4	95.8	1	3.2	0.099	0.502
EL OCOTE	70.44	1	0	2465	78.1	4.3	8	3.1	2.4	1.2	1.6	1.3	78.1	4.3	17.6	0.086	0.504

25 CARR : ENT. JOROBAS - TULA

CLAVE: 00159

RUTA : MEX-087

AÑO : 2007

L U G A R	E S T A C I O N				C L A S I F I C A C I O N V E H I C U L A R E N P O R C I E N T O .												
	KM	TE	SC	TDPA	A	B	C2	C3	T3S2	T3S3	T3S2R4	OTROS	A	B	C	K'	D
T. C. MEXICO - QUERETARO (CUOTA)	0.00	3	0	7490	69.4	13.1	7.8	4.5	1.9	1	0	2.3	69.4	13.1	17.5	0.091	0.509
LIM. EDOS. TERM. MEX. PPIA. HGO.	7.50	0	0														
T. DER. ATOTONILCO	21.50	1	0	7481	76.7	5	0.8	2.7	5.8	3.9	3.5	1.6	76.7	5	18.3	0.091	0.507
TULA DE ALLENDE	37.70	1	0	6220	73.6	5.8	6.6	5	2.7	3.3	2.1	0.9	73.6	5.8	20.6	0.074	0.502

26 CARR : T. C. (LOS REYES - EL TEPHE) - TIZAYUCA

CLAVE: 00014

RUTA : EM-HGO

AÑO : 2007

L U G A R	E S T A C I O N				C L A S I F I C A C I O N V E H I C U L A R E N P O R C I E N T O .												
	KM	TE	SC	TDPA	A	B	C2	C3	T3S2	T3S3	T3S2R4	OTROS	A	B	C	K'	D
T. C. LOS REYES - EL TEPHE	0.00	3	0	3532	87.3	2.4	3.3	2.4	1.9	1.2	0	1.5	87.3	2.4	10.3	0.083	0.506
LIM. EDOS. TERM. MEX. PPIA. HGO.	6.50	0	0														
TIZAYUCA	8.00	1	0	2478	83.6	6.7	3.6	2.1	0.8	1.5	1.1	0.6	83.6	6.7	9.7	0.08	0.5

27 CARR : ENT. TOLMAN - CD. SAHAGUN

CLAVE: 00119

RUTA : EM-009-HGO

AÑO : 2007

L U G A R	E S T A C I O N				C L A S I F I C A C I O N V E H I C U L A R E N P O R C I E N T O .												
	KM	TE	SC	TDPA	A	B	C2	C3	T3S2	T3S3	T3S2R4	OTROS	A	B	C	K'	D
T. C. VENTA DE CARPIO - TULANCINGO	0.00	3	0	8933	79.5	3.7	0.5	1.1	4	2.9	5	3.3	79.5	3.7	16.8	0.087	0.506
OTUMBA	5.00	3	0	5039	84.3	5.1	3.4	0.6	3.3	1.5	0.9	0.9	84.3	5.1	10.6	0.094	0.506
T. DER. JALTEPEC	21.00	3	0	6273	75.1	4	6.2	5.7	4	2.1	1.5	1.4	75.1	4	20.9	0.067	0.528
LIM. EDOS. TERM. MEX. PPIA. HGO.	25.00	0	0														
CD. SAHAGUN	32.00	1	1	4112	79.7	3.9	5.8	1.8	4.3	1.6	1.4	1.5	79.7	3.9	16.4	0.088	0.504

HIDALGO

27 CARR : ENT. TOLMAN - CD. SAHAGUN

CLAVE: 00119

RUTA : EM-009-HGO

AÑO : 2007

L U G A R	E S T A C I O N				C L A S I F I C A C I O N V E H I C U L A R E N P O R C I E N T O .													
	KM	TE	SC	TDPA	A	B	C2	C3	T3S2	T3S3	T3S2R4	OTROS	A	B	C	K'	D	
CD. SAHAGUN	32.00	1	2	4048	80.6	4	5.6	1.5	4.1	1.4	1.3	1.5	80.6	4	15.4	0.09	0.504	

28 CARR : JILOTEPEC - MARAVILLAS

CLAVE: 00015

RUTA : EM-HGO

AÑO : 2007

L U G A R	E S T A C I O N				C L A S I F I C A C I O N V E H I C U L A R E N P O R C I E N T O .													
	KM	TE	SC	TDPA	A	B	C2	C3	T3S2	T3S3	T3S2R4	OTROS	A	B	C	K'	D	
JILOTEPEC	0.00	3	0	4474	82.7	4.5	2.4	0.9	3.4	1.9	1.4	2.8	82.7	4.5	12.8	0.081	0.501	
X. C. MEXICO - QUERETARO (CUOTA)	21.30	1	0	1329	87.8	6.2	3.2	0.7	1	0.3	0.2	0.6	87.8	6.2	6	0.093	0.512	
X. C. MEXICO - QUERETARO (CUOTA)	21.30	3	0	2087	82.9	5.1	1.4	1.3	3.8	2.5	1.3	1.7	82.9	5.1	12	0.103	0.501	
ACAZUCHITLAN	29.00	1	0	2203	80.2	9.3	2.7	1.6	2.3	1.6	0.5	1.8	80.2	9.3	10.5	0.153	0.517	
LIM. EDOS. TERM. MEX. PPIA. HGO.	29.30	0	0															
MARAVILLAS	36.40	1	0	1237	80.8	4.2	4.9	2.4	2.5	2.2	1.9	1.1	80.8	4.2	15	0.096	0.505	
T. C. EL SAUCILLO - AMEALCO	40.00	1	0	1367	88.9	4.1	1.1	0.9	2.5	1	0.5	1	88.9	4.1	7	0.159	0.506	

29 CARR : LOS REYES - EL TEPHE

CLAVE: 00021

RUTA : EM-HGO

AÑO : 2007

L U G A R	E S T A C I O N				C L A S I F I C A C I O N V E H I C U L A R E N P O R C I E N T O .													
	KM	TE	SC	TDPA	A	B	C2	C3	T3S2	T3S3	T3S2R4	OTROS	A	B	C	K'	D	
T. C. MEXICO - PACHUCA (LIBRE)	0.00	0	0															
LOS REYES	1.35	3	0	12345	74.7	4.5	6.3	6	3	2.4	0.1	3	74.7	4.5	20.8	0.097	0.504	
ZUMPANGO	15.35	1	0	14367	73.2	6.4	7.5	4.5	2.9	2.2	0.1	3.2	73.2	6.4	20.4	0.065	0.507	
ZUMPANGO	15.35	3	0	12145	75.1	5.9	5.6	5.2	2.9	2.9	0.2	2.2	75.1	5.9	19	0.088	0.502	
TEQUIQUIAC	29.00	1	0	7953	77.8	5.4	6.3	4	2	2.1	0	2.4	77.8	5.4	16.8	0.087	0.513	
APAXCO	39.00	3	1	4327	78.7	4.3	5.4	2.7	1.9	4.3	0	2.7	78.7	4.3	17	0.088	0.502	
APAXCO	39.00	3	2	4368	80.7	3.9	5.7	2.9	1.9	3.8	0	1.1	80.7	3.9	15.4	0.085	0.502	
LIM. EDOS. TERM. MEX. PPIA. HGO.	40.00	0	0															
T. IZQ. ATOTONILCO (1° ACCESO)	42.00	1	0	5921	75.2	5.6	6.4	3.4	2.8	3	2	1.6	75.2	5.6	19.2	0.09	0.502	
TLAXCOAPAN	52.00	3	0	7519	81.5	5.5	3.6	2	1.7	2.9	2	0.8	81.5	5.5	13	0.086	0.501	
TLAHUELILPA DE OCAMPO	60.00	3	1	5597	84	3.1	5.6	1.6	2.5	0.8	0.7	1.7	84	3.1	12.9	0.078	0.501	
TLAHUELILPA DE OCAMPO	60.00	3	2	5612	87.1	3	2.9	1.4	2.5	0.8	0.7	1.6	87.1	3	9.9	0.09	0.501	
PROGRESO	72.00	1	1	6584	83.5	4	5.3	1.4	2.9	0.8	0.6	1.5	83.5	4	12.5	0.093	0.5	
PROGRESO	72.00	1	2	6588	83.7	4	4.1	1.3	3.1	0.9	0.9	2	83.7	4	12.3	0.09	0.5	
EL TEPHE	97.00	1	0	4985	84.2	2.9	4	1.5	3.5	1.2	1.4	1.3	84.2	2.9	12.9	0.088	0.507	

HIDALGO

30 CARR : MEXICO - PACHUCA (LIBRE)

CLAVE: 00431

RUTA : MEX-085

AÑO : 2007

L U G A R	E S T A C I O N			C L A S I F I C A C I O N V E H I C U L A R E N P O R C I E N T O .												
	KM	TE	SC TDPA	A	B	C2	C3	T3S2	T3S3	T3S2R4	OTROS	A	B	C	K'	D
MEXICO	0.00	0	0													
LIM. EDOS. TERM. D.F. PPIA. MEX.	9.89	0	0													
T. DER. PIRAMIDES	26.93	1	0 37985	84.8	4.6	4.1	0.4	2.6	2.3	0.3	0.9	84.8	4.6	10.6	0.077	0.509
VENTA DE CARPIO	27.00	3	1 22803	74.6	10.6	3.9	2	3.1	2.7	0.2	2.9	74.6	10.6	14.8	0.069	0.506
VENTA DE CARPIO	27.00	3	2 23034	74.2	10.8	4	2.2	2.7	2.7	0.2	3.2	74.2	10.8	15	0.071	0.506
T. DER. AUTOPISTA MEXICO - TECAMAC (CUOTA)	37.52	1	1 12837	66.3	8.5	7.2	7.6	3.3	2.1	0.4	4.6	66.3	8.5	25.2	0.08	0.503
T. DER. AUTOPISTA MEXICO - TECAMAC (CUOTA)	37.52	1	2 12680	67.4	8.4	7.1	8.2	3.2	1.6	0.3	3.8	67.4	8.4	24.2	0.072	0.503
T. IZQ. ZUMPANGO	44.68	1	0 18027	71.2	5.3	6.5	5.6	3.7	3.1	0.4	4.2	71.2	5.3	23.5	0.098	0.508
T. IZQ. ZUMPANGO	44.68	3	0 14535	73.1	5.9	5.9	5.5	3.4	1.9	0.5	3.8	73.1	5.9	21	0.084	0.503
LIM. EDOS. TERM. MEX. PPIA. HGO.	49.25	0	0													
TIZAYUCA	52.50	3	0 7473	78.3	8.2	6.6	2.1	1	2.7	1	0.1	78.3	8.2	13.5	0.079	0.501
T. C. MEXICO - TIZAYUCA (CUOTA)	61.00	3	1 10440	76.9	6.1	5.6	2	4.7	1	1.1	2.6	76.9	6.1	17	0.124	0.502
T. C. MEXICO - TIZAYUCA (CUOTA)	61.00	3	2 10513	77.3	7.5	4.5	1.8	4.2	1.2	1	2.5	77.3	7.5	15.2	0.105	0.502
ENT. COLONIA	83.97	1	1 15854	67.3	5.8	3.3	1.6	9.2	2.8	5.1	4.9	67.3	5.8	26.9	0.105	0.502
ENT. COLONIA	83.97	1	2 15709	66.8	8.8	3.3	1.5	7.5	2.5	4.5	5.1	66.8	8.8	24.4	0.102	0.502
X. C. LIBRAMIENTO DE PACHUCA	86.50	1	1 14244	73.7	2.1	1.5	1.4	7.1	3.3	5.4	5.5	73.7	2.1	24.2	0.108	0.501
X. C. LIBRAMIENTO DE PACHUCA	86.50	1	2 14319	78.5	3.1	1	1	4.9	2.9	4.3	4.3	78.5	3.1	18.4	0.104	0.501
PACHUCA	94.00	0	0													

31 CARR : MEXICO - QUERETARO (CUOTA)

CLAVE: 00411

RUTA : MEX-057D

AÑO : 2007

L U G A R	E S T A C I O N			C L A S I F I C A C I O N V E H I C U L A R E N P O R C I E N T O .												
	KM	TE	SC TDPA	A	B	C2	C3	T3S2	T3S3	T3S2R4	OTROS	A	B	C	K'	D
MEXICO	0.00	0	0													
LIM. EDOS. TERM. D.F. PPIA. MEX.	11.30	0	0													
CASETA DE COBRO TEPOTZOTLAN	43.01	2	1 21887													
CASETA DE COBRO TEPOTZOTLAN	43.01	2	2 21886													
ENT. JOROBAS	56.18	1	1 28666	70.4	8.5	7.6	6.4	3.4	2.1	0.3	1.3	70.4	8.5	21.1	0.083	0.512
ENT. JOROBAS	56.18	1	2 30040	63.9	8.5	6.8	6.4	5.9	4.3	0.2	4	63.9	8.5	27.6	0.065	0.512
ENT. JOROBAS	56.18	3	1 23700	74.3	7	6.2	4.8	2.5	2.7	0	2.5	74.3	7	18.7	0.095	0.506
ENT. JOROBAS	56.18	3	2 23117	62.6	9.2	6.5	6.7	6.9	4.1	0	4	62.6	9.2	28.2	0.088	0.506
LIM. EDOS. TERM. MEX. PPIA. HGO.	60.00	0	0													
T. DER. TEPEJI DEL RIO	69.36	1	1 20917	69.2	7.7	7.6	3.9	4.7	3.9	2.2	0.8	69.2	7.7	23.1	0.096	0.503
T. DER. TEPEJI DEL RIO	69.36	1	2 20671	70.4	8.2	7.9	3.6	4	3	2.2	0.7	70.4	8.2	21.4	0.114	0.503
T. DER. TEPEJI DEL RIO	69.36	3	1 17822	71.5	7.8	6.7	4.2	4.5	2.1	2.3	0.9	71.5	7.8	20.7	0.085	0.5

HIDALGO

32 CARR : MEXICO - TIZAYUCA (CUOTA)

CLAVE: 00432

RUTA : MEX-085D

AÑO : 2007

L U G A R	E S T A C I O N			C L A S I F I C A C I O N V E H I C U L A R E N P O R C I E N T O .												
	KM	TE	SC TDPA	A	B	C2	C3	T3S2	T3S3	T3S2R4	OTROS	A	B	C	K'	D
T. C. MEXICO - PACHUCA (LIBRE)	0.00	0	0													
LIM. EDOS. TERM. D.F. PPIA. MEX.	9.86	0	0													
ENT. MORELOS	23.28	3	1 17118	79.7	6	4.6	3	2.1	1.9	0	2.7	79.7	6	14.3	0.106	0.504
ENT. MORELOS	23.28	3	2 17414	79.5	5.5	5.1	3	2.3	2.2	0	2.4	79.5	5.5	15	0.095	0.504
CASETA DE COBRO OJO DE AGUA	25.00	2	1 20823													
CASETA DE COBRO OJO DE AGUA	25.00	2	2 20822													
T. IZQ. TECAMAC	35.62	3	1 9740	80.3	5.4	4.4	3.4	1.6	1.3	0.6	3	80.3	5.4	14.3	0.127	0.519
T. IZQ. TECAMAC	35.62	3	2 10525	80.3	3.9	3.9	2.9	1.4	3.1	0.5	4	80.3	3.9	15.8	0.107	0.519
LIM. EDOS. TERM. MEX. PPIA. HGO.	49.25	0	0													
X. C. OTUMBA - TIZAYUCA	53.45	1	1 11599	70.4	10.4	7.3	2.1	4.1	1.9	1.9	1.9	70.4	10.4	19.2	0.086	0.501
X. C. OTUMBA - TIZAYUCA	53.45	1	2 11644	73.6	9.5	4.8	2.3	4	2.1	1.8	1.9	73.6	9.5	16.9	0.085	0.501
T. C. MEXICO - PACHUCA (LIBRE)	60.50	1	1 12382	79.4	3.6	5.1	2.5	4.6	1.2	1.2	2.4	79.4	3.6	17	0.081	0.503
T. C. MEXICO - PACHUCA (LIBRE)	60.50	1	2 12214	78	5.1	5.1	2.5	4.5	1.2	1.2	2.4	78	5.1	16.9	0.087	0.503

33 CARR : OTUMBA - TIZAYUCA

CLAVE: 00012

RUTA : EM-HGO

AÑO : 2007

L U G A R	E S T A C I O N			C L A S I F I C A C I O N V E H I C U L A R E N P O R C I E N T O .												
	KM	TE	SC TDPA	A	B	C2	C3	T3S2	T3S3	T3S2R4	OTROS	A	B	C	K'	D
OTUMBA	0.00	3	0 4322	92.1	4.6	0	3.3	0	0	0	0	92.1	4.6	3.3	0.076	0.506
X. C. VENTA DE CARPIO - TULANCINGO	6.00	3	0 3081	84.3	6.5	4.1	2.4	0.8	0.2	0	1.7	84.3	6.5	9.2	0.082	0.501
TEMASCALAPA	26.50	3	0 2914	78.6	6.2	5.9	4.6	2.4	0.7	0	1.6	78.6	6.2	15.2	0.103	0.516
LIM. EDOS. TERM. MEX. PPIA. HGO.	29.00	0	0													
TIZAYUCA	37.10	1	1 3361	81.7	6.1	1.9	1.4	4	1.1	1.4	2.4	81.7	6.1	12.2	0.091	0.503
TIZAYUCA	37.10	1	2 3407	80.6	4.6	3	1.3	4.9	1	1.8	2.8	80.6	4.6	14.8	0.111	0.503

34 CARR : SANTO DOMINGO - T. C. (MEXICO - QUERETARO (CUOTA))

CLAVE: 00433

RUTA : EM-011-HGO

AÑO : 2007

L U G A R	E S T A C I O N			C L A S I F I C A C I O N V E H I C U L A R E N P O R C I E N T O .												
	KM	TE	SC TDPA	A	B	C2	C3	T3S2	T3S3	T3S2R4	OTROS	A	B	C	K'	D
T. C. TOLUCA - PALMILLAS	0.00	3	0 2766	80.9	5	5.4	3.9	1.4	1.2	0.4	1.8	80.9	5	14.1	0.078	0.5
X. C. LOS REYES - IXTLAHUACA	6.11	3	0 3011	80.2	5.9	5.5	3.9	1.3	1.1	0.3	1.8	80.2	5.9	13.9	0.073	0.503
X. C. VILLA DEL CARBON - ATLACOMULCO	23.94	3	0 3236	79.4	7.3	5.4	3.7	1.2	1.1	0.3	1.6	79.4	7.3	13.3	0.083	0.501
T. DER. CHAPA DE MOTA	42.70	1	0 6256	82.4	3.7	4.3	2.4	2.8	2.5	0	1.9	82.4	3.7	13.9	0.073	0.506
LIM. EDOS. TERM. MEX. PPIA. HGO.	63.34	0	0													
T. C. MEXICO - QUERETARO (CUOTA)	65.84	1	0 5349	76.1	10.6	4.5	1.4	2.4	1.3	2.1	1.6	76.1	10.6	13.3	0.09	0.503

HIDALGO

35 CARR : TAMAZUNCHALE - SAN FELIPE ORIZATLAN

CLAVE: 00609

RUTA : MEX-102

AÑO : 2007

L U G A R	E S T A C I O N				C L A S I F I C A C I O N V E H I C U L A R E N P O R C I E N T O .												
	KM	TE	SC	TDPA	A	B	C2	C3	T3S2	T3S3	T3S2R4	OTROS	A	B	C	K'	D
T. C. PORTEZUELO - CD. VALLES	0.00	3	0	6797	65	16.8	1.2	2.4	5.5	2	4.6	2.5	65	16.8	18.2	0.073	0.513
LIM. EDOS. TERM. S.L.P. PPIA. HGO.	20.00	0	0														
SAN FELIPE ORIZATLAN	27.10	1	0	2582	87.2	4.1	1.3	0.2	3.7	0.7	1.3	1.5	87.2	4.1	8.7	0.087	0.524

36 CARR : VENTA DE CARPIO - T. C. (PACHUCA - TUXPAM)

CLAVE: 00455

RUTA : MEX-132

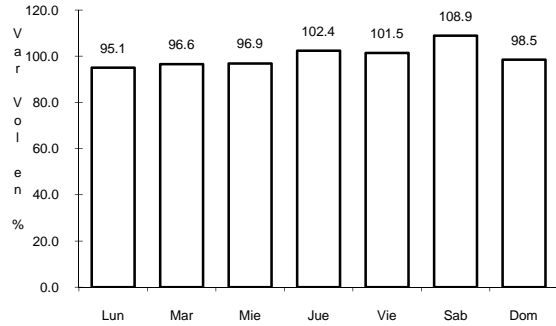
AÑO : 2007

L U G A R	E S T A C I O N				C L A S I F I C A C I O N V E H I C U L A R E N P O R C I E N T O .												
	KM	TE	SC	TDPA	A	B	C2	C3	T3S2	T3S3	T3S2R4	OTROS	A	B	C	K'	D
T. C. MEXICO - PACHUCA (LIBRE)	0.00	0	0														
T. DER. TEXCOCO	6.42	3	0	17343	78	5	6.4	4.4	2	1.5	0	2.7	78	5	17	0.099	0.506
TEPEXPAN	7.57	3	0	9534	84.3	2.8	3.4	2.5	2.3	1.9	0.2	2.6	84.3	2.8	12.9	0.109	0.528
ACOLMAN	12.42	1	0	7722	89.8	2.9	1.8	1.3	1.1	1.2	0.5	1.4	89.8	2.9	7.3	0.098	0.526
TEOTIHUACAN	20.70	3	0	6103	96.4	2.4	0	0.8	0.1	0.1	0.1	0.1	96.4	2.4	1.2	0.077	0.506
T. DER. OTUMBA	31.79	1	0	6824	84	4.2	2.7	0.5	4.3	0.9	1.5	1.9	84	4.2	11.8	0.062	0.507
T. DER. OTUMBA	31.79	3	0	6410	87.8	3.9	2.4	1.8	1.9	0.7	0.4	1.1	87.8	3.9	8.3	0.069	0.524
X. C. TIZAYUCA - OTUMBA	37.85	1	1	5067	63.7	5	0.9	4.6	9.9	4.8	6.4	4.7	63.7	5	31.3	0.062	0.508
X. C. TIZAYUCA - OTUMBA	37.85	1	2	5226	61.1	5.3	1.2	4.9	11.5	4.9	7.7	3.4	61.1	5.3	33.6	0.079	0.508
X. C. TIZAYUCA - OTUMBA	37.85	3	1	5358	72.3	5	1.2	3.7	7.6	2.9	4	3.3	72.3	5	22.7	0.079	0.514
X. C. TIZAYUCA - OTUMBA	37.85	3	2	5655	73.4	4.7	0.8	3.2	7.2	3.1	3.9	3.7	73.4	4.7	21.9	0.075	0.514
LIM. EDOS. TERM. MEX. PPIA. HGO.	49.85	0	0														
X. C. PACHUCA - CD. SAHAGUN	54.00	3	1	6081	87.7	4.3	3.4	0.8	1.3	1.2	0.6	0.7	87.7	4.3	8	0.088	0.503
X. C. PACHUCA - CD. SAHAGUN	54.00	3	2	6013	86.7	3.5	3.8	1.3	1.5	1.6	0.9	0.7	86.7	3.5	9.8	0.077	0.503
X. C. CALPULALPAN - EL OCOTE	64.17	1	1	6054	80	3.5	1.9	4.7	3.9	2.2	1.9	1.9	80	3.5	16.5	0.113	0.538
X. C. CALPULALPAN - EL OCOTE	64.17	1	2	6179	79	3.5	4.1	4.1	4.2	2.6	1.3	1.2	79	3.5	17.5	0.1	0.538
X. C. CALPULALPAN - EL OCOTE	64.17	3	1	6248	78.7	4	3.1	3.7	5	2.2	1.5	1.8	78.7	4	17.3	0.115	0.503
X. C. CALPULALPAN - EL OCOTE	64.17	3	2	6325	79.6	3.9	4.5	3.5	4.1	2.2	1	1.2	79.6	3.9	16.5	0.104	0.503
T. C. PACHUCA - TUXPAM	84.08	1	1	6865	80.1	4	3.2	3.4	4.3	2.2	1.5	1.3	80.1	4	15.9	0.113	0.507
T. C. PACHUCA - TUXPAM	84.08	1	2	6677	79	4	3.2	2.9	4.5	2.5	2	1.9	79	4	17	0.101	0.507

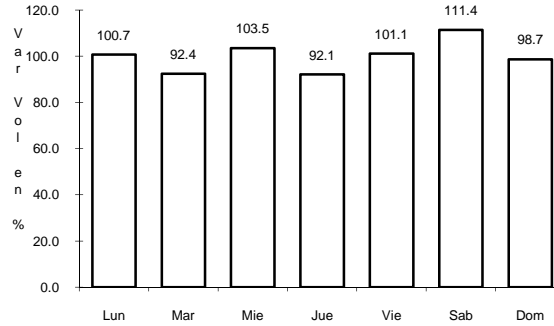
8 CARR: ENT. COLONIA - PORTEZUELO

CLAVE: 13257

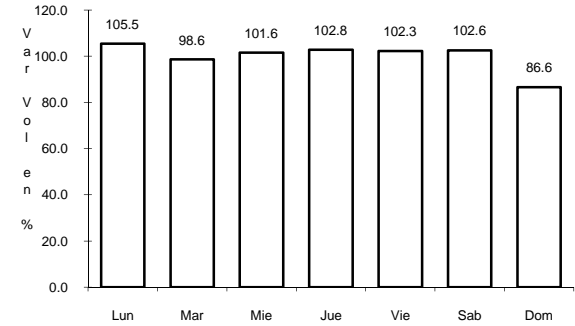
RUTA: MEX-085



Km: 0.00 Tipo: 3 Sent: 1



Km: 0.00 Tipo: 3 Sent: 2

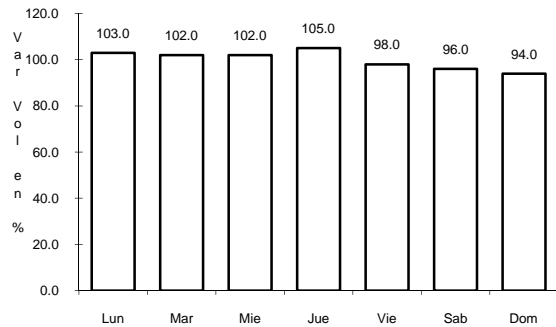


Km: 75.20 Tipo: 3 Sent: 0

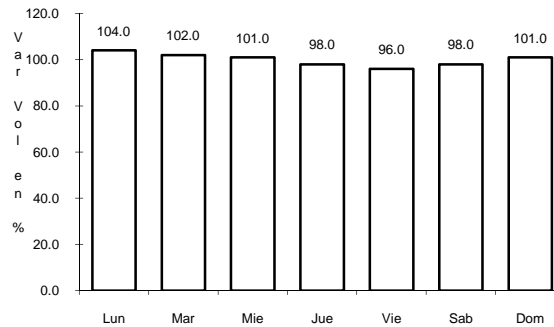
9 CARR: EL SAUCILLO - AMEALCO

CLAVE: 13103

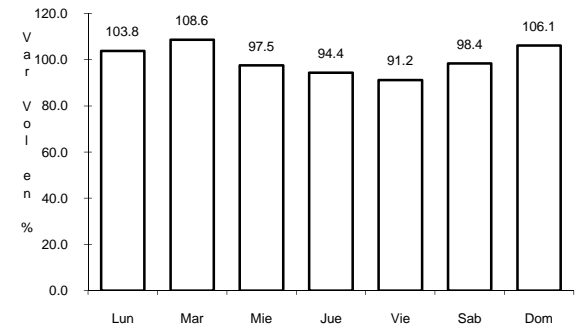
RUTA: HGO-103



Km: 0.00 Tipo: 3 Sent: 0



Km: 11.00 Tipo: 3 Sent: 0

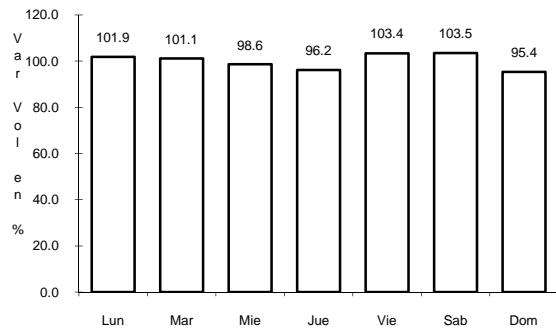


Km: 21.40 Tipo: 1 Sent: 0

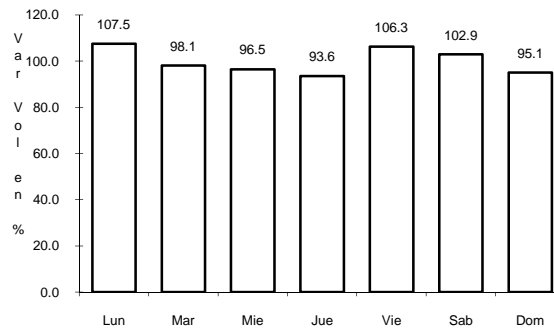
10 CARR: ENT. EMILIANO ZAPATA - CD. SAHAGUN

CLAVE: 13255

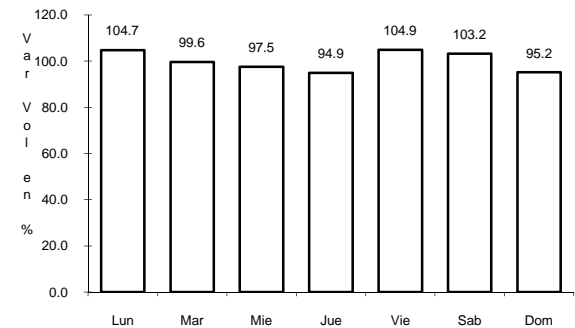
RUTA: HGO



Km: 2.70 Tipo: 1 Sent: 1



Km: 2.70 Tipo: 1 Sent: 2

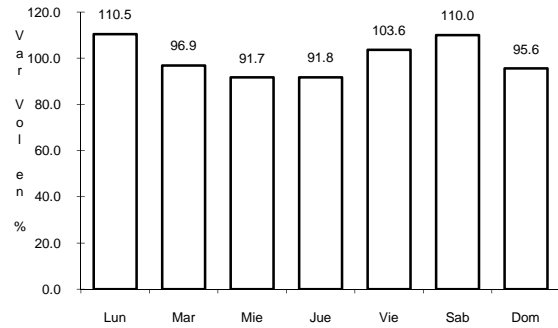


Km: 17.98 Tipo: 1 Sent: 0

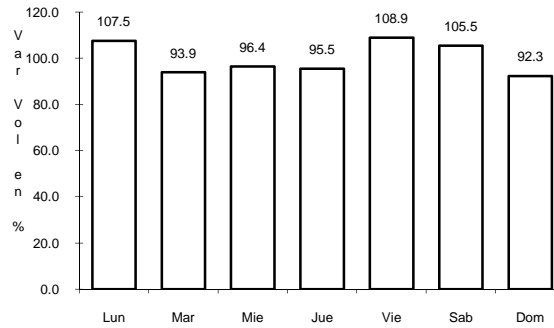
11 CARR: ENT. TEPEJI DEL RIO - TLAHUELILPAN

CLAVE: 13017

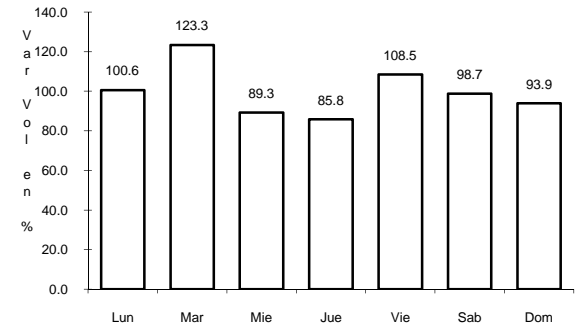
RUTA: HGO-017



Km: 3.00 Tipo: 3 Sent: 0



Km: 32.00 Tipo: 1 Sent: 1

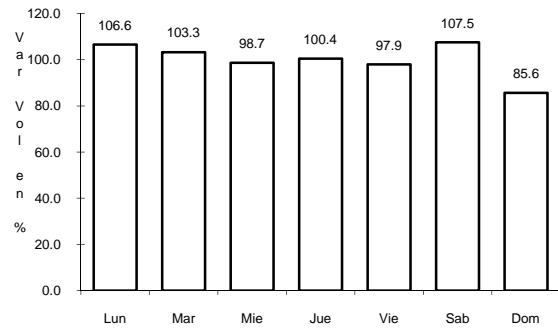


Km: 32.00 Tipo: 1 Sent: 2

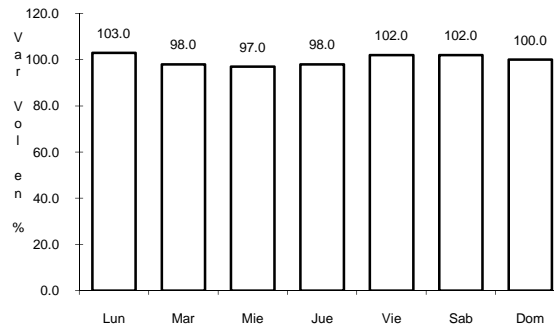
12 CARR: TEPEJI DEL RIO - T.C. (MEXICO - QUERÉTARO)

CLAVE: 13104

RUTA: HGO



Km: 0.00 Tipo: 3 Sent: 0

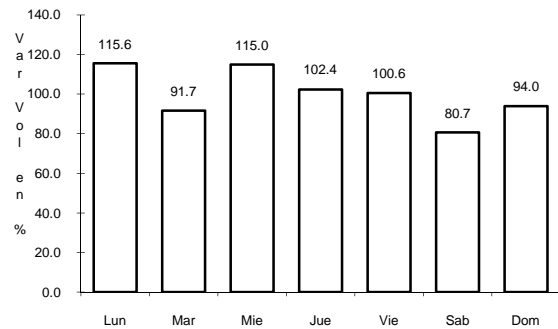


Km: 12.40 Tipo: 1 Sent: 0

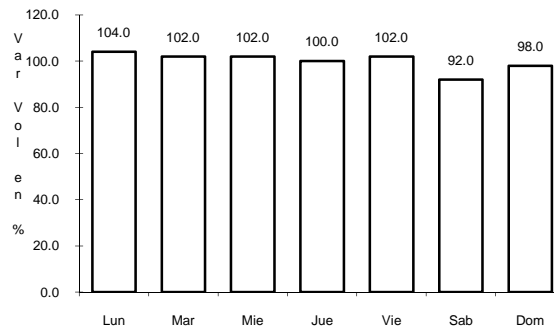
13 CARR: FRANCISCO I. MADERO - TULA DE ALLENDE

CLAVE: 13043

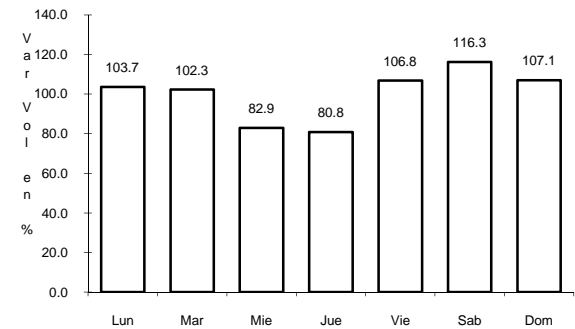
RUTA: HGO



Km: 0.00 Tipo: 3 Sent: 0



Km: 38.20 Tipo: 1 Sent: 0

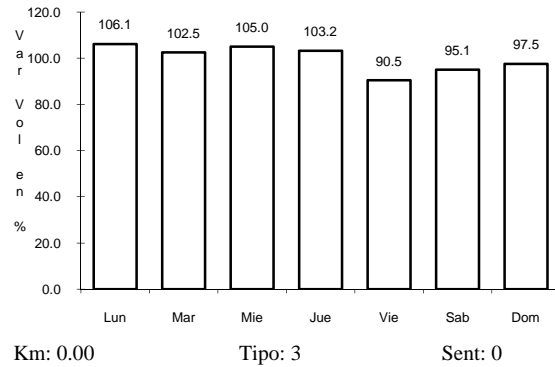


Km: 52.70 Tipo: 1 Sent: 0

14 CARR: HUICHAPAN - TECOZAUTLA

CLAVE: 13030

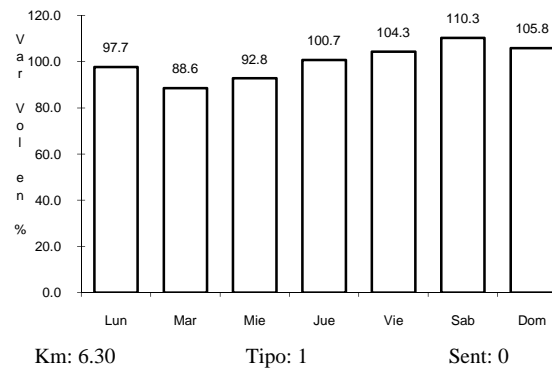
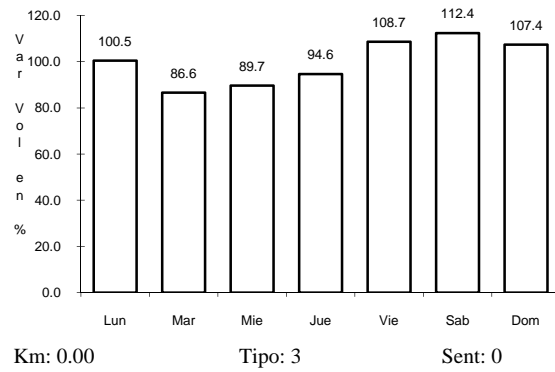
RUTA: HGO-030



15 CARR: LIBRAMIENTO DE ATOTONILCO EL GRANDE

CLAVE: 13238

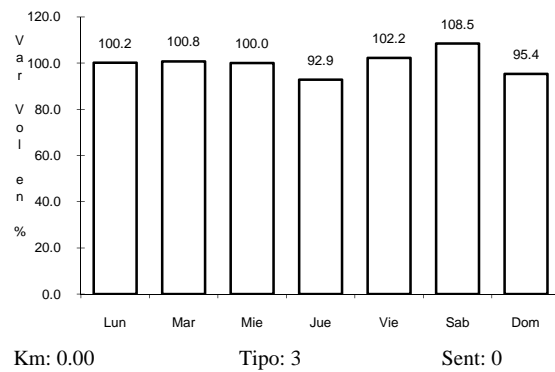
RUTA: HGO



16 CARR: LIBRAMIENTO DE TULANCINGO (CUOTA)

CLAVE: 00026

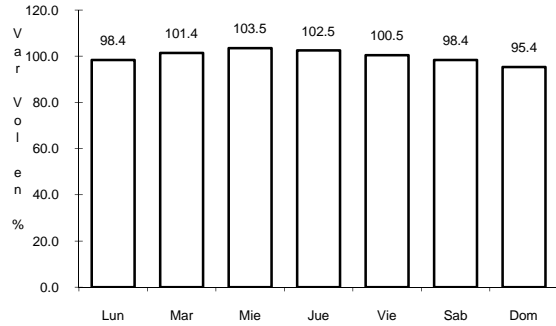
RUTA: MEX-132D



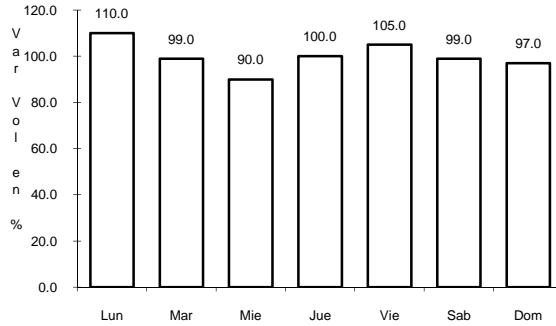
23 CARR: APIZACO - TEJOCOTAL

CLAVE: 00430

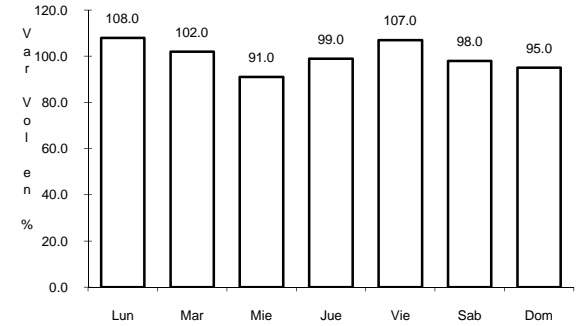
RUTA: MEX-119



Km: 0.00 Tipo: 3 Sent: 0



Km: 52.20 Tipo: 1 Sent: 0

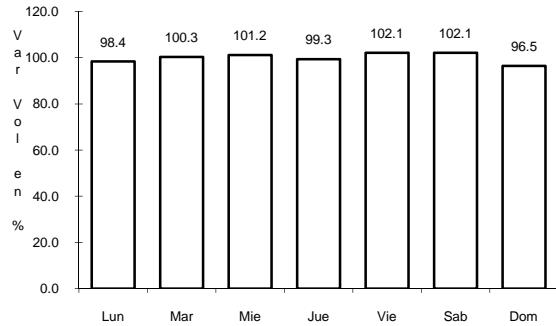


Km: 113.15 Tipo: 1 Sent: 0

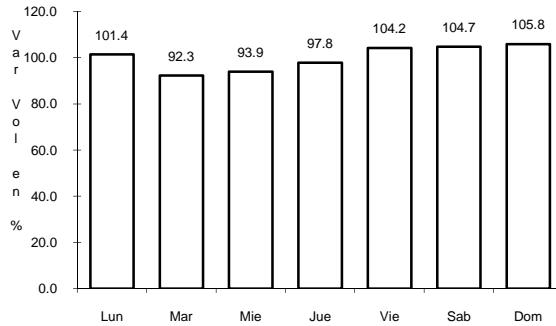
24 CARR: CALPULALPAN - EL OCOTE

CLAVE: 00054

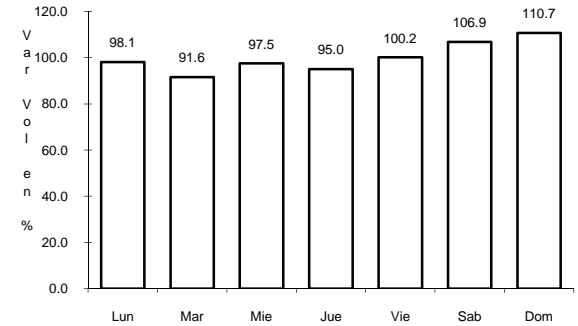
RUTA: MEX-HGO



Km: 0.00 Tipo: 3 Sent: 0



Km: 34.92 Tipo: 3 Sent: 0

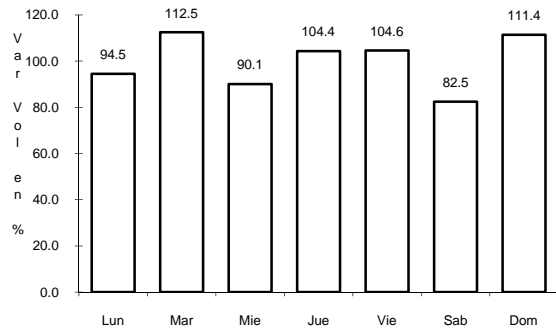


Km: 70.44 Tipo: 1 Sent: 0

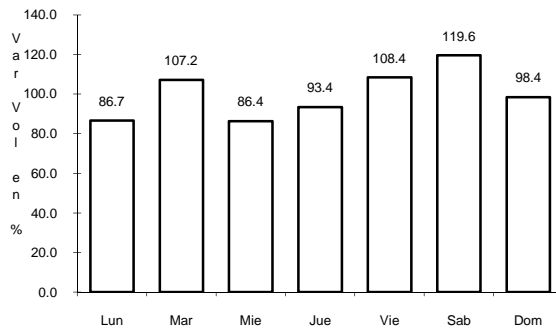
25 CARR: ENT. JOROBAS - TULA

CLAVE: 00159

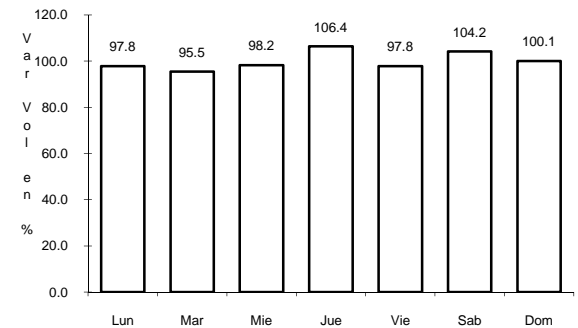
RUTA: MEX-087



Km: 0.00 Tipo: 3 Sent: 0



Km: 21.50 Tipo: 1 Sent: 0

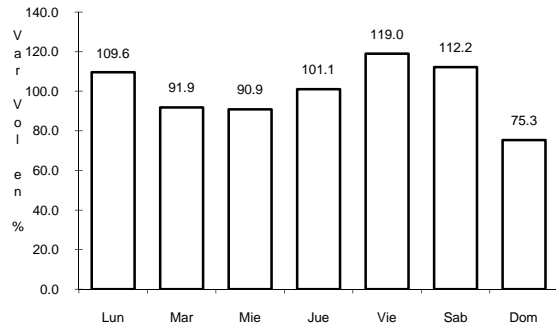


Km: 37.70 Tipo: 1 Sent: 0

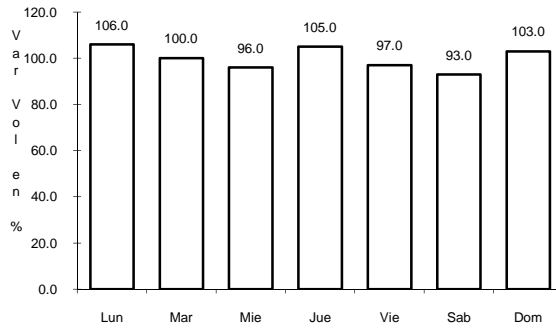
29 CARR: LOS REYES - EL TEPHE

CLAVE: 00021

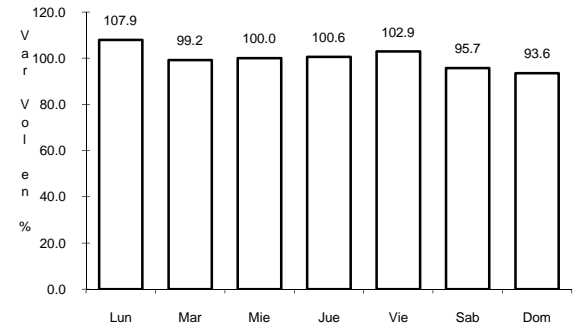
RUTA: EM-HGO



Km: 1.35 Tipo: 3 Sent: 0



Km: 42.00 Tipo: 1 Sent: 0

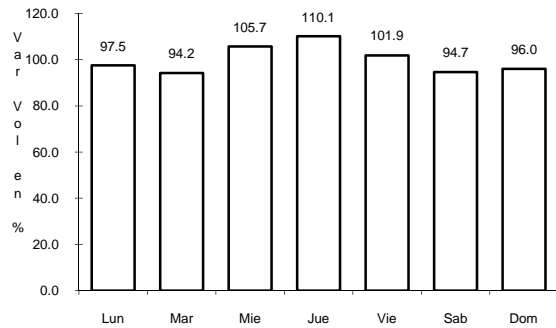


Km: 97.00 Tipo: 1 Sent: 0

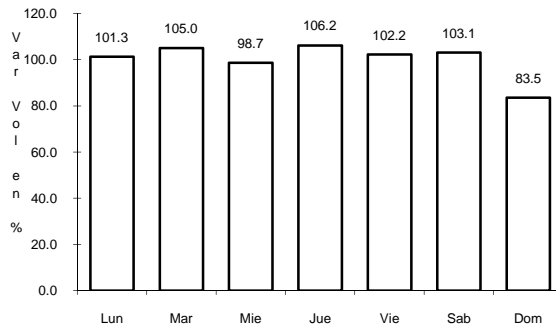
30 CARR: MEXICO - PACHUCA (LIBRE)

CLAVE: 00431

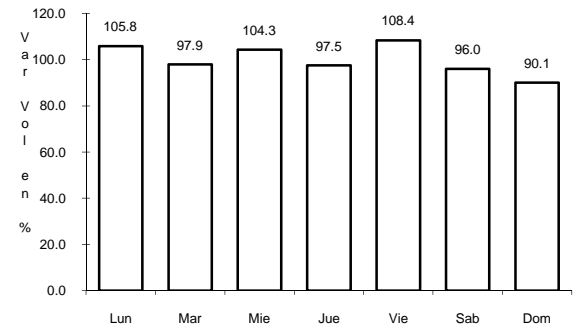
RUTA: MEX-085



Km: 26.93 Tipo: 1 Sent: 0



Km: 86.50 Tipo: 1 Sent: 1

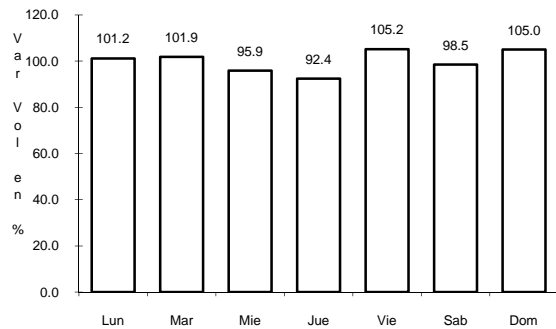


Km: 86.50 Tipo: 1 Sent: 2

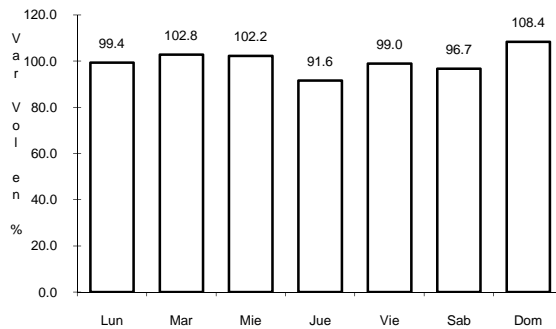
31 CARR: MEXICO - QUERETARO (CUOTA)

CLAVE: 00411

RUTA: MEX-057D



Km: 56.18 Tipo: 1 Sent: 1

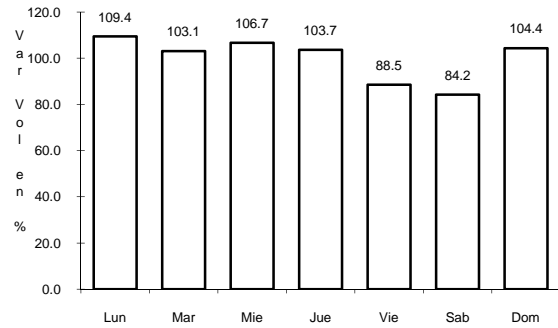


Km: 56.18 Tipo: 1 Sent: 2

32 CARR: MEXICO - TIZAYUCA (CUOTA)

CLAVE: 00432

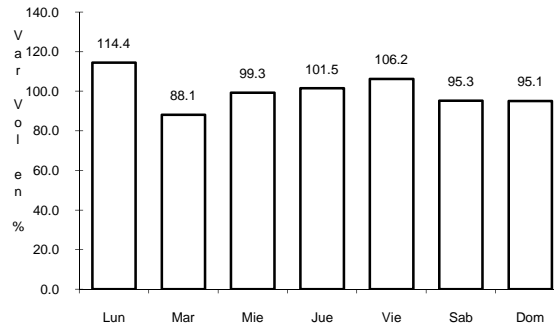
RUTA: MEX-085D



Km: 23.28

Tipo: 3

Sent: 1



Km: 23.28

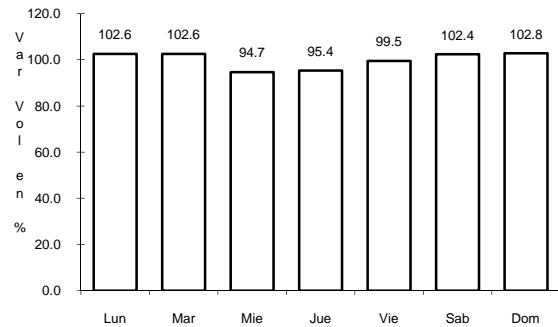
Tipo: 3

Sent: 2

33 CARR: OTUMBA - TIZAYUCA

CLAVE: 00012

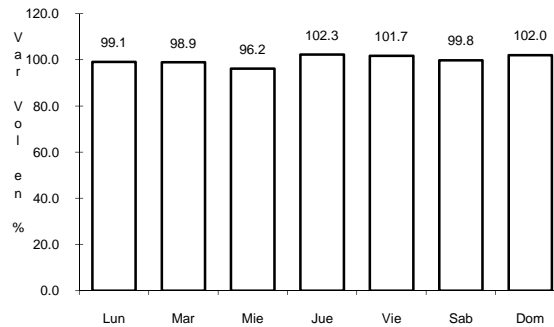
RUTA: EM-HGO



Km: 0.00

Tipo: 3

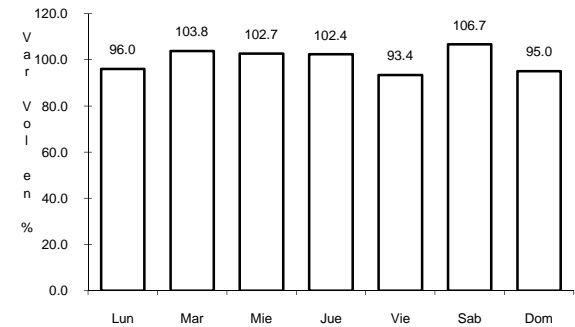
Sent: 0



Km: 37.10

Tipo: 1

Sent: 1



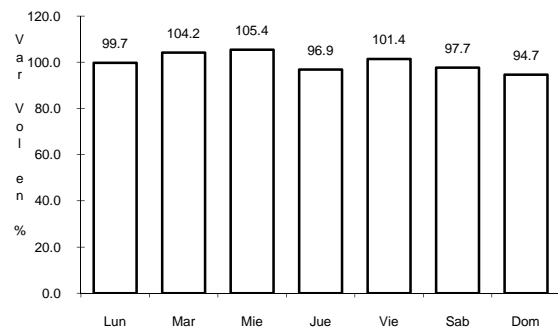
Km: 37.10

Tipo: 1

Sent: 2

34 CARR: SANTO DOMINGO - T. C. (MEXICO - QUERETARO (CUOTA)) CLAVE: 00433

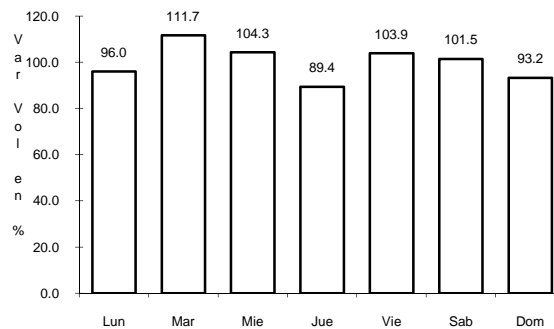
RUTA: EM-011-HGO



Km: 0.00

Tipo: 3

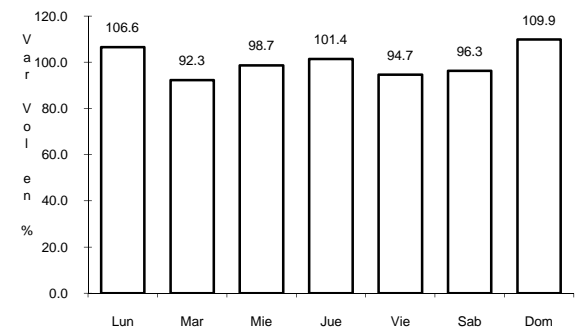
Sent: 0



Km: 23.94

Tipo: 3

Sent: 0



Km: 65.84

Tipo: 1

Sent: 0

